



DEPARTMENT OF NATURAL RESOURCES & ENVIRONMENT
STATE OF MICHIGAN

TIMBER SALE PROSPECTUS

Notice is hereby given that bids will be received by the Unit Manager, TRAVERSE CITY MANAGEMENT UNIT, for certain timber on the following described lands:

COMP.16 RPP / T26N, R13W, SEC. 19, NWNW, S1/2NWNENW, N1/2SWNW.
T26N, R13W, SEC. 31, SWSW, W1/2SESW.
BENZIE COUNTY (Appr. \$35,123.86)
SALE ACRES: 29

BLACK & WHITE RED / T23N, R14W, SEC. 04, N1/2SE, S1/2NE.
MANISTEE COUNTY (Appr. \$37,065.00)
SALE ACRES: 70

FAIRWOOD MIX / T27N, R10W, SEC. 26, S1/2SW, NESW.
GRAND TRAVERSE COUNTY (Appr. \$14,314.10)
SALE ACRES: 52.4

GUNN ROAD HARDWOODS / T25N, R14W, SEC. 19, SWSE.
BENZIE COUNTY (Appr. \$3,066.87)
SALE ACRES: 15.6

POUZAR OAK / T25N, R12W, SEC. 18, SESW, SWSE.
T25N, R12W, SEC. 19, NENW, NWNE.
GRAND TRAVERSE COUNTY (Appr. \$18,991.20)
SALE ACRES: 50

SALE DATE AND TIME: 2:00 p.m. on May 27, 2010.

TRAVERSE CITY

BID INSTRUCTIONS (Ver. 06/23/2008):

1. Bid Location, Date, and Time: Bids must be received by the Unit Manager, Traverse City Management Unit, 970 Emerson, Traverse City, MI 49686, no later than 2:00 p.m., on May 27, 2010. For further information concerning this sale, contact the Unit Manager at 231-922-5280.
2. Bidder's Qualifications: Purchaser shall obtain workers compensation insurance to cover claims under Michigan's Worker's Disability Compensation Act of 1969 or similar employee benefit act of any other state applicable to an employee. If all or part of a timber sale was prepared by a private contractor, that contractor and that contractor's company are not permitted to bid on the timber sale contract. Bids will not be accepted from individuals or companies appearing on the DNR/FMFEM No-Bid List. This list contains the names of purchasers who previously failed to execute a contract within 21-days or who have a history of poor performance.
3. Preparation of Sealed Bids: Bids shall be manually signed in ink; bid prices must be entered for each species and product in the Bid Price column for all material subject to bidding; and all fill-in blanks must be completed. If erasures or other changes appear on the forms, each erasure or change must be initialed by the person signing the bid.
4. Submission of Sealed Bids: Bid forms may be obtained from the Unit Manager. All bids must be submitted on the bid form and in an envelope clearly identified as described in this section. NOTE: Only one bid form per bid envelope. Sealed bids must be submitted to the Unit office designated in the prospectus and must be submitted at or prior to the time established in the prospectus. The envelope should show on the outside (a) that it is a "Bid for Timber," and (b) the sale name or number, and (c) the date and time of bid opening as shown in the prospectus. Bids received after the time specified in the sale prospectus are late bids and will be rejected.
5. Public Opening of Sealed Bids: If conditions permit, the sealed bids will be publicly opened and posted at the time and place set in the prospectus.
6. Award of Contract: Award of the contract will be made to the Bidder whose bid, conforming to the prospectus, is most advantageous to the State of Michigan on the basis of total value at rates bid for the estimated quantities. The State reserves the right to reject any bid or waive any minor irregularity in bids received. A written award mailed (or otherwise furnished) to the successful Bidder shall be deemed to result in a binding contract without further action by either party.
7. Down Payment: The Bidder to whom award is made must make a down payment within 21 days of the sale award. The amount of the down payment will be calculated as shown in the Bond and Payment Schedule of this prospectus. Only cash may be used to meet this requirement.
8. Performance Security: As guarantee of faithful performance, a cash bond, certificate of deposit, surety bond or irrevocable letter of credit (LOC) is required within 21 days of the sale award. The amount of the performance security is shown in the Bond and Payment Schedule of this prospectus. If an LOC or surety is used, the coverage must extend for at least 6 months beyond the contract expiration.
9. Timber Sale Contract: Additional conditions and requirements common to all timber sales are listed on the timber sale contract (R4031) and are available on line at www.michigan.gov/dnr. Contact the Unit Manager for additional information or a sample contract. Within 21 days of the date of the award letter, the bidder must sign the contract and provide the required down payment, performance security, and verification of worker's disability compensation. The down payment and performance security shall be in accordance with the provisions of the timber sale contract, in the sums stated in this prospectus. If these actions are not taken, then the Bidder, the Bidder's corporation, and the corporation's principals may not be permitted to bid on State timber sales for a period of 1 year. In addition, the Bidder certifies that if awarded this contract, the Bidder will complete the timber sale contract in accordance with its terms and any modifications thereof including requirements to purchase, cut, and remove the included timber by the termination date.

10. Disclaimer of Estimates and Bidder's Warranty of Inspection: Before submitting this bid, the Bidder is advised and cautioned to inspect the sale area, review the requirements of the sale contract, and take other steps as may be reasonably necessary to ascertain the location, estimated volumes, construction estimates, and operating costs of the proposed sale. Failure to do so will not relieve the Bidder from responsibility for completing the contract.

The Bidder warrants that this bid is submitted solely on the basis of the Bidder's examination and inspection of the quality and quantity of the timber offered for sale and the Bidder's opinion of the value thereof and the costs of recovery. No reliance should be placed on the State of Michigan's estimates of timber quality, quantity or costs of recovery. Bidder further acknowledges that the State of Michigan: (i) expressly disclaims any warranty of fitness of timber for any purpose; (ii) offers this timber as is without any warranty of quality (merchantability) or quantity and (iii) expressly disclaims any warranty as to the quantity or quality of timber sold.

11. Certification and Chain-of-Custody: Unless otherwise indicated in the contract under section 7 - Other Conditions of the Sale Specific Conditions & Requirements, the area encompassed by this timber sale is certified to the standards of the Forest Stewardship Council (FSC) - Certificate #SCS-FM/COC-090N and the Sustainable Forestry Initiative (SFI) - Certificate # NSF-SFIS-5Y031-S1. Forest products from this sale may be delivered to the mill as "FSC and / or SFI certified" as long as the contractor hauling the forest products is chain-of-custody (COC) certified or covered under a COC certificate from the destination mill. The purchaser is responsible for maintaining COC after leaving the sale area.

REBECCA A. HUMPHRIES
Director

COMP.16 RPP (066-09-01)

A timber sale contract for this LUMP SUM SEALED timber sale will be awarded the responsible bidder offering the highest sealed bid price. Bids must be at or above the following appraised price for each species:

| <u>SPECIES</u> | <u>ESTIMATED VOLUME*</u> | <u>APPRAISED PRICE</u> |
|----------------|--------------------------|------------------------|
| SAWLOGS | | |
| RED PINE | 76.10 MBF | \$ 113.00/MBF |
| PULPWOOD | | |
| RED PINE | 643.80 CORDS | \$ 41.20/CORD |

*The volumes are statistically estimated within plus (+) or minus (-) 15.04 percent. These estimated volumes are final and not subject to adjustment. Prospective bidders are urged to examine this timber and to make their own estimates of quantity and quality.

BOND AND PAYMENT SCHEDULE:

1. A bond in the amount of \$1,756.00, to insure faithful performance of the conditions of the contract, will be deposited by the successful bidder within 21 days of the sale award.
2. Cutting in any sale or unit without the required advance payment would be considered a trespass.
3. Total payment may be paid in advance or according to the following schedule:
 - (a) Ten percent (10%) of the sale value must be paid within 21 days of the sale award.
 - (b) The 10% down payment will be credited towards the first unit cut.
 - (c) Payment for each of the following units must be made before cutting begins in that unit:

| PAYMENT UNIT NUMBER | PERCENT OF TOTAL SALE VALUE |
|---------------------|-----------------------------|
| 1 | 52% |
| 2 | 48% |
4. If no cutting takes place, the 10% down payment will not be refunded.
5. Operations on the contract issued will terminate on December 31, 2012.



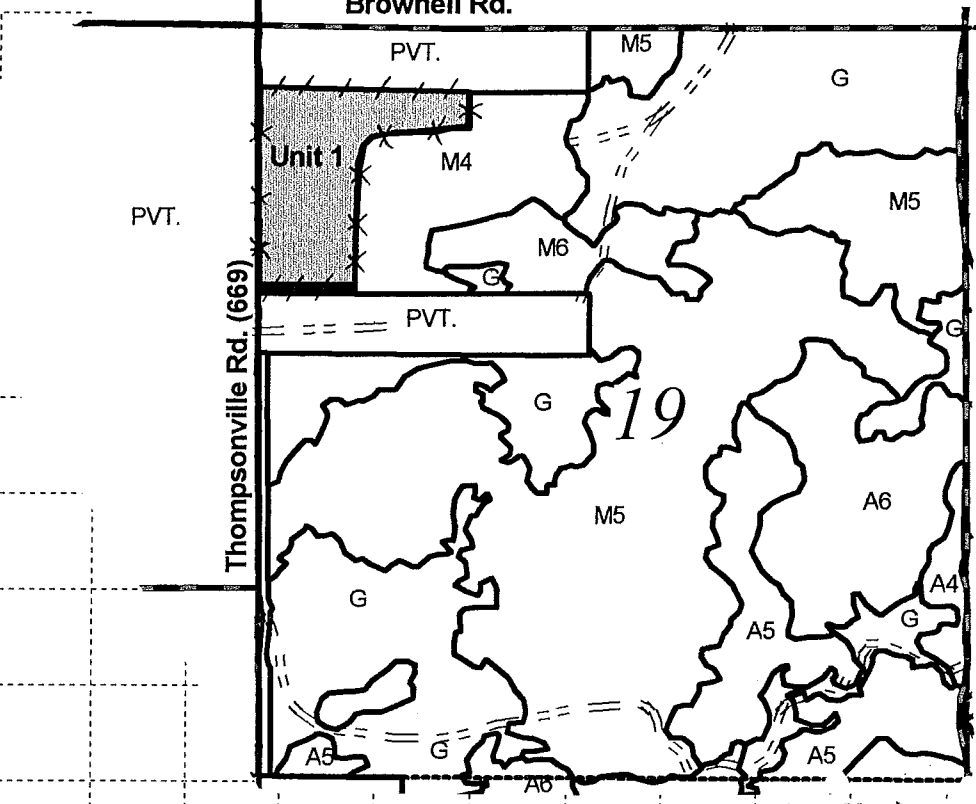
TIMBER SALE MAP

This information provided under authority of Part 525, Act 451 of 1994, as amended.

| | | |
|---------------------------|-------------------|------------------------|
| Sale No. 61-066 | Year 09 | Sale Type 01 |
|---------------------------|-------------------|------------------------|

| | | | | |
|-----------------------------------------------------------------------------------|---------------------|----------------------------------------------|---------------------------------------------------------------------------------------|---------------------------|
| State Forest and Forest Management Unit: Pere Marquette / Traverse City | | Mapped and Cruised By: Craig Allen | | Date: 8/28/2009 |
| Township 26N | Range 13W | Section(s) 19, 31 | Subdivision Sec. 19- NWNW, S1/2NWNENW, N1/2SWNW. Sec. 31-SWSW, W1/2SESW | |
| | | | | Scale: 1 inch = 1/4 mile |

| Cover Type | | | | Density | |
|-------------------|--------------------|----------------------|------------------|---------------------------|-----------------------|
| A = Aspen | H = Hemlock | P = Lowland Poplar | V = Bog or Marsh | 1 = Non Stocked | 7 = Saw Timber Poor |
| B = Paper Birch | J = Jack Pine | Q = Mixed Swamp Cnfr | W = White Pine | 2 = Seedling Sapling Poor | 8 = Saw Timber Medium |
| C = Cedar | L = Lowland Brush | R = Red Pine | X = Non Stocked | 3 = Seedling Sapling Well | 9 = Saw Timber Well |
| E = Swamp Hdwoods | M = Mpl, Bch, Brch | S = Black Spruce | Z = Water | 4 = Pole Timber Poor | |
| F = Spruce Fir | N = Marsh | T = Tamarack | | 5 = Pole Timber Medium | |
| G = Grass | O = Oak | U = Upland Brush | | 6 = Pole Timber Well | |

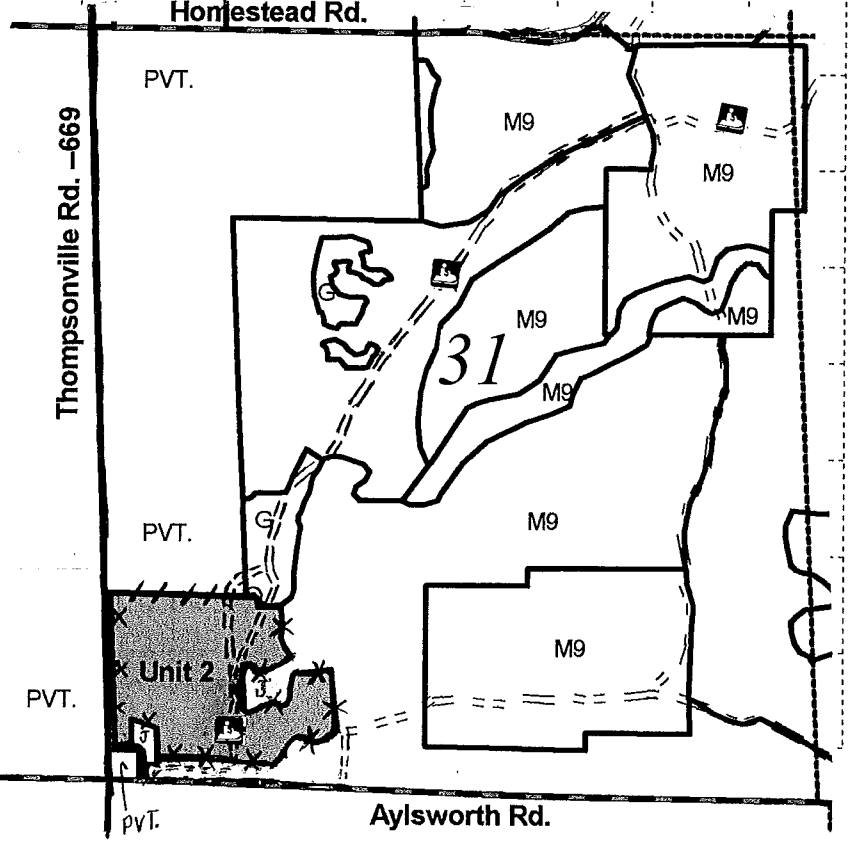


“Comp 16 RPP”

Unit 1 = 15 acres
Unit 2 = 14 acres
Sale total = 29 acres

Legend

- Red Sale Boundary
- Blue Sale Boundary
- Paved road
- Improved gravel road
- Forest 2-track road
- Snowmobile Trail



Sale Specific Conditions & Requirements

Sale Name: Comp.16 Rpp Sale Number: 61-066-09-01

1 - Sale Area

1.2 - Boundaries

1.2.1 - Painted boundaries (12/08)

The sale boundary is marked and identified by red and blue paint. Exterior sale boundary lines against private property are marked with blue paint. Exterior sale boundary lines against state lands are marked with red paint.

2 - Timber Specifications

2.1 - Included Timber

2.1.4 - Species designation unit(s) (12/08)

Within Payment Unit(s) 1 and 2 , all red pine trees are designated for cutting regardless of merchantability. Except, do not cut or damage any red pine trees marked with green paint (reserve trees).

2.2 - Utilization

2.2.2 - Chipping required (9/09)

This sale area must be chip harvested to facilitate subsequent planting operations. The purchaser has the option to produce sawlogs or pulpwood bolts, but the remaining portion of the trees must be chipped and hauled.

2.2.3 - Stump heights (4/07)

Stump heights within the Sale Area shall not exceed 6 inches for all trees. This is in order to facilitate planting operations.

2.4 - Special Protection

2.4.2 - Reserve trees (1/09)

The Purchaser shall not cut live or dead reserve trees within cutting units or clearings. Reserve trees are marked with green paint. The Purchaser shall protect reserve trees from damage by the Purchaser's operations. If the Purchaser's operations have cut or damaged reserve trees through carelessness, the Purchaser shall pay \$25 as fixed, agreed and liquidated damages for each reserve tree cut or damaged. Such payment does not constitute ownership of the undesignated timber.

5 - Operations

5.1 - Notification

5.1.1 - Pre-sale conference (12/08)

A pre-sale conference on site between the Purchaser and sale administrator is required prior to beginning any operations to determine landing and road locations.

5.2 - Conduct of Operations

5.2.3 - Operating Restrictions

5.2.3.6 - Bark beetle restriction (12/08)

In the event drought creates a high risk of pine bark beetle infestation, pine is not to be cut during the period March 1 through July 1, unless all portions of trees greater than two inches in diameter are removed from the sale area, reduced to chips, or treated to the satisfaction of the Unit Manager or his/her representative, within fifteen days of being severed from the stump. Pine log decks, pulpwood piles and treetops that are piled for chipping in the fall or winter within a 1/4 mile of susceptible sites must be removed before March 15. Residual slash must not be placed in piles or rows and must be spread over the site for quick drying. The Department of Natural Resources will exercise this specification if the risk of damage warrants.

5.2.41 - Snowmobile trail protection (8/09)

The Platte River snowmobile trail (traveling through unit 2) is shown on the Timber Sale Map. Do not cut or damage posts with orange trail markers or traffic control signs. If the trail is used, it must be maintained and restored to a condition equal to or better than before the sale. The trail may not be used for any timber sale operations from December 1 to March 31. All stumps within 20 feet of the snowmobile trail must be cut at ground level. In addition, any trees cut within 5 feet of the trail must have the stumps removed and be disposed of according to the direction of the DNR sale administrator.

BLACK & WHITE RED (080-09-01)

A timber sale contract for this LUMP SUM SEALED timber sale will be awarded the responsible bidder offering the highest sealed bid price. Bids must be at or above the following appraised price for each species:

| <u>SPECIES</u> | <u>ESTIMATED VOLUME*</u> | <u>APPRAISED PRICE</u> |
|----------------|--------------------------|------------------------|
| PULPWOOD | | |
| RED PINE | 1,059.00 CORDS | \$ 35.00/CORD |

*The volumes are statistically estimated within plus (+) or minus (-) 11.73 percent. These estimated volumes are final and not subject to adjustment. Prospective bidders are urged to examine this timber and to make their own estimates of quantity and quality.

BOND AND PAYMENT SCHEDULE:

1. A bond in the amount of \$1,855.00, to insure faithful performance of the conditions of the contract, will be deposited by the successful bidder within 21 days of the sale award.
2. Cutting in any sale or unit without the required advance payment would be considered a trespass.
3. Total payment may be paid in advance or according to the following schedule:
 - (a) Ten percent (10%) of the sale value must be paid within 21 days of the sale award.
 - (b) The 10% down payment will be credited towards the first unit cut.
 - (c) Payment for each of the following units must be made before cutting begins in that unit:

| <u>PAYMENT UNIT NUMBER</u> | <u>PERCENT OF TOTAL SALE VALUE</u> |
|----------------------------|------------------------------------|
| 1 | 08% |
| 2 | 43% |
| 3 | 31% |
| 4 | 18% |
4. If no cutting takes place, the 10% down payment will not be refunded.
5. Operations on the contract issued will terminate on June 30, 2012.



Michigan Department of Natural Resources-Forest Management Division
TIMBER SALE MAP

This information provided under authority of Part 525, Act 451 of 1994, as amended.

| | | |
|----------|------|-----------|
| Sale No. | Year | Sale Type |
| 80 | 09 | 01 |

| | | | | | |
|---------------------------------------------------------------------------------|---------------------|---------------------------------|--------------------------------------|-------------------------------|--|
| State Forest and Forest Management Unit: Pere Marquette-Traverse City | | Mapped By: Scott Lint | | Date: July 30, 2009 | |
| Township 23N | Range 14W | Section(s) 4 | Subdivision N1/2SE, S1/2NE | Scale: 1:15840 | |

Cover Type

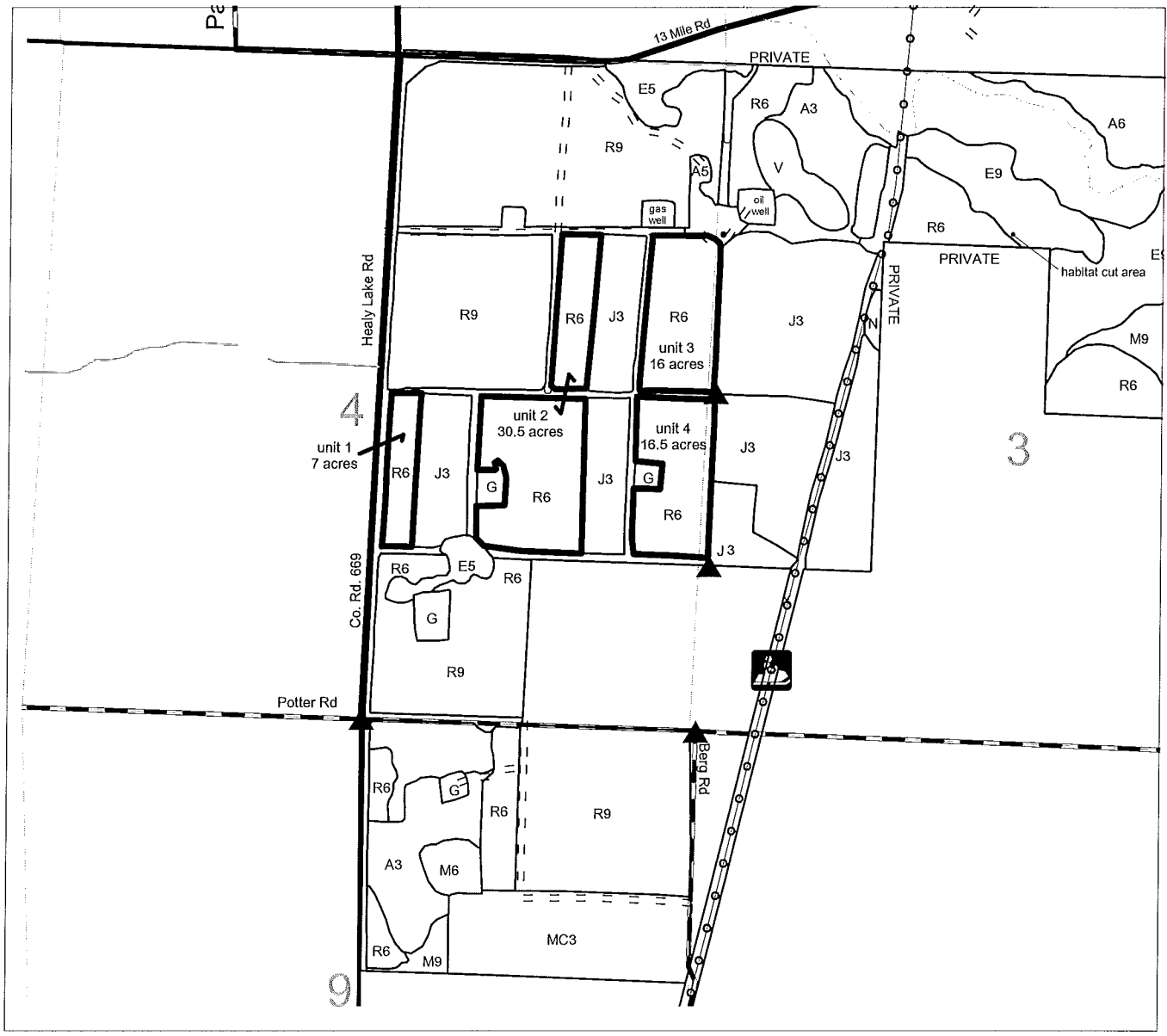
Density

| | | | | | |
|-----------------|------------------|--------------------|----------------|-------------------------|---------------------|
| A=Aspen | H=Hemlock | P=Lowland Poplar | V=Bog or Marsh | 1=Non Stocked | 7=Saw Timber Poor |
| B=Paper Birch | J=Jack Pine | Q=Mixed Swamp Cnfr | W=White Pine | 2=Seedling Sapling Poor | 8=Saw Timber Medium |
| C=Cedar | L=Lowland Brush | R=Red Pine | X=Non Stocked | 3=Seedling Sapling Well | 9=Saw Timber Well |
| E=Swamp Hdwoods | M=Mpl, Bch, Brch | S=Black Spruce | Z=Water | 4=Pole Timber Poor | |
| F=Spruce Fir | N=Marsh | T=Tamarack | | 5=Pole Timber Medium | |
| G=Grass | O=Oak | U=Upland Brush | | 6=Pole Timber Well | |

= sale area
 = survey corner/witness trees
 = snowmobile trail

Black & White Red

sale area: 70 acres



Sale Specific Conditions & Requirements

Sale Name: Black & White Red Sale Number: 61-080-09-01

1 - Sale Area

1.2 - Boundaries

1.2.1 - Painted boundaries (12/08)

The sale boundary is marked and identified by red slash marks on the corners of each unit. The units are separated by blocks of young jack pine

2 - Timber Specifications

2.1 - Included Timber

2.1.3 - Cut tree marked unit(s) (12/08)

Within Payment Unit(s), all trees are designated for cutting when marked with orange paint above and below stump height, regardless of merchantability.

5 - Operations

5.2 - Conduct of Operations

5.2.1 - Slash

5.2.1.8 - Slash height (12/08)

No slash may exceed 24 inches in height.

5.2.3 - Operating Restrictions

5.2.3.6 - Bark beetle restriction (12/08)

In the event drought creates a high risk of pine bark beetle infestation, pine is not to be cut during the period March 1 through July 1, unless all portions of trees greater than two inches in diameter are removed from the sale area, reduced to chips, or treated to the satisfaction of the Unit Manager or his/her representative, within fifteen days of being severed from the stump. Pine log decks, pulpwood piles and treetops that are piled for chipping in the fall or winter within a 1/4 mile of susceptible sites must be removed before March 15. Residual slash must not be placed in piles or rows and must be spread over the site for quick drying. The Department of Natural Resources will exercise this specification if the risk of damage warrants.

FAIRWOOD MIX (096-09-01)

A timber sale contract for this LUMP SUM SEALED timber sale will be awarded the responsible bidder offering the highest sealed bid price. Bids must be at or above the following appraised price for each species:

| <u>SPECIES</u> | <u>ESTIMATED VOLUME*</u> | <u>APPRAISED PRICE</u> |
|----------------|--------------------------|------------------------|
| SAWLOGS | | |
| RED OAK | 14.90 MBF | \$ 175.00/MBF |
| B.T. ASPEN | 53.30 MBF | \$ 50.00/MBF |
| PULPWOOD | | |
| RED MAPLE | 156.00 CORDS | \$ 12.50/CORD |
| B.T. ASPEN | 274.00 CORDS | \$ 13.00/CORD |
| MIXED OAK | 210.00 CORDS | \$ 11.00/CORD |

In addition, the successful bidder agrees to purchase the following species at the indicated appraised price:

| <u>SPECIES</u> | <u>ESTIMATED VOLUME*</u> | <u>APPRAISED PRICE</u> |
|----------------|--------------------------|------------------------|
| SAWLOGS | | |
| RED MAPLE | 3.70 MBF | \$ 78.00/MBF |
| WHITE OAK | 6.00 MBF | \$ 58.00/MBF |
| MIXED OAK | 5.00 MBF | \$ 101.00/MBF |
| PULPWOOD | | |
| WHITE PINE | 3.00 CORDS | \$ 8.00/CORD |
| JACK PINE | 6.00 CORDS | \$ 9.00/CORD |

*The volumes are statistically estimated within plus (+) or minus (-) 18.29 percent. These estimated volumes are final and not subject to adjustment. Prospective bidders are urged to examine this timber and to make their own estimates of quantity and quality.

BOND AND PAYMENT SCHEDULE:

1. A bond in the amount of \$716.00, to insure faithful performance of the conditions of the contract, will be deposited by the successful bidder within 21 days of the sale award.
2. Cutting in any sale or unit without the required advance payment would be considered a trespass.
3. Total payment may be paid in advance or according to the following schedule:
 - (a) Ten percent (10%) of the sale value must be paid within 21 days of the sale award.
 - (b) The 10% down payment will be credited towards the first unit cut.
 - (c) Payment for each of the following units must be made before cutting begins in that unit:

| <u>PAYMENT UNIT NUMBER</u> | <u>PERCENT OF TOTAL SALE VALUE</u> |
|----------------------------|------------------------------------|
| 1 | 30% |
| 2 | 20% |
| 3 | 30% |
| 4 | 20% |
4. If no cutting takes place, the 10% down payment will not be refunded.
5. Operations on the contract issued will terminate on June 30, 2012.

Michigan Department of Natural Resources-Forest Management Division
TIMBER SALE MAP

This information provided under authority of Part 525, Act 451 of 1994, as amended.

| | | |
|----------|------|-----------|
| Sale No. | Year | Sale Type |
| 092 | 09 | 01 |

| | | | | | |
|-----------------------------------------------------------------------------------|---------------------|------------------------------------------------|-----------------------------------|------------------------------------|--|
| State Forest and Forest Management Unit: Pere Marquette - Traverse City | | Mapped By: Marked By: Patrick Ruppen | | Date: September 30, 2009 | |
| Township 27N | Range 10W | Section(s) 26 | Subdivision S1/2SW NESW | Scale: 1:15,840 | |

Cover Type

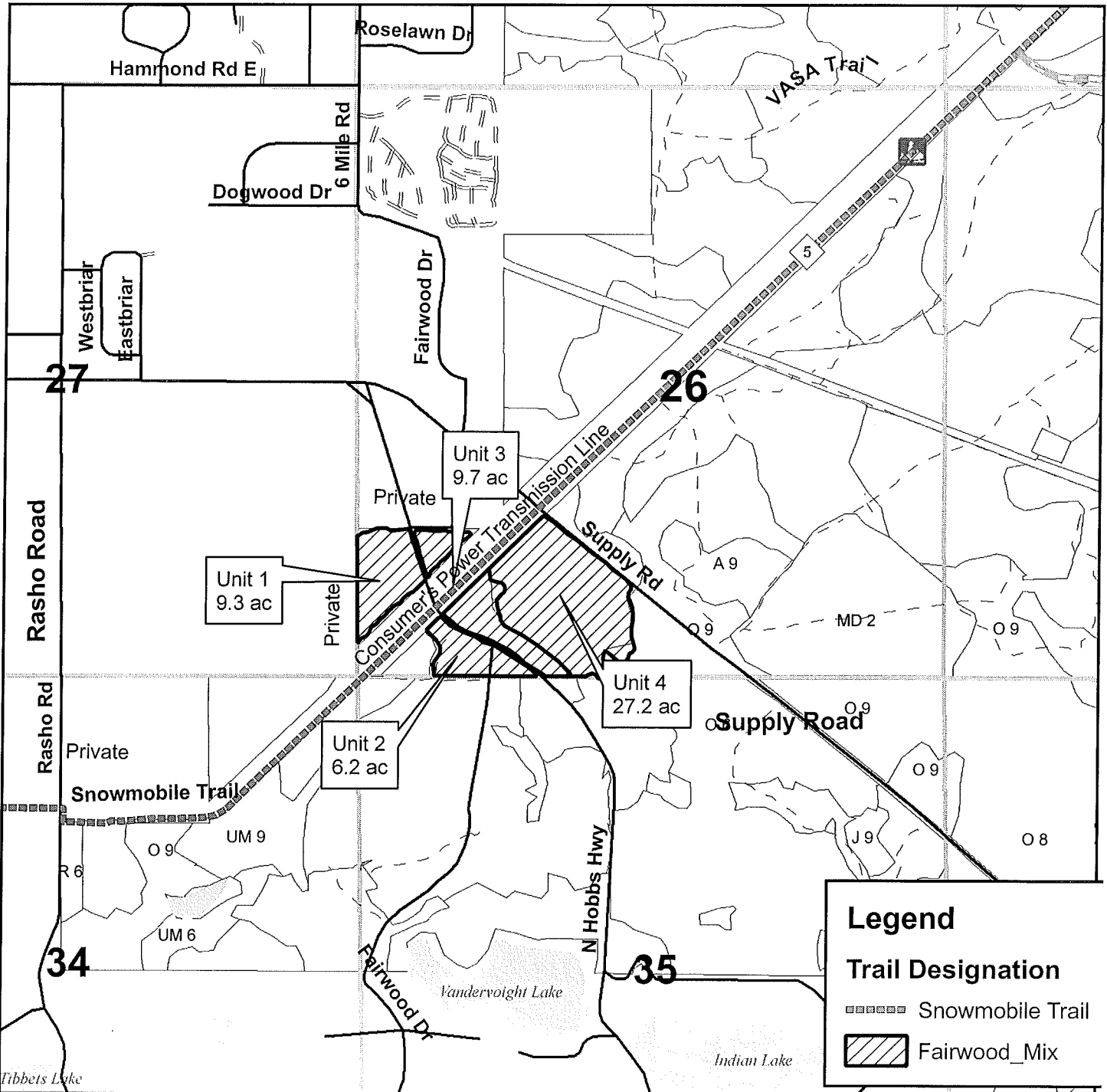
Density

- | | | | | | |
|-----------------|------------------|--------------------|----------------|-------------------------|---------------------|
| A=Aspen | H=Hemlock | P=Lowland Poplar | V=Bog or Marsh | 1=Non Stocked | 7=Saw Timber Poor |
| B=Paper Birch | J=Jack Pine | Q=Mixed Swamp Cnfr | W=White Pine | 2=Seedling Sapling Poor | 8=Saw Timber Medium |
| C=Cedar | L=Lowland Brush | R=Red Pine | X=Non Stocked | 3=Seedling Sapling Well | 9=Saw Timber Well |
| E=Swamp Hdwoods | M=Mpl, Bch, Brch | S=Black Spruce | Z=Water | 4=Pole Timber Poor | |
| F=Spruce Fir | N=Marsh | T=Tamarack | | 5=Pole Timber Medium | |
| G=Grass | O=Oak | U=Upland Brush | | 6=Pole Timber Well | |



Fairwood Mix

Sale Area 52.4 acres



Legend

Trail Designation

- Snowmobile Trail
- ▨ Fairwood_Mix

Sale Specific Conditions & Requirements

Sale Name: Fairwood Mix Sale Number: 61-096-09-01

1 - Sale Area

1.2 - Boundaries

1.2.1 - Painted boundaries (12/08)

The sale boundary is marked and identified by blue and red paint. Exterior sale boundary lines against private property are marked with blue paint. Exterior sale boundary lines against state are marked with red paint.

2 - Timber Specifications

2.1 - Included Timber

2.1.3 - Cut tree marked unit(s) (12/08)

Within Payment Unit(s) #'s 4 and that part of 3 north and west of the powerline, all trees are designated for cutting when marked with orange paint above and below stump height, regardless of merchantability. In addition cut all aspen and jack pine.

2.1.7 - Leave tree marked unit(s) (10/09)

Within Payment Unit(s) #'s 1,2 and that part of 3 that lies south and east of the powerline, all trees which meet minimum piece specifications in 2.2 Utilization, are designated for cutting except trees marked with green paint above and below stump height. Reserve trees identified in accordance with 2.4.2 - Reserve trees, within leave tree marked unit boundaries, are not Included Timber and are to be protected.

2.1.11 - Description of timber note (2/04)

Note that mixed oak sawlogs are pin/poor quality red oak. Red maple pulp has a small amount of sugar maple and aspen pulp has approximately 10 cd. white birch included.

2.4 - Special Protection

2.4.2 - Reserve trees (1/09)

The Purchaser shall not cut live or dead reserve trees within cutting units or clearings. Reserve trees are marked with green paint. The Purchaser shall protect reserve trees from damage by the Purchaser's operations. If the Purchaser's operations have cut or damaged reserve trees through carelessness, the Purchaser shall pay \$20.00 as fixed, agreed and liquidated damages for each reserve tree cut or damaged. Such payment does not constitute ownership of the undesignated timber.

4 - Transportation

4.1 - Construction

4.1.7 - Road closure (4/07)

All new roads built into the sale must be blocked to vehicle traffic upon completion of the sale. Overgrown roads that are reopened shall be considered new roads. These roads must be rendered impassable to cars and trucks.

4.4 - Access

4.4.1 - Private property access (12/08)

Permission for access across private land has been obtained by the DNR. This will allow the use of the powerline to access sale area.

5 - Operations

5.1 - Notification

5.1.1 - Pre-sale conference (12/08)

A pre-sale conference on site between the Purchaser and sale administrator is required prior to beginning any operations to determine landing and road locations. The Unit Manager or his/her representative must be contacted at least 3 days in advance to schedule the conference.

5.1.4 - Post-sale conference (9/09)

A post-sale conference on site between the Purchaser and sale administrator is required 5 days prior to the completion of active logging operations to determine clean-up and repair of landings, road edges, and the fulfillment of other contract specifications.

5.2 - Conduct of Operations

5.2.1 - Slash

5.2.1.2 - Slash Removal

5.2.1.2.6 - Slash removal, general (7/05)

All slash must be removed from the Consumer's Power cleared right of way.

5.2.1.8 - Slash height (12/08)

No slash or tree tops may exceed 30 inches in height.

5.2.2 - Hazard Trees/Snags

5.2.2.1 - Den trees (2/04)

Obvious hollow and/or den trees shall be protected and left standing unless they are a safety hazard.

5.2.3 - Operating Restrictions

5.2.3.1 - Operating restrictions (12/08)

Within Payment Unit(s), unless changed by written agreement, cutting, skidding, and hauling are limited to the period of July 15 through December 1. This restriction is because of oak wilt and snowmobile trail concerns.

5.2.4 - Dead and Down Creation

5.2.4.6 - Dead and down creation, other (9/09)

To create grouse habitat, all trees marked with an 'X' will be cut at breast height and left with the upper part of the tree touching the stump. These are for drumming logs. If a clump of trees is marked, the clump should be cut and left in a pile. The slash height requirement does not apply to these drumming logs and the tops should be left intact.

5.2.41 - Snowmobile trail protection (8/09)

The Boardman Valley Trail is a snowmobile trail and is shown on the Timber Sale Map. Do not cut or damage posts with orange trail markers or traffic control signs. If the trail is used, it must be maintained and restored to a condition equal to or better than before the sale. The road maintenance/restoration must be done prior to December 1. . Using the snowmobile trail as the center line, maintain a 20 foot wide slash, debris, and rut free zone daily. No decking of forest products will be permitted along the snowmobile trail. All stumps within 20 feet of the snowmobile trail must be cut at ground level.

5.4 - Soil Protection

5.4.1 - Rutting restriction, general (1/09)

Operations are to cease immediately if equipment and weather conditions result in rutting of roads and skid trails which is 12 inches or greater in depth and 50 feet in length. The Unit Manager or his/her representative may restrict hauling and/or skidding if ruts exceed the specified depth. With the Unit Manager or his/her representative's approval, the Purchaser may return to the area when the risk of rutting has decreased.

GUNN ROAD HARDWOODS (104-09-01)

A timber sale contract for this LUMP SUM SEALED timber sale will be awarded the responsible bidder offering the highest sealed bid price. Bids must be at or above the following appraised price for each species:

| <u>SPECIES</u> | <u>ESTIMATED VOLUME*</u> | <u>APPRAISED PRICE</u> |
|----------------|--------------------------|------------------------|
| SAWLOGS | | |
| RED MAPLE | 11.30 MBF | \$ 59.00/MBF |
| B.T. ASPEN | 23.00 MBF | \$ 38.00/MBF |
| PULPWOOD | | |
| RED MAPLE | 38.40 CORDS | \$ 9.35/CORD |
| B.T. ASPEN | 83.30 CORDS | \$ 9.50/CORD |

In addition, the successful bidder agrees to purchase the following species at the indicated appraised price:

| <u>SPECIES</u> | <u>ESTIMATED VOLUME*</u> | <u>APPRAISED PRICE</u> |
|----------------|--------------------------|------------------------|
| SAWLOGS | | |
| MIX HARDWD | 4.40 MBF | \$ 59.00/MBF |
| PULPWOOD | | |
| MIX HARDWD | 14.80 CORDS | \$ 7.85/CORD |

*These estimated volumes are final and not subject to adjustment. Prospective bidders are urged to examine this timber and to make their own estimates of quantity and quality.

BOND AND PAYMENT SCHEDULE:

1. A bond in the amount of \$153.00, to insure faithful performance of the conditions of the contract, will be deposited by the successful bidder within 21 days of the sale award.
2. Cutting in any sale or unit without the required advance payment would be considered a trespass.
3. Total payment may be paid in advance or according to the following schedule:
 - (a) Ten percent (10%) of the sale value must be paid within 21 days of the sale award.
 - (b) The remainder is due before cutting begins.
4. If no cutting takes place, the 10% down payment will not be refunded.
5. Operations on the contract issued will terminate on December 31, 2012.



TIMBER SALE MAP

This information provided under authority of Part 525, Act 451 of 1994, as amended.

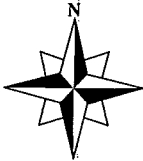
| | | |
|--------------------|------------|-----------------|
| Sale No. 61-104 | Year 09 | Sale Type 01 |
|--------------------|------------|-----------------|

| | | | | |
|----------------------------------------------------------------------------------|--------------|---------------------------------------|---------------------|---------------------------|
| State Forest and Forest Management Unit: Traverse City Forest Management Unit | | Cruised and Mapped By: Craig Allen | | Date: 09/18/2009 |
| Township 25N | Range 14W | Section(s) 19 | Subdivision SWSE | Scale: 1 inch = 1056 feet |

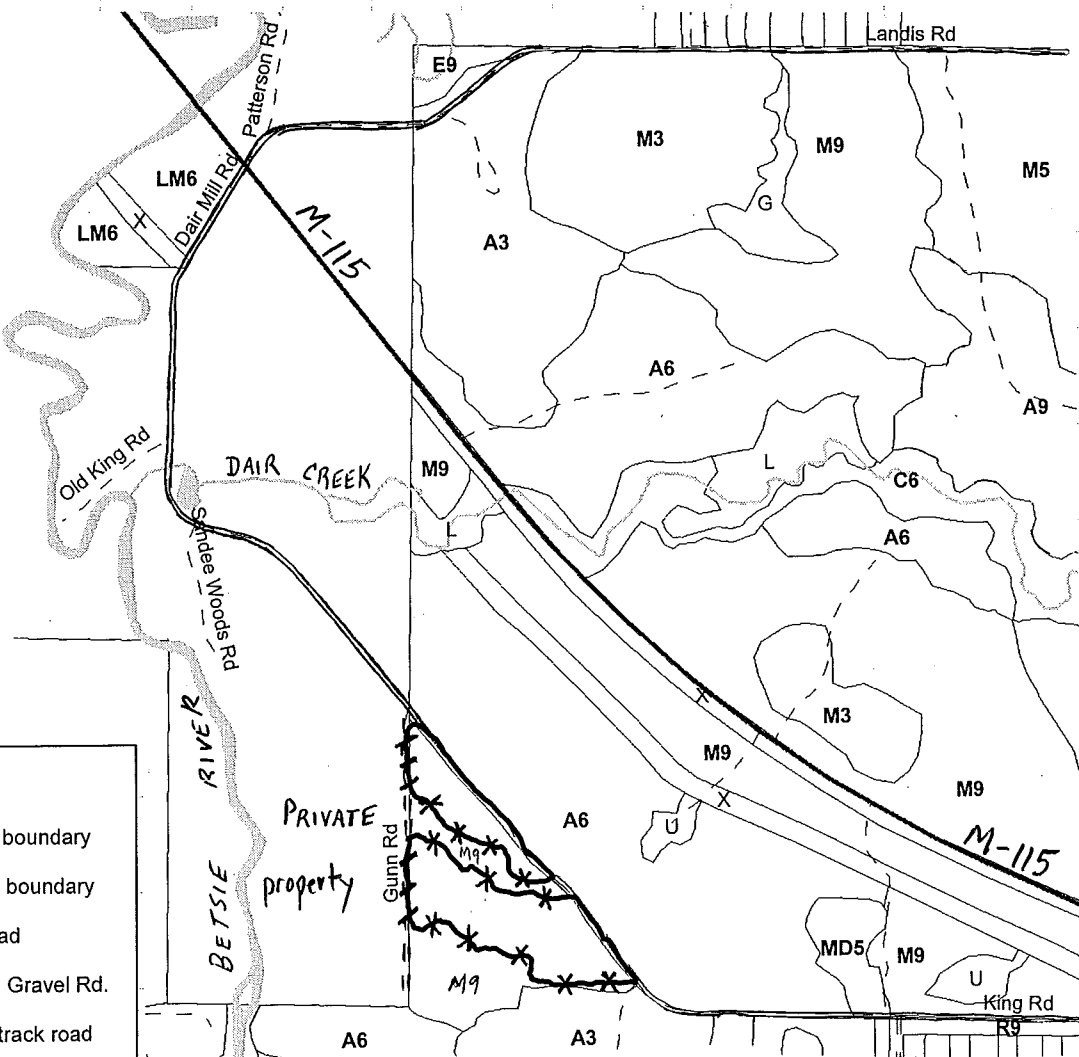
Cover Type

Density

- | | | | | | |
|-------------------|--------------------|----------------------|------------------|---------------------------|-----------------------|
| A = Aspen | H = Hemlock | P = Lowland Poplar | V = Bog or Marsh | 1 = Non Stocked | 7 = Saw Timber Poor |
| B = Paper Birch | J = Jack Pine | Q = Mixed Swamp Cnfr | W = White Pine | 2 = Seedling Sapling Poor | 8 = Saw Timber Medium |
| C = Cedar | L = Lowland Brush | R = Red Pine | X = Non Stocked | 3 = Seedling Sapling Well | 9 = Saw Timber Well |
| E = Swamp Hdwoods | M = Mpl, Bch, Brch | S = Black Spruce | Z = Water | 4 = Pole Timber Poor | |
| F = Spruce Fir | N = Marsh | T = Tamarack | | 5 = Pole Timber Medium | |
| G = Grass | O = Oak | U = Upland Brush | | 6 = Pole Timber Well | |



"Gunn Road Hardwoods"
Unit 1 = 15.6 acres



Legend:

- Red sale boundary
- Blue sale boundary
- Paved road
- Improved Gravel Rd.
- Forest 2-track road

Sale Specific Conditions & Requirements

Sale Name: Gunn Road Hardwoods Sale Number: 61-104-09-01

1 - Sale Area

1.2 - Boundaries

1.2.1 - Painted boundaries (12/08)

The sale boundary is marked and identified by red and blue paint. Exterior sale boundary lines against private property are marked with blue paint. Exterior sale boundary lines against state are marked with red paint. See attached sale map.

2 - Timber Specifications

2.1 - Included Timber

2.1.3 - Cut tree marked unit(s) (12/08)

Within Payment Unit(s) 1, all trees are designated for cutting when marked with orange paint above and below stump height, regardless of merchantability. Also, any ironwood trees may be cut within the sale to facilitate harvest activities.

2.2 - Utilization

2.2.6 - Roundwood operation required (5/07)

The skidding of whole trees or tree segments with limbs attached is prohibited. All products must be produced as roundwood and forwarded to existing roads or landing areas in final product length.

5 - Operations

5.2 - Conduct of Operations

5.2.1 - Slash

5.2.1.8 - Slash height (12/08)

No slash or tree tops may exceed 36 inches in height.

5.2.3 - Operating Restrictions

5.2.3.3 - Bark slippage restriction (3/09)

Within Payment Unit(s) # 1, unless changed by written agreement, cutting and skidding are not permitted during the period of April 15 to July 15. This restriction is because of bark slippage.

POUZAR OAK (112-09-01)

A timber sale contract for this LUMP SUM SEALED timber sale will be awarded the responsible bidder offering the highest sealed bid price. Bids must be at or above the following appraised price for each species:

| <u>SPECIES</u> | <u>ESTIMATED VOLUME*</u> | <u>APPRAISED PRICE</u> |
|----------------|--------------------------|------------------------|
| SAWLOGS | | |
| RED OAK | 105.40 MBF | \$ 174.00/MBF |

In addition, the successful bidder agrees to purchase the following species at the indicated appraised price:

| <u>SPECIES</u> | <u>ESTIMATED VOLUME*</u> | <u>APPRAISED PRICE</u> |
|----------------|--------------------------|------------------------|
| SAWLOGS | | |
| RED MAPLE | .40 MBF | \$ 72.00/MBF |
| BEECH | .20 MBF | \$ 33.00/MBF |
| PULPWOOD | | |
| RED OAK | 158.00 CORDS | \$ 3.90/CORD |

*These estimated volumes are final and not subject to adjustment. Prospective bidders are urged to examine this timber and to make their own estimates of quantity and quality.

BOND AND PAYMENT SCHEDULE:

1. A bond in the amount of \$936.00, to insure faithful performance of the conditions of the contract, will be deposited by the successful bidder within 21 days of the sale award.
2. Cutting in any sale or unit without the required advance payment would be considered a trespass.
3. Total payment may be paid in advance or according to the following schedule:
 - (a) Ten percent (10%) of the sale value must be paid within 21 days of the sale award.
 - (b) The 10% down payment will be credited towards the first unit cut.
 - (c) Payment for each of the following units must be made before cutting begins in that unit:

| PAYMENT UNIT NUMBER | PERCENT OF TOTAL SALE VALUE |
|---------------------|-----------------------------|
| 1 | 34% |
| 2 | 66% |
4. If no cutting takes place, the 10% down payment will not be refunded.
5. Operations on the contract issued will terminate on April 15, 2012.



Michigan Department of Natural Resources-Forest Management Division
TIMBER SALE MAP

This information provided under authority of Part 525, Act 451 of 1994, as amended.

| | | |
|----------|------|-----------|
| Sale No. | Year | Sale Type |
| 112 | 09 | 01 |

| | | | |
|---------------------------------------------------------------------------------|---------------------|----------------------------------------------------|-----------------------------------------------------------|
| State Forest and Forest Management Unit: Pere Marquette-Traverse City | | Mapped By: Marked/Crusied By: Scott Lint | Date: September 25, 2009 |
| Township 25N | Range 12W | Section(s) 18, 19 | Subdivision 18 - SESW, SWSE 19 - NENW, NWNE |
| | | | Scale: 1:15,840 |

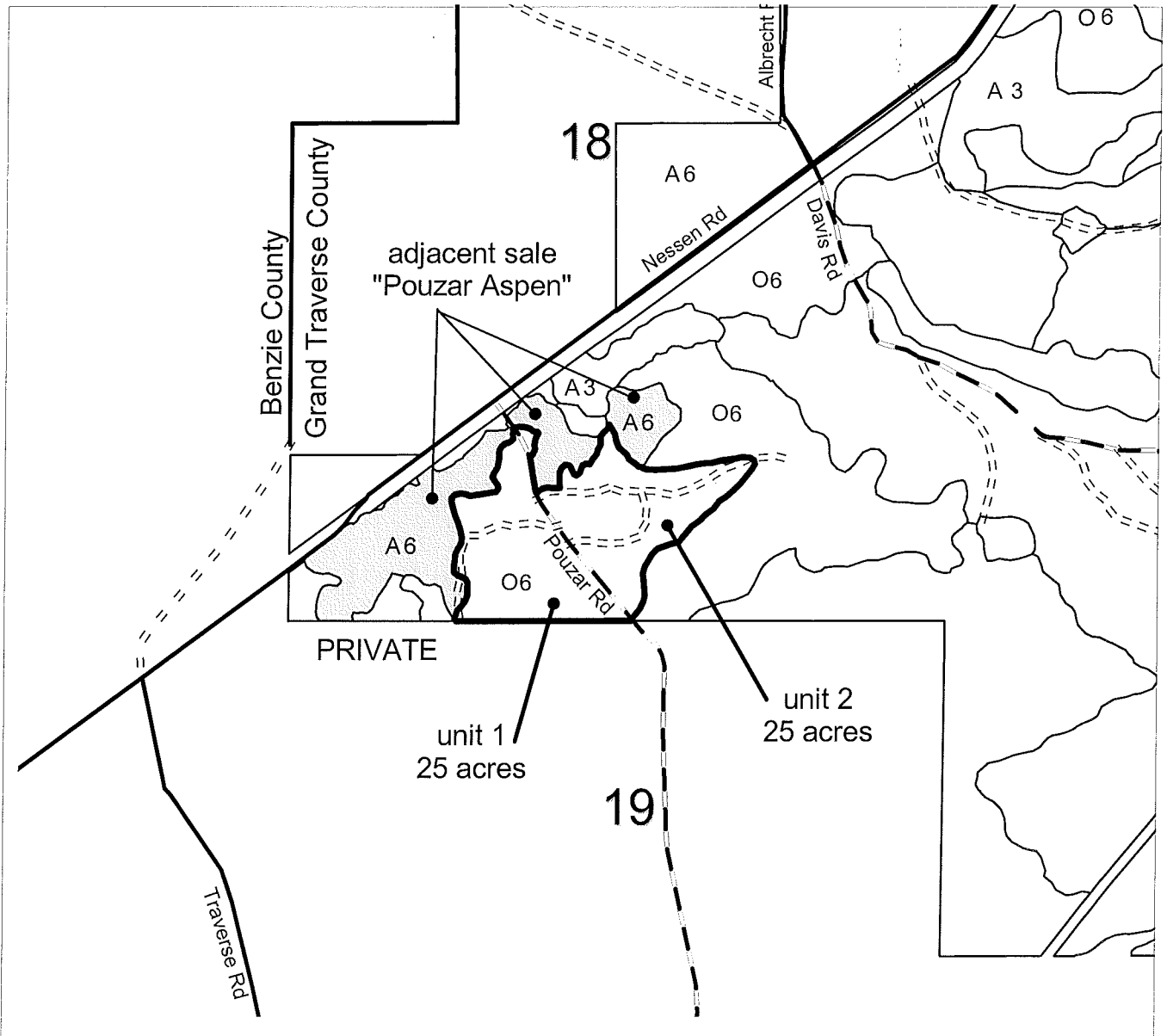
| Cover Type | | | Density | | |
|-----------------|------------------|--------------------|----------------|-------------------------|---------------------|
| A=Aspen | H=Hemlock | P=Lowland Poplar | V=Bog or Marsh | 1=Non Stocked | 7=Saw Timber Poor |
| B=Paper Birch | J=Jack Pine | Q=Mixed Swamp Cnfr | W=White Pine | 2=Seedling Sapling Poor | 8=Saw Timber Medium |
| C=Cedar | L=Lowland Brush | R=Red Pine | X=Non Stocked | 3=Seedling Sapling Well | 9=Saw Timber Well |
| E=Swamp Hdwoods | M=Mpl, Bch, Brch | S=Black Spruce | Z=Water | 4=Pole Timber Poor | |
| F=Spruce Fir | N=Marsh | T=Tamarack | | 5=Pole Timber Medium | |
| G=Grass | O=Oak | U=Upland Brush | | 6=Pole Timber Well | |

= sale area

= adjacent sale

Pouzar Oak

sale area: 50 acres



Sale Specific Conditions & Requirements

Sale Name: Pouzar Oak Sale Number: 61-112-09-01

1 - Sale Area

1.2 - Boundaries

1.2.1 - Painted boundaries (12/08)

The sale boundary is marked and identified by blue and red paint. Exterior sale boundary lines against private property are marked with blue paint. Exterior sale boundary lines against state are marked with red paint. Pouzar Road is the boundary between units 1 and 2.

2 - Timber Specifications

2.1 - Included Timber

2.1.3 - Cut tree marked unit(s) (12/08)

Within Payment Unit(s) , all trees are designated for cutting when marked with orange paint above and below stump height, regardless of merchantability.

2.2 - Utilization

2.2.4 - Skidding length (2/09)

Skidding of unlimbed tops or lengths over 17 feet is not permissible unless approved by the Unit Manager or his/her representative.

5 - Operations

5.2 - Conduct of Operations

5.2.1 - Slash

5.2.1.8 - Slash height (12/08)

No slash or tree tops may exceed 36 inches in height.

5.2.3 - Operating Restrictions

5.2.3.4 - Oak wilt restriction (12/08)

Within Payment Unit(s) , unless changed by written agreement, cutting and skidding are not permitted during the period of April 15 to July 15. This is necessary to reduce the spread of oak wilt. For more information, contact the Unit Manager or his/her representative.

COMP.16 RPP (066-09-01)
T26N, R13W, SEC. 19, NWNW, S1/2NWNENW, N1/2SWNW.
T26N, R13W, SEC. 31, SWSW, W1/2SESW.
BENZIE COUNTY

In response to the notice of sale to be held 2:00 p.m. on May 27, 2010, I am hereby submitting my sealed bid (firm offer) for the following forest products to be cut. Bids for individual species and total bid value must be at or above the appraised price. All non-responsive bid forms may be rejected.

| <u>SPECIES</u> | <u>APPRAISED PRICE</u> | <u>BID PRICE</u> | <u>ESTIMATED VOLUME*</u> | <u>= VALUE</u> |
|--------------------|------------------------|------------------|--------------------------|----------------|
| SAWLOGS | | | | |
| RED PINE | \$ 113.00/MBF | \$ _____ X | 76.10 MBF | = \$ _____ |
| PULPWOOD | | | | |
| RED PINE | \$ 41.20/CORD | \$ _____ X | 643.80 CORDS | = \$ _____ |
| TOTAL BID VALUE \$ | | | | _____ |

*These volumes are statistically estimated within plus (+) or minus (-) 15.04%. These estimated volumes are final and not subject to adjustment. Prospective bidders are urged to examine this timber and to make their own estimates of quantity and quality.

I understand that any or all bids may be rejected, and that the individual unit bid price will be the basis to determine total bid value. All bids must be signed and all bid items must be bid or the bid form may be rejected. I also understand that consideration and awarding a contract will be based upon my past performance and ability to complete the contract based upon equipment and manpower subject to my control.

(bidder's printed name)

(bidder's signature)

Address/Telephone _____

THE WINNING BIDDER MUST COMPLETE THE FORM ON THE REVERSE SIDE
WITHIN 21 DAYS OF SALE AWARD



**TIMBER SALE
VERIFICATION OF WORKER'S DISABILITY
COMPENSATION ACT COMPLIANCE**

*As required by Act 317, P.A. 1969 (Worker's Compensation) and Part 525
of Act 451 of 1994, as amended.*

| FOR DEPARTMENT USE ONLY | |
|-------------------------|-------|
| Sale or Permit No | |
| Year: | Type: |
| Forest Area: | |

VERIFICATION OF WORKER'S DISABILITY COMPENSATION ACT COMPLIANCE

- This verification must be completed and submitted within 21 days of contract award and prior to the issuance of the timber sale contract.
- In addition, if boxes 2B or 2C are checked, then Notice of Exclusion or Certificate of Insurance must be submitted within 21 days of the contract award and prior to the issuance of the timber sale contract.
- All information must be typed or printed except for written signatures.

Please Check Appropriate Categories:

1. My business is organized as (you must check one of the boxes below):
 - A. Sole Proprietorship (individual)
 - B. Partnership
 - C. Corporation
2. You must check one of the boxes below:
 - A. I certify that my business is a sole proprietorship and it has no employees but the sole proprietor. I am not subject to the Worker's Compensation Laws.
 - B. I certify that my business has satisfied its obligation to the Worker's Compensation Act through the use of an approved Notice of Exclusion (BWC-337, Rev. 5/96). I will provide a copy of the Notice of Exclusion within 21 days of the contract award. (For questions or a copy of the BWC-337, please call the Worker's Compensation Bureau at 517-322-1195).
 - C. I certify that my business has a Worker's Compensation Policy. I will provide an original Certificate of Insurance within 21 days of the contract award.
3. If you have checked item 2(A) or 2(B), you must indicate the number of **both** full and part time employees other than yourself including family members and active partners (if none, you must enter "0").

_____ Full Time Employees

_____ Part Time Employees

| | | | |
|------------------|-------|-------------------------------------|--|
| Name of Business | | Federal ID (or) Social Security No. | |
| Address | | Telephone No. () | |
| City | State | Zip + 4 | |

I hereby certify that the above information is true and correct. I agree to notify the DNR of any changes that occur in factors affecting my coverage during any of my present and future operations.

Signature of Owner or Authorized Representative

Title

Date

TIMBER SALE / SEALED BID
STATE OF MICHIGAN / DNRE

TRAVERSE CITY MANAGEMENT UNIT
TRAVERSE CITY

BLACK & WHITE RED (080-09-01)
T23N, R14W, SEC. 04, N1/2SE, S1/2NE.
MANISTEE COUNTY

In response to the notice of sale to be held 2:00 p.m. on May 27, 2010, I am hereby submitting my sealed bid (firm offer) for the following forest products to be cut. Bids for individual species and total bid value must be at or above the appraised price. All non-responsive bid forms may be rejected.

| <u>SPECIES</u> | <u>APPRAISED PRICE</u> | <u>BID PRICE</u> | <u>ESTIMATED VOLUME* = VALUE</u> |
|----------------|------------------------|------------------|----------------------------------|
| PULPWOOD | | | |
| RED PINE | \$ 35.00/CORD | \$ _____ X | 1,059.00 CORDS = \$ _____ |
| | | | TOTAL BID VALUE \$ _____ |

*These volumes are statistically estimated within plus (+) or minus (-) 11.73%. These estimated volumes are final and not subject to adjustment. Prospective bidders are urged to examine this timber and to make their own estimates of quantity and quality.

I understand that any or all bids may be rejected, and that the individual unit bid price will be the basis to determine total bid value. All bids must be signed and all bid items must be bid or the bid form may be rejected. I also understand that consideration and awarding a contract will be based upon my past performance and ability to complete the contract based upon equipment and manpower subject to my control.

(bidder's printed name)

(bidder's signature)

Address/Telephone _____

THE WINNING BIDDER MUST COMPLETE THE FORM ON THE REVERSE SIDE
WITHIN 21 DAYS OF SALE AWARD



**TIMBER SALE
VERIFICATION OF WORKER'S DISABILITY
COMPENSATION ACT COMPLIANCE**

*As required by Act 317, P.A. 1969 (Worker's Compensation) and Part 525
of Act 451 of 1994, as amended.*

| FOR DEPARTMENT USE ONLY | |
|-------------------------|-------|
| Sale or Permit No | |
| Year: | Type: |
| Forest Area: | |

VERIFICATION OF WORKER'S DISABILITY COMPENSATION ACT COMPLIANCE

- This verification must be completed and submitted within 21 days of contract award and prior to the issuance of the timber sale contract.
- In addition, if boxes 2B or 2C are checked, then Notice of Exclusion or Certificate of Insurance must be submitted within 21 days of the contract award and prior to the issuance of the timber sale contract.
- All information must be typed or printed except for written signatures.

Please Check Appropriate Categories:

1. My business is organized as (you must check one of the boxes below):
 - A. Sole Proprietorship (Individual)
 - B. Partnership
 - C. Corporation
2. You must check one of the boxes below:
 - A. I certify that my business is a sole proprietorship and it has no employees but the sole proprietor. I am not subject to the Worker's Compensation Laws.
 - B. I certify that my business has satisfied its obligation to the Worker's Compensation Act through the use of an approved Notice of Exclusion (BWC-337, Rev. 5/96). I will provide a copy of the Notice of Exclusion within 21 days of the contract award. (For questions or a copy of the BWC-337, please call the Worker's Compensation Bureau at 517-322-1195).
 - C. I certify that my business has a Worker's Compensation Policy. I will provide an original Certificate of Insurance within 21 days of the contract award.
3. If you have checked item 2(A) or 2(B), you must indicate the number of both full and part time employees other than yourself including family members and active partners (if none, you must enter "0").

_____ Full Time Employees

_____ Part Time Employees

| | | | |
|------------------|-------|-------------------------------------|--|
| Name of Business | | Federal ID (or) Social Security No. | |
| Address | | Telephone No. () | |
| City | State | Zip + 4 | |

I hereby certify that the above information is true and correct. I agree to notify the DNR of any changes that occur in factors affecting my coverage during any of my present and future operations.

Signature of Owner or Authorized Representative

Title

Date

FAIRWOOD MIX (096-09-01)
T27N, R10W, SEC. 26, S1/2SW, NESW.
GRAND TRAVERSE COUNTY

In response to the notice of sale to be held 2:00 p.m. on May 27, 2010, I am hereby submitting my sealed bid (firm offer) for the following forest products to be cut. Bids for individual species and total bid value must be at or above the appraised price. All non-responsive bid forms may be rejected.

| <u>SPECIES</u> | <u>APPRAISED PRICE</u> | <u>BID PRICE</u> | <u>ESTIMATED VOLUME*</u> | <u>= VALUE</u> |
|-----------------|------------------------|------------------|--------------------------|----------------|
| <u>SAWLOGS</u> | | | | |
| RED OAK | \$ 175.00/MBF | \$ _____ X | 14.90 MBF | = \$ _____ |
| B.T. ASPEN | \$ 50.00/MBF | \$ _____ X | 53.30 MBF | = \$ _____ |
| <u>PULPWOOD</u> | | | | |
| RED MAPLE | \$ 12.50/CORD | \$ _____ X | 156.00 CORDS | = \$ _____ |
| B.T. ASPEN | \$ 13.00/CORD | \$ _____ X | 274.00 CORDS | = \$ _____ |
| MIXED OAK | \$ 11.00/CORD | \$ _____ X | 210.00 CORDS | = \$ _____ |
| SUBTOTAL 1 | | | | \$ _____ |

In addition, the successful bidder agrees to purchase the following species at the appraised price:

| <u>SPECIES</u> | <u>APPRAISED PRICE</u> | <u>ESTIMATED VOLUME*</u> | <u>VALUE</u> |
|----------------------------------------------------|------------------------|--------------------------|--------------|
| <u>SAWLOGS</u> | | | |
| RED MAPLE | \$ 78.00/MBF | 3.70 MBF | = \$ 288.60 |
| WHITE OAK | \$ 58.00/MBF | 6.00 MBF | = \$ 348.00 |
| MIXED OAK | \$ 101.00/MBF | 5.00 MBF | = \$ 505.00 |
| <u>PULPWOOD</u> | | | |
| WHITE PINE | \$ 8.00/CORD | 3.00 CORDS | = \$ 24.00 |
| JACK PINE | \$ 9.00/CORD | 6.00 CORDS | = \$ 54.00 |
| SUBTOTAL 2 | | | \$ 1,219.60 |
| SUBTOTAL 1 + SUBTOTAL 2 = TOTAL BID VALUE \$ _____ | | | |

*These volumes are statistically estimated within plus (+) or minus (-) 18.29%. These estimated volumes are final and not subject to adjustment. Prospective bidders are urged to examine this timber and to make their own estimates of quantity and quality.

I understand that any or all bids may be rejected, and that the individual unit bid price will be the basis to determine total bid value. All bids must be signed and all bid items must be bid or the bid form may be rejected. I also understand that consideration and awarding a contract will be based upon my past performance and ability to complete the contract based upon equipment and manpower subject to my control.

(bidder's printed name)

(bidder's signature)

Address/Telephone _____

THE WINNING BIDDER MUST COMPLETE THE FORM ON THE REVERSE SIDE
WITHIN 21 DAYS OF SALE AWARD



FOR DEPARTMENT USE ONLY

**TIMBER SALE
VERIFICATION OF WORKER'S DISABILITY
COMPENSATION ACT COMPLIANCE**

*As required by Act 317, P.A. 1969 (Worker's Compensation) and Part 525
of Act 451 of 1994, as amended.*

Sale or Permit No

Year:

Type:

Forest Area:

VERIFICATION OF WORKER'S DISABILITY COMPENSATION ACT COMPLIANCE

- This verification must be completed and submitted within 21 days of contract award and prior to the issuance of the timber sale contract.
- In addition, if boxes 2B or 2C are checked, then Notice of Exclusion or Certificate of Insurance must be submitted within 21 days of the contract award and prior to the issuance of the timber sale contract.
- All information must be typed or printed except for written signatures.

Please Check Appropriate Categories:

1. My business is organized as (you must check one of the boxes below):
 - A. Sole Proprietorship (individual)
 - B. Partnership
 - C. Corporation
2. You must check one of the boxes below:
 - A. I certify that my business is a sole proprietorship and it has no employees but the sole proprietor. I am not subject to the Worker's Compensation Laws.
 - B. I certify that my business has satisfied its obligation to the Worker's Compensation Act through the use of an approved Notice of Exclusion (BWC-337, Rev. 5/96). I will provide a copy of the Notice of Exclusion within 21 days of the contract award. (For questions or a copy of the BWC-337, please call the Worker's Compensation Bureau at 517-322-1195).
 - C. I certify that my business has a Worker's Compensation Policy. I will provide an original Certificate of Insurance within 21 days of the contract award.
3. If you have checked item 2(A) or 2(B), you must indicate the number of both full and part time employees other than yourself including family members and active partners (if none, you must enter "0").

_____ Full Time Employees

_____ Part Time Employees

Name of Business

Federal ID (or) Social Security No.

Address

Telephone No.

()

City

State

Zip + 4

I hereby certify that the above information is true and correct. I agree to notify the DNR of any changes that occur in factors affecting my coverage during any of my present and future operations.

Signature of Owner or Authorized Representative

Title

Date

GUNN ROAD HARDWOODS (104-09-01)
 T25N, R14W, SEC. 19, SWSE.
 BENZIE COUNTY

In response to the notice of sale to be held 2:00 p.m. on May 27, 2010, I am hereby submitting my sealed bid (firm offer) for the following forest products to be cut. Bids for individual species and total bid value must be at or above the appraised price. All non-responsive bid forms may be rejected.

| <u>SPECIES</u> | <u>APPRAISED PRICE</u> | <u>BID PRICE</u> | <u>ESTIMATED VOLUME*</u> | <u>= VALUE</u> |
|----------------|------------------------|------------------|--------------------------|----------------|
| SAWLOGS | | | | |
| RED MAPLE | \$ 59.00/MBF | \$ _____ X | 11.30 MBF | = \$ _____ |
| B.T. ASPEN | \$ 38.00/MBF | \$ _____ X | 23.00 MBF | = \$ _____ |
| PULPWOOD | | | | |
| RED MAPLE | \$ 9.35/CORD | \$ _____ X | 38.40 CORDS | = \$ _____ |
| B.T. ASPEN | \$ 9.50/CORD | \$ _____ X | 83.30 CORDS | = \$ _____ |
| | | | SUBTOTAL 1 | \$ _____ |

In addition, the successful bidder agrees to purchase the following species at the appraised price:

| <u>SPECIES</u> | <u>APPRAISED PRICE</u> | <u>ESTIMATED VOLUME*</u> | <u>VALUE</u> |
|----------------------------------------------------|------------------------|--------------------------|----------------------|
| SAWLOGS | | | |
| MIX HARDWD | \$ 59.00/MBF | 4.40 MBF | = \$ 259.60 |
| PULPWOOD | | | |
| MIX HARDWD | \$ 7.85/CORD | 14.80 CORDS | = \$ 116.18 |
| | | | SUBTOTAL 2 \$ 375.78 |
| SUBTOTAL 1 + SUBTOTAL 2 = TOTAL BID VALUE \$ _____ | | | |

*These estimated volumes are final and not subject to adjustment. Prospective bidders are urged to examine this timber and to make their own estimates of quantity and quality.

I understand that any or all bids may be rejected, and that the individual unit bid price will be the basis to determine total bid value. All bids must be signed and all bid items must be bid or the bid form may be rejected. I also understand that consideration and awarding a contract will be based upon my past performance and ability to complete the contract based upon equipment and manpower subject to my control.

 (bidder's printed name)

 (bidder's signature)

Address/Telephone _____

THE WINNING BIDDER MUST COMPLETE THE FORM ON THE REVERSE SIDE
 WITHIN 21 DAYS OF SALE AWARD



| FOR DEPARTMENT USE ONLY | |
|-------------------------|-------|
| Sale or Permit No | |
| Year: | Type: |
| Forest Area: | |

**TIMBER SALE
VERIFICATION OF WORKER'S DISABILITY
COMPENSATION ACT COMPLIANCE**

As required by Act 317, P.A. 1969 (Worker's Compensation) and Part 525 of Act 451 of 1994, as amended.

VERIFICATION OF WORKER'S DISABILITY COMPENSATION ACT COMPLIANCE

- This verification must be completed and submitted within 21 days of contract award and prior to the issuance of the timber sale contract.
- In addition, if boxes 2B or 2C are checked, then Notice of Exclusion or Certificate of Insurance must be submitted within 21 days of the contract award and prior to the issuance of the timber sale contract.
- All Information must be typed or printed except for written signatures.

Please Check Appropriate Categories:

1. My business is organized as (you must check one of the boxes below):
 - A. Sole Proprietorship (individual)
 - B. Partnership
 - C. Corporation
2. You must check one of the boxes below:
 - A. I certify that my business is a sole proprietorship and it has no employees but the sole proprietor. I am not subject to the Worker's Compensation Laws.
 - B. I certify that my business has satisfied its obligation to the Worker's Compensation Act through the use of an approved Notice of Exclusion (BWC-337, Rev. 5/96). I will provide a copy of the Notice of Exclusion within 21 days of the contract award. (For questions or a copy of the BWC-337, please call the Worker's Compensation Bureau at 517-322-1195).
 - C. I certify that my business has a Worker's Compensation Policy. I will provide an original Certificate of Insurance within 21 days of the contract award.
3. If you have checked item 2(A) or 2(B), you must indicate the number of both full and part time employees other than yourself including family members and active partners (if none, you must enter "0").

_____ Full Time Employees

_____ Part Time Employees

| | | | |
|------------------|-------|-------------------------------------|--|
| Name of Business | | Federal ID (or) Social Security No. | |
| Address | | Telephone No. () | |
| City | State | Zip + 4 | |

I hereby certify that the above information is true and correct. I agree to notify the DNR of any changes that occur in factors affecting my coverage during any of my present and future operations.

Signature of Owner or Authorized Representative

Title

Date

POUZAR OAK (112-09-01)
 T25N, R12W, SEC. 18, SESW, SWSE.
 T25N, R12W, SEC. 19, NENW, NWNE.
 GRAND TRAVERSE COUNTY

In response to the notice of sale to be held 2:00 p.m. on May 27, 2010, I am hereby submitting my sealed bid (firm offer) for the following forest products to be cut. Bids for individual species and total bid value must be at or above the appraised price. All non-responsive bid forms may be rejected.

| <u>SPECIES</u> | <u>APPRAISED PRICE</u> | <u>BID PRICE</u> | <u>ESTIMATED VOLUME*</u> | <u>= VALUE</u> |
|----------------|------------------------|------------------|--------------------------|----------------|
| SAWLOGS | | | | |
| RED OAK | \$ 174.00/MBF | \$ _____ X | 105.40 MBF | = \$ _____ |
| | | | SUBTOTAL 1 | \$ _____ |

In addition, the successful bidder agrees to purchase the following species at the appraised price:

| <u>SPECIES</u> | <u>APPRAISED PRICE</u> | <u>ESTIMATED VOLUME*</u> | <u>VALUE</u> |
|----------------|------------------------|--------------------------|----------------------------------------------------|
| SAWLOGS | | | |
| RED MAPLE | \$ 72.00/MBF | .40 MBF | = \$ 28.80 |
| BEECH | \$ 33.00/MBF | .20 MBF | = \$ 6.60 |
| PULPWOOD | | | |
| RED OAK | \$ 3.90/CORD | 158.00 CORDS | = \$ 616.20 |
| | | | SUBTOTAL 2 \$ 651.60 |
| | | | SUBTOTAL 1 + SUBTOTAL 2 = TOTAL BID VALUE \$ _____ |

*These estimated volumes are final and not subject to adjustment. Prospective bidders are urged to examine this timber and to make their own estimates of quantity and quality.

I understand that any or all bids may be rejected, and that the individual unit bid price will be the basis to determine total bid value. All bids must be signed and all bid items must be bid or the bid form may be rejected. I also understand that consideration and awarding a contract will be based upon my past performance and ability to complete the contract based upon equipment and manpower subject to my control.

 (bidder's printed name)

 (bidder's signature)

Address/Telephone _____

THE WINNING BIDDER MUST COMPLETE THE FORM ON THE REVERSE SIDE
 WITHIN 21 DAYS OF SALE AWARD



| FOR DEPARTMENT USE ONLY | |
|-------------------------|-------|
| Sale or Permit No | |
| Year: | Type: |
| Forest Area: | |

**TIMBER SALE
VERIFICATION OF WORKER'S DISABILITY
COMPENSATION ACT COMPLIANCE**

As required by Act 317, P.A. 1969 (Worker's Compensation) and Part 525 of Act 451 of 1994, as amended.

VERIFICATION OF WORKER'S DISABILITY COMPENSATION ACT COMPLIANCE

- This verification must be completed and submitted within 21 days of contract award and prior to the issuance of the timber sale contract.
- In addition, if boxes 2B or 2C are checked, then Notice of Exclusion or Certificate of Insurance must be submitted within 21 days of the contract award and prior to the issuance of the timber sale contract.
- All Information must be typed or printed except for written signatures.

Please Check Appropriate Categories:

1. My business is organized as (you must check one of the boxes below):
 - A. Sole Proprietorship (individual)
 - B. Partnership
 - C. Corporation
2. You must check one of the boxes below:
 - A. I certify that my business is a sole proprietorship and it has no employees but the sole proprietor. I am not subject to the Worker's Compensation Laws.
 - B. I certify that my business has satisfied its obligation to the Worker's Compensation Act through the use of an approved Notice of Exclusion (BWC-337, Rev. 5/96). I will provide a copy of the Notice of Exclusion within 21 days of the contract award. (For questions or a copy of the BWC-337, please call the Worker's Compensation Bureau at 517-322-1195).
 - C. I certify that my business has a Worker's Compensation Policy. I will provide an original Certificate of Insurance within 21 days of the contract award.
3. If you have checked item 2(A) or 2(B), you must indicate the number of both full and part time employees other than yourself including family members and active partners (if none, you must enter "0").

_____ Full Time Employees

_____ Part Time Employees

| | | | |
|------------------|-------|-------------------------------------|--|
| Name of Business | | Federal ID (or) Social Security No. | |
| Address | | Telephone No. () | |
| City | State | Zip + 4 | |

I hereby certify that the above information is true and correct. I agree to notify the DNR of any changes that occur in factors affecting my coverage during any of my present and future operations.

Signature of Owner or Authorized Representative

Title

Date