



**DEPARTMENT OF NATURAL RESOURCES AND  
ENVIRONMENT  
STATE OF MICHIGAN**

**CORRECTION NOTICE #1 - July 13, 2011**

The following changes have been made to the prospectus whose original scheduled bid date, time and location are Monday, 08/17/2011 at 11:00AM local time in the Gladwin Office.

The sale map for the STONE FENCE ASPEN timber sale (73-017-10-01) has been updated. Please use the attached sale map when bidding on this sale and disregard the original sale map sent with the prospectus.

We apologize for any inconvenience this may have caused. If you need assistance, please contact Jason Hartman at 989-426-9205.



### TIMBER SALE MAP

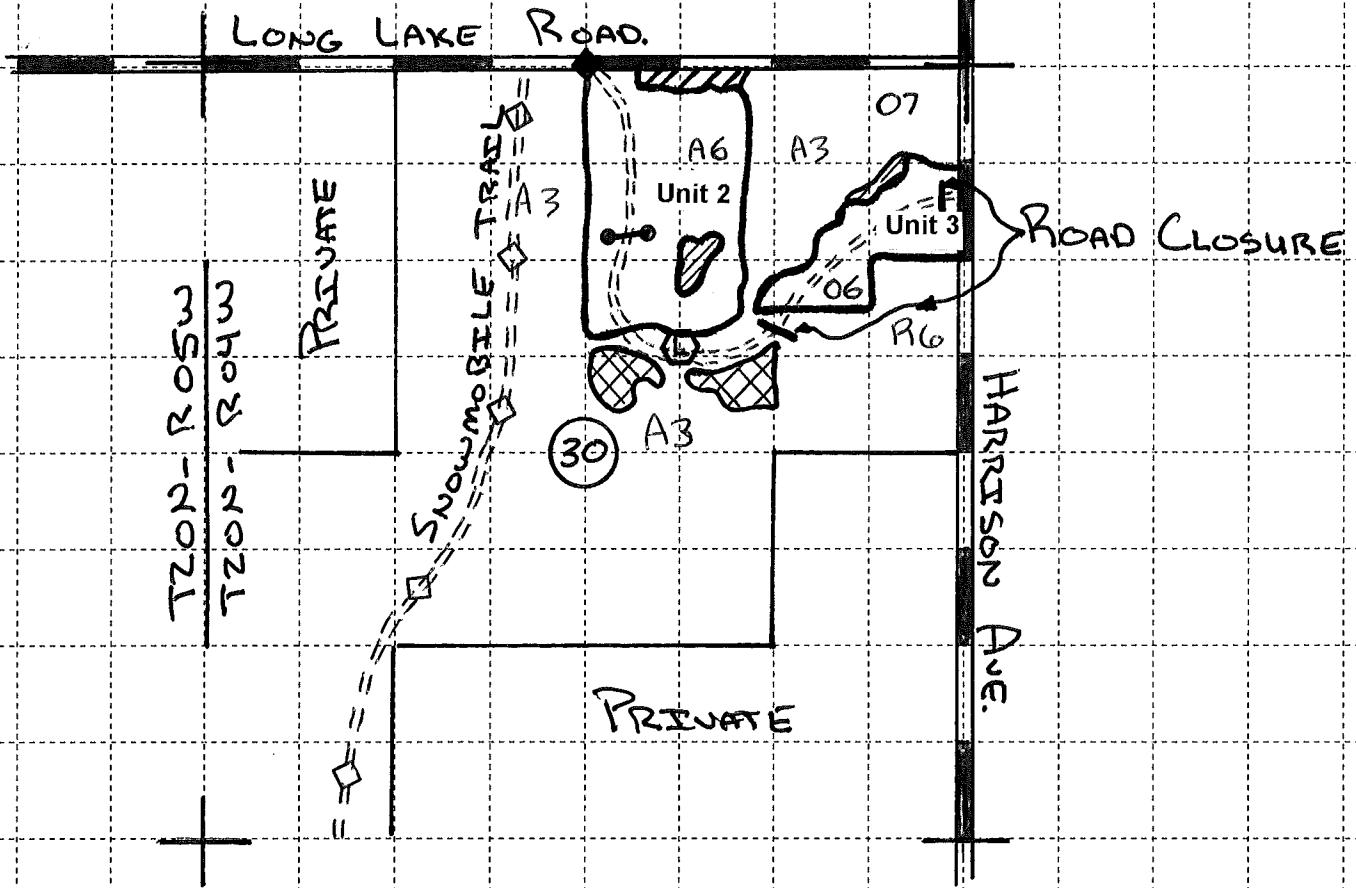
This information provided by authority of Part 525 of Act 451, PA 1994, as amended.

Sale Number	Year
73-017-10-01	2010

Forest Management Unit <b>GLADWIN UNIT</b>	County <b>CLARE</b>	Marked By <b>GALLAGHER</b>	Date 08/30/2010	Page of 1 of 2
Township <b>T20N</b>	Range <b>R4W &amp; R5W</b>	Section(s) and Subdivision(s) <b>T20N R04W, SECTION 30, NE1/4: T20N R05W, SECTION 24, NWSW: NESW:</b>	Scale: [...1 inch.....] = 1/4 mile	

Cover Type				Density	
A = Aspen	G = Grass	O = Oak	U = Upland Brush	0 = Non Stocked	5 = Pole Timber Medium
B = Paper Birch	H = Hemlock	P = Lowland Poplar	V = Bog or Marsh	1 = Seedling Sapling Poor	6 = Pole Timber Well
C = Cedar	J = Jack Pine	Q = Mixed Swamp Cnfr	W = White Pine	2 = Seedling Sapling Medium	7 = Saw Timber Poor
D = Treed Bog	L = Lowland Brush	R = Red Pine	X = Non Stocked	3 = Seedling Sapling Well	8 = Saw Timber Medium
E = Swamp Hdwoods	M = Mpl, Bch, Brch	S = Black Spruce	Z = Water	4 = Pole Timber Poor	9 = Saw Timber Well
F = Spruce Fir	N = Marsh	T = Tamarack			

**STONE FENCE ASPEN:**  
Clare County - Acres: 78



**ACRES:**

Unit 1 - 20 acres
Unit 2 - 41 acres
Unit 3 - 17 acres

**KEY:**

	Sale Boundary - Red Paint
	Gate
	Possible Landing Locations
	Survey Corner
	Retention Areas (No Cut Areas)
	Maintained Wildlife Opening



**TIMBER SALE MAP**

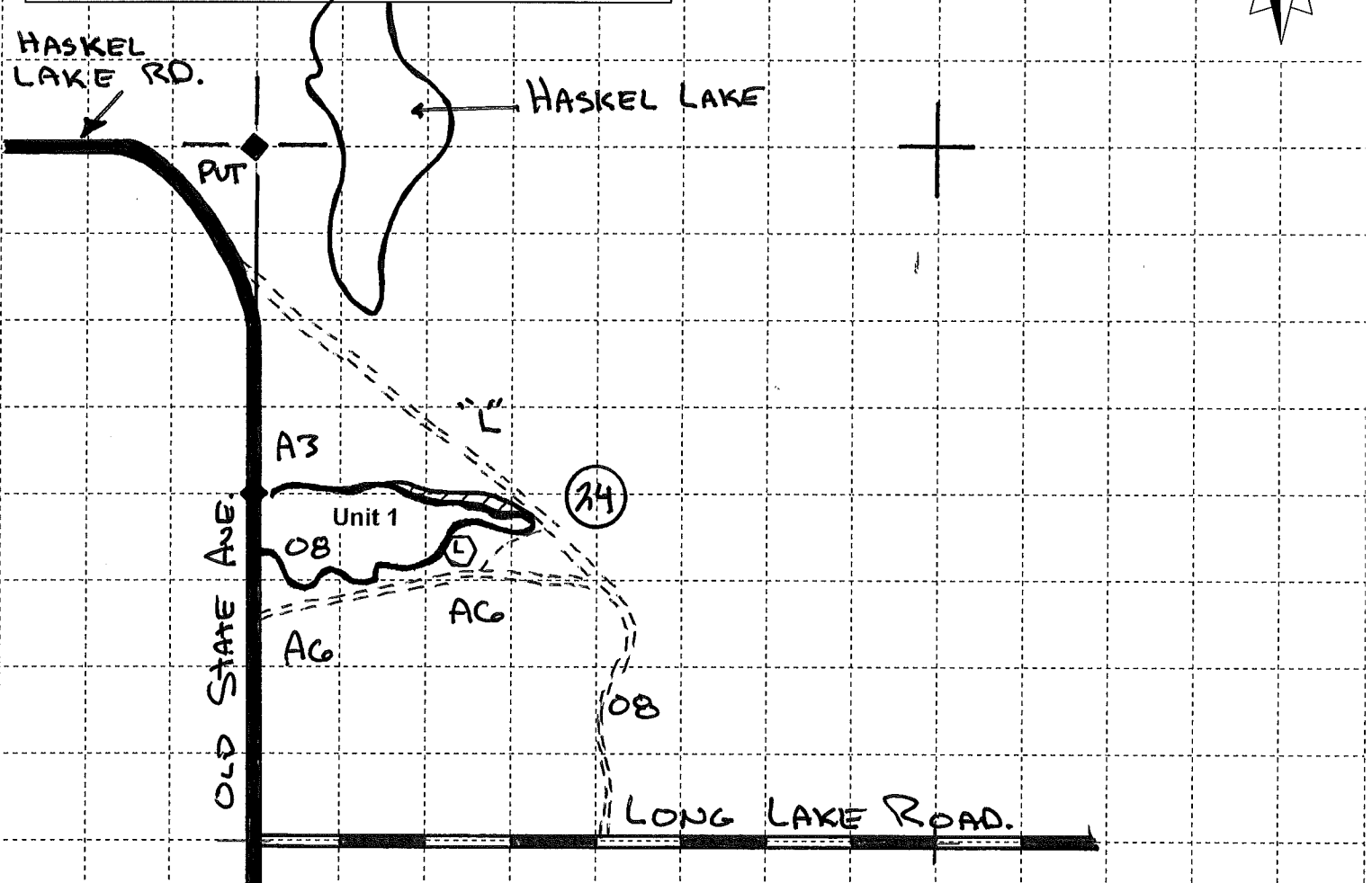
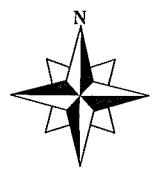
This information provided by authority of Part 525 of Act 451, PA 1994, as amended.

Sale Number	Year
73-017-10-01	2010

Forest Management Unit <b>GLADWIN UNIT</b>	County <b>CLARE</b>	Marked By <b>GALLAGHER</b>	Date 08/30/2010	Page of 2 2
Township <b>T20N</b>	Range <b>R4W &amp; R5W</b>	Section(s) and Subdivision(s) <b>T20N R04W, SECTION 30, NE1/4: T20N R05W, SECTION 24, NWSW: NESW:</b>	Scale: [...1 inch.....] = 1/4 mile	

Cover Type				Density	
A = Aspen	G = Grass	O = Oak	U = Upland Brush	0 = Non Stocked	5 = Pole Timber Medium
B = Paper Birch	H = Hemlock	P = Lowland Poplar	V = Bog or Marsh	1 = Seedling Sapling Poor	6 = Pole Timber Well
C = Cedar	J = Jack Pine	Q = Mixed Swamp Cnfr	W = White Pine	2 = Seedling Sapling Medium	7 = Saw Timber Poor
D = Treed Bog	L = Lowland Brush	R = Red Pine	X = Non Stocked	3 = Seedling Sapling Well	8 = Saw Timber Medium
E = Swamp Hdwoods	M = Mpl, Bch, Brch	S = Black Spruce	Z = Water	4 = Pole Timber Poor	9 = Saw Timber Well
F = Spruce Fir	N = Marsh	T = Tamarack			

**STONE FENCE ASPEN:**  
Clare County - Acres: 78



**ACRES:**  
Unit 1 - 20 acres  
Unit 2 - 41 acres  
Unit 3 - 17 acres

**KEY:**

	Sale Boundary - Red Paint
	Gate
	Possible Landing Locations
	Survey Corner
	Retention Areas (No Cut Areas)
	Maintained Wildlife Opening