



**DEPARTMENT OF NATURAL RESOURCES
STATE OF MICHIGAN**

TIMBER SALE PROSPECTUS #4885

REVISION NOTICE #1 - March 19, 2013

SCHEDULED SALE DATE AND TIME: 9:00 a.m. (local time) on Thursday, April 4, 2013

LOCATION: **BARAGA MGMT UNIT, 427 US 41 NORTH, BARAGA, MI 49908**

This prospectus has been modified with the following changes.

The pulp volumes on the sale map for Grouse Grove were incorrect. Please see the new map for Grouse Grove.

The sale map for the GROUSE GROVE timber sale (11-024-13-01) has been updated. Please use the attached sale map when bidding on this sale and disregard the original sale map sent with the prospectus.

We apologize for any inconvenience this may have caused. If you need assistance, please contact Don Mankee at 906-353-6651.



TIMBER SALE MAP

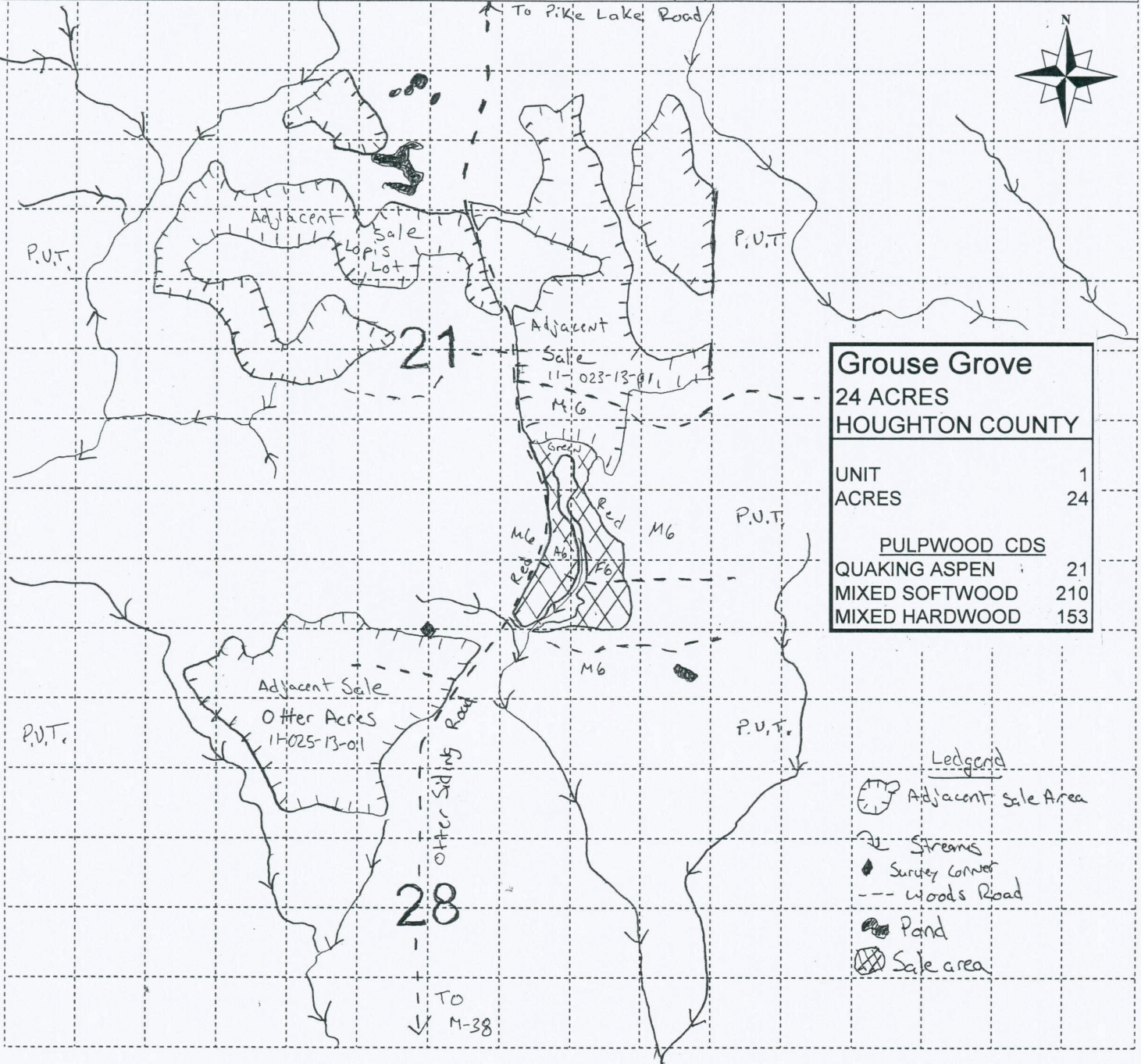
This information provided by authority of Part 525, 1994 PA 451, as amended.

Sale Number	Year
11-024	2013

Forest Management Unit	County	Mapped By	Date	Page	of
Baraga	Houghton	Mittlestat	12/19/2012	1	1
Township	Range	Section(s) and Subdivision(s)	Scale: [1/4 inches.....] = 1 mile		
52N	35W	Sec 21 - SE1/4, Sec 28 - N1/2NE			

Cover Type			
A = Aspen	J = Jack Pine	O = Oak	U = Upland Brush
B = Paper Birch	K = Rock	P = Lowland Poplar	UM = Upland Mix Forest
C = Cedar	L = Lowland Brush	Q = Mixed Swamp Conifer	V = Bog or Marsh
D = Treed Bog	LM = Lowland Mix Forest	R = Red Pine	W = White Pine
E = Swamp Hardwoods	M = Maple, Beech, Birch	S = Black Spruce	X = Non Stocked
F = Spruce/Fir	MC = Mixed Conifer	T = Tamarack	Y = Sand
G = Grass	MD = Mixed Deciduous	Z = Water	
H = Hemlock	N = Marsh		

Density	
0 = Non Stocked	5 = Pole Timber Medium
1 = Seedling Sapling Poor	6 = Pole Timber Well
2 = Seedling Sapling Medium	7 = Saw Timber Poor
3 = Seedling Sapling Well	8 = Saw Timber Medium
4 = Pole Timber Poor	9 = Saw Timber Well



Grouse Grove	
24 ACRES	
HOUGHTON COUNTY	
UNIT	1
ACRES	24
PULPWOOD CDS	
QUAKING ASPEN	21
MIXED SOFTWOOD	210
MIXED HARDWOOD	153