



**DEPARTMENT OF NATURAL RESOURCES
STATE OF MICHIGAN**

TIMBER SALE PROSPECTUS #4962

REVISION NOTICE #1 - November 20, 2013

SCHEDULED SALE DATE AND TIME: 3:00 p.m. (local time) on Monday, December 2, 2013

LOCATION: GWINN MGMT UNIT, 410 WEST M-35, GWINN, MI 49841

This prospectus has been modified with the following changes.

New maps are being sent as there were printing issues on the prospectus.

The sale map for the SHARKYS CAMP timber sale (32-003-13-01) has been updated. Please use the attached sale map when bidding on this sale and disregard the original sale map sent with the prospectus.

The sale map for the 565 SPRUCE timber sale (32-007-13-01) has been updated. Please use the attached sale map when bidding on this sale and disregard the original sale map sent with the prospectus.

The sale map for the HEMMINGS ASPEN timber sale (32-010-13-01) has been updated. Please use the attached sale map when bidding on this sale and disregard the original sale map sent with the prospectus.

The sale map for the STACK MEMORIAL HARDWOODS timber sale (32-015-13-01) has been updated. Please use the attached sale map when bidding on this sale and disregard the original sale map sent with the prospectus.

We apologize for any inconvenience this may have caused. If you need assistance, please contact Jim Ferris at 906-346-9201.

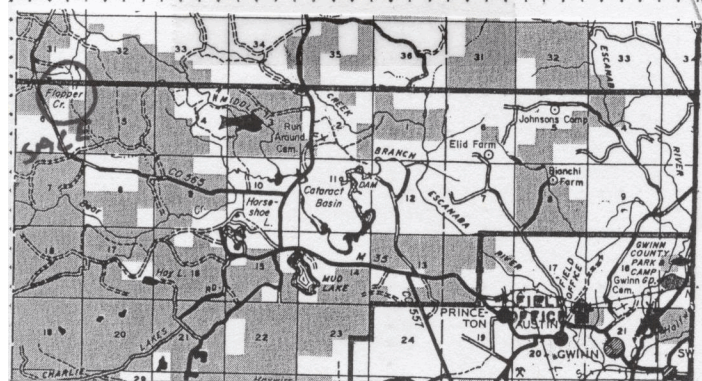
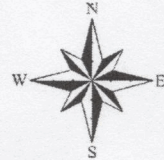
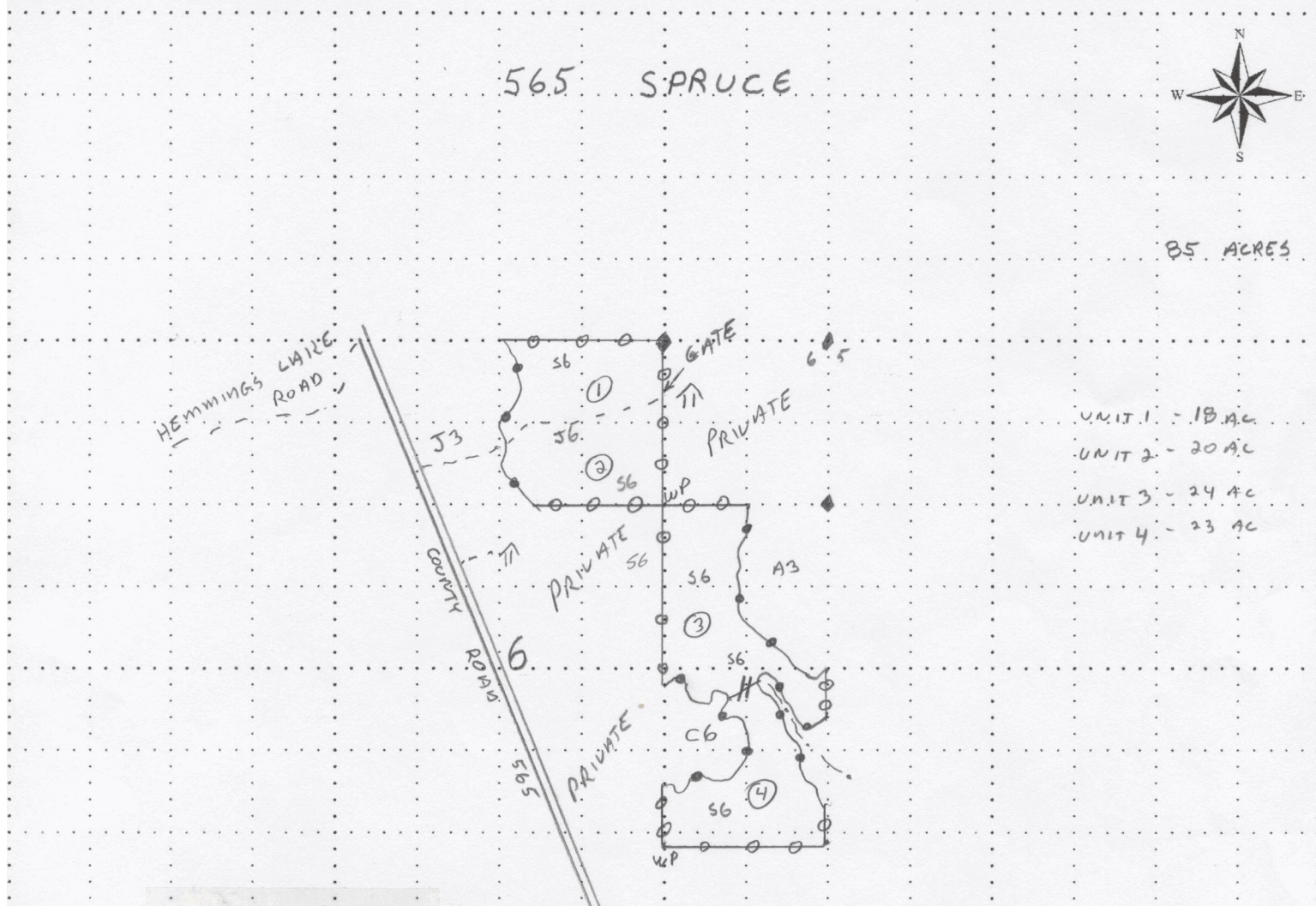


TIMBER SALE MAP

This information provided by authority of Part 525, 1994 PA 451, as amended.

Forest Management Unit Gwinn	County Marquette	Mapped By LaBumbard	Date 04/18/2013	Page 1	of 1
Township 45N	Range 26W	Section(s) and Subdivision(s) Sec 6 NWNE, SENE, NESE	Cruised By KL, TS, BT		

Cover Type				Density	
A = Aspen	J = Jack Pine	O = Oak	U = Upland Brush	0 = Non Stocked	5 = Pole Timber Medium
B = Paper Birch	K = Rock	P = Lowland Poplar	UM = Upland Mix Forest	1 = Seedling Sapling Poor	6 = Pole Timber Well
C = Cedar	L = Lowland Brush	Q = Mixed Swamp Conifer	V = Bog or Marsh	2 = Seedling Sapling Medium	7 = Saw Timber Poor
D = Treed Bog	LM = Lowland Mix Forest	R = Red Pine	W = White Pine	3 = Seedling Sapling Well	8 = Saw Timber Medium
E = Swamp Hardwoods	M = Maple, Beech, Birch	S = Black Spruce	X = Non Stocked	4 = Pole Timber Poor	9 = Saw Timber Well
F = Spruce/Fir	MC = Mixed Conifer	T = Tamarack	Y = Sand		
G = Grass	MD = Mixed Deciduous		Z = Water		
H = Hemlock	N = Marsh				



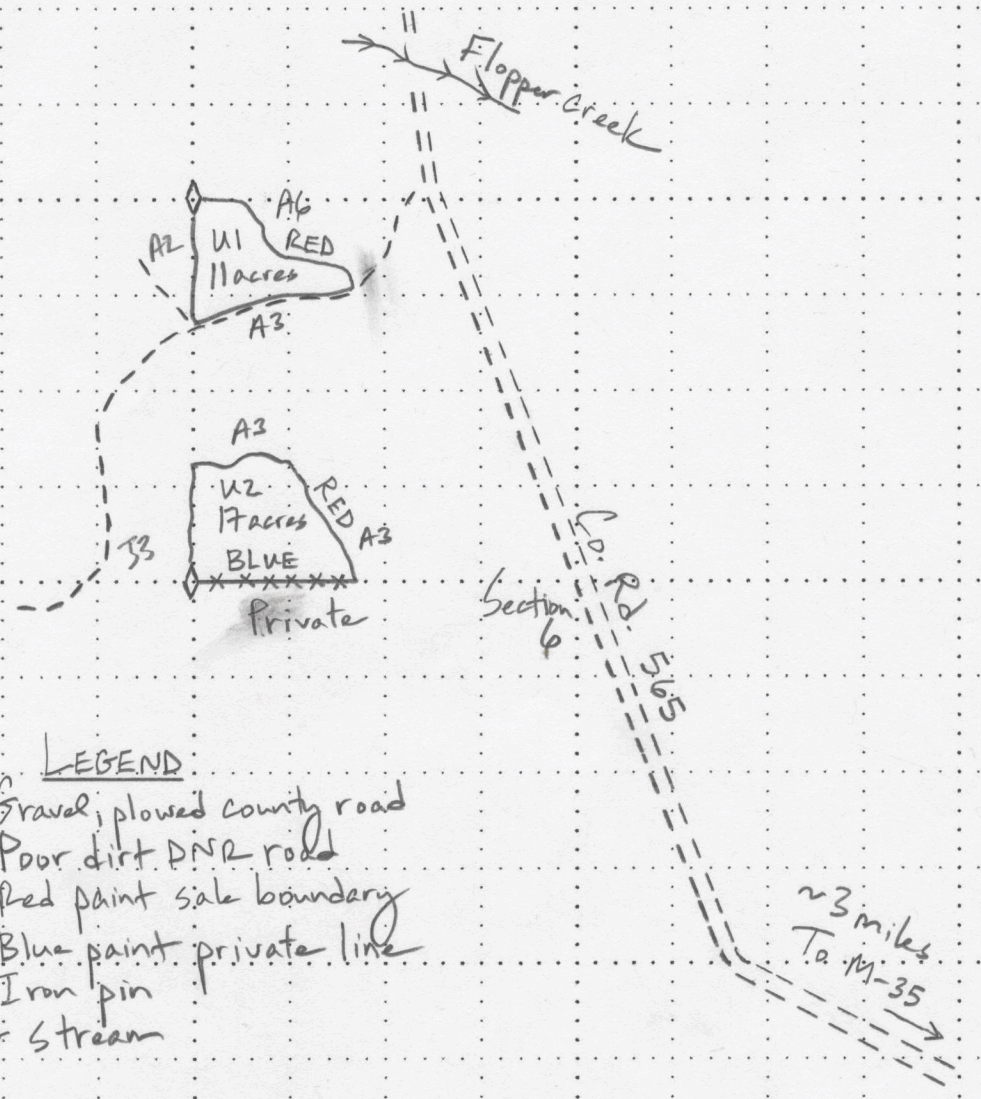
LEGEND

- BLUE PAINT LINE
- RED PAINT LINE
- PAYMENT UNIT LINE
- PAYMENT UNIT #
- MONUMENTED CORNER
- WOOD POST CORNER
- CREEK

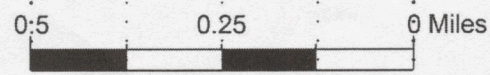


Forest Management Unit GWINN		County MARQUETTE	Mapped By LaBumbard	Date 4-15-2013	Page 1	of 1
Township 45N	Range 26W	Section(s) and Subdivision(s) 6 - NWNW, SWNW				
Cover Type A = Aspen B = Paper Birch C = Cedar D = Treed Bog E = Swamp Hdwoods F = Spruce Fir G = Grass H = Hemlock J = Jack Pine L = Lowland Brush M = Mpl, Bch, Brch N = Marsh O = Oak P = Lowland Poplar Q = Mixed Swamp Cnfr R = Red Pine S = Black Spruce T = Tamarack U = Upland Brush V = Bog or Marsh W = White Pine X = Non Stocked Z = Water			Density 0 = Non Stocked 1 = Seedling Sapling Poor 2 = Seedling Sapling Medium 3 = Seedling Sapling Well 4 = Pole Timber Poor 5 = Pole Timber Medium 6 = Pole Timber Well 7 = Saw Timber Poor 8 = Saw Timber Medium 9 = Saw Timber Well			

HEMMINGS: ASPEN
 28 acres



- LEGEND**
- === Gravel, plowed county road
 - Poor dirt DNR road
 - Red paint sale boundary
 - xxx Blue paint private line
 - ◇ Iron pin
 - Stream



Empt. 35



TIMBER SALE MAP

This information provided by authority of Part 525 of Act 451, PA 1994, as amended.

Sale Number	Year
32-003-13-01	2013

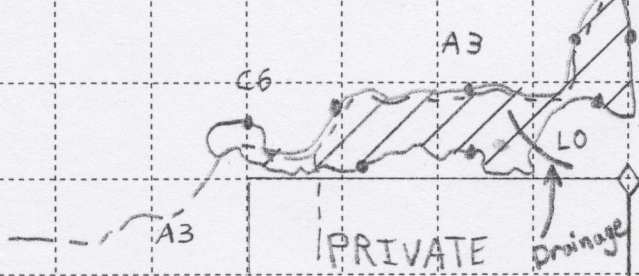
Forest Management Unit	County	Mapped By	J.H. Johnston	Date	Page	of
Gwinn Management Unit	Marquette	Cruised By	J.H. Johnston	4/18/2013	1	1
Township	Range	Section(s) and Subdivision(s)		Scale: ...4 inches..... = 1 mile		
T44N	R24W	NENE, NWNE Section 32				

Cover Type				Density	
A = Aspen	G = Grass	O = Oak	U = Upland Brush	0 = Non Stocked	5 = Pole Timber Medium
B = Paper Birch	H = Hemlock	P = Lowland Poplar	V = Bog or Marsh	1 = Seedling Sapling Poor	6 = Pole Timber Well
C = Cedar	J = Jack Pine	Q = Mixed Swamp Cnfr	W = White Pine	2 = Seedling Sapling Medium	7 = Saw Timber Poor
D = Treed Bog	L = Lowland Brush	R = Red Pine	X = Non Stocked	3 = Seedling Sapling Well	8 = Saw Timber Medium
E = Swamp Hdwoods	M = Mpl, Bch, Brch	S = Black Spruce	Z = Water	4 = Pole Timber Poor	9 = Saw Timber Well
F = Spruce Fir	N = Marsh	T = Tamarack			

SHARKY'S CAMP
22 ACRES

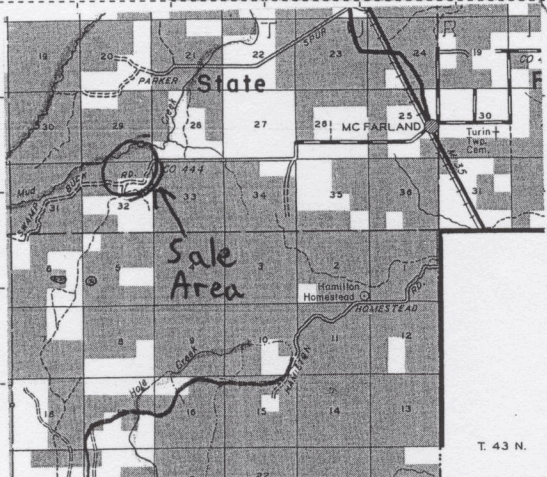


SWAMPBUCK ROAD ≈ 4 miles to M-35



LEGEND

- Survey corner
- Dirt Road
- Red sale boundary
- Harvest area





TIMBER SALE MAP

This information provided by authority of Part 525, 1994 PA 451, as amended.

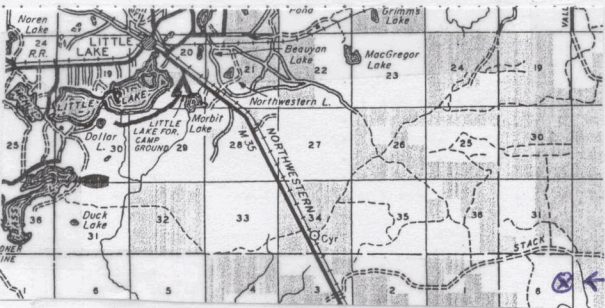
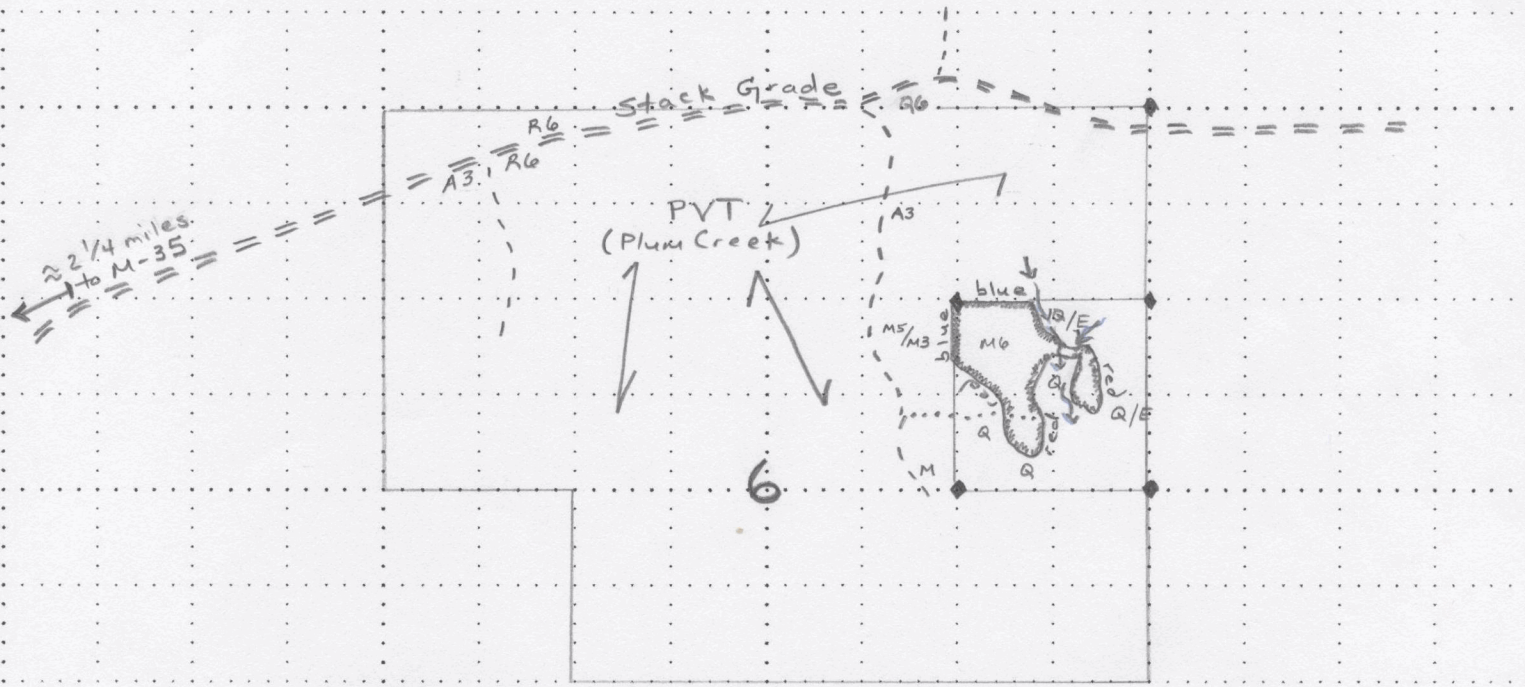
32-015

13

Forest Management Unit Gwinn		County Marquette	Mapped By T. Sysol	Date 5/28/13	Page 1	of 1
Township 44N	Range 23W	Section(s) and Subdivision(s) 6 SENE				
Cover Type			Density			
A = Aspen	J = Jack Pine	O = Oak	U = Upland Brush	0 = Non Stocked	5 = Pole Timber Medium	
B = Paper Birch	K = Rock	P = Lowland Poplar	UM = Upland Mix Forest	1 = Seedling Sapling Poor	6 = Pole Timber Well	
C = Cedar	L = Lowland Brush	Q = Mixed Swamp Conifer	V = Bog or Marsh	2 = Seedling Sapling Medium	7 = Saw Timber Poor	
D = Treed Bog	LM = Lowland Mix Forest	R = Red Pine	W = White Pine	3 = Seedling Sapling Well	8 = Saw Timber Medium	
E = Swamp Hardwoods	M = Maple, Beech, Birch	S = Black Spruce	X = Non Stocked	4 = Pole Timber Poor	9 = Saw Timber Well	
F = Spruce/Fir	MC = Mixed Conifer	T = Tamarack	Y = Sand			
G = Grass	MD = Mixed Deciduous		Z = Water			
H = Hemlock	N = Marsh					

STACK MEMORIAL HARDWOODS

12 acres



Sale location

- Sale Area (red, blue)
- Poor State Dirt Road = = = =
- Two-Track Road (closed) - - - -
- Trail (ORY)
- Survey corner(s) ◆
- Seasonal drainage ~ ~

