



**DEPARTMENT OF NATURAL RESOURCES
STATE OF MICHIGAN**

TIMBER SALE PROSPECTUS #5631

SCHEDULED SALE DATE AND TIME: 3:00 p.m. (local time) on May 23, 2016.

LOCATION: MANTON FIELD OFFICE, 521 N MICHIGAN, MANTON, MI 49663.

PROSPECTUS NOTE: The bidder is advised to inspect the sale area and review the location, estimated volumes, operating costs and contract terms of proposed sales. Please be aware that some landowners may request 60 days or more notice for access across their land.

Notice is hereby given that bids will be received by the Unit Manager, CADILLAC MANAGEMENT UNIT, for certain timber on the following described lands:

Final Strip Red (63-002-16)

Wexford County, Advertised Price \$205,070.95, 51.7 Acres, Red Pine.

West Modders Mix (63-006-16)

Missaukee County, Advertised Price \$29,609.65, 66.4 Acres, Aspen, Jack Pine.

Cranberry Combo (63-008-16)

Missaukee County, Advertised Price \$24,564.95, 65.7 Acres, Hardwood, Jack Pine.

SALE NOTE: Access may be through private or other public land.

BID INSTRUCTIONS (VER. 05/04/2016):

1. Scheduled Bid Location, Date, and Time (2/11)

Bids must be received by the Unit Manager, MANTON OFFICE, 521 N MICHIGAN, MANTON, MI 49663, no later than 3:00 p.m. (local time) on May 23, 2016. For further information concerning this sale, contact Jim Malloy at 231-824-3591 extension 10.

2. Bidder's Qualifications (5/16)

Purchaser shall obtain workers compensation insurance to cover claims under Michigan's Worker's Disability Compensation Act of 1969 or similar employee benefit act of any other state applicable to an employee. If all or part of a timber sale was prepared by a private contractor, the contractor and that contractor's company are not permitted to bid on the timber sale contract. Bids will not be accepted from individuals or companies appearing on the DNR/FRD No-Bid List. This list contains the names of purchasers who previously failed to execute a contract within 21-days or who have a history of poor performance.

3. Preparation of Sealed Bids (5/16)

Bid Forms may be completed online thru Michigan DNR Timber Sale Online Bidding (OLB) at www.michigan.gov/timberbidding or by completing the hardcopy Bid Form found in the Timber Sale Prospectus. Hardcopy Bid Forms shall be manually signed in ink. Registration in OLB is considered your 'signature' for all bids submitted thru that system. Bid prices must be entered for each species and product in the Bid Price column for all material subject to bidding and all fill-in blanks must be completed. If erasures or other changes appear on the hardcopy Bid Form, each erasure or change must be initialed by the person signing the bid.

4. Submission of Sealed Bids (5/16)

Bid forms may be obtained from the Unit Manager or thru OLB. Bids may be submitted hardcopy or thru OLB. All hardcopy bids must be submitted on the bid form and in an envelope clearly identified as described in this section. NOTE: Only one bid form per bid envelope. Sealed bids must be submitted to the Unit office designated in the prospectus and must be submitted at or prior to the time established in the prospectus. The envelope should show on the outside (a) the sale name or number and (b) the date and time of bid opening, as shown in the prospectus. Bids received after the time specified in the sale prospectus are late bids and will be rejected.

It is possible for a bidder to submit multiple bids on a single sale. For example, a bid may be submitted hardcopy and a bid may be submitted thru OLB. Or, two bidders from the same company could both submit bids on the same sale. If this were to happen, the State would accept all bids received and award the contract accordingly. All bidding and contractual requirements would apply to all bids received.

5. Public Opening of Sealed Bids (5/16)

If conditions permit, the sealed bids will be publicly opened and posted at the time and place set in the prospectus.

If a bidder, present at a bid opening, has submitted bids on more than one sale, that bidder may withdraw their unopened bid envelopes or announce the withdraw of their online bid after being declared the successful bidder on one sale.

6. Award of Contract (1/11)

Award of the contract will be made to the Bidder whose bid, conforming to the prospectus, is most advantageous to the State of Michigan on the basis of total value at rates bid for the estimated quantities. The State reserves the right to reject any bid or waive any minor irregularity in bids received. A written award mailed (or otherwise furnished) to the successful Bidder shall be deemed to result in a binding contract without further action by either party.

7. Down Payment (1/11)

The Bidder to whom award is made must make a down payment within 21 days of the sale award. The amount of the down payment will be calculated as shown in the Bond and Payment Schedule of this prospectus. Only cash may be used to meet this requirement.

8. Performance Security (1/11)

As guarantee of faithful performance, a cash bond, certificate of deposit, surety bond or irrevocable letter of credit (LOC) is required within 21 days of the sale award. The amount of the performance security is shown in the Bond and

Payment Schedule of this prospectus. If an LOC or surety is used, the coverage must extend for at least 6 months beyond the contract expiration.

9. Timber Sale Contract (9/14)

Additional conditions and requirements common to all timber sales are listed on the timber sale contract (R4031) and are available on line at www.michigan.gov/timber. Contact the Unit Manager for additional information or a sample contract. Within 21 days of the date of the award letter, the bidder must sign the contract and provide the required down payment, performance security, and verification of worker's disability compensation. The down payment and performance security shall be in accordance with the provisions of the timber sale contract, in the sums stated in this prospectus. If these actions are not taken, then the Bidder, the Bidder's corporation, and the corporation's principals may not be permitted to bid on State timber sales for a period of 1 year. In addition, the Bidder certifies that if awarded this contract, the Bidder will complete the timber sale contract in accordance with its terms and any modifications thereof including requirements to purchase, cut, and remove the included timber by the expiration date.

10. Disclaimer of Estimates and Bidder's Warranty of Inspection (1/11)

Before submitting this bid, the Bidder is advised and cautioned to inspect the sale area, review the requirements of the sale contract, and take other steps as may be reasonably necessary to ascertain the location, estimated volumes, construction estimates, and operating costs of the proposed sale. Failure to do so will not relieve the Bidder from responsibility for completing the contract.

The Bidder warrants that this bid is submitted solely on the basis of the Bidder's examination and inspection of the quality and quantity of the timber offered for sale and the Bidder's opinion of the value thereof and the costs of recovery. No reliance should be placed on the State of Michigan's estimates of timber quality, quantity or costs of recovery. Bidder further acknowledges that the State of Michigan: (i) expressly disclaims any warranty of fitness of timber for any purpose; (ii) offers this timber as is without any warranty of quality (merchantability) or quantity and (iii) expressly disclaims any warranty as to the quantity or quality of timber sold.

11. Certification and Chain-of-Custody (10/14)

Unless otherwise indicated in the contract under section 7 – Other Conditions of the Sale Specific Conditions & Requirements, the area encompassed by this timber sale is certified to the standards of the Forest Stewardship Council (FSC) - Certificate #SCS-FM/COC-00090N and the Sustainable Forestry Initiative (SFI) - Certificate # NSF-SFIS-5Y031-SF5. Forest products from this sale may be delivered to the mill as "FSC 100% and / or SFI certified" as long as the contractor hauling the forest products is chain-of-custody (COC) certified or covered under a COC certificate from the destination mill. The purchaser is responsible for maintaining COC after leaving the sale area.

DR. WILLIAM MORITZ
Director

TIMBER SALE INFORMATION

Final Strip Red (63-002-16)

Wexford County (Advertised Price \$205,070.95)

A timber sale contract for this lump sum, sealed bid timber sale will be awarded to the responsible bidder offering the highest sealed bid price. Bids must be at or above the following advertised price for each species:

<u>PRODUCTS & SPECIES</u>	<u>ESTIMATED UNITS*</u>	<u>ADVERTISED PRICE</u>
Sawtimber		
Red Pine	1,259.60 MBF	\$ 138.00 / MBF
Pulpwood		
Red Pine	689.00 Cords	\$ 45.35 / Cord

* The total volume is statistically estimated within plus (+) or minus (-) 6.00 percent. The estimated units are final and not subject to adjustment. Prospective bidders are urged to examine this timber and to make their own estimates of quantity and quality.

BOND AND PAYMENT SCHEDULE:

1. A bond in the amount of \$10,254.00 to insure faithful performance of the conditions of the contract will be deposited by the successful bidder within 21 days of the sale award.
2. Cutting in any sale or unit without the required advance payment would be considered a trespass.
3. Total payment must be paid in advance or according to the following schedule:
 - (a) Ten percent (10%) of the sale value must be paid within 21 days of the sale award.
 - (b) The remainder is due before cutting begins.
4. If no cutting takes place, the 10% down payment will not be refunded.
5. Operations on the contract issued will terminate on 06/30/2018.

Description of Timber by Payment Unit (PU)

PU	MARKET GROU	PRODUCT	QUANTITY	UNIT	ACRES	ADVERTISE PRICE
1	Red Pine	Sawtimber	1,259.6	MBF	51.7	\$205,070.95
	Red Pine	Pulpwood	689.0	Cords		
TOTAL:			1,259.6	MBF		
TOTAL:			689.0	Cords		

Sale Specific Conditions & Requirements

Sale Name: Final Strip Red

Sale Number: 63-002-16 Seq#: 1

1 - Sale Area

1.2 - Boundaries

1.2.1 - Painted boundaries (1/14)

The sale boundary is marked and identified by red paint. The sale has a red boundary along the exterior of the R9 strips, but no paint along the edges of the A1 strips.

2 - Timber Specifications

2.1 - Included Timber

2.1.1 - Clearcut unit(s) with unmerchantable trees (6/14)

Within Payment Unit(s) 1, cut all trees that are two (2) inches or more at DBH.

2.2 - Utilization

2.2.2 - Chipping required (5/14)

This area must be chip harvested to facilitate subsequent planting operations. The Purchaser has the option to produce sawlogs or pulpwood bolts, but the remaining portion of the trees must be chipped and hauled. The requirement to retain approximately 1/6 to 1/3 of tree tops and limbs less than four inches in diameter does not apply (G. C. & R. 2.2). This is because of future planting activities.

2.2.3 - Stump heights (4/07)

Stump heights within the Sale Area shall not exceed 6 inches for all trees. This is in order to facilitate planting operations.

3 - Payments

3.3 - Pre-measured Sales

3.3.4 - Dividing payment units (7/14)

Payment Unit(s) may be divided at the request of the Purchaser and upon approval of the Unit Manager. Dividing Payment Units is a contract modification which requires a Timber Sale Contract Supplement.

4 - Transportation

4.1 - Construction

4.1.7 - Road closure (10/11)

Some existing roads may need to be closed. In general, this will require constructing double earthen berms at strategic locations. Stumps and brush must be placed along the remainder of the trail. Berms must also be placed at intervals of not over 50 feet and at all junctions. These roads must be rendered impassable to cars and trucks. All stumps from road building and landing construction must be reserved to block any newly constructed roads upon completion of the sale. These stumps must be scattered along the road system to prohibit vehicular movement. Contact the sale administrator for specific details of design and placement.

4.1.12 - No new roads (1/12)

No new roads will be permitted. All operations are limited to existing roads. Skid trails only will be allowed.

4.2 - Maintenance

4.2.5 - Two wheel drive condition (2/04)

All existing trail roads on and adjacent to the sale area must be passable by two-wheel drive traffic for the duration of the sale.

5 - Operations

5.1 - Notification

5.1.1 - Pre-sale conference (10/11)

A pre-sale conference on site between the Purchaser and sale administrator is required prior to beginning any operations to determine landing and road locations. The Unit Manager or his/her representative must be contacted at least 3 days in advance to schedule the conference.

5.1.4 - Post-sale conference (6/11)

A post-sale conference on site between the Purchaser and sale administrator is required 3 days prior to the completion of active logging operations to determine clean-up and repair of landings, road edges, and the fulfillment of other contract specifications.

6 - Safety and Fire Prevention

6.2 - Signing

6.2.1 - Road posting (9/09)

The Purchaser is responsible for posting and maintaining caution signs on E 10 Rd and N 39 Rd prior to beginning operations. The road must be posted at appropriate distances from the sale area to warn of logging activity and truck traffic. Signs must be removed when harvest operations are suspended or completed. The Purchaser will provide these signs.



TIMBER SALE MAP

This information provided by authority of Part 525, 1994 PA 451, as amended.

Forest Management Unit Cadillac		County Wexford	Mapped By Ventimiglia		Date 10/12/2015	Page 1	of 1
Township 24N	Range 09W	Section(s) and Subdivision(s) Section 19 - SE			Scale 1:15,840		
Cover Type				Density			
A = Aspen	H = Hemlock	N = Marsh	U = Upland Brush	0 = Non Stocked	5 = Pole Timber Medium		
B = Paper Birch	J = Jack Pine	O = Oak	UM = Upland Mixed	1 = Seedling Sapling Poor	6 = Pole Timber Well		
C = Cedar	L = Lowland Brush	P = Lowland Poplar	V = Bog or Marsh	2 = Seedling Sapling Medium	7 = Saw Timber Poor		
D = Tread Bog	LM = Lowland Mixed	Q = Mixed Swamp Conifer	W = White Pine	3 = Seedling Sapling Well	8 = Saw Timber Medium		
E = Swamp Hdwoods	M = Mpl, Bch, Brch	R = Red Pine	X = Non Stocked	4 = Pole Timber Poor	9 = Saw Timber Well		
F = Spruce Fir	MC = Mixed Conifer	S = Black Spruce	Z = Water				
G = Grass	MD = Mixed Deciduous	T = Tamarack					

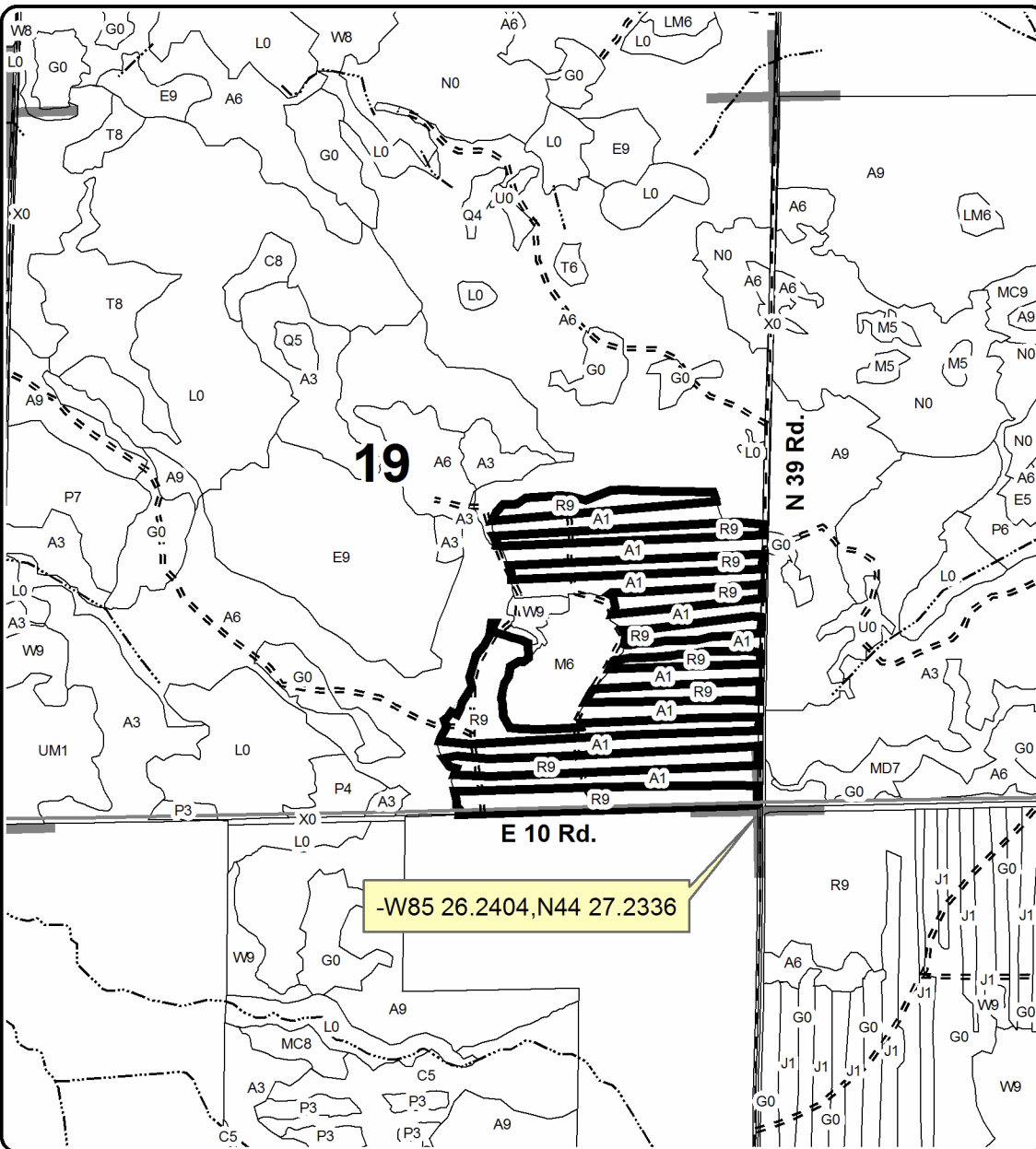
PU Acres

1 52

Final Strip Red

Compartment 148

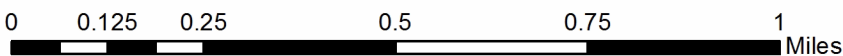
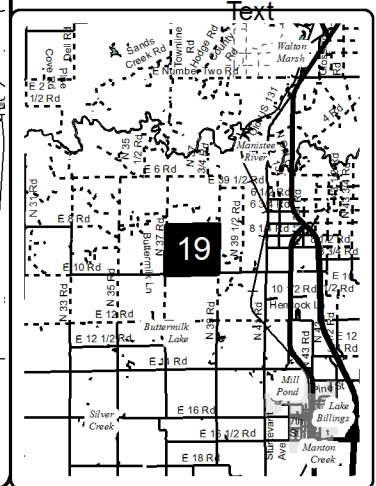
52 Acres



Legend

- Paved Roads
- Gravel Roads
- Poor Dirt Roads
- Section Corners
- Streams
- Sale Boundary**
- Against State (Red / Type Change)

Locator Map
1:250,000



TIMBER SALE INFORMATION

West Modders Mix (63-006-16)

Missaukee County (Advertised Price \$29,609.65)

A timber sale contract for this lump sum, sealed bid timber sale will be awarded to the responsible bidder offering the highest sealed bid price. Bids must be at or above the following advertised price for each species:

<u>PRODUCTS & SPECIES</u>	<u>ESTIMATED UNITS*</u>	<u>ADVERTISED PRICE</u>
Sawtimber		
B. T. Aspen	17.10 MBF	\$ 70.00 / MBF
Northern Pin Oak	25.70 MBF	\$ 175.00 / MBF
Red Maple	8.80 MBF	\$ 171.00 / MBF
Red Pine	9.80 MBF	\$ 128.00 / MBF
White Pine	9.40 MBF	\$ 78.00 / MBF
Pulpwood		
B. T. Aspen	541.00 Cords	\$ 15.50 / Cord
Black Spruce	3.00 Cords	\$ 26.25 / Cord
Jack Pine	261.00 Cords	\$ 17.55 / Cord
Northern Pin Oak	148.00 Cords	\$ 14.90 / Cord
Paper Birch	6.00 Cords	\$ 23.95 / Cord
Red Maple	221.00 Cords	\$ 17.05 / Cord
Red Pine	18.00 Cords	\$ 42.10 / Cord
White Pine	34.00 Cords	\$ 14.80 / Cord

* The total volume is statistically estimated within plus (+) or minus (-) 7.18 percent. The estimated units are final and not subject to adjustment. Prospective bidders are urged to examine this timber and to make their own estimates of quantity and quality.

BOND AND PAYMENT SCHEDULE:

1. A bond in the amount of \$1,480.00 to insure faithful performance of the conditions of the contract will be deposited by the successful bidder within 21 days of the sale award.
2. Cutting in any sale or unit without the required advance payment would be considered a trespass.
3. Total payment must be paid in advance or according to the following schedule:
 - (a) Ten percent (10%) of the sale value must be paid within 21 days of the sale award.
 - (b) The 10% down payment will be credited towards the first unit cut.
4. If no cutting takes place, the 10% down payment will not be refunded.
5. Operations on the contract issued will terminate on 06/30/2018.

Description of Timber by Payment Unit (PU)

PU	MARKET GROU	PRODUCT	QUANTITY	UNIT	ACRES	ADVERTISE PRICE
1	B. T. Aspen	Sawtimber	0.8	MBF	30.0	\$11,921.80
	Northern Pin Oak		14.8	MBF		
	Red Maple		0.5	MBF		
	Red Pine		2.8	MBF		
	White Pine		4.5	MBF		
	B. T. Aspen	Pulpwood	228.0	Cords		
	Black Spruce		3.0	Cords		
	Jack Pine		81.0	Cords		
	<i>Jack Pine</i>	<i>Sawtimber</i>	6.7	<i>MBF</i>		
	<i>Jack Pine</i>	<i>Pulpwood</i>	68.0	<i>Cords</i>		
	Northern Pin Oak		80.0	Cords		
	Red Maple		106.0	Cords		
	Red Pine		5.0	Cords		
	White Pine		16.0	Cords		
	2	B. T. Aspen	Sawtimber	15.2		
Northern Pin Oak			8.6	MBF		
Red Maple			6.0	MBF		
Red Pine			2.1	MBF		
B. T. Aspen		Pulpwood	270.0	Cords		
Jack Pine			6.0	Cords		
<i>Jack Pine</i>			6.0	<i>Cords</i>		
Northern Pin Oak			33.0	Cords		
Paper Birch			6.0	Cords		
Red Maple			81.0	Cords		
Red Pine			3.0	Cords		
3		B. T. Aspen	Sawtimber	1.1	MBF	16.8
	Northern Pin Oak		2.3	MBF		
	Red Maple		2.3	MBF		
	Red Pine		4.9	MBF		
	White Pine		4.9	MBF		
	B. T. Aspen	Pulpwood	43.0	Cords		
	Jack Pine		174.0	Cords		
	<i>Jack Pine</i>	<i>Sawtimber</i>	10.8	<i>MBF</i>		
	<i>Jack Pine</i>	<i>Pulpwood</i>	152.0	<i>Cords</i>		
	Northern Pin Oak		35.0	Cords		
	Red Maple		34.0	Cords		
	Red Pine		10.0	Cords		
	White Pine		18.0	Cords		
	TOTAL:			88.3	MBF	
TOTAL:			1,458.0	Cords		

Sale Specific Conditions & Requirements

Sale Name: West Modders Mix

Sale Number: 63-006-16 Seq#: 1

1 - Sale Area

1.2 - Boundaries

1.2.1 - Painted boundaries (1/14)

The sale boundary and Payment Unit boundaries are marked and identified by blue and red paint. Exterior sale boundary lines against private property are marked with blue paint. Exterior sale boundary lines against state are marked with red paint. The painted boundary line trees are not Included Timber and are to be protected.

2 - Timber Specifications

2.1 - Included Timber

2.1.1 - Clearcut unit(s) with unmerchantable trees (6/14)

Within Payment Unit(s) 1-3, cut all trees that are two (2) inches or more at DBH, except do not cut any black cherry. In addition, do not cut any oak or pine less than 10 inch DBH. Do not cut any trees marked with green paint.

3 - Payments

3.6 - Payment Unit Cutting Schedule

3.6.2 - One active unit (12/08)

Each Payment Unit must be completed to the satisfaction of the Unit Manager or his/her representative before the next unit may be opened.

4 - Transportation

4.1 - Construction

4.1.12 - No new roads (1/12)

No new roads will be permitted in any Payment Unit. All operations are limited to existing roads. Skid trails only will be allowed.

4.2 - Maintenance

4.2.4 - Grading (12/14)

For completion of the sale, state forest roads must be graded. In general, this will require a road grader or bull dozer to shape up the roads after forest products have been hauled off site. This includes cleaning of drainage areas, grading, crowning and filling with gravel, if necessary. The grading equipment to be used must be approved by the Unit Manager or his/her representative.

4.2.5 - Two wheel drive condition (2/04)

All existing trail roads on and adjacent to the sale area must be passable by two-wheel drive traffic for the duration of the sale.

5 - Operations

5.1 - Notification

5.1.1 - Pre-sale conference (10/11)

A pre-sale conference on site between the Purchaser and sale administrator is required prior to beginning any operations to determine landing and road locations. The Unit Manager or his/her representative must be contacted at least 3 days in advance to schedule the conference.

5.1.4 - Post-sale conference (6/11)

A post-sale conference on site between the Purchaser and sale administrator is required 3 days prior to the completion of active logging operations to determine clean-up and repair of landings, road edges, and the fulfillment of other contract specifications.

5.2 - Conduct of Operations

5.2.1 - Slash

5.2.1.8 - Slash height (12/08)

No slash or tree tops may exceed 36 inches in height.

5.2.3 - Operating Restrictions

5.2.3.4 - Oak wilt restriction (6/10)

Within Payment Unit(s) 1-3, unless changed by written agreement, cutting, skidding, and hauling are not permitted during the period of April 15 to July 15. This is necessary to reduce the spread of oak wilt. For more information, contact the Unit Manager or his/her representative.

5.2.4 - Dead and Down Creation

5.2.4.4 - Dead and down creation, grouse (8/13)

To encourage grouse and other wildlife, in Payment Unit(s) 1-3, leave one, 12" diameter or larger log-length (8 foot minimum) piece on the ground for every 2 acres. Also leave at least six (6) large tops per acre. These will be evenly scattered throughout the unit. This can be an unmerchantable piece or a full tree.

5.2.22 - Operating Caution

5.2.22.2 - Operating caution (6/11)

It is recommended, but not required, that within Payment Unit(s) 1-3, cutting, skidding, and hauling occur during dry summer or frozen winter conditions. The reason for the recommendation is because of wet sensitive soils along the edge areas of sale.

5.2.29 - Shrub protection (9/07)

Do not cut or damage hawthorn, witch-hazel, dogwood or junberry. These woody-shrub plants are highly beneficial to various wildlife species.

5.2.38 - No decking against live trees (2/04)

Cut products may not be decked against unmarked or designated leave trees.

5.4 - Soil Protection

5.4.1 - Rutting restriction, general (1/09)

Operations are to cease immediately if equipment and weather conditions result in rutting of roads and skid trails which is 12 inches or greater in depth and 50 feet in length. The Unit Manager or his/her representative may restrict hauling and/or skidding if ruts exceed the specified depth. With the Unit Manager or his/her representative's approval, the Purchaser may return to the area when the risk of rutting has decreased.



TIMBER SALE MAP

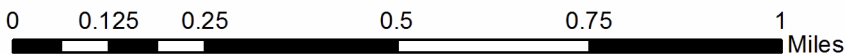
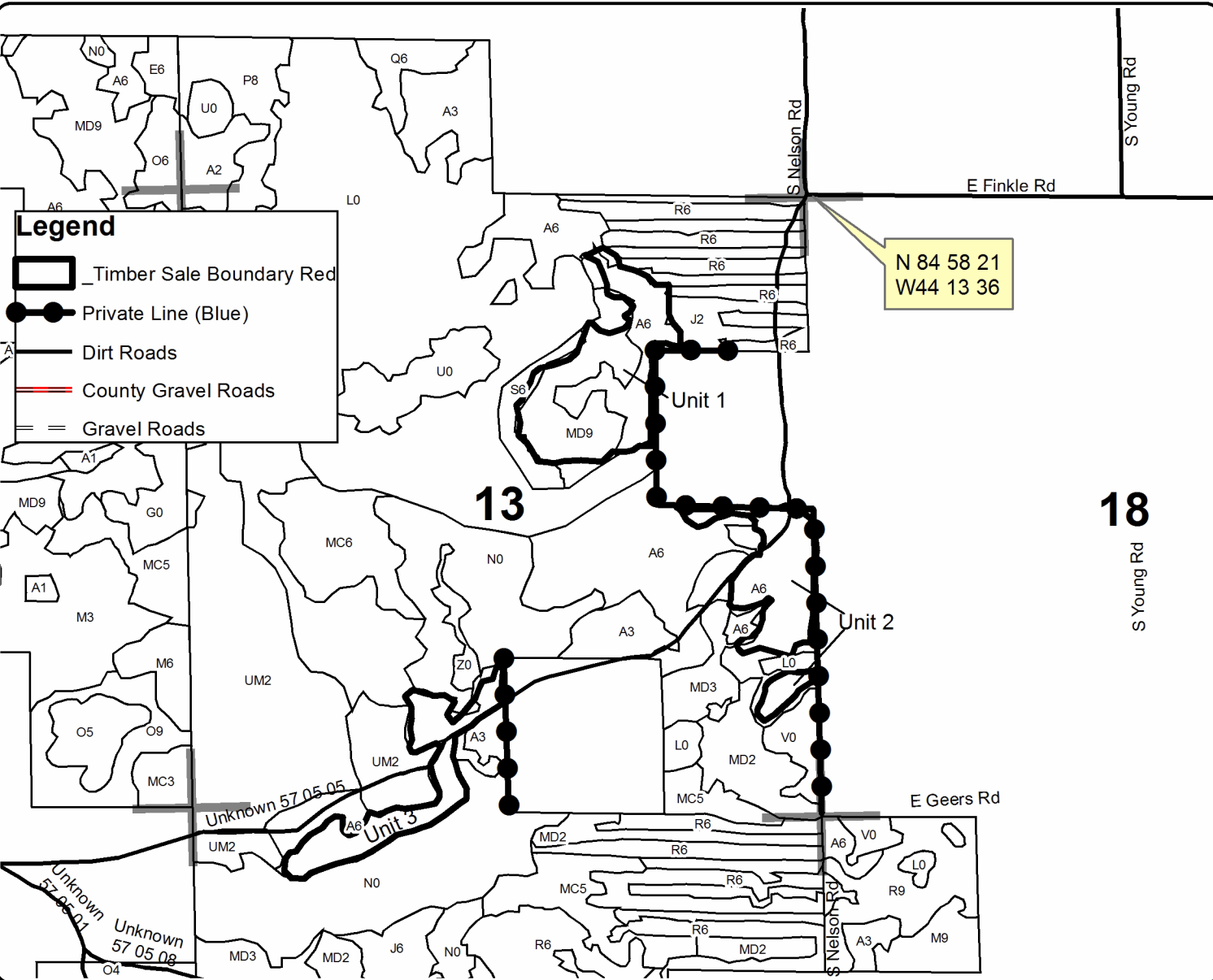
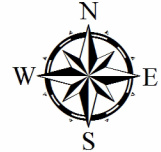
This information provided by authority of Part 525, 1994 PA 451, as amended.

Forest Management Unit Cadillac Unit		County Missaukee County	Mapped By Eisele	Date 12/01/2015	Page 1	of 1
Township 21N	Range R6W	Section(s) and Subdivision(s) 13 NWNE,SWNE,NESE,SESW 24 NENW		Scale 1:15,840		
Cover Type				Density		
A = Aspen	H = Hemlock	N = Marsh	U = Upland Brush	0 = Non Stocked	5 = Pole Timber Medium	
B = Paper Birch	J = Jack Pine	O = Oak	UM = Upland Mixed	1 = Seedling Sapling Poor	6 = Pole Timber Well	
C = Cedar	L = Lowland Brush	P = Lowland Poplar	V = Bog or Marsh	2 = Seedling Sapling Medium	7 = Saw Timber Poor	
D = Treed Bog	LM = Lowland Mixed	Q = Mixed Swamp Conifer	W = White Pine	3 = Seedling Sapling Well	8 = Saw Timber Medium	
E = Swamp Hdwoods	M = Mpl, Bch, Brch	R = Red Pine	X = Non Stocked	4 = Pole Timber Poor	9 = Saw Timber Well	
F = Spruce Fir	MC = Mixed Conifer	S = Black Spruce	Z = Water			
G = Grass	MD = Mixed Deciduous	T = Tamarack				

Payment unit **3-16 acres**
1-29 acres
2-20 acres

West Modders Mix

Compartment 106
65 Acres



TIMBER SALE INFORMATION

Cranberry Combo (63-008-16)

Missaukee County (Advertised Price \$24,564.95)

SALE NOTE: Access may be through private or other public land.

A timber sale contract for this lump sum, sealed bid timber sale will be awarded to the responsible bidder offering the highest sealed bid price. Bids must be at or above the following advertised price for each species:

<u>PRODUCTS & SPECIES</u>	<u>ESTIMATED UNITS*</u>	<u>ADVERTISED PRICE</u>
Sawtimber		
B. T. Aspen	6.90 MBF	\$ 70.00 / MBF
Black Cherry	2.60 MBF	\$ 225.00 / MBF
Northern Pin Oak	12.60 MBF	\$ 175.00 / MBF
Red Maple	10.80 MBF	\$ 171.00 / MBF
Red Pine	4.00 MBF	\$ 128.00 / MBF
White Pine	24.50 MBF	\$ 78.00 / MBF
Pulpwood		
B. T. Aspen	45.00 Cords	\$ 15.50 / Cord
Balsam Fir	82.00 Cords	\$ 15.65 / Cord
Black Cherry	58.00 Cords	\$ 17.05 / Cord
Jack Pine	344.00 Cords	\$ 17.55 / Cord
Northern Pin Oak	130.00 Cords	\$ 14.90 / Cord
Red Maple	157.00 Cords	\$ 17.05 / Cord
Red Pine	14.00 Cords	\$ 42.10 / Cord
White Pine	190.00 Cords	\$ 14.80 / Cord

* The total volume is statistically estimated within plus (+) or minus (-) 8.05 percent. The estimated units are final and not subject to adjustment. Prospective bidders are urged to examine this timber and to make their own estimates of quantity and quality.

BOND AND PAYMENT SCHEDULE:

1. A bond in the amount of \$1,228.00 to insure faithful performance of the conditions of the contract will be deposited by the successful bidder within 21 days of the sale award.
2. Cutting in any sale or unit without the required advance payment would be considered a trespass.
3. Total payment must be paid in advance or according to the following schedule:
 - (a) Ten percent (10%) of the sale value must be paid within 21 days of the sale award.
 - (b) The 10% down payment will be credited towards the first unit cut.
4. If no cutting takes place, the 10% down payment will not be refunded.
5. Operations on the contract issued will terminate on 06/30/2018.

Description of Timber by Payment Unit (PU)

PU	MARKET GROU	PRODUCT	QUANTITY	UNIT	ACRES	ADVERTISE PRICE			
1	B. T. Aspen	Sawtimber	1.9	MBF	11.1	\$4,475.10			
	Northern Pin Oak		4.8	MBF					
	Red Pine		1.8	MBF					
	White Pine		2.8	MBF					
	B. T. Aspen	Pulpwood	17.0	Cords					
	Balsam Fir		8.0	Cords					
	Jack Pine		60.0	Cords					
	<i>Jack Pine</i>	<i>Sawtimber</i>	1.6	<i>MBF</i>					
	<i>Jack Pine</i>	<i>Pulpwood</i>	57.0	<i>Cords</i>					
	Northern Pin Oak		44.0	Cords					
	Red Maple		8.0	Cords					
	Red Pine		4.0	Cords					
	White Pine		44.0	Cords					
	2	Northern Pin Oak	Sawtimber	5.7			MBF	21.1	\$6,725.75
Red Maple			0.8	MBF					
Red Pine			2.2	MBF					
White Pine			9.2	MBF					
Jack Pine		Pulpwood	157.0	Cords					
<i>Jack Pine</i>		<i>Sawtimber</i>	10.9	<i>MBF</i>					
<i>Jack Pine</i>		<i>Pulpwood</i>	135.0	<i>Cords</i>					
Northern Pin Oak			54.0	Cords					
Red Maple			2.0	Cords					
Red Pine			10.0	Cords					
White Pine			39.0	Cords					
3		Black Cherry	Sawtimber	2.6	MBF	11.4	\$5,107.70		
		Northern Pin Oak		2.1	MBF				
		Red Maple		0.5	MBF				
	White Pine		3.6	MBF					
	B. T. Aspen	Pulpwood	3.0	Cords					
	Black Cherry		58.0	Cords					
	Jack Pine		101.0	Cords					
	<i>Jack Pine</i>	<i>Sawtimber</i>	1.8	<i>MBF</i>					
	<i>Jack Pine</i>	<i>Pulpwood</i>	97.0	<i>Cords</i>					
	Northern Pin Oak		32.0	Cords					
	Red Maple		7.0	Cords					
	White Pine		26.0	Cords					
	4	B. T. Aspen	Sawtimber	5.0	MBF			22.1	\$8,256.40
		Red Maple		9.5	MBF				
White Pine			8.9	MBF					
B. T. Aspen		Pulpwood	25.0	Cords					
Balsam Fir			74.0	Cords					
Jack Pine			26.0	Cords					
<i>Jack Pine</i>		<i>Sawtimber</i>	0.9	<i>MBF</i>					
<i>Jack Pine</i>		<i>Pulpwood</i>	24.0	<i>Cords</i>					
Red Maple			140.0	Cords					
White Pine			81.0	Cords					
TOTAL:			76.6	MBF					
TOTAL:			1,333.0	Cords					

Sale Specific Conditions & Requirements

Sale Name: Cranberry Combo

Sale Number: 63-008-16 Seq#: 1

1 - Sale Area

1.2 - Boundaries

1.2.1 - Painted boundaries (1/14)

The sale boundary is marked with blue and red paint. Exterior boundary lines against private property are marked with blue paint. Exterior boundary lines against state are marked with red paint. The painted boundary lines are not included timber and are to be protected.

2 - Timber Specifications

2.1 - Included Timber

2.1.1 - Clearcut unit(s) with unmerchantable trees (6/14)

Within Payment Unit(s) 1-4, cut all aspen, jack pine, and maple trees that are two (2) inches or more at DBH. In addition, cut all white pine that measure 10 inches or larger at DBH. Cut only red pine and oak marked with orange paint. Do not cut green marked trees. In addition, within Payment Unit 3, cut all black cherry down to 2 inches.

3 - Payments

3.6 - Payment Unit Cutting Schedule

3.6.2 - One active unit (12/08)

Each Payment Unit must be completed to the satisfaction of the Unit Manager or his/her representative before the next unit may be opened.

4 - Transportation

4.1 - Construction

4.1.12 - No new roads (1/12)

No new roads will be permitted in any Payment Unit. All operations are limited to existing roads. Skid trails only will be allowed.

4.2 - Maintenance

4.2.4 - Grading (12/14)

For completion of the sale, state forest roads must be graded. In general, this will require a road grader or bull dozer to shape up the roads after forest products have been hauled off site. This includes cleaning of drainage areas, grading, crowning and filling with gravel, if necessary. The grading equipment to be used must be approved by the Unit Manager or his/her representative.

4.2.5 - Two wheel drive condition (2/04)

All existing trail roads on and adjacent to the sale area must be passable by two-wheel drive traffic for the duration of the sale.

4.4 - Access

4.4.1 - Private property access (3/11)

Permission for access across private land is the responsibility of the Purchaser. Should the Purchaser desire to cross private land, a copy of the written permission from the private land-owner may be required by the DNR.

5 - Operations

5.1 - Notification

5.1.1 - Pre-sale conference (10/11)

A pre-sale conference on site between the Purchaser and sale administrator is required prior to beginning any operations to determine landing and road locations. The Unit Manager or his/her representative must be contacted at least 3 days in advance to schedule the conference.

5.1.4 - Post-sale conference (6/11)

A post-sale conference on site between the Purchaser and sale administrator is required 3 days prior to the completion of active logging operations to determine clean-up and repair of landings, road edges, and the fulfillment of other contract specifications.

5.2 - Conduct of Operations

5.2.1 - Slash

5.2.1.8 - Slash height (12/08)

No slash or tree tops may exceed 36 inches in height.

5.2.3 - Operating Restrictions

5.2.3.3 - Bark slippage restriction (3/09)

Within Payment Unit(s) 1-4, unless changed by written agreement, cutting and skidding are not permitted during the period of April 15 to July 15. This restriction is because of bark slippage.

5.2.4 - Dead and Down Creation

5.2.4.4 - Dead and down creation, grouse (8/13)

To encourage grouse and other wildlife, in Payment Unit(s) 1-4, leave one, 12" diameter or larger log-length (8 foot minimum) piece on the ground for every 2 acres. And at least six (6) large tops every 2 acres. These will be evenly scattered throughout the unit. This can be an unmerchantable piece or a full tree.

5.2.22 - Operating Caution

5.2.22.2 - Operating caution (6/11)

It is recommended, but not required, that within Payment Unit(s) 1-4's, cutting, skidding, and hauling occur during dry summer or frozen winter conditions. The reason for the recommendation because of wet hummocky ground.

5.2.38 - No decking against live trees (2/04)

Cut products may not be decked against unmarked or designated leave trees.

5.4 - Soil Protection

5.4.1 - Rutting restriction, general (1/09)

Operations are to cease immediately if equipment and weather conditions result in rutting of roads and skid trails which is 12 inches or greater in depth and 50 feet in length. The Unit Manager or his/her representative may restrict hauling and/or skidding if ruts exceed the specified depth. With the Unit Manager or his/her representative's approval, the Purchaser may return to the area when the risk of rutting has decreased.

5.4.5 - Soil caution (11/04)

Care must be taken to minimize soil damage due to the wet soils.



TIMBER SALE MAP

This information provided by authority of Part 525, 1994 PA 451, as amended.

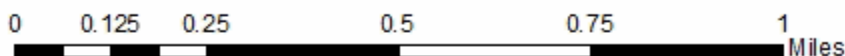
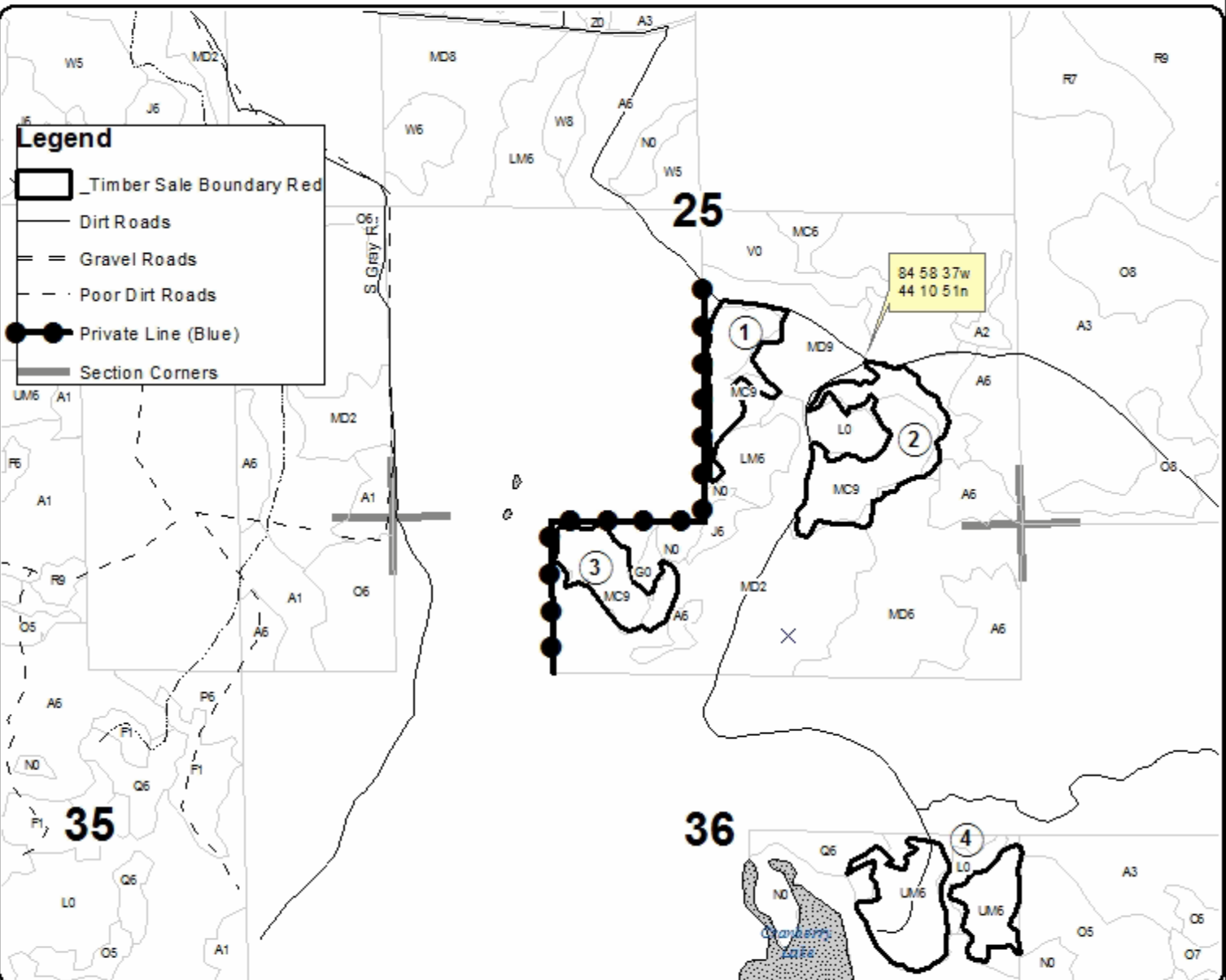
Forest Management Unit		County	Mapped By	Date	Page	of
Cadillact Unit		Missaukee County	Eisele	03/01/2016	1	1
Township	Range	Section(s) and Subdivision(s)		Scale		
21N	R6W	25 SWSE, SESE 36 NENW, NESE		1:15,840		

Cover Type				Density	
A = Aspen	H = Hemlock	N = Marsh	U = Upland Brush	0 = Non Stocked	5 = Pole Timber Medium
R = Paper Birch	J = Jack Pine	O = Oak	UM = Upland Mixed	1 = Seedling Sapling Poor	6 = Pole Timber Well
C = Cedar	L = Lowland Brush	P = Lowland Poplar	V = Bog or Marsh	2 = Seedling Sapling Medium	7 = Saw Timber Poor
D = Tread Bog	LM = Lowland Mixed	Q = Mixed Swamp Conifer	W = White Pine	3 = Seedling Sapling Well	8 = Saw Timber Medium
E = Swamp Hdwoods	M = Mpl. Bch, Birch	R = Red Pine	X = Non Stocked	4 = Pole Timber Poor	9 = Saw Timber Well
F = Spruce Fir	MC = Mixed Conifer	S = Black Spruce	Z = Water		
G = Grass	MD = Mixed Deciduous	T = Tamarack			

Payment unit 3-11.4 acres
 1-11.1 acres 4-22.1 acres
 2-21.1 acres

Cranberry Combo

Compartment 106
 65.7 Acres



Final Strip Red (63-002-16)
; Wexford COUNTY

In response to the notice of sale to be held 3:00 p.m. (local time) on May 23, 2016, I am hereby submitting my sealed bid (firm offer) for the following forest products to be cut. Bids for individual species must be at or above the advertised price. All non-responsive bid forms may be rejected.

<u>PRODUCTS & SPECIES</u>	<u>ESTIMATED VOLUME*</u>	<u>ADVERTISED PRICE</u>	<u>BID PRICE</u>
Sawtimber Red Pine	1,259.60 MBF	\$ 138.00/MBF	\$ _____
Pulpwood Red Pine	689.00 Cords	\$ 45.35/Cord	\$ _____

*The volumes are statistically estimated within plus (+) or minus (-) 6.00 percent. These estimated volumes are final and not subject to adjustment. Prospective bidders are urged to examine this timber and to make their own estimates of quantity and quality.

I understand that any or all bids may be rejected. All bids must be signed and all bid items must be bid or the bid form may be rejected. I also understand that consideration and awarding a contract will be based upon my past performance and ability to complete the contract based upon equipment and staffing subject to my control.

FEDERAL ID: ____ - ____ - ____ or SOCIAL SECURITY NUMBER: ____ - ____ - ____

Company or individual bidding: _____

Company representative's name: _____

Address: _____

City: _____ State: _____ Zip: _____

IF AVAILABLE, PLEASE PLACE THE PERSONALIZED LABEL FROM YOUR PROSPECTUS IN THE ABOVE BOX.

Individual or company representative's signature: _____ Date: _____

Phone number : _____ Email (optional): _____

THE WINNING BIDDER MUST COMPLETE THE VERIFICATION OF WORKER'S DISABILITY COMPENSATION ACT COMPLIANCE (ON REVERSE SIDE IF DOUBLE SIDED) WITHIN 21 DAYS OF SALE AWARD DATE



FOR DEPARTMENT USE ONLY	
Sale Number (XX - XXX - XX - XX)	
Forest Management Unit:	

TIMBER SALE VERIFICATION OF WORKER'S DISABILITY COMPENSATION ACT COMPLIANCE

As required by Act 317, P.A. 1969 (Worker's Compensation) and
Part 5 of Act 451 of 1994, as amended.

VERIFICATION OF WORKER'S DISABILITY COMPENSATION ACT COMPLIANCE

- This verification must be completed and submitted within 21 days of contract award and prior to the issuance of the timber sale contract.
- In addition, if boxes 2B or 2C are checked, then Notice of Exclusion or Certificate of Insurance must be submitted within twenty-one (21) days of the contract award and prior to the issuance of the timber sale contract.
- All information must be typed or printed except for written signatures.

Please Check Appropriate Categories:

1. My business is organized as (you **must** check one of the boxes below):
 - A. Sole Proprietorship (individual)
 - B. Partnership
 - C. Corporation
2. You **must** check one of the boxes below:
 - A. I certify my business is a sole proprietorship and it has no employees but the sole proprietor. I am not subject to the Worker's Compensation Laws.
 - B. I certify my business has satisfied its obligation to the Worker's Compensation Act through the use of an approved Notice of Exclusion (BWC-337, Rev. 5/96). I will provide a copy of the Notice of Exclusion within 21 days of the contract award. (For questions or a copy of the BWC-337, please call the Worker's Compensation Bureau at 517 -322-1195).
 - C. I certify my business has a Worker's Compensation Policy. I will provide an original Certificate of Insurance within twenty-one (21) days of the contract award.
3. If you have checked item 2(A) or 2(B), you **must** indicate the number of **both** full-time and part-time employees, other than yourself, including family members and active partners (if none, you must enter "0").

_____ Full-time Employees

_____ Part-time Employees

Name of Business		Federal ID (or) Social Security No.	
Address		Telephone ()	
City	State	ZIP	

I hereby certify that the above information is true and correct. I agree to notify the Michigan DNR of any changes that occur in factors affecting my coverage during any of my present and future operations.

Signature of Owner or Authorized Representative

Title

Date

Please complete the "SEALED BID" information on the next page

West Modders Mix (63-006-16)
; Missaukee COUNTY

In response to the notice of sale to be held 3:00 p.m. (local time) on May 23, 2016, I am hereby submitting my sealed bid (firm offer) for the following forest products to be cut. Bids for individual species must be at or above the advertised price. All non-responsive bid forms may be rejected.

<u>PRODUCTS & SPECIES</u>	<u>ESTIMATED VOLUME*</u>	<u>ADVERTISED PRICE</u>	<u>BID PRICE</u>
Sawtimber			
B. T. Aspen	17.10 MBF	\$ 70.00/MBF	\$ _____
Northern Pin Oak	25.70 MBF	\$ 175.00/MBF	\$ _____
Red Maple	8.80 MBF	\$ 171.00/MBF	\$ _____
Red Pine	9.80 MBF	\$ 128.00/MBF	\$ _____
White Pine	9.40 MBF	\$ 78.00/MBF	\$ _____
Pulpwood			
B. T. Aspen	541.00 Cords	\$ 15.50/Cord	\$ _____
Black Spruce	3.00 Cords	\$ 26.25/Cord	\$ _____
Jack Pine	261.00 Cords	\$ 17.55/Cord	\$ _____
Northern Pin Oak	148.00 Cords	\$ 14.90/Cord	\$ _____
Paper Birch	6.00 Cords	\$ 23.95/Cord	\$ _____
Red Maple	221.00 Cords	\$ 17.05/Cord	\$ _____
Red Pine	18.00 Cords	\$ 42.10/Cord	\$ _____
White Pine	34.00 Cords	\$ 14.80/Cord	\$ _____

*The volumes are statistically estimated within plus (+) or minus (-) 7.18 percent. These estimated volumes are final and not subject to adjustment. Prospective bidders are urged to examine this timber and to make their own estimates of quantity and quality.

I understand that any or all bids may be rejected. All bids must be signed and all bid items must be bid or the bid form may be rejected. I also understand that consideration and awarding a contract will be based upon my past performance and ability to complete the contract based upon equipment and staffing subject to my control.

FEDERAL ID: _____ - _____ or SOCIAL SECURITY NUMBER: _____ - _____ - _____

Company or individual bidding: _____

Company representative's name: _____

Address: _____

City: _____ State: _____ Zip: _____

IF AVAILABLE, PLEASE PLACE THE PERSONALIZED LABEL FROM YOUR PROSPECTUS IN THE ABOVE BOX.

Individual or company representative's signature: _____ Date: _____

Phone number : _____ Email (optional): _____

THE WINNING BIDDER MUST COMPLETE THE VERIFICATION OF WORKER'S DISABILITY COMPENSATION ACT COMPLIANCE (ON REVERSE SIDE IF DOUBLE SIDED) WITHIN 21 DAYS OF SALE AWARD DATE



FOR DEPARTMENT USE ONLY
Sale Number (XX - XXX - XX - XX)
Forest Management Unit:

TIMBER SALE VERIFICATION OF WORKER'S DISABILITY COMPENSATION ACT COMPLIANCE

*As required by Act 317, P.A. 1969 (Worker's Compensation) and
Part 5 of Act 451 of 1994, as amended.*

VERIFICATION OF WORKER'S DISABILITY COMPENSATION ACT COMPLIANCE

- This verification must be completed and submitted within 21 days of contract award and prior to the issuance of the timber sale contract.
- In addition, if boxes 2B or 2C are checked, then Notice of Exclusion or Certificate of Insurance must be submitted within twenty-one (21) days of the contract award and prior to the issuance of the timber sale contract.
- All information must be typed or printed except for written signatures.

Please Check Appropriate Categories:

1. My business is organized as (you **must** check one of the boxes below):
 - A. Sole Proprietorship (individual)
 - B. Partnership
 - C. Corporation
2. You **must** check one of the boxes below:
 - A. I certify my business is a sole proprietorship and it has no employees but the sole proprietor. I am not subject to the Worker's Compensation Laws.
 - B. I certify my business has satisfied its obligation to the Worker's Compensation Act through the use of an approved Notice of Exclusion (BWC-337, Rev. 5/96). I will provide a copy of the Notice of Exclusion within 21 days of the contract award. (For questions or a copy of the BWC-337, please call the Worker's Compensation Bureau at 517 -322-1195).
 - C. I certify my business has a Worker's Compensation Policy. I will provide an original Certificate of Insurance within twenty-one (21) days of the contract award.
3. If you have checked item 2(A) or 2(B), you **must** indicate the number of **both** full-time and part-time employees, other than yourself, including family members and active partners (if none, you must enter "0").

_____ Full-time Employees

_____ Part-time Employees

Name of Business		Federal ID (or) Social Security No.	
Address		Telephone ()	
City	State	ZIP	

I hereby certify that the above information is true and correct. I agree to notify the Michigan DNR of any changes that occur in factors affecting my coverage during any of my present and future operations.

Signature of Owner or Authorized Representative

Title

Date

Please complete the "SEALED BID" information on the next page

Cranberry Combo (63-008-16)
; Missaukee COUNTY

In response to the notice of sale to be held 3:00 p.m. (local time) on May 23, 2016, I am hereby submitting my sealed bid (firm offer) for the following forest products to be cut. Bids for individual species must be at or above the advertised price. All non-responsive bid forms may be rejected.

<u>PRODUCTS & SPECIES</u>	<u>ESTIMATED VOLUME*</u>	<u>ADVERTISED PRICE</u>	<u>BID PRICE</u>
Sawtimber			
B. T. Aspen	6.90 MBF	\$ 70.00/MBF	\$ _____
Black Cherry	2.60 MBF	\$ 225.00/MBF	\$ _____
Northern Pin Oak	12.60 MBF	\$ 175.00/MBF	\$ _____
Red Maple	10.80 MBF	\$ 171.00/MBF	\$ _____
Red Pine	4.00 MBF	\$ 128.00/MBF	\$ _____
White Pine	24.50 MBF	\$ 78.00/MBF	\$ _____
Pulpwood			
B. T. Aspen	45.00 Cords	\$ 15.50/Cord	\$ _____
Balsam Fir	82.00 Cords	\$ 15.65/Cord	\$ _____
Black Cherry	58.00 Cords	\$ 17.05/Cord	\$ _____
Jack Pine	344.00 Cords	\$ 17.55/Cord	\$ _____
Northern Pin Oak	130.00 Cords	\$ 14.90/Cord	\$ _____
Red Maple	157.00 Cords	\$ 17.05/Cord	\$ _____
Red Pine	14.00 Cords	\$ 42.10/Cord	\$ _____
White Pine	190.00 Cords	\$ 14.80/Cord	\$ _____

*The volumes are statistically estimated within plus (+) or minus (-) 8.05 percent. These estimated volumes are final and not subject to adjustment. Prospective bidders are urged to examine this timber and to make their own estimates of quantity and quality.

I understand that any or all bids may be rejected. All bids must be signed and all bid items must be bid or the bid form may be rejected. I also understand that consideration and awarding a contract will be based upon my past performance and ability to complete the contract based upon equipment and staffing subject to my control.

FEDERAL ID: _____ or SOCIAL SECURITY NUMBER: _____

Company or individual bidding: _____

Company representative's name: _____

Address: _____

City: _____ State: _____ Zip: _____

IF AVAILABLE, PLEASE PLACE THE PERSONALIZED LABEL FROM YOUR PROSPECTUS IN THE ABOVE BOX.

Individual or company representative's signature: _____ Date: _____

Phone number : _____ Email (optional): _____

THE WINNING BIDDER MUST COMPLETE THE VERIFICATION OF WORKER'S DISABILITY COMPENSATION ACT COMPLIANCE (ON REVERSE SIDE IF DOUBLE SIDED) WITHIN 21 DAYS OF SALE AWARD DATE



FOR DEPARTMENT USE ONLY
Sale Number (XX - XXX - XX - XX)
Forest Management Unit:

TIMBER SALE VERIFICATION OF WORKER'S DISABILITY COMPENSATION ACT COMPLIANCE

*As required by Act 317, P.A. 1969 (Worker's Compensation) and
Part 5 of Act 451 of 1994, as amended.*

VERIFICATION OF WORKER'S DISABILITY COMPENSATION ACT COMPLIANCE

- This verification must be completed and submitted within 21 days of contract award and prior to the issuance of the timber sale contract.
- In addition, if boxes 2B or 2C are checked, then Notice of Exclusion or Certificate of Insurance must be submitted within twenty-one (21) days of the contract award and prior to the issuance of the timber sale contract.
- All information must be typed or printed except for written signatures.

Please Check Appropriate Categories:

1. My business is organized as (you **must** check one of the boxes below):
 - A. Sole Proprietorship (individual)
 - B. Partnership
 - C. Corporation

2. You **must** check one of the boxes below:
 - A. I certify my business is a sole proprietorship and it has no employees but the sole proprietor. I am not subject to the Worker's Compensation Laws.
 - B. I certify my business has satisfied its obligation to the Worker's Compensation Act through the use of an approved Notice of Exclusion (BWC-337, Rev. 5/96). I will provide a copy of the Notice of Exclusion within 21 days of the contract award. (For questions or a copy of the BWC-337, please call the Worker's Compensation Bureau at 517 -322-1195).
 - C. I certify my business has a Worker's Compensation Policy. I will provide an original Certificate of Insurance within twenty-one (21) days of the contract award.

3. If you have checked item 2(A) or 2(B), you **must** indicate the number of **both** full-time and part-time employees, other than yourself, including family members and active partners (if none, you must enter "0").

_____ Full-time Employees

_____ Part-time Employees

Name of Business		Federal ID (or) Social Security No.	
Address		Telephone ()	
City	State	ZIP	

I hereby certify that the above information is true and correct. I agree to notify the Michigan DNR of any changes that occur in factors affecting my coverage during any of my present and future operations.

Signature of Owner or Authorized Representative

Title

Date

Please complete the "SEALED BID" information on the next page