



**DEPARTMENT OF NATURAL RESOURCES
STATE OF MICHIGAN**

TIMBER SALE PROSPECTUS #5979

SCHEDULED SALE DATE AND TIME: 3:00 p.m. (local time) on September 25, 2017.

LOCATION: MANTON FIELD OFFICE, 521 N MICHIGAN, MANTON, MI 49663.

PROSPECTUS NOTE: The bidder is advised to inspect the sale area and review the location, estimated volumes, operating costs and contract terms of proposed sales. Please be aware that some landowners may request 60 days or more notice for access across their land.

Notice is hereby given that bids will be received by the Unit Manager, CADILLAC MANAGEMENT UNIT, for certain timber on the following described lands:

Cannon Combo (63-013-17)

Missaukee County, Advertised Price \$36,491.90, 103.6 Acres, Aspen, Hardwood.

SALE NOTE: This is a combination of aspen clear cuts with oak and pine marked green to leave through out sale area.

thrilling aspen (63-019-17)

Wexford County, Advertised Price \$57,672.30, 66.4 Acres, Aspen, Hardwood.

SALE NOTE: There are ORV trails located within this timber sale. The permanent location of certain sections of the trail will be moved to the edge of the sale area. Some trail locations will need to be protected. Contact the sale administrator for details.

A recreation site such as a trail, pathway, or campground is within the sale area or the vicinity. Certain restrictions/specifications may be applicable including time restrictions. Access may be through other public land.

Reroute Pine (63-020-17)

Wexford County, Advertised Price \$267,427.50, 193.6 Acres, Hardwood, Red Pine.

SALE NOTE: This sale contains red pine final harvests. All products are to be processed at the landing. Chipping is encouraged, but not required. Slash pile dimensions at landings are to be defined by the sale administrator.

A recreation site such as a trail, pathway, or campground is within the sale area or the vicinity. Certain restrictions/specifications may be applicable including time restrictions.

GNA Shaded Fuelbreak Mix (63-805-17)

Lake County, Advertised Price \$2,562.25, 20.0 Acres, Hardwood, Jack Pine.

SALE NOTE: This is a Good Neighbor Authority (GNA) timber sale on national forest land. This timber sale was set-up and is being advertised by the Michigan DNR for the US Forest Service. The contract will be awarded and administered by the Michigan DNR. Note the additional Sale Specific Conditions & Requirements containing the acronym 'GNA'.

Access may be through private land.

BID INSTRUCTIONS (VER. 09/02/2016):

1. Scheduled Bid Location, Date, and Time (2/11)

Bids must be received by the Unit Manager, MANTON OFFICE, 521 N MICHIGAN, MANTON, MI 49663, no later than 3:00 p.m. (local time) on September 25, 2017. For further information concerning this sale, contact Joe Ventinglia at 231-824-3591 extension 11.

2. Bidder's Qualifications (5/16)

Purchaser shall obtain workers compensation insurance to cover claims under Michigan's Worker's Disability Compensation Act of 1969 or similar employee benefit act of any other state applicable to an employee. If all or part of a timber sale was prepared by a private contractor, the contractor and that contractor's company are not permitted to bid on the timber sale contract. Bids will not be accepted from individuals or companies appearing on the DNR/FRD No-Bid List. This list contains the names of purchasers who previously failed to execute a contract within 21-days or who have a history of poor performance.

3. Preparation of Sealed Bids (5/16)

Bid Forms may be completed online thru Michigan DNR Timber Sale Online Bidding (OLB) at www.michigan.gov/timberbidding or by completing the hardcopy Bid Form found in the Timber Sale Prospectus. Hardcopy Bid Forms shall be manually signed in ink. Registration in OLB is considered your 'signature' for all bids submitted thru that system. Bid prices must be entered for each species and product in the Bid Price column for all material subject to bidding and all fill-in blanks must be completed. If erasures or other changes appear on the hardcopy Bid Form, each erasure or change must be initialed by the person signing the bid.

4. Submission of Sealed Bids (5/16)

Bid forms may be obtained from the Unit Manager or thru OLB. Bids may be submitted hardcopy or thru OLB. All hardcopy bids must be submitted on the bid form and in an envelope clearly identified as described in this section. NOTE: Only one bid form per bid envelope. Sealed bids must be submitted to the Unit office designated in the prospectus and must be submitted at or prior to the time established in the prospectus. The envelope should show on the outside (a) the sale name or number and (b) the date and time of bid opening, as shown in the prospectus. Bids received after the time specified in the sale prospectus are late bids and will be rejected.

It is possible for a bidder to submit multiple bids on a single sale. For example, a bid may be submitted hardcopy and a bid may be submitted thru OLB. Or, two bidders from the same company could both submit bids on the same sale. If this were to happen, the State would accept all bids received and award the contract accordingly. All bidding and contractual requirements would apply to all bids received.

5. Public Opening of Sealed Bids (7/16)

If conditions permit, the sealed bids will be publicly opened and posted at the time and place set in the prospectus.

If a bidder, present at a bid opening, has submitted bids on more than one sale, that bidder may withdraw their unopened bid envelopes or announce the withdrawal of their online bid after being declared the successful bidder on one sale.

6. Award of Contract (1/11)

Award of the contract will be made to the Bidder whose bid, conforming to the prospectus, is most advantageous to the State of Michigan on the basis of total value at rates bid for the estimated quantities. The State reserves the right to reject any bid or waive any minor irregularity in bids received. A written award mailed (or otherwise furnished) to the successful Bidder shall be deemed to result in a binding contract without further action by either party.

7. Down Payment (1/11)

The Bidder to whom award is made must make a down payment within 21 days of the sale award. The amount of the down payment will be calculated as shown in the Bond and Payment Schedule of this prospectus. Only cash may be used to meet this requirement.

8. Performance Security (1/11)

As guarantee of faithful performance, a cash bond, certificate of deposit, surety bond or irrevocable letter of credit (LOC) is required within 21 days of the sale award. The amount of the performance security is shown in the Bond and

Payment Schedule of this prospectus. If an LOC or surety is used, the coverage must extend for at least 6 months beyond the contract expiration.

9. Timber Sale Contract (9/14)

Additional conditions and requirements common to all timber sales are listed on the timber sale contract (R4031) and are available on line at www.michigan.gov/timber. Contact the Unit Manager for additional information or a sample contract. Within 21 days of the date of the award letter, the bidder must sign the contract and provide the required down payment, performance security, and verification of worker's disability compensation. The down payment and performance security shall be in accordance with the provisions of the timber sale contract, in the sums stated in this prospectus. If these actions are not taken, then the Bidder, the Bidder's corporation, and the corporation's principals may not be permitted to bid on State timber sales for a period of 1 year. In addition, the Bidder certifies that if awarded this contract, the Bidder will complete the timber sale contract in accordance with its terms and any modifications thereof including requirements to purchase, cut, and remove the included timber by the expiration date.

10. Disclaimer of Estimates and Bidder's Warranty of Inspection (7/16)

Before submitting this bid, the Bidder is advised and cautioned to inspect the sale area, review the requirements of the sale contract, and take other steps as may be reasonably necessary to ascertain the location, estimated volumes, construction estimates, and operating costs of the proposed sale. Failure to do so will not relieve the Bidder from responsibility for completing the contract.

The Bidder warrants that this bid is submitted solely on the basis of the Bidder's examination and inspection of the quality and quantity of the timber offered for sale and the Bidder's opinion of the value thereof and the costs of recovery. No reliance should be placed on the State of Michigan's estimates of timber quality, quantity or costs of recovery. Bidder further acknowledges that the State of Michigan: (i) expressly disclaims any warranty of fitness of timber for any purpose; (ii) offers this timber as is without any warranty of quality (merchantability) or quantity and (iii) expressly disclaims any warranty as to the quantity or quality of timber sold.

11. Certification and Chain-of-Custody (10/14)

Unless otherwise indicated in the contract under section 7 – Other Conditions of the Sale Specific Conditions & Requirements, the area encompassed by this timber sale is certified to the standards of the Forest Stewardship Council (FSC) - Certificate #SCS-FM/COC-00090N and the Sustainable Forestry Initiative (SFI) - Certificate #NSF-SFIS-5Y031-SF5. Forest products from this sale may be delivered to the mill as "FSC 100% and / or SFI certified" as long as the contractor hauling the forest products is chain-of-custody (COC) certified or covered under a COC certificate from the destination mill. The purchaser is responsible for maintaining COC after leaving the sale area.

12. Good Neighbor Authority (GNA) Requirements (7/16)

If the name of this timber sales contains the acronym GNA, it is authorized by the Good Neighbor Authority (GNA) and covered by various agreements between the U.S. Forest Service and the State. The timber sale occurs on federal land and the following conditions apply:

GNA contracts on US Forest Service land will not be awarded to purchasers on the Federal list of excluded parties. The System for Award Management (SAM) will be checked for active excluded parties prior to award of contract. In addition, the Bidder to whom award is made must complete an Assurance Regarding Felony Conviction or Tax Delinquent Status for Corporate Applicants (AD-3031).

13. Good Neighbor Authority (GNA) Requirements, con't (9/16)

Bidder certifies, by signing this bid form, that to the best of Bidder's knowledge that the following representations are accurate and complete.

- a. That the Bidder and its principals are not presently debarred, suspended, proposed for debarment, declared ineligible, or voluntary excluded from timber sales (covered transactions) by any Federal department or agency.
- b. That the Bidder and its principals have not within a 3-year period preceding this bid been convicted of or had a civil judgment rendered against them for commission of fraud or a criminal offense in connection with obtaining, attempting to obtain, or performing a public (Federal, State, or local) transaction or contract under a public transaction; violation of Federal or State antitrust statutes or commission of embezzlement, theft, forgery, bribery, falsification or destruction of records, making false statements, or receiving stolen property.

c. That the Bidder and its principals are not presently indicted for or otherwise criminally or civilly charged by a governmental entity (Federal, State, or local) with commission of any of the offenses enumerated in paragraph b of this certification.

d. That the Bidder and its principals have not within a 3-year period preceding this bid had one or more public transactions (Federal, State, or local) terminated for breach or default of a timber or forest product contract.

Bidders that cannot certify this requirement, in whole or in part, shall submit an explanation with their bid.

KEITH CREAGH

Director

TIMBER SALE INFORMATION

Cannon Combo (63-013-17)

Missaukee County (Advertised Price \$36,491.90)

SALE NOTE: This is a combination of aspen clear cuts with oak and pine marked green to leave through out sale area.

A timber sale contract for this lump sum, sealed bid timber sale will be awarded to the responsible bidder offering the highest sealed bid price. Bids must be at or above the following advertised price for each species:

<u>PRODUCTS & SPECIES</u>	<u>ESTIMATED UNITS*</u>		<u>ADVERTISED PRICE</u>
Sawtimber			
B. T. Aspen	66.40	MBF	\$ 85.00 / MBF
Black Cherry	2.80	MBF	\$ 83.00 / MBF
Red Maple	30.40	MBF	\$ 90.00 / MBF
Red Oak	8.50	MBF	\$ 172.00 / MBF
Red Pine	7.10	MBF	\$ 81.00 / MBF
White Pine	5.20	MBF	\$ 53.00 / MBF
Pulpwood			
B. T. Aspen	1,072.00	Cords	\$ 12.00 / Cord
Balsam Fir	22.00	Cords	\$ 9.20 / Cord
Black Cherry	122.00	Cords	\$ 14.80 / Cord
Jack Pine	5.00	Cords	\$ 12.60 / Cord
Red Maple	593.00	Cords	\$ 14.80 / Cord
Red Oak	30.00	Cords	\$ 12.70 / Cord
Red Pine	22.00	Cords	\$ 27.60 / Cord
White Pine	64.00	Cords	\$ 13.55 / Cord

* The total volume is statistically estimated within plus (+) or minus (-) 7.26 percent. The estimated units are final and not subject to adjustment. Prospective bidders are urged to examine this timber and to make their own estimates of quantity and quality.

BOND AND PAYMENT SCHEDULE:

1. A bond in the amount of \$1,825.00 to insure faithful performance of the conditions of the contract will be deposited by the successful bidder within 21 days of the sale award.
2. Cutting in any sale or unit without the required advance payment would be considered a trespass.
3. Total payment must be paid in advance or according to the following schedule:
 - (a) Ten percent (10%) of the sale value must be paid within 21 days of the sale award.
 - (b) The 10% down payment will be credited towards the first unit cut.
4. If no cutting takes place, the 10% down payment will not be refunded.
5. Operations on the contract issued will terminate on 09/30/2019.

Description of Timber by Payment Unit (PU)

PU	MARKET GROUP	PRODUCT	QUANTITY	UNIT	ACRES	ADVERTISE PRICE
1	B. T. Aspen	Sawtimber	32.1	MBF	38.9	\$13,439.70
	Black Cherry		0.5	MBF		
	Red Maple		13.8	MBF		
	B. T. Aspen	Pulpwood	494.0	Cords		
	Balsam Fir		8.0	Cords		
	Black Cherry		29.0	Cords		
	Red Maple		197.0	Cords		
	White Pine		6.0	Cords		
2	B. T. Aspen	Sawtimber	2.3	MBF	15.5	\$4,461.20
	Black Cherry		2.3	MBF		
	Red Maple		3.6	MBF		
	B. T. Aspen	Pulpwood	40.0	Cords		
	Black Cherry		79.0	Cords		
	Red Maple		142.0	Cords		
3	B. T. Aspen	Sawtimber	20.0	MBF	30.7	\$11,683.50
	Red Maple		9.2	MBF		
	Red Oak		4.6	MBF		
	Red Pine		1.5	MBF		
	B. T. Aspen		Pulpwood	355.0		
	Black Cherry	11.0		Cords		
	Jack Pine	5.0		Cords		
	Red Maple	206.0		Cords		
	Red Oak	17.0		Cords		
	Red Pine	9.0		Cords		
	White Pine	18.0		Cords		
	4	B. T. Aspen	Sawtimber	12.0		
Red Maple		3.8		MBF		
Red Oak		3.9		MBF		
Red Pine		5.6		MBF		
White Pine		5.2		MBF		
B. T. Aspen		Pulpwood	183.0	Cords		
Balsam Fir			14.0	Cords		
Black Cherry			3.0	Cords		
Red Maple			48.0	Cords		
Red Oak			13.0	Cords		
Red Pine			13.0	Cords		
White Pine			40.0	Cords		
TOTAL:			120.4	MBF		
TOTAL:			1,930.0	Cords		

Sale Specific Conditions & Requirements

Sale Name: Cannon Combo

Sale Number: 63-013-17 Seq#: 1

1 - Sale Area

1.2 - Boundaries

1.2.1 - Painted boundaries (1/14)

The sale boundary and Payment Unit boundaries are marked and identified by red paint.

2 - Timber Specifications

2.1 - Included Timber

2.1.1 - Clearcut unit(s) with unmerchantable trees (6/14)

Within Payment Unit(s) 1-4, cut all aspen, maple and jack pine trees that are two (2) inches or more at DBH, except do not cut any trees marked with green paint. In addition, cut oak, black cherry, white pine and red pine over 10 inches at DBH.

2.2 - Utilization

2.2.5 - Limbed tree skidding (1/09)

The skidding of whole trees or tree segments with limbs attached is prohibited.

3 - Payments

3.4 - Damaged Timber

3.4.1 - Damaged timber (6/14)

General Condition and Requirement 3.4 Damaged Timber, defines liquidated damages for undesignated live merchantable trees which are cut or injured. In addition, extreme care should be taken to avoid damage to tree seedlings and saplings.

Within the sale area, if more than 25% of the tree seedlings or saplings (1/4" to 4.5" DBH) within a specified portion of the sale area are damaged, liquidated damages will be assessed at \$300 per acre for all acreage within that specified portion of the sale area that was damaged.

No damage is acceptable to merchantable trees. Within the sale area, if more than 5% of trees (> 4.5" DBH) within a specified area of the sale are damaged, liquidated damages will be assessed for all trees damaged. Rates will be in accordance with General Condition and Requirement 3.4 Damaged Timber.

3.6 - Payment Unit Cutting Schedule

3.6.2 - One active unit (12/08)

Each Payment Unit must be completed to the satisfaction of the Unit Manager or his/her representative before the next unit may be opened.

4 - Transportation

4.1 - Construction

4.1.12 - No new roads (1/12)

No new roads will be permitted in any Payment Unit. All operations are limited to existing roads. Skid trails only will be allowed.

4.2 - Maintenance

4.2.5 - Two wheel drive condition (2/04)

All existing trail roads on and adjacent to the sale area must be passable by two-wheel drive traffic for the duration of the sale.

5 - Operations

5.1 - Notification

5.1.1 - Pre-sale conference (10/16)

A pre-sale conference between the Purchaser and sale administrator is required prior to beginning any operations to determine landing and road locations. The Unit Manager or his/her representative must be contacted at least 5 days in advance to schedule the conference.

5.1.4 - Post-sale conference (10/16)

A post-sale conference on site between the Purchaser and sale administrator is required 5 days prior to the completion of active logging operations to determine clean-up and repair of landings, road edges, and the fulfillment of other contract specifications.

5.2 - Conduct of Operations

5.2.1 - Slash

5.2.1.8 - Slash height (12/08)

No slash or tree tops may exceed 24 inches in height.

5.2.3 - Operating Restrictions

5.2.3.1 - Operating restrictions (9/11)

Within Payment Unit(s) 1-4, unless changed by written agreement, cutting, skidding, and hauling are only permitted during winter frozen conditions or dry summer conditions. This restriction is because of sensitive soils and reptile habitat.

5.2.3.4 - Oak wilt restriction (4/17)

Within Payment Unit(s) 1-4, unless changed by written agreement, cutting, skidding, and hauling are not permitted during the period of April 15 to July 15. This is necessary to reduce the spread of oak wilt. For more information, contact the Unit Manager or his/her representative.

5.2.3.11 - Coppice regeneration protection (4/10)

Any post harvest operations, such as chipping, must be completed before sprouting of regeneration occurs. If it is anticipated that chipping will be delayed, then tops shall be carried to one central location or left unchipped. The Unit Manager or his/her representative may cease such operations if sprouting occurs before the operation is complete.

5.2.4 - Dead and Down Creation

5.2.4.5 - Dead and down creation, reptiles and amphibians (2/05)

To encourage reptiles and amphibians, within unit(s) 1-4, leave one 14" DBH or greater full-length tree on the ground, with the top still intact, per 5 acres. These trees shall be evenly scattered through out the unit(s) and identified by blue flagging.

5.2.39 - ORV trail/route protection (12/12)

The N. Missaukee is an ORV trail or route and is shown on the Timber Sale Map. Do not cut trees or damage posts with orange ORV markers. All stumps within 5 feet of the trail must be cut flush with the ground. Do not run equipment down the ORV trail or route.

5.4 - Soil Protection

5.4.1 - Rutting restriction, general (7/16)

Operations are to cease immediately if equipment and weather conditions result in rutting of roads and/or skid trails which is 12 inches or greater in depth and 50 feet in length. The Unit Manager or his/her representative may restrict hauling and/or skidding if ruts exceed the specified depth. With the Unit Manager or his/her representative's approval, the Purchaser may return to the area when the risk of rutting has decreased.

6 - Safety and Fire Prevention

6.2 - Signing

6.2.3 - Recreational trail posting (2/10)

The Purchaser is responsible for posting and maintaining caution signs on the N. Missaukee ORV trail prior to beginning operations. The trail must be posted at appropriate distances from the sale area to warn of logging activity and truck traffic at both ends of the trail. Signs must be removed when harvest operations are suspended or completed. The Purchaser will

provide these signs.



TIMBER SALE MAP

This information provided by authority of Part 525, 1994 PA 451, as amended.

Forest Management Unit Cadillac		County Missaukee	Mapped By Eisele	Date 06/12/2017	Page 1	of 1
Township T24N	Range R06W	Section(s) and Subdivision(s) Section 12 various		Scale 1:15,840		

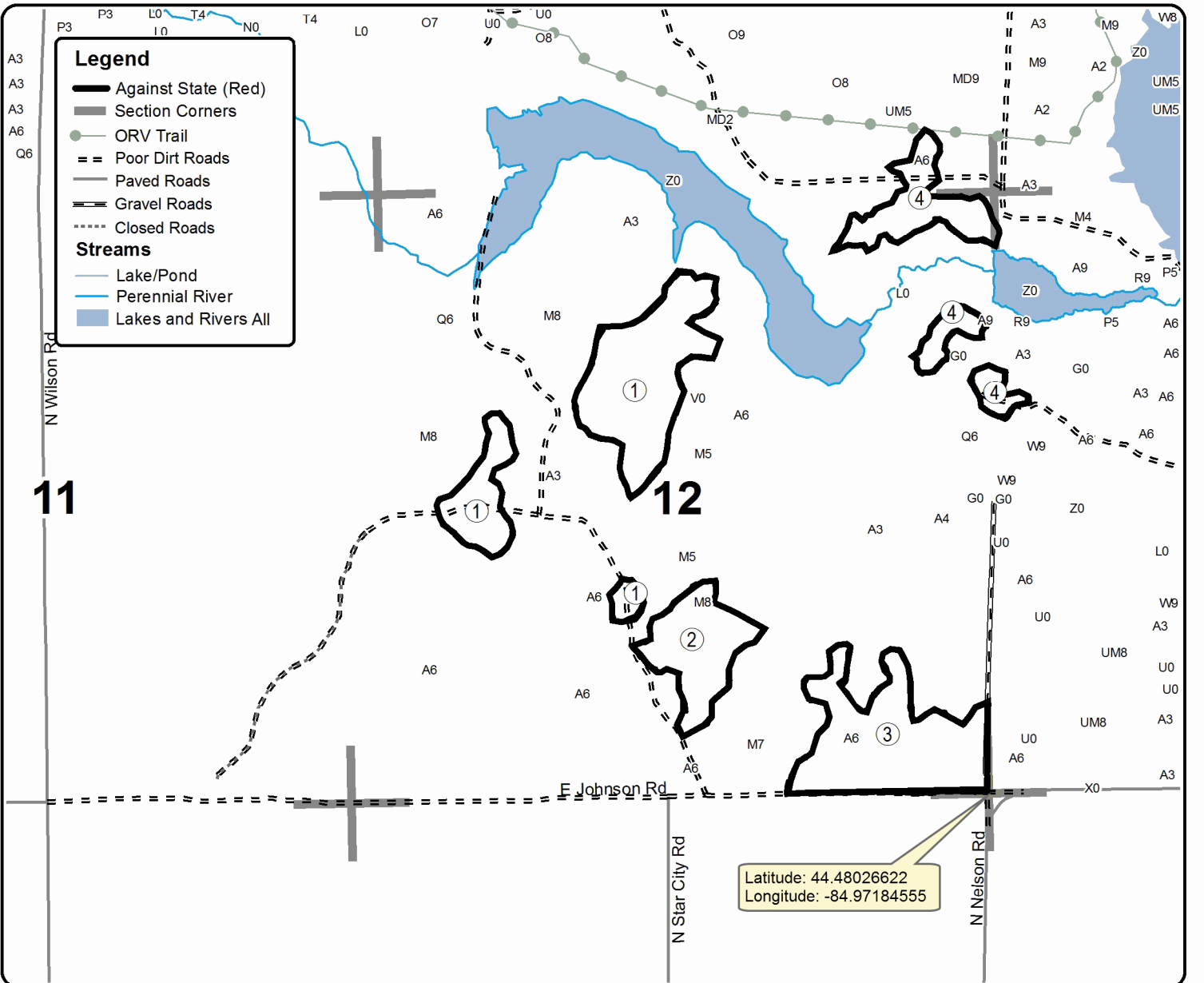
Cover Type				Density			
A = Aspen	H = Hemlock	N = Marsh	U = Upland Brush	0 = Non Stocked	5 = Pole Timber Medium		
B = Paper Birch	J = Jack Pine	O = Oak	UM = Upland Mixed	1 = Seedling Sapling Poor	6 = Pole Timber Well		
C = Cedar	L = Lowland Brush	P = Lowland Poplar	V = Bog or Marsh	2 = Seedling Sapling Medium	7 = Saw Timber Poor		
D = Treed Bog	LM = Lowland Mixed	Q = Mixed Swamp Conifer	W = White Pine	3 = Seedling Sapling Well	8 = Saw Timber Medium		
E = Swamp Hdwoods	M = Mpl, Bch, Brch	R = Red Pine	X = Non Stocked	4 = Pole Timber Poor	9 = Saw Timber Well		
F = Spruce Fir	MC = Mixed Conifer	S = Black Spruce	Z = Water				
G = Grass	MD = Mixed Deciduous	T = Tamarack					

PU	Acres	PU	Acres
1	38.9	4	18.5
2	15.5		
3	30.7		

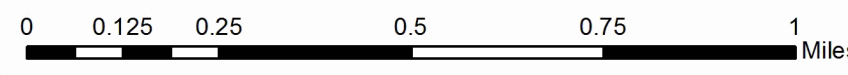
Cannon Combo

Compartment 86

103.6 Acres



Latitude: 44.48026622
Longitude: -84.97184555



TIMBER SALE INFORMATION

thrilling aspen (63-019-17)

Wexford County (Advertised Price \$57,672.30)

SALE NOTE: There are ORV trails located within this timber sale. The permanent location of certain sections of the trail will be moved to the edge of the sale area. Some trail locations will need to be protected. Contact the sale administrator for details.

A recreation site such as a trail, pathway, or campground is within the sale area or the vicinity. Certain restrictions/specifications may be applicable including time restrictions. Access may be through other public land.

A timber sale contract for this lump sum, sealed bid timber sale will be awarded to the responsible bidder offering the highest sealed bid price. Bids must be at or above the following advertised price for each species:

<u>PRODUCTS & SPECIES</u>	<u>ESTIMATED UNITS*</u>	<u>ADVERTISED PRICE</u>
Sawtimber		
Beech	12.60 MBF	\$ 107.00 / MBF
Black Cherry	3.30 MBF	\$ 124.00 / MBF
Mixed Aspen	145.70 MBF	\$ 128.00 / MBF
Red Maple	36.40 MBF	\$ 135.00 / MBF
Red Oak	18.00 MBF	\$ 258.00 / MBF
Pulpwood		
Beech	170.00 Cords	\$ 22.20 / Cord
Black Cherry	16.00 Cords	\$ 22.20 / Cord
Mixed Aspen	853.00 Cords	\$ 18.05 / Cord
Red Maple	275.00 Cords	\$ 22.20 / Cord
Red Oak	109.00 Cords	\$ 19.05 / Cord

* The total volume is statistically estimated within plus (+) or minus (-) 14.10 percent. The estimated units are final and not subject to adjustment. Prospective bidders are urged to examine this timber and to make their own estimates of quantity and quality.

BOND AND PAYMENT SCHEDULE:

1. A bond in the amount of \$2,884.00 to insure faithful performance of the conditions of the contract will be deposited by the successful bidder within 21 days of the sale award.
2. Cutting in any sale or unit without the required advance payment would be considered a trespass.
3. Total payment must be paid in advance or according to the following schedule:
 - (a) Ten percent (10%) of the sale value must be paid within 21 days of the sale award.
 - (b) The 10% down payment will be credited towards the first unit cut.
4. If no cutting takes place, the 10% down payment will not be refunded.
5. Operations on the contract issued will terminate on 09/30/2019.

Description of Timber by Payment Unit (PU)

PU	MARKET GROUP	PRODUCT	QUANTITY	UNIT	ACRES	ADVERTISE PRICE	
1	Beech	Sawtimber	7.7	MBF	34.0	\$30,125.30	
	Mixed Aspen		62.5	MBF			
	<i>B. T. Aspen</i>		62.5	<i>MBF</i>			
	Red Maple		19.2	MBF			
	Red Oak		15.0	MBF			
	Beech		Pulpwood	136.0			Cords
	<i>Beech</i>			136.0			<i>Cords</i>
	Mixed Aspen			316.0			Cords
	<i>B. T. Aspen</i>			316.0			<i>Cords</i>
	Red Maple			200.0			Cords
Red Oak	88.0	Cords					
2	Beech	Sawtimber	4.9	MBF	32.4	\$27,547.00	
	Black Cherry		3.3	MBF			
	Mixed Aspen		83.2	MBF			
	<i>B. T. Aspen</i>		81.2	<i>MBF</i>			
	<i>Quaking Aspen</i>		2.0	<i>MBF</i>			
	Red Maple		17.2	MBF			
	Red Oak		3.0	MBF			
	Beech		Pulpwood	34.0			Cords
	<i>Beech</i>			29.0			<i>Cords</i>
	<i>Ironwood</i>			5.0			<i>Cords</i>
	Black Cherry			16.0			Cords
	Mixed Aspen			537.0			Cords
	<i>B. T. Aspen</i>			496.0			<i>Cords</i>
	<i>Quaking Aspen</i>		41.0	<i>Cords</i>			
	Red Maple		75.0	Cords			
	Red Oak		21.0	Cords			
TOTAL:			216.0	MBF			
TOTAL:			1,423.0	Cords			

Sale Specific Conditions & Requirements

Sale Name: thrilling aspen

Sale Number: 63-019-17 Seq#: 1

1 - Sale Area

1.2 - Boundaries

1.2.1 - Painted boundaries (1/14)

The sale boundary and Payment Unit boundaries are marked and identified by blue and red paint. Exterior sale boundary lines against private property are marked with blue paint. Exterior sale boundary lines against state are marked with red paint. The painted boundary line trees are not Included Timber and are to be protected.

2 - Timber Specifications

2.1 - Included Timber

2.1.1 - Clearcut unit(s) with unmerchantable trees (6/14)

Within Payment Unit(s) 1 and 2, cut all trees that are two (2) inches or more at DBH except white pine.

2.2 - Utilization

2.2.3 - Stump heights (4/07)

Stump heights within Payment Unit(s) 1 and 2 shall not exceed 12 inches for trees greater than 10 inches DBH and 4 inches for trees smaller than 10 inches DBH.

4 - Transportation

4.1 - Construction

4.1.6 - Road construction (1/09)

Construction of new roads or improvements of existing roads shall be done in such a way as to minimize the environmental and visual impacts. Merchantable trees shall be cut and utilized unless otherwise directed. Non-merchantable trees shall be severed and laid flat on the ground. Slash shall be scattered, and not left in windrows and kept a minimum of 10 feet back from the road edge. Stumps shall be set upright, not left on edge, and be moved at least 10 feet away from the road edge. Disturbed soil shall be feathered into the woods and not left in berms or windrows.

4.1.7 - Road closure (10/11)

All new roads built into the sale must be blocked to vehicle traffic upon completion of the sale. Overgrown roads that are reopened shall be considered new roads. In general, this will require constructing double earthen berms at strategic locations. Stumps and brush must be placed along the remainder of the trail. These roads must be rendered impassable to cars and trucks.

5 - Operations

5.1 - Notification

5.1.1 - Pre-sale conference (10/16)

A pre-sale conference on site between the Purchaser and sale administrator is required prior to beginning any operations to determine landing and road locations. The Unit Manager or his/her representative must be contacted at least 3 days in advance to schedule the conference.

5.1.4 - Post-sale conference (10/16)

A post-sale conference on site between the Purchaser and sale administrator is required 3 days prior to the completion of active logging operations to determine clean-up and repair of landings, road edges, and the fulfillment of other contract specifications.

5.2 - Conduct of Operations

5.2.1 - Slash

5.2.1.8 - Slash height (12/08)

No slash or tree tops may exceed 24 inches in height.

5.2.4 - Dead and Down Creation

5.2.4.4 - Dead and down creation, grouse (8/13)

To encourage grouse and other wildlife, in Payment Unit(s) 1 and 2, leave one, 12" diameter or larger log-length (8 foot minimum) piece on the ground for every 2 acres. These will be evenly scattered throughout the unit.

5.2.39 - ORV trail/route protection (12/12)

The Missaukee Junction is an ORV trail and is shown on the Timber Sale Map. Do not cut trees or damage posts with orange ORV markers. All stumps within 5 feet of the trail must be cut flush with the ground. Maintain a 20 foot wide slash, debris, and rut free zone daily using the ORV trail or route as the centerline. Do not run equipment down the ORV trail or route. Skidding across the trail or route may only occur in locations approved by the sale administrator. The ORV Trail will be flagged or identified during pre-sale meeting.

5.4 - Soil Protection

5.4.1 - Rutting restriction, general (7/16)

Operations are to cease immediately if equipment and weather conditions result in rutting of roads and/or skid trails which is 12 inches or greater in depth and 50 feet in length. The Unit Manager or his/her representative may restrict hauling and/or skidding if ruts exceed the specified depth. With the Unit Manager or his/her representative's approval, the Purchaser may return to the area when the risk of rutting has decreased.

5.4.6 - Wet area protection (5/10)

No harvesting operations, including skidding and felling, are to take place within the vernal pond areas or drainages. When harvesting occurs, there should be no disturbance to the vernal pond depression. All equipment, trees and tops should be kept out of this area. Within 100 feet of the pond, equipment should only be used when the soil is in a dry or frozen condition. Care must be taken by the Purchaser to identify and avoid operating in these areas of the timber sale.

6 - Safety and Fire Prevention

6.2 - Signing

6.2.1 - Road posting (9/09)

The Purchaser is responsible for posting and maintaining caution signs on all county roads prior to beginning operations. The road must be posted 200 feet from the sale area to warn of logging activity and truck traffic. Signs must be removed when harvest operations are suspended or completed. The Purchaser will provide these signs.

6.2.3 - Recreational trail posting (2/10)

The Purchaser is responsible for posting and maintaining caution signs on Missaukee Junction ORV trail prior to beginning operations. The trail must be posted 200 feet from the sale area to warn of logging activity and truck traffic at both ends of the trail. Signs must be removed when harvest operations are suspended or completed. The Purchaser will provide these signs.



TIMBER SALE MAP

This information provided by authority of Part 525, 1994 PA 451, as amended.

Sale Number	Year
63-019	17

Forest Management Unit Cadillac	County Wexford	Mapped By Dickinson	Date 06/12/2017	Page 1	of 1
Township 22N	Range 09W	Section(s) and Subdivision(s) Sec. 5 SWNW, SENW, SWNE, NWSE, NESW, SESW, NWNW, NWSW; Sec. 6 NESE	Scale 1:15,840		
Cruised By Tweedale/Ventimiglia					

Cover Type				Density	
A = Aspen	H = Hemlock	N = Marsh	U = Upland Brush	0 = Non Stocked	5 = Pole Timber Medium
B = Paper Birch	J = Jack Pine	O = Oak	UM = Upland Mixed	1 = Seedling Sapling Poor	6 = Pole Timber Well
C = Cedar	L = Lowland Brush	P = Lowland Poplar	V = Bog or Marsh	2 = Seedling Sapling Medium	7 = Saw Timber Poor
LM = Lowland Mixed	M = Mpl, Bch, Brch	Q = Mixed Swamp Conifer	W = White Pine	3 = Seedling Sapling Well	8 = Saw Timber Medium
D = Tread Bog	MC = Mixed Conifer	R = Red Pine	X = Non Stocked	4 = Pole Timber Poor	9 = Saw Timber Well
E = Swamp Hdwoods	T = Tamarack	S = Black Spruce	Z = Water		
F = Spruce Fir					
G = Grass					

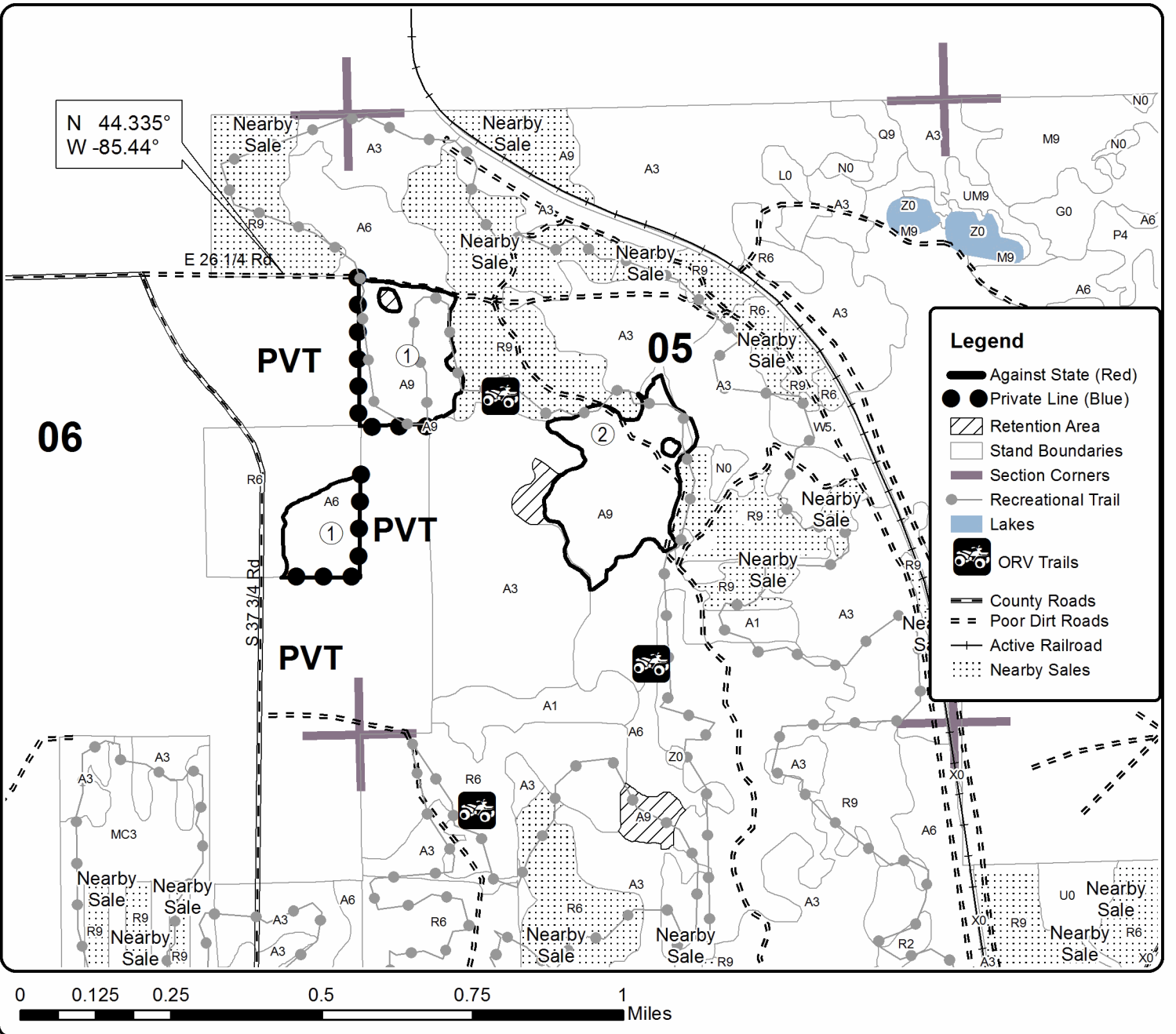
PU Acres

1	34
2	32.4

Thrilling Aspen

Compartment 139

66.4 Acres



TIMBER SALE INFORMATION

Reroute Pine (63-020-17)

Wexford County (Advertised Price \$267,427.50)

SALE NOTE: This sale contains red pine final harvests. All products are to be processed at the landing. Chipping is encouraged, but not required. Slash pile dimensions at landings are to be defined by the sale administrator.

A recreation site such as a trail, pathway, or campground is within the sale area or the vicinity. Certain restrictions/specifications may be applicable including time restrictions.

A timber sale contract for this lump sum, sealed bid timber sale will be awarded to the responsible bidder offering the highest sealed bid price. Bids must be at or above the following advertised price for each species:

<u>PRODUCTS & SPECIES</u>	<u>ESTIMATED UNITS*</u>	<u>ADVERTISED PRICE</u>
Sawtimber		
Mixed Aspen	47.10 MBF	\$ 85.00 / MBF
Red Maple	19.20 MBF	\$ 90.00 / MBF
Red Oak	20.90 MBF	\$ 172.00 / MBF
Red Pine	1,937.00 MBF	\$ 81.00 / MBF
White Pine	19.00 MBF	\$ 53.00 / MBF
Pulpwood		
Beech	27.00 Cords	\$ 14.80 / Cord
Mixed Aspen	167.00 Cords	\$ 12.00 / Cord
Red Maple	209.00 Cords	\$ 14.80 / Cord
Red Oak	66.00 Cords	\$ 12.70 / Cord
Red Pine	3,336.00 Cords	\$ 27.60 / Cord
White Pine	132.00 Cords	\$ 13.55 / Cord

* The total volume is statistically estimated within plus (+) or minus (-) 12.05 percent. The estimated units are final and not subject to adjustment. Prospective bidders are urged to examine this timber and to make their own estimates of quantity and quality.

BOND AND PAYMENT SCHEDULE:

1. A bond in the amount of \$13,371.00 to insure faithful performance of the conditions of the contract will be deposited by the successful bidder within 21 days of the sale award.
2. Cutting in any sale or unit without the required advance payment would be considered a trespass.
3. Total payment must be paid in advance or according to the following schedule:
 - (a) Ten percent (10%) of the sale value must be paid within 21 days of the sale award.
 - (b) The 10% down payment will be credited towards the first unit cut.
4. If no cutting takes place, the 10% down payment will not be refunded.
5. Operations on the contract issued will terminate on 09/30/2019.

Description of Timber by Payment Unit (PU)

PU	MARKET GROUP	PRODUCT	QUANTITY	UNIT	ACRES	ADVERTISE PRICE		
1	Mixed Aspen	Sawtimber	29.4	MBF	26.3	\$30,357.00		
	<i>B. T. Aspen</i>		29.4	<i>MBF</i>				
	Red Oak		1.9	MBF				
	Red Pine		202.3	MBF				
	Beech		Pulpwood	22.0			Cords	
	<i>Beech</i>			22.0			<i>Cords</i>	
	Mixed Aspen		16.0	Cords				
	<i>B. T. Aspen</i>		16.0	<i>Cords</i>				
	Red Maple		9.0	Cords				
	Red Oak		7.0	Cords				
Red Pine	377.0	Cords						
2	Red Maple	Sawtimber	5.3	MBF	34.3	\$54,073.40		
	Red Pine		470.0	MBF				
	Red Maple	Pulpwood	98.0	Cords				
	Red Pine		510.0	Cords				
3	Mixed Aspen	Sawtimber	5.9	MBF	6.3	\$4,735.50		
	<i>Quaking Aspen</i>		5.9	<i>MBF</i>				
	Red Maple		2.4	MBF				
	Red Pine		4.4	MBF				
	White Pine		15.8	MBF				
	Mixed Aspen		Pulpwood	56.0			Cords	
	<i>Quaking Aspen</i>			56.0			<i>Cords</i>	
	Red Maple			50.0			Cords	
	Red Pine			6.0			Cords	
White Pine	92.0	Cords						
4	Mixed Aspen	Sawtimber	11.8	MBF	33.2	\$12,978.80		
	<i>B. T. Aspen</i>		11.8	<i>MBF</i>				
	Red Maple		4.4	MBF				
	Red Oak		2.8	MBF				
	Red Pine		49.4	MBF				
	Beech		Pulpwood	5.0			Cords	
	<i>Beech</i>			<i>Sawtimber</i>			1.0	<i>MBF</i>
	<i>Beech</i>			<i>Pulpwood</i>			3.0	<i>Cords</i>
	Mixed Aspen		68.0	Cords				
	<i>B. T. Aspen</i>		61.0	<i>Cords</i>				
	<i>Quaking Aspen</i>		7.0	<i>Cords</i>				
	Red Maple		15.0	Cords				
	Red Oak		4.0	Cords				
Red Pine	215.0	Cords						
5	Red Maple	Sawtimber	7.1	MBF	58.4	\$105,239.95		
	Red Pine		916.5	MBF				
	White Pine		3.2	MBF				
	Mixed Aspen		Pulpwood	27.0			Cords	
	<i>Quaking Aspen</i>			27.0			<i>Cords</i>	
	Red Maple			37.0			Cords	
	Red Pine			1,059.0			Cords	
	White Pine		7.0	Cords				
6	Red Oak	Sawtimber	16.2	MBF	35.1	\$60,042.85		
	Red Pine		294.4	MBF				
	Red Oak		Pulpwood	55.0			Cords	
	Red Pine			1,169.0			Cords	
	White Pine			33.0			Cords	
TOTAL:			2,043.2	MBF				
TOTAL:			3,937.0	Cords				

Sale Specific Conditions & Requirements

Sale Name: Reroute Pine

Sale Number: 63-020-17 Seq#: 1

1 - Sale Area

1.2 - Boundaries

1.2.1 - Painted boundaries (1/14)

The sale boundary and Payment Unit boundaries are marked and identified by blue and red paint. Exterior sale boundary lines against private property are marked with blue paint. Exterior sale boundary lines against state are marked with red paint. The interior Payment Unit boundary between Payment Units 2 and 3 is marked with red paint.

2 - Timber Specifications

2.1 - Included Timber

2.1.1 - Clearcut unit(s) with unmerchantable trees (6/14)

Within Payment Unit(s) 1, 2, 5 and 6, cut all speciestrees that are two (2) inches or more at DBH.

2.1.7 - Leave tree marked unit(s) (6/14)

Within Payment Unit(s) 3, all trees which meet minimum piece specifications in 2.2 Utilization, are designated for cutting except trees marked with green paint above and below stump height.

2.1.8 - Designated plantation row unit(s) (12/08)

Within Payment Unit(s) 4, all red pinetrees which meet minimum piece specifications in 2.2 Utilization, within designated plantation rows are designated for cutting. Designated plantation rows are every third row. Begin with the third row in from the outside of the plantation, then continue every third row. Because of the variability of row direction, it shall be the responsibility of the producer to maintain the third row sequence.

2.2 - Utilization

2.2.3 - Stump heights (4/07)

Stump heights within Payment Unit(s) 1, 2, 5 and 6 shall not exceed 6 inches for all trees. This is in order to facilitate planting operations.

2.2.8 - Utilization and removal (5/14)

All products meeting standards set forth in General Condition and Requirement 2.2 - Utilization must be removed from the sale area. All trees must be processed at the landing. This is because this site will be re-planted to red pine.

4 - Transportation

4.1 - Construction

4.1.6 - Road construction (1/09)

Construction of new roads or improvements of existing roads shall be done in such a way as to minimize the environmental and visual impacts. Merchantable trees shall be cut and utilized unless otherwise directed. Non-merchantable trees shall be severed and laid flat on the ground. Slash shall be scattered, and not left in windrows and kept a minimum of 10 feet back from the road edge. Stumps shall be set upright, not left on edge, and be moved at least 10 feet away from the road edge. Disturbed soil shall be feathered into the woods and not left in berms or windrows.

4.1.7 - Road closure (10/11)

All new roads built into the sale must be blocked to vehicle traffic upon completion of the sale. Overgrown roads that are reopened shall be considered new roads. In general, this will require constructing double earthen berms at strategic locations. Stumps and brush must be placed along the remainder of the trail. These roads must be rendered impassable to cars and trucks.

4.2 - Maintenance

4.2.3 - Road maintenance (8/13)

The following road maintenance is required: Within 15 days of completion of hauling, or if no hauling occurs for 15 days, the road must be maintained and graded. This includes cleaning of drainage areas, grading, crowning and filling with gravel, if

necessary. Roads must be returned to pre-sale conditions.

4.2.5 - Two wheel drive condition (2/04)

All existing trail roads on and adjacent to the sale area must be passable by two-wheel drive traffic for the duration of the sale.

5 - Operations

5.1 - Notification

5.1.1 - Pre-sale conference (10/16)

A pre-sale conference on site between the Purchaser and sale administrator is required prior to beginning any operations. The Unit Manager or his/her representative must be contacted at least 15 days in advance to schedule the conference. This is to facilitate the re-routing of ORV trails.

5.1.4 - Post-sale conference (10/16)

A post-sale conference on site between the Purchaser and sale administrator is required 5 days prior to the completion of active logging operations to determine clean-up and repair of landings, road edges, and the fulfillment of other contract specifications.

5.2 - Conduct of Operations

5.2.1 - Slash

5.2.1.2 - Slash Removal

5.2.1.2.6 - Slash removal, general (7/05)

All slash must be removed from Payment Units 1, 2, 5 and 6.

5.2.1.13 - Dispose of slash as directed (12/05)

Slash is to be disposed of as directed by the Unit Manager or his/her representative. Slash piles may be chipped or piled at the landing. If the producer decides to leave slash in piles at the landing, they are to be left in a location approved by the sale administrator. Retain approximately 1/6 to 1/3 of the slash from harvested trees (tree tops and limbs less than four inches in diameter).

5.2.3 - Operating Restrictions

5.2.3.4 - Oak wilt restriction (4/17)

Within Payment Unit(s) 1, 2, 3, 4, 5 and 6, brushing of access roads are not permitted during the period of April 15 to July 15. This is necessary to reduce the spread of oak wilt. For more information, contact the Unit Manager or his/her representative.

5.2.38 - No decking against live trees (2/04)

Cut products may not be decked against unmarked or designated leave trees.

5.2.39 - ORV trail/route protection (12/12)

The Missaukee Junction ORV trail is shown on the Timber Sale Map. All stumps within 5 feet of the edge of the sale unit must be cut flush with the ground, or left 4 ft high. This is to facilitate the rerouting of the trail bed. Maintain a 20 foot wide slash, debris, and rut free zone along the edge of each unit. Skidding across the trail or route may only occur in locations approved by the sale administrator.

5.4 - Soil Protection

5.4.1 - Rutting restriction, general (7/16)

Operations are to cease immediately if equipment and weather conditions result in rutting of roads and/or skid trails which is 12 inches or greater in depth and 50 feet in length. The Unit Manager or his/her representative may restrict hauling and/or skidding if ruts exceed the specified depth. With the Unit Manager or his/her representative's approval, the Purchaser may return to the area when the risk of rutting has decreased.

6 - Safety and Fire Prevention

6.2 - Signing

6.2.1 - Road posting (9/09)

The Purchaser is responsible for posting and maintaining caution signs on all access roads prior to beginning operations. The road must be posted 200 feet from the sale area to warn of logging activity and truck traffic. Signs must be removed when harvest operations are suspended or completed. The Purchaser will provide these signs.

6.2.3 - Recreational trail posting (2/10)

The Purchaser is responsible for posting and maintaining caution signs on the Missaukee Junction ORV trails prior to beginning operations. The trail must be posted at appropriate distances from the sale area to warn of logging activity and truck traffic at both ends of the trail. Signs must be removed when harvest operations are suspended or completed. The Purchaser will provide these signs.



TIMBER SALE MAP

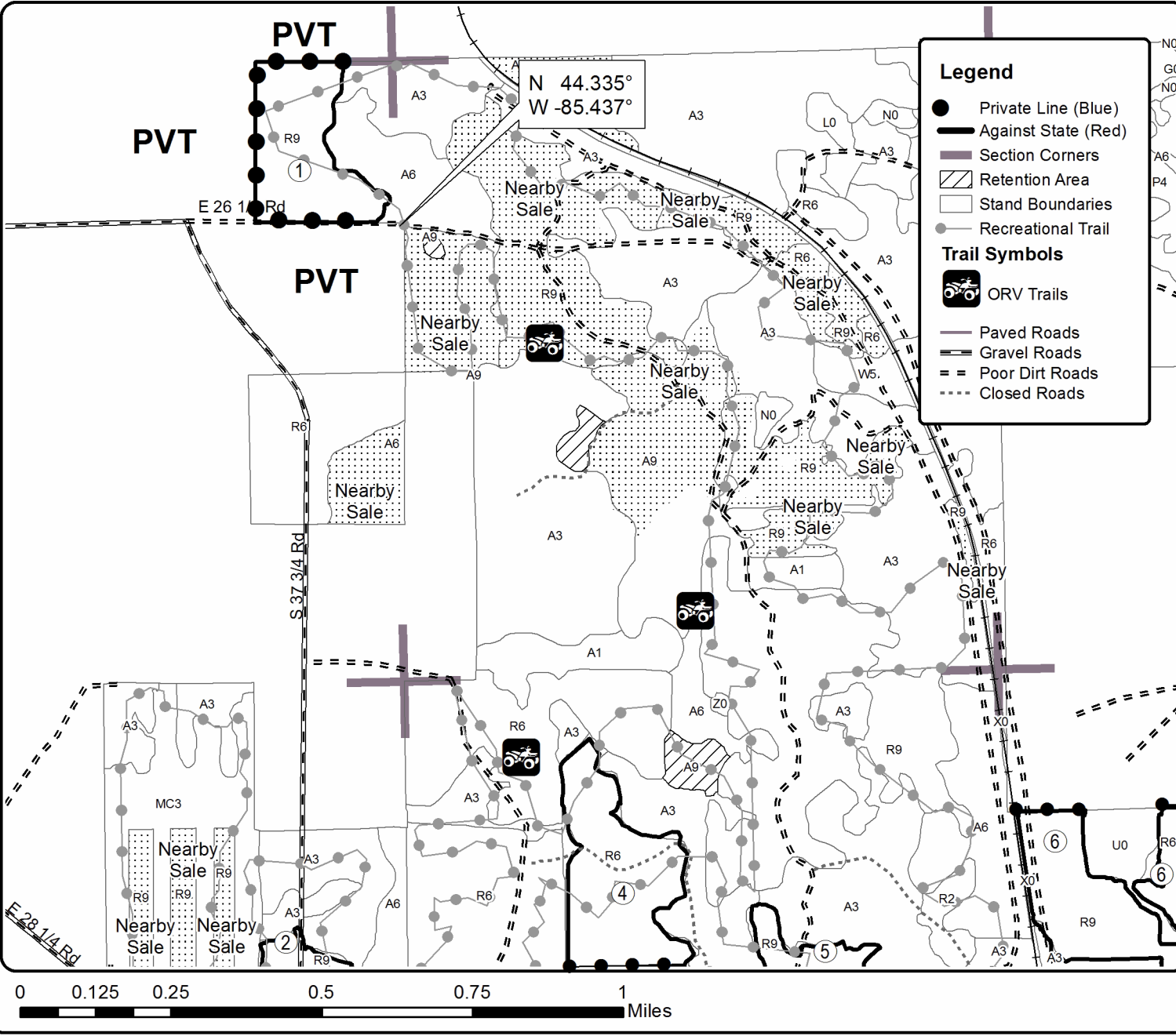
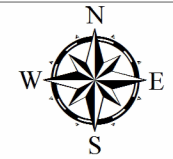
This information provided by authority of Part 525, 1994 PA 451, as amended.

Forest Management Unit Cadillac	County Wexford	Mapped By Tweedale/Dickinson	Date 06/15/2017	Page 1	of 2
Township 22N	Range 09W	Section(s) and Subdivision(s) Section 6 NENE, Section 7 SENE, NESE, SESE, SWSE, Section 8 SENE, SWNE, NENW, SENW, NESE	Scale 1:15,840		

Cover Type				Density	
A = Aspen	H = Hemlock	N = Marsh	U = Upland Brush	0 = Non Stocked	5 = Pole Timber Medium
B = Paper Birch	J = Jack Pine	O = Oak	UM = Upland Mixed	1 = Seedling Sapling Poor	6 = Pole Timber Well
C = Cedar	L = Lowland Brush	P = Lowland Poplar	V = Bog or Marsh	2 = Seedling Sapling Medium	7 = Saw Timber Poor
D = Treed Bog	LM = Lowland Mixed	Q = Mixed Swamp Conifer	W = White Pine	3 = Seedling Sapling Well	8 = Saw Timber Medium
E = Swamp Hdwoods	M = Mpl, Bch, Brch	R = Red Pine	X = Non Stocked	4 = Pole Timber Poor	9 = Saw Timber Well
F = Spruce Fir	MC = Mixed Conifer	S = Black Spruce	Z = Water		
G = Grass	MD = Mixed Deciduous	T = Tamarack			

PU	Acres	PU	Acres
1	26.3	4	33.2
2	34.3	5	58.4
3	6.3	6	35.1

Reroute Pine Compartment 139 193.6 Acres MAP 1 of 2





Sale Number	Year
63-020	17

TIMBER SALE MAP

This information provided by authority of Part 525, 1994 PA 451, as amended.

Forest Management Unit Cadillac		County Wexford	Mapped By Tweedale/Dickinson	Date 06/15/2017	Page 2	of 2
Township 22N	Range 09W	Section(s) and Subdivision(s) Section 6 NENE, Section 7 SENE, SESE, SWSE, Section 8 SENE, SWNE, NENW, SENW, NESE			Scale 1:15,840	

Cover Type

A = Aspen	H = Hemlock	N = Marsh	U = Upland Brush
B = Paper Birch	J = Jack Pine	O = Oak	UM = Upland Mixed
C = Cedar	L = Lowland Brush	P = Lowland Poplar	V = Bog or Marsh
D = Treed Bog	LM = Lowland Mixed	Q = Mixed Swamp Conifer	W = White Pine
E = Swamp Hdwoods	M = Mpl, Bch, Brch	R = Red Pine	X = Non Stocked
F = Spruce Fir	MC = Mixed Conifer	S = Black Spruce	Z = Water
G = Grass	MD = Mixed Deciduous	T = Tamarack	

Density

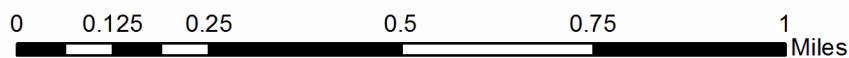
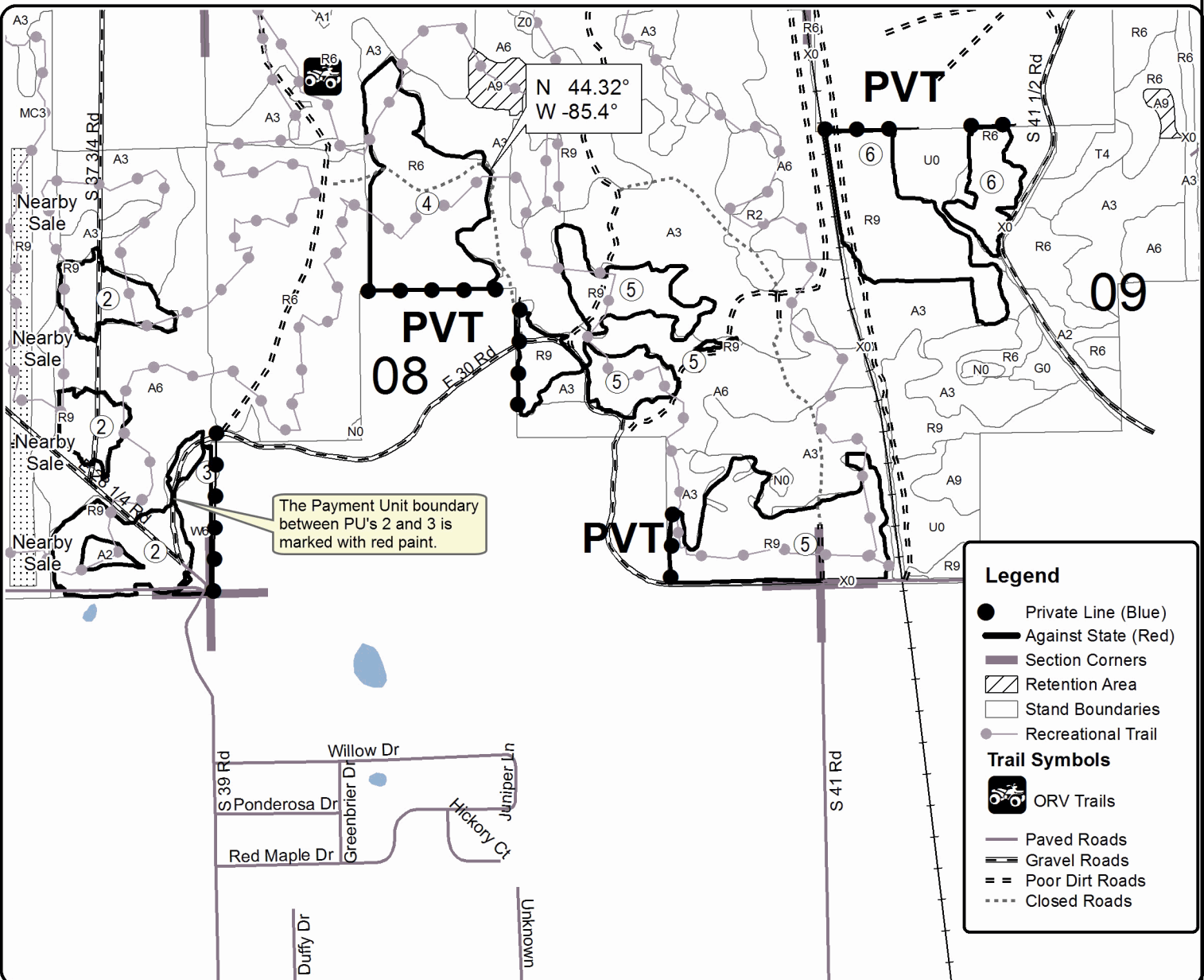
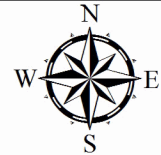
0 = Non Stocked	5 = Pole Timber Medium
1 = Seedling Sapling Poor	6 = Pole Timber Well
2 = Seedling Sapling Medium	7 = Saw Timber Poor
3 = Seedling Sapling Well	8 = Saw Timber Medium
4 = Pole Timber Poor	9 = Saw Timber Well

PU	Acres	PU	Acres
1	26.3	4	33.2
2	34.3	5	58.4
3	6.3	6	35.1

Reroute Pine

Compartment 139

193.6 Acres MAP 2 of 2



TIMBER SALE INFORMATION

GNA Shaded Fuelbreak Mix (63-805-17)

Lake County (Advertised Price \$2,562.25)

SALE NOTE: This is a Good Neighbor Authority (GNA) timber sale on national forest land. This timber sale was set-up and is being advertised by the Michigan DNR for the US Forest Service. The contract will be awarded and administered by the Michigan DNR. Note the additional Sale Specific Conditions & Requirements containing the acronym 'GNA'.

Access may be through private land.

A timber sale contract for this lump sum, sealed bid timber sale will be awarded to the responsible bidder offering the highest sealed bid price. Bids must be at or above the following advertised price for each species:

<u>PRODUCTS & SPECIES</u>	<u>ESTIMATED UNITS*</u>	<u>ADVERTISED PRICE</u>
Pulpwood		
B. T. Aspen	7.00 Cords	\$ 16.85 / Cord
Black Cherry	6.00 Cords	\$ 20.75 / Cord
Jack Pine	112.00 Cords	\$ 17.65 / Cord
Mixed Oak	15.00 Cords	\$ 17.80 / Cord
White Pine	4.00 Cords	\$ 19.00 / Cord

* The total volume is statistically estimated within plus (+) or minus (-) 23.18 percent. The estimated units are final and not subject to adjustment. Prospective bidders are urged to examine this timber and to make their own estimates of quantity and quality.

BOND AND PAYMENT SCHEDULE:

1. A bond in the amount of \$128.00 to insure faithful performance of the conditions of the contract will be deposited by the successful bidder within 21 days of the sale award.
2. Cutting in any sale or unit without the required advance payment would be considered a trespass.
3. Total payment must be paid in advance or according to the following schedule:
 - (a) Ten percent (10%) of the sale value must be paid within 21 days of the sale award.
 - (b) The remainder is due before cutting begins.
4. If no cutting takes place, the 10% down payment will not be refunded.
5. Operations on the contract issued will terminate on 09/30/2019.

Description of Timber by Payment Unit (PU)

PU	MARKET GROUP	PRODUCT	QUANTITY	UNIT	ACRES	ADVERTISE PRICE
1	B. T. Aspen	Pulpwood	7.0	Cords	20.0	\$2,562.25
	<i>B. T. Aspen</i>	<i>Sawtimber</i>	<i>0.7</i>	<i>MBF</i>		
	<i>B. T. Aspen</i>	<i>Pulpwood</i>	<i>6.0</i>	<i>Cords</i>		
	Black Cherry		6.0	Cords		
	<i>Black Cherry</i>	<i>Sawtimber</i>	<i>0.4</i>	<i>MBF</i>		
	<i>Black Cherry</i>	<i>Pulpwood</i>	<i>5.0</i>	<i>Cords</i>		
	Jack Pine		5.0	Cords		
	<i>Jack Pine</i>	<i>Sawtimber</i>	<i>2.6</i>	<i>MBF</i>		
	Jack Pine	Pulpwood	107.0	Cords		
	Mixed Oak		15.0	Cords		
	<i>Red Oak</i>	<i>Sawtimber</i>	<i>1.0</i>	<i>MBF</i>		
	<i>Red Oak</i>	<i>Pulpwood</i>	<i>8.0</i>	<i>Cords</i>		
	<i>White Oak</i>		<i>5.0</i>	<i>Cords</i>		
	White Pine		4.0	Cords		
	<i>White Pine</i>	<i>Sawtimber</i>	<i>0.5</i>	<i>MBF</i>		
	<i>White Pine</i>	<i>Pulpwood</i>	<i>3.0</i>	<i>Cords</i>		
TOTAL:			144.0	Cords		

Sale Specific Conditions & Requirements

Sale Name: GNA Shaded Fuelbreak Mix

Sale Number: 63-805-17 Seq#: 1

1 - Sale Area

1.2 - Boundaries

1.2.1 - Painted boundaries (1/14)

The sale boundary is marked and identified by orange paint. Exterior sale boundary lines against private property and U.S. Forest Service property are marked with orange paint. The painted boundary line trees are not Included Timber and are to be protected.

2 - Timber Specifications

2.1 - Included Timber

2.1.7 - Leave tree marked unit(s) (6/14)

Within Payment Unit(s) 1, all trees, which meet minimum piece specifications in 2.2 Utilization, are designated for cutting, except trees marked with orange paint above and below stump height.

2.2 - Utilization

2.2.3 - Stump heights (4/07)

Stump heights within the Sale Area shall not exceed 12 inches for trees greater than 10 inches DBH and 6 inches for trees smaller than 10 inches DBH.

2.2.12 - GNA, cut and remove included timber (1/16)

Unless provided otherwise herein, the DNR agrees to sell and permit Purchaser to cut and remove included timber and Purchaser agrees to purchase, cut, and remove included timber.

3 - Payments

3.4 - Damaged Timber

3.4.1 - Damaged timber (6/14)

General Condition and Requirement 3.4 Damaged Timber, defines liquidated damages for undesignated live merchantable trees which are cut or injured.

No damage is acceptable to merchantable trees. Within the sale area, if more than 5% of trees (> 4.5" DBH) within a specified area of the sale are damaged, liquidated damages will be assessed for all trees damaged. Rates will be in accordance with General Condition and Requirement 3.4 Damaged Timber.

4 - Transportation

4.1 - Construction

4.1.4 - Timber removed for construction (12/09)

Trees cut or damaged in the process of pre-approved road, landing or skid trail construction will be decked in an area separate from other Designated Timber and not removed until measured by the sale administrator. Payment will be made at the specified Purchase Unit Price.

4.1.6 - Road construction (1/09)

Improvements of existing roads shall be done in such a way as to minimize the environmental and visual impacts. Merchantable trees shall be cut and utilized unless otherwise directed. Non-merchantable trees shall be severed and laid flat on the ground. Slash shall be scattered, and not left in windrows and kept a minimum of 10 feet back from the road edge. Stumps shall be set upright, not left on edge, and be moved at least 10 feet away from the road edge. Disturbed soil shall be feathered into the woods and not left in berms or windrows.

4.1.11 - Permits (2/12)

The Purchaser will secure any necessary permits that may be required.

4.4 - Access

4.4.1 - Private property access (3/11)

Permission for access across private land has been obtained by the DNR through the Laster property. Contact the timber sale administrator a minimum of 3 days prior to entering the property to inform landowner of potential bidder presence. Should the Purchaser desire to cross other private land, a copy of the written permission from the private land-owner may be required by the DNR.

5 - Operations

5.1 - Notification

5.1.1 - Pre-sale conference (10/16)

A pre-sale conference between the Purchaser and sale administrator is required prior to beginning any operations. The Unit Manager or his/her representative must be contacted at least 3 days in advance to schedule the conference.

5.2 - Conduct of Operations

5.2.1 - Slash

5.2.1.8 - Slash height (12/08)

No slash or tree tops may exceed 24 inches in height.

5.2.2 - Hazard Trees/Snags

5.2.2.1 - Den trees (10/16)

Obvious hollow and/or den trees shall be protected and left standing unless they are a safety hazard.

5.2.3 - Operating Restrictions

5.2.3.1 - Operating restrictions (9/11)

Within Payment Unit(s) 1, felling and skidding are limited to the period of January 1 to March 31. This restriction is to prevent infection of Heterobasidion Root Disease (HRD).

5.2.32 - Decking/landing restoration (9/13)

All decking and landing areas must have the surface area restored to a condition equal to or better than before. This is to ensure the proper regeneration of the stand. Wood debris, chips and "cookies" from trimmings must be removed or scattered away from landing and loading areas and may not be windrowed on the edge.

5.2.38 - No decking against live trees (2/04)

Cut products may not be decked against unmarked or designated leave trees.

5.4 - Soil Protection

5.4.1 - Rutting restriction, general (7/16)

Operations are to cease immediately if equipment and weather conditions result in rutting of roads and/or skid trails which is 12 inches or greater in depth and 50 feet in length. The Unit Manager or his/her representative may restrict hauling and/or skidding if ruts exceed the specified depth. With the Unit Manager or his/her representative's approval, the Purchaser may return to the area when the risk of rutting has decreased.

5.6 - Debris and Waste Material

5.6.2 - GNA, equipment cleaning (1/16)

(a) Areas, known by the DNR prior to timber sale advertisement, that are infested with invasive species of concern are shown on the Timber Sale Map. A current list of invasive species of concern and a map showing the extent of known infestations is available from the DNR. For purposes of this provision, "Off-Road Equipment" includes all logging and construction machinery, except for log trucks, chip vans, service vehicles, water trucks, pickup trucks, cars, and similar vehicles.

(b) Purchaser shall adhere to the following requirements with regard to cleaning "Off-Road Equipment":

(i) Prior to moving Off-Road Equipment onto the Sale Area, Purchaser shall identify the location of the equipment's most recent operation. Purchaser shall not move any Off-Road Equipment that last operated in an area infested with one or more invasive species of concern onto Sale Area without having cleaned such equipment of seeds, soil, vegetative matter, and other debris that could contain or hold seeds, and having notified the DNR, as provided in (iii). If the location of prior operation cannot be identified, then Purchaser shall assume that the location is infested with invasive species of concern.

(ii) Prior to moving Off-Road Equipment from a cutting unit that is shown on the Timber Sale Map to be infested with invasive species of concern to, or through any other area that is shown as being free of invasive species of concern, or infested with a different invasive species, Purchaser shall clean such equipment of seeds, soil, vegetative matter, and other debris that could contain or hold seeds, and shall notify the DNR, as provided in (iii).

(iii) Prior to moving any Off-Road Equipment subject to the cleaning requirements set forth above, Purchaser shall advise DNR of its cleaning measures and make the equipment available for inspection. DNR shall have 2 days, excluding weekends and State holidays, to inspect equipment after it has been made available. After satisfactory inspection or after such 2 day period, Purchaser may move the equipment as planned. Equipment shall be considered clean when a visual inspection does not disclose seeds, soil, vegetative matter, and other debris that could contain or hold seeds. Purchaser shall not be required to disassemble equipment unless so directed by the DNR after inspection.

(iv) If Purchaser desires to clean Off-Road Equipment on National Forest land, such as at the end of a project or prior to moving to, or through an area that is free of invasive species of concern, Purchaser shall obtain prior approval from the Unit Manager or his/her representative as to the location for such cleaning and measures, if any, for controlling impacts.

(v) Unit Manager or his/her representative may order delay, interruption, or modification of this Contract pursuant to Condition & Requirement 7.3 or 7.3.4.

(c) Nothing contained in this Condition & Requirement shall be interpreted as creating any warranty on the part of the DNR that all locations of invasive species of concern have been described herein, elsewhere in this Contract, or designated on the ground. Following sale advertisement, additional locations may be described or designated, and other species may be added to the list of invasive species of concern. In such event, the Unit Manager or his/her representative may order delay, interruption, or modification of this Contract pursuant to Condition & Requirement 7.3 or 7.3.4.

(d) The parties shall promptly communicate with one another with respect to description or designation of additional locations; discovery of locations of new species or new infestation; and, addition of species to the list of invasive species of concern.

5.8 - Protection of Endangered Species

5.8.5 - Protection of raptor nests (3/13)

All trees with raptor nests will be protected if found during harvesting operations. Notification will be made to the Unit Manager or his/her representative who will notify the Wildlife Biologist so an on-site evaluation and recommendation can be made, if necessary.

6 - Safety and Fire Prevention

6.2 - Signing

6.2.1 - Road posting (9/09)

The Purchaser is responsible for posting and maintaining caution signs on 56th St. prior to beginning operations. The road must be posted at appropriate distances from the sale area to warn of logging activity and truck traffic. Signs must be removed when harvest operations are suspended or completed. The Purchaser will provide these signs.

7 - Other Conditions

SKIP

7.1.1 - GNA, title (7/16)

General Condition & Requirement 7.1 is inapplicable. The following applies to this contract.

All right, title, and interest in and to any Included Timber shall remain in USDA Forest Service with the State of Michigan

acting on behalf of the USDA Forest Service under this GNA contract, until it has been Measured, removed from Sale Area or other authorized cutting area, and paid for, at which time title shall vest in Purchaser. Title to any Included Timber that has been Measured and paid for, but not removed from Sale Area or other authorized cutting area by Purchaser on or prior to Termination Date, shall remain in USDA Forest Service.

7.3 - Contract Modifications

7.3.3 - Modification for reforestation (8/05)

When contractual work of Purchaser has been accepted for any Payment Unit identified on Sale Area Map, Payment Unit will be eliminated from the Sale Area on written notice so that reforestation operations can begin.

7.3.4 - GNA, contract suspension and modification (5/16)

(a) The Unit Manager may, by written order, delay or interrupt authorized operations under this contract or, notwithstanding Condition & Requirement 7.3, modify this contract, in whole or in part:

(i) To prevent environmental degradation or resource damage, including, but not limited to, harm to habitat, plants, animals, cultural resources, or cave resources;

(ii) To ensure consistency with land and resource management plans or other documents prepared pursuant to the National Environmental Policy Act of 1969, 42 USC 4321-4347;

(iii) To conduct environmental analysis, including, but not limited to, engaging in consultation pursuant to the Endangered Species Act of 1973, 16 USC 1531, et seq.; or

(iv) Upon agreement of the Forest Service, due to administrative appeal or litigation, regardless of whether the Unit Manager's order is required by a court order or this contract is named in such a proceeding.

(b) In the event of an order delaying or interrupting Purchaser's Operations under this Condition & Requirement, Purchaser's remedy shall be:

(i) a no cost contract extension,

(ii) reimbursement for Out-of-Pocket Expenses,

however, the foregoing remedies shall be available only to the extent that the Unit Manager's order was the sole and exclusive cause of the delay or interruption of Purchaser's operations.

(c) Remedies awarded to the Purchaser shall not be duplicative, and the Unit Manager shall have the right to structure remedies provided herein to avoid duplicative compensation.

(d) Purchaser agrees that this Condition & Requirement, and the remedies provided herein shall apply regardless of any finding by any court that the DNR failed to comply with any statute, regulation and/or policy in connection with awarding, advertising, or authorizing this sale, or a similar sale.

7.5 - Loss

7.5.2 - GNA, liability for loss (7/16)

If Included Timber is destroyed or damaged by an unexpected event that changes the nature of Included Timber, such as wind, flood, insects, disease, or similar cause, the Purchaser shall bear the timber value loss resulting from such destruction or damage.

Deterioration or loss of timber value due to delay or interruption under 7.3.4 - GNA, contract suspension and modification, shall be borne by the party holding title. In this event, Included Timber to which USDA Forest Service holds title, Purchaser of the State GNA contract will not be obligated to remove and pay for such timber. This Subsection shall not be construed to relieve either party of liability for negligence.

7.10 - Certified Timber

7.10.1 - Non-certified timber (2/16)

The area encompassed by this timber sale is not certified to the standards of the Forest Stewardship Council (FSC) or the Sustainable Forestry Initiative (SFI). Forest products from this sale may not be delivered to the mill as "FSC and / or SFI certified". The lands within this sale belong to the National Forest system and are being managed by the State as part of a Good Neighbor Authority (GNA) agreement.



TIMBER SALE MAP

This information provided by authority of Part 525, 1994 PA 451, as amended.

Forest Management Unit Cadillac	County Lake	Mapped By Hallfrisch	Date 08/15/2017	Page 1	of 1
Township 17N	Range 12W	Section(s) and Subdivision(s) Sec. 04 NESE	Scale 1:15,840		

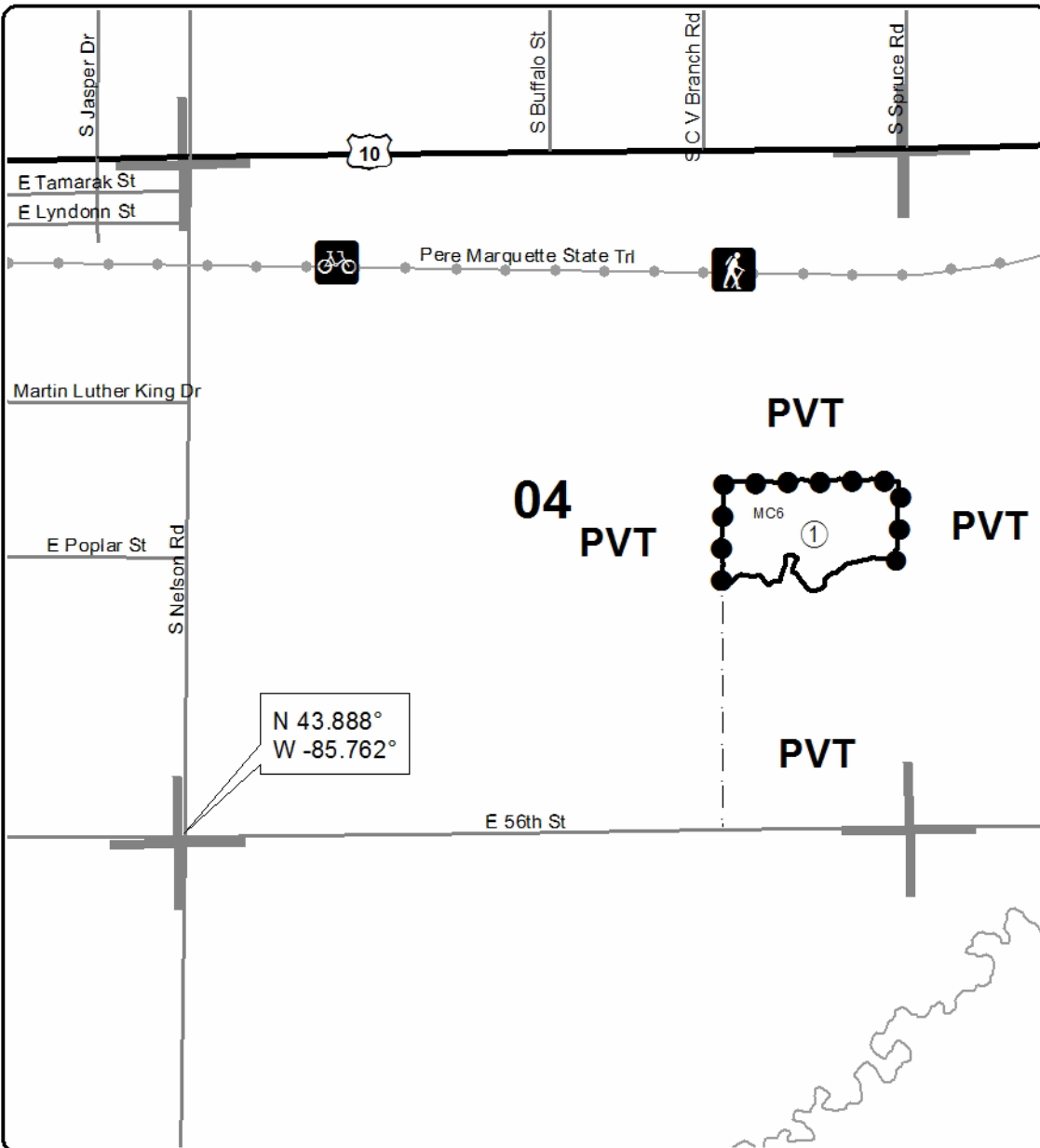
Cover Type				Density	
A = Aspen	H = Hemlock	N = Marsh	U = Upland Brush	0 = Non Stocked	5 = Pole Timber Medium
B = Paper Birch	J = Jack Pine	O = Oak	UM = Upland Mixed	1 = Seedling Sapling Poor	6 = Pole Timber Well
C = Cedar	L = Lowland Brush	P = Lowland Poplar	V = Bog or Marsh	2 = Seedling Sapling Medium	7 = Saw Timber Poor
D = Tread Bog	LM = Lowland Mixed	Q = Mixed Swamp Conifer	W = White Pine	3 = Seedling Sapling Well	8 = Saw Timber Medium
E = Swamp Hdwoods	M = Mpl, Bch, Brch	R = Red Pine	X = Non Stocked	4 = Pole Timber Poor	9 = Saw Timber Well
F = Spruce Fir	MC = Mixed Conifer	S = Black Spruce	Z = Water		
G = Grass	MD = Mixed Deciduous	T = Tamarack			

PU Acres

1 20

GNA Shaded Fuelbreak Mix

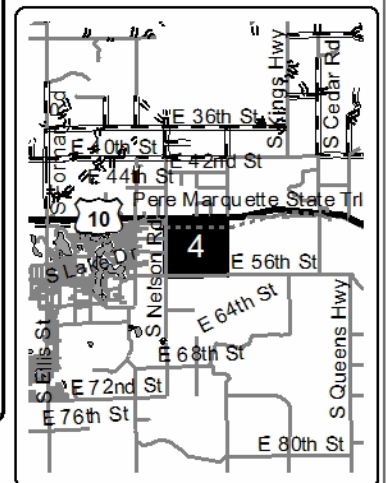
Compartment 7904503
20 Acres



Legend

- Sale Boundary (Orange)
- Private Line (Orange)
- Section Corners
- Recreational Trail
- Streams
- Highway
- Paved Roads
- Access Route

Locator Map
1:200,000



Cannon Combo (63-013-17)
; Missaukee COUNTY

In response to the notice of sale to be held 3:00 p.m. (local time) on September 25, 2017, I am hereby submitting my sealed bid (firm offer) for the following forest products to be cut. Bids for individual species must be at or above the advertised price. All non-responsive bid forms may be rejected.

<u>PRODUCTS & SPECIES</u>	<u>ESTIMATED VOLUME*</u>	<u>ADVERTISED PRICE</u>	<u>BID PRICE/UNIT</u>
Sawtimber			
B. T. Aspen	66.40 MBF	\$ 85.00/MBF	\$ _____
Black Cherry	2.80 MBF	\$ 83.00/MBF	\$ _____
Red Maple	30.40 MBF	\$ 90.00/MBF	\$ _____
Red Oak	8.50 MBF	\$ 172.00/MBF	\$ _____
Red Pine	7.10 MBF	\$ 81.00/MBF	\$ _____
White Pine	5.20 MBF	\$ 53.00/MBF	\$ _____
Pulpwood			
B. T. Aspen	1,072.00 Cords	\$ 12.00/Cord	\$ _____
Balsam Fir	22.00 Cords	\$ 9.20/Cord	\$ _____
Black Cherry	122.00 Cords	\$ 14.80/Cord	\$ _____
Jack Pine	5.00 Cords	\$ 12.60/Cord	\$ _____
Red Maple	593.00 Cords	\$ 14.80/Cord	\$ _____
Red Oak	30.00 Cords	\$ 12.70/Cord	\$ _____
Red Pine	22.00 Cords	\$ 27.60/Cord	\$ _____
White Pine	64.00 Cords	\$ 13.55/Cord	\$ _____

*The volumes are statistically estimated within plus (+) or minus (-) 7.26 percent. These estimated volumes are final and not subject to adjustment. Prospective bidders are urged to examine this timber and to make their own estimates of quantity and quality.

I understand that any or all bids may be rejected. All bids must be signed and all bid items must be bid or the bid form may be rejected. I also understand that consideration and awarding a contract will be based upon my past performance and ability to complete the contract based upon equipment and staffing subject to my control.

FEDERAL ID: _____ or SOCIAL SECURITY NUMBER: _____

Company or individual bidding: _____

Company representative's name: _____

Address: _____

City: _____ State: _____ Zip: _____

IF AVAILABLE, PLEASE PLACE THE PERSONALIZED LABEL FROM YOUR PROSPECTUS IN THE ABOVE BOX.

Individual or company representative's signature: _____ Date: _____

Phone number : _____ Email (optional): _____

THE WINNING BIDDER MUST COMPLETE THE VERIFICATION OF WORKER'S DISABILITY COMPENSATION ACT COMPLIANCE (ON REVERSE SIDE IF DOUBLE SIDED) WITHIN 21 DAYS OF SALE AWARD DATE



FOR DEPARTMENT USE ONLY
Sale Number (XX - XXX - XX - XX)
Forest Management Unit:

TIMBER SALE VERIFICATION OF WORKER'S DISABILITY COMPENSATION ACT COMPLIANCE

*As required by Act 317, P.A. 1969 (Worker's Compensation) and
Part 5 of Act 451 of 1994, as amended.*

VERIFICATION OF WORKER'S DISABILITY COMPENSATION ACT COMPLIANCE

- This verification must be completed and submitted within 21 days of contract award and prior to the issuance of the timber sale contract.
- In addition, if boxes 2B or 2C are checked, then Notice of Exclusion or Certificate of Insurance must be submitted within twenty-one (21) days of the contract award and prior to the issuance of the timber sale contract.
- All information must be typed or printed except for written signatures.

Please Check Appropriate Categories:

1. My business is organized as (you **must** check one of the boxes below):
 - A. Sole Proprietorship (individual)
 - B. Partnership
 - C. Corporation
2. You **must** check one of the boxes below:
 - A. I certify my business is a sole proprietorship and it has no employees but the sole proprietor. I am not subject to the Worker's Compensation Laws.
 - B. I certify my business has satisfied its obligation to the Worker's Compensation Act through the use of an approved Notice of Exclusion (BWC-337, Rev. 5/96). I will provide a copy of the Notice of Exclusion within 21 days of the contract award. (For questions or a copy of the BWC-337, please call the Worker's Compensation Bureau at 517-322-1195).
 - C. I certify my business has a Worker's Compensation Policy. I will provide an original Certificate of Insurance within twenty-one (21) days of the contract award.
3. If you have checked item 2(A) or 2(B), you **must** indicate the number of **both** full-time and part-time employees, other than yourself, including family members and active partners (if none, you must enter "0").

_____ Full-time Employees

_____ Part-time Employees

Name of Business		Federal ID (or) Social Security No.	
Address		Telephone ()	
City	State	ZIP	

I hereby certify that the above information is true and correct. I agree to notify the Michigan DNR of any changes that occur in factors affecting my coverage during any of my present and future operations.

Signature of Owner or Authorized Representative

Title

Date

Please complete the "SEALED BID" information on the next page

thrilling aspen (63-019-17)
; Wexford COUNTY

In response to the notice of sale to be held 3:00 p.m. (local time) on September 25, 2017, I am hereby submitting my sealed bid (firm offer) for the following forest products to be cut. Bids for individual species must be at or above the advertised price. All non-responsive bid forms may be rejected.

<u>PRODUCTS & SPECIES</u>	<u>ESTIMATED VOLUME*</u>	<u>ADVERTISED PRICE</u>	<u>BID PRICE/UNIT</u>
Sawtimber			
Beech	12.60 MBF	\$ 107.00/MBF	\$ _____
Black Cherry	3.30 MBF	\$ 124.00/MBF	\$ _____
Mixed Aspen	145.70 MBF	\$ 128.00/MBF	\$ _____
Red Maple	36.40 MBF	\$ 135.00/MBF	\$ _____
Red Oak	18.00 MBF	\$ 258.00/MBF	\$ _____
Pulpwood			
Beech	170.00 Cords	\$ 22.20/Cord	\$ _____
Black Cherry	16.00 Cords	\$ 22.20/Cord	\$ _____
Mixed Aspen	853.00 Cords	\$ 18.05/Cord	\$ _____
Red Maple	275.00 Cords	\$ 22.20/Cord	\$ _____
Red Oak	109.00 Cords	\$ 19.05/Cord	\$ _____

*The volumes are statistically estimated within plus (+) or minus (-) 14.10 percent. These estimated volumes are final and not subject to adjustment. Prospective bidders are urged to examine this timber and to make their own estimates of quantity and quality.

I understand that any or all bids may be rejected. All bids must be signed and all bid items must be bid or the bid form may be rejected. I also understand that consideration and awarding a contract will be based upon my past performance and ability to complete the contract based upon equipment and staffing subject to my control.

FEDERAL ID: _____ or SOCIAL SECURITY NUMBER: _____

Company or individual bidding: _____

Company representative's name: _____

Address: _____

City: _____ State: _____ Zip: _____

IF AVAILABLE, PLEASE PLACE THE PERSONALIZED LABEL FROM YOUR PROSPECTUS IN THE ABOVE BOX.

Individual or company representative's signature: _____ Date: _____

Phone number : _____ Email (optional): _____

THE WINNING BIDDER MUST COMPLETE THE VERIFICATION OF WORKER'S DISABILITY COMPENSATION ACT COMPLIANCE (ON REVERSE SIDE IF DOUBLE SIDED) WITHIN 21 DAYS OF SALE AWARD DATE



FOR DEPARTMENT USE ONLY	
Sale Number (XX - XXX - XX - XX)	
Forest Management Unit:	

TIMBER SALE VERIFICATION OF WORKER'S DISABILITY COMPENSATION ACT COMPLIANCE

As required by Act 317, P.A. 1969 (Worker's Compensation) and
Part 5 of Act 451 of 1994, as amended.

VERIFICATION OF WORKER'S DISABILITY COMPENSATION ACT COMPLIANCE

- This verification must be completed and submitted within 21 days of contract award and prior to the issuance of the timber sale contract.
- In addition, if boxes 2B or 2C are checked, then Notice of Exclusion or Certificate of Insurance must be submitted within twenty-one (21) days of the contract award and prior to the issuance of the timber sale contract.
- All information must be typed or printed except for written signatures.

Please Check Appropriate Categories:

1. My business is organized as (you **must** check one of the boxes below):
 - A. Sole Proprietorship (individual)
 - B. Partnership
 - C. Corporation
2. You **must** check one of the boxes below:
 - A. I certify my business is a sole proprietorship and it has no employees but the sole proprietor. I am not subject to the Worker's Compensation Laws.
 - B. I certify my business has satisfied its obligation to the Worker's Compensation Act through the use of an approved Notice of Exclusion (BWC-337, Rev. 5/96). I will provide a copy of the Notice of Exclusion within 21 days of the contract award. (For questions or a copy of the BWC-337, please call the Worker's Compensation Bureau at 517-322-1195).
 - C. I certify my business has a Worker's Compensation Policy. I will provide an original Certificate of Insurance within twenty-one (21) days of the contract award.
3. If you have checked item 2(A) or 2(B), you **must** indicate the number of **both** full-time and part-time employees, other than yourself, including family members and active partners (if none, you must enter "0").

_____ Full-time Employees

_____ Part-time Employees

Name of Business		Federal ID (or) Social Security No.	
Address		Telephone ()	
City	State	ZIP	

I hereby certify that the above information is true and correct. I agree to notify the Michigan DNR of any changes that occur in factors affecting my coverage during any of my present and future operations.

Signature of Owner or Authorized Representative

Title

Date

Please complete the "SEALED BID" information on the next page

Reroute Pine (63-020-17)
; Wexford COUNTY

In response to the notice of sale to be held 3:00 p.m. (local time) on September 25, 2017, I am hereby submitting my sealed bid (firm offer) for the following forest products to be cut. Bids for individual species must be at or above the advertised price. All non-responsive bid forms may be rejected.

<u>PRODUCTS & SPECIES</u>	<u>ESTIMATED VOLUME*</u>	<u>ADVERTISED PRICE</u>	<u>BID PRICE/UNIT</u>
Sawtimber			
Mixed Aspen	47.10 MBF	\$ 85.00/MBF	\$ _____
Red Maple	19.20 MBF	\$ 90.00/MBF	\$ _____
Red Oak	20.90 MBF	\$ 172.00/MBF	\$ _____
Red Pine	1,937.00 MBF	\$ 81.00/MBF	\$ _____
White Pine	19.00 MBF	\$ 53.00/MBF	\$ _____
Pulpwood			
Beech	27.00 Cords	\$ 14.80/Cord	\$ _____
Mixed Aspen	167.00 Cords	\$ 12.00/Cord	\$ _____
Red Maple	209.00 Cords	\$ 14.80/Cord	\$ _____
Red Oak	66.00 Cords	\$ 12.70/Cord	\$ _____
Red Pine	3,336.00 Cords	\$ 27.60/Cord	\$ _____
White Pine	132.00 Cords	\$ 13.55/Cord	\$ _____

*The volumes are statistically estimated within plus (+) or minus (-) 12.05 percent. These estimated volumes are final and not subject to adjustment. Prospective bidders are urged to examine this timber and to make their own estimates of quantity and quality.

I understand that any or all bids may be rejected. All bids must be signed and all bid items must be bid or the bid form may be rejected. I also understand that consideration and awarding a contract will be based upon my past performance and ability to complete the contract based upon equipment and staffing subject to my control.

FEDERAL ID: _____ or SOCIAL SECURITY NUMBER: _____

Company or individual bidding: _____

Company representative's name: _____

Address: _____

City: _____ State: _____ Zip: _____

IF AVAILABLE, PLEASE PLACE THE PERSONALIZED LABEL FROM YOUR PROSPECTUS IN THE ABOVE BOX.

Individual or company representative's signature: _____ Date: _____

Phone number : _____ Email (optional): _____

THE WINNING BIDDER MUST COMPLETE THE VERIFICATION OF WORKER'S DISABILITY COMPENSATION ACT COMPLIANCE (ON REVERSE SIDE IF DOUBLE SIDED) WITHIN 21 DAYS OF SALE AWARD DATE



FOR DEPARTMENT USE ONLY	
Sale Number (XX - XXX - XX - XX)	
Forest Management Unit:	

TIMBER SALE VERIFICATION OF WORKER'S DISABILITY COMPENSATION ACT COMPLIANCE

As required by Act 317, P.A. 1969 (Worker's Compensation) and
Part 5 of Act 451 of 1994, as amended.

VERIFICATION OF WORKER'S DISABILITY COMPENSATION ACT COMPLIANCE

- This verification must be completed and submitted within 21 days of contract award and prior to the issuance of the timber sale contract.
- In addition, if boxes 2B or 2C are checked, then Notice of Exclusion or Certificate of Insurance must be submitted within twenty-one (21) days of the contract award and prior to the issuance of the timber sale contract.
- All information must be typed or printed except for written signatures.

Please Check Appropriate Categories:

1. My business is organized as (you **must** check one of the boxes below):
 - A. Sole Proprietorship (individual)
 - B. Partnership
 - C. Corporation
2. You **must** check one of the boxes below:
 - A. I certify my business is a sole proprietorship and it has no employees but the sole proprietor. I am not subject to the Worker's Compensation Laws.
 - B. I certify my business has satisfied its obligation to the Worker's Compensation Act through the use of an approved Notice of Exclusion (BWC-337, Rev. 5/96). I will provide a copy of the Notice of Exclusion within 21 days of the contract award. (For questions or a copy of the BWC-337, please call the Worker's Compensation Bureau at 517-322-1195).
 - C. I certify my business has a Worker's Compensation Policy. I will provide an original Certificate of Insurance within twenty-one (21) days of the contract award.
3. If you have checked item 2(A) or 2(B), you **must** indicate the number of **both** full-time and part-time employees, other than yourself, including family members and active partners (if none, you must enter "0").

_____ Full-time Employees

_____ Part-time Employees

Name of Business		Federal ID (or) Social Security No.	
Address		Telephone ()	
City	State	ZIP	

I hereby certify that the above information is true and correct. I agree to notify the Michigan DNR of any changes that occur in factors affecting my coverage during any of my present and future operations.

Signature of Owner or Authorized Representative

Title

Date

Please complete the "SEALED BID" information on the next page

GNA Shaded Fuelbreak Mix (63-805-17)
; Lake COUNTY

In response to the notice of sale to be held 3:00 p.m. (local time) on September 25, 2017, I am hereby submitting my sealed bid (firm offer) for the following forest products to be cut. Bids for individual species must be at or above the advertised price. All non-responsive bid forms may be rejected.

<u>PRODUCTS & SPECIES</u>	<u>ESTIMATED VOLUME*</u>	<u>ADVERTISED PRICE</u>	<u>BID PRICE/UNIT</u>
Pulpwood			
B. T. Aspen	7.00 Cords	\$ 16.85/Cord	\$ _____
Black Cherry	6.00 Cords	\$ 20.75/Cord	\$ _____
Jack Pine	112.00 Cords	\$ 17.65/Cord	\$ _____
Mixed Oak	15.00 Cords	\$ 17.80/Cord	\$ _____
White Pine	4.00 Cords	\$ 19.00/Cord	\$ _____

*The volumes are statistically estimated within plus (+) or minus (-) 23.18 percent. These estimated volumes are final and not subject to adjustment. Prospective bidders are urged to examine this timber and to make their own estimates of quantity and quality.

I understand that any or all bids may be rejected. All bids must be signed and all bid items must be bid or the bid form may be rejected. I also understand that consideration and awarding a contract will be based upon my past performance and ability to complete the contract based upon equipment and staffing subject to my control.

FEDERAL ID: _____ - _____ or SOCIAL SECURITY NUMBER: _____ - _____ - _____

Company or individual bidding: _____

Company representative's name: _____

Address: _____

City: _____ State: _____ Zip: _____

IF AVAILABLE, PLEASE PLACE THE PERSONALIZED LABEL FROM YOUR PROSPECTUS IN THE ABOVE BOX.

Individual or company representative's signature: _____ Date: _____

Phone number : _____ Email (optional): _____

THE WINNING BIDDER MUST COMPLETE THE VERIFICATION OF WORKER'S DISABILITY COMPENSATION ACT COMPLIANCE (ON REVERSE SIDE IF DOUBLE SIDED) WITHIN 21 DAYS OF SALE AWARD DATE



FOR DEPARTMENT USE ONLY
Sale Number (XX – XXX – XX – XX)
Forest Management Unit:

TIMBER SALE VERIFICATION OF WORKER'S DISABILITY COMPENSATION ACT COMPLIANCE

*As required by Act 317, P.A. 1969 (Worker's Compensation) and
Part 5 of Act 451 of 1994, as amended.*

VERIFICATION OF WORKER'S DISABILITY COMPENSATION ACT COMPLIANCE

- This verification must be completed and submitted within 21 days of contract award and prior to the issuance of the timber sale contract.
- In addition, if boxes 2B or 2C are checked, then Notice of Exclusion or Certificate of Insurance must be submitted within twenty-one (21) days of the contract award and prior to the issuance of the timber sale contract.
- All information must be typed or printed except for written signatures.

Please Check Appropriate Categories:

1. My business is organized as (you **must** check one of the boxes below):
 - A. Sole Proprietorship (individual)
 - B. Partnership
 - C. Corporation
2. You **must** check one of the boxes below:
 - A. I certify my business is a sole proprietorship and it has no employees but the sole proprietor. I am not subject to the Worker's Compensation Laws.
 - B. I certify my business has satisfied its obligation to the Worker's Compensation Act through the use of an approved Notice of Exclusion (BWC-337, Rev. 5/96). I will provide a copy of the Notice of Exclusion within 21 days of the contract award. (For questions or a copy of the BWC-337, please call the Worker's Compensation Bureau at 517-322-1195).
 - C. I certify my business has a Worker's Compensation Policy. I will provide an original Certificate of Insurance within twenty-one (21) days of the contract award.
3. If you have checked item 2(A) or 2(B), you **must** indicate the number of **both** full-time and part-time employees, other than yourself, including family members and active partners (if none, you must enter "0").

_____ Full-time Employees

_____ Part-time Employees

Name of Business		Federal ID (or) Social Security No.	
Address		Telephone ()	
City	State	ZIP	

I hereby certify that the above information is true and correct. I agree to notify the Michigan DNR of any changes that occur in factors affecting my coverage during any of my present and future operations.

Signature of Owner or Authorized Representative

Title

Date

Please complete the "SEALED BID" information on the next page