



**DEPARTMENT OF NATURAL RESOURCES
STATE OF MICHIGAN**

TIMBER SALE PROSPECTUS #5727

REVISION NOTICE #1 - September 21, 2016

SCHEDULED SALE DATE AND TIME: 2:00 p.m. (local time) on Wednesday, October 12, 2016

LOCATION: SHINGLETON MGMT UNIT, PO BOX 67 M-28 WEST, SHINGLETON, MI 49884

This prospectus has been modified with the following changes.

Prospectus #5727 is revised to add sale map (Page 1 of 2) for the Cooper Spread SBW timber sale (41-008-16), which was inadvertently not included with the original Prospectus.

We apologize for any inconvenience this may have caused. If you need assistance, please contact Robert Burnham at 906-452-6227 ext. 240.



TIMBER SALE MAP

This information provided by authority of Part 5, 1994 PA 451, as amended.

Sale Number	Year
008	16

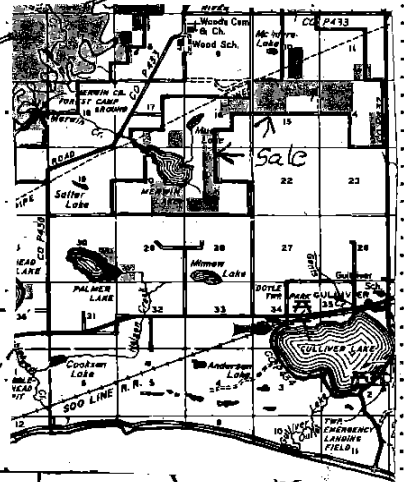
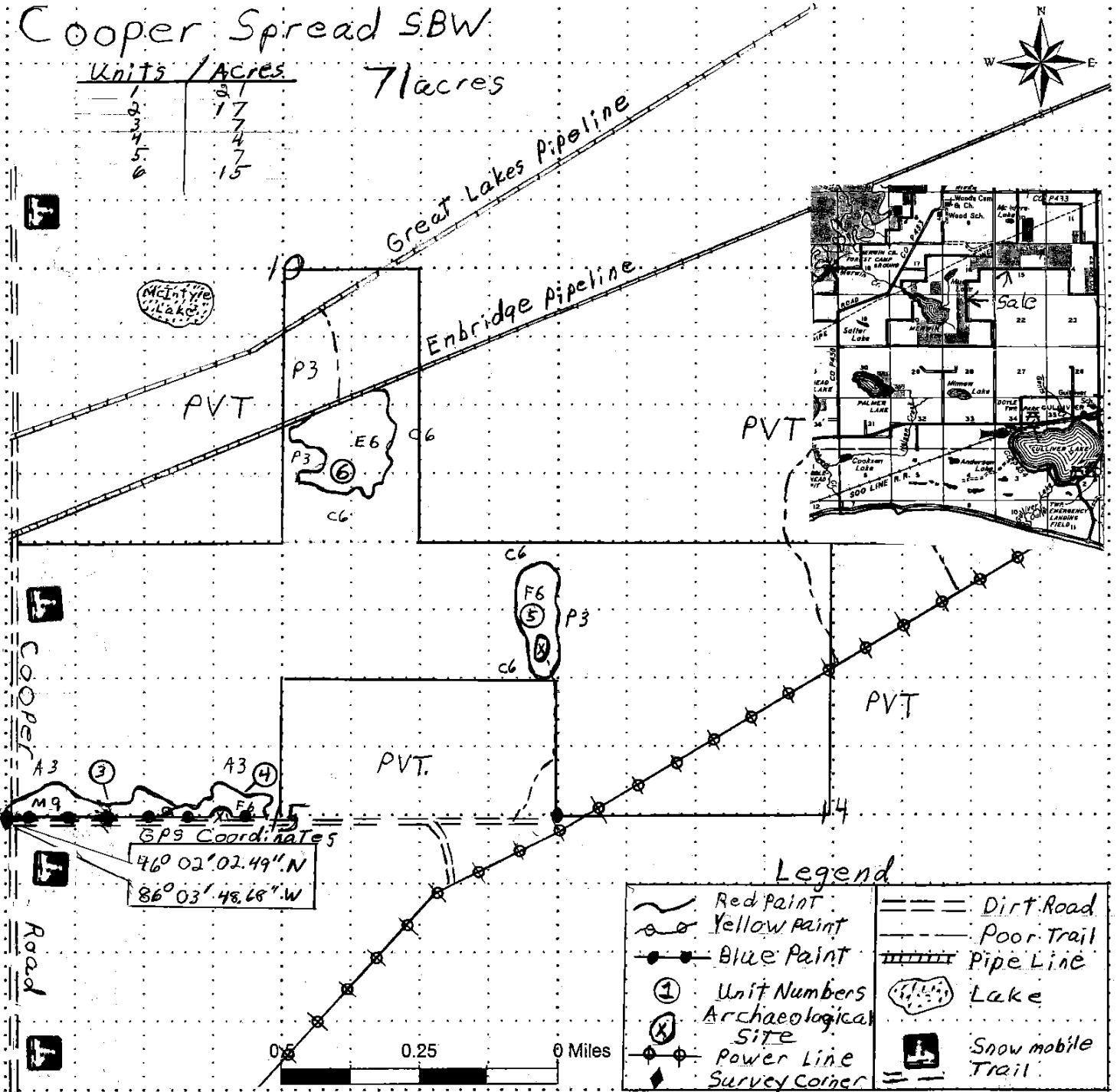
Forest Management Unit Shingleton	County Schoolcraft	Mapped By T. Burnis	Date 3-7-16	Page 1	of 2
Compartment Number 68	Township 42N	Range 14W	Section(s) and Subdivision(s) 15 NENE, 10 W 1/4 SE 1/4 S 1/2 NW		

Cover Type				Density	
A = Aspen	J = Jack Pine	O = Oak	U = Upland Brush	0 = Non Stocked	5 = Pole Timber Medium
B = Paper Birch	K = Rock	P = Lowland Poplar	UM = Upland Mix Forest	1 = Seedling Sapling Poor	6 = Pole Timber Well
C = Cedar	L = Lowland Brush	Q = Mixed Swamp Conifer	V = Bog or Marsh	2 = Seedling Sapling Medium	7 = Saw Timber Poor
D = Treed Bog	LM = Lowland Mix Forest	R = Red Pine	W = White Pine	3 = Seedling Sapling Well	8 = Saw Timber Medium
E = Swamp Hardwoods	M = Maple, Beech, Birch	S = Black Spruce	X = Non Stocked	4 = Pole Timber Poor	9 = Saw Timber Well
F = Spruce/Fir	MC = Mixed Conifer	T = Tamarack	Y = Sand		
G = Grass	MD = Mixed Deciduous	Z = Water			
H = Hemlock	N = Marsh				

Cooper Spread SBW

Units	Acres
1	31
2	17
3	4
4	4
5	7
6	15

71 acres



Legend

	Red Paint		Dirt Road
	Yellow Paint		Poor Trail
	Blue Paint		Pipe Line
	Unit Numbers		Lake
	Archaeological Site		Snowmobile Trail
	Power Line		
	Survey Corner		

