



**DEPARTMENT OF NATURAL RESOURCES  
STATE OF MICHIGAN**

**TIMBER SALE PROSPECTUS #5727**

**REVISION NOTICE #2 - September 21, 2016**

**SCHEDULED SALE DATE AND TIME: 2:00 p.m. (local time) on Wednesday, October 12, 2016**

**LOCATION: SHINGLETON MGMT UNIT, PO BOX 67 M-28 WEST, SHINGLETON, MI 49884**

This prospectus has been modified with the following changes.

Prospectus #5727 is revised to add both pages of the sale map (Page 1 and Page 2) for the Cooper Spread SBW timber sale (41-008-16), as Page 1 was inadvertently not attached with the original prospectus. Please use the attached sale maps when bidding on this sale and disregard the original sale map sent with the prospectus.

We apologize for any inconvenience this may have caused. If you need assistance, please contact Robert Burnham at 906-452-6227 ext. 240.



**TIMBER SALE MAP**

This information provided by authority of Part 5, 1994 PA 451, as amended.

Sale Number	Year
008	16

Forest Management Unit <b>Shingleton</b>	County <b>Schoolcraft</b>	Mapped By <b>T. Burnis</b>	Date <b>3-7-16</b>	Page <b>1</b>	of <b>2</b>
Compartment Number <b>68</b>	Township <b>42N</b>	Cruised By <b>Burnis, Petrelius</b>	Section(s) and Subdivision(s) <b>10 W 1/2 SE 1/4</b>	<b>S 1/2 NW</b>	
	Range <b>14 W</b>				

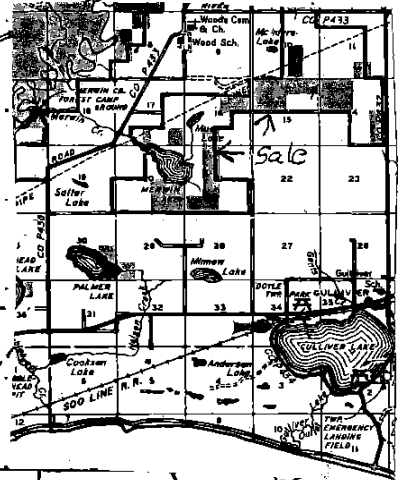
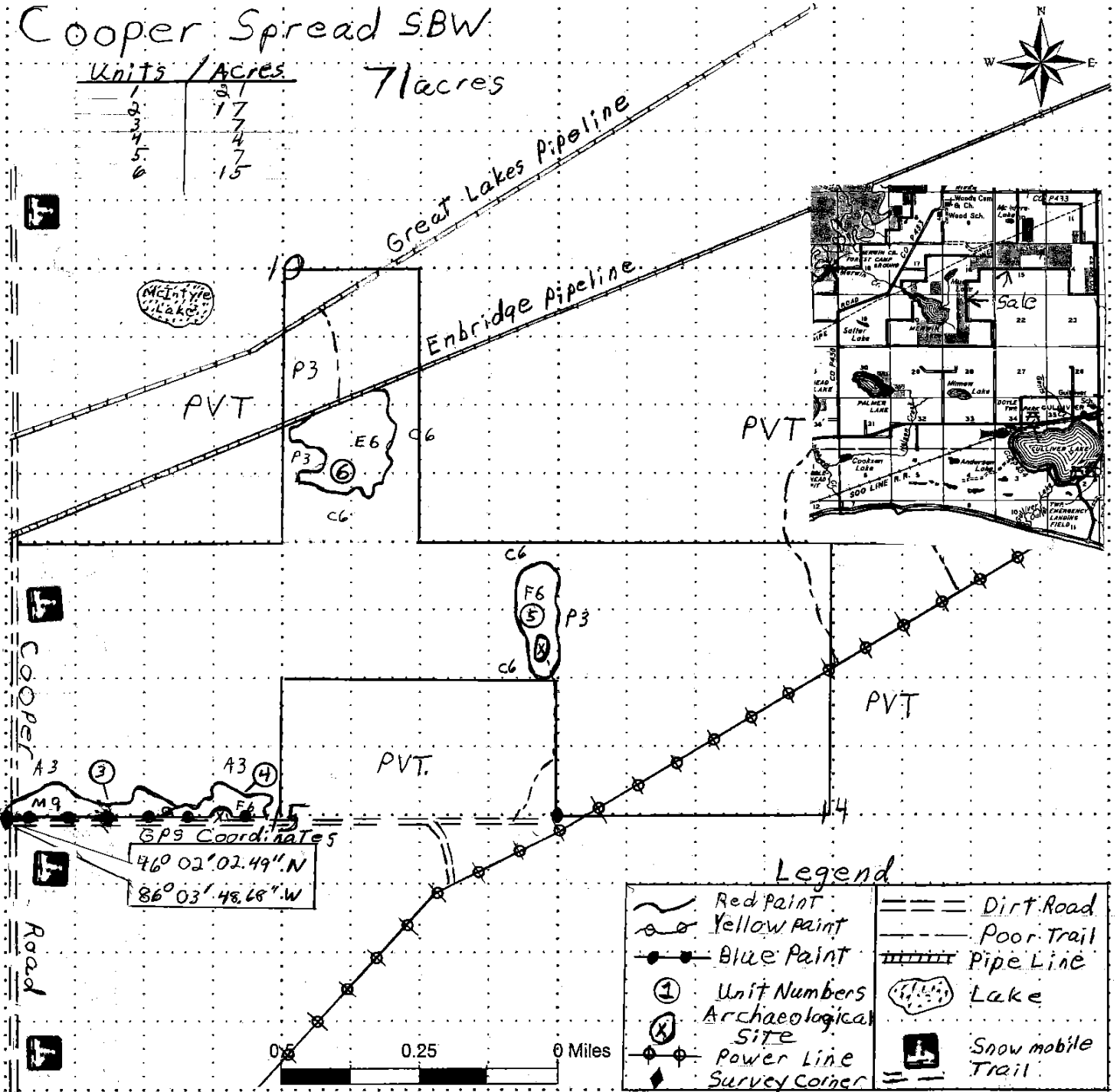
Cover Type				Density	
A = Aspen	J = Jack Pine	O = Oak	U = Upland Brush	0 = Non Stocked	5 = Pole Timber Medium
B = Paper Birch	K = Rock	P = Lowland Poplar	UM = Upland Mix Forest	1 = Seedling Sapling Poor	6 = Pole Timber Well
C = Cedar	L = Lowland Brush	Q = Mixed Swamp Conifer	V = Bog or Marsh	2 = Seedling Sapling Medium	7 = Saw Timber Poor
D = Treed Bog	LM = Lowland Mix Forest	R = Red Pine	W = White Pine	3 = Seedling Sapling Well	8 = Saw Timber Medium
E = Swamp Hardwoods	M = Maple, Beech, Birch	S = Black Spruce	X = Non Stocked	4 = Pole Timber Poor	9 = Saw Timber Well
F = Spruce/Fir	MC = Mixed Conifer	T = Tamarack	Y = Sand		
G = Grass	MD = Mixed Deciduous	Z = Water			
H = Hemlock	N = Marsh				

Cooper Spread SBW

Units / Acres

1	31
2	17
3	4
4	4
5	7
6	15

71 acres



This prospectus has been modified with the following changes.

Prospectus #5727 is revised to add both pages of the sale map (Page 1 and Page 2) for the Cooper Spread SBW timber sale (41-008-16), as Page 1 was inadvertently not attached with the original prospectus. Please use the attached sale maps when bidding on this sale and disregard the original sale map sent with the prospectus.

We apologize for any inconvenience this may have caused. If you need assistance, please contact Robert Burnham at 906-452-6227 ext. 240.



# TIMBER SALE MAP

This information provided by authority of Part 5, 1994 PA 451, as amended.

Sale Number	Year
008	16

Forest Management Unit <i>Shingleton</i>	County <i>Schoolcraft</i>	Mapped By <i>T. Burnis</i>	Date <i>3-7-16</i>	Page <i>2</i>	of <i>12</i>
Compartment Number <i>68</i>	Township <i>42 N</i>	Cruised By <i>Burnis, Petrelius</i>	Range <i>Irving, Clair</i>		
		Section(s) and Subdivision(s) <i>15 SW 1/4, 16 SE 1/4, 21 E 1/4 NW</i>			

Cover Type				Density	
A = Aspen	J = Jack Pine	O = Oak	U = Upland Brush	0 = Non Stocked	5 = Pole Timber Medium
B = Paper Birch	K = Rock	P = Lowland Poplar	UM = Upland Mix Forest	1 = Seedling Sapling Poor	6 = Pole Timber Well
C = Cedar	L = Lowland Brush	Q = Mixed Swamp Conifer	V = Bog or Marsh	2 = Seedling Sapling Medium	7 = Saw Timber Poor
D = Treed Bog	LM = Lowland Mix Forest	R = Red Pine	W = White Pine	3 = Seedling Sapling Well	8 = Saw Timber Medium
E = Swamp Hardwoods	M = Maple, Beech, Birch	S = Black Spruce	X = Non Stocked	4 = Pole Timber Poor	9 = Saw Timber Well
F = Spruce/Fir	MC = Mixed Conifer	T = Tamarack	Y = Sand		
G = Grass	MD = Mixed Deciduous	Z = Water			
H = Hemlock	N = Marsh				

