



**DEPARTMENT OF NATURAL RESOURCES
STATE OF MICHIGAN**

TIMBER SALE PROSPECTUS #5947

SCHEDULED SALE DATE AND TIME: 2:00 p.m. (local time) on July 12, 2017.

LOCATION: SHINGLETON MGMT UNIT, PO BOX 67 M-28 WEST, SHINGLETON, MI 49884.

PROSPECTUS NOTE: The bidder is advised to inspect the sale area and review the location, estimated volumes, operating costs and contract terms of proposed sales. Please be aware that some landowners may request 60 days or more notice for access across their land.

Notice is hereby given that bids will be received by the Unit Manager, SHINGLETON MANAGEMENT UNIT, for certain timber on the following described lands:

Garden Grade GEM 2017 (41-001-17)

Delta County, Advertised Price \$112,106.75, 225.8 Acres, Aspen, Hardwood.

SALE NOTE: Road work is required on this sale. The total price for this sale has been lowered accordingly. See Sale Specification 4.1.8 for information.

Some Payment Units may contain a large amount of non-merchantable timber that must be harvested. (Sale Specification 2.1.11).

It is recommended, but not required that harvesting occur during the dry summer conditions to prevent conflicts with snowmobiles.

The Cooks Garden Grade is a snowmobile trail and is shown on the Timber Sale Map. See Sale Specification 5.2.41 for restrictions.

A recreation site such as a trail, pathway, or campground is within the sale area or the vicinity. Certain restrictions/specifications may be applicable including time restrictions. Access may be through other public land.

Picture Perfect Pine (41-007-17)

Schoolcraft County, Advertised Price \$13,272.40, 21.2 Acres, Jack Pine, Red Pine.

SALE NOTE: Permission for access across federal land is the responsibility of the Purchaser. See Sale Specification 4.4.5 for information.

Access may be through other public land.

Quantum of Blue Line (41-022-16)

Delta County, Advertised Price \$22,844.90, 74.6 Acres, Hardwood, Spruce/Fir/Tamarack.

SALE NOTE: This sale will require two (2) stream crossings to gain access to the sale area. A site visit is required prior to opening any unit to discuss the design and placement of the crossings. The DNR will secure the DEQ permits after the on-site meeting, allow 60-90 days to secure the permits. See Sale Specification 4.1.2 for additional requirements.

Permission for access across private land is the responsibility of the Purchaser.

Within Payment Units 2-6, it is recommended, but not required, that harvesting occur during dry summer or frozen winter conditions due to wet areas within the sale boundary.

The sale area has received damage from spruce budworm. The Purchase should harvest the wood as soon as possible.

Access may be through private or other public land.

BID INSTRUCTIONS (VER. 09/02/2016):

1. Scheduled Bid Location, Date, and Time (2/11)

Bids must be received by the Unit Manager, SHINGLETON OFFICE, PO BOX 67 M-28 WEST, SHINGLETON, MI 49884, no later than 2:00 p.m. (local time) on July 12, 2017. For further information concerning this sale, contact Robert Burnham at 906-452-6227 extension 240.

2. Bidder's Qualifications (5/16)

Purchaser shall obtain workers compensation insurance to cover claims under Michigan's Worker's Disability Compensation Act of 1969 or similar employee benefit act of any other state applicable to an employee. If all or part of a timber sale was prepared by a private contractor, the contractor and that contractor's company are not permitted to bid on the timber sale contract. Bids will not be accepted from individuals or companies appearing on the DNR/FRD No-Bid List. This list contains the names of purchasers who previously failed to execute a contract within 21-days or who have a history of poor performance.

3. Preparation of Sealed Bids (5/16)

Bid Forms may be completed online thru Michigan DNR Timber Sale Online Bidding (OLB) at www.michigan.gov/timberbidding or by completing the hardcopy Bid Form found in the Timber Sale Prospectus. Hardcopy Bid Forms shall be manually signed in ink. Registration in OLB is considered your 'signature' for all bids submitted thru that system. Bid prices must be entered for each species and product in the Bid Price column for all material subject to bidding and all fill-in blanks must be completed. If erasures or other changes appear on the hardcopy Bid Form, each erasure or change must be initialed by the person signing the bid.

4. Submission of Sealed Bids (5/16)

Bid forms may be obtained from the Unit Manager or thru OLB. Bids may be submitted hardcopy or thru OLB. All hardcopy bids must be submitted on the bid form and in an envelope clearly identified as described in this section. NOTE: Only one bid form per bid envelope. Sealed bids must be submitted to the Unit office designated in the prospectus and must be submitted at or prior to the time established in the prospectus. The envelope should show on the outside (a) the sale name or number and (b) the date and time of bid opening, as shown in the prospectus. Bids received after the time specified in the sale prospectus are late bids and will be rejected.

It is possible for a bidder to submit multiple bids on a single sale. For example, a bid may be submitted hardcopy and a bid may be submitted thru OLB. Or, two bidders from the same company could both submit bids on the same sale. If this were to happen, the State would accept all bids received and award the contract accordingly. All bidding and contractual requirements would apply to all bids received.

5. Public Opening of Sealed Bids (7/16)

If conditions permit, the sealed bids will be publicly opened and posted at the time and place set in the prospectus.

If a bidder, present at a bid opening, has submitted bids on more than one sale, that bidder may withdraw their unopened bid envelopes or announce the withdrawal of their online bid after being declared the successful bidder on one sale.

6. Award of Contract (1/11)

Award of the contract will be made to the Bidder whose bid, conforming to the prospectus, is most advantageous to the State of Michigan on the basis of total value at rates bid for the estimated quantities. The State reserves the right to reject any bid or waive any minor irregularity in bids received. A written award mailed (or otherwise furnished) to the successful Bidder shall be deemed to result in a binding contract without further action by either party.

7. Down Payment (1/11)

The Bidder to whom award is made must make a down payment within 21 days of the sale award. The amount of the down payment will be calculated as shown in the Bond and Payment Schedule of this prospectus. Only cash may be used to meet this requirement.

8. Performance Security (1/11)

As guarantee of faithful performance, a cash bond, certificate of deposit, surety bond or irrevocable letter of credit (LOC) is required within 21 days of the sale award. The amount of the performance security is shown in the Bond and

Payment Schedule of this prospectus. If an LOC or surety is used, the coverage must extend for at least 6 months beyond the contract expiration.

9. Timber Sale Contract (9/14)

Additional conditions and requirements common to all timber sales are listed on the timber sale contract (R4031) and are available on line at www.michigan.gov/timber. Contact the Unit Manager for additional information or a sample contract. Within 21 days of the date of the award letter, the bidder must sign the contract and provide the required down payment, performance security, and verification of worker's disability compensation. The down payment and performance security shall be in accordance with the provisions of the timber sale contract, in the sums stated in this prospectus. If these actions are not taken, then the Bidder, the Bidder's corporation, and the corporation's principals may not be permitted to bid on State timber sales for a period of 1 year. In addition, the Bidder certifies that if awarded this contract, the Bidder will complete the timber sale contract in accordance with its terms and any modifications thereof including requirements to purchase, cut, and remove the included timber by the expiration date.

10. Disclaimer of Estimates and Bidder's Warranty of Inspection (7/16)

Before submitting this bid, the Bidder is advised and cautioned to inspect the sale area, review the requirements of the sale contract, and take other steps as may be reasonably necessary to ascertain the location, estimated volumes, construction estimates, and operating costs of the proposed sale. Failure to do so will not relieve the Bidder from responsibility for completing the contract.

The Bidder warrants that this bid is submitted solely on the basis of the Bidder's examination and inspection of the quality and quantity of the timber offered for sale and the Bidder's opinion of the value thereof and the costs of recovery. No reliance should be placed on the State of Michigan's estimates of timber quality, quantity or costs of recovery. Bidder further acknowledges that the State of Michigan: (i) expressly disclaims any warranty of fitness of timber for any purpose; (ii) offers this timber as is without any warranty of quality (merchantability) or quantity and (iii) expressly disclaims any warranty as to the quantity or quality of timber sold.

11. Certification and Chain-of-Custody (10/14)

Unless otherwise indicated in the contract under section 7 – Other Conditions of the Sale Specific Conditions & Requirements, the area encompassed by this timber sale is certified to the standards of the Forest Stewardship Council (FSC) - Certificate #SCS-FM/COC-00090N and the Sustainable Forestry Initiative (SFI) - Certificate # NSF-SFIS-5Y031-SF5. Forest products from this sale may be delivered to the mill as "FSC 100% and / or SFI certified" as long as the contractor hauling the forest products is chain-of-custody (COC) certified or covered under a COC certificate from the destination mill. The purchaser is responsible for maintaining COC after leaving the sale area.

12. Good Neighbor Authority (GNA) Requirements (7/16)

If the name of this timber sales contains the acronym GNA, it is authorized by the Good Neighbor Authority (GNA) and covered by various agreements between the U.S. Forest Service and the State. The timber sale occurs on federal land and the following conditions apply:

GNA contracts on US Forest Service land will not be awarded to purchasers on the Federal list of excluded parties. The System for Award Management (SAM) will be checked for active excluded parties prior to award of contract. In addition, the Bidder to whom award is made must complete an Assurance Regarding Felony Conviction or Tax Delinquent Status for Corporate Applicants (AD-3031).

13. Good Neighbor Authority (GNA) Requirements, con't (9/16)

Bidder certifies, by signing this bid form, that to the best of Bidder's knowledge that the following representations are accurate and complete.

- a. That the Bidder and its principals are not presently debarred, suspended, proposed for debarment, declared ineligible, or voluntary excluded from timber sales (covered transactions) by any Federal department or agency.
- b. That the Bidder and its principals have not within a 3-year period preceding this bid been convicted of or had a civil judgment rendered against them for commission of fraud or a criminal offense in connection with obtaining, attempting to obtain, or performing a public (Federal, State, or local) transaction or contract under a public transaction; violation of Federal or State antitrust statutes or commission of embezzlement, theft, forgery, bribery, falsification or destruction of records, making false statements, or receiving stolen property.

c. That the Bidder and its principals are not presently indicted for or otherwise criminally or civilly charged by a governmental entity (Federal, State, or local) with commission of any of the offenses enumerated in paragraph b of this certification.

d. That the Bidder and its principals have not within a 3-year period preceding this bid had one or more public transactions (Federal, State, or local) terminated for breach or default of a timber or forest product contract.

Bidders that cannot certify this requirement, in whole or in part, shall submit an explanation with their bid.

KEITH CREAGH

Director

TIMBER SALE INFORMATION

Garden Grade GEM 2017 (41-001-17)

Delta County (Advertised Price \$112,106.75)

SALE NOTE: Road work is required on this sale. The total price for this sale has been lowered accordingly. See Sale Specification 4.1.8 for information.

Some Payment Units may contain a large amount of non-merchantable timber that must be harvested. (Sale Specification 2.1.11).

It is recommended, but not required that harvesting occur during the dry summer conditions to prevent conflicts with snowmobiles.

The Cooks Garden Grade is a snowmobile trail and is shown on the Timber Sale Map. See Sale Specification 5.2.41 for restrictions.

A recreation site such as a trail, pathway, or campground is within the sale area or the vicinity. Certain restrictions/specifications may be applicable including time restrictions. Access may be through other public land.

A timber sale contract for this lump sum, sealed bid timber sale will be awarded to the responsible bidder offering the highest sealed bid price. Bids must be at or above the following advertised price for each species:

<u>PRODUCTS & SPECIES</u>	<u>ESTIMATED UNITS*</u>	<u>ADVERTISED PRICE</u>
Sawtimber		
Red Maple	4.10 MBF	\$ 131.00 / MBF
Sugar Maple	2.80 MBF	\$ 474.00 / MBF
Pulpwood		
Balsam Fir	405.00 Cords	\$ 15.50 / Cord
Balsam Poplar	126.00 Cords	\$ 26.30 / Cord
Black Spruce	84.00 Cords	\$ 28.30 / Cord
Jack Pine	217.00 Cords	\$ 41.55 / Cord
Mixed Aspen	2,648.00 Cords	\$ 26.45 / Cord
Mixed Hardwood	596.00 Cords	\$ 21.35 / Cord
N. White Cedar	6.00 Cords	\$ 21.25 / Cord
Red Pine	75.00 Cords	\$ 55.15 / Cord
White Pine	57.00 Cords	\$ 20.25 / Cord
White Spruce	38.00 Cords	\$ 28.30 / Cord

* The total volume is statistically estimated within plus (+) or minus (-) 10.72 percent. The estimated units are final and not subject to adjustment. Prospective bidders are urged to examine this timber and to make their own estimates of quantity and quality.

BOND AND PAYMENT SCHEDULE:

1. A bond in the amount of \$5,605.00 to insure faithful performance of the conditions of the contract will be deposited by the successful bidder within 21 days of the sale award.
2. Cutting in any sale or unit without the required advance payment would be considered a trespass.
3. Total payment must be paid in advance or according to the following schedule:
 - (a) Ten percent (10%) of the sale value must be paid within 21 days of the sale award.
 - (b) The 10% down payment will be credited towards the first unit cut.
4. If no cutting takes place, the 10% down payment will not be refunded.
5. Operations on the contract issued will terminate on 06/30/2020.

Description of Timber by Payment Unit (PU)

PU	MARKET GROUP	PRODUCT	QUANTITY	UNIT	ACRES	ADVERTISE PRICE
1	Red Maple	Sawtimber	1.2	MBF	19.0	\$9,538.10
	Balsam Fir	Pulpwood	93.0	Cords		
	Balsam Poplar		28.0	Cords		
	Mixed Aspen		160.0	Cords		
	<i>B. T. Aspen</i>		160.0	<i>Cords</i>		
	Mixed Hardwood		108.0	Cords		
	<i>American Elm</i>		5.0	<i>Cords</i>		
	<i>Paper Birch</i>		19.0	<i>Cords</i>		
	<i>Red Maple</i>		70.0	<i>Cords</i>		
	<i>White Ash</i>		12.0	<i>Cords</i>		
	<i>Yellow Birch</i>		2.0	<i>Cords</i>		
	N. White Cedar		6.0	Cords		
	White Spruce		19.0	Cords		
2	Balsam Fir	Pulpwood	31.0	Cords	7.0	\$5,474.15
	Mixed Aspen		149.0	Cords		
	<i>Quaking Aspen</i>		149.0	<i>Cords</i>		
	Mixed Hardwood		44.0	Cords		
	<i>Black Cherry</i>		9.0	<i>Cords</i>		
	<i>Red Maple</i>		35.0	<i>Cords</i>		
	White Spruce		4.0	Cords		
3	Balsam Fir	Pulpwood	107.0	Cords	25.1	\$10,420.25
	Black Spruce		38.0	Cords		
	Mixed Aspen		264.0	Cords		
	<i>Quaking Aspen</i>		264.0	<i>Cords</i>		
	Mixed Hardwood		25.0	Cords		
	<i>Black Cherry</i>		14.0	<i>Cords</i>		
	<i>Red Maple</i>		11.0	<i>Cords</i>		
White Spruce		6.0	Cords			
4	Balsam Fir	Pulpwood	3.0	Cords	4.4	\$1,179.70
	Mixed Aspen		38.0	Cords		
	<i>Quaking Aspen</i>		38.0	<i>Cords</i>		
	Mixed Hardwood		6.0	Cords		
	<i>Black Cherry</i>		3.0	<i>Cords</i>		
	<i>Paper Birch</i>		2.0	<i>Cords</i>		
	<i>Red Maple</i>		1.0	<i>Cords</i>		
5	Sugar Maple	Sawtimber	2.8	MBF	10.8	\$11,803.80
	Balsam Fir	Pulpwood	32.0	Cords		
	Balsam Poplar		29.0	Cords		
	Mixed Aspen		292.0	Cords		
	<i>Quaking Aspen</i>		292.0	<i>Cords</i>		
	Mixed Hardwood		70.0	Cords		
	<i>Beech</i>		8.0	<i>Cords</i>		
	<i>Black Cherry</i>		4.0	<i>Cords</i>		
	<i>Red Maple</i>		8.0	<i>Cords</i>		
	<i>Sugar Maple</i>		50.0	<i>Cords</i>		
6	Balsam Fir	Pulpwood	40.0	Cords	16.6	\$8,533.50
	Balsam Poplar		33.0	Cords		
	Mixed Aspen		218.0	Cords		
	<i>B. T. Aspen</i>		61.0	<i>Cords</i>		
	<i>Quaking Aspen</i>		157.0	<i>Cords</i>		
	Mixed Hardwood		48.0	Cords		
	<i>Paper Birch</i>		10.0	<i>Cords</i>		
	<i>Red Maple</i>		38.0	<i>Cords</i>		
	White Spruce		9.0	Cords		
	7	Red Maple	Sawtimber	1.1		
Balsam Fir		Pulpwood	20.0	Cords		

Description of Timber by Payment Unit (PU), con't

PU	MARKET GROUP	PRODUCT	QUANTITY	UNIT	ACRES	ADVERTISE PRICE
	Balsam Poplar		36.0	Cords		
	Black Spruce		1.0	Cords		
	Mixed Aspen		290.0	Cords		
	<i>Quaking Aspen</i>		290.0	<i>Cords</i>		
	Mixed Hardwood		95.0	Cords		
	<i>Black Cherry</i>		30.0	<i>Cords</i>		
	<i>Paper Birch</i>		11.0	<i>Cords</i>		
	<i>Red Maple</i>		54.0	<i>Cords</i>		
8	Balsam Fir	Pulpwood	46.0	Cords	16.7	\$3,870.25
	Black Spruce		28.0	Cords		
	Mixed Aspen		66.0	Cords		
	<i>Quaking Aspen</i>		66.0	<i>Cords</i>		
	Mixed Hardwood		29.0	Cords		
	<i>Paper Birch</i>		7.0	<i>Cords</i>		
	<i>Red Maple</i>		22.0	<i>Cords</i>		
9	Balsam Fir	Pulpwood	11.0	Cords	15.4	\$5,715.15
	Black Spruce		2.0	Cords		
	Mixed Aspen		183.0	Cords		
	<i>B. T. Aspen</i>		183.0	<i>Cords</i>		
	Mixed Hardwood		15.0	Cords		
	<i>Red Maple</i>		15.0	<i>Cords</i>		
	Red Pine		3.0	Cords		
	White Pine		8.0	Cords		
10	Balsam Fir	Pulpwood	10.0	Cords	14.1	\$8,764.95
	Black Spruce		3.0	Cords		
	Mixed Aspen		195.0	Cords		
	<i>B. T. Aspen</i>		195.0	<i>Cords</i>		
	Mixed Hardwood		35.0	Cords		
	<i>Red Maple</i>		35.0	<i>Cords</i>		
	Red Pine		42.0	Cords		
	White Pine		15.0	Cords		
11	Red Maple	Sawtimber	1.8	MBF	29.8	\$8,716.20
	Balsam Fir	Pulpwood	7.0	Cords		
	Black Spruce		5.0	Cords		
	Jack Pine		74.0	Cords		
	Mixed Aspen		105.0	Cords		
	<i>Quaking Aspen</i>		105.0	<i>Cords</i>		
	Mixed Hardwood		53.0	Cords		
	<i>Black Cherry</i>		7.0	<i>Cords</i>		
	<i>Red Maple</i>		46.0	<i>Cords</i>		
	Red Pine		16.0	Cords		
	White Pine		18.0	Cords		
12	Jack Pine	Pulpwood	117.0	Cords	21.9	\$10,642.20
	Mixed Aspen		185.0	Cords		
	<i>B. T. Aspen</i>		185.0	<i>Cords</i>		
	Mixed Hardwood		11.0	Cords		
	<i>Black Cherry</i>		6.0	<i>Cords</i>		
	<i>Paper Birch</i>		5.0	<i>Cords</i>		
	Red Pine		10.0	Cords		
	White Pine		5.0	Cords		
13	Balsam Fir	Pulpwood	3.0	Cords	5.4	\$2,671.75
	Jack Pine		5.0	Cords		
	Mixed Aspen		73.0	Cords		
	<i>Quaking Aspen</i>		73.0	<i>Cords</i>		
	Mixed Hardwood		19.0	Cords		
	<i>Red Maple</i>		19.0	<i>Cords</i>		

Description of Timber by Payment Unit (PU), con't

PU	MARKET GROUP	PRODUCT	QUANTITY	UNIT	ACRES	ADVERTISE PRICE
	White Pine		4.0	Cords		
14	Balsam Fir	Pulpwood	2.0	Cords	19.3	\$13,648.80
	Black Spruce		7.0	Cords		
	Jack Pine		21.0	Cords		
	Mixed Aspen		430.0	Cords		
	<i>B. T. Aspen</i>		430.0	<i>Cords</i>		
	Mixed Hardwood		38.0	Cords		
	<i>Red Maple</i>		38.0	<i>Cords</i>		
	Red Pine		4.0	Cords		
	White Pine		7.0	Cords		
TOTAL:			6.9	MBF		
TOTAL:			4,252.0	Cords		

Sale Specific Conditions & Requirements

Sale Name: Garden Grade GEM 2017

Sale Number: 41-001-17 Seq#: 1

1 - Sale Area

1.2 - Boundaries

1.2.1 - Painted boundaries (1/14)

The sale boundary is marked and identified by blue and red paint. Exterior sale boundary lines against private property are marked with blue paint. Exterior sale boundary lines against state are marked with red paint. The painted boundary line trees are not Included Timber and are to be protected.

2 - Timber Specifications

2.1 - Included Timber

2.1.1 - Clearcut unit(s) with unmerchantable trees (6/14)

Within Payment Unit(s) 1-14, cut all hardwood and aspen trees that are two (2) inches or more at DBH, except do not cut oak. In addition, cut all conifer species according to specifications listed in 2.2 - Utilization, except do not cut hemlock. Special protection trees identified in accordance with condition 3.4.2, within clearcutting unit boundaries, are not Included Timber and are to be protected.

2.1.11 - Description of timber note (2/04)

Note that some Payment Units may contain a large amount of non-merchantable timber that must be harvested.

3 - Payments

3.4 - Damaged Timber

3.4.2 - Special Protection Trees (4/14)

The Purchaser shall not cut live or dead special protection trees within cutting units or clearings. Special protection trees are hemlock and oak. If the Purchaser's operations have cut or damaged special protection trees through carelessness, the Purchaser shall pay \$100 as fixed, agreed and liquidated damages for each special protection tree cut or damaged. Such payment does not constitute ownership of the undesignated timber.

4 - Transportation

4.1 - Construction

4.1.3 - Slash and earthen piles (8/04)

Piles or windrows of earth along roads and landings that have been widened or constructed shall be leveled. Slash from road maintenance or construction, including stumps, shall be dispersed throughout the sale.

4.1.4 - Timber removed for construction (12/09)

Trees cut or damaged in the process of pre-approved road, landing or skid trail construction will be decked in an area separate from other Designated Timber and not removed until measured by the sale administrator. Payment will be made at the specified Purchase Unit Price.

4.1.6 - Road construction (1/09)

Construction of new roads or improvements of existing roads shall be done in such a way as to minimize the environmental and visual impacts. Merchantable trees shall be cut and utilized unless otherwise directed. Non-merchantable trees shall be severed and laid flat on the ground. Slash shall be scattered, and not left in windrows and kept a minimum of 10 feet back from the road edge. Stumps shall be set upright, not left on edge, and be moved at least 10 feet away from the road edge. Disturbed soil shall be feathered into the woods and not left in berms or windrows.

4.1.7 - Road closure (10/11)

All new roads built into the sale must be blocked to vehicle traffic upon completion of the sale. All new roads built into the sale must be blocked to vehicle traffic within 30 days of completion of hauling. Overgrown roads that are reopened shall be considered new roads. In general, this will require constructing a four (4') foot high berm of stumps and logs covered with earth. These roads must be rendered impassable to cars and trucks. Contact the sale administrator for specific details of

design and placement.

4.1.8 - Road work (1) (8/07)

The following road work is required: 500 cubic yards of 23a gravel must be purchased, hauled, and spread on the Cooks Garden Grade. All work will be done at the Purchaser's expense. The sale administrator will designate locations along the Cooks Garden Grade.

4.2 - Maintenance

4.2.2 - Fill material (4/07)

To maintain roads, fill material may be needed in areas where "holes" exist or may be expected to develop. This fill material should be placed before trucking begins.

4.2.4 - Grading (10/16)

For completion of the sale, state forest roads must be graded. In general, this will require a road grader or bull dozer to shape up the roads after forest products have been hauled off site. This includes cleaning of drainage areas, grading, crowning and filling with gravel, if necessary. The grading equipment to be used must be approved by the Unit Manager or his/her representative.

4.4 - Access

4.4.3 - Access gate (12/08)

The access gates must be locked at the completion of each day unless otherwise approved by the Unit Manager or his/her representative.

5 - Operations

5.1 - Notification

5.1.1 - Pre-sale conference (10/16)

A pre-sale conference between the Purchaser and sale administrator is required prior to beginning any operations. The Unit Manager or his/her representative must be contacted at least 5 days in advance to schedule the conference.

5.1.4 - Post-sale conference (10/16)

A post-sale conference on site between the Purchaser and sale administrator is required 5 days prior to the completion of active logging operations to determine clean-up and repair of landings, road edges, and the fulfillment of other contract specifications.

5.1.6 - Utility R.O.W. (1/15)

It is the responsibility of the Purchaser to obtain permission from the utility company to utilize the power line R.O.W. for operations.

5.2 - Conduct of Operations

5.2.2 - Hazard Trees/Snags

5.2.2.1 - Den trees (10/16)

Obvious hollow and/or den trees shall be protected and left standing unless they are a safety hazard.

5.2.4 - Dead and Down Creation

5.2.4.4 - Dead and down creation, grouse (8/13)

To encourage grouse and other wildlife, in Payment Unit(s) 1 - 14, leave one, 8" diameter or larger log-length (8 foot minimum) piece on the ground for every 1 acres. These will be evenly scattered throughout the unit.

5.2.22 - Operating Caution

5.2.22.1 - Operating caution (6/11)

It is recommended, but not required, that within Payment Unit(s) 1 - 14, cutting, skidding, and hauling occur during dry summer conditions. The reason for the recommendation is to prevent conflicts with snowmobiles.

5.2.29 - Shrub protection (9/07)

Do not cut or damage dogwood or juneberry. These woody-shrub plants are highly beneficial to various wildlife species.

5.2.32 - Decking/landing restoration (9/13)

All decking and landing areas must have the surface area restored to a condition equal to or better than before. This is to ensure the proper regeneration of the stand. Wood debris, chips and "cookies" from trimmings must be removed or scattered away from landing and loading areas and may not be windrowed on the edge.

5.2.38 - No decking against live trees (2/04)

Cut products may not be decked against unmarked or designated leave trees.

5.2.41 - Snowmobile trail protection (9/11)

The Cooks Garden Grade is a snowmobile trail and is shown on the Timber Sale Map. Do not cut or damage posts with orange trail markers or traffic control signs. If the trail is used for hauling, it must be graded to the satisfaction of the Unit Manager or his/her representative prior to December 1st. If the trail is to be used for hauling during the snowmobile season, then a snow covered base must be left on the trail. No decking of forest products will be permitted along the snowmobile trail. All stumps within 20 feet of the snowmobile trail must be cut at ground level.

5.4 - Soil Protection

5.4.1 - Rutting restriction, general (7/16)

Operations are to cease immediately if equipment and weather conditions result in rutting of roads and/or skid trails which is 12 inches or greater in depth and 50 feet in length. The Unit Manager or his/her representative may restrict hauling and/or skidding if ruts exceed the specified depth. With the Unit Manager or his/her representative's approval, the Purchaser may return to the area when the risk of rutting has decreased.

5.5 - Protection of Improvements

5.5.3 - Protection of improvements detail (10/13)

The following are specific protection measures for this sale: All signs, kiosks, and gates must be protected against damage from harvesting operations.

5.8 - Protection of Endangered Species

5.8.3 - Red shoulder hawk or goshawk (2/16)

In the event that an active red shoulder hawk or goshawk nest is found, the contract may be amended to protect the nest site until the nest is determined to be inactive. The value of the trees in this excluded area will be refunded or credited to the Purchaser. The nest will be buffered with a five-chain radius (eight acre) protection area, centered on the nest tree, in which there will be no cutting or new roads constructed. Avoid human disturbance, including loading and skidding, in the protection area.

An additional zone of five chains (ten chains centered on the active nest tree) will be established in which there is no management activity from April 1 to July 30 (UP). Limit biomass harvesting and chipping operations within this ten-chain zone, retain the maximum one-third of residues per the Woody Biomass Harvesting Guidelines (Michigan DNR 2010). Nests determined to be inactive will be protected with a one-chain no-harvest buffer.

6 - Safety and Fire Prevention

6.2 - Signing

6.2.2 - Snowmobile trail posting (8/09)

The Purchaser is responsible for posting and maintaining caution signs on the Cooks Garden Grade prior to beginning operations during the snowmobile season (approximately December 1 to March 31). The trail must be posted at appropriate distances from the sale area to warn of logging activity and truck traffic. Signs must be removed when harvest operations are suspended or completed. The Purchaser will provide these signs.

7 - Other Conditions

7.3 - Contract Modifications

7.3.1 - Emerald Ash Borer

7.3.1.2 - Emerald ash borer, ash or firewood on sale (2/05)

There is ash and/or "firewood" in this sale and it is located within an emerald ash borer quarantined area. The Director of the Michigan Department of Agriculture (MDA) by the authority of Act No. 72 of the Public Acts of 1945, as amended, and Quarantine Regulation No. 620, has promulgated this quarantine to prevent the further spread of this pest and sets forth: definitions, regulated articles, regulated areas, conditions of movement, violations and penalties, and special exemptions. The Purchaser must comply with this quarantine. Contact the MDA for further information.



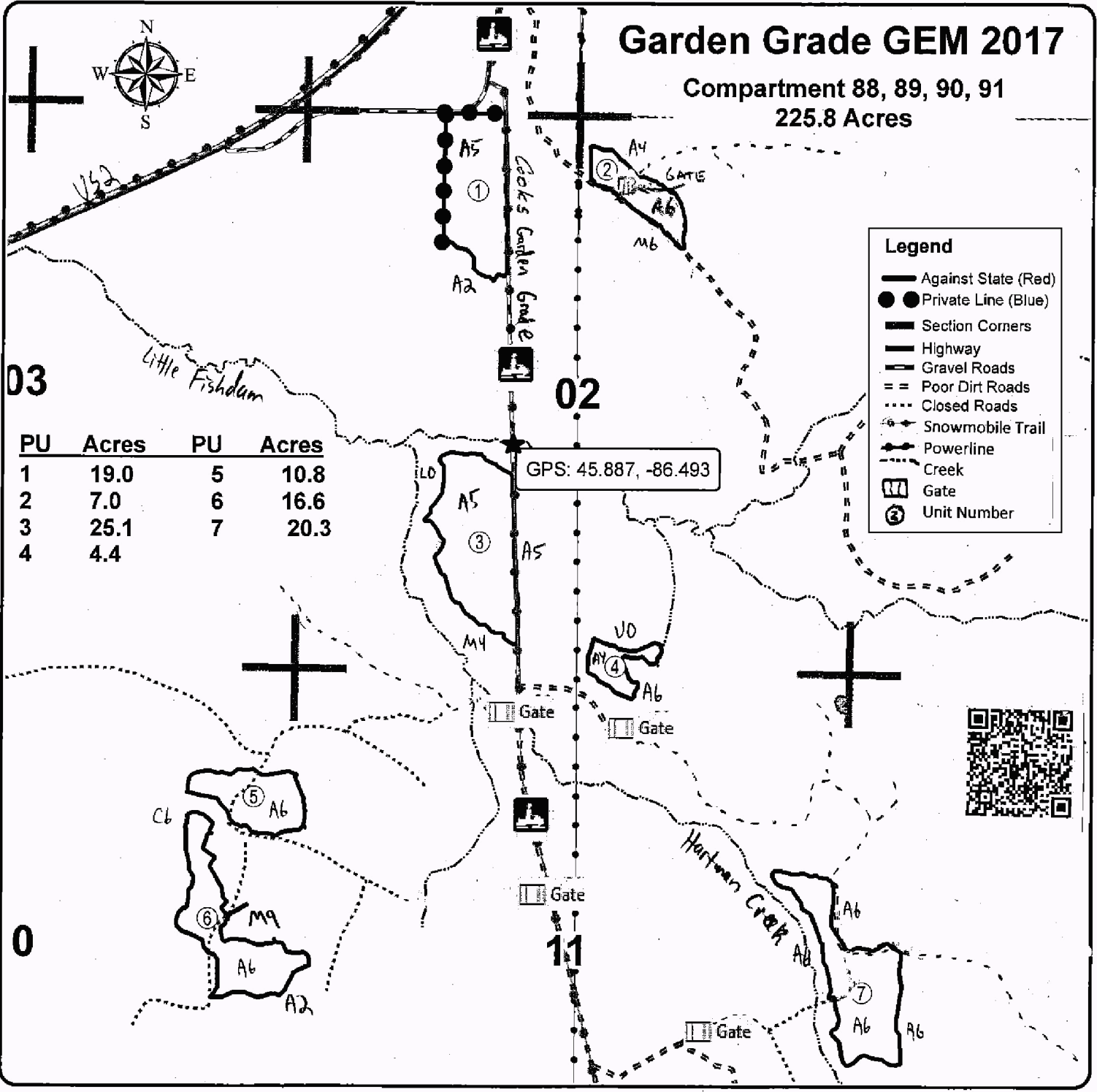
TIMBER SALE MAP

This information provided by authority of Part 525, 1994 PA 451, as amended.

Sale Number	Year
41-001	17

Forest Management Unit Shingleton	County Delta	Mapped By Petrelus	Date 12/19/2016	Page 1	of 2
Township 40N	Range 18W	Section(s) and Subdivision(s) Section 2, 10, 11, 12, 13, 14, 23, and 24	Scale 4 inches = 1 mile		

Cover Type				Density	
A = Aspen	H = Hemlock	N = Marsh	U = Upland Brush	0 = Non Stocked	5 = Pole Timber Medium
B = Paper Birch	J = Jack Pine	O = Oak	UM = Upland Mixed	1 = Seedling Sapling Poor	6 = Pole Timber Well
C = Cedar	L = Lowland Brush	P = Lowland Poplar	V = Bog or Marsh	2 = Seedling Sapling Medium	7 = Saw Timber Poor
D = Treed Bog	LM = Lowland Mixed	Q = Mixed Swamp Conifer	W = White Pine	3 = Seedling Sapling Well	8 = Saw Timber Medium
E = Swamp Hdwoods	M = Mpl, Bch, Birch	R = Red Pine	X = Non Stocked	4 = Pole Timber Poor	9 = Saw Timber Well
F = Spruce Fir	MC = Mixed Conifer	S = Black Spruce	Z = Water		
G = Grass	MD = Mixed Deciduous	T = Tamarack			





TIMBER SALE MAP

This information provided by authority of Part 525, 1994 PA 451, as amended.

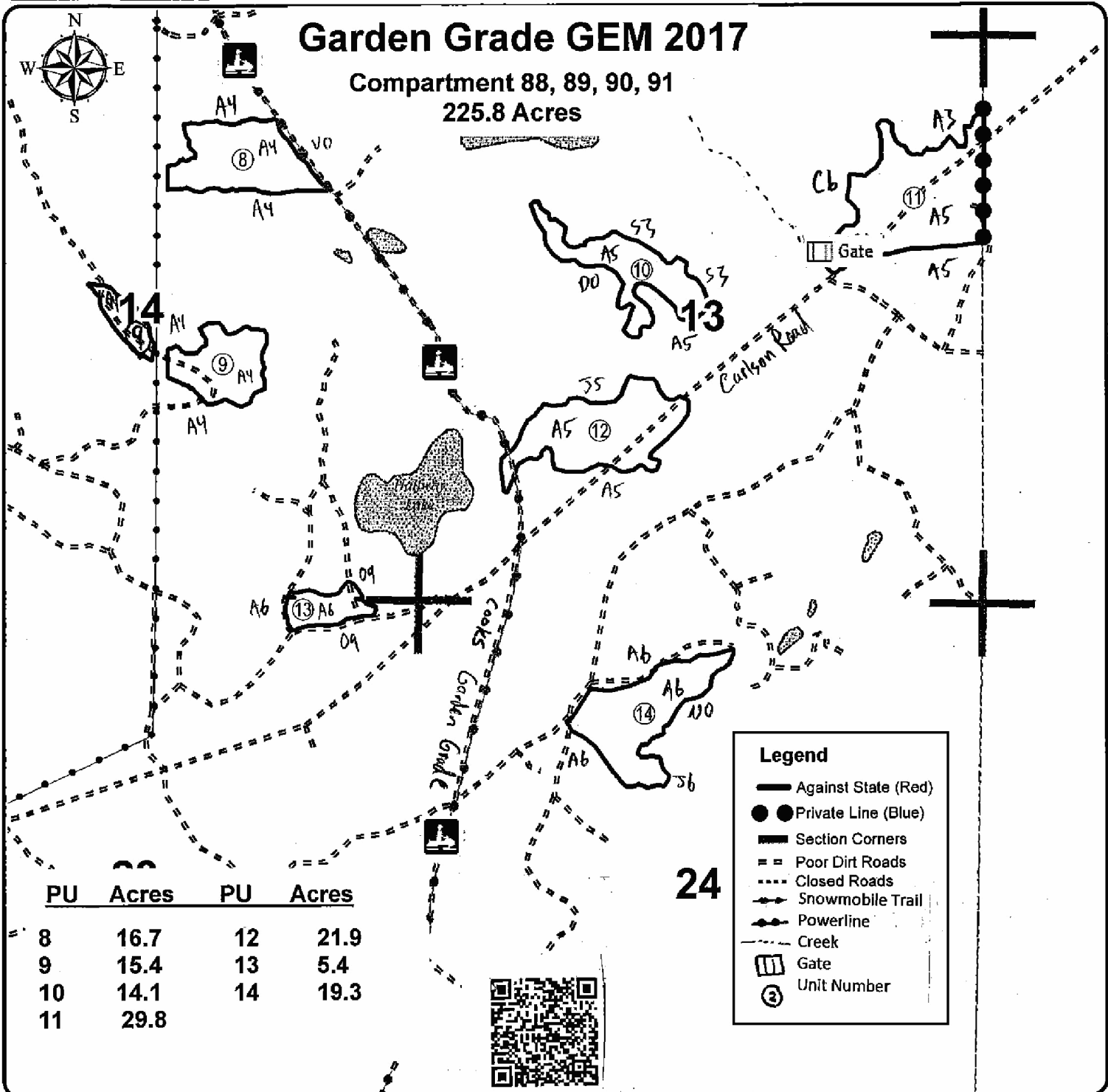
Sale Number	Year
41-001	17

Forest Management Unit Shingleton	County Delta	Mapped By Petrelius	Date 12/19/2016	Page 2	of 2
Township 40N	Range 18W	Section(s) and Subdivision(s) Section 2, 10, 11, 12, 13, 14, 23, and 24	Scale 4 inches = 1 mile		

Cover Type				Density	
A = Aspen	H = Hemlock	N = Marsh	U = Upland Brush	0 = Non Stocked	5 = Pole Timber Medium
B = Paper Birch	J = Jack Pine	O = Oak	UM = Upland Mixed	1 = Seedling Sapling Poor	6 = Pole Timber Well
C = Cedar	L = Lowland Brush	P = Lowland Poplar	V = Bog or Marsh	2 = Seedling Sapling Medium	7 = Saw Timber Poor
D = Tread Bog	LM = Lowland Mixed	Q = Mixed Swamp Conifer	W = White Pine	3 = Seedling Sapling Well	8 = Saw Timber Medium
E = Swamp Hdwoods	M = Mpl, Bch, Brch	R = Red Pine	X = Non Stocked	4 = Pole Timber Poor	9 = Saw Timber Well
F = Spruce Fir	MC = Mixed Conifer	S = Black Spruce	Z = Water		
G = Grass	MD = Mixed Deciduous	T = Tamarack			

Garden Grade GEM 2017

Compartment 88, 89, 90, 91
225.8 Acres



Legend	
	Against State (Red)
	Private Line (Blue)
	Section Corners
	Poor Dirt Roads
	Closed Roads
	Snowmobile Trail
	Powerline
	Creek
	Gate
	Unit Number

PU	Acres	PU	Acres
8	16.7	12	21.9
9	15.4	13	5.4
10	14.1	14	19.3
11	29.8		

TIMBER SALE INFORMATION

Picture Perfect Pine (41-007-17)

Schoolcraft County (Advertised Price \$13,272.40)

SALE NOTE: Permission for access across federal land is the responsibility of the Purchaser. See Sale Specification 4.4.5 for information.

Access may be through other public land.

A timber sale contract for this lump sum, sealed bid timber sale will be awarded to the responsible bidder offering the highest sealed bid price. Bids must be at or above the following advertised price for each species:

<u>PRODUCTS & SPECIES</u>	<u>ESTIMATED UNITS*</u>	<u>ADVERTISED PRICE</u>
Pulpwood		
Jack Pine	2.00 Cords	\$ 46.45 / Cord
Red Pine	215.00 Cords	\$ 61.30 / Cord

* The total volume is statistically estimated within plus (+) or minus (-) 21.36 percent. The estimated units are final and not subject to adjustment. Prospective bidders are urged to examine this timber and to make their own estimates of quantity and quality.

BOND AND PAYMENT SCHEDULE:

1. A bond in the amount of \$664.00 to insure faithful performance of the conditions of the contract will be deposited by the successful bidder within 21 days of the sale award.
2. Cutting in any sale or unit without the required advance payment would be considered a trespass.
3. Total payment must be paid in advance or according to the following schedule:
 - (a) Ten percent (10%) of the sale value must be paid within 21 days of the sale award.
 - (b) The 10% down payment will be credited towards the first unit cut.
4. If no cutting takes place, the 10% down payment will not be refunded.
5. Operations on the contract issued will terminate on 06/30/2019.

Description of Timber by Payment Unit (PU)

PU	MARKET GROUP	PRODUCT	QUANTITY	UNIT	ACRES	ADVERTISE PRICE
1	Red Pine	Pulpwood	68.0	Cords	7.3	\$4,168.40
2	Jack Pine	Pulpwood	2.0	Cords	13.9	\$9,104.00
	Red Pine		147.0	Cords		
TOTAL:			217.0	Cords		

Sale Specific Conditions & Requirements

Sale Name: Picture Perfect Pine

Sale Number: 41-007-17 Seq#: 1

1 - Sale Area

1.2 - Boundaries

1.2.1 - Painted boundaries (1/14)

The sale boundary and Payment Unit boundaries are marked and identified by blue, red, and yellow paint. Exterior sale boundary lines against private property are marked with blue paint. Exterior sale boundary lines against state are marked with red paint. Interior Payment Unit boundaries are marked with yellow paint.

2 - Timber Specifications

2.1 - Included Timber

2.1.3 - Cut tree marked unit(s) (12/08)

Within Payment Unit(s) 1 & 2, all trees are designated for cutting when marked with orange paint above and below stump height, regardless of merchantability.

2.2 - Utilization

2.2.3 - Stump heights (4/07)

Stump heights within the Sale Area shall not exceed 6 inches for all trees. This is in order to facilitate planting operations.

3 - Payments

3.4 - Damaged Timber

3.4.2 - Special Protection Trees (4/14)

The Purchaser shall not cut live or dead special protection trees within cutting units or clearings. Special protection trees are oak and hemlock. If the Purchaser's operations have cut or damaged special protection trees through carelessness, the Purchaser shall pay \$100 as fixed, agreed and liquidated damages for each special protection tree cut or damaged. Such payment does not constitute ownership of the undesignated timber.

4 - Transportation

4.1 - Construction

4.1.3 - Slash and earthen piles (8/04)

Piles or windrows of earth along roads and landings that have been widened or constructed shall be leveled. Slash from road maintenance or construction, including stumps, shall be dispersed throughout the sale.

4.1.12 - No new roads (1/12)

No new roads will be permitted in any Payment Unit. All operations are limited to existing roads. Skid trails only will be allowed.

4.2 - Maintenance

4.2.2 - Fill material (4/07)

To maintain roads, fill material may be needed in areas where "holes" exist or may be expected to develop. This fill material should be placed before trucking begins.

4.2.4 - Grading (10/16)

For completion of the sale, state forest roads must be graded. In general, this will require a road grader or bull dozer to shape up the roads after forest products have been hauled off site. This includes cleaning of drainage areas, grading, crowning and filling with gravel, if necessary. The grading equipment to be used must be approved by the Unit Manager or his/her representative.

4.4 - Access

4.4.2 - Alternate route on private property (2/04)

It is the Purchaser's responsibility to obtain access across private land for any routes other than the route shown on the sale map.

4.4.5 - Federal property access (3/11)

Permission for access across federal land is the responsibility of the Purchaser. If hauling is to occur from the sale to the northwest, a permit from the Forest Service is required on the Stutts Road.

5 - Operations

5.1 - Notification

5.1.1 - Pre-sale conference (10/16)

A pre-sale conference between the Purchaser and sale administrator is required prior to beginning any operations. The Unit Manager or his/her representative must be contacted at least 5 days in advance to schedule the conference.

5.1.4 - Post-sale conference (10/16)

A post-sale conference on site between the Purchaser and sale administrator is required 5 days prior to the completion of active logging operations to determine clean-up and repair of landings, road edges, and the fulfillment of other contract specifications.

5.2 - Conduct of Operations

5.2.2 - Hazard Trees/Snags

5.2.2.1 - Den trees (10/16)

Obvious hollow and/or den trees shall be protected and left standing unless they are a safety hazard.

5.2.3 - Operating Restrictions

5.2.3.6 - Bark beetle restriction (12/08)

In the event drought creates a high risk of pine bark beetle infestation, pine is not to be cut during the period March 1 through July 1, unless all portions of trees greater than two inches in diameter are removed from the sale area, reduced to chips, or treated to the satisfaction of the Unit Manager or his/her representative, within fifteen days of being severed from the stump. Pine log decks, pulpwood piles and treetops that are piled for chipping in the fall or winter within a 1/4 mile of susceptible sites must be removed before March 15. Residual slash must not be placed in piles or rows and must be spread over the site for quick drying. The Department of Natural Resources will exercise this specification if the risk of damage warrants.

5.2.32 - Decking/landing restoration (9/13)

All decking and landing areas must have the surface area restored to a condition equal to or better than before. This is to ensure the proper regeneration of the stand. Wood debris, chips and "cookies" from trimmings must be removed or scattered away from landing and loading areas and may not be windrowed on the edge.

5.2.38 - No decking against live trees (2/04)

Cut products may not be decked against unmarked or designated leave trees.

5.4 - Soil Protection

5.4.1 - Rutting restriction, general (7/16)

Operations are to cease immediately if equipment and weather conditions result in rutting of roads and/or skid trails which is 12 inches or greater in depth and 50 feet in length. The Unit Manager or his/her representative may restrict hauling and/or skidding if ruts exceed the specified depth. With the Unit Manager or his/her representative's approval, the Purchaser may return to the area when the risk of rutting has decreased.

5.8 - Protection of Endangered Species

5.8.3 - Red shoulder hawk or goshawk (2/16)

In the event that an active red shoulder hawk or goshawk nest is found, the contract may be amended to protect the nest site until the nest is determined to be inactive. The value of the trees in this excluded area will be refunded or credited to the Purchaser. The nest will be buffered with a five-chain radius (eight acre) protection area, centered on the nest tree, in which there will be no cutting or new roads constructed. Avoid human disturbance, including loading and skidding, in the protection area.

An additional zone of five chains (ten chains centered on the active nest tree) will be established in which there is no management activity from April 1 to July 30 (UP). Limit biomass harvesting and chipping operations within this ten-chain zone, retain the maximum one-third of residues per the Woody Biomass Harvesting Guidelines (Michigan DNR 2010). Nests determined to be inactive will be protected with a one-chain no-harvest buffer.

7 - Other Conditions

7.3 - Contract Modifications

7.3.1 - Emerald Ash Borer

7.3.1.1 - Emerald ash borer, no ash or firewood on sale (2/05)

There is no ash or "firewood" in this sale, but it is located within an emerald ash borer quarantined area. The Director of the Michigan Department of Agriculture (MDA) by the authority of Act No. 72 of the Public Acts of 1945, as amended, and Quarantine Regulation No. 620, has promulgated this quarantine to prevent the further spread of this pest and sets forth: definitions, regulated articles, regulated areas, conditions of movement, violations and penalties, and special exemptions. The Purchaser must comply with this quarantine. Contact the MDA for further information.



TIMBER SALE MAP

This information provided by authority of Part 5, 1994 PA 451, as amended.

Sale Number	Year
41-007-17	2017

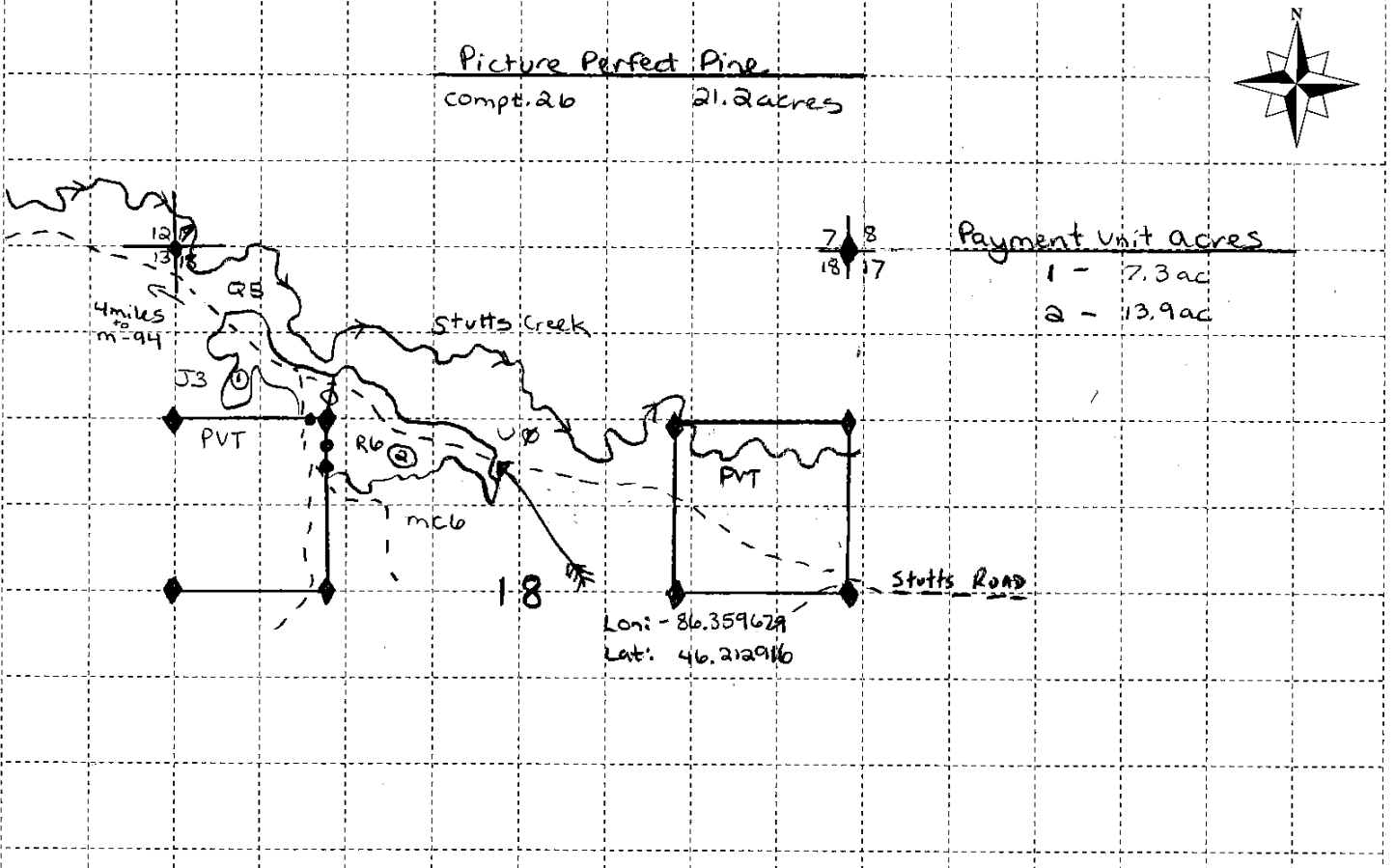
Forest Management Unit Shingleton	County Schoolcraft	Mapped By S. Clark	Date 01/09/2017	Page 1	of 1
Compartment Number 26	Township T44N	Range R16W	Section(s) and Subdivision(s) Sec 18 NWNW, E 1/2 NW	Scale: ...4 inches..... = 1 mile	

Cover Type

A = Aspen	J = Jack Pine	O = Oak	U = Upland Brush
B = Paper Birch	K = Rock	P = Lowland Poplar	UM = Upland Mix Forest
C = Cedar	L = Lowland Brush	Q = Mixed Swamp Conifer	V = Bog or Marsh
D = Treed Bog	LM = Lowland Mix Forest	R = Red Pine	W = White Pine
E = Swamp Hardwoods	M = Maple, Beech, Birch	S = Black Spruce	X = Non Stocked
F = Spruce/Fir	MC = Mixed Conifer	T = Tamarack	Y = Sand
G = Grass	MD = Mixed Deciduous	Z = Water	
H = Hemlock	N = Marsh		

Density

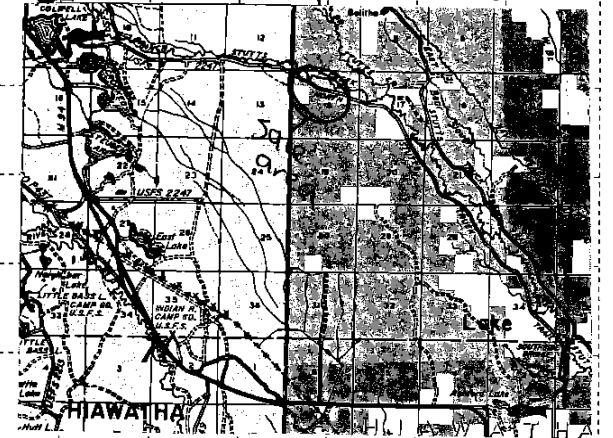
0 = Non Stocked	5 = Pole Timber Medium
1 = Seedling Sapling Poor	6 = Pole Timber Well
2 = Seedling Sapling Medium	7 = Saw Timber Poor
3 = Seedling Sapling Well	8 = Saw Timber Medium
4 = Pole Timber Poor	9 = Saw Timber Well



Legend

- Sale boundary - State - red
- Sale boundary - Private - blue
- Sale boundary - Payment unit - yellow
- ① Payment Unit
- ◆ Survey grade corners
- ~ Creek
- + Section corner
- - - poor dirt road

18 | 17 Locater map 1" = 3 miles



TIMBER SALE INFORMATION

Quantum of Blue Line (41-022-16)

Delta County (Advertised Price \$22,844.90)

SALE NOTE: This sale will require two (2) stream crossings to gain access to the sale area. A site visit is required prior to opening any unit to discuss the design and placement of the crossings. The DNR will secure the DEQ permits after the on-site meeting, allow 60-90 days to secure the permits. See Sale Specification 4.1.2 for additional requirements.

Permission for access across private land is the responsibility of the Purchaser.

Within Payment Units 2-6, it is recommended, but not required, that harvesting occur during dry summer or frozen winter conditions due to wet areas within the sale boundary.

The sale area has received damage from spruce budworm. The Purchase should harvest the wood as soon as possible.

Access may be through private or other public land.

A timber sale contract for this lump sum, sealed bid timber sale will be awarded to the responsible bidder offering the highest sealed bid price. Bids must be at or above the following advertised price for each species:

<u>PRODUCTS & SPECIES</u>	<u>ESTIMATED UNITS*</u>	<u>ADVERTISED PRICE</u>
Sawtimber		
Paper Birch	4.20 MBF	\$ 99.00 / MBF
Red Maple	1.50 MBF	\$ 146.00 / MBF
Pulpwood		
B. T. Aspen	80.00 Cords	\$ 29.40 / Cord
Balsam Fir	107.00 Cords	\$ 17.20 / Cord
Black Spruce	246.00 Cords	\$ 31.45 / Cord
N. White Cedar	67.00 Cords	\$ 23.65 / Cord
Paper Birch	97.00 Cords	\$ 28.25 / Cord
Red Maple	174.00 Cords	\$ 23.75 / Cord
Red Pine	24.00 Cords	\$ 61.30 / Cord
White Pine	3.00 Cords	\$ 22.50 / Cord
Yellow Birch	12.00 Cords	\$ 23.75 / Cord

* The total volume is statistically estimated within plus (+) or minus (-) 16.68 percent. The estimated units are final and not subject to adjustment. Prospective bidders are urged to examine this timber and to make their own estimates of quantity and quality.

BOND AND PAYMENT SCHEDULE:

1. A bond in the amount of \$1,142.00 to insure faithful performance of the conditions of the contract will be deposited by the successful bidder within 21 days of the sale award.
2. Cutting in any sale or unit without the required advance payment would be considered a trespass.
3. Total payment must be paid in advance or according to the following schedule:
 - (a) Ten percent (10%) of the sale value must be paid within 21 days of the sale award.
 - (b) The 10% down payment will be credited towards the first unit cut.
4. If no cutting takes place, the 10% down payment will not be refunded.
5. Operations on the contract issued will terminate on 06/30/2020.

Description of Timber by Payment Unit (PU)

PU	MARKET GROUP	PRODUCT	QUANTITY	UNIT	ACRES	ADVERTISE PRICE
1	Paper Birch	Sawtimber	0.5	MBF	19.1	\$5,460.05
	B. T. Aspen	Pulpwood	53.0	Cords		
	Balsam Fir		18.0	Cords		
	N. White Cedar		7.0	Cords		
	Paper Birch		18.0	Cords		
	Red Maple		51.0	Cords		
	Red Pine		24.0	Cords		
	White Pine		3.0	Cords		
	Yellow Birch		5.0	Cords		
	2	Paper Birch	Sawtimber	2.3		
B. T. Aspen		Pulpwood	27.0	Cords		
Balsam Fir			39.0	Cords		
Black Spruce			17.0	Cords		
Paper Birch			20.0	Cords		
Red Maple			32.0	Cords		
3		Paper Birch	Sawtimber	1.4	MBF	23.3
	Red Maple		1.5	MBF		
	Balsam Fir	Pulpwood	30.0	Cords		
	Black Spruce		11.0	Cords		
	N. White Cedar		29.0	Cords		
	Paper Birch		48.0	Cords		
	Red Maple		60.0	Cords		
	Yellow Birch		7.0	Cords		
	4	Balsam Fir	Pulpwood	3.0	Cords	
Black Spruce			38.0	Cords		
N. White Cedar			5.0	Cords		
Paper Birch			4.0	Cords		
Red Maple			10.0	Cords		
5		Balsam Fir	Pulpwood	17.0	Cords	12.0
	Black Spruce		120.0	Cords		
	N. White Cedar		26.0	Cords		
	Paper Birch		7.0	Cords		
	Red Maple		21.0	Cords		
	6	Black Spruce	Pulpwood	60.0	Cords	
TOTAL:			5.7	MBF		
TOTAL:			810.0	Cords		

Sale Specific Conditions & Requirements

Sale Name: Quantum of Blue Line

Sale Number: 41-022-16 Seq#: 1

1 - Sale Area

1.2 - Boundaries

1.2.1 - Painted boundaries (1/14)

The sale boundary is marked and identified by blue and red paint. Exterior sale boundary lines against private property are marked with blue paint. Exterior sale boundary lines against state are marked with red paint. The painted boundary line trees are not Included Timber and are to be protected.

2 - Timber Specifications

2.1 - Included Timber

2.1.2 - Clearcut unit(s) w/o unmerchantable trees (8/11)

Within Payment Unit(s) 1 - 6, cut all trees which meet minimum piece specifications in 2.2 Utilization except oak and hemlock. Special protection trees identified in accordance with condition 3.4.2, within clearcutting unit boundaries, are not Included Timber and are to be protected.

In addition, do not cut any trees marked with green paint above and below stump height in Payment Units 1 and 4.

2.2 - Utilization

2.2.10 - No chipping tops and limbs (8/16)

Within Payment Unit(s) 1 - 6, chipping of the bole, 2-inches in diameter or greater, is allowed. Chipping of limbs or portions of the tree less than 2-inches in diameter is not permitted. Limbs and the remaining top must be left on site and scattered.

3 - Payments

3.4 - Damaged Timber

3.4.2 - Special Protection Trees (4/14)

The Purchaser shall not cut live or dead special protection trees within cutting units or clearings. Special protection trees are oak and hemlock. If the Purchaser's operations have cut or damaged special protection trees through carelessness, the Purchaser shall pay \$100 as fixed, agreed and liquidated damages for each special protection tree cut or damaged. Such payment does not constitute ownership of the undesignated timber.

4 - Transportation

4.1 - Construction

4.1.2 - Stream crossings, specific (3/11)

Two stream crossings will be required to access Payment Units 1, 2, and 3. The crossings can either be crane mat bridges or culverts, depending on what the Purchaser prefers. The crossings will be temporary, therefore; all materials will be supplied by the Purchaser. The DNR will secure the appropriate permits once the pre-work meeting is conducted to determine the type of crossings. Allow 60 to 90 days to secure the DEQ permits.

4.1.4 - Timber removed for construction (12/09)

Trees cut or damaged in the process of pre-approved road, landing or skid trail construction will be decked in an area separate from other Designated Timber and not removed until measured by the sale administrator. Payment will be made at the specified Purchase Unit Price.

4.1.6 - Road construction (1/09)

Construction of new roads or improvements of existing roads shall be done in such a way as to minimize the environmental and visual impacts. Merchantable trees shall be cut and utilized unless otherwise directed. Non-merchantable trees shall be severed and laid flat on the ground. Slash shall be scattered, and not left in windrows and kept a minimum of 10 feet back from the road edge. Stumps shall be set upright, not left on edge, and be moved at least 10 feet away from the road edge. Disturbed soil shall be feathered into the woods and not left in berms or windrows.

NOTE: A crossing will be required between Payment Units 5 and 6. The location of the crossing has been identified on the ground with red paint and the word "ROAD" painted on a tree located on the southern boundary of Payment Unit 5. Its location is shown on the Timber Sale Map.

4.1.7 - Road closure (10/11)

All new roads built into the sale must be blocked to vehicle traffic upon completion of the sale. Overgrown roads that are reopened shall be considered new roads. In general, this will require constructing a four (4') foot high berm of stumps and logs covered with earth. Stumps and brush must be placed along the remainder of the trail. These roads must be rendered impassable to cars and trucks. Contact the sale administrator for specific details of design and placement.

4.2 - Maintenance

4.2.1 - Hauling restriction (12/08)

Hauling may be restricted on forest roads by the Unit Manager or his/her representative. The restriction may occur during spring breakup or wet weather conditions.

4.2.2 - Fill material (4/07)

To maintain roads, fill material may be needed in areas where "holes" exist or may be expected to develop. This fill material should be placed before trucking begins.

4.2.4 - Grading (12/14)

For completion of the sale, state forest roads must be graded. In general, this will require a road grader or bull dozer to shape up the roads after forest products have been hauled off site. This includes cleaning of drainage areas, grading, crowning and filling with gravel, if necessary. The grading equipment to be used must be approved by the Unit Manager or his/her representative.

4.4 - Access

4.4.1 - Private property access (3/11)

Permission for access across private land is the responsibility of the purchaser.

5 - Operations

5.1 - Notification

5.1.1 - Pre-sale conference (10/11)

A pre-sale conference on site between the Purchaser and sale administrator is required prior to beginning any operations. The Unit Manager or his/her representative must be contacted at least 5 days in advance to schedule the conference.

5.1.4 - Post-sale conference (6/11)

A post-sale conference on site between the Purchaser and sale administrator is required prior to the completion of active logging operations to determine clean-up and repair of landings, road edges, and the fulfillment of other contract specifications.

5.2 - Conduct of Operations

5.2.1 - Slash

5.2.1.11 - Slash for reforestation (5/07)

To facilitate reforestation, the sale area shall be left with slash evenly distributed. Bunched tops within the cutting area shall be broken up and scattered. Stumps shall be cut low to the ground. Processing sites shall not be left with a compacted layer of slash; tops from these sites shall be hauled back into the cut area and scattered.

5.2.2 - Hazard Trees/Snags

5.2.2.1 - Den trees (2/04)

Obvious hollow and/or den trees shall be protected and left standing unless they are a safety hazard.

5.2.17 - Crane Mats/Timber Mats (10/14)

Some roads or skid trails may require extra protection such as that afforded by Crane Mats/Timber Mats. If available, Crane Mats/Timber Mats may be borrowed from the DNR and are located at the Marquette ICC and the Grayling Field Office. Contact the sale administrator for specific details. A Timber Sale Contract Supplement will be used to document the

Purchaser's use of the DNR's Crane Mats/Timber Mats. It is the responsibility of the Purchaser to contact the sale administrator to schedule pick up and drop off. In addition, all mats must be cleaned prior to drop off. A charge of \$125.00 will be assessed for all damaged or non-returned mats. Damage is defined as misuse resulting in three or more broken cants.

5.2.22 - Operating Caution

5.2.22.1 - Operating caution (6/11)

It is recommended, but not required, that within Payment Unit(s) 2, 3, 4, 5, and 6, cutting, skidding, and hauling occur during dry summer or frozen winter conditions. The reason for the recommendation is because of wet areas within the sale boundary.

5.2.38 - No decking against live trees (2/04)

Cut products may not be decked against unmarked or designated leave trees.

5.4 - Soil Protection

5.4.1 - Rutting restriction, general (7/16)

Operations are to cease immediately if equipment and weather conditions result in rutting of roads which is 12 inches or greater in depth and 50 feet in length. The Unit Manager or his/her representative may restrict hauling and/or skidding if ruts exceed the specified depth. With the Unit Manager or his/her representative's approval, the Purchaser may return to the area when the risk of rutting has decreased.

5.8 - Protection of Endangered Species

5.8.3 - Red shoulder hawk or goshawk (2/16)

In the event that an active red shoulder hawk or goshawk nest is found, the contract may be amended to protect the nest site until the nest is determined to be inactive. The value of the trees in this excluded area will be refunded or credited to the Purchaser. The nest will be buffered with a five-chain radius (eight acre) protection area, centered on the nest tree, in which there will be no cutting or new roads constructed. Avoid human disturbance, including loading and skidding, in the protection area.

An additional zone of five chains (ten chains centered on the active nest tree) will be established in which there is no management activity from April 1 to July 30 (UP). Limit biomass harvesting and chipping operations within this ten-chain zone, retain the maximum one-third of residues per the Woody Biomass Harvesting Guidelines (Michigan DNR 2010). Nests determined to be inactive will be protected with a one-chain no-harvest buffer.

7 - Other Conditions

7.3 - Contract Modifications

7.3.1 - Emerald Ash Borer

7.3.1.2 - Emerald ash borer, ash or firewood on sale (2/05)

There is ash and/or "firewood" in this sale and it is located within an emerald ash borer quarantined area. The Director of the Michigan Department of Agriculture (MDA) by the authority of Act No. 72 of the Public Acts of 1945, as amended, and Quarantine Regulation No. 620, has promulgated this quarantine to prevent the further spread of this pest and sets forth: definitions, regulated articles, regulated areas, conditions of movement, violations and penalties, and special exemptions. The Purchaser must comply with this quarantine. Contact the MDA for further information.

7.5 - Loss

7.5.1 - Deteriorating timber (7/09)

The sale area has received damage from spruce budworm. The Purchaser should harvest the wood as soon as possible. The Department of Natural Resources is held free of responsibility of any further damage or deterioration due to delay in harvesting.



TIMBER SALE MAP

This information provided by authority of Part 525, 1994 PA 451, as amended.

Sale Number	Year
41-022	16

Forest Management Unit	County	Mapped By	Date	Page	of
Shingleton	Delta	Irving	9/27/2016	1	1

Township	Range	Section(s) and Subdivision(s)	Scale
41N	18W	S34: NW1/4, SE1/4, S1/2NE, NENE, W1/2NW	1:15,840

Cover Type				Density	
A = Aspen	H = Hemlock	N = Marsh	U = Upland Brush	0 = Non Stocked	5 = Pole Timber Medium
B = Paper Birch	J = Jack Pine	O = Oak	UM = Upland Mixed	1 = Seedling Sapling Poor	6 = Pole Timber Well
C = Cedar	L = Lowland Brush	P = Lowland Poplar	V = Bog or Marsh	2 = Seedling Sapling Medium	7 = Saw Timber Poor
D = Tread Bog	LM = Lowland Mixed	Q = Mixed Swamp Conifer	W = White Pine	3 = Seedling Sapling Well	8 = Saw Timber Medium
E = Swamp Hdwoods	M = Mpl, Bch, Brch	R = Red Pine	X = Non Stocked	4 = Pole Timber Poor	9 = Saw Timber Well
F = Spruce Fir	MC = Mixed Conifer	S = Black Spruce	Z = Water		
G = Grass	MD = Mixed Deciduous	T = Tamarack			

PU	Acres	PU	Acres
1	19.1	4	6.2
2	10.4	5	12
3	23.3	6	3.6

Quantum of Blue Line

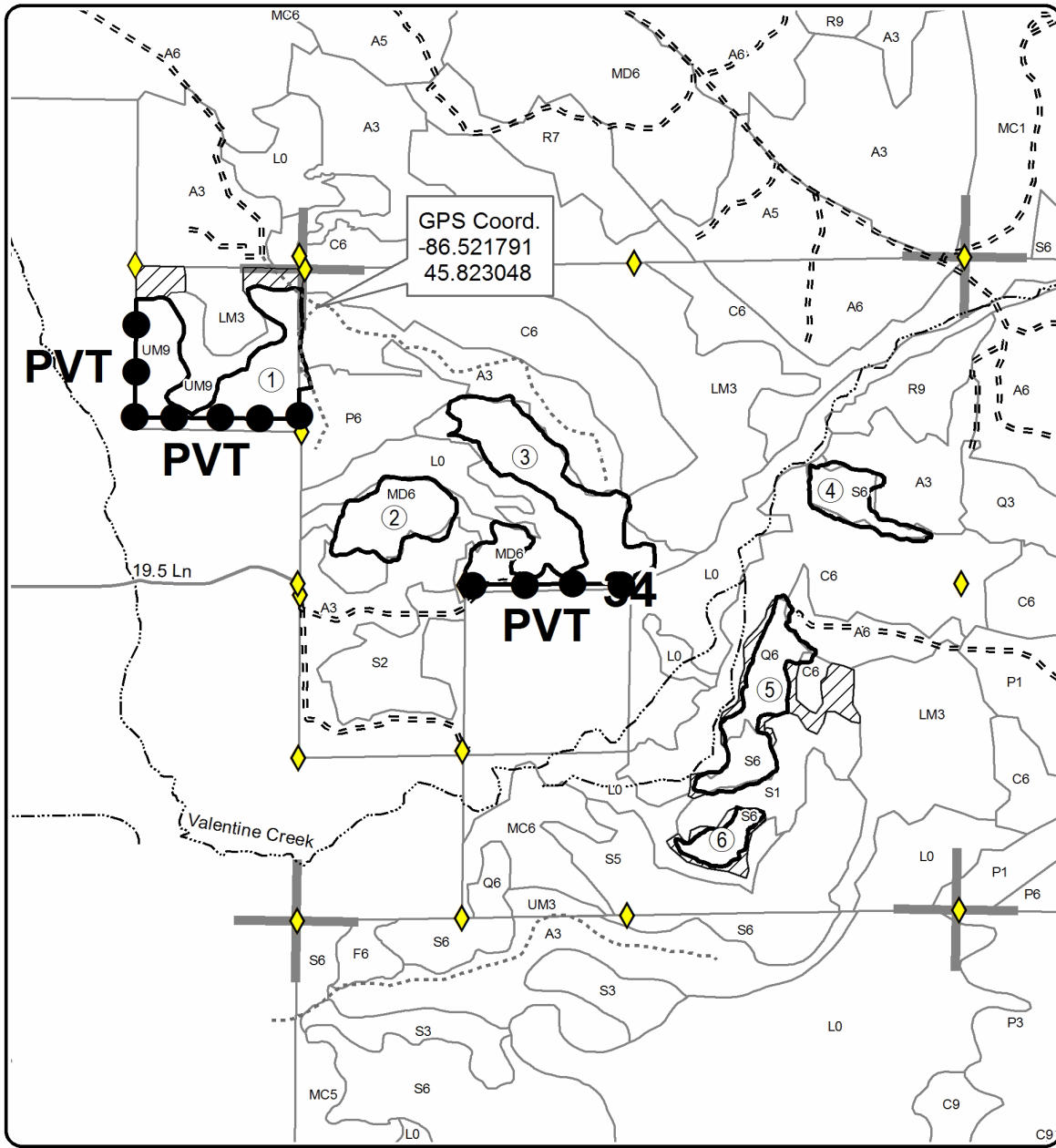
Compartment 93

74.6 Acres

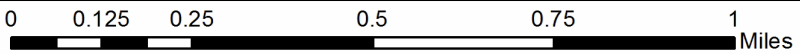
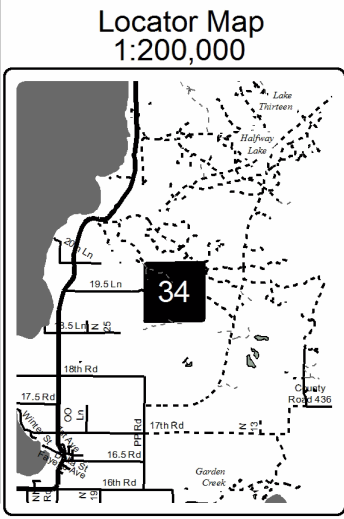


Legend

- Against State (Red)
- Private Line (Blue)
- Section Corners
- ▨ Retention Area
- ▭ Stand Boundaries
- Section Corners
- Paved Roads
- == Poor Dirt Roads
- Closed Roads
- ◆ Survey Corners



Scan QR code with your smartphone to open in PDF Maps



Quantum of Blue Line (41-022-16)
 ; Delta COUNTY

In response to the notice of sale to be held 2:00 p.m. (local time) on July 12, 2017, I am hereby submitting my sealed bid (firm offer) for the following forest products to be cut. Bids for individual species must be at or above the advertised price. All non-responsive bid forms may be rejected.

<u>PRODUCTS & SPECIES</u>	<u>ESTIMATED VOLUME*</u>	<u>ADVERTISED PRICE</u>	<u>BID PRICE</u>
Sawtimber			
Paper Birch	4.20 MBF	\$ 99.00/MBF	\$ _____
Red Maple	1.50 MBF	\$ 146.00/MBF	\$ _____
Pulpwood			
B. T. Aspen	80.00 Cords	\$ 29.40/Cord	\$ _____
Balsam Fir	107.00 Cords	\$ 17.20/Cord	\$ _____
Black Spruce	246.00 Cords	\$ 31.45/Cord	\$ _____
N. White Cedar	67.00 Cords	\$ 23.65/Cord	\$ _____
Paper Birch	97.00 Cords	\$ 28.25/Cord	\$ _____
Red Maple	174.00 Cords	\$ 23.75/Cord	\$ _____
Red Pine	24.00 Cords	\$ 61.30/Cord	\$ _____
White Pine	3.00 Cords	\$ 22.50/Cord	\$ _____
Yellow Birch	12.00 Cords	\$ 23.75/Cord	\$ _____

*The volumes are statistically estimated within plus (+) or minus (-) 16.68 percent. These estimated volumes are final and not subject to adjustment. Prospective bidders are urged to examine this timber and to make their own estimates of quantity and quality.

I understand that any or all bids may be rejected. All bids must be signed and all bid items must be bid or the bid form may be rejected. I also understand that consideration and awarding a contract will be based upon my past performance and ability to complete the contract based upon equipment and staffing subject to my control.

FEDERAL ID: _____ or SOCIAL SECURITY NUMBER: _____

Company or individual bidding: _____

Company representative's name: _____

Address: _____

City: _____ State: _____ Zip: _____

IF AVAILABLE, PLEASE PLACE THE PERSONALIZED LABEL FROM YOUR PROSPECTUS IN THE ABOVE BOX.

Individual or company representative's signature: _____ Date: _____

Phone number : _____ Email (optional): _____

THE WINNING BIDDER MUST COMPLETE THE VERIFICATION OF WORKER'S DISABILITY COMPENSATION ACT COMPLIANCE (ON REVERSE SIDE IF DOUBLE SIDED) WITHIN 21 DAYS OF SALE AWARD DATE



FOR DEPARTMENT USE ONLY
Sale Number (XX - XXX - XX - XX)
Forest Management Unit:

TIMBER SALE VERIFICATION OF WORKER'S DISABILITY COMPENSATION ACT COMPLIANCE

*As required by Act 317, P.A. 1969 (Worker's Compensation) and
Part 5 of Act 451 of 1994, as amended.*

VERIFICATION OF WORKER'S DISABILITY COMPENSATION ACT COMPLIANCE

- This verification must be completed and submitted within 21 days of contract award and prior to the issuance of the timber sale contract.
- In addition, if boxes 2B or 2C are checked, then Notice of Exclusion or Certificate of Insurance must be submitted within twenty-one (21) days of the contract award and prior to the issuance of the timber sale contract.
- All information must be typed or printed except for written signatures.

Please Check Appropriate Categories:

1. My business is organized as (you **must** check one of the boxes below):
 - A. Sole Proprietorship (individual)
 - B. Partnership
 - C. Corporation
2. You **must** check one of the boxes below:
 - A. I certify my business is a sole proprietorship and it has no employees but the sole proprietor. I am not subject to the Worker's Compensation Laws.
 - B. I certify my business has satisfied its obligation to the Worker's Compensation Act through the use of an approved Notice of Exclusion (BWC-337, Rev. 5/96). I will provide a copy of the Notice of Exclusion within 21 days of the contract award. (For questions or a copy of the BWC-337, please call the Worker's Compensation Bureau at 517-322-1195).
 - C. I certify my business has a Worker's Compensation Policy. I will provide an original Certificate of Insurance within twenty-one (21) days of the contract award.
3. If you have checked item 2(A) or 2(B), you **must** indicate the number of **both** full-time and part-time employees, other than yourself, including family members and active partners (if none, you must enter "0").

_____ Full-time Employees

_____ Part-time Employees

Name of Business		Federal ID (or) Social Security No.	
Address		Telephone ()	
City	State	ZIP	

I hereby certify that the above information is true and correct. I agree to notify the Michigan DNR of any changes that occur in factors affecting my coverage during any of my present and future operations.

Signature of Owner or Authorized Representative

Title

Date

Please complete the "SEALED BID" information on the next page

Garden Grade GEM 2017 (41-001-17)
 ; Delta COUNTY

In response to the notice of sale to be held 2:00 p.m. (local time) on July 12, 2017, I am hereby submitting my sealed bid (firm offer) for the following forest products to be cut. Bids for individual species must be at or above the advertised price. All non-responsive bid forms may be rejected.

<u>PRODUCTS & SPECIES</u>	<u>ESTIMATED VOLUME*</u>	<u>ADVERTISED PRICE</u>	<u>BID PRICE</u>
Sawtimber			
Red Maple	4.10 MBF	\$ 131.00/MBF	\$ _____
Sugar Maple	2.80 MBF	\$ 474.00/MBF	\$ _____
Pulpwood			
Balsam Fir	405.00 Cords	\$ 15.50/Cord	\$ _____
Balsam Poplar	126.00 Cords	\$ 26.30/Cord	\$ _____
Black Spruce	84.00 Cords	\$ 28.30/Cord	\$ _____
Jack Pine	217.00 Cords	\$ 41.55/Cord	\$ _____
Mixed Aspen	2,648.00 Cords	\$ 26.45/Cord	\$ _____
Mixed Hardwood	596.00 Cords	\$ 21.35/Cord	\$ _____
N. White Cedar	6.00 Cords	\$ 21.25/Cord	\$ _____
Red Pine	75.00 Cords	\$ 55.15/Cord	\$ _____
White Pine	57.00 Cords	\$ 20.25/Cord	\$ _____
White Spruce	38.00 Cords	\$ 28.30/Cord	\$ _____

*The volumes are statistically estimated within plus (+) or minus (-) 10.72 percent. These estimated volumes are final and not subject to adjustment. Prospective bidders are urged to examine this timber and to make their own estimates of quantity and quality.

I understand that any or all bids may be rejected. All bids must be signed and all bid items must be bid or the bid form may be rejected. I also understand that consideration and awarding a contract will be based upon my past performance and ability to complete the contract based upon equipment and staffing subject to my control.

FEDERAL ID: ____ - ____ - ____ or SOCIAL SECURITY NUMBER: ____ - ____ - ____

Company or individual bidding: _____

Company representative's name: _____

Address: _____

City: _____ State: _____ Zip: _____

IF AVAILABLE, PLEASE PLACE THE PERSONALIZED LABEL FROM YOUR PROSPECTUS IN THE ABOVE BOX.

Individual or company representative's signature: _____ Date: _____

Phone number : _____ Email (optional): _____

THE WINNING BIDDER MUST COMPLETE THE VERIFICATION OF WORKER'S DISABILITY COMPENSATION ACT COMPLIANCE (ON REVERSE SIDE IF DOUBLE SIDED) WITHIN 21 DAYS OF SALE AWARD DATE



FOR DEPARTMENT USE ONLY	
Sale Number (XX - XXX - XX - XX)	
Forest Management Unit:	

TIMBER SALE VERIFICATION OF WORKER'S DISABILITY COMPENSATION ACT COMPLIANCE

As required by Act 317, P.A. 1969 (Worker's Compensation) and
Part 5 of Act 451 of 1994, as amended.

VERIFICATION OF WORKER'S DISABILITY COMPENSATION ACT COMPLIANCE

- This verification must be completed and submitted within 21 days of contract award and prior to the issuance of the timber sale contract.
- In addition, if boxes 2B or 2C are checked, then Notice of Exclusion or Certificate of Insurance must be submitted within twenty-one (21) days of the contract award and prior to the issuance of the timber sale contract.
- All information must be typed or printed except for written signatures.

Please Check Appropriate Categories:

1. My business is organized as (you **must** check one of the boxes below):
 - A. Sole Proprietorship (individual)
 - B. Partnership
 - C. Corporation
2. You **must** check one of the boxes below:
 - A. I certify my business is a sole proprietorship and it has no employees but the sole proprietor. I am not subject to the Worker's Compensation Laws.
 - B. I certify my business has satisfied its obligation to the Worker's Compensation Act through the use of an approved Notice of Exclusion (BWC-337, Rev. 5/96). I will provide a copy of the Notice of Exclusion within 21 days of the contract award. (For questions or a copy of the BWC-337, please call the Worker's Compensation Bureau at 517-322-1195).
 - C. I certify my business has a Worker's Compensation Policy. I will provide an original Certificate of Insurance within twenty-one (21) days of the contract award.
3. If you have checked item 2(A) or 2(B), you **must** indicate the number of **both** full-time and part-time employees, other than yourself, including family members and active partners (if none, you must enter "0").

_____ Full-time Employees

_____ Part-time Employees

Name of Business		Federal ID (or) Social Security No.	
Address		Telephone ()	
City	State	ZIP	

I hereby certify that the above information is true and correct. I agree to notify the Michigan DNR of any changes that occur in factors affecting my coverage during any of my present and future operations.

Signature of Owner or Authorized Representative

Title

Date

Please complete the "SEALED BID" information on the next page

Picture Perfect Pine (41-007-17)
; Schoolcraft COUNTY

In response to the notice of sale to be held 2:00 p.m. (local time) on July 12, 2017, I am hereby submitting my sealed bid (firm offer) for the following forest products to be cut. Bids for individual species must be at or above the advertised price. All non-responsive bid forms may be rejected.

<u>PRODUCTS & SPECIES</u>	<u>ESTIMATED VOLUME*</u>	<u>ADVERTISED PRICE</u>	<u>BID PRICE</u>
Pulpwood			
Jack Pine	2.00 Cords	\$ 46.45/Cord	\$ _____
Red Pine	215.00 Cords	\$ 61.30/Cord	\$ _____

*The volumes are statistically estimated within plus (+) or minus (-) 21.36 percent. These estimated volumes are final and not subject to adjustment. Prospective bidders are urged to examine this timber and to make their own estimates of quantity and quality.

I understand that any or all bids may be rejected. All bids must be signed and all bid items must be bid or the bid form may be rejected. I also understand that consideration and awarding a contract will be based upon my past performance and ability to complete the contract based upon equipment and staffing subject to my control.

FEDERAL ID: _____ or SOCIAL SECURITY NUMBER: _____

Company or individual bidding: _____

Company representative's name: _____

Address: _____

City: _____ State: _____ Zip: _____

IF AVAILABLE, PLEASE PLACE THE PERSONALIZED LABEL FROM YOUR PROSPECTUS IN THE ABOVE BOX.

Individual or company representative's signature: _____ Date: _____

Phone number : _____ Email (optional): _____

THE WINNING BIDDER MUST COMPLETE THE VERIFICATION OF WORKER'S DISABILITY COMPENSATION ACT COMPLIANCE (ON REVERSE SIDE IF DOUBLE SIDED) WITHIN 21 DAYS OF SALE AWARD DATE



FOR DEPARTMENT USE ONLY	
Sale Number (XX - XXX - XX - XX)	
Forest Management Unit:	

TIMBER SALE VERIFICATION OF WORKER'S DISABILITY COMPENSATION ACT COMPLIANCE

As required by Act 317, P.A. 1969 (Worker's Compensation) and
Part 5 of Act 451 of 1994, as amended.

VERIFICATION OF WORKER'S DISABILITY COMPENSATION ACT COMPLIANCE

- This verification must be completed and submitted within 21 days of contract award and prior to the issuance of the timber sale contract.
- In addition, if boxes 2B or 2C are checked, then Notice of Exclusion or Certificate of Insurance must be submitted within twenty-one (21) days of the contract award and prior to the issuance of the timber sale contract.
- All information must be typed or printed except for written signatures.

Please Check Appropriate Categories:

1. My business is organized as (you **must** check one of the boxes below):
 - A. Sole Proprietorship (individual)
 - B. Partnership
 - C. Corporation
2. You **must** check one of the boxes below:
 - A. I certify my business is a sole proprietorship and it has no employees but the sole proprietor. I am not subject to the Worker's Compensation Laws.
 - B. I certify my business has satisfied its obligation to the Worker's Compensation Act through the use of an approved Notice of Exclusion (BWC-337, Rev. 5/96). I will provide a copy of the Notice of Exclusion within 21 days of the contract award. (For questions or a copy of the BWC-337, please call the Worker's Compensation Bureau at 517-322-1195).
 - C. I certify my business has a Worker's Compensation Policy. I will provide an original Certificate of Insurance within twenty-one (21) days of the contract award.
3. If you have checked item 2(A) or 2(B), you **must** indicate the number of **both** full-time and part-time employees, other than yourself, including family members and active partners (if none, you must enter "0").

_____ Full-time Employees

_____ Part-time Employees

Name of Business		Federal ID (or) Social Security No.	
Address		Telephone ()	
City	State	ZIP	

I hereby certify that the above information is true and correct. I agree to notify the Michigan DNR of any changes that occur in factors affecting my coverage during any of my present and future operations.

Signature of Owner or Authorized Representative

Title

Date

Please complete the "SEALED BID" information on the next page