



**DEPARTMENT OF NATURAL RESOURCES
STATE OF MICHIGAN**

TIMBER SALE PROSPECTUS #5769

SCHEDULED SALE DATE AND TIME: 4:00 p.m. (local time) on January 12, 2017.

LOCATION: TRAVERSE CITY MGMT UNIT, 2122 M 37 SOUTH, TRAVERSE CITY, MI 49685.

PROSPECTUS NOTE: The bidder is advised to inspect the sale area and review the location, estimated volumes, operating costs and contract terms of proposed sales. Please be aware that some landowners may request 60 days or more notice for access across their land.

Notice is hereby given that bids will be received by the Unit Manager, TRAVERSE CITY MANAGEMENT UNIT, for certain timber on the following described lands:

Montana Aspen (61-005-17)

Benzie County, Advertised Price \$61,672.85, 87.2 Acres, Aspen, Hardwood.

SALE NOTE: Note that Payment Unit 2 must be harvested by March 31, 2017. In addition, a small amount of additional timber may be available for purchase on private land adjacent to Payment Unit 2. Contact Scott Hedberg for details: 824 Honey Creek, Ann Arbor, MI 48103, 734-905-3158.

A recreation site such as a trail, pathway, or campground is within the sale area or the vicinity. Certain restrictions/specifications may be applicable including time restrictions.

Island Time Oak (61-020-16)

Grand Traverse County, Advertised Price \$11,547.60, 42.3 Acres, Aspen, Hardwood.

SALE NOTE: Marked Timber Sale with oak and some red maple.

Access may be through private or other public land.

Red Start Mix (61-039-16)

Grand Traverse County, Advertised Price \$30,497.40, 31.9 Acres, Hardwood, Red Oak.

SALE NOTE: Unit 1 is decent quality oak that must have the tops chipped to prepare site for planting. Unit 2 must be produced as short-wood. A landing may be located for unit 2 in the northeast corner of the unit off of a two track road that comes in off of Strombolis road. Unit 2 may also be forwarded to a landing location for unit 1.

A recreation site such as a trail, pathway, or campground is within the sale area or the vicinity. Certain restrictions/specifications may be applicable including time restrictions.

Elliott Road Mix (61-045-16)

Grand Traverse County, Advertised Price \$19,546.10, 84.2 Acres, Hardwood, Jack Pine.

Dry Gulch Aspen (61-073-16)

Benzie County, Advertised Price \$43,298.85, 82.6 Acres, Aspen, White Pine.

Rocking Horse Aspen (61-074-16)

Benzie County, Advertised Price \$37,784.60, 43.2 Acres, Aspen, Hardwood.

BID INSTRUCTIONS (VER. 09/02/2016):

1. Scheduled Bid Location, Date, and Time (2/11)

Bids must be received by the Unit Manager, TRAVERSE CITY OFFICE, 2122 M 37 SOUTH, TRAVERSE CITY, MI 49685, no later than 4:00 p.m. (local time) on January 12, 2017. For further information concerning this sale, contact David Lemmien at 231-922-5280 extension 6840.

2. Bidder's Qualifications (5/16)

Purchaser shall obtain workers compensation insurance to cover claims under Michigan's Worker's Disability Compensation Act of 1969 or similar employee benefit act of any other state applicable to an employee. If all or part of a timber sale was prepared by a private contractor, the contractor and that contractor's company are not permitted to bid on the timber sale contract. Bids will not be accepted from individuals or companies appearing on the DNR/FRD No-Bid List. This list contains the names of purchasers who previously failed to execute a contract within 21-days or who have a history of poor performance.

3. Preparation of Sealed Bids (5/16)

Bid Forms may be completed online thru Michigan DNR Timber Sale Online Bidding (OLB) at www.michigan.gov/timberbidding or by completing the hardcopy Bid Form found in the Timber Sale Prospectus. Hardcopy Bid Forms shall be manually signed in ink. Registration in OLB is considered your 'signature' for all bids submitted thru that system. Bid prices must be entered for each species and product in the Bid Price column for all material subject to bidding and all fill-in blanks must be completed. If erasures or other changes appear on the hardcopy Bid Form, each erasure or change must be initialed by the person signing the bid.

4. Submission of Sealed Bids (5/16)

Bid forms may be obtained from the Unit Manager or thru OLB. Bids may be submitted hardcopy or thru OLB. All hardcopy bids must be submitted on the bid form and in an envelope clearly identified as described in this section. NOTE: Only one bid form per bid envelope. Sealed bids must be submitted to the Unit office designated in the prospectus and must be submitted at or prior to the time established in the prospectus. The envelope should show on the outside (a) the sale name or number and (b) the date and time of bid opening, as shown in the prospectus. Bids received after the time specified in the sale prospectus are late bids and will be rejected.

It is possible for a bidder to submit multiple bids on a single sale. For example, a bid may be submitted hardcopy and a bid may be submitted thru OLB. Or, two bidders from the same company could both submit bids on the same sale. If this were to happen, the State would accept all bids received and award the contract accordingly. All bidding and contractual requirements would apply to all bids received.

5. Public Opening of Sealed Bids (7/16)

If conditions permit, the sealed bids will be publicly opened and posted at the time and place set in the prospectus.

If a bidder, present at a bid opening, has submitted bids on more than one sale, that bidder may withdraw their unopened bid envelopes or announce the withdrawal of their online bid after being declared the successful bidder on one sale.

6. Award of Contract (1/11)

Award of the contract will be made to the Bidder whose bid, conforming to the prospectus, is most advantageous to the State of Michigan on the basis of total value at rates bid for the estimated quantities. The State reserves the right to reject any bid or waive any minor irregularity in bids received. A written award mailed (or otherwise furnished) to the successful Bidder shall be deemed to result in a binding contract without further action by either party.

7. Down Payment (1/11)

The Bidder to whom award is made must make a down payment within 21 days of the sale award. The amount of the down payment will be calculated as shown in the Bond and Payment Schedule of this prospectus. Only cash may be used to meet this requirement.

8. Performance Security (1/11)

As guarantee of faithful performance, a cash bond, certificate of deposit, surety bond or irrevocable letter of credit (LOC) is required within 21 days of the sale award. The amount of the performance security is shown in the Bond and

Payment Schedule of this prospectus. If an LOC or surety is used, the coverage must extend for at least 6 months beyond the contract expiration.

9. Timber Sale Contract (9/14)

Additional conditions and requirements common to all timber sales are listed on the timber sale contract (R4031) and are available on line at www.michigan.gov/timber. Contact the Unit Manager for additional information or a sample contract. Within 21 days of the date of the award letter, the bidder must sign the contract and provide the required down payment, performance security, and verification of worker's disability compensation. The down payment and performance security shall be in accordance with the provisions of the timber sale contract, in the sums stated in this prospectus. If these actions are not taken, then the Bidder, the Bidder's corporation, and the corporation's principals may not be permitted to bid on State timber sales for a period of 1 year. In addition, the Bidder certifies that if awarded this contract, the Bidder will complete the timber sale contract in accordance with its terms and any modifications thereof including requirements to purchase, cut, and remove the included timber by the expiration date.

10. Disclaimer of Estimates and Bidder's Warranty of Inspection (7/16)

Before submitting this bid, the Bidder is advised and cautioned to inspect the sale area, review the requirements of the sale contract, and take other steps as may be reasonably necessary to ascertain the location, estimated volumes, construction estimates, and operating costs of the proposed sale. Failure to do so will not relieve the Bidder from responsibility for completing the contract.

The Bidder warrants that this bid is submitted solely on the basis of the Bidder's examination and inspection of the quality and quantity of the timber offered for sale and the Bidder's opinion of the value thereof and the costs of recovery. No reliance should be placed on the State of Michigan's estimates of timber quality, quantity or costs of recovery. Bidder further acknowledges that the State of Michigan: (i) expressly disclaims any warranty of fitness of timber for any purpose; (ii) offers this timber as is without any warranty of quality (merchantability) or quantity and (iii) expressly disclaims any warranty as to the quantity or quality of timber sold.

11. Certification and Chain-of-Custody (10/14)

Unless otherwise indicated in the contract under section 7 – Other Conditions of the Sale Specific Conditions & Requirements, the area encompassed by this timber sale is certified to the standards of the Forest Stewardship Council (FSC) - Certificate #SCS-FM/COC-00090N and the Sustainable Forestry Initiative (SFI) - Certificate #NSF-SFIS-5Y031-SF5. Forest products from this sale may be delivered to the mill as "FSC 100% and / or SFI certified" as long as the contractor hauling the forest products is chain-of-custody (COC) certified or covered under a COC certificate from the destination mill. The purchaser is responsible for maintaining COC after leaving the sale area.

12. Good Neighbor Authority (GNA) Requirements (7/16)

If the name of this timber sales contains the acronym GNA, it is authorized by the Good Neighbor Authority (GNA) and covered by various agreements between the U.S. Forest Service and the State. The timber sale occurs on federal land and the following conditions apply:

GNA contracts on US Forest Service land will not be awarded to purchasers on the Federal list of excluded parties. The System for Award Management (SAM) will be checked for active excluded parties prior to award of contract. In addition, the Bidder to whom award is made must complete an Assurance Regarding Felony Conviction or Tax Delinquent Status for Corporate Applicants (AD-3031).

13. Good Neighbor Authority (GNA) Requirements, con't (9/16)

Bidder certifies, by signing this bid form, that to the best of Bidder's knowledge that the following representations are accurate and complete.

- a. That the Bidder and its principals are not presently debarred, suspended, proposed for debarment, declared ineligible, or voluntary excluded from timber sales (covered transactions) by any Federal department or agency.
- b. That the Bidder and its principals have not within a 3-year period preceding this bid been convicted of or had a civil judgment rendered against them for commission of fraud or a criminal offense in connection with obtaining, attempting to obtain, or performing a public (Federal, State, or local) transaction or contract under a public transaction; violation of Federal or State antitrust statutes or commission of embezzlement, theft, forgery, bribery, falsification or destruction of records, making false statements, or receiving stolen property.

c. That the Bidder and its principals are not presently indicted for or otherwise criminally or civilly charged by a governmental entity (Federal, State, or local) with commission of any of the offenses enumerated in paragraph b of this certification.

d. That the Bidder and its principals have not within a 3-year period preceding this bid had one or more public transactions (Federal, State, or local) terminated for breach or default of a timber or forest product contract.

Bidders that cannot certify this requirement, in whole or in part, shall submit an explanation with their bid.

KEITH CREAGH

Director

TIMBER SALE INFORMATION

Montana Aspen (61-005-17)

Benzie County (Advertised Price \$61,672.85)

SALE NOTE: Note that Payment Unit 2 must be harvested by March 31, 2017. In addition, a small amount of additional timber may be available for purchase on private land adjacent to Payment Unit 2. Contact Scott Hedberg for details: 824 Honey Creek, Ann Arbor, MI 48103, 734-905-3158.

A recreation site such as a trail, pathway, or campground is within the sale area or the vicinity. Certain restrictions/specifications may be applicable including time restrictions.

A timber sale contract for this lump sum, sealed bid timber sale will be awarded to the responsible bidder offering the highest sealed bid price. Bids must be at or above the following advertised price for each species:

<u>PRODUCTS & SPECIES</u>	<u>ESTIMATED UNITS*</u>	<u>ADVERTISED PRICE</u>
Sawtimber		
Basswood	1.70 MBF	\$ 100.00 / MBF
Black Cherry	0.70 MBF	\$ 240.00 / MBF
Mixed Aspen	220.80 MBF	\$ 111.00 / MBF
Red Maple	22.60 MBF	\$ 149.00 / MBF
Red Oak	6.80 MBF	\$ 234.00 / MBF
Sugar Maple	6.90 MBF	\$ 303.00 / MBF
White Pine	9.80 MBF	\$ 82.00 / MBF
Pulpwood		
Basswood	24.00 Cords	\$ 12.25 / Cord
Mixed Aspen	1,034.00 Cords	\$ 21.40 / Cord
Mixed Hardwood	287.00 Cords	\$ 18.05 / Cord
Red Oak	48.00 Cords	\$ 14.40 / Cord
White Pine	40.00 Cords	\$ 17.00 / Cord

* The total volume is statistically estimated within plus (+) or minus (-) 12.58 percent. The estimated units are final and not subject to adjustment. Prospective bidders are urged to examine this timber and to make their own estimates of quantity and quality.

BOND AND PAYMENT SCHEDULE:

1. A bond in the amount of \$3,084.00 to insure faithful performance of the conditions of the contract will be deposited by the successful bidder within 21 days of the sale award.
2. Cutting in any sale or unit without the required advance payment would be considered a trespass.
3. Total payment must be paid in advance or according to the following schedule:
 - (a) Ten percent (10%) of the sale value must be paid within 21 days of the sale award.
 - (b) The 10% down payment will be credited towards the first unit cut.
4. If no cutting takes place, the 10% down payment will not be refunded.
5. Operations on the contract issued will terminate on 03/31/2019.

Description of Timber by Payment Unit (PU)

PU	MARKET GROUP	PRODUCT	QUANTITY	UNIT	ACRES	ADVERTISE PRICE	
1	Mixed Aspen	Sawtimber	49.5	MBF	6.7	\$9,358.95	
	<i>B. T. Aspen</i>		48.7	<i>MBF</i>			
	<i>Quaking Aspen</i>		0.8	<i>MBF</i>			
	Red Maple		9.7	MBF			
	Mixed Aspen		Pulpwood	73.0			Cords
	<i>B. T. Aspen</i>			69.0			<i>Cords</i>
	<i>Quaking Aspen</i>			4.0			<i>Cords</i>
	Mixed Hardwood			39.0			Cords
	<i>Red Maple</i>			39.0			<i>Cords</i>
	White Pine			9.0			Cords
2	Mixed Aspen	Sawtimber	57.4	MBF	6.0	\$10,513.00	
	<i>B. T. Aspen</i>		57.4	<i>MBF</i>			
	Red Maple		4.0	MBF			
	Sugar Maple		2.6	MBF			
	Mixed Aspen		Pulpwood	112.0			Cords
	<i>B. T. Aspen</i>			112.0			<i>Cords</i>
	Mixed Hardwood			20.0			Cords
	<i>Beech</i>			3.0			<i>Cords</i>
	<i>Red Maple</i>			15.0			<i>Cords</i>
	<i>Sugar Maple</i>			2.0			<i>Cords</i>
3	Basswood	Sawtimber	0.4	MBF	4.9	\$505.30	
	Red Oak		0.7	MBF			
	Sugar Maple		0.4	MBF			
	Basswood		Pulpwood	5.0			Cords
	Mixed Hardwood			5.0			Cords
	<i>Ironwood</i>			1.0			<i>Cords</i>
	<i>Sugar Maple</i>			4.0			<i>Cords</i>
	Red Oak		2.0	Cords			
4	Black Cherry	Sawtimber	0.7	MBF	20.2	\$7,752.55	
	Mixed Aspen		32.1	MBF			
	<i>B. T. Aspen</i>		26.9	<i>MBF</i>			
	<i>Quaking Aspen</i>		5.2	<i>MBF</i>			
	Sugar Maple		1.6	MBF			
	Basswood		Pulpwood	3.0			Cords
	Mixed Aspen			118.0			Cords
	<i>B. T. Aspen</i>			69.0			<i>Cords</i>
	<i>Quaking Aspen</i>			49.0			<i>Cords</i>
	Mixed Hardwood			54.0			Cords
	<i>Black Cherry</i>			10.0			<i>Cords</i>
	<i>Ironwood</i>			16.0			<i>Cords</i>
	<i>Red Maple</i>			15.0			<i>Cords</i>
	<i>Sugar Maple</i>		13.0	<i>Cords</i>			
5	Mixed Aspen	Sawtimber	28.8	MBF	3.5	\$4,181.20	
	<i>B. T. Aspen</i>		28.3	<i>MBF</i>			
	<i>Quaking Aspen</i>		0.5	<i>MBF</i>			
	Mixed Aspen		Pulpwood	46.0			Cords
	<i>B. T. Aspen</i>			44.0			<i>Cords</i>
	<i>Quaking Aspen</i>			2.0			<i>Cords</i>
6	Basswood	Sawtimber	1.3	MBF	6.3	\$2,791.15	
	Mixed Aspen		2.7	MBF			
	<i>B. T. Aspen</i>		2.7	<i>MBF</i>			
	Red Maple		0.8	MBF			
	Red Oak		4.5	MBF			
	Sugar Maple		0.7	MBF			
	Basswood		Pulpwood	16.0			Cords
	Mixed Aspen			7.0			Cords

Description of Timber by Payment Unit (PU), con't

PU	MARKET GROUP	PRODUCT	QUANTITY	UNIT	ACRES	ADVERTISE PRICE
6 con't	<i>B. T. Aspen</i>	<i>Pulpwood</i>	7.0	<i>Cords</i>		
	Mixed Hardwood		27.0	Cords		
	<i>Ironwood</i>		1.0	<i>Cords</i>		
	<i>Red Maple</i>		15.0	<i>Cords</i>		
	<i>Sugar Maple</i>		11.0	<i>Cords</i>		
	Red Oak		10.0	Cords		
	7		Mixed Aspen	Sawtimber		
<i>B. T. Aspen</i>	27.6	<i>MBF</i>				
<i>Quaking Aspen</i>	1.1	<i>MBF</i>				
Red Maple	6.8	MBF				
Sugar Maple	1.6	MBF				
White Pine	9.8	MBF				
Mixed Aspen	<i>Pulpwood</i>	71.0	Cords			
<i>B. T. Aspen</i>		57.0	<i>Cords</i>			
<i>Quaking Aspen</i>		14.0	<i>Cords</i>			
Mixed Hardwood		52.0	Cords			
<i>Beech</i>		4.0	<i>Cords</i>			
<i>Red Maple</i>		45.0	<i>Cords</i>			
<i>Sugar Maple</i>		3.0	<i>Cords</i>			
White Pine		31.0	Cords			
8	Mixed Aspen	Sawtimber	5.2	MBF	7.7	\$4,124.20
<i>B. T. Aspen</i>	5.2		<i>MBF</i>			
Mixed Aspen	<i>Pulpwood</i>	159.0	Cords			
<i>B. T. Aspen</i>		136.0	<i>Cords</i>			
<i>Quaking Aspen</i>		23.0	<i>Cords</i>			
Mixed Hardwood		8.0	Cords			
<i>Red Maple</i>		5.0	<i>Cords</i>			
<i>Sugar Maple</i>		3.0	<i>Cords</i>			
9	Mixed Aspen	Sawtimber	6.1	MBF	9.2	\$6,784.00
<i>B. T. Aspen</i>	6.1		<i>MBF</i>			
Red Maple	<i>Pulpwood</i>	0.7	MBF			
Mixed Aspen		267.0	Cords			
<i>B. T. Aspen</i>		267.0	<i>Cords</i>			
Mixed Hardwood		16.0	Cords			
<i>Beech</i>		1.0	<i>Cords</i>			
<i>Ironwood</i>		1.0	<i>Cords</i>			
<i>Red Maple</i>		13.0	<i>Cords</i>			
<i>Sugar Maple</i>		1.0	<i>Cords</i>			
10	Mixed Aspen	Sawtimber	9.7	MBF	10.4	\$4,706.20
<i>B. T. Aspen</i>	9.7		<i>MBF</i>			
Red Maple	<i>Pulpwood</i>	0.6	MBF			
Mixed Aspen		130.0	Cords			
<i>B. T. Aspen</i>		56.0	<i>Cords</i>			
<i>Quaking Aspen</i>		74.0	<i>Cords</i>			
Mixed Hardwood		42.0	Cords			
<i>Beech</i>		1.0	<i>Cords</i>			
<i>Black Cherry</i>		7.0	<i>Cords</i>			
<i>Ironwood</i>		1.0	<i>Cords</i>			
<i>Red Maple</i>		20.0	<i>Cords</i>			
<i>Sugar Maple</i>		13.0	<i>Cords</i>			
11	Mixed Aspen	Sawtimber	0.6	MBF	6.6	\$2,484.00
<i>B. T. Aspen</i>	0.6		<i>MBF</i>			
Red Oak	<i>Pulpwood</i>	1.6	MBF			
Mixed Aspen		51.0	Cords			
<i>B. T. Aspen</i>		42.0	<i>Cords</i>			
<i>Quaking Aspen</i>		9.0	<i>Cords</i>			

Description of Timber by Payment Unit (PU), con't

PU	MARKET GROUP	PRODUCT	QUANTITY	UNIT	ACRES	ADVERTISE PRICE
11 con't	Mixed Hardwood	Pulpwood	24.0	Cords		
	<i>Black Cherry</i>		1.0	<i>Cords</i>		
	<i>Sugar Maple</i>		23.0	<i>Cords</i>		
	Red Oak		36.0	Cords		
TOTAL:			269.3	MBF		
TOTAL:			1,433.0	Cords		

Sale Specific Conditions & Requirements

Sale Name: Montana Aspen

Sale Number: 61-005-17 Seq#: 1

1 - Sale Area

1.2 - Boundaries

1.2.1 - Painted boundaries (1/14)

The sale boundary and Payment Unit boundaries are marked and identified by blue, red and yellow paint. Exterior sale boundary lines against private property are marked with blue paint. Exterior sale boundary lines against state are marked with red paint. Retention islands within Payment Units 8-11 are marked with double slashes of red paint. Interior Payment Unit boundaries are marked with yellow paint, with the exception of the boundary between Payment Units 5 and 6, which is marked with red paint. Painted boundary line trees are not Included Timber and are to be protected unless marked with orange paint.

2 - Timber Specifications

2.1 - Included Timber

2.1.1 - Clearcut unit(s) with unmerchantable trees (6/14)

Within Payment Unit(s) 2, 7, 8, 9, 10, and 11, cut all trees that are two (2) inches or more at DBH, except for trees marked with green paint and the following:

Within Payment Unit 2, do not cut oak or conifers.

Within Payment Unit 7, do not cut oak or cherry.

Within Payment Unit 8, do not cut oak, cherry, conifers, or elm.

Within Payment Unit 9, do not cut oak, cherry, or conifers.

Within Payment Unit 10, do not cut oak or conifers.

Within Payment Unit 11, do not cut conifers.

2.1.3 - Cut tree marked unit(s) (12/08)

Within Payment Unit(s) 3, 4, and 6, all trees are designated for cutting when marked with orange paint above and below stump height, regardless of merchantability. In addition, within Payment Unit 4, cut all aspen, ironwood, and beech greater than 2 inches DBH, while protecting maple and basswood saplings (see spec 3.4.1).

2.1.4 - Species designation unit(s) (12/08)

Within Payment Unit(s) 1, all aspen, red maple, paper birch, and cherry greater than 2" DBH, and any white pine less than 10" and greater than 2" DBH, are designated for cutting regardless of merchantability. Do not cut any trees marked with green paint.

2.1.5 - Overstory removal unit(s) (8/11)

Within Payment Unit(s) 5, all aspen trees which meet minimum piece specifications in 2.2 Utilization, are designated for cutting.

2.1.11 - Description of timber note (2/04)

Note that mixed hardwood pulpwood is mainly red maple and sugar maple, with small amounts of ironwood, cherry, and beech.

2.2 - Utilization

2.2.6 - Roundwood operation required (5/07)

The skidding of whole trees or tree segments with limbs attached is prohibited within Payment Units 1, 2, 5, 6 and 7. All products must be produced as roundwood and forwarded to existing roads or landing areas in final product length.

3 - Payments

3.4 - Damaged Timber

3.4.1 - Damaged timber (6/14)

General Condition and Requirement 3.4 Damaged Timber, defines liquidated damages for undesignated live merchantable

trees which are cut or injured. In addition, within Payment Unit 4, extreme care should be taken to avoid damage to maple and basswood saplings greater than 2 inches DBH.

4 - Transportation

4.1 - Construction

4.1.3 - Slash and earthen piles (8/04)

Piles or windrows of earth along roads and landings that have been widened or constructed shall be leveled. Slash from road maintenance or construction, including stumps, shall be chipped or dispersed throughout the sale.

4.1.7 - Road closure (10/11)

All new roads built into the sale must be blocked to vehicle traffic upon completion of the sale. In general, this will require constructing a four (4') foot high berm of stumps and logs covered with earth. Contact the sale administrator for specific details of design and placement.

5 - Operations

5.2 - Conduct of Operations

5.2.1 - Slash

5.2.1.8 - Slash height (12/08)

No slash or tree tops may exceed 24 inches in height. Exception: within Payment Units 2, 4, and 7-11, tops and cut saplings may be left in scattered, compact piles up to 5' in height, as directed by the timber sale administrator.

5.2.3 - Operating Restrictions

5.2.3.1 - Operating restrictions (9/11)

Within Payment Unit(s) 2, unless changed by written agreement, cutting, skidding, and hauling must be completed by 03/31/2017. This restriction is in place to coordinate with activities on neighboring private lands.

5.2.3.2 - Operating restrictions (9/11)

Within Payment Unit(s) 1, 3 and 4, cutting, skidding, and hauling are not permitted during the period of April 15 to September 10. This restriction is to minimize impacts during peak recreational activity.

5.2.3.4 - Oak wilt restriction (6/10)

Within Payment Unit(s) unless changed by written agreement, cutting, skidding, and hauling are not permitted during the period of April 15 to July 15. This is necessary to reduce the spread of oak wilt. For more information, contact the Unit Manager or his/her representative.

5.2.3.6 - Bark beetle restriction (12/08)

In the event drought creates a high risk of pine bark beetle infestation, pine is not to be cut during the period March 1 through July 1, unless all portions of trees greater than two inches in diameter are removed from the sale area, reduced to chips, or treated to the satisfaction of the Unit Manager or his/her representative, within fifteen days of being severed from the stump. Pine log decks, pulpwood piles and treetops that are piled for chipping in the fall or winter within a 1/4 mile of susceptible sites must be removed before March 15. Residual slash must not be placed in piles or rows and must be spread over the site for quick drying. The Department of Natural Resources will exercise this specification if the risk of damage warrants.

5.2.4 - Dead and Down Creation

5.2.4.1 - Dead and down creation, marked trees (10/13)

All trees marked with an "X" must be felled and left on site for wildlife. Within Payment Units 2, 4, and 7-11, place the cut "X" tree against its own 4' tall stump, or cut at ground level and place against a small (<5" DBH) nearby tree retained for this purpose.

5.2.17 - Crane Mats/Timber Mats (10/14)

Depending on soil conditions, crane mats /timber mats or something similar may be needed on forwarding trails accessing the northwest lobe of Payment Unit 1, and to access Payment Unit 2 from Reynolds Road. If available, Crane Mats/Timber Mats may be borrowed from the DNR and are located at the Marquette ICC and the Grayling Field Office. Contact the sale

administrator for specific details. A Timber Sale Contract Supplement will be used to document the Purchaser's use of the DNR's Crane Mats/Timber Mats. It is the responsibility of the Purchaser to contact the sale administrator to schedule pick up and drop off. In addition, all mats must be cleaned prior to drop off. A charge of \$350.00 will be assessed for all damaged or non-returned mats. Damage is defined as misuse resulting in three or more broken cants.

5.2.38 - No decking against live trees (2/04)

Cut products may not be decked against unmarked or designated leave trees.

5.2.40 - Pathway protection (10/10)

The Lake Ann Pathway is shown on the Timber Sale Map, adjacent to Payment Unit 4. An uncut buffer separates this unit from the pathway. Do not fall trees into the buffer. Do not run equipment down or across the pathway.

5.4 - Soil Protection

5.4.3 - Erosion control (12/08)

Skid trails or haul roads may require erosion control structures or berms per direction of the Unit Manager or his/her representative.

6 - Safety and Fire Prevention

6.2 - Signing

6.2.1 - Road posting (9/09)

The Purchaser is responsible for posting and maintaining caution signs on Reynolds Road prior to beginning operations. The road must be posted at appropriate distances from the sale area to warn of logging activity and truck traffic. Signs must be removed when harvest operations are suspended or completed. The Purchaser will provide these signs.



TIMBER SALE MAP

This information provided by authority of Part 525, 1994 PA 451, as amended.

Forest Management Unit Traverse City		County Benzie	Mapped By Tim Webb	Date 11/04/2016	Page 1	of 1
Township 27N	Range 13W	Section(s) and Subdivision(s) Sec. 34: NW1/4, W1/2NE; Sec. 27: N1/2NE, NENW, SWNE, SE1/4, S1/2SW		Scale 1:15,840		

Cover Type

A = Aspen	H = Hemlock	N = Marsh	U = Upland Brush
B = Paper Birch	J = Jack Pine	O = Oak	UM = Upland Mixed
C = Cedar	L = Lowland Brush	P = Lowland Poplar	V = Bog or Marsh
D = Tread Bog	LM = Lowland Mixed	Q = Mixed Swamp Conifer	W = White Pine
E = Swamp Hdwoods	M = Mpl, Bch, Brch	R = Red Pine	X = Non Stocked
F = Spruce Fir	MC = Mixed Conifer	S = Black Spruce	Z = Water
G = Grass	MD = Mixed Deciduous	T = Tamarack	

Density

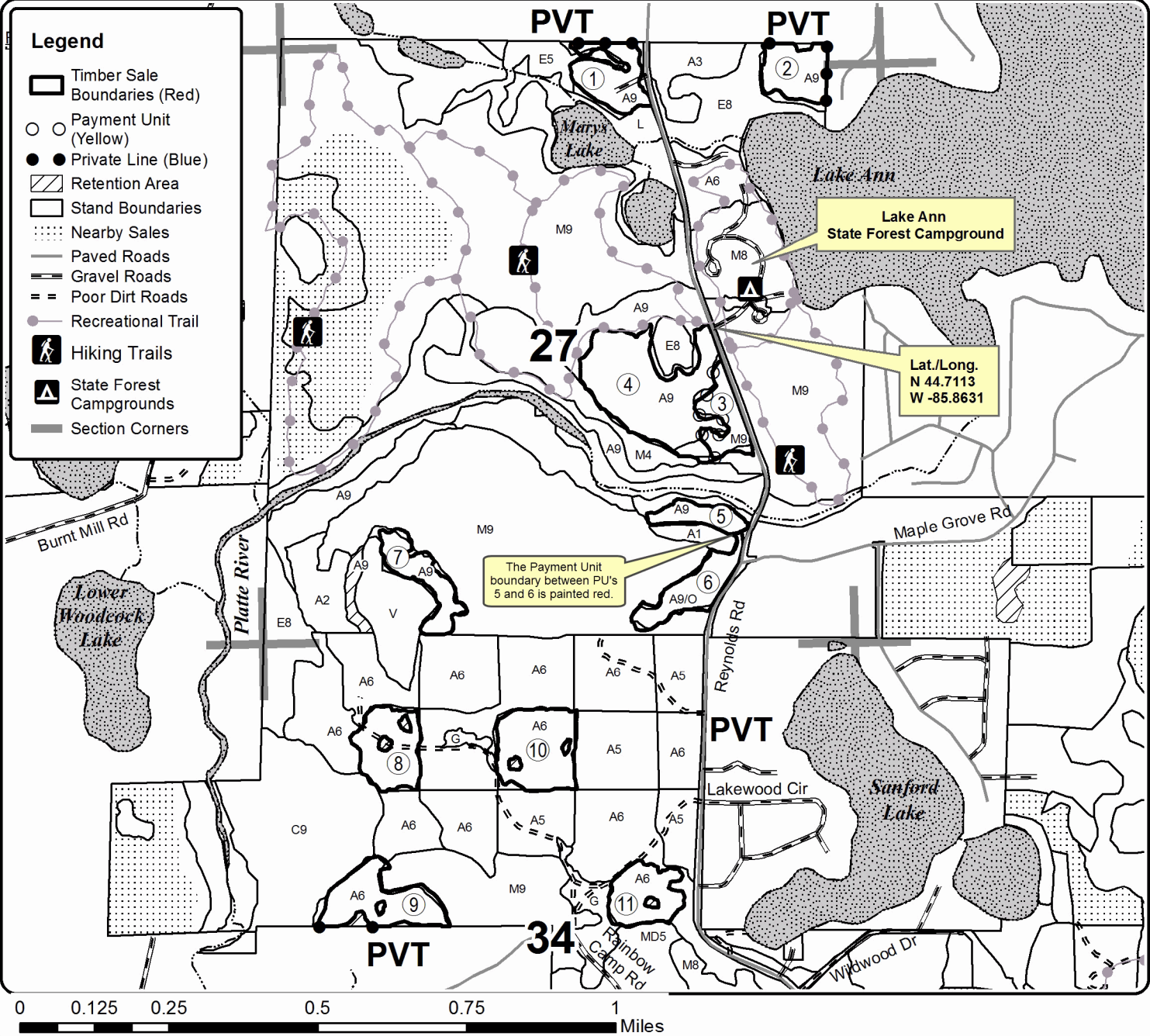
0 = Non Stocked	5 = Pole Timber Medium
1 = Seedling Sapling Poor	6 = Pole Timber Well
2 = Seedling Sapling Medium	7 = Saw Timber Poor
3 = Seedling Sapling Well	8 = Saw Timber Medium
4 = Pole Timber Poor	9 = Saw Timber Well

PU	Acres	PU	Acres	PU	Acres	PU	Acres
1	6.7	4	20.2	7	5.7	10	10.4
2	6.0	5	3.5	8	7.7	11	6.6
3	4.9	6	6.3	9	9.2		

Montana Aspen

Compartment 11

87.2 Acres



TIMBER SALE INFORMATION

Island Time Oak (61-020-16)

Grand Traverse County (Advertised Price \$11,547.60)

SALE NOTE: Marked Timber Sale with oak and some red maple.

Access may be through private or other public land.

A timber sale contract for this lump sum, sealed bid timber sale will be awarded to the responsible bidder offering the highest sealed bid price. Bids must be at or above the following advertised price for each species:

<u>PRODUCTS & SPECIES</u>	<u>ESTIMATED UNITS*</u>	<u>ADVERTISED PRICE</u>
Sawtimber		
B. T. Aspen	3.40 MBF	\$ 111.00 / MBF
Northern Pin Oak	41.80 MBF	\$ 125.00 / MBF
White Oak	8.50 MBF	\$ 68.00 / MBF
Pulpwood		
B. T. Aspen	6.00 Cords	\$ 21.40 / Cord
Mixed Oak	265.00 Cords	\$ 14.40 / Cord
Red Maple	76.00 Cords	\$ 18.05 / Cord
White Pine	3.00 Cords	\$ 17.00 / Cord

* The total volume is statistically estimated within plus (+) or minus (-) 20.02 percent. The estimated units are final and not subject to adjustment. Prospective bidders are urged to examine this timber and to make their own estimates of quantity and quality.

BOND AND PAYMENT SCHEDULE:

1. A bond in the amount of \$1,000.00 to insure faithful performance of the conditions of the contract will be deposited by the successful bidder within 21 days of the sale award.
2. Cutting in any sale or unit without the required advance payment would be considered a trespass.
3. Total payment must be paid in advance or according to the following schedule:
 - (a) Ten percent (10%) of the sale value must be paid within 21 days of the sale award.
 - (b) The remainder is due before cutting begins.
4. If no cutting takes place, the 10% down payment will not be refunded.
5. Operations on the contract issued will terminate on 03/31/2019.

Description of Timber by Payment Unit (PU)

PU	MARKET GROUP	PRODUCT	QUANTITY	UNIT	ACRES	ADVERTISE PRICE
1	B. T. Aspen	Sawtimber	3.4	MBF	42.3	\$11,547.60
	Northern Pin Oak		41.8	MBF		
	White Oak		8.5	MBF		
	B. T. Aspen	Pulpwood	6.0	Cords		
	Mixed Oak		265.0	Cords		
	<i>Northern Pin Oak</i>		<i>156.0</i>	<i>Cords</i>		
	<i>White Oak</i>		<i>109.0</i>	<i>Cords</i>		
	Red Maple		76.0	Cords		
	<i>Red Maple</i>	<i>Sawtimber</i>	<i>1.3</i>	<i>MBF</i>		
	<i>Red Maple</i>	<i>Pulpwood</i>	<i>73.0</i>	<i>Cords</i>		
	White Pine		3.0	Cords		
TOTAL:			53.7	MBF		
TOTAL:			350.0	Cords		

Sale Specific Conditions & Requirements

Sale Name: Island Time Oak

Sale Number: 61-020-16 Seq#: 1

1 - Sale Area

1.2 - Boundaries

1.2.1 - Painted boundaries (1/14)

The sale boundary and Payment Unit boundaries are marked and identified by blue and red paint. Exterior sale boundary lines against private property are marked with blue paint. Exterior sale boundary lines against state are marked with red paint. The painted boundary line trees are not Included Timber and are to be protected.

2 - Timber Specifications

2.1 - Included Timber

2.1.3 - Cut tree marked unit(s) (12/08)

Within Payment Unit(s) #1, all trees are designated for cutting when marked with orange paint above and below stump height, regardless of merchantability. In addition, cut all merchantable aspen.

An oak wilt pocket has been treated in the center of this sale area along the south line. The area has been trenched and spore trees were felled and burned. The trench lines were marked with red paint dots. All remaining red oak trees within this oak wilt treatment area have been marked for removal. Note; additional "SP" trees may be marked prior to the harvest operation as several more trees are likely to die from oak wilt within this immediate area. Red oak trees that are marked with an "SP" are infected with the oak wilt fungus and must be chipped or taken to a processing facility or mill and processed or sawn into dimensional lumber. These trees pose a risk of spreading the oak wilt disease. They are not to be sold as firewood.

2.2 - Utilization

2.2.6 - Roundwood operation required (5/07)

The skidding of whole trees or tree segments with limbs attached is prohibited. All products must be produced as roundwood and forwarded to existing roads or landing areas in final product length.

3 - Payments

3.4 - Damaged Timber

3.4.1 - Damaged timber (6/14)

General Condition and Requirement 3.4 Damaged Timber, defines liquidated damages for undesignated live merchantable trees which are cut or injured. In addition, extreme care should be taken to avoid damage to tree seedlings and saplings.

White pine saplings are present in the understory. Every effort must be made to retain saplings and limit damage to existing stems.

4 - Transportation

4.1 - Construction

4.1.12 - No new roads (1/12)

No new roads will be permitted. All operations are limited to existing roads. Skid trails only will be allowed.

4.4 - Access

4.4.1 - Private property access (3/11)

Permission for access across private land is the responsibility of the Purchaser. Should the Purchaser desire to cross private land, a copy of the written permission from the private land-owner may be required by the DNR.

5 - Operations

5.1 - Notification

5.1.1 - Pre-sale conference (10/16)

A pre-sale conference on site between the Purchaser and sale administrator is required prior to beginning any operations to determine landing and road locations. The Unit Manager or his/her representative must be contacted at least 5 days in advance to schedule the conference.

5.2 - Conduct of Operations

5.2.1 - Slash

5.2.1.8 - Slash height (12/08)

No slash or tree tops may exceed 30 inches in height.

5.2.3 - Operating Restrictions

5.2.3.4 - Oak wilt restriction (6/10)

Within Payment Unit(s) 1, cutting, skidding, and hauling are not permitted during the period of April 15 to July 15. This is necessary to reduce the spread of oak wilt. For more information, contact the Unit Manager or his/her representative.

5.2.38 - No decking against live trees (2/04)

Cut products may not be decked against unmarked or designated leave trees.

5.4 - Soil Protection

5.4.1 - Rutting restriction, general (7/16)

Operations are to cease immediately if equipment and weather conditions result in rutting of roads and/or skid trails which is 12 inches or greater in depth and 50 feet in length. The Unit Manager or his/her representative may restrict hauling and/or skidding if ruts exceed the specified depth. With the Unit Manager or his/her representative's approval, the Purchaser may return to the area when the risk of rutting has decreased.

6 - Safety and Fire Prevention

6.2 - Signing

6.2.1 - Road posting (9/09)

The Purchaser is responsible for posting and maintaining caution signs on Supply Road prior to beginning operations. The road must be posted at appropriate distances from the sale area to warn of logging activity and truck traffic. Signs must be removed when harvest operations are suspended or completed. The Purchaser will provide these signs.



Sale Number	Year
61-020	##

TIMBER SALE MAP

This information provided by authority of Part 525, 1994 PA 451, as amended.

Forest Management Unit	County	Mapped By	Ruppen	Date	Page	of
Traverse City	Grand Traverse	Cruised By	Ruppen	09/30/2016	1	1
Township	Range	Section(s) and Subdivision(s)	Scale			
27N	9W	Sec 31 W1/2 NE 1/4	1:15,840			

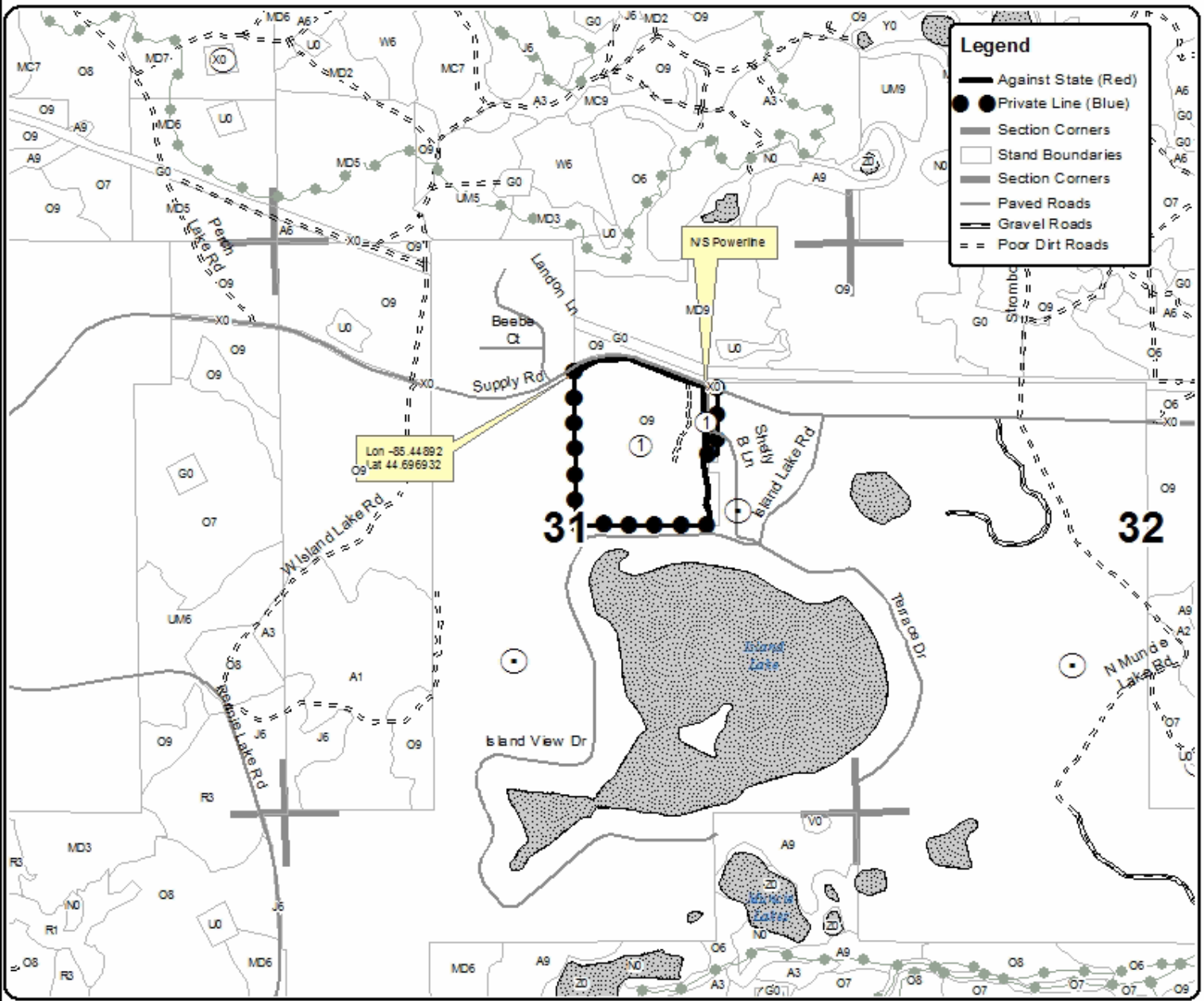
Cover Type				Density	
A = Aspen	H = Hemlock	N = Marsh	U = Upland Brush	0 = Non Stocked	5 = Pole Timber Medium
B = Paper Birch	J = Jack Pine	O = Oak	UM = Upland Mixed	1 = Seedling Sapling Poor	6 = Pole Timber Well
C = Cedar	L = Lowland Brush	P = Lowland Poplar	V = Bog or Marsh	2 = Seedling Sapling Medium	7 = Saw Timber Poor
D = Tread Bog	LM = Lowland Mixed	Q = Mixed Swamp Conifer	W = White Pine	3 = Seedling Sapling Well	8 = Saw Timber Medium
E = Swamp Hdwoods	M = Mpl, Bch, Brch	R = Red Pine	X = Non Stocked	4 = Pole Timber Poor	9 = Saw Timber Well
F = Spruce Fir	MC = Mixed Conifer	S = Black Spruce	Z = Water		
G = Grass	MD = Mixed Deciduous	T = Tamarack			

PU Acres
1 42.3

Island Time Oak

Compartment 043

42.3 Acres



TIMBER SALE INFORMATION

Red Start Mix (61-039-16)

Grand Traverse County (Advertised Price \$30,497.40)

SALE NOTE: Unit 1 is decent quality oak that must have the tops chipped to prepare site for planting. Unit 2 must be produced as short-wood. A landing may be located for unit 2 in the northeast corner of the unit off of a two track road that comes in off of Strombolis road. Unit 2 may also be forwarded to a landing location for unit 1.

A recreation site such as a trail, pathway, or campground is within the sale area or the vicinity. Certain restrictions/specifications may be applicable including time restrictions.

A timber sale contract for this lump sum, sealed bid timber sale will be awarded to the responsible bidder offering the highest sealed bid price. Bids must be at or above the following advertised price for each species:

<u>PRODUCTS & SPECIES</u>	<u>ESTIMATED UNITS*</u>	<u>ADVERTISED PRICE</u>
Sawtimber		
B. T. Aspen	8.40 MBF	\$ 111.00 / MBF
Red Maple	3.60 MBF	\$ 149.00 / MBF
Red Oak	80.70 MBF	\$ 234.00 / MBF
Red Pine	1.10 MBF	\$ 121.00 / MBF
White Oak	40.00 MBF	\$ 68.00 / MBF
White Pine	3.00 MBF	\$ 82.00 / MBF
Pulpwood		
B. T. Aspen	13.00 Cords	\$ 21.40 / Cord
Black Cherry	3.00 Cords	\$ 18.05 / Cord
Jack Pine	5.00 Cords	\$ 11.25 / Cord
Mixed Oak	336.00 Cords	\$ 14.40 / Cord
Red Maple	70.00 Cords	\$ 18.05 / Cord
Red Pine	6.00 Cords	\$ 38.70 / Cord
White Pine	19.00 Cords	\$ 17.00 / Cord

* The total volume is statistically estimated within plus (+) or minus (-) 22.21 percent. The estimated units are final and not subject to adjustment. Prospective bidders are urged to examine this timber and to make their own estimates of quantity and quality.

BOND AND PAYMENT SCHEDULE:

1. A bond in the amount of \$1,525.00 to insure faithful performance of the conditions of the contract will be deposited by the successful bidder within 21 days of the sale award.
2. Cutting in any sale or unit without the required advance payment would be considered a trespass.
3. Total payment must be paid in advance or according to the following schedule:
 - (a) Ten percent (10%) of the sale value must be paid within 21 days of the sale award.
 - (b) The 10% down payment will be credited towards the first unit cut.
4. If no cutting takes place, the 10% down payment will not be refunded.
5. Operations on the contract issued will terminate on 03/31/2019.

Description of Timber by Payment Unit (PU)

PU	MARKET GROUP	PRODUCT	QUANTITY	UNIT	ACRES	ADVERTISE PRICE	
1	B. T. Aspen	Sawtimber	4.1	MBF	14.8	\$22,067.60	
	Red Maple		3.2	MBF			
	Red Oak		58.3	MBF			
	Red Pine		1.1	MBF			
	White Oak		35.4	MBF			
	White Pine		3.0	MBF			
	B. T. Aspen		Pulpwood	3.0			Cords
	Jack Pine			2.0			Cords
	Mixed Oak			222.0			Cords
	<i>Red Oak</i>			89.0			<i>Cords</i>
	<i>White Oak</i>	133.0		<i>Cords</i>			
	Red Maple		50.0	Cords			
	Red Pine		6.0	Cords			
	White Pine		17.0	Cords			
	2	B. T. Aspen	Sawtimber	4.3			MBF
Red Maple		0.4		MBF			
Red Oak		22.4		MBF			
White Oak		4.6		MBF			
B. T. Aspen		Pulpwood		10.0	Cords		
Black Cherry			3.0	Cords			
Jack Pine			3.0	Cords			
Mixed Oak			114.0	Cords			
<i>Red Oak</i>			69.0	<i>Cords</i>			
<i>White Oak</i>			45.0	<i>Cords</i>			
Red Maple				20.0	Cords		
White Pine				2.0	Cords		
TOTAL:			136.8	MBF			
TOTAL:			452.0	Cords			

Sale Specific Conditions & Requirements

Sale Name: Red Start Mix

Sale Number: 61-039-16 Seq#: 1

1 - Sale Area

1.2 - Boundaries

1.2.1 - Painted boundaries (1/14)

The sale boundary is marked and identified by red paint. Exterior sale boundary lines against state are marked with red paint. The painted boundary line trees are not Included Timber and are to be protected.

2 - Timber Specifications

2.1 - Included Timber

2.1.1 - Clearcut unit(s) with unmerchantable trees (6/14)

Within Payment Unit(s) #1, cut all trees that are two (2) inches or more at DBH. Special protection trees identified in accordance with condition 3.4.2, within clearcutting unit boundaries, are not Included Timber and are to be protected.

2.1.3 - Cut tree marked unit(s) (12/08)

Within Payment Unit(s) #2, all trees are designated for cutting when marked with orange paint above and below stump height, regardless of merchantability. In addition, cut all merchantable aspen.

2.2 - Utilization

2.2.2 - Chipping required (5/14)

Payment Unit #1 must be chip harvested to facilitate subsequent planting operations. The Purchaser has the option to produce sawlogs or pulpwood bolts, but the remaining portion of the trees must be chipped and hauled. The requirement to retain approximately 1/6 to 1/3 of tree tops and limbs less than four inches in diameter does not apply (G. C. & R. 2.2). This is because slash will interfere with future planting operations.

2.2.3 - Stump heights (4/07)

Stump heights within Payment Unit(s) #1 shall not exceed 6 inches for all trees. This is in order to facilitate planting operations.

2.2.6 - Roundwood operation required (5/07)

The skidding of whole trees or tree segments with limbs attached is prohibited within Payment Unit(s) #2. All products must be produced as roundwood and forwarded to existing roads or landing areas in final product length.

3 - Payments

3.4 - Damaged Timber

3.4.2 - Special Protection Trees (4/14)

The Purchaser shall not cut live or dead special protection trees within cutting units or clearings. Special protection trees are marked with green paint. If the Purchaser's operations have cut or damaged special protection trees through carelessness, the Purchaser shall pay \$50 as fixed, agreed and liquidated damages for each special protection tree cut or damaged. Such payment does not constitute ownership of the undesignated timber.

4 - Transportation

4.1 - Construction

4.1.12 - No new roads (1/12)

No new roads will be permitted in any Payment Unit. All operations are limited to existing roads. Skid trails only will be allowed.

4.2 - Maintenance

4.2.5 - Two wheel drive condition (2/04)

All existing trail roads on and adjacent to the sale area must be passable by two-wheel drive traffic for the duration of the

sale.

5 - Operations

5.1 - Notification

5.1.1 - Pre-sale conference (10/16)

A pre-sale conference on site between the Purchaser and sale administrator is required prior to beginning any operations to determine landing and road locations. The Unit Manager or his/her representative must be contacted at least 3 days in advance to schedule the conference.

5.2 - Conduct of Operations

5.2.1 - Slash

5.2.1.8 - Slash height (12/08)

No slash or tree tops may exceed 30 inches in height. This applies to Payment Unit #2.

5.2.3 - Operating Restrictions

5.2.3.4 - Oak wilt restriction (6/10)

Within Payment Unit(s) #'s 1 and 2, cutting, skidding and hauling are not permitted during the period of April 15 to July 15. This is necessary to reduce the spread of oak wilt. For more information, contact the Unit Manager or his/her representative.

5.2.38 - No decking against live trees (2/04)

Cut products may not be decked against unmarked or designated leave trees.

5.4 - Soil Protection

5.4.1 - Rutting restriction, general (7/16)

Operations are to cease immediately if equipment and weather conditions result in rutting of roads and/or skid trails which is 12 inches or greater in depth and 50 feet in length. The Unit Manager or his/her representative may restrict hauling and/or skidding if ruts exceed the specified depth. With the Unit Manager or his/her representative's approval, the Purchaser may return to the area when the risk of rutting has decreased.

5.4.4 - Slope protection (5/15)

Skid trails and roads on slopes shall be water barred with slash, stumps, and/or clean straw bales native to the area as soon as use is complete to prevent erosion.

6 - Safety and Fire Prevention

6.2 - Signing

6.2.3 - Recreational trail posting (2/10)

The Purchaser is responsible for posting and maintaining caution signs on the bike trail prior to beginning operations. The trail must be posted at appropriate distances from the sale area to warn of logging activity and truck traffic at both ends of the trail. Signs must be removed when harvest operations are suspended or completed. The Purchaser will provide these signs.



TIMBER SALE MAP

This information provided by authority of Part 525, 1994 PA 451, as amended.

Forest Management Unit Traverse City		County Grand Traverse	Mapped By Ruppen	Date 09/30/2016	Page 1	of 1
Township 27	Range 9W	Section(s) and Subdivision(s) Sec 29 SENW SWNW NESW NWSW Sec 30 NESE NWSE		Scale SESE SWSE 1:15,840		

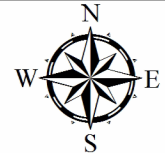
Cover Type				Density	
A = Aspen	H = Hemlock	N = Marsh	U = Upland Brush	0 = Non Stocked	5 = Pole Timber Medium
B = Paper Birch	J = Jack Pine	O = Oak	UM = Upland Mixed	1 = Seedling Sapling Poor	6 = Pole Timber Well
C = Cedar	L = Lowland Brush	P = Lowland Poplar	V = Bog or Marsh	2 = Seedling Sapling Medium	7 = Saw Timber Poor
D = Treed Bog	LM = Lowland Mixed	Q = Mixed Swamp Conifer	W = White Pine	3 = Seedling Sapling Well	8 = Saw Timber Medium
E = Swamp Hdwoods	M = Mpl, Bch, Brch	R = Red Pine	X = Non Stocked	4 = Pole Timber Poor	9 = Saw Timber Well
F = Spruce Fir	MC = Mixed Conifer	S = Black Spruce	Z = Water		
G = Grass	MD = Mixed Deciduous	T = Tamarack			

PU	Acres
1	14.8
2	17.1

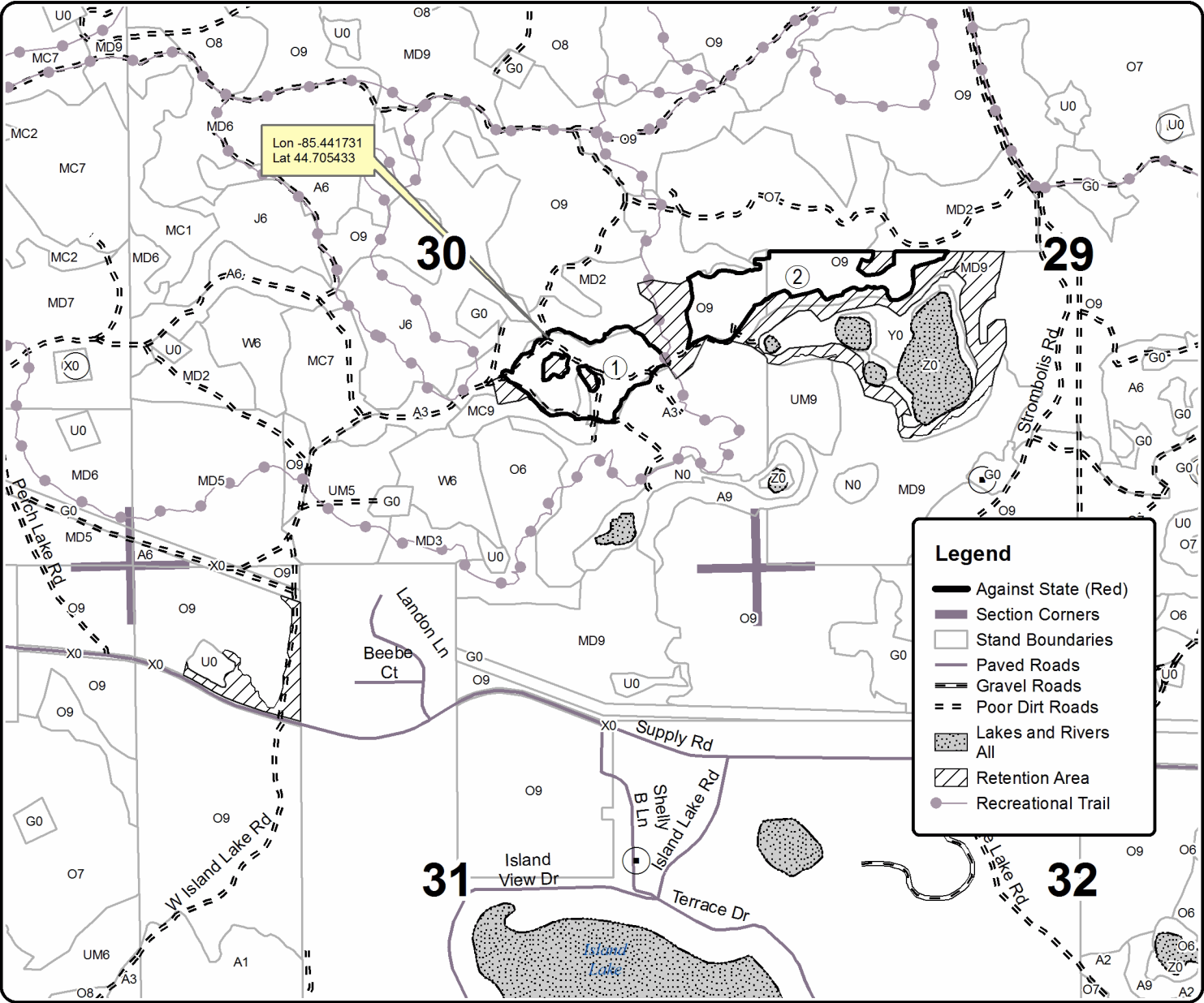
Red Start Mix

Compartment 043

31.9 Acres

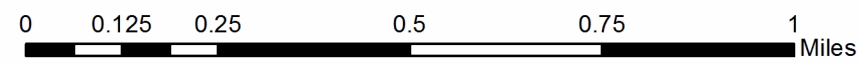


Lon -85.441731
Lat 44.705433



Legend

- Against State (Red)
- Section Corners
- Stand Boundaries
- Paved Roads
- Gravel Roads
- Poor Dirt Roads
- Lakes and Rivers
- All
- Retention Area
- Recreational Trail



TIMBER SALE INFORMATION

Elliott Road Mix (61-045-16)

Grand Traverse County (Advertised Price \$19,546.10)

A timber sale contract for this lump sum, sealed bid timber sale will be awarded to the responsible bidder offering the highest sealed bid price. Bids must be at or above the following advertised price for each species:

<u>PRODUCTS & SPECIES</u>	<u>ESTIMATED UNITS*</u>	<u>ADVERTISED PRICE</u>
Sawtimber		
Jack Pine	12.90 MBF	\$ 23.00 / MBF
Mixed Oak	105.20 MBF	\$ 113.00 / MBF
Pulpwood		
Jack Pine	132.00 Cords	\$ 11.25 / Cord
Mixed Aspen	19.00 Cords	\$ 21.40 / Cord
Mixed Oak	518.00 Cords	\$ 9.75 / Cord
Red Maple	4.00 Cords	\$ 18.05 / Cord
Red Pine	7.00 Cords	\$ 37.50 / Cord
White Pine	5.00 Cords	\$ 17.00 / Cord

* The total volume is statistically estimated within plus (+) or minus (-) 13.50 percent. The estimated units are final and not subject to adjustment. Prospective bidders are urged to examine this timber and to make their own estimates of quantity and quality.

BOND AND PAYMENT SCHEDULE:

1. A bond in the amount of \$977.00 to insure faithful performance of the conditions of the contract will be deposited by the successful bidder within 21 days of the sale award.
2. Cutting in any sale or unit without the required advance payment would be considered a trespass.
3. Total payment must be paid in advance or according to the following schedule:
 - (a) Ten percent (10%) of the sale value must be paid within 21 days of the sale award.
 - (b) The 10% down payment will be credited towards the first unit cut.
4. If no cutting takes place, the 10% down payment will not be refunded.
5. Operations on the contract issued will terminate on 03/31/2019.

Description of Timber by Payment Unit (PU)

PU	MARKET GROUP	PRODUCT	QUANTITY	UNIT	ACRES	ADVERTISE PRICE
1	Jack Pine	Sawtimber	7.2	MBF	47.1	\$10,932.40
	Mixed Oak		58.9	MBF		
	<i>Northern Pin Oak</i>		55.5	<i>MBF</i>		
	<i>White Oak</i>		3.4	<i>MBF</i>		
	Jack Pine	Pulpwood	74.0	Cords		
	Mixed Aspen		10.0	Cords		
	<i>Quaking Aspen</i>	<i>Sawtimber</i>	1.2	<i>MBF</i>		
	<i>B. T. Aspen</i>	<i>Pulpwood</i>	2.0	<i>Cords</i>		
	<i>Quaking Aspen</i>		6.0	<i>Cords</i>		
	Mixed Oak		290.0	Cords		
	<i>Northern Pin Oak</i>		263.0	<i>Cords</i>		
	<i>White Oak</i>		27.0	<i>Cords</i>		
	Red Maple		2.0	Cords		
	Red Pine		4.0	Cords		
	<i>Red Pine</i>	<i>Sawtimber</i>	0.6	<i>MBF</i>		
	<i>Red Pine</i>	<i>Pulpwood</i>	3.0	<i>Cords</i>		
	White Pine		3.0	Cords		
	<i>White Pine</i>	<i>Sawtimber</i>	0.4	<i>MBF</i>		
	<i>White Pine</i>	<i>Pulpwood</i>	2.0	<i>Cords</i>		
	2	Jack Pine	Sawtimber	5.7		
Mixed Oak			46.3	MBF		
<i>Northern Pin Oak</i>			43.7	<i>MBF</i>		
<i>White Oak</i>			2.6	<i>MBF</i>		
Jack Pine		Pulpwood	58.0	Cords		
Mixed Aspen			9.0	Cords		
<i>Quaking Aspen</i>		<i>Sawtimber</i>	1.0	<i>MBF</i>		
<i>B. T. Aspen</i>		<i>Pulpwood</i>	2.0	<i>Cords</i>		
<i>Quaking Aspen</i>			5.0	<i>Cords</i>		
Mixed Oak			228.0	Cords		
<i>Northern Pin Oak</i>			207.0	<i>Cords</i>		
<i>White Oak</i>			21.0	<i>Cords</i>		
Red Maple			2.0	Cords		
Red Pine			3.0	Cords		
<i>Red Pine</i>		<i>Sawtimber</i>	0.4	<i>MBF</i>		
<i>Red Pine</i>		<i>Pulpwood</i>	2.0	<i>Cords</i>		
White Pine			3.0	Cords		
<i>White Pine</i>		<i>Sawtimber</i>	0.3	<i>MBF</i>		
<i>White Pine</i>		<i>Pulpwood</i>	2.0	<i>Cords</i>		
TOTAL:			118.1	MBF		
TOTAL:			686.0	Cords		

Sale Specific Conditions & Requirements

Sale Name: Elliott Road Mix

Sale Number: 61-045-16 Seq#: 1

1 - Sale Area

1.2 - Boundaries

1.2.1 - Painted boundaries (1/14)

The sale boundary and Payment Unit boundaries are marked and identified by blue, red and yellow paint. Exterior sale boundary lines against private property are marked with blue paint. Exterior sale boundary lines against state are marked with red paint. Interior Payment Unit boundaries are marked with yellow paint. The painted boundary line trees are not Included Timber and are to be protected. Yellow painted trees designating an interior Payment Unit boundary are only to be cut when all surrounding Payment Units have been paid.

2 - Timber Specifications

2.1 - Included Timber

2.1.4 - Species designation unit(s) (12/08)

Within Payment Unit(s) 1, all trees are designated for cutting which meet minimum piece specifications in 2.2 - Utilization except red pine, white pine, white oak, and trees marked with green paint. Also, harvest trees with orange paint, regardless of species.

2.1.7 - Leave tree marked unit(s) (6/14)

Within Payment Unit(s) 2, all trees, which meet minimum piece specifications in 2.2 Utilization, are designated for cutting, except trees marked with green paint above and below stump height. In addition, do not cut or damage white pine under 5 inches DBH.

3 - Payments

3.3 - Pre-measured Sales

3.3.4 - Dividing payment units (7/14)

Payment Unit(s) 1 and 2 may be divided at the request of the Purchaser and upon approval of the Unit Manager. Dividing Payment Units is a contract modification which requires a Timber Sale Contract Supplement.

4 - Transportation

4.1 - Construction

4.1.6 - Road construction (1/09)

Construction of new roads or improvements of existing roads shall be done in such a way as to minimize the environmental and visual impacts. Merchantable trees shall be cut and utilized unless otherwise directed. Non-merchantable trees shall be severed and laid flat on the ground. Slash shall be scattered, and not left in windrows and kept a minimum of 10 feet back from the road edge. Stumps shall be set upright, not left on edge, and be moved at least 10 feet away from the road edge. Disturbed soil shall be feathered into the woods and not left in berms or windrows.

4.1.7 - Road closure (10/11)

All new roads built into the sale must be blocked to vehicle traffic upon completion of the sale. Overgrown roads that are reopened shall be considered new roads. In general, this will require constructing a four (4') foot high berm of stumps and logs covered with earth. Stumps and brush must be placed along the remainder of the trail. These roads must be rendered impassable to cars and trucks. All stumps from road building and landing construction must be reserved to block any newly constructed roads upon completion of the sale. These stumps must be scattered along the road system to prohibit vehicular movement.

5 - Operations

5.1 - Notification

5.1.1 - Pre-sale conference (10/11)

A pre-sale conference on site between the Purchaser and sale administrator is required prior to beginning any operations. The Unit Manager or his/her representative must be contacted at least 5 days in advance to schedule the conference.

5.1.4 - Post-sale conference (6/11)

A post-sale conference on site between the Purchaser and sale administrator is required 5 days prior to the completion of active logging operations to determine clean-up and repair of landings, road edges, and the fulfillment of other contract specifications.

5.2 - Conduct of Operations

5.2.1 - Slash

5.2.1.8 - Slash height (12/08)

No slash or tree tops may exceed 24 inches in height.

5.2.3 - Operating Restrictions

5.2.3.4 - Oak wilt restriction (6/10)

Within Payment Unit(s) 1 and 2, unless changed by written agreement, cutting, skidding, and hauling are not permitted during the period of April 15 to July 15. This is necessary to reduce the spread of oak wilt. For more information, contact the Unit Manager or his/her representative.

5.2.4 - Dead and Down Creation

5.2.4.3 - Dead and down creation, dead trees (6/07)

Except as provided for in General Condition and Requirement 5.2.2, no dead trees, standing or down, are to be cut, skidded, or processed. Exception: All dead trees that are deemed a safety hazard may be felled.

5.2.37 - No decking areas (12/08)

No decking is allowed within 50 feet of a County road without permission of the Unit Manager or his/her representative.

5.2.38 - No decking against live trees (2/04)

Cut products may not be decked against unmarked or designated leave trees.

5.4 - Soil Protection

5.4.1 - Rutting restriction, general (1/09)

Operations are to cease immediately if equipment and weather conditions result in rutting of roads and skid trails which is 12 inches or greater in depth and 50 feet in length. The Unit Manager or his/her representative may restrict hauling and/or skidding if ruts exceed the specified depth. With the Unit Manager or his/her representative's approval, the Purchaser may return to the area when the risk of rutting has decreased.

6 - Safety and Fire Prevention

6.2 - Signing

6.2.1 - Road posting (9/09)

The Purchaser is responsible for posting and maintaining caution signs on Elliott Rd, Medrack Rd, Glossinger Rd, and Hollister Rd prior to beginning operations. The road must be posted at appropriate distances from the sale area to warn of logging activity and truck traffic. Signs must be removed when harvest operations are suspended or completed. The Purchaser will provide these signs.



TIMBER SALE MAP

This information provided by authority of Part 525, 1994 PA 451, as amended.

Forest Management Unit Traverse City Unit		County Grand Traverse	Mapped By Blair Tweedale	Date 07/08/2016	Page 1	of 1
Township 25N	Range 09W	Section(s) and Subdivision(s) Sec. 34 NWNW, SWNW, SENW, NESW		Scale 1:15,840		

Cover Type				Density			
A = Aspen	H = Hemlock	N = Marsh	U = Upland Brush	0 = Non Stocked	5 = Pole Timber Medium		
B = Paper Birch	J = Jack Pine	O = Oak	UM = Upland Mixed	1 = Seedling Sapling Poor	6 = Pole Timber Well		
C = Cedar	L = Lowland Brush	P = Lowland Poplar	V = Bog or Marsh	2 = Seedling Sapling Medium	7 = Saw Timber Poor		
D = Treed Bog	LM = Lowland Mixed	Q = Mixed Swamp Conifer	W = White Pine	3 = Seedling Sapling Well	8 = Saw Timber Medium		
E = Swamp Hdwoods	M = Mpl, Bch, Brch	R = Red Pine	X = Non Stocked	4 = Pole Timber Poor	9 = Saw Timber Well		
F = Spruce Fir	MC = Mixed Conifer	S = Black Spruce	Z = Water				
G = Grass	MD = Mixed Deciduous	T = Tamarack					

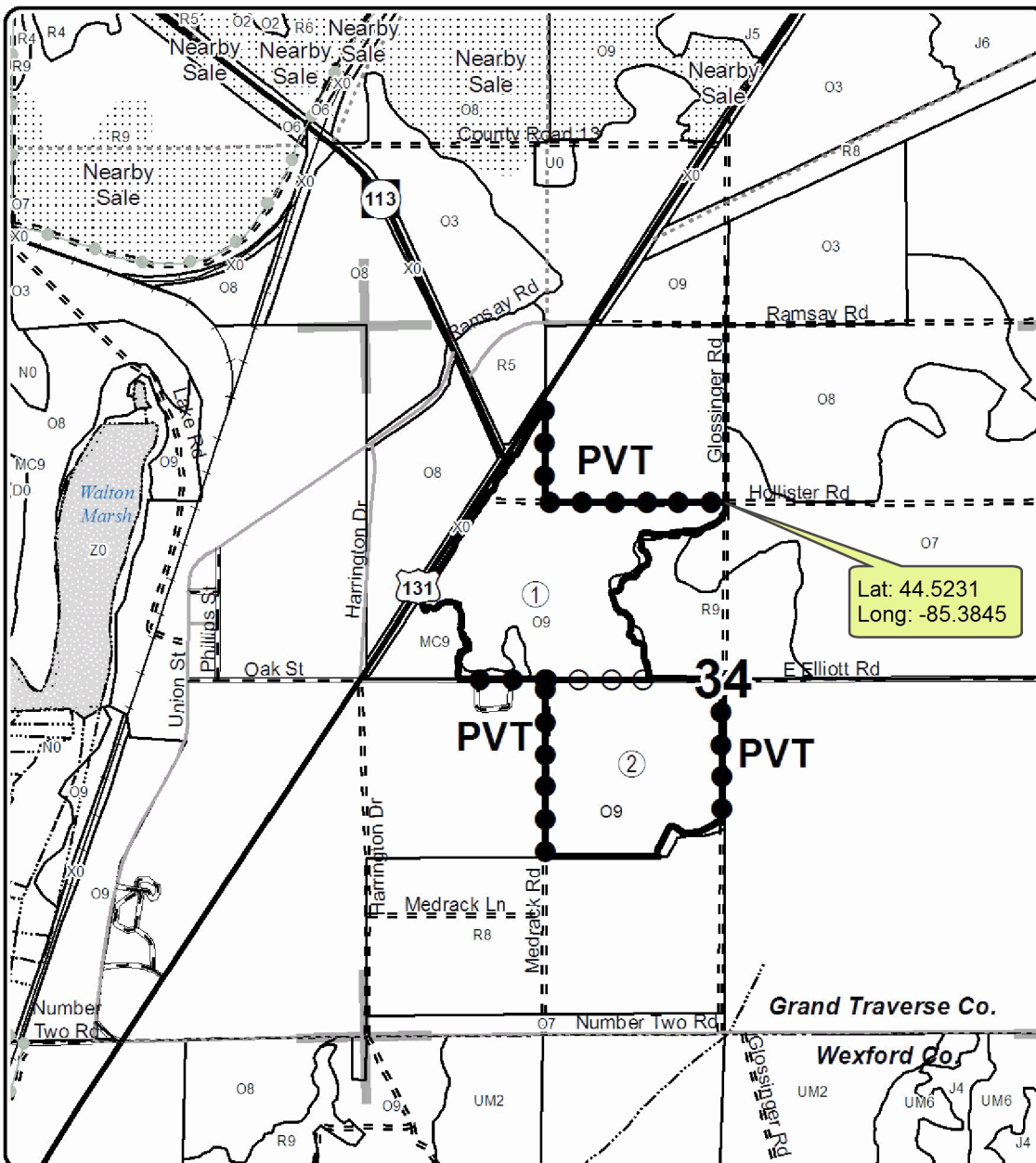
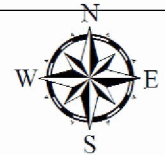
PU Acres

1	47.1
2	37.1

Elliot Road Mix

Compartment 57

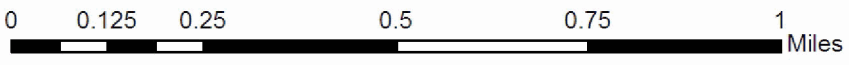
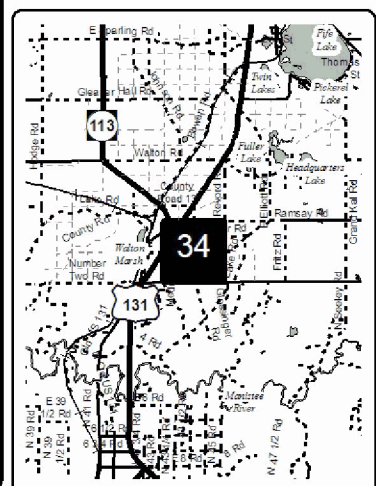
84.2 Acres



Legend

- Against State (Red)
- Payment Unit (Yellow)
- Private Line (Blue)
- Stand Boundaries
- Section Corners
- Highway
- Paved Roads
- Gravel Roads
- Poor Dirt Roads
- Closed Roads
- Recreation Trail
- Streams
- Railroad
- Nearby Timber Sales
- PU_Label
- Lakes and Rivers

Locator Map
1:200,000



TIMBER SALE INFORMATION

Dry Gulch Aspen (61-073-16)

Benzie County (Advertised Price \$43,298.85)

A timber sale contract for this lump sum, sealed bid timber sale will be awarded to the responsible bidder offering the highest sealed bid price. Bids must be at or above the following advertised price for each species:

<u>PRODUCTS & SPECIES</u>	<u>ESTIMATED UNITS*</u>	<u>ADVERTISED PRICE</u>
Sawtimber		
B. T. Aspen	161.70 MBF	\$ 111.00 / MBF
Beech	0.80 MBF	\$ 93.00 / MBF
Black Cherry	0.80 MBF	\$ 240.00 / MBF
Red Maple	2.60 MBF	\$ 149.00 / MBF
White Pine	27.80 MBF	\$ 82.00 / MBF
Pulpwood		
B. T. Aspen	959.00 Cords	\$ 21.40 / Cord
Beech	9.00 Cords	\$ 18.05 / Cord
Black Cherry	7.00 Cords	\$ 18.05 / Cord
Red Maple	7.00 Cords	\$ 18.05 / Cord
White Pine	87.00 Cords	\$ 17.00 / Cord

* The total volume is statistically estimated within plus (+) or minus (-) 11.47 percent. The estimated units are final and not subject to adjustment. Prospective bidders are urged to examine this timber and to make their own estimates of quantity and quality.

BOND AND PAYMENT SCHEDULE:

1. A bond in the amount of \$2,165.00 to insure faithful performance of the conditions of the contract will be deposited by the successful bidder within 21 days of the sale award.
2. Cutting in any sale or unit without the required advance payment would be considered a trespass.
3. Total payment must be paid in advance or according to the following schedule:
 - (a) Ten percent (10%) of the sale value must be paid within 21 days of the sale award.
 - (b) The 10% down payment will be credited towards the first unit cut.
4. If no cutting takes place, the 10% down payment will not be refunded.
5. Operations on the contract issued will terminate on 03/31/2019.

Description of Timber by Payment Unit (PU)

PU	MARKET GROUP	PRODUCT	QUANTITY	UNIT	ACRES	ADVERTISE PRICE
1	B. T. Aspen	Sawtimber	74.8	MBF	52.4	\$19,535.15
	Black Cherry		0.8	MBF		
	B. T. Aspen	Pulpwood	510.0	Cords		
	Black Cherry		7.0	Cords		
2	B. T. Aspen	Sawtimber	86.9	MBF	30.2	\$23,763.70
	Beech		0.8	MBF		
	Red Maple		2.6	MBF		
	White Pine		27.8	MBF		
	B. T. Aspen	Pulpwood	449.0	Cords		
	Beech		9.0	Cords		
	Red Maple		7.0	Cords		
	White Pine		87.0	Cords		
TOTAL:			193.7	MBF		
TOTAL:			1,069.0	Cords		

Sale Specific Conditions & Requirements

Sale Name: Dry Gulch Aspen

Sale Number: 61-073-16 Seq#: 1

1 - Sale Area

1.2 - Boundaries

1.2.1 - Painted boundaries (1/14)

The sale boundary and Payment Unit boundaries are marked and identified by blue and red paint. Exterior sale boundary lines against private property are marked with blue paint. Exterior sale boundary lines against state are marked with red paint. The painted boundary line trees are not Included Timber and are to be protected.

2 - Timber Specifications

2.1 - Included Timber

2.1.4 - Species designation unit(s) (12/08)

Within Payment Unit(s) 1 and 2, all aspen, maple, cherry, ironwood and beech trees are designated for cutting regardless of merchantability, except do not cut any trees marked with green paint. Also, within Payment Unit 2, all white pine are designated for cutting regardless of merchantability.

2.2 - Utilization

2.2.3 - Stump heights (4/07)

Stump heights within the Sale Area shall not exceed 12 inches for trees greater than 10 inches DBH and 4 inches for trees smaller than 10 inches DBH.

4 - Transportation

4.1 - Construction

4.1.3 - Slash and earthen piles (8/04)

Piles or windrows of earth along roads and landings that have been widened or constructed shall be leveled. Slash from road maintenance or construction, including stumps, shall be piled in numerous locations as specified by DNR sale administrator for rabbit and other small mammal habitat creation (see spec 5.2.4.4).

5 - Operations

5.1 - Notification

5.1.1 - Pre-sale conference (10/16)

A pre-sale conference on site between the Purchaser and sale administrator is required prior to beginning any operations to determine landing and road locations.

5.1.4 - Post-sale conference (10/16)

A post-sale conference on site between the Purchaser and sale administrator is required at least 3 days prior to the completion of active logging operations to determine clean-up and repair of landings, road edges, and the fulfillment of other contract specifications.

5.2 - Conduct of Operations

5.2.1 - Slash

5.2.1.8 - Slash height (12/08)

No slash or tree tops may exceed 24 inches in height. Exception to this height limit for slash piles in sale spec. 5.2.4.4.

5.2.2 - Hazard Trees/Snags

5.2.2.1 - Den trees (10/16)

Obvious hollow and/or den trees shall be protected and left standing unless they are a safety hazard.

5.2.3 - Operating Restrictions

5.2.3.4 - Oak wilt restriction (6/10)

Within Payment Unit(s) 1 and 2, cutting, skidding, and hauling are not permitted during the period of April 15 to July 15. This is necessary to reduce the spread of oak wilt. For more information, contact the Unit Manager or his/her representative.

5.2.4 - Dead and Down Creation

5.2.4.4 - Dead and down creation, grouse (8/13)

To encourage grouse and other wildlife, in Payment Unit(s) 1 and 2, leave one, 12" diameter or larger log-length (8 foot minimum) piece on the ground for every 2 acres (26 pieces for Payment Unit 1, 15 pieces for Payment Unit 2). These trees must be cut 4 feet above the ground level leaving a standing snag. The felled (log length) portion of the tree must be pushed up against the standing snag. These should be evenly scattered throughout the cut unit. This can be an unmerchantable 8 foot piece or a full tree.

Also, leave at least six (6) large tops in a single pile and at least 20 piles scattered evenly throughout Payment Unit 1 and 10 piles scattered evenly throughout Payment Unit 2.



TIMBER SALE MAP

This information provided by authority of Part 525, 1994 PA 451, as amended.

Forest Management Unit Traverse City	County Benzie	Mapped By Craig Allen	Date 09/27/2016	Page 1	of 1
Township 26N	Range 13W	Section(s) and Subdivision(s) 21 ; SW, NWSE, SWSE and sec. 28 ; NWNE	Scale 1:15,840		

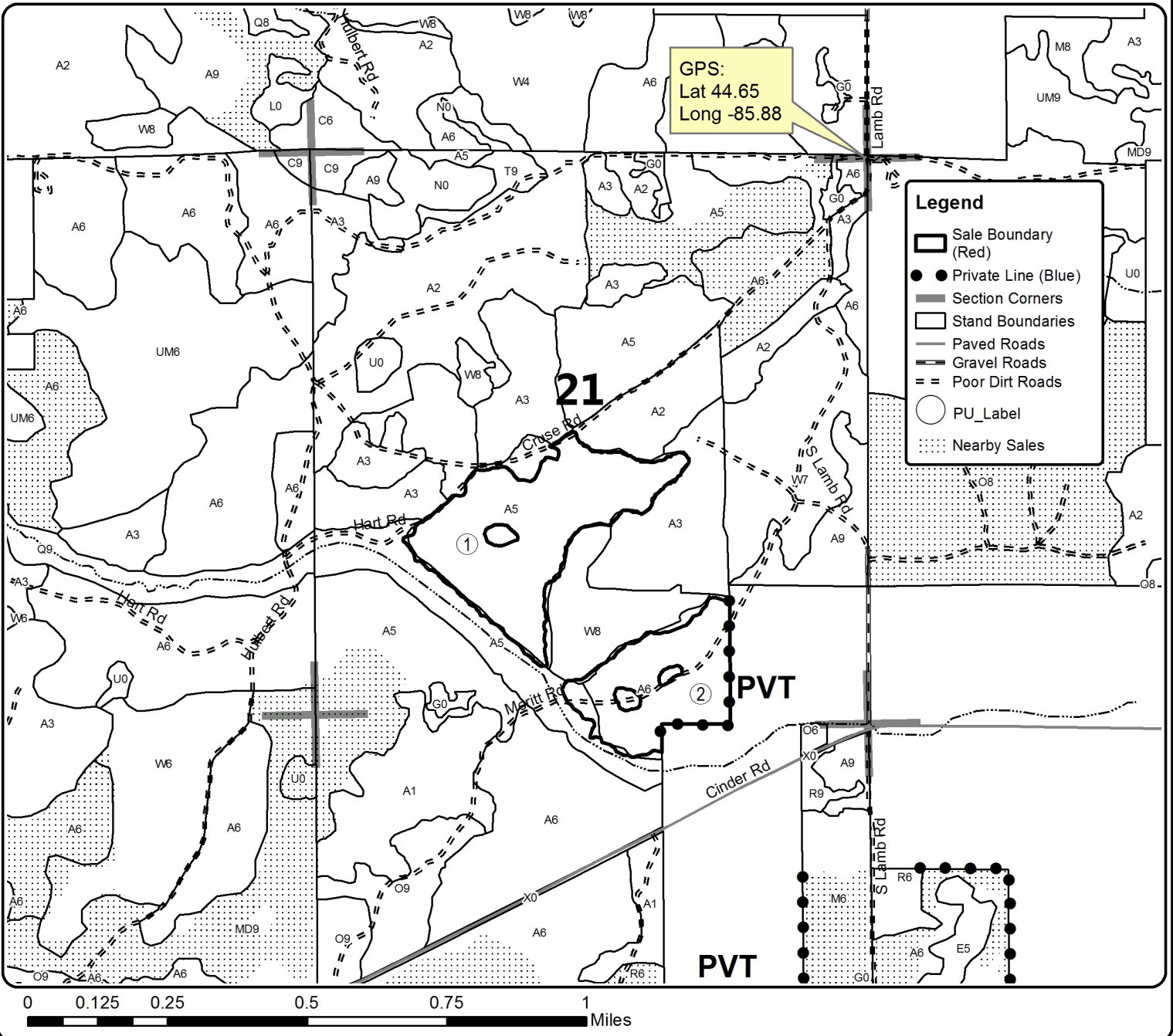
Cover Type				Density			
A = Aspen	H = Hemlock	N = Marsh	U = Upland Brush	0 = Non Stocked	5 = Pole Timber Medium		
B = Paper Birch	J = Jack Pine	O = Oak	UM = Upland Mixed	1 = Seedling Sapling Poor	6 = Pole Timber Well		
C = Cedar	L = Lowland Brush	P = Lowland Poplar	V = Bog or Marsh	2 = Seedling Sapling Medium	7 = Saw Timber Poor		
D = Treed Bog	LM = Lowland Mixed	Q = Mixed Swamp Conifer	W = White Pine	3 = Seedling Sapling Well	8 = Saw Timber Medium		
E = Swamp Hdwoods	M = Mpl, Bch, Brch	R = Red Pine	X = Non Stocked	4 = Pole Timber Poor	9 = Saw Timber Well		
F = Spruce Fir	MC = Mixed Conifer	S = Black Spruce	Z = Water				
G = Grass	MD = Mixed Deciduous	T = Tamarack					

PU	Acres
1	52.4
2	30.2

Dry Gulch Aspen

Compartment 17

82.6 Acres



TIMBER SALE INFORMATION

Rocking Horse Aspen (61-074-16)

Benzie County (Advertised Price \$37,784.60)

A timber sale contract for this lump sum, sealed bid timber sale will be awarded to the responsible bidder offering the highest sealed bid price. Bids must be at or above the following advertised price for each species:

<u>PRODUCTS & SPECIES</u>	<u>ESTIMATED UNITS*</u>	<u>ADVERTISED PRICE</u>
Sawtimber		
B. T. Aspen	114.40 MBF	\$ 111.00 / MBF
Black Cherry	2.90 MBF	\$ 240.00 / MBF
Quaking Aspen	17.10 MBF	\$ 111.00 / MBF
Red Maple	17.20 MBF	\$ 149.00 / MBF
Pulpwood		
B. T. Aspen	678.00 Cords	\$ 21.40 / Cord
Black Cherry	7.00 Cords	\$ 18.05 / Cord
Quaking Aspen	147.00 Cords	\$ 21.40 / Cord
Red Maple	119.00 Cords	\$ 18.05 / Cord

* The total volume is statistically estimated within plus (+) or minus (-) 20.38 percent. The estimated units are final and not subject to adjustment. Prospective bidders are urged to examine this timber and to make their own estimates of quantity and quality.

BOND AND PAYMENT SCHEDULE:

1. A bond in the amount of \$1,889.00 to insure faithful performance of the conditions of the contract will be deposited by the successful bidder within 21 days of the sale award.
2. Cutting in any sale or unit without the required advance payment would be considered a trespass.
3. Total payment must be paid in advance or according to the following schedule:
 - (a) Ten percent (10%) of the sale value must be paid within 21 days of the sale award.
 - (b) The remainder is due before cutting begins.
4. If no cutting takes place, the 10% down payment will not be refunded.
5. Operations on the contract issued will terminate on 03/31/2019.

Description of Timber by Payment Unit (PU)

PU	MARKET GROUP	PRODUCT	QUANTITY	UNIT	ACRES	ADVERTISE PRICE
1	B. T. Aspen	Sawtimber	114.4	MBF	43.2	\$37,784.60
	Black Cherry		2.9	MBF		
	Quaking Aspen		17.1	MBF		
	Red Maple		17.2	MBF		
	B. T. Aspen	Pulpwood	678.0	Cords		
	Black Cherry		7.0	Cords		
	Quaking Aspen		147.0	Cords		
	Red Maple		119.0	Cords		
TOTAL:			151.6	MBF		
TOTAL:			951.0	Cords		

Sale Specific Conditions & Requirements

Sale Name: Rocking Horse Aspen

Sale Number: 61-074-16 Seq#: 1

1 - Sale Area

1.2 - Boundaries

1.2.1 - Painted boundaries (1/14)

The sale boundary is marked and identified by red paint. Exterior sale boundary lines against state are marked with red paint. The painted boundary line trees are not Included Timber and are to be protected.

2 - Timber Specifications

2.1 - Included Timber

2.1.4 - Species designation unit(s) (12/08)

Within Payment Unit(s) 1, all aspen, maple, cherry, ironwood and beech trees are designated for cutting regardless of merchantability. Do not cut any tree marked with green paint and do not cut any oak or white pine.

2.2 - Utilization

2.2.3 - Stump heights (4/07)

Stump heights within the Sale Area shall not exceed 12 inches for trees greater than 10 inches DBH and 4 inches for trees smaller than 10 inches DBH.

4 - Transportation

4.1 - Construction

4.1.3 - Slash and earthen piles (8/04)

Piles or windrows of earth along roads and landings that have been widened or constructed shall be leveled. Slash from road maintenance or construction, including stumps, shall be piled in numerous locations as specified by DNR sale administrator for rabbit and other small mammal habitat creation (see Spec. 5.2.4.4).

5 - Operations

5.1 - Notification

5.1.1 - Pre-sale conference (10/16)

A pre-sale conference on site between the Purchaser and sale administrator is required prior to beginning any operations to determine landing and road locations.

5.1.4 - Post-sale conference (10/16)

A post-sale conference on site between the Purchaser and sale administrator is required at least 3 days prior to the completion of active logging operations to determine clean-up and repair of landings, road edges, and the fulfillment of other contract specifications.

5.2 - Conduct of Operations

5.2.1 - Slash

5.2.1.8 - Slash height (12/08)

No slash or tree tops may exceed 24 inches in height. Exception to this height limit for slash piles in sale spec. 5.2.4.4

5.2.2 - Hazard Trees/Snags

5.2.2.1 - Den trees (10/16)

Obvious hollow and/or den trees shall be protected and left standing unless they are a safety hazard.

5.2.3 - Operating Restrictions

5.2.3.4 - Oak wilt restriction (6/10)

Within Payment Unit(s) 1, cutting, skidding, and hauling are not permitted during the period of April 15 to July 15. This is necessary to reduce the spread of oak wilt. For more information, contact the Unit Manager or his/her representative.

5.2.4 - Dead and Down Creation

5.2.4.4 - Dead and down creation, grouse (8/13)

To encourage grouse and other wildlife, in Payment Unit(s) 1, leave one, 12" diameter or larger log-length (8 foot minimum) piece on the ground for every 2 acres (21 pieces). These trees must be cut 4 feet above the ground, leaving a standing snag. The felled (log length) portion of the tree must be pushed up against the standing snag. These should be evenly scattered throughout the cut unit. This can be an unmerchantable 8 foot piece or a full tree.

In addition, leave at least six (6) large tops in a single pile, and at least 15 piles scattered evenly throughout Payment Unit 1.



TIMBER SALE MAP

This information provided by authority of Part 525, 1994 PA 451, as amended.

Sale Number	Year
61-074	16

Forest Management Unit		County	Mapped By		Date	Page of	
Traverse City		Benzie	Craig Allen		09/27/2016	1	1
Township	Range	Section(s) and Subdivisions			Scale		
26N	13W	21 : NE			1:15,840		

Cover Type				Density			
A = Aspen	H = Hemlock	N = Marsh	U = Upland Brush	0 = Non Stocked	5 = Pole Timber Medium		
B = Paper Birch	J = Jack Pine	O = Oak	UM = Upland Mixed	1 = Seedling Sapling Poor	6 = Pole Timber Well		
C = Cedar	L = Lowland Brush	P = Lowland Poplar	V = Bog or Marsh	2 = Seedling Sapling Medium	7 = Saw Timber Poor		
D = Tread Bog	LM = Lowland Mixed	Q = Mixed Swamp Conifer	W = White Pine	3 = Seedling Sapling Well	8 = Saw Timber Medium		
E = Swamp Hdwoods	M = Mpl. Bch, Brch	R = Red Pine	X = Non Stocked	4 = Pole Timber Poor	9 = Saw Timber Well		
F = Spruce Fir	MC = Mixed Conifer	S = Black Spruce	Z = Water				
G = Grass	MD = Mixed Deciduous	T = Tamarack					

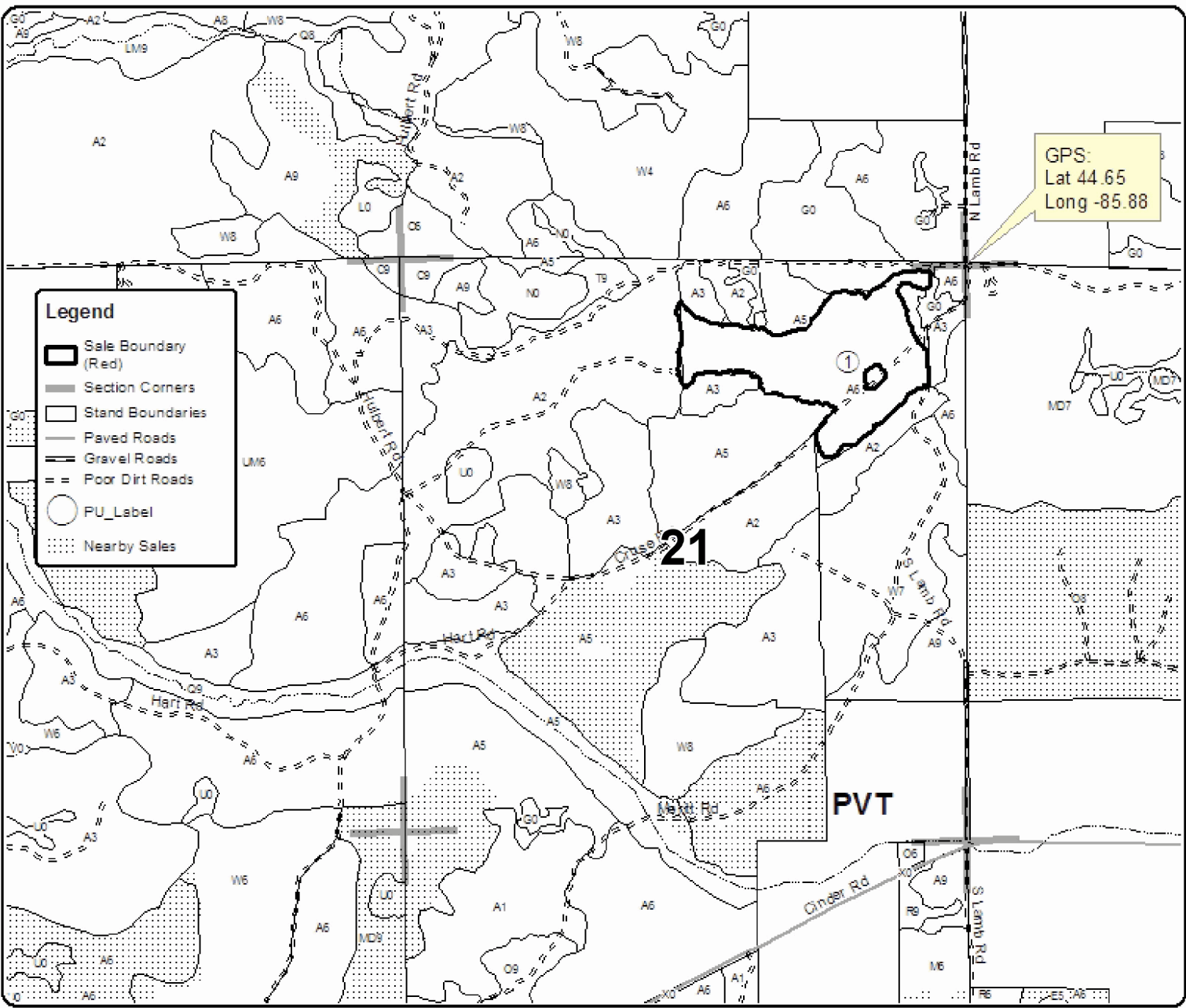
PU Acres
1 43.2

Rocking Horse Aspen

Compartment 17
43.2 Acres



GPS:
Lat 44.65
Long -85.88



Elliott Road Mix (61-045-16)
; Grand Traverse COUNTY

In response to the notice of sale to be held 4:00 p.m. (local time) on January 12, 2017, I am hereby submitting my sealed bid (firm offer) for the following forest products to be cut. Bids for individual species must be at or above the advertised price. All non-responsive bid forms may be rejected.

<u>PRODUCTS & SPECIES</u>	<u>ESTIMATED VOLUME*</u>	<u>ADVERTISED PRICE</u>	<u>BID PRICE</u>
Sawtimber			
Jack Pine	12.90 MBF	\$ 23.00/MBF	\$ _____
Mixed Oak	105.20 MBF	\$ 113.00/MBF	\$ _____
Pulpwood			
Jack Pine	132.00 Cords	\$ 11.25/Cord	\$ _____
Mixed Aspen	19.00 Cords	\$ 21.40/Cord	\$ _____
Mixed Oak	518.00 Cords	\$ 9.75/Cord	\$ _____
Red Maple	4.00 Cords	\$ 18.05/Cord	\$ _____
Red Pine	7.00 Cords	\$ 37.50/Cord	\$ _____
White Pine	5.00 Cords	\$ 17.00/Cord	\$ _____

*The volumes are statistically estimated within plus (+) or minus (-) 13.50 percent. These estimated volumes are final and not subject to adjustment. Prospective bidders are urged to examine this timber and to make their own estimates of quantity and quality.

I understand that any or all bids may be rejected. All bids must be signed and all bid items must be bid or the bid form may be rejected. I also understand that consideration and awarding a contract will be based upon my past performance and ability to complete the contract based upon equipment and staffing subject to my control.

FEDERAL ID: _____ or SOCIAL SECURITY NUMBER: _____

Company or individual bidding: _____

Company representative's name: _____

Address: _____

City: _____ State: _____ Zip: _____

IF AVAILABLE, PLEASE PLACE THE PERSONALIZED LABEL FROM YOUR PROSPECTUS IN THE ABOVE BOX.

Individual or company representative's signature: _____ Date: _____

Phone number : _____ Email (optional): _____

THE WINNING BIDDER MUST COMPLETE THE VERIFICATION OF WORKER'S DISABILITY COMPENSATION ACT COMPLIANCE (ON REVERSE SIDE IF DOUBLE SIDED) WITHIN 21 DAYS OF SALE AWARD DATE



FOR DEPARTMENT USE ONLY
Sale Number (XX - XXX - XX - XX)
Forest Management Unit:

TIMBER SALE VERIFICATION OF WORKER'S DISABILITY COMPENSATION ACT COMPLIANCE

*As required by Act 317, P.A. 1969 (Worker's Compensation) and
Part 5 of Act 451 of 1994, as amended.*

VERIFICATION OF WORKER'S DISABILITY COMPENSATION ACT COMPLIANCE

- This verification must be completed and submitted within 21 days of contract award and prior to the issuance of the timber sale contract.
- In addition, if boxes 2B or 2C are checked, then Notice of Exclusion or Certificate of Insurance must be submitted within twenty-one (21) days of the contract award and prior to the issuance of the timber sale contract.
- All information must be typed or printed except for written signatures.

Please Check Appropriate Categories:

1. My business is organized as (you **must** check one of the boxes below):
 - A. Sole Proprietorship (individual)
 - B. Partnership
 - C. Corporation
2. You **must** check one of the boxes below:
 - A. I certify my business is a sole proprietorship and it has no employees but the sole proprietor. I am not subject to the Worker's Compensation Laws.
 - B. I certify my business has satisfied its obligation to the Worker's Compensation Act through the use of an approved Notice of Exclusion (BWC-337, Rev. 5/96). I will provide a copy of the Notice of Exclusion within 21 days of the contract award. (For questions or a copy of the BWC-337, please call the Worker's Compensation Bureau at 517-322-1195).
 - C. I certify my business has a Worker's Compensation Policy. I will provide an original Certificate of Insurance within twenty-one (21) days of the contract award.
3. If you have checked item 2(A) or 2(B), you **must** indicate the number of **both** full-time and part-time employees, other than yourself, including family members and active partners (if none, you must enter "0").

_____ Full-time Employees

_____ Part-time Employees

Name of Business		Federal ID (or) Social Security No.	
Address		Telephone ()	
City	State	ZIP	

I hereby certify that the above information is true and correct. I agree to notify the Michigan DNR of any changes that occur in factors affecting my coverage during any of my present and future operations.

Signature of Owner or Authorized Representative

Title

Date

Please complete the "SEALED BID" information on the next page

Dry Gulch Aspen (61-073-16)
 ; Benzie COUNTY

In response to the notice of sale to be held 4:00 p.m. (local time) on January 12, 2017, I am hereby submitting my sealed bid (firm offer) for the following forest products to be cut. Bids for individual species must be at or above the advertised price. All non-responsive bid forms may be rejected.

<u>PRODUCTS & SPECIES</u>	<u>ESTIMATED VOLUME*</u>	<u>ADVERTISED PRICE</u>	<u>BID PRICE</u>
Sawtimber			
B. T. Aspen	161.70 MBF	\$ 111.00/MBF	\$ _____
Beech	0.80 MBF	\$ 93.00/MBF	\$ _____
Black Cherry	0.80 MBF	\$ 240.00/MBF	\$ _____
Red Maple	2.60 MBF	\$ 149.00/MBF	\$ _____
White Pine	27.80 MBF	\$ 82.00/MBF	\$ _____
Pulpwood			
B. T. Aspen	959.00 Cords	\$ 21.40/Cord	\$ _____
Beech	9.00 Cords	\$ 18.05/Cord	\$ _____
Black Cherry	7.00 Cords	\$ 18.05/Cord	\$ _____
Red Maple	7.00 Cords	\$ 18.05/Cord	\$ _____
White Pine	87.00 Cords	\$ 17.00/Cord	\$ _____

*The volumes are statistically estimated within plus (+) or minus (-) 11.47 percent. These estimated volumes are final and not subject to adjustment. Prospective bidders are urged to examine this timber and to make their own estimates of quantity and quality.

I understand that any or all bids may be rejected. All bids must be signed and all bid items must be bid or the bid form may be rejected. I also understand that consideration and awarding a contract will be based upon my past performance and ability to complete the contract based upon equipment and staffing subject to my control.

FEDERAL ID: _____ or SOCIAL SECURITY NUMBER: _____

Company or individual bidding: _____

Company representative's name: _____

Address: _____

City: _____ State: _____ Zip: _____

IF AVAILABLE, PLEASE PLACE THE PERSONALIZED LABEL FROM YOUR PROSPECTUS IN THE ABOVE BOX.

Individual or company representative's signature: _____ Date: _____

Phone number : _____ Email (optional): _____

THE WINNING BIDDER MUST COMPLETE THE VERIFICATION OF WORKER'S DISABILITY COMPENSATION ACT COMPLIANCE (ON REVERSE SIDE IF DOUBLE SIDED) WITHIN 21 DAYS OF SALE AWARD DATE



FOR DEPARTMENT USE ONLY
Sale Number (XX – XXX – XX – XX)
Forest Management Unit:

TIMBER SALE VERIFICATION OF WORKER'S DISABILITY COMPENSATION ACT COMPLIANCE

*As required by Act 317, P.A. 1969 (Worker's Compensation) and
Part 5 of Act 451 of 1994, as amended.*

VERIFICATION OF WORKER'S DISABILITY COMPENSATION ACT COMPLIANCE

- This verification must be completed and submitted within 21 days of contract award and prior to the issuance of the timber sale contract.
- In addition, if boxes 2B or 2C are checked, then Notice of Exclusion or Certificate of Insurance must be submitted within twenty-one (21) days of the contract award and prior to the issuance of the timber sale contract.
- All information must be typed or printed except for written signatures.

Please Check Appropriate Categories:

1. My business is organized as (you **must** check one of the boxes below):
 - A. Sole Proprietorship (individual)
 - B. Partnership
 - C. Corporation

2. You **must** check one of the boxes below:
 - A. I certify my business is a sole proprietorship and it has no employees but the sole proprietor. I am not subject to the Worker's Compensation Laws.
 - B. I certify my business has satisfied its obligation to the Worker's Compensation Act through the use of an approved Notice of Exclusion (BWC-337, Rev. 5/96). I will provide a copy of the Notice of Exclusion within 21 days of the contract award. (For questions or a copy of the BWC-337, please call the Worker's Compensation Bureau at 517-322-1195).
 - C. I certify my business has a Worker's Compensation Policy. I will provide an original Certificate of Insurance within twenty-one (21) days of the contract award.

3. If you have checked item 2(A) or 2(B), you **must** indicate the number of **both** full-time and part-time employees, other than yourself, including family members and active partners (if none, you must enter "0").

_____ Full-time Employees

_____ Part-time Employees

Name of Business		Federal ID (or) Social Security No.	
Address		Telephone ()	
City	State	ZIP	

I hereby certify that the above information is true and correct. I agree to notify the Michigan DNR of any changes that occur in factors affecting my coverage during any of my present and future operations.

Signature of Owner or Authorized Representative

Title

Date

Please complete the "SEALED BID" information on the next page

Rocking Horse Aspen (61-074-16)
; Benzie COUNTY

In response to the notice of sale to be held 4:00 p.m. (local time) on January 12, 2017, I am hereby submitting my sealed bid (firm offer) for the following forest products to be cut. Bids for individual species must be at or above the advertised price. All non-responsive bid forms may be rejected.

<u>PRODUCTS & SPECIES</u>	<u>ESTIMATED VOLUME*</u>	<u>ADVERTISED PRICE</u>	<u>BID PRICE</u>
Sawtimber			
B. T. Aspen	114.40 MBF	\$ 111.00/MBF	\$ _____
Black Cherry	2.90 MBF	\$ 240.00/MBF	\$ _____
Quaking Aspen	17.10 MBF	\$ 111.00/MBF	\$ _____
Red Maple	17.20 MBF	\$ 149.00/MBF	\$ _____
Pulpwood			
B. T. Aspen	678.00 Cords	\$ 21.40/Cord	\$ _____
Black Cherry	7.00 Cords	\$ 18.05/Cord	\$ _____
Quaking Aspen	147.00 Cords	\$ 21.40/Cord	\$ _____
Red Maple	119.00 Cords	\$ 18.05/Cord	\$ _____

*The volumes are statistically estimated within plus (+) or minus (-) 20.38 percent. These estimated volumes are final and not subject to adjustment. Prospective bidders are urged to examine this timber and to make their own estimates of quantity and quality.

I understand that any or all bids may be rejected. All bids must be signed and all bid items must be bid or the bid form may be rejected. I also understand that consideration and awarding a contract will be based upon my past performance and ability to complete the contract based upon equipment and staffing subject to my control.

FEDERAL ID: _____ or SOCIAL SECURITY NUMBER: _____

Company or individual bidding: _____

Company representative's name: _____

Address: _____

City: _____ State: _____ Zip: _____

IF AVAILABLE, PLEASE PLACE THE PERSONALIZED LABEL FROM YOUR PROSPECTUS IN THE ABOVE BOX.

Individual or company representative's signature: _____ Date: _____

Phone number : _____ Email (optional): _____

THE WINNING BIDDER MUST COMPLETE THE VERIFICATION OF WORKER'S DISABILITY COMPENSATION ACT COMPLIANCE (ON REVERSE SIDE IF DOUBLE SIDED) WITHIN 21 DAYS OF SALE AWARD DATE



FOR DEPARTMENT USE ONLY
Sale Number (XX - XXX - XX - XX)
Forest Management Unit:

TIMBER SALE VERIFICATION OF WORKER'S DISABILITY COMPENSATION ACT COMPLIANCE

*As required by Act 317, P.A. 1969 (Worker's Compensation) and
Part 5 of Act 451 of 1994, as amended.*

VERIFICATION OF WORKER'S DISABILITY COMPENSATION ACT COMPLIANCE

- This verification must be completed and submitted within 21 days of contract award and prior to the issuance of the timber sale contract.
- In addition, if boxes 2B or 2C are checked, then Notice of Exclusion or Certificate of Insurance must be submitted within twenty-one (21) days of the contract award and prior to the issuance of the timber sale contract.
- All information must be typed or printed except for written signatures.

Please Check Appropriate Categories:

1. My business is organized as (you **must** check one of the boxes below):
 - A. Sole Proprietorship (individual)
 - B. Partnership
 - C. Corporation

2. You **must** check one of the boxes below:
 - A. I certify my business is a sole proprietorship and it has no employees but the sole proprietor. I am not subject to the Worker's Compensation Laws.
 - B. I certify my business has satisfied its obligation to the Worker's Compensation Act through the use of an approved Notice of Exclusion (BWC-337, Rev. 5/96). I will provide a copy of the Notice of Exclusion within 21 days of the contract award. (For questions or a copy of the BWC-337, please call the Worker's Compensation Bureau at 517-322-1195).
 - C. I certify my business has a Worker's Compensation Policy. I will provide an original Certificate of Insurance within twenty-one (21) days of the contract award.

3. If you have checked item 2(A) or 2(B), you **must** indicate the number of **both** full-time and part-time employees, other than yourself, including family members and active partners (if none, you must enter "0").

_____ Full-time Employees

_____ Part-time Employees

Name of Business		Federal ID (or) Social Security No.	
Address		Telephone ()	
City	State	ZIP	

I hereby certify that the above information is true and correct. I agree to notify the Michigan DNR of any changes that occur in factors affecting my coverage during any of my present and future operations.

Signature of Owner or Authorized Representative

Title

Date

Please complete the "SEALED BID" information on the next page

Island Time Oak (61-020-16)
; Grand Traverse COUNTY

In response to the notice of sale to be held 4:00 p.m. (local time) on January 12, 2017, I am hereby submitting my sealed bid (firm offer) for the following forest products to be cut. Bids for individual species must be at or above the advertised price. All non-responsive bid forms may be rejected.

<u>PRODUCTS & SPECIES</u>	<u>ESTIMATED VOLUME*</u>	<u>ADVERTISED PRICE</u>	<u>BID PRICE</u>
Sawtimber			
B. T. Aspen	3.40 MBF	\$ 111.00/MBF	\$ _____
Northern Pin Oak	41.80 MBF	\$ 125.00/MBF	\$ _____
White Oak	8.50 MBF	\$ 68.00/MBF	\$ _____
Pulpwood			
B. T. Aspen	6.00 Cords	\$ 21.40/Cord	\$ _____
Mixed Oak	265.00 Cords	\$ 14.40/Cord	\$ _____
Red Maple	76.00 Cords	\$ 18.05/Cord	\$ _____
White Pine	3.00 Cords	\$ 17.00/Cord	\$ _____

*The volumes are statistically estimated within plus (+) or minus (-) 20.02 percent. These estimated volumes are final and not subject to adjustment. Prospective bidders are urged to examine this timber and to make their own estimates of quantity and quality.

I understand that any or all bids may be rejected. All bids must be signed and all bid items must be bid or the bid form may be rejected. I also understand that consideration and awarding a contract will be based upon my past performance and ability to complete the contract based upon equipment and staffing subject to my control.

FEDERAL ID: _____ or SOCIAL SECURITY NUMBER: _____

Company or individual bidding: _____

Company representative's name: _____

Address: _____

City: _____ State: _____ Zip: _____

IF AVAILABLE, PLEASE PLACE THE PERSONALIZED LABEL FROM YOUR PROSPECTUS IN THE ABOVE BOX.

Individual or company representative's signature: _____ Date: _____

Phone number : _____ Email (optional): _____

THE WINNING BIDDER MUST COMPLETE THE VERIFICATION OF WORKER'S DISABILITY COMPENSATION ACT COMPLIANCE (ON REVERSE SIDE IF DOUBLE SIDED) WITHIN 21 DAYS OF SALE AWARD DATE



FOR DEPARTMENT USE ONLY
Sale Number (XX - XXX - XX - XX)
Forest Management Unit:

TIMBER SALE VERIFICATION OF WORKER'S DISABILITY COMPENSATION ACT COMPLIANCE

*As required by Act 317, P.A. 1969 (Worker's Compensation) and
Part 5 of Act 451 of 1994, as amended.*

VERIFICATION OF WORKER'S DISABILITY COMPENSATION ACT COMPLIANCE

- This verification must be completed and submitted within 21 days of contract award and prior to the issuance of the timber sale contract.
- In addition, if boxes 2B or 2C are checked, then Notice of Exclusion or Certificate of Insurance must be submitted within twenty-one (21) days of the contract award and prior to the issuance of the timber sale contract.
- All information must be typed or printed except for written signatures.

Please Check Appropriate Categories:

1. My business is organized as (you **must** check one of the boxes below):
 - A. Sole Proprietorship (individual)
 - B. Partnership
 - C. Corporation
2. You **must** check one of the boxes below:
 - A. I certify my business is a sole proprietorship and it has no employees but the sole proprietor. I am not subject to the Worker's Compensation Laws.
 - B. I certify my business has satisfied its obligation to the Worker's Compensation Act through the use of an approved Notice of Exclusion (BWC-337, Rev. 5/96). I will provide a copy of the Notice of Exclusion within 21 days of the contract award. (For questions or a copy of the BWC-337, please call the Worker's Compensation Bureau at 517-322-1195).
 - C. I certify my business has a Worker's Compensation Policy. I will provide an original Certificate of Insurance within twenty-one (21) days of the contract award.
3. If you have checked item 2(A) or 2(B), you **must** indicate the number of **both** full-time and part-time employees, other than yourself, including family members and active partners (if none, you must enter "0").

_____ Full-time Employees _____ Part-time Employees

Name of Business		Federal ID (or) Social Security No.	
Address		Telephone ()	
City	State	ZIP	

I hereby certify that the above information is true and correct. I agree to notify the Michigan DNR of any changes that occur in factors affecting my coverage during any of my present and future operations.

Signature of Owner or Authorized Representative

_____ Date

Please complete the "SEALED BID" information on the next page

Red Start Mix (61-039-16)
 ; Grand Traverse COUNTY

In response to the notice of sale to be held 4:00 p.m. (local time) on January 12, 2017, I am hereby submitting my sealed bid (firm offer) for the following forest products to be cut. Bids for individual species must be at or above the advertised price. All non-responsive bid forms may be rejected.

<u>PRODUCTS & SPECIES</u>	<u>ESTIMATED VOLUME*</u>	<u>ADVERTISED PRICE</u>	<u>BID PRICE</u>
Sawtimber			
B. T. Aspen	8.40 MBF	\$ 111.00/MBF	\$ _____
Red Maple	3.60 MBF	\$ 149.00/MBF	\$ _____
Red Oak	80.70 MBF	\$ 234.00/MBF	\$ _____
Red Pine	1.10 MBF	\$ 121.00/MBF	\$ _____
White Oak	40.00 MBF	\$ 68.00/MBF	\$ _____
White Pine	3.00 MBF	\$ 82.00/MBF	\$ _____
Pulpwood			
B. T. Aspen	13.00 Cords	\$ 21.40/Cord	\$ _____
Black Cherry	3.00 Cords	\$ 18.05/Cord	\$ _____
Jack Pine	5.00 Cords	\$ 11.25/Cord	\$ _____
Mixed Oak	336.00 Cords	\$ 14.40/Cord	\$ _____
Red Maple	70.00 Cords	\$ 18.05/Cord	\$ _____
Red Pine	6.00 Cords	\$ 38.70/Cord	\$ _____
White Pine	19.00 Cords	\$ 17.00/Cord	\$ _____

*The volumes are statistically estimated within plus (+) or minus (-) 22.21 percent. These estimated volumes are final and not subject to adjustment. Prospective bidders are urged to examine this timber and to make their own estimates of quantity and quality.

I understand that any or all bids may be rejected. All bids must be signed and all bid items must be bid or the bid form may be rejected. I also understand that consideration and awarding a contract will be based upon my past performance and ability to complete the contract based upon equipment and staffing subject to my control.

FEDERAL ID: _____ or SOCIAL SECURITY NUMBER: _____

Company or individual bidding: _____

Company representative's name: _____

Address: _____

City: _____ State: _____ Zip: _____

IF AVAILABLE, PLEASE PLACE THE PERSONALIZED LABEL FROM YOUR PROSPECTUS IN THE ABOVE BOX.

Individual or company representative's signature: _____ Date: _____

Phone number : _____ Email (optional): _____

THE WINNING BIDDER MUST COMPLETE THE VERIFICATION OF WORKER'S DISABILITY COMPENSATION ACT COMPLIANCE (ON REVERSE SIDE IF DOUBLE SIDED) WITHIN 21 DAYS OF SALE AWARD DATE



FOR DEPARTMENT USE ONLY
Sale Number (XX - XXX - XX - XX)
Forest Management Unit:

TIMBER SALE VERIFICATION OF WORKER'S DISABILITY COMPENSATION ACT COMPLIANCE

*As required by Act 317, P.A. 1969 (Worker's Compensation) and
Part 5 of Act 451 of 1994, as amended.*

VERIFICATION OF WORKER'S DISABILITY COMPENSATION ACT COMPLIANCE

- This verification must be completed and submitted within 21 days of contract award and prior to the issuance of the timber sale contract.
- In addition, if boxes 2B or 2C are checked, then Notice of Exclusion or Certificate of Insurance must be submitted within twenty-one (21) days of the contract award and prior to the issuance of the timber sale contract.
- All information must be typed or printed except for written signatures.

Please Check Appropriate Categories:

1. My business is organized as (you **must** check one of the boxes below):
 - A. Sole Proprietorship (individual)
 - B. Partnership
 - C. Corporation

2. You **must** check one of the boxes below:
 - A. I certify my business is a sole proprietorship and it has no employees but the sole proprietor. I am not subject to the Worker's Compensation Laws.
 - B. I certify my business has satisfied its obligation to the Worker's Compensation Act through the use of an approved Notice of Exclusion (BWC-337, Rev. 5/96). I will provide a copy of the Notice of Exclusion within 21 days of the contract award. (For questions or a copy of the BWC-337, please call the Worker's Compensation Bureau at 517-322-1195).
 - C. I certify my business has a Worker's Compensation Policy. I will provide an original Certificate of Insurance within twenty-one (21) days of the contract award.

3. If you have checked item 2(A) or 2(B), you **must** indicate the number of **both** full-time and part-time employees, other than yourself, including family members and active partners (if none, you must enter "0").

_____ Full-time Employees

_____ Part-time Employees

Name of Business		Federal ID (or) Social Security No.	
Address		Telephone ()	
City	State	ZIP	

I hereby certify that the above information is true and correct. I agree to notify the Michigan DNR of any changes that occur in factors affecting my coverage during any of my present and future operations.

Signature of Owner or Authorized Representative

Title

Date

Please complete the "SEALED BID" information on the next page

Montana Aspen (61-005-17)
 ; Benzie COUNTY

In response to the notice of sale to be held 4:00 p.m. (local time) on January 12, 2017, I am hereby submitting my sealed bid (firm offer) for the following forest products to be cut. Bids for individual species must be at or above the advertised price. All non-responsive bid forms may be rejected.

<u>PRODUCTS & SPECIES</u>	<u>ESTIMATED VOLUME*</u>	<u>ADVERTISED PRICE</u>	<u>BID PRICE</u>
Sawtimber			
Basswood	1.70 MBF	\$ 100.00/MBF	\$ _____
Black Cherry	0.70 MBF	\$ 240.00/MBF	\$ _____
Mixed Aspen	220.80 MBF	\$ 111.00/MBF	\$ _____
Red Maple	22.60 MBF	\$ 149.00/MBF	\$ _____
Red Oak	6.80 MBF	\$ 234.00/MBF	\$ _____
Sugar Maple	6.90 MBF	\$ 303.00/MBF	\$ _____
White Pine	9.80 MBF	\$ 82.00/MBF	\$ _____
Pulpwood			
Basswood	24.00 Cords	\$ 12.25/Cord	\$ _____
Mixed Aspen	1,034.00 Cords	\$ 21.40/Cord	\$ _____
Mixed Hardwood	287.00 Cords	\$ 18.05/Cord	\$ _____
Red Oak	48.00 Cords	\$ 14.40/Cord	\$ _____
White Pine	40.00 Cords	\$ 17.00/Cord	\$ _____

*The volumes are statistically estimated within plus (+) or minus (-) 12.58 percent. These estimated volumes are final and not subject to adjustment. Prospective bidders are urged to examine this timber and to make their own estimates of quantity and quality.

I understand that any or all bids may be rejected. All bids must be signed and all bid items must be bid or the bid form may be rejected. I also understand that consideration and awarding a contract will be based upon my past performance and ability to complete the contract based upon equipment and staffing subject to my control.

FEDERAL ID: ____ - ____ - ____ or SOCIAL SECURITY NUMBER: ____ - ____ - ____

Company or individual bidding: _____

Company representative's name: _____

Address: _____

City: _____ State: _____ Zip: _____

IF AVAILABLE, PLEASE PLACE THE PERSONALIZED LABEL FROM YOUR PROSPECTUS IN THE ABOVE BOX.

Individual or company representative's signature: _____ Date: _____

Phone number : _____ Email (optional): _____

THE WINNING BIDDER MUST COMPLETE THE VERIFICATION OF WORKER'S DISABILITY COMPENSATION ACT COMPLIANCE (ON REVERSE SIDE IF DOUBLE SIDED) WITHIN 21 DAYS OF SALE AWARD DATE



FOR DEPARTMENT USE ONLY
Sale Number (XX - XXX - XX - XX)
Forest Management Unit:

TIMBER SALE VERIFICATION OF WORKER'S DISABILITY COMPENSATION ACT COMPLIANCE

*As required by Act 317, P.A. 1969 (Worker's Compensation) and
Part 5 of Act 451 of 1994, as amended.*

VERIFICATION OF WORKER'S DISABILITY COMPENSATION ACT COMPLIANCE

- This verification must be completed and submitted within 21 days of contract award and prior to the issuance of the timber sale contract.
- In addition, if boxes 2B or 2C are checked, then Notice of Exclusion or Certificate of Insurance must be submitted within twenty-one (21) days of the contract award and prior to the issuance of the timber sale contract.
- All information must be typed or printed except for written signatures.

Please Check Appropriate Categories:

1. My business is organized as (you **must** check one of the boxes below):
 - A. Sole Proprietorship (individual)
 - B. Partnership
 - C. Corporation

2. You **must** check one of the boxes below:
 - A. I certify my business is a sole proprietorship and it has no employees but the sole proprietor. I am not subject to the Worker's Compensation Laws.
 - B. I certify my business has satisfied its obligation to the Worker's Compensation Act through the use of an approved Notice of Exclusion (BWC-337, Rev. 5/96). I will provide a copy of the Notice of Exclusion within 21 days of the contract award. (For questions or a copy of the BWC-337, please call the Worker's Compensation Bureau at 517-322-1195).
 - C. I certify my business has a Worker's Compensation Policy. I will provide an original Certificate of Insurance within twenty-one (21) days of the contract award.

3. If you have checked item 2(A) or 2(B), you **must** indicate the number of **both** full-time and part-time employees, other than yourself, including family members and active partners (if none, you must enter "0").

_____ Full-time Employees

_____ Part-time Employees

Name of Business		Federal ID (or) Social Security No.	
Address		Telephone ()	
City	State	ZIP	

I hereby certify that the above information is true and correct. I agree to notify the Michigan DNR of any changes that occur in factors affecting my coverage during any of my present and future operations.

Signature of Owner or Authorized Representative

Title

Date

Please complete the "SEALED BID" information on the next page