



**DEPARTMENT OF NATURAL RESOURCES
STATE OF MICHIGAN**

TIMBER SALE PROSPECTUS #5749

SCHEDULED SALE DATE AND TIME: 4:00 p.m. (local time) on November 3, 2016.

LOCATION: TRAVERSE CITY MGMT UNIT, 2122 M 37 SOUTH, TRAVERSE CITY, MI 49685.

PROSPECTUS NOTE: The bidder is advised to inspect the sale area and review the location, estimated volumes, operating costs and contract terms of proposed sales. Please be aware that some landowners may request 60 days or more notice for access across their land.

Notice is hereby given that bids will be received by the Unit Manager, TRAVERSE CITY MANAGEMENT UNIT, for certain timber on the following described lands:

Pink Pine (61-032-16)

Benzie County, Advertised Price \$121,094.30, 228.1 Acres, Hardwood, Red Pine, White Pine.

LVBA Oak (61-063-16)

Grand Traverse County, Advertised Price \$70,318.30, 215.8 Acres, Hardwood, Jack Pine.

SALE NOTE: This sale contains a number of recreation sites in the form of trails. The main trail that will be affected by this sale is the snowmobile trail which will most likely be used as the main haul route heading eastward to US131. Due to this fact, coupled with the fact that units 1, 2 & 4 have the oak wilt restriction applied to them, the sale will have a relatively small window for harvest. The sale has a 2.5 year contract in an attempt to account for this.

A recreation site such as a trail, pathway, or campground is within the sale area or the vicinity. Certain restrictions/specifications may be applicable including time restrictions.

Wrong Side Red Pine (61-066-16)

Grand Traverse County, Advertised Price \$77,618.40, 39.7 Acres, Hardwood, Red Pine.

SALE NOTE: A recreation site such as a trail, pathway, or campground is within the sale area or the vicinity. Certain restrictions/specifications may be applicable including time restrictions.

North Branch Aspen (61-072-16)

Benzie County, Advertised Price \$9,829.20, 8.5 Acres, Aspen, Red Pine.

SOUTH BRANCH BARRENS MIX (61-078-15) / T26N, R09W, SEC. 12, N1/2.

Grand Traverse County, Advertised Price \$26,698.50, 99.0 Acres, Hardwood, Red Oak.

BID INSTRUCTIONS (VER. 09/02/2016):

1. Scheduled Bid Location, Date, and Time (2/11)

Bids must be received by the Unit Manager, TRAVERSE CITY OFFICE, 2122 M 37 SOUTH, TRAVERSE CITY, MI 49685, no later than 4:00 p.m. (local time) on November 3, 2016. For further information concerning this sale, contact David Lemmien at 231-922-5280 extension 6840.

2. Bidder's Qualifications (5/16)

Purchaser shall obtain workers compensation insurance to cover claims under Michigan's Worker's Disability Compensation Act of 1969 or similar employee benefit act of any other state applicable to an employee. If all or part of a timber sale was prepared by a private contractor, the contractor and that contractor's company are not permitted to bid on the timber sale contract. Bids will not be accepted from individuals or companies appearing on the DNR/FRD No-Bid List. This list contains the names of purchasers who previously failed to execute a contract within 21-days or who have a history of poor performance.

3. Preparation of Sealed Bids (5/16)

Bid Forms may be completed online thru Michigan DNR Timber Sale Online Bidding (OLB) at www.michigan.gov/timberbidding or by completing the hardcopy Bid Form found in the Timber Sale Prospectus. Hardcopy Bid Forms shall be manually signed in ink. Registration in OLB is considered your 'signature' for all bids submitted thru that system. Bid prices must be entered for each species and product in the Bid Price column for all material subject to bidding and all fill-in blanks must be completed. If erasures or other changes appear on the hardcopy Bid Form, each erasure or change must be initialed by the person signing the bid.

4. Submission of Sealed Bids (5/16)

Bid forms may be obtained from the Unit Manager or thru OLB. Bids may be submitted hardcopy or thru OLB. All hardcopy bids must be submitted on the bid form and in an envelope clearly identified as described in this section. NOTE: Only one bid form per bid envelope. Sealed bids must be submitted to the Unit office designated in the prospectus and must be submitted at or prior to the time established in the prospectus. The envelope should show on the outside (a) the sale name or number and (b) the date and time of bid opening, as shown in the prospectus. Bids received after the time specified in the sale prospectus are late bids and will be rejected.

It is possible for a bidder to submit multiple bids on a single sale. For example, a bid may be submitted hardcopy and a bid may be submitted thru OLB. Or, two bidders from the same company could both submit bids on the same sale. If this were to happen, the State would accept all bids received and award the contract accordingly. All bidding and contractual requirements would apply to all bids received.

5. Public Opening of Sealed Bids (7/16)

If conditions permit, the sealed bids will be publicly opened and posted at the time and place set in the prospectus.

If a bidder, present at a bid opening, has submitted bids on more than one sale, that bidder may withdraw their unopened bid envelopes or announce the withdrawal of their online bid after being declared the successful bidder on one sale.

6. Award of Contract (1/11)

Award of the contract will be made to the Bidder whose bid, conforming to the prospectus, is most advantageous to the State of Michigan on the basis of total value at rates bid for the estimated quantities. The State reserves the right to reject any bid or waive any minor irregularity in bids received. A written award mailed (or otherwise furnished) to the successful Bidder shall be deemed to result in a binding contract without further action by either party.

7. Down Payment (1/11)

The Bidder to whom award is made must make a down payment within 21 days of the sale award. The amount of the down payment will be calculated as shown in the Bond and Payment Schedule of this prospectus. Only cash may be used to meet this requirement.

8. Performance Security (1/11)

As guarantee of faithful performance, a cash bond, certificate of deposit, surety bond or irrevocable letter of credit (LOC) is required within 21 days of the sale award. The amount of the performance security is shown in the Bond and

Payment Schedule of this prospectus. If an LOC or surety is used, the coverage must extend for at least 6 months beyond the contract expiration.

9. Timber Sale Contract (9/14)

Additional conditions and requirements common to all timber sales are listed on the timber sale contract (R4031) and are available on line at www.michigan.gov/timber. Contact the Unit Manager for additional information or a sample contract. Within 21 days of the date of the award letter, the bidder must sign the contract and provide the required down payment, performance security, and verification of worker's disability compensation. The down payment and performance security shall be in accordance with the provisions of the timber sale contract, in the sums stated in this prospectus. If these actions are not taken, then the Bidder, the Bidder's corporation, and the corporation's principals may not be permitted to bid on State timber sales for a period of 1 year. In addition, the Bidder certifies that if awarded this contract, the Bidder will complete the timber sale contract in accordance with its terms and any modifications thereof including requirements to purchase, cut, and remove the included timber by the expiration date.

10. Disclaimer of Estimates and Bidder's Warranty of Inspection (7/16)

Before submitting this bid, the Bidder is advised and cautioned to inspect the sale area, review the requirements of the sale contract, and take other steps as may be reasonably necessary to ascertain the location, estimated volumes, construction estimates, and operating costs of the proposed sale. Failure to do so will not relieve the Bidder from responsibility for completing the contract.

The Bidder warrants that this bid is submitted solely on the basis of the Bidder's examination and inspection of the quality and quantity of the timber offered for sale and the Bidder's opinion of the value thereof and the costs of recovery. No reliance should be placed on the State of Michigan's estimates of timber quality, quantity or costs of recovery. Bidder further acknowledges that the State of Michigan: (i) expressly disclaims any warranty of fitness of timber for any purpose; (ii) offers this timber as is without any warranty of quality (merchantability) or quantity and (iii) expressly disclaims any warranty as to the quantity or quality of timber sold.

11. Certification and Chain-of-Custody (10/14)

Unless otherwise indicated in the contract under section 7 – Other Conditions of the Sale Specific Conditions & Requirements, the area encompassed by this timber sale is certified to the standards of the Forest Stewardship Council (FSC) - Certificate #SCS-FM/COC-00090N and the Sustainable Forestry Initiative (SFI) - Certificate # NSF-SFIS-5Y031-SF5. Forest products from this sale may be delivered to the mill as "FSC 100% and / or SFI certified" as long as the contractor hauling the forest products is chain-of-custody (COC) certified or covered under a COC certificate from the destination mill. The purchaser is responsible for maintaining COC after leaving the sale area.

12. Good Neighbor Authority (GNA) Requirements (7/16)

If the name of this timber sales contains the acronym GNA, it is authorized by the Good Neighbor Authority (GNA) and covered by various agreements between the U.S. Forest Service and the State. The timber sale occurs on federal land and the following conditions apply:

GNA contracts on US Forest Service land will not be awarded to purchasers on the Federal list of excluded parties. The System for Award Management (SAM) will be checked for active excluded parties prior to award of contract. In addition, the Bidder to whom award is made must complete an Assurance Regarding Felony Conviction or Tax Delinquent Status for Corporate Applicants (AD-3031).

13. Good Neighbor Authority (GNA) Requirements, con't (9/16)

Bidder certifies, by signing this bid form, that to the best of Bidder's knowledge that the following representations are accurate and complete.

- a. That the Bidder and its principals are not presently debarred, suspended, proposed for debarment, declared ineligible, or voluntary excluded from timber sales (covered transactions) by any Federal department or agency.
- b. That the Bidder and its principals have not within a 3-year period preceding this bid been convicted of or had a civil judgment rendered against them for commission of fraud or a criminal offense in connection with obtaining, attempting to obtain, or performing a public (Federal, State, or local) transaction or contract under a public transaction; violation of Federal or State antitrust statutes or commission of embezzlement, theft, forgery, bribery, falsification or destruction of records, making false statements, or receiving stolen property.

c. That the Bidder and its principals are not presently indicted for or otherwise criminally or civilly charged by a governmental entity (Federal, State, or local) with commission of any of the offenses enumerated in paragraph b of this certification.

d. That the Bidder and its principals have not within a 3-year period preceding this bid had one or more public transactions (Federal, State, or local) terminated for breach or default of a timber or forest product contract.

Bidders that cannot certify this requirement, in whole or in part, shall submit an explanation with their bid.

KEITH CREAGH

Director

TIMBER SALE INFORMATION

Pink Pine (61-032-16)

Benzie County (Advertised Price \$121,094.30)

A timber sale contract for this lump sum, sealed bid timber sale will be awarded to the responsible bidder offering the highest sealed bid price. Bids must be at or above the following advertised price for each species:

<u>PRODUCTS & SPECIES</u>	<u>ESTIMATED UNITS*</u>		<u>ADVERTISED PRICE</u>
Sawtimber			
Basswood	18.00	MBF	\$ 87.00 / MBF
Beech	3.00	MBF	\$ 69.00 / MBF
Black Cherry	49.40	MBF	\$ 256.00 / MBF
Mixed Aspen	71.30	MBF	\$ 99.00 / MBF
Red Maple	25.30	MBF	\$ 161.00 / MBF
Red Pine	96.10	MBF	\$ 122.00 / MBF
Sugar Maple	38.90	MBF	\$ 268.00 / MBF
White Pine	109.40	MBF	\$ 88.00 / MBF
Pulpwood			
Basswood	48.00	Cords	\$ 12.50 / Cord
Mixed Aspen	460.00	Cords	\$ 21.40 / Cord
Mixed Hardwood	1,163.00	Cords	\$ 20.00 / Cord
Red Pine	538.00	Cords	\$ 40.85 / Cord
White Pine	1,540.00	Cords	\$ 5.25 / Cord

* The total volume is statistically estimated within plus (+) or minus (-) 7.63 percent. The estimated units are final and not subject to adjustment. Prospective bidders are urged to examine this timber and to make their own estimates of quantity and quality.

BOND AND PAYMENT SCHEDULE:

1. A bond in the amount of \$6,055.00 to insure faithful performance of the conditions of the contract will be deposited by the successful bidder within 21 days of the sale award.
2. Cutting in any sale or unit without the required advance payment would be considered a trespass.
3. Total payment must be paid in advance or according to the following schedule:
 - (a) Ten percent (10%) of the sale value must be paid within 21 days of the sale award.
 - (b) The 10% down payment will be credited towards the first unit cut.
4. If no cutting takes place, the 10% down payment will not be refunded.
5. Operations on the contract issued will terminate on 12/31/2018.

Description of Timber by Payment Unit (PU)

PU	MARKET GROUP	PRODUCT	QUANTITY	UNIT	ACRES	ADVERTISE PRICE					
1	Sugar Maple	Sawtimber	5.8	MBF	9.3	\$3,827.50					
			White Pine	8.5			MBF				
			Mixed Aspen	9.0			Cords				
			<i>B. T. Aspen</i>	3.0			<i>Cords</i>				
			<i>Quaking Aspen</i>	6.0			<i>Cords</i>				
			Mixed Hardwood	43.0			Cords				
			<i>Ironwood</i>	6.0			<i>Cords</i>				
			<i>Sugar Maple</i>	37.0			<i>Cords</i>				
			White Pine	90.0			Cords				
			2	Black Cherry			Sawtimber	9.1	MBF	16.4	\$13,744.90
Mixed Aspen	7.4	MBF									
<i>B. T. Aspen</i>	2.2	<i>MBF</i>									
<i>Quaking Aspen</i>	5.2	<i>MBF</i>									
Red Maple	6.8	MBF									
Sugar Maple	3.1	MBF									
White Pine	33.6	MBF									
Mixed Aspen	57.0	Cords									
<i>B. T. Aspen</i>	2.0	<i>Cords</i>									
<i>Quaking Aspen</i>	55.0	<i>Cords</i>									
Mixed Hardwood	134.0	Cords									
<i>American Elm</i>	1.0	<i>Cords</i>									
<i>Black Cherry</i>	88.0	<i>Cords</i>									
<i>Ironwood</i>	1.0	<i>Cords</i>									
<i>Paper Birch</i>	2.0	<i>Cords</i>									
<i>Red Maple</i>	28.0	<i>Cords</i>									
<i>Sugar Maple</i>	14.0	<i>Cords</i>									
White Pine	362.0	Cords									
3	Black Cherry	Sawtimber			12.2	MBF		21.8	\$18,369.00		
					Mixed Aspen	10.0					
			<i>B. T. Aspen</i>	3.0	<i>MBF</i>						
			<i>Quaking Aspen</i>	7.0	<i>MBF</i>						
			Red Maple	9.1	MBF						
			Sugar Maple	4.1	MBF						
			White Pine	44.7	MBF						
			Mixed Aspen	77.0	Cords						
			<i>B. T. Aspen</i>	3.0	<i>Cords</i>						
			<i>Quaking Aspen</i>	74.0	<i>Cords</i>						
			Mixed Hardwood	179.0	Cords						
			<i>American Elm</i>	2.0	<i>Cords</i>						
			<i>Black Cherry</i>	117.0	<i>Cords</i>						
			<i>Ironwood</i>	1.0	<i>Cords</i>						
			<i>Paper Birch</i>	3.0	<i>Cords</i>						
			<i>Red Maple</i>	38.0	<i>Cords</i>						
			<i>Sugar Maple</i>	18.0	<i>Cords</i>						
			White Pine	482.0	Cords						
			4	Beech	Sawtimber	0.8	MBF			41.7	\$15,291.85
						Black Cherry	12.7				
Mixed Aspen	8.0	MBF									
<i>B. T. Aspen</i>	3.0	<i>MBF</i>									
<i>Quaking Aspen</i>	5.0	<i>MBF</i>									
Red Maple	4.3	MBF									
White Pine	13.4	MBF									
Mixed Aspen	98.0	Cords									
<i>B. T. Aspen</i>	14.0	<i>Cords</i>									
<i>Quaking Aspen</i>	84.0	<i>Cords</i>									
Mixed Hardwood	267.0	Cords									

Description of Timber by Payment Unit (PU), con't

PU	MARKET GROUP	PRODUCT	QUANTITY	UNIT	ACRES	ADVERTISE PRICE					
4 con't	<i>Beech</i>	<i>Pulpwood</i>	4.0	<i>Cords</i>							
	<i>Black Cherry</i>		223.0	<i>Cords</i>							
	<i>Ironwood</i>		4.0	<i>Cords</i>							
	<i>Red Maple</i>		31.0	<i>Cords</i>							
	<i>Sugar Maple</i>		5.0	<i>Cords</i>							
	White Pine		359.0	Cords							
5	Beech	Sawtimber	0.5	MBF	28.6	\$10,453.25					
	Black Cherry		8.7	MBF							
	Mixed Aspen		5.5	MBF							
	<i>B. T. Aspen</i>		2.1	<i>MBF</i>							
	<i>Quaking Aspen</i>		3.4	<i>MBF</i>							
	Red Maple		2.9	MBF							
	White Pine		9.2	MBF							
	Mixed Aspen		Pulpwood	67.0			Cords				
	<i>B. T. Aspen</i>			10.0			<i>Cords</i>				
	<i>Quaking Aspen</i>			57.0			<i>Cords</i>				
	Mixed Hardwood			182.0			Cords				
	<i>Beech</i>			3.0			<i>Cords</i>				
	<i>Black Cherry</i>			153.0			<i>Cords</i>				
	<i>Ironwood</i>			2.0			<i>Cords</i>				
	<i>Red Maple</i>			21.0			<i>Cords</i>				
	<i>Sugar Maple</i>			3.0			<i>Cords</i>				
	White Pine			247.0			Cords				
	6			Red Pine			Sawtimber	16.3	MBF	8.9	\$4,235.35
Red Pine		Pulpwood		55.0	Cords						
7	Basswood	Sawtimber	7.1	MBF	12.7	\$5,169.30					
	Black Cherry		0.7	MBF							
	Red Maple		0.7	MBF							
	Red Pine		5.4	MBF							
	Basswood		Pulpwood	14.0			Cords				
	Mixed Hardwood			61.0			Cords				
	<i>Black Cherry</i>			17.0			<i>Cords</i>				
	<i>Red Maple</i>			10.0			<i>Cords</i>				
	<i>Sugar Maple</i>			34.0			<i>Cords</i>				
	Red Pine			54.0			Cords				
	8			Basswood			Sawtimber	5.1	MBF	41.2	\$21,717.50
Beech		0.8	MBF								
Black Cherry		3.0	MBF								
Mixed Aspen		5.9	MBF								
<i>B. T. Aspen</i>		5.9	<i>MBF</i>								
Red Maple		0.8	MBF								
Red Pine		37.8	MBF								
Sugar Maple		10.3	MBF								
Basswood		Pulpwood	12.0	Cords							
Mixed Aspen			36.0	Cords							
<i>B. T. Aspen</i>			21.0	<i>Cords</i>							
<i>Quaking Aspen</i>			15.0	<i>Cords</i>							
Mixed Hardwood			127.0	Cords							
<i>Beech</i>			9.0	<i>Cords</i>							
<i>Black Cherry</i>			23.0	<i>Cords</i>							
<i>Ironwood</i>			7.0	<i>Cords</i>							
<i>Red Maple</i>			1.0	<i>Cords</i>							
<i>Sugar Maple</i>			84.0	<i>Cords</i>							
<i>White Ash</i>			3.0	<i>Cords</i>							
Red Pine			218.0	Cords							
9			Basswood	Sawtimber	4.0	MBF		32.1	\$16,915.10		

Description of Timber by Payment Unit (PU), con't

PU	MARKET GROUP	PRODUCT	QUANTITY	UNIT	ACRES	ADVERTISE PRICE	
9 con't	Beech	Sawtimber	0.7	MBF			
	Black Cherry		2.4	MBF			
	Mixed Aspen		4.6	MBF			
	<i>B. T. Aspen</i>		4.6	<i>MBF</i>			
	Red Maple		0.6	MBF			
	Red Pine		29.4	MBF			
	Sugar Maple		8.1	MBF			
	Basswood		Pulpwood	9.0			Cords
	Mixed Aspen			27.0			Cords
	<i>B. T. Aspen</i>			16.0			<i>Cords</i>
	<i>Quaking Aspen</i>			11.0			<i>Cords</i>
	Mixed Hardwood			98.0			Cords
	<i>Beech</i>			7.0			<i>Cords</i>
	<i>Black Cherry</i>			18.0			<i>Cords</i>
	<i>Ironwood</i>			5.0			<i>Cords</i>
	<i>Red Maple</i>			1.0			<i>Cords</i>
	<i>Sugar Maple</i>			65.0			<i>Cords</i>
	<i>White Ash</i>			2.0			<i>Cords</i>
	Red Pine			170.0			Cords
10	Basswood	Sawtimber	0.8	MBF	7.6	\$7,247.10	
	Mixed Aspen		28.8	MBF			
	<i>B. T. Aspen</i>		28.8	<i>MBF</i>			
	Sugar Maple		5.5	MBF			
	Basswood		Pulpwood	11.0			Cords
	Mixed Aspen			82.0			Cords
	<i>B. T. Aspen</i>			82.0			<i>Cords</i>
	Mixed Hardwood			48.0			Cords
	<i>American Elm</i>			2.0			<i>Cords</i>
	<i>Black Cherry</i>			8.0			<i>Cords</i>
	<i>Ironwood</i>			10.0			<i>Cords</i>
	<i>Red Maple</i>			4.0			<i>Cords</i>
	<i>Sugar Maple</i>			24.0			<i>Cords</i>
11	Basswood	Sawtimber		1.0	MBF	7.8	\$4,123.45
	Beech		0.2	MBF			
	Black Cherry		0.6	MBF			
	Mixed Aspen		1.1	MBF			
	<i>B. T. Aspen</i>		1.1	<i>MBF</i>			
	Red Maple		0.1	MBF			
	Red Pine		7.2	MBF			
	Sugar Maple		2.0	MBF			
	Basswood		Pulpwood	2.0	Cords		
	Mixed Aspen			7.0	Cords		
	<i>B. T. Aspen</i>			4.0	<i>Cords</i>		
	<i>Quaking Aspen</i>			3.0	<i>Cords</i>		
	Mixed Hardwood			24.0	Cords		
	<i>Beech</i>			2.0	<i>Cords</i>		
	<i>Black Cherry</i>			4.0	<i>Cords</i>		
	<i>Ironwood</i>			1.0	<i>Cords</i>		
	<i>Sugar Maple</i>			16.0	<i>Cords</i>		
	<i>White Ash</i>			1.0	<i>Cords</i>		
Red Pine	41.0	Cords					
TOTAL:				411.4	MBF		
TOTAL:			3,749.0	Cords			

Sale Specific Conditions & Requirements

Sale Name: Pink Pine

Sale Number: 61-032-16 Seq#: 1

1 - Sale Area

1.2 - Boundaries

1.2.1 - Painted boundaries (1/14)

The sale boundary and Payment Unit boundaries are marked and identified by red and yellow paint. Exterior sale boundary lines against state are marked with red paint. Interior Payment Unit boundaries are marked with yellow paint. The painted boundary line trees are not Included Timber and are to be protected unless marked with orange paint.

2 - Timber Specifications

2.1 - Included Timber

2.1.1 - Clearcut unit(s) with unmerchantable trees (6/14)

Within Payment Unit(s) 10, cut all trees that are two (2) inches or more at DBH except for white pine and any trees marked with green paint.

2.1.3 - Cut tree marked unit(s) (12/08)

Within Payment Unit(s) 1, 4, 6, 7, 8, 9, and 11, all trees are designated for cutting when marked with orange paint above and below stump height, regardless of merchantability. In addition, in Payment Unit 4, cut all aspen, beech, and ironwood trees greater than 4" DBH unless marked with green paint.

2.1.7 - Leave tree marked unit(s) (6/14)

Within Payment Unit(s) 2, 3, and 5, cut all trees that are two (2) inches or more at DBH except trees marked with green paint above and below stump height. Exception: single-stemmed maple and white pine saplings less than five inches DBH may be left standing if undamaged.

2.1.11 - Description of timber note (2/04)

Note that mixed hardwood pulpwood is primarily black cherry, with sugar maple and red maple, plus small amounts of beech, ironwood, ash, paper birch, and elm.

2.2 - Utilization

2.2.4 - Skidding length (2/14)

Skidding of unlimbed tops or lengths over 17 feet is not permissible unless approved by the Unit Manager or his/her representative.

3 - Payments

3.6 - Payment Unit Cutting Schedule

3.6.3 - Operating schedule (12/08)

Unless changed by written agreement, only 2 Payment Unit(s) may be operated at any one time. All contractual requirements on a Payment Unit shall be completed and accepted by the Unit Manager or his/her representative prior to the opening of an additional Payment Unit.

4 - Transportation

4.1 - Construction

4.1.3 - Slash and earthen piles (8/04)

Piles or windrows of earth along roads and landings that have been widened or constructed shall be leveled. Slash from road maintenance or construction, including stumps, shall be dispersed throughout the sale.

4.1.7 - Road closure (10/11)

All new roads built into the sale must be blocked to vehicle traffic upon completion of the sale. In general, this will require constructing a four (4') foot high berm of stumps and logs covered with earth. Contact the sale administrator for specific details of design and placement.

4.1.8 - Road work (1) (8/07)

To improve access to the sale, two potential access roads may be developed by the purchaser, as shown on the timber sale map. The southern proposed access to the south end of Payment Unit 5 will have trees cleared by the DNR prior to the sale, but may require additional grading and gravel placement by the purchaser. The northern proposed access between Payment Units 1 and 4 may be cleared and developed by the purchaser if desired for access, as directed by the timber sale administrator.

5 - Operations

5.2 - Conduct of Operations

5.2.1 - Slash

5.2.1.8 - Slash height (12/08)

No slash or tree tops may exceed 30 inches in height.

5.2.3 - Operating Restrictions

5.2.3.3 - Bark slippage restriction (3/09)

Within Payment Unit(s) 1 through 9 and 11, unless changed by written agreement, cutting and skidding are not permitted during the period of April 15 to July 15. This restriction is because of bark slippage.

5.2.3.6 - Bark beetle restriction (12/08)

In the event drought creates a high risk of pine bark beetle infestation, pine is not to be cut during the period March 1 through July 1, unless all portions of trees greater than two inches in diameter are removed from the sale area, reduced to chips, or treated to the satisfaction of the Unit Manager or his/her representative, within fifteen days of being severed from the stump. Pine log decks, pulpwood piles and treetops that are piled for chipping in the fall or winter within a 1/4 mile of susceptible sites must be removed before March 15. Residual slash must not be placed in piles or rows and must be spread over the site for quick drying. The Department of Natural Resources will exercise this specification if the risk of damage warrants.

5.2.3.9 - Beech hauling restriction (3/11)

American beech wood products with bark still attached, other than chips, are not to be transported from stands infested with beech scale to or through uninfested beech areas from July 15 to November 15. Beech scale is mobile at this time of year and can move from infested wood to live beech. (See Map of current beech scale distribution on the DNR Forest Health Website, www.michigan.gov/dnr.)

5.2.4 - Dead and Down Creation

5.2.4.1 - Dead and down creation, marked trees (10/13)

All trees marked with a green or orange "X" must be felled and left on site for wildlife.

5.2.38 - No decking against live trees (2/04)

Cut products may not be decked against unmarked or designated leave trees.

5.2.41 - Snowmobile trail protection (9/11)

The Platte snowmobile trail is shown on the Timber Sale Map. Do not cut or damage posts with orange trail markers or traffic control signs. If the trail is used for hauling, it must be graded to the satisfaction of the Unit Manager or his/her representative prior to December 1st. The snowmobile trail may not be used for any timber sale operations from December 1 to March 31. No decking of forest products will be permitted along the snowmobile trail between December 1 and March 31. All stumps within 20 feet of the snowmobile trail must be cut at ground level. In addition, any trees cut within 5 feet of the trail must have the stumps removed and be disposed of according to the direction of the Unit Manager or his/her representative.

5.4 - Soil Protection

5.4.3 - Erosion control (12/08)

Skid trails or haul roads may require erosion control structures or berms per direction of the Unit Manager or his/her representative.



TIMBER SALE MAP

This information provided by authority of Part 525, 1994 PA 451, as amended.

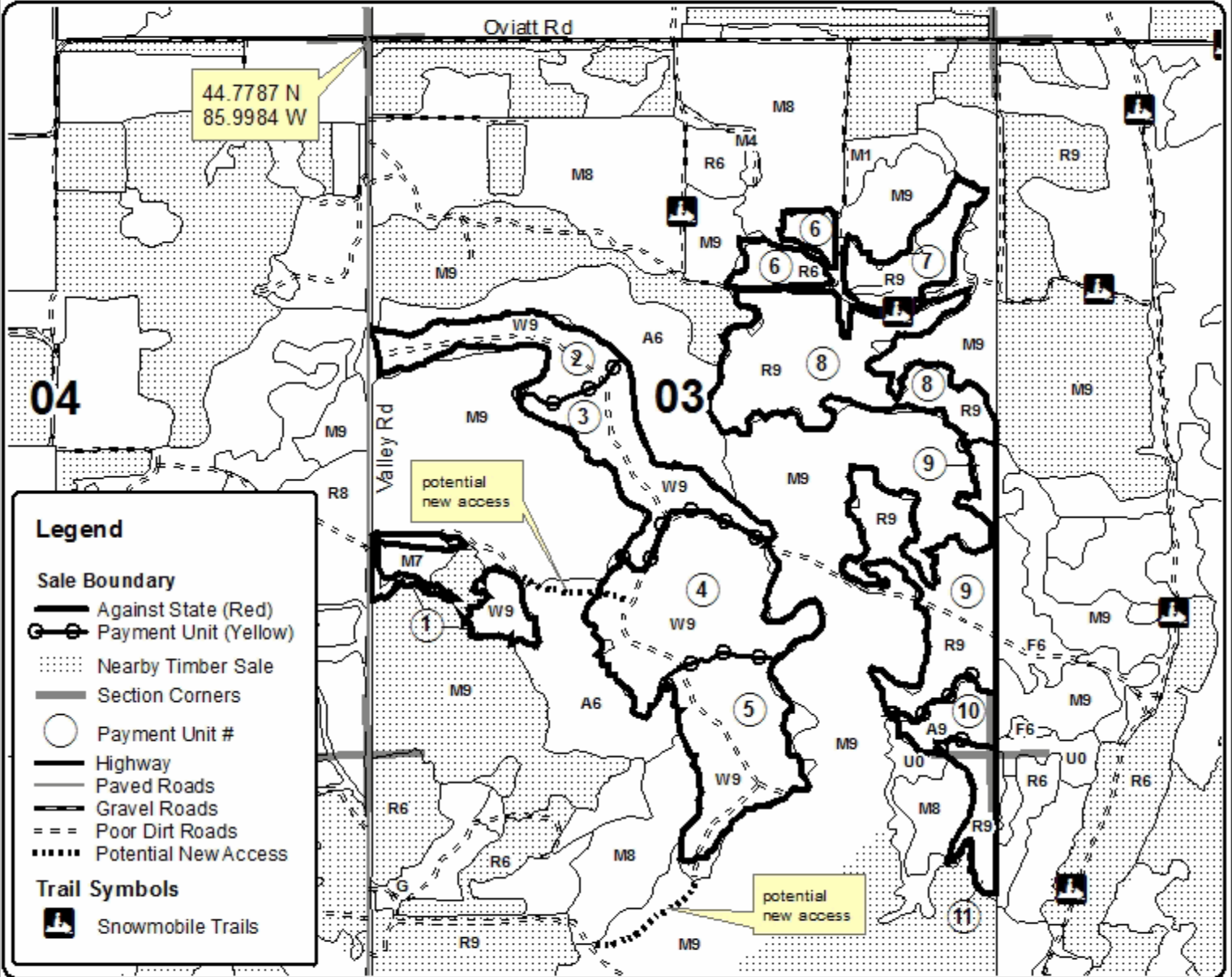
Sale Number	Year
61-032	16

Forest Management Unit Traverse City	County Benzie	Mapped By Tim Webb	Date 08/07/2016	Page 1	of 1
Township 27N	Range 14W	Section(s) and Subdivision(s) Sec. 3: E1/2, SW1/4, S1/2NW1/4; Sec. 10: N1/2NE1/4	Scale 1:15,840		

Cover Type				Density			
A = Aspen	H = Hemlock	N = Marsh	U = Upland Brush	0 = Non Stocked	5 = Pole Timber Medium		
R = Paper Birch	J = Jack Pine	O = Oak	UM = Upland Mixed	1 = Seedling Sapling Poor	6 = Pole Timber Well		
C = Cedar	L = Lowland Brush	P = Lowland Poplar	V = Bog or Marsh	2 = Seedling Sapling Medium	7 = Saw Timber Poor		
D = Tread Bog	LM = Lowland Mixed	Q = Mixed Swamp Conifer	W = White Pine	3 = Seedling Sapling Well	8 = Saw Timber Medium		
E = Swamp Hdwoods	M = Mpl. Bch, Birch	R = Red Pine	X = Non Stocked	4 = Pole Timber Poor	9 = Saw Timber Well		
F = Spruce Fir	MC = Mixed Conifer	S = Black Spruce	Z = Water				
G = Grass	MD = Mixed Deciduous	T = Tamarack					

PU	Acres	PU	Acres	PU	Acres	PU	Acres
1	9.3	4	41.7	7	12.7	10	7.6
2	16.4	5	28.6	8	41.2	11	7.8
3	21.8	6	8.9	9	32.1		

Pink Pine
228.1 acres



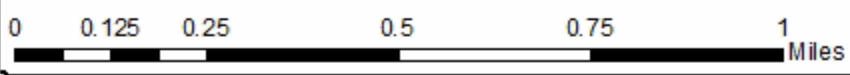
Legend

Sale Boundary

- Against State (Red)
- Payment Unit (Yellow)
- ⋯ Nearby Timber Sale
- Section Corners
- Payment Unit #
- Highway
- Paved Roads
- Gravel Roads
- - - Poor Dirt Roads
- ⋯ Potential New Access

Trail Symbols

- ⊠ Snowmobile Trails



TIMBER SALE INFORMATION

LVBA Oak (61-063-16)

Grand Traverse County (Advertised Price \$70,318.30)

SALE NOTE: This sale contains a number of recreation sites in the form of trails. The main trail that will be affected by this sale is the snowmobile trail which will most likely be used as the main haul route heading eastward to US131. Due to this fact, coupled with the fact that units 1, 2 & 4 have the oak wilt restriction applied to them, the sale will have a relatively small window for harvest. The sale has a 2.5 year contract in an attempt to account for this.

A recreation site such as a trail, pathway, or campground is within the sale area or the vicinity. Certain restrictions/specifications may be applicable including time restrictions.

A timber sale contract for this lump sum, sealed bid timber sale will be awarded to the responsible bidder offering the highest sealed bid price. Bids must be at or above the following advertised price for each species:

<u>PRODUCTS & SPECIES</u>	<u>ESTIMATED UNITS*</u>	<u>ADVERTISED PRICE</u>
Sawtimber		
B. T. Aspen	14.50 MBF	\$ 99.00 / MBF
Northern Pin Oak	175.00 MBF	\$ 114.00 / MBF
Red Pine	78.10 MBF	\$ 122.00 / MBF
White Oak	124.30 MBF	\$ 60.00 / MBF
Pulpwood		
B. T. Aspen	29.00 Cords	\$ 21.40 / Cord
Jack Pine	519.00 Cords	\$ 11.25 / Cord
Northern Pin Oak	593.00 Cords	\$ 16.10 / Cord
Red Maple	156.00 Cords	\$ 20.00 / Cord
Red Oak	84.00 Cords	\$ 16.10 / Cord
Red Pine	93.00 Cords	\$ 40.85 / Cord
White Oak	371.00 Cords	\$ 16.10 / Cord
White Pine	98.00 Cords	\$ 17.30 / Cord

* The total volume is statistically estimated within plus (+) or minus (-) 9.47 percent. The estimated units are final and not subject to adjustment. Prospective bidders are urged to examine this timber and to make their own estimates of quantity and quality.

BOND AND PAYMENT SCHEDULE:

1. A bond in the amount of \$3,516.00 to insure faithful performance of the conditions of the contract will be deposited by the successful bidder within 21 days of the sale award.
2. Cutting in any sale or unit without the required advance payment would be considered a trespass.
3. Total payment must be paid in advance or according to the following schedule:
 - (a) Ten percent (10%) of the sale value must be paid within 21 days of the sale award.
 - (b) The 10% down payment will be credited towards the first unit cut.
4. If no cutting takes place, the 10% down payment will not be refunded.
5. Operations on the contract issued will terminate on 06/30/2019.

Description of Timber by Payment Unit (PU)

PU	MARKET GROUP	PRODUCT	QUANTITY	UNIT	ACRES	ADVERTISE PRICE
1	B. T. Aspen	Sawtimber	13.1	MBF	30.1	\$19,433.75
	Northern Pin Oak		28.1	MBF		
	<i>Northern Pin Oak</i>		0.8	<i>MBF</i>		
	<i>Red Oak</i>		27.3	<i>MBF</i>		
	Red Pine		7.1	MBF		
	White Oak		93.9	MBF		
	B. T. Aspen	Pulpwood	21.0	Cords		
	Jack Pine		11.0	Cords		
	<i>Jack Pine</i>		11.0	<i>Cords</i>		
	Northern Pin Oak		2.0	Cords		
	Red Maple		45.0	Cords		
	<i>Red Maple</i>	<i>Sawtimber</i>	2.3	<i>MBF</i>		
	<i>Red Maple</i>	<i>Pulpwood</i>	40.0	<i>Cords</i>		
	Red Oak		49.0	Cords		
	Red Pine		26.0	Cords		
	White Oak		224.0	Cords		
	White Pine		85.0	Cords		
	<i>White Pine</i>	<i>Sawtimber</i>	7.0	<i>MBF</i>		
	<i>White Pine</i>	<i>Pulpwood</i>	71.0	<i>Cords</i>		
	2	B. T. Aspen	Sawtimber	1.4		
Northern Pin Oak			23.0	MBF		
<i>Northern Pin Oak</i>			16.5	<i>MBF</i>		
<i>Red Oak</i>			6.5	<i>MBF</i>		
White Oak			30.4	MBF		
B. T. Aspen		Pulpwood	8.0	Cords		
Jack Pine			78.0	Cords		
<i>Jack Pine</i>		<i>Sawtimber</i>	2.9	<i>MBF</i>		
<i>Jack Pine</i>		<i>Pulpwood</i>	72.0	<i>Cords</i>		
Northern Pin Oak			81.0	Cords		
Red Maple			89.0	Cords		
<i>Red Maple</i>		<i>Sawtimber</i>	1.8	<i>MBF</i>		
<i>Red Maple</i>		<i>Pulpwood</i>	85.0	<i>Cords</i>		
Red Oak			7.0	Cords		
White Oak			147.0	Cords		
White Pine			8.0	Cords		
<i>White Pine</i>		8.0	<i>Cords</i>			
3	Red Pine	Sawtimber	71.0	MBF	7.6	\$11,485.45
	Red Pine	Pulpwood	67.0	Cords		
	White Pine		5.0	Cords		
	<i>White Pine</i>	<i>Sawtimber</i>	1.0	<i>MBF</i>		
	<i>White Pine</i>	<i>Pulpwood</i>	3.0	<i>Cords</i>		
4	Northern Pin Oak	Sawtimber	123.9	MBF	138.0	\$28,063.90
	<i>Northern Pin Oak</i>		109.1	<i>MBF</i>		
	<i>Red Oak</i>		14.8	<i>MBF</i>		
	Jack Pine	Pulpwood	430.0	Cords		
	<i>Jack Pine</i>	<i>Sawtimber</i>	16.8	<i>MBF</i>		
	<i>Jack Pine</i>	<i>Pulpwood</i>	396.0	<i>Cords</i>		
	Northern Pin Oak		510.0	Cords		
	Red Maple		22.0	Cords		
	<i>Red Maple</i>	<i>Sawtimber</i>	0.8	<i>MBF</i>		
	<i>Red Maple</i>	<i>Pulpwood</i>	20.0	<i>Cords</i>		
	Red Oak		28.0	Cords		
TOTAL:			391.9	MBF		
TOTAL:			1,943.0	Cords		

Sale Specific Conditions & Requirements

Sale Name: LVBA Oak

Sale Number: 61-063-16 Seq#: 1

1 - Sale Area

1.2 - Boundaries

1.2.1 - Painted boundaries (1/14)

The sale boundary and Payment Unit boundaries are marked and identified by red paint.

2 - Timber Specifications

2.1 - Included Timber

2.1.4 - Species designation unit(s) (12/08)

Within Payment Unit(s) 4, all trees which meet minimum piece specifications in 2.2 - Utilization are designated for cutting except red pine, white pine and white oak.

2.1.7 - Leave tree marked unit(s) (6/14)

Within Payment Unit(s) 1, 2 & 3, all trees, which meet minimum piece specifications in 2.2 Utilization, are designated for cutting except trees marked with green paint above and below stump height.

2.2 - Utilization

2.2.3 - Stump heights (4/07)

Stump heights within the Sale Area shall not exceed 12 inches for trees greater than 10 inches DBH and 4 inches for trees smaller than 10 inches DBH.

3 - Payments

3.3 - Pre-measured Sales

3.3.4 - Dividing payment units (7/14)

Payment Unit(s) 4 may be divided at the request of the Purchaser and upon approval of the Unit Manager. Dividing Payment Units is a contract modification which requires a Timber Sale Contract Supplement. There will be only one division for this Payment Unit.

3.4 - Damaged Timber

3.4.1 - Damaged timber (6/14)

General Condition and Requirement 3.4 Damaged Timber, defines liquidated damages for undesignated live merchantable trees which are cut or injured. In addition, extreme care should be taken to avoid damage to tree seedlings and saplings.

Within the sale area, if more than 25% of the tree seedlings or saplings (1/4" to 4.5" DBH) within units 1, 2 & 4 are damaged, liquidated damages will be assessed at \$100.00 per acre for all acreage within that specified portion of the sale area that was damaged.

No damage is acceptable to merchantable trees. Within the entire sale area, if more than 10% of trees (> 4.5" DBH) are damaged, liquidated damages will be assessed for all trees damaged. Rates will be in accordance with General Condition and Requirement 3.4 Damaged Timber.

4 - Transportation

4.1 - Construction

4.1.11 - Permits (2/12)

The Purchaser will secure any necessary permits that may be required.

4.1.12 - No new roads (1/12)

No new roads will be permitted in any Payment Unit. All operations are limited to existing roads. Skid trails only will be allowed.

5 - Operations

5.2 - Conduct of Operations

5.2.1 - Slash

5.2.1.8 - Slash height (12/08)

No slash or tree tops may exceed 36 inches in height.

5.2.2 - Hazard Trees/Snags

5.2.2.1 - Den trees (2/04)

Obvious hollow and/or den trees shall be protected and left standing unless they are a safety hazard.

5.2.3 - Operating Restrictions

5.2.3.4 - Oak wilt restriction (6/10)

Within Payment Unit(s) 1, 2 & 4, unless changed by written agreement, cutting, skidding, and hauling are not permitted during the period of April 15 to July 15. This is necessary to reduce the spread of oak wilt. For more information, contact the Unit Manager or his/her representative.

5.2.29 - Shrub protection (9/07)

Do not cut or damage hawthorn, witch-hazel or juneberry. These woody-shrub plants are highly beneficial to various wildlife species.

5.2.39 - ORV trail/route protection (12/12)

The MCCCT is a motorcycle trail and is shown on the Timber Sale Map. Do not cut trees or damage posts with trail markers. All stumps within 5 feet of the trail must be cut flush with the ground. Maintain a 20 foot wide slash, debris, and rut free zone daily using the trail as the centerline. Do not run equipment down the route. Skidding across the trail or route may only occur in locations approved by the sale administrator.

5.2.40 - Pathway protection (10/10)

The North County Trail is a non-motorized trail and is shown on the Timber Sale Map. Do not cut trees or damage posts with orange pathway markers. Maintain a 20-foot wide slash, debris, and rut free zone daily, using the pathway as the centerline. Do not run equipment down the pathway. Skidding across the trail may only occur in locations approved by the sale administrator.

5.2.41 - Snowmobile trail protection (9/11)

The Snowmobile Trail 5 is shown on the Timber Sale Map. Do not cut or damage posts with orange trail markers or traffic control signs. If the trail is used, it must be maintained and restored to a condition equal to or better than before the sale. The road maintenance/restoration must be done prior to December 1. If the trail is used for hauling, it must be graded to the satisfaction of the Unit Manager or his/her representative prior to December 1st. The snowmobile trail may not be used for any timber sale operations from December 1 to March 31 unless approved by the unit manager or his/her representative. Maintain a 20 foot wide slash, debris, and rut free zone daily using the snowmobile trail as the centerline. No decking of forest products will be permitted along the snowmobile trail. All stumps within 20 feet of the snowmobile trail must be cut at ground level.

5.4 - Soil Protection

5.4.1 - Rutting restriction, general (7/16)

Operations are to cease immediately if equipment and weather conditions result in rutting of roads and/or skid trails which is 12 inches or greater in depth and 50 feet in length. The Unit Manager or his/her representative may restrict hauling and/or skidding if ruts exceed the specified depth. With the Unit Manager or his/her representative's approval, the Purchaser may return to the area when the risk of rutting has decreased.

6 - Safety and Fire Prevention

6.2 - Signing

6.2.2 - Snowmobile trail posting (8/09)

The Purchaser is responsible for posting and maintaining caution signs on the snowmobile trail prior to beginning operations

during the snowmobile season (approximately December 1 to March 31). The trail must be posted at appropriate distances from the sale area to warn of logging activity and truck traffic. Signs must be removed when harvest operations are suspended or completed. The Purchaser will provide these signs.

6.2.3 - Recreational trail posting (2/10)

The Purchaser is responsible for posting and maintaining caution signs on on both the North Country Trail and the MCCCT motorcycle trail prior to beginning operations. The trail must be posted at appropriate distances from the sale area to warn of logging activity and truck traffic at both ends of the trail. Signs must be removed when harvest operations are suspended or completed. The Purchaser will provide these signs.



TIMBER SALE MAP

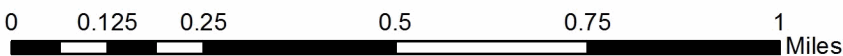
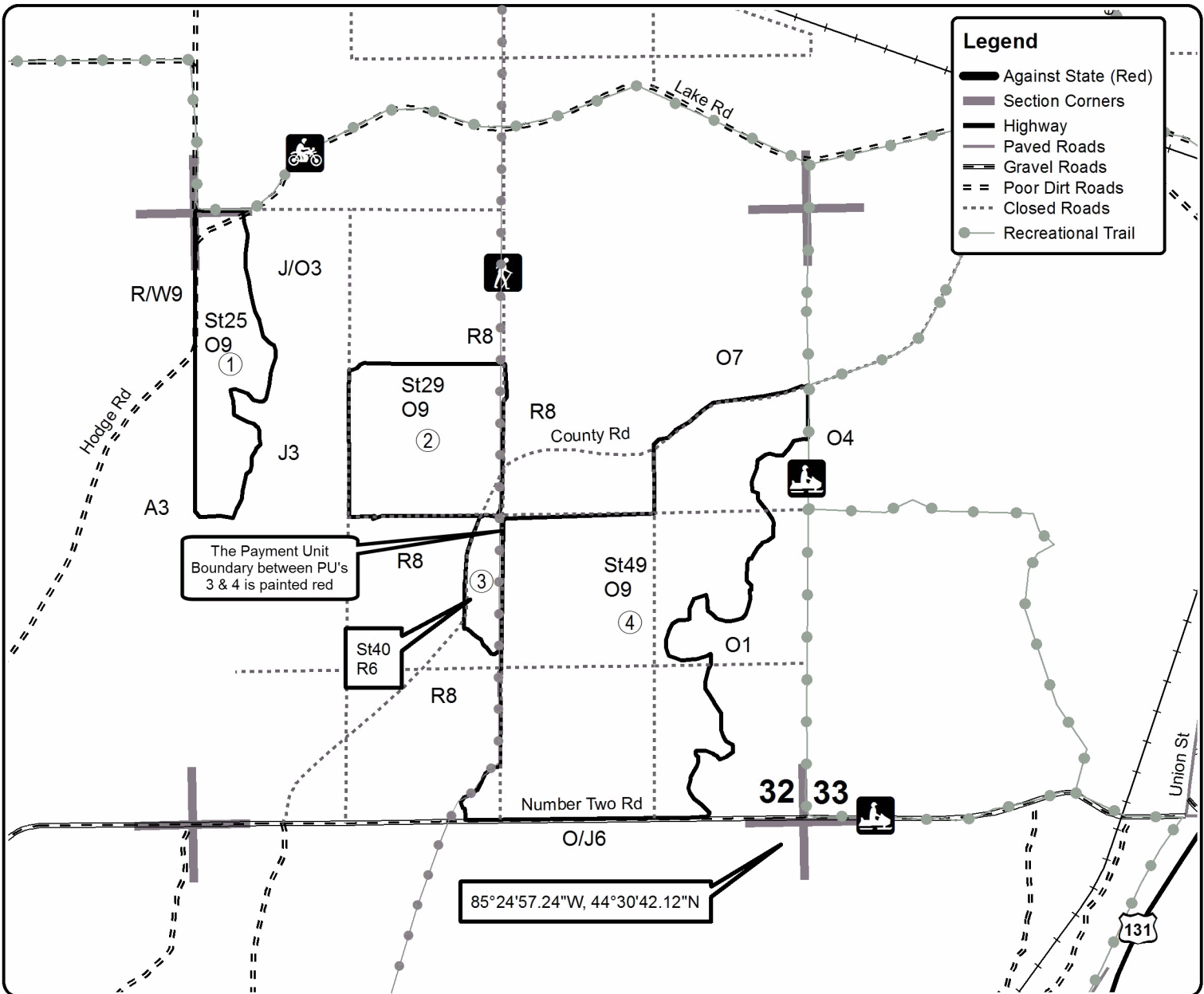
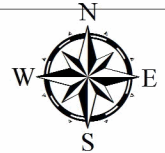
This information provided by authority of Part 525, 1994 PA 451, as amended.

Forest Management Unit Traverse City FMU		County Grand Traverse	Mapped By Patrick Cotant	Date 8/15/2016	Page 1	of 1
Township 25N	Range 9W	Section(s) and Subdivision(s) Sec 32 - W1/2NW, SENW, SENE, NESW, SE1/4		Scale 1:15,840		
Cruised By Patrick Cotant/Andy Hallfrisch						

Cover Type				Density			
A = Aspen	H = Hemlock	N = Marsh	U = Upland Brush	0 = Non Stocked	5 = Pole Timber Medium		
B = Paper Birch	J = Jack Pine	O = Oak	UM = Upland Mixed	1 = Seedling Sapling Poor	6 = Pole Timber Well		
C = Cedar	L = Lowland Brush	P = Lowland Poplar	V = Bog or Marsh	2 = Seedling Sapling Medium	7 = Saw Timber Poor		
D = Treed Bog	LM = Lowland Mixed	Q = Mixed Swamp Conifer	W = White Pine	3 = Seedling Sapling Well	8 = Saw Timber Medium		
E = Swamp Hdwoods	M = Mpl, Bch, Brch	R = Red Pine	X = Non Stocked	4 = Pole Timber Poor	9 = Saw Timber Well		
F = Spruce Fir	MC = Mixed Conifer	S = Black Spruce	Z = Water				
G = Grass	MD = Mixed Deciduous	T = Tamarack					

PU	Acres	PU	Acres
1	30.1	4	138.0
2	40.1		
3	7.6		

LVBA Oak Compartment 057 215.8 Acres



TIMBER SALE INFORMATION

Wrong Side Red Pine (61-066-16)

Grand Traverse County (Advertised Price \$77,618.40)

SALE NOTE: A recreation site such as a trail, pathway, or campground is within the sale area or the vicinity. Certain restrictions/specifications may be applicable including time restrictions.

A timber sale contract for this lump sum, sealed bid timber sale will be awarded to the responsible bidder offering the highest sealed bid price. Bids must be at or above the following advertised price for each species:

<u>PRODUCTS & SPECIES</u>	<u>ESTIMATED UNITS*</u>	<u>ADVERTISED PRICE</u>
Sawtimber		
Red Pine	382.20 MBF	\$ 139.00 / MBF
White Oak	11.10 MBF	\$ 69.00 / MBF
White Pine	41.30 MBF	\$ 99.00 / MBF
Pulpwood		
Misc. Species 1	41.00 Cords	\$ 4.25 / Cord
Northern Pin Oak	136.00 Cords	\$ 18.25 / Cord
Red Pine	334.00 Cords	\$ 46.25 / Cord
White Oak	25.00 Cords	\$ 18.25 / Cord
White Pine	55.00 Cords	\$ 19.60 / Cord

* The total volume is statistically estimated within plus (+) or minus (-) 13.32 percent. The estimated units are final and not subject to adjustment. Prospective bidders are urged to examine this timber and to make their own estimates of quantity and quality.

BOND AND PAYMENT SCHEDULE:

1. A bond in the amount of \$3,881.00 to insure faithful performance of the conditions of the contract will be deposited by the successful bidder within 21 days of the sale award.
2. Cutting in any sale or unit without the required advance payment would be considered a trespass.
3. Total payment must be paid in advance or according to the following schedule:
 - (a) Ten percent (10%) of the sale value must be paid within 21 days of the sale award.
 - (b) The 10% down payment will be credited towards the first unit cut.
4. If no cutting takes place, the 10% down payment will not be refunded.
5. Operations on the contract issued will terminate on 12/31/2018.

Description of Timber by Payment Unit (PU)

PU	MARKET GROUP	PRODUCT	QUANTITY	UNIT	ACRES	ADVERTISE PRICE
1	Red Pine	Sawtimber	99.2	MBF	10.3	\$20,141.35
	White Oak		2.9	MBF		
	White Pine		10.7	MBF		
	Misc. Species 1	Pulpwood	11.0	Cords		
	Northern Pin Oak		35.0	Cords		
	<i>Northern Pin Oak</i>	<i>Sawtimber</i>	7.2	<i>MBF</i>		
	<i>Northern Pin Oak</i>	<i>Pulpwood</i>	21.0	<i>Cords</i>		
	Red Pine		87.0	Cords		
	White Oak		6.0	Cords		
	White Pine		14.0	Cords		
	2	Red Pine	Sawtimber	181.0		
White Oak			5.2	MBF		
White Pine			19.6	MBF		
Misc. Species 1		Pulpwood	19.0	Cords		
Northern Pin Oak			64.0	Cords		
<i>Northern Pin Oak</i>		<i>Sawtimber</i>	13.1	<i>MBF</i>		
<i>Northern Pin Oak</i>		<i>Pulpwood</i>	38.0	<i>Cords</i>		
Red Pine			158.0	Cords		
White Oak			12.0	Cords		
White Pine			26.0	Cords		
3		Red Pine	Sawtimber	102.0	MBF	10.6
	White Oak		3.0	MBF		
	White Pine		11.0	MBF		
	Misc. Species 1	Pulpwood	11.0	Cords		
	Northern Pin Oak		37.0	Cords		
	<i>Northern Pin Oak</i>	<i>Sawtimber</i>	7.4	<i>MBF</i>		
	<i>Northern Pin Oak</i>	<i>Pulpwood</i>	22.0	<i>Cords</i>		
	Red Pine		89.0	Cords		
	White Oak		7.0	Cords		
	White Pine		15.0	Cords		
	TOTAL:			434.6	MBF	
TOTAL:			591.0	Cords		

Sale Specific Conditions & Requirements

Sale Name: Wrong Side Red Pine

Sale Number: 61-066-16 Seq#: 1

1 - Sale Area

1.2 - Boundaries

1.2.1 - Painted boundaries (1/14)

The sale boundary and Payment Unit boundaries are marked and identified by red and yellow paint. Exterior sale boundary lines against state are marked with red paint. Interior Payment Unit boundaries are marked with yellow paint. The painted boundary line trees are not Included Timber and are to be protected. Yellow painted trees designating an interior Payment Unit boundary are only to be cut when all surrounding Payment Units have been paid.

2 - Timber Specifications

2.1 - Included Timber

2.1.1 - Clearcut unit(s) with unmerchantable trees (6/14)

Within Payment Unit(s) 1, 2 & 3, cut all trees that are two (2) inches or more at DBH except trees marked with green paint.

2.1.11 - Description of timber note (2/04)

Note that Miscellaneous Species 1 = dead oak.

2.2 - Utilization

2.2.2 - Chipping required (5/14)

Payment Unit's 1, 2 & 3 must be chip harvested to facilitate subsequent planting operations. The Purchaser has the option to produce sawlogs or pulpwood bolts, but the remaining portion of the trees must be chipped and hauled. Do not chip 1/6 to 1/3 of the slash from harvested trees (tree tops and limbs less than four inches in diameter). Material left should be evenly scattered throughout the sale area so as not to inhibit future planting operations including trenching.

2.2.3 - Stump heights (4/07)

Stump heights within the Sale Area shall not exceed 6 inches for all trees. This is in order to facilitate planting operations.

3 - Payments

3.4 - Damaged Timber

3.4.1 - Damaged timber (6/14)

General Condition and Requirement 3.4 Damaged Timber, defines liquidated damages for undesignated live merchantable trees which are cut or injured. No damage is acceptable to merchantable trees that are marked with green paint/designated to leave. Within the sale area, if any trees (> 4.5" DBH) within the sale area are damaged, liquidated damages will be assessed for all trees damaged. Rates will be in accordance with General Condition and Requirement 3.4 Damaged Timber.

4 - Transportation

4.1 - Construction

4.1.11 - Permits (2/12)

The Purchaser will secure any necessary permits that may be required.

4.1.12 - No new roads (1/12)

No new roads will be permitted in any Payment Unit. All operations are limited to existing roads. Skid trails only will be allowed.

5 - Operations

5.2 - Conduct of Operations

5.2.1 - Slash

5.2.1.8 - Slash height (12/08)

No slash or tree tops may exceed 24 inches in height.

5.2.39 - ORV trail/route protection (12/12)

The MCCCT trail is shown on the Timber Sale Map. Do not cut trees or damage posts with trail markers. All stumps within 5 feet of the trail must be cut flush with the ground. Maintain a 20 foot wide slash, debris, and rut free zone daily using the MCCCT trail or route as the centerline. Do not run equipment down the MCCCT trail. Skidding across the trail or route may only occur in locations approved by the sale administrator.

5.2.41 - Snowmobile trail protection (9/11)

The snowmobile trail is shown on the Timber Sale Map. Do not cut or damage posts with orange trail markers or traffic control signs. If the trail is used, it must be maintained and restored to a condition equal to or better than before the sale. The road maintenance/restoration must be done prior to December 1. If the trail is used for hauling, it must be graded to the satisfaction of the Unit Manager or his/her representative prior to December 1st. The snowmobile trail may not be used for any timber sale operations from December 1 to March 31 unless approved by the unit manager or his/her representative. Maintain a 20 foot wide slash, debris, and rut free zone daily using the snowmobile trail as the centerline. No decking of forest products will be permitted along the snowmobile trail. All stumps within 20 feet of the snowmobile trail must be cut at ground level.

5.4 - Soil Protection

5.4.1 - Rutting restriction, general (7/16)

Operations are to cease immediately if equipment and weather conditions result in rutting of roads and/or skid trails which is 12 inches or greater in depth and 50 feet in length. The Unit Manager or his/her representative may restrict hauling and/or skidding if ruts exceed the specified depth. With the Unit Manager or his/her representative's approval, the Purchaser may return to the area when the risk of rutting has decreased.

6 - Safety and Fire Prevention

6.2 - Signing

6.2.1 - Road posting (9/09)

The Purchaser is responsible for posting and maintaining caution signs on M-113 prior to beginning operations. The road must be posted at appropriate distances from the sale area to warn of logging activity and truck traffic. Signs must be removed when harvest operations are suspended or completed. The Purchaser will provide these signs.

6.2.2 - Snowmobile trail posting (8/09)

The Purchaser is responsible for posting and maintaining caution signs on the snowmobile trail prior to beginning operations during the snowmobile season (approximately December 1 to March 31). The trail must be posted at appropriate distances from the sale area to warn of logging activity and truck traffic. Signs must be removed when harvest operations are suspended or completed. The Purchaser will provide these signs.

6.2.3 - Recreational trail posting (2/10)

The Purchaser is responsible for posting and maintaining caution signs on the MCCCT trail prior to beginning operations. The trail must be posted at appropriate distances from the sale area to warn of logging activity and truck traffic at both ends of the trail. Signs must be removed when harvest operations are suspended or completed. The Purchaser will provide these signs.



TIMBER SALE MAP

This information provided by authority of Part 525, 1994 PA 451, as amended.

Forest Management Unit Traverse City FMU		County Grand Traverse	Mapped By Patrick Cotant	Date 8/16/2016	Page 1	of 1
Township 25N	Range 9W	Section(s) and Subdivision(s) Sec 28 - NESW, NWSE, S1/2SE		Scale 1:15,840		

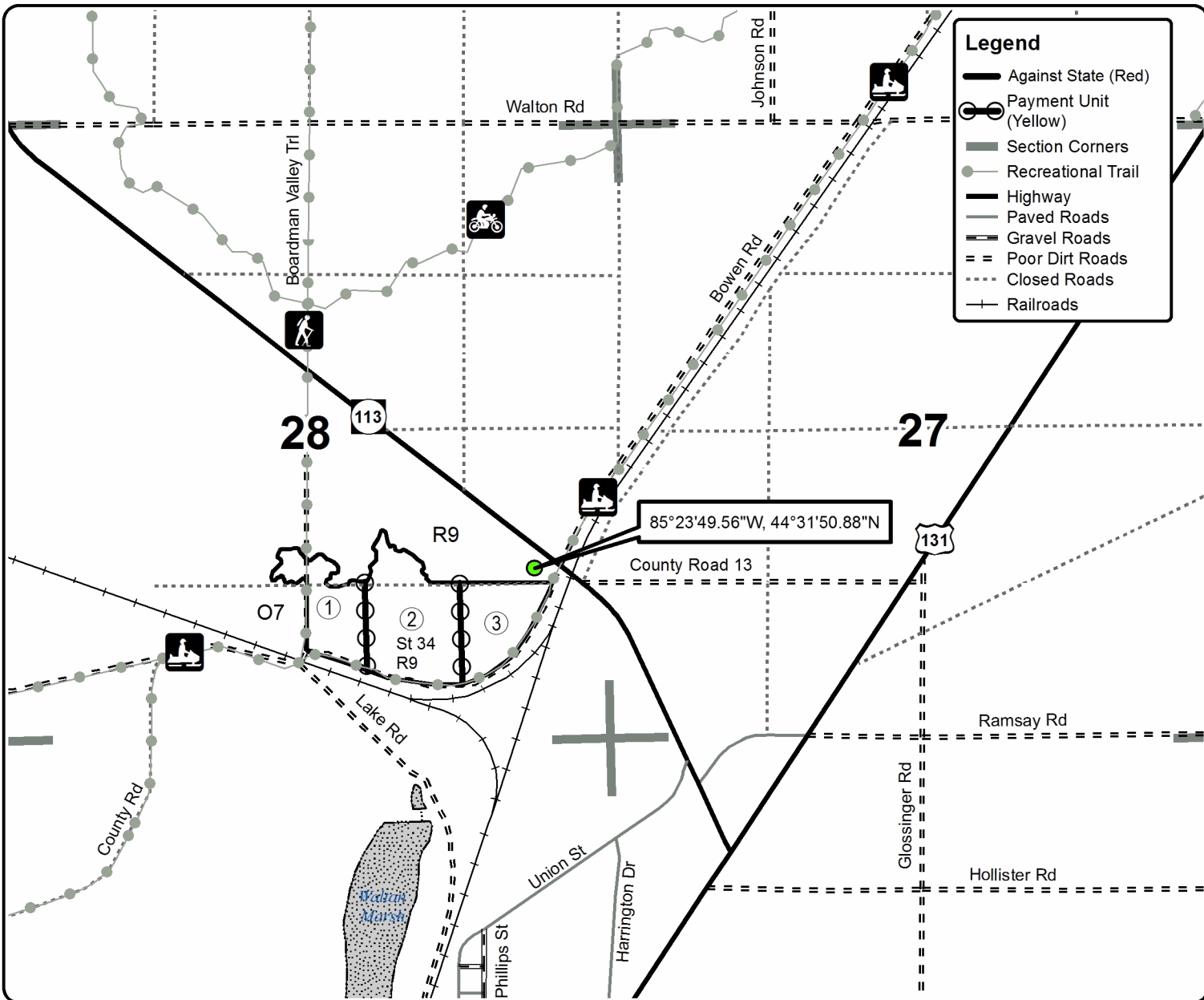
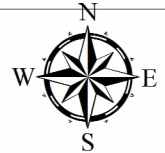
Cover Type				Density			
A = Aspen	H = Hemlock	N = Marsh	U = Upland Brush	0 = Non Stocked	5 = Pole Timber Medium		
B = Paper Birch	J = Jack Pine	O = Oak	UM = Upland Mixed	1 = Seedling Sapling Poor	6 = Pole Timber Well		
C = Cedar	L = Lowland Brush	P = Lowland Poplar	V = Bog or Marsh	2 = Seedling Sapling Medium	7 = Saw Timber Poor		
D = Treed Bog	LM = Lowland Mixed	Q = Mixed Swamp Conifer	W = White Pine	3 = Seedling Sapling Well	8 = Saw Timber Medium		
E = Swamp Hdwoods	M = Mpl, Bch, Brch	R = Red Pine	X = Non Stocked	4 = Pole Timber Poor	9 = Saw Timber Well		
F = Spruce Fir	MC = Mixed Conifer	S = Black Spruce	Z = Water				
G = Grass	MD = Mixed Deciduous	T = Tamarack					

PU	Acres
1	10.3
2	18.8
3	10.6

Wrong Side Red Pine

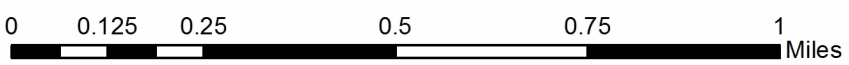
Compartment 057

39.7 Acres



Legend

- Against State (Red)
- Payment Unit (Yellow)
- Section Corners
- Recreational Trail
- Highway
- Paved Roads
- Gravel Roads
- == Poor Dirt Roads
- ... Closed Roads
- Railroads



TIMBER SALE INFORMATION

North Branch Aspen (61-072-16)

Benzie County (Advertised Price \$9,829.20)

A timber sale contract for this lump sum, sealed bid timber sale will be awarded to the responsible bidder offering the highest sealed bid price. Bids must be at or above the following advertised price for each species:

<u>PRODUCTS & SPECIES</u>	<u>ESTIMATED UNITS*</u>	<u>ADVERTISED PRICE</u>
Sawtimber		
B. T. Aspen	23.80 MBF	\$ 92.00 / MBF
Red Pine	7.50 MBF	\$ 114.00 / MBF
Sugar Maple	9.50 MBF	\$ 250.00 / MBF
Pulpwood		
B. T. Aspen	94.00 Cords	\$ 19.95 / Cord
Mixed Hardwood	46.00 Cords	\$ 18.65 / Cord
Red Pine	44.00 Cords	\$ 38.10 / Cord

* The total volume is statistically estimated within plus (+) or minus (-) 18.18 percent. The estimated units are final and not subject to adjustment. Prospective bidders are urged to examine this timber and to make their own estimates of quantity and quality.

BOND AND PAYMENT SCHEDULE:

1. A bond in the amount of \$491.00 to insure faithful performance of the conditions of the contract will be deposited by the successful bidder within 21 days of the sale award.
2. Cutting in any sale or unit without the required advance payment would be considered a trespass.
3. Total payment must be paid in advance or according to the following schedule:
 - (a) Ten percent (10%) of the sale value must be paid within 21 days of the sale award.
 - (b) The 10% down payment will be credited towards the first unit cut.
4. If no cutting takes place, the 10% down payment will not be refunded.
5. Operations on the contract issued will terminate on 12/31/2018.

Description of Timber by Payment Unit (PU)

PU	MARKET GROUP	PRODUCT	QUANTITY	UNIT	ACRES	ADVERTISE PRICE
1	B. T. Aspen	Sawtimber	20.3	MBF	5.4	\$6,736.40
	Sugar Maple		9.5	MBF		
	B. T. Aspen	Pulpwood	82.0	Cords		
	Mixed Hardwood		46.0	Cords		
	<i>Sugar Maple</i>		<i>46.0</i>	<i>Cords</i>		
2	B. T. Aspen	Sawtimber	3.5	MBF	3.1	\$3,092.80
	Red Pine		7.5	MBF		
	B. T. Aspen	Pulpwood	12.0	Cords		
	Red Pine		44.0	Cords		
TOTAL:			40.8	MBF		
TOTAL:			184.0	Cords		

Sale Specific Conditions & Requirements

Sale Name: North Branch Aspen

Sale Number: 61-072-16 Seq#: 1

1 - Sale Area

1.2 - Boundaries

1.2.1 - Painted boundaries (1/14)

The sale boundary and Payment Unit boundaries are marked and identified by blue, red and yellow paint. Exterior sale boundary lines against private property are marked with blue paint. Exterior sale boundary lines against state land are marked with red paint. Interior Payment Unit boundaries are marked with yellow paint. The painted boundary line trees are not Included Timber and are to be protected unless marked with orange paint.

2 - Timber Specifications

2.1 - Included Timber

2.1.1 - Clearcut unit(s) with unmerchantable trees (6/14)

Within Payment Unit(s) 1, cut all trees that are two (2) inches or more at DBH except for oak trees and trees marked with green paint.

2.1.3 - Cut tree marked unit(s) (12/08)

Within Payment Unit(s) 2, all trees are designated for cutting when marked with orange paint above and below stump height, regardless of merchantability.

2.1.11 - Description of timber note (2/04)

Note that mixed hardwood pulpwood is predominantly sugar maple, with small amounts of beech and basswood.

2.2 - Utilization

2.2.6 - Roundwood operation required (5/07)

The skidding of whole trees or tree segments with limbs attached is prohibited. All products must be produced as roundwood and forwarded to existing roads or landing areas in final product length.

4 - Transportation

4.1 - Construction

4.1.3 - Slash and earthen piles (8/04)

Piles or windrows of earth along roads and landings that have been widened or constructed shall be leveled. Slash from road maintenance or construction, including stumps, shall be dispersed throughout the sale.

4.1.7 - Road closure (10/11)

All new roads built into the sale must be blocked to vehicle traffic upon completion of the sale. In general, this will require constructing a four (4') foot high berm of stumps and logs covered with earth. Contact the sale administrator for specific details of design and placement.

5 - Operations

5.2 - Conduct of Operations

5.2.1 - Slash

5.2.1.8 - Slash height (12/08)

No slash or tree tops may exceed 30 inches in height.

5.2.3 - Operating Restrictions

5.2.3.6 - Bark beetle restriction (12/08)

In the event drought creates a high risk of pine bark beetle infestation, pine is not to be cut during the period March 1 through July 1, unless all portions of trees greater than two inches in diameter are removed from the sale area, reduced to chips, or treated to the satisfaction of the Unit Manager or his/her representative, within fifteen days of being severed

from the stump. Pine log decks, pulpwood piles and treetops that are piled for chipping in the fall or winter within a 1/4 mile of susceptible sites must be removed before March 15. Residual slash must not be placed in piles or rows and must be spread over the site for quick drying. The Department of Natural Resources will exercise this specification if the risk of damage warrants.

5.2.4 - Dead and Down Creation

5.2.4.1 - Dead and down creation, marked trees (10/13)

All trees marked with a green "X" must be felled and left on site for wildlife.

5.2.18 - Equipment requirements (1/09)

Although not required, it is recommended that this sale be cut using track vehicles, as most of the sale is on a moderately steep hillside.

5.2.38 - No decking against live trees (2/04)

Cut products may not be decked against unmarked or designated leave trees.

5.3 - Stream Protection

5.3.1 - Operating near stream (7/04)

No tracked or wheeled vehicles shall be operated within 100 feet of the N. Branch Platte River, which runs just south of the sale area. Equipment must remain within the red painted sale boundary line along the south edge of the sale, unless excepted by the sale administrator.

5.4 - Soil Protection

5.4.3 - Erosion control (12/08)

Skid trails or haul roads may require erosion control structures or berms per direction of the Unit Manager or his/her representative.

6 - Safety and Fire Prevention

6.2 - Signing

6.2.1 - Road posting (9/09)

The Purchaser is responsible for posting and maintaining caution signs on Valley Road prior to beginning operations. The road must be posted at appropriate distances from the sale area to warn of logging activity and truck traffic. Signs must be removed when harvest operations are suspended or completed. The Purchaser will provide these signs.



TIMBER SALE MAP

This information provided by authority of Part 525, 1994 PA 451, as amended.

Sale Number	Year
61-072	16

Forest Management Unit Traverse City	County Benzie	Mapped By Tim Webb	Date 09/07/2016	Page 1	of 1
Township 27N	Range 14W	Section(s) and Subdivision(s) sec. 21: SENE, NESE	Scale 1:7,920		

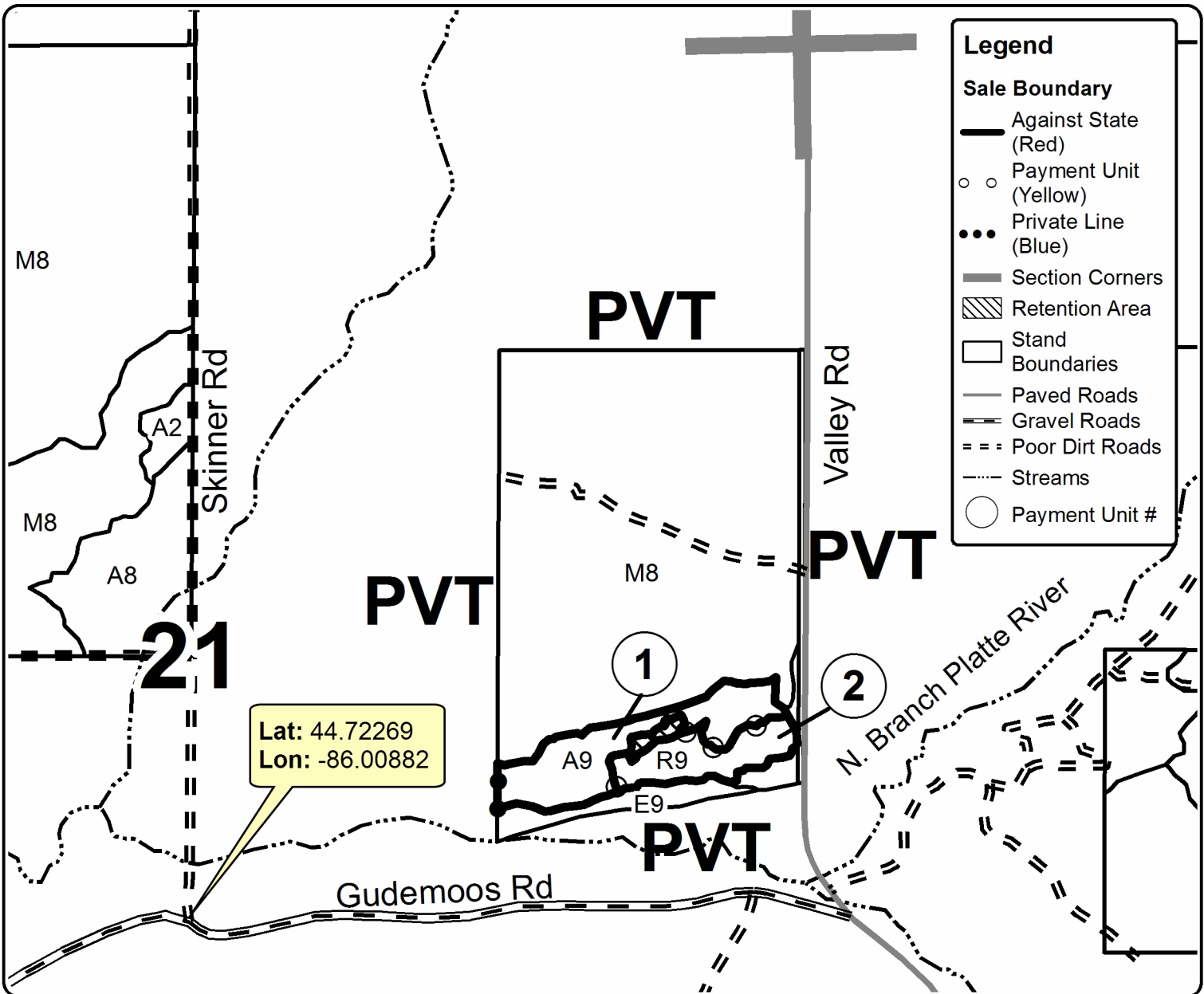
Cover Type				Density	
A = Aspen	H = Hemlock	N = Marsh	U = Upland Brush	0 = Non Stocked	5 = Pole Timber Medium
B = Paper Birch	J = Jack Pine	O = Oak	UM = Upland Mixed	1 = Seedling Sapling Poor	6 = Pole Timber Well
C = Cedar	L = Lowland Brush	P = Lowland Poplar	V = Bog or Marsh	2 = Seedling Sapling Medium	7 = Saw Timber Poor
D = Treed Bog	LM = Lowland Mixed	Q = Mixed Swamp Conifer	W = White Pine	3 = Seedling Sapling Well	8 = Saw Timber Medium
E = Swamp Hdwoods	M = Mpl, Bch, Brch	R = Red Pine	X = Non Stocked	4 = Pole Timber Poor	9 = Saw Timber Well
F = Spruce Fir	MC = Mixed Conifer	S = Black Spruce	Z = Water		
G = Grass	MD = Mixed Deciduous	T = Tamarack			

PU	Acres
1	5.4
2	3.1

North Branch Aspen

Compartment 7

8.5 acres



TIMBER SALE INFORMATION

SOUTH BRANCH BARRENS MIX (61-078-15)

T26N, R09W, SEC. 12.

Grand Traverse County (Advertised Price \$26,698.50)

A timber sale contract for this lump sum, sealed bid timber sale will be awarded to the responsible bidder offering the highest sealed bid price. Bids must be at or above the following advertised price for each species:

<u>PRODUCTS & SPECIES</u>	<u>ESTIMATED UNITS*</u>	<u>ADVERTISED PRICE</u>
Sawtimber		
Red Oak	54.50 MBF	\$ 252.00 / MBF
White Oak	29.50 MBF	\$ 74.00 / MBF
Pulpwood		
Mixed Oak	447.00 Cords	\$ 8.80 / Cord
Red Maple	264.00 Cords	\$ 15.60 / Cord

In addition, the successful bidder agrees to purchase the following species at the indicated advertised price for a total value of \$2,729.50:

<u>PRODUCTS & SPECIES</u>	<u>ESTIMATED UNITS*</u>	<u>ADVERTISED PRICE</u>
Pulpwood		
Mixed Aspen	45.00 Cords	\$ 21.60 / Cord
Mixed Softwood	74.00 Cords	\$ 23.75 / Cord

* The total volume is statistically estimated within plus (+) or minus (-) 21.60 percent. The estimated units are final and not subject to adjustment. Prospective bidders are urged to examine this timber and to make their own estimates of quantity and quality.

BOND AND PAYMENT SCHEDULE:

1. A bond in the amount of \$1,400.00 to insure faithful performance of the conditions of the contract will be deposited by the successful bidder within 21 days of the sale award.
2. Cutting in any sale or unit without the required advance payment would be considered a trespass.
3. Total payment must be paid in advance or according to the following schedule:
 - (a) Ten percent (10%) of the sale value must be paid within 21 days of the sale award.
 - (b) The 10% down payment will be credited towards the first unit cut.
4. If no cutting takes place, the 10% down payment will not be refunded.
5. Operations on the contract issued will terminate on 12/31/2018.

Sale Specific Conditions & Requirements

Sale Name: SOUTH BRANCH BARRENS MIX

Sale Number: 61-078-15 Seq#: 1

1 - Sale Area

1.2 - Boundaries

1.2.1 - Painted boundaries (1/14)

The sale boundary is marked and identified by red paint. Exterior sale boundary lines against state are marked with red paint. The painted boundary line trees are not Included Timber and are to be protected.

2 - Timber Specifications

2.1 - Included Timber

2.1.7 - Leave tree marked unit(s) (6/14)

Within Payment Unit(s) 1 and 2, cut all trees that are two (2) inches or more at DBH except trees marked with green paint above and below stump height.

2.1.11 - Description of timber note (2/04)

Note that mixed pine pulpwood is white pine and jack pine and mixed oak pulpwood includes 3 cords black cherry.

2.2 - Utilization

2.2.2 - Chipping required (5/14)

This area must be chip harvested to facilitate future silvicultural activities. The Purchaser has the option to produce sawlogs or pulpwood bolts, but the remaining portion of the trees must be chipped and hauled. The requirement to leave 1/6 to 1/3 of the slash from harvested trees (tree tops and limbs less than four inches in diameter) does not apply on this harvest as this would impede future management (periodic prescribed burning to maintain barrens habitat).

2.2.3 - Stump heights (4/07)

Stump heights within the Sale Area shall not exceed 6 inches for all trees.

3 - Payments

3.3 - Pre-measured Sales

3.3.4 - Dividing payment units (7/14)

Payment Unit(s) 1 may be divided at the request of the Purchaser and upon approval of the Unit Manager. Dividing Payment Units is a contract modification which requires a Timber Sale Contract Supplement.

3.4 - Damaged Timber

3.4.1 - Damaged timber (6/14)

General Condition and Requirement 3.4 Damaged Timber, defines liquidated damages for undesignated live merchantable trees which are cut or injured. No damage is acceptable to merchantable trees. Within the sale area, if more than 5% of trees (> 4.5" DBH) within a specified area of the sale are damaged, liquidated damages will be assessed for all trees damaged. Rates will be in accordance with General Condition and Requirement 3.4 Damaged Timber.

4 - Transportation

4.2 - Maintenance

4.2.5 - Two wheel drive condition (2/04)

All existing trail roads on and adjacent to the sale area must be passable by two-wheel drive traffic for the duration of the sale.

5 - Operations

5.1 - Notification

5.1.1 - Pre-sale conference (10/11)

A pre-sale conference on site between the Purchaser and sale administrator is required prior to beginning any operations to determine landing and road locations. The Unit Manager or his/her representative must be contacted at least 5 days in advance to schedule the conference.

5.1.4 - Post-sale conference (6/11)

A post-sale conference on site between the Purchaser and sale administrator is required 5 days prior to the completion of active logging operations to determine clean-up and repair of landings, road edges, and the fulfillment of other contract specifications.

5.2 - Conduct of Operations

5.2.1 - Slash

5.2.1.8 - Slash height (12/08)

No slash or tree tops may exceed 24 inches in height.

5.2.3 - Operating Restrictions

5.2.3.4 - Oak wilt restriction (6/10)

Within Payment Unit(s) 1 and 2, unless changed by written agreement, cutting, skidding, and hauling are not permitted during the period of April 15 to July 15. This is necessary to reduce the spread of oak wilt. For more information, contact the Unit Manager or his/her representative.

5.2.38 - No decking against live trees (2/04)

Cut products may not be decked against unmarked or designated leave trees.

5.4 - Soil Protection

5.4.1 - Rutting restriction, general (1/09)

Operations are to cease immediately if equipment and weather conditions result in rutting of roads and skid trails which is 12 inches or greater in depth and 50 feet in length. The Unit Manager or his/her representative may restrict hauling and/or skidding if ruts exceed the specified depth. With the Unit Manager or his/her representative's approval, the Purchaser may return to the area when the risk of rutting has decreased.

6 - Safety and Fire Prevention

6.2 - Signing

6.2.1 - Road posting (9/09)

The Purchaser is responsible for posting and maintaining caution signs on Fife Lake Road and River Road prior to beginning operations. The road must be posted 200 feet from the sale area to warn of logging activity and truck traffic. Signs must be removed when harvest operations are suspended or completed. The Purchaser will provide these signs.



Sale Number	Year
61-078	15

TIMBER SALE MAP

This information provided by authority of Part 525, 1994 PA 451, as amended.

Forest Management Unit	County	Mapped By	Blair Tweedale	Date	Page	of
Traverse City Management Unit	Grand Traverse	Cruised By	Cross/Tweedale	09/29/2015	1	1
Township	Range	Section(s) and Subdivision(s)	Scale			
26N	09W	Section 12: N 1/2	1:15,840			

Cover Type

A = Aspen	H = Hemlock	N = Marsh	U = Upland Brush
B = Paper Birch	J = Jack Pine	O = Oak	UM = Upland Mixed
C = Cedar	L = Lowland Brush	P = Lowland Poplar	V = Bog or Marsh
D = Tread Bog	LM = Lowland Mixed	Q = Mixed Swamp Conifer	W = White Pine
E = Swamp Hdwoods	M = Mpl, Bch, Brch	R = Red Pine	X = Non Stocked
F = Spruce Fir	MC = Mixed Conifer	S = Black Spruce	Z = Water
G = Grass	MD = Mixed Deciduous	T = Tamarack	

Density

0 = Non Stocked	5 = Pole Timber Medium
1 = Seedling Sapling Poor	6 = Pole Timber Well
2 = Seedling Sapling Medium	7 = Saw Timber Poor
3 = Seedling Sapling Well	8 = Saw Timber Medium
4 = Pole Timber Poor	9 = Saw Timber Well

PU Acres

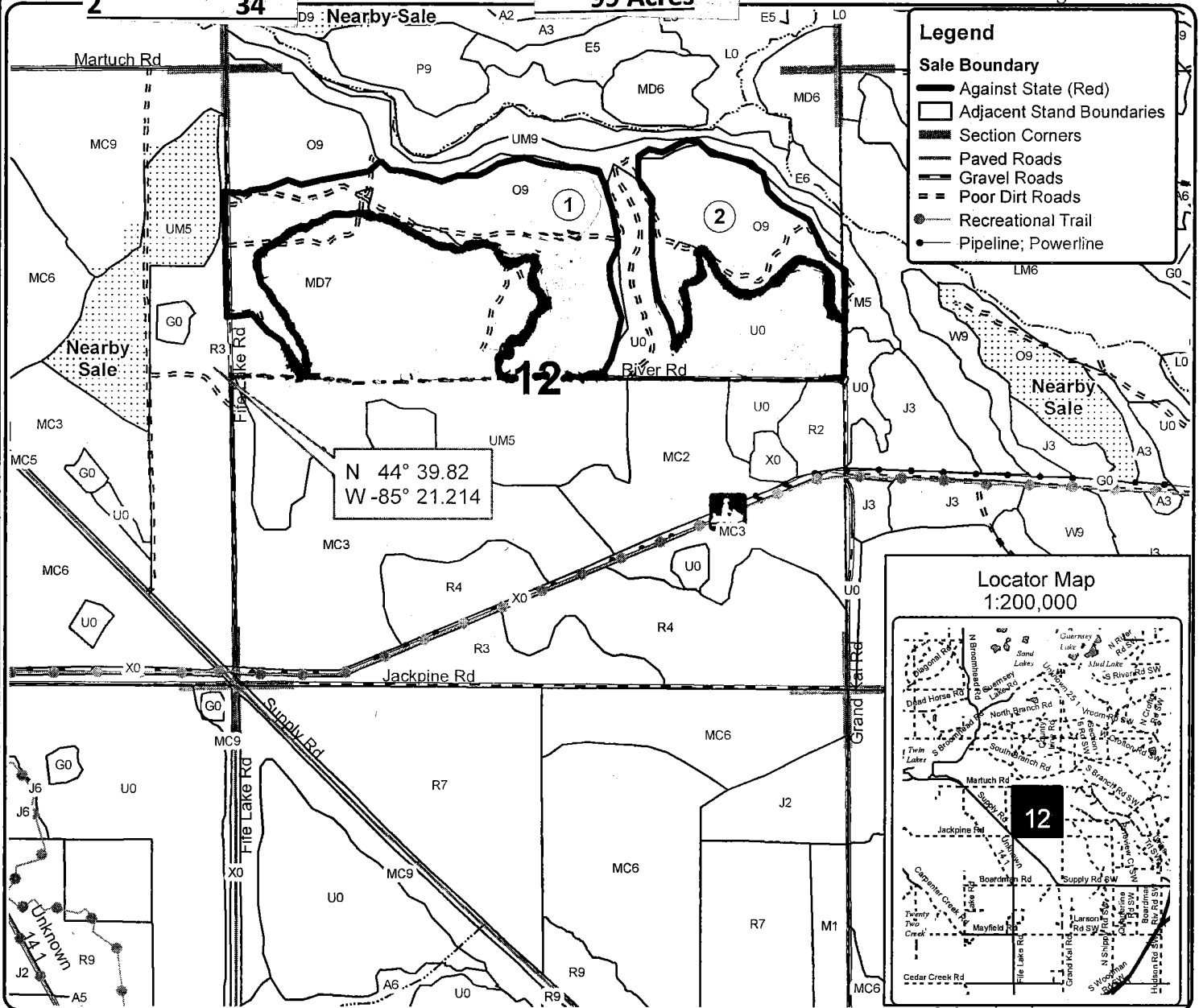
1 65

2 34

South Branch Barrens Mix

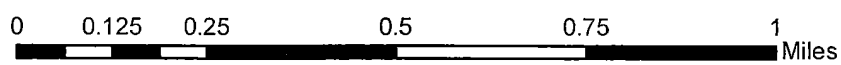
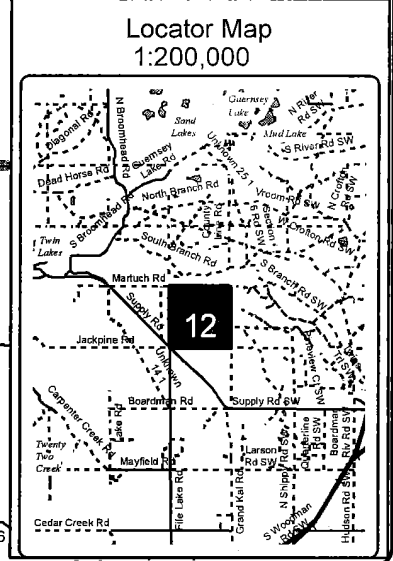
Compartment 046

99 Acres



Legend

- Sale Boundary**
 - Against State (Red)
 - Adjacent Stand Boundaries
 - Section Corners
 - Paved Roads
 - Gravel Roads
 - Poor Dirt Roads
 - Recreational Trail
 - Pipeline; Powerline



SOUTH BRANCH BARRENS MIX (61-078-15)
 T26N, R09W, SEC. 12; Grand Traverse COUNTY

In response to the notice of sale to be held 4:00 p.m. (local time) on November 3, 2016, I am hereby submitting my sealed bid (firm offer) for the following forest products to be cut. Bids for individual species must be at or above the advertised price. All non-responsive bid forms may be rejected.

<u>PRODUCTS & SPECIES</u>	<u>ESTIMATED VOLUME*</u>	<u>ADVERTISED PRICE</u>	<u>BID PRICE</u>
Sawtimber			
Red Oak	54.50 MBF	\$ 252.00/MBF	\$ _____
White Oak	29.50 MBF	\$ 74.00/MBF	\$ _____
Pulpwood			
Mixed Oak	447.00 Cords	\$ 8.80/Cord	\$ _____
Red Maple	264.00 Cords	\$ 15.60/Cord	\$ _____

In addition, the successful bidder agrees to purchase the following species at the indicated advertised price for a total value of \$2,729.50 :

<u>PRODUCTS & SPECIES</u>	<u>ESTIMATED VOLUME*</u>	<u>ADVERTISED PRICE</u>
Pulpwood		
Mixed Aspen	45.00 Cords	\$ 21.60/Cord
Mixed Softwood	74.00 Cords	\$ 23.75/Cord

*The volumes are statistically estimated within plus (+) or minus (-) 21.60 percent. These estimated volumes are final and not subject to adjustment. Prospective bidders are urged to examine this timber and to make their own estimates of quantity and quality.

I understand that any or all bids may be rejected. All bids must be signed and all bid items must be bid or the bid form may be rejected. I also understand that consideration and awarding a contract will be based upon my past performance and ability to complete the contract based upon equipment and staffing subject to my control.

FEDERAL ID: _____ or SOCIAL SECURITY NUMBER: _____

Company or individual bidding: _____

Company representative's name: _____

Address: _____

City: _____ State: _____ Zip: _____

IF AVAILABLE, PLEASE PLACE THE PERSONALIZED LABEL FROM YOUR PROSPECTUS IN THE ABOVE BOX.

Individual or company representative's signature: _____ Date: _____

Phone number : _____ Email (optional): _____

THE WINNING BIDDER MUST COMPLETE THE VERIFICATION OF WORKER'S DISABILITY COMPENSATION ACT COMPLIANCE (ON REVERSE SIDE IF DOUBLE SIDED) WITHIN 21 DAYS OF SALE AWARD DATE



FOR DEPARTMENT USE ONLY	
Sale Number (XX - XXX - XX - XX)	
Forest Management Unit:	

TIMBER SALE VERIFICATION OF WORKER'S DISABILITY COMPENSATION ACT COMPLIANCE

As required by Act 317, P.A. 1969 (Worker's Compensation) and
Part 5 of Act 451 of 1994, as amended.

VERIFICATION OF WORKER'S DISABILITY COMPENSATION ACT COMPLIANCE

- This verification must be completed and submitted within 21 days of contract award and prior to the issuance of the timber sale contract.
- In addition, if boxes 2B or 2C are checked, then Notice of Exclusion or Certificate of Insurance must be submitted within twenty-one (21) days of the contract award and prior to the issuance of the timber sale contract.
- All information must be typed or printed except for written signatures.

Please Check Appropriate Categories:

1. My business is organized as (you **must** check one of the boxes below):
 - A. Sole Proprietorship (individual)
 - B. Partnership
 - C. Corporation
2. You **must** check one of the boxes below:
 - A. I certify my business is a sole proprietorship and it has no employees but the sole proprietor. I am not subject to the Worker's Compensation Laws.
 - B. I certify my business has satisfied its obligation to the Worker's Compensation Act through the use of an approved Notice of Exclusion (BWC-337, Rev. 5/96). I will provide a copy of the Notice of Exclusion within 21 days of the contract award. (For questions or a copy of the BWC-337, please call the Worker's Compensation Bureau at 517-322-1195).
 - C. I certify my business has a Worker's Compensation Policy. I will provide an original Certificate of Insurance within twenty-one (21) days of the contract award.
3. If you have checked item 2(A) or 2(B), you **must** indicate the number of **both** full-time and part-time employees, other than yourself, including family members and active partners (if none, you must enter "0").

_____ Full-time Employees

_____ Part-time Employees

Name of Business		Federal ID (or) Social Security No.	
Address		Telephone ()	
City	State	ZIP	

I hereby certify that the above information is true and correct. I agree to notify the Michigan DNR of any changes that occur in factors affecting my coverage during any of my present and future operations.

Signature of Owner or Authorized Representative

Title

Date

Please complete the "SEALED BID" information on the next page

Pink Pine (61-032-16)
 ; Benzie COUNTY

In response to the notice of sale to be held 4:00 p.m. (local time) on November 3, 2016, I am hereby submitting my sealed bid (firm offer) for the following forest products to be cut. Bids for individual species must be at or above the advertised price. All non-responsive bid forms may be rejected.

<u>PRODUCTS & SPECIES</u>	<u>ESTIMATED VOLUME*</u>	<u>ADVERTISED PRICE</u>	<u>BID PRICE</u>
Sawtimber			
Basswood	18.00 MBF	\$ 87.00/MBF	\$ _____
Beech	3.00 MBF	\$ 69.00/MBF	\$ _____
Black Cherry	49.40 MBF	\$ 256.00/MBF	\$ _____
Mixed Aspen	71.30 MBF	\$ 99.00/MBF	\$ _____
Red Maple	25.30 MBF	\$ 161.00/MBF	\$ _____
Red Pine	96.10 MBF	\$ 122.00/MBF	\$ _____
Sugar Maple	38.90 MBF	\$ 268.00/MBF	\$ _____
White Pine	109.40 MBF	\$ 88.00/MBF	\$ _____
Pulpwood			
Basswood	48.00 Cords	\$ 12.50/Cord	\$ _____
Mixed Aspen	460.00 Cords	\$ 21.40/Cord	\$ _____
Mixed Hardwood	1,163.00 Cords	\$ 20.00/Cord	\$ _____
Red Pine	538.00 Cords	\$ 40.85/Cord	\$ _____
White Pine	1,540.00 Cords	\$ 5.25/Cord	\$ _____

*The volumes are statistically estimated within plus (+) or minus (-) 7.63 percent. These estimated volumes are final and not subject to adjustment. Prospective bidders are urged to examine this timber and to make their own estimates of quantity and quality.

I understand that any or all bids may be rejected. All bids must be signed and all bid items must be bid or the bid form may be rejected. I also understand that consideration and awarding a contract will be based upon my past performance and ability to complete the contract based upon equipment and staffing subject to my control.

FEDERAL ID: _____ or SOCIAL SECURITY NUMBER: _____
 Company or individual bidding: _____
 Company representative's name: _____
 Address: _____
 City: _____ State: _____ Zip: _____

IF AVAILABLE, PLEASE PLACE THE PERSONALIZED LABEL FROM YOUR PROSPECTUS IN THE ABOVE BOX.

Individual or company representative's signature: _____ Date: _____

Phone number : _____ Email (optional): _____

THE WINNING BIDDER MUST COMPLETE THE VERIFICATION OF WORKER'S DISABILITY COMPENSATION ACT COMPLIANCE (ON REVERSE SIDE IF DOUBLE SIDED) WITHIN 21 DAYS OF SALE AWARD DATE



FOR DEPARTMENT USE ONLY
Sale Number (XX - XXX - XX - XX)
Forest Management Unit:

TIMBER SALE VERIFICATION OF WORKER'S DISABILITY COMPENSATION ACT COMPLIANCE

*As required by Act 317, P.A. 1969 (Worker's Compensation) and
Part 5 of Act 451 of 1994, as amended.*

VERIFICATION OF WORKER'S DISABILITY COMPENSATION ACT COMPLIANCE

- This verification must be completed and submitted within 21 days of contract award and prior to the issuance of the timber sale contract.
- In addition, if boxes 2B or 2C are checked, then Notice of Exclusion or Certificate of Insurance must be submitted within twenty-one (21) days of the contract award and prior to the issuance of the timber sale contract.
- All information must be typed or printed except for written signatures.

Please Check Appropriate Categories:

1. My business is organized as (you **must** check one of the boxes below):
 - A. Sole Proprietorship (individual)
 - B. Partnership
 - C. Corporation

2. You **must** check one of the boxes below:
 - A. I certify my business is a sole proprietorship and it has no employees but the sole proprietor. I am not subject to the Worker's Compensation Laws.
 - B. I certify my business has satisfied its obligation to the Worker's Compensation Act through the use of an approved Notice of Exclusion (BWC-337, Rev. 5/96). I will provide a copy of the Notice of Exclusion within 21 days of the contract award. (For questions or a copy of the BWC-337, please call the Worker's Compensation Bureau at 517-322-1195).
 - C. I certify my business has a Worker's Compensation Policy. I will provide an original Certificate of Insurance within twenty-one (21) days of the contract award.

3. If you have checked item 2(A) or 2(B), you **must** indicate the number of **both** full-time and part-time employees, other than yourself, including family members and active partners (if none, you must enter "0").

_____ Full-time Employees

_____ Part-time Employees

Name of Business		Federal ID (or) Social Security No.	
Address		Telephone ()	
City	State	ZIP	

I hereby certify that the above information is true and correct. I agree to notify the Michigan DNR of any changes that occur in factors affecting my coverage during any of my present and future operations.

Signature of Owner or Authorized Representative

Title

Date

Please complete the "SEALED BID" information on the next page

LVBA Oak (61-063-16)
 ; Grand Traverse COUNTY

In response to the notice of sale to be held 4:00 p.m. (local time) on November 3, 2016, I am hereby submitting my sealed bid (firm offer) for the following forest products to be cut. Bids for individual species must be at or above the advertised price. All non-responsive bid forms may be rejected.

<u>PRODUCTS & SPECIES</u>	<u>ESTIMATED VOLUME*</u>	<u>ADVERTISED PRICE</u>	<u>BID PRICE</u>
Sawtimber			
B. T. Aspen	14.50 MBF	\$ 99.00/MBF	\$ _____
Northern Pin Oak	175.00 MBF	\$ 114.00/MBF	\$ _____
Red Pine	78.10 MBF	\$ 122.00/MBF	\$ _____
White Oak	124.30 MBF	\$ 60.00/MBF	\$ _____
Pulpwood			
B. T. Aspen	29.00 Cords	\$ 21.40/Cord	\$ _____
Jack Pine	519.00 Cords	\$ 11.25/Cord	\$ _____
Northern Pin Oak	593.00 Cords	\$ 16.10/Cord	\$ _____
Red Maple	156.00 Cords	\$ 20.00/Cord	\$ _____
Red Oak	84.00 Cords	\$ 16.10/Cord	\$ _____
Red Pine	93.00 Cords	\$ 40.85/Cord	\$ _____
White Oak	371.00 Cords	\$ 16.10/Cord	\$ _____
White Pine	98.00 Cords	\$ 17.30/Cord	\$ _____

*The volumes are statistically estimated within plus (+) or minus (-) 9.47 percent. These estimated volumes are final and not subject to adjustment. Prospective bidders are urged to examine this timber and to make their own estimates of quantity and quality.

I understand that any or all bids may be rejected. All bids must be signed and all bid items must be bid or the bid form may be rejected. I also understand that consideration and awarding a contract will be based upon my past performance and ability to complete the contract based upon equipment and staffing subject to my control.

FEDERAL ID: _____ or SOCIAL SECURITY NUMBER: _____

Company or individual bidding: _____

Company representative's name: _____

Address: _____

City: _____ State: _____ Zip: _____

IF AVAILABLE, PLEASE PLACE THE PERSONALIZED LABEL FROM YOUR PROSPECTUS IN THE ABOVE BOX.

Individual or company representative's signature: _____ Date: _____

Phone number : _____ Email (optional): _____

THE WINNING BIDDER MUST COMPLETE THE VERIFICATION OF WORKER'S DISABILITY COMPENSATION ACT COMPLIANCE (ON REVERSE SIDE IF DOUBLE SIDED) WITHIN 21 DAYS OF SALE AWARD DATE



FOR DEPARTMENT USE ONLY
Sale Number (XX - XXX - XX - XX)
Forest Management Unit:

TIMBER SALE VERIFICATION OF WORKER'S DISABILITY COMPENSATION ACT COMPLIANCE

*As required by Act 317, P.A. 1969 (Worker's Compensation) and
Part 5 of Act 451 of 1994, as amended.*

VERIFICATION OF WORKER'S DISABILITY COMPENSATION ACT COMPLIANCE

- This verification must be completed and submitted within 21 days of contract award and prior to the issuance of the timber sale contract.
- In addition, if boxes 2B or 2C are checked, then Notice of Exclusion or Certificate of Insurance must be submitted within twenty-one (21) days of the contract award and prior to the issuance of the timber sale contract.
- All information must be typed or printed except for written signatures.

Please Check Appropriate Categories:

1. My business is organized as (you **must** check one of the boxes below):
 - A. Sole Proprietorship (individual)
 - B. Partnership
 - C. Corporation
2. You **must** check one of the boxes below:
 - A. I certify my business is a sole proprietorship and it has no employees but the sole proprietor. I am not subject to the Worker's Compensation Laws.
 - B. I certify my business has satisfied its obligation to the Worker's Compensation Act through the use of an approved Notice of Exclusion (BWC-337, Rev. 5/96). I will provide a copy of the Notice of Exclusion within 21 days of the contract award. (For questions or a copy of the BWC-337, please call the Worker's Compensation Bureau at 517-322-1195).
 - C. I certify my business has a Worker's Compensation Policy. I will provide an original Certificate of Insurance within twenty-one (21) days of the contract award.
3. If you have checked item 2(A) or 2(B), you **must** indicate the number of **both** full-time and part-time employees, other than yourself, including family members and active partners (if none, you must enter "0").

_____ Full-time Employees _____ Part-time Employees

Name of Business		Federal ID (or) Social Security No.	
Address		Telephone ()	
City	State	ZIP	

I hereby certify that the above information is true and correct. I agree to notify the Michigan DNR of any changes that occur in factors affecting my coverage during any of my present and future operations.

Signature of Owner or Authorized Representative

Title

Date

Please complete the "SEALED BID" information on the next page

Wrong Side Red Pine (61-066-16)
 ; Grand Traverse COUNTY

In response to the notice of sale to be held 4:00 p.m. (local time) on November 3, 2016, I am hereby submitting my sealed bid (firm offer) for the following forest products to be cut. Bids for individual species must be at or above the advertised price. All non-responsive bid forms may be rejected.

<u>PRODUCTS & SPECIES</u>	<u>ESTIMATED VOLUME*</u>	<u>ADVERTISED PRICE</u>	<u>BID PRICE</u>
Sawtimber			
Red Pine	382.20 MBF	\$ 139.00/MBF	\$ _____
White Oak	11.10 MBF	\$ 69.00/MBF	\$ _____
White Pine	41.30 MBF	\$ 99.00/MBF	\$ _____
Pulpwood			
Misc. Species 1	41.00 Cords	\$ 4.25/Cord	\$ _____
Northern Pin Oak	136.00 Cords	\$ 18.25/Cord	\$ _____
Red Pine	334.00 Cords	\$ 46.25/Cord	\$ _____
White Oak	25.00 Cords	\$ 18.25/Cord	\$ _____
White Pine	55.00 Cords	\$ 19.60/Cord	\$ _____

*The volumes are statistically estimated within plus (+) or minus (-) 13.32 percent. These estimated volumes are final and not subject to adjustment. Prospective bidders are urged to examine this timber and to make their own estimates of quantity and quality.

I understand that any or all bids may be rejected. All bids must be signed and all bid items must be bid or the bid form may be rejected. I also understand that consideration and awarding a contract will be based upon my past performance and ability to complete the contract based upon equipment and staffing subject to my control.

FEDERAL ID: ____ - ____ - ____ or SOCIAL SECURITY NUMBER: ____ - ____ - ____

Company or individual bidding: _____

Company representative's name: _____

Address: _____

City: _____ State: _____ Zip: _____

IF AVAILABLE, PLEASE PLACE THE PERSONALIZED LABEL FROM YOUR PROSPECTUS IN THE ABOVE BOX.

Individual or company representative's signature: _____ Date: _____

Phone number : _____ Email (optional): _____

THE WINNING BIDDER MUST COMPLETE THE VERIFICATION OF WORKER'S DISABILITY COMPENSATION ACT COMPLIANCE (ON REVERSE SIDE IF DOUBLE SIDED) WITHIN 21 DAYS OF SALE AWARD DATE



FOR DEPARTMENT USE ONLY
Sale Number (XX - XXX - XX - XX)
Forest Management Unit:

TIMBER SALE VERIFICATION OF WORKER'S DISABILITY COMPENSATION ACT COMPLIANCE

*As required by Act 317, P.A. 1969 (Worker's Compensation) and
Part 5 of Act 451 of 1994, as amended.*

VERIFICATION OF WORKER'S DISABILITY COMPENSATION ACT COMPLIANCE

- This verification must be completed and submitted within 21 days of contract award and prior to the issuance of the timber sale contract.
- In addition, if boxes 2B or 2C are checked, then Notice of Exclusion or Certificate of Insurance must be submitted within twenty-one (21) days of the contract award and prior to the issuance of the timber sale contract.
- All information must be typed or printed except for written signatures.

Please Check Appropriate Categories:

1. My business is organized as (you **must** check one of the boxes below):
 - A. Sole Proprietorship (individual)
 - B. Partnership
 - C. Corporation
2. You **must** check one of the boxes below:
 - A. I certify my business is a sole proprietorship and it has no employees but the sole proprietor. I am not subject to the Worker's Compensation Laws.
 - B. I certify my business has satisfied its obligation to the Worker's Compensation Act through the use of an approved Notice of Exclusion (BWC-337, Rev. 5/96). I will provide a copy of the Notice of Exclusion within 21 days of the contract award. (For questions or a copy of the BWC-337, please call the Worker's Compensation Bureau at 517-322-1195).
 - C. I certify my business has a Worker's Compensation Policy. I will provide an original Certificate of Insurance within twenty-one (21) days of the contract award.
3. If you have checked item 2(A) or 2(B), you **must** indicate the number of **both** full-time and part-time employees, other than yourself, including family members and active partners (if none, you must enter "0").

_____ Full-time Employees

_____ Part-time Employees

Name of Business		Federal ID (or) Social Security No.	
Address		Telephone ()	
City	State	ZIP	

I hereby certify that the above information is true and correct. I agree to notify the Michigan DNR of any changes that occur in factors affecting my coverage during any of my present and future operations.

Signature of Owner or Authorized Representative

Title

Date

Please complete the "SEALED BID" information on the next page

North Branch Aspen (61-072-16)
; Benzie COUNTY

In response to the notice of sale to be held 4:00 p.m. (local time) on November 3, 2016, I am hereby submitting my sealed bid (firm offer) for the following forest products to be cut. Bids for individual species must be at or above the advertised price. All non-responsive bid forms may be rejected.

<u>PRODUCTS & SPECIES</u>	<u>ESTIMATED VOLUME*</u>	<u>ADVERTISED PRICE</u>	<u>BID PRICE</u>
Sawtimber			
B. T. Aspen	23.80 MBF	\$ 92.00/MBF	\$ _____
Red Pine	7.50 MBF	\$ 114.00/MBF	\$ _____
Sugar Maple	9.50 MBF	\$ 250.00/MBF	\$ _____
Pulpwood			
B. T. Aspen	94.00 Cords	\$ 19.95/Cord	\$ _____
Mixed Hardwood	46.00 Cords	\$ 18.65/Cord	\$ _____
Red Pine	44.00 Cords	\$ 38.10/Cord	\$ _____

*The volumes are statistically estimated within plus (+) or minus (-) 18.18 percent. These estimated volumes are final and not subject to adjustment. Prospective bidders are urged to examine this timber and to make their own estimates of quantity and quality.

I understand that any or all bids may be rejected. All bids must be signed and all bid items must be bid or the bid form may be rejected. I also understand that consideration and awarding a contract will be based upon my past performance and ability to complete the contract based upon equipment and staffing subject to my control.

FEDERAL ID: _____ or SOCIAL SECURITY NUMBER: _____

Company or individual bidding: _____

Company representative's name: _____

Address: _____

City: _____ State: _____ Zip: _____

IF AVAILABLE, PLEASE PLACE THE PERSONALIZED LABEL FROM YOUR PROSPECTUS IN THE ABOVE BOX.

Individual or company representative's signature: _____ Date: _____

Phone number : _____ Email (optional): _____

THE WINNING BIDDER MUST COMPLETE THE VERIFICATION OF WORKER'S DISABILITY COMPENSATION ACT COMPLIANCE (ON REVERSE SIDE IF DOUBLE SIDED) WITHIN 21 DAYS OF SALE AWARD DATE



TIMBER SALE VERIFICATION OF WORKER'S DISABILITY COMPENSATION ACT COMPLIANCE

As required by Act 317, P.A. 1969 (Worker's Compensation) and
Part 5 of Act 451 of 1994, as amended.

FOR DEPARTMENT USE ONLY
Sale Number (XX - XXX - XX - XX)
Forest Management Unit:

VERIFICATION OF WORKER'S DISABILITY COMPENSATION ACT COMPLIANCE

- This verification must be completed and submitted within 21 days of contract award and prior to the issuance of the timber sale contract.
- In addition, if boxes 2B or 2C are checked, then Notice of Exclusion or Certificate of Insurance must be submitted within twenty-one (21) days of the contract award and prior to the issuance of the timber sale contract.
- All information must be typed or printed except for written signatures.

Please Check Appropriate Categories:

1. My business is organized as (you **must** check one of the boxes below):
 - A. Sole Proprietorship (individual)
 - B. Partnership
 - C. Corporation
2. You **must** check one of the boxes below:
 - A. I certify my business is a sole proprietorship and it has no employees but the sole proprietor. I am not subject to the Worker's Compensation Laws.
 - B. I certify my business has satisfied its obligation to the Worker's Compensation Act through the use of an approved Notice of Exclusion (BWC-337, Rev. 5/96). I will provide a copy of the Notice of Exclusion within 21 days of the contract award. (For questions or a copy of the BWC-337, please call the Worker's Compensation Bureau at 517-322-1195).
 - C. I certify my business has a Worker's Compensation Policy. I will provide an original Certificate of Insurance within twenty-one (21) days of the contract award.
3. If you have checked item 2(A) or 2(B), you **must** indicate the number of **both** full-time and part-time employees, other than yourself, including family members and active partners (if none, you must enter "0").

_____ Full-time Employees

_____ Part-time Employees

Name of Business		Federal ID (or) Social Security No.	
Address		Telephone ()	
City	State	ZIP	

I hereby certify that the above information is true and correct. I agree to notify the Michigan DNR of any changes that occur in factors affecting my coverage during any of my present and future operations.

Signature of Owner or Authorized Representative

Title

Date

Please complete the "SEALED BID" information on the next page