



**DEPARTMENT OF NATURAL RESOURCES
STATE OF MICHIGAN**

TIMBER SALE PROSPECTUS #5690

SCHEDULED SALE DATE AND TIME: 11:00 a.m. (local time) on December 20, 2016.

LOCATION: ROSCOMMON MGMT UNIT, PO BOX 218, ROSCOMMON, MI 48653.

PROSPECTUS NOTE: The bidder is advised to inspect the sale area and review the location, estimated volumes, operating costs and contract terms of proposed sales. Please be aware that some landowners may request 60 days or more notice for access across their land.

Notice is hereby given that bids will be received by the Unit Manager, ROSCOMMON MANAGEMENT UNIT, for certain timber on the following described lands:

Office Mix (71-027-16)

Roscommon County, Advertised Price \$120,043.35, 226.6 Acres, Aspen, Hardwood.

18 access (71-028-16)

Roscommon County, Advertised Price \$10,757.85, 31.2 Acres, Aspen, Hardwood.

Triangle Oak (71-029-16)

Roscommon County, Advertised Price \$40,280.00, 75.4 Acres, Hardwood, Red Pine.

BID INSTRUCTIONS (VER. 09/02/2016):

1. Scheduled Bid Location, Date, and Time (2/11)

Bids must be received by the Unit Manager, ROSCOMMON OFFICE, PO BOX 218, ROSCOMMON, MI 48653, no later than 11:00 a.m. (local time) on December 20, 2016. For further information concerning this sale, contact Steve Anderson at 989-275-4622 extension 2740.

2. Bidder's Qualifications (5/16)

Purchaser shall obtain workers compensation insurance to cover claims under Michigan's Worker's Disability Compensation Act of 1969 or similar employee benefit act of any other state applicable to an employee. If all or part of a timber sale was prepared by a private contractor, the contractor and that contractor's company are not permitted to bid on the timber sale contract. Bids will not be accepted from individuals or companies appearing on the DNR/FRD No-Bid List. This list contains the names of purchasers who previously failed to execute a contract within 21-days or who have a history of poor performance.

3. Preparation of Sealed Bids (5/16)

Bid Forms may be completed online thru Michigan DNR Timber Sale Online Bidding (OLB) at www.michigan.gov/timberbidding or by completing the hardcopy Bid Form found in the Timber Sale Prospectus. Hardcopy Bid Forms shall be manually signed in ink. Registration in OLB is considered your 'signature' for all bids submitted thru that system. Bid prices must be entered for each species and product in the Bid Price column for all material subject to bidding and all fill-in blanks must be completed. If erasures or other changes appear on the hardcopy Bid Form, each erasure or change must be initialed by the person signing the bid.

4. Submission of Sealed Bids (5/16)

Bid forms may be obtained from the Unit Manager or thru OLB. Bids may be submitted hardcopy or thru OLB. All hardcopy bids must be submitted on the bid form and in an envelope clearly identified as described in this section. NOTE: Only one bid form per bid envelope. Sealed bids must be submitted to the Unit office designated in the prospectus and must be submitted at or prior to the time established in the prospectus. The envelope should show on the outside (a) the sale name or number and (b) the date and time of bid opening, as shown in the prospectus. Bids received after the time specified in the sale prospectus are late bids and will be rejected.

It is possible for a bidder to submit multiple bids on a single sale. For example, a bid may be submitted hardcopy and a bid may be submitted thru OLB. Or, two bidders from the same company could both submit bids on the same sale. If this were to happen, the State would accept all bids received and award the contract accordingly. All bidding and contractual requirements would apply to all bids received.

5. Public Opening of Sealed Bids (7/16)

If conditions permit, the sealed bids will be publicly opened and posted at the time and place set in the prospectus.

If a bidder, present at a bid opening, has submitted bids on more than one sale, that bidder may withdraw their unopened bid envelopes or announce the withdrawal of their online bid after being declared the successful bidder on one sale.

6. Award of Contract (1/11)

Award of the contract will be made to the Bidder whose bid, conforming to the prospectus, is most advantageous to the State of Michigan on the basis of total value at rates bid for the estimated quantities. The State reserves the right to reject any bid or waive any minor irregularity in bids received. A written award mailed (or otherwise furnished) to the successful Bidder shall be deemed to result in a binding contract without further action by either party.

7. Down Payment (1/11)

The Bidder to whom award is made must make a down payment within 21 days of the sale award. The amount of the down payment will be calculated as shown in the Bond and Payment Schedule of this prospectus. Only cash may be used to meet this requirement.

8. Performance Security (1/11)

As guarantee of faithful performance, a cash bond, certificate of deposit, surety bond or irrevocable letter of credit (LOC) is required within 21 days of the sale award. The amount of the performance security is shown in the Bond and

Payment Schedule of this prospectus. If an LOC or surety is used, the coverage must extend for at least 6 months beyond the contract expiration.

9. Timber Sale Contract (9/14)

Additional conditions and requirements common to all timber sales are listed on the timber sale contract (R4031) and are available on line at www.michigan.gov/timber. Contact the Unit Manager for additional information or a sample contract. Within 21 days of the date of the award letter, the bidder must sign the contract and provide the required down payment, performance security, and verification of worker's disability compensation. The down payment and performance security shall be in accordance with the provisions of the timber sale contract, in the sums stated in this prospectus. If these actions are not taken, then the Bidder, the Bidder's corporation, and the corporation's principals may not be permitted to bid on State timber sales for a period of 1 year. In addition, the Bidder certifies that if awarded this contract, the Bidder will complete the timber sale contract in accordance with its terms and any modifications thereof including requirements to purchase, cut, and remove the included timber by the expiration date.

10. Disclaimer of Estimates and Bidder's Warranty of Inspection (7/16)

Before submitting this bid, the Bidder is advised and cautioned to inspect the sale area, review the requirements of the sale contract, and take other steps as may be reasonably necessary to ascertain the location, estimated volumes, construction estimates, and operating costs of the proposed sale. Failure to do so will not relieve the Bidder from responsibility for completing the contract.

The Bidder warrants that this bid is submitted solely on the basis of the Bidder's examination and inspection of the quality and quantity of the timber offered for sale and the Bidder's opinion of the value thereof and the costs of recovery. No reliance should be placed on the State of Michigan's estimates of timber quality, quantity or costs of recovery. Bidder further acknowledges that the State of Michigan: (i) expressly disclaims any warranty of fitness of timber for any purpose; (ii) offers this timber as is without any warranty of quality (merchantability) or quantity and (iii) expressly disclaims any warranty as to the quantity or quality of timber sold.

11. Certification and Chain-of-Custody (10/14)

Unless otherwise indicated in the contract under section 7 – Other Conditions of the Sale Specific Conditions & Requirements, the area encompassed by this timber sale is certified to the standards of the Forest Stewardship Council (FSC) - Certificate #SCS-FM/COC-00090N and the Sustainable Forestry Initiative (SFI) - Certificate #NSF-SFIS-5Y031-SF5. Forest products from this sale may be delivered to the mill as "FSC 100% and / or SFI certified" as long as the contractor hauling the forest products is chain-of-custody (COC) certified or covered under a COC certificate from the destination mill. The purchaser is responsible for maintaining COC after leaving the sale area.

12. Good Neighbor Authority (GNA) Requirements (7/16)

If the name of this timber sales contains the acronym GNA, it is authorized by the Good Neighbor Authority (GNA) and covered by various agreements between the U.S. Forest Service and the State. The timber sale occurs on federal land and the following conditions apply:

GNA contracts on US Forest Service land will not be awarded to purchasers on the Federal list of excluded parties. The System for Award Management (SAM) will be checked for active excluded parties prior to award of contract. In addition, the Bidder to whom award is made must complete an Assurance Regarding Felony Conviction or Tax Delinquent Status for Corporate Applicants (AD-3031).

13. Good Neighbor Authority (GNA) Requirements, con't (9/16)

Bidder certifies, by signing this bid form, that to the best of Bidder's knowledge that the following representations are accurate and complete.

- a. That the Bidder and its principals are not presently debarred, suspended, proposed for debarment, declared ineligible, or voluntary excluded from timber sales (covered transactions) by any Federal department or agency.
- b. That the Bidder and its principals have not within a 3-year period preceding this bid been convicted of or had a civil judgment rendered against them for commission of fraud or a criminal offense in connection with obtaining, attempting to obtain, or performing a public (Federal, State, or local) transaction or contract under a public transaction; violation of Federal or State antitrust statutes or commission of embezzlement, theft, forgery, bribery, falsification or destruction of records, making false statements, or receiving stolen property.

c. That the Bidder and its principals are not presently indicted for or otherwise criminally or civilly charged by a governmental entity (Federal, State, or local) with commission of any of the offenses enumerated in paragraph b of this certification.

d. That the Bidder and its principals have not within a 3-year period preceding this bid had one or more public transactions (Federal, State, or local) terminated for breach or default of a timber or forest product contract.

Bidders that cannot certify this requirement, in whole or in part, shall submit an explanation with their bid.

KEITH CREAGH

Director

TIMBER SALE INFORMATION

Office Mix (71-027-16)

Roscommon County (Advertised Price \$120,043.35)

A timber sale contract for this lump sum, sealed bid timber sale will be awarded to the responsible bidder offering the highest sealed bid price. Bids must be at or above the following advertised price for each species:

<u>PRODUCTS & SPECIES</u>	<u>ESTIMATED UNITS*</u>	<u>ADVERTISED PRICE</u>
Sawtimber		
B. T. Aspen	18.20 MBF	\$ 83.00 / MBF
BI/R/Hybrid Oak	198.30 MBF	\$ 130.00 / MBF
Jack Pine	24.50 MBF	\$ 34.00 / MBF
Quaking Aspen	53.40 MBF	\$ 82.00 / MBF
Red Oak	23.40 MBF	\$ 195.00 / MBF
Red Pine	11.50 MBF	\$ 152.00 / MBF
Pulpwood		
B. T. Aspen	334.00 Cords	\$ 36.65 / Cord
Jack Pine	312.00 Cords	\$ 16.15 / Cord
Mixed Oak	713.00 Cords	\$ 15.35 / Cord
Quaking Aspen	1,223.00 Cords	\$ 36.65 / Cord
Red Maple	261.00 Cords	\$ 19.15 / Cord
Red Pine	39.00 Cords	\$ 48.15 / Cord
White Pine	69.00 Cords	\$ 18.95 / Cord

* The total volume is statistically estimated within plus (+) or minus (-) 8.09 percent. The estimated units are final and not subject to adjustment. Prospective bidders are urged to examine this timber and to make their own estimates of quantity and quality.

BOND AND PAYMENT SCHEDULE:

1. A bond in the amount of \$6,002.00 to insure faithful performance of the conditions of the contract will be deposited by the successful bidder within 21 days of the sale award.
2. Cutting in any sale or unit without the required advance payment would be considered a trespass.
3. Total payment must be paid in advance or according to the following schedule:
 - (a) Ten percent (10%) of the sale value must be paid within 21 days of the sale award.
 - (b) The 10% down payment will be credited towards the first unit cut.
4. If no cutting takes place, the 10% down payment will not be refunded.
5. Operations on the contract issued will terminate on 03/31/2019.

Description of Timber by Payment Unit (PU)

PU	MARKET GROUP	PRODUCT	QUANTITY	UNIT	ACRES	ADVERTISE PRICE
1	BI/R/Hybrid Oak	Sawtimber	1.8	MBF	16.3	\$10,581.55
	Quaking Aspen		12.5	MBF		
	Jack Pine	Pulpwood	13.0	Cords		
	Mixed Oak		10.0	Cords		
	<i>BI/R/Hybrid Oak</i>		<i>10.0</i>	<i>Cords</i>		
	Quaking Aspen		234.0	Cords		
	Red Maple		20.0	Cords		
	<i>Red Maple</i>		<i>20.0</i>	<i>Cords</i>		
2	B. T. Aspen	Sawtimber	3.3	MBF	25.0	\$9,752.90
	BI/R/Hybrid Oak		36.4	MBF		
	B. T. Aspen	Pulpwood	78.0	Cords		
	Jack Pine		10.0	Cords		
	Mixed Oak		110.0	Cords		
	<i>BI/R/Hybrid Oak</i>		<i>110.0</i>	<i>Cords</i>		
	Red Maple		2.0	Cords		
	<i>Red Maple</i>		<i>2.0</i>	<i>Cords</i>		
3	B. T. Aspen	Sawtimber	0.4	MBF	16.7	\$5,568.00
	BI/R/Hybrid Oak		24.4	MBF		
	B. T. Aspen	Pulpwood	21.0	Cords		
	Jack Pine		6.0	Cords		
	Mixed Oak		85.0	Cords		
	<i>BI/R/Hybrid Oak</i>		<i>85.0</i>	<i>Cords</i>		
	Red Maple		10.0	Cords		
	<i>Red Maple</i>		<i>10.0</i>	<i>Cords</i>		
4	B. T. Aspen	Sawtimber	3.8	MBF	20.9	\$8,967.70
	BI/R/Hybrid Oak		26.9	MBF		
	Jack Pine		5.5	MBF		
	Red Pine		1.7	MBF		
	B. T. Aspen	Pulpwood	20.0	Cords		
	Jack Pine		40.0	Cords		
	Mixed Oak		101.0	Cords		
	<i>BI/R/Hybrid Oak</i>		<i>101.0</i>	<i>Cords</i>		
	Quaking Aspen		13.0	Cords		
	Red Maple		31.0	Cords		
	<i>Red Maple</i>	<i>Sawtimber</i>	<i>2.2</i>	<i>MBF</i>		
	<i>Red Maple</i>	<i>Pulpwood</i>	<i>27.0</i>	<i>Cords</i>		
	Red Pine		12.0	Cords		
	White Pine		7.0	Cords		
<i>White Pine</i>		<i>7.0</i>	<i>Cords</i>			
5	BI/R/Hybrid Oak	Sawtimber	10.3	MBF	14.7	\$5,901.80
	Quaking Aspen		2.3	MBF		
	Red Pine		0.5	MBF		
	Jack Pine	Pulpwood	7.0	Cords		
	Mixed Oak		30.0	Cords		
	<i>BI/R/Hybrid Oak</i>		<i>30.0</i>	<i>Cords</i>		
	Quaking Aspen		99.0	Cords		
	Red Pine		2.0	Cords		
6	BI/R/Hybrid Oak	Sawtimber	14.1	MBF	36.7	\$9,697.95
	Jack Pine		19.0	MBF		
	Red Pine		3.7	MBF		
	Jack Pine	Pulpwood	236.0	Cords		
	Mixed Oak		81.0	Cords		
	<i>BI/R/Hybrid Oak</i>		<i>81.0</i>	<i>Cords</i>		
	Quaking Aspen		14.0	Cords		
	Red Maple		4.0	Cords		
<i>Red Maple</i>		<i>4.0</i>	<i>Cords</i>			

Description of Timber by Payment Unit (PU), con't

PU	MARKET GROUP	PRODUCT	QUANTITY	UNIT	ACRES	ADVERTISE PRICE
6 con't	Red Pine White Pine <i>White Pine</i>	Pulpwood	10.0 28.0 28.0	Cords Cords <i>Cords</i>		
7	B. T. Aspen BI/R/Hybrid Oak Quaking Aspen Red Pine B. T. Aspen Mixed Oak <i>BI/R/Hybrid Oak</i> Quaking Aspen Red Maple <i>Red Maple</i> Red Pine White Pine <i>White Pine</i> <i>White Pine</i>	Sawtimber Pulpwood <i>Sawtimber</i> <i>Pulpwood</i>	2.8 0.7 15.1 2.2 70.0 14.0 14.0 336.0 32.0 32.0 6.0 13.0 1.2 11.0	MBF MBF MBF MBF Cords Cords <i>Cords</i> Cords Cords <i>Cords</i> Cords Cords <i>MBF</i> <i>Cords</i>	26.5	\$18,138.85
8	B. T. Aspen BI/R/Hybrid Oak Quaking Aspen Red Pine B. T. Aspen Mixed Oak <i>BI/R/Hybrid Oak</i> Quaking Aspen Red Maple <i>Red Maple</i> Red Pine White Pine <i>White Pine</i> <i>White Pine</i>	Sawtimber Pulpwood <i>Sawtimber</i> <i>Pulpwood</i>	3.2 0.8 17.2 2.5 81.0 17.0 17.0 383.0 37.0 37.0 7.0 15.0 1.4 12.0	MBF MBF MBF MBF Cords Cords <i>Cords</i> Cords Cords <i>Cords</i> Cords Cords <i>MBF</i> <i>Cords</i>	30.2	\$20,756.40
9	B. T. Aspen BI/R/Hybrid Oak Quaking Aspen Red Pine B. T. Aspen Mixed Oak <i>BI/R/Hybrid Oak</i> Quaking Aspen Red Maple <i>Red Maple</i> Red Pine White Pine <i>White Pine</i> <i>White Pine</i>	Sawtimber Pulpwood <i>Sawtimber</i> <i>Pulpwood</i>	1.2 22.8 6.3 0.9 29.0 60.0 60.0 144.0 44.0 44.0 2.0 6.0 0.5 5.0	MBF MBF MBF MBF Cords Cords <i>Cords</i> Cords Cords <i>Cords</i> Cords Cords <i>MBF</i> <i>Cords</i>	20.0	\$12,031.05
10	B. T. Aspen BI/R/Hybrid Oak Red Oak B. T. Aspen Mixed Oak <i>White Oak</i> <i>BI/R/Hybrid Oak</i> <i>Red Oak</i> <i>White Oak</i> Red Maple <i>Red Maple</i>	Sawtimber Pulpwood <i>Sawtimber</i> <i>Pulpwood</i> <i>Sawtimber</i>	3.5 60.1 23.4 35.0 205.0 2.4 143.0 32.0 25.0 81.0 3.4	MBF MBF MBF Cords Cords <i>MBF</i> <i>Cords</i> <i>Cords</i> <i>Cords</i> Cords <i>MBF</i>	19.6	\$18,647.15

Description of Timber by Payment Unit (PU), con't

PU	MARKET GROUP	PRODUCT	QUANTITY	UNIT	ACRES	ADVERTISE PRICE
10 con't	<i>Red Maple</i>	<i>Pulpwood</i>	<i>74.0</i>	<i>Cords</i>		
TOTAL:			329.3	MBF		
TOTAL:			2,951.0	Cords		

Sale Specific Conditions & Requirements

Sale Name: Office Mix

Sale Number: 71-027-16 Seq#: 1

1 - Sale Area

1.2 - Boundaries

1.2.1 - Painted boundaries (1/14)

The sale boundary and Payment Unit boundaries are marked and identified by red and yellow paint. Exterior sale boundary lines against state are marked with red paint. Interior Payment Unit boundaries are marked with yellow paint. The painted boundary line trees are not Included Timber and are to be protected. Yellow painted trees designating an interior Payment Unit boundary are only to be cut when all surrounding Payment Units have been paid.

2 - Timber Specifications

2.1 - Included Timber

2.1.1 - Clearcut unit(s) with unmerchantable trees (6/14)

Within Payment Unit(s) #'s 1, 5, 6, 7, 8, 9 and 10, cut all trees that are two (2) inches or more at DBH except trees marked with green paint. In addition, do not cut any conifers within Payment Unit #9.

2.1.2 - Clearcut unit(s) w/o unmerchantable trees (8/11)

Within Payment Unit(s) #'s 2, 3 and 4, cut all trees which meet minimum piece specifications in 2.2 Utilization. Do not cut any green marked trees.

2.2 - Utilization

2.2.3 - Stump heights (4/07)

Stump heights within the Sale Area shall not exceed 12 inches for trees greater than 10 inches DBH and 4 inches for trees smaller than 10 inches DBH.

3 - Payments

3.3 - Pre-measured Sales

3.3.4 - Dividing payment units (7/14)

Payment Unit(s) may be divided at the request of the Purchaser and upon approval of the Unit Manager. Dividing Payment Units is a contract modification which requires a Timber Sale Contract Supplement.

3.4 - Damaged Timber

3.4.1 - Damaged timber (6/14)

General Condition and Requirement 3.4 Damaged Timber, defines liquidated damages for undesignated live merchantable trees which are cut or injured. In addition, extreme care should be taken to avoid damage to tree seedlings and saplings.

Within Payment Units #'s 2, 3 and 4, if more than 20% of the tree seedlings or saplings (1/4" to 4.5" DBH) within a specified portion of the sale area are damaged, liquidated damages will be assessed at \$300 per acre for all acreage within that specified portion of the sale area that was damaged.

No damage is acceptable to merchantable trees. Within the sale area, if more than 5% of trees (> 4.5" DBH) within a specified area of the sale are damaged, liquidated damages will be assessed for all trees damaged. Rates will be in accordance with General Condition and Requirement 3.4 Damaged Timber.

4 - Transportation

4.1 - Construction

4.1.3 - Slash and earthen piles (8/04)

Piles or windrows of earth along roads and landings that have been widened or constructed shall be leveled. Slash from road maintenance or construction, including stumps, shall be dispersed throughout the sale.

4.1.7 - Road closure (10/11)

All new roads built into the sale must be blocked to vehicle traffic upon completion of the sale. In general, this will require constructing a four (4') foot high berm of stumps and logs covered with earth. Stumps and brush must be placed along the remainder of the trail. These roads must be rendered impassable to cars and trucks. Contact the sale administrator for specific details of design and placement.

4.2 - Maintenance

4.2.1 - Hauling restriction (12/08)

Hauling may be restricted on forest roads by the Unit Manager or his/her representative. The restriction may occur during wet weather conditions.

4.2.3 - Road maintenance (8/13)

The following road maintenance is required: Within 60 days of completion of hauling, or if no hauling occurs for 60 days, the road must be maintained and graded. This includes cleaning of drainage areas, grading, crowning and filling with gravel, if necessary. Damages will be assessed if grading/repair does not occur.

4.2.5 - Two wheel drive condition (2/04)

All existing trail roads on and adjacent to the sale area must be passable by two-wheel drive traffic for the duration of the sale.

5 - Operations

5.1 - Notification

5.1.1 - Pre-sale conference (10/16)

A pre-sale conference between the Purchaser and sale administrator is required prior to beginning any operations to determine landing and road locations.

5.1.4 - Post-sale conference (6/11)

A post-sale conference on site between the Purchaser and sale administrator is required prior to the completion of active logging operations to determine clean-up and repair of landings, road edges, and the fulfillment of other contract specifications.

5.2 - Conduct of Operations

5.2.1 - Slash

5.2.1.8 - Slash height (12/08)

No slash or tree tops may exceed 24 inches in height.

5.2.2 - Hazard Trees/Snags

5.2.2.1 - Den trees (2/04)

Obvious hollow and/or den trees shall be protected and left standing unless they are a safety hazard.

5.2.4 - Dead and Down Creation

5.2.4.3 - Dead and down creation, dead trees (6/07)

Except as provided for in General Condition and Requirement 5.2.2, no dead trees, standing or down, are to be cut, skidded, or processed.

5.2.30 - Landing/road top soil protection (2/15)

Top soil on landings and new roads must be removed, stockpiled and saved. Upon completion of the timber sale, soil must be evenly distributed back over the area for revegetation.

5.2.32 - Decking/landing restoration (9/13)

All decking and landing areas must have the surface area restored to a condition equal to or better than before. This is to ensure the proper regeneration of the stand. Wood debris, chips and "cookies" from trimmings must be removed or scattered away from landing and loading areas and may not be windrowed on the edge.



TIMBER SALE MAP

This information provided by authority of Part 525, 1994 PA 451, as amended.

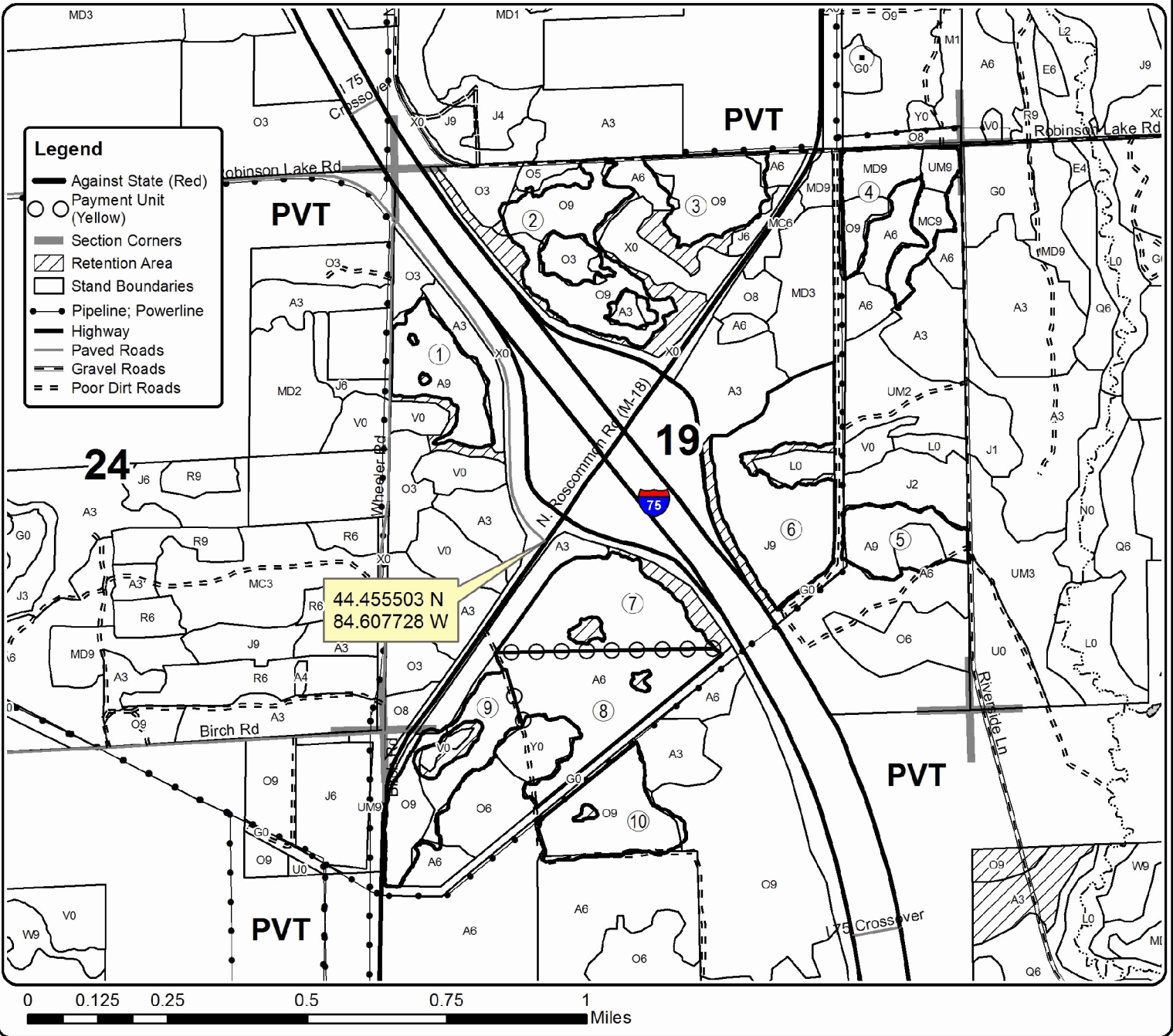
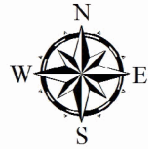
Sale Number	Year
71-027	16

Forest Management Unit Roscommon	County Roscommon	Mapped By Lewicki	Date 09/30/2016	Page 1	of 1
Township 24N	Range 02W	Section(s) and Subdivision(s) 19 - NE1/4;NW1/4;SE1/4;SW1/4 30 - N1/2NW	Scale 1:15,840		

Cover Type				Density			
A = Aspen	H = Hemlock	N = Marsh	U = Upland Brush	0 = Non Stocked	5 = Pole Timber Medium		
B = Paper Birch	J = Jack Pine	O = Oak	UM = Upland Mixed	1 = Seedling Sapling Poor	6 = Pole Timber Well		
C = Cedar	L = Lowland Brush	P = Lowland Poplar	V = Bog or Marsh	2 = Seedling Sapling Medium	7 = Saw Timber Poor		
D = Tread Bog	LM = Lowland Mixed	Q = Mixed Swamp Conifer	W = White Pine	3 = Seedling Sapling Well	8 = Saw Timber Medium		
E = Swamp Hdwoods	M = Mpl, Bch, Brch	R = Red Pine	X = Non Stocked	4 = Pole Timber Poor	9 = Saw Timber Well		
F = Spruce Fir	MC = Mixed Conifer	S = Black Spruce	Z = Water				
G = Grass	MD = Mixed Deciduous	T = Tamarack					

PU	Acres	PU	Acres
1	16.3	6	36.7
2	25.0	7	26.5
3	16.7	8	30.2
4	20.9	9	20.0
5	14.7	10	19.6

Office Mix Compartment 35 226.6 Acres



TIMBER SALE INFORMATION

18 access (71-028-16)

Roscommon County (Advertised Price \$10,757.85)

A timber sale contract for this lump sum, sealed bid timber sale will be awarded to the responsible bidder offering the highest sealed bid price. Bids must be at or above the following advertised price for each species:

<u>PRODUCTS & SPECIES</u>	<u>ESTIMATED UNITS*</u>	<u>ADVERTISED PRICE</u>
Sawtimber		
BI/R/Hybrid Oak	29.50 MBF	\$ 130.00 / MBF
Red Maple	6.30 MBF	\$ 43.00 / MBF
Pulpwood		
B. T. Aspen	25.00 Cords	\$ 36.65 / Cord
BI/R/Hybrid Oak	95.00 Cords	\$ 15.35 / Cord
Jack Pine	14.00 Cords	\$ 16.15 / Cord
Quaking Aspen	86.00 Cords	\$ 36.65 / Cord
Red Maple	44.00 Cords	\$ 19.15 / Cord
White Pine	3.00 Cords	\$ 18.95 / Cord

* The total volume is statistically estimated within plus (+) or minus (-) 27.85 percent. The estimated units are final and not subject to adjustment. Prospective bidders are urged to examine this timber and to make their own estimates of quantity and quality.

BOND AND PAYMENT SCHEDULE:

1. A bond in the amount of \$538.00 to insure faithful performance of the conditions of the contract will be deposited by the successful bidder within 21 days of the sale award.
2. Cutting in any sale or unit without the required advance payment would be considered a trespass.
3. Total payment must be paid in advance or according to the following schedule:
 - (a) Ten percent (10%) of the sale value must be paid within 21 days of the sale award.
 - (b) The 10% down payment will be credited towards the first unit cut.
4. If no cutting takes place, the 10% down payment will not be refunded.
5. Operations on the contract issued will terminate on 12/31/2018.

Description of Timber by Payment Unit (PU)

PU	MARKET GROUP	PRODUCT	QUANTITY	UNIT	ACRES	ADVERTISE PRICE
1	BI/R/Hybrid Oak	Sawtimber	0.4	MBF	5.7	\$3,758.80
	Red Maple		0.8	MBF		
	BI/R/Hybrid Oak	Pulpwood	3.0	Cords		
	Jack Pine		14.0	Cords		
	Quaking Aspen		86.0	Cords		
	<i>Quaking Aspen</i>	<i>Sawtimber</i>	3.2	<i>MBF</i>		
	<i>Quaking Aspen</i>	<i>Pulpwood</i>	80.0	<i>Cords</i>		
	Red Maple		10.0	Cords		
	White Pine		3.0	Cords		
	2	BI/R/Hybrid Oak	Sawtimber	29.1		
Red Maple			5.5	MBF		
B. T. Aspen		Pulpwood	25.0	Cords		
<i>B. T. Aspen</i>		<i>Sawtimber</i>	4.3	<i>MBF</i>		
<i>B. T. Aspen</i>		<i>Pulpwood</i>	16.0	<i>Cords</i>		
BI/R/Hybrid Oak			92.0	Cords		
Red Maple			34.0	Cords		
TOTAL:			35.8	MBF		
TOTAL:			267.0	Cords		

Sale Specific Conditions & Requirements

Sale Name: 18 access

Sale Number: 71-028-16 Seq#: 1

1 - Sale Area

1.2 - Boundaries

1.2.1 - Painted boundaries (1/14)

The sale boundary and Payment Unit boundaries are marked and identified by red and yellow paint. Exterior sale boundary lines against state are marked with red paint. Interior Payment Unit boundaries are marked with yellow paint. The painted boundary line trees are not Included Timber and are to be protected. Yellow painted trees designating an interior Payment Unit boundary are only to be cut when all surrounding Payment Units have been paid.

2 - Timber Specifications

2.1 - Included Timber

2.1.1 - Clearcut unit(s) with unmerchantable trees (6/14)

Within Payment Unit(s) #1, cut all trees that are two (2) inches or more at DBH, except do not cut trees marked with green paint.

2.1.3 - Cut tree marked unit(s) (12/08)

Within Payment Unit(s) #2, all trees are designated for cutting when marked with orange paint above and below stump height, regardless of merchantability. In addition, all aspen is designated for cutting.

2.2 - Utilization

2.2.3 - Stump heights (4/07)

Stump heights within the Sale Area shall not exceed 12 inches for trees greater than 10 inches DBH and 4 inches for trees smaller than 10 inches DBH.

3 - Payments

3.4 - Damaged Timber

3.4.1 - Damaged timber (6/14)

General Condition and Requirement 3.4 Damaged Timber, defines liquidated damages for undesignated live merchantable trees which are cut or injured. In addition, extreme care should be taken to avoid damage to tree seedlings and saplings.

Within Payment Unit #2, if more than 20% of the tree seedlings or saplings (1/4" to 4.5" DBH) within a specified portion of the sale area are damaged, liquidated damages will be assessed at \$300 per acre for all acreage within that specified portion of the sale area that was damaged.

No damage is acceptable to merchantable trees. Within the sale area, if more than 5% of trees (> 4.5" DBH) within a specified area of the sale are damaged, liquidated damages will be assessed for all trees damaged. Rates will be in accordance with General Condition and Requirement 3.4 Damaged Timber.

4 - Transportation

4.1 - Construction

4.1.3 - Slash and earthen piles (8/04)

Piles or windrows of earth along roads and landings that have been widened or constructed shall be leveled. Slash from road maintenance or construction, including stumps, shall be dispersed throughout the sale.

4.1.7 - Road closure (10/11)

All new roads built into the sale must be blocked to vehicle traffic upon completion of the sale. In general, this will require constructing a four (4') foot high berm of stumps and logs covered with earth. Stumps and brush must be placed along the remainder of the trail. These roads must be rendered impassable to cars and trucks. Contact the sale administrator for specific details of design and placement.

4.1.12 - No new roads (1/12)

No new roads will be permitted in any Payment Unit. All operations are limited to existing roads.

4.2 - Maintenance

4.2.1 - Hauling restriction (12/08)

Hauling may be restricted on forest roads by the Unit Manager or his/her representative. The restriction may occur during wet weather conditions.

4.2.3 - Road maintenance (8/13)

The following road maintenance is required: Within 60 days of completion of hauling, or if no hauling occurs for 60 days, the road must be maintained and graded. This includes cleaning of drainage areas, grading, crowning and filling with gravel, if necessary. Damages will be assessed if grading/repair does not occur.

4.2.5 - Two wheel drive condition (2/04)

All existing trail roads on and adjacent to the sale area must be passable by two-wheel drive traffic for the duration of the sale.

5 - Operations

5.1 - Notification

5.1.1 - Pre-sale conference (10/16)

A pre-sale conference between the Purchaser and sale administrator is required prior to beginning any operations to determine landing and road locations.

5.1.4 - Post-sale conference (6/11)

A post-sale conference on site between the Purchaser and sale administrator is required prior to the completion of active logging operations to determine clean-up and repair of landings, road edges, and the fulfillment of other contract specifications.

5.2 - Conduct of Operations

5.2.1 - Slash

5.2.1.8 - Slash height (12/08)

No slash or tree tops may exceed 24 inches in height.

5.2.2 - Hazard Trees/Snags

5.2.2.1 - Den trees (2/04)

Obvious hollow and/or den trees shall be protected and left standing unless they are a safety hazard.

5.2.3 - Operating Restrictions

5.2.3.4 - Oak wilt restriction (6/10)

Within Payment Unit(s) #'s 2, unless changed by written agreement, cutting, skidding, and hauling are not permitted during the period of April 15 to July 15. This is necessary to reduce the spread of oak wilt. For more information, contact the Unit Manager or his/her representative.

5.2.4 - Dead and Down Creation

5.2.4.3 - Dead and down creation, dead trees (6/07)

Except as provided for in General Condition and Requirement 5.2.2, no dead trees, standing or down, are to be cut, skidded, or processed.

5.2.30 - Landing/road top soil protection (2/15)

Top soil on landings and new roads must be removed, stockpiled and saved. Upon completion of the timber sale, soil must be evenly distributed back over the area for revegetation.

5.2.32 - Decking/landing restoration (9/13)

All decking and landing areas must have the surface area restored to a condition equal to or better than before. This is to ensure the proper regeneration of the stand. Wood debris, chips and "cookies" from trimmings must be removed or scattered

away from landing and loading areas and may not be windrowed on the edge.

6 - Safety and Fire Prevention

6.2 - Signing

6.2.1 - Road posting (9/09)

The Purchaser is responsible for posting and maintaining caution signs on M-18 prior to beginning operations. The road must be posted at appropriate distances from the sale area to warn of logging activity and truck traffic. Signs must be removed when harvest operations are suspended or completed. The Purchaser will provide these signs.



TIMBER SALE MAP

This information provided by authority of Part 525, 1994 PA 451, as amended.

Sale Number	Year
71-028	16

Forest Management Unit	County	Mapped By	Lewicki	Date	Page	of
Roscommon Management Unit	Roscommon County	Cruised By	Lewicki	09/28/2016	1	1

Township	Range	Section(s) and Subdivision(s)	Scale
24N	02W	N1/2SW; S1/2NW; SWNE; NWSE	1:15,840

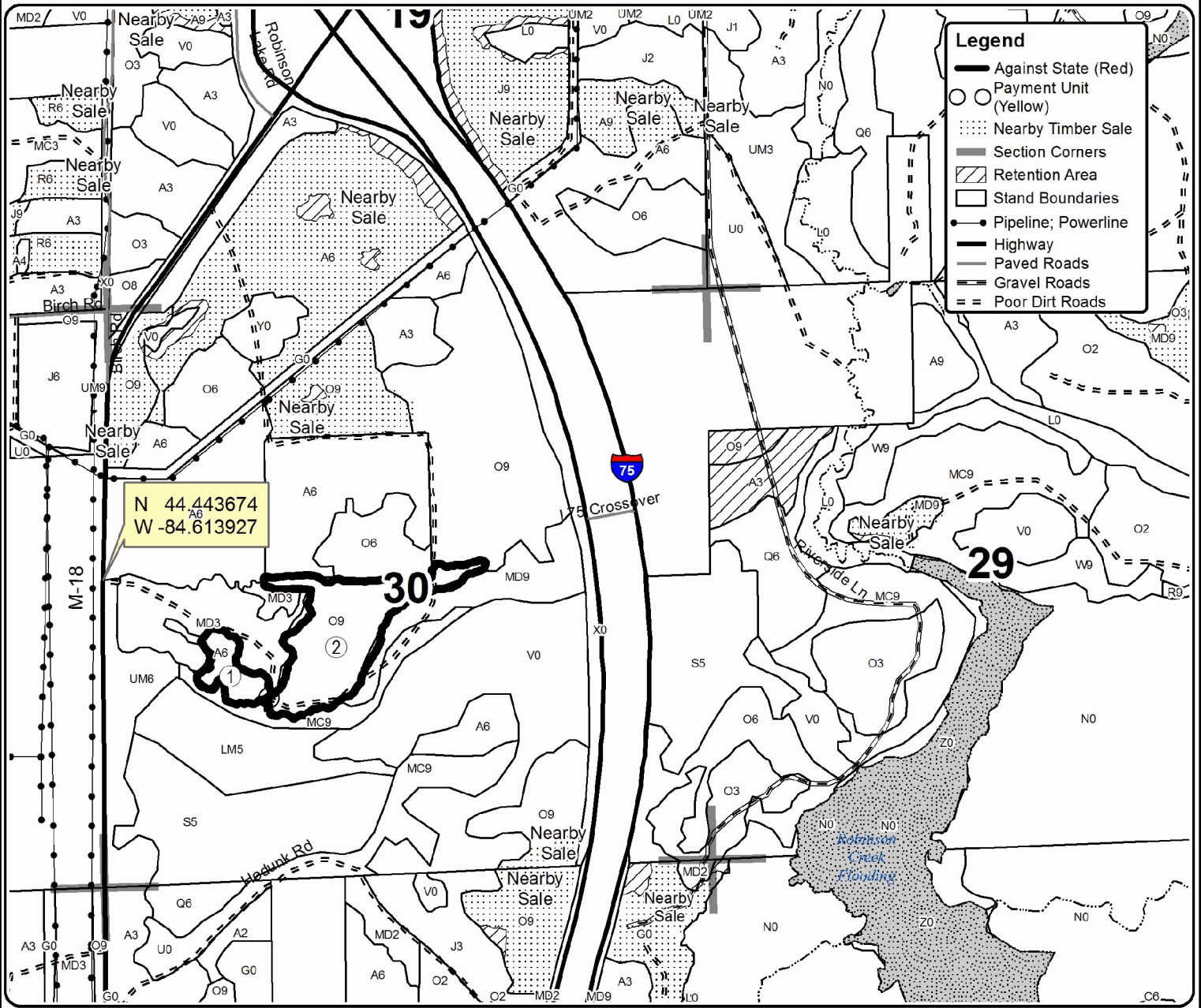
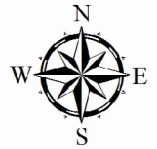
Cover Type				Density			
A = Aspen	H = Hemlock	N = Marsh	U = Upland Brush	0 = Non Stocked	5 = Pole Timber Medium		
B = Paper Birch	J = Jack Pine	O = Oak	UM = Upland Mixed	1 = Seedling Sapling Poor	6 = Pole Timber Well		
C = Cedar	L = Lowland Brush	P = Lowland Poplar	V = Bog or Marsh	2 = Seedling Sapling Medium	7 = Saw Timber Poor		
D = Tread Bog	LM = Lowland Mixed	Q = Mixed Swamp Conifer	W = White Pine	3 = Seedling Sapling Well	8 = Saw Timber Medium		
E = Swamp Hdwoods	M = Mpl, Bch, Brch	R = Red Pine	X = Non Stocked	4 = Pole Timber Poor	9 = Saw Timber Well		
F = Spruce Fir	MC = Mixed Conifer	S = Black Spruce	Z = Water				
G = Grass	MD = Mixed Deciduous	T = Tamarack					

PU Acres

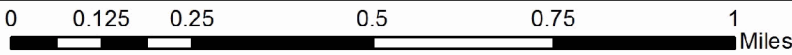
1	5.7
2	25.5

18 ACCESS

Compartment 35
31.2 Acres



Legend	
	Against State (Red)
	Payment Unit (Yellow)
	Nearby Timber Sale
	Section Corners
	Retention Area
	Stand Boundaries
	Pipeline; Powerline
	Highway
	Paved Roads
	Gravel Roads
	Poor Dirt Roads



TIMBER SALE INFORMATION

Triangle Oak (71-029-16)

Roscommon County (Advertised Price \$40,280.00)

A timber sale contract for this lump sum, sealed bid timber sale will be awarded to the responsible bidder offering the highest sealed bid price. Bids must be at or above the following advertised price for each species:

<u>PRODUCTS & SPECIES</u>	<u>ESTIMATED UNITS*</u>	<u>ADVERTISED PRICE</u>
Sawtimber		
B/R/Hybrid Oak	117.30 MBF	\$ 130.00 / MBF
Red Pine	31.80 MBF	\$ 152.00 / MBF
White Oak	10.20 MBF	\$ 71.00 / MBF
Pulpwood		
B. T. Aspen	124.00 Cords	\$ 36.65 / Cord
Jack Pine	84.00 Cords	\$ 16.15 / Cord
Mixed Oak	387.00 Cords	\$ 15.35 / Cord
Red Maple	108.00 Cords	\$ 19.15 / Cord
Red Pine	112.00 Cords	\$ 48.15 / Cord
White Pine	9.00 Cords	\$ 18.95 / Cord

* The total volume is statistically estimated within plus (+) or minus (-) 11.90 percent. The estimated units are final and not subject to adjustment. Prospective bidders are urged to examine this timber and to make their own estimates of quantity and quality.

BOND AND PAYMENT SCHEDULE:

1. A bond in the amount of \$2,014.00 to insure faithful performance of the conditions of the contract will be deposited by the successful bidder within 21 days of the sale award.
2. Cutting in any sale or unit without the required advance payment would be considered a trespass.
3. Total payment must be paid in advance or according to the following schedule:
 - (a) Ten percent (10%) of the sale value must be paid within 21 days of the sale award.
 - (b) The 10% down payment will be credited towards the first unit cut.
4. If no cutting takes place, the 10% down payment will not be refunded.
5. Operations on the contract issued will terminate on 12/31/2018.

Description of Timber by Payment Unit (PU)

PU	MARKET GROUP	PRODUCT	QUANTITY	UNIT	ACRES	ADVERTISE PRICE
1	BI/R/Hybrid Oak	Sawtimber	31.1	MBF	21.0	\$8,984.40
	Red Pine		9.3	MBF		
	White Oak		5.6	MBF		
	B. T. Aspen	Pulpwood	7.0	Cords		
	<i>B. T. Aspen</i>	<i>Sawtimber</i>	<i>0.7</i>	<i>MBF</i>		
	<i>B. T. Aspen</i>	<i>Pulpwood</i>	<i>6.0</i>	<i>Cords</i>		
	Mixed Oak		92.0	Cords		
	<i>BI/R/Hybrid Oak</i>		<i>71.0</i>	<i>Cords</i>		
	<i>White Oak</i>		<i>21.0</i>	<i>Cords</i>		
	Red Maple		21.0	Cords		
	<i>Red Maple</i>	<i>Sawtimber</i>	<i>1.4</i>	<i>MBF</i>		
	<i>Red Maple</i>	<i>Pulpwood</i>	<i>18.0</i>	<i>Cords</i>		
	Red Pine		22.0	Cords		
	2	BI/R/Hybrid Oak	Sawtimber	23.0		
Red Pine			8.3	MBF		
White Oak			3.8	MBF		
B. T. Aspen		Pulpwood	32.0	Cords		
<i>B. T. Aspen</i>		<i>Sawtimber</i>	<i>1.6</i>	<i>MBF</i>		
<i>B. T. Aspen</i>		<i>Pulpwood</i>	<i>29.0</i>	<i>Cords</i>		
Jack Pine			14.0	Cords		
<i>Jack Pine</i>		<i>Sawtimber</i>	<i>2.0</i>	<i>MBF</i>		
<i>Jack Pine</i>		<i>Pulpwood</i>	<i>10.0</i>	<i>Cords</i>		
Mixed Oak			89.0	Cords		
<i>BI/R/Hybrid Oak</i>			<i>71.0</i>	<i>Cords</i>		
<i>White Oak</i>			<i>18.0</i>	<i>Cords</i>		
Red Maple			19.0	Cords		
<i>Red Maple</i>			<i>19.0</i>	<i>Cords</i>		
Red Pine		32.0	Cords			
3	BI/R/Hybrid Oak	Sawtimber	25.2	MBF	19.8	\$11,606.70
	Red Pine		7.7	MBF		
	White Oak		0.8	MBF		
	B. T. Aspen	Pulpwood	56.0	Cords		
	<i>B. T. Aspen</i>	<i>Sawtimber</i>	<i>5.3</i>	<i>MBF</i>		
	<i>B. T. Aspen</i>	<i>Pulpwood</i>	<i>45.0</i>	<i>Cords</i>		
	Jack Pine		45.0	Cords		
	<i>Jack Pine</i>	<i>Sawtimber</i>	<i>5.4</i>	<i>MBF</i>		
	<i>Jack Pine</i>	<i>Pulpwood</i>	<i>34.0</i>	<i>Cords</i>		
	Mixed Oak		80.0	Cords		
	<i>BI/R/Hybrid Oak</i>		<i>75.0</i>	<i>Cords</i>		
	<i>White Oak</i>		<i>5.0</i>	<i>Cords</i>		
	Red Maple		41.0	Cords		
	<i>Red Maple</i>	<i>Sawtimber</i>	<i>3.2</i>	<i>MBF</i>		
<i>Red Maple</i>	<i>Pulpwood</i>	<i>35.0</i>	<i>Cords</i>			
Red Pine		48.0	Cords			
4	BI/R/Hybrid Oak	Sawtimber	7.7	MBF	6.6	\$2,469.90
	B. T. Aspen	Pulpwood	12.0	Cords		
	<i>B. T. Aspen</i>		<i>12.0</i>	<i>Cords</i>		
	Jack Pine		4.0	Cords		
	<i>Jack Pine</i>		<i>4.0</i>	<i>Cords</i>		
	Mixed Oak		41.0	Cords		
	<i>BI/R/Hybrid Oak</i>		<i>41.0</i>	<i>Cords</i>		
	Red Maple		6.0	Cords		
	<i>Red Maple</i>		<i>6.0</i>	<i>Cords</i>		
	Red Pine		3.0	Cords		
	White Pine		4.0	Cords		
<i>White Pine</i>		<i>4.0</i>	<i>Cords</i>			

Description of Timber by Payment Unit (PU), con't

PU	MARKET GROUP	PRODUCT	QUANTITY	UNIT	ACRES	ADVERTISE PRICE
5	BI/R/Hybrid Oak	Sawtimber	30.3	MBF	12.0	\$8,027.90
	Red Pine		6.5	MBF		
	B. T. Aspen	Pulpwood	17.0	Cords		
	<i>B. T. Aspen</i>	<i>Sawtimber</i>	1.3	<i>MBF</i>		
	<i>B. T. Aspen</i>	<i>Pulpwood</i>	14.0	<i>Cords</i>		
	Jack Pine		21.0	Cords		
	<i>Jack Pine</i>	<i>Sawtimber</i>	1.2	<i>MBF</i>		
	<i>Jack Pine</i>	<i>Pulpwood</i>	19.0	<i>Cords</i>		
	Mixed Oak		85.0	Cords		
	<i>BI/R/Hybrid Oak</i>		85.0	<i>Cords</i>		
	Red Maple		21.0	Cords		
	<i>Red Maple</i>	<i>Sawtimber</i>	0.8	<i>MBF</i>		
	<i>Red Maple</i>	<i>Pulpwood</i>	19.0	<i>Cords</i>		
	Red Pine		7.0	Cords		
	White Pine		5.0	Cords		
	<i>White Pine</i>	<i>Sawtimber</i>	0.5	<i>MBF</i>		
	<i>White Pine</i>	<i>Pulpwood</i>	4.0	<i>Cords</i>		
TOTAL:			159.3	MBF		
TOTAL:			824.0	Cords		

Sale Specific Conditions & Requirements

Sale Name: Triangle Oak

Sale Number: 71-029-16 Seq#: 1

1 - Sale Area

1.2 - Boundaries

1.2.1 - Painted boundaries (1/14)

The sale boundary is marked and identified by blue and red paint. Exterior sale boundary lines against private property are marked with blue paint. Exterior sale boundary lines against state are marked with red paint. The painted boundary line trees are not Included Timber and are to be protected.

2 - Timber Specifications

2.1 - Included Timber

2.1.1 - Clearcut unit(s) with unmerchantable trees (6/14)

Within Payment Unit(s) #5, cut all trees that are two (2) inches or more at DBH except trees marked with green paint.

2.1.7 - Leave tree marked unit(s) (6/14)

Within Payment Unit(s) #'s 1-4, all trees, which meet minimum piece specifications in 2.2 Utilization, are designated for cutting except white pine and trees marked with green paint above and below stump height.

2.2 - Utilization

2.2.3 - Stump heights (4/07)

Stump heights within the Sale Area shall not exceed 12 inches for trees greater than 10 inches DBH and 4 inches for trees smaller than 10 inches DBH.

3 - Payments

3.4 - Damaged Timber

3.4.1 - Damaged timber (6/14)

General Condition and Requirement 3.4 Damaged Timber, defines liquidated damages for undesignated live merchantable trees which are cut or injured. In addition, extreme care should be taken to avoid damage to tree seedlings and saplings.

Within Payment Unit #'s 1-4, if more than 20% of the tree seedlings or saplings (1/4" to 4.5" DBH) within a specified portion of the sale area are damaged, liquidated damages will be assessed at \$300 per acre for all acreage within that specified portion of the sale area that was damaged.

No damage is acceptable to merchantable trees. Within the sale area, if more than 5% of trees (> 4.5" DBH) within a specified area of the sale are damaged, liquidated damages will be assessed for all trees damaged. Rates will be in accordance with General Condition and Requirement 3.4 Damaged Timber.

4 - Transportation

4.1 - Construction

4.1.6 - Road construction (1/09)

Construction of new roads or improvements of existing roads shall be done in such a way as to minimize the environmental and visual impacts. Merchantable trees shall be cut and utilized unless otherwise directed. Non-merchantable trees shall be severed and laid flat on the ground. Slash shall be scattered, and not left in windrows and kept a minimum of 10 feet back from the road edge. Stumps shall be set upright, not left on edge, and be moved at least 10 feet away from the road edge. Disturbed soil shall be feathered into the woods and not left in berms or windrows.

4.1.7 - Road closure (10/11)

All new roads built into the sale must be blocked to vehicle traffic upon completion of the sale. In general, this will require constructing a four (4') foot high berm of stumps and logs covered with earth. Stumps and brush must be placed along the remainder of the trail. These roads must be rendered impassable to cars and trucks. Contact the sale administrator for

specific details of design and placement.

4.2 - Maintenance

4.2.1 - Hauling restriction (12/08)

Hauling may be restricted on forest roads by the Unit Manager or his/her representative. The restriction may occur during wet weather conditions.

4.2.5 - Two wheel drive condition (2/04)

All existing trail roads on and adjacent to the sale area must be passable by two-wheel drive traffic for the duration of the sale.

5 - Operations

5.1 - Notification

5.1.1 - Pre-sale conference (10/16)

A pre-sale conference between the Purchaser and sale administrator is required prior to beginning any operations to determine landing and road locations.

5.1.4 - Post-sale conference (6/11)

A post-sale conference on site between the Purchaser and sale administrator is required prior to the completion of active logging operations to determine clean-up and repair of landings, road edges, and the fulfillment of other contract specifications.

5.2 - Conduct of Operations

5.2.1 - Slash

5.2.1.1 - Slash within sale area (9/16)

No trees are to be felled outside the sale area and all slash is to be kept at least 10 feet back from the red paint line. If sale boundary lines are along a public road or highway, then slash must be removed 50' from these lines per General Condition & Requirement 5.2.1.

5.2.1.8 - Slash height (12/08)

No slash or tree tops may exceed 24 inches in height.

5.2.2 - Hazard Trees/Snags

5.2.2.1 - Den trees (2/04)

Obvious hollow and/or den trees shall be protected and left standing unless they are a safety hazard.

5.2.3 - Operating Restrictions

5.2.3.4 - Oak wilt restriction (6/10)

Within Payment Unit(s) #'s 1-4, unless changed by written agreement, cutting, skidding, and hauling are not permitted during the period of April 15 to July 15. This is necessary to reduce the spread of oak wilt. For more information, contact the Unit Manager or his/her representative.

5.2.4 - Dead and Down Creation

5.2.4.3 - Dead and down creation, dead trees (6/07)

Except as provided for in General Condition and Requirement 5.2.2, no dead trees, standing or down, are to be cut, skidded, or processed.

5.2.30 - Landing/road top soil protection (2/15)

Top soil on landings and new roads must be removed, stockpiled and saved. Upon completion of the timber sale, soil must be evenly distributed back over the area for revegetation.

5.2.32 - Decking/landing restoration (9/13)

All decking and landing areas must have the surface area restored to a condition equal to or better than before. This is to ensure the proper regeneration of the stand. Wood debris, chips and "cookies" from trimmings must be removed or scattered away from landing and loading areas and may not be windrowed on the edge.

6 - Safety and Fire Prevention

6.2 - Signing

6.2.1 - Road posting (9/09)

The Purchaser is responsible for posting and maintaining caution signs on M-157 and M55 prior to beginning operations. The road must be posted at appropriate distances from the sale area to warn of logging activity and truck traffic. Signs must be removed when harvest operations are suspended or completed. The Purchaser will provide these signs.



TIMBER SALE MAP

This information provided by authority of Part 525, 1994 PA 451, as amended.

Forest Management Unit		County	Mapped By	Lewicki	Date	Page	of
Roscommon Management Unit		Roscommon County	Cruised By	Lewicki	09/28/2016	1	1
Township	Range	Section(s) and Subdivision(s)			Scale		
22N	02W	S.7 W1/2NW; W1/2SW; NE S.18 W1/2NE			1:15,840		

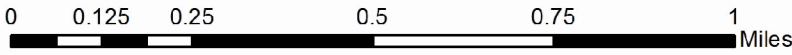
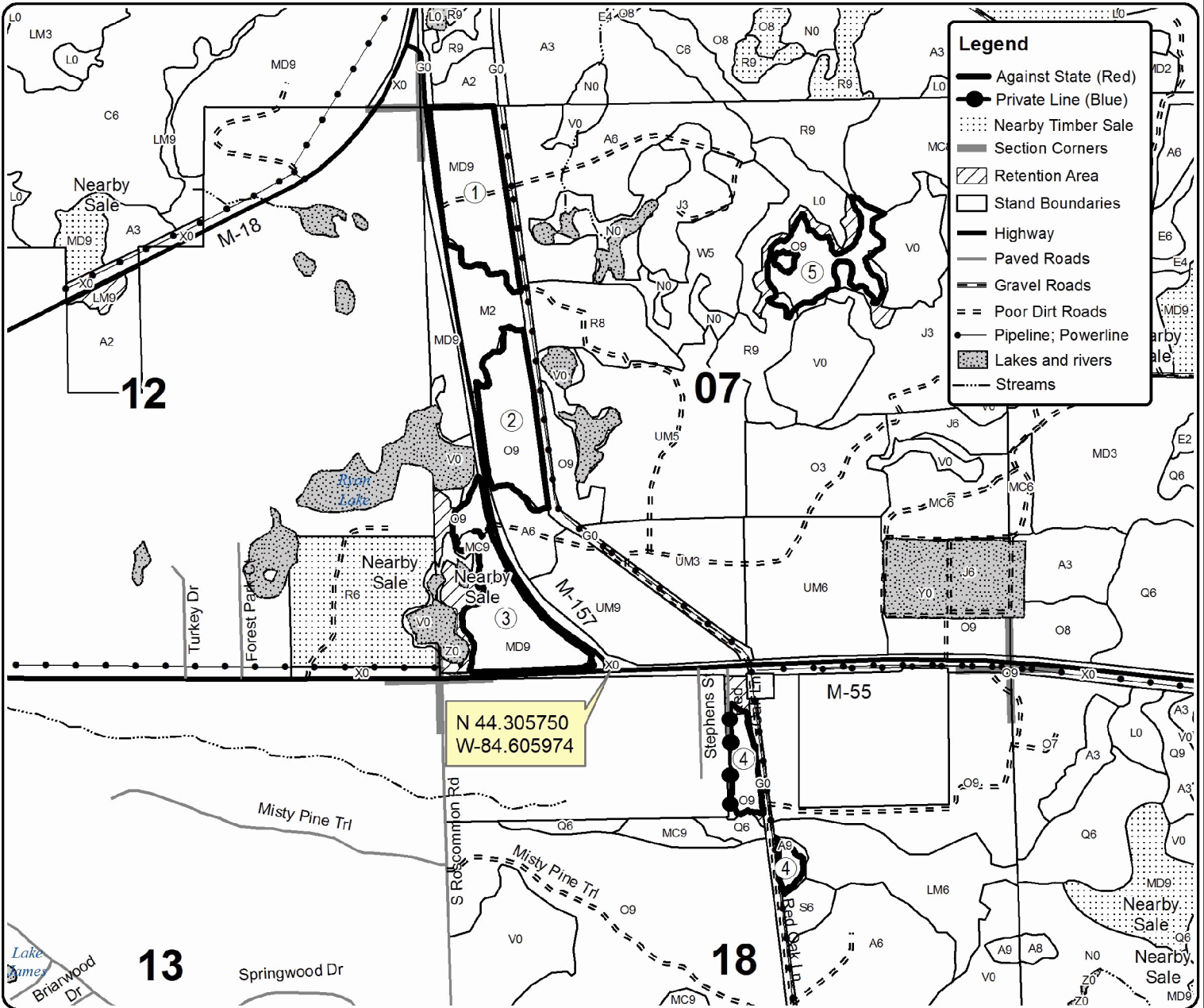
Cover Type				Density			
A = Aspen	H = Hemlock	N = Marsh	U = Upland Brush	0 = Non Stocked	5 = Pole Timber Medium		
B = Paper Birch	J = Jack Pine	O = Oak	UM = Upland Mixed	1 = Seedling Sapling Poor	6 = Pole Timber Well		
C = Cedar	L = Lowland Brush	P = Lowland Poplar	V = Bog or Marsh	2 = Seedling Sapling Medium	7 = Saw Timber Poor		
D = Treed Bog	LM = Lowland Mixed	Q = Mixed Swamp Conifer	W = White Pine	3 = Seedling Sapling Well	8 = Saw Timber Medium		
E = Swamp Hdwoods	M = Mpl, Bch, Brch	R = Red Pine	X = Non Stocked	4 = Pole Timber Poor	9 = Saw Timber Well		
F = Spruce Fir	MC = Mixed Conifer	S = Black Spruce	Z = Water				
G = Grass	MD = Mixed Deciduous	T = Tamarack					

PU	Acres	PU	Acres
1	21	4	6.6
2	16	5	12
3	19.8		

TRIANGLE OAK

Compartment 105

75.4 Acres



Office Mix (71-027-16)
 ; Roscommon COUNTY

In response to the notice of sale to be held 11:00 a.m. (local time) on December 20, 2016, I am hereby submitting my sealed bid (firm offer) for the following forest products to be cut. Bids for individual species must be at or above the advertised price. All non-responsive bid forms may be rejected.

<u>PRODUCTS & SPECIES</u>	<u>ESTIMATED VOLUME*</u>	<u>ADVERTISED PRICE</u>	<u>BID PRICE</u>
Sawtimber			
B. T. Aspen	18.20 MBF	\$ 83.00/MBF	\$ _____
Bl/R/Hybrid Oak	198.30 MBF	\$ 130.00/MBF	\$ _____
Jack Pine	24.50 MBF	\$ 34.00/MBF	\$ _____
Quaking Aspen	53.40 MBF	\$ 82.00/MBF	\$ _____
Red Oak	23.40 MBF	\$ 195.00/MBF	\$ _____
Red Pine	11.50 MBF	\$ 152.00/MBF	\$ _____
Pulpwood			
B. T. Aspen	334.00 Cords	\$ 36.65/Cord	\$ _____
Jack Pine	312.00 Cords	\$ 16.15/Cord	\$ _____
Mixed Oak	713.00 Cords	\$ 15.35/Cord	\$ _____
Quaking Aspen	1,223.00 Cords	\$ 36.65/Cord	\$ _____
Red Maple	261.00 Cords	\$ 19.15/Cord	\$ _____
Red Pine	39.00 Cords	\$ 48.15/Cord	\$ _____
White Pine	69.00 Cords	\$ 18.95/Cord	\$ _____

*The volumes are statistically estimated within plus (+) or minus (-) 8.09 percent. These estimated volumes are final and not subject to adjustment. Prospective bidders are urged to examine this timber and to make their own estimates of quantity and quality.

I understand that any or all bids may be rejected. All bids must be signed and all bid items must be bid or the bid form may be rejected. I also understand that consideration and awarding a contract will be based upon my past performance and ability to complete the contract based upon equipment and staffing subject to my control.

FEDERAL ID: _____ or SOCIAL SECURITY NUMBER: _____
 Company or individual bidding: _____
 Company representative's name: _____
 Address: _____
 City: _____ State: _____ Zip: _____

IF AVAILABLE, PLEASE PLACE THE PERSONALIZED LABEL FROM YOUR PROSPECTUS IN THE ABOVE BOX.

Individual or company representative's signature: _____ Date: _____

Phone number : _____ Email (optional): _____

THE WINNING BIDDER MUST COMPLETE THE VERIFICATION OF WORKER'S DISABILITY COMPENSATION ACT COMPLIANCE (ON REVERSE SIDE IF DOUBLE SIDED) WITHIN 21 DAYS OF SALE AWARD DATE



FOR DEPARTMENT USE ONLY
Sale Number (XX - XXX - XX - XX)
Forest Management Unit:

TIMBER SALE VERIFICATION OF WORKER'S DISABILITY COMPENSATION ACT COMPLIANCE

*As required by Act 317, P.A. 1969 (Worker's Compensation) and
Part 5 of Act 451 of 1994, as amended.*

VERIFICATION OF WORKER'S DISABILITY COMPENSATION ACT COMPLIANCE

- This verification must be completed and submitted within 21 days of contract award and prior to the issuance of the timber sale contract.
- In addition, if boxes 2B or 2C are checked, then Notice of Exclusion or Certificate of Insurance must be submitted within twenty-one (21) days of the contract award and prior to the issuance of the timber sale contract.
- All information must be typed or printed except for written signatures.

Please Check Appropriate Categories:

1. My business is organized as (you **must** check one of the boxes below):
 - A. Sole Proprietorship (individual)
 - B. Partnership
 - C. Corporation

2. You **must** check one of the boxes below:
 - A. I certify my business is a sole proprietorship and it has no employees but the sole proprietor. I am not subject to the Worker's Compensation Laws.
 - B. I certify my business has satisfied its obligation to the Worker's Compensation Act through the use of an approved Notice of Exclusion (BWC-337, Rev. 5/96). I will provide a copy of the Notice of Exclusion within 21 days of the contract award. (For questions or a copy of the BWC-337, please call the Worker's Compensation Bureau at 517-322-1195).
 - C. I certify my business has a Worker's Compensation Policy. I will provide an original Certificate of Insurance within twenty-one (21) days of the contract award.

3. If you have checked item 2(A) or 2(B), you **must** indicate the number of **both** full-time and part-time employees, other than yourself, including family members and active partners (if none, you must enter "0").

_____ Full-time Employees

_____ Part-time Employees

Name of Business		Federal ID (or) Social Security No.	
Address		Telephone ()	
City	State	ZIP	

I hereby certify that the above information is true and correct. I agree to notify the Michigan DNR of any changes that occur in factors affecting my coverage during any of my present and future operations.

Signature of Owner or Authorized Representative

Title

Date

Please complete the "SEALED BID" information on the next page

18 access (71-028-16)
 ; Roscommon COUNTY

In response to the notice of sale to be held 11:00 a.m. (local time) on December 20, 2016, I am hereby submitting my sealed bid (firm offer) for the following forest products to be cut. Bids for individual species must be at or above the advertised price. All non-responsive bid forms may be rejected.

<u>PRODUCTS & SPECIES</u>	<u>ESTIMATED VOLUME*</u>	<u>ADVERTISED PRICE</u>	<u>BID PRICE</u>
Sawtimber			
BI/R/Hybrid Oak	29.50 MBF	\$ 130.00/MBF	\$ _____
Red Maple	6.30 MBF	\$ 43.00/MBF	\$ _____
Pulpwood			
B. T. Aspen	25.00 Cords	\$ 36.65/Cord	\$ _____
BI/R/Hybrid Oak	95.00 Cords	\$ 15.35/Cord	\$ _____
Jack Pine	14.00 Cords	\$ 16.15/Cord	\$ _____
Quaking Aspen	86.00 Cords	\$ 36.65/Cord	\$ _____
Red Maple	44.00 Cords	\$ 19.15/Cord	\$ _____
White Pine	3.00 Cords	\$ 18.95/Cord	\$ _____

*The volumes are statistically estimated within plus (+) or minus (-) 27.85 percent. These estimated volumes are final and not subject to adjustment. Prospective bidders are urged to examine this timber and to make their own estimates of quantity and quality.

I understand that any or all bids may be rejected. All bids must be signed and all bid items must be bid or the bid form may be rejected. I also understand that consideration and awarding a contract will be based upon my past performance and ability to complete the contract based upon equipment and staffing subject to my control.

FEDERAL ID: _____ - _____ or SOCIAL SECURITY NUMBER: _____ - _____ - _____

Company or individual bidding: _____

Company representative's name: _____

Address: _____

City: _____ State: _____ Zip: _____

IF AVAILABLE, PLEASE PLACE THE PERSONALIZED LABEL FROM YOUR PROSPECTUS IN THE ABOVE BOX.

Individual or company representative's signature: _____ Date: _____

Phone number : _____ Email (optional): _____

THE WINNING BIDDER MUST COMPLETE THE VERIFICATION OF WORKER'S DISABILITY COMPENSATION ACT COMPLIANCE (ON REVERSE SIDE IF DOUBLE SIDED) WITHIN 21 DAYS OF SALE AWARD DATE



FOR DEPARTMENT USE ONLY	
Sale Number (XX - XXX - XX - XX)	
Forest Management Unit:	

TIMBER SALE VERIFICATION OF WORKER'S DISABILITY COMPENSATION ACT COMPLIANCE

As required by Act 317, P.A. 1969 (Worker's Compensation) and
Part 5 of Act 451 of 1994, as amended.

VERIFICATION OF WORKER'S DISABILITY COMPENSATION ACT COMPLIANCE

- This verification must be completed and submitted within 21 days of contract award and prior to the issuance of the timber sale contract.
- In addition, if boxes 2B or 2C are checked, then Notice of Exclusion or Certificate of Insurance must be submitted within twenty-one (21) days of the contract award and prior to the issuance of the timber sale contract.
- All information must be typed or printed except for written signatures.

Please Check Appropriate Categories:

1. My business is organized as (you **must** check one of the boxes below):
 - A. Sole Proprietorship (individual)
 - B. Partnership
 - C. Corporation
2. You **must** check one of the boxes below:
 - A. I certify my business is a sole proprietorship and it has no employees but the sole proprietor. I am not subject to the Worker's Compensation Laws.
 - B. I certify my business has satisfied its obligation to the Worker's Compensation Act through the use of an approved Notice of Exclusion (BWC-337, Rev. 5/96). I will provide a copy of the Notice of Exclusion within 21 days of the contract award. (For questions or a copy of the BWC-337, please call the Worker's Compensation Bureau at 517-322-1195).
 - C. I certify my business has a Worker's Compensation Policy. I will provide an original Certificate of Insurance within twenty-one (21) days of the contract award.
3. If you have checked item 2(A) or 2(B), you **must** indicate the number of **both** full-time and part-time employees, other than yourself, including family members and active partners (if none, you must enter "0").

_____ Full-time Employees

_____ Part-time Employees

Name of Business		Federal ID (or) Social Security No.	
Address		Telephone ()	
City	State	ZIP	

I hereby certify that the above information is true and correct. I agree to notify the Michigan DNR of any changes that occur in factors affecting my coverage during any of my present and future operations.

Signature of Owner or Authorized Representative

Title

Date

Please complete the "SEALED BID" information on the next page

Triangle Oak (71-029-16)
 ; Roscommon COUNTY

In response to the notice of sale to be held 11:00 a.m. (local time) on December 20, 2016, I am hereby submitting my sealed bid (firm offer) for the following forest products to be cut. Bids for individual species must be at or above the advertised price. All non-responsive bid forms may be rejected.

<u>PRODUCTS & SPECIES</u>	<u>ESTIMATED VOLUME*</u>	<u>ADVERTISED PRICE</u>	<u>BID PRICE</u>
Sawtimber			
BI/R/Hybrid Oak	117.30 MBF	\$ 130.00/MBF	\$ _____
Red Pine	31.80 MBF	\$ 152.00/MBF	\$ _____
White Oak	10.20 MBF	\$ 71.00/MBF	\$ _____
Pulpwood			
B. T. Aspen	124.00 Cords	\$ 36.65/Cord	\$ _____
Jack Pine	84.00 Cords	\$ 16.15/Cord	\$ _____
Mixed Oak	387.00 Cords	\$ 15.35/Cord	\$ _____
Red Maple	108.00 Cords	\$ 19.15/Cord	\$ _____
Red Pine	112.00 Cords	\$ 48.15/Cord	\$ _____
White Pine	9.00 Cords	\$ 18.95/Cord	\$ _____

*The volumes are statistically estimated within plus (+) or minus (-) 11.90 percent. These estimated volumes are final and not subject to adjustment. Prospective bidders are urged to examine this timber and to make their own estimates of quantity and quality.

I understand that any or all bids may be rejected. All bids must be signed and all bid items must be bid or the bid form may be rejected. I also understand that consideration and awarding a contract will be based upon my past performance and ability to complete the contract based upon equipment and staffing subject to my control.

FEDERAL ID: ____ - ____ - ____ or SOCIAL SECURITY NUMBER: ____ - ____ - ____

Company or individual bidding: _____

Company representative's name: _____

Address: _____

City: _____ State: _____ Zip: _____

IF AVAILABLE, PLEASE PLACE THE PERSONALIZED LABEL FROM YOUR PROSPECTUS IN THE ABOVE BOX.

Individual or company representative's signature: _____ Date: _____

Phone number : _____ Email (optional): _____

THE WINNING BIDDER MUST COMPLETE THE VERIFICATION OF WORKER'S DISABILITY COMPENSATION ACT COMPLIANCE (ON REVERSE SIDE IF DOUBLE SIDED) WITHIN 21 DAYS OF SALE AWARD DATE



FOR DEPARTMENT USE ONLY
Sale Number (XX - XXX - XX - XX)
Forest Management Unit:

TIMBER SALE VERIFICATION OF WORKER'S DISABILITY COMPENSATION ACT COMPLIANCE

*As required by Act 317, P.A. 1969 (Worker's Compensation) and
Part 5 of Act 451 of 1994, as amended.*

VERIFICATION OF WORKER'S DISABILITY COMPENSATION ACT COMPLIANCE

- This verification must be completed and submitted within 21 days of contract award and prior to the issuance of the timber sale contract.
- In addition, if boxes 2B or 2C are checked, then Notice of Exclusion or Certificate of Insurance must be submitted within twenty-one (21) days of the contract award and prior to the issuance of the timber sale contract.
- All information must be typed or printed except for written signatures.

Please Check Appropriate Categories:

1. My business is organized as (you **must** check one of the boxes below):
 - A. Sole Proprietorship (individual)
 - B. Partnership
 - C. Corporation

2. You **must** check one of the boxes below:
 - A. I certify my business is a sole proprietorship and it has no employees but the sole proprietor. I am not subject to the Worker's Compensation Laws.
 - B. I certify my business has satisfied its obligation to the Worker's Compensation Act through the use of an approved Notice of Exclusion (BWC-337, Rev. 5/96). I will provide a copy of the Notice of Exclusion within 21 days of the contract award. (For questions or a copy of the BWC-337, please call the Worker's Compensation Bureau at 517-322-1195).
 - C. I certify my business has a Worker's Compensation Policy. I will provide an original Certificate of Insurance within twenty-one (21) days of the contract award.

3. If you have checked item 2(A) or 2(B), you **must** indicate the number of **both** full-time and part-time employees, other than yourself, including family members and active partners (if none, you must enter "0").

_____ Full-time Employees

_____ Part-time Employees

Name of Business		Federal ID (or) Social Security No.	
Address		Telephone ()	
City	State	ZIP	

I hereby certify that the above information is true and correct. I agree to notify the Michigan DNR of any changes that occur in factors affecting my coverage during any of my present and future operations.

Signature of Owner or Authorized Representative

Title

Date

Please complete the "SEALED BID" information on the next page