



**DEPARTMENT OF NATURAL RESOURCES
STATE OF MICHIGAN**

TIMBER SALE PROSPECTUS #5772

SCHEDULED SALE DATE AND TIME: 4:00 p.m. (local time) on December 22, 2016.

LOCATION: TRAVERSE CITY MGMT UNIT, 2122 M 37 SOUTH, TRAVERSE CITY, MI 49685.

PROSPECTUS NOTE: The bidder is advised to inspect the sale area and review the location, estimated volumes, operating costs and contract terms of proposed sales. Please be aware that some landowners may request 60 days or more notice for access across their land.

Notice is hereby given that bids will be received by the Unit Manager, TRAVERSE CITY MANAGEMENT UNIT, for certain timber on the following described lands:

Little Lamb Hardwoods (61-076-16)

Benzie County, Advertised Price \$26,458.05, 30.2 Acres, Aspen, Hardwood.

Splitter Oak (61-078-16)

Grand Traverse County, Advertised Price \$57,854.05, 219.5 Acres, Hardwood, Jack Pine.

SALE NOTE: A recreation site such as a trail, pathway, or campground is within the sale area or the vicinity. Certain restrictions/specifications may be applicable including time restrictions.

C7 High Vis Oak Salvage (61-081-16)

Grand Traverse County, Advertised Price \$10,430.90, 46.8 Acres, Hardwood, Jack Pine.

Grandfather Weave (61-085-16)

Grand Traverse County, Advertised Price \$14,722.30, 15.1 Acres, Aspen, Hardwood.

SALE NOTE: Large oak logs. Good quality white oak. Red oak saw log volume includes red and pin oak. Majority is pin oak. Tops must be chipped in this treatment are to prepare site for planting operations.

Bowers Bridge Hardwood (61-086-16)

Benzie County, Advertised Price \$34,386.15, 74.0 Acres, Hardwood, Sugar Maple.

SALE NOTE: A recreation site such as a trail, pathway, or campground is within the sale area or the vicinity. Certain restrictions/specifications may be applicable including time restrictions.

BID INSTRUCTIONS (VER. 09/02/2016):

1. Scheduled Bid Location, Date, and Time (2/11)

Bids must be received by the Unit Manager, TRAVERSE CITY OFFICE, 2122 M 37 SOUTH, TRAVERSE CITY, MI 49685, no later than 4:00 p.m. (local time) on December 22, 2016. For further information concerning this sale, contact David Lemmien at 231-922-5280 extension 6840.

2. Bidder's Qualifications (5/16)

Purchaser shall obtain workers compensation insurance to cover claims under Michigan's Worker's Disability Compensation Act of 1969 or similar employee benefit act of any other state applicable to an employee. If all or part of a timber sale was prepared by a private contractor, the contractor and that contractor's company are not permitted to bid on the timber sale contract. Bids will not be accepted from individuals or companies appearing on the DNR/FRD No-Bid List. This list contains the names of purchasers who previously failed to execute a contract within 21-days or who have a history of poor performance.

3. Preparation of Sealed Bids (5/16)

Bid Forms may be completed online thru Michigan DNR Timber Sale Online Bidding (OLB) at www.michigan.gov/timberbidding or by completing the hardcopy Bid Form found in the Timber Sale Prospectus. Hardcopy Bid Forms shall be manually signed in ink. Registration in OLB is considered your 'signature' for all bids submitted thru that system. Bid prices must be entered for each species and product in the Bid Price column for all material subject to bidding and all fill-in blanks must be completed. If erasures or other changes appear on the hardcopy Bid Form, each erasure or change must be initialed by the person signing the bid.

4. Submission of Sealed Bids (5/16)

Bid forms may be obtained from the Unit Manager or thru OLB. Bids may be submitted hardcopy or thru OLB. All hardcopy bids must be submitted on the bid form and in an envelope clearly identified as described in this section. NOTE: Only one bid form per bid envelope. Sealed bids must be submitted to the Unit office designated in the prospectus and must be submitted at or prior to the time established in the prospectus. The envelope should show on the outside (a) the sale name or number and (b) the date and time of bid opening, as shown in the prospectus. Bids received after the time specified in the sale prospectus are late bids and will be rejected.

It is possible for a bidder to submit multiple bids on a single sale. For example, a bid may be submitted hardcopy and a bid may be submitted thru OLB. Or, two bidders from the same company could both submit bids on the same sale. If this were to happen, the State would accept all bids received and award the contract accordingly. All bidding and contractual requirements would apply to all bids received.

5. Public Opening of Sealed Bids (7/16)

If conditions permit, the sealed bids will be publicly opened and posted at the time and place set in the prospectus.

If a bidder, present at a bid opening, has submitted bids on more than one sale, that bidder may withdraw their unopened bid envelopes or announce the withdrawal of their online bid after being declared the successful bidder on one sale.

6. Award of Contract (1/11)

Award of the contract will be made to the Bidder whose bid, conforming to the prospectus, is most advantageous to the State of Michigan on the basis of total value at rates bid for the estimated quantities. The State reserves the right to reject any bid or waive any minor irregularity in bids received. A written award mailed (or otherwise furnished) to the successful Bidder shall be deemed to result in a binding contract without further action by either party.

7. Down Payment (1/11)

The Bidder to whom award is made must make a down payment within 21 days of the sale award. The amount of the down payment will be calculated as shown in the Bond and Payment Schedule of this prospectus. Only cash may be used to meet this requirement.

8. Performance Security (1/11)

As guarantee of faithful performance, a cash bond, certificate of deposit, surety bond or irrevocable letter of credit (LOC) is required within 21 days of the sale award. The amount of the performance security is shown in the Bond and

Payment Schedule of this prospectus. If an LOC or surety is used, the coverage must extend for at least 6 months beyond the contract expiration.

9. Timber Sale Contract (9/14)

Additional conditions and requirements common to all timber sales are listed on the timber sale contract (R4031) and are available on line at www.michigan.gov/timber. Contact the Unit Manager for additional information or a sample contract. Within 21 days of the date of the award letter, the bidder must sign the contract and provide the required down payment, performance security, and verification of worker's disability compensation. The down payment and performance security shall be in accordance with the provisions of the timber sale contract, in the sums stated in this prospectus. If these actions are not taken, then the Bidder, the Bidder's corporation, and the corporation's principals may not be permitted to bid on State timber sales for a period of 1 year. In addition, the Bidder certifies that if awarded this contract, the Bidder will complete the timber sale contract in accordance with its terms and any modifications thereof including requirements to purchase, cut, and remove the included timber by the expiration date.

10. Disclaimer of Estimates and Bidder's Warranty of Inspection (7/16)

Before submitting this bid, the Bidder is advised and cautioned to inspect the sale area, review the requirements of the sale contract, and take other steps as may be reasonably necessary to ascertain the location, estimated volumes, construction estimates, and operating costs of the proposed sale. Failure to do so will not relieve the Bidder from responsibility for completing the contract.

The Bidder warrants that this bid is submitted solely on the basis of the Bidder's examination and inspection of the quality and quantity of the timber offered for sale and the Bidder's opinion of the value thereof and the costs of recovery. No reliance should be placed on the State of Michigan's estimates of timber quality, quantity or costs of recovery. Bidder further acknowledges that the State of Michigan: (i) expressly disclaims any warranty of fitness of timber for any purpose; (ii) offers this timber as is without any warranty of quality (merchantability) or quantity and (iii) expressly disclaims any warranty as to the quantity or quality of timber sold.

11. Certification and Chain-of-Custody (10/14)

Unless otherwise indicated in the contract under section 7 – Other Conditions of the Sale Specific Conditions & Requirements, the area encompassed by this timber sale is certified to the standards of the Forest Stewardship Council (FSC) - Certificate #SCS-FM/COC-00090N and the Sustainable Forestry Initiative (SFI) - Certificate # NSF-SFIS-5Y031-SF5. Forest products from this sale may be delivered to the mill as "FSC 100% and / or SFI certified" as long as the contractor hauling the forest products is chain-of-custody (COC) certified or covered under a COC certificate from the destination mill. The purchaser is responsible for maintaining COC after leaving the sale area.

12. Good Neighbor Authority (GNA) Requirements (7/16)

If the name of this timber sales contains the acronym GNA, it is authorized by the Good Neighbor Authority (GNA) and covered by various agreements between the U.S. Forest Service and the State. The timber sale occurs on federal land and the following conditions apply:

GNA contracts on US Forest Service land will not be awarded to purchasers on the Federal list of excluded parties. The System for Award Management (SAM) will be checked for active excluded parties prior to award of contract. In addition, the Bidder to whom award is made must complete an Assurance Regarding Felony Conviction or Tax Delinquent Status for Corporate Applicants (AD-3031).

13. Good Neighbor Authority (GNA) Requirements, con't (9/16)

Bidder certifies, by signing this bid form, that to the best of Bidder's knowledge that the following representations are accurate and complete.

- a. That the Bidder and its principals are not presently debarred, suspended, proposed for debarment, declared ineligible, or voluntary excluded from timber sales (covered transactions) by any Federal department or agency.
- b. That the Bidder and its principals have not within a 3-year period preceding this bid been convicted of or had a civil judgment rendered against them for commission of fraud or a criminal offense in connection with obtaining, attempting to obtain, or performing a public (Federal, State, or local) transaction or contract under a public transaction; violation of Federal or State antitrust statutes or commission of embezzlement, theft, forgery, bribery, falsification or destruction of records, making false statements, or receiving stolen property.

c. That the Bidder and its principals are not presently indicted for or otherwise criminally or civilly charged by a governmental entity (Federal, State, or local) with commission of any of the offenses enumerated in paragraph b of this certification.

d. That the Bidder and its principals have not within a 3-year period preceding this bid had one or more public transactions (Federal, State, or local) terminated for breach or default of a timber or forest product contract.

Bidders that cannot certify this requirement, in whole or in part, shall submit an explanation with their bid.

KEITH CREAGH

Director

TIMBER SALE INFORMATION

Little Lamb Hardwoods (61-076-16)

Benzie County (Advertised Price \$26,458.05)

A timber sale contract for this lump sum, sealed bid timber sale will be awarded to the responsible bidder offering the highest sealed bid price. Bids must be at or above the following advertised price for each species:

<u>PRODUCTS & SPECIES</u>	<u>ESTIMATED UNITS*</u>	<u>ADVERTISED PRICE</u>
Sawtimber		
B. T. Aspen	65.10 MBF	\$ 114.00 / MBF
Basswood	1.60 MBF	\$ 102.00 / MBF
Beech	13.70 MBF	\$ 92.00 / MBF
Black Cherry	0.70 MBF	\$ 260.00 / MBF
Red Maple	39.70 MBF	\$ 161.00 / MBF
Pulpwood		
B. T. Aspen	214.00 Cords	\$ 21.70 / Cord
Basswood	2.00 Cords	\$ 12.45 / Cord
Beech	37.00 Cords	\$ 18.15 / Cord
Black Cherry	2.00 Cords	\$ 18.15 / Cord
Red Maple	293.00 Cords	\$ 18.15 / Cord
Sugar Maple	19.00 Cords	\$ 18.15 / Cord

* The total volume is statistically estimated within plus (+) or minus (-) 19.52 percent. The estimated units are final and not subject to adjustment. Prospective bidders are urged to examine this timber and to make their own estimates of quantity and quality.

BOND AND PAYMENT SCHEDULE:

1. A bond in the amount of \$1,323.00 to insure faithful performance of the conditions of the contract will be deposited by the successful bidder within 21 days of the sale award.
2. Cutting in any sale or unit without the required advance payment would be considered a trespass.
3. Total payment must be paid in advance or according to the following schedule:
 - (a) Ten percent (10%) of the sale value must be paid within 21 days of the sale award.
 - (b) The 10% down payment will be credited towards the first unit cut.
4. If no cutting takes place, the 10% down payment will not be refunded.
5. Operations on the contract issued will terminate on 12/31/2018.

Description of Timber by Payment Unit (PU)

PU	MARKET GROUP	PRODUCT	QUANTITY	UNIT	ACRES	ADVERTISE PRICE		
1	B. T. Aspen	Sawtimber	23.3	MBF	17.4	\$13,095.25		
	Beech		13.7	MBF				
	Black Cherry		0.7	MBF				
	Red Maple		21.2	MBF				
	B. T. Aspen	Pulpwood	39.0	Cords				
	Beech		37.0	Cords				
	Black Cherry		2.0	Cords				
	Red Maple		203.0	Cords				
	Red Maple		19.0	Cords				
	Sugar Maple		19.0	Cords				
2	B. T. Aspen	Sawtimber	41.8	MBF	12.8	\$13,362.80		
	Basswood		1.6	MBF				
	Red Maple		18.5	MBF				
	B. T. Aspen	Pulpwood	175.0	Cords				
	Basswood		2.0	Cords				
	Red Maple		90.0	Cords				
	TOTAL:			120.8			MBF	
	TOTAL:			567.0			Cords	

Sale Specific Conditions & Requirements

Sale Name: Little Lamb Hardwoods

Sale Number: 61-076-16 Seq#: 1

1 - Sale Area

1.2 - Boundaries

1.2.1 - Painted boundaries (1/14)

The sale boundary is marked and identified by blue and red and paint. Exterior sale boundary lines against private property are marked with blue paint. Exterior sale boundary lines against state are marked with red paint. The painted boundary line trees are not Included Timber and are to be protected.

2 - Timber Specifications

2.1 - Included Timber

2.1.4 - Species designation unit(s) (12/08)

Within Payment Unit(s) 1 and 2, all aspen, beech, maple, cherry, basswood and ironwood trees are designated for cutting regardless of merchantability. Do not cut any tree marked with green paint.

2.2 - Utilization

2.2.3 - Stump heights (4/07)

Stump heights within Payment Unit(s) 1 and 2 shall not exceed 12 inches for trees greater than 10 inches DBH and 4 inches for trees smaller than 10 inches DBH.

4 - Transportation

4.1 - Construction

4.1.3 - Slash and earthen piles (8/04)

Piles or windrows of earth along roads and landings that have been widened or constructed shall be leveled. Slash from road maintenance or construction, including stumps, shall be dispersed throughout the sale.

5 - Operations

5.1 - Notification

5.1.1 - Pre-sale conference (10/16)

A pre-sale conference on site between the Purchaser and sale administrator is required prior to beginning any operations to determine landing and road locations.

5.1.4 - Post-sale conference (6/11)

A post-sale conference on site between the Purchaser and sale administrator is required prior to the completion of active logging operations to determine clean-up and repair of landings, road edges, and the fulfillment of other contract specifications.

5.2 - Conduct of Operations

5.2.1 - Slash

5.2.1.8 - Slash height (12/08)

No slash or tree tops may exceed 24 inches in height. Exception to this height limit for slash piles in sale spec. 5.2.4.4.

5.2.2 - Hazard Trees/Snags

5.2.2.1 - Den trees (10/16)

Obvious hollow and/or den trees shall be protected and left standing unless they are a safety hazard.

5.2.3 - Operating Restrictions

5.2.3.4 - Oak wilt restriction (6/10)

Within Payment Unit(s) 1 and 2, cutting, skidding, and hauling are not permitted during the period of April 15 to July 15.

This is necessary to reduce the spread of oak wilt. For more information, contact the Unit Manager or his/her representative.

5.2.4 - Dead and Down Creation

5.2.4.3 - Dead and down creation, dead trees (6/07)

Except as provided for in General Condition and Requirement 5.2.2, no dead trees, standing or down, are to be cut, skidded, or processed.

5.2.4.4 - Dead and down creation, grouse (8/13)

To encourage grouse and other wildlife, in Payment Unit(s) 1 and 2, leave one, 12" diameter or larger log-length (8 foot minimum) piece on the ground for every 2 acres. In addition, leave at least six (6) large tops in a single pile and at least one pile per acre. These will be evenly scattered throughout the unit. This can be an unmerchantable piece or a full tree.

5.2.17 - Crane Mats/Timber Mats (10/14)

Some skid trails may require extra protection such as that afforded by Crane Mats/Timber Mats. If available, Crane Mats/Timber Mats may be borrowed from the DNR and are located at the Marquette ICC and the Grayling Field Office. Contact the sale administrator for specific details. A Timber Sale Contract Supplement will be used to document the Purchaser's use of the DNR's Crane Mats/Timber Mats. It is the responsibility of the Purchaser to contact the sale administrator to schedule pick up and drop off. In addition, all mats must be cleaned prior to drop off. A charge of \$350.00 will be assessed for all damaged or non-returned mats. Damage is defined as misuse resulting in three or more broken cants.

5.2.38 - No decking against live trees (2/04)

Cut products may not be decked against unmarked or designated leave trees.



TIMBER SALE MAP

This information provided by authority of Part 525, 1994 PA 451, as amended.

Sale Number	Year
61 -076	16

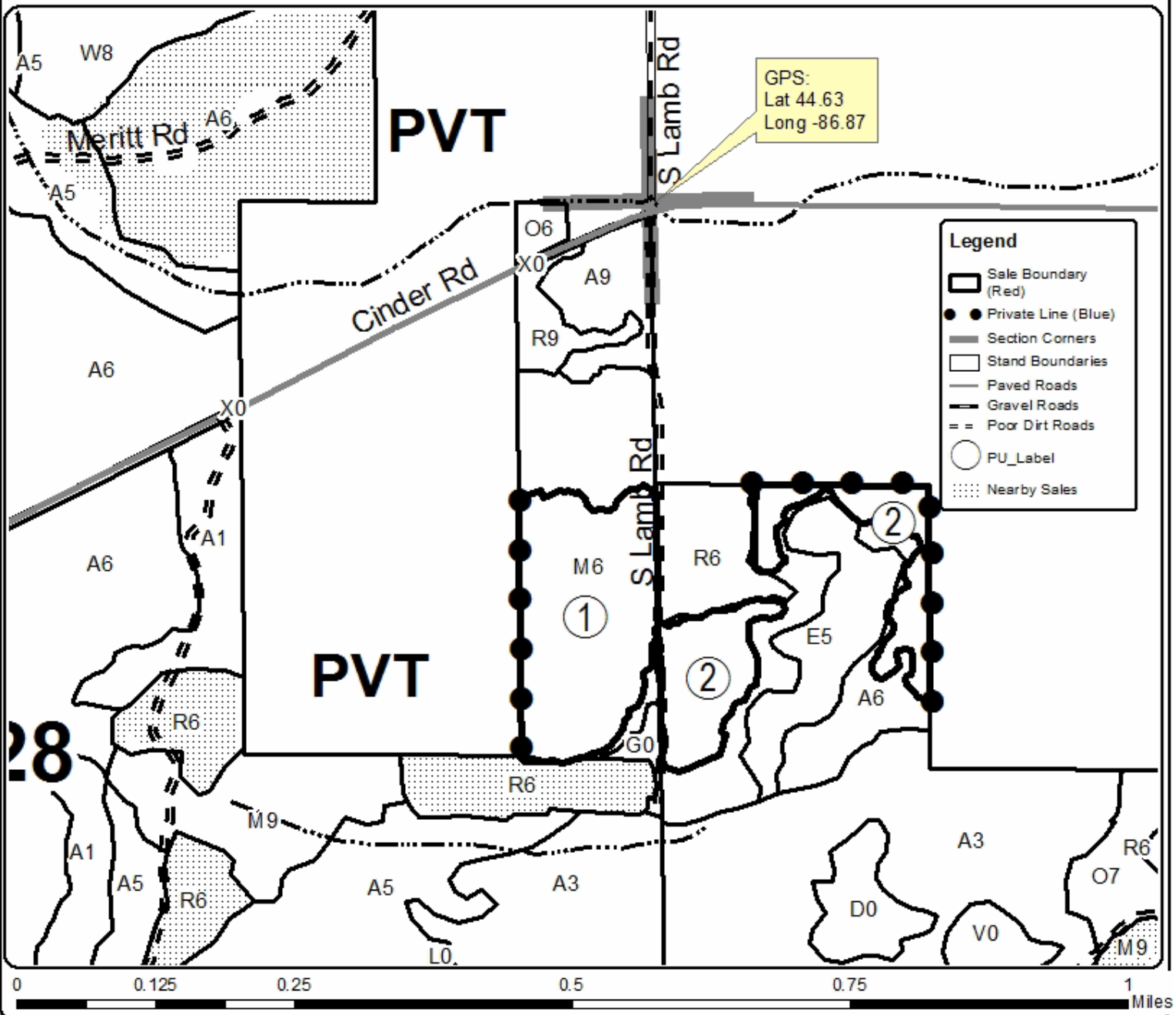
Forest Management Unit	County	Mapped By	Craig Allen	Date	Page	of
Traverse City	Benzie	Cruised By	Craig Allen	09/27/2016	1	1
Township	Range	Section(s) and Subdivision(s)	Scale			
26N	13W	28: SENE and 27: SWNW	1:7,920			

Cover Type				Density	
A = Aspen	H = Hemlock	N = Marsh	U = Upland Brush	0 = Non Stocked	5 = Pole Timber Medium
B = Paper Birch	J = Jack Pine	O = Oak	UM = Upland Mixed	1 = Seedling Sapling Poor	6 = Pole Timber Well
C = Cedar	L = Lowland Brush	P = Lowland Poplar	V = Bog or Marsh	2 = Seedling Sapling Medium	7 = Saw Timber Poor
D = Tread Bog	LM = Lowland Mixed	Q = Mixed Swamp Conifer	W = White Pine	3 = Seedling Sapling Well	8 = Saw Timber Medium
E = Swamp Hdwoods	M = Mpl, Bch, Brch	R = Red Pine	X = Non Stocked	4 = Pole Timber Poor	9 = Saw Timber Well
F = Spruce Fir	MC = Mixed Conifer	S = Black Spruce	Z = Water		
G = Grass	MD = Mixed Deciduous	T = Tamarack			

PU	Acres
1	17.4
2	12.8

Little Lamb Hardwoods

Compartment 17 & 18
30.2 Acres



TIMBER SALE INFORMATION

Splitter Oak (61-078-16)

Grand Traverse County (Advertised Price \$57,854.05)

SALE NOTE: A recreation site such as a trail, pathway, or campground is within the sale area or the vicinity. Certain restrictions/specifications may be applicable including time restrictions.

A timber sale contract for this lump sum, sealed bid timber sale will be awarded to the responsible bidder offering the highest sealed bid price. Bids must be at or above the following advertised price for each species:

<u>PRODUCTS & SPECIES</u>	<u>ESTIMATED UNITS*</u>	<u>ADVERTISED PRICE</u>
Sawtimber		
Northern Pin Oak	163.30 MBF	\$ 116.00 / MBF
White Oak	222.00 MBF	\$ 63.00 / MBF
Pulpwood		
B. T. Aspen	36.00 Cords	\$ 20.25 / Cord
Jack Pine	257.00 Cords	\$ 10.65 / Cord
Misc. Species 1	88.00 Cords	\$ 3.50 / Cord
Northern Pin Oak	661.00 Cords	\$ 12.70 / Cord
Red Maple	88.00 Cords	\$ 16.95 / Cord
White Oak	887.00 Cords	\$ 12.70 / Cord

* The total volume is statistically estimated within plus (+) or minus (-) 8.77 percent. The estimated units are final and not subject to adjustment. Prospective bidders are urged to examine this timber and to make their own estimates of quantity and quality.

BOND AND PAYMENT SCHEDULE:

1. A bond in the amount of \$2,893.00 to insure faithful performance of the conditions of the contract will be deposited by the successful bidder within 21 days of the sale award.
2. Cutting in any sale or unit without the required advance payment would be considered a trespass.
3. Total payment must be paid in advance or according to the following schedule:
 - (a) Ten percent (10%) of the sale value must be paid within 21 days of the sale award.
 - (b) The 10% down payment will be credited towards the first unit cut.
4. If no cutting takes place, the 10% down payment will not be refunded.
5. Operations on the contract issued will terminate on 06/30/2019.

Description of Timber by Payment Unit (PU)

PU	MARKET GROUP	PRODUCT	QUANTITY	UNIT	ACRES	ADVERTISE PRICE
1	Northern Pin Oak	Sawtimber	52.0	MBF	51.3	\$13,716.90
	White Oak		46.0	MBF		
	Misc. Species 1	Pulpwood	36.0	Cords		
	Northern Pin Oak		182.0	Cords		
	White Oak		185.0	Cords		
2	Northern Pin Oak	Sawtimber	76.7	MBF	87.5	\$27,637.85
	White Oak		117.0	MBF		
	B. T. Aspen	Pulpwood	31.0	Cords		
	<i>B. T. Aspen</i>	<i>Sawtimber</i>	3.0	<i>MBF</i>		
	<i>B. T. Aspen</i>	<i>Pulpwood</i>	25.0	<i>Cords</i>		
	Jack Pine		94.0	Cords		
	<i>Jack Pine</i>	<i>Sawtimber</i>	0.6	<i>MBF</i>		
	<i>Jack Pine</i>	<i>Pulpwood</i>	93.0	<i>Cords</i>		
	Misc. Species 1		42.0	Cords		
	Northern Pin Oak		270.0	Cords		
	Red Maple		64.0	Cords		
	<i>Red Maple</i>	<i>Sawtimber</i>	4.3	<i>MBF</i>		
	<i>Red Maple</i>	<i>Pulpwood</i>	55.0	<i>Cords</i>		
	White Oak		400.0	Cords		
	3	Northern Pin Oak	Sawtimber	7.5		
White Oak			21.2	MBF		
B. T. Aspen		Pulpwood	2.0	Cords		
<i>B. T. Aspen</i>			2.0	<i>Cords</i>		
Jack Pine			56.0	Cords		
<i>Jack Pine</i>			56.0	<i>Cords</i>		
Misc. Species 1			2.0	Cords		
Northern Pin Oak			74.0	Cords		
Red Maple			24.0	Cords		
<i>Red Maple</i>		<i>Sawtimber</i>	1.9	<i>MBF</i>		
<i>Red Maple</i>	<i>Pulpwood</i>	20.0	<i>Cords</i>			
White Oak		165.0	Cords			
4	Northern Pin Oak	Sawtimber	27.1	MBF	46.8	\$10,207.70
	White Oak		37.8	MBF		
	B. T. Aspen	Pulpwood	3.0	Cords		
	<i>B. T. Aspen</i>		3.0	<i>Cords</i>		
	Jack Pine		107.0	Cords		
	<i>Jack Pine</i>		107.0	<i>Cords</i>		
	Misc. Species 1		8.0	Cords		
	Northern Pin Oak		135.0	Cords		
	White Oak		137.0	Cords		
TOTAL:			385.3	MBF		
TOTAL:			2,017.0	Cords		

Sale Specific Conditions & Requirements

Sale Name: Splitter Oak

Sale Number: 61-078-16 Seq#: 1

1 - Sale Area

1.2 - Boundaries

1.2.1 - Painted boundaries (1/14)

The sale boundary and Payment Unit boundaries are marked and identified by red paint. Exterior sale boundary lines against state are marked with red paint. Interior Payment Unit boundaries are marked with red paint. The painted boundary line trees are not Included Timber and are to be protected.

2 - Timber Specifications

2.1 - Included Timber

2.1.7 - Leave tree marked unit(s) (6/14)

Within Payment Unit(s) 1, 2, 3 & 4, all trees, which meet minimum piece specifications in 2.2 Utilization, are designated for cutting except trees marked with green paint above and below stump height. This includes dead standing oak - all of which must be cut and removed from sale area.

2.1.11 - Description of timber note (2/04)

Note that Miscellaneous Species 1 = dead oak.

2.2 - Utilization

2.2.3 - Stump heights (4/07)

Stump heights within the Sale Area shall not exceed 12 inches for trees greater than 10 inches DBH and 4 inches for trees smaller than 10 inches DBH.

3 - Payments

3.3 - Pre-measured Sales

3.3.4 - Dividing payment units (7/14)

Payment Unit(s) may be divided at the request of the Purchaser and upon approval of the Unit Manager. Dividing Payment Units is a contract modification which requires a Timber Sale Contract Supplement. There will be only one division per Payment Unit.

3.4 - Damaged Timber

3.4.1 - Damaged timber (6/14)

General Condition and Requirement 3.4 Damaged Timber, defines liquidated damages for undesignated live merchantable trees which are cut or injured. In addition, extreme care should be taken to avoid damage to tree seedlings and saplings.

Within the sale area, if more than 25% of the tree seedlings or saplings (1/4" to 4.5" DBH) within a specified portion of the sale area are damaged, liquidated damages will be assessed at 50\$ per acre for all acreage within that specified portion of the sale area that was damaged.

No damage is acceptable to merchantable trees. Within the sale area, if more than 5% of trees (> 4.5" DBH) within a specified area of the sale are damaged, liquidated damages will be assessed for all trees damaged. Rates will be in accordance with General Condition and Requirement 3.4 Damaged Timber.

4 - Transportation

4.1 - Construction

4.1.11 - Permits (2/12)

The Purchaser will secure any necessary permits that may be required.

4.1.12 - No new roads (1/12)

No new roads will be permitted in any Payment Unit. All operations are limited to existing roads, some of which may need to be brushed and improved for timber sale operations. Development of new skid trails only will be allowed.

5 - Operations

5.2 - Conduct of Operations

5.2.1 - Slash

5.2.1.8 - Slash height (12/08)

No slash or tree tops may exceed 24 inches in height.

5.2.2 - Hazard Trees/Snags

5.2.2.1 - Den trees (2/04)

Obvious hollow and/or den trees shall be protected and left standing unless they are a safety hazard.

5.2.3 - Operating Restrictions

5.2.3.4 - Oak wilt restriction (6/10)

Within Payment Unit(s) 1, 2, 3 & 4, unless changed by written agreement, cutting and skidding are not permitted during the period of April 15 to July 15. This is necessary to reduce the spread of oak wilt. For more information, contact the Unit Manager or his/her representative.

5.2.29 - Shrub protection (9/07)

Do not cut or damage hawthorn, witch-hazel or juneberry. These woody-shrub plants are highly beneficial to various wildlife species.

5.2.40 - Pathway protection (10/10)

The Shore to Shore trail is a non motorized hiking/horse trail and is shown on the Timber Sale Map. The trail will not be directly affected by timber sale operations, aside from potentially the northern most portion of Payment Unit 4. With this in mind, do not cut trees or damage posts with blue pathway markers. Maintain a 20-foot wide slash, debris, and rut free zone daily, using the pathway as the centerline. Do not run equipment down this small section of pathway unless approved by the sale administrator. Skidding across the trail is not allowed.

5.4 - Soil Protection

5.4.1 - Rutting restriction, general (7/16)

Operations are to cease immediately if equipment and weather conditions result in rutting of roads and/or skid trails which is 12 inches or greater in depth and 50 feet in length. The Unit Manager or his/her representative may restrict hauling and/or skidding if ruts exceed the specified depth. With the Unit Manager or his/her representative's approval, the Purchaser may return to the area when the risk of rutting has decreased.

6 - Safety and Fire Prevention

6.2 - Signing

6.2.1 - Road posting (9/09)

The Purchaser is responsible for posting and maintaining caution signs on US 131 prior to beginning operations. The road must be posted at appropriate distances from the sale area and/or from the trucks entrance on to US 131 to warn of logging activity and truck traffic. Signs must be removed when harvest operations are suspended or completed. The Purchaser will provide these signs.

6.2.3 - Recreational trail posting (2/10)

The Purchaser is responsible for posting and maintaining caution signs on the Shore to Shore trail prior to beginning operations. The trail must be posted approximately 200 feet from the eastern edge of Unit 4 to warn of logging activity and truck traffic at both ends of the trail. Signs must be removed when harvest operations are suspended or completed. The Purchaser will provide these signs.



TIMBER SALE MAP

This information provided by authority of Part 525, 1994 PA 451, as amended.

Forest Management Unit Traverse City FMU		County Grand Traverse	Mapped By Patrick Cotant	Date 09/22/2016	Page 1	of 1
Township 25N	Range 9W	Section(s) and Subdivision(s) Sec 22 - S1/2SE, SE5W Sec 27 - NE1/4, NENW, S1/2NW		Scale 1:15,840		

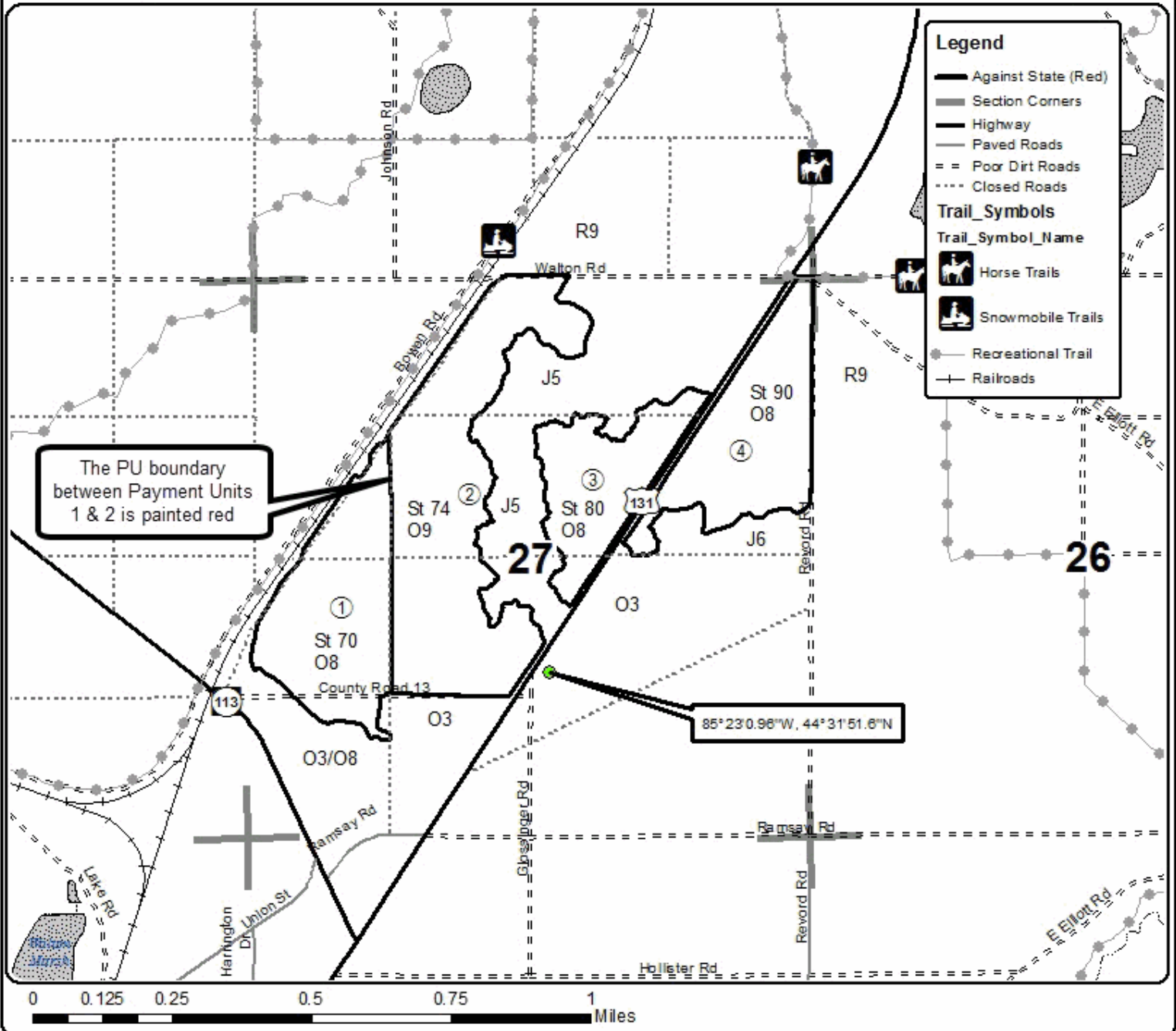
Cover Type				Density			
A = Aspen	H = Hemlock	N = Marsh	U = Upland Brush	0 = Non Stocked	5 = Pole Timber Medium		
B = Paper Birch	J = Jack Pine	O = Oak	UM = Upland Mixed	1 = Seedling Sapling Poor	6 = Pole Timber Well		
C = Cedar	L = Lowland Brush	P = Lowland Poplar	V = Bog or Marsh	2 = Seedling Sapling Medium	7 = Saw Timber Poor		
D = Treed Bog	LM = Lowland Mixed	Q = Mixed Swamp Conifer	W = White Pine	3 = Seedling Sapling Well	8 = Saw Timber Medium		
E = Swamp Hdwoods	M = Mpl, Bch, Brch	R = Red Pine	X = Non Stocked	4 = Pole Timber Poor	9 = Saw Timber Well		
F = Spruce Fir	MC = Mixed Conifer	S = Black Spruce	Z = Water				
G = Grass	MD = Mixed Deciduous	T = Tamarack					

PU	Acres	PU	Acres
1	51.3	4	46.8
2	87.5		
3	33.9		

Splitter Oak

Compartment 057

219.5 Acres



TIMBER SALE INFORMATION

C7 High Vis Oak Salvage (61-081-16)

Grand Traverse County (Advertised Price \$10,430.90)

A timber sale contract for this lump sum, sealed bid timber sale will be awarded to the responsible bidder offering the highest sealed bid price. Bids must be at or above the following advertised price for each species:

<u>PRODUCTS & SPECIES</u>	<u>ESTIMATED UNITS*</u>	<u>ADVERTISED PRICE</u>
Sawtimber		
Northern Pin Oak	65.40 MBF	\$ 100.00 / MBF
White Oak	10.30 MBF	\$ 54.00 / MBF
Pulpwood		
Jack Pine	30.00 Cords	\$ 9.15 / Cord
Misc. Species 1	119.00 Cords	\$ 3.00 / Cord
Northern Pin Oak	213.00 Cords	\$ 10.90 / Cord
White Oak	35.00 Cords	\$ 10.90 / Cord

* The total volume is statistically estimated within plus (+) or minus (-) 19.80 percent. The estimated units are final and not subject to adjustment. Prospective bidders are urged to examine this timber and to make their own estimates of quantity and quality.

BOND AND PAYMENT SCHEDULE:

1. A bond in the amount of \$522.00 to insure faithful performance of the conditions of the contract will be deposited by the successful bidder within 21 days of the sale award.
2. Cutting in any sale or unit without the required advance payment would be considered a trespass.
3. Total payment must be paid in advance or according to the following schedule:
 - (a) Ten percent (10%) of the sale value must be paid within 21 days of the sale award.
 - (b) The 10% down payment will be credited towards the first unit cut.
4. If no cutting takes place, the 10% down payment will not be refunded.
5. Operations on the contract issued will terminate on 12/31/2018.

Description of Timber by Payment Unit (PU)

PU	MARKET GROUP	PRODUCT	QUANTITY	UNIT	ACRES	ADVERTISE PRICE
1	Northern Pin Oak	Sawtimber	30.0	MBF	27.9	\$5,409.70
	White Oak		10.3	MBF		
	Jack Pine	Pulpwood	30.0	Cords		
	Misc. Species 1		54.0	Cords		
	Northern Pin Oak		104.0	Cords		
	White Oak		26.0	Cords		
2	Northern Pin Oak	Sawtimber	35.4	MBF	18.9	\$5,021.20
	Misc. Species 1	Pulpwood	65.0	Cords		
	Northern Pin Oak		109.0	Cords		
	White Oak		9.0	Cords		
TOTAL:			75.7	MBF		
TOTAL:			397.0	Cords		

Sale Specific Conditions & Requirements

Sale Name: C7 High Vis Oak Salvage

Sale Number: 61-081-16 Seq#: 1

1 - Sale Area

1.2 - Boundaries

1.2.1 - Painted boundaries (1/14)

The sale boundary is marked and identified by blue and red paint. Exterior sale boundary lines against private property are marked with blue paint. Exterior sale boundary lines against state are marked with red paint. Payment Units 1 & 2 are separate stands, not directly adjacent to one another - therefore the Payment Units are delineated by red paint. The painted boundary line trees are not Included Timber and are to be protected.

2 - Timber Specifications

2.1 - Included Timber

2.1.7 - Leave tree marked unit(s) (6/14)

Within Payment Unit(s) 1 & 2, all trees, which meet minimum piece specifications in 2.2 Utilization, are designated for cutting except trees marked with green paint above and below stump height. In addition, NO red or white pine are to be cut.

2.1.11 - Description of timber note (2/04)

Note that Miscellaneous Species 1 = dead oak.

3 - Payments

3.4 - Damaged Timber

3.4.1 - Damaged timber (6/14)

General Condition and Requirement 3.4 Damaged Timber, defines liquidated damages for undesignated live merchantable trees which are cut or injured. In addition, extreme care should be taken to avoid damage to tree seedlings and saplings.

Within the sale area, if more than 25% of the tree seedlings or saplings (1/4" to 4.5" DBH) within a specified portion of the sale area are damaged, liquidated damages will be assessed at \$100 per acre for all acreage within that specified portion of the sale area that was damaged.

No damage is acceptable to merchantable trees. Within the sale area, if more than 10% of trees (> 4.5" DBH) within a specified area of the sale are damaged, liquidated damages will be assessed for all trees damaged. Rates will be in accordance with General Condition and Requirement 3.4 Damaged Timber.

4 - Transportation

4.1 - Construction

4.1.11 - Permits (2/12)

The Purchaser will secure any necessary permits that may be required.

4.1.12 - No new roads (1/12)

No new roads will be permitted in any Payment Unit. All operations are limited to existing roads. Skid trails only will be allowed.

5 - Operations

5.2 - Conduct of Operations

5.2.1 - Slash

5.2.1.8 - Slash height (12/08)

No slash or tree tops may exceed 24 inches in height.

5.2.2 - Hazard Trees/Snags

5.2.2.1 - Den trees (2/04)

Obvious hollow and/or den trees shall be protected and left standing unless they are a safety hazard.

5.2.3 - Operating Restrictions

5.2.3.4 - Oak wilt restriction (6/10)

Within Payment Unit(s) 1 & 2, unless changed by written agreement, cutting, skidding, and hauling are not permitted during the period of April 15 to July 15. This is necessary to reduce the spread of oak wilt. For more information, contact the Unit Manager or his/her representative.

5.2.29 - Shrub protection (9/07)

Do not cut or damage hawthorn, witch-hazel or juneberry. These woody-shrub plants are highly beneficial to various wildlife species.

5.2.31 - Landing locations (9/13)

Recommended landing areas are marked on the timber sale map with the letter "L". Landings must be confined to these designated sites unless otherwise authorized by the Unit Manager or his/her representative. Landings must be restored to original or better condition following sale operations.

5.4 - Soil Protection

5.4.1 - Rutting restriction, general (7/16)

Operations are to cease immediately if equipment and weather conditions result in rutting of roads and/or skid trails which is 12 inches or greater in depth and 50 feet in length. The Unit Manager or his/her representative may restrict hauling and/or skidding if ruts exceed the specified depth. With the Unit Manager or his/her representative's approval, the Purchaser may return to the area when the risk of rutting has decreased.

6 - Safety and Fire Prevention

6.2 - Signing

6.2.1 - Road posting (9/09)

The Purchaser is responsible for posting and maintaining caution signs on Union Street which divides the two Payment Units and M113 prior to beginning operations. The road must be posted at appropriate distances from the sale area to warn of logging activity and truck traffic. Signs must be removed when harvest operations are suspended or completed. The Purchaser will provide these signs.



Sale Number	Year
61-081-16	2016

TIMBER SALE MAP

This information provided by authority of Part 525, 1994 PA 451, as amended.

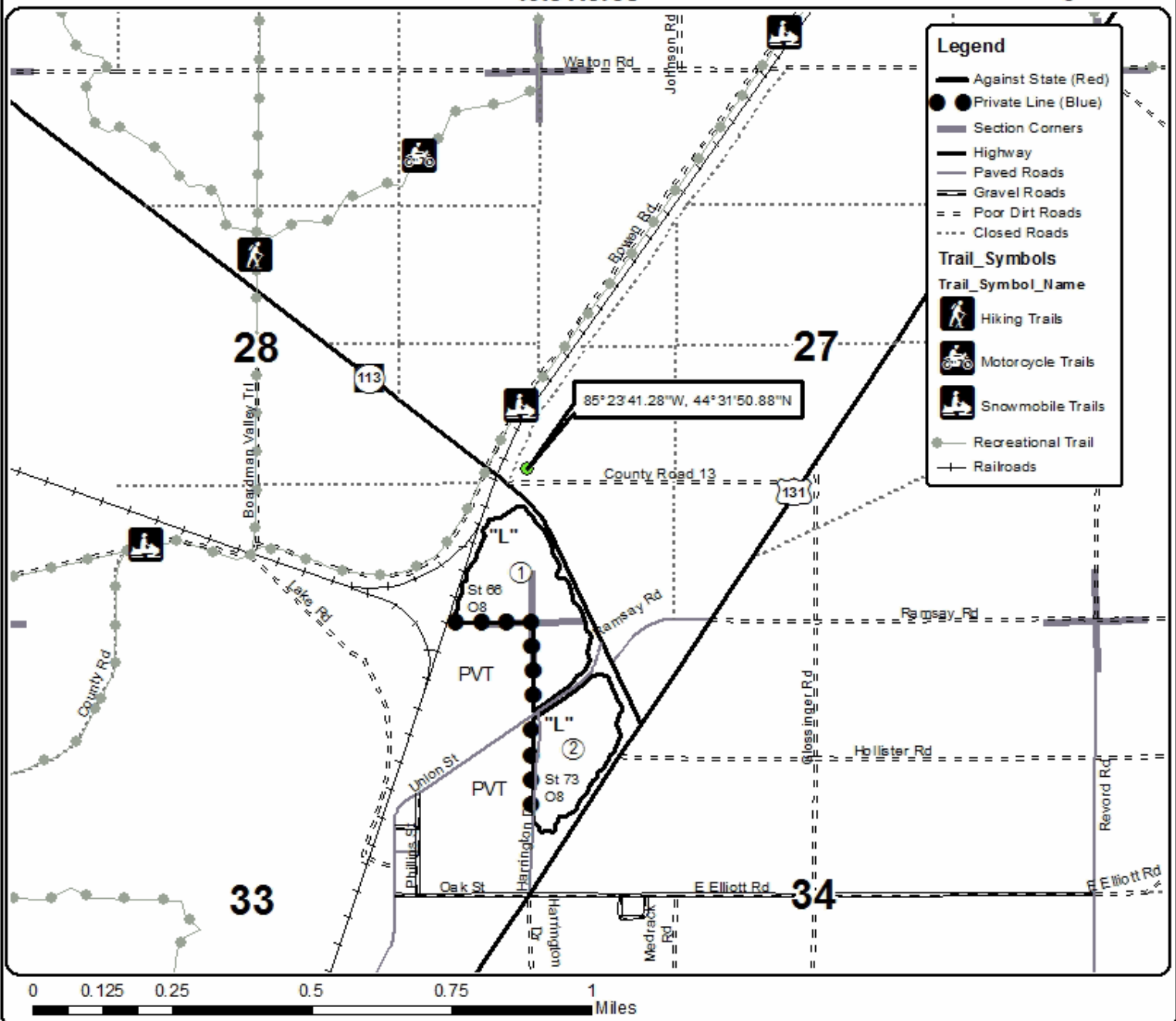
Forest Management Unit	County	Mapped By	Patrick Cotant	Date	Page	of
Traverse City FMU	Grand Traverse	Cruised By	Patrick Cotant	09/23/2016	1	1
Township	Range	Section(s) and Subdivision(s)	Scale			
25N	9W	Sec 27 - SWSW Sec 28 - SESE Sec 34 - W1/2NW	1:15,840			

Cover Type				Density			
A = Aspen	H = Hemlock	N = Marsh	U = Upland Brush	0 = Non Stocked	5 = Pole Timber Medium		
B = Paper Birch	J = Jack Pine	O = Oak	UM = Upland Mixed	1 = Seedling Sapling Poor	6 = Pole Timber Well		
C = Cedar	L = Lowland Brush	P = Lowland Poplar	V = Bog or Marsh	2 = Seedling Sapling Medium	7 = Saw Timber Poor		
D = Tread Bog	LM = Lowland Mixed	Q = Mixed Swamp Conifer	W = White Pine	3 = Seedling Sapling Well	8 = Saw Timber Medium		
E = Swamp Hdwoods	M = Mpl, Bch, Brch	R = Red Pine	X = Non Stocked	4 = Pole Timber Poor	9 = Saw Timber Well		
F = Spruce Fir	MC = Mixed Conifer	S = Black Spruce	Z = Water				
G = Grass	MD = Mixed Deciduous	T = Tamarack					

PU	Acres
1	27.9
2	18.9

C7 High Vis Oak Salvage

Compartment 057
46.8 Acres



TIMBER SALE INFORMATION

Grandfather Weave (61-085-16)

Grand Traverse County (Advertised Price \$14,722.30)

SALE NOTE: Large oak logs. Good quality white oak. Red oak saw log volume includes red and pin oak. Majority is pin oak. Tops must be chipped in this treatment are to prepare site for planting operations.

A timber sale contract for this lump sum, sealed bid timber sale will be awarded to the responsible bidder offering the highest sealed bid price. Bids must be at or above the following advertised price for each species:

<u>PRODUCTS & SPECIES</u>	<u>ESTIMATED UNITS*</u>	<u>ADVERTISED PRICE</u>
Sawtimber		
B. T. Aspen	7.50 MBF	\$ 114.00 / MBF
Northern Pin Oak	34.10 MBF	\$ 125.00 / MBF
Red Maple	6.60 MBF	\$ 161.00 / MBF
White Oak	52.20 MBF	\$ 68.00 / MBF
White Pine	5.00 MBF	\$ 86.00 / MBF
Pulpwood		
B. T. Aspen	24.00 Cords	\$ 21.70 / Cord
Mixed Oak	164.00 Cords	\$ 13.60 / Cord
Red Maple	61.00 Cords	\$ 18.15 / Cord
Red Pine	5.00 Cords	\$ 39.35 / Cord
White Pine	29.00 Cords	\$ 17.50 / Cord

* The total volume is statistically estimated within plus (+) or minus (-) 28.37 percent. The estimated units are final and not subject to adjustment. Prospective bidders are urged to examine this timber and to make their own estimates of quantity and quality.

BOND AND PAYMENT SCHEDULE:

1. A bond in the amount of \$736.00 to insure faithful performance of the conditions of the contract will be deposited by the successful bidder within 21 days of the sale award.
2. Cutting in any sale or unit without the required advance payment would be considered a trespass.
3. Total payment must be paid in advance or according to the following schedule:
 - (a) Ten percent (10%) of the sale value must be paid within 21 days of the sale award.
 - (b) The remainder is due before cutting begins.
4. If no cutting takes place, the 10% down payment will not be refunded.
5. Operations on the contract issued will terminate on 12/31/2018.

Description of Timber by Payment Unit (PU)

PU	MARKET GROUP	PRODUCT	QUANTITY	UNIT	ACRES	ADVERTISE PRICE
1	B. T. Aspen	Sawtimber	7.5	MBF	15.1	\$14,722.30
	Northern Pin Oak		34.1	MBF		
	Red Maple		6.6	MBF		
	White Oak		52.2	MBF		
	White Pine		5.0	MBF		
	B. T. Aspen	Pulpwood	24.0	Cords		
	Mixed Oak		164.0	Cords		
	<i>Northern Pin Oak</i>		39.0	<i>Cords</i>		
	<i>White Oak</i>		125.0	<i>Cords</i>		
	Red Maple		61.0	Cords		
	Red Pine		5.0	Cords		
	<i>Red Pine</i>		0.4	<i>MBF</i>		
	<i>Red Pine</i>	<i>Pulpwood</i>	4.0	<i>Cords</i>		
	White Pine		29.0	Cords		
	TOTAL:			105.4		
TOTAL:			283.0	Cords		

Sale Specific Conditions & Requirements

Sale Name: Grandfather Weave

Sale Number: 61-085-16 Seq#: 1

1 - Sale Area

1.2 - Boundaries

1.2.1 - Painted boundaries (1/14)

The sale boundary boundaries is marked and identified red paint. The painted boundary line trees are not Included Timber and are to be protected.

2 - Timber Specifications

2.1 - Included Timber

2.1.7 - Leave tree marked unit(s) (6/14)

Within Payment Unit(s) #1, cut all trees that are two (2) inches or more at DBH except trees marked with green paint above and below stump height. Special protection trees identified in accordance with condition 3.4.2, within clearcutting unit boundaries, are not Included Timber and are to be protected.

2.1.11 - Description of timber note (2/04)

Note that Red pine pulpwood includes 400 bf of red pine saw logs.

2.2 - Utilization

2.2.2 - Chipping required (5/14)

This area must be chip harvested to facilitate subsequent planting operations. The Purchaser has the option to produce sawlogs or pulpwood bolts, but the remaining portion of the trees must be chipped and hauled. The requirement to retain approximately 1/6 to 1/3 of tree tops and limbs less than four inches in diameter does not apply (G. C. & R. 2.2). This is because slash will impede future planting operations.

2.2.3 - Stump heights (4/07)

Stump heights within the Sale Area shall not exceed 6 inches for all trees. This is in order to facilitate planting operations.

3 - Payments

3.4 - Damaged Timber

3.4.2 - Special Protection Trees (4/14)

The Purchaser shall not cut live or dead special protection trees within cutting units or clearings. Special protection trees are marked with green paint. If the Purchaser's operations have cut or damaged special protection trees through carelessness, the Purchaser shall pay \$75 as fixed, agreed and liquidated damages for each special protection tree cut or damaged. Such payment does not constitute ownership of the undesignated timber.

4 - Transportation

4.1 - Construction

4.1.12 - No new roads (1/12)

No new roads will be permitted in any Payment Unit. All operations are limited to existing roads. Skid trails only will be allowed.

4.2 - Maintenance

4.2.5 - Two wheel drive condition (2/04)

All existing trail roads on and adjacent to the sale area must be passable by two-wheel drive traffic for the duration of the sale.

5 - Operations

5.1 - Notification

5.1.1 - Pre-sale conference (10/11)

A pre-sale conference on site between the Purchaser and sale administrator is required prior to beginning any operations to determine landing and road locations. The Unit Manager or his/her representative must be contacted at least 3 days in advance to schedule the conference.

5.1.4 - Post-sale conference (6/11)

A post-sale conference on site between the Purchaser and sale administrator is required 3 days prior to the completion of active logging operations to determine clean-up and repair of landings, road edges, and the fulfillment of other contract specifications..

5.2 - Conduct of Operations

5.2.3 - Operating Restrictions

5.2.3.4 - Oak wilt restriction (6/10)

Within Payment Unit(s) #1, cutting, skidding, and hauling are not permitted during the period of April 15 to July 15. This is necessary to reduce the spread of oak wilt. For more information, contact the Unit Manager or his/her representative.

5.2.38 - No decking against live trees (2/04)

Cut products may not be decked against unmarked or designated leave trees.

5.4 - Soil Protection

5.4.1 - Rutting restriction, general (7/16)

Operations are to cease immediately if equipment and weather conditions result in rutting of roads and/or skid trails which is 12 inches or greater in depth and 50 feet in length. The Unit Manager or his/her representative may restrict hauling and/or skidding if ruts exceed the specified depth. With the Unit Manager or his/her representative's approval, the Purchaser may return to the area when the risk of rutting has decreased.

6 - Safety and Fire Prevention

6.2 - Signing

6.2.1 - Road posting (9/09)

The Purchaser is responsible for posting and maintaining caution signs on Supply Rd and the road on the east side of the sale area prior to beginning operations. The road must be posted at appropriate distances from the sale area to warn of logging activity and truck traffic. Signs must be removed when harvest operations are suspended or completed. The Purchaser will provide these signs.

8 - Performance and Settlement

SKIP

8.3.1 - Completion of contract, chipping (1/16)

In addition to cutting, all chipping must be completed by the contract expiration date. If chipping has not been completed, an extension fee or damages may be charged per General Condition & Requirement 7.2 and 8.3.



TIMBER SALE MAP

This information provided by authority of Part 525, 1994 PA 451, as amended.

Forest Management Unit Traverse City	County Grand Traverse	Mapped By Ruppen	Date 9/21/2016	Page 1	of 1
Township 27N	Range 9W	Section(s) and Subdivision(s) Sec 31 NWNW	Scale 1:15,840		

Section(s) and Subdivision(s) Sec 31 NWNW	Scale 1:15,840
----------------------------------------------	-------------------

Cover Type				Density	
A = Aspen	H = Hemlock	N = Marsh	U = Upland Brush	0 = Non Stocked	5 = Pole Timber Medium
B = Paper Birch	J = Jack Pine	O = Oak	UM = Upland Mixed	1 = Seedling Sapling Poor	6 = Pole Timber Well
C = Cedar	L = Lowland Brush	P = Lowland Poplar	V = Bog or Marsh	2 = Seedling Sapling Medium	7 = Saw Timber Poor
D = Tread Bog	LM = Lowland Mixed	Q = Mixed Swamp Conifer	W = White Pine	3 = Seedling Sapling Well	8 = Saw Timber Medium
E = Swamp Hdwoods	M = Mpl, Bch, Brch	R = Red Pine	X = Non Stocked	4 = Pole Timber Poor	9 = Saw Timber Well
F = Spruce Fir	MC = Mixed Conifer	S = Black Spruce	Z = Water		
G = Grass	MD = Mixed Deciduous	T = Tamarack			

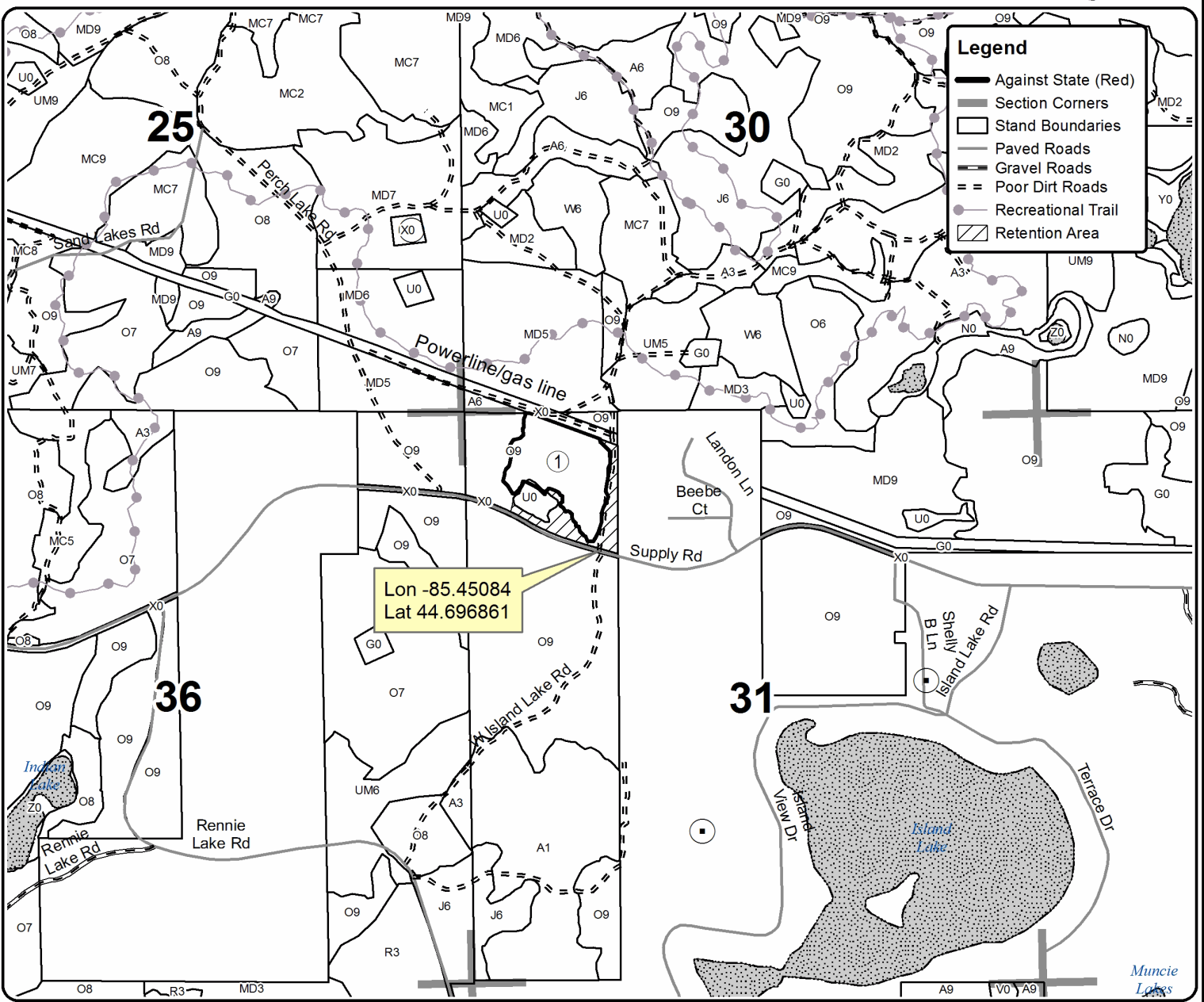
PU Acres

1 15.1

Grandfather Weave

Compartment 43

15.1 Acres



TIMBER SALE INFORMATION

Bowers Bridge Hardwood (61-086-16)

Benzie County (Advertised Price \$34,386.15)

SALE NOTE: A recreation site such as a trail, pathway, or campground is within the sale area or the vicinity. Certain restrictions/specifications may be applicable including time restrictions.

A timber sale contract for this lump sum, sealed bid timber sale will be awarded to the responsible bidder offering the highest sealed bid price. Bids must be at or above the following advertised price for each species:

<u>PRODUCTS & SPECIES</u>	<u>ESTIMATED UNITS*</u>	<u>ADVERTISED PRICE</u>
Sawtimber		
B. T. Aspen	3.80 MBF	\$ 106.00 / MBF
Basswood	25.50 MBF	\$ 95.00 / MBF
Beech	3.50 MBF	\$ 86.00 / MBF
Black Cherry	6.90 MBF	\$ 242.00 / MBF
Red Maple	7.30 MBF	\$ 150.00 / MBF
Sugar Maple	78.70 MBF	\$ 264.00 / MBF
Pulpwood		
Basswood	45.00 Cords	\$ 11.60 / Cord
Mixed Aspen	8.00 Cords	\$ 20.25 / Cord
Mixed Hardwood	415.00 Cords	\$ 16.95 / Cord

* The total volume is statistically estimated within plus (+) or minus (-) 17.89 percent. The estimated units are final and not subject to adjustment. Prospective bidders are urged to examine this timber and to make their own estimates of quantity and quality.

BOND AND PAYMENT SCHEDULE:

1. A bond in the amount of \$1,719.00 to insure faithful performance of the conditions of the contract will be deposited by the successful bidder within 21 days of the sale award.
2. Cutting in any sale or unit without the required advance payment would be considered a trespass.
3. Total payment must be paid in advance or according to the following schedule:
 - (a) Ten percent (10%) of the sale value must be paid within 21 days of the sale award.
 - (b) The 10% down payment will be credited towards the first unit cut.
4. If no cutting takes place, the 10% down payment will not be refunded.
5. Operations on the contract issued will terminate on 12/31/2018.

Description of Timber by Payment Unit (PU)

PU	MARKET GROUP	PRODUCT	QUANTITY	UNIT	ACRES	ADVERTISE PRICE	
1	B. T. Aspen	Sawtimber	2.3	MBF	32.5	\$17,179.50	
	Basswood		10.3	MBF			
	Beech		1.4	MBF			
	Black Cherry		4.1	MBF			
	Red Maple		3.6	MBF			
	Sugar Maple		39.6	MBF			
	Basswood		Pulpwood	21.0			Cords
	Mixed Aspen			4.0			Cords
	<i>B. T. Aspen</i>			4.0			<i>Cords</i>
	Mixed Hardwood			208.0			Cords
	<i>Beech</i>			13.0			<i>Cords</i>
	<i>Black Cherry</i>			13.0			<i>Cords</i>
	<i>Red Maple</i>			8.0			<i>Cords</i>
	<i>Sugar Maple</i>			174.0			<i>Cords</i>
2	B. T. Aspen	Sawtimber	1.5	MBF	22.0	\$11,610.50	
	Basswood		6.9	MBF			
	Beech		0.9	MBF			
	Black Cherry		2.8	MBF			
	Red Maple		2.5	MBF			
	Sugar Maple		26.8	MBF			
	Basswood		Pulpwood	15.0			Cords
	Mixed Aspen			3.0			Cords
	<i>B. T. Aspen</i>			3.0			<i>Cords</i>
	Mixed Hardwood			139.0			Cords
	<i>Beech</i>			8.0			<i>Cords</i>
	<i>Black Cherry</i>			8.0			<i>Cords</i>
	<i>Red Maple</i>			6.0			<i>Cords</i>
	<i>Sugar Maple</i>			117.0			<i>Cords</i>
3	Basswood	Sawtimber	8.3	MBF	11.8	\$4,869.55	
	Beech		1.2	MBF			
	Red Maple		1.0	MBF			
	Sugar Maple		11.6	MBF			
	Basswood		Pulpwood	9.0			Cords
	Mixed Hardwood			39.0			Cords
	<i>Beech</i>			5.0			<i>Cords</i>
	<i>Red Maple</i>			8.0			<i>Cords</i>
	<i>Sugar Maple</i>			25.0			<i>Cords</i>
	<i>Yellow Birch</i>			1.0			<i>Cords</i>
	4			Red Maple			Sawtimber
Sugar Maple		0.7	MBF				
Mixed Aspen		Pulpwood	1.0	Cords			
<i>Quaking Aspen</i>			1.0	<i>Cords</i>			
Mixed Hardwood			29.0	Cords			
<i>Black Cherry</i>			2.0	<i>Cords</i>			
<i>Ironwood</i>			3.0	<i>Cords</i>			
<i>Red Maple</i>			3.0	<i>Cords</i>			
<i>Sugar Maple</i>			21.0	<i>Cords</i>			
TOTAL:			125.7	MBF			
TOTAL:			468.0	Cords			

Sale Specific Conditions & Requirements

Sale Name: Bowers Bridge Hardwood

Sale Number: 61-086-16 Seq#: 1

1 - Sale Area

1.2 - Boundaries

1.2.1 - Painted boundaries (1/14)

The sale boundaries are marked and identified by blue and red paint. Exterior sale boundary lines against private property are marked with blue paint. Exterior sale boundary lines against state land are marked with red paint. The boundary between Payment Units 1 and 2 is Burnt Mill Road. Painted boundary line trees are not Included Timber and are to be protected unless marked with orange paint.

2 - Timber Specifications

2.1 - Included Timber

2.1.3 - Cut tree marked unit(s) (12/08)

Within Payment Unit(s) 1- 4, all trees are designated for cutting when marked with orange paint above and below stump height, regardless of merchantability.

2.1.11 - Description of timber note (2/04)

Note that mixed hardwood pulpwood includes predominantly sugar maple with lesser amounts of beech, red maple, black cherry, ironwood, and yellow birch.

2.2 - Utilization

2.2.6 - Roundwood operation required (5/07)

The skidding of whole trees or tree segments with limbs attached is prohibited. All products must be produced as roundwood and forwarded to existing roads or landing areas in final product length.

4 - Transportation

4.1 - Construction

4.1.2 - Stream crossings, specific (3/11)

There is a stream crossing on Bronson Lake Road between Payments Units 2 and 3 as shown on the Timber Sale Map. Hauling and forwarding on the road across this stream will not be permitted because of an inadequate culvert. The timber sale administrator will work with the operators to locate a feasible forwarding route leading from Payment Unit 3 south and east to a landing location on Bronson Lake Road. This is being done to avoid the stream crossing, and to minimize vehicle traffic on the Shore to Shore Trail where it runs on Bronson Lake Rd.

4.1.12 - No new roads (1/12)

No new roads will be permitted in any Payment Unit. All operations are limited to existing roads. Only forwarding trails will be allowed, which may require blocking with slash or berms at the close of operations, at the direction of the timber sale administrator.

5 - Operations

5.2 - Conduct of Operations

5.2.1 - Slash

5.2.1.8 - Slash height (12/08)

No slash or tree tops may exceed 36 inches in height.

5.2.3 - Operating Restrictions

5.2.3.3 - Bark slippage restriction (3/09)

Within Payment Unit(s) 1 - 4, cutting and skidding are not permitted during the period of April 15 to July 15. This restriction is because of bark slippage.

5.2.3.9 - Beech hauling restriction (3/11)

American beech wood products with bark still attached, other than chips, are not to be transported from stands infested with beech scale to or through uninfested beech areas from July 15 to November 15. Beech scale is mobile at this time of year and can move from infested wood to live beech. (See Map of current beech scale distribution on the DNR Forest Health Website, www.michigan.gov/dnr.)

5.2.4 - Dead and Down Creation

5.2.4.1 - Dead and down creation, marked trees (10/13)

All trees marked with an "X" must be felled and left on site for wildlife. These trees have been taken off the timber tally.

5.2.38 - No decking against live trees (2/04)

Cut products may not be decked against unmarked or designated leave trees.

5.2.40 - Pathway protection (10/10)

The Shore-to-Shore hiking/riding trail is shown on the Timber Sale Map. Do not cut trees or damage posts with blue pathway markers unless also marked with orange paint. Maintain a 20-foot wide slash, debris, and rut free zone daily, using the pathway as the center-line. Do not run equipment down the pathway. Skidding across the trail may only occur in locations approved by the sale administrator.

5.4 - Soil Protection

5.4.3 - Erosion control (12/08)

Skid trails or haul roads may require erosion control structures or berms per direction of the Unit Manager or his/her representative.

6 - Safety and Fire Prevention

6.2 - Signing

6.2.1 - Road posting (9/09)

The Purchaser is responsible for posting and maintaining caution signs on Bronson Lake, Marl and Burnt Mill roads prior to beginning operations. The road must be posted at appropriate distances from the sale area to warn of logging activity and truck traffic. Signs must be removed when harvest operations are suspended or completed. The Purchaser will provide these signs.



TIMBER SALE MAP

This information provided by authority of Part 525, 1994 PA 451, as amended.

Sale Number	Year
61-086	16

Forest Management Unit Traverse City	County Benzie	Mapped By Tim Webb	Date 09/27/2016	Page 1	of 1
Township 26N	Range 13W	Section(s) and Subdivision(s) sec. 4: S1/2 NW, SWNE, NENE, NESE	Scale 1:15,840		

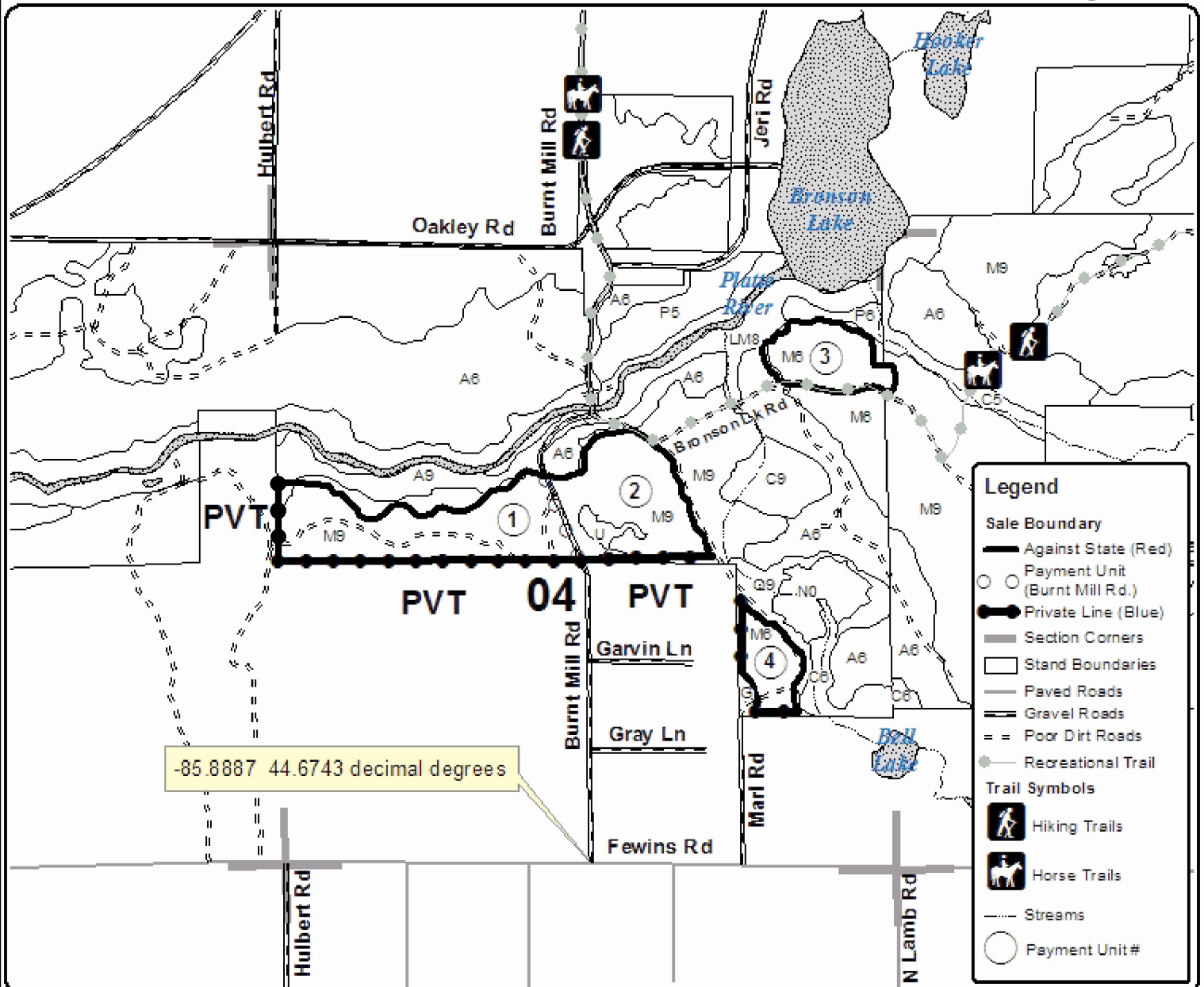
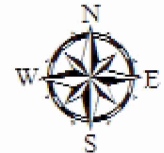
Cover Type				Density			
A = Aspen	H = Hemlock	N = Marsh	U = Upland Brush	0 = Non Stocked	5 = Pole Timber Medium		
R = Paper Birch	J = Jack Pine	O = Oak	UM = Upland Mixed	1 = Seedling Sapling Poor	6 = Pole Timber Well		
C = Cedar	L = Lowland Brush	P = Lowland Poplar	V = Bog or Marsh	2 = Seedling Sapling Medium	7 = Saw Timber Poor		
D = Tread Bog	LM = Lowland Mixed	Q = Mixed Swamp Conifer	W = White Pine	3 = Seedling Sapling Well	8 = Saw Timber Medium		
E = Swamp Hdwoods	M = Mpl. Bch, Birch	R = Red Pine	X = Non Stocked	4 = Pole Timber Poor	9 = Saw Timber Well		
F = Spruce Fir	MC = Mixed Conifer	S = Black Spruce	Z = Water				
G = Grass	MD = Mixed Deciduous	T = Tamarack					

PU	Acres	PU	Acres
1	32.5	4	7.7
2	22.0		
3	11.8		

Bowers Bridge Hardwood

Compartment 13

74 acres



Legend

- Sale Boundary**
 - Against State (Red)
- Payment Unit (Burnt Mill Rd.)**
 - Circle with number
- Private Line (Blue)**
 - Thick blue line
- Section Corners**
 - Small square symbol
- Stand Boundaries**
 - Dashed line
- Paved Roads**
 - Double solid line
- Gravel Roads**
 - Single solid line
- Poor Dirt Roads**
 - Dashed-dotted line
- Recreational Trail**
 - Dotted line
- Trail Symbols**
 - Hiking Trails: Hiker icon
 - Horse Trails: Horse icon
- Streams**
 - Wavy line
- Payment Unit #**
 - Circle with number



Splitter Oak (61-078-16)
 ; Grand Traverse COUNTY

In response to the notice of sale to be held 4:00 p.m. (local time) on December 22, 2016, I am hereby submitting my sealed bid (firm offer) for the following forest products to be cut. Bids for individual species must be at or above the advertised price. All non-responsive bid forms may be rejected.

<u>PRODUCTS & SPECIES</u>	<u>ESTIMATED VOLUME*</u>	<u>ADVERTISED PRICE</u>	<u>BID PRICE</u>
Sawtimber			
Northern Pin Oak	163.30 MBF	\$ 116.00/MBF	\$ _____
White Oak	222.00 MBF	\$ 63.00/MBF	\$ _____
Pulpwood			
B. T. Aspen	36.00 Cords	\$ 20.25/Cord	\$ _____
Jack Pine	257.00 Cords	\$ 10.65/Cord	\$ _____
Misc. Species 1	88.00 Cords	\$ 3.50/Cord	\$ _____
Northern Pin Oak	661.00 Cords	\$ 12.70/Cord	\$ _____
Red Maple	88.00 Cords	\$ 16.95/Cord	\$ _____
White Oak	887.00 Cords	\$ 12.70/Cord	\$ _____

*The volumes are statistically estimated within plus (+) or minus (-) 8.77 percent. These estimated volumes are final and not subject to adjustment. Prospective bidders are urged to examine this timber and to make their own estimates of quantity and quality.

I understand that any or all bids may be rejected. All bids must be signed and all bid items must be bid or the bid form may be rejected. I also understand that consideration and awarding a contract will be based upon my past performance and ability to complete the contract based upon equipment and staffing subject to my control.

FEDERAL ID: _____ or SOCIAL SECURITY NUMBER: _____

Company or individual bidding: _____

Company representative's name: _____

Address: _____

City: _____ State: _____ Zip: _____

IF AVAILABLE, PLEASE PLACE THE PERSONALIZED LABEL FROM YOUR PROSPECTUS IN THE ABOVE BOX.

Individual or company representative's signature: _____ Date: _____

Phone number : _____ Email (optional): _____

THE WINNING BIDDER MUST COMPLETE THE VERIFICATION OF WORKER'S DISABILITY COMPENSATION ACT COMPLIANCE (ON REVERSE SIDE IF DOUBLE SIDED) WITHIN 21 DAYS OF SALE AWARD DATE

Grandfather Weave (61-085-16)
 ; Grand Traverse COUNTY

In response to the notice of sale to be held 4:00 p.m. (local time) on December 22, 2016, I am hereby submitting my sealed bid (firm offer) for the following forest products to be cut. Bids for individual species must be at or above the advertised price. All non-responsive bid forms may be rejected.

<u>PRODUCTS & SPECIES</u>	<u>ESTIMATED VOLUME*</u>	<u>ADVERTISED PRICE</u>	<u>BID PRICE</u>
Sawtimber			
B. T. Aspen	7.50 MBF	\$ 114.00/MBF	\$ _____
Northern Pin Oak	34.10 MBF	\$ 125.00/MBF	\$ _____
Red Maple	6.60 MBF	\$ 161.00/MBF	\$ _____
White Oak	52.20 MBF	\$ 68.00/MBF	\$ _____
White Pine	5.00 MBF	\$ 86.00/MBF	\$ _____
Pulpwood			
B. T. Aspen	24.00 Cords	\$ 21.70/Cord	\$ _____
Mixed Oak	164.00 Cords	\$ 13.60/Cord	\$ _____
Red Maple	61.00 Cords	\$ 18.15/Cord	\$ _____
Red Pine	5.00 Cords	\$ 39.35/Cord	\$ _____
White Pine	29.00 Cords	\$ 17.50/Cord	\$ _____

*The volumes are statistically estimated within plus (+) or minus (-) 28.37 percent. These estimated volumes are final and not subject to adjustment. Prospective bidders are urged to examine this timber and to make their own estimates of quantity and quality.

I understand that any or all bids may be rejected. All bids must be signed and all bid items must be bid or the bid form may be rejected. I also understand that consideration and awarding a contract will be based upon my past performance and ability to complete the contract based upon equipment and staffing subject to my control.

FEDERAL ID: _____ or SOCIAL SECURITY NUMBER: _____

Company or individual bidding: _____

Company representative's name: _____

Address: _____

City: _____ State: _____ Zip: _____

IF AVAILABLE, PLEASE PLACE THE PERSONALIZED LABEL FROM YOUR PROSPECTUS IN THE ABOVE BOX.

Individual or company representative's signature: _____ Date: _____

Phone number : _____ Email (optional): _____

THE WINNING BIDDER MUST COMPLETE THE VERIFICATION OF WORKER'S DISABILITY COMPENSATION ACT COMPLIANCE (ON REVERSE SIDE IF DOUBLE SIDED) WITHIN 21 DAYS OF SALE AWARD DATE



FOR DEPARTMENT USE ONLY	
Sale Number (XX - XXX - XX - XX)	
Forest Management Unit:	

TIMBER SALE VERIFICATION OF WORKER'S DISABILITY COMPENSATION ACT COMPLIANCE

As required by Act 317, P.A. 1969 (Worker's Compensation) and
Part 5 of Act 451 of 1994, as amended.

VERIFICATION OF WORKER'S DISABILITY COMPENSATION ACT COMPLIANCE

- This verification must be completed and submitted within 21 days of contract award and prior to the issuance of the timber sale contract.
- In addition, if boxes 2B or 2C are checked, then Notice of Exclusion or Certificate of Insurance must be submitted within twenty-one (21) days of the contract award and prior to the issuance of the timber sale contract.
- All information must be typed or printed except for written signatures.

Please Check Appropriate Categories:

1. My business is organized as (you **must** check one of the boxes below):
 - A. Sole Proprietorship (individual)
 - B. Partnership
 - C. Corporation
2. You **must** check one of the boxes below:
 - A. I certify my business is a sole proprietorship and it has no employees but the sole proprietor. I am not subject to the Worker's Compensation Laws.
 - B. I certify my business has satisfied its obligation to the Worker's Compensation Act through the use of an approved Notice of Exclusion (BWC-337, Rev. 5/96). I will provide a copy of the Notice of Exclusion within 21 days of the contract award. (For questions or a copy of the BWC-337, please call the Worker's Compensation Bureau at 517-322-1195).
 - C. I certify my business has a Worker's Compensation Policy. I will provide an original Certificate of Insurance within twenty-one (21) days of the contract award.
3. If you have checked item 2(A) or 2(B), you **must** indicate the number of **both** full-time and part-time employees, other than yourself, including family members and active partners (if none, you must enter "0").

_____ Full-time Employees

_____ Part-time Employees

Name of Business		Federal ID (or) Social Security No.	
Address		Telephone ()	
City	State	ZIP	

I hereby certify that the above information is true and correct. I agree to notify the Michigan DNR of any changes that occur in factors affecting my coverage during any of my present and future operations.

Signature of Owner or Authorized Representative

Title

Date

Please complete the "SEALED BID" information on the next page

C7 High Vis Oak Salvage (61-081-16)
 ; Grand Traverse COUNTY

In response to the notice of sale to be held 4:00 p.m. (local time) on December 22, 2016, I am hereby submitting my sealed bid (firm offer) for the following forest products to be cut. Bids for individual species must be at or above the advertised price. All non-responsive bid forms may be rejected.

<u>PRODUCTS & SPECIES</u>	<u>ESTIMATED VOLUME*</u>	<u>ADVERTISED PRICE</u>	<u>BID PRICE</u>
Sawtimber			
Northern Pin Oak	65.40 MBF	\$ 100.00/MBF	\$ _____
White Oak	10.30 MBF	\$ 54.00/MBF	\$ _____
Pulpwood			
Jack Pine	30.00 Cords	\$ 9.15/Cord	\$ _____
Misc. Species 1	119.00 Cords	\$ 3.00/Cord	\$ _____
Northern Pin Oak	213.00 Cords	\$ 10.90/Cord	\$ _____
White Oak	35.00 Cords	\$ 10.90/Cord	\$ _____

*The volumes are statistically estimated within plus (+) or minus (-) 19.80 percent. These estimated volumes are final and not subject to adjustment. Prospective bidders are urged to examine this timber and to make their own estimates of quantity and quality.

I understand that any or all bids may be rejected. All bids must be signed and all bid items must be bid or the bid form may be rejected. I also understand that consideration and awarding a contract will be based upon my past performance and ability to complete the contract based upon equipment and staffing subject to my control.

FEDERAL ID: ____ - ____ - ____ or SOCIAL SECURITY NUMBER: ____ - ____ - ____

Company or individual bidding: _____

Company representative's name: _____

Address: _____

City: _____ State: _____ Zip: _____

IF AVAILABLE, PLEASE PLACE THE PERSONALIZED LABEL FROM YOUR PROSPECTUS IN THE ABOVE BOX.

Individual or company representative's signature: _____ Date: _____

Phone number : _____ Email (optional): _____

THE WINNING BIDDER MUST COMPLETE THE VERIFICATION OF WORKER'S DISABILITY COMPENSATION ACT COMPLIANCE (ON REVERSE SIDE IF DOUBLE SIDED) WITHIN 21 DAYS OF SALE AWARD DATE



FOR DEPARTMENT USE ONLY
Sale Number (XX - XXX - XX - XX)
Forest Management Unit:

TIMBER SALE VERIFICATION OF WORKER'S DISABILITY COMPENSATION ACT COMPLIANCE

*As required by Act 317, P.A. 1969 (Worker's Compensation) and
Part 5 of Act 451 of 1994, as amended.*

VERIFICATION OF WORKER'S DISABILITY COMPENSATION ACT COMPLIANCE

- This verification must be completed and submitted within 21 days of contract award and prior to the issuance of the timber sale contract.
- In addition, if boxes 2B or 2C are checked, then Notice of Exclusion or Certificate of Insurance must be submitted within twenty-one (21) days of the contract award and prior to the issuance of the timber sale contract.
- All information must be typed or printed except for written signatures.

Please Check Appropriate Categories:

1. My business is organized as (you **must** check one of the boxes below):
 - A. Sole Proprietorship (individual)
 - B. Partnership
 - C. Corporation
2. You **must** check one of the boxes below:
 - A. I certify my business is a sole proprietorship and it has no employees but the sole proprietor. I am not subject to the Worker's Compensation Laws.
 - B. I certify my business has satisfied its obligation to the Worker's Compensation Act through the use of an approved Notice of Exclusion (BWC-337, Rev. 5/96). I will provide a copy of the Notice of Exclusion within 21 days of the contract award. (For questions or a copy of the BWC-337, please call the Worker's Compensation Bureau at 517-322-1195).
 - C. I certify my business has a Worker's Compensation Policy. I will provide an original Certificate of Insurance within twenty-one (21) days of the contract award.
3. If you have checked item 2(A) or 2(B), you **must** indicate the number of **both** full-time and part-time employees, other than yourself, including family members and active partners (if none, you must enter "0").

_____ Full-time Employees

_____ Part-time Employees

Name of Business		Federal ID (or) Social Security No.	
Address		Telephone ()	
City	State	ZIP	

I hereby certify that the above information is true and correct. I agree to notify the Michigan DNR of any changes that occur in factors affecting my coverage during any of my present and future operations.

Signature of Owner or Authorized Representative

Title

Date

Please complete the "SEALED BID" information on the next page

Bowers Bridge Hardwood (61-086-16)
 ; Benzie COUNTY

In response to the notice of sale to be held 4:00 p.m. (local time) on December 22, 2016, I am hereby submitting my sealed bid (firm offer) for the following forest products to be cut. Bids for individual species must be at or above the advertised price. All non-responsive bid forms may be rejected.

<u>PRODUCTS & SPECIES</u>	<u>ESTIMATED VOLUME*</u>	<u>ADVERTISED PRICE</u>	<u>BID PRICE</u>
Sawtimber			
B. T. Aspen	3.80 MBF	\$ 106.00/MBF	\$ _____
Basswood	25.50 MBF	\$ 95.00/MBF	\$ _____
Beech	3.50 MBF	\$ 86.00/MBF	\$ _____
Black Cherry	6.90 MBF	\$ 242.00/MBF	\$ _____
Red Maple	7.30 MBF	\$ 150.00/MBF	\$ _____
Sugar Maple	78.70 MBF	\$ 264.00/MBF	\$ _____
Pulpwood			
Basswood	45.00 Cords	\$ 11.60/Cord	\$ _____
Mixed Aspen	8.00 Cords	\$ 20.25/Cord	\$ _____
Mixed Hardwood	415.00 Cords	\$ 16.95/Cord	\$ _____

*The volumes are statistically estimated within plus (+) or minus (-) 17.89 percent. These estimated volumes are final and not subject to adjustment. Prospective bidders are urged to examine this timber and to make their own estimates of quantity and quality.

I understand that any or all bids may be rejected. All bids must be signed and all bid items must be bid or the bid form may be rejected. I also understand that consideration and awarding a contract will be based upon my past performance and ability to complete the contract based upon equipment and staffing subject to my control.

FEDERAL ID: ____ - ____ - ____ or SOCIAL SECURITY NUMBER: ____ - ____ - ____

Company or individual bidding: _____

Company representative's name: _____

Address: _____

City: _____ State: _____ Zip: _____

IF AVAILABLE, PLEASE PLACE THE PERSONALIZED LABEL FROM YOUR PROSPECTUS IN THE ABOVE BOX.

Individual or company representative's signature: _____ Date: _____

Phone number : _____ Email (optional): _____

THE WINNING BIDDER MUST COMPLETE THE VERIFICATION OF WORKER'S DISABILITY COMPENSATION ACT COMPLIANCE (ON REVERSE SIDE IF DOUBLE SIDED) WITHIN 21 DAYS OF SALE AWARD DATE



FOR DEPARTMENT USE ONLY
Sale Number (XX - XXX - XX - XX)
Forest Management Unit:

TIMBER SALE VERIFICATION OF WORKER'S DISABILITY COMPENSATION ACT COMPLIANCE

*As required by Act 317, P.A. 1969 (Worker's Compensation) and
Part 5 of Act 451 of 1994, as amended.*

VERIFICATION OF WORKER'S DISABILITY COMPENSATION ACT COMPLIANCE

- This verification must be completed and submitted within 21 days of contract award and prior to the issuance of the timber sale contract.
- In addition, if boxes 2B or 2C are checked, then Notice of Exclusion or Certificate of Insurance must be submitted within twenty-one (21) days of the contract award and prior to the issuance of the timber sale contract.
- All information must be typed or printed except for written signatures.

Please Check Appropriate Categories:

1. My business is organized as (you **must** check one of the boxes below):
 - A. Sole Proprietorship (individual)
 - B. Partnership
 - C. Corporation
2. You **must** check one of the boxes below:
 - A. I certify my business is a sole proprietorship and it has no employees but the sole proprietor. I am not subject to the Worker's Compensation Laws.
 - B. I certify my business has satisfied its obligation to the Worker's Compensation Act through the use of an approved Notice of Exclusion (BWC-337, Rev. 5/96). I will provide a copy of the Notice of Exclusion within 21 days of the contract award. (For questions or a copy of the BWC-337, please call the Worker's Compensation Bureau at 517-322-1195).
 - C. I certify my business has a Worker's Compensation Policy. I will provide an original Certificate of Insurance within twenty-one (21) days of the contract award.
3. If you have checked item 2(A) or 2(B), you **must** indicate the number of **both** full-time and part-time employees, other than yourself, including family members and active partners (if none, you must enter "0").

_____ Full-time Employees _____ Part-time Employees

Name of Business		Federal ID (or) Social Security No.	
Address		Telephone ()	
City	State	ZIP	

I hereby certify that the above information is true and correct. I agree to notify the Michigan DNR of any changes that occur in factors affecting my coverage during any of my present and future operations.

Signature of Owner or Authorized Representative

_____ _____
Title Date

Please complete the "SEALED BID" information on the next page

Little Lamb Hardwoods (61-076-16)
 ; Benzie COUNTY

In response to the notice of sale to be held 4:00 p.m. (local time) on December 22, 2016, I am hereby submitting my sealed bid (firm offer) for the following forest products to be cut. Bids for individual species must be at or above the advertised price. All non-responsive bid forms may be rejected.

<u>PRODUCTS & SPECIES</u>	<u>ESTIMATED VOLUME*</u>	<u>ADVERTISED PRICE</u>	<u>BID PRICE</u>
Sawtimber			
B. T. Aspen	65.10 MBF	\$ 114.00/MBF	\$ _____
Basswood	1.60 MBF	\$ 102.00/MBF	\$ _____
Beech	13.70 MBF	\$ 92.00/MBF	\$ _____
Black Cherry	0.70 MBF	\$ 260.00/MBF	\$ _____
Red Maple	39.70 MBF	\$ 161.00/MBF	\$ _____
Pulpwood			
B. T. Aspen	214.00 Cords	\$ 21.70/Cord	\$ _____
Basswood	2.00 Cords	\$ 12.45/Cord	\$ _____
Beech	37.00 Cords	\$ 18.15/Cord	\$ _____
Black Cherry	2.00 Cords	\$ 18.15/Cord	\$ _____
Red Maple	293.00 Cords	\$ 18.15/Cord	\$ _____
Sugar Maple	19.00 Cords	\$ 18.15/Cord	\$ _____

*The volumes are statistically estimated within plus (+) or minus (-) 19.52 percent. These estimated volumes are final and not subject to adjustment. Prospective bidders are urged to examine this timber and to make their own estimates of quantity and quality.

I understand that any or all bids may be rejected. All bids must be signed and all bid items must be bid or the bid form may be rejected. I also understand that consideration and awarding a contract will be based upon my past performance and ability to complete the contract based upon equipment and staffing subject to my control.

FEDERAL ID: _____ or SOCIAL SECURITY NUMBER: _____

Company or individual bidding: _____

Company representative's name: _____

Address: _____

City: _____ State: _____ Zip: _____

IF AVAILABLE, PLEASE PLACE THE PERSONALIZED LABEL FROM YOUR PROSPECTUS IN THE ABOVE BOX.

Individual or company representative's signature: _____ Date: _____

Phone number : _____ Email (optional): _____

THE WINNING BIDDER MUST COMPLETE THE VERIFICATION OF WORKER'S DISABILITY COMPENSATION ACT COMPLIANCE (ON REVERSE SIDE IF DOUBLE SIDED) WITHIN 21 DAYS OF SALE AWARD DATE



FOR DEPARTMENT USE ONLY
Sale Number (XX - XXX - XX - XX)
Forest Management Unit:

TIMBER SALE VERIFICATION OF WORKER'S DISABILITY COMPENSATION ACT COMPLIANCE

*As required by Act 317, P.A. 1969 (Worker's Compensation) and
Part 5 of Act 451 of 1994, as amended.*

VERIFICATION OF WORKER'S DISABILITY COMPENSATION ACT COMPLIANCE

- This verification must be completed and submitted within 21 days of contract award and prior to the issuance of the timber sale contract.
- In addition, if boxes 2B or 2C are checked, then Notice of Exclusion or Certificate of Insurance must be submitted within twenty-one (21) days of the contract award and prior to the issuance of the timber sale contract.
- All information must be typed or printed except for written signatures.

Please Check Appropriate Categories:

1. My business is organized as (you **must** check one of the boxes below):
 - A. Sole Proprietorship (individual)
 - B. Partnership
 - C. Corporation

2. You **must** check one of the boxes below:
 - A. I certify my business is a sole proprietorship and it has no employees but the sole proprietor. I am not subject to the Worker's Compensation Laws.
 - B. I certify my business has satisfied its obligation to the Worker's Compensation Act through the use of an approved Notice of Exclusion (BWC-337, Rev. 5/96). I will provide a copy of the Notice of Exclusion within 21 days of the contract award. (For questions or a copy of the BWC-337, please call the Worker's Compensation Bureau at 517-322-1195).
 - C. I certify my business has a Worker's Compensation Policy. I will provide an original Certificate of Insurance within twenty-one (21) days of the contract award.

3. If you have checked item 2(A) or 2(B), you **must** indicate the number of **both** full-time and part-time employees, other than yourself, including family members and active partners (if none, you must enter "0").

_____ Full-time Employees

_____ Part-time Employees

Name of Business		Federal ID (or) Social Security No.	
Address		Telephone ()	
City	State	ZIP	

I hereby certify that the above information is true and correct. I agree to notify the Michigan DNR of any changes that occur in factors affecting my coverage during any of my present and future operations.

Signature of Owner or Authorized Representative

Title

Date

Please complete the "SEALED BID" information on the next page