



**DEPARTMENT OF NATURAL RESOURCES  
STATE OF MICHIGAN**

**TIMBER SALE PROSPECTUS #5812**

SCHEDULED SALE DATE AND TIME: 10:00 a.m. (local time) on February 28, 2017.

LOCATION: ATLANTA MGMT UNIT, 13501 M-33, ATLANTA, MI 49709.

PROSPECTUS NOTE: The bidder is advised to inspect the sale area and review the location, estimated volumes, operating costs and contract terms of proposed sales. Please be aware that some landowners may request 60 days or more notice for access across their land.

Notice is hereby given that bids will be received by the Unit Manager, ATLANTA MANAGEMENT UNIT, for certain timber on the following described lands:

Sinkhole Mix (54-033-16)

Presque Isle County, Advertised Price \$27,982.75, 70.7 Acres, Jack Pine, Red Pine.

SALE NOTE: A recreation site such as a trail, pathway, or campground is within the sale area or the vicinity. Certain restrictions/specifications may be applicable including time restrictions.

Tomahawk Creek Red Pine (54-034-16)

Presque Isle County, Advertised Price \$14,857.55, 16.5 Acres, Red Pine.

Up Down Aspen (54-035-16)

Presque Isle County, Advertised Price \$17,334.65, 24.4 Acres, Aspen.

SALE NOTE: A recreation site such as a trail, pathway, or campground is within the sale area or the vicinity. Certain restrictions/specifications may be applicable including time restrictions.

Inefficient Aspen (54-036-16)

Presque Isle County, Advertised Price \$39,639.75, 87.9 Acres, Aspen, Red Oak.

## BID INSTRUCTIONS (VER. 09/02/2016):

### 1. Scheduled Bid Location, Date, and Time (2/11)

Bids must be received by the Unit Manager, ATLANTA OFFICE, 13501 M-33, ATLANTA, MI 49709, no later than 10:00 a.m. (local time) on February 28, 2017. For further information concerning this sale, contact Cody Stevens at 989-785-4251 extension 5240.

### 2. Bidder's Qualifications (5/16)

Purchaser shall obtain workers compensation insurance to cover claims under Michigan's Worker's Disability Compensation Act of 1969 or similar employee benefit act of any other state applicable to an employee. If all or part of a timber sale was prepared by a private contractor, the contractor and that contractor's company are not permitted to bid on the timber sale contract. Bids will not be accepted from individuals or companies appearing on the DNR/FRD No-Bid List. This list contains the names of purchasers who previously failed to execute a contract within 21-days or who have a history of poor performance.

### 3. Preparation of Sealed Bids (5/16)

Bid Forms may be completed online thru Michigan DNR Timber Sale Online Bidding (OLB) at [www.michigan.gov/timberbidding](http://www.michigan.gov/timberbidding) or by completing the hardcopy Bid Form found in the Timber Sale Prospectus. Hardcopy Bid Forms shall be manually signed in ink. Registration in OLB is considered your 'signature' for all bids submitted thru that system. Bid prices must be entered for each species and product in the Bid Price column for all material subject to bidding and all fill-in blanks must be completed. If erasures or other changes appear on the hardcopy Bid Form, each erasure or change must be initialed by the person signing the bid.

### 4. Submission of Sealed Bids (5/16)

Bid forms may be obtained from the Unit Manager or thru OLB. Bids may be submitted hardcopy or thru OLB. All hardcopy bids must be submitted on the bid form and in an envelope clearly identified as described in this section. NOTE: Only one bid form per bid envelope. Sealed bids must be submitted to the Unit office designated in the prospectus and must be submitted at or prior to the time established in the prospectus. The envelope should show on the outside (a) the sale name or number and (b) the date and time of bid opening, as shown in the prospectus. Bids received after the time specified in the sale prospectus are late bids and will be rejected.

It is possible for a bidder to submit multiple bids on a single sale. For example, a bid may be submitted hardcopy and a bid may be submitted thru OLB. Or, two bidders from the same company could both submit bids on the same sale. If this were to happen, the State would accept all bids received and award the contract accordingly. All bidding and contractual requirements would apply to all bids received.

### 5. Public Opening of Sealed Bids (7/16)

If conditions permit, the sealed bids will be publicly opened and posted at the time and place set in the prospectus.

If a bidder, present at a bid opening, has submitted bids on more than one sale, that bidder may withdraw their unopened bid envelopes or announce the withdrawal of their online bid after being declared the successful bidder on one sale.

### 6. Award of Contract (1/11)

Award of the contract will be made to the Bidder whose bid, conforming to the prospectus, is most advantageous to the State of Michigan on the basis of total value at rates bid for the estimated quantities. The State reserves the right to reject any bid or waive any minor irregularity in bids received. A written award mailed (or otherwise furnished) to the successful Bidder shall be deemed to result in a binding contract without further action by either party.

### 7. Down Payment (1/11)

The Bidder to whom award is made must make a down payment within 21 days of the sale award. The amount of the down payment will be calculated as shown in the Bond and Payment Schedule of this prospectus. Only cash may be used to meet this requirement.

### 8. Performance Security (1/11)

As guarantee of faithful performance, a cash bond, certificate of deposit, surety bond or irrevocable letter of credit (LOC) is required within 21 days of the sale award. The amount of the performance security is shown in the Bond and

Payment Schedule of this prospectus. If an LOC or surety is used, the coverage must extend for at least 6 months beyond the contract expiration.

#### 9. Timber Sale Contract (9/14)

Additional conditions and requirements common to all timber sales are listed on the timber sale contract (R4031) and are available on line at [www.michigan.gov/timber](http://www.michigan.gov/timber). Contact the Unit Manager for additional information or a sample contract. Within 21 days of the date of the award letter, the bidder must sign the contract and provide the required down payment, performance security, and verification of worker's disability compensation. The down payment and performance security shall be in accordance with the provisions of the timber sale contract, in the sums stated in this prospectus. If these actions are not taken, then the Bidder, the Bidder's corporation, and the corporation's principals may not be permitted to bid on State timber sales for a period of 1 year. In addition, the Bidder certifies that if awarded this contract, the Bidder will complete the timber sale contract in accordance with its terms and any modifications thereof including requirements to purchase, cut, and remove the included timber by the expiration date.

#### 10. Disclaimer of Estimates and Bidder's Warranty of Inspection (7/16)

Before submitting this bid, the Bidder is advised and cautioned to inspect the sale area, review the requirements of the sale contract, and take other steps as may be reasonably necessary to ascertain the location, estimated volumes, construction estimates, and operating costs of the proposed sale. Failure to do so will not relieve the Bidder from responsibility for completing the contract.

The Bidder warrants that this bid is submitted solely on the basis of the Bidder's examination and inspection of the quality and quantity of the timber offered for sale and the Bidder's opinion of the value thereof and the costs of recovery. No reliance should be placed on the State of Michigan's estimates of timber quality, quantity or costs of recovery. Bidder further acknowledges that the State of Michigan: (i) expressly disclaims any warranty of fitness of timber for any purpose; (ii) offers this timber as is without any warranty of quality (merchantability) or quantity and (iii) expressly disclaims any warranty as to the quantity or quality of timber sold.

#### 11. Certification and Chain-of-Custody (10/14)

Unless otherwise indicated in the contract under section 7 – Other Conditions of the Sale Specific Conditions & Requirements, the area encompassed by this timber sale is certified to the standards of the Forest Stewardship Council (FSC) - Certificate #SCS-FM/COC-00090N and the Sustainable Forestry Initiative (SFI) - Certificate # NSF-SFIS-5Y031-SF5. Forest products from this sale may be delivered to the mill as "FSC 100% and / or SFI certified" as long as the contractor hauling the forest products is chain-of-custody (COC) certified or covered under a COC certificate from the destination mill. The purchaser is responsible for maintaining COC after leaving the sale area.

#### 12. Good Neighbor Authority (GNA) Requirements (7/16)

If the name of this timber sales contains the acronym GNA, it is authorized by the Good Neighbor Authority (GNA) and covered by various agreements between the U.S. Forest Service and the State. The timber sale occurs on federal land and the following conditions apply:

GNA contracts on US Forest Service land will not be awarded to purchasers on the Federal list of excluded parties. The System for Award Management (SAM) will be checked for active excluded parties prior to award of contract. In addition, the Bidder to whom award is made must complete an Assurance Regarding Felony Conviction or Tax Delinquent Status for Corporate Applicants (AD-3031).

#### 13. Good Neighbor Authority (GNA) Requirements, con't (9/16)

Bidder certifies, by signing this bid form, that to the best of Bidder's knowledge that the following representations are accurate and complete.

- a. That the Bidder and its principals are not presently debarred, suspended, proposed for debarment, declared ineligible, or voluntary excluded from timber sales (covered transactions) by any Federal department or agency.
- b. That the Bidder and its principals have not within a 3-year period preceding this bid been convicted of or had a civil judgment rendered against them for commission of fraud or a criminal offense in connection with obtaining, attempting to obtain, or performing a public (Federal, State, or local) transaction or contract under a public transaction; violation of Federal or State antitrust statutes or commission of embezzlement, theft, forgery, bribery, falsification or destruction of records, making false statements, or receiving stolen property.

c. That the Bidder and its principals are not presently indicted for or otherwise criminally or civilly charged by a governmental entity (Federal, State, or local) with commission of any of the offenses enumerated in paragraph b of this certification.

d. That the Bidder and its principals have not within a 3-year period preceding this bid had one or more public transactions (Federal, State, or local) terminated for breach or default of a timber or forest product contract.

Bidders that cannot certify this requirement, in whole or in part, shall submit an explanation with their bid.

KEITH CREAGH

Director

# TIMBER SALE INFORMATION

## Sinkhole Mix (54-033-16)

Presque Isle County (Advertised Price \$27,982.75)

SALE NOTE: A recreation site such as a trail, pathway, or campground is within the sale area or the vicinity. Certain restrictions/specifications may be applicable including time restrictions.

A timber sale contract for this lump sum, sealed bid timber sale will be awarded to the responsible bidder offering the highest sealed bid price. Bids must be at or above the following advertised price for each species:

<u>PRODUCTS &amp; SPECIES</u>	<u>ESTIMATED UNITS*</u>	<u>ADVERTISED PRICE</u>
Sawtimber		
BI/R/Hybrid Oak	7.20 MBF	\$ 115.00 / MBF
Red Pine	73.60 MBF	\$ 133.00 / MBF
Pulpwood		
B. T. Aspen	39.00 Cords	\$ 17.50 / Cord
BI/R/Hybrid Oak	76.00 Cords	\$ 16.65 / Cord
Jack Pine	464.00 Cords	\$ 25.05 / Cord
Red Maple	10.00 Cords	\$ 15.90 / Cord
Red Pine	79.00 Cords	\$ 45.15 / Cord
White Pine	2.00 Cords	\$ 34.50 / Cord

\* The total volume is statistically estimated within plus (+) or minus (-) 17.27 percent. The estimated units are final and not subject to adjustment. Prospective bidders are urged to examine this timber and to make their own estimates of quantity and quality.

### **BOND AND PAYMENT SCHEDULE:**

1. A bond in the amount of \$1,399.00 to insure faithful performance of the conditions of the contract will be deposited by the successful bidder within 21 days of the sale award.
2. Cutting in any sale or unit without the required advance payment would be considered a trespass.
3. Total payment must be paid in advance or according to the following schedule:
  - (a) Ten percent (10%) of the sale value must be paid within 21 days of the sale award.
  - (b) The 10% down payment will be credited towards the first unit cut.
4. If no cutting takes place, the 10% down payment will not be refunded.
5. Operations on the contract issued will terminate on 06/30/2019.

**Description of Timber by Payment Unit (PU)**

PU	MARKET GROUP	PRODUCT	QUANTITY	UNIT	ACRES	ADVERTISE PRICE
1	BI/R/Hybrid Oak	Sawtimber	3.1	MBF	30.5	\$18,003.70
	Red Pine		60.5	MBF		
	B. T. Aspen	Pulpwood	7.0	Cords		
	BI/R/Hybrid Oak		23.0	Cords		
	Jack Pine		233.0	Cords		
	<i>Jack Pine</i>	<i>Sawtimber</i>	8.9	<i>MBF</i>		
	<i>Jack Pine</i>	<i>Pulpwood</i>	215.0	<i>Cords</i>		
	Red Maple		4.0	Cords		
	Red Pine		70.0	Cords		
	White Pine		1.0	Cords		
	2	BI/R/Hybrid Oak	Sawtimber	1.8		
Red Pine			10.9	MBF		
B. T. Aspen		Pulpwood	16.0	Cords		
BI/R/Hybrid Oak			20.0	Cords		
Jack Pine			127.0	Cords		
<i>Jack Pine</i>		<i>Sawtimber</i>	4.7	<i>MBF</i>		
<i>Jack Pine</i>		<i>Pulpwood</i>	118.0	<i>Cords</i>		
Red Maple			3.0	Cords		
Red Pine			8.0	Cords		
White Pine			1.0	Cords		
3		BI/R/Hybrid Oak	Sawtimber	2.3	MBF	18.5
	Red Pine		2.2	MBF		
	B. T. Aspen	Pulpwood	16.0	Cords		
	BI/R/Hybrid Oak		33.0	Cords		
	Jack Pine		104.0	Cords		
	<i>Jack Pine</i>	<i>Sawtimber</i>	7.6	<i>MBF</i>		
	<i>Jack Pine</i>	<i>Pulpwood</i>	89.0	<i>Cords</i>		
	Red Maple		3.0	Cords		
	Red Pine		1.0	Cords		
TOTAL:			80.8	MBF		
TOTAL:			670.0	Cords		

## Sale Specific Conditions & Requirements

**Sale Name: Sinkhole Mix**

**Sale Number: 54-033-16 Seq#: 1**

### 1 - Sale Area

#### 1.2 - Boundaries

##### 1.2.1 - Painted boundaries (1/14)

The sale boundary is marked and identified by blue and red paint. Exterior sale boundary lines against private property are marked with blue paint. Exterior sale boundary lines against state are marked with red paint. Interior Payment Unit boundaries are unpainted and identified by the north-south running forest road. Interior retention areas are marked with a red X. The painted boundary line trees are not Included Timber and are to be protected.

### 2 - Timber Specifications

#### 2.1 - Included Timber

##### 2.1.1 - Clearcut unit(s) with unmerchantable trees (6/14)

Within Payment Unit(s) #'s 1-3, cut all trees that are two (2) inches or more at DBH, except for any trees marked with green paint.

#### 2.2 - Utilization

##### 2.2.2 - Chipping required (5/14)

This area must be chip harvested to facilitate subsequent planting operations. The Purchaser has the option to produce sawlogs or pulpwood bolts, but the remaining portion of the trees must be chipped and hauled. Do not chip 1/6 to 1/3 of the slash from harvested trees (tree tops and limbs less than four inches in diameter).

##### 2.2.3 - Stump heights (4/07)

Stump heights within all Payment Units shall not exceed 6 inches for all trees. This is in order to facilitate planting operations.

##### 2.2.11 - Chipping restriction (9/14)

If chipping occurs on this sale, then no woody debris present on the ground at the start of the sale may be chipped.

### 4 - Transportation

#### 4.1 - Construction

##### 4.1.3 - Slash and earthen piles (8/04)

Piles or windrows of earth along roads and landings that have been widened or constructed shall be leveled. Slash from road maintenance or construction, including stumps, shall be dispersed throughout the sale.

##### 4.1.12 - No new roads (1/12)

No new roads will be permitted in any Payment Unit. All operations are limited to existing roads.

#### 4.2 - Maintenance

##### 4.2.5 - Two wheel drive condition (2/04)

All existing trail roads on and adjacent to the sale area must be passable by two-wheel drive traffic for the duration of the sale.

### 5 - Operations

#### 5.1 - Notification

##### 5.1.6 - Utility R.O.W. (1/15)

It is the responsibility of the Purchaser to obtain permission from the utility company to utilize the power line R.O.W. for operations.

#### 5.2 - Conduct of Operations

##### 5.2.1 - Slash

#### 5.2.1.10 - No slash in openings (5/10)

No brush or logging debris are to be left in the wildlife openings which are indicated by G on the Timber Sale Map. Any damage to the opening shall be repaired according to specifications of the Unit Manager or his/her representative.

#### 5.2.2 - Hazard Trees/Snags

##### 5.2.2.1 - Den trees (2/04)

Obvious hollow and/or den trees shall be protected and left standing unless they are a safety hazard.

#### 5.2.3 - Operating Restrictions

##### 5.2.3.1 - Operating restrictions (9/11)

Within Payment Unit(s) #'s 2 and 3, unless changed by written agreement, cutting and skidding limited to the period of April 1 to December 1. This restriction is meant to maximize the amount of ground scarification in snow-free conditions.

##### 5.2.3.6 - Bark beetle restriction (12/08)

In the event drought creates a high risk of pine bark beetle infestation, pine is not to be cut during the period March 1 through July 1, unless all portions of trees greater than two inches in diameter are removed from the sale area, reduced to chips, or treated to the satisfaction of the Unit Manager or his/her representative, within fifteen days of being severed from the stump. Pine log decks, pulpwood piles and treetops that are piled for chipping in the fall or winter within a 1/4 mile of susceptible sites must be removed before March 15. Residual slash must not be placed in piles or rows and must be spread over the site for quick drying. The Department of Natural Resources will exercise this specification if the risk of damage warrants.

#### 5.2.29 - Shrub protection (9/07)

Do not cut or damage hawthorn or serviceberry clumps. A large clump of hawthorn is present along the northern part of the road that divides Payment Unit #'s 1 and 2. Protect this clump from any harvesting damage. These woody-shrub plants are highly beneficial to various wildlife species.

#### 5.2.32 - Decking/landing restoration (9/13)

All decking and landing areas must have the surface area restored to a condition equal to or better than before. This is to ensure the proper regeneration of the stand. Wood debris, chips and "cookies" from trimmings must be removed or scattered away from landing and loading areas and may not be windrowed on the edge.

#### 5.2.40 - Pathway protection (10/10)

The High Country Pathway is a hiking trail and is shown on the Timber Sale Map. The pathway passes through the southeastern portion of Payment Unit #2. Do not cut trees or damage posts with blue pathway markers. Maintain a 20-foot wide slash, debris, and rut free zone daily, using the pathway as the centerline. Do not run equipment down the pathway. Skidding across the trail may only occur in locations approved by the sale administrator.

### 5.4 - Soil Protection

#### 5.4.1 - Rutting restriction, general (7/16)

Operations are to cease immediately if equipment and weather conditions result in rutting of roads and/or skid trails which is 12 inches or greater in depth and 50 feet in length. The Unit Manager or his/her representative may restrict hauling and/or skidding if ruts exceed the specified depth. With the Unit Manager or his/her representative's approval, the Purchaser may return to the area when the risk of rutting has decreased.

### 5.8 - Protection of Endangered Species

#### 5.8.5 - Protection of raptor nests (3/13)

All trees with raptor nests will be protected if found during harvesting operations. Notification will be made to the Unit Manager or his/her representative who will notify the Wildlife Biologist so an on-site evaluation and recommendation can be made, if necessary.

## 6 - Safety and Fire Prevention

### 6.2 - Signing

#### 6.2.3 - Recreational trail posting (2/10)

The Purchaser is responsible for posting and maintaining caution signs on the High Country Pathway prior to beginning



operations. The trail must be posted at appropriate distances from the sale area to warn of logging activity and truck traffic at both ends of the trail. Signs must be removed when harvest operations are suspended or completed.

## **8 - Performance and Settlement**

### 8.3 - Uncompleted or Terminated Contracts

#### 8.3.1 - Completion of contract, chipping (1/16)

In addition to cutting, all chipping must be completed by the contract expiration date. If chipping has not been completed, an extension fee or damages may be charged per General Condition & Requirement 7.2 and 8.3.



Sale Number	Year
54 - 033	16

# TIMBER SALE MAP

This information provided by authority of Part 525, 1994 PA 451, as amended.

Forest Management Unit <b>Atlanta</b>		County <b>Presque Isle</b>	Mapped By <b>Rekowski</b>	Date <b>08/29/2016</b>	Page <b>1</b>	of <b>1</b>
Township <b>33N</b>	Range <b>02E</b>	Section(s) and Subdivision(s) <b>16: NWSE</b> <b>20: NENE, SENE 21: NWNW, SWNW</b>		Scale <b>1:15,840</b>		
Cruised By <b>Rekowski</b>						

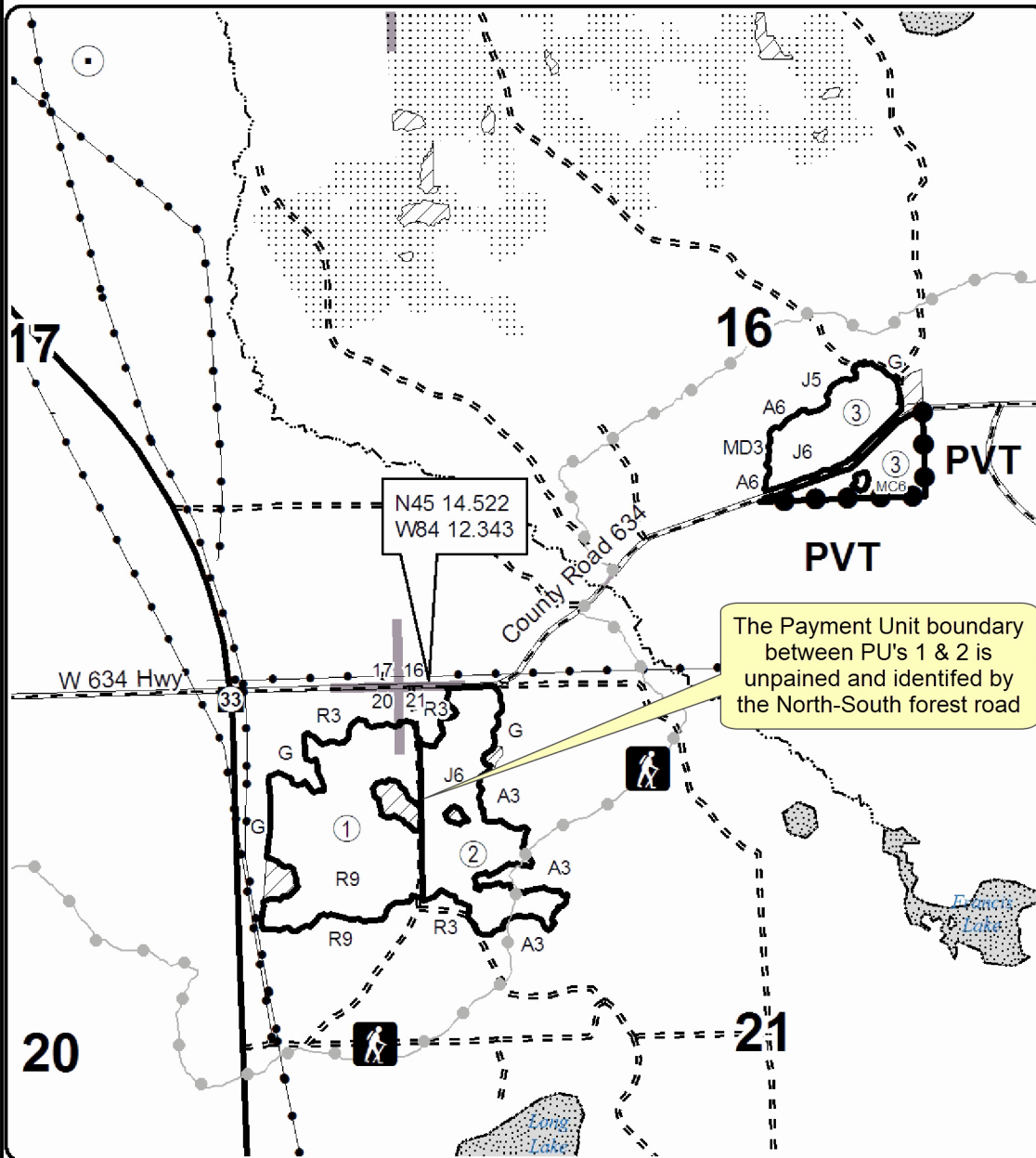
Cover Type				Density			
A = Aspen	H = Hemlock	N = Marsh	U = Upland Brush	0 = Non Stocked	5 = Pole Timber Medium		
B = Paper Birch	J = Jack Pine	O = Oak	UM = Upland Mixed	1 = Seedling Sapling Poor	6 = Pole Timber Well		
C = Cedar	L = Lowland Brush	P = Lowland Poplar	V = Bog or Marsh	2 = Seedling Sapling Medium	7 = Saw Timber Poor		
D = Treed Bog	LM = Lowland Mixed	Q = Mixed Swamp Conifer	W = White Pine	3 = Seedling Sapling Well	8 = Saw Timber Medium		
E = Swamp Hdwoods	M = Mpl, Bch, Brch	R = Red Pine	X = Non Stocked	4 = Pole Timber Poor	9 = Saw Timber Well		
F = Spruce Fir	MC = Mixed Conifer	S = Black Spruce	Z = Water				
G = Grass	MD = Mixed Deciduous	T = Tamarack					

PU	Acres
1	30.5
2	21.7
3	18.5

## Sinkhole Mix

### Compartment 119

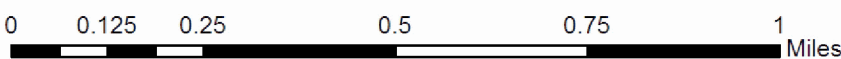
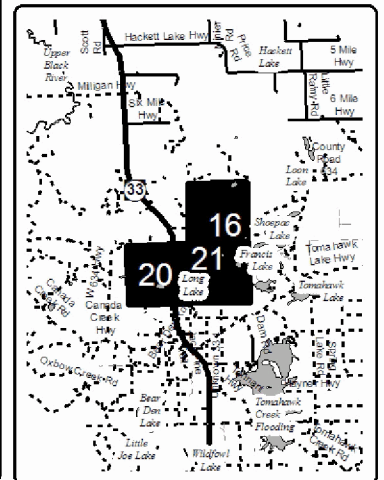
70.7 Acres



**Legend**

- Sale Boundary**
  - Against State (Red)
  - Private Line (Blue)
  - Retention (Red X)
  - PU\_Label
- Nearby Sales (Dotted pattern)
- High Country Pathway (Dashed line with dots)
- Highway (Thick solid line)
- Paved Roads (Thin solid line)
- Gravel Roads (Dashed line)
- Poor Dirt Roads (Dotted line)
- Pipeline; Powerline (Line with cross-ticks)
- Section Corners (Small squares)
- Streams (Wavy line)
- Lakes (Stippled area)

Locator Map  
1:200,000



**TIMBER SALE INFORMATION**

Tomahawk Creek Red Pine (54-034-16)

Presque Isle County (Advertised Price \$14,857.55)

A timber sale contract for this lump sum, sealed bid timber sale will be awarded to the responsible bidder offering the highest sealed bid price. Bids must be at or above the following advertised price for each species:

<u>PRODUCTS &amp; SPECIES</u>	<u>ESTIMATED UNITS*</u>	<u>ADVERTISED PRICE</u>
Sawtimber		
Red Pine	45.20 MBF	\$ 133.00 / MBF
Pulpwood		
BI/R/Hybrid Oak	1.00 Cords	\$ 16.65 / Cord
Jack Pine	1.00 Cords	\$ 25.05 / Cord
Red Pine	195.00 Cords	\$ 45.15 / Cord

\* The total volume is statistically estimated within plus (+) or minus (-) 24.89 percent. The estimated units are final and not subject to adjustment. Prospective bidders are urged to examine this timber and to make their own estimates of quantity and quality.

**BOND AND PAYMENT SCHEDULE:**

1. A bond in the amount of \$743.00 to insure faithful performance of the conditions of the contract will be deposited by the successful bidder within 21 days of the sale award.
2. Cutting in any sale or unit without the required advance payment would be considered a trespass.
3. Total payment must be paid in advance or according to the following schedule:
  - (a) Ten percent (10%) of the sale value must be paid within 21 days of the sale award.
  - (b) The remainder is due before cutting begins.
4. If no cutting takes place, the 10% down payment will not be refunded.
5. Operations on the contract issued will terminate on 06/30/2019.

**Description of Timber by Payment Unit (PU)**

PU	MARKET GROUP	PRODUCT	QUANTITY	UNIT	ACRES	ADVERTISE PRICE
1	Red Pine	Sawtimber	45.2	MBF	16.5	\$14,857.55
	BI/R/Hybrid Oak	Pulpwood	1.0	Cords		
	Jack Pine		1.0	Cords		
	Red Pine		195.0	Cords		
TOTAL:			45.2	MBF		
TOTAL:			197.0	Cords		

## Sale Specific Conditions & Requirements

**Sale Name: Tomahawk Creek Red Pine**

**Sale Number: 54-034-16 Seq#: 1**

### 1 - Sale Area

#### 1.2 - Boundaries

##### 1.2.1 - Painted boundaries (1/14)

The sale boundary is marked and identified by red paint. Exterior sale boundary lines against state are marked with red paint. The painted boundary line trees are not Included Timber and are to be protected.

### 2 - Timber Specifications

#### 2.1 - Included Timber

##### 2.1.8 - Designated plantation row unit(s) (12/08)

Within Payment Unit(s) #1, all trees which meet minimum piece specifications in 2.2 Utilization, within designated plantation rows are designated for cutting. Designated plantation rows begin with the third row in from the outside of the plantation, then continue every third row. Because of the variability of row direction, it shall be the responsibility of the producer to maintain the third row sequence.

#### 2.2 - Utilization

##### 2.2.6 - Roundwood operation required (5/07)

The skidding of whole trees or tree segments with limbs attached is prohibited. All products must be produced as roundwood and forwarded to existing roads or landing areas in final product length.

### 3 - Payments

#### 3.4 - Damaged Timber

##### 3.4.1 - Damaged timber (6/14)

General Condition and Requirement 3.4 Damaged Timber, defines liquidated damages for undesignated live merchantable trees which are cut or injured.

No damage is acceptable to merchantable trees. Within the sale area, if more than 5% of trees (> 4.5" DBH) within a specified area of the sale are damaged, liquidated damages will be assessed for all trees damaged. Rates will be in accordance with General Condition and Requirement 3.4 Damaged Timber.

### 4 - Transportation

#### 4.1 - Construction

##### 4.1.3 - Slash and earthen piles (8/04)

Piles or windrows of earth along roads and landings that have been widened or constructed shall be leveled. Slash from road maintenance or construction, including stumps, shall be dispersed throughout the sale.

##### 4.1.4 - Timber removed for construction (12/09)

Trees cut or damaged in the process of pre-approved road, landing or skid trail construction will be decked in an area separate from other Designated Timber and not removed until measured by the sale administrator. Payment will be made at the specified Purchase Unit Price.

##### 4.1.12 - No new roads (1/12)

No new roads will be permitted. All operations are limited to existing roads.

#### 4.2 - Maintenance

##### 4.2.5 - Two wheel drive condition (2/04)

All existing trail roads on and adjacent to the sale area must be passable by two-wheel drive traffic for the duration of the

sale.

## 5 - Operations

### 5.1 - Notification

#### 5.1.1 - Pre-sale conference (10/11)

A pre-sale conference between the Purchaser and sale administrator is required prior to beginning any operations to determine landing and road locations. The Unit Manager or his/her representative must be contacted at least 5 days in advance to schedule the conference.

### 5.2 - Conduct of Operations

#### 5.2.3 - Operating Restrictions

##### 5.2.3.3 - Bark slippage restriction (3/09)

Within Payment Unit(s) #1, cutting and skidding are not permitted during the period of April 15 to July 15. This restriction is because of bark slippage.

##### 5.2.3.6 - Bark beetle restriction (12/08)

In the event drought creates a high risk of pine bark beetle infestation, pine is not to be cut during the period March 1 through July 1, unless all portions of trees greater than two inches in diameter are removed from the sale area, reduced to chips, or treated to the satisfaction of the Unit Manager or his/her representative, within fifteen days of being severed from the stump. Pine log decks, pulpwood piles and treetops that are piled for chipping in the fall or winter within a 1/4 mile of susceptible sites must be removed before March 15. Residual slash must not be placed in piles or rows and must be spread over the site for quick drying. The Department of Natural Resources will exercise this specification if the risk of damage warrants.

#### 5.2.20 - Equipment width (2/04)

Equipment used to remove designated rows must be capable of moving through cut rows without damaging residual trees.

#### 5.2.38 - No decking against live trees (2/04)

Cut products may not be decked against unmarked or designated leave trees.

### 5.4 - Soil Protection

#### 5.4.1 - Rutting restriction, general (7/16)

Operations are to cease immediately if equipment and weather conditions result in rutting of roads and/or skid trails which is 12 inches or greater in depth and 50 feet in length. The Unit Manager or his/her representative may restrict hauling and/or skidding if ruts exceed the specified depth. With the Unit Manager or his/her representative's approval, the Purchaser may return to the area when the risk of rutting has decreased.

### 5.8 - Protection of Endangered Species

#### 5.8.5 - Protection of raptor nests (3/13)

All trees with raptor nests will be protected if found during harvesting operations. Notification will be made to the Unit Manager or his/her representative who will notify the Wildlife Biologist so an on-site evaluation and recommendation can be made, if necessary.



# TIMBER SALE MAP

This information provided by authority of Part 525, 1994 PA 451, as amended.

Forest Management Unit <b>Atlanta</b>		County <b>Presque Isle</b>	Mapped By <b>Rekowski</b>		Date <b>08/17/2016</b>	Page <b>1</b>	of <b>1</b>
Township <b>33N</b>	Range <b>02E</b>	Section(s) and Subdivision(s) <b>17: SE1/4 of NE 1/4</b>			Scale <b>1:15,840</b>		
<b>Cover Type</b>				<b>Density</b>			
A = Aspen	H = Hemlock	N = Marsh	U = Upland Brush	0 = Non Stocked	5 = Pole Timber Medium		
B = Paper Birch	J = Jack Pine	O = Oak	UM = Upland Mixed	1 = Seedling Sapling Poor	6 = Pole Timber Well		
C = Cedar	L = Lowland Brush	P = Lowland Poplar	V = Bog or Marsh	2 = Seedling Sapling Medium	7 = Saw Timber Poor		
D = Treed Bog	LM = Lowland Mixed	Q = Mixed Swamp Conifer	W = White Pine	3 = Seedling Sapling Well	8 = Saw Timber Medium		
E = Swamp Hdwoods	M = Mpl, Bch, Brch	R = Red Pine	X = Non Stocked	4 = Pole Timber Poor	9 = Saw Timber Well		
F = Spruce Fir	MC = Mixed Conifer	S = Black Spruce	Z = Water				
G = Grass	MD = Mixed Deciduous	T = Tamarack					

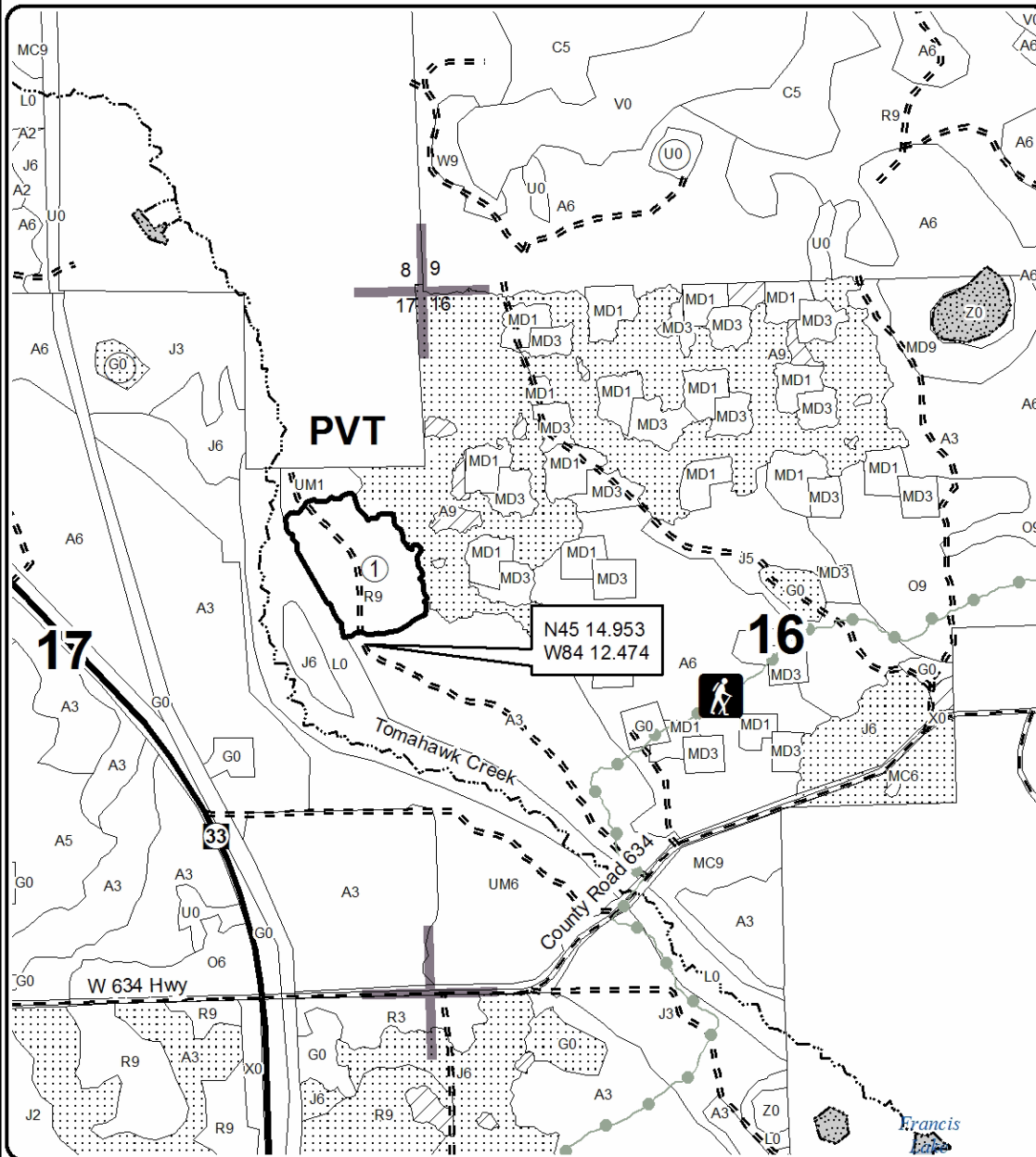
**PU Acres**

**1 16.5**

## Tomahawk Creek Red Pine

**Compartment 119**

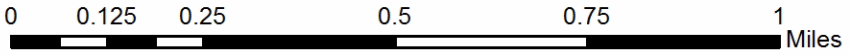
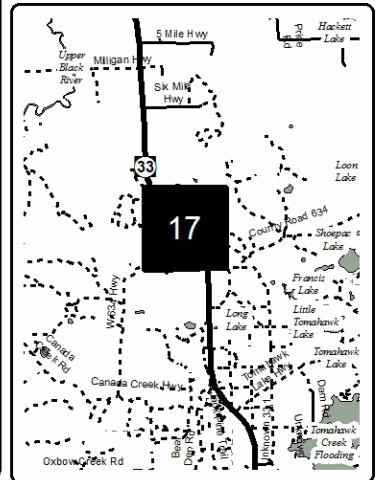
**16.5 Acres**



**Legend**

- Sale Boundary**
  - Against State (Red)
- PU\_Label
- Nearby Sales
- Stand Boundaries
- Section Corners
- Highway
- Gravel Roads
- Poor Dirt Roads
- Recreational Trail
- Streams
- Lakes

Locator Map  
1:150,000



# TIMBER SALE INFORMATION

## Up Down Aspen (54-035-16)

Presque Isle County (Advertised Price \$17,334.65)

SALE NOTE: A recreation site such as a trail, pathway, or campground is within the sale area or the vicinity. Certain restrictions/specifications may be applicable including time restrictions.

A timber sale contract for this lump sum, sealed bid timber sale will be awarded to the responsible bidder offering the highest sealed bid price. Bids must be at or above the following advertised price for each species:

<u>PRODUCTS &amp; SPECIES</u>	<u>ESTIMATED UNITS*</u>		<u>ADVERTISED PRICE</u>
Sawtimber			
BI/R/Hybrid Oak	19.70	MBF	\$ 115.00 / MBF
Mixed Aspen	20.50	MBF	\$ 79.00 / MBF
Red Pine	3.20	MBF	\$ 133.00 / MBF
White Pine	4.70	MBF	\$ 73.00 / MBF
Pulpwood			
BI/R/Hybrid Oak	60.00	Cords	\$ 16.65 / Cord
Mixed Aspen	502.00	Cords	\$ 17.50 / Cord
Red Maple	56.00	Cords	\$ 15.90 / Cord
Red Pine	7.00	Cords	\$ 45.15 / Cord
White Pine	49.00	Cords	\$ 34.50 / Cord

\* The total volume is statistically estimated within plus (+) or minus (-) 28.62 percent. The estimated units are final and not subject to adjustment. Prospective bidders are urged to examine this timber and to make their own estimates of quantity and quality.

### **BOND AND PAYMENT SCHEDULE:**

1. A bond in the amount of \$867.00 to insure faithful performance of the conditions of the contract will be deposited by the successful bidder within 21 days of the sale award.
2. Cutting in any sale or unit without the required advance payment would be considered a trespass.
3. Total payment must be paid in advance or according to the following schedule:
  - (a) Ten percent (10%) of the sale value must be paid within 21 days of the sale award.
  - (b) The 10% down payment will be credited towards the first unit cut.
4. If no cutting takes place, the 10% down payment will not be refunded.
5. Operations on the contract issued will terminate on 06/30/2019.

**Description of Timber by Payment Unit (PU)**

PU	MARKET GROUP	PRODUCT	QUANTITY	UNIT	ACRES	ADVERTISE PRICE
1	Mixed Aspen	Sawtimber	2.3	MBF	11.1	\$6,546.20
	<i>B. T. Aspen</i>		1.5	<i>MBF</i>		
	<i>Quaking Aspen</i>		0.8	<i>MBF</i>		
	Red Pine		3.2	MBF		
	White Pine		4.7	MBF		
	BI/R/Hybrid Oak	Pulpwood	5.0	Cords		
	Mixed Aspen		164.0	Cords		
	<i>B. T. Aspen</i>		107.0	<i>Cords</i>		
	<i>Quaking Aspen</i>		57.0	<i>Cords</i>		
	Red Maple		40.0	Cords		
	<i>Red Maple</i>	<i>Sawtimber</i>	1.8	<i>MBF</i>		
	<i>Red Maple</i>	<i>Pulpwood</i>	36.0	<i>Cords</i>		
	Red Pine		7.0	Cords		
	White Pine		49.0	Cords		
	2	BI/R/Hybrid Oak	Sawtimber	19.7		
Mixed Aspen			18.2	MBF		
<i>B. T. Aspen</i>			18.2	<i>MBF</i>		
BI/R/Hybrid Oak		Pulpwood	55.0	Cords		
Mixed Aspen			338.0	Cords		
<i>B. T. Aspen</i>			326.0	<i>Cords</i>		
<i>Quaking Aspen</i>			12.0	<i>Cords</i>		
Red Maple			16.0	Cords		
<i>Red Maple</i>		<i>Sawtimber</i>	1.0	<i>MBF</i>		
<i>Red Maple</i>		<i>Pulpwood</i>	14.0	<i>Cords</i>		
TOTAL:			48.1	MBF		
TOTAL:			674.0	Cords		



## Sale Specific Conditions & Requirements

**Sale Name: Up Down Aspen**

**Sale Number: 54-035-16 Seq#: 1**

### 1 - Sale Area

#### 1.2 - Boundaries

##### 1.2.1 - Painted boundaries (1/14)

The sale boundary is marked and identified by red paint. Exterior sale boundary lines against state are marked with red paint. Interior retention areas are marked with a red X. Red painted boundary line trees are not Included Timber and are to be protected.

### 2 - Timber Specifications

#### 2.1 - Included Timber

##### 2.1.1 - Clearcut unit(s) with unmerchantable trees (6/14)

Within Payment Unit(s) #'s 1-2, cut all trees that are two (2) inches or more at DBH except do not cut any trees marked with green paint.

### 3 - Payments

#### 3.4 - Damaged Timber

##### 3.4.1 - Damaged timber (6/14)

General Condition and Requirement 3.4 Damaged Timber, defines liquidated damages for undesignated live merchantable trees which are cut or injured. No damage is acceptable to undesignated merchantable trees. Within the sale area, if more than 5% of trees (> 4.5" DBH) within a specified area of the sale are damaged, liquidated damages will be assessed for all trees damaged. Rates will be in accordance with General Condition and Requirement 3.4 Damaged Timber.

### 4 - Transportation

#### 4.1 - Construction

##### 4.1.3 - Slash and earthen piles (8/04)

Piles or windrows of earth along roads and landings that have been widened or constructed shall be leveled. Slash from road maintenance or construction, including stumps, shall be dispersed throughout the sale.

##### 4.1.6 - Road construction (1/09)

Improvements of existing roads shall be done in such a way as to minimize the environmental and visual impacts. Merchantable trees shall be cut and utilized unless otherwise directed. Non-merchantable trees shall be severed and laid flat on the ground. Slash shall be scattered, and not left in windrows and kept a minimum of 10 feet back from the road edge. Stumps shall be set upright, not left on edge, and be moved at least 10 feet away from the road edge. Disturbed soil shall be feathered into the woods and not left in berms or windrows.

##### 4.1.12 - No new roads (1/12)

No new roads will be permitted in any Payment Unit. All operations are limited to existing roads.

#### 4.2 - Maintenance

##### 4.2.5 - Two wheel drive condition (2/04)

All existing trail roads on and adjacent to the sale area must be passable by two-wheel drive traffic for the duration of the sale.

### 5 - Operations

#### 5.1 - Notification

##### 5.1.1 - Pre-sale conference (10/11)

A pre-sale conference between the Purchaser and sale administrator is required prior to beginning any operations to determine landing and road locations. The Unit Manager or his/her representative must be contacted at least 10 days in

advance to schedule the conference.

#### 5.1.4 - Post-sale conference (10/16)

A post-sale conference on site between the Purchaser and sale administrator is required 5 days prior to the completion of active logging operations to determine clean-up and repair of landings, road edges, and the fulfillment of other contract specifications.

#### 5.1.6 - Utility R.O.W. (1/15)

It is the responsibility of the Purchaser to obtain permission from the utility company to utilize the power line R.O.W. for operations.

### 5.2 - Conduct of Operations

#### 5.2.1 - Slash

##### 5.2.1.11 - Slash for reforestation (5/07)

To facilitate reforestation, the sale area shall be left with slash evenly distributed. Bunched tops within the cutting area shall be broken up and scattered. Stumps shall be cut low to the ground. Processing sites shall not be left with a compacted layer of slash; tops from these sites shall be hauled back into the cut area and scattered.

#### 5.2.2 - Hazard Trees/Snags

##### 5.2.2.1 - Den trees (2/04)

Obvious hollow and/or den trees shall be protected and left standing unless they are a safety hazard.

#### 5.2.29 - Shrub protection (9/07)

Do not cut or damage hawthorn or serviceberry clumps. These woody-shrub plants are highly beneficial to various wildlife species.

#### 5.2.31 - Landing locations (9/13)

Recommended landing areas are marked on the timber sale map with the letters "LD". Landings should be confined to these designated sites unless otherwise authorized by the timber sale administrator.

#### 5.2.39 - ORV trail/route protection (12/12)

The MCCCT is an ORV trail and travels adjacent to Payment Unit #2 as shown on the Timber Sale Map. Do not cut trees or damage posts with orange ORV markers. All stumps within 5 feet of the trail must be cut flush with the ground. Maintain a 20 foot wide slash, debris, and rut free zone daily using the ORV trail or route as the centerline. Do not run equipment down the ORV trail or route. No skidding across the trail will be permitted.

### 5.4 - Soil Protection

#### 5.4.1 - Rutting restriction, general (7/16)

Operations are to cease immediately if equipment and weather conditions result in rutting of roads and/or skid trails which is 12 inches or greater in depth and 50 feet in length. The Unit Manager or his/her representative may restrict hauling and/or skidding if ruts exceed the specified depth. With the Unit Manager or his/her representative's approval, the Purchaser may return to the area when the risk of rutting has decreased.

## 6 - Safety and Fire Prevention

### 6.2 - Signing

#### 6.2.3 - Recreational trail posting (2/10)

The Purchaser is responsible for posting and maintaining caution signs on the MCCCT ORV trail prior to beginning operations. The trail must be posted at appropriate distances from the sale area to warn of logging activity and truck traffic at both ends of the trail. Signs must be removed when harvest operations are suspended or completed. The Purchaser will provide these signs.

## 8 - Performance and Settlement

### 8.3 - Uncompleted or Terminated Contracts

#### 8.3.1 - Completion of contract, chipping (1/16)

In addition to cutting, all chipping must be completed by the contract expiration date. If chipping has not been completed, an extension fee or damages may be charged per General Condition & Requirement 7.2 and 8.3.



Sale Number	Year
54 - 035	16

# TIMBER SALE MAP

This information provided by authority of Part 525, 1994 PA 451, as amended.

Forest Management Unit <b>Atlanta</b>		County <b>Presque Isle</b>	Mapped By <b>Rekowski</b>	Date <b>08/23/2016</b>	Page <b>1</b>	of <b>2</b>
Township <b>33N</b>	Range <b>02E</b>	Section(s) and Subdivision(s) <b>17: N1/2NW 20: SESE</b>		Scale <b>1:7,920</b>		
Cruised By <b>Rekowski</b>						

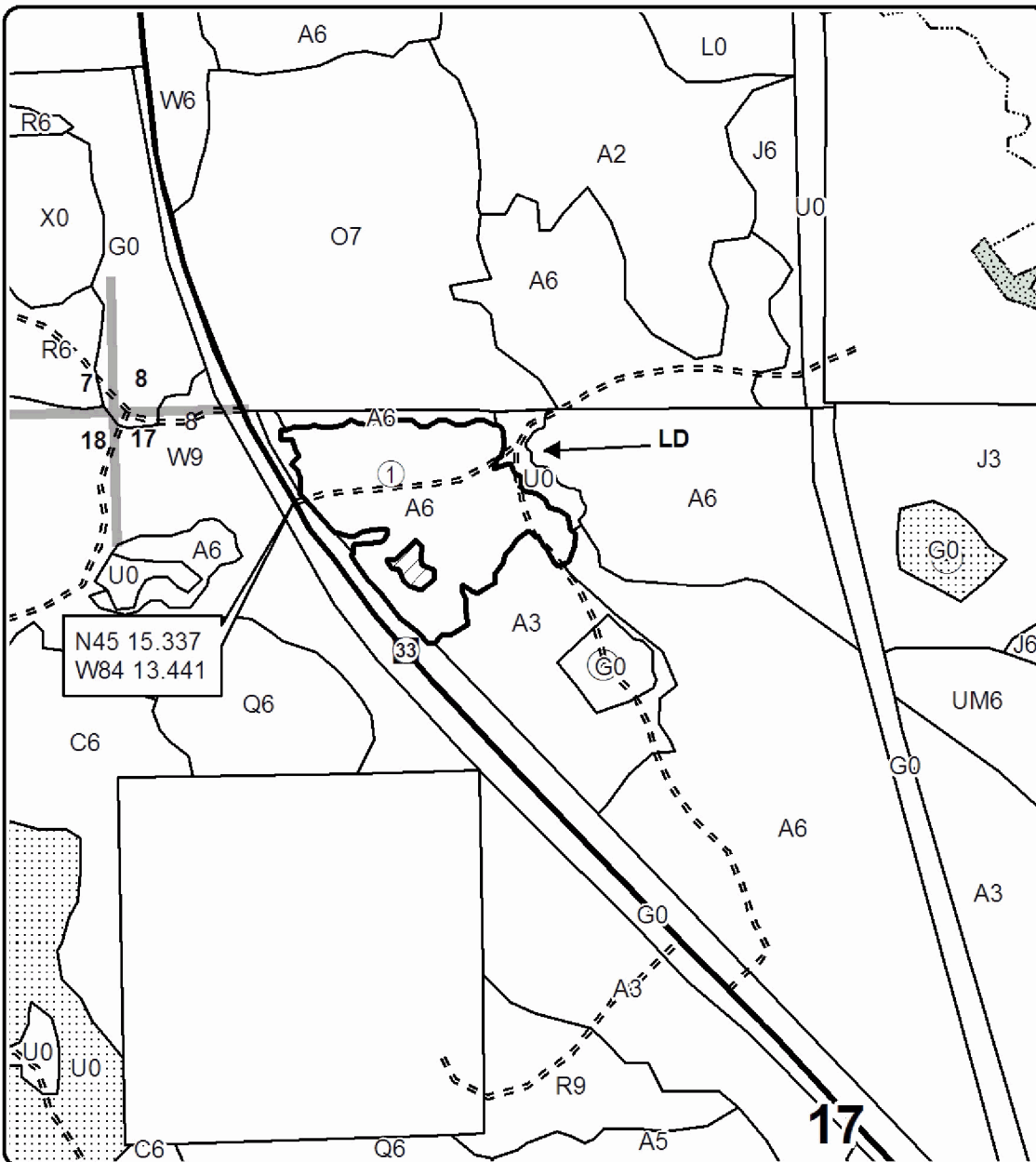
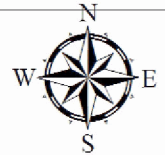
Cover Type				Density			
A = Aspen	H = Hemlock	N = Marsh	U = Upland Brush	0 = Non Stocked	5 = Pole Timber Medium		
B = Paper Birch	J = Jack Pine	O = Oak	UM = Upland Mixed	1 = Seedling Sapling Poor	6 = Pole Timber Well		
C = Cedar	L = Lowland Brush	P = Lowland Poplar	V = Bog or Marsh	2 = Seedling Sapling Medium	7 = Saw Timber Poor		
D = Tread Bog	LM = Lowland Mixed	Q = Mixed Swamp Conifer	W = White Pine	3 = Seedling Sapling Well	8 = Saw Timber Medium		
E = Swamp Hdwoods	M = Mpl, Bch, Brch	R = Red Pine	X = Non Stocked	4 = Pole Timber Poor	9 = Saw Timber Well		
F = Spruce Fir	MC = Mixed Conifer	S = Black Spruce	Z = Water				
G = Grass	MD = Mixed Deciduous	T = Tamarack					

PU	Acres
1	11.1
2	13.3

## Up Down Aspen

### Compartment 119

### 24.4 Acres

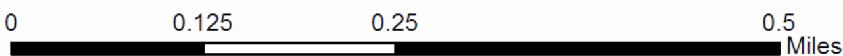
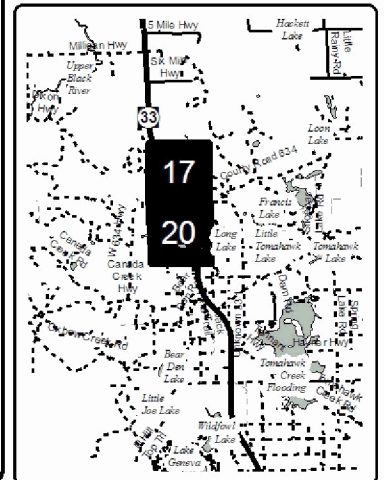


**Legend**

- Sale Boundary**
  - Against State (Red)
  - Retention Area (Red X)
- Payment Unit Label
- Stand Boundaries
- Section Corners
- Highway
- Poor Dirt Roads
- Oil & Gas Well
- Surface Locations

LD marker on map is preferred landing location.

Locator Map  
1:200,000





Sale Number	Year
54 - 035	16

# TIMBER SALE MAP

This information provided by authority of Part 525, 1994 PA 451, as amended.

Forest Management Unit <b>Atlanta</b>		County <b>Presque Isle</b>	Mapped By <b>Rekowski</b>	Date <b>08/23/2016</b>	Page <b>2</b>	of <b>2</b>
Township <b>33N</b>	Range <b>02E</b>	Section(s) and Subdivision(s) <b>17: N1/2NW 20: SESE</b>		Scale <b>1:7,920</b>		

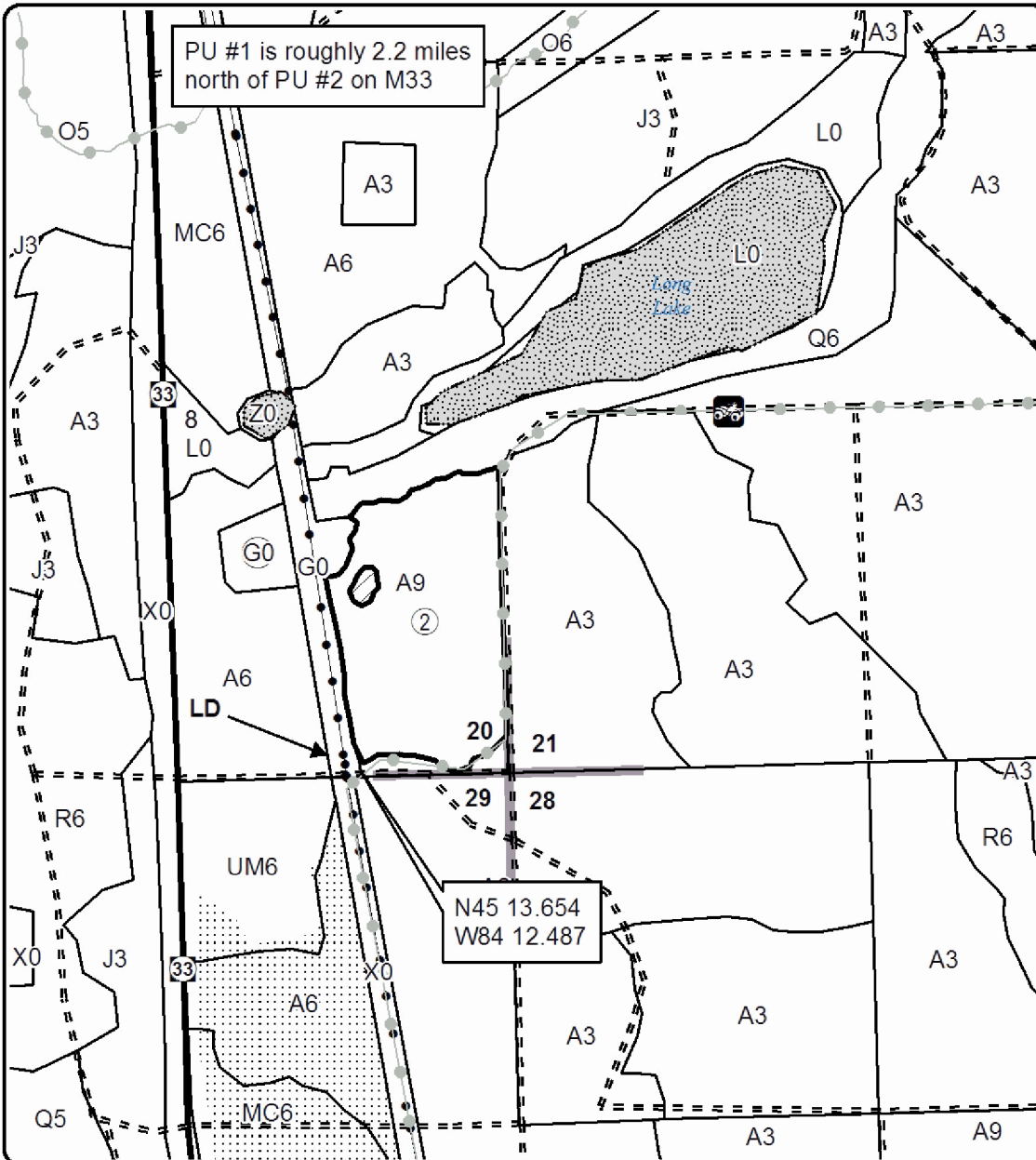
Cover Type				Density			
A = Aspen	H = Hemlock	N = Marsh	U = Upland Brush	0 = Non Stocked	5 = Pole Timber Medium		
B = Paper Birch	J = Jack Pine	O = Oak	UM = Upland Mixed	1 = Seedling Sapling Poor	6 = Pole Timber Well		
C = Cedar	L = Lowland Brush	P = Lowland Poplar	V = Bog or Marsh	2 = Seedling Sapling Medium	7 = Saw Timber Poor		
D = Treed Bog	LM = Lowland Mixed	Q = Mixed Swamp Conifer	W = White Pine	3 = Seedling Sapling Well	8 = Saw Timber Medium		
E = Swamp Hdwoods	M = Mpl, Bch, Brch	R = Red Pine	X = Non Stocked	4 = Pole Timber Poor	9 = Saw Timber Well		
F = Spruce Fir	MC = Mixed Conifer	S = Black Spruce	Z = Water				
G = Grass	MD = Mixed Deciduous	T = Tamarack					

PU	Acres
1	11.1
2	13.3

## Up Down Aspen

### Compartment 119

### 24.4 Acres

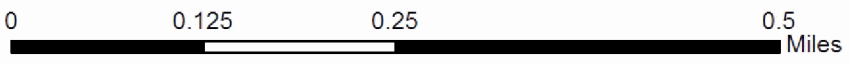
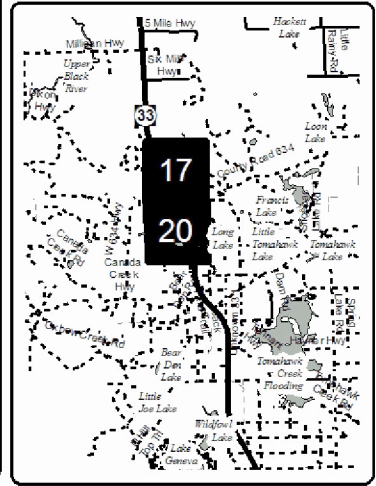


**Legend**

- Sale Boundary**
  - Against State (Red)
  - Retention Area (Red X)
- Payment Unit Label
- Stand Boundaries
- Section Corners
- Highway
- Poor Dirt Roads
- Oil & Gas Well
- Surface Locations
- MCCCT ORV Trail
- Pipeline; Powerline
- Nearby Timber Sale
- Lakes

LD marker on map is preferred landing location.

Locator Map  
1:200,000





# TIMBER SALE INFORMATION

## Inefficient Aspen (54-036-16)

Presque Isle County (Advertised Price \$39,639.75)

A timber sale contract for this lump sum, sealed bid timber sale will be awarded to the responsible bidder offering the highest sealed bid price. Bids must be at or above the following advertised price for each species:

<u>PRODUCTS &amp; SPECIES</u>	<u>ESTIMATED UNITS*</u>	<u>ADVERTISED PRICE</u>
Sawtimber		
B. T. Aspen	28.90 MBF	\$ 79.00 / MBF
Red Oak	74.60 MBF	\$ 167.00 / MBF
Pulpwood		
Jack Pine	14.00 Cords	\$ 25.05 / Cord
Mixed Aspen	727.00 Cords	\$ 17.50 / Cord
Red Maple	231.00 Cords	\$ 15.90 / Cord
Red Oak	380.00 Cords	\$ 16.65 / Cord
Red Pine	13.00 Cords	\$ 45.15 / Cord
White Oak	6.00 Cords	\$ 16.65 / Cord
White Pine	33.00 Cords	\$ 34.50 / Cord

\* The total volume is statistically estimated within plus (+) or minus (-) 18.12 percent. The estimated units are final and not subject to adjustment. Prospective bidders are urged to examine this timber and to make their own estimates of quantity and quality.

### **BOND AND PAYMENT SCHEDULE:**

1. A bond in the amount of \$1,982.00 to insure faithful performance of the conditions of the contract will be deposited by the successful bidder within 21 days of the sale award.
2. Cutting in any sale or unit without the required advance payment would be considered a trespass.
3. Total payment must be paid in advance or according to the following schedule:
  - (a) Ten percent (10%) of the sale value must be paid within 21 days of the sale award.
  - (b) The 10% down payment will be credited towards the first unit cut.
4. If no cutting takes place, the 10% down payment will not be refunded.
5. Operations on the contract issued will terminate on 12/31/2019.

**Description of Timber by Payment Unit (PU)**

PU	MARKET GROUP	PRODUCT	QUANTITY	UNIT	ACRES	ADVERTISE PRICE
1	B. T. Aspen	Sawtimber	6.3	MBF	20.3	\$8,258.95
	Red Oak		11.5	MBF		
	Jack Pine	Pulpwood	3.0	Cords		
	Mixed Aspen		185.0	Cords		
	<i>B. T. Aspen</i>		128.0	<i>Cords</i>		
	<i>Quaking Aspen</i>		57.0	<i>Cords</i>		
	Red Maple		53.0	Cords		
	<i>Red Maple</i>	<i>Sawtimber</i>	1.3	<i>MBF</i>		
	<i>Red Maple</i>	<i>Pulpwood</i>	50.0	<i>Cords</i>		
	Red Oak		66.0	Cords		
	White Pine		17.0	Cords		
	<i>White Pine</i>	<i>Sawtimber</i>	0.9	<i>MBF</i>		
	<i>White Pine</i>	<i>Pulpwood</i>	15.0	<i>Cords</i>		
	2	B. T. Aspen	Sawtimber	6.3		
Red Oak			11.3	MBF		
Jack Pine		Pulpwood	2.0	Cords		
Mixed Aspen			183.0	Cords		
<i>B. T. Aspen</i>			127.0	<i>Cords</i>		
<i>Quaking Aspen</i>			56.0	<i>Cords</i>		
Red Maple			52.0	Cords		
<i>Red Maple</i>		<i>Sawtimber</i>	1.2	<i>MBF</i>		
<i>Red Maple</i>		<i>Pulpwood</i>	50.0	<i>Cords</i>		
Red Oak			65.0	Cords		
White Pine			17.0	Cords		
<i>White Pine</i>		<i>Sawtimber</i>	0.8	<i>MBF</i>		
<i>White Pine</i>		<i>Pulpwood</i>	15.0	<i>Cords</i>		
3		B. T. Aspen	Sawtimber	7.2	MBF	20.9
	Red Oak		22.8	MBF		
	Jack Pine	Pulpwood	4.0	Cords		
	Mixed Aspen		158.0	Cords		
	<i>B. T. Aspen</i>		155.0	<i>Cords</i>		
	<i>Quaking Aspen</i>		3.0	<i>Cords</i>		
	Red Maple		56.0	Cords		
	<i>Red Maple</i>	<i>Sawtimber</i>	0.4	<i>MBF</i>		
	<i>Red Maple</i>	<i>Pulpwood</i>	55.0	<i>Cords</i>		
	Red Oak		110.0	Cords		
	Red Pine		6.0	Cords		
	<i>Red Pine</i>	<i>Sawtimber</i>	1.1	<i>MBF</i>		
	<i>Red Pine</i>	<i>Pulpwood</i>	4.0	<i>Cords</i>		
	White Oak		3.0	Cords		
4	B. T. Aspen	Sawtimber	9.1	MBF	26.6	\$12,998.00
	Red Oak		29.0	MBF		
	Jack Pine	Pulpwood	5.0	Cords		
	Mixed Aspen		201.0	Cords		
	<i>B. T. Aspen</i>		197.0	<i>Cords</i>		
	<i>Quaking Aspen</i>		4.0	<i>Cords</i>		
	Red Maple		70.0	Cords		
	<i>Red Maple</i>	<i>Sawtimber</i>	0.6	<i>MBF</i>		
	<i>Red Maple</i>	<i>Pulpwood</i>	69.0	<i>Cords</i>		
	Red Oak		139.0	Cords		
	Red Pine		7.0	Cords		
	<i>Red Pine</i>	<i>Sawtimber</i>	1.3	<i>MBF</i>		
	<i>Red Pine</i>	<i>Pulpwood</i>	4.0	<i>Cords</i>		
	White Oak		3.0	Cords		
TOTAL:			103.5	MBF		



TOTAL:	1,405.0	Cords
--------	---------	-------

# Sale Specific Conditions & Requirements

**Sale Name: Inefficient Aspen**

**Sale Number: 54-036-16 Seq#: 1**

## 1 - Sale Area

### 1.2 - Boundaries

#### 1.2.1 - Painted boundaries (1/14)

The sale boundary and Payment Unit boundaries are marked and identified by blue, red and yellow paint. Exterior sale boundary lines against private property are marked with blue paint. Exterior sale boundary lines against state are marked with red paint. Interior Payment Unit boundaries are marked with yellow paint. Red and blue painted boundary line trees are not Included Timber and are to be protected. Yellow painted trees designating an interior Payment Unit boundary are only to be cut when all surrounding Payment Units have been paid. Interior retention areas are marked with an orange X.

## 2 - Timber Specifications

### 2.1 - Included Timber

#### 2.1.1 - Clearcut unit(s) with unmerchantable trees (6/14)

Within Payment Unit(s) #'s 1-4, cut all trees that are two (2) inches or more at DBH, except for any trees marked with green paint.

### 2.2 - Utilization

#### 2.2.4 - Skidding length (2/14)

Skidding of lengths over 17 feet is permissible as long as the timber sale administrator approves the method and machinery used. If at any point damage exceeds General Condition & Requirement 3.4 or results in damage to Special Protection Areas outlined in specification 3.4.3, all of the remaining wood must be skid in lengths less than 17 feet.

## 3 - Payments

### 3.4 - Damaged Timber

#### 3.4.3 - Special Protection Areas (8/11)

The Purchaser shall protect special protection areas from damage by the Purchaser's operations. Special protection areas are old 5-spot cuts that are shown as MD1 or MD3 areas on the Timber Sale Map. These areas have been marked out of the sale boundary with red paint. If the Purchaser's operations have cut or damaged special protection areas through carelessness, the Purchaser shall pay \$150 as fixed, agreed and liquidated damages for each acre or part thereof cut or damaged. Such payment does not constitute ownership of the undesignated timber.

## 4 - Transportation

### 4.1 - Construction

#### 4.1.3 - Slash and earthen piles (8/04)

Piles or windrows of earth along roads and landings that have been widened or constructed shall be leveled. Slash from road maintenance or construction, including stumps, shall be dispersed throughout the sale.

#### 4.1.7 - Road closure (10/11)

Overgrown roads that are reopened must be blocked to vehicle traffic upon completion of the sale. In general, this will require constructing double earthen berms at strategic locations. These roads must be rendered impassable to cars and trucks. Contact the sale administrator for specific details of design and placement.

#### 4.1.12 - No new roads (1/12)

No new roads will be permitted in any Payment Unit. All operations are limited to existing roads.

### 4.2 - Maintenance

#### 4.2.5 - Two wheel drive condition (2/04)

All existing trail roads on and adjacent to the sale area must be passable by two-wheel drive traffic for the duration of the sale.

## 5 - Operations

### 5.1 - Notification

#### 5.1.1 - Pre-sale conference (10/11)

A pre-sale conference between the Purchaser and sale administrator is required prior to beginning any operations to determine landing and road locations. The Unit Manager or his/her representative must be contacted at least 10 days in advance to schedule the conference.

### 5.2 - Conduct of Operations

#### 5.2.2 - Hazard Trees/Snags

##### 5.2.2.1 - Den trees (2/04)

Obvious hollow and/or den trees shall be protected and left standing unless they are a safety hazard.

#### 5.2.3 - Operating Restrictions

##### 5.2.3.11 - Coppice regeneration protection (4/10)

Timber harvesting in any Payment Unit must be completed before significant deciduous sprouting occurs so as to minimize damage to the new regeneration. Any post harvest operations, such as chipping, must be completed before sprouting of regeneration occurs. If it is anticipated that chipping will be delayed, then tops shall be carried to one central location or left unchipped. The Unit Manager or his/her representative may cease such operations if sprouting occurs before the operation is complete.

##### 5.2.29 - Shrub protection (9/07)

Do not cut or damage hawthorn, witch-hazel, or junberry. Some of these shrub clumps have been marked with green paint to aid in identification. These woody-shrub plants are highly beneficial to various wildlife species.

##### 5.2.32 - Decking/landing restoration (9/13)

All decking and landing areas must have the surface area restored to a condition equal to or better than before. This is to ensure the proper regeneration of the stand. Wood debris, chips and "cookies" from trimmings must be removed or scattered away from landing and loading areas and may not be windrowed on the edge.

### 5.4 - Soil Protection

#### 5.4.1 - Rutting restriction, general (7/16)

Operations are to cease immediately if equipment and weather conditions result in rutting of roads and/or skid trails which is 12 inches or greater in depth and 50 feet in length. The Unit Manager or his/her representative may restrict hauling and/or skidding if ruts exceed the specified depth. With the Unit Manager or his/her representative's approval, the Purchaser may return to the area when the risk of rutting has decreased.

### 5.8 - Protection of Endangered Species

#### 5.8.5 - Protection of raptor nests (3/13)

All trees with raptor nests will be protected if found during harvesting operations. Notification will be made to the Unit Manager or his/her representative who will notify the Wildlife Biologist so an on-site evaluation and recommendation can be made, if necessary.

## 8 - Performance and Settlement

### 8.3 - Uncompleted or Terminated Contracts

#### 8.3.1 - Completion of contract, chipping (1/16)

In addition to cutting, all chipping must be completed by the contract expiration date. If chipping has not been completed, an extension fee or damages may be charged per General Condition & Requirement 7.2 and 8.3.



# TIMBER SALE MAP

This information provided by authority of Part 525, 1994 PA 451, as amended.

Forest Management Unit <b>Atlanta</b>		County <b>Presque Isle</b>	Mapped By <b>Rekowski</b>	Date <b>09/27/2016</b>	Page <b>1</b>	of <b>2</b>
Township <b>33N</b>	Range <b>02E</b>	Section(s) and Subdivision(s) <b>9: SWSE 16: NW1/4, W1/2NE, NWSW 17: SENE</b>		Scale <b>1:15,840</b>		

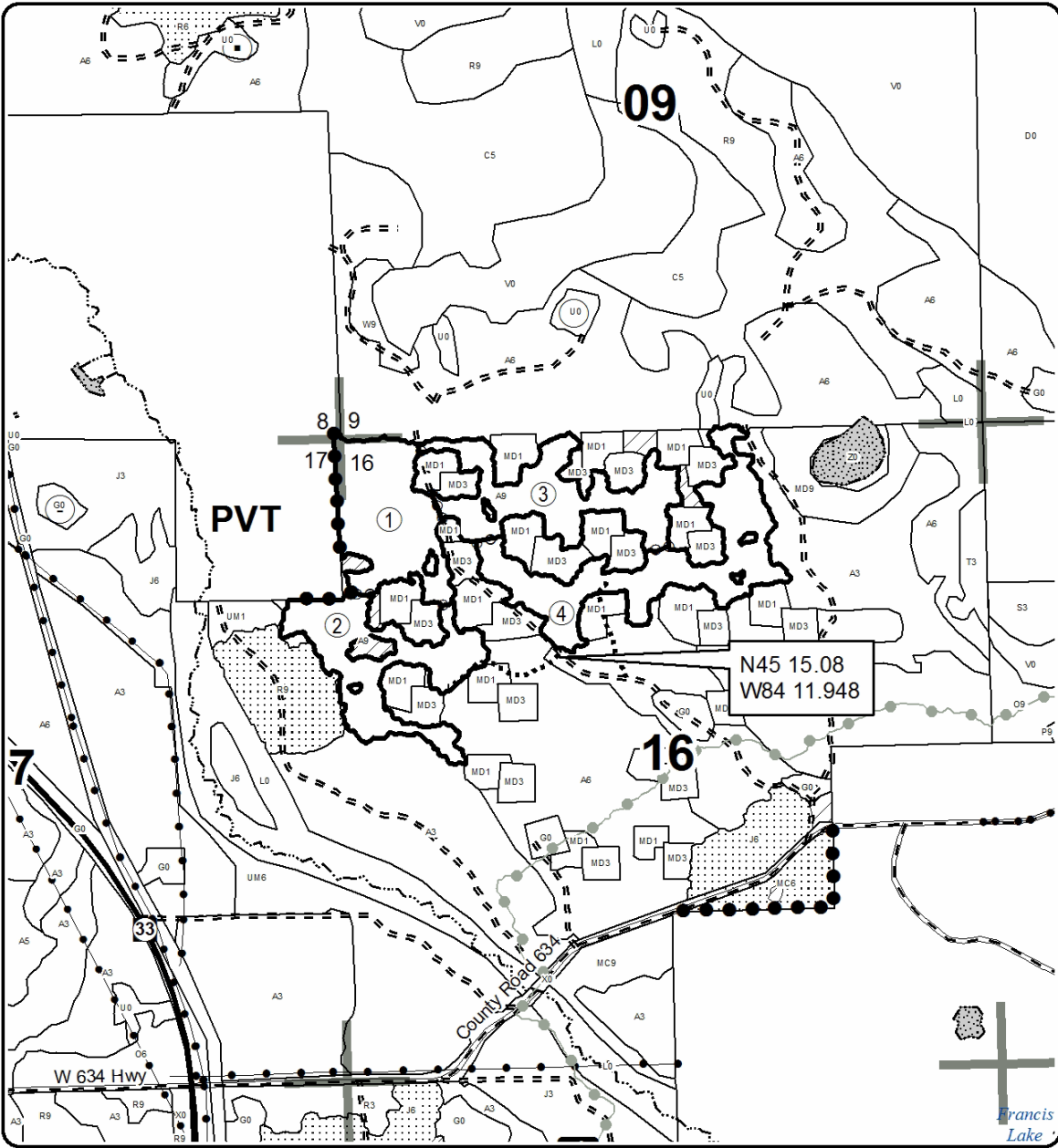
Cover Type				Density			
A = Aspen	H = Hemlock	N = Marsh	U = Upland Brush	0 = Non Stocked	5 = Pole Timber Medium		
B = Paper Birch	J = Jack Pine	O = Oak	UM = Upland Mixed	1 = Seedling Sapling Poor	6 = Pole Timber Well		
C = Cedar	L = Lowland Brush	P = Lowland Poplar	V = Bog or Marsh	2 = Seedling Sapling Medium	7 = Saw Timber Poor		
D = Treed Bog	LM = Lowland Mixed	Q = Mixed Swamp Conifer	W = White Pine	3 = Seedling Sapling Well	8 = Saw Timber Medium		
E = Swamp Hdwoods	M = Mpl, Bch, Brch	R = Red Pine	X = Non Stocked	4 = Pole Timber Poor	9 = Saw Timber Well		
F = Spruce Fir	MC = Mixed Conifer	S = Black Spruce	Z = Water				
G = Grass	MD = Mixed Deciduous	T = Tamarack					

PU	Acres	PU	Acres
1	20.3	4	26.6
2	20.1		
3	20.9		

## Inefficient Aspen

### Compartment 119

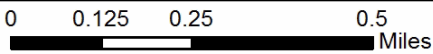
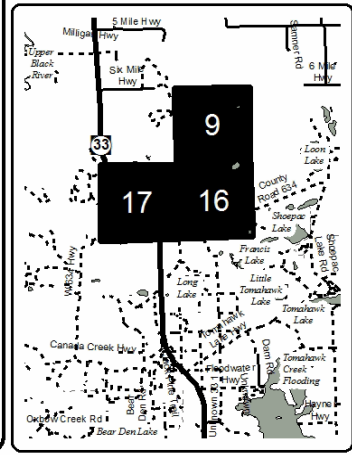
87.9 Acres



**Legend**

- Sale Boundary**
  - Against State (Red)
  - Payment Unit (Yellow)
  - Private Line (Blue)
- Retention (Orange X)
- Stand Boundaries
- Nearby Timber Sale
- Highway
- Gravel Roads
- Poor Dirt Roads
- Closed Roads
- Recreational Trail
- Section Corners
- Streams
- Lakes
- Pipeline; Powerline

**Locator Map**  
1:150,000





Sale Number	Year
54 - 036	16

# TIMBER SALE MAP

This information provided by authority of Part 525, 1994 PA 451, as amended.

Forest Management Unit <b>Atlanta</b>		County <b>Presque Isle</b>	Mapped By <b>Rekowski</b>	Date <b>09/27/2016</b>	Page <b>2</b>	of <b>2</b>
Township <b>33N</b>	Range <b>02E</b>	Section(s) and Subdivision(s) <b>9: SWSE 16: NW1/4, W1/2NE, NWSW 17: SENE</b>			Scale <b>1:7,920</b>	

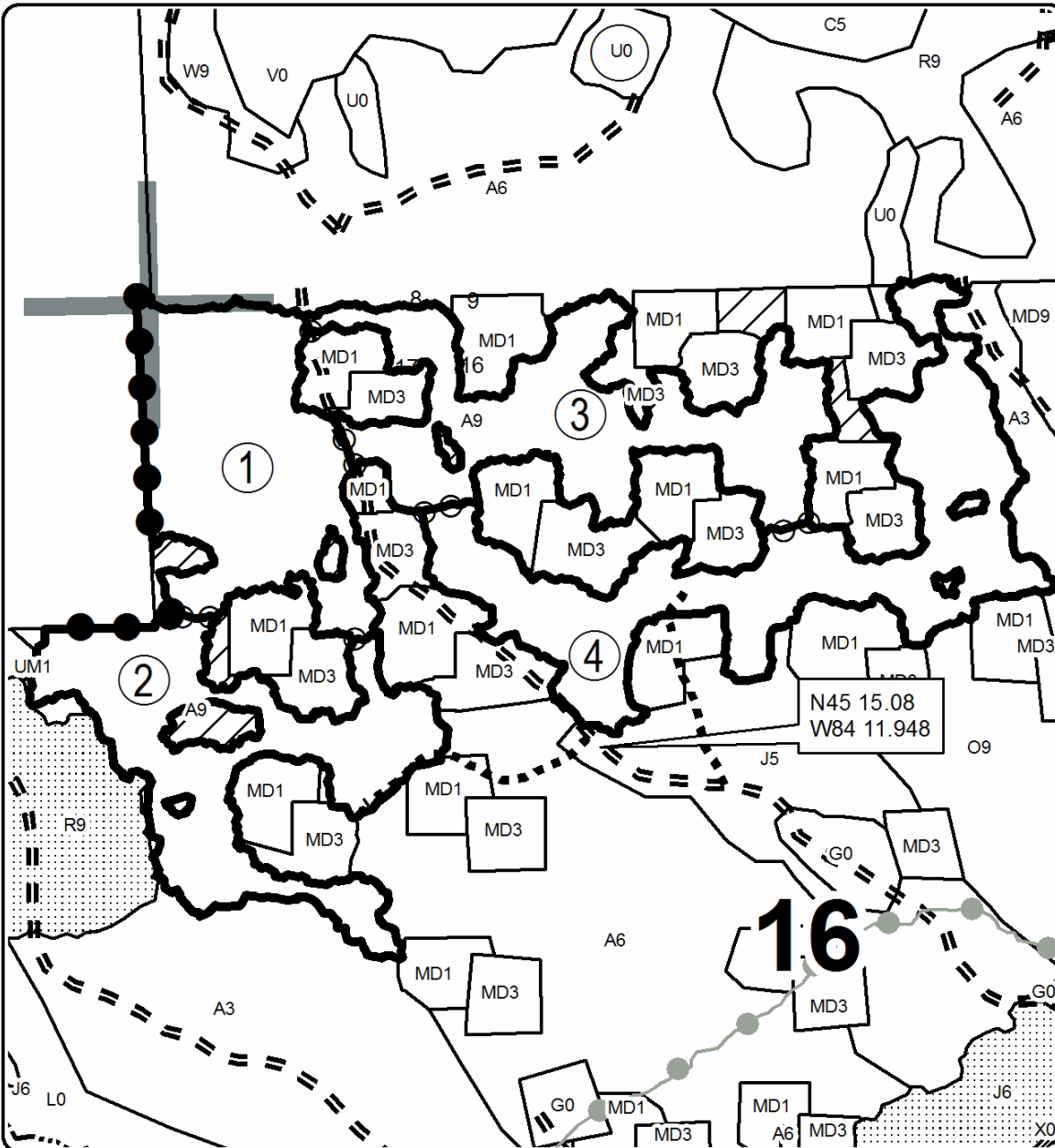
Cover Type				Density	
A = Aspen	H = Hemlock	N = Marsh	U = Upland Brush	0 = Non Stocked	5 = Pole Timber Medium
B = Paper Birch	J = Jack Pine	O = Oak	UM = Upland Mixed	1 = Seedling Sapling Poor	6 = Pole Timber Well
C = Cedar	L = Lowland Brush	P = Lowland Poplar	V = Bog or Marsh	2 = Seedling Sapling Medium	7 = Saw Timber Poor
D = Tread Bog	LM = Lowland Mixed	Q = Mixed Swamp Conifer	W = White Pine	3 = Seedling Sapling Well	8 = Saw Timber Medium
E = Swamp Hdwoods	M = Mpl, Bch, Brch	R = Red Pine	X = Non Stocked	4 = Pole Timber Poor	9 = Saw Timber Well
F = Spruce Fir	MC = Mixed Conifer	S = Black Spruce	Z = Water		
G = Grass	MD = Mixed Deciduous	T = Tamarack			

PU	Acres	PU	Acres
1	20.3	4	26.6
2	20.1		
3	20.9		

## Inefficient Aspen

### Compartment 119

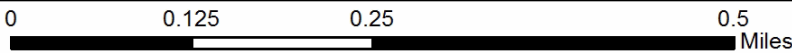
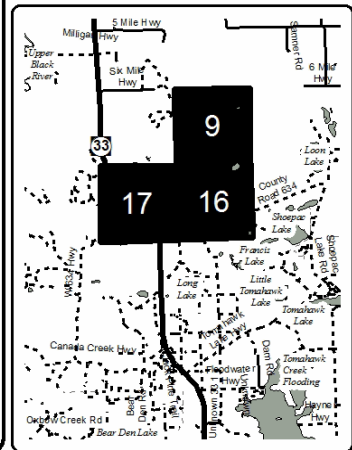
87.9 Acres



### Legend

- Sale Boundary**
  - Against State (Red)
  - Payment Unit (Yellow)
  - Private Line (Blue)
- Retention (Orange X)
- Stand Boundaries
- Nearby Timber Sale
- Highway
- Gravel Roads
- Poor Dirt Roads
- Closed Roads
- Recreational Trail
- Section Corners
- Streams
- Lakes
- Pipeline; Powerline

Locator Map  
1:150,000





Tomahawk Creek Red Pine (54-034-16)  
 ; Presque Isle COUNTY

In response to the notice of sale to be held 10:00 a.m. (local time) on February 28, 2017, I am hereby submitting my sealed bid (firm offer) for the following forest products to be cut. Bids for individual species must be at or above the advertised price. All non-responsive bid forms may be rejected.

<u>PRODUCTS &amp; SPECIES</u>	<u>ESTIMATED VOLUME*</u>	<u>ADVERTISED PRICE</u>	<u>BID PRICE</u>
Sawtimber			
Red Pine	45.20 MBF	\$ 133.00/MBF	\$ _____
Pulpwood			
Bl/R/Hybrid Oak	1.00 Cords	\$ 16.65/Cord	\$ _____
Jack Pine	1.00 Cords	\$ 25.05/Cord	\$ _____
Red Pine	195.00 Cords	\$ 45.15/Cord	\$ _____

\*The volumes are statistically estimated within plus (+) or minus (-) 24.89 percent. These estimated volumes are final and not subject to adjustment. Prospective bidders are urged to examine this timber and to make their own estimates of quantity and quality.

I understand that any or all bids may be rejected. All bids must be signed and all bid items must be bid or the bid form may be rejected. I also understand that consideration and awarding a contract will be based upon my past performance and ability to complete the contract based upon equipment and staffing subject to my control.

FEDERAL ID: \_\_\_\_\_ or SOCIAL SECURITY NUMBER: \_\_\_\_\_

Company or individual bidding: \_\_\_\_\_

Company representative's name: \_\_\_\_\_

Address: \_\_\_\_\_

City: \_\_\_\_\_ State: \_\_\_\_\_ Zip: \_\_\_\_\_

IF AVAILABLE, PLEASE PLACE THE PERSONALIZED LABEL FROM YOUR PROSPECTUS IN THE ABOVE BOX.

Individual or company representative's signature: \_\_\_\_\_ Date: \_\_\_\_\_

Phone number : \_\_\_\_\_ Email (optional): \_\_\_\_\_

**THE WINNING BIDDER MUST COMPLETE THE VERIFICATION OF WORKER'S DISABILITY COMPENSATION ACT COMPLIANCE (ON REVERSE SIDE IF DOUBLE SIDED) WITHIN 21 DAYS OF SALE AWARD DATE**



FOR DEPARTMENT USE ONLY	
Sale Number (XX - XXX - XX - XX)	
Forest Management Unit:	

# TIMBER SALE VERIFICATION OF WORKER'S DISABILITY COMPENSATION ACT COMPLIANCE

As required by Act 317, P.A. 1969 (Worker's Compensation) and  
Part 5 of Act 451 of 1994, as amended.

## VERIFICATION OF WORKER'S DISABILITY COMPENSATION ACT COMPLIANCE

- This verification must be completed and submitted within 21 days of contract award and prior to the issuance of the timber sale contract.
- In addition, if boxes 2B or 2C are checked, then Notice of Exclusion or Certificate of Insurance must be submitted within twenty-one (21) days of the contract award and prior to the issuance of the timber sale contract.
- All information must be typed or printed except for written signatures.

Please Check Appropriate Categories:

1. My business is organized as (you **must** check one of the boxes below):
  - A.  Sole Proprietorship (individual)
  - B.  Partnership
  - C.  Corporation
2. You **must** check one of the boxes below:
  - A.  I certify my business is a sole proprietorship and it has no employees but the sole proprietor. I am not subject to the Worker's Compensation Laws.
  - B.  I certify my business has satisfied its obligation to the Worker's Compensation Act through the use of an approved Notice of Exclusion (BWC-337, Rev. 5/96). I will provide a copy of the Notice of Exclusion within 21 days of the contract award. (For questions or a copy of the BWC-337, please call the Worker's Compensation Bureau at 517-322-1195).
  - C.  I certify my business has a Worker's Compensation Policy. I will provide an original Certificate of Insurance within twenty-one (21) days of the contract award.
3. If you have checked item 2(A) or 2(B), you **must** indicate the number of **both** full-time and part-time employees, other than yourself, including family members and active partners (if none, you must enter "0").

\_\_\_\_\_ Full-time Employees

\_\_\_\_\_ Part-time Employees

Name of Business		Federal ID (or) Social Security No.	
Address		Telephone (       )	
City	State	ZIP	

*I hereby certify that the above information is true and correct. I agree to notify the Michigan DNR of any changes that occur in factors affecting my coverage during any of my present and future operations.*

\_\_\_\_\_  
Signature of Owner or Authorized Representative

\_\_\_\_\_  
Title

\_\_\_\_\_  
Date

Please complete the "SEALED BID" information on the next page



Up Down Aspen (54-035-16)  
 ; Presque Isle COUNTY

In response to the notice of sale to be held 10:00 a.m. (local time) on February 28, 2017, I am hereby submitting my sealed bid (firm offer) for the following forest products to be cut. Bids for individual species must be at or above the advertised price. All non-responsive bid forms may be rejected.

<u>PRODUCTS &amp; SPECIES</u>	<u>ESTIMATED VOLUME*</u>	<u>ADVERTISED PRICE</u>	<u>BID PRICE</u>
<b>Sawtimber</b>			
Bl/R/Hybrid Oak	19.70 MBF	\$ 115.00/MBF	\$ _____
Mixed Aspen	20.50 MBF	\$ 79.00/MBF	\$ _____
Red Pine	3.20 MBF	\$ 133.00/MBF	\$ _____
White Pine	4.70 MBF	\$ 73.00/MBF	\$ _____
<b>Pulpwood</b>			
Bl/R/Hybrid Oak	60.00 Cords	\$ 16.65/Cord	\$ _____
Mixed Aspen	502.00 Cords	\$ 17.50/Cord	\$ _____
Red Maple	56.00 Cords	\$ 15.90/Cord	\$ _____
Red Pine	7.00 Cords	\$ 45.15/Cord	\$ _____
White Pine	49.00 Cords	\$ 34.50/Cord	\$ _____

\*The volumes are statistically estimated within plus (+) or minus (-) 28.62 percent. These estimated volumes are final and not subject to adjustment. Prospective bidders are urged to examine this timber and to make their own estimates of quantity and quality.

I understand that any or all bids may be rejected. All bids must be signed and all bid items must be bid or the bid form may be rejected. I also understand that consideration and awarding a contract will be based upon my past performance and ability to complete the contract based upon equipment and staffing subject to my control.

FEDERAL ID: \_\_\_\_ - \_\_\_\_ - \_\_\_\_ or SOCIAL SECURITY NUMBER: \_\_\_\_ - \_\_\_\_ - \_\_\_\_

Company or individual bidding: \_\_\_\_\_

Company representative's name: \_\_\_\_\_

Address: \_\_\_\_\_

City: \_\_\_\_\_ State: \_\_\_\_\_ Zip: \_\_\_\_\_

IF AVAILABLE, PLEASE PLACE THE PERSONALIZED LABEL FROM YOUR PROSPECTUS IN THE ABOVE BOX.

Individual or company representative's signature: \_\_\_\_\_ Date: \_\_\_\_\_

Phone number : \_\_\_\_\_ Email (optional): \_\_\_\_\_

**THE WINNING BIDDER MUST COMPLETE THE VERIFICATION OF WORKER'S DISABILITY COMPENSATION ACT COMPLIANCE (ON REVERSE SIDE IF DOUBLE SIDED) WITHIN 21 DAYS OF SALE AWARD DATE**



FOR DEPARTMENT USE ONLY	
Sale Number (XX - XXX - XX - XX)	
Forest Management Unit:	

# TIMBER SALE VERIFICATION OF WORKER'S DISABILITY COMPENSATION ACT COMPLIANCE

As required by Act 317, P.A. 1969 (Worker's Compensation) and  
Part 5 of Act 451 of 1994, as amended.

## VERIFICATION OF WORKER'S DISABILITY COMPENSATION ACT COMPLIANCE

- This verification must be completed and submitted within 21 days of contract award and prior to the issuance of the timber sale contract.
- In addition, if boxes 2B or 2C are checked, then Notice of Exclusion or Certificate of Insurance must be submitted within twenty-one (21) days of the contract award and prior to the issuance of the timber sale contract.
- All information must be typed or printed except for written signatures.

Please Check Appropriate Categories:

1. My business is organized as (you **must** check one of the boxes below):
  - A.  Sole Proprietorship (individual)
  - B.  Partnership
  - C.  Corporation
2. You **must** check one of the boxes below:
  - A.  I certify my business is a sole proprietorship and it has no employees but the sole proprietor. I am not subject to the Worker's Compensation Laws.
  - B.  I certify my business has satisfied its obligation to the Worker's Compensation Act through the use of an approved Notice of Exclusion (BWC-337, Rev. 5/96). I will provide a copy of the Notice of Exclusion within 21 days of the contract award. (For questions or a copy of the BWC-337, please call the Worker's Compensation Bureau at 517-322-1195).
  - C.  I certify my business has a Worker's Compensation Policy. I will provide an original Certificate of Insurance within twenty-one (21) days of the contract award.
3. If you have checked item 2(A) or 2(B), you **must** indicate the number of **both** full-time and part-time employees, other than yourself, including family members and active partners (if none, you must enter "0").

\_\_\_\_\_ Full-time Employees

\_\_\_\_\_ Part-time Employees

Name of Business		Federal ID (or) Social Security No.	
Address		Telephone (       )	
City	State	ZIP	

*I hereby certify that the above information is true and correct. I agree to notify the Michigan DNR of any changes that occur in factors affecting my coverage during any of my present and future operations.*

\_\_\_\_\_  
Signature of Owner or Authorized Representative

\_\_\_\_\_  
Title

\_\_\_\_\_  
Date

Please complete the "SEALED BID" information on the next page

Sinkhole Mix (54-033-16)  
 ; Presque Isle COUNTY

In response to the notice of sale to be held 10:00 a.m. (local time) on February 28, 2017, I am hereby submitting my sealed bid (firm offer) for the following forest products to be cut. Bids for individual species must be at or above the advertised price. All non-responsive bid forms may be rejected.

<u>PRODUCTS &amp; SPECIES</u>	<u>ESTIMATED VOLUME*</u>	<u>ADVERTISED PRICE</u>	<u>BID PRICE</u>
<b>Sawtimber</b>			
BI/R/Hybrid Oak	7.20 MBF	\$ 115.00/MBF	\$ _____
Red Pine	73.60 MBF	\$ 133.00/MBF	\$ _____
<b>Pulpwood</b>			
B. T. Aspen	39.00 Cords	\$ 17.50/Cord	\$ _____
BI/R/Hybrid Oak	76.00 Cords	\$ 16.65/Cord	\$ _____
Jack Pine	464.00 Cords	\$ 25.05/Cord	\$ _____
Red Maple	10.00 Cords	\$ 15.90/Cord	\$ _____
Red Pine	79.00 Cords	\$ 45.15/Cord	\$ _____
White Pine	2.00 Cords	\$ 34.50/Cord	\$ _____

\*The volumes are statistically estimated within plus (+) or minus (-) 17.27 percent. These estimated volumes are final and not subject to adjustment. Prospective bidders are urged to examine this timber and to make their own estimates of quantity and quality.

I understand that any or all bids may be rejected. All bids must be signed and all bid items must be bid or the bid form may be rejected. I also understand that consideration and awarding a contract will be based upon my past performance and ability to complete the contract based upon equipment and staffing subject to my control.

FEDERAL ID: \_\_\_\_\_ or SOCIAL SECURITY NUMBER: \_\_\_\_\_

Company or individual bidding: \_\_\_\_\_

Company representative's name: \_\_\_\_\_

Address: \_\_\_\_\_

City: \_\_\_\_\_ State: \_\_\_\_\_ Zip: \_\_\_\_\_

IF AVAILABLE, PLEASE PLACE THE PERSONALIZED LABEL FROM YOUR PROSPECTUS IN THE ABOVE BOX.

Individual or company representative's signature: \_\_\_\_\_ Date: \_\_\_\_\_

Phone number : \_\_\_\_\_ Email (optional): \_\_\_\_\_

**THE WINNING BIDDER MUST COMPLETE THE VERIFICATION OF WORKER'S DISABILITY COMPENSATION ACT COMPLIANCE (ON REVERSE SIDE IF DOUBLE SIDED) WITHIN 21 DAYS OF SALE AWARD DATE**



Inefficient Aspen (54-036-16)  
 ; Presque Isle COUNTY

In response to the notice of sale to be held 10:00 a.m. (local time) on February 28, 2017, I am hereby submitting my sealed bid (firm offer) for the following forest products to be cut. Bids for individual species must be at or above the advertised price. All non-responsive bid forms may be rejected.

<u>PRODUCTS &amp; SPECIES</u>	<u>ESTIMATED VOLUME*</u>	<u>ADVERTISED PRICE</u>	<u>BID PRICE</u>
<b>Sawtimber</b>			
B. T. Aspen	28.90 MBF	\$ 79.00/MBF	\$ _____
Red Oak	74.60 MBF	\$ 167.00/MBF	\$ _____
<b>Pulpwood</b>			
Jack Pine	14.00 Cords	\$ 25.05/Cord	\$ _____
Mixed Aspen	727.00 Cords	\$ 17.50/Cord	\$ _____
Red Maple	231.00 Cords	\$ 15.90/Cord	\$ _____
Red Oak	380.00 Cords	\$ 16.65/Cord	\$ _____
Red Pine	13.00 Cords	\$ 45.15/Cord	\$ _____
White Oak	6.00 Cords	\$ 16.65/Cord	\$ _____
White Pine	33.00 Cords	\$ 34.50/Cord	\$ _____

\*The volumes are statistically estimated within plus (+) or minus (-) 18.12 percent. These estimated volumes are final and not subject to adjustment. Prospective bidders are urged to examine this timber and to make their own estimates of quantity and quality.

I understand that any or all bids may be rejected. All bids must be signed and all bid items must be bid or the bid form may be rejected. I also understand that consideration and awarding a contract will be based upon my past performance and ability to complete the contract based upon equipment and staffing subject to my control.

FEDERAL ID: \_\_\_\_ - \_\_\_\_ - \_\_\_\_ or SOCIAL SECURITY NUMBER: \_\_\_\_ - \_\_\_\_ - \_\_\_\_

Company or individual bidding: \_\_\_\_\_

Company representative's name: \_\_\_\_\_

Address: \_\_\_\_\_

City: \_\_\_\_\_ State: \_\_\_\_\_ Zip: \_\_\_\_\_

IF AVAILABLE, PLEASE PLACE THE PERSONALIZED LABEL FROM YOUR PROSPECTUS IN THE ABOVE BOX.

Individual or company representative's signature: \_\_\_\_\_ Date: \_\_\_\_\_

Phone number : \_\_\_\_\_ Email (optional): \_\_\_\_\_

**THE WINNING BIDDER MUST COMPLETE THE VERIFICATION OF WORKER'S DISABILITY COMPENSATION ACT COMPLIANCE (ON REVERSE SIDE IF DOUBLE SIDED) WITHIN 21 DAYS OF SALE AWARD DATE**



<b>FOR DEPARTMENT USE ONLY</b>
Sale Number (XX - XXX - XX - XX)
Forest Management Unit:

## TIMBER SALE VERIFICATION OF WORKER'S DISABILITY COMPENSATION ACT COMPLIANCE

*As required by Act 317, P.A. 1969 (Worker's Compensation) and  
Part 5 of Act 451 of 1994, as amended.*

### VERIFICATION OF WORKER'S DISABILITY COMPENSATION ACT COMPLIANCE

- This verification must be completed and submitted within 21 days of contract award and prior to the issuance of the timber sale contract.
- In addition, if boxes 2B or 2C are checked, then Notice of Exclusion or Certificate of Insurance must be submitted within twenty-one (21) days of the contract award and prior to the issuance of the timber sale contract.
- All information must be typed or printed except for written signatures.

Please Check Appropriate Categories:

1. My business is organized as (you **must** check one of the boxes below):
  - A.  Sole Proprietorship (individual)
  - B.  Partnership
  - C.  Corporation
  
2. You **must** check one of the boxes below:
  - A.  I certify my business is a sole proprietorship and it has no employees but the sole proprietor. I am not subject to the Worker's Compensation Laws.
  - B.  I certify my business has satisfied its obligation to the Worker's Compensation Act through the use of an approved Notice of Exclusion (BWC-337, Rev. 5/96). I will provide a copy of the Notice of Exclusion within 21 days of the contract award. (For questions or a copy of the BWC-337, please call the Worker's Compensation Bureau at 517-322-1195).
  - C.  I certify my business has a Worker's Compensation Policy. I will provide an original Certificate of Insurance within twenty-one (21) days of the contract award.
  
3. If you have checked item 2(A) or 2(B), you **must** indicate the number of **both** full-time and part-time employees, other than yourself, including family members and active partners (if none, you must enter "0").

\_\_\_\_\_ Full-time Employees

\_\_\_\_\_ Part-time Employees

Name of Business		Federal ID (or) Social Security No.	
Address		Telephone (       )	
City	State	ZIP	

*I hereby certify that the above information is true and correct. I agree to notify the Michigan DNR of any changes that occur in factors affecting my coverage during any of my present and future operations.*

\_\_\_\_\_  
Signature of Owner or Authorized Representative

\_\_\_\_\_  
Title

\_\_\_\_\_  
Date

**Please complete the "SEALED BID" information on the next page**