



**DEPARTMENT OF NATURAL RESOURCES
STATE OF MICHIGAN**

TIMBER SALE PROSPECTUS #5730

SCHEDULED SALE DATE AND TIME: 11:00 a.m. (local time) on March 15, 2017.

LOCATION: ROSCOMMON MGMT UNIT, PO BOX 218, ROSCOMMON, MI 48653.

PROSPECTUS NOTE: The bidder is advised to inspect the sale area and review the location, estimated volumes, operating costs and contract terms of proposed sales. Please be aware that some landowners may request 60 days or more notice for access across their land.

Notice is hereby given that bids will be received by the Unit Manager, ROSCOMMON MANAGEMENT UNIT, for certain timber on the following described lands:

Moorestown Mix (71-011-16)

Roscommon County, Advertised Price \$68,558.75, 74.7 Acres, Aspen, Hardwood.

SALE NOTE: A recreation site such as a trail, pathway, or campground is within the sale area or the vicinity. Certain restrictions/specifications may be applicable including time restrictions.

County Line Aspen (71-019-16)

Roscommon County, Advertised Price \$129,769.20, 211.1 Acres, Aspen, Hardwood.

Kenny's Haze (71-026-16)

Roscommon County, Advertised Price \$11,361.65, 80.9 Acres, Aspen, Hardwood.

SALE NOTE: This is a scaled sale. Volumes may widely vary, as the sale was lightly cruised. It is on very poorly drained soils that hold water most times of the year. A winter harvest is required to get soils frozen. All harvesting equipment is required to be tracked. Wheeled machines with "track" add-ons will be allowed. The only access route is down a seasonal county road that is also a snowmobile trail during the winter months. Some snow will be required to be left on the road for a base.

A recreation site such as a trail, pathway, or campground is within the sale area or the vicinity. Certain restrictions/specifications may be applicable including time restrictions.

BID INSTRUCTIONS (VER. 09/02/2016):

1. Scheduled Bid Location, Date, and Time (2/11)

Bids must be received by the Unit Manager, ROSCOMMON OFFICE, PO BOX 218, ROSCOMMON, MI 48653, no later than 11:00 a.m. (local time) on March 15, 2017. For further information concerning this sale, contact Steve Anderson at 989-275-4622 extension 2740.

2. Bidder's Qualifications (5/16)

Purchaser shall obtain workers compensation insurance to cover claims under Michigan's Worker's Disability Compensation Act of 1969 or similar employee benefit act of any other state applicable to an employee. If all or part of a timber sale was prepared by a private contractor, the contractor and that contractor's company are not permitted to bid on the timber sale contract. Bids will not be accepted from individuals or companies appearing on the DNR/FRD No-Bid List. This list contains the names of purchasers who previously failed to execute a contract within 21-days or who have a history of poor performance.

3. Preparation of Sealed Bids (5/16)

Bid Forms may be completed online thru Michigan DNR Timber Sale Online Bidding (OLB) at www.michigan.gov/timberbidding or by completing the hardcopy Bid Form found in the Timber Sale Prospectus. Hardcopy Bid Forms shall be manually signed in ink. Registration in OLB is considered your 'signature' for all bids submitted thru that system. Bid prices must be entered for each species and product in the Bid Price column for all material subject to bidding and all fill-in blanks must be completed. If erasures or other changes appear on the hardcopy Bid Form, each erasure or change must be initialed by the person signing the bid.

4. Submission of Sealed Bids (5/16)

Bid forms may be obtained from the Unit Manager or thru OLB. Bids may be submitted hardcopy or thru OLB. All hardcopy bids must be submitted on the bid form and in an envelope clearly identified as described in this section. NOTE: Only one bid form per bid envelope. Sealed bids must be submitted to the Unit office designated in the prospectus and must be submitted at or prior to the time established in the prospectus. The envelope should show on the outside (a) the sale name or number and (b) the date and time of bid opening, as shown in the prospectus. Bids received after the time specified in the sale prospectus are late bids and will be rejected.

It is possible for a bidder to submit multiple bids on a single sale. For example, a bid may be submitted hardcopy and a bid may be submitted thru OLB. Or, two bidders from the same company could both submit bids on the same sale. If this were to happen, the State would accept all bids received and award the contract accordingly. All bidding and contractual requirements would apply to all bids received.

5. Public Opening of Sealed Bids (7/16)

If conditions permit, the sealed bids will be publicly opened and posted at the time and place set in the prospectus.

If a bidder, present at a bid opening, has submitted bids on more than one sale, that bidder may withdraw their unopened bid envelopes or announce the withdrawal of their online bid after being declared the successful bidder on one sale.

6. Award of Contract (1/11)

Award of the contract will be made to the Bidder whose bid, conforming to the prospectus, is most advantageous to the State of Michigan on the basis of total value at rates bid for the estimated quantities. The State reserves the right to reject any bid or waive any minor irregularity in bids received. A written award mailed (or otherwise furnished) to the successful Bidder shall be deemed to result in a binding contract without further action by either party.

7. Down Payment (1/11)

The Bidder to whom award is made must make a down payment within 21 days of the sale award. The amount of the down payment will be calculated as shown in the Bond and Payment Schedule of this prospectus. Only cash may be used to meet this requirement.

8. Performance Security (1/11)

As guarantee of faithful performance, a cash bond, certificate of deposit, surety bond or irrevocable letter of credit (LOC) is required within 21 days of the sale award. The amount of the performance security is shown in the Bond and

Payment Schedule of this prospectus. If an LOC or surety is used, the coverage must extend for at least 6 months beyond the contract expiration.

9. Timber Sale Contract (9/14)

Additional conditions and requirements common to all timber sales are listed on the timber sale contract (R4031) and are available on line at www.michigan.gov/timber. Contact the Unit Manager for additional information or a sample contract. Within 21 days of the date of the award letter, the bidder must sign the contract and provide the required down payment, performance security, and verification of worker's disability compensation. The down payment and performance security shall be in accordance with the provisions of the timber sale contract, in the sums stated in this prospectus. If these actions are not taken, then the Bidder, the Bidder's corporation, and the corporation's principals may not be permitted to bid on State timber sales for a period of 1 year. In addition, the Bidder certifies that if awarded this contract, the Bidder will complete the timber sale contract in accordance with its terms and any modifications thereof including requirements to purchase, cut, and remove the included timber by the expiration date.

10. Disclaimer of Estimates and Bidder's Warranty of Inspection (7/16)

Before submitting this bid, the Bidder is advised and cautioned to inspect the sale area, review the requirements of the sale contract, and take other steps as may be reasonably necessary to ascertain the location, estimated volumes, construction estimates, and operating costs of the proposed sale. Failure to do so will not relieve the Bidder from responsibility for completing the contract.

The Bidder warrants that this bid is submitted solely on the basis of the Bidder's examination and inspection of the quality and quantity of the timber offered for sale and the Bidder's opinion of the value thereof and the costs of recovery. No reliance should be placed on the State of Michigan's estimates of timber quality, quantity or costs of recovery. Bidder further acknowledges that the State of Michigan: (i) expressly disclaims any warranty of fitness of timber for any purpose; (ii) offers this timber as is without any warranty of quality (merchantability) or quantity and (iii) expressly disclaims any warranty as to the quantity or quality of timber sold.

11. Certification and Chain-of-Custody (10/14)

Unless otherwise indicated in the contract under section 7 – Other Conditions of the Sale Specific Conditions & Requirements, the area encompassed by this timber sale is certified to the standards of the Forest Stewardship Council (FSC) - Certificate #SCS-FM/COC-00090N and the Sustainable Forestry Initiative (SFI) - Certificate # NSF-SFIS-5Y031-SF5. Forest products from this sale may be delivered to the mill as "FSC 100% and / or SFI certified" as long as the contractor hauling the forest products is chain-of-custody (COC) certified or covered under a COC certificate from the destination mill. The purchaser is responsible for maintaining COC after leaving the sale area.

12. Good Neighbor Authority (GNA) Requirements (7/16)

If the name of this timber sales contains the acronym GNA, it is authorized by the Good Neighbor Authority (GNA) and covered by various agreements between the U.S. Forest Service and the State. The timber sale occurs on federal land and the following conditions apply:

GNA contracts on US Forest Service land will not be awarded to purchasers on the Federal list of excluded parties. The System for Award Management (SAM) will be checked for active excluded parties prior to award of contract. In addition, the Bidder to whom award is made must complete an Assurance Regarding Felony Conviction or Tax Delinquent Status for Corporate Applicants (AD-3031).

13. Good Neighbor Authority (GNA) Requirements, con't (9/16)

Bidder certifies, by signing this bid form, that to the best of Bidder's knowledge that the following representations are accurate and complete.

- a. That the Bidder and its principals are not presently debarred, suspended, proposed for debarment, declared ineligible, or voluntary excluded from timber sales (covered transactions) by any Federal department or agency.
- b. That the Bidder and its principals have not within a 3-year period preceding this bid been convicted of or had a civil judgment rendered against them for commission of fraud or a criminal offense in connection with obtaining, attempting to obtain, or performing a public (Federal, State, or local) transaction or contract under a public transaction; violation of Federal or State antitrust statutes or commission of embezzlement, theft, forgery, bribery, falsification or destruction of records, making false statements, or receiving stolen property.

c. That the Bidder and its principals are not presently indicted for or otherwise criminally or civilly charged by a governmental entity (Federal, State, or local) with commission of any of the offenses enumerated in paragraph b of this certification.

d. That the Bidder and its principals have not within a 3-year period preceding this bid had one or more public transactions (Federal, State, or local) terminated for breach or default of a timber or forest product contract.

Bidders that cannot certify this requirement, in whole or in part, shall submit an explanation with their bid.

KEITH CREAGH

Director

TIMBER SALE INFORMATION

Moorestown Mix (71-011-16)

Roscommon County (Advertised Price \$68,558.75)

SALE NOTE: A recreation site such as a trail, pathway, or campground is within the sale area or the vicinity. Certain restrictions/specifications may be applicable including time restrictions.

A timber sale contract for this lump sum, sealed bid timber sale will be awarded to the responsible bidder offering the highest sealed bid price. Bids must be at or above the following advertised price for each species:

<u>PRODUCTS & SPECIES</u>	<u>ESTIMATED UNITS*</u>		<u>ADVERTISED PRICE</u>
Sawtimber			
BI/R/Hybrid Oak	109.20	MBF	\$ 117.00 / MBF
Mixed Aspen	19.00	MBF	\$ 76.00 / MBF
Red Maple	18.30	MBF	\$ 48.00 / MBF
Red Oak	77.30	MBF	\$ 189.00 / MBF
Red Pine	32.00	MBF	\$ 144.00 / MBF
White Oak	56.80	MBF	\$ 63.00 / MBF
White Pine	29.00	MBF	\$ 91.00 / MBF
Pulpwood			
Jack Pine	2.00	Cords	\$ 16.15 / Cord
Mixed Aspen	301.00	Cords	\$ 38.40 / Cord
Mixed Oak	444.00	Cords	\$ 15.60 / Cord
Red Maple	221.00	Cords	\$ 20.00 / Cord
Red Pine	73.00	Cords	\$ 48.55 / Cord
White Pine	68.00	Cords	\$ 22.70 / Cord

* The total volume is statistically estimated within plus (+) or minus (-) 9.29 percent. The estimated units are final and not subject to adjustment. Prospective bidders are urged to examine this timber and to make their own estimates of quantity and quality.

BOND AND PAYMENT SCHEDULE:

1. A bond in the amount of \$3,428.00 to insure faithful performance of the conditions of the contract will be deposited by the successful bidder within 21 days of the sale award.
2. Cutting in any sale or unit without the required advance payment would be considered a trespass.
3. Total payment must be paid in advance or according to the following schedule:
 - (a) Ten percent (10%) of the sale value must be paid within 21 days of the sale award.
 - (b) The 10% down payment will be credited towards the first unit cut.
4. If no cutting takes place, the 10% down payment will not be refunded.
5. Operations on the contract issued will terminate on 09/30/2019.

Description of Timber by Payment Unit (PU)

PU	MARKET GROUP	PRODUCT	QUANTITY	UNIT	ACRES	ADVERTISE PRICE	
1	BI/R/Hybrid Oak	Sawtimber	8.0	MBF	12.8	\$16,415.85	
	Mixed Aspen		1.7	MBF			
	<i>B. T. Aspen</i>		1.7	<i>MBF</i>			
	Red Maple		2.0	MBF			
	Red Oak		46.9	MBF			
	Red Pine		5.4	MBF			
	White Oak		16.7	MBF			
	White Pine		8.1	MBF			
	Mixed Aspen		Pulpwood	8.0			Cords
	<i>B. T. Aspen</i>			8.0			<i>Cords</i>
	Mixed Oak	111.0		Cords			
	<i>BI/R/Hybrid Oak</i>	15.0		<i>Cords</i>			
	<i>Red Oak</i>	55.0		<i>Cords</i>			
	<i>White Oak</i>	41.0		<i>Cords</i>			
	Red Maple	29.0		Cords			
	<i>Red Maple</i>	29.0		<i>Cords</i>			
	Red Pine	15.0	Cords				
	White Pine	21.0	Cords				
2	BI/R/Hybrid Oak	Sawtimber	1.4	MBF	8.0	\$8,876.60	
	Mixed Aspen		6.7	MBF			
	<i>B. T. Aspen</i>		6.7	<i>MBF</i>			
	Red Maple		2.0	MBF			
	Red Oak		4.0	MBF			
	Red Pine		11.0	MBF			
	Mixed Aspen		Pulpwood	113.0			Cords
	<i>B. T. Aspen</i>			93.0			<i>Cords</i>
	<i>Quaking Aspen</i>			20.0			<i>Cords</i>
	Mixed Oak			11.0			Cords
	<i>BI/R/Hybrid Oak</i>	6.0	<i>Cords</i>				
	<i>Red Oak</i>	5.0	<i>Cords</i>				
	Red Maple	24.0	Cords				
	<i>Red Maple</i>	24.0	<i>Cords</i>				
Red Pine	16.0	Cords					
3	Red Pine	Sawtimber	4.2	MBF	6.3	\$2,061.30	
	Red Pine	Pulpwood	30.0	Cords			
4	BI/R/Hybrid Oak	Sawtimber	99.8	MBF	33.4	\$28,282.80	
	Mixed Aspen		1.9	MBF			
	<i>B. T. Aspen</i>		1.9	<i>MBF</i>			
	Red Maple		4.9	MBF			
	Red Oak		26.4	MBF			
	Red Pine		2.3	MBF			
	White Oak		39.4	MBF			
	White Pine		1.3	MBF			
	Mixed Aspen		Pulpwood	40.0			Cords
	<i>B. T. Aspen</i>			30.0			<i>Cords</i>
	<i>Quaking Aspen</i>	10.0		<i>Cords</i>			
	Mixed Oak	303.0		Cords			
	<i>BI/R/Hybrid Oak</i>	181.0		<i>Cords</i>			
	<i>Red Oak</i>	25.0		<i>Cords</i>			
	<i>White Oak</i>	97.0		<i>Cords</i>			
	Red Maple	95.0		Cords			
	<i>Red Maple</i>	95.0	<i>Cords</i>				
	Red Pine	2.0	Cords				
White Pine	2.0	Cords					
5	Mixed Aspen	Sawtimber	5.9	MBF	6.1	\$5,593.80	
	<i>Quaking Aspen</i>		5.9	<i>MBF</i>			

Description of Timber by Payment Unit (PU), con't

PU	MARKET GROUP	PRODUCT	QUANTITY	UNIT	ACRES	ADVERTISE PRICE				
5 con't	Red Maple	Sawtimber	8.0	MBF						
	White Oak		0.7	MBF						
	White Pine		5.6	MBF						
	Mixed Aspen	Pulpwood	72.0	Cords						
	<i>Quaking Aspen</i>		72.0	<i>Cords</i>						
	Mixed Oak		4.0	Cords						
	<i>Bl/R/Hybrid Oak</i>		2.0	<i>Cords</i>						
	<i>White Oak</i>		2.0	<i>Cords</i>						
	Red Maple		52.0	Cords						
	<i>Red Maple</i>		52.0	<i>Cords</i>						
White Pine	15.0		Cords							
6	Mixed Aspen		Sawtimber	2.8	MBF	8.1	\$7,328.40			
	<i>Quaking Aspen</i>			2.8	<i>MBF</i>					
	Red Maple		1.4	MBF						
	Red Pine		9.1	MBF						
	White Pine		14.0	MBF						
	Jack Pine	Pulpwood	2.0	Cords						
	<i>Jack Pine</i>		<i>Sawtimber</i>	0.3	<i>MBF</i>					
	<i>Jack Pine</i>		<i>Pulpwood</i>	1.0	<i>Cords</i>					
	Mixed Aspen			68.0	Cords					
	<i>Quaking Aspen</i>			68.0	<i>Cords</i>					
	Mixed Oak			15.0	Cords					
	<i>Bl/R/Hybrid Oak</i>			15.0	<i>Cords</i>					
	Red Maple			21.0	Cords					
	<i>Black Cherry</i>			1.0	<i>Cords</i>					
	<i>Red Maple</i>			20.0	<i>Cords</i>					
	Red Pine			10.0	Cords					
	White Pine			30.0	Cords					
	TOTAL:			341.6	MBF					
	TOTAL:			1,109.0	Cords					

Sale Specific Conditions & Requirements

Sale Name: Moorestown Mix

Sale Number: 71-011-16 Seq#: 1

1 - Sale Area

1.2 - Boundaries

1.2.1 - Painted boundaries (1/14)

The sale boundary is marked and identified by blue and red paint. Exterior sale boundary lines against private property are marked with blue paint. Exterior sale boundary lines against state are marked with red paint. The painted boundary line trees are not Included Timber and are to be protected.

2 - Timber Specifications

2.1 - Included Timber

2.1.1 - Clearcut unit(s) with unmerchantable trees (6/14)

Within Payment Unit(s) #'s 1, 2 and 5, cut all trees that are two (2) inches or more at DBH, except within Payment Unit #2, leave all white oak.

2.1.3 - Cut tree marked unit(s) (12/08)

Within Payment Unit(s) #3, all trees are designated for cutting when marked with orange paint above and below stump height, regardless of merchantability.

2.1.7 - Leave tree marked unit(s) (6/14)

Within Payment Unit(s) #'s 4 and 6, cut all trees that are two (2) inches or more at DBH, except trees marked with green paint above and below stump height. In addition, within Payment Unit #4, leave all red pine and white pine unless marked with orange paint.

2.2 - Utilization

2.2.3 - Stump heights (4/07)

Stump heights within the Sale Area shall not exceed 12 inches for trees greater than 10 inches DBH and 4 inches for trees smaller than 10 inches DBH.

3 - Payments

3.3 - Pre-measured Sales

3.3.4 - Dividing payment units (7/14)

Payment Unit(s) may be divided at the request of the Purchaser and upon approval of the Unit Manager. Dividing Payment Units is a contract modification which requires a Timber Sale Contract Supplement.

4 - Transportation

4.1 - Construction

4.1.3 - Slash and earthen piles (8/04)

Piles or windrows of earth along roads and landings that have been widened or constructed shall be leveled. Slash from road maintenance or construction, including stumps, shall be dispersed throughout the sale.

4.1.6 - Road construction (1/09)

Construction of new roads or improvements of existing roads shall be done in such a way as to minimize the environmental and visual impacts. Merchantable trees shall be cut and utilized unless otherwise directed. Non-merchantable trees shall be severed and laid flat on the ground. Slash shall be scattered, and not left in windrows and kept a minimum of 10 feet back from the road edge. Stumps shall be set upright, not left on edge, and be moved at least 10 feet away from the road edge. Disturbed soil shall be feathered into the woods and not left in berms or windrows.

4.1.7 - Road closure (10/11)

All new roads built into the sale must be blocked to vehicle traffic upon completion of the sale. Some existing roads may also need to be closed. In general, this will require constructing a four (4') foot high berm of stumps and logs covered with earth.

Stumps and brush must be placed along the remainder of the trail. These roads must be rendered impassable to cars and trucks. All stumps from road building and landing construction must be reserved to block any newly constructed roads upon completion of the sale. These stumps must be scattered along the road system to prohibit vehicular movement. Contact the sale administrator for specific details of design and placement.

4.2 - Maintenance

4.2.1 - Hauling restriction (12/08)

Hauling may be restricted on forest roads by the Unit Manager or his/her representative. The restriction may occur during wet weather conditions.

4.2.3 - Road maintenance (8/13)

The following road maintenance is required: Within 60 days of completion of hauling, or if no hauling occurs for 60 days, the road must be maintained and graded. This includes cleaning of drainage areas, grading, crowning and filling with gravel, if necessary. Damages will be assessed if grading/repair does not occur.

4.2.5 - Two wheel drive condition (2/04)

All existing trail roads on and adjacent to the sale area must be passable by two-wheel drive traffic for the duration of the sale.

5 - Operations

5.2 - Conduct of Operations

5.2.1 - Slash

5.2.1.8 - Slash height (12/08)

No slash or tree tops may exceed 24 inches in height.

5.2.2 - Hazard Trees/Snags

5.2.2.1 - Den trees (2/04)

Obvious hollow and/or den trees shall be protected and left standing unless they are a safety hazard.

5.2.3 - Operating Restrictions

5.2.3.3 - Bark slippage restriction (3/09)

Within Payment Unit(s) #3, cutting and skidding are not permitted during the period of April 15 to July 15. This restriction is because of bark slippage.

5.2.3.4 - Oak wilt restriction (6/10)

Within Payment Unit(s) #4, unless changed by written agreement, cutting, skidding, and hauling are not permitted during the period of April 15 to July 15. This is necessary to reduce the spread of oak wilt. For more information, contact the Unit Manager or his/her representative.

5.2.3.11 - Coppice regeneration protection (4/10)

Timber harvesting in any Payment Unit must be completed before significant aspen sprouting occurs in that Payment Unit so as to minimize damage to the new regeneration. Any post harvest operations, such as chipping, must be completed before sprouting of regeneration occurs. If it is anticipated that chipping will be delayed, then tops shall be carried to one central location or left unchipped. The Unit Manager or his/her representative may cease such operations if sprouting occurs before the operation is complete.

5.2.4 - Dead and Down Creation

5.2.4.4 - Dead and down creation, grouse (8/13)

To encourage grouse and other wildlife, in Payment Unit(s) #'s 5 and 6, leave two (2), eight (8) inch diameter or larger log-length (8 foot minimum) piece on the ground for every one (1) acres. This can be an unmerchantable piece or a full tree. In addition, one (1) slash pile consisting of at least six (6) large tops should be left for every two (2) acres. These should be evenly scattered throughout the unit.

5.2.32 - Decking/landing restoration (9/13)

All decking and landing areas must have the surface area restored to a condition equal to or better than before. This is to

ensure the proper regeneration of the stand. Wood debris, chips and "cookies" from trimmings must be removed or scattered away from landing and loading areas and may not be windrowed on the edge.

5.2.38 - No decking against live trees (2/04)

Cut products may not be decked against unmarked or designated leave trees.

5.2.39 - ORV trail/route protection (12/12)

The West Higgins Lake ORV trail runs through Payment Unit #'s 1, 2 and 4, and is shown on the Timber Sale Map. Do not cut trees or damage posts with orange ORV markers. All stumps within 10 feet of the trail must be cut flush with the ground. Maintain a 20 foot wide slash, debris, and rut free zone daily using the ORV trail or route as the centerline. Do not run equipment down the ORV trail or route. Skidding across the trail or route may only occur in locations approved by the sale administrator.

5.2.41 - Snowmobile trail protection (9/11)

There is a snowmobile trail that runs along Hose Rd next to Payment Unit #'s 5 and 6, and is shown on the Timber Sale Map. Do not cut or damage posts with orange trail markers or traffic control signs. If the trail is used, it must be maintained and restored to a condition equal to or better than before the sale. If the trail is used for hauling, it must be graded to the satisfaction of the Unit Manager or his/her representative prior to December 1st. Maintain a 20 foot wide slash, debris, and rut free zone daily using the snowmobile trail as the centerline. No decking of forest products will be permitted along the snowmobile trail. All stumps within 10 feet of the snowmobile trail must be cut at ground level.

5.4 - Soil Protection

5.4.1 - Rutting restriction, general (7/16)

Operations are to cease immediately if equipment and weather conditions result in rutting of roads and/or skid trails which is 12 inches or greater in depth and 50 feet in length. The Unit Manager or his/her representative may restrict hauling and/or skidding if ruts exceed the specified depth. With the Unit Manager or his/her representative's approval, the Purchaser may return to the area when the risk of rutting has decreased.

5.4.3 - Erosion control (12/08)

Skid trails or haul roads may require erosion control structures or berms per direction of the Unit Manager or his/her representative.

6 - Safety and Fire Prevention

6.2 - Signing

6.2.3 - Recreational trail posting (2/10)

The Purchaser is responsible for posting and maintaining caution signs on all snowmobile and ORV trails prior to beginning operations. The trail must be posted at appropriate distances from the sale area to warn of logging activity and truck traffic at both ends of the trail. Signs must be removed when harvest operations are suspended or completed.



TIMBER SALE MAP

This information provided by authority of Part 525, 1994 PA 451, as amended.

Forest Management Unit Roscommon		County Roscommon	Mapped By Charlie VanKalker	Date 08/18/2016	Page 1	of 1
Township 24N	Range 04W	Section(s) and Subdivision(s) S.7-SWSE,NESE,E1/2SW1/4 S.8-SWSW,NWSE,SWSE		Scale 1:15,840		

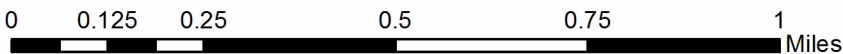
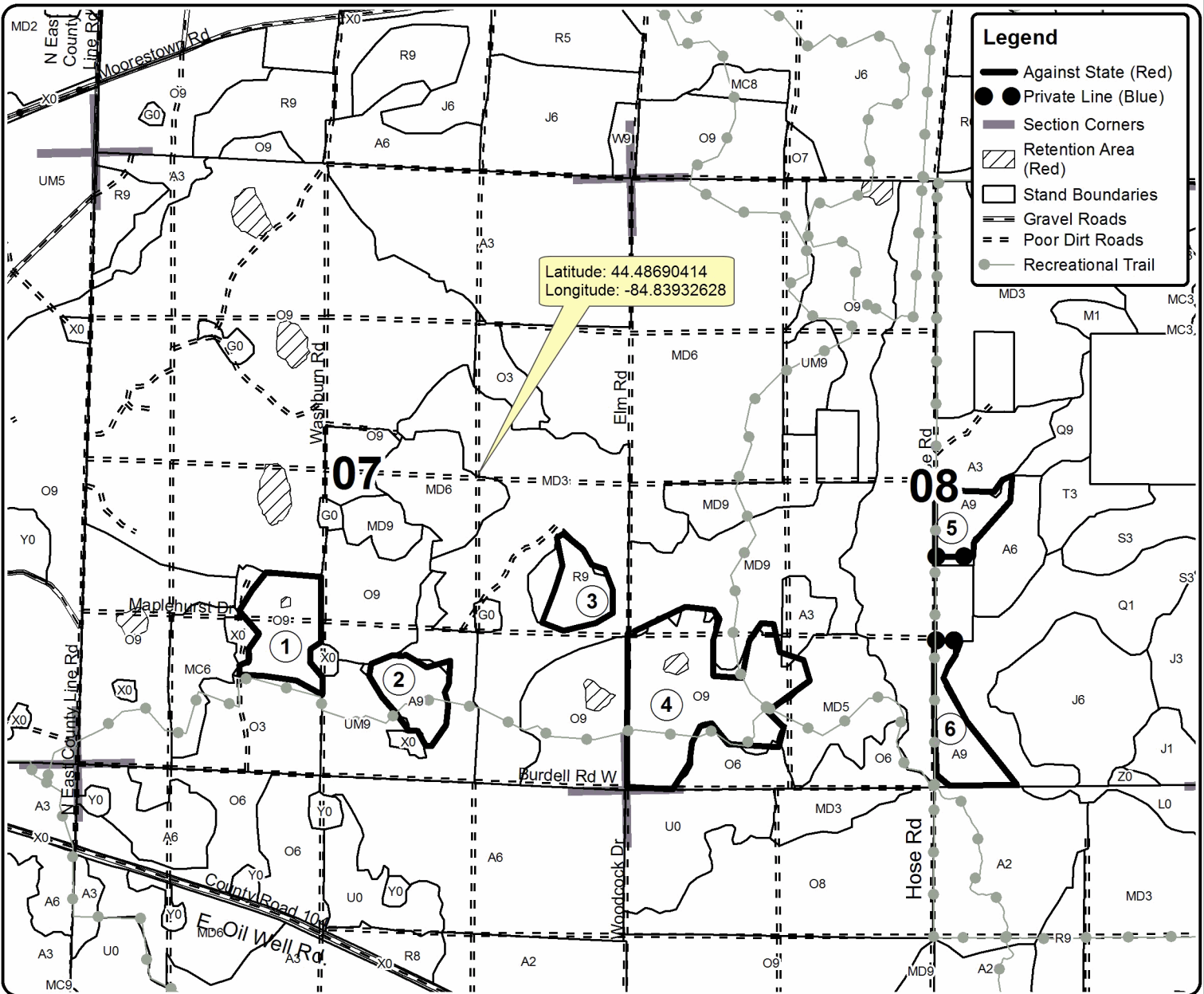
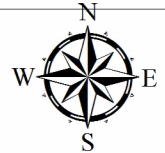
Cover Type				Density		
A = Aspen	H = Hemlock	N = Marsh	U = Upland Brush	0 = Non Stocked	5 = Pole Timber Medium	
B = Paper Birch	J = Jack Pine	O = Oak	UM = Upland Mixed	1 = Seedling Sapling Poor	6 = Pole Timber Well	
C = Cedar	L = Lowland Brush	P = Lowland Poplar	V = Bog or Marsh	2 = Seedling Sapling Medium	7 = Saw Timber Poor	
D = Treed Bog	LM = Lowland Mixed	Q = Mixed Swamp Conifer	W = White Pine	3 = Seedling Sapling Well	8 = Saw Timber Medium	
E = Swamp Hdwoods	M = Mpl, Bch, Brch	R = Red Pine	X = Non Stocked	4 = Pole Timber Poor	9 = Saw Timber Well	
F = Spruce Fir	MC = Mixed Conifer	S = Black Spruce	Z = Water			
G = Grass	MD = Mixed Deciduous	T = Tamarack				

PU	Acres	PU	Acres
1	12.8	4	33.4
2	8.0	5	6.1
3	6.3	6	8.1

Moorestown Mix

Compartment 22

74.7 Acres



TIMBER SALE INFORMATION

County Line Aspen (71-019-16)

Roscommon County (Advertised Price \$129,769.20)

A timber sale contract for this lump sum, sealed bid timber sale will be awarded to the responsible bidder offering the highest sealed bid price. Bids must be at or above the following advertised price for each species:

<u>PRODUCTS & SPECIES</u>	<u>ESTIMATED UNITS*</u>		<u>ADVERTISED PRICE</u>
Sawtimber			
Mixed Aspen	81.40	MBF	\$ 82.00 / MBF
Mixed Oak	20.30	MBF	\$ 117.00 / MBF
Red Maple	22.20	MBF	\$ 48.00 / MBF
Red Pine	47.70	MBF	\$ 144.00 / MBF
White Pine	17.20	MBF	\$ 91.00 / MBF
Pulpwood			
B. T. Aspen	986.00	Cords	\$ 38.40 / Cord
Balsam Fir	318.00	Cords	\$ 19.55 / Cord
Bl/R/Hybrid Oak	205.00	Cords	\$ 15.60 / Cord
Black Spruce	13.00	Cords	\$ 31.30 / Cord
Jack Pine	70.00	Cords	\$ 16.15 / Cord
Paper Birch	27.00	Cords	\$ 26.05 / Cord
Quaking Aspen	1,157.00	Cords	\$ 38.40 / Cord
Red Maple	545.00	Cords	\$ 20.00 / Cord
Red Pine	63.00	Cords	\$ 48.55 / Cord
White Pine	146.00	Cords	\$ 22.70 / Cord

* The total volume is statistically estimated within plus (+) or minus (-) 7.78 percent. The estimated units are final and not subject to adjustment. Prospective bidders are urged to examine this timber and to make their own estimates of quantity and quality.

BOND AND PAYMENT SCHEDULE:

1. A bond in the amount of \$6,488.00 to insure faithful performance of the conditions of the contract will be deposited by the successful bidder within 21 days of the sale award.
2. Cutting in any sale or unit without the required advance payment would be considered a trespass.
3. Total payment must be paid in advance or according to the following schedule:
 - (a) Ten percent (10%) of the sale value must be paid within 21 days of the sale award.
 - (b) The 10% down payment will be credited towards the first unit cut.
4. If no cutting takes place, the 10% down payment will not be refunded.
5. Operations on the contract issued will terminate on 03/31/2020.

Description of Timber by Payment Unit (PU)

PU	MARKET GROUP	PRODUCT	QUANTITY	UNIT	ACRES	ADVERTISE PRICE	
1	Mixed Aspen	Sawtimber	0.8	MBF	17.2	\$8,488.90	
	<i>B. T. Aspen</i>		0.8	<i>MBF</i>			
	Mixed Oak		0.4	MBF			
	<i>Northern Pin Oak</i>		0.4	<i>MBF</i>			
	Red Pine		1.6	MBF			
	White Pine		4.4	MBF			
	B. T. Aspen		Pulpwood	118.0			Cords
	Balsam Fir			76.0			Cords
	<i>Balsam Fir</i>			45.0			<i>Cords</i>
	<i>Northern Pin Oak</i>			31.0			<i>Cords</i>
	Black Spruce			11.0			Cords
	Red Maple			30.0			Cords
	Red Pine			4.0			Cords
	White Pine	26.0	Cords				
2	Mixed Aspen	Sawtimber	3.9	MBF	23.1	\$13,197.10	
	<i>B. T. Aspen</i>		3.4	<i>MBF</i>			
	<i>Quaking Aspen</i>		0.5	<i>MBF</i>			
	Mixed Oak		5.4	MBF			
	<i>BI/R/Hybrid Oak</i>		5.4	<i>MBF</i>			
	Red Pine		2.7	MBF			
	White Pine		1.2	MBF			
	B. T. Aspen		Pulpwood	131.0			Cords
	Balsam Fir			3.0			Cords
	<i>Balsam Fir</i>			3.0			<i>Cords</i>
	BI/R/Hybrid Oak			78.0			Cords
	Jack Pine			2.0			Cords
	Quaking Aspen			107.0			Cords
	Red Maple	37.0		Cords			
Red Pine	5.0	Cords					
White Pine	14.0	Cords					
3	Mixed Aspen	Sawtimber	2.7	MBF	16.8	\$9,584.65	
	<i>B. T. Aspen</i>		2.4	<i>MBF</i>			
	<i>Quaking Aspen</i>		0.3	<i>MBF</i>			
	Mixed Oak		3.9	MBF			
	<i>BI/R/Hybrid Oak</i>		3.9	<i>MBF</i>			
	Red Pine		2.0	MBF			
	White Pine		0.8	MBF			
	B. T. Aspen		Pulpwood	95.0			Cords
	Balsam Fir			3.0			Cords
	<i>Balsam Fir</i>			3.0			<i>Cords</i>
	BI/R/Hybrid Oak			57.0			Cords
	Jack Pine			2.0			Cords
	Quaking Aspen			77.0			Cords
	Red Maple	27.0		Cords			
Red Pine	4.0	Cords					
White Pine	10.0	Cords					
4	Mixed Aspen	Sawtimber	3.7	MBF	25.7	\$15,320.10	
	<i>B. T. Aspen</i>		3.7	<i>MBF</i>			
	Mixed Oak		4.2	MBF			
	<i>BI/R/Hybrid Oak</i>		3.9	<i>MBF</i>			
	<i>White Oak</i>		0.3	<i>MBF</i>			
	Red Maple		7.3	MBF			
	Red Pine		20.9	MBF			
	White Pine		1.9	MBF			
	B. T. Aspen	Pulpwood	20.0	Cords			
Balsam Fir	61.0		Cords				

Description of Timber by Payment Unit (PU), con't

PU	MARKET GROUP	PRODUCT	QUANTITY	UNIT	ACRES	ADVERTISE PRICE	
4 con't	<i>Balsam Fir</i>	<i>Pulpwood</i>	58.0	<i>Cords</i>			
	<i>White Oak</i>		3.0	<i>Cords</i>			
	BI/R/Hybrid Oak		23.0	Cords			
	Paper Birch		4.0	Cords			
	Quaking Aspen		100.0	Cords			
	Red Maple		161.0	Cords			
	Red Pine		25.0	Cords			
	White Pine		13.0	Cords			
5	Mixed Aspen	Sawtimber	3.5	MBF	23.9	\$14,243.55	
	<i>B. T. Aspen</i>		3.5	<i>MBF</i>			
	Mixed Oak		3.9	MBF			
	<i>BI/R/Hybrid Oak</i>		3.7	<i>MBF</i>			
	<i>White Oak</i>		0.2	<i>MBF</i>			
	Red Maple		6.8	MBF			
	Red Pine		19.4	MBF			
	White Pine		1.8	MBF			
	B. T. Aspen		Pulpwood	19.0			Cords
	Balsam Fir			56.0			Cords
	<i>Balsam Fir</i>			54.0			<i>Cords</i>
	<i>White Oak</i>			2.0			<i>Cords</i>
	BI/R/Hybrid Oak			21.0			Cords
	Paper Birch			4.0			Cords
	Quaking Aspen			93.0			Cords
	Red Maple			150.0			Cords
	Red Pine			23.0			Cords
	White Pine			12.0			Cords
6	Mixed Oak	Sawtimber	2.5	MBF	8.2	\$3,322.55	
	<i>BI/R/Hybrid Oak</i>		2.5	<i>MBF</i>			
	Red Maple		0.5	MBF			
	Red Pine		1.1	MBF			
	White Pine		3.9	MBF			
	<i>BI/R/Hybrid Oak</i>		Pulpwood	21.0			Cords
	Jack Pine			66.0			Cords
	Red Maple			6.0			Cords
	Red Pine			1.0			Cords
	White Pine			41.0			Cords
7	Red Maple	Sawtimber	0.4	MBF	19.7	\$8,660.05	
	White Pine		2.7	MBF			
	Balsam Fir	Pulpwood	1.0	Cords			
	<i>Balsam Fir</i>		1.0	<i>Cords</i>			
	Quaking Aspen		199.0	Cords			
	Red Maple		14.0	Cords			
	White Pine		20.0	Cords			
8	Mixed Aspen	Sawtimber	3.6	MBF	12.8	\$6,102.70	
	<i>B. T. Aspen</i>		2.6	<i>MBF</i>			
	<i>Quaking Aspen</i>		1.0	<i>MBF</i>			
	White Pine		0.1	MBF			
	B. T. Aspen		Pulpwood	37.0			Cords
	Balsam Fir			8.0			Cords
	<i>Balsam Fir</i>			6.0			<i>Cords</i>
	<i>Northern Pin Oak</i>			2.0			<i>Cords</i>
	Black Spruce			1.0			Cords
	Quaking Aspen			108.0			Cords
	Red Maple			1.0			Cords
	White Pine			1.0			Cords
9	Mixed Aspen	Sawtimber	8.8	MBF	31.7	\$15,027.35	

Description of Timber by Payment Unit (PU), con't

PU	MARKET GROUP	PRODUCT	QUANTITY	UNIT	ACRES	ADVERTISE PRICE
9 con't	<i>B. T. Aspen</i>	<i>Sawtimber</i>	6.3	<i>MBF</i>		
	<i>Quaking Aspen</i>		2.5	<i>MBF</i>		
	White Pine		0.4	MBF		
	B. T. Aspen	Pulpwood	90.0	Cords		
	Balsam Fir		20.0	Cords		
	<i>Balsam Fir</i>		15.0	<i>Cords</i>		
	<i>Northern Pin Oak</i>		5.0	<i>Cords</i>		
	Black Spruce		1.0	Cords		
	Quaking Aspen		266.0	Cords		
	Red Maple		3.0	Cords		
	Red Pine		1.0	Cords		
	White Pine		3.0	Cords		
10	Mixed Aspen	Sawtimber	54.4	MBF	32.0	\$35,822.25
	<i>B. T. Aspen</i>		54.4	<i>MBF</i>		
	Red Maple		7.2	MBF		
	B. T. Aspen	Pulpwood	476.0	Cords		
	Balsam Fir		90.0	Cords		
	<i>Balsam Fir</i>	<i>Sawtimber</i>	3.6	<i>MBF</i>		
	<i>Balsam Fir</i>	<i>Pulpwood</i>	81.0	<i>Cords</i>		
	<i>Northern Pin Oak</i>		2.0	<i>Cords</i>		
	BI/R/Hybrid Oak		5.0	Cords		
	Paper Birch		19.0	Cords		
	Quaking Aspen		207.0	Cords		
	Red Maple		116.0	Cords		
	White Pine		6.0	Cords		
	TOTAL:			188.8		
TOTAL:			3,530.0	Cords		

Sale Specific Conditions & Requirements

Sale Name: County Line Aspen

Sale Number: 71-019-16 Seq#: 1

1 - Sale Area

1.2 - Boundaries

1.2.1 - Painted boundaries (1/14)

The sale boundary and Payment Unit boundaries are marked and identified by blue, red and yellow paint. Exterior sale boundary lines against private property are marked with blue paint. Exterior sale boundary lines against state are marked with red paint. Interior Payment Unit boundaries are marked with yellow paint. The painted boundary line trees are not Included Timber and are to be protected unless marked with orange paint. Yellow painted trees designating an interior Payment Unit boundary are only to be cut when all surrounding Payment Units have been paid.

2 - Timber Specifications

2.1 - Included Timber

2.1.1 - Clearcut unit(s) with unmerchantable trees (6/14)

Within Payment Unit(s) 1 - 10, cut all trees that are two (2) inches or more at DBH, with the following exceptions:

Within all Payment Units, do not cut any trees marked with green paint or cedar trees.

Within Payment Unit(s) 1 - 3, do not cut any white oak.

Within Payment Unit(s) 7, do not cut any oak trees.

2.2 - Utilization

2.2.3 - Stump heights (4/07)

Stump heights within the Sale Area shall not exceed 6 inches for all trees. A written waiver of this requirement may be obtained if wet summer weather makes winter logging necessary.

2.2.10 - No chipping tops and limbs (8/16)

Within Payment Unit(s) 6, chipping of jack pine limbs or tops is not permitted. Limbs and the remaining top must be left on site and scattered.

3 - Payments

3.3 - Pre-measured Sales

3.3.4 - Dividing payment units (7/14)

Payment Unit(s) may be divided at the request of the Purchaser and upon approval of the Unit Manager. Dividing Payment Units is a contract modification which requires a Timber Sale Contract Supplement. There will be only one division per Payment Unit.

3.4 - Damaged Timber

3.4.1 - Damaged timber (6/14)

General Condition and Requirement 3.4 Damaged Timber, defines liquidated damages for undesignated live merchantable trees which are cut or injured.

No damage is acceptable to merchantable trees. Within all Payment Units, if more than 5% of trees (> 4.5" DBH) within a specified area of the sale are damaged, liquidated damages will be assessed for all trees damaged. Rates will be in accordance with General Condition and Requirement 3.4 Damaged Timber.

4 - Transportation

4.1 - Construction

4.1.3 - Slash and earthen piles (8/04)

Piles or windrows of earth along roads and landings that have been widened or constructed shall be leveled. Slash from road maintenance or construction, including stumps, shall be chipped, utilized or dispersed throughout the sale.

4.1.12 - No new roads (1/12)

No new roads will be permitted in any Payment Unit. All operations are limited to existing roads. Skid trails only will be allowed.

4.2 - Maintenance

4.2.2 - Fill material (4/07)

To maintain roads, fill material may be needed in areas where "holes" exist or may be expected to develop. This fill material should be placed before trucking begins.

4.2.3 - Road maintenance (8/13)

The following road maintenance is required: Within 60 days of completion of hauling, or if no hauling occurs for 60 days, the road must be maintained and graded. This includes cleaning of drainage areas, grading, crowning and filling with gravel, if necessary. Damages will be assessed if grading/repair does not occur.

5 - Operations

5.1 - Notification

5.1.1 - Pre-sale conference (10/16)

A pre-sale conference on site between the Purchaser and sale administrator is required prior to beginning any operations to determine landing and road locations.

5.1.4 - Post-sale conference (6/11)

A post-sale conference on site between the Purchaser and sale administrator is required 5 days prior to the completion of active logging operations to determine clean-up and repair of landings, road edges, and the fulfillment of other contract specifications.

5.2 - Conduct of Operations

5.2.1 - Slash

5.2.1.8 - Slash height (12/08)

No slash or tree tops may exceed 24 inches in height.

5.2.2 - Hazard Trees/Snags

5.2.2.1 - Den trees (2/04)

Obvious hollow and/or den trees shall be protected and left standing unless they are a safety hazard.

5.2.3 - Operating Restrictions

5.2.3.11 - Coppice regeneration protection (4/10)

Timber harvesting in any Payment Unit must be completed before significant aspen sprouting occurs in that Payment Unit so as to minimize damage to the new regeneration. Any post harvest operations, such as chipping, must be completed before sprouting of regeneration occurs. If it is anticipated that chipping will be delayed, then tops shall be carried to one central location or left unchipped. The Unit Manager or his/her representative may cease such operations if sprouting occurs before the operation is complete.

5.2.4 - Dead and Down Creation

5.2.4.2 - Dead and down creation, hare and grouse (1/14)

To improve habitat for snowshoe hare, grouse, and other species, the Purchaser is to leave one brush pile on the ground for every two acres within Payment Units 1, 2, 3, 8, and 9. They should be scattered throughout the sale and positioned along the sales outer perimeter bounding a lowland timber/brush type. If possible, two or more pieces of log or tree with a minimum length of 5 feet and 6 inches in diameter should be felled so they overlap. They can be of any tree species and can be an un-merchantable pieces of wood, a full tree, or any combination of each. These pieces need to be covered with smaller limbs/brush, creating a "pile."

5.2.17 - Crane Mats/Timber Mats (10/14)

Some roads or skid trails may require extra protection such as that afforded by Crane Mats/Timber Mats. Approximately 30 feet of Crane Mats /Timber Mats or something similar must be used on the skid trail accessing Payment Unit 1. If available, Crane Mats/Timber Mats may be borrowed from the DNR and are located at the Marquette ICC and the Grayling Field Office. Contact the sale administrator for specific details. A Timber Sale Contract Supplement will be used to document the Purchaser's use of the DNR's Crane Mats/Timber Mats. It is the responsibility of the Purchaser to contact the sale administrator to schedule pick up and drop off. In addition, all mats must be cleaned prior to drop off. A charge of \$350.00 will be assessed for all damaged or non-returned mats. Damage is defined as misuse resulting in three or more broken cants.

5.2.32 - Decking/landing restoration (9/13)

All decking and landing areas must have the surface area restored to a condition equal to or better than before. This is to ensure the proper regeneration of the stand. Wood debris, chips and "cookies" from trimmings must be removed or scattered away from landing and loading areas and may not be windrowed on the edge.

5.2.38 - No decking against live trees (2/04)

Cut products may not be decked against unmarked or designated leave trees.

5.2.43 - Opening protection (12/08)

No activities are permitted in openings marked on the Timber Sale Map with the letter "G". Any damage to the openings shall be repaired according to specifications of the Unit Manager or his/her representative.

5.4 - Soil Protection

5.4.1 - Rutting restriction, general (7/16)

Operations are to cease immediately if equipment and weather conditions result in rutting of roads and/or skid trails which is 12 inches or greater in depth and 50 feet in length. The Unit Manager or his/her representative may restrict hauling and/or skidding if ruts exceed the specified depth. With the Unit Manager or his/her representative's approval, the Purchaser may return to the area when the risk of rutting has decreased.

5.4.6 - Wet area protection (5/10)

No harvesting operations, including skidding and felling, are to take place within vernal pond areas. Vernal ponds are either painted out of the sale with red paint or have all trees within the vernal area painted with green "leave" paint. When harvesting occurs, there should be no disturbance to the vernal pond depression. All equipment, trees and tops should be kept out of this area. Within 100 feet of the pond, equipment should only be used when the soil is in a dry or frozen condition. Care must be taken by the Purchaser to identify and avoid operating in these areas of the timber sale.

6 - Safety and Fire Prevention

6.2 - Signing

6.2.3 - Recreational trail posting (2/10)

The Purchaser is responsible for posting and maintaining caution signs on the ORV Trail just south of Grass Lake Road prior to beginning operations. The trail must be posted 200 feet from the where the haul road accessing Payment Units 8 & 9 crosses the trail to warn of logging activity and truck traffic at both ends of the trail. Signs must be removed when harvest operations are suspended or completed.



TIMBER SALE MAP

This information provided by authority of Part 525, 1994 PA 451, as amended.

Sale Number	Year
71-019	16

Forest Management Unit	County	Mapped By	Bates	Date	Page	of
Your Management Unit	County Name	Cruised By	Bates	9/30/2016	1	2

Township	Range	Section(s) and Subdivision(s)	Scale
21N	04W	34 - NW1/4; N1/2SW; SESW 35 - SW1/4	1:15,840

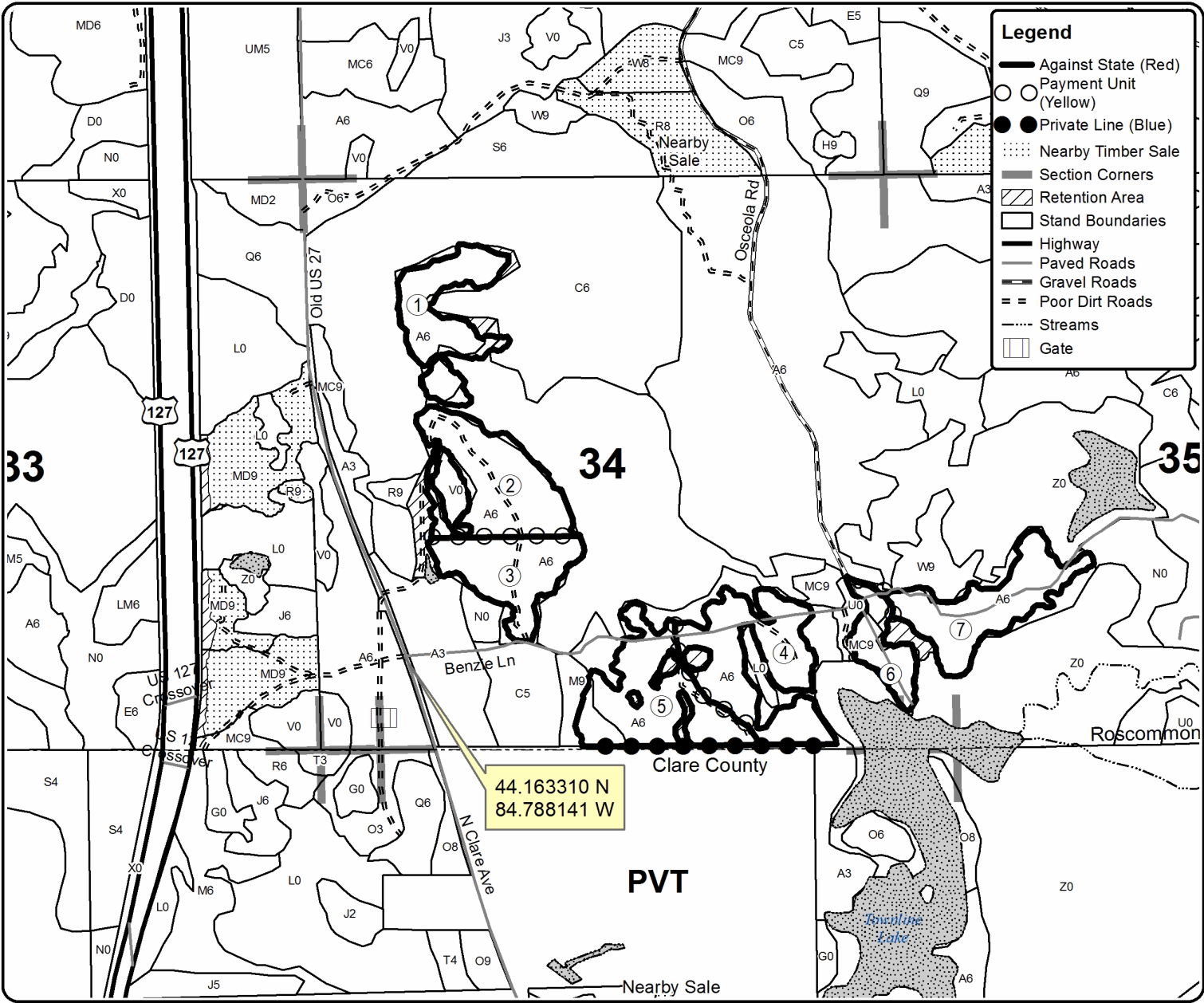
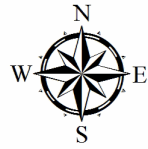
Cover Type				Density			
A = Aspen	H = Hemlock	N = Marsh	U = Upland Brush	0 = Non Stocked	5 = Pole Timber Medium		
B = Paper Birch	J = Jack Pine	O = Oak	UM = Upland Mixed	1 = Seedling Sapling Poor	6 = Pole Timber Well		
C = Cedar	L = Lowland Brush	P = Lowland Poplar	V = Bog or Marsh	2 = Seedling Sapling Medium	7 = Saw Timber Poor		
D = Tread Bog	LM = Lowland Mixed	Q = Mixed Swamp Conifer	W = White Pine	3 = Seedling Sapling Well	8 = Saw Timber Medium		
E = Swamp Hdwoods	M = Mpl, Bch, Brch	R = Red Pine	X = Non Stocked	4 = Pole Timber Poor	9 = Saw Timber Well		
F = Spruce Fir	MC = Mixed Conifer	S = Black Spruce	Z = Water				
G = Grass	MD = Mixed Deciduous	T = Tamarack					

PU	Acres	PU	Acres
1	17.2	5	23.9
2	23.1	6	8.2
3	16.8	7	19.7
4	25.7		

County Line Aspen

Compartment 157

211.1 Acres





TIMBER SALE MAP

This information provided by authority of Part 525, 1994 PA 451, as amended.

Sale Number	Year
71-019	16

Forest Management Unit		County	Mapped By	Bates	Date	Page	of
Roscommon		Roscommon	Cruised By	Bates	9/30/2016	2	2
Township	Range	Section(s) and Subdivision(s)			Scale		
21N	04W	36 - SWNE; SENW; NWSE; SW1/4			1:15,840		

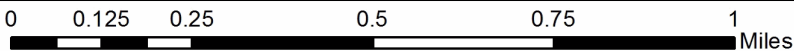
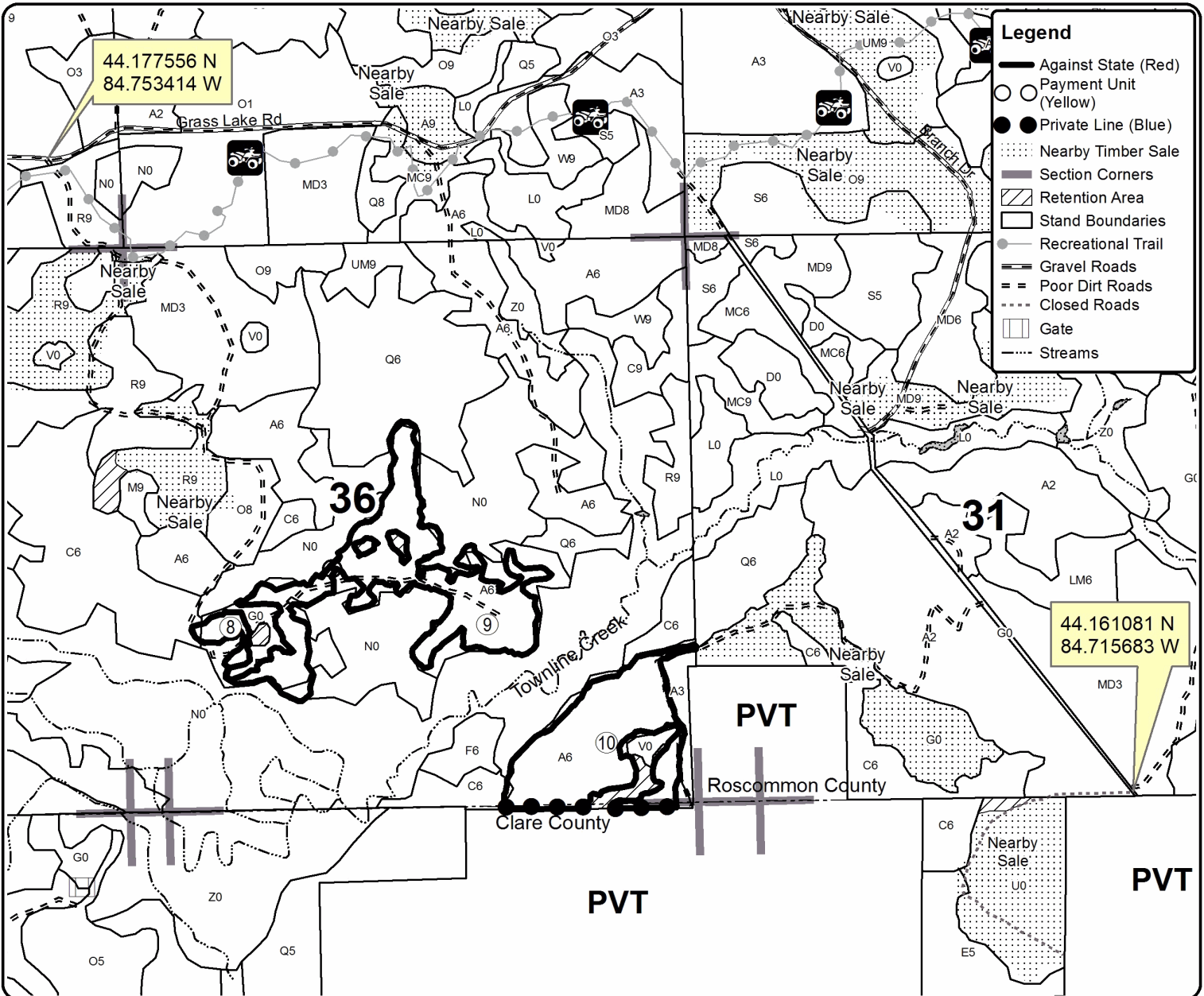
Cover Type				Density			
A = Aspen	H = Hemlock	N = Marsh	U = Upland Brush	0 = Non Stocked	5 = Pole Timber Medium		
B = Paper Birch	J = Jack Pine	O = Oak	UM = Upland Mixed	1 = Seedling Sapling Poor	6 = Pole Timber Well		
C = Cedar	L = Lowland Brush	P = Lowland Poplar	V = Bog or Marsh	2 = Seedling Sapling Medium	7 = Saw Timber Poor		
D = Tread Bog	LM = Lowland Mixed	Q = Mixed Swamp Conifer	W = White Pine	3 = Seedling Sapling Well	8 = Saw Timber Medium		
E = Swamp Hdwoods	M = Mpl, Bch, Brch	R = Red Pine	X = Non Stocked	4 = Pole Timber Poor	9 = Saw Timber Well		
F = Spruce Fir	MC = Mixed Conifer	S = Black Spruce	Z = Water				
G = Grass	MD = Mixed Deciduous	T = Tamarack					

PU	Acres	PU	Acres
8	12.8		
9	31.7		
10	32.0		

County Line Aspen

Compartment 157

211.1 Acres



TIMBER SALE INFORMATION

Kenny's Haze (71-026-16)

Roscommon County (Advertised Price \$11,361.65)

SALE NOTE: This is a scaled sale. Volumes may widely vary, as the sale was lightly cruised. It is on very poorly drained soils that hold water most times of the year. A winter harvest is required to get soils frozen. All harvesting equipment is required to be tracked. Wheeled machines with "track" add-ons will be allowed. The only access route is down a seasonal county road that is also a snowmobile trail during the winter months. Some snow will be required to be left on the road for a base.

A recreation site such as a trail, pathway, or campground is within the sale area or the vicinity. Certain restrictions/specifications may be applicable including time restrictions.

A timber sale contract for this lump sum, sealed bid timber sale will be awarded to the responsible bidder offering the highest sealed bid price. Bids must be at or above the following advertised price for each species:

<u>PRODUCTS & SPECIES</u>	<u>ESTIMATED UNITS*</u>	<u>ADVERTISED PRICE</u>
Sawtimber		
Red Maple	41.80 MBF	\$ 32.00 / MBF
Pulpwood		
Balsam Fir	24.00 Cords	\$ 13.05 / Cord
Black Spruce	74.00 Cords	\$ 20.85 / Cord
Paper Birch	84.00 Cords	\$ 17.35 / Cord
Quaking Aspen	174.00 Cords	\$ 25.60 / Cord
Red Maple	169.00 Cords	\$ 13.35 / Cord

* The total volume is statistically estimated within plus (+) or minus (-) 56.80 percent. The estimated units are final and not subject to adjustment. Prospective bidders are urged to examine this timber and to make their own estimates of quantity and quality.

BOND AND PAYMENT SCHEDULE:

1. A bond in the amount of \$568.00 to insure faithful performance of the conditions of the contract will be deposited by the successful bidder within 21 days of the sale award.
2. Cutting in any sale or unit without the required advance payment would be considered a trespass.
3. Total payment must be paid in advance or according to the following schedule:
 - (a) Ten percent (10%) of the sale value must be paid within 21 days of the sale award.
 - (b) The remainder is due before cutting begins.
4. If no cutting takes place, the 10% down payment will not be refunded.
5. Operations on the contract issued will terminate on 03/31/2020.

Description of Timber by Payment Unit (PU)

PU	MARKET GROUP	PRODUCT	QUANTITY	UNIT	ACRES	ADVERTISE PRICE
1	Red Maple	Sawtimber	41.8	MBF	80.9	\$11,361.65
	Balsam Fir	Pulpwood	24.0	Cords		
	Black Spruce		74.0	Cords		
	Paper Birch		84.0	Cords		
	Quaking Aspen		174.0	Cords		
	Red Maple		169.0	Cords		
	TOTAL:			41.8		
TOTAL:			525.0	Cords		

Sale Specific Conditions & Requirements

Sale Name: Kenny's Haze

Sale Number: 71-026-16 Seq#: 2

1 - Sale Area

1.2 - Boundaries

1.2.1 - Painted boundaries (1/14)

The sale boundary is marked and identified by red paint. Exterior sale boundary lines against state are marked with red paint. The painted boundary line trees are not Included Timber and are to be protected.

2 - Timber Specifications

2.1 - Included Timber

2.1.2 - Clearcut unit(s) w/o unmerchantable trees (8/11)

Within Payment Unit(s) 1, cut all trees which meet minimum piece specifications in 2.2 Utilization except cedar.

2.2 - Utilization

2.2.10 - No chipping tops and limbs (8/16)

Within Payment Unit(s) 1, chipping of limbs or tops is not permitted. Limbs and the remaining top must be left on site and scattered.

3 - Payments

3.2 - Scaled Sales

3.2.1 - Scale location (2/04)

Forest products will be placed for measurement at a location determined by the Sale Administrator at the pre-sale meeting.

3.4 - Damaged Timber

3.4.1 - Damaged timber (6/14)

General Condition and Requirement 3.4 Damaged Timber, defines liquidated damages for undesignated live merchantable trees which are cut or injured. In addition, extreme care should be taken to avoid damage to tree seedlings and saplings.

Within the sale area, if more than 35% of the tree seedlings or saplings (1/4" to 4.5" DBH) within a specified portion of the sale area are damaged, liquidated damages will be assessed at \$300 per acre for all acreage within that specified portion of the sale area that was damaged.

4 - Transportation

4.1 - Construction

4.1.12 - No new roads (1/12)

No new roads will be permitted. All operations are limited to existing roads. Skid trails only will be allowed.

5 - Operations

5.1 - Notification

5.1.1 - Pre-sale conference (10/16)

A pre-sale conference on site between the Purchaser and sale administrator is required prior to beginning any operations to determine landing/scaling location(s).

5.2 - Conduct of Operations

5.2.1 - Slash

5.2.1.8 - Slash height (12/08)

No slash may exceed 24 inches in height.

5.2.2 - Hazard Trees/Snags

5.2.2.1 - Den trees (10/16)

Obvious hollow and/or den trees shall be protected and left standing unless they are a safety hazard.

5.2.3 - Operating Restrictions

5.2.3.1 - Operating restrictions (9/11)

Within Payment Unit(s) 1, cutting and skidding are limited to the months of December 1 through March 31. This restriction is because of rutting potential.

5.2.4 - Dead and Down Creation

5.2.4.2 - Dead and down creation, hare and grouse (1/14)

To improve habitat for snowshoe hare, grouse, and other species, the Purchaser is to leave 1 brush pile on the ground for every five acres. The brush pile needs to be constructed of at least two pieces of wood 6 inches in diameter or greater by at least five feet in length placed on the ground so as to overlap. Then limbs/tops are to be placed on tops of this to a height of at least five feet. Materials can be an un-merchantable piece of wood or a full tree.

5.2.18 - Equipment requirements (1/09)

All harvesting equipment must be tracked to lessen the ground pressure placed on the wet soils by the equipment. Wheeled machines with "track" add-ons will be allowed.

5.2.32 - Decking/landing restoration (9/13)

All decking and landing areas must have the surface area restored to a condition equal to or better than before. This is to ensure the proper regeneration of the stand. Slash needs to be spread evenly over the landing location to deter vehicle traffic upon sale completion.

5.2.41 - Snowmobile trail protection (9/11)

Higgins Lake Road is used as a snowmobile trail in the winter months and is shown on the Timber Sale Map. Do not cut or damage posts with orange trail markers or traffic control signs. The county road is the only access into the sale and when used during the snowmobile season, a snow covered base must be left on the trail. Maintain a 20 foot wide slash, debris, and rut free zone daily using the snowmobile trail as the centerline. No decking of forest products will be permitted along the snowmobile trail.

5.4 - Soil Protection

5.4.1 - Rutting restriction, general (7/16)

Operations are to cease immediately if equipment and weather conditions result in rutting of roads and/or skid trails which is 12 inches or greater in depth and 50 feet in length. The Unit Manager or his/her representative may restrict hauling and/or skidding if ruts exceed the specified depth. With the Unit Manager or his/her representative's approval, the Purchaser may return to the area when the risk of rutting has decreased.

5.4.5 - Soil caution (11/04)

Care must be taken to minimize soil damage due to the organic/poorly drained soils.

6 - Safety and Fire Prevention

6.2 - Signing

6.2.2 - Snowmobile trail posting (8/09)

The Purchaser is responsible for posting and maintaining caution signs on the snowmobile trail prior to beginning operations during the snowmobile season (approximately December 1 to March 31). The trail must be posted at appropriate distances from the sale area to warn of logging activity and truck traffic. Signs must be removed when harvest operations are suspended or completed. The Purchaser will provide these signs.

7 - Other Conditions

7.2 - Extensions

7.2.5 - Weather related extension (1/13)

If weather conditions during the operating period of this contract prevent harvesting, this sale may qualify for a weather related extension. If approved, the normal extension fee would be waived. To qualify, there must be a documented attempt

each year to harvest in the difficult portion of the sale.



TIMBER SALE MAP

This information provided by authority of Part 525, 1994 PA 451, as amended.

Sale Number	Year
71-026	16

Forest Management Unit Roscommon	County Roscommon	Mapped By Fanelli/Bates	Date 10/06/2016	Page 1	of 1
Township 24N	Range 04W	Section(s) and Subdivision(s) 33 - S1/2NW; SW1/4; NWSE, SWNE	Scale 1:15,840		

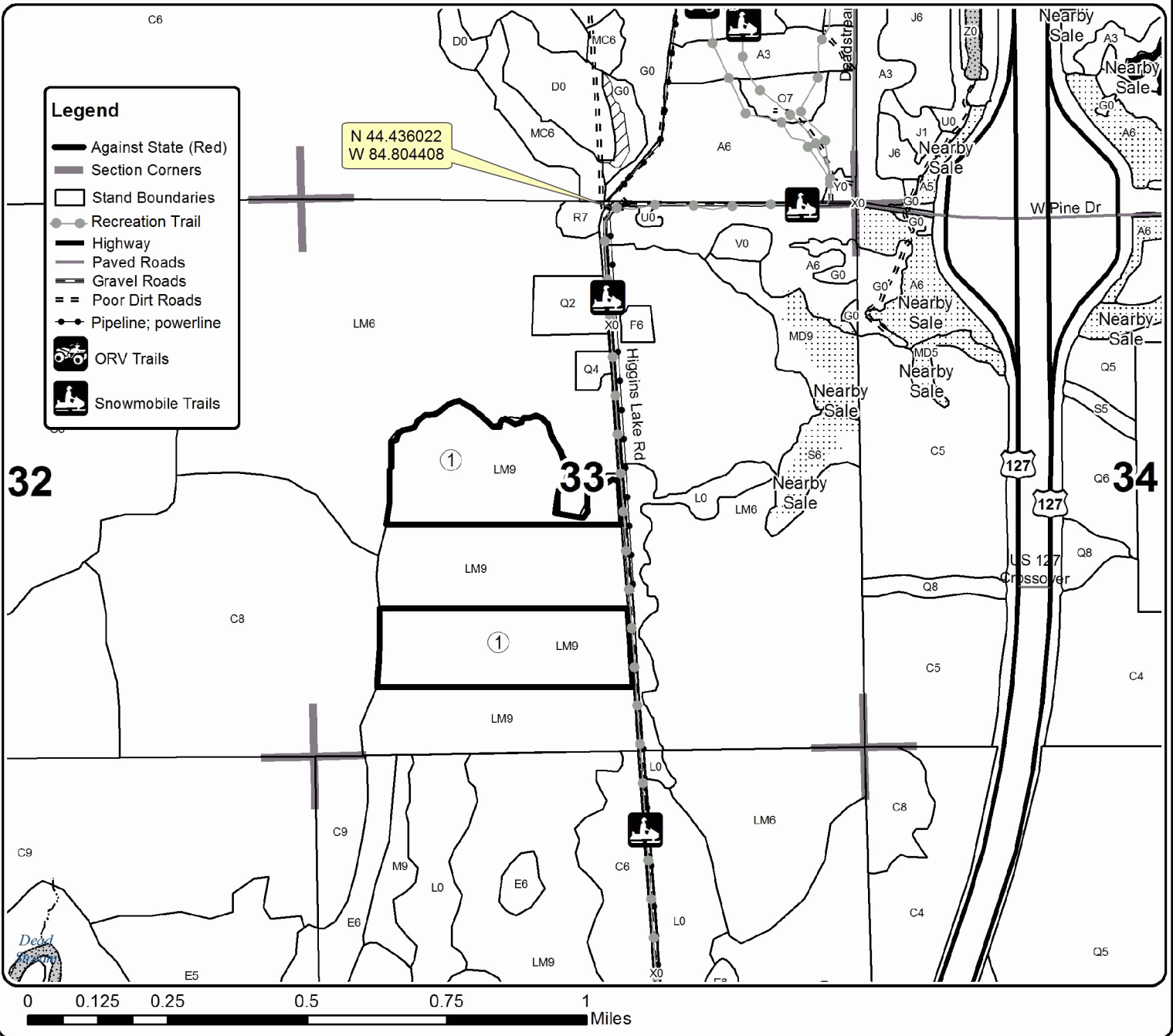
Cover Type				Density			
A = Aspen	H = Hemlock	N = Marsh	U = Upland Brush	0 = Non Stocked	5 = Pole Timber Medium		
B = Paper Birch	J = Jack Pine	O = Oak	UM = Upland Mixed	1 = Seedling Sapling Poor	6 = Pole Timber Well		
C = Cedar	L = Lowland Brush	P = Lowland Poplar	V = Bog or Marsh	2 = Seedling Sapling Medium	7 = Saw Timber Poor		
D = Treed Bog	LM = Lowland Mixed	Q = Mixed Swamp Conifer	W = White Pine	3 = Seedling Sapling Well	8 = Saw Timber Medium		
E = Swamp Hdwoods	M = Mpl, Bch, Brch	R = Red Pine	X = Non Stocked	4 = Pole Timber Poor	9 = Saw Timber Well		
F = Spruce Fir	MC = Mixed Conifer	S = Black Spruce	Z = Water				
G = Grass	MD = Mixed Deciduous	T = Tamarack					

PU Acres
1 80.9

Kenny's Haze

Compartment 27

80.9 Acres



Moorestown Mix (71-011-16)
 ; Roscommon COUNTY

In response to the notice of sale to be held 11:00 a.m. (local time) on March 15, 2017, I am hereby submitting my sealed bid (firm offer) for the following forest products to be cut. Bids for individual species must be at or above the advertised price. All non-responsive bid forms may be rejected.

<u>PRODUCTS & SPECIES</u>	<u>ESTIMATED VOLUME*</u>	<u>ADVERTISED PRICE</u>	<u>BID PRICE</u>
Sawtimber			
Bl/R/Hybrid Oak	109.20 MBF	\$ 117.00/MBF	\$ _____
Mixed Aspen	19.00 MBF	\$ 76.00/MBF	\$ _____
Red Maple	18.30 MBF	\$ 48.00/MBF	\$ _____
Red Oak	77.30 MBF	\$ 189.00/MBF	\$ _____
Red Pine	32.00 MBF	\$ 144.00/MBF	\$ _____
White Oak	56.80 MBF	\$ 63.00/MBF	\$ _____
White Pine	29.00 MBF	\$ 91.00/MBF	\$ _____
Pulpwood			
Jack Pine	2.00 Cords	\$ 16.15/Cord	\$ _____
Mixed Aspen	301.00 Cords	\$ 38.40/Cord	\$ _____
Mixed Oak	444.00 Cords	\$ 15.60/Cord	\$ _____
Red Maple	221.00 Cords	\$ 20.00/Cord	\$ _____
Red Pine	73.00 Cords	\$ 48.55/Cord	\$ _____
White Pine	68.00 Cords	\$ 22.70/Cord	\$ _____

*The volumes are statistically estimated within plus (+) or minus (-) 9.29 percent. These estimated volumes are final and not subject to adjustment. Prospective bidders are urged to examine this timber and to make their own estimates of quantity and quality.

I understand that any or all bids may be rejected. All bids must be signed and all bid items must be bid or the bid form may be rejected. I also understand that consideration and awarding a contract will be based upon my past performance and ability to complete the contract based upon equipment and staffing subject to my control.

FEDERAL ID: _____ or SOCIAL SECURITY NUMBER: _____
 Company or individual bidding: _____
 Company representative's name: _____
 Address: _____
 City: _____ State: _____ Zip: _____

IF AVAILABLE, PLEASE PLACE THE PERSONALIZED LABEL FROM YOUR PROSPECTUS IN THE ABOVE BOX.

Individual or company representative's signature: _____ Date: _____

Phone number : _____ Email (optional): _____

THE WINNING BIDDER MUST COMPLETE THE VERIFICATION OF WORKER'S DISABILITY COMPENSATION ACT COMPLIANCE (ON REVERSE SIDE IF DOUBLE SIDED) WITHIN 21 DAYS OF SALE AWARD DATE



FOR DEPARTMENT USE ONLY
Sale Number (XX - XXX - XX - XX)
Forest Management Unit:

TIMBER SALE VERIFICATION OF WORKER'S DISABILITY COMPENSATION ACT COMPLIANCE

*As required by Act 317, P.A. 1969 (Worker's Compensation) and
Part 5 of Act 451 of 1994, as amended.*

VERIFICATION OF WORKER'S DISABILITY COMPENSATION ACT COMPLIANCE

- This verification must be completed and submitted within 21 days of contract award and prior to the issuance of the timber sale contract.
- In addition, if boxes 2B or 2C are checked, then Notice of Exclusion or Certificate of Insurance must be submitted within twenty-one (21) days of the contract award and prior to the issuance of the timber sale contract.
- All information must be typed or printed except for written signatures.

Please Check Appropriate Categories:

1. My business is organized as (you **must** check one of the boxes below):
 - A. Sole Proprietorship (individual)
 - B. Partnership
 - C. Corporation
2. You **must** check one of the boxes below:
 - A. I certify my business is a sole proprietorship and it has no employees but the sole proprietor. I am not subject to the Worker's Compensation Laws.
 - B. I certify my business has satisfied its obligation to the Worker's Compensation Act through the use of an approved Notice of Exclusion (BWC-337, Rev. 5/96). I will provide a copy of the Notice of Exclusion within 21 days of the contract award. (For questions or a copy of the BWC-337, please call the Worker's Compensation Bureau at 517-322-1195).
 - C. I certify my business has a Worker's Compensation Policy. I will provide an original Certificate of Insurance within twenty-one (21) days of the contract award.
3. If you have checked item 2(A) or 2(B), you **must** indicate the number of **both** full-time and part-time employees, other than yourself, including family members and active partners (if none, you must enter "0").

_____ Full-time Employees

_____ Part-time Employees

Name of Business		Federal ID (or) Social Security No.	
Address		Telephone ()	
City	State	ZIP	

I hereby certify that the above information is true and correct. I agree to notify the Michigan DNR of any changes that occur in factors affecting my coverage during any of my present and future operations.

Signature of Owner or Authorized Representative

Title

Date

Please complete the "SEALED BID" information on the next page

County Line Aspen (71-019-16)
 ; Roscommon COUNTY

In response to the notice of sale to be held 11:00 a.m. (local time) on March 15, 2017, I am hereby submitting my sealed bid (firm offer) for the following forest products to be cut. Bids for individual species must be at or above the advertised price. All non-responsive bid forms may be rejected.

<u>PRODUCTS & SPECIES</u>	<u>ESTIMATED VOLUME*</u>	<u>ADVERTISED PRICE</u>	<u>BID PRICE</u>
Sawtimber			
Mixed Aspen	81.40 MBF	\$ 82.00/MBF	\$ _____
Mixed Oak	20.30 MBF	\$ 117.00/MBF	\$ _____
Red Maple	22.20 MBF	\$ 48.00/MBF	\$ _____
Red Pine	47.70 MBF	\$ 144.00/MBF	\$ _____
White Pine	17.20 MBF	\$ 91.00/MBF	\$ _____
Pulpwood			
B. T. Aspen	986.00 Cords	\$ 38.40/Cord	\$ _____
Balsam Fir	318.00 Cords	\$ 19.55/Cord	\$ _____
Bl/R/Hybrid Oak	205.00 Cords	\$ 15.60/Cord	\$ _____
Black Spruce	13.00 Cords	\$ 31.30/Cord	\$ _____
Jack Pine	70.00 Cords	\$ 16.15/Cord	\$ _____
Paper Birch	27.00 Cords	\$ 26.05/Cord	\$ _____
Quaking Aspen	1,157.00 Cords	\$ 38.40/Cord	\$ _____
Red Maple	545.00 Cords	\$ 20.00/Cord	\$ _____
Red Pine	63.00 Cords	\$ 48.55/Cord	\$ _____
White Pine	146.00 Cords	\$ 22.70/Cord	\$ _____

*The volumes are statistically estimated within plus (+) or minus (-) 7.78 percent. These estimated volumes are final and not subject to adjustment. Prospective bidders are urged to examine this timber and to make their own estimates of quantity and quality.

I understand that any or all bids may be rejected. All bids must be signed and all bid items must be bid or the bid form may be rejected. I also understand that consideration and awarding a contract will be based upon my past performance and ability to complete the contract based upon equipment and staffing subject to my control.

FEDERAL ID: _____ or SOCIAL SECURITY NUMBER: _____

Company or individual bidding: _____

Company representative's name: _____

Address: _____

City: _____ State: _____ Zip: _____

IF AVAILABLE, PLEASE PLACE THE PERSONALIZED LABEL FROM YOUR PROSPECTUS IN THE ABOVE BOX.

Individual or company representative's signature: _____ Date: _____

Phone number : _____ Email (optional): _____

THE WINNING BIDDER MUST COMPLETE THE VERIFICATION OF WORKER'S DISABILITY COMPENSATION ACT COMPLIANCE (ON REVERSE SIDE IF DOUBLE SIDED) WITHIN 21 DAYS OF SALE AWARD DATE



FOR DEPARTMENT USE ONLY
Sale Number (XX - XXX - XX - XX)
Forest Management Unit:

TIMBER SALE VERIFICATION OF WORKER'S DISABILITY COMPENSATION ACT COMPLIANCE

*As required by Act 317, P.A. 1969 (Worker's Compensation) and
Part 5 of Act 451 of 1994, as amended.*

VERIFICATION OF WORKER'S DISABILITY COMPENSATION ACT COMPLIANCE

- This verification must be completed and submitted within 21 days of contract award and prior to the issuance of the timber sale contract.
- In addition, if boxes 2B or 2C are checked, then Notice of Exclusion or Certificate of Insurance must be submitted within twenty-one (21) days of the contract award and prior to the issuance of the timber sale contract.
- All information must be typed or printed except for written signatures.

Please Check Appropriate Categories:

1. My business is organized as (you **must** check one of the boxes below):
 - A. Sole Proprietorship (individual)
 - B. Partnership
 - C. Corporation
2. You **must** check one of the boxes below:
 - A. I certify my business is a sole proprietorship and it has no employees but the sole proprietor. I am not subject to the Worker's Compensation Laws.
 - B. I certify my business has satisfied its obligation to the Worker's Compensation Act through the use of an approved Notice of Exclusion (BWC-337, Rev. 5/96). I will provide a copy of the Notice of Exclusion within 21 days of the contract award. (For questions or a copy of the BWC-337, please call the Worker's Compensation Bureau at 517-322-1195).
 - C. I certify my business has a Worker's Compensation Policy. I will provide an original Certificate of Insurance within twenty-one (21) days of the contract award.
3. If you have checked item 2(A) or 2(B), you **must** indicate the number of **both** full-time and part-time employees, other than yourself, including family members and active partners (if none, you must enter "0").

_____ Full-time Employees

_____ Part-time Employees

Name of Business		Federal ID (or) Social Security No.	
Address		Telephone ()	
City	State	ZIP	

I hereby certify that the above information is true and correct. I agree to notify the Michigan DNR of any changes that occur in factors affecting my coverage during any of my present and future operations.

Signature of Owner or Authorized Representative

Title

Date

Please complete the "SEALED BID" information on the next page

Kenny's Haze (71-026-16)
 ; Roscommon COUNTY

In response to the notice of sale to be held 11:00 a.m. (local time) on March 15, 2017, I am hereby submitting my sealed bid (firm offer) for the following forest products to be cut. Bids for individual species must be at or above the advertised price. All non-responsive bid forms may be rejected.

<u>PRODUCTS & SPECIES</u>	<u>ESTIMATED VOLUME*</u>	<u>ADVERTISED PRICE</u>	<u>BID PRICE</u>
Sawtimber			
Red Maple	41.80 MBF	\$ 32.00/MBF	\$ _____
Pulpwood			
Balsam Fir	24.00 Cords	\$ 13.05/Cord	\$ _____
Black Spruce	74.00 Cords	\$ 20.85/Cord	\$ _____
Paper Birch	84.00 Cords	\$ 17.35/Cord	\$ _____
Quaking Aspen	174.00 Cords	\$ 25.60/Cord	\$ _____
Red Maple	169.00 Cords	\$ 13.35/Cord	\$ _____

*The volumes are statistically estimated within plus (+) or minus (-) 56.80 percent. These estimated volumes are final and not subject to adjustment. Prospective bidders are urged to examine this timber and to make their own estimates of quantity and quality.

I understand that any or all bids may be rejected. All bids must be signed and all bid items must be bid or the bid form may be rejected. I also understand that consideration and awarding a contract will be based upon my past performance and ability to complete the contract based upon equipment and staffing subject to my control.

FEDERAL ID: _____ or SOCIAL SECURITY NUMBER: _____

Company or individual bidding: _____

Company representative's name: _____

Address: _____

City: _____ State: _____ Zip: _____

IF AVAILABLE, PLEASE PLACE THE PERSONALIZED LABEL FROM YOUR PROSPECTUS IN THE ABOVE BOX.

Individual or company representative's signature: _____ Date: _____

Phone number : _____ Email (optional): _____

THE WINNING BIDDER MUST COMPLETE THE VERIFICATION OF WORKER'S DISABILITY COMPENSATION ACT COMPLIANCE (ON REVERSE SIDE IF DOUBLE SIDED) WITHIN 21 DAYS OF SALE AWARD DATE



FOR DEPARTMENT USE ONLY
Sale Number (XX – XXX – XX – XX)
Forest Management Unit:

TIMBER SALE VERIFICATION OF WORKER'S DISABILITY COMPENSATION ACT COMPLIANCE

*As required by Act 317, P.A. 1969 (Worker's Compensation) and
Part 5 of Act 451 of 1994, as amended.*

VERIFICATION OF WORKER'S DISABILITY COMPENSATION ACT COMPLIANCE

- This verification must be completed and submitted within 21 days of contract award and prior to the issuance of the timber sale contract.
- In addition, if boxes 2B or 2C are checked, then Notice of Exclusion or Certificate of Insurance must be submitted within twenty-one (21) days of the contract award and prior to the issuance of the timber sale contract.
- All information must be typed or printed except for written signatures.

Please Check Appropriate Categories:

- My business is organized as (you **must** check one of the boxes below):
 - Sole Proprietorship (individual)
 - Partnership
 - Corporation
- You **must** check one of the boxes below:
 - I certify my business is a sole proprietorship and it has no employees but the sole proprietor. I am not subject to the Worker's Compensation Laws.
 - I certify my business has satisfied its obligation to the Worker's Compensation Act through the use of an approved Notice of Exclusion (BWC-337, Rev. 5/96). I will provide a copy of the Notice of Exclusion within 21 days of the contract award. (For questions or a copy of the BWC-337, please call the Worker's Compensation Bureau at 517-322-1195).
 - I certify my business has a Worker's Compensation Policy. I will provide an original Certificate of Insurance within twenty-one (21) days of the contract award.
- If you have checked item 2(A) or 2(B), you **must** indicate the number of **both** full-time and part-time employees, other than yourself, including family members and active partners (if none, you must enter "0").

_____ Full-time Employees

_____ Part-time Employees

Name of Business		Federal ID (or) Social Security No.	
Address		Telephone ()	
City	State	ZIP	

I hereby certify that the above information is true and correct. I agree to notify the Michigan DNR of any changes that occur in factors affecting my coverage during any of my present and future operations.

Signature of Owner or Authorized Representative

Title

Date

Please complete the "SEALED BID" information on the next page