



**DEPARTMENT OF NATURAL RESOURCES
STATE OF MICHIGAN**

TIMBER SALE PROSPECTUS #5954

SCHEDULED SALE DATE AND TIME: 3:00 p.m. (local time) on June 27, 2017.

LOCATION: INDIAN RIVER FIELD OFFICE, 6984 WILSON RD, INDIAN RIVER, MI 49749.

PROSPECTUS NOTE: The bidder is advised to inspect the sale area and review the location, estimated volumes, operating costs and contract terms of proposed sales. Please be aware that some landowners may request 60 days or more notice for access across their land.

Notice is hereby given that bids will be received by the Unit Manager, GAYLORD MANAGEMENT UNIT, for certain timber on the following described lands:

Buckwheat Aspen (52-113-16)

Cheboygan County, Advertised Price \$79,199.15, 190.6 Acres, Aspen, Hardwood.

Alfalfa Aspen (52-125-16)

Cheboygan County, Advertised Price \$133,763.15, 129.9 Acres, Aspen, Hardwood.

Darla Aspen (52-128-16)

Cheboygan County, Advertised Price \$77,100.80, 104.3 Acres, Aspen, Hardwood.

BID INSTRUCTIONS (VER. 09/02/2016):

1. Scheduled Bid Location, Date, and Time (2/11)

Bids must be received by the Unit Manager, INDIAN RIVER OFFICE, 6984 WILSON RD, INDIAN RIVER, MI 49749, no later than 3:00 p.m. (local time) on June 27, 2017. For further information concerning this sale, contact Joyce Angel at 989-732-3541 extension 5440.

2. Bidder's Qualifications (5/16)

Purchaser shall obtain workers compensation insurance to cover claims under Michigan's Worker's Disability Compensation Act of 1969 or similar employee benefit act of any other state applicable to an employee. If all or part of a timber sale was prepared by a private contractor, the contractor and that contractor's company are not permitted to bid on the timber sale contract. Bids will not be accepted from individuals or companies appearing on the DNR/FRD No-Bid List. This list contains the names of purchasers who previously failed to execute a contract within 21-days or who have a history of poor performance.

3. Preparation of Sealed Bids (5/16)

Bid Forms may be completed online thru Michigan DNR Timber Sale Online Bidding (OLB) at www.michigan.gov/timberbidding or by completing the hardcopy Bid Form found in the Timber Sale Prospectus. Hardcopy Bid Forms shall be manually signed in ink. Registration in OLB is considered your 'signature' for all bids submitted thru that system. Bid prices must be entered for each species and product in the Bid Price column for all material subject to bidding and all fill-in blanks must be completed. If erasures or other changes appear on the hardcopy Bid Form, each erasure or change must be initialed by the person signing the bid.

4. Submission of Sealed Bids (5/16)

Bid forms may be obtained from the Unit Manager or thru OLB. Bids may be submitted hardcopy or thru OLB. All hardcopy bids must be submitted on the bid form and in an envelope clearly identified as described in this section. NOTE: Only one bid form per bid envelope. Sealed bids must be submitted to the Unit office designated in the prospectus and must be submitted at or prior to the time established in the prospectus. The envelope should show on the outside (a) the sale name or number and (b) the date and time of bid opening, as shown in the prospectus. Bids received after the time specified in the sale prospectus are late bids and will be rejected.

It is possible for a bidder to submit multiple bids on a single sale. For example, a bid may be submitted hardcopy and a bid may be submitted thru OLB. Or, two bidders from the same company could both submit bids on the same sale. If this were to happen, the State would accept all bids received and award the contract accordingly. All bidding and contractual requirements would apply to all bids received.

5. Public Opening of Sealed Bids (7/16)

If conditions permit, the sealed bids will be publicly opened and posted at the time and place set in the prospectus.

If a bidder, present at a bid opening, has submitted bids on more than one sale, that bidder may withdraw their unopened bid envelopes or announce the withdrawal of their online bid after being declared the successful bidder on one sale.

6. Award of Contract (1/11)

Award of the contract will be made to the Bidder whose bid, conforming to the prospectus, is most advantageous to the State of Michigan on the basis of total value at rates bid for the estimated quantities. The State reserves the right to reject any bid or waive any minor irregularity in bids received. A written award mailed (or otherwise furnished) to the successful Bidder shall be deemed to result in a binding contract without further action by either party.

7. Down Payment (1/11)

The Bidder to whom award is made must make a down payment within 21 days of the sale award. The amount of the down payment will be calculated as shown in the Bond and Payment Schedule of this prospectus. Only cash may be used to meet this requirement.

8. Performance Security (1/11)

As guarantee of faithful performance, a cash bond, certificate of deposit, surety bond or irrevocable letter of credit (LOC) is required within 21 days of the sale award. The amount of the performance security is shown in the Bond and

Payment Schedule of this prospectus. If an LOC or surety is used, the coverage must extend for at least 6 months beyond the contract expiration.

9. Timber Sale Contract (9/14)

Additional conditions and requirements common to all timber sales are listed on the timber sale contract (R4031) and are available on line at www.michigan.gov/timber. Contact the Unit Manager for additional information or a sample contract. Within 21 days of the date of the award letter, the bidder must sign the contract and provide the required down payment, performance security, and verification of worker's disability compensation. The down payment and performance security shall be in accordance with the provisions of the timber sale contract, in the sums stated in this prospectus. If these actions are not taken, then the Bidder, the Bidder's corporation, and the corporation's principals may not be permitted to bid on State timber sales for a period of 1 year. In addition, the Bidder certifies that if awarded this contract, the Bidder will complete the timber sale contract in accordance with its terms and any modifications thereof including requirements to purchase, cut, and remove the included timber by the expiration date.

10. Disclaimer of Estimates and Bidder's Warranty of Inspection (7/16)

Before submitting this bid, the Bidder is advised and cautioned to inspect the sale area, review the requirements of the sale contract, and take other steps as may be reasonably necessary to ascertain the location, estimated volumes, construction estimates, and operating costs of the proposed sale. Failure to do so will not relieve the Bidder from responsibility for completing the contract.

The Bidder warrants that this bid is submitted solely on the basis of the Bidder's examination and inspection of the quality and quantity of the timber offered for sale and the Bidder's opinion of the value thereof and the costs of recovery. No reliance should be placed on the State of Michigan's estimates of timber quality, quantity or costs of recovery. Bidder further acknowledges that the State of Michigan: (i) expressly disclaims any warranty of fitness of timber for any purpose; (ii) offers this timber as is without any warranty of quality (merchantability) or quantity and (iii) expressly disclaims any warranty as to the quantity or quality of timber sold.

11. Certification and Chain-of-Custody (10/14)

Unless otherwise indicated in the contract under section 7 – Other Conditions of the Sale Specific Conditions & Requirements, the area encompassed by this timber sale is certified to the standards of the Forest Stewardship Council (FSC) - Certificate #SCS-FM/COC-00090N and the Sustainable Forestry Initiative (SFI) - Certificate #NSF-SFIS-5Y031-SF5. Forest products from this sale may be delivered to the mill as "FSC 100% and / or SFI certified" as long as the contractor hauling the forest products is chain-of-custody (COC) certified or covered under a COC certificate from the destination mill. The purchaser is responsible for maintaining COC after leaving the sale area.

12. Good Neighbor Authority (GNA) Requirements (7/16)

If the name of this timber sales contains the acronym GNA, it is authorized by the Good Neighbor Authority (GNA) and covered by various agreements between the U.S. Forest Service and the State. The timber sale occurs on federal land and the following conditions apply:

GNA contracts on US Forest Service land will not be awarded to purchasers on the Federal list of excluded parties. The System for Award Management (SAM) will be checked for active excluded parties prior to award of contract. In addition, the Bidder to whom award is made must complete an Assurance Regarding Felony Conviction or Tax Delinquent Status for Corporate Applicants (AD-3031).

13. Good Neighbor Authority (GNA) Requirements, con't (9/16)

Bidder certifies, by signing this bid form, that to the best of Bidder's knowledge that the following representations are accurate and complete.

- a. That the Bidder and its principals are not presently debarred, suspended, proposed for debarment, declared ineligible, or voluntary excluded from timber sales (covered transactions) by any Federal department or agency.
- b. That the Bidder and its principals have not within a 3-year period preceding this bid been convicted of or had a civil judgment rendered against them for commission of fraud or a criminal offense in connection with obtaining, attempting to obtain, or performing a public (Federal, State, or local) transaction or contract under a public transaction; violation of Federal or State antitrust statutes or commission of embezzlement, theft, forgery, bribery, falsification or destruction of records, making false statements, or receiving stolen property.

c. That the Bidder and its principals are not presently indicted for or otherwise criminally or civilly charged by a governmental entity (Federal, State, or local) with commission of any of the offenses enumerated in paragraph b of this certification.

d. That the Bidder and its principals have not within a 3-year period preceding this bid had one or more public transactions (Federal, State, or local) terminated for breach or default of a timber or forest product contract.

Bidders that cannot certify this requirement, in whole or in part, shall submit an explanation with their bid.

KEITH CREAGH

Director

TIMBER SALE INFORMATION

Buckwheat Aspen (52-113-16)

Cheboygan County (Advertised Price \$79,199.15)

A timber sale contract for this lump sum, sealed bid timber sale will be awarded to the responsible bidder offering the highest sealed bid price. Bids must be at or above the following advertised price for each species:

<u>PRODUCTS & SPECIES</u>	<u>ESTIMATED UNITS*</u>	<u>ADVERTISED PRICE</u>
Sawtimber		
B. T. Aspen	211.90 MBF	\$ 52.00 / MBF
Red Pine	11.70 MBF	\$ 154.00 / MBF
White Pine	5.70 MBF	\$ 77.00 / MBF
Pulpwood		
B. T. Aspen	3,738.00 Cords	\$ 14.25 / Cord
Balsam Fir	64.00 Cords	\$ 21.90 / Cord
Jack Pine	11.00 Cords	\$ 24.05 / Cord
Mixed Hardwood	453.00 Cords	\$ 16.30 / Cord
Red Pine	39.00 Cords	\$ 49.55 / Cord
White Pine	51.00 Cords	\$ 33.15 / Cord

* The total volume is statistically estimated within plus (+) or minus (-) 17.26 percent. The estimated units are final and not subject to adjustment. Prospective bidders are urged to examine this timber and to make their own estimates of quantity and quality.

BOND AND PAYMENT SCHEDULE:

1. A bond in the amount of \$3,960.00 to insure faithful performance of the conditions of the contract will be deposited by the successful bidder within 21 days of the sale award.
2. Cutting in any sale or unit without the required advance payment would be considered a trespass.
3. Total payment must be paid in advance or according to the following schedule:
 - (a) Ten percent (10%) of the sale value must be paid within 21 days of the sale award.
 - (b) The 10% down payment will be credited towards the first unit cut.
4. If no cutting takes place, the 10% down payment will not be refunded.
5. Operations on the contract issued will terminate on 06/30/2020.

Description of Timber by Payment Unit (PU)

PU	MARKET GROUP	PRODUCT	QUANTITY	UNIT	ACRES	ADVERTISE PRICE
1	B. T. Aspen	Sawtimber	20.7	MBF	26.4	\$7,401.75
	B. T. Aspen	Pulpwood	382.0	Cords		
	Mixed Hardwood		48.0	Cords		
	<i>Red Maple</i>		44.0	<i>Cords</i>		
	<i>Sugar Maple</i>		4.0	<i>Cords</i>		
	White Pine		3.0	Cords		
2	B. T. Aspen	Sawtimber	23.7	MBF	30.3	\$8,484.10
	B. T. Aspen	Pulpwood	439.0	Cords		
	Mixed Hardwood		55.0	Cords		
	<i>Red Maple</i>		51.0	<i>Cords</i>		
	<i>Sugar Maple</i>		4.0	<i>Cords</i>		
	White Pine		3.0	Cords		
3	B. T. Aspen	Sawtimber	4.7	MBF	27.8	\$8,864.15
	Red Pine		4.7	MBF		
	White Pine		1.4	MBF		
	B. T. Aspen	Pulpwood	391.0	Cords		
	Mixed Hardwood		67.0	Cords		
	<i>Red Maple</i>		67.0	<i>Cords</i>		
	Red Pine		16.0	Cords		
	White Pine		10.0	Cords		
4	B. T. Aspen	Sawtimber	7.0	MBF	42.1	\$13,291.80
	Red Pine		7.0	MBF		
	White Pine		2.1	MBF		
	B. T. Aspen	Pulpwood	591.0	Cords		
	Mixed Hardwood		102.0	Cords		
	<i>Red Maple</i>		102.0	<i>Cords</i>		
	Red Pine		23.0	Cords		
	White Pine		14.0	Cords		
5	B. T. Aspen	Sawtimber	74.6	MBF	31.8	\$18,951.45
	White Pine		0.9	MBF		
	B. T. Aspen	Pulpwood	862.0	Cords		
	Balsam Fir		33.0	Cords		
	Jack Pine		11.0	Cords		
	Mixed Hardwood		90.0	Cords		
	<i>Paper Birch</i>		5.0	<i>Cords</i>		
	<i>Red Maple</i>		85.0	<i>Cords</i>		
White Pine		8.0	Cords			
6	B. T. Aspen	Sawtimber	81.2	MBF	32.2	\$22,205.90
	White Pine		1.3	MBF		
	B. T. Aspen	Pulpwood	1,073.0	Cords		
	Balsam Fir		31.0	Cords		
	Mixed Hardwood		91.0	Cords		
	<i>Paper Birch</i>		8.0	<i>Cords</i>		
	<i>Red Maple</i>		83.0	<i>Cords</i>		
	White Pine		13.0	Cords		
TOTAL:			229.3	MBF		
TOTAL:			4,356.0	Cords		

Sale Specific Conditions & Requirements

Sale Name: Buckwheat Aspen

Sale Number: 52-113-16 Seq#: 1

1 - Sale Area

1.2 - Boundaries

1.2.1 - Painted boundaries (1/14)

The Sale Boundary and Payment Unit boundaries are marked and identified by blue, red, and yellow paint. Exterior sale boundary lines against private property are marked with blue paint. Exterior sale boundary lines against state are marked with red paint. Interior Payment Unit boundaries are marked with yellow paint. The painted boundary line trees are not Included Timber and are to be protected. Yellow painted trees designating an interior Payment Unit boundary are only to be cut when all surrounding Payment Units have been paid.

2 - Timber Specifications

2.1 - Included Timber

2.1.1 - Clearcut unit(s) with unmerchantable trees (6/14)

Within Payment Unit(s) 1, 2, 3, 4, 5, and 6, cut all trees that are two (2) inches or more at DBH, except pine eighteen (18) inches or more at DBH and all oak.

3 - Payments

3.3 - Pre-measured Sales

3.3.4 - Dividing payment units (7/14)

Payment Unit(s) 1, 2, 3, 4, 5, and 6 may be divided at the request of the Purchaser and upon approval of the Unit Manager. Dividing Payment Units is a contract modification which requires a Timber Sale Contract Supplement. There will be only one division per Payment Unit.

4 - Transportation

4.1 - Construction

4.1.6 - Road construction (1/09)

Construction of new roads or improvements of existing roads shall be done in such a way as to minimize the environmental and visual impacts. Merchantable trees shall be cut and utilized unless otherwise directed. Non-merchantable trees shall be severed and laid flat on the ground. Slash shall be scattered, not left in windrows, and kept a minimum of 10 feet back from the road edge. Stumps shall be set upright, not left on edge, and be moved at least 10 feet away from the road edge. Disturbed soil shall be feathered into the woods and not left in berms or windrows.

4.1.7 - Road closure (10/11)

All new roads built into the sale must be blocked to vehicle traffic upon completion of the sale. Overgrown roads that are reopened shall be considered new roads. In general, this will require constructing a four (4') foot high berm of stumps and logs covered with earth. These roads must be rendered impassable to cars and trucks. Contact the sale administrator for specific details of design and placement.

4.2 - Maintenance

4.2.5 - Two wheel drive condition (2/04)

All existing trail roads on and adjacent to the sale area must be passable by two-wheel drive traffic for the duration of the sale.

5 - Operations

5.1 - Notification

5.1.1 - Pre-sale conference (10/11)

A pre-sale conference on site between the Purchaser and sale administrator is required prior to beginning any operations to determine landing and road locations. The Unit Manager or his/her representative must be contacted at least 3 days in

advance to schedule the conference.

5.2 - Conduct of Operations

5.2.1 - Slash

5.2.1.10 - No slash in openings (5/10)

No brush or logging debris is to be left in the maintained wildlife opening which is indicated by G0 on the Timber Sale Map. Any damage to the opening shall be repaired according to specifications of the Unit Manager or his/her representative.

5.2.2 - Hazard Trees/Snags

5.2.2.1 - Den trees (2/04)

Obvious hollow and/or den trees shall be protected and left standing unless they are a safety hazard.

5.2.3 - Operating Restrictions

5.2.3.4 - Oak wilt restriction (6/10)

Within Payment Unit(s) 1, 2, 3, 4, 5, and 6, unless changed by written agreement, cutting, skidding, and hauling are not permitted during the period of April 15 to July 15. This is necessary to reduce the spread of oak wilt. For more information, contact the Unit Manager or his/her representative.

5.4 - Soil Protection

5.4.1 - Rutting restriction, general (1/09)

Operations are to cease immediately if equipment and weather conditions result in rutting on skid trails which is 12 inches or greater in depth and 50 feet in length. The Unit Manager or his/her representative may restrict hauling and/or skidding if ruts exceed the specified depth. With the Unit Manager or his/her representative's approval, the Purchaser may return to the area when the risk of rutting has decreased.



TIMBER SALE MAP

This information provided by authority of Part 525, 1994 PA 451, as amended.

Sale Number	Year
52 - 113	16

Forest Management Unit Gaylord	County Cheboygan	Mapped By Martell, Reid	Date 08/19/16	Page 1	of 1
Township 34N	Range 02W	Section(s) and Subdivision(s) Sec 35 - N1/2, SW1/4, W1/2SE1/4, NE1/4SE1/4; Sec 26 - SW1/41/4; Sec 27 - SE1/41/4	Scale 1:15,840		

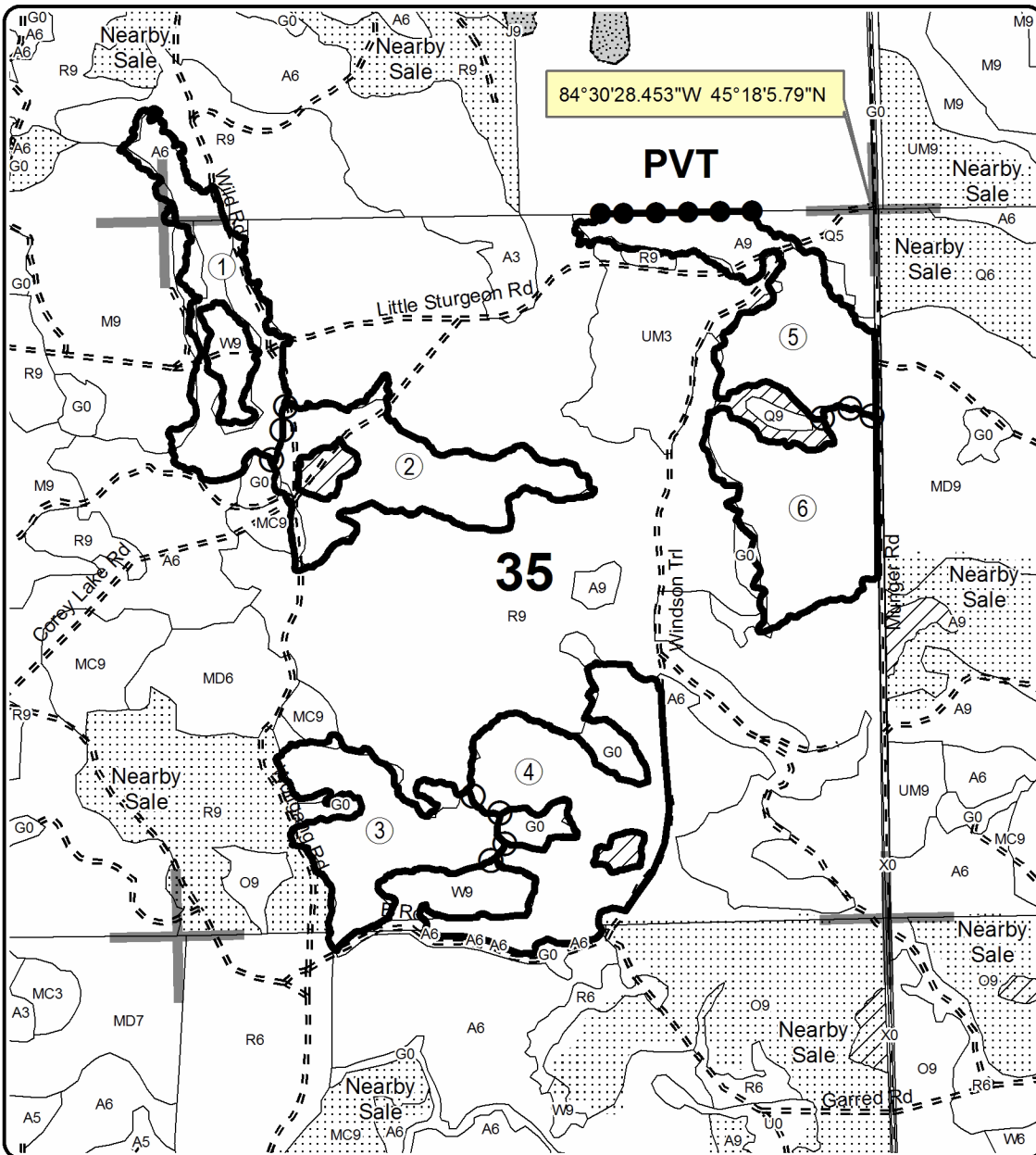
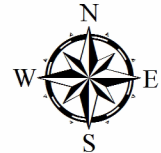
Cover Type				Density	
A = Aspen	H = Hemlock	N = Marsh	U = Upland Brush	0 = Non Stocked	5 = Pole Timber Medium
B = Paper Birch	J = Jack Pine	O = Oak	UM = Upland Mixed	1 = Seedling Sapling Poor	6 = Pole Timber Well
C = Cedar	L = Lowland Brush	P = Lowland Poplar	V = Bog or Marsh	2 = Seedling Sapling Medium	7 = Saw Timber Poor
D = Tread Bog	LM = Lowland Mixed	Q = Mixed Swamp Conifer	W = White Pine	3 = Seedling Sapling Well	8 = Saw Timber Medium
E = Swamp Hdwoods	M = Mpl, Bch, Brch	R = Red Pine	X = Non Stocked	4 = Pole Timber Poor	9 = Saw Timber Well
F = Spruce Fir	MC = Mixed Conifer	S = Black Spruce	Z = Water		
G = Grass	MD = Mixed Deciduous	T = Tamarack			

PU	Acres	PU	Acres
1	26.4	4	42.1
2	30.3	5	31.8
3	27.8	6	32.2

Buckwheat Aspen

Compartment 172

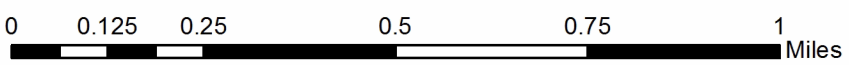
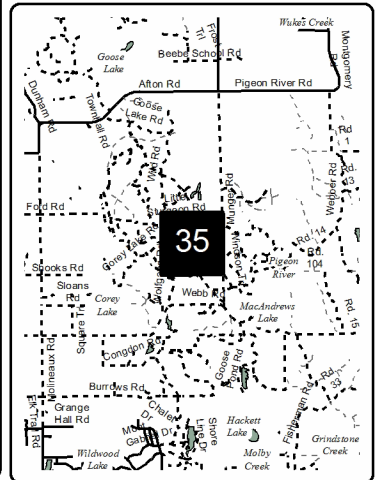
190.6 Acres



Legend

- Against State (Red)
- Payment Unit (Yellow)
- Private Line (Blue)
- Retention Area
- Stand Boundaries
- Nearby Timber Sale
- Section Corners
- Gravel Roads
- Poor Dirt Roads

Locator Map
1:200,000



TIMBER SALE INFORMATION

Alfalfa Aspen (52-125-16)

Cheboygan County (Advertised Price \$133,763.15)

A timber sale contract for this lump sum, sealed bid timber sale will be awarded to the responsible bidder offering the highest sealed bid price. Bids must be at or above the following advertised price for each species:

<u>PRODUCTS & SPECIES</u>	<u>ESTIMATED UNITS*</u>		<u>ADVERTISED PRICE</u>
Sawtimber			
B. T. Aspen	32.50	MBF	\$ 52.00 / MBF
Basswood	58.40	MBF	\$ 66.00 / MBF
Beech	60.80	MBF	\$ 37.00 / MBF
Red Maple	12.50	MBF	\$ 149.00 / MBF
Sugar Maple	253.30	MBF	\$ 267.00 / MBF
Pulpwood			
B. T. Aspen	1,131.00	Cords	\$ 14.25 / Cord
Balsam Fir	37.00	Cords	\$ 21.90 / Cord
Basswood	144.00	Cords	\$ 6.00 / Cord
Beech	585.00	Cords	\$ 16.30 / Cord
Mixed Hardwood	1,711.00	Cords	\$ 16.30 / Cord
White Pine	38.00	Cords	\$ 33.15 / Cord

* The total volume is statistically estimated within plus (+) or minus (-) 15.71 percent. The estimated units are final and not subject to adjustment. Prospective bidders are urged to examine this timber and to make their own estimates of quantity and quality.

BOND AND PAYMENT SCHEDULE:

1. A bond in the amount of \$6,688.00 to insure faithful performance of the conditions of the contract will be deposited by the successful bidder within 21 days of the sale award.
2. Cutting in any sale or unit without the required advance payment would be considered a trespass.
3. Total payment must be paid in advance or according to the following schedule:
 - (a) Ten percent (10%) of the sale value must be paid within 21 days of the sale award.
 - (b) The 10% down payment will be credited towards the first unit cut.
4. If no cutting takes place, the 10% down payment will not be refunded.
5. Operations on the contract issued will terminate on 06/30/2020.

Description of Timber by Payment Unit (PU)

PU	MARKET GROUP	PRODUCT	QUANTITY	UNIT	ACRES	ADVERTISE PRICE
1	B. T. Aspen	Sawtimber	16.7	MBF	44.6	\$63,074.90
	Basswood		31.2	MBF		
	Beech		32.5	MBF		
	Red Maple		5.5	MBF		
	Sugar Maple		135.5	MBF		
	B. T. Aspen	Pulpwood	214.0	Cords		
	Basswood		77.0	Cords		
	Beech		288.0	Cords		
	Mixed Hardwood		843.0	Cords		
	<i>Red Maple</i>		17.0	<i>Cords</i>		
	<i>Sugar Maple</i>		826.0	<i>Cords</i>		
2	B. T. Aspen	Sawtimber	14.6	MBF	38.8	\$54,875.25
	Basswood		27.2	MBF		
	Beech		28.3	MBF		
	Red Maple		4.8	MBF		
	Sugar Maple		117.8	MBF		
	B. T. Aspen	Pulpwood	187.0	Cords		
	Basswood		67.0	Cords		
	Beech		251.0	Cords		
	Mixed Hardwood		733.0	Cords		
	<i>Red Maple</i>		15.0	<i>Cords</i>		
	<i>Sugar Maple</i>		718.0	<i>Cords</i>		
3	B. T. Aspen	Pulpwood	561.0	Cords	35.9	\$12,083.95
	Balsam Fir		28.0	Cords		
	Beech		46.0	Cords		
	Mixed Hardwood		90.0	Cords		
	<i>Red Maple</i>		38.0	<i>Cords</i>		
	<i>Sugar Maple</i>		52.0	<i>Cords</i>		
	White Pine		38.0	Cords		
	4		B. T. Aspen	Sawtimber		
Red Maple		2.2	MBF			
B. T. Aspen		Pulpwood	169.0	Cords		
Balsam Fir			9.0	Cords		
Mixed Hardwood			45.0	Cords		
<i>Red Maple</i>			45.0	<i>Cords</i>		
TOTAL:			417.5	MBF		
TOTAL:			3,646.0	Cords		

Sale Specific Conditions & Requirements

Sale Name: Alfalfa Aspen

Sale Number: 52-125-16 Seq#: 1

1 - Sale Area

1.2 - Boundaries

1.2.1 - Painted boundaries (1/14)

The sale boundary and Payment Unit boundaries are marked and identified by blue, red and yellow paint. Exterior sale boundary lines against private property are marked with blue paint. Exterior sale boundary lines against state are marked with red paint. Interior Payment Unit boundaries are marked with yellow paint. Yellow painted trees designating an interior Payment Unit boundary are only to be cut when all surrounding Payment Units have been paid.

2 - Timber Specifications

2.1 - Included Timber

2.1.1 - Clearcut unit(s) with unmerchantable trees (6/14)

Within Payment Unit(s) 1, 2, 3 and 4, cut all trees that are two (2) inches or more at DBH except oak. In addition, within Payment Unit 3, do not cut green painted trees.

2.2 - Utilization

2.2.3 - Stump heights (4/07)

Stump heights within Payment Unit 1 and 2 shall not exceed 12 inches for trees greater than 10 inches DBH and 4 inches for trees smaller than 10 inches DBH. This is in order to facilitate future planting operations.

3 - Payments

3.3 - Pre-measured Sales

3.3.4 - Dividing payment units (7/14)

Payment Unit(s) 1, 2 and 3 may be divided at the request of the Purchaser and upon approval of the Unit Manager. Dividing Payment Units is a contract modification which requires a Timber Sale Contract Supplement. There will be only one division per Payment Unit.

3.4 - Damaged Timber

3.4.1 - Damaged timber (6/14)

General Condition and Requirement 3.4 Damaged Timber, defines liquidated damages for undesignated live merchantable trees which are cut or injured.

No damage is acceptable to merchantable trees. Within the sale area, if more than 5% of trees (> 4.5" DBH) within a specified area of the sale are damaged, liquidated damages will be assessed for all trees damaged. Rates will be in accordance with General Condition and Requirement 3.4 Damaged Timber.

4 - Transportation

4.1 - Construction

4.1.7 - Road closure (10/11)

All new roads built into the sale must be blocked to vehicle traffic upon completion of the sale. Overgrown roads that are reopened shall be considered new roads. In general, this will require constructing a four (4') foot high berm of stumps and logs covered with earth. Contact the sale administrator for specific details of design and placement.

4.2 - Maintenance

4.2.5 - Two wheel drive condition (2/04)

All existing trail roads on and adjacent to the sale area must be passable by two-wheel drive traffic for the duration of the sale.

5 - Operations

5.1 - Notification

5.1.1 - Pre-sale conference (10/11)

A pre-sale conference on site between the Purchaser and sale administrator is required prior to beginning any operations to determine landing and road locations. The Unit Manager or his/her representative must be contacted at least 3 days in advance to schedule the conference.

5.1.3 - Well heads and natural gas pipelines (11/15)

The Purchaser is responsible for contacting the gas pipeline company prior to operating equipment in the vicinity of well heads or natural gas pipelines.

5.2 - Conduct of Operations

5.2.1 - Slash

5.2.1.10 - No slash in openings (5/10)

No brush or logging debris is to be left in the maintained wildlife opening which is indicated by G0 on the Timber Sale Map. Any damage to the opening shall be repaired according to specifications of the Unit Manager or his/her representative.

5.2.2 - Hazard Trees/Snags

5.2.2.1 - Den trees (2/04)

Obvious hollow and/or den trees shall be protected and left standing unless they are a safety hazard.

5.2.3 - Operating Restrictions

5.2.3.1 - Operating restrictions (9/11)

Within Payment Unit(s) 1 and 2, unless changed by written agreement, cutting, skidding, and hauling are limited to the period of November 1 to April 31. This restriction is intended to help the regeneration of this stand.

5.2.3.4 - Oak wilt restriction (6/10)

Within Payment Unit(s) 3 and 4, cutting, skidding, and hauling are not permitted during the period of April 15 to July 15. This is necessary to reduce the spread of oak wilt. For more information, contact the Unit Manager or his/her representative.

5.4 - Soil Protection

5.4.1 - Rutting restriction, general (7/16)

Operations are to cease immediately if equipment and weather conditions result in rutting of roads and/or skid trails which is 12 inches or greater in depth and 50 feet in length. The Unit Manager or his/her representative may restrict hauling and/or skidding if ruts exceed the specified depth. With the Unit Manager or his/her representative's approval, the Purchaser may return to the area when the risk of rutting has decreased.

5.8 - Protection of Endangered Species

5.8.5 - Protection of raptor nests (3/13)

All trees with raptor nests will be protected if found during harvesting operations. Notification will be made to the Unit Manager or his/her representative who will notify the Wildlife Biologist so an on-site evaluation and recommendation can be made, if necessary.



TIMBER SALE MAP

This information provided by authority of Part 525, 1994 PA 451, as amended.

Sale Number	Year
52-125	16

Forest Management Unit	County	Mapped By	Date	Page	of
Gaylord FMU - Indian River FO	Cheboygan	Harig	09/28/2016	1	1
Township	Range	Section(s) and Subdivision(s)	Scale		
34N	02W	Sec. 27 - S1/2SE, SESW Sec. 34 - N1/2NE, SWNE, NW1/4, W1/2SE, N1/2SW, SESW	1:15,840		

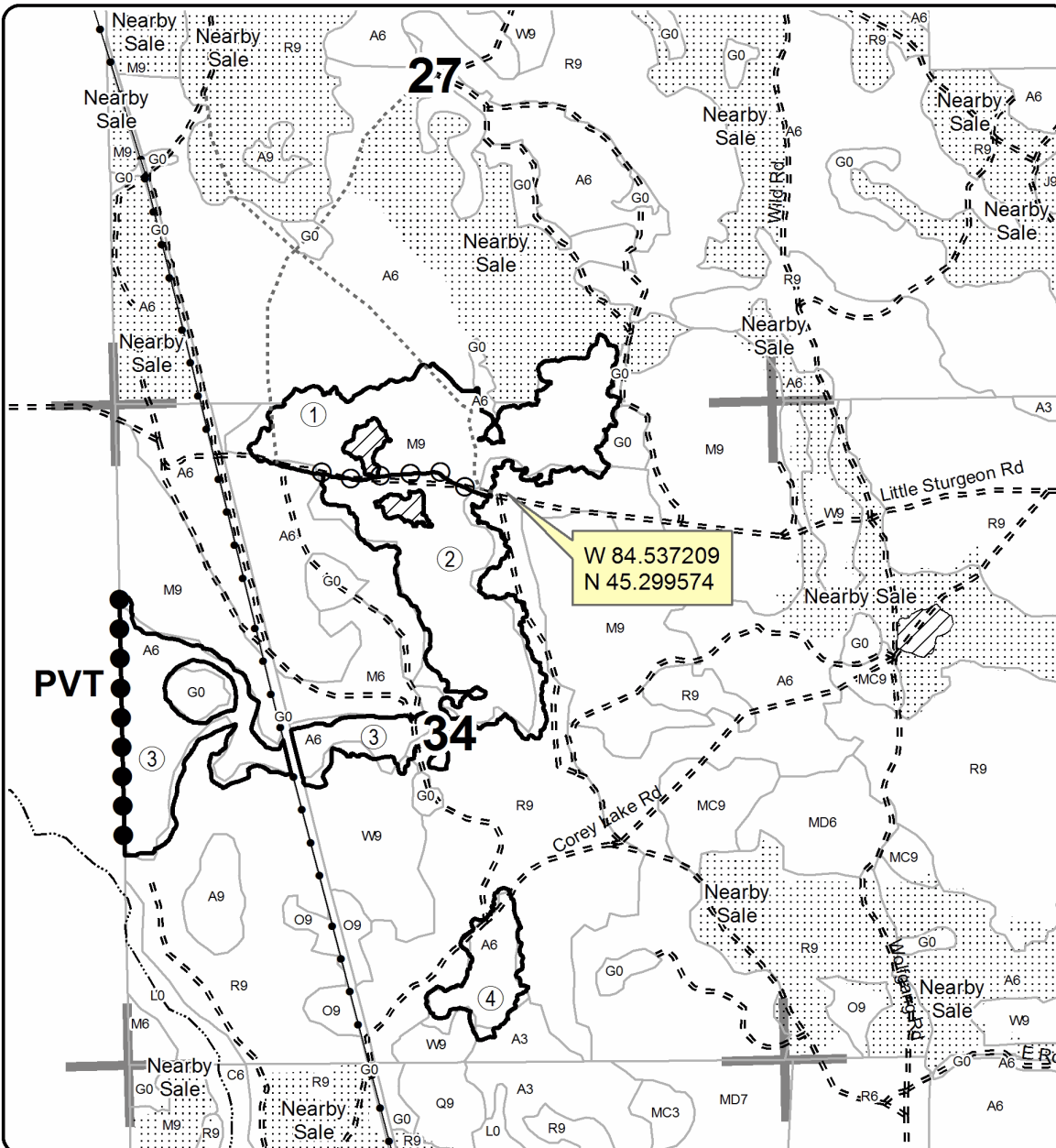
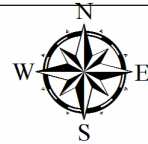
Cover Type				Density	
A = Aspen	H = Hemlock	N = Marsh	U = Upland Brush	0 = Non Stocked	5 = Pole Timber Medium
B = Paper Birch	J = Jack Pine	O = Oak	UM = Upland Mixed	1 = Seedling Sapling Poor	6 = Pole Timber Well
C = Cedar	L = Lowland Brush	P = Lowland Poplar	V = Bog or Marsh	2 = Seedling Sapling Medium	7 = Saw Timber Poor
D = Tread Bog	LM = Lowland Mixed	Q = Mixed Swamp Conifer	W = White Pine	3 = Seedling Sapling Well	8 = Saw Timber Medium
E = Swamp Hdwoods	M = Mpl, Bch, Brch	R = Red Pine	X = Non Stocked	4 = Pole Timber Poor	9 = Saw Timber Well
F = Spruce Fir	MC = Mixed Conifer	S = Black Spruce	Z = Water		
G = Grass	MD = Mixed Deciduous	T = Tamarack			

PU	Acres	PU	Acres
1	44.6	4	10.6
2	38.8		
3	35.9		

Alfalfa Aspen

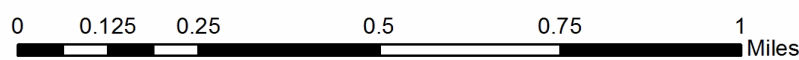
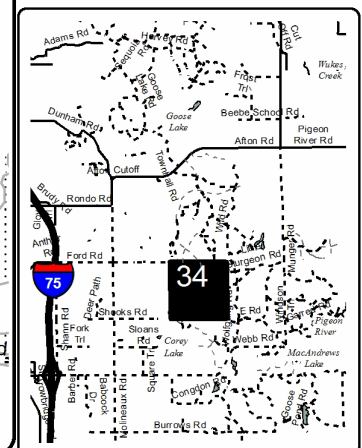
Compartment 172

129.9 Acres



Legend	
	Against State (Red)
	Payment Unit (Yellow)
	Private Line (Blue)
	Section Corners
	Retention Area
	Stand Boundaries
	Poor Dirt Roads
	Closed Roads
	Pipeline; Powerline
	Streams

Locator Map
1:200,000



TIMBER SALE INFORMATION

Darla Aspen (52-128-16)

Cheboygan County (Advertised Price \$77,100.80)

A timber sale contract for this lump sum, sealed bid timber sale will be awarded to the responsible bidder offering the highest sealed bid price. Bids must be at or above the following advertised price for each species:

<u>PRODUCTS & SPECIES</u>	<u>ESTIMATED UNITS*</u>		<u>ADVERTISED PRICE</u>
Sawtimber			
Mixed Aspen	181.40	MBF	\$ 52.00 / MBF
Red Maple	19.70	MBF	\$ 149.00 / MBF
Red Oak	28.00	MBF	\$ 181.00 / MBF
Red Pine	22.90	MBF	\$ 154.00 / MBF
Sugar Maple	6.70	MBF	\$ 267.00 / MBF
Pulpwood			
Balsam Fir	202.00	Cords	\$ 21.90 / Cord
Basswood	107.00	Cords	\$ 6.00 / Cord
Black Spruce	33.00	Cords	\$ 36.15 / Cord
Jack Pine	28.00	Cords	\$ 24.05 / Cord
Mixed Aspen	1,878.00	Cords	\$ 14.25 / Cord
Mixed Hardwood	610.00	Cords	\$ 16.30 / Cord
N. White Cedar	23.00	Cords	\$ 19.00 / Cord
Red Oak	66.00	Cords	\$ 19.15 / Cord
Red Pine	43.00	Cords	\$ 49.55 / Cord
Tamarack	22.00	Cords	\$ 34.85 / Cord
White Pine	155.00	Cords	\$ 33.15 / Cord
White Spruce	27.00	Cords	\$ 36.15 / Cord

* The total volume is statistically estimated within plus (+) or minus (-) 15.43 percent. The estimated units are final and not subject to adjustment. Prospective bidders are urged to examine this timber and to make their own estimates of quantity and quality.

BOND AND PAYMENT SCHEDULE:

1. A bond in the amount of \$3,855.00 to insure faithful performance of the conditions of the contract will be deposited by the successful bidder within 21 days of the sale award.
2. Cutting in any sale or unit without the required advance payment would be considered a trespass.
3. Total payment must be paid in advance or according to the following schedule:
 - (a) Ten percent (10%) of the sale value must be paid within 21 days of the sale award.
 - (b) The 10% down payment will be credited towards the first unit cut.
4. If no cutting takes place, the 10% down payment will not be refunded.
5. Operations on the contract issued will terminate on 06/30/2020.

Description of Timber by Payment Unit (PU)

PU	MARKET GROUP	PRODUCT	QUANTITY	UNIT	ACRES	ADVERTISE PRICE
1	Mixed Aspen	Sawtimber	69.6	MBF	33.2	\$32,250.65
	<i>B. T. Aspen</i>		37.6	<i>MBF</i>		
	<i>Quaking Aspen</i>		32.0	<i>MBF</i>		
	Red Maple		17.2	MBF		
	Red Oak		28.0	MBF		
	Red Pine		20.9	MBF		
	Balsam Fir	Pulpwood	13.0	Cords		
	<i>Balsam Fir</i>		13.0	<i>Cords</i>		
	Mixed Aspen		496.0	Cords		
	<i>B. T. Aspen</i>		336.0	<i>Cords</i>		
	<i>Quaking Aspen</i>		160.0	<i>Cords</i>		
	Mixed Hardwood		281.0	Cords		
	<i>Beech</i>		5.0	<i>Cords</i>		
	<i>Paper Birch</i>		11.0	<i>Cords</i>		
	<i>Red Maple</i>		256.0	<i>Cords</i>		
	<i>Sugar Maple</i>		9.0	<i>Cords</i>		
	Red Oak		66.0	Cords		
	Red Pine		35.0	Cords		
	White Pine		86.0	Cords		
	<i>White Pine</i>	Sawtimber	1.6	<i>MBF</i>		
<i>White Pine</i>	Pulpwood	83.0	<i>Cords</i>			
2	Mixed Aspen	Sawtimber	106.0	MBF	44.0	\$30,933.90
	<i>B. T. Aspen</i>		83.9	<i>MBF</i>		
	<i>Quaking Aspen</i>		22.1	<i>MBF</i>		
	Sugar Maple		6.7	MBF		
	Balsam Fir	Pulpwood	117.0	Cords		
	<i>Balsam Fir</i>	Sawtimber	6.7	<i>MBF</i>		
	<i>Balsam Fir</i>	Pulpwood	104.0	<i>Cords</i>		
	Basswood		107.0	Cords		
	Mixed Aspen		1,018.0	Cords		
	<i>B. T. Aspen</i>		700.0	<i>Cords</i>		
	<i>Quaking Aspen</i>		318.0	<i>Cords</i>		
	Mixed Hardwood		299.0	Cords		
	<i>Red Maple</i>		174.0	<i>Cords</i>		
	<i>Sugar Maple</i>		125.0	<i>Cords</i>		
	White Pine		12.0	Cords		
	<i>White Pine</i>		12.0	<i>Cords</i>		
	White Spruce		18.0	Cords		
	<i>White Spruce</i>	Sawtimber	4.6	<i>MBF</i>		
<i>White Spruce</i>	Pulpwood	9.0	<i>Cords</i>			
3	Mixed Aspen	Sawtimber	5.8	MBF	27.1	\$13,916.25
	<i>Quaking Aspen</i>		5.8	<i>MBF</i>		
	Red Maple		2.5	MBF		
	Red Pine		2.0	MBF		
	Balsam Fir	Pulpwood	72.0	Cords		
	<i>Balsam Fir</i>	Sawtimber	5.5	<i>MBF</i>		
	<i>Balsam Fir</i>	Pulpwood	61.0	<i>Cords</i>		
	Black Spruce		33.0	Cords		
	Jack Pine		28.0	Cords		
	Mixed Aspen		364.0	Cords		
	<i>B. T. Aspen</i>		33.0	<i>Cords</i>		
	<i>Quaking Aspen</i>		331.0	<i>Cords</i>		
	Mixed Hardwood		30.0	Cords		
	<i>Red Maple</i>		30.0	<i>Cords</i>		
	N. White Cedar		23.0	Cords		
Red Pine		8.0	Cords			

Description of Timber by Payment Unit (PU), con't

PU	MARKET GROUP	PRODUCT	QUANTITY	UNIT	ACRES	ADVERTISE PRICE
3 con't	Tamarack	Pulpwood	22.0	Cords		
	White Pine		57.0	Cords		
	<i>White Pine</i>		57.0	<i>Cords</i>		
	White Spruce		9.0	Cords		
	<i>White Spruce</i>		9.0	<i>Cords</i>		
TOTAL:			258.7	MBF		
TOTAL:			3,194.0	Cords		

Sale Specific Conditions & Requirements

Sale Name: Darla Aspen

Sale Number: 52-128-16 Seq#: 1

1 - Sale Area

1.2 - Boundaries

1.2.1 - Painted boundaries (1/14)

The sale boundary is marked and identified by red paint. Exterior sale boundary lines against state are marked with red paint. The painted boundary line trees are not Included Timber and are to be protected.

2 - Timber Specifications

2.1 - Included Timber

2.1.1 - Clearcut unit(s) with unmerchantable trees (6/14)

Within Payment Unit(s) 1, cut all trees that are two (2) inches or more at DBH except green painted trees. Within Payment Units 2 and 3, cut all trees that are two (2) inches or more a DBH except oak and hemlock. Do not cut red or white pine over 18" DBH in Payment Units 1, 2 and 3.

3 - Payments

3.3 - Pre-measured Sales

3.3.4 - Dividing payment units (7/14)

Payment Unit(s) 1, 2 and 3 may be divided at the request of the Purchaser and upon approval of the Unit Manager. Dividing Payment Units is a contract modification which requires a Timber Sale Contract Supplement. There will be only one division per Payment Unit.

3.4 - Damaged Timber

3.4.1 - Damaged timber (6/14)

General Condition and Requirement 3.4 Damaged Timber, defines liquidated damages for undesignated live merchantable trees which are cut or injured.

No damage is acceptable to merchantable trees. Within the sale area, if more than 5% of trees (> 4.5" DBH) within a specified area of the sale are damaged, liquidated damages will be assessed for all trees damaged. Rates will be in accordance with General Condition and Requirement 3.4 Damaged Timber.

4 - Transportation

4.1 - Construction

4.1.3 - Slash and earthen piles (8/04)

Piles or windrows of earth along roads and landings that have been widened or constructed shall be leveled. Slash from road maintenance or construction, including stumps, shall be dispersed throughout the sale, chipped or otherwise utilized.

4.1.6 - Road construction (1/09)

Construction of new roads or improvements of existing roads shall be done in such a way as to minimize the environmental and visual impacts. Merchantable trees shall be cut and utilized unless otherwise directed. Non-merchantable trees shall be severed and laid flat on the ground. Slash shall be scattered, and not left in windrows and kept a minimum of 10 feet back from the road edge. Stumps shall be set upright, not left on edge, and be moved at least 10 feet away from the road edge. Disturbed soil shall be feathered into the woods and not left in berms or windrows.

4.1.7 - Road closure (10/11)

All new roads built into the sale must be blocked to vehicle traffic upon completion of the sale. In general, this will require constructing a four (4') foot high berm of stumps and logs covered with earth. Contact the sale administrator for specific details of design and placement.

4.2 - Maintenance

4.2.5 - Two wheel drive condition (2/04)

All existing trail roads on and adjacent to the sale area must be passable by two-wheel drive traffic for the duration of the sale.

5 - Operations

5.1 - Notification

5.1.1 - Pre-sale conference (10/11)

A pre-sale conference on site between the Purchaser and sale administrator is required prior to beginning any operations to determine landing and road locations. The Unit Manager or his/her representative must be contacted at least 3 days in advance to schedule the conference.

5.2 - Conduct of Operations

5.2.1 - Slash

5.2.1.10 - No slash in openings (5/10)

No brush or logging debris is to be left in the maintained wildlife opening which is indicated by G0 on the Timber Sale Map. Any damage to the opening shall be repaired according to specifications of the Unit Manager or his/her representative.

5.2.2 - Hazard Trees/Snags

5.2.2.1 - Den trees (2/04)

Obvious hollow and/or den trees shall be protected and left standing unless they are a safety hazard.

5.2.3 - Operating Restrictions

5.2.3.4 - Oak wilt restriction (6/10)

Within Payment Unit(s) 1, 2 and 3, unless changed by written agreement, cutting, skidding, and hauling are not permitted during the period of April 15 to July 15. This is necessary to reduce the spread of oak wilt. For more information, contact the Unit Manager or his/her representative.

5.2.22 - Operating Caution

5.2.22.1 - Operating caution (6/11)

It is recommended, but not required, that within Payment Unit(s) 2 and 3, cutting, skidding, and hauling occur during dry summer or frozen winter conditions. The reason for the recommendation is because wet/heavy soils in parts of these units as well as access roads.

5.4 - Soil Protection

5.4.1 - Rutting restriction, general (7/16)

Operations are to cease immediately if equipment and weather conditions result in rutting of roads and/or skid trails which is 12 inches or greater in depth and 50 feet in length. The Unit Manager or his/her representative may restrict hauling and/or skidding if ruts exceed the specified depth. With the Unit Manager or his/her representative's approval, the Purchaser may return to the area when the risk of rutting has decreased.

5.8 - Protection of Endangered Species

5.8.5 - Protection of raptor nests (3/13)

All trees with raptor nests will be protected if found during harvesting operations. Notification will be made to the Unit Manager or his/her representative who will notify the Wildlife Biologist so an on-site evaluation and recommendation can be made, if necessary.



TIMBER SALE MAP

This information provided by authority of Part 525, 1994 PA 451, as amended.

Sale Number	Year
52-128	16

Forest Management Unit	County	Mapped By	Date	Page	of
Gaylord FMU - Indian River FO	Cheboygan	Harig	08/16/2016	1	1
Township	Range	Section(s) and Subdivision(s)	Scale		
34N	02W	Section 36 - S1/2NE,NWNE,SWNW,E1/2SE,N1/2SW	1:15,840		

Cover Type				Density			
A = Aspen	H = Hemlock	N = Marsh	U = Upland Brush	0 = Non Stocked	5 = Pole Timber Medium		
B = Paper Birch	J = Jack Pine	O = Oak	UM = Upland Mixed	1 = Seedling Sapling Poor	6 = Pole Timber Well		
C = Cedar	L = Lowland Brush	P = Lowland Poplar	V = Bog or Marsh	2 = Seedling Sapling Medium	7 = Saw Timber Poor		
D = Treed Bog	LM = Lowland Mixed	Q = Mixed Swamp Conifer	W = White Pine	3 = Seedling Sapling Well	8 = Saw Timber Medium		
E = Swamp Hdwoods	M = Mpl, Bch, Brch	R = Red Pine	X = Non Stocked	4 = Pole Timber Poor	9 = Saw Timber Well		
F = Spruce Fir	MC = Mixed Conifer	S = Black Spruce	Z = Water				
G = Grass	MD = Mixed Deciduous	T = Tamarack					

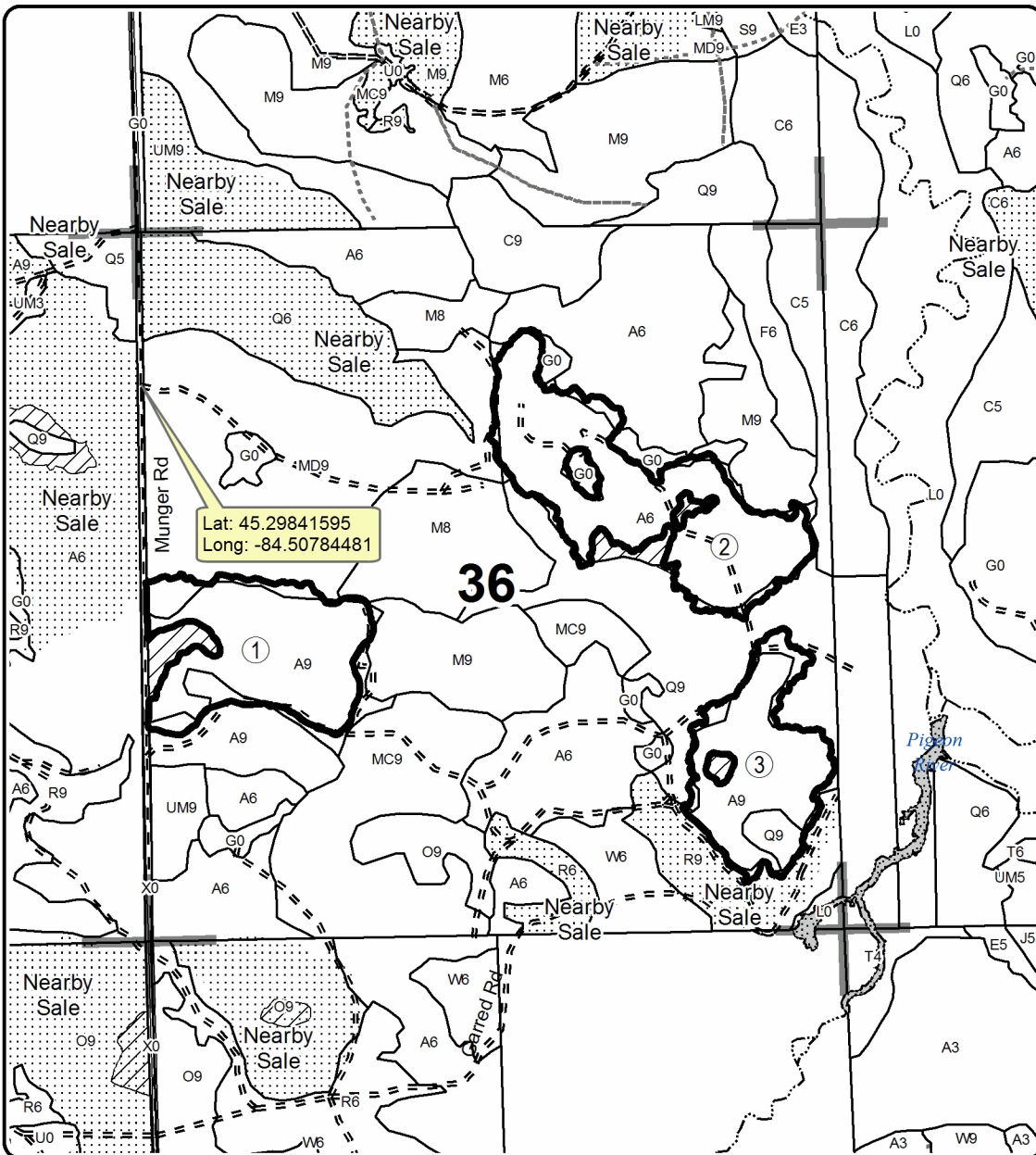
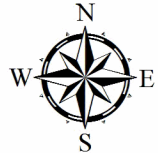
PU Acres

1	33.2
2	44.0
3	27.1

Darla Aspen

Compartment 172

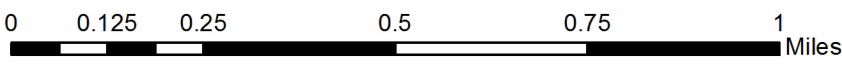
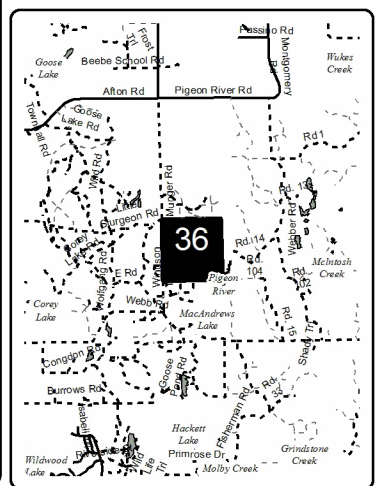
104.3 Acres



Legend

- Against State (Red)
- Section Corners
- Retention Area
- Stand Boundaries
- Gravel Roads
- Poor Dirt Roads
- Closed Roads
- Lakes and Rivers
- All
- Streams

Locator Map
1:200,000



Buckwheat Aspen (52-113-16)
 ; Cheboygan COUNTY

In response to the notice of sale to be held 3:00 p.m. (local time) on June 27, 2017, I am hereby submitting my sealed bid (firm offer) for the following forest products to be cut. Bids for individual species must be at or above the advertised price. All non-responsive bid forms may be rejected.

<u>PRODUCTS & SPECIES</u>	<u>ESTIMATED VOLUME*</u>	<u>ADVERTISED PRICE</u>	<u>BID PRICE</u>
Sawtimber			
B. T. Aspen	211.90 MBF	\$ 52.00/MBF	\$ _____
Red Pine	11.70 MBF	\$ 154.00/MBF	\$ _____
White Pine	5.70 MBF	\$ 77.00/MBF	\$ _____
Pulpwood			
B. T. Aspen	3,738.00 Cords	\$ 14.25/Cord	\$ _____
Balsam Fir	64.00 Cords	\$ 21.90/Cord	\$ _____
Jack Pine	11.00 Cords	\$ 24.05/Cord	\$ _____
Mixed Hardwood	453.00 Cords	\$ 16.30/Cord	\$ _____
Red Pine	39.00 Cords	\$ 49.55/Cord	\$ _____
White Pine	51.00 Cords	\$ 33.15/Cord	\$ _____

*The volumes are statistically estimated within plus (+) or minus (-) 17.26 percent. These estimated volumes are final and not subject to adjustment. Prospective bidders are urged to examine this timber and to make their own estimates of quantity and quality.

I understand that any or all bids may be rejected. All bids must be signed and all bid items must be bid or the bid form may be rejected. I also understand that consideration and awarding a contract will be based upon my past performance and ability to complete the contract based upon equipment and staffing subject to my control.

FEDERAL ID: ____ - ____ - ____ or SOCIAL SECURITY NUMBER: ____ - ____ - ____

Company or individual bidding: _____

Company representative's name: _____

Address: _____

City: _____ State: _____ Zip: _____

IF AVAILABLE, PLEASE PLACE THE PERSONALIZED LABEL FROM YOUR PROSPECTUS IN THE ABOVE BOX.

Individual or company representative's signature: _____ Date: _____

Phone number : _____ Email (optional): _____

THE WINNING BIDDER MUST COMPLETE THE VERIFICATION OF WORKER'S DISABILITY COMPENSATION ACT COMPLIANCE (ON REVERSE SIDE IF DOUBLE SIDED) WITHIN 21 DAYS OF SALE AWARD DATE



FOR DEPARTMENT USE ONLY
Sale Number (XX - XXX - XX - XX)
Forest Management Unit:

TIMBER SALE VERIFICATION OF WORKER'S DISABILITY COMPENSATION ACT COMPLIANCE

*As required by Act 317, P.A. 1969 (Worker's Compensation) and
Part 5 of Act 451 of 1994, as amended.*

VERIFICATION OF WORKER'S DISABILITY COMPENSATION ACT COMPLIANCE

- This verification must be completed and submitted within 21 days of contract award and prior to the issuance of the timber sale contract.
- In addition, if boxes 2B or 2C are checked, then Notice of Exclusion or Certificate of Insurance must be submitted within twenty-one (21) days of the contract award and prior to the issuance of the timber sale contract.
- All information must be typed or printed except for written signatures.

Please Check Appropriate Categories:

1. My business is organized as (you **must** check one of the boxes below):
 - A. Sole Proprietorship (individual)
 - B. Partnership
 - C. Corporation

2. You **must** check one of the boxes below:
 - A. I certify my business is a sole proprietorship and it has no employees but the sole proprietor. I am not subject to the Worker's Compensation Laws.
 - B. I certify my business has satisfied its obligation to the Worker's Compensation Act through the use of an approved Notice of Exclusion (BWC-337, Rev. 5/96). I will provide a copy of the Notice of Exclusion within 21 days of the contract award. (For questions or a copy of the BWC-337, please call the Worker's Compensation Bureau at 517-322-1195).
 - C. I certify my business has a Worker's Compensation Policy. I will provide an original Certificate of Insurance within twenty-one (21) days of the contract award.

3. If you have checked item 2(A) or 2(B), you **must** indicate the number of **both** full-time and part-time employees, other than yourself, including family members and active partners (if none, you must enter "0").

_____ Full-time Employees

_____ Part-time Employees

Name of Business		Federal ID (or) Social Security No.	
Address		Telephone ()	
City	State	ZIP	

I hereby certify that the above information is true and correct. I agree to notify the Michigan DNR of any changes that occur in factors affecting my coverage during any of my present and future operations.

Signature of Owner or Authorized Representative

Title

Date

Please complete the "SEALED BID" information on the next page

Alfalfa Aspen (52-125-16)
 ; Cheboygan COUNTY

In response to the notice of sale to be held 3:00 p.m. (local time) on June 27, 2017, I am hereby submitting my sealed bid (firm offer) for the following forest products to be cut. Bids for individual species must be at or above the advertised price. All non-responsive bid forms may be rejected.

<u>PRODUCTS & SPECIES</u>	<u>ESTIMATED VOLUME*</u>	<u>ADVERTISED PRICE</u>	<u>BID PRICE</u>
Sawtimber			
B. T. Aspen	32.50 MBF	\$ 52.00/MBF	\$ _____
Basswood	58.40 MBF	\$ 66.00/MBF	\$ _____
Beech	60.80 MBF	\$ 37.00/MBF	\$ _____
Red Maple	12.50 MBF	\$ 149.00/MBF	\$ _____
Sugar Maple	253.30 MBF	\$ 267.00/MBF	\$ _____
Pulpwood			
B. T. Aspen	1,131.00 Cords	\$ 14.25/Cord	\$ _____
Balsam Fir	37.00 Cords	\$ 21.90/Cord	\$ _____
Basswood	144.00 Cords	\$ 6.00/Cord	\$ _____
Beech	585.00 Cords	\$ 16.30/Cord	\$ _____
Mixed Hardwood	1,711.00 Cords	\$ 16.30/Cord	\$ _____
White Pine	38.00 Cords	\$ 33.15/Cord	\$ _____

*The volumes are statistically estimated within plus (+) or minus (-) 15.71 percent. These estimated volumes are final and not subject to adjustment. Prospective bidders are urged to examine this timber and to make their own estimates of quantity and quality.

I understand that any or all bids may be rejected. All bids must be signed and all bid items must be bid or the bid form may be rejected. I also understand that consideration and awarding a contract will be based upon my past performance and ability to complete the contract based upon equipment and staffing subject to my control.

FEDERAL ID: _____ or SOCIAL SECURITY NUMBER: _____

Company or individual bidding: _____

Company representative's name: _____

Address: _____

City: _____ State: _____ Zip: _____

IF AVAILABLE, PLEASE PLACE THE PERSONALIZED LABEL FROM YOUR PROSPECTUS IN THE ABOVE BOX.

Individual or company representative's signature: _____ Date: _____

Phone number : _____ Email (optional): _____

THE WINNING BIDDER MUST COMPLETE THE VERIFICATION OF WORKER'S DISABILITY COMPENSATION ACT COMPLIANCE (ON REVERSE SIDE IF DOUBLE SIDED) WITHIN 21 DAYS OF SALE AWARD DATE



FOR DEPARTMENT USE ONLY
Sale Number (XX - XXX - XX - XX)
Forest Management Unit:

TIMBER SALE VERIFICATION OF WORKER'S DISABILITY COMPENSATION ACT COMPLIANCE

*As required by Act 317, P.A. 1969 (Worker's Compensation) and
Part 5 of Act 451 of 1994, as amended.*

VERIFICATION OF WORKER'S DISABILITY COMPENSATION ACT COMPLIANCE

- This verification must be completed and submitted within 21 days of contract award and prior to the issuance of the timber sale contract.
- In addition, if boxes 2B or 2C are checked, then Notice of Exclusion or Certificate of Insurance must be submitted within twenty-one (21) days of the contract award and prior to the issuance of the timber sale contract.
- All information must be typed or printed except for written signatures.

Please Check Appropriate Categories:

1. My business is organized as (you **must** check one of the boxes below):
 - A. Sole Proprietorship (individual)
 - B. Partnership
 - C. Corporation
2. You **must** check one of the boxes below:
 - A. I certify my business is a sole proprietorship and it has no employees but the sole proprietor. I am not subject to the Worker's Compensation Laws.
 - B. I certify my business has satisfied its obligation to the Worker's Compensation Act through the use of an approved Notice of Exclusion (BWC-337, Rev. 5/96). I will provide a copy of the Notice of Exclusion within 21 days of the contract award. (For questions or a copy of the BWC-337, please call the Worker's Compensation Bureau at 517-322-1195).
 - C. I certify my business has a Worker's Compensation Policy. I will provide an original Certificate of Insurance within twenty-one (21) days of the contract award.
3. If you have checked item 2(A) or 2(B), you **must** indicate the number of **both** full-time and part-time employees, other than yourself, including family members and active partners (if none, you must enter "0").

_____ Full-time Employees

_____ Part-time Employees

Name of Business		Federal ID (or) Social Security No.	
Address		Telephone ()	
City	State	ZIP	

I hereby certify that the above information is true and correct. I agree to notify the Michigan DNR of any changes that occur in factors affecting my coverage during any of my present and future operations.

Signature of Owner or Authorized Representative

Title

Date

Please complete the "SEALED BID" information on the next page

Darla Aspen (52-128-16)
 ; Cheboygan COUNTY

In response to the notice of sale to be held 3:00 p.m. (local time) on June 27, 2017, I am hereby submitting my sealed bid (firm offer) for the following forest products to be cut. Bids for individual species must be at or above the advertised price. All non-responsive bid forms may be rejected.

<u>PRODUCTS & SPECIES</u>	<u>ESTIMATED VOLUME*</u>	<u>ADVERTISED PRICE</u>	<u>BID PRICE</u>
Sawtimber			
Mixed Aspen	181.40 MBF	\$ 52.00/MBF	\$ _____
Red Maple	19.70 MBF	\$ 149.00/MBF	\$ _____
Red Oak	28.00 MBF	\$ 181.00/MBF	\$ _____
Red Pine	22.90 MBF	\$ 154.00/MBF	\$ _____
Sugar Maple	6.70 MBF	\$ 267.00/MBF	\$ _____
Pulpwood			
Balsam Fir	202.00 Cords	\$ 21.90/Cord	\$ _____
Basswood	107.00 Cords	\$ 6.00/Cord	\$ _____
Black Spruce	33.00 Cords	\$ 36.15/Cord	\$ _____
Jack Pine	28.00 Cords	\$ 24.05/Cord	\$ _____
Mixed Aspen	1,878.00 Cords	\$ 14.25/Cord	\$ _____
Mixed Hardwood	610.00 Cords	\$ 16.30/Cord	\$ _____
N. White Cedar	23.00 Cords	\$ 19.00/Cord	\$ _____
Red Oak	66.00 Cords	\$ 19.15/Cord	\$ _____
Red Pine	43.00 Cords	\$ 49.55/Cord	\$ _____
Tamarack	22.00 Cords	\$ 34.85/Cord	\$ _____
White Pine	155.00 Cords	\$ 33.15/Cord	\$ _____
White Spruce	27.00 Cords	\$ 36.15/Cord	\$ _____

*The volumes are statistically estimated within plus (+) or minus (-) 15.43 percent. These estimated volumes are final and not subject to adjustment. Prospective bidders are urged to examine this timber and to make their own estimates of quantity and quality.

I understand that any or all bids may be rejected. All bids must be signed and all bid items must be bid or the bid form may be rejected. I also understand that consideration and awarding a contract will be based upon my past performance and ability to complete the contract based upon equipment and staffing subject to my control.

FEDERAL ID: _____ or SOCIAL SECURITY NUMBER: _____

Company or individual bidding: _____

Company representative's name: _____

Address: _____

City: _____ State: _____ Zip: _____

IF AVAILABLE, PLEASE PLACE THE PERSONALIZED LABEL FROM YOUR PROSPECTUS IN THE ABOVE BOX.

Individual or company representative's signature: _____ Date: _____

Phone number : _____ Email (optional): _____

THE WINNING BIDDER MUST COMPLETE THE VERIFICATION OF WORKER'S DISABILITY COMPENSATION ACT COMPLIANCE (ON REVERSE SIDE IF DOUBLE SIDED) WITHIN 21 DAYS OF SALE AWARD DATE



FOR DEPARTMENT USE ONLY
Sale Number (XX - XXX - XX - XX)
Forest Management Unit:

TIMBER SALE VERIFICATION OF WORKER'S DISABILITY COMPENSATION ACT COMPLIANCE

*As required by Act 317, P.A. 1969 (Worker's Compensation) and
Part 5 of Act 451 of 1994, as amended.*

VERIFICATION OF WORKER'S DISABILITY COMPENSATION ACT COMPLIANCE

- This verification must be completed and submitted within 21 days of contract award and prior to the issuance of the timber sale contract.
- In addition, if boxes 2B or 2C are checked, then Notice of Exclusion or Certificate of Insurance must be submitted within twenty-one (21) days of the contract award and prior to the issuance of the timber sale contract.
- All information must be typed or printed except for written signatures.

Please Check Appropriate Categories:

1. My business is organized as (you **must** check one of the boxes below):
 - A. Sole Proprietorship (individual)
 - B. Partnership
 - C. Corporation

2. You **must** check one of the boxes below:
 - A. I certify my business is a sole proprietorship and it has no employees but the sole proprietor. I am not subject to the Worker's Compensation Laws.
 - B. I certify my business has satisfied its obligation to the Worker's Compensation Act through the use of an approved Notice of Exclusion (BWC-337, Rev. 5/96). I will provide a copy of the Notice of Exclusion within 21 days of the contract award. (For questions or a copy of the BWC-337, please call the Worker's Compensation Bureau at 517-322-1195).
 - C. I certify my business has a Worker's Compensation Policy. I will provide an original Certificate of Insurance within twenty-one (21) days of the contract award.

3. If you have checked item 2(A) or 2(B), you **must** indicate the number of **both** full-time and part-time employees, other than yourself, including family members and active partners (if none, you must enter "0").

_____ Full-time Employees

_____ Part-time Employees

Name of Business		Federal ID (or) Social Security No.	
Address		Telephone ()	
City	State	ZIP	

I hereby certify that the above information is true and correct. I agree to notify the Michigan DNR of any changes that occur in factors affecting my coverage during any of my present and future operations.

Signature of Owner or Authorized Representative

Title

Date

Please complete the "SEALED BID" information on the next page