



**DEPARTMENT OF NATURAL RESOURCES  
STATE OF MICHIGAN**

**TIMBER SALE PROSPECTUS #5912**

SCHEDULED SALE DATE AND TIME: 8:30 a.m. (local time) on July 12, 2017.

LOCATION: CRYSTAL FALLS MGT UNIT, 1420 US-2 WEST, CRYSTAL FALLS, MI 49920.

PROSPECTUS NOTE: \*\*\*PLEASE NOTE - BID OPENINGS ARE NOW HELD AT 8:30 A.M. (LOCAL TIME)\*\*\*

The bidder is advised to inspect the sale area and review the location, estimated volumes, operating costs and contract terms of proposed sales. Please be aware that some landowners may request 60 days or more notice for access across their land.

Notice is hereby given that bids will be received by the Unit Manager, CRYSTAL FALLS MANAGEMENT UNIT, for certain timber on the following described lands:

Hunter Trail Sale SBW (12-015-17)

Dickinson County, Advertised Price \$37,463.75, 55.9 Acres, Aspen, Spruce/Fir/Tamarack.

SALE NOTE: Sale to expire April 15, 2018. No extensions granted on this sale. Harvesting allowed between July 16, 2017 – Sept 15, 2017 OR Dec 1, 2017 – April 15, 2018. Short harvest window due to Oak Wilt considerations, reduce hunter/logger interface, and to facilitate hunter walking trail plantings. Road must be improved for hauling. When upgrading road, protect top soil. Best access for Unit 5 is through private landowners.

Two Trucks Mix (12-066-16)

Iron County, Advertised Price \$158,528.80, 264.3 Acres, Hardwood, Sugar Maple.

SALE NOTE: Access may be through private land.

Rock Dam Aspen (12-068-16)

Iron County, Advertised Price \$28,386.40, 64.8 Acres, Aspen, Spruce/Fir/Tamarack.

Spies Lake Rd Hardwood (12-069-16)

Iron County, Advertised Price \$22,301.65, 66.3 Acres, Hardwood, Spruce/Fir/Tamarack.

SALE NOTE: Access may be through private land.

## BID INSTRUCTIONS (VER. 09/02/2016):

### 1. Scheduled Bid Location, Date, and Time (2/11)

Bids must be received by the Unit Manager, CRYSTAL FALLS OFFICE, 1420 US-2 WEST, CRYSTAL FALLS, MI 49920, no later than 8:30 a.m. (local time) on July 12, 2017. For further information concerning this sale, contact Dan McNamee at 906-875-6622 extension 105.

### 2. Bidder's Qualifications (5/16)

Purchaser shall obtain workers compensation insurance to cover claims under Michigan's Worker's Disability Compensation Act of 1969 or similar employee benefit act of any other state applicable to an employee. If all or part of a timber sale was prepared by a private contractor, the contractor and that contractor's company are not permitted to bid on the timber sale contract. Bids will not be accepted from individuals or companies appearing on the DNR/FRD No-Bid List. This list contains the names of purchasers who previously failed to execute a contract within 21-days or who have a history of poor performance.

### 3. Preparation of Sealed Bids (5/16)

Bid Forms may be completed online thru Michigan DNR Timber Sale Online Bidding (OLB) at [www.michigan.gov/timberbidding](http://www.michigan.gov/timberbidding) or by completing the hardcopy Bid Form found in the Timber Sale Prospectus. Hardcopy Bid Forms shall be manually signed in ink. Registration in OLB is considered your 'signature' for all bids submitted thru that system. Bid prices must be entered for each species and product in the Bid Price column for all material subject to bidding and all fill-in blanks must be completed. If erasures or other changes appear on the hardcopy Bid Form, each erasure or change must be initialed by the person signing the bid.

### 4. Submission of Sealed Bids (5/16)

Bid forms may be obtained from the Unit Manager or thru OLB. Bids may be submitted hardcopy or thru OLB. All hardcopy bids must be submitted on the bid form and in an envelope clearly identified as described in this section. NOTE: Only one bid form per bid envelope. Sealed bids must be submitted to the Unit office designated in the prospectus and must be submitted at or prior to the time established in the prospectus. The envelope should show on the outside (a) the sale name or number and (b) the date and time of bid opening, as shown in the prospectus. Bids received after the time specified in the sale prospectus are late bids and will be rejected.

It is possible for a bidder to submit multiple bids on a single sale. For example, a bid may be submitted hardcopy and a bid may be submitted thru OLB. Or, two bidders from the same company could both submit bids on the same sale. If this were to happen, the State would accept all bids received and award the contract accordingly. All bidding and contractual requirements would apply to all bids received.

### 5. Public Opening of Sealed Bids (7/16)

If conditions permit, the sealed bids will be publicly opened and posted at the time and place set in the prospectus.

If a bidder, present at a bid opening, has submitted bids on more than one sale, that bidder may withdraw their unopened bid envelopes or announce the withdrawal of their online bid after being declared the successful bidder on one sale.

### 6. Award of Contract (1/11)

Award of the contract will be made to the Bidder whose bid, conforming to the prospectus, is most advantageous to the State of Michigan on the basis of total value at rates bid for the estimated quantities. The State reserves the right to reject any bid or waive any minor irregularity in bids received. A written award mailed (or otherwise furnished) to the successful Bidder shall be deemed to result in a binding contract without further action by either party.

### 7. Down Payment (1/11)

The Bidder to whom award is made must make a down payment within 21 days of the sale award. The amount of the down payment will be calculated as shown in the Bond and Payment Schedule of this prospectus. Only cash may be used to meet this requirement.

### 8. Performance Security (1/11)

As guarantee of faithful performance, a cash bond, certificate of deposit, surety bond or irrevocable letter of credit (LOC) is required within 21 days of the sale award. The amount of the performance security is shown in the Bond and

Payment Schedule of this prospectus. If an LOC or surety is used, the coverage must extend for at least 6 months beyond the contract expiration.

#### 9. Timber Sale Contract (9/14)

Additional conditions and requirements common to all timber sales are listed on the timber sale contract (R4031) and are available on line at [www.michigan.gov/timber](http://www.michigan.gov/timber). Contact the Unit Manager for additional information or a sample contract. Within 21 days of the date of the award letter, the bidder must sign the contract and provide the required down payment, performance security, and verification of worker's disability compensation. The down payment and performance security shall be in accordance with the provisions of the timber sale contract, in the sums stated in this prospectus. If these actions are not taken, then the Bidder, the Bidder's corporation, and the corporation's principals may not be permitted to bid on State timber sales for a period of 1 year. In addition, the Bidder certifies that if awarded this contract, the Bidder will complete the timber sale contract in accordance with its terms and any modifications thereof including requirements to purchase, cut, and remove the included timber by the expiration date.

#### 10. Disclaimer of Estimates and Bidder's Warranty of Inspection (7/16)

Before submitting this bid, the Bidder is advised and cautioned to inspect the sale area, review the requirements of the sale contract, and take other steps as may be reasonably necessary to ascertain the location, estimated volumes, construction estimates, and operating costs of the proposed sale. Failure to do so will not relieve the Bidder from responsibility for completing the contract.

The Bidder warrants that this bid is submitted solely on the basis of the Bidder's examination and inspection of the quality and quantity of the timber offered for sale and the Bidder's opinion of the value thereof and the costs of recovery. No reliance should be placed on the State of Michigan's estimates of timber quality, quantity or costs of recovery. Bidder further acknowledges that the State of Michigan: (i) expressly disclaims any warranty of fitness of timber for any purpose; (ii) offers this timber as is without any warranty of quality (merchantability) or quantity and (iii) expressly disclaims any warranty as to the quantity or quality of timber sold.

#### 11. Certification and Chain-of-Custody (10/14)

Unless otherwise indicated in the contract under section 7 – Other Conditions of the Sale Specific Conditions & Requirements, the area encompassed by this timber sale is certified to the standards of the Forest Stewardship Council (FSC) - Certificate #SCS-FM/COC-00090N and the Sustainable Forestry Initiative (SFI) - Certificate #NSF-SFIS-5Y031-SF5. Forest products from this sale may be delivered to the mill as "FSC 100% and / or SFI certified" as long as the contractor hauling the forest products is chain-of-custody (COC) certified or covered under a COC certificate from the destination mill. The purchaser is responsible for maintaining COC after leaving the sale area.

#### 12. Good Neighbor Authority (GNA) Requirements (7/16)

If the name of this timber sales contains the acronym GNA, it is authorized by the Good Neighbor Authority (GNA) and covered by various agreements between the U.S. Forest Service and the State. The timber sale occurs on federal land and the following conditions apply:

GNA contracts on US Forest Service land will not be awarded to purchasers on the Federal list of excluded parties. The System for Award Management (SAM) will be checked for active excluded parties prior to award of contract. In addition, the Bidder to whom award is made must complete an Assurance Regarding Felony Conviction or Tax Delinquent Status for Corporate Applicants (AD-3031).

#### 13. Good Neighbor Authority (GNA) Requirements, con't (9/16)

Bidder certifies, by signing this bid form, that to the best of Bidder's knowledge that the following representations are accurate and complete.

- a. That the Bidder and its principals are not presently debarred, suspended, proposed for debarment, declared ineligible, or voluntary excluded from timber sales (covered transactions) by any Federal department or agency.
- b. That the Bidder and its principals have not within a 3-year period preceding this bid been convicted of or had a civil judgment rendered against them for commission of fraud or a criminal offense in connection with obtaining, attempting to obtain, or performing a public (Federal, State, or local) transaction or contract under a public transaction; violation of Federal or State antitrust statutes or commission of embezzlement, theft, forgery, bribery, falsification or destruction of records, making false statements, or receiving stolen property.

c. That the Bidder and its principals are not presently indicted for or otherwise criminally or civilly charged by a governmental entity (Federal, State, or local) with commission of any of the offenses enumerated in paragraph b of this certification.

d. That the Bidder and its principals have not within a 3-year period preceding this bid had one or more public transactions (Federal, State, or local) terminated for breach or default of a timber or forest product contract.

Bidders that cannot certify this requirement, in whole or in part, shall submit an explanation with their bid.

KEITH CREAGH

Director

## TIMBER SALE INFORMATION

### Hunter Trail Sale SBW (12-015-17)

Dickinson County (Advertised Price \$37,463.75)

SALE NOTE: Sale to expire April 15, 2018. No extensions granted on this sale. Harvesting allowed between July 16, 2017 – Sept 15, 2017 OR Dec 1, 2017 – April 15, 2018. Short harvest window due to Oak Wilt considerations, reduce hunter/logger interface, and to facilitate hunter walking trail plantings. Road must be improved for hauling. When upgrading road, protect top soil. Best access for Unit 5 is through private landowners.

A timber sale contract for this lump sum, sealed bid timber sale will be awarded to the responsible bidder offering the highest sealed bid price. Bids must be at or above the following advertised price for each species:

<u>PRODUCTS &amp; SPECIES</u>	<u>ESTIMATED UNITS*</u>	<u>ADVERTISED PRICE</u>
Pulpwood		
Balsam Fir	6.00 Cords	\$ 15.10 / Cord
Mixed Hardwood	39.00 Cords	\$ 21.60 / Cord
Quaking Aspen	1,315.00 Cords	\$ 27.25 / Cord
White Spruce	34.00 Cords	\$ 20.50 / Cord

\* The total volume is statistically estimated within plus (+) or minus (-) 15.67 percent. The estimated units are final and not subject to adjustment. Prospective bidders are urged to examine this timber and to make their own estimates of quantity and quality.

#### **BOND AND PAYMENT SCHEDULE:**

1. A bond in the amount of \$1,873.00 to insure faithful performance of the conditions of the contract will be deposited by the successful bidder within 21 days of the sale award.
2. Cutting in any sale or unit without the required advance payment would be considered a trespass.
3. Total payment must be paid in advance or according to the following schedule:
  - (a) Ten percent (10%) of the sale value must be paid within 21 days of the sale award.
  - (b) The 10% down payment will be credited towards the first unit cut.
4. If no cutting takes place, the 10% down payment will not be refunded.
5. Operations on the contract issued will terminate on 04/15/2018.

#### **Description of Timber by Payment Unit (PU)**

PU	MARKET GROUP	PRODUCT	QUANTITY	UNIT	ACRES	ADVERTISE PRICE
1	Balsam Fir	Pulpwood	6.0	Cords	19.1	\$12,093.05
	Mixed Hardwood		22.0	Cords		
	<i>Paper Birch</i>		11.0	<i>Cords</i>		
	<i>Red Maple</i>		11.0	<i>Cords</i>		
	Quaking Aspen		417.0	Cords		
	White Spruce		8.0	Cords		
2	Quaking Aspen	Pulpwood	273.0	Cords	8.2	\$7,521.25
	White Spruce		4.0	Cords		
3	Quaking Aspen	Pulpwood	192.0	Cords	10.6	\$5,334.50
	White Spruce		5.0	Cords		
4	Quaking Aspen	Pulpwood	360.0	Cords	13.9	\$9,994.50
	White Spruce		9.0	Cords		
5	Mixed Hardwood	Pulpwood	17.0	Cords	4.1	\$2,520.45
	<i>Balsam Poplar</i>		9.0	<i>Cords</i>		
	<i>Ironwood</i>		4.0	<i>Cords</i>		
	<i>Red Maple</i>		4.0	<i>Cords</i>		
	Quaking Aspen		73.0	Cords		
	White Spruce		8.0	Cords		
<b>TOTAL:</b>			1,394.0	Cords		

## Sale Specific Conditions & Requirements

**Sale Name: Hunter Trail Sale SBW**

**Sale Number: 12-015-17 Seq#: 1**

### 1 - Sale Area

#### 1.2 - Boundaries

##### 1.2.1 - Painted boundaries (1/14)

The sale boundary and Payment Unit boundaries are marked and identified by blue and red paint. Exterior sale boundary lines against private property are marked with blue paint. Exterior sale boundary lines against state are marked with red paint. The interior Payment Unit boundary is marked with red paint. The painted boundary line trees are not Included Timber and are to be protected.

### 2 - Timber Specifications

#### 2.1 - Included Timber

##### 2.1.1 - Clearcut unit(s) with unmerchantable trees (6/14)

Within Payment Unit(s) #'s 1-5, cut all trees that are two (2) inches or more at DBH except pine and oak. In addition, leave all submerchantable conifers.

### 4 - Transportation

#### 4.1 - Construction

##### 4.1.3 - Slash and earthen piles (8/04)

Piles or windrows of earth along roads and landings that have been widened or constructed shall be leveled. Slash from road maintenance or construction, including stumps, shall be dispersed throughout the sale.

##### 4.1.4 - Timber removed for construction (12/09)

Trees cut or damaged in the process of pre-approved road, landing or skid trail construction will be decked in an area separate from other Designated Timber and not removed until measured by the sale administrator. Payment will be made at the specified Purchase Unit Price.

##### 4.1.6 - Road construction (1/09)

Improvements of existing roads shall be done in such a way as to minimize the environmental and visual impacts. Merchantable trees shall be cut and utilized unless otherwise directed. Non-merchantable trees shall be severed and laid flat on the ground. Slash shall be scattered, and not left in windrows and kept a minimum of 10 feet back from the road edge. Stumps shall be set upright, not left on edge, and be moved at least 10 feet away from the road edge. Disturbed soil shall be feathered into the woods and not left in berms or windrows.

##### 4.1.7 - Road closure (10/11)

There are currently berms at the locations shown on the Timber Sale Map. These berms are required to be in place from September 15 to December 1, and must also be in place when operations are completed. Contact the sale administrator for specific details of design and placement.

##### 4.1.8 - Road work (1) (8/07)

The following road work is required: the existing hunter walking trail must be widened and straightened to accommodate haul trucks. Topsoil must be protected and re-distributed so trail can be planted post harvest.

##### 4.1.12 - No new roads (1/12)

No new roads will be permitted in any Payment Unit. All operations are limited to existing roads. Improvements to existing roads are permitted.

#### 4.4 - Access

##### 4.4.3 - Access gate (12/08)

The access gate must be locked from September 15 to December 1 to deter vehicle traffic on the hunter walking trail.

### 5 - Operations

## 5.2 - Conduct of Operations

### 5.2.1 - Slash

#### 5.2.1.13 - Dispose of slash as directed (12/05)

Slash is to be disposed of as directed by the sale administrator. Slash must be scattered and not left in piles.

### 5.2.2 - Hazard Trees/Snags

#### 5.2.2.1 - Den trees (10/16)

Obvious hollow and/or den trees shall be protected and left standing unless they are a safety hazard.

### 5.2.3 - Operating Restrictions

#### 5.2.3.4 - Oak wilt restriction (4/17)

Within Payment Unit(s) #'s 1-5, unless changed by written agreement, cutting, skidding, and hauling are not permitted during the period of April 15 to July 15. This is necessary to reduce the spread of oak wilt. For more information, contact the Unit Manager or his/her representative.

#### 5.2.3.5 - Hunting operating restriction (12/08)

No Payment unit may be started during the period of September 15 to December 1 without permission of the Unit Manager or his/her representative.

#### 5.2.30 - Landing/road top soil protection (2/15)

Top soil on roads and landings must be removed, stockpiled and saved. Upon completion of the timber sale, soil must be evenly distributed back over the area for revegetation.

#### 5.2.32 - Decking/landing restoration (9/13)

All decking and landing areas must have the surface area restored to a condition equal to or better than before. This is to ensure the proper regeneration of the stand. Wood debris, chips and "cookies" from trimmings must be removed or scattered away from landing and loading areas and may not be windrowed on the edge.

## 5.4 - Soil Protection

### 5.4.1 - Rutting restriction, general (7/16)

Operations are to cease immediately if equipment and weather conditions result in rutting of roads and/or skid trails which is 12 inches or greater in depth and 50 feet in length. The Unit Manager or his/her representative may restrict hauling and/or skidding if ruts exceed the specified depth. With the Unit Manager or his/her representative's approval, the Purchaser may return to the area when the risk of rutting has decreased.

## 7 - Other Conditions

### 7.2 - Extensions

#### 7.2.2 - No extensions (3/09)

There will be no extensions granted on this contract. The purpose of this sale is to create habitat for the Ruffed Grouse. This sale is already scheduled for planting in 2018.

### 7.5 - Loss

#### 7.5.1 - Deteriorating timber (7/09)

The sale area has received damage from Spruce Budworm. The Purchaser should harvest the wood as soon as possible. The Department of Natural Resources is held free of responsibility of any further damage or deterioration due to delay in harvesting.



# TIMBER SALE MAP

This information provided by authority of Part 525, 1994 PA 451, as amended.

Forest Management Unit Crystal Falls	County Dickinson	Mapped By Church	Date 04/07/2017	Page 1	of 1
Township 41N	Range 28W	Section(s) and Subdivision(s) NESW, NWSE, SENW, SESE, SESW, SWNE, SWSE, SWSW	Scale 1:15,840		

Cover Type				Density	
A = Aspen	H = Hemlock	N = Marsh	U = Upland Brush	0 = Non Stocked	5 = Pole Timber Medium
B = Paper Birch	J = Jack Pine	O = Oak	UM = Upland Mixed	1 = Seedling Sapling Poor	6 = Pole Timber Well
C = Cedar	L = Lowland Brush	P = Lowland Poplar	V = Bog or Marsh	2 = Seedling Sapling Medium	7 = Saw Timber Poor
D = Treed Bog	LM = Lowland Mixed	Q = Mixed Swamp Conifer	W = White Pine	3 = Seedling Sapling Well	8 = Saw Timber Medium
E = Swamp Hdwoods	M = Mpl, Bch, Brch	R = Red Pine	X = Non Stocked	4 = Pole Timber Poor	9 = Saw Timber Well
F = Spruce Fir	MC = Mixed Conifer	S = Black Spruce	Z = Water		
G = Grass	MD = Mixed Deciduous	T = Tamarack			

PU	Acres	PU	Acres
1	19.1	4	13.9
2	8.2	5	4.1
3	10.6		

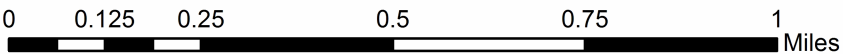
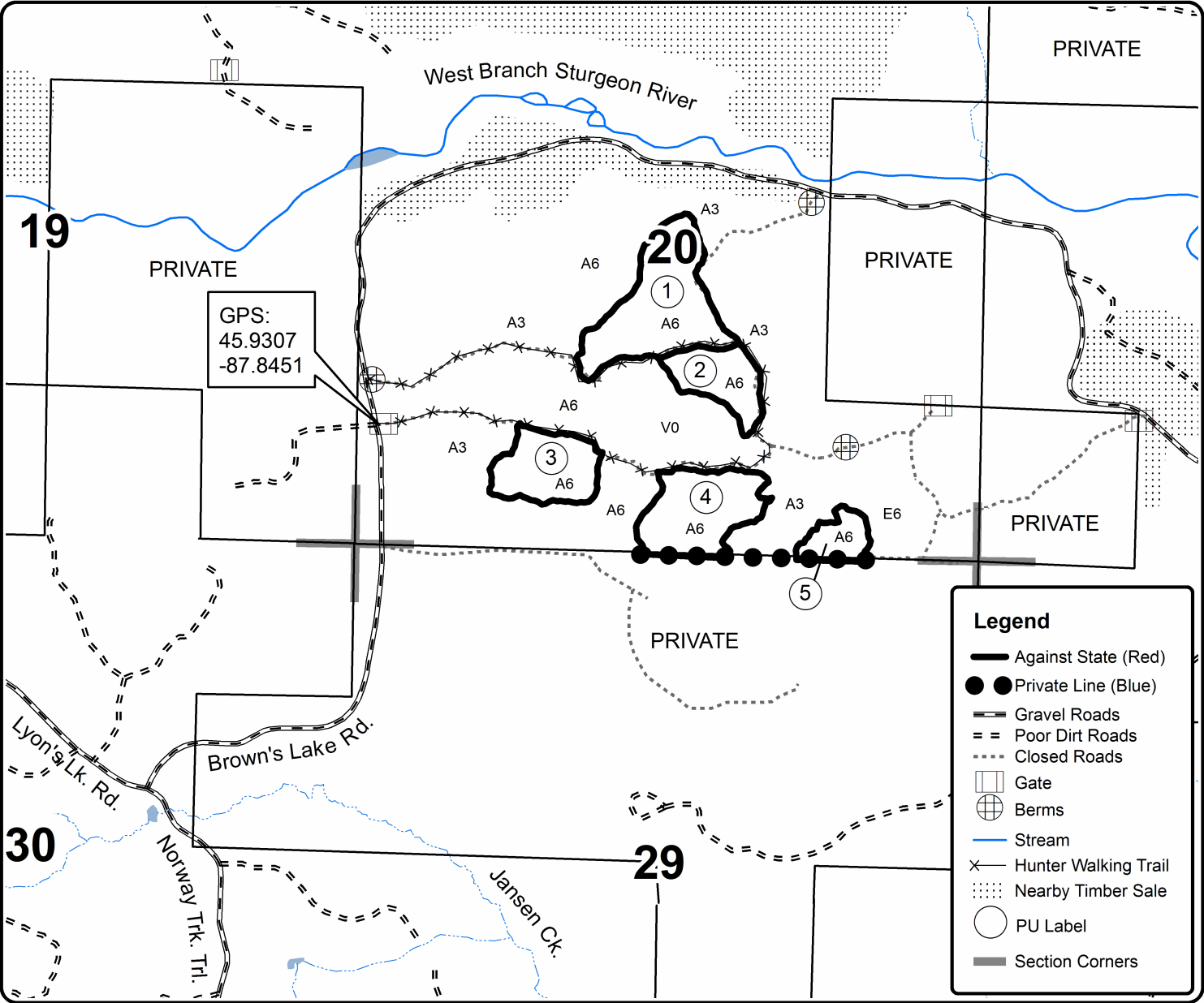


QR Code for GeoRef PDF

## Hunter Trail Sale SBW

### Compartment 78

55.9 Acres





# TIMBER SALE INFORMATION

## Two Trucks Mix (12-066-16)

Iron County (Advertised Price \$158,528.80)

SALE NOTE: Access may be through private land.

A timber sale contract for this lump sum, sealed bid timber sale will be awarded to the responsible bidder offering the highest sealed bid price. Bids must be at or above the following advertised price for each species:

<u>PRODUCTS &amp; SPECIES</u>	<u>ESTIMATED UNITS*</u>	<u>ADVERTISED PRICE</u>
Sawtimber		
Basswood	0.40 MBF	\$ 166.00 / MBF
Black Cherry	19.60 MBF	\$ 88.00 / MBF
Red Maple	73.70 MBF	\$ 189.00 / MBF
Sugar Maple	80.20 MBF	\$ 339.00 / MBF
Yellow Birch	4.90 MBF	\$ 117.00 / MBF
Pulpwood		
Balsam Fir	310.00 Cords	\$ 14.50 / Cord
Mixed Hardwood	4,397.00 Cords	\$ 20.70 / Cord
Paper Birch	104.00 Cords	\$ 20.00 / Cord
Quaking Aspen	95.00 Cords	\$ 26.10 / Cord
Tamarack	70.00 Cords	\$ 11.25 / Cord
White Spruce	722.00 Cords	\$ 19.65 / Cord

\* The total volume is statistically estimated within plus (+) or minus (-) 10.02 percent. The estimated units are final and not subject to adjustment. Prospective bidders are urged to examine this timber and to make their own estimates of quantity and quality.

### **BOND AND PAYMENT SCHEDULE:**

1. A bond in the amount of \$10,200.00 to insure faithful performance of the conditions of the contract will be deposited by the successful bidder within 21 days of the sale award.
2. Cutting in any sale or unit without the required advance payment would be considered a trespass.
3. Total payment must be paid in advance or according to the following schedule:
  - (a) Ten percent (10%) of the sale value must be paid within 21 days of the sale award.
  - (b) The 10% down payment will be credited towards the first unit cut.
4. If no cutting takes place, the 10% down payment will not be refunded.
5. Operations on the contract issued will terminate on 06/30/2020.

**Description of Timber by Payment Unit (PU)**

PU	MARKET GROUP	PRODUCT	QUANTITY	UNIT	ACRES	ADVERTISE PRICE
1	Red Maple	Sawtimber	17.9	MBF	19.0	\$14,180.35
	Balsam Fir	Pulpwood	61.0	Cords		
	Mixed Hardwood		361.0	Cords		
	Tamarack		30.0	Cords		
	White Spruce		107.0	Cords		
2	Black Cherry	Sawtimber	18.7	MBF	34.6	\$12,791.45
	Red Maple		3.3	MBF		
	Sugar Maple		0.5	MBF		
	Balsam Fir	Pulpwood	7.0	Cords		
	Mixed Hardwood		462.0	Cords		
	White Spruce		35.0	Cords		
3	Red Maple	Sawtimber	24.2	MBF	25.7	\$19,137.80
	Balsam Fir	Pulpwood	83.0	Cords		
	Mixed Hardwood		487.0	Cords		
	Tamarack		40.0	Cords		
	White Spruce		144.0	Cords		
4	Balsam Fir	Pulpwood	144.0	Cords	46.9	\$15,009.25
	Mixed Hardwood		11.0	Cords		
	Paper Birch		101.0	Cords		
	Quaking Aspen		95.0	Cords		
	White Spruce		417.0	Cords		
5	Black Cherry	Sawtimber	0.2	MBF	7.6	\$3,400.10
	Red Maple		1.1	MBF		
	Sugar Maple		3.8	MBF		
	Yellow Birch		0.2	MBF		
	Mixed Hardwood	Pulpwood	90.0	Cords		
6	Red Maple	Sawtimber	4.0	MBF	9.4	\$5,799.15
	Sugar Maple		0.5	MBF		
	Balsam Fir	Pulpwood	15.0	Cords		
	Mixed Hardwood		204.0	Cords		
	Paper Birch		3.0	Cords		
	White Spruce		19.0	Cords		
7	Basswood	Sawtimber	0.4	MBF	67.4	\$23,655.90
	Black Cherry		0.2	MBF		
	Red Maple		3.6	MBF		
	Sugar Maple		30.6	MBF		
	Yellow Birch		4.2	MBF		
	Mixed Hardwood	Pulpwood	581.0	Cords		
8	Black Cherry	Sawtimber	0.5	MBF	53.7	\$31,207.10
	Red Maple		19.6	MBF		
	Sugar Maple		44.8	MBF		
	Yellow Birch		0.5	MBF		
	Mixed Hardwood	Pulpwood	590.0	Cords		
TOTAL:			178.8	MBF		
TOTAL:			4,087.0	Cords		

## Sale Specific Conditions & Requirements

**Sale Name: Two Trucks Mix**

**Sale Number: 12-066-16 Seq#: 2**

### 1 - Sale Area

#### 1.2 - Boundaries

##### 1.2.1 - Painted boundaries (1/14)

The sale boundary against private land is marked with blue paint. The sale boundary against state land is marked with red paint. Interior Payment Unit boundaries are marked with red paint slashes.

### 2 - Timber Specifications

#### 2.1 - Included Timber

##### 2.1.2 - Clearcut unit(s) w/o unmerchantable trees (8/11)

Within Payment Unit(s) 1 and 3, cut all aspen, mixed hardwood, white birch, balsam fir, spruce, and tamarack trees which meet minimum piece specifications in 2.2 Utilization (1 pulpstick tall and larger). Do not cut trees marked with green paint, oak or elm.

Within Payment Unit 4, cut all aspen, mixed hardwood, white birch, balsam fir, spruce and tamarack trees 1 pulpstick tall and larger. Do not cut elm, cherry, or oak.

Within Payment Unit 6, cut all aspen, white birch, spruce, balsam fir, and tamarack trees 1 pulpstick tall and larger.

##### 2.1.3 - Cut tree marked unit(s) (12/08)

Within Payment Unit(s) 2, 5, 7, and 8, all trees are designated for cutting when marked with orange paint above and below stump height, regardless of merchantability.

#### 2.2 - Utilization

##### 2.2.11 - Chipping restriction (9/14)

If chipping occurs on this sale, then no woody debris present on the ground at the start of the sale may be chipped. Chip piles must be removed within 60 days of the sale expiration. In addition, after chip pile removal, residual chip depth at the landing may not exceed 4 inches.

### 3 - Payments

#### 3.3 - Pre-measured Sales

##### 3.3.4 - Dividing payment units (7/14)

Payment Unit(s) 7 and 8 may be divided at the request of the Purchaser and upon approval of the Unit Manager. Dividing Payment Units is a contract modification which requires a Timber Sale Contract Supplement.

### 4 - Transportation

#### 4.1 - Construction

##### 4.1.6 - Road construction (1/09)

Construction of new roads or improvements of existing roads shall be done in such a way as to minimize the environmental and visual impacts. Merchantable trees shall be cut and utilized unless otherwise directed. Non-merchantable trees shall be severed and laid flat on the ground. Slash shall be scattered. Stumps shall be set upright, not left on edge, and be moved at least 5 feet away from the road edge. Disturbed soil shall be feathered into the woods and not left in berms or windrows.

##### 4.1.7 - Road closure (10/11)

New roads built into the sale must be blocked to vehicle traffic within 60 days of the sale expiration. Overgrown roads that are reopened shall be considered new roads. In general, this will require constructing a four (4') foot high berm of stumps, logs and earth. These roads must be rendered impassable to wheeled vehicles. Contact the sale administrator for specific details of design and placement.

## 4.2 - Maintenance

### 4.2.5 - Two wheel drive condition (2/04)

All existing trail roads on and adjacent to the sale area must be passable by two-wheel drive traffic for the duration of the sale.

## 4.4 - Access

### 4.4.1 - Private property access (3/11)

Permission for access across private land is the responsibility of the Purchaser. Road use agreements may be required from Weyerhaeuser. At a minimum, the Purchaser must contact Weyerhaeuser prior to beginning operations notifying them of road use.

## 5 - Operations

### 5.2 - Conduct of Operations

#### 5.2.1 - Slash

##### 5.2.1.8 - Slash height (12/08)

No slash may exceed 36 inches in height.

##### 5.2.1.11 - Slash for reforestation (5/07)

To facilitate reforestation, the sale area shall be left with slash evenly distributed. Bunched tops within the cutting area shall be broken up and scattered. Stumps shall be cut low to the ground. Processing sites shall not be left with a compacted layer of slash; tops from these sites shall be hauled back into the cut area and scattered.

#### 5.2.2 - Hazard Trees/Snags

##### 5.2.2.1 - Den trees (2/04)

Obvious hollow and/or den trees shall be protected and left standing unless they are a safety hazard.

#### 5.2.3 - Operating Restrictions

##### 5.2.3.1 - Operating restrictions (9/11)

Within Payment Unit(s) 1 - 3 and 5 - 8, unless changed by written agreement, cutting, skidding, and hauling are not permitted from March 1 to December 15. Within Payment Unit 4, cutting, skidding, or hauling is not permitted from March 1 to June 1. This restriction is to avoid spring break up conditions and wet soil/roads.

##### 5.2.37 - No decking areas (12/08)

No decking is allowed within 50 feet of the Cable Lake Road without permission of the Unit Manager or his/her representative.

##### 5.2.38 - No decking against live trees (2/04)

Cut products may not be decked against unmarked or designated leave trees.

### 5.4 - Soil Protection

#### 5.4.1 - Rutting restriction, general (7/16)

Operations are to cease immediately if equipment and weather conditions result in rutting of roads and/or skid trails which is 12 inches or greater in depth and 50 feet in length. The Unit Manager or his/her representative may restrict hauling and/or skidding if ruts exceed the specified depth. With the Unit Manager or his/her representative's approval, the Purchaser may return to the area when the risk of rutting has decreased.

#### 5.4.6 - Wet area protection (5/10)

No harvesting operations, including skidding and felling, are to take place within the vernal pond areas or drainages. When harvesting occurs, there should be no disturbance to the vernal pond depression. All equipment, trees and tops should be kept out of this area. Within 100 feet of the pond, equipment should only be used when the soil is in a dry or frozen condition. Care must be taken by the Purchaser to identify and avoid operating in these areas of the timber sale.

### 5.8 - Protection of Endangered Species

5.8.5 - Protection of raptor nests (3/13)

All trees with raptor nests will be protected if found during harvesting operations. Notification will be made to the Unit Manager or his/her representative who will notify the Wildlife Biologist so an on-site evaluation and recommendation can be made, if necessary.



# TIMBER SALE MAP

This information provided by authority of Part 525, 1994 PA 451, as amended.

Sale Number	Year
12-066 -16-01	2016

Forest Management Unit Crystal Falls	County Iron	Mapped By Rice	Date 9/27/16	Page 1	of 3
Township 45,46N	Range 34W	Section(s) and Subdivision(s) T46N sec 28 SWSE, sec 33 W1/2NE	Scale 4 inches = 1 mile		
		Cruised By Rice			

### Cover Type

A = Aspen	H = Hemlock	N = Marsh	U = Upland Brush
B = Paper Birch	J = Jack Pine	O = Oak	UM = Upland Mixed
C = Cedar	L = Lowland Brush	P = Lowland Poplar	V = Bog or Marsh
D = Tread Bog	LM = Lowland Mixed	Q = Mixed Swamp Conifer	W = White Pine
E = Swamp Hdwoods	M = Mpl, Bch, Brch	R = Red Pine	X = Non Stocked
F = Spruce Fir	MC = Mixed Conifer	S = Black Spruce	Z = Water
G = Grass	MD = Mixed Deciduous	T = Tamarack	

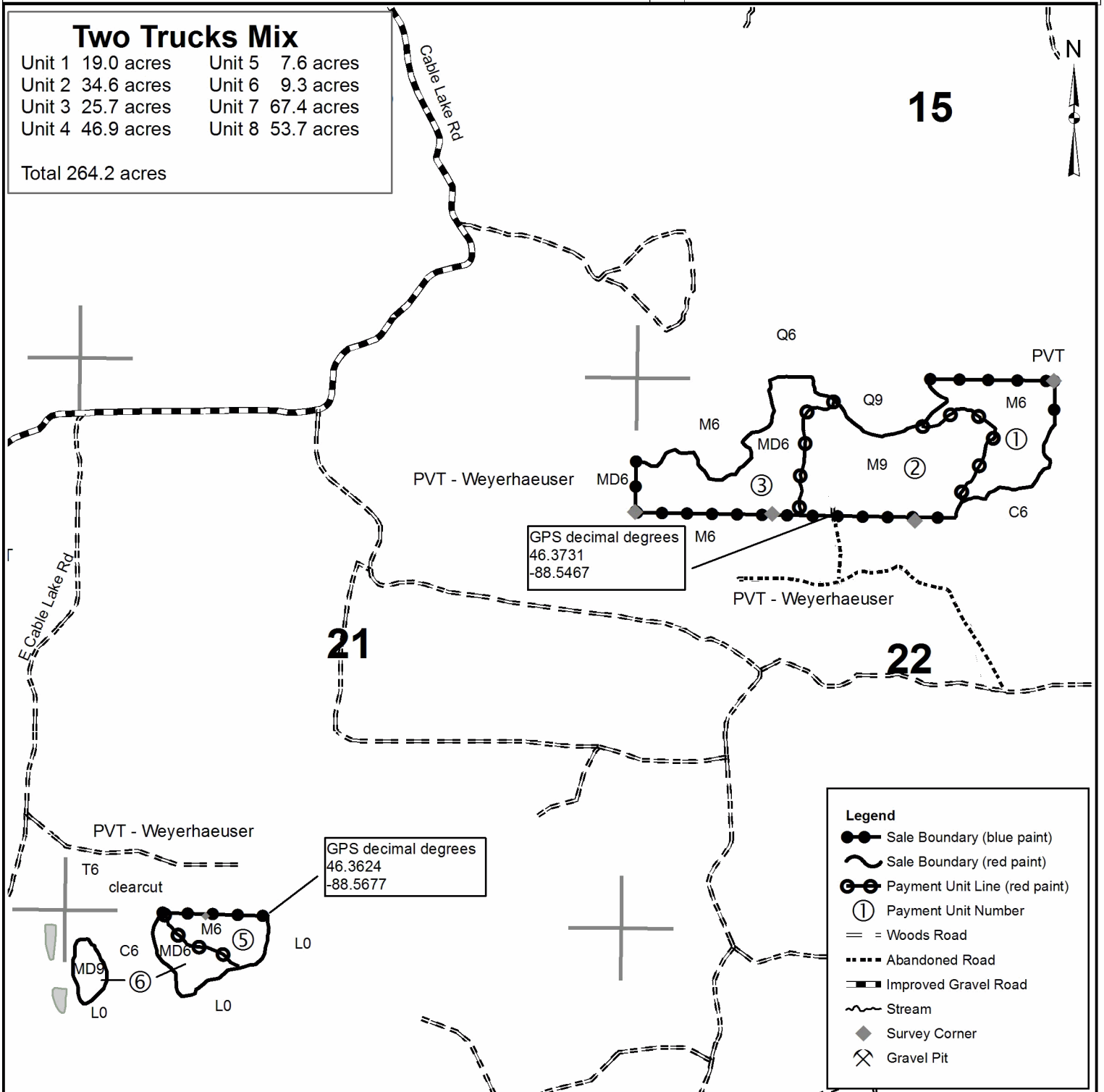
### Density

0 = Non Stocked	5 = Pole Timber Medium
1 = Seedling Sapling Poor	6 = Pole Timber Well
2 = Seedling Sapling Medium	7 = Saw Timber Poor
3 = Seedling Sapling Well	8 = Saw Timber Medium
4 = Pole Timber Poor	9 = Saw Timber Well

## Two Trucks Mix

Unit 1 19.0 acres	Unit 5 7.6 acres
Unit 2 34.6 acres	Unit 6 9.3 acres
Unit 3 25.7 acres	Unit 7 67.4 acres
Unit 4 46.9 acres	Unit 8 53.7 acres

Total 264.2 acres





# TIMBER SALE MAP

This information provided by authority of Part 525, 1994 PA 451, as amended.

Sale Number	Year
12-066 -16-01	2016

Forest Management Unit Crystal Falls	County Iron	Mapped By Rice	Date 9/27/16	Page 2	of 3
Township 45,46N	Range 34W	Section(s) and Subdivision(s) T46N sec 4 NESW, E1/2NW, NWNW sec 5 NENE	Scale 4 inches = 1 mile		

### Cover Type

A = Aspen	H = Hemlock	N = Marsh	U = Upland Brush
B = Paper Birch	J = Jack Pine	O = Oak	UM = Upland Mixed
C = Cedar	L = Lowland Brush	P = Lowland Poplar	V = Bog or Marsh
D = Treed Bog	LM = Lowland Mixed	Q = Mixed Swamp Conifer	W = White Pine
E = Swamp Hdwoods	M = Mpl, Bch, Brch	R = Red Pine	X = Non Stocked
F = Spruce Fir	MC = Mixed Conifer	S = Black Spruce	Z = Water
G = Grass	MD = Mixed Deciduous	T = Tamarack	

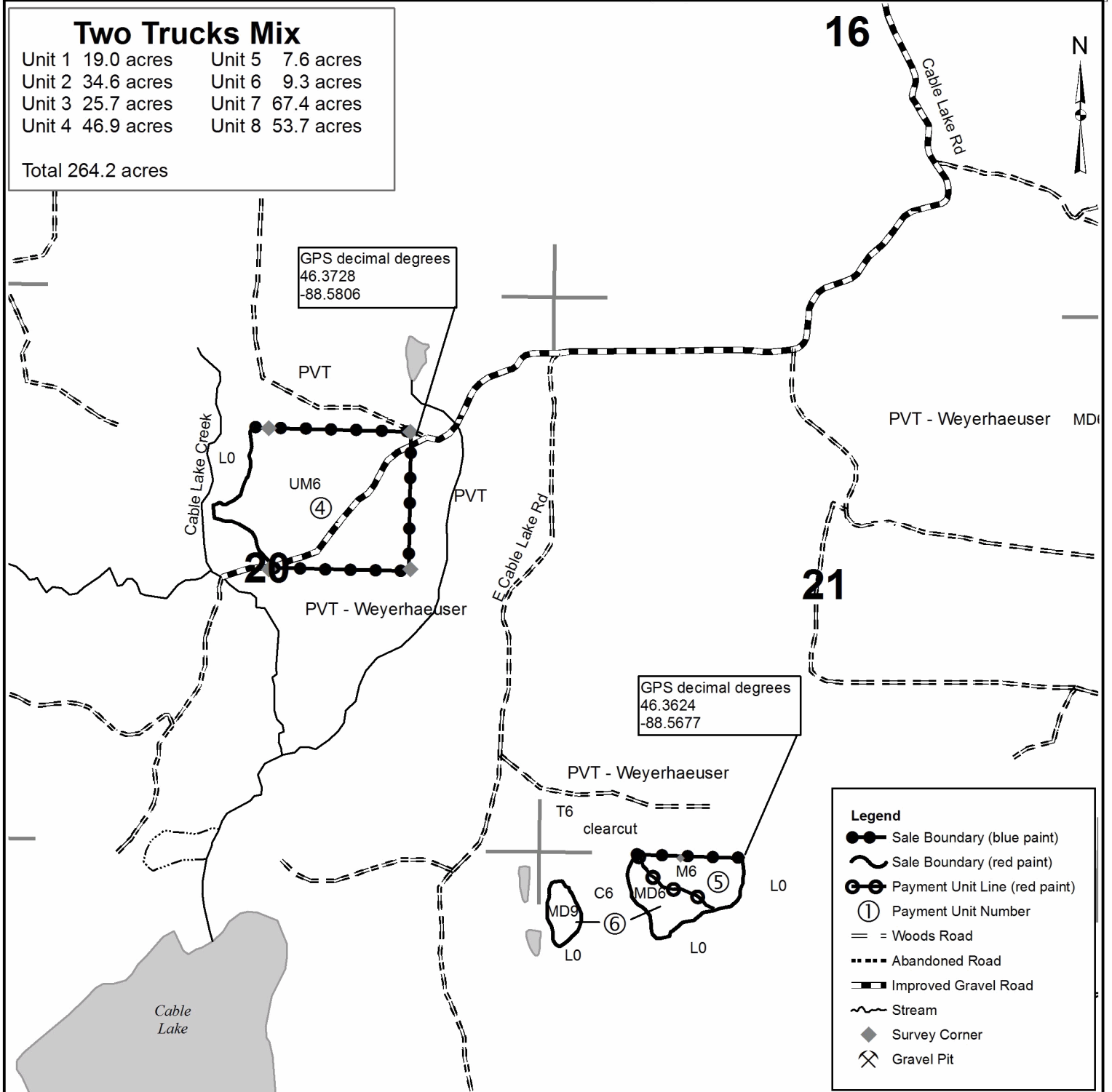
### Density

0 = Non Stocked	5 = Pole Timber Medium
1 = Seedling Sapling Poor	6 = Pole Timber Well
2 = Seedling Sapling Medium	7 = Saw Timber Poor
3 = Seedling Sapling Well	8 = Saw Timber Medium
4 = Pole Timber Poor	9 = Saw Timber Well

## Two Trucks Mix

Unit 1 19.0 acres	Unit 5 7.6 acres
Unit 2 34.6 acres	Unit 6 9.3 acres
Unit 3 25.7 acres	Unit 7 67.4 acres
Unit 4 46.9 acres	Unit 8 53.7 acres

Total 264.2 acres





# TIMBER SALE MAP

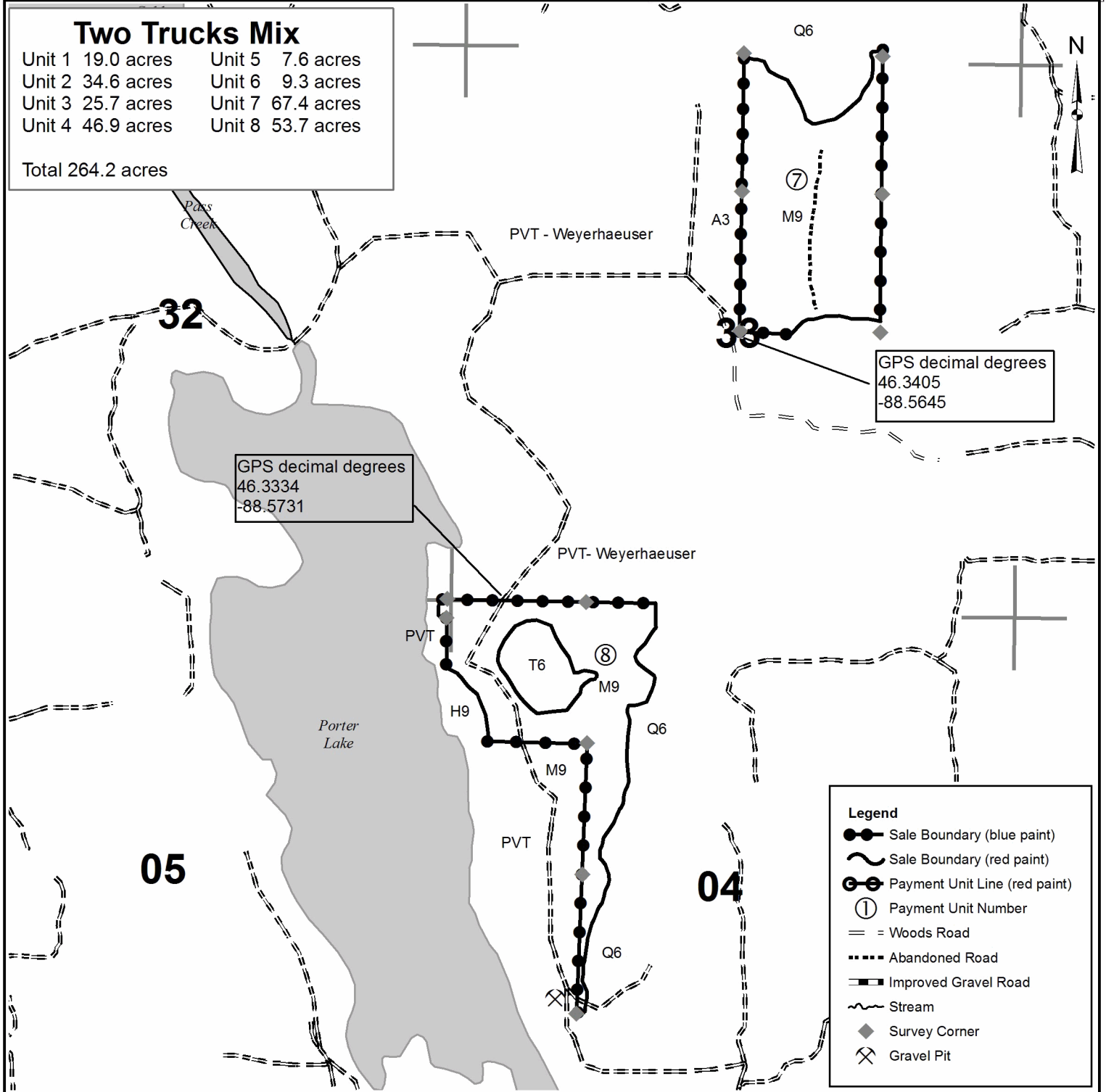
This information provided by authority of Part 525, 1994 PA 451, as amended.

Sale Number	Year
12-066 -16-01	2016

Forest Management Unit Crystal Falls	County Iron	Mapped By Rice	Date 9/27/16	Page 3	of 3
Township 45,46N	Range 34W	Section(s) and Subdivision(s) T46N sec 28 SWSE, sec 33 W1/2NE	Scale 4 inches = 1 mile		

Cover Type				Density	
A = Aspen	H = Hemlock	N = Marsh	U = Upland Brush	0 = Non Stocked	5 = Pole Timber Medium
B = Paper Birch	J = Jack Pine	O = Oak	UM = Upland Mixed	1 = Seedling Sapling Poor	6 = Pole Timber Well
C = Cedar	L = Lowland Brush	P = Lowland Poplar	V = Bog or Marsh	2 = Seedling Sapling Medium	7 = Saw Timber Poor
D = Treed Bog	LM = Lowland Mixed	Q = Mixed Swamp Conifer	W = White Pine	3 = Seedling Sapling Well	8 = Saw Timber Medium
E = Swamp Hdwoods	M = Mpl, Bch, Brch	R = Red Pine	X = Non Stocked	4 = Pole Timber Poor	9 = Saw Timber Well
F = Spruce Fir	MC = Mixed Conifer	S = Black Spruce	Z = Water		
G = Grass	MD = Mixed Deciduous	T = Tamarack			

Two Trucks Mix	
Unit 1 19.0 acres	Unit 5 7.6 acres
Unit 2 34.6 acres	Unit 6 9.3 acres
Unit 3 25.7 acres	Unit 7 67.4 acres
Unit 4 46.9 acres	Unit 8 53.7 acres
Total 264.2 acres	





**TIMBER SALE INFORMATION**

Rock Dam Aspen (12-068-16)

Iron County (Advertised Price \$28,386.40)

A timber sale contract for this lump sum, sealed bid timber sale will be awarded to the responsible bidder offering the highest sealed bid price. Bids must be at or above the following advertised price for each species:

<u>PRODUCTS &amp; SPECIES</u>	<u>ESTIMATED UNITS*</u>	<u>ADVERTISED PRICE</u>
Pulpwood		
Balsam Fir	163.00 Cords	\$ 14.50 / Cord
Quaking Aspen	712.00 Cords	\$ 26.10 / Cord
Red Maple	105.00 Cords	\$ 20.70 / Cord
White Spruce	268.00 Cords	\$ 19.65 / Cord

\* The total volume is statistically estimated within plus (+) or minus (-) 12.42 percent. The estimated units are final and not subject to adjustment. Prospective bidders are urged to examine this timber and to make their own estimates of quantity and quality.

**BOND AND PAYMENT SCHEDULE:**

1. A bond in the amount of \$1,700.00 to insure faithful performance of the conditions of the contract will be deposited by the successful bidder within 21 days of the sale award.
2. Cutting in any sale or unit without the required advance payment would be considered a trespass.
3. Total payment must be paid in advance or according to the following schedule:
  - (a) Ten percent (10%) of the sale value must be paid within 21 days of the sale award.
  - (b) The 10% down payment will be credited towards the first unit cut.
4. If no cutting takes place, the 10% down payment will not be refunded.
5. Operations on the contract issued will terminate on 06/30/2020.

**Description of Timber by Payment Unit (PU)**

PU	MARKET GROUP	PRODUCT	QUANTITY	UNIT	ACRES	ADVERTISE PRICE
1	Balsam Fir	Pulpwood	38.0	Cords	15.8	\$7,668.50
	Quaking Aspen		184.0	Cords		
	Red Maple		34.0	Cords		
	White Spruce		82.0	Cords		
2	Balsam Fir	Pulpwood	65.0	Cords	25.4	\$10,746.20
	Quaking Aspen		274.0	Cords		
	Red Maple		37.0	Cords		
	White Spruce		96.0	Cords		
3	Balsam Fir	Pulpwood	60.0	Cords	23.6	\$9,971.70
	Quaking Aspen		254.0	Cords		
	Red Maple		34.0	Cords		
	White Spruce		90.0	Cords		
<b>TOTAL:</b>			1,248.0	Cords		

## Sale Specific Conditions & Requirements

**Sale Name: Rock Dam Aspen**

**Sale Number: 12-068-16 Seq#: 2**

### 1 - Sale Area

#### 1.2 - Boundaries

##### 1.2.1 - Painted boundaries (1/14)

The sale boundary against private land is marked with blue paint. The sale boundary state land is marked with double red paint dots. Interior Payment Unit boundaries are marked with double red paint slashes. Trees with double red slashes designating an interior Payment Unit boundary may be cut if the trees are species designated for cutting and the adjacent Payment Units have been paid.

### 2 - Timber Specifications

#### 2.1 - Included Timber

##### 2.1.2 - Clearcut unit(s) w/o unmerchantable trees (8/11)

Within Payment Unit(s) 1, cut all aspen, red maple, spruce, and balsam fir trees which meet minimum piece specifications in 2.2 Utilization (1 pulpstick and larger). Do not cut trees marked with green paint.

Within Payment Units 2 and 3, cut all aspen, maple, and jack pine trees 1 pulpstick and larger. In addition, cut spruce and balsam fir 2 pulpsticks tall and larger.

#### 2.2 - Utilization

##### 2.2.3 - Stump heights (4/07)

Stump heights within the Sale Area shall not exceed 12 inches for trees greater than 10 inches DBH and 4 inches for trees smaller than 10 inches DBH.

##### 2.2.11 - Chipping restriction (9/14)

If chipping occurs on this sale, then no woody debris present on the ground at the start of the sale may be chipped. Chip piles must be removed within 60 days of the sale expiration. In addition, after chip piles are removal, residual chip depth at the landing may not exceed 4 inches.

### 4 - Transportation

#### 4.1 - Construction

##### 4.1.6 - Road construction (1/09)

Improvements of existing roads shall be done in such a way as to minimize the environmental and visual impacts. Merchantable trees shall be cut and utilized unless otherwise directed. Non-merchantable trees shall be severed and laid flat on the ground. Slash shall be scattered, and not left in windrows. Stumps shall be set upright, not left on edge, and be moved at least 5 feet away from the road edge. Disturbed soil shall be feathered into the woods and not left in berms or windrows.

##### 4.1.12 - No new roads (1/12)

No new roads will be permitted.

#### 4.2 - Maintenance

##### 4.2.5 - Two wheel drive condition (2/04)

All existing trail roads on and adjacent to the sale area must be passable by two-wheel drive traffic for the duration of the sale.

### 5 - Operations

#### 5.2 - Conduct of Operations

##### 5.2.1 - Slash

##### 5.2.1.8 - Slash height (12/08)

No slash may exceed 36 inches in height.

5.2.1.11 - Slash for reforestation (5/07)

To facilitate reforestation, the sale area shall be left with slash evenly distributed. Bunched tops within the cutting area shall be broken up and scattered. Stumps shall be cut low to the ground. Processing sites shall not be left with a compacted layer of slash; tops from these sites shall be hauled back into the cut area and scattered.

5.2.2 - Hazard Trees/Snags

5.2.2.1 - Den trees (2/04)

Obvious hollow and/or den trees shall be protected and left standing unless they are a safety hazard.

5.2.3 - Operating Restrictions

5.2.3.1 - Operating restrictions (9/11)

Within Payment Unit(s) 1 - 3, unless changed by written agreement, cutting, skidding, and hauling are not permitted from March 1 to May 15. This restriction is to avoid spring break up conditions.

5.2.38 - No decking against live trees (2/04)

Cut products may not be decked against unmarked or designated leave trees.

5.4 - Soil Protection

5.4.1 - Rutting restriction, general (7/16)

Operations are to cease immediately if equipment and weather conditions result in rutting of roads and/or skid trails which is 12 inches or greater in depth and 50 feet in length. The Unit Manager or his/her representative may restrict hauling and/or skidding if ruts exceed the specified depth. With the Unit Manager or his/her representative's approval, the Purchaser may return to the area when the risk of rutting has decreased.

5.8 - Protection of Endangered Species

5.8.5 - Protection of raptor nests (3/13)

All trees with raptor nests will be protected if found during harvesting operations. Notification will be made to the Unit Manager or his/her representative who will notify the Wildlife Biologist so an on-site evaluation and recommendation can be made, if necessary.



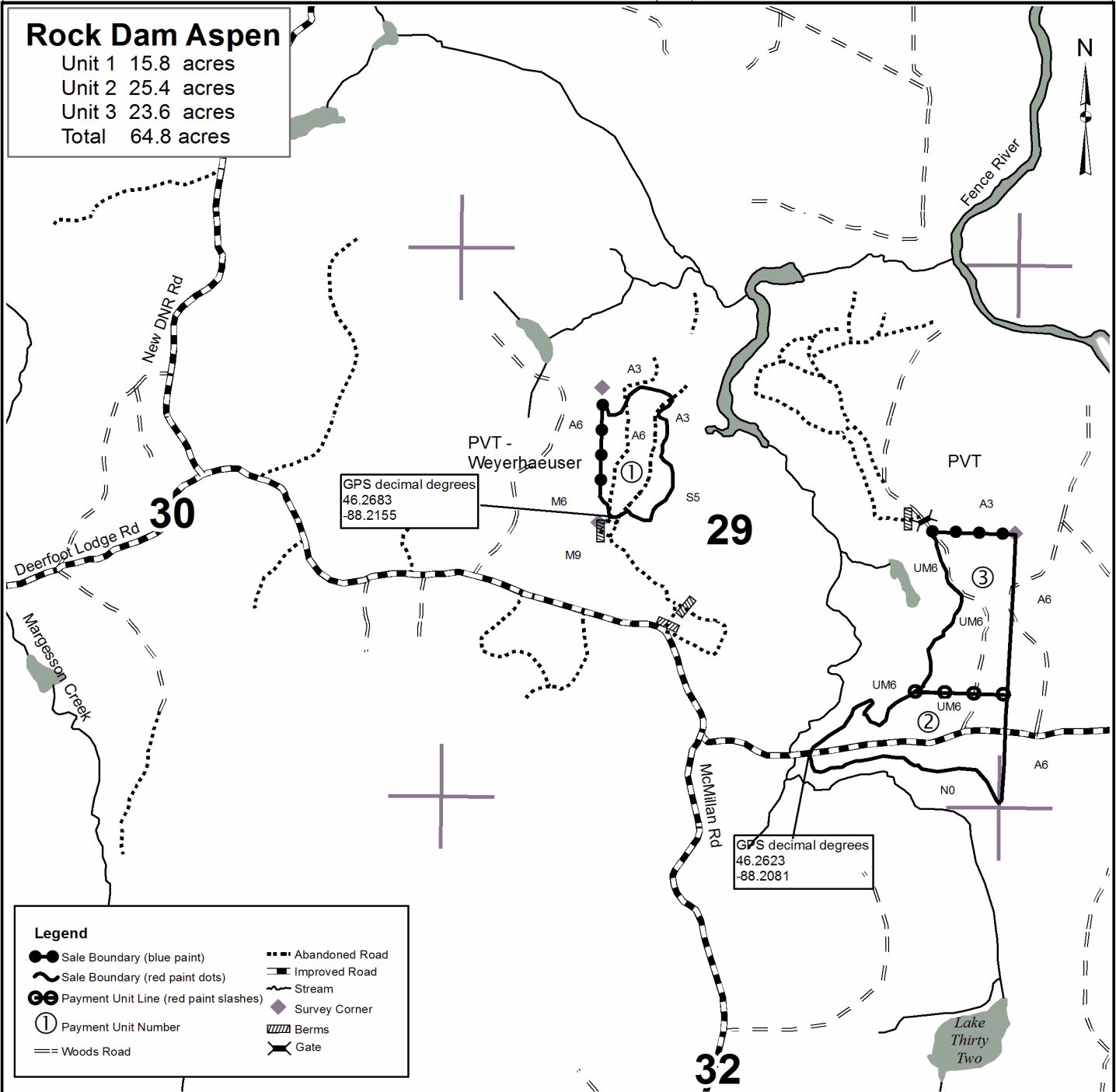
# TIMBER SALE MAP

This information provided by authority of Part 525, 1994 PA 451, as amended.

Sale Number	Year
12-068 -16-01	2016

Forest Management Unit Crystal Falls	County Iron	Mapped By Rice	Date 9/30/16	Page 1	of 1
Township 45N	Range 31W	Section(s) and Subdivision(s) sec 29 E1/2NW, E1/2SE, SWSE    sec 28 W1/2SW	Scale 4 inches = 1 mile		

Cover Type				Density	
A = Aspen	H = Hemlock	N = Marsh	U = Upland Brush	0 = Non Stocked	5 = Pole Timber Medium
B = Paper Birch	J = Jack Pine	O = Oak	UM = Upland Mixed	1 = Seedling Sapling Poor	6 = Pole Timber Well
C = Cedar	L = Lowland Brush	P = Lowland Poplar	V = Bog or Marsh	2 = Seedling Sapling Medium	7 = Saw Timber Poor
D = Tread Bog	LM = Lowland Mixed	Q = Mixed Swamp Conifer	W = White Pine	3 = Seedling Sapling Well	8 = Saw Timber Medium
E = Swamp Hdwoods	M = Mpl. Bch, Brch	R = Red Pine	X = Non Stocked	4 = Pole Timber Poor	9 = Saw Timber Well
F = Spruce Fir	MC = Mixed Conifer	S = Black Spruce	Z = Water		
G = Grass	MD = Mixed Deciduous	T = Tamarack			



**Legend**

● Sale Boundary (blue paint)	--- Abandoned Road
~ Sale Boundary (red paint dots)	— Improved Road
~ Stream	~ Gate
⊘ Payment Unit Line (red paint slashes)	◆ Survey Corner
① Payment Unit Number	▨ Berms
== Woods Road	

**TIMBER SALE INFORMATION**

Spies Lake Rd Hardwood (12-069-16)

Iron County (Advertised Price \$22,301.65)

SALE NOTE: Access may be through private land.

A timber sale contract for this lump sum, sealed bid timber sale will be awarded to the responsible bidder offering the highest sealed bid price. Bids must be at or above the following advertised price for each species:

<u>PRODUCTS &amp; SPECIES</u>	<u>ESTIMATED UNITS*</u>	<u>ADVERTISED PRICE</u>
Sawtimber		
Red Maple	8.00 MBF	\$ 189.00 / MBF
Sugar Maple	28.20 MBF	\$ 339.00 / MBF
Pulpwood		
Balsam Fir	73.00 Cords	\$ 14.50 / Cord
Mixed Hardwood	280.00 Cords	\$ 20.70 / Cord
Quaking Aspen	76.00 Cords	\$ 26.10 / Cord
Tamarack	3.00 Cords	\$ 11.25 / Cord
White Spruce	120.00 Cords	\$ 19.65 / Cord

\* The total volume is statistically estimated within plus (+) or minus (-) 30.75 percent. The estimated units are final and not subject to adjustment. Prospective bidders are urged to examine this timber and to make their own estimates of quantity and quality.

**BOND AND PAYMENT SCHEDULE:**

1. A bond in the amount of \$1,800.00 to insure faithful performance of the conditions of the contract will be deposited by the successful bidder within 21 days of the sale award.
2. Cutting in any sale or unit without the required advance payment would be considered a trespass.
3. Total payment must be paid in advance or according to the following schedule:
  - (a) Ten percent (10%) of the sale value must be paid within 21 days of the sale award.
  - (b) The 10% down payment will be credited towards the first unit cut.
4. If no cutting takes place, the 10% down payment will not be refunded.
5. Operations on the contract issued will terminate on 06/30/2020.

**Description of Timber by Payment Unit (PU)**

PU	MARKET GROUP	PRODUCT	QUANTITY	UNIT	ACRES	ADVERTISE PRICE
1	Red Maple	Sawtimber	5.9	MBF	43.7	\$13,598.70
	Sugar Maple		26.2	MBF		
	Mixed Hardwood	Pulpwood	174.0	Cords		
2	Red Maple	Sawtimber	2.1	MBF	10.1	\$2,793.00
	Sugar Maple		2.0	MBF		
	Mixed Hardwood	Pulpwood	83.0	Cords		
3	Balsam Fir	Pulpwood	73.0	Cords	12.5	\$5,909.95
	Mixed Hardwood		23.0	Cords		
	Quaking Aspen		76.0	Cords		
	Tamarack		3.0	Cords		
	White Spruce		120.0	Cords		
TOTAL:			36.2	MBF		
TOTAL:			552.0	Cords		

## Sale Specific Conditions & Requirements

**Sale Name: Spies Lake Rd Hardwood**

**Sale Number: 12-069-16 Seq#: 2**

### 1 - Sale Area

#### 1.2 - Boundaries

##### 1.2.1 - Painted boundaries (1/14)

Sale boundary lines against private land are marked with blue paint. Sale boundary lines against state land are marked with double red paint dots. Interior Payment Unit boundaries are marked with red paint.

### 2 - Timber Specifications

#### 2.1 - Included Timber

##### 2.1.2 - Clearcut unit(s) w/o unmerchantable trees (8/11)

Within Payment Unit(s) 3, cut all aspen, tamarack and red maple trees which meet minimum piece specifications in 2.2 Utilization (1 pulpstick tall and larger). In addition, cut all spruce and balsam fir 2 pulpsticks tall and larger. Do not cut trees marked with green paint.

##### 2.1.3 - Cut tree marked unit(s) (12/08)

Within Payment Unit(s) 1 and 2, all trees are designated for cutting when marked with orange paint above and below stump height, regardless of merchantability.

#### 2.2 - Utilization

##### 2.2.3 - Stump heights (4/07)

Stump heights within the Sale Area shall not exceed 12 inches for trees greater than 10 inches DBH and 4 inches for trees smaller than 10 inches DBH.

##### 2.2.11 - Chipping restriction (9/14)

If chipping occurs on this sale, then no woody debris present on the ground at the start of the sale may be chipped. Chip piles must be removed within 60 days of the sale expiration. In addition, after chip piles are removal, residual chip depth at the landing may not exceed 4 inches.

### 3 - Payments

#### 3.4 - Damaged Timber

##### 3.4.1 - Damaged timber (6/14)

General Condition and Requirement 3.4 Damaged Timber, defines liquidated damages for undesignated live merchantable trees which are cut or injured. In addition, extreme care should be taken to avoid damage to tree seedlings and saplings.

### 4 - Transportation

#### 4.1 - Construction

##### 4.1.6 - Road construction (1/09)

Improvements of existing roads shall be done in such a way as to minimize the environmental and visual impacts. Merchantable trees shall be cut and utilized unless otherwise directed. Non-merchantable trees shall be severed and laid flat on the ground. Slash shall be scattered, and not left in windrows. Stumps shall be set upright, not left on edge, and be moved at least 5 feet away from the road edge. Disturbed soil shall be feathered into the woods and not left in berms or windrows.

##### 4.1.7 - Road closure (10/11)

Any previously abandoned roads that are improved must be blocked to vehicle traffic within 60 days of the sale expiration. In general, this will require constructing 4 foot berms of slash, stumps and earth. These roads must be made impassable to ORVs. Contact the sale administrator for specific design and placement.

##### 4.1.12 - No new roads (1/12)

No new roads will be permitted. Existing overgrown roads may be opened up and utilized with approval from the sale administrator.

#### 4.4 - Access

##### 4.4.1 - Private property access (3/11)

Permission for access across private land and obtaining road use agreement/s is the responsibility of the Purchaser. Any necessary road use agreement/s from industrial forest landowners must be obtained before logging operations begin.

### 5 - Operations

#### 5.2 - Conduct of Operations

##### 5.2.1 - Slash

###### 5.2.1.8 - Slash height (12/08)

No slash may exceed 36 inches in height.

###### 5.2.1.11 - Slash for reforestation (5/07)

To facilitate reforestation, the sale area shall be left with slash evenly distributed. Bunched tops within the cutting area shall be broken up and scattered. Stumps shall be cut low to the ground. Processing sites shall not be left with a compacted layer of slash; tops from these sites shall be hauled back into the cut area and scattered.

##### 5.2.2 - Hazard Trees/Snags

###### 5.2.2.1 - Den trees (10/16)

Obvious hollow and/or den trees shall be protected and left standing unless they are a safety hazard.

##### 5.2.3 - Operating Restrictions

###### 5.2.3.1 - Operating restrictions (9/11)

Within Payment Unit(s) 1 - 3, unless changed by written agreement, cutting, skidding, and hauling are not permitted from March 1 to December 15. If summer conditions are extremely dry, there may be opportunity to enter the sale during non frozen conditions. Bark slip season (no operating until after July 15) still remains in place. This restriction is to avoid wet ground areas and spring break up conditions.

###### 5.2.37 - No decking areas (12/08)

No decking is allowed within 50 feet of US 141.

###### 5.2.38 - No decking against live trees (2/04)

Cut products may not be decked against unmarked or designated leave trees.

#### 5.4 - Soil Protection

##### 5.4.1 - Rutting restriction, general (7/16)

Operations are to cease immediately if equipment and weather conditions result in rutting of roads and/or skid trails which is 12 inches or greater in depth and 50 feet in length. The Unit Manager or his/her representative may restrict hauling and/or skidding if ruts exceed the specified depth. With the Unit Manager or his/her representative's approval, the Purchaser may return to the area when the risk of rutting has decreased.

##### 5.4.6 - Wet area protection (5/10)

No harvesting operations, including skidding and felling, are to take place within the vernal pond areas or drainages. When harvesting occurs, there should be no disturbance to the vernal pond depression. All equipment, trees and tops should be kept out of this area. Within 100 feet of the pond, equipment should only be used when the soil is in a dry or frozen condition. Care must be taken by the Purchaser to identify and avoid operating in these areas of the timber sale.

#### 5.8 - Protection of Endangered Species

##### 5.8.5 - Protection of raptor nests (3/13)

All trees with raptor nests will be protected if found during harvesting operations. Notification will be made to the Unit Manager or his/her representative who will notify the Wildlife Biologist so an on-site evaluation and recommendation can be made, if necessary.



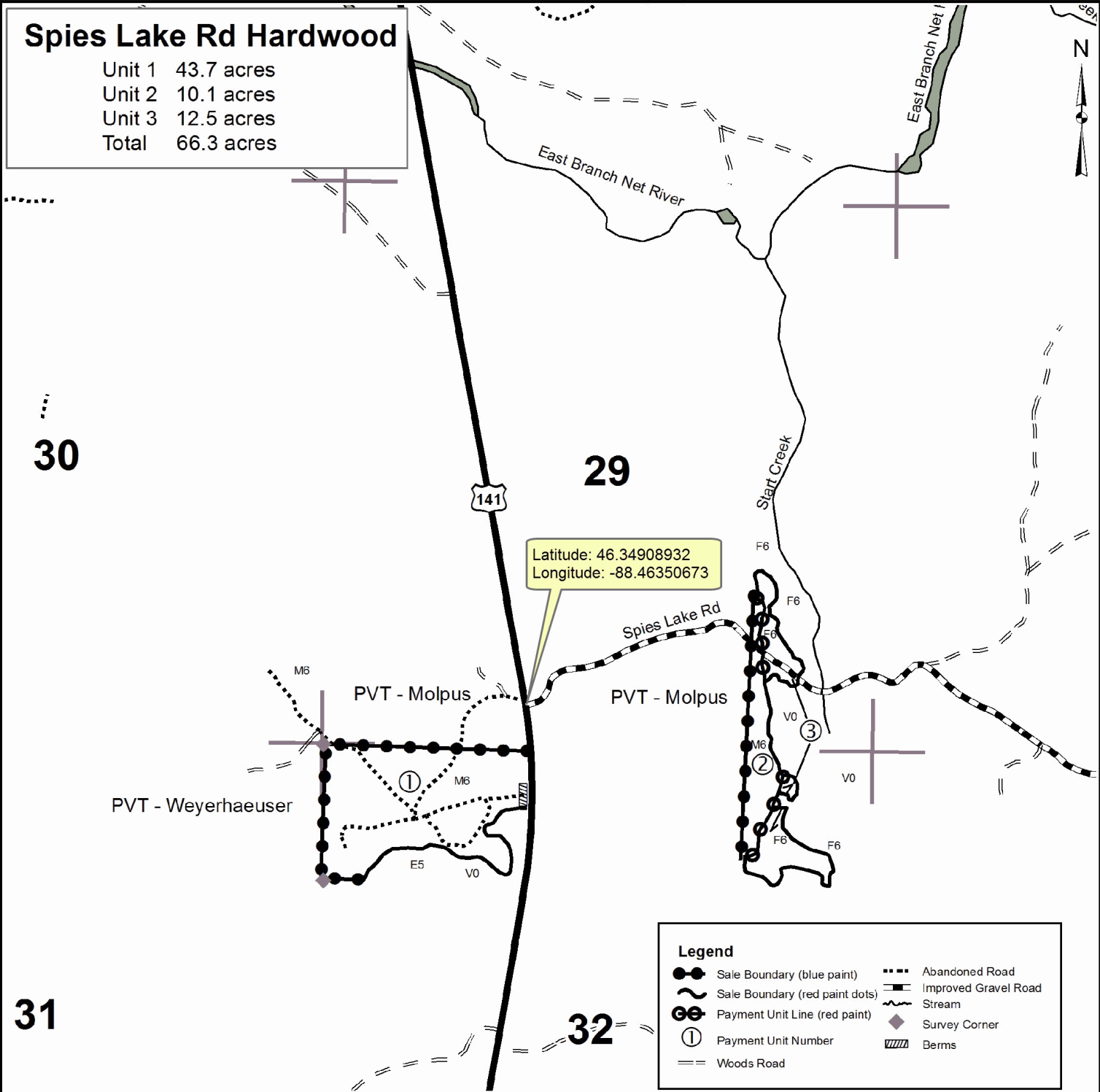
# TIMBER SALE MAP

This information provided by authority of Part 525, 1994 PA 451, as amended.

Sale Number	Year
12-069 -16-01	2016

Forest Management Unit Crystal Falls	County Iron	Mapped By Rice	Date 10/12/16	Page 1	of 1
Township 46N	Range 33W	Section(s) and Subdivision(s) sec 29 E1/2SE sec 32 N1/2NW, NENE	Scale 4 inches = 1 mile		

Cover Type				Density			
A = Aspen	H = Hemlock	N = Marsh	U = Upland Brush	0 = Non Stocked	5 = Pole Timber Medium		
B = Paper Birch	J = Jack Pine	O = Oak	UM = Upland Mixed	1 = Seedling Sapling Poor	6 = Pole Timber Well		
C = Cedar	L = Lowland Brush	P = Lowland Poplar	V = Bog or Marsh	2 = Seedling Sapling Medium	7 = Saw Timber Poor		
D = Tread Bog	LM = Lowland Mixed	Q = Mixed Swamp Conifer	W = White Pine	3 = Seedling Sapling Well	8 = Saw Timber Medium		
E = Swamp Hdwoods	M = Mpl, Bch, Brch	R = Red Pine	X = Non Stocked	4 = Pole Timber Poor	9 = Saw Timber Well		
F = Spruce Fir	MC = Mixed Conifer	S = Black Spruce	Z = Water				
G = Grass	MD = Mixed Deciduous	T = Tamarack					





Hunter Trail Sale SBW (12-015-17)  
; Dickinson COUNTY

In response to the notice of sale to be held 8:30 a.m. (local time) on July 12, 2017, I am hereby submitting my sealed bid (firm offer) for the following forest products to be cut. Bids for individual species must be at or above the advertised price. All non-responsive bid forms may be rejected.

<u>PRODUCTS &amp; SPECIES</u>	<u>ESTIMATED VOLUME*</u>	<u>ADVERTISED PRICE</u>	<u>BID PRICE</u>
Pulpwood			
Balsam Fir	6.00 Cords	\$ 15.10/Cord	\$ _____
Mixed Hardwood	39.00 Cords	\$ 21.60/Cord	\$ _____
Quaking Aspen	1,315.00 Cords	\$ 27.25/Cord	\$ _____
White Spruce	34.00 Cords	\$ 20.50/Cord	\$ _____

\*The volumes are statistically estimated within plus (+) or minus (-) 15.67 percent. These estimated volumes are final and not subject to adjustment. Prospective bidders are urged to examine this timber and to make their own estimates of quantity and quality.

I understand that any or all bids may be rejected. All bids must be signed and all bid items must be bid or the bid form may be rejected. I also understand that consideration and awarding a contract will be based upon my past performance and ability to complete the contract based upon equipment and staffing subject to my control.

FEDERAL ID: \_\_\_\_ - \_\_\_\_ - \_\_\_\_ or SOCIAL SECURITY NUMBER: \_\_\_\_ - \_\_\_\_ - \_\_\_\_

Company or individual bidding: \_\_\_\_\_

Company representative's name: \_\_\_\_\_

Address: \_\_\_\_\_

City: \_\_\_\_\_ State: \_\_\_\_\_ Zip: \_\_\_\_\_

IF AVAILABLE, PLEASE PLACE THE PERSONALIZED LABEL FROM YOUR PROSPECTUS IN THE ABOVE BOX.

Individual or company representative's signature: \_\_\_\_\_ Date: \_\_\_\_\_

Phone number : \_\_\_\_\_ Email (optional): \_\_\_\_\_

**THE WINNING BIDDER MUST COMPLETE THE VERIFICATION OF WORKER'S DISABILITY COMPENSATION ACT COMPLIANCE (ON REVERSE SIDE IF DOUBLE SIDED) WITHIN 21 DAYS OF SALE AWARD DATE**



<b>FOR DEPARTMENT USE ONLY</b>
Sale Number (XX - XXX - XX - XX)
Forest Management Unit:

## TIMBER SALE VERIFICATION OF WORKER'S DISABILITY COMPENSATION ACT COMPLIANCE

*As required by Act 317, P.A. 1969 (Worker's Compensation) and  
Part 5 of Act 451 of 1994, as amended.*

### VERIFICATION OF WORKER'S DISABILITY COMPENSATION ACT COMPLIANCE

- This verification must be completed and submitted within 21 days of contract award and prior to the issuance of the timber sale contract.
- In addition, if boxes 2B or 2C are checked, then Notice of Exclusion or Certificate of Insurance must be submitted within twenty-one (21) days of the contract award and prior to the issuance of the timber sale contract.
- All information must be typed or printed except for written signatures.

Please Check Appropriate Categories:

1. My business is organized as (you **must** check one of the boxes below):
  - A.  Sole Proprietorship (individual)
  - B.  Partnership
  - C.  Corporation
  
2. You **must** check one of the boxes below:
  - A.  I certify my business is a sole proprietorship and it has no employees but the sole proprietor. I am not subject to the Worker's Compensation Laws.
  - B.  I certify my business has satisfied its obligation to the Worker's Compensation Act through the use of an approved Notice of Exclusion (BWC-337, Rev. 5/96). I will provide a copy of the Notice of Exclusion within 21 days of the contract award. (For questions or a copy of the BWC-337, please call the Worker's Compensation Bureau at 517-322-1195).
  - C.  I certify my business has a Worker's Compensation Policy. I will provide an original Certificate of Insurance within twenty-one (21) days of the contract award.
  
3. If you have checked item 2(A) or 2(B), you **must** indicate the number of **both** full-time and part-time employees, other than yourself, including family members and active partners (if none, you must enter "0").

\_\_\_\_\_ Full-time Employees

\_\_\_\_\_ Part-time Employees

Name of Business		Federal ID (or) Social Security No.	
Address		Telephone (       )	
City	State	ZIP	

*I hereby certify that the above information is true and correct. I agree to notify the Michigan DNR of any changes that occur in factors affecting my coverage during any of my present and future operations.*

\_\_\_\_\_  
Signature of Owner or Authorized Representative

\_\_\_\_\_  
Title

\_\_\_\_\_  
Date

**Please complete the "SEALED BID" information on the next page**

Two Trucks Mix (12-066-16)  
 ; Iron COUNTY

In response to the notice of sale to be held 8:30 a.m. (local time) on July 12, 2017, I am hereby submitting my sealed bid (firm offer) for the following forest products to be cut. Bids for individual species must be at or above the advertised price. All non-responsive bid forms may be rejected.

<u>PRODUCTS &amp; SPECIES</u>	<u>ESTIMATED VOLUME*</u>	<u>ADVERTISED PRICE</u>	<u>BID PRICE</u>
<b>Sawtimber</b>			
Basswood	0.40 MBF	\$ 166.00/MBF	\$ _____
Black Cherry	19.60 MBF	\$ 88.00/MBF	\$ _____
Red Maple	73.70 MBF	\$ 189.00/MBF	\$ _____
Sugar Maple	80.20 MBF	\$ 339.00/MBF	\$ _____
Yellow Birch	4.90 MBF	\$ 117.00/MBF	\$ _____
<b>Pulpwood</b>			
Balsam Fir	310.00 Cords	\$ 14.50/Cord	\$ _____
Mixed Hardwood	4,397.00 Cords	\$ 20.70/Cord	\$ _____
Paper Birch	104.00 Cords	\$ 20.00/Cord	\$ _____
Quaking Aspen	95.00 Cords	\$ 26.10/Cord	\$ _____
Tamarack	70.00 Cords	\$ 11.25/Cord	\$ _____
White Spruce	722.00 Cords	\$ 19.65/Cord	\$ _____

\*The volumes are statistically estimated within plus (+) or minus (-) 10.02 percent. These estimated volumes are final and not subject to adjustment. Prospective bidders are urged to examine this timber and to make their own estimates of quantity and quality.

I understand that any or all bids may be rejected. All bids must be signed and all bid items must be bid or the bid form may be rejected. I also understand that consideration and awarding a contract will be based upon my past performance and ability to complete the contract based upon equipment and staffing subject to my control.

FEDERAL ID: \_\_\_\_\_ or SOCIAL SECURITY NUMBER: \_\_\_\_\_

Company or individual bidding: \_\_\_\_\_

Company representative's name: \_\_\_\_\_

Address: \_\_\_\_\_

City: \_\_\_\_\_ State: \_\_\_\_\_ Zip: \_\_\_\_\_

IF AVAILABLE, PLEASE PLACE THE PERSONALIZED LABEL FROM YOUR PROSPECTUS IN THE ABOVE BOX.

Individual or company representative's signature: \_\_\_\_\_ Date: \_\_\_\_\_

Phone number : \_\_\_\_\_ Email (optional): \_\_\_\_\_

**THE WINNING BIDDER MUST COMPLETE THE VERIFICATION OF WORKER'S DISABILITY COMPENSATION ACT COMPLIANCE (ON REVERSE SIDE IF DOUBLE SIDED) WITHIN 21 DAYS OF SALE AWARD DATE**



<b>FOR DEPARTMENT USE ONLY</b>	
Sale Number (XX - XXX - XX - XX)	
Forest Management Unit:	

# TIMBER SALE VERIFICATION OF WORKER'S DISABILITY COMPENSATION ACT COMPLIANCE

As required by Act 317, P.A. 1969 (Worker's Compensation) and  
Part 5 of Act 451 of 1994, as amended.

### VERIFICATION OF WORKER'S DISABILITY COMPENSATION ACT COMPLIANCE

- This verification must be completed and submitted within 21 days of contract award and prior to the issuance of the timber sale contract.
- In addition, if boxes 2B or 2C are checked, then Notice of Exclusion or Certificate of Insurance must be submitted within twenty-one (21) days of the contract award and prior to the issuance of the timber sale contract.
- All information must be typed or printed except for written signatures.

Please Check Appropriate Categories:

1. My business is organized as (you **must** check one of the boxes below):
  - A.  Sole Proprietorship (individual)
  - B.  Partnership
  - C.  Corporation
2. You **must** check one of the boxes below:
  - A.  I certify my business is a sole proprietorship and it has no employees but the sole proprietor. I am not subject to the Worker's Compensation Laws.
  - B.  I certify my business has satisfied its obligation to the Worker's Compensation Act through the use of an approved Notice of Exclusion (BWC-337, Rev. 5/96). I will provide a copy of the Notice of Exclusion within 21 days of the contract award. (For questions or a copy of the BWC-337, please call the Worker's Compensation Bureau at 517-322-1195).
  - C.  I certify my business has a Worker's Compensation Policy. I will provide an original Certificate of Insurance within twenty-one (21) days of the contract award.
3. If you have checked item 2(A) or 2(B), you **must** indicate the number of **both** full-time and part-time employees, other than yourself, including family members and active partners (if none, you must enter "0").

\_\_\_\_\_ Full-time Employees

\_\_\_\_\_ Part-time Employees

Name of Business		Federal ID (or) Social Security No.	
Address		Telephone (      )	
City	State	ZIP	

*I hereby certify that the above information is true and correct. I agree to notify the Michigan DNR of any changes that occur in factors affecting my coverage during any of my present and future operations.*

\_\_\_\_\_  
Signature of Owner or Authorized Representative

\_\_\_\_\_  
Title

\_\_\_\_\_  
Date

Please complete the "SEALED BID" information on the next page

Rock Dam Aspen (12-068-16)  
; Iron COUNTY

In response to the notice of sale to be held 8:30 a.m. (local time) on July 12, 2017, I am hereby submitting my sealed bid (firm offer) for the following forest products to be cut. Bids for individual species must be at or above the advertised price. All non-responsive bid forms may be rejected.

<u>PRODUCTS &amp; SPECIES</u>	<u>ESTIMATED VOLUME*</u>	<u>ADVERTISED PRICE</u>	<u>BID PRICE</u>
Pulpwood			
Balsam Fir	163.00 Cords	\$ 14.50/Cord	\$ _____
Quaking Aspen	712.00 Cords	\$ 26.10/Cord	\$ _____
Red Maple	105.00 Cords	\$ 20.70/Cord	\$ _____
White Spruce	268.00 Cords	\$ 19.65/Cord	\$ _____

\*The volumes are statistically estimated within plus (+) or minus (-) 12.42 percent. These estimated volumes are final and not subject to adjustment. Prospective bidders are urged to examine this timber and to make their own estimates of quantity and quality.

I understand that any or all bids may be rejected. All bids must be signed and all bid items must be bid or the bid form may be rejected. I also understand that consideration and awarding a contract will be based upon my past performance and ability to complete the contract based upon equipment and staffing subject to my control.

FEDERAL ID: \_\_\_\_ - \_\_\_\_ - \_\_\_\_ or SOCIAL SECURITY NUMBER: \_\_\_\_ - \_\_\_\_ - \_\_\_\_

Company or individual bidding: \_\_\_\_\_

Company representative's name: \_\_\_\_\_

Address: \_\_\_\_\_

City: \_\_\_\_\_ State: \_\_\_\_\_ Zip: \_\_\_\_\_

IF AVAILABLE, PLEASE PLACE THE PERSONALIZED LABEL FROM YOUR PROSPECTUS IN THE ABOVE BOX.

Individual or company representative's signature: \_\_\_\_\_ Date: \_\_\_\_\_

Phone number : \_\_\_\_\_ Email (optional): \_\_\_\_\_

**THE WINNING BIDDER MUST COMPLETE THE VERIFICATION OF WORKER'S DISABILITY COMPENSATION ACT COMPLIANCE (ON REVERSE SIDE IF DOUBLE SIDED) WITHIN 21 DAYS OF SALE AWARD DATE**



<b>FOR DEPARTMENT USE ONLY</b>
Sale Number (XX - XXX - XX - XX)
Forest Management Unit:

## TIMBER SALE VERIFICATION OF WORKER'S DISABILITY COMPENSATION ACT COMPLIANCE

*As required by Act 317, P.A. 1969 (Worker's Compensation) and  
Part 5 of Act 451 of 1994, as amended.*

### VERIFICATION OF WORKER'S DISABILITY COMPENSATION ACT COMPLIANCE

- This verification must be completed and submitted within 21 days of contract award and prior to the issuance of the timber sale contract.
- In addition, if boxes 2B or 2C are checked, then Notice of Exclusion or Certificate of Insurance must be submitted within twenty-one (21) days of the contract award and prior to the issuance of the timber sale contract.
- All information must be typed or printed except for written signatures.

Please Check Appropriate Categories:

1. My business is organized as (you **must** check one of the boxes below):
  - A.  Sole Proprietorship (individual)
  - B.  Partnership
  - C.  Corporation
2. You **must** check one of the boxes below:
  - A.  I certify my business is a sole proprietorship and it has no employees but the sole proprietor. I am not subject to the Worker's Compensation Laws.
  - B.  I certify my business has satisfied its obligation to the Worker's Compensation Act through the use of an approved Notice of Exclusion (BWC-337, Rev. 5/96). I will provide a copy of the Notice of Exclusion within 21 days of the contract award. (For questions or a copy of the BWC-337, please call the Worker's Compensation Bureau at 517-322-1195).
  - C.  I certify my business has a Worker's Compensation Policy. I will provide an original Certificate of Insurance within twenty-one (21) days of the contract award.
3. If you have checked item 2(A) or 2(B), you **must** indicate the number of **both** full-time and part-time employees, other than yourself, including family members and active partners (if none, you must enter "0").

\_\_\_\_\_ Full-time Employees

\_\_\_\_\_ Part-time Employees

Name of Business		Federal ID (or) Social Security No.	
Address		Telephone (       )	
City	State	ZIP	

*I hereby certify that the above information is true and correct. I agree to notify the Michigan DNR of any changes that occur in factors affecting my coverage during any of my present and future operations.*

\_\_\_\_\_  
Signature of Owner or Authorized Representative

\_\_\_\_\_  
Title

\_\_\_\_\_  
Date

**Please complete the "SEALED BID" information on the next page**

Spies Lake Rd Hardwood (12-069-16)  
 ; Iron COUNTY

In response to the notice of sale to be held 8:30 a.m. (local time) on July 12, 2017, I am hereby submitting my sealed bid (firm offer) for the following forest products to be cut. Bids for individual species must be at or above the advertised price. All non-responsive bid forms may be rejected.

<u>PRODUCTS &amp; SPECIES</u>	<u>ESTIMATED VOLUME*</u>	<u>ADVERTISED PRICE</u>	<u>BID PRICE</u>
<b>Sawtimber</b>			
Red Maple	8.00 MBF	\$ 189.00/MBF	\$ _____
Sugar Maple	28.20 MBF	\$ 339.00/MBF	\$ _____
<b>Pulpwood</b>			
Balsam Fir	73.00 Cords	\$ 14.50/Cord	\$ _____
Mixed Hardwood	280.00 Cords	\$ 20.70/Cord	\$ _____
Quaking Aspen	76.00 Cords	\$ 26.10/Cord	\$ _____
Tamarack	3.00 Cords	\$ 11.25/Cord	\$ _____
White Spruce	120.00 Cords	\$ 19.65/Cord	\$ _____

\*The volumes are statistically estimated within plus (+) or minus (-) 30.75 percent. These estimated volumes are final and not subject to adjustment. Prospective bidders are urged to examine this timber and to make their own estimates of quantity and quality.

I understand that any or all bids may be rejected. All bids must be signed and all bid items must be bid or the bid form may be rejected. I also understand that consideration and awarding a contract will be based upon my past performance and ability to complete the contract based upon equipment and staffing subject to my control.

FEDERAL ID: \_\_\_\_\_ or SOCIAL SECURITY NUMBER: \_\_\_\_\_  
 Company or individual bidding: \_\_\_\_\_  
 Company representative's name: \_\_\_\_\_  
 Address: \_\_\_\_\_  
 City: \_\_\_\_\_ State: \_\_\_\_\_ Zip: \_\_\_\_\_

IF AVAILABLE, PLEASE PLACE THE PERSONALIZED LABEL FROM YOUR PROSPECTUS IN THE ABOVE BOX.

Individual or company representative's signature: \_\_\_\_\_ Date: \_\_\_\_\_

Phone number : \_\_\_\_\_ Email (optional): \_\_\_\_\_

**THE WINNING BIDDER MUST COMPLETE THE VERIFICATION OF WORKER'S DISABILITY COMPENSATION ACT COMPLIANCE (ON REVERSE SIDE IF DOUBLE SIDED) WITHIN 21 DAYS OF SALE AWARD DATE**



<b>FOR DEPARTMENT USE ONLY</b>
Sale Number (XX - XXX - XX - XX)
Forest Management Unit:

## TIMBER SALE VERIFICATION OF WORKER'S DISABILITY COMPENSATION ACT COMPLIANCE

*As required by Act 317, P.A. 1969 (Worker's Compensation) and  
Part 5 of Act 451 of 1994, as amended.*

### VERIFICATION OF WORKER'S DISABILITY COMPENSATION ACT COMPLIANCE

- This verification must be completed and submitted within 21 days of contract award and prior to the issuance of the timber sale contract.
- In addition, if boxes 2B or 2C are checked, then Notice of Exclusion or Certificate of Insurance must be submitted within twenty-one (21) days of the contract award and prior to the issuance of the timber sale contract.
- All information must be typed or printed except for written signatures.

Please Check Appropriate Categories:

1. My business is organized as (you **must** check one of the boxes below):
  - A.  Sole Proprietorship (individual)
  - B.  Partnership
  - C.  Corporation
2. You **must** check one of the boxes below:
  - A.  I certify my business is a sole proprietorship and it has no employees but the sole proprietor. I am not subject to the Worker's Compensation Laws.
  - B.  I certify my business has satisfied its obligation to the Worker's Compensation Act through the use of an approved Notice of Exclusion (BWC-337, Rev. 5/96). I will provide a copy of the Notice of Exclusion within 21 days of the contract award. (For questions or a copy of the BWC-337, please call the Worker's Compensation Bureau at 517-322-1195).
  - C.  I certify my business has a Worker's Compensation Policy. I will provide an original Certificate of Insurance within twenty-one (21) days of the contract award.
3. If you have checked item 2(A) or 2(B), you **must** indicate the number of **both** full-time and part-time employees, other than yourself, including family members and active partners (if none, you must enter "0").

\_\_\_\_\_ Full-time Employees

\_\_\_\_\_ Part-time Employees

Name of Business		Federal ID (or) Social Security No.	
Address		Telephone (       )	
City	State	ZIP	

*I hereby certify that the above information is true and correct. I agree to notify the Michigan DNR of any changes that occur in factors affecting my coverage during any of my present and future operations.*

\_\_\_\_\_  
Signature of Owner or Authorized Representative

\_\_\_\_\_  
Title

\_\_\_\_\_  
Date

**Please complete the "SEALED BID" information on the next page**