



**DEPARTMENT OF NATURAL RESOURCES  
STATE OF MICHIGAN**

**TIMBER SALE PROSPECTUS #5990**

SCHEDULED SALE DATE AND TIME: 3:00 p.m. (local time) on July 13, 2017.

LOCATION: NEWBERRY MGMT UNIT, PO BOX 428, 5666 STATE HWY M-123, NEWBERRY, MI 49868.

PROSPECTUS NOTE: All sales on this Prospectus have been previously advertised and went "no bid." They have been reduced and are being re-offered. Please review each sale for details.

The bidder is advised to inspect the sale area and review the location, estimated volumes, operating costs and contract terms of proposed sales. Please be aware that some landowners may request 60 days or more notice for access across their land.

Notice is hereby given that bids will be received by the Unit Manager, NEWBERRY MANAGEMENT UNIT, for certain timber on the following described lands:

County Road 415 MWR (42-002-17)

Luce County, Advertised Price \$821.60, 30.2 Acres, Hardwood, Sugar Maple.

SALE NOTE: This sale has been reduced approximately 50% from the original advertised price, as it went "no bid" on Prospectus 5918, which had a bid opening date of June 1, 2017.

This sale is part of a research project and should be harvested promptly.

Harvesting is limited to December 1, 2017 to March 15, 2018.

Slash less than nine inches may not be removed from the sale area. See Sale Spec 2.2.8 for additional restrictions.

Since this is a research sale with a short contract length, one (1) contract extension may be applied to one other State Forest Timber Sale Contract owned by the Purchaser. See Sale Spec 7.2.7 for additional information.

A recreation site such as a trail, pathway, or campground is within the sale area or the vicinity. Certain restrictions/specifications may be applicable including time restrictions.

Wandering Lab Mix (42-003-16)

Luce County, Advertised Price \$22,552.10, 79.5 Acres, Aspen, Hardwood.

SALE NOTE: This sale has been reduced approximately 40% from its original advertised price, as it went "no bid" on Prospectus #5891 on April 13, 2017 and again on Prospectus #5936 on June 15, 2017.

Access to the southern portion of Unit 3 will require the installation of a culvert for cross drainage at a natural drainage-way. See Sale Spec 4.1.5 for additional information.

Within Payment Unit(s) 1, 2 and 3, harvesting is limited to the period of December 31 through March 15 due to the low ground conditions.

The snowmobile trail is shown on the Timber Sale Map. See Sale Spec 5.2.41 for restrictions.

A recreation site such as a trail, pathway, or campground is within the sale area or the vicinity. Certain restrictions/specifications may be applicable including time restrictions.

Soggy Snowshoes (42-006-16)

Luce County, Advertised Price \$83,222.45, 242.7 Acres, Hardwood, Spruce/Fir/Tamarack.

SALE NOTE: This sale has been reduced approximately 25% from the original advertised price, as it went "no bid" on Prospectus 5936, which had a bid opening date of June 15, 2017.

This sale has been Harvesting is limited to the period of December 15 through March 15 due to low ground in the sale area.

The Charcoal Grade is a snowmobile trail and is shown on the Timber Sale Map. See Sale Spec 5.2.41 for restrictions.

A recreation site such as a trail, pathway, or campground is within the sale area or the vicinity. Certain restrictions/specifications may be applicable including time restrictions.

Comp 78 South Hardwoods (42-018-16)

Luce County, Advertised Price \$88,723.40, 348.1 Acres, Hardwood, Spruce/Fir/Tamarack.

SALE NOTE: This sale has been reduced approximately 40% from the original advertised price, as it went "no bid" on Prospectus 5833, which had a bid opening date of March 2, 2017 and again on Prospectus 5915 on May 18, 2017.

Permission for access across private land is responsibility of Purchaser. There are multiple private property parcels which may need to be crossed (Atwood Creek Assoc.). See Sale Spec 4.4.1, 4.4.2 and 4.4.3 for additional requirements.

Within Payment Unit(s) 1 - 10, and 13, harvesting is limited to period of December 15 to April 1 due to low ground nature of the sale area.

Within Payment Unit(s) 12, 14 and 15, harvesting is not permitted during the period of April 15 to July 15 due to bark slippage.

Within Payment Unit(s) 11, 12, 14 and 15, it is recommended that harvesting occur during summer or frozen winter conditions due to potential for rutting.

The Charcoal Grade is a snowmobile trail & is shown on Timber Sale Map. See Sale Spec 5.2.41 for restrictions.

A recreation site such as a trail, pathway, or campground is within the sale area or the vicinity. Certain restrictions/specifications may be applicable including time restrictions. Access may be through private or other public land.

## BID INSTRUCTIONS (VER. 09/02/2016):

### 1. Scheduled Bid Location, Date, and Time (2/11)

Bids must be received by the Unit Manager, NEWBERRY OFFICE, PO BOX 428 5666 STATE HWY M-123, NEWBERRY, MI 49868, no later than 3:00 p.m. (local time) on July 13, 2017. For further information concerning this sale, contact Keith Magnusson at 906-293-3293 extension 4740.

### 2. Bidder's Qualifications (5/16)

Purchaser shall obtain workers compensation insurance to cover claims under Michigan's Worker's Disability Compensation Act of 1969 or similar employee benefit act of any other state applicable to an employee. If all or part of a timber sale was prepared by a private contractor, the contractor and that contractor's company are not permitted to bid on the timber sale contract. Bids will not be accepted from individuals or companies appearing on the DNR/FRD No-Bid List. This list contains the names of purchasers who previously failed to execute a contract within 21-days or who have a history of poor performance.

### 3. Preparation of Sealed Bids (5/16)

Bid Forms may be completed online thru Michigan DNR Timber Sale Online Bidding (OLB) at [www.michigan.gov/timberbidding](http://www.michigan.gov/timberbidding) or by completing the hardcopy Bid Form found in the Timber Sale Prospectus. Hardcopy Bid Forms shall be manually signed in ink. Registration in OLB is considered your 'signature' for all bids submitted thru that system. Bid prices must be entered for each species and product in the Bid Price column for all material subject to bidding and all fill-in blanks must be completed. If erasures or other changes appear on the hardcopy Bid Form, each erasure or change must be initialed by the person signing the bid.

### 4. Submission of Sealed Bids (5/16)

Bid forms may be obtained from the Unit Manager or thru OLB. Bids may be submitted hardcopy or thru OLB. All hardcopy bids must be submitted on the bid form and in an envelope clearly identified as described in this section. NOTE: Only one bid form per bid envelope. Sealed bids must be submitted to the Unit office designated in the prospectus and must be submitted at or prior to the time established in the prospectus. The envelope should show on the outside (a) the sale name or number and (b) the date and time of bid opening, as shown in the prospectus. Bids received after the time specified in the sale prospectus are late bids and will be rejected.

It is possible for a bidder to submit multiple bids on a single sale. For example, a bid may be submitted hardcopy and a bid may be submitted thru OLB. Or, two bidders from the same company could both submit bids on the same sale. If this were to happen, the State would accept all bids received and award the contract accordingly. All bidding and contractual requirements would apply to all bids received.

### 5. Public Opening of Sealed Bids (7/16)

If conditions permit, the sealed bids will be publicly opened and posted at the time and place set in the prospectus.

If a bidder, present at a bid opening, has submitted bids on more than one sale, that bidder may withdraw their unopened bid envelopes or announce the withdrawal of their online bid after being declared the successful bidder on one sale.

### 6. Award of Contract (1/11)

Award of the contract will be made to the Bidder whose bid, conforming to the prospectus, is most advantageous to the State of Michigan on the basis of total value at rates bid for the estimated quantities. The State reserves the right to reject any bid or waive any minor irregularity in bids received. A written award mailed (or otherwise furnished) to the successful Bidder shall be deemed to result in a binding contract without further action by either party.

### 7. Down Payment (1/11)

The Bidder to whom award is made must make a down payment within 21 days of the sale award. The amount of the down payment will be calculated as shown in the Bond and Payment Schedule of this prospectus. Only cash may be used to meet this requirement.

### 8. Performance Security (1/11)

As guarantee of faithful performance, a cash bond, certificate of deposit, surety bond or irrevocable letter of credit (LOC) is required within 21 days of the sale award. The amount of the performance security is shown in the Bond and

Payment Schedule of this prospectus. If an LOC or surety is used, the coverage must extend for at least 6 months beyond the contract expiration.

#### 9. Timber Sale Contract (9/14)

Additional conditions and requirements common to all timber sales are listed on the timber sale contract (R4031) and are available on line at [www.michigan.gov/timber](http://www.michigan.gov/timber). Contact the Unit Manager for additional information or a sample contract. Within 21 days of the date of the award letter, the bidder must sign the contract and provide the required down payment, performance security, and verification of worker's disability compensation. The down payment and performance security shall be in accordance with the provisions of the timber sale contract, in the sums stated in this prospectus. If these actions are not taken, then the Bidder, the Bidder's corporation, and the corporation's principals may not be permitted to bid on State timber sales for a period of 1 year. In addition, the Bidder certifies that if awarded this contract, the Bidder will complete the timber sale contract in accordance with its terms and any modifications thereof including requirements to purchase, cut, and remove the included timber by the expiration date.

#### 10. Disclaimer of Estimates and Bidder's Warranty of Inspection (7/16)

Before submitting this bid, the Bidder is advised and cautioned to inspect the sale area, review the requirements of the sale contract, and take other steps as may be reasonably necessary to ascertain the location, estimated volumes, construction estimates, and operating costs of the proposed sale. Failure to do so will not relieve the Bidder from responsibility for completing the contract.

The Bidder warrants that this bid is submitted solely on the basis of the Bidder's examination and inspection of the quality and quantity of the timber offered for sale and the Bidder's opinion of the value thereof and the costs of recovery. No reliance should be placed on the State of Michigan's estimates of timber quality, quantity or costs of recovery. Bidder further acknowledges that the State of Michigan: (i) expressly disclaims any warranty of fitness of timber for any purpose; (ii) offers this timber as is without any warranty of quality (merchantability) or quantity and (iii) expressly disclaims any warranty as to the quantity or quality of timber sold.

#### 11. Certification and Chain-of-Custody (10/14)

Unless otherwise indicated in the contract under section 7 – Other Conditions of the Sale Specific Conditions & Requirements, the area encompassed by this timber sale is certified to the standards of the Forest Stewardship Council (FSC) - Certificate #SCS-FM/COC-00090N and the Sustainable Forestry Initiative (SFI) - Certificate # NSF-SFIS-5Y031-SF5. Forest products from this sale may be delivered to the mill as "FSC 100% and / or SFI certified" as long as the contractor hauling the forest products is chain-of-custody (COC) certified or covered under a COC certificate from the destination mill. The purchaser is responsible for maintaining COC after leaving the sale area.

#### 12. Good Neighbor Authority (GNA) Requirements (7/16)

If the name of this timber sales contains the acronym GNA, it is authorized by the Good Neighbor Authority (GNA) and covered by various agreements between the U.S. Forest Service and the State. The timber sale occurs on federal land and the following conditions apply:

GNA contracts on US Forest Service land will not be awarded to purchasers on the Federal list of excluded parties. The System for Award Management (SAM) will be checked for active excluded parties prior to award of contract. In addition, the Bidder to whom award is made must complete an Assurance Regarding Felony Conviction or Tax Delinquent Status for Corporate Applicants (AD-3031).

#### 13. Good Neighbor Authority (GNA) Requirements, con't (9/16)

Bidder certifies, by signing this bid form, that to the best of Bidder's knowledge that the following representations are accurate and complete.

- a. That the Bidder and its principals are not presently debarred, suspended, proposed for debarment, declared ineligible, or voluntary excluded from timber sales (covered transactions) by any Federal department or agency.
- b. That the Bidder and its principals have not within a 3-year period preceding this bid been convicted of or had a civil judgment rendered against them for commission of fraud or a criminal offense in connection with obtaining, attempting to obtain, or performing a public (Federal, State, or local) transaction or contract under a public transaction; violation of Federal or State antitrust statutes or commission of embezzlement, theft, forgery, bribery, falsification or destruction of records, making false statements, or receiving stolen property.

c. That the Bidder and its principals are not presently indicted for or otherwise criminally or civilly charged by a governmental entity (Federal, State, or local) with commission of any of the offenses enumerated in paragraph b of this certification.

d. That the Bidder and its principals have not within a 3-year period preceding this bid had one or more public transactions (Federal, State, or local) terminated for breach or default of a timber or forest product contract.

Bidders that cannot certify this requirement, in whole or in part, shall submit an explanation with their bid.

KEITH CREAGH

Director

**TIMBER SALE INFORMATION**

County Road 415 MWR (42-002-17)

Luce County (Advertised Price \$821.60)

SALE NOTE: This sale has been reduced approximately 50% from the original advertised price, as it went "no bid" on Prospectus 5918, which had a bid opening date of June 1, 2017.

This sale is part of a research project and should be harvested promptly.

Harvesting is limited to December 1, 2017 to March 15, 2018.

Slash less than nine inches may not be removed from the sale area. See Sale Spec 2.2.8 for additional restrictions.

Since this is a research sale with a short contract length, one (1) contract extension may be applied to one other State Forest Timber Sale Contract owned by the Purchaser. See Sale Spec 7.2.7 for additional information.

A recreation site such as a trail, pathway, or campground is within the sale area or the vicinity. Certain restrictions/specifications may be applicable including time restrictions.

A timber sale contract for this lump sum, sealed bid timber sale will be awarded to the responsible bidder offering the highest sealed bid price. Bids must be at or above the following advertised price for each species:

<u>PRODUCTS &amp; SPECIES</u>	<u>ESTIMATED UNITS*</u>	<u>ADVERTISED PRICE</u>
Sawtimber		
Red Maple	9.10 MBF	\$ 37.00 / MBF
Sugar Maple	1.40 MBF	\$ 130.00 / MBF
Pulpwood		
Hemlock	4.00 Cords	\$ 3.80 / Cord
Mixed Hardwood	42.00 Cords	\$ 6.85 / Cord

\* The total volume is statistically estimated within plus (+) or minus (-) 44.43 percent. The estimated units are final and not subject to adjustment. Prospective bidders are urged to examine this timber and to make their own estimates of quantity and quality.

**BOND AND PAYMENT SCHEDULE:**

1. A bond in the amount of \$41.00 to insure faithful performance of the conditions of the contract will be deposited by the successful bidder within 21 days of the sale award.
2. Cutting in any sale or unit without the required advance payment would be considered a trespass.
3. Total payment must be paid in advance or according to the following schedule:
  - (a) Ten percent (10%) of the sale value must be paid within 21 days of the sale award.
  - (b) The remainder is due before cutting begins.
4. If no cutting takes place, the 10% down payment will not be refunded.
5. Operations on the contract issued will terminate on 06/30/2018.

**Description of Timber by Payment Unit (PU)**

PU	MARKET GROUP	PRODUCT	QUANTITY	UNIT	ACRES	ADVERTISE PRICE
1	Red Maple	Sawtimber	9.1	MBF	30.2	\$821.60
	Sugar Maple		1.4	MBF		
	Hemlock	Pulpwood	4.0	Cords		
	Mixed Hardwood		42.0	Cords		
TOTAL:			10.5	MBF		
TOTAL:			46.0	Cords		

## Sale Specific Conditions & Requirements

**Sale Name: County Road 415 MWR**

**Sale Number: 42-002-17 Seq#: 2**

### 1 - Sale Area

#### 1.2 - Boundaries

##### 1.2.1 - Painted boundaries (1/14)

The sale boundary is marked and identified by red and blue paint. Exterior sale boundary lines against private property are marked with blue paint. Exterior sale boundary lines against state are marked with red paint. Interior sale boundaries are marked with yellow paint, designating patch cuts. The painted boundary line trees are not Included Timber and are to be protected unless marked with orange paint.

### 2 - Timber Specifications

#### 2.1 - Included Timber

##### 2.1.3 - Cut tree marked unit(s) (12/08)

Within Payment Unit(s) #1, all trees are designated for cutting when marked with orange paint above and below stump height, regardless of merchantability. ALSO, within Payment Units #1, cut all trees that are two (2) inches or more at DBH within designated patch-cut areas (bounded by yellow paint). Yellow painted boundary trees are not to be harvested. The total area of the patch cuts is 1.95 acres with each patch being 0.15 acres in size. Thirteen (13) patch cut areas are located within the 30 acre treatment area bounded by red paint.

##### 2.1.11 - Description of timber note (2/04)

Note that Mixed Hardwood pulp includes red maple, sugar maple and beech.

#### 2.2 - Utilization

##### 2.2.8 - Utilization and removal (5/14)

In Payment Units #1, all slash less than nine inches (<9") top diameter outside bark at the small end may not be removed from the sale area, e.g. tops. These tops are to be left intact where they fall with branches remaining upright. This is because of the research nature of this project.

### 3 - Payments

#### 3.4 - Damaged Timber

##### 3.4.1 - Damaged timber (6/14)

General Condition and Requirement 3.4 Damaged Timber, defines liquidated damages for undesignated live merchantable trees which are cut or injured. No damage is acceptable to residual merchantable trees. Within the sale area, if more than 5% of trees (> 4.5" DBH) within a specified area of the sale are damaged, liquidated damages will be assessed for all trees damaged. Rates will be in accordance with General Condition and Requirement 3.4 Damaged Timber, or at a rate of \$50 per saw timber tree and \$5 per pole sized tree, whichever is greater.

### 4 - Transportation

#### 4.1 - Construction

##### 4.1.7 - Road closure (10/11)

All currently blocked roads into the sale must be re-blocked to vehicle traffic upon completion of the sale. In general, this will require constructing double earthen berms at strategic locations. These roads must be rendered impassable to cars and trucks. Contact the sale administrator for specific details of design and placement.

##### 4.1.12 - No new roads (1/12)

No new roads will be permitted in any Payment Unit. All operations are limited to existing roads.

### 5 - Operations

#### 5.1 - Notification



#### 5.1.1 - Pre-sale conference (10/16)

A pre-sale conference between the Purchaser and sale administrator is required prior to beginning any operations to discuss sale specifications. The Unit Manager or his/her representative must be contacted at least 5 days in advance to schedule the conference.

#### 5.1.4 - Post-sale conference (10/16)

A post-sale conference on site between the Purchaser and sale administrator is required at least 3 days prior to the completion of active logging operations to determine clean-up and repair of landings, road edges, and the fulfillment of other contract specifications.

### 5.2 - Conduct of Operations

#### 5.2.2 - Hazard Trees/Snags

##### 5.2.2.1 - Den trees (10/16)

Obvious hollow and/or den trees shall be protected and left standing unless they are a safety hazard.

#### 5.2.3 - Operating Restrictions

##### 5.2.3.1 - Operating restrictions (9/11)

Within Payment Unit(s) #1, unless changed by written agreement, cutting and skidding is limited to the period of December 1st, 2017 to March 15th, 2018. Payments must be received and operations must begin no later than February 1st, 2018. This restriction is due to the necessity of assuring that all operations are on schedule for timely completion of the research project.

#### 5.2.37 - No decking areas (12/08)

No decking is allowed within 50 feet of County Road 415.

#### 5.2.38 - No decking against live trees (2/04)

Cut products may not be decked against unmarked or designated leave trees.

### 5.4 - Soil Protection

#### 5.4.1 - Rutting restriction, general (7/16)

Operations are to cease immediately if equipment and weather conditions result in rutting of roads and/or skid trails which is 12 inches or greater in depth and 50 feet in length. The Unit Manager or his/her representative may restrict hauling and/or skidding if ruts exceed the specified depth. With the Unit Manager or his/her representative's approval, the Purchaser may return to the area when the risk of rutting has decreased.

## 6 - Safety and Fire Prevention

### 6.2 - Signing

#### 6.2.1 - Road posting (9/09)

The Purchaser is responsible for posting and maintaining caution signs on County Road 415 prior to beginning operations. The road must be posted at appropriate distances from the sale area to warn of logging activity and truck traffic. Signs must be removed when harvest operations are suspended or completed.

## 7 - Other Conditions

### 7.2 - Extensions

#### 7.2.7 - Research extension (12/16)

This is a research sale with a short contract length. The sale must be harvested promptly. One (1), twelve (12) month extension can be applied to one (1) other State Forest Timber Sale Contract owned by the purchaser or owned by one (1) designated sub-contractor of the Purchaser that works this contract. To qualify, the contract expiration date of the contract to be extended must be within twelve (12) months from the issue date of this contract. If this is the first extension on the other State Forest Timber Sale Contract, then the 5% extension fee will be waived. If this is an additional extension, the 10% fee will be reduced to 5%. The salvage extension must be used before this contract is closed-out. This specification does not alleviate the purchaser from any contractual obligations of the extended State Forest Timber Sale Contract. Per General Condition & Requirement 7.2, extensions are at the sole discretion of the DNR.





# TIMBER SALE MAP

This information provided by authority of Part 525, 1994 PA 451, as amended.

Forest Management Unit Newberry Management Unit		County Luce	Mapped By Douglass	Date 03/08/2017	Page 1	of 1
Township 46N	Range 11W	Section(s) and Subdivision(s) Section 4 SESW		Scale 1:15,840		

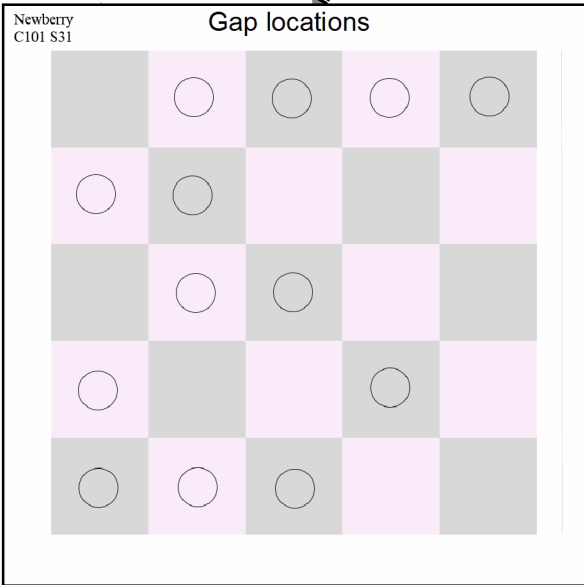
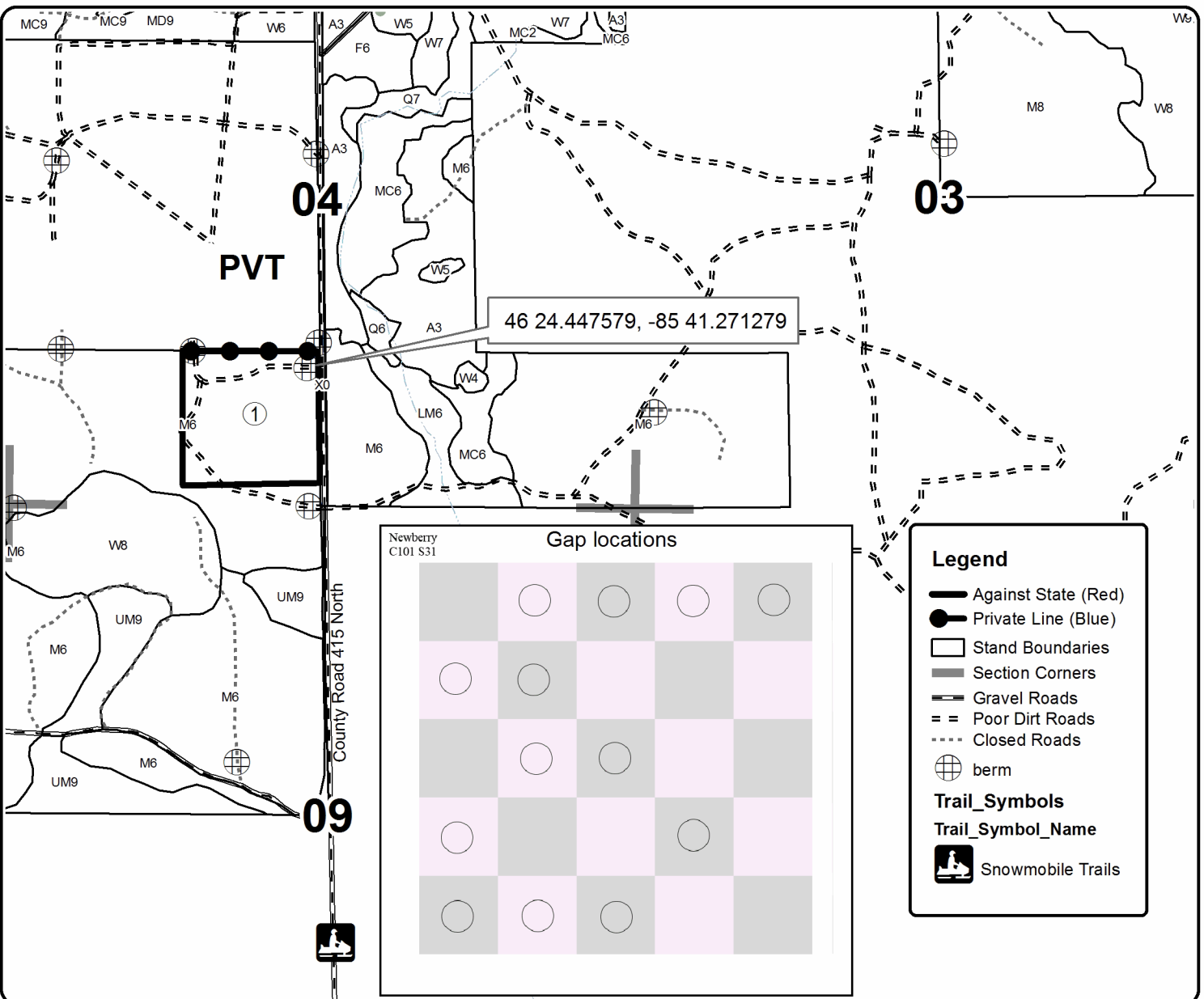
Cover Type				Density	
A = Aspen	H = Hemlock	N = Marsh	U = Upland Brush	0 = Non Stocked	5 = Pole Timber Medium
B = Paper Birch	J = Jack Pine	O = Oak	UM = Upland Mixed	1 = Seedling Sapling Poor	6 = Pole Timber Well
C = Cedar	L = Lowland Brush	P = Lowland Poplar	V = Bog or Marsh	2 = Seedling Sapling Medium	7 = Saw Timber Poor
D = Treed Bog	LM = Lowland Mixed	Q = Mixed Swamp Conifer	W = White Pine	3 = Seedling Sapling Well	8 = Saw Timber Medium
E = Swamp Hdwoods	M = Mpl, Bch, Brch	R = Red Pine	X = Non Stocked	4 = Pole Timber Poor	9 = Saw Timber Well
F = Spruce Fir	MC = Mixed Conifer	S = Black Spruce	Z = Water		
G = Grass	MD = Mixed Deciduous	T = Tamarack			

**PU**   **Acres**  
**1**   **30.2**

## County Road 415 MWR

### Compartment 101

30.2 Acres



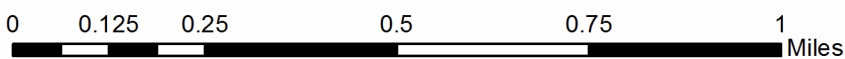
**Legend**

- Against State (Red)
- Private Line (Blue)
- Stand Boundaries
- Section Corners
- Gravel Roads
- Poor Dirt Roads
- Closed Roads
- berm

**Trail\_Symbols**

Trail\_Symbol\_Name

- Snowmobile Trails





# TIMBER SALE INFORMATION

## Wandering Lab Mix (42-003-16)

Luce County (Advertised Price \$22,552.10)

SALE NOTE: This sale has been reduced approximately 40% from its original advertised price, as it went "no bid" on Prospectus #5891 on April 13, 2017 and again on Prospectus #5936 on June 15, 2017.

Access to the southern portion of Unit 3 will require the installation of a culvert for cross drainage at a natural drainage-way. See Sale Spec 4.1.5 for additional information.

Within Payment Unit(s) 1, 2 and 3, harvesting is limited to the period of December 31 through March 15 due to the low ground conditions.

The snowmobile trail is shown on the Timber Sale Map. See Sale Spec 5.2.41 for restrictions.

A recreation site such as a trail, pathway, or campground is within the sale area or the vicinity. Certain restrictions/specifications may be applicable including time restrictions.

A timber sale contract for this lump sum, sealed bid timber sale will be awarded to the responsible bidder offering the highest sealed bid price. Bids must be at or above the following advertised price for each species:

<u>PRODUCTS &amp; SPECIES</u>	<u>ESTIMATED UNITS*</u>	<u>ADVERTISED PRICE</u>
Sawtimber		
Paper Birch	0.50 MBF	\$ 43.00 / MBF
Red Maple	9.10 MBF	\$ 52.00 / MBF
Sugar Maple	0.50 MBF	\$ 182.00 / MBF
Yellow Birch	5.20 MBF	\$ 50.00 / MBF
Pulpwood		
Balsam Fir	123.00 Cords	\$ 5.65 / Cord
Hemlock	216.00 Cords	\$ 5.30 / Cord
Mixed Aspen	816.00 Cords	\$ 12.30 / Cord
Mixed Hardwood	567.00 Cords	\$ 9.60 / Cord
Mixed Spruce	163.00 Cords	\$ 14.90 / Cord
N. White Cedar	229.00 Cords	\$ 8.55 / Cord

\* The total volume is statistically estimated within plus (+) or minus (-) 8.53 percent. The estimated units are final and not subject to adjustment. Prospective bidders are urged to examine this timber and to make their own estimates of quantity and quality.

### **BOND AND PAYMENT SCHEDULE:**

1. A bond in the amount of \$1,128.00 to insure faithful performance of the conditions of the contract will be deposited by the successful bidder within 21 days of the sale award.
2. Cutting in any sale or unit without the required advance payment would be considered a trespass.
3. Total payment must be paid in advance or according to the following schedule:
  - (a) Ten percent (10%) of the sale value must be paid within 21 days of the sale award.
  - (b) The 10% down payment will be credited towards the first unit cut.
4. If no cutting takes place, the 10% down payment will not be refunded.
5. Operations on the contract issued will terminate on 06/30/2021.

**Description of Timber by Payment Unit (PU)**

PU	MARKET GROUP	PRODUCT	QUANTITY	UNIT	ACRES	ADVERTISE PRICE
1	Red Maple	Sawtimber	0.8	MBF	4.3	\$550.40
	Mixed Hardwood	Pulpwood	53.0	Cords		
2	Paper Birch	Sawtimber	0.5	MBF	33.4	\$9,168.40
	Red Maple		8.3	MBF		
	Sugar Maple		0.5	MBF		
	Yellow Birch		5.2	MBF		
	Balsam Fir	Pulpwood	97.0	Cords		
	Hemlock		216.0	Cords		
	Mixed Hardwood		387.0	Cords		
	Mixed Spruce		67.0	Cords		
	N. White Cedar		229.0	Cords		
3	Balsam Fir	Pulpwood	26.0	Cords	41.8	\$12,833.30
	Mixed Aspen		816.0	Cords		
	Mixed Hardwood		127.0	Cords		
	Mixed Spruce		96.0	Cords		
TOTAL:			15.3	MBF		
TOTAL:			2,114.0	Cords		

## Sale Specific Conditions & Requirements

**Sale Name: Wandering Lab Mix**

**Sale Number: 42-003-16 Seq#: 4**

### 1 - Sale Area

#### 1.2 - Boundaries

##### 1.2.1 - Painted boundaries (1/14)

The sale boundary is marked and identified by blue and red paint. Exterior sale boundary lines against private property are marked with blue paint. Exterior sale boundary lines against state are marked with red paint. The painted boundary line trees are not Included Timber and are to be protected.

### 2 - Timber Specifications

#### 2.1 - Included Timber

##### 2.1.2 - Clearcut unit(s) w/o unmerchantable trees (8/11)

Within Payment Unit(s) #'s 1, 2, and 3, cut all trees which meet minimum piece specifications in 2.2 Utilization with the following exceptions:

Within Payment Unit 1, leave all hemlock, spruce and balsam fir.

Within Payment Unit 2, leave all yellow birch and cedar greater than 20" and leave all hemlock greater than 24". In addition, leave all white pine.

Within Payment Unit 3, leave all white pine, hemlock, elm, yellow birch and paper birch.

##### 2.1.11 - Description of timber note (2/04)

Note that beech, black ash, paper birch, red maple, sugar maple and yellow birch are mixed hardwood pulp.

### 3 - Payments

#### 3.3 - Pre-measured Sales

##### 3.3.4 - Dividing payment units (7/14)

Payment Unit(s) 2 and 3 may be divided at the request of the Purchaser and upon approval of the Unit Manager. Dividing Payment Units is a contract modification which requires a Timber Sale Contract Supplement. There will be only one division per Payment Unit.

### 4 - Transportation

#### 4.1 - Construction

##### 4.1.5 - Culverts (5/14)

Access to the southern portion of Unit 3 will require the installation of a culvert for cross drainage at a natural drainage-way. The culvert shall be a minimum of 12 inches in diameter and 24 feet in length. The culvert is to be removed prior to closing the sale and any fill shall be removed from wetland soils as specified. Soils shall be maintained and left in a non-erodible condition, with water bars, seed, fertilizer, mulch, and slash installed as directed by the sale administrator and as specified in the BMP manual.

##### 4.1.6 - Road construction (1/09)

Construction of new roads or improvements of existing roads shall be done in such a way as to minimize the environmental and visual impacts. Merchantable trees shall be cut and utilized unless otherwise directed. Non-merchantable trees shall be severed and laid flat on the ground. Slash shall be scattered, and not left in windrows and kept a minimum of 10 feet back from the road edge. Stumps shall be set upright, not left on edge, and be moved at least 10 feet away from the road edge. Disturbed soil shall be feathered into the woods and not left in berms or windrows.

##### 4.1.7 - Road closure (10/11)

All new roads built into the sale must be blocked to vehicle traffic upon completion of the sale. In general, this will require constructing a four (4') foot high berm of stumps and logs covered with earth. Place slash a minimum of 100' behind the

bermed roads. These roads must be rendered impassable to cars and trucks and ORVs. Contact the sale administrator for specific details of design and placement.

#### 4.2 - Maintenance

##### 4.2.3 - Road maintenance (8/13)

The following road maintenance may be needed: Within 60 days of completion of hauling, or if no hauling occurs for 60 days, the road must be maintained and graded. This includes cleaning of drainage areas, grading, crowning and filling with gravel, if necessary. Damages will be assessed if grading/repair does not occur. Roads must be graded and leveled back to pre-harvest conditions. Contact sale administrator for directions.

### 5 - Operations

#### 5.1 - Notification

##### 5.1.1 - Pre-sale conference (10/16)

A pre-sale conference on site or at the DNR Field Office between the Purchaser and sale administrator is required prior to beginning any operations in a Payment Unit. The Unit Manager or his/her representative must be contacted at least 5 days in advance to schedule the conference.

##### 5.1.4 - Post-sale conference (10/16)

A post-sale conference on site between the Purchaser and sale administrator is required 5 days prior to the completion of active logging operations to determine clean-up and repair of landings, road edges, and the fulfillment of other contract specifications. This is recommended prior to removing equipment from the sale area to expedite the closure process.

#### 5.2 - Conduct of Operations

##### 5.2.2 - Hazard Trees/Snags

###### 5.2.2.1 - Den trees (10/16)

Obvious hollow and/or den trees shall be protected and left standing unless they are a safety hazard.

##### 5.2.3 - Operating Restrictions

###### 5.2.3.2 - Operating restrictions (9/11)

Within Payment Unit(s) 1, 2 and 3, unless changed by written agreement, cutting, skidding and hauling are limited to the period of December 31 through March 15. This restriction is because of the sale being a winter cut and the low ground conditions.

##### 5.2.32 - Decking/landing restoration (9/13)

All decking and landing areas must have the surface area restored to a condition equal to or better than before. This is to ensure the proper regeneration of the stand. Wood debris, chips and "cookies" from trimmings must be removed or scattered away from landing and loading areas and may not be windrowed on the edge.

##### 5.2.38 - No decking against live trees (2/04)

Cut products may not be decked against unmarked or designated leave trees.

##### 5.2.41 - Snowmobile trail protection (9/11)

The snowmobile trail is shown on the Timber Sale Map. Do not cut or damage posts with orange trail markers or traffic control signs. If the trail is used, it must be maintained and restored to a condition equal to or better than before the sale. If the trail road is to be used for hauling during the snowmobile season, then a snow covered base must be left on the trail. The snowmobile trail may only be crossed at right angles. Maintain a 20 foot wide slash, debris, and rut free zone daily using the snowmobile trail as the centerline. No decking of forest products will be permitted along the snowmobile trail.

#### 5.4 - Soil Protection

##### 5.4.1 - Rutting restriction, general (7/16)

Operations are to cease immediately if equipment and weather conditions result in rutting of roads which is 12 inches or greater in depth and 50 feet in length. The Unit Manager or his/her representative may restrict hauling and/or skidding if ruts exceed the specified depth. With the Unit Manager or his/her representative's approval, the Purchaser may return to the area when the risk of rutting has decreased.



## 5.8 - Protection of Endangered Species

### 5.8.5 - Protection of raptor nests (3/13)

All trees with raptor nests will be protected if found during harvesting operations. Notification will be made to the Unit Manager or his/her representative who will notify the Wildlife Biologist so an on-site evaluation and recommendation can be made, if necessary.

## 6 - Safety and Fire Prevention

### 6.2 - Signing

#### 6.2.1 - Road posting (9/09)

The Purchaser is responsible for posting and maintaining caution signs on County Road 500 and M-123 prior to beginning operations. The road must be posted at appropriate distances from the sale area to warn of logging activity and truck traffic. Signs must be removed when harvest operations are suspended or completed. The Purchaser will provide these signs.

#### 6.2.2 - Snowmobile trail posting (8/09)

The Purchaser is responsible for posting and maintaining caution signs on the snowmobile trail prior to beginning operations during the snowmobile season (approximately December 1 to March 31). The trail must be posted at appropriate distances from the sale area to warn of logging activity and truck traffic. Signs must be removed when harvest operations are suspended or completed. The Purchaser will provide these signs.



# TIMBER SALE MAP

This information provided by authority of Part 525, 1994 PA 451, as amended.

Sale Number	Year
42-003	16

Forest Management Unit Newberry	County Luce	Mapped By Payment	Date 10/11/2016	Page 1	of 2
Township 48N	Range 8W	Sections(s) and Subdivision(s) Sec 18. NWNW, SWNW, SENW, Sec 7. SWSW.	Scale 1:7,920		

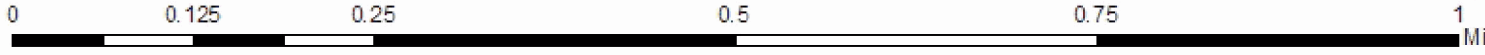
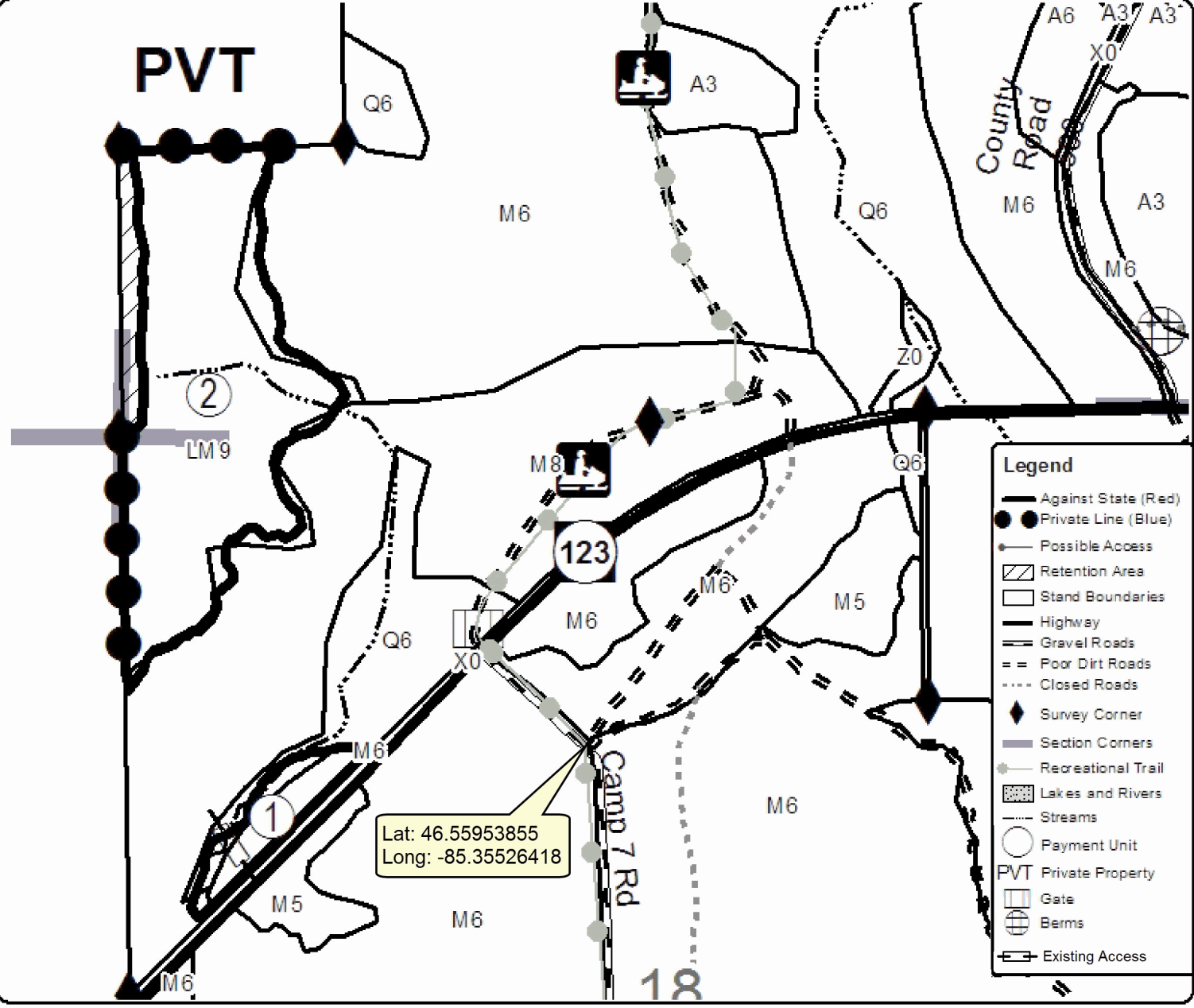
Cover Type				Density			
A = Aspen	H = Hemlock	N = Marsh	U = Upland Brush	0 = Non Stocked	5 = Pole Timber Medium		
B = Paper Birch	J = Jack Pine	O = Oak	UM = Upland Mixed	1 = Seedling Sapling Poor	6 = Pole Timber Well		
C = Cedar	L = Lowland Brush	P = Lowland Poplar	V = Bog or Marsh	2 = Seedling Sapling Medium	7 = Saw Timber Poor		
D = Tread Bog	LM = Lowland Mixed	Q = Mixed Swamp Conifer	W = White Pine	3 = Seedling Sapling Well	8 = Saw Timber Medium		
E = Swamp Hardwoods	M = Mpl. Bch. Birch	R = Red Pine	X = Non Stocked	4 = Pole Timber Poor	9 = Saw Timber Well		
F = Spruce Fir	MC = Mixed Conifer	S = Black Spruce	Z = Water				
G = Grass	MD = Mixed Deciduous	T = Tamarack					

PU	Acres	PU	Acres
1	4.3		
2	33.4		
3	41.8		

## Wandering Lab Mix

### Compartment 46

79.5 Acres





# TIMBER SALE MAP

This information provided by authority of Part 525, 1994 PA 451, as amended.

Sale Number	Year
42-003	16

Forest Management Unit	County	Mapped By	Payment	Date	Page	of
Newberry	Luce	Cruised By	Newberry Staff	10/11/2016	2	2

Township	Range	Section(s) and Subdivision(s)	Scale
48N	8W	Sec 6. SE 1/4, SENE. Sec 5. NWNW.	1:7,920

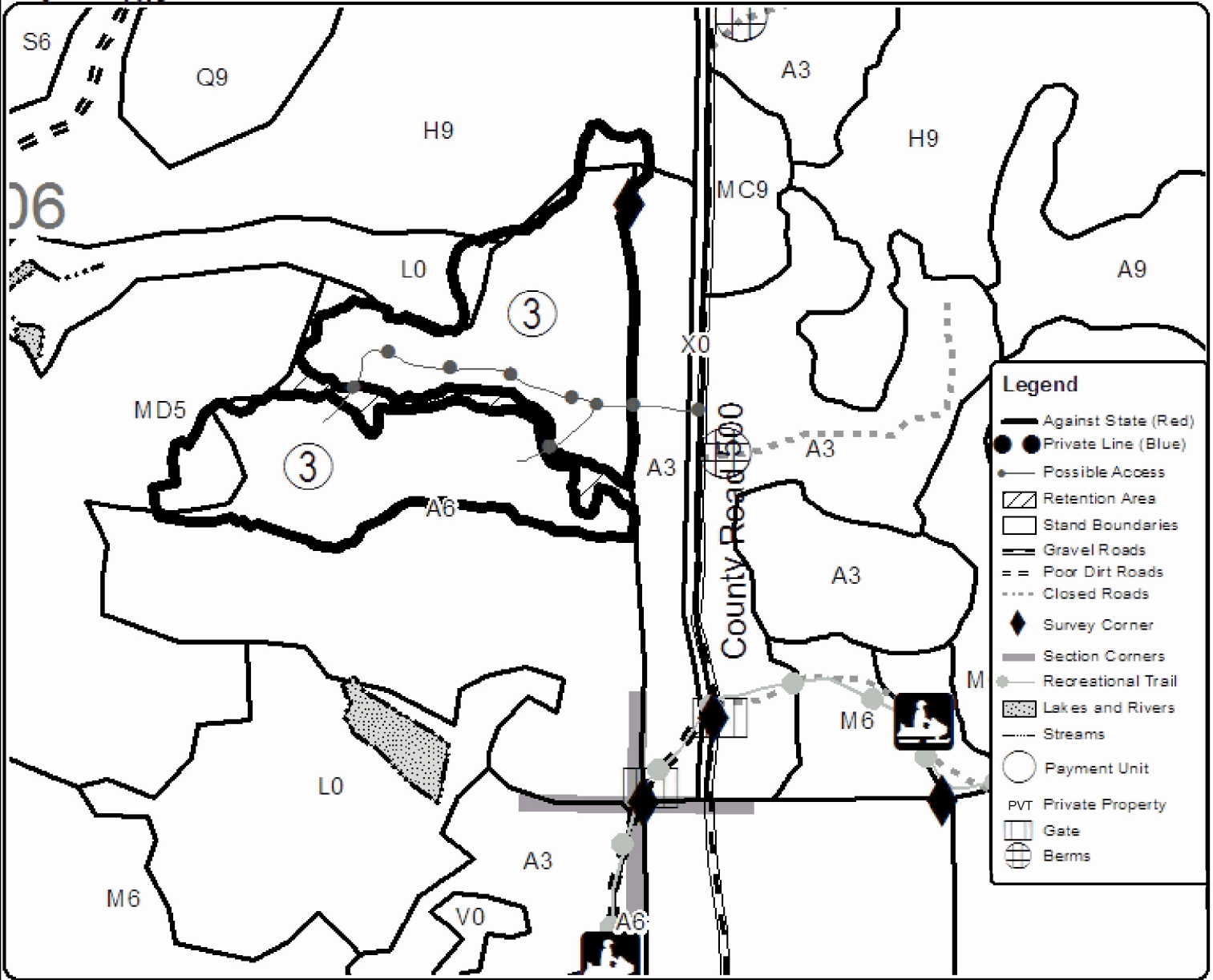
Cover Type				Density			
A = Aspen	H = Hemlock	N = Marsh	L = Upland Brush	0 = Non Stocked	5 = Pole Timber Medium		
B = Paper Birch	J = Jack Pine	O = Oak	LM = Upland Mixed	1 = Seedling Sapling Poor	6 = Pole Timber Well		
C = Cedar	L = Lowland Brush	P = Lowland Poplar	V = Bog or Marsh	2 = Seedling Sapling Medium	7 = Saw Timber Poor		
D = Tread Bog	LM = Lowland Mixed	Q = Mixed Swamp Conifer	W = White Pine	3 = Seedling Sapling Well	8 = Saw Timber Medium		
E = Swamp Hdwoods	M = Mpl. Dch. Drch	R = Red Pine	X = Non Stocked	4 = Pole Timber Poor	9 = Saw Timber Well		
F = Spruce Fir	MC = Mixed Conifer	S = Back Spruce	Z = Water				
G = Grass	MD = Mixed Deciduous	T = Tamarack					

PU	Acres	PU	Acres
1	4.3		
2	33.4		
3	41.8		

## Wandering Lab Mix

### Compartment 46

79.5 Acres



Legend	
	Against State (Red)
	Private Line (Blue)
	Possible Access
	Retention Area
	Stand Boundaries
	Gravel Roads
	Poor Dirt Roads
	Closed Roads
	Survey Corner
	Section Corners
	Recreational Trail
	Lakes and Rivers
	Streams
	Payment Unit
	PVT Private Property
	Gate
	Berms





# TIMBER SALE INFORMATION

## Soggy Snowshoes (42-006-16)

Luce County (Advertised Price \$83,222.45)

SALE NOTE: This sale has been reduced approximately 25% from the original advertised price, as it went "no bid" on Prospectus 5936, which had a bid opening date of June 15, 2017.

This sale has been Harvesting is limited to the period of December 15 through March 15 due to low ground in the sale area.

The Charcoal Grade is a snowmobile trail and is shown on the Timber Sale Map. See Sale Spec 5.2.41 for restrictions.

A recreation site such as a trail, pathway, or campground is within the sale area or the vicinity. Certain restrictions/specifications may be applicable including time restrictions.

A timber sale contract for this lump sum, sealed bid timber sale will be awarded to the responsible bidder offering the highest sealed bid price. Bids must be at or above the following advertised price for each species:

<u>PRODUCTS &amp; SPECIES</u>	<u>ESTIMATED UNITS*</u>	<u>ADVERTISED PRICE</u>
Sawtimber		
Paper Birch	17.20 MBF	\$ 62.00 / MBF
Red Maple	46.50 MBF	\$ 74.00 / MBF
Sugar Maple	10.00 MBF	\$ 260.00 / MBF
Pulpwood		
Balsam Fir	236.00 Cords	\$ 8.10 / Cord
Mixed Hardwood	1,138.00 Cords	\$ 13.70 / Cord
Mixed Spruce	1,938.00 Cords	\$ 21.30 / Cord
N. White Cedar	879.00 Cords	\$ 12.20 / Cord
Quaking Aspen	123.00 Cords	\$ 17.55 / Cord
Red Pine	76.00 Cords	\$ 51.00 / Cord
Tamarack	50.00 Cords	\$ 11.50 / Cord

\* The total volume is statistically estimated within plus (+) or minus (-) 11.33 percent. The estimated units are final and not subject to adjustment. Prospective bidders are urged to examine this timber and to make their own estimates of quantity and quality.

### **BOND AND PAYMENT SCHEDULE:**

1. A bond in the amount of \$4,161.00 to insure faithful performance of the conditions of the contract will be deposited by the successful bidder within 21 days of the sale award.
2. Cutting in any sale or unit without the required advance payment would be considered a trespass.
3. Total payment must be paid in advance or according to the following schedule:
  - (a) Ten percent (10%) of the sale value must be paid within 21 days of the sale award.
  - (b) The 10% down payment will be credited towards the first unit cut.
4. If no cutting takes place, the 10% down payment will not be refunded.
5. Operations on the contract issued will terminate on 06/30/2021.

**Description of Timber by Payment Unit (PU)**

PU	MARKET GROUP	PRODUCT	QUANTITY	UNIT	ACRES	ADVERTISE PRICE
1	Paper Birch	Sawtimber	2.4	MBF	27.0	\$10,282.40
	Red Maple		4.7	MBF		
	Balsam Fir	Pulpwood	16.0	Cords		
	Mixed Hardwood		96.0	Cords		
	Mixed Spruce		281.0	Cords		
	N. White Cedar		129.0	Cords		
	Quaking Aspen		8.0	Cords		
	Red Pine		11.0	Cords		
	Tamarack		7.0	Cords		
2	Paper Birch	Sawtimber	2.1	MBF	23.6	\$9,018.05
	Red Maple		4.1	MBF		
	Balsam Fir	Pulpwood	14.0	Cords		
	Mixed Hardwood		84.0	Cords		
	Mixed Spruce		246.0	Cords		
	N. White Cedar		113.0	Cords		
	Quaking Aspen		7.0	Cords		
	Red Pine		10.0	Cords		
	Tamarack		6.0	Cords		
3	Paper Birch	Sawtimber	2.3	MBF	26.0	\$9,903.20
	Red Maple		4.5	MBF		
	Balsam Fir	Pulpwood	15.0	Cords		
	Mixed Hardwood		92.0	Cords		
	Mixed Spruce		270.0	Cords		
	N. White Cedar		124.0	Cords		
	Quaking Aspen		8.0	Cords		
	Red Pine		11.0	Cords		
	Tamarack		7.0	Cords		
4	Paper Birch	Sawtimber	2.9	MBF	33.3	\$12,690.20
	Red Maple		5.8	MBF		
	Balsam Fir	Pulpwood	20.0	Cords		
	Mixed Hardwood		118.0	Cords		
	Mixed Spruce		346.0	Cords		
	N. White Cedar		159.0	Cords		
	Quaking Aspen		10.0	Cords		
	Red Pine		14.0	Cords		
	Tamarack		9.0	Cords		
5	Paper Birch	Sawtimber	3.7	MBF	44.4	\$16,917.70
	Red Maple		7.7	MBF		
	Balsam Fir	Pulpwood	26.0	Cords		
	Mixed Hardwood		158.0	Cords		
	Mixed Spruce		461.0	Cords		
	N. White Cedar		214.0	Cords		
	Quaking Aspen		14.0	Cords		
	Red Pine		18.0	Cords		
	Tamarack		13.0	Cords		
6	Paper Birch	Sawtimber	2.6	MBF	29.3	\$11,167.55
	Red Maple		5.1	MBF		
	Balsam Fir	Pulpwood	17.0	Cords		
	Mixed Hardwood		104.0	Cords		
	Mixed Spruce		305.0	Cords		
	N. White Cedar		140.0	Cords		
	Quaking Aspen		9.0	Cords		
	Red Pine		12.0	Cords		
	Tamarack		8.0	Cords		
7	Paper Birch	Sawtimber	0.5	MBF	28.5	\$4,591.80
	Red Maple		4.1	MBF		

**Description of Timber by Payment Unit (PU), con't**

PU	MARKET GROUP	PRODUCT	QUANTITY	UNIT	ACRES	ADVERTISE PRICE
	Sugar Maple Balsam Fir Mixed Hardwood Mixed Spruce	Pulpwood	0.3 77.0 230.0 19.0	MBF Cords Cords Cords		
8	Paper Birch Red Maple Sugar Maple Balsam Fir Mixed Hardwood Mixed Spruce Quaking Aspen	Sawtimber   Pulpwood	0.4 8.6 2.7 51.0 220.0 10.0 8.0	MBF MBF MBF Cords Cords Cords Cords	24.0	\$5,143.70
9	Paper Birch Red Maple Sugar Maple Mixed Hardwood Quaking Aspen	Sawtimber   Pulpwood	0.3 1.9 7.0 36.0 59.0	MBF MBF MBF Cords Cords	6.6	\$3,507.85
TOTAL:			73.7	MBF		
TOTAL:			4,440.0	Cords		

# Sale Specific Conditions & Requirements

**Sale Name: Soggy Snowshoes**

**Sale Number: 42-006-16 Seq#: 3**

## 1 - Sale Area

### 1.2 - Boundaries

#### 1.2.1 - Painted boundaries (1/14)

The sale boundary and Payment Unit boundaries are marked and identified by blue, red and yellow paint. Exterior sale boundary lines against private property are marked with blue paint. Exterior sale boundary lines against state are marked with red paint. Interior Payment Unit boundaries are marked with yellow paint. The retention pocket in Payment Unit 5 is marked with yellow paint. The painted boundary line trees are not Included Timber and are to be protected unless marked with orange paint.

## 2 - Timber Specifications

### 2.1 - Included Timber

#### 2.1.2 - Clearcut unit(s) w/o unmerchantable trees (8/11)

Within Payment Unit(s) #'s 1, 2, 3, 4, 5 and 6, cut all trees which meet minimum piece specifications in 2.2 Utilization, except do not cut any white pine and hemlock.

#### 2.1.3 - Cut tree marked unit(s) (12/08)

Within Payment Unit(s) #'s 7, 8 and 9, all trees are designated for cutting when marked with orange paint above and below stump height, regardless of merchantability. Except, within Payment Units 7, 8 and 9, leave all hemlock where it is present.

## 3 - Payments

### 3.3 - Pre-measured Sales

#### 3.3.4 - Dividing payment units (7/14)

Payment Unit(s) #'s 4, 5 and 6 may be divided at the request of the Purchaser and upon approval of the Unit Manager.

Dividing Payment Units is a contract modification which requires a Timber Sale Contract Supplement. There will be only one division per Payment Unit.

## 4 - Transportation

### 4.1 - Construction

#### 4.1.6 - Road construction (1/09)

Construction of new roads or improvements of existing roads shall be done in such a way as to minimize the environmental and visual impacts. Merchantable trees shall be cut and utilized unless otherwise directed. Non-merchantable trees shall be severed and laid flat on the ground. Slash shall be scattered, and not left in windrows and kept a minimum of 10 feet back from the road edge. Stumps shall be set upright, not left on edge, and be moved at least 10 feet away from the road edge. Disturbed soil shall be feathered into the woods and not left in berms or windrows.

#### 4.1.7 - Road closure (10/11)

All new roads built into the sale must be blocked to vehicle traffic upon completion of the sale. Overgrown roads that are re-opened shall be considered new roads. In general, this will require constructing a four (4') foot high berm of stumps and logs covered with earth. These roads must be rendered impassable to cars and trucks and ORVs. Contact the sale administrator for specific details of design and placement.

### 4.2 - Maintenance

#### 4.2.5 - Two wheel drive condition (2/04)

All existing trail roads on and adjacent to the sale area must be passable by two-wheel drive traffic for the duration of the sale.

### 4.4 - Access

#### 4.4.1 - Private property access (3/11)



Permission for access across private land is the responsibility of the Purchaser. Should the Purchaser desire to cross private land, a copy of the written permission from the private land-owner may be required by the DNR.

#### 4.4.2 - Alternate route on private property (2/04)

It is the Purchaser's responsibility to obtain access across private land for any routes other than the route shown on the sale map.

## 5 - Operations

### 5.1 - Notification

#### 5.1.1 - Pre-sale conference (10/16)

A pre-sale conference on site or at the Newberry DNR Field Office between the Purchaser and sale administrator is required prior to beginning any operations a Payment Unit to determine landing and road locations. The Unit Manager or his/her representative must be contacted at least 5 days in advance to schedule the conference.

#### 5.1.4 - Post-sale conference (6/11)

A post-sale conference on site between the Purchaser and sale administrator is required 5 days prior to the completion of active logging operations to determine clean-up and repair of landings, road edges, and the fulfillment of other contract specifications. It is recommended that the Purchaser contact the sale administrator prior to removing equipment from the sale to expedite the closure process.

### 5.2 - Conduct of Operations

#### 5.2.1 - Slash

##### 5.2.1.8 - Slash height (12/08)

No slash or tree tops may exceed 36 inches in height.

#### 5.2.2 - Hazard Trees/Snags

##### 5.2.2.1 - Den trees (2/04)

Obvious hollow and/or den trees shall be protected and left standing unless they are a safety hazard.

#### 5.2.3 - Operating Restrictions

##### 5.2.3.1 - Operating restrictions (9/11)

Within Payment Unit(s) #'s 1, 2, 3, 4, 5, 6, 7, 8 and 9, unless changed by written agreement, cutting, skidding and hauling are limited to the period of December 15 through March 15. This restriction is because of the low ground in the sale area.

#### 5.2.38 - No decking against live trees (2/04)

Cut products may not be decked against unmarked or designated leave trees.

#### 5.2.41 - Snowmobile trail protection (9/11)

The Charcoal Grade is the snowmobile trail and is shown on the Timber Sale Map. Do not cut or damage posts with orange trail markers or traffic control signs. If the trail is used, it must be maintained and restored to a condition equal to or better than before the sale. The road maintenance/restoration must be done prior to December 1. If the trail is used for hauling, it must be graded to the satisfaction of the Unit Manager or his/her representative prior to December 1. If the trail road is to be used for hauling during the snowmobile season, then a snow covered base must be left on the trail. Maintain a 20 foot wide slash, debris, and rut free zone daily using the snowmobile trail as the centerline. No decking of forest products will be permitted along the snowmobile trail. All stumps within 20 feet of the snowmobile trail must be cut at ground level.

### 5.4 - Soil Protection

#### 5.4.1 - Rutting restriction, general (7/16)

Operations are to cease immediately if equipment and weather conditions result in rutting of roads which is 12 inches or greater in depth and 50 feet in length. The Unit Manager or his/her representative may restrict hauling and/or skidding if ruts exceed the specified depth. With the Unit Manager or his/her representative's approval, the Purchaser may return to the area when the risk of rutting has decreased.

#### 5.4.5 - Soil caution (11/04)

Care must be taken to minimize soil damage due to the potential wet nature of the soils in the sale area.

#### 5.8 - Protection of Endangered Species

##### 5.8.5 - Protection of raptor nests (3/13)

All trees with raptor nests will be protected if found during harvesting operations. Notification will be made to the Unit Manager or his/her representative who will notify the Wildlife Biologist so an on-site evaluation and recommendation can be made, if necessary.

### 6 - Safety and Fire Prevention

#### 6.2 - Signing

##### 6.2.2 - Snowmobile trail posting (8/09)

The Purchaser is responsible for posting and maintaining caution signs on the Snowmobile trail (Charcoal Grade) prior to beginning operations during the snowmobile season (approximately December 1 to March 31). The trail must be posted at appropriate distances from the sale area to warn of logging activity and truck traffic. Signs must be removed when harvest operations are suspended or completed. The Purchaser will provide these signs.

### 7 - Other Conditions

#### 7.2 - Extensions

##### 7.2.5 - Weather related extension (1/13)

If weather conditions during the operating period of this contract prevent harvesting, this sale may qualify for a weather related extension. If approved, the normal extension fee would be waived. To qualify, there must be a documented attempt each year to harvest in the difficult portion of the sale.



# TIMBER SALE MAP

This information provided by authority of Part 525, 1994 PA 451, as amended.

Sale Number	Year
42-006	16

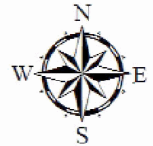
Forest Management Unit <b>Newberry</b>	County <b>Luce</b>	Mapped By <b>Payment</b>	Date <b>10/5/2016</b>	Page <b>1</b>	of <b>1</b>
Township <b>46N</b>	Range <b>9W</b>	Section(s) and Subdivision(s) <b>Sec. 1. SW 1/4, SWNW, NWSE, SWSE. Sec 2. NESE. Sec 12. SENW, NWNE, SWNE, SENE, SESE.</b>	Scale <b>1:15,840</b>		

Cover Type				Density	
A = Aspen	H = Hemlock	N = Marsh	U = Upland Brush	0 = Non Stocked	5 = Pole Timber Medium
B = Paper Birch	J = Jack Pine	O = Oak	UM = Upland Mixed	1 = Seedling Sapling Poor	6 = Pole Timber Well
C = Cedar	L = Lowland Brush	P = Lowland Poplar	V = Bog or Marsh	2 = Seedling Sapling Medium	7 = Saw Timber Poor
D = Tread Bog	LM = Lowland Mixed	Q = Mixed Swamp Conifer	W = White Pine	3 = Seedling Sapling Well	8 = Saw Timber Medium
E = Swamp Hdwoods	M = Mpl, Boh, Brch	R = Red Pine	X = Non Stocked	4 = Pole Timber Poor	9 = Saw Timber Well
F = Spruce Fir	MC = Mixed Conifer	S = Black Spruce	Z = Water		
G = Grass	MD = Mixed Deciduous	T = Tamarack			

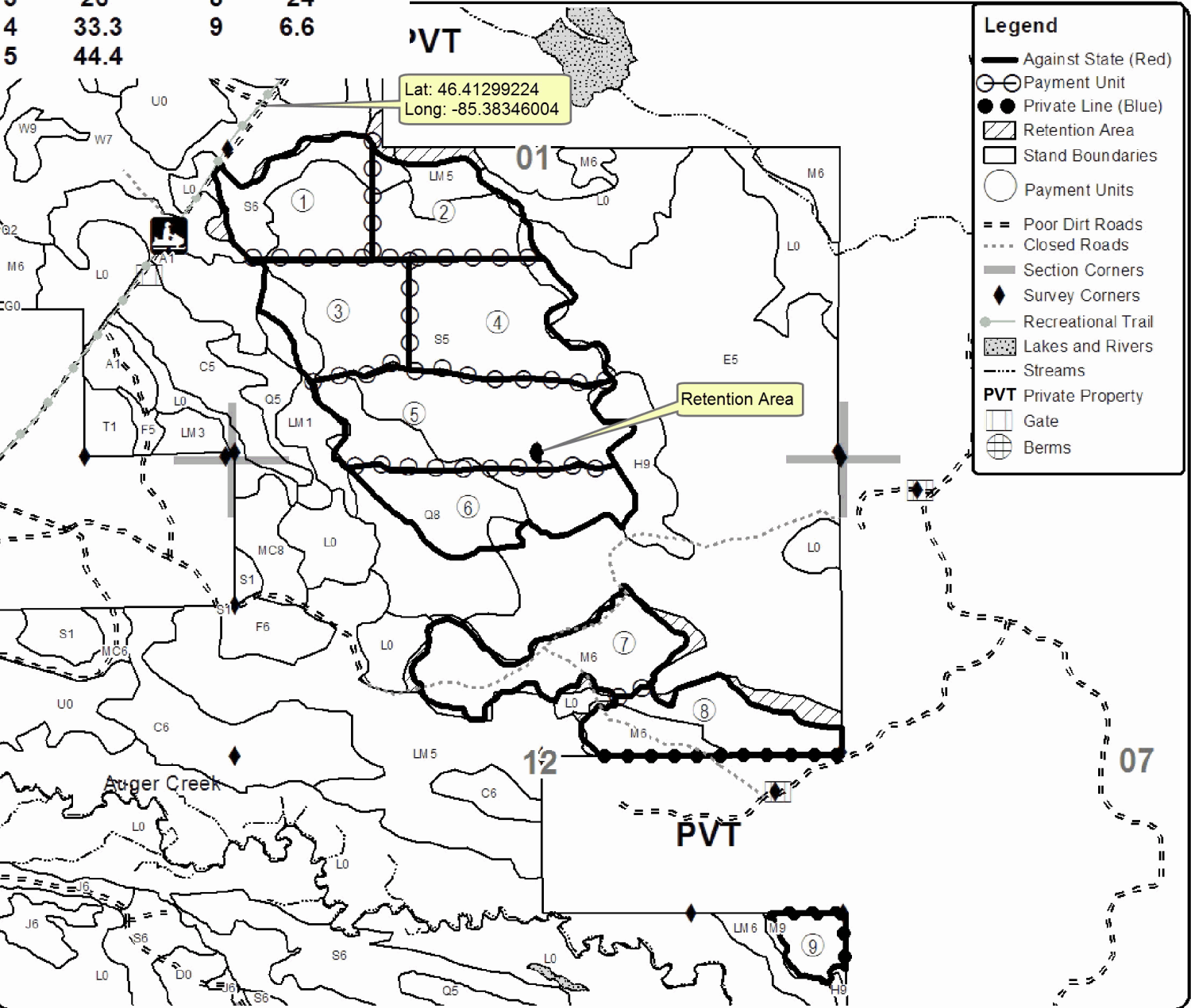
PU	Acres	PU	Acres
1	27	6	29.3
2	23.6	7	28.5
3	26	8	24
4	33.3	9	6.6
5	44.4		

## Soggy Snowshoes

Compartment 116  
242.7 Acres



Lat: 46.41299224  
Long: -85.38346004





## TIMBER SALE INFORMATION

### Comp 78 South Hardwoods (42-018-16)

Luce County (Advertised Price \$88,723.40)

SALE NOTE: This sale has been reduced approximately 40% from the original advertised price, as it went "no bid" on Prospectus 5833, which had a bid opening date of March 2, 2017 and again on Prospectus 5915 on May 18, 2017.

Permission for access across private land is responsibility of Purchaser. There are multiple private property parcels which may need to be crossed (Atwood Creek Assoc.). See Sale Spec 4.4.1, 4.4.2 and 4.4.3 for additional requirements.

Within Payment Unit(s) 1 - 10, and 13, harvesting is limited to period of December 15 to April 1 due to low ground nature of the sale area.

Within Payment Unit(s) 12, 14 and 15, harvesting is not permitted during the period of April 15 to July 15 due to bark slippage.

Within Payment Unit(s) 11, 12, 14 and 15, it is recommended that harvesting occur during summer or frozen winter conditions due to potential for rutting.

The Charcoal Grade is a snowmobile trail & is shown on Timber Sale Map. See Sale Spec 5.2.41 for restrictions.

A recreation site such as a trail, pathway, or campground is within the sale area or the vicinity. Certain restrictions/specifications may be applicable including time restrictions. Access may be through private or other public land.

A timber sale contract for this lump sum, sealed bid timber sale will be awarded to the responsible bidder offering the highest sealed bid price. Bids must be at or above the following advertised price for each species:

<u>PRODUCTS &amp; SPECIES</u>	<u>ESTIMATED UNITS*</u>	<u>ADVERTISED PRICE</u>
Sawtimber		
Red Maple	366.70 MBF	\$ 52.00 / MBF
Sugar Maple	27.20 MBF	\$ 182.00 / MBF
White Pine	7.50 MBF	\$ 23.00 / MBF
Yellow Birch	3.20 MBF	\$ 50.00 / MBF
Pulpwood		
Balsam Fir	843.00 Cords	\$ 5.65 / Cord
Mixed Aspen	108.00 Cords	\$ 12.30 / Cord
Mixed Hardwood	4,921.00 Cords	\$ 9.60 / Cord
N. White Cedar	187.00 Cords	\$ 8.55 / Cord
Paper Birch	28.00 Cords	\$ 8.00 / Cord
White Pine	40.00 Cords	\$ 11.75 / Cord
White Spruce	587.00 Cords	\$ 14.90 / Cord

\* The total volume is statistically estimated within plus (+) or minus (-) 8.76 percent. The estimated units are final and not subject to adjustment. Prospective bidders are urged to examine this timber and to make their own estimates of quantity and quality.

### **BOND AND PAYMENT SCHEDULE:**

1. A bond in the amount of \$4,436.00 to insure faithful performance of the conditions of the contract will be deposited by the successful bidder within 21 days of the sale award.
2. Cutting in any sale or unit without the required advance payment would be considered a trespass.
3. Total payment must be paid in advance or according to the following schedule:
  - (a) Ten percent (10%) of the sale value must be paid within 21 days of the sale award.
  - (b) The 10% down payment will be credited towards the first unit cut.
4. If no cutting takes place, the 10% down payment will not be refunded.
5. Operations on the contract issued will terminate on 06/30/2021.

**Description of Timber by Payment Unit (PU)**

PU	MARKET GROUP	PRODUCT	QUANTITY	UNIT	ACRES	ADVERTISE PRICE
1	Red Maple White Pine Yellow Birch Balsam Fir Mixed Hardwood N. White Cedar Paper Birch White Pine White Spruce	Sawtimber	20.7	MBF	25.0	\$7,101.10
			4.4	MBF		
			2.2	MBF		
		Pulpwood	43.0	Cords		
			322.0	Cords		
			159.0	Cords		
			21.0	Cords		
			10.0	Cords		
			56.0	Cords		
		2	Red Maple Sugar Maple Balsam Fir Mixed Aspen Mixed Hardwood White Spruce	Sawtimber		
	1.4			MBF		
Pulpwood	35.0			Cords		
	4.0			Cords		
	227.0			Cords		
	19.0			Cords		
3	Red Maple Sugar Maple Balsam Fir Mixed Aspen Mixed Hardwood White Spruce			Sawtimber	52.5	MBF
			2.9	MBF		
		Pulpwood	75.0	Cords		
			8.0	Cords		
			485.0	Cords		
			40.0	Cords		
		4	Red Maple Sugar Maple Balsam Fir Mixed Aspen Mixed Hardwood White Spruce	Sawtimber	40.5	MBF
	2.2			MBF		
Pulpwood	58.0			Cords		
	6.0			Cords		
	373.0			Cords		
	30.0			Cords		
5	Red Maple Sugar Maple Balsam Fir Mixed Aspen Mixed Hardwood White Spruce			Sawtimber	70.3	MBF
			3.9	MBF		
		Pulpwood	101.0	Cords		
			10.0	Cords		
			649.0	Cords		
			53.0	Cords		
		6	Red Maple Sugar Maple White Pine Balsam Fir Mixed Aspen Mixed Hardwood N. White Cedar White Pine White Spruce	Sawtimber	33.7	MBF
	1.2			MBF		
	1.4			MBF		
Pulpwood	192.0			Cords		
	45.0			Cords		
	553.0			Cords		
	22.0			Cords		
	12.0			Cords		
	58.0			Cords		
7	Red Maple Sugar Maple Balsam Fir Mixed Hardwood White Spruce			Sawtimber	59.9	MBF
			1.9	MBF		
		Pulpwood	49.0	Cords		
			487.0	Cords		
			25.0	Cords		
		8	Red Maple Sugar Maple Balsam Fir Mixed Hardwood White Spruce	Sawtimber	18.6	MBF
	4.6			MBF		
Pulpwood	54.0			Cords		
	292.0			Cords		
	8.0			Cords		
9	Red Maple Sugar Maple Balsam Fir	Sawtimber	15.5	MBF	21.2	\$6,573.00
			5.7	MBF		
		Pulpwood	36.0	Cords		

**Description of Timber by Payment Unit (PU), con't**

PU	MARKET GROUP	PRODUCT	QUANTITY	UNIT	ACRES	ADVERTISE PRICE
9 con't	Mixed Hardwood White Spruce	Pulpwood	338.0	Cords		
			86.0	Cords		
10	Red Maple	Sawtimber	2.8	MBF	6.7	\$2,597.85
	Sugar Maple		2.1	MBF		
	Balsam Fir	Pulpwood	63.0	Cords		
	Mixed Aspen		15.0	Cords		
	Mixed Hardwood		60.0	Cords		
	White Spruce		64.0	Cords		
11	Red Maple	Sawtimber	14.9	MBF	12.7	\$4,473.90
	White Pine		1.7	MBF		
	Yellow Birch		1.0	MBF		
	Balsam Fir	Pulpwood	56.0	Cords		
	Mixed Aspen		10.0	Cords		
	Mixed Hardwood		176.0	Cords		
	N. White Cedar		6.0	Cords		
	Paper Birch		7.0	Cords		
	White Pine		18.0	Cords		
	White Spruce		78.0	Cords		
	12		Mixed Hardwood	Pulpwood		
13	Red Maple	Sawtimber	12.7	MBF	22.4	\$6,000.90
	Sugar Maple		1.3	MBF		
	Balsam Fir	Pulpwood	34.0	Cords		
	Mixed Hardwood		403.0	Cords		
	White Spruce		70.0	Cords		
14	Balsam Fir	Pulpwood	26.0	Cords	25.0	\$2,339.60
	Mixed Aspen		5.0	Cords		
	Mixed Hardwood		222.0	Cords		
15	Balsam Fir	Pulpwood	21.0	Cords	20.6	\$1,946.55
	Mixed Aspen		5.0	Cords		
	Mixed Hardwood		184.0	Cords		
TOTAL:			404.6	MBF		
TOTAL:			6,714.0	Cords		

# Sale Specific Conditions & Requirements

**Sale Name: Comp 78 South Hardwoods**

**Sale Number: 42-018-16 Seq#: 4**

## 1 - Sale Area

### 1.2 - Boundaries

#### 1.2.1 - Painted boundaries (1/14)

The sale boundary and Payment Unit boundaries are marked and identified by blue, red and yellow paint. Exterior sale boundary lines against private property are marked in blue paint. Exterior sale boundary lines against state are marked with red paint. Interior Retention Areas are also marked with red paint (Payment Unit 1). Interior Payment Unit boundaries are marked with yellow paint.

## 2 - Timber Specifications

### 2.1 - Included Timber

#### 2.1.2 - Clearcut unit(s) w/o unmerchantable trees (8/11)

Within Payment Unit(s) 1, cut all trees which meet minimum piece specifications in 2.2 Utilization. DO NOT CUT any white pine or hemlock.

Within Payment Units 9 and 10, cut all trees which meet minimum piece specifications in 2.2 Utilization. DO NOT CUT trees marked with green paint.

Within Payment Units 6 and 11, cut all trees which meet minimum piece specifications in 2.2 Utilization. In Payment Unit 11, DO NOT CUT any hemlock.

#### 2.1.3 - Cut tree marked unit(s) (12/08)

Within Payment Unit(s) 12, 14 and 15, all trees are designated for cutting when marked with orange paint above and below stump height, regardless of merchantability. In addition, in Payment Units 14 and 15, cut all balsam and aspen which meet minimum piece specifications in 2.2 Utilization.

#### 2.1.7 - Leave tree marked unit(s) (6/14)

Within Payment Unit(s) 2, 3, 4, 5, 7, 8 and 13, cut all trees which meet minimum piece specifications in 2.2 Utilization. DO NOT CUT any cedar, hemlock or trees marked in GREEN paint.

#### 2.1.11 - Description of timber note (2/04)

Note that mixed hardwood pulp consists of red maple, sugar maple, yellow birch, black ash and elm. Mixed aspen consists of both bigtooth and quaking aspen.

### 2.2 - Utilization

#### 2.2.4 - Skidding length (2/14)

Within Payment Units 7, 8, 12, 14 and 15, skidding of unlimbed tops or lengths over 17 feet is not permissible unless approved by the Unit Manager or his/her representative.

## 3 - Payments

### 3.3 - Pre-measured Sales

#### 3.3.4 - Dividing payment units (7/14)

Payment Unit(s) may be divided at the request of the Purchaser and upon approval of the Unit Manager. Dividing Payment Units is a contract modification which requires a Timber Sale Contract Supplement. There will be only one division per Payment Unit.

## 4 - Transportation

### 4.1 - Construction

#### 4.1.6 - Road construction (1/09)

Construction of new roads or improvements of existing roads shall be done in such a way as to minimize the environmental



and visual impacts. Merchantable trees shall be cut and utilized unless otherwise directed. Non-merchantable trees shall be severed and laid flat on the ground. Slash shall be scattered, and not left in windrows and kept a minimum of 10 feet back from the road edge. Stumps shall be set upright, not left on edge, and be moved at least 10 feet away from the road edge. Disturbed soil shall be feathered into the woods and not left in berms or windrows.

#### 4.1.7 - Road closure (10/11)

All new roads built into the sale must be blocked to vehicle traffic within 30 days of completion of hauling. Overgrown and/or abandoned roads that are reopened shall be considered new roads. In general, this will require constructing a four (4') foot high berm of stumps and logs covered with earth at the beginning of any new road course. Stumps and slash must be placed along the road course for a minimum of 200 feet, effectively obliterating it. These roads must be rendered impassable to cars, trucks and ORV's. Stumps from road building and landing construction can be reserved to meet the above road closure specifications. Temporary berms may be required if no sale activity occurs for 30 or more consecutive days. Contact the sale administrator for specific details of design and placement.

### 4.2 - Maintenance

#### 4.2.1 - Hauling restriction (12/08)

Hauling may be restricted on the Charcoal Grade and other forest roads by the Unit Manager or his/her representative. The restriction may occur during periods of wet weather conditions, or at any time that the damage to the roads is deemed excessive.

#### 4.2.4 - Grading (12/14)

For completion of the sale, state forest roads must be graded. In general, this will require a road grader or bull dozer to shape up the roads after forest products have been hauled off site. This includes cleaning of drainage areas, grading, crowning and filling with gravel, if necessary. The grading equipment to be used must be approved by the Unit Manager or his/her representative.

#### 4.2.5 - Two wheel drive condition (2/04)

All existing trail roads on and adjacent to the sale area must be passable by two-wheel drive traffic for the duration of the sale.

### 4.4 - Access

#### 4.4.1 - Private property access (3/11)

Permission for access across private land is the responsibility of the Purchaser. There are multiple private property parcels which may need to be crossed for access (Atwood Creek Association). A copy of the written permission from the private landowner(s) must be given to the Unit Manager prior to beginning any harvesting operations.

#### 4.4.2 - Alternate route on private property (2/04)

It is the Purchaser's responsibility to obtain access across private land for any routes other than the route shown on the sale map.

#### 4.4.3 - Access gate (12/08)

The access gate/private gate must be locked at the completion of each day unless otherwise approved by the Atwood Creek Association and discussed with the Unit Manager or his/her representative.

## 5 - Operations

### 5.1 - Notification

#### 5.1.1 - Pre-sale conference (10/16)

A pre-sale conference between the Purchaser and sale administrator is required prior to beginning any sale operations. The Unit Manager or his/her representative must be contacted at least 5 days in advance to schedule the conference.

#### 5.1.4 - Post-sale conference (10/16)

A post-sale conference on site between the Purchaser and sale administrator is required 5 days prior to the completion of active logging operations to determine clean-up and repair of landings, road edges, and the fulfillment of other contract specifications. It is recommended that this conference take place prior to equipment being moved off site.

### 5.2 - Conduct of Operations

## 5.2.1 - Slash

### 5.2.1.8 - Slash height (12/08)

No slash or tree tops may exceed 36 inches in height.

## 5.2.2 - Hazard Trees/Snags

### 5.2.2.1 - Den trees (10/16)

Obvious hollow and/or den trees shall be protected and left standing unless they are a safety hazard.

## 5.2.3 - Operating Restrictions

### 5.2.3.1 - Operating restrictions (9/11)

Within Payment Unit(s) 1 - 10, and 13, unless changed by written agreement, cutting, skidding and hauling are limited to the period of December 15 to April 1. This restriction is due to the low ground nature of the Payment Units and access to the Payment Units.

### 5.2.3.3 - Bark slippage restriction (3/09)

Within Payment Unit(s) 12, 14 & 15, unless changed by written agreement, cutting and skidding are not permitted during the period of April 15 to July 15. This restriction is because of bark slippage.

## 5.2.22 - Operating Caution

### 5.2.22.1 - Operating caution (6/11)

It is recommended, but not required, that within Payment Unit(s) 11, 12, 14 and 15, cutting, skidding and hauling occur during dry summer or frozen winter conditions. The reason for the recommendation is to avoid the potential for rutting in wetter times of the year.

## 5.2.32 - Decking/landing restoration (9/13)

All decking and landing areas must have the surface area restored to a condition equal to or better than before. This is to ensure the proper regeneration of the stand. Wood debris, chips and "cookies" from trimmings must be removed or scattered away from landing and loading areas and may not be windrowed on the edge.

## 5.2.38 - No decking against live trees (2/04)

Cut products may not be decked against unmarked or designated leave trees.

## 5.2.41 - Snowmobile trail protection (9/11)

The Charcoal Grade is a snowmobile trail and is shown on the Timber Sale Map. If harvesting operations occur during the snowmobile season, a snow covered base must be left on the trail for the duration of the snowmobile season. No decking of forest products will be permitted along the snowmobile trail. All stumps within 20 feet of the snowmobile trail must be cut at ground level. Do not cut or damage posts with orange trail markers or traffic control signs.

The Charcoal Grade must be maintained and restored to a condition equal to or better than before the sale. It must be graded to the satisfaction of the Unit Manager or his/her representative prior to December 1st of the year following completion of harvest operations.

## 5.4 - Soil Protection

### 5.4.1 - Rutting restriction, general (7/16)

Operations are to cease immediately if equipment and weather conditions result in rutting of roads and/or skid trails which is 12 inches or greater in depth and 50 feet in length. The Unit Manager or his/her representative may restrict hauling and/or skidding if ruts exceed the specified depth. With the Unit Manager or his/her representative's approval, the Purchaser may return to the area when the risk of rutting has decreased.

## 5.8 - Protection of Endangered Species

### 5.8.5 - Protection of raptor nests (3/13)

All trees with raptor nests will be protected if found during harvesting operations. Notification will be made to the Unit Manager or his/her representative who will notify the Wildlife Biologist so an on-site evaluation and recommendation can be made, if necessary.

## 6 - Safety and Fire Prevention

## 6.2 - Signing

### 6.2.2 - Snowmobile trail posting (8/09)

The Purchaser is responsible for posting and maintaining caution signs on the snowmobile trail (Charcoal Grade) prior to beginning operations during the snowmobile season (approximately December 1 to March 31). The trail must be posted at appropriate distances from the sale area to warn of logging activity and truck traffic. Signs must be removed when harvest operations are suspended or completed. The Purchaser will provide these signs.



# TIMBER SALE MAP

This information provided by authority of Part 525, 1994 PA 451, as amended.

Sale Number	Year
42-018	16

Forest Management Unit	County	Mapped By	Payment	Date	Page	of
Newberry	Luce	Cruised By	Grossman Forestry	10/13/2016	1	1
Township	Range	Section(s) and Subdivision(s)		Scale		
47N	8W	Sec17.SENE,NESE,Sec16.N1/2,SE1/4, NW SW,NESW,Sec15.NWNW,SES,SW SE,Sec22.NWNW,NENW.		1:15,840		

Cover Type				Density			
A = Aspen	H = Hemlock	N = Marsh	U = Upland Brush	0 = Non Stocked	5 = Pole Timber Medium		
B = Paper Birch	J = Jack Pine	O = Oak	UM = Upland Mixed	1 = Seedling Sapling Poor	6 = Pole Timber Well		
C = Cedar	L = Lowland Brush	P = Lowland Poplar	V = Bog or Marsh	2 = Seedling Sapling Medium	7 = Saw Timber Poor		
D = Tread Bog	LM = Lowland Mixed	Q = Mixed Swamp Conifer	W = White Pine	3 = Seedling Sapling Well	8 = Saw Timber Medium		
E = Swamp Hardwoods	M = Mpl, Bch, Brch	R = Red Pine	X = Non Stocked	4 = Pole Timber Poor	9 = Saw Timber Well		
F = Spruce Fir	MC = Mixed Conifer	S = Black Spruce	Z = Water				
G = Grass	MD = Mixed Deciduous	T = Tamarack					

## PU Acres PU Acres **Compartment 78 South Hardwoods**

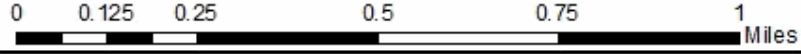
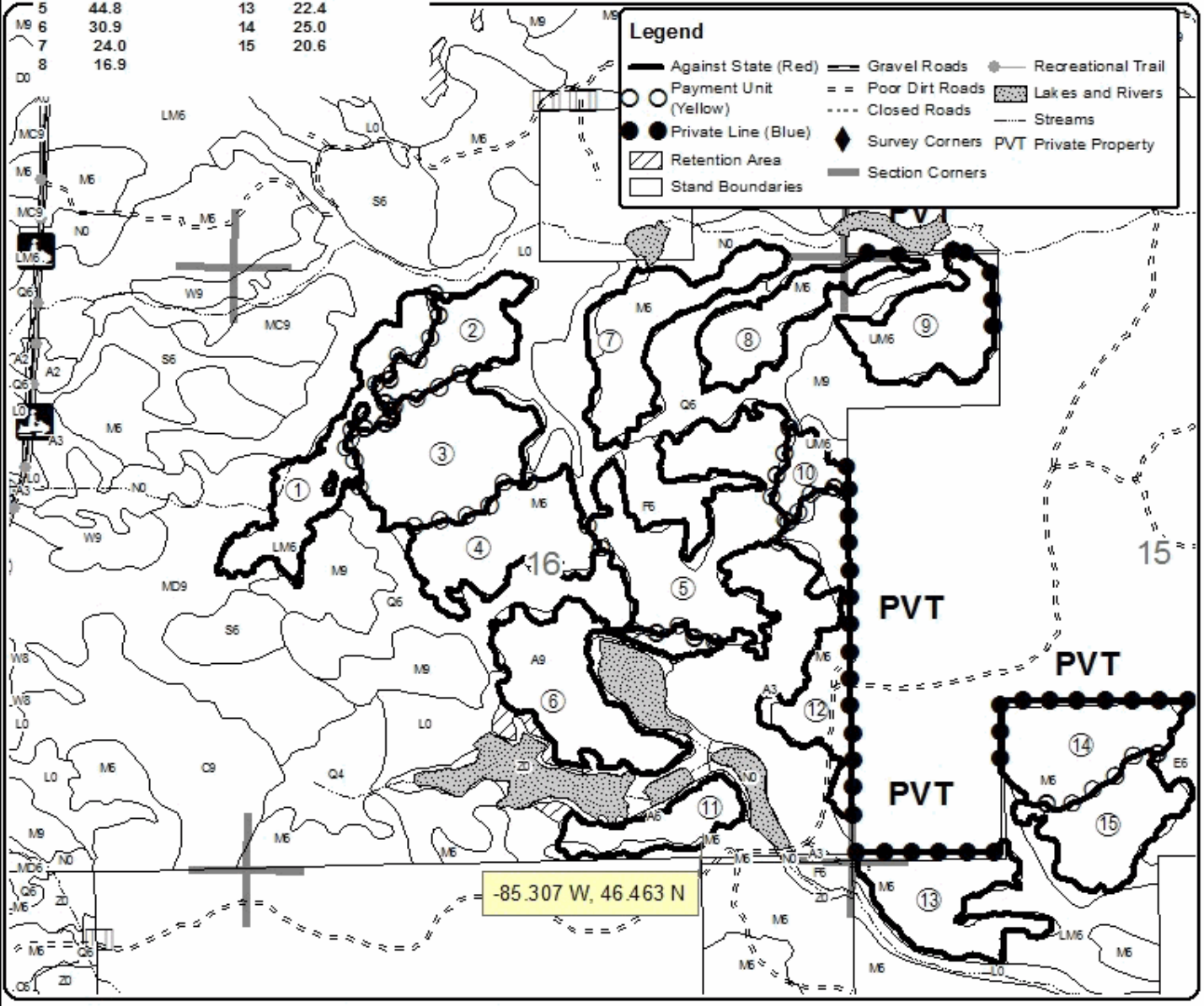
348.1 Acres



PU	Acres	PU	Acres
1	25.0	9	21.2
2	15.7	10	6.7
3	33.5	11	12.7
4	25.8	12	22.9
5	44.8	13	22.4
6	30.9	14	25.0
7	24.0	15	20.6
8	16.9		

**Legend**

- Against State (Red)
- Payment Unit (Yellow)
- Private Line (Blue)
- ▨ Retention Area
- ▭ Stand Boundaries
- Gravel Roads
- == Poor Dirt Roads
- Closed Roads
- ◆ Survey Corners
- Section Corners
- Recreational Trail
- ▨ Lakes and Rivers
- Streams
- ▭ PVT Private Property



FORM

Soggy Snowshoes (42-006-16)

; Luce COUNTY

In response to the notice of sale to be held 3:00 p.m. (local time) on July 13, 2017, I am hereby submitting my sealed bid (firm offer) for the following forest products to be cut. Bids for individual species must be at or above the advertised price. All non-responsive bid forms may be rejected.

<u>PRODUCTS &amp; SPECIES</u>	<u>ESTIMATED VOLUME*</u>	<u>ADVERTISED PRICE</u>	<u>BID PRICE</u>
<b>Sawtimber</b>			
Paper Birch	17.20 MBF	\$ 62.00/MBF	\$ _____
Red Maple	46.50 MBF	\$ 74.00/MBF	\$ _____
Sugar Maple	10.00 MBF	\$ 260.00/MBF	\$ _____
<b>Pulpwood</b>			
Balsam Fir	236.00 Cords	\$ 8.10/Cord	\$ _____
Mixed Hardwood	1,138.00 Cords	\$ 13.70/Cord	\$ _____
Mixed Spruce	1,938.00 Cords	\$ 21.30/Cord	\$ _____
N. White Cedar	879.00 Cords	\$ 12.20/Cord	\$ _____
Quaking Aspen	123.00 Cords	\$ 17.55/Cord	\$ _____
Red Pine	76.00 Cords	\$ 51.00/Cord	\$ _____
Tamarack	50.00 Cords	\$ 11.50/Cord	\$ _____

\*The volumes are statistically estimated within plus (+) or minus (-) 11.33 percent. These estimated volumes are final and not subject to adjustment. Prospective bidders are urged to examine this timber and to make their own estimates of quantity and quality.

I understand that any or all bids may be rejected. All bids must be signed and all bid items must be bid or the bid form may be rejected. I also understand that consideration and awarding a contract will be based upon my past performance and ability to complete the contract based upon equipment and staffing subject to my control.

FEDERAL ID: \_\_\_\_\_ or SOCIAL SECURITY NUMBER: \_\_\_\_\_

Company or individual bidding: \_\_\_\_\_

Company representative's name: \_\_\_\_\_

Address: \_\_\_\_\_

City: \_\_\_\_\_ State: \_\_\_\_\_ Zip: \_\_\_\_\_

IF AVAILABLE, PLEASE PLACE THE PERSONALIZED LABEL FROM YOUR PROSPECTUS IN THE ABOVE BOX.

Individual or company representative's signature: \_\_\_\_\_ Date: \_\_\_\_\_

Phone number : \_\_\_\_\_ Email (optional): \_\_\_\_\_

**THE WINNING BIDDER MUST COMPLETE THE VERIFICATION OF WORKER'S DISABILITY COMPENSATION ACT COMPLIANCE (ON REVERSE SIDE IF DOUBLE SIDED) WITHIN 21 DAYS OF SALE AWARD DATE**



<b>FOR DEPARTMENT USE ONLY</b>
Sale Number (XX – XXX – XX – XX)
Forest Management Unit:

## TIMBER SALE VERIFICATION OF WORKER'S DISABILITY COMPENSATION ACT COMPLIANCE

*As required by Act 317, P.A. 1969 (Worker's Compensation) and  
Part 5 of Act 451 of 1994, as amended.*

### VERIFICATION OF WORKER'S DISABILITY COMPENSATION ACT COMPLIANCE

- This verification must be completed and submitted within 21 days of contract award and prior to the issuance of the timber sale contract.
- In addition, if boxes 2B or 2C are checked, then Notice of Exclusion or Certificate of Insurance must be submitted within twenty-one (21) days of the contract award and prior to the issuance of the timber sale contract.
- All information must be typed or printed except for written signatures.

Please Check Appropriate Categories:

1. My business is organized as (you **must** check one of the boxes below):
  - A.  Sole Proprietorship (individual)
  - B.  Partnership
  - C.  Corporation
  
2. You **must** check one of the boxes below:
  - A.  I certify my business is a sole proprietorship and it has no employees but the sole proprietor. I am not subject to the Worker's Compensation Laws.
  - B.  I certify my business has satisfied its obligation to the Worker's Compensation Act through the use of an approved Notice of Exclusion (BWC-337, Rev. 5/96). I will provide a copy of the Notice of Exclusion within 21 days of the contract award. (For questions or a copy of the BWC-337, please call the Worker's Compensation Bureau at 517-322-1195).
  - C.  I certify my business has a Worker's Compensation Policy. I will provide an original Certificate of Insurance within twenty-one (21) days of the contract award.
  
3. If you have checked item 2(A) or 2(B), you **must** indicate the number of **both** full-time and part-time employees, other than yourself, including family members and active partners (if none, you must enter "0").

\_\_\_\_\_ Full-time Employees

\_\_\_\_\_ Part-time Employees

Name of Business		Federal ID (or) Social Security No.	
Address		Telephone (       )	
City	State	ZIP	

*I hereby certify that the above information is true and correct. I agree to notify the Michigan DNR of any changes that occur in factors affecting my coverage during any of my present and future operations.*

\_\_\_\_\_  
Signature of Owner or Authorized Representative

\_\_\_\_\_  
Title

\_\_\_\_\_  
Date

**Please complete the "SEALED BID" information on the next page**

Wandering Lab Mix (42-003-16)  
 ; Luce COUNTY

In response to the notice of sale to be held 3:00 p.m. (local time) on July 13, 2017, I am hereby submitting my sealed bid (firm offer) for the following forest products to be cut. Bids for individual species must be at or above the advertised price. All non-responsive bid forms may be rejected.

<u>PRODUCTS &amp; SPECIES</u>	<u>ESTIMATED VOLUME*</u>	<u>ADVERTISED PRICE</u>	<u>BID PRICE</u>
<b>Sawtimber</b>			
Paper Birch	0.50 MBF	\$ 43.00/MBF	\$ _____
Red Maple	9.10 MBF	\$ 52.00/MBF	\$ _____
Sugar Maple	0.50 MBF	\$ 182.00/MBF	\$ _____
Yellow Birch	5.20 MBF	\$ 50.00/MBF	\$ _____
<b>Pulpwood</b>			
Balsam Fir	123.00 Cords	\$ 5.65/Cord	\$ _____
Hemlock	216.00 Cords	\$ 5.30/Cord	\$ _____
Mixed Aspen	816.00 Cords	\$ 12.30/Cord	\$ _____
Mixed Hardwood	567.00 Cords	\$ 9.60/Cord	\$ _____
Mixed Spruce	163.00 Cords	\$ 14.90/Cord	\$ _____
N. White Cedar	229.00 Cords	\$ 8.55/Cord	\$ _____

\*The volumes are statistically estimated within plus (+) or minus (-) 8.53 percent. These estimated volumes are final and not subject to adjustment. Prospective bidders are urged to examine this timber and to make their own estimates of quantity and quality.

I understand that any or all bids may be rejected. All bids must be signed and all bid items must be bid or the bid form may be rejected. I also understand that consideration and awarding a contract will be based upon my past performance and ability to complete the contract based upon equipment and staffing subject to my control.

FEDERAL ID: \_\_\_\_\_ or SOCIAL SECURITY NUMBER: \_\_\_\_\_

Company or individual bidding: \_\_\_\_\_

Company representative's name: \_\_\_\_\_

Address: \_\_\_\_\_

City: \_\_\_\_\_ State: \_\_\_\_\_ Zip: \_\_\_\_\_

IF AVAILABLE, PLEASE PLACE THE PERSONALIZED LABEL FROM YOUR PROSPECTUS IN THE ABOVE BOX.

Individual or company representative's signature: \_\_\_\_\_ Date: \_\_\_\_\_

Phone number : \_\_\_\_\_ Email (optional): \_\_\_\_\_

**THE WINNING BIDDER MUST COMPLETE THE VERIFICATION OF WORKER'S DISABILITY COMPENSATION ACT COMPLIANCE (ON REVERSE SIDE IF DOUBLE SIDED) WITHIN 21 DAYS OF SALE AWARD DATE**



<b>FOR DEPARTMENT USE ONLY</b>
Sale Number (XX - XXX - XX - XX)
Forest Management Unit:

## TIMBER SALE VERIFICATION OF WORKER'S DISABILITY COMPENSATION ACT COMPLIANCE

*As required by Act 317, P.A. 1969 (Worker's Compensation) and  
Part 5 of Act 451 of 1994, as amended.*

### VERIFICATION OF WORKER'S DISABILITY COMPENSATION ACT COMPLIANCE

- This verification must be completed and submitted within 21 days of contract award and prior to the issuance of the timber sale contract.
- In addition, if boxes 2B or 2C are checked, then Notice of Exclusion or Certificate of Insurance must be submitted within twenty-one (21) days of the contract award and prior to the issuance of the timber sale contract.
- All information must be typed or printed except for written signatures.

Please Check Appropriate Categories:

1. My business is organized as (you **must** check one of the boxes below):
  - A.  Sole Proprietorship (individual)
  - B.  Partnership
  - C.  Corporation
  
2. You **must** check one of the boxes below:
  - A.  I certify my business is a sole proprietorship and it has no employees but the sole proprietor. I am not subject to the Worker's Compensation Laws.
  - B.  I certify my business has satisfied its obligation to the Worker's Compensation Act through the use of an approved Notice of Exclusion (BWC-337, Rev. 5/96). I will provide a copy of the Notice of Exclusion within 21 days of the contract award. (For questions or a copy of the BWC-337, please call the Worker's Compensation Bureau at 517-322-1195).
  - C.  I certify my business has a Worker's Compensation Policy. I will provide an original Certificate of Insurance within twenty-one (21) days of the contract award.
  
3. If you have checked item 2(A) or 2(B), you **must** indicate the number of **both** full-time and part-time employees, other than yourself, including family members and active partners (if none, you must enter "0").

\_\_\_\_\_ Full-time Employees

\_\_\_\_\_ Part-time Employees

Name of Business		Federal ID (or) Social Security No.	
Address		Telephone (       )	
City	State	ZIP	

*I hereby certify that the above information is true and correct. I agree to notify the Michigan DNR of any changes that occur in factors affecting my coverage during any of my present and future operations.*

\_\_\_\_\_  
Signature of Owner or Authorized Representative

\_\_\_\_\_  
Title

\_\_\_\_\_  
Date

**Please complete the "SEALED BID" information on the next page**



Comp 78 South Hardwoods (42-018-16)  
 ; Luce COUNTY

In response to the notice of sale to be held 3:00 p.m. (local time) on July 13, 2017, I am hereby submitting my sealed bid (firm offer) for the following forest products to be cut. Bids for individual species must be at or above the advertised price. All non-responsive bid forms may be rejected.

<u>PRODUCTS &amp; SPECIES</u>	<u>ESTIMATED VOLUME*</u>	<u>ADVERTISED PRICE</u>	<u>BID PRICE</u>
<b>Sawtimber</b>			
Red Maple	366.70 MBF	\$ 52.00/MBF	\$ _____
Sugar Maple	27.20 MBF	\$ 182.00/MBF	\$ _____
White Pine	7.50 MBF	\$ 23.00/MBF	\$ _____
Yellow Birch	3.20 MBF	\$ 50.00/MBF	\$ _____
<b>Pulpwood</b>			
Balsam Fir	843.00 Cords	\$ 5.65/Cord	\$ _____
Mixed Aspen	108.00 Cords	\$ 12.30/Cord	\$ _____
Mixed Hardwood	4,921.00 Cords	\$ 9.60/Cord	\$ _____
N. White Cedar	187.00 Cords	\$ 8.55/Cord	\$ _____
Paper Birch	28.00 Cords	\$ 8.00/Cord	\$ _____
White Pine	40.00 Cords	\$ 11.75/Cord	\$ _____
White Spruce	587.00 Cords	\$ 14.90/Cord	\$ _____

\*The volumes are statistically estimated within plus (+) or minus (-) 8.76 percent. These estimated volumes are final and not subject to adjustment. Prospective bidders are urged to examine this timber and to make their own estimates of quantity and quality.

I understand that any or all bids may be rejected. All bids must be signed and all bid items must be bid or the bid form may be rejected. I also understand that consideration and awarding a contract will be based upon my past performance and ability to complete the contract based upon equipment and staffing subject to my control.

FEDERAL ID: \_\_\_\_\_ or SOCIAL SECURITY NUMBER: \_\_\_\_\_

Company or individual bidding: \_\_\_\_\_

Company representative's name: \_\_\_\_\_

Address: \_\_\_\_\_

City: \_\_\_\_\_ State: \_\_\_\_\_ Zip: \_\_\_\_\_

IF AVAILABLE, PLEASE PLACE THE PERSONALIZED LABEL FROM YOUR PROSPECTUS IN THE ABOVE BOX.

Individual or company representative's signature: \_\_\_\_\_ Date: \_\_\_\_\_

Phone number : \_\_\_\_\_ Email (optional): \_\_\_\_\_

**THE WINNING BIDDER MUST COMPLETE THE VERIFICATION OF WORKER'S DISABILITY COMPENSATION ACT COMPLIANCE (ON REVERSE SIDE IF DOUBLE SIDED) WITHIN 21 DAYS OF SALE AWARD DATE**



<b>FOR DEPARTMENT USE ONLY</b>
Sale Number (XX - XXX - XX - XX)
Forest Management Unit:

## TIMBER SALE VERIFICATION OF WORKER'S DISABILITY COMPENSATION ACT COMPLIANCE

*As required by Act 317, P.A. 1969 (Worker's Compensation) and  
Part 5 of Act 451 of 1994, as amended.*

### VERIFICATION OF WORKER'S DISABILITY COMPENSATION ACT COMPLIANCE

- This verification must be completed and submitted within 21 days of contract award and prior to the issuance of the timber sale contract.
- In addition, if boxes 2B or 2C are checked, then Notice of Exclusion or Certificate of Insurance must be submitted within twenty-one (21) days of the contract award and prior to the issuance of the timber sale contract.
- All information must be typed or printed except for written signatures.

Please Check Appropriate Categories:

1. My business is organized as (you **must** check one of the boxes below):
  - A.  Sole Proprietorship (individual)
  - B.  Partnership
  - C.  Corporation
2. You **must** check one of the boxes below:
  - A.  I certify my business is a sole proprietorship and it has no employees but the sole proprietor. I am not subject to the Worker's Compensation Laws.
  - B.  I certify my business has satisfied its obligation to the Worker's Compensation Act through the use of an approved Notice of Exclusion (BWC-337, Rev. 5/96). I will provide a copy of the Notice of Exclusion within 21 days of the contract award. (For questions or a copy of the BWC-337, please call the Worker's Compensation Bureau at 517-322-1195).
  - C.  I certify my business has a Worker's Compensation Policy. I will provide an original Certificate of Insurance within twenty-one (21) days of the contract award.
3. If you have checked item 2(A) or 2(B), you **must** indicate the number of **both** full-time and part-time employees, other than yourself, including family members and active partners (if none, you must enter "0").

\_\_\_\_\_ Full-time Employees                      \_\_\_\_\_ Part-time Employees

Name of Business		Federal ID (or) Social Security No.	
Address		Telephone (        )	
City	State	ZIP	

*I hereby certify that the above information is true and correct. I agree to notify the Michigan DNR of any changes that occur in factors affecting my coverage during any of my present and future operations.*

\_\_\_\_\_  
Signature of Owner or Authorized Representative

\_\_\_\_\_                      \_\_\_\_\_  
Title                                      Date

**Please complete the "SEALED BID" information on the next page**

County Road 415 MWR (42-002-17)  
; Luce COUNTY

In response to the notice of sale to be held 3:00 p.m. (local time) on July 13, 2017, I am hereby submitting my sealed bid (firm offer) for the following forest products to be cut. Bids for individual species must be at or above the advertised price. All non-responsive bid forms may be rejected.

<u>PRODUCTS &amp; SPECIES</u>	<u>ESTIMATED VOLUME*</u>	<u>ADVERTISED PRICE</u>	<u>BID PRICE</u>
Sawtimber			
Red Maple	9.10 MBF	\$ 37.00/MBF	\$ _____
Sugar Maple	1.40 MBF	\$ 130.00/MBF	\$ _____
Pulpwood			
Hemlock	4.00 Cords	\$ 3.80/Cord	\$ _____
Mixed Hardwood	42.00 Cords	\$ 6.85/Cord	\$ _____

\*The volumes are statistically estimated within plus (+) or minus (-) 44.43 percent. These estimated volumes are final and not subject to adjustment. Prospective bidders are urged to examine this timber and to make their own estimates of quantity and quality.

I understand that any or all bids may be rejected. All bids must be signed and all bid items must be bid or the bid form may be rejected. I also understand that consideration and awarding a contract will be based upon my past performance and ability to complete the contract based upon equipment and staffing subject to my control.

FEDERAL ID: \_\_\_\_\_ or SOCIAL SECURITY NUMBER: \_\_\_\_\_

Company or individual bidding: \_\_\_\_\_

Company representative's name: \_\_\_\_\_

Address: \_\_\_\_\_

City: \_\_\_\_\_ State: \_\_\_\_\_ Zip: \_\_\_\_\_

IF AVAILABLE, PLEASE PLACE THE PERSONALIZED LABEL FROM YOUR PROSPECTUS IN THE ABOVE BOX.

Individual or company representative's signature: \_\_\_\_\_ Date: \_\_\_\_\_

Phone number : \_\_\_\_\_ Email (optional): \_\_\_\_\_

**THE WINNING BIDDER MUST COMPLETE THE VERIFICATION OF WORKER'S DISABILITY COMPENSATION ACT COMPLIANCE (ON REVERSE SIDE IF DOUBLE SIDED) WITHIN 21 DAYS OF SALE AWARD DATE**



FOR DEPARTMENT USE ONLY	
Sale Number (XX - XXX - XX - XX)	
Forest Management Unit:	

## TIMBER SALE VERIFICATION OF WORKER'S DISABILITY COMPENSATION ACT COMPLIANCE

As required by Act 317, P.A. 1969 (Worker's Compensation) and  
Part 5 of Act 451 of 1994, as amended.

### VERIFICATION OF WORKER'S DISABILITY COMPENSATION ACT COMPLIANCE

- This verification must be completed and submitted within 21 days of contract award and prior to the issuance of the timber sale contract.
- In addition, if boxes 2B or 2C are checked, then Notice of Exclusion or Certificate of Insurance must be submitted within twenty-one (21) days of the contract award and prior to the issuance of the timber sale contract.
- All information must be typed or printed except for written signatures.

Please Check Appropriate Categories:

1. My business is organized as (you **must** check one of the boxes below):
  - A.  Sole Proprietorship (individual)
  - B.  Partnership
  - C.  Corporation
2. You **must** check one of the boxes below:
  - A.  I certify my business is a sole proprietorship and it has no employees but the sole proprietor. I am not subject to the Worker's Compensation Laws.
  - B.  I certify my business has satisfied its obligation to the Worker's Compensation Act through the use of an approved Notice of Exclusion (BWC-337, Rev. 5/96). I will provide a copy of the Notice of Exclusion within 21 days of the contract award. (For questions or a copy of the BWC-337, please call the Worker's Compensation Bureau at 517-322-1195).
  - C.  I certify my business has a Worker's Compensation Policy. I will provide an original Certificate of Insurance within twenty-one (21) days of the contract award.
3. If you have checked item 2(A) or 2(B), you **must** indicate the number of **both** full-time and part-time employees, other than yourself, including family members and active partners (if none, you must enter "0").

\_\_\_\_\_ Full-time Employees

\_\_\_\_\_ Part-time Employees

Name of Business		Federal ID (or) Social Security No.	
Address		Telephone (       )	
City	State	ZIP	

*I hereby certify that the above information is true and correct. I agree to notify the Michigan DNR of any changes that occur in factors affecting my coverage during any of my present and future operations.*

\_\_\_\_\_  
Signature of Owner or Authorized Representative

\_\_\_\_\_  
Title

\_\_\_\_\_  
Date

Please complete the "SEALED BID" information on the next page