



**DEPARTMENT OF NATURAL RESOURCES  
STATE OF MICHIGAN**

**TIMBER SALE PROSPECTUS #5906**

SCHEDULED SALE DATE AND TIME: 3:00 p.m. (local time) on August 8, 2017.

LOCATION: NAUBINWAY FIELD OFFICE, PO BOX 287 US 2, NAUBINWAY, MI 49762.

PROSPECTUS NOTE: The bidder is advised to inspect the sale area and review the location, estimated volumes, operating costs and contract terms of proposed sales. Please be aware that some landowners may request 60 days or more notice for access across their land.

Notice is hereby given that bids will be received by the Unit Manager, SAULT STE MARIE MANAGEMENT UNIT, for certain timber on the following described lands:

Hawkeye Hardwood (45-111-16)

Mackinac County, Advertised Price \$61,225.90, 209.9 Acres, Hardwood, Sugar Maple.

Loud Hound Aspen Mix (45-119-16)

Mackinac County, Advertised Price \$42,919.35, 146.1 Acres, Aspen, Spruce/Fir/Tamarack.

SALE NOTE: A recreation site such as a trail, pathway, or campground is within the sale area or the vicinity. Certain restrictions/specifications may be applicable including time restrictions.

Soggy Spruce (45-120-16)

Mackinac County, Advertised Price \$13,918.90, 42.3 Acres, Aspen, Spruce/Fir/Tamarack.

SALE NOTE: Access may be through private land.

GEM Stone Aspen (45-122-16)

Mackinac County, Advertised Price \$34,247.45, 121.2 Acres, Aspen, Spruce/Fir/Tamarack.

SALE NOTE: A recreation site such as a trail, pathway, or campground is within the sale area or the vicinity. Certain restrictions/specifications may be applicable including time restrictions.

Eevee Mix (45-123-16)

Mackinac County, Advertised Price \$12,347.30, 66.7 Acres, Hardwood, N White Cedar.

SALE NOTE: A recreation site such as a trail, pathway, or campground is within the sale area or the vicinity. Certain restrictions/specifications may be applicable including time restrictions.

## BID INSTRUCTIONS (VER. 09/02/2016):

### 1. Scheduled Bid Location, Date, and Time (2/11)

Bids must be received by the Unit Manager, NAUBINWAY OFFICE, PO BOX 287 US 2, NAUBINWAY, MI 49762, no later than 3:00 p.m. (local time) on August 8, 2017. For further information concerning this sale, contact Karen Rodock at 906-477-6048 extension 2040.

### 2. Bidder's Qualifications (5/16)

Purchaser shall obtain workers compensation insurance to cover claims under Michigan's Worker's Disability Compensation Act of 1969 or similar employee benefit act of any other state applicable to an employee. If all or part of a timber sale was prepared by a private contractor, the contractor and that contractor's company are not permitted to bid on the timber sale contract. Bids will not be accepted from individuals or companies appearing on the DNR/FRD No-Bid List. This list contains the names of purchasers who previously failed to execute a contract within 21-days or who have a history of poor performance.

### 3. Preparation of Sealed Bids (5/16)

Bid Forms may be completed online thru Michigan DNR Timber Sale Online Bidding (OLB) at [www.michigan.gov/timberbidding](http://www.michigan.gov/timberbidding) or by completing the hardcopy Bid Form found in the Timber Sale Prospectus. Hardcopy Bid Forms shall be manually signed in ink. Registration in OLB is considered your 'signature' for all bids submitted thru that system. Bid prices must be entered for each species and product in the Bid Price column for all material subject to bidding and all fill-in blanks must be completed. If erasures or other changes appear on the hardcopy Bid Form, each erasure or change must be initialed by the person signing the bid.

### 4. Submission of Sealed Bids (5/16)

Bid forms may be obtained from the Unit Manager or thru OLB. Bids may be submitted hardcopy or thru OLB. All hardcopy bids must be submitted on the bid form and in an envelope clearly identified as described in this section. NOTE: Only one bid form per bid envelope. Sealed bids must be submitted to the Unit office designated in the prospectus and must be submitted at or prior to the time established in the prospectus. The envelope should show on the outside (a) the sale name or number and (b) the date and time of bid opening, as shown in the prospectus. Bids received after the time specified in the sale prospectus are late bids and will be rejected.

It is possible for a bidder to submit multiple bids on a single sale. For example, a bid may be submitted hardcopy and a bid may be submitted thru OLB. Or, two bidders from the same company could both submit bids on the same sale. If this were to happen, the State would accept all bids received and award the contract accordingly. All bidding and contractual requirements would apply to all bids received.

### 5. Public Opening of Sealed Bids (7/16)

If conditions permit, the sealed bids will be publicly opened and posted at the time and place set in the prospectus.

If a bidder, present at a bid opening, has submitted bids on more than one sale, that bidder may withdraw their unopened bid envelopes or announce the withdrawal of their online bid after being declared the successful bidder on one sale.

### 6. Award of Contract (1/11)

Award of the contract will be made to the Bidder whose bid, conforming to the prospectus, is most advantageous to the State of Michigan on the basis of total value at rates bid for the estimated quantities. The State reserves the right to reject any bid or waive any minor irregularity in bids received. A written award mailed (or otherwise furnished) to the successful Bidder shall be deemed to result in a binding contract without further action by either party.

### 7. Down Payment (1/11)

The Bidder to whom award is made must make a down payment within 21 days of the sale award. The amount of the down payment will be calculated as shown in the Bond and Payment Schedule of this prospectus. Only cash may be used to meet this requirement.

### 8. Performance Security (1/11)

As guarantee of faithful performance, a cash bond, certificate of deposit, surety bond or irrevocable letter of credit (LOC) is required within 21 days of the sale award. The amount of the performance security is shown in the Bond and

Payment Schedule of this prospectus. If an LOC or surety is used, the coverage must extend for at least 6 months beyond the contract expiration.

#### 9. Timber Sale Contract (9/14)

Additional conditions and requirements common to all timber sales are listed on the timber sale contract (R4031) and are available on line at [www.michigan.gov/timber](http://www.michigan.gov/timber). Contact the Unit Manager for additional information or a sample contract. Within 21 days of the date of the award letter, the bidder must sign the contract and provide the required down payment, performance security, and verification of worker's disability compensation. The down payment and performance security shall be in accordance with the provisions of the timber sale contract, in the sums stated in this prospectus. If these actions are not taken, then the Bidder, the Bidder's corporation, and the corporation's principals may not be permitted to bid on State timber sales for a period of 1 year. In addition, the Bidder certifies that if awarded this contract, the Bidder will complete the timber sale contract in accordance with its terms and any modifications thereof including requirements to purchase, cut, and remove the included timber by the expiration date.

#### 10. Disclaimer of Estimates and Bidder's Warranty of Inspection (7/16)

Before submitting this bid, the Bidder is advised and cautioned to inspect the sale area, review the requirements of the sale contract, and take other steps as may be reasonably necessary to ascertain the location, estimated volumes, construction estimates, and operating costs of the proposed sale. Failure to do so will not relieve the Bidder from responsibility for completing the contract.

The Bidder warrants that this bid is submitted solely on the basis of the Bidder's examination and inspection of the quality and quantity of the timber offered for sale and the Bidder's opinion of the value thereof and the costs of recovery. No reliance should be placed on the State of Michigan's estimates of timber quality, quantity or costs of recovery. Bidder further acknowledges that the State of Michigan: (i) expressly disclaims any warranty of fitness of timber for any purpose; (ii) offers this timber as is without any warranty of quality (merchantability) or quantity and (iii) expressly disclaims any warranty as to the quantity or quality of timber sold.

#### 11. Certification and Chain-of-Custody (10/14)

Unless otherwise indicated in the contract under section 7 – Other Conditions of the Sale Specific Conditions & Requirements, the area encompassed by this timber sale is certified to the standards of the Forest Stewardship Council (FSC) - Certificate #SCS-FM/COC-00090N and the Sustainable Forestry Initiative (SFI) - Certificate # NSF-SFIS-5Y031-SF5. Forest products from this sale may be delivered to the mill as "FSC 100% and / or SFI certified" as long as the contractor hauling the forest products is chain-of-custody (COC) certified or covered under a COC certificate from the destination mill. The purchaser is responsible for maintaining COC after leaving the sale area.

#### 12. Good Neighbor Authority (GNA) Requirements (7/16)

If the name of this timber sales contains the acronym GNA, it is authorized by the Good Neighbor Authority (GNA) and covered by various agreements between the U.S. Forest Service and the State. The timber sale occurs on federal land and the following conditions apply:

GNA contracts on US Forest Service land will not be awarded to purchasers on the Federal list of excluded parties. The System for Award Management (SAM) will be checked for active excluded parties prior to award of contract. In addition, the Bidder to whom award is made must complete an Assurance Regarding Felony Conviction or Tax Delinquent Status for Corporate Applicants (AD-3031).

#### 13. Good Neighbor Authority (GNA) Requirements, con't (9/16)

Bidder certifies, by signing this bid form, that to the best of Bidder's knowledge that the following representations are accurate and complete.

- a. That the Bidder and its principals are not presently debarred, suspended, proposed for debarment, declared ineligible, or voluntary excluded from timber sales (covered transactions) by any Federal department or agency.
- b. That the Bidder and its principals have not within a 3-year period preceding this bid been convicted of or had a civil judgment rendered against them for commission of fraud or a criminal offense in connection with obtaining, attempting to obtain, or performing a public (Federal, State, or local) transaction or contract under a public transaction; violation of Federal or State antitrust statutes or commission of embezzlement, theft, forgery, bribery, falsification or destruction of records, making false statements, or receiving stolen property.

c. That the Bidder and its principals are not presently indicted for or otherwise criminally or civilly charged by a governmental entity (Federal, State, or local) with commission of any of the offenses enumerated in paragraph b of this certification.

d. That the Bidder and its principals have not within a 3-year period preceding this bid had one or more public transactions (Federal, State, or local) terminated for breach or default of a timber or forest product contract.

Bidders that cannot certify this requirement, in whole or in part, shall submit an explanation with their bid.

KEITH CREAGH

Director

## TIMBER SALE INFORMATION

Hawkeye Hardwood (45-111-16)

Mackinac County (Advertised Price \$61,225.90)

A timber sale contract for this lump sum, sealed bid timber sale will be awarded to the responsible bidder offering the highest sealed bid price. Bids must be at or above the following advertised price for each species:

<u>PRODUCTS &amp; SPECIES</u>	<u>ESTIMATED UNITS*</u>	<u>ADVERTISED PRICE</u>
Sawtimber		
Red Maple	2.40 MBF	\$ 79.00 / MBF
Sugar Maple	87.80 MBF	\$ 409.00 / MBF
Pulpwood		
Beech	172.00 Cords	\$ 21.30 / Cord
Mixed Hardwood	1,010.00 Cords	\$ 21.25 / Cord

\* The total volume is statistically estimated within plus (+) or minus (-) 17.10 percent. The estimated units are final and not subject to adjustment. Prospective bidders are urged to examine this timber and to make their own estimates of quantity and quality.

### **BOND AND PAYMENT SCHEDULE:**

1. A bond in the amount of \$4,898.00 to insure faithful performance of the conditions of the contract will be deposited by the successful bidder within 21 days of the sale award.
2. Cutting in any sale or unit without the required advance payment would be considered a trespass.
3. Total payment must be paid in advance or according to the following schedule:
  - (a) Ten percent (10%) of the sale value must be paid within 21 days of the sale award.
  - (b) The 10% down payment will be credited towards the first unit cut.
4. If no cutting takes place, the 10% down payment will not be refunded.
5. Operations on the contract issued will terminate on 06/30/2019.

**Description of Timber by Payment Unit (PU)**

PU	MARKET GROUP	PRODUCT	QUANTITY	UNIT	ACRES	ADVERTISE PRICE
1	Red Maple	Sawtimber	0.3	MBF	33.8	\$10,833.55
	Sugar Maple		16.4	MBF		
	Beech	Pulpwood	20.0	Cords		
	Mixed Hardwood		173.0	Cords		
	<i>Red Maple</i>		11.0	<i>Cords</i>		
	<i>Sugar Maple</i>		162.0	<i>Cords</i>		
2	Red Maple	Sawtimber	0.3	MBF	32.5	\$10,439.35
	Sugar Maple		15.8	MBF		
	Beech	Pulpwood	19.0	Cords		
	Mixed Hardwood		167.0	Cords		
	<i>Red Maple</i>		11.0	<i>Cords</i>		
	<i>Sugar Maple</i>		156.0	<i>Cords</i>		
3	Red Maple	Sawtimber	0.4	MBF	42.5	\$13,662.90
	Sugar Maple		20.7	MBF		
	Beech	Pulpwood	25.0	Cords		
	Mixed Hardwood		218.0	Cords		
	<i>Red Maple</i>		14.0	<i>Cords</i>		
	<i>Sugar Maple</i>		204.0	<i>Cords</i>		
4	Red Maple	Sawtimber	0.4	MBF	40.3	\$12,957.95
	Sugar Maple		19.6	MBF		
	Beech	Pulpwood	24.0	Cords		
	Mixed Hardwood		207.0	Cords		
	<i>Red Maple</i>		13.0	<i>Cords</i>		
	<i>Sugar Maple</i>		194.0	<i>Cords</i>		
5	Red Maple	Sawtimber	0.5	MBF	28.7	\$6,280.00
	Sugar Maple		7.2	MBF		
	Beech	Pulpwood	39.0	Cords		
	Mixed Hardwood		116.0	Cords		
	<i>Red Maple</i>		10.0	<i>Cords</i>		
	<i>Sugar Maple</i>		106.0	<i>Cords</i>		
6	Red Maple	Sawtimber	0.5	MBF	32.1	\$7,052.15
	Sugar Maple		8.1	MBF		
	Beech	Pulpwood	45.0	Cords		
	Mixed Hardwood		129.0	Cords		
	<i>Red Maple</i>		11.0	<i>Cords</i>		
	<i>Sugar Maple</i>		118.0	<i>Cords</i>		
TOTAL:			90.2	MBF		
TOTAL:			1,182.0	Cords		

## Sale Specific Conditions & Requirements

**Sale Name: Hawkeye Hardwood**

**Sale Number: 45-111-16 Seq#: 1**

### 1 - Sale Area

#### 1.2 - Boundaries

##### 1.2.1 - Painted boundaries (1/14)

The sale boundary and Payment Unit boundaries are marked and identified by red and yellow paint. Exterior sale boundary lines against state are marked with red paint. Interior Payment Unit boundaries are marked with yellow paint. The painted boundary line trees are not Included Timber and are to be protected.

### 2 - Timber Specifications

#### 2.1 - Included Timber

##### 2.1.3 - Cut tree marked unit(s) (12/08)

Within Payment Unit(s) 1, 2, 3, 4, 5 & 6, all trees are designated for cutting when marked with orange paint above and below stump height, regardless of merchantability.

#### 2.2 - Utilization

##### 2.2.4 - Skidding length (2/14)

Skidding of unlimbed tops or lengths over 17 feet is not permissible. Unless changed by written agreement.

### 3 - Payments

#### 3.3 - Pre-measured Sales

##### 3.3.4 - Dividing payment units (7/14)

Payment Unit(s) 1, 2, 3, 4, 5 & 6 may be divided at the request of the Purchaser and upon approval of the Unit Manager. Dividing Payment Units is a contract modification which requires a Timber Sale Contract Supplement.

### 4 - Transportation

#### 4.1 - Construction

##### 4.1.9 - Road work (2) (12/08)

On Batty Doe Lake road, the Purchaser must ditch and crown a two and a half (2.5) mile portion of this road as designated by the sale administrator. A final grading on this portion of the road must be done when hauling is complete. The Purchaser is required to purchase and spread 150 cu. yards of crushed stone with maximum stone size of 3 inches in diameter. In addition: The Purchaser is required to purchase and spread 90 cu. yards of 23A crushed gravel. Gravel placement will be as designated by the sale administrator. In addition to the area crowned and ditched, an additional 1.6 miles of road will require final grading.

#### 4.2 - Maintenance

##### 4.2.5 - Two wheel drive condition (2/04)

All existing trail roads on and adjacent to the sale area must be passable by two-wheel drive traffic for the duration of the sale.

### 5 - Operations

#### 5.1 - Notification

##### 5.1.1 - Pre-sale conference (10/11)

A pre-sale conference between the Purchaser and sale administrator is required prior to beginning any operations. The Unit Manager or his/her representative must be contacted at least 3 days in advance to schedule the conference.

##### 5.1.4 - Post-sale conference (6/11)

A post-sale conference on site between the Purchaser and sale administrator is required 3 days prior to the completion of active logging operations to determine clean-up and repair of landings, road edges, and the fulfillment of other contract

specifications.

## 5.2 - Conduct of Operations

### 5.2.2 - Hazard Trees/Snags

#### 5.2.2.1 - Den trees (2/04)

Obvious hollow and/or den trees shall be protected and left standing unless they are a safety hazard.

### 5.2.3 - Operating Restrictions

#### 5.2.3.1 - Operating restrictions (9/11)

Within Payment Unit(s) 1, 2, 3, 4, 5, and 6, unless changed by written agreement, cutting, skidding, and hauling are limited to the period of September 1st to April 1st. This restriction is because of deer yard and bark slippage.

#### 5.2.38 - No decking against live trees (2/04)

Cut products may not be decked against unmarked or designated leave trees.

## 5.4 - Soil Protection

### 5.4.1 - Rutting restriction, general (7/16)

Operations are to cease immediately if equipment and weather conditions result in rutting of roads and/or skid trails which is 12 inches or greater in depth and 50 feet in length. The Unit Manager or his/her representative may restrict hauling and/or skidding if ruts exceed the specified depth. With the Unit Manager or his/her representative's approval, the Purchaser may return to the area when the risk of rutting has decreased.

## 5.8 - Protection of Endangered Species

### 5.8.5 - Protection of raptor nests (3/13)

All trees with raptor nests will be protected if found during harvesting operations. Notification will be made to the Unit Manager or his/her representative who will notify the Wildlife Biologist so an on-site evaluation and recommendation can be made, if necessary.

## 7 - Other Conditions

### 7.3 - Contract Modifications

#### 7.3.1 - Emerald Ash Borer

##### 7.3.1.2 - Emerald ash borer, ash or firewood on sale (2/05)

There is ash and/or "firewood" in this sale and it is located within an emerald ash borer quarantined area. The Director of the Michigan Department of Agriculture (MDA) by the authority of Act No. 72 of the Public Acts of 1945, as amended, and Quarantine Regulation No. 620, has promulgated this quarantine to prevent the further spread of this pest and sets forth: definitions, regulated articles, regulated areas, conditions of movement, violations and penalties, and special exemptions. The Purchaser must comply with this quarantine. Contact the MDA for further information.





# TIMBER SALE MAP

This information provided by authority of Part 525, 1994 PA 451, as amended.

Sale Number	Year
45-111	2016

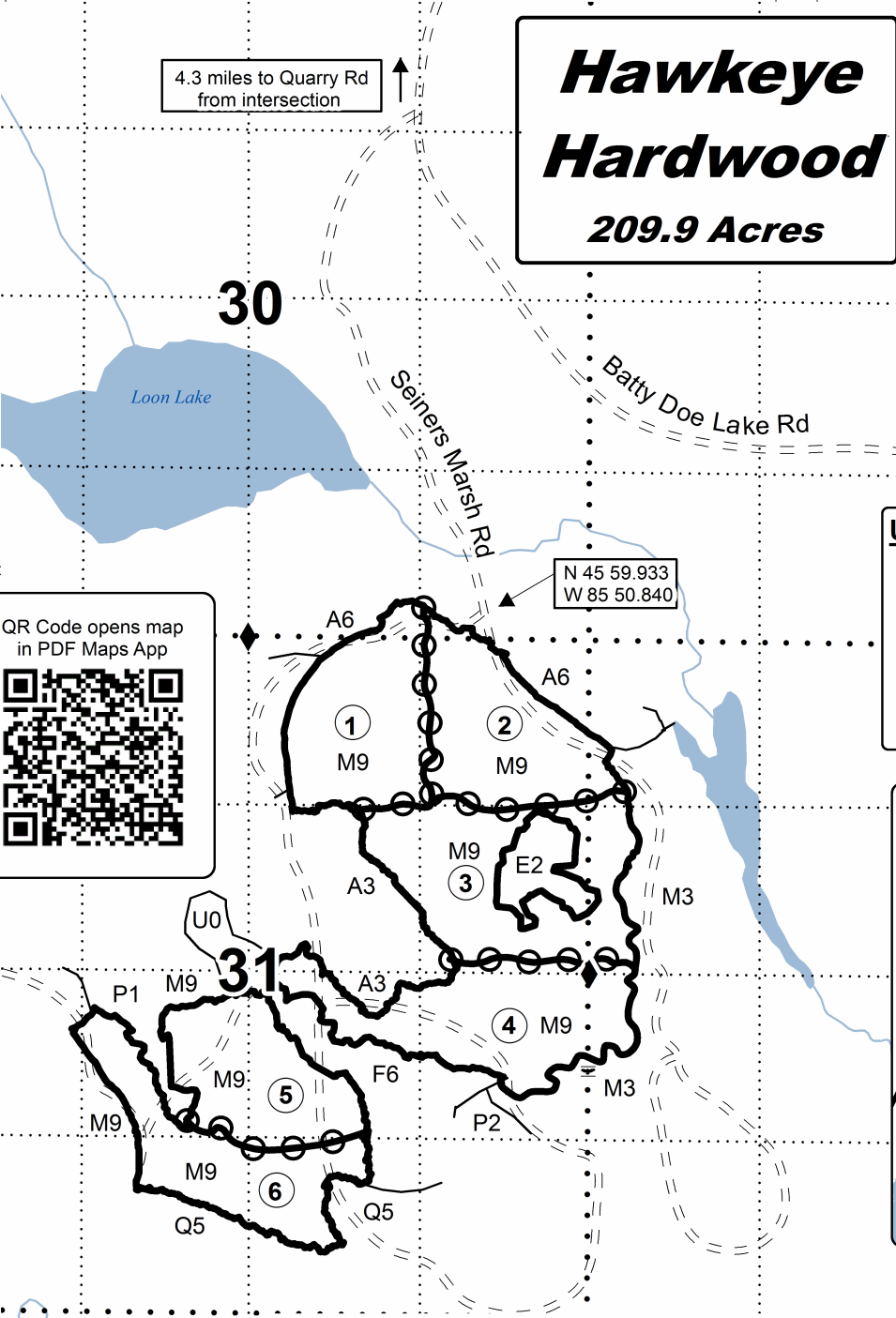
Forest Management Unit <b>Sault M.U. - Naubinway</b>	County <b>Mackinac</b>	Mapped By <b>Lester Livermore</b>	Date <b>8/11/2016</b>	Page <b>1</b>	of <b>1</b>
Township <b>42N</b>	Range <b>12W</b>	Section(s) and Subdivision(s) <b>30 - S1/2 SE 31 - NE, NWSW</b>	Scale <b>Scale - 1:15840</b>		

Cover Type				Density		
A = Aspen	H = Hemlock	N = Marsh	U = Upland Brush	0 = Non Stocked	5 = Pole Timber Medium	
B = Paper Birch	J = Jack Pine	O = Oak	UM = Upland Mixed	1 = Seedling Sapling Poor	6 = Pole Timber Well	
C = Cedar	L = Lowland Brush	P = Lowland Poplar	V = Bog or Marsh	2 = Seedling Sapling Medium	7 = Saw Timber Poor	
D = Tread Bog	LM = Lowland Mixed	Q = Mixed Swamp Conifer	W = White Pine	3 = Seedling Sapling Well	8 = Saw Timber Medium	
E = Swamp Hdwoods	M = Mpl, Bch, Brch	R = Red Pine	X = Non Stocked	4 = Pole Timber Poor	9 = Saw Timber Well	
F = Spruce Fir	MC = Mixed Conifer	S = Black Spruce	Z = Water			
G = Grass	MD = Mixed Deciduous	T = Tamarack				

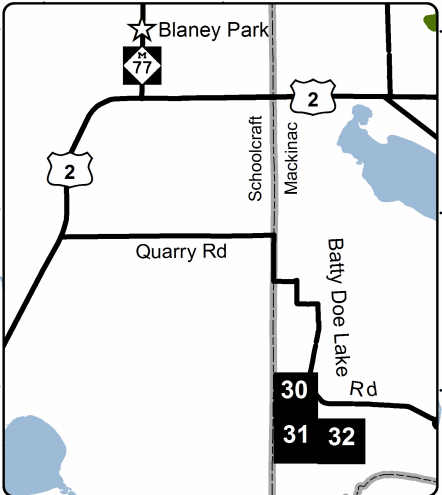
**Hawkeye  
Hardwood**  
**209.9 Acres**

**Legend**

- Sale Boundary - Red Paint
- Unit Line - Yellow Paint
- Timber Type Line
- === Dirt State Road
- ◆ Survey Corner



Unit	Acres	Cords	MBF
1	33.8	16.7	193
2	32.5	16.1	186
3	42.5	21.1	243
4	40.3	20.0	231
5	28.7	7.7	155
6	32.1	8.6	174



Locator Map  
1:200,000





# TIMBER SALE INFORMATION

## Loud Hound Aspen Mix (45-119-16)

Mackinac County (Advertised Price \$42,919.35)

SALE NOTE: A recreation site such as a trail, pathway, or campground is within the sale area or the vicinity. Certain restrictions/specifications may be applicable including time restrictions.

A timber sale contract for this lump sum, sealed bid timber sale will be awarded to the responsible bidder offering the highest sealed bid price. Bids must be at or above the following advertised price for each species:

<u>PRODUCTS &amp; SPECIES</u>	<u>ESTIMATED UNITS*</u>	<u>ADVERTISED PRICE</u>
Pulpwood		
B. T. Aspen	466.00 Cords	\$ 16.60 / Cord
Balsam Fir	723.00 Cords	\$ 9.15 / Cord
Black Cherry	14.00 Cords	\$ 23.00 / Cord
Black Spruce	64.00 Cords	\$ 20.00 / Cord
Jack Pine	6.00 Cords	\$ 29.00 / Cord
Paper Birch	62.00 Cords	\$ 11.45 / Cord
Quaking Aspen	1,018.00 Cords	\$ 16.60 / Cord
Red Maple	244.00 Cords	\$ 23.00 / Cord
White Pine	8.00 Cords	\$ 16.45 / Cord
White Spruce	172.00 Cords	\$ 20.00 / Cord

\* The total volume is statistically estimated within plus (+) or minus (-) 12.71 percent. The estimated units are final and not subject to adjustment. Prospective bidders are urged to examine this timber and to make their own estimates of quantity and quality.

### **BOND AND PAYMENT SCHEDULE:**

1. A bond in the amount of \$3,434.00 to insure faithful performance of the conditions of the contract will be deposited by the successful bidder within 21 days of the sale award.
2. Cutting in any sale or unit without the required advance payment would be considered a trespass.
3. Total payment must be paid in advance or according to the following schedule:
  - (a) Ten percent (10%) of the sale value must be paid within 21 days of the sale award.
  - (b) The 10% down payment will be credited towards the first unit cut.
4. If no cutting takes place, the 10% down payment will not be refunded.
5. Operations on the contract issued will terminate on 12/31/2019.

**Description of Timber by Payment Unit (PU)**

PU	MARKET GROUP	PRODUCT	QUANTITY	UNIT	ACRES	ADVERTISE PRICE
1	B. T. Aspen Balsam Fir Black Cherry Black Spruce Paper Birch Quaking Aspen Red Maple White Pine White Spruce	Pulpwood	91.0 202.0 14.0 9.0 37.0 229.0 168.0 8.0 68.0	Cords Cords Cords Cords Cords Cords Cords Cords Cords	31.5	\$13,441.55
2	Balsam Fir Paper Birch Quaking Aspen Red Maple White Spruce	Pulpwood	227.0 11.0 293.0 35.0 24.0	Cords Cords Cords Cords Cords	23.0	\$8,351.80
3	B. T. Aspen Balsam Fir Paper Birch Quaking Aspen Red Maple White Spruce	Pulpwood	17.0 15.0 8.0 35.0 38.0 3.0	Cords Cords Cords Cords Cords Cords	6.6	\$2,026.05
4	B. T. Aspen Balsam Fir Black Spruce Jack Pine Paper Birch Quaking Aspen Red Maple White Spruce	Pulpwood	219.0 170.0 34.0 4.0 4.0 281.0 2.0 47.0	Cords Cords Cords Cords Cords Cords Cords Cords	51.9	\$11,683.30
5	B. T. Aspen Balsam Fir Black Spruce Jack Pine Paper Birch Quaking Aspen Red Maple White Spruce	Pulpwood	139.0 109.0 21.0 2.0 2.0 180.0 1.0 30.0	Cords Cords Cords Cords Cords Cords Cords Cords	33.1	\$7,416.65
TOTAL:			2,777.0	Cords		

## Sale Specific Conditions & Requirements

**Sale Name: Loud Hound Aspen Mix**

**Sale Number: 45-119-16 Seq#: 1**

### 1 - Sale Area

#### 1.2 - Boundaries

##### 1.2.1 - Painted boundaries (1/14)

The sale boundary and Payment Unit boundaries are marked and identified by red and yellow paint. Exterior sale boundary lines against state are marked with red paint. Interior Payment Unit boundaries are marked with yellow paint. The painted boundary line trees are not Included Timber and are to be protected. Yellow painted trees designating an interior Payment Unit boundary are only to be cut when all surrounding Payment Units have been paid.

### 2 - Timber Specifications

#### 2.1 - Included Timber

##### 2.1.1 - Clearcut unit(s) with unmerchantable trees (6/14)

Within Payment Unit(s) 1, cut all deciduous trees that are two (2) inches or more at DBH and cut all coniferous trees that are four (4) inches or more at DBH. DO NOT CUT any hemlock or trees marked with green paint.

Within Payment Unit(s) 2, 3, 4, & 5, cut all aspen trees that are two (2) inches or more at DBH and cut all spruce and balsam trees that are four (4) inches or more at DBH. DO NOT CUT any white pine, paper birch, black cherry, maple, or trees marked with green paint. In addition, LEAVE one (1) representative spruce or balsam fir tree scattered approximately every 100 feet.

### 3 - Payments

#### 3.3 - Pre-measured Sales

##### 3.3.4 - Dividing payment units (7/14)

Payment Unit(s) 1, 2, 3, 4, & 5 may be divided at the request of the Purchaser and upon approval of the Unit Manager. Dividing Payment Units is a contract modification which requires a Timber Sale Contract Supplement.

### 4 - Transportation

#### 4.1 - Construction

##### 4.1.12 - No new roads (1/12)

No new roads will be permitted in any Payment Unit. All operations are limited to existing roads. Skid trails only will be allowed.

#### 4.2 - Maintenance

##### 4.2.3 - Road maintenance (8/13)

The following road maintenance is required: During periods of sale activity, routine maintenance is required on the used portions of Norton Camp and/or Giddings roads. The road(s) must be maintained and graded to the satisfaction of the sale administrator. This includes cleaning of drainage areas, grading, crowning and filling with gravel, if necessary. Damages will be assessed if grading/repair does not occur.

##### 4.2.5 - Two wheel drive condition (2/04)

All existing trail roads on and adjacent to the sale area must be passable by two-wheel drive traffic for the duration of the sale.

### 5 - Operations

#### 5.1 - Notification

##### 5.1.1 - Pre-sale conference (10/16)

A pre-sale conference on site between the Purchaser and sale administrator is required prior to beginning any operations to determine landing, skid trails and road locations, etc. The Unit Manager or his/her representative must be contacted at least 3

days in advance to schedule the conference.

#### 5.1.4 - Post-sale conference (6/11)

A post-sale conference on site between the Purchaser and sale administrator is required 3 days prior to the completion of active logging operations to determine clean-up and repair of landings, road edges, and the fulfillment of other contract specifications.

### 5.2 - Conduct of Operations

#### 5.2.2 - Hazard Trees/Snags

##### 5.2.2.1 - Den trees (2/04)

Obvious hollow and/or den trees shall be protected and left standing unless they are a safety hazard.

### 5.4 - Soil Protection

#### 5.4.1 - Rutting restriction, general (7/16)

Operations are to cease immediately if equipment and weather conditions result in rutting of roads and/or skid trails which is 12 inches or greater in depth and 50 feet in length. The Unit Manager or his/her representative may restrict hauling and/or skidding if ruts exceed the specified depth. With the Unit Manager or his/her representative's approval, the Purchaser may return to the area when the risk of rutting has decreased.

### 5.8 - Protection of Endangered Species

#### 5.8.5 - Protection of raptor nests (3/13)

All trees with raptor nests will be protected if found during harvesting operations. Notification will be made to the Unit Manager or his/her representative who will notify the Wildlife Biologist so an on-site evaluation and recommendation can be made, if necessary.

## 6 - Safety and Fire Prevention

### 6.2 - Signing

#### 6.2.1 - Road posting (9/09)

The Purchaser is responsible for posting and maintaining caution signs on Norton Camp Road and Dinky Line prior to beginning operations. The road must be posted approximately 200 feet from the sale area on all potential haul routes to warn of logging activity and truck traffic. Signs must be removed when harvest operations are suspended or completed. The Purchaser will provide these signs.

## 7 - Other Conditions

### 7.3 - Contract Modifications

#### 7.3.1 - Emerald Ash Borer

##### 7.3.1.1 - Emerald ash borer, no ash or firewood on sale (2/05)

There is no ash or "firewood" in this sale, but it is located within an emerald ash borer quarantined area. The Director of the Michigan Department of Agriculture (MDA) by the authority of Act No. 72 of the Public Acts of 1945, as amended, and Quarantine Regulation No. 620, has promulgated this quarantine to prevent the further spread of this pest and sets forth: definitions, regulated articles, regulated areas, conditions of movement, violations and penalties, and special exemptions. The Purchaser must comply with this quarantine. Contact the MDA for further information.



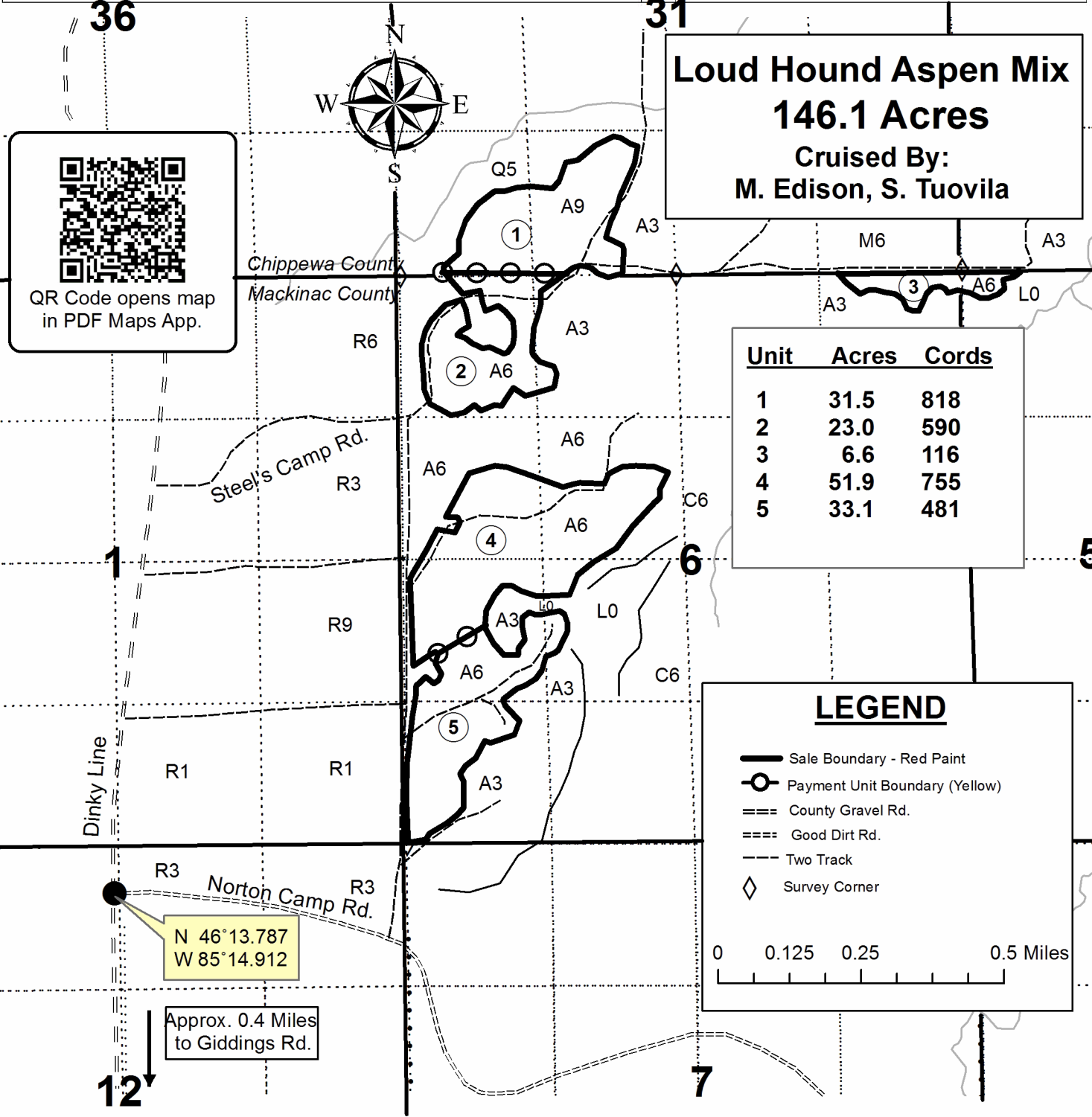
# TIMBER SALE MAP

This information provided by authority of Part 525, 1994 PA 451, as amended.

Sale Number	Year
45-114	2016

Forest Management Unit Sault F.M.U. / Naubinway F.O.	County Mackinac	Mapped By Edison	Date 9/30/2016	Page 1	of 1
Township T44N	Range 6W	Section(s) and Subdivision(s) Sec.5 NWNW Sec.6 W1/2SW, NW1/4, NESW, NENE Sec.31 S1/2SW	Scale 1: 15,840		
T45N	6W				

Cover Type				Density			
A = Aspen	H = Hemlock	N = Marsh	U = Upland Brush	0 = Non Stocked	5 = Pole Timber Medium		
B = Paper Birch	J = Jack Pine	O = Oak	UM = Upland Mixed	1 = Seedling Sapling Poor	6 = Pole Timber Well		
C = Cedar	L = Lowland Brush	P = Lowland Poplar	V = Bog or Marsh	2 = Seedling Sapling Medium	7 = Saw Timber Poor		
D = Treed Bog	LM = Lowland Mixed	Q = Mixed Swamp Conifer	W = White Pine	3 = Seedling Sapling Well	8 = Saw Timber Medium		
E = Swamp Hdwoods	M = Mpl. Bch, Brch	R = Red Pine	X = Non Stocked	4 = Pole Timber Poor	9 = Saw Timber Well		
F = Spruce Fir	MC = Mixed Conifer	S = Black Spruce	Z = Water				
G = Grass	MD = Mixed Deciduous	T = Tamarack					







**TIMBER SALE INFORMATION**

Soggy Spruce (45-120-16)

Mackinac County (Advertised Price \$13,918.90)

SALE NOTE: Access may be through private land.

A timber sale contract for this lump sum, sealed bid timber sale will be awarded to the responsible bidder offering the highest sealed bid price. Bids must be at or above the following advertised price for each species:

<u>PRODUCTS &amp; SPECIES</u>	<u>ESTIMATED UNITS*</u>	<u>ADVERTISED PRICE</u>
Pulpwood		
Balsam Fir	90.00 Cords	\$ 13.75 / Cord
Mixed Spruce	333.00 Cords	\$ 30.00 / Cord
N. White Cedar	2.00 Cords	\$ 18.30 / Cord
Paper Birch	16.00 Cords	\$ 17.15 / Cord
Quaking Aspen	76.00 Cords	\$ 24.90 / Cord
Red Maple	7.00 Cords	\$ 34.50 / Cord
White Pine	10.00 Cords	\$ 24.65 / Cord

\* The total volume is statistically estimated within plus (+) or minus (-) 13.14 percent. The estimated units are final and not subject to adjustment. Prospective bidders are urged to examine this timber and to make their own estimates of quantity and quality.

**BOND AND PAYMENT SCHEDULE:**

1. A bond in the amount of \$1,114.00 to insure faithful performance of the conditions of the contract will be deposited by the successful bidder within 21 days of the sale award.
2. Cutting in any sale or unit without the required advance payment would be considered a trespass.
3. Total payment must be paid in advance or according to the following schedule:
  - (a) Ten percent (10%) of the sale value must be paid within 21 days of the sale award.
  - (b) The 10% down payment will be credited towards the first unit cut.
4. If no cutting takes place, the 10% down payment will not be refunded.
5. Operations on the contract issued will terminate on 12/31/2019.

**Description of Timber by Payment Unit (PU)**

PU	MARKET GROUP	PRODUCT	QUANTITY	UNIT	ACRES	ADVERTISE PRICE				
1	Balsam Fir	Pulpwood	47.0	Cords	25.3	\$7,976.75				
	Mixed Spruce		210.0	Cords						
	<i>Black Spruce</i>		199.0	<i>Cords</i>						
	<i>White Spruce</i>		11.0	<i>Cords</i>						
	Quaking Aspen		40.0	Cords						
	Red Maple		1.0	Cords						
	2		Balsam Fir	Pulpwood			43.0	Cords	17.0	\$5,942.15
Mixed Spruce		123.0	Cords							
<i>Black Spruce</i>		63.0	<i>Cords</i>							
<i>White Spruce</i>		60.0	<i>Cords</i>							
N. White Cedar		2.0	Cords							
Paper Birch		16.0	Cords							
Quaking Aspen		36.0	Cords							
Red Maple		6.0	Cords							
White Pine		10.0	Cords							
<b>TOTAL:</b>			534.0		Cords					

## Sale Specific Conditions & Requirements

**Sale Name: Soggy Spruce**

**Sale Number: 45-120-16 Seq#: 1**

### 1 - Sale Area

#### 1.2 - Boundaries

##### 1.2.1 - Painted boundaries (1/14)

The sale boundary is marked and identified by red paint. The painted boundary trees are not Included Timber and are to be protected.

### 2 - Timber Specifications

#### 2.1 - Included Timber

##### 2.1.1 - Clearcut unit(s) with unmerchantable trees (6/14)

Within Payment Unit(s) 1 and 2, cut all deciduous trees that are two (2) inches or more at DBH and cut all conifers that are four (4) inches or more at DBH, except do not cut tamarack and white pine within Payment Unit 1, and do not cut white pine 12 inches and larger in Payment Unit 2. In addition, leave a healthy, mature representative tree spaced every 75 feet. This will leave approximately 8 trees per acre.

### 4 - Transportation

#### 4.1 - Construction

##### 4.1.2 - Stream crossings, specific (3/11)

The McAlpine Creek crossing on the west side of Krause Road will require the installation of a culvert, which will be provided from the DNR. The Purchaser will pick up the culvert at the Naubinway Field Office and install the culvert. The culvert installation will be performed in accordance with the specifications on the appropriate permits which shall be provided by the DNR. The Purchaser will then remove the culvert in accordance with the permit specifications and return the culvert to the Naubinway Field Office.

#### 4.4 - Access

##### 4.4.1 - Private property access (3/11)

Permission for access across private land is the responsibility of the Purchaser. The Purchaser must agree to the private land-owner's conditions for use of the private land to access the sale. Contact the DNR Unit Manager or his/her representative for the private land-owner contact information.

### 5 - Operations

#### 5.1 - Notification

##### 5.1.1 - Pre-sale conference (10/16)

A pre-sale conference on site between the Purchaser and sale administrator is required prior to beginning any operations in a Payment Unit. The Unit Manager or his/her representative must be contacted at least 3 days in advance to schedule the conference.

##### 5.1.4 - Post-sale conference (10/16)

A post-sale conference on site between the Purchaser and sale administrator is required 3 days prior to the completion of active logging operations to determine clean-up and repair of landings, road edges, and the fulfillment of other contract specifications.

#### 5.2 - Conduct of Operations

##### 5.2.22 - Operating Caution

###### 5.2.22.1 - Operating caution (6/11)

It is recommended, but not required, that within Payment Unit(s) 1 and 2, cutting, skidding, and hauling occur during dry summer or frozen winter conditions. The reason for the recommendation is because of low ground in the Units.

#### 5.2.38 - No decking against live trees (2/04)

Cut products may not be decked against unmarked or designated leave trees.

#### 5.2.41 - Snowmobile trail protection (9/11)

The snowmobile trail is shown on the Timber Sale Map. Do not cut or damage posts with orange trail markers or traffic control signs. If the trail is used, it must be maintained and restored to a condition equal to or better than before the sale. If the trail is to be used for hauling during the snowmobile season, then a snow covered base must be left on the trail. No decking of forest products will be permitted along the snowmobile trail.

### 5.4 - Soil Protection

#### 5.4.1 - Rutting restriction, general (7/16)

Operations are to cease immediately if equipment and weather conditions result in rutting of roads and/or skid trails which is 12 inches or greater in depth and 50 feet in length. The Unit Manager or his/her representative may restrict hauling and/or skidding if ruts exceed the specified depth. With the Unit Manager or his/her representative's approval, the Purchaser may return to the area when the risk of rutting has decreased.

### 5.7 - Protection of Historical Sites

#### 5.7.1 - Historical sites (7/12)

The Purchaser shall not cut live or dead trees or operate equipment within historical sites. Historical sites are marked with a red boundary line in the center of Payment Unit 2. Within this area equipment must stay on the road and may not leave the road to turn around. Decking of wood and staging equipment in this area will not be permitted. The Purchaser shall protect historical sites from damage by the Purchaser's operations. If Purchaser's operations have cut or damaged historical sites through carelessness, the Purchaser shall pay \$1000 as fixed, agreed and liquidated damages for each acre or part thereof cut or damaged.

### 5.8 - Protection of Endangered Species

#### 5.8.5 - Protection of raptor nests (3/13)

All trees with raptor nests will be protected if found during harvesting operations. Notification will be made to the Unit Manager or his/her representative who will notify the Wildlife Biologist so an on-site evaluation and recommendation can be made, if necessary.

## 6 - Safety and Fire Prevention

### 6.2 - Signing

#### 6.2.2 - Snowmobile trail posting (8/09)

The Purchaser is responsible for posting and maintaining caution signs on the snowmobile trail prior to beginning operations during the snowmobile season (approximately December 1 to March 31). The trail must be posted at appropriate distances from the sale area to warn of logging activity and truck traffic. Signs must be removed when harvest operations are suspended or completed. The Purchaser will provide these signs.

## 7 - Other Conditions

### 7.3 - Contract Modifications

#### 7.3.1 - Emerald Ash Borer

##### 7.3.1.2 - Emerald ash borer, ash or firewood on sale (2/05)

There is ash and/or "firewood" in this sale and it is located within an emerald ash borer quarantined area. The Director of the Michigan Department of Agriculture (MDA) by the authority of Act No. 72 of the Public Acts of 1945, as amended, and Quarantine Regulation No. 620, has promulgated this quarantine to prevent the further spread of this pest and sets forth: definitions, regulated articles, regulated areas, conditions of movement, violations and penalties, and special exemptions. The Purchaser must comply with this quarantine. Contact the MDA for further information.



# TIMBER SALE MAP

This information provided by authority of Part 525, 1994 PA 451, as amended.

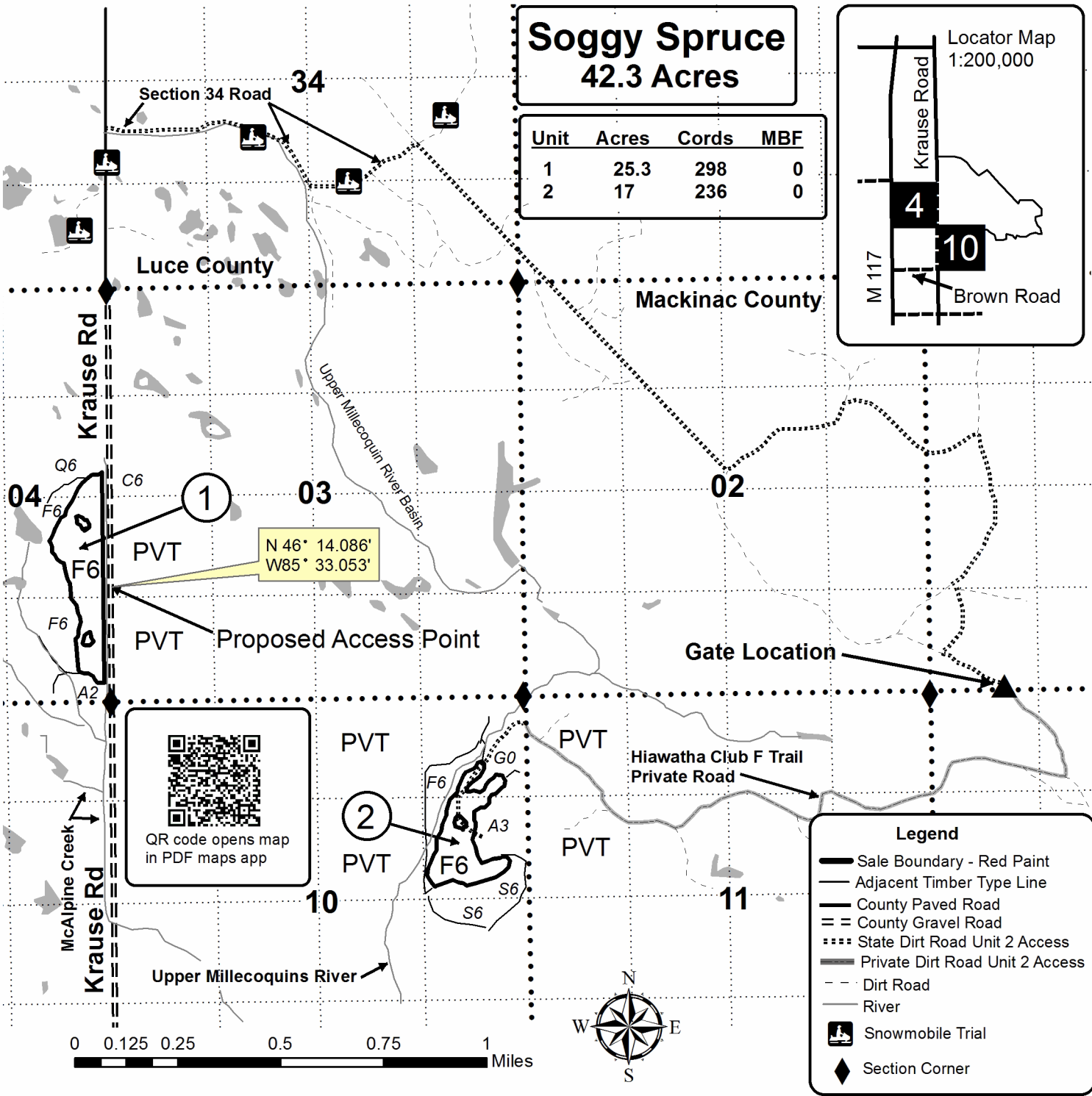
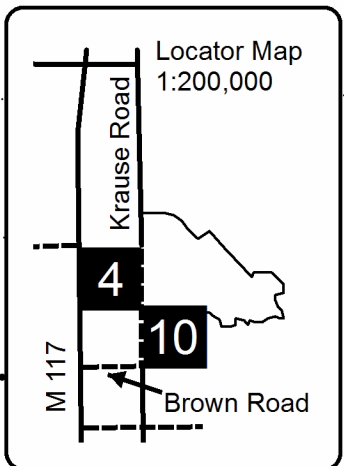
Sale Number	Year
45 - 120	2016

Forest Management Unit	County	Mapped By	Date	Page	of
Sault M.U. - Naubinway F.O.	Mackinac	Steve Tuovila	10/11/2016	1	1
Township	Range	Section(s) and Subdivision(s)	Scale		
44N	10W	4: E1/2SE, SENE 10: E1/2NE	1:21,726		

Cover Type				Density			
A = Aspen	H = Hemlock	N = Marsh	U = Upland Brush	0 = Non Stocked	5 = Pole Timber Medium		
B = Paper Birch	J = Jack Pine	O = Oak	UM = Upland Mixed	1 = Seedling Sapling Poor	6 = Pole Timber Well		
C = Cedar	L = Lowland Brush	P = Lowland Poplar	V = Bog or Marsh	2 = Seedling Sapling Medium	7 = Saw Timber Poor		
D = Treed Bog	LM = Lowland Mixed	Q = Mixed Swamp Conifer	W = White Pine	3 = Seedling Sapling Well	8 = Saw Timber Medium		
E = Swamp Hdwoods	M = Mpl, Bch, Brch	R = Red Pine	X = Non Stocked	4 = Pole Timber Poor	9 = Saw Timber Well		
F = Spruce Fir	MC = Mixed Conifer	S = Black Spruce	Z = Water				
G = Grass	MD = Mixed Deciduous	T = Tamarack					

**Soggy Spruce**  
42.3 Acres

Unit	Acres	Cords	MBF
1	25.3	298	0
2	17	236	0



**Legend**

- Sale Boundary - Red Paint
- Adjacent Timber Type Line
- County Paved Road
- County Gravel Road
- State Dirt Road Unit 2 Access
- Private Dirt Road Unit 2 Access
- Dirt Road
- River
- Snowmobile Trail
- Section Corner

# TIMBER SALE INFORMATION

## GEM Stone Aspen (45-122-16)

Mackinac County (Advertised Price \$34,247.45)

SALE NOTE: A recreation site such as a trail, pathway, or campground is within the sale area or the vicinity. Certain restrictions/specifications may be applicable including time restrictions.

A timber sale contract for this lump sum, sealed bid timber sale will be awarded to the responsible bidder offering the highest sealed bid price. Bids must be at or above the following advertised price for each species:

<u>PRODUCTS &amp; SPECIES</u>	<u>ESTIMATED UNITS*</u>	<u>ADVERTISED PRICE</u>
Pulpwood		
Balsam Fir	347.00 Cords	\$ 11.90 / Cord
Misc. Species 1	75.00 Acres	\$ 33.00 / Acre
Mixed Aspen	411.00 Cords	\$ 21.55 / Cord
Mixed Hardwood	253.00 Cords	\$ 29.90 / Cord
N. White Cedar	134.00 Cords	\$ 15.85 / Cord
Paper Birch	261.00 Cords	\$ 14.90 / Cord
Red Pine	4.00 Cords	\$ 67.15 / Cord
White Spruce	190.00 Cords	\$ 26.00 / Cord

\* The total volume is statistically estimated within plus (+) or minus (-) 10.19 percent. The estimated units are final and not subject to adjustment. Prospective bidders are urged to examine this timber and to make their own estimates of quantity and quality.

### **BOND AND PAYMENT SCHEDULE:**

1. A bond in the amount of \$2,740.00 to insure faithful performance of the conditions of the contract will be deposited by the successful bidder within 21 days of the sale award.
2. Cutting in any sale or unit without the required advance payment would be considered a trespass.
3. Total payment must be paid in advance or according to the following schedule:
  - (a) Ten percent (10%) of the sale value must be paid within 21 days of the sale award.
  - (b) The 10% down payment will be credited towards the first unit cut.
4. If no cutting takes place, the 10% down payment will not be refunded.
5. Operations on the contract issued will terminate on 12/31/2019.

**Description of Timber by Payment Unit (PU)**

PU	MARKET GROUP	PRODUCT	QUANTITY	UNIT	ACRES	ADVERTISE PRICE
1	Misc. Species 1	Pulpwood	10.0	Acres	10.0	\$330.00
2	Balsam Fir	Pulpwood	186.0	Cords	16.9	\$14,484.95
	Mixed Aspen		196.0	Cords		
	<i>Quaking Aspen</i>		196.0	<i>Cords</i>		
	Mixed Hardwood		172.0	Cords		
	<i>Red Maple</i>		121.0	<i>Cords</i>		
	<i>Sugar Maple</i>		51.0	<i>Cords</i>		
	N. White Cedar		13.0	Cords		
	Paper Birch		141.0	Cords		
	White Spruce		23.0	Cords		
3	Misc. Species 1	Pulpwood	37.0	Acres	36.6	\$1,221.00
4	Balsam Fir	Pulpwood	101.0	Cords	14.8	\$7,788.40
	Mixed Aspen		190.0	Cords		
	<i>Balsam Poplar</i>		10.0	<i>Cords</i>		
	<i>Quaking Aspen</i>		180.0	<i>Cords</i>		
	Mixed Hardwood		12.0	Cords		
	<i>Red Maple</i>		12.0	<i>Cords</i>		
	N. White Cedar		66.0	Cords		
	Paper Birch		59.0	Cords		
	White Spruce		8.0	Cords		
5	Misc. Species 1	Pulpwood	28.0	Acres	27.9	\$924.00
6	Balsam Fir	Pulpwood	60.0	Cords	15.0	\$9,499.10
	Mixed Aspen		25.0	Cords		
	<i>Quaking Aspen</i>		25.0	<i>Cords</i>		
	Mixed Hardwood		69.0	Cords		
	<i>Black Ash</i>		22.0	<i>Cords</i>		
	<i>Black Cherry</i>		3.0	<i>Cords</i>		
	<i>Red Maple</i>		42.0	<i>Cords</i>		
	<i>Yellow Birch</i>		2.0	<i>Cords</i>		
	N. White Cedar		55.0	Cords		
	Paper Birch		61.0	Cords		
	Red Pine		4.0	Cords		
	White Spruce		159.0	Cords		
TOTAL:			1,600.0	Cords		
TOTAL:			75.0	Acres		

## Sale Specific Conditions & Requirements

**Sale Name: GEM Stone Aspen**

**Sale Number: 45-122-16 Seq#: 1**

### 1 - Sale Area

#### 1.2 - Boundaries

##### 1.2.1 - Painted boundaries (1/14)

The sale boundary is marked and identified by red paint. The exterior sale boundary against state land is marked with red paint. The painted boundary line trees are not included timber and are to be protected.

### 2 - Timber Specifications

#### 2.1 - Included Timber

##### 2.1.1 - Clearcut unit(s) with unmerchantable trees (6/14)

Within Payment Unit(s) 1, 2, 3, 4, 5 and 6, cut all deciduous trees that are two (2) inches or more at DBH and all coniferous trees that are four (4) inches or more at DBH. In addition, leave one healthy, mature representative tree spaced approximately every 75 feet.

### 4 - Transportation

#### 4.2 - Maintenance

##### 4.2.5 - Two wheel drive condition (2/04)

All existing trail roads on and adjacent to the sale area must be passable by two-wheel drive traffic for the duration of the sale.

#### 4.4 - Access

##### 4.4.3 - Access gate (12/08)

The access gate must be locked at the completion of each day unless otherwise approved by the Unit Manager or his/her representative.

### 5 - Operations

#### 5.1 - Notification

##### 5.1.1 - Pre-sale conference (10/16)

A pre-sale conference on site between the Purchaser and sale administrator is required prior to beginning any operations to determine landing, skid trails and road locations, etc. The Unit Manager or his/her representative must be contacted at least 3 days in advance to schedule the conference.

##### 5.1.4 - Post-sale conference (10/16)

A post-sale conference on site between the Purchaser and sale administrator is required 3 days prior to the completion of active logging operations to determine clean-up and repair of landings, road edges, and the fulfillment of other contract specifications.

#### 5.2 - Conduct of Operations

##### 5.2.2 - Hazard Trees/Snags

###### 5.2.2.1 - Den trees (10/16)

Obvious hollow and/or den trees shall be protected and left standing unless they are a safety hazard.

##### 5.2.3 - Operating Restrictions

###### 5.2.3.1 - Operating restrictions (9/11)

Within Payment Unit(s) 1-6, unless changed by written agreement, cutting, skidding, and hauling are limited to the period of December 1 to April 1. This restriction is because of deer yard.

###### 5.2.38 - No decking against live trees (2/04)

Cut products may not be decked against unmarked or designated leave trees.

#### 5.4 - Soil Protection

##### 5.4.1 - Rutting restriction, general (7/16)

Operations are to cease immediately if equipment and weather conditions result in rutting of roads and/or skid trails which is 12 inches or greater in depth and 50 feet in length. The Unit Manager or his/her representative may restrict hauling and/or skidding if ruts exceed the specified depth. With the Unit Manager or his/her representative's approval, the Purchaser may return to the area when the risk of rutting has decreased.

#### 5.8 - Protection of Endangered Species

##### 5.8.5 - Protection of raptor nests (3/13)

All trees with raptor nests will be protected if found during harvesting operations. Notification will be made to the Unit Manager or his/her representative who will notify the Wildlife Biologist so an on-site evaluation and recommendation can be made, if necessary.

### 7 - Other Conditions

#### 7.3 - Contract Modifications

##### 7.3.1 - Emerald Ash Borer

###### 7.3.1.1 - Emerald ash borer, no ash or firewood on sale (2/05)

There is no ash or "firewood" in this sale, but it is located within an emerald ash borer quarantined area. The Director of the Michigan Department of Agriculture (MDA) by the authority of Act No. 72 of the Public Acts of 1945, as amended, and Quarantine Regulation No. 620, has promulgated this quarantine to prevent the further spread of this pest and sets forth: definitions, regulated articles, regulated areas, conditions of movement, violations and penalties, and special exemptions. The Purchaser must comply with this quarantine. Contact the MDA for further information.





# TIMBER SALE MAP

This information provided by authority of Part 525, 1994 PA 451, as amended.

Forest Management Unit: **Sault M.U. - Naubinway F.O.**

County: **Mackinac**

Section(s) and Subdivision(s): **15:NMW1/4,W1/2NE,SWNE;NWSW-W-16;SESE**

Scale: **1:15,840**

Township: **43N**

Range: **8W**

Section(s) and Subdivision(s): **21:NENE-1/4,W1/2NW,SENN,N1/2NE-11:S;1/2SE-13:NNWNW**

Year: **2016**

Sale Number: **45 - 122**

Page: **1** of **1**

Date: **9/30/2016**

Unit	Acres	Cords
1	10.0	
2	16.9	731
3	36.6	
4	14.8	436
5	27.9	
6	15.0	433

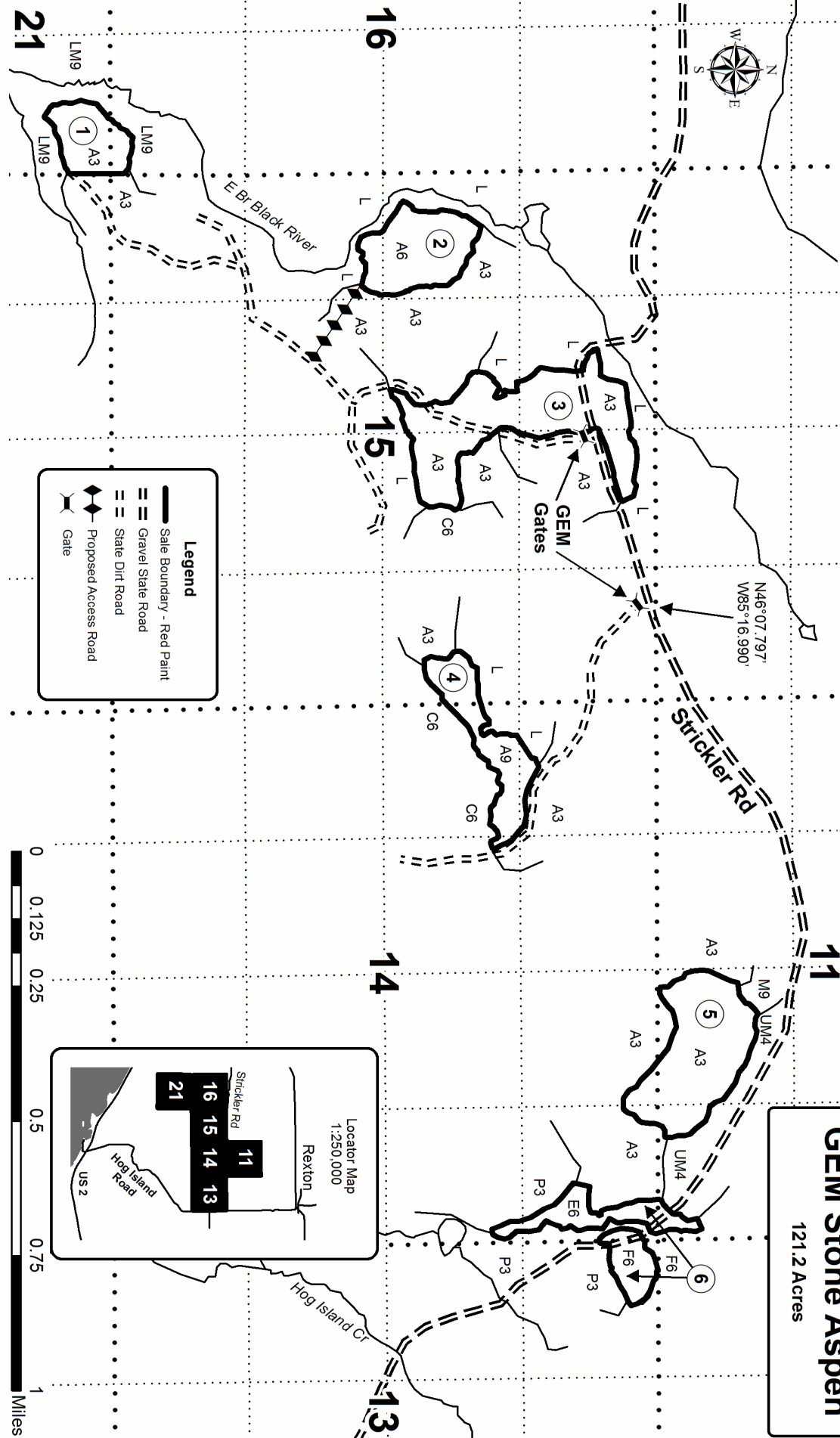
Cover Type	Density
A = Aspen	0 = Non Stocked
B = Paper Birch	1 = Seeding Sapling Poor
C = Cedar	2 = Seeding Sapling Medium
D = Tread Bog	3 = Seeding Sapling Well
E = Swamp Hemlocks	4 = Pole Timber Poor
F = Spruce Fir	5 = Pole Timber Medium
G = Grass	6 = Pole Timber Well
H = Hemlock	7 = Saw Timber Poor
J = Jack Pine	8 = Saw Timber Medium
L = Lowland Brush	9 = Saw Timber Well
LM = Lowland Mixed	
M = Mpl. Bch. Birch	
MC = Mixed Conifer	
MD = Mixed Deciduous	
N = Marsh	
O = Oak	
P = Lowland Poplar	
Q = Mixed Swamp Conifer	
R = Red Pine	
S = Black Spruce	
T = Tamarack	
U = Upland Brush	
UM = Upland Mixed	
V = Bog or Marsh	
W = White Pine	
X = Non Stocked	
Z = Water	



QR Code opens map in PDF Maps App

## GEM Stone Aspen

121.2 Acres



**Legend**

- Sale Boundary - Red Paint
- == Gravel State Road
- == State Dirt Road
- == Proposed Access Road
- ◆ Gate

Locator Map  
1:250,000

Strickler Rd  
Rexton  
Hog Island Road  
Us 2





# TIMBER SALE INFORMATION

## Eevee Mix (45-123-16)

Mackinac County (Advertised Price \$12,347.30)

SALE NOTE: A recreation site such as a trail, pathway, or campground is within the sale area or the vicinity. Certain restrictions/specifications may be applicable including time restrictions.

A timber sale contract for this lump sum, sealed bid timber sale will be awarded to the responsible bidder offering the highest sealed bid price. Bids must be at or above the following advertised price for each species:

<u>PRODUCTS &amp; SPECIES</u>	<u>ESTIMATED UNITS*</u>	<u>ADVERTISED PRICE</u>
Pulpwood		
Balsam Fir	62.00 Cords	\$ 12.80 / Cord
Misc. Species 1	37.00 Acres	\$ 35.00 / Acre
Mixed Aspen	12.00 Cords	\$ 23.25 / Cord
Mixed Hardwood	146.00 Cords	\$ 32.20 / Cord
N. White Cedar	155.00 Cords	\$ 17.10 / Cord
Paper Birch	124.00 Cords	\$ 16.00 / Cord
White Spruce	23.00 Cords	\$ 28.00 / Cord

\* The total volume is statistically estimated within plus (+) or minus (-) 24.42 percent. The estimated units are final and not subject to adjustment. Prospective bidders are urged to examine this timber and to make their own estimates of quantity and quality.

### **BOND AND PAYMENT SCHEDULE:**

1. A bond in the amount of \$988.00 to insure faithful performance of the conditions of the contract will be deposited by the successful bidder within 21 days of the sale award.
2. Cutting in any sale or unit without the required advance payment would be considered a trespass.
3. Total payment must be paid in advance or according to the following schedule:
  - (a) Ten percent (10%) of the sale value must be paid within 21 days of the sale award.
  - (b) The 10% down payment will be credited towards the first unit cut.
4. If no cutting takes place, the 10% down payment will not be refunded.
5. Operations on the contract issued will terminate on 12/31/2019.

**Description of Timber by Payment Unit (PU)**

PU	MARKET GROUP	PRODUCT	QUANTITY	UNIT	ACRES	ADVERTISE PRICE
1	Misc. Species 1	Pulpwood	20.0	Acres	20.3	\$700.00
2	Misc. Species 1	Pulpwood	17.0	Acres	17.0	\$595.00
3	Balsam Fir	Pulpwood	26.0	Cords	12.6	\$4,932.45
	Mixed Aspen		9.0	Cords		
	<i>Quaking Aspen</i>		9.0	<i>Cords</i>		
	Mixed Hardwood		9.0	Cords		
	<i>Red Maple</i>		9.0	<i>Cords</i>		
	N. White Cedar		146.0	Cords		
	Paper Birch		67.0	Cords		
	White Spruce		19.0	Cords		
4	Balsam Fir	Pulpwood	36.0	Cords	7.0	\$3,576.05
	Mixed Aspen		3.0	Cords		
	<i>Balsam Poplar</i>		3.0	<i>Cords</i>		
	Mixed Hardwood		58.0	Cords		
	<i>Black Cherry</i>		3.0	<i>Cords</i>		
	<i>Red Maple</i>		48.0	<i>Cords</i>		
	<i>White Ash</i>		5.0	<i>Cords</i>		
	<i>Yellow Birch</i>		2.0	<i>Cords</i>		
	N. White Cedar		9.0	Cords		
	Paper Birch		57.0	Cords		
	White Spruce		4.0	Cords		
	5		Mixed Hardwood	Pulpwood		
<i>Beech</i>		11.0	<i>Cords</i>			
<i>Red Maple</i>		34.0	<i>Cords</i>			
<i>Sugar Maple</i>		34.0	<i>Cords</i>			

TOTAL: 522.0 Cords

TOTAL: 37.0 Acres

## Sale Specific Conditions & Requirements

**Sale Name: Eevee Mix**

**Sale Number: 45-123-16 Seq#: 1**

### 1 - Sale Area

#### 1.2 - Boundaries

##### 1.2.1 - Painted boundaries (1/14)

The sale boundary is marked and identified by red paint. The exterior sale boundary against state land is marked with red paint. The painted boundary line trees are not included timber and are to be protected.

### 2 - Timber Specifications

#### 2.1 - Included Timber

##### 2.1.1 - Clearcut unit(s) with unmerchantable trees (6/14)

Within Payment Unit(s) 1, 2, 3 and 4, cut all deciduous trees that are two (2) inches or more at DBH and all coniferous trees that are four (4) inches or more at DBH. In addition, leave one healthy, mature representative tree spaced approximately every 75 feet.

##### 2.1.3 - Cut tree marked unit(s) (12/08)

Within Payment Unit(s) 5, all trees are designated for cutting when marked with orange paint above and below stump height, regardless of merchantability.

### 4 - Transportation

#### 4.2 - Maintenance

##### 4.2.5 - Two wheel drive condition (2/04)

All existing trail roads on and adjacent to the sale area must be passable by two-wheel drive traffic for the duration of the sale.

### 5 - Operations

#### 5.1 - Notification

##### 5.1.1 - Pre-sale conference (10/16)

A pre-sale conference on site between the Purchaser and sale administrator is required prior to beginning any operations to determine landing, skid trails and road locations, etc. The Unit Manager or his/her representative must be contacted at least 3 days in advance to schedule the conference.

##### 5.1.4 - Post-sale conference (10/16)

A post-sale conference on site between the Purchaser and sale administrator is required 3 days prior to the completion of active logging operations to determine clean-up and repair of landings, road edges, and the fulfillment of other contract specifications.

#### 5.2 - Conduct of Operations

##### 5.2.2 - Hazard Trees/Snags

###### 5.2.2.1 - Den trees (10/16)

Obvious hollow and/or den trees shall be protected and left standing unless they are a safety hazard.

##### 5.2.3 - Operating Restrictions

###### 5.2.3.1 - Operating restrictions (9/11)

Within Payment Unit(s) 1-5, unless changed by written agreement, cutting, skidding, and hauling are limited to the period of December 1 to April 1. This restriction is because of deer yard.

##### 5.2.38 - No decking against live trees (2/04)

Cut products may not be decked against unmarked or designated leave trees.

#### 5.2.41 - Snowmobile trail protection (9/11)

The snowmobile trail is shown on the Timber Sale Map. Do not cut or damage posts with orange trail markers or traffic control signs. If the trail is used, it must be maintained and restored to a condition equal to or better than before the sale. If the trail is to be used for hauling during the snowmobile season, then a snow covered base must be left on the trail. No decking of forest products will be permitted along the snowmobile trail. The Purchaser is responsible for posting and maintaining caution signs on the snowmobile trail prior to beginning operations. The trail must be posted at appropriate distances from the sale area to warn of logging activity and truck traffic. Signs must be removed when harvest operations are suspended or completed. The Purchaser will provide these signs.

#### 5.4 - Soil Protection

##### 5.4.1 - Rutting restriction, general (7/16)

Operations are to cease immediately if equipment and weather conditions result in rutting of roads and/or skid trails which is 12 inches or greater in depth and 50 feet in length. The Unit Manager or his/her representative may restrict hauling and/or skidding if ruts exceed the specified depth. With the Unit Manager or his/her representative's approval, the Purchaser may return to the area when the risk of rutting has decreased.

#### 5.8 - Protection of Endangered Species

##### 5.8.5 - Protection of raptor nests (3/13)

All trees with raptor nests will be protected if found during harvesting operations. Notification will be made to the Unit Manager or his/her representative who will notify the Wildlife Biologist so an on-site evaluation and recommendation can be made, if necessary.

### 7 - Other Conditions

#### 7.3 - Contract Modifications

##### 7.3.1 - Emerald Ash Borer

###### 7.3.1.1 - Emerald ash borer, no ash or firewood on sale (2/05)

There is no ash or "firewood" in this sale, but it is located within an emerald ash borer quarantined area. The Director of the Michigan Department of Agriculture (MDA) by the authority of Act No. 72 of the Public Acts of 1945, as amended, and Quarantine Regulation No. 620, has promulgated this quarantine to prevent the further spread of this pest and sets forth: definitions, regulated articles, regulated areas, conditions of movement, violations and penalties, and special exemptions. The Purchaser must comply with this quarantine. Contact the MDA for further information.



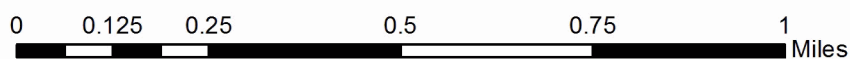
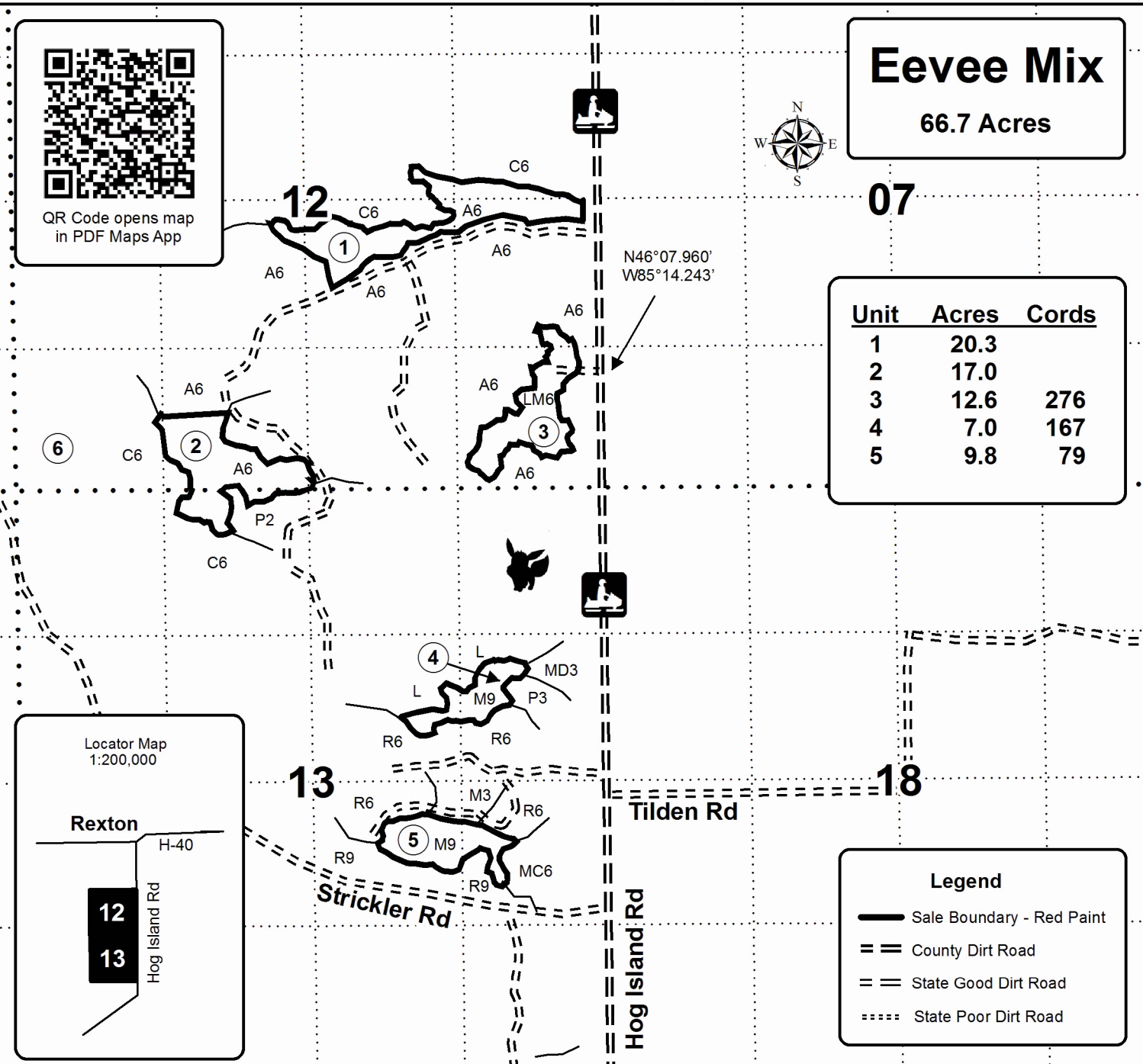
# TIMBER SALE MAP

This information provided by authority of Part 525, 1994 PA 451, as amended.

Sale Number	Year
45 - 123	2016

Forest Management Unit	County	Mapped By	Date	Page	of
Sault M.U. - Naubinway F.O.	Mackinac	Cory Luoto	10/11/2016	1	1
Township	Range	Section(s) and Subdivision(s)	Scale		
43N	8W	13: N1/2SE, S1/2NE, NENW - 12: SE1/4, SESW, S1/2NE	1:15,840		

Cover Type				Density	
A = Aspen	H = Hemlock	N = Marsh	U = Upland Brush	0 = Non Stocked	5 = Pole Timber Medium
B = Paper Birch	J = Jack Pine	O = Oak	UM = Upland Mixed	1 = Seedling Sapling Poor	6 = Pole Timber Well
C = Cedar	L = Lowland Brush	P = Lowland Poplar	V = Bog or Marsh	2 = Seedling Sapling Medium	7 = Saw Timber Poor
D = Treed Bog	LM = Lowland Mixed	Q = Mixed Swamp Conifer	W = White Pine	3 = Seedling Sapling Well	8 = Saw Timber Medium
E = Swamp Hdwoods	M = Mpl, Bch, Brch	R = Red Pine	X = Non Stocked	4 = Pole Timber Poor	9 = Saw Timber Well
F = Spruce Fir	MC = Mixed Conifer	S = Black Spruce	Z = Water		
G = Grass	MD = Mixed Deciduous	T = Tamarack			







Hawkeye Hardwood (45-111-16)  
; Mackinac COUNTY

In response to the notice of sale to be held 3:00 p.m. (local time) on August 8, 2017, I am hereby submitting my sealed bid (firm offer) for the following forest products to be cut. Bids for individual species must be at or above the advertised price. All non-responsive bid forms may be rejected.

<u>PRODUCTS &amp; SPECIES</u>	<u>ESTIMATED VOLUME*</u>	<u>ADVERTISED PRICE</u>	<u>BID PRICE</u>
Sawtimber			
Red Maple	2.40 MBF	\$ 79.00/MBF	\$ _____
Sugar Maple	87.80 MBF	\$ 409.00/MBF	\$ _____
Pulpwood			
Beech	172.00 Cords	\$ 21.30/Cord	\$ _____
Mixed Hardwood	1,010.00 Cords	\$ 21.25/Cord	\$ _____

\*The volumes are statistically estimated within plus (+) or minus (-) 17.10 percent. These estimated volumes are final and not subject to adjustment. Prospective bidders are urged to examine this timber and to make their own estimates of quantity and quality.

I understand that any or all bids may be rejected. All bids must be signed and all bid items must be bid or the bid form may be rejected. I also understand that consideration and awarding a contract will be based upon my past performance and ability to complete the contract based upon equipment and staffing subject to my control.

FEDERAL ID: _____ or SOCIAL SECURITY NUMBER: _____ Company or individual bidding: _____ Company representative's name: _____ Address: _____ City: _____ State: _____ Zip: _____
---

IF AVAILABLE, PLEASE PLACE THE PERSONALIZED LABEL FROM YOUR PROSPECTUS IN THE ABOVE BOX.

Individual or company representative's signature: \_\_\_\_\_ Date: \_\_\_\_\_

Phone number : \_\_\_\_\_ Email (optional): \_\_\_\_\_

**THE WINNING BIDDER MUST COMPLETE THE VERIFICATION OF WORKER'S DISABILITY COMPENSATION ACT COMPLIANCE (ON REVERSE SIDE IF DOUBLE SIDED) WITHIN 21 DAYS OF SALE AWARD DATE**



FOR DEPARTMENT USE ONLY	
Sale Number (XX - XXX - XX - XX)	
Forest Management Unit:	

## TIMBER SALE VERIFICATION OF WORKER'S DISABILITY COMPENSATION ACT COMPLIANCE

As required by Act 317, P.A. 1969 (Worker's Compensation) and  
Part 5 of Act 451 of 1994, as amended.

### VERIFICATION OF WORKER'S DISABILITY COMPENSATION ACT COMPLIANCE

- This verification must be completed and submitted within 21 days of contract award and prior to the issuance of the timber sale contract.
- In addition, if boxes 2B or 2C are checked, then Notice of Exclusion or Certificate of Insurance must be submitted within twenty-one (21) days of the contract award and prior to the issuance of the timber sale contract.
- All information must be typed or printed except for written signatures.

Please Check Appropriate Categories:

1. My business is organized as (you **must** check one of the boxes below):
  - A.  Sole Proprietorship (individual)
  - B.  Partnership
  - C.  Corporation
2. You **must** check one of the boxes below:
  - A.  I certify my business is a sole proprietorship and it has no employees but the sole proprietor. I am not subject to the Worker's Compensation Laws.
  - B.  I certify my business has satisfied its obligation to the Worker's Compensation Act through the use of an approved Notice of Exclusion (BWC-337, Rev. 5/96). I will provide a copy of the Notice of Exclusion within 21 days of the contract award. (For questions or a copy of the BWC-337, please call the Worker's Compensation Bureau at 517-322-1195).
  - C.  I certify my business has a Worker's Compensation Policy. I will provide an original Certificate of Insurance within twenty-one (21) days of the contract award.
3. If you have checked item 2(A) or 2(B), you **must** indicate the number of **both** full-time and part-time employees, other than yourself, including family members and active partners (if none, you must enter "0").

\_\_\_\_\_ Full-time Employees

\_\_\_\_\_ Part-time Employees

Name of Business		Federal ID (or) Social Security No.	
Address		Telephone (       )	
City	State	ZIP	

*I hereby certify that the above information is true and correct. I agree to notify the Michigan DNR of any changes that occur in factors affecting my coverage during any of my present and future operations.*

\_\_\_\_\_  
Signature of Owner or Authorized Representative

\_\_\_\_\_  
Title

\_\_\_\_\_  
Date

Please complete the "SEALED BID" information on the next page

Loud Hound Aspen Mix (45-119-16)  
 ; Mackinac COUNTY

In response to the notice of sale to be held 3:00 p.m. (local time) on August 8, 2017, I am hereby submitting my sealed bid (firm offer) for the following forest products to be cut. Bids for individual species must be at or above the advertised price. All non-responsive bid forms may be rejected.

<u>PRODUCTS &amp; SPECIES</u>	<u>ESTIMATED VOLUME*</u>	<u>ADVERTISED PRICE</u>	<u>BID PRICE</u>
Pulpwood			
B. T. Aspen	466.00 Cords	\$ 16.60/Cord	\$ _____
Balsam Fir	723.00 Cords	\$ 9.15/Cord	\$ _____
Black Cherry	14.00 Cords	\$ 23.00/Cord	\$ _____
Black Spruce	64.00 Cords	\$ 20.00/Cord	\$ _____
Jack Pine	6.00 Cords	\$ 29.00/Cord	\$ _____
Paper Birch	62.00 Cords	\$ 11.45/Cord	\$ _____
Quaking Aspen	1,018.00 Cords	\$ 16.60/Cord	\$ _____
Red Maple	244.00 Cords	\$ 23.00/Cord	\$ _____
White Pine	8.00 Cords	\$ 16.45/Cord	\$ _____
White Spruce	172.00 Cords	\$ 20.00/Cord	\$ _____

\*The volumes are statistically estimated within plus (+) or minus (-) 12.71 percent. These estimated volumes are final and not subject to adjustment. Prospective bidders are urged to examine this timber and to make their own estimates of quantity and quality.

I understand that any or all bids may be rejected. All bids must be signed and all bid items must be bid or the bid form may be rejected. I also understand that consideration and awarding a contract will be based upon my past performance and ability to complete the contract based upon equipment and staffing subject to my control.

FEDERAL ID: \_\_\_\_ - \_\_\_\_ - \_\_\_\_ or SOCIAL SECURITY NUMBER: \_\_\_\_ - \_\_\_\_ - \_\_\_\_  
 Company or individual bidding: \_\_\_\_\_  
 Company representative's name: \_\_\_\_\_  
 Address: \_\_\_\_\_  
 City: \_\_\_\_\_ State: \_\_\_\_\_ Zip: \_\_\_\_\_

IF AVAILABLE, PLEASE PLACE THE PERSONALIZED LABEL FROM YOUR PROSPECTUS IN THE ABOVE BOX.

Individual or company representative's signature: \_\_\_\_\_ Date: \_\_\_\_\_

Phone number : \_\_\_\_\_ Email (optional): \_\_\_\_\_

**THE WINNING BIDDER MUST COMPLETE THE VERIFICATION OF WORKER'S DISABILITY COMPENSATION ACT COMPLIANCE (ON REVERSE SIDE IF DOUBLE SIDED) WITHIN 21 DAYS OF SALE AWARD DATE**



Soggy Spruce (45-120-16)  
 ; Mackinac COUNTY

In response to the notice of sale to be held 3:00 p.m. (local time) on August 8, 2017, I am hereby submitting my sealed bid (firm offer) for the following forest products to be cut. Bids for individual species must be at or above the advertised price. All non-responsive bid forms may be rejected.

<u>PRODUCTS &amp; SPECIES</u>	<u>ESTIMATED VOLUME*</u>	<u>ADVERTISED PRICE</u>	<u>BID PRICE</u>
Pulpwood			
Balsam Fir	90.00 Cords	\$ 13.75/Cord	\$ _____
Mixed Spruce	333.00 Cords	\$ 30.00/Cord	\$ _____
N. White Cedar	2.00 Cords	\$ 18.30/Cord	\$ _____
Paper Birch	16.00 Cords	\$ 17.15/Cord	\$ _____
Quaking Aspen	76.00 Cords	\$ 24.90/Cord	\$ _____
Red Maple	7.00 Cords	\$ 34.50/Cord	\$ _____
White Pine	10.00 Cords	\$ 24.65/Cord	\$ _____

\*The volumes are statistically estimated within plus (+) or minus (-) 13.14 percent. These estimated volumes are final and not subject to adjustment. Prospective bidders are urged to examine this timber and to make their own estimates of quantity and quality.

I understand that any or all bids may be rejected. All bids must be signed and all bid items must be bid or the bid form may be rejected. I also understand that consideration and awarding a contract will be based upon my past performance and ability to complete the contract based upon equipment and staffing subject to my control.

FEDERAL ID: \_\_\_\_ - \_\_\_\_ - \_\_\_\_ or SOCIAL SECURITY NUMBER: \_\_\_\_ - \_\_\_\_ - \_\_\_\_

Company or individual bidding: \_\_\_\_\_

Company representative's name: \_\_\_\_\_

Address: \_\_\_\_\_

City: \_\_\_\_\_ State: \_\_\_\_\_ Zip: \_\_\_\_\_

IF AVAILABLE, PLEASE PLACE THE PERSONALIZED LABEL FROM YOUR PROSPECTUS IN THE ABOVE BOX.

Individual or company representative's signature: \_\_\_\_\_ Date: \_\_\_\_\_

Phone number : \_\_\_\_\_ Email (optional): \_\_\_\_\_

**THE WINNING BIDDER MUST COMPLETE THE VERIFICATION OF WORKER'S DISABILITY COMPENSATION ACT COMPLIANCE (ON REVERSE SIDE IF DOUBLE SIDED) WITHIN 21 DAYS OF SALE AWARD DATE**



<b>FOR DEPARTMENT USE ONLY</b>
Sale Number (XX - XXX - XX - XX)
Forest Management Unit:

## TIMBER SALE VERIFICATION OF WORKER'S DISABILITY COMPENSATION ACT COMPLIANCE

*As required by Act 317, P.A. 1969 (Worker's Compensation) and  
Part 5 of Act 451 of 1994, as amended.*

### VERIFICATION OF WORKER'S DISABILITY COMPENSATION ACT COMPLIANCE

- This verification must be completed and submitted within 21 days of contract award and prior to the issuance of the timber sale contract.
- In addition, if boxes 2B or 2C are checked, then Notice of Exclusion or Certificate of Insurance must be submitted within twenty-one (21) days of the contract award and prior to the issuance of the timber sale contract.
- All information must be typed or printed except for written signatures.

Please Check Appropriate Categories:

1. My business is organized as (you **must** check one of the boxes below):
  - A.  Sole Proprietorship (individual)
  - B.  Partnership
  - C.  Corporation
2. You **must** check one of the boxes below:
  - A.  I certify my business is a sole proprietorship and it has no employees but the sole proprietor. I am not subject to the Worker's Compensation Laws.
  - B.  I certify my business has satisfied its obligation to the Worker's Compensation Act through the use of an approved Notice of Exclusion (BWC-337, Rev. 5/96). I will provide a copy of the Notice of Exclusion within 21 days of the contract award. (For questions or a copy of the BWC-337, please call the Worker's Compensation Bureau at 517-322-1195).
  - C.  I certify my business has a Worker's Compensation Policy. I will provide an original Certificate of Insurance within twenty-one (21) days of the contract award.
3. If you have checked item 2(A) or 2(B), you **must** indicate the number of **both** full-time and part-time employees, other than yourself, including family members and active partners (if none, you must enter "0").

\_\_\_\_\_ Full-time Employees

\_\_\_\_\_ Part-time Employees

Name of Business		Federal ID (or) Social Security No.	
Address		Telephone (       )	
City	State	ZIP	

*I hereby certify that the above information is true and correct. I agree to notify the Michigan DNR of any changes that occur in factors affecting my coverage during any of my present and future operations.*

\_\_\_\_\_  
Signature of Owner or Authorized Representative

\_\_\_\_\_  
Title

\_\_\_\_\_  
Date

**Please complete the "SEALED BID" information on the next page**

GEM Stone Aspen (45-122-16)  
 ; Mackinac COUNTY

In response to the notice of sale to be held 3:00 p.m. (local time) on August 8, 2017, I am hereby submitting my sealed bid (firm offer) for the following forest products to be cut. Bids for individual species must be at or above the advertised price. All non-responsive bid forms may be rejected.

<u>PRODUCTS &amp; SPECIES</u>	<u>ESTIMATED VOLUME*</u>	<u>ADVERTISED PRICE</u>	<u>BID PRICE</u>
Pulpwood			
Balsam Fir	347.00 Cords	\$ 11.90/Cord	\$ _____
Misc. Species 1	75.00 Acres	\$ 33.00/Acres	\$ _____
Mixed Aspen	411.00 Cords	\$ 21.55/Cord	\$ _____
Mixed Hardwood	253.00 Cords	\$ 29.90/Cord	\$ _____
N. White Cedar	134.00 Cords	\$ 15.85/Cord	\$ _____
Paper Birch	261.00 Cords	\$ 14.90/Cord	\$ _____
Red Pine	4.00 Cords	\$ 67.15/Cord	\$ _____
White Spruce	190.00 Cords	\$ 26.00/Cord	\$ _____

\*The volumes are statistically estimated within plus (+) or minus (-) 10.19 percent. These estimated volumes are final and not subject to adjustment. Prospective bidders are urged to examine this timber and to make their own estimates of quantity and quality.

I understand that any or all bids may be rejected. All bids must be signed and all bid items must be bid or the bid form may be rejected. I also understand that consideration and awarding a contract will be based upon my past performance and ability to complete the contract based upon equipment and staffing subject to my control.

FEDERAL ID: \_\_\_\_ - \_\_\_\_ - \_\_\_\_ or SOCIAL SECURITY NUMBER: \_\_\_\_ - \_\_\_\_ - \_\_\_\_

Company or individual bidding: \_\_\_\_\_

Company representative's name: \_\_\_\_\_

Address: \_\_\_\_\_

City: \_\_\_\_\_ State: \_\_\_\_\_ Zip: \_\_\_\_\_

IF AVAILABLE, PLEASE PLACE THE PERSONALIZED LABEL FROM YOUR PROSPECTUS IN THE ABOVE BOX.

Individual or company representative's signature: \_\_\_\_\_ Date: \_\_\_\_\_

Phone number : \_\_\_\_\_ Email (optional): \_\_\_\_\_

**THE WINNING BIDDER MUST COMPLETE THE VERIFICATION OF WORKER'S DISABILITY COMPENSATION ACT COMPLIANCE (ON REVERSE SIDE IF DOUBLE SIDED) WITHIN 21 DAYS OF SALE AWARD DATE**



<b>FOR DEPARTMENT USE ONLY</b>
Sale Number (XX - XXX - XX - XX)
Forest Management Unit:

## TIMBER SALE VERIFICATION OF WORKER'S DISABILITY COMPENSATION ACT COMPLIANCE

*As required by Act 317, P.A. 1969 (Worker's Compensation) and  
Part 5 of Act 451 of 1994, as amended.*

### VERIFICATION OF WORKER'S DISABILITY COMPENSATION ACT COMPLIANCE

- This verification must be completed and submitted within 21 days of contract award and prior to the issuance of the timber sale contract.
- In addition, if boxes 2B or 2C are checked, then Notice of Exclusion or Certificate of Insurance must be submitted within twenty-one (21) days of the contract award and prior to the issuance of the timber sale contract.
- All information must be typed or printed except for written signatures.

Please Check Appropriate Categories:

1. My business is organized as (you **must** check one of the boxes below):
  - A.  Sole Proprietorship (individual)
  - B.  Partnership
  - C.  Corporation
  
2. You **must** check one of the boxes below:
  - A.  I certify my business is a sole proprietorship and it has no employees but the sole proprietor. I am not subject to the Worker's Compensation Laws.
  - B.  I certify my business has satisfied its obligation to the Worker's Compensation Act through the use of an approved Notice of Exclusion (BWC-337, Rev. 5/96). I will provide a copy of the Notice of Exclusion within 21 days of the contract award. (For questions or a copy of the BWC-337, please call the Worker's Compensation Bureau at 517-322-1195).
  - C.  I certify my business has a Worker's Compensation Policy. I will provide an original Certificate of Insurance within twenty-one (21) days of the contract award.
  
3. If you have checked item 2(A) or 2(B), you **must** indicate the number of **both** full-time and part-time employees, other than yourself, including family members and active partners (if none, you must enter "0").

\_\_\_\_\_ Full-time Employees

\_\_\_\_\_ Part-time Employees

Name of Business		Federal ID (or) Social Security No.	
Address		Telephone (       )	
City	State	ZIP	

*I hereby certify that the above information is true and correct. I agree to notify the Michigan DNR of any changes that occur in factors affecting my coverage during any of my present and future operations.*

\_\_\_\_\_  
Signature of Owner or Authorized Representative

\_\_\_\_\_  
Title

\_\_\_\_\_  
Date

**Please complete the "SEALED BID" information on the next page**



Eevee Mix (45-123-16)  
 ; Mackinac COUNTY

In response to the notice of sale to be held 3:00 p.m. (local time) on August 8, 2017, I am hereby submitting my sealed bid (firm offer) for the following forest products to be cut. Bids for individual species must be at or above the advertised price. All non-responsive bid forms may be rejected.

<u>PRODUCTS &amp; SPECIES</u>	<u>ESTIMATED VOLUME*</u>	<u>ADVERTISED PRICE</u>	<u>BID PRICE</u>
Pulpwood			
Balsam Fir	62.00 Cords	\$ 12.80/Cord	\$ _____
Misc. Species 1	37.00 Acres	\$ 35.00/Acres	\$ _____
Mixed Aspen	12.00 Cords	\$ 23.25/Cord	\$ _____
Mixed Hardwood	146.00 Cords	\$ 32.20/Cord	\$ _____
N. White Cedar	155.00 Cords	\$ 17.10/Cord	\$ _____
Paper Birch	124.00 Cords	\$ 16.00/Cord	\$ _____
White Spruce	23.00 Cords	\$ 28.00/Cord	\$ _____

\*The volumes are statistically estimated within plus (+) or minus (-) 24.42 percent. These estimated volumes are final and not subject to adjustment. Prospective bidders are urged to examine this timber and to make their own estimates of quantity and quality.

I understand that any or all bids may be rejected. All bids must be signed and all bid items must be bid or the bid form may be rejected. I also understand that consideration and awarding a contract will be based upon my past performance and ability to complete the contract based upon equipment and staffing subject to my control.

FEDERAL ID: \_\_\_ - \_\_\_ - \_\_\_ or SOCIAL SECURITY NUMBER: \_\_\_ - \_\_\_ - \_\_\_

Company or individual bidding: \_\_\_\_\_

Company representative's name: \_\_\_\_\_

Address: \_\_\_\_\_

City: \_\_\_\_\_ State: \_\_\_\_\_ Zip: \_\_\_\_\_

IF AVAILABLE, PLEASE PLACE THE PERSONALIZED LABEL FROM YOUR PROSPECTUS IN THE ABOVE BOX.

Individual or company representative's signature: \_\_\_\_\_ Date: \_\_\_\_\_

Phone number : \_\_\_\_\_ Email (optional): \_\_\_\_\_

**THE WINNING BIDDER MUST COMPLETE THE VERIFICATION OF WORKER'S DISABILITY COMPENSATION ACT COMPLIANCE (ON REVERSE SIDE IF DOUBLE SIDED) WITHIN 21 DAYS OF SALE AWARD DATE**



<b>FOR DEPARTMENT USE ONLY</b>
Sale Number (XX – XXX – XX – XX)
Forest Management Unit:

## TIMBER SALE VERIFICATION OF WORKER'S DISABILITY COMPENSATION ACT COMPLIANCE

*As required by Act 317, P.A. 1969 (Worker's Compensation) and  
Part 5 of Act 451 of 1994, as amended.*

### VERIFICATION OF WORKER'S DISABILITY COMPENSATION ACT COMPLIANCE

- This verification must be completed and submitted within 21 days of contract award and prior to the issuance of the timber sale contract.
- In addition, if boxes 2B or 2C are checked, then Notice of Exclusion or Certificate of Insurance must be submitted within twenty-one (21) days of the contract award and prior to the issuance of the timber sale contract.
- All information must be typed or printed except for written signatures.

Please Check Appropriate Categories:

1. My business is organized as (you **must** check one of the boxes below):
  - A.  Sole Proprietorship (individual)
  - B.  Partnership
  - C.  Corporation
  
2. You **must** check one of the boxes below:
  - A.  I certify my business is a sole proprietorship and it has no employees but the sole proprietor. I am not subject to the Worker's Compensation Laws.
  - B.  I certify my business has satisfied its obligation to the Worker's Compensation Act through the use of an approved Notice of Exclusion (BWC-337, Rev. 5/96). I will provide a copy of the Notice of Exclusion within 21 days of the contract award. (For questions or a copy of the BWC-337, please call the Worker's Compensation Bureau at 517-322-1195).
  - C.  I certify my business has a Worker's Compensation Policy. I will provide an original Certificate of Insurance within twenty-one (21) days of the contract award.
  
3. If you have checked item 2(A) or 2(B), you **must** indicate the number of **both** full-time and part-time employees, other than yourself, including family members and active partners (if none, you must enter "0").

\_\_\_\_\_ Full-time Employees

\_\_\_\_\_ Part-time Employees

Name of Business		Federal ID (or) Social Security No.	
Address		Telephone (       )	
City	State	ZIP	

*I hereby certify that the above information is true and correct. I agree to notify the Michigan DNR of any changes that occur in factors affecting my coverage during any of my present and future operations.*

\_\_\_\_\_  
Signature of Owner or Authorized Representative

\_\_\_\_\_  
Title

\_\_\_\_\_  
Date

**Please complete the "SEALED BID" information on the next page**