



**DEPARTMENT OF NATURAL RESOURCES
STATE OF MICHIGAN**

TIMBER SALE PROSPECTUS #6195

SCHEDULED SALE DATE AND TIME: 3:00 p.m. (local time) on July 17, 2018.

LOCATION: ESCANABA OFFICE, 6833 HWY 2, 41 & M-35, GLADSTONE, MI 49837.

PROSPECTUS NOTE: The bidder is advised to inspect the sale area and review the location, estimated volumes, operating costs and contract terms of proposed sales. Please be aware that some landowners may request 60 days or more notice for access across their land.

Notice is hereby given that bids will be received by the Unit Manager, ESCANABA MANAGEMENT UNIT, for certain timber on the following described lands:

X1 Lane Mix (33-021-18)

Menominee County, Advertised Price \$66,150.10, 161.3 Acres, Hardwood, Spruce/Fir/Tamarack.

SALE NOTE: The eastern larch beetle has caused some tamarack mortality within Payment Units 2 and 3. The spruce budworm has caused some spruce/fir defoliation throughout the sale. 70 yards of pit run gravel need to be hauled in and spread by the Purchaser prior to hauling any wood.

Fenced Beets SBW (33-022-18)

Menominee County, Advertised Price \$71,066.20, 149.0 Acres, Aspen, Hardwood.

SALE NOTE: The spruce budworm is present and has caused some balsam fir and spruce defoliation and a minor amount of mortality at this time. The eastern larch beetle is also present, causing some tamarack mortality. A culvert will need to be purchased by the Purchaser and 120 yards of gravel will need to be hauled and spread by the Purchaser.

Boneyard Bonanza (33-023-18)

Menominee County, Advertised Price \$66,184.95, 119.6 Acres, Aspen, Hardwood.

SALE NOTE: There is potential for oak wilt within the sale. If oak wilt is identified during the duration of the contract, the sale specs maybe modified (see spec 7.3.2).

120 yards of gravel must be hauled and spread on the Boneyard Road prior to any hauling taking place (see spec 4.1.8).

Thirty One (33-013-17)

Menominee County, Advertised Price \$14,731.60, 40.6 Acres, Hardwood, Spruce/Fir/Tamarack.

SALE NOTE: Some portions of this sale have been impacted by the Eastern Larch Beetle. It is recommended to harvest Payment Units 2 and 3 in the winter of 2018.

Access may be through private land.

BID INSTRUCTIONS (VER. 11/28/2017):

1. Scheduled Bid Location, Date, and Time (2/11)

Bids must be received by the Unit Manager, ESCANABA OFFICE, 6833 HWY 2, 41 & M-35, GLADSTONE, MI 49837, no later than 3:00 p.m. (local time) on July 17, 2018. For further information concerning this sale, contact Eric Thompson at 906-786-2354.

2. Bidder's Qualifications (5/16)

Purchaser shall obtain workers compensation insurance to cover claims under Michigan's Worker's Disability Compensation Act of 1969 or similar employee benefit act of any other state applicable to an employee. If all or part of a timber sale was prepared by a private contractor, the contractor and that contractor's company are not permitted to bid on the timber sale contract. Bids will not be accepted from individuals or companies appearing on the DNR/FRD No-Bid List. This list contains the names of purchasers who previously failed to execute a contract within 21-days or who have a history of poor performance.

3. Preparation of Sealed Bids (5/16)

Bid Forms may be completed online thru Michigan DNR Timber Sale Online Bidding (OLB) at www.michigan.gov/timberbidding or by completing the hardcopy Bid Form found in the Timber Sale Prospectus. Hardcopy Bid Forms shall be manually signed in ink. Registration in OLB is considered your 'signature' for all bids submitted thru that system. Bid prices must be entered for each species and product in the Bid Price column for all material subject to bidding and all fill-in blanks must be completed. If erasures or other changes appear on the hardcopy Bid Form, each erasure or change must be initialed by the person signing the bid.

4. Submission of Sealed Bids (5/16)

Bid forms may be obtained from the Unit Manager or thru OLB. Bids may be submitted hardcopy or thru OLB. All hardcopy bids must be submitted on the bid form and in an envelope clearly identified as described in this section. NOTE: Only one bid form per bid envelope. Sealed bids must be submitted to the Unit office designated in the prospectus and must be submitted at or prior to the time established in the prospectus. The envelope should show on the outside (a) the sale name or number and (b) the date and time of bid opening, as shown in the prospectus. Bids received after the time specified in the sale prospectus are late bids and will be rejected.

It is possible for a bidder to submit multiple bids on a single sale. For example, a bid may be submitted hardcopy and a bid may be submitted thru OLB. Or, two bidders from the same company could both submit bids on the same sale. If this were to happen, the State would accept all bids received and award the contract accordingly. All bidding and contractual requirements would apply to all bids received.

5. Public Opening of Sealed Bids (7/16)

If conditions permit, the sealed bids will be publicly opened and posted at the time and place set in the prospectus.

If a bidder, present at a bid opening, has submitted bids on more than one sale, that bidder may withdraw their unopened bid envelopes or announce the withdrawal of their online bid after being declared the successful bidder on one sale.

6. Award of Contract (1/11)

Award of the contract will be made to the Bidder whose bid, conforming to the prospectus, is most advantageous to the State of Michigan on the basis of total value at rates bid for the estimated quantities. The State reserves the right to reject any bid or waive any minor irregularity in bids received. A written award mailed (or otherwise furnished) to the successful Bidder shall be deemed to result in a binding contract without further action by either party.

7. Down Payment (1/11)

The Bidder to whom award is made must make a down payment within 21 days of the sale award. The amount of the down payment will be calculated as shown in the Bond and Payment Schedule of this prospectus. Only cash may be used to meet this requirement.

8. Performance Security (1/11)

As guarantee of faithful performance, a cash bond, certificate of deposit, surety bond or irrevocable letter of credit (LOC) is required within 21 days of the sale award. The amount of the performance security is shown in the Bond and

Payment Schedule of this prospectus. If an LOC or surety is used, the coverage must extend for at least 6 months beyond the contract expiration.

9. Timber Sale Contract (11/17)

Additional conditions and requirements common to all timber sales are listed on the timber sale contract (R4031) and are available on line at www.michigan.gov/timber. Contact the Unit Manager for additional information or a sample contract. Within 21 days of the date of the award letter, the bidder must sign the contract and provide the required down payment, performance security, and verification of worker's disability compensation. The down payment and performance security shall be in accordance with the provisions of the timber sale contract, in the sums stated in this prospectus. If these actions are not taken, then the Bidder, the Bidder's corporation, and the corporation's principals may not be permitted to bid on State timber sales for a period of 1 year. In addition, the Bidder certifies that if awarded this contract, the Bidder will complete the timber sale contract in accordance with its terms and any modifications thereof including requirements to purchase, cut, and remove the included timber by the expiration date.

Payment Unit values in the State Forest Timber Sale Contract are calculated based on the advertised value of the Payment Unit as a percentage of the total advertised value of the contract. The advertised value of each Payment Unit is given in the Description of Timber by Payment Unit table on the Timber Sale Information page. For example, if the value of Payment Unit 1 is advertised as \$1,500 and the total Timber Sale value is advertised as \$10,000, the contract price for Payment Unit 1 will be 15% of the total bid price ($\$1,500/\$10,000 * 100$).

10. Disclaimer of Estimates and Bidder's Warranty of Inspection (7/16)

Before submitting this bid, the Bidder is advised and cautioned to inspect the sale area, review the requirements of the sale contract, and take other steps as may be reasonably necessary to ascertain the location, estimated volumes, construction estimates, and operating costs of the proposed sale. Failure to do so will not relieve the Bidder from responsibility for completing the contract.

The Bidder warrants that this bid is submitted solely on the basis of the Bidder's examination and inspection of the quality and quantity of the timber offered for sale and the Bidder's opinion of the value thereof and the costs of recovery. No reliance should be placed on the State of Michigan's estimates of timber quality, quantity or costs of recovery. Bidder further acknowledges that the State of Michigan: (i) expressly disclaims any warranty of fitness of timber for any purpose; (ii) offers this timber as is without any warranty of quality (merchantability) or quantity and (iii) expressly disclaims any warranty as to the quantity or quality of timber sold.

11. Certification and Chain-of-Custody (10/14)

Unless otherwise indicated in the contract under section 7 – Other Conditions of the Sale Specific Conditions & Requirements, the area encompassed by this timber sale is certified to the standards of the Forest Stewardship Council (FSC) - Certificate #SCS-FM/COC-00090N and the Sustainable Forestry Initiative (SFI) - Certificate # NSF-SFIS-5Y031-SF5. Forest products from this sale may be delivered to the mill as "FSC 100% and / or SFI certified" as long as the contractor hauling the forest products is chain-of-custody (COC) certified or covered under a COC certificate from the destination mill. The purchaser is responsible for maintaining COC after leaving the sale area.

12. Good Neighbor Authority (GNA) Requirements (7/16)

If the name of this timber sales contains the acronym GNA, it is authorized by the Good Neighbor Authority (GNA) and covered by various agreements between the U.S. Forest Service and the State. The timber sale occurs on federal land and the following conditions apply:

GNA contracts on US Forest Service land will not be awarded to purchasers on the Federal list of excluded parties. The System for Award Management (SAM) will be checked for active excluded parties prior to award of contract. In addition, the Bidder to whom award is made must complete an Assurance Regarding Felony Conviction or Tax Delinquent Status for Corporate Applicants (AD-3031).

13. Good Neighbor Authority (GNA) Requirements, con't (9/16)

Bidder certifies, by signing this bid form, that to the best of Bidder's knowledge that the following representations are accurate and complete.

a. That the Bidder and its principals are not presently debarred, suspended, proposed for debarment, declared ineligible, or voluntary excluded from timber sales (covered transactions) by any Federal department or agency.

b. That the Bidder and its principals have not within a 3-year period preceding this bid been convicted of or had a civil judgment rendered against them for commission of fraud or a criminal offense in connection with obtaining, attempting to obtain, or performing a public (Federal, State, or local) transaction or contract under a public transaction; violation of Federal or State antitrust statutes or commission of embezzlement, theft, forgery, bribery, falsification or destruction of records, making false statements, or receiving stolen property.

c. That the Bidder and its principals are not presently indicted for or otherwise criminally or civilly charged by a governmental entity (Federal, State, or local) with commission of any of the offenses enumerated in paragraph b of this certification.

d. That the Bidder and its principals have not within a 3-year period preceding this bid had one or more public transactions (Federal, State, or local) terminated for breach or default of a timber or forest product contract.

Bidders that cannot certify this requirement, in whole or in part, shall submit an explanation with their bid.

KEITH CREAGH

Director

TIMBER SALE INFORMATION

X1 Lane Mix (33-021-18)

Menominee County (Advertised Price \$66,150.10)

SALE NOTE: The eastern larch beetle has caused some tamarack mortality within Payment Units 2 and 3. The spruce budworm has caused some spruce/fir defoliation throughout the sale. 70 yards of pit run gravel need to be hauled in and spread by the Purchaser prior to hauling any wood.

A timber sale contract for this lump sum, sealed bid timber sale will be awarded to the responsible bidder offering the highest sealed bid price. Bids must be at or above the following advertised price for each species:

| <u>PRODUCTS & SPECIES</u> | <u>ESTIMATED UNITS*</u> | | <u>ADVERTISED PRICE</u> |
|-------------------------------|-------------------------|-------|-------------------------|
| Sawtimber | | | |
| Basswood | 12.20 | MBF | \$ 118.00 / MBF |
| Black Ash | 2.40 | MBF | \$ 78.00 / MBF |
| Green Ash | 3.40 | MBF | \$ 92.00 / MBF |
| Mixed Oak | 12.60 | MBF | \$ 145.00 / MBF |
| Red Maple | 19.40 | MBF | \$ 206.00 / MBF |
| White Oak | 1.70 | MBF | \$ 58.00 / MBF |
| White Pine | 6.20 | MBF | \$ 54.00 / MBF |
| Pulpwood | | | |
| Balsam Fir | 82.00 | Cords | \$ 26.90 / Cord |
| Jack Pine | 40.00 | Cords | \$ 46.85 / Cord |
| Mixed Aspen | 44.00 | Cords | \$ 29.25 / Cord |
| Mixed Hardwood | 1,342.00 | Cords | \$ 29.15 / Cord |
| Mixed Oak | 174.00 | Cords | \$ 26.05 / Cord |
| Mixed Spruce | 131.00 | Cords | \$ 21.50 / Cord |
| N. White Cedar | 9.00 | Cords | \$ 22.60 / Cord |
| Red Pine | 36.00 | Cords | \$ 58.75 / Cord |
| Tamarack | 130.00 | Cords | \$ 19.25 / Cord |
| White Pine | 50.00 | Cords | \$ 25.95 / Cord |

* The total volume is statistically estimated within plus (+) or minus (-) 12.07 percent. The estimated units are final and not subject to adjustment. Prospective bidders are urged to examine this timber and to make their own estimates of quantity and quality.

BOND AND PAYMENT SCHEDULE:

1. A bond in the amount of \$3,308.00 to insure faithful performance of the conditions of the contract will be deposited by the successful bidder within 21 days of the sale award.
2. Cutting in any sale or unit without the required advance payment would be considered a trespass.
3. Total payment must be paid in advance or according to the following schedule:
 - (a) Ten percent (10%) of the sale value must be paid within 21 days of the sale award.
 - (b) The 10% down payment will be credited towards the first unit cut.
 - (c) Payment for each of the following units must be made before cutting begins in that unit:

| PAYMENT UNIT NUMBER | PERCENT OF TOTAL SALE VALUE |
|---------------------|-----------------------------|
| 01 | 7.2% |
| 02 | 3.4% |
| 03 | 7.3% |
| 04 | 18.5% |
| 05 | 22.1% |
| 06 | 20.9% |
| 07 | 15.4% |
| 08 | 5.2% |

4. If no cutting takes place, the 10% down payment will not be refunded.
5. Operations on the contract issued will terminate on 09/30/2020.

Description of Timber by Payment Unit (PU)

| PU | MARKET GROUP | PRODUCT | QUANTITY | UNIT | ACRES | ADVERTISE PRICE |
|----|-------------------------|-----------|----------|-------|-------|-----------------|
| 1 | White Pine | Sawtimber | 0.5 | MBF | 47.0 | \$4,784.30 |
| | Balsam Fir | Pulpwood | 5.0 | Cords | | |
| | Jack Pine | | 5.0 | Cords | | |
| | Mixed Aspen | | 35.0 | Cords | | |
| | <i>Quaking Aspen</i> | | 35.0 | Cords | | |
| | Mixed Oak | | 42.0 | Cords | | |
| | <i>Northern Pin Oak</i> | | 42.0 | Cords | | |
| | Red Pine | | 36.0 | Cords | | |
| | White Pine | | 6.0 | Cords | | |
| 2 | Mixed Spruce | Pulpwood | 31.0 | Cords | 9.0 | \$2,237.50 |
| | <i>Black Spruce</i> | | 31.0 | Cords | | |
| | N. White Cedar | | 5.0 | Cords | | |
| | Tamarack | | 69.0 | Cords | | |
| | White Pine | | 5.0 | Cords | | |
| 3 | Jack Pine | Pulpwood | 35.0 | Cords | 21.1 | \$4,828.45 |
| | Mixed Aspen | | 4.0 | Cords | | |
| | <i>Quaking Aspen</i> | | 4.0 | Cords | | |
| | Mixed Hardwood | | 19.0 | Cords | | |
| | <i>Red Maple</i> | | 19.0 | Cords | | |
| | Mixed Oak | | 1.0 | Cords | | |
| | <i>Northern Pin Oak</i> | | 1.0 | Cords | | |
| | Mixed Spruce | | 54.0 | Cords | | |
| | <i>Black Spruce</i> | | 54.0 | Cords | | |
| | Tamarack | | 57.0 | Cords | | |
| | White Pine | | 9.0 | Cords | | |
| 4 | Mixed Oak | Sawtimber | 4.9 | MBF | 16.6 | \$12,230.15 |
| | <i>Red Oak</i> | | 4.9 | MBF | | |
| | Red Maple | | 4.1 | MBF | | |
| | White Pine | | 3.1 | MBF | | |
| | Mixed Aspen | Pulpwood | 1.0 | Cords | | |
| | <i>B. T. Aspen</i> | | 1.0 | Cords | | |
| | Mixed Hardwood | | 305.0 | Cords | | |
| | <i>Basswood</i> | | 6.0 | Cords | | |
| | <i>Black Cherry</i> | | 2.0 | Cords | | |
| | <i>Ironwood</i> | | 2.0 | Cords | | |
| | <i>Paper Birch</i> | | 3.0 | Cords | | |
| | <i>Red Maple</i> | | 289.0 | Cords | | |
| | <i>White Ash</i> | | 3.0 | Cords | | |
| | Mixed Oak | | 47.0 | Cords | | |
| | <i>Red Oak</i> | | 42.0 | Cords | | |
| | <i>White Oak</i> | | 5.0 | Cords | | |
| | White Pine | | 14.0 | Cords | | |
| 5 | Basswood | Sawtimber | 11.0 | MBF | 18.6 | \$14,565.15 |
| | Mixed Oak | | 5.9 | MBF | | |
| | <i>Northern Pin Oak</i> | | 0.5 | MBF | | |
| | <i>Red Oak</i> | | 5.4 | MBF | | |
| | Red Maple | | 5.5 | MBF | | |
| | White Pine | | 1.3 | MBF | | |
| | Balsam Fir | Pulpwood | 3.0 | Cords | | |
| | Mixed Hardwood | | 321.0 | Cords | | |
| | <i>Basswood</i> | | 67.0 | Cords | | |
| | <i>Green Ash</i> | | 13.0 | Cords | | |
| | <i>Paper Birch</i> | | 8.0 | Cords | | |
| | <i>Red Maple</i> | | 230.0 | Cords | | |
| | <i>White Ash</i> | | 3.0 | Cords | | |
| | Mixed Oak | | 60.0 | Cords | | |

Description of Timber by Payment Unit (PU), con't

| PU | MARKET GROUP | PRODUCT | QUANTITY | UNIT | ACRES | ADVERTISE PRICE | | | |
|---------------------|-------------------------|------------------|-----------|--------------|-------|-----------------|------------|------|-------------|
| 5 con't | <i>Northern Pin Oak</i> | <i>Pulpwood</i> | 6.0 | <i>Cords</i> | | | | | |
| | <i>Red Oak</i> | | 47.0 | <i>Cords</i> | | | | | |
| | <i>White Oak</i> | | 7.0 | <i>Cords</i> | | | | | |
| | White Pine | | 8.0 | Cords | | | | | |
| 6 | Basswood | Sawtimber | 1.2 | MBF | 21.9 | \$13,847.60 | | | |
| | Green Ash | | 1.0 | MBF | | | | | |
| | Mixed Oak | | 1.8 | MBF | | | | | |
| | <i>Northern Pin Oak</i> | | 1.0 | <i>MBF</i> | | | | | |
| | <i>Red Oak</i> | | 0.8 | <i>MBF</i> | | | | | |
| | Red Maple | | 6.2 | MBF | | | | | |
| | White Oak | | 1.7 | MBF | | | | | |
| | White Pine | | 1.3 | MBF | | | | | |
| | Balsam Fir | Pulpwood | 1.0 | Cords | | | | | |
| | Mixed Aspen | | 3.0 | Cords | | | | | |
| | <i>Quaking Aspen</i> | | 3.0 | <i>Cords</i> | | | | | |
| | Mixed Hardwood | | 380.0 | Cords | | | | | |
| | <i>White Ash</i> | <i>Sawtimber</i> | 0.5 | <i>MBF</i> | | | | | |
| | <i>Basswood</i> | <i>Pulpwood</i> | 11.0 | <i>Cords</i> | | | | | |
| | <i>Black Ash</i> | | 4.0 | <i>Cords</i> | | | | | |
| | <i>Black Cherry</i> | | 22.0 | <i>Cords</i> | | | | | |
| | <i>Green Ash</i> | | 25.0 | <i>Cords</i> | | | | | |
| | <i>Ironwood</i> | | 1.0 | <i>Cords</i> | | | | | |
| | <i>Paper Birch</i> | | 5.0 | <i>Cords</i> | | | | | |
| | <i>Red Maple</i> | | 279.0 | <i>Cords</i> | | | | | |
| | <i>White Ash</i> | | 32.0 | <i>Cords</i> | | | | | |
| | Mixed Oak | | 21.0 | Cords | | | | | |
| | <i>Northern Pin Oak</i> | | 4.0 | <i>Cords</i> | | | | | |
| | <i>Red Oak</i> | | 9.0 | <i>Cords</i> | | | | | |
| | <i>White Oak</i> | | 8.0 | <i>Cords</i> | | | | | |
| | Mixed Spruce | | 3.0 | Cords | | | | | |
| | <i>White Spruce</i> | | 3.0 | <i>Cords</i> | | | | | |
| | White Pine | | 4.0 | Cords | | | | | |
| | 7 | Black Ash | Sawtimber | 2.4 | | | MBF | 19.5 | \$10,185.80 |
| | | Green Ash | | 0.9 | | | MBF | | |
| | | Red Maple | | 1.2 | | | MBF | | |
| | | Balsam Fir | Pulpwood | 33.0 | | | Cords | | |
| Mixed Hardwood | | | 283.0 | Cords | | | | | |
| <i>American Elm</i> | | | 7.0 | <i>Cords</i> | | | | | |
| <i>Basswood</i> | | | 11.0 | <i>Cords</i> | | | | | |
| <i>Black Ash</i> | | | 136.0 | <i>Cords</i> | | | | | |
| <i>Green Ash</i> | | | 77.0 | <i>Cords</i> | | | | | |
| <i>Paper Birch</i> | | | 5.0 | <i>Cords</i> | | | | | |
| <i>Red Maple</i> | | | 47.0 | <i>Cords</i> | | | | | |
| Mixed Spruce | | | 13.0 | Cords | | | | | |
| <i>White Spruce</i> | | | 13.0 | <i>Cords</i> | | | | | |
| N. White Cedar | | | 4.0 | Cords | | | | | |
| Tamarack | | | 3.0 | Cords | | | | | |
| White Pine | | | 4.0 | Cords | | | | | |
| 8 | | Green Ash | Sawtimber | 1.5 | MBF | 7.6 | \$3,471.15 | | |
| | Red Maple | | 2.4 | MBF | | | | | |
| | Balsam Fir | Pulpwood | 40.0 | Cords | | | | | |
| | Mixed Aspen | | 1.0 | Cords | | | | | |
| | <i>Quaking Aspen</i> | | 1.0 | <i>Cords</i> | | | | | |
| | Mixed Hardwood | | 34.0 | Cords | | | | | |
| | <i>Balsam Poplar</i> | | 2.0 | <i>Cords</i> | | | | | |
| | <i>Black Cherry</i> | | 1.0 | <i>Cords</i> | | | | | |

Description of Timber by Payment Unit (PU), con't

| PU | MARKET GROUP | PRODUCT | QUANTITY | UNIT | ACRES | ADVERTISE PRICE |
|---------|-------------------------|-----------------|----------|--------------|-------|-----------------|
| 8 con't | <i>Green Ash</i> | <i>Pulpwood</i> | 17.0 | <i>Cords</i> | | |
| | <i>Paper Birch</i> | | 4.0 | <i>Cords</i> | | |
| | <i>Red Maple</i> | | 10.0 | <i>Cords</i> | | |
| | Mixed Oak | | 3.0 | Cords | | |
| | <i>Northern Pin Oak</i> | | 3.0 | <i>Cords</i> | | |
| | Mixed Spruce | | 30.0 | Cords | | |
| | <i>White Spruce</i> | | 30.0 | <i>Cords</i> | | |
| | Tamarack | | 1.0 | Cords | | |
| TOTAL: | | | 57.9 | MBF | | |
| TOTAL: | | | 2,038.0 | Cords | | |

Sale Specific Conditions & Requirements

Sale Name: X1 Lane Mix

Sale Number: 33-021-18 Seq#: 1

1 - Sale Area

1.2 - Boundaries

1.2.1 - Painted boundaries (1/14)

The sale boundary and Payment Unit boundaries are marked and identified by blue, red, and yellow paint. Exterior sale boundary lines against private property are marked with blue paint. Exterior sale boundary lines against state are marked with red paint. The retention patch within Payment Unit 5 is marked with red paint; no harvesting activities may occur within this area. Interior Payment Unit boundaries are marked with yellow paint. The painted boundary line trees are not Included Timber and are to be protected. Yellow painted trees designating an interior Payment Unit boundary are only to be cut when all surrounding Payment Units have been paid for.

2 - Timber Specifications

2.1 - Included Timber

2.1.1 - Clearcut unit(s) with unmerchantable trees (6/14)

Within Payment Unit(s) 1, 2, 4, 5, 6, and 7, cut all trees that are three (3) inches or more at DBH, except do not cut hemlock and trees marked with green paint within Payment Units 4, 5, and 6.

Within Payment Unit(s) 3 and 8, cut all trees that are four (4) inches or more at DBH, except do not cut elm within Payment Unit 8.

2.2 - Utilization

2.2.3 - Stump heights (4/07)

Stump heights within Payment Unit 1 shall not exceed 10 inches for trees greater than 10 inches DBH, and 4 inches for trees smaller than 10 inches DBH. This is in order to facilitate planting operations.

2.2.4 - Skidding length (2/14)

Skidding of unlimbed tops or lengths over 17 feet is not permissible within Payment Units 3 and 8, unless approved by the Unit Manager or his/her representative. This is to protect the advanced regeneration within each of the Payment Units.

3 - Payments

3.3 - Pre-measured Sales

3.3.4 - Dividing payment units (7/14)

Payment Unit(s) \$18,000 in value or greater may be divided at the request of the Purchaser and upon approval of the Unit Manager. Dividing Payment Units is a contract modification which requires a Timber Sale Contract Supplement. There will be only one division per Payment Unit.

3.4 - Damaged Timber

3.4.1 - Damaged timber (6/14)

General Condition and Requirement 3.4 Damaged Timber, defines liquidated damages for undesignated live merchantable trees which are cut or injured.

Within Payment Units 3 and 8, if more than 40% of the tree seedlings or saplings (1/4" to 4" DBH) within a specified portion of the sale area are damaged, liquidated damages will be assessed at \$500 per acre for all acreage within that specified portion of the sale area that was damaged.

4 - Transportation

4.1 - Construction

4.1.8 - Road work (1) (8/07)

The following road work is required: the Purchaser must haul and spread 70 yards of pit run gravel on to the access roads throughout the sale area. Two culverts need additional fill placed over them and some additional areas require some fill. Gravel is available from a state pit approximately 7 miles from the sale, off of the Snakey Lake Road.

The road work must be completed prior to any hauling taking place.

4.2 - Maintenance

4.2.1 - Hauling restriction (12/08)

Hauling may be restricted on forest roads by the Unit Manager or his/her representative. The restriction may occur during spring breakup or during other wet weather conditions.

4.2.4 - Grading (10/16)

For completion of the sale, state forest roads must be graded. In general, this will require a road grader or bull dozer to shape up the roads after forest products have been hauled off site. This includes cleaning of drainage areas, grading, crowning and filling with gravel, if necessary. The grading equipment to be used must be approved by the Unit Manager or his/her representative.

5 - Operations

5.2 - Conduct of Operations

5.2.3 - Operating Restrictions

5.2.3.1 - Operating restrictions (9/11)

Within Payment Unit(s) 2, 3, and 7, cutting and skidding are limited to the period of December 1 to March 31, unless there is an extended dry or frozen period and the sale administrator allows harvesting during that time period. This restriction is because of low wet ground throughout these Payment Units.

5.2.22 - Operating Caution

5.2.22.1 - Operating caution (6/11)

It is recommended, but not required, that within Payment Unit(s) 4, 5, 6, and 8, cutting and skidding occur during dry summer or frozen winter conditions. The reason for the recommendation is because of some low wet ground within the Payment Units.

5.4 - Soil Protection

5.4.1 - Rutting restriction, general (7/16)

Operations are to cease immediately if equipment and weather conditions result in rutting of roads and/or skid trails which is 12 inches or greater in depth and 50 feet in length. The Unit Manager or his/her representative may restrict hauling and/or skidding if ruts exceed the specified depth. With the Unit Manager or his/her representative's approval, the Purchaser may return to the area when the risk of rutting has decreased.

6 - Safety and Fire Prevention

6.2 - Signing

6.2.1 - Road posting (9/09)

The Purchaser is responsible for posting and maintaining caution signs on X-1 Lane prior to beginning operations. The road must be posted at appropriate distances from the sale area to warn of logging activity and truck traffic. Signs must be removed when harvest operations are suspended or completed. The Purchaser will provide these signs.

7 - Other Conditions

7.5 - Loss

7.5.1 - Deteriorating timber (7/09)

The sale area has received damage from the eastern larch beetle and the spruce budworm. The larch beetle has caused some tamarack mortality and the budworm has caused some spruce and fir defoliation. The Purchaser should harvest the wood as soon as possible. The Department of Natural Resources is held free of responsibility of any further damage or deterioration due to delay in harvesting.



TIMBER SALE MAP

This information provided by authority of Part 525, 1994 PA 451, as amended.

| | | | | | | | |
|--|--------------|--|---------------------|--|--------------------|-----------|---------|
| Forest Management Unit Escanaba Management Unit | | County Menominee County | Mapped By Bealdo | | Date 10/30/2017 | Page 1 | of 1 |
| Township 35N | Range 28W | Section(s) and Subdivision(s) Sec 20 - S1/2 NW, NESW, S1/2 NE, NENE, NESE | | | Scale 1:15,840 | | |

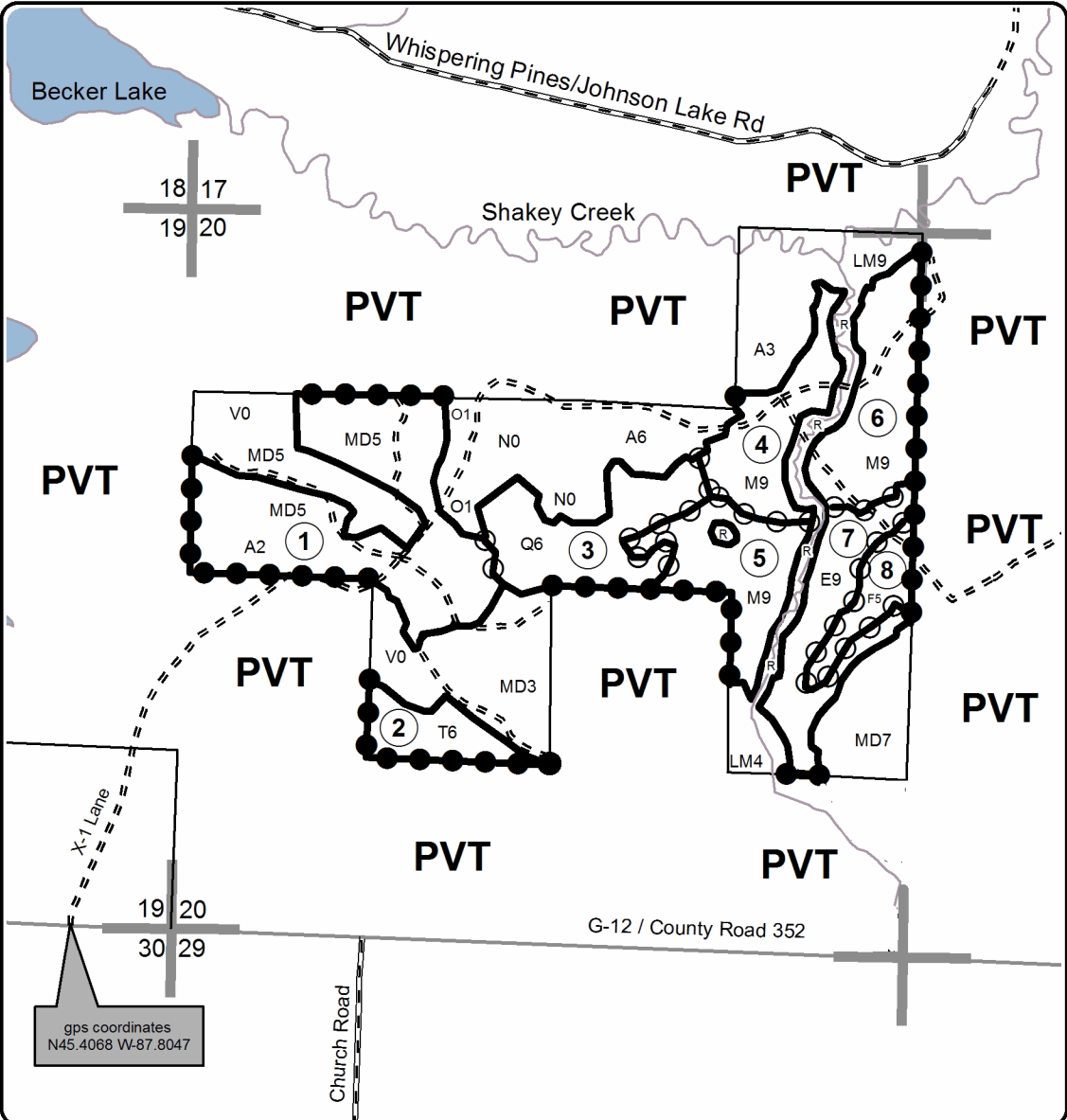
| Cover Type | | | | Density | | | |
|-------------------|----------------------|-------------------------|-------------------|-----------------------------|------------------------|--|--|
| A = Aspen | H = Hemlock | N = Marsh | U = Upland Brush | 0 = Non Stocked | 5 = Pole Timber Medium | | |
| B = Paper Birch | J = Jack Pine | O = Oak | UM = Upland Mixed | 1 = Seedling Sapling Poor | 6 = Pole Timber Well | | |
| C = Cedar | L = Lowland Brush | P = Lowland Poplar | V = Bog or Marsh | 2 = Seedling Sapling Medium | 7 = Saw Timber Poor | | |
| D = Tread Bog | LM = Lowland Mixed | Q = Mixed Swamp Conifer | W = White Pine | 3 = Seedling Sapling Well | 8 = Saw Timber Medium | | |
| E = Swamp Hdwoods | M = Mpl, Bch, Brch | R = Red Pine | X = Non Stocked | 4 = Pole Timber Poor | 9 = Saw Timber Well | | |
| F = Spruce Fir | MC = Mixed Conifer | S = Black Spruce | Z = Water | | | | |
| G = Grass | MD = Mixed Deciduous | T = Tamarack | | | | | |

| PU | Acres | PU | Acres |
|----|-------|----|-------|
| 1 | 47.0 | 5 | 18.6 |
| 2 | 9.0 | 6 | 21.9 |
| 3 | 21.1 | 7 | 19.5 |
| 4 | 16.6 | 8 | 7.6 |

X1 Lane Mix
Compartment 24
161.3 Acres

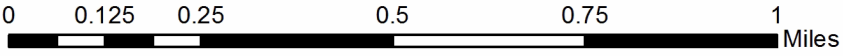
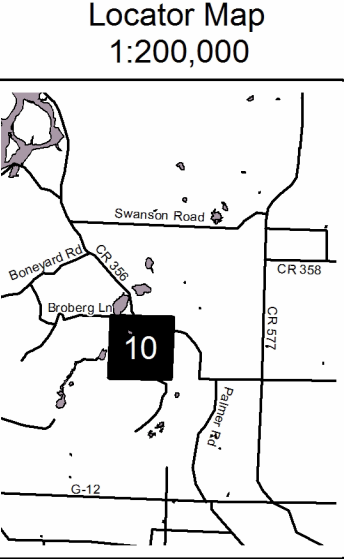


QR Code opens map in PDF Maps App



Legend

- Against State (Red)
- Payment Unit (Yellow)
- Private Line (Blue)
- Section Corners
- 20 Section Number
- Paved Roads
- Gravel Roads
- == Poor Dirt Roads
- State Land Boundary
- ① Payment Unit
- ~ Creek/Seasonal Drainage
- R Retention Patch
- PVT Private Property



TIMBER SALE INFORMATION

Fenced Beets SBW (33-022-18)

Menominee County (Advertised Price \$71,066.20)

SALE NOTE: The spruce budworm is present and has caused some balsam fir and spruce defoliation and a minor amount of mortality at this time. The eastern larch beetle is also present, causing some tamarack mortality. A culvert will need to be purchased by the Purchaser and 120 yards of gravel will need to be hauled and spread by the Purchaser.

A timber sale contract for this lump sum, sealed bid timber sale will be awarded to the responsible bidder offering the highest sealed bid price. Bids must be at or above the following advertised price for each species:

| <u>PRODUCTS & SPECIES</u> | <u>ESTIMATED UNITS*</u> | | <u>ADVERTISED PRICE</u> |
|-------------------------------|-------------------------|-------|-------------------------|
| Sawtimber | | | |
| Basswood | 0.50 | MBF | \$ 118.00 / MBF |
| Green Ash | 1.00 | MBF | \$ 92.00 / MBF |
| Northern Pin Oak | 2.70 | MBF | \$ 145.00 / MBF |
| Red Maple | 12.30 | MBF | \$ 206.00 / MBF |
| Sugar Maple | 0.50 | MBF | \$ 319.00 / MBF |
| White Pine | 48.60 | MBF | \$ 54.00 / MBF |
| Pulpwood | | | |
| Balsam Fir | 250.00 | Cords | \$ 26.90 / Cord |
| Mixed Aspen | 752.00 | Cords | \$ 29.25 / Cord |
| Mixed Hardwood | 692.00 | Cords | \$ 29.15 / Cord |
| Mixed Oak | 59.00 | Cords | \$ 26.05 / Cord |
| Mixed Spruce | 261.00 | Cords | \$ 21.50 / Cord |
| N. White Cedar | 25.00 | Cords | \$ 22.60 / Cord |
| Red Pine | 9.00 | Cords | \$ 58.75 / Cord |
| Tamarack | 89.00 | Cords | \$ 19.25 / Cord |
| White Pine | 245.00 | Cords | \$ 25.95 / Cord |

* The total volume is statistically estimated within plus (+) or minus (-) 8.02 percent. The estimated units are final and not subject to adjustment. Prospective bidders are urged to examine this timber and to make their own estimates of quantity and quality.

BOND AND PAYMENT SCHEDULE:

1. A bond in the amount of \$3,553.00 to insure faithful performance of the conditions of the contract will be deposited by the successful bidder within 21 days of the sale award.
2. Cutting in any sale or unit without the required advance payment would be considered a trespass.
3. Total payment must be paid in advance or according to the following schedule:
 - (a) Ten percent (10%) of the sale value must be paid within 21 days of the sale award.
 - (b) The 10% down payment will be credited towards the first unit cut.
 - (c) Payment for each of the following units must be made before cutting begins in that unit:

| PAYMENT UNIT NUMBER | PERCENT OF TOTAL SALE VALUE |
|---------------------|-----------------------------|
| 01 | 9.9% |
| 02 | 4.1% |
| 03 | 18.2% |
| 04 | 9.7% |
| 05 | 8.5% |
| 06 | 6.1% |
| 07 | 3.8% |
| 08 | 7.3% |
| 09 | 14.0% |
| 10 | 18.4% |

4. If no cutting takes place, the 10% down payment will not be refunded.
5. Operations on the contract issued will terminate on 06/30/2021.

Description of Timber by Payment Unit (PU)

| PU | MARKET GROUP | PRODUCT | QUANTITY | UNIT | ACRES | ADVERTISE PRICE | |
|------------|------------------|------------|-------------------------|-------|-------|-----------------|--------------|
| 1 | Northern Pin Oak | Sawtimber | 1.3 | MBF | 11.4 | \$7,068.40 | |
| | | White Pine | 18.6 | MBF | | | |
| | Mixed Hardwood | Pulpwood | | 12.0 | | | Cords |
| | | | <i>Red Maple</i> | 12.0 | | | <i>Cords</i> |
| | | | Mixed Oak | 19.0 | | | Cords |
| | | | <i>Northern Pin Oak</i> | 19.0 | | | <i>Cords</i> |
| | | | Mixed Spruce | 41.0 | | | Cords |
| | | | <i>Black Spruce</i> | 41.0 | | | <i>Cords</i> |
| | | | Tamarack | 74.0 | | | Cords |
| | | | White Pine | 105.0 | | | Cords |
| 2 | White Pine | Sawtimber | 0.5 | MBF | 5.3 | \$2,903.80 | |
| | | Balsam Fir | 26.0 | Cords | | | |
| | Mixed Hardwood | Pulpwood | | 53.0 | | | Cords |
| | | | <i>Green Ash</i> | 40.0 | | | <i>Cords</i> |
| | | | <i>Paper Birch</i> | 13.0 | | | <i>Cords</i> |
| | | | Mixed Oak | 1.0 | | | Cords |
| | | | <i>Northern Pin Oak</i> | 1.0 | | | <i>Cords</i> |
| | | | Mixed Spruce | 24.0 | | | Cords |
| | | | <i>Black Spruce</i> | 24.0 | | | <i>Cords</i> |
| | | | Tamarack | 2.0 | | | Cords |
| White Pine | 2.0 | Cords | | | | | |
| 3 | Basswood | Sawtimber | 0.5 | MBF | 23.3 | \$12,936.10 | |
| | | | 1.0 | MBF | | | |
| | | | 9.8 | MBF | | | |
| | | | 0.5 | MBF | | | |
| | | | 2.5 | MBF | | | |
| | Mixed Hardwood | Pulpwood | Balsam Fir | 43.0 | | | Cords |
| | | | | 304.0 | | | Cords |
| | | | <i>Basswood</i> | 13.0 | | | <i>Cords</i> |
| | | | <i>Black Ash</i> | 34.0 | | | <i>Cords</i> |
| | | | <i>Black Cherry</i> | 2.0 | | | <i>Cords</i> |
| | | | <i>Green Ash</i> | 60.0 | | | <i>Cords</i> |
| | | | <i>Red Maple</i> | 184.0 | | | <i>Cords</i> |
| | | | <i>Sugar Maple</i> | 9.0 | | | <i>Cords</i> |
| | | | <i>Yellow Birch</i> | 2.0 | | | <i>Cords</i> |
| | | | Mixed Oak | 5.0 | | | Cords |
| | | | <i>Northern Pin Oak</i> | 5.0 | | | <i>Cords</i> |
| | | | Mixed Spruce | 9.0 | | | Cords |
| | | | <i>Black Spruce</i> | 6.0 | | | <i>Cords</i> |
| | | | <i>White Spruce</i> | 3.0 | | | <i>Cords</i> |
| | | | White Pine | 5.0 | | | Cords |
| 4 | Red Maple | Sawtimber | 2.5 | MBF | 18.9 | \$6,895.70 | |
| | | | White Pine | 21.4 | | | MBF |
| | Mixed Hardwood | Pulpwood | Balsam Fir | 9.0 | | | Cords |
| | | | Mixed Aspen | 6.0 | | | Cords |
| | | | <i>Quaking Aspen</i> | 6.0 | | | <i>Cords</i> |
| | | | | 81.0 | | | Cords |
| | | | <i>Green Ash</i> | 6.0 | | | <i>Cords</i> |
| | | | <i>Paper Birch</i> | 1.0 | | | <i>Cords</i> |
| | | | <i>Red Maple</i> | 74.0 | | | <i>Cords</i> |
| | | | Mixed Oak | 4.0 | | | Cords |
| | | | <i>Northern Pin Oak</i> | 4.0 | | | <i>Cords</i> |
| | | | Mixed Spruce | 16.0 | | | Cords |
| | | | <i>Black Spruce</i> | 1.0 | | | <i>Cords</i> |
| | | | <i>White Spruce</i> | 15.0 | | | <i>Cords</i> |
| | | | White Pine | 77.0 | | | Cords |

Description of Timber by Payment Unit (PU), con't

| PU | MARKET GROUP | PRODUCT | QUANTITY | UNIT | ACRES | ADVERTISE PRICE |
|----|-------------------------|-----------|----------|--------------|-------|-----------------|
| 5 | Balsam Fir | Pulpwood | 55.0 | Cords | 12.8 | \$6,069.55 |
| | Mixed Aspen | | 78.0 | Cords | | |
| | <i>Quaking Aspen</i> | | 78.0 | <i>Cords</i> | | |
| | Mixed Hardwood | | 46.0 | Cords | | |
| | <i>Red Maple</i> | | 46.0 | <i>Cords</i> | | |
| | Mixed Oak | | 16.0 | Cords | | |
| | <i>Northern Pin Oak</i> | | 10.0 | <i>Cords</i> | | |
| | <i>White Oak</i> | | 6.0 | <i>Cords</i> | | |
| | Mixed Spruce | | 22.0 | Cords | | |
| | <i>Black Spruce</i> | | 10.0 | <i>Cords</i> | | |
| | <i>White Spruce</i> | | 12.0 | <i>Cords</i> | | |
| | White Pine | | 3.0 | Cords | | |
| 6 | Balsam Fir | Pulpwood | 44.0 | Cords | 12.0 | \$4,301.50 |
| | Mixed Aspen | | 8.0 | Cords | | |
| | <i>Quaking Aspen</i> | | 8.0 | <i>Cords</i> | | |
| | Mixed Hardwood | | 29.0 | Cords | | |
| | <i>Balsam Poplar</i> | | 5.0 | <i>Cords</i> | | |
| | <i>Black Cherry</i> | | 3.0 | <i>Cords</i> | | |
| | <i>Green Ash</i> | | 2.0 | <i>Cords</i> | | |
| | <i>Red Maple</i> | | 19.0 | <i>Cords</i> | | |
| | Mixed Spruce | | 59.0 | Cords | | |
| | <i>Black Spruce</i> | | 16.0 | <i>Cords</i> | | |
| | <i>White Spruce</i> | | 43.0 | <i>Cords</i> | | |
| | N. White Cedar | | 23.0 | Cords | | |
| | Tamarack | | 13.0 | Cords | | |
| 7 | Balsam Fir | Pulpwood | 25.0 | Cords | 5.3 | \$2,700.55 |
| | Mixed Aspen | | 18.0 | Cords | | |
| | <i>Quaking Aspen</i> | | 18.0 | <i>Cords</i> | | |
| | Mixed Hardwood | | 19.0 | Cords | | |
| | <i>Black Cherry</i> | | 2.0 | <i>Cords</i> | | |
| | <i>Paper Birch</i> | | 2.0 | <i>Cords</i> | | |
| | <i>Red Maple</i> | | 15.0 | <i>Cords</i> | | |
| | Mixed Oak | | 2.0 | Cords | | |
| | <i>Northern Pin Oak</i> | | 2.0 | <i>Cords</i> | | |
| | Mixed Spruce | | 32.0 | Cords | | |
| | <i>Black Spruce</i> | | 7.0 | <i>Cords</i> | | |
| | <i>White Spruce</i> | | 25.0 | <i>Cords</i> | | |
| | White Pine | | 8.0 | Cords | | |
| 8 | Northern Pin Oak | Sawtimber | 0.9 | MBF | 10.8 | \$5,183.40 |
| | Mixed Aspen | Pulpwood | 99.0 | Cords | | |
| | <i>B. T. Aspen</i> | | 32.0 | <i>Cords</i> | | |
| | <i>Quaking Aspen</i> | | 67.0 | <i>Cords</i> | | |
| | Mixed Hardwood | | 31.0 | Cords | | |
| | <i>Paper Birch</i> | | 2.0 | <i>Cords</i> | | |
| | <i>Red Maple</i> | | 29.0 | <i>Cords</i> | | |
| | Mixed Oak | | 7.0 | Cords | | |
| | <i>Northern Pin Oak</i> | | 7.0 | <i>Cords</i> | | |
| | Mixed Spruce | | 3.0 | Cords | | |
| | <i>White Spruce</i> | | 3.0 | <i>Cords</i> | | |
| | Red Pine | | 3.0 | Cords | | |
| | White Pine | | 32.0 | Cords | | |
| 9 | White Pine | Sawtimber | 0.9 | MBF | 19.3 | \$9,979.70 |
| | Balsam Fir | Pulpwood | 22.0 | Cords | | |
| | Mixed Aspen | | 240.0 | Cords | | |
| | <i>B. T. Aspen</i> | | 19.0 | <i>Cords</i> | | |
| | <i>Quaking Aspen</i> | | 221.0 | <i>Cords</i> | | |

Description of Timber by Payment Unit (PU), con't

| PU | MARKET GROUP | PRODUCT | QUANTITY | UNIT | ACRES | ADVERTISE PRICE |
|---------|-------------------------|-----------|----------|--------------|-------|-----------------|
| 9 con't | Mixed Hardwood | Pulpwood | 45.0 | Cords | | |
| | <i>Balsam Poplar</i> | | 3.0 | <i>Cords</i> | | |
| | <i>Paper Birch</i> | | 3.0 | <i>Cords</i> | | |
| | <i>Red Maple</i> | | 39.0 | <i>Cords</i> | | |
| | Mixed Oak | | 2.0 | Cords | | |
| | <i>Northern Pin Oak</i> | | 2.0 | <i>Cords</i> | | |
| | Mixed Spruce | | 29.0 | Cords | | |
| | <i>White Spruce</i> | | 29.0 | <i>Cords</i> | | |
| | Red Pine | | 3.0 | Cords | | |
| | White Pine | | 6.0 | Cords | | |
| 10 | Northern Pin Oak | Sawtimber | 0.5 | MBF | 29.9 | \$13,027.50 |
| | White Pine | | 4.7 | MBF | | |
| | Balsam Fir | Pulpwood | 26.0 | Cords | | |
| | Mixed Aspen | | 303.0 | Cords | | |
| | <i>B. T. Aspen</i> | | 27.0 | <i>Cords</i> | | |
| | <i>Quaking Aspen</i> | | 276.0 | <i>Cords</i> | | |
| | Mixed Hardwood | | 72.0 | Cords | | |
| | <i>Balsam Poplar</i> | | 7.0 | <i>Cords</i> | | |
| | <i>Black Ash</i> | | 2.0 | <i>Cords</i> | | |
| | <i>Black Cherry</i> | | 2.0 | <i>Cords</i> | | |
| | <i>Paper Birch</i> | | 2.0 | <i>Cords</i> | | |
| | <i>Red Maple</i> | | 59.0 | <i>Cords</i> | | |
| | Mixed Oak | | 3.0 | Cords | | |
| | <i>Northern Pin Oak</i> | | 3.0 | <i>Cords</i> | | |
| | Mixed Spruce | | 26.0 | Cords | | |
| | <i>White Spruce</i> | | 26.0 | <i>Cords</i> | | |
| | N. White Cedar | | 2.0 | Cords | | |
| | Red Pine | | 3.0 | Cords | | |
| | White Pine | | 7.0 | Cords | | |
| | TOTAL: | | | 65.6 | | |
| TOTAL: | | | 2,382.0 | Cords | | |

Sale Specific Conditions & Requirements

Sale Name: Fenced Beets SBW

Sale Number: 33-022-18 Seq#: 1

1 - Sale Area

1.2 - Boundaries

1.2.1 - Painted boundaries (1/14)

The sale boundary and Payment Unit boundaries are marked and identified by blue, red, and yellow paint. Exterior sale boundary lines against private property are marked with blue paint. Exterior sale boundary lines against state are marked with red paint. There is a double dot red paint line along Co Rd 356 and the powerline R.O.W. within Payment Units 8, 9, and 10. The double dot red painted trees are included timber and should be harvested. Interior Payment Unit boundaries are marked with yellow paint. The painted boundary line trees are not Included Timber and are to be protected. Yellow painted trees designating an interior Payment Unit boundary are only to be cut when all surrounding Payment Units have been paid for.

2 - Timber Specifications

2.1 - Included Timber

2.1.1 - Clearcut unit(s) with unmerchantable trees (6/14)

Within Payment Unit(s) 1 - 10, cut all trees that are three (3) inches or more at DBH, with the following exceptions.

Within Payment Units 2 and 7, do not cut cedar.

Within Payment Units 3 and 4, do not cut cedar and hemlock, and trees marked with orange paint.

Within Payment Units 5, 8, 9, and 10, do not cut trees marked with orange paint.

2.1.9 - Harvest exception (12/08)

Do not cut any cedar trees within Payment Units 2, 3, 4, and 7, other than those that are necessary to remove in order to operate within the sale area. Every effort must be made to preserve the existing cedar and to leave an intact stand upon sale completion. All cut cedar shall be piled separately by products and scaled in the woods unless other scaling arrangements are agreed to by the Unit Manager or his/her representative. Stumpage price for cedar within the Payment Units listed above, shall be \$60.00 per cord.

2.2 - Utilization

2.2.3 - Stump heights (4/07)

Stump heights within Payment Unit(s) 4 and 5, shall not exceed 12 inches for trees greater than 10 inches DBH and 4 inches for trees smaller than 10 inches DBH. This is in order to facilitate scarifying operations.

3 - Payments

3.3 - Pre-measured Sales

3.3.4 - Dividing payment units (7/14)

Payment Unit(s) \$18,000 in value or greater may be divided at the request of the Purchaser and upon approval of the Unit Manager. Dividing Payment Units is a contract modification which requires a Timber Sale Contract Supplement. There will be only one division per Payment Unit.

4 - Transportation

4.1 - Construction

4.1.6 - Road construction (1/09)

Construction of new roads or improvements of existing roads shall be done in such a way as to minimize the environmental and visual impacts. Merchantable trees shall be cut and utilized unless otherwise directed. Non-merchantable trees shall be severed and laid flat on the ground. Slash shall be scattered, and not left in windrows and kept a minimum of 10 feet back from the road edge. Stumps shall be set upright, not left on edge, and be moved at least 10 feet away from the road edge. Disturbed soil shall be feathered into the woods and not left in berms or windrows.

4.1.8 - Road work (1) (8/07)

The following road work is required: the purchaser must purchase and install a new corrugated steel culvert 12" X 24' on the access road on the North side of Payment Unit 3. The Purchaser will also need to haul and spread 120 yards of pit run gravel. About 70 yards will be placed over the culvert and on the approaches and the other 50 yards will be placed on the Longrie Lake Road. A minimum of 12 inches of gravel will need to be placed over the culvert. Gravel is available from a state pit about 5 miles away, on the Swanson Road. The roadwork must be completed prior to harvesting Payment Unit 3 - 7.

4.2 - Maintenance

4.2.1 - Hauling restriction (12/08)

Hauling may be restricted on forest roads by the Unit Manager or his/her representative. The restriction may occur during spring breakup or during other wet weather conditions.

4.2.4 - Grading (10/16)

For completion of the sale, state forest roads must be graded. In general, this will require a road grader or bull dozer to shape up the roads after forest products have been hauled off site. This includes cleaning of drainage areas, grading, crowning and filling with gravel, if necessary. The grading equipment to be used must be approved by the Unit Manager or his/her representative.

5 - Operations

5.1 - Notification

5.1.6 - Utility R.O.W. (1/15)

It is the responsibility of the Purchaser to obtain permission from the utility company to utilize the power line R.O.W. for operations. This will apply to Payment Unit 8. American Transmission Company owns the transmission line.

5.2 - Conduct of Operations

5.2.3 - Operating Restrictions

5.2.3.1 - Operating restrictions (9/11)

Within Payment Unit(s) 1, 2, 6, and 7, cutting and skidding are limited to the period of December 1st to March 31st, unless there is an extended dry or frozen period and the sale administrator allows harvesting during that time period. This restriction is because of low wet ground throughout these Payment Units.

5.2.22 - Operating Caution

5.2.22.1 - Operating caution (6/11)

It is recommended, but not required, that within Payment Unit(s) 3 and 4, cutting and skidding occur during dry summer or frozen winter conditions. The reason for the recommendation is because about a third of each Payment Unit has low wet ground.

5.4 - Soil Protection

5.4.1 - Rutting restriction, general (7/16)

Operations are to cease immediately if equipment and weather conditions result in rutting of roads and/or skid trails which is 12 inches or greater in depth and 50 feet in length. The Unit Manager or his/her representative may restrict hauling and/or skidding if ruts exceed the specified depth. With the Unit Manager or his/her representative's approval, the Purchaser may return to the area when the risk of rutting has decreased.

6 - Safety and Fire Prevention

6.2 - Signing

6.2.1 - Road posting (9/09)

The Purchaser is responsible for posting and maintaining caution signs on the Longrie Lake Road prior to beginning operations. The road must be posted at appropriate distances from the sale area to warn of logging activity and truck traffic. Signs must be removed when harvest operations are suspended or completed. The Purchaser will provide these signs.

7 - Other Conditions

7.3 - Contract Modifications

7.3.2 - Modification for oak wilt (2/05)

Within the sale area, there may be patches of oak wilt. If oak wilt is identified within the sale area, this contract may be modified. The following modifications could occur: time of cutting, species to cut, volume to harvest, or various others dealing with the treatment of oak wilt. If a species is not specified in this contract, it shall be paid for at the average price received for that species and product.

7.5 - Loss

7.5.1 - Deteriorating timber (7/09)

The sale area has received damage from the spruce budworm and the eastern larch beetle. The spruce budworm has caused some spruce/fir defoliation and a minor amount of mortality at this time. The larch beetle has caused a minor amount of tamarack mortality. The Purchaser should harvest the wood as soon as possible. The Department of Natural Resources is held free of responsibility of any further damage or deterioration due to delay in harvesting.



TIMBER SALE MAP

This information provided by authority of Part 525, 1994 PA 451, as amended.

| | | | | | | |
|--|--------------|---|---------------------|-------------------|-----------|---------|
| Forest Management Unit Escanaba Management Unit | | County Menominee County | Mapped By Beaudo | Date 5/23/2018 | Page 1 | of 1 |
| Township 35N | Range 28W | Section(s) and Subdivision(s) Sec 10 - NENE, NENW, NESE, NESW, NWSE, NWSW, SENE, SENW, SESE, SESW, SWNE, SWSE, SWSW | | Scale 1:15,840 | | |

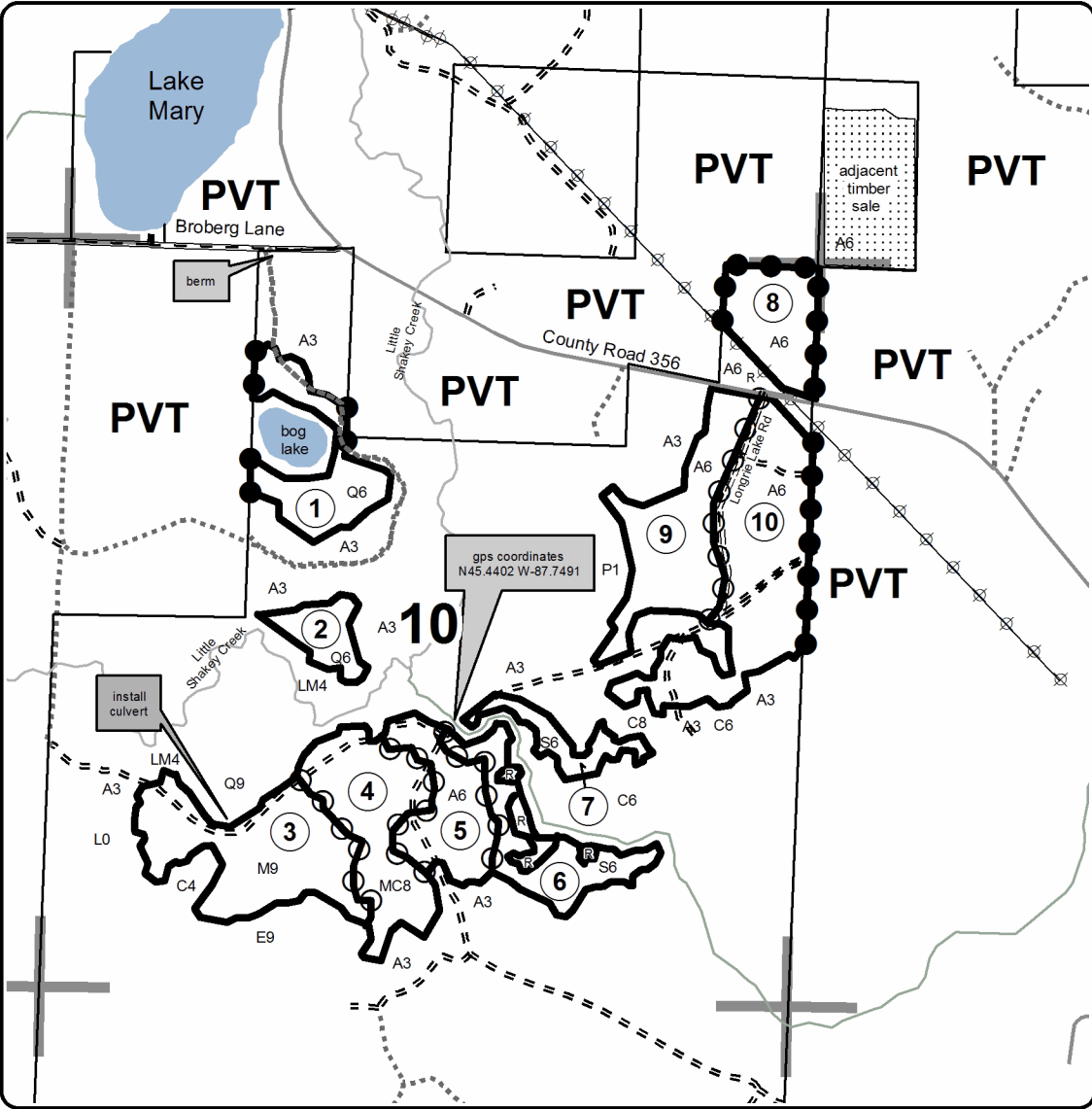
| Cover Type | | | | Density | | | |
|-------------------|----------------------|-------------------------|-------------------|-----------------------------|------------------------|--|--|
| A = Aspen | H = Hemlock | N = Marsh | U = Upland Brush | 0 = Non Stocked | 5 = Pole Timber Medium | | |
| B = Paper Birch | J = Jack Pine | O = Oak | UM = Upland Mixed | 1 = Seedling Sapling Poor | 6 = Pole Timber Well | | |
| C = Cedar | L = Lowland Brush | P = Lowland Poplar | V = Bog or Marsh | 2 = Seedling Sapling Medium | 7 = Saw Timber Poor | | |
| D = Treed Bog | LM = Lowland Mixed | Q = Mixed Swamp Conifer | W = White Pine | 3 = Seedling Sapling Well | 8 = Saw Timber Medium | | |
| E = Swamp Hdwoods | M = Mpl, Bch, Brch | R = Red Pine | X = Non Stocked | 4 = Pole Timber Poor | 9 = Saw Timber Well | | |
| F = Spruce Fir | MC = Mixed Conifer | S = Black Spruce | Z = Water | | | | |
| G = Grass | MD = Mixed Deciduous | T = Tamarack | | | | | |

| PU | Acres | PU | Acres |
|----|-------|----|-------|
| 1 | 11.4 | 6 | 12.0 |
| 2 | 5.3 | 7 | 5.3 |
| 3 | 23.3 | 8 | 10.8 |
| 4 | 18.9 | 9 | 19.3 |
| 5 | 12.8 | 10 | 29.9 |

Fenced Beets SBW
Compartment 21
149 Acres



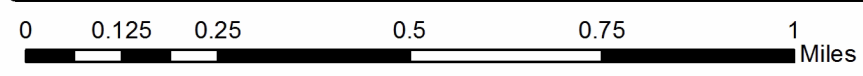
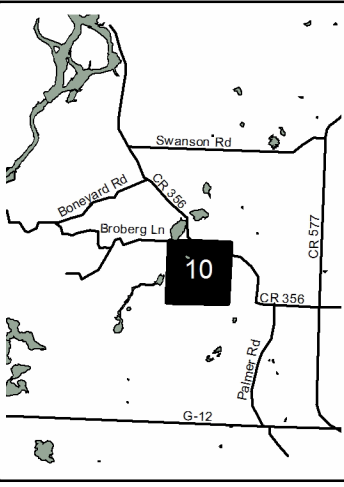

QR Code opens map in PDF Maps App



Legend

- Against State (Red)
- Payment Unit (Yellow)
- Private Line (Blue)
- Section Corner
- 10** Section Number
- Paved Roads
- Gravel Roads
- Poor Dirt Roads
- Closed
- Powerline
- PVT** Private Property
- Payment Unit
- Creek/Drainage
- R** Retention Patch

Locator Map
1:200,000



TIMBER SALE INFORMATION

Boneyard Bonanza (33-023-18)

Menominee County (Advertised Price \$66,184.95)

SALE NOTE: There is potential for oak wilt within the sale. If oak wilt is identified during the duration of the contract, the sale specs maybe modified (see spec 7.3.2).

120 yards of gravel must be hauled and spread on the Boneyard Road prior to any hauling taking place (see spec 4.1.8).

A timber sale contract for this lump sum, sealed bid timber sale will be awarded to the responsible bidder offering the highest sealed bid price. Bids must be at or above the following advertised price for each species:

| <u>PRODUCTS & SPECIES</u> | <u>ESTIMATED UNITS*</u> | <u>ADVERTISED PRICE</u> |
|-------------------------------|-------------------------|-------------------------|
| Sawtimber | | |
| Northern Pin Oak | 27.50 MBF | \$ 145.00 / MBF |
| Paper Birch | 0.40 MBF | \$ 83.00 / MBF |
| Red Maple | 2.20 MBF | \$ 206.00 / MBF |
| White Oak | 6.70 MBF | \$ 58.00 / MBF |
| Pulpwood | | |
| Balsam Fir | 89.00 Cords | \$ 26.90 / Cord |
| Mixed Aspen | 835.00 Cords | \$ 29.25 / Cord |
| Mixed Hardwood | 540.00 Cords | \$ 29.15 / Cord |
| Mixed Spruce | 68.00 Cords | \$ 21.50 / Cord |
| Northern Pin Oak | 473.00 Cords | \$ 26.05 / Cord |
| Tamarack | 30.00 Cords | \$ 19.25 / Cord |
| White Oak | 169.00 Cords | \$ 26.05 / Cord |

* The total volume is statistically estimated within plus (+) or minus (-) 8.99 percent. The estimated units are final and not subject to adjustment. Prospective bidders are urged to examine this timber and to make their own estimates of quantity and quality.

BOND AND PAYMENT SCHEDULE:

1. A bond in the amount of \$3,309.00 to insure faithful performance of the conditions of the contract will be deposited by the successful bidder within 21 days of the sale award.
2. Cutting in any sale or unit without the required advance payment would be considered a trespass.
3. Total payment must be paid in advance or according to the following schedule:
 - (a) Ten percent (10%) of the sale value must be paid within 21 days of the sale award.
 - (b) The 10% down payment will be credited towards the first unit cut.
 - (c) Payment for each of the following units must be made before cutting begins in that unit:

| PAYMENT UNIT NUMBER | PERCENT OF TOTAL SALE VALUE |
|---------------------|-----------------------------|
| 01 | 16.9% |
| 02 | 8.7% |
| 03 | 23.7% |
| 04 | 12.6% |
| 05 | 17.4% |
| 06 | 20.7% |

4. If no cutting takes place, the 10% down payment will not be refunded.
5. Operations on the contract issued will terminate on 06/30/2021.

Description of Timber by Payment Unit (PU)

| PU | MARKET GROUP | PRODUCT | QUANTITY | UNIT | ACRES | ADVERTISE PRICE | |
|----------|----------------------|-------------------|------------------|----------------------|-------|-----------------|--------------------|
| 1 | Northern Pin Oak | Sawtimber | 12.5 | MBF | 24.4 | \$11,177.80 | |
| | | | 1.3 | MBF | | | |
| | | | 2.0 | MBF | | | |
| | | | Pulpwood | 43.0 | | | Cords |
| | | | | <i>B. T. Aspen</i> | | | <i>8.0 Cords</i> |
| | | | | <i>Quaking Aspen</i> | | | <i>35.0 Cords</i> |
| | | | | Mixed Hardwood | | | 63.0 Cords |
| | | | | <i>Paper Birch</i> | | | <i>7.0 Cords</i> |
| | | | | <i>Red Maple</i> | | | <i>56.0 Cords</i> |
| | | | | Northern Pin Oak | | | 142.0 Cords |
| | | | White Oak | 84.0 Cords | | | |
| 2 | Northern Pin Oak | Sawtimber | 1.0 | MBF | 14.4 | \$5,756.95 | |
| | | | 0.5 | MBF | | | |
| | | | Pulpwood | 3.0 | | | Cords |
| | | | | Mixed Aspen | | | 108.0 Cords |
| | | | | <i>Quaking Aspen</i> | | | <i>108.0 Cords</i> |
| | | | | Mixed Hardwood | | | 8.0 Cords |
| | | | | <i>Balsam Poplar</i> | | | <i>2.0 Cords</i> |
| | | | | <i>Black Cherry</i> | | | <i>4.0 Cords</i> |
| | | | | <i>Red Maple</i> | | | <i>2.0 Cords</i> |
| | | | Northern Pin Oak | 58.0 Cords | | | |
| | | | White Oak | 23.0 Cords | | | |
| 3 | Northern Pin Oak | Sawtimber | 2.2 | MBF | 24.3 | \$15,636.15 | |
| | | | 0.5 | MBF | | | |
| | | | Pulpwood | 27.0 | | | Cords |
| | | | | Mixed Aspen | | | 213.0 Cords |
| | | | | <i>B. T. Aspen</i> | | | <i>85.0 Cords</i> |
| | | | | <i>Quaking Aspen</i> | | | <i>128.0 Cords</i> |
| | | | | Mixed Hardwood | | | 180.0 Cords |
| | | | | <i>Balsam Poplar</i> | | | <i>5.0 Cords</i> |
| | | | | <i>Black Ash</i> | | | <i>56.0 Cords</i> |
| | | | | <i>Black Cherry</i> | | | <i>2.0 Cords</i> |
| | | | | <i>Paper Birch</i> | | | <i>5.0 Cords</i> |
| | | | | <i>Red Maple</i> | | | <i>112.0 Cords</i> |
| | | | | Mixed Spruce | | | 32.0 Cords |
| | | | | <i>Black Spruce</i> | | | <i>27.0 Cords</i> |
| | | | | <i>White Spruce</i> | | | <i>5.0 Cords</i> |
| | | | | Northern Pin Oak | | | 80.0 Cords |
| | | | White Oak | 12.0 Cords | | | |
| | | | 4 | Northern Pin Oak | | | Sawtimber |
| 0.4 | MBF | | | | | | |
| 0.4 | MBF | | | | | | |
| Pulpwood | 51.0 | Cords | | | | | |
| | Mixed Aspen | 61.0 Cords | | | | | |
| | <i>B. T. Aspen</i> | <i>14.0 Cords</i> | | | | | |
| | <i>Quaking Aspen</i> | <i>47.0 Cords</i> | | | | | |
| | Mixed Hardwood | 127.0 Cords | | | | | |
| | <i>Balsam Poplar</i> | <i>14.0 Cords</i> | | | | | |
| | <i>Black Ash</i> | <i>16.0 Cords</i> | | | | | |
| | <i>Green Ash</i> | <i>10.0 Cords</i> | | | | | |
| | <i>Paper Birch</i> | <i>17.0 Cords</i> | | | | | |
| | <i>Red Maple</i> | <i>70.0 Cords</i> | | | | | |
| | Mixed Spruce | 26.0 Cords | | | | | |
| | <i>Black Spruce</i> | <i>26.0 Cords</i> | | | | | |
| | Northern Pin Oak | 7.0 Cords | | | | | |
| | Tamarack | 23.0 Cords | | | | | |

Description of Timber by Payment Unit (PU), con't

| PU | MARKET GROUP | PRODUCT | QUANTITY | UNIT | ACRES | ADVERTISE PRICE |
|--------|----------------------|-----------|-----------|--------------|-------|-----------------|
| 5 | Northern Pin Oak | Sawtimber | 2.0 | MBF | 19.9 | \$11,547.05 |
| | Red Maple | | 0.5 | MBF | | |
| | White Oak | 2.0 | MBF | | | |
| | Balsam Fir | Pulpwood | 8.0 | Cords | | |
| | Mixed Aspen | | 156.0 | Cords | | |
| | <i>B. T. Aspen</i> | | 108.0 | <i>Cords</i> | | |
| | <i>Quaking Aspen</i> | | 48.0 | <i>Cords</i> | | |
| | Mixed Hardwood | | 125.0 | Cords | | |
| | <i>Balsam Poplar</i> | | 6.0 | <i>Cords</i> | | |
| | <i>Black Ash</i> | | 4.0 | <i>Cords</i> | | |
| | <i>Green Ash</i> | | 2.0 | <i>Cords</i> | | |
| | <i>Paper Birch</i> | | 3.0 | <i>Cords</i> | | |
| | <i>Red Maple</i> | | 110.0 | <i>Cords</i> | | |
| | Mixed Spruce | | 10.0 | Cords | | |
| | <i>White Spruce</i> | | 10.0 | <i>Cords</i> | | |
| | Northern Pin Oak | | 51.0 | Cords | | |
| | Tamarack | | 7.0 | Cords | | |
| | White Oak | | 36.0 | Cords | | |
| 6 | Northern Pin Oak | | Sawtimber | 8.4 | MBF | 23.4 |
| | White Oak | 1.7 | | MBF | | |
| | Mixed Aspen | Pulpwood | 254.0 | Cords | | |
| | <i>B. T. Aspen</i> | | 73.0 | <i>Cords</i> | | |
| | <i>Quaking Aspen</i> | | 181.0 | <i>Cords</i> | | |
| | Mixed Hardwood | | 37.0 | Cords | | |
| | <i>Balsam Poplar</i> | | 2.0 | <i>Cords</i> | | |
| | <i>Paper Birch</i> | | 3.0 | <i>Cords</i> | | |
| | <i>Red Maple</i> | | 32.0 | <i>Cords</i> | | |
| | Northern Pin Oak | | 135.0 | Cords | | |
| | White Oak | | 14.0 | Cords | | |
| TOTAL: | | | 36.8 | MBF | | |
| TOTAL: | | | 2,204.0 | Cords | | |

Sale Specific Conditions & Requirements

Sale Name: Boneyard Bonanza

Sale Number: 33-023-18 Seq#: 1

1 - Sale Area

1.2 - Boundaries

1.2.1 - Painted boundaries (1/14)

The sale boundary and Payment Unit boundaries are marked and identified by blue, red, and yellow paint. Exterior sale boundary lines against private property are marked with blue paint. Exterior sale boundary lines against state are marked with red paint. Retention patches are marked with red paint; no harvesting activities may occur within these areas. Interior Payment Unit boundaries are marked with yellow paint. The painted boundary line trees are not Included Timber and are to be protected. Yellow painted trees designating an interior Payment Unit boundary are only to be cut when all surrounding Payment Units have been paid for.

2 - Timber Specifications

2.1 - Included Timber

2.1.1 - Clearcut unit(s) with unmerchantable trees (6/14)

Within Payment Unit(s) 1 - 6, cut all trees that are three (3) inches or more at DBH, except do not cut pine and cedar.

3 - Payments

3.3 - Pre-measured Sales

3.3.4 - Dividing payment units (7/14)

Payment Unit(s) \$18,000 in value or greater may be divided at the request of the Purchaser and upon approval of the Unit Manager. Dividing Payment Units is a contract modification which requires a Timber Sale Contract Supplement. There will be only one division per Payment Unit.

4 - Transportation

4.1 - Construction

4.1.8 - Road work (1) (8/07)

The following road work is required: the Purchaser must haul and spread 120 yards of gravel onto the Boneyard Road. The gravel will be placed in locations identified during the pre-sale meeting. The gravel is available from a state pit about 3 miles away on the Swanson Road. All road work must be completed prior to any hauling taking place.

4.2 - Maintenance

4.2.1 - Hauling restriction (12/08)

Hauling may be restricted on forest roads by the Unit Manager or his/her representative. The restriction may occur during spring breakup or during other wet weather conditions.

4.2.4 - Grading (10/16)

For completion of the sale, state forest roads must be graded. In general, this will require a road grader or bull dozer to shape up the roads after forest products have been hauled off site. This includes cleaning of drainage areas, grading, crowning and filling with gravel, if necessary. The grading equipment to be used must be approved by the Unit Manager or his/her representative.

5 - Operations

5.2 - Conduct of Operations

5.2.3 - Operating Restrictions

5.2.3.1 - Operating restrictions (9/11)

Within Payment Unit(s) 4, cutting and skidding are limited to the period of December 1 to March 31, unless there is an extended dry or frozen period and the sale administrator approves of harvesting during that time period. This restriction is

because of low wet ground throughout the unit.

5.4 - Soil Protection

5.4.1 - Rutting restriction, general (7/16)

Operations are to cease immediately if equipment and weather conditions result in rutting of roads and/or skid trails which is 12 inches or greater in depth and 50 feet in length. The Unit Manager or his/her representative may restrict hauling and/or skidding if ruts exceed the specified depth. With the Unit Manager or his/her representative's approval, the Purchaser may return to the area when the risk of rutting has decreased.

5.5 - Protection of Improvements

5.5.3 - Protection of improvements detail (10/13)

There are a number of green well casings sticking 2 to 3 feet out of the ground throughout the sale area. The Purchaser must identify and protect them. If one of the well casings is broken, notify the sale administrator immediately.

6 - Safety and Fire Prevention

6.2 - Signing

6.2.1 - Road posting (9/09)

The Purchaser is responsible for posting and maintaining caution signs on the Boneyard Road prior to beginning operations. The road must be posted at appropriate distances from the sale area to warn of logging activity and truck traffic. Signs must be removed when harvest operations are suspended or completed. The Purchaser will provide these signs.

7 - Other Conditions

7.3 - Contract Modifications

7.3.2 - Modification for oak wilt (2/05)

Within the sale area, there may be patches of oak wilt. If oak wilt is identified within the sale area, this contract may be modified. The following modifications could occur: time of cutting, species to cut, volume to harvest, or various others dealing with the treatment of oak wilt. If a species is not specified in this contract, it shall be paid for at the average price received for that species and product.



TIMBER SALE MAP

This information provided by authority of Part 525, 1994 PA 451, as amended.

| | | | | | | |
|--|--------------|--|---------------------|-------------------|-----------|---------|
| Forest Management Unit Escanaba Management Unit | | County Menominee County | Mapped By Beaudo | Date 1/11/2018 | Page 1 | of 1 |
| Township 35N | Range 28W | Section(s) and Subdivision(s) Sec 4 - NENW, NESW, NWNW, NWSW, SENW, SWNW; Sec 5 - SENE. | | Scale 1:15,840 | | |

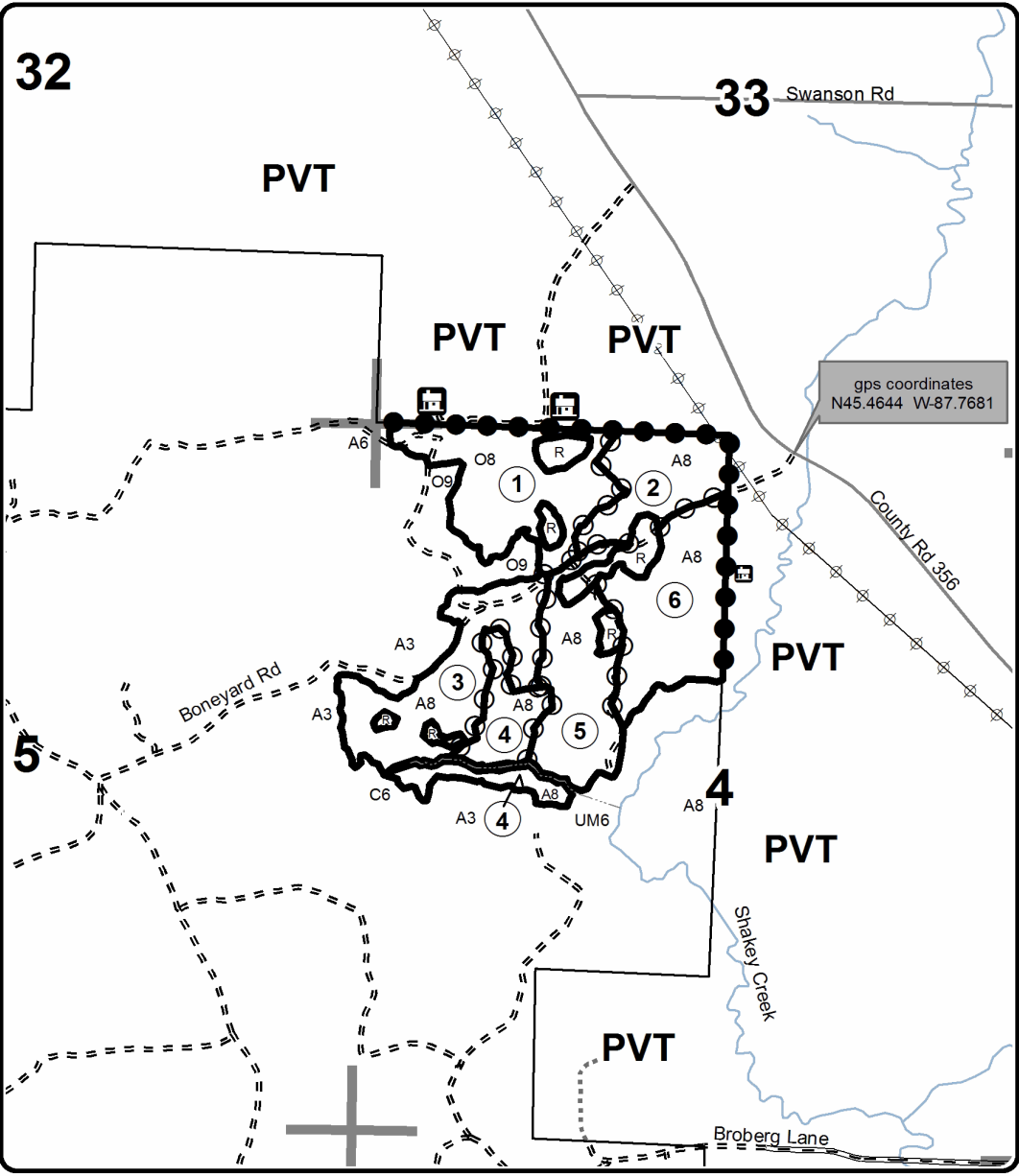
| Cover Type | | | | Density | | | |
|-------------------|----------------------|-------------------------|-------------------|-----------------------------|------------------------|--|--|
| A = Aspen | H = Hemlock | N = Marsh | U = Upland Brush | 0 = Non Stocked | 5 = Pole Timber Medium | | |
| B = Paper Birch | J = Jack Pine | O = Oak | UM = Upland Mixed | 1 = Seedling Sapling Poor | 6 = Pole Timber Well | | |
| C = Cedar | L = Lowland Brush | P = Lowland Poplar | V = Bog or Marsh | 2 = Seedling Sapling Medium | 7 = Saw Timber Poor | | |
| D = Treed Bog | LM = Lowland Mixed | Q = Mixed Swamp Conifer | W = White Pine | 3 = Seedling Sapling Well | 8 = Saw Timber Medium | | |
| E = Swamp Hdwoods | M = Mpl, Bch, Brch | R = Red Pine | X = Non Stocked | 4 = Pole Timber Poor | 9 = Saw Timber Well | | |
| F = Spruce Fir | MC = Mixed Conifer | S = Black Spruce | Z = Water | | | | |
| G = Grass | MD = Mixed Deciduous | T = Tamarack | | | | | |

| PU | Acres | PU | Acres |
|----|-------|----|-------|
| 1 | 24.4 | 4 | 13.2 |
| 2 | 14.4 | 5 | 19.9 |
| 3 | 24.3 | 6 | 23.4 |

Boneyard Bonanza
 Compartment 22
 119.6 Acres



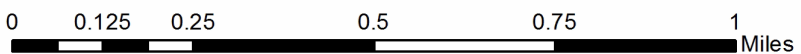
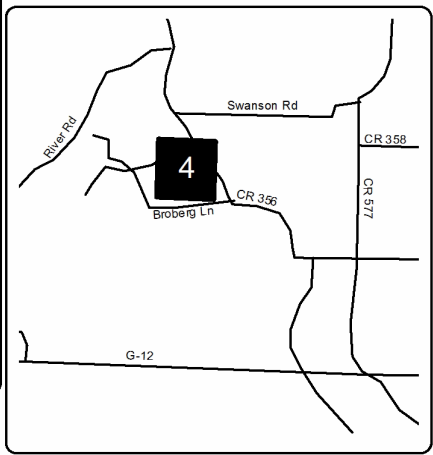
QR Code opens pdf map viewer



Legend

- Against State (Red)
- Payment Unit (Yellow)
- Private Line (Blue)
- Section Corners
- Section Number
- Paved Roads
- Gravel Roads
- Poor Dirt Roads
- Closed
- Payment Unit
- PVT Private Property
- Creek/Drainage
- Retention Patch
- Transmission Line
- House or Cabin

Locator Map
1:200,000



TIMBER SALE INFORMATION

Thirty One (33-013-17)

Menominee County (Advertised Price \$14,731.60)

SALE NOTE: Some portions of this sale have been impacted by the Eastern Larch Beetle. It is recommended to harvest Payment Units 2 and 3 in the winter of 2018.

Access may be through private land.

A timber sale contract for this lump sum, sealed bid timber sale will be awarded to the responsible bidder offering the highest sealed bid price. Bids must be at or above the following advertised price for each species:

| <u>PRODUCTS & SPECIES</u> | <u>ESTIMATED UNITS*</u> | <u>ADVERTISED PRICE</u> |
|-------------------------------|-------------------------|-------------------------|
| Sawtimber | | |
| Basswood | 13.30 MBF | \$ 79.00 / MBF |
| Green Ash | 4.40 MBF | \$ 61.00 / MBF |
| Sugar Maple | 8.70 MBF | \$ 212.00 / MBF |
| White Ash | 1.50 MBF | \$ 44.00 / MBF |
| Yellow Birch | 1.40 MBF | \$ 85.00 / MBF |
| Pulpwood | | |
| Balsam Fir | 81.00 Cords | \$ 17.95 / Cord |
| Mixed Hardwood | 249.00 Cords | \$ 19.45 / Cord |
| Mixed Spruce | 91.00 Cords | \$ 14.35 / Cord |
| N. White Cedar | 129.00 Cords | \$ 15.05 / Cord |
| Quaking Aspen | 28.00 Cords | \$ 19.50 / Cord |
| Tamarack | 101.00 Cords | \$ 12.80 / Cord |

* The total volume is statistically estimated within plus (+) or minus (-) 21.33 percent. The estimated units are final and not subject to adjustment. Prospective bidders are urged to examine this timber and to make their own estimates of quantity and quality.

BOND AND PAYMENT SCHEDULE:

1. A bond in the amount of \$1,500.00 to insure faithful performance of the conditions of the contract will be deposited by the successful bidder within 21 days of the sale award.
2. Cutting in any sale or unit without the required advance payment would be considered a trespass.
3. Total payment must be paid in advance or according to the following schedule:
 - (a) Ten percent (10%) of the sale value must be paid within 21 days of the sale award.
 - (b) The 10% down payment will be credited towards the first unit cut.
 - (c) Payment for each of the following units must be made before cutting begins in that unit:

| PAYMENT UNIT NUMBER | PERCENT OF TOTAL SALE VALUE |
|---------------------|-----------------------------|
| 01 | 30.4% |
| 02 | 36.8% |
| 03 | 30.1% |
| 04 | 2.7% |

4. If no cutting takes place, the 10% down payment will not be refunded.
5. Operations on the contract issued will terminate on 12/31/2020.

Description of Timber by Payment Unit (PU)

| PU | MARKET GROUP | PRODUCT | QUANTITY | UNIT | ACRES | ADVERTISE PRICE |
|----------------|----------------|-----------|--------------|-----------|-------|-----------------|
| 1 | Basswood | Sawtimber | 13.3 | MBF | 12.2 | \$4,473.70 |
| | Sugar Maple | | 8.7 | MBF | | |
| | White Ash | | 1.5 | MBF | | |
| | Balsam Fir | Pulpwood | 3.0 | Cords | | |
| | Mixed Hardwood | | 75.0 | Cords | | |
| 2 | Green Ash | Sawtimber | 3.5 | MBF | 12.2 | \$5,416.55 |
| | Balsam Fir | Pulpwood | 43.0 | Cords | | |
| | Mixed Hardwood | | 134.0 | Cords | | |
| | Mixed Spruce | | 22.0 | Cords | | |
| | N. White Cedar | | 64.0 | Cords | | |
| | Quaking Aspen | | 28.0 | Cords | | |
| | 3 | | Green Ash | Sawtimber | | |
| Yellow Birch | | Pulpwood | 1.4 | MBF | | |
| Balsam Fir | | | 35.0 | Cords | | |
| Mixed Hardwood | | | 40.0 | Cords | | |
| Mixed Spruce | | | 41.0 | Cords | | |
| N. White Cedar | | | 65.0 | Cords | | |
| Tamarack | | | 101.0 | Cords | | |
| 4 | | | Mixed Spruce | Pulpwood | 28.0 | Cords |
| TOTAL: | | | 29.3 | MBF | | |
| TOTAL: | | | 679.0 | Cords | | |

Sale Specific Conditions & Requirements

Sale Name: Thirty One

Sale Number: 33-013-17 Seq#: 2

1 - Sale Area

1.2 - Boundaries

1.2.1 - Painted boundaries (1/14)

The sale boundary and Payment Unit boundaries are marked and identified by blue and red paint. Exterior sale boundary lines against private property are marked with blue paint. Exterior sale boundary lines against state are marked with red paint. Interior Payment Unit boundaries are marked with red painted U marks. The painted boundary line trees are not Included Timber and are to be protected unless marked with orange paint. The red painted U marked trees designating an interior Payment Unit boundary are only to be cut when all surrounding Payment Units have been paid.

2 - Timber Specifications

2.1 - Included Timber

2.1.1 - Clearcut unit(s) with unmerchantable trees (6/14)

Within Payment Unit(s) 2, 3, and 4, cut all trees that are three (3) inches or more at DBH.

2.1.3 - Cut tree marked unit(s) (12/08)

Within Payment Unit(s) 1, all trees are designated for cutting when marked with orange paint above and below stump height, regardless of merchantability.

3 - Payments

3.3 - Pre-measured Sales

3.3.4 - Dividing payment units (7/14)

Payment Unit(s) with a contract purchase value of \$15,000 or greater may be divided at the request of the Purchaser and upon approval of the Unit Manager. Dividing Payment Units is a contract modification which requires a Timber Sale Contract Supplement.

4 - Transportation

4.1 - Construction

4.1.6 - Road construction (1/09)

Construction of new roads or improvements of existing roads shall be done in such a way as to minimize the environmental and visual impacts. Merchantable trees shall be cut and utilized unless otherwise directed. Non-merchantable trees shall be severed and laid flat on the ground. Slash shall be scattered, and not left in windrows and kept a minimum of 10 feet back from the road edge. Stumps shall be set upright, not left on edge, and be moved at least 10 feet away from the road edge. Disturbed soil shall be feathered into the woods and not left in berms or windrows.

4.1.7 - Road closure (10/11)

All new roads built into the sale must be blocked to vehicle traffic upon completion of the sale. In general, this will require constructing a four (4') foot high berm of stumps and logs covered with earth. Contact the sale administrator for specific details of design and placement.

4.2 - Maintenance

4.2.2 - Fill material (4/07)

To maintain roads, fill material may be needed in areas where "holes" exist or may be expected to develop. This fill material should be placed before trucking begins. Contact the sale administrator regarding the availability of onsite sand or gravel from adjacent State-owned lands.

4.2.4 - Grading (10/16)

For completion of the sale, state forest roads must be graded. In general, this will require a road grader or bull dozer to shape up the roads after forest products have been hauled off site. This includes cleaning of drainage areas, grading, crowning and filling with gravel, if necessary. The grading equipment to be used must be approved by the Unit Manager or his/her

representative.

4.4 - Access

4.4.1 - Private property access (3/11)

Permission for access across private land is the responsibility of the Purchaser.

5 - Operations

5.2 - Conduct of Operations

5.2.2 - Hazard Trees/Snags

5.2.2.1 - Den trees (10/16)

Obvious hollow and/or den trees shall be protected and left standing unless they are a safety hazard.

5.2.3 - Operating Restrictions

5.2.3.1 - Operating restrictions (9/11)

Within Payment Unit(s) 2, 3, and 4, unless changed by written agreement, cutting, skidding, and hauling are limited to the period of 12/01 to 03/15. This restriction is because the areas within the units are lowland spruce with mixed lowland conifer areas.

5.2.3.3 - Bark slippage restriction (3/09)

Within Payment Unit(s) 1, unless changed by written agreement, cutting and skidding are not permitted during the period of April 15 to July 15. This restriction is because of bark slippage.

5.4 - Soil Protection

5.4.1 - Rutting restriction, general (7/16)

Operations are to cease immediately if equipment and weather conditions result in rutting of roads and/or skid trails which is 12 inches or greater in depth and 50 feet in length. The Unit Manager or his/her representative may restrict hauling and/or skidding if ruts exceed the specified depth. With the Unit Manager or his/her representative's approval, the Purchaser may return to the area when the risk of rutting has decreased.

7 - Other Conditions

7.5 - Loss

7.5.1 - Deteriorating timber (7/09)

The sale area has received damage from Eastern Larch Beetle (ELB). The Purchaser should harvest the wood as soon as possible. The Department of Natural Resources is held free of responsibility of any further damage or deterioration due to delay in harvesting.



TIMBER SALE MAP

This information provided by authority of Part 525, 1994 PA 451, as amended.

| | | | | | | |
|--|--------------|--|------------------------------|--------------------|-----------|---------|
| Forest Management Unit Escanaba Management Unit | | County Menominee County | Mapped By Collins, Racine | Date 09/26/2017 | Page 1 | of 1 |
| Township 37N | Range 25W | Section(s) and Subdivision(s) 37N 25W sec 33 - NWNW, NESW, NWSW, SESW, SWSW | | Scale 1:15,840 | | |

| Cover Type | | | | Density | |
|-------------------|----------------------|-------------------------|-------------------|-----------------------------|------------------------|
| A = Aspen | H = Hemlock | N = Marsh | U = Upland Brush | 0 = Non Stocked | 5 = Pole Timber Medium |
| B = Paper Birch | J = Jack Pine | O = Oak | UM = Upland Mixed | 1 = Seedling Sapling Poor | 6 = Pole Timber Well |
| C = Cedar | L = Lowland Brush | P = Lowland Poplar | V = Bog or Marsh | 2 = Seedling Sapling Medium | 7 = Saw Timber Poor |
| D = Tread Bog | LM = Lowland Mixed | Q = Mixed Swamp Conifer | W = White Pine | 3 = Seedling Sapling Well | 8 = Saw Timber Medium |
| E = Swamp Hdwoods | M = Mpl, Bch, Brch | R = Red Pine | X = Non Stocked | 4 = Pole Timber Poor | 9 = Saw Timber Well |
| F = Spruce Fir | MC = Mixed Conifer | S = Black Spruce | Z = Water | | |
| G = Grass | MD = Mixed Deciduous | T = Tamarack | | | |

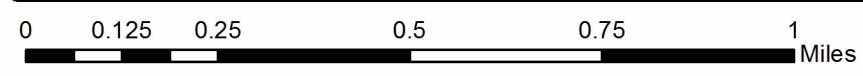
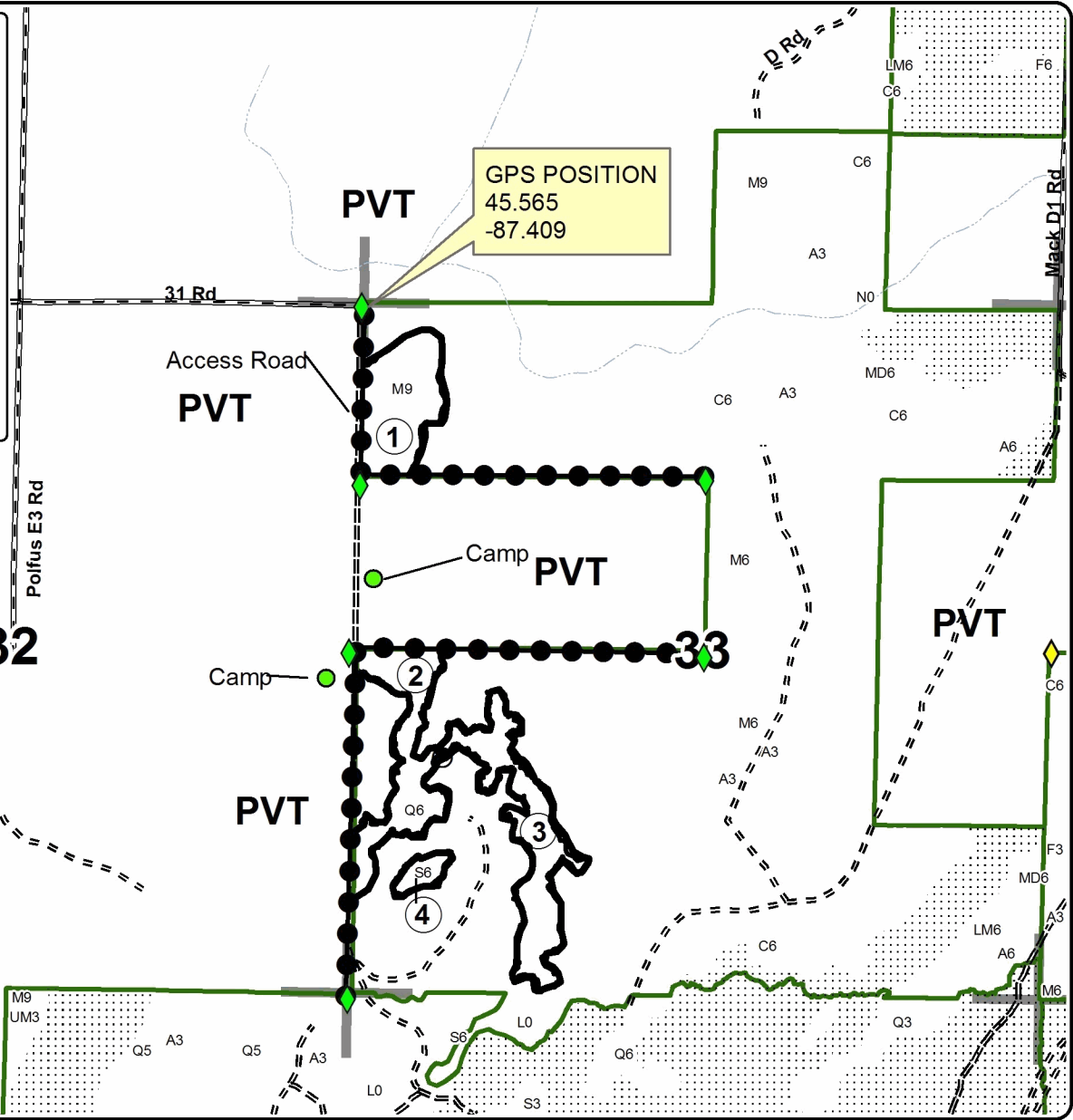
| PU | Acres | PU | Acres |
|----|-------|----|-------|
| 1 | 12.2 | 3 | 14.2 |
| 2 | 12.2 | 4 | 2 |

Thirty One
Compartment 36
40.6 Acres



Legend

- Against State (Red)
- Payment Unit (Red U)
- Private Line (Blue)
- Section Corners
- Nearby Timber Sale
- Poor Dirt Roads
- Gravel Roads
- Streams
- State Forests
- DNR Survey Corners



X1 Lane Mix (33-021-18)
; Menominee COUNTY

In response to the notice of sale to be held 3:00 p.m. (local time) on July 17, 2018, I am hereby submitting my sealed bid (firm offer) for the following forest products to be cut. Bids for individual species must be at or above the advertised price. All non-responsive bid forms may be rejected.

| <u>PRODUCTS & SPECIES</u> | <u>ESTIMATED VOLUME*</u> | <u>ADVERTISED PRICE</u> | <u>BID PRICE/UNIT</u> |
|-------------------------------|--------------------------|-------------------------|-----------------------|
| Sawtimber | | | |
| Basswood | 12.20 MBF | \$ 118.00/MBF | \$ _____ |
| Black Ash | 2.40 MBF | \$ 78.00/MBF | \$ _____ |
| Green Ash | 3.40 MBF | \$ 92.00/MBF | \$ _____ |
| Mixed Oak | 12.60 MBF | \$ 145.00/MBF | \$ _____ |
| Red Maple | 19.40 MBF | \$ 206.00/MBF | \$ _____ |
| White Oak | 1.70 MBF | \$ 58.00/MBF | \$ _____ |
| White Pine | 6.20 MBF | \$ 54.00/MBF | \$ _____ |
| Pulpwood | | | |
| Balsam Fir | 82.00 Cords | \$ 26.90/Cord | \$ _____ |
| Jack Pine | 40.00 Cords | \$ 46.85/Cord | \$ _____ |
| Mixed Aspen | 44.00 Cords | \$ 29.25/Cord | \$ _____ |
| Mixed Hardwood | 1,342.00 Cords | \$ 29.15/Cord | \$ _____ |
| Mixed Oak | 174.00 Cords | \$ 26.05/Cord | \$ _____ |
| Mixed Spruce | 131.00 Cords | \$ 21.50/Cord | \$ _____ |
| N. White Cedar | 9.00 Cords | \$ 22.60/Cord | \$ _____ |
| Red Pine | 36.00 Cords | \$ 58.75/Cord | \$ _____ |
| Tamarack | 130.00 Cords | \$ 19.25/Cord | \$ _____ |
| White Pine | 50.00 Cords | \$ 25.95/Cord | \$ _____ |

*The volumes are statistically estimated within plus (+) or minus (-) 12.07 percent. These estimated volumes are final and not subject to adjustment. Prospective bidders are urged to examine this timber and to make their own estimates of quantity and quality.

I understand that any or all bids may be rejected. All bids must be signed and all bid items must be bid or the bid form may be rejected. I also understand that consideration and awarding a contract will be based upon my past performance and ability to complete the contract based upon equipment and staffing subject to my control.

FEDERAL ID: _____ or SOCIAL SECURITY NUMBER: _____

Company or individual bidding: _____

Company representative's name: _____

Address: _____

City: _____ State: _____ Zip: _____

IF AVAILABLE, PLEASE PLACE THE PERSONALIZED LABEL FROM YOUR PROSPECTUS IN THE ABOVE BOX.

Individual or company representative's signature: _____ Date: _____

Phone number : _____ Email (optional): _____

THE WINNING BIDDER MUST COMPLETE THE VERIFICATION OF WORKER'S DISABILITY COMPENSATION ACT COMPLIANCE (ON REVERSE SIDE IF DOUBLE SIDED) WITHIN 21 DAYS OF SALE AWARD DATE



| |
|----------------------------------|
| FOR DEPARTMENT USE ONLY |
| Sale Number (XX - XXX - XX - XX) |
| Forest Management Unit: |

TIMBER SALE VERIFICATION OF WORKER'S DISABILITY COMPENSATION ACT COMPLIANCE

*As required by Act 317, P.A. 1969 (Worker's Compensation) and
Part 5 of Act 451 of 1994, as amended.*

VERIFICATION OF WORKER'S DISABILITY COMPENSATION ACT COMPLIANCE

- This verification must be completed and submitted within 21 days of contract award and prior to the issuance of the timber sale contract.
- In addition, if boxes 2B or 2C are checked, then Notice of Exclusion or Certificate of Insurance must be submitted within twenty-one (21) days of the contract award and prior to the issuance of the timber sale contract.
- All information must be typed or printed except for written signatures.

Please Check Appropriate Categories:

1. My business is organized as (you **must** check one of the boxes below):
 - A. Sole Proprietorship (individual)
 - B. Partnership
 - C. Corporation
2. You **must** check one of the boxes below:
 - A. I certify my business is a sole proprietorship and it has no employees but the sole proprietor. I am not subject to the Worker's Compensation Laws.
 - B. I certify my business has satisfied its obligation to the Worker's Compensation Act through the use of an approved Notice of Exclusion (BWC-337, Rev. 5/96). I will provide a copy of the Notice of Exclusion within 21 days of the contract award. (For questions or a copy of the BWC-337, please call the Worker's Compensation Bureau at 517-322-1195).
 - C. I certify my business has a Worker's Compensation Policy. I will provide an original Certificate of Insurance within twenty-one (21) days of the contract award.
3. If you have checked item 2(A) or 2(B), you **must** indicate the number of **both** full-time and part-time employees, other than yourself, including family members and active partners (if none, you must enter "0").

_____ Full-time Employees

_____ Part-time Employees

| | | | |
|------------------|-------|-------------------------------------|--|
| Name of Business | | Federal ID (or) Social Security No. | |
| Address | | Telephone () | |
| City | State | ZIP | |

I hereby certify that the above information is true and correct. I agree to notify the Michigan DNR of any changes that occur in factors affecting my coverage during any of my present and future operations.

Signature of Owner or Authorized Representative

Title

Date

Please complete the "SEALED BID" information on the next page

Fenced Beets SBW (33-022-18)
; Menominee COUNTY

In response to the notice of sale to be held 3:00 p.m. (local time) on July 17, 2018, I am hereby submitting my sealed bid (firm offer) for the following forest products to be cut. Bids for individual species must be at or above the advertised price. All non-responsive bid forms may be rejected.

| <u>PRODUCTS & SPECIES</u> | <u>ESTIMATED VOLUME*</u> | <u>ADVERTISED PRICE</u> | <u>BID PRICE/UNIT</u> |
|-------------------------------|--------------------------|-------------------------|-----------------------|
| Sawtimber | | | |
| Basswood | 0.50 MBF | \$ 118.00/MBF | \$ _____ |
| Green Ash | 1.00 MBF | \$ 92.00/MBF | \$ _____ |
| Northern Pin Oak | 2.70 MBF | \$ 145.00/MBF | \$ _____ |
| Red Maple | 12.30 MBF | \$ 206.00/MBF | \$ _____ |
| Sugar Maple | 0.50 MBF | \$ 319.00/MBF | \$ _____ |
| White Pine | 48.60 MBF | \$ 54.00/MBF | \$ _____ |
| Pulpwood | | | |
| Balsam Fir | 250.00 Cords | \$ 26.90/Cord | \$ _____ |
| Mixed Aspen | 752.00 Cords | \$ 29.25/Cord | \$ _____ |
| Mixed Hardwood | 692.00 Cords | \$ 29.15/Cord | \$ _____ |
| Mixed Oak | 59.00 Cords | \$ 26.05/Cord | \$ _____ |
| Mixed Spruce | 261.00 Cords | \$ 21.50/Cord | \$ _____ |
| N. White Cedar | 25.00 Cords | \$ 22.60/Cord | \$ _____ |
| Red Pine | 9.00 Cords | \$ 58.75/Cord | \$ _____ |
| Tamarack | 89.00 Cords | \$ 19.25/Cord | \$ _____ |
| White Pine | 245.00 Cords | \$ 25.95/Cord | \$ _____ |

*The volumes are statistically estimated within plus (+) or minus (-) 8.02 percent. These estimated volumes are final and not subject to adjustment. Prospective bidders are urged to examine this timber and to make their own estimates of quantity and quality.

I understand that any or all bids may be rejected. All bids must be signed and all bid items must be bid or the bid form may be rejected. I also understand that consideration and awarding a contract will be based upon my past performance and ability to complete the contract based upon equipment and staffing subject to my control.

FEDERAL ID: _____ or SOCIAL SECURITY NUMBER: _____

Company or individual bidding: _____

Company representative's name: _____

Address: _____

City: _____ State: _____ Zip: _____

IF AVAILABLE, PLEASE PLACE THE PERSONALIZED LABEL FROM YOUR PROSPECTUS IN THE ABOVE BOX.

Individual or company representative's signature: _____ Date: _____

Phone number : _____ Email (optional): _____

THE WINNING BIDDER MUST COMPLETE THE VERIFICATION OF WORKER'S DISABILITY COMPENSATION ACT COMPLIANCE (ON REVERSE SIDE IF DOUBLE SIDED) WITHIN 21 DAYS OF SALE AWARD DATE



| FOR DEPARTMENT USE ONLY | |
|----------------------------------|--|
| Sale Number (XX - XXX - XX - XX) | |
| Forest Management Unit: | |

TIMBER SALE VERIFICATION OF WORKER'S DISABILITY COMPENSATION ACT COMPLIANCE

As required by Act 317, P.A. 1969 (Worker's Compensation) and
Part 5 of Act 451 of 1994, as amended.

VERIFICATION OF WORKER'S DISABILITY COMPENSATION ACT COMPLIANCE

- This verification must be completed and submitted within 21 days of contract award and prior to the issuance of the timber sale contract.
- In addition, if boxes 2B or 2C are checked, then Notice of Exclusion or Certificate of Insurance must be submitted within twenty-one (21) days of the contract award and prior to the issuance of the timber sale contract.
- All information must be typed or printed except for written signatures.

Please Check Appropriate Categories:

1. My business is organized as (you **must** check one of the boxes below):
 - A. Sole Proprietorship (individual)
 - B. Partnership
 - C. Corporation
2. You **must** check one of the boxes below:
 - A. I certify my business is a sole proprietorship and it has no employees but the sole proprietor. I am not subject to the Worker's Compensation Laws.
 - B. I certify my business has satisfied its obligation to the Worker's Compensation Act through the use of an approved Notice of Exclusion (BWC-337, Rev. 5/96). I will provide a copy of the Notice of Exclusion within 21 days of the contract award. (For questions or a copy of the BWC-337, please call the Worker's Compensation Bureau at 517-322-1195).
 - C. I certify my business has a Worker's Compensation Policy. I will provide an original Certificate of Insurance within twenty-one (21) days of the contract award.
3. If you have checked item 2(A) or 2(B), you **must** indicate the number of **both** full-time and part-time employees, other than yourself, including family members and active partners (if none, you must enter "0").

_____ Full-time Employees

_____ Part-time Employees

| | | | |
|------------------|-------|-------------------------------------|--|
| Name of Business | | Federal ID (or) Social Security No. | |
| Address | | Telephone () | |
| City | State | ZIP | |

I hereby certify that the above information is true and correct. I agree to notify the Michigan DNR of any changes that occur in factors affecting my coverage during any of my present and future operations.

Signature of Owner or Authorized Representative

Title

Date

Please complete the "SEALED BID" information on the next page

Thirty One (33-013-17)
; Menominee COUNTY

In response to the notice of sale to be held 3:00 p.m. (local time) on July 17, 2018, I am hereby submitting my sealed bid (firm offer) for the following forest products to be cut. Bids for individual species must be at or above the advertised price. All non-responsive bid forms may be rejected.

| <u>PRODUCTS & SPECIES</u> | <u>ESTIMATED VOLUME*</u> | <u>ADVERTISED PRICE</u> | <u>BID PRICE/UNIT</u> |
|-------------------------------|--------------------------|-------------------------|-----------------------|
| Sawtimber | | | |
| Basswood | 13.30 MBF | \$ 79.00/MBF | \$ _____ |
| Green Ash | 4.40 MBF | \$ 61.00/MBF | \$ _____ |
| Sugar Maple | 8.70 MBF | \$ 212.00/MBF | \$ _____ |
| White Ash | 1.50 MBF | \$ 44.00/MBF | \$ _____ |
| Yellow Birch | 1.40 MBF | \$ 85.00/MBF | \$ _____ |
| Pulpwood | | | |
| Balsam Fir | 81.00 Cords | \$ 17.95/Cord | \$ _____ |
| Mixed Hardwood | 249.00 Cords | \$ 19.45/Cord | \$ _____ |
| Mixed Spruce | 91.00 Cords | \$ 14.35/Cord | \$ _____ |
| N. White Cedar | 129.00 Cords | \$ 15.05/Cord | \$ _____ |
| Quaking Aspen | 28.00 Cords | \$ 19.50/Cord | \$ _____ |
| Tamarack | 101.00 Cords | \$ 12.80/Cord | \$ _____ |

*The volumes are statistically estimated within plus (+) or minus (-) 21.33 percent. These estimated volumes are final and not subject to adjustment. Prospective bidders are urged to examine this timber and to make their own estimates of quantity and quality.

I understand that any or all bids may be rejected. All bids must be signed and all bid items must be bid or the bid form may be rejected. I also understand that consideration and awarding a contract will be based upon my past performance and ability to complete the contract based upon equipment and staffing subject to my control.

FEDERAL ID: _____ or SOCIAL SECURITY NUMBER: _____

Company or individual bidding: _____

Company representative's name: _____

Address: _____

City: _____ State: _____ Zip: _____

IF AVAILABLE, PLEASE PLACE THE PERSONALIZED LABEL FROM YOUR PROSPECTUS IN THE ABOVE BOX.

Individual or company representative's signature: _____ Date: _____

Phone number : _____ Email (optional): _____

THE WINNING BIDDER MUST COMPLETE THE VERIFICATION OF WORKER'S DISABILITY COMPENSATION ACT COMPLIANCE (ON REVERSE SIDE IF DOUBLE SIDED) WITHIN 21 DAYS OF SALE AWARD DATE



| | |
|----------------------------------|--|
| FOR DEPARTMENT USE ONLY | |
| Sale Number (XX - XXX - XX - XX) | |
| Forest Management Unit: | |

TIMBER SALE VERIFICATION OF WORKER'S DISABILITY COMPENSATION ACT COMPLIANCE

As required by Act 317, P.A. 1969 (Worker's Compensation) and
Part 5 of Act 451 of 1994, as amended.

VERIFICATION OF WORKER'S DISABILITY COMPENSATION ACT COMPLIANCE

- This verification must be completed and submitted within 21 days of contract award and prior to the issuance of the timber sale contract.
- In addition, if boxes 2B or 2C are checked, then Notice of Exclusion or Certificate of Insurance must be submitted within twenty-one (21) days of the contract award and prior to the issuance of the timber sale contract.
- All information must be typed or printed except for written signatures.

Please Check Appropriate Categories:

1. My business is organized as (you **must** check one of the boxes below):
 - A. Sole Proprietorship (individual)
 - B. Partnership
 - C. Corporation
2. You **must** check one of the boxes below:
 - A. I certify my business is a sole proprietorship and it has no employees but the sole proprietor. I am not subject to the Worker's Compensation Laws.
 - B. I certify my business has satisfied its obligation to the Worker's Compensation Act through the use of an approved Notice of Exclusion (BWC-337, Rev. 5/96). I will provide a copy of the Notice of Exclusion within 21 days of the contract award. (For questions or a copy of the BWC-337, please call the Worker's Compensation Bureau at 517-322-1195).
 - C. I certify my business has a Worker's Compensation Policy. I will provide an original Certificate of Insurance within twenty-one (21) days of the contract award.
3. If you have checked item 2(A) or 2(B), you **must** indicate the number of **both** full-time and part-time employees, other than yourself, including family members and active partners (if none, you must enter "0").

_____ Full-time Employees

_____ Part-time Employees

| | | | |
|------------------|-------|-------------------------------------|--|
| Name of Business | | Federal ID (or) Social Security No. | |
| Address | | Telephone () | |
| City | State | ZIP | |

I hereby certify that the above information is true and correct. I agree to notify the Michigan DNR of any changes that occur in factors affecting my coverage during any of my present and future operations.

Signature of Owner or Authorized Representative

Title

Date

Please complete the "SEALED BID" information on the next page

Boneyard Bonanza (33-023-18)
; Menominee COUNTY

In response to the notice of sale to be held 3:00 p.m. (local time) on July 17, 2018, I am hereby submitting my sealed bid (firm offer) for the following forest products to be cut. Bids for individual species must be at or above the advertised price. All non-responsive bid forms may be rejected.

| <u>PRODUCTS & SPECIES</u> | <u>ESTIMATED VOLUME*</u> | <u>ADVERTISED PRICE</u> | <u>BID PRICE/UNIT</u> |
|-------------------------------|--------------------------|-------------------------|-----------------------|
| Sawtimber | | | |
| Northern Pin Oak | 27.50 MBF | \$ 145.00/MBF | \$ _____ |
| Paper Birch | 0.40 MBF | \$ 83.00/MBF | \$ _____ |
| Red Maple | 2.20 MBF | \$ 206.00/MBF | \$ _____ |
| White Oak | 6.70 MBF | \$ 58.00/MBF | \$ _____ |
| Pulpwood | | | |
| Balsam Fir | 89.00 Cords | \$ 26.90/Cord | \$ _____ |
| Mixed Aspen | 835.00 Cords | \$ 29.25/Cord | \$ _____ |
| Mixed Hardwood | 540.00 Cords | \$ 29.15/Cord | \$ _____ |
| Mixed Spruce | 68.00 Cords | \$ 21.50/Cord | \$ _____ |
| Northern Pin Oak | 473.00 Cords | \$ 26.05/Cord | \$ _____ |
| Tamarack | 30.00 Cords | \$ 19.25/Cord | \$ _____ |
| White Oak | 169.00 Cords | \$ 26.05/Cord | \$ _____ |

*The volumes are statistically estimated within plus (+) or minus (-) 8.99 percent. These estimated volumes are final and not subject to adjustment. Prospective bidders are urged to examine this timber and to make their own estimates of quantity and quality.

I understand that any or all bids may be rejected. All bids must be signed and all bid items must be bid or the bid form may be rejected. I also understand that consideration and awarding a contract will be based upon my past performance and ability to complete the contract based upon equipment and staffing subject to my control.

FEDERAL ID: _____ or SOCIAL SECURITY NUMBER: _____

Company or individual bidding: _____

Company representative's name: _____

Address: _____

City: _____ State: _____ Zip: _____

IF AVAILABLE, PLEASE PLACE THE PERSONALIZED LABEL FROM YOUR PROSPECTUS IN THE ABOVE BOX.

Individual or company representative's signature: _____ Date: _____

Phone number : _____ Email (optional): _____

THE WINNING BIDDER MUST COMPLETE THE VERIFICATION OF WORKER'S DISABILITY COMPENSATION ACT COMPLIANCE (ON REVERSE SIDE IF DOUBLE SIDED) WITHIN 21 DAYS OF SALE AWARD DATE



| |
|----------------------------------|
| FOR DEPARTMENT USE ONLY |
| Sale Number (XX - XXX - XX - XX) |
| Forest Management Unit: |

TIMBER SALE VERIFICATION OF WORKER'S DISABILITY COMPENSATION ACT COMPLIANCE

*As required by Act 317, P.A. 1969 (Worker's Compensation) and
Part 5 of Act 451 of 1994, as amended.*

VERIFICATION OF WORKER'S DISABILITY COMPENSATION ACT COMPLIANCE

- This verification must be completed and submitted within 21 days of contract award and prior to the issuance of the timber sale contract.
- In addition, if boxes 2B or 2C are checked, then Notice of Exclusion or Certificate of Insurance must be submitted within twenty-one (21) days of the contract award and prior to the issuance of the timber sale contract.
- All information must be typed or printed except for written signatures.

Please Check Appropriate Categories:

1. My business is organized as (you **must** check one of the boxes below):
 - A. Sole Proprietorship (individual)
 - B. Partnership
 - C. Corporation

2. You **must** check one of the boxes below:
 - A. I certify my business is a sole proprietorship and it has no employees but the sole proprietor. I am not subject to the Worker's Compensation Laws.
 - B. I certify my business has satisfied its obligation to the Worker's Compensation Act through the use of an approved Notice of Exclusion (BWC-337, Rev. 5/96). I will provide a copy of the Notice of Exclusion within 21 days of the contract award. (For questions or a copy of the BWC-337, please call the Worker's Compensation Bureau at 517-322-1195).
 - C. I certify my business has a Worker's Compensation Policy. I will provide an original Certificate of Insurance within twenty-one (21) days of the contract award.

3. If you have checked item 2(A) or 2(B), you **must** indicate the number of **both** full-time and part-time employees, other than yourself, including family members and active partners (if none, you must enter "0").

_____ Full-time Employees

_____ Part-time Employees

| | | | |
|------------------|-------|-------------------------------------|--|
| Name of Business | | Federal ID (or) Social Security No. | |
| Address | | Telephone () | |
| City | State | ZIP | |

I hereby certify that the above information is true and correct. I agree to notify the Michigan DNR of any changes that occur in factors affecting my coverage during any of my present and future operations.

Signature of Owner or Authorized Representative

Title

Date

Please complete the "SEALED BID" information on the next page