



**DEPARTMENT OF NATURAL RESOURCES
STATE OF MICHIGAN**

TIMBER SALE PROSPECTUS #6203

SCHEDULED SALE DATE AND TIME: 9:00 a.m. (local time) on July 31, 2018.

LOCATION: GRAYLING MGMT UNIT, 1955 HARTWICK PINES ROAD, GRAYLING, MI 49738.

PROSPECTUS NOTE: The bidder is advised to inspect the sale area and review the location, estimated volumes, operating costs and contract terms of proposed sales. Please be aware that some landowners may request 60 days or more notice for access across their land.

Notice is hereby given that bids will be received by the Unit Manager, GRAYLING MANAGEMENT UNIT, for certain timber on the following described lands:

Comp 230 Mix (72-004-16)

Crawford County, Advertised Price \$36,710.80, 88.7 Acres, Hardwood, White Pine.

SALE NOTE: Sale contains oak wilt restriction, ORV trail, and drumming log specs. The sale can be accessed off of 7 Mile Rd.

A recreation site such as a trail, pathway, or campground is within the sale area or the vicinity. Certain restrictions/specifications may be applicable including time restrictions.

Comp 230 North Mix (72-007-16)

Crawford County, Advertised Price \$117,778.40, 156.5 Acres, Hardwood, Jack Pine.

SALE NOTE: Sale access is either off 7 mile road from the south via Cemetery Crossing Trl or via snowmobile trail 489 from the North. Oak wilt restriction applies to a portion of this sale (see spec 5.2.3.4 for details).

A recreation site such as a trail, pathway, or campground is within the sale area or the vicinity. Certain restrictions/specifications may be applicable including time restrictions.

Snood Mix (72-042-16)

Crawford County, Advertised Price \$27,312.15, 43.6 Acres, Aspen, Hardwood.

SALE NOTE: Access is off of Johnson Road. Sale is a mix of aspen and hardwoods. Harvesting is restricted from April 15 - July 15 due to oak wilt restrictions, unless the Purchaser harvests a swath 150 feet wide along the private land boundary where oak is present prior to April 15.

Billman Oak (72-043-16)

Crawford County, Advertised Price \$53,478.35, 57.2 Acres, Aspen, Hardwood.

SALE NOTE: Majority oak sale. Please be aware of the pipeline running through the sale area. Harvesting will not be permitted from April 15 - July 15 due to oak wilt concerns unless 150 foot wide swaths are harvested around retention islands and along any boundaries that contain oak trees prior to April 15th. This will reduce the risk of damage to residual oak for disease transmission.

Turkey Foot (72-044-16)

Crawford County, Advertised Price \$41,356.10, 66.2 Acres, Aspen, Jack Pine, Red Pine.

SALE NOTE: Access to sale is off of Pioneer Road. Make sure to be aware of Railroad Corridor separating Payment Units 1 and 2. No harvesting is to occur from April 15- July 15 due to oak wilt restrictions unless a 150 foot swath of timber is cleared prior to April 15 around all residual oak trees in the boundary or in retention areas. Work with your sale administrator regarding arrangements to be able to operate during oak wilt restrictions.

BID INSTRUCTIONS (VER. 07/02/2018):

1. Scheduled Bid Location, Date, and Time (2/11)

Bids must be received by the Unit Manager, GRAYLING OFFICE, 1955 HARTWICK PINES ROAD, GRAYLING, MI 49738, no later than 9:00 a.m. (local time) on July 31, 2018. For further information concerning this sale, contact Susan Thiel at 989-348-6371 extension 7440.

2. Bidder's Qualifications (5/16)

Purchaser shall obtain workers compensation insurance to cover claims under Michigan's Worker's Disability Compensation Act of 1969 or similar employee benefit act of any other state applicable to an employee. If all or part of a timber sale was prepared by a private contractor, the contractor and that contractor's company are not permitted to bid on the timber sale contract. Bids will not be accepted from individuals or companies appearing on the DNR/FRD No-Bid List. This list contains the names of purchasers who previously failed to execute a contract within 21-days or who have a history of poor performance.

3. Preparation of Sealed Bids (5/16)

Bid Forms may be completed online thru Michigan DNR Timber Sale Online Bidding (OLB) at www.michigan.gov/timberbidding or by completing the hardcopy Bid Form found in the Timber Sale Prospectus. Hardcopy Bid Forms shall be manually signed in ink. Registration in OLB is considered your 'signature' for all bids submitted thru that system. Bid prices must be entered for each species and product in the Bid Price column for all material subject to bidding and all fill-in blanks must be completed. If erasures or other changes appear on the hardcopy Bid Form, each erasure or change must be initialed by the person signing the bid.

4. Submission of Sealed Bids (5/16)

Bid forms may be obtained from the Unit Manager or thru OLB. Bids may be submitted hardcopy or thru OLB. All hardcopy bids must be submitted on the bid form and in an envelope clearly identified as described in this section. NOTE: Only one bid form per bid envelope. Sealed bids must be submitted to the Unit office designated in the prospectus and must be submitted at or prior to the time established in the prospectus. The envelope should show on the outside (a) the sale name or number and (b) the date and time of bid opening, as shown in the prospectus. Bids received after the time specified in the sale prospectus are late bids and will be rejected.

It is possible for a bidder to submit multiple bids on a single sale. For example, a bid may be submitted hardcopy and a bid may be submitted thru OLB. Or, two bidders from the same company could both submit bids on the same sale. If this were to happen, the State would accept all bids received and award the contract accordingly. All bidding and contractual requirements would apply to all bids received.

5. Public Opening of Sealed Bids (7/16)

If conditions permit, the sealed bids will be publicly opened and posted at the time and place set in the prospectus.

If a bidder, present at a bid opening, has submitted bids on more than one sale, that bidder may withdraw their unopened bid envelopes or announce the withdrawal of their online bid after being declared the successful bidder on one sale.

6. Award of Contract (1/11)

Award of the contract will be made to the Bidder whose bid, conforming to the prospectus, is most advantageous to the State of Michigan on the basis of total value at rates bid for the estimated quantities. The State reserves the right to reject any bid or waive any minor irregularity in bids received. A written award mailed (or otherwise furnished) to the successful Bidder shall be deemed to result in a binding contract without further action by either party.

7. Down Payment (1/11)

The Bidder to whom award is made must make a down payment within 21 days of the sale award. The amount of the down payment will be calculated as shown in the Bond and Payment Schedule of this prospectus. Only cash may be used to meet this requirement.

8. Performance Security (1/11)

As guarantee of faithful performance, a cash bond, certificate of deposit, surety bond or irrevocable letter of credit (LOC) is required within 21 days of the sale award. The amount of the performance security is shown in the Bond and

Payment Schedule of this prospectus. If an LOC or surety is used, the coverage must extend for at least 6 months beyond the contract expiration.

9. Timber Sale Contract (7/18)

Additional conditions and requirements common to all timber sales are listed on the timber sale contract (R4031) and are available on line at www.michigan.gov/timber. Contact the Unit Manager for additional information or a sample contract. Within 21 days of the date of the award letter, the bidder must sign the contract and provide the required down payment, performance security, and verification of worker's disability compensation. The down payment and performance security shall be in accordance with the provisions of the timber sale contract, in the sums stated in this prospectus. If these actions are not taken, then the Bidder, the Bidder's corporation, and the corporation's principals may not be permitted to bid on State timber sales for a period of 3 months after the first offense, 6 months after the second offense, and 1 year after the third offense. An offense will only be counted against the Bidder for 5 years. In addition, the Bidder certifies that if awarded this contract, the Bidder will complete the timber sale contract in accordance with its terms and any modifications thereof including requirements to purchase, cut, and remove the included timber by the expiration date.

Payment Unit values in the State Forest Timber Sale Contract are calculated based on the advertised value of the Payment Unit as a percentage of the total advertised value of the contract. The advertised value of each Payment Unit is given in the Description of Timber by Payment Unit table on the Timber Sale Information page. For example, if the value of Payment Unit 1 is advertised as \$1,500 and the total Timber Sale value is advertised as \$10,000, the contract price for Payment Unit 1 will be 15% of the total bid price ($\$1,500/\$10,000 * 100$).

10. Disclaimer of Estimates and Bidder's Warranty of Inspection (7/16)

Before submitting this bid, the Bidder is advised and cautioned to inspect the sale area, review the requirements of the sale contract, and take other steps as may be reasonably necessary to ascertain the location, estimated volumes, construction estimates, and operating costs of the proposed sale. Failure to do so will not relieve the Bidder from responsibility for completing the contract.

The Bidder warrants that this bid is submitted solely on the basis of the Bidder's examination and inspection of the quality and quantity of the timber offered for sale and the Bidder's opinion of the value thereof and the costs of recovery. No reliance should be placed on the State of Michigan's estimates of timber quality, quantity or costs of recovery. Bidder further acknowledges that the State of Michigan: (i) expressly disclaims any warranty of fitness of timber for any purpose; (ii) offers this timber as is without any warranty of quality (merchantability) or quantity and (iii) expressly disclaims any warranty as to the quantity or quality of timber sold.

11. Certification and Chain-of-Custody (10/14)

Unless otherwise indicated in the contract under section 7 – Other Conditions of the Sale Specific Conditions & Requirements, the area encompassed by this timber sale is certified to the standards of the Forest Stewardship Council (FSC) - Certificate #SCS-FM/COC-00090N and the Sustainable Forestry Initiative (SFI) - Certificate #NSF-SFIS-5Y031-SF5. Forest products from this sale may be delivered to the mill as "FSC 100% and / or SFI certified" as long as the contractor hauling the forest products is chain-of-custody (COC) certified or covered under a COC certificate from the destination mill. The purchaser is responsible for maintaining COC after leaving the sale area.

12. Good Neighbor Authority (GNA) Requirements (7/16)

If the name of this timber sales contains the acronym GNA, it is authorized by the Good Neighbor Authority (GNA) and covered by various agreements between the U.S. Forest Service and the State. The timber sale occurs on federal land and the following conditions apply:

GNA contracts on US Forest Service land will not be awarded to purchasers on the Federal list of excluded parties. The System for Award Management (SAM) will be checked for active excluded parties prior to award of contract. In addition, the Bidder to whom award is made must complete an Assurance Regarding Felony Conviction or Tax Delinquent Status for Corporate Applicants (AD-3031).

13. Good Neighbor Authority (GNA) Requirements, con't (9/16)

Bidder certifies, by signing this bid form, that to the best of Bidder's knowledge that the following representations are accurate and complete.

- a. That the Bidder and its principals are not presently debarred, suspended, proposed for debarment, declared ineligible, or voluntary excluded from timber sales (covered transactions) by any Federal department or agency.
- b. That the Bidder and its principals have not within a 3-year period preceding this bid been convicted of or had a civil judgment rendered against them for commission of fraud or a criminal offense in connection with obtaining, attempting to obtain, or performing a public (Federal, State, or local) transaction or contract under a public transaction; violation of Federal or State antitrust statutes or commission of embezzlement, theft, forgery, bribery, falsification or destruction of records, making false statements, or receiving stolen property.
- c. That the Bidder and its principals are not presently indicted for or otherwise criminally or civilly charged by a governmental entity (Federal, State, or local) with commission of any of the offenses enumerated in paragraph b of this certification.
- d. That the Bidder and its principals have not within a 3-year period preceding this bid had one or more public transactions (Federal, State, or local) terminated for breach or default of a timber or forest product contract.

Bidders that cannot certify this requirement, in whole or in part, shall submit an explanation with their bid.

KEITH CREAGH
Director

TIMBER SALE INFORMATION

Comp 230 Mix (72-004-16)

Crawford County (Advertised Price \$36,710.80)

SALE NOTE: Sale contains oak wilt restriction, ORV trail, and drumming log specs. The sale can be accessed off of 7 Mile Rd.

A recreation site such as a trail, pathway, or campground is within the sale area or the vicinity. Certain restrictions/specifications may be applicable including time restrictions.

A timber sale contract for this lump sum, sealed bid timber sale will be awarded to the responsible bidder offering the highest sealed bid price. Bids must be at or above the following advertised price for each species:

<u>PRODUCTS & SPECIES</u>	<u>ESTIMATED UNITS*</u>		<u>ADVERTISED PRICE</u>
Sawtimber			
Bl/R/Hybrid Oak	40.70	MBF	\$ 203.00 / MBF
Red Pine	14.60	MBF	\$ 123.00 / MBF
White Oak	22.40	MBF	\$ 59.00 / MBF
White Pine	11.70	MBF	\$ 71.00 / MBF
Pulpwood			
B. T. Aspen	68.00	Cords	\$ 23.00 / Cord
Jack Pine	25.00	Cords	\$ 14.85 / Cord
Misc. Species 1	229.00	Cords	\$ 3.75 / Cord
Mixed Hardwood	252.00	Cords	\$ 24.05 / Cord
Mixed Oak	658.00	Cords	\$ 16.25 / Cord
Red Pine	36.00	Cords	\$ 46.75 / Cord
Scotch Pine	82.00	Cords	\$ 29.45 / Cord
White Pine	46.00	Cords	\$ 18.60 / Cord

* The total volume is statistically estimated within plus (+) or minus (-) 10.90 percent. The estimated units are final and not subject to adjustment. Prospective bidders are urged to examine this timber and to make their own estimates of quantity and quality.

BOND AND PAYMENT SCHEDULE:

1. A bond in the amount of \$1,836.00 to insure faithful performance of the conditions of the contract will be deposited by the successful bidder within 21 days of the sale award.
2. Cutting in any sale or unit without the required advance payment would be considered a trespass.
3. Total payment must be paid in advance or according to the following schedule:
 - (a) Ten percent (10%) of the sale value must be paid within 21 days of the sale award.
 - (b) The 10% down payment will be credited towards the first unit cut.
 - (c) Payment for each of the following units must be made before cutting begins in that unit:

PAYMENT UNIT NUMBER	PERCENT OF TOTAL SALE VALUE
01	11.6%
02	16.1%
03	41.6%
04	30.7%

4. If no cutting takes place, the 10% down payment will not be refunded.
5. Operations on the contract issued will terminate on 12/31/2020.

Description of Timber by Payment Unit (PU)

PU	MARKET GROUP	PRODUCT	QUANTITY	UNIT	ACRES	ADVERTISE PRICE
1	Red Pine	Sawtimber	6.2	MBF	8.0	\$4,246.20
	Jack Pine	Pulpwood	14.0	Cords		
	Misc. Species 1		2.0	Cords		
	Mixed Hardwood		1.0	Cords		
	<i>Black Cherry</i>		1.0	Cords		
	Mixed Oak		5.0	Cords		
	<i>BI/R/Hybrid Oak</i>		5.0	Cords		
	Red Pine		16.0	Cords		
	Scotch Pine		82.0	Cords		
	<i>Scotch Pine</i>	Sawtimber	1.6	MBF		
	<i>Scotch Pine</i>	Pulpwood	79.0	Cords		
2	BI/R/Hybrid Oak	Sawtimber	0.4	MBF	10.9	\$5,903.70
	Red Pine		8.4	MBF		
	White Oak		4.3	MBF		
	White Pine		11.7	MBF		
	B. T. Aspen	Pulpwood	26.0	Cords		
	<i>B. T. Aspen</i>	Sawtimber	3.6	MBF		
	<i>B. T. Aspen</i>	Pulpwood	19.0	Cords		
	Jack Pine		11.0	Cords		
	Misc. Species 1		1.0	Cords		
	Mixed Hardwood		14.0	Cords		
	<i>Red Maple</i>		14.0	Cords		
	Mixed Oak		50.0	Cords		
	<i>BI/R/Hybrid Oak</i>		22.0	Cords		
	<i>White Oak</i>		28.0	Cords		
	Red Pine		20.0	Cords		
	White Pine		46.0	Cords		
	3	BI/R/Hybrid Oak	Sawtimber	23.2		
White Oak			10.4	MBF		
B. T. Aspen		Pulpwood	24.0	Cords		
<i>B. T. Aspen</i>		Sawtimber	2.9	MBF		
<i>B. T. Aspen</i>		Pulpwood	18.0	Cords		
Misc. Species 1			130.0	Cords		
Mixed Hardwood			136.0	Cords		
<i>Red Maple</i>		Sawtimber	3.7	MBF		
<i>Black Cherry</i>		Pulpwood	3.0	Cords		
<i>Red Maple</i>			126.0	Cords		
Mixed Oak			347.0	Cords		
<i>BI/R/Hybrid Oak</i>			191.0	Cords		
<i>White Oak</i>			156.0	Cords		
4	BI/R/Hybrid Oak	Sawtimber	17.1	MBF	29.6	\$11,264.60
	White Oak		7.7	MBF		
	B. T. Aspen	Pulpwood	18.0	Cords		
	<i>B. T. Aspen</i>	Sawtimber	2.2	MBF		
	<i>B. T. Aspen</i>	Pulpwood	14.0	Cords		
	Misc. Species 1		96.0	Cords		
	Mixed Hardwood		100.0	Cords		
	<i>Red Maple</i>	Sawtimber	2.7	MBF		
	<i>Black Cherry</i>	Pulpwood	2.0	Cords		
	<i>Red Maple</i>		93.0	Cords		
	Mixed Oak		256.0	Cords		
	<i>BI/R/Hybrid Oak</i>		141.0	Cords		
	<i>White Oak</i>		115.0	Cords		
TOTAL:			89.4	MBF		

TOTAL:	1,395.0	Cords
--------	---------	-------

Sale Specific Conditions & Requirements

Sale Name: Comp 230 Mix

Sale Number: 72-004-16 Seq#: 2

1 - Sale Area

1.2 - Boundaries

1.2.1 - Painted boundaries (1/14)

The sale boundary and Payment Unit boundaries are marked and identified by red and yellow paint. Exterior sale boundary lines against state are marked with red paint. Interior Payment Unit boundaries are marked with yellow paint. Yellow painted trees designating an interior Payment Unit boundary are only to be cut when all surrounding Payment Units have been paid.

2 - Timber Specifications

2.1 - Included Timber

2.1.1 - Clearcut unit(s) with unmerchantable trees (6/14)

Within Payment Unit(s) 1-4, cut all trees that are two (2) inches or more at DBH, except do not cut white pine in Payment Unit 1, and do not cut red pine or white pine in Payment Units 3 and 4.

2.1.11 - Description of timber note (2/04)

Note that Misc. Species 1 is dead oak, which is Included Timber and designated for cutting.

2.2 - Utilization

2.2.2 - Chipping required (5/14)

Payment Units 1 and 2 must be chip harvested to facilitate subsequent planting operations. The Purchaser has the option to produce sawlogs or pulpwood bolts, but the remaining portion of the trees must be chipped and hauled.

2.2.3 - Stump heights (4/07)

Stump heights within the Sale Area shall not exceed 6 inches for all trees.

3 - Payments

3.3 - Pre-measured Sales

3.3.4 - Dividing payment units (7/14)

Payment Unit(s) may be divided at the request of the Purchaser and upon approval of the Unit Manager. Dividing Payment Units is a contract modification which requires a Timber Sale Contract Supplement.

3.4 - Damaged Timber

3.4.1 - Damaged timber (6/14)

General Condition and Requirement 3.4 Damaged Timber, defines liquidated damages for undesignated live merchantable trees which are cut or injured. In addition, extreme care should be taken to avoid damage to tree seedlings and saplings. Try to minimize damage to advanced oak regeneration. If damage is unavoidable, the stems must be cut instead of just running them over.

4 - Transportation

4.1 - Construction

4.1.3 - Slash and earthen piles (8/04)

Piles or windrows of earth along roads and landings that have been widened or constructed shall be leveled. Slash from road maintenance or construction, including stumps, shall be chipped, utilized or otherwise dispersed throughout the sale.

4.1.6 - Road construction (1/09)

Construction of new roads or improvements of existing roads shall be done in such a way as to minimize the environmental and visual impacts. Merchantable trees shall be cut and utilized unless otherwise directed. Non-merchantable trees shall be severed and laid flat on the ground. Slash shall be chipped, utilized or dispersed throughout the sale. Stumps shall be set upright, not left on edge, and be moved at least 10 feet away from the road edge. Disturbed soil shall be feathered into the

woods and not left in berms or windrows.

4.1.7 - Road closure (10/11)

All new roads built into the sale must be blocked to vehicle traffic upon completion of the sale. Overgrown roads that are reopened shall be considered new roads. In general, this will require constructing a four (4') foot high berm of stumps and logs covered with earth. Stumps and brush must be placed along the remainder of the trail. These roads must be rendered impassable to cars and trucks. All stumps from road building and landing construction must be reserved to block any newly constructed roads upon completion of the sale. These stumps must be scattered along the road system to prohibit vehicular movement. Contact the sale administrator for specific details of design and placement.

4.1.11 - Permits (2/12)

The Purchaser will secure any necessary permits that may be required.

4.2 - Maintenance

4.2.5 - Two wheel drive condition (2/04)

All existing trail roads on and adjacent to the sale area must be passable by two-wheel drive traffic for the duration of the sale.

5 - Operations

5.1 - Notification

5.1.1 - Pre-sale conference (10/11)

A pre-sale conference on site between the Purchaser and sale administrator is required prior to beginning any operations to determine landing and road locations. The Unit Manager or his/her representative must be contacted at least 5 days in advance to schedule the conference.

5.1.4 - Post-sale conference (6/11)

A post-sale conference on site between the Purchaser and sale administrator is required 5 days prior to the completion of active logging operations to determine clean-up and repair of landings, road edges, and the fulfillment of other contract specifications.

5.2 - Conduct of Operations

5.2.1 - Slash

5.2.1.8 - Slash height (12/08)

No slash or tree tops may exceed 24 inches in height.

5.2.2 - Hazard Trees/Snags

5.2.2.1 - Den trees (2/04)

Obvious hollow and/or den trees shall be protected and left standing unless they are a safety hazard.

5.2.3 - Operating Restrictions

5.2.3.4 - Oak wilt restriction (6/10)

Within Payment Unit(s) 3 and 4, unless changed by written agreement, cutting, skidding, and hauling are not permitted during the period of April 15 to July 15. This is necessary to reduce the spread of oak wilt. For more information, contact the Unit Manager or his/her representative.

5.2.4 - Dead and Down Creation

5.2.4.4 - Dead and down creation, grouse (6/18)

To encourage grouse and other wildlife, in Payment Unit(s) 3 and 4, leave one 12" or larger diameter (or largest diameter trees within stand) whole tree on the ground for every 2 acres, preferably a hardwood species such as oak or maple or if no hardwoods are present, a pine species (white or red). These trees will be evenly scattered throughout the unit, preferably at least two chains from any roads, two-tracks, or trails open to vehicles.

5.2.29 - Shrub protection (9/07)

Do not cut or damage hawthorn, witch-hazel, dogwood or junberry in Payment Unit 4. These woody-shrub plants are highly

beneficial to various wildlife species.

5.2.32 - Decking/landing restoration (9/13)

All decking and landing areas must have the surface area restored to a condition equal to or better than before. This is to ensure the proper regeneration of the stand. Wood debris, chips and "cookies" from trimmings must be removed or scattered away from landing and loading areas and may not be windrowed on the edge.

5.2.38 - No decking against live trees (2/04)

Cut products may not be decked against unmarked or designated leave trees.

5.2.39 - ORV trail/route protection (12/12)

The West Higgins Route and Beaver Creek MCCCT are ORV and motorcycle trails and are shown on the Timber Sale Map. Trees with orange ORV markers shall be cut off above the markers and at least 5 feet above ground. All stumps within 5 feet of the trail must be cut flush with the ground. Maintain a 20 foot wide slash, debris, and rut free zone daily using the ORV trail or route as the centerline. Do not run equipment down the ORV trail or route. Skidding across the trail or route may only occur in locations approved by the sale administrator.

5.4 - Soil Protection

5.4.1 - Rutting restriction, general (7/16)

Operations are to cease immediately if equipment and weather conditions result in rutting of roads and/or skid trails which is 12 inches or greater in depth and 50 feet in length. The Unit Manager or his/her representative may restrict hauling and/or skidding if ruts exceed the specified depth. With the Unit Manager or his/her representative's approval, the Purchaser may return to the area when the risk of rutting has decreased.

6 - Safety and Fire Prevention

6.2 - Signing

6.2.1 - Road posting (9/09)

The Purchaser is responsible for posting and maintaining caution signs on Cemetery Crossing Trl and 7 Mile Rd prior to beginning operations. The road must be posted at appropriate distances from the sale area to warn of logging activity and truck traffic. Signs must be removed when harvest operations are suspended or completed. The Purchaser will provide these signs.

6.2.3 - Recreational trail posting (2/10)

The Purchaser is responsible for posting and maintaining caution signs on Beaver Creek MCCCT prior to beginning operations. The trail must be posted at appropriate distances from the sale area to warn of logging activity and truck traffic at both ends of the trail. Signs must be removed when harvest operations are suspended or completed. The Purchaser will provide these signs.



TIMBER SALE MAP

This information provided by authority of Part 525, 1994 PA 451, as amended.

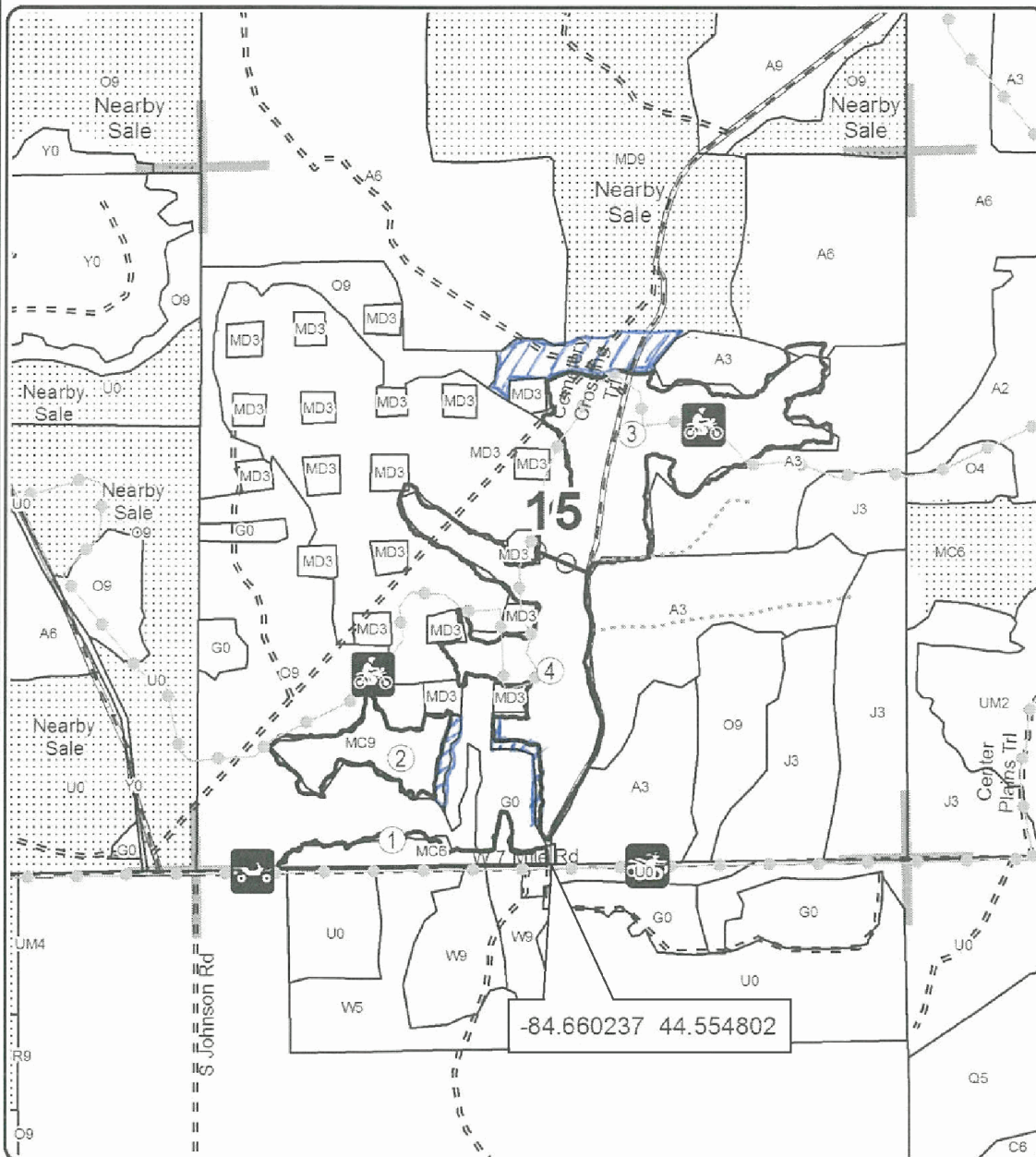
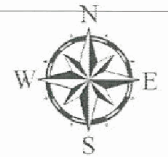
Forest Management Unit Grayling Management Unit	County Crawford	Mapped By Lipe, R	Date 08/15/2016	Page 1	of 1
Township 25N	Range 03W	Section(s) and Subdivision(s) Sec 15 - S1/2SW, W1/2NE, S1/2NE	Scale 1:15,840		

Cover Type				Density			
A = Aspen	H = Hemlock	N = Marsh	U = Upland Brush	0 = Non Stocked	5 = Pole Timber Medium		
B = Paper Birch	J = Jack Pine	O = Oak	UM = Upland Mixed	1 = Seedling Sapling Poor	6 = Pole Timber Well		
C = Cedar	L = Lowland Brush	P = Lowland Poplar	V = Bog or Marsh	2 = Seedling Sapling Medium	7 = Saw Timber Poor		
D = Treed Bog	LM = Lowland Mixed	Q = Mixed Swamp Conifer	W = White Pine	3 = Seedling Sapling Well	8 = Saw Timber Medium		
E = Swamp Hdwoods	M = Mpl, Bch, Brch	R = Red Pine	X = Non Stocked	4 = Pole Timber Poor	9 = Saw Timber Well		
F = Spruce Fir	MC = Mixed Conifer	S = Black Spruce	Z = Water				
G = Grass	MD = Mixed Deciduous	T = Tamarack					

PU	Acres	PU	Acres
1	8	4	29.6
2	10.9		
3	40.2		

COMP 230 MIX

Compartment 230
88.7 Acres

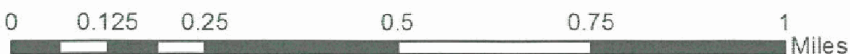
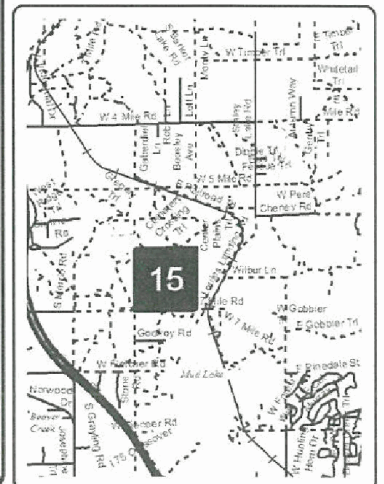


Legend

- Against State (Red)
- Payment Unit (Yellow)
- ⋯ Nearby Timber Sale
- ▭ Section Corners
- ▭ Stand Boundaries
- ▬ Gravel Roads
- ▬ Poor Dirt Roads
- ▬ Closed Roads
- PU_Label
- Recreational Trail

Retention Area

Locator Map
1:200,000



TIMBER SALE INFORMATION

Comp 230 North Mix (72-007-16)

Crawford County (Advertised Price \$117,778.40)

SALE NOTE: Sale access is either off 7 mile road from the south via Cemetery Crossing Trl or via snowmobile trail 489 from the North. Oak wilt restriction applies to a portion of this sale (see spec 5.2.3.4 for details).

A recreation site such as a trail, pathway, or campground is within the sale area or the vicinity. Certain restrictions/specifications may be applicable including time restrictions.

A timber sale contract for this lump sum, sealed bid timber sale will be awarded to the responsible bidder offering the highest sealed bid price. Bids must be at or above the following advertised price for each species:

<u>PRODUCTS & SPECIES</u>	<u>ESTIMATED UNITS*</u>		<u>ADVERTISED PRICE</u>
Sawtimber			
BI/R/Hybrid Oak	298.20	MBF	\$ 203.00 / MBF
White Oak	40.30	MBF	\$ 59.00 / MBF
Pulpwood			
BI/R/Hybrid Oak	1,948.00	Cords	\$ 16.25 / Cord
Jack Pine	123.00	Cords	\$ 14.85 / Cord
Mixed Aspen	98.00	Cords	\$ 23.00 / Cord
Mixed Hardwood	332.00	Cords	\$ 24.05 / Cord
Red Pine	14.00	Cords	\$ 46.75 / Cord
White Oak	609.00	Cords	\$ 16.25 / Cord
White Pine	32.00	Cords	\$ 18.60 / Cord

* The total volume is statistically estimated within plus (+) or minus (-) 10.84 percent. The estimated units are final and not subject to adjustment. Prospective bidders are urged to examine this timber and to make their own estimates of quantity and quality.

BOND AND PAYMENT SCHEDULE:

1. A bond in the amount of \$5,889.00 to insure faithful performance of the conditions of the contract will be deposited by the successful bidder within 21 days of the sale award.
2. Cutting in any sale or unit without the required advance payment would be considered a trespass.
3. Total payment must be paid in advance or according to the following schedule:
 - (a) Ten percent (10%) of the sale value must be paid within 21 days of the sale award.
 - (b) The 10% down payment will be credited towards the first unit cut.
 - (c) Payment for each of the following units must be made before cutting begins in that unit:

PAYMENT UNIT NUMBER	PERCENT OF TOTAL SALE VALUE
01	3.6%
02	8.0%
03	51.3%
04	37.1%

4. If no cutting takes place, the 10% down payment will not be refunded.
5. Operations on the contract issued will terminate on 12/31/2020.

Description of Timber by Payment Unit (PU)

PU	MARKET GROUP	PRODUCT	QUANTITY	UNIT	ACRES	ADVERTISE PRICE
1	BI/R/Hybrid Oak	Sawtimber	0.9	MBF	21.9	\$4,256.45
	<i>Northern Pin Oak</i>		0.9	<i>MBF</i>		
	BI/R/Hybrid Oak	Pulpwood	40.0	Cords		
	<i>Northern Pin Oak</i>		40.0	<i>Cords</i>		
	Jack Pine		123.0	Cords		
	Mixed Aspen		5.0	Cords		
	<i>Quaking Aspen</i>		5.0	<i>Cords</i>		
	Mixed Hardwood		26.0	Cords		
	<i>Black Cherry</i>		13.0	<i>Cords</i>		
	<i>Red Maple</i>		13.0	<i>Cords</i>		
	Red Pine		6.0	Cords		
	<i>Red Pine</i>	<i>Sawtimber</i>	0.5	<i>MBF</i>		
	<i>Red Pine</i>	<i>Pulpwood</i>	5.0	<i>Cords</i>		
	White Oak		8.0	Cords		
	White Pine		24.0	Cords		
	<i>White Pine</i>	<i>Sawtimber</i>	1.0	<i>MBF</i>		
<i>White Pine</i>	<i>Pulpwood</i>	22.0	<i>Cords</i>			
2	BI/R/Hybrid Oak	Sawtimber	24.2	MBF	15.3	\$9,452.45
	<i>BI/R/Hybrid Oak</i>		24.2	<i>MBF</i>		
	White Oak		3.3	MBF		
	BI/R/Hybrid Oak	Pulpwood	118.0	Cords		
	<i>BI/R/Hybrid Oak</i>		118.0	<i>Cords</i>		
	Mixed Aspen		17.0	Cords		
	<i>Quaking Aspen</i>	<i>Sawtimber</i>	2.2	<i>MBF</i>		
	<i>Quaking Aspen</i>	<i>Pulpwood</i>	13.0	<i>Cords</i>		
	Mixed Hardwood		17.0	Cords		
	<i>Misc. Species 1</i>		6.0	<i>Cords</i>		
	<i>Red Maple</i>		11.0	<i>Cords</i>		
	Red Pine		8.0	Cords		
	<i>Red Pine</i>	<i>Sawtimber</i>	1.1	<i>MBF</i>		
	<i>Red Pine</i>	<i>Pulpwood</i>	6.0	<i>Cords</i>		
	White Oak		68.0	Cords		
	White Pine		8.0	Cords		
<i>White Pine</i>		8.0	<i>Cords</i>			
3	BI/R/Hybrid Oak	Sawtimber	158.4	MBF	69.2	\$60,340.80
	<i>BI/R/Hybrid Oak</i>		158.4	<i>MBF</i>		
	White Oak		21.5	MBF		
	BI/R/Hybrid Oak	Pulpwood	1,038.0	Cords		
	<i>BI/R/Hybrid Oak</i>		1,038.0	<i>Cords</i>		
	Mixed Aspen		44.0	Cords		
	<i>B. T. Aspen</i>		39.0	<i>Cords</i>		
	<i>Quaking Aspen</i>		5.0	<i>Cords</i>		
	Mixed Hardwood		167.0	Cords		
	<i>Red Maple</i>	<i>Sawtimber</i>	3.7	<i>MBF</i>		
	<i>Red Maple</i>	<i>Pulpwood</i>	160.0	<i>Cords</i>		
	White Oak		309.0	Cords		
4	BI/R/Hybrid Oak	Sawtimber	114.7	MBF	50.1	\$43,704.65
	<i>BI/R/Hybrid Oak</i>		114.7	<i>MBF</i>		
	White Oak		15.5	MBF		
	BI/R/Hybrid Oak	Pulpwood	752.0	Cords		
	<i>BI/R/Hybrid Oak</i>		752.0	<i>Cords</i>		
	Mixed Aspen		32.0	Cords		
	<i>B. T. Aspen</i>		29.0	<i>Cords</i>		
	<i>Quaking Aspen</i>		3.0	<i>Cords</i>		
	Mixed Hardwood		121.0	Cords		
	<i>Red Maple</i>	<i>Sawtimber</i>	2.7	<i>MBF</i>		

Description of Timber by Payment Unit (PU), con't

PU	MARKET GROUP	PRODUCT	QUANTITY	UNIT	ACRES	ADVERTISE PRICE
4 con't	<i>Red Maple</i>	<i>Pulpwood</i>	116.0	<i>Cords</i>		
	White Oak		224.0	Cords		
TOTAL:			338.5	MBF		
TOTAL:			3,155.0	Cords		

Sale Specific Conditions & Requirements

Sale Name: Comp 230 North Mix

Sale Number: 72-007-16 Seq#: 2

1 - Sale Area

1.2 - Boundaries

1.2.1 - Painted boundaries (1/14)

The sale boundary and Payment Unit boundaries are marked and identified by blue, red and yellow paint. Exterior sale boundary lines against private property are marked with blue paint. Exterior sale boundary lines against state are marked with red paint. Interior Payment Unit boundaries are marked with yellow paint. Yellow painted trees designating an interior Payment Unit boundary are only to be cut when all surrounding Payment Units have been paid.

2 - Timber Specifications

2.1 - Included Timber

2.1.1 - Clearcut unit(s) with unmerchantable trees (6/14)

Within Payment Unit(s) 1 - 4, cut all trees that are two (2) inches or more at DBH, except within Payment Units 3 and 4, do not cut red pine, white pine, or any green painted trees.

2.2 - Utilization

2.2.2 - Chipping required (5/14)

Payment Unit 1 must be chip harvested to facilitate subsequent planting operations. The Purchaser has the option to produce sawlogs or pulpwood bolts, but the remaining portion of the trees must be chipped and hauled. Do not chip 1/6 to 1/3 of the slash from harvested trees (tree tops and limbs less than four inches in diameter).

2.2.3 - Stump heights (4/07)

Stump heights within Payment Unit(s) 2 - 4 shall not exceed 12 inches for trees greater than 10 inches DBH and 4 inches for trees smaller than 10 inches DBH. Stump heights within Payment Unit(s) 1 shall not exceed 6 inches for all trees. This is in order to facilitate planting operations. A written waiver of this requirement may be obtained if wet summer weather makes winter logging necessary.

3 - Payments

3.3 - Pre-measured Sales

3.3.4 - Dividing payment units (7/14)

Payment Unit(s) 3 & 4 may be divided at the request of the Purchaser and upon approval of the Unit Manager. Dividing Payment Units is a contract modification which requires a Timber Sale Contract Supplement.

3.4 - Damaged Timber

3.4.1 - Damaged timber (6/14)

General Condition and Requirement 3.4 Damaged Timber, defines liquidated damages for undesignated live merchantable trees which are cut or injured. In addition, extreme care should be taken to avoid damage to tree seedlings and saplings. Try to minimize damage to advance oak regeneration. If damage is unavoidable, stems must be cut instead of being run over.

4 - Transportation

4.1 - Construction

4.1.3 - Slash and earthen piles (8/04)

Piles or windrows of earth along roads and landings that have been widened or constructed shall be leveled. Slash from road maintenance or construction, including stumps, shall be chipped, utilized or otherwise dispersed throughout the sale.

4.1.6 - Road construction (1/09)

Construction of new roads or improvements of existing roads shall be done in such a way as to minimize the environmental and visual impacts. Merchantable trees shall be cut and utilized unless otherwise directed. Non-merchantable trees shall be severed and laid flat on the ground. Slash shall be chipped, utilized or otherwise dispersed throughout the sale. Stumps shall

be set upright, not left on edge, and be moved at least 10 feet away from the road edge. Disturbed soil shall be feathered into the woods and not left in berms or windrows.

4.1.7 - Road closure (10/11)

All new roads built into the sale must be blocked to vehicle traffic upon completion of the sale. Overgrown roads that are reopened shall be considered new roads. In general, this will require constructing a four (4') foot high berm of stumps and logs covered with earth. Stumps and brush must be placed along the remainder of the trail. All stumps from road building and landing construction must be reserved to block any newly constructed roads upon completion of the sale. These stumps must be scattered along the road system to prohibit vehicular movement. Contact the sale administrator for specific details of design and placement.

4.1.11 - Permits (2/12)

The Purchaser will secure any necessary permits that may be required.

4.2 - Maintenance

4.2.5 - Two wheel drive condition (2/04)

All existing trail roads on and adjacent to the sale area must be passable by two-wheel drive traffic for the duration of the sale.

5 - Operations

5.1 - Notification

5.1.1 - Pre-sale conference (10/11)

A pre-sale conference on site between the Purchaser and sale administrator is required prior to beginning any operations to determine landing and road locations. The Unit Manager or his/her representative must be contacted at least 5 days in advance to schedule the conference.

5.1.4 - Post-sale conference (6/11)

A post-sale conference on site between the Purchaser and sale administrator is required 5 days prior to the completion of active logging operations to determine clean-up and repair of landings, road edges, and the fulfillment of other contract specifications.

5.2 - Conduct of Operations

5.2.1 - Slash

5.2.1.8 - Slash height (12/08)

No slash may exceed 24 inches in height.

5.2.2 - Hazard Trees/Snags

5.2.2.1 - Den trees (2/04)

Obvious hollow and/or den trees shall be protected and left standing unless they are a safety hazard.

5.2.3 - Operating Restrictions

5.2.3.4 - Oak wilt restriction (6/10)

Within Payment Unit(s) 2 - 4, unless changed by written agreement, cutting, skidding, and hauling are not permitted during the period of April 15 to July 15. This is necessary to reduce the spread of oak wilt. For more information, contact the Unit Manager or his/her representative.

5.2.4 - Dead and Down Creation

5.2.4.4 - Dead and down creation, grouse (8/13)

To encourage grouse and other wildlife, in Payment Unit(s) 2 - 4, leave one, 10" diameter or larger log-length (8 foot minimum) piece on the ground for every 2 acres. These will be evenly scattered throughout the unit. This can be an unmerchantable piece or a full tree, preferably a hardwood species such as oak or maple or if no hardwoods are present, a pine species (white or red).

5.2.29 - Shrub protection (9/07)

Do not cut or damage hawthorn, witch-hazel, dogwood or juneberry. These woody-shrub plants are highly beneficial to various wildlife species.

5.2.32 - Decking/landing restoration (9/13)

All decking and landing areas must have the surface area restored to a condition equal to or better than before. This is to ensure the proper regeneration of the stand. Wood debris, chips and "cookies" from trimmings must be removed or scattered away from landing and loading areas and may not be windrowed on the edge.

5.2.38 - No decking against live trees (2/04)

Cut products may not be decked against unmarked or designated leave trees.

5.2.41 - Snowmobile trail protection (9/11)

The snowmobile trail 489 is shown on the Timber Sale Map. Do not cut or damage posts with orange trail markers or traffic control signs. If the trail is used, it must be maintained and restored to a condition equal to or better than before the sale. If the trail is used for hauling, it must be graded to the satisfaction of the Unit Manager or his/her representative prior to December 1st. The snowmobile trail may not be used for any timber sale operations from December 1 to March 31, unless approved by the Unit Manager or his/her representative. Permission must be obtained in writing from the Unit Manager or his/her representative to use the trail road for hauling during the snowmobile season. If the trail is to be used for hauling during the snowmobile season, then a snow covered base must be left on the trail.

5.4 - Soil Protection

5.4.1 - Rutting restriction, general (7/16)

Operations are to cease immediately if equipment and weather conditions result in rutting of roads and/or skid trails which is 12 inches or greater in depth and 50 feet in length. The Unit Manager or his/her representative may restrict hauling and/or skidding if ruts exceed the specified depth. With the Unit Manager or his/her representative's approval, the Purchaser may return to the area when the risk of rutting has decreased.

6 - Safety and Fire Prevention

6.2 - Signing

6.2.1 - Road posting (9/09)

The Purchaser is responsible for posting and maintaining caution signs on Cemetery Crossing Trl and 7 mile road (if hauling to south) prior to beginning operations. The road must be posted at appropriate distances from the sale area to warn of logging activity and truck traffic. Signs must be removed when harvest operations are suspended or completed. The Purchaser will provide these signs.

6.2.2 - Snowmobile trail posting (8/09)

The Purchaser is responsible for posting and maintaining caution signs on snowmobile trail 489 (if used for hauling out to the north) prior to beginning operations during the snowmobile season (approximately December 1 to March 31). The trail must be posted at appropriate distances from the sale area to warn of logging activity and truck traffic. Signs must be removed when harvest operations are suspended or completed. The Purchaser will provide these signs.



TIMBER SALE MAP

This information provided by authority of Part 525, 1994 PA 451, as amended.

Sale Number	Year
72 - 007	16

Forest Management Unit	County	Mapped By	Date	Page	of
Grayling	Crawford	Barnes	09/16/2016	1	1
Township	Range	Section(s) and Subdivision(s)	Scale		
25N	03W	Sec 10 - SE, SESW; Sec 15 - NE, NENW	1:15,840		

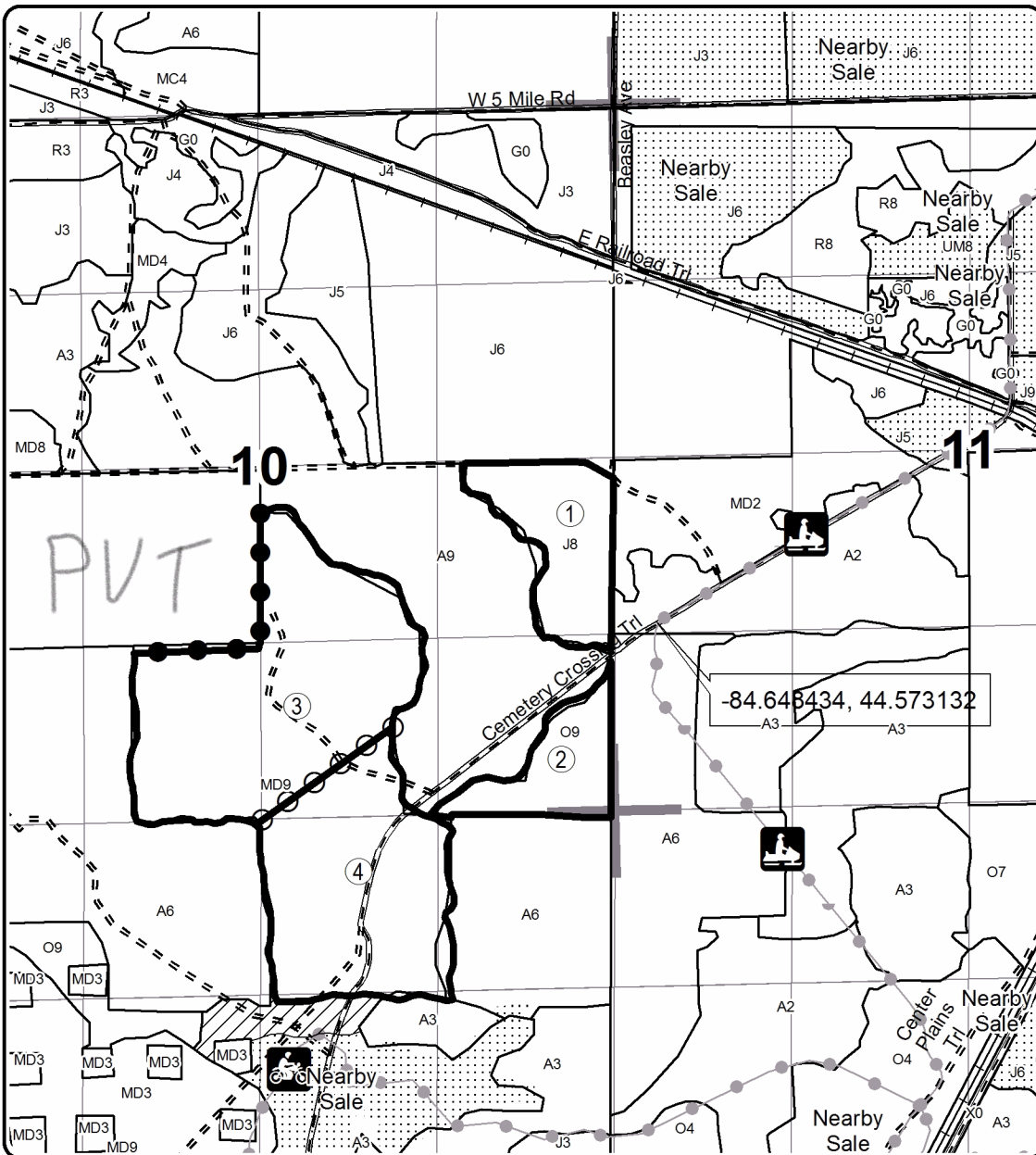
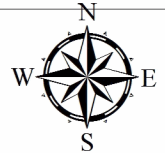
Cover Type				Density			
A = Aspen	H = Hemlock	N = Marsh	U = Upland Brush	0 = Non Stocked	5 = Pole Timber Medium		
B = Paper Birch	J = Jack Pine	O = Oak	UM = Upland Mixed	1 = Seedling Sapling Poor	6 = Pole Timber Well		
C = Cedar	L = Lowland Brush	P = Lowland Poplar	V = Bog or Marsh	2 = Seedling Sapling Medium	7 = Saw Timber Poor		
D = Treed Bog	LM = Lowland Mixed	Q = Mixed Swamp Conifer	W = White Pine	3 = Seedling Sapling Well	8 = Saw Timber Medium		
E = Swamp Hdwoods	M = Mpl, Bch, Brch	R = Red Pine	X = Non Stocked	4 = Pole Timber Poor	9 = Saw Timber Well		
F = Spruce Fir	MC = Mixed Conifer	S = Black Spruce	Z = Water				
G = Grass	MD = Mixed Deciduous	T = Tamarack					

PU	Acres	PU	Acres
1	21.9	4	50.1
2	15.3		
3	69.2		

Comp 230 North Mix

Compartment 230

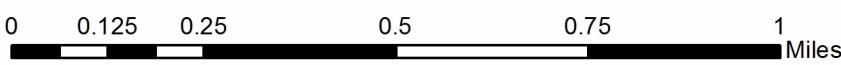
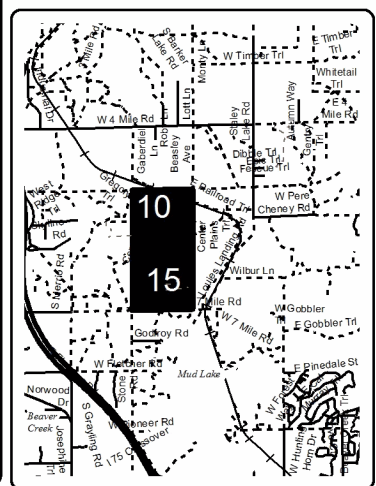
156.5 Acres



Legend

- Against State (Red)
- Payment Unit (Yellow)
- Private Line (Blue)
- Section Corners
- Retention Area
- Stand Boundaries
- Gravel Roads
- Poor Dirt Roads
- PU_Label
- Recreational Trail
- Railroads

Locator Map
1:200,000



TIMBER SALE INFORMATION

Snood Mix (72-042-16)

Crawford County (Advertised Price \$27,312.15)

SALE NOTE: Access is off of Johnson Road. Sale is a mix of aspen and hardwoods. Harvesting is restricted from April 15 - July 15 due to oak wilt restrictions, unless the Purchaser harvests a swath 150 feet wide along the private land boundary where oak is present prior to April 15.

A timber sale contract for this lump sum, sealed bid timber sale will be awarded to the responsible bidder offering the highest sealed bid price. Bids must be at or above the following advertised price for each species:

<u>PRODUCTS & SPECIES</u>	<u>ESTIMATED UNITS*</u>	<u>ADVERTISED PRICE</u>
Sawtimber		
B. T. Aspen	24.40 MBF	\$ 79.00 / MBF
Mixed Oak	30.60 MBF	\$ 203.00 / MBF
Red Maple	17.40 MBF	\$ 43.00 / MBF
Red Pine	2.20 MBF	\$ 123.00 / MBF
White Oak	22.80 MBF	\$ 59.00 / MBF
Pulpwood		
B. T. Aspen	282.00 Cords	\$ 23.00 / Cord
Mixed Oak	176.00 Cords	\$ 16.25 / Cord
Red Maple	301.00 Cords	\$ 24.05 / Cord
Red Pine	2.00 Cords	\$ 46.75 / Cord
White Pine	7.00 Cords	\$ 18.60 / Cord

* The total volume is statistically estimated within plus (+) or minus (-) 11.33 percent. The estimated units are final and not subject to adjustment. Prospective bidders are urged to examine this timber and to make their own estimates of quantity and quality.

BOND AND PAYMENT SCHEDULE:

- A bond in the amount of \$1,366.00 to insure faithful performance of the conditions of the contract will be deposited by the successful bidder within 21 days of the sale award.
- Cutting in any sale or unit without the required advance payment would be considered a trespass.
- Total payment must be paid in advance or according to the following schedule:
 - Ten percent (10%) of the sale value must be paid within 21 days of the sale award.
 - The remainder is due before cutting begins.
 - Payment for each of the following units must be made before cutting begins in that unit:

<u>PAYMENT UNIT NUMBER</u>	<u>PERCENT OF TOTAL SALE VALUE</u>
01	100.0%
- If no cutting takes place, the 10% down payment will not be refunded.
- Operations on the contract issued will terminate on 09/30/2020.

Description of Timber by Payment Unit (PU)

<u>PU</u>	<u>MARKET GROUP</u>	<u>PRODUCT</u>	<u>QUANTITY</u>	<u>UNIT</u>	<u>ACRES</u>	<u>ADVERTISE PRICE</u>
1	B. T. Aspen	Sawtimber	24.4	MBF	43.6	\$27,312.15
	Mixed Oak		30.6	MBF		
	Red Maple		17.4	MBF		
	Red Pine		2.2	MBF		
	White Oak		22.8	MBF		
	B. T. Aspen	Pulpwood	282.0	Cords		
	Mixed Oak		176.0	Cords		
	Red Maple		301.0	Cords		
	Red Pine		2.0	Cords		
	White Pine		7.0	Cords		
TOTAL:			97.4	MBF		
TOTAL:			768.0	Cords		

Sale Specific Conditions & Requirements

Sale Name: Snood Mix

Sale Number: 72-042-16 Seq#: 2

1 - Sale Area

1.2 - Boundaries

1.2.1 - Painted boundaries (1/14)

The sale boundary and Payment Unit boundaries are marked and identified by blue and red paint, along with a road. Exterior sale boundary lines against private property are marked with blue paint. Exterior sale boundary lines against state are marked with red paint, with the exception of the western boundary, which is unpainted and identified by Johnson Road. The painted boundary line trees are not Included Timber and are to be protected.

2 - Timber Specifications

2.1 - Included Timber

2.1.1 - Clearcut unit(s) with unmerchantable trees (6/14)

Within Payment Unit(s) 1, cut all trees that are two (2) inches or more at DBH.

3 - Payments

3.3 - Pre-measured Sales

3.3.4 - Dividing payment units (7/14)

Payment Unit(s) may be divided at the request of the Purchaser and upon approval of the Unit Manager. Dividing Payment Units is a contract modification which requires a Timber Sale Contract Supplement.

4 - Transportation

4.1 - Construction

4.1.3 - Slash and earthen piles (8/04)

Piles or windrows of earth along roads and landings that have been widened or constructed shall be leveled. Slash from road maintenance or construction, including stumps, shall be dispersed throughout the sale.

4.1.6 - Road construction (1/09)

Construction of new roads or improvements of existing roads shall be done in such a way as to minimize the environmental and visual impacts. Merchantable trees shall be cut and utilized unless otherwise directed. Non-merchantable trees shall be severed and laid flat on the ground. Slash shall be scattered, and not left in windrows and kept a minimum of 10 feet back from the road edge. Stumps shall be set upright, not left on edge, and be moved at least 10 feet away from the road edge. Disturbed soil shall be feathered into the woods and not left in berms or windrows.

4.1.7 - Road closure (10/11)

All new roads built into the sale must be blocked to vehicle traffic upon completion of the sale. Overgrown roads that are reopened shall be considered new roads. In general, this will require constructing a four (4') foot high berm of stumps and logs covered with earth. Stumps and brush must be placed along the remainder of the trail. These roads must be rendered impassable to cars and trucks. Contact the sale administrator for specific details of design and placement.

4.1.11 - Permits (2/12)

The Purchaser will secure any necessary highway and stream crossing permits that may be required.

4.2 - Maintenance

4.2.5 - Two wheel drive condition (2/04)

All existing trail roads on and adjacent to the sale area must be passable by two-wheel drive traffic for the duration of the sale.

5 - Operations

5.1 - Notification

5.1.1 - Pre-sale conference (10/11)

A pre-sale conference on site between the Purchaser and sale administrator is required prior to beginning any operations to determine landing and road locations. The Unit Manager or his/her representative must be contacted at least 5 days in advance to schedule the conference.

5.1.4 - Post-sale conference (6/11)

A post-sale conference on site between the Purchaser and sale administrator is required 5 days prior to the completion of active logging operations to determine clean-up and repair of landings, road edges, and the fulfillment of other contract specifications.

5.2 - Conduct of Operations

5.2.1 - Slash

5.2.1.11 - Slash for reforestation (5/07)

To facilitate reforestation, the sale area shall be left with slash evenly distributed. Bunched tops within the cutting area shall be broken up and scattered. Stumps shall be cut low to the ground. Processing sites shall not be left with a compacted layer of slash; tops from these sites shall be hauled back into the cut area and scattered.

5.2.2 - Hazard Trees/Snags

5.2.2.1 - Den trees (2/04)

Obvious hollow and/or den trees shall be protected and left standing unless they are a safety hazard.

5.2.3 - Operating Restrictions

5.2.3.5 - Oak wilt restriction (1/18)

Within Payment Unit(s) 1, unless changed by written agreement, cutting, skidding, hauling within the sale and brushing of access roads to the sale are not permitted during the period of April 15 to July 15. Operations may be allowed if specific steps are taken to prevent damaging uncut oak during the high risk period. Those steps may include completing all road brushing before April 15th and clearing a tree-length buffer along uncut oak cover before April 15th. This is necessary to reduce the spread of oak wilt. For more information, contact the Unit Manager or his/her representative.

5.2.29 - Shrub protection (9/07)

Do not cut or damage hawthorn. These woody-shrub plants are highly beneficial to various wildlife species.

5.2.32 - Decking/landing restoration (9/13)

All decking and landing areas must have the surface area restored to a condition equal to or better than before. This is to ensure the proper regeneration of the stand. Wood debris, chips and "cookies" from trimmings must be removed or scattered away from landing and loading areas and may not be windrowed on the edge.

5.4 - Soil Protection

5.4.1 - Rutting restriction, general (7/16)

Operations are to cease immediately if equipment and weather conditions result in rutting of roads and/or skid trails which is 12 inches or greater in depth and 50 feet in length. The Unit Manager or his/her representative may restrict hauling and/or skidding if ruts exceed the specified depth. With the Unit Manager or his/her representative's approval, the Purchaser may return to the area when the risk of rutting has decreased.

6 - Safety and Fire Prevention

6.2 - Signing

6.2.1 - Road posting (9/09)

The Purchaser is responsible for posting and maintaining caution signs on Johnson Road prior to beginning operations. The road must be posted 200 feet from the sale area to warn of logging activity and truck traffic. Signs must be removed when harvest operations are suspended or completed. The Purchaser will provide these signs.



TIMBER SALE MAP

This information provided by authority of Part 525, 1994 PA 451, as amended.

Forest Management Unit Grayling Management Unit	County Crawford	Mapped By Tweedale	Date 09/21/2016	Page 1	of 1
Township 25N	Range 03W	Section(s) and Subdivision(s) Sec. 27 SENW, SWNW, NWSW	Scale 1:15,840		

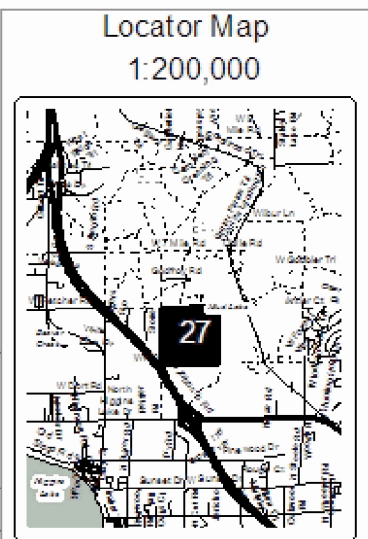
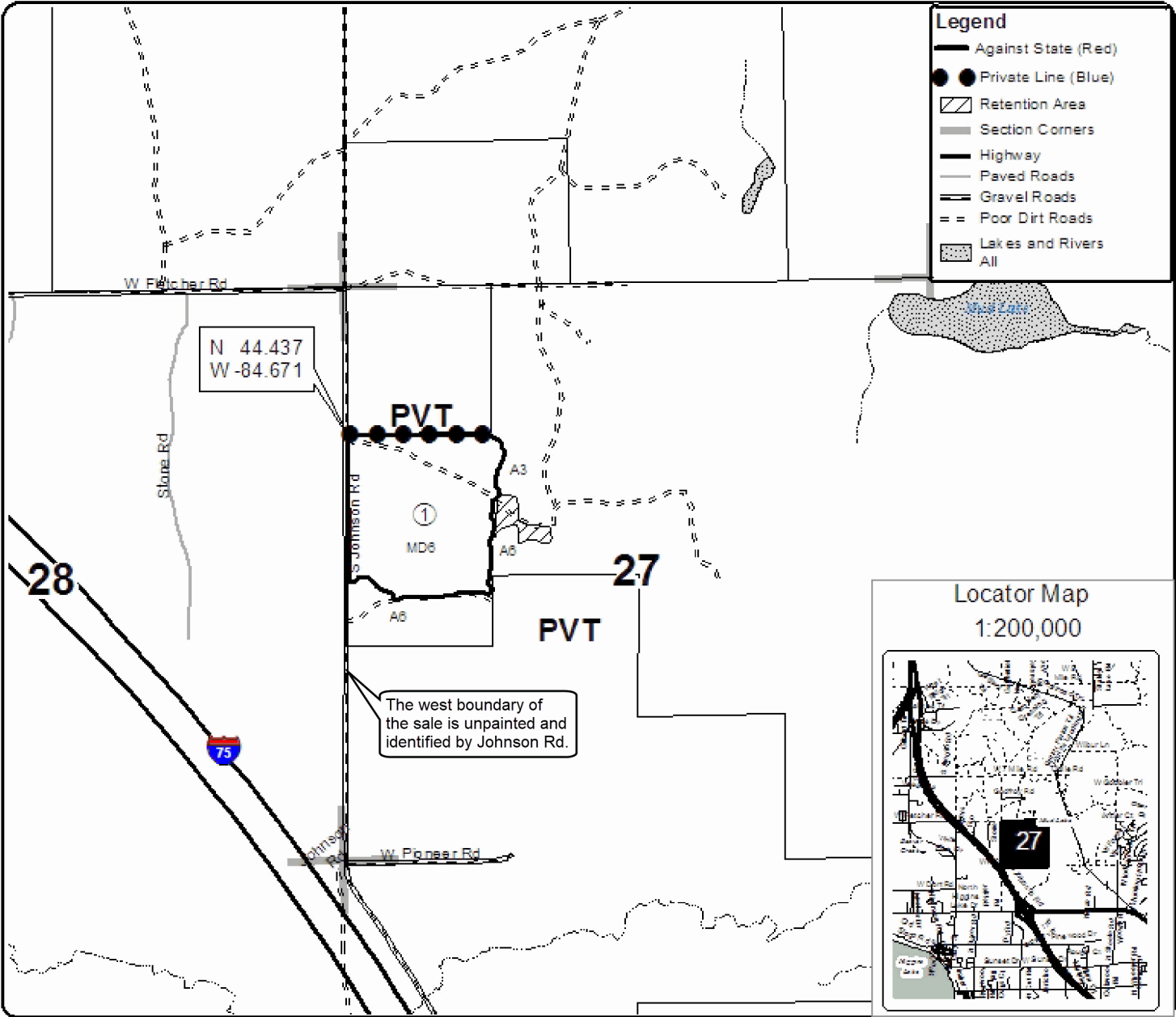
Cover Type				Density			
A = Aspen	H = Hemlock	N = Marsh	U = Upland Brush	0 = Non Stocked	5 = Pole Timber Medium		
B = Paper Birch	J = Jack Pine	O = Oak	UM = Upland Mixed	1 = Seedling Sapling Poor	6 = Pole Timber Well		
C = Cedar	L = Lowland Brush	P = Lowland Poplar	V = Bog or Marsh	2 = Seedling Sapling Medium	7 = Saw Timber Poor		
D = Tread Bog	LM = Lowland Mixed	Q = Mixed Swamp Conifer	W = White Pine	3 = Seedling Sapling Well	8 = Saw Timber Medium		
E = Swamp Hdwoods	M = Mpl, Bch, Brch	R = Red Pine	X = Non Stocked	4 = Pole Timber Poor	9 = Saw Timber Well		
F = Spruce Fir	MC = Mixed Conifer	S = Black Spruce	Z = Water				
G = Grass	MD = Mixed Deciduous	T = Tamarack					

PU	Acres
1	43.6

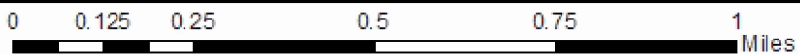
Snood Mix

Compartment 228

43.6 Acres



The west boundary of the sale is unpainted and identified by Johnson Rd.



TIMBER SALE INFORMATION

Billman Oak (72-043-16)

Crawford County (Advertised Price \$53,478.35)

SALE NOTE: Majority oak sale. Please be aware of the pipeline running through the sale area. Harvesting will not be permitted from April 15 - July 15 due to oak wilt concerns unless 150 foot wide swaths are harvested around retention islands and along any boundaries that contain oak trees prior to April 15th. This will reduce the risk of damage to residual oak for disease transmission.

A timber sale contract for this lump sum, sealed bid timber sale will be awarded to the responsible bidder offering the highest sealed bid price. Bids must be at or above the following advertised price for each species:

<u>PRODUCTS & SPECIES</u>	<u>ESTIMATED UNITS*</u>		<u>ADVERTISED PRICE</u>
Sawtimber			
Mixed Oak	206.20	MBF	\$ 190.00 / MBF
White Oak	22.60	MBF	\$ 56.00 / MBF
Pulpwood			
B. T. Aspen	76.00	Cords	\$ 21.45 / Cord
Jack Pine	4.00	Cords	\$ 13.85 / Cord
Mixed Oak	685.00	Cords	\$ 15.20 / Cord
Red Maple	22.00	Cords	\$ 22.45 / Cord
Red Pine	3.00	Cords	\$ 43.65 / Cord
White Pine	18.00	Cords	\$ 17.35 / Cord

* The total volume is statistically estimated within plus (+) or minus (-) 10.74 percent. The estimated units are final and not subject to adjustment. Prospective bidders are urged to examine this timber and to make their own estimates of quantity and quality.

BOND AND PAYMENT SCHEDULE:

1. A bond in the amount of \$2,674.00 to insure faithful performance of the conditions of the contract will be deposited by the successful bidder within 21 days of the sale award.
2. Cutting in any sale or unit without the required advance payment would be considered a trespass.
3. Total payment must be paid in advance or according to the following schedule:
 - (a) Ten percent (10%) of the sale value must be paid within 21 days of the sale award.
 - (b) The remainder is due before cutting begins.
 - (c) Payment for each of the following units must be made before cutting begins in that unit:

PAYMENT UNIT NUMBER	PERCENT OF TOTAL SALE VALUE
01	100.0%
4. If no cutting takes place, the 10% down payment will not be refunded.
5. Operations on the contract issued will terminate on 09/30/2020.

Description of Timber by Payment Unit (PU)

PU	MARKET GROUP	PRODUCT	QUANTITY	UNIT	ACRES	ADVERTISE PRICE
1	Mixed Oak	Sawtimber	206.2	MBF	57.2	\$53,478.35
	White Oak		22.6	MBF		
	B. T. Aspen	Pulpwood	76.0	Cords		
	Jack Pine		4.0	Cords		
	Mixed Oak		685.0	Cords		
	Red Maple		22.0	Cords		
	Red Pine		3.0	Cords		
	White Pine		18.0	Cords		
	TOTAL:			228.8		
TOTAL:			808.0	Cords		

Sale Specific Conditions & Requirements

Sale Name: Billman Oak

Sale Number: 72-043-16 Seq#: 2

1 - Sale Area

1.2 - Boundaries

1.2.1 - Painted boundaries (1/14)

The sale boundary and Payment Unit boundaries are marked and identified by blue, red, and green paint, along with a road. Exterior sale boundary lines against private property are marked with blue paint. Exterior sale boundary lines against state are marked with red paint, with the exception of the east boundary, which is unpainted and identified by Billman Road. Retention areas are marked with green paint. The painted boundary line trees are not Included Timber and are to be protected.

2 - Timber Specifications

2.1 - Included Timber

2.1.1 - Clearcut unit(s) with unmerchantable trees (6/14)

Within Payment Unit(s) 1, cut all trees that are two (2) inches or more at DBH.

3 - Payments

3.3 - Pre-measured Sales

3.3.4 - Dividing payment units (7/14)

Payment Unit(s) may be divided at the request of the Purchaser and upon approval of the Unit Manager. Dividing Payment Units is a contract modification which requires a Timber Sale Contract Supplement.

4 - Transportation

4.1 - Construction

4.1.3 - Slash and earthen piles (8/04)

Piles or windrows of earth along roads and landings that have been widened or constructed shall be leveled. Slash from road maintenance or construction, including stumps, shall be dispersed throughout the sale.

4.1.6 - Road construction (1/09)

Construction of new roads or improvements of existing roads shall be done in such a way as to minimize the environmental and visual impacts. Merchantable trees shall be cut and utilized unless otherwise directed. Non-merchantable trees shall be severed and laid flat on the ground. Slash shall be scattered, and not left in windrows and kept a minimum of 10 feet back from the road edge. Stumps shall be set upright, not left on edge, and be moved at least 10 feet away from the road edge. Disturbed soil shall be feathered into the woods and not left in berms or windrows.

4.1.7 - Road closure (10/11)

All new roads built into the sale must be blocked to vehicle traffic upon completion of the sale. Overgrown roads that are reopened shall be considered new roads. In general, this will require constructing a four (4') foot high berm of stumps and logs covered with earth. Stumps and brush must be placed along the remainder of the trail. These roads must be rendered impassable to cars and trucks. Contact the sale administrator for specific details of design and placement.

4.1.11 - Permits (2/12)

The Purchaser will secure any necessary highway and stream crossing permits that may be required.

4.2 - Maintenance

4.2.5 - Two wheel drive condition (2/04)

All existing trail roads on and adjacent to the sale area must be passable by two-wheel drive traffic for the duration of the sale.

5 - Operations

5.1 - Notification

5.1.1 - Pre-sale conference (10/11)

A pre-sale conference on site between the Purchaser and sale administrator is required prior to beginning any operations to determine landing and road locations. The Unit Manager or his/her representative must be contacted at least 5 days in advance to schedule the conference.

5.1.3 - Well heads and natural gas pipelines (11/15)

The Purchaser is responsible for contacting the pipeline company 30 days prior to operating equipment in the vicinity of well heads or natural gas pipelines. Written permission is required before harvest operations begin and must be submitted to the Unit Manager.

5.1.4 - Post-sale conference (6/11)

A post-sale conference on site between the Purchaser and sale administrator is required 5 days prior to the completion of active logging operations to determine clean-up and repair of landings, road edges, and the fulfillment of other contract specifications.

5.2 - Conduct of Operations

5.2.1 - Slash

5.2.1.11 - Slash for reforestation (5/07)

To facilitate reforestation, the sale area shall be left with slash evenly distributed. Bunched tops within the cutting area shall be broken up and scattered. Stumps shall be cut low to the ground. Processing sites shall not be left with a compacted layer of slash; tops from these sites shall be hauled back into the cut area and scattered.

5.2.2 - Hazard Trees/Snags

5.2.2.1 - Den trees (2/04)

Obvious hollow and/or den trees shall be protected and left standing unless they are a safety hazard.

5.2.3 - Operating Restrictions

5.2.3.5 - Oak wilt restriction (1/18)

Within Payment Unit(s) 1, unless changed by written agreement, cutting, skidding, hauling within the sale and brushing of access roads to the sale are not permitted during the period of April 15 to July 15. Operations may be allowed if specific steps are taken to prevent damaging uncut oak during the high risk period. Those steps may include completing all road brushing before April 15th and clearing a tree-length buffer along uncut oak cover before April 15th. This is necessary to reduce the spread of oak wilt. For more information, contact the Unit Manager or his/her representative.

5.2.32 - Decking/landing restoration (9/13)

All decking and landing areas must have the surface area restored to a condition equal to or better than before. This is to ensure the proper regeneration of the stand. Wood debris, chips and "cookies" from trimmings must be removed or scattered away from landing and loading areas and may not be windrowed on the edge.

5.4 - Soil Protection

5.4.1 - Rutting restriction, general (7/16)

Operations are to cease immediately if equipment and weather conditions result in rutting of roads and/or skid trails which is 12 inches or greater in depth and 50 feet in length. The Unit Manager or his/her representative may restrict hauling and/or skidding if ruts exceed the specified depth. With the Unit Manager or his/her representative's approval, the Purchaser may return to the area when the risk of rutting has decreased.

6 - Safety and Fire Prevention

6.2 - Signing

6.2.1 - Road posting (9/09)

The Purchaser is responsible for posting and maintaining caution signs on Billman Road prior to beginning operations. The road must be posted 200 feet from the sale area to warn of logging activity and truck traffic. Signs must be removed when harvest operations are suspended or completed. The Purchaser will provide these signs.



TIMBER SALE MAP

This information provided by authority of Part 525, 1994 PA 451, as amended.

Sale Number	Year
72-043	16

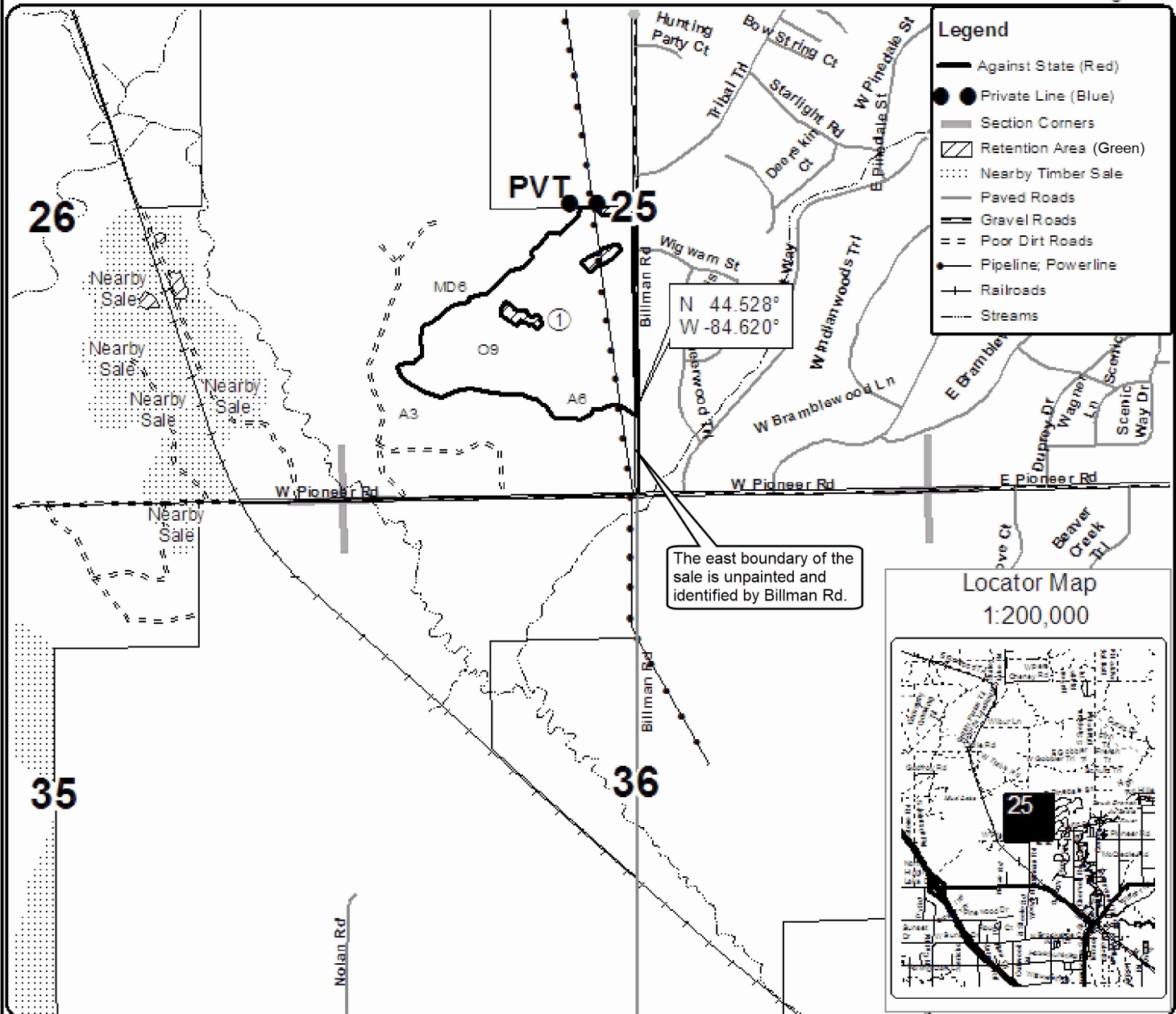
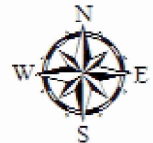
Forest Management Unit	County	Mapped By	Tweedale	Date	Page	of
Grayling Management Unit	Crawford	Cruised By	Hallfrisch, Tweedale	09/21/2016	1	1
Township	Range	Section(s) and Subdivision(s)		Scale		
25N	03W	Sec. 25 NESW, NWSW, SESW, SWSW		1:15,840		

Cover Type				Density			
A = Aspen	H = Hemlock	N = Marsh	U = Upland Brush	0 = Non Stocked	5 = Pole Timber Medium		
B = Paper Birch	J = Jack Pine	O = Oak	UM = Upland Mixed	1 = Seedling Sapling Poor	6 = Pole Timber Well		
C = Cedar	L = Lowland Brush	P = Lowland Poplar	V = Bog or Marsh	2 = Seedling Sapling Medium	7 = Saw Timber Poor		
D = Treed Bog	LM = Lowland Mixed	Q = Mixed Swamp Conifer	W = White Pine	3 = Seedling Sapling Well	8 = Saw Timber Medium		
E = Swamp Hdwoods	M = Mpl, Bch, Brch	R = Red Pine	X = Non Stocked	4 = Pole Timber Poor	9 = Saw Timber Well		
F = Spruce Fir	MC = Mixed Conifer	S = Black Spruce	Z = Water				
G = Grass	MD = Mixed Deciduous	T = Tamarack					

PU Acres
1 57.2

Billman Oak

Compartment 228
57.2 Acres



The east boundary of the sale is unpainted and identified by Billman Rd.

Locator Map
1:200,000



TIMBER SALE INFORMATION

Turkey Foot (72-044-16)

Crawford County (Advertised Price \$41,356.10)

SALE NOTE: Access to sale is off of Pioneer Road. Make sure to be aware of Railroad Corridor separating Payment Units 1 and 2. No harvesting is to occur from April 15- July 15 due to oak wilt restrictions unless a 150 foot swath of timber is cleared prior to April 15 around all residual oak trees in the boundary or in retention areas. Work with your sale administrator regarding arrangements to be able to operate during oak wilt restrictions.

A timber sale contract for this lump sum, sealed bid timber sale will be awarded to the responsible bidder offering the highest sealed bid price. Bids must be at or above the following advertised price for each species:

<u>PRODUCTS & SPECIES</u>	<u>ESTIMATED UNITS*</u>		<u>ADVERTISED PRICE</u>
Sawtimber			
Basswood	8.30	MBF	\$ 118.00 / MBF
Mixed Aspen	155.30	MBF	\$ 79.00 / MBF
Red Pine	35.70	MBF	\$ 123.00 / MBF
White Pine	8.90	MBF	\$ 71.00 / MBF
White Spruce	23.80	MBF	\$ 64.00 / MBF
Pulpwood			
Balsam Fir	41.00	Cords	\$ 11.60 / Cord
Basswood	25.00	Cords	\$ 12.50 / Cord
Jack Pine	134.00	Cords	\$ 14.85 / Cord
Mixed Aspen	571.00	Cords	\$ 23.00 / Cord
Mixed Hardwood	25.00	Cords	\$ 24.05 / Cord
Red Oak	4.00	Cords	\$ 16.25 / Cord
Red Pine	63.00	Cords	\$ 46.75 / Cord
White Pine	58.00	Cords	\$ 18.60 / Cord
White Spruce	34.00	Cords	\$ 28.25 / Cord

* The total volume is statistically estimated within plus (+) or minus (-) 21.75 percent. The estimated units are final and not subject to adjustment. Prospective bidders are urged to examine this timber and to make their own estimates of quantity and quality.

BOND AND PAYMENT SCHEDULE:

1. A bond in the amount of \$2,068.00 to insure faithful performance of the conditions of the contract will be deposited by the successful bidder within 21 days of the sale award.
2. Cutting in any sale or unit without the required advance payment would be considered a trespass.
3. Total payment must be paid in advance or according to the following schedule:
 - (a) Ten percent (10%) of the sale value must be paid within 21 days of the sale award.
 - (b) The 10% down payment will be credited towards the first unit cut.
 - (c) Payment for each of the following units must be made before cutting begins in that unit:

PAYMENT UNIT NUMBER	PERCENT OF TOTAL SALE VALUE
01	47.5%
02	52.5%

4. If no cutting takes place, the 10% down payment will not be refunded.
5. Operations on the contract issued will terminate on 09/30/2020.

Description of Timber by Payment Unit (PU)

PU	MARKET GROUP	PRODUCT	QUANTITY	UNIT	ACRES	ADVERTISE PRICE
1	Basswood	Sawtimber	3.9	MBF	20.1	\$19,626.20
	Mixed Aspen		90.5	MBF		
	<i>B. T. Aspen</i>		10.6	<i>MBF</i>		
	<i>Quaking Aspen</i>		79.9	<i>MBF</i>		
	Red Pine		14.3	MBF		
	White Pine		3.9	MBF		
	Balsam Fir	Pulpwood	23.0	Cords		
	Basswood		11.0	Cords		
	Jack Pine		3.0	Cords		
	<i>Jack Pine</i>	<i>Sawtimber</i>	0.4	<i>MBF</i>		
	<i>Jack Pine</i>	<i>Pulpwood</i>	2.0	<i>Cords</i>		
	Mixed Aspen		332.0	Cords		
	<i>B. T. Aspen</i>		44.0	<i>Cords</i>		
	<i>Quaking Aspen</i>		288.0	<i>Cords</i>		
	Mixed Hardwood		8.0	Cords		
	<i>Red Maple</i>	<i>Sawtimber</i>	0.5	<i>MBF</i>		
	<i>Sugar Maple</i>		0.2	<i>MBF</i>		
	<i>Red Maple</i>	<i>Pulpwood</i>	3.0	<i>Cords</i>		
	<i>Sugar Maple</i>		4.0	<i>Cords</i>		
	Red Oak		2.0	Cords		
	Red Pine		25.0	Cords		
	White Pine		27.0	Cords		
	2	Basswood	Sawtimber	4.4		
Mixed Aspen			64.8	MBF		
<i>B. T. Aspen</i>			7.2	<i>MBF</i>		
<i>Quaking Aspen</i>			57.6	<i>MBF</i>		
Red Pine			21.4	MBF		
White Pine			5.0	MBF		
White Spruce			23.8	MBF		
Balsam Fir		Pulpwood	18.0	Cords		
Basswood			14.0	Cords		
Jack Pine			132.0	Cords		
<i>Jack Pine</i>		<i>Sawtimber</i>	0.3	<i>MBF</i>		
<i>Jack Pine</i>		<i>Pulpwood</i>	131.0	<i>Cords</i>		
Mixed Aspen			239.0	Cords		
<i>B. T. Aspen</i>			30.0	<i>Cords</i>		
<i>Quaking Aspen</i>			209.0	<i>Cords</i>		
Mixed Hardwood			16.0	Cords		
<i>Red Maple</i>		<i>Sawtimber</i>	0.4	<i>MBF</i>		
<i>Sugar Maple</i>			0.2	<i>MBF</i>		
<i>Black Cherry</i>		<i>Pulpwood</i>	11.0	<i>Cords</i>		
<i>Red Maple</i>			2.0	<i>Cords</i>		
<i>Sugar Maple</i>			2.0	<i>Cords</i>		
Red Oak			2.0	Cords		
Red Pine			38.0	Cords		
White Pine		31.0	Cords			
White Spruce		34.0	Cords			
TOTAL:			232.0	MBF		
TOTAL:			955.0	Cords		

Sale Specific Conditions & Requirements

Sale Name: Turkey Foot

Sale Number: 72-044-16 Seq#: 2

1 - Sale Area

1.2 - Boundaries

1.2.1 - Painted boundaries (1/14)

The sale boundary and Payment Unit boundaries are marked and identified by blue, red, and green paint, along with the railroad grade. Exterior sale boundary lines against private property are marked with blue paint. Exterior sale boundary lines against state are marked with red paint. The interior Payment Unit boundary is unpainted and identified by the railroad grade. Retention areas are marked with green paint. The painted boundary line trees are not Included Timber and are to be protected.

2 - Timber Specifications

2.1 - Included Timber

2.1.1 - Clearcut unit(s) with unmerchantable trees (6/14)

Within Payment Unit(s) 1 and 2, cut all trees that are two (2) inches or more at DBH.

3 - Payments

3.3 - Pre-measured Sales

3.3.4 - Dividing payment units (7/14)

Payment Unit(s) may be divided at the request of the Purchaser and upon approval of the Unit Manager. Dividing Payment Units is a contract modification which requires a Timber Sale Contract Supplement.

4 - Transportation

4.1 - Construction

4.1.3 - Slash and earthen piles (8/04)

Piles or windrows of earth along roads and landings that have been widened or constructed shall be leveled. Slash from road maintenance or construction, including stumps, shall be dispersed throughout the sale.

4.1.6 - Road construction (1/09)

Construction of new roads or improvements of existing roads shall be done in such a way as to minimize the environmental and visual impacts. Merchantable trees shall be cut and utilized unless otherwise directed. Non-merchantable trees shall be severed and laid flat on the ground. Slash shall be scattered, and not left in windrows and kept a minimum of 10 feet back from the road edge. Stumps shall be set upright, not left on edge, and be moved at least 10 feet away from the road edge. Disturbed soil shall be feathered into the woods and not left in berms or windrows.

4.1.7 - Road closure (10/11)

All new roads built into the sale must be blocked to vehicle traffic upon completion of the sale. Overgrown roads that are reopened shall be considered new roads. In general, this will require constructing a four (4') foot high berm of stumps and logs covered with earth. Stumps and brush must be placed along the remainder of the trail. These roads must be rendered impassable to cars and trucks. Contact the sale administrator for specific details of design and placement.

4.1.11 - Permits (2/12)

The Purchaser will secure any necessary highway and stream crossing permits that may be required.

5 - Operations

5.1 - Notification

5.1.1 - Pre-sale conference (10/11)

A pre-sale conference on site between the Purchaser and sale administrator is required prior to beginning any operations to determine landing and road locations. The Unit Manager or his/her representative must be contacted at least 5 days in advance to schedule the conference.

5.1.4 - Post-sale conference (6/11)

A post-sale conference on site between the Purchaser and sale administrator is required 5 days prior to the completion of active logging operations to determine clean-up and repair of landings, road edges, and the fulfillment of other contract specifications.

5.1.7 - Railroad R.O.W. (3/16)

Do not operate on or fell trees across the Railroad Right-of-Way.

5.2 - Conduct of Operations

5.2.1 - Slash

5.2.1.1 - Slash within sale area (9/16)

No trees are to be felled outside the sale area and all slash is to be kept at least 10 feet back from the red paint line. If sale boundary lines are along a public road or highway, then slash must be removed 50' from these lines per General Condition & Requirement 5.2.1.

5.2.1.11 - Slash for reforestation (5/07)

To facilitate reforestation, the sale area shall be left with slash evenly distributed. Bunched tops within the cutting area shall be broken up and scattered. Stumps shall be cut low to the ground. Processing sites shall not be left with a compacted layer of slash; tops from these sites shall be hauled back into the cut area and scattered.

5.2.2 - Hazard Trees/Snags

5.2.2.1 - Den trees (2/04)

Obvious hollow and/or den trees shall be protected and left standing unless they are a safety hazard.

5.2.3 - Operating Restrictions

5.2.3.5 - Oak wilt restriction (1/18)

Within Payment Unit(s) 1 and 2, unless changed by written agreement, cutting, skidding, hauling within the sale and brushing of access roads to the sale are not permitted during the period of April 15 to July 15. Operations may be allowed if specific steps are taken to prevent damaging uncut oak during the high risk period. Those steps may include completing all road brushing before April 15th and clearing a tree-length buffer along uncut oak cover before April 15th. This is necessary to reduce the spread of oak wilt. For more information, contact the Unit Manager or his/her representative.

5.2.4 - Dead and Down Creation

5.2.4.4 - Dead and down creation, grouse (6/18)

To encourage grouse and other wildlife, in Payment Unit(s) 1 and 2, leave one 12" or larger diameter (or largest diameter trees within stand) whole tree on the ground for every 2 acres, preferably a hardwood species such as oak or maple or if no hardwoods are present, a pine species (white or red). These trees will be evenly scattered throughout the unit, preferably at least two chains from any roads, two-tracks, or trails open to vehicles.

5.2.29 - Shrub protection (9/07)

Do not cut or damage hawthorn, witch-hazel, dogwood or juneberry. These woody-shrub plants are highly beneficial to various wildlife species.

5.2.32 - Decking/landing restoration (9/13)

All decking and landing areas must have the surface area restored to a condition equal to or better than before. This is to ensure the proper regeneration of the stand. Wood debris, chips and "cookies" from trimmings must be removed or scattered away from landing and loading areas and may not be windrowed on the edge.

5.4 - Soil Protection

5.4.1 - Rutting restriction, general (7/16)

Operations are to cease immediately if equipment and weather conditions result in rutting of roads and/or skid trails which is 12 inches or greater in depth and 50 feet in length. The Unit Manager or his/her representative may restrict hauling and/or skidding if ruts exceed the specified depth. With the Unit Manager or his/her representative's approval, the Purchaser may return to the area when the risk of rutting has decreased.

6 - Safety and Fire Prevention

6.2 - Signing

6.2.1 - Road posting (9/09)

The Purchaser is responsible for posting and maintaining caution signs on Pioneer Road prior to beginning operations. The road must be posted at appropriate distances from the sale area to warn of logging activity and truck traffic. Signs must be removed when harvest operations are suspended or completed. The Purchaser will provide these signs.



TIMBER SALE MAP

This information provided by authority of Part 525, 1994 PA 451, as amended.

Sale Number	Year
72-042	16

Forest Management Unit	County	Mapped By	Tweedale	Date	Page	of
Grayling Management Unit	Crawford	Cruised By	Hallfrisch	09/21/2016	1	1
Township	Range	Section(s) and Subdivision(s)	Scale			
25N	03W	Sec. 26 NESE, NWSE, SWSE, SESE, SWNE Sec. 35 NWNE	1:15,840			

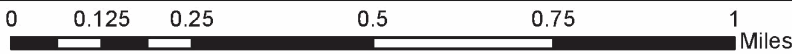
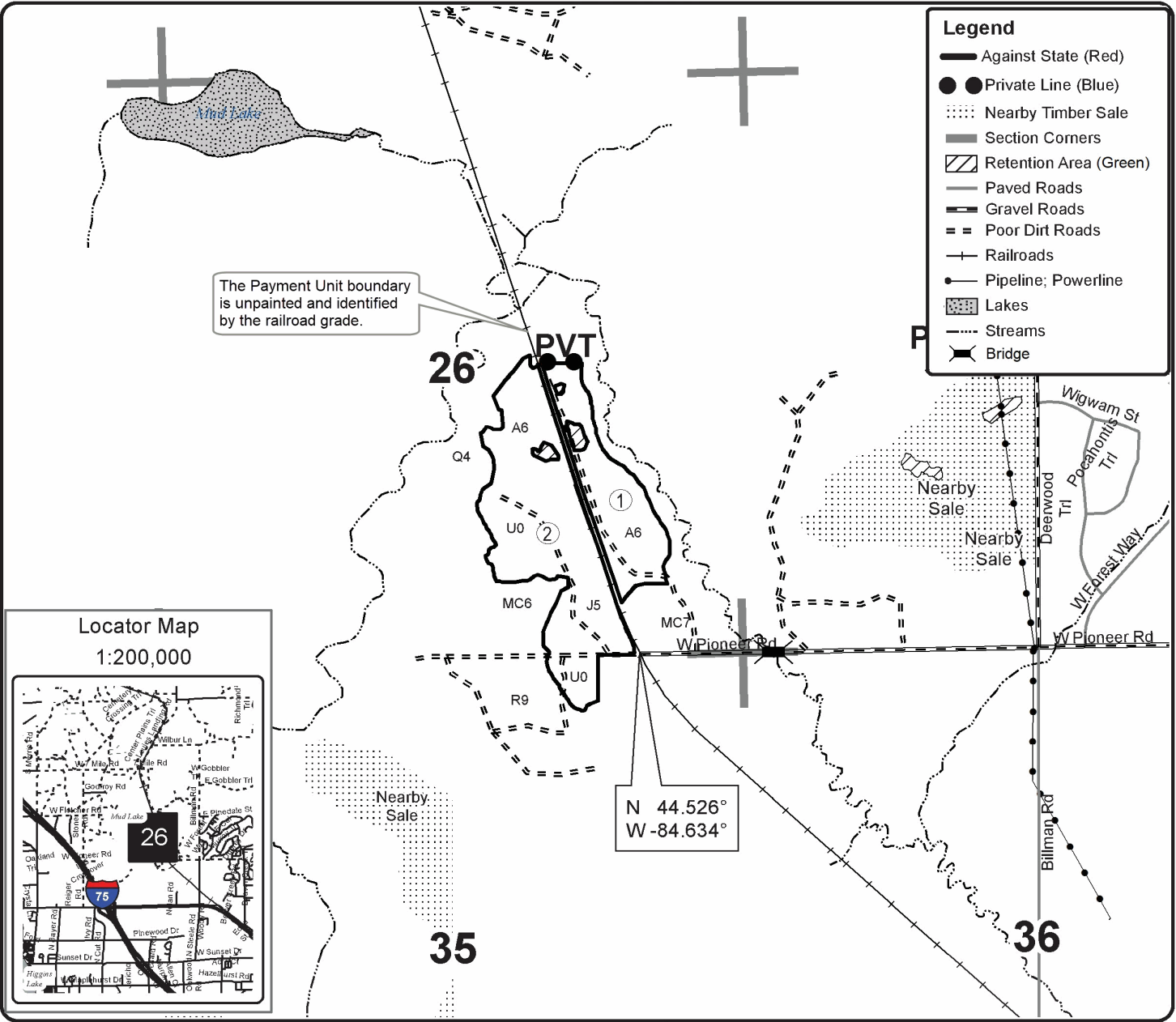
Cover Type				Density	
A = Aspen	H = Hemlock	N = Marsh	U = Upland Brush	0 = Non Stocked	5 = Pole Timber Medium
B = Paper Birch	J = Jack Pine	O = Oak	UM = Upland Mixed	1 = Seedling Sapling Poor	6 = Pole Timber Well
C = Cedar	L = Lowland Brush	P = Lowland Poplar	V = Bog or Marsh	2 = Seedling Sapling Medium	7 = Saw Timber Poor
D = Treed Bog	LM = Lowland Mixed	Q = Mixed Swamp Conifer	W = White Pine	3 = Seedling Sapling Well	8 = Saw Timber Medium
E = Swamp Hdwoods	M = Mpl, Bch, Brch	R = Red Pine	X = Non Stocked	4 = Pole Timber Poor	9 = Saw Timber Well
F = Spruce Fir	MC = Mixed Conifer	S = Black Spruce	Z = Water		
G = Grass	MD = Mixed Deciduous	T = Tamarack			

PU	Acres
1	20.1
2	46.2

Turkey Foot

Compartment 228

66.3 Acres



Comp 230 North Mix (72-007-16)
; Crawford COUNTY

In response to the notice of sale to be held 9:00 a.m. (local time) on July 31, 2018, I am hereby submitting my sealed bid (firm offer) for the following forest products to be cut. Bids for individual species must be at or above the advertised price. All non-responsive bid forms may be rejected.

<u>PRODUCTS & SPECIES</u>	<u>ESTIMATED VOLUME*</u>	<u>ADVERTISED PRICE</u>	<u>BID PRICE/UNIT</u>
Sawtimber			
BI/R/Hybrid Oak	298.20 MBF	\$ 203.00/MBF	\$ _____
White Oak	40.30 MBF	\$ 59.00/MBF	\$ _____
Pulpwood			
BI/R/Hybrid Oak	1,948.00 Cords	\$ 16.25/Cord	\$ _____
Jack Pine	123.00 Cords	\$ 14.85/Cord	\$ _____
Mixed Aspen	98.00 Cords	\$ 23.00/Cord	\$ _____
Mixed Hardwood	332.00 Cords	\$ 24.05/Cord	\$ _____
Red Pine	14.00 Cords	\$ 46.75/Cord	\$ _____
White Oak	609.00 Cords	\$ 16.25/Cord	\$ _____
White Pine	32.00 Cords	\$ 18.60/Cord	\$ _____

*The volumes are statistically estimated within plus (+) or minus (-) 10.84 percent. These estimated volumes are final and not subject to adjustment. Prospective bidders are urged to examine this timber and to make their own estimates of quantity and quality.

I understand that any or all bids may be rejected. All bids must be signed and all bid items must be bid or the bid form may be rejected. I also understand that consideration and awarding a contract will be based upon my past performance and ability to complete the contract based upon equipment and staffing subject to my control.

FEDERAL ID: ____ - ____ - ____ or SOCIAL SECURITY NUMBER: ____ - ____ - ____

Company or individual bidding: _____

Company representative's name: _____

Address: _____

City: _____ State: _____ Zip: _____

IF AVAILABLE, PLEASE PLACE THE PERSONALIZED LABEL FROM YOUR PROSPECTUS IN THE ABOVE BOX.

Individual or company representative's signature: _____ Date: _____

Phone number : _____ Email (optional): _____

THE WINNING BIDDER MUST COMPLETE THE VERIFICATION OF WORKER'S DISABILITY COMPENSATION ACT COMPLIANCE (ON REVERSE SIDE IF DOUBLE SIDED) WITHIN 21 DAYS OF SALE AWARD DATE



FOR DEPARTMENT USE ONLY
Sale Number (XX - XXX - XX - XX)
Forest Management Unit:

TIMBER SALE VERIFICATION OF WORKER'S DISABILITY COMPENSATION ACT COMPLIANCE

*As required by Act 317, P.A. 1969 (Worker's Compensation) and
Part 5 of Act 451 of 1994, as amended.*

VERIFICATION OF WORKER'S DISABILITY COMPENSATION ACT COMPLIANCE

- This verification must be completed and submitted within 21 days of contract award and prior to the issuance of the timber sale contract.
- In addition, if boxes 2B or 2C are checked, then Notice of Exclusion or Certificate of Insurance must be submitted within twenty-one (21) days of the contract award and prior to the issuance of the timber sale contract.
- All information must be typed or printed except for written signatures.

Please Check Appropriate Categories:

1. My business is organized as (you **must** check one of the boxes below):
 - A. Sole Proprietorship (individual)
 - B. Partnership
 - C. Corporation

2. You **must** check one of the boxes below:
 - A. I certify my business is a sole proprietorship and it has no employees but the sole proprietor. I am not subject to the Worker's Compensation Laws.
 - B. I certify my business has satisfied its obligation to the Worker's Compensation Act through the use of an approved Notice of Exclusion (BWC-337, Rev. 5/96). I will provide a copy of the Notice of Exclusion within 21 days of the contract award. (For questions or a copy of the BWC-337, please call the Worker's Compensation Bureau at 517-322-1195).
 - C. I certify my business has a Worker's Compensation Policy. I will provide an original Certificate of Insurance within twenty-one (21) days of the contract award.

3. If you have checked item 2(A) or 2(B), you **must** indicate the number of **both** full-time and part-time employees, other than yourself, including family members and active partners (if none, you must enter "0").

_____ Full-time Employees

_____ Part-time Employees

Name of Business		Federal ID (or) Social Security No.	
Address		Telephone ()	
City	State	ZIP	

I hereby certify that the above information is true and correct. I agree to notify the Michigan DNR of any changes that occur in factors affecting my coverage during any of my present and future operations.

Signature of Owner or Authorized Representative

Title

Date

Please complete the "SEALED BID" information on the next page

Comp 230 Mix (72-004-16)
; Crawford COUNTY

In response to the notice of sale to be held 9:00 a.m. (local time) on July 31, 2018, I am hereby submitting my sealed bid (firm offer) for the following forest products to be cut. Bids for individual species must be at or above the advertised price. All non-responsive bid forms may be rejected.

<u>PRODUCTS & SPECIES</u>	<u>ESTIMATED VOLUME*</u>	<u>ADVERTISED PRICE</u>	<u>BID PRICE/UNIT</u>
Sawtimber			
BI/R/Hybrid Oak	40.70 MBF	\$ 203.00/MBF	\$ _____
Red Pine	14.60 MBF	\$ 123.00/MBF	\$ _____
White Oak	22.40 MBF	\$ 59.00/MBF	\$ _____
White Pine	11.70 MBF	\$ 71.00/MBF	\$ _____
Pulpwood			
B. T. Aspen	68.00 Cords	\$ 23.00/Cord	\$ _____
Jack Pine	25.00 Cords	\$ 14.85/Cord	\$ _____
Misc. Species 1	229.00 Cords	\$ 3.75/Cord	\$ _____
Mixed Hardwood	252.00 Cords	\$ 24.05/Cord	\$ _____
Mixed Oak	658.00 Cords	\$ 16.25/Cord	\$ _____
Red Pine	36.00 Cords	\$ 46.75/Cord	\$ _____
Scotch Pine	82.00 Cords	\$ 29.45/Cord	\$ _____
White Pine	46.00 Cords	\$ 18.60/Cord	\$ _____

*The volumes are statistically estimated within plus (+) or minus (-) 10.90 percent. These estimated volumes are final and not subject to adjustment. Prospective bidders are urged to examine this timber and to make their own estimates of quantity and quality.

I understand that any or all bids may be rejected. All bids must be signed and all bid items must be bid or the bid form may be rejected. I also understand that consideration and awarding a contract will be based upon my past performance and ability to complete the contract based upon equipment and staffing subject to my control.

FEDERAL ID: ____ - ____ - ____ or SOCIAL SECURITY NUMBER: ____ - ____ - ____

Company or individual bidding: _____

Company representative's name: _____

Address: _____

City: _____ State: _____ Zip: _____

IF AVAILABLE, PLEASE PLACE THE PERSONALIZED LABEL FROM YOUR PROSPECTUS IN THE ABOVE BOX.

Individual or company representative's signature: _____ Date: _____

Phone number : _____ Email (optional): _____

THE WINNING BIDDER MUST COMPLETE THE VERIFICATION OF WORKER'S DISABILITY COMPENSATION ACT COMPLIANCE (ON REVERSE SIDE IF DOUBLE SIDED) WITHIN 21 DAYS OF SALE AWARD DATE



FOR DEPARTMENT USE ONLY
Sale Number (XX - XXX - XX - XX)
Forest Management Unit:

TIMBER SALE VERIFICATION OF WORKER'S DISABILITY COMPENSATION ACT COMPLIANCE

*As required by Act 317, P.A. 1969 (Worker's Compensation) and
Part 5 of Act 451 of 1994, as amended.*

VERIFICATION OF WORKER'S DISABILITY COMPENSATION ACT COMPLIANCE

- This verification must be completed and submitted within 21 days of contract award and prior to the issuance of the timber sale contract.
- In addition, if boxes 2B or 2C are checked, then Notice of Exclusion or Certificate of Insurance must be submitted within twenty-one (21) days of the contract award and prior to the issuance of the timber sale contract.
- All information must be typed or printed except for written signatures.

Please Check Appropriate Categories:

1. My business is organized as (you **must** check one of the boxes below):
 - A. Sole Proprietorship (individual)
 - B. Partnership
 - C. Corporation

2. You **must** check one of the boxes below:
 - A. I certify my business is a sole proprietorship and it has no employees but the sole proprietor. I am not subject to the Worker's Compensation Laws.
 - B. I certify my business has satisfied its obligation to the Worker's Compensation Act through the use of an approved Notice of Exclusion (BWC-337, Rev. 5/96). I will provide a copy of the Notice of Exclusion within 21 days of the contract award. (For questions or a copy of the BWC-337, please call the Worker's Compensation Bureau at 517-322-1195).
 - C. I certify my business has a Worker's Compensation Policy. I will provide an original Certificate of Insurance within twenty-one (21) days of the contract award.

3. If you have checked item 2(A) or 2(B), you **must** indicate the number of **both** full-time and part-time employees, other than yourself, including family members and active partners (if none, you must enter "0").

_____ Full-time Employees

_____ Part-time Employees

Name of Business		Federal ID (or) Social Security No.	
Address		Telephone ()	
City	State	ZIP	

I hereby certify that the above information is true and correct. I agree to notify the Michigan DNR of any changes that occur in factors affecting my coverage during any of my present and future operations.

Signature of Owner or Authorized Representative

Title

Date

Please complete the "SEALED BID" information on the next page

Turkey Foot (72-044-16)
; Crawford COUNTY

In response to the notice of sale to be held 9:00 a.m. (local time) on July 31, 2018, I am hereby submitting my sealed bid (firm offer) for the following forest products to be cut. Bids for individual species must be at or above the advertised price. All non-responsive bid forms may be rejected.

<u>PRODUCTS & SPECIES</u>	<u>ESTIMATED VOLUME*</u>	<u>ADVERTISED PRICE</u>	<u>BID PRICE/UNIT</u>
Sawtimber			
Basswood	8.30 MBF	\$ 118.00/MBF	\$ _____
Mixed Aspen	155.30 MBF	\$ 79.00/MBF	\$ _____
Red Pine	35.70 MBF	\$ 123.00/MBF	\$ _____
White Pine	8.90 MBF	\$ 71.00/MBF	\$ _____
White Spruce	23.80 MBF	\$ 64.00/MBF	\$ _____
Pulpwood			
Balsam Fir	41.00 Cords	\$ 11.60/Cord	\$ _____
Basswood	25.00 Cords	\$ 12.50/Cord	\$ _____
Jack Pine	134.00 Cords	\$ 14.85/Cord	\$ _____
Mixed Aspen	571.00 Cords	\$ 23.00/Cord	\$ _____
Mixed Hardwood	25.00 Cords	\$ 24.05/Cord	\$ _____
Red Oak	4.00 Cords	\$ 16.25/Cord	\$ _____
Red Pine	63.00 Cords	\$ 46.75/Cord	\$ _____
White Pine	58.00 Cords	\$ 18.60/Cord	\$ _____
White Spruce	34.00 Cords	\$ 28.25/Cord	\$ _____

*The volumes are statistically estimated within plus (+) or minus (-) 21.75 percent. These estimated volumes are final and not subject to adjustment. Prospective bidders are urged to examine this timber and to make their own estimates of quantity and quality.

I understand that any or all bids may be rejected. All bids must be signed and all bid items must be bid or the bid form may be rejected. I also understand that consideration and awarding a contract will be based upon my past performance and ability to complete the contract based upon equipment and staffing subject to my control.

FEDERAL ID: ____ - ____ - ____ or SOCIAL SECURITY NUMBER: ____ - ____ - ____

Company or individual bidding: _____

Company representative's name: _____

Address: _____

City: _____ State: _____ Zip: _____

IF AVAILABLE, PLEASE PLACE THE PERSONALIZED LABEL FROM YOUR PROSPECTUS IN THE ABOVE BOX.

Individual or company representative's signature: _____ Date: _____

Phone number : _____ Email (optional): _____

THE WINNING BIDDER MUST COMPLETE THE VERIFICATION OF WORKER'S DISABILITY COMPENSATION ACT COMPLIANCE (ON REVERSE SIDE IF DOUBLE SIDED) WITHIN 21 DAYS OF SALE AWARD DATE



FOR DEPARTMENT USE ONLY	
Sale Number (XX - XXX - XX - XX)	
Forest Management Unit:	

TIMBER SALE VERIFICATION OF WORKER'S DISABILITY COMPENSATION ACT COMPLIANCE

As required by Act 317, P.A. 1969 (Worker's Compensation) and
Part 5 of Act 451 of 1994, as amended.

VERIFICATION OF WORKER'S DISABILITY COMPENSATION ACT COMPLIANCE

- This verification must be completed and submitted within 21 days of contract award and prior to the issuance of the timber sale contract.
- In addition, if boxes 2B or 2C are checked, then Notice of Exclusion or Certificate of Insurance must be submitted within twenty-one (21) days of the contract award and prior to the issuance of the timber sale contract.
- All information must be typed or printed except for written signatures.

Please Check Appropriate Categories:

1. My business is organized as (you **must** check one of the boxes below):
 - A. Sole Proprietorship (individual)
 - B. Partnership
 - C. Corporation
2. You **must** check one of the boxes below:
 - A. I certify my business is a sole proprietorship and it has no employees but the sole proprietor. I am not subject to the Worker's Compensation Laws.
 - B. I certify my business has satisfied its obligation to the Worker's Compensation Act through the use of an approved Notice of Exclusion (BWC-337, Rev. 5/96). I will provide a copy of the Notice of Exclusion within 21 days of the contract award. (For questions or a copy of the BWC-337, please call the Worker's Compensation Bureau at 517-322-1195).
 - C. I certify my business has a Worker's Compensation Policy. I will provide an original Certificate of Insurance within twenty-one (21) days of the contract award.
3. If you have checked item 2(A) or 2(B), you **must** indicate the number of **both** full-time and part-time employees, other than yourself, including family members and active partners (if none, you must enter "0").

_____ Full-time Employees

_____ Part-time Employees

Name of Business		Federal ID (or) Social Security No.	
Address		Telephone ()	
City	State	ZIP	

I hereby certify that the above information is true and correct. I agree to notify the Michigan DNR of any changes that occur in factors affecting my coverage during any of my present and future operations.

Signature of Owner or Authorized Representative

Title

Date

Please complete the "SEALED BID" information on the next page

Snood Mix (72-042-16)
; Crawford COUNTY

In response to the notice of sale to be held 9:00 a.m. (local time) on July 31, 2018, I am hereby submitting my sealed bid (firm offer) for the following forest products to be cut. Bids for individual species must be at or above the advertised price. All non-responsive bid forms may be rejected.

<u>PRODUCTS & SPECIES</u>	<u>ESTIMATED VOLUME*</u>	<u>ADVERTISED PRICE</u>	<u>BID PRICE/UNIT</u>
Sawtimber			
B. T. Aspen	24.40 MBF	\$ 79.00/MBF	\$ _____
Mixed Oak	30.60 MBF	\$ 203.00/MBF	\$ _____
Red Maple	17.40 MBF	\$ 43.00/MBF	\$ _____
Red Pine	2.20 MBF	\$ 123.00/MBF	\$ _____
White Oak	22.80 MBF	\$ 59.00/MBF	\$ _____
Pulpwood			
B. T. Aspen	282.00 Cords	\$ 23.00/Cord	\$ _____
Mixed Oak	176.00 Cords	\$ 16.25/Cord	\$ _____
Red Maple	301.00 Cords	\$ 24.05/Cord	\$ _____
Red Pine	2.00 Cords	\$ 46.75/Cord	\$ _____
White Pine	7.00 Cords	\$ 18.60/Cord	\$ _____

*The volumes are statistically estimated within plus (+) or minus (-) 11.33 percent. These estimated volumes are final and not subject to adjustment. Prospective bidders are urged to examine this timber and to make their own estimates of quantity and quality.

I understand that any or all bids may be rejected. All bids must be signed and all bid items must be bid or the bid form may be rejected. I also understand that consideration and awarding a contract will be based upon my past performance and ability to complete the contract based upon equipment and staffing subject to my control.

FEDERAL ID: _____ or SOCIAL SECURITY NUMBER: _____

Company or individual bidding: _____

Company representative's name: _____

Address: _____

City: _____ State: _____ Zip: _____

IF AVAILABLE, PLEASE PLACE THE PERSONALIZED LABEL FROM YOUR PROSPECTUS IN THE ABOVE BOX.

Individual or company representative's signature: _____ Date: _____

Phone number : _____ Email (optional): _____

THE WINNING BIDDER MUST COMPLETE THE VERIFICATION OF WORKER'S DISABILITY COMPENSATION ACT COMPLIANCE (ON REVERSE SIDE IF DOUBLE SIDED) WITHIN 21 DAYS OF SALE AWARD DATE

Billman Oak (72-043-16)
; Crawford COUNTY

In response to the notice of sale to be held 9:00 a.m. (local time) on July 31, 2018, I am hereby submitting my sealed bid (firm offer) for the following forest products to be cut. Bids for individual species must be at or above the advertised price. All non-responsive bid forms may be rejected.

<u>PRODUCTS & SPECIES</u>	<u>ESTIMATED VOLUME*</u>	<u>ADVERTISED PRICE</u>	<u>BID PRICE/UNIT</u>
Sawtimber			
Mixed Oak	206.20 MBF	\$ 190.00/MBF	\$ _____
White Oak	22.60 MBF	\$ 56.00/MBF	\$ _____
Pulpwood			
B. T. Aspen	76.00 Cords	\$ 21.45/Cord	\$ _____
Jack Pine	4.00 Cords	\$ 13.85/Cord	\$ _____
Mixed Oak	685.00 Cords	\$ 15.20/Cord	\$ _____
Red Maple	22.00 Cords	\$ 22.45/Cord	\$ _____
Red Pine	3.00 Cords	\$ 43.65/Cord	\$ _____
White Pine	18.00 Cords	\$ 17.35/Cord	\$ _____

*The volumes are statistically estimated within plus (+) or minus (-) 10.74 percent. These estimated volumes are final and not subject to adjustment. Prospective bidders are urged to examine this timber and to make their own estimates of quantity and quality.

I understand that any or all bids may be rejected. All bids must be signed and all bid items must be bid or the bid form may be rejected. I also understand that consideration and awarding a contract will be based upon my past performance and ability to complete the contract based upon equipment and staffing subject to my control.

FEDERAL ID: ____ - ____ - ____ or SOCIAL SECURITY NUMBER: ____ - ____ - ____

Company or individual bidding: _____

Company representative's name: _____

Address: _____

City: _____ State: _____ Zip: _____

IF AVAILABLE, PLEASE PLACE THE PERSONALIZED LABEL FROM YOUR PROSPECTUS IN THE ABOVE BOX.

Individual or company representative's signature: _____ Date: _____

Phone number : _____ Email (optional): _____

THE WINNING BIDDER MUST COMPLETE THE VERIFICATION OF WORKER'S DISABILITY COMPENSATION ACT COMPLIANCE (ON REVERSE SIDE IF DOUBLE SIDED) WITHIN 21 DAYS OF SALE AWARD DATE



FOR DEPARTMENT USE ONLY
Sale Number (XX - XXX - XX - XX)
Forest Management Unit:

TIMBER SALE VERIFICATION OF WORKER'S DISABILITY COMPENSATION ACT COMPLIANCE

*As required by Act 317, P.A. 1969 (Worker's Compensation) and
Part 5 of Act 451 of 1994, as amended.*

VERIFICATION OF WORKER'S DISABILITY COMPENSATION ACT COMPLIANCE

- This verification must be completed and submitted within 21 days of contract award and prior to the issuance of the timber sale contract.
- In addition, if boxes 2B or 2C are checked, then Notice of Exclusion or Certificate of Insurance must be submitted within twenty-one (21) days of the contract award and prior to the issuance of the timber sale contract.
- All information must be typed or printed except for written signatures.

Please Check Appropriate Categories:

1. My business is organized as (you **must** check one of the boxes below):
 - A. Sole Proprietorship (individual)
 - B. Partnership
 - C. Corporation
2. You **must** check one of the boxes below:
 - A. I certify my business is a sole proprietorship and it has no employees but the sole proprietor. I am not subject to the Worker's Compensation Laws.
 - B. I certify my business has satisfied its obligation to the Worker's Compensation Act through the use of an approved Notice of Exclusion (BWC-337, Rev. 5/96). I will provide a copy of the Notice of Exclusion within 21 days of the contract award. (For questions or a copy of the BWC-337, please call the Worker's Compensation Bureau at 517-322-1195).
 - C. I certify my business has a Worker's Compensation Policy. I will provide an original Certificate of Insurance within twenty-one (21) days of the contract award.
3. If you have checked item 2(A) or 2(B), you **must** indicate the number of **both** full-time and part-time employees, other than yourself, including family members and active partners (if none, you must enter "0").

_____ Full-time Employees

_____ Part-time Employees

Name of Business		Federal ID (or) Social Security No.	
Address		Telephone ()	
City	State	ZIP	

I hereby certify that the above information is true and correct. I agree to notify the Michigan DNR of any changes that occur in factors affecting my coverage during any of my present and future operations.

Signature of Owner or Authorized Representative

Title

Date

Please complete the "SEALED BID" information on the next page