



**DEPARTMENT OF NATURAL RESOURCES  
STATE OF MICHIGAN**

**TIMBER SALE PROSPECTUS #6142**

SCHEDULED SALE DATE AND TIME: 4:00 p.m. (local time) on February 12, 2018.

LOCATION: KALKASKA FIELD OFFICE, 2089 N BIRCH ST, KALKASKA, MI 49646.

PROSPECTUS NOTE: The bidder is advised to inspect the sale area and review the location, estimated volumes, operating costs and contract terms of proposed sales. Please be aware that some landowners may request 60 days or more notice for access across their land.

Notice is hereby given that bids will be received by the Unit Manager, TRAVERSE CITY MANAGEMENT UNIT, for certain timber on the following described lands:

153 Donathan Block (61-134-17)

Kalkaska County, Advertised Price \$204,162.10, 264.1 Acres, Aspen, Hardwood.

107 Belated Pine (61-146-17)

Kalkaska County, Advertised Price \$29,722.20, 55.8 Acres, Red Pine, White Pine.

SALE NOTE: Pipelines and snowmobile trails will need protected during sale operations.

A recreation site such as a trail, pathway, or campground is within the sale area or the vicinity. Certain restrictions/specifications may be applicable including time restrictions.

Mixed Riverview (61-152-17)

Kalkaska County, Advertised Price \$141,064.00, 210.6 Acres, Aspen, Hardwood.

SALE NOTE: Access may be through private land.

40 Laps Mix (61-653-17)

Kalkaska County, Advertised Price \$18,323.80, 63.5 Acres, Hardwood, Jack Pine.

SALE NOTE: Please note that this sale is on Military Board Land and is NOT certified. Timing restrictions and chipping requirements will apply. Previous sales adjacent to Payment Unit 3 have revealed old bullets in trees. Sale prices have been reduced to reflect that risk.

## BID INSTRUCTIONS (VER. 11/28/2017):

### 1. Scheduled Bid Location, Date, and Time (2/11)

Bids must be received by the Unit Manager, KALKASKA OFFICE, 2089 N BIRCH ST, KALKASKA, MI 49646, no later than 4:00 p.m. (local time) on February 12, 2018. For further information concerning this sale, contact David Lemmien at 231-922-5280 extension 6840.

### 2. Bidder's Qualifications (5/16)

Purchaser shall obtain workers compensation insurance to cover claims under Michigan's Worker's Disability Compensation Act of 1969 or similar employee benefit act of any other state applicable to an employee. If all or part of a timber sale was prepared by a private contractor, the contractor and that contractor's company are not permitted to bid on the timber sale contract. Bids will not be accepted from individuals or companies appearing on the DNR/FRD No-Bid List. This list contains the names of purchasers who previously failed to execute a contract within 21-days or who have a history of poor performance.

### 3. Preparation of Sealed Bids (5/16)

Bid Forms may be completed online thru Michigan DNR Timber Sale Online Bidding (OLB) at [www.michigan.gov/timberbidding](http://www.michigan.gov/timberbidding) or by completing the hardcopy Bid Form found in the Timber Sale Prospectus. Hardcopy Bid Forms shall be manually signed in ink. Registration in OLB is considered your 'signature' for all bids submitted thru that system. Bid prices must be entered for each species and product in the Bid Price column for all material subject to bidding and all fill-in blanks must be completed. If erasures or other changes appear on the hardcopy Bid Form, each erasure or change must be initialed by the person signing the bid.

### 4. Submission of Sealed Bids (5/16)

Bid forms may be obtained from the Unit Manager or thru OLB. Bids may be submitted hardcopy or thru OLB. All hardcopy bids must be submitted on the bid form and in an envelope clearly identified as described in this section. NOTE: Only one bid form per bid envelope. Sealed bids must be submitted to the Unit office designated in the prospectus and must be submitted at or prior to the time established in the prospectus. The envelope should show on the outside (a) the sale name or number and (b) the date and time of bid opening, as shown in the prospectus. Bids received after the time specified in the sale prospectus are late bids and will be rejected.

It is possible for a bidder to submit multiple bids on a single sale. For example, a bid may be submitted hardcopy and a bid may be submitted thru OLB. Or, two bidders from the same company could both submit bids on the same sale. If this were to happen, the State would accept all bids received and award the contract accordingly. All bidding and contractual requirements would apply to all bids received.

### 5. Public Opening of Sealed Bids (7/16)

If conditions permit, the sealed bids will be publicly opened and posted at the time and place set in the prospectus.

If a bidder, present at a bid opening, has submitted bids on more than one sale, that bidder may withdraw their unopened bid envelopes or announce the withdrawal of their online bid after being declared the successful bidder on one sale.

### 6. Award of Contract (1/11)

Award of the contract will be made to the Bidder whose bid, conforming to the prospectus, is most advantageous to the State of Michigan on the basis of total value at rates bid for the estimated quantities. The State reserves the right to reject any bid or waive any minor irregularity in bids received. A written award mailed (or otherwise furnished) to the successful Bidder shall be deemed to result in a binding contract without further action by either party.

### 7. Down Payment (1/11)

The Bidder to whom award is made must make a down payment within 21 days of the sale award. The amount of the down payment will be calculated as shown in the Bond and Payment Schedule of this prospectus. Only cash may be used to meet this requirement.

### 8. Performance Security (1/11)

As guarantee of faithful performance, a cash bond, certificate of deposit, surety bond or irrevocable letter of credit (LOC) is required within 21 days of the sale award. The amount of the performance security is shown in the Bond and

Payment Schedule of this prospectus. If an LOC or surety is used, the coverage must extend for at least 6 months beyond the contract expiration.

#### 9. Timber Sale Contract (11/17)

Additional conditions and requirements common to all timber sales are listed on the timber sale contract (R4031) and are available on line at [www.michigan.gov/timber](http://www.michigan.gov/timber). Contact the Unit Manager for additional information or a sample contract. Within 21 days of the date of the award letter, the bidder must sign the contract and provide the required down payment, performance security, and verification of worker's disability compensation. The down payment and performance security shall be in accordance with the provisions of the timber sale contract, in the sums stated in this prospectus. If these actions are not taken, then the Bidder, the Bidder's corporation, and the corporation's principals may not be permitted to bid on State timber sales for a period of 1 year. In addition, the Bidder certifies that if awarded this contract, the Bidder will complete the timber sale contract in accordance with its terms and any modifications thereof including requirements to purchase, cut, and remove the included timber by the expiration date.

Payment Unit values in the State Forest Timber Sale Contract are calculated based on the advertised value of the Payment Unit as a percentage of the total advertised value of the contract. The advertised value of each Payment Unit is given in the Description of Timber by Payment Unit table on the Timber Sale Information page. For example, if the value of Payment Unit 1 is advertised as \$1,500 and the total Timber Sale value is advertised as \$10,000, the contract price for Payment Unit 1 will be 15% of the total bid price ( $\$1,500/\$10,000 * 100$ ).

#### 10. Disclaimer of Estimates and Bidder's Warranty of Inspection (7/16)

Before submitting this bid, the Bidder is advised and cautioned to inspect the sale area, review the requirements of the sale contract, and take other steps as may be reasonably necessary to ascertain the location, estimated volumes, construction estimates, and operating costs of the proposed sale. Failure to do so will not relieve the Bidder from responsibility for completing the contract.

The Bidder warrants that this bid is submitted solely on the basis of the Bidder's examination and inspection of the quality and quantity of the timber offered for sale and the Bidder's opinion of the value thereof and the costs of recovery. No reliance should be placed on the State of Michigan's estimates of timber quality, quantity or costs of recovery. Bidder further acknowledges that the State of Michigan: (i) expressly disclaims any warranty of fitness of timber for any purpose; (ii) offers this timber as is without any warranty of quality (merchantability) or quantity and (iii) expressly disclaims any warranty as to the quantity or quality of timber sold.

#### 11. Certification and Chain-of-Custody (10/14)

Unless otherwise indicated in the contract under section 7 – Other Conditions of the Sale Specific Conditions & Requirements, the area encompassed by this timber sale is certified to the standards of the Forest Stewardship Council (FSC) - Certificate #SCS-FM/COC-00090N and the Sustainable Forestry Initiative (SFI) - Certificate # NSF-SFIS-5Y031-SF5. Forest products from this sale may be delivered to the mill as "FSC 100% and / or SFI certified" as long as the contractor hauling the forest products is chain-of-custody (COC) certified or covered under a COC certificate from the destination mill. The purchaser is responsible for maintaining COC after leaving the sale area.

#### 12. Good Neighbor Authority (GNA) Requirements (7/16)

If the name of this timber sales contains the acronym GNA, it is authorized by the Good Neighbor Authority (GNA) and covered by various agreements between the U.S. Forest Service and the State. The timber sale occurs on federal land and the following conditions apply:

GNA contracts on US Forest Service land will not be awarded to purchasers on the Federal list of excluded parties. The System for Award Management (SAM) will be checked for active excluded parties prior to award of contract. In addition, the Bidder to whom award is made must complete an Assurance Regarding Felony Conviction or Tax Delinquent Status for Corporate Applicants (AD-3031).

#### 13. Good Neighbor Authority (GNA) Requirements, con't (9/16)

Bidder certifies, by signing this bid form, that to the best of Bidder's knowledge that the following representations are accurate and complete.

a. That the Bidder and its principals are not presently debarred, suspended, proposed for debarment, declared ineligible, or voluntary excluded from timber sales (covered transactions) by any Federal department or agency.

b. That the Bidder and its principals have not within a 3-year period preceding this bid been convicted of or had a civil judgment rendered against them for commission of fraud or a criminal offense in connection with obtaining, attempting to obtain, or performing a public (Federal, State, or local) transaction or contract under a public transaction; violation of Federal or State antitrust statutes or commission of embezzlement, theft, forgery, bribery, falsification or destruction of records, making false statements, or receiving stolen property.

c. That the Bidder and its principals are not presently indicted for or otherwise criminally or civilly charged by a governmental entity (Federal, State, or local) with commission of any of the offenses enumerated in paragraph b of this certification.

d. That the Bidder and its principals have not within a 3-year period preceding this bid had one or more public transactions (Federal, State, or local) terminated for breach or default of a timber or forest product contract.

Bidders that cannot certify this requirement, in whole or in part, shall submit an explanation with their bid.

KEITH CREAGH

Director

# TIMBER SALE INFORMATION

153 Donathan Block (61-134-17)

Kalkaska County (Advertised Price \$204,162.10)

A timber sale contract for this lump sum, sealed bid timber sale will be awarded to the responsible bidder offering the highest sealed bid price. Bids must be at or above the following advertised price for each species:

<u>PRODUCTS &amp; SPECIES</u>	<u>ESTIMATED UNITS*</u>	<u>ADVERTISED PRICE</u>
Sawtimber		
Basswood	35.40 MBF	\$ 119.00 / MBF
Beech	128.00 MBF	\$ 93.00 / MBF
Mixed Aspen	76.70 MBF	\$ 110.00 / MBF
Red Maple	68.00 MBF	\$ 126.00 / MBF
Red Oak	2.10 MBF	\$ 205.00 / MBF
Red Pine	5.40 MBF	\$ 117.00 / MBF
Sugar Maple	302.90 MBF	\$ 279.00 / MBF
Pulpwood		
Balsam Fir	63.00 Cords	\$ 13.35 / Cord
Misc. Species 1	59.00 Cords	\$ 7.50 / Cord
Mixed Aspen	1,461.00 Cords	\$ 20.50 / Cord
Mixed Hardwood	2,459.00 Cords	\$ 20.35 / Cord
Red Pine	98.00 Cords	\$ 42.80 / Cord

\* The total volume is statistically estimated within plus (+) or minus (-) 10.55 percent. The estimated units are final and not subject to adjustment. Prospective bidders are urged to examine this timber and to make their own estimates of quantity and quality.

## **BOND AND PAYMENT SCHEDULE:**

1. A bond in the amount of \$10,208.00 to insure faithful performance of the conditions of the contract will be deposited by the successful bidder within 21 days of the sale award.
2. Cutting in any sale or unit without the required advance payment would be considered a trespass.
3. Total payment must be paid in advance or according to the following schedule:
  - (a) Ten percent (10%) of the sale value must be paid within 21 days of the sale award.
  - (b) The 10% down payment will be credited towards the first unit cut.
4. If no cutting takes place, the 10% down payment will not be refunded.
5. Operations on the contract issued will terminate on 03/31/2021.

**Description of Timber by Payment Unit (PU)**

PU	MARKET GROUP	PRODUCT	QUANTITY	UNIT	ACRES	ADVERTISE PRICE	
1	Basswood	Sawtimber	7.1	MBF	50.8	\$33,809.10	
	Beech		22.4	MBF			
	Mixed Aspen		0.7	MBF			
	<i>B. T. Aspen</i>		0.7	<i>MBF</i>			
	Red Maple		2.8	MBF			
	Red Oak		1.0	MBF			
	Sugar Maple		74.1	MBF			
	Misc. Species 1		Pulpwood	9.0			Cords
	<i>White Ash</i>			9.0			<i>Cords</i>
	Mixed Aspen			9.0			Cords
	<i>B. T. Aspen</i>			9.0			<i>Cords</i>
	Mixed Hardwood			458.0			Cords
	<i>Basswood</i>			9.0			<i>Cords</i>
	<i>Beech</i>			144.0			<i>Cords</i>
	<i>Ironwood</i>			27.0			<i>Cords</i>
	<i>Red Maple</i>			10.0			<i>Cords</i>
	<i>Red Oak</i>			1.0			<i>Cords</i>
<i>Sugar Maple</i>	267.0	<i>Cords</i>					
2	Basswood	Sawtimber	1.6	MBF	23.5	\$11,853.85	
	Beech		6.7	MBF			
	Mixed Aspen		0.2	MBF			
	<i>B. T. Aspen</i>		0.2	<i>MBF</i>			
	Red Maple		0.6	MBF			
	Red Oak		0.2	MBF			
	Sugar Maple		22.9	MBF			
	Misc. Species 1		Pulpwood	2.0			Cords
	<i>White Ash</i>			2.0			<i>Cords</i>
	Mixed Aspen			2.0			Cords
	<i>B. T. Aspen</i>			2.0			<i>Cords</i>
	Mixed Hardwood			219.0			Cords
	<i>Basswood</i>			2.0			<i>Cords</i>
	<i>Beech</i>			76.0			<i>Cords</i>
	<i>Black Cherry</i>			14.0			<i>Cords</i>
	<i>Ironwood</i>			6.0			<i>Cords</i>
	<i>Red Maple</i>			2.0			<i>Cords</i>
<i>Sugar Maple</i>	119.0	<i>Cords</i>					
3	Basswood	Sawtimber	6.6	MBF	47.5	\$31,635.05	
	Beech		20.9	MBF			
	Mixed Aspen		0.7	MBF			
	<i>B. T. Aspen</i>		0.7	<i>MBF</i>			
	Red Maple		2.6	MBF			
	Red Oak		0.9	MBF			
	Sugar Maple		69.3	MBF			
	Misc. Species 1		Pulpwood	9.0			Cords
	<i>White Ash</i>			9.0			<i>Cords</i>
	Mixed Aspen			9.0			Cords
	<i>B. T. Aspen</i>			9.0			<i>Cords</i>
	Mixed Hardwood			429.0			Cords
	<i>Basswood</i>			9.0			<i>Cords</i>
	<i>Beech</i>			135.0			<i>Cords</i>
	<i>Ironwood</i>			26.0			<i>Cords</i>
	<i>Red Maple</i>			9.0			<i>Cords</i>
	<i>Red Oak</i>			1.0			<i>Cords</i>
<i>Sugar Maple</i>	249.0	<i>Cords</i>					
4	Beech	Sawtimber	2.6	MBF	65.7	\$58,672.15	
	Mixed Aspen		61.8	MBF			

**Description of Timber by Payment Unit (PU), con't**

PU	MARKET GROUP	PRODUCT	QUANTITY	UNIT	ACRES	ADVERTISE PRICE
4 con't	<i>B. T. Aspen</i>	<i>Sawtimber</i>	44.8	<i>MBF</i>		
	<i>Quaking Aspen</i>		17.0	<i>MBF</i>		
	Red Maple		35.9	MBF		
	Sugar Maple		52.6	MBF		
	Balsam Fir	Pulpwood	43.0	Cords		
	Mixed Aspen		1,028.0	Cords		
	<i>B. T. Aspen</i>		363.0	<i>Cords</i>		
	<i>Quaking Aspen</i>		665.0	<i>Cords</i>		
	Mixed Hardwood		530.0	Cords		
	<i>Beech</i>		18.0	<i>Cords</i>		
	<i>Black Cherry</i>		11.0	<i>Cords</i>		
	<i>Ironwood</i>		23.0	<i>Cords</i>		
	<i>Paper Birch</i>		9.0	<i>Cords</i>		
	<i>Red Maple</i>		286.0	<i>Cords</i>		
	<i>Sugar Maple</i>		183.0	<i>Cords</i>		
5	Basswood	Sawtimber	20.1	MBF	47.6	\$44,460.65
	Beech		75.4	MBF		
	Sugar Maple		75.0	MBF		
	Misc. Species 1	Pulpwood	39.0	Cords		
	<i>White Ash</i>		39.0	<i>Cords</i>		
	Mixed Aspen		7.0	Cords		
	<i>B. T. Aspen</i>		7.0	<i>Cords</i>		
	Mixed Hardwood		673.0	Cords		
	<i>Basswood</i>		19.0	<i>Cords</i>		
	<i>Beech</i>		340.0	<i>Cords</i>		
	<i>Ironwood</i>		23.0	<i>Cords</i>		
	<i>Sugar Maple</i>		291.0	<i>Cords</i>		
6	Mixed Aspen	Sawtimber	13.3	MBF	29.0	\$23,731.30
	<i>Quaking Aspen</i>		13.3	<i>MBF</i>		
	Red Maple		26.1	MBF		
	Red Pine		5.4	MBF		
	Sugar Maple		9.0	MBF		
	Balsam Fir	Pulpwood	20.0	Cords		
	Mixed Aspen		406.0	Cords		
	<i>Quaking Aspen</i>		406.0	<i>Cords</i>		
	Mixed Hardwood		150.0	Cords		
	<i>Black Cherry</i>		36.0	<i>Cords</i>		
	<i>Red Maple</i>		81.0	<i>Cords</i>		
	<i>Sugar Maple</i>		33.0	<i>Cords</i>		
	Red Pine		98.0	Cords		
TOTAL:			618.5	MBF		
TOTAL:			4,140.0	Cords		

## Sale Specific Conditions & Requirements

Sale Name: 153 Donathan Block

Sale Number: 61-134-17 Seq#: 1

### 1 - Sale Area

#### 1.2 - Boundaries

##### 1.2.1 - Painted boundaries (1/14)

The sale boundary and Payment Unit boundaries are marked and identified by blue, red and yellow paint. Exterior sale boundary lines against private property are marked with blue paint. Exterior sale boundary lines against state are marked with red paint. Interior Payment Unit boundaries are marked with yellow paint. The painted boundary line trees are not Included Timber and are to be protected unless marked with orange paint.

### 2 - Timber Specifications

#### 2.1 - Included Timber

##### 2.1.1 - Clearcut unit(s) with unmerchantable trees (6/14)

Within Payment Unit(s) 4, cut all trees that are two (2) inches or more at DBH, except do not cut oak, cedar or hemlock. In addition, do not cut balsam fir or white pine less than 4" in diameter.

##### 2.1.3 - Cut tree marked unit(s) (12/08)

Within Payment Unit(s) 1, 2, 3 and 5, all trees are designated for cutting when marked with orange paint above and below stump height, regardless of merchantability. In addition cut all aspen, ironwood, ash and beech unless they are marked with an orange 'X'.

##### 2.1.4 - Designated timber unit(s) (6/17)

Within Payment Unit(s) 6, all aspen, cherry, balsam fir, red maple, sugar maple and trees marked with orange paint are designated for cutting regardless of merchantability.

##### 2.1.11 - Description of timber note (2/04)

Note that Misc. Species 1 = dead ash, which is designated for cutting.

#### 2.2 - Utilization

##### 2.2.4 - Skidding length (2/14)

Skidding of unlimbed tops or lengths over 17 feet is not permissible in Payment Units 1, 2, 3 and 5. Skidding of lengths over 17 feet is permissible as long as the timber sale administrator approves the method and machinery used. If at any point damage exceeds specification 3.4.1, all of the remaining wood must be skid in lengths less than 17 feet.

### 3 - Payments

#### 3.3 - Pre-measured Sales

##### 3.3.4 - Dividing payment units (7/14)

Payment Unit(s) with a value greater than \$15,000 may be divided at the request of the Purchaser and upon approval of the Unit Manager. Dividing Payment Units is a contract modification which requires a Timber Sale Contract Supplement. There will be only one division per Payment Unit.

#### 3.4 - Damaged Timber

##### 3.4.1 - Damaged timber (6/14)

General Condition and Requirement 3.4 Damaged Timber, defines liquidated damages for undesignated live merchantable trees which are cut or injured. In addition, extreme care should be taken to avoid damage to tree seedlings and saplings.

No damage is acceptable to merchantable trees. Within the sale area, if more than 10% of trees (> 4.5" DBH) within a specified area of the sale are damaged, liquidated damages will be assessed for all trees damaged. Rates will be in accordance with General Condition and Requirement 3.4 Damaged Timber.



## 4 - Transportation

### 4.1 - Construction

#### 4.1.6 - Road construction (1/09)

Construction of new roads or improvements of existing roads shall be done in such a way as to minimize the environmental and visual impacts. Merchantable trees shall be cut and utilized unless otherwise directed. Non-merchantable trees shall be severed and laid flat on the ground. Slash shall be scattered, and not left in windrows and kept a minimum of 10 feet back from the road edge. Stumps shall be set upright, not left on edge, and be moved at least 10 feet away from the road edge. Disturbed soil shall be feathered into the woods and not left in berms or windrows.

#### 4.1.7 - Road closure (10/11)

All new roads built into the sale must be blocked to vehicle traffic within 30 days of completion of hauling. Overgrown roads that are reopened shall be considered new roads. In general, this will require constructing a four (4') foot high berm of stumps and logs covered with earth. Stumps and brush must be placed along the remainder of the trail. These roads must be rendered impassable to cars and trucks. Contact the sale administrator for specific details of design and placement.

## 5 - Operations

### 5.1 - Notification

#### 5.1.3 - Well heads and natural gas pipelines (11/15)

The Purchaser is responsible for contacting the gas or pipeline company prior to operating equipment in the vicinity of well heads or natural gas pipelines.

### 5.2 - Conduct of Operations

#### 5.2.1 - Slash

##### 5.2.1.8 - Slash height (12/08)

No slash or tree tops may exceed 36 inches in height.

#### 5.2.2 - Hazard Trees/Snags

##### 5.2.2.1 - Den trees (10/16)

Obvious hollow and/or den trees shall be protected and left standing unless they are a safety hazard.

#### 5.2.3 - Operating Restrictions

##### 5.2.3.3 - Bark slippage restriction (3/09)

Within Payment Unit(s) 1, 2, 3 and 5, cutting and skidding are not permitted during the period of April 15 to July 15. This restriction is because of bark slippage.

##### 5.2.3.11 - Coppice regeneration protection (4/10)

Timber harvesting in Payment Units 4 and 6 must be completed before significant aspen sprouting occurs in that Payment Unit so as to minimize damage to the new regeneration. Any post harvest operations, such as chipping, must be completed before sprouting of regeneration occurs. If it is anticipated that chipping will be delayed, then tops shall be carried to one central location or left unchipped. The Unit Manager or his/her representative may cease such operations if sprouting occurs before the operation is complete.

#### 5.2.4 - Dead and Down Creation

##### 5.2.4.4 - Dead and down creation, grouse (8/13)

To encourage grouse and other wildlife, in Payment Unit(s) 4 and 6, leave at least six (6) large tops in a single pile, and at least one pile for every 2 acres. These will be evenly scattered throughout the unit.

#### 5.2.32 - Decking/landing restoration (9/13)

All decking and landing areas must have the surface area restored to a condition equal to or better than before. This is to ensure the proper regeneration of the stand.

#### 5.2.38 - No decking against live trees (2/04)

Cut products may not be decked against unmarked or designated leave trees.

## 5.4 - Soil Protection

### 5.4.1 - Rutting restriction, general (7/16)

Operations are to cease immediately if equipment and weather conditions result in rutting of roads and/or skid trails which is 12 inches or greater in depth and 50 feet in length. The Unit Manager or his/her representative may restrict hauling and/or skidding if ruts exceed the specified depth. With the Unit Manager or his/her representative's approval, the Purchaser may return to the area when the risk of rutting has decreased.

## 5.8 - Protection of Endangered Species

### 5.8.5 - Protection of raptor nests (3/13)

All trees with raptor nests will be protected if found during harvesting operations. Notification will be made to the Unit Manager or his/her representative who will notify the Wildlife Biologist so an on-site evaluation and recommendation can be made, if necessary.

## 6 - Safety and Fire Prevention

### 6.2 - Signing

#### 6.2.1 - Road posting (9/09)

The Purchaser is responsible for posting and maintaining caution signs on Donathan Rd. and other haul roads prior to beginning operations. The road must be posted at appropriate distances from the sale area to warn of logging activity and truck traffic. Signs must be removed when harvest operations are suspended or completed. The Purchaser will provide these signs.



# TIMBER SALE MAP

This information provided by authority of Part 5, 1994 PA 451, as amended.

Sale Number	Year
61-134	17

Forest Management Unit Traverse City	County Kalkaska	Mapped By Standerfer	Date 8/22/17	Page 1	of 1
Compartment Number 153	Township 25N	Range 07W	Section(s) and Subdivision(s) NW, NWSE 21-NE, NWSE 22-NE, NWSE	Scale:  ... 4" .....  = 1 mile	

Cover Type				Density	
A = Aspen	J = Jack Pine	O = Oak	U = Upland Brush	0 = Non Stocked	5 = Pole Timber Medium
B = Paper Birch	K = Rock	P = Lowland Poplar	UM = Upland Mix Forest	1 = Seedling Sapling Poor	6 = Pole Timber Well
C = Cedar	L = Lowland Brush	Q = Mixed Swamp Conifer	V = Bog or Marsh	2 = Seedling Sapling Medium	7 = Saw Timber Poor
D = Treed Bog	LM = Lowland Mix Forest	R = Red Pine	W = White Pine	3 = Seedling Sapling Well	8 = Saw Timber Medium
E = Swamp Hardwoods	M = Maple, Beech, Birch	S = Black Spruce	X = Non Stocked	4 = Pole Timber Poor	9 = Saw Timber Well
F = Spruce/Fir	MC = Mixed Conifer	T = Tamarack	Y = Sand		
G = Grass	MD = Mixed Deciduous		Z = Water		
H = Hemlock	N = Marsh				





**TIMBER SALE INFORMATION**

107 Belated Pine (61-146-17)

Kalkaska County (Advertised Price \$29,722.20)

SALE NOTE: Pipelines and snowmobile trails will need protected during sale operations.

A recreation site such as a trail, pathway, or campground is within the sale area or the vicinity. Certain restrictions/specifications may be applicable including time restrictions.

A timber sale contract for this lump sum, sealed bid timber sale will be awarded to the responsible bidder offering the highest sealed bid price. Bids must be at or above the following advertised price for each species:

<u>PRODUCTS &amp; SPECIES</u>	<u>ESTIMATED UNITS*</u>	<u>ADVERTISED PRICE</u>
Sawtimber		
Red Maple	0.50 MBF	\$ 126.00 / MBF
Red Pine	116.50 MBF	\$ 117.00 / MBF
White Pine	51.10 MBF	\$ 65.00 / MBF
Pulpwood		
B. T. Aspen	33.00 Cords	\$ 20.50 / Cord
Jack Pine	219.00 Cords	\$ 15.50 / Cord
Red Maple	28.00 Cords	\$ 20.35 / Cord
Red Oak	2.00 Cords	\$ 17.65 / Cord
Red Pine	127.00 Cords	\$ 42.80 / Cord
White Pine	179.00 Cords	\$ 14.50 / Cord

\* The total volume is statistically estimated within plus (+) or minus (-) 14.20 percent. The estimated units are final and not subject to adjustment. Prospective bidders are urged to examine this timber and to make their own estimates of quantity and quality.

**BOND AND PAYMENT SCHEDULE:**

1. A bond in the amount of \$1,486.00 to insure faithful performance of the conditions of the contract will be deposited by the successful bidder within 21 days of the sale award.
2. Cutting in any sale or unit without the required advance payment would be considered a trespass.
3. Total payment must be paid in advance or according to the following schedule:
  - (a) Ten percent (10%) of the sale value must be paid within 21 days of the sale award.
  - (b) The remainder is due before cutting begins.
4. If no cutting takes place, the 10% down payment will not be refunded.
5. Operations on the contract issued will terminate on 03/31/2020.

**Description of Timber by Payment Unit (PU)**

PU	MARKET GROUP	PRODUCT	QUANTITY	UNIT	ACRES	ADVERTISE PRICE
1	Red Maple	Sawtimber	0.5	MBF	55.8	\$29,722.20
	Red Pine		116.5	MBF		
	White Pine		51.1	MBF		
	B. T. Aspen	Pulpwood	33.0	Cords		
	Jack Pine		219.0	Cords		
	Red Maple		28.0	Cords		
	Red Oak		2.0	Cords		
	Red Pine		127.0	Cords		
	White Pine		179.0	Cords		
TOTAL:			168.1	MBF		
TOTAL:			588.0	Cords		

## Sale Specific Conditions & Requirements

**Sale Name: 107 Belated Pine**

**Sale Number: 61-146-17 Seq#: 1**

### 1 - Sale Area

#### 1.2 - Boundaries

##### 1.2.1 - Painted boundaries (1/14)

The sale boundary is marked and identified with red paint. The painted boundary line trees are not Included Timber and are to be protected unless marked with orange paint.

### 2 - Timber Specifications

#### 2.1 - Included Timber

##### 2.1.3 - Cut tree marked unit(s) (12/08)

Within Payment Unit(s) 1, all trees are designated for cutting when marked with orange paint above and below stump height, regardless of merchantability. In addition, cut all aspen and jack pine that are over two (2) inches at DBH.

### 3 - Payments

#### 3.3 - Pre-measured Sales

##### 3.3.4 - Dividing payment units (7/14)

Payment Unit(s) may be divided at the request of the Purchaser and upon approval of the Unit Manager. Dividing Payment Units is a contract modification which requires a Timber Sale Contract Supplement.

### 4 - Transportation

#### 4.1 - Construction

##### 4.1.4 - Timber removed for construction (12/09)

Trees cut or damaged in the process of pre-approved road, landing or skid trail construction will be decked in an area separate from other Designated Timber and not removed until measured by the sale administrator. Payment will be made at the specified Purchase Unit Price.

##### 4.1.7 - Road closure (10/11)

All new roads built into the sale must be blocked to vehicle traffic upon completion of the sale. In general, this will require constructing a four (4') foot high berm of stumps and logs covered with earth. Stumps and brush must be placed along the remainder of the trail where they are readily available.

### 5 - Operations

#### 5.1 - Notification

##### 5.1.3 - Well heads and natural gas pipelines (11/15)

The Purchaser is responsible for contacting the pipeline company 30 days prior to operating equipment in the vicinity of well heads or natural gas pipelines. If pipelines are crossed with heavy equipment, 811 will need to be called and the precautions from company representatives will need to be followed to protect the pipeline infrastructure. Crane mats will likely be needed if truck traffic goes over the pipelines.

#### 5.2 - Conduct of Operations

##### 5.2.3 - Operating Restrictions

###### 5.2.3.6 - Bark beetle restriction (12/08)

In the event drought creates a high risk of pine bark beetle infestation, pine is not to be cut during the period March 1 through July 1, unless all portions of trees greater than two inches in diameter are removed from the sale area, reduced to chips, or treated to the satisfaction of the Unit Manager or his/her representative, within fifteen days of being severed from the stump. Pine log decks, pulpwood piles and treetops that are piled for chipping in the fall or winter within a 1/4 mile of susceptible sites must be removed before March 15. Residual slash must not be placed in piles or rows and must

be spread over the site for quick drying. The Department of Natural Resources will exercise this specification if the risk of damage warrants.

#### 5.2.41 - Snowmobile trail protection (9/11)

Cameron Bridge Road is a snowmobile trail during the winter months, and is shown on the Timber Sale Map. Do not cut or damage posts with orange trail markers or traffic control signs. If the trail is used, it must be maintained and restored to a condition equal to or better than before the sale. If the trail road is to be used for hauling during the snowmobile season, then a snow covered base must be left on the trail. No decking of forest products will be permitted along the snowmobile trail. All stumps within 20 feet of the snowmobile trail must be cut at ground level.

### 5.4 - Soil Protection

#### 5.4.1 - Rutting restriction, general (7/16)

Operations are to cease immediately if equipment and weather conditions result in rutting of roads and/or skid trails which is 12 inches or greater in depth and 50 feet in length. The Unit Manager or his/her representative may restrict hauling and/or skidding if ruts exceed the specified depth. With the Unit Manager or his/her representative's approval, the Purchaser may return to the area when the risk of rutting has decreased.

## 6 - Safety and Fire Prevention

### 6.2 - Signing

#### 6.2.1 - Road posting (9/09)

The Purchaser is responsible for posting and maintaining caution signs on Cameron Bridge Road (which is also the snowmobile trail) prior to beginning operations. The road must be posted at appropriate distances from the sale area to warn of logging activity and truck traffic. Signs must be removed when harvest operations are suspended or completed. The Purchaser will provide these signs.



# TIMBER SALE MAP

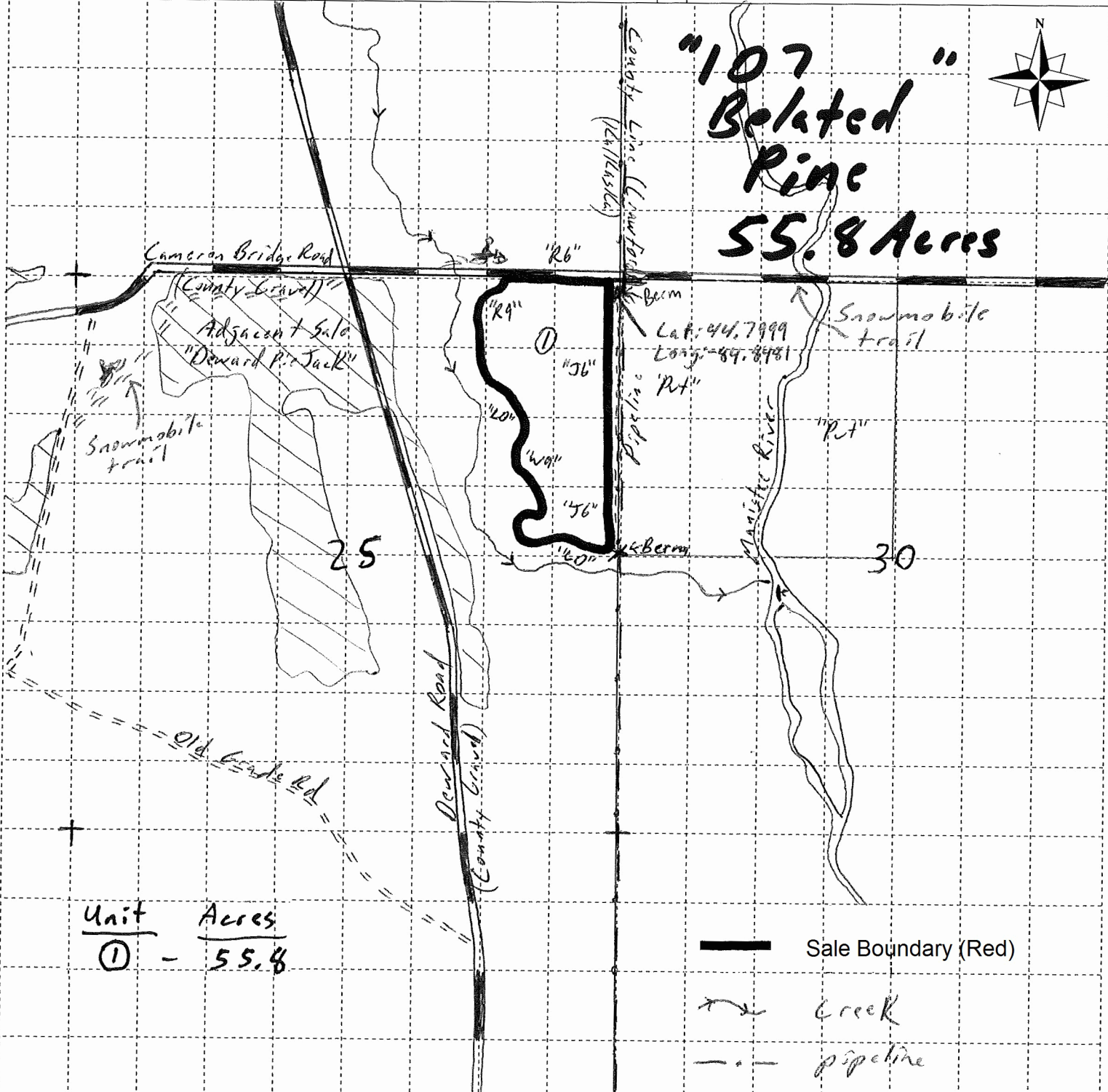
This information provided by authority of Part 5, 1994 PA 451, as amended.

Sale Number <b>61-146</b>	Year <b>17</b>
Date <b>8/22/17</b>	Page of <b>1   1</b>
Scale:  ... 4" .....  = 1 mile	

Forest Management Unit <b>Traverse City</b>	County <b>Kalamazoo</b>	Mapped By <b>Standerfer</b>
Compartment Number <b>107</b>	Township <b>28N</b>	Range <b>05W</b>
Section(s) and Subdivision(s) <b>25 - N 1/2 NE, SENE</b>		Cruised By <b>Kalamazoo Office</b>

Cover Type			
A = Aspen	J = Jack Pine	O = Oak	U = Upland Brush
B = Paper Birch	K = Rock	P = Lowland Poplar	UM = Upland Mix Forest
C = Cedar	L = Lowland Brush	Q = Mixed Swamp Conifer	V = Bog or Marsh
D = Treed Bog	LM = Lowland Mix Forest	R = Red Pine	W = White Pine
E = Swamp Hardwoods	M = Maple, Beech, Birch	S = Black Spruce	X = Non Stocked
F = Spruce/Fir	MC = Mixed Conifer	T = Tamarack	Y = Sand
G = Grass	MD = Mixed Deciduous	Z = Water	
H = Hemlock	N = Marsh		

Density	
0 = Non Stocked	5 = Pole Timber Medium
1 = Seedling Sapling Poor	6 = Pole Timber Well
2 = Seedling Sapling Medium	7 = Saw Timber Poor
3 = Seedling Sapling Well	8 = Saw Timber Medium
4 = Pole Timber Poor	9 = Saw Timber Well





# TIMBER SALE INFORMATION

## Mixed Riverview (61-152-17)

Kalkaska County (Advertised Price \$141,064.00)

SALE NOTE: Access may be through private land.

A timber sale contract for this lump sum, sealed bid timber sale will be awarded to the responsible bidder offering the highest sealed bid price. Bids must be at or above the following advertised price for each species:

<u>PRODUCTS &amp; SPECIES</u>	<u>ESTIMATED UNITS*</u>	<u>ADVERTISED PRICE</u>
Sawtimber		
Mixed Aspen	220.30 MBF	\$ 110.00 / MBF
Red Maple	72.00 MBF	\$ 126.00 / MBF
Red Pine	29.50 MBF	\$ 117.00 / MBF
Pulpwood		
Balsam Fir	157.00 Cords	\$ 13.35 / Cord
Mixed Aspen	3,397.00 Cords	\$ 20.50 / Cord
Mixed Hardwood	915.00 Cords	\$ 20.35 / Cord
Red Pine	326.00 Cords	\$ 42.80 / Cord

\* The total volume is statistically estimated within plus (+) or minus (-) 10.79 percent. The estimated units are final and not subject to adjustment. Prospective bidders are urged to examine this timber and to make their own estimates of quantity and quality.

### **BOND AND PAYMENT SCHEDULE:**

1. A bond in the amount of \$7,053.00 to insure faithful performance of the conditions of the contract will be deposited by the successful bidder within 21 days of the sale award.
2. Cutting in any sale or unit without the required advance payment would be considered a trespass.
3. Total payment must be paid in advance or according to the following schedule:
  - (a) Ten percent (10%) of the sale value must be paid within 21 days of the sale award.
  - (b) The 10% down payment will be credited towards the first unit cut.
4. If no cutting takes place, the 10% down payment will not be refunded.
5. Operations on the contract issued will terminate on 03/31/2021.

**Description of Timber by Payment Unit (PU)**

PU	MARKET GROUP	PRODUCT	QUANTITY	UNIT	ACRES	ADVERTISE PRICE
1	Mixed Aspen	Sawtimber	21.5	MBF	57.3	\$34,896.30
	<i>B. T. Aspen</i>		17.7	<i>MBF</i>		
	<i>Quaking Aspen</i>		3.8	<i>MBF</i>		
	Red Maple		2.4	MBF		
	Balsam Fir	Pulpwood	31.0	Cords		
	<i>Balsam Fir</i>		31.0	<i>Cords</i>		
	Mixed Aspen		1,410.0	Cords		
	<i>B. T. Aspen</i>		269.0	<i>Cords</i>		
	<i>Quaking Aspen</i>		1,141.0	<i>Cords</i>		
	Mixed Hardwood		143.0	Cords		
	<i>Black Cherry</i>		11.0	<i>Cords</i>		
	<i>Paper Birch</i>		16.0	<i>Cords</i>		
	<i>Red Maple</i>		116.0	<i>Cords</i>		
	2	Mixed Aspen	Sawtimber	43.9		
<i>B. T. Aspen</i>			43.9	<i>MBF</i>		
Red Maple			26.3	MBF		
Red Pine			1.9	MBF		
Balsam Fir		Pulpwood	44.0	Cords		
<i>Balsam Fir</i>		<i>Sawtimber</i>	1.6	<i>MBF</i>		
<i>Balsam Fir</i>		<i>Pulpwood</i>	41.0	<i>Cords</i>		
Mixed Aspen			633.0	Cords		
<i>B. T. Aspen</i>			633.0	<i>Cords</i>		
Mixed Hardwood			159.0	Cords		
<i>Red Maple</i>			159.0	<i>Cords</i>		
Red Pine			59.0	Cords		
3		Red Pine	Sawtimber	22.2	MBF	20.3
	Mixed Aspen	Pulpwood	10.0	Cords		
	<i>Quaking Aspen</i>		10.0	<i>Cords</i>		
	Red Pine		246.0	Cords		
4	Mixed Aspen	Sawtimber	66.2	MBF	42.5	\$30,932.15
	<i>B. T. Aspen</i>		55.5	<i>MBF</i>		
	<i>Quaking Aspen</i>		10.7	<i>MBF</i>		
	Red Maple		14.9	MBF		
	Balsam Fir	Pulpwood	35.0	Cords		
	<i>Balsam Fir</i>	<i>Sawtimber</i>	2.6	<i>MBF</i>		
	<i>Balsam Fir</i>	<i>Pulpwood</i>	30.0	<i>Cords</i>		
	Mixed Aspen		672.0	Cords		
	<i>B. T. Aspen</i>		621.0	<i>Cords</i>		
	<i>Quaking Aspen</i>		51.0	<i>Cords</i>		
	Mixed Hardwood		370.0	Cords		
	<i>Basswood</i>		7.0	<i>Cords</i>		
	<i>Red Maple</i>		359.0	<i>Cords</i>		
	<i>Red Oak</i>		4.0	<i>Cords</i>		
5	Mixed Aspen	Sawtimber	34.4	MBF	10.5	\$10,001.05
	<i>B. T. Aspen</i>		11.9	<i>MBF</i>		
	<i>Quaking Aspen</i>		22.5	<i>MBF</i>		
	Red Pine		5.4	MBF		
	Balsam Fir	Pulpwood	47.0	Cords		
	<i>Balsam Fir</i>		47.0	<i>Cords</i>		
	Mixed Aspen		198.0	Cords		
	<i>B. T. Aspen</i>		127.0	<i>Cords</i>		
	<i>Quaking Aspen</i>		71.0	<i>Cords</i>		
	Red Pine		21.0	Cords		
6	Mixed Aspen	Sawtimber	25.0	MBF	29.7	\$13,110.45
	<i>Quaking Aspen</i>		25.0	<i>MBF</i>		
	Red Maple		11.9	MBF		

**Description of Timber by Payment Unit (PU), con't**

PU	MARKET GROUP	PRODUCT	QUANTITY	UNIT	ACRES	ADVERTISE PRICE
6 con't	Mixed Aspen	Pulpwood	330.0	Cords		
	<i>B. T. Aspen</i>		105.0	<i>Cords</i>		
	<i>Quaking Aspen</i>		225.0	<i>Cords</i>		
	Mixed Hardwood		103.0	Cords		
	<i>Black Cherry</i>		6.0	<i>Cords</i>		
	<i>Red Maple</i>		97.0	<i>Cords</i>		
7	Mixed Aspen	Sawtimber	29.3	MBF	15.1	\$11,103.00
	<i>B. T. Aspen</i>		24.7	<i>MBF</i>		
	<i>Quaking Aspen</i>		4.6	<i>MBF</i>		
	Red Maple		16.5	MBF		
	Mixed Aspen	Pulpwood	144.0	Cords		
	<i>B. T. Aspen</i>		130.0	<i>Cords</i>		
	<i>Quaking Aspen</i>		14.0	<i>Cords</i>		
	Mixed Hardwood		140.0	Cords		
	<i>Paper Birch</i>		7.0	<i>Cords</i>		
	<i>Red Maple</i>		133.0	<i>Cords</i>		
	TOTAL:			321.8		
TOTAL:			4,795.0	Cords		

# Sale Specific Conditions & Requirements

**Sale Name: Mixed Riverview**

**Sale Number: 61-152-17 Seq#: 1**

## 1 - Sale Area

### 1.2 - Boundaries

#### 1.2.1 - Painted boundaries (1/14)

The sale boundary and Payment Unit boundaries are marked and identified by blue and red paint. Exterior sale boundary lines against private property are marked with blue paint. Exterior sale boundary lines against state are marked with red paint.

## 2 - Timber Specifications

### 2.1 - Included Timber

#### 2.1.1 - Clearcut unit(s) with unmerchantable trees (6/14)

Within Payment Unit(s) 1, 2, 4, 6, and 7, cut all trees that are two (2) inches or more at DBH, with the following exceptions:

Within Payment Unit 1, do not cut balsam fir.

Within Payment Units 2 and 4, do not cut any white pine or oak.

Within Payment Units 6 and 7, do not cut any conifers.

#### 2.1.3 - Cut tree marked unit(s) (12/08)

Within Payment Unit(s) 3, all trees are designated for cutting when marked with orange paint above and below stump height, regardless of merchantability.

#### 2.1.4 - Designated timber unit(s) (6/17)

Within Payment Unit(s) 5, all aspen, red maple, and trees marked with orange paint are designated for cutting, regardless of merchantability. In addition, cut balsam fir four (4) inches or greater at DBH.

## 3 - Payments

### 3.3 - Pre-measured Sales

#### 3.3.4 - Dividing payment units (7/14)

Payment Unit(s) over \$15,000 in value may be divided at the request of the Purchaser and upon approval of the Unit Manager. Dividing Payment Units is a contract modification which requires a Timber Sale Contract Supplement.

## 4 - Transportation

### 4.1 - Construction

#### 4.1.6 - Road construction (1/09)

Construction of new roads or improvements of existing roads shall be done in such a way as to minimize the environmental and visual impacts. Merchantable trees shall be cut and utilized unless otherwise directed. Non-merchantable trees shall be severed and laid flat on the ground. Slash shall be scattered, and not left in windrows and kept a minimum of 10 feet back from the road edge. Stumps shall be set upright, not left on edge, and be moved at least 10 feet away from the road edge. Disturbed soil shall be feathered into the woods and not left in berms or windrows.

#### 4.1.7 - Road closure (10/11)

All new roads built into the sale must be blocked to vehicle traffic upon completion of the sale. Overgrown roads that are reopened shall be considered new roads. In general, this will require constructing a four (4') foot high berm of stumps and logs covered with earth. These roads must be rendered impassable to cars and trucks. Temporary berms may be required if no sale activity occurs for 30 or more consecutive days.

### 4.4 - Access

#### 4.4.1 - Private property access (3/11)

Permission for access across private land has been obtained by the DNR.

## 5 - Operations

### 5.2 - Conduct of Operations

#### 5.2.2 - Hazard Trees/Snags

##### 5.2.2.1 - Den trees (10/16)

Obvious hollow and/or den trees shall be protected and left standing unless they are a safety hazard.

#### 5.2.4 - Dead and Down Creation

##### 5.2.4.4 - Dead and down creation, grouse (8/13)

To encourage grouse and other wildlife, in Payment Unit(s) 1, 2, 4, 5, 6, and 7, leave at least six (6) large tops in a single pile and at least one pile for every two acres. Larger cull pieces should be mixed into these piles when they are readily available. These will be evenly scattered throughout the units.

##### 5.2.4.7 - Dead and down creation: hare, grouse, deer and other species (5/15)

To improve horizontal cover habitat for snowshoe hare, grouse, deer, and other species, the Purchaser is to push over red painted boundary trees that are over 8 inches at DBH. Pushed over trees should be no closer than 50 feet apart. These trees should be tipped over with the root ball still attached so the base of the tree is suspended off the ground. The crown of the fallen tree should be at or near ground level after it is pushed over. No trees should be pushed over within 50 feet of county roads or blue private line. This requirement is to be completed as the cutting progresses through the Payment Unit. Note: this requirement only applies to the boundary of Payment Unit 1, the western and southern boundaries of Payment Unit 2, the southern boundary of Payment Unit 4, and the northern boundary of Payment Unit 6. Contact the sale administrator for further details.

#### 5.2.22 - Operating Caution

##### 5.2.22.1 - Operating caution (6/11)

It is recommended, but not required, that within Payment Unit(s) 1, 2, 4, 5, 6, and 7, cutting and skidding occur during dry summer or frozen winter conditions. The reason for the recommendation is due to seasonally wet soil.

#### 5.2.29 - Shrub protection (9/07)

Do not cut or damage hawthorn, witch-hazel, dogwood or juneberry. These woody-shrub plants are highly beneficial to various wildlife species.

#### 5.2.38 - No decking against live trees (2/04)

Cut products may not be decked against unmarked or designated leave trees.

### 5.4 - Soil Protection

#### 5.4.1 - Rutting restriction, general (7/16)

Operations are to cease immediately if equipment and weather conditions result in rutting of roads and/or skid trails which is 12 inches or greater in depth and 50 feet in length. The Unit Manager or his/her representative may restrict hauling and/or skidding if ruts exceed the specified depth. With the Unit Manager or his/her representative's approval, the Purchaser may return to the area when the risk of rutting has decreased.

## 6 - Safety and Fire Prevention

### 6.2 - Signing

#### 6.2.1 - Road posting (9/09)

The Purchaser is responsible for posting and maintaining caution signs on Riverview Rd. prior to beginning operations. The road must be posted at appropriate distances from the sale area to warn of logging activity and truck traffic. Signs must be removed when harvest operations are suspended or completed. The Purchaser will provide these signs.

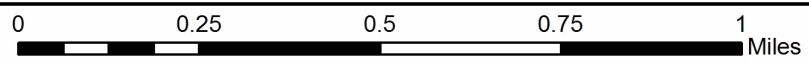
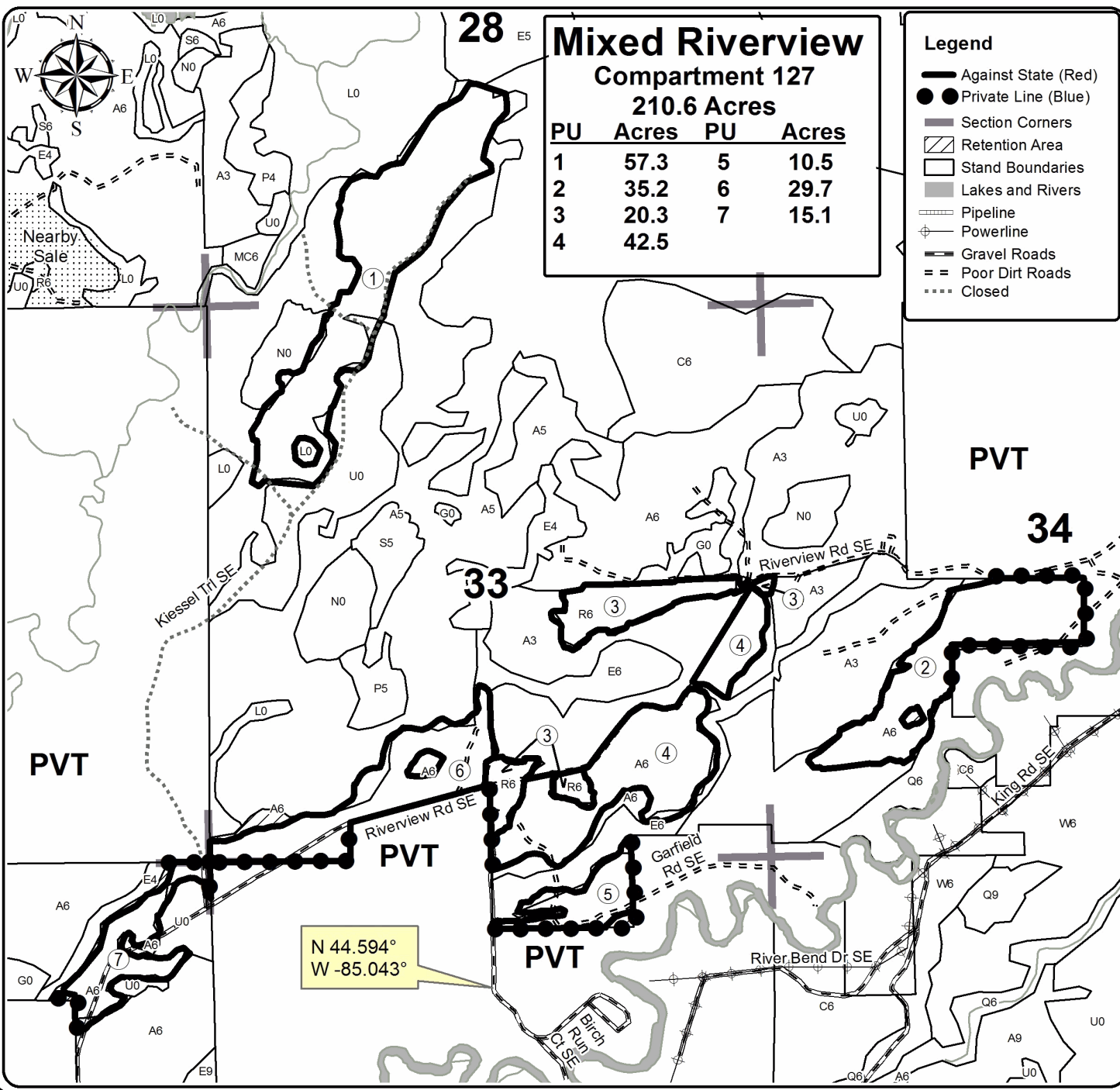


# TIMBER SALE MAP

This information provided by authority of Part 525, 1994 PA 451, as amended.

Forest Management Unit Traverse City	County Kalkaska	Mapped By Ritchie	Date 08/07/2017	Page 1	of 1
Township 26N	Range 06W	Section(s) and Subdivision(s) 25N06W Sec. 4 and 5, 26N06W Sec. 28, 33, and 34	Scale 1:15,840		

Cover Type				Density	
A = Aspen	H = Hemlock	N = Marsh	U = Upland Brush	0 = Non Stocked	5 = Pole Timber Medium
B = Paper Birch	J = Jack Pine	O = Oak	UM = Upland Mixed	1 = Seedling Sapling Poor	6 = Pole Timber Well
C = Cedar	L = Lowland Brush	P = Lowland Poplar	V = Bog or Marsh	2 = Seedling Sapling Medium	7 = Saw Timber Poor
D = Treed Bog	LM = Lowland Mixed	Q = Mixed Swamp Conifer	W = White Pine	3 = Seedling Sapling Well	8 = Saw Timber Medium
E = Swamp Hdwoods	M = Mpl, Bch, Brch	R = Red Pine	X = Non Stocked	4 = Pole Timber Poor	9 = Saw Timber Well
F = Spruce Fir	MC = Mixed Conifer	S = Black Spruce	Z = Water		
G = Grass	MD = Mixed Deciduous	T = Tamarack			



# TIMBER SALE INFORMATION

## 40 Laps Mix (61-653-17)

Kalkaska County (Advertised Price \$18,323.80)

SALE NOTE: Please note that this sale is on Military Board Land and is NOT certified. Timing restrictions and chipping requirements will apply. Previous sales adjacent to Payment Unit 3 have revealed old bullets in trees. Sale prices have been reduced to reflect that risk.

A timber sale contract for this lump sum, sealed bid timber sale will be awarded to the responsible bidder offering the highest sealed bid price. Bids must be at or above the following advertised price for each species:

<u>PRODUCTS &amp; SPECIES</u>	<u>ESTIMATED UNITS*</u>	<u>ADVERTISED PRICE</u>
Sawtimber		
B. T. Aspen	10.90 MBF	\$ 88.00 / MBF
Bl/R/Hybrid Oak	44.90 MBF	\$ 91.00 / MBF
Red Maple	1.90 MBF	\$ 100.00 / MBF
White Oak	2.50 MBF	\$ 46.00 / MBF
Pulpwood		
B. T. Aspen	126.00 Cords	\$ 16.40 / Cord
Jack Pine	278.00 Cords	\$ 12.40 / Cord
Misc. Species 1	64.00 Cords	\$ 6.00 / Cord
Mixed Hardwood	50.00 Cords	\$ 16.30 / Cord
Mixed Oak	435.00 Cords	\$ 14.10 / Cord
White Pine	11.00 Cords	\$ 11.60 / Cord

\* The total volume is statistically estimated within plus (+) or minus (-) 14.42 percent. The estimated units are final and not subject to adjustment. Prospective bidders are urged to examine this timber and to make their own estimates of quantity and quality.

### **BOND AND PAYMENT SCHEDULE:**

1. A bond in the amount of \$1,832.00 to insure faithful performance of the conditions of the contract will be deposited by the successful bidder within 21 days of the sale award.
2. Cutting in any sale or unit without the required advance payment would be considered a trespass.
3. Total payment must be paid in advance or according to the following schedule:
  - (a) Ten percent (10%) of the sale value must be paid within 21 days of the sale award.
  - (b) The 10% down payment will be credited towards the first unit cut.
4. If no cutting takes place, the 10% down payment will not be refunded.
5. Operations on the contract issued will terminate on 04/15/2020.

**Description of Timber by Payment Unit (PU)**

PU	MARKET GROUP	PRODUCT	QUANTITY	UNIT	ACRES	ADVERTISE PRICE
1	B. T. Aspen	Sawtimber	5.6	MBF	12.7	\$5,273.60
	BI/R/Hybrid Oak		9.7	MBF		
	Red Maple		1.9	MBF		
	White Oak		2.5	MBF		
	B. T. Aspen	Pulpwood	74.0	Cords		
	Jack Pine		5.0	Cords		
	<i>Jack Pine</i>		5.0	<i>Cords</i>		
	Misc. Species 1		28.0	Cords		
	<i>Misc. Species 1</i>		28.0	<i>Cords</i>		
	Mixed Hardwood		41.0	Cords		
	<i>Black Cherry</i>		6.0	<i>Cords</i>		
	<i>Red Maple</i>		35.0	<i>Cords</i>		
	Mixed Oak		96.0	Cords		
	<i>BI/R/Hybrid Oak</i>		78.0	<i>Cords</i>		
<i>White Oak</i>	18.0	<i>Cords</i>				
White Pine	11.0	Cords				
2	Jack Pine	Pulpwood	273.0	Cords	20.9	\$3,574.50
	<i>Jack Pine</i>	<i>Sawtimber</i>	5.0	<i>MBF</i>		
	<i>Jack Pine</i>	<i>Pulpwood</i>	263.0	<i>Cords</i>		
	Misc. Species 1		1.0	Cords		
	<i>Misc. Species 2</i>		1.0	<i>Cords</i>		
	Mixed Oak		13.0	Cords		
	<i>BI/R/Hybrid Oak</i>		3.0	<i>Cords</i>		
	<i>Red Oak</i>		10.0	<i>Cords</i>		
3	B. T. Aspen	Sawtimber	5.3	MBF	29.9	\$9,475.70
	BI/R/Hybrid Oak		35.2	MBF		
	B. T. Aspen	Pulpwood	52.0	Cords		
	Misc. Species 1		35.0	Cords		
	<i>Misc. Species 1</i>		35.0	<i>Cords</i>		
	Mixed Hardwood		9.0	Cords		
	<i>Red Maple</i>		9.0	<i>Cords</i>		
	Mixed Oak		326.0	Cords		
<i>BI/R/Hybrid Oak</i>	326.0	<i>Cords</i>				
TOTAL:			60.2	MBF		
TOTAL:			964.0	Cords		



## Sale Specific Conditions & Requirements

**Sale Name: 40 Laps Mix**

**Sale Number: 61-653-17 Seq#: 1**

### 1 - Sale Area

#### 1.2 - Boundaries

##### 1.2.1 - Painted boundaries (1/14)

The sale boundaries are marked and identified by blue and red paint. Exterior sale boundary lines against private property are marked with blue paint. Exterior sale boundary lines against state are marked with red paint. The painted boundary line trees are not Included Timber and are to be protected.

### 2 - Timber Specifications

#### 2.1 - Included Timber

##### 2.1.1 - Clearcut unit(s) with unmerchantable trees (6/14)

Within Payment Unit(s) 1, cut all trees that are two (2) inches or more at DBH, except trees marked with green paint above and below stump height.

Within Payment Unit(s) 2, cut all trees that are two (2) inches or more at DBH, except white oak and white pine.

##### 2.1.4 - Designated timber unit(s) (6/17)

Within Payment Unit(s) 3, all aspen, black/red/hybrid oak and red maple trees are designated for cutting, regardless of merchantability.

##### 2.1.11 - Description of timber note (2/04)

Note that Misc. Species 1 is dead oak, which may be cut throughout the sale.

#### 2.2 - Utilization

##### 2.2.2 - Chipping required (5/14)

This area must be chip harvested to meet National Guard requirements. Products may be produced as roundwood and forwarded to decking areas in final product length, but the tops must be left intact and skidded to the landing for chipping in order to minimize the amount of residual slash left in Military training areas. The requirement to retain approximately 1/6 to 1/3 of tree tops and limbs less than four inches in diameter does not apply (G. C. & R. 2.2). This is because this sale is not certified.

##### 2.2.3 - Stump heights (4/07)

Stump heights within the Sale Area shall not exceed 6 inches for all trees. This is in order to accommodate military requirements. A written waiver of this requirement may be requested if wet weather, sandy roads, or training restrictions make winter logging necessary.

### 4 - Transportation

#### 4.1 - Construction

##### 4.1.6 - Road construction (1/09)

Improvements of existing roads shall be done in such a way as to minimize the environmental and visual impacts. Merchantable trees shall be cut and utilized unless otherwise directed. Non-merchantable trees shall be severed and laid flat on the ground. Slash shall be chipped, utilized or otherwise removed from the sale. Stumps shall be set upright, not left on edge, and be moved at least 10 feet away from the road edge. Disturbed soil shall be feathered into the woods and not left in berms or windrows.

##### 4.1.7 - Road closure (10/11)

Overgrown or closed roads that are reopened must be blocked to vehicle traffic within 30 days of completion of hauling. In general, this will require constructing a four (4') foot high berm of stumps and logs covered with earth. These roads must be rendered impassable to cars, trucks and ORVs. Contact the sale administrator for specific details of design and placement.

##### 4.1.11 - Permits (2/12)

The Purchaser will secure any necessary Kalkaska County Road Commission driveway permits that may be required.

#### 4.1.12 - No new roads (1/12)

No new roads will be permitted. All operations are limited to existing roads.

## 5 - Operations

### 5.1 - Notification

#### 5.1.1 - Pre-sale conference (10/16)

A pre-sale conference on site between the Purchaser and sale administrator is required prior to beginning any operations to determine landing and road locations. The Sale Administrator must be contacted at least 5 days in advance to schedule the conference.

#### 5.1.3 - Well heads and natural gas pipelines (11/15)

The Purchaser is responsible for contacting the gas or pipeline company prior to operating equipment in the vicinity of well heads or natural gas pipelines. There is a natural gas pipeline adjacent to Payment Unit 3, however operations are not likely to affect it, so the contact information provided is for emergency purposes only. Contact Tracy Lawrence with Great Lakes Gas at 810-730-0134.

#### 5.1.5 - National Guard notification (2/15)

This sale is upon lands utilized for training by the Michigan National Guard - Camp Grayling. A minimum of five (5) business days prior to opening this sale, the producer must request that the sale administrator contact the military for information regarding training plans that may impact sale operations.

### 5.2 - Conduct of Operations

#### 5.2.3 - Operating Restrictions

##### 5.2.3.4 - Oak wilt restriction (4/17)

Within Payment Unit(s) 3, unless changed by written agreement, cutting, skidding, and hauling are not permitted during the period of April 15 to July 15. Operations may be allowed if specific steps are taken to prevent damaging uncut oak during the high risk period. Those steps include completing all road brushing before April 15th, clearing a tree-length buffer along the sale boundary adjacent to other oak stands before April 15th or leaving an uncut buffer there until after July 15th. This is necessary to reduce the spread of oak wilt. For more information, contact the Unit Manager or his/her representative.

##### 5.2.3.7 - National Guard training restriction (1/09)

Operations on this contract (especially Payment Unit 3) may not be allowed during National Guard training operations. Typically, the restricted period is from May 1 to October 31. The Purchaser must check with the Sale Administrator who will coordinate the cutting schedule with the Military. All harvest equipment and timber products must be removed from the sale area during the restricted period.

##### 5.2.3.11 - Coppice regeneration protection (4/10)

Within Payment Unit 1, chipping must be completed before sprouting of regeneration occurs. If it is anticipated that chipping will be delayed, then tops shall be carried to one central location. The Unit Manager or Sale Administrator may cease such operations if sprouting occurs before the operation is complete.

#### 5.2.32 - Decking/landing restoration (9/13)

All decking and landing areas must have the surface area restored to a condition equal to or better than before. This is to ensure the proper regeneration of the stand. Wood debris, chips and "cookies" from trimmings must be removed or scattered away from landing and loading areas and may not be windrowed on the edge.

#### 5.2.38 - No decking against live trees (2/04)

Cut products may not be decked against unmarked or designated leave trees.

### 5.4 - Soil Protection

#### 5.4.1 - Rutting restriction, general (7/16)

Operations are to cease immediately if equipment and weather conditions result in rutting of roads and/or skid trails which is 12 inches or greater in depth and 50 feet in length. The Unit Manager or his/her representative may restrict hauling and/or

skidding if ruts exceed the specified depth. With the Unit Manager or his/her representative's approval, the Purchaser may return to the area when the risk of rutting has decreased.

#### 5.4.4 - Slope protection (5/15)

Skid trails and roads on slopes shall be water barred with slash, stumps, and/or clean straw bales native to the area as soon as use is complete to prevent erosion.

## 6 - Safety and Fire Prevention

### 6.2 - Signing

#### 6.2.1 - Road posting (9/09)

The Purchaser is responsible for posting and maintaining caution signs on major haul roads prior to beginning operations. The road must be posted at appropriate distances from both ends of the sale area to warn of logging activity and truck traffic. Signs must be removed when harvest operations are suspended or completed. The Purchaser will provide these signs.

### SKIP

#### 6.4 - Unexploded ordinance (7/15)

Be aware that the sale area could contain UXO (unexploded ordinances). Do not touch, or drive over any metal objects. If any objects are found, please flag the area and notify the Unit Manager or his/her representative, so that they can make arrangements with the Military.

## 7 - Other Conditions

### 7.5 - Loss

#### 7.5.1 - Deteriorating timber (7/09)

The sale area has received damage from age-related oak decline. The Purchaser should harvest the wood as soon as possible. The Department of Natural Resources is held free of responsibility of any further damage or deterioration due to delay in harvesting.

### 7.10 - Certified Timber

#### 7.10.1 - Non-certified timber (2/16)

The area encompassed by this timber sale is not certified to the standards of the Forest Stewardship Council (FSC) or the Sustainable Forestry Initiative (SFI). Forest products from this sale may not be delivered to the mill as "FSC and / or SFI certified". The lands within this sale are managed for military training.



# TIMBER SALE MAP

This information provided by authority of Part 525, 1994 PA 451, as amended.

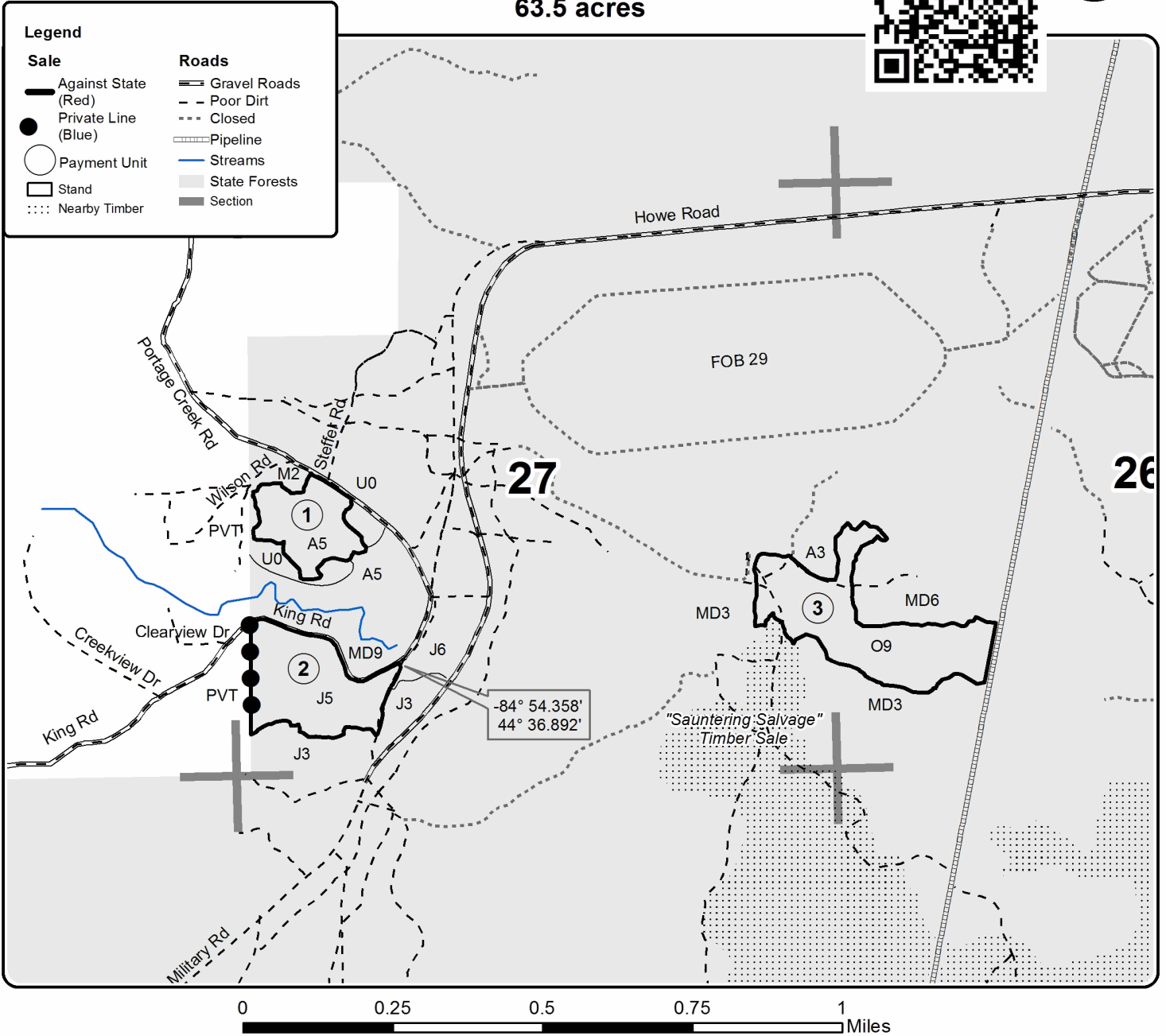
Sale Number	Year
61-653	2017

Forest Management Unit Traverse City	County Kalkaska	Mapped By Armstrong	Date 7/26/2017	Page 1	of 1
Township 26N	Range 5W	Section(s) and Subdivision(s) Sec 26: NWSW, SWSW, SESW; Sec 27: SWNW, E1/2SE, W1/2SW, SESW	Scale 1:15,840		

Cover Type				Density	
A = Aspen	H = Hemlock	N = Marsh	U = Upland Brush	0 = Non Stocked	5 = Pole Timber Medium
B = Paper Birch	J = Jack Pine	O = Oak	UM = Upland Mixed	1 = Seedling Sapling Poor	6 = Pole Timber Well
C = Cedar	L = Lowland Brush	P = Lowland Poplar	V = Bog or Marsh	2 = Seedling Sapling Medium	7 = Saw Timber Poor
D = Treed Bog	LM = Lowland Mixed	Q = Mixed Swamp Conifer	W = White Pine	3 = Seedling Sapling Well	8 = Saw Timber Medium
E = Swamp Hdwoods	M = Mpl, Bch, Brch	R = Red Pine	X = Non Stocked	4 = Pole Timber Poor	9 = Saw Timber Well
F = Spruce Fir	MC = Mixed Conifer	S = Black Spruce	Z = Water		
G = Grass	MD = Mixed Deciduous	T = Tamarack			

Unit	Acres	Unit	Acres
1	12.7	3	29.9
2	20.9		

**40 Laps Mix**  
**Compartment 230**  
**63.5 acres**



40 Laps Mix (61-653-17)  
; Kalkaska COUNTY

In response to the notice of sale to be held 4:00 p.m. (local time) on February 12, 2018, I am hereby submitting my sealed bid (firm offer) for the following forest products to be cut. Bids for individual species must be at or above the advertised price. All non-responsive bid forms may be rejected.

<u>PRODUCTS &amp; SPECIES</u>	<u>ESTIMATED VOLUME*</u>	<u>ADVERTISED PRICE</u>	<u>BID PRICE/UNIT</u>
<b>Sawtimber</b>			
B. T. Aspen	10.90 MBF	\$ 88.00/MBF	\$ _____
Bl/R/Hybrid Oak	44.90 MBF	\$ 91.00/MBF	\$ _____
Red Maple	1.90 MBF	\$ 100.00/MBF	\$ _____
White Oak	2.50 MBF	\$ 46.00/MBF	\$ _____
<b>Pulpwood</b>			
B. T. Aspen	126.00 Cords	\$ 16.40/Cord	\$ _____
Jack Pine	278.00 Cords	\$ 12.40/Cord	\$ _____
Misc. Species 1	64.00 Cords	\$ 6.00/Cord	\$ _____
Mixed Hardwood	50.00 Cords	\$ 16.30/Cord	\$ _____
Mixed Oak	435.00 Cords	\$ 14.10/Cord	\$ _____
White Pine	11.00 Cords	\$ 11.60/Cord	\$ _____

\*The volumes are statistically estimated within plus (+) or minus (-) 14.42 percent. These estimated volumes are final and not subject to adjustment. Prospective bidders are urged to examine this timber and to make their own estimates of quantity and quality.

I understand that any or all bids may be rejected. All bids must be signed and all bid items must be bid or the bid form may be rejected. I also understand that consideration and awarding a contract will be based upon my past performance and ability to complete the contract based upon equipment and staffing subject to my control.

FEDERAL ID: \_\_\_\_\_ or SOCIAL SECURITY NUMBER: \_\_\_\_\_

Company or individual bidding: \_\_\_\_\_

Company representative's name: \_\_\_\_\_

Address: \_\_\_\_\_

City: \_\_\_\_\_ State: \_\_\_\_\_ Zip: \_\_\_\_\_

IF AVAILABLE, PLEASE PLACE THE PERSONALIZED LABEL FROM YOUR PROSPECTUS IN THE ABOVE BOX.

Individual or company representative's signature: \_\_\_\_\_ Date: \_\_\_\_\_

Phone number : \_\_\_\_\_ Email (optional): \_\_\_\_\_

**THE WINNING BIDDER MUST COMPLETE THE VERIFICATION OF WORKER'S DISABILITY COMPENSATION ACT COMPLIANCE (ON REVERSE SIDE IF DOUBLE SIDED) WITHIN 21 DAYS OF SALE AWARD DATE**



<b>FOR DEPARTMENT USE ONLY</b>
Sale Number (XX - XXX - XX - XX)
Forest Management Unit:

## TIMBER SALE VERIFICATION OF WORKER'S DISABILITY COMPENSATION ACT COMPLIANCE

*As required by Act 317, P.A. 1969 (Worker's Compensation) and  
Part 5 of Act 451 of 1994, as amended.*

### VERIFICATION OF WORKER'S DISABILITY COMPENSATION ACT COMPLIANCE

- This verification must be completed and submitted within 21 days of contract award and prior to the issuance of the timber sale contract.
- In addition, if boxes 2B or 2C are checked, then Notice of Exclusion or Certificate of Insurance must be submitted within twenty-one (21) days of the contract award and prior to the issuance of the timber sale contract.
- All information must be typed or printed except for written signatures.

Please Check Appropriate Categories:

1. My business is organized as (you **must** check one of the boxes below):
  - A.  Sole Proprietorship (individual)
  - B.  Partnership
  - C.  Corporation
  
2. You **must** check one of the boxes below:
  - A.  I certify my business is a sole proprietorship and it has no employees but the sole proprietor. I am not subject to the Worker's Compensation Laws.
  - B.  I certify my business has satisfied its obligation to the Worker's Compensation Act through the use of an approved Notice of Exclusion (BWC-337, Rev. 5/96). I will provide a copy of the Notice of Exclusion within 21 days of the contract award. (For questions or a copy of the BWC-337, please call the Worker's Compensation Bureau at 517-322-1195).
  - C.  I certify my business has a Worker's Compensation Policy. I will provide an original Certificate of Insurance within twenty-one (21) days of the contract award.
  
3. If you have checked item 2(A) or 2(B), you **must** indicate the number of **both** full-time and part-time employees, other than yourself, including family members and active partners (if none, you must enter "0").

\_\_\_\_\_ Full-time Employees

\_\_\_\_\_ Part-time Employees

Name of Business		Federal ID (or) Social Security No.	
Address		Telephone (       )	
City	State	ZIP	

*I hereby certify that the above information is true and correct. I agree to notify the Michigan DNR of any changes that occur in factors affecting my coverage during any of my present and future operations.*

\_\_\_\_\_  
Signature of Owner or Authorized Representative

\_\_\_\_\_  
Title

\_\_\_\_\_  
Date

**Please complete the "SEALED BID" information on the next page**

Mixed Riverview (61-152-17)  
; Kalkaska COUNTY

In response to the notice of sale to be held 4:00 p.m. (local time) on February 12, 2018, I am hereby submitting my sealed bid (firm offer) for the following forest products to be cut. Bids for individual species must be at or above the advertised price. All non-responsive bid forms may be rejected.

<u>PRODUCTS &amp; SPECIES</u>	<u>ESTIMATED VOLUME*</u>	<u>ADVERTISED PRICE</u>	<u>BID PRICE/UNIT</u>
<b>Sawtimber</b>			
Mixed Aspen	220.30 MBF	\$ 110.00/MBF	\$ _____
Red Maple	72.00 MBF	\$ 126.00/MBF	\$ _____
Red Pine	29.50 MBF	\$ 117.00/MBF	\$ _____
<b>Pulpwood</b>			
Balsam Fir	157.00 Cords	\$ 13.35/Cord	\$ _____
Mixed Aspen	3,397.00 Cords	\$ 20.50/Cord	\$ _____
Mixed Hardwood	915.00 Cords	\$ 20.35/Cord	\$ _____
Red Pine	326.00 Cords	\$ 42.80/Cord	\$ _____

\*The volumes are statistically estimated within plus (+) or minus (-) 10.79 percent. These estimated volumes are final and not subject to adjustment. Prospective bidders are urged to examine this timber and to make their own estimates of quantity and quality.

I understand that any or all bids may be rejected. All bids must be signed and all bid items must be bid or the bid form may be rejected. I also understand that consideration and awarding a contract will be based upon my past performance and ability to complete the contract based upon equipment and staffing subject to my control.

FEDERAL ID: \_\_\_\_\_ or SOCIAL SECURITY NUMBER: \_\_\_\_\_  
 Company or individual bidding: \_\_\_\_\_  
 Company representative's name: \_\_\_\_\_  
 Address: \_\_\_\_\_  
 City: \_\_\_\_\_ State: \_\_\_\_\_ Zip: \_\_\_\_\_

IF AVAILABLE, PLEASE PLACE THE PERSONALIZED LABEL FROM YOUR PROSPECTUS IN THE ABOVE BOX.

Individual or company representative's signature: \_\_\_\_\_ Date: \_\_\_\_\_

Phone number : \_\_\_\_\_ Email (optional): \_\_\_\_\_

**THE WINNING BIDDER MUST COMPLETE THE VERIFICATION OF WORKER'S DISABILITY COMPENSATION ACT COMPLIANCE (ON REVERSE SIDE IF DOUBLE SIDED) WITHIN 21 DAYS OF SALE AWARD DATE**



<b>FOR DEPARTMENT USE ONLY</b>
Sale Number (XX - XXX - XX - XX)
Forest Management Unit:

## TIMBER SALE VERIFICATION OF WORKER'S DISABILITY COMPENSATION ACT COMPLIANCE

*As required by Act 317, P.A. 1969 (Worker's Compensation) and  
Part 5 of Act 451 of 1994, as amended.*

### VERIFICATION OF WORKER'S DISABILITY COMPENSATION ACT COMPLIANCE

- This verification must be completed and submitted within 21 days of contract award and prior to the issuance of the timber sale contract.
- In addition, if boxes 2B or 2C are checked, then Notice of Exclusion or Certificate of Insurance must be submitted within twenty-one (21) days of the contract award and prior to the issuance of the timber sale contract.
- All information must be typed or printed except for written signatures.

Please Check Appropriate Categories:

1. My business is organized as (you **must** check one of the boxes below):
  - A.  Sole Proprietorship (individual)
  - B.  Partnership
  - C.  Corporation
2. You **must** check one of the boxes below:
  - A.  I certify my business is a sole proprietorship and it has no employees but the sole proprietor. I am not subject to the Worker's Compensation Laws.
  - B.  I certify my business has satisfied its obligation to the Worker's Compensation Act through the use of an approved Notice of Exclusion (BWC-337, Rev. 5/96). I will provide a copy of the Notice of Exclusion within 21 days of the contract award. (For questions or a copy of the BWC-337, please call the Worker's Compensation Bureau at 517-322-1195).
  - C.  I certify my business has a Worker's Compensation Policy. I will provide an original Certificate of Insurance within twenty-one (21) days of the contract award.
3. If you have checked item 2(A) or 2(B), you **must** indicate the number of **both** full-time and part-time employees, other than yourself, including family members and active partners (if none, you must enter "0").

\_\_\_\_\_ Full-time Employees

\_\_\_\_\_ Part-time Employees

Name of Business		Federal ID (or) Social Security No.	
Address		Telephone (       )	
City	State	ZIP	

*I hereby certify that the above information is true and correct. I agree to notify the Michigan DNR of any changes that occur in factors affecting my coverage during any of my present and future operations.*

\_\_\_\_\_  
Signature of Owner or Authorized Representative

\_\_\_\_\_  
Title

\_\_\_\_\_  
Date

**Please complete the "SEALED BID" information on the next page**



107 Belated Pine (61-146-17)  
; Kalkaska COUNTY

In response to the notice of sale to be held 4:00 p.m. (local time) on February 12, 2018, I am hereby submitting my sealed bid (firm offer) for the following forest products to be cut. Bids for individual species must be at or above the advertised price. All non-responsive bid forms may be rejected.

<u>PRODUCTS &amp; SPECIES</u>	<u>ESTIMATED VOLUME*</u>	<u>ADVERTISED PRICE</u>	<u>BID PRICE/UNIT</u>
<b>Sawtimber</b>			
Red Maple	0.50 MBF	\$ 126.00/MBF	\$ _____
Red Pine	116.50 MBF	\$ 117.00/MBF	\$ _____
White Pine	51.10 MBF	\$ 65.00/MBF	\$ _____
<b>Pulpwood</b>			
B. T. Aspen	33.00 Cords	\$ 20.50/Cord	\$ _____
Jack Pine	219.00 Cords	\$ 15.50/Cord	\$ _____
Red Maple	28.00 Cords	\$ 20.35/Cord	\$ _____
Red Oak	2.00 Cords	\$ 17.65/Cord	\$ _____
Red Pine	127.00 Cords	\$ 42.80/Cord	\$ _____
White Pine	179.00 Cords	\$ 14.50/Cord	\$ _____

\*The volumes are statistically estimated within plus (+) or minus (-) 14.20 percent. These estimated volumes are final and not subject to adjustment. Prospective bidders are urged to examine this timber and to make their own estimates of quantity and quality.

I understand that any or all bids may be rejected. All bids must be signed and all bid items must be bid or the bid form may be rejected. I also understand that consideration and awarding a contract will be based upon my past performance and ability to complete the contract based upon equipment and staffing subject to my control.

FEDERAL ID: \_\_\_\_ - \_\_\_\_ - \_\_\_\_ or SOCIAL SECURITY NUMBER: \_\_\_\_ - \_\_\_\_ - \_\_\_\_

Company or individual bidding: \_\_\_\_\_

Company representative's name: \_\_\_\_\_

Address: \_\_\_\_\_

City: \_\_\_\_\_ State: \_\_\_\_\_ Zip: \_\_\_\_\_

IF AVAILABLE, PLEASE PLACE THE PERSONALIZED LABEL FROM YOUR PROSPECTUS IN THE ABOVE BOX.

Individual or company representative's signature: \_\_\_\_\_ Date: \_\_\_\_\_

Phone number : \_\_\_\_\_ Email (optional): \_\_\_\_\_

**THE WINNING BIDDER MUST COMPLETE THE VERIFICATION OF WORKER'S DISABILITY COMPENSATION ACT COMPLIANCE (ON REVERSE SIDE IF DOUBLE SIDED) WITHIN 21 DAYS OF SALE AWARD DATE**



<b>FOR DEPARTMENT USE ONLY</b>	
Sale Number (XX - XXX - XX - XX)	
Forest Management Unit:	

# TIMBER SALE VERIFICATION OF WORKER'S DISABILITY COMPENSATION ACT COMPLIANCE

As required by Act 317, P.A. 1969 (Worker's Compensation) and  
Part 5 of Act 451 of 1994, as amended.

## VERIFICATION OF WORKER'S DISABILITY COMPENSATION ACT COMPLIANCE

- This verification must be completed and submitted within 21 days of contract award and prior to the issuance of the timber sale contract.
- In addition, if boxes 2B or 2C are checked, then Notice of Exclusion or Certificate of Insurance must be submitted within twenty-one (21) days of the contract award and prior to the issuance of the timber sale contract.
- All information must be typed or printed except for written signatures.

Please Check Appropriate Categories:

1. My business is organized as (you **must** check one of the boxes below):
  - A.  Sole Proprietorship (individual)
  - B.  Partnership
  - C.  Corporation
2. You **must** check one of the boxes below:
  - A.  I certify my business is a sole proprietorship and it has no employees but the sole proprietor. I am not subject to the Worker's Compensation Laws.
  - B.  I certify my business has satisfied its obligation to the Worker's Compensation Act through the use of an approved Notice of Exclusion (BWC-337, Rev. 5/96). I will provide a copy of the Notice of Exclusion within 21 days of the contract award. (For questions or a copy of the BWC-337, please call the Worker's Compensation Bureau at 517-322-1195).
  - C.  I certify my business has a Worker's Compensation Policy. I will provide an original Certificate of Insurance within twenty-one (21) days of the contract award.
3. If you have checked item 2(A) or 2(B), you **must** indicate the number of **both** full-time and part-time employees, other than yourself, including family members and active partners (if none, you must enter "0").

\_\_\_\_\_ Full-time Employees

\_\_\_\_\_ Part-time Employees

Name of Business		Federal ID (or) Social Security No.	
Address		Telephone (       )	
City	State	ZIP	

*I hereby certify that the above information is true and correct. I agree to notify the Michigan DNR of any changes that occur in factors affecting my coverage during any of my present and future operations.*

\_\_\_\_\_  
Signature of Owner or Authorized Representative

\_\_\_\_\_  
Title

\_\_\_\_\_  
Date

Please complete the "SEALED BID" information on the next page

153 Donathan Block (61-134-17)  
; Kalkaska COUNTY

In response to the notice of sale to be held 4:00 p.m. (local time) on February 12, 2018, I am hereby submitting my sealed bid (firm offer) for the following forest products to be cut. Bids for individual species must be at or above the advertised price. All non-responsive bid forms may be rejected.

<u>PRODUCTS &amp; SPECIES</u>	<u>ESTIMATED VOLUME*</u>	<u>ADVERTISED PRICE</u>	<u>BID PRICE/UNIT</u>
<b>Sawtimber</b>			
Basswood	35.40 MBF	\$ 119.00/MBF	\$ _____
Beech	128.00 MBF	\$ 93.00/MBF	\$ _____
Mixed Aspen	76.70 MBF	\$ 110.00/MBF	\$ _____
Red Maple	68.00 MBF	\$ 126.00/MBF	\$ _____
Red Oak	2.10 MBF	\$ 205.00/MBF	\$ _____
Red Pine	5.40 MBF	\$ 117.00/MBF	\$ _____
Sugar Maple	302.90 MBF	\$ 279.00/MBF	\$ _____
<b>Pulpwood</b>			
Balsam Fir	63.00 Cords	\$ 13.35/Cord	\$ _____
Misc. Species 1	59.00 Cords	\$ 7.50/Cord	\$ _____
Mixed Aspen	1,461.00 Cords	\$ 20.50/Cord	\$ _____
Mixed Hardwood	2,459.00 Cords	\$ 20.35/Cord	\$ _____
Red Pine	98.00 Cords	\$ 42.80/Cord	\$ _____

\*The volumes are statistically estimated within plus (+) or minus (-) 10.55 percent. These estimated volumes are final and not subject to adjustment. Prospective bidders are urged to examine this timber and to make their own estimates of quantity and quality.

I understand that any or all bids may be rejected. All bids must be signed and all bid items must be bid or the bid form may be rejected. I also understand that consideration and awarding a contract will be based upon my past performance and ability to complete the contract based upon equipment and staffing subject to my control.

FEDERAL ID: \_\_\_\_ - \_\_\_\_ - \_\_\_\_ or SOCIAL SECURITY NUMBER: \_\_\_\_ - \_\_\_\_ - \_\_\_\_

Company or individual bidding: \_\_\_\_\_

Company representative's name: \_\_\_\_\_

Address: \_\_\_\_\_

City: \_\_\_\_\_ State: \_\_\_\_\_ Zip: \_\_\_\_\_

IF AVAILABLE, PLEASE PLACE THE PERSONALIZED LABEL FROM YOUR PROSPECTUS IN THE ABOVE BOX.

Individual or company representative's signature: \_\_\_\_\_ Date: \_\_\_\_\_

Phone number : \_\_\_\_\_ Email (optional): \_\_\_\_\_

**THE WINNING BIDDER MUST COMPLETE THE VERIFICATION OF WORKER'S DISABILITY COMPENSATION ACT COMPLIANCE (ON REVERSE SIDE IF DOUBLE SIDED) WITHIN 21 DAYS OF SALE AWARD DATE**

