



**DEPARTMENT OF NATURAL RESOURCES  
STATE OF MICHIGAN**

**TIMBER SALE PROSPECTUS #6168**

SCHEDULED SALE DATE AND TIME: 3:00 p.m. (local time) on May 22, 2018.

LOCATION: NAUBINWAY FIELD OFFICE, PO BOX 287 US 2, NAUBINWAY, MI 49762.

PROSPECTUS NOTE: The bidder is advised to inspect the sale area and review the location, estimated volumes, operating costs and contract terms of proposed sales. Please be aware that some landowners may request 60 days or more notice for access across their land.

Notice is hereby given that bids will be received by the Unit Manager, SAULT STE MARIE MANAGEMENT UNIT, for certain timber on the following described lands:

Richardson Road Hardwood (45-101-17)

Mackinac County, Advertised Price \$202,090.80, 403.1 Acres, Hardwood, Sugar Maple.

Lake Breeze Maple (45-109-17)

Mackinac County, Advertised Price \$21,701.90, 60.8 Acres, Hardwood, Sugar Maple.

Deadzone Mix (45-113-17)

Mackinac County, Advertised Price \$36,291.90, 182.7 Acres, Hardwood, Spruce/Fir/Tamarack.

## BID INSTRUCTIONS (VER. 11/28/2017):

### 1. Scheduled Bid Location, Date, and Time (2/11)

Bids must be received by the Unit Manager, NAUBINWAY OFFICE, PO BOX 287 US 2, NAUBINWAY, MI 49762, no later than 3:00 p.m. (local time) on May 22, 2018. For further information concerning this sale, contact Karen Rodock at 906-477-6048 extension 2040.

### 2. Bidder's Qualifications (5/16)

Purchaser shall obtain workers compensation insurance to cover claims under Michigan's Worker's Disability Compensation Act of 1969 or similar employee benefit act of any other state applicable to an employee. If all or part of a timber sale was prepared by a private contractor, the contractor and that contractor's company are not permitted to bid on the timber sale contract. Bids will not be accepted from individuals or companies appearing on the DNR/FRD No-Bid List. This list contains the names of purchasers who previously failed to execute a contract within 21-days or who have a history of poor performance.

### 3. Preparation of Sealed Bids (5/16)

Bid Forms may be completed online thru Michigan DNR Timber Sale Online Bidding (OLB) at [www.michigan.gov/timberbidding](http://www.michigan.gov/timberbidding) or by completing the hardcopy Bid Form found in the Timber Sale Prospectus. Hardcopy Bid Forms shall be manually signed in ink. Registration in OLB is considered your 'signature' for all bids submitted thru that system. Bid prices must be entered for each species and product in the Bid Price column for all material subject to bidding and all fill-in blanks must be completed. If erasures or other changes appear on the hardcopy Bid Form, each erasure or change must be initialed by the person signing the bid.

### 4. Submission of Sealed Bids (5/16)

Bid forms may be obtained from the Unit Manager or thru OLB. Bids may be submitted hardcopy or thru OLB. All hardcopy bids must be submitted on the bid form and in an envelope clearly identified as described in this section. NOTE: Only one bid form per bid envelope. Sealed bids must be submitted to the Unit office designated in the prospectus and must be submitted at or prior to the time established in the prospectus. The envelope should show on the outside (a) the sale name or number and (b) the date and time of bid opening, as shown in the prospectus. Bids received after the time specified in the sale prospectus are late bids and will be rejected.

It is possible for a bidder to submit multiple bids on a single sale. For example, a bid may be submitted hardcopy and a bid may be submitted thru OLB. Or, two bidders from the same company could both submit bids on the same sale. If this were to happen, the State would accept all bids received and award the contract accordingly. All bidding and contractual requirements would apply to all bids received.

### 5. Public Opening of Sealed Bids (7/16)

If conditions permit, the sealed bids will be publicly opened and posted at the time and place set in the prospectus.

If a bidder, present at a bid opening, has submitted bids on more than one sale, that bidder may withdraw their unopened bid envelopes or announce the withdrawal of their online bid after being declared the successful bidder on one sale.

### 6. Award of Contract (1/11)

Award of the contract will be made to the Bidder whose bid, conforming to the prospectus, is most advantageous to the State of Michigan on the basis of total value at rates bid for the estimated quantities. The State reserves the right to reject any bid or waive any minor irregularity in bids received. A written award mailed (or otherwise furnished) to the successful Bidder shall be deemed to result in a binding contract without further action by either party.

### 7. Down Payment (1/11)

The Bidder to whom award is made must make a down payment within 21 days of the sale award. The amount of the down payment will be calculated as shown in the Bond and Payment Schedule of this prospectus. Only cash may be used to meet this requirement.

### 8. Performance Security (1/11)

As guarantee of faithful performance, a cash bond, certificate of deposit, surety bond or irrevocable letter of credit (LOC) is required within 21 days of the sale award. The amount of the performance security is shown in the Bond and

Payment Schedule of this prospectus. If an LOC or surety is used, the coverage must extend for at least 6 months beyond the contract expiration.

#### 9. Timber Sale Contract (11/17)

Additional conditions and requirements common to all timber sales are listed on the timber sale contract (R4031) and are available on line at [www.michigan.gov/timber](http://www.michigan.gov/timber). Contact the Unit Manager for additional information or a sample contract. Within 21 days of the date of the award letter, the bidder must sign the contract and provide the required down payment, performance security, and verification of worker's disability compensation. The down payment and performance security shall be in accordance with the provisions of the timber sale contract, in the sums stated in this prospectus. If these actions are not taken, then the Bidder, the Bidder's corporation, and the corporation's principals may not be permitted to bid on State timber sales for a period of 1 year. In addition, the Bidder certifies that if awarded this contract, the Bidder will complete the timber sale contract in accordance with its terms and any modifications thereof including requirements to purchase, cut, and remove the included timber by the expiration date.

Payment Unit values in the State Forest Timber Sale Contract are calculated based on the advertised value of the Payment Unit as a percentage of the total advertised value of the contract. The advertised value of each Payment Unit is given in the Description of Timber by Payment Unit table on the Timber Sale Information page. For example, if the value of Payment Unit 1 is advertised as \$1,500 and the total Timber Sale value is advertised as \$10,000, the contract price for Payment Unit 1 will be 15% of the total bid price ( $\$1,500/\$10,000 * 100$ ).

#### 10. Disclaimer of Estimates and Bidder's Warranty of Inspection (7/16)

Before submitting this bid, the Bidder is advised and cautioned to inspect the sale area, review the requirements of the sale contract, and take other steps as may be reasonably necessary to ascertain the location, estimated volumes, construction estimates, and operating costs of the proposed sale. Failure to do so will not relieve the Bidder from responsibility for completing the contract.

The Bidder warrants that this bid is submitted solely on the basis of the Bidder's examination and inspection of the quality and quantity of the timber offered for sale and the Bidder's opinion of the value thereof and the costs of recovery. No reliance should be placed on the State of Michigan's estimates of timber quality, quantity or costs of recovery. Bidder further acknowledges that the State of Michigan: (i) expressly disclaims any warranty of fitness of timber for any purpose; (ii) offers this timber as is without any warranty of quality (merchantability) or quantity and (iii) expressly disclaims any warranty as to the quantity or quality of timber sold.

#### 11. Certification and Chain-of-Custody (10/14)

Unless otherwise indicated in the contract under section 7 – Other Conditions of the Sale Specific Conditions & Requirements, the area encompassed by this timber sale is certified to the standards of the Forest Stewardship Council (FSC) - Certificate #SCS-FM/COC-00090N and the Sustainable Forestry Initiative (SFI) - Certificate # NSF-SFIS-5Y031-SF5. Forest products from this sale may be delivered to the mill as "FSC 100% and / or SFI certified" as long as the contractor hauling the forest products is chain-of-custody (COC) certified or covered under a COC certificate from the destination mill. The purchaser is responsible for maintaining COC after leaving the sale area.

#### 12. Good Neighbor Authority (GNA) Requirements (7/16)

If the name of this timber sales contains the acronym GNA, it is authorized by the Good Neighbor Authority (GNA) and covered by various agreements between the U.S. Forest Service and the State. The timber sale occurs on federal land and the following conditions apply:

GNA contracts on US Forest Service land will not be awarded to purchasers on the Federal list of excluded parties. The System for Award Management (SAM) will be checked for active excluded parties prior to award of contract. In addition, the Bidder to whom award is made must complete an Assurance Regarding Felony Conviction or Tax Delinquent Status for Corporate Applicants (AD-3031).

#### 13. Good Neighbor Authority (GNA) Requirements, con't (9/16)

Bidder certifies, by signing this bid form, that to the best of Bidder's knowledge that the following representations are accurate and complete.

a. That the Bidder and its principals are not presently debarred, suspended, proposed for debarment, declared ineligible, or voluntary excluded from timber sales (covered transactions) by any Federal department or agency.

b. That the Bidder and its principals have not within a 3-year period preceding this bid been convicted of or had a civil judgment rendered against them for commission of fraud or a criminal offense in connection with obtaining, attempting to obtain, or performing a public (Federal, State, or local) transaction or contract under a public transaction; violation of Federal or State antitrust statutes or commission of embezzlement, theft, forgery, bribery, falsification or destruction of records, making false statements, or receiving stolen property.

c. That the Bidder and its principals are not presently indicted for or otherwise criminally or civilly charged by a governmental entity (Federal, State, or local) with commission of any of the offenses enumerated in paragraph b of this certification.

d. That the Bidder and its principals have not within a 3-year period preceding this bid had one or more public transactions (Federal, State, or local) terminated for breach or default of a timber or forest product contract.

Bidders that cannot certify this requirement, in whole or in part, shall submit an explanation with their bid.

KEITH CREAGH

Director

## TIMBER SALE INFORMATION

Richardson Road Hardwood (45-101-17)

Mackinac County (Advertised Price \$202,090.80)

A timber sale contract for this lump sum, sealed bid timber sale will be awarded to the responsible bidder offering the highest sealed bid price. Bids must be at or above the following advertised price for each species:

<u>PRODUCTS &amp; SPECIES</u>	<u>ESTIMATED UNITS*</u>		<u>ADVERTISED PRICE</u>
Sawtimber			
Red Maple	15.30	MBF	\$ 120.00 / MBF
Sugar Maple	236.70	MBF	\$ 513.00 / MBF
White Ash	33.40	MBF	\$ 74.00 / MBF
Yellow Birch	6.80	MBF	\$ 89.00 / MBF
Pulpwood			
B. T. Aspen	67.00	Cords	\$ 23.60 / Cord
Balsam Fir	70.00	Cords	\$ 14.35 / Cord
Beech	415.00	Cords	\$ 26.25 / Cord
Mixed Hardwood	2,234.00	Cords	\$ 26.25 / Cord
Quaking Aspen	117.00	Cords	\$ 23.60 / Cord
White Spruce	39.00	Cords	\$ 22.25 / Cord

\* The total volume is statistically estimated within plus (+) or minus (-) 10.58 percent. The estimated units are final and not subject to adjustment. Prospective bidders are urged to examine this timber and to make their own estimates of quantity and quality.

### **BOND AND PAYMENT SCHEDULE:**

1. A bond in the amount of \$16,167.00 to insure faithful performance of the conditions of the contract will be deposited by the successful bidder within 21 days of the sale award.
2. Cutting in any sale or unit without the required advance payment would be considered a trespass.
3. Total payment must be paid in advance or according to the following schedule:
  - (a) Ten percent (10%) of the sale value must be paid within 21 days of the sale award.
  - (b) The 10% down payment will be credited towards the first unit cut.
  - (c) Payment for each of the following units must be made before cutting begins in that unit:

PAYMENT UNIT NUMBER	PERCENT OF TOTAL SALE VALUE
01	3.4%
02	5.6%
03	11.1%
04	2.7%
05	3.6%
06	3.0%
07	7.4%
08	7.9%
09	3.3%
10	8.4%
11	11.4%
12	7.7%
13	4.3%
14	7.6%
15	8.6%
16	4.0%

4. If no cutting takes place, the 10% down payment will not be refunded.
5. Operations on the contract issued will terminate on 06/30/2021.

**Description of Timber by Payment Unit (PU)**

PU	MARKET GROUP	PRODUCT	QUANTITY	UNIT	ACRES	ADVERTISE PRICE
1	Red Maple	Sawtimber	2.6	MBF	23.5	\$6,803.35
	Sugar Maple		2.1	MBF		
	Yellow Birch		1.0	MBF		
	B. T. Aspen	Pulpwood	26.0	Cords		
	Balsam Fir		14.0	Cords		
	Beech		2.0	Cords		
	Mixed Hardwood		106.0	Cords		
	<i>Paper Birch</i>		19.0	<i>Cords</i>		
	<i>Red Maple</i>		44.0	<i>Cords</i>		
	<i>Sugar Maple</i>		39.0	<i>Cords</i>		
	<i>Yellow Birch</i>		4.0	<i>Cords</i>		
	Quaking Aspen		38.0	Cords		
	White Spruce		35.0	Cords		
	2	Sugar Maple	Sawtimber	10.9		
Beech		Pulpwood	59.0	Cords		
Mixed Hardwood			158.0	Cords		
<i>Black Cherry</i>			5.0	<i>Cords</i>		
<i>Sugar Maple</i>			153.0	<i>Cords</i>		
3	Sugar Maple	Sawtimber	31.9	MBF	38.0	\$22,454.70
	Beech	Pulpwood	33.0	Cords		
	Mixed Hardwood		199.0	Cords		
	<i>Black Cherry</i>		5.0	<i>Cords</i>		
	<i>Sugar Maple</i>		194.0	<i>Cords</i>		
4	Red Maple	Sawtimber	2.5	MBF	21.1	\$5,428.05
	Sugar Maple		3.6	MBF		
	Beech	Pulpwood	34.0	Cords		
	Mixed Hardwood		91.0	Cords		
	<i>Red Maple</i>		6.0	<i>Cords</i>		
	<i>Sugar Maple</i>		85.0	<i>Cords</i>		
5	Sugar Maple	Sawtimber	6.9	MBF	23.6	\$7,267.20
	Beech	Pulpwood	9.0	Cords		
	Mixed Hardwood		133.0	Cords		
	<i>Red Maple</i>		12.0	<i>Cords</i>		
	<i>Sugar Maple</i>		121.0	<i>Cords</i>		
6	Sugar Maple	Sawtimber	7.5	MBF	21.9	\$6,131.25
	Mixed Hardwood	Pulpwood	87.0	Cords		
	<i>Sugar Maple</i>		87.0	<i>Cords</i>		
7	Sugar Maple	Sawtimber	19.9	MBF	32.9	\$14,862.35
	White Ash		0.1	MBF		
	Mixed Hardwood	Pulpwood	177.0	Cords		
	<i>Black Cherry</i>		28.0	<i>Cords</i>		
	<i>Red Maple</i>		18.0	<i>Cords</i>		
	<i>Sugar Maple</i>		125.0	<i>Cords</i>		
	<i>White Ash</i>		6.0	<i>Cords</i>		
8	Sugar Maple	Sawtimber	18.0	MBF	28.5	\$15,991.85
	Yellow Birch		1.9	MBF		
	Beech	Pulpwood	111.0	Cords		
	Mixed Hardwood		140.0	Cords		
	<i>Red Maple</i>		30.0	<i>Cords</i>		
	<i>Sugar Maple</i>		103.0	<i>Cords</i>		
	<i>Yellow Birch</i>		7.0	<i>Cords</i>		
9	Sugar Maple	Sawtimber	8.1	MBF	14.3	\$6,622.80
	Beech	Pulpwood	27.0	Cords		
	Mixed Hardwood		67.0	Cords		
	<i>Sugar Maple</i>		67.0	<i>Cords</i>		

**Description of Timber by Payment Unit (PU), con't**

PU	MARKET GROUP	PRODUCT	QUANTITY	UNIT	ACRES	ADVERTISE PRICE
10	Sugar Maple	Sawtimber	21.1	MBF	28.8	\$16,966.80
	Beech	Pulpwood	80.0	Cords		
	Mixed Hardwood		154.0	Cords		
	<i>Red Maple</i>		17.0	<i>Cords</i>		
	<i>Sugar Maple</i>		137.0	<i>Cords</i>		
11	Red Maple	Sawtimber	1.3	MBF	33.8	\$23,364.15
	Sugar Maple		27.9	MBF		
	White Ash		33.3	MBF		
	Beech	Pulpwood	7.0	Cords		
	Mixed Hardwood		238.0	Cords		
	<i>Black Cherry</i>		17.0	<i>Cords</i>		
	<i>Red Maple</i>		8.0	<i>Cords</i>		
	<i>Sugar Maple</i>		132.0	<i>Cords</i>		
	<i>White Ash</i>		72.0	<i>Cords</i>		
	<i>Yellow Birch</i>		9.0	<i>Cords</i>		
12	Sugar Maple	Sawtimber	20.1	MBF	22.3	\$15,651.65
	Yellow Birch		1.9	MBF		
	Beech	Pulpwood	28.0	Cords		
	Mixed Hardwood		169.0	Cords		
	<i>Sugar Maple</i>		162.0	<i>Cords</i>		
13	Sugar Maple	Sawtimber	9.1	MBF	18.7	\$8,632.05
	Beech	Pulpwood	13.0	Cords		
	Mixed Hardwood		138.0	Cords		
	<i>Black Cherry</i>		5.0	<i>Cords</i>		
	<i>Sugar Maple</i>		133.0	<i>Cords</i>		
14	Sugar Maple	Sawtimber	23.5	MBF	18.2	\$15,258.00
	Mixed Hardwood	Pulpwood	122.0	Cords		
	<i>Sugar Maple</i>		113.0	<i>Cords</i>		
	<i>White Ash</i>		9.0	<i>Cords</i>		
15	Red Maple	Sawtimber	8.9	MBF	20.9	\$17,356.00
	Sugar Maple		22.5	MBF		
	Yellow Birch		2.0	MBF		
	Beech	Pulpwood	12.0	Cords		
	Mixed Hardwood		162.0	Cords		
	<i>Black Cherry</i>		7.0	<i>Cords</i>		
	<i>Red Maple</i>		50.0	<i>Cords</i>		
	<i>Sugar Maple</i>		101.0	<i>Cords</i>		
	<i>Yellow Birch</i>		4.0	<i>Cords</i>		
16	Sugar Maple	Sawtimber	3.6	MBF	17.0	\$8,012.65
	B. T. Aspen	Pulpwood	41.0	Cords		
	Balsam Fir		56.0	Cords		
	Mixed Hardwood		93.0	Cords		
	<i>Paper Birch</i>		14.0	<i>Cords</i>		
	<i>Sugar Maple</i>		79.0	<i>Cords</i>		
	Quaking Aspen		79.0	Cords		
	White Spruce		4.0	Cords		
TOTAL:			292.2	MBF		
TOTAL:			2,942.0	Cords		

## Sale Specific Conditions & Requirements

**Sale Name: Richardson Road Hardwood**

**Sale Number: 45-101-17 Seq#: 1**

### 1 - Sale Area

#### 1.2 - Boundaries

##### 1.2.1 - Painted boundaries (1/14)

The sale boundary and Payment Unit boundaries are marked and identified by red, blue, and yellow paint, along with forest roads (see Timber Sale Map). Exterior sale boundary lines against state are marked with red paint. Exterior sale boundary lines against private land are marked with blue paint. Interior Payment Unit lines are marked with yellow paint. The painted boundary line trees are not included timber and are to be protected.

### 2 - Timber Specifications

#### 2.1 - Included Timber

##### 2.1.1 - Clearcut unit(s) with unmerchantable trees (6/14)

Within Payment Unit(s) 1 and 16, cut all deciduous trees that are two (2) inches or more at DBH, and all coniferous trees that are four (4) inches or more at DBH, with the following exceptions:

Within Payment Unit 1, do not cut cedar, white pine, or hemlock.

Within Payment Unit 16, do not cut cedar or yellow birch.

In addition, leave one healthy, mature, representative tree spaced approximately every 75 feet throughout the stand.

##### 2.1.3 - Cut tree marked unit(s) (12/08)

Within Payment Unit(s) 2 - 15, all trees are designated for cutting when marked with orange paint above and below stump height, regardless of merchantability.

#### 2.2 - Utilization

##### 2.2.4 - Skidding length (2/14)

Skidding of unlimbed tops or lengths over 17 feet is not permissible in Payment Units 2 - 15, unless approved by the Unit Manager or his/her representative.

### 3 - Payments

#### 3.3 - Pre-measured Sales

##### 3.3.4 - Dividing payment units (7/14)

Payment Unit(s) 2 - 15 may be divided at the request of the Purchaser and upon approval of the Unit Manager. Dividing Payment Units is a contract modification which requires a Timber Sale Contract Supplement.

### 4 - Transportation

#### 4.1 - Construction

##### 4.1.7 - Road closure (10/11)

All new roads built into the sale must be blocked to vehicle traffic upon completion of the sale. Overgrown roads that are reopened shall be considered new roads. In general, this will require constructing a four (4') foot high berm of stumps and logs covered with earth. Contact the sale administrator for specific details of design and placement.

#### 4.2 - Maintenance

##### 4.2.5 - Two wheel drive condition (2/04)

All existing trail roads on and adjacent to the sale area must be passable by two-wheel drive traffic for the duration of the sale.

### 5 - Operations



## 5.1 - Notification

### 5.1.1 - Pre-sale conference (10/16)

A pre-sale conference on site between the Purchaser and sale administrator is required prior to beginning any operations to determine landing, skid trails and road locations, etc. The Unit Manager or his/her representative must be contacted at least 3 days in advance to schedule the conference.

### 5.1.4 - Post-sale conference (10/16)

A post-sale conference on site between the Purchaser and sale administrator is required 3 days prior to the completion of active logging operations to determine clean-up and repair of landings, road edges, and the fulfillment of other contract specifications.

### 5.1.6 - Utility R.O.W. (1/15)

It is the responsibility of the Purchaser to obtain permission from the utility company to utilize the power line R.O.W. for operations. Contact American Transmission Company in Kingsford, MI @ (906)779-7912.

## 5.2 - Conduct of Operations

### 5.2.2 - Hazard Trees/Snags

#### 5.2.2.1 - Den trees (10/16)

Obvious hollow and/or den trees shall be protected and left standing unless they are a safety hazard.

### 5.2.3 - Operating Restrictions

#### 5.2.3.3 - Bark slippage restriction (3/09)

Within Payment Unit(s) 2 - 15, unless changed by written agreement, cutting and skidding are not permitted during the period of May 1 to June 30. This restriction is because of bark slippage.

### 5.2.4 - Dead and Down Creation

#### 5.2.4.3 - Dead and down creation, dead trees (6/07)

Except as provided for in General Condition and Requirement 5.2.2, no dead trees, standing or down, are to be cut, skidded, or processed.

### 5.2.38 - No decking against live trees (2/04)

Cut products may not be decked against unmarked or designated leave trees.

## 5.4 - Soil Protection

### 5.4.1 - Rutting restriction, general (7/16)

Operations are to cease immediately if equipment and weather conditions result in rutting of roads and/or skid trails which is 12 inches or greater in depth and 50 feet in length. The Unit Manager or his/her representative may restrict hauling and/or skidding if ruts exceed the specified depth. With the Unit Manager or his/her representative's approval, the Purchaser may return to the area when the risk of rutting has decreased.

## 5.8 - Protection of Endangered Species

### 5.8.5 - Protection of raptor nests (3/13)

All trees with raptor nests will be protected if found during harvesting operations. Notification will be made to the Unit Manager or his/her representative who will notify the Wildlife Biologist so an on-site evaluation and recommendation can be made, if necessary.

## 7 - Other Conditions

### 7.3 - Contract Modifications

#### 7.3.1 - Emerald Ash Borer

##### 7.3.1.2 - Emerald ash borer, ash or firewood on sale (2/05)

There is ash and/or "firewood" in this sale and it is located within an emerald ash borer quarantined area. The Director of the Michigan Department of Agriculture (MDA) by the authority of Act No. 72 of the Public Acts of 1945, as amended,

and Quarantine Regulation No. 620, has promulgated this quarantine to prevent the further spread of this pest and sets forth: definitions, regulated articles, regulated areas, conditions of movement, violations and penalties, and special exemptions. The Purchaser must comply with this quarantine. Contact the MDA for further information.



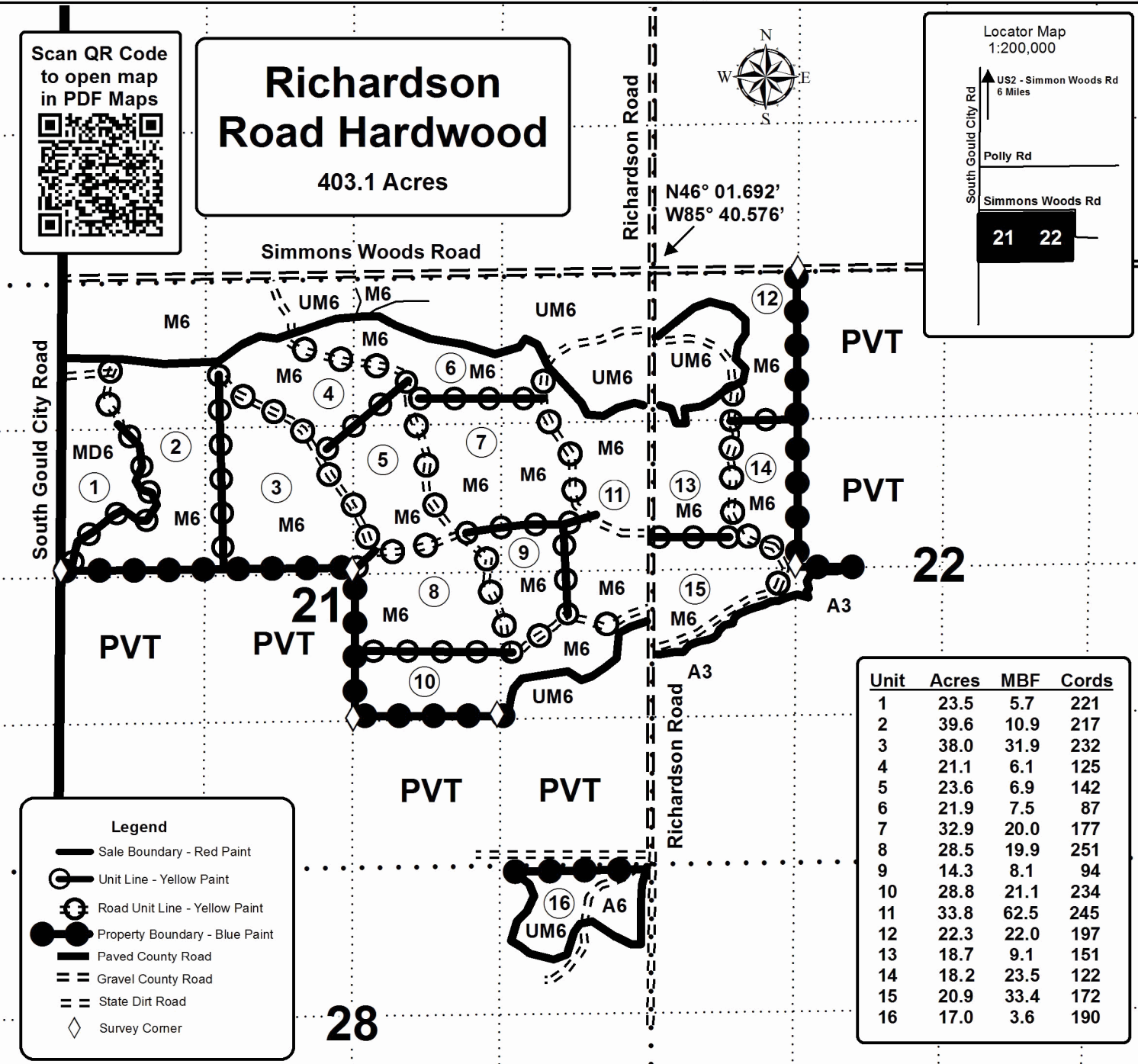
# TIMBER SALE MAP

This information provided by authority of Part 525, 1994 PA 451, as amended.

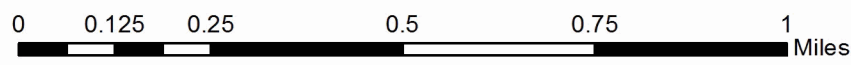
Sale Number	Year
45 - 101	2017
Date	Page of
9/21/17	1 1

Forest Management Unit	County	Mapped By	Date	Page	of
Sault M.U. - Naubinway F.O.	Mackinac	Cory Luoto	9/21/17	1	1
Crused By	Cedar Ridge Forestry				
Township	Range	Section(s) and Subdivision(s)	Scale		
42N	11W	21: N1/2, N1/2SE - 22: W1/2NW, N1/2SW 28: NENE	1:15,840		

Cover Type				Density			
A = Aspen	H = Hemlock	N = Marsh	U = Upland Brush	0 = Non Stocked	5 = Pole Timber Medium		
B = Paper Birch	J = Jack Pine	O = Oak	UM = Upland Mixed	1 = Seedling Sapling Poor	6 = Pole Timber Well		
C = Cedar	L = Lowland Brush	P = Lowland Poplar	V = Bog or Marsh	2 = Seedling Sapling Medium	7 = Saw Timber Poor		
D = Tread Bog	LM = Lowland Mixed	Q = Mixed Swamp Conifer	W = White Pine	3 = Seedling Sapling Well	8 = Saw Timber Medium		
E = Swamp Hdwoods	M = Mpl, Bch, Brch	R = Red Pine	X = Non Stocked	4 = Pole Timber Poor	9 = Saw Timber Well		
F = Spruce Fir	MC = Mixed Conifer	S = Black Spruce	Z = Water				
G = Grass	MD = Mixed Deciduous	T = Tamarack					



Unit	Acres	MBF	Cords
1	23.5	5.7	221
2	39.6	10.9	217
3	38.0	31.9	232
4	21.1	6.1	125
5	23.6	6.9	142
6	21.9	7.5	87
7	32.9	20.0	177
8	28.5	19.9	251
9	14.3	8.1	94
10	28.8	21.1	234
11	33.8	62.5	245
12	22.3	22.0	197
13	18.7	9.1	151
14	18.2	23.5	122
15	20.9	33.4	172
16	17.0	3.6	190





TIMBER SALE INFORMATION

Lake Breeze Maple (45-109-17)

Mackinac County (Advertised Price \$21,701.90)

A timber sale contract for this lump sum, sealed bid timber sale will be awarded to the responsible bidder offering the highest sealed bid price. Bids must be at or above the following advertised price for each species:

<u>PRODUCTS &amp; SPECIES</u>	<u>ESTIMATED UNITS*</u>	<u>ADVERTISED PRICE</u>
Sawtimber		
Red Maple	14.80 MBF	\$ 138.00 / MBF
Sugar Maple	15.00 MBF	\$ 592.00 / MBF
Yellow Birch	1.40 MBF	\$ 103.00 / MBF
Pulpwood		
Mixed Hardwood	351.00 Cords	\$ 30.30 / Cord

\* The total volume is statistically estimated within plus (+) or minus (-) 22.68 percent. The estimated units are final and not subject to adjustment. Prospective bidders are urged to examine this timber and to make their own estimates of quantity and quality.

**BOND AND PAYMENT SCHEDULE:**

1. A bond in the amount of \$1,736.00 to insure faithful performance of the conditions of the contract will be deposited by the successful bidder within 21 days of the sale award.
2. Cutting in any sale or unit without the required advance payment would be considered a trespass.
3. Total payment must be paid in advance or according to the following schedule:
  - (a) Ten percent (10%) of the sale value must be paid within 21 days of the sale award.
  - (b) The 10% down payment will be credited towards the first unit cut.
  - (c) Payment for each of the following units must be made before cutting begins in that unit:

<u>PAYMENT UNIT NUMBER</u>	<u>PERCENT OF TOTAL SALE VALUE</u>
01	12.5%
02	15.5%
03	6.1%
04	14.4%
05	26.6%
06	24.9%

4. If no cutting takes place, the 10% down payment will not be refunded.
5. Operations on the contract issued will terminate on 12/31/2020.

**Description of Timber by Payment Unit (PU)**

PU	MARKET GROUP	PRODUCT	QUANTITY	UNIT	ACRES	ADVERTISE PRICE
1	Red Maple	Sawtimber	0.8	MBF	12.8	\$2,717.10
	Sugar Maple		2.1	MBF		
	Mixed Hardwood	Pulpwood	45.0	Cords		
	<i>Beech</i>		3.0	<i>Cords</i>		
	<i>Red Maple</i>		25.0	<i>Cords</i>		
	<i>Sugar Maple</i>		17.0	<i>Cords</i>		
2	Red Maple	Sawtimber	5.9	MBF	11.1	\$3,372.90
	Sugar Maple		1.2	MBF		
	Mixed Hardwood	Pulpwood	61.0	Cords		
	<i>Beech</i>		4.0	<i>Cords</i>		
	<i>Red Maple</i>		43.0	<i>Cords</i>		
	<i>Sugar Maple</i>		14.0	<i>Cords</i>		
3	Red Maple	Sawtimber	2.1	MBF	6.9	\$1,320.00
	Mixed Hardwood	Pulpwood	34.0	Cords		
	<i>Beech</i>		2.0	<i>Cords</i>		
	<i>Red Maple</i>		18.0	<i>Cords</i>		
	<i>Sugar Maple</i>		14.0	<i>Cords</i>		
	4	Red Maple	Sawtimber	1.9		
Yellow Birch			1.4	MBF		
Mixed Hardwood		Pulpwood	90.0	Cords		
<i>Beech</i>			21.0	<i>Cords</i>		
<i>Red Maple</i>			45.0	<i>Cords</i>		
<i>Sugar Maple</i>			21.0	<i>Cords</i>		
<i>Yellow Birch</i>			3.0	<i>Cords</i>		
5	Red Maple	Sawtimber	1.0	MBF	11.2	\$5,749.00
	Sugar Maple		6.1	MBF		
	Mixed Hardwood	Pulpwood	66.0	Cords		
	<i>Beech</i>		4.0	<i>Cords</i>		
	<i>Red Maple</i>		9.0	<i>Cords</i>		
	<i>Sugar Maple</i>		49.0	<i>Cords</i>		
	<i>Yellow Birch</i>		4.0	<i>Cords</i>		
6	Red Maple	Sawtimber	3.1	MBF	7.1	\$5,409.50
	Sugar Maple		5.6	MBF		
	Mixed Hardwood	Pulpwood	55.0	Cords		
	<i>Red Maple</i>		22.0	<i>Cords</i>		
	<i>Sugar Maple</i>		33.0	<i>Cords</i>		
TOTAL:			31.2	MBF		
TOTAL:			351.0	Cords		

## Sale Specific Conditions & Requirements

**Sale Name: Lake Breeze Maple**

**Sale Number: 45-109-17 Seq#: 1**

### 1 - Sale Area

#### 1.2 - Boundaries

##### 1.2.1 - Painted boundaries (1/14)

The sale boundary and Payment Unit boundaries are marked and identified by red and green paint, along with pipelines and a road (see Timber Sale Map). Exterior sale boundary lines are identified by red paint on the north, east, and south sides of the sale. The west boundary of the sale is against private property and is identified by the two track road that runs north and south. Interior Unit boundary lines are identified by green paint. The painted boundary line trees are not Included Timber and are to be protected unless marked with orange paint.

### 2 - Timber Specifications

#### 2.1 - Included Timber

##### 2.1.3 - Cut tree marked unit(s) (12/08)

Within Payment Unit(s) 1 - 7, all trees are designated for cutting when marked with orange paint above and below stump height, regardless of merchantability.

#### 2.2 - Utilization

##### 2.2.4 - Skidding length (2/14)

Skidding of unlimbed tops or lengths over 17 feet is not permissible unless changed by written agreement.

### 4 - Transportation

#### 4.1 - Construction

##### 4.1.12 - No new roads (1/12)

No new roads will be permitted in any Payment Unit. All operations are limited to existing roads. Skid trails only will be allowed.

#### 4.2 - Maintenance

##### 4.2.5 - Two wheel drive condition (2/04)

All existing trail roads on and adjacent to the sale area must be passable by two-wheel drive traffic for the duration of the sale.

### 5 - Operations

#### 5.1 - Notification

##### 5.1.1 - Pre-sale conference (10/16)

A pre-sale conference on site between the Purchaser and sale administrator is required prior to beginning any operations to determine landing, skid trails and road locations, etc. The Unit Manager or his/her representative must be contacted at least 3 days in advance to schedule the conference.

##### 5.1.4 - Post-sale conference (10/16)

A post-sale conference on site between the Purchaser and sale administrator is required 3 days prior to the completion of active logging operations to determine clean-up and repair of landings, road edges, and the fulfillment of other contract specifications.

##### 5.1.6 - Utility R.O.W. (1/15)

It is the responsibility of the Purchaser to obtain permission from the utility company to utilize the power line R.O.W. for operations. Contact American Transmission Company in Kingsford Michigan at (906)779-7912. The Purchaser must also contact Enbridge Energy and TransCanada to obtain permission to use the pipeline R.O.W.'s for operations.

#### 5.2 - Conduct of Operations

## 5.2.2 - Hazard Trees/Snags

### 5.2.2.1 - Den trees (10/16)

Obvious hollow and/or den trees shall be protected and left standing unless they are a safety hazard.

## 5.2.3 - Operating Restrictions

### 5.2.3.1 - Operating restrictions (9/11)

Within Payment Unit(s) 1 - 6, cutting, skidding, and hauling are limited to the period of December 1 to March 31, unless changed by written agreement. This restriction is because of deer yard.

## 5.2.4 - Dead and Down Creation

### 5.2.4.3 - Dead and down creation, dead trees (6/07)

Except as provided for in General Condition and Requirement 5.2.2, no dead trees, standing or down, are to be cut, skidded, or processed.

### 5.2.38 - No decking against live trees (2/04)

Cut products may not be decked against unmarked or designated leave trees.

## 5.4 - Soil Protection

### 5.4.1 - Rutting restriction, general (7/16)

Operations are to cease immediately if equipment and weather conditions result in rutting of roads and/or skid trails which is 12 inches or greater in depth and 50 feet in length. The Unit Manager or his/her representative may restrict hauling and/or skidding if ruts exceed the specified depth. With the Unit Manager or his/her representative's approval, the Purchaser may return to the area when the risk of rutting has decreased.

## 5.8 - Protection of Endangered Species

### 5.8.5 - Protection of raptor nests (3/13)

All trees with raptor nests will be protected if found during harvesting operations. Notification will be made to the Unit Manager or his/her representative who will notify the Wildlife Biologist so an on-site evaluation and recommendation can be made, if necessary.

## 7 - Other Conditions

### 7.3 - Contract Modifications

#### 7.3.1 - Emerald Ash Borer

##### 7.3.1.2 - Emerald ash borer, ash or firewood on sale (2/05)

There is ash and/or "firewood" in this sale and it is located within an emerald ash borer quarantined area. The Director of the Michigan Department of Agriculture (MDA) by the authority of Act No. 72 of the Public Acts of 1945, as amended, and Quarantine Regulation No. 620, has promulgated this quarantine to prevent the further spread of this pest and sets forth: definitions, regulated articles, regulated areas, conditions of movement, violations and penalties, and special exemptions. The Purchaser must comply with this quarantine. Contact the MDA for further information.





# TIMBER SALE MAP

This information provided by authority of Part 525, 1994 PA 451, as amended.

Sale Number	Year
45 - 109	2017

Forest Management Unit Sault M.U. - Naubinway F.O.		County Mackinac	Mapped By Steve Tuovila	Date 9/28/17	Page 1	of 1
Township 43N	Range 09W	Section(s) and Subdivision(s) 13 - SWSW 24 - NW1/4		Scale 1:15,840		

Cover Type				Density			
A = Aspen	H = Hemlock	N = Marsh	U = Upland Brush	0 = Non Stocked	5 = Pole Timber Medium		
B = Paper Birch	J = Jack Pine	O = Oak	UM = Upland Mixed	1 = Seedling Sapling Poor	6 = Pole Timber Well		
C = Cedar	L = Lowland Brush	P = Lowland Poplar	V = Bog or Marsh	2 = Seedling Sapling Medium	7 = Saw Timber Poor		
D = Tread Bog	LM = Lowland Mixed	Q = Mixed Swamp Conifer	W = White Pine	3 = Seedling Sapling Well	8 = Saw Timber Medium		
E = Swamp Hdwoods	M = Mpl, Bch, Brch	R = Red Pine	X = Non Stocked	4 = Pole Timber Poor	9 = Saw Timber Well		
F = Spruce Fir	MC = Mixed Conifer	S = Black Spruce	Z = Water				
G = Grass	MD = Mixed Deciduous	T = Tamarack					

**Legend**

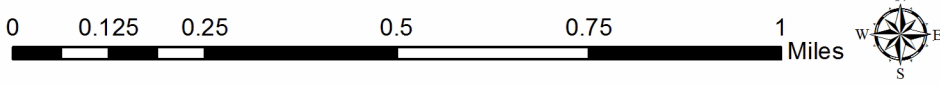
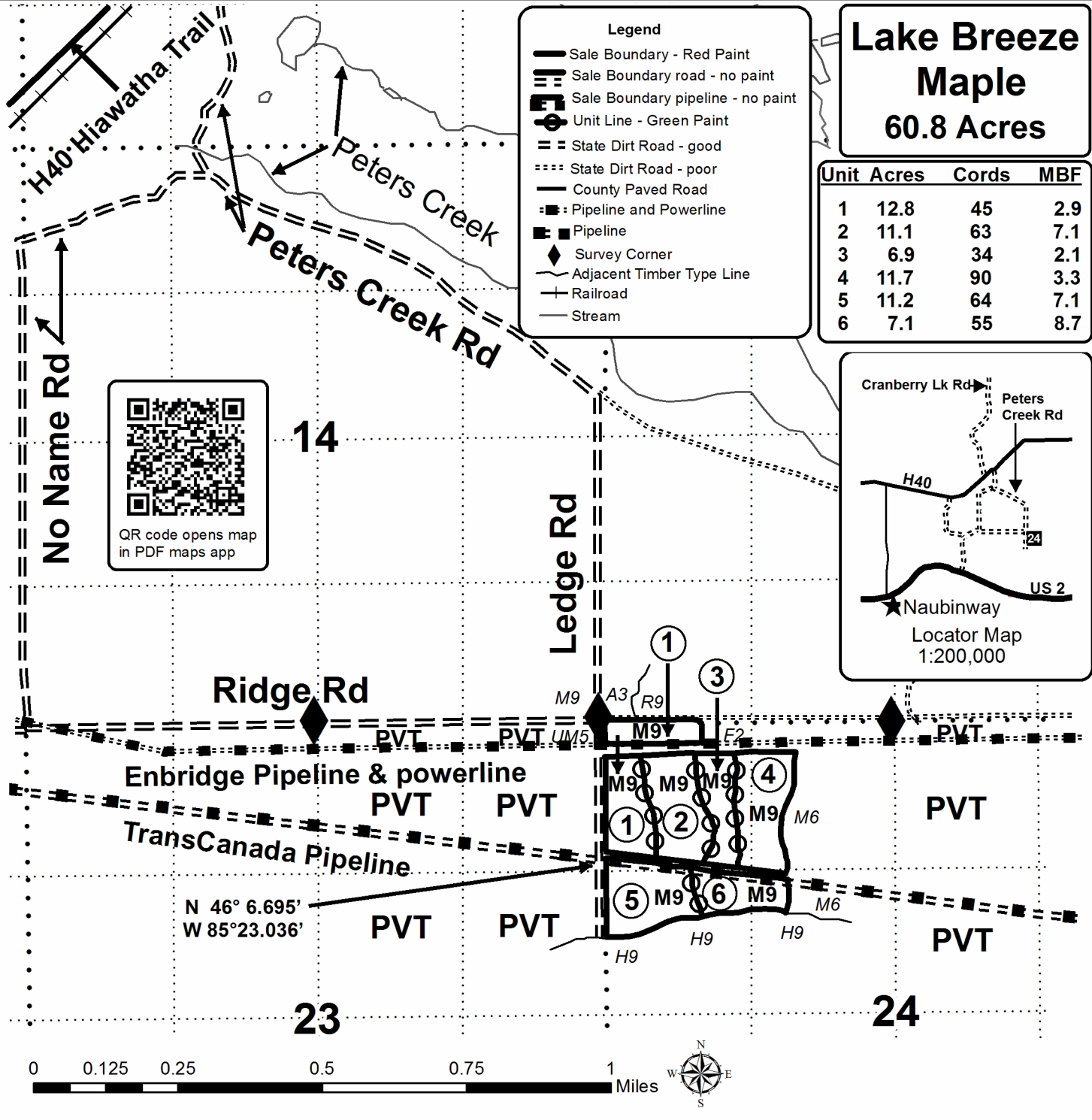
- Sale Boundary - Red Paint
- Sale Boundary road - no paint
- Sale Boundary pipeline - no paint
- Unit Line - Green Paint
- State Dirt Road - good
- State Dirt Road - poor
- County Paved Road
- Pipeline and Powerline
- Pipeline
- Survey Corner
- Adjacent Timber Type Line
- Railroad
- Stream

**Lake Breeze Maple**  
**60.8 Acres**

Unit	Acres	Cords	MBF
1	12.8	45	2.9
2	11.1	63	7.1
3	6.9	34	2.1
4	11.7	90	3.3
5	11.2	64	7.1
6	7.1	55	8.7

**Locator Map 1:200,000**

QR code opens map in PDF maps app





**TIMBER SALE INFORMATION**

Deadzone Mix (45-113-17)

Mackinac County (Advertised Price \$36,291.90)

A timber sale contract for this lump sum, sealed bid timber sale will be awarded to the responsible bidder offering the highest sealed bid price. Bids must be at or above the following advertised price for each species:

<u>PRODUCTS &amp; SPECIES</u>	<u>ESTIMATED UNITS*</u>	<u>ADVERTISED PRICE</u>
Sawtimber		
Sugar Maple	4.60 MBF	\$ 473.00 / MBF
White Ash	6.40 MBF	\$ 68.00 / MBF
Pulpwood		
Balsam Fir	114.00 Cords	\$ 13.25 / Cord
Basswood	34.00 Cords	\$ 9.50 / Cord
Mixed Aspen	120.00 Cords	\$ 21.80 / Cord
Mixed Hardwood	1,080.00 Cords	\$ 24.25 / Cord
Mixed Spruce	148.00 Cords	\$ 20.55 / Cord

\* The total volume is statistically estimated within plus (+) or minus (-) 12.16 percent. The estimated units are final and not subject to adjustment. Prospective bidders are urged to examine this timber and to make their own estimates of quantity and quality.

**BOND AND PAYMENT SCHEDULE:**

1. A bond in the amount of \$2,903.00 to insure faithful performance of the conditions of the contract will be deposited by the successful bidder within 21 days of the sale award.
2. Cutting in any sale or unit without the required advance payment would be considered a trespass.
3. Total payment must be paid in advance or according to the following schedule:
  - (a) Ten percent (10%) of the sale value must be paid within 21 days of the sale award.
  - (b) The 10% down payment will be credited towards the first unit cut.
  - (c) Payment for each of the following units must be made before cutting begins in that unit:
 

<u>PAYMENT UNIT NUMBER</u>	<u>PERCENT OF TOTAL SALE VALUE</u>
01	12.8%
02	28.2%
03	10.5%
04	17.8%
05	20.7%
06	10.0%
4. If no cutting takes place, the 10% down payment will not be refunded.
5. Operations on the contract issued will terminate on 12/31/2020.

**Description of Timber by Payment Unit (PU)**

PU	MARKET GROUP	PRODUCT	QUANTITY	UNIT	ACRES	ADVERTISE PRICE	
1	Basswood	Pulpwood	14.0	Cords	29.7	\$4,651.40	
	Mixed Aspen		6.0	Cords			
	<i>Quaking Aspen</i>		6.0	<i>Cords</i>			
	Mixed Hardwood		175.0	Cords			
	<i>Paper Birch</i>		3.0	<i>Cords</i>			
	<i>Red Maple</i>		12.0	<i>Cords</i>			
	<i>Sugar Maple</i>		90.0	<i>Cords</i>			
	<i>White Ash</i>		70.0	<i>Cords</i>			
	Mixed Spruce		7.0	Cords			
	<i>White Spruce</i>		7.0	<i>Cords</i>			
2	Sugar Maple	Sawtimber	2.1	MBF	38.1	\$10,237.50	
	Balsam Fir	Pulpwood	108.0	Cords			
	Mixed Aspen		18.0	Cords			
	<i>Quaking Aspen</i>		18.0	<i>Cords</i>			
	Mixed Hardwood		195.0	Cords			
	<i>Beech</i>		8.0	<i>Cords</i>			
	<i>Red Maple</i>		63.0	<i>Cords</i>			
	<i>Sugar Maple</i>		80.0	<i>Cords</i>			
	<i>White Ash</i>		41.0	<i>Cords</i>			
	<i>Yellow Birch</i>		3.0	<i>Cords</i>			
	Mixed Spruce		131.0	Cords			
	<i>Black Spruce</i>		13.0	<i>Cords</i>			
	<i>White Spruce</i>		118.0	<i>Cords</i>			
3	Sugar Maple		Sawtimber	0.9	MBF	29.6	\$3,819.70
	Basswood	Pulpwood	5.0	Cords			
	Mixed Hardwood		138.0	Cords			
	<i>Black Ash</i>		19.0	<i>Cords</i>			
	<i>Sugar Maple</i>		110.0	<i>Cords</i>			
	<i>White Ash</i>		9.0	<i>Cords</i>			
4	White Ash		Sawtimber	4.8	MBF	27.5	\$6,446.80
	Basswood	Pulpwood	5.0	Cords			
	Mixed Aspen		8.0	Cords			
	<i>Balsam Poplar</i>		4.0	<i>Cords</i>			
	<i>Quaking Aspen</i>		4.0	<i>Cords</i>			
	Mixed Hardwood		239.0	Cords			
	<i>Black Ash</i>		37.0	<i>Cords</i>			
	<i>Green Ash</i>		19.0	<i>Cords</i>			
	<i>Sugar Maple</i>		99.0	<i>Cords</i>			
	<i>White Ash</i>		84.0	<i>Cords</i>			
	Mixed Spruce		5.0	Cords			
	<i>White Spruce</i>		5.0	<i>Cords</i>			
	5		Sugar Maple	Sawtimber	1.6		
White Ash			Pulpwood	1.6	MBF		
Balsam Fir		3.0		Cords			
Mixed Aspen		84.0		Cords			
<i>Balsam Poplar</i>		22.0		<i>Cords</i>			
<i>Quaking Aspen</i>		62.0		<i>Cords</i>			
Mixed Hardwood		193.0		Cords			
<i>Beech</i>		3.0		<i>Cords</i>			
<i>Black Ash</i>		27.0		<i>Cords</i>			
<i>Green Ash</i>		13.0		<i>Cords</i>			
<i>Sugar Maple</i>		62.0		<i>Cords</i>			
<i>White Ash</i>		88.0		<i>Cords</i>			
Mixed Spruce		5.0		Cords			
<i>White Spruce</i>		5.0		<i>Cords</i>			
6	Balsam Fir	Pulpwood		3.0	Cords	25.8	\$3,616.95

**Description of Timber by Payment Unit (PU), con't**

PU	MARKET GROUP	PRODUCT	QUANTITY	UNIT	ACRES	ADVERTISE PRICE
6 con't	Basswood	Pulpwood	10.0	Cords		
	Mixed Aspen		4.0	Cords		
	<i>Quaking Aspen</i>		4.0	<i>Cords</i>		
	Mixed Hardwood		140.0	Cords		
	<i>Beech</i>		6.0	<i>Cords</i>		
	<i>Sugar Maple</i>		49.0	<i>Cords</i>		
	<i>White Ash</i>		85.0	<i>Cords</i>		
TOTAL:			11.0	MBF		
TOTAL:			1,496.0	Cords		

# Sale Specific Conditions & Requirements

**Sale Name: Deadzone Mix**

**Sale Number: 45-113-17 Seq#: 1**

## 1 - Sale Area

### 1.2 - Boundaries

#### 1.2.1 - Painted boundaries (1/14)

The sale boundary and Payment Unit boundaries are marked and identified by red, blue, and yellow paint, along with a county road. The exterior sale boundary against state land is marked with red paint. The exterior sale boundary against private land is marked with blue paint. Interior Payment Unit lines are marked with yellow paint, with the exception of the boundaries between Payment Units 1 & 3, 1 & 6, and 2 & 6, which are unpainted and identified by Richardson Road. The painted boundary line trees are not included timber and are to be protected.

## 2 - Timber Specifications

### 2.1 - Included Timber

#### 2.1.1 - Clearcut unit(s) with unmerchantable trees (6/14)

Within Payment Unit(s) 2, cut all deciduous trees that are two (2) inches or more at DBH, and all coniferous trees that are four (4) inches or more at DBH, except do not cut any cedar or hemlock. In addition, leave one healthy, mature representative tree spaced approximately every 75 feet throughout the stand.

#### 2.1.4 - Designated timber unit(s) (6/17)

Within Payment Unit(s) 1 and 3-6, all deciduous trees that are two (2) inches or more DBH are designated for cutting, except maple. Maple are designated for cutting when marked with orange slash marks. In addition, all conifer trees that are four (4) inches or more DBH are designated for cutting. Do not cut any cedar, hemlock, trees marked with green paint, or trees marked with orange X's.

### 2.2 - Utilization

#### 2.2.4 - Skidding length (2/14)

Within Payment Units 1 and 3-6, skidding of unlimbed tops or lengths over 17 feet is not permissible unless approved by the Unit Manager or his/her representative.

## 3 - Payments

### 3.3 - Pre-measured Sales

#### 3.3.4 - Dividing payment units (7/14)

Payment Unit(s) 1-6 may be divided at the request of the Purchaser and upon approval of the Unit Manager. Dividing Payment Units is a contract modification which requires a Timber Sale Contract Supplement.

## 4 - Transportation

### 4.1 - Construction

#### 4.1.6 - Road construction (1/09)

Construction of new roads or improvements of existing roads shall be done in such a way as to minimize the environmental and visual impacts. Merchantable trees shall be cut and utilized unless otherwise directed. Non-merchantable trees shall be severed and laid flat on the ground. Slash shall be scattered, and not left in windrows and kept a minimum of 10 feet back from the road edge. Stumps shall be set upright, not left on edge, and be moved at least 10 feet away from the road edge. Disturbed soil shall be feathered into the woods and not left in berms or windrows.

#### 4.1.7 - Road closure (10/11)

All new roads built into the sale must be blocked to vehicle traffic upon completion of the sale. Overgrown roads that are reopened shall be considered new roads. In general, this will require constructing a four (4') foot high berm of stumps and logs covered with earth. Contact the sale administrator for specific details of design and placement.

### 4.2 - Maintenance

#### 4.2.5 - Two wheel drive condition (2/04)

All existing trail roads on and adjacent to the sale area must be passable by two-wheel drive traffic for the duration of the sale.

### 5 - Operations

#### 5.1 - Notification

##### 5.1.1 - Pre-sale conference (10/16)

A pre-sale conference on site between the Purchaser and sale administrator is required prior to beginning any operations to determine landing, skid trails and road locations, etc. The Unit Manager or his/her representative must be contacted at least 3 days in advance to schedule the conference.

##### 5.1.4 - Post-sale conference (10/16)

A post-sale conference on site between the Purchaser and sale administrator is required 3 days prior to the completion of active logging operations to determine clean-up and repair of landings, road edges, and the fulfillment of other contract specifications.

#### 5.2 - Conduct of Operations

##### 5.2.2 - Hazard Trees/Snags

###### 5.2.2.1 - Den trees (10/16)

Obvious hollow and/or den trees shall be protected and left standing unless they are a safety hazard.

##### 5.2.3 - Operating Restrictions

###### 5.2.3.2 - Operating restrictions (9/11)

Within Payment Unit(s) 1-6, unless changed by written agreement, cutting, skidding, and hauling are limited to the period of December 1 to April 1. This restriction is to protect wet, sensitive soils.

###### 5.2.3.3 - Bark slippage restriction (3/09)

Within Payment Unit(s) 1 and 3-6, unless changed by written agreement, cutting and skidding are not permitted during the period of May 1 to June 30. This restriction is because of bark slippage.

##### 5.2.4 - Dead and Down Creation

###### 5.2.4.3 - Dead and down creation, dead trees (6/07)

Except as provided for in General Condition and Requirement 5.2.2, no dead trees, standing or down, are to be cut, skidded, or processed.

##### 5.2.38 - No decking against live trees (2/04)

Cut products may not be decked against unmarked or designated leave trees.

#### 5.4 - Soil Protection

##### 5.4.1 - Rutting restriction, general (7/16)

Operations are to cease immediately if equipment and weather conditions result in rutting of roads and/or skid trails which is 12 inches or greater in depth and 50 feet in length. The Unit Manager or his/her representative may restrict hauling and/or skidding if ruts exceed the specified depth. With the Unit Manager or his/her representative's approval, the Purchaser may return to the area when the risk of rutting has decreased.

#### 5.8 - Protection of Endangered Species

##### 5.8.5 - Protection of raptor nests (3/13)

All trees with raptor nests will be protected if found during harvesting operations. Notification will be made to the Unit Manager or his/her representative who will notify the Wildlife Biologist so an on-site evaluation and recommendation can be made, if necessary.

### 7 - Other Conditions

#### 7.3 - Contract Modifications

### 7.3.1 - Emerald Ash Borer

#### 7.3.1.2 - Emerald ash borer, ash or firewood on sale (2/05)

There is ash and/or "firewood" in this sale and it is located within an emerald ash borer quarantined area. The Director of the Michigan Department of Agriculture (MDA) by the authority of Act No. 72 of the Public Acts of 1945, as amended, and Quarantine Regulation No. 620, has promulgated this quarantine to prevent the further spread of this pest and sets forth: definitions, regulated articles, regulated areas, conditions of movement, violations and penalties, and special exemptions. The Purchaser must comply with this quarantine. Contact the MDA for further information.





# TIMBER SALE MAP

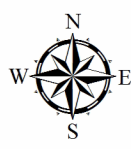
This information provided by authority of Part 525, 1994 PA 451, as amended.

Sale Number	Year
45-113	2017

Forest Management Unit Sault M.U. - Naubinway F.O.		County Mackinac	Mapped By M. Edison	Date 9/29/2017	Page 1	of 1
Township 42N	Range 11W	Section(s) and Subdivision(s) 15: N1/2SW, SWSW, SESW, NWSE, SWSE 16:E1/2SE		Scale 1:15,840		

Cover Type				Density	
A = Aspen	H = Hemlock	N = Marsh	U = Upland Brush	0 = Non Stocked	5 = Pole Timber Medium
B = Paper Birch	J = Jack Pine	O = Oak	UM = Upland Mixed	1 = Seedling Sapling Poor	6 = Pole Timber Well
C = Cedar	L = Lowland Brush	P = Lowland Poplar	V = Bog or Marsh	2 = Seedling Sapling Medium	7 = Saw Timber Poor
D = Tread Bog	LM = Lowland Mixed	Q = Mixed Swamp Conifer	W = White Pine	3 = Seedling Sapling Well	8 = Saw Timber Medium
E = Swamp Hdwoods	M = Mpl, Bch, Brch	R = Red Pine	X = Non Stocked	4 = Pole Timber Poor	9 = Saw Timber Well
F = Spruce Fir	MC = Mixed Conifer	S = Black Spruce	Z = Water		
G = Grass	MD = Mixed Deciduous	T = Tamarack			

**Deadzone Mix**  
 182.7 Acres  
 11.0 MBF  
 1,496 Cords  
 Cruised By:  
 Sault Unit Staff

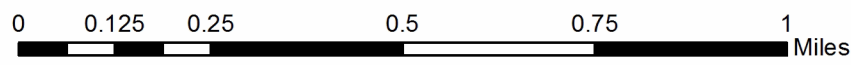
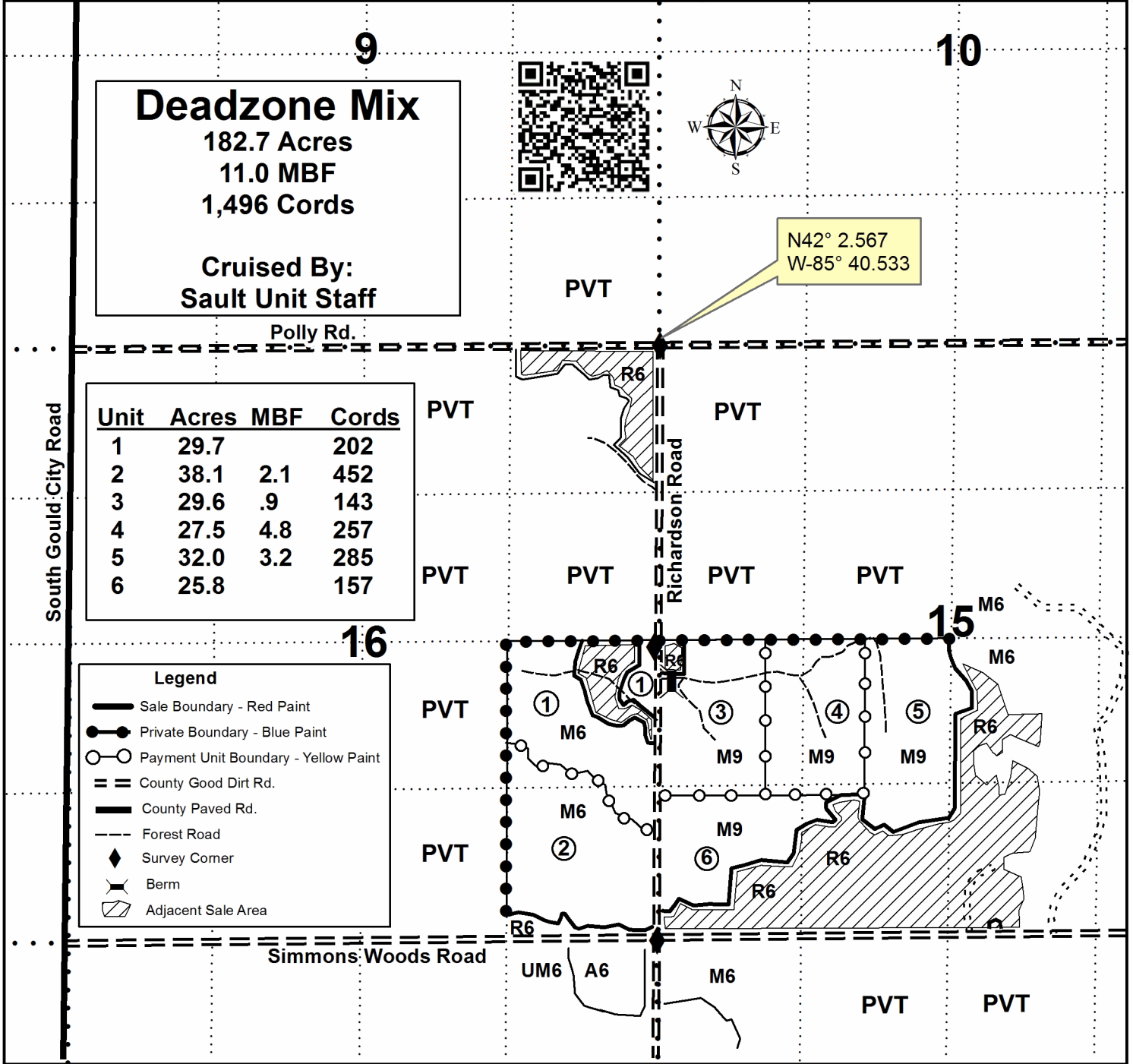


N42° 2.567  
 W-85° 40.533

Unit	Acres	MBF	Cords
1	29.7		202
2	38.1	2.1	452
3	29.6	.9	143
4	27.5	4.8	257
5	32.0	3.2	285
6	25.8		157

**Legend**

- Sale Boundary - Red Paint
- Private Boundary - Blue Paint
- Payment Unit Boundary - Yellow Paint
- == County Good Dirt Rd.
- County Paved Rd.
- Forest Road
- ◆ Survey Corner
- ▭ Berm
- ▨ Adjacent Sale Area





Richardson Road Hardwood (45-101-17)  
; Mackinac COUNTY

In response to the notice of sale to be held 3:00 p.m. (local time) on May 22, 2018, I am hereby submitting my sealed bid (firm offer) for the following forest products to be cut. Bids for individual species must be at or above the advertised price. All non-responsive bid forms may be rejected.

<u>PRODUCTS &amp; SPECIES</u>	<u>ESTIMATED VOLUME*</u>	<u>ADVERTISED PRICE</u>	<u>BID PRICE/UNIT</u>
<b>Sawtimber</b>			
Red Maple	15.30 MBF	\$ 120.00/MBF	\$ _____
Sugar Maple	236.70 MBF	\$ 513.00/MBF	\$ _____
White Ash	33.40 MBF	\$ 74.00/MBF	\$ _____
Yellow Birch	6.80 MBF	\$ 89.00/MBF	\$ _____
<b>Pulpwood</b>			
B. T. Aspen	67.00 Cords	\$ 23.60/Cord	\$ _____
Balsam Fir	70.00 Cords	\$ 14.35/Cord	\$ _____
Beech	415.00 Cords	\$ 26.25/Cord	\$ _____
Mixed Hardwood	2,234.00 Cords	\$ 26.25/Cord	\$ _____
Quaking Aspen	117.00 Cords	\$ 23.60/Cord	\$ _____
White Spruce	39.00 Cords	\$ 22.25/Cord	\$ _____

\*The volumes are statistically estimated within plus (+) or minus (-) 10.58 percent. These estimated volumes are final and not subject to adjustment. Prospective bidders are urged to examine this timber and to make their own estimates of quantity and quality.

I understand that any or all bids may be rejected. All bids must be signed and all bid items must be bid or the bid form may be rejected. I also understand that consideration and awarding a contract will be based upon my past performance and ability to complete the contract based upon equipment and staffing subject to my control.

FEDERAL ID: \_\_\_\_\_ or SOCIAL SECURITY NUMBER: \_\_\_\_\_

Company or individual bidding: \_\_\_\_\_

Company representative's name: \_\_\_\_\_

Address: \_\_\_\_\_

City: \_\_\_\_\_ State: \_\_\_\_\_ Zip: \_\_\_\_\_

IF AVAILABLE, PLEASE PLACE THE PERSONALIZED LABEL FROM YOUR PROSPECTUS IN THE ABOVE BOX.

Individual or company representative's signature: \_\_\_\_\_ Date: \_\_\_\_\_

Phone number : \_\_\_\_\_ Email (optional): \_\_\_\_\_

**THE WINNING BIDDER MUST COMPLETE THE VERIFICATION OF WORKER'S DISABILITY COMPENSATION ACT COMPLIANCE (ON REVERSE SIDE IF DOUBLE SIDED) WITHIN 21 DAYS OF SALE AWARD DATE**



**FOR DEPARTMENT USE ONLY**

Sale Number (XX - XXX - XX - XX)

Forest Management Unit:

**TIMBER SALE  
VERIFICATION OF WORKER'S DISABILITY  
COMPENSATION ACT COMPLIANCE**

*As required by Act 317, P.A. 1969 (Worker's Compensation) and  
Part 5 of Act 451 of 1994, as amended.*

**VERIFICATION OF WORKER'S DISABILITY COMPENSATION ACT COMPLIANCE**

- This verification must be completed and submitted within 21 days of contract award and prior to the issuance of the timber sale contract.
- In addition, if boxes 2B or 2C are checked, then Notice of Exclusion or Certificate of Insurance must be submitted within twenty-one (21) days of the contract award and prior to the issuance of the timber sale contract.
- All information must be typed or printed except for written signatures.

Please Check Appropriate Categories:

1. My business is organized as (you **must** check one of the boxes below):
  - A.  Sole Proprietorship (individual)
  - B.  Partnership
  - C.  Corporation
2. You **must** check one of the boxes below:
  - A.  I certify my business is a sole proprietorship and it has no employees but the sole proprietor. I am not subject to the Worker's Compensation Laws.
  - B.  I certify my business has satisfied its obligation to the Worker's Compensation Act through the use of an approved Notice of Exclusion (BWC-337, Rev. 5/96). I will provide a copy of the Notice of Exclusion within 21 days of the contract award. (For questions or a copy of the BWC-337, please call the Worker's Compensation Bureau at 517-322-1195).
  - C.  I certify my business has a Worker's Compensation Policy. I will provide an original Certificate of Insurance within twenty-one (21) days of the contract award.
3. If you have checked item 2(A) or 2(B), you **must** indicate the number of **both** full-time and part-time employees, other than yourself, including family members and active partners (if none, you must enter "0").

\_\_\_\_\_ Full-time Employees

\_\_\_\_\_ Part-time Employees

Name of Business		Federal ID (or) Social Security No.
Address		Telephone (        )
City	State	ZIP

*I hereby certify that the above information is true and correct. I agree to notify the Michigan DNR of any changes that occur in factors affecting my coverage during any of my present and future operations.*

\_\_\_\_\_  
Signature of Owner or Authorized Representative

\_\_\_\_\_  
Title

\_\_\_\_\_  
Date

**Please complete the "SEALED BID" information on the next page**

Deadzone Mix (45-113-17)  
; Mackinac COUNTY

In response to the notice of sale to be held 3:00 p.m. (local time) on May 22, 2018, I am hereby submitting my sealed bid (firm offer) for the following forest products to be cut. Bids for individual species must be at or above the advertised price. All non-responsive bid forms may be rejected.

<u>PRODUCTS &amp; SPECIES</u>	<u>ESTIMATED VOLUME*</u>	<u>ADVERTISED PRICE</u>	<u>BID PRICE/UNIT</u>
<b>Sawtimber</b>			
Sugar Maple	4.60 MBF	\$ 473.00/MBF	\$ _____
White Ash	6.40 MBF	\$ 68.00/MBF	\$ _____
<b>Pulpwood</b>			
Balsam Fir	114.00 Cords	\$ 13.25/Cord	\$ _____
Basswood	34.00 Cords	\$ 9.50/Cord	\$ _____
Mixed Aspen	120.00 Cords	\$ 21.80/Cord	\$ _____
Mixed Hardwood	1,080.00 Cords	\$ 24.25/Cord	\$ _____
Mixed Spruce	148.00 Cords	\$ 20.55/Cord	\$ _____

\*The volumes are statistically estimated within plus (+) or minus (-) 12.16 percent. These estimated volumes are final and not subject to adjustment. Prospective bidders are urged to examine this timber and to make their own estimates of quantity and quality.

I understand that any or all bids may be rejected. All bids must be signed and all bid items must be bid or the bid form may be rejected. I also understand that consideration and awarding a contract will be based upon my past performance and ability to complete the contract based upon equipment and staffing subject to my control.

FEDERAL ID: \_\_\_\_\_ or SOCIAL SECURITY NUMBER: \_\_\_\_\_

Company or individual bidding: \_\_\_\_\_

Company representative's name: \_\_\_\_\_

Address: \_\_\_\_\_

City: \_\_\_\_\_ State: \_\_\_\_\_ Zip: \_\_\_\_\_

IF AVAILABLE, PLEASE PLACE THE PERSONALIZED LABEL FROM YOUR PROSPECTUS IN THE ABOVE BOX.

Individual or company representative's signature: \_\_\_\_\_ Date: \_\_\_\_\_

Phone number : \_\_\_\_\_ Email (optional): \_\_\_\_\_

**THE WINNING BIDDER MUST COMPLETE THE VERIFICATION OF WORKER'S DISABILITY COMPENSATION ACT COMPLIANCE (ON REVERSE SIDE IF DOUBLE SIDED) WITHIN 21 DAYS OF SALE AWARD DATE**



<b>FOR DEPARTMENT USE ONLY</b>
Sale Number (XX - XXX - XX - XX)
Forest Management Unit:

## TIMBER SALE VERIFICATION OF WORKER'S DISABILITY COMPENSATION ACT COMPLIANCE

*As required by Act 317, P.A. 1969 (Worker's Compensation) and  
Part 5 of Act 451 of 1994, as amended.*

### VERIFICATION OF WORKER'S DISABILITY COMPENSATION ACT COMPLIANCE

- This verification must be completed and submitted within 21 days of contract award and prior to the issuance of the timber sale contract.
- In addition, if boxes 2B or 2C are checked, then Notice of Exclusion or Certificate of Insurance must be submitted within twenty-one (21) days of the contract award and prior to the issuance of the timber sale contract.
- All information must be typed or printed except for written signatures.

Please Check Appropriate Categories:

1. My business is organized as (you **must** check one of the boxes below):
  - A.  Sole Proprietorship (individual)
  - B.  Partnership
  - C.  Corporation
  
2. You **must** check one of the boxes below:
  - A.  I certify my business is a sole proprietorship and it has no employees but the sole proprietor. I am not subject to the Worker's Compensation Laws.
  - B.  I certify my business has satisfied its obligation to the Worker's Compensation Act through the use of an approved Notice of Exclusion (BWC-337, Rev. 5/96). I will provide a copy of the Notice of Exclusion within 21 days of the contract award. (For questions or a copy of the BWC-337, please call the Worker's Compensation Bureau at 517-322-1195).
  - C.  I certify my business has a Worker's Compensation Policy. I will provide an original Certificate of Insurance within twenty-one (21) days of the contract award.
  
3. If you have checked item 2(A) or 2(B), you **must** indicate the number of **both** full-time and part-time employees, other than yourself, including family members and active partners (if none, you must enter "0").

\_\_\_\_\_ Full-time Employees                      \_\_\_\_\_ Part-time Employees

Name of Business		Federal ID (or) Social Security No.	
Address		Telephone (       )	
City	State	ZIP	

*I hereby certify that the above information is true and correct. I agree to notify the Michigan DNR of any changes that occur in factors affecting my coverage during any of my present and future operations.*

\_\_\_\_\_  
Signature of Owner or Authorized Representative

\_\_\_\_\_  
Title

\_\_\_\_\_  
Date

**Please complete the "SEALED BID" information on the next page**

Lake Breeze Maple (45-109-17)  
; Mackinac COUNTY

In response to the notice of sale to be held 3:00 p.m. (local time) on May 22, 2018, I am hereby submitting my sealed bid (firm offer) for the following forest products to be cut. Bids for individual species must be at or above the advertised price. All non-responsive bid forms may be rejected.

<u>PRODUCTS &amp; SPECIES</u>	<u>ESTIMATED VOLUME*</u>	<u>ADVERTISED PRICE</u>	<u>BID PRICE/UNIT</u>
Sawtimber			
Red Maple	14.80 MBF	\$ 138.00/MBF	\$ _____
Sugar Maple	15.00 MBF	\$ 592.00/MBF	\$ _____
Yellow Birch	1.40 MBF	\$ 103.00/MBF	\$ _____
Pulpwood			
Mixed Hardwood	351.00 Cords	\$ 30.30/Cord	\$ _____

\*The volumes are statistically estimated within plus (+) or minus (-) 22.68 percent. These estimated volumes are final and not subject to adjustment. Prospective bidders are urged to examine this timber and to make their own estimates of quantity and quality.

I understand that any or all bids may be rejected. All bids must be signed and all bid items must be bid or the bid form may be rejected. I also understand that consideration and awarding a contract will be based upon my past performance and ability to complete the contract based upon equipment and staffing subject to my control.

FEDERAL ID: \_\_\_\_\_ or SOCIAL SECURITY NUMBER: \_\_\_\_\_

Company or individual bidding: \_\_\_\_\_

Company representative's name: \_\_\_\_\_

Address: \_\_\_\_\_

City: \_\_\_\_\_ State: \_\_\_\_\_ Zip: \_\_\_\_\_

IF AVAILABLE, PLEASE PLACE THE PERSONALIZED LABEL FROM YOUR PROSPECTUS IN THE ABOVE BOX.

Individual or company representative's signature: \_\_\_\_\_ Date: \_\_\_\_\_

Phone number : \_\_\_\_\_ Email (optional): \_\_\_\_\_

**THE WINNING BIDDER MUST COMPLETE THE VERIFICATION OF WORKER'S DISABILITY COMPENSATION ACT COMPLIANCE (ON REVERSE SIDE IF DOUBLE SIDED) WITHIN 21 DAYS OF SALE AWARD DATE**



<b>FOR DEPARTMENT USE ONLY</b>
Sale Number (XX - XXX - XX - XX)
Forest Management Unit:

## TIMBER SALE VERIFICATION OF WORKER'S DISABILITY COMPENSATION ACT COMPLIANCE

*As required by Act 317, P.A. 1969 (Worker's Compensation) and  
Part 5 of Act 451 of 1994, as amended.*

### VERIFICATION OF WORKER'S DISABILITY COMPENSATION ACT COMPLIANCE

- This verification must be completed and submitted within 21 days of contract award and prior to the issuance of the timber sale contract.
- In addition, if boxes 2B or 2C are checked, then Notice of Exclusion or Certificate of Insurance must be submitted within twenty-one (21) days of the contract award and prior to the issuance of the timber sale contract.
- All information must be typed or printed except for written signatures.

Please Check Appropriate Categories:

1. My business is organized as (you **must** check one of the boxes below):
  - A.  Sole Proprietorship (individual)
  - B.  Partnership
  - C.  Corporation
2. You **must** check one of the boxes below:
  - A.  I certify my business is a sole proprietorship and it has no employees but the sole proprietor. I am not subject to the Worker's Compensation Laws.
  - B.  I certify my business has satisfied its obligation to the Worker's Compensation Act through the use of an approved Notice of Exclusion (BWC-337, Rev. 5/96). I will provide a copy of the Notice of Exclusion within 21 days of the contract award. (For questions or a copy of the BWC-337, please call the Worker's Compensation Bureau at 517-322-1195).
  - C.  I certify my business has a Worker's Compensation Policy. I will provide an original Certificate of Insurance within twenty-one (21) days of the contract award.
3. If you have checked item 2(A) or 2(B), you **must** indicate the number of **both** full-time and part-time employees, other than yourself, including family members and active partners (if none, you must enter "0").

\_\_\_\_\_ Full-time Employees                      \_\_\_\_\_ Part-time Employees

Name of Business		Federal ID (or) Social Security No.	
Address		Telephone (       )	
City	State	ZIP	

*I hereby certify that the above information is true and correct. I agree to notify the Michigan DNR of any changes that occur in factors affecting my coverage during any of my present and future operations.*

\_\_\_\_\_  
Signature of Owner or Authorized Representative

\_\_\_\_\_  
Title

\_\_\_\_\_  
Date

**Please complete the "SEALED BID" information on the next page**