



**DEPARTMENT OF NATURAL RESOURCES
STATE OF MICHIGAN**

TIMBER SALE PROSPECTUS #6079

SCHEDULED SALE DATE AND TIME: 9:00 a.m. (local time) on January 18, 2018.

LOCATION: PIGEON RIVER COUNTRY MGMT UNIT, 9966 TWIN LAKES RD, VANDERBILT, MI 49795.

PROSPECTUS NOTE: The bidder is advised to inspect the sale area and review the location, estimated volumes, operating costs and contract terms of proposed sales. Please be aware that some landowners may request 60 days or more notice for access across their land.

Notice is hereby given that bids will be received by the Unit Manager, PIGEON RIVER COUNTRY MANAGEMENT UNIT, for certain timber on the following described lands:

Recreational Pine (53-012-17)

Otsego County, Advertised Price \$58,869.05, 50.0 Acres, Red Pine, White Pine.

SALE NOTE: Please note the seasonal operating restrictions. No exemptions will be granted for the harvesting time period.

A recreation site such as a trail, pathway, or campground is within the sale area or the vicinity. Certain restrictions/specifications may be applicable including time restrictions.

Bear Station Aspen (53-019-17)

Cheboygan County, Advertised Price \$37,166.60, 42.2 Acres, Aspen, Spruce/Fir/Tamarack.

BID INSTRUCTIONS (VER. 11/28/2017):

1. Scheduled Bid Location, Date, and Time (2/11)

Bids must be received by the Unit Manager, PIGEON RIVER COUNTRY OFFICE, 9966 TWIN LAKES RD, VANDERBILT, MI 49795, no later than 9:00 a.m. (local time) on January 18, 2018. For further information concerning this sale, contact Scott Whitcomb at 989-983-4101.

2. Bidder's Qualifications (5/16)

Purchaser shall obtain workers compensation insurance to cover claims under Michigan's Worker's Disability Compensation Act of 1969 or similar employee benefit act of any other state applicable to an employee. If all or part of a timber sale was prepared by a private contractor, the contractor and that contractor's company are not permitted to bid on the timber sale contract. Bids will not be accepted from individuals or companies appearing on the DNR/FRD No-Bid List. This list contains the names of purchasers who previously failed to execute a contract within 21-days or who have a history of poor performance.

3. Preparation of Sealed Bids (5/16)

Bid Forms may be completed online thru Michigan DNR Timber Sale Online Bidding (OLB) at www.michigan.gov/timberbidding or by completing the hardcopy Bid Form found in the Timber Sale Prospectus. Hardcopy Bid Forms shall be manually signed in ink. Registration in OLB is considered your 'signature' for all bids submitted thru that system. Bid prices must be entered for each species and product in the Bid Price column for all material subject to bidding and all fill-in blanks must be completed. If erasures or other changes appear on the hardcopy Bid Form, each erasure or change must be initialed by the person signing the bid.

4. Submission of Sealed Bids (5/16)

Bid forms may be obtained from the Unit Manager or thru OLB. Bids may be submitted hardcopy or thru OLB. All hardcopy bids must be submitted on the bid form and in an envelope clearly identified as described in this section. NOTE: Only one bid form per bid envelope. Sealed bids must be submitted to the Unit office designated in the prospectus and must be submitted at or prior to the time established in the prospectus. The envelope should show on the outside (a) the sale name or number and (b) the date and time of bid opening, as shown in the prospectus. Bids received after the time specified in the sale prospectus are late bids and will be rejected.

It is possible for a bidder to submit multiple bids on a single sale. For example, a bid may be submitted hardcopy and a bid may be submitted thru OLB. Or, two bidders from the same company could both submit bids on the same sale. If this were to happen, the State would accept all bids received and award the contract accordingly. All bidding and contractual requirements would apply to all bids received.

5. Public Opening of Sealed Bids (7/16)

If conditions permit, the sealed bids will be publicly opened and posted at the time and place set in the prospectus.

If a bidder, present at a bid opening, has submitted bids on more than one sale, that bidder may withdraw their unopened bid envelopes or announce the withdrawal of their online bid after being declared the successful bidder on one sale.

6. Award of Contract (1/11)

Award of the contract will be made to the Bidder whose bid, conforming to the prospectus, is most advantageous to the State of Michigan on the basis of total value at rates bid for the estimated quantities. The State reserves the right to reject any bid or waive any minor irregularity in bids received. A written award mailed (or otherwise furnished) to the successful Bidder shall be deemed to result in a binding contract without further action by either party.

7. Down Payment (1/11)

The Bidder to whom award is made must make a down payment within 21 days of the sale award. The amount of the down payment will be calculated as shown in the Bond and Payment Schedule of this prospectus. Only cash may be used to meet this requirement.

8. Performance Security (1/11)

As guarantee of faithful performance, a cash bond, certificate of deposit, surety bond or irrevocable letter of credit (LOC) is required within 21 days of the sale award. The amount of the performance security is shown in the Bond and

Payment Schedule of this prospectus. If an LOC or surety is used, the coverage must extend for at least 6 months beyond the contract expiration.

9. Timber Sale Contract (11/17)

Additional conditions and requirements common to all timber sales are listed on the timber sale contract (R4031) and are available on line at www.michigan.gov/timber. Contact the Unit Manager for additional information or a sample contract. Within 21 days of the date of the award letter, the bidder must sign the contract and provide the required down payment, performance security, and verification of worker's disability compensation. The down payment and performance security shall be in accordance with the provisions of the timber sale contract, in the sums stated in this prospectus. If these actions are not taken, then the Bidder, the Bidder's corporation, and the corporation's principals may not be permitted to bid on State timber sales for a period of 1 year. In addition, the Bidder certifies that if awarded this contract, the Bidder will complete the timber sale contract in accordance with its terms and any modifications thereof including requirements to purchase, cut, and remove the included timber by the expiration date.

Payment Unit values in the State Forest Timber Sale Contract are calculated based on the advertised value of the Payment Unit as a percentage of the total advertised value of the contract. The advertised value of each Payment Unit is given in the Description of Timber by Payment Unit table on the Timber Sale Information page. For example, if the value of Payment Unit 1 is advertised as \$1,500 and the total Timber Sale value is advertised as \$10,000, the contract price for Payment Unit 1 will be 15% of the total bid price ($\$1,500/\$10,000 * 100$).

10. Disclaimer of Estimates and Bidder's Warranty of Inspection (7/16)

Before submitting this bid, the Bidder is advised and cautioned to inspect the sale area, review the requirements of the sale contract, and take other steps as may be reasonably necessary to ascertain the location, estimated volumes, construction estimates, and operating costs of the proposed sale. Failure to do so will not relieve the Bidder from responsibility for completing the contract.

The Bidder warrants that this bid is submitted solely on the basis of the Bidder's examination and inspection of the quality and quantity of the timber offered for sale and the Bidder's opinion of the value thereof and the costs of recovery. No reliance should be placed on the State of Michigan's estimates of timber quality, quantity or costs of recovery. Bidder further acknowledges that the State of Michigan: (i) expressly disclaims any warranty of fitness of timber for any purpose; (ii) offers this timber as is without any warranty of quality (merchantability) or quantity and (iii) expressly disclaims any warranty as to the quantity or quality of timber sold.

11. Certification and Chain-of-Custody (10/14)

Unless otherwise indicated in the contract under section 7 – Other Conditions of the Sale Specific Conditions & Requirements, the area encompassed by this timber sale is certified to the standards of the Forest Stewardship Council (FSC) - Certificate #SCS-FM/COC-00090N and the Sustainable Forestry Initiative (SFI) - Certificate # NSF-SFIS-5Y031-SF5. Forest products from this sale may be delivered to the mill as "FSC 100% and / or SFI certified" as long as the contractor hauling the forest products is chain-of-custody (COC) certified or covered under a COC certificate from the destination mill. The purchaser is responsible for maintaining COC after leaving the sale area.

12. Good Neighbor Authority (GNA) Requirements (7/16)

If the name of this timber sales contains the acronym GNA, it is authorized by the Good Neighbor Authority (GNA) and covered by various agreements between the U.S. Forest Service and the State. The timber sale occurs on federal land and the following conditions apply:

GNA contracts on US Forest Service land will not be awarded to purchasers on the Federal list of excluded parties. The System for Award Management (SAM) will be checked for active excluded parties prior to award of contract. In addition, the Bidder to whom award is made must complete an Assurance Regarding Felony Conviction or Tax Delinquent Status for Corporate Applicants (AD-3031).

13. Good Neighbor Authority (GNA) Requirements, con't (9/16)

Bidder certifies, by signing this bid form, that to the best of Bidder's knowledge that the following representations are accurate and complete.

a. That the Bidder and its principals are not presently debarred, suspended, proposed for debarment, declared ineligible, or voluntary excluded from timber sales (covered transactions) by any Federal department or agency.

b. That the Bidder and its principals have not within a 3-year period preceding this bid been convicted of or had a civil judgment rendered against them for commission of fraud or a criminal offense in connection with obtaining, attempting to obtain, or performing a public (Federal, State, or local) transaction or contract under a public transaction; violation of Federal or State antitrust statutes or commission of embezzlement, theft, forgery, bribery, falsification or destruction of records, making false statements, or receiving stolen property.

c. That the Bidder and its principals are not presently indicted for or otherwise criminally or civilly charged by a governmental entity (Federal, State, or local) with commission of any of the offenses enumerated in paragraph b of this certification.

d. That the Bidder and its principals have not within a 3-year period preceding this bid had one or more public transactions (Federal, State, or local) terminated for breach or default of a timber or forest product contract.

Bidders that cannot certify this requirement, in whole or in part, shall submit an explanation with their bid.

KEITH CREAGH

Director

TIMBER SALE INFORMATION

Recreational Pine (53-012-17)

Otsego County (Advertised Price \$58,869.05)

SALE NOTE: Please note the seasonal operating restrictions. No exemptions will be granted for the harvesting time period.

A recreation site such as a trail, pathway, or campground is within the sale area or the vicinity. Certain restrictions/specifications may be applicable including time restrictions.

A timber sale contract for this lump sum, sealed bid timber sale will be awarded to the responsible bidder offering the highest sealed bid price. Bids must be at or above the following advertised price for each species:

<u>PRODUCTS & SPECIES</u>	<u>ESTIMATED UNITS*</u>	<u>ADVERTISED PRICE</u>
Sawtimber		
Red Oak	23.40 MBF	\$ 185.00 / MBF
Red Pine	337.30 MBF	\$ 114.00 / MBF
White Pine	50.40 MBF	\$ 60.00 / MBF
Pulpwood		
B. T. Aspen	4.00 Cords	\$ 21.80 / Cord
Red Maple	66.00 Cords	\$ 19.65 / Cord
Red Oak	44.00 Cords	\$ 21.75 / Cord
Red Pine	163.00 Cords	\$ 49.25 / Cord
White Pine	110.00 Cords	\$ 24.50 / Cord

* The total volume is statistically estimated within plus (+) or minus (-) 16.10 percent. The estimated units are final and not subject to adjustment. Prospective bidders are urged to examine this timber and to make their own estimates of quantity and quality.

BOND AND PAYMENT SCHEDULE:

1. A bond in the amount of \$2,943.00 to insure faithful performance of the conditions of the contract will be deposited by the successful bidder within 21 days of the sale award.
2. Cutting in any sale or unit without the required advance payment would be considered a trespass.
3. Total payment must be paid in advance or according to the following schedule:
 - (a) Ten percent (10%) of the sale value must be paid within 21 days of the sale award.
 - (b) The 10% down payment will be credited towards the first unit cut.
4. If no cutting takes place, the 10% down payment will not be refunded.
5. Operations on the contract issued will terminate on 06/30/2020.

Description of Timber by Payment Unit (PU)

PU	MARKET GROUP	PRODUCT	QUANTITY	UNIT	ACRES	ADVERTISE PRICE
1	Red Oak	Sawtimber	3.3	MBF	19.1	\$23,846.60
	Red Pine		148.1	MBF		
	White Pine		22.9	MBF		
	Red Maple	Pulpwood	18.0	Cords		
	Red Oak		8.0	Cords		
	Red Pine		66.0	Cords		
	White Pine		49.0	Cords		
	2	Red Oak	Sawtimber	2.4		
Red Pine			99.7	MBF		
White Pine			15.4	MBF		
Red Maple		Pulpwood	12.0	Cords		
Red Oak			6.0	Cords		
Red Pine			45.0	Cords		
White Pine			33.0	Cords		
3		Red Oak	Sawtimber	17.7	MBF	18.0
	Red Pine		89.5	MBF		
	White Pine		12.1	MBF		
	B. T. Aspen	Pulpwood	4.0	Cords		
	Red Maple		36.0	Cords		
	Red Oak		30.0	Cords		
	Red Pine		52.0	Cords		
	White Pine		28.0	Cords		
	TOTAL:			411.1	MBF	
TOTAL:			387.0	Cords		

Sale Specific Conditions & Requirements

Sale Name: Recreational Pine

Sale Number: 53-012-17 Seq#: 1

1 - Sale Area

1.2 - Boundaries

1.2.1 - Painted boundaries (1/14)

The sale boundary and Payment Unit boundaries are marked and identified by red and yellow paint. Exterior sale boundary lines against state are marked with red paint. Interior retention areas are marked with a red X. Interior Payment Unit boundaries are marked with yellow paint. Red and yellow painted boundary line trees are not Included Timber and are to be protected.

2 - Timber Specifications

2.1 - Included Timber

2.1.7 - Leave tree marked unit(s) (6/14)

Within Payment Unit(s) 1-3, cut all trees and saplings that are at least 4.5 feet tall, except paper birch and trees/saplings marked with green paint.

2.2 - Utilization

2.2.2 - Chipping required (5/14)

This area must be chip harvested to facilitate future silvicultural activities. Products may be produced as roundwood and forwarded to decking areas in final product length, but the tops must be left intact and skidded to the landing for chipping. The requirement to retain approximately 1/6 to 1/3 of tree tops and limbs less than four inches in diameter does not apply (G. C. & R. 2.2). This is because of future silvicultural activities planned for the Sale Area.

2.2.3 - Stump heights (4/07)

Stump heights within the Sale Area shall not exceed 12 inches for trees greater than 10 inches DBH and 4 inches for trees smaller than 10 inches DBH.

3 - Payments

3.4 - Damaged Timber

3.4.1 - Damaged timber (6/14)

General Condition and Requirement 3.4 Damaged Timber, defines liquidated damages for undesignated live merchantable trees which are cut or injured. No damage is acceptable to merchantable trees. Within the sale area, if more than 5% of trees (> 4.5" DBH) within a specified area of the sale are damaged, liquidated damages will be assessed for all trees damaged. Rates will be in accordance with General Condition and Requirement 3.4 Damaged Timber.

In addition, extreme caution must be used to protect pockets of white pine and oak saplings that have been marked with green paint. The remainder of the regeneration throughout the Sale Area must be cut.

3.6 - Payment Unit Cutting Schedule

3.6.8 - Operating period (5/16)

Once cutting begins, operations must continue until all Payment Units are completed. This requirement is for post-harvest silvicultural activities that are planned within the entire Sale Area.

4 - Transportation

4.1 - Construction

4.1.3 - Slash and earthen piles (8/04)

Piles or windrows of earth along roads and landings that have been widened or constructed shall be leveled. Slash from road maintenance or construction, including stumps, shall be dispersed throughout the sale.

4.1.7 - Road closure (10/11)

Overgrown roads that are reopened must be blocked to vehicle traffic upon completion of the sale. In general, this will require constructing a four (4') foot high berm of stumps and logs covered with earth. Temporary berms may be required if no sale activity occurs for 30 or more consecutive days. Contact the sale administrator for specific details of design and placement.

4.1.12 - No new roads (1/12)

No new roads will be permitted in any Payment Unit. All operations are limited to existing roads.

4.2 - Maintenance

4.2.5 - Two wheel drive condition (2/04)

All existing trail roads on and adjacent to the sale area must be passable by two-wheel drive traffic for the duration of the sale.

5 - Operations

5.2 - Conduct of Operations

5.2.2 - Hazard Trees/Snags

5.2.2.1 - Den trees (10/16)

Obvious hollow and/or den trees shall be protected and left standing unless they are a safety hazard.

5.2.3 - Operating Restrictions

5.2.3.1 - Operating restrictions (9/11)

Within Payment Unit(s) 1-3, cutting, skidding, and hauling are limited to the period of November 1 to April 1. This restriction is in place to avoid conflicts with recreational users in the summer and early-fall and also to avoid operating during the oak wilt time period in the spring.

5.2.31 - Landing locations (9/13)

Recommended landing areas are the G stand for Payment Unit 1, and an area along Road 81 near the east-west closed road for Payment Units 2 and 3. The landing in the G stand for Payment Unit 1 must avoid all areas that are planted annually as a food plot. Wooden posts demarcate the general area that is planted. The landing for Payment Units 2 and 3 is limited to a "T" turnaround at the closed road which will accommodate a truck with a 50 foot trailer. Hauling further north along Road 81 is not permitted as this road dead-ends at the Witness Tree. Landings must be confined to these designated sites unless otherwise authorized by the Unit Manager or his/her representative.

5.2.32 - Decking/landing restoration (9/13)

All decking and landing areas must have the surface area restored to a condition equal to or better than before. This is to ensure the proper regeneration of the stand. Wood debris, chips and "cookies" from trimmings must be removed or scattered away from landing and loading areas and may not be windrowed on the edge. Excess chips may be scattered on nearby roadways but may not be left piled in the landing areas.

5.2.38 - No decking against live trees (2/04)

Cut products may not be decked against unmarked or designated leave trees.

5.2.40 - Pathway protection (10/10)

A horse trail is present in the Sale Area and is shown on the Timber Sale Map. The trail follows the north-south running Payment Unit Line. Do not cut trees or damage posts with white pathway markers. Maintain a 20-foot wide slash, debris, and rut free zone daily, using the pathway as the centerline. Do not run equipment down the pathway. Skidding across the trail will not be permitted.

5.4 - Soil Protection

5.4.1 - Rutting restriction, general (7/16)

Operations are to cease immediately if equipment and weather conditions result in rutting of roads and/or skid trails which is 12 inches or greater in depth and 25 feet in length. The Unit Manager or his/her representative may restrict hauling and/or skidding if ruts exceed the specified depth. With the Unit Manager or his/her representative's approval, the Purchaser may return to the area when the risk of rutting has decreased.

5.8 - Protection of Endangered Species

5.8.5 - Protection of raptor nests (3/13)

All trees with raptor nests will be protected if found during harvesting operations. Notification will be made to the Unit Manager or his/her representative who will notify the Wildlife Biologist so an on-site evaluation and recommendation can be made, if necessary.

6 - Safety and Fire Prevention

6.2 - Signing

6.2.1 - Road posting (9/09)

The Purchaser is responsible for posting and maintaining caution signs on Sturgeon Valley Road prior to beginning operations. The road must be posted at appropriate distances from the sale area to warn of logging activity and truck traffic. Signs must be removed when harvest operations are suspended or completed.

6.2.3 - Recreational trail posting (2/10)

The Purchaser is responsible for posting and maintaining caution signs on the horse trail prior to beginning operations. The trail must be posted at appropriate distances from the sale area to warn of logging activity and truck traffic at both ends of the trail. Signs must be removed when harvest operations are suspended or completed.

8 - Performance and Settlement

8.3 - Uncompleted or Terminated Contracts

8.3.1 - Completion of contract, chipping (1/16)

In addition to cutting, all chipping must be completed by the contract expiration date. If chipping has not been completed, an extension fee or damages may be charged per General Condition & Requirement 7.2 and 8.3.



TIMBER SALE MAP

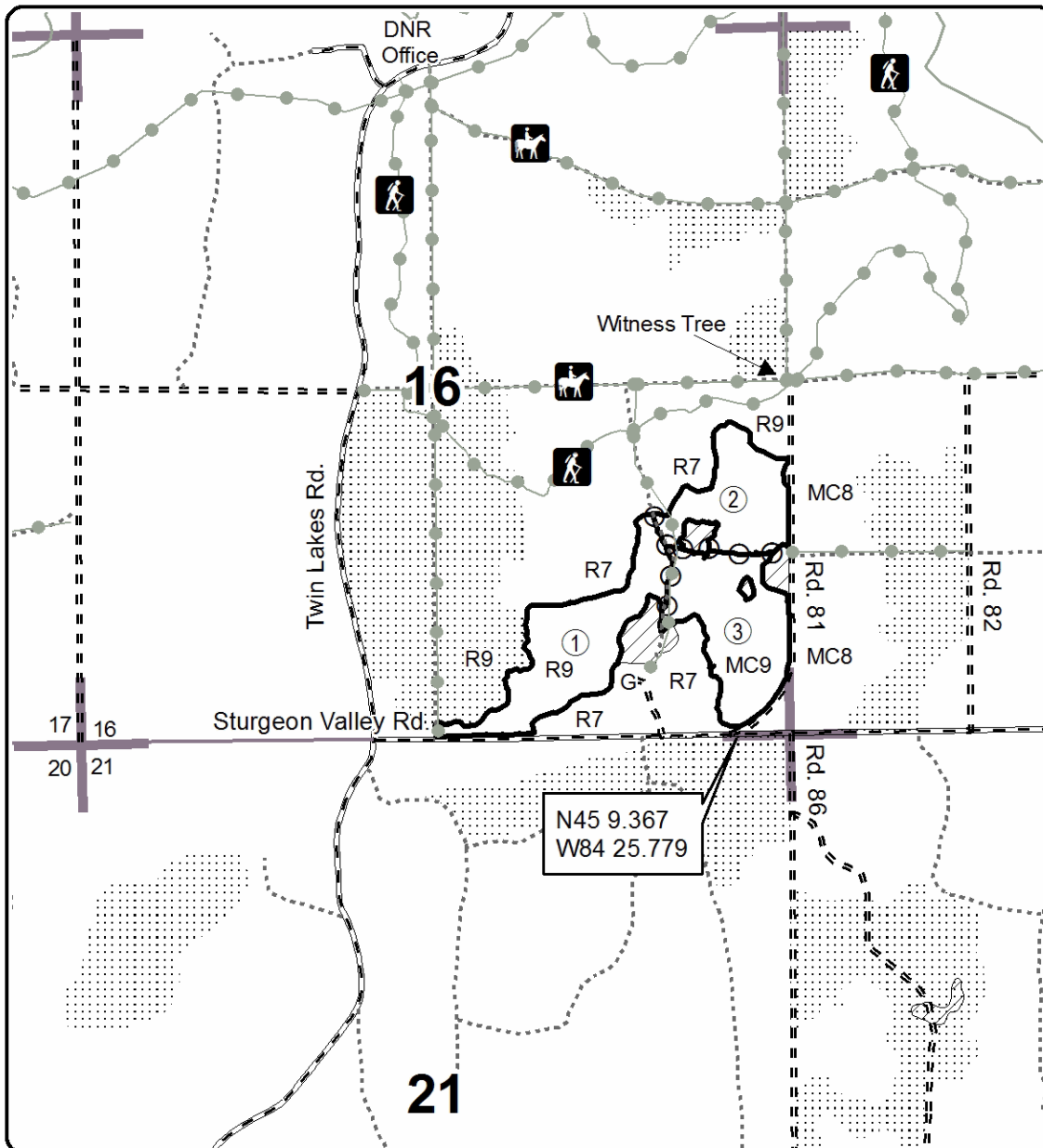
This information provided by authority of Part 525, 1994 PA 451, as amended.

Forest Management Unit Pigeon River Country		County Otsego	Mapped By Rekowski		Date 06/15/2017	Page 1	of 1
Township 32N	Range 01W	Section(s) and Subdivision(s) 16: E1/2SE, SWSE			Scale 1:15,840		
Cruised By Rekowski							

Cover Type				Density			
A = Aspen	H = Hemlock	N = Marsh	U = Upland Brush	0 = Non Stocked	5 = Pole Timber Medium		
B = Paper Birch	J = Jack Pine	O = Oak	UM = Upland Mixed	1 = Seedling Sapling Poor	6 = Pole Timber Well		
C = Cedar	L = Lowland Brush	P = Lowland Poplar	V = Bog or Marsh	2 = Seedling Sapling Medium	7 = Saw Timber Poor		
D = Tread Bog	LM = Lowland Mixed	Q = Mixed Swamp Conifer	W = White Pine	3 = Seedling Sapling Well	8 = Saw Timber Medium		
E = Swamp Hdwoods	M = Mpl, Bch, Brch	R = Red Pine	X = Non Stocked	4 = Pole Timber Poor	9 = Saw Timber Well		
F = Spruce Fir	MC = Mixed Conifer	S = Black Spruce	Z = Water				
G = Grass	MD = Mixed Deciduous	T = Tamarack					

PU	Acres
1	19.1
2	12.9
3	18

Recreational Pine Compartment 036 50 Acres

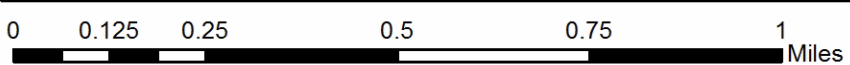
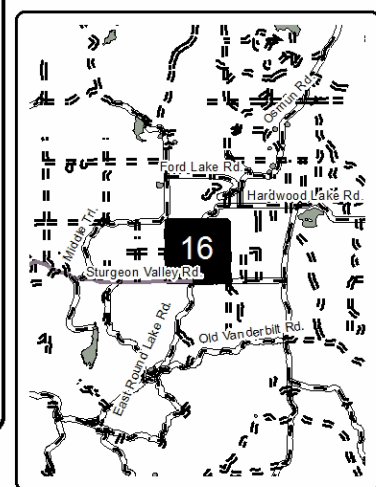


Legend

Sale Boundary

- Against State (Red)
- Payment Unit (Yellow)
- ▨ Retention (Red X)
- ⋯ Nearby Timber Sale
- Paved Roads
- Gravel Roads
- - - Poor Dirt Roads
- - - Closed Roads
- Recreational Trail
- 🚶 Hiking Trails
- 🐎 Horse Trails
- Section Corners

Locator Map
1:200,000



TIMBER SALE INFORMATION

Bear Station Aspen (53-019-17)

Cheboygan County (Advertised Price \$37,166.60)

A timber sale contract for this lump sum, sealed bid timber sale will be awarded to the responsible bidder offering the highest sealed bid price. Bids must be at or above the following advertised price for each species:

<u>PRODUCTS & SPECIES</u>	<u>ESTIMATED UNITS*</u>	<u>ADVERTISED PRICE</u>
Sawtimber		
Mixed Aspen	100.80 MBF	\$ 69.00 / MBF
N. White Cedar	19.70 MBF	\$ 40.00 / MBF
Paper Birch	13.40 MBF	\$ 58.00 / MBF
Red Maple	36.70 MBF	\$ 144.00 / MBF
Red Pine	9.10 MBF	\$ 114.00 / MBF
White Spruce	38.30 MBF	\$ 76.00 / MBF
Pulpwood		
Balsam Fir	312.00 Cords	\$ 22.75 / Cord
Mixed Aspen	204.00 Cords	\$ 21.80 / Cord
N. White Cedar	18.00 Cords	\$ 20.20 / Cord
Paper Birch	41.00 Cords	\$ 19.75 / Cord
Red Maple	121.00 Cords	\$ 19.65 / Cord
Red Pine	7.00 Cords	\$ 49.25 / Cord
White Pine	53.00 Cords	\$ 24.50 / Cord
White Spruce	75.00 Cords	\$ 35.65 / Cord

* The total volume is statistically estimated within plus (+) or minus (-) 12.69 percent. The estimated units are final and not subject to adjustment. Prospective bidders are urged to examine this timber and to make their own estimates of quantity and quality.

BOND AND PAYMENT SCHEDULE:

1. A bond in the amount of \$2,000.00 to insure faithful performance of the conditions of the contract will be deposited by the successful bidder within 21 days of the sale award.
2. Cutting in any sale or unit without the required advance payment would be considered a trespass.
3. Total payment must be paid in advance or according to the following schedule:
 - (a) Ten percent (10%) of the sale value must be paid within 21 days of the sale award.
 - (b) The 10% down payment will be credited towards the first unit cut.
4. If no cutting takes place, the 10% down payment will not be refunded.
5. Operations on the contract issued will terminate on 06/30/2021.

Description of Timber by Payment Unit (PU)

PU	MARKET GROUP	PRODUCT	QUANTITY	UNIT	ACRES	ADVERTISE PRICE	
1	Mixed Aspen	Sawtimber	60.7	MBF	25.4	\$22,393.15	
	<i>B. T. Aspen</i>		5.4	<i>MBF</i>			
	<i>Quaking Aspen</i>		55.3	<i>MBF</i>			
	N. White Cedar		11.9	MBF			
	Paper Birch		8.1	MBF			
	Red Maple		22.1	MBF			
	Red Pine		5.5	MBF			
	White Spruce		23.1	MBF			
	Balsam Fir		Pulpwood	188.0			Cords
	Mixed Aspen			123.0			Cords
	<i>B. T. Aspen</i>			8.0			<i>Cords</i>
	<i>Balsam Poplar</i>			4.0			<i>Cords</i>
	<i>Quaking Aspen</i>			111.0			<i>Cords</i>
	N. White Cedar			11.0			Cords
	Paper Birch			25.0			Cords
	Red Maple			73.0			Cords
	Red Pine			4.0			Cords
	White Pine			32.0			Cords
	White Spruce		45.0	Cords			
	2		Mixed Aspen	Sawtimber			40.1
<i>B. T. Aspen</i>		3.6	<i>MBF</i>				
<i>Quaking Aspen</i>		36.5	<i>MBF</i>				
N. White Cedar		7.8	MBF				
Paper Birch		5.3	MBF				
Red Maple		14.6	MBF				
Red Pine		3.6	MBF				
White Spruce		15.2	MBF				
Balsam Fir		Pulpwood	124.0		Cords		
Mixed Aspen			81.0		Cords		
<i>B. T. Aspen</i>			6.0		<i>Cords</i>		
<i>Balsam Poplar</i>			2.0		<i>Cords</i>		
<i>Quaking Aspen</i>			73.0		<i>Cords</i>		
N. White Cedar			7.0		Cords		
Paper Birch			16.0		Cords		
Red Maple			48.0		Cords		
Red Pine			3.0		Cords		
White Pine			21.0		Cords		
White Spruce		30.0	Cords				
TOTAL:			218.0		MBF		
TOTAL:			831.0	Cords			

Sale Specific Conditions & Requirements

Sale Name: Bear Station Aspen

Sale Number: 53-019-17 Seq#: 1

1 - Sale Area

1.2 - Boundaries

1.2.1 - Painted boundaries (1/14)

The sale boundary and Payment Unit boundaries are marked and identified by blue, red and yellow paint. Exterior sale boundary lines against private property are marked with blue paint. Exterior sale boundary lines against state are marked with red paint. Interior Payment Unit boundaries are marked with yellow paint. The red and blue painted boundary line trees are not Included Timber and are to be protected.

2 - Timber Specifications

2.1 - Included Timber

2.1.1 - Clearcut unit(s) with unmerchantable trees (6/14)

Within Payment Unit(s) I & II, cut all trees that are two (2) inches or more at DBH, regardless of merchantability, except do not cut any white pine with a diameter greater than 16" at DBH. In addition, all trees marked with a green X are to be cut and left to lay after all cutting and skidding has been done in that unit.

4 - Transportation

4.1 - Construction

4.1.3 - Slash and earthen piles (8/04)

Piles or windrows of earth along roads and landings that have been widened or constructed shall be leveled. Slash from road maintenance or construction, including stumps, shall be dispersed throughout the sale.

4.1.6 - Road construction (1/09)

Construction of new roads or improvements of existing roads shall be done in such a way as to minimize the environmental and visual impacts. Merchantable trees shall be cut and utilized unless otherwise directed. Non-merchantable trees shall be severed and laid flat on the ground. Slash shall be scattered, and not left in windrows and kept a minimum of 10 feet back from the road edge. Stumps shall be set upright, not left on edge, and be moved at least 10 feet away from the road edge. Disturbed soil shall be feathered into the woods and not left in berms or windrows.

4.1.7 - Road closure (10/11)

All new roads built into the sale must be blocked to vehicle traffic upon completion of the sale. Overgrown roads that are reopened shall be considered new roads. In general, this will require constructing a four (4') foot high berm of stumps and logs covered with earth. Temporary berms may be required if no sale activity occurs for 30 or more consecutive days.

4.2 - Maintenance

4.2.5 - Two wheel drive condition (2/04)

All existing trail roads on and adjacent to the sale area must be passable by two-wheel drive traffic for the duration of the sale.

5 - Operations

5.2 - Conduct of Operations

5.2.1 - Slash

5.2.1.8 - Slash height (12/08)

No slash or tree tops may exceed 24 inches in height.

5.2.2 - Hazard Trees/Snags

5.2.2.1 - Den trees (10/16)

Obvious hollow and/or den trees shall be protected and left standing unless they are a safety hazard.

5.2.3 - Operating Restrictions

5.2.3.1 - Operating restrictions (9/11)

Within Payment Unit(s) I & II, unless changed by written agreement, cutting, skidding, and hauling are not permitted during the period of March 15 to July 1. This restriction is limit the effects of over-browsing by Elk and Deer, as well as to mitigate soil damage during breakup.

5.4 - Soil Protection

5.4.1 - Rutting restriction, general (7/16)

Operations are to cease immediately if equipment and weather conditions result in rutting of roads and/or skid trails which is 12 inches or greater in depth and 50 feet in length. The Unit Manager or his/her representative may restrict hauling and/or skidding if ruts exceed the specified depth. With the Unit Manager or his/her representative's approval, the Purchaser may return to the area when the risk of rutting has decreased.

6 - Safety and Fire Prevention

6.2 - Signing

6.2.1 - Road posting (9/09)

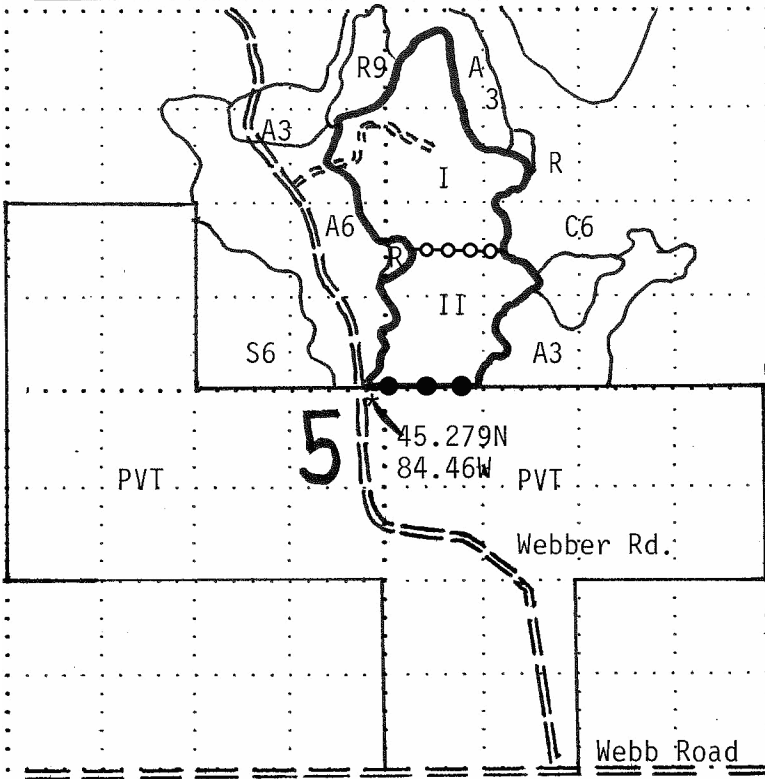
The Purchaser is responsible for posting and maintaining caution signs on Webber Road prior to beginning operations. The road must be posted at appropriate distances from the sale area to warn of logging activity and truck traffic. Signs must be removed when harvest operations are suspended or completed.



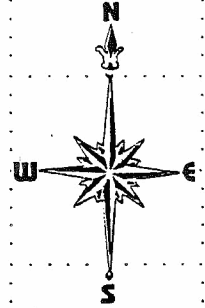
Sale Number	Year
53-019-17	2017

Forest Management Unit Pigeon River Country FMU	County Cheboygan	Mapped By Rick McDonald	Date 9/25/2017	Page 1	of 1
Township 33N	Range 01W	Section(s) and Subdivision(s) 5 - E 1/2 of NW 1/4, W 1/2 of NE 1/4	Scale ... = 1 mile		

Cover Type				Density	
A = Aspen	H = Hemlock	P = Lowland Poplar	V = Bog or Marsh	0 = Non Stocked	5 = Pole Timber Medium
B = Paper Birch	J = Jack Pine	Q = Mixed Swamp Cnfr	W = White Pine	1 = Seedling Sapling Poor	6 = Pole Timber Well
C = Cedar	L = Lowland Brush	R = Red Pine	X = Non Stocked	2 = Seedling Sapling Medium	7 = Saw Timber Poor
E = Swamp Hdwoods	M = Mpl, Bch, Brch	S = Black Spruce	Z = Water	3 = Seedling Sapling Well	8 = Saw Timber Medium
F = Spruce Fir	N = Marsh	T = Tamarack		4 = Pole Timber Poor	9 = Saw Timber Well
G = Grass	O = Oak	U = Upland Brush			

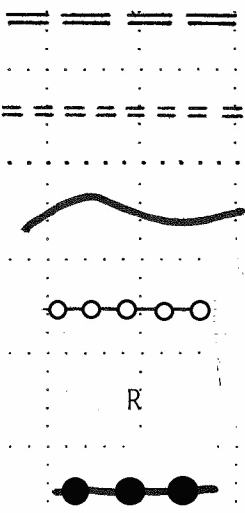


Compartment 8
stand 17

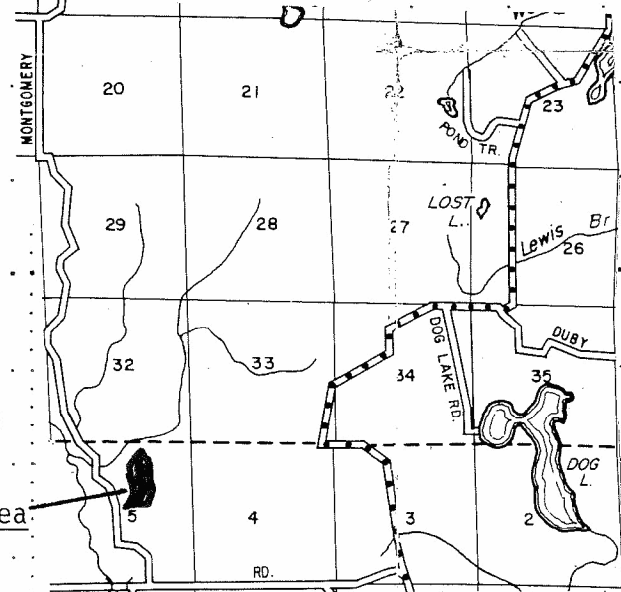


Bear Station Aspen (42.2 acres)

Unit I ----- 25.4 acres
 Unit II ----- 16.8 acres



County Road - gravel
 Open Forest Road
 Sale Area Boundary (Red)
 Payment Unit Line (Yellow)
 Retention R
 Sale Boundary Line - private (blue)



Recreational Pine (53-012-17)
; Otsego COUNTY

In response to the notice of sale to be held 9:00 a.m. (local time) on January 18, 2018, I am hereby submitting my sealed bid (firm offer) for the following forest products to be cut. Bids for individual species must be at or above the advertised price. All non-responsive bid forms may be rejected.

<u>PRODUCTS & SPECIES</u>	<u>ESTIMATED VOLUME*</u>	<u>ADVERTISED PRICE</u>	<u>BID PRICE/UNIT</u>
Sawtimber			
Red Oak	23.40 MBF	\$ 185.00/MBF	\$ _____
Red Pine	337.30 MBF	\$ 114.00/MBF	\$ _____
White Pine	50.40 MBF	\$ 60.00/MBF	\$ _____
Pulpwood			
B. T. Aspen	4.00 Cords	\$ 21.80/Cord	\$ _____
Red Maple	66.00 Cords	\$ 19.65/Cord	\$ _____
Red Oak	44.00 Cords	\$ 21.75/Cord	\$ _____
Red Pine	163.00 Cords	\$ 49.25/Cord	\$ _____
White Pine	110.00 Cords	\$ 24.50/Cord	\$ _____

*The volumes are statistically estimated within plus (+) or minus (-) 16.10 percent. These estimated volumes are final and not subject to adjustment. Prospective bidders are urged to examine this timber and to make their own estimates of quantity and quality.

I understand that any or all bids may be rejected. All bids must be signed and all bid items must be bid or the bid form may be rejected. I also understand that consideration and awarding a contract will be based upon my past performance and ability to complete the contract based upon equipment and staffing subject to my control.

FEDERAL ID: ____ - ____ - ____ or SOCIAL SECURITY NUMBER: ____ - ____ - ____

Company or individual bidding: _____

Company representative's name: _____

Address: _____

City: _____ State: _____ Zip: _____

IF AVAILABLE, PLEASE PLACE THE PERSONALIZED LABEL FROM YOUR PROSPECTUS IN THE ABOVE BOX.

Individual or company representative's signature: _____ Date: _____

Phone number : _____ Email (optional): _____

THE WINNING BIDDER MUST COMPLETE THE VERIFICATION OF WORKER'S DISABILITY COMPENSATION ACT COMPLIANCE (ON REVERSE SIDE IF DOUBLE SIDED) WITHIN 21 DAYS OF SALE AWARD DATE



FOR DEPARTMENT USE ONLY
Sale Number (XX - XXX - XX - XX)
Forest Management Unit:

TIMBER SALE VERIFICATION OF WORKER'S DISABILITY COMPENSATION ACT COMPLIANCE

*As required by Act 317, P.A. 1969 (Worker's Compensation) and
Part 5 of Act 451 of 1994, as amended.*

VERIFICATION OF WORKER'S DISABILITY COMPENSATION ACT COMPLIANCE

- This verification must be completed and submitted within 21 days of contract award and prior to the issuance of the timber sale contract.
- In addition, if boxes 2B or 2C are checked, then Notice of Exclusion or Certificate of Insurance must be submitted within twenty-one (21) days of the contract award and prior to the issuance of the timber sale contract.
- All information must be typed or printed except for written signatures.

Please Check Appropriate Categories:

1. My business is organized as (you **must** check one of the boxes below):
 - A. Sole Proprietorship (individual)
 - B. Partnership
 - C. Corporation

2. You **must** check one of the boxes below:
 - A. I certify my business is a sole proprietorship and it has no employees but the sole proprietor. I am not subject to the Worker's Compensation Laws.
 - B. I certify my business has satisfied its obligation to the Worker's Compensation Act through the use of an approved Notice of Exclusion (BWC-337, Rev. 5/96). I will provide a copy of the Notice of Exclusion within 21 days of the contract award. (For questions or a copy of the BWC-337, please call the Worker's Compensation Bureau at 517-322-1195).
 - C. I certify my business has a Worker's Compensation Policy. I will provide an original Certificate of Insurance within twenty-one (21) days of the contract award.

3. If you have checked item 2(A) or 2(B), you **must** indicate the number of **both** full-time and part-time employees, other than yourself, including family members and active partners (if none, you must enter "0").

_____ Full-time Employees

_____ Part-time Employees

Name of Business		Federal ID (or) Social Security No.	
Address		Telephone ()	
City	State	ZIP	

I hereby certify that the above information is true and correct. I agree to notify the Michigan DNR of any changes that occur in factors affecting my coverage during any of my present and future operations.

Signature of Owner or Authorized Representative

Title

Date

Please complete the "SEALED BID" information on the next page

Bear Station Aspen (53-019-17)
; Cheboygan COUNTY

In response to the notice of sale to be held 9:00 a.m. (local time) on January 18, 2018, I am hereby submitting my sealed bid (firm offer) for the following forest products to be cut. Bids for individual species must be at or above the advertised price. All non-responsive bid forms may be rejected.

<u>PRODUCTS & SPECIES</u>	<u>ESTIMATED VOLUME*</u>	<u>ADVERTISED PRICE</u>	<u>BID PRICE/UNIT</u>
Sawtimber			
Mixed Aspen	100.80 MBF	\$ 69.00/MBF	\$ _____
N. White Cedar	19.70 MBF	\$ 40.00/MBF	\$ _____
Paper Birch	13.40 MBF	\$ 58.00/MBF	\$ _____
Red Maple	36.70 MBF	\$ 144.00/MBF	\$ _____
Red Pine	9.10 MBF	\$ 114.00/MBF	\$ _____
White Spruce	38.30 MBF	\$ 76.00/MBF	\$ _____
Pulpwood			
Balsam Fir	312.00 Cords	\$ 22.75/Cord	\$ _____
Mixed Aspen	204.00 Cords	\$ 21.80/Cord	\$ _____
N. White Cedar	18.00 Cords	\$ 20.20/Cord	\$ _____
Paper Birch	41.00 Cords	\$ 19.75/Cord	\$ _____
Red Maple	121.00 Cords	\$ 19.65/Cord	\$ _____
Red Pine	7.00 Cords	\$ 49.25/Cord	\$ _____
White Pine	53.00 Cords	\$ 24.50/Cord	\$ _____
White Spruce	75.00 Cords	\$ 35.65/Cord	\$ _____

*The volumes are statistically estimated within plus (+) or minus (-) 12.69 percent. These estimated volumes are final and not subject to adjustment. Prospective bidders are urged to examine this timber and to make their own estimates of quantity and quality.

I understand that any or all bids may be rejected. All bids must be signed and all bid items must be bid or the bid form may be rejected. I also understand that consideration and awarding a contract will be based upon my past performance and ability to complete the contract based upon equipment and staffing subject to my control.

FEDERAL ID: ____ - ____ - ____ or SOCIAL SECURITY NUMBER: ____ - ____ - ____

Company or individual bidding: _____

Company representative's name: _____

Address: _____

City: _____ State: _____ Zip: _____

IF AVAILABLE, PLEASE PLACE THE PERSONALIZED LABEL FROM YOUR PROSPECTUS IN THE ABOVE BOX.

Individual or company representative's signature: _____ Date: _____

Phone number : _____ Email (optional): _____

THE WINNING BIDDER MUST COMPLETE THE VERIFICATION OF WORKER'S DISABILITY COMPENSATION ACT COMPLIANCE (ON REVERSE SIDE IF DOUBLE SIDED) WITHIN 21 DAYS OF SALE AWARD DATE



FOR DEPARTMENT USE ONLY

Sale Number (XX - XXX - XX - XX)

Forest Management Unit:

**TIMBER SALE
VERIFICATION OF WORKER'S DISABILITY
COMPENSATION ACT COMPLIANCE**

*As required by Act 317, P.A. 1969 (Worker's Compensation) and
Part 5 of Act 451 of 1994, as amended.*

VERIFICATION OF WORKER'S DISABILITY COMPENSATION ACT COMPLIANCE

- This verification must be completed and submitted within 21 days of contract award and prior to the issuance of the timber sale contract.
- In addition, if boxes 2B or 2C are checked, then Notice of Exclusion or Certificate of Insurance must be submitted within twenty-one (21) days of the contract award and prior to the issuance of the timber sale contract.
- All information must be typed or printed except for written signatures.

Please Check Appropriate Categories:

1. My business is organized as (you **must** check one of the boxes below):
 - A. Sole Proprietorship (individual)
 - B. Partnership
 - C. Corporation
2. You **must** check one of the boxes below:
 - A. I certify my business is a sole proprietorship and it has no employees but the sole proprietor. I am not subject to the Worker's Compensation Laws.
 - B. I certify my business has satisfied its obligation to the Worker's Compensation Act through the use of an approved Notice of Exclusion (BWC-337, Rev. 5/96). I will provide a copy of the Notice of Exclusion within 21 days of the contract award. (For questions or a copy of the BWC-337, please call the Worker's Compensation Bureau at 517-322-1195).
 - C. I certify my business has a Worker's Compensation Policy. I will provide an original Certificate of Insurance within twenty-one (21) days of the contract award.
3. If you have checked item 2(A) or 2(B), you **must** indicate the number of **both** full-time and part-time employees, other than yourself, including family members and active partners (if none, you must enter "0").

_____ Full-time Employees

_____ Part-time Employees

Name of Business		Federal ID (or) Social Security No.	
Address		Telephone ()	
City	State	ZIP	

I hereby certify that the above information is true and correct. I agree to notify the Michigan DNR of any changes that occur in factors affecting my coverage during any of my present and future operations.

Signature of Owner or Authorized Representative

Title

Date

Please complete the "SEALED BID" information on the next page