



**DEPARTMENT OF NATURAL RESOURCES  
STATE OF MICHIGAN**

**TIMBER SALE PROSPECTUS #6147**

SCHEDULED SALE DATE AND TIME: 4:00 p.m. (local time) on June 7, 2018.

LOCATION: TRAVERSE CITY MGMT UNIT, 2122 M 37 SOUTH, TRAVERSE CITY, MI 49685.

PROSPECTUS NOTE: The bidder is advised to inspect the sale area and review the location, estimated volumes, operating costs and contract terms of proposed sales. Please be aware that some landowners may request 60 days or more notice for access across their land.

Notice is hereby given that bids will be received by the Unit Manager, TRAVERSE CITY MANAGEMENT UNIT, for certain timber on the following described lands:

Chopper Red (61-049-17)

Grand Traverse County, Advertised Price \$27,826.40, 26.3 Acres, Red Pine, White Pine.

SALE NOTE: Red Pine final harvest. Areas must be chip harvested with tree length skidding to prepare site for re-planting. Area must be harvested by October 30 2018.

Pick Pocket Jack (61-089-17)

Grand Traverse County, Advertised Price \$12,559.25, 70.4 Acres, Hardwood, Jack Pine.

SALE NOTE: Short-wood job required. Sale includes jack pine and aspen along with marked oak/red maple.

A recreation site such as a trail, pathway, or campground is within the sale area or the vicinity. Certain restrictions/specifications may be applicable including time restrictions.

Maple Grove Mix (61-090-17)

Benzie County, Advertised Price \$40,932.05, 52.5 Acres, Hardwood, Red Oak.

Half Moon Harvest (61-091-17)

Benzie County, Advertised Price \$26,458.55, 26.5 Acres, Aspen, Hardwood.

Leatherwood Mix (61-092-17)

Benzie County, Advertised Price \$27,843.25, 58.8 Acres, Aspen, Hardwood.

SALE NOTE: Sale access will require installation of a temporary bridge, which may be provided by the DNR. Seasonal restrictions will be used to limit recreation impacts to the Lake Ann Pathway.

A recreation site such as a trail, pathway, or campground is within the sale area or the vicinity. Certain restrictions/specifications may be applicable including time restrictions.

## BID INSTRUCTIONS (VER. 11/28/2017):

### 1. Scheduled Bid Location, Date, and Time (2/11)

Bids must be received by the Unit Manager, TRAVERSE CITY OFFICE, 2122 M 37 SOUTH, TRAVERSE CITY, MI 49685, no later than 4:00 p.m. (local time) on June 7, 2018. For further information concerning this sale, contact David Lemmien at 231-922-5280 extension 6840.

### 2. Bidder's Qualifications (5/16)

Purchaser shall obtain workers compensation insurance to cover claims under Michigan's Worker's Disability Compensation Act of 1969 or similar employee benefit act of any other state applicable to an employee. If all or part of a timber sale was prepared by a private contractor, the contractor and that contractor's company are not permitted to bid on the timber sale contract. Bids will not be accepted from individuals or companies appearing on the DNR/FRD No-Bid List. This list contains the names of purchasers who previously failed to execute a contract within 21-days or who have a history of poor performance.

### 3. Preparation of Sealed Bids (5/16)

Bid Forms may be completed online thru Michigan DNR Timber Sale Online Bidding (OLB) at [www.michigan.gov/timberbidding](http://www.michigan.gov/timberbidding) or by completing the hardcopy Bid Form found in the Timber Sale Prospectus. Hardcopy Bid Forms shall be manually signed in ink. Registration in OLB is considered your 'signature' for all bids submitted thru that system. Bid prices must be entered for each species and product in the Bid Price column for all material subject to bidding and all fill-in blanks must be completed. If erasures or other changes appear on the hardcopy Bid Form, each erasure or change must be initialed by the person signing the bid.

### 4. Submission of Sealed Bids (5/16)

Bid forms may be obtained from the Unit Manager or thru OLB. Bids may be submitted hardcopy or thru OLB. All hardcopy bids must be submitted on the bid form and in an envelope clearly identified as described in this section. NOTE: Only one bid form per bid envelope. Sealed bids must be submitted to the Unit office designated in the prospectus and must be submitted at or prior to the time established in the prospectus. The envelope should show on the outside (a) the sale name or number and (b) the date and time of bid opening, as shown in the prospectus. Bids received after the time specified in the sale prospectus are late bids and will be rejected.

It is possible for a bidder to submit multiple bids on a single sale. For example, a bid may be submitted hardcopy and a bid may be submitted thru OLB. Or, two bidders from the same company could both submit bids on the same sale. If this were to happen, the State would accept all bids received and award the contract accordingly. All bidding and contractual requirements would apply to all bids received.

### 5. Public Opening of Sealed Bids (7/16)

If conditions permit, the sealed bids will be publicly opened and posted at the time and place set in the prospectus.

If a bidder, present at a bid opening, has submitted bids on more than one sale, that bidder may withdraw their unopened bid envelopes or announce the withdrawal of their online bid after being declared the successful bidder on one sale.

### 6. Award of Contract (1/11)

Award of the contract will be made to the Bidder whose bid, conforming to the prospectus, is most advantageous to the State of Michigan on the basis of total value at rates bid for the estimated quantities. The State reserves the right to reject any bid or waive any minor irregularity in bids received. A written award mailed (or otherwise furnished) to the successful Bidder shall be deemed to result in a binding contract without further action by either party.

### 7. Down Payment (1/11)

The Bidder to whom award is made must make a down payment within 21 days of the sale award. The amount of the down payment will be calculated as shown in the Bond and Payment Schedule of this prospectus. Only cash may be used to meet this requirement.

### 8. Performance Security (1/11)

As guarantee of faithful performance, a cash bond, certificate of deposit, surety bond or irrevocable letter of credit (LOC) is required within 21 days of the sale award. The amount of the performance security is shown in the Bond and

Payment Schedule of this prospectus. If an LOC or surety is used, the coverage must extend for at least 6 months beyond the contract expiration.

#### 9. Timber Sale Contract (11/17)

Additional conditions and requirements common to all timber sales are listed on the timber sale contract (R4031) and are available on line at [www.michigan.gov/timber](http://www.michigan.gov/timber). Contact the Unit Manager for additional information or a sample contract. Within 21 days of the date of the award letter, the bidder must sign the contract and provide the required down payment, performance security, and verification of worker's disability compensation. The down payment and performance security shall be in accordance with the provisions of the timber sale contract, in the sums stated in this prospectus. If these actions are not taken, then the Bidder, the Bidder's corporation, and the corporation's principals may not be permitted to bid on State timber sales for a period of 1 year. In addition, the Bidder certifies that if awarded this contract, the Bidder will complete the timber sale contract in accordance with its terms and any modifications thereof including requirements to purchase, cut, and remove the included timber by the expiration date.

Payment Unit values in the State Forest Timber Sale Contract are calculated based on the advertised value of the Payment Unit as a percentage of the total advertised value of the contract. The advertised value of each Payment Unit is given in the Description of Timber by Payment Unit table on the Timber Sale Information page. For example, if the value of Payment Unit 1 is advertised as \$1,500 and the total Timber Sale value is advertised as \$10,000, the contract price for Payment Unit 1 will be 15% of the total bid price ( $\$1,500/\$10,000 * 100$ ).

#### 10. Disclaimer of Estimates and Bidder's Warranty of Inspection (7/16)

Before submitting this bid, the Bidder is advised and cautioned to inspect the sale area, review the requirements of the sale contract, and take other steps as may be reasonably necessary to ascertain the location, estimated volumes, construction estimates, and operating costs of the proposed sale. Failure to do so will not relieve the Bidder from responsibility for completing the contract.

The Bidder warrants that this bid is submitted solely on the basis of the Bidder's examination and inspection of the quality and quantity of the timber offered for sale and the Bidder's opinion of the value thereof and the costs of recovery. No reliance should be placed on the State of Michigan's estimates of timber quality, quantity or costs of recovery. Bidder further acknowledges that the State of Michigan: (i) expressly disclaims any warranty of fitness of timber for any purpose; (ii) offers this timber as is without any warranty of quality (merchantability) or quantity and (iii) expressly disclaims any warranty as to the quantity or quality of timber sold.

#### 11. Certification and Chain-of-Custody (10/14)

Unless otherwise indicated in the contract under section 7 – Other Conditions of the Sale Specific Conditions & Requirements, the area encompassed by this timber sale is certified to the standards of the Forest Stewardship Council (FSC) - Certificate #SCS-FM/COC-00090N and the Sustainable Forestry Initiative (SFI) - Certificate # NSF-SFIS-5Y031-SF5. Forest products from this sale may be delivered to the mill as "FSC 100% and / or SFI certified" as long as the contractor hauling the forest products is chain-of-custody (COC) certified or covered under a COC certificate from the destination mill. The purchaser is responsible for maintaining COC after leaving the sale area.

#### 12. Good Neighbor Authority (GNA) Requirements (7/16)

If the name of this timber sales contains the acronym GNA, it is authorized by the Good Neighbor Authority (GNA) and covered by various agreements between the U.S. Forest Service and the State. The timber sale occurs on federal land and the following conditions apply:

GNA contracts on US Forest Service land will not be awarded to purchasers on the Federal list of excluded parties. The System for Award Management (SAM) will be checked for active excluded parties prior to award of contract. In addition, the Bidder to whom award is made must complete an Assurance Regarding Felony Conviction or Tax Delinquent Status for Corporate Applicants (AD-3031).

#### 13. Good Neighbor Authority (GNA) Requirements, con't (9/16)

Bidder certifies, by signing this bid form, that to the best of Bidder's knowledge that the following representations are accurate and complete.

a. That the Bidder and its principals are not presently debarred, suspended, proposed for debarment, declared ineligible, or voluntary excluded from timber sales (covered transactions) by any Federal department or agency.

b. That the Bidder and its principals have not within a 3-year period preceding this bid been convicted of or had a civil judgment rendered against them for commission of fraud or a criminal offense in connection with obtaining, attempting to obtain, or performing a public (Federal, State, or local) transaction or contract under a public transaction; violation of Federal or State antitrust statutes or commission of embezzlement, theft, forgery, bribery, falsification or destruction of records, making false statements, or receiving stolen property.

c. That the Bidder and its principals are not presently indicted for or otherwise criminally or civilly charged by a governmental entity (Federal, State, or local) with commission of any of the offenses enumerated in paragraph b of this certification.

d. That the Bidder and its principals have not within a 3-year period preceding this bid had one or more public transactions (Federal, State, or local) terminated for breach or default of a timber or forest product contract.

Bidders that cannot certify this requirement, in whole or in part, shall submit an explanation with their bid.

KEITH CREAGH  
Director

**TIMBER SALE INFORMATION**

Chopper Red (61-049-17)

Grand Traverse County (Advertised Price \$27,826.40)

SALE NOTE: Red Pine final harvest. Areas must be chip harvested with tree length skidding to prepare site for re-planting. Area must be harvested by October 30 2018.

A timber sale contract for this lump sum, sealed bid timber sale will be awarded to the responsible bidder offering the highest sealed bid price. Bids must be at or above the following advertised price for each species:

<u>PRODUCTS &amp; SPECIES</u>	<u>ESTIMATED UNITS*</u>	<u>ADVERTISED PRICE</u>
Sawtimber		
Red Oak	2.50 MBF	\$ 138.00 / MBF
Red Pine	229.00 MBF	\$ 78.00 / MBF
White Pine	5.50 MBF	\$ 41.00 / MBF
Pulpwood		
Jack Pine	1.00 Cords	\$ 9.30 / Cord
Misc. Species 2	32.00 Cords	\$ 5.00 / Cord
Mixed Hardwood	9.00 Cords	\$ 12.60 / Cord
Red Pine	338.00 Cords	\$ 26.90 / Cord
White Pine	2.00 Cords	\$ 9.50 / Cord

\* The total volume is statistically estimated within plus (+) or minus (-) 13.87 percent. The estimated units are final and not subject to adjustment. Prospective bidders are urged to examine this timber and to make their own estimates of quantity and quality.

**BOND AND PAYMENT SCHEDULE:**

1. A bond in the amount of \$1,391.00 to insure faithful performance of the conditions of the contract will be deposited by the successful bidder within 21 days of the sale award.
2. Cutting in any sale or unit without the required advance payment would be considered a trespass.
3. Total payment must be paid in advance or according to the following schedule:
  - (a) Ten percent (10%) of the sale value must be paid within 21 days of the sale award.
  - (b) The 10% down payment will be credited towards the first unit cut.
  - (c) Payment for each of the following units must be made before cutting begins in that unit:
 

<u>PAYMENT UNIT NUMBER</u>	<u>PERCENT OF TOTAL SALE VALUE</u>
01	44.8%
02	54.9%
03	0.3%
4. If no cutting takes place, the 10% down payment will not be refunded.
5. Operations on the contract issued will terminate on 06/30/2019.

**Description of Timber by Payment Unit (PU)**

PU	MARKET GROUP	PRODUCT	QUANTITY	UNIT	ACRES	ADVERTISE PRICE
1	Red Oak	Sawtimber	2.4	MBF	10.1	\$12,465.00
	Red Pine		88.7	MBF		
	White Pine	5.4	MBF			
	Misc. Species 2	Pulpwood	32.0	Cords		
	Mixed Hardwood		5.0	Cords		
	Red Pine		177.0	Cords		
	White Pine		1.0	Cords		
2	Red Pine	Sawtimber	140.3	MBF	8.5	\$15,274.30
	Red Pine	Pulpwood	161.0	Cords		
3	Red Oak	Sawtimber	0.1	MBF	7.7	\$87.10
	White Pine		0.1	MBF		
	Jack Pine	Pulpwood	1.0	Cords		
	Mixed Hardwood		4.0	Cords		
	White Pine		1.0	Cords		
TOTAL:			237.0	MBF		
TOTAL:			382.0	Cords		

## Sale Specific Conditions & Requirements

**Sale Name: Chopper Red**

**Sale Number: 61-049-17 Seq#: 2**

### 1 - Sale Area

#### 1.2 - Boundaries

##### 1.2.1 - Painted boundaries (1/14)

The sale boundary is marked and identified by red paint, O'Dell Road, and timber type changes. Exterior sale boundary lines against state are marked with red paint, with the exception of the boundary for Payment Unit 3, which is unpainted. Payment Unit 3 has been roller chopped while adjacent stands have not; this distinction will serve as the boundary. The painted boundary line trees are Included Timber and are to be harvested, with the exception of the red painted boundary trees on the east side of sale area along Broomhead Road, which are to be retained.

### 2 - Timber Specifications

#### 2.1 - Included Timber

##### 2.1.1 - Clearcut unit(s) with unmerchantable trees (6/14)

Within Payment Unit(s) 1 and 2, cut all trees that are one (1) inch or more at DBH.

##### 2.1.3 - Cut tree marked unit(s) (12/08)

Within Payment Unit(s) 3, all trees are designated for cutting when marked with orange paint above and below stump height, regardless of merchantability. These are scattered hardwood and pine trees (approx. 35-40 trees) left in the area that has been roller chopped to eliminate advanced jack pine regeneration.

##### 2.1.11 - Description of timber note (2/04)

Note that Misc. Species 2 is dead oak, which is designated for cutting. Mixed Hardwood pulp includes red maple, sugar maple, red oak, black cherry.

#### 2.2 - Utilization

##### 2.2.2 - Chipping required (5/14)

This area must be chip harvested to facilitate subsequent planting operations. The Purchaser has the option to produce sawlogs or pulpwood bolts, but the remaining portion of the trees must be chipped and hauled. The requirement to retain approximately 1/6 to 1/3 of tree tops and limbs less than four inches in diameter does not apply (G. C. & R. 2.2). This is because slash would interfere with future planting operations.

##### 2.2.3 - Stump heights (4/07)

Stump heights within the Sale Area shall not exceed 6 inches for all trees. This is in order to facilitate planting operations.

##### 2.2.4 - Skidding length (2/14)

Tree length skidding is required.

### 5 - Operations

#### 5.1 - Notification

##### 5.1.1 - Pre-sale conference (10/16)

A pre-sale conference on site between the Purchaser and sale administrator is required prior to beginning any operations to determine landing and road locations. The Unit Manager or his/her representative must be contacted at least 3 days in advance to schedule the conference.

##### 5.1.4 - Post-sale conference (10/16)

A post-sale conference on site between the Purchaser and sale administrator is required 3 days prior to the completion of active logging operations to determine clean-up and repair of landings, road edges, and the fulfillment of other contract specifications.

#### 5.2 - Conduct of Operations

##### 5.2.3 - Operating Restrictions

#### 5.2.3.4 - Oak wilt restriction (4/17)

Within Payment Unit(s) 1-3, unless changed by written agreement, cutting, skidding, and hauling are not permitted during the period of April 15 to July 15. Operations may be allowed if specific steps are taken to prevent damaging uncut oak during the high risk period. Those steps include completing all road brushing before April 15th, clearing a tree-length buffer along uncut oak cover before April 15th or leaving an uncut buffer there until after July 15th. This is necessary to reduce the spread of oak wilt. For more information, contact the Unit Manager or his/her representative.

#### 5.4 - Soil Protection

##### 5.4.1 - Rutting restriction, general (7/16)

Operations are to cease immediately if equipment and weather conditions result in rutting of roads and/or skid trails which is 12 inches or greater in depth and 50 feet in length. The Unit Manager or his/her representative may restrict hauling and/or skidding if ruts exceed the specified depth. With the Unit Manager or his/her representative's approval, the Purchaser may return to the area when the risk of rutting has decreased.

### 6 - Safety and Fire Prevention

#### 6.2 - Signing

##### 6.2.1 - Road posting (9/09)

The Purchaser is responsible for posting and maintaining caution signs on Broomhead and O'Dell Roads prior to beginning operations. The road must be posted at appropriate distances from the sale area to warn of logging activity and truck traffic. Signs must be removed when harvest operations are suspended or completed. The Purchaser will provide these signs.

### 7 - Other Conditions

#### 7.2 - Extensions

##### 7.2.2 - No extensions (3/09)

There will be no extensions granted on this contract. This sale is already scheduled for planting.





Sale Number	Year
61-049	17

# TIMBER SALE MAP

This information provided by authority of *Pari 525, 1994 PA 451, as amended.*

Forest Management Unit Traverse City	County Grand Traverse	Mapped By Ruppen	Date 9/17/2017	Page 1	of 1
Township 27N	Range 9W	Section(s) and Subdivision(s) Sec 9 NENW//Sec 10 NWNW	Scale 1:7,920		

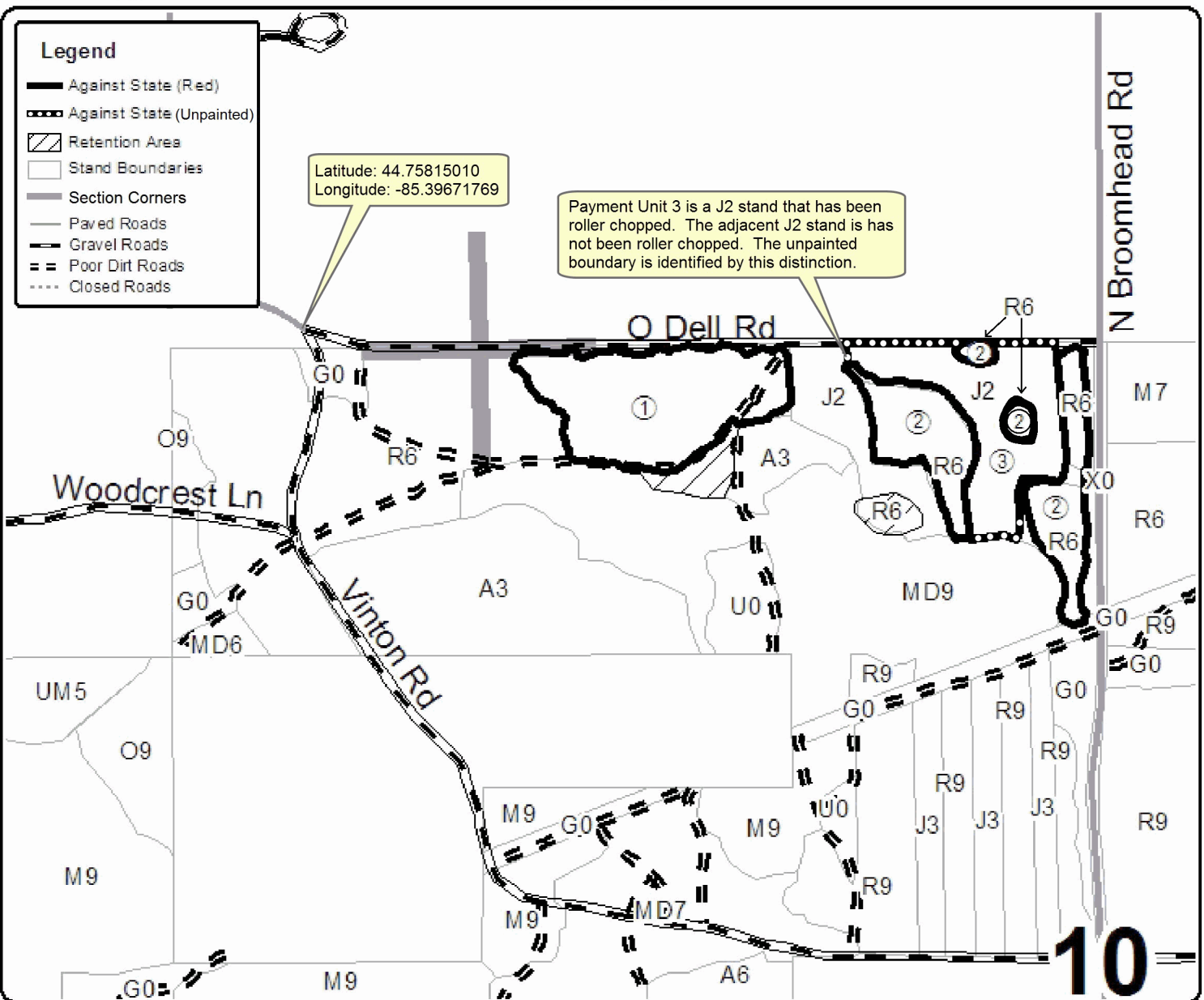
Cover Type				Density			
A = Aspen	H = Hemlock	N = Marsh	U = Upland Brush	0 = Non Stocked	5 = Pole Timber Medium		
B = Paper Birch	J = Jack Pine	O = Oak	UM = Upland Mixed	1 = Seeding Sapling Poor	6 = Pole Timber Well		
C = Cedar	L = Lowland Brush	P = Lowland Poplar	V = Bog or Marsh	2 = Seeding Sapling Medium	7 = Saw Timber Poor		
D = Treed Bog	LM = Lowland Mixed	Q = Mixed Swamp Conifer	W = White Pine	3 = Seeding Sapling Well	8 = Saw Timber Medium		
E = Swamp Hdwoods	M = Mpl. Bch. Bich	R = Red Pine	X = Non Stocked	4 = Pole Timber Poor	9 = Saw Timber Well		
F = Spruce Fir	MC = Mixed Conifer	S = Black Spruce	Z = Water				
G = Grass	MD = Mixed Deciduous	T = Tamarack					

PU	Acres
1	10.1
2	8.5
3	7.7

## Chopper Red

### Compartment 41

Acres 26.3





**TIMBER SALE INFORMATION**

Pick Pocket Jack (61-089-17)

Grand Traverse County (Advertised Price \$12,559.25)

SALE NOTE: Short-wood job required. Sale includes jack pine and aspen along with marked oak/red maple.

A recreation site such as a trail, pathway, or campground is within the sale area or the vicinity. Certain restrictions/specifications may be applicable including time restrictions.

A timber sale contract for this lump sum, sealed bid timber sale will be awarded to the responsible bidder offering the highest sealed bid price. Bids must be at or above the following advertised price for each species:

<u>PRODUCTS &amp; SPECIES</u>	<u>ESTIMATED UNITS*</u>	<u>ADVERTISED PRICE</u>
Sawtimber		
Jack Pine	27.40 MBF	\$ 30.00 / MBF
Red Pine	3.30 MBF	\$ 117.00 / MBF
White Oak	7.70 MBF	\$ 56.00 / MBF
Pulpwood		
B. T. Aspen	19.00 Cords	\$ 20.35 / Cord
Black Cherry	31.00 Cords	\$ 18.95 / Cord
Jack Pine	560.00 Cords	\$ 13.90 / Cord
Mixed Oak	61.00 Cords	\$ 16.85 / Cord
Red Maple	21.00 Cords	\$ 18.95 / Cord
Red Pine	8.00 Cords	\$ 40.35 / Cord
White Pine	29.00 Cords	\$ 14.25 / Cord

\* The total volume is statistically estimated within plus (+) or minus (-) 17.37 percent. The estimated units are final and not subject to adjustment. Prospective bidders are urged to examine this timber and to make their own estimates of quantity and quality.

**BOND AND PAYMENT SCHEDULE:**

1. A bond in the amount of \$1,000.00 to insure faithful performance of the conditions of the contract will be deposited by the successful bidder within 21 days of the sale award.
2. Cutting in any sale or unit without the required advance payment would be considered a trespass.
3. Total payment must be paid in advance or according to the following schedule:
  - (a) Ten percent (10%) of the sale value must be paid within 21 days of the sale award.
  - (b) The 10% down payment will be credited towards the first unit cut.
  - (c) Payment for each of the following units must be made before cutting begins in that unit:

<u>PAYMENT UNIT NUMBER</u>	<u>PERCENT OF TOTAL SALE VALUE</u>
01	28.9%
02	34.7%
03	19.4%
04	17.0%

4. If no cutting takes place, the 10% down payment will not be refunded.
5. Operations on the contract issued will terminate on 06/30/2020.

**Description of Timber by Payment Unit (PU)**

PU	MARKET GROUP	PRODUCT	QUANTITY	UNIT	ACRES	ADVERTISE PRICE
1	Jack Pine	Sawtimber	5.6	MBF	19.2	\$3,624.05
	Red Pine		1.5	MBF		
	White Oak		3.5	MBF		
	B. T. Aspen	Pulpwood	6.0	Cords		
	Black Cherry		14.0	Cords		
	<i>Black Cherry</i>	<i>Sawtimber</i>	0.4	<i>MBF</i>		
	<i>Black Cherry</i>	<i>Pulpwood</i>	13.0	<i>Cords</i>		
	Jack Pine		137.0	Cords		
	Mixed Oak		22.0	Cords		
	<i>White Oak</i>		22.0	<i>Cords</i>		
	Red Maple		10.0	Cords		
	<i>Red Maple</i>	<i>Sawtimber</i>	0.4	<i>MBF</i>		
	<i>Red Maple</i>	<i>Pulpwood</i>	9.0	<i>Cords</i>		
	Red Pine		4.0	Cords		
	White Pine		5.0	Cords		
	<i>White Pine</i>		5.0	<i>Cords</i>		
	2	Jack Pine	Sawtimber	6.8		
Red Pine			1.8	MBF		
White Oak			4.2	MBF		
B. T. Aspen		Pulpwood	8.0	Cords		
Black Cherry			17.0	Cords		
<i>Black Cherry</i>		<i>Sawtimber</i>	0.5	<i>MBF</i>		
<i>Black Cherry</i>		<i>Pulpwood</i>	16.0	<i>Cords</i>		
Jack Pine			167.0	Cords		
Mixed Oak			26.0	Cords		
<i>White Oak</i>			26.0	<i>Cords</i>		
Red Maple			11.0	Cords		
<i>Red Maple</i>		<i>Sawtimber</i>	0.5	<i>MBF</i>		
<i>Red Maple</i>		<i>Pulpwood</i>	10.0	<i>Cords</i>		
Red Pine			4.0	Cords		
White Pine			7.0	Cords		
<i>White Pine</i>			7.0	<i>Cords</i>		
3		Jack Pine	Sawtimber	10.0	MBF	14.6
	B. T. Aspen	Pulpwood	5.0	Cords		
	Jack Pine		124.0	Cords		
	Mixed Oak		4.0	Cords		
	<i>Red Oak</i>		2.0	<i>Cords</i>		
	<i>White Oak</i>		2.0	<i>Cords</i>		
	White Pine		17.0	Cords		
	<i>White Pine</i>	<i>Sawtimber</i>	1.0	<i>MBF</i>		
	<i>White Pine</i>	<i>Pulpwood</i>	15.0	<i>Cords</i>		
	4	Jack Pine	Sawtimber	5.0	MBF	
Jack Pine		Pulpwood	132.0	Cords		
Mixed Oak			9.0	Cords		
<i>Red Oak</i>			5.0	<i>Cords</i>		
<i>White Oak</i>			4.0	<i>Cords</i>		
TOTAL:			38.4	MBF		
TOTAL:			729.0	Cords		

## Sale Specific Conditions & Requirements

**Sale Name: Pick Pocket Jack**

**Sale Number: 61-089-17 Seq#: 1**

### 1 - Sale Area

#### 1.2 - Boundaries

##### 1.2.1 - Painted boundaries (1/14)

The sale boundary is marked and identified by red paint. Exterior sale boundary lines against state are marked with red paint. No cut buffers along the motorcycle trail are marked with purple/pink paint. The painted boundary line trees are not Included Timber and are to be protected unless marked with orange paint.

### 2 - Timber Specifications

#### 2.1 - Included Timber

##### 2.1.4 - Designated timber unit(s) (6/17)

Within Payment Unit(s) 1-4, all jack pine and aspen trees are designated for cutting, which meet minimum piece specifications in 2.2 - Utilization. In addition, cut all trees marked with orange paint above and below stump height.

#### 2.2 - Utilization

##### 2.2.6 - Roundwood operation required (5/07)

The skidding of whole trees or tree segments with limbs attached is prohibited within Payment Unit(s) 1-4. All products must be produced as roundwood and forwarded to existing roads or landing areas in final product length.

### 4 - Transportation

#### 4.1 - Construction

##### 4.1.12 - No new roads (1/12)

No new roads will be permitted in any Payment Unit. All operations are limited to existing roads. Skid trails only will be allowed.

#### 4.2 - Maintenance

##### 4.2.4 - Grading (10/16)

For completion of the sale, state forest roads must be graded. In general, this will require a road grader or bull dozer to shape up the roads after forest products have been hauled off site. This includes cleaning of drainage areas, grading, crowning and filling with gravel, if necessary. The grading equipment to be used must be approved by the Unit Manager or his/her representative.

##### 4.2.5 - Two wheel drive condition (2/04)

All existing trail roads on and adjacent to the sale area must be passable by two-wheel drive traffic for the duration of the sale.

### 5 - Operations

#### 5.1 - Notification

##### 5.1.1 - Pre-sale conference (10/16)

A pre-sale conference on site between the Purchaser and sale administrator is required prior to beginning any operations to determine landing and road locations. The Unit Manager or his/her representative must be contacted at least 3 days in advance to schedule the conference.

##### 5.1.4 - Post-sale conference (10/16)

A post-sale conference on site between the Purchaser and sale administrator is required 3 days prior to the completion of active logging operations to determine clean-up and repair of landings, road edges, and the fulfillment of other contract specifications.

#### 5.2 - Conduct of Operations

## 5.2.1 - Slash

### 5.2.1.8 - Slash height (12/08)

No slash or tree tops may exceed 30 inches in height.

## 5.2.2 - Hazard Trees/Snags

### 5.2.2.1 - Den trees (10/16)

Obvious hollow and/or den trees shall be protected and left standing unless they are a safety hazard.

## 5.2.3 - Operating Restrictions

### 5.2.3.4 - Oak wilt restriction (9/17)

Within Payment Unit(s) 1-4, cutting, skidding, hauling and brushing of access roads are not permitted during the period of April 15 to July 15. This is necessary to reduce the spread of oak wilt. For more information, contact the Unit Manager or his/her representative.

## 5.2.39 - ORV trail/route protection (12/12)

The motorcycle trail is shown on the Timber Sale Map. Do not cut trees or damage posts with orange ORV markers. No cut buffers are marked with pink/purple paint approximately 20' on each side of the trail. Trees within the buffer area are not Included Timber. Maintain a 20 foot wide slash, debris, and rut free zone daily using the ORV trail or route as the centerline. Do not run equipment down the ORV trail or route. Skidding across the trail or route may only occur in locations approved by the sale administrator.

## 5.2.40 - Pathway protection (10/10)

The horse trail is shown on the Timber Sale Map. It runs down a forest road in the sale area. Do not cut trees or damage posts with blue pathway markers. Maintain a 20-foot wide slash, debris, and rut free zone daily, using the pathway as the centerline.

## 5.4 - Soil Protection

### 5.4.1 - Rutting restriction, general (7/16)

Operations are to cease immediately if equipment and weather conditions result in rutting of roads and/or skid trails which is 12 inches or greater in depth and 50 feet in length. The Unit Manager or his/her representative may restrict hauling and/or skidding if ruts exceed the specified depth. With the Unit Manager or his/her representative's approval, the Purchaser may return to the area when the risk of rutting has decreased.

## 6 - Safety and Fire Prevention

### 6.2 - Signing

#### 6.2.3 - Recreational trail posting (2/10)

The Purchaser is responsible for posting and maintaining caution signs on the motorcycle trail prior to beginning operations. The trail must be posted at appropriate distances from the sale area to warn of logging activity and truck traffic at both ends of the trail. Signs must be removed when harvest operations are suspended or completed. The Purchaser will provide these signs.



# TIMBER SALE MAP

This information provided by authority of Part 525, 1994 PA 451, as amended.

Forest Management Unit Traverse City	County Grand Traverse	Mapped By Ruppen	Date 09/30/2017	Page 1	of 1
Township 27N	Range 9W	Section(s) and Subdivision(s) Sec 19 SENW, W1/2NE, SENE, N1/2SW, NWSE	Scale 1:15,840		

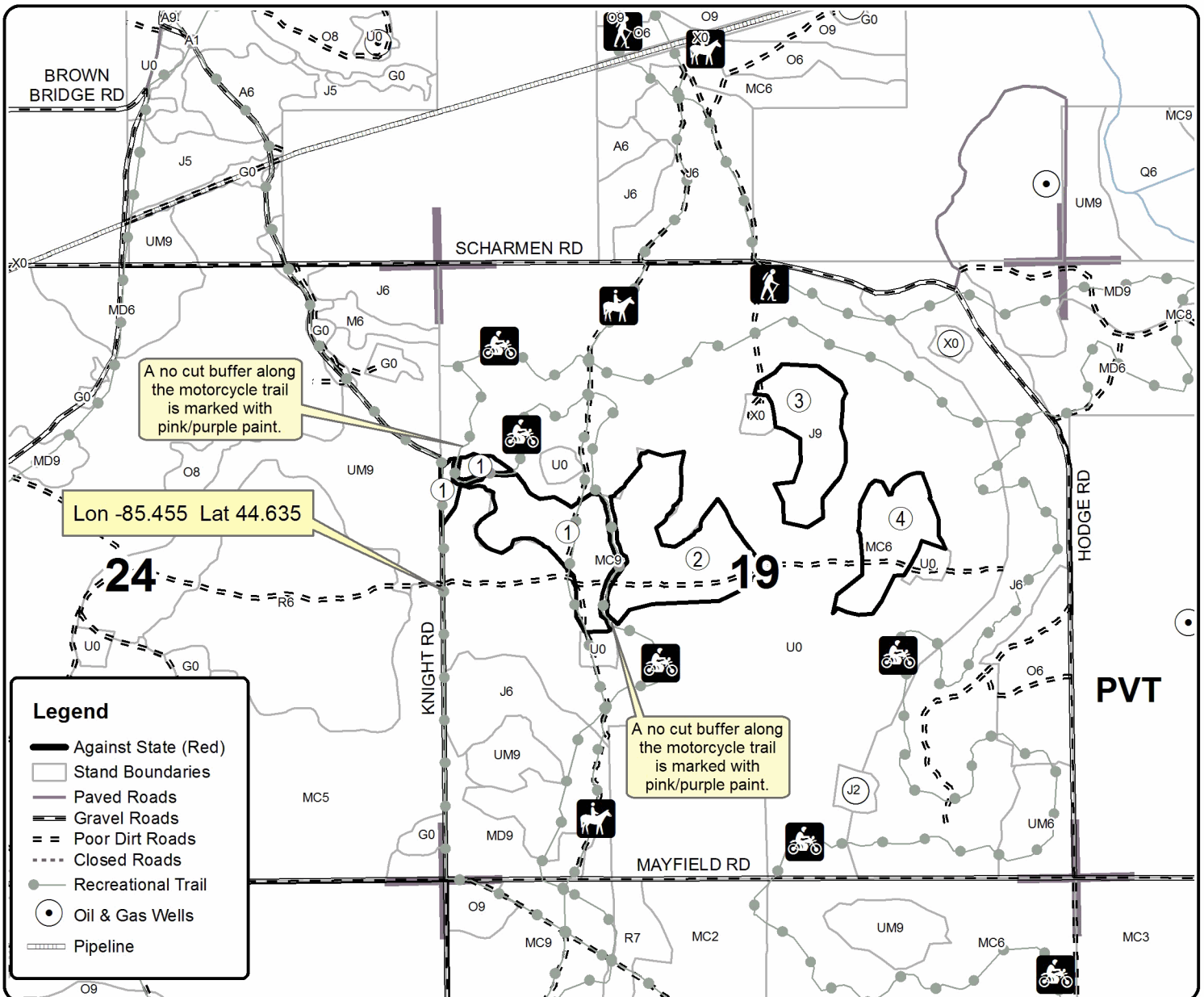
Cover Type				Density	
A = Aspen	H = Hemlock	N = Marsh	U = Upland Brush	0 = Non Stocked	5 = Pole Timber Medium
B = Paper Birch	J = Jack Pine	O = Oak	UM = Upland Mixed	1 = Seedling Sapling Poor	6 = Pole Timber Well
C = Cedar	L = Lowland Brush	P = Lowland Poplar	V = Bog or Marsh	2 = Seedling Sapling Medium	7 = Saw Timber Poor
D = Tread Bog	LM = Lowland Mixed	Q = Mixed Swamp Conifer	W = White Pine	3 = Seedling Sapling Well	8 = Saw Timber Medium
E = Swamp Hdwoods	M = Mpl, Bch, Brch	R = Red Pine	X = Non Stocked	4 = Pole Timber Poor	9 = Saw Timber Well
F = Spruce Fir	MC = Mixed Conifer	S = Black Spruce	Z = Water		
G = Grass	MD = Mixed Deciduous	T = Tamarack			

PU	Acres	PU	Acres
1	19.2	4	13.1
2	23.5		
3	14.6		

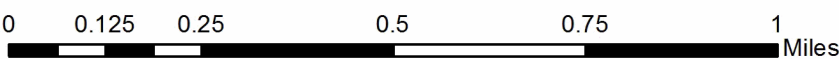
## Pick Pocket Jack

### Compartment 53

70.4 Acres



Legend	
	Against State (Red)
	Stand Boundaries
	Paved Roads
	Gravel Roads
	Poor Dirt Roads
	Closed Roads
	Recreational Trail
	Oil & Gas Wells
	Pipeline







# TIMBER SALE INFORMATION

## Maple Grove Mix (61-090-17)

Benzie County (Advertised Price \$40,932.05)

A timber sale contract for this lump sum, sealed bid timber sale will be awarded to the responsible bidder offering the highest sealed bid price. Bids must be at or above the following advertised price for each species:

<u>PRODUCTS &amp; SPECIES</u>	<u>ESTIMATED UNITS*</u>		<u>ADVERTISED PRICE</u>
<b>Sawtimber</b>			
B. T. Aspen	35.10	MBF	\$ 109.00 / MBF
Basswood	0.50	MBF	\$ 111.00 / MBF
Beech	12.60	MBF	\$ 111.00 / MBF
Red Maple	46.10	MBF	\$ 114.00 / MBF
Red Oak	77.80	MBF	\$ 206.00 / MBF
Sugar Maple	3.00	MBF	\$ 266.00 / MBF
White Pine	1.00	MBF	\$ 62.00 / MBF
<b>Pulpwood</b>			
B. T. Aspen	219.00	Cords	\$ 20.35 / Cord
Mixed Hardwood	351.00	Cords	\$ 18.95 / Cord
Red Oak	140.00	Cords	\$ 16.85 / Cord
White Pine	3.00	Cords	\$ 14.25 / Cord

\* The total volume is statistically estimated within plus (+) or minus (-) 15.56 percent. The estimated units are final and not subject to adjustment. Prospective bidders are urged to examine this timber and to make their own estimates of quantity and quality.

**BOND AND PAYMENT SCHEDULE:**

1. A bond in the amount of \$2,047.00 to insure faithful performance of the conditions of the contract will be deposited by the successful bidder within 21 days of the sale award.
2. Cutting in any sale or unit without the required advance payment would be considered a trespass.
3. Total payment must be paid in advance or according to the following schedule:
  - (a) Ten percent (10%) of the sale value must be paid within 21 days of the sale award.
  - (b) The 10% down payment will be credited towards the first unit cut.
  - (c) Payment for each of the following units must be made before cutting begins in that unit:

PAYMENT UNIT NUMBER	PERCENT OF TOTAL SALE VALUE
01	53.1%
02	9.9%
03	26.2%
04	10.8%

4. If no cutting takes place, the 10% down payment will not be refunded.
5. Operations on the contract issued will terminate on 06/30/2020.

**Description of Timber by Payment Unit (PU)**

PU	MARKET GROUP	PRODUCT	QUANTITY	UNIT	ACRES	ADVERTISE PRICE			
1	B. T. Aspen	Sawtimber	5.1	MBF	30.8	\$21,730.45			
	Basswood		0.5	MBF					
	Beech		8.8	MBF					
	Red Maple		6.9	MBF					
	Red Oak		64.3	MBF					
	Sugar Maple		0.5	MBF					
	B. T. Aspen		Pulpwood	26.0			Cords		
	Mixed Hardwood	179.0		Cords					
	<i>Basswood</i>	3.0		<i>Cords</i>					
	<i>Beech</i>	125.0		<i>Cords</i>					
	<i>Red Maple</i>	45.0		<i>Cords</i>					
	<i>Sugar Maple</i>	6.0		<i>Cords</i>					
	Red Oak	122.0	Cords						
2	Beech	Sawtimber	1.3	MBF	8.7	\$4,055.90			
	B. T. Aspen	Pulpwood	141.0	Cords					
	Mixed Hardwood		55.0	Cords					
	<i>Beech</i>		10.0	<i>Cords</i>					
	<i>Red Maple</i>		45.0	<i>Cords</i>					
3	B. T. Aspen	Sawtimber	20.1	MBF	6.5	\$10,729.60			
	Beech		1.6	MBF					
	Red Maple		27.9	MBF					
	Red Oak		9.9	MBF					
	Sugar Maple		2.5	MBF					
	B. T. Aspen	Pulpwood	30.0	Cords					
	Mixed Hardwood		86.0	Cords					
	<i>Beech</i>		4.0	<i>Cords</i>					
	<i>Red Maple</i>		75.0	<i>Cords</i>					
	<i>Sugar Maple</i>		7.0	<i>Cords</i>					
Red Oak	14.0	Cords							
4	B. T. Aspen	Sawtimber	9.9	MBF	6.5	\$4,416.10			
	Beech		0.9	MBF					
	Red Maple		11.3	MBF					
	Red Oak		3.6	MBF					
	White Pine		1.0	MBF					
	B. T. Aspen		Pulpwood	22.0			Cords		
	Mixed Hardwood	31.0		Cords					
	<i>Beech</i>	4.0		<i>Cords</i>					
	<i>Red Maple</i>	27.0		<i>Cords</i>					
	Red Oak	4.0		Cords					
	White Pine	3.0		Cords					
	TOTAL:			176.1			MBF		
	TOTAL:			713.0			Cords		

# Sale Specific Conditions & Requirements

**Sale Name: Maple Grove Mix**

**Sale Number: 61-090-17 Seq#: 1**

## 1 - Sale Area

### 1.2 - Boundaries

#### 1.2.1 - Painted boundaries (1/14)

The sale boundary and Payment Unit boundaries are marked and identified by blue, red and yellow paint, along with roads. Exterior sale boundary lines against private property are marked with blue paint. Exterior sale boundary lines against state land are marked with red paint, with the exception of the north and west boundaries of Payment Unit 1, which are unpainted and identified by Maple Grove Road and E. Sanford Lake Road, respectively. Interior Payment Unit boundaries are marked with yellow paint. The painted boundary line trees are not Included Timber and are to be protected unless marked with orange paint.

## 2 - Timber Specifications

### 2.1 - Included Timber

#### 2.1.1 - Clearcut unit(s) with unmerchantable trees (6/14)

Within Payment Unit(s) 2 and 3, cut all trees that are two (2) inches or more at DBH, except conifers or trees marked with green paint. In addition, within Payment Unit 2, do not cut any oak or cherry trees.

#### 2.1.3 - Cut tree marked unit(s) (12/08)

Within Payment Unit(s) 1 and 4, all trees are designated for cutting when marked with orange paint above and below stump height, regardless of merchantability.

#### 2.1.11 - Description of timber note (2/04)

Note that Mixed Hardwood pulpwood includes primarily red maple and beech, with small amounts of sugar maple and basswood.

### 2.2 - Utilization

#### 2.2.6 - Roundwood operation required (5/07)

The skidding of whole trees or tree segments with limbs attached is prohibited. All products must be produced as roundwood and forwarded to existing roads or landing areas in final product length.

## 4 - Transportation

### 4.1 - Construction

#### 4.1.3 - Slash and earthen piles (8/04)

Piles or windrows of earth along roads and landings that have been widened or constructed shall be leveled. Slash from road maintenance or construction, including stumps, shall be dispersed throughout the sale.

#### 4.1.7 - Road closure (10/11)

All new roads built into the sale must be blocked to vehicle traffic upon completion of the sale. In general, this will require constructing a four (4') foot high berm of stumps and logs covered with earth. Contact the sale administrator for specific details of design and placement.

## 5 - Operations

### 5.2 - Conduct of Operations

#### 5.2.1 - Slash

##### 5.2.1.8 - Slash height (12/08)

No slash or tree tops may exceed 24 inches in height.

#### 5.2.3 - Operating Restrictions

##### 5.2.3.4 - Oak wilt restriction (9/17)

Within Payment Units 1-4, unless changed by written agreement, cutting, skidding, hauling and brushing of access roads are not permitted during the period of April 15 to July 15. This is necessary to reduce the spread of oak wilt. For more information, contact the Unit Manager or his/her representative.

#### 5.2.4 - Dead and Down Creation

##### 5.2.4.1 - Dead and down creation, marked trees (10/13)

All trees marked with an orange "X" must be felled and left on site for wildlife.

##### 5.2.38 - No decking against live trees (2/04)

Cut products may not be decked against unmarked or designated leave trees.

#### 5.4 - Soil Protection

##### 5.4.3 - Erosion control (12/08)

Skid trails or haul roads may require erosion control structures or berms per direction of the Unit Manager or his/her representative.

##### 5.4.6 - Wet area protection (5/10)

No harvesting operations, including skidding and felling, are to take place within the "E7" or "E8" cover types adjacent to Payment Units 3 and 4. These are swamp forests. All equipment, trees and tops should be kept out of these areas. Care must be taken by the Purchaser to identify and avoid operating in these areas of the timber sale.

### **6 - Safety and Fire Prevention**

#### 6.2 - Signing

##### 6.2.1 - Road posting (9/09)

The Purchaser is responsible for posting and maintaining caution signs on Maple Grove and E. Sanford Lake roads prior to beginning operations. The road must be posted at appropriate distances from the sale area to warn of logging activity and truck traffic. Signs must be removed when harvest operations are suspended or completed. The Purchaser will provide these signs.



### TIMBER SALE MAP

This information provided by authority of Part 525, 1994 PA 451, as amended.

Forest Management Unit Traverse City FMU		County Benzie	Mapped By Tim Webb	Date 09/29/2017	Page 1	of 1
Township 27N	Range 13W	Section(s) and Subdivision(s) Sec. 26: S1/2SW, SWSE; Sec. 35: NENW, NWNE		Scale 1:7,920		

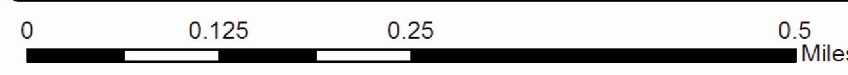
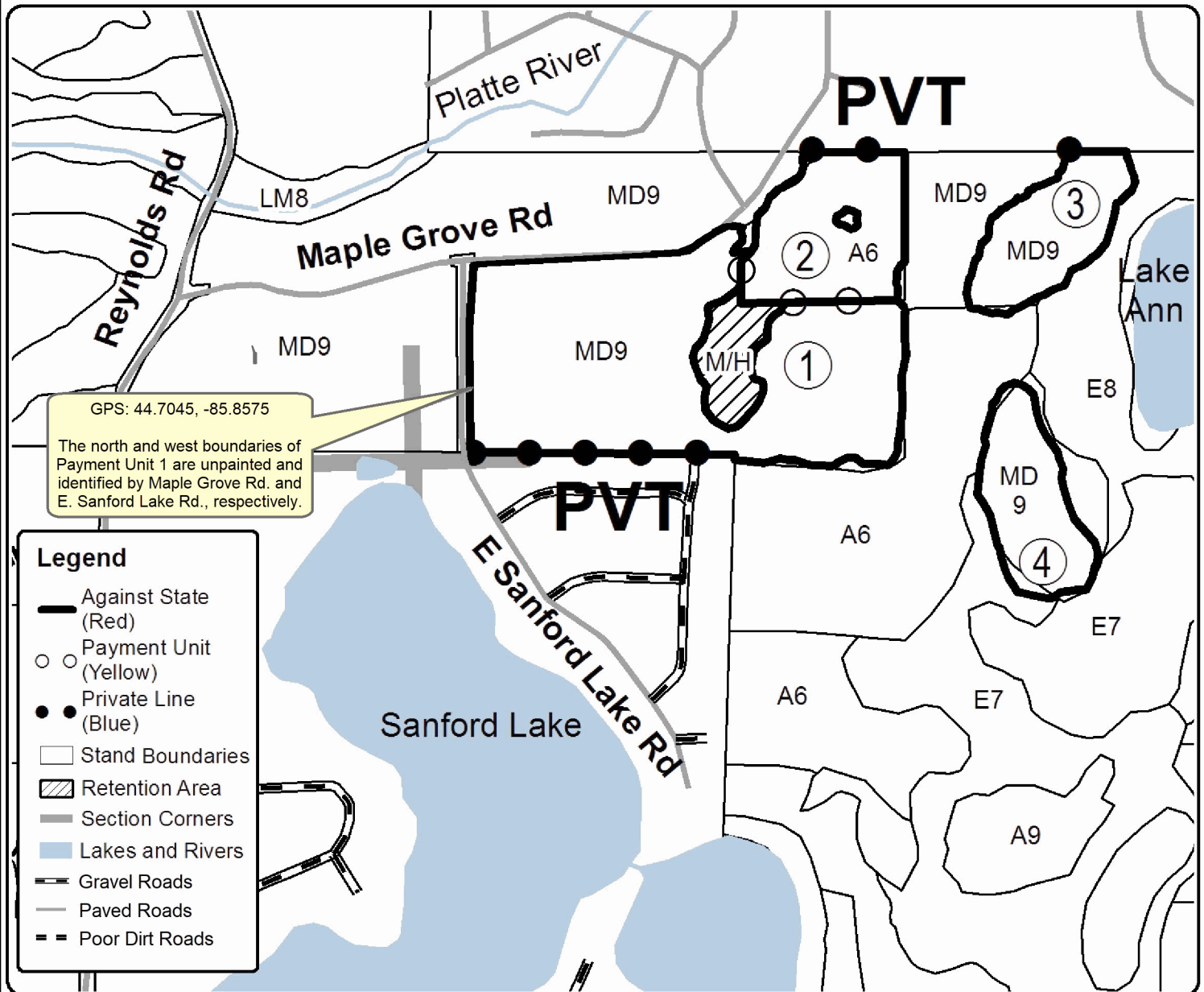
Cover Type				Density			
A = Aspen	H = Hemlock	N = Marsh	U = Upland Brush	0 = Non Stocked	5 = Pole Timber Medium		
B = Paper Birch	J = Jack Pine	O = Oak	UM = Upland Mixed	1 = Seedling Sapling Poor	6 = Pole Timber Well		
C = Cedar	L = Lowland Brush	P = Lowland Poplar	V = Bog or Marsh	2 = Seedling Sapling Medium	7 = Saw Timber Poor		
D = Treed Bog	LM = Lowland Mixed	Q = Mixed Swamp Conifer	W = White Pine	3 = Seedling Sapling Well	8 = Saw Timber Medium		
E = Swamp Hdwoods	M = Mpl, Bch, Brch	R = Red Pine	X = Non Stocked	4 = Pole Timber Poor	9 = Saw Timber Well		
F = Spruce Fir	MC = Mixed Conifer	S = Black Spruce	Z = Water				
G = Grass	MD = Mixed Deciduous	T = Tamarack					

PU	Acres	PU	Acres
1	30.8	4	6.5
2	8.7		
3	6.5		

## Maple Grove Mix

### Compartment 11

52.5 acres





**TIMBER SALE INFORMATION**

Half Moon Harvest (61-091-17)

Benzie County (Advertised Price \$26,458.55)

A timber sale contract for this lump sum, sealed bid timber sale will be awarded to the responsible bidder offering the highest sealed bid price. Bids must be at or above the following advertised price for each species:

<u>PRODUCTS &amp; SPECIES</u>	<u>ESTIMATED UNITS*</u>	<u>ADVERTISED PRICE</u>
<b>Sawtimber</b>		
B. T. Aspen	26.10 MBF	\$ 109.00 / MBF
Black Cherry	10.70 MBF	\$ 173.00 / MBF
Red Maple	81.60 MBF	\$ 114.00 / MBF
Sugar Maple	17.30 MBF	\$ 266.00 / MBF
<b>Pulpwood</b>		
B. T. Aspen	77.00 Cords	\$ 20.35 / Cord
Mixed Hardwood	332.00 Cords	\$ 18.95 / Cord

\* The total volume is statistically estimated within plus (+) or minus (-) 20.47 percent. The estimated units are final and not subject to adjustment. Prospective bidders are urged to examine this timber and to make their own estimates of quantity and quality.

**BOND AND PAYMENT SCHEDULE:**

- A bond in the amount of \$1,323.00 to insure faithful performance of the conditions of the contract will be deposited by the successful bidder within 21 days of the sale award.
- Cutting in any sale or unit without the required advance payment would be considered a trespass.
- Total payment must be paid in advance or according to the following schedule:
  - Ten percent (10%) of the sale value must be paid within 21 days of the sale award.
  - The 10% down payment will be credited towards the first unit cut.
  - Payment for each of the following units must be made before cutting begins in that unit:
 

PAYMENT UNIT NUMBER	PERCENT OF TOTAL SALE VALUE
01	93.8%
02	6.2%
- If no cutting takes place, the 10% down payment will not be refunded.
- Operations on the contract issued will terminate on 06/30/2020.

**Description of Timber by Payment Unit (PU)**

PU	MARKET GROUP	PRODUCT	QUANTITY	UNIT	ACRES	ADVERTISE PRICE
1	B. T. Aspen	Sawtimber	18.7	MBF	23.4	\$24,819.00
	Black Cherry		10.7	MBF		
	Red Maple		81.6	MBF		
	Sugar Maple		17.3	MBF		
	B. T. Aspen	Pulpwood	37.0	Cords		
	Mixed Hardwood		331.0	Cords		
	<i>Black Cherry</i>		42.0	<i>Cords</i>		
	<i>Ironwood</i>		4.0	<i>Cords</i>		
	<i>Red Maple</i>		230.0	<i>Cords</i>		
	<i>Sugar Maple</i>		55.0	<i>Cords</i>		
2	B. T. Aspen	Sawtimber	7.4	MBF	3.1	\$1,639.55
	B. T. Aspen	Pulpwood	40.0	Cords		
	Mixed Hardwood		1.0	Cords		
	<i>Red Maple</i>		1.0	<i>Cords</i>		
TOTAL:			135.7	MBF		
TOTAL:			409.0	Cords		

## Sale Specific Conditions & Requirements

**Sale Name: Half Moon Harvest**

**Sale Number: 61-091-17 Seq#: 1**

### 1 - Sale Area

#### 1.2 - Boundaries

##### 1.2.1 - Painted boundaries (1/14)

The sale boundary is marked and identified by blue and red paint. Exterior sale boundary lines against private property are marked with blue paint. Exterior sale boundary lines against state are marked with red paint. The painted boundary line trees are not Included Timber and are to be protected.

### 2 - Timber Specifications

#### 2.1 - Included Timber

##### 2.1.4 - Designated timber unit(s) (6/17)

Within Payment Unit(s) 1 and 2, all aspen, maple, cherry, and ironwood trees are designated for cutting regardless of merchantability, except do not cut any trees marked with green paint.

#### 2.2 - Utilization

##### 2.2.3 - Stump heights (4/07)

Stump heights within the Sale Area shall not exceed 12 inches for trees greater than 10 inches DBH and 4 inches for trees smaller than 10 inches DBH.

### 4 - Transportation

#### 4.1 - Construction

##### 4.1.3 - Slash and earthen piles (8/04)

Piles or windrows of earth along roads and landings that have been widened or constructed shall be leveled. Slash from road maintenance or construction, including stumps, shall be piled in numerous locations (for rabbit and other small mammal habitat creation) or spread evenly throughout the sale area as specified by DNR sale administrator. See spec 5.2.4.4 for details.

### 5 - Operations

#### 5.2 - Conduct of Operations

##### 5.2.1 - Slash

###### 5.2.1.8 - Slash height (12/08)

No slash or tree tops may exceed 24 inches in height. There is an exception to this height limit for the slash piles in spec 5.2.4.4.

##### 5.2.2 - Hazard Trees/Snags

###### 5.2.2.1 - Den trees (10/16)

Obvious hollow and/or den trees shall be protected and left standing unless they are a safety hazard.

##### 5.2.3 - Operating Restrictions

###### 5.2.3.3 - Bark slippage restriction (3/09)

Within Payment Unit(s) 1 and 2, unless changed by written agreement, cutting and skidding are not permitted during the period of April 15 to July 15. This restriction is because of bark slippage.

##### 5.2.4 - Dead and Down Creation

###### 5.2.4.4 - Dead and down creation, grouse (8/13)

To encourage grouse and other wildlife, in Payment Unit(s) 1 and 2, leave one, 12" diameter or larger log-length (8 foot minimum) piece on the ground for every 3 acres (i.e. Payment Unit 1 = 8 pieces, Payment Unit 2 = 1 piece). These trees must be cut 4 feet above the ground level leaving a standing snag. The felled (log length) portion of the tree must be



pushed up against the standing snag. These should be evenly scattered throughout the cut unit. This can be an unmerchantable 8 foot piece or a full tree.

#### 5.4 - Soil Protection

##### 5.4.1 - Rutting restriction, general (7/16)

Operations are to cease immediately if equipment and weather conditions result in rutting of roads and/or skid trails which is 12 inches or greater in depth and 50 feet in length. The Unit Manager or his/her representative may restrict hauling and/or skidding if ruts exceed the specified depth. With the Unit Manager or his/her representative's approval, the Purchaser may return to the area when the risk of rutting has decreased.



# TIMBER SALE MAP

This information provided by authority of Part 525, 1994 PA 451, as amended.

Forest Management Unit Traverse City		County Benzie	Mapped By Craig Allen	Date 09/29/2017	Page 1	of 1
Township 25N	Range 14W	Section(s) and Subdivision(s) Sec.11; SWSW, Sec.14; SW		Scale 1:15,840		

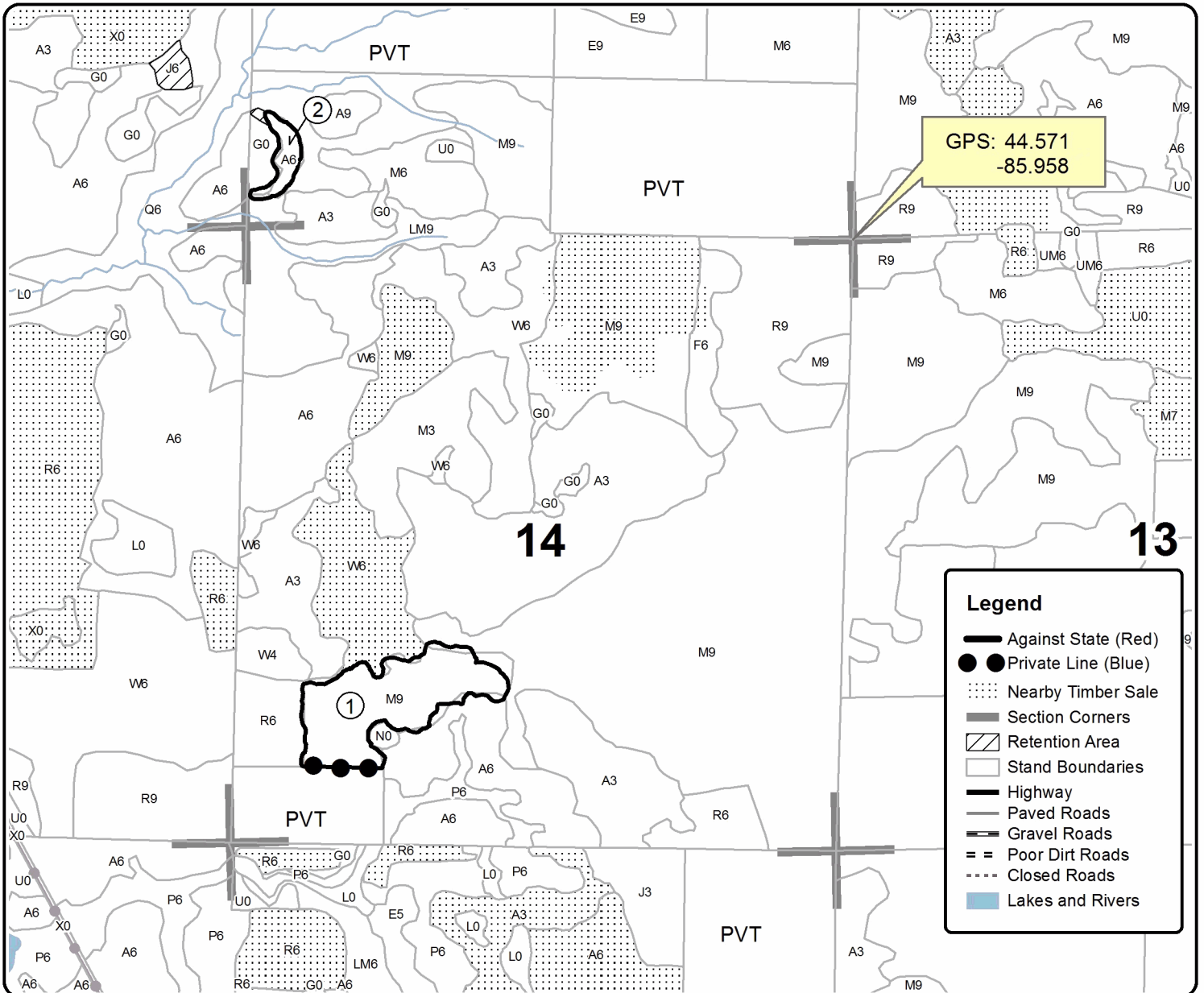
Cover Type				Density	
A = Aspen	H = Hemlock	N = Marsh	U = Upland Brush	0 = Non Stocked	5 = Pole Timber Medium
B = Paper Birch	J = Jack Pine	O = Oak	UM = Upland Mixed	1 = Seedling Sapling Poor	6 = Pole Timber Well
C = Cedar	L = Lowland Brush	P = Lowland Poplar	V = Bog or Marsh	2 = Seedling Sapling Medium	7 = Saw Timber Poor
D = Treed Bog	LM = Lowland Mixed	Q = Mixed Swamp Conifer	W = White Pine	3 = Seedling Sapling Well	8 = Saw Timber Medium
E = Swamp Hdwoods	M = Mpl, Bch, Brch	R = Red Pine	X = Non Stocked	4 = Pole Timber Poor	9 = Saw Timber Well
F = Spruce Fir	MC = Mixed Conifer	S = Black Spruce	Z = Water		
G = Grass	MD = Mixed Deciduous	T = Tamarack			

PU	Acres
1	23.4
2	3.1

## Half Moon Harvest

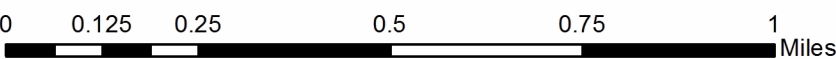
### Compartment 24

26.5 Acres



**Legend**

- Against State (Red)
- Private Line (Blue)
- Nearby Timber Sale
- Section Corners
- Retention Area
- Stand Boundaries
- Highway
- Paved Roads
- Gravel Roads
- Poor Dirt Roads
- Closed Roads
- Lakes and Rivers



**TIMBER SALE INFORMATION**

Leatherwood Mix (61-092-17)

Benzie County (Advertised Price \$27,843.25)

SALE NOTE: Sale access will require installation of a temporary bridge, which may be provided by the DNR. Seasonal restrictions will be used to limit recreation impacts to the Lake Ann Pathway.

A recreation site such as a trail, pathway, or campground is within the sale area or the vicinity. Certain restrictions/specifications may be applicable including time restrictions.

A timber sale contract for this lump sum, sealed bid timber sale will be awarded to the responsible bidder offering the highest sealed bid price. Bids must be at or above the following advertised price for each species:

<u>PRODUCTS &amp; SPECIES</u>	<u>ESTIMATED UNITS*</u>		<u>ADVERTISED PRICE</u>
Sawtimber			
B. T. Aspen	124.70	MBF	\$ 73.00 / MBF
Basswood	40.80	MBF	\$ 74.00 / MBF
Beech	9.50	MBF	\$ 74.00 / MBF
Black Cherry	4.50	MBF	\$ 115.00 / MBF
Red Oak	0.40	MBF	\$ 138.00 / MBF
Sugar Maple	30.60	MBF	\$ 177.00 / MBF
Pulpwood			
Basswood	102.00	Cords	\$ 18.20 / Cord
Mixed Aspen	335.00	Cords	\$ 13.55 / Cord
Mixed Hardwood	209.00	Cords	\$ 12.60 / Cord

\* The total volume is statistically estimated within plus (+) or minus (-) 16.95 percent. The estimated units are final and not subject to adjustment. Prospective bidders are urged to examine this timber and to make their own estimates of quantity and quality.

**BOND AND PAYMENT SCHEDULE:**

1. A bond in the amount of \$1,392.00 to insure faithful performance of the conditions of the contract will be deposited by the successful bidder within 21 days of the sale award.
2. Cutting in any sale or unit without the required advance payment would be considered a trespass.
3. Total payment must be paid in advance or according to the following schedule:
  - (a) Ten percent (10%) of the sale value must be paid within 21 days of the sale award.
  - (b) The 10% down payment will be credited towards the first unit cut.
  - (c) Payment for each of the following units must be made before cutting begins in that unit:

PAYMENT UNIT NUMBER	PERCENT OF TOTAL SALE VALUE
01	42.2%
02	57.8%

4. If no cutting takes place, the 10% down payment will not be refunded.
5. Operations on the contract issued will terminate on 06/30/2020.

**Description of Timber by Payment Unit (PU)**

PU	MARKET GROUP	PRODUCT	QUANTITY	UNIT	ACRES	ADVERTISE PRICE	
1	B. T. Aspen	Sawtimber	105.3	MBF	19.8	\$11,751.90	
	<i>B. T. Aspen</i>		105.3	<i>MBF</i>			
	Beech	2.3	MBF				
	Mixed Aspen	Pulpwood	280.0	Cords			
	<i>B. T. Aspen</i>		280.0	<i>Cords</i>			
	Mixed Hardwood		8.0	Cords			
<i>Beech</i>	8.0		<i>Cords</i>				
2	B. T. Aspen	Sawtimber	19.4	MBF	39.0	\$16,091.35	
	<i>B. T. Aspen</i>		17.3	<i>MBF</i>			
	<i>Quaking Aspen</i>		2.1	<i>MBF</i>			
	Basswood	40.8	MBF				
	Beech	7.2	MBF				
	Black Cherry	4.5	MBF				
	Red Oak	0.4	MBF				
	Sugar Maple	30.6	MBF				
	Basswood	Pulpwood	102.0	Cords			
	Mixed Aspen		55.0	Cords			
	<i>B. T. Aspen</i>		35.0	<i>Cords</i>			
	<i>Quaking Aspen</i>		20.0	<i>Cords</i>			
	Mixed Hardwood		201.0	Cords			
	<i>Beech</i>		40.0	<i>Cords</i>			
	<i>Black Cherry</i>		13.0	<i>Cords</i>			
	<i>Ironwood</i>		8.0	<i>Cords</i>			
	<i>Red Oak</i>		3.0	<i>Cords</i>			
	<i>Sugar Maple</i>		133.0	<i>Cords</i>			
	<i>White Ash</i>		4.0	<i>Cords</i>			
	TOTAL:			210.5			MBF
TOTAL:			646.0	Cords			

# Sale Specific Conditions & Requirements

**Sale Name: Leatherwood Mix**

**Sale Number: 61-092-17 Seq#: 1**

## 1 - Sale Area

### 1.2 - Boundaries

#### 1.2.1 - Painted boundaries (1/14)

The sale boundary and Payment Unit boundaries are marked and identified by blue, red and yellow paint. Exterior sale boundary lines against private property are marked with blue paint. Exterior sale boundary lines against state land are marked with red paint. Interior Payment Unit boundaries are marked with yellow paint. The painted boundary line trees are not Included Timber and are to be protected unless marked with orange paint.

## 2 - Timber Specifications

### 2.1 - Included Timber

#### 2.1.3 - Cut tree marked unit(s) (12/08)

Within Payment Unit(s) 2, all trees are designated for cutting when marked with orange paint above and below stump height, regardless of merchantability. In addition, cut all aspen, beech, and ironwood trees which meet minimum piece specifications in 2.2 - Utilization.

#### 2.1.4 - Designated timber unit(s) (6/17)

Within Payment Unit(s) 1, all aspen and beech trees are designated for cutting which meet minimum piece specifications in 2.2 - Utilization. In addition, cut all trees marked with orange paint. Sapling trees may be cut as needed to facilitate harvest of designated timber, but must be severed at ground level and laid flat on the ground, not left just bent, broken, or pushed over.

### 2.2 - Utilization

#### 2.2.6 - Roundwood operation required (5/07)

The skidding of whole trees or tree segments with limbs attached is prohibited. All products must be produced as roundwood and forwarded to existing roads or landing areas in final product length.

## 3 - Payments

### 3.6 - Payment Unit Cutting Schedule

#### 3.6.8 - Operating period (5/16)

Once cutting begins, operations must continue until all Payment Units are completed. This requirement will minimize closures for the Lake Ann Pathway loop affected by the sale.

## 4 - Transportation

### 4.1 - Construction

#### 4.1.2 - Stream crossings, specific (3/11)

The stream crossing between the designated landing site and the sale units will require the installation of a portable bridge and crane mats (see spec. 5.2.17) which may be borrowed from the DNR. This installation will be performed in accordance with the specifications on the appropriate permits which shall be provided by the DNR. The DNR may provide assistance and some heavy equipment to facilitate bridge installation.

#### 4.1.7 - Road closure (10/11)

The main forwarding trail from the landing to the sale area must be blocked to vehicle traffic upon completion of the sale. In general, this will require constructing a four (4') foot high berm of stumps and logs covered with earth. Contact the sale administrator for specific details of design and placement.

#### 4.1.12 - No new roads (1/12)

No new roads will be permitted. All operations are limited to existing roads. Forwarding trails only will be allowed.

## 5 - Operations

## 5.1 - Notification

### 5.1.1 - Pre-sale conference (10/16)

A pre-sale conference on site between the Purchaser and sale administrator is required prior to beginning any operations to determine the sale access route and temporary bridge installation methods. The Unit Manager or his/her representative must be contacted at least 10 days in advance to schedule the conference. This will also allow adequate time to initiate a temporary closure on the affected pathway loop.

### 5.1.4 - Post-sale conference (10/16)

A post-sale conference on site between the Purchaser and sale administrator is required 5 days prior to the completion of active logging operations to determine clean-up and repair of landings, road edges, and the fulfillment of other contract specifications. In particular, clean-up of slash and damaged trees and shrubs within sight of the Lake Ann Pathway will be determined, as well as the removal and stabilization of the temporary stream crossing.

## 5.2 - Conduct of Operations

### 5.2.1 - Slash

#### 5.2.1.8 - Slash height (12/08)

No slash or tree tops may exceed 24 inches in height. However, some minor piling of slash may be allowed by the sale administrator if doing so will help with slash disposal near the pathway.

### 5.2.3 - Operating Restrictions

#### 5.2.3.1 - Operating restrictions (9/11)

Within Payment Unit(s) 1 and 2, unless changed by written agreement, cutting and forwarding are limited to the period of August 15 to December 1. This restriction is to minimize recreational impacts and to avoid harvesting during the bark slip period.

### 5.2.4 - Dead and Down Creation

#### 5.2.4.1 - Dead and down creation, marked trees (10/13)

All trees marked with an orange "X" must be felled and left on site for wildlife.

### 5.2.17 - Crane Mats/Timber Mats (9/17)

Approaches to the temporary bridge will require crane mats or another suitable method to prevent rutting in the stream floodplain. If available, Crane Mats/Timber Mats may be borrowed from the DNR and are located at the Marquette ICC, the Newberry Field Office and the Grayling Field Office. Contact the sale administrator for specific details. A Timber Sale Contract Supplement will be used to document the Purchaser's use of the DNR's Crane Mats/Timber Mats. It is the responsibility of the Purchaser to contact the sale administrator to schedule pick up and drop off. In addition, all mats must be cleaned prior to drop off. A charge of \$350.00 will be assessed for all damaged or non-returned mats. Damage is defined as misuse resulting in three or more broken cants.

### 5.2.31 - Landing locations (9/13)

The landing area is marked on the Timber Sale Map with the letter "L". The landing must be confined to this designated site unless otherwise authorized by the Unit Manager or his/her representative.

### 5.2.40 - Pathway protection (10/10)

The Lake Ann Pathway hiking trail is shown on the Timber Sale Map. Do not cut trees or damage posts with blue pathway markers. Maintain a 40-foot wide slash, debris, and rut free zone daily, using the pathway as the centerline. Do not run equipment down the pathway. Skidding across the trail may only occur in locations approved by the sale administrator.

## 5.3 - Stream Protection

### 5.3.1 - Operating near stream (7/04)

No tracked or wheeled vehicles shall be operated within 50 feet of the stream, except at the approved crossing.

## 5.4 - Soil Protection

### 5.4.3 - Erosion control (12/08)

Skid trails or haul roads may require erosion control structures or berms per direction of the Unit Manager or his/her representative.

5.4.6 - Wet area protection (5/10)

No harvesting operations, including skidding and felling, are to take place within the bog adjacent to Payment Unit 1 ("V" type on the Timber Sale Map). When harvesting occurs, there should be no disturbance to the bog. All equipment, trees and tops should be kept out of this area. Care must be taken by the Purchaser to identify and avoid operating in these areas of the timber sale.



# TIMBER SALE MAP

This information provided by authority of Part 525, 1994 PA 451, as amended.

Forest Management Unit Traverse City FMU	County Benzie	Mapped By Tim Webb	Date 09/29/2017	Page 1	of 1
Township 27N	Range 13W	Section(s) and Subdivision(s) Sec. 27: W1/2NW, SENW, NWSW	Cruised By Tim Webb		
Scale 1:15,840					

### Cover Type

A = Aspen	H = Hemlock	N = Marsh	U = Upland Brush
B = Paper Birch	J = Jack Pine	O = Oak	UM = Upland Mixed
C = Cedar	L = Lowland Brush	P = Lowland Poplar	V = Bog or Marsh
D = Treed Bog	LM = Lowland Mixed	Q = Mixed Swamp Conifer	W = White Pine
E = Swamp Hdwoods	M = Mpl, Bch, Brch	R = Red Pine	X = Non Stocked
F = Spruce Fir	MC = Mixed Conifer	S = Black Spruce	Z = Water
G = Grass	MD = Mixed Deciduous	T = Tamarack	

### Density

0 = Non Stocked	5 = Pole Timber Medium
1 = Seedling Sapling Poor	6 = Pole Timber Well
2 = Seedling Sapling Medium	7 = Saw Timber Poor
3 = Seedling Sapling Well	8 = Saw Timber Medium
4 = Pole Timber Poor	9 = Saw Timber Well

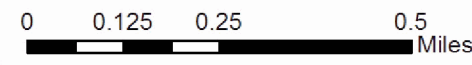
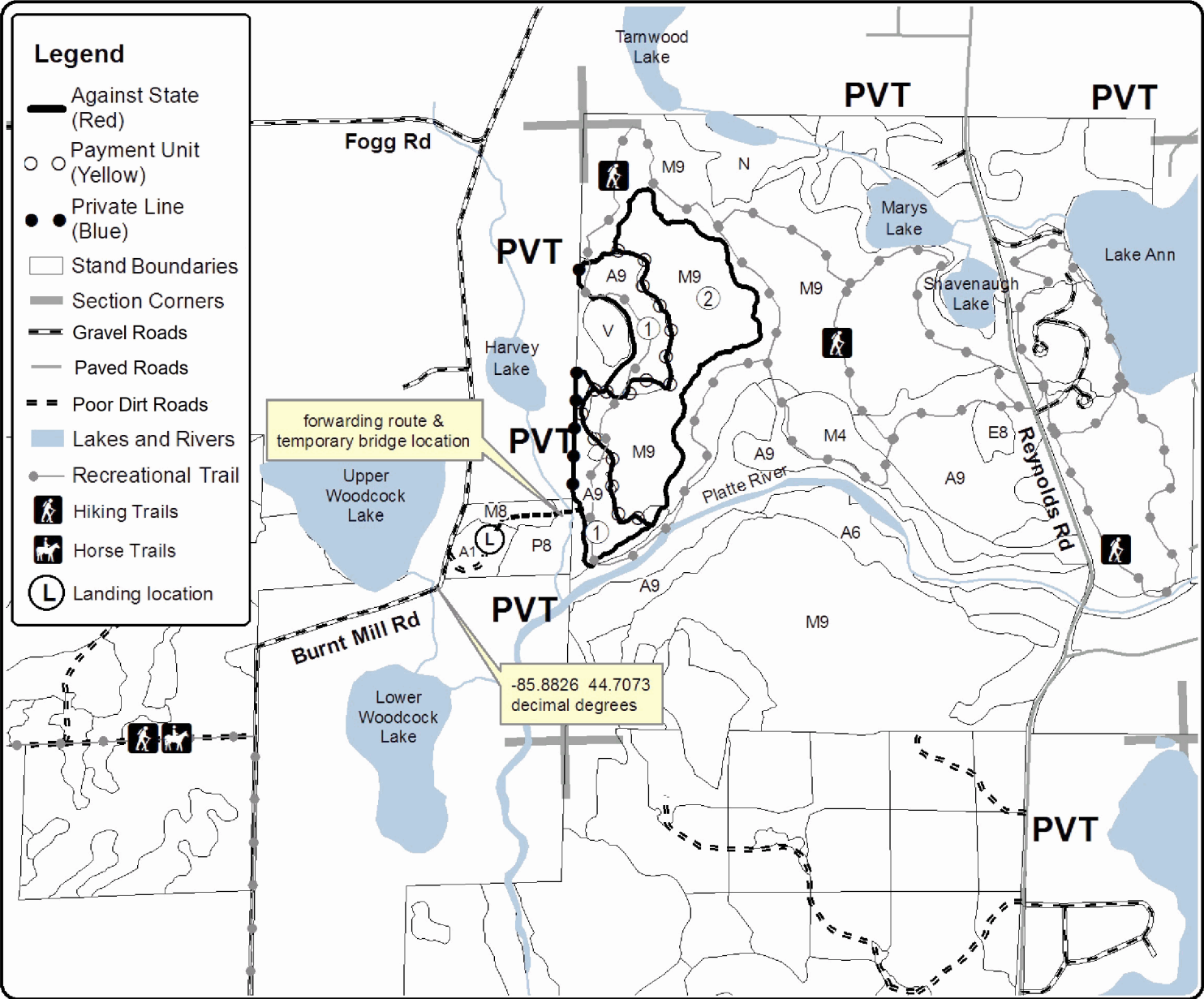
### PU Acres

- 1 19.8
- 2 39.0

## Leatherwood Mix

### Compartment 11

58.8 acres





Pick Pocket Jack (61-089-17)  
; Grand Traverse COUNTY

In response to the notice of sale to be held 4:00 p.m. (local time) on June 7, 2018, I am hereby submitting my sealed bid (firm offer) for the following forest products to be cut. Bids for individual species must be at or above the advertised price. All non-responsive bid forms may be rejected.

<u>PRODUCTS &amp; SPECIES</u>	<u>ESTIMATED VOLUME*</u>	<u>ADVERTISED PRICE</u>	<u>BID PRICE/UNIT</u>
<b>Sawtimber</b>			
Jack Pine	27.40 MBF	\$ 30.00/MBF	\$ _____
Red Pine	3.30 MBF	\$ 117.00/MBF	\$ _____
White Oak	7.70 MBF	\$ 56.00/MBF	\$ _____
<b>Pulpwood</b>			
B. T. Aspen	19.00 Cords	\$ 20.35/Cord	\$ _____
Black Cherry	31.00 Cords	\$ 18.95/Cord	\$ _____
Jack Pine	560.00 Cords	\$ 13.90/Cord	\$ _____
Mixed Oak	61.00 Cords	\$ 16.85/Cord	\$ _____
Red Maple	21.00 Cords	\$ 18.95/Cord	\$ _____
Red Pine	8.00 Cords	\$ 40.35/Cord	\$ _____
White Pine	29.00 Cords	\$ 14.25/Cord	\$ _____

\*The volumes are statistically estimated within plus (+) or minus (-) 17.37 percent. These estimated volumes are final and not subject to adjustment. Prospective bidders are urged to examine this timber and to make their own estimates of quantity and quality.

I understand that any or all bids may be rejected. All bids must be signed and all bid items must be bid or the bid form may be rejected. I also understand that consideration and awarding a contract will be based upon my past performance and ability to complete the contract based upon equipment and staffing subject to my control.

FEDERAL ID: \_\_\_\_\_ or SOCIAL SECURITY NUMBER: \_\_\_\_\_

Company or individual bidding: \_\_\_\_\_

Company representative's name: \_\_\_\_\_

Address: \_\_\_\_\_

City: \_\_\_\_\_ State: \_\_\_\_\_ Zip: \_\_\_\_\_

IF AVAILABLE, PLEASE PLACE THE PERSONALIZED LABEL FROM YOUR PROSPECTUS IN THE ABOVE BOX.

Individual or company representative's signature: \_\_\_\_\_ Date: \_\_\_\_\_

Phone number : \_\_\_\_\_ Email (optional): \_\_\_\_\_

**THE WINNING BIDDER MUST COMPLETE THE VERIFICATION OF WORKER'S DISABILITY COMPENSATION ACT COMPLIANCE (ON REVERSE SIDE IF DOUBLE SIDED) WITHIN 21 DAYS OF SALE AWARD DATE**



FOR DEPARTMENT USE ONLY	
Sale Number (XX - XXX - XX - XX)	
Forest Management Unit:	

### TIMBER SALE VERIFICATION OF WORKER'S DISABILITY COMPENSATION ACT COMPLIANCE

As required by Act 317, P.A. 1969 (Worker's Compensation) and  
Part 5 of Act 451 of 1994, as amended.

#### VERIFICATION OF WORKER'S DISABILITY COMPENSATION ACT COMPLIANCE

- This verification must be completed and submitted within 21 days of contract award and prior to the issuance of the timber sale contract.
- In addition, if boxes 2B or 2C are checked, then Notice of Exclusion or Certificate of Insurance must be submitted within twenty-one (21) days of the contract award and prior to the issuance of the timber sale contract.
- All information must be typed or printed except for written signatures.

Please Check Appropriate Categories:

1. My business is organized as (you **must** check one of the boxes below):
  - A.  Sole Proprietorship (individual)
  - B.  Partnership
  - C.  Corporation
2. You **must** check one of the boxes below:
  - A.  I certify my business is a sole proprietorship and it has no employees but the sole proprietor. I am not subject to the Worker's Compensation Laws.
  - B.  I certify my business has satisfied its obligation to the Worker's Compensation Act through the use of an approved Notice of Exclusion (BWC-337, Rev. 5/96). I will provide a copy of the Notice of Exclusion within 21 days of the contract award. (For questions or a copy of the BWC-337, please call the Worker's Compensation Bureau at 517-322-1195).
  - C.  I certify my business has a Worker's Compensation Policy. I will provide an original Certificate of Insurance within twenty-one (21) days of the contract award.
3. If you have checked item 2(A) or 2(B), you **must** indicate the number of **both** full-time and part-time employees, other than yourself, including family members and active partners (if none, you must enter "0").

\_\_\_\_\_ Full-time Employees

\_\_\_\_\_ Part-time Employees

Name of Business		Federal ID (or) Social Security No.	
Address		Telephone (       )	
City	State	ZIP	

*I hereby certify that the above information is true and correct. I agree to notify the Michigan DNR of any changes that occur in factors affecting my coverage during any of my present and future operations.*

\_\_\_\_\_  
Signature of Owner or Authorized Representative

\_\_\_\_\_  
Title

\_\_\_\_\_  
Date

Please complete the "SEALED BID" information on the next page

Half Moon Harvest (61-091-17)  
; Benzie COUNTY

In response to the notice of sale to be held 4:00 p.m. (local time) on June 7, 2018, I am hereby submitting my sealed bid (firm offer) for the following forest products to be cut. Bids for individual species must be at or above the advertised price. All non-responsive bid forms may be rejected.

<u>PRODUCTS &amp; SPECIES</u>	<u>ESTIMATED VOLUME*</u>	<u>ADVERTISED PRICE</u>	<u>BID PRICE/UNIT</u>
<b>Sawtimber</b>			
B. T. Aspen	26.10 MBF	\$ 109.00/MBF	\$ _____
Black Cherry	10.70 MBF	\$ 173.00/MBF	\$ _____
Red Maple	81.60 MBF	\$ 114.00/MBF	\$ _____
Sugar Maple	17.30 MBF	\$ 266.00/MBF	\$ _____
<b>Pulpwood</b>			
B. T. Aspen	77.00 Cords	\$ 20.35/Cord	\$ _____
Mixed Hardwood	332.00 Cords	\$ 18.95/Cord	\$ _____

\*The volumes are statistically estimated within plus (+) or minus (-) 20.47 percent. These estimated volumes are final and not subject to adjustment. Prospective bidders are urged to examine this timber and to make their own estimates of quantity and quality.

I understand that any or all bids may be rejected. All bids must be signed and all bid items must be bid or the bid form may be rejected. I also understand that consideration and awarding a contract will be based upon my past performance and ability to complete the contract based upon equipment and staffing subject to my control.

FEDERAL ID: \_\_\_\_\_ or SOCIAL SECURITY NUMBER: \_\_\_\_\_

Company or individual bidding: \_\_\_\_\_

Company representative's name: \_\_\_\_\_

Address: \_\_\_\_\_

City: \_\_\_\_\_ State: \_\_\_\_\_ Zip: \_\_\_\_\_

IF AVAILABLE, PLEASE PLACE THE PERSONALIZED LABEL FROM YOUR PROSPECTUS IN THE ABOVE BOX.

Individual or company representative's signature: \_\_\_\_\_ Date: \_\_\_\_\_

Phone number : \_\_\_\_\_ Email (optional): \_\_\_\_\_

**THE WINNING BIDDER MUST COMPLETE THE VERIFICATION OF WORKER'S DISABILITY COMPENSATION ACT COMPLIANCE (ON REVERSE SIDE IF DOUBLE SIDED) WITHIN 21 DAYS OF SALE AWARD DATE**



<b>FOR DEPARTMENT USE ONLY</b>
Sale Number (XX - XXX - XX - XX)
Forest Management Unit:

## TIMBER SALE VERIFICATION OF WORKER'S DISABILITY COMPENSATION ACT COMPLIANCE

*As required by Act 317, P.A. 1969 (Worker's Compensation) and  
Part 5 of Act 451 of 1994, as amended.*

### VERIFICATION OF WORKER'S DISABILITY COMPENSATION ACT COMPLIANCE

- This verification must be completed and submitted within 21 days of contract award and prior to the issuance of the timber sale contract.
- In addition, if boxes 2B or 2C are checked, then Notice of Exclusion or Certificate of Insurance must be submitted within twenty-one (21) days of the contract award and prior to the issuance of the timber sale contract.
- All information must be typed or printed except for written signatures.

Please Check Appropriate Categories:

1. My business is organized as (you **must** check one of the boxes below):
  - A.  Sole Proprietorship (individual)
  - B.  Partnership
  - C.  Corporation
2. You **must** check one of the boxes below:
  - A.  I certify my business is a sole proprietorship and it has no employees but the sole proprietor. I am not subject to the Worker's Compensation Laws.
  - B.  I certify my business has satisfied its obligation to the Worker's Compensation Act through the use of an approved Notice of Exclusion (BWC-337, Rev. 5/96). I will provide a copy of the Notice of Exclusion within 21 days of the contract award. (For questions or a copy of the BWC-337, please call the Worker's Compensation Bureau at 517-322-1195).
  - C.  I certify my business has a Worker's Compensation Policy. I will provide an original Certificate of Insurance within twenty-one (21) days of the contract award.
3. If you have checked item 2(A) or 2(B), you **must** indicate the number of **both** full-time and part-time employees, other than yourself, including family members and active partners (if none, you must enter "0").

\_\_\_\_\_ Full-time Employees

\_\_\_\_\_ Part-time Employees

Name of Business		Federal ID (or) Social Security No.	
Address		Telephone (       )	
City	State	ZIP	

*I hereby certify that the above information is true and correct. I agree to notify the Michigan DNR of any changes that occur in factors affecting my coverage during any of my present and future operations.*

\_\_\_\_\_  
Signature of Owner or Authorized Representative

\_\_\_\_\_  
Title

\_\_\_\_\_  
Date

**Please complete the "SEALED BID" information on the next page**

Maple Grove Mix (61-090-17)  
; Benzie COUNTY

In response to the notice of sale to be held 4:00 p.m. (local time) on June 7, 2018, I am hereby submitting my sealed bid (firm offer) for the following forest products to be cut. Bids for individual species must be at or above the advertised price. All non-responsive bid forms may be rejected.

<u>PRODUCTS &amp; SPECIES</u>	<u>ESTIMATED VOLUME*</u>	<u>ADVERTISED PRICE</u>	<u>BID PRICE/UNIT</u>
<b>Sawtimber</b>			
B. T. Aspen	35.10 MBF	\$ 109.00/MBF	\$ _____
Basswood	0.50 MBF	\$ 111.00/MBF	\$ _____
Beech	12.60 MBF	\$ 111.00/MBF	\$ _____
Red Maple	46.10 MBF	\$ 114.00/MBF	\$ _____
Red Oak	77.80 MBF	\$ 206.00/MBF	\$ _____
Sugar Maple	3.00 MBF	\$ 266.00/MBF	\$ _____
White Pine	1.00 MBF	\$ 62.00/MBF	\$ _____
<b>Pulpwood</b>			
B. T. Aspen	219.00 Cords	\$ 20.35/Cord	\$ _____
Mixed Hardwood	351.00 Cords	\$ 18.95/Cord	\$ _____
Red Oak	140.00 Cords	\$ 16.85/Cord	\$ _____
White Pine	3.00 Cords	\$ 14.25/Cord	\$ _____

\*The volumes are statistically estimated within plus (+) or minus (-) 15.56 percent. These estimated volumes are final and not subject to adjustment. Prospective bidders are urged to examine this timber and to make their own estimates of quantity and quality.

I understand that any or all bids may be rejected. All bids must be signed and all bid items must be bid or the bid form may be rejected. I also understand that consideration and awarding a contract will be based upon my past performance and ability to complete the contract based upon equipment and staffing subject to my control.

FEDERAL ID: \_\_\_\_\_ or SOCIAL SECURITY NUMBER: \_\_\_\_\_

Company or individual bidding: \_\_\_\_\_

Company representative's name: \_\_\_\_\_

Address: \_\_\_\_\_

City: \_\_\_\_\_ State: \_\_\_\_\_ Zip: \_\_\_\_\_

IF AVAILABLE, PLEASE PLACE THE PERSONALIZED LABEL FROM YOUR PROSPECTUS IN THE ABOVE BOX.

Individual or company representative's signature: \_\_\_\_\_ Date: \_\_\_\_\_

Phone number : \_\_\_\_\_ Email (optional): \_\_\_\_\_

**THE WINNING BIDDER MUST COMPLETE THE VERIFICATION OF WORKER'S DISABILITY COMPENSATION ACT COMPLIANCE (ON REVERSE SIDE IF DOUBLE SIDED) WITHIN 21 DAYS OF SALE AWARD DATE**



<b>FOR DEPARTMENT USE ONLY</b>
Sale Number (XX - XXX - XX - XX)
Forest Management Unit:

## TIMBER SALE VERIFICATION OF WORKER'S DISABILITY COMPENSATION ACT COMPLIANCE

*As required by Act 317, P.A. 1969 (Worker's Compensation) and  
Part 5 of Act 451 of 1994, as amended.*

### VERIFICATION OF WORKER'S DISABILITY COMPENSATION ACT COMPLIANCE

- This verification must be completed and submitted within 21 days of contract award and prior to the issuance of the timber sale contract.
- In addition, if boxes 2B or 2C are checked, then Notice of Exclusion or Certificate of Insurance must be submitted within twenty-one (21) days of the contract award and prior to the issuance of the timber sale contract.
- All information must be typed or printed except for written signatures.

Please Check Appropriate Categories:

1. My business is organized as (you **must** check one of the boxes below):
  - A.  Sole Proprietorship (individual)
  - B.  Partnership
  - C.  Corporation
2. You **must** check one of the boxes below:
  - A.  I certify my business is a sole proprietorship and it has no employees but the sole proprietor. I am not subject to the Worker's Compensation Laws.
  - B.  I certify my business has satisfied its obligation to the Worker's Compensation Act through the use of an approved Notice of Exclusion (BWC-337, Rev. 5/96). I will provide a copy of the Notice of Exclusion within 21 days of the contract award. (For questions or a copy of the BWC-337, please call the Worker's Compensation Bureau at 517-322-1195).
  - C.  I certify my business has a Worker's Compensation Policy. I will provide an original Certificate of Insurance within twenty-one (21) days of the contract award.
3. If you have checked item 2(A) or 2(B), you **must** indicate the number of **both** full-time and part-time employees, other than yourself, including family members and active partners (if none, you must enter "0").

\_\_\_\_\_ Full-time Employees

\_\_\_\_\_ Part-time Employees

Name of Business		Federal ID (or) Social Security No.	
Address		Telephone (       )	
City	State	ZIP	

*I hereby certify that the above information is true and correct. I agree to notify the Michigan DNR of any changes that occur in factors affecting my coverage during any of my present and future operations.*

\_\_\_\_\_  
Signature of Owner or Authorized Representative

\_\_\_\_\_  
Title

\_\_\_\_\_  
Date

**Please complete the "SEALED BID" information on the next page**

Leatherwood Mix (61-092-17)  
; Benzie COUNTY

In response to the notice of sale to be held 4:00 p.m. (local time) on June 7, 2018, I am hereby submitting my sealed bid (firm offer) for the following forest products to be cut. Bids for individual species must be at or above the advertised price. All non-responsive bid forms may be rejected.

<u>PRODUCTS &amp; SPECIES</u>	<u>ESTIMATED VOLUME*</u>	<u>ADVERTISED PRICE</u>	<u>BID PRICE/UNIT</u>
<b>Sawtimber</b>			
B. T. Aspen	124.70 MBF	\$ 73.00/MBF	\$ _____
Basswood	40.80 MBF	\$ 74.00/MBF	\$ _____
Beech	9.50 MBF	\$ 74.00/MBF	\$ _____
Black Cherry	4.50 MBF	\$ 115.00/MBF	\$ _____
Red Oak	0.40 MBF	\$ 138.00/MBF	\$ _____
Sugar Maple	30.60 MBF	\$ 177.00/MBF	\$ _____
<b>Pulpwood</b>			
Basswood	102.00 Cords	\$ 18.20/Cord	\$ _____
Mixed Aspen	335.00 Cords	\$ 13.55/Cord	\$ _____
Mixed Hardwood	209.00 Cords	\$ 12.60/Cord	\$ _____

\*The volumes are statistically estimated within plus (+) or minus (-) 16.95 percent. These estimated volumes are final and not subject to adjustment. Prospective bidders are urged to examine this timber and to make their own estimates of quantity and quality.

I understand that any or all bids may be rejected. All bids must be signed and all bid items must be bid or the bid form may be rejected. I also understand that consideration and awarding a contract will be based upon my past performance and ability to complete the contract based upon equipment and staffing subject to my control.

FEDERAL ID: \_\_\_\_ - \_\_\_\_ - \_\_\_\_ or SOCIAL SECURITY NUMBER: \_\_\_\_ - \_\_\_\_ - \_\_\_\_

Company or individual bidding: \_\_\_\_\_

Company representative's name: \_\_\_\_\_

Address: \_\_\_\_\_

City: \_\_\_\_\_ State: \_\_\_\_\_ Zip: \_\_\_\_\_

IF AVAILABLE, PLEASE PLACE THE PERSONALIZED LABEL FROM YOUR PROSPECTUS IN THE ABOVE BOX.

Individual or company representative's signature: \_\_\_\_\_ Date: \_\_\_\_\_

Phone number : \_\_\_\_\_ Email (optional): \_\_\_\_\_

**THE WINNING BIDDER MUST COMPLETE THE VERIFICATION OF WORKER'S DISABILITY COMPENSATION ACT COMPLIANCE (ON REVERSE SIDE IF DOUBLE SIDED) WITHIN 21 DAYS OF SALE AWARD DATE**



<b>FOR DEPARTMENT USE ONLY</b>
Sale Number (XX - XXX - XX - XX)
Forest Management Unit:

## TIMBER SALE VERIFICATION OF WORKER'S DISABILITY COMPENSATION ACT COMPLIANCE

*As required by Act 317, P.A. 1969 (Worker's Compensation) and  
Part 5 of Act 451 of 1994, as amended.*

### VERIFICATION OF WORKER'S DISABILITY COMPENSATION ACT COMPLIANCE

- This verification must be completed and submitted within 21 days of contract award and prior to the issuance of the timber sale contract.
- In addition, if boxes 2B or 2C are checked, then Notice of Exclusion or Certificate of Insurance must be submitted within twenty-one (21) days of the contract award and prior to the issuance of the timber sale contract.
- All information must be typed or printed except for written signatures.

Please Check Appropriate Categories:

1. My business is organized as (you **must** check one of the boxes below):
  - A.  Sole Proprietorship (individual)
  - B.  Partnership
  - C.  Corporation
2. You **must** check one of the boxes below:
  - A.  I certify my business is a sole proprietorship and it has no employees but the sole proprietor. I am not subject to the Worker's Compensation Laws.
  - B.  I certify my business has satisfied its obligation to the Worker's Compensation Act through the use of an approved Notice of Exclusion (BWC-337, Rev. 5/96). I will provide a copy of the Notice of Exclusion within 21 days of the contract award. (For questions or a copy of the BWC-337, please call the Worker's Compensation Bureau at 517-322-1195).
  - C.  I certify my business has a Worker's Compensation Policy. I will provide an original Certificate of Insurance within twenty-one (21) days of the contract award.
3. If you have checked item 2(A) or 2(B), you **must** indicate the number of **both** full-time and part-time employees, other than yourself, including family members and active partners (if none, you must enter "0").

\_\_\_\_\_ Full-time Employees

\_\_\_\_\_ Part-time Employees

Name of Business		Federal ID (or) Social Security No.	
Address		Telephone (        )	
City	State	ZIP	

*I hereby certify that the above information is true and correct. I agree to notify the Michigan DNR of any changes that occur in factors affecting my coverage during any of my present and future operations.*

\_\_\_\_\_  
Signature of Owner or Authorized Representative

\_\_\_\_\_  
Title

\_\_\_\_\_  
Date

**Please complete the "SEALED BID" information on the next page**



Chopper Red (61-049-17)  
; Grand Traverse COUNTY

In response to the notice of sale to be held 4:00 p.m. (local time) on June 7, 2018, I am hereby submitting my sealed bid (firm offer) for the following forest products to be cut. Bids for individual species must be at or above the advertised price. All non-responsive bid forms may be rejected.

<u>PRODUCTS &amp; SPECIES</u>	<u>ESTIMATED VOLUME*</u>	<u>ADVERTISED PRICE</u>	<u>BID PRICE/UNIT</u>
<b>Sawtimber</b>			
Red Oak	2.50 MBF	\$ 138.00/MBF	\$ _____
Red Pine	229.00 MBF	\$ 78.00/MBF	\$ _____
White Pine	5.50 MBF	\$ 41.00/MBF	\$ _____
<b>Pulpwood</b>			
Jack Pine	1.00 Cords	\$ 9.30/Cord	\$ _____
Misc. Species 2	32.00 Cords	\$ 5.00/Cord	\$ _____
Mixed Hardwood	9.00 Cords	\$ 12.60/Cord	\$ _____
Red Pine	338.00 Cords	\$ 26.90/Cord	\$ _____
White Pine	2.00 Cords	\$ 9.50/Cord	\$ _____

\*The volumes are statistically estimated within plus (+) or minus (-) 13.87 percent. These estimated volumes are final and not subject to adjustment. Prospective bidders are urged to examine this timber and to make their own estimates of quantity and quality.

I understand that any or all bids may be rejected. All bids must be signed and all bid items must be bid or the bid form may be rejected. I also understand that consideration and awarding a contract will be based upon my past performance and ability to complete the contract based upon equipment and staffing subject to my control.

FEDERAL ID: \_\_\_\_ - \_\_\_\_ - \_\_\_\_ or SOCIAL SECURITY NUMBER: \_\_\_\_ - \_\_\_\_ - \_\_\_\_

Company or individual bidding: \_\_\_\_\_

Company representative's name: \_\_\_\_\_

Address: \_\_\_\_\_

City: \_\_\_\_\_ State: \_\_\_\_\_ Zip: \_\_\_\_\_

IF AVAILABLE, PLEASE PLACE THE PERSONALIZED LABEL FROM YOUR PROSPECTUS IN THE ABOVE BOX.

Individual or company representative's signature: \_\_\_\_\_ Date: \_\_\_\_\_

Phone number : \_\_\_\_\_ Email (optional): \_\_\_\_\_

**THE WINNING BIDDER MUST COMPLETE THE VERIFICATION OF WORKER'S DISABILITY COMPENSATION ACT COMPLIANCE (ON REVERSE SIDE IF DOUBLE SIDED) WITHIN 21 DAYS OF SALE AWARD DATE**



<b>FOR DEPARTMENT USE ONLY</b>
Sale Number (XX - XXX - XX - XX)
Forest Management Unit:

## TIMBER SALE VERIFICATION OF WORKER'S DISABILITY COMPENSATION ACT COMPLIANCE

*As required by Act 317, P.A. 1969 (Worker's Compensation) and  
Part 5 of Act 451 of 1994, as amended.*

### VERIFICATION OF WORKER'S DISABILITY COMPENSATION ACT COMPLIANCE

- This verification must be completed and submitted within 21 days of contract award and prior to the issuance of the timber sale contract.
- In addition, if boxes 2B or 2C are checked, then Notice of Exclusion or Certificate of Insurance must be submitted within twenty-one (21) days of the contract award and prior to the issuance of the timber sale contract.
- All information must be typed or printed except for written signatures.

Please Check Appropriate Categories:

1. My business is organized as (you **must** check one of the boxes below):
  - A.  Sole Proprietorship (individual)
  - B.  Partnership
  - C.  Corporation
  
2. You **must** check one of the boxes below:
  - A.  I certify my business is a sole proprietorship and it has no employees but the sole proprietor. I am not subject to the Worker's Compensation Laws.
  - B.  I certify my business has satisfied its obligation to the Worker's Compensation Act through the use of an approved Notice of Exclusion (BWC-337, Rev. 5/96). I will provide a copy of the Notice of Exclusion within 21 days of the contract award. (For questions or a copy of the BWC-337, please call the Worker's Compensation Bureau at 517-322-1195).
  - C.  I certify my business has a Worker's Compensation Policy. I will provide an original Certificate of Insurance within twenty-one (21) days of the contract award.
  
3. If you have checked item 2(A) or 2(B), you **must** indicate the number of **both** full-time and part-time employees, other than yourself, including family members and active partners (if none, you must enter "0").

\_\_\_\_\_ Full-time Employees

\_\_\_\_\_ Part-time Employees

Name of Business		Federal ID (or) Social Security No.	
Address		Telephone (       )	
City	State	ZIP	

*I hereby certify that the above information is true and correct. I agree to notify the Michigan DNR of any changes that occur in factors affecting my coverage during any of my present and future operations.*

\_\_\_\_\_  
Signature of Owner or Authorized Representative

\_\_\_\_\_  
Title

\_\_\_\_\_  
Date

**Please complete the "SEALED BID" information on the next page**