



**DEPARTMENT OF NATURAL RESOURCES
STATE OF MICHIGAN**

TIMBER SALE PROSPECTUS #6035

SCHEDULED SALE DATE AND TIME: 4:00 p.m. (local time) on December 20, 2017.

LOCATION: TRAVERSE CITY MGMT UNIT, 2122 M 37 SOUTH, TRAVERSE CITY, MI 49685.

PROSPECTUS NOTE: The bidder is advised to inspect the sale area and review the location, estimated volumes, operating costs and contract terms of proposed sales. Please be aware that some landowners may request 60 days or more notice for access across their land.

Notice is hereby given that bids will be received by the Unit Manager, TRAVERSE CITY MANAGEMENT UNIT, for certain timber on the following described lands:

Pancake Hardwood (61-001-17)

Benzie County, Advertised Price \$109,609.20, 126.1 Acres, Hardwood, Sugar Maple.

Grass Lake Aspen (61-023-17)

Benzie County, Advertised Price \$68,148.70, 86.9 Acres, Aspen, Hardwood.

SALE NOTE: A recreation site such as a trail, pathway, or campground is within the sale area or the vicinity. Certain restrictions/specifications may be applicable including time restrictions.

Wilt Pocket Red (61-060-17)

Grand Traverse County, Advertised Price \$121,658.90, 53.8 Acres, Aspen, Red Pine.

SALE NOTE: Red pine final harvest. Tops must be chipped and tree length harvest is required to prepare site for re-planting.

Oak Islands (61-073-17)

Benzie County, Advertised Price \$115,674.75, 92.3 Acres, Red Oak.

BID INSTRUCTIONS (VER. 11/27/2017):

1. Scheduled Bid Location, Date, and Time (2/11)

Bids must be received by the Unit Manager, TRAVERSE CITY OFFICE, 2122 M 37 SOUTH, TRAVERSE CITY, MI 49685, no later than 4:00 p.m. (local time) on December 20, 2017. For further information concerning this sale, contact David Lemmien at 231-922-5280 extension 6840.

2. Bidder's Qualifications (5/16)

Purchaser shall obtain workers compensation insurance to cover claims under Michigan's Worker's Disability Compensation Act of 1969 or similar employee benefit act of any other state applicable to an employee. If all or part of a timber sale was prepared by a private contractor, the contractor and that contractor's company are not permitted to bid on the timber sale contract. Bids will not be accepted from individuals or companies appearing on the DNR/FRD No-Bid List. This list contains the names of purchasers who previously failed to execute a contract within 21-days or who have a history of poor performance.

3. Preparation of Sealed Bids (5/16)

Bid Forms may be completed online thru Michigan DNR Timber Sale Online Bidding (OLB) at www.michigan.gov/timberbidding or by completing the hardcopy Bid Form found in the Timber Sale Prospectus. Hardcopy Bid Forms shall be manually signed in ink. Registration in OLB is considered your 'signature' for all bids submitted thru that system. Bid prices must be entered for each species and product in the Bid Price column for all material subject to bidding and all fill-in blanks must be completed. If erasures or other changes appear on the hardcopy Bid Form, each erasure or change must be initialed by the person signing the bid.

4. Submission of Sealed Bids (5/16)

Bid forms may be obtained from the Unit Manager or thru OLB. Bids may be submitted hardcopy or thru OLB. All hardcopy bids must be submitted on the bid form and in an envelope clearly identified as described in this section. NOTE: Only one bid form per bid envelope. Sealed bids must be submitted to the Unit office designated in the prospectus and must be submitted at or prior to the time established in the prospectus. The envelope should show on the outside (a) the sale name or number and (b) the date and time of bid opening, as shown in the prospectus. Bids received after the time specified in the sale prospectus are late bids and will be rejected.

It is possible for a bidder to submit multiple bids on a single sale. For example, a bid may be submitted hardcopy and a bid may be submitted thru OLB. Or, two bidders from the same company could both submit bids on the same sale. If this were to happen, the State would accept all bids received and award the contract accordingly. All bidding and contractual requirements would apply to all bids received.

5. Public Opening of Sealed Bids (7/16)

If conditions permit, the sealed bids will be publicly opened and posted at the time and place set in the prospectus.

If a bidder, present at a bid opening, has submitted bids on more than one sale, that bidder may withdraw their unopened bid envelopes or announce the withdrawal of their online bid after being declared the successful bidder on one sale.

6. Award of Contract (1/11)

Award of the contract will be made to the Bidder whose bid, conforming to the prospectus, is most advantageous to the State of Michigan on the basis of total value at rates bid for the estimated quantities. The State reserves the right to reject any bid or waive any minor irregularity in bids received. A written award mailed (or otherwise furnished) to the successful Bidder shall be deemed to result in a binding contract without further action by either party.

7. Down Payment (1/11)

The Bidder to whom award is made must make a down payment within 21 days of the sale award. The amount of the down payment will be calculated as shown in the Bond and Payment Schedule of this prospectus. Only cash may be used to meet this requirement.

8. Performance Security (1/11)

As guarantee of faithful performance, a cash bond, certificate of deposit, surety bond or irrevocable letter of credit (LOC) is required within 21 days of the sale award. The amount of the performance security is shown in the Bond and

Payment Schedule of this prospectus. If an LOC or surety is used, the coverage must extend for at least 6 months beyond the contract expiration.

9. Timber Sale Contract (11/17)

Additional conditions and requirements common to all timber sales are listed on the timber sale contract (R4031) and are available on line at www.michigan.gov/timber. Contact the Unit Manager for additional information or a sample contract. Within 21 days of the date of the award letter, the bidder must sign the contract and provide the required down payment, performance security, and verification of worker's disability compensation. The down payment and performance security shall be in accordance with the provisions of the timber sale contract, in the sums stated in this prospectus. If these actions are not taken, then the Bidder, the Bidder's corporation, and the corporation's principals may not be permitted to bid on State timber sales for a period of 1 year. In addition, the Bidder certifies that if awarded this contract, the Bidder will complete the timber sale contract in accordance with its terms and any modifications thereof including requirements to purchase, cut, and remove the included timber by the expiration date.

Payment Unit values in the State Forest Timber Sale Contract are calculated based on the advertised value of the Payment Unit as a percentage of the total advertised value of the contract. The advertised value of each Payment Unit is given in the Description of Timber by Payment Unit table on the Timber Sale Information page. For example, if the value of Payment Unit 1 is advertised as \$1,500 and the total Timber Sale value is advertised as \$10,000, the contract price for Payment Unit 1 will be 15% of the total bid price ($\$1,500/\$10,000 * 100$).

10. Disclaimer of Estimates and Bidder's Warranty of Inspection (7/16)

Before submitting this bid, the Bidder is advised and cautioned to inspect the sale area, review the requirements of the sale contract, and take other steps as may be reasonably necessary to ascertain the location, estimated volumes, construction estimates, and operating costs of the proposed sale. Failure to do so will not relieve the Bidder from responsibility for completing the contract.

The Bidder warrants that this bid is submitted solely on the basis of the Bidder's examination and inspection of the quality and quantity of the timber offered for sale and the Bidder's opinion of the value thereof and the costs of recovery. No reliance should be placed on the State of Michigan's estimates of timber quality, quantity or costs of recovery. Bidder further acknowledges that the State of Michigan: (i) expressly disclaims any warranty of fitness of timber for any purpose; (ii) offers this timber as is without any warranty of quality (merchantability) or quantity and (iii) expressly disclaims any warranty as to the quantity or quality of timber sold.

11. Certification and Chain-of-Custody (10/14)

Unless otherwise indicated in the contract under section 7 – Other Conditions of the Sale Specific Conditions & Requirements, the area encompassed by this timber sale is certified to the standards of the Forest Stewardship Council (FSC) - Certificate #SCS-FM/COC-00090N and the Sustainable Forestry Initiative (SFI) - Certificate # NSF-SFIS-5Y031-SF5. Forest products from this sale may be delivered to the mill as "FSC 100% and / or SFI certified" as long as the contractor hauling the forest products is chain-of-custody (COC) certified or covered under a COC certificate from the destination mill. The purchaser is responsible for maintaining COC after leaving the sale area.

12. Good Neighbor Authority (GNA) Requirements (7/16)

If the name of this timber sales contains the acronym GNA, it is authorized by the Good Neighbor Authority (GNA) and covered by various agreements between the U.S. Forest Service and the State. The timber sale occurs on federal land and the following conditions apply:

GNA contracts on US Forest Service land will not be awarded to purchasers on the Federal list of excluded parties. The System for Award Management (SAM) will be checked for active excluded parties prior to award of contract. In addition, the Bidder to whom award is made must complete an Assurance Regarding Felony Conviction or Tax Delinquent Status for Corporate Applicants (AD-3031).

13. Good Neighbor Authority (GNA) Requirements, con't (9/16)

Bidder certifies, by signing this bid form, that to the best of Bidder's knowledge that the following representations are accurate and complete.

a. That the Bidder and its principals are not presently debarred, suspended, proposed for debarment, declared ineligible, or voluntary excluded from timber sales (covered transactions) by any Federal department or agency.

b. That the Bidder and its principals have not within a 3-year period preceding this bid been convicted of or had a civil judgment rendered against them for commission of fraud or a criminal offense in connection with obtaining, attempting to obtain, or performing a public (Federal, State, or local) transaction or contract under a public transaction; violation of Federal or State antitrust statutes or commission of embezzlement, theft, forgery, bribery, falsification or destruction of records, making false statements, or receiving stolen property.

c. That the Bidder and its principals are not presently indicted for or otherwise criminally or civilly charged by a governmental entity (Federal, State, or local) with commission of any of the offenses enumerated in paragraph b of this certification.

d. That the Bidder and its principals have not within a 3-year period preceding this bid had one or more public transactions (Federal, State, or local) terminated for breach or default of a timber or forest product contract.

Bidders that cannot certify this requirement, in whole or in part, shall submit an explanation with their bid.

KEITH CREAGH

Director

TIMBER SALE INFORMATION

Pancake Hardwood (61-001-17)

Benzie County (Advertised Price \$109,609.20)

A timber sale contract for this lump sum, sealed bid timber sale will be awarded to the responsible bidder offering the highest sealed bid price. Bids must be at or above the following advertised price for each species:

<u>PRODUCTS & SPECIES</u>	<u>ESTIMATED UNITS*</u>	<u>ADVERTISED PRICE</u>
Sawtimber		
Basswood	32.50 MBF	\$ 108.00 / MBF
Beech	64.40 MBF	\$ 91.00 / MBF
Black Cherry	97.60 MBF	\$ 192.00 / MBF
Mixed Aspen	15.70 MBF	\$ 105.00 / MBF
Red Maple	166.20 MBF	\$ 127.00 / MBF
Sugar Maple	133.00 MBF	\$ 282.00 / MBF
Yellow Birch	0.70 MBF	\$ 138.00 / MBF
Pulpwood		
Basswood	29.00 Cords	\$ 27.65 / Cord
Mixed Aspen	22.00 Cords	\$ 19.55 / Cord
Mixed Hardwood	1,103.00 Cords	\$ 18.05 / Cord

* The total volume is statistically estimated within plus (+) or minus (-) 14.84 percent. The estimated units are final and not subject to adjustment. Prospective bidders are urged to examine this timber and to make their own estimates of quantity and quality.

BOND AND PAYMENT SCHEDULE:

1. A bond in the amount of \$5,480.00 to insure faithful performance of the conditions of the contract will be deposited by the successful bidder within 21 days of the sale award.
2. Cutting in any sale or unit without the required advance payment would be considered a trespass.
3. Total payment must be paid in advance or according to the following schedule:
 - (a) Ten percent (10%) of the sale value must be paid within 21 days of the sale award.
 - (b) The 10% down payment will be credited towards the first unit cut.
4. If no cutting takes place, the 10% down payment will not be refunded.
5. Operations on the contract issued will terminate on 12/31/2019.

Description of Timber by Payment Unit (PU)

PU	MARKET GROUP	PRODUCT	QUANTITY	UNIT	ACRES	ADVERTISE PRICE	
1	Beech	Sawtimber	3.9	MBF	10.7	\$4,139.90	
	Black Cherry		0.9	MBF			
	Mixed Aspen		8.6	MBF			
	<i>B. T. Aspen</i>		8.3	<i>MBF</i>			
	<i>Quaking Aspen</i>		0.3	<i>MBF</i>			
	Red Maple		2.7	MBF			
	Sugar Maple		2.3	MBF			
	Mixed Aspen		Pulpwood	14.0			Cords
	<i>B. T. Aspen</i>			13.0			<i>Cords</i>
	<i>Quaking Aspen</i>			1.0			<i>Cords</i>
	Mixed Hardwood			80.0			Cords
	<i>Beech</i>			21.0			<i>Cords</i>
	<i>Black Cherry</i>			3.0			<i>Cords</i>
	<i>Red Maple</i>			28.0			<i>Cords</i>
	<i>Sugar Maple</i>			28.0			<i>Cords</i>
	2			Basswood			Sawtimber
Beech		21.1		MBF			
Black Cherry		2.3	MBF				
Mixed Aspen		1.7	MBF				
<i>B. T. Aspen</i>		1.7	<i>MBF</i>				
Red Maple		70.3	MBF				
Sugar Maple		29.1	MBF				
Basswood		Pulpwood	22.0	Cords			
Mixed Aspen			2.0	Cords			
<i>B. T. Aspen</i>			2.0	<i>Cords</i>			
Mixed Hardwood			355.0	Cords			
<i>Beech</i>			84.0	<i>Cords</i>			
<i>Black Cherry</i>			16.0	<i>Cords</i>			
<i>Ironwood</i>			2.0	<i>Cords</i>			
<i>Red Maple</i>			107.0	<i>Cords</i>			
<i>Sugar Maple</i>			146.0	<i>Cords</i>			
3	Basswood		Sawtimber	2.1	MBF	30.4	\$32,085.90
	Beech	7.4		MBF			
	Black Cherry	68.3		MBF			
	Mixed Aspen	2.1		MBF			
	<i>Quaking Aspen</i>	2.1		<i>MBF</i>			
	Red Maple	53.8		MBF			
	Sugar Maple	22.9		MBF			
	Basswood	Pulpwood		1.0	Cords		
	Mixed Aspen			2.0	Cords		
	<i>Quaking Aspen</i>			2.0	<i>Cords</i>		
	Mixed Hardwood			249.0	Cords		
	<i>Beech</i>			11.0	<i>Cords</i>		
	<i>Black Cherry</i>			89.0	<i>Cords</i>		
	<i>Red Maple</i>			98.0	<i>Cords</i>		
	<i>Sugar Maple</i>			51.0	<i>Cords</i>		
	4			Basswood	Sawtimber		
Beech			32.0	MBF			
Black Cherry		26.1	MBF				
Mixed Aspen		3.3	MBF				
<i>Quaking Aspen</i>		3.3	<i>MBF</i>				
Red Maple		39.4	MBF				
Sugar Maple		78.7	MBF				
Yellow Birch		0.7	MBF				
Basswood		Pulpwood	6.0	Cords			
Mixed Aspen			4.0	Cords			

Description of Timber by Payment Unit (PU), con't

PU	MARKET GROUP	PRODUCT	QUANTITY	UNIT	ACRES	ADVERTISE PRICE
4 con't	<i>Quaking Aspen</i>	<i>Pulpwood</i>	4.0	<i>Cords</i>		
	Mixed Hardwood		419.0	Cords		
	<i>Beech</i>		61.0	<i>Cords</i>		
	<i>Black Cherry</i>		41.0	<i>Cords</i>		
	<i>Red Maple</i>		74.0	<i>Cords</i>		
	<i>Sugar Maple</i>		240.0	<i>Cords</i>		
	<i>Yellow Birch</i>		3.0	<i>Cords</i>		
TOTAL:			510.1	MBF		
TOTAL:			1,154.0	Cords		

Sale Specific Conditions & Requirements

Sale Name: Pancake Hardwood

Sale Number: 61-001-17 Seq#: 1

1 - Sale Area

1.2 - Boundaries

1.2.1 - Painted boundaries (1/14)

The sale boundary and Payment Unit boundaries are marked and identified by blue, red and yellow paint. Exterior sale boundary lines against private property are marked with blue paint. Exterior sale boundary lines against state land are marked with red paint. Interior payment unit boundaries are marked with yellow paint. The painted boundary line trees are not Included Timber and are to be protected unless marked with orange paint.

2 - Timber Specifications

2.1 - Included Timber

2.1.3 - Cut tree marked unit(s) (12/08)

Within Payment Unit(s) 1 - 4, all trees are designated for cutting when marked with orange paint above and below stump height, regardless of merchantability. In addition, cut all beech and aspen trees greater than 5 inches DBH unless marked with green paint. Beech and ironwood less than 5 inches at DBH may be cut as necessary to facilitate harvest of designated timber, but should not be left broken, bent, or damaged.

2.1.11 - Description of timber note (2/04)

Note that mixed hardwood pulpwood includes primarily sugar and red maple, with lesser amounts of beech and cherry, and a small amount of yellow birch and ironwood.

2.2 - Utilization

2.2.6 - Roundwood operation required (5/07)

The skidding of whole trees or tree segments with limbs attached is prohibited. All products must be produced as roundwood and forwarded to existing roads or landing areas in final product length.

4 - Transportation

4.1 - Construction

4.1.3 - Slash and earthen piles (8/04)

Piles or windrows of earth along roads and landings that have been widened or constructed shall be leveled. Slash from road maintenance or construction, including stumps, shall be dispersed throughout the sale.

4.1.7 - Road closure (10/11)

All new roads built into the sale must be blocked to vehicle traffic upon completion of the sale. In general, this will require constructing a four (4') foot high berm of stumps and logs covered with earth. Contact the sale administrator for specific details of design and placement.

5 - Operations

5.2 - Conduct of Operations

5.2.1 - Slash

5.2.1.8 - Slash height (12/08)

No slash or tree tops may exceed 36 inches in height.

5.2.3 - Operating Restrictions

5.2.3.1 - Operating restrictions (9/11)

Within Payment Unit(s) 3 and 4, cutting, skidding, and hauling are not permitted during the period of March 1 to August 15. This restriction is to protect active raptor nests.

5.2.3.3 - Bark slippage restriction (3/09)

Within Payment Unit(s) 1 - 4, cutting and skidding are not permitted during the period of April 15 to July 15. This restriction is because of bark slippage.

5.2.4 - Dead and Down Creation

5.2.4.1 - Dead and down creation, marked trees (10/13)

All trees marked with an orange "X" must be felled and left on site for wildlife.

5.2.38 - No decking against live trees (2/04)

Cut products may not be decked against unmarked or designated leave trees.

5.4 - Soil Protection

5.4.3 - Erosion control (12/08)

Skid trails or haul roads may require erosion control structures or berms per direction of the Unit Manager or his/her representative.

5.8 - Protection of Endangered Species

5.8.5 - Protection of raptor nests (3/13)

All trees with raptor nests will be protected if found during harvesting operations. Notification will be made to the Unit Manager or his/her representative who will notify the Wildlife Biologist so an on-site evaluation and recommendation can be made, if necessary.



TIMBER SALE MAP

This information provided by authority of Part 525, 1994 PA 451, as amended.

Forest Management Unit Traverse City		County Benzie	Mapped By Tim Webb	Date 08/21/2017	Page 1	of 1
Township 26N	Range 14W	Section(s) and Subdivision(s) Sec. 3: NWNW, SENW, N1/2SW, SWSW		Scale 1:15,840		

Cover Type

A = Aspen	H = Hemlock	N = Marsh	U = Upland Brush
B = Paper Birch	J = Jack Pine	O = Oak	UM = Upland Mixed
C = Cedar	L = Lowland Brush	P = Lowland Poplar	V = Bog or Marsh
D = Treed Bog	LM = Lowland Mixed	Q = Mixed Swamp Conifer	W = White Pine
E = Swamp Hdwoods	M = Mpl, Bch, Brch	R = Red Pine	X = Non Stocked
F = Spruce Fir	MC = Mixed Conifer	S = Black Spruce	Z = Water
G = Grass	MD = Mixed Deciduous	T = Tamarack	

Density

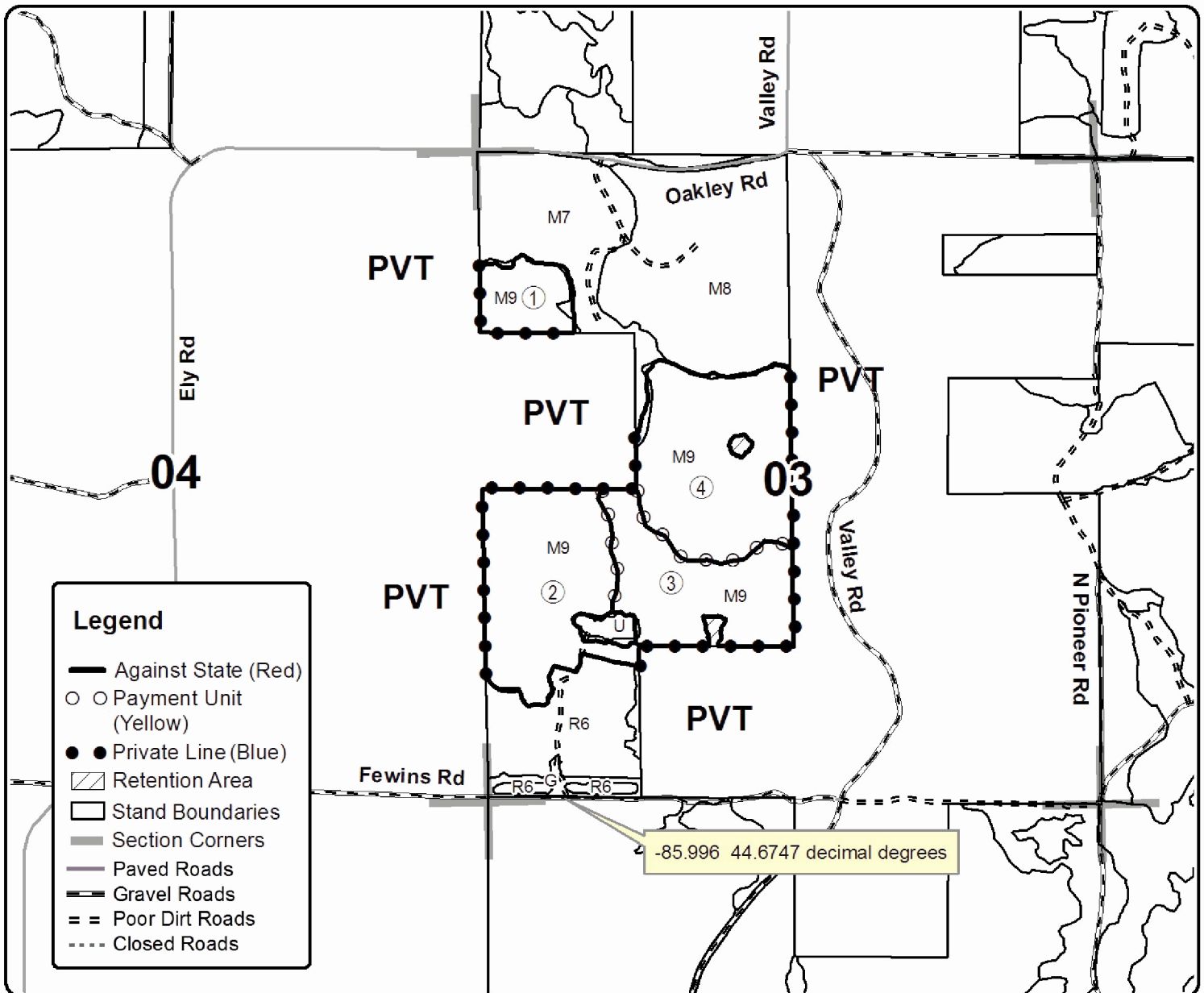
0 = Non Stocked	5 = Pole Timber Medium
1 = Seedling Sapling Poor	6 = Pole Timber Well
2 = Seedling Sapling Medium	7 = Saw Timber Poor
3 = Seedling Sapling Well	8 = Saw Timber Medium
4 = Pole Timber Poor	9 = Saw Timber Well

PU	Acres	PU	Acres
1	10.7	4	44.9
2	40.1		
3	30.4		

Pancake Hardwood

Compartment 14

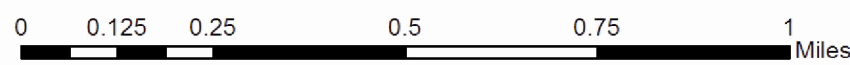
126.1 acres



Legend

- Against State (Red)
- Payment Unit (Yellow)
- Private Line (Blue)
- Retention Area
- Stand Boundaries
- Section Corners
- Paved Roads
- Gravel Roads
- Poor Dirt Roads
- Closed Roads

-85.996 44.6747 decimal degrees



TIMBER SALE INFORMATION

Grass Lake Aspen (61-023-17)

Benzie County (Advertised Price \$68,148.70)

SALE NOTE: A recreation site such as a trail, pathway, or campground is within the sale area or the vicinity. Certain restrictions/specifications may be applicable including time restrictions.

A timber sale contract for this lump sum, sealed bid timber sale will be awarded to the responsible bidder offering the highest sealed bid price. Bids must be at or above the following advertised price for each species:

<u>PRODUCTS & SPECIES</u>	<u>ESTIMATED UNITS*</u>	<u>ADVERTISED PRICE</u>
Sawtimber		
Beech	10.70 MBF	\$ 97.00 / MBF
Black Cherry	8.10 MBF	\$ 205.00 / MBF
Mixed Aspen	153.70 MBF	\$ 113.00 / MBF
Red Maple	115.60 MBF	\$ 137.00 / MBF
Sugar Maple	15.40 MBF	\$ 302.00 / MBF
Pulpwood		
Balsam Fir	7.00 Cords	\$ 13.70 / Cord
Mixed Aspen	618.00 Cords	\$ 20.95 / Cord
Mixed Hardwood	752.00 Cords	\$ 19.35 / Cord

* The total volume is statistically estimated within plus (+) or minus (-) 13.10 percent. The estimated units are final and not subject to adjustment. Prospective bidders are urged to examine this timber and to make their own estimates of quantity and quality.

BOND AND PAYMENT SCHEDULE:

1. A bond in the amount of \$3,407.00 to insure faithful performance of the conditions of the contract will be deposited by the successful bidder within 21 days of the sale award.
2. Cutting in any sale or unit without the required advance payment would be considered a trespass.
3. Total payment must be paid in advance or according to the following schedule:
 - (a) Ten percent (10%) of the sale value must be paid within 21 days of the sale award.
 - (b) The 10% down payment will be credited towards the first unit cut.
4. If no cutting takes place, the 10% down payment will not be refunded.
5. Operations on the contract issued will terminate on 12/31/2019.

Description of Timber by Payment Unit (PU)

PU	MARKET GROUP	PRODUCT	QUANTITY	UNIT	ACRES	ADVERTISE PRICE	
1	Beech	Sawtimber	10.7	MBF	24.8	\$25,415.00	
	Mixed Aspen		15.3	MBF			
	<i>B. T. Aspen</i>		15.3	<i>MBF</i>			
	Red Maple		67.2	MBF			
	Sugar Maple		15.4	MBF			
	Mixed Aspen		Pulpwood	28.0			Cords
	<i>B. T. Aspen</i>			28.0			<i>Cords</i>
	Mixed Hardwood			424.0			Cords
	<i>Beech</i>			34.0			<i>Cords</i>
	<i>Black Cherry</i>			3.0			<i>Cords</i>
	<i>Ironwood</i>			5.0			<i>Cords</i>
	<i>Red Maple</i>			282.0			<i>Cords</i>
	<i>Sugar Maple</i>			100.0			<i>Cords</i>
	2		Black Cherry	Sawtimber			0.2
Mixed Aspen		10.3	MBF				
<i>B. T. Aspen</i>		9.4	<i>MBF</i>				
<i>Quaking Aspen</i>		0.9	<i>MBF</i>				
Red Maple		6.2	MBF				
Balsam Fir		Pulpwood	7.0		Cords		
Mixed Aspen			38.0		Cords		
<i>B. T. Aspen</i>			19.0		<i>Cords</i>		
<i>Quaking Aspen</i>			19.0		<i>Cords</i>		
Mixed Hardwood			23.0		Cords		
<i>Beech</i>			1.0		<i>Cords</i>		
<i>Black Cherry</i>			1.0		<i>Cords</i>		
<i>Red Maple</i>			21.0		<i>Cords</i>		
3		Black Cherry	Sawtimber		3.6	MBF	27.7
	Mixed Aspen	62.4		MBF			
	<i>B. T. Aspen</i>	62.4		<i>MBF</i>			
	Red Maple	3.6		MBF			
	Mixed Aspen	Pulpwood		325.0	Cords		
	<i>B. T. Aspen</i>			292.0	<i>Cords</i>		
	<i>Quaking Aspen</i>			33.0	<i>Cords</i>		
	Mixed Hardwood			132.0	Cords		
	<i>Black Cherry</i>			23.0	<i>Cords</i>		
	<i>Red Maple</i>			109.0	<i>Cords</i>		
	4			Black Cherry	Sawtimber	4.3	
Mixed Aspen		27.9	MBF				
<i>B. T. Aspen</i>		27.9	<i>MBF</i>				
Red Maple		30.6	MBF				
Mixed Aspen		Pulpwood	72.0	Cords			
<i>B. T. Aspen</i>			72.0	<i>Cords</i>			
Mixed Hardwood			85.0	Cords			
<i>Black Cherry</i>			22.0	<i>Cords</i>			
<i>Red Maple</i>			63.0	<i>Cords</i>			
5	Mixed Aspen	Sawtimber	37.8	MBF	17.6	\$10,317.45	
	<i>B. T. Aspen</i>		37.8	<i>MBF</i>			
	Red Maple		8.0	MBF			
	Mixed Aspen		Pulpwood	155.0			Cords
	<i>B. T. Aspen</i>			155.0			<i>Cords</i>
	Mixed Hardwood			88.0			Cords
	<i>Black Cherry</i>			10.0			<i>Cords</i>
	<i>Red Maple</i>		78.0	<i>Cords</i>			
TOTAL:			303.5	MBF			

TOTAL: 1,377.0 Cords

Sale Specific Conditions & Requirements

Sale Name: Grass Lake Aspen

Sale Number: 61-023-17 Seq#: 1

1 - Sale Area

1.2 - Boundaries

1.2.1 - Painted boundaries (1/14)

The sale boundary is marked and identified by red and yellow paint. Exterior sale boundary lines against state are marked with red paint. Retention areas are marked with red paint, with the exception of the area in Payment Unit 5, which is marked with yellow paint. Retention areas are not to be entered or operated in. The painted boundary line trees are not Included Timber and are to be protected.

2 - Timber Specifications

2.1 - Included Timber

2.1.4 - Designated timber unit(s) (6/17)

Within Payment Unit(s) 1-5, all aspen, maple, cherry, beech and ironwood trees are designated for cutting regardless of merchantability. In addition, within Payment Unit 2, all balsam fir trees are designated for cutting. Do not cut any trees marked with green paint.

2.2 - Utilization

2.2.3 - Stump heights (4/07)

Stump heights within the Sale Area shall not exceed 12 inches for trees greater than 10 inches DBH and 4 inches for trees smaller than 10 inches DBH.

2.2.6 - Roundwood operation required (5/07)

The skidding of whole trees or tree segments with limbs attached is prohibited within Payment Unit(s) 1-5. All products must be produced as roundwood and forwarded to existing roads or landing areas in final product length.

4 - Transportation

4.1 - Construction

4.1.3 - Slash and earthen piles (8/04)

Piles or windrows of earth along roads and landings that have been widened or constructed shall be leveled. Slash from road maintenance or construction, including stumps, shall be dispersed throughout the sale, or piled in numerous locations as specified by DNR sale administrator (for rabbit and other small animal habitat creation).

5 - Operations

5.1 - Notification

5.1.4 - Post-sale conference (10/16)

A post-sale conference on site between the Purchaser and sale administrator is required 3 days prior to the completion of active logging operations to determine clean-up and repair of landings, road edges, and the fulfillment of other contract specifications.

5.2 - Conduct of Operations

5.2.1 - Slash

5.2.1.8 - Slash height (12/08)

No slash or tree tops may exceed 24 inches in height. Slash should be pulled back away from road edges.

5.2.2 - Hazard Trees/Snags

5.2.2.1 - Den trees (10/16)

Obvious hollow and/or den trees shall be protected and left standing unless they are a safety hazard.

5.2.3 - Operating Restrictions

5.2.3.4 - Oak wilt restriction (9/17)

Within Payment Unit(s) 1-5, unless changed by written agreement, cutting, skidding, hauling and brushing of access roads are not permitted during the period of April 15 to July 15. This is necessary to reduce the spread of oak wilt. For more information, contact the Unit Manager or his/her representative.

5.2.4 - Dead and Down Creation

5.2.4.4 - Dead and down creation, grouse (8/13)

To encourage grouse and other wildlife, in Payment Unit(s) 1-5, leave one, 12" diameter or larger log-length (8 foot minimum) piece on the ground for every 2 acres (Payment Unit 1 = 13 pieces, Payment Unit 2 = 2 pieces, Payment Unit 3 = 14 pieces, Payment Unit 4 = 6 pieces, Payment Unit 5 = 9 pieces). These trees must be cut approximately 4 feet above the ground level leaving a standing snag. The felled (log length) portion of the tree must be pushed up against the standing snag. These should be evenly scattered throughout the cut unit. This can be an unmerchantable 8 foot piece or a full tree.

5.2.38 - No decking against live trees (2/04)

Cut products may not be decked against unmarked or designated leave trees.

5.2.41 - Snowmobile trail protection (9/11)

The Betsie River Trail is a snowmobile trail and is shown on the Timber Sale Map. Do not cut or damage posts with orange trail markers or traffic control signs. If the trail is used, it must be maintained and restored to a condition equal to or better than before the sale. If the trail is used for hauling, it must be graded to the satisfaction of the Unit Manager or his/her representative prior to December 1st. If the trail road is to be used for hauling during the snowmobile season, then a snow covered base must be left on the trail. Maintain a 20 foot wide slash, debris, and rut free zone daily using the snowmobile trail as the centerline. No decking of forest products will be permitted along the snowmobile trail when snowmobiles are using the trail. All stumps within 20 feet of the snowmobile trail must be cut at ground level.

5.4 - Soil Protection

5.4.1 - Rutting restriction, general (7/16)

Operations are to cease immediately if equipment and weather conditions result in rutting of roads and/or forwarding trails which is 12 inches or greater in depth and 50 feet in length. The Unit Manager or his/her representative may restrict hauling and/or skidding if ruts exceed the specified depth. With the Unit Manager or his/her representative's approval, the Purchaser may return to the area when the risk of rutting has decreased.

6 - Safety and Fire Prevention

6.2 - Signing

6.2.2 - Snowmobile trail posting (8/09)

The Purchaser is responsible for posting and maintaining caution signs on Betsie River snowmobile trail prior to beginning operations during the snowmobile season (approximately December 1 to March 31). The trail must be posted at appropriate distances from the sale area to warn of logging activity and truck traffic. Signs must be removed when harvest operations are suspended or completed. The Purchaser will provide these signs.



TIMBER SALE MAP

This information provided by authority of Part 525, 1994 PA 451, as amended.

Sale Number	Year
61 -023	17

Forest Management Unit Traverse City	County Benzie	Mapped By Craig Allen	Date 9/28/2017	Page 1	of 1
Township 26N	Range 13W	Section(s) and Subdivision(s) Sec. 26; NWSW, Sec. 27; W1/2SE, E1/2SW, SWSW, Sec. 34; NWSE, S1/2SE, Sec. 35; SWSW	Scale 1:15,840		

Cover Type

A = Aspen	H = Hemlock	N = Marsh	U = Upland Brush
B = Paper Birch	J = Jack Pine	O = Oak	UM = Upland Mixed
C = Cedar	L = Lowland Brush	P = Lowland Poplar	V = Bog or Marsh
D = Tread Bog	LM = Lowland Mixed	Q = Mixed Swamp Conifer	W = White Pine
E = Swamp Hdwoods	M = Mpl, Bch, Bich	R = Red Pine	X = Non Stocked
F = Spruce Fir	MC = Mixed Conifer	S = Black Spruce	Z = Water
G = Grass	MD = Mixed Deciduous	T = Tamarack	

Density

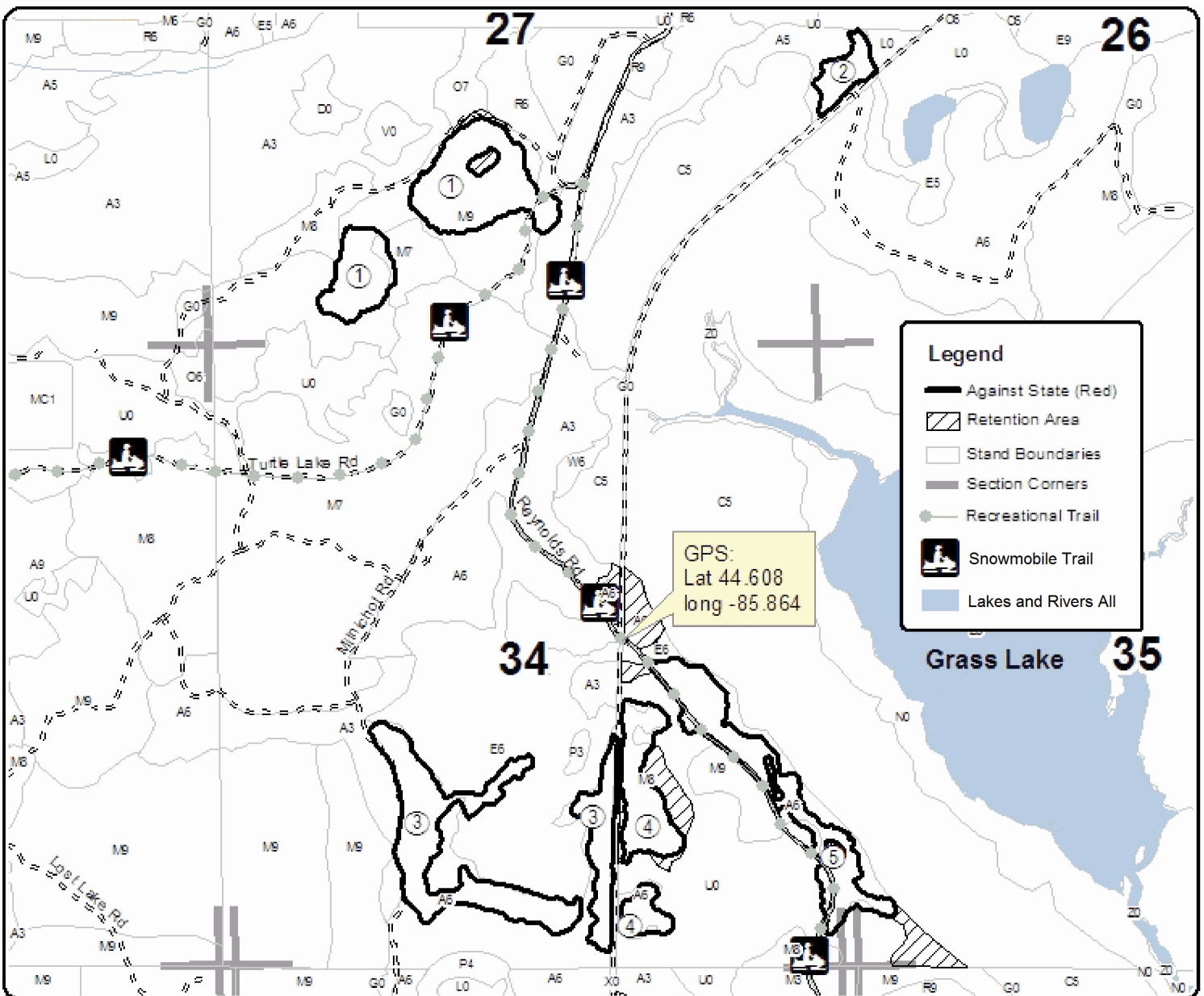
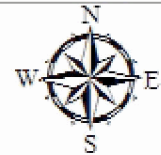
0 = Non Stocked	5 = Pole Timber Medium
1 = Seeding Sapling Poor	6 = Pole Timber Well
2 = Seeding Sapling Medium	7 = Saw Timber Poor
3 = Seeding Sapling Well	8 = Saw Timber Medium
4 = Pole Timber Poor	9 = Saw Timber Well

PU	Acres	PU	Acres
1	24.8	4	12.8
2	4	5	17.6
3	27.7		

Grass Lake Aspen

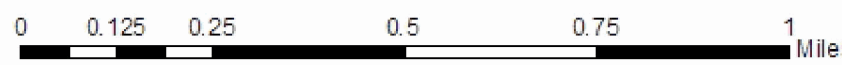
Compartment 18

86.9 Acres



Legend

- Against State (Red)
- Retention Area
- Stand Boundaries
- Section Corners
- Recreational Trail
- Snowmobile Trail
- Lakes and Rivers All



TIMBER SALE INFORMATION

Wilt Pocket Red (61-060-17)

Grand Traverse County (Advertised Price \$121,658.90)

SALE NOTE: Red pine final harvest. Tops must be chipped and tree length harvest is required to prepare site for re-planting.

A timber sale contract for this lump sum, sealed bid timber sale will be awarded to the responsible bidder offering the highest sealed bid price. Bids must be at or above the following advertised price for each species:

<u>PRODUCTS & SPECIES</u>	<u>ESTIMATED UNITS*</u>	<u>ADVERTISED PRICE</u>
Sawtimber		
Red Oak	3.40 MBF	\$ 181.00 / MBF
Red Pine	647.90 MBF	\$ 123.00 / MBF
Pulpwood		
B. T. Aspen	28.00 Cords	\$ 20.95 / Cord
Black Cherry	11.00 Cords	\$ 19.35 / Cord
Red Oak	7.00 Cords	\$ 13.95 / Cord
Red Pine	943.00 Cords	\$ 42.90 / Cord

* The total volume is statistically estimated within plus (+) or minus (-) 9.54 percent. The estimated units are final and not subject to adjustment. Prospective bidders are urged to examine this timber and to make their own estimates of quantity and quality.

BOND AND PAYMENT SCHEDULE:

1. A bond in the amount of \$6,083.00 to insure faithful performance of the conditions of the contract will be deposited by the successful bidder within 21 days of the sale award.
2. Cutting in any sale or unit without the required advance payment would be considered a trespass.
3. Total payment must be paid in advance or according to the following schedule:
 - (a) Ten percent (10%) of the sale value must be paid within 21 days of the sale award.
 - (b) The 10% down payment will be credited towards the first unit cut.
4. If no cutting takes place, the 10% down payment will not be refunded.
5. Operations on the contract issued will terminate on 12/31/2019.

Description of Timber by Payment Unit (PU)

PU	MARKET GROUP	PRODUCT	QUANTITY	UNIT	ACRES	ADVERTISE PRICE
1	Red Oak	Sawtimber	1.9	MBF	20.9	\$41,071.00
	Red Pine		233.7	MBF		
	Red Oak	Pulpwood	4.0	Cords		
	Red Pine		278.0	Cords		
2	Red Pine	Sawtimber	235.8	MBF	17.4	\$45,763.30
	B. T. Aspen	Pulpwood	28.0	Cords		
	Red Pine		377.0	Cords		
3	Red Oak	Sawtimber	1.5	MBF	15.5	\$34,824.60
	Red Pine		178.4	MBF		
	Black Cherry	Pulpwood	11.0	Cords		
	Red Oak		3.0	Cords		
	Red Pine		288.0	Cords		
TOTAL:			651.3	MBF		
TOTAL:			989.0	Cords		

Sale Specific Conditions & Requirements

Sale Name: Wilt Pocket Red

Sale Number: 61-060-17 Seq#: 1

1 - Sale Area

1.2 - Boundaries

1.2.1 - Painted boundaries (1/14)

The sale boundary and Payment Unit boundaries are marked and identified by blue and red paint, along with a power line ROW and a two-track road. Exterior sale boundary lines against private property are marked with blue paint. Exterior sale boundary lines against state are marked with red paint. The Interior Payment Unit boundaries between Payment Units 1 & 2 and 1 & 3 are unpainted and identified by the power line ROW. The Interior Payment Unit boundary between Payment Units 2 & 3 is unpainted and identified by the two-track road. The painted boundary line trees are not Included Timber and are to be protected.

2 - Timber Specifications

2.1 - Included Timber

2.1.1 - Clearcut unit(s) with unmerchantable trees (6/14)

Within Payment Unit(s) 1-3, cut all trees that are one (1) inch or more at DBH.

2.2 - Utilization

2.2.2 - Chipping required (5/14)

This area must be chip harvested to facilitate subsequent planting operations. The Purchaser has the option to produce sawlogs or pulpwood bolts, but the remaining portion of the trees must be chipped and hauled. The requirement to retain approximately 1/6 to 1/3 of tree tops and limbs less than four inches in diameter does not apply (G. C. & R. 2.2). This is because slash would interfere with future planting operations.

2.2.3 - Stump heights (4/07)

Stump heights within the Sale Area shall not exceed 6 inches for all trees. This is in order to facilitate planting operations.

2.2.4 - Skidding length (2/14)

Tree length skidding is required.

4 - Transportation

4.1 - Construction

4.1.12 - No new roads (1/12)

No new roads will be permitted in any Payment Unit. All operations are limited to existing roads. Skid trails only will be allowed.

5 - Operations

5.1 - Notification

5.1.1 - Pre-sale conference (10/16)

A pre-sale conference on site between the Purchaser and sale administrator is required prior to beginning any operations to determine landing and road locations. The Unit Manager or his/her representative must be contacted at least 3 days in advance to schedule the conference.

5.1.4 - Post-sale conference (10/16)

A post-sale conference on site between the Purchaser and sale administrator is required 3 days prior to the completion of active logging operations to determine clean-up and repair of landings, road edges, and the fulfillment of other contract specifications.

5.2 - Conduct of Operations

5.2.3 - Operating Restrictions

5.2.3.4 - Oak wilt restriction (4/17)

Within Payment Unit(s) 1-3, unless changed by written agreement, cutting, skidding, and hauling are not permitted during the period of April 15 to July 15. Operations may be allowed if specific steps are taken to prevent damaging uncut oak during the high risk period. Those steps include completing all road brushing before April 15th, clearing a tree-length buffer along uncut oak cover before April 15th or leaving an uncut buffer there until after July 15th. This is necessary to reduce the spread of oak wilt. For more information, contact the Unit Manager or his/her representative.

5.4 - Soil Protection

5.4.1 - Rutting restriction, general (7/16)

Operations are to cease immediately if equipment and weather conditions result in rutting of roads and/or skid trails which is 12 inches or greater in depth and 50 feet in length. The Unit Manager or his/her representative may restrict hauling and/or skidding if ruts exceed the specified depth. With the Unit Manager or his/her representative's approval, the Purchaser may return to the area when the risk of rutting has decreased.

6 - Safety and Fire Prevention

6.2 - Signing

6.2.1 - Road posting (9/09)

The Purchaser is responsible for posting and maintaining caution signs on Broomhead Road prior to beginning operations. The road must be posted at appropriate distances from the sale area to warn of logging activity and truck traffic. Signs must be removed when harvest operations are suspended or completed. The Purchaser will provide these signs.



TIMBER SALE MAP

This information provided by authority of Part 525, 1994 PA 451, as amended.

Forest Management Unit Traverse City		County Grand Traverse	Mapped By Ruppen	Date 09/06/2017	Page 1	of 1
Township 27 N	Range 9 W	Section(s) and Subdivision(s) Sec 10 N1/2NE SWNE		Scale 1:7,920		
Cruised By Ruppen						

Cover Type

A = Aspen	H = Hemlock	N = Marsh	U = Upland Brush
B = Paper Birch	J = Jack Pine	O = Oak	UM = Upland Mixed
C = Cedar	L = Lowland Brush	P = Lowland Poplar	V = Bog or Marsh
D = Treed Bog	LM = Lowland Mixed	Q = Mixed Swamp Conifer	W = White Pine
E = Swamp Hdwoods	M = Mpl, Bch, Bich	R = Red Pine	X = Non Stocked
F = Spruce Fir	MC = Mixed Conifer	S = Black Spruce	Z = Water
G = Grass	MD = Mixed Deciduous	T = Tamarack	

Density

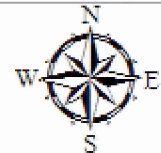
0 = Non Stocked	5 = Pole Timber Medium
1 = Seeding Sapling Poor	6 = Pole Timber Well
2 = Seeding Sapling Medium	7 = Saw Timber Poor
3 = Seeding Sapling Well	8 = Saw Timber Medium
4 = Pole Timber Poor	9 = Saw Timber Well

PU	Acres
1	20.9
2	17.4
3	15.5

Wilt Pocket Red

Compartment 041

53.8 Acres



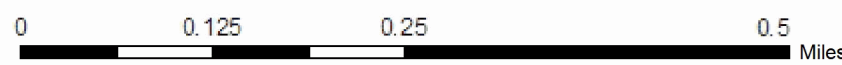
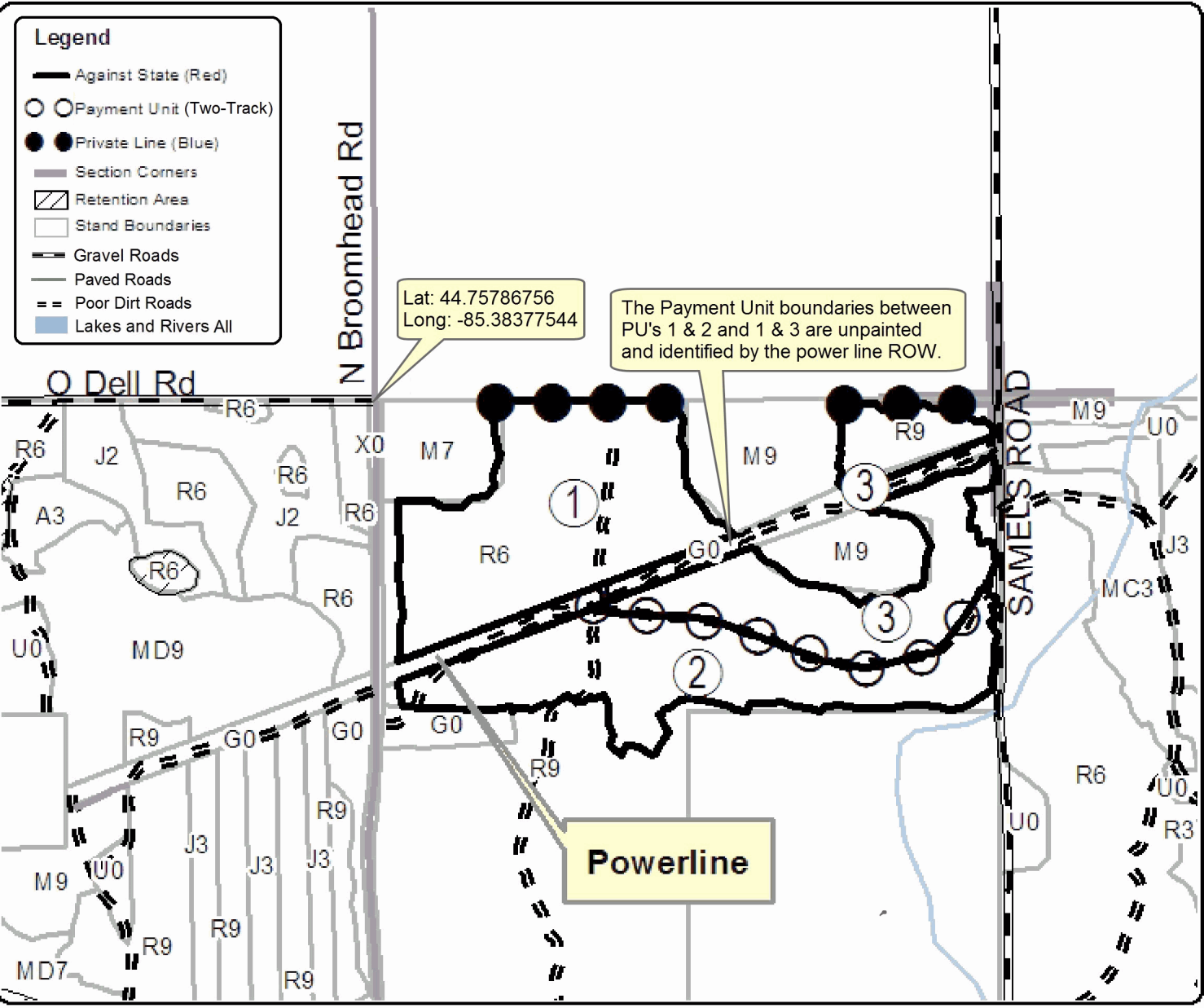
Legend

- Against State (Red)
- Payment Unit (Two-Track)
- Private Line (Blue)
- Section Corners
- Retention Area
- Stand Boundaries
- Gravel Roads
- Paved Roads
- Poor Dirt Roads
- Lakes and Rivers All

Lat: 44.75786756
Long: -85.38377544

The Payment Unit boundaries between PU's 1 & 2 and 1 & 3 are unpainted and identified by the power line ROW.

Powerline



TIMBER SALE INFORMATION

Oak Islands (61-073-17)

Benzie County (Advertised Price \$115,674.75)

A timber sale contract for this lump sum, sealed bid timber sale will be awarded to the responsible bidder offering the highest sealed bid price. Bids must be at or above the following advertised price for each species:

<u>PRODUCTS & SPECIES</u>	<u>ESTIMATED UNITS*</u>	<u>ADVERTISED PRICE</u>
Sawtimber		
Red Oak	566.10 MBF	\$ 181.00 / MBF
Pulpwood		
Red Oak	947.00 Cords	\$ 13.95 / Cord

* The total volume is statistically estimated within plus (+) or minus (-) 14.34 percent. The estimated units are final and not subject to adjustment. Prospective bidders are urged to examine this timber and to make their own estimates of quantity and quality.

BOND AND PAYMENT SCHEDULE:

1. A bond in the amount of \$5,784.00 to insure faithful performance of the conditions of the contract will be deposited by the successful bidder within 21 days of the sale award.
2. Cutting in any sale or unit without the required advance payment would be considered a trespass.
3. Total payment must be paid in advance or according to the following schedule:
 - (a) Ten percent (10%) of the sale value must be paid within 21 days of the sale award.
 - (b) The remainder is due before cutting begins.
4. If no cutting takes place, the 10% down payment will not be refunded.
5. Operations on the contract issued will terminate on 12/31/2019.

Description of Timber by Payment Unit (PU)

PU	MARKET GROUP	PRODUCT	QUANTITY	UNIT	ACRES	ADVERTISE PRICE
1	Red Oak	Sawtimber	566.1	MBF	92.3	\$115,674.75
	Red Oak	Pulpwood	947.0	Cords		
TOTAL:			566.1	MBF		
TOTAL:			947.0	Cords		

Sale Specific Conditions & Requirements

Sale Name: Oak Islands

Sale Number: 61-073-17 Seq#: 1

1 - Sale Area

1.2 - Boundaries

1.2.1 - Painted boundaries (1/14)

The sale boundary is marked and identified by blue and red paint. Exterior sale boundary lines against private property are marked with blue paint. Exterior sale boundary lines against state are marked with red paint. The painted boundary line trees are not Included Timber and are to be protected.

2 - Timber Specifications

2.1 - Included Timber

2.1.4 - Designated timber unit(s) (6/17)

Within Payment Unit(s) 1, all red oak trees are designated for cutting regardless of merchantability, except do not cut any trees marked with green paint.

2.2 - Utilization

2.2.3 - Stump heights (4/07)

Stump heights within the Sale Area shall not exceed 12 inches for trees greater than 10 inches DBH and 4 inches for trees smaller than 10 inches DBH.

2.2.4 - Skidding length (2/14)

Skidding of unlimbed tops or lengths over 17 feet is not permissible unless approved by the Unit Manager or his/her representative. This is in an effort to minimize damage to existing understory trees and saplings, particularly of sugar maple, aspen, oak and white pine.

3 - Payments

3.3 - Pre-measured Sales

3.3.4 - Dividing payment units (7/14)

Payment Unit(s) 1 may be divided at the request of the Purchaser and upon approval of the Unit Manager. Dividing Payment Units is a contract modification which requires a Timber Sale Contract Supplement. There will be only one division per Payment Unit.

3.4 - Damaged Timber

3.4.1 - Damaged timber (6/14)

General Condition and Requirement 3.4 Damaged Timber, defines liquidated damages for undesignated live merchantable trees which are cut or injured. In addition, extreme care should be taken to avoid damage to tree seedlings and saplings, particularly of sugar maple, aspen, oak and pine.

4 - Transportation

4.1 - Construction

4.1.3 - Slash and earthen piles (8/04)

Piles or windrows of earth along roads and landings that have been widened or constructed shall be leveled. Slash from road maintenance or construction, including stumps, shall be dispersed throughout the sale or may be piled in numerous locations as specified by DNR sale administrator (for rabbit and other small animal habitat creation).

4.1.12 - No new roads (1/12)

No new roads will be permitted in any Payment Unit. Skidding / forwarding lanes will be permitted as discussed with DNR sale administrator.

5 - Operations

5.1 - Notification

5.1.4 - Post-sale conference (10/16)

A post-sale conference on site between the Purchaser and sale administrator is required 3 days prior to the completion of active logging operations to determine clean-up and repair of landings, road edges, and the fulfillment of other contract specifications.

5.2 - Conduct of Operations

5.2.1 - Slash

5.2.1.8 - Slash height (12/08)

No slash or tree tops may exceed 36 inches in height.

5.2.3 - Operating Restrictions

5.2.3.4 - Oak wilt restriction (9/17)

Within Payment Unit(s) 1, unless changed by written agreement, cutting, skidding, and hauling are not permitted during the period of April 15 to July 15. This is necessary to reduce the spread of oak wilt. For more information, contact the Unit Manager or his/her representative.



TIMBER SALE MAP

This information provided by authority of Par 525, 1994 PA 451, as amended.

Sale Number	Year
61- 073	17

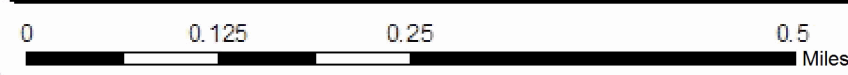
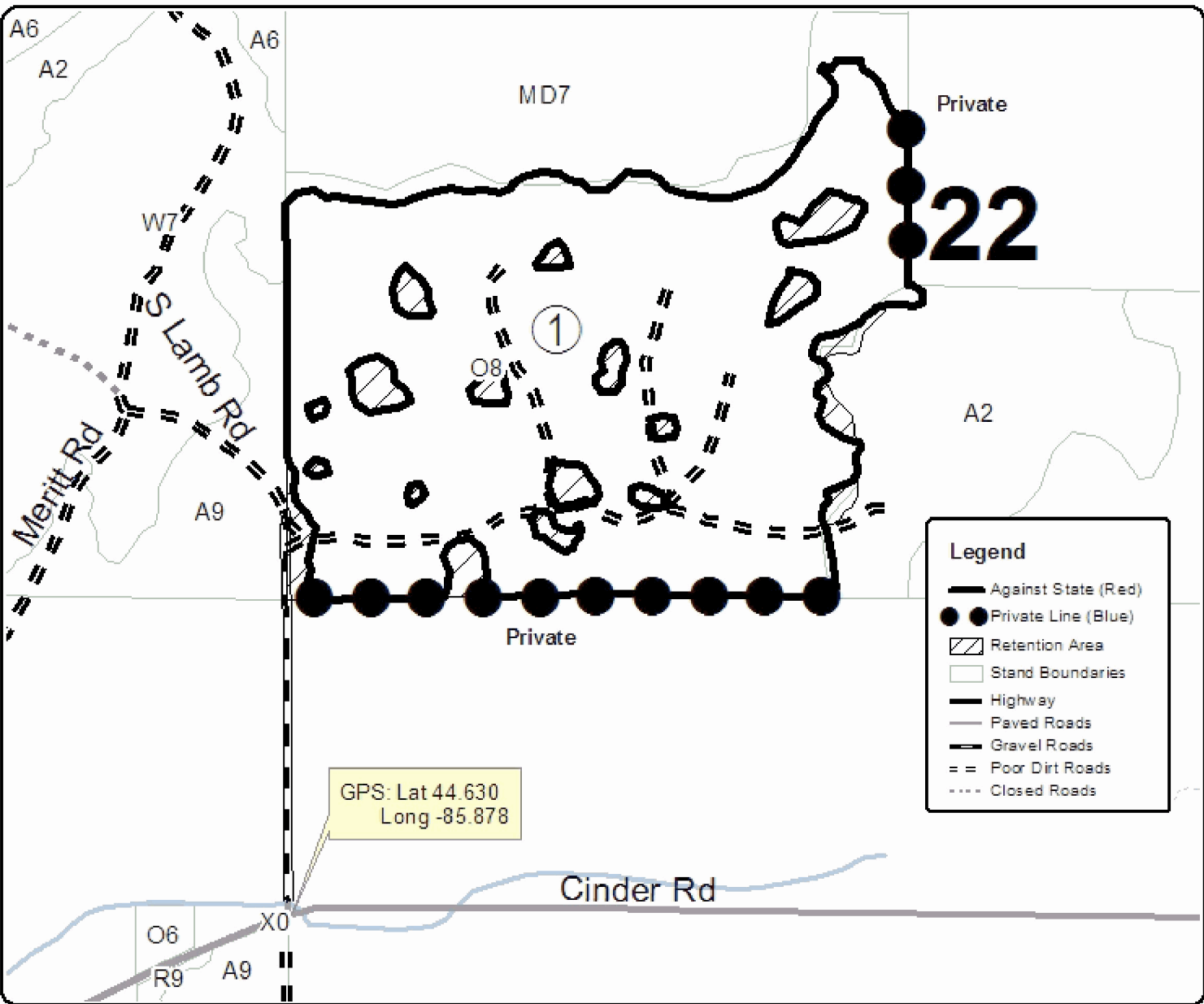
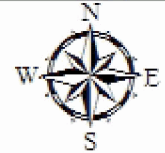
Forest Management Unit Traverse City	County Benzie	Mapped By Craig Allen	Date 09/07/2017	Page 1	of 1
Cruised By Craig Allen					

Township 26N	Range 13W	Section(s) and Subdivision(s) sec. 22, SENW, SWNW, NWSE, NESW, NWSW	Scale 1:7,920
-----------------	--------------	------------------------------------------------------------------------	------------------

Cover Type				Density			
A = Aspen	H = Hemlock	N = Marsh	U = Upland Brush	0 = Non Stocked	5 = Pole Timber Medium		
B = Paper Birch	J = Jack Pine	O = Oak	UM = Upland Mixed	1 = Seeding Sapling Poor	6 = Pole Timber Well		
C = Cedar	L = Lowland Brush	P = Lowland Poplar	V = Bog or Marsh	2 = Seeding Sapling Medium	7 = Saw Timber Poor		
D = Treed Bog	LM = Lowland Mixed	Q = Mixed Swamp Conifer	W = White Pine	3 = Seeding Sapling Well	8 = Saw Timber Medium		
E = Swamp Hdwoods	M = Mpl. Bch. Bich	R = Red Pine	X = Non Stocked	4 = Pole Timber Poor	9 = Saw Timber Well		
F = Spruce Fir	MC = Mixed Conifer	S = Black Spruce	Z = Water				
G = Grass	MD = Mixed Deciduous	T = Tamarack					

PU Acres
1 92.3

Oak Islands
Compartment 18
92.3 Acres



Pancake Hardwood (61-001-17)
; Benzie COUNTY

In response to the notice of sale to be held 4:00 p.m. (local time) on December 20, 2017, I am hereby submitting my sealed bid (firm offer) for the following forest products to be cut. Bids for individual species must be at or above the advertised price. All non-responsive bid forms may be rejected.

<u>PRODUCTS & SPECIES</u>	<u>ESTIMATED VOLUME*</u>	<u>ADVERTISED PRICE</u>	<u>BID PRICE/UNIT</u>
Sawtimber			
Basswood	32.50 MBF	\$ 108.00/MBF	\$ _____
Beech	64.40 MBF	\$ 91.00/MBF	\$ _____
Black Cherry	97.60 MBF	\$ 192.00/MBF	\$ _____
Mixed Aspen	15.70 MBF	\$ 105.00/MBF	\$ _____
Red Maple	166.20 MBF	\$ 127.00/MBF	\$ _____
Sugar Maple	133.00 MBF	\$ 282.00/MBF	\$ _____
Yellow Birch	0.70 MBF	\$ 138.00/MBF	\$ _____
Pulpwood			
Basswood	29.00 Cords	\$ 27.65/Cord	\$ _____
Mixed Aspen	22.00 Cords	\$ 19.55/Cord	\$ _____
Mixed Hardwood	1,103.00 Cords	\$ 18.05/Cord	\$ _____

*The volumes are statistically estimated within plus (+) or minus (-) 14.84 percent. These estimated volumes are final and not subject to adjustment. Prospective bidders are urged to examine this timber and to make their own estimates of quantity and quality.

I understand that any or all bids may be rejected. All bids must be signed and all bid items must be bid or the bid form may be rejected. I also understand that consideration and awarding a contract will be based upon my past performance and ability to complete the contract based upon equipment and staffing subject to my control.

FEDERAL ID: _____ or SOCIAL SECURITY NUMBER: _____

Company or individual bidding: _____

Company representative's name: _____

Address: _____

City: _____ State: _____ Zip: _____

IF AVAILABLE, PLEASE PLACE THE PERSONALIZED LABEL FROM YOUR PROSPECTUS IN THE ABOVE BOX.

Individual or company representative's signature: _____ Date: _____

Phone number : _____ Email (optional): _____

THE WINNING BIDDER MUST COMPLETE THE VERIFICATION OF WORKER'S DISABILITY COMPENSATION ACT COMPLIANCE (ON REVERSE SIDE IF DOUBLE SIDED) WITHIN 21 DAYS OF SALE AWARD DATE



FOR DEPARTMENT USE ONLY
Sale Number (XX - XXX - XX - XX)
Forest Management Unit:

TIMBER SALE VERIFICATION OF WORKER'S DISABILITY COMPENSATION ACT COMPLIANCE

*As required by Act 317, P.A. 1969 (Worker's Compensation) and
Part 5 of Act 451 of 1994, as amended.*

VERIFICATION OF WORKER'S DISABILITY COMPENSATION ACT COMPLIANCE

- This verification must be completed and submitted within 21 days of contract award and prior to the issuance of the timber sale contract.
- In addition, if boxes 2B or 2C are checked, then Notice of Exclusion or Certificate of Insurance must be submitted within twenty-one (21) days of the contract award and prior to the issuance of the timber sale contract.
- All information must be typed or printed except for written signatures.

Please Check Appropriate Categories:

1. My business is organized as (you **must** check one of the boxes below):
 - A. Sole Proprietorship (individual)
 - B. Partnership
 - C. Corporation
2. You **must** check one of the boxes below:
 - A. I certify my business is a sole proprietorship and it has no employees but the sole proprietor. I am not subject to the Worker's Compensation Laws.
 - B. I certify my business has satisfied its obligation to the Worker's Compensation Act through the use of an approved Notice of Exclusion (BWC-337, Rev. 5/96). I will provide a copy of the Notice of Exclusion within 21 days of the contract award. (For questions or a copy of the BWC-337, please call the Worker's Compensation Bureau at 517-322-1195).
 - C. I certify my business has a Worker's Compensation Policy. I will provide an original Certificate of Insurance within twenty-one (21) days of the contract award.
3. If you have checked item 2(A) or 2(B), you **must** indicate the number of **both** full-time and part-time employees, other than yourself, including family members and active partners (if none, you must enter "0").

_____ Full-time Employees

_____ Part-time Employees

Name of Business		Federal ID (or) Social Security No.	
Address		Telephone ()	
City	State	ZIP	

I hereby certify that the above information is true and correct. I agree to notify the Michigan DNR of any changes that occur in factors affecting my coverage during any of my present and future operations.

Signature of Owner or Authorized Representative

Title

Date

Please complete the "SEALED BID" information on the next page

Grass Lake Aspen (61-023-17)
; Benzie COUNTY

In response to the notice of sale to be held 4:00 p.m. (local time) on December 20, 2017, I am hereby submitting my sealed bid (firm offer) for the following forest products to be cut. Bids for individual species must be at or above the advertised price. All non-responsive bid forms may be rejected.

<u>PRODUCTS & SPECIES</u>	<u>ESTIMATED VOLUME*</u>	<u>ADVERTISED PRICE</u>	<u>BID PRICE/UNIT</u>
Sawtimber			
Beech	10.70 MBF	\$ 97.00/MBF	\$ _____
Black Cherry	8.10 MBF	\$ 205.00/MBF	\$ _____
Mixed Aspen	153.70 MBF	\$ 113.00/MBF	\$ _____
Red Maple	115.60 MBF	\$ 137.00/MBF	\$ _____
Sugar Maple	15.40 MBF	\$ 302.00/MBF	\$ _____
Pulpwood			
Balsam Fir	7.00 Cords	\$ 13.70/Cord	\$ _____
Mixed Aspen	618.00 Cords	\$ 20.95/Cord	\$ _____
Mixed Hardwood	752.00 Cords	\$ 19.35/Cord	\$ _____

*The volumes are statistically estimated within plus (+) or minus (-) 13.10 percent. These estimated volumes are final and not subject to adjustment. Prospective bidders are urged to examine this timber and to make their own estimates of quantity and quality.

I understand that any or all bids may be rejected. All bids must be signed and all bid items must be bid or the bid form may be rejected. I also understand that consideration and awarding a contract will be based upon my past performance and ability to complete the contract based upon equipment and staffing subject to my control.

FEDERAL ID: ____ - ____ - ____ or SOCIAL SECURITY NUMBER: ____ - ____ - ____

Company or individual bidding: _____

Company representative's name: _____

Address: _____

City: _____ State: _____ Zip: _____

IF AVAILABLE, PLEASE PLACE THE PERSONALIZED LABEL FROM YOUR PROSPECTUS IN THE ABOVE BOX.

Individual or company representative's signature: _____ Date: _____

Phone number : _____ Email (optional): _____

THE WINNING BIDDER MUST COMPLETE THE VERIFICATION OF WORKER'S DISABILITY COMPENSATION ACT COMPLIANCE (ON REVERSE SIDE IF DOUBLE SIDED) WITHIN 21 DAYS OF SALE AWARD DATE



FOR DEPARTMENT USE ONLY
Sale Number (XX - XXX - XX - XX)
Forest Management Unit:

TIMBER SALE VERIFICATION OF WORKER'S DISABILITY COMPENSATION ACT COMPLIANCE

*As required by Act 317, P.A. 1969 (Worker's Compensation) and
Part 5 of Act 451 of 1994, as amended.*

VERIFICATION OF WORKER'S DISABILITY COMPENSATION ACT COMPLIANCE

- This verification must be completed and submitted within 21 days of contract award and prior to the issuance of the timber sale contract.
- In addition, if boxes 2B or 2C are checked, then Notice of Exclusion or Certificate of Insurance must be submitted within twenty-one (21) days of the contract award and prior to the issuance of the timber sale contract.
- All information must be typed or printed except for written signatures.

Please Check Appropriate Categories:

1. My business is organized as (you **must** check one of the boxes below):
 - A. Sole Proprietorship (individual)
 - B. Partnership
 - C. Corporation
2. You **must** check one of the boxes below:
 - A. I certify my business is a sole proprietorship and it has no employees but the sole proprietor. I am not subject to the Worker's Compensation Laws.
 - B. I certify my business has satisfied its obligation to the Worker's Compensation Act through the use of an approved Notice of Exclusion (BWC-337, Rev. 5/96). I will provide a copy of the Notice of Exclusion within 21 days of the contract award. (For questions or a copy of the BWC-337, please call the Worker's Compensation Bureau at 517-322-1195).
 - C. I certify my business has a Worker's Compensation Policy. I will provide an original Certificate of Insurance within twenty-one (21) days of the contract award.
3. If you have checked item 2(A) or 2(B), you **must** indicate the number of **both** full-time and part-time employees, other than yourself, including family members and active partners (if none, you must enter "0").

_____ Full-time Employees

_____ Part-time Employees

Name of Business		Federal ID (or) Social Security No.	
Address		Telephone ()	
City	State	ZIP	

I hereby certify that the above information is true and correct. I agree to notify the Michigan DNR of any changes that occur in factors affecting my coverage during any of my present and future operations.

Signature of Owner or Authorized Representative

Title

Date

Please complete the "SEALED BID" information on the next page

Wilt Pocket Red (61-060-17)
; Grand Traverse COUNTY

In response to the notice of sale to be held 4:00 p.m. (local time) on December 20, 2017, I am hereby submitting my sealed bid (firm offer) for the following forest products to be cut. Bids for individual species must be at or above the advertised price. All non-responsive bid forms may be rejected.

<u>PRODUCTS & SPECIES</u>	<u>ESTIMATED VOLUME*</u>	<u>ADVERTISED PRICE</u>	<u>BID PRICE/UNIT</u>
Sawtimber			
Red Oak	3.40 MBF	\$ 181.00/MBF	\$ _____
Red Pine	647.90 MBF	\$ 123.00/MBF	\$ _____
Pulpwood			
B. T. Aspen	28.00 Cords	\$ 20.95/Cord	\$ _____
Black Cherry	11.00 Cords	\$ 19.35/Cord	\$ _____
Red Oak	7.00 Cords	\$ 13.95/Cord	\$ _____
Red Pine	943.00 Cords	\$ 42.90/Cord	\$ _____

*The volumes are statistically estimated within plus (+) or minus (-) 9.54 percent. These estimated volumes are final and not subject to adjustment. Prospective bidders are urged to examine this timber and to make their own estimates of quantity and quality.

I understand that any or all bids may be rejected. All bids must be signed and all bid items must be bid or the bid form may be rejected. I also understand that consideration and awarding a contract will be based upon my past performance and ability to complete the contract based upon equipment and staffing subject to my control.

FEDERAL ID: _____ or SOCIAL SECURITY NUMBER: _____

Company or individual bidding: _____

Company representative's name: _____

Address: _____

City: _____ State: _____ Zip: _____

IF AVAILABLE, PLEASE PLACE THE PERSONALIZED LABEL FROM YOUR PROSPECTUS IN THE ABOVE BOX.

Individual or company representative's signature: _____ Date: _____

Phone number : _____ Email (optional): _____

THE WINNING BIDDER MUST COMPLETE THE VERIFICATION OF WORKER'S DISABILITY COMPENSATION ACT COMPLIANCE (ON REVERSE SIDE IF DOUBLE SIDED) WITHIN 21 DAYS OF SALE AWARD DATE



FOR DEPARTMENT USE ONLY
Sale Number (XX - XXX - XX - XX)
Forest Management Unit:

TIMBER SALE VERIFICATION OF WORKER'S DISABILITY COMPENSATION ACT COMPLIANCE

*As required by Act 317, P.A. 1969 (Worker's Compensation) and
Part 5 of Act 451 of 1994, as amended.*

VERIFICATION OF WORKER'S DISABILITY COMPENSATION ACT COMPLIANCE

- This verification must be completed and submitted within 21 days of contract award and prior to the issuance of the timber sale contract.
- In addition, if boxes 2B or 2C are checked, then Notice of Exclusion or Certificate of Insurance must be submitted within twenty-one (21) days of the contract award and prior to the issuance of the timber sale contract.
- All information must be typed or printed except for written signatures.

Please Check Appropriate Categories:

1. My business is organized as (you **must** check one of the boxes below):
 - A. Sole Proprietorship (individual)
 - B. Partnership
 - C. Corporation
2. You **must** check one of the boxes below:
 - A. I certify my business is a sole proprietorship and it has no employees but the sole proprietor. I am not subject to the Worker's Compensation Laws.
 - B. I certify my business has satisfied its obligation to the Worker's Compensation Act through the use of an approved Notice of Exclusion (BWC-337, Rev. 5/96). I will provide a copy of the Notice of Exclusion within 21 days of the contract award. (For questions or a copy of the BWC-337, please call the Worker's Compensation Bureau at 517-322-1195).
 - C. I certify my business has a Worker's Compensation Policy. I will provide an original Certificate of Insurance within twenty-one (21) days of the contract award.
3. If you have checked item 2(A) or 2(B), you **must** indicate the number of **both** full-time and part-time employees, other than yourself, including family members and active partners (if none, you must enter "0").

_____ Full-time Employees _____ Part-time Employees

Name of Business		Federal ID (or) Social Security No.	
Address		Telephone ()	
City	State	ZIP	

I hereby certify that the above information is true and correct. I agree to notify the Michigan DNR of any changes that occur in factors affecting my coverage during any of my present and future operations.

Signature of Owner or Authorized Representative

_____ _____
Title Date

Please complete the "SEALED BID" information on the next page

Oak Islands (61-073-17)
; Benzie COUNTY

In response to the notice of sale to be held 4:00 p.m. (local time) on December 20, 2017, I am hereby submitting my sealed bid (firm offer) for the following forest products to be cut. Bids for individual species must be at or above the advertised price. All non-responsive bid forms may be rejected.

<u>PRODUCTS & SPECIES</u>	<u>ESTIMATED VOLUME*</u>	<u>ADVERTISED PRICE</u>	<u>BID PRICE/UNIT</u>
Sawtimber			
Red Oak	566.10 MBF	\$ 181.00/MBF	\$ _____
Pulpwood			
Red Oak	947.00 Cords	\$ 13.95/Cord	\$ _____

*The volumes are statistically estimated within plus (+) or minus (-) 14.34 percent. These estimated volumes are final and not subject to adjustment. Prospective bidders are urged to examine this timber and to make their own estimates of quantity and quality.

I understand that any or all bids may be rejected. All bids must be signed and all bid items must be bid or the bid form may be rejected. I also understand that consideration and awarding a contract will be based upon my past performance and ability to complete the contract based upon equipment and staffing subject to my control.

FEDERAL ID: ____ - ____ - ____ or SOCIAL SECURITY NUMBER: ____ - ____ - ____

Company or individual bidding: _____

Company representative's name: _____

Address: _____

City: _____ State: _____ Zip: _____

IF AVAILABLE, PLEASE PLACE THE PERSONALIZED LABEL FROM YOUR PROSPECTUS IN THE ABOVE BOX.

Individual or company representative's signature: _____ Date: _____

Phone number : _____ Email (optional): _____

THE WINNING BIDDER MUST COMPLETE THE VERIFICATION OF WORKER'S DISABILITY COMPENSATION ACT COMPLIANCE (ON REVERSE SIDE IF DOUBLE SIDED) WITHIN 21 DAYS OF SALE AWARD DATE



FOR DEPARTMENT USE ONLY	
Sale Number (XX - XXX - XX - XX)	
Forest Management Unit:	

TIMBER SALE VERIFICATION OF WORKER'S DISABILITY COMPENSATION ACT COMPLIANCE

As required by Act 317, P.A. 1969 (Worker's Compensation) and
Part 5 of Act 451 of 1994, as amended.

VERIFICATION OF WORKER'S DISABILITY COMPENSATION ACT COMPLIANCE

- This verification must be completed and submitted within 21 days of contract award and prior to the issuance of the timber sale contract.
- In addition, if boxes 2B or 2C are checked, then Notice of Exclusion or Certificate of Insurance must be submitted within twenty-one (21) days of the contract award and prior to the issuance of the timber sale contract.
- All information must be typed or printed except for written signatures.

Please Check Appropriate Categories:

1. My business is organized as (you **must** check one of the boxes below):
 - A. Sole Proprietorship (individual)
 - B. Partnership
 - C. Corporation
2. You **must** check one of the boxes below:
 - A. I certify my business is a sole proprietorship and it has no employees but the sole proprietor. I am not subject to the Worker's Compensation Laws.
 - B. I certify my business has satisfied its obligation to the Worker's Compensation Act through the use of an approved Notice of Exclusion (BWC-337, Rev. 5/96). I will provide a copy of the Notice of Exclusion within 21 days of the contract award. (For questions or a copy of the BWC-337, please call the Worker's Compensation Bureau at 517-322-1195).
 - C. I certify my business has a Worker's Compensation Policy. I will provide an original Certificate of Insurance within twenty-one (21) days of the contract award.
3. If you have checked item 2(A) or 2(B), you **must** indicate the number of **both** full-time and part-time employees, other than yourself, including family members and active partners (if none, you must enter "0").

_____ Full-time Employees

_____ Part-time Employees

Name of Business		Federal ID (or) Social Security No.	
Address		Telephone ()	
City	State	ZIP	

I hereby certify that the above information is true and correct. I agree to notify the Michigan DNR of any changes that occur in factors affecting my coverage during any of my present and future operations.

Signature of Owner or Authorized Representative

Title

Date

Please complete the "SEALED BID" information on the next page