



**DEPARTMENT OF NATURAL RESOURCES
STATE OF MICHIGAN**

TIMBER SALE PROSPECTUS #6058

SCHEDULED SALE DATE AND TIME: 8:30 a.m. (local time) on January 17, 2018.

LOCATION: CRYSTAL FALLS MGT UNIT, 1420 US-2 WEST, CRYSTAL FALLS, MI 49920.

PROSPECTUS NOTE: The bidder is advised to inspect the sale area and review the location, estimated volumes, operating costs and contract terms of proposed sales. Please be aware that some landowners may request 60 days or more notice for access across their land.

Notice is hereby given that bids will be received by the Unit Manager, CRYSTAL FALLS MANAGEMENT UNIT, for certain timber on the following described lands:

Cornea (12-006-17)

Dickinson County, Advertised Price \$34,723.60, 52.0 Acres, Aspen, Hardwood.

SALE NOTE: Access to Payment Units 1 and 2 require permission from private landowner located off of Palmcooks Rocky Top Road.

Access may be through private land.

Minnesconsin Mix (12-019-17)

Dickinson County, Advertised Price \$100,261.30, 193.3 Acres, Hardwood, Sugar Maple.

SALE NOTE: Payment Units 1-7 are harvestable in frozen ground conditions only. The snowmobile trail west of the sale will need to be posted and left with a snow covered base IF hauling that direction. A culvert replacement and a minimum of 150 cubic yards of gravel will be required for this sale to be considered complete.

A recreation site such as a trail, pathway, or campground is within the sale area or the vicinity. Certain restrictions/specifications may be applicable including time restrictions.

Salmagundi (12-026-17)

Dickinson County, Advertised Price \$179,309.55, 257.1 Acres, Aspen, Spruce/Fir/Tamarack.

SALE NOTE: Permission to cross private land is the responsibility of the purchaser.

Payment Units 1, 2, 4, 11, and 12 are limited to cutting and skidding from July 15 to March 31 due to bark slippage restriction.

Payment Units 8 & 9 are limited to very dry summer or frozen ground conditions.

Haul routes for Payment Units 1-4 are along a snowmobile trail and it is recommended operations occur prior to snowmobile season (generally December 1 to March 31).

A recreation site such as a trail, pathway, or campground is within the sale area or the vicinity. Certain restrictions/specifications may be applicable including time restrictions. Access may be through private land.

Stickleback Road SBW (12-033-17)

Dickinson County, Advertised Price \$149,194.55, 178.0 Acres, Aspen, Spruce/Fir/Tamarack.

SALE NOTE: No decking along snowmobile trail during snowmobile season. Brush piles to be created for grouse and hare habitat.

A recreation site such as a trail, pathway, or campground is within the sale area or the vicinity. Certain restrictions/specifications may be applicable including time restrictions.

Mosquito Aspen (12-067-17)

Dickinson County, Advertised Price \$30,745.65, 39.3 Acres, Aspen, Spruce/Fir/Tamarack.

BID INSTRUCTIONS (VER. 11/28/2017):

1. Scheduled Bid Location, Date, and Time (2/11)

Bids must be received by the Unit Manager, CRYSTAL FALLS OFFICE, 1420 US-2 WEST, CRYSTAL FALLS, MI 49920, no later than 8:30 a.m. (local time) on January 17, 2018. For further information concerning this sale, contact Dan McNamee at 906-875-6622 extension 105.

2. Bidder's Qualifications (5/16)

Purchaser shall obtain workers compensation insurance to cover claims under Michigan's Worker's Disability Compensation Act of 1969 or similar employee benefit act of any other state applicable to an employee. If all or part of a timber sale was prepared by a private contractor, the contractor and that contractor's company are not permitted to bid on the timber sale contract. Bids will not be accepted from individuals or companies appearing on the DNR/FRD No-Bid List. This list contains the names of purchasers who previously failed to execute a contract within 21-days or who have a history of poor performance.

3. Preparation of Sealed Bids (5/16)

Bid Forms may be completed online thru Michigan DNR Timber Sale Online Bidding (OLB) at www.michigan.gov/timberbidding or by completing the hardcopy Bid Form found in the Timber Sale Prospectus. Hardcopy Bid Forms shall be manually signed in ink. Registration in OLB is considered your 'signature' for all bids submitted thru that system. Bid prices must be entered for each species and product in the Bid Price column for all material subject to bidding and all fill-in blanks must be completed. If erasures or other changes appear on the hardcopy Bid Form, each erasure or change must be initialed by the person signing the bid.

4. Submission of Sealed Bids (5/16)

Bid forms may be obtained from the Unit Manager or thru OLB. Bids may be submitted hardcopy or thru OLB. All hardcopy bids must be submitted on the bid form and in an envelope clearly identified as described in this section. NOTE: Only one bid form per bid envelope. Sealed bids must be submitted to the Unit office designated in the prospectus and must be submitted at or prior to the time established in the prospectus. The envelope should show on the outside (a) the sale name or number and (b) the date and time of bid opening, as shown in the prospectus. Bids received after the time specified in the sale prospectus are late bids and will be rejected.

It is possible for a bidder to submit multiple bids on a single sale. For example, a bid may be submitted hardcopy and a bid may be submitted thru OLB. Or, two bidders from the same company could both submit bids on the same sale. If this were to happen, the State would accept all bids received and award the contract accordingly. All bidding and contractual requirements would apply to all bids received.

5. Public Opening of Sealed Bids (7/16)

If conditions permit, the sealed bids will be publicly opened and posted at the time and place set in the prospectus.

If a bidder, present at a bid opening, has submitted bids on more than one sale, that bidder may withdraw their unopened bid envelopes or announce the withdrawal of their online bid after being declared the successful bidder on one sale.

6. Award of Contract (1/11)

Award of the contract will be made to the Bidder whose bid, conforming to the prospectus, is most advantageous to the State of Michigan on the basis of total value at rates bid for the estimated quantities. The State reserves the right to reject any bid or waive any minor irregularity in bids received. A written award mailed (or otherwise furnished) to the successful Bidder shall be deemed to result in a binding contract without further action by either party.

7. Down Payment (1/11)

The Bidder to whom award is made must make a down payment within 21 days of the sale award. The amount of the down payment will be calculated as shown in the Bond and Payment Schedule of this prospectus. Only cash may be used to meet this requirement.

8. Performance Security (1/11)

As guarantee of faithful performance, a cash bond, certificate of deposit, surety bond or irrevocable letter of credit (LOC) is required within 21 days of the sale award. The amount of the performance security is shown in the Bond and

Payment Schedule of this prospectus. If an LOC or surety is used, the coverage must extend for at least 6 months beyond the contract expiration.

9. Timber Sale Contract (11/17)

Additional conditions and requirements common to all timber sales are listed on the timber sale contract (R4031) and are available on line at www.michigan.gov/timber. Contact the Unit Manager for additional information or a sample contract. Within 21 days of the date of the award letter, the bidder must sign the contract and provide the required down payment, performance security, and verification of worker's disability compensation. The down payment and performance security shall be in accordance with the provisions of the timber sale contract, in the sums stated in this prospectus. If these actions are not taken, then the Bidder, the Bidder's corporation, and the corporation's principals may not be permitted to bid on State timber sales for a period of 1 year. In addition, the Bidder certifies that if awarded this contract, the Bidder will complete the timber sale contract in accordance with its terms and any modifications thereof including requirements to purchase, cut, and remove the included timber by the expiration date.

Payment Unit values in the State Forest Timber Sale Contract are calculated based on the advertised value of the Payment Unit as a percentage of the total advertised value of the contract. The advertised value of each Payment Unit is given in the Description of Timber by Payment Unit table on the Timber Sale Information page. For example, if the value of Payment Unit 1 is advertised as \$1,500 and the total Timber Sale value is advertised as \$10,000, the contract price for Payment Unit 1 will be 15% of the total bid price ($\$1,500/\$10,000 * 100$).

10. Disclaimer of Estimates and Bidder's Warranty of Inspection (7/16)

Before submitting this bid, the Bidder is advised and cautioned to inspect the sale area, review the requirements of the sale contract, and take other steps as may be reasonably necessary to ascertain the location, estimated volumes, construction estimates, and operating costs of the proposed sale. Failure to do so will not relieve the Bidder from responsibility for completing the contract.

The Bidder warrants that this bid is submitted solely on the basis of the Bidder's examination and inspection of the quality and quantity of the timber offered for sale and the Bidder's opinion of the value thereof and the costs of recovery. No reliance should be placed on the State of Michigan's estimates of timber quality, quantity or costs of recovery. Bidder further acknowledges that the State of Michigan: (i) expressly disclaims any warranty of fitness of timber for any purpose; (ii) offers this timber as is without any warranty of quality (merchantability) or quantity and (iii) expressly disclaims any warranty as to the quantity or quality of timber sold.

11. Certification and Chain-of-Custody (10/14)

Unless otherwise indicated in the contract under section 7 – Other Conditions of the Sale Specific Conditions & Requirements, the area encompassed by this timber sale is certified to the standards of the Forest Stewardship Council (FSC) - Certificate #SCS-FM/COC-00090N and the Sustainable Forestry Initiative (SFI) - Certificate # NSF-SFIS-5Y031-SF5. Forest products from this sale may be delivered to the mill as "FSC 100% and / or SFI certified" as long as the contractor hauling the forest products is chain-of-custody (COC) certified or covered under a COC certificate from the destination mill. The purchaser is responsible for maintaining COC after leaving the sale area.

12. Good Neighbor Authority (GNA) Requirements (7/16)

If the name of this timber sales contains the acronym GNA, it is authorized by the Good Neighbor Authority (GNA) and covered by various agreements between the U.S. Forest Service and the State. The timber sale occurs on federal land and the following conditions apply:

GNA contracts on US Forest Service land will not be awarded to purchasers on the Federal list of excluded parties. The System for Award Management (SAM) will be checked for active excluded parties prior to award of contract. In addition, the Bidder to whom award is made must complete an Assurance Regarding Felony Conviction or Tax Delinquent Status for Corporate Applicants (AD-3031).

13. Good Neighbor Authority (GNA) Requirements, con't (9/16)

Bidder certifies, by signing this bid form, that to the best of Bidder's knowledge that the following representations are accurate and complete.

a. That the Bidder and its principals are not presently debarred, suspended, proposed for debarment, declared ineligible, or voluntary excluded from timber sales (covered transactions) by any Federal department or agency.

b. That the Bidder and its principals have not within a 3-year period preceding this bid been convicted of or had a civil judgment rendered against them for commission of fraud or a criminal offense in connection with obtaining, attempting to obtain, or performing a public (Federal, State, or local) transaction or contract under a public transaction; violation of Federal or State antitrust statutes or commission of embezzlement, theft, forgery, bribery, falsification or destruction of records, making false statements, or receiving stolen property.

c. That the Bidder and its principals are not presently indicted for or otherwise criminally or civilly charged by a governmental entity (Federal, State, or local) with commission of any of the offenses enumerated in paragraph b of this certification.

d. That the Bidder and its principals have not within a 3-year period preceding this bid had one or more public transactions (Federal, State, or local) terminated for breach or default of a timber or forest product contract.

Bidders that cannot certify this requirement, in whole or in part, shall submit an explanation with their bid.

KEITH CREAGH

Director

TIMBER SALE INFORMATION

Cornea (12-006-17)

Dickinson County (Advertised Price \$34,723.60)

SALE NOTE: Access to Payment Units 1 and 2 require permission from private landowner located off of Palmcooks Rocky Top Road.

Access may be through private land.

A timber sale contract for this lump sum, sealed bid timber sale will be awarded to the responsible bidder offering the highest sealed bid price. Bids must be at or above the following advertised price for each species:

<u>PRODUCTS & SPECIES</u>	<u>ESTIMATED UNITS*</u>	<u>ADVERTISED PRICE</u>
Sawtimber		
Basswood	3.80 MBF	\$ 240.00 / MBF
Sugar Maple	2.00 MBF	\$ 459.00 / MBF
Pulpwood		
Balsam Fir	47.00 Cords	\$ 20.15 / Cord
Mixed Aspen	552.00 Cords	\$ 34.95 / Cord
Mixed Hardwood	347.00 Cords	\$ 26.50 / Cord
N. White Cedar	10.00 Cords	\$ 21.10 / Cord
Red Pine	45.00 Cords	\$ 51.65 / Cord
White Spruce	36.00 Cords	\$ 25.65 / Cord

* The total volume is statistically estimated within plus (+) or minus (-) 13.30 percent. The estimated units are final and not subject to adjustment. Prospective bidders are urged to examine this timber and to make their own estimates of quantity and quality.

BOND AND PAYMENT SCHEDULE:

1. A bond in the amount of \$1,736.00 to insure faithful performance of the conditions of the contract will be deposited by the successful bidder within 21 days of the sale award.
2. Cutting in any sale or unit without the required advance payment would be considered a trespass.
3. Total payment must be paid in advance or according to the following schedule:
 - (a) Ten percent (10%) of the sale value must be paid within 21 days of the sale award.
 - (b) The 10% down payment will be credited towards the first unit cut.
4. If no cutting takes place, the 10% down payment will not be refunded.
5. Operations on the contract issued will terminate on 12/31/2020.

Description of Timber by Payment Unit (PU)

PU	MARKET GROUP	PRODUCT	QUANTITY	UNIT	ACRES	ADVERTISE PRICE
1	Balsam Fir	Pulpwood	3.0	Cords	6.8	\$3,504.95
	Mixed Aspen		58.0	Cords		
	<i>B. T. Aspen</i>		21.0	<i>Cords</i>		
	<i>Quaking Aspen</i>		37.0	<i>Cords</i>		
	Mixed Hardwood		38.0	Cords		
	<i>American Elm</i>		1.0	<i>Cords</i>		
	<i>Balsam Poplar</i>		7.0	<i>Cords</i>		
	<i>Black Cherry</i>		2.0	<i>Cords</i>		
	<i>Paper Birch</i>		7.0	<i>Cords</i>		
	<i>Red Maple</i>		11.0	<i>Cords</i>		
	<i>Sugar Maple</i>		8.0	<i>Cords</i>		
	<i>Yellow Birch</i>		2.0	<i>Cords</i>		
	White Spruce		16.0	Cords		
	2		Basswood	Sawtimber		
Sugar Maple			2.0	MBF		
Balsam Fir		Pulpwood	41.0	Cords		
Mixed Aspen			179.0	Cords		
<i>B. T. Aspen</i>			66.0	<i>Cords</i>		
<i>Quaking Aspen</i>			113.0	<i>Cords</i>		
Mixed Hardwood			236.0	Cords		
<i>American Elm</i>			3.0	<i>Cords</i>		
<i>Balsam Poplar</i>			3.0	<i>Cords</i>		
<i>Basswood</i>			51.0	<i>Cords</i>		
<i>Ironwood</i>			19.0	<i>Cords</i>		
<i>Paper Birch</i>			34.0	<i>Cords</i>		
<i>Red Maple</i>			47.0	<i>Cords</i>		
<i>Sugar Maple</i>			79.0	<i>Cords</i>		
White Spruce			11.0	Cords		
3			Mixed Aspen	Pulpwood	72.0	Cords
	<i>B. T. Aspen</i>	52.0	<i>Cords</i>			
	<i>Quaking Aspen</i>	20.0	<i>Cords</i>			
	Mixed Hardwood	17.0	Cords			
	<i>Black Cherry</i>	5.0	<i>Cords</i>			
	<i>Paper Birch</i>	5.0	<i>Cords</i>			
	<i>Red Maple</i>	7.0	<i>Cords</i>			
	White Spruce	1.0	Cords			
4	Balsam Fir	Pulpwood	3.0	Cords	16.2	\$12,777.75
	Mixed Aspen		243.0	Cords		
	<i>B. T. Aspen</i>		68.0	<i>Cords</i>		
	<i>Quaking Aspen</i>		175.0	<i>Cords</i>		
	Mixed Hardwood		56.0	Cords		
	<i>American Elm</i>		3.0	<i>Cords</i>		
	<i>Red Maple</i>		53.0	<i>Cords</i>		
	N. White Cedar		10.0	Cords		
	Red Pine		45.0	Cords		
White Spruce	8.0	Cords				
TOTAL:			5.8	MBF		
TOTAL:			1,037.0	Cords		

Sale Specific Conditions & Requirements

Sale Name: Cornea

Sale Number: 12-006-17 Seq#: 1

1 - Sale Area

1.2 - Boundaries

1.2.1 - Painted boundaries (1/14)

The sale boundary and Payment Unit boundaries are marked and identified by blue and red paint. Exterior sale boundary lines against private property are marked with blue paint. Exterior sale boundary lines against state are marked with red paint. The painted boundary line trees are not Included Timber and are to be protected.

2 - Timber Specifications

2.1 - Included Timber

2.1.1 - Clearcut unit(s) with unmerchantable trees (6/14)

Within Payment Unit(s) 1 - 4, cut all trees that are two (2) inches or more at DBH, except oak and white pine. In addition:

Within Payment Units 1 and 2, do not cut cedar, hemlock, and red pine.

Within Payment Unit 3, do not cut hemlock and red pine.

4 - Transportation

4.1 - Construction

4.1.6 - Road construction (1/09)

Improvements of existing roads shall be done in such a way as to minimize the environmental and visual impacts.

Merchantable trees shall be cut and utilized unless otherwise directed. Non-merchantable trees shall be severed and laid flat on the ground. Slash shall be scattered, and not left in windrows and kept a minimum of 10 feet back from the road edge.

Stumps shall be set upright, not left on edge, and be moved at least 10 feet away from the road edge. Disturbed soil shall be feathered into the woods and not left in berms or windrows.

4.1.12 - No new roads (1/12)

No new roads will be permitted in any Payment Unit. All operations are limited to existing roads. Skid trails only will be allowed.

4.3 - Public Right-of-Way

4.3.2 - County R-O-W (12/06)

The county must be contacted prior to crossing or harvesting in the county road R-O-W. This applies to Payment Unit 3 and County Road 573.

4.4 - Access

4.4.1 - Private property access (3/11)

Permission for access across private land is the responsibility of the Purchaser.

5 - Operations

5.2 - Conduct of Operations

5.2.2 - Hazard Trees/Snags

5.2.2.1 - Den trees (10/16)

Obvious hollow and/or den trees shall be protected and left standing unless they are a safety hazard.

5.4 - Soil Protection

5.4.1 - Rutting restriction, general (7/16)

Operations are to cease immediately if equipment and weather conditions result in rutting of roads and/or skid trails which is

12 inches or greater in depth and 50 feet in length. The Unit Manager or his/her representative may restrict hauling and/or skidding if ruts exceed the specified depth. With the Unit Manager or his/her representative's approval, the Purchaser may return to the area when the risk of rutting has decreased.



TIMBER SALE MAP

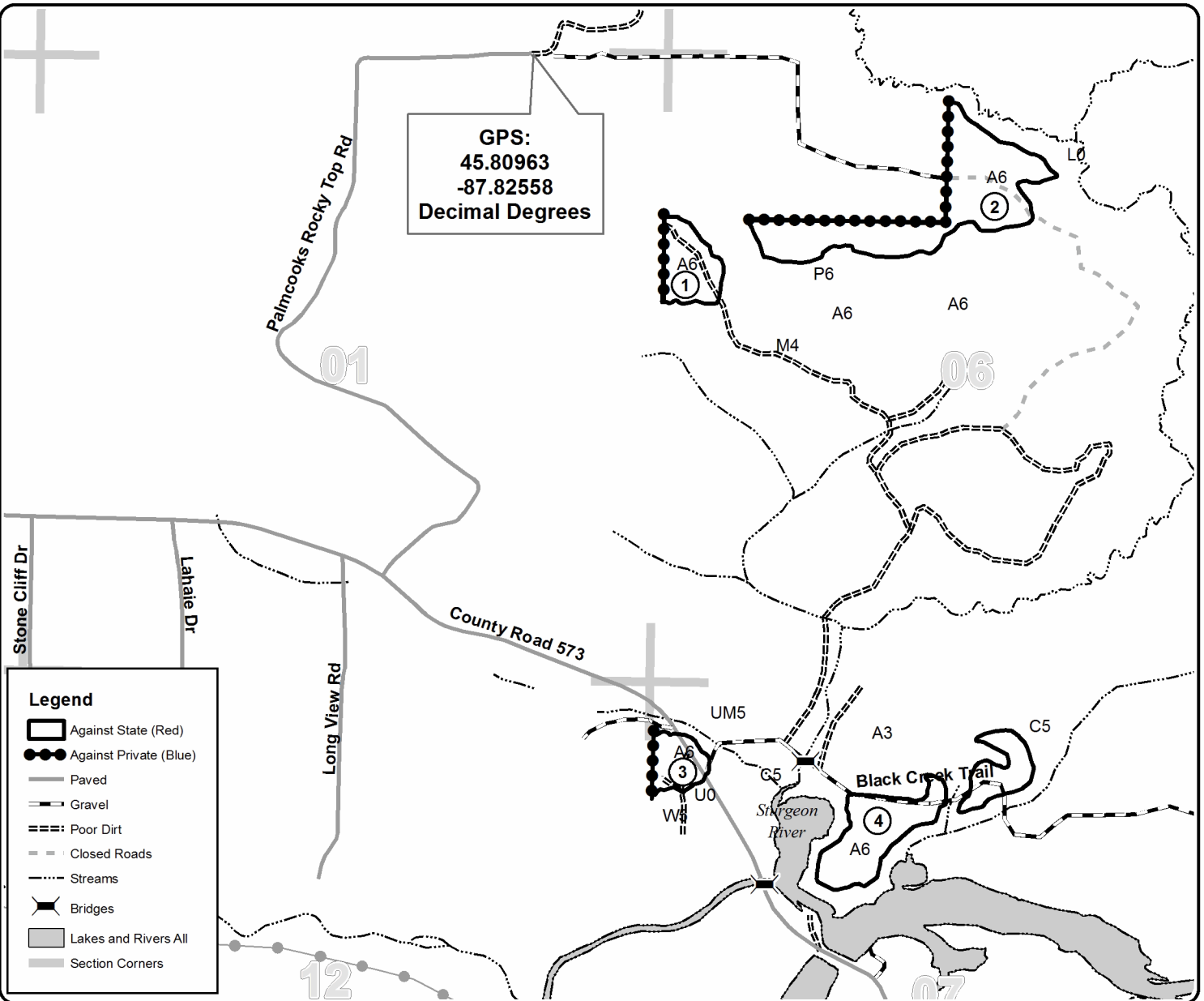
This information provided by authority of Part 525, 1994 PA 451, as amended.

Forest Management Unit Crystal Falls		County Dickinson	Mapped By Brolin	Date 06/28/2017	Page 1	of 1
Township 39N	Range 28W	Section(s) and Subdivision(s) NW1/4 NE1/4 and SW1/4 NE1/4 and S1/2 NW1/4 Section 6, and N1/2 NW1/4 and NW1/4 NE1/4 and SE1/4 NW1/4 Section 7		Scale 1:15,840		

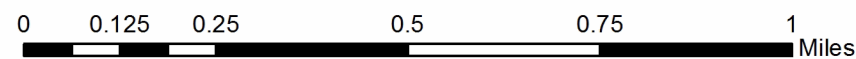
Cover Type				Density	
A = Aspen	H = Hemlock	N = Marsh	U = Upland Brush	0 = Non Stocked	5 = Pole Timber Medium
B = Paper Birch	J = Jack Pine	O = Oak	UM = Upland Mixed	1 = Seedling Sapling Poor	6 = Pole Timber Well
C = Cedar	L = Lowland Brush	P = Lowland Poplar	V = Bog or Marsh	2 = Seedling Sapling Medium	7 = Saw Timber Poor
DM = Treed Bog	LM = Lowland Mixed	Q = Mixed Swamp Conifer	W = White Pine	3 = Seedling Sapling Well	8 = Saw Timber Medium
E = Swamp Hdwoods	M = Mpl, Bch, Brch	R = Red Pine	X = Non Stocked	4 = Pole Timber Poor	9 = Saw Timber Well
F = Spruce Fir	MC = Mixed Conifer	S = Black Spruce	Z = Water		
G = Grass	MD = Mixed Deciduous	T = Tamarack			

PU	Acres
1	6.8
2	24.5
3	4.5
4	16.2

Cornea Compartment 110 52 Acres



Legend	
	Against State (Red)
	Against Private (Blue)
	Paved
	Gravel
	Poor Dirt
	Closed Roads
	Streams
	Bridges
	Lakes and Rivers All
	Section Corners



TIMBER SALE INFORMATION

Minnesconsin Mix (12-019-17)

Dickinson County (Advertised Price \$100,261.30)

SALE NOTE: Payment Units 1-7 are harvestable in frozen ground conditions only. The snowmobile trail west of the sale will need to be posted and left with a snow covered base IF hauling that direction. A culvert replacement and a minimum of 150 cubic yards of gravel will be required for this sale to be considered complete.

A recreation site such as a trail, pathway, or campground is within the sale area or the vicinity. Certain restrictions/specifications may be applicable including time restrictions.

A timber sale contract for this lump sum, sealed bid timber sale will be awarded to the responsible bidder offering the highest sealed bid price. Bids must be at or above the following advertised price for each species:

<u>PRODUCTS & SPECIES</u>	<u>ESTIMATED UNITS*</u>		<u>ADVERTISED PRICE</u>
Sawtimber			
Basswood	171.00	MBF	\$ 228.00 / MBF
Sugar Maple	7.70	MBF	\$ 437.00 / MBF
Pulpwood			
Balsam Fir	149.00	Cords	\$ 19.20 / Cord
Balsam Poplar	182.00	Cords	\$ 33.30 / Cord
Basswood	894.00	Cords	\$ 11.40 / Cord
Paper Birch	234.00	Cords	\$ 22.60 / Cord
Quaking Aspen	364.00	Cords	\$ 33.30 / Cord
Red Maple	177.00	Cords	\$ 25.25 / Cord
Sugar Maple	516.00	Cords	\$ 25.25 / Cord
White Spruce	159.00	Cords	\$ 24.45 / Cord

* The total volume is statistically estimated within plus (+) or minus (-) 10.05 percent. The estimated units are final and not subject to adjustment. Prospective bidders are urged to examine this timber and to make their own estimates of quantity and quality.

BOND AND PAYMENT SCHEDULE:

1. A bond in the amount of \$8,021.00 to insure faithful performance of the conditions of the contract will be deposited by the successful bidder within 21 days of the sale award.
2. Cutting in any sale or unit without the required advance payment would be considered a trespass.
3. Total payment must be paid in advance or according to the following schedule:
 - (a) Ten percent (10%) of the sale value must be paid within 21 days of the sale award.
 - (b) The 10% down payment will be credited towards the first unit cut.
4. If no cutting takes place, the 10% down payment will not be refunded.
5. Operations on the contract issued will terminate on 06/30/2021.

Description of Timber by Payment Unit (PU)

PU	MARKET GROUP	PRODUCT	QUANTITY	UNIT	ACRES	ADVERTISE PRICE
1	Basswood	Sawtimber	23.1	MBF	20.1	\$9,554.20
			1.0	MBF		
	Balsam Fir	Pulpwood	3.0	Cords		
			5.0	Cords		
			110.0	Cords		
			7.0	Cords		
			15.0	Cords		
			6.0	Cords		
			59.0	Cords		
			3.0	Cords		
			3.0	Cords		
2	Basswood	Sawtimber	41.6	MBF	34.2	\$16,002.05
			1.9	MBF		
	Balsam Poplar	Pulpwood	3.0	Cords		
			194.0	Cords		
			4.0	Cords		
			16.0	Cords		
			6.0	Cords		
			103.0	Cords		
			103.0	Cords		
			103.0	Cords		
3	Basswood	Sawtimber	24.3	MBF	20.0	\$9,334.15
			1.1	MBF		
	Balsam Poplar	Pulpwood	2.0	Cords		
			113.0	Cords		
			3.0	Cords		
			9.0	Cords		
			3.0	Cords		
			60.0	Cords		
			60.0	Cords		
4	Basswood	Sawtimber	59.7	MBF	49.0	\$22,931.05
			2.7	MBF		
	Balsam Poplar	Pulpwood	5.0	Cords		
			277.0	Cords		
			6.0	Cords		
			23.0	Cords		
			8.0	Cords		
			147.0	Cords		
			147.0	Cords		
5	Basswood	Sawtimber	22.3	MBF	18.3	\$8,583.00
			1.0	MBF		
	Balsam Poplar	Pulpwood	2.0	Cords		
			104.0	Cords		
			2.0	Cords		
			9.0	Cords		
			3.0	Cords		
			55.0	Cords		
			55.0	Cords		
6	Balsam Fir	Pulpwood	51.0	Cords	18.1	\$11,832.95
			58.0	Cords		
			34.0	Cords		
			74.0	Cords		
			102.0	Cords		
			52.0	Cords		
			32.0	Cords		
			55.0	Cords		
			55.0	Cords		
7	Balsam Fir	Pulpwood	95.0	Cords	33.6	\$22,023.90
			107.0	Cords		
			62.0	Cords		
			138.0	Cords		
			190.0	Cords		
			99.0	Cords		

Description of Timber by Payment Unit (PU), con't

PU	MARKET GROUP	PRODUCT	QUANTITY	UNIT	ACRES	ADVERTISE PRICE
	Sugar Maple		60.0	Cords		
	White Spruce		101.0	Cords		
TOTAL:			178.7	MBF		
TOTAL:			2,675.0	Cords		

Sale Specific Conditions & Requirements

Sale Name: Minnesconsin Mix

Sale Number: 12-019-17 Seq#: 1

1 - Sale Area

1.2 - Boundaries

1.2.1 - Painted boundaries (1/14)

The sale boundary and Payment Unit boundaries are marked and identified by red and yellow paint. Exterior sale boundary lines against state are marked with red paint. Interior Payment Unit boundaries are marked with yellow paint. The red painted boundary line and yellow unit boundary trees are not Included Timber and are to be protected unless marked with orange paint.

2 - Timber Specifications

2.1 - Included Timber

2.1.1 - Clearcut unit(s) with unmerchantable trees (6/14)

Within Payment Unit(s) 6-7, cut all trees that are two (2) inches or more at DBH, except do not cut cedar, white pine, and hemlock. In addition, do not cut conifers that have one (1) stick or less.

2.1.3 - Cut tree marked unit(s) (12/08)

Within Payment Unit(s) 1-5, all trees are designated for cutting when marked with orange paint above and below stump height, regardless of merchantability. In addition, all aspen may be cut.

3 - Payments

3.3 - Pre-measured Sales

3.3.4 - Dividing payment units (7/14)

Payment Unit(s) may be divided at the request of the Purchaser and upon approval of the Unit Manager. Dividing Payment Units is a contract modification which requires a Timber Sale Contract Supplement. There will be only one division per Payment Unit.

3.4 - Damaged Timber

3.4.1 - Damaged timber (6/14)

General Condition and Requirement 3.4 Damaged Timber, defines liquidated damages for undesignated live merchantable trees which are cut or injured. No damage is acceptable to merchantable trees. Within the sale area, if more than 10% of trees (> 4.5" DBH) within a specified area of the sale are damaged, liquidated damages will be assessed for all trees damaged. Rates will be in accordance with General Condition and Requirement 3.4 Damaged Timber, or at a rate of \$15 per sawtimber tree and \$5 per pole sized tree, whichever is greater.

4 - Transportation

4.1 - Construction

4.1.4 - Timber removed for construction (12/09)

Trees cut or damaged in the process of pre-approved road, landing or skid trail construction will be decked in an area separate from other Designated Timber and not removed until measured by the sale administrator. Payment will be made at the specified Purchase Unit Price.

4.1.5 - Culverts (5/14)

Roads may require the installation of culverts for cross drainage or at natural drainage-ways. If culverts are needed in these locations, their placement will be specified by the sale administrator and they shall be installed prior to hauling. The culverts shall be new, corrugated metal or plastic gauge. Culverts will be a minimum of 12 inches in diameter and 24 feet in length, or as directed by DEQ. If culverts are removed, fill shall be removed from wetland soils as specified. Soils shall be maintained and left in a non-erodible condition, with water bars, seed, fertilizer, mulch, and slash installed as directed by the sale administrator and as specified in the BMP manual. Stream crossing permits, if needed, will be obtained by the purchaser.

4.1.6 - Road construction (1/09)

Construction of new roads or improvements of existing roads shall be done in such a way as to minimize the environmental and visual impacts. Merchantable trees shall be cut and utilized unless otherwise directed. Non-merchantable trees shall be severed and laid flat on the ground. Slash shall be scattered, and not left in windrows and kept a minimum of 10 feet back from the road edge. Stumps shall be set upright, not left on edge, and be moved at least 5 feet away from the road edge. Disturbed soil shall be feathered into the woods and not left in berms or windrows.

4.1.7 - Road closure (10/11)

All new roads built into the sale must be blocked to vehicle traffic upon completion of the sale. Overgrown roads that are reopened shall be considered new roads. In general, this will require constructing a four (4') foot high berm of stumps and logs covered with earth. Contact the sale administrator for specific details of design and placement.

4.2 - Maintenance

4.2.1 - Hauling restriction (12/08)

Hauling may be restricted on forest roads by the Unit Manager or his/her representative. The restriction may occur during spring breakup or prolonged wet weather conditions.

4.2.3 - Road maintenance (8/13)

The following road maintenance is required: The Purchaser is responsible for the purchase and replacement of a culvert at the designated site as shown on the Timber Sale Map. DEQ permits will be obtained by the DNR. Approximately 150 cubic yards of gravel will be placed on the Wells Grade Road between the culvert replacement and the west end of Payment Unit 1. The Purchaser may need to purchase this gravel if there is none available nearby on State land. The road maintenance must be completed before this contract is closed-out.

4.2.4 - Grading (10/16)

For completion of the sale, state forest roads must be graded. In general, this will require a road grader or bull dozer to shape up the roads after forest products have been hauled off site. This includes cleaning of drainage areas, grading, crowning and filling with gravel, if necessary. The grading equipment to be used must be approved by the Unit Manager or his/her representative.

5 - Operations

5.1 - Notification

5.1.1 - Pre-sale conference (10/16)

A pre-sale conference between the Purchaser and sale administrator is required prior to beginning any operations to determine landing and road locations. The Unit Manager or his/her representative must be contacted at least 5 days in advance to schedule the conference.

5.2 - Conduct of Operations

5.2.1 - Slash

5.2.1.10 - No slash in openings (5/10)

No brush or logging debris is to be left in the grassy opening which is indicated by G0 on the Timber Sale Map. This opening may be used for decking or processing, but no residual material is to be left. Any damage to the opening shall be repaired according to specifications of the Unit Manager or his/her representative.

5.2.3 - Operating Restrictions

5.2.3.1 - Operating restrictions (9/11)

Within Payment Unit(s) 1-7, unless changed by written agreement, cutting, skidding, and hauling are limited to frozen ground conditions only. No exceptions will be granted for Payment Units 6 & 7. This restriction is due to shallow, wet soils with seeps and an active hawk nest.

5.2.3.2 - Decking/landing restoration (9/13)

All decking and landing areas must have the surface area restored to a condition equal to or better than before. This is to ensure the proper regeneration of the stand. Wood debris, chips and "cookies" from trimmings must be removed or scattered away from landing and loading areas and may not be windrowed on the edge.

5.2.41 - Snowmobile trail protection (9/11)

Two miles west of the sale is snowmobile trail #5/16. Do not cut or damage posts with orange trail markers or traffic control signs. If the trail is used, it must be maintained and restored to a condition equal to or better than before the sale. The road maintenance/restoration must be done prior to December 1. If the trail is used for hauling, it must be graded to the satisfaction of the Unit Manager or his/her representative prior to December 1st. If the trail road is to be used for hauling during the snowmobile season, then a snow covered base must be left on the trail.

5.4 - Soil Protection

5.4.1 - Rutting restriction, general (7/16)

Operations are to cease immediately if equipment and weather conditions result in rutting of roads and/or skid trails which is 12 inches or greater in depth and 50 feet in length. The Unit Manager or his/her representative may restrict hauling and/or skidding if ruts exceed the specified depth. With the Unit Manager or his/her representative's approval, the Purchaser may return to the area when the risk of rutting has decreased.

5.8 - Protection of Endangered Species

5.8.5 - Protection of raptor nests (3/13)

All trees with raptor nests will be protected if found during harvesting operations. Notification will be made to the Unit Manager or his/her representative who will notify the Wildlife Biologist so an on-site evaluation and recommendation can be made, if necessary.

6 - Safety and Fire Prevention

6.2 - Signing

6.2.2 - Snowmobile trail posting (8/09)

The Purchaser is responsible for posting and maintaining caution signs on snowmobile trail #5/16 prior to beginning operations during the snowmobile season (approximately December 1 to March 31). The trail must be posted at appropriate distances from the sale area to warn of logging activity and truck traffic. Signs must be removed when harvest operations are suspended or completed. If the snowmobile trail is used for hauling, the Purchaser will provide these signs.



TIMBER SALE MAP

This information provided by authority of Part 525, 1994 PA 451, as amended.

Forest Management Unit Crystal Falls	County Dickinson	Mapped By D Goupell	Date 6/27/17	Page 1	of 1
Township 42N	Range 29W	Section(s) and Subdivision(s) Sec 2: S1/2NE,NWNE,S1/2NW,NENW Sec 11: NENW,NWNE	Scale 1:15,840		

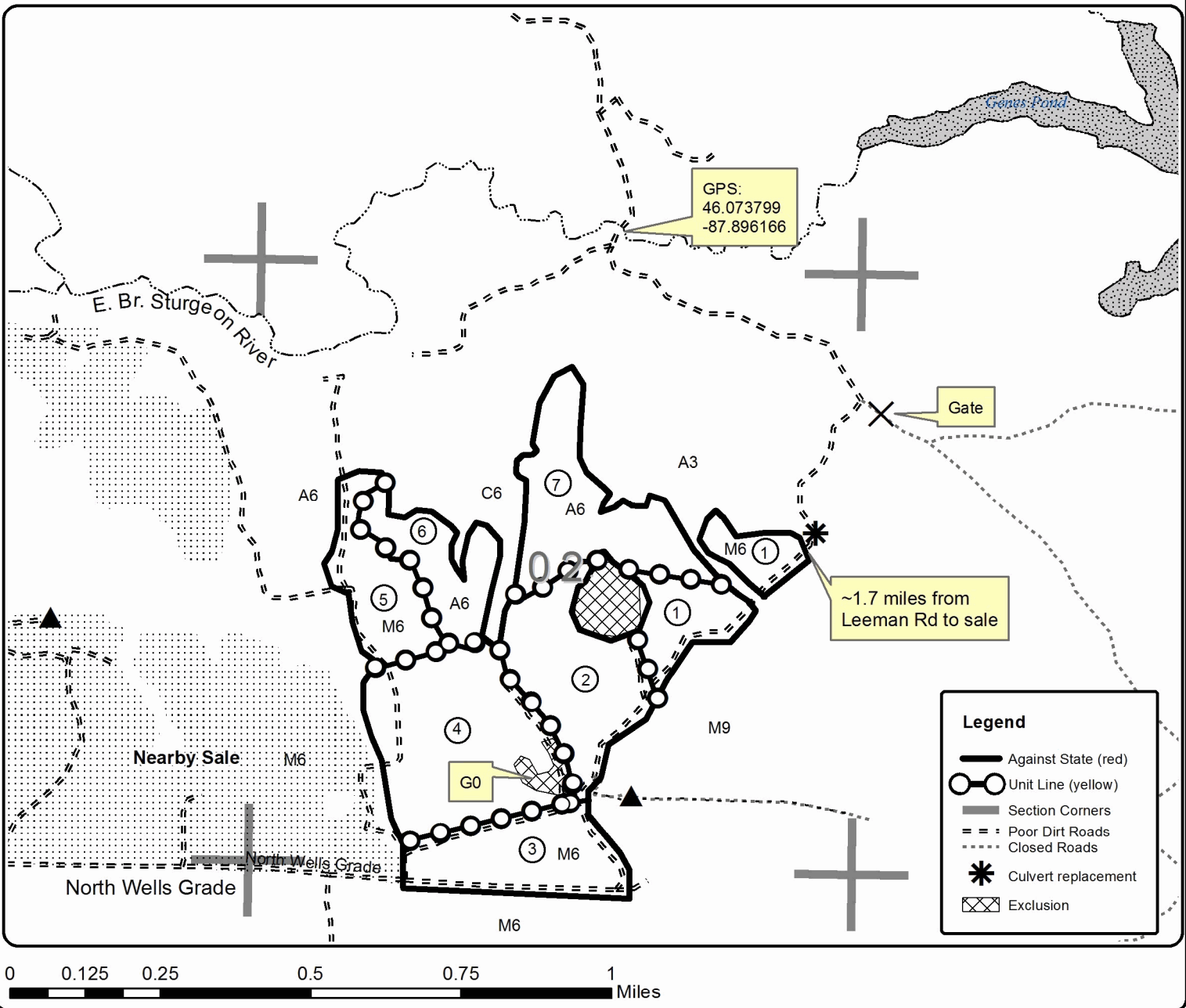
Cover Type				Density	
A = Aspen	H = Hemlock	N = Marsh	U = Upland Brush	0 = Non Stocked	5 = Pole Timber Medium
B = Paper Birch	J = Jack Pine	O = Oak	UM = Upland Mixed	1 = Seedling Sapling Poor	6 = Pole Timber Well
C = Cedar	L = Lowland Brush	P = Lowland Poplar	V = Bog or Marsh	2 = Seedling Sapling Medium	7 = Saw Timber Poor
D = Treed Bog	LM = Lowland Mixed	Q = Mixed Swamp Conifer	W = White Pine	3 = Seedling Sapling Well	8 = Saw Timber Medium
E = Swamp Hdwoods	M = Mpl, Bch, Brch	R = Red Pine	X = Non Stocked	4 = Pole Timber Poor	9 = Saw Timber Well
F = Spruce Fir	MC = Mixed Conifer	S = Black Spruce	Z = Water		
G = Grass	MD = Mixed Deciduous	T = Tamarack			

PU	Acres	PU	Acres
1	20.1	5	18.3
2	34.2	6	18.1
3	20.0	7	33.6
4	49.0		

Minnesconsin Mix

Compartment 55

193.3 Acres



TIMBER SALE INFORMATION

Salmagundi (12-026-17)

Dickinson County (Advertised Price \$179,309.55)

SALE NOTE: Permission to cross private land is the responsibility of the purchaser.

Payment Units 1, 2, 4, 11, and 12 are limited to cutting and skidding from July 15 to March 31 due to bark slippage restriction.

Payment Units 8 & 9 are limited to very dry summer or frozen ground conditions.

Haul routes for Payment Units 1-4 are along a snowmobile trail and it is recommended operations occur prior to snowmobile season (generally December 1 to March 31).

A recreation site such as a trail, pathway, or campground is within the sale area or the vicinity. Certain restrictions/specifications may be applicable including time restrictions. Access may be through private land.

A timber sale contract for this lump sum, sealed bid timber sale will be awarded to the responsible bidder offering the highest sealed bid price. Bids must be at or above the following advertised price for each species:

<u>PRODUCTS & SPECIES</u>	<u>ESTIMATED UNITS*</u>	<u>ADVERTISED PRICE</u>
Sawtimber		
Basswood	35.30 MBF	\$ 240.00 / MBF
Red Pine	94.70 MBF	\$ 164.00 / MBF
Sugar Maple	14.30 MBF	\$ 459.00 / MBF
White Pine	0.50 MBF	\$ 59.00 / MBF
Pulpwood		
Balsam Fir	407.00 Cords	\$ 20.15 / Cord
Basswood	180.00 Cords	\$ 12.00 / Cord
Black Spruce	258.00 Cords	\$ 25.65 / Cord
Jack Pine	1.00 Cords	\$ 42.90 / Cord
Mixed Aspen	2,547.00 Cords	\$ 34.95 / Cord
Mixed Hardwood	293.00 Cords	\$ 26.50 / Cord
Red Pine	582.00 Cords	\$ 51.65 / Cord
Tamarack	131.00 Cords	\$ 13.55 / Cord
White Pine	7.00 Cords	\$ 28.80 / Cord
White Spruce	112.00 Cords	\$ 25.65 / Cord

* The total volume is statistically estimated within plus (+) or minus (-) 9.23 percent. The estimated units are final and not subject to adjustment. Prospective bidders are urged to examine this timber and to make their own estimates of quantity and quality.

BOND AND PAYMENT SCHEDULE:

1. A bond in the amount of \$14,345.00 to insure faithful performance of the conditions of the contract will be deposited by the successful bidder within 21 days of the sale award.
2. Cutting in any sale or unit without the required advance payment would be considered a trespass.
3. Total payment must be paid in advance or according to the following schedule:
 - (a) Ten percent (10%) of the sale value must be paid within 21 days of the sale award.
 - (b) The 10% down payment will be credited towards the first unit cut.
4. If no cutting takes place, the 10% down payment will not be refunded.
5. Operations on the contract issued will terminate on 06/30/2020.

Description of Timber by Payment Unit (PU)

PU	MARKET GROUP	PRODUCT	QUANTITY	UNIT	ACRES	ADVERTISE PRICE
1	Red Pine	Sawtimber	61.1	MBF	35.0	\$21,792.30
	Balsam Fir	Pulpwood	1.0	Cords		
	Black Spruce		4.0	Cords		
	Jack Pine		1.0	Cords		
	Mixed Aspen		4.0	Cords		
	<i>Quaking Aspen</i>		4.0	<i>Cords</i>		
	Mixed Hardwood		1.0	Cords		
	<i>Red Maple</i>		1.0	<i>Cords</i>		
	Red Pine		220.0	Cords		
	White Spruce		3.0	Cords		
2	Red Pine	Sawtimber	28.7	MBF	50.7	\$16,799.10
	White Pine		0.5	MBF		
	Mixed Aspen	Pulpwood	32.0	Cords		
	<i>Quaking Aspen</i>		32.0	<i>Cords</i>		
	Mixed Hardwood		2.0	Cords		
	<i>Red Maple</i>		2.0	<i>Cords</i>		
	Red Pine		202.0	Cords		
	White Pine		7.0	Cords		
	White Spruce		10.0	Cords		
3	Balsam Fir	Pulpwood	8.0	Cords	14.2	\$6,099.45
	Mixed Aspen		92.0	Cords		
	<i>Quaking Aspen</i>		92.0	<i>Cords</i>		
	Mixed Hardwood		65.0	Cords		
	<i>Paper Birch</i>		10.0	<i>Cords</i>		
	<i>Red Maple</i>		43.0	<i>Cords</i>		
	<i>Sugar Maple</i>		12.0	<i>Cords</i>		
	White Spruce		39.0	Cords		
4	Basswood	Sawtimber	15.6	MBF	20.9	\$9,908.80
	Sugar Maple		6.9	MBF		
	Basswood	Pulpwood	42.0	Cords		
	Mixed Aspen		16.0	Cords		
	<i>B. T. Aspen</i>		3.0	<i>Cords</i>		
	<i>Quaking Aspen</i>		13.0	<i>Cords</i>		
	Mixed Hardwood		73.0	Cords		
	<i>Red Maple</i>	<i>Sawtimber</i>	0.4	<i>MBF</i>		
	<i>Red Maple</i>	<i>Pulpwood</i>	2.0	<i>Cords</i>		
<i>Sugar Maple</i>		70.0	<i>Cords</i>			
5	Basswood	Sawtimber	4.1	MBF	25.8	\$27,858.65
	Sugar Maple		0.9	MBF		
	Balsam Fir	Pulpwood	65.0	Cords		
	Basswood		21.0	Cords		
	Mixed Aspen		686.0	Cords		
	<i>Balsam Poplar</i>		21.0	<i>Cords</i>		
	<i>Quaking Aspen</i>		665.0	<i>Cords</i>		
	Mixed Hardwood		31.0	Cords		
	<i>American Elm</i>		8.0	<i>Cords</i>		
	<i>Ironwood</i>		2.0	<i>Cords</i>		
	<i>Red Maple</i>		2.0	<i>Cords</i>		
	<i>Sugar Maple</i>		19.0	<i>Cords</i>		
	White Spruce		4.0	Cords		
6	Basswood	Sawtimber	6.8	MBF	43.0	\$46,392.90
	Sugar Maple		1.5	MBF		
	Balsam Fir	Pulpwood	108.0	Cords		
	Basswood		34.0	Cords		
	Mixed Aspen		1,144.0	Cords		
	<i>Balsam Poplar</i>		35.0	<i>Cords</i>		

Description of Timber by Payment Unit (PU), con't

PU	MARKET GROUP	PRODUCT	QUANTITY	UNIT	ACRES	ADVERTISE PRICE
6 con't	<i>Quaking Aspen</i>	<i>Pulpwood</i>	1,109.0	<i>Cords</i>		
	Mixed Hardwood		51.0	Cords		
	<i>American Elm</i>		12.0	<i>Cords</i>		
	<i>Ironwood</i>		3.0	<i>Cords</i>		
	<i>Red Maple</i>		4.0	<i>Cords</i>		
	<i>Sugar Maple</i>		32.0	<i>Cords</i>		
	White Spruce		6.0	Cords		
7	Basswood	Sawtimber	3.8	MBF	9.5	\$9,829.30
	Basswood	Pulpwood	17.0	Cords		
	Mixed Aspen		244.0	Cords		
	<i>B. T. Aspen</i>		35.0	<i>Cords</i>		
	<i>Quaking Aspen</i>		209.0	<i>Cords</i>		
	Mixed Hardwood		7.0	Cords		
	<i>Sugar Maple</i>		7.0	<i>Cords</i>		
8	Balsam Fir	Pulpwood	105.0	Cords	18.8	\$12,212.25
	Black Spruce		207.0	Cords		
	Mixed Aspen		79.0	Cords		
	<i>Balsam Poplar</i>		25.0	<i>Cords</i>		
	<i>Quaking Aspen</i>		54.0	<i>Cords</i>		
	Mixed Hardwood		11.0	Cords		
	<i>Paper Birch</i>		7.0	<i>Cords</i>		
	<i>Sugar Maple</i>		4.0	<i>Cords</i>		
	Tamarack		128.0	Cords		
	9		Balsam Fir	Pulpwood		
Black Spruce		33.0	Cords			
Mixed Aspen		85.0	Cords			
<i>Balsam Poplar</i>		83.0	<i>Cords</i>			
<i>Quaking Aspen</i>		2.0	<i>Cords</i>			
Tamarack		3.0	Cords			
10		Basswood	Sawtimber		5.0	MBF
	Sugar Maple		5.0	MBF		
	Balsam Fir	Pulpwood	72.0	Cords		
	Basswood		66.0	Cords		
	Black Spruce		14.0	Cords		
	Mixed Aspen		165.0	Cords		
	<i>B. T. Aspen</i>		74.0	<i>Cords</i>		
	<i>Balsam Poplar</i>		4.0	<i>Cords</i>		
	<i>Quaking Aspen</i>		87.0	<i>Cords</i>		
	Mixed Hardwood		52.0	Cords		
	<i>Ironwood</i>		13.0	<i>Cords</i>		
	<i>Red Maple</i>		3.0	<i>Cords</i>		
	<i>Sugar Maple</i>		36.0	<i>Cords</i>		
	White Spruce		48.0	Cords		
11	Red Pine	Sawtimber	2.4	MBF	6.8	\$3,854.15
	Red Pine	Pulpwood	67.0	Cords		
12	Red Pine	Sawtimber	2.5	MBF	7.4	\$5,264.75
	Red Pine	Pulpwood	93.0	Cords		
	White Spruce		2.0	Cords		
TOTAL:			144.8	MBF		
TOTAL:			4,518.0	Cords		

Sale Specific Conditions & Requirements

Sale Name: Salmagundi

Sale Number: 12-026-17 Seq#: 1

1 - Sale Area

1.2 - Boundaries

1.2.1 - Painted boundaries (1/14)

The sale boundary and Payment Unit boundaries are marked and identified by blue, red and yellow paint. Exterior sale boundary lines against private property are marked with blue paint. Exterior sale boundary lines against state are marked with red paint. Seed tree plots within Payment Unit 8 are marked with red paint and are not to be cut. Interior Payment Unit boundaries are marked with yellow paint. Yellow painted trees designating an interior Payment Unit boundary are only to be cut when all surrounding Payment Units have been paid.

2 - Timber Specifications

2.1 - Included Timber

2.1.1 - Clearcut unit(s) with unmerchantable trees (6/14)

Within Payment Unit(s) 3, 9, and 10, cut all trees that are two (2) inches or more at DBH, except do not cut white pine, red pine, white birch, cherry and green marked trees (green marked trees are only in Payment Unit 3). In addition, cut all spruce and fir that have two (2) sticks or more.

2.1.2 - Clearcut unit(s) w/o unmerchantable trees (8/11)

Within Payment Unit(s) 5 - 7, cut all trees which meet minimum piece specifications in 2.2 Utilization, except do not cut red pine, white pine, white birch, cherry and green marked trees (green marked trees only in Payment Units 5 & 6). In addition, cut all spruce and fir that have three (3) sticks or more.

Within Payment Unit(s) 8, cut all trees which meet minimum piece specifications in 2.2 Utilization, except do not cut cedar.

2.1.3 - Cut tree marked unit(s) (12/08)

Within Payment Unit(s) 1, 2, 4, 11, and 12, all trees are designated for cutting when marked with orange paint above and below stump height, regardless of merchantability. In addition, within Payment Unit 1, cut all spruce, fir and aspen. Also, within Payment Unit 2, cut all spruce, fir, aspen, maple, and birch.

2.2 - Utilization

2.2.4 - Skidding length (2/14)

Skidding of unlimbed tops or lengths over 17 feet is not permissible in Payment Units 1, 2, 4, 11, and 12.

4 - Transportation

4.1 - Construction

4.1.6 - Road construction (1/09)

Construction of new roads or improvements of existing roads shall be done in such a way as to minimize the environmental and visual impacts. Merchantable trees shall be cut and utilized unless otherwise directed. Non-merchantable trees shall be severed and laid flat on the ground. Slash shall be scattered, and not left in windrows and kept a minimum of 10 feet back from the road edge. Stumps shall be set upright, not left on edge, and be moved at least 5 feet away from the road edge. Disturbed soil shall be feathered into the woods and not left in berms or windrows.

4.1.7 - Road closure (10/11)

All new roads built into the sale must be blocked to vehicle traffic upon completion of the sale. Overgrown roads that are reopened shall be considered new roads. In general, this will require constructing a four (4') foot high berm of stumps and logs covered with earth. These roads must be rendered impassable to cars and trucks. All stumps from road building and landing construction MAY be reserved to block any newly constructed roads upon completion of the sale. These stumps must be scattered along the road system to prohibit vehicular movement. Contact the sale administrator for specific details of design and placement.

4.2 - Maintenance

4.2.1 - Hauling restriction (12/08)

Hauling may be restricted on forest roads by the Unit Manager or his/her representative. The restriction may occur during spring breakup or prolonged wet weather conditions.

4.3 - Public Right-of-Way

4.3.2 - County R-O-W (12/06)

The county must be contacted prior to decking along the county road R-O-W. This applies to the Turner Road.

4.4 - Access

4.4.1 - Private property access (3/11)

Permission for access across private land is the responsibility of the Purchaser.

5 - Operations

5.1 - Notification

5.1.6 - Utility R.O.W. (1/15)

It is the responsibility of the Purchaser to obtain permission from the utility company to utilize the power line R.O.W. for operations. No decking will be permitted beneath power lines.

5.2 - Conduct of Operations

5.2.3 - Operating Restrictions

5.2.3.1 - Operating restrictions (9/11)

Within Payment Unit(s) 8 and 9, unless changed by written agreement, cutting and skidding are limited to frozen ground or very dry summer conditions. This restriction is due to wet soils.

5.2.3.3 - Bark slippage restriction (3/09)

Within Payment Unit(s) 1, 2, 4, 11, and 12, unless changed by written agreement, cutting and skidding are not permitted during the period of April 1 to July 15. This restriction is because of bark slippage.

5.2.22 - Operating Caution

5.2.22.1 - Operating caution (6/11)

It is recommended, but not required, that within Payment Unit(s) 1-4, hauling occur during the non-snowmobile season (approximately December 1 to March 31). The reason for the recommendation is to reduce snowmobile/logging truck interface.

5.2.32 - Decking/landing restoration (9/13)

All decking and landing areas must have the surface area restored to a condition equal to or better than before. This is to ensure the proper regeneration of the stand. Wood debris, chips and "cookies" from trimmings must be removed or scattered away from landing and loading areas and may not be windrowed on the edge.

5.2.41 - Snowmobile trail protection (9/11)

The powerline and Two Mile Creek Rd is a snowmobile trail and is shown on the Timber Sale Map. Do not cut or damage posts with orange trail markers or traffic control signs. If the trail is used, it must be maintained and restored to a condition equal to or better than before the sale. The road maintenance/restoration must be done prior to December 1. If the trail is used for hauling, it must be graded to the satisfaction of the Unit Manager or his/her representative prior to December 1st. If the trail road is to be used for hauling during the snowmobile season, then a minimum 4" snow covered base must be left on the trail. Maintain a 20 foot wide slash, debris, and rut free zone daily using the snowmobile trail as the centerline. No decking of forest products will be permitted along the snowmobile trail during snowmobile season. All stumps within 20 feet of the snowmobile trail must be cut at ground level. In addition, any trees cut within 5 feet of the trail must have the stumps removed and be disposed of according to the direction of the Unit Manager or his/her representative.

5.4 - Soil Protection

5.4.1 - Rutting restriction, general (7/16)

Operations are to cease immediately if equipment and weather conditions result in rutting of roads and/or skid trails which is 12 inches or greater in depth and 50 feet in length. The Unit Manager or his/her representative may restrict hauling and/or

skidding if ruts exceed the specified depth. With the Unit Manager or his/her representative's approval, the Purchaser may return to the area when the risk of rutting has decreased.

6 - Safety and Fire Prevention

6.2 - Signing

6.2.2 - Snowmobile trail posting (8/09)

The Purchaser is responsible for posting and maintaining caution signs on the snowmobile trail prior to beginning operations during the snowmobile season (approximately December 1 to March 31). The trail must be posted 200 feet from the haul route to warn of logging activity and truck traffic. Signs must be removed when harvest operations are suspended or completed. The Purchaser will provide these signs.

7 - Other Conditions

7.5 - Loss

7.5.1 - Deteriorating timber (7/09)

The sale area has received damage from spruce budworm. The Purchaser should harvest the wood as soon as possible. The Department of Natural Resources is held free of responsibility of any further damage or deterioration due to delay in harvesting.



TIMBER SALE MAP

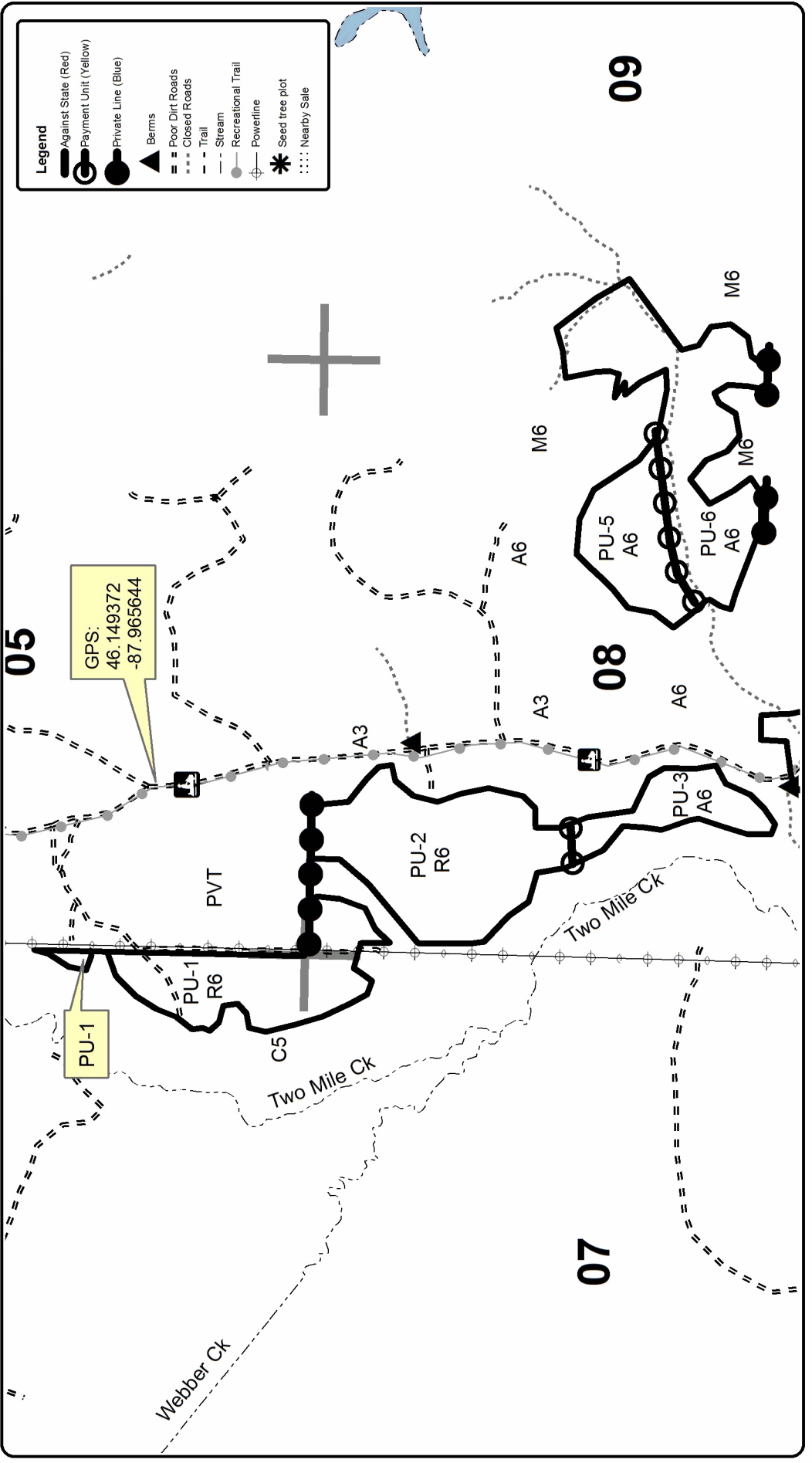
This information provided by authority of Part 525, 1994 PA 451, as amended.

Forest Management Unit Crystal Falls	County Dickinson	Mapped By Jake Siler	Sale Number 12-026	Year 17
Range 43N	Section(s) and Subdivision(s) Sec. 6-11, 14-17	Cruised By Brolin, Siler, Michaud	Date 08/28/17	Page of 1 3
Scale 1:15,840				

Salmagundi Compartment 43 257.1 Acres

PU	Acres	PU	Acres
1	35.0	7	9.5
2	50.7	8	18.8
3	14.2	9	9.2
4	20.9	10	15.8
5	25.8	11	6.8
6	43.0	12	7.4

Cover Type		Density	
A = Aspen	H = Hemlock	0 = Non Stocked	5 = Pole Timber Medium
B = Paper Birch	J = Jack Pine	1 = Seeding Sapling Poor	6 = Pole Timber Well
C = Cedar	L = Lowland Brush	2 = Seeding Sapling Medium	7 = Saw Timber Poor
D = Treed Bog	LM = Lowland Mixed	3 = Seeding Sapling Well	8 = Saw Timber Medium
E = Swamp Hdwoods	M = Mpl. Bch, Birch	4 = Pole Timber Poor	9 = Saw Timber Well
F = Spruce Fir	MC = Mixed Conifer		
G = Grass	MD = Mixed Deciduous		
	N = Marsh		
	O = Oak		
	P = Lowland Poplar		
	Q = Mixed Swamp Conifer		
	R = Red Pine		
	S = Black Spruce		
	T = Tamarack		
	U = Upland Brush		
	UM = Upland Mixed		
	V = Bog or Marsh		
	W = White Pine		
	X = Non Stocked		
	Z = Water		





Michigan Department of Natural Resources - Forest Resources Division

TIMBER SALE MAP

This information provided by authority of Part 525, 1994 PA 451, as amended.

Forest Management Unit Crystal Falls	County Dickinson	Mapped By Jake Siler	Sale Number 12-026	Year 17
Township 43N	Section(s) and Subdivision(s) Sec. 6-11, 14-17	Cruised By Brolin, Siler, Michaud	Date 08/28/17	Page of 2 3
Range 29W	Scale 1:15,840			

Cover Type

- A = Aspen
- B = Paper Birch
- C = Cedar
- D = Tread Bog
- E = Swamp Hardwoods
- F = Spruce Fir
- G = Grass
- H = Hemlock
- J = Jack Pine
- L = Lowland Mixed
- LM = Lowland Mixed
- M = Mpl. Bch. Birch
- MC = Mixed Conifer
- MD = Mixed Deciduous
- N = Marsh
- O = Oak
- P = Lowland Poplar
- Q = Mixed Swamp Conifer
- R = Red Pine
- S = Black Spruce
- T = Tamarack
- U = Upland Brush
- UM = Upland Mixed
- V = Bog or Marsh
- X = White Pine
- W = Non Stocked
- Z = Water

Density

- 0 = Non Stocked
- 1 = Seeding Sapling Poor
- 2 = Seeding Sapling Medium
- 3 = Seeding Sapling Well
- 4 = Pole Timber Poor
- 5 = Pole Timber Medium
- 6 = Pole Timber Well
- 7 = Saw Timber Poor
- 8 = Saw Timber Medium
- 9 = Saw Timber Well

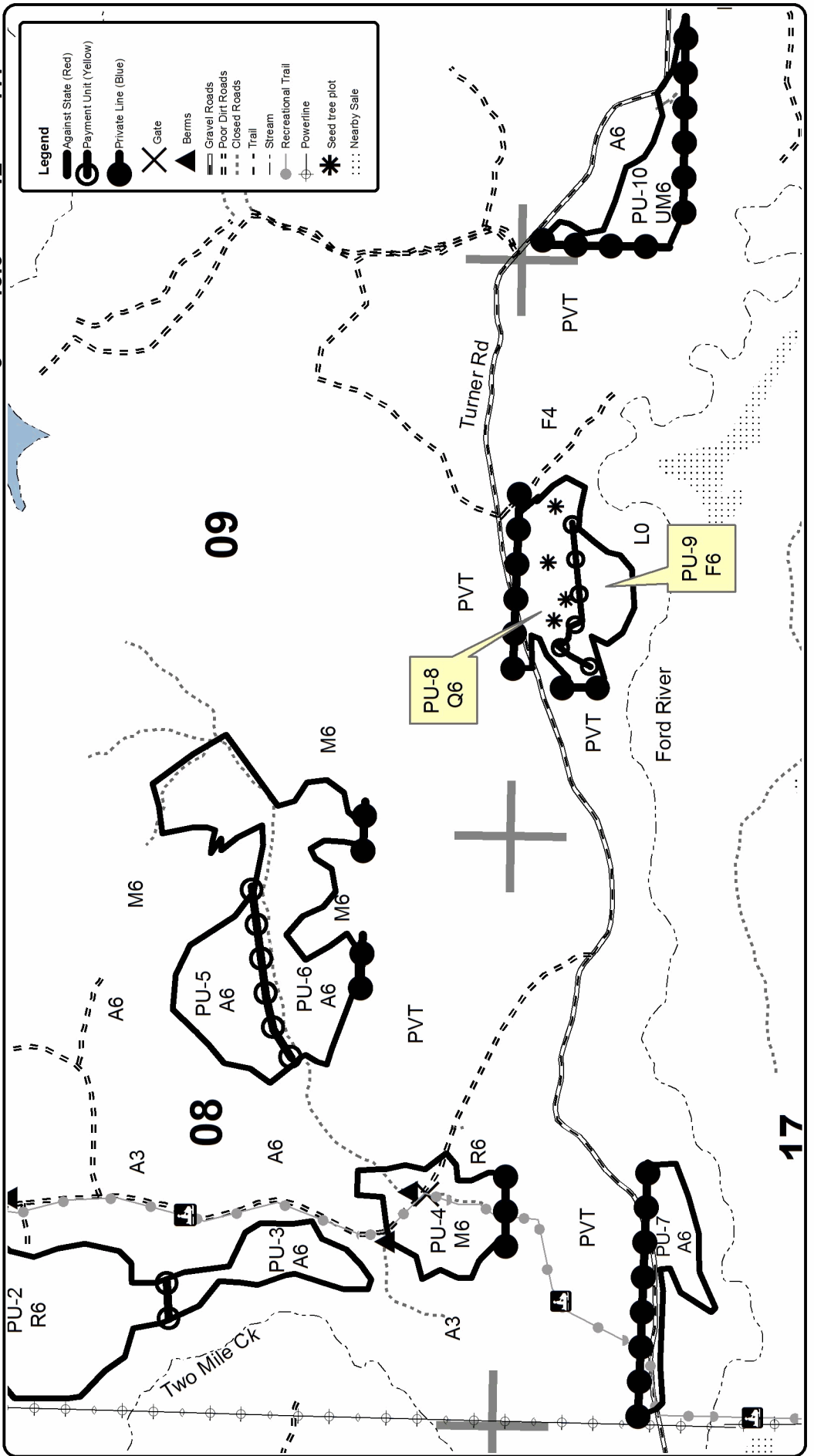


Salmagundi

Compartment 43

257.1 Acres

PU	Acres	PU	Acres
1	35.0	7	9.5
2	50.7	8	18.8
3	14.2	9	9.2
4	20.9	10	15.8
5	25.8	11	6.8
6	43.0	12	7.4





Michigan Department of Natural Resources - Forest Resources Division

TIMBER SALE MAP

This information provided by authority of Part 525, 1994 PA 451, as amended.

Forest Management Unit Crystal Falls	County Dickinson	Mapped By Jake Siler	Sale Number 12-026	Year 17
Township 43N	Section(s) and Subdivision(s) Sec. 6-11, 14-17	Cruised By Brolin, Siler, Michaud	Date 08/28/17	Page of 3 3
Range 29W	Scale 1:15,840			

Cover Type

- A = Aspen
- B = Paper Birch
- C = Cedar
- D = Treed Bog
- E = Swamp Hardwoods
- F = Spruce Fir
- G = Grass
- H = Hemlock
- J = Jack Pine
- L = Lowland Mixed
- M = Mpl. Bch. Birch
- MC = Mixed Conifer
- MD = Mixed Deciduous
- N = Marsh
- O = Oak
- P = Lowland Poplar
- Q = Mixed Swamp Conifer
- R = Red Pine
- S = Black Spruce
- T = Tamarack
- U = Upland Brush
- UM = Upland Mixed
- V = Bog or Marsh
- W = White Pine
- X = Non Stocked
- Z = Water

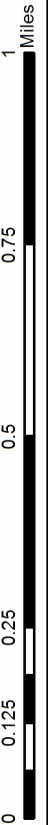
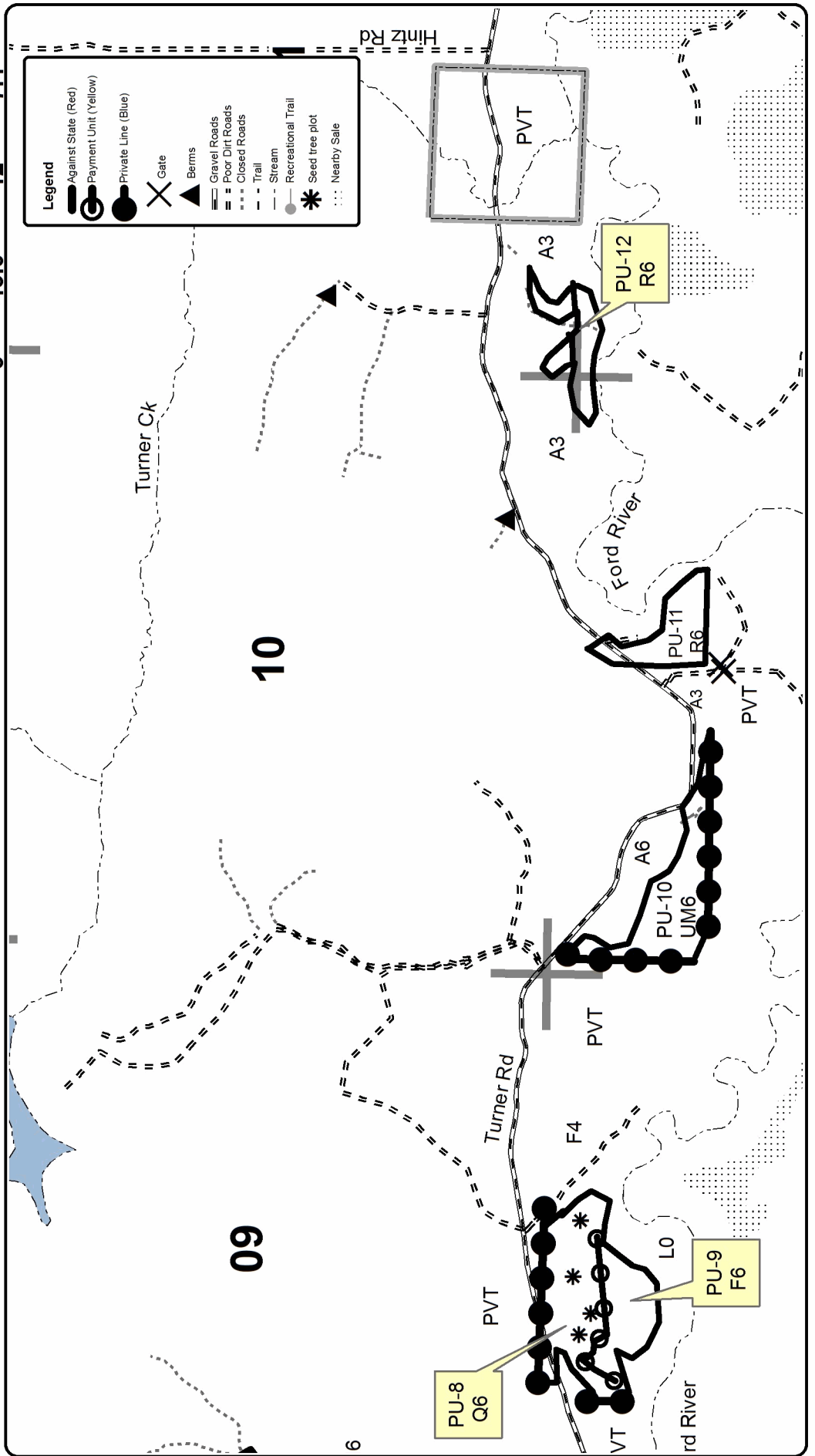
Density

- 0 = Non Stocked
- 1 = Seeding Sapling Poor
- 2 = Seeding Sapling Medium
- 3 = Seeding Sapling Well
- 4 = Pole Timber Poor
- 5 = Pole Timber Medium
- 6 = Pole Timber Well
- 7 = Saw Timber Poor
- 8 = Saw Timber Medium
- 9 = Saw Timber Well



Salmagundi Compartment 43 257.1 Acres

PU	Acres	PU	Acres
1	35.0	7	9.5
2	50.7	8	18.8
3	14.2	9	9.2
4	20.9	10	15.8
5	25.8	11	6.8
6	43.0	12	7.4



TIMBER SALE INFORMATION

Stickleback Road SBW (12-033-17)

Dickinson County (Advertised Price \$149,194.55)

SALE NOTE: No decking along snowmobile trail during snowmobile season. Brush piles to be created for grouse and hare habitat.

A recreation site such as a trail, pathway, or campground is within the sale area or the vicinity. Certain restrictions/specifications may be applicable including time restrictions.

A timber sale contract for this lump sum, sealed bid timber sale will be awarded to the responsible bidder offering the highest sealed bid price. Bids must be at or above the following advertised price for each species:

<u>PRODUCTS & SPECIES</u>	<u>ESTIMATED UNITS*</u>	<u>ADVERTISED PRICE</u>
Sawtimber		
Basswood	18.40 MBF	\$ 208.00 / MBF
Paper Birch	11.00 MBF	\$ 81.00 / MBF
Pulpwood		
Balsam Fir	574.00 Cords	\$ 17.45 / Cord
Basswood	206.00 Cords	\$ 10.40 / Cord
Jack Pine	292.00 Cords	\$ 37.20 / Cord
Mixed Hardwood	595.00 Cords	\$ 22.95 / Cord
Mixed Spruce	494.00 Cords	\$ 22.25 / Cord
Quaking Aspen	3,195.00 Cords	\$ 30.30 / Cord

* The total volume is statistically estimated within plus (+) or minus (-) 8.10 percent. The estimated units are final and not subject to adjustment. Prospective bidders are urged to examine this timber and to make their own estimates of quantity and quality.

BOND AND PAYMENT SCHEDULE:

1. A bond in the amount of \$11,936.00 to insure faithful performance of the conditions of the contract will be deposited by the successful bidder within 21 days of the sale award.
2. Cutting in any sale or unit without the required advance payment would be considered a trespass.
3. Total payment must be paid in advance or according to the following schedule:
 - (a) Ten percent (10%) of the sale value must be paid within 21 days of the sale award.
 - (b) The 10% down payment will be credited towards the first unit cut.
4. If no cutting takes place, the 10% down payment will not be refunded.
5. Operations on the contract issued will terminate on 06/30/2021.

Description of Timber by Payment Unit (PU)

PU	MARKET GROUP	PRODUCT	QUANTITY	UNIT	ACRES	ADVERTISE PRICE
1	Balsam Fir	Pulpwood	95.0	Cords	44.6	\$23,844.75
	<i>Balsam Fir</i>		89.0	<i>Cords</i>		
	<i>Tamarack</i>		6.0	<i>Cords</i>		
	Jack Pine		274.0	Cords		
	Mixed Hardwood		51.0	Cords		
	<i>Black Cherry</i>		10.0	<i>Cords</i>		
	<i>Paper Birch</i>		29.0	<i>Cords</i>		
	<i>Red Maple</i>		12.0	<i>Cords</i>		
	Mixed Spruce		289.0	Cords		
	<i>White Spruce</i>		289.0	<i>Cords</i>		
	Quaking Aspen		145.0	Cords		
	2		Basswood	Sawtimber		
Paper Birch			2.4	MBF		
Balsam Fir		Pulpwood	94.0	Cords		
<i>Balsam Fir</i>			94.0	<i>Cords</i>		
Basswood			44.0	Cords		
Mixed Hardwood			90.0	Cords		
<i>Red Maple</i>		Sawtimber	0.2	<i>MBF</i>		
<i>Sugar Maple</i>			0.9	<i>MBF</i>		
<i>Balsam Poplar</i>		Pulpwood	27.0	<i>Cords</i>		
<i>Ironwood</i>			1.0	<i>Cords</i>		
<i>Paper Birch</i>			21.0	<i>Cords</i>		
<i>Red Maple</i>			31.0	<i>Cords</i>		
<i>Sugar Maple</i>			8.0	<i>Cords</i>		
Mixed Spruce			11.0	Cords		
<i>White Spruce</i>			11.0	<i>Cords</i>		
Quaking Aspen			602.0	Cords		
3		Basswood	Sawtimber	6.4	MBF	35.6
	Paper Birch		3.5	MBF		
	Balsam Fir	Pulpwood	136.0	Cords		
	<i>Balsam Fir</i>		136.0	<i>Cords</i>		
	Basswood		63.0	Cords		
	Mixed Hardwood		133.0	Cords		
	<i>Red Maple</i>	Sawtimber	0.4	<i>MBF</i>		
	<i>Sugar Maple</i>		1.3	<i>MBF</i>		
	<i>Balsam Poplar</i>	Pulpwood	39.0	<i>Cords</i>		
	<i>Ironwood</i>		1.0	<i>Cords</i>		
	<i>Paper Birch</i>		31.0	<i>Cords</i>		
	<i>Red Maple</i>		46.0	<i>Cords</i>		
	<i>Sugar Maple</i>		12.0	<i>Cords</i>		
	Mixed Spruce		16.0	Cords		
	<i>White Spruce</i>		16.0	<i>Cords</i>		
	Quaking Aspen		874.0	Cords		
	4	Paper Birch	Sawtimber	1.2	MBF	
Balsam Fir		Pulpwood	73.0	Cords		
<i>Balsam Fir</i>			73.0	<i>Cords</i>		
Basswood			29.0	Cords		
Mixed Hardwood			200.0	Cords		
<i>Red Maple</i>		Sawtimber	1.9	<i>MBF</i>		
<i>Sugar Maple</i>			1.9	<i>MBF</i>		
<i>Balsam Poplar</i>		Pulpwood	12.0	<i>Cords</i>		
<i>Ironwood</i>			3.0	<i>Cords</i>		
<i>Paper Birch</i>			49.0	<i>Cords</i>		
<i>Red Maple</i>			108.0	<i>Cords</i>		
<i>Sugar Maple</i>			20.0	<i>Cords</i>		
Mixed Spruce			32.0	Cords		

Description of Timber by Payment Unit (PU), con't

PU	MARKET GROUP	PRODUCT	QUANTITY	UNIT	ACRES	ADVERTISE PRICE
4 con't	<i>White Spruce</i>	<i>Pulpwood</i>	32.0	<i>Cords</i>		
	Quaking Aspen		620.0	Cords		
5	Basswood	Sawtimber	7.6	MBF	37.0	\$35,656.25
	Paper Birch		3.9	MBF		
	Balsam Fir	Pulpwood	148.0	Cords		
	<i>Balsam Fir</i>		148.0	<i>Cords</i>		
	Basswood		70.0	Cords		
	Mixed Hardwood		115.0	Cords		
	<i>Sugar Maple</i>	<i>Sawtimber</i>	1.2	<i>MBF</i>		
	<i>Balsam Poplar</i>	<i>Pulpwood</i>	44.0	<i>Cords</i>		
	<i>Ironwood</i>		1.0	<i>Cords</i>		
	<i>Paper Birch</i>		26.0	<i>Cords</i>		
	<i>Red Maple</i>		32.0	<i>Cords</i>		
	<i>Sugar Maple</i>		10.0	<i>Cords</i>		
	Mixed Spruce		12.0	Cords		
	<i>White Spruce</i>		12.0	<i>Cords</i>		
	Quaking Aspen		909.0	Cords		
6	Balsam Fir	Pulpwood	28.0	Cords	11.0	\$5,640.90
	<i>Balsam Fir</i>		28.0	<i>Cords</i>		
	Jack Pine		18.0	Cords		
	Mixed Hardwood		6.0	Cords		
	<i>Red Maple</i>		6.0	<i>Cords</i>		
	Mixed Spruce		134.0	Cords		
	<i>Black Spruce</i>		79.0	<i>Cords</i>		
	<i>White Spruce</i>		55.0	<i>Cords</i>		
	Quaking Aspen		45.0	Cords		
TOTAL:			29.4	MBF		
TOTAL:			5,356.0	Cords		

Sale Specific Conditions & Requirements

Sale Name: Stickleback Road SBW

Sale Number: 12-033-17 Seq#: 1

1 - Sale Area

1.2 - Boundaries

1.2.1 - Painted boundaries (1/14)

The sale boundary and Payment Unit boundaries are marked and identified by blue, red and yellow paint. Exterior sale boundary lines against private property are marked with blue paint. Exterior sale boundary lines against state are marked with red paint. Interior Payment Unit boundaries are marked with yellow paint. The painted boundary line trees are not Included Timber and are to be protected. Yellow painted trees designating an interior Payment Unit boundary are only to be cut when all surrounding Payment Units have been paid.

2 - Timber Specifications

2.1 - Included Timber

2.1.1 - Clearcut unit(s) with unmerchantable trees (6/14)

Within Payment Unit(s) #'s 1-6, cut all trees that are two (2) inches or more at DBH except do not cut cedar, hemlock, white pine, and red pine. In addition, do not cut spruce or fir that are 1 stick and less.

3 - Payments

3.3 - Pre-measured Sales

3.3.4 - Dividing payment units (7/14)

Payment Unit(s) #'s 1-5 may be divided at the request of the Purchaser and upon approval of the Unit Manager. Dividing Payment Units is a contract modification which requires a Timber Sale Contract Supplement. There will be only one division per Payment Unit.

4 - Transportation

4.1 - Construction

4.1.6 - Road construction (1/09)

Construction of new roads or improvements of existing roads shall be done in such a way as to minimize the environmental and visual impacts. Merchantable trees shall be cut and utilized unless otherwise directed. Non-merchantable trees shall be severed and laid flat on the ground. Slash shall be scattered, and not left in windrows and kept a minimum of 10 feet back from the road edge. Stumps shall be set upright, not left on edge, and be moved at least 10 feet away from the road edge. Disturbed soil shall be feathered into the woods and not left in berms or windrows.

4.1.7 - Road closure (10/11)

All new roads built into the sale must be blocked to vehicle traffic upon completion of the sale. Overgrown roads that are reopened shall be considered new roads. In general, this will require constructing a four (4') foot high berm of stumps and logs covered with earth. Contact the sale administrator for specific details of design and placement.

5 - Operations

5.2 - Conduct of Operations

5.2.1 - Slash

5.2.1.13 - Dispose of slash as directed (12/05)

Slash is to be disposed of as directed by the sale administrator.

5.2.2 - Hazard Trees/Snags

5.2.2.1 - Den trees (10/16)

Obvious hollow and/or den trees shall be protected and left standing unless they are a safety hazard.

5.2.4 - Dead and Down Creation

5.2.4.2 - Dead and down creation, hare and grouse (1/14)

To improve habitat for snowshoe hare, grouse, and other species, the Purchaser is to leave 3 large slash piles on the ground for every Payment Unit. They should be scattered throughout each Payment Unit. Each pile should be a minimum of 6 feet in diameter and 6 feet tall. They can be constructed of any tree species and can be an un-merchantable pieces of wood or full trees.

5.2.41 - Snowmobile trail protection (9/11)

The snowmobile trail is shown on the Timber Sale Map. Do not cut or damage posts with orange trail markers or traffic control signs. If the trail is used, it must be maintained and restored to a condition equal to or better than before the sale. The road maintenance/restoration must be done prior to December 1. If the trail road is to be used for hauling during the snowmobile season, then a snow covered base must be left on the trail and no decking along the trail will be allowed.

5.4 - Soil Protection

5.4.1 - Rutting restriction, general (7/16)

Operations are to cease immediately if equipment and weather conditions result in rutting of roads and/or skid trails which is 12 inches or greater in depth and 50 feet in length. The Unit Manager or his/her representative may restrict hauling and/or skidding if ruts exceed the specified depth. With the Unit Manager or his/her representative's approval, the Purchaser may return to the area when the risk of rutting has decreased.

6 - Safety and Fire Prevention

6.2 - Signing

6.2.2 - Snowmobile trail posting (8/09)

The Purchaser is responsible for posting and maintaining caution signs on the snowmobile trail prior to beginning operations during the snowmobile season (approximately December 1 to March 31). The trail must be posted at appropriate distances from the sale area to warn of logging activity and truck traffic. Signs must be removed when harvest operations are suspended or completed. The Purchaser will provide these signs.

7 - Other Conditions

7.5 - Loss

7.5.1 - Deteriorating timber (7/09)

The sale area has received damage from windthrow and Spruce Budworm. The Purchaser should harvest the wood as soon as possible. The Department of Natural Resources is held free of responsibility of any further damage or deterioration due to delay in harvesting.



TIMBER SALE MAP

This information provided by authority of Part 525, 1994 PA 451, as amended.

Forest Management Unit Crystal Falls		County Dickinson County	Mapped By Andy Church	Date 09/27/2017	Page 1	of 1
Township 44N	Range 27W	Section(s) and Subdivision(s) Sec 12: SW, SWNW, SWSE Sec 13: NE, NENW Sec 14: NENE		Scale 1:15,840		

Cover Type				Density	
A = Aspen	H = Hemlock	N = Marsh	U = Upland Brush	0 = Non Stocked	5 = Pole Timber Medium
B = Paper Birch	J = Jack Pine	O = Oak	UM = Upland Mixed	1 = Seedling Sapling Poor	6 = Pole Timber Well
C = Cedar	L = Lowland Brush	P = Lowland Poplar	V = Bog or Marsh	2 = Seedling Sapling Medium	7 = Saw Timber Poor
D = Tread Bog	LM = Lowland Mixed	Q = Mixed Swamp Conifer	W = White Pine	3 = Seedling Sapling Well	8 = Saw Timber Medium
E = Swamp Hdwoods	M = Mpl, Bch, Brch	R = Red Pine	X = Non Stocked	4 = Pole Timber Poor	9 = Saw Timber Well
F = Spruce Fir	MC = Mixed Conifer	S = Black Spruce	Z = Water		
G = Grass	MD = Mixed Deciduous	T = Tamarack			

PU	Acres	PU	Acres
1	44.6	4	25.3
2	24.5	5	37.0
3	35.6	6	11.0

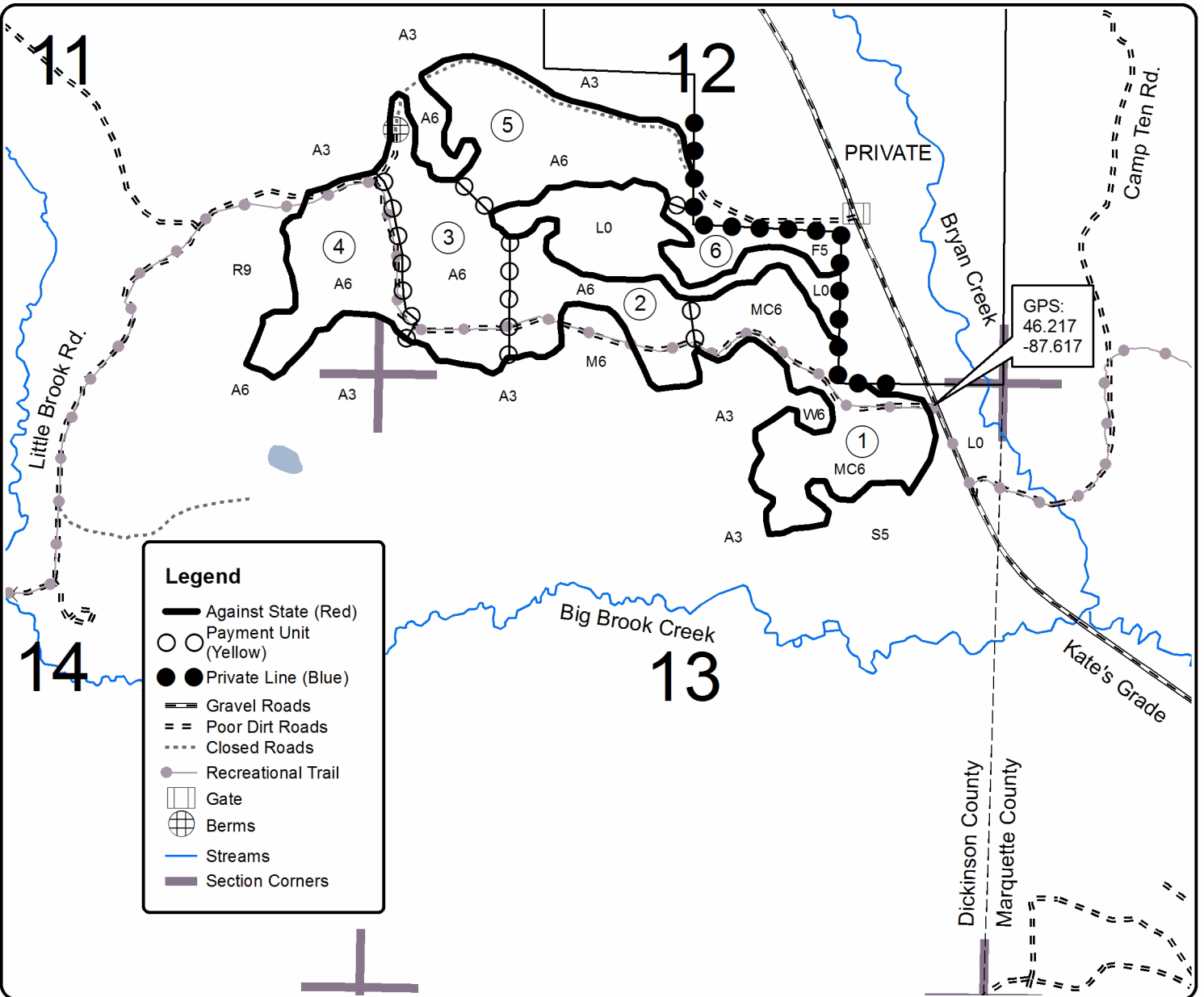


QR Code for GeoRef PDF

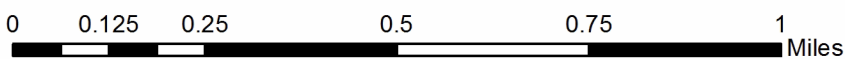
Stickleback Road SBW

Compartment 22

178.0 Acres



Legend	
	Against State (Red)
	Payment Unit (Yellow)
	Private Line (Blue)
	Gravel Roads
	Poor Dirt Roads
	Closed Roads
	Recreational Trail
	Gate
	Berms
	Streams
	Section Corners



TIMBER SALE INFORMATION

Mosquito Aspen (12-067-17)

Dickinson County (Advertised Price \$30,745.65)

A timber sale contract for this lump sum, sealed bid timber sale will be awarded to the responsible bidder offering the highest sealed bid price. Bids must be at or above the following advertised price for each species:

<u>PRODUCTS & SPECIES</u>	<u>ESTIMATED UNITS*</u>	<u>ADVERTISED PRICE</u>
Pulpwood		
Balsam Fir	178.00 Cords	\$ 20.15 / Cord
Mixed Hardwood	193.00 Cords	\$ 26.50 / Cord
Quaking Aspen	619.00 Cords	\$ 34.95 / Cord
White Spruce	16.00 Cords	\$ 25.65 / Cord

* The total volume is statistically estimated within plus (+) or minus (-) 11.58 percent. The estimated units are final and not subject to adjustment. Prospective bidders are urged to examine this timber and to make their own estimates of quantity and quality.

BOND AND PAYMENT SCHEDULE:

1. A bond in the amount of \$2,000.00 to insure faithful performance of the conditions of the contract will be deposited by the successful bidder within 21 days of the sale award.
2. Cutting in any sale or unit without the required advance payment would be considered a trespass.
3. Total payment must be paid in advance or according to the following schedule:
 - (a) Ten percent (10%) of the sale value must be paid within 21 days of the sale award.
 - (b) The 10% down payment will be credited towards the first unit cut.
4. If no cutting takes place, the 10% down payment will not be refunded.
5. Operations on the contract issued will terminate on 06/30/2020.

Description of Timber by Payment Unit (PU)

PU	MARKET GROUP	PRODUCT	QUANTITY	UNIT	ACRES	ADVERTISE PRICE
1	Balsam Fir	Pulpwood	60.0	Cords	13.9	\$9,856.65
	Mixed Hardwood		60.0	Cords		
	<i>Balsam Poplar</i>		5.0	<i>Cords</i>		
	<i>Black Cherry</i>		3.0	<i>Cords</i>		
	<i>Red Maple</i>		26.0	<i>Cords</i>		
	<i>Sugar Maple</i>		7.0	<i>Cords</i>		
	<i>White Ash</i>		13.0	<i>Cords</i>		
	<i>Yellow Birch</i>		6.0	<i>Cords</i>		
	Quaking Aspen		199.0	Cords		
	White Spruce		4.0	Cords		
2	Balsam Fir	Pulpwood	118.0	Cords	25.4	\$20,889.00
	Mixed Hardwood		133.0	Cords		
	<i>Balsam Poplar</i>		7.0	<i>Cords</i>		
	<i>Basswood</i>		5.0	<i>Cords</i>		
	<i>Black Cherry</i>		2.0	<i>Cords</i>		
	<i>Red Maple</i>		92.0	<i>Cords</i>		
	<i>Sugar Maple</i>		3.0	<i>Cords</i>		
	<i>White Ash</i>		24.0	<i>Cords</i>		
	Quaking Aspen		420.0	Cords		
	White Spruce		12.0	Cords		
	TOTAL:			1,006.0		

Sale Specific Conditions & Requirements

Sale Name: Mosquito Aspen

Sale Number: 12-067-17 Seq#: 1

1 - Sale Area

1.2 - Boundaries

1.2.1 - Painted boundaries (1/14)

The sale boundary is marked and identified by blue and red paint. Exterior sale boundary lines against private property are marked with blue paint. Exterior sale boundary lines against state are marked with double red paint dots.

2 - Timber Specifications

2.1 - Included Timber

2.1.1 - Clearcut unit(s) with unmerchantable trees (6/14)

Within Payment Unit(s) 1 and 2, cut all aspen and mixed hardwood trees that are two (2) inches or more at DBH except oak. In addition, cut all spruce, balsam, tamarack and jack pine which meet minimum piece specifications in 2.2 - Utilization.

2.2 - Utilization

2.2.11 - Chipping restriction (9/14)

If chipping occurs on this sale, then no woody debris present on the ground at the start of the sale may be chipped. In addition, brush or chips may not be stored or stockpiled on-site for more than 60 days past the sale expiration date. Residual chip depth at the landing may not exceed 4 inches.

3 - Payments

3.4 - Damaged Timber

3.4.1 - Damaged timber (6/14)

General Condition and Requirement 3.4 Damaged Timber, defines liquidated damages for undesignated live merchantable trees which are cut or injured. In addition, extreme care should be taken to avoid damage to ash seedlings and saplings.

4 - Transportation

4.1 - Construction

4.1.6 - Road construction (1/09)

Improvements of existing roads shall be done in such a way as to minimize the environmental and visual impacts. Merchantable trees shall be cut and utilized unless otherwise directed. Non-merchantable trees shall be severed and laid flat on the ground. Slash shall be scattered, and not left in windrows. Stumps shall be set upright, not left on edge, and be moved at least 10 feet away from the road edge. Disturbed soil shall be feathered into the woods and not left in berms or windrows.

4.1.7 - Road closure (10/11)

All new roads built into the sale must be blocked to vehicle traffic within 60 days of the sale expiration. Overgrown roads that are reopened shall be considered new roads. In general, this will require constructing a four foot high berm of stumps and logs covered with dirt. Contact the sale administrator for specific design and placement.

5 - Operations

5.2 - Conduct of Operations

5.2.1 - Slash

5.2.1.8 - Slash height (12/08)

No slash or tree tops may exceed 36 inches in height.

5.2.38 - No decking against live trees (2/04)

Cut products may not be decked against unmarked or designated leave trees.

5.4 - Soil Protection

5.4.1 - Rutting restriction, general (7/16)

Operations are to cease immediately if equipment and weather conditions result in rutting of roads and/or skid trails which is 12 inches or greater in depth and 50 feet in length. The Unit Manager or his/her representative may restrict hauling and/or skidding if ruts exceed the specified depth. With the Unit Manager or his/her representative's approval, the Purchaser may return to the area when the risk of rutting has decreased.

5.8 - Protection of Endangered Species

5.8.5 - Protection of raptor nests (3/13)

All trees with raptor nests will be protected if found during harvesting operations. Notification will be made to the Unit Manager or his/her representative who will notify the Wildlife Biologist so an on-site evaluation and recommendation can be made, if necessary.



TIMBER SALE MAP

This information provided by authority of Part 525, 1994 PA 451, as amended.

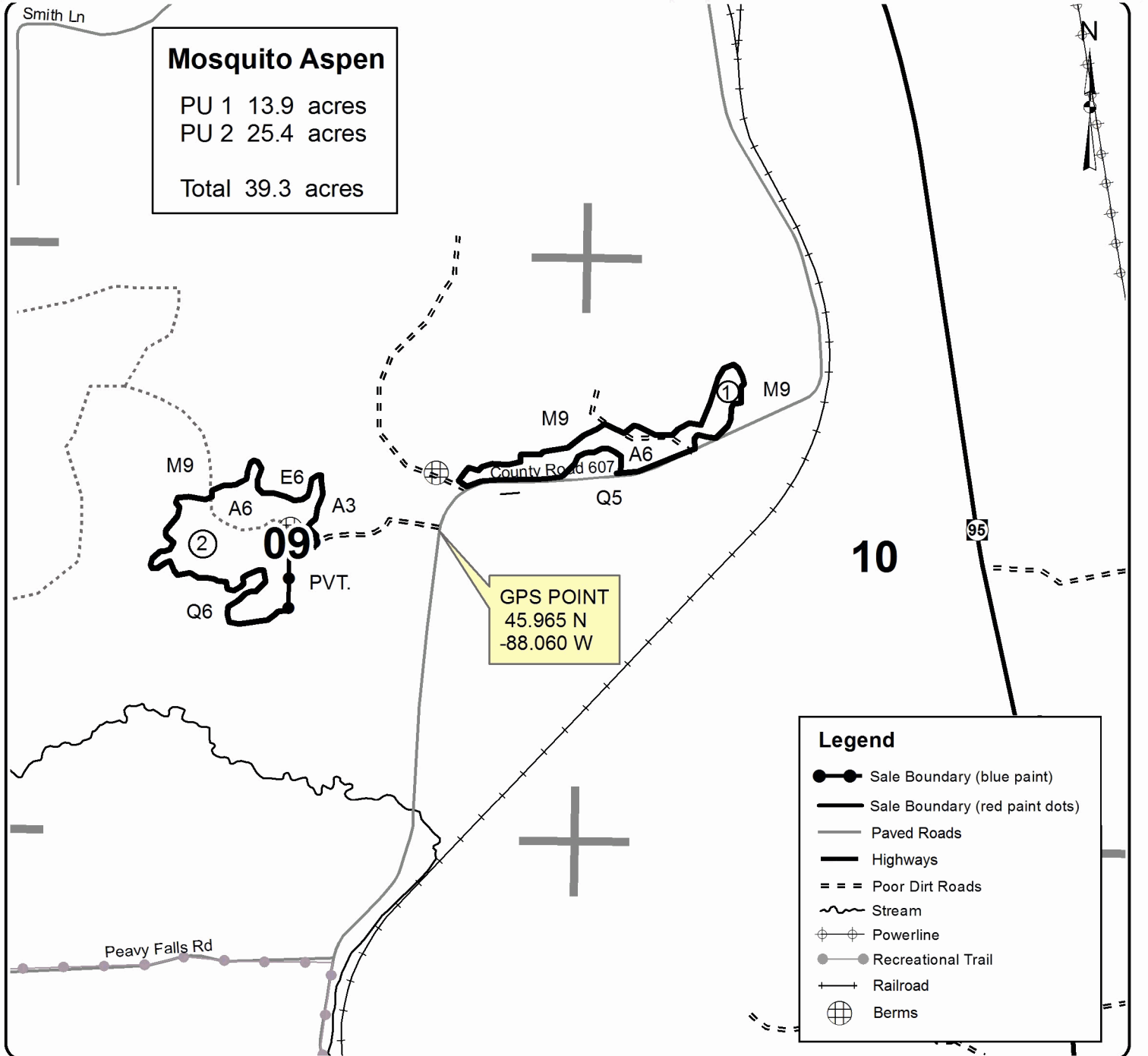
Forest Management Unit Crystal Falls		County Dickinson	Mapped By Sebero	Date 09/05/17	Page 1	of 1
Township 41N	Range 30W	Section(s) and Subdivision(s) 9 S1/2NE,NESW,SEnw 10 N1/2NW,SWNW		Scale 1:15,840		
Cruised By Sebero						

Cover Type

A = Aspen	H = Hemlock	N = Marsh	U = Upland Brush
B = Paper Birch	J = Jack Pine	O = Oak	UM = Upland Mixed
C = Cedar	L = Lowland Brush	P = Lowland Poplar	V = Bog or Marsh
D = Treed Bog	LM = Lowland Mixed	Q = Mixed Swamp Conifer	W = White Pine
E = Swamp Hdwoods	M = Mpl, Bch, Brch	R = Red Pine	X = Non Stocked
F = Spruce Fir	MC = Mixed Conifer	S = Black Spruce	Z = Water
G = Grass	MD = Mixed Deciduous	T = Tamarack	

Density

0 = Non Stocked	5 = Pole Timber Medium
1 = Seedling Sapling Poor	6 = Pole Timber Well
2 = Seedling Sapling Medium	7 = Saw Timber Poor
3 = Seedling Sapling Well	8 = Saw Timber Medium
4 = Pole Timber Poor	9 = Saw Timber Well



Cornea (12-006-17)
; Dickinson COUNTY

In response to the notice of sale to be held 8:30 a.m. (local time) on January 17, 2018, I am hereby submitting my sealed bid (firm offer) for the following forest products to be cut. Bids for individual species must be at or above the advertised price. All non-responsive bid forms may be rejected.

<u>PRODUCTS & SPECIES</u>	<u>ESTIMATED VOLUME*</u>	<u>ADVERTISED PRICE</u>	<u>BID PRICE/UNIT</u>
Sawtimber			
Basswood	3.80 MBF	\$ 240.00/MBF	\$ _____
Sugar Maple	2.00 MBF	\$ 459.00/MBF	\$ _____
Pulpwood			
Balsam Fir	47.00 Cords	\$ 20.15/Cord	\$ _____
Mixed Aspen	552.00 Cords	\$ 34.95/Cord	\$ _____
Mixed Hardwood	347.00 Cords	\$ 26.50/Cord	\$ _____
N. White Cedar	10.00 Cords	\$ 21.10/Cord	\$ _____
Red Pine	45.00 Cords	\$ 51.65/Cord	\$ _____
White Spruce	36.00 Cords	\$ 25.65/Cord	\$ _____

*The volumes are statistically estimated within plus (+) or minus (-) 13.30 percent. These estimated volumes are final and not subject to adjustment. Prospective bidders are urged to examine this timber and to make their own estimates of quantity and quality.

I understand that any or all bids may be rejected. All bids must be signed and all bid items must be bid or the bid form may be rejected. I also understand that consideration and awarding a contract will be based upon my past performance and ability to complete the contract based upon equipment and staffing subject to my control.

FEDERAL ID: ____ - ____ - ____ or SOCIAL SECURITY NUMBER: ____ - ____ - ____

Company or individual bidding: _____

Company representative's name: _____

Address: _____

City: _____ State: _____ Zip: _____

IF AVAILABLE, PLEASE PLACE THE PERSONALIZED LABEL FROM YOUR PROSPECTUS IN THE ABOVE BOX.

Individual or company representative's signature: _____ Date: _____

Phone number : _____ Email (optional): _____

THE WINNING BIDDER MUST COMPLETE THE VERIFICATION OF WORKER'S DISABILITY COMPENSATION ACT COMPLIANCE (ON REVERSE SIDE IF DOUBLE SIDED) WITHIN 21 DAYS OF SALE AWARD DATE



FOR DEPARTMENT USE ONLY
Sale Number (XX - XXX - XX - XX)
Forest Management Unit:

TIMBER SALE VERIFICATION OF WORKER'S DISABILITY COMPENSATION ACT COMPLIANCE

*As required by Act 317, P.A. 1969 (Worker's Compensation) and
Part 5 of Act 451 of 1994, as amended.*

VERIFICATION OF WORKER'S DISABILITY COMPENSATION ACT COMPLIANCE

- This verification must be completed and submitted within 21 days of contract award and prior to the issuance of the timber sale contract.
- In addition, if boxes 2B or 2C are checked, then Notice of Exclusion or Certificate of Insurance must be submitted within twenty-one (21) days of the contract award and prior to the issuance of the timber sale contract.
- All information must be typed or printed except for written signatures.

Please Check Appropriate Categories:

1. My business is organized as (you **must** check one of the boxes below):
 - A. Sole Proprietorship (individual)
 - B. Partnership
 - C. Corporation
2. You **must** check one of the boxes below:
 - A. I certify my business is a sole proprietorship and it has no employees but the sole proprietor. I am not subject to the Worker's Compensation Laws.
 - B. I certify my business has satisfied its obligation to the Worker's Compensation Act through the use of an approved Notice of Exclusion (BWC-337, Rev. 5/96). I will provide a copy of the Notice of Exclusion within 21 days of the contract award. (For questions or a copy of the BWC-337, please call the Worker's Compensation Bureau at 517-322-1195).
 - C. I certify my business has a Worker's Compensation Policy. I will provide an original Certificate of Insurance within twenty-one (21) days of the contract award.
3. If you have checked item 2(A) or 2(B), you **must** indicate the number of **both** full-time and part-time employees, other than yourself, including family members and active partners (if none, you must enter "0").

_____ Full-time Employees

_____ Part-time Employees

Name of Business		Federal ID (or) Social Security No.	
Address		Telephone ()	
City	State	ZIP	

I hereby certify that the above information is true and correct. I agree to notify the Michigan DNR of any changes that occur in factors affecting my coverage during any of my present and future operations.

Signature of Owner or Authorized Representative

Title

Date

Please complete the "SEALED BID" information on the next page

Minnesconsin Mix (12-019-17)
; Dickinson COUNTY

In response to the notice of sale to be held 8:30 a.m. (local time) on January 17, 2018, I am hereby submitting my sealed bid (firm offer) for the following forest products to be cut. Bids for individual species must be at or above the advertised price. All non-responsive bid forms may be rejected.

<u>PRODUCTS & SPECIES</u>	<u>ESTIMATED VOLUME*</u>	<u>ADVERTISED PRICE</u>	<u>BID PRICE/UNIT</u>
Sawtimber			
Basswood	171.00 MBF	\$ 228.00/MBF	\$ _____
Sugar Maple	7.70 MBF	\$ 437.00/MBF	\$ _____
Pulpwood			
Balsam Fir	149.00 Cords	\$ 19.20/Cord	\$ _____
Balsam Poplar	182.00 Cords	\$ 33.30/Cord	\$ _____
Basswood	894.00 Cords	\$ 11.40/Cord	\$ _____
Paper Birch	234.00 Cords	\$ 22.60/Cord	\$ _____
Quaking Aspen	364.00 Cords	\$ 33.30/Cord	\$ _____
Red Maple	177.00 Cords	\$ 25.25/Cord	\$ _____
Sugar Maple	516.00 Cords	\$ 25.25/Cord	\$ _____
White Spruce	159.00 Cords	\$ 24.45/Cord	\$ _____

*The volumes are statistically estimated within plus (+) or minus (-) 10.05 percent. These estimated volumes are final and not subject to adjustment. Prospective bidders are urged to examine this timber and to make their own estimates of quantity and quality.

I understand that any or all bids may be rejected. All bids must be signed and all bid items must be bid or the bid form may be rejected. I also understand that consideration and awarding a contract will be based upon my past performance and ability to complete the contract based upon equipment and staffing subject to my control.

FEDERAL ID: _____ or SOCIAL SECURITY NUMBER: _____

Company or individual bidding: _____

Company representative's name: _____

Address: _____

City: _____ State: _____ Zip: _____

IF AVAILABLE, PLEASE PLACE THE PERSONALIZED LABEL FROM YOUR PROSPECTUS IN THE ABOVE BOX.

Individual or company representative's signature: _____ Date: _____

Phone number : _____ Email (optional): _____

THE WINNING BIDDER MUST COMPLETE THE VERIFICATION OF WORKER'S DISABILITY COMPENSATION ACT COMPLIANCE (ON REVERSE SIDE IF DOUBLE SIDED) WITHIN 21 DAYS OF SALE AWARD DATE



FOR DEPARTMENT USE ONLY
Sale Number (XX - XXX - XX - XX)
Forest Management Unit:

TIMBER SALE VERIFICATION OF WORKER'S DISABILITY COMPENSATION ACT COMPLIANCE

*As required by Act 317, P.A. 1969 (Worker's Compensation) and
Part 5 of Act 451 of 1994, as amended.*

VERIFICATION OF WORKER'S DISABILITY COMPENSATION ACT COMPLIANCE

- This verification must be completed and submitted within 21 days of contract award and prior to the issuance of the timber sale contract.
- In addition, if boxes 2B or 2C are checked, then Notice of Exclusion or Certificate of Insurance must be submitted within twenty-one (21) days of the contract award and prior to the issuance of the timber sale contract.
- All information must be typed or printed except for written signatures.

Please Check Appropriate Categories:

1. My business is organized as (you **must** check one of the boxes below):
 - A. Sole Proprietorship (individual)
 - B. Partnership
 - C. Corporation

2. You **must** check one of the boxes below:
 - A. I certify my business is a sole proprietorship and it has no employees but the sole proprietor. I am not subject to the Worker's Compensation Laws.
 - B. I certify my business has satisfied its obligation to the Worker's Compensation Act through the use of an approved Notice of Exclusion (BWC-337, Rev. 5/96). I will provide a copy of the Notice of Exclusion within 21 days of the contract award. (For questions or a copy of the BWC-337, please call the Worker's Compensation Bureau at 517-322-1195).
 - C. I certify my business has a Worker's Compensation Policy. I will provide an original Certificate of Insurance within twenty-one (21) days of the contract award.

3. If you have checked item 2(A) or 2(B), you **must** indicate the number of **both** full-time and part-time employees, other than yourself, including family members and active partners (if none, you must enter "0").

_____ Full-time Employees

_____ Part-time Employees

Name of Business		Federal ID (or) Social Security No.	
Address		Telephone ()	
City	State	ZIP	

I hereby certify that the above information is true and correct. I agree to notify the Michigan DNR of any changes that occur in factors affecting my coverage during any of my present and future operations.

Signature of Owner or Authorized Representative

Title

Date

Please complete the "SEALED BID" information on the next page

Salmagundi (12-026-17)
; Dickinson COUNTY

In response to the notice of sale to be held 8:30 a.m. (local time) on January 17, 2018, I am hereby submitting my sealed bid (firm offer) for the following forest products to be cut. Bids for individual species must be at or above the advertised price. All non-responsive bid forms may be rejected.

<u>PRODUCTS & SPECIES</u>	<u>ESTIMATED VOLUME*</u>	<u>ADVERTISED PRICE</u>	<u>BID PRICE/UNIT</u>
Sawtimber			
Basswood	35.30 MBF	\$ 240.00/MBF	\$ _____
Red Pine	94.70 MBF	\$ 164.00/MBF	\$ _____
Sugar Maple	14.30 MBF	\$ 459.00/MBF	\$ _____
White Pine	0.50 MBF	\$ 59.00/MBF	\$ _____
Pulpwood			
Balsam Fir	407.00 Cords	\$ 20.15/Cord	\$ _____
Basswood	180.00 Cords	\$ 12.00/Cord	\$ _____
Black Spruce	258.00 Cords	\$ 25.65/Cord	\$ _____
Jack Pine	1.00 Cords	\$ 42.90/Cord	\$ _____
Mixed Aspen	2,547.00 Cords	\$ 34.95/Cord	\$ _____
Mixed Hardwood	293.00 Cords	\$ 26.50/Cord	\$ _____
Red Pine	582.00 Cords	\$ 51.65/Cord	\$ _____
Tamarack	131.00 Cords	\$ 13.55/Cord	\$ _____
White Pine	7.00 Cords	\$ 28.80/Cord	\$ _____
White Spruce	112.00 Cords	\$ 25.65/Cord	\$ _____

*The volumes are statistically estimated within plus (+) or minus (-) 9.23 percent. These estimated volumes are final and not subject to adjustment. Prospective bidders are urged to examine this timber and to make their own estimates of quantity and quality.

I understand that any or all bids may be rejected. All bids must be signed and all bid items must be bid or the bid form may be rejected. I also understand that consideration and awarding a contract will be based upon my past performance and ability to complete the contract based upon equipment and staffing subject to my control.

FEDERAL ID: _____ or SOCIAL SECURITY NUMBER: _____

Company or individual bidding: _____

Company representative's name: _____

Address: _____

City: _____ State: _____ Zip: _____

IF AVAILABLE, PLEASE PLACE THE PERSONALIZED LABEL FROM YOUR PROSPECTUS IN THE ABOVE BOX.

Individual or company representative's signature: _____ Date: _____

Phone number : _____ Email (optional): _____

THE WINNING BIDDER MUST COMPLETE THE VERIFICATION OF WORKER'S DISABILITY COMPENSATION ACT COMPLIANCE (ON REVERSE SIDE IF DOUBLE SIDED) WITHIN 21 DAYS OF SALE AWARD DATE



FOR DEPARTMENT USE ONLY
Sale Number (XX - XXX - XX - XX)
Forest Management Unit:

TIMBER SALE VERIFICATION OF WORKER'S DISABILITY COMPENSATION ACT COMPLIANCE

*As required by Act 317, P.A. 1969 (Worker's Compensation) and
Part 5 of Act 451 of 1994, as amended.*

VERIFICATION OF WORKER'S DISABILITY COMPENSATION ACT COMPLIANCE

- This verification must be completed and submitted within 21 days of contract award and prior to the issuance of the timber sale contract.
- In addition, if boxes 2B or 2C are checked, then Notice of Exclusion or Certificate of Insurance must be submitted within twenty-one (21) days of the contract award and prior to the issuance of the timber sale contract.
- All information must be typed or printed except for written signatures.

Please Check Appropriate Categories:

1. My business is organized as (you **must** check one of the boxes below):
 - A. Sole Proprietorship (individual)
 - B. Partnership
 - C. Corporation

2. You **must** check one of the boxes below:
 - A. I certify my business is a sole proprietorship and it has no employees but the sole proprietor. I am not subject to the Worker's Compensation Laws.
 - B. I certify my business has satisfied its obligation to the Worker's Compensation Act through the use of an approved Notice of Exclusion (BWC-337, Rev. 5/96). I will provide a copy of the Notice of Exclusion within 21 days of the contract award. (For questions or a copy of the BWC-337, please call the Worker's Compensation Bureau at 517-322-1195).
 - C. I certify my business has a Worker's Compensation Policy. I will provide an original Certificate of Insurance within twenty-one (21) days of the contract award.

3. If you have checked item 2(A) or 2(B), you **must** indicate the number of **both** full-time and part-time employees, other than yourself, including family members and active partners (if none, you must enter "0").

_____ Full-time Employees

_____ Part-time Employees

Name of Business		Federal ID (or) Social Security No.	
Address		Telephone ()	
City	State	ZIP	

I hereby certify that the above information is true and correct. I agree to notify the Michigan DNR of any changes that occur in factors affecting my coverage during any of my present and future operations.

Signature of Owner or Authorized Representative

Title

Date

Please complete the "SEALED BID" information on the next page

Mosquito Aspen (12-067-17)
; Dickinson COUNTY

In response to the notice of sale to be held 8:30 a.m. (local time) on January 17, 2018, I am hereby submitting my sealed bid (firm offer) for the following forest products to be cut. Bids for individual species must be at or above the advertised price. All non-responsive bid forms may be rejected.

<u>PRODUCTS & SPECIES</u>	<u>ESTIMATED VOLUME*</u>	<u>ADVERTISED PRICE</u>	<u>BID PRICE/UNIT</u>
Pulpwood			
Balsam Fir	178.00 Cords	\$ 20.15/Cord	\$ _____
Mixed Hardwood	193.00 Cords	\$ 26.50/Cord	\$ _____
Quaking Aspen	619.00 Cords	\$ 34.95/Cord	\$ _____
White Spruce	16.00 Cords	\$ 25.65/Cord	\$ _____

*The volumes are statistically estimated within plus (+) or minus (-) 11.58 percent. These estimated volumes are final and not subject to adjustment. Prospective bidders are urged to examine this timber and to make their own estimates of quantity and quality.

I understand that any or all bids may be rejected. All bids must be signed and all bid items must be bid or the bid form may be rejected. I also understand that consideration and awarding a contract will be based upon my past performance and ability to complete the contract based upon equipment and staffing subject to my control.

FEDERAL ID: ___ - ___ - ___ or SOCIAL SECURITY NUMBER: ___ - ___ - ___

Company or individual bidding: _____

Company representative's name: _____

Address: _____

City: _____ State: _____ Zip: _____

IF AVAILABLE, PLEASE PLACE THE PERSONALIZED LABEL FROM YOUR PROSPECTUS IN THE ABOVE BOX.

Individual or company representative's signature: _____ Date: _____

Phone number : _____ Email (optional): _____

THE WINNING BIDDER MUST COMPLETE THE VERIFICATION OF WORKER'S DISABILITY COMPENSATION ACT COMPLIANCE (ON REVERSE SIDE IF DOUBLE SIDED) WITHIN 21 DAYS OF SALE AWARD DATE



FOR DEPARTMENT USE ONLY
Sale Number (XX - XXX - XX - XX)
Forest Management Unit:

TIMBER SALE VERIFICATION OF WORKER'S DISABILITY COMPENSATION ACT COMPLIANCE

*As required by Act 317, P.A. 1969 (Worker's Compensation) and
Part 5 of Act 451 of 1994, as amended.*

VERIFICATION OF WORKER'S DISABILITY COMPENSATION ACT COMPLIANCE

- This verification must be completed and submitted within 21 days of contract award and prior to the issuance of the timber sale contract.
- In addition, if boxes 2B or 2C are checked, then Notice of Exclusion or Certificate of Insurance must be submitted within twenty-one (21) days of the contract award and prior to the issuance of the timber sale contract.
- All information must be typed or printed except for written signatures.

Please Check Appropriate Categories:

1. My business is organized as (you **must** check one of the boxes below):
 - A. Sole Proprietorship (individual)
 - B. Partnership
 - C. Corporation
2. You **must** check one of the boxes below:
 - A. I certify my business is a sole proprietorship and it has no employees but the sole proprietor. I am not subject to the Worker's Compensation Laws.
 - B. I certify my business has satisfied its obligation to the Worker's Compensation Act through the use of an approved Notice of Exclusion (BWC-337, Rev. 5/96). I will provide a copy of the Notice of Exclusion within 21 days of the contract award. (For questions or a copy of the BWC-337, please call the Worker's Compensation Bureau at 517-322-1195).
 - C. I certify my business has a Worker's Compensation Policy. I will provide an original Certificate of Insurance within twenty-one (21) days of the contract award.
3. If you have checked item 2(A) or 2(B), you **must** indicate the number of **both** full-time and part-time employees, other than yourself, including family members and active partners (if none, you must enter "0").

_____ Full-time Employees

_____ Part-time Employees

Name of Business		Federal ID (or) Social Security No.	
Address		Telephone ()	
City	State	ZIP	

I hereby certify that the above information is true and correct. I agree to notify the Michigan DNR of any changes that occur in factors affecting my coverage during any of my present and future operations.

Signature of Owner or Authorized Representative

Title

Date

Please complete the "SEALED BID" information on the next page

Stickleback Road SBW (12-033-17)
; Dickinson COUNTY

In response to the notice of sale to be held 8:30 a.m. (local time) on January 17, 2018, I am hereby submitting my sealed bid (firm offer) for the following forest products to be cut. Bids for individual species must be at or above the advertised price. All non-responsive bid forms may be rejected.

<u>PRODUCTS & SPECIES</u>	<u>ESTIMATED VOLUME*</u>	<u>ADVERTISED PRICE</u>	<u>BID PRICE/UNIT</u>
Sawtimber			
Basswood	18.40 MBF	\$ 208.00/MBF	\$ _____
Paper Birch	11.00 MBF	\$ 81.00/MBF	\$ _____
Pulpwood			
Balsam Fir	574.00 Cords	\$ 17.45/Cord	\$ _____
Basswood	206.00 Cords	\$ 10.40/Cord	\$ _____
Jack Pine	292.00 Cords	\$ 37.20/Cord	\$ _____
Mixed Hardwood	595.00 Cords	\$ 22.95/Cord	\$ _____
Mixed Spruce	494.00 Cords	\$ 22.25/Cord	\$ _____
Quaking Aspen	3,195.00 Cords	\$ 30.30/Cord	\$ _____

*The volumes are statistically estimated within plus (+) or minus (-) 8.10 percent. These estimated volumes are final and not subject to adjustment. Prospective bidders are urged to examine this timber and to make their own estimates of quantity and quality.

I understand that any or all bids may be rejected. All bids must be signed and all bid items must be bid or the bid form may be rejected. I also understand that consideration and awarding a contract will be based upon my past performance and ability to complete the contract based upon equipment and staffing subject to my control.

FEDERAL ID: ____ - ____ - ____ or SOCIAL SECURITY NUMBER: ____ - ____ - ____

Company or individual bidding: _____

Company representative's name: _____

Address: _____

City: _____ State: _____ Zip: _____

IF AVAILABLE, PLEASE PLACE THE PERSONALIZED LABEL FROM YOUR PROSPECTUS IN THE ABOVE BOX.

Individual or company representative's signature: _____ Date: _____

Phone number : _____ Email (optional): _____

THE WINNING BIDDER MUST COMPLETE THE VERIFICATION OF WORKER'S DISABILITY COMPENSATION ACT COMPLIANCE (ON REVERSE SIDE IF DOUBLE SIDED) WITHIN 21 DAYS OF SALE AWARD DATE



FOR DEPARTMENT USE ONLY
Sale Number (XX - XXX - XX - XX)
Forest Management Unit:

TIMBER SALE VERIFICATION OF WORKER'S DISABILITY COMPENSATION ACT COMPLIANCE

*As required by Act 317, P.A. 1969 (Worker's Compensation) and
Part 5 of Act 451 of 1994, as amended.*

VERIFICATION OF WORKER'S DISABILITY COMPENSATION ACT COMPLIANCE

- This verification must be completed and submitted within 21 days of contract award and prior to the issuance of the timber sale contract.
- In addition, if boxes 2B or 2C are checked, then Notice of Exclusion or Certificate of Insurance must be submitted within twenty-one (21) days of the contract award and prior to the issuance of the timber sale contract.
- All information must be typed or printed except for written signatures.

Please Check Appropriate Categories:

1. My business is organized as (you **must** check one of the boxes below):
 - A. Sole Proprietorship (individual)
 - B. Partnership
 - C. Corporation
2. You **must** check one of the boxes below:
 - A. I certify my business is a sole proprietorship and it has no employees but the sole proprietor. I am not subject to the Worker's Compensation Laws.
 - B. I certify my business has satisfied its obligation to the Worker's Compensation Act through the use of an approved Notice of Exclusion (BWC-337, Rev. 5/96). I will provide a copy of the Notice of Exclusion within 21 days of the contract award. (For questions or a copy of the BWC-337, please call the Worker's Compensation Bureau at 517-322-1195).
 - C. I certify my business has a Worker's Compensation Policy. I will provide an original Certificate of Insurance within twenty-one (21) days of the contract award.
3. If you have checked item 2(A) or 2(B), you **must** indicate the number of **both** full-time and part-time employees, other than yourself, including family members and active partners (if none, you must enter "0").

_____ Full-time Employees

_____ Part-time Employees

Name of Business		Federal ID (or) Social Security No.	
Address		Telephone ()	
City	State	ZIP	

I hereby certify that the above information is true and correct. I agree to notify the Michigan DNR of any changes that occur in factors affecting my coverage during any of my present and future operations.

Signature of Owner or Authorized Representative

Title

Date

Please complete the "SEALED BID" information on the next page