



**DEPARTMENT OF NATURAL RESOURCES  
STATE OF MICHIGAN**

**TIMBER SALE PROSPECTUS #6150**

SCHEDULED SALE DATE AND TIME: 9:00 a.m. (local time) on January 30, 2018.

LOCATION: BARAGA MGMT UNIT, 427 US 41 NORTH, BARAGA, MI 49908.

PROSPECTUS NOTE: The bidder is advised to inspect the sale area and review the location, estimated volumes, operating costs and contract terms of proposed sales. Please be aware that some landowners may request 60 days or more notice for access across their land.

Notice is hereby given that bids will be received by the Unit Manager, BARAGA MANAGEMENT UNIT, for certain timber on the following described lands:

Oak Patch (11-009-17)

Houghton County, Advertised Price \$96,083.60, 154.5 Acres, Hardwood, Sugar Maple.

SALE NOTE: Access may be through private or other public land.

GNA North Beaver Creek (11-800-17)

Houghton County, Advertised Price \$124,880.30, 346.7 Acres, Jack Pine, Red Pine.

SALE NOTE: This is a Good Neighbor Authority (GNA) timber sale on national forest land. This timber sale was set-up and is being advertised by the Michigan DNR for the US Forest Service. The contract will be awarded and administered by the Michigan DNR. Note the additional Sale Specific Conditions & Requirements containing the acronym 'GNA'.

Access may be through other public land.

## BID INSTRUCTIONS (VER. 11/28/2017):

### 1. Scheduled Bid Location, Date, and Time (2/11)

Bids must be received by the Unit Manager, BARAGA OFFICE, 427 US 41 NORTH, BARAGA, MI 49908, no later than 9:00 a.m. (local time) on January 30, 2018. For further information concerning this sale, contact Brad Carlson at 906-353-6651.

### 2. Bidder's Qualifications (5/16)

Purchaser shall obtain workers compensation insurance to cover claims under Michigan's Worker's Disability Compensation Act of 1969 or similar employee benefit act of any other state applicable to an employee. If all or part of a timber sale was prepared by a private contractor, the contractor and that contractor's company are not permitted to bid on the timber sale contract. Bids will not be accepted from individuals or companies appearing on the DNR/FRD No-Bid List. This list contains the names of purchasers who previously failed to execute a contract within 21-days or who have a history of poor performance.

### 3. Preparation of Sealed Bids (5/16)

Bid Forms may be completed online thru Michigan DNR Timber Sale Online Bidding (OLB) at [www.michigan.gov/timberbidding](http://www.michigan.gov/timberbidding) or by completing the hardcopy Bid Form found in the Timber Sale Prospectus. Hardcopy Bid Forms shall be manually signed in ink. Registration in OLB is considered your 'signature' for all bids submitted thru that system. Bid prices must be entered for each species and product in the Bid Price column for all material subject to bidding and all fill-in blanks must be completed. If erasures or other changes appear on the hardcopy Bid Form, each erasure or change must be initialed by the person signing the bid.

### 4. Submission of Sealed Bids (5/16)

Bid forms may be obtained from the Unit Manager or thru OLB. Bids may be submitted hardcopy or thru OLB. All hardcopy bids must be submitted on the bid form and in an envelope clearly identified as described in this section. NOTE: Only one bid form per bid envelope. Sealed bids must be submitted to the Unit office designated in the prospectus and must be submitted at or prior to the time established in the prospectus. The envelope should show on the outside (a) the sale name or number and (b) the date and time of bid opening, as shown in the prospectus. Bids received after the time specified in the sale prospectus are late bids and will be rejected.

It is possible for a bidder to submit multiple bids on a single sale. For example, a bid may be submitted hardcopy and a bid may be submitted thru OLB. Or, two bidders from the same company could both submit bids on the same sale. If this were to happen, the State would accept all bids received and award the contract accordingly. All bidding and contractual requirements would apply to all bids received.

### 5. Public Opening of Sealed Bids (7/16)

If conditions permit, the sealed bids will be publicly opened and posted at the time and place set in the prospectus.

If a bidder, present at a bid opening, has submitted bids on more than one sale, that bidder may withdraw their unopened bid envelopes or announce the withdrawal of their online bid after being declared the successful bidder on one sale.

### 6. Award of Contract (1/11)

Award of the contract will be made to the Bidder whose bid, conforming to the prospectus, is most advantageous to the State of Michigan on the basis of total value at rates bid for the estimated quantities. The State reserves the right to reject any bid or waive any minor irregularity in bids received. A written award mailed (or otherwise furnished) to the successful Bidder shall be deemed to result in a binding contract without further action by either party.

### 7. Down Payment (1/11)

The Bidder to whom award is made must make a down payment within 21 days of the sale award. The amount of the down payment will be calculated as shown in the Bond and Payment Schedule of this prospectus. Only cash may be used to meet this requirement.

### 8. Performance Security (1/11)

As guarantee of faithful performance, a cash bond, certificate of deposit, surety bond or irrevocable letter of credit (LOC) is required within 21 days of the sale award. The amount of the performance security is shown in the Bond and

Payment Schedule of this prospectus. If an LOC or surety is used, the coverage must extend for at least 6 months beyond the contract expiration.

#### 9. Timber Sale Contract (11/17)

Additional conditions and requirements common to all timber sales are listed on the timber sale contract (R4031) and are available on line at [www.michigan.gov/timber](http://www.michigan.gov/timber). Contact the Unit Manager for additional information or a sample contract. Within 21 days of the date of the award letter, the bidder must sign the contract and provide the required down payment, performance security, and verification of worker's disability compensation. The down payment and performance security shall be in accordance with the provisions of the timber sale contract, in the sums stated in this prospectus. If these actions are not taken, then the Bidder, the Bidder's corporation, and the corporation's principals may not be permitted to bid on State timber sales for a period of 1 year. In addition, the Bidder certifies that if awarded this contract, the Bidder will complete the timber sale contract in accordance with its terms and any modifications thereof including requirements to purchase, cut, and remove the included timber by the expiration date.

Payment Unit values in the State Forest Timber Sale Contract are calculated based on the advertised value of the Payment Unit as a percentage of the total advertised value of the contract. The advertised value of each Payment Unit is given in the Description of Timber by Payment Unit table on the Timber Sale Information page. For example, if the value of Payment Unit 1 is advertised as \$1,500 and the total Timber Sale value is advertised as \$10,000, the contract price for Payment Unit 1 will be 15% of the total bid price ( $\$1,500/\$10,000 * 100$ ).

#### 10. Disclaimer of Estimates and Bidder's Warranty of Inspection (7/16)

Before submitting this bid, the Bidder is advised and cautioned to inspect the sale area, review the requirements of the sale contract, and take other steps as may be reasonably necessary to ascertain the location, estimated volumes, construction estimates, and operating costs of the proposed sale. Failure to do so will not relieve the Bidder from responsibility for completing the contract.

The Bidder warrants that this bid is submitted solely on the basis of the Bidder's examination and inspection of the quality and quantity of the timber offered for sale and the Bidder's opinion of the value thereof and the costs of recovery. No reliance should be placed on the State of Michigan's estimates of timber quality, quantity or costs of recovery. Bidder further acknowledges that the State of Michigan: (i) expressly disclaims any warranty of fitness of timber for any purpose; (ii) offers this timber as is without any warranty of quality (merchantability) or quantity and (iii) expressly disclaims any warranty as to the quantity or quality of timber sold.

#### 11. Certification and Chain-of-Custody (10/14)

Unless otherwise indicated in the contract under section 7 – Other Conditions of the Sale Specific Conditions & Requirements, the area encompassed by this timber sale is certified to the standards of the Forest Stewardship Council (FSC) - Certificate #SCS-FM/COC-00090N and the Sustainable Forestry Initiative (SFI) - Certificate # NSF-SFIS-5Y031-SF5. Forest products from this sale may be delivered to the mill as "FSC 100% and / or SFI certified" as long as the contractor hauling the forest products is chain-of-custody (COC) certified or covered under a COC certificate from the destination mill. The purchaser is responsible for maintaining COC after leaving the sale area.

#### 12. Good Neighbor Authority (GNA) Requirements (7/16)

If the name of this timber sales contains the acronym GNA, it is authorized by the Good Neighbor Authority (GNA) and covered by various agreements between the U.S. Forest Service and the State. The timber sale occurs on federal land and the following conditions apply:

GNA contracts on US Forest Service land will not be awarded to purchasers on the Federal list of excluded parties. The System for Award Management (SAM) will be checked for active excluded parties prior to award of contract. In addition, the Bidder to whom award is made must complete an Assurance Regarding Felony Conviction or Tax Delinquent Status for Corporate Applicants (AD-3031).

#### 13. Good Neighbor Authority (GNA) Requirements, con't (9/16)

Bidder certifies, by signing this bid form, that to the best of Bidder's knowledge that the following representations are accurate and complete.

a. That the Bidder and its principals are not presently debarred, suspended, proposed for debarment, declared ineligible, or voluntary excluded from timber sales (covered transactions) by any Federal department or agency.

b. That the Bidder and its principals have not within a 3-year period preceding this bid been convicted of or had a civil judgment rendered against them for commission of fraud or a criminal offense in connection with obtaining, attempting to obtain, or performing a public (Federal, State, or local) transaction or contract under a public transaction; violation of Federal or State antitrust statutes or commission of embezzlement, theft, forgery, bribery, falsification or destruction of records, making false statements, or receiving stolen property.

c. That the Bidder and its principals are not presently indicted for or otherwise criminally or civilly charged by a governmental entity (Federal, State, or local) with commission of any of the offenses enumerated in paragraph b of this certification.

d. That the Bidder and its principals have not within a 3-year period preceding this bid had one or more public transactions (Federal, State, or local) terminated for breach or default of a timber or forest product contract.

Bidders that cannot certify this requirement, in whole or in part, shall submit an explanation with their bid.

KEITH CREAGH

Director

# TIMBER SALE INFORMATION

## Oak Patch (11-009-17)

Houghton County (Advertised Price \$96,083.60)

SALE NOTE: Access may be through private or other public land.

A timber sale contract for this lump sum, sealed bid timber sale will be awarded to the responsible bidder offering the highest sealed bid price. Bids must be at or above the following advertised price for each species:

<u>PRODUCTS &amp; SPECIES</u>	<u>ESTIMATED UNITS*</u>	<u>ADVERTISED PRICE</u>
Sawtimber		
Basswood	38.50 MBF	\$ 122.00 / MBF
Black Cherry	1.00 MBF	\$ 141.00 / MBF
Red Maple	64.80 MBF	\$ 219.00 / MBF
Red Oak	26.50 MBF	\$ 158.00 / MBF
Sugar Maple	123.90 MBF	\$ 387.00 / MBF
Yellow Birch	5.80 MBF	\$ 164.00 / MBF
Pulpwood		
Balsam Fir	5.00 Cords	\$ 11.30 / Cord
Basswood	89.00 Cords	\$ 15.95 / Cord
Mixed Hardwood	1,275.00 Cords	\$ 17.40 / Cord
N. White Cedar	5.00 Cords	\$ 19.65 / Cord
White Spruce	12.00 Cords	\$ 17.30 / Cord

\* The total volume is statistically estimated within plus (+) or minus (-) 7.71 percent. The estimated units are final and not subject to adjustment. Prospective bidders are urged to examine this timber and to make their own estimates of quantity and quality.

### **BOND AND PAYMENT SCHEDULE:**

1. A bond in the amount of \$10,000.00 to insure faithful performance of the conditions of the contract will be deposited by the successful bidder within 21 days of the sale award.
2. Cutting in any sale or unit without the required advance payment would be considered a trespass.
3. Total payment must be paid in advance or according to the following schedule:
  - (a) Ten percent (10%) of the sale value must be paid within 21 days of the sale award.
  - (b) The 10% down payment will be credited towards the first unit cut.
4. If no cutting takes place, the 10% down payment will not be refunded.
5. Operations on the contract issued will terminate on 06/30/2021.

**Description of Timber by Payment Unit (PU)**

PU	MARKET GROUP	PRODUCT	QUANTITY	UNIT	ACRES	ADVERTISE PRICE
1	Red Maple	Sawtimber	4.3	MBF	6.0	\$2,090.10
	Mixed Hardwood	Pulpwood	66.0	Cords		
	<i>Red Maple</i>		55.0	<i>Cords</i>		
	<i>Sugar Maple</i>		11.0	<i>Cords</i>		
2	Red Oak	Sawtimber	7.3	MBF	3.1	\$7,003.55
	Sugar Maple		12.3	MBF		
	Mixed Hardwood	Pulpwood	57.0	Cords		
	<i>Red Maple</i>		3.0	<i>Cords</i>		
	<i>Red Oak</i>		7.0	<i>Cords</i>		
	<i>Sugar Maple</i>		47.0	<i>Cords</i>		
	N. White Cedar		5.0	Cords		
3	Red Maple	Sawtimber	17.9	MBF	53.1	\$34,792.00
	Red Oak		1.7	MBF		
	Sugar Maple		58.8	MBF		
	Yellow Birch		5.1	MBF		
	Balsam Fir	Pulpwood	3.0	Cords		
	Mixed Hardwood		401.0	Cords		
	<i>Ironwood</i>		2.0	<i>Cords</i>		
	<i>Red Maple</i>		103.0	<i>Cords</i>		
	<i>Red Oak</i>		2.0	<i>Cords</i>		
	<i>Sugar Maple</i>		280.0	<i>Cords</i>		
	<i>Yellow Birch</i>		14.0	<i>Cords</i>		
	4	Basswood	Sawtimber	9.2		
Red Maple			5.5	MBF		
Sugar Maple			11.1	MBF		
Basswood		Pulpwood	34.0	Cords		
Mixed Hardwood			141.0	Cords		
<i>American Elm</i>			2.0	<i>Cords</i>		
<i>Red Maple</i>			51.0	<i>Cords</i>		
<i>Sugar Maple</i>			88.0	<i>Cords</i>		
5	Basswood	Sawtimber	2.5	MBF	5.1	\$4,405.70
	Red Maple		2.4	MBF		
	Red Oak		2.3	MBF		
	Sugar Maple		4.5	MBF		
	Basswood	Pulpwood	6.0	Cords		
	Mixed Hardwood		78.0	Cords		
	<i>Red Maple</i>		7.0	<i>Cords</i>		
	<i>Red Oak</i>		1.0	<i>Cords</i>		
	<i>Sugar Maple</i>		70.0	<i>Cords</i>		
	White Spruce		1.0	Cords		
6	Basswood	Sawtimber	11.7	MBF	24.0	\$12,782.15
	Red Maple		13.4	MBF		
	Red Oak		2.0	MBF		
	Sugar Maple		11.2	MBF		
	Balsam Fir	Pulpwood	2.0	Cords		
	Basswood		19.0	Cords		
	Mixed Hardwood		187.0	Cords		
	<i>Red Maple</i>		77.0	<i>Cords</i>		
	<i>Red Oak</i>		1.0	<i>Cords</i>		
	<i>Sugar Maple</i>		109.0	<i>Cords</i>		
	White Spruce		11.0	Cords		
	7	Basswood	Sawtimber	12.9		
Black Cherry			1.0	MBF		
Red Maple			9.1	MBF		
Sugar Maple			13.9	MBF		
Basswood		Pulpwood	20.0	Cords		

**Description of Timber by Payment Unit (PU), con't**

PU	MARKET GROUP	PRODUCT	QUANTITY	UNIT	ACRES	ADVERTISE PRICE
	Mixed Hardwood		176.0	Cords		
	<i>Black Cherry</i>		7.0	<i>Cords</i>		
	<i>Red Maple</i>		53.0	<i>Cords</i>		
	<i>Sugar Maple</i>		116.0	<i>Cords</i>		
8	Red Maple	Sawtimber	3.1	MBF	1.2	\$2,208.20
	Red Oak		1.3	MBF		
	Sugar Maple		1.9	MBF		
	Yellow Birch		0.3	MBF		
	Mixed Hardwood	Pulpwood	31.0	Cords		
	<i>Ironwood</i>		1.0	<i>Cords</i>		
	<i>Red Maple</i>		10.0	<i>Cords</i>		
	<i>Red Oak</i>		2.0	<i>Cords</i>		
	<i>Sugar Maple</i>		16.0	<i>Cords</i>		
	<i>Yellow Birch</i>		2.0	<i>Cords</i>		
9	Basswood	Sawtimber	2.2	MBF	6.9	\$10,715.20
	Red Maple		9.1	MBF		
	Red Oak		11.9	MBF		
	Sugar Maple		10.2	MBF		
	Yellow Birch		0.4	MBF		
	Basswood	Pulpwood	10.0	Cords		
	Mixed Hardwood		138.0	Cords		
	<i>Red Maple</i>		41.0	<i>Cords</i>		
	<i>Red Oak</i>		14.0	<i>Cords</i>		
	<i>Sugar Maple</i>		79.0	<i>Cords</i>		
	<i>Yellow Birch</i>		4.0	<i>Cords</i>		
TOTAL:			260.5	MBF		
TOTAL:			1,386.0	Cords		

## Sale Specific Conditions & Requirements

**Sale Name: Oak Patch**

**Sale Number: 11-009-17 Seq#: 1**

### 1 - Sale Area

#### 1.2 - Boundaries

##### 1.2.1 - Painted boundaries (1/14)

The sale boundary and Payment Unit boundaries are marked and identified by blue and red paint. Exterior sale boundary lines against private are marked with blue paint. Exterior sale boundary lines against state are marked with red paint. Interior Payment Unit boundary lines are also marked with red paint. The painted boundary line trees are not Included Timber and are to be protected unless marked with orange paint.

### 2 - Timber Specifications

#### 2.1 - Included Timber

##### 2.1.1 - Clearcut unit(s) with unmerchantable trees (6/14)

Within Payment Unit(s) 2, 5, 8, and 9, cut all trees that are two (2) inches or more at DBH, except red oak marked with green paint, and all hemlock, white pine, and cedar.

##### 2.1.3 - Cut tree marked unit(s) (12/08)

Within Payment Unit(s) 1, 3, 4, 6, and 7, all trees are designated for cutting when marked with orange paint above and below stump height, regardless of merchantability.

#### 2.2 - Utilization

##### 2.2.1 - Utilization (2/04)

All listed board foot volumes of sawlog size products in this contract have been determined using a top diameter inside bark of 8 inches.

##### 2.2.4 - Skidding length (2/14)

Skidding of unlimbed tops or lengths over 26 feet is not permissible in Payment Units 1, 3, 4, 6, and 7 unless approved by the Unit Manager or his/her representative.

##### 2.2.7 - Uncut designated trees (2/04)

Liquidated damages of \$10.00 per tree will be assessed for every marked tree not cut.

##### 2.2.8 - Utilization and removal (5/14)

All products meeting standards set forth in General Condition and Requirement 2.2 - Utilization must be removed from the sale area. This is because excessive woody debris prohibits regeneration.

### 3 - Payments

#### 3.4 - Damaged Timber

##### 3.4.1 - Damaged timber (6/14)

General Condition and Requirement 3.4 Damaged Timber, defines liquidated damages for undesignated live merchantable trees which are cut or injured. In addition, extreme care should be taken to avoid damage to tree seedlings and saplings. No damage is acceptable to merchantable trees within the sale area. If damage occurs, rates will be in accordance with General Condition and Requirement 3.4 Damaged Timber.

### 4 - Transportation

#### 4.1 - Construction

##### 4.1.1 - Stream crossings, general (3/11)

All stream crossing structures will be temporary and therefore, shall be provided by the Purchaser, and must be removed upon completion of the sale. All permits for stream crossings will be provided by the DNR for crossings on State Forest Land. Please notify the DNR 90 days prior to working on any crossings that will require a DEQ permit.



#### 4.1.2 - Stream crossings, specific (3/11)

The Creek/River crossing will require the installation of a culvert or portable bridge which may be borrowed from the DNR. This installation will be performed in accordance with the specifications on the appropriate permits which shall be provided by the DNR.

#### 4.1.3 - Slash and earthen piles (8/04)

Piles or windrows of earth along roads and landings that have been widened or constructed shall be leveled. Slash from road maintenance or construction, including stumps, shall be utilized or dispersed throughout the sale.

#### 4.1.5 - Culverts (5/14)

Roads may require the installation of culverts for cross drainage or at natural drainage-ways. If culverts are needed in these locations, their placement will be specified by the sale administrator and they shall be installed prior to hauling. The culverts shall be new, corrugated metal or plastic. Culverts will be a minimum of 12 inches in diameter and 24 feet in length. If culverts are removed, fill shall be removed from wetland soils as specified. Soils shall be maintained and left in a non-erodible condition, with water bars, seed, fertilizer, mulch, and slash installed as directed by the sale administrator and as specified in the BMP manual. Stream crossing permits, if needed for crossings on State Forest Land, will be obtained by the DNR. 90 day advance notice is needed to process any permit applications.

#### 4.1.6 - Road construction (1/09)

Construction of new roads or improvements of existing roads shall be done in such a way as to minimize the environmental and visual impacts. Merchantable trees shall be cut and utilized unless otherwise directed. Non-merchantable trees shall be severed and laid flat on the ground. Slash shall be scattered, and not left in windrows and kept a minimum of 10 feet back from the road edge, and may be chipped, utilized or otherwise removed from the sale. Stumps shall be set upright, not left on edge, and be moved at least 10 feet away from the road edge. Disturbed soil shall be feathered into the woods and not left in berms or windrows.

#### 4.1.7 - Road closure (10/11)

All new roads built into the sale must be blocked to vehicle traffic upon completion of the sale. Overgrown roads that are reopened shall be considered new roads. In general, this will require constructing a four (4') foot high berm of stumps and logs covered with earth. Contact the sale administrator for specific details of design and placement.

### 4.2 - Maintenance

#### 4.2.2 - Fill material (4/07)

To maintain roads, fill material may be needed in areas where "holes" exist or may be expected to develop. This fill material should be placed before trucking begins. The sale administrator reserves the right to halt harvest activities if haul roads are not properly filled and shaped to his/her specifications.

#### 4.2.4 - Grading (10/16)

For completion of the sale, state forest roads must be graded. In general, this will require a road grader or bull dozer to shape up the roads after forest products have been hauled off site. This includes cleaning of drainage areas, grading, crowning and filling with gravel, if necessary. The grading equipment to be used must be approved by the Unit Manager or his/her representative.

### 4.4 - Access

#### 4.4.1 - Private property access (3/11)

Permission for access across private land is the responsibility of the Purchaser. Should the Purchaser desire to cross private land, a copy of the written permission from the private land-owner may be required by the DNR.

## 5 - Operations

### 5.2 - Conduct of Operations

#### 5.2.1 - Slash

##### 5.2.1.11 - Slash for reforestation (5/07)

To facilitate reforestation, the sale area shall be left with slash evenly distributed. Bunched tops within the cutting area shall be broken up and scattered. Stumps shall be cut low to the ground. Processing sites shall not be left with a compacted layer of slash; tops from these sites shall be hauled back into the cut area and scattered.

### 5.2.3 - Operating Restrictions

#### 5.2.3.2 - Operating restrictions (9/11)

Within Payment Unit(s) 1-9, unless changed by written agreement, all clean up activities are to be completed by June 30. This restriction is to let the area revegetate before the dry season.

#### 5.2.3.3 - Bark slippage restriction (3/09)

Within Payment Unit(s) 1-9, unless changed by written agreement, cutting and skidding are not permitted during the period of April 1 to July 15. This restriction is because of bark slippage.

#### 5.2.30 - Landing/road top soil protection (2/15)

Top soil on landings and new roads must be removed, stockpiled and saved. Upon completion of the timber sale, soil must be evenly distributed back over the area for revegetation. In addition, the area must be seeded and mulched per instructions of the sale administrator.

#### 5.2.32 - Decking/landing restoration (9/13)

All decking and landing areas must have the surface area restored to a condition equal to or better than before. This is to ensure the proper regeneration of the stand. Wood debris, chips and "cookies" from trimmings must be removed or scattered away from landing and loading areas and may not be windrowed on the edge.

#### 5.2.38 - No decking against live trees (2/04)

Cut products may not be decked against unmarked or designated leave trees.

### 5.4 - Soil Protection

#### 5.4.1 - Rutting restriction, general (7/16)

Operations are to cease immediately if equipment and weather conditions result in rutting of roads and/or skid trails which is 12 inches or greater in depth and 50 feet in length. The Unit Manager or his/her representative may restrict hauling and/or skidding if ruts exceed the specified depth. With the Unit Manager or his/her representative's approval, the Purchaser may return to the area when the risk of rutting has decreased.

#### 5.4.4 - Slope protection (5/15)

Skid trails and roads on slopes shall be water barred with slash, stumps, and/or clean straw bales native to the area as soon as use is complete to prevent erosion.

### 5.8 - Protection of Endangered Species

#### 5.8.5 - Protection of raptor nests (3/13)

All trees with raptor nests will be protected if found during harvesting operations. Notification will be made to the Unit Manager or his/her representative who will notify the Wildlife Biologist so an on-site evaluation and recommendation can be made, if necessary.

## 7 - Other Conditions

### 7.3 - Contract Modifications

#### 7.3.1 - Emerald Ash Borer

##### 7.3.1.2 - Emerald ash borer, ash or firewood on sale (2/05)

There is ash and/or "firewood" in this sale and it is located within an emerald ash borer quarantined area. The Director of the Michigan Department of Agriculture (MDA) by the authority of Act No. 72 of the Public Acts of 1945, as amended, and Quarantine Regulation No. 620, has promulgated this quarantine to prevent the further spread of this pest and sets forth: definitions, regulated articles, regulated areas, conditions of movement, violations and penalties, and special exemptions. The Purchaser must comply with this quarantine. Contact the MDA for further information.



# TIMBER SALE MAP

This information provided by authority of Part 525, 1994 PA 451, as amended.

Sale Number	Year
11-009	17

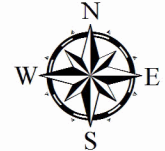
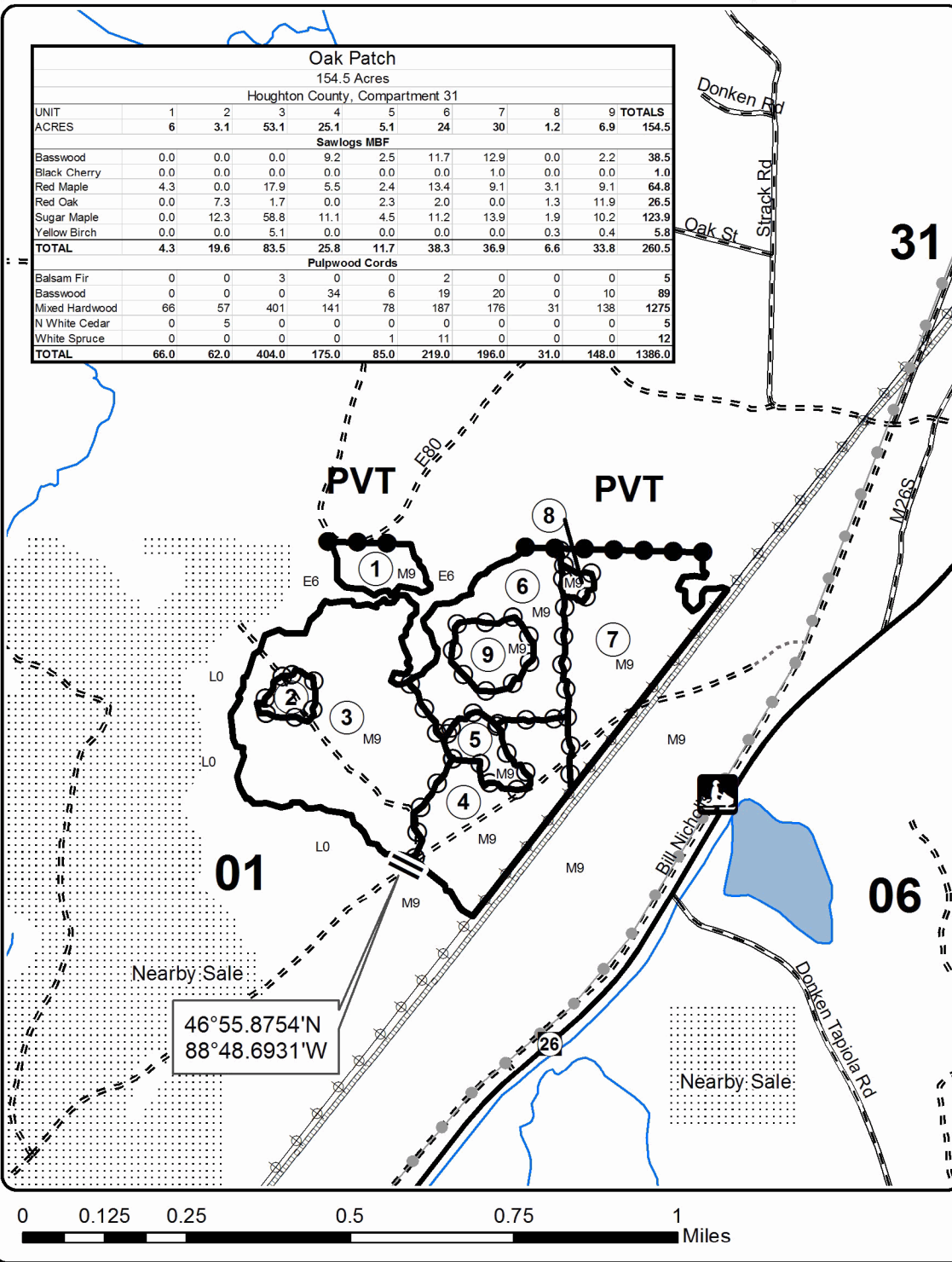
Forest Management Unit Baraga		County Houghton	Mapped By Ryan Mattila	Date 8/11/2017	Page 1	of 1
Township 52N	Range 35&36W	Section(s) and Subdivision(s) 52N 35W Sec 6; W1/2NW. 52N 36W Sec 1; E1/2NW, NESE, NE1/4.		Scale 1:15,840		

### Cover Type

A = Aspen	H = Hemlock	N = Marsh	U = Upland Brush
B = Paper Birch	J = Jack Pine	O = Oak	UM = Upland Mixed
L = Lowland Brush	LM = Lowland Mixed	P = Lowland Poplar	V = Bog or Marsh
C = Cedar	M = Mpl, Bch, Brch	Q = Mixed Swamp Conifer	W = White Pine
D = Treed Bog	MC = Mixed Conifer	R = Red Pine	X = Non Stocked
E = Swamp Hdwoods	MD = Mixed Deciduous	S = Black Spruce	Z = Water
F = Spruce Fir			
G = Grass			

### Density

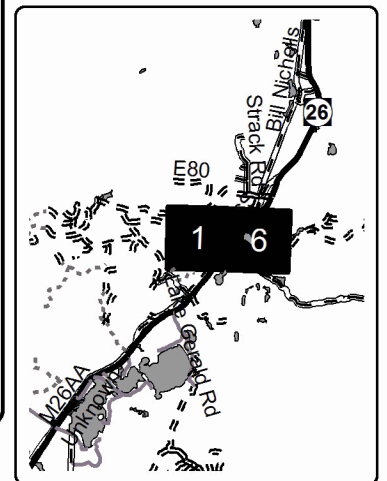
0 = Non Stocked	5 = Pole Timber Medium
1 = Seedling Sapling Poor	6 = Pole Timber Well
2 = Seedling Sapling Medium	7 = Saw Timber Poor
3 = Seedling Sapling Well	8 = Saw Timber Medium
4 = Pole Timber Poor	9 = Saw Timber Well



### Legend

- Against State (Red)
- Payment Unit (Red)
- Private Line (Blue)
- Nearby Timber Sale
- Payment Unit Label
- Lakes and Rivers
- All
- Streams
- Pipeline
- Powerline
- Highway
- Gravel Roads
- Poor Dirt Roads
- Closed Roads
- Bridge out
- Recreational Trail

Locator Map  
1:200,000





# TIMBER SALE INFORMATION

GNA North Beaver Creek (11-800-17)

Houghton County (Advertised Price \$124,880.30)

SALE NOTE: This is a Good Neighbor Authority (GNA) timber sale on national forest land. This timber sale was set-up and is being advertised by the Michigan DNR for the US Forest Service. The contract will be awarded and administered by the Michigan DNR. Note the additional Sale Specific Conditions & Requirements containing the acronym 'GNA'.

Access may be through other public land.

A timber sale contract for this lump sum, sealed bid timber sale will be awarded to the responsible bidder offering the highest sealed bid price. Bids must be at or above the following advertised price for each species:

<u>PRODUCTS &amp; SPECIES</u>	<u>ESTIMATED UNITS*</u>	<u>ADVERTISED PRICE</u>
Sawtimber		
Red Pine	227.10 MBF	\$ 134.00 / MBF
White Spruce	2.00 MBF	\$ 35.00 / MBF
Pulpwood		
Balsam Fir	17.00 Cords	\$ 11.30 / Cord
Jack Pine	361.00 Cords	\$ 42.90 / Cord
Mixed Spruce	55.00 Cords	\$ 17.30 / Cord
Quaking Aspen	182.00 Cords	\$ 16.65 / Cord
Red Maple	6.00 Cords	\$ 17.40 / Cord
Red Pine	1,363.00 Cords	\$ 54.70 / Cord
White Pine	2.00 Cords	\$ 28.80 / Cord

\* The total volume is statistically estimated within plus (+) or minus (-) 8.33 percent. The estimated units are final and not subject to adjustment. Prospective bidders are urged to examine this timber and to make their own estimates of quantity and quality.

## **BOND AND PAYMENT SCHEDULE:**

1. A bond in the amount of \$10,000.00 to insure faithful performance of the conditions of the contract will be deposited by the successful bidder within 21 days of the sale award.
2. Cutting in any sale or unit without the required advance payment would be considered a trespass.
3. Total payment must be paid in advance or according to the following schedule:
  - (a) Ten percent (10%) of the sale value must be paid within 21 days of the sale award.
  - (b) The 10% down payment will be credited towards the first unit cut.
4. If no cutting takes place, the 10% down payment will not be refunded.
5. Operations on the contract issued will terminate on 06/30/2021.

**Description of Timber by Payment Unit (PU)**

PU	MARKET GROUP	PRODUCT	QUANTITY	UNIT	ACRES	ADVERTISE PRICE
1	Red Pine	Sawtimber	2.5	MBF	14.4	\$11,457.80
	Balsam Fir	Pulpwood	2.0	Cords		
	Jack Pine		159.0	Cords		
	Mixed Spruce		36.0	Cords		
	Quaking Aspen		130.0	Cords		
	Red Maple		4.0	Cords		
	Red Pine		26.0	Cords		
	2	Red Pine	Sawtimber	51.0		
White Spruce			2.0	MBF		
Balsam Fir		Pulpwood	13.0	Cords		
Jack Pine			40.0	Cords		
Mixed Spruce			18.0	Cords		
Quaking Aspen			49.0	Cords		
Red Pine			131.0	Cords		
3		Red Pine	Sawtimber	6.5	MBF	24.0
	Jack Pine	Pulpwood	6.0	Cords		
	Red Pine		240.0	Cords		
4	Red Pine	Sawtimber	20.8	MBF	59.5	\$12,344.15
	Jack Pine	Pulpwood	38.0	Cords		
	Quaking Aspen		3.0	Cords		
	Red Pine		144.0	Cords		
5	Red Pine	Sawtimber	0.4	MBF	26.7	\$8,987.50
	Jack Pine	Pulpwood	59.0	Cords		
	Red Pine		116.0	Cords		
	White Pine		2.0	Cords		
6	Red Pine	Sawtimber	16.7	MBF	21.5	\$4,845.30
	Jack Pine	Pulpwood	3.0	Cords		
	Mixed Spruce		1.0	Cords		
	Red Pine		45.0	Cords		
7	Red Pine	Sawtimber	54.7	MBF	39.8	\$13,128.00
	Red Pine	Pulpwood	106.0	Cords		
8	Red Pine	Sawtimber	26.9	MBF	31.2	\$8,637.00
	Red Pine	Pulpwood	92.0	Cords		
9	Red Pine	Sawtimber	38.8	MBF	39.5	\$11,086.90
	Red Maple	Pulpwood	2.0	Cords		
	Red Pine		107.0	Cords		
10	Red Pine	Sawtimber	0.9	MBF	17.4	\$10,793.60
	Balsam Fir	Pulpwood	2.0	Cords		
	Jack Pine		6.0	Cords		
	Red Pine		190.0	Cords		
11	Red Pine	Sawtimber	7.9	MBF	23.9	\$12,283.80
	Jack Pine	Pulpwood	50.0	Cords		
	Red Pine		166.0	Cords		
TOTAL:			229.1	MBF		
TOTAL:			1,986.0	Cords		

## Sale Specific Conditions & Requirements

**Sale Name: GNA North Beaver Creek**

**Sale Number: 11-800-17 Seq#: 2**

### 1 - Sale Area

#### 1.2 - Boundaries

##### 1.2.1 - Painted boundaries (1/14)

The sale boundary and Payment Unit boundaries are marked and identified by orange paint. Exterior sale boundary lines are marked with triple orange paint marks. Interior Payment Unit boundaries are marked with double orange paint marks. The painted boundary line trees are not Included Timber and are to be protected, unless marked with blue paint.

### 2 - Timber Specifications

#### 2.1 - Included Timber

##### 2.1.2 - Clearcut unit(s) w/o unmerchantable trees (8/11)

Within Payment Unit(s) 1, cut all jack pine, aspen, red maple, spruce, and balsam fir trees which meet minimum piece specifications in 2.2 Utilization. In addition, cut red pine that are marked with blue paint above and below stump height, regardless of merchantability.

##### 2.1.3 - Cut tree marked unit(s) (12/08)

Within Payment Unit(s) 2-11, all trees are designated for cutting when marked with blue paint above and below stump height, regardless of merchantability.

#### 2.2 - Utilization

##### 2.2.10 - No chipping tops and limbs (8/16)

Within Payment Unit(s) 1-11, chipping of limbs or tops is not permitted. Limbs and the remaining top must be left on site and scattered.

##### 2.2.12 - GNA, cut and remove included timber (1/16)

Unless provided otherwise herein, the DNR agrees to sell and permit Purchaser to cut and remove included timber and Purchaser agrees to purchase, cut, and remove included timber.

### 4 - Transportation

#### 4.1 - Construction

##### 4.1.7 - Road closure (10/11)

Overgrown or closed roads that are reopened must be closed upon timber sale completion. In general, this will require constructing a minimal four (4') foot high berm of stumps, logs and earth. These roads must be rendered impassable to vehicles. Contact the sale administrator for specific placement and construction.

##### 4.1.12 - No new roads (1/12)

No new roads will be permitted. All operations are limited to existing roads.

#### 4.2 - Maintenance

##### 4.2.5 - Two wheel drive condition (2/04)

All existing trail roads on and adjacent to the sale area must be passable by two-wheel drive traffic for the duration of the sale.

### 5 - Operations

#### 5.1 - Notification

##### 5.1.1 - Pre-sale conference (10/16)

A pre-sale conference on site between the Purchaser and sale administrator is required prior to beginning any operations to determine landing and road locations. The Unit Manager or his/her representative must be contacted at least 10 days in advance to schedule the conference.

#### 5.1.4 - Post-sale conference (10/16)

A post-sale conference on site between the Purchaser and sale administrator is required 5 days prior to the completion of active logging operations to determine clean-up and repair of landings, road edges, and the fulfillment of other contract specifications.

### 5.2 - Conduct of Operations

#### 5.2.1 - Slash

##### 5.2.1.8 - Slash height (12/08)

No slash or tree tops may exceed 36 inches in height.

##### 5.2.1.11 - Slash for reforestation (5/07)

To facilitate reforestation, the sale area shall be left with slash evenly distributed. Bunched tops within the cutting area shall be broken up and scattered. Stumps shall be cut low to the ground. Processing sites shall not be left with a compacted layer of slash; tops from these sites shall be hauled back into the cut area and scattered.

#### 5.2.2 - Hazard Trees/Snags

##### 5.2.2.1 - Den trees (10/16)

Obvious hollow and/or den trees shall be protected and left standing unless they are a safety hazard.

#### 5.2.3 - Operating Restrictions

##### 5.2.3.2 - Operating restrictions (9/11)

Within Payment Unit(s) 1-11, unless changed by written agreement, cutting, skidding, and hauling are not permitted from March 1 to July 15. This restriction is to avoid spring break up conditions and bark slip season.

##### 5.2.3.6 - Bark beetle restriction (12/08)

In the event drought creates a high risk of pine bark beetle infestation, pine is not to be cut during the period March 1 through July 1, unless all portions of trees greater than two inches in diameter are removed from the sale area, reduced to chips, or treated to the satisfaction of the Unit Manager or his/her representative, within fifteen days of being severed from the stump. Pine log decks, pulpwood piles and treetops that are piled for chipping in the fall or winter within a 1/4 mile of susceptible sites must be removed before March 15. Residual slash must not be placed in piles or rows and must be spread over the site for quick drying. The Department of Natural Resources will exercise this specification if the risk of damage warrants.

##### 5.2.32 - Decking/landing restoration (9/13)

All decking and landing areas must have the surface area restored to a condition equal to or better than before. This is to ensure the proper regeneration of the stand. Wood debris, chips and "cookies" from trimmings must be removed or scattered away from landing and loading areas and may not be windrowed on the edge.

##### 5.2.38 - No decking against live trees (2/04)

Cut products may not be decked against unmarked or designated leave trees.

### 5.4 - Soil Protection

#### 5.4.1 - Rutting restriction, general (7/16)

Operations are to cease immediately if equipment and weather conditions result in rutting of roads and/or skid trails which is 12 inches or greater in depth and 50 feet in length. The Unit Manager or his/her representative may restrict hauling and/or skidding if ruts exceed the specified depth. With the Unit Manager or his/her representative's approval, the Purchaser may return to the area when the risk of rutting has decreased.

### 5.6 - Debris and Waste Material

#### 5.6.2 - GNA, equipment cleaning (1/16)

(a) Areas, known by the DNR prior to timber sale advertisement, that are infested with invasive species of concern are shown on the Timber Sale Map. A current list of invasive species of concern and a map showing the extent of known infestations is available from the DNR. For purposes of this provision, "Off-Road Equipment" includes all logging and construction machinery, except for log trucks, chip vans, service vehicles, water trucks, pickup trucks, cars, and similar vehicles.



(b) Purchaser shall adhere to the following requirements with regard to cleaning "Off-Road Equipment":

(i) Prior to moving Off-Road Equipment onto the Sale Area, Purchaser shall identify the location of the equipment's most recent operation. Purchaser shall not move any Off-Road Equipment that last operated in an area infested with one or more invasive species of concern onto Sale Area without having cleaned such equipment of seeds, soil, vegetative matter, and other debris that could contain or hold seeds, and having notified the DNR, as provided in (iii). If the location of prior operation cannot be identified, then Purchaser shall assume that the location is infested with invasive species of concern.

(ii) Prior to moving Off-Road Equipment from a cutting unit that is shown on the Timber Sale Map to be infested with invasive species of concern to, or through any other area that is shown as being free of invasive species of concern, or infested with a different invasive species, Purchaser shall clean such equipment of seeds, soil, vegetative matter, and other debris that could contain or hold seeds, and shall notify the DNR, as provided in (iii).

(iii) Prior to moving any Off-Road Equipment subject to the cleaning requirements set forth above, Purchaser shall advise DNR of its cleaning measures and make the equipment available for inspection. DNR shall have 2 days, excluding weekends and State holidays, to inspect equipment after it has been made available. After satisfactory inspection or after such 2 day period, Purchaser may move the equipment as planned. Equipment shall be considered clean when a visual inspection does not disclose seeds, soil, vegetative matter, and other debris that could contain or hold seeds. Purchaser shall not be required to disassemble equipment unless so directed by the DNR after inspection.

(iv) If Purchaser desires to clean Off-Road Equipment on National Forest land, such as at the end of a project or prior to moving to, or through an area that is free of invasive species of concern, Purchaser shall obtain prior approval from the Unit Manager or his/her representative as to the location for such cleaning and measures, if any, for controlling impacts.

(v) Unit Manager or his/her representative may order delay, interruption, or modification of this Contract pursuant to Condition & Requirement 7.3 or 7.3.4.

(c) Nothing contained in this Condition & Requirement shall be interpreted as creating any warranty on the part of the DNR that all locations of invasive species of concern have been described herein, elsewhere in this Contract, or designated on the ground. Following sale advertisement, additional locations may be described or designated, and other species may be added to the list of invasive species of concern. In such event, the Unit Manager or his/her representative may order delay, interruption, or modification of this Contract pursuant to Condition & Requirement 7.3 or 7.3.4.

(d) The parties shall promptly communicate with one another with respect to description or designation of additional locations; discovery of locations of new species or new infestation; and, addition of species to the list of invasive species of concern.

## 5.8 - Protection of Endangered Species

### 5.8.5 - Protection of raptor nests (3/13)

All trees with raptor nests will be protected if found during harvesting operations. Notification will be made to the Unit Manager or his/her representative who will notify the Wildlife Biologist so an on-site evaluation and recommendation can be made, if necessary.

## 7 - Other Conditions

### SKIP

#### 7.1.1 - GNA, title (7/16)

General Condition & Requirement 7.1 is inapplicable. The following applies to this contract.

All right, title, and interest in and to any Included Timber shall remain in USDA Forest Service with the State of Michigan acting on behalf of the USDA Forest Service under this GNA contract, until it has been Measured, removed from Sale Area or other authorized cutting area, and paid for, at which time title shall vest in Purchaser. Title to any Included Timber that has been Measured and paid for, but not removed from Sale Area or other authorized cutting area by Purchaser on or prior to Termination Date, shall remain in USDA Forest Service.

## 7.3 - Contract Modifications

### 7.3.3 - Modification for reforestation (8/05)

When contractual work of Purchaser has been accepted for any Payment Unit identified on Sale Area Map, Payment Unit will be eliminated from the Sale Area on written notice so that reforestation operations can begin.

### 7.3.4 - GNA, contract suspension and modification (5/16)

(a) The Unit Manager may, by written order, delay or interrupt authorized operations under this contract or, notwithstanding Condition & Requirement 7.3, modify this contract, in whole or in part:

(i) To prevent environmental degradation or resource damage, including, but not limited to, harm to habitat, plants, animals, cultural resources, or cave resources;

(ii) To ensure consistency with land and resource management plans or other documents prepared pursuant to the National Environmental Policy Act of 1969, 42 USC 4321-4347;

(iii) To conduct environmental analysis, including, but not limited to, engaging in consultation pursuant to the Endangered Species Act of 1973, 16 USC 1531, et seq.; or

(iv) Upon agreement of the Forest Service, due to administrative appeal or litigation, regardless of whether the Unit Manager's order is required by a court order or this contract is named in such a proceeding.

(b) In the event of an order delaying or interrupting Purchaser's Operations under this Condition & Requirement, Purchaser's remedy shall be:

(i) a no cost contract extension,

(ii) reimbursement for Out-of-Pocket Expenses,

however, the foregoing remedies shall be available only to the extent that the Unit Manager's order was the sole and exclusive cause of the delay or interruption of Purchaser's operations.

(c) Remedies awarded to the Purchaser shall not be duplicative, and the Unit Manager shall have the right to structure remedies provided herein to avoid duplicative compensation.

(d) Purchaser agrees that this Condition & Requirement, and the remedies provided herein shall apply regardless of any finding by any court that the DNR failed to comply with any statute, regulation and/or policy in connection with awarding, advertising, or authorizing this sale, or a similar sale.

## 7.5 - Loss

### 7.5.2 - GNA, liability for loss (7/16)

If Included Timber is destroyed or damaged by an unexpected event that changes the nature of Included Timber, such as wind, flood, insects, disease, or similar cause, the Purchaser shall bear the timber value loss resulting from such destruction or damage.

Deterioration or loss of timber value due to delay or interruption under 7.3.4 - GNA, contract suspension and modification, shall be borne by the party holding title. In this event, Included Timber to which USDA Forest Service holds title, Purchaser of the State GNA contract will not be obligated to remove and pay for such timber. This Subsection shall not be construed to relieve either party of liability for negligence.

## 7.10 - Certified Timber

### 7.10.1 - Non-certified timber (2/16)

The area encompassed by this timber sale is not certified to the standards of the Forest Stewardship Council (FSC) or the Sustainable Forestry Initiative (SFI). Forest products from this sale may not be delivered to the mill as "FSC and / or SFI certified". The lands within this sale belong to the National Forest system and are being managed by the State as part of a

Good Neighbor Authority (GNA) agreement.

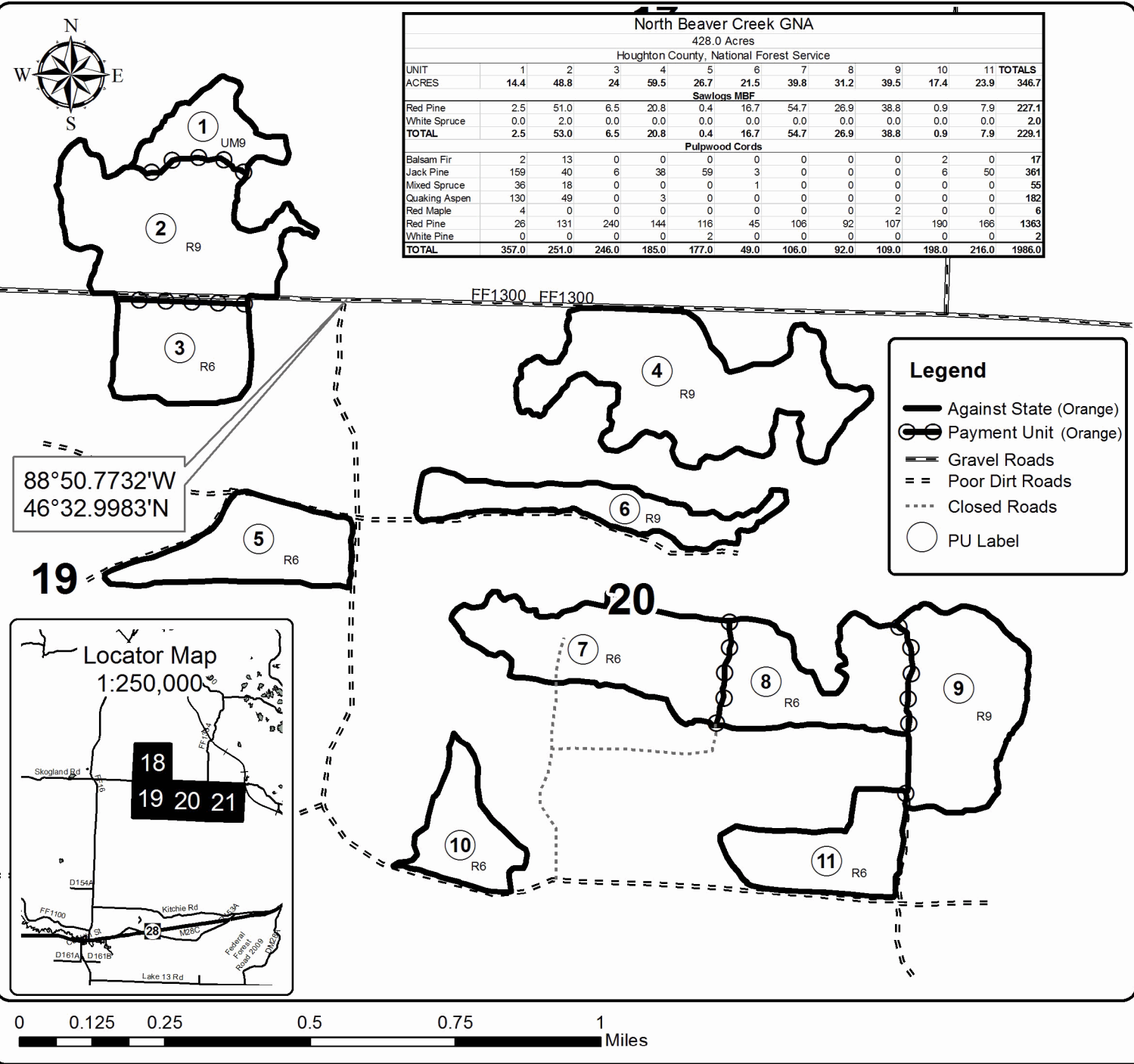


# TIMBER SALE MAP

This information provided by authority of Part 525, 1994 PA 451, as amended.

Forest Management Unit Ottawa National Forest		County Houghton	Mapped By Ryan Mattila	Date 5/31/2017	Page 1	of 1
Township 48N	Range 36W	Section(s) and Subdivision(s) Sec 18; SESW, SE1/4. Sec 19; NE1/4. Sec 20; S1/2, N1/2NE, SWNE, S1/2NW, NENW. Sec 21; W1/2SW		Scale 1:15,840		

Cover Type				Density			
A = Aspen	H = Hemlock	N = Marsh	U = Upland Brush	0 = Non Stocked	5 = Pole Timber Medium		
B = Paper Birch	J = Jack Pine	O = Oak	UM = Upland Mixed	1 = Seedling Sapling Poor	6 = Pole Timber Well		
C = Cedar	L = Lowland Brush	P = Lowland Poplar	V = Bog or Marsh	2 = Seedling Sapling Medium	7 = Saw Timber Poor		
D = Treed Bog	LM = Lowland Mixed	Q = Mixed Swamp Conifer	W = White Pine	3 = Seedling Sapling Well	8 = Saw Timber Medium		
E = Swamp Hdwoods	M = Mpl, Bch, Brch	R = Red Pine	X = Non Stocked	4 = Pole Timber Poor	9 = Saw Timber Well		
F = Spruce Fir	MC = Mixed Conifer	S = Black Spruce	Z = Water				
G = Grass	MD = Mixed Deciduous	T = Tamarack					



Oak Patch (11-009-17)  
; Houghton COUNTY

In response to the notice of sale to be held 9:00 a.m. (local time) on January 30, 2018, I am hereby submitting my sealed bid (firm offer) for the following forest products to be cut. Bids for individual species must be at or above the advertised price. All non-responsive bid forms may be rejected.

<u>PRODUCTS &amp; SPECIES</u>	<u>ESTIMATED VOLUME*</u>	<u>ADVERTISED PRICE</u>	<u>BID PRICE/UNIT</u>
<b>Sawtimber</b>			
Basswood	38.50 MBF	\$ 122.00/MBF	\$ _____
Black Cherry	1.00 MBF	\$ 141.00/MBF	\$ _____
Red Maple	64.80 MBF	\$ 219.00/MBF	\$ _____
Red Oak	26.50 MBF	\$ 158.00/MBF	\$ _____
Sugar Maple	123.90 MBF	\$ 387.00/MBF	\$ _____
Yellow Birch	5.80 MBF	\$ 164.00/MBF	\$ _____
<b>Pulpwood</b>			
Balsam Fir	5.00 Cords	\$ 11.30/Cord	\$ _____
Basswood	89.00 Cords	\$ 15.95/Cord	\$ _____
Mixed Hardwood	1,275.00 Cords	\$ 17.40/Cord	\$ _____
N. White Cedar	5.00 Cords	\$ 19.65/Cord	\$ _____
White Spruce	12.00 Cords	\$ 17.30/Cord	\$ _____

\*The volumes are statistically estimated within plus (+) or minus (-) 7.71 percent. These estimated volumes are final and not subject to adjustment. Prospective bidders are urged to examine this timber and to make their own estimates of quantity and quality.

I understand that any or all bids may be rejected. All bids must be signed and all bid items must be bid or the bid form may be rejected. I also understand that consideration and awarding a contract will be based upon my past performance and ability to complete the contract based upon equipment and staffing subject to my control.

FEDERAL ID: \_\_\_\_\_ or SOCIAL SECURITY NUMBER: \_\_\_\_\_

Company or individual bidding: \_\_\_\_\_

Company representative's name: \_\_\_\_\_

Address: \_\_\_\_\_

City: \_\_\_\_\_ State: \_\_\_\_\_ Zip: \_\_\_\_\_

IF AVAILABLE, PLEASE PLACE THE PERSONALIZED LABEL FROM YOUR PROSPECTUS IN THE ABOVE BOX.

Individual or company representative's signature: \_\_\_\_\_ Date: \_\_\_\_\_

Phone number : \_\_\_\_\_ Email (optional): \_\_\_\_\_

**THE WINNING BIDDER MUST COMPLETE THE VERIFICATION OF WORKER'S DISABILITY COMPENSATION ACT COMPLIANCE (ON REVERSE SIDE IF DOUBLE SIDED) WITHIN 21 DAYS OF SALE AWARD DATE**



<b>FOR DEPARTMENT USE ONLY</b>
Sale Number (XX - XXX - XX - XX)
Forest Management Unit:

## TIMBER SALE VERIFICATION OF WORKER'S DISABILITY COMPENSATION ACT COMPLIANCE

*As required by Act 317, P.A. 1969 (Worker's Compensation) and  
Part 5 of Act 451 of 1994, as amended.*

### VERIFICATION OF WORKER'S DISABILITY COMPENSATION ACT COMPLIANCE

- This verification must be completed and submitted within 21 days of contract award and prior to the issuance of the timber sale contract.
- In addition, if boxes 2B or 2C are checked, then Notice of Exclusion or Certificate of Insurance must be submitted within twenty-one (21) days of the contract award and prior to the issuance of the timber sale contract.
- All information must be typed or printed except for written signatures.

Please Check Appropriate Categories:

1. My business is organized as (you **must** check one of the boxes below):
  - A.  Sole Proprietorship (individual)
  - B.  Partnership
  - C.  Corporation
  
2. You **must** check one of the boxes below:
  - A.  I certify my business is a sole proprietorship and it has no employees but the sole proprietor. I am not subject to the Worker's Compensation Laws.
  - B.  I certify my business has satisfied its obligation to the Worker's Compensation Act through the use of an approved Notice of Exclusion (BWC-337, Rev. 5/96). I will provide a copy of the Notice of Exclusion within 21 days of the contract award. (For questions or a copy of the BWC-337, please call the Worker's Compensation Bureau at 517-322-1195).
  - C.  I certify my business has a Worker's Compensation Policy. I will provide an original Certificate of Insurance within twenty-one (21) days of the contract award.
  
3. If you have checked item 2(A) or 2(B), you **must** indicate the number of **both** full-time and part-time employees, other than yourself, including family members and active partners (if none, you must enter "0").

\_\_\_\_\_ Full-time Employees

\_\_\_\_\_ Part-time Employees

Name of Business		Federal ID (or) Social Security No.	
Address		Telephone (       )	
City	State	ZIP	

*I hereby certify that the above information is true and correct. I agree to notify the Michigan DNR of any changes that occur in factors affecting my coverage during any of my present and future operations.*

\_\_\_\_\_  
Signature of Owner or Authorized Representative

\_\_\_\_\_  
Title

\_\_\_\_\_  
Date

**Please complete the "SEALED BID" information on the next page**

GNA North Beaver Creek (11-800-17)  
; Houghton COUNTY

In response to the notice of sale to be held 9:00 a.m. (local time) on January 30, 2018, I am hereby submitting my sealed bid (firm offer) for the following forest products to be cut. Bids for individual species must be at or above the advertised price. All non-responsive bid forms may be rejected.

<u>PRODUCTS &amp; SPECIES</u>	<u>ESTIMATED VOLUME*</u>	<u>ADVERTISED PRICE</u>	<u>BID PRICE/UNIT</u>
<b>Sawtimber</b>			
Red Pine	227.10 MBF	\$ 134.00/MBF	\$ _____
White Spruce	2.00 MBF	\$ 35.00/MBF	\$ _____
<b>Pulpwood</b>			
Balsam Fir	17.00 Cords	\$ 11.30/Cord	\$ _____
Jack Pine	361.00 Cords	\$ 42.90/Cord	\$ _____
Mixed Spruce	55.00 Cords	\$ 17.30/Cord	\$ _____
Quaking Aspen	182.00 Cords	\$ 16.65/Cord	\$ _____
Red Maple	6.00 Cords	\$ 17.40/Cord	\$ _____
Red Pine	1,363.00 Cords	\$ 54.70/Cord	\$ _____
White Pine	2.00 Cords	\$ 28.80/Cord	\$ _____

\*The volumes are statistically estimated within plus (+) or minus (-) 8.33 percent. These estimated volumes are final and not subject to adjustment. Prospective bidders are urged to examine this timber and to make their own estimates of quantity and quality.

I understand that any or all bids may be rejected. All bids must be signed and all bid items must be bid or the bid form may be rejected. I also understand that consideration and awarding a contract will be based upon my past performance and ability to complete the contract based upon equipment and staffing subject to my control.

FEDERAL ID: \_\_\_\_ - \_\_\_\_ - \_\_\_\_ or SOCIAL SECURITY NUMBER: \_\_\_\_ - \_\_\_\_ - \_\_\_\_

Company or individual bidding: \_\_\_\_\_

Company representative's name: \_\_\_\_\_

Address: \_\_\_\_\_

City: \_\_\_\_\_ State: \_\_\_\_\_ Zip: \_\_\_\_\_

IF AVAILABLE, PLEASE PLACE THE PERSONALIZED LABEL FROM YOUR PROSPECTUS IN THE ABOVE BOX.

Individual or company representative's signature: \_\_\_\_\_ Date: \_\_\_\_\_

Phone number : \_\_\_\_\_ Email (optional): \_\_\_\_\_

**THE WINNING BIDDER MUST COMPLETE THE VERIFICATION OF WORKER'S DISABILITY COMPENSATION ACT COMPLIANCE (ON REVERSE SIDE IF DOUBLE SIDED) WITHIN 21 DAYS OF SALE AWARD DATE**



<b>FOR DEPARTMENT USE ONLY</b>
Sale Number (XX - XXX - XX - XX)
Forest Management Unit:

## TIMBER SALE VERIFICATION OF WORKER'S DISABILITY COMPENSATION ACT COMPLIANCE

*As required by Act 317, P.A. 1969 (Worker's Compensation) and  
Part 5 of Act 451 of 1994, as amended.*

### VERIFICATION OF WORKER'S DISABILITY COMPENSATION ACT COMPLIANCE

- This verification must be completed and submitted within 21 days of contract award and prior to the issuance of the timber sale contract.
- In addition, if boxes 2B or 2C are checked, then Notice of Exclusion or Certificate of Insurance must be submitted within twenty-one (21) days of the contract award and prior to the issuance of the timber sale contract.
- All information must be typed or printed except for written signatures.

Please Check Appropriate Categories:

1. My business is organized as (you **must** check one of the boxes below):
  - A.  Sole Proprietorship (individual)
  - B.  Partnership
  - C.  Corporation
2. You **must** check one of the boxes below:
  - A.  I certify my business is a sole proprietorship and it has no employees but the sole proprietor. I am not subject to the Worker's Compensation Laws.
  - B.  I certify my business has satisfied its obligation to the Worker's Compensation Act through the use of an approved Notice of Exclusion (BWC-337, Rev. 5/96). I will provide a copy of the Notice of Exclusion within 21 days of the contract award. (For questions or a copy of the BWC-337, please call the Worker's Compensation Bureau at 517-322-1195).
  - C.  I certify my business has a Worker's Compensation Policy. I will provide an original Certificate of Insurance within twenty-one (21) days of the contract award.
3. If you have checked item 2(A) or 2(B), you **must** indicate the number of **both** full-time and part-time employees, other than yourself, including family members and active partners (if none, you must enter "0").

\_\_\_\_\_ Full-time Employees

\_\_\_\_\_ Part-time Employees

Name of Business		Federal ID (or) Social Security No.	
Address		Telephone (       )	
City	State	ZIP	

*I hereby certify that the above information is true and correct. I agree to notify the Michigan DNR of any changes that occur in factors affecting my coverage during any of my present and future operations.*

\_\_\_\_\_  
Signature of Owner or Authorized Representative

\_\_\_\_\_  
Title

\_\_\_\_\_  
Date

**Please complete the "SEALED BID" information on the next page**