



**DEPARTMENT OF NATURAL RESOURCES
STATE OF MICHIGAN**

TIMBER SALE PROSPECTUS #6178

SCHEDULED SALE DATE AND TIME: 8:30 a.m. (local time) on June 6, 2018.

LOCATION: CRYSTAL FALLS MGT UNIT, 1420 US-2 WEST, CRYSTAL FALLS, MI 49920.

PROSPECTUS NOTE: The bidder is advised to inspect the sale area and review the location, estimated volumes, operating costs and contract terms of proposed sales. Please be aware that some landowners may request 60 days or more notice for access across their land.

Notice is hereby given that bids will be received by the Unit Manager, CRYSTAL FALLS MANAGEMENT UNIT, for certain timber on the following described lands:

Nodding Trillium (12-004-18)

Dickinson County, Advertised Price \$251,599.45, 223.4 Acres, Aspen, Hardwood.

SALE NOTE: Operations will not be permitted during snowmobile season, which generally runs December 1 - March 31. Dickinson County Road Commission will need to be contacted prior to decking along Schwartz Creek or McGregor Creek Roads.

A recreation site such as a trail, pathway, or campground is within the sale area or the vicinity. Certain restrictions/specifications may be applicable including time restrictions.

Red Tag Salvage SBW (12-011-17)

Dickinson County, Advertised Price \$23,928.10, 100.3 Acres, Aspen, Spruce/Fir/Tamarack.

SALE NOTE: Payment Units 2 and 3 must be cut during frozen ground conditions. See spec 5.2.3.1 for details.

Slash piles must be created. See spec 5.2.4.2 for details.

The sale has received damage from windthrow, Eastern Larch Beetle, Spruce Budworm, and Eastern Dwarf Mistletoe. See spec 7.5.1 for details.

Mondo Sawdodger SBW (12-013-17)

Dickinson County, Advertised Price \$134,086.00, 248.3 Acres, Hardwood, Spruce/Fir/Tamarack.

SALE NOTE: Payment Units 2 and 4 are limited to frozen ground conditions, due to the wet soils. If non-frozen operations are desired in the remaining units, 10 culverts will be required. The culverts, DEQ permit, and installation are the responsibility of the Purchaser.

Hazelnut Soup (12-030-17)

Dickinson County, Advertised Price \$37,158.50, 56.5 Acres, Aspen, Hardwood.

Little Paw (12-032-17)

Dickinson County, Advertised Price \$90,168.40, 123.6 Acres, Aspen, Red Pine.

SALE NOTE: Operations are limited to snow free conditions within Payment Units 1-6. See spec 5.2.3.1.

Bark slip and oak wilt restrictions are in place. See specs 5.2.3.3 & 5.2.3.4.

A recreation site such as a trail, pathway, or campground is within the sale area or the vicinity. Certain restrictions/specifications may be applicable including time restrictions.

Birch Bark (12-013-16)

Dickinson County, Advertised Price \$64,702.95, 123.1 Acres, Aspen, Hardwood.

SALE NOTE: The best access route to the sale is through private land from the south. It is the responsibility of the Purchaser to obtain permission for access across private property. See spec 4.4.1.

If the Purchaser would like to access this sale through state land from the north, a temporary bridge must be installed over Harding Creek. It is the responsibility of the Purchaser to obtain DEQ permits. See specs 4.1.1 & 4.1.11.

No harvesting operations will be permitted from April 15 to July 15 due to bark slip and oak wilt restrictions. See specs 5.2.3.3 and 5.2.3.4.

It is recommended to limit operations in Payment Units 6-8 to dry summer or frozen winter conditions due to wet soils. See spec 5.2.22.1.

Access may be through private land.

BID INSTRUCTIONS (VER. 11/28/2017):

1. Scheduled Bid Location, Date, and Time (2/11)

Bids must be received by the Unit Manager, CRYSTAL FALLS OFFICE, 1420 US-2 WEST, CRYSTAL FALLS, MI 49920, no later than 8:30 a.m. (local time) on June 6, 2018. For further information concerning this sale, contact Dan McNamee at 906-875-6622.

2. Bidder's Qualifications (5/16)

Purchaser shall obtain workers compensation insurance to cover claims under Michigan's Worker's Disability Compensation Act of 1969 or similar employee benefit act of any other state applicable to an employee. If all or part of a timber sale was prepared by a private contractor, the contractor and that contractor's company are not permitted to bid on the timber sale contract. Bids will not be accepted from individuals or companies appearing on the DNR/FRD No-Bid List. This list contains the names of purchasers who previously failed to execute a contract within 21-days or who have a history of poor performance.

3. Preparation of Sealed Bids (5/16)

Bid Forms may be completed online thru Michigan DNR Timber Sale Online Bidding (OLB) at www.michigan.gov/timberbidding or by completing the hardcopy Bid Form found in the Timber Sale Prospectus. Hardcopy Bid Forms shall be manually signed in ink. Registration in OLB is considered your 'signature' for all bids submitted thru that system. Bid prices must be entered for each species and product in the Bid Price column for all material subject to bidding and all fill-in blanks must be completed. If erasures or other changes appear on the hardcopy Bid Form, each erasure or change must be initialed by the person signing the bid.

4. Submission of Sealed Bids (5/16)

Bid forms may be obtained from the Unit Manager or thru OLB. Bids may be submitted hardcopy or thru OLB. All hardcopy bids must be submitted on the bid form and in an envelope clearly identified as described in this section. NOTE: Only one bid form per bid envelope. Sealed bids must be submitted to the Unit office designated in the prospectus and must be submitted at or prior to the time established in the prospectus. The envelope should show on the outside (a) the sale name or number and (b) the date and time of bid opening, as shown in the prospectus. Bids received after the time specified in the sale prospectus are late bids and will be rejected.

It is possible for a bidder to submit multiple bids on a single sale. For example, a bid may be submitted hardcopy and a bid may be submitted thru OLB. Or, two bidders from the same company could both submit bids on the same sale. If this were to happen, the State would accept all bids received and award the contract accordingly. All bidding and contractual requirements would apply to all bids received.

5. Public Opening of Sealed Bids (7/16)

If conditions permit, the sealed bids will be publicly opened and posted at the time and place set in the prospectus.

If a bidder, present at a bid opening, has submitted bids on more than one sale, that bidder may withdraw their unopened bid envelopes or announce the withdrawal of their online bid after being declared the successful bidder on one sale.

6. Award of Contract (1/11)

Award of the contract will be made to the Bidder whose bid, conforming to the prospectus, is most advantageous to the State of Michigan on the basis of total value at rates bid for the estimated quantities. The State reserves the right to reject any bid or waive any minor irregularity in bids received. A written award mailed (or otherwise furnished) to the successful Bidder shall be deemed to result in a binding contract without further action by either party.

7. Down Payment (1/11)

The Bidder to whom award is made must make a down payment within 21 days of the sale award. The amount of the down payment will be calculated as shown in the Bond and Payment Schedule of this prospectus. Only cash may be used to meet this requirement.

8. Performance Security (1/11)

As guarantee of faithful performance, a cash bond, certificate of deposit, surety bond or irrevocable letter of credit (LOC) is required within 21 days of the sale award. The amount of the performance security is shown in the Bond and

Payment Schedule of this prospectus. If an LOC or surety is used, the coverage must extend for at least 6 months beyond the contract expiration.

9. Timber Sale Contract (11/17)

Additional conditions and requirements common to all timber sales are listed on the timber sale contract (R4031) and are available on line at www.michigan.gov/timber. Contact the Unit Manager for additional information or a sample contract. Within 21 days of the date of the award letter, the bidder must sign the contract and provide the required down payment, performance security, and verification of worker's disability compensation. The down payment and performance security shall be in accordance with the provisions of the timber sale contract, in the sums stated in this prospectus. If these actions are not taken, then the Bidder, the Bidder's corporation, and the corporation's principals may not be permitted to bid on State timber sales for a period of 1 year. In addition, the Bidder certifies that if awarded this contract, the Bidder will complete the timber sale contract in accordance with its terms and any modifications thereof including requirements to purchase, cut, and remove the included timber by the expiration date.

Payment Unit values in the State Forest Timber Sale Contract are calculated based on the advertised value of the Payment Unit as a percentage of the total advertised value of the contract. The advertised value of each Payment Unit is given in the Description of Timber by Payment Unit table on the Timber Sale Information page. For example, if the value of Payment Unit 1 is advertised as \$1,500 and the total Timber Sale value is advertised as \$10,000, the contract price for Payment Unit 1 will be 15% of the total bid price ($\$1,500/\$10,000 * 100$).

10. Disclaimer of Estimates and Bidder's Warranty of Inspection (7/16)

Before submitting this bid, the Bidder is advised and cautioned to inspect the sale area, review the requirements of the sale contract, and take other steps as may be reasonably necessary to ascertain the location, estimated volumes, construction estimates, and operating costs of the proposed sale. Failure to do so will not relieve the Bidder from responsibility for completing the contract.

The Bidder warrants that this bid is submitted solely on the basis of the Bidder's examination and inspection of the quality and quantity of the timber offered for sale and the Bidder's opinion of the value thereof and the costs of recovery. No reliance should be placed on the State of Michigan's estimates of timber quality, quantity or costs of recovery. Bidder further acknowledges that the State of Michigan: (i) expressly disclaims any warranty of fitness of timber for any purpose; (ii) offers this timber as is without any warranty of quality (merchantability) or quantity and (iii) expressly disclaims any warranty as to the quantity or quality of timber sold.

11. Certification and Chain-of-Custody (10/14)

Unless otherwise indicated in the contract under section 7 – Other Conditions of the Sale Specific Conditions & Requirements, the area encompassed by this timber sale is certified to the standards of the Forest Stewardship Council (FSC) - Certificate #SCS-FM/COC-00090N and the Sustainable Forestry Initiative (SFI) - Certificate # NSF-SFIS-5Y031-SF5. Forest products from this sale may be delivered to the mill as "FSC 100% and / or SFI certified" as long as the contractor hauling the forest products is chain-of-custody (COC) certified or covered under a COC certificate from the destination mill. The purchaser is responsible for maintaining COC after leaving the sale area.

12. Good Neighbor Authority (GNA) Requirements (7/16)

If the name of this timber sales contains the acronym GNA, it is authorized by the Good Neighbor Authority (GNA) and covered by various agreements between the U.S. Forest Service and the State. The timber sale occurs on federal land and the following conditions apply:

GNA contracts on US Forest Service land will not be awarded to purchasers on the Federal list of excluded parties. The System for Award Management (SAM) will be checked for active excluded parties prior to award of contract. In addition, the Bidder to whom award is made must complete an Assurance Regarding Felony Conviction or Tax Delinquent Status for Corporate Applicants (AD-3031).

13. Good Neighbor Authority (GNA) Requirements, con't (9/16)

Bidder certifies, by signing this bid form, that to the best of Bidder's knowledge that the following representations are accurate and complete.

a. That the Bidder and its principals are not presently debarred, suspended, proposed for debarment, declared ineligible, or voluntary excluded from timber sales (covered transactions) by any Federal department or agency.

b. That the Bidder and its principals have not within a 3-year period preceding this bid been convicted of or had a civil judgment rendered against them for commission of fraud or a criminal offense in connection with obtaining, attempting to obtain, or performing a public (Federal, State, or local) transaction or contract under a public transaction; violation of Federal or State antitrust statutes or commission of embezzlement, theft, forgery, bribery, falsification or destruction of records, making false statements, or receiving stolen property.

c. That the Bidder and its principals are not presently indicted for or otherwise criminally or civilly charged by a governmental entity (Federal, State, or local) with commission of any of the offenses enumerated in paragraph b of this certification.

d. That the Bidder and its principals have not within a 3-year period preceding this bid had one or more public transactions (Federal, State, or local) terminated for breach or default of a timber or forest product contract.

Bidders that cannot certify this requirement, in whole or in part, shall submit an explanation with their bid.

KEITH CREAGH
Director

TIMBER SALE INFORMATION

Nodding Trillium (12-004-18)

Dickinson County (Advertised Price \$251,599.45)

SALE NOTE: Operations will not be permitted during snowmobile season, which generally runs December 1 - March 31. Dickinson County Road Commission will need to be contacted prior to decking along Schwartz Creek or McGregor Creek Roads.

A recreation site such as a trail, pathway, or campground is within the sale area or the vicinity. Certain restrictions/specifications may be applicable including time restrictions.

A timber sale contract for this lump sum, sealed bid timber sale will be awarded to the responsible bidder offering the highest sealed bid price. Bids must be at or above the following advertised price for each species:

<u>PRODUCTS & SPECIES</u>	<u>ESTIMATED UNITS*</u>	<u>ADVERTISED PRICE</u>
Sawtimber		
Red Maple	8.80 MBF	\$ 187.00 / MBF
Sugar Maple	16.70 MBF	\$ 375.00 / MBF
Pulpwood		
Balsam Fir	491.00 Cords	\$ 17.80 / Cord
Basswood	61.00 Cords	\$ 11.55 / Cord
Black Spruce	15.00 Cords	\$ 20.45 / Cord
Mixed Hardwood	1,636.00 Cords	\$ 24.20 / Cord
Quaking Aspen	5,104.00 Cords	\$ 37.00 / Cord
White Spruce	269.00 Cords	\$ 20.45 / Cord

* The total volume is statistically estimated within plus (+) or minus (-) 7.82 percent. The estimated units are final and not subject to adjustment. Prospective bidders are urged to examine this timber and to make their own estimates of quantity and quality.

BOND AND PAYMENT SCHEDULE:

1. A bond in the amount of \$20,128.00 to insure faithful performance of the conditions of the contract will be deposited by the successful bidder within 21 days of the sale award.
2. Cutting in any sale or unit without the required advance payment would be considered a trespass.
3. Total payment must be paid in advance or according to the following schedule:
 - (a) Ten percent (10%) of the sale value must be paid within 21 days of the sale award.
 - (b) The 10% down payment will be credited towards the first unit cut.
 - (c) Payment for each of the following units must be made before cutting begins in that unit:

<u>PAYMENT UNIT NUMBER</u>	<u>PERCENT OF TOTAL SALE VALUE</u>
01	3.5%
02	15.1%
03	11.1%
04	15.3%
05	16.9%
06	15.4%
07	11.7%
08	11.0%

4. If no cutting takes place, the 10% down payment will not be refunded.
5. Operations on the contract issued will terminate on 06/30/2021.

Description of Timber by Payment Unit (PU)

PU	MARKET GROUP	PRODUCT	QUANTITY	UNIT	ACRES	ADVERTISE PRICE				
1	Balsam Fir	Pulpwood	32.0	Cords	7.2	\$8,774.20				
	Mixed Hardwood		73.0	Cords						
	<i>Paper Birch</i>		7.0	<i>Cords</i>						
	<i>Red Maple</i>		46.0	<i>Cords</i>						
	<i>Sugar Maple</i>		20.0	<i>Cords</i>						
	Quaking Aspen		174.0	Cords						
	White Spruce		86.0	Cords						
2	Red Maple	Sawtimber	5.8	MBF	30.1	\$38,004.00				
	Sugar Maple	Pulpwood	7.7	MBF						
	Balsam Fir		43.0	Cords						
	Mixed Hardwood		299.0	Cords						
	<i>Paper Birch</i>		11.0	<i>Cords</i>						
	<i>Red Maple</i>		228.0	<i>Cords</i>						
	<i>Sugar Maple</i>		60.0	<i>Cords</i>						
	Quaking Aspen		656.0	Cords						
	White Spruce		86.0	Cords						
	3		Red Maple	Sawtimber			3.0	MBF	29.2	\$27,857.65
			Sugar Maple	Pulpwood			0.1	MBF		
Balsam Fir			57.0		Cords					
Black Spruce		15.0	Cords							
Mixed Hardwood		221.0	Cords							
<i>Paper Birch</i>		43.0	<i>Cords</i>							
<i>Red Maple</i>		170.0	<i>Cords</i>							
<i>Sugar Maple</i>		8.0	<i>Cords</i>							
Quaking Aspen		541.0	Cords							
White Spruce		28.0	Cords							
4		Balsam Fir	Pulpwood		76.0	Cords	31.5	\$38,382.80		
		Mixed Hardwood			200.0	Cords				
		<i>Red Maple</i>			181.0	<i>Cords</i>				
	<i>Sugar Maple</i>	19.0			<i>Cords</i>					
	Quaking Aspen	870.0		Cords						
	White Spruce	24.0		Cords						
5	Balsam Fir	Pulpwood	150.0	Cords	32.7	\$42,768.40				
	Mixed Hardwood		68.0	Cords						
	<i>Paper Birch</i>		12.0	<i>Cords</i>						
	<i>Red Maple</i>		54.0	<i>Cords</i>						
	<i>Sugar Maple</i>		2.0	<i>Cords</i>						
	Quaking Aspen		1,026.0	Cords						
	White Spruce		24.0	Cords						
	6		Sugar Maple	Sawtimber			0.4	MBF	33.0	\$38,703.65
Balsam Fir		Pulpwood	96.0	Cords						
Basswood			1.0	Cords						
Mixed Hardwood			207.0	Cords						
<i>Paper Birch</i>			13.0	<i>Cords</i>						
<i>Red Maple</i>			126.0	<i>Cords</i>						
<i>Sugar Maple</i>			68.0	<i>Cords</i>						
Quaking Aspen			859.0	Cords						
White Spruce			2.0	Cords						
7			Sugar Maple	Sawtimber	8.4	MBF	24.6	\$29,519.50		
	Balsam Fir		Pulpwood	18.0	Cords					
	Basswood	23.0		Cords						
	Mixed Hardwood	348.0		Cords						
	<i>Red Maple</i>	221.0		<i>Cords</i>						
	<i>Sugar Maple</i>	127.0		<i>Cords</i>						
	Quaking Aspen	451.0		Cords						
	White Spruce	33.0		Cords						
	8	Sugar Maple		Sawtimber	0.1	MBF			35.1	\$27,589.25
Balsam Fir		Pulpwood		19.0	Cords					

Description of Timber by Payment Unit (PU), con't

PU	MARKET GROUP	PRODUCT	QUANTITY	UNIT	ACRES	ADVERTISE PRICE
	Basswood		37.0	Cords		
	Mixed Hardwood		220.0	Cords		
	<i>Paper Birch</i>		24.0	<i>Cords</i>		
	<i>Red Maple</i>		161.0	<i>Cords</i>		
	<i>Sugar Maple</i>		35.0	<i>Cords</i>		
	Quaking Aspen		527.0	Cords		
	White Spruce		96.0	Cords		
TOTAL:			25.5	MBF		
TOTAL:			7,576.0	Cords		

Sale Specific Conditions & Requirements

Sale Name: Nodding Trillium

Sale Number: 12-004-18 Seq#: 1

1 - Sale Area

1.2 - Boundaries

1.2.1 - Painted boundaries (1/14)

The sale boundary and Payment Unit boundaries are marked and identified by blue, red and yellow paint. Exterior sale boundary lines against private property are marked with blue paint. Exterior sale boundary lines against state are marked with red paint. Interior Payment Unit boundaries are marked with yellow paint. The painted boundary line trees are not Included Timber and are to be protected. Yellow painted trees designating an interior Payment Unit boundary are only to be cut when all surrounding Payment Units have been paid.

2 - Timber Specifications

2.1 - Included Timber

2.1.1 - Clearcut unit(s) with unmerchantable trees (6/14)

Within Payment Unit(s) 1-8, cut all trees that are two (2) inches or more at DBH, except white pine, red pine, cedar, and oak. In addition, within Payment Units 4-8, do not cut sub-merchantable balsam fir and spruce.

3 - Payments

3.3 - Pre-measured Sales

3.3.4 - Dividing payment units (7/14)

Payment Unit(s) 4-8 may be divided at the request of the Purchaser and upon approval of the Unit Manager. Dividing Payment Units is a contract modification which requires a Timber Sale Contract Supplement. There will be only one division per Payment Unit.

4 - Transportation

4.1 - Construction

4.1.6 - Road construction (1/09)

Construction of new roads or improvements of existing roads shall be done in such a way as to minimize the environmental and visual impacts. Merchantable trees shall be cut and utilized unless otherwise directed. Non-merchantable trees shall be severed and laid flat on the ground. Slash shall be scattered, and not left in windrows and kept a minimum of 10 feet back from the road edge. Stumps shall be set upright, not left on edge, and be moved at least 10 feet away from the road edge. Disturbed soil shall be feathered into the woods and not left in berms or windrows.

4.1.7 - Road closure (10/11)

All new roads built into the sale must be blocked to vehicle traffic upon completion of the sale. Overgrown roads that are reopened shall be considered new roads. In general, this will require constructing a four (4') foot high berm of stumps and logs covered with earth. Contact the sale administrator for specific details of design and placement.

4.2 - Maintenance

4.2.5 - Two wheel drive condition (2/04)

All existing trail roads on and adjacent to the sale area must be passable by two-wheel drive traffic for the duration of the sale.

4.3 - Public Right-of-Way

4.3.2 - County R-O-W (12/06)

The county must be contacted prior to decking along the county road R-O-W. This applies to Payment Units 2-8 along Schwartz Creek Road. The Dickinson County Road Commission may require a permit.

5 - Operations

5.2 - Conduct of Operations

5.2.3 - Operating Restrictions

5.2.3.1 - Operating restrictions (9/11)

Within Payment Unit(s) 1-8, unless changed by written agreement, cutting, skidding, and hauling are not permitted during the snowmobile season, which typically runs from December 1 to March 31. This restriction is to protect everyone by reducing snowmobile and logging equipment interface on the same trail system.

5.2.32 - Decking/landing restoration (9/13)

All decking and landing areas must have the surface area restored to a condition equal to or better than before. This is to ensure the proper regeneration of the stand. Wood debris, chips and "cookies" from trimmings must be removed or scattered away from landing and loading areas and may not be windrowed on the edge.

5.2.41 - Snowmobile trail protection (9/11)

The Schwartz Creek Road is also a snowmobile trail and is shown on the Timber Sale Map. Do not cut or damage posts with orange trail markers or traffic control signs. The snowmobile trail may not be used for any timber sale operations from December 1 to March 31. Maintain a 20 foot wide slash, debris, and rut free zone daily using the snowmobile trail as the centerline.

5.4 - Soil Protection

5.4.1 - Rutting restriction, general (7/16)

Operations are to cease immediately if equipment and weather conditions result in rutting of roads and/or skid trails which is 12 inches or greater in depth and 50 feet in length. The Unit Manager or his/her representative may restrict hauling and/or skidding if ruts exceed the specified depth. With the Unit Manager or his/her representative's approval, the Purchaser may return to the area when the risk of rutting has decreased.

5.4.4 - Slope protection (5/15)

Skid trails and roads on slopes shall be water barred with slash, stumps, and/or clean straw bales native to the area as soon as use is complete to prevent erosion.

6 - Safety and Fire Prevention

6.2 - Signing

6.2.1 - Road posting (9/09)

The Purchaser is responsible for posting and maintaining caution signs on Schwartz Creek Road prior to beginning operations. The road must be posted at appropriate distances from the sale area to warn of logging activity and truck traffic. Signs must be removed when harvest operations are suspended or completed. The Purchaser will provide these signs.

7 - Other Conditions

7.5 - Loss

7.5.1 - Deteriorating timber (7/09)

The sale area has received damage from spruce budworm. The Purchaser should harvest the wood as soon as possible. The Department of Natural Resources is held free of responsibility of any further damage or deterioration due to delay in harvesting.



TIMBER SALE MAP

This information provided by authority of Part 525, 1994 PA 451, as amended.

Forest Management Unit Crystal Falls Management Unit	County Dickinson Co.	Mapped By Debbie Goupell	Date 2/21/18	Page 1	of 2
Township 44N	Range 28W	Section(s) and Subdivision(s) Sec 9: SWSE, Sec 10: SWSW, S1/2SE Sec 11: SWSW Sec 14: W1/2NW, SENW, N1/2SW, NWSE Sec 15: NE1/4, N1/2NW, NESE Sec 16: NWNE	Scale 1:15,840		

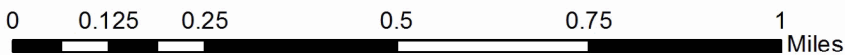
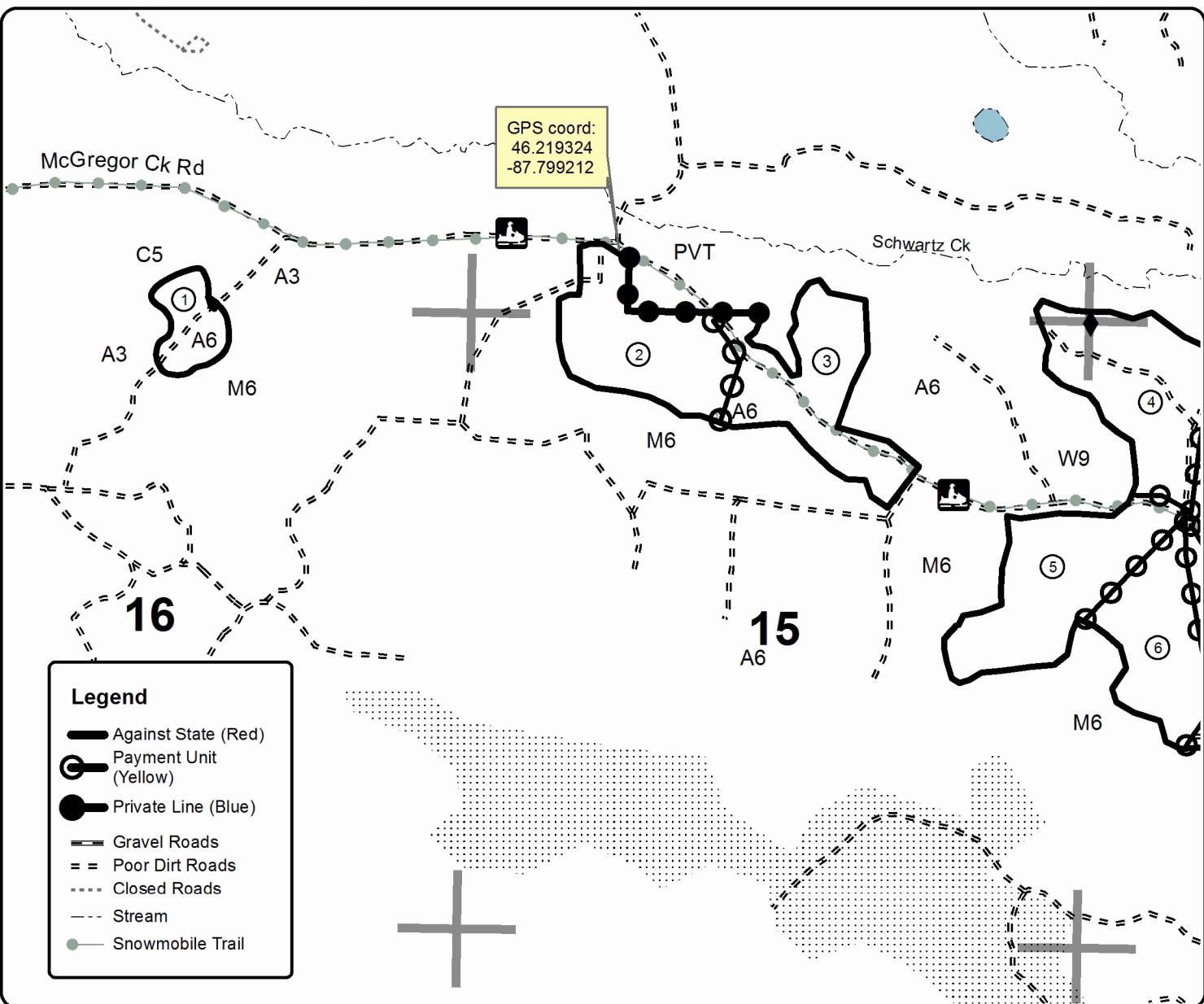
Cover Type				Density			
A = Aspen	H = Hemlock	N = Marsh	U = Upland Brush	0 = Non Stocked	5 = Pole Timber Medium		
B = Paper Birch	J = Jack Pine	O = Oak	UM = Upland Mixed	1 = Seedling Sapling Poor	6 = Pole Timber Well		
C = Cedar	L = Lowland Brush	P = Lowland Poplar	V = Bog or Marsh	2 = Seedling Sapling Medium	7 = Saw Timber Poor		
D = Treed Bog	LM = Lowland Mixed	Q = Mixed Swamp Conifer	W = White Pine	3 = Seedling Sapling Well	8 = Saw Timber Medium		
E = Swamp Hdwoods	M = Mpl, Bch, Brch	R = Red Pine	X = Non Stocked	4 = Pole Timber Poor	9 = Saw Timber Well		
F = Spruce Fir	MC = Mixed Conifer	S = Black Spruce	Z = Water				
G = Grass	MD = Mixed Deciduous	T = Tamarack					

PU	Acres	PU	Acres
1	7.2	5	32.7
2	30.1	6	33.0
3	29.2	7	24.6
4	31.5	8	35.1

Nodding Trillium

Compartment 17

223.4 acres





TIMBER SALE MAP

This information provided by authority of Part 525, 1994 PA 451, as amended.

Forest Management Unit Crystal Falls Management Unit		County Dickinson Co.	Mapped By Debbie Goupell	Date 2/21/18	Page 2	of 2
Township 44N	Range 28W	Section(s) and Subdivision(s) Sec 9: SWSE, Sec 10: SWSW, S1/2SE Sec 11: SWSW Sec 14: W1/2NW, SENW, N1/2SW, NWSE Sec 15: NE1/4, N1/2NW, NESE Sec 16: NWNE		Scale 1:15,840		

Cover Type

A = Aspen	H = Hemlock	N = Marsh	U = Upland Brush
B = Paper Birch	J = Jack Pine	O = Oak	UM = Upland Mixed
C = Cedar	L = Lowland Brush	P = Lowland Poplar	V = Bog or Marsh
D = Treed Bog	LM = Lowland Mixed	Q = Mixed Swamp Conifer	W = White Pine
E = Swamp Hdwoods	M = Mpl, Bch, Brch	R = Red Pine	X = Non Stocked
F = Spruce Fir	MC = Mixed Conifer	S = Black Spruce	Z = Water
G = Grass	MD = Mixed Deciduous	T = Tamarack	

Density

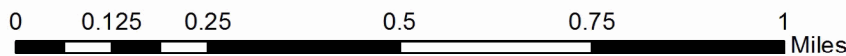
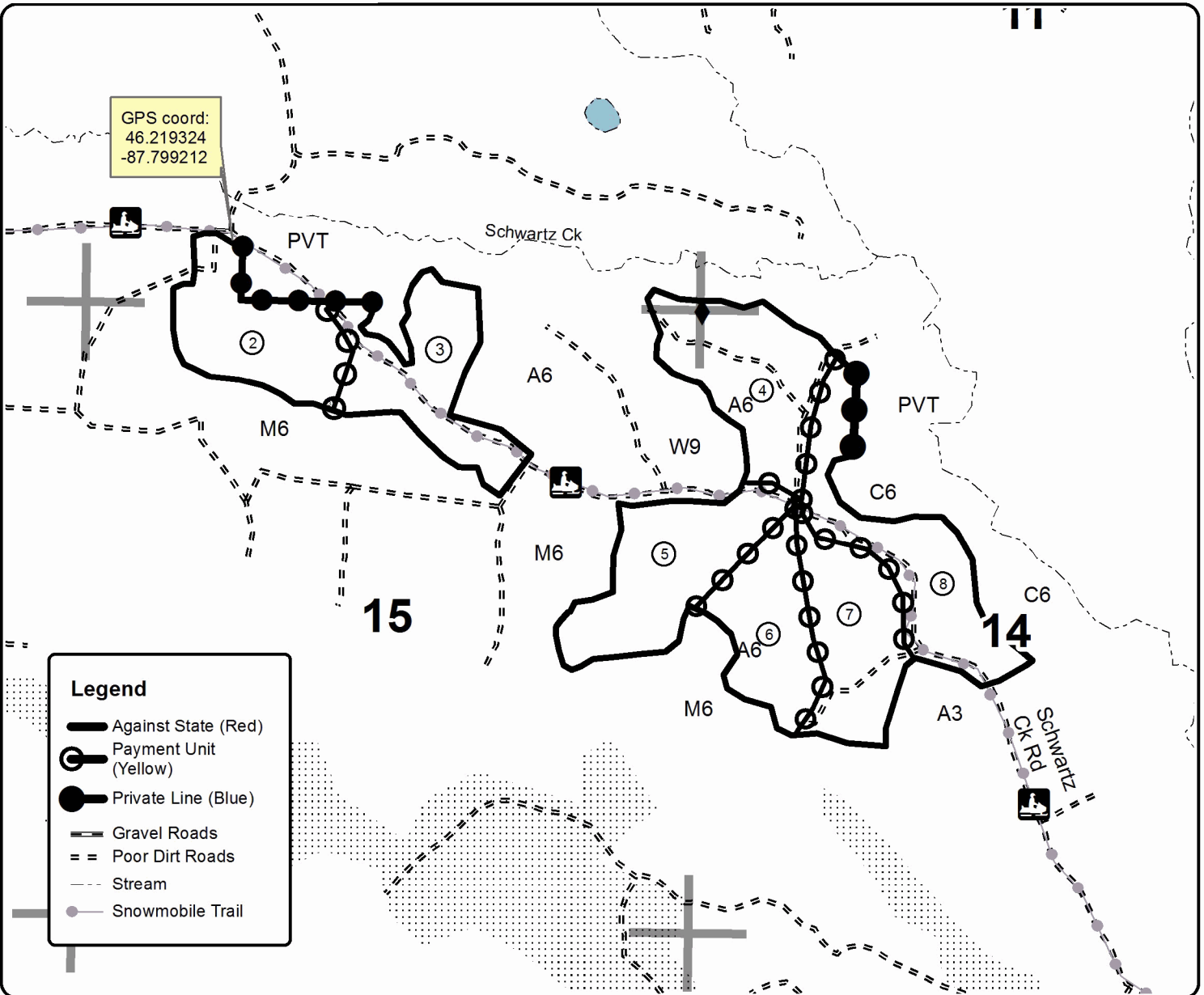
0 = Non Stocked	5 = Pole Timber Medium
1 = Seedling Sapling Poor	6 = Pole Timber Well
2 = Seedling Sapling Medium	7 = Saw Timber Poor
3 = Seedling Sapling Well	8 = Saw Timber Medium
4 = Pole Timber Poor	9 = Saw Timber Well

PU	Acres	PU	Acres
1	7.2	5	32.7
2	30.1	6	33.0
3	29.2	7	24.6
4	31.5	8	35.1

Nodding Trillium

Compartment 17

223.4 acres



TIMBER SALE INFORMATION

Red Tag Salvage SBW (12-011-17)

Dickinson County (Advertised Price \$23,928.10)

SALE NOTE: Payment Units 2 and 3 must be cut during frozen ground conditions. See spec 5.2.3.1 for details.

Slash piles must be created. See spec 5.2.4.2 for details.

The sale has received damage from windthrow, Eastern Larch Beetle, Spruce Budworm, and Eastern Dwarf Mistletoe. See spec 7.5.1 for details.

A timber sale contract for this lump sum, sealed bid timber sale will be awarded to the responsible bidder offering the highest sealed bid price. Bids must be at or above the following advertised price for each species:

<u>PRODUCTS & SPECIES</u>	<u>ESTIMATED UNITS*</u>	<u>ADVERTISED PRICE</u>
Pulpwood		
Balsam Fir	75.00 Cords	\$ 11.90 / Cord
Black Spruce	250.00 Cords	\$ 16.45 / Cord
Mixed Aspen	185.00 Cords	\$ 24.65 / Cord
Mixed Hardwood	42.00 Cords	\$ 16.15 / Cord
Red Pine	39.00 Cords	\$ 37.80 / Cord
Tamarack	1,147.00 Cords	\$ 8.15 / Cord
White Spruce	174.00 Cords	\$ 16.45 / Cord

* The total volume is statistically estimated within plus (+) or minus (-) 12.76 percent. The estimated units are final and not subject to adjustment. Prospective bidders are urged to examine this timber and to make their own estimates of quantity and quality.

BOND AND PAYMENT SCHEDULE:

1. A bond in the amount of \$1,196.00 to insure faithful performance of the conditions of the contract will be deposited by the successful bidder within 21 days of the sale award.
2. Cutting in any sale or unit without the required advance payment would be considered a trespass.
3. Total payment must be paid in advance or according to the following schedule:
 - (a) Ten percent (10%) of the sale value must be paid within 21 days of the sale award.
 - (b) The 10% down payment will be credited towards the first unit cut.
 - (c) Payment for each of the following units must be made before cutting begins in that unit:

<u>PAYMENT UNIT NUMBER</u>	<u>PERCENT OF TOTAL SALE VALUE</u>
01	19.8%
02	35.0%
03	45.2%
4. If no cutting takes place, the 10% down payment will not be refunded.
5. Operations on the contract issued will terminate on 06/30/2021.

Description of Timber by Payment Unit (PU)

PU	MARKET GROUP	PRODUCT	QUANTITY	UNIT	ACRES	ADVERTISE PRICE
1	Balsam Fir	Pulpwood	12.0	Cords	8.4	\$4,738.60
	Black Spruce		24.0	Cords		
	Mixed Aspen		132.0	Cords		
	<i>Quaking Aspen</i>		132.0	<i>Cords</i>		
	Mixed Hardwood		23.0	Cords		
	<i>Paper Birch</i>		8.0	<i>Cords</i>		
	<i>Red Maple</i>		15.0	<i>Cords</i>		
	White Spruce		35.0	Cords		
	2		Balsam Fir	Pulpwood		
Black Spruce		126.0	Cords			
Mixed Aspen		42.0	Cords			
<i>Balsam Poplar</i>		1.0	<i>Cords</i>			
<i>Quaking Aspen</i>		41.0	<i>Cords</i>			
Mixed Hardwood		8.0	Cords			
<i>Black Cherry</i>		1.0	<i>Cords</i>			
<i>Paper Birch</i>		1.0	<i>Cords</i>			
<i>Red Maple</i>		6.0	<i>Cords</i>			
Red Pine		39.0	Cords			
Tamarack		279.0	Cords			
White Spruce		67.0	Cords			
3		Balsam Fir	Pulpwood		39.0	Cords
	Black Spruce	100.0		Cords		
	Mixed Aspen	11.0		Cords		
	<i>Balsam Poplar</i>	4.0		<i>Cords</i>		
	<i>Quaking Aspen</i>	7.0		<i>Cords</i>		
	Mixed Hardwood	11.0		Cords		
	<i>Black Cherry</i>	7.0		<i>Cords</i>		
	<i>Paper Birch</i>	4.0		<i>Cords</i>		
	Tamarack	868.0		Cords		
	White Spruce	72.0		Cords		
TOTAL:			1,912.0	Cords		

Sale Specific Conditions & Requirements

Sale Name: Red Tag Salvage SBW

Sale Number: 12-011-17 Seq#: 1

1 - Sale Area

1.2 - Boundaries

1.2.1 - Painted boundaries (1/14)

The sale boundary and Payment Unit boundaries are marked and identified by blue and red paint. Exterior sale boundary lines against private property are marked with blue paint. Exterior sale boundary lines against state are marked with red paint. The painted boundary line trees are not Included Timber and are to be protected.

2 - Timber Specifications

2.1 - Included Timber

2.1.1 - Clearcut unit(s) with unmerchantable trees (6/14)

Within Payment Unit(s) 1-3, cut all trees that are two (2) inches or more at DBH except white pine, cedar, and unmarked red pine. In addition, leave all submerchantable conifers. Note that approximately 1 acre of red pine in Payment Unit 2 is selectively marked for harvest with orange paint.

3 - Payments

3.3 - Pre-measured Sales

3.3.4 - Dividing payment units (7/14)

Payment Unit(s) 3 may be divided at the request of the Purchaser and upon approval of the Unit Manager. Dividing Payment Units is a contract modification which requires a Timber Sale Contract Supplement. There will be only one division.

4 - Transportation

4.1 - Construction

4.1.6 - Road construction (1/09)

Construction of new roads or improvements of existing roads shall be done in such a way as to minimize the environmental and visual impacts. Merchantable trees shall be cut and utilized unless otherwise directed. Non-merchantable trees shall be severed and laid flat on the ground. Slash shall be scattered, and not left in windrows and kept a minimum of 10 feet back from the road edge. Stumps shall be set upright, not left on edge, and be moved at least 10 feet away from the road edge. Disturbed soil shall be feathered into the woods and not left in berms or windrows.

4.1.7 - Road closure (10/11)

All new roads built into the sale must be blocked to vehicle traffic upon completion of the sale. Overgrown roads that are reopened shall be considered new roads. In general, this will require constructing a four (4') foot high berm of stumps and logs covered with earth. Contact the sale administrator for specific details of design and placement.

4.3 - Public Right-of-Way

4.3.2 - County R-O-W (12/06)

The county must be contacted prior to crossing or harvesting in the county road R-O-W. This applies to Payment Units 2 and 3 and County Road 581.

5 - Operations

5.2 - Conduct of Operations

5.2.1 - Slash

5.2.1.13 - Dispose of slash as directed (12/05)

Slash is to be disposed of as directed by the sale administrator.

5.2.2 - Hazard Trees/Snags

5.2.2.1 - Den trees (10/16)

Obvious hollow and/or den trees shall be protected and left standing unless they are a safety hazard.

5.2.3 - Operating Restrictions

5.2.3.1 - Operating restrictions (9/11)

Within Payment Unit(s) 2 and 3, unless changed by written agreement, cutting, skidding, and hauling are limited to frozen ground conditions. This restriction is due to the saturated soils.

5.2.4 - Dead and Down Creation

5.2.4.2 - Dead and down creation, hare and grouse (1/14)

To improve habitat for snowshoe hare, grouse, and other species, the Purchaser is to leave one pile of slash measuring 6 feet in diameter and 6 feet tall on the ground for every eight acres. This equates to one pile in Payment Unit 1, four piles in Payment Unit 2, and seven piles in Payment Unit 3. They should be scattered throughout the sale. The piles can be made from any tree species.

5.2.17 - Crane Mats/Timber Mats (10/14)

Some roads or skid trails may require extra protection such as that afforded by Crane Mats/Timber Mats. If available, Crane Mats/Timber Mats may be borrowed from the DNR and are located at the Marquette ICC and the Grayling Field Office. Contact the sale administrator for specific details. A Timber Sale Contract Supplement will be used to document the Purchaser's use of the DNR's Crane Mats/Timber Mats. It is the responsibility of the Purchaser to contact the sale administrator to schedule pick up and drop off. In addition, all mats must be cleaned prior to drop off. A charge of \$125.00 will be assessed for all damaged or non-returned mats. Damage is defined as misuse resulting in three or more broken cants.

5.4 - Soil Protection

5.4.1 - Rutting restriction, general (7/16)

Operations are to cease immediately if equipment and weather conditions result in rutting of roads and/or skid trails which is 12 inches or greater in depth and 50 feet in length. The Unit Manager or his/her representative may restrict hauling and/or skidding if ruts exceed the specified depth. With the Unit Manager or his/her representative's approval, the Purchaser may return to the area when the risk of rutting has decreased.

6 - Safety and Fire Prevention

6.2 - Signing

6.2.1 - Road posting (9/09)

The Purchaser is responsible for posting and maintaining caution signs on County Road 581 prior to beginning operations. The road must be posted at appropriate distances from the sale area to warn of logging activity and truck traffic. Signs must be removed when harvest operations are suspended or completed. The Purchaser will provide these signs.

7 - Other Conditions

7.5 - Loss

7.5.1 - Deteriorating timber (7/09)

The sale area has received damage from windthrow, Eastern Dwarf Mistletoe, Spruce Budworm, and Eastern Larch Beetle. The Purchaser should harvest the wood as soon as possible. The Department of Natural Resources is held free of responsibility of any further damage or deterioration due to delay in harvesting.



TIMBER SALE MAP

This information provided by authority of Part 525, 1994 PA 451, as amended.

Forest Management Unit Crystal Falls	County Dickinson	Mapped By Church	Date 02/24/2017	Page 1	of 1
Township 44N	Range 27W	Section(s) and Subdivision(s) Sec 21: SE, S1/2NE Sec 28: NENE Sec 22: SW, SWSE Sec 27: N1/2NW, NWNE	Scale 1:15,840		

Cover Type				Density	
A = Aspen	H = Hemlock	N = Marsh	U = Upland Brush	0 = Non Stocked	5 = Pole Timber Medium
B = Paper Birch	J = Jack Pine	O = Oak	UM = Upland Mixed	1 = Seedling Sapling Poor	6 = Pole Timber Well
C = Cedar	L = Lowland Brush	P = Lowland Poplar	V = Bog or Marsh	2 = Seedling Sapling Medium	7 = Saw Timber Poor
D = Treed Bog	LM = Lowland Mixed	Q = Mixed Swamp Conifer	W = White Pine	3 = Seedling Sapling Well	8 = Saw Timber Medium
E = Swamp Hdwoods	M = Mpl, Bch, Brch	R = Red Pine	X = Non Stocked	4 = Pole Timber Poor	9 = Saw Timber Well
F = Spruce Fir	MC = Mixed Conifer	S = Black Spruce	Z = Water		
G = Grass	MD = Mixed Deciduous	T = Tamarack			

PU	Acres
1	8.4
2	33.4
3	58.5

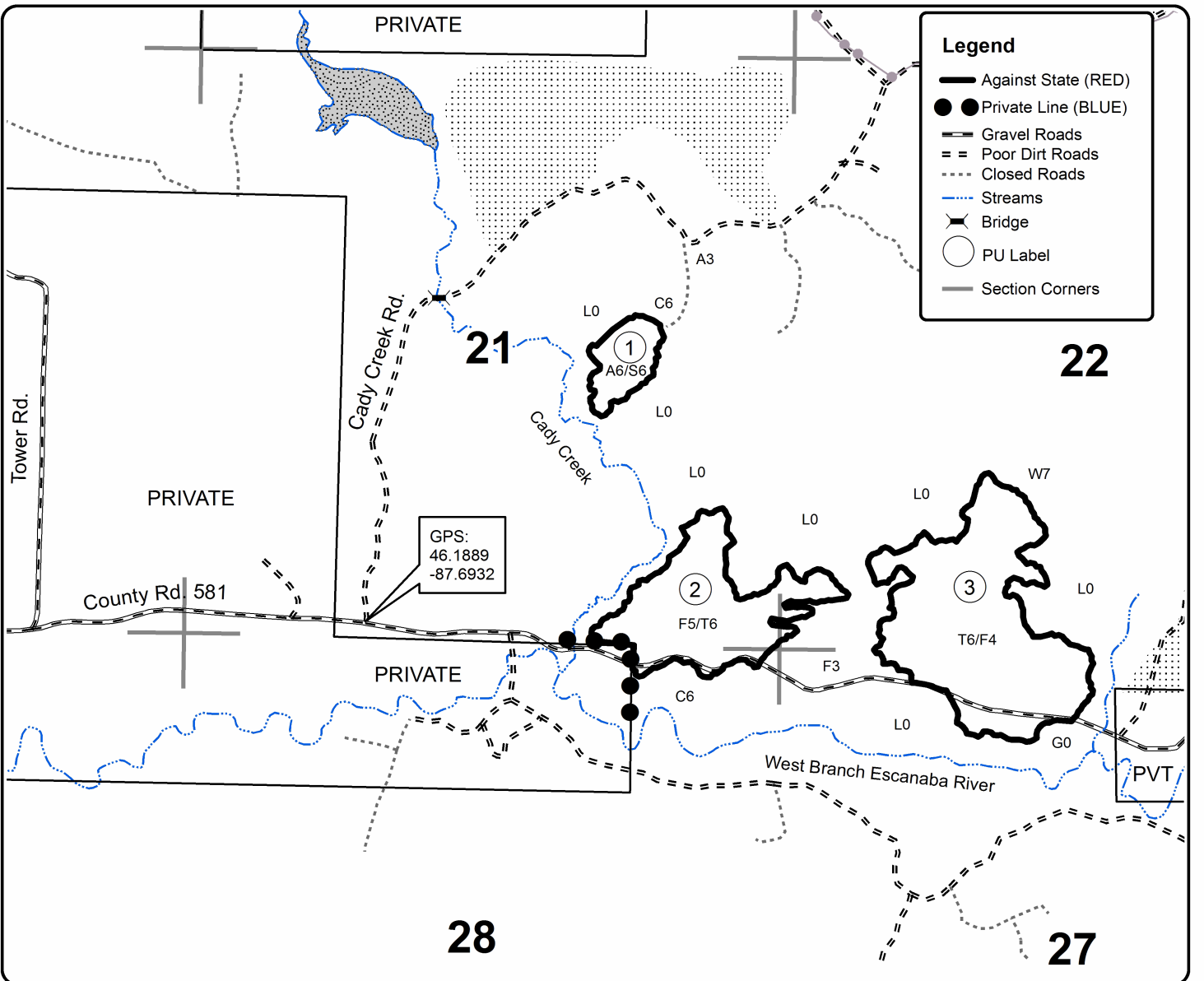
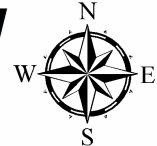


QR Code for GeoRef PDF

Red Tag Salvage SBW

Compartment 24

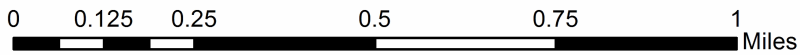
100.3 Acres



Legend

- Against State (RED)
- Private Line (BLUE)
- Gravel Roads
- - - Poor Dirt Roads
- ... Closed Roads
- ... Streams
- Bridge
- PU Label
- Section Corners

GPS:
46.1889
-87.6932



TIMBER SALE INFORMATION

Mondo Sawdodger SBW (12-013-17)

Dickinson County (Advertised Price \$134,086.00)

SALE NOTE: Payment Units 2 and 4 are limited to frozen ground conditions, due to the wet soils. If non-frozen operations are desired in the remaining units, 10 culverts will be required. The culverts, DEQ permit, and installation are the responsibility of the Purchaser.

A timber sale contract for this lump sum, sealed bid timber sale will be awarded to the responsible bidder offering the highest sealed bid price. Bids must be at or above the following advertised price for each species:

<u>PRODUCTS & SPECIES</u>	<u>ESTIMATED UNITS*</u>	<u>ADVERTISED PRICE</u>
Sawtimber		
Basswood	7.90 MBF	\$ 233.00 / MBF
Paper Birch	6.30 MBF	\$ 92.00 / MBF
Red Maple	4.90 MBF	\$ 187.00 / MBF
Sugar Maple	5.30 MBF	\$ 433.00 / MBF
Pulpwood		
Balsam Fir	549.00 Cords	\$ 17.80 / Cord
Basswood	62.00 Cords	\$ 11.55 / Cord
Mixed Aspen	862.00 Cords	\$ 37.00 / Cord
Mixed Hardwood	1,906.00 Cords	\$ 24.20 / Cord
Mixed Spruce	1,530.00 Cords	\$ 24.70 / Cord
Tamarack	176.00 Cords	\$ 12.25 / Cord

* The total volume is statistically estimated within plus (+) or minus (-) 7.80 percent. The estimated units are final and not subject to adjustment. Prospective bidders are urged to examine this timber and to make their own estimates of quantity and quality.

BOND AND PAYMENT SCHEDULE:

1. A bond in the amount of \$6,704.00 to insure faithful performance of the conditions of the contract will be deposited by the successful bidder within 21 days of the sale award.
2. Cutting in any sale or unit without the required advance payment would be considered a trespass.
3. Total payment must be paid in advance or according to the following schedule:
 - (a) Ten percent (10%) of the sale value must be paid within 21 days of the sale award.
 - (b) The 10% down payment will be credited towards the first unit cut.
 - (c) Payment for each of the following units must be made before cutting begins in that unit:

<u>PAYMENT UNIT NUMBER</u>	<u>PERCENT OF TOTAL SALE VALUE</u>
01	18.7%
02	11.6%
03	10.5%
04	13.8%
05	14.3%
06	9.2%
07	16.0%
08	5.9%

4. If no cutting takes place, the 10% down payment will not be refunded.
5. Operations on the contract issued will terminate on 06/30/2021.

Description of Timber by Payment Unit (PU)

PU	MARKET GROUP	PRODUCT	QUANTITY	UNIT	ACRES	ADVERTISE PRICE				
1	Balsam Fir	Pulpwood	96.0	Cords	41.7	\$24,996.80				
	Mixed Aspen		200.0	Cords						
	<i>Quaking Aspen</i>		200.0	<i>Cords</i>						
	Mixed Hardwood		334.0	Cords						
	<i>Paper Birch</i>		27.0	<i>Cords</i>						
	<i>Red Maple</i>		307.0	<i>Cords</i>						
	Mixed Spruce		316.0	Cords						
	<i>Black Spruce</i>		118.0	<i>Cords</i>						
	<i>White Spruce</i>		198.0	<i>Cords</i>						
	2		Basswood	Sawtimber			0.7	MBF	32.2	\$15,490.65
Red Maple			1.4	MBF						
Sugar Maple			0.4	MBF						
Balsam Fir		Pulpwood	56.0	Cords						
Basswood			4.0	Cords						
Mixed Aspen			95.0	Cords						
<i>Balsam Poplar</i>			45.0	<i>Cords</i>						
<i>Quaking Aspen</i>			50.0	<i>Cords</i>						
Mixed Hardwood			179.0	Cords						
<i>Black Ash</i>			26.0	<i>Cords</i>						
<i>Paper Birch</i>			25.0	<i>Cords</i>						
<i>Red Maple</i>			116.0	<i>Cords</i>						
<i>Sugar Maple</i>			12.0	<i>Cords</i>						
Mixed Spruce			185.0	Cords						
<i>Black Spruce</i>			136.0	<i>Cords</i>						
<i>White Spruce</i>			49.0	<i>Cords</i>						
Tamarack			117.0	Cords						
3			Basswood	Sawtimber	1.2	MBF	24.9	\$14,145.40		
			Red Maple		0.5	MBF				
			Sugar Maple		0.7	MBF				
	Balsam Fir		Pulpwood	75.0	Cords					
	Basswood			7.0	Cords					
	Mixed Aspen			102.0	Cords					
	<i>Balsam Poplar</i>	10.0		<i>Cords</i>						
	<i>Quaking Aspen</i>	92.0		<i>Cords</i>						
	Mixed Hardwood	163.0		Cords						
	<i>Black Ash</i>	5.0		<i>Cords</i>						
	<i>Paper Birch</i>	17.0		<i>Cords</i>						
	<i>Red Maple</i>	123.0		<i>Cords</i>						
	<i>Sugar Maple</i>	18.0		<i>Cords</i>						
	Mixed Spruce	175.0		Cords						
	<i>Black Spruce</i>	93.0		<i>Cords</i>						
	<i>White Spruce</i>	82.0		<i>Cords</i>						
	Tamarack	1.0		Cords						
	4	Basswood		Sawtimber	0.4	MBF			40.2	\$18,496.45
		Red Maple			1.8	MBF				
		Sugar Maple			0.2	MBF				
Balsam Fir		Pulpwood		64.0	Cords					
Basswood				2.0	Cords					
Mixed Aspen				78.0	Cords					
<i>Balsam Poplar</i>			40.0	<i>Cords</i>						
<i>Quaking Aspen</i>			38.0	<i>Cords</i>						
Mixed Hardwood			160.0	Cords						
<i>Black Ash</i>			2.0	<i>Cords</i>						
<i>Paper Birch</i>			25.0	<i>Cords</i>						
<i>Red Maple</i>			127.0	<i>Cords</i>						
<i>Sugar Maple</i>			6.0	<i>Cords</i>						

Description of Timber by Payment Unit (PU), con't

PU	MARKET GROUP	PRODUCT	QUANTITY	UNIT	ACRES	ADVERTISE PRICE				
4 con't	Mixed Spruce	Pulpwood	380.0	Cords						
	<i>Black Spruce</i>		240.0	<i>Cords</i>						
	<i>White Spruce</i>		140.0	<i>Cords</i>						
	Tamarack		55.0	Cords						
5	Basswood	Sawtimber	2.4	MBF	34.0	\$19,197.60				
	Red Maple		0.7	MBF						
	Sugar Maple		1.4	MBF						
	Balsam Fir	Pulpwood	120.0	Cords						
	Basswood		14.0	Cords						
	Mixed Aspen		128.0	Cords						
	<i>Balsam Poplar</i>		9.0	<i>Cords</i>						
	<i>Quaking Aspen</i>		119.0	<i>Cords</i>						
	Mixed Hardwood		198.0	Cords						
	<i>American Elm</i>		2.0	<i>Cords</i>						
	<i>Black Cherry</i>		2.0	<i>Cords</i>						
	<i>Paper Birch</i>		25.0	<i>Cords</i>						
	<i>Red Maple</i>		131.0	<i>Cords</i>						
	<i>Sugar Maple</i>		38.0	<i>Cords</i>						
	Mixed Spruce		245.0	Cords						
	<i>Black Spruce</i>		146.0	<i>Cords</i>						
	<i>White Spruce</i>		99.0	<i>Cords</i>						
	Tamarack		2.0	Cords						
	6		Basswood	Sawtimber			1.6	MBF	21.9	\$12,322.20
			Red Maple				0.5	MBF		
Sugar Maple		0.9	MBF							
Balsam Fir		Pulpwood	78.0	Cords						
Basswood			9.0	Cords						
Mixed Aspen			82.0	Cords						
<i>Balsam Poplar</i>			5.0	<i>Cords</i>						
<i>Quaking Aspen</i>			77.0	<i>Cords</i>						
Mixed Hardwood			125.0	Cords						
<i>Paper Birch</i>			16.0	<i>Cords</i>						
<i>Red Maple</i>			85.0	<i>Cords</i>						
<i>Sugar Maple</i>			24.0	<i>Cords</i>						
Mixed Spruce			158.0	Cords						
<i>Black Spruce</i>			94.0	<i>Cords</i>						
<i>White Spruce</i>			64.0	<i>Cords</i>						
Tamarack			1.0	Cords						
7	Basswood	Sawtimber	1.6	MBF	34.7	\$21,473.10				
	Paper Birch		5.2	MBF						
	Sugar Maple		1.7	MBF						
	Balsam Fir	Pulpwood	36.0	Cords						
	Basswood		26.0	Cords						
	Mixed Aspen		164.0	Cords						
	<i>Quaking Aspen</i>		164.0	<i>Cords</i>						
	Mixed Hardwood		478.0	Cords						
	<i>Paper Birch</i>		77.0	<i>Cords</i>						
	<i>Red Maple</i>		359.0	<i>Cords</i>						
	<i>Sugar Maple</i>		42.0	<i>Cords</i>						
	Mixed Spruce		53.0	Cords						
	<i>Black Spruce</i>		1.0	<i>Cords</i>						
	<i>White Spruce</i>		52.0	<i>Cords</i>						
8	Paper Birch	Sawtimber	1.1	MBF	18.7	\$7,963.80				
	Balsam Fir	Pulpwood	24.0	Cords						
	Mixed Aspen		13.0	Cords						
	<i>Quaking Aspen</i>		13.0	<i>Cords</i>						

Description of Timber by Payment Unit (PU), con't

PU	MARKET GROUP	PRODUCT	QUANTITY	UNIT	ACRES	ADVERTISE PRICE
8 con't	Mixed Hardwood	Pulpwood	269.0	Cords		
	<i>Paper Birch</i>		107.0	<i>Cords</i>		
	<i>Red Maple</i>		162.0	<i>Cords</i>		
	Mixed Spruce		18.0	Cords		
	<i>Black Spruce</i>		3.0	<i>Cords</i>		
	<i>White Spruce</i>		15.0	<i>Cords</i>		
TOTAL:			24.4	MBF		
TOTAL:			5,085.0	Cords		

Sale Specific Conditions & Requirements

Sale Name: Mondo Sawdodger SBW

Sale Number: 12-013-17 Seq#: 1

1 - Sale Area

1.2 - Boundaries

1.2.1 - Painted boundaries (1/14)

The sale boundary and Payment Unit boundaries are marked and identified by red and yellow paint. Exterior sale boundary lines against state are marked with red paint. Interior Payment Unit boundaries are marked with yellow paint. The painted boundary line trees are not Included Timber and are to be protected. Yellow painted trees designating an interior Payment Unit boundary are only to be cut when all surrounding Payment Units have been paid.

2 - Timber Specifications

2.1 - Included Timber

2.1.1 - Clearcut unit(s) with unmerchantable trees (6/14)

Within Payment Unit(s) 1 and 5-8, cut all trees that are two (2) inches or more at DBH, except cedar, hemlock, pine, and oak.

2.1.2 - Clearcut unit(s) w/o unmerchantable trees (8/11)

Within Payment Unit(s) 2-4, cut all trees which meet minimum piece specifications in 2.2 Utilization, except cedar, hemlock, pine, and oak. In addition, within the upland areas of these units, cut all trees that are two (2) inches or more at DBH.

4 - Transportation

4.1 - Construction

4.1.5 - Culverts (5/14)

If non-frozen operations are desired, roads will require the installation of culverts for cross drainage. Ten culverts will be required. Their placement will be specified by the sale administrator and they shall be installed prior to hauling. The culverts shall be new, plastic gauge. Culverts will be a minimum of 18 inches in diameter and 24 feet in length. Culverts will be permanent. Culverts and installation is the responsibility of the Purchaser. DEQ permits, if needed, will also be obtained by the Purchaser.

4.1.6 - Road construction (1/09)

Construction of new roads or improvements of existing roads shall be done in such a way as to minimize the environmental and visual impacts. Merchantable trees shall be cut and utilized unless otherwise directed. Non-merchantable trees shall be severed and laid flat on the ground. Slash shall be scattered, and not left in windrows and kept a minimum of 10 feet back from the road edge. Stumps shall be set upright, not left on edge, and be moved at least 10 feet away from the road edge. Disturbed soil shall be feathered into the woods and not left in berms or windrows.

4.1.7 - Road closure (10/11)

All new roads built into the sale must be blocked to vehicle traffic upon completion of the sale. Overgrown roads that are reopened shall be considered new roads. In general, this will require constructing a four (4') foot high berm of stumps and logs covered with earth. Contact the sale administrator for specific details of design and placement.

4.1.11 - Permits (2/12)

The Purchaser will secure any necessary DEQ permits that may be required.

5 - Operations

5.2 - Conduct of Operations

5.2.1 - Slash

5.2.1.13 - Dispose of slash as directed (12/05)

Slash is to be disposed of as directed by the sale administrator.

5.2.2 - Hazard Trees/Snags

5.2.2.1 - Den trees (10/16)

Obvious hollow and/or den trees shall be protected and left standing unless they are a safety hazard.

5.2.3 - Operating Restrictions

5.2.3.1 - Operating restrictions (9/11)

Within Payment Unit(s) 2 and 4, unless changed by written agreement, cutting and skidding are limited to frozen ground conditions. This restriction is because of the wet soils.

5.2.4 - Dead and Down Creation

5.2.4.2 - Dead and down creation, hare and grouse (1/14)

To improve habitat for snowshoe hare, grouse, and other species, the Purchaser is to leave two (2) large slash piles on the ground for every Payment Unit. They should be scattered throughout the unit. These piles should measure a minimum diameter of six feet and a minimum height of six feet. They can be constructed of any tree species and can be un-merchantable pieces of wood or full trees.

5.4 - Soil Protection

5.4.1 - Rutting restriction, general (7/16)

Operations are to cease immediately if equipment and weather conditions result in rutting of roads and/or skid trails which is 12 inches or greater in depth and 50 feet in length. The Unit Manager or his/her representative may restrict hauling and/or skidding if ruts exceed the specified depth. With the Unit Manager or his/her representative's approval, the Purchaser may return to the area when the risk of rutting has decreased.

7 - Other Conditions

7.5 - Loss

7.5.1 - Deteriorating timber (7/09)

The sale area has received damage from Spruce Budworm and Eastern Larch Beetle. The Purchaser should harvest the wood as soon as possible. The Department of Natural Resources is held free of responsibility of any further damage or deterioration due to delay in harvesting.



TIMBER SALE MAP

This information provided by authority of Part 525, 1994 PA 451, as amended.

Forest Management Unit Crystal Falls	County Dickinson	Mapped By Church	Date 04/20/2017	Page 1	of 1
Township 44N	Range 27W	Section(s) and Subdivision(s) Sec 24: S1/2, SWNW Sec 23: S1/2, E1/2NW, S1/2NE, NWNE	Scale 1:15,840		
Cruised By Church, Goupell					

Cover Type				Density			
A = Aspen	H = Hemlock	N = Marsh	U = Upland Brush	0 = Non Stocked	5 = Pole Timber Medium		
B = Paper Birch	J = Jack Pine	O = Oak	UM = Upland Mixed	1 = Seedling Sapling Poor	6 = Pole Timber Well		
C = Cedar	L = Lowland Brush	P = Lowland Poplar	V = Bog or Marsh	2 = Seedling Sapling Medium	7 = Saw Timber Poor		
LM = Lowland Mixed	M = Mpl, Bch, Brch	Q = Mixed Swamp Conifer	W = White Pine	3 = Seedling Sapling Well	8 = Saw Timber Medium		
D = Treed Bog	MC = Mixed Conifer	R = Red Pine	X = Non Stocked	4 = Pole Timber Poor	9 = Saw Timber Well		
E = Swamp Hdwoods	MD = Mixed Deciduous	S = Black Spruce	Z = Water				
F = Spruce Fir	T = Tamarack						
G = Grass							

PU	Acres	PU	Acres
1	41.7	5	34.0
2	32.2	6	21.9
3	24.9	7	34.7
4	40.2	8	18.7

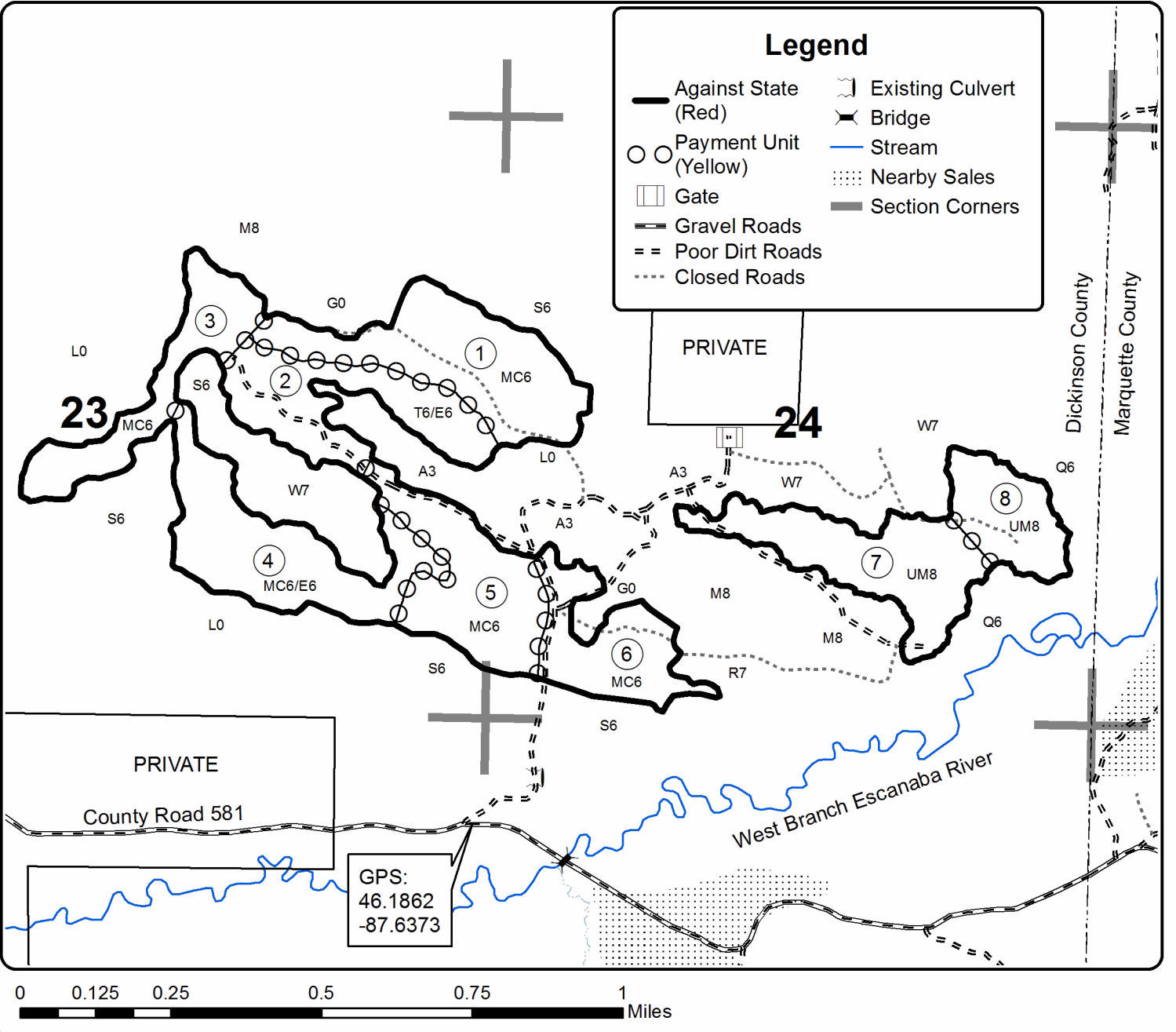


QR Code for GeoRef PDF

Mondo Sawdodger SBW

Compartment 24

248.3 Acres



TIMBER SALE INFORMATION

Hazelnut Soup (12-030-17)

Dickinson County (Advertised Price \$37,158.50)

A timber sale contract for this lump sum, sealed bid timber sale will be awarded to the responsible bidder offering the highest sealed bid price. Bids must be at or above the following advertised price for each species:

<u>PRODUCTS & SPECIES</u>	<u>ESTIMATED UNITS*</u>	<u>ADVERTISED PRICE</u>
Sawtimber		
Red Pine	10.80 MBF	\$ 135.00 / MBF
Pulpwood		
Balsam Fir	10.00 Cords	\$ 17.80 / Cord
Mixed Hardwood	117.00 Cords	\$ 24.20 / Cord
Quaking Aspen	863.00 Cords	\$ 37.00 / Cord
Red Pine	6.00 Cords	\$ 56.70 / Cord
White Spruce	17.00 Cords	\$ 24.70 / Cord

* The total volume is statistically estimated within plus (+) or minus (-) 15.25 percent. The estimated units are final and not subject to adjustment. Prospective bidders are urged to examine this timber and to make their own estimates of quantity and quality.

BOND AND PAYMENT SCHEDULE:

- A bond in the amount of \$1,858.00 to insure faithful performance of the conditions of the contract will be deposited by the successful bidder within 21 days of the sale award.
- Cutting in any sale or unit without the required advance payment would be considered a trespass.
- Total payment must be paid in advance or according to the following schedule:
 - Ten percent (10%) of the sale value must be paid within 21 days of the sale award.
 - The 10% down payment will be credited towards the first unit cut.
 - Payment for each of the following units must be made before cutting begins in that unit:

PAYMENT UNIT NUMBER	PERCENT OF TOTAL SALE VALUE
01	91.9%
02	8.1%
- If no cutting takes place, the 10% down payment will not be refunded.
- Operations on the contract issued will terminate on 06/30/2021.

Description of Timber by Payment Unit (PU)

PU	MARKET GROUP	PRODUCT	QUANTITY	UNIT	ACRES	ADVERTISE PRICE
1	Red Pine	Sawtimber	10.8	MBF	51.8	\$34,159.90
	Mixed Hardwood	Pulpwood	109.0	Cords		
	Red Maple	Sawtimber	1.0	MBF		
	Paper Birch	Pulpwood	17.0	Cords		
	Red Maple		90.0	Cords		
	Quaking Aspen		792.0	Cords		
	Red Pine		6.0	Cords		
	White Spruce		17.0	Cords		
2	Balsam Fir	Pulpwood	10.0	Cords	4.7	\$2,998.60
	Mixed Hardwood		8.0	Cords		
	Red Maple		8.0	Cords		
	Quaking Aspen		71.0	Cords		
TOTAL:			10.8	MBF		
TOTAL:			1,013.0	Cords		

Sale Specific Conditions & Requirements

Sale Name: Hazelnut Soup

Sale Number: 12-030-17 Seq#: 1

1 - Sale Area

1.2 - Boundaries

1.2.1 - Painted boundaries (1/14)

The sale boundary and Payment Unit boundaries are marked and identified by red paint. Exterior sale boundary lines against state are marked with red paint. The painted boundary line trees are not Included Timber and are to be protected.

2 - Timber Specifications

2.1 - Included Timber

2.1.1 - Clearcut unit(s) with unmerchantable trees (6/14)

Within Payment Unit(s) 1 and 2, cut all trees that are two (2) inches or more at DBH, with the following exceptions:

- Within Payment Unit 1, do not cut cedar, white pine, cherry, hemlock, and oak.

- Within Payment Unit 2, do not cut pine, cedar, hemlock, and oak.

2.1.11 - Description of timber note (2/04)

Note that mixed hardwood pulp includes red maple and paper birch.

2.2 - Utilization

2.2.11 - Chipping restriction (9/14)

If chipping occurs on this sale, then no woody debris present on the ground at the start of the sale may be chipped. In addition, brush or chips may not be stored or stockpiled on-site for more than 60 days.

3 - Payments

3.3 - Pre-measured Sales

3.3.4 - Dividing payment units (7/14)

Payment Unit(s) 1 may be divided at the request of the Purchaser and upon approval of the Unit Manager. Dividing Payment Units is a contract modification which requires a Timber Sale Contract Supplement.

4 - Transportation

4.1 - Construction

4.1.3 - Slash and earthen piles (8/04)

Piles or windrows of earth along roads and landings that have been widened or constructed shall be leveled. Slash from road maintenance or construction, including stumps, shall be dispersed throughout the sale, chipped, utilized or otherwise removed from the sale.

4.1.6 - Road construction (1/09)

Construction of new roads or improvements of existing roads shall be done in such a way as to minimize the environmental and visual impacts. Merchantable trees shall be cut and utilized unless otherwise directed. Non-merchantable trees shall be severed and laid flat on the ground. Slash shall be scattered, and not left in windrows and kept a minimum of 10 feet back from the road edge, or, be chipped, utilized or otherwise removed from the sale. Stumps shall be set upright, not left on edge, and be moved at least 10 feet away from the road edge. Disturbed soil shall be feathered into the woods and not left in berms or windrows.

4.1.7 - Road closure (10/11)

All new roads built into the sale must be blocked to vehicle traffic upon completion of the sale. In general, this will require constructing a four (4') foot high berm of stumps and logs covered with earth. These roads must be rendered impassable to cars and trucks. Temporary berms may be required if no sale activity occurs for 30 or more consecutive days. Contact the sale administrator for specific details of design and placement.

4.2 - Maintenance

4.2.1 - Hauling restriction (12/08)

Hauling may be restricted on forest roads by the Unit Manager or his/her representative. The restriction may occur during spring breakup or wet weather conditions.

5 - Operations

5.1 - Notification

5.1.1 - Pre-sale conference (10/16)

A pre-sale conference between the Purchaser and sale administrator is required prior to beginning any operations. The Unit Manager or his/her representative must be contacted at least 5 days in advance to schedule the conference.

5.1.4 - Post-sale conference (10/16)

A post-sale conference on site between the Purchaser and sale administrator is required 3 days prior to the completion of active logging operations to determine clean-up and repair of landings, road edges, and the fulfillment of other contract specifications.

5.2 - Conduct of Operations

5.2.1 - Slash

5.2.1.8 - Slash height (12/08)

No slash or tree tops may exceed 24 inches in height.

5.2.2 - Hazard Trees/Snags

5.2.2.1 - Den trees (10/16)

Obvious hollow and/or den trees shall be protected and left standing unless they are a safety hazard.

5.2.32 - Decking/landing restoration (9/13)

All decking and landing areas must have the surface area restored to a condition equal to or better than before. This is to ensure the proper regeneration of the stand. Wood debris, chips and "cookies" from trimmings must be removed or scattered away from landing and loading areas and may not be windrowed on the edge.

5.4 - Soil Protection

5.4.1 - Rutting restriction, general (7/16)

Operations are to cease immediately if equipment and weather conditions result in rutting of roads and/or skid trails which is 12 inches or greater in depth and 50 feet in length. The Unit Manager or his/her representative may restrict hauling and/or skidding if ruts exceed the specified depth. With the Unit Manager or his/her representative's approval, the Purchaser may return to the area when the risk of rutting has decreased.

5.4.4 - Slope protection (5/15)

Skid trails and roads on slopes shall be water barred with slash, stumps, and/or clean straw bales native to the area as soon as use is complete to prevent erosion.

5.8 - Protection of Endangered Species

5.8.5 - Protection of raptor nests (3/13)

All trees with raptor nests will be protected if found during harvesting operations. Notification will be made to the Unit Manager or his/her representative who will notify the Wildlife Biologist so an on-site evaluation and recommendation can be made, if necessary.



TIMBER SALE MAP

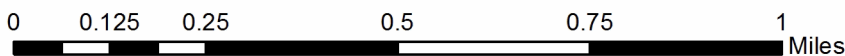
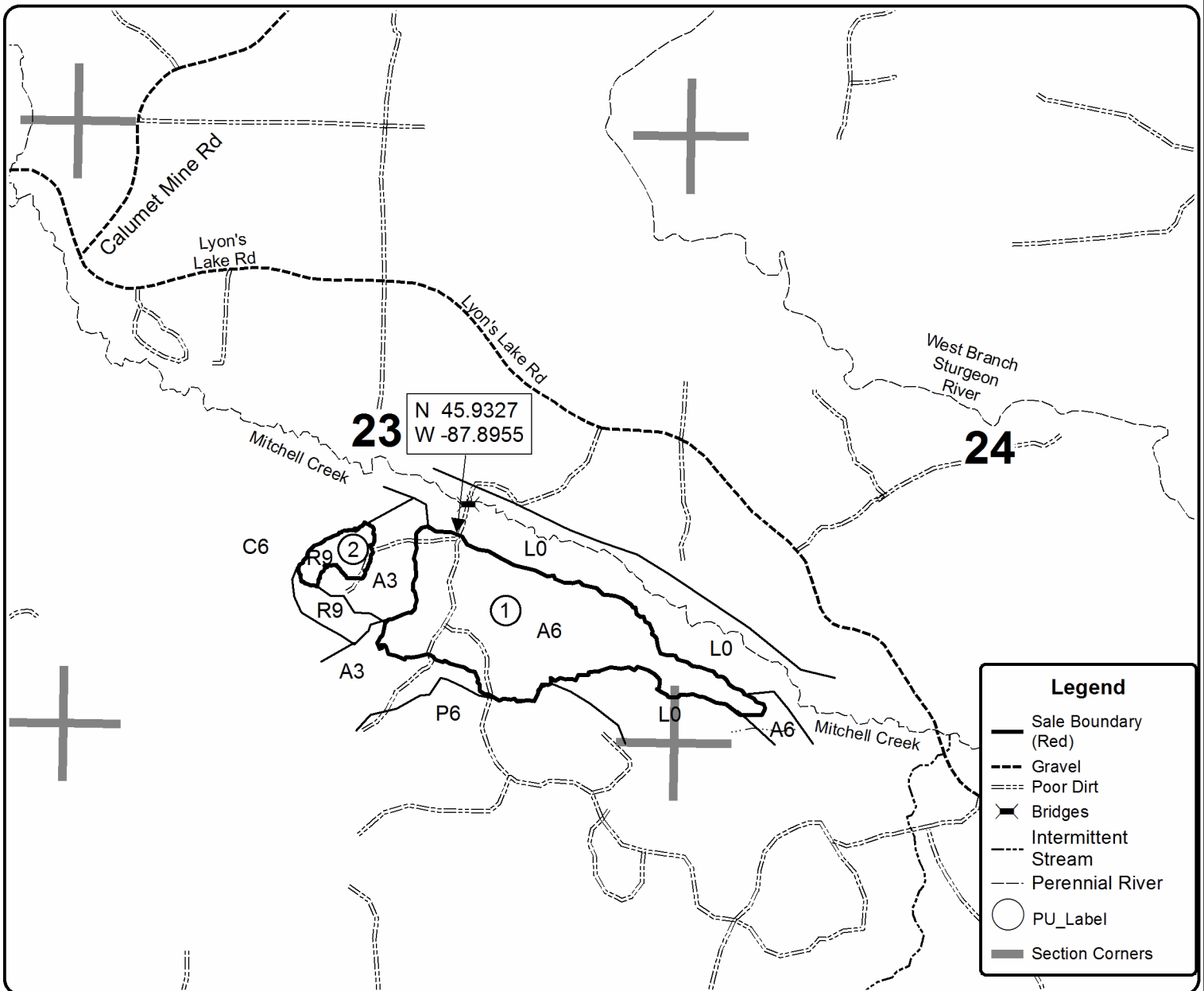
This information provided by authority of Part 525, 1994 PA 451, as amended.

Forest Management Unit Crystal Falls	County Dickinson	Mapped By Matt Modlin	Date 09/20/2017	Page 1	of 1
Township 41N	Range 29W	Section(s) and Subdivision(s) SE1/4, E1/2SW1/4 Sec 23, SWSW Sec 24	Scale 1:15,840		

Cover Type				Density	
A = Aspen	H = Hemlock	N = Marsh	U = Upland Brush	0 = Non Stocked	5 = Pole Timber Medium
B = Paper Birch	J = Jack Pine	O = Oak	UM = Upland Mixed	1 = Seedling Sapling Poor	6 = Pole Timber Well
C = Cedar	L = Lowland Brush	P = Lowland Poplar	V = Bog or Marsh	2 = Seedling Sapling Medium	7 = Saw Timber Poor
D = Tread Bog	LM = Lowland Mixed	Q = Mixed Swamp Conifer	W = White Pine	3 = Seedling Sapling Well	8 = Saw Timber Medium
E = Swamp Hdwoods	M = Mpl, Bch, Brch	R = Red Pine	X = Non Stocked	4 = Pole Timber Poor	9 = Saw Timber Well
F = Spruce Fir	MC = Mixed Conifer	S = Black Spruce	Z = Water		
G = Grass	MD = Mixed Deciduous	T = Tamarack			

PU	Acres
1	51.8
2	4.7

Hazelnut Soup Compartment 79 56.5 Acres



TIMBER SALE INFORMATION

Little Paw (12-032-17)

Dickinson County (Advertised Price \$90,168.40)

SALE NOTE: Operations are limited to snow free conditions within Payment Units 1-6. See spec 5.2.3.1.

Bark slip and oak wilt restrictions are in place. See specs 5.2.3.3 & 5.2.3.4.

A recreation site such as a trail, pathway, or campground is within the sale area or the vicinity. Certain restrictions/specifications may be applicable including time restrictions.

A timber sale contract for this lump sum, sealed bid timber sale will be awarded to the responsible bidder offering the highest sealed bid price. Bids must be at or above the following advertised price for each species:

<u>PRODUCTS & SPECIES</u>	<u>ESTIMATED UNITS*</u>		<u>ADVERTISED PRICE</u>
Sawtimber			
Paper Birch	12.50	MBF	\$ 92.00 / MBF
Red Maple	4.90	MBF	\$ 187.00 / MBF
Red Pine	106.70	MBF	\$ 135.00 / MBF
Sugar Maple	1.60	MBF	\$ 433.00 / MBF
White Pine	4.40	MBF	\$ 69.00 / MBF
Pulpwood			
Balsam Fir	254.00	Cords	\$ 17.80 / Cord
Mixed Hardwood	463.00	Cords	\$ 24.20 / Cord
Quaking Aspen	914.00	Cords	\$ 37.00 / Cord
Red Pine	320.00	Cords	\$ 56.70 / Cord
White Pine	46.00	Cords	\$ 34.35 / Cord
White Spruce	139.00	Cords	\$ 24.70 / Cord

* The total volume is statistically estimated within plus (+) or minus (-) 11.59 percent. The estimated units are final and not subject to adjustment. Prospective bidders are urged to examine this timber and to make their own estimates of quantity and quality.

BOND AND PAYMENT SCHEDULE:

1. A bond in the amount of \$4,508.00 to insure faithful performance of the conditions of the contract will be deposited by the successful bidder within 21 days of the sale award.
2. Cutting in any sale or unit without the required advance payment would be considered a trespass.
3. Total payment must be paid in advance or according to the following schedule:
 - (a) Ten percent (10%) of the sale value must be paid within 21 days of the sale award.
 - (b) The 10% down payment will be credited towards the first unit cut.
 - (c) Payment for each of the following units must be made before cutting begins in that unit:

PAYMENT UNIT NUMBER	PERCENT OF TOTAL SALE VALUE
01	10.5%
02	19.8%
03	3.8%
04	20.1%
05	17.3%
06	28.5%

4. If no cutting takes place, the 10% down payment will not be refunded.
5. Operations on the contract issued will terminate on 06/30/2021.

Description of Timber by Payment Unit (PU)

PU	MARKET GROUP	PRODUCT	QUANTITY	UNIT	ACRES	ADVERTISE PRICE
1	Red Pine	Sawtimber	16.1	MBF	13.6	\$9,505.60
	Balsam Fir	Pulpwood	1.0	Cords		
	Red Pine		129.0	Cords		
2	Red Maple	Sawtimber	1.0	MBF	13.6	\$17,817.50
	Red Pine		16.5	MBF		
	Sugar Maple		1.6	MBF		
	Balsam Fir	Pulpwood	19.0	Cords		
	Mixed Hardwood		54.0	Cords		
	<i>Paper Birch</i>		16.0	<i>Cords</i>		
	<i>Red Maple</i>		32.0	<i>Cords</i>		
	<i>Sugar Maple</i>		1.0	<i>Cords</i>		
	<i>Yellow Birch</i>		5.0	<i>Cords</i>		
	Quaking Aspen		184.0	Cords		
	Red Pine		106.0	Cords		
White Spruce		10.0	Cords			
3	Paper Birch	Sawtimber	2.4	MBF	8.6	\$3,407.00
	Balsam Fir	Pulpwood	14.0	Cords		
	Mixed Hardwood		4.0	Cords		
	<i>Paper Birch</i>		4.0	<i>Cords</i>		
	Quaking Aspen		68.0	Cords		
	White Pine		8.0	Cords		
	White Spruce		2.0	Cords		
4	Paper Birch	Sawtimber	1.6	MBF	21.5	\$18,123.00
	Red Pine		33.3	MBF		
	White Pine		3.3	MBF		
	Balsam Fir	Pulpwood	52.0	Cords		
	Mixed Hardwood		105.0	Cords		
	<i>Paper Birch</i>		34.0	<i>Cords</i>		
	<i>Red Maple</i>		71.0	<i>Cords</i>		
	Quaking Aspen		147.0	Cords		
	Red Pine		43.0	Cords		
	White Pine		34.0	Cords		
White Spruce		30.0	Cords			
5	Paper Birch	Sawtimber	2.0	MBF	21.4	\$15,639.60
	Red Maple		1.0	MBF		
	Red Pine		40.8	MBF		
	White Pine		1.1	MBF		
	Balsam Fir	Pulpwood	51.0	Cords		
	Mixed Hardwood		69.0	Cords		
	<i>Black Cherry</i>		3.0	<i>Cords</i>		
	<i>Paper Birch</i>		25.0	<i>Cords</i>		
	<i>Red Maple</i>		37.0	<i>Cords</i>		
	<i>White Ash</i>		4.0	<i>Cords</i>		
	Quaking Aspen		118.0	Cords		
	Red Pine		42.0	Cords		
	White Pine		4.0	Cords		
White Spruce		9.0	Cords			
6	Paper Birch	Sawtimber	6.5	MBF	44.9	\$25,675.70
	Red Maple		2.9	MBF		
	Balsam Fir	Pulpwood	117.0	Cords		
	Mixed Hardwood		231.0	Cords		
	<i>Black Cherry</i>		4.0	<i>Cords</i>		
	<i>Ironwood</i>		2.0	<i>Cords</i>		
	<i>Paper Birch</i>		163.0	<i>Cords</i>		
	<i>Red Maple</i>		62.0	<i>Cords</i>		
	Quaking Aspen		397.0	Cords		

Description of Timber by Payment Unit (PU), con't

PU	MARKET GROUP	PRODUCT	QUANTITY	UNIT	ACRES	ADVERTISE PRICE
6 con't	White Spruce	Pulpwood	88.0	Cords		
TOTAL:			130.1	MBF		
TOTAL:			2,136.0	Cords		

Sale Specific Conditions & Requirements

Sale Name: Little Paw

Sale Number: 12-032-17 Seq#: 1

1 - Sale Area

1.2 - Boundaries

1.2.1 - Painted boundaries (1/14)

The sale boundary and Payment Unit boundaries are marked and identified by blue and red paint. Exterior sale boundary lines against private property are marked with blue paint. Exterior sale boundary lines against state are marked with red painted chevron marks. Interior Payment Unit boundaries are marked with red paint dots. The painted boundary line trees are not Included Timber and are to be protected. Red dot painted trees designating an interior Payment Unit boundary are only to be cut when all surrounding Payment Units have been paid.

2 - Timber Specifications

2.1 - Included Timber

2.1.1 - Clearcut unit(s) with unmerchantable trees (6/14)

Within Payment Unit(s) 2 and 6, cut all trees that are two (2) inches or more at DBH, along with the following conditions:

Within Payment Unit 1, do not cut pine, oak, cedar, and hemlock.

Within Payment Unit 2, do not cut pine, oak, cedar, and hemlock, spruce, and fir. Spruce and fir that are 6 inches or greater at a 4 inch stump are designated for cutting. In addition, red pine is designated for cutting.

2.1.3 - Cut tree marked unit(s) (12/08)

Within Payment Unit(s) 1, all trees are designated for cutting when marked with orange paint above and below stump height, regardless of merchantability.

2.1.7 - Leave tree marked unit(s) (6/14)

Within Payment Unit(s) 3, 4, and 5, cut all trees that are two (2) inches or more at DBH, except do not cut cedar, hemlock, oak, and trees marked with green paint above and below stump height.

2.1.11 - Description of timber note (2/04)

Note that Mixed Hardwood pulp includes black cherry, ironwood, paper birch, red maple, sugar maple, white ash, and yellow birch.

2.2 - Utilization

2.2.11 - Chipping restriction (9/14)

If chipping occurs on this sale, then no woody debris present on the ground at the start of the sale may be chipped. In addition, brush or chips may not be stored or stockpiled on-site for more than 60 days.

3 - Payments

3.3 - Pre-measured Sales

3.3.4 - Dividing payment units (7/14)

Payment Unit(s) may be divided at the request of the Purchaser and upon approval of the Unit Manager. Dividing Payment Units is a contract modification which requires a Timber Sale Contract Supplement.

4 - Transportation

4.1 - Construction

4.1.3 - Slash and earthen piles (8/04)

Piles or windrows of earth along roads and landings that have been widened or constructed shall be leveled. Slash from road maintenance or construction, including stumps, shall be dispersed throughout the sale, chipped, utilized, or otherwise removed from the sale.

4.1.6 - Road construction (1/09)

Improvements of existing roads shall be done in such a way as to minimize the environmental and visual impacts.

Merchantable trees shall be cut and utilized unless otherwise directed. Non-merchantable trees shall be severed and laid flat on the ground. Slash shall be scattered, and not left in windrows and kept a minimum of 10 feet back from the road edge or otherwise be chipped, utilized or removed from the sale. Stumps shall be set upright, not left on edge, and be moved at least 10 feet away from the road edge. Disturbed soil shall be feathered into the woods and not left in berms or windrows.

4.1.12 - No new roads (1/12)

No new roads will be permitted. All operations are limited to existing roads.

4.2 - Maintenance

4.2.1 - Hauling restriction (12/08)

Hauling may be restricted on forest roads by the Unit Manager or his/her representative. The restriction may occur during spring breakup or wet weather conditions.

5 - Operations

5.1 - Notification

5.1.1 - Pre-sale conference (10/16)

A pre-sale conference between the Purchaser and sale administrator is required prior to beginning any operations to determine landing and road locations. The Unit Manager or his/her representative must be contacted at least 5 days in advance to schedule the conference.

5.1.4 - Post-sale conference (10/16)

A post-sale conference on site between the Purchaser and sale administrator is required 3 days prior to the completion of active logging operations to determine clean-up and repair of landings, road edges, and the fulfillment of other contract specifications.

5.2 - Conduct of Operations

5.2.1 - Slash

5.2.1.8 - Slash height (12/08)

No slash or tree tops may exceed 24 inches in height.

5.2.2 - Hazard Trees/Snags

5.2.2.1 - Den trees (10/16)

Obvious hollow and/or den trees shall be protected and left standing unless they are a safety hazard.

5.2.3 - Operating Restrictions

5.2.3.1 - Operating restrictions (9/11)

Within Payment Unit(s) 1-6, unless changed by written agreement, all operations are limited to snow free conditions. This restriction is because of the Merriman Ski Pathway.

5.2.3.3 - Bark slippage restriction (3/09)

Within Payment Unit(s) 1 and 3-5, unless changed by written agreement, cutting and skidding are not permitted during the period of April 15 to July 15. This restriction is because of bark slippage.

5.2.3.4 - Oak wilt restriction (9/17)

Within Payment Unit(s) 1-6, unless changed by written agreement, cutting, skidding, hauling and brushing of access roads are not permitted during the period of April 15 to July 15. This is necessary to reduce the spread of oak wilt. For more information, contact the Unit Manager or his/her representative.

5.2.32 - Decking/landing restoration (9/13)

All decking and landing areas must have the surface area restored to a condition equal to or better than before. This is to ensure the proper regeneration of the stand. Wood debris, chips and "cookies" from trimmings must be removed or scattered away from landing and loading areas and may not be windrowed on the edge.

5.2.40 - Pathway protection (10/10)

The Merriman Ski Pathway is shown on the Timber Sale Map. Do not cut trees or damage posts with blue pathway markers. Maintain a 20-foot wide slash, debris, and rut free zone daily, using the pathway as the centerline. Do not run equipment down the pathway. Skidding across the trail may only occur at locations approved by the sale administrator.

5.4 - Soil Protection

5.4.1 - Rutting restriction, general (7/16)

Operations are to cease immediately if equipment and weather conditions result in rutting of roads and/or skid trails which is 12 inches or greater in depth and 50 feet in length. The Unit Manager or his/her representative may restrict hauling and/or skidding if ruts exceed the specified depth. With the Unit Manager or his/her representative's approval, the Purchaser may return to the area when the risk of rutting has decreased.

5.8 - Protection of Endangered Species

5.8.5 - Protection of raptor nests (3/13)

All trees with raptor nests will be protected if found during harvesting operations. Notification will be made to the Unit Manager or his/her representative who will notify the Wildlife Biologist so an on-site evaluation and recommendation can be made, if necessary.

7 - Other Conditions

7.5 - Loss

7.5.1 - Deteriorating timber (7/09)

The sale area has received damage from spruce budworm. The Purchaser should harvest the wood as soon as possible. The Department of Natural Resources is held free of responsibility of any further damage or deterioration due to delay in harvesting.



Sale Number	Year
12-032-17-01	2017

TIMBER SALE MAP

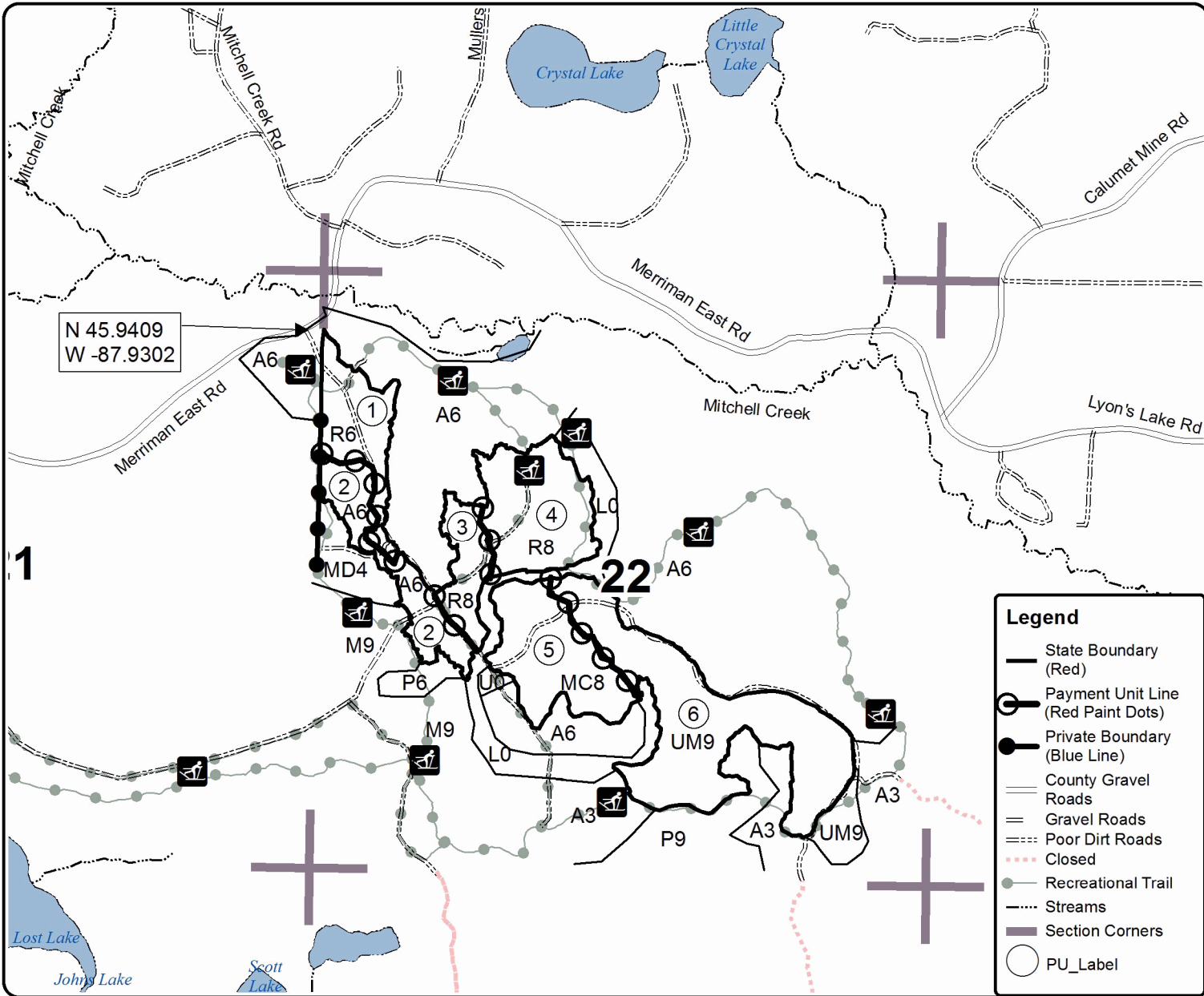
This information provided by authority of Part 525, 1994 PA 451, as amended.

Forest Management Unit Crystal Falls		County Dickinson	Mapped By Matt Modlin	Date 09/22/2017	Page 1	of 1
Township 41N	Range 29W	Section(s) and Subdivision(s) SE1/4, N1/2SW1/4, S1/2NW1/4, NW1/4NW1/4, SESW Sec 22; NENE Sec 21		Scale 1:15,840		

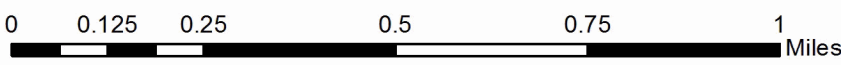
Cover Type				Density			
A = Aspen	H = Hemlock	N = Marsh	U = Upland Brush	0 = Non Stocked	5 = Pole Timber Medium		
B = Paper Birch	J = Jack Pine	O = Oak	UM = Upland Mixed	1 = Seedling Sapling Poor	6 = Pole Timber Well		
C = Cedar	L = Lowland Brush	P = Lowland Poplar	V = Bog or Marsh	2 = Seedling Sapling Medium	7 = Saw Timber Poor		
D = Treed Bog	LM = Lowland Mixed	Q = Mixed Swamp Conifer	W = White Pine	3 = Seedling Sapling Well	8 = Saw Timber Medium		
E = Swamp Hdwoods	M = Mpl, Bch, Brch	R = Red Pine	X = Non Stocked	4 = Pole Timber Poor	9 = Saw Timber Well		
F = Spruce Fir	MC = Mixed Conifer	S = Black Spruce	Z = Water				
G = Grass	MD = Mixed Deciduous	T = Tamarack					

PU	Acres	PU	Acres
1	13.6	4	21.5
2	13.6	5	21.4
3	8.6	6	44.9

Little Paw Compartment 79 123.6 Acres



Legend	
	State Boundary (Red)
	Payment Unit Line (Red Paint Dots)
	Private Boundary (Blue Line)
	County Gravel Roads
	Gravel Roads
	Poor Dirt Roads
	Closed
	Recreational Trail
	Streams
	Section Corners
	PU_Label



TIMBER SALE INFORMATION

Birch Bark (12-013-16)

Dickinson County (Advertised Price \$64,702.95)

SALE NOTE: The best access route to the sale is through private land from the south. It is the responsibility of the Purchaser to obtain permission for access across private property. See spec 4.4.1.

If the Purchaser would like to access this sale through state land from the north, a temporary bridge must be installed over Harding Creek. It is the responsibility of the Purchaser to obtain DEQ permits. See specs 4.1.1 & 4.1.11.

No harvesting operations will be permitted from April 15 to July 15 due to bark slip and oak wilt restrictions. See specs 5.2.3.3 and 5.2.3.4.

It is recommended to limit operations in Payment Units 6-8 to dry summer or frozen winter conditions due to wet soils. See spec 5.2.22.1.

Access may be through private land.

A timber sale contract for this lump sum, sealed bid timber sale will be awarded to the responsible bidder offering the highest sealed bid price. Bids must be at or above the following advertised price for each species:

<u>PRODUCTS & SPECIES</u>	<u>ESTIMATED UNITS*</u>	<u>ADVERTISED PRICE</u>
Sawtimber		
Paper Birch	1.40 MBF	\$ 92.00 / MBF
Red Maple	5.10 MBF	\$ 187.00 / MBF
Red Pine	37.70 MBF	\$ 135.00 / MBF
Sugar Maple	0.90 MBF	\$ 433.00 / MBF
White Pine	12.30 MBF	\$ 69.00 / MBF
Pulpwood		
Balsam Fir	24.00 Cords	\$ 17.80 / Cord
Jack Pine	7.00 Cords	\$ 42.25 / Cord
Mixed Aspen	1,012.00 Cords	\$ 37.00 / Cord
Mixed Hardwood	487.00 Cords	\$ 24.20 / Cord
Red Pine	84.00 Cords	\$ 56.70 / Cord
White Pine	70.00 Cords	\$ 34.35 / Cord
White Spruce	7.00 Cords	\$ 24.70 / Cord

* The total volume is statistically estimated within plus (+) or minus (-) 14.93 percent. The estimated units are final and not subject to adjustment. Prospective bidders are urged to examine this timber and to make their own estimates of quantity and quality.

BOND AND PAYMENT SCHEDULE:

1. A bond in the amount of \$3,235.00 to insure faithful performance of the conditions of the contract will be deposited by the successful bidder within 21 days of the sale award.
2. Cutting in any sale or unit without the required advance payment would be considered a trespass.
3. Total payment must be paid in advance or according to the following schedule:
 - (a) Ten percent (10%) of the sale value must be paid within 21 days of the sale award.
 - (b) The 10% down payment will be credited towards the first unit cut.
 - (c) Payment for each of the following units must be made before cutting begins in that unit:

PAYMENT UNIT NUMBER	PERCENT OF TOTAL SALE VALUE
01	8.4%
02	10.9%
03	20.7%
04	16.3%
05	4.5%
06	13.9%
07	8.5%
08	16.8%

4. If no cutting takes place, the 10% down payment will not be refunded.
5. Operations on the contract issued will terminate on 06/30/2021.

Description of Timber by Payment Unit (PU)

PU	MARKET GROUP	PRODUCT	QUANTITY	UNIT	ACRES	ADVERTISE PRICE
1	Red Pine	Sawtimber	18.8	MBF	7.6	\$5,457.85
	Jack Pine	Pulpwood	7.0	Cords		
	Mixed Hardwood		3.0	Cords		
	<i>Red Maple</i>		3.0	<i>Cords</i>		
	Red Pine		45.0	Cords		
2	Red Maple	Sawtimber	1.6	MBF	27.8	\$7,042.45
	Sugar Maple		0.9	MBF		
	White Pine		0.8	MBF		
	Balsam Fir	Pulpwood	22.0	Cords		
	Mixed Aspen		92.0	Cords		
	<i>Quaking Aspen</i>		92.0	<i>Cords</i>		
	Mixed Hardwood		102.0	Cords		
	<i>Ironwood</i>		2.0	<i>Cords</i>		
	<i>Paper Birch</i>		6.0	<i>Cords</i>		
	<i>Red Maple</i>		76.0	<i>Cords</i>		
	<i>Sugar Maple</i>		18.0	<i>Cords</i>		
	White Pine		1.0	Cords		
3	Red Maple	Sawtimber	3.5	MBF	37.4	\$13,420.95
	Red Pine		18.9	MBF		
	White Pine		11.5	MBF		
	Mixed Hardwood	Pulpwood	200.0	Cords		
	<i>Red Maple</i>		166.0	<i>Cords</i>		
	<i>Sugar Maple</i>		34.0	<i>Cords</i>		
	Red Pine		39.0	Cords		
	White Pine		69.0	Cords		
4	Mixed Aspen	Pulpwood	262.0	Cords	8.5	\$10,516.80
	<i>B. T. Aspen</i>		262.0	<i>Cords</i>		
	Mixed Hardwood		34.0	Cords		
	<i>Red Maple</i>		34.0	<i>Cords</i>		
5	Paper Birch	Sawtimber	1.4	MBF	5.7	\$2,893.80
	Mixed Aspen	Pulpwood	42.0	Cords		
	<i>B. T. Aspen</i>		2.0	<i>Cords</i>		
	<i>Quaking Aspen</i>		40.0	<i>Cords</i>		
	Mixed Hardwood		48.0	Cords		
	<i>Paper Birch</i>		48.0	<i>Cords</i>		
	White Spruce		2.0	Cords		
6	Balsam Fir	Pulpwood	2.0	Cords	18.2	\$8,999.30
	Mixed Aspen		235.0	Cords		
	<i>Balsam Poplar</i>		8.0	<i>Cords</i>		
	<i>Quaking Aspen</i>		227.0	<i>Cords</i>		
	Mixed Hardwood		6.0	Cords		
	<i>Black Ash</i>		6.0	<i>Cords</i>		
	White Spruce		5.0	Cords		
7	Mixed Aspen	Pulpwood	124.0	Cords	5.0	\$5,531.80
	<i>B. T. Aspen</i>		108.0	<i>Cords</i>		
	<i>Quaking Aspen</i>		16.0	<i>Cords</i>		
	Mixed Hardwood		39.0	Cords		
	<i>Red Maple</i>		39.0	<i>Cords</i>		
8	Mixed Aspen	Pulpwood	257.0	Cords	12.9	\$10,840.00
	<i>B. T. Aspen</i>		47.0	<i>Cords</i>		
	<i>Balsam Poplar</i>		7.0	<i>Cords</i>		
	<i>Quaking Aspen</i>		203.0	<i>Cords</i>		
	Mixed Hardwood		55.0	Cords		
	<i>Black Ash</i>		3.0	<i>Cords</i>		
	<i>Paper Birch</i>		3.0	<i>Cords</i>		

Description of Timber by Payment Unit (PU), con't

PU	MARKET GROUP	PRODUCT	QUANTITY	UNIT	ACRES	ADVERTISE PRICE
8 con't	<i>Red Maple</i>	<i>Pulpwood</i>	38.0	<i>Cords</i>		
	<i>Sugar Maple</i>		11.0	<i>Cords</i>		
TOTAL:			57.4	MBF		
TOTAL:			1,691.0	Cords		

Sale Specific Conditions & Requirements

Sale Name: Birch Bark

Sale Number: 12-013-16 Seq#: 2

1 - Sale Area

1.2 - Boundaries

1.2.1 - Painted boundaries (1/14)

The sale boundary and Payment Unit boundaries are marked and identified by blue, red and yellow paint. Exterior sale boundary lines against private property are marked with blue paint. Exterior sale boundary lines against state are marked with red paint. Interior Payment Unit boundaries are marked with yellow paint on both sides of the trees. The painted boundary line trees are not Included Timber and are to be protected. Yellow painted trees designating an interior Payment Unit boundary are only to be cut when all surrounding Payment Units have been paid.

2 - Timber Specifications

2.1 - Included Timber

2.1.1 - Clearcut unit(s) with unmerchantable trees (6/14)

Within Payment Unit(s) 4 and 6-8, cut all trees that are two (2) inches or more at DBH, except hemlock, cedar, elm, cherry, oak, red pine, white pine, and the following:

- Within Payment Units 7 and 8, do not cut spruce and balsam that are less than 6 inches in diameter at a 4 inch stump.
- Within Payment Unit 4, do not cut spruce and balsam that are less than 10 inches in diameter at a 4 inch stump.

2.1.3 - Cut tree marked unit(s) (12/08)

Within Payment Unit(s) 1-3, all trees are designated for cutting when marked with orange paint above and below stump height, regardless of merchantability. In addition, within Payment Units 1 and 3, cut all red maple. Also, within Payment Unit 2, cut all red maple and aspen.

2.1.4 - Designated timber unit(s) (6/17)

Within Payment Unit(s) 5, all aspen and birch trees are designated for cutting which meet minimum piece specifications in 2.2 - Utilization. In addition, cut all spruce and balsam 10 inches or greater at a 4 inch stump.

2.1.11 - Description of timber note (2/04)

Note that Mixed Aspen pulp includes quaking aspen, big tooth aspen, and balsam poplar. Mixed Hardwood pulp includes paper birch, sugar maple, red maple, black ash, and ironwood.

2.2 - Utilization

2.2.11 - Chipping restriction (9/14)

If chipping occurs on this sale, then no woody debris present on the ground at the start of the sale may be chipped. In addition, brush or chips may not be stored or stockpiled on-site for more than 60 days.

3 - Payments

3.3 - Pre-measured Sales

3.3.4 - Dividing payment units (7/14)

Payment Unit(s) 2 and 3 may be divided at the request of the Purchaser and upon approval of the Unit Manager. Dividing Payment Units is a contract modification which requires a Timber Sale Contract Supplement. There will be only one division per Payment Unit.

4 - Transportation

4.1 - Construction

4.1.1 - Stream crossings, general (3/11)

All stream crossing structures will be temporary and therefore, shall be provided by the Purchaser, and must be removed upon completion of the sale. All permits for stream crossings will be provided by the Purchaser. This pertains to the potential

crossing of Harding Creek in T40N R30W Sec 3.

4.1.3 - Slash and earthen piles (8/04)

Piles or windrows of earth along roads and landings that have been widened or constructed shall be leveled. Slash from road maintenance or construction, including stumps, shall be dispersed throughout the sale, chipped, utilized or otherwise removed from the sale.

4.1.4 - Timber removed for construction (12/09)

Trees cut or damaged in the process of pre-approved road, landing or skid trail construction will be decked in an area separate from other Designated Timber and not removed until measured by the sale administrator. Payment will be made at the specified Purchase Unit Price.

4.1.6 - Road construction (1/09)

Construction of new roads or improvements of existing roads shall be done in such a way as to minimize the environmental and visual impacts. Merchantable trees shall be cut and utilized unless otherwise directed. Non-merchantable trees shall be severed and laid flat on the ground. Slash shall be scattered, and not left in windrows and kept a minimum of 10 feet back from the road edge. Stumps shall be set upright, not left on edge, and be moved at least 10 feet away from the road edge. Disturbed soil shall be feathered into the woods and not left in berms or windrows.

4.1.7 - Road closure (10/11)

All new roads built into the sale must be blocked to vehicle traffic upon completion of the sale. In general, this will require constructing a four (4') foot high berm of stumps and logs covered with earth.

4.1.11 - Permits (2/12)

The Purchaser will secure any necessary stream crossing permits that may be required. This pertains to accessing Payment Units 1-3 from the north, through State land that crosses Harding Creek in T40N R30W, Section 3.

4.2 - Maintenance

4.2.1 - Hauling restriction (12/08)

Hauling may be restricted on forest roads by the Unit Manager or his/her representative. The restriction may occur during spring breakup, or wet weather conditions.

4.4 - Access

4.4.1 - Private property access (3/11)

Permission for access across private land is the responsibility of the Purchaser.

5 - Operations

5.1 - Notification

5.1.4 - Post-sale conference (10/16)

A post-sale conference on site between the Purchaser and sale administrator is required 3 days prior to the completion of active logging operations to determine clean-up and repair of landings, road edges, and the fulfillment of other contract specifications.

5.2 - Conduct of Operations

5.2.1 - Slash

5.2.1.8 - Slash height (12/08)

No slash or tree tops may exceed 24 inches in height.

5.2.1.13 - Dispose of slash as directed (12/05)

Slash is to be disposed of as directed by the Sale Administrator.

5.2.2 - Hazard Trees/Snags

5.2.2.1 - Den trees (2/04)

Obvious hollow and/or den trees shall be protected and left standing unless they are a safety hazard.

5.2.3 - Operating Restrictions

5.2.3.3 - Bark slippage restriction (3/09)

Within Payment Unit(s) 1-3, unless changed by written agreement, cutting and skidding are not permitted during the period of April 15 to July 15. This restriction is because of bark slippage.

5.2.3.4 - Oak wilt restriction (4/17)

Within Payment Unit(s) 1-5, unless changed by written agreement, cutting, skidding, and hauling are not permitted during the period of April 15 to July 15. This is necessary to reduce the spread of oak wilt. For more information, contact the Unit Manager or his/her representative.

5.2.22 - Operating Caution

5.2.22.1 - Operating caution (6/11)

It is recommended, but not required, that within Payment Unit(s) 6, 7, and 8, cutting, skidding, and hauling occur during dry summer or frozen winter conditions. The reason for the recommendation is because there are seeps at the bottom of the hill in Payment Units 7 and 8, and a low area on the East side of Payment Unit 6.

5.2.32 - Decking/landing restoration (9/13)

All decking and landing areas must have the surface area restored to a condition equal to or better than before. This is to ensure the proper regeneration of the stand. Wood debris, chips and "cookies" from trimmings must be removed or scattered away from landing and loading areas and may not be windrowed on the edge.

5.4 - Soil Protection

5.4.1 - Rutting restriction, general (7/16)

Operations are to cease immediately if equipment and weather conditions result in rutting of roads and/or skid trails which is 12 inches or greater in depth and 50 feet in length. The Unit Manager or his/her representative may restrict hauling and/or skidding if ruts exceed the specified depth. With the Unit Manager or his/her representative's approval, the Purchaser may return to the area when the risk of rutting has decreased.

5.4.4 - Slope protection (5/15)

Skid trails and roads on slopes shall be water barred with slash, stumps, and/or clean straw bales native to the area as soon as use is complete to prevent erosion.

5.8 - Protection of Endangered Species

5.8.5 - Protection of raptor nests (3/13)

All trees with raptor nests will be protected if found during harvesting operations. Notification will be made to the Unit Manager or his/her representative who will notify the Wildlife Biologist so an on-site evaluation and recommendation can be made, if necessary.



TIMBER SALE MAP

This information provided by authority of Part 525, 1994 PA 451, as amended.

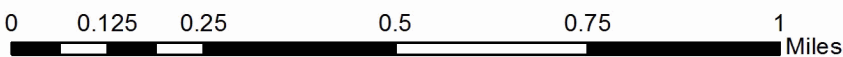
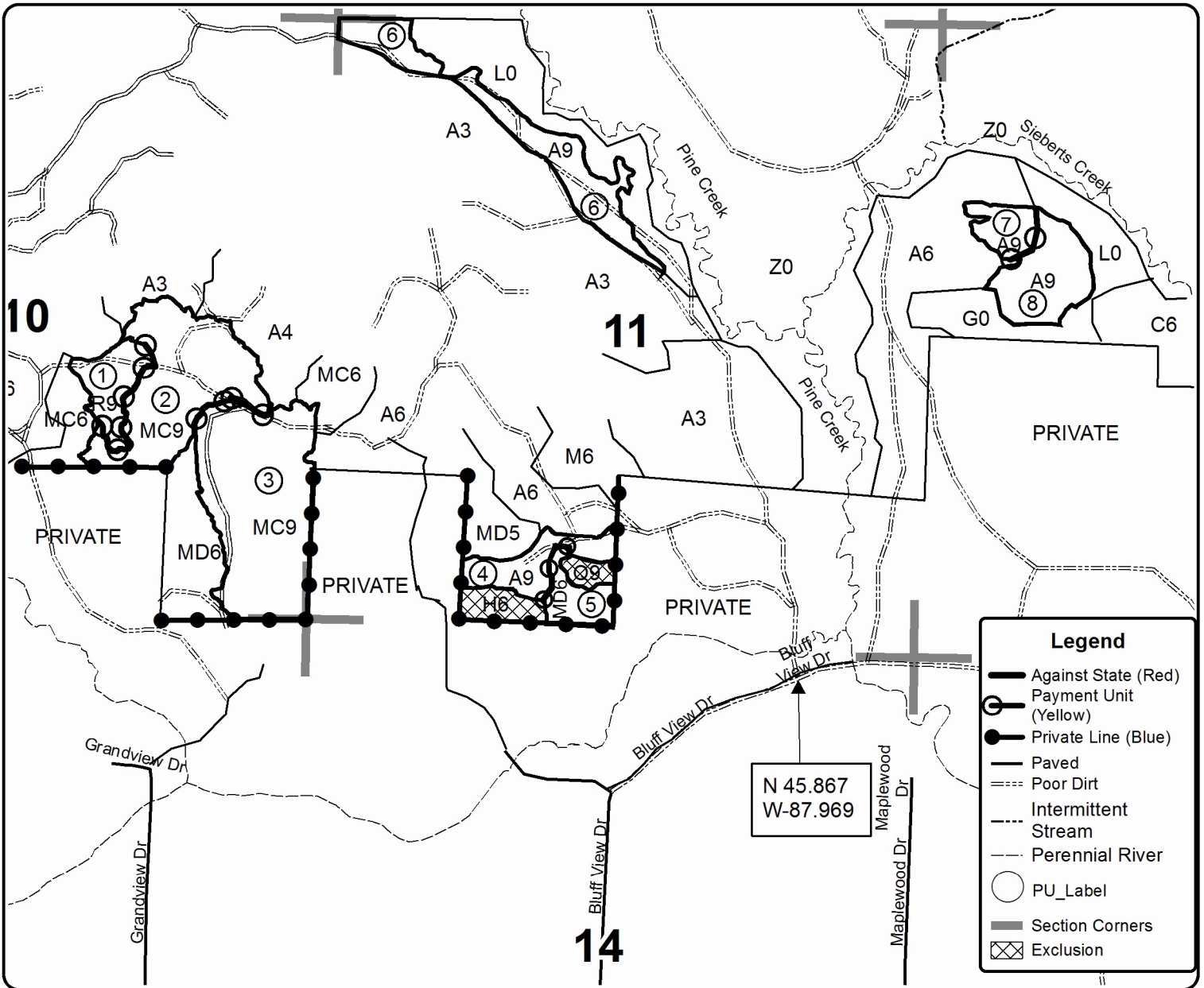
Sale Number	Year
12-013-16-01	2016

Forest Management Unit Crystal Falls	County Dickinson	Mapped By Matt Modlin	Date 09/20/2017	Page 1	of 1
Township 40N	Range 30W	Section(s) and Subdivision(s) S1/2 NE, N1/2SE, SESE Sec 10; N1/2NW, SENW, SESW, SWNE, NWSW Sec 11; S1/2NW Sec 12	Scale 1:15,840		

Cover Type				Density	
A = Aspen	H = Hemlock	N = Marsh	U = Upland Brush	0 = Non Stocked	5 = Pole Timber Medium
B = Paper Birch	J = Jack Pine	O = Oak	UM = Upland Mixed	1 = Seedling Sapling Poor	6 = Pole Timber Well
C = Cedar	L = Lowland Brush	P = Lowland Poplar	V = Bog or Marsh	2 = Seedling Sapling Medium	7 = Saw Timber Poor
D = Tread Bog	LM = Lowland Mixed	Q = Mixed Swamp Conifer	W = White Pine	3 = Seedling Sapling Well	8 = Saw Timber Medium
E = Swamp Hdwoods	M = Mpl, Bch, Brch	R = Red Pine	X = Non Stocked	4 = Pole Timber Poor	9 = Saw Timber Well
F = Spruce Fir	MC = Mixed Conifer	S = Black Spruce	Z = Water		
G = Grass	MD = Mixed Deciduous	T = Tamarack			

PU	Acres	PU	Acres	PU	Acres
1	7.6	4	8.5	7	5.0
2	27.8	5	5.7	8	12.9
3	37.4	6	18.2		

Birch Bark
Compartment 102 & 103
123.1 Acres



Red Tag Salvage SBW (12-011-17)
; Dickinson COUNTY

In response to the notice of sale to be held 8:30 a.m. (local time) on June 6, 2018, I am hereby submitting my sealed bid (firm offer) for the following forest products to be cut. Bids for individual species must be at or above the advertised price. All non-responsive bid forms may be rejected.

<u>PRODUCTS & SPECIES</u>	<u>ESTIMATED VOLUME*</u>	<u>ADVERTISED PRICE</u>	<u>BID PRICE/UNIT</u>
Pulpwood			
Balsam Fir	75.00 Cords	\$ 11.90/Cord	\$ _____
Black Spruce	250.00 Cords	\$ 16.45/Cord	\$ _____
Mixed Aspen	185.00 Cords	\$ 24.65/Cord	\$ _____
Mixed Hardwood	42.00 Cords	\$ 16.15/Cord	\$ _____
Red Pine	39.00 Cords	\$ 37.80/Cord	\$ _____
Tamarack	1,147.00 Cords	\$ 8.15/Cord	\$ _____
White Spruce	174.00 Cords	\$ 16.45/Cord	\$ _____

*The volumes are statistically estimated within plus (+) or minus (-) 12.76 percent. These estimated volumes are final and not subject to adjustment. Prospective bidders are urged to examine this timber and to make their own estimates of quantity and quality.

I understand that any or all bids may be rejected. All bids must be signed and all bid items must be bid or the bid form may be rejected. I also understand that consideration and awarding a contract will be based upon my past performance and ability to complete the contract based upon equipment and staffing subject to my control.

FEDERAL ID: ____ - ____ - ____ or SOCIAL SECURITY NUMBER: ____ - ____ - ____

Company or individual bidding: _____

Company representative's name: _____

Address: _____

City: _____ State: _____ Zip: _____

IF AVAILABLE, PLEASE PLACE THE PERSONALIZED LABEL FROM YOUR PROSPECTUS IN THE ABOVE BOX.

Individual or company representative's signature: _____ Date: _____

Phone number : _____ Email (optional): _____

THE WINNING BIDDER MUST COMPLETE THE VERIFICATION OF WORKER'S DISABILITY COMPENSATION ACT COMPLIANCE (ON REVERSE SIDE IF DOUBLE SIDED) WITHIN 21 DAYS OF SALE AWARD DATE

Mondo Sawdodger SBW (12-013-17)
; Dickinson COUNTY

In response to the notice of sale to be held 8:30 a.m. (local time) on June 6, 2018, I am hereby submitting my sealed bid (firm offer) for the following forest products to be cut. Bids for individual species must be at or above the advertised price. All non-responsive bid forms may be rejected.

<u>PRODUCTS & SPECIES</u>	<u>ESTIMATED VOLUME*</u>	<u>ADVERTISED PRICE</u>	<u>BID PRICE/UNIT</u>
Sawtimber			
Basswood	7.90 MBF	\$ 233.00/MBF	\$ _____
Paper Birch	6.30 MBF	\$ 92.00/MBF	\$ _____
Red Maple	4.90 MBF	\$ 187.00/MBF	\$ _____
Sugar Maple	5.30 MBF	\$ 433.00/MBF	\$ _____
Pulpwood			
Balsam Fir	549.00 Cords	\$ 17.80/Cord	\$ _____
Basswood	62.00 Cords	\$ 11.55/Cord	\$ _____
Mixed Aspen	862.00 Cords	\$ 37.00/Cord	\$ _____
Mixed Hardwood	1,906.00 Cords	\$ 24.20/Cord	\$ _____
Mixed Spruce	1,530.00 Cords	\$ 24.70/Cord	\$ _____
Tamarack	176.00 Cords	\$ 12.25/Cord	\$ _____

*The volumes are statistically estimated within plus (+) or minus (-) 7.80 percent. These estimated volumes are final and not subject to adjustment. Prospective bidders are urged to examine this timber and to make their own estimates of quantity and quality.

I understand that any or all bids may be rejected. All bids must be signed and all bid items must be bid or the bid form may be rejected. I also understand that consideration and awarding a contract will be based upon my past performance and ability to complete the contract based upon equipment and staffing subject to my control.

FEDERAL ID: _____ or SOCIAL SECURITY NUMBER: _____

Company or individual bidding: _____

Company representative's name: _____

Address: _____

City: _____ State: _____ Zip: _____

IF AVAILABLE, PLEASE PLACE THE PERSONALIZED LABEL FROM YOUR PROSPECTUS IN THE ABOVE BOX.

Individual or company representative's signature: _____ Date: _____

Phone number : _____ Email (optional): _____

THE WINNING BIDDER MUST COMPLETE THE VERIFICATION OF WORKER'S DISABILITY COMPENSATION ACT COMPLIANCE (ON REVERSE SIDE IF DOUBLE SIDED) WITHIN 21 DAYS OF SALE AWARD DATE



FOR DEPARTMENT USE ONLY	
Sale Number (XX - XXX - XX - XX)	
Forest Management Unit:	

TIMBER SALE VERIFICATION OF WORKER'S DISABILITY COMPENSATION ACT COMPLIANCE

As required by Act 317, P.A. 1969 (Worker's Compensation) and
Part 5 of Act 451 of 1994, as amended.

VERIFICATION OF WORKER'S DISABILITY COMPENSATION ACT COMPLIANCE

- This verification must be completed and submitted within 21 days of contract award and prior to the issuance of the timber sale contract.
- In addition, if boxes 2B or 2C are checked, then Notice of Exclusion or Certificate of Insurance must be submitted within twenty-one (21) days of the contract award and prior to the issuance of the timber sale contract.
- All information must be typed or printed except for written signatures.

Please Check Appropriate Categories:

1. My business is organized as (you **must** check one of the boxes below):
 - A. Sole Proprietorship (individual)
 - B. Partnership
 - C. Corporation
2. You **must** check one of the boxes below:
 - A. I certify my business is a sole proprietorship and it has no employees but the sole proprietor. I am not subject to the Worker's Compensation Laws.
 - B. I certify my business has satisfied its obligation to the Worker's Compensation Act through the use of an approved Notice of Exclusion (BWC-337, Rev. 5/96). I will provide a copy of the Notice of Exclusion within 21 days of the contract award. (For questions or a copy of the BWC-337, please call the Worker's Compensation Bureau at 517-322-1195).
 - C. I certify my business has a Worker's Compensation Policy. I will provide an original Certificate of Insurance within twenty-one (21) days of the contract award.
3. If you have checked item 2(A) or 2(B), you **must** indicate the number of **both** full-time and part-time employees, other than yourself, including family members and active partners (if none, you must enter "0").

_____ Full-time Employees

_____ Part-time Employees

Name of Business		Federal ID (or) Social Security No.	
Address		Telephone ()	
City	State	ZIP	

I hereby certify that the above information is true and correct. I agree to notify the Michigan DNR of any changes that occur in factors affecting my coverage during any of my present and future operations.

Signature of Owner or Authorized Representative

Title

Date

Please complete the "SEALED BID" information on the next page

Birch Bark (12-013-16)
; Dickinson COUNTY

In response to the notice of sale to be held 8:30 a.m. (local time) on June 6, 2018, I am hereby submitting my sealed bid (firm offer) for the following forest products to be cut. Bids for individual species must be at or above the advertised price. All non-responsive bid forms may be rejected.

<u>PRODUCTS & SPECIES</u>	<u>ESTIMATED VOLUME*</u>	<u>ADVERTISED PRICE</u>	<u>BID PRICE/UNIT</u>
Sawtimber			
Paper Birch	1.40 MBF	\$ 92.00/MBF	\$ _____
Red Maple	5.10 MBF	\$ 187.00/MBF	\$ _____
Red Pine	37.70 MBF	\$ 135.00/MBF	\$ _____
Sugar Maple	0.90 MBF	\$ 433.00/MBF	\$ _____
White Pine	12.30 MBF	\$ 69.00/MBF	\$ _____
Pulpwood			
Balsam Fir	24.00 Cords	\$ 17.80/Cord	\$ _____
Jack Pine	7.00 Cords	\$ 42.25/Cord	\$ _____
Mixed Aspen	1,012.00 Cords	\$ 37.00/Cord	\$ _____
Mixed Hardwood	487.00 Cords	\$ 24.20/Cord	\$ _____
Red Pine	84.00 Cords	\$ 56.70/Cord	\$ _____
White Pine	70.00 Cords	\$ 34.35/Cord	\$ _____
White Spruce	7.00 Cords	\$ 24.70/Cord	\$ _____

*The volumes are statistically estimated within plus (+) or minus (-) 14.93 percent. These estimated volumes are final and not subject to adjustment. Prospective bidders are urged to examine this timber and to make their own estimates of quantity and quality.

I understand that any or all bids may be rejected. All bids must be signed and all bid items must be bid or the bid form may be rejected. I also understand that consideration and awarding a contract will be based upon my past performance and ability to complete the contract based upon equipment and staffing subject to my control.

FEDERAL ID: _____ - _____ or SOCIAL SECURITY NUMBER: _____ - _____ - _____

Company or individual bidding: _____

Company representative's name: _____

Address: _____

City: _____ State: _____ Zip: _____

IF AVAILABLE, PLEASE PLACE THE PERSONALIZED LABEL FROM YOUR PROSPECTUS IN THE ABOVE BOX.

Individual or company representative's signature: _____ Date: _____

Phone number : _____ Email (optional): _____

THE WINNING BIDDER MUST COMPLETE THE VERIFICATION OF WORKER'S DISABILITY COMPENSATION ACT COMPLIANCE (ON REVERSE SIDE IF DOUBLE SIDED) WITHIN 21 DAYS OF SALE AWARD DATE



FOR DEPARTMENT USE ONLY	
Sale Number (XX - XXX - XX - XX)	
Forest Management Unit:	

TIMBER SALE VERIFICATION OF WORKER'S DISABILITY COMPENSATION ACT COMPLIANCE

As required by Act 317, P.A. 1969 (Worker's Compensation) and
Part 5 of Act 451 of 1994, as amended.

VERIFICATION OF WORKER'S DISABILITY COMPENSATION ACT COMPLIANCE

- This verification must be completed and submitted within 21 days of contract award and prior to the issuance of the timber sale contract.
- In addition, if boxes 2B or 2C are checked, then Notice of Exclusion or Certificate of Insurance must be submitted within twenty-one (21) days of the contract award and prior to the issuance of the timber sale contract.
- All information must be typed or printed except for written signatures.

Please Check Appropriate Categories:

1. My business is organized as (you **must** check one of the boxes below):
 - A. Sole Proprietorship (individual)
 - B. Partnership
 - C. Corporation
2. You **must** check one of the boxes below:
 - A. I certify my business is a sole proprietorship and it has no employees but the sole proprietor. I am not subject to the Worker's Compensation Laws.
 - B. I certify my business has satisfied its obligation to the Worker's Compensation Act through the use of an approved Notice of Exclusion (BWC-337, Rev. 5/96). I will provide a copy of the Notice of Exclusion within 21 days of the contract award. (For questions or a copy of the BWC-337, please call the Worker's Compensation Bureau at 517-322-1195).
 - C. I certify my business has a Worker's Compensation Policy. I will provide an original Certificate of Insurance within twenty-one (21) days of the contract award.
3. If you have checked item 2(A) or 2(B), you **must** indicate the number of **both** full-time and part-time employees, other than yourself, including family members and active partners (if none, you must enter "0").

_____ Full-time Employees

_____ Part-time Employees

Name of Business		Federal ID (or) Social Security No.	
Address		Telephone ()	
City	State	ZIP	

I hereby certify that the above information is true and correct. I agree to notify the Michigan DNR of any changes that occur in factors affecting my coverage during any of my present and future operations.

Signature of Owner or Authorized Representative

Title

Date

Please complete the "SEALED BID" information on the next page

Hazelnut Soup (12-030-17)
; Dickinson COUNTY

In response to the notice of sale to be held 8:30 a.m. (local time) on June 6, 2018, I am hereby submitting my sealed bid (firm offer) for the following forest products to be cut. Bids for individual species must be at or above the advertised price. All non-responsive bid forms may be rejected.

<u>PRODUCTS & SPECIES</u>	<u>ESTIMATED VOLUME*</u>	<u>ADVERTISED PRICE</u>	<u>BID PRICE/UNIT</u>
Sawtimber			
Red Pine	10.80 MBF	\$ 135.00/MBF	\$ _____
Pulpwood			
Balsam Fir	10.00 Cords	\$ 17.80/Cord	\$ _____
Mixed Hardwood	117.00 Cords	\$ 24.20/Cord	\$ _____
Quaking Aspen	863.00 Cords	\$ 37.00/Cord	\$ _____
Red Pine	6.00 Cords	\$ 56.70/Cord	\$ _____
White Spruce	17.00 Cords	\$ 24.70/Cord	\$ _____

*The volumes are statistically estimated within plus (+) or minus (-) 15.25 percent. These estimated volumes are final and not subject to adjustment. Prospective bidders are urged to examine this timber and to make their own estimates of quantity and quality.

I understand that any or all bids may be rejected. All bids must be signed and all bid items must be bid or the bid form may be rejected. I also understand that consideration and awarding a contract will be based upon my past performance and ability to complete the contract based upon equipment and staffing subject to my control.

FEDERAL ID: ____ - ____ - ____ or SOCIAL SECURITY NUMBER: ____ - ____ - ____

Company or individual bidding: _____

Company representative's name: _____

Address: _____

City: _____ State: _____ Zip: _____

IF AVAILABLE, PLEASE PLACE THE PERSONALIZED LABEL FROM YOUR PROSPECTUS IN THE ABOVE BOX.

Individual or company representative's signature: _____ Date: _____

Phone number : _____ Email (optional): _____

THE WINNING BIDDER MUST COMPLETE THE VERIFICATION OF WORKER'S DISABILITY COMPENSATION ACT COMPLIANCE (ON REVERSE SIDE IF DOUBLE SIDED) WITHIN 21 DAYS OF SALE AWARD DATE

Little Paw (12-032-17)
; Dickinson COUNTY

In response to the notice of sale to be held 8:30 a.m. (local time) on June 6, 2018, I am hereby submitting my sealed bid (firm offer) for the following forest products to be cut. Bids for individual species must be at or above the advertised price. All non-responsive bid forms may be rejected.

<u>PRODUCTS & SPECIES</u>	<u>ESTIMATED VOLUME*</u>	<u>ADVERTISED PRICE</u>	<u>BID PRICE/UNIT</u>
Sawtimber			
Paper Birch	12.50 MBF	\$ 92.00/MBF	\$ _____
Red Maple	4.90 MBF	\$ 187.00/MBF	\$ _____
Red Pine	106.70 MBF	\$ 135.00/MBF	\$ _____
Sugar Maple	1.60 MBF	\$ 433.00/MBF	\$ _____
White Pine	4.40 MBF	\$ 69.00/MBF	\$ _____
Pulpwood			
Balsam Fir	254.00 Cords	\$ 17.80/Cord	\$ _____
Mixed Hardwood	463.00 Cords	\$ 24.20/Cord	\$ _____
Quaking Aspen	914.00 Cords	\$ 37.00/Cord	\$ _____
Red Pine	320.00 Cords	\$ 56.70/Cord	\$ _____
White Pine	46.00 Cords	\$ 34.35/Cord	\$ _____
White Spruce	139.00 Cords	\$ 24.70/Cord	\$ _____

*The volumes are statistically estimated within plus (+) or minus (-) 11.59 percent. These estimated volumes are final and not subject to adjustment. Prospective bidders are urged to examine this timber and to make their own estimates of quantity and quality.

I understand that any or all bids may be rejected. All bids must be signed and all bid items must be bid or the bid form may be rejected. I also understand that consideration and awarding a contract will be based upon my past performance and ability to complete the contract based upon equipment and staffing subject to my control.

FEDERAL ID: _____ or SOCIAL SECURITY NUMBER: _____

Company or individual bidding: _____

Company representative's name: _____

Address: _____

City: _____ State: _____ Zip: _____

IF AVAILABLE, PLEASE PLACE THE PERSONALIZED LABEL FROM YOUR PROSPECTUS IN THE ABOVE BOX.

Individual or company representative's signature: _____ Date: _____

Phone number : _____ Email (optional): _____

THE WINNING BIDDER MUST COMPLETE THE VERIFICATION OF WORKER'S DISABILITY COMPENSATION ACT COMPLIANCE (ON REVERSE SIDE IF DOUBLE SIDED) WITHIN 21 DAYS OF SALE AWARD DATE



FOR DEPARTMENT USE ONLY	
Sale Number (XX - XXX - XX - XX)	
Forest Management Unit:	

TIMBER SALE VERIFICATION OF WORKER'S DISABILITY COMPENSATION ACT COMPLIANCE

As required by Act 317, P.A. 1969 (Worker's Compensation) and
Part 5 of Act 451 of 1994, as amended.

VERIFICATION OF WORKER'S DISABILITY COMPENSATION ACT COMPLIANCE

- This verification must be completed and submitted within 21 days of contract award and prior to the issuance of the timber sale contract.
- In addition, if boxes 2B or 2C are checked, then Notice of Exclusion or Certificate of Insurance must be submitted within twenty-one (21) days of the contract award and prior to the issuance of the timber sale contract.
- All information must be typed or printed except for written signatures.

Please Check Appropriate Categories:

1. My business is organized as (you **must** check one of the boxes below):
 - A. Sole Proprietorship (individual)
 - B. Partnership
 - C. Corporation
2. You **must** check one of the boxes below:
 - A. I certify my business is a sole proprietorship and it has no employees but the sole proprietor. I am not subject to the Worker's Compensation Laws.
 - B. I certify my business has satisfied its obligation to the Worker's Compensation Act through the use of an approved Notice of Exclusion (BWC-337, Rev. 5/96). I will provide a copy of the Notice of Exclusion within 21 days of the contract award. (For questions or a copy of the BWC-337, please call the Worker's Compensation Bureau at 517-322-1195).
 - C. I certify my business has a Worker's Compensation Policy. I will provide an original Certificate of Insurance within twenty-one (21) days of the contract award.
3. If you have checked item 2(A) or 2(B), you **must** indicate the number of **both** full-time and part-time employees, other than yourself, including family members and active partners (if none, you must enter "0").

_____ Full-time Employees

_____ Part-time Employees

Name of Business		Federal ID (or) Social Security No.	
Address		Telephone ()	
City	State	ZIP	

I hereby certify that the above information is true and correct. I agree to notify the Michigan DNR of any changes that occur in factors affecting my coverage during any of my present and future operations.

Signature of Owner or Authorized Representative

Title

Date

Please complete the "SEALED BID" information on the next page

Nodding Trillium (12-004-18)
; Dickinson COUNTY

In response to the notice of sale to be held 8:30 a.m. (local time) on June 6, 2018, I am hereby submitting my sealed bid (firm offer) for the following forest products to be cut. Bids for individual species must be at or above the advertised price. All non-responsive bid forms may be rejected.

<u>PRODUCTS & SPECIES</u>	<u>ESTIMATED VOLUME*</u>	<u>ADVERTISED PRICE</u>	<u>BID PRICE/UNIT</u>
Sawtimber			
Red Maple	8.80 MBF	\$ 187.00/MBF	\$ _____
Sugar Maple	16.70 MBF	\$ 375.00/MBF	\$ _____
Pulpwood			
Balsam Fir	491.00 Cords	\$ 17.80/Cord	\$ _____
Basswood	61.00 Cords	\$ 11.55/Cord	\$ _____
Black Spruce	15.00 Cords	\$ 20.45/Cord	\$ _____
Mixed Hardwood	1,636.00 Cords	\$ 24.20/Cord	\$ _____
Quaking Aspen	5,104.00 Cords	\$ 37.00/Cord	\$ _____
White Spruce	269.00 Cords	\$ 20.45/Cord	\$ _____

*The volumes are statistically estimated within plus (+) or minus (-) 7.82 percent. These estimated volumes are final and not subject to adjustment. Prospective bidders are urged to examine this timber and to make their own estimates of quantity and quality.

I understand that any or all bids may be rejected. All bids must be signed and all bid items must be bid or the bid form may be rejected. I also understand that consideration and awarding a contract will be based upon my past performance and ability to complete the contract based upon equipment and staffing subject to my control.

FEDERAL ID: ____ - ____ - ____ or SOCIAL SECURITY NUMBER: ____ - ____ - ____

Company or individual bidding: _____

Company representative's name: _____

Address: _____

City: _____ State: _____ Zip: _____

IF AVAILABLE, PLEASE PLACE THE PERSONALIZED LABEL FROM YOUR PROSPECTUS IN THE ABOVE BOX.

Individual or company representative's signature: _____ Date: _____

Phone number : _____ Email (optional): _____

THE WINNING BIDDER MUST COMPLETE THE VERIFICATION OF WORKER'S DISABILITY COMPENSATION ACT COMPLIANCE (ON REVERSE SIDE IF DOUBLE SIDED) WITHIN 21 DAYS OF SALE AWARD DATE



FOR DEPARTMENT USE ONLY
Sale Number (XX – XXX – XX – XX)
Forest Management Unit:

TIMBER SALE VERIFICATION OF WORKER'S DISABILITY COMPENSATION ACT COMPLIANCE

*As required by Act 317, P.A. 1969 (Worker's Compensation) and
Part 5 of Act 451 of 1994, as amended.*

VERIFICATION OF WORKER'S DISABILITY COMPENSATION ACT COMPLIANCE

- This verification must be completed and submitted within 21 days of contract award and prior to the issuance of the timber sale contract.
- In addition, if boxes 2B or 2C are checked, then Notice of Exclusion or Certificate of Insurance must be submitted within twenty-one (21) days of the contract award and prior to the issuance of the timber sale contract.
- All information must be typed or printed except for written signatures.

Please Check Appropriate Categories:

1. My business is organized as (you **must** check one of the boxes below):
 - A. Sole Proprietorship (individual)
 - B. Partnership
 - C. Corporation

2. You **must** check one of the boxes below:
 - A. I certify my business is a sole proprietorship and it has no employees but the sole proprietor. I am not subject to the Worker's Compensation Laws.
 - B. I certify my business has satisfied its obligation to the Worker's Compensation Act through the use of an approved Notice of Exclusion (BWC-337, Rev. 5/96). I will provide a copy of the Notice of Exclusion within 21 days of the contract award. (For questions or a copy of the BWC-337, please call the Worker's Compensation Bureau at 517-322-1195).
 - C. I certify my business has a Worker's Compensation Policy. I will provide an original Certificate of Insurance within twenty-one (21) days of the contract award.

3. If you have checked item 2(A) or 2(B), you **must** indicate the number of **both** full-time and part-time employees, other than yourself, including family members and active partners (if none, you must enter "0").

_____ Full-time Employees

_____ Part-time Employees

Name of Business		Federal ID (or) Social Security No.	
Address		Telephone ()	
City	State	ZIP	

I hereby certify that the above information is true and correct. I agree to notify the Michigan DNR of any changes that occur in factors affecting my coverage during any of my present and future operations.

Signature of Owner or Authorized Representative

Title

Date

Please complete the "SEALED BID" information on the next page