



**DEPARTMENT OF NATURAL RESOURCES
STATE OF MICHIGAN**

TIMBER SALE PROSPECTUS #6099

SCHEDULED SALE DATE AND TIME: 10:00 a.m. (local time) on July 24, 2018.

LOCATION: ATLANTA MGMT UNIT, 13501 M-33, ATLANTA, MI 49709.

PROSPECTUS NOTE: The bidder is advised to inspect the sale area and review the location, estimated volumes, operating costs and contract terms of proposed sales. Please be aware that some landowners may request 60 days or more notice for access across their land.

Notice is hereby given that bids will be received by the Unit Manager, ATLANTA MANAGEMENT UNIT, for certain timber on the following described lands:

Graham's Bear Drag Mix (54-011-17)

Alpena County, Advertised Price \$75,829.55, 128.2 Acres, Aspen, Hardwood.

SALE NOTE: A recreation site such as a trail, pathway, or campground is within the sale area or the vicinity. Certain restrictions/specifications may be applicable including time restrictions.

Little Rd Aspen (54-026-17)

Alpena County, Advertised Price \$36,429.65, 48.9 Acres, Aspen, Hardwood.

TG Said 2 Plant (54-037-17)

Alpena County, Advertised Price \$47,627.35, 34.1 Acres, Red Pine, White Pine.

BID INSTRUCTIONS (VER. 11/28/2017):

1. Scheduled Bid Location, Date, and Time (2/11)

Bids must be received by the Unit Manager, ATLANTA OFFICE, 13501 M-33, ATLANTA, MI 49709, no later than 10:00 a.m. (local time) on July 24, 2018. For further information concerning this sale, contact Cody Stevens at 989-785-4251 extension 5240.

2. Bidder's Qualifications (5/16)

Purchaser shall obtain workers compensation insurance to cover claims under Michigan's Worker's Disability Compensation Act of 1969 or similar employee benefit act of any other state applicable to an employee. If all or part of a timber sale was prepared by a private contractor, the contractor and that contractor's company are not permitted to bid on the timber sale contract. Bids will not be accepted from individuals or companies appearing on the DNR/FRD No-Bid List. This list contains the names of purchasers who previously failed to execute a contract within 21-days or who have a history of poor performance.

3. Preparation of Sealed Bids (5/16)

Bid Forms may be completed online thru Michigan DNR Timber Sale Online Bidding (OLB) at www.michigan.gov/timberbidding or by completing the hardcopy Bid Form found in the Timber Sale Prospectus. Hardcopy Bid Forms shall be manually signed in ink. Registration in OLB is considered your 'signature' for all bids submitted thru that system. Bid prices must be entered for each species and product in the Bid Price column for all material subject to bidding and all fill-in blanks must be completed. If erasures or other changes appear on the hardcopy Bid Form, each erasure or change must be initialed by the person signing the bid.

4. Submission of Sealed Bids (5/16)

Bid forms may be obtained from the Unit Manager or thru OLB. Bids may be submitted hardcopy or thru OLB. All hardcopy bids must be submitted on the bid form and in an envelope clearly identified as described in this section. NOTE: Only one bid form per bid envelope. Sealed bids must be submitted to the Unit office designated in the prospectus and must be submitted at or prior to the time established in the prospectus. The envelope should show on the outside (a) the sale name or number and (b) the date and time of bid opening, as shown in the prospectus. Bids received after the time specified in the sale prospectus are late bids and will be rejected.

It is possible for a bidder to submit multiple bids on a single sale. For example, a bid may be submitted hardcopy and a bid may be submitted thru OLB. Or, two bidders from the same company could both submit bids on the same sale. If this were to happen, the State would accept all bids received and award the contract accordingly. All bidding and contractual requirements would apply to all bids received.

5. Public Opening of Sealed Bids (7/16)

If conditions permit, the sealed bids will be publicly opened and posted at the time and place set in the prospectus.

If a bidder, present at a bid opening, has submitted bids on more than one sale, that bidder may withdraw their unopened bid envelopes or announce the withdrawal of their online bid after being declared the successful bidder on one sale.

6. Award of Contract (1/11)

Award of the contract will be made to the Bidder whose bid, conforming to the prospectus, is most advantageous to the State of Michigan on the basis of total value at rates bid for the estimated quantities. The State reserves the right to reject any bid or waive any minor irregularity in bids received. A written award mailed (or otherwise furnished) to the successful Bidder shall be deemed to result in a binding contract without further action by either party.

7. Down Payment (1/11)

The Bidder to whom award is made must make a down payment within 21 days of the sale award. The amount of the down payment will be calculated as shown in the Bond and Payment Schedule of this prospectus. Only cash may be used to meet this requirement.

8. Performance Security (1/11)

As guarantee of faithful performance, a cash bond, certificate of deposit, surety bond or irrevocable letter of credit (LOC) is required within 21 days of the sale award. The amount of the performance security is shown in the Bond and

Payment Schedule of this prospectus. If an LOC or surety is used, the coverage must extend for at least 6 months beyond the contract expiration.

9. Timber Sale Contract (11/17)

Additional conditions and requirements common to all timber sales are listed on the timber sale contract (R4031) and are available on line at www.michigan.gov/timber. Contact the Unit Manager for additional information or a sample contract. Within 21 days of the date of the award letter, the bidder must sign the contract and provide the required down payment, performance security, and verification of worker's disability compensation. The down payment and performance security shall be in accordance with the provisions of the timber sale contract, in the sums stated in this prospectus. If these actions are not taken, then the Bidder, the Bidder's corporation, and the corporation's principals may not be permitted to bid on State timber sales for a period of 1 year. In addition, the Bidder certifies that if awarded this contract, the Bidder will complete the timber sale contract in accordance with its terms and any modifications thereof including requirements to purchase, cut, and remove the included timber by the expiration date.

Payment Unit values in the State Forest Timber Sale Contract are calculated based on the advertised value of the Payment Unit as a percentage of the total advertised value of the contract. The advertised value of each Payment Unit is given in the Description of Timber by Payment Unit table on the Timber Sale Information page. For example, if the value of Payment Unit 1 is advertised as \$1,500 and the total Timber Sale value is advertised as \$10,000, the contract price for Payment Unit 1 will be 15% of the total bid price ($\$1,500/\$10,000 * 100$).

10. Disclaimer of Estimates and Bidder's Warranty of Inspection (7/16)

Before submitting this bid, the Bidder is advised and cautioned to inspect the sale area, review the requirements of the sale contract, and take other steps as may be reasonably necessary to ascertain the location, estimated volumes, construction estimates, and operating costs of the proposed sale. Failure to do so will not relieve the Bidder from responsibility for completing the contract.

The Bidder warrants that this bid is submitted solely on the basis of the Bidder's examination and inspection of the quality and quantity of the timber offered for sale and the Bidder's opinion of the value thereof and the costs of recovery. No reliance should be placed on the State of Michigan's estimates of timber quality, quantity or costs of recovery. Bidder further acknowledges that the State of Michigan: (i) expressly disclaims any warranty of fitness of timber for any purpose; (ii) offers this timber as is without any warranty of quality (merchantability) or quantity and (iii) expressly disclaims any warranty as to the quantity or quality of timber sold.

11. Certification and Chain-of-Custody (10/14)

Unless otherwise indicated in the contract under section 7 – Other Conditions of the Sale Specific Conditions & Requirements, the area encompassed by this timber sale is certified to the standards of the Forest Stewardship Council (FSC) - Certificate #SCS-FM/COC-00090N and the Sustainable Forestry Initiative (SFI) - Certificate # NSF-SFIS-5Y031-SF5. Forest products from this sale may be delivered to the mill as "FSC 100% and / or SFI certified" as long as the contractor hauling the forest products is chain-of-custody (COC) certified or covered under a COC certificate from the destination mill. The purchaser is responsible for maintaining COC after leaving the sale area.

12. Good Neighbor Authority (GNA) Requirements (7/16)

If the name of this timber sales contains the acronym GNA, it is authorized by the Good Neighbor Authority (GNA) and covered by various agreements between the U.S. Forest Service and the State. The timber sale occurs on federal land and the following conditions apply:

GNA contracts on US Forest Service land will not be awarded to purchasers on the Federal list of excluded parties. The System for Award Management (SAM) will be checked for active excluded parties prior to award of contract. In addition, the Bidder to whom award is made must complete an Assurance Regarding Felony Conviction or Tax Delinquent Status for Corporate Applicants (AD-3031).

13. Good Neighbor Authority (GNA) Requirements, con't (9/16)

Bidder certifies, by signing this bid form, that to the best of Bidder's knowledge that the following representations are accurate and complete.

a. That the Bidder and its principals are not presently debarred, suspended, proposed for debarment, declared ineligible, or voluntary excluded from timber sales (covered transactions) by any Federal department or agency.

b. That the Bidder and its principals have not within a 3-year period preceding this bid been convicted of or had a civil judgment rendered against them for commission of fraud or a criminal offense in connection with obtaining, attempting to obtain, or performing a public (Federal, State, or local) transaction or contract under a public transaction; violation of Federal or State antitrust statutes or commission of embezzlement, theft, forgery, bribery, falsification or destruction of records, making false statements, or receiving stolen property.

c. That the Bidder and its principals are not presently indicted for or otherwise criminally or civilly charged by a governmental entity (Federal, State, or local) with commission of any of the offenses enumerated in paragraph b of this certification.

d. That the Bidder and its principals have not within a 3-year period preceding this bid had one or more public transactions (Federal, State, or local) terminated for breach or default of a timber or forest product contract.

Bidders that cannot certify this requirement, in whole or in part, shall submit an explanation with their bid.

KEITH CREAGH

Director

TIMBER SALE INFORMATION

Graham's Bear Drag Mix (54-011-17)

Alpena County (Advertised Price \$75,829.55)

SALE NOTE: A recreation site such as a trail, pathway, or campground is within the sale area or the vicinity. Certain restrictions/specifications may be applicable including time restrictions.

A timber sale contract for this lump sum, sealed bid timber sale will be awarded to the responsible bidder offering the highest sealed bid price. Bids must be at or above the following advertised price for each species:

<u>PRODUCTS & SPECIES</u>	<u>ESTIMATED UNITS*</u>		<u>ADVERTISED PRICE</u>
Sawtimber			
Mixed Aspen	11.90	MBF	\$ 88.00 / MBF
Mixed Spruce	26.70	MBF	\$ 65.00 / MBF
Red Maple	42.30	MBF	\$ 137.00 / MBF
Red Pine	3.60	MBF	\$ 119.00 / MBF
White Pine	5.10	MBF	\$ 109.00 / MBF
Pulpwood			
Balsam Fir	425.00	Cords	\$ 39.15 / Cord
Misc. Species 1	6.00	Cords	\$ 5.00 / Cord
Mixed Aspen	790.00	Cords	\$ 24.30 / Cord
Mixed Hardwood	853.00	Cords	\$ 19.50 / Cord
Mixed Spruce	186.00	Cords	\$ 32.55 / Cord
N. White Cedar	72.00	Cords	\$ 30.80 / Cord
Paper Birch	116.00	Cords	\$ 23.25 / Cord
Red Pine	18.00	Cords	\$ 48.70 / Cord
Tamarack	7.00	Cords	\$ 32.65 / Cord
White Pine	31.00	Cords	\$ 54.65 / Cord

* The total volume is statistically estimated within plus (+) or minus (-) 9.00 percent. The estimated units are final and not subject to adjustment. Prospective bidders are urged to examine this timber and to make their own estimates of quantity and quality.

BOND AND PAYMENT SCHEDULE:

1. A bond in the amount of \$3,791.00 to insure faithful performance of the conditions of the contract will be deposited by the successful bidder within 21 days of the sale award.
2. Cutting in any sale or unit without the required advance payment would be considered a trespass.
3. Total payment must be paid in advance or according to the following schedule:
 - (a) Ten percent (10%) of the sale value must be paid within 21 days of the sale award.
 - (b) The 10% down payment will be credited towards the first unit cut.
 - (c) Payment for each of the following units must be made before cutting begins in that unit:

PAYMENT UNIT NUMBER	PERCENT OF TOTAL SALE VALUE
01	10.2%
02	9.1%
03	10.3%
04	11.6%
05	10.6%
06	6.5%
07	16.3%
08	14.6%
09	6.2%
10	4.6%

4. If no cutting takes place, the 10% down payment will not be refunded.
5. Operations on the contract issued will terminate on 12/31/2021.

Description of Timber by Payment Unit (PU)

PU	MARKET GROUP	PRODUCT	QUANTITY	UNIT	ACRES	ADVERTISE PRICE
1	Mixed Aspen	Sawtimber	2.9	MBF	15.9	\$7,723.05
	<i>B. T. Aspen</i>		2.3	<i>MBF</i>		
	<i>Quaking Aspen</i>		0.6	<i>MBF</i>		
	Red Maple		1.1	MBF		
	Red Pine		0.5	MBF		
	Balsam Fir	Pulpwood	49.0	Cords		
	<i>Balsam Fir</i>		49.0	<i>Cords</i>		
	Mixed Aspen		178.0	Cords		
	<i>B. T. Aspen</i>		129.0	<i>Cords</i>		
	<i>Quaking Aspen</i>		49.0	<i>Cords</i>		
	Mixed Hardwood		47.0	Cords		
	<i>Red Maple</i>		47.0	<i>Cords</i>		
	Red Pine		2.0	Cords		
2	Mixed Aspen	Sawtimber	2.5	MBF	14.1	\$6,894.90
	<i>B. T. Aspen</i>		2.0	<i>MBF</i>		
	<i>Quaking Aspen</i>		0.5	<i>MBF</i>		
	Red Maple		1.0	MBF		
	Red Pine		0.5	MBF		
	Balsam Fir	Pulpwood	44.0	Cords		
	<i>Balsam Fir</i>		44.0	<i>Cords</i>		
	Mixed Aspen		158.0	Cords		
	<i>B. T. Aspen</i>		115.0	<i>Cords</i>		
	<i>Quaking Aspen</i>		43.0	<i>Cords</i>		
	Mixed Hardwood		42.0	Cords		
	<i>Red Maple</i>		42.0	<i>Cords</i>		
	Red Pine		2.0	Cords		
3	Mixed Aspen	Sawtimber	0.3	MBF	11.7	\$7,781.55
	<i>B. T. Aspen</i>		0.3	<i>MBF</i>		
	Red Maple		8.8	MBF		
	Balsam Fir	Pulpwood	40.0	Cords		
	<i>Balsam Fir</i>	<i>Sawtimber</i>	0.6	<i>MBF</i>		
	<i>Balsam Fir</i>	<i>Pulpwood</i>	39.0	<i>Cords</i>		
	Mixed Aspen		29.0	Cords		
	<i>B. T. Aspen</i>		7.0	<i>Cords</i>		
	<i>Quaking Aspen</i>		22.0	<i>Cords</i>		
	Mixed Hardwood		174.0	Cords		
	<i>Red Maple</i>		174.0	<i>Cords</i>		
	Mixed Spruce		1.0	Cords		
	<i>White Spruce</i>		1.0	<i>Cords</i>		
	Paper Birch		32.0	Cords		
	<i>Paper Birch</i>	<i>Sawtimber</i>	3.0	<i>MBF</i>		
	<i>Paper Birch</i>	<i>Pulpwood</i>	26.0	<i>Cords</i>		
White Pine		2.0	Cords			
4	Mixed Aspen	Sawtimber	0.3	MBF	13.2	\$8,812.95
	<i>B. T. Aspen</i>		0.3	<i>MBF</i>		
	Red Maple		10.0	MBF		
	Balsam Fir	Pulpwood	45.0	Cords		
	<i>Balsam Fir</i>	<i>Sawtimber</i>	0.7	<i>MBF</i>		
	<i>Balsam Fir</i>	<i>Pulpwood</i>	44.0	<i>Cords</i>		
	Mixed Aspen		33.0	Cords		
	<i>B. T. Aspen</i>		8.0	<i>Cords</i>		
	<i>Quaking Aspen</i>		25.0	<i>Cords</i>		
	Mixed Hardwood		197.0	Cords		
	<i>Red Maple</i>		197.0	<i>Cords</i>		
	Mixed Spruce		2.0	Cords		
	<i>White Spruce</i>		2.0	<i>Cords</i>		

Description of Timber by Payment Unit (PU), con't

PU	MARKET GROUP	PRODUCT	QUANTITY	UNIT	ACRES	ADVERTISE PRICE	
4 con't	Paper Birch	Pulpwood	36.0	Cords			
	<i>Paper Birch</i>	<i>Sawtimber</i>	3.3	<i>MBF</i>			
	<i>Paper Birch</i>	<i>Pulpwood</i>	29.0	<i>Cords</i>			
	White Pine		2.0	Cords			
5	Mixed Aspen	Sawtimber	4.9	MBF	9.0	\$8,001.25	
	<i>B. T. Aspen</i>		4.9	<i>MBF</i>			
	Red Maple		1.1	MBF			
	Red Pine		1.6	MBF			
	White Pine		4.4	MBF			
	Balsam Fir		Pulpwood	15.0			Cords
	<i>Balsam Fir</i>			15.0			<i>Cords</i>
	Mixed Aspen			119.0			Cords
	<i>B. T. Aspen</i>			108.0			<i>Cords</i>
	<i>Balsam Poplar</i>			3.0			<i>Cords</i>
	<i>Quaking Aspen</i>			8.0			<i>Cords</i>
	Mixed Hardwood			29.0			Cords
	<i>Red Maple</i>	29.0		<i>Cords</i>			
	Mixed Spruce	15.0		Cords			
	<i>Black Spruce</i>	5.0		<i>Cords</i>			
	<i>White Spruce</i>	10.0		<i>Cords</i>			
	N. White Cedar	2.0		Cords			
	Paper Birch	9.0	Cords				
	<i>Paper Birch</i>	<i>Sawtimber</i>	0.5	<i>MBF</i>			
	<i>Paper Birch</i>	<i>Pulpwood</i>	8.0	<i>Cords</i>			
	Red Pine	9.0	Cords				
	Tamarack	6.0	Cords				
	White Pine	24.0	Cords				
	6	Red Maple	Sawtimber	3.5			MBF
Balsam Fir		Pulpwood	39.0	Cords			
<i>Balsam Fir</i>			39.0	<i>Cords</i>			
Misc. Species 1			2.0	Cords			
Mixed Aspen			21.0	Cords			
<i>B. T. Aspen</i>			2.0	<i>Cords</i>			
<i>Quaking Aspen</i>			19.0	<i>Cords</i>			
Mixed Hardwood			92.0	Cords			
<i>Red Maple</i>			92.0	<i>Cords</i>			
Mixed Spruce			13.0	Cords			
<i>Black Spruce</i>			4.0	<i>Cords</i>			
<i>White Spruce</i>			9.0	<i>Cords</i>			
Paper Birch			8.0	Cords			
<i>Paper Birch</i>			<i>Sawtimber</i>	0.4	<i>MBF</i>		
<i>Paper Birch</i>	<i>Pulpwood</i>	7.0	<i>Cords</i>				
7	Mixed Aspen	Sawtimber	1.0	MBF	18.6	\$12,392.70	
	<i>B. T. Aspen</i>		1.0	<i>MBF</i>			
	Mixed Spruce		11.6	MBF			
	<i>White Spruce</i>		11.6	<i>MBF</i>			
	Red Maple		6.2	MBF			
	Red Pine		0.7	MBF			
	White Pine		0.7	MBF			
	Balsam Fir		Pulpwood	65.0			Cords
	<i>Balsam Fir</i>			65.0			<i>Cords</i>
	Mixed Aspen			145.0			Cords
	<i>B. T. Aspen</i>			112.0			<i>Cords</i>
	<i>Quaking Aspen</i>			33.0			<i>Cords</i>
	Mixed Hardwood	103.0		Cords			
	<i>Red Maple</i>	103.0		<i>Cords</i>			

Description of Timber by Payment Unit (PU), con't

PU	MARKET GROUP	PRODUCT	QUANTITY	UNIT	ACRES	ADVERTISE PRICE
7 con't	Mixed Spruce	Pulpwood	61.0	Cords		
	<i>Black Spruce</i>		4.0	<i>Cords</i>		
	<i>White Spruce</i>		57.0	<i>Cords</i>		
	N. White Cedar		3.0	Cords		
	Paper Birch		4.0	Cords		
	<i>Paper Birch</i>		4.0	<i>Cords</i>		
	Red Pine		2.0	Cords		
	Tamarack		1.0	Cords		
	White Pine		3.0	Cords		
8	Mixed Spruce	Sawtimber	6.8	MBF	17.5	\$11,070.85
	<i>White Spruce</i>		6.8	<i>MBF</i>		
	Red Maple		7.3	MBF		
	Balsam Fir	Pulpwood	74.0	Cords		
	<i>Balsam Fir</i>		74.0	<i>Cords</i>		
	Misc. Species 1		4.0	Cords		
	Mixed Aspen		54.0	Cords		
	<i>B. T. Aspen</i>		17.0	<i>Cords</i>		
	<i>Balsam Poplar</i>		5.0	<i>Cords</i>		
	<i>Quaking Aspen</i>		32.0	<i>Cords</i>		
	Mixed Hardwood		95.0	Cords		
	<i>Black Cherry</i>		1.0	<i>Cords</i>		
	<i>Red Maple</i>		94.0	<i>Cords</i>		
	Mixed Spruce		32.0	Cords		
	<i>Black Spruce</i>		1.0	<i>Cords</i>		
	<i>White Spruce</i>		31.0	<i>Cords</i>		
	N. White Cedar		67.0	Cords		
	Paper Birch		19.0	Cords		
	<i>Paper Birch</i>		0.5	<i>MBF</i>		
	<i>Paper Birch</i>		18.0	<i>Cords</i>		
9	Mixed Spruce	Sawtimber	6.4	MBF	8.2	\$4,713.00
	<i>Black Spruce</i>		3.3	<i>MBF</i>		
	<i>White Spruce</i>		3.1	<i>MBF</i>		
	Red Maple	1.7	MBF			
	Balsam Fir	Pulpwood	25.0	Cords		
	<i>Balsam Fir</i>		25.0	<i>Cords</i>		
	Mixed Aspen		34.0	Cords		
	<i>B. T. Aspen</i>		34.0	<i>Cords</i>		
	Mixed Hardwood		25.0	Cords		
	<i>Red Maple</i>		25.0	<i>Cords</i>		
	Mixed Spruce		53.0	Cords		
	<i>Black Spruce</i>		34.0	<i>Cords</i>		
	<i>White Spruce</i>		19.0	<i>Cords</i>		
	Paper Birch		2.0	Cords		
	<i>Paper Birch</i>		2.0	<i>Cords</i>		
10	Mixed Spruce		Sawtimber	1.9	MBF	7.0
	<i>Black Spruce</i>	1.9		<i>MBF</i>		
	Red Maple	1.6		MBF		
	Red Pine	0.3	MBF			
	Balsam Fir	Pulpwood	28.0	Cords		
	<i>Balsam Fir</i>		28.0	<i>Cords</i>		
	Mixed Aspen		19.0	Cords		
	<i>Quaking Aspen</i>		19.0	<i>Cords</i>		
	Mixed Hardwood		49.0	Cords		
	<i>Red Maple</i>		49.0	<i>Cords</i>		
	Mixed Spruce		9.0	Cords		
	<i>Black Spruce</i>		9.0	<i>Cords</i>		

Description of Timber by Payment Unit (PU), con't

PU	MARKET GROUP	PRODUCT	QUANTITY	UNIT	ACRES	ADVERTISE PRICE
10 con't	Paper Birch	Pulpwood	6.0	Cords		
	<i>Paper Birch</i>		6.0	<i>Cords</i>		
	Red Pine		3.0	Cords		
TOTAL:			89.6	MBF		
TOTAL:			2,503.0	Cords		

Sale Specific Conditions & Requirements

Sale Name: Graham's Bear Drag Mix

Sale Number: 54-011-17 Seq#: 1

1 - Sale Area

1.2 - Boundaries

1.2.1 - Painted boundaries (1/14)

The sale boundary and Payment Unit boundaries are marked and identified by blue, red and yellow paint. Exterior sale boundary lines against private property are marked with blue paint. Exterior sale boundary lines against state are marked with red paint. Interior retention boundaries are marked with red paint. Interior Payment Unit boundaries are marked with yellow paint. The painted boundary line trees are not Included Timber and are to be protected. Yellow painted trees designating an interior Payment Unit boundary are only to be cut when all surrounding Payment Units have been paid.

2 - Timber Specifications

2.1 - Included Timber

2.1.1 - Clearcut unit(s) with unmerchantable trees (6/14)

Within Payment Unit(s) 1-10, cut all trees that are two (2) inches or more at DBH, except do not cut hemlock or green marked trees. In addition, do not cut any white pine within Payment Unit 2. Also, do not cut any white pine or cedar within Payment Unit 4.

2.1.11 - Description of timber note (2/04)

Note that Mixed Spruce pulpwood and Mixed Spruce sawtimber consist of both white and black spruce. Mixed Hardwood pulpwood consists of red maple and a trace amount of cherry. Misc. Species 1 is dead and dying ash, which is designated for cutting.

2.2 - Utilization

2.2.6 - Roundwood operation required (5/07)

The skidding of whole trees or tree segments with limbs attached is prohibited within all Payment Units. All products must be produced as roundwood and forwarded to existing roads or landing areas in final product length.

2.2.9 - No chipping permitted (12/08)

Within Payment Unit(s) 1-10, no chipping is permitted.

3 - Payments

3.4 - Damaged Timber

3.4.1 - Damaged timber (6/14)

General Condition and Requirement 3.4 Damaged Timber, defines liquidated damages for undesignated live merchantable trees which are cut or injured. In addition, extreme care should be taken to avoid damage to tree seedlings and saplings.

Within Payment Units 2 and 5, if more than 25% of the pine seedlings or saplings (1/4" to 4.5" DBH) within a specified portion of the sale area are damaged, liquidated damages will be assessed at \$50 per acre for all acreage within that specified portion of the sale area that was damaged.

No damage is acceptable to undesignated merchantable trees. Within the sale area, if more than 5% of trees (> 4.5" DBH) within a specified area of the sale are damaged, liquidated damages will be assessed for all trees damaged. Rates will be in accordance with General Condition and Requirement 3.4 Damaged Timber.

3.4.2 - Special Protection Trees (4/14)

The Purchaser shall not cut live or dead special protection trees within cutting units or clearings. Special protection trees are marked with green paint and have a DBH greater than 26 inches. If the Purchaser's operations have cut or damaged special protection trees through carelessness, the Purchaser shall pay \$150 as fixed, agreed and liquidated damages for each special protection tree cut or damaged. Such payment does not constitute ownership of the undesignated timber.

4 - Transportation

4.1 - Construction

4.1.3 - Slash and earthen piles (8/04)

Piles or windrows of earth along roads and landings that have been widened or constructed shall be leveled. Slash from road maintenance or construction, including stumps, shall be dispersed throughout the sale.

4.1.5 - Culverts (5/14)

Roads may require the installation of culverts for cross drainage or at natural drainage-ways. If culverts are needed in these locations, their placement will be specified by the sale administrator and they shall be supplied and installed by the sale owner prior to hauling. The culverts shall be new corrugated metal. Culverts will be a minimum of 12 inches in diameter and 24 feet in length. Culverts shall be sized and placed as detailed by the Best Management Practices (BMPs) in the "Sustainable Soil and Water Quality Practices on Forest Land" manual.

4.1.6 - Road construction (1/09)

Improvements of existing roads shall be done in such a way as to minimize the environmental and visual impacts. Merchantable trees shall be cut and utilized unless otherwise directed. Non-merchantable trees shall be severed and laid flat on the ground. Slash shall be scattered, and not left in windrows and kept a minimum of 10 feet back from the road edge. Stumps shall be set upright, not left on edge, and be moved at least 10 feet away from the road edge. Disturbed soil shall be feathered into the woods and not left in berms or windrows.

4.1.8 - Road work (1) (8/07)

The following road work is required on the forest road/snowmobile trail that runs between Graham and Wikaryasz Roads: 23A crushed limestone fill must be added and shaped to restore this trail to its presale condition after hauling is completed. The Purchaser of the sale must supply the 23A crushed lime stone fill.

4.1.10 - Oversight (12/08)

The Unit Manager, or his/her representative, must be present when the road improvement project is initiated to discuss and approve the road work that is to be done.

4.1.12 - No new roads (1/12)

No new roads will be permitted in any Payment Unit. All operations are limited to existing roads. Skid trails only will be allowed.

4.2 - Maintenance

4.2.2 - Fill material (4/07)

To maintain roads, fill material may be needed in areas where "holes" exist or may be expected to develop. This fill material should be placed before trucking begins. The fill material must be 23A crushed lime stone.

5 - Operations

5.1 - Notification

5.1.1 - Pre-sale conference (10/16)

A pre-sale conference on site between the Purchaser and sale administrator is required prior to beginning any operations in a Payment Unit to determine landing and road locations.

5.1.4 - Post-sale conference (10/16)

A post-sale conference on site between the Purchaser and sale administrator is required prior to the completion of active logging operations to determine clean-up and repair of landings, road edges, and the fulfillment of other contract specifications.

5.2 - Conduct of Operations

5.2.1 - Slash

5.2.1.11 - Slash for reforestation (5/07)

To facilitate reforestation, the sale area shall be left with slash evenly distributed. Bunched tops within the cutting area shall be broken up and scattered. Stumps shall be cut low to the ground. Processing sites shall not be left with a compacted layer of slash; tops from these sites shall be hauled back into the cut area and scattered.

5.2.2 - Hazard Trees/Snags

5.2.2.1 - Den trees (10/16)

Obvious hollow and/or den trees shall be protected and left standing unless they are a safety hazard.

5.2.3 - Operating Restrictions

5.2.3.1 - Operating restrictions (9/11)

Within Payment Unit(s) 3-10, unless approved by the Unit Manager, hauling is not permitted from 5:00 p.m. Friday evening through 6:00 a.m. Monday morning during the period of 12/1 to 4/1. This restriction is due to the necessity of using the snowmobile trail for hauling wood from the sale.

5.2.3.2 - Operating restrictions (9/11)

Within Payment Unit(s) 6, 8, 9, and 10, unless changed by written agreement, cutting, skidding, and hauling are limited to the period of 8/1 to 3/1. This restriction is due to the presence of seasonally saturated soils.

5.2.3.11 - Coppice regeneration protection (4/10)

Timber harvesting in any Payment Unit must be completed before significant sprouting occurs in that Payment Unit so as to minimize damage to the new regeneration. Any post harvest operations, such as chipping, must be completed before sprouting of regeneration occurs. If it is anticipated that chipping will be delayed, then tops shall be carried to one central location or left unchipped. The Unit Manager or his/her representative may cease such operations if sprouting occurs before the operation is complete.

5.2.4 - Dead and Down Creation

5.2.4.4 - Dead and down creation, grouse (8/13)

To encourage grouse and other wildlife, in Payment Unit(s) 1-5 and 7, leave one 9" diameter or larger log-length (8 foot minimum) piece on the ground for every 2 acres. These will be evenly scattered throughout the unit. This can be an unmerchantable piece or a full tree.

5.2.17 - Crane Mats/Timber Mats (10/14)

Some roads or skid trails may require extra protection such as that afforded by Crane Mats/Timber Mats. If available, Crane Mats/Timber Mats may be borrowed from the DNR and are located at the Marquette ICC and the Grayling Field Office. Contact the sale administrator for specific details. A Timber Sale Contract Supplement will be used to document the Purchaser's use of the DNR's Crane Mats/Timber Mats. It is the responsibility of the Purchaser to contact the sale administrator to schedule pick up and drop off. In addition, all mats must be cleaned prior to drop off. A charge of \$350.00 will be assessed for all damaged or non-returned mats. Damage is defined as misuse resulting in three or more broken cants.

5.2.22 - Operating Caution

5.2.22.1 - Operating caution (6/11)

It is recommended, but not required, that within Payment Unit(s) 1-5 and 7, cutting, skidding, and hauling occur during dry summer or frozen winter conditions. The reason for the recommendation is due to the presence of seasonally saturated soils.

5.2.32 - Decking/landing restoration (9/13)

All decking and landing areas must have the surface area restored to a condition equal to or better than before. This is to ensure the proper regeneration of the stand. Wood debris, chips and "cookies" from trimmings must be removed or scattered away from landing and loading areas and may not be windrowed on the edge.

5.2.38 - No decking against live trees (2/04)

Cut products may not be decked against unmarked or designated leave trees.

5.2.41 - Snowmobile trail protection (9/11)

The snowmobile trail is shown on the Timber Sale Map. Do not cut or damage posts with orange trail markers or traffic control signs. The trail must be maintained and restored to a condition equal to or better than before the sale. The road maintenance/restoration must be done prior to December 1. During the snowmobile season, a snow covered base must be left on the trail. Maintain a 20 foot wide slash, debris, and rut free zone daily using the snowmobile trail as the centerline. All stumps within 10 feet of the snowmobile trail must be cut at ground level.

5.4 - Soil Protection

5.4.1 - Rutting restriction, general (7/16)

Operations are to cease immediately if equipment and weather conditions result in rutting of roads and/or skid trails which is 12 inches or greater in depth and 50 feet in length. The Unit Manager or his/her representative may restrict hauling and/or skidding if ruts exceed the specified depth. With the Unit Manager or his/her representative's approval, the Purchaser may return to the area when the risk of rutting has decreased.

5.4.5 - Soil caution (11/04)

The sale contains areas with sensitive soils that are prone to rutting. The Purchaser is required to lay down slash to travel over these areas as they work. This is to prevent unnecessary rutting caused by harvesting and forwarding equipment.

5.8 - Protection of Endangered Species

5.8.5 - Protection of raptor nests (3/13)

All trees with raptor nests will be protected if found during harvesting operations. Notification will be made to the Unit Manager or his/her representative who will notify the Wildlife Biologist so an on-site evaluation and recommendation can be made, if necessary.

6 - Safety and Fire Prevention

6.2 - Signing

6.2.1 - Road posting (9/09)

The Purchaser is responsible for posting and maintaining caution signs on the forest trail/snowmobile trail that connects Graham and Wikaryasz Roads prior to beginning operations. The road must be posted at appropriate distances from the sale area to warn of logging activity and truck traffic. Signs must be removed when harvest operations are suspended or completed. The Purchaser will provide these signs.



TIMBER SALE MAP

This information provided by authority of Part 525, 1994 PA 451, as amended.

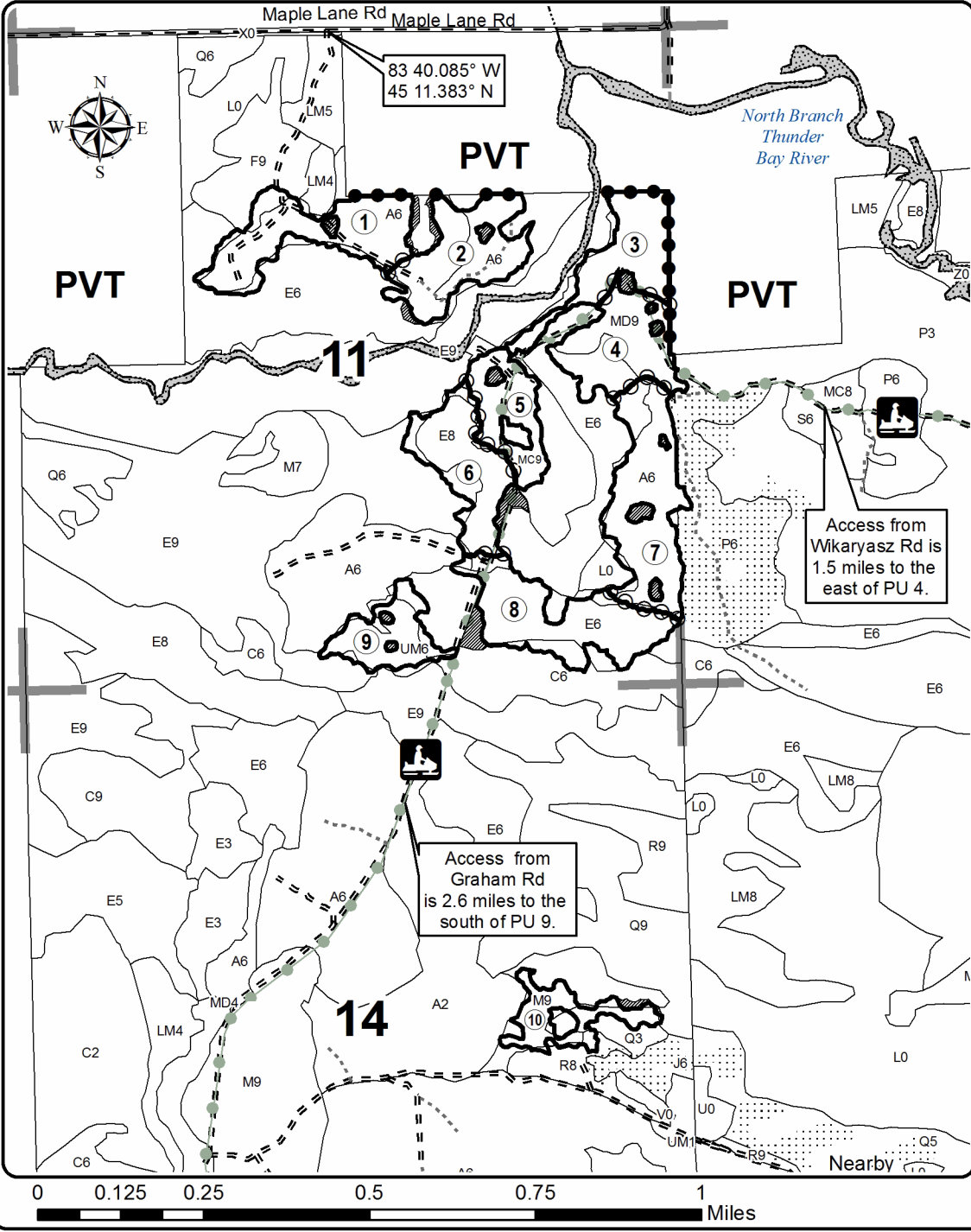
Sale Number	Year
54-011	17

Forest Management Unit Atlanta	County Alpena	Mapped By D. Parris	Date 1/17/2017	Page 1	of 1
Township 32N	Range 06E	Section(s) and Subdivision(s) Sec. 11 SE4, E2NW, S2NE, SESW Sec. 12 W2SW; Sec. 14 N2SE, S2NE	Scale 1:15,840		

Cover Type				Density		
A = Aspen	H = Hemlock	N = Marsh	U = Upland Brush	0 = Non Stocked	5 = Pole Timber Medium	
B = Paper Birch	J = Jack Pine	O = Oak	UM = Upland Mixed	1 = Seedling Sapling Poor	6 = Pole Timber Well	
C = Cedar	L = Lowland Brush	P = Lowland Poplar	V = Bog or Marsh	2 = Seedling Sapling Medium	7 = Saw Timber Poor	
D = Treed Bog	LM = Lowland Mixed	Q = Mixed Swamp Conifer	W = White Pine	3 = Seedling Sapling Well	8 = Saw Timber Medium	
E = Swamp Hdwoods	M = Mpl, Bch, Brch	R = Red Pine	X = Non Stocked	4 = Pole Timber Poor	9 = Saw Timber Well	
F = Spruce Fir	MC = Mixed Conifer	S = Black Spruce	Z = Water			
G = Grass	MD = Mixed Deciduous	T = Tamarack				

Graham's Bear Drag Mix

Compartment 111 128.2 Acres



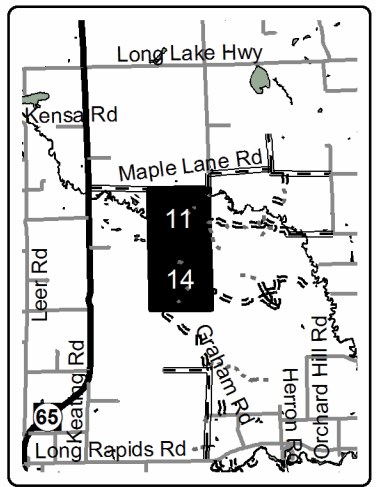
PU	Acres	Stand	PU	Acres	Stand
1	15.9	8	6	13.0	14
2	14.1	8, 12	7	18.6	20, 25
3	11.7	16	8	17.5	23
4	13.2	16, 20	9	8.2	21
5	9.0	17	10	7.0	43

Legend

- Against State (Red)
- Payment Unit (Yellow)
- Private Line (Blue)
- Retention Area (Red)
- Payment Unit
- Nearby Sales
- Stand Boundaries
- Highway
- Paved Roads
- Gravel Roads
- Poor Dirt Roads
- Closed Roads
- Lakes and Rivers All
- Recreational Trail
- Section Corners



Locator Map
1:200,000



TIMBER SALE INFORMATION

Little Rd Aspen (54-026-17)

Alpena County (Advertised Price \$36,429.65)

A timber sale contract for this lump sum, sealed bid timber sale will be awarded to the responsible bidder offering the highest sealed bid price. Bids must be at or above the following advertised price for each species:

<u>PRODUCTS & SPECIES</u>	<u>ESTIMATED UNITS*</u>	<u>ADVERTISED PRICE</u>
Sawtimber		
B. T. Aspen	83.50 MBF	\$ 88.00 / MBF
Quaking Aspen	41.50 MBF	\$ 88.00 / MBF
Red Maple	15.50 MBF	\$ 137.00 / MBF
Red Pine	6.20 MBF	\$ 119.00 / MBF
Sugar Maple	1.20 MBF	\$ 457.00 / MBF
White Spruce	4.60 MBF	\$ 64.00 / MBF
Pulpwood		
Balsam Fir	53.00 Cords	\$ 39.15 / Cord
Jack Pine	14.00 Cords	\$ 24.30 / Cord
Mixed Aspen	548.00 Cords	\$ 24.30 / Cord
Mixed Hardwood	168.00 Cords	\$ 19.50 / Cord
Mixed Oak	16.00 Cords	\$ 21.75 / Cord
Paper Birch	33.00 Cords	\$ 23.25 / Cord
Red Pine	13.00 Cords	\$ 48.70 / Cord
White Pine	10.00 Cords	\$ 54.65 / Cord
White Spruce	13.00 Cords	\$ 32.55 / Cord

* The total volume is statistically estimated within plus (+) or minus (-) 16.79 percent. The estimated units are final and not subject to adjustment. Prospective bidders are urged to examine this timber and to make their own estimates of quantity and quality.

BOND AND PAYMENT SCHEDULE:

1. A bond in the amount of \$1,821.00 to insure faithful performance of the conditions of the contract will be deposited by the successful bidder within 21 days of the sale award.
2. Cutting in any sale or unit without the required advance payment would be considered a trespass.
3. Total payment must be paid in advance or according to the following schedule:
 - (a) Ten percent (10%) of the sale value must be paid within 21 days of the sale award.
 - (b) The remainder is due before cutting begins.
 - (c) Payment for each of the following units must be made before cutting begins in that unit:

<u>PAYMENT UNIT NUMBER</u>	<u>PERCENT OF TOTAL SALE VALUE</u>
01	100.0%
4. If no cutting takes place, the 10% down payment will not be refunded.
5. Operations on the contract issued will terminate on 12/31/2020.

Description of Timber by Payment Unit (PU)

PU	MARKET GROUP	PRODUCT	QUANTITY	UNIT	ACRES	ADVERTISE PRICE
1	B. T. Aspen	Sawtimber	83.5	MBF	48.9	\$36,429.65
	Quaking Aspen		41.5	MBF		
	Red Maple		15.5	MBF		
	Red Pine		6.2	MBF		
	Sugar Maple		1.2	MBF		
	White Spruce		4.6	MBF		
	Balsam Fir	Pulpwood	53.0	Cords		
	<i>Balsam Fir</i>	<i>Sawtimber</i>	2.1	<i>MBF</i>		
	<i>Balsam Fir</i>	<i>Pulpwood</i>	49.0	<i>Cords</i>		
	Jack Pine		14.0	Cords		
	Mixed Aspen		548.0	Cords		
	<i>B. T. Aspen</i>		270.0	<i>Cords</i>		
	<i>Quaking Aspen</i>		278.0	<i>Cords</i>		
	Mixed Hardwood		168.0	Cords		
	<i>Red Maple</i>		158.0	<i>Cords</i>		
	<i>Sugar Maple</i>		10.0	<i>Cords</i>		
	Mixed Oak		16.0	Cords		
	<i>Bl/R/Hybrid Oak</i>		14.0	<i>Cords</i>		
	<i>Red Oak</i>		2.0	<i>Cords</i>		
	Paper Birch		33.0	Cords		
	<i>Paper Birch</i>	<i>Sawtimber</i>	0.7	<i>MBF</i>		
	<i>Paper Birch</i>	<i>Pulpwood</i>	32.0	<i>Cords</i>		
	Red Pine		13.0	Cords		
	White Pine		10.0	Cords		
	<i>White Pine</i>	<i>Sawtimber</i>	2.0	<i>MBF</i>		
	<i>White Pine</i>	<i>Pulpwood</i>	6.0	<i>Cords</i>		
	White Spruce		13.0	Cords		
TOTAL:			152.5	MBF		
TOTAL:			868.0	Cords		

Sale Specific Conditions & Requirements

Sale Name: Little Rd Aspen

Sale Number: 54-026-17 Seq#: 1

1 - Sale Area

1.2 - Boundaries

1.2.1 - Painted boundaries (1/14)

The sale boundary and Payment Unit boundaries are marked and identified by blue and red paint. Exterior sale boundary lines against private property are marked with blue paint. Exterior sale boundary lines against state are marked with red paint. The painted boundary line trees are not Included Timber and are to be protected.

2 - Timber Specifications

2.1 - Included Timber

2.1.1 - Clearcut unit(s) with unmerchantable trees (6/14)

Within Payment Unit(s) 1, cut all trees that are two (2) inches or more at DBH, except do not cut white cedar.

3 - Payments

3.3 - Pre-measured Sales

3.3.4 - Dividing payment units (7/14)

Payment Unit(s) 1 may be divided at the request of the Purchaser and upon approval of the Unit Manager. Dividing Payment Units is a contract modification which requires a Timber Sale Contract Supplement. There will be only one division per Payment Unit.

4 - Transportation

4.1 - Construction

4.1.12 - No new roads (1/12)

No new roads will be permitted in any Payment Unit. All operations are limited to existing roads. Skid trails only will be allowed.

4.2 - Maintenance

4.2.5 - Two wheel drive condition (2/04)

All existing trail roads on and adjacent to the sale area must be passable by two-wheel drive traffic for the duration of the sale.

5 - Operations

5.2 - Conduct of Operations

5.2.1 - Slash

5.2.1.8 - Slash height (12/08)

No slash or tree tops may exceed 24 inches in height.

5.2.2 - Hazard Trees/Snags

5.2.2.1 - Den trees (10/16)

Obvious hollow and/or den trees shall be protected and left standing unless they are a safety hazard.

5.2.3 - Operating Restrictions

5.2.3.11 - Coppice regeneration protection (4/10)

Timber harvesting in any Payment Unit must be completed before significant aspen sprouting occurs in that Payment Unit so as to minimize damage to the new regeneration. Any post harvest operations, such as chipping, must be completed before sprouting of regeneration occurs. If it is anticipated that chipping will be delayed, then tops shall be carried to one

central location or left unchipped. The Unit Manager or his/her representative may cease such operations if sprouting occurs before the operation is complete.

5.2.4 - Dead and Down Creation

5.2.4.4 - Dead and down creation, grouse (8/13)

To encourage grouse and other wildlife, in Payment Unit(s) 1, leave one, 12" diameter or larger log-length (8 foot minimum) piece on the ground for every 2 acres. These will be evenly scattered throughout the unit. This can be an unmerchantable piece or a full tree.

5.2.32 - Decking/landing restoration (9/13)

All decking and landing areas must have the surface area restored to a condition equal to or better than before. This is to ensure the proper regeneration of the stand. Wood debris, chips and "cookies" from trimmings must be removed or scattered away from landing and loading areas and may not be windrowed on the edge.

5.4 - Soil Protection

5.4.1 - Rutting restriction, general (7/16)

Operations are to cease immediately if equipment and weather conditions result in rutting of roads and/or skid trails which is 12 inches or greater in depth and 50 feet in length. The Unit Manager or his/her representative may restrict hauling and/or skidding if ruts exceed the specified depth. With the Unit Manager or his/her representative's approval, the Purchaser may return to the area when the risk of rutting has decreased.

5.8 - Protection of Endangered Species

5.8.5 - Protection of raptor nests (3/13)

All trees with raptor nests will be protected if found during harvesting operations. Notification will be made to the Unit Manager or his/her representative who will notify the Wildlife Biologist so an on-site evaluation and recommendation can be made, if necessary.



TIMBER SALE MAP

This information provided by authority of Part 525, 1994 PA 451, as amended.

Sale Number	Year
54 - 026	17

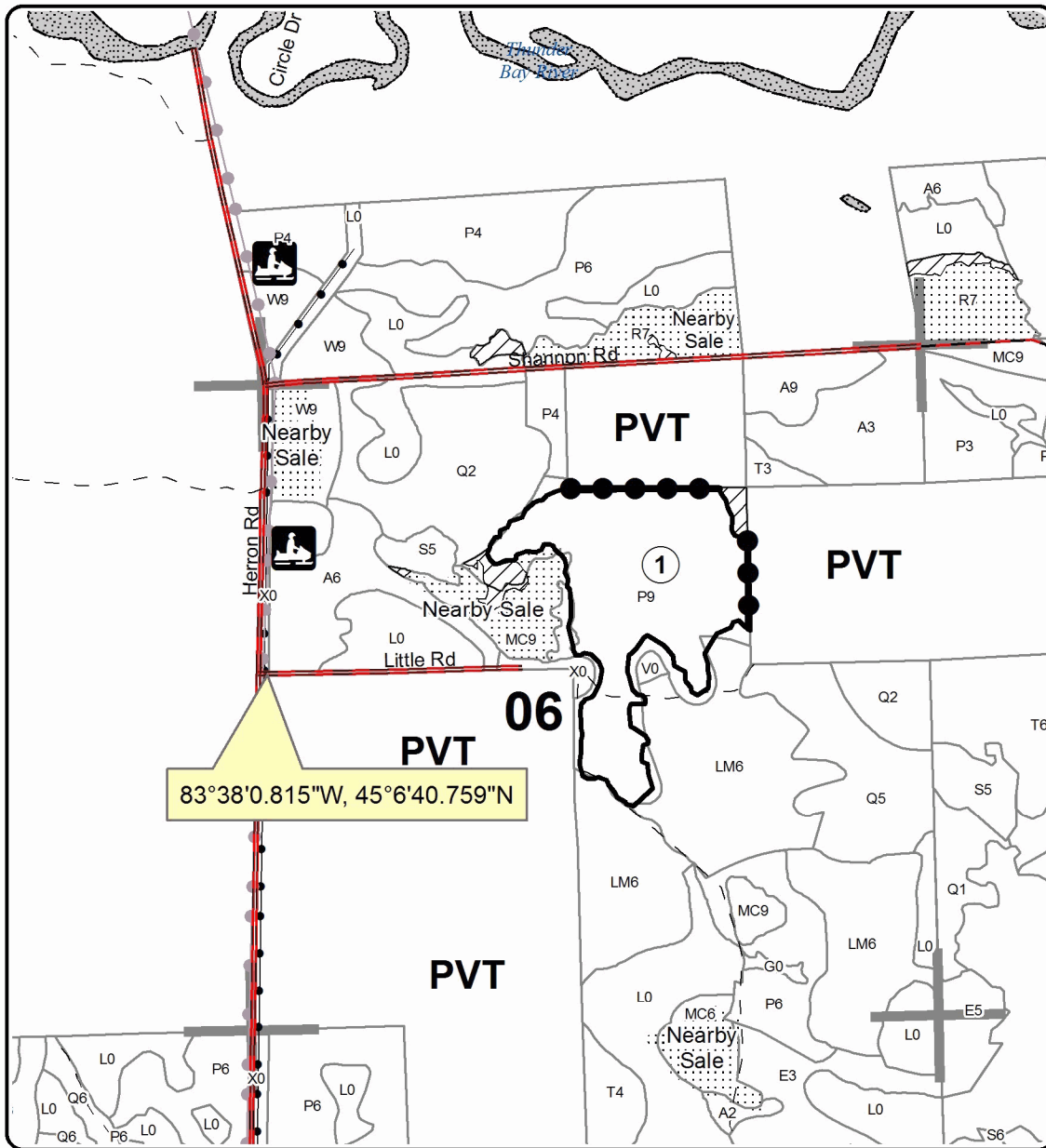
Forest Management Unit Atlanta Management Unit	County Alpena	Mapped By A Krugh	Date 09/26/2017	Page 1	of 1
Township 31N	Range 07E	Section(s) and Subdivision(s) Sec 6 SWNE SENW NWSE	Scale 1:15,840		

Cover Type				Density	
A = Aspen	H = Hemlock	N = Marsh	U = Upland Brush	0 = Non Stocked	5 = Pole Timber Medium
B = Paper Birch	J = Jack Pine	O = Oak	UM = Upland Mixed	1 = Seedling Sapling Poor	6 = Pole Timber Well
C = Cedar	L = Lowland Brush	P = Lowland Poplar	V = Bog or Marsh	2 = Seedling Sapling Medium	7 = Saw Timber Poor
D = Treed Bog	LM = Lowland Mixed	Q = Mixed Swamp Conifer	W = White Pine	3 = Seedling Sapling Well	8 = Saw Timber Medium
E = Swamp Hdwoods	M = Mpl, Bch, Brch	R = Red Pine	X = Non Stocked	4 = Pole Timber Poor	9 = Saw Timber Well
F = Spruce Fir	MC = Mixed Conifer	S = Black Spruce	Z = Water		
G = Grass	MD = Mixed Deciduous	T = Tamarack			



Little Rd Aspen

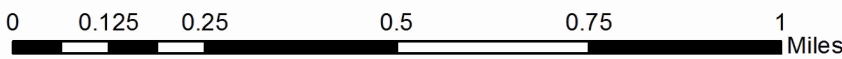
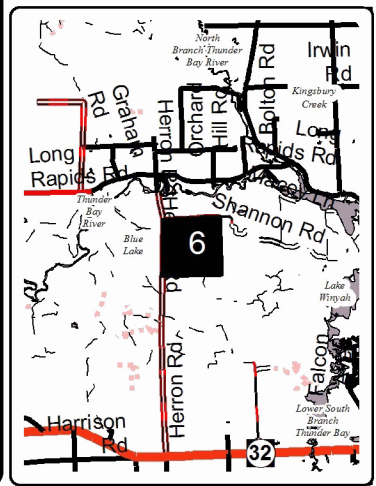
Compartment 102
48.9 Acres



Legend

- Against State (Red)
- Private Line (Blue)
- Payment Unit
- ▨ Retention Area
- Stand Boundaries
- Recreational Trail
- County Gravel Roads
- Gravel Roads
- County Poor Dirt Roads
- Poor Dirt Roads
- Section Corners
- Pipeline; Powerline
- ▨ Lakes & Rivers

Locator Map
1:200,000



TIMBER SALE INFORMATION

TG Said 2 Plant (54-037-17)

Alpena County (Advertised Price \$47,627.35)

A timber sale contract for this lump sum, sealed bid timber sale will be awarded to the responsible bidder offering the highest sealed bid price. Bids must be at or above the following advertised price for each species:

<u>PRODUCTS & SPECIES</u>	<u>ESTIMATED UNITS*</u>	<u>ADVERTISED PRICE</u>
Sawtimber		
Mixed Spruce	9.60 MBF	\$ 65.00 / MBF
Red Maple	5.30 MBF	\$ 137.00 / MBF
Red Pine	126.70 MBF	\$ 119.00 / MBF
White Pine	42.90 MBF	\$ 74.00 / MBF
Pulpwood		
Balsam Fir	13.00 Cords	\$ 39.15 / Cord
Jack Pine	121.00 Cords	\$ 24.30 / Cord
Mixed Aspen	77.00 Cords	\$ 24.30 / Cord
Mixed Spruce	106.00 Cords	\$ 32.55 / Cord
Paper Birch	5.00 Cords	\$ 23.25 / Cord
Red Maple	26.00 Cords	\$ 19.50 / Cord
Red Pine	232.00 Cords	\$ 48.70 / Cord
Tamarack	7.00 Cords	\$ 32.65 / Cord
White Pine	130.00 Cords	\$ 54.65 / Cord

* The total volume is statistically estimated within plus (+) or minus (-) 22.36 percent. The estimated units are final and not subject to adjustment. Prospective bidders are urged to examine this timber and to make their own estimates of quantity and quality.

BOND AND PAYMENT SCHEDULE:

1. A bond in the amount of \$2,381.00 to insure faithful performance of the conditions of the contract will be deposited by the successful bidder within 21 days of the sale award.
2. Cutting in any sale or unit without the required advance payment would be considered a trespass.
3. Total payment must be paid in advance or according to the following schedule:
 - (a) Ten percent (10%) of the sale value must be paid within 21 days of the sale award.
 - (b) The 10% down payment will be credited towards the first unit cut.
 - (c) Payment for each of the following units must be made before cutting begins in that unit:

<u>PAYMENT UNIT NUMBER</u>	<u>PERCENT OF TOTAL SALE VALUE</u>
01	17.2%
02	38.4%
03	8.4%
04	36.0%

4. If no cutting takes place, the 10% down payment will not be refunded.
5. Operations on the contract issued will terminate on 06/30/2021.

Description of Timber by Payment Unit (PU)

PU	MARKET GROUP	PRODUCT	QUANTITY	UNIT	ACRES	ADVERTISE PRICE
1	White Pine	Sawtimber	23.5	MBF	6.2	\$8,171.90
	Balsam Fir	Pulpwood	13.0	Cords		
	Mixed Aspen		62.0	Cords		
	<i>B. T. Aspen</i>		37.0	<i>Cords</i>		
	<i>Quaking Aspen</i>		25.0	<i>Cords</i>		
	Mixed Spruce		2.0	Cords		
	<i>White Spruce</i>		2.0	<i>Cords</i>		
	Red Maple		13.0	Cords		
	White Pine		75.0	Cords		
2	Red Pine	Sawtimber	68.6	MBF	10.5	\$18,304.05
	White Pine		5.6	MBF		
	Jack Pine	Pulpwood	96.0	Cords		
	Mixed Aspen		5.0	Cords		
	<i>B. T. Aspen</i>		5.0	<i>Cords</i>		
	Red Pine		128.0	Cords		
	White Pine		19.0	Cords		
3	White Pine	Sawtimber	1.4	MBF	8.5	\$4,015.50
	Jack Pine	Pulpwood	18.0	Cords		
	Mixed Aspen		10.0	Cords		
	<i>Quaking Aspen</i>		10.0	<i>Cords</i>		
	Mixed Spruce		71.0	Cords		
	<i>Black Spruce</i>		64.0	<i>Cords</i>		
	<i>White Spruce</i>		7.0	<i>Cords</i>		
	Red Maple		2.0	Cords		
	Red Pine		8.0	Cords		
	White Pine		9.0	Cords		
4	Mixed Spruce	Sawtimber	9.6	MBF	8.9	\$17,135.90
	<i>Black Spruce</i>		7.9	<i>MBF</i>		
	<i>White Spruce</i>		1.7	<i>MBF</i>		
	Red Maple		5.3	MBF		
	Red Pine		58.1	MBF		
	White Pine		12.4	MBF		
	Jack Pine	Pulpwood	7.0	Cords		
	Mixed Spruce		33.0	Cords		
	<i>Black Spruce</i>		29.0	<i>Cords</i>		
	<i>White Spruce</i>		4.0	<i>Cords</i>		
	Paper Birch		5.0	Cords		
	<i>Paper Birch</i>	<i>Sawtimber</i>	0.7	<i>MBF</i>		
	<i>Paper Birch</i>	<i>Pulpwood</i>	4.0	<i>Cords</i>		
	Red Maple		11.0	Cords		
	Red Pine		96.0	Cords		
	Tamarack		7.0	Cords		
	<i>Tamarack</i>	<i>Sawtimber</i>	0.7	<i>MBF</i>		
	<i>Tamarack</i>	<i>Pulpwood</i>	6.0	<i>Cords</i>		
White Pine		27.0	Cords			
TOTAL:			184.5	MBF		
TOTAL:			717.0	Cords		

Sale Specific Conditions & Requirements

Sale Name: TG Said 2 Plant

Sale Number: 54-037-17 Seq#: 1

1 - Sale Area

1.2 - Boundaries

1.2.1 - Painted boundaries (1/14)

The sale boundary lines are marked and identified by red paint. Exterior sale boundary lines against state are marked with red paint. The painted boundary line trees are not Included Timber and are to be protected.

2 - Timber Specifications

2.1 - Included Timber

2.1.1 - Clearcut unit(s) with unmerchantable trees (6/14)

Within Payment Unit(s) 2-4, cut all trees that are two (2) inches or more at DBH.

2.1.7 - Leave tree marked unit(s) (6/14)

Within Payment Unit(s) 1, all trees which meet minimum piece specifications in 2.2 Utilization, are designated for cutting, except do not cut trees marked with yellow paint above and below stump height.

2.2 - Utilization

2.2.2 - Chipping required (5/14)

Payment Units 2-4 must be chip harvested to facilitate subsequent planting operations. The Purchaser has the option to produce sawlogs or pulpwood bolts, but the remaining portion of the trees must be chipped and hauled. All tops must be chipped, or at a minimum skidded to the landing area, within 30 days of felling cut trees within a Payment Unit so follow-up planting operations are not delayed. Do not chip 1/6 to 1/3 of the slash from harvested trees (tree tops and limbs less than four inches in diameter).

2.2.3 - Stump heights (4/07)

Stump heights within Payment Unit(s) 2-4 shall not exceed 6 inches for all trees. This is in order to facilitate planting operations.

2.2.4 - Skidding length (2/14)

Tree length skidding is required within Payment Unit 1. This is to scarify the soil for natural regeneration.

3 - Payments

3.4 - Damaged Timber

3.4.1 - Damaged timber (6/14)

General Condition and Requirement 3.4 Damaged Timber, defines liquidated damages for undesignated live merchantable trees which are cut or injured.

No damage is acceptable to merchantable trees. Within the sale area, if more than 5% of trees (> 4.5" DBH) within a specified area of the sale are damaged, liquidated damages will be assessed for all trees damaged. Rates will be in accordance with General Condition and Requirement 3.4 Damaged Timber.

4 - Transportation

4.1 - Construction

4.1.6 - Road construction (1/09)

Construction of new roads or improvements of existing roads shall be done in such a way as to minimize the environmental and visual impacts. Merchantable trees shall be cut and utilized unless otherwise directed. Non-merchantable trees shall be severed and laid flat on the ground. Slash shall be chipped, utilized or otherwise removed from the sale. Stumps shall be set upright, not left on edge, and be moved at least 10 feet away from the road edge. Disturbed soil shall be feathered into the

woods and not left in berms or windrows.

4.1.8 - Road work (1) (8/07)

The following road work is required, unless otherwise approved by the Unit Manager or his/her representative: Due to poor road conditions, the Purchaser will need to install geo cloth and corrugated stone on the access road into Payment Unit 3. In addition, a driveway will need to be created on the access road into Payment Unit 4, and the access road will need to be widened for hauling. Contact the sale administrator for further details.

4.2 - Maintenance

4.2.5 - Two wheel drive condition (2/04)

All existing trail roads on and adjacent to the sale area must be passable by two-wheel drive traffic for the duration of the sale.

5 - Operations

5.2 - Conduct of Operations

5.2.2 - Hazard Trees/Snags

5.2.2.1 - Den trees (10/16)

Obvious hollow and/or den trees shall be protected and left standing unless they are a safety hazard.

5.2.3 - Operating Restrictions

5.2.3.1 - Operating restrictions (9/11)

Within Payment Unit(s) 1, unless changed by written agreement, cutting and skidding are limited to snow off conditions. This restriction is for regeneration purposes.

5.2.3.3 - Bark slippage restriction (3/09)

Within Payment Unit(s) 1, unless changed by written agreement, cutting and skidding are not permitted during the period of April 15 to July 15. This restriction is because of bark slippage.

5.2.3.6 - Bark beetle restriction (12/08)

In the event drought creates a high risk of pine bark beetle infestation, pine is not to be cut during the period March 1 through July 1, unless all portions of trees greater than two inches in diameter are removed from the sale area, reduced to chips, or treated to the satisfaction of the Unit Manager or his/her representative, within fifteen days of being severed from the stump. Pine log decks, pulpwood piles and treetops that are piled for chipping in the fall or winter within a 1/4 mile of susceptible sites must be removed before March 15. Residual slash must not be placed in piles or rows and must be spread over the site for quick drying. The Department of Natural Resources will exercise this specification if the risk of damage warrants.

5.2.32 - Decking/landing restoration (9/13)

All decking and landing areas must have the surface area restored to a condition equal to or better than before. This is to ensure the proper regeneration of the stand. Wood debris, chips and "cookies" from trimmings must be removed or scattered away from landing and loading areas and may not be windrowed on the edge.

5.2.38 - No decking against live trees (2/04)

Cut products may not be decked against unmarked or designated leave trees.

5.4 - Soil Protection

5.4.1 - Rutting restriction, general (7/16)

Operations are to cease immediately if equipment and weather conditions result in rutting of roads and/or skid trails which is 12 inches or greater in depth and 50 feet in length. The Unit Manager or his/her representative may restrict hauling and/or skidding if ruts exceed the specified depth. With the Unit Manager or his/her representative's approval, the Purchaser may return to the area when the risk of rutting has decreased.

5.8 - Protection of Endangered Species

5.8.5 - Protection of raptor nests (3/13)

All trees with raptor nests will be protected if found during harvesting operations. Notification will be made to the Unit

Manager or his/her representative who will notify the Wildlife Biologist so an on-site evaluation and recommendation can be made, if necessary.

6 - Safety and Fire Prevention

6.2 - Signing

6.2.2 - Snowmobile trail posting (8/09)

The Purchaser is responsible for posting and maintaining caution signs on the snowmobile trail prior to beginning operations during the snowmobile season (approximately December 1 to March 31). The trail must be posted at appropriate distances from the sale area to warn of logging activity and truck traffic. Signs must be removed when harvest operations are suspended or completed. The Purchaser will provide these signs.

8 - Performance and Settlement

8.3 - Uncompleted or Terminated Contracts

8.3.1 - Completion of contract, chipping (1/16)

In addition to cutting, all chipping must be completed by the contract expiration date. If chipping has not been completed, an extension fee or damages may be charged per General Condition & Requirement 7.2 and 8.3.



Sale Number	Year
54 - 037	17

TIMBER SALE MAP

This information provided by authority of Part 525, 1994 PA 451, as amended.

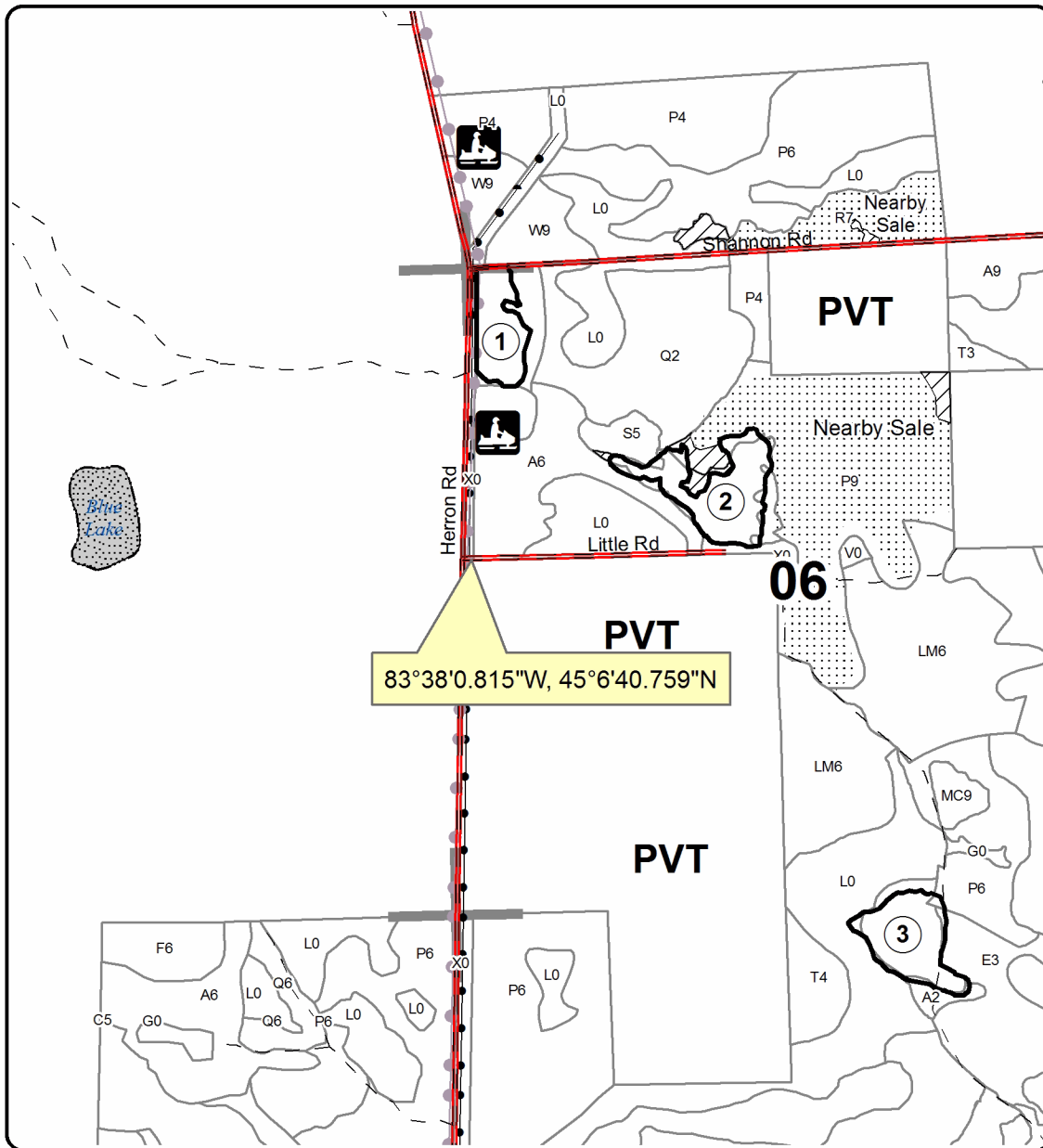
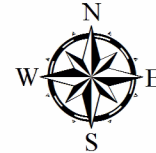
Forest Management Unit Atlanta Management Unit	County Alpena	Mapped By A Krugh	Date 09/26/2017	Page 1	of 2
Township 31N	Range 07E	Section(s) and Subdivision(s) Sec 6 W2NW SENW SWSE Sec 7 NWNE SWSW Sec 18 N2NW	Cruised By A Krugh & D Coy	Scale 1:15,840	

Cover Type				Density	
A = Aspen	H = Hemlock	N = Marsh	U = Upland Brush	0 = Non Stocked	5 = Pole Timber Medium
B = Paper Birch	J = Jack Pine	O = Oak	UM = Upland Mixed	1 = Seedling Sapling Poor	6 = Pole Timber Well
C = Cedar	L = Lowland Brush	P = Lowland Poplar	V = Bog or Marsh	2 = Seedling Sapling Medium	7 = Saw Timber Poor
LM = Lowland Mixed	M = Mpl, Bch, Brch	Q = Mixed Swamp Conifer	W = White Pine	3 = Seedling Sapling Well	8 = Saw Timber Medium
E = Swamp Hdwoods	MC = Mixed Conifer	R = Red Pine	X = Non Stocked	4 = Pole Timber Poor	9 = Saw Timber Well
F = Spruce Fir	MD = Mixed Deciduous	S = Black Spruce	Z = Water		
G = Grass		T = Tamarack			

TG Said 2 Plant
Compartment 102
34.1 Acres



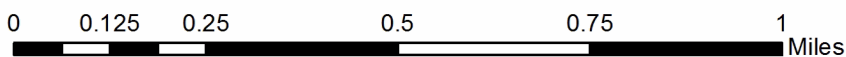
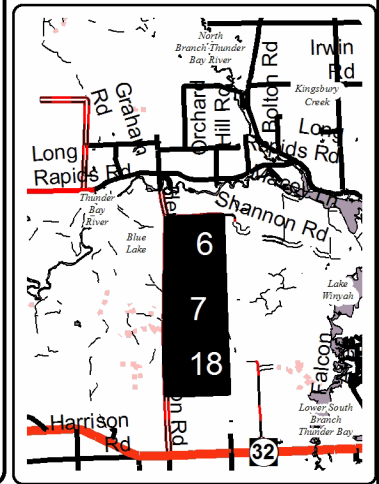
PU	Acres
1	6.2
2	10.5
3	8.5
4	8.9



Legend

- Against State (Red)
- Payment Unit
- ▨ Retention Area
- Stand Boundaries
- County Gravel Roads
- Gravel Roads
- - - Poor Dirt Roads
- ⋯ Closed
- Recreational Trail
- Section Corners
- Pipeline; Powerline
- ▤ Lakes

Locator Map
1:200,000





Sale Number	Year
54 - 037	17

TIMBER SALE MAP

This information provided by authority of Part 525, 1994 PA 451, as amended.

Forest Management Unit Atlanta Management Unit		County Alpena	Mapped By A Krugh	Date 09/26/2017	Page 2	of 2
Township 31N	Range 07E	Section(s) and Subdivision(s) Sec 6 W2NW SENW SWSE Sec 7 NWNE SWSW Sec 18 N2NW		Scale 1:15,840		

Cover Type				Density			
A = Aspen	H = Hemlock	N = Marsh	U = Upland Brush	0 = Non Stocked	5 = Pole Timber Medium		
B = Paper Birch	J = Jack Pine	O = Oak	UM = Upland Mixed	1 = Seedling Sapling Poor	6 = Pole Timber Well		
C = Cedar	L = Lowland Brush	P = Lowland Poplar	V = Bog or Marsh	2 = Seedling Sapling Medium	7 = Saw Timber Poor		
D = Tread Bog	LM = Lowland Mixed	Q = Mixed Swamp Conifer	W = White Pine	3 = Seedling Sapling Well	8 = Saw Timber Medium		
E = Swamp Hdwoods	M = Mpl, Bch, Brch	R = Red Pine	X = Non Stocked	4 = Pole Timber Poor	9 = Saw Timber Well		
F = Spruce Fir	MC = Mixed Conifer	S = Black Spruce	Z = Water				
G = Grass	MD = Mixed Deciduous	T = Tamarack					

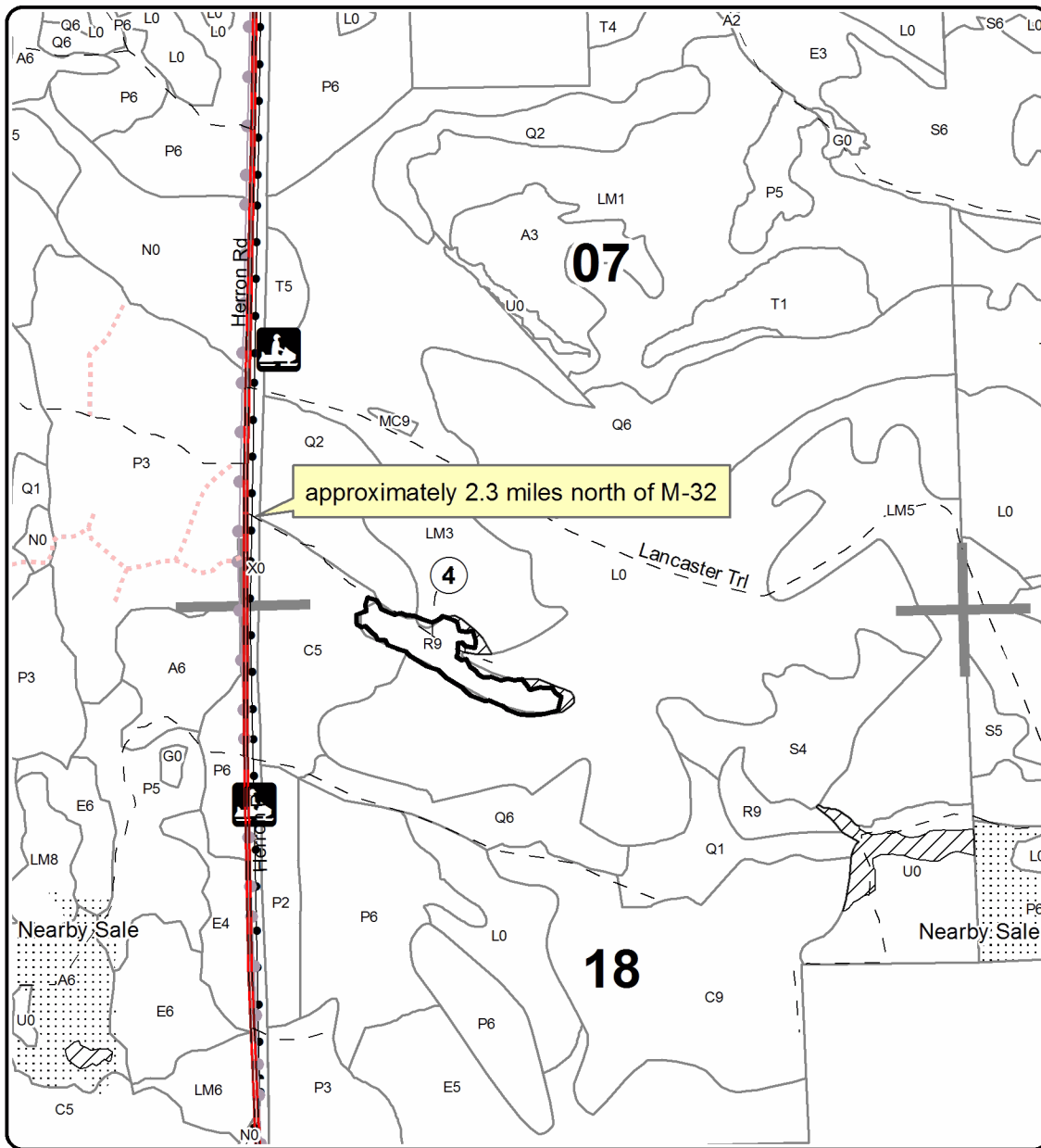
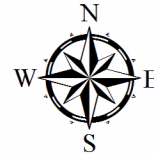
TG Said 2 Plant

Compartment 102

34.1 Acres



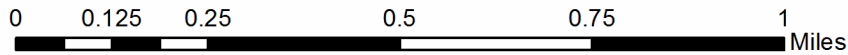
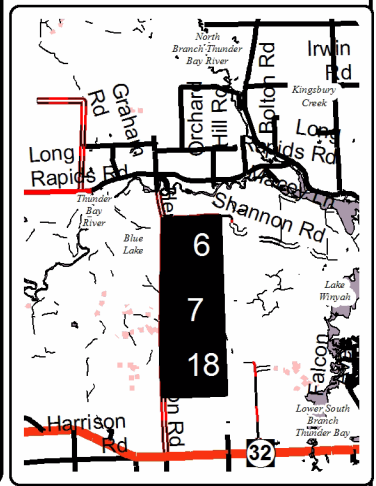
PU	Acres
1	6.2
2	10.5
3	8.5
4	8.9



Legend

- Against State (Red)
- Payment Unit
- ▨ Retention Area
- Stand Boundaries
- County Gravel Roads
- Gravel Roads
- - Poor Dirt Roads
- ... Closed
- Recreational Trail
- Section Corners
- Pipeline; Powerline

Locator Map
1:200,000



Graham's Bear Drag Mix (54-011-17)
; Alpena COUNTY

In response to the notice of sale to be held 10:00 a.m. (local time) on July 24, 2018, I am hereby submitting my sealed bid (firm offer) for the following forest products to be cut. Bids for individual species must be at or above the advertised price. All non-responsive bid forms may be rejected.

<u>PRODUCTS & SPECIES</u>	<u>ESTIMATED VOLUME*</u>	<u>ADVERTISED PRICE</u>	<u>BID PRICE/UNIT</u>
Sawtimber			
Mixed Aspen	11.90 MBF	\$ 88.00/MBF	\$ _____
Mixed Spruce	26.70 MBF	\$ 65.00/MBF	\$ _____
Red Maple	42.30 MBF	\$ 137.00/MBF	\$ _____
Red Pine	3.60 MBF	\$ 119.00/MBF	\$ _____
White Pine	5.10 MBF	\$ 109.00/MBF	\$ _____
Pulpwood			
Balsam Fir	425.00 Cords	\$ 39.15/Cord	\$ _____
Misc. Species 1	6.00 Cords	\$ 5.00/Cord	\$ _____
Mixed Aspen	790.00 Cords	\$ 24.30/Cord	\$ _____
Mixed Hardwood	853.00 Cords	\$ 19.50/Cord	\$ _____
Mixed Spruce	186.00 Cords	\$ 32.55/Cord	\$ _____
N. White Cedar	72.00 Cords	\$ 30.80/Cord	\$ _____
Paper Birch	116.00 Cords	\$ 23.25/Cord	\$ _____
Red Pine	18.00 Cords	\$ 48.70/Cord	\$ _____
Tamarack	7.00 Cords	\$ 32.65/Cord	\$ _____
White Pine	31.00 Cords	\$ 54.65/Cord	\$ _____

*The volumes are statistically estimated within plus (+) or minus (-) 9.00 percent. These estimated volumes are final and not subject to adjustment. Prospective bidders are urged to examine this timber and to make their own estimates of quantity and quality.

I understand that any or all bids may be rejected. All bids must be signed and all bid items must be bid or the bid form may be rejected. I also understand that consideration and awarding a contract will be based upon my past performance and ability to complete the contract based upon equipment and staffing subject to my control.

FEDERAL ID: _____ or SOCIAL SECURITY NUMBER: _____

Company or individual bidding: _____

Company representative's name: _____

Address: _____

City: _____ State: _____ Zip: _____

IF AVAILABLE, PLEASE PLACE THE PERSONALIZED LABEL FROM YOUR PROSPECTUS IN THE ABOVE BOX.

Individual or company representative's signature: _____ Date: _____

Phone number : _____ Email (optional): _____

THE WINNING BIDDER MUST COMPLETE THE VERIFICATION OF WORKER'S DISABILITY COMPENSATION ACT COMPLIANCE (ON REVERSE SIDE IF DOUBLE SIDED) WITHIN 21 DAYS OF SALE AWARD DATE



FOR DEPARTMENT USE ONLY	
Sale Number (XX - XXX - XX - XX)	
Forest Management Unit:	

TIMBER SALE VERIFICATION OF WORKER'S DISABILITY COMPENSATION ACT COMPLIANCE

As required by Act 317, P.A. 1969 (Worker's Compensation) and
Part 5 of Act 451 of 1994, as amended.

VERIFICATION OF WORKER'S DISABILITY COMPENSATION ACT COMPLIANCE

- This verification must be completed and submitted within 21 days of contract award and prior to the issuance of the timber sale contract.
- In addition, if boxes 2B or 2C are checked, then Notice of Exclusion or Certificate of Insurance must be submitted within twenty-one (21) days of the contract award and prior to the issuance of the timber sale contract.
- All information must be typed or printed except for written signatures.

Please Check Appropriate Categories:

1. My business is organized as (you **must** check one of the boxes below):
 - A. Sole Proprietorship (individual)
 - B. Partnership
 - C. Corporation
2. You **must** check one of the boxes below:
 - A. I certify my business is a sole proprietorship and it has no employees but the sole proprietor. I am not subject to the Worker's Compensation Laws.
 - B. I certify my business has satisfied its obligation to the Worker's Compensation Act through the use of an approved Notice of Exclusion (BWC-337, Rev. 5/96). I will provide a copy of the Notice of Exclusion within 21 days of the contract award. (For questions or a copy of the BWC-337, please call the Worker's Compensation Bureau at 517-322-1195).
 - C. I certify my business has a Worker's Compensation Policy. I will provide an original Certificate of Insurance within twenty-one (21) days of the contract award.
3. If you have checked item 2(A) or 2(B), you **must** indicate the number of **both** full-time and part-time employees, other than yourself, including family members and active partners (if none, you must enter "0").

_____ Full-time Employees

_____ Part-time Employees

Name of Business		Federal ID (or) Social Security No.	
Address		Telephone ()	
City	State	ZIP	

I hereby certify that the above information is true and correct. I agree to notify the Michigan DNR of any changes that occur in factors affecting my coverage during any of my present and future operations.

Signature of Owner or Authorized Representative

Title

Date

Please complete the "SEALED BID" information on the next page

Little Rd Aspen (54-026-17)
; Alpena COUNTY

In response to the notice of sale to be held 10:00 a.m. (local time) on July 24, 2018, I am hereby submitting my sealed bid (firm offer) for the following forest products to be cut. Bids for individual species must be at or above the advertised price. All non-responsive bid forms may be rejected.

<u>PRODUCTS & SPECIES</u>	<u>ESTIMATED VOLUME*</u>	<u>ADVERTISED PRICE</u>	<u>BID PRICE/UNIT</u>
Sawtimber			
B. T. Aspen	83.50 MBF	\$ 88.00/MBF	\$ _____
Quaking Aspen	41.50 MBF	\$ 88.00/MBF	\$ _____
Red Maple	15.50 MBF	\$ 137.00/MBF	\$ _____
Red Pine	6.20 MBF	\$ 119.00/MBF	\$ _____
Sugar Maple	1.20 MBF	\$ 457.00/MBF	\$ _____
White Spruce	4.60 MBF	\$ 64.00/MBF	\$ _____
Pulpwood			
Balsam Fir	53.00 Cords	\$ 39.15/Cord	\$ _____
Jack Pine	14.00 Cords	\$ 24.30/Cord	\$ _____
Mixed Aspen	548.00 Cords	\$ 24.30/Cord	\$ _____
Mixed Hardwood	168.00 Cords	\$ 19.50/Cord	\$ _____
Mixed Oak	16.00 Cords	\$ 21.75/Cord	\$ _____
Paper Birch	33.00 Cords	\$ 23.25/Cord	\$ _____
Red Pine	13.00 Cords	\$ 48.70/Cord	\$ _____
White Pine	10.00 Cords	\$ 54.65/Cord	\$ _____
White Spruce	13.00 Cords	\$ 32.55/Cord	\$ _____

*The volumes are statistically estimated within plus (+) or minus (-) 16.79 percent. These estimated volumes are final and not subject to adjustment. Prospective bidders are urged to examine this timber and to make their own estimates of quantity and quality.

I understand that any or all bids may be rejected. All bids must be signed and all bid items must be bid or the bid form may be rejected. I also understand that consideration and awarding a contract will be based upon my past performance and ability to complete the contract based upon equipment and staffing subject to my control.

FEDERAL ID: ____ - ____ - ____ or SOCIAL SECURITY NUMBER: ____ - ____ - ____

Company or individual bidding: _____

Company representative's name: _____

Address: _____

City: _____ State: _____ Zip: _____

IF AVAILABLE, PLEASE PLACE THE PERSONALIZED LABEL FROM YOUR PROSPECTUS IN THE ABOVE BOX.

Individual or company representative's signature: _____ Date: _____

Phone number : _____ Email (optional): _____

THE WINNING BIDDER MUST COMPLETE THE VERIFICATION OF WORKER'S DISABILITY COMPENSATION ACT COMPLIANCE (ON REVERSE SIDE IF DOUBLE SIDED) WITHIN 21 DAYS OF SALE AWARD DATE



FOR DEPARTMENT USE ONLY
Sale Number (XX - XXX - XX - XX)
Forest Management Unit:

TIMBER SALE VERIFICATION OF WORKER'S DISABILITY COMPENSATION ACT COMPLIANCE

*As required by Act 317, P.A. 1969 (Worker's Compensation) and
Part 5 of Act 451 of 1994, as amended.*

VERIFICATION OF WORKER'S DISABILITY COMPENSATION ACT COMPLIANCE

- This verification must be completed and submitted within 21 days of contract award and prior to the issuance of the timber sale contract.
- In addition, if boxes 2B or 2C are checked, then Notice of Exclusion or Certificate of Insurance must be submitted within twenty-one (21) days of the contract award and prior to the issuance of the timber sale contract.
- All information must be typed or printed except for written signatures.

Please Check Appropriate Categories:

1. My business is organized as (you **must** check one of the boxes below):
 - A. Sole Proprietorship (individual)
 - B. Partnership
 - C. Corporation
2. You **must** check one of the boxes below:
 - A. I certify my business is a sole proprietorship and it has no employees but the sole proprietor. I am not subject to the Worker's Compensation Laws.
 - B. I certify my business has satisfied its obligation to the Worker's Compensation Act through the use of an approved Notice of Exclusion (BWC-337, Rev. 5/96). I will provide a copy of the Notice of Exclusion within 21 days of the contract award. (For questions or a copy of the BWC-337, please call the Worker's Compensation Bureau at 517-322-1195).
 - C. I certify my business has a Worker's Compensation Policy. I will provide an original Certificate of Insurance within twenty-one (21) days of the contract award.
3. If you have checked item 2(A) or 2(B), you **must** indicate the number of **both** full-time and part-time employees, other than yourself, including family members and active partners (if none, you must enter "0").

_____ Full-time Employees

_____ Part-time Employees

Name of Business		Federal ID (or) Social Security No.	
Address		Telephone ()	
City	State	ZIP	

I hereby certify that the above information is true and correct. I agree to notify the Michigan DNR of any changes that occur in factors affecting my coverage during any of my present and future operations.

Signature of Owner or Authorized Representative

Title

Date

Please complete the "SEALED BID" information on the next page

TG Said 2 Plant (54-037-17)
; Alpena COUNTY

In response to the notice of sale to be held 10:00 a.m. (local time) on July 24, 2018, I am hereby submitting my sealed bid (firm offer) for the following forest products to be cut. Bids for individual species must be at or above the advertised price. All non-responsive bid forms may be rejected.

<u>PRODUCTS & SPECIES</u>	<u>ESTIMATED VOLUME*</u>	<u>ADVERTISED PRICE</u>	<u>BID PRICE/UNIT</u>
Sawtimber			
Mixed Spruce	9.60 MBF	\$ 65.00/MBF	\$ _____
Red Maple	5.30 MBF	\$ 137.00/MBF	\$ _____
Red Pine	126.70 MBF	\$ 119.00/MBF	\$ _____
White Pine	42.90 MBF	\$ 74.00/MBF	\$ _____
Pulpwood			
Balsam Fir	13.00 Cords	\$ 39.15/Cord	\$ _____
Jack Pine	121.00 Cords	\$ 24.30/Cord	\$ _____
Mixed Aspen	77.00 Cords	\$ 24.30/Cord	\$ _____
Mixed Spruce	106.00 Cords	\$ 32.55/Cord	\$ _____
Paper Birch	5.00 Cords	\$ 23.25/Cord	\$ _____
Red Maple	26.00 Cords	\$ 19.50/Cord	\$ _____
Red Pine	232.00 Cords	\$ 48.70/Cord	\$ _____
Tamarack	7.00 Cords	\$ 32.65/Cord	\$ _____
White Pine	130.00 Cords	\$ 54.65/Cord	\$ _____

*The volumes are statistically estimated within plus (+) or minus (-) 22.36 percent. These estimated volumes are final and not subject to adjustment. Prospective bidders are urged to examine this timber and to make their own estimates of quantity and quality.

I understand that any or all bids may be rejected. All bids must be signed and all bid items must be bid or the bid form may be rejected. I also understand that consideration and awarding a contract will be based upon my past performance and ability to complete the contract based upon equipment and staffing subject to my control.

FEDERAL ID: _____ or SOCIAL SECURITY NUMBER: _____

Company or individual bidding: _____

Company representative's name: _____

Address: _____

City: _____ State: _____ Zip: _____

IF AVAILABLE, PLEASE PLACE THE PERSONALIZED LABEL FROM YOUR PROSPECTUS IN THE ABOVE BOX.

Individual or company representative's signature: _____ Date: _____

Phone number : _____ Email (optional): _____

THE WINNING BIDDER MUST COMPLETE THE VERIFICATION OF WORKER'S DISABILITY COMPENSATION ACT COMPLIANCE (ON REVERSE SIDE IF DOUBLE SIDED) WITHIN 21 DAYS OF SALE AWARD DATE



FOR DEPARTMENT USE ONLY	
Sale Number (XX - XXX - XX - XX)	
Forest Management Unit:	

TIMBER SALE VERIFICATION OF WORKER'S DISABILITY COMPENSATION ACT COMPLIANCE

As required by Act 317, P.A. 1969 (Worker's Compensation) and
Part 5 of Act 451 of 1994, as amended.

VERIFICATION OF WORKER'S DISABILITY COMPENSATION ACT COMPLIANCE

- This verification must be completed and submitted within 21 days of contract award and prior to the issuance of the timber sale contract.
- In addition, if boxes 2B or 2C are checked, then Notice of Exclusion or Certificate of Insurance must be submitted within twenty-one (21) days of the contract award and prior to the issuance of the timber sale contract.
- All information must be typed or printed except for written signatures.

Please Check Appropriate Categories:

1. My business is organized as (you **must** check one of the boxes below):
 - A. Sole Proprietorship (individual)
 - B. Partnership
 - C. Corporation
2. You **must** check one of the boxes below:
 - A. I certify my business is a sole proprietorship and it has no employees but the sole proprietor. I am not subject to the Worker's Compensation Laws.
 - B. I certify my business has satisfied its obligation to the Worker's Compensation Act through the use of an approved Notice of Exclusion (BWC-337, Rev. 5/96). I will provide a copy of the Notice of Exclusion within 21 days of the contract award. (For questions or a copy of the BWC-337, please call the Worker's Compensation Bureau at 517-322-1195).
 - C. I certify my business has a Worker's Compensation Policy. I will provide an original Certificate of Insurance within twenty-one (21) days of the contract award.
3. If you have checked item 2(A) or 2(B), you **must** indicate the number of **both** full-time and part-time employees, other than yourself, including family members and active partners (if none, you must enter "0").

_____ Full-time Employees

_____ Part-time Employees

Name of Business		Federal ID (or) Social Security No.	
Address		Telephone ()	
City	State	ZIP	

I hereby certify that the above information is true and correct. I agree to notify the Michigan DNR of any changes that occur in factors affecting my coverage during any of my present and future operations.

Signature of Owner or Authorized Representative

Title

Date

Please complete the "SEALED BID" information on the next page