



**DEPARTMENT OF NATURAL RESOURCES
STATE OF MICHIGAN**

TIMBER SALE PROSPECTUS #6230

SCHEDULED SALE DATE AND TIME: 8:30 a.m. (local time) on July 25, 2018.

LOCATION: CRYSTAL FALLS MGT UNIT, 1420 US-2 WEST, CRYSTAL FALLS, MI 49920.

PROSPECTUS NOTE: The bidder is advised to inspect the sale area and review the location, estimated volumes, operating costs and contract terms of proposed sales. Please be aware that some landowners may request 60 days or more notice for access across their land.

Notice is hereby given that bids will be received by the Unit Manager, CRYSTAL FALLS MANAGEMENT UNIT, for certain timber on the following described lands:

Left Leg Limp (12-005-18)

Dickinson County, Advertised Price \$68,357.55, 151.5 Acres, Aspen, Spruce/Fir/Tamarack.

SALE NOTE: This sale received wind damage in June, 2018 and it is recommended to harvest as soon as possible. Payment Units 2-6 are very wet and have shallow soils, so care must be used to harvest during non-frozen ground conditions.

Camp 5 Mix (12-055-18)

Iron County, Advertised Price \$25,836.55, 65.0 Acres, Aspen, Spruce/Fir/Tamarack.

SALE NOTE: Access may be through private or other public land.

Deerfoot Hardwood (12-056-18)

Iron County, Advertised Price \$51,600.75, 91.3 Acres, Hardwood, Sugar Maple.

Two Trucks Hardwood (12-058-18)

Iron County, Advertised Price \$80,906.60, 202.3 Acres, Hardwood, Spruce/Fir/Tamarack.

SALE NOTE: Access may be through private land.

BID INSTRUCTIONS (VER. 07/02/2018):

1. Scheduled Bid Location, Date, and Time (2/11)

Bids must be received by the Unit Manager, CRYSTAL FALLS OFFICE, 1420 US-2 WEST, CRYSTAL FALLS, MI 49920, no later than 8:30 a.m. (local time) on July 25, 2018. For further information concerning this sale, contact Dan McNamee at 906-875-6622.

2. Bidder's Qualifications (5/16)

Purchaser shall obtain workers compensation insurance to cover claims under Michigan's Worker's Disability Compensation Act of 1969 or similar employee benefit act of any other state applicable to an employee. If all or part of a timber sale was prepared by a private contractor, the contractor and that contractor's company are not permitted to bid on the timber sale contract. Bids will not be accepted from individuals or companies appearing on the DNR/FRD No-Bid List. This list contains the names of purchasers who previously failed to execute a contract within 21-days or who have a history of poor performance.

3. Preparation of Sealed Bids (5/16)

Bid Forms may be completed online thru Michigan DNR Timber Sale Online Bidding (OLB) at www.michigan.gov/timberbidding or by completing the hardcopy Bid Form found in the Timber Sale Prospectus. Hardcopy Bid Forms shall be manually signed in ink. Registration in OLB is considered your 'signature' for all bids submitted thru that system. Bid prices must be entered for each species and product in the Bid Price column for all material subject to bidding and all fill-in blanks must be completed. If erasures or other changes appear on the hardcopy Bid Form, each erasure or change must be initialed by the person signing the bid.

4. Submission of Sealed Bids (5/16)

Bid forms may be obtained from the Unit Manager or thru OLB. Bids may be submitted hardcopy or thru OLB. All hardcopy bids must be submitted on the bid form and in an envelope clearly identified as described in this section. NOTE: Only one bid form per bid envelope. Sealed bids must be submitted to the Unit office designated in the prospectus and must be submitted at or prior to the time established in the prospectus. The envelope should show on the outside (a) the sale name or number and (b) the date and time of bid opening, as shown in the prospectus. Bids received after the time specified in the sale prospectus are late bids and will be rejected.

It is possible for a bidder to submit multiple bids on a single sale. For example, a bid may be submitted hardcopy and a bid may be submitted thru OLB. Or, two bidders from the same company could both submit bids on the same sale. If this were to happen, the State would accept all bids received and award the contract accordingly. All bidding and contractual requirements would apply to all bids received.

5. Public Opening of Sealed Bids (7/16)

If conditions permit, the sealed bids will be publicly opened and posted at the time and place set in the prospectus.

If a bidder, present at a bid opening, has submitted bids on more than one sale, that bidder may withdraw their unopened bid envelopes or announce the withdrawal of their online bid after being declared the successful bidder on one sale.

6. Award of Contract (1/11)

Award of the contract will be made to the Bidder whose bid, conforming to the prospectus, is most advantageous to the State of Michigan on the basis of total value at rates bid for the estimated quantities. The State reserves the right to reject any bid or waive any minor irregularity in bids received. A written award mailed (or otherwise furnished) to the successful Bidder shall be deemed to result in a binding contract without further action by either party.

7. Down Payment (1/11)

The Bidder to whom award is made must make a down payment within 21 days of the sale award. The amount of the down payment will be calculated as shown in the Bond and Payment Schedule of this prospectus. Only cash may be used to meet this requirement.

8. Performance Security (1/11)

As guarantee of faithful performance, a cash bond, certificate of deposit, surety bond or irrevocable letter of credit (LOC) is required within 21 days of the sale award. The amount of the performance security is shown in the Bond and

Payment Schedule of this prospectus. If an LOC or surety is used, the coverage must extend for at least 6 months beyond the contract expiration.

9. Timber Sale Contract (7/18)

Additional conditions and requirements common to all timber sales are listed on the timber sale contract (R4031) and are available on line at www.michigan.gov/timber. Contact the Unit Manager for additional information or a sample contract. Within 21 days of the date of the award letter, the bidder must sign the contract and provide the required down payment, performance security, and verification of worker's disability compensation. The down payment and performance security shall be in accordance with the provisions of the timber sale contract, in the sums stated in this prospectus. If these actions are not taken, then the Bidder, the Bidder's corporation, and the corporation's principals may not be permitted to bid on State timber sales for a period of 3 months after the first offense, 6 months after the second offense, and 1 year after the third offense. An offense will only be counted against the Bidder for 5 years. In addition, the Bidder certifies that if awarded this contract, the Bidder will complete the timber sale contract in accordance with its terms and any modifications thereof including requirements to purchase, cut, and remove the included timber by the expiration date.

Payment Unit values in the State Forest Timber Sale Contract are calculated based on the advertised value of the Payment Unit as a percentage of the total advertised value of the contract. The advertised value of each Payment Unit is given in the Description of Timber by Payment Unit table on the Timber Sale Information page. For example, if the value of Payment Unit 1 is advertised as \$1,500 and the total Timber Sale value is advertised as \$10,000, the contract price for Payment Unit 1 will be 15% of the total bid price ($\$1,500/\$10,000 * 100$).

10. Disclaimer of Estimates and Bidder's Warranty of Inspection (7/16)

Before submitting this bid, the Bidder is advised and cautioned to inspect the sale area, review the requirements of the sale contract, and take other steps as may be reasonably necessary to ascertain the location, estimated volumes, construction estimates, and operating costs of the proposed sale. Failure to do so will not relieve the Bidder from responsibility for completing the contract.

The Bidder warrants that this bid is submitted solely on the basis of the Bidder's examination and inspection of the quality and quantity of the timber offered for sale and the Bidder's opinion of the value thereof and the costs of recovery. No reliance should be placed on the State of Michigan's estimates of timber quality, quantity or costs of recovery. Bidder further acknowledges that the State of Michigan: (i) expressly disclaims any warranty of fitness of timber for any purpose; (ii) offers this timber as is without any warranty of quality (merchantability) or quantity and (iii) expressly disclaims any warranty as to the quantity or quality of timber sold.

11. Certification and Chain-of-Custody (10/14)

Unless otherwise indicated in the contract under section 7 – Other Conditions of the Sale Specific Conditions & Requirements, the area encompassed by this timber sale is certified to the standards of the Forest Stewardship Council (FSC) - Certificate #SCS-FM/COC-00090N and the Sustainable Forestry Initiative (SFI) - Certificate #NSF-SFIS-5Y031-SF5. Forest products from this sale may be delivered to the mill as "FSC 100% and / or SFI certified" as long as the contractor hauling the forest products is chain-of-custody (COC) certified or covered under a COC certificate from the destination mill. The purchaser is responsible for maintaining COC after leaving the sale area.

12. Good Neighbor Authority (GNA) Requirements (7/16)

If the name of this timber sales contains the acronym GNA, it is authorized by the Good Neighbor Authority (GNA) and covered by various agreements between the U.S. Forest Service and the State. The timber sale occurs on federal land and the following conditions apply:

GNA contracts on US Forest Service land will not be awarded to purchasers on the Federal list of excluded parties. The System for Award Management (SAM) will be checked for active excluded parties prior to award of contract. In addition, the Bidder to whom award is made must complete an Assurance Regarding Felony Conviction or Tax Delinquent Status for Corporate Applicants (AD-3031).

13. Good Neighbor Authority (GNA) Requirements, con't (9/16)

Bidder certifies, by signing this bid form, that to the best of Bidder's knowledge that the following representations are accurate and complete.

- a. That the Bidder and its principals are not presently debarred, suspended, proposed for debarment, declared ineligible, or voluntary excluded from timber sales (covered transactions) by any Federal department or agency.
- b. That the Bidder and its principals have not within a 3-year period preceding this bid been convicted of or had a civil judgment rendered against them for commission of fraud or a criminal offense in connection with obtaining, attempting to obtain, or performing a public (Federal, State, or local) transaction or contract under a public transaction; violation of Federal or State antitrust statutes or commission of embezzlement, theft, forgery, bribery, falsification or destruction of records, making false statements, or receiving stolen property.
- c. That the Bidder and its principals are not presently indicted for or otherwise criminally or civilly charged by a governmental entity (Federal, State, or local) with commission of any of the offenses enumerated in paragraph b of this certification.
- d. That the Bidder and its principals have not within a 3-year period preceding this bid had one or more public transactions (Federal, State, or local) terminated for breach or default of a timber or forest product contract.

Bidders that cannot certify this requirement, in whole or in part, shall submit an explanation with their bid.

KEITH CREAGH
Director

TIMBER SALE INFORMATION

Left Leg Lump (12-005-18)

Dickinson County (Advertised Price \$68,357.55)

SALE NOTE: This sale received wind damage in June, 2018 and it is recommended to harvest as soon as possible. Payment Units 2-6 are very wet and have shallow soils, so care must be used to harvest during non-frozen ground conditions.

A timber sale contract for this lump sum, sealed bid timber sale will be awarded to the responsible bidder offering the highest sealed bid price. Bids must be at or above the following advertised price for each species:

<u>PRODUCTS & SPECIES</u>	<u>ESTIMATED UNITS*</u>	<u>ADVERTISED PRICE</u>
Sawtimber		
Basswood	5.50 MBF	\$ 148.00 / MBF
Sugar Maple	8.60 MBF	\$ 250.00 / MBF
Pulpwood		
Balsam Fir	529.00 Cords	\$ 12.05 / Cord
Balsam Poplar	431.00 Cords	\$ 16.15 / Cord
Basswood	75.00 Cords	\$ 7.60 / Cord
Mixed Hardwood	441.00 Cords	\$ 16.15 / Cord
Quaking Aspen	1,617.00 Cords	\$ 25.35 / Cord
White Spruce	209.00 Cords	\$ 16.15 / Cord

* The total volume is statistically estimated within plus (+) or minus (-) 7.74 percent. The estimated units are final and not subject to adjustment. Prospective bidders are urged to examine this timber and to make their own estimates of quantity and quality.

BOND AND PAYMENT SCHEDULE:

1. A bond in the amount of \$5,469.00 to insure faithful performance of the conditions of the contract will be deposited by the successful bidder within 21 days of the sale award.
2. Cutting in any sale or unit without the required advance payment would be considered a trespass.
3. Total payment must be paid in advance or according to the following schedule:
 - (a) Ten percent (10%) of the sale value must be paid within 21 days of the sale award.
 - (b) The 10% down payment will be credited towards the first unit cut.
 - (c) Payment for each of the following units must be made before cutting begins in that unit:

<u>PAYMENT UNIT NUMBER</u>	<u>PERCENT OF TOTAL SALE VALUE</u>
01	16.0%
02	15.3%
03	16.3%
04	17.0%
05	17.7%
06	17.7%
4. If no cutting takes place, the 10% down payment will not be refunded.
5. Operations on the contract issued will terminate on 06/30/2021.

Description of Timber by Payment Unit (PU)

PU	MARKET GROUP	PRODUCT	QUANTITY	UNIT	ACRES	ADVERTISE PRICE			
1	Basswood	Sawtimber	2.3	MBF	23.1	\$10,918.05			
			1.7	MBF					
	Balsam Fir	Pulpwood	86.0	Cords					
	Balsam Poplar		21.0	Cords					
	Basswood		13.0	Cords					
	Mixed Hardwood		180.0	Cords					
	<i>Black Ash</i>		8.0	<i>Cords</i>					
	<i>Paper Birch</i>		4.0	<i>Cords</i>					
	<i>Red Maple</i>		103.0	<i>Cords</i>					
	<i>Sugar Maple</i>		61.0	<i>Cords</i>					
	<i>Yellow Birch</i>		4.0	<i>Cords</i>					
	Quaking Aspen		199.0	Cords					
	White Spruce	45.0	Cords						
	2	Balsam Fir	Pulpwood	134.0			Cords	26.0	\$10,478.25
Balsam Poplar				135.0	Cords				
Basswood				15.0	Cords				
Mixed Hardwood				38.0	Cords				
<i>Black Ash</i>				6.0	<i>Cords</i>				
<i>Sugar Maple</i>				32.0	<i>Cords</i>				
Quaking Aspen				212.0	Cords				
White Spruce				36.0	Cords				
3	Basswood	Sawtimber	2.6	MBF	23.6	\$11,120.05			
			Sugar Maple	3.4			MBF		
	Balsam Fir	Pulpwood	123.0	Cords					
	Balsam Poplar		103.0	Cords					
	Basswood		8.0	Cords					
	Mixed Hardwood		91.0	Cords					
	<i>Black Ash</i>		17.0	<i>Cords</i>					
	<i>Red Maple</i>		2.0	<i>Cords</i>					
	<i>Sugar Maple</i>		72.0	<i>Cords</i>					
	Quaking Aspen		173.0	Cords					
	White Spruce		51.0	Cords					
4	Basswood	Sawtimber	0.2	MBF	25.5	\$11,595.90			
			Sugar Maple	1.1			MBF		
	Balsam Fir	Pulpwood	60.0	Cords					
	Balsam Poplar		56.0	Cords					
	Basswood		13.0	Cords					
	Mixed Hardwood		43.0	Cords					
	<i>Black Ash</i>		12.0	<i>Cords</i>					
	<i>Paper Birch</i>		2.0	<i>Cords</i>					
	<i>Red Maple</i>		3.0	<i>Cords</i>					
	<i>Sugar Maple</i>		26.0	<i>Cords</i>					
	Quaking Aspen		334.0	Cords					
	White Spruce		25.0	Cords					
	5	Basswood	Sawtimber	0.2			MBF	26.6	\$12,101.90
				Sugar Maple			1.2		
Balsam Fir		Pulpwood	63.0	Cords					
Balsam Poplar			58.0	Cords					
Basswood			13.0	Cords					
Mixed Hardwood			44.0	Cords					
<i>Black Ash</i>			12.0	<i>Cords</i>					
<i>Paper Birch</i>			2.0	<i>Cords</i>					
<i>Red Maple</i>			3.0	<i>Cords</i>					
<i>Sugar Maple</i>			27.0	<i>Cords</i>					
Quaking Aspen			349.0	Cords					
White Spruce			26.0	Cords					

Description of Timber by Payment Unit (PU), con't

PU	MARKET GROUP	PRODUCT	QUANTITY	UNIT	ACRES	ADVERTISE PRICE			
6	Basswood	Sawtimber	0.2	MBF	26.7	\$12,143.40			
	Sugar Maple		1.2	MBF					
	Balsam Fir	Pulpwood	63.0	Cords					
	Balsam Poplar		58.0	Cords					
	Basswood		13.0	Cords					
	Mixed Hardwood		45.0	Cords					
	<i>Black Ash</i>		13.0	<i>Cords</i>					
	<i>Paper Birch</i>		2.0	<i>Cords</i>					
	<i>Red Maple</i>		3.0	<i>Cords</i>					
	<i>Sugar Maple</i>		27.0	<i>Cords</i>					
	Quaking Aspen		350.0	Cords					
	White Spruce		26.0	Cords					
	TOTAL:			14.1			MBF		
	TOTAL:			3,302.0			Cords		

Sale Specific Conditions & Requirements

Sale Name: Left Leg Limp

Sale Number: 12-005-18 Seq#: 1

1 - Sale Area

1.2 - Boundaries

1.2.1 - Painted boundaries (1/14)

The sale boundary and Payment Unit boundaries are marked and identified by blue, red and yellow paint. Exterior sale boundary lines against private property are marked with blue paint. Exterior sale boundary lines against state are marked with red paint. Interior Payment Unit boundaries are marked with yellow paint. Yellow painted trees designating an interior Payment Unit boundary are only to be cut when all surrounding Payment Units have been paid.

2 - Timber Specifications

2.1 - Included Timber

2.1.1 - Clearcut unit(s) with unmerchantable trees (6/14)

Within Payment Unit(s) 1-6, cut all trees that are two (2) inches or more at DBH, except do not cut black ash, sugar maple, cedar, pine and hemlock (if found). In addition, cut all black ash and sugar maple which meet minimum piece specifications in 2.2 - Utilization.

4 - Transportation

4.1 - Construction

4.1.6 - Road construction (1/09)

Construction of new roads or improvements of existing roads shall be done in such a way as to minimize the environmental and visual impacts. Merchantable trees shall be cut and utilized unless otherwise directed. Non-merchantable trees shall be severed and laid flat on the ground. Slash shall be scattered, and not left in windrows and kept a minimum of 10 feet back from the road edge. Stumps shall be set upright, not left on edge, and be moved at least 5 feet away from the road edge. Disturbed soil shall be feathered into the woods and not left in berms or windrows.

4.1.7 - Road closure (10/11)

All new roads built into the sale must be blocked to vehicle traffic upon completion of the sale. Overgrown roads that are reopened shall be considered new roads. In general, this will require constructing a four (4') foot high berm of stumps and logs covered with earth. Contact the sale administrator for specific details of design and placement.

4.2 - Maintenance

4.2.1 - Hauling restriction (12/08)

Hauling may be restricted on forest roads by the Unit Manager or his/her representative. The restriction may occur during spring breakup or prolonged wet weather conditions.

4.2.4 - Grading (10/16)

For completion of the sale, state forest roads must be graded. In general, this will require a road grader or bull dozer to shape up the roads after forest products have been hauled off site. This includes cleaning of drainage areas, grading, crowning and filling with gravel, if necessary. The grading equipment to be used must be approved by the Unit Manager or his/her representative.

5 - Operations

5.2 - Conduct of Operations

5.2.1 - Slash

5.2.1.1 - Slash within sale area (9/16)

No trees are to be felled outside the sale area and all slash is to be kept at least 10 feet back from the red paint line. This is because of another adjacent timber sale. If sale boundary lines are along a public road or highway, then slash must be removed 50' from these lines per General Condition & Requirement 5.2.1.

5.2.22 - Operating Caution

5.2.22.1 - Operating caution (6/11)

It is recommended, but not required, that within Payment Unit(s) 1-6, cutting and skidding occur during dry summer or frozen winter conditions. The reason for the recommendation is because of wet and shallow soils.

If the sale is harvested during non-frozen ground conditions, care must be taken to ensure that sensitive soils are not damaged. Note that spec 5.4.1 still applies.

5.2.32 - Decking/landing restoration (9/13)

All decking and landing areas must have the surface area restored to a condition equal to or better than before. This is to ensure the proper regeneration of the stand. Wood debris, chips and "cookies" from trimmings must be removed or scattered away from landing and loading areas and may not be windrowed on the edge.

5.4 - Soil Protection

5.4.1 - Rutting restriction, general (7/16)

Operations are to cease immediately if equipment and weather conditions result in rutting of roads and/or skid trails which is 12 inches or greater in depth and 50 feet in length. The Unit Manager or his/her representative may restrict hauling and/or skidding if ruts exceed the specified depth. With the Unit Manager or his/her representative's approval, the Purchaser may return to the area when the risk of rutting has decreased.

5.4.6 - Wet area protection (5/10)

No harvesting operations, including skidding and felling, are to take place within the vernal pond areas or drainages. When harvesting occurs, there should be no disturbance to the vernal pond depression. All equipment, trees and tops should be kept out of this area. Care must be taken by the Purchaser to identify and avoid operating in these areas of the timber sale.

7 - Other Conditions

7.2 - Extensions

7.2.3 - Salvage extension (6/13)

This is a salvage sale with a short contract length. The sale must be harvested promptly. One (1), twelve (12) month extension can be applied to one (1) other State Forest Timber Sale Contract owned by the purchaser or owned by one (1) designated sub-contractor of the Purchaser that works this contract. To qualify, the contract expiration date of the contract to be extended must be within twelve (12) months from the issue date of this contract. If this is the first extension on the other State Forest Timber Sale Contract, then the 5% extension fee will be waived. If this is an additional extension, the 10% fee will be reduced to 5%. The salvage extension must be used before this contract is closed-out. This specification does not alleviate the purchaser from any contractual obligations of the extended State Forest Timber Sale Contract. Per General Condition & Requirement 7.2, extensions are at the sole discretion of the DNR.

7.5 - Loss

7.5.1 - Deteriorating timber (7/09)

The sale area has received damage from wind in June, 2018 and spruce budworm. The Purchaser should harvest the wood as soon as possible. The Department of Natural Resources is held free of responsibility of any further damage or deterioration due to delay in harvesting.



Sale Number	Year
12-005	18

TIMBER SALE MAP

This information provided by authority of Part 525, 1994 PA 451, as amended.

Forest Management Unit Crystal Falls Management Unit		County Dickinson Co.	Mapped By Debbie Goupell	Date 2/22/18	Page 1	of 1
Township 42N	Range 28W	Section(s) and Subdivision(s) Sec 13: S1/2NE, NESE, S1/2SE Sec 23: NENE, S1/2NE Sec 24: N1/2NE, SWNE, NW1/4		Scale 1:15,840		

Cover Type

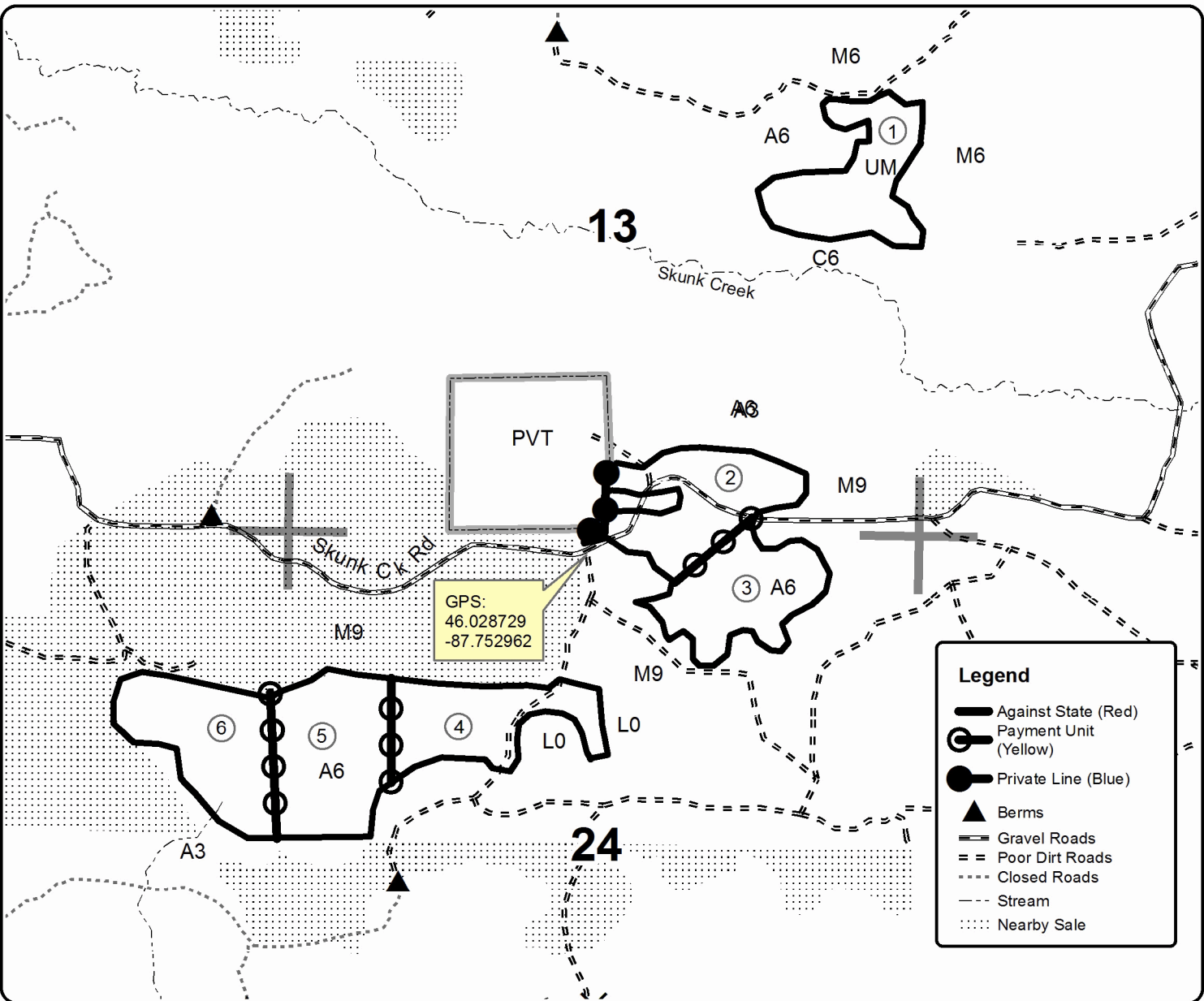
A = Aspen	H = Hemlock	N = Marsh	U = Upland Brush
B = Paper Birch	J = Jack Pine	O = Oak	UM = Upland Mixed
C = Cedar	L = Lowland Brush	P = Lowland Poplar	V = Bog or Marsh
D = Treed Bog	LM = Lowland Mixed	Q = Mixed Swamp Conifer	W = White Pine
E = Swamp Hdwoods	M = Mpl, Bch, Brch	R = Red Pine	X = Non Stocked
F = Spruce Fir	MC = Mixed Conifer	S = Black Spruce	Z = Water
G = Grass	MD = Mixed Deciduous	T = Tamarack	

Density

0 = Non Stocked	5 = Pole Timber Medium
1 = Seedling Sapling Poor	6 = Pole Timber Well
2 = Seedling Sapling Medium	7 = Saw Timber Poor
3 = Seedling Sapling Well	8 = Saw Timber Medium
4 = Pole Timber Poor	9 = Saw Timber Well

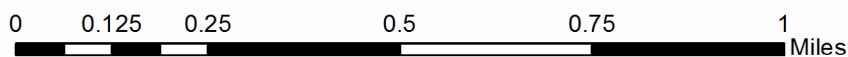
PU	Acres	PU	Acres
1	23.1	4	25.5
2	26.0	5	26.6
3	23.6	6	26.7

Left Leg Limp Compartment 66 151.5 acres



Legend

- Against State (Red)
- Payment Unit (Yellow)
- Private Line (Blue)
- Berms
- Gravel Roads
- Poor Dirt Roads
- Closed Roads
- Stream
- Nearby Sale



TIMBER SALE INFORMATION

Camp 5 Mix (12-055-18)

Iron County (Advertised Price \$25,836.55)

SALE NOTE: Access may be through private or other public land.

A timber sale contract for this lump sum, sealed bid timber sale will be awarded to the responsible bidder offering the highest sealed bid price. Bids must be at or above the following advertised price for each species:

<u>PRODUCTS & SPECIES</u>	<u>ESTIMATED UNITS*</u>	<u>ADVERTISED PRICE</u>
Sawtimber		
Red Pine	20.60 MBF	\$ 89.00 / MBF
Pulpwood		
Balsam Fir	11.00 Cords	\$ 12.05 / Cord
Jack Pine	47.00 Cords	\$ 28.35 / Cord
Quaking Aspen	588.00 Cords	\$ 25.35 / Cord
Red Maple	2.00 Cords	\$ 16.15 / Cord
Red Pine	28.00 Cords	\$ 39.40 / Cord
Tamarack	57.00 Cords	\$ 10.70 / Cord
White Pine	42.00 Cords	\$ 27.50 / Cord
White Spruce	293.00 Cords	\$ 16.15 / Cord

* The total volume is statistically estimated within plus (+) or minus (-) 13.81 percent. The estimated units are final and not subject to adjustment. Prospective bidders are urged to examine this timber and to make their own estimates of quantity and quality.

BOND AND PAYMENT SCHEDULE:

1. A bond in the amount of \$1,300.00 to insure faithful performance of the conditions of the contract will be deposited by the successful bidder within 21 days of the sale award.
2. Cutting in any sale or unit without the required advance payment would be considered a trespass.
3. Total payment must be paid in advance or according to the following schedule:
 - (a) Ten percent (10%) of the sale value must be paid within 21 days of the sale award.
 - (b) The 10% down payment will be credited towards the first unit cut.
 - (c) Payment for each of the following units must be made before cutting begins in that unit:

<u>PAYMENT UNIT NUMBER</u>	<u>PERCENT OF TOTAL SALE VALUE</u>
01	60.0%
02	18.5%
03	10.0%
04	11.5%

4. If no cutting takes place, the 10% down payment will not be refunded.
5. Operations on the contract issued will terminate on 06/30/2021.

Description of Timber by Payment Unit (PU)

PU	MARKET GROUP	PRODUCT	QUANTITY	UNIT	ACRES	ADVERTISE PRICE
1	Balsam Fir	Pulpwood	1.0	Cords	32.4	\$15,512.40
	Jack Pine		11.0	Cords		
	Quaking Aspen		538.0	Cords		
	Tamarack		3.0	Cords		
	White Spruce		94.0	Cords		
2	Red Pine	Sawtimber	20.6	MBF	10.2	\$4,780.95
	Quaking Aspen	Pulpwood	17.0	Cords		
	Red Maple		2.0	Cords		
	Red Pine		28.0	Cords		
	White Pine		42.0	Cords		
	White Spruce		14.0	Cords		
3	Jack Pine	Pulpwood	36.0	Cords	8.4	\$2,571.50
	Quaking Aspen		25.0	Cords		
	Tamarack		51.0	Cords		
	White Spruce		23.0	Cords		
4	Balsam Fir	Pulpwood	10.0	Cords	14.0	\$2,971.70
	Quaking Aspen		8.0	Cords		
	Tamarack		3.0	Cords		
	White Spruce		162.0	Cords		
TOTAL:			20.6	MBF		
TOTAL:			1,068.0	Cords		

Sale Specific Conditions & Requirements

Sale Name: Camp 5 Mix

Sale Number: 12-055-18 Seq#: 1

1 - Sale Area

1.2 - Boundaries

1.2.1 - Painted boundaries (1/14)

Timber sale boundary lines against private property are marked with blue paint. Sale boundary lines against state land are marked with double red paint dots, with the exception of the west boundary of Payment Unit 2, which is unpainted and identified by Camp 5 Road, as shown on the Timber Sale Map. Interior Payment Unit boundaries are marked with double red paint slashes.

2 - Timber Specifications

2.1 - Included Timber

2.1.2 - Clearcut unit(s) w/o unmerchantable trees (8/11)

Within Payment Unit(s) 1, cut all aspen, spruce, balsam fir, jack pine, and tamarack trees which meet minimum piece specifications in 2.2 Utilization (one 100" piece to a 4 inch top diameter inside the bark).

Within Payment Unit(s) 3, cut all aspen, spruce, balsam fir, jack pine, tamarack, and cherry 1 stick tall and larger.

Within Payment Unit(s) 4, cut all spruce and balsam fir 1 stick tall and larger. In addition, aspen may be cut only for equipment access, but should be kept to a minimum. Any aspen cut shall be decked separately to be scaled and paid at the purchase price.

2.1.3 - Cut tree marked unit(s) (12/08)

Within Payment Unit(s) 2, all trees are designated for cutting when marked with orange paint above and below stump height, regardless of merchantability.

2.2 - Utilization

2.2.3 - Stump heights (4/07)

Stump heights within the Sale Area shall not exceed 12 inches for trees greater than 10 inches DBH and 4 inches for trees smaller than 10 inches DBH.

2.2.11 - Chipping restriction (9/14)

If chipping occurs on this sale, then no woody debris present on the ground at the start of the sale may be chipped. Chip piles must be removed within 60 days of the sale expiration. In addition, after chip pile removal, residual chip depth at the landing may not exceed 4 inches.

4 - Transportation

4.1 - Construction

4.1.6 - Road construction (1/09)

Improvements of existing roads shall be done in such a way as to minimize the environmental and visual impacts. Merchantable trees shall be cut and utilized unless otherwise directed. Non-merchantable trees shall be severed and laid flat on the ground. Slash shall be scattered, and not left in windrows. Stumps shall be set upright, not left on edge, and be moved at least 5 feet away from the road edge. Disturbed soil shall be feathered into the woods and not left in berms or windrows.

4.1.7 - Road closure (10/11)

Any overgrown road that is reopened into the sale must be blocked to vehicle traffic within 60 days of the sale expiration. In general, this will require scattering stumps and brush in the road course. These roads must be made impassable to ORVs. Contact the sale administrator for specific design and placement.

4.1.12 - No new roads (1/12)

No new roads will be permitted. All operations are limited to existing roads. Existing overgrown roads may be opened up and utilized with approval from the sale administrator.

4.2 - Maintenance

4.2.5 - Two wheel drive condition (2/04)

All existing trail roads on and adjacent to the sale area must be passable by two-wheel drive traffic for the duration of the sale.

4.4 - Access

4.4.1 - Private property access (3/11)

Permission for access across private land is the responsibility of the Purchaser. Access to Payment Unit 1 crosses Keweenaw Land Association lands. It is the responsibility of the Purchaser to obtain any road use agreement that may be required.

5 - Operations

5.2 - Conduct of Operations

5.2.1 - Slash

5.2.1.8 - Slash height (12/08)

No slash or tree tops may exceed 24 inches in height.

5.2.1.11 - Slash for reforestation (5/07)

To facilitate reforestation, the sale area shall be left with slash evenly distributed. Bunched tops within the cutting area shall be broken up and scattered. Stumps shall be cut low to the ground. Processing sites shall not be left with a compacted layer of slash; tops from these sites shall be hauled back into the cut area and scattered.

5.2.2 - Hazard Trees/Snags

5.2.2.1 - Den trees (10/16)

Obvious hollow and/or den trees shall be protected and left standing unless they are a safety hazard.

5.2.3 - Operating Restrictions

5.2.3.1 - Operating restrictions (9/11)

Within Payment Unit(s) 1, unless changed by written agreement, cutting, skidding, and hauling are not permitted from March 1 to May 15. This restriction is to avoid resource damage due to spring break up.

Within Payment Unit(s) 2, unless changed by written agreement, cutting, skidding and hauling are not permitted from March 1 to July 15. This restriction is to avoid resource damage due to spring break up and bark slip season.

Within Payment Unit(s) 3 and 4, unless changed by written agreement, cutting skidding and hauling are limited to the period of December 15 to March 1, during frozen winter conditions. This restriction is to avoid damage to a seeded hunter walking trail during non frozen and no snow conditions.

5.2.37 - No decking areas (12/08)

No decking is allowed within 10 feet of the Camp 5 Road without permission of the Iron County Road Commission and the sale administrator. All load trim ends must be removed from the cleared edge of the Camp 5 Road.

5.2.38 - No decking against live trees (2/04)

Cut products may not be decked against unmarked or designated leave trees.

5.4 - Soil Protection

5.4.1 - Rutting restriction, general (7/16)

Operations are to cease immediately if equipment and weather conditions result in rutting of roads and/or skid trails which is 12 inches or greater in depth and 50 feet in length. The Unit Manager or his/her representative may restrict hauling and/or skidding if ruts exceed the specified depth. With the Unit Manager or his/her representative's approval, the Purchaser may return to the area when the risk of rutting has decreased.

5.8 - Protection of Endangered Species

5.8.5 - Protection of raptor nests (3/13)

All trees with raptor nests will be protected if found during harvesting operations. Notification will be made to the Unit Manager or his/her representative who will notify the Wildlife Biologist so an on-site evaluation and recommendation can be made, if necessary.



Sale Number	Year
12 - 055	2018

TIMBER SALE MAP

This information provided by authority of Part 525, 1994 PA 451, as amended.

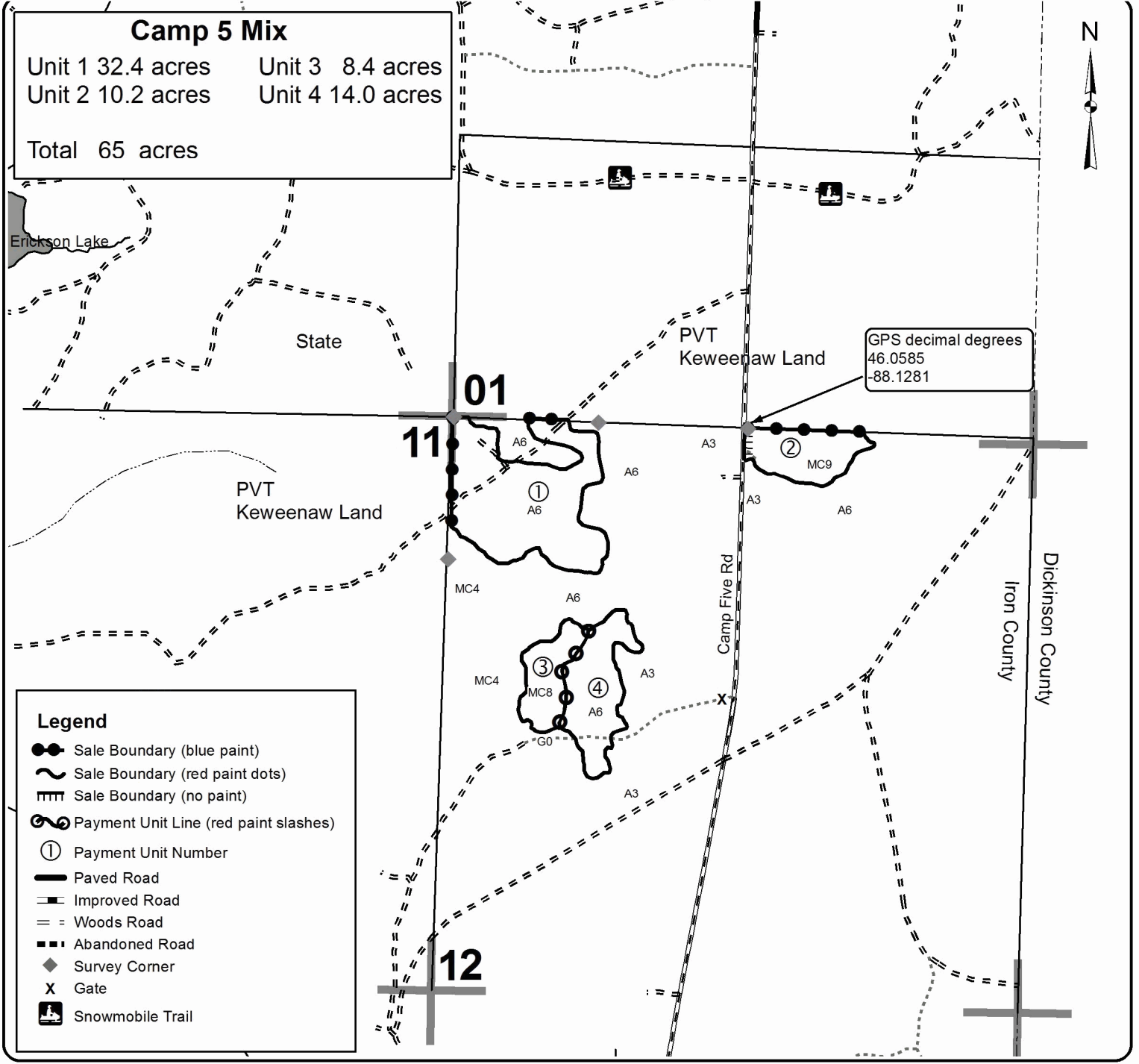
Forest Management Unit Crystal Falls		County Iron	Mapped By Rice	Date 05/21/18	Page 1	of 1
Township 42N	Range 31W	Section(s) and Subdivision(s) sec 12 NWNE, NW1/4, N1/2SW		Scale 4 inches = 1 mile		

Cover Type

A = Aspen	H = Hemlock	N = Marsh	U = Upland Brush
B = Paper Birch	J = Jack Pine	O = Oak	UM = Upland Mixed
C = Cedar	L = Lowland Brush	P = Lowland Poplar	V = Bog or Marsh
D = Treed Bog	LM = Lowland Mixed	Q = Mixed Swamp Conifer	W = White Pine
E = Swamp Hdwoods	M = Mpl, Bch, Brch	R = Red Pine	X = Non Stocked
F = Spruce Fir	MC = Mixed Conifer	S = Black Spruce	Z = Water
G = Grass	MD = Mixed Deciduous	T = Tamarack	

Density

0 = Non Stocked	5 = Pole Timber Medium
1 = Seedling Sapling Poor	6 = Pole Timber Well
2 = Seedling Sapling Medium	7 = Saw Timber Poor
3 = Seedling Sapling Well	8 = Saw Timber Medium
4 = Pole Timber Poor	9 = Saw Timber Well



Legend	
	Sale Boundary (blue paint)
	Sale Boundary (red paint dots)
	Sale Boundary (no paint)
	Payment Unit Line (red paint slashes)
	Payment Unit Number
	Paved Road
	Improved Road
	Woods Road
	Abandoned Road
	Survey Corner
	Gate
	Snowmobile Trail

TIMBER SALE INFORMATION

Deerfoot Hardwood (12-056-18)

Iron County (Advertised Price \$51,600.75)

A timber sale contract for this lump sum, sealed bid timber sale will be awarded to the responsible bidder offering the highest sealed bid price. Bids must be at or above the following advertised price for each species:

<u>PRODUCTS & SPECIES</u>	<u>ESTIMATED UNITS*</u>	<u>ADVERTISED PRICE</u>
Sawtimber		
Basswood	17.00 MBF	\$ 148.00 / MBF
Black Cherry	4.10 MBF	\$ 120.00 / MBF
Red Maple	40.60 MBF	\$ 125.00 / MBF
Sugar Maple	94.00 MBF	\$ 292.00 / MBF
Pulpwood		
Basswood	53.00 Cords	\$ 7.60 / Cord
Mixed Hardwood	923.00 Cords	\$ 16.15 / Cord
Quaking Aspen	30.00 Cords	\$ 25.35 / Cord

* The total volume is statistically estimated within plus (+) or minus (-) 12.34 percent. The estimated units are final and not subject to adjustment. Prospective bidders are urged to examine this timber and to make their own estimates of quantity and quality.

BOND AND PAYMENT SCHEDULE:

- A bond in the amount of \$2,700.00 to insure faithful performance of the conditions of the contract will be deposited by the successful bidder within 21 days of the sale award.
- Cutting in any sale or unit without the required advance payment would be considered a trespass.
- Total payment must be paid in advance or according to the following schedule:
 - Ten percent (10%) of the sale value must be paid within 21 days of the sale award.
 - The remainder is due before cutting begins.
 - Payment for each of the following units must be made before cutting begins in that unit:

PAYMENT UNIT NUMBER	PERCENT OF TOTAL SALE VALUE
01	100.0%
- If no cutting takes place, the 10% down payment will not be refunded.
- Operations on the contract issued will terminate on 06/30/2021.

Description of Timber by Payment Unit (PU)

PU	MARKET GROUP	PRODUCT	QUANTITY	UNIT	ACRES	ADVERTISE PRICE		
1	Basswood	Sawtimber	17.0	MBF	91.3	\$51,600.75		
	Black Cherry		4.1	MBF				
	Red Maple		40.6	MBF				
	Sugar Maple		94.0	MBF				
	Basswood	Pulpwood	53.0	Cords				
	Mixed Hardwood		923.0	Cords				
	<i>Black Cherry</i>		27.0	<i>Cords</i>				
	<i>Paper Birch</i>		14.0	<i>Cords</i>				
	<i>Red Maple</i>		250.0	<i>Cords</i>				
	<i>Sugar Maple</i>		632.0	<i>Cords</i>				
	Quaking Aspen		30.0	Cords				
	TOTAL:			155.7			MBF	
	TOTAL:			1,006.0			Cords	

Sale Specific Conditions & Requirements

Sale Name: Deerfoot Hardwood

Sale Number: 12-056-18 Seq#: 1

1 - Sale Area

1.2 - Boundaries

1.2.1 - Painted boundaries (1/14)

Timber sale boundary lines against private property are marked with blue paint. Sale boundary lines against state land are marked with red paint.

2 - Timber Specifications

2.1 - Included Timber

2.1.3 - Cut tree marked unit(s) (12/08)

Within Payment Unit(s) 1, all trees are designated for cutting when marked with orange paint above and below stump height, regardless of merchantability.

2.2 - Utilization

2.2.3 - Stump heights (4/07)

Stump heights within the Sale Area shall not exceed 12 inches for trees greater than 10 inches DBH and 4 inches for trees smaller than 10 inches DBH.

2.2.11 - Chipping restriction (9/14)

If chipping occurs on this sale, then no woody debris present on the ground at the start of the sale may be chipped. Chip piles must be removed within 60 days of the sale expiration. In addition, after chip pile removal, residual chip depth at the landing may not exceed 4 inches.

3 - Payments

3.3 - Pre-measured Sales

3.3.4 - Dividing payment units (7/14)

Payment Unit(s) 1 may be divided at the request of the Purchaser and upon approval of the Unit Manager. Dividing Payment Units is a contract modification which requires a Timber Sale Contract Supplement.

3.4 - Damaged Timber

3.4.1 - Damaged timber (6/14)

General Condition and Requirement 3.4 Damaged Timber, defines liquidated damages for undesignated live merchantable trees which are cut or injured. Extreme care should be taken to avoid damage to tree seedlings and saplings.

4 - Transportation

4.1 - Construction

4.1.6 - Road construction (1/09)

Improvements of existing roads shall be done in such a way as to minimize the environmental and visual impacts. Merchantable trees shall be cut and utilized unless otherwise directed. Non-merchantable trees shall be severed and laid flat on the ground. Slash shall be scattered, and not left in windrows. Stumps shall be set upright, not left on edge, and be moved at least 5 feet away from the road edge. Disturbed soil shall be feathered into the woods and not left in berms or windrows.

4.1.12 - No new roads (1/12)

No new roads will be permitted. All operations are limited to existing roads. Existing overgrown roads may be opened up and utilized with approval from the sale administrator.

4.2 - Maintenance

4.2.3 - Road maintenance (8/13)

The following road maintenance will be required: Within 60 days of completion of hauling, or if no hauling occurs for 60 days,

the Deerfoot Lodge Road must be maintained and graded if areas become high centered from hauling and/or skidding. This includes cleaning of drainage areas, grading, crowning and filling with gravel, if necessary. All load trim ends must also be removed from the road edge and shoulder. Damages will be assessed if grading/repair does not occur.

4.2.5 - Two wheel drive condition (2/04)

All existing trail roads on and adjacent to the sale area must be passable by two-wheel drive traffic for the duration of the sale.

5 - Operations

5.2 - Conduct of Operations

5.2.1 - Slash

5.2.1.8 - Slash height (12/08)

No slash or tree tops may exceed 24 inches in height.

5.2.1.11 - Slash for reforestation (5/07)

To facilitate reforestation, the sale area shall be left with slash evenly distributed. Bunched tops within the cutting area shall be broken up and scattered. Stumps shall be cut low to the ground. Processing sites shall not be left with a compacted layer of slash; tops from these sites shall be hauled back into the cut area and scattered.

5.2.2 - Hazard Trees/Snags

5.2.2.1 - Den trees (10/16)

Obvious hollow and/or den trees shall be protected and left standing unless they are a safety hazard.

5.2.3 - Operating Restrictions

5.2.3.1 - Operating restrictions (9/11)

Within Payment Unit(s) 1, unless changed by written agreement, cutting, skidding, and hauling are not permitted from March 1 to July 15. This restriction is to avoid resource damage during spring break up to the sale area, forest roads, and bark slip season. If prolonged wet weather conditions occur throughout the operating season, the sale administrator may suspend operations until favorable weather and ground conditions are present.

5.2.3.8 - No decking against live trees (2/04)

Cut products may not be decked against unmarked or designated leave trees.

5.4 - Soil Protection

5.4.1 - Rutting restriction, general (7/16)

Operations are to cease immediately if equipment and weather conditions result in rutting of roads and/or skid trails which is 12 inches or greater in depth and 50 feet in length. The Unit Manager or his/her representative may restrict hauling and/or skidding if ruts exceed the specified depth. With the Unit Manager or his/her representative's approval, the Purchaser may return to the area when the risk of rutting has decreased.

5.4.6 - Wet area protection (5/10)

No harvesting operations, including skidding and felling, are to take place within any vernal pond areas or drainages. If any vernal areas are found during operations, there should be no disturbance to the vernal pond depression. All equipment, trees and tops should be kept out of this area. Within 100 feet of the pond, equipment should only be used when the soil is in a dry or frozen condition. Care must be taken by the Purchaser to identify and avoid operating in these areas of the timber sale.

5.8 - Protection of Endangered Species

5.8.5 - Protection of raptor nests (3/13)

All trees with raptor nests will be protected if found during harvesting operations. Notification will be made to the Unit Manager or his/her representative who will notify the Wildlife Biologist so an on-site evaluation and recommendation can be made, if necessary.



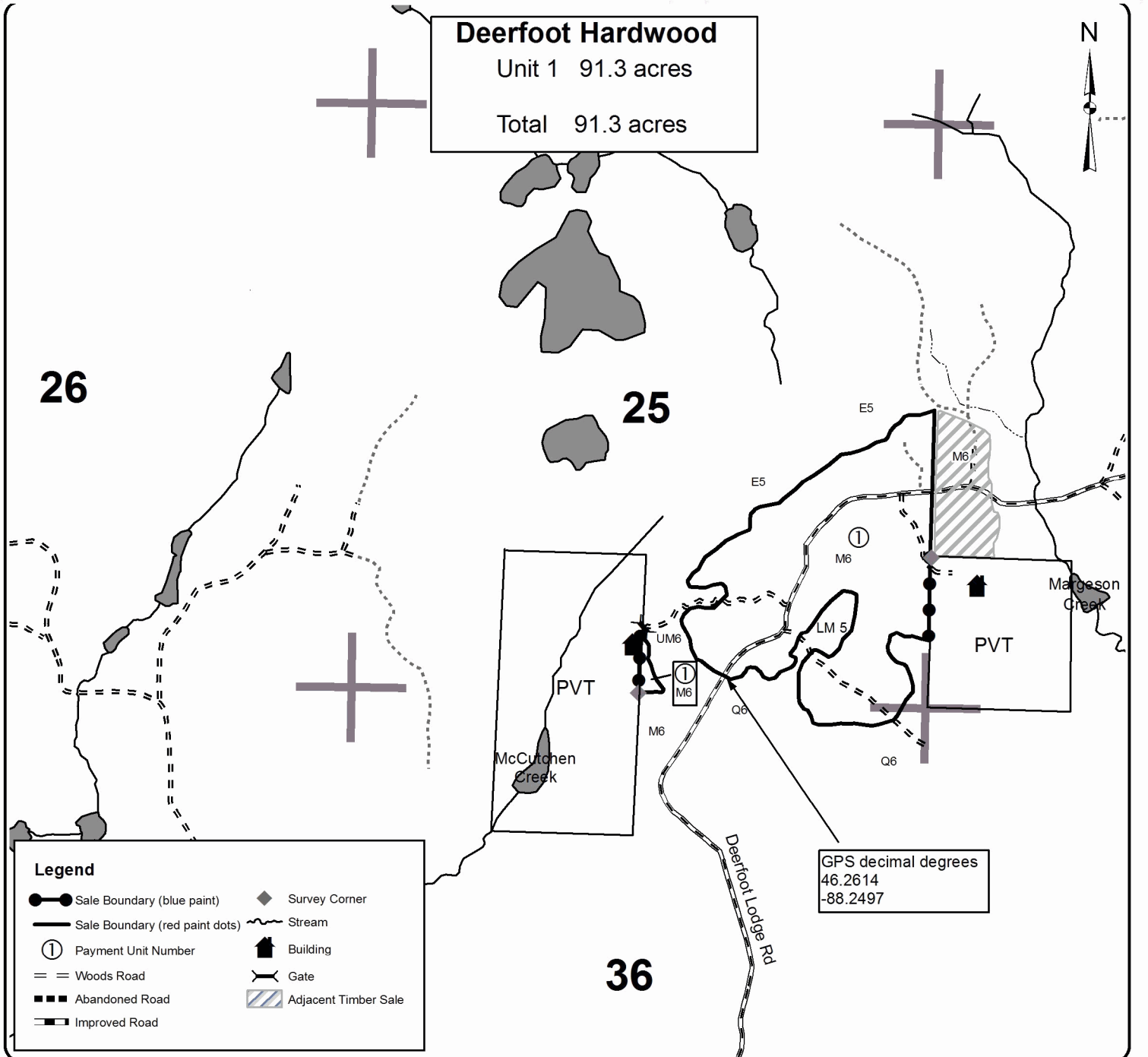
TIMBER SALE MAP

This information provided by authority of Part 525, 1994 PA 451, as amended.

Sale Number	Year
12 - 056	2018

Forest Management Unit Crystal Falls	County Iron	Mapped By Rice	Date 05/25/18	Page 1	of 1
Township 45N	Range 32W	Section(s) and Subdivision(s) sec 25 SENE, SE/4 sec 30 SWNW, NWSW sec 36 NENE	Cruised By VanNoss Forestry		
Scale 4 inches = 1 mile					

Cover Type				Density	
A = Aspen	H = Hemlock	N = Marsh	U = Upland Brush	0 = Non Stocked	5 = Pole Timber Medium
B = Paper Birch	J = Jack Pine	O = Oak	UM = Upland Mixed	1 = Seedling Sapling Poor	6 = Pole Timber Well
C = Cedar	L = Lowland Brush	P = Lowland Poplar	V = Bog or Marsh	2 = Seedling Sapling Medium	7 = Saw Timber Poor
D = Treed Bog	LM = Lowland Mixed	Q = Mixed Swamp Conifer	W = White Pine	3 = Seedling Sapling Well	8 = Saw Timber Medium
E = Swamp Hdwoods	M = Mpl, Bch, Brch	R = Red Pine	X = Non Stocked	4 = Pole Timber Poor	9 = Saw Timber Well
F = Spruce Fir	MC = Mixed Conifer	S = Black Spruce	Z = Water		
G = Grass	MD = Mixed Deciduous	T = Tamarack			



TIMBER SALE INFORMATION

Two Trucks Hardwood (12-058-18)

Iron County (Advertised Price \$80,906.60)

SALE NOTE: Access may be through private land.

A timber sale contract for this lump sum, sealed bid timber sale will be awarded to the responsible bidder offering the highest sealed bid price. Bids must be at or above the following advertised price for each species:

<u>PRODUCTS & SPECIES</u>	<u>ESTIMATED UNITS*</u>	<u>ADVERTISED PRICE</u>
Sawtimber		
Basswood	0.40 MBF	\$ 148.00 / MBF
Black Cherry	19.40 MBF	\$ 120.00 / MBF
Red Maple	68.40 MBF	\$ 125.00 / MBF
Sugar Maple	75.90 MBF	\$ 292.00 / MBF
Yellow Birch	4.70 MBF	\$ 88.00 / MBF
Pulpwood		
Balsam Fir	149.00 Cords	\$ 12.05 / Cord
Mixed Hardwood	2,492.00 Cords	\$ 16.15 / Cord
Tamarack	70.00 Cords	\$ 10.70 / Cord
White Spruce	285.00 Cords	\$ 16.15 / Cord

* The total volume is statistically estimated within plus (+) or minus (-) 12.61 percent. The estimated units are final and not subject to adjustment. Prospective bidders are urged to examine this timber and to make their own estimates of quantity and quality.

BOND AND PAYMENT SCHEDULE:

1. A bond in the amount of \$6,500.00 to insure faithful performance of the conditions of the contract will be deposited by the successful bidder within 21 days of the sale award.
2. Cutting in any sale or unit without the required advance payment would be considered a trespass.
3. Total payment must be paid in advance or according to the following schedule:
 - (a) Ten percent (10%) of the sale value must be paid within 21 days of the sale award.
 - (b) The 10% down payment will be credited towards the first unit cut.
 - (c) Payment for each of the following units must be made before cutting begins in that unit:

<u>PAYMENT UNIT NUMBER</u>	<u>PERCENT OF TOTAL SALE VALUE</u>
01	13.1%
02	13.4%
03	18.3%
04	23.7%
05	31.5%

4. If no cutting takes place, the 10% down payment will not be refunded.
5. Operations on the contract issued will terminate on 06/30/2021.

Description of Timber by Payment Unit (PU)

PU	MARKET GROUP	PRODUCT	QUANTITY	UNIT	ACRES	ADVERTISE PRICE
1	Red Maple	Sawtimber	17.5	MBF	18.6	\$10,601.35
	Balsam Fir	Pulpwood	60.0	Cords		
	Mixed Hardwood		353.0	Cords		
	<i>Red Maple</i>		343.0	<i>Cords</i>		
	<i>Sugar Maple</i>		10.0	<i>Cords</i>		
	Tamarack		29.0	Cords		
	White Spruce		104.0	Cords		
	2	Black Cherry	Sawtimber	18.7		
Red Maple			3.3	MBF		
Sugar Maple			0.5	MBF		
Balsam Fir		Pulpwood	6.0	Cords		
Mixed Hardwood			457.0	Cords		
<i>Black Cherry</i>			33.0	<i>Cords</i>		
<i>Red Maple</i>			281.0	<i>Cords</i>		
<i>Sugar Maple</i>			143.0	<i>Cords</i>		
White Spruce			35.0	Cords		
3		Red Maple	Sawtimber	24.4	MBF	25.9
	Balsam Fir	Pulpwood	83.0	Cords		
	Mixed Hardwood		491.0	Cords		
	<i>Red Maple</i>		478.0	<i>Cords</i>		
	<i>Sugar Maple</i>		13.0	<i>Cords</i>		
	Tamarack		41.0	Cords		
	White Spruce		146.0	Cords		
	4	Basswood	Sawtimber	0.4	MBF	
Black Cherry			0.2	MBF		
Red Maple			3.6	MBF		
Sugar Maple			30.6	MBF		
Yellow Birch			4.2	MBF		
Mixed Hardwood		Pulpwood	580.0	Cords		
<i>Basswood</i>			4.0	<i>Cords</i>		
<i>Black Cherry</i>			1.0	<i>Cords</i>		
<i>Red Maple</i>			81.0	<i>Cords</i>		
<i>Sugar Maple</i>			485.0	<i>Cords</i>		
<i>Yellow Birch</i>			9.0	<i>Cords</i>		
5		Black Cherry	Sawtimber	0.5	MBF	56.4
	Red Maple		19.6	MBF		
	Sugar Maple		44.8	MBF		
	Yellow Birch		0.5	MBF		
	Mixed Hardwood	Pulpwood	611.0	Cords		
	<i>Black Cherry</i>		2.0	<i>Cords</i>		
	<i>Red Maple</i>		133.0	<i>Cords</i>		
	<i>Sugar Maple</i>		475.0	<i>Cords</i>		
	<i>Yellow Birch</i>		1.0	<i>Cords</i>		
	TOTAL:			168.8	MBF	
TOTAL:			2,996.0	Cords		

Sale Specific Conditions & Requirements

Sale Name: Two Trucks Hardwood

Sale Number: 12-058-18 Seq#: 1

1 - Sale Area

1.2 - Boundaries

1.2.1 - Painted boundaries (1/14)

The sale boundary against private land is marked with blue paint. The sale boundary against state land is marked with red paint. Interior Payment Unit boundaries are marked with red paint slashes.

2 - Timber Specifications

2.1 - Included Timber

2.1.2 - Clearcut unit(s) w/o unmerchantable trees (8/11)

Within Payment Unit(s) 1 and 3, cut all aspen, mixed hardwood, white birch, balsam fir, spruce, and tamarack trees which meet minimum piece specifications in 2.2 Utilization. Do not cut trees marked with green paint, oak, or elm.

2.1.3 - Cut tree marked unit(s) (12/08)

Within Payment Unit(s) 2, 4, and 5, trees are designated for cutting when marked with orange paint above and below stump height, regardless of merchantability.

2.2 - Utilization

2.2.11 - Chipping restriction (9/14)

If chipping occurs on this sale, then no woody debris present on the ground at the start of the sale may be chipped. Chip piles must be removed within 60 days of the sale expiration. In addition, after chip pile removal, residual chip depth at the landing may not exceed 4 inches.

3 - Payments

3.4 - Damaged Timber

3.4.1 - Damaged timber (6/14)

General Condition and Requirement 3.4 Damaged Timber, defines liquidated damages for undesignated live merchantable trees which are cut or injured. Extreme care should be taken to avoid damage to tree seedlings and saplings.

4 - Transportation

4.1 - Construction

4.1.6 - Road construction (1/09)

Construction of new roads or improvements of existing roads shall be done in such a way as to minimize the environmental and visual impacts. Merchantable trees shall be cut and utilized unless otherwise directed. Non-merchantable trees shall be severed and laid flat on the ground. Slash shall be scattered. Stumps shall be set upright, not left on edge, and be moved at least 5 feet away from the road edge. Disturbed soil shall be feathered into the woods and not left in berms or windrows.

4.1.7 - Road closure (10/11)

New roads built into the sale must be blocked to vehicle traffic within 60 days of the sale expiration. Overgrown roads that are reopened shall be considered new roads. In general, this will require constructing a four (4') foot high berm of stumps, logs and earth. These roads must be rendered impassable to wheeled vehicles. Contact the sale administrator for specific details of design and placement.

4.2 - Maintenance

4.2.5 - Two wheel drive condition (2/04)

All existing trail roads on and adjacent to the sale area must be passable by two-wheel drive traffic for the duration of the sale.

4.4 - Access

4.4.1 - Private property access (3/11)

Permission for access across private land is the responsibility of the Purchaser. It is also the responsibility of the Purchaser to obtain any road use agreement from Weyerhaeuser. At a minimum, the Purchaser must contact Weyerhaeuser prior to beginning operations notifying them of road use.

5 - Operations

5.2 - Conduct of Operations

5.2.1 - Slash

5.2.1.8 - Slash height (12/08)

No slash may exceed 36 inches in height.

5.2.1.11 - Slash for reforestation (5/07)

To facilitate reforestation, the sale area shall be left with slash evenly distributed. Bunched tops within the cutting area shall be broken up and scattered. Stumps shall be cut low to the ground. Processing sites shall not be left with a compacted layer of slash; tops from these sites shall be hauled back into the cut area and scattered.

5.2.3 - Operating Restrictions

5.2.3.1 - Operating restrictions (9/11)

Within Payment Unit(s) 1 - 5, unless changed by written agreement, cutting, skidding, and hauling are not permitted from March 1 to December 15. This restriction is to avoid resource damage during spring break up and wet soil/roads.

5.2.38 - No decking against live trees (2/04)

Cut products may not be decked against unmarked or designated leave trees.

5.4 - Soil Protection

5.4.1 - Rutting restriction, general (7/16)

Operations are to cease immediately if equipment and weather conditions result in rutting of roads and/or skid trails which is 12 inches or greater in depth and 50 feet in length. The Unit Manager or his/her representative may restrict hauling and/or skidding if ruts exceed the specified depth. With the Unit Manager or his/her representative's approval, the Purchaser may return to the area when the risk of rutting has decreased.

5.4.6 - Wet area protection (5/10)

No harvesting operations, including skidding and felling, are to take place within any vernal pond areas. If vernal pond areas are found during operations, no disturbance is to occur to the vernal depression. All equipment, trees and tops should be kept out of this area. Within 100 feet of the pond, equipment should only be used when the soil is in a dry or frozen condition. Care must be taken by the Purchaser to identify and avoid operating in these areas of the timber sale.

5.8 - Protection of Endangered Species

5.8.5 - Protection of raptor nests (3/13)

All trees with raptor nests will be protected if found during harvesting operations. Notification will be made to the Unit Manager or his/her representative who will notify the Wildlife Biologist so an on-site evaluation and recommendation can be made, if necessary.



TIMBER SALE MAP

This information provided by authority of Part 525, 1994 PA 451, as amended.

Forest Management Unit Crystal Falls	County Iron	Mapped By Rice	Date 06/12/18	Page 1	of 2
Township 45/46N	Range 34W	Cruised By Rice	Scale 4 inches = 1 mile		
Section(s) and Subdivision(s) sec 4 N1/2NW, SENW, NESW sec 5 NENE Scale sec 15 S1/2SW sec 22 N1/2NW, NWNE sec 28 SWSE sec 33 W1/2, NE					

Cover Type

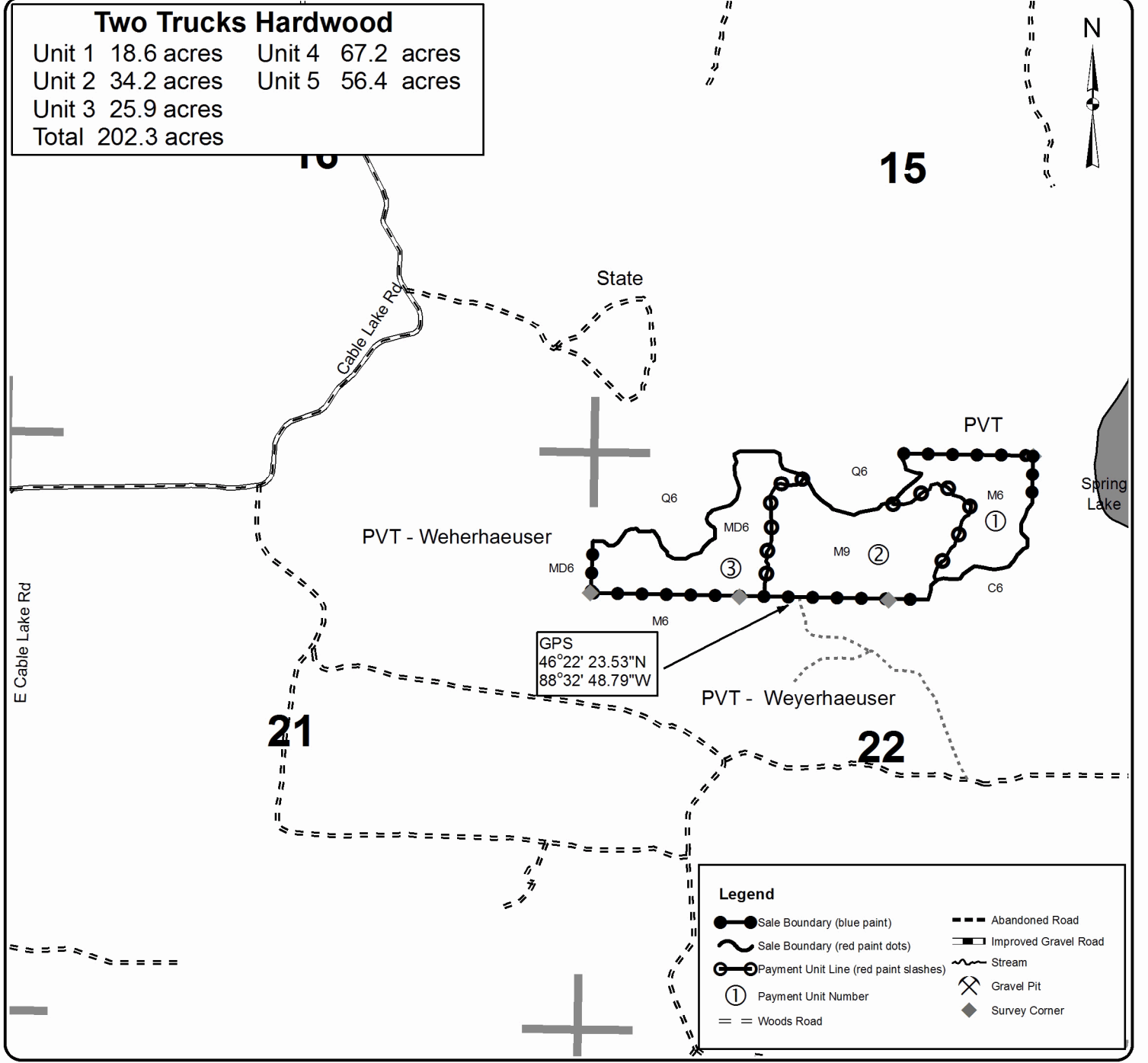
A = Aspen	H = Hemlock	N = Marsh	U = Upland Brush
B = Paper Birch	J = Jack Pine	O = Oak	UM = Upland Mixed
C = Cedar	L = Lowland Brush	P = Lowland Poplar	V = Bog or Marsh
D = Treed Bog	LM = Lowland Mixed	Q = Mixed Swamp Conifer	W = White Pine
E = Swamp Hdwoods	M = Mpl, Bch, Brch	R = Red Pine	X = Non Stocked
F = Spruce Fir	MC = Mixed Conifer	S = Black Spruce	Z = Water
G = Grass	MD = Mixed Deciduous	T = Tamarack	

Density

0 = Non Stocked	5 = Pole Timber Medium
1 = Seedling Sapling Poor	6 = Pole Timber Well
2 = Seedling Sapling Medium	7 = Saw Timber Poor
3 = Seedling Sapling Well	8 = Saw Timber Medium
4 = Pole Timber Poor	9 = Saw Timber Well

Two Trucks Hardwood

Unit 1 18.6 acres	Unit 4 67.2 acres
Unit 2 34.2 acres	Unit 5 56.4 acres
Unit 3 25.9 acres	
Total 202.3 acres	





TIMBER SALE MAP

This information provided by authority of Part 525, 1994 PA 451, as amended.

Sale Number	Year
12 - 058	2018

Forest Management Unit Crystal Falls	County Iron	Mapped By Rice	Date 06/12/18	Page 2	of 2
Township 45/46N	Range 34W	Section(s) and Subdivision(s) sec 4 N1/2NW, SENW, NESW sec 5 NENE Scale sec 15 S1/2SW sec 22 N1/2NW, NWNE sec 28 SWSE sec 33 W1/2, NE	4 inches = 1 mile		

Cover Type

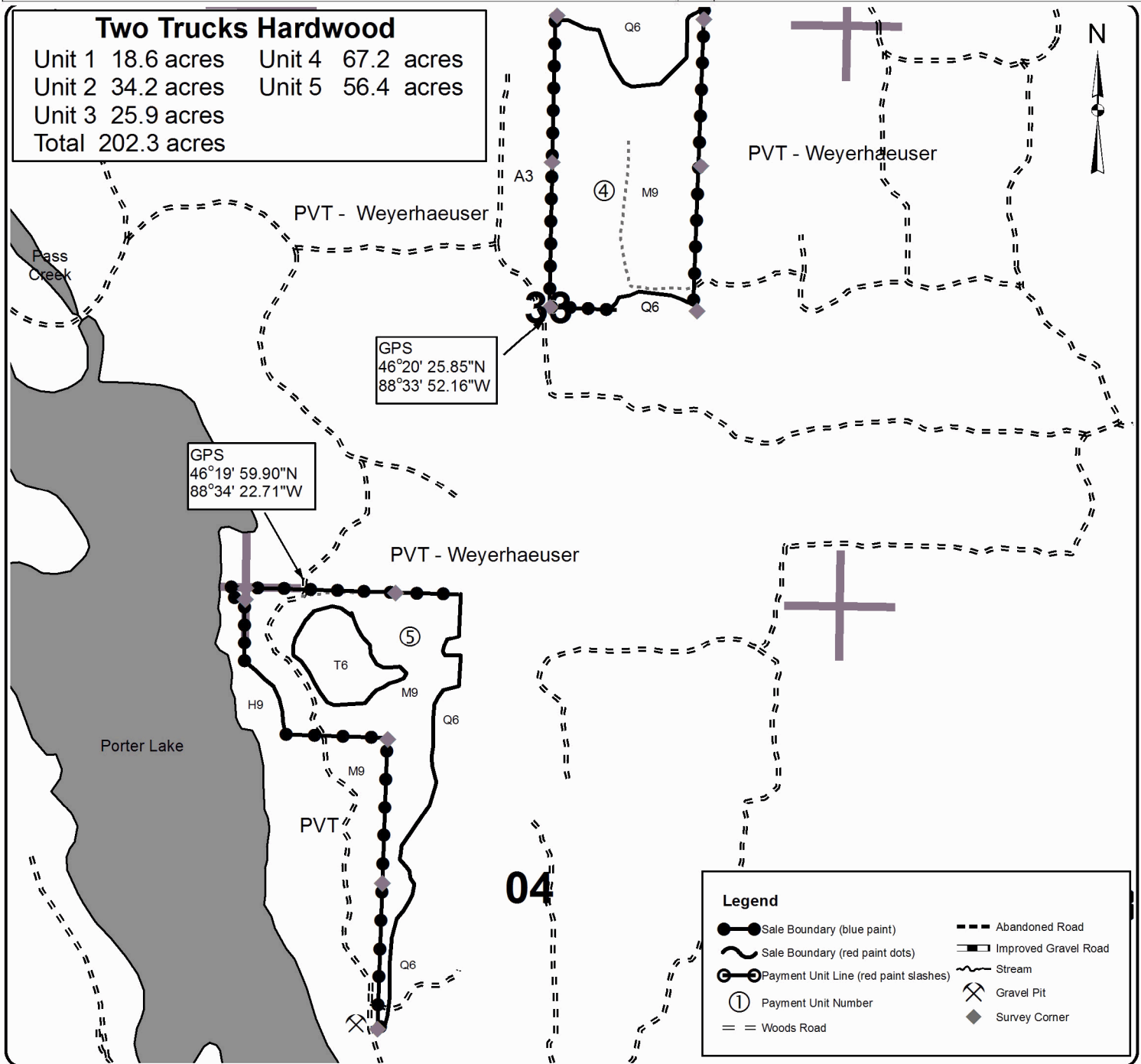
A = Aspen	H = Hemlock	N = Marsh	U = Upland Brush
B = Paper Birch	J = Jack Pine	O = Oak	UM = Upland Mixed
C = Cedar	L = Lowland Brush	P = Lowland Poplar	V = Bog or Marsh
D = Treed Bog	LM = Lowland Mixed	Q = Mixed Swamp Conifer	W = White Pine
E = Swamp Hdwoods	M = Mpl, Bch, Brch	R = Red Pine	X = Non Stocked
F = Spruce Fir	MC = Mixed Conifer	S = Black Spruce	Z = Water
G = Grass	MD = Mixed Deciduous	T = Tamarack	

Density

0 = Non Stocked	5 = Pole Timber Medium
1 = Seedling Sapling Poor	6 = Pole Timber Well
2 = Seedling Sapling Medium	7 = Saw Timber Poor
3 = Seedling Sapling Well	8 = Saw Timber Medium
4 = Pole Timber Poor	9 = Saw Timber Well

Two Trucks Hardwood

Unit 1 18.6 acres	Unit 4 67.2 acres
Unit 2 34.2 acres	Unit 5 56.4 acres
Unit 3 25.9 acres	
Total 202.3 acres	



Left Leg Limp (12-005-18)
; Dickinson COUNTY

In response to the notice of sale to be held 8:30 a.m. (local time) on July 25, 2018, I am hereby submitting my sealed bid (firm offer) for the following forest products to be cut. Bids for individual species must be at or above the advertised price. All non-responsive bid forms may be rejected.

<u>PRODUCTS & SPECIES</u>	<u>ESTIMATED VOLUME*</u>	<u>ADVERTISED PRICE</u>	<u>BID PRICE/UNIT</u>
Sawtimber			
Basswood	5.50 MBF	\$ 148.00/MBF	\$ _____
Sugar Maple	8.60 MBF	\$ 250.00/MBF	\$ _____
Pulpwood			
Balsam Fir	529.00 Cords	\$ 12.05/Cord	\$ _____
Balsam Poplar	431.00 Cords	\$ 16.15/Cord	\$ _____
Basswood	75.00 Cords	\$ 7.60/Cord	\$ _____
Mixed Hardwood	441.00 Cords	\$ 16.15/Cord	\$ _____
Quaking Aspen	1,617.00 Cords	\$ 25.35/Cord	\$ _____
White Spruce	209.00 Cords	\$ 16.15/Cord	\$ _____

*The volumes are statistically estimated within plus (+) or minus (-) 7.74 percent. These estimated volumes are final and not subject to adjustment. Prospective bidders are urged to examine this timber and to make their own estimates of quantity and quality.

I understand that any or all bids may be rejected. All bids must be signed and all bid items must be bid or the bid form may be rejected. I also understand that consideration and awarding a contract will be based upon my past performance and ability to complete the contract based upon equipment and staffing subject to my control.

FEDERAL ID: ____ - ____ - ____ or SOCIAL SECURITY NUMBER: ____ - ____ - ____

Company or individual bidding: _____

Company representative's name: _____

Address: _____

City: _____ State: _____ Zip: _____

IF AVAILABLE, PLEASE PLACE THE PERSONALIZED LABEL FROM YOUR PROSPECTUS IN THE ABOVE BOX.

Individual or company representative's signature: _____ Date: _____

Phone number : _____ Email (optional): _____

THE WINNING BIDDER MUST COMPLETE THE VERIFICATION OF WORKER'S DISABILITY COMPENSATION ACT COMPLIANCE (ON REVERSE SIDE IF DOUBLE SIDED) WITHIN 21 DAYS OF SALE AWARD DATE



FOR DEPARTMENT USE ONLY
Sale Number (XX - XXX - XX - XX)
Forest Management Unit:

TIMBER SALE VERIFICATION OF WORKER'S DISABILITY COMPENSATION ACT COMPLIANCE

*As required by Act 317, P.A. 1969 (Worker's Compensation) and
Part 5 of Act 451 of 1994, as amended.*

VERIFICATION OF WORKER'S DISABILITY COMPENSATION ACT COMPLIANCE

- This verification must be completed and submitted within 21 days of contract award and prior to the issuance of the timber sale contract.
- In addition, if boxes 2B or 2C are checked, then Notice of Exclusion or Certificate of Insurance must be submitted within twenty-one (21) days of the contract award and prior to the issuance of the timber sale contract.
- All information must be typed or printed except for written signatures.

Please Check Appropriate Categories:

1. My business is organized as (you **must** check one of the boxes below):
 - A. Sole Proprietorship (individual)
 - B. Partnership
 - C. Corporation

2. You **must** check one of the boxes below:
 - A. I certify my business is a sole proprietorship and it has no employees but the sole proprietor. I am not subject to the Worker's Compensation Laws.
 - B. I certify my business has satisfied its obligation to the Worker's Compensation Act through the use of an approved Notice of Exclusion (BWC-337, Rev. 5/96). I will provide a copy of the Notice of Exclusion within 21 days of the contract award. (For questions or a copy of the BWC-337, please call the Worker's Compensation Bureau at 517-322-1195).
 - C. I certify my business has a Worker's Compensation Policy. I will provide an original Certificate of Insurance within twenty-one (21) days of the contract award.

3. If you have checked item 2(A) or 2(B), you **must** indicate the number of **both** full-time and part-time employees, other than yourself, including family members and active partners (if none, you must enter "0").

_____ Full-time Employees

_____ Part-time Employees

Name of Business		Federal ID (or) Social Security No.	
Address		Telephone ()	
City	State	ZIP	

I hereby certify that the above information is true and correct. I agree to notify the Michigan DNR of any changes that occur in factors affecting my coverage during any of my present and future operations.

Signature of Owner or Authorized Representative

Title

Date

Please complete the "SEALED BID" information on the next page

Camp 5 Mix (12-055-18)
; Iron COUNTY

In response to the notice of sale to be held 8:30 a.m. (local time) on July 25, 2018, I am hereby submitting my sealed bid (firm offer) for the following forest products to be cut. Bids for individual species must be at or above the advertised price. All non-responsive bid forms may be rejected.

<u>PRODUCTS & SPECIES</u>	<u>ESTIMATED VOLUME*</u>	<u>ADVERTISED PRICE</u>	<u>BID PRICE/UNIT</u>
Sawtimber			
Red Pine	20.60 MBF	\$ 89.00/MBF	\$ _____
Pulpwood			
Balsam Fir	11.00 Cords	\$ 12.05/Cord	\$ _____
Jack Pine	47.00 Cords	\$ 28.35/Cord	\$ _____
Quaking Aspen	588.00 Cords	\$ 25.35/Cord	\$ _____
Red Maple	2.00 Cords	\$ 16.15/Cord	\$ _____
Red Pine	28.00 Cords	\$ 39.40/Cord	\$ _____
Tamarack	57.00 Cords	\$ 10.70/Cord	\$ _____
White Pine	42.00 Cords	\$ 27.50/Cord	\$ _____
White Spruce	293.00 Cords	\$ 16.15/Cord	\$ _____

*The volumes are statistically estimated within plus (+) or minus (-) 13.81 percent. These estimated volumes are final and not subject to adjustment. Prospective bidders are urged to examine this timber and to make their own estimates of quantity and quality.

I understand that any or all bids may be rejected. All bids must be signed and all bid items must be bid or the bid form may be rejected. I also understand that consideration and awarding a contract will be based upon my past performance and ability to complete the contract based upon equipment and staffing subject to my control.

FEDERAL ID: ____ - ____ - ____ or SOCIAL SECURITY NUMBER: ____ - ____ - ____

Company or individual bidding: _____

Company representative's name: _____

Address: _____

City: _____ State: _____ Zip: _____

IF AVAILABLE, PLEASE PLACE THE PERSONALIZED LABEL FROM YOUR PROSPECTUS IN THE ABOVE BOX.

Individual or company representative's signature: _____ Date: _____

Phone number : _____ Email (optional): _____

THE WINNING BIDDER MUST COMPLETE THE VERIFICATION OF WORKER'S DISABILITY COMPENSATION ACT COMPLIANCE (ON REVERSE SIDE IF DOUBLE SIDED) WITHIN 21 DAYS OF SALE AWARD DATE



FOR DEPARTMENT USE ONLY
Sale Number (XX - XXX - XX - XX)
Forest Management Unit:

TIMBER SALE VERIFICATION OF WORKER'S DISABILITY COMPENSATION ACT COMPLIANCE

*As required by Act 317, P.A. 1969 (Worker's Compensation) and
Part 5 of Act 451 of 1994, as amended.*

VERIFICATION OF WORKER'S DISABILITY COMPENSATION ACT COMPLIANCE

- This verification must be completed and submitted within 21 days of contract award and prior to the issuance of the timber sale contract.
- In addition, if boxes 2B or 2C are checked, then Notice of Exclusion or Certificate of Insurance must be submitted within twenty-one (21) days of the contract award and prior to the issuance of the timber sale contract.
- All information must be typed or printed except for written signatures.

Please Check Appropriate Categories:

1. My business is organized as (you **must** check one of the boxes below):
 - A. Sole Proprietorship (individual)
 - B. Partnership
 - C. Corporation
2. You **must** check one of the boxes below:
 - A. I certify my business is a sole proprietorship and it has no employees but the sole proprietor. I am not subject to the Worker's Compensation Laws.
 - B. I certify my business has satisfied its obligation to the Worker's Compensation Act through the use of an approved Notice of Exclusion (BWC-337, Rev. 5/96). I will provide a copy of the Notice of Exclusion within 21 days of the contract award. (For questions or a copy of the BWC-337, please call the Worker's Compensation Bureau at 517-322-1195).
 - C. I certify my business has a Worker's Compensation Policy. I will provide an original Certificate of Insurance within twenty-one (21) days of the contract award.
3. If you have checked item 2(A) or 2(B), you **must** indicate the number of **both** full-time and part-time employees, other than yourself, including family members and active partners (if none, you must enter "0").

_____ Full-time Employees _____ Part-time Employees

Name of Business		Federal ID (or) Social Security No.	
Address		Telephone ()	
City	State	ZIP	

I hereby certify that the above information is true and correct. I agree to notify the Michigan DNR of any changes that occur in factors affecting my coverage during any of my present and future operations.

Signature of Owner or Authorized Representative

Title

Date

Please complete the "SEALED BID" information on the next page

Deerfoot Hardwood (12-056-18)
; Iron COUNTY

In response to the notice of sale to be held 8:30 a.m. (local time) on July 25, 2018, I am hereby submitting my sealed bid (firm offer) for the following forest products to be cut. Bids for individual species must be at or above the advertised price. All non-responsive bid forms may be rejected.

<u>PRODUCTS & SPECIES</u>	<u>ESTIMATED VOLUME*</u>	<u>ADVERTISED PRICE</u>	<u>BID PRICE/UNIT</u>
Sawtimber			
Basswood	17.00 MBF	\$ 148.00/MBF	\$ _____
Black Cherry	4.10 MBF	\$ 120.00/MBF	\$ _____
Red Maple	40.60 MBF	\$ 125.00/MBF	\$ _____
Sugar Maple	94.00 MBF	\$ 292.00/MBF	\$ _____
Pulpwood			
Basswood	53.00 Cords	\$ 7.60/Cord	\$ _____
Mixed Hardwood	923.00 Cords	\$ 16.15/Cord	\$ _____
Quaking Aspen	30.00 Cords	\$ 25.35/Cord	\$ _____

*The volumes are statistically estimated within plus (+) or minus (-) 12.34 percent. These estimated volumes are final and not subject to adjustment. Prospective bidders are urged to examine this timber and to make their own estimates of quantity and quality.

I understand that any or all bids may be rejected. All bids must be signed and all bid items must be bid or the bid form may be rejected. I also understand that consideration and awarding a contract will be based upon my past performance and ability to complete the contract based upon equipment and staffing subject to my control.

FEDERAL ID: _____ or SOCIAL SECURITY NUMBER: _____

Company or individual bidding: _____

Company representative's name: _____

Address: _____

City: _____ State: _____ Zip: _____

IF AVAILABLE, PLEASE PLACE THE PERSONALIZED LABEL FROM YOUR PROSPECTUS IN THE ABOVE BOX.

Individual or company representative's signature: _____ Date: _____

Phone number : _____ Email (optional): _____

THE WINNING BIDDER MUST COMPLETE THE VERIFICATION OF WORKER'S DISABILITY COMPENSATION ACT COMPLIANCE (ON REVERSE SIDE IF DOUBLE SIDED) WITHIN 21 DAYS OF SALE AWARD DATE



FOR DEPARTMENT USE ONLY	
Sale Number (XX - XXX - XX - XX)	
Forest Management Unit:	

TIMBER SALE VERIFICATION OF WORKER'S DISABILITY COMPENSATION ACT COMPLIANCE

As required by Act 317, P.A. 1969 (Worker's Compensation) and
Part 5 of Act 451 of 1994, as amended.

VERIFICATION OF WORKER'S DISABILITY COMPENSATION ACT COMPLIANCE

- This verification must be completed and submitted within 21 days of contract award and prior to the issuance of the timber sale contract.
- In addition, if boxes 2B or 2C are checked, then Notice of Exclusion or Certificate of Insurance must be submitted within twenty-one (21) days of the contract award and prior to the issuance of the timber sale contract.
- All information must be typed or printed except for written signatures.

Please Check Appropriate Categories:

1. My business is organized as (you **must** check one of the boxes below):
 - A. Sole Proprietorship (individual)
 - B. Partnership
 - C. Corporation
2. You **must** check one of the boxes below:
 - A. I certify my business is a sole proprietorship and it has no employees but the sole proprietor. I am not subject to the Worker's Compensation Laws.
 - B. I certify my business has satisfied its obligation to the Worker's Compensation Act through the use of an approved Notice of Exclusion (BWC-337, Rev. 5/96). I will provide a copy of the Notice of Exclusion within 21 days of the contract award. (For questions or a copy of the BWC-337, please call the Worker's Compensation Bureau at 517-322-1195).
 - C. I certify my business has a Worker's Compensation Policy. I will provide an original Certificate of Insurance within twenty-one (21) days of the contract award.
3. If you have checked item 2(A) or 2(B), you **must** indicate the number of **both** full-time and part-time employees, other than yourself, including family members and active partners (if none, you must enter "0").

_____ Full-time Employees

_____ Part-time Employees

Name of Business		Federal ID (or) Social Security No.	
Address		Telephone ()	
City	State	ZIP	

I hereby certify that the above information is true and correct. I agree to notify the Michigan DNR of any changes that occur in factors affecting my coverage during any of my present and future operations.

Signature of Owner or Authorized Representative

Title

Date

Please complete the "SEALED BID" information on the next page

Two Trucks Hardwood (12-058-18)
; Iron COUNTY

In response to the notice of sale to be held 8:30 a.m. (local time) on July 25, 2018, I am hereby submitting my sealed bid (firm offer) for the following forest products to be cut. Bids for individual species must be at or above the advertised price. All non-responsive bid forms may be rejected.

<u>PRODUCTS & SPECIES</u>	<u>ESTIMATED VOLUME*</u>	<u>ADVERTISED PRICE</u>	<u>BID PRICE/UNIT</u>
Sawtimber			
Basswood	0.40 MBF	\$ 148.00/MBF	\$ _____
Black Cherry	19.40 MBF	\$ 120.00/MBF	\$ _____
Red Maple	68.40 MBF	\$ 125.00/MBF	\$ _____
Sugar Maple	75.90 MBF	\$ 292.00/MBF	\$ _____
Yellow Birch	4.70 MBF	\$ 88.00/MBF	\$ _____
Pulpwood			
Balsam Fir	149.00 Cords	\$ 12.05/Cord	\$ _____
Mixed Hardwood	2,492.00 Cords	\$ 16.15/Cord	\$ _____
Tamarack	70.00 Cords	\$ 10.70/Cord	\$ _____
White Spruce	285.00 Cords	\$ 16.15/Cord	\$ _____

*The volumes are statistically estimated within plus (+) or minus (-) 12.61 percent. These estimated volumes are final and not subject to adjustment. Prospective bidders are urged to examine this timber and to make their own estimates of quantity and quality.

I understand that any or all bids may be rejected. All bids must be signed and all bid items must be bid or the bid form may be rejected. I also understand that consideration and awarding a contract will be based upon my past performance and ability to complete the contract based upon equipment and staffing subject to my control.

FEDERAL ID: ____ - ____ - ____ or SOCIAL SECURITY NUMBER: ____ - ____ - ____

Company or individual bidding: _____

Company representative's name: _____

Address: _____

City: _____ State: _____ Zip: _____

IF AVAILABLE, PLEASE PLACE THE PERSONALIZED LABEL FROM YOUR PROSPECTUS IN THE ABOVE BOX.

Individual or company representative's signature: _____ Date: _____
Phone number : _____ Email (optional): _____

THE WINNING BIDDER MUST COMPLETE THE VERIFICATION OF WORKER'S DISABILITY COMPENSATION ACT COMPLIANCE (ON REVERSE SIDE IF DOUBLE SIDED) WITHIN 21 DAYS OF SALE AWARD DATE



FOR DEPARTMENT USE ONLY	
Sale Number (XX - XXX - XX - XX)	
Forest Management Unit:	

TIMBER SALE VERIFICATION OF WORKER'S DISABILITY COMPENSATION ACT COMPLIANCE

As required by Act 317, P.A. 1969 (Worker's Compensation) and
Part 5 of Act 451 of 1994, as amended.

VERIFICATION OF WORKER'S DISABILITY COMPENSATION ACT COMPLIANCE

- This verification must be completed and submitted within 21 days of contract award and prior to the issuance of the timber sale contract.
- In addition, if boxes 2B or 2C are checked, then Notice of Exclusion or Certificate of Insurance must be submitted within twenty-one (21) days of the contract award and prior to the issuance of the timber sale contract.
- All information must be typed or printed except for written signatures.

Please Check Appropriate Categories:

1. My business is organized as (you **must** check one of the boxes below):
 - A. Sole Proprietorship (individual)
 - B. Partnership
 - C. Corporation
2. You **must** check one of the boxes below:
 - A. I certify my business is a sole proprietorship and it has no employees but the sole proprietor. I am not subject to the Worker's Compensation Laws.
 - B. I certify my business has satisfied its obligation to the Worker's Compensation Act through the use of an approved Notice of Exclusion (BWC-337, Rev. 5/96). I will provide a copy of the Notice of Exclusion within 21 days of the contract award. (For questions or a copy of the BWC-337, please call the Worker's Compensation Bureau at 517-322-1195).
 - C. I certify my business has a Worker's Compensation Policy. I will provide an original Certificate of Insurance within twenty-one (21) days of the contract award.
3. If you have checked item 2(A) or 2(B), you **must** indicate the number of **both** full-time and part-time employees, other than yourself, including family members and active partners (if none, you must enter "0").

_____ Full-time Employees

_____ Part-time Employees

Name of Business		Federal ID (or) Social Security No.	
Address		Telephone ()	
City	State	ZIP	

I hereby certify that the above information is true and correct. I agree to notify the Michigan DNR of any changes that occur in factors affecting my coverage during any of my present and future operations.

Signature of Owner or Authorized Representative

Title

Date

Please complete the "SEALED BID" information on the next page