



**DEPARTMENT OF NATURAL RESOURCES
STATE OF MICHIGAN**

TIMBER SALE PROSPECTUS #6238

SCHEDULED SALE DATE AND TIME: 9:00 a.m. (local time) on November 1, 2018.

LOCATION: BARAGA MGMT UNIT, 427 US 41 NORTH, BARAGA, MI 49908.

PROSPECTUS NOTE: The bidder is advised to inspect the sale area and review the location, estimated volumes, operating costs and contract terms of proposed sales. Please be aware that some landowners may request 60 days or more notice for access across their land.

Notice is hereby given that bids will be received by the Unit Manager, BARAGA MANAGEMENT UNIT, for certain timber on the following described lands:

Partridge SBW (11-005-18) / T48N, R32W, SEC. 21, SENE,E1/2SE.

T48N, R32W, SEC. 22, SWNW,SW,SWSE.

T48N, R32W, SEC. 27, NW,NWNE,N1/2SW,SESW,S1/2SE.

T48N, R32W, SEC. 27, NWSE.

T48N, R32W, SEC. 28, E1/2NE.

Baraga County, Advertised Price \$126,043.05, 394.5 Acres, Spruce/Fir/Tamarack, Hardwood.

SALE NOTE: Access may be through private land.

Pike Mix SBW (11-009-18) / T51N, R35W, SEC. 19, NW,SWNE,NESW.

Houghton County, Advertised Price \$50,677.85, 154.6 Acres, Hardwood, Aspen.

BID INSTRUCTIONS (VER. 07/02/2018):

1. Scheduled Bid Location, Date, and Time (2/11)

Bids must be received by the Unit Manager, BARAGA OFFICE, 427 US 41 NORTH, BARAGA, MI 49908, no later than 9:00 a.m. (local time) on November 1, 2018. For further information concerning this sale, contact Brad Carlson at 906-353-6651.

2. Bidder's Qualifications (5/16)

Purchaser shall obtain workers compensation insurance to cover claims under Michigan's Worker's Disability Compensation Act of 1969 or similar employee benefit act of any other state applicable to an employee. If all or part of a timber sale was prepared by a private contractor, the contractor and that contractor's company are not permitted to bid on the timber sale contract. Bids will not be accepted from individuals or companies appearing on the DNR/FRD No-Bid List. This list contains the names of purchasers who previously failed to execute a contract within 21-days or who have a history of poor performance.

3. Preparation of Sealed Bids (5/16)

Bid Forms may be completed online thru Michigan DNR Timber Sale Online Bidding (OLB) at www.michigan.gov/timberbidding or by completing the hardcopy Bid Form found in the Timber Sale Prospectus. Hardcopy Bid Forms shall be manually signed in ink. Registration in OLB is considered your 'signature' for all bids submitted thru that system. Bid prices must be entered for each species and product in the Bid Price column for all material subject to bidding and all fill-in blanks must be completed. If erasures or other changes appear on the hardcopy Bid Form, each erasure or change must be initialed by the person signing the bid.

4. Submission of Sealed Bids (5/16)

Bid forms may be obtained from the Unit Manager or thru OLB. Bids may be submitted hardcopy or thru OLB. All hardcopy bids must be submitted on the bid form and in an envelope clearly identified as described in this section. NOTE: Only one bid form per bid envelope. Sealed bids must be submitted to the Unit office designated in the prospectus and must be submitted at or prior to the time established in the prospectus. The envelope should show on the outside (a) the sale name or number and (b) the date and time of bid opening, as shown in the prospectus. Bids received after the time specified in the sale prospectus are late bids and will be rejected.

It is possible for a bidder to submit multiple bids on a single sale. For example, a bid may be submitted hardcopy and a bid may be submitted thru OLB. Or, two bidders from the same company could both submit bids on the same sale. If this were to happen, the State would accept all bids received and award the contract accordingly. All bidding and contractual requirements would apply to all bids received.

5. Public Opening of Sealed Bids (7/16)

If conditions permit, the sealed bids will be publicly opened and posted at the time and place set in the prospectus.

If a bidder, present at a bid opening, has submitted bids on more than one sale, that bidder may withdraw their unopened bid envelopes or announce the withdrawal of their online bid after being declared the successful bidder on one sale.

6. Award of Contract (1/11)

Award of the contract will be made to the Bidder whose bid, conforming to the prospectus, is most advantageous to the State of Michigan on the basis of total value at rates bid for the estimated quantities. The State reserves the right to reject any bid or waive any minor irregularity in bids received. A written award mailed (or otherwise furnished) to the successful Bidder shall be deemed to result in a binding contract without further action by either party.

7. Down Payment (1/11)

The Bidder to whom award is made must make a down payment within 21 days of the sale award. The amount of the down payment will be calculated as shown in the Bond and Payment Schedule of this prospectus. Only cash may be used to meet this requirement.

8. Performance Security (1/11)

As guarantee of faithful performance, a cash bond, certificate of deposit, surety bond or irrevocable letter of credit (LOC) is required within 21 days of the sale award. The amount of the performance security is shown in the Bond and

Payment Schedule of this prospectus. If an LOC or surety is used, the coverage must extend for at least 6 months beyond the contract expiration.

9. Timber Sale Contract (7/18)

Additional conditions and requirements common to all timber sales are listed on the timber sale contract (R4031) and are available on line at www.michigan.gov/timber. Contact the Unit Manager for additional information or a sample contract. Within 21 days of the date of the award letter, the bidder must sign the contract and provide the required down payment, performance security, and verification of worker's disability compensation. The down payment and performance security shall be in accordance with the provisions of the timber sale contract, in the sums stated in this prospectus. If these actions are not taken, then the Bidder, the Bidder's corporation, and the corporation's principals may not be permitted to bid on State timber sales for a period of 3 months after the first offense, 6 months after the second offense, and 1 year after the third offense. An offense will only be counted against the Bidder for 5 years. In addition, the Bidder certifies that if awarded this contract, the Bidder will complete the timber sale contract in accordance with its terms and any modifications thereof including requirements to purchase, cut, and remove the included timber by the expiration date.

Payment Unit values in the State Forest Timber Sale Contract are calculated based on the advertised value of the Payment Unit as a percentage of the total advertised value of the contract. The advertised value of each Payment Unit is given in the Description of Timber by Payment Unit table on the Timber Sale Information page. For example, if the value of Payment Unit 1 is advertised as \$1,500 and the total Timber Sale value is advertised as \$10,000, the contract price for Payment Unit 1 will be 15% of the total bid price ($\$1,500/\$10,000 * 100$).

10. Disclaimer of Estimates and Bidder's Warranty of Inspection (7/16)

Before submitting this bid, the Bidder is advised and cautioned to inspect the sale area, review the requirements of the sale contract, and take other steps as may be reasonably necessary to ascertain the location, estimated volumes, construction estimates, and operating costs of the proposed sale. Failure to do so will not relieve the Bidder from responsibility for completing the contract.

The Bidder warrants that this bid is submitted solely on the basis of the Bidder's examination and inspection of the quality and quantity of the timber offered for sale and the Bidder's opinion of the value thereof and the costs of recovery. No reliance should be placed on the State of Michigan's estimates of timber quality, quantity or costs of recovery. Bidder further acknowledges that the State of Michigan: (i) expressly disclaims any warranty of fitness of timber for any purpose; (ii) offers this timber as is without any warranty of quality (merchantability) or quantity and (iii) expressly disclaims any warranty as to the quantity or quality of timber sold.

11. Certification and Chain-of-Custody (10/14)

Unless otherwise indicated in the contract under section 7 – Other Conditions of the Sale Specific Conditions & Requirements, the area encompassed by this timber sale is certified to the standards of the Forest Stewardship Council (FSC) - Certificate #SCS-FM/COC-00090N and the Sustainable Forestry Initiative (SFI) - Certificate #NSF-SFIS-5Y031-SF5. Forest products from this sale may be delivered to the mill as "FSC 100% and / or SFI certified" as long as the contractor hauling the forest products is chain-of-custody (COC) certified or covered under a COC certificate from the destination mill. The purchaser is responsible for maintaining COC after leaving the sale area.

12. Good Neighbor Authority (GNA) Requirements (7/16)

If the name of this timber sales contains the acronym GNA, it is authorized by the Good Neighbor Authority (GNA) and covered by various agreements between the U.S. Forest Service and the State. The timber sale occurs on federal land and the following conditions apply:

GNA contracts on US Forest Service land will not be awarded to purchasers on the Federal list of excluded parties. The System for Award Management (SAM) will be checked for active excluded parties prior to award of contract. In addition, the Bidder to whom award is made must complete an Assurance Regarding Felony Conviction or Tax Delinquent Status for Corporate Applicants (AD-3031).

13. Good Neighbor Authority (GNA) Requirements, con't (9/16)

Bidder certifies, by signing this bid form, that to the best of Bidder's knowledge that the following representations are accurate and complete.

- a. That the Bidder and its principals are not presently debarred, suspended, proposed for debarment, declared ineligible, or voluntary excluded from timber sales (covered transactions) by any Federal department or agency.
- b. That the Bidder and its principals have not within a 3-year period preceding this bid been convicted of or had a civil judgment rendered against them for commission of fraud or a criminal offense in connection with obtaining, attempting to obtain, or performing a public (Federal, State, or local) transaction or contract under a public transaction; violation of Federal or State antitrust statutes or commission of embezzlement, theft, forgery, bribery, falsification or destruction of records, making false statements, or receiving stolen property.
- c. That the Bidder and its principals are not presently indicted for or otherwise criminally or civilly charged by a governmental entity (Federal, State, or local) with commission of any of the offenses enumerated in paragraph b of this certification.
- d. That the Bidder and its principals have not within a 3-year period preceding this bid had one or more public transactions (Federal, State, or local) terminated for breach or default of a timber or forest product contract.

Bidders that cannot certify this requirement, in whole or in part, shall submit an explanation with their bid.

KEITH CREAGH
Director

TIMBER SALE INFORMATION

Partridge SBW (11-005-18)

T48N, R32W, SEC. 21; T48N, R32W, SEC. 22; T48N, R32W, SEC. 27; T48N, R32W, SEC. 28.
Baraga County (Advertised Price \$126,043.05)

SALE NOTE: Access may be through private land.

A timber sale contract for this lump sum, sealed bid timber sale will be awarded to the responsible bidder offering the highest sealed bid price. Bids must be at or above the following advertised price for each species:

<u>PRODUCTS & SPECIES</u>	<u>ESTIMATED UNITS*</u>	<u>ADVERTISED PRICE</u>
Sawtimber		
Black Cherry	9.70 MBF	\$ 174.00 / MBF
Paper Birch	7.40 MBF	\$ 41.00 / MBF
Red Maple	9.10 MBF	\$ 223.00 / MBF
Sugar Maple	40.30 MBF	\$ 370.00 / MBF
White Spruce	8.20 MBF	\$ 60.00 / MBF
Yellow Birch	1.70 MBF	\$ 173.00 / MBF
Pulpwood		
Balsam Fir	715.00 Cords	\$ 20.65 / Cord
Jack Pine	4.00 Cords	\$ 41.80 / Cord
Mixed Aspen	125.00 Cords	\$ 30.30 / Cord
Mixed Hardwood	1,577.00 Cords	\$ 17.90 / Cord
Mixed Spruce	1,312.00 Cords	\$ 32.40 / Cord
Paper Birch	340.00 Cords	\$ 19.40 / Cord
Tamarack	566.00 Cords	\$ 18.15 / Cord

* The total volume is statistically estimated within plus (+) or minus (-) 7.23 percent. The estimated units are final and not subject to adjustment. Prospective bidders are urged to examine this timber and to make their own estimates of quantity and quality.

BOND AND PAYMENT SCHEDULE:

1. A bond in the amount of \$11,000.00 to insure faithful performance of the conditions of the contract will be deposited by the successful bidder within 21 days of the sale award.
2. Cutting in any sale or unit without the required advance payment would be considered a trespass.
3. Total payment must be paid in advance or according to the following schedule:
 - (a) Ten percent (10%) of the sale value must be paid within 21 days of the sale award.
 - (b) The 10% down payment will be credited towards the first unit cut.

(c) Payment for each of the following units must be made before cutting begins in that unit:

<u>PAYMENT UNIT NUMBER</u>	<u>PERCENT OF TOTAL SALE VALUE</u>
01	11.4%
02	13.6%
03	1.6%
04	2.4%
05	6.8%
06	13.7%
07	4.3%
08	3.2%
09	4.4%
10	10.3%
11	17.1%
12	11.2%

4. If no cutting takes place, the 10% down payment will not be refunded.
5. Operations on the contract issued will terminate on 06/30/2021.

Description of Timber by Payment Unit (PU)

PU	MARKET GROUP	PRODUCT	QUANTITY	UNIT	ACRES	ADVERTISE PRICE
1	Black Cherry	Sawtimber	4.9	MBF	44.0	\$14,308.75
	Red Maple		2.5	MBF		
	Sugar Maple		13.3	MBF		
	Balsam Fir	Pulpwood	63.0	Cords		
	Mixed Hardwood		373.0	Cords		
	<i>Black Cherry</i>		75.0	<i>Cords</i>		
	<i>Red Maple</i>		69.0	<i>Cords</i>		
	<i>Sugar Maple</i>		229.0	<i>Cords</i>		
	2	Black Cherry	Sawtimber	3.1		
Red Maple			4.9	MBF		
Sugar Maple			22.9	MBF		
White Spruce			8.2	MBF		
Mixed Hardwood		Pulpwood	356.0	Cords		
<i>Black Cherry</i>			19.0	<i>Cords</i>		
<i>Red Maple</i>			95.0	<i>Cords</i>		
<i>Sugar Maple</i>			230.0	<i>Cords</i>		
<i>Yellow Birch</i>			12.0	<i>Cords</i>		
Mixed Spruce			5.0	Cords		
<i>White Spruce</i>			5.0	<i>Cords</i>		
3		Yellow Birch	Sawtimber	1.7	MBF	8.8
	Mixed Hardwood	Pulpwood	97.0	Cords		
	<i>Red Maple</i>		22.0	<i>Cords</i>		
	<i>Sugar Maple</i>		68.0	<i>Cords</i>		
	<i>Yellow Birch</i>		7.0	<i>Cords</i>		
4	Black Cherry	Sawtimber	1.7	MBF	10.1	\$3,069.00
	Red Maple		1.7	MBF		
	Sugar Maple		4.1	MBF		
	Mixed Hardwood	Pulpwood	49.0	Cords		
	<i>Black Cherry</i>		4.0	<i>Cords</i>		
	<i>Red Maple</i>		20.0	<i>Cords</i>		
<i>Sugar Maple</i>		25.0	<i>Cords</i>			
5	Paper Birch	Sawtimber	0.6	MBF	28.7	\$8,588.35
	Balsam Fir	Pulpwood	40.0	Cords		
	Mixed Hardwood		118.0	Cords		
	<i>Red Maple</i>		95.0	<i>Cords</i>		
	<i>Yellow Birch</i>		23.0	<i>Cords</i>		
	Mixed Spruce		162.0	Cords		
	<i>Black Spruce</i>		161.0	<i>Cords</i>		
	<i>White Spruce</i>		1.0	<i>Cords</i>		
	Paper Birch		11.0	Cords		
	Tamarack		9.0	Cords		
6	Paper Birch	Sawtimber	3.8	MBF	38.8	\$17,325.40
	Balsam Fir	Pulpwood	32.0	Cords		
	Mixed Hardwood		138.0	Cords		
	<i>Red Maple</i>		87.0	<i>Cords</i>		
	<i>Sugar Maple</i>		51.0	<i>Cords</i>		
	Mixed Spruce		354.0	Cords		
	<i>Black Spruce</i>		354.0	<i>Cords</i>		
	Paper Birch		95.0	Cords		
	Tamarack		40.0	Cords		
7	Paper Birch	Sawtimber	0.7	MBF	26.6	\$5,403.70
	Balsam Fir	Pulpwood	33.0	Cords		
	Mixed Hardwood		86.0	Cords		
	<i>Red Maple</i>		66.0	<i>Cords</i>		
	<i>Yellow Birch</i>		20.0	<i>Cords</i>		
	Mixed Spruce		70.0	Cords		

Description of Timber by Payment Unit (PU), con't

PU	MARKET GROUP	PRODUCT	QUANTITY	UNIT	ACRES	ADVERTISE PRICE
	<i>Black Spruce</i> Paper Birch Tamarack		70.0 41.0 5.0	<i>Cords</i> Cords Cords		
8	Balsam Fir Mixed Hardwood <i>Red Maple</i> <i>Sugar Maple</i> <i>Yellow Birch</i> Mixed Spruce <i>Black Spruce</i> <i>White Spruce</i> Paper Birch Tamarack	Pulpwood	33.0 92.0 66.0 4.0 22.0 41.0 34.0 7.0 17.0 5.0	Cords Cords <i>Cords</i> <i>Cords</i> <i>Cords</i> Cords <i>Cords</i> <i>Cords</i> Cords Cords	19.1	\$4,077.20
9	Balsam Fir Mixed Aspen <i>B. T. Aspen</i> <i>Quaking Aspen</i> Mixed Hardwood <i>Black Ash</i> <i>Red Maple</i> <i>Sugar Maple</i> <i>Yellow Birch</i> Mixed Spruce <i>Black Spruce</i> <i>White Spruce</i> Paper Birch Tamarack	Pulpwood	49.0 27.0 17.0 10.0 74.0 8.0 24.0 24.0 18.0 50.0 36.0 14.0 22.0 19.0	Cords Cords <i>Cords</i> <i>Cords</i> Cords <i>Cords</i> <i>Cords</i> <i>Cords</i> <i>Cords</i> Cords <i>Cords</i> <i>Cords</i> Cords Cords	21.1	\$5,546.20
10	Paper Birch Balsam Fir Mixed Aspen <i>Quaking Aspen</i> Mixed Hardwood <i>Red Maple</i> <i>Sugar Maple</i> Mixed Spruce <i>Black Spruce</i> <i>White Spruce</i> Paper Birch Tamarack	Sawtimber Pulpwood	2.3 85.0 15.0 15.0 42.0 33.0 9.0 241.0 223.0 18.0 65.0 45.0	MBF Cords Cords <i>Cords</i> Cords <i>Cords</i> <i>Cords</i> Cords <i>Cords</i> <i>Cords</i> Cords Cords	34.5	\$12,942.00
11	Balsam Fir Jack Pine Mixed Aspen <i>Quaking Aspen</i> Mixed Hardwood <i>Red Maple</i> <i>Sugar Maple</i> Mixed Spruce <i>Black Spruce</i> <i>White Spruce</i> Paper Birch Tamarack	Pulpwood	229.0 4.0 37.0 37.0 109.0 80.0 29.0 276.0 264.0 12.0 34.0 217.0	Cords Cords Cords <i>Cords</i> Cords <i>Cords</i> <i>Cords</i> Cords <i>Cords</i> <i>Cords</i> Cords Cords	52.8	\$21,508.80
12	Balsam Fir Mixed Aspen <i>Balsam Poplar</i> <i>Quaking Aspen</i> Mixed Hardwood	Pulpwood	151.0 46.0 18.0 28.0 43.0	Cords Cords <i>Cords</i> <i>Cords</i> Cords	58.8	\$14,111.75

Description of Timber by Payment Unit (PU), con't

PU	MARKET GROUP	PRODUCT	QUANTITY	UNIT	ACRES	ADVERTISE PRICE
12 con't	<i>Red Maple</i>	<i>Pulpwood</i>	43.0	<i>Cords</i>		
	Mixed Spruce		113.0	Cords		
	<i>Black Spruce</i>		99.0	<i>Cords</i>		
	<i>White Spruce</i>		14.0	<i>Cords</i>		
	Paper Birch		55.0	Cords		
	Tamarack		226.0	Cords		
TOTAL:			76.4	MBF		
TOTAL:			4,639.0	Cords		

Sale Specific Conditions & Requirements

Sale Name: Partridge SBW

Sale Number: 11-005-18 Seq#: 1

1 - Sale Area

1.2 - Boundaries

1.2.1 - Painted boundaries (1/14)

The sale boundary and Payment Unit boundaries are marked and identified by red paint. Exterior sale boundary lines against state are marked with red paint. Interior Payment Unit boundaries are marked with red paint. The painted boundary line trees are not Included Timber and are to be protected, unless otherwise directed by the sale administrator.

2 - Timber Specifications

2.1 - Included Timber

2.1.1 - Clearcut unit(s) with unmerchantable trees (6/14)

Within Payment Unit(s) 5 - 12, cut all trees that are two (2) inches or more at DBH, except hemlock, black cherry, white pine, cedar, red pine, and red oak, if present. In addition, within Payment Units 10 and 12, do not cut any paper birch less than 8 inches at DBH.

2.1.3 - Cut tree marked unit(s) (12/08)

Within Payment Unit(s) 1 - 4, all trees are designated for cutting when marked with orange paint above and below stump height, regardless of merchantability.

2.2 - Utilization

2.2.1 - Utilization (2/04)

All listed board foot volumes of sawlog size products in this contract have been determined using a top diameter inside bark of 8 inches.

2.2.7 - Uncut designated trees (2/04)

Liquidated damages of \$10.00 per tree will be assessed for every marked tree not cut.

2.2.8 - Utilization and removal (5/14)

All products meeting standards set forth in General Condition and Requirement 2.2 - Utilization must be removed from the sale area. Chips are considered a product and cannot be stockpiled on site. This is because chip piles inhibit regeneration.

3 - Payments

3.4 - Damaged Timber

3.4.1 - Damaged timber (6/14)

General Condition and Requirement 3.4 Damaged Timber, defines liquidated damages for undesignated live merchantable trees which are cut or injured. In addition, extreme care should be taken to avoid damage to tree seedlings and saplings. No damage is acceptable to merchantable trees. Within the sale area, if more than 10% of trees (> 4.5" DBH) within a specified area of the sale are damaged, liquidated damages will be assessed for all trees damaged. Rates will be in accordance with General Condition and Requirement 3.4 Damaged Timber.

4 - Transportation

4.1 - Construction

4.1.1 - Stream crossings, general (3/11)

All stream crossing structures will be temporary and therefore, shall be provided by the Purchaser, and must be removed upon completion of the sale. All permits for stream crossings will be provided by the DNR for crossings on State Forest Land. Please notify the DNR 90 days prior to working on any crossings that will require a DEQ permit.

4.1.3 - Slash and earthen piles (8/04)

Piles or windrows of earth along roads and landings that have been widened or constructed shall be leveled. Slash from road maintenance or construction, including stumps, shall be dispersed throughout the sale.

4.1.5 - Culverts (5/14)

Roads may require the installation of culverts for cross drainage or at natural drainage-ways. If culverts are needed in these locations, their placement will be specified by the sale administrator and they shall be installed prior to hauling. The culverts shall be new, corrugated metal or plastic gauge. Culverts will be a minimum of 12 inches in diameter and 24 feet in length. If culverts are removed, fill shall be removed from wetland soils as specified. Soils shall be maintained and left in a non-erodible condition, with water bars, seed, fertilizer, mulch, and slash installed as directed by the sale administrator and as specified in the BMP manual. Stream crossing permits, for crossings on state land, will be obtained by the DNR. Please notify the DNR 90 days prior to working on any crossings that will require a DEQ permit.

4.1.6 - Road construction (1/09)

Construction of new roads or improvements of existing roads shall be done in such a way as to minimize the environmental and visual impacts. Merchantable trees shall be cut and utilized unless otherwise directed. Non-merchantable trees shall be severed and laid flat on the ground. Slash shall be scattered, and not left in windrows and kept a minimum of 10 feet back from the road edge, and may be chipped, utilized or otherwise removed from the sale. Stumps shall be set upright, not left on edge, and be moved at least 10 feet away from the road edge. Disturbed soil shall be feathered into the woods and not left in berms or windrows.

4.1.7 - Road closure (10/11)

All new roads built into the sale must be blocked to vehicle traffic upon completion of the sale. Overgrown roads that are reopened shall be considered new roads. In general, this will require constructing a four (4') foot high berm of stumps and logs covered with earth. Contact the sale administrator for specific details of design and placement.

4.2 - Maintenance

4.2.2 - Fill material (4/07)

To maintain roads, fill material may be needed in areas where "holes" exist or may be expected to develop. This fill material should be placed before trucking begins. The sale administrator reserves the right to halt harvest activities if haul roads are not properly filled and shaped to his/her specifications.

4.2.4 - Grading (10/16)

For completion of the sale, state forest roads must be graded. In general, this will require a road grader or bull dozer to shape up the roads after forest products have been hauled off site. This includes cleaning of drainage areas, grading, crowning and filling with gravel, if necessary. The grading equipment to be used must be approved by the Unit Manager or his/her representative.

4.4 - Access

4.4.1 - Private property access (3/11)

Permission for access across private land is the responsibility of the Purchaser. Should the Purchaser desire to cross private land, a copy of the written permission from the private land-owner may be required by the DNR.

5 - Operations

5.2 - Conduct of Operations

5.2.1 - Slash

5.2.1.11 - Slash for reforestation (5/07)

To facilitate reforestation, the sale area shall be left with slash evenly distributed. Bunched tops within the cutting area shall be broken up and scattered. Stumps shall be cut low to the ground. Processing sites shall not be left with a compacted layer of slash; tops from these sites shall be hauled back into the cut area and scattered.

5.2.2 - Hazard Trees/Snags

5.2.2.1 - Den trees (10/16)

Obvious hollow and/or den trees shall be protected and left standing unless they are a safety hazard.

5.2.3 - Operating Restrictions

5.2.3.1 - Operating restrictions (9/11)

Within Payment Unit(s) 5 - 9, unless changed by written agreement, cutting, skidding, and hauling are limited to the period

of January 1 to March 15. This restriction is because of the wet soil types.

5.2.3.3 - Bark slippage restriction (3/09)

Within Payment Unit(s) 1 - 4, unless changed by written agreement, cutting and skidding are not permitted during the period of April 15 to July 15. This restriction is because of bark slippage.

5.2.22 - Operating Caution

5.2.22.1 - Operating caution (6/11)

It is recommended, but not required, that within Payment Unit(s) 10, 11, and 12, cutting, skidding, and hauling occur during frozen winter conditions. The reason for the recommendation is because of wet soil types.

5.2.30 - Landing/road top soil protection (2/15)

Top soil on landings and new roads must be removed, stockpiled and saved. Upon completion of the timber sale, soil must be evenly distributed back over the area for revegetation. In addition, the area must be seeded and mulched per the instructions of the sale administrator by June 30 following harvest completion to allow for re-vegetation before the dry season.

5.2.32 - Decking/landing restoration (9/13)

All decking and landing areas must have the surface area restored to a condition equal to or better than before. This is to ensure the proper regeneration of the stand. Wood debris, chips and "cookies" from trimmings must be removed or scattered away from landing and loading areas and may not be wind rowed on the edge.

5.2.38 - No decking against live trees (2/04)

Cut products may not be decked against unmarked or designated leave trees.

5.4 - Soil Protection

5.4.1 - Rutting restriction, general (7/16)

Operations are to cease immediately if equipment and weather conditions result in rutting of roads and/or skid trails which is 12 inches or greater in depth and 50 feet in length. The Unit Manager or his/her representative may restrict hauling and/or skidding if ruts exceed the specified depth. With the Unit Manager or his/her representative's approval, the Purchaser may return to the area when the risk of rutting has decreased.

5.8 - Protection of Endangered Species

5.8.5 - Protection of raptor nests (3/13)

All trees with raptor nests will be protected if found during harvesting operations. Notification will be made to the Unit Manager or his/her representative who will notify the Wildlife Biologist so an on-site evaluation and recommendation can be made, if necessary.

7 - Other Conditions

7.3 - Contract Modifications

7.3.1 - Emerald Ash Borer

7.3.1.2 - Emerald ash borer, ash or firewood on sale (2/05)

There is ash and/or "firewood" in this sale and it is located within an emerald ash borer quarantined area. The Director of the Michigan Department of Agriculture (MDA) by the authority of Act No. 72 of the Public Acts of 1945, as amended, and Quarantine Regulation No. 620, has promulgated this quarantine to prevent the further spread of this pest and sets forth: definitions, regulated articles, regulated areas, conditions of movement, violations and penalties, and special exemptions. The Purchaser must comply with this quarantine. Contact the MDA for further information.



TIMBER SALE MAP

This information provided by authority of Part 525, 1994 PA 451, as amended.

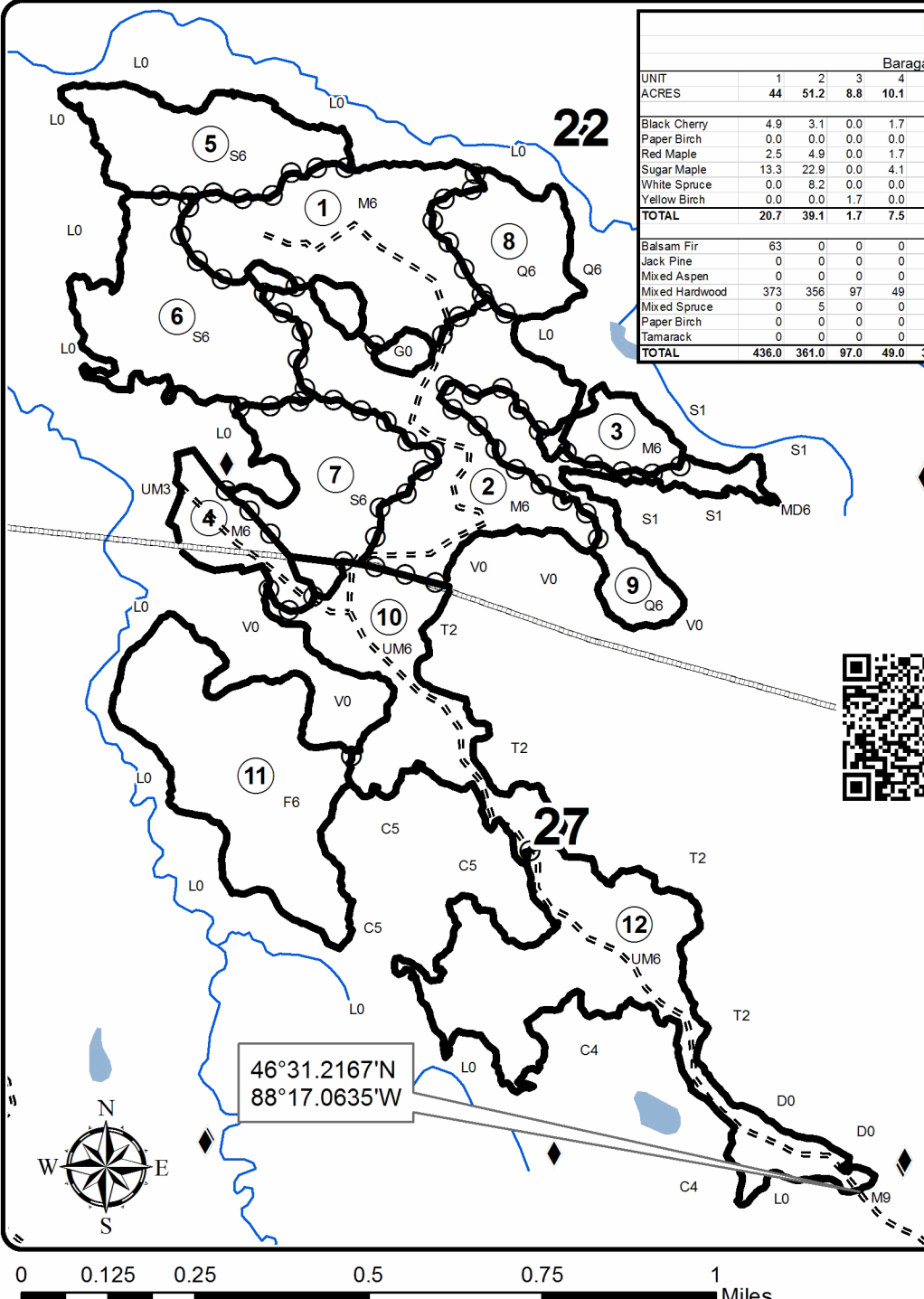
Forest Management Unit Baraga		County Baraga	Mapped By Ryan Mattila	Date 5/22/2018	Page 1	of 1
Township 48N	Range 32W	Section(s) and Subdivision(s) Sec 28; E1/2NE, Sec 21; E1/2SE, SENE. Sec 34; NENE, Sec 22; SWNW, S1/2SE, SW1/4, Sec 27; W1/2, N1/2NE, SE1/4.		Scale 1:15,840		

Cover Type

A = Aspen	H = Hemlock	N = Marsh	U = Upland Brush
B = Paper Birch	J = Jack Pine	O = Oak	UM = Upland Mixed
C = Cedar	L = Lowland Brush	P = Lowland Poplar	V = Bog or Marsh
D = Treed Bog	LM = Lowland Mixed	Q = Mixed Swamp Conifer	W = White Pine
E = Swamp Hdwoods	M = Mpl, Bch, Brch	R = Red Pine	X = Non Stocked
F = Spruce Fir	MC = Mixed Conifer	S = Black Spruce	Z = Water
G = Grass	MD = Mixed Deciduous	T = Tamarack	

Density

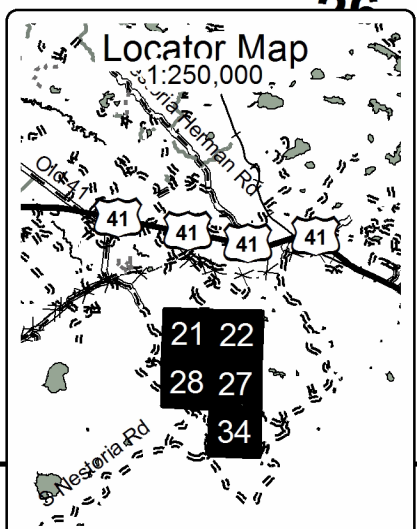
0 = Non Stocked	5 = Pole Timber Medium
1 = Seedling Sapling Poor	6 = Pole Timber Well
2 = Seedling Sapling Medium	7 = Saw Timber Poor
3 = Seedling Sapling Well	8 = Saw Timber Medium
4 = Pole Timber Poor	9 = Saw Timber Well



Partridge SBW													
394.5 Acres													
Baraga County, Compartment 20													
UNIT	1	2	3	4	5	6	7	8	9	10	11	12 TOTALS	
ACRES	44	51.2	8.8	10.1	28.7	38.8	26.6	19.1	21.1	34.5	52.8	58.8	394.5
Sawlogs MBF													
Black Cherry	4.9	3.1	0.0	1.7	0.0	0.0	0.0	0.0	0.0	0.0	0.0	0.0	9.7
Paper Birch	0.0	0.0	0.0	0.0	0.6	3.8	0.7	0.0	0.0	2.3	0.0	0.0	7.4
Red Maple	2.5	4.9	0.0	1.7	0.0	0.0	0.0	0.0	0.0	0.0	0.0	0.0	9.1
Sugar Maple	13.3	22.9	0.0	4.1	0.0	0.0	0.0	0.0	0.0	0.0	0.0	0.0	40.3
White Spruce	0.0	8.2	0.0	0.0	0.0	0.0	0.0	0.0	0.0	0.0	0.0	0.0	8.2
Yellow Birch	0.0	0.0	1.7	0.0	0.0	0.0	0.0	0.0	0.0	0.0	0.0	0.0	1.7
TOTAL	20.7	39.1	1.7	7.5	0.6	3.8	0.7	0.0	0.0	2.3	0.0	0.0	76.4
Pulpwood Cords													
Balsam Fir	63	0	0	0	40	32	33	33	49	85	229	151	715
Jack Pine	0	0	0	0	0	0	0	0	0	0	4	0	4
Mixed Aspen	0	0	0	0	0	0	0	0	27	15	37	46	125
Mixed Hardwood	373	356	97	49	118	138	86	92	74	42	109	43	1577
Mixed Spruce	0	5	0	0	162	354	70	41	50	241	276	113	1312
Paper Birch	0	0	0	0	11	95	41	17	22	65	34	55	340
Tamarack	0	0	0	0	9	40	5	5	19	45	217	226	566
TOTAL	436.0	361.0	97.0	49.0	340.0	659.0	235.0	188.0	241.0	493.0	634.0	906.0	4639.0

Legend

- Against State (Red)
- Payment Unit (Red)
- Payment Unit Label
- Poor Dirt Roads
- Lakes and Rivers All
- River
- Survey Corners
- Pipeline



TIMBER SALE INFORMATION

Pike Mix SBW (11-009-18)

T51N, R35W, SEC. 19.

Houghton County (Advertised Price \$50,677.85)

A timber sale contract for this lump sum, sealed bid timber sale will be awarded to the responsible bidder offering the highest sealed bid price. Bids must be at or above the following advertised price for each species:

<u>PRODUCTS & SPECIES</u>	<u>ESTIMATED UNITS*</u>	<u>ADVERTISED PRICE</u>
Sawtimber		
Black Cherry	3.70 MBF	\$ 174.00 / MBF
Red Maple	30.30 MBF	\$ 223.00 / MBF
Sugar Maple	11.00 MBF	\$ 370.00 / MBF
White Spruce	11.20 MBF	\$ 60.00 / MBF
Yellow Birch	4.90 MBF	\$ 173.00 / MBF
Pulpwood		
Balsam Fir	47.00 Cords	\$ 20.65 / Cord
Mixed Aspen	322.00 Cords	\$ 30.30 / Cord
Mixed Hardwood	1,441.00 Cords	\$ 17.90 / Cord
White Spruce	36.00 Cords	\$ 32.40 / Cord

* The total volume is statistically estimated within plus (+) or minus (-) 10.22 percent. The estimated units are final and not subject to adjustment. Prospective bidders are urged to examine this timber and to make their own estimates of quantity and quality.

BOND AND PAYMENT SCHEDULE:

1. A bond in the amount of \$4,900.00 to insure faithful performance of the conditions of the contract will be deposited by the successful bidder within 21 days of the sale award.
2. Cutting in any sale or unit without the required advance payment would be considered a trespass.
3. Total payment must be paid in advance or according to the following schedule:
 - (a) Ten percent (10%) of the sale value must be paid within 21 days of the sale award.
 - (b) The 10% down payment will be credited towards the first unit cut.
 - (c) Payment for each of the following units must be made before cutting begins in that unit:

<u>PAYMENT UNIT NUMBER</u>	<u>PERCENT OF TOTAL SALE VALUE</u>
01	36.6%
02	9.6%
03	27.9%
04	25.9%

4. If no cutting takes place, the 10% down payment will not be refunded.
5. Operations on the contract issued will terminate on 06/30/2020.

Description of Timber by Payment Unit (PU)

PU	MARKET GROUP	PRODUCT	QUANTITY	UNIT	ACRES	ADVERTISE PRICE	
1	Black Cherry	Sawtimber	5.9	MBF	62.6	\$19,598.20	
	Red Maple		18.7	MBF			
	Sugar Maple		8.7	MBF			
	White Spruce		7.4	MBF			
	Yellow Birch		4.3	MBF			
	Mixed Aspen		Pulpwood	28.0			Cords
	<i>Quaking Aspen</i>			28.0			<i>Cords</i>
	Mixed Hardwood			482.0			Cords
	<i>Black Cherry</i>			70.0			<i>Cords</i>
	<i>Red Maple</i>			228.0			<i>Cords</i>
	<i>Sugar Maple</i>			95.0			<i>Cords</i>
	<i>Yellow Birch</i>			89.0			<i>Cords</i>
	White Spruce			16.0			Cords
	2			Red Maple			Sawtimber
White Spruce		1.7		MBF			
Balsam Fir		Pulpwood	22.0	Cords			
Mixed Aspen			29.0	Cords			
<i>B. T. Aspen</i>			3.0	<i>Cords</i>			
<i>Quaking Aspen</i>			26.0	<i>Cords</i>			
Mixed Hardwood			162.0	Cords			
<i>Red Maple</i>			140.0	<i>Cords</i>			
<i>Sugar Maple</i>			11.0	<i>Cords</i>			
<i>Yellow Birch</i>			11.0	<i>Cords</i>			
White Spruce			9.0	Cords			
3			Red Maple	Sawtimber	6.8	MBF	
	Sugar Maple	2.3	MBF				
	White Spruce	2.1	MBF				
	Yellow Birch	0.6	MBF				
	Balsam Fir	Pulpwood	13.0		Cords		
	Mixed Aspen		98.0		Cords		
	<i>B. T. Aspen</i>		5.0		<i>Cords</i>		
	<i>Quaking Aspen</i>		93.0		<i>Cords</i>		
	Mixed Hardwood		456.0		Cords		
	<i>Black Ash</i>		18.0		<i>Cords</i>		
	<i>Red Maple</i>		296.0		<i>Cords</i>		
	<i>Sugar Maple</i>		51.0		<i>Cords</i>		
	<i>Yellow Birch</i>		91.0		<i>Cords</i>		
	White Spruce		4.0		Cords		
4	Red Maple	Sawtimber	3.8	MBF	33.7	\$13,112.50	
	Balsam Fir		Pulpwood	12.0			Cords
	Mixed Aspen			167.0			Cords
	<i>Quaking Aspen</i>			167.0			<i>Cords</i>
	Mixed Hardwood			376.0			Cords
	<i>Black Ash</i>			3.0			<i>Cords</i>
	<i>Paper Birch</i>			3.0			<i>Cords</i>
	<i>Red Maple</i>			356.0			<i>Cords</i>
	<i>Sugar Maple</i>			8.0			<i>Cords</i>
	<i>Yellow Birch</i>			6.0			<i>Cords</i>
	White Spruce			7.0			Cords
	TOTAL:			63.3			MBF
TOTAL:			1,881.0	Cords			

Sale Specific Conditions & Requirements

Sale Name: Pike Mix SBW

Sale Number: 11-009-18 Seq#: 1

1 - Sale Area

1.2 - Boundaries

1.2.1 - Painted boundaries (1/14)

The sale boundary and Payment Unit boundaries are marked and identified by blue and red paint, along with roads. Exterior sale boundary lines against private property are marked with blue paint. Exterior sale boundary lines against state are marked with red paint, with the exception of the boundary along Pike Lake Road, which is unpainted and identified by Pike Lake Road. Interior Payment Unit boundaries are marked with red paint, with the exception of boundary between Payment Units 3 and 4, which is unpainted and identified by the secondary forest access road. The painted boundary line trees are not Included Timber and are to be protected, unless otherwise directed by the sale administrator.

2 - Timber Specifications

2.1 - Included Timber

2.1.2 - Clearcut unit(s) w/o unmerchantable trees (8/11)

Within Payment Unit(s) 2, 3, and 4, cut all trees which meet minimum piece specifications in 2.2 Utilization, except do not cut hemlock, black cherry, cedar, white pine, red pine, and red oak if present. In addition, do not cut any yellow birch that are 20 inches at DBH or greater.

2.1.3 - Cut tree marked unit(s) (12/08)

Within Payment Unit(s) 1, all trees are designated for cutting when marked with orange paint above and below stump height, regardless of merchantability.

2.2 - Utilization

2.2.1 - Utilization (2/04)

All listed board foot volumes of sawlog size products in this contract have been determined using a top diameter inside bark of 8 inches.

2.2.7 - Uncut designated trees (2/04)

Liquidated damages of \$10.00 per tree will be assessed for every marked tree not cut.

2.2.8 - Utilization and removal (5/14)

All products meeting standards set forth in General Condition and Requirement 2.2 - Utilization must be removed from the sale area. Chips are considered a product and cannot be stockpiled on site. This is because chip piles inhibit regeneration.

3 - Payments

3.4 - Damaged Timber

3.4.1 - Damaged timber (6/14)

General Condition and Requirement 3.4 Damaged Timber, defines liquidated damages for undesignated live merchantable trees which are cut or injured. In addition, extreme care should be taken to avoid damage to tree seedlings and saplings. No damage is acceptable to merchantable trees. Within the sale area, if more than 10% of trees (> 4.5" DBH) within a specified area of the sale are damaged, liquidated damages will be assessed for all trees damaged. Rates will be in accordance with General Condition and Requirement 3.4 Damaged Timber.

4 - Transportation

4.1 - Construction

4.1.1 - Stream crossings, general (3/11)

All stream crossing structures will be temporary and therefore, shall be provided by the Purchaser, and must be removed upon completion of the sale. All permits for stream crossings will be provided by the DNR for crossings on State Forest Land. Please notify the DNR 90 days prior to working on any crossings that will require a DEQ permit.

4.1.3 - Slash and earthen piles (8/04)

Piles or windrows of earth along roads and landings that have been widened or constructed shall be leveled. Slash from road maintenance or construction, including stumps, shall be dispersed throughout the sale.

4.1.5 - Culverts (5/14)

Roads may require the installation of culverts for cross drainage or at natural drainage-ways. If culverts are needed in these locations, their placement will be specified by the sale administrator and they shall be installed prior to hauling. The culverts shall be new, corrugated metal or plastic gauge. Culverts will be a minimum of 12 inches in diameter and 24 feet in length. If culverts are removed, fill shall be removed from wetland soils as specified. Soils shall be maintained and left in a non-erodible condition, with water bars, seed, fertilizer, mulch, and slash installed as directed by the sale administrator and as specified in the BMP manual. Stream crossing permits, for crossings on state land, will be obtained by the DNR. Please notify the DNR 90 days prior to working on any crossings that will require a DEQ permit.

4.1.6 - Road construction (1/09)

Construction of new roads or improvements of existing roads shall be done in such a way as to minimize the environmental and visual impacts. Merchantable trees shall be cut and utilized unless otherwise directed. Non-merchantable trees shall be severed and laid flat on the ground. Slash shall be scattered, and not left in windrows and kept a minimum of 10 feet back from the road edge, and may be chipped, utilized or otherwise removed from the sale. Stumps shall be set upright, not left on edge, and be moved at least 10 feet away from the road edge. Disturbed soil shall be feathered into the woods and not left in berms or windrows.

4.1.7 - Road closure (10/11)

All new roads built into the sale must be blocked to vehicle traffic upon completion of the sale. Overgrown roads that are reopened shall be considered new roads. In general, this will require constructing a four (4') foot high berm of stumps and logs covered with earth. Contact the sale administrator for specific details of design and placement.

4.2 - Maintenance

4.2.2 - Fill material (4/07)

To maintain roads, fill material may be needed in areas where "holes" exist or may be expected to develop. This fill material should be placed before trucking begins. The sale administrator reserves the right to halt harvest activities if haul roads are not properly filled and shaped to his/her specifications.

4.2.4 - Grading (10/16)

For completion of the sale, state forest roads must be graded. In general, this will require a road grader or bull dozer to shape up the roads after forest products have been hauled off site. This includes cleaning of drainage areas, grading, crowning and filling with gravel, if necessary. The grading equipment to be used must be approved by the Unit Manager or his/her representative.

5 - Operations

5.2 - Conduct of Operations

5.2.1 - Slash

5.2.1.11 - Slash for reforestation (5/07)

To facilitate reforestation, the sale area shall be left with slash evenly distributed. Bunched tops within the cutting area shall be broken up and scattered. Stumps shall be cut low to the ground. Processing sites shall not be left with a compacted layer of slash; tops from these sites shall be hauled back into the cut area and scattered.

5.2.2 - Hazard Trees/Snags

5.2.2.1 - Den trees (10/16)

Obvious hollow and/or den trees shall be protected and left standing unless they are a safety hazard.

5.2.30 - Landing/road top soil protection (2/15)

Top soil on landings and new roads must be removed, stockpiled and saved. Upon completion of the timber sale, soil must be evenly distributed back over the area for revegetation. In addition, the area must be seeded and mulched per the instructions of the sale administrator by July 15 following harvest completion to allow for re-vegetation before the dry season.

5.2.32 - Decking/landing restoration (9/13)

All decking and landing areas must have the surface area restored to a condition equal to or better than before. This is to ensure the proper regeneration of the stand. Wood debris, chips and "cookies" from trimmings must be removed or scattered away from landing and loading areas and may not be wind rowed on the edge.

5.2.38 - No decking against live trees (2/04)

Cut products may not be decked against unmarked or designated leave trees.

5.4 - Soil Protection

5.4.1 - Rutting restriction, general (7/16)

Operations are to cease immediately if equipment and weather conditions result in rutting of roads and/or skid trails which is 12 inches or greater in depth and 50 feet in length. The Unit Manager or his/her representative may restrict hauling and/or skidding if ruts exceed the specified depth. With the Unit Manager or his/her representative's approval, the Purchaser may return to the area when the risk of rutting has decreased.

5.8 - Protection of Endangered Species

5.8.5 - Protection of raptor nests (3/13)

All trees with raptor nests will be protected if found during harvesting operations. Notification will be made to the Unit Manager or his/her representative who will notify the Wildlife Biologist so an on-site evaluation and recommendation can be made, if necessary.

7 - Other Conditions

7.3 - Contract Modifications

7.3.1 - Emerald Ash Borer

7.3.1.2 - Emerald ash borer, ash or firewood on sale (2/05)

There is ash and/or "firewood" in this sale and it is located within an emerald ash borer quarantined area. The Director of the Michigan Department of Agriculture (MDA) by the authority of Act No. 72 of the Public Acts of 1945, as amended, and Quarantine Regulation No. 620, has promulgated this quarantine to prevent the further spread of this pest and sets forth: definitions, regulated articles, regulated areas, conditions of movement, violations and penalties, and special exemptions. The Purchaser must comply with this quarantine. Contact the MDA for further information.

7.5 - Loss

7.5.1 - Deteriorating timber (7/09)

The sale area has received damage from spruce budworm. The Purchaser should harvest the wood as soon as possible. The Department of Natural Resources is held free of responsibility of any further damage or deterioration due to delay in harvesting.



TIMBER SALE MAP

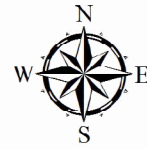
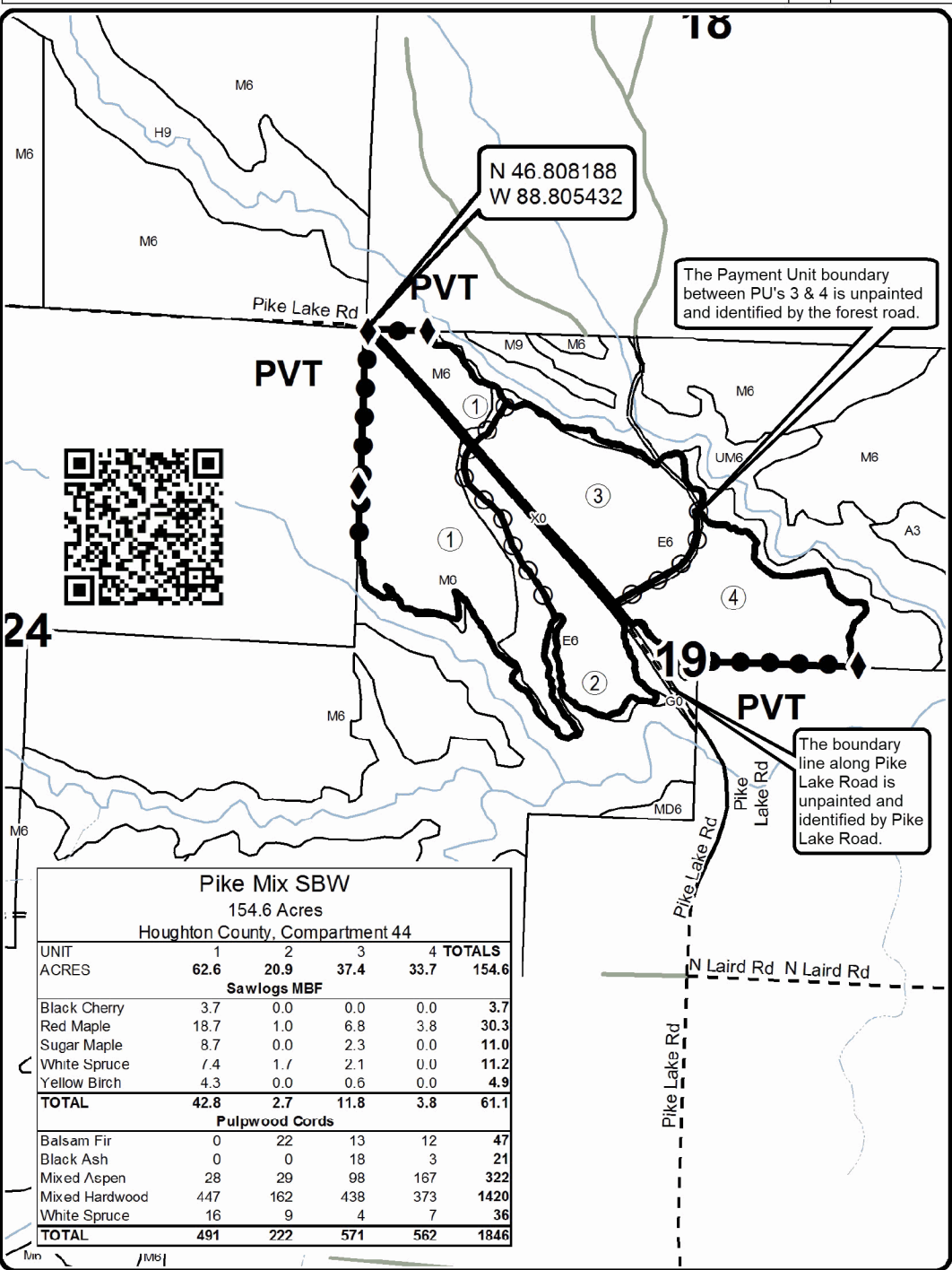
This information provided by authority of Part 525, 1994 PA 451, as amended.

Sale Number	Year
11-009	18

Forest Management Unit Baraga	County Houghton	Mapped By Carlson	Date 6/7/2018	Page 1	of 1
Cruised By Baraga Staff					

Township 51N	Range 35W	Section(s) and Subdivision(s) Sec 19 - S1/2NE, NWNE, NW1/4, N1/2SW	Scale 1:15,840
-----------------	--------------	---	-------------------

Cover Type				Density			
A = Aspen	H = Hemlock	N = Marsh	U = Upland Brush	0 = Non Stocked	5 = Pole Timber Medium		
B = Paper Birch	J = Jack Pine	O = Oak	UM = Upland Mixed	1 = Seedling Sapling Poor	6 = Pole Timber Well		
C = Cedar	L = Lowland Brush	P = Lowland Poplar	V = Bog or Marsh	2 = Seedling Sapling Medium	7 = Saw Timber Poor		
D = Treed Bog	LM = Lowland Mixed	Q = Mixed Swamp Conifer	W = White Pine	3 = Seedling Sapling Well	8 = Saw Timber Medium		
E = Swamp Hdwoods	M = Mpl, Bch, Brch	R = Red Pine	X = Non Stocked	4 = Pole Timber Poor	9 = Saw Timber Well		
F = Spruce Fir	MC = Mixed Conifer	S = Black Spruce	Z = Water				
G = Grass	MD = Mixed Deciduous	T = Tamarack					



Legend

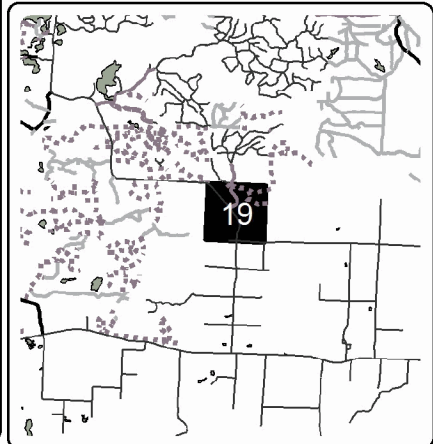
- Against State (Red)
- Payment Unit (Red)
- Private Line (Blue)
- Secondary Forest Road
- Forest Access Route
- Paved Road
- Gravel Road
- Private
- Survey Corner
- Lakes and Rivers All

N 46.808188
W 88.805432

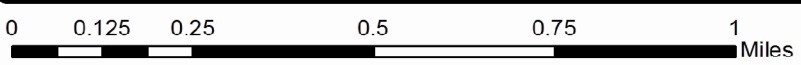
The Payment Unit boundary between PU's 3 & 4 is unpainted and identified by the forest road.

The boundary line along Pike Lake Road is unpainted and identified by Pike Lake Road.

Locator Map
1:200,000



Pike Mix SBW					
154.6 Acres					
Houghton County, Compartment 44					
UNIT	1	2	3	4	TOTALS
ACRES	62.6	20.9	37.4	33.7	154.6
Sawlogs MBF					
Black Cherry	3.7	0.0	0.0	0.0	3.7
Red Maple	18.7	1.0	6.8	3.8	30.3
Sugar Maple	8.7	0.0	2.3	0.0	11.0
White Spruce	7.4	1.7	2.1	0.0	11.2
Yellow Birch	4.3	0.0	0.6	0.0	4.9
TOTAL	42.8	2.7	11.8	3.8	61.1
Pulpwood Cords					
Balsam Fir	0	22	13	12	47
Black Ash	0	0	18	3	21
Mixed Aspen	28	29	98	167	322
Mixed Hardwood	447	162	438	373	1420
White Spruce	16	9	4	7	36
TOTAL	491	222	571	562	1846



Pike Mix SBW (11-009-18)
T51N, R35W, SEC. 19; Houghton COUNTY

In response to the notice of sale to be held 9:00 a.m. (local time) on November 1, 2018, I am hereby submitting my sealed bid (firm offer) for the following forest products to be cut. Bids for individual species must be at or above the advertised price. All non-responsive bid forms may be rejected.

<u>PRODUCTS & SPECIES</u>	<u>ESTIMATED VOLUME*</u>	<u>ADVERTISED PRICE</u>	<u>BID PRICE/UNIT</u>
Sawtimber			
Black Cherry	3.70 MBF	\$ 174.00/MBF	\$ _____
Red Maple	30.30 MBF	\$ 223.00/MBF	\$ _____
Sugar Maple	11.00 MBF	\$ 370.00/MBF	\$ _____
White Spruce	11.20 MBF	\$ 60.00/MBF	\$ _____
Yellow Birch	4.90 MBF	\$ 173.00/MBF	\$ _____
Pulpwood			
Balsam Fir	47.00 Cords	\$ 20.65/Cord	\$ _____
Mixed Aspen	322.00 Cords	\$ 30.30/Cord	\$ _____
Mixed Hardwood	1,441.00 Cords	\$ 17.90/Cord	\$ _____
White Spruce	36.00 Cords	\$ 32.40/Cord	\$ _____

*The volumes are statistically estimated within plus (+) or minus (-) 10.22 percent. These estimated volumes are final and not subject to adjustment. Prospective bidders are urged to examine this timber and to make their own estimates of quantity and quality.

I understand that any or all bids may be rejected. All bids must be signed and all bid items must be bid or the bid form may be rejected. I also understand that consideration and awarding a contract will be based upon my past performance and ability to complete the contract based upon equipment and staffing subject to my control.

FEDERAL ID: ____ - ____ - ____ or SOCIAL SECURITY NUMBER: ____ - ____ - ____

Company or individual bidding: _____

Company representative's name: _____

Address: _____

City: _____ State: _____ Zip: _____

IF AVAILABLE, PLEASE PLACE THE PERSONALIZED LABEL FROM YOUR PROSPECTUS IN THE ABOVE BOX.

Individual or company representative's signature: _____ Date: _____
Phone number : _____ Email (optional): _____

THE WINNING BIDDER MUST COMPLETE THE VERIFICATION OF WORKER'S DISABILITY COMPENSATION ACT COMPLIANCE (ON REVERSE SIDE IF DOUBLE SIDED) WITHIN 21 DAYS OF SALE AWARD DATE



FOR DEPARTMENT USE ONLY	
Sale Number (XX - XXX - XX - XX)	
Forest Management Unit:	

TIMBER SALE VERIFICATION OF WORKER'S DISABILITY COMPENSATION ACT COMPLIANCE

As required by Act 317, P.A. 1969 (Worker's Compensation) and
Part 5 of Act 451 of 1994, as amended.

VERIFICATION OF WORKER'S DISABILITY COMPENSATION ACT COMPLIANCE

- This verification must be completed and submitted within 21 days of contract award and prior to the issuance of the timber sale contract.
- In addition, if boxes 2B or 2C are checked, then Notice of Exclusion or Certificate of Insurance must be submitted within twenty-one (21) days of the contract award and prior to the issuance of the timber sale contract.
- All information must be typed or printed except for written signatures.

Please Check Appropriate Categories:

1. My business is organized as (you **must** check one of the boxes below):
 - A. Sole Proprietorship (individual)
 - B. Partnership
 - C. Corporation
2. You **must** check one of the boxes below:
 - A. I certify my business is a sole proprietorship and it has no employees but the sole proprietor. I am not subject to the Worker's Compensation Laws.
 - B. I certify my business has satisfied its obligation to the Worker's Compensation Act through the use of an approved Notice of Exclusion (BWC-337, Rev. 5/96). I will provide a copy of the Notice of Exclusion within 21 days of the contract award. (For questions or a copy of the BWC-337, please call the Worker's Compensation Bureau at 517-322-1195).
 - C. I certify my business has a Worker's Compensation Policy. I will provide an original Certificate of Insurance within twenty-one (21) days of the contract award.
3. If you have checked item 2(A) or 2(B), you **must** indicate the number of **both** full-time and part-time employees, other than yourself, including family members and active partners (if none, you must enter "0").

_____ Full-time Employees

_____ Part-time Employees

Name of Business		Federal ID (or) Social Security No.	
Address		Telephone ()	
City	State	ZIP	

I hereby certify that the above information is true and correct. I agree to notify the Michigan DNR of any changes that occur in factors affecting my coverage during any of my present and future operations.

Signature of Owner or Authorized Representative

Title

Date

Please complete the "SEALED BID" information on the next page

Partridge SBW (11-005-18)
T48N, R32W, SEC. 21; T48N, R32W, SEC. 22; T48N, R32W, SEC. 27; T48N,

In response to the notice of sale to be held 9:00 a.m. (local time) on November 1, 2018, I am hereby submitting my sealed bid (firm offer) for the following forest products to be cut. Bids for individual species must be at or above the advertised price. All non-responsive bid forms may be rejected.

<u>PRODUCTS & SPECIES</u>	<u>ESTIMATED VOLUME*</u>	<u>ADVERTISED PRICE</u>	<u>BID PRICE/UNIT</u>
Sawtimber			
Black Cherry	9.70 MBF	\$ 174.00/MBF	\$ _____
Paper Birch	7.40 MBF	\$ 41.00/MBF	\$ _____
Red Maple	9.10 MBF	\$ 223.00/MBF	\$ _____
Sugar Maple	40.30 MBF	\$ 370.00/MBF	\$ _____
White Spruce	8.20 MBF	\$ 60.00/MBF	\$ _____
Yellow Birch	1.70 MBF	\$ 173.00/MBF	\$ _____
Pulpwood			
Balsam Fir	715.00 Cords	\$ 20.65/Cord	\$ _____
Jack Pine	4.00 Cords	\$ 41.80/Cord	\$ _____
Mixed Aspen	125.00 Cords	\$ 30.30/Cord	\$ _____
Mixed Hardwood	1,577.00 Cords	\$ 17.90/Cord	\$ _____
Mixed Spruce	1,312.00 Cords	\$ 32.40/Cord	\$ _____
Paper Birch	340.00 Cords	\$ 19.40/Cord	\$ _____
Tamarack	566.00 Cords	\$ 18.15/Cord	\$ _____

*The volumes are statistically estimated within plus (+) or minus (-) 7.23 percent. These estimated volumes are final and not subject to adjustment. Prospective bidders are urged to examine this timber and to make their own estimates of quantity and quality.

I understand that any or all bids may be rejected. All bids must be signed and all bid items must be bid or the bid form may be rejected. I also understand that consideration and awarding a contract will be based upon my past performance and ability to complete the contract based upon equipment and staffing subject to my control.

FEDERAL ID: _____ or SOCIAL SECURITY NUMBER: _____

Company or individual bidding: _____

Company representative's name: _____

Address: _____

City: _____ State: _____ Zip: _____

IF AVAILABLE, PLEASE PLACE THE PERSONALIZED LABEL FROM YOUR PROSPECTUS IN THE ABOVE BOX.

Individual or company representative's signature: _____ Date: _____

Phone number : _____ Email (optional): _____

THE WINNING BIDDER MUST COMPLETE THE VERIFICATION OF WORKER'S DISABILITY COMPENSATION ACT COMPLIANCE (ON REVERSE SIDE IF DOUBLE SIDED) WITHIN 21 DAYS OF SALE AWARD DATE



FOR DEPARTMENT USE ONLY
Sale Number (XX - XXX - XX - XX)
Forest Management Unit:

TIMBER SALE VERIFICATION OF WORKER'S DISABILITY COMPENSATION ACT COMPLIANCE

*As required by Act 317, P.A. 1969 (Worker's Compensation) and
Part 5 of Act 451 of 1994, as amended.*

VERIFICATION OF WORKER'S DISABILITY COMPENSATION ACT COMPLIANCE

- This verification must be completed and submitted within 21 days of contract award and prior to the issuance of the timber sale contract.
- In addition, if boxes 2B or 2C are checked, then Notice of Exclusion or Certificate of Insurance must be submitted within twenty-one (21) days of the contract award and prior to the issuance of the timber sale contract.
- All information must be typed or printed except for written signatures.

Please Check Appropriate Categories:

1. My business is organized as (you **must** check one of the boxes below):
 - A. Sole Proprietorship (individual)
 - B. Partnership
 - C. Corporation
2. You **must** check one of the boxes below:
 - A. I certify my business is a sole proprietorship and it has no employees but the sole proprietor. I am not subject to the Worker's Compensation Laws.
 - B. I certify my business has satisfied its obligation to the Worker's Compensation Act through the use of an approved Notice of Exclusion (BWC-337, Rev. 5/96). I will provide a copy of the Notice of Exclusion within 21 days of the contract award. (For questions or a copy of the BWC-337, please call the Worker's Compensation Bureau at 517-322-1195).
 - C. I certify my business has a Worker's Compensation Policy. I will provide an original Certificate of Insurance within twenty-one (21) days of the contract award.
3. If you have checked item 2(A) or 2(B), you **must** indicate the number of **both** full-time and part-time employees, other than yourself, including family members and active partners (if none, you must enter "0").

_____ Full-time Employees

_____ Part-time Employees

Name of Business		Federal ID (or) Social Security No.	
Address		Telephone ()	
City	State	ZIP	

I hereby certify that the above information is true and correct. I agree to notify the Michigan DNR of any changes that occur in factors affecting my coverage during any of my present and future operations.

Signature of Owner or Authorized Representative

Title

Date

Please complete the "SEALED BID" information on the next page