



**DEPARTMENT OF NATURAL RESOURCES
STATE OF MICHIGAN**

TIMBER SALE PROSPECTUS #6408

SCHEDULED SALE DATE AND TIME: 10:00 a.m. (local time) on February 19, 2019.

LOCATION: SE REGION-WILD, 3580 STATE PARK DRIVE, BAY CITY, MI 48706.

PROSPECTUS NOTE: The bidder is advised to inspect the sale area and review the location, estimated volumes, operating costs and contract terms of proposed sales. Please be aware that some landowners may request 60 days or more notice for access across their land.

Notice is hereby given that bids will be received by the Game Area Manager, CASS CITY FIELD OFFICE-WILD, for certain timber on the following described lands:

Bliss Aspen Mix (55-115-19) / T12N, R09E, SEC. 26, SENW,SWNE,S1/2SW,SE.
T12N, R09E, SEC. 35, NENW,NWNE.

Tuscola County, Advertised Price \$54,799.85, 116.5 Acres, Aspen, Hardwood.

SALE NOTE: Within Payment Unit(s) 1 - 6, unless changed by written agreement, cutting, skidding, and hauling are not permitted during the period of April 1 to June 15. No Payment unit may be started during the period of November 10 to November 30 without permission of the Unit Manager or his/her representative.

Access may be through other public land.

Gilford Mix (55-110-18) / T13N, R10E, SEC. 31, NESE,S1/2SE.
T13N, R10E, SEC. 32, SW,NWSE,S1/2SE.

Tuscola County, Advertised Price \$27,688.10, 64.4 Acres, Aspen, Hardwood, Jack Pine.

SALE NOTE: Within Payment Unit(s) 1 - 3, unless changed by written agreement, cutting, skidding, and hauling are not permitted during the period of April 1 to June 1. No Payment unit may be started during the period of November 10 to November 30 without permission of the Unit Manager or his/her representative.

Access may be through other public land.

Minden Aspen Mix (55-112-18) / T14N, R14E, SEC. 18, N1/2SW,SWSW.
T14N, R14E, SEC. 30, E1/2NW,N1/2NE,SWNE.

Sanilac County, Advertised Price \$19,965.85, 43.8 Acres, Aspen, Hardwood.

SALE NOTE: Within Payment Unit(s) 1 and 2, unless changed by written agreement, cutting, skidding, and hauling are not permitted during the period of April 1 to June 15. No Payment unit may be started during the period of November 10 to November 30 without permission of the Unit Manager or his/her representative.

Access may be through other public land.

Argyle Swamp Mix (55-113-18) / T13N, R13E, SEC. 1 , S1/2SW.

T13N, R13E, SEC. 12, NW,W1/2NE.

Sanilac County, Advertised Price \$26,477.90, 55.1 Acres, Aspen, Hardwood.

SALE NOTE: Permission for access across private land is the responsibility of the Purchaser (see spec 4.4.1).

Within Payment Unit(s) 1 - 3, unless changed by written agreement, cutting, skidding, and hauling are not permitted during the period of April 1 to June 15 (see spec 5.2.3.1).

No Payment unit may be started during the period of November 10 to November 30 without permission of the Unit Manager or his/her representative (see spec 5.2.3.12).

Access may be through private land.

BID INSTRUCTIONS (VER. 07/02/2018):

1. Scheduled Bid Location, Date, and Time (2/11)

Bids must be received by the Unit Manager, BAY CITY OFFICE, 3580 STATE PARK DRIVE, BAY CITY, MI 48706, no later than 10:00 a.m. (local time) on February 19, 2019. For further information concerning this sale, contact Don Bonnette at 989-686-2634.

2. Bidder's Qualifications (5/16)

Purchaser shall obtain workers compensation insurance to cover claims under Michigan's Worker's Disability Compensation Act of 1969 or similar employee benefit act of any other state applicable to an employee. If all or part of a timber sale was prepared by a private contractor, the contractor and that contractor's company are not permitted to bid on the timber sale contract. Bids will not be accepted from individuals or companies appearing on the DNR/FRD No-Bid List. This list contains the names of purchasers who previously failed to execute a contract within 21-days or who have a history of poor performance.

3. Preparation of Sealed Bids (5/16)

Bid Forms may be completed online thru Michigan DNR Timber Sale Online Bidding (OLB) at www.michigan.gov/timberbidding or by completing the hardcopy Bid Form found in the Timber Sale Prospectus. Hardcopy Bid Forms shall be manually signed in ink. Registration in OLB is considered your 'signature' for all bids submitted thru that system. Bid prices must be entered for each species and product in the Bid Price column for all material subject to bidding and all fill-in blanks must be completed. If erasures or other changes appear on the hardcopy Bid Form, each erasure or change must be initialed by the person signing the bid.

4. Submission of Sealed Bids (5/16)

Bid forms may be obtained from the Unit Manager or thru OLB. Bids may be submitted hardcopy or thru OLB. All hardcopy bids must be submitted on the bid form and in an envelope clearly identified as described in this section. NOTE: Only one bid form per bid envelope. Sealed bids must be submitted to the Unit office designated in the prospectus and must be submitted at or prior to the time established in the prospectus. The envelope should show on the outside (a) the sale name or number and (b) the date and time of bid opening, as shown in the prospectus. Bids received after the time specified in the sale prospectus are late bids and will be rejected.

It is possible for a bidder to submit multiple bids on a single sale. For example, a bid may be submitted hardcopy and a bid may be submitted thru OLB. Or, two bidders from the same company could both submit bids on the same sale. If this were to happen, the State would accept all bids received and award the contract accordingly. All bidding and contractual requirements would apply to all bids received.

5. Public Opening of Sealed Bids (7/16)

If conditions permit, the sealed bids will be publicly opened and posted at the time and place set in the prospectus.

If a bidder, present at a bid opening, has submitted bids on more than one sale, that bidder may withdraw their unopened bid envelopes or announce the withdrawal of their online bid after being declared the successful bidder on one sale.

6. Award of Contract (1/11)

Award of the contract will be made to the Bidder whose bid, conforming to the prospectus, is most advantageous to the State of Michigan on the basis of total value at rates bid for the estimated quantities. The State reserves the right to reject any bid or waive any minor irregularity in bids received. A written award mailed (or otherwise furnished) to the successful Bidder shall be deemed to result in a binding contract without further action by either party.

7. Down Payment (1/11)

The Bidder to whom award is made must make a down payment within 21 days of the sale award. The amount of the down payment will be calculated as shown in the Bond and Payment Schedule of this prospectus. Only cash may be used to meet this requirement.

8. Performance Security (1/11)

As guarantee of faithful performance, a cash bond, certificate of deposit, surety bond or irrevocable letter of credit (LOC) is required within 21 days of the sale award. The amount of the performance security is shown in the Bond and

Payment Schedule of this prospectus. If an LOC or surety is used, the coverage must extend for at least 6 months beyond the contract expiration.

9. Timber Sale Contract (7/18)

Additional conditions and requirements common to all timber sales are listed on the timber sale contract (R4031) and are available on line at www.michigan.gov/timber. Contact the Unit Manager for additional information or a sample contract. Within 21 days of the date of the award letter, the bidder must sign the contract and provide the required down payment, performance security, and verification of worker's disability compensation. The down payment and performance security shall be in accordance with the provisions of the timber sale contract, in the sums stated in this prospectus. If these actions are not taken, then the Bidder, the Bidder's corporation, and the corporation's principals may not be permitted to bid on State timber sales for a period of 3 months after the first offense, 6 months after the second offense, and 1 year after the third offense. An offense will only be counted against the Bidder for 5 years. In addition, the Bidder certifies that if awarded this contract, the Bidder will complete the timber sale contract in accordance with its terms and any modifications thereof including requirements to purchase, cut, and remove the included timber by the expiration date.

Payment Unit values in the State Forest Timber Sale Contract are calculated based on the advertised value of the Payment Unit as a percentage of the total advertised value of the contract. The advertised value of each Payment Unit is given in the Description of Timber by Payment Unit table on the Timber Sale Information page. For example, if the value of Payment Unit 1 is advertised as \$1,500 and the total Timber Sale value is advertised as \$10,000, the contract price for Payment Unit 1 will be 15% of the total bid price ($\$1,500/\$10,000 * 100$).

10. Disclaimer of Estimates and Bidder's Warranty of Inspection (7/16)

Before submitting this bid, the Bidder is advised and cautioned to inspect the sale area, review the requirements of the sale contract, and take other steps as may be reasonably necessary to ascertain the location, estimated volumes, construction estimates, and operating costs of the proposed sale. Failure to do so will not relieve the Bidder from responsibility for completing the contract.

The Bidder warrants that this bid is submitted solely on the basis of the Bidder's examination and inspection of the quality and quantity of the timber offered for sale and the Bidder's opinion of the value thereof and the costs of recovery. No reliance should be placed on the State of Michigan's estimates of timber quality, quantity or costs of recovery. Bidder further acknowledges that the State of Michigan: (i) expressly disclaims any warranty of fitness of timber for any purpose; (ii) offers this timber as is without any warranty of quality (merchantability) or quantity and (iii) expressly disclaims any warranty as to the quantity or quality of timber sold.

11. Certification and Chain-of-Custody (10/14)

Unless otherwise indicated in the contract under section 7 – Other Conditions of the Sale Specific Conditions & Requirements, the area encompassed by this timber sale is certified to the standards of the Forest Stewardship Council (FSC) - Certificate #SCS-FM/COC-00090N and the Sustainable Forestry Initiative (SFI) - Certificate #NSF-SFIS-5Y031-SF5. Forest products from this sale may be delivered to the mill as "FSC 100% and / or SFI certified" as long as the contractor hauling the forest products is chain-of-custody (COC) certified or covered under a COC certificate from the destination mill. The purchaser is responsible for maintaining COC after leaving the sale area.

12. Good Neighbor Authority (GNA) Requirements (7/16)

If the name of this timber sales contains the acronym GNA, it is authorized by the Good Neighbor Authority (GNA) and covered by various agreements between the U.S. Forest Service and the State. The timber sale occurs on federal land and the following conditions apply:

GNA contracts on US Forest Service land will not be awarded to purchasers on the Federal list of excluded parties. The System for Award Management (SAM) will be checked for active excluded parties prior to award of contract. In addition, the Bidder to whom award is made must complete an Assurance Regarding Felony Conviction or Tax Delinquent Status for Corporate Applicants (AD-3031).

13. Good Neighbor Authority (GNA) Requirements, con't (9/16)

Bidder certifies, by signing this bid form, that to the best of Bidder's knowledge that the following representations are accurate and complete.

- a. That the Bidder and its principals are not presently debarred, suspended, proposed for debarment, declared ineligible, or voluntary excluded from timber sales (covered transactions) by any Federal department or agency.
- b. That the Bidder and its principals have not within a 3-year period preceding this bid been convicted of or had a civil judgment rendered against them for commission of fraud or a criminal offense in connection with obtaining, attempting to obtain, or performing a public (Federal, State, or local) transaction or contract under a public transaction; violation of Federal or State antitrust statutes or commission of embezzlement, theft, forgery, bribery, falsification or destruction of records, making false statements, or receiving stolen property.
- c. That the Bidder and its principals are not presently indicted for or otherwise criminally or civilly charged by a governmental entity (Federal, State, or local) with commission of any of the offenses enumerated in paragraph b of this certification.
- d. That the Bidder and its principals have not within a 3-year period preceding this bid had one or more public transactions (Federal, State, or local) terminated for breach or default of a timber or forest product contract.

Bidders that cannot certify this requirement, in whole or in part, shall submit an explanation with their bid.

DAN EICHINGER
Director

TIMBER SALE INFORMATION

Bliss Aspen Mix (55-115-19)
 T12N, R09E, SEC. 26; T12N, R09E, SEC. 35.
 Tuscola County (Advertised Price \$54,799.85)

SALE NOTE: Within Payment Unit(s) 1 - 6, unless changed by written agreement, cutting, skidding, and hauling are not permitted during the period of April 1 to June 15. No Payment unit may be started during the period of November 10 to November 30 without permission of the Unit Manager or his/her representative.

Access may be through other public land.

A timber sale contract for this lump sum, sealed bid timber sale will be awarded to the responsible bidder offering the highest sealed bid price. Bids must be at or above the following advertised price for each species:

<u>PRODUCTS & SPECIES</u>	<u>ESTIMATED UNITS*</u>	<u>ADVERTISED PRICE</u>
Sawtimber		
Basswood	7.60 MBF	\$ 30.00 / MBF
Black Cherry	5.40 MBF	\$ 83.00 / MBF
Green Ash	10.10 MBF	\$ 30.00 / MBF
Jack Pine	6.20 MBF	\$ 23.00 / MBF
Mixed Aspen	469.10 MBF	\$ 34.00 / MBF
Paper Birch	14.70 MBF	\$ 30.00 / MBF
Red Maple	142.70 MBF	\$ 38.00 / MBF
Red Pine	92.60 MBF	\$ 38.00 / MBF
Pulpwood		
Jack Pine	21.00 Cords	\$ 11.25 / Cord
Mixed Aspen	977.00 Cords	\$ 11.25 / Cord
Mixed Hardwood	172.00 Cords	\$ 12.75 / Cord
Paper Birch	120.00 Cords	\$ 10.50 / Cord
Red Maple	817.00 Cords	\$ 12.75 / Cord
Red Pine	171.00 Cords	\$ 19.00 / Cord

* The estimated units are final and not subject to adjustment. Prospective bidders are urged to examine this timber and to make their own estimates of quantity and quality.

BOND AND PAYMENT SCHEDULE:

1. A bond in the amount of \$2,740.00 to insure faithful performance of the conditions of the contract will be deposited by the successful bidder within 21 days of the sale award.
2. Cutting in any sale or unit without the required advance payment would be considered a trespass.
3. Total payment must be paid in advance or according to the following schedule:
 - (a) Ten percent (10%) of the sale value must be paid within 21 days of the sale award.
 - (b) The 10% down payment will be credited towards the first unit cut.
 - (c) Payment for each of the following units must be made before cutting begins in that unit:

PAYMENT UNIT NUMBER	PERCENT OF TOTAL SALE VALUE
01	12.5%
02	21.6%
03	12.4%
04	10.5%
05	21.8%
06	21.2%

4. If no cutting takes place, the 10% down payment will not be refunded.
5. Operations on the contract issued will terminate on 03/31/2021.

Description of Timber by Payment Unit (PU)

PU	MARKET GROUP	PRODUCT	QUANTITY	UNIT	ACRES	ADVERTISE PRICE	
1	Basswood	Sawtimber	0.9	MBF	13.2	\$6,837.60	
	Green Ash		2.0	MBF			
	Jack Pine		6.2	MBF			
	Mixed Aspen		40.1	MBF			
	<i>B. T. Aspen</i>		23.4	<i>MBF</i>			
	<i>Cottonwood</i>		15.3	<i>MBF</i>			
	<i>Quaking Aspen</i>		1.4	<i>MBF</i>			
	Paper Birch		0.9	MBF			
	Red Maple		5.4	MBF			
	Red Pine		32.3	MBF			
	Jack Pine		Pulpwood	21.0			Cords
	Mixed Aspen			109.0			Cords
	<i>B. T. Aspen</i>			48.0			<i>Cords</i>
	<i>Cottonwood</i>			13.0			<i>Cords</i>
	<i>Quaking Aspen</i>	48.0		<i>Cords</i>			
	Mixed Hardwood	35.0		Cords			
	<i>American Elm</i>	4.0		<i>Cords</i>			
	<i>Basswood</i>	27.0		<i>Cords</i>			
	<i>Green Ash</i>	4.0		<i>Cords</i>			
	Paper Birch	4.0		Cords			
	Red Maple	47.0	Cords				
Red Pine	65.0	Cords					
2	Basswood	Sawtimber	4.9	MBF	20.2	\$11,828.75	
	Black Cherry		5.4	MBF			
	Green Ash		8.1	MBF			
	Mixed Aspen		62.5	MBF			
	<i>B. T. Aspen</i>		38.2	<i>MBF</i>			
	<i>Cottonwood</i>		11.7	<i>MBF</i>			
	<i>Quaking Aspen</i>		12.6	<i>MBF</i>			
	Red Maple		27.3	MBF			
	Red Pine		60.3	MBF			
	Mixed Aspen		Pulpwood	124.0			Cords
	<i>B. T. Aspen</i>	57.0		<i>Cords</i>			
	<i>Cottonwood</i>	14.0		<i>Cords</i>			
	<i>Quaking Aspen</i>	53.0		<i>Cords</i>			
	Mixed Hardwood	62.0		Cords			
	<i>Basswood</i>	27.0		<i>Cords</i>			
	<i>Black Cherry</i>	16.0		<i>Cords</i>			
	<i>Green Ash</i>	19.0		<i>Cords</i>			
	Paper Birch	29.0		Cords			
	Red Maple	81.0	Cords				
Red Pine	106.0	Cords					
3	Basswood	Sawtimber	0.3	MBF	15.6	\$6,771.20	
	Mixed Aspen		68.9	MBF			
	<i>B. T. Aspen</i>		22.1	<i>MBF</i>			
	<i>Cottonwood</i>		9.7	<i>MBF</i>			
	<i>Quaking Aspen</i>		37.1	<i>MBF</i>			
	Paper Birch		2.6	MBF			
	Red Maple	20.7	MBF				
	Mixed Aspen	Pulpwood	139.0	Cords			
	<i>B. T. Aspen</i>		53.0	<i>Cords</i>			
	<i>Cottonwood</i>		8.0	<i>Cords</i>			
	<i>Quaking Aspen</i>		78.0	<i>Cords</i>			
	Mixed Hardwood		14.0	Cords			
	<i>American Elm</i>		4.0	<i>Cords</i>			
<i>Basswood</i>	4.0		<i>Cords</i>				

Description of Timber by Payment Unit (PU), con't

PU	MARKET GROUP	PRODUCT	QUANTITY	UNIT	ACRES	ADVERTISE PRICE			
3 con't	<i>Black Cherry</i>	<i>Pulpwood</i>	2.0	<i>Cords</i>					
	<i>Green Ash</i>		4.0	<i>Cords</i>					
	Paper Birch		16.0	Cords					
	Red Maple		129.0	Cords					
4	Basswood	Sawtimber	0.3	MBF	13.2	\$5,739.45			
	Mixed Aspen		58.3	MBF					
	<i>B. T. Aspen</i>		18.7	<i>MBF</i>					
	<i>Cottonwood</i>		8.2	<i>MBF</i>					
	<i>Quaking Aspen</i>		31.4	<i>MBF</i>					
	Paper Birch		2.2	MBF					
	Red Maple		17.5	MBF					
	Mixed Aspen		Pulpwood	118.0			Cords		
	<i>B. T. Aspen</i>			45.0			<i>Cords</i>		
	<i>Cottonwood</i>			7.0			<i>Cords</i>		
	<i>Quaking Aspen</i>	66.0		<i>Cords</i>					
	Mixed Hardwood	12.0		Cords					
	<i>American Elm</i>	4.0		<i>Cords</i>					
	<i>Basswood</i>	3.0		<i>Cords</i>					
	<i>Black Cherry</i>	2.0		<i>Cords</i>					
	<i>Green Ash</i>	3.0		<i>Cords</i>					
	Paper Birch	14.0		Cords					
	Red Maple	109.0	Cords						
	5	Basswood	Sawtimber	0.6			MBF	27.6	\$12,032.50
		Mixed Aspen		121.5			MBF		
<i>B. T. Aspen</i>		38.9		<i>MBF</i>					
<i>Cottonwood</i>		17.1		<i>MBF</i>					
<i>Quaking Aspen</i>		65.5		<i>MBF</i>					
Paper Birch		4.6		MBF					
Red Maple		36.5		MBF					
Mixed Aspen		Pulpwood		248.0	Cords				
<i>B. T. Aspen</i>				95.0	<i>Cords</i>				
<i>Cottonwood</i>				14.0	<i>Cords</i>				
<i>Quaking Aspen</i>			139.0	<i>Cords</i>					
Mixed Hardwood			26.0	Cords					
<i>American Elm</i>			8.0	<i>Cords</i>					
<i>Basswood</i>			7.0	<i>Cords</i>					
<i>Black Cherry</i>			4.0	<i>Cords</i>					
<i>Green Ash</i>			7.0	<i>Cords</i>					
Paper Birch			29.0	Cords					
Red Maple		230.0	Cords						
6		Basswood	Sawtimber	0.6	MBF	26.7	\$11,590.35		
		Mixed Aspen		117.8	MBF				
	<i>B. T. Aspen</i>	37.8		<i>MBF</i>					
	<i>Cottonwood</i>	16.5		<i>MBF</i>					
	<i>Quaking Aspen</i>	63.5		<i>MBF</i>					
	Paper Birch	4.4		MBF					
	Red Maple	35.3		MBF					
	Mixed Aspen	Pulpwood		239.0	Cords				
	<i>B. T. Aspen</i>			91.0	<i>Cords</i>				
	<i>Cottonwood</i>			14.0	<i>Cords</i>				
	<i>Quaking Aspen</i>		134.0	<i>Cords</i>					
	Mixed Hardwood		23.0	Cords					
	<i>American Elm</i>		7.0	<i>Cords</i>					
	<i>Basswood</i>		6.0	<i>Cords</i>					
	<i>Black Cherry</i>		4.0	<i>Cords</i>					
	<i>Green Ash</i>		6.0	<i>Cords</i>					

Description of Timber by Payment Unit (PU), con't

PU	MARKET GROUP	PRODUCT	QUANTITY	UNIT	ACRES	ADVERTISE PRICE
6 con't	Paper Birch	Pulpwood	28.0	Cords		
	Red Maple		221.0	Cords		
TOTAL:			748.4	MBF		
TOTAL:			2,278.0	Cords		

Sale Specific Conditions & Requirements

Sale Name: Bliss Aspen Mix

Sale Number: 55-115-19 Seq#: 1

1 - Sale Area

1.2 - Boundaries

1.2.1 - Painted boundaries (1/14)

The sale boundary and Payment Unit boundaries are marked and identified by red and yellow paint. Exterior sale boundary lines against state are marked with red paint. Interior Payment Unit boundaries are marked with yellow paint. The painted boundary line trees are not Included Timber and are to be protected.

2 - Timber Specifications

2.1 - Included Timber

2.1.1 - Clearcut unit(s) with unmerchantable trees (6/14)

Within Payment Unit(s) 1-6, cut all red pine marked with orange paint. In addition, cut all other trees that are two (2) inches or more at DBH, except do not cut white pine, hemlock, beech, oak, hickory, white spruce, walnut, cedar, apple and trees marked with green paint. Special protection trees identified in accordance with condition 3.4.2, within clearcutting unit boundaries, are not Included Timber and are to be protected.

2.2 - Utilization

2.2.3 - Stump heights (4/07)

Stump heights within the Sale Area shall not exceed 12 inches.

2.2.10 - No chipping tops and limbs (8/16)

Within Payment Unit(s) 1 - 6, chipping of the bole, 4-inches in diameter or greater, is allowed. Chipping of limbs or portions of the tree less than 4-inches in diameter is not permitted. Limbs and the remaining top must be left on site and scattered.

3 - Payments

3.4 - Damaged Timber

3.4.2 - Special Protection Trees (4/14)

The Purchaser shall not cut live or dead special protection trees within cutting units or clearings. Special protection trees are marked with green paint. If the Purchaser's operations have cut or damaged special protection trees through carelessness, the Purchaser shall pay \$100 as fixed, agreed and liquidated damages for each special protection tree cut or damaged. Such payment does not constitute ownership of the undesignated timber.

3.6 - Payment Unit Cutting Schedule

3.6.2 - One active unit (12/08)

Each Payment Unit must be completed to the satisfaction of the Unit Manager or his/her representative before the next unit may be opened. The Purchaser must give a one week notice before finishing a unit to allow for inspection.

4 - Transportation

4.1 - Construction

4.1.3 - Slash and earthen piles (8/04)

Piles or windrows of earth along roads and landings that have been widened or constructed shall be leveled. Slash from road maintenance or construction, including stumps, shall be distributed within the sale boundaries.

4.1.12 - No new roads (1/12)

No new roads will be permitted in any Payment Unit. All operations are limited to skid trails or existing trails.

5 - Operations

5.1 - Notification

5.1.1 - Pre-sale conference (10/16)

A pre-sale conference on site between the Purchaser and sale administrator is required prior to beginning any operations to determine landing and skid trail locations. The Unit Manager or his/her representative must be contacted at least 10 days in advance to schedule the conference.

5.1.4 - Post-sale conference (10/16)

A post-sale conference on site between the Purchaser and sale administrator is required 10 days prior to the completion of active logging operations to determine clean-up and repair of landings, road edges, and the fulfillment of other contract specifications.

5.2 - Conduct of Operations

5.2.1 - Slash

5.2.1.8 - Slash height (12/08)

No slash may exceed 48 inches in height.

5.2.1.11 - Slash for reforestation (5/07)

To facilitate reforestation, the sale area shall be left with slash evenly distributed. Bunched tops within the cutting area shall be broken up and scattered. Stumps shall be cut low to the ground. Processing sites shall not be left with a compacted layer of slash; tops from these sites shall be hauled back into the cut area and scattered.

5.2.2 - Hazard Trees/Snags

5.2.2.1 - Den trees (10/16)

Obvious hollow and/or den trees shall be protected and left standing unless they are a safety hazard.

5.2.3 - Operating Restrictions

5.2.3.1 - Operating restrictions (9/11)

Within Payment Unit(s) 1 - 6, unless changed by written agreement, cutting, skidding, and hauling are not permitted during the period of April 1 to June 15. This restriction is required to prevent damage to saturated soils, prevent bark slip, minimize rutting and to maximize regeneration.

5.2.3.2 - Operating restrictions (9/11)

Within Payment Unit(s) 1 - 6, the number of skid trails must be minimized. This restriction is necessary to protect sensitive soils and maximize regeneration.

5.2.3.12 - Hunting operating restriction (1/18)

No Payment unit may be started during the period of November 10 to November 30 without permission of the Unit Manager or his/her representative.

5.2.4 - Dead and Down Creation

5.2.4.6 - Dead and down creation, other (9/09)

To create grouse habitat, within Payment Unit(s) 1 - 6, leave one, tree (maple where available) greater than 7 inches at DBH on the ground for every acre. These trees are to be felled and left within 3 feet of the stump.

5.2.32 - Decking/landing restoration (9/13)

All decking and landing areas must have the surface area restored to a condition equal to or better than before. This is to ensure the proper regeneration of the stand. Wood debris, chips and "cookies" from trimmings must be removed or scattered within the sale boundary away from landing and loading areas and may not be windrowed on the edge.

5.2.37 - No decking areas (12/08)

No decking is allowed in any parking area. In addition, no equipment storage is allowed in any parking area.

5.2.38 - No decking against live trees (2/04)

Cut products may not be decked against unmarked or designated leave trees.

5.4 - Soil Protection

5.4.1 - Rutting restriction, general (7/16)

Operations are to cease immediately if equipment and weather conditions result in rutting of roads and/or skid trails which is 8

inches or greater in depth and 50 feet in length. The Unit Manager or his/her representative may restrict hauling and/or skidding if ruts exceed the specified depth. With the Unit Manager or his/her representative's approval, the Purchaser may return to the area when the risk of rutting has decreased.

5.4.6 - Wet area protection (5/10)

No harvesting operations, including skidding and felling, are to take place within the drainages in Payment Unit 5 when flowing water is present. When harvesting occurs, there should be no disturbance to the drainage and/or vernal pond depression. All equipment, trees and tops should be kept out of this area. Within 100 feet of the pond, equipment should only be used when the soil is in a dry or frozen condition. Care must be taken by the Purchaser to identify and avoid operating in these areas of the timber sale.

7 - Other Conditions

7.10 - Certified Timber

7.10.1 - Non-certified timber (2/16)

The area encompassed by this timber sale is not certified to the standards of the Forest Stewardship Council (FSC) or the Sustainable Forestry Initiative (SFI). Forest products from this sale may not be delivered to the mill as "FSC and / or SFI certified". The lands within this sale are managed as a State Game Area.



TIMBER SALE MAP

This information provided by authority of Part 525, 1994 PA 451, as amended.

Sale Number	Year
55-115-19	2019

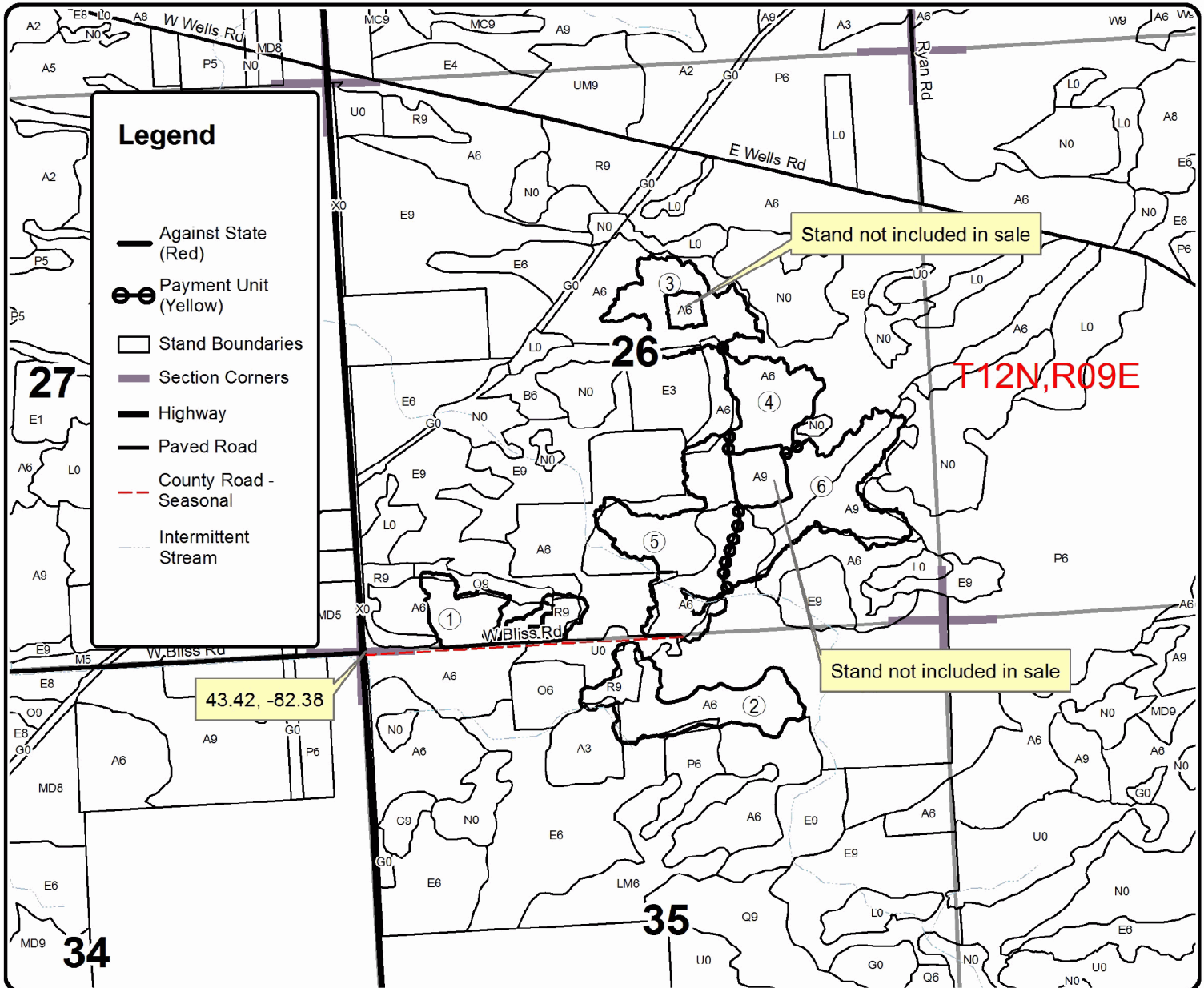
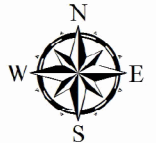
Forest Management Unit Tuscola SGA	County Tuscola	Mapped By DJ Bonnette	Date 12/10/2018	Page 1	of 1
Township 12N	Range 09E	Section(s) and Subdivision(s) Sec. 26; SENW, SWNE, S 1/2 SW, SE Sec. 35; NENW, NWNE	Cruised By DJ Bonnette		
Scale 1:15,840					

Cover Type				Density	
A = Aspen	H = Hemlock	N = Marsh	U = Upland Brush	0 = Non Stocked	5 = Pole Timber Medium
B = Paper Birch	J = Jack Pine	O = Oak	UM = Upland Mixed	1 = Seedling Sapling Poor	6 = Pole Timber Well
C = Cedar	L = Lowland Brush	P = Lowland Poplar	V = Bog or Marsh	2 = Seedling Sapling Medium	7 = Saw Timber Poor
D = Treed Bog	LM = Lowland Mixed	Q = Mixed Swamp Conifer	W = White Pine	3 = Seedling Sapling Well	8 = Saw Timber Medium
E = Swamp Hdwoods	M = Mpl, Bch, Brch	R = Red Pine	X = Non Stocked	4 = Pole Timber Poor	9 = Saw Timber Well
F = Spruce Fir	MC = Mixed Conifer	S = Black Spruce	Z = Water		
G = Grass	MD = Mixed Deciduous	T = Tamarack			

PU	Acres	PU	Acres
1	13.2	4	13.2
2	20.2	5	27.6
3	15.6	6	26.7

Bliss Aspen Mix

116.5 Acres



43.42, -82.38

Stand not included in sale

Stand not included in sale

T12N,R09E

TIMBER SALE INFORMATION

Gilford Mix (55-110-18)

T13N, R10E, SEC. 31; T13N, R10E, SEC. 32.

Tuscola County (Advertised Price \$27,688.10)

SALE NOTE: Within Payment Unit(s) 1 - 3, unless changed by written agreement, cutting, skidding, and hauling are not permitted during the period of April 1 to June 1. No Payment unit may be started during the period of November 10 to November 30 without permission of the Unit Manager or his/her representative.

Access may be through other public land.

A timber sale contract for this lump sum, sealed bid timber sale will be awarded to the responsible bidder offering the highest sealed bid price. Bids must be at or above the following advertised price for each species:

<u>PRODUCTS & SPECIES</u>	<u>ESTIMATED UNITS*</u>		<u>ADVERTISED PRICE</u>
Sawtimber			
Black Cherry	14.80	MBF	\$ 83.00 / MBF
Jack Pine	79.00	MBF	\$ 23.00 / MBF
Mixed Aspen	140.60	MBF	\$ 30.00 / MBF
Red Maple	56.00	MBF	\$ 38.00 / MBF
Red Pine	74.40	MBF	\$ 38.00 / MBF
Pulpwood			
Black Cherry	92.00	Cords	\$ 12.75 / Cord
Jack Pine	353.00	Cords	\$ 11.25 / Cord
Mixed Aspen	353.00	Cords	\$ 11.25 / Cord
Paper Birch	18.00	Cords	\$ 10.50 / Cord
Red Maple	312.00	Cords	\$ 12.75 / Cord
Red Pine	108.00	Cords	\$ 19.00 / Cord
White Pine	12.00	Cords	\$ 11.25 / Cord

* The estimated units are final and not subject to adjustment. Prospective bidders are urged to examine this timber and to make their own estimates of quantity and quality.

BOND AND PAYMENT SCHEDULE:

1. A bond in the amount of \$1,384.00 to insure faithful performance of the conditions of the contract will be deposited by the successful bidder within 21 days of the sale award.
2. Cutting in any sale or unit without the required advance payment would be considered a trespass.
3. Total payment must be paid in advance or according to the following schedule:
 - (a) Ten percent (10%) of the sale value must be paid within 21 days of the sale award.
 - (b) The 10% down payment will be credited towards the first unit cut.
 - (c) Payment for each of the following units must be made before cutting begins in that unit:

PAYMENT UNIT NUMBER	PERCENT OF TOTAL SALE VALUE
01	22.0%
02	20.5%
03	57.5%
4. If no cutting takes place, the 10% down payment will not be refunded.
5. Operations on the contract issued will terminate on 03/31/2021.

Description of Timber by Payment Unit (PU)

PU	MARKET GROUP	PRODUCT	QUANTITY	UNIT	ACRES	ADVERTISE PRICE
1	Black Cherry	Sawtimber	2.8	MBF	16.8	\$6,095.20
	Mixed Aspen		54.9	MBF		
	Red Maple		28.6	MBF		
	Black Cherry	Pulpwood	14.0	Cords		
	Mixed Aspen		90.0	Cords		
	Red Maple		152.0	Cords		
2	Mixed Aspen	Sawtimber	61.1	MBF	13.1	\$5,676.50
	Red Maple		22.0	MBF		
	Mixed Aspen	Pulpwood	133.0	Cords		
	Paper Birch		6.0	Cords		
	Red Maple		103.0	Cords		
	White Pine		12.0	Cords		
3	Black Cherry	Sawtimber	12.0	MBF	34.5	\$15,916.40
	Jack Pine		79.0	MBF		
	Mixed Aspen		24.6	MBF		
	Red Maple		5.4	MBF		
	Red Pine		74.4	MBF		
	Black Cherry	Pulpwood	78.0	Cords		
	Jack Pine		353.0	Cords		
	Mixed Aspen		130.0	Cords		
	Paper Birch		12.0	Cords		
	Red Maple		57.0	Cords		
	Red Pine		108.0	Cords		
TOTAL:			364.8	MBF		
TOTAL:			1,248.0	Cords		

Sale Specific Conditions & Requirements

Sale Name: Gilford Mix

Sale Number: 55-110-18 Seq#: 3

1 - Sale Area

1.2 - Boundaries

1.2.1 - Painted boundaries (1/14)

The sale boundaries are marked and identified by red and green paint. Exterior sale boundary lines against state are marked with red paint. The retention areas within Payment Unit 3 are marked with green paint; these areas are not to be entered or operated in. The painted boundary line trees are not Included Timber and are to be protected.

2 - Timber Specifications

2.1 - Included Timber

2.1.1 - Clearcut unit(s) with unmerchantable trees (6/14)

Within Payment Unit(s) 1, cut all trees that are two (2) inches or more at DBH, except white pine, hemlock, beech, oak, apple and trees marked with green paint.

Within Payment Unit(s) 2, cut all white pine less than six (6) inches at DBH, and all other trees that are two (2) inches or more at DBH, except cedar, beech, oak, hemlock and apple.

Within Payment Unit(s) 3, cut all red pine and jack pine five (5) inches or more DBH, and all other trees that are two (2) inches or more DBH, except, oak, beech, apple and cedar.

Special protection trees identified in accordance with condition 3.4.2, within clearcutting unit boundaries, are not Included Timber and are to be protected.

2.2 - Utilization

2.2.3 - Stump heights (4/07)

Stump heights within the Sale Area shall not exceed 12 inches.

2.2.10 - No chipping tops and limbs (8/16)

Within Payment Unit(s) 1 - 3, chipping of the bole, 4-inches in diameter or greater, is allowed. Chipping of limbs or portions of the tree less than 4-inches in diameter is not permitted. Limbs and the remaining top must be left on site and scattered.

3 - Payments

3.4 - Damaged Timber

3.4.2 - Special Protection Trees (4/14)

The Purchaser shall not cut live or dead special protection trees within cutting units or clearings. Special protection trees are apple, hickory, walnut and trees marked with green paint. If the Purchaser's operations have cut or damaged special protection trees through carelessness, the Purchaser shall pay \$100 as fixed, agreed and liquidated damages for each special protection tree cut or damaged. Such payment does not constitute ownership of the undesignated timber.

3.6 - Payment Unit Cutting Schedule

3.6.2 - One active unit (12/08)

Each Payment Unit must be completed to the satisfaction of the Unit Manager or his/her representative before the next unit may be opened. The Purchaser must give a one week notice before finishing a unit to allow for inspection.

4 - Transportation

4.1 - Construction

4.1.3 - Slash and earthen piles (8/04)

Piles or windrows of earth along roads and landings that have been widened or constructed shall be leveled. Slash from road

maintenance or construction, including stumps, shall be distributed within the sale boundaries.

4.1.12 - No new roads (1/12)

No new roads will be permitted in any Payment Unit. All operations are limited to skid trails or existing trails.

4.2 - Maintenance

4.2.3 - Road maintenance (8/13)

The following road maintenance is required: Within 60 days of completion of hauling, or if no hauling occurs for 60 days, the trail beyond the gate must be maintained in as good or better condition than before operations began. This includes cleaning of drainage areas, grading, crowning and filling with gravel, if necessary. Damages will be assessed if grading/repair does not occur.

4.4 - Access

4.4.3 - Access gate (12/08)

Access to Payment Unit 2 is through the vehicle barrier and gate on the north side of Gilford Rd. Gates must be closed and locked at the end of each day, and should remain closed during daytime hours. This is to prevent someone other than the Purchaser from going through the gate and being locked in. The vehicle barrier must be replaced when harvesting operations are complete.

5 - Operations

5.1 - Notification

5.1.1 - Pre-sale conference (10/16)

A pre-sale conference on site between the Purchaser and sale administrator is required prior to beginning any operations to determine landing and road locations. The Unit Manager or his/her representative must be contacted at least 10 days in advance to schedule the conference.

5.1.4 - Post-sale conference (10/16)

A post-sale conference on site between the Purchaser and sale administrator is required 10 days prior to the completion of active logging operations to determine clean-up and repair of landings, road edges, and the fulfillment of other contract specifications.

5.2 - Conduct of Operations

5.2.1 - Slash

5.2.1.8 - Slash height (12/08)

No slash may exceed 48 inches in height.

5.2.1.11 - Slash for reforestation (5/07)

To facilitate reforestation, the sale area shall be left with slash evenly distributed. Bunched tops within the cutting area shall be broken up and scattered. Stumps shall be cut low to the ground. Processing sites shall not be left with a compacted layer of slash; tops from these sites shall be hauled back into the cut area and scattered.

5.2.2 - Hazard Trees/Snags

5.2.2.1 - Den trees (10/16)

Obvious hollow and/or den trees shall be protected and left standing unless they are a safety hazard.

5.2.3 - Operating Restrictions

5.2.3.1 - Operating restrictions (9/11)

Within Payment Unit(s) 1 - 3, unless changed by written agreement, cutting, skidding, and hauling are not permitted during the period of April 1 to June 1. This restriction is required to prevent damage to saturated soils, minimize rutting and to maximize regeneration.

5.2.3.2 - Operating restrictions (9/11)

Within Payment Unit(s) 1 - 3, the number of skid trails must be minimized. This restriction is necessary to protect sensitive soils and maximize regeneration.

5.2.3.12 - Hunting operating restriction (1/18)

No Payment unit may be started during the period of November 10 to November 30 without permission of the Unit Manager or his/her representative.

5.2.4 - Dead and Down Creation

5.2.4.6 - Dead and down creation, other (9/09)

To create grouse habitat, within Payment Unit(s) 1 and 2, leave one, tree (maple where available) greater than 7 inches at DBH on the ground for every acre. These trees are to be felled and left within 3 feet of the stump.

5.2.32 - Decking/landing restoration (9/13)

All decking and landing areas must have the surface area restored to a condition equal to or better than before. This is to ensure the proper regeneration of the stand. Wood debris, chips and "cookies" from trimmings must be removed or scattered within the sale boundary away from landing and loading areas and may not be windrowed on the edge.

5.2.37 - No decking areas (12/08)

No decking is allowed in any parking area. In addition, no equipment storage is allowed in any parking area.

5.4 - Soil Protection

5.4.1 - Rutting restriction, general (7/16)

Operations are to cease immediately if equipment and weather conditions result in rutting of roads and/or skid trails which is 8 inches or greater in depth and 50 feet in length. The Unit Manager or his/her representative may restrict hauling and/or skidding if ruts exceed the specified depth. With the Unit Manager or his/her representative's approval, the Purchaser may return to the area when the risk of rutting has decreased.

7 - Other Conditions

7.10 - Certified Timber

7.10.1 - Non-certified timber (2/16)

The area encompassed by this timber sale is not certified to the standards of the Forest Stewardship Council (FSC) or the Sustainable Forestry Initiative (SFI). Forest products from this sale may not be delivered to the mill as "FSC and / or SFI certified". The lands within this sale are managed as a State Game Area.



TIMBER SALE MAP

This information provided by authority of Part 525, 1994 PA 451, as amended.

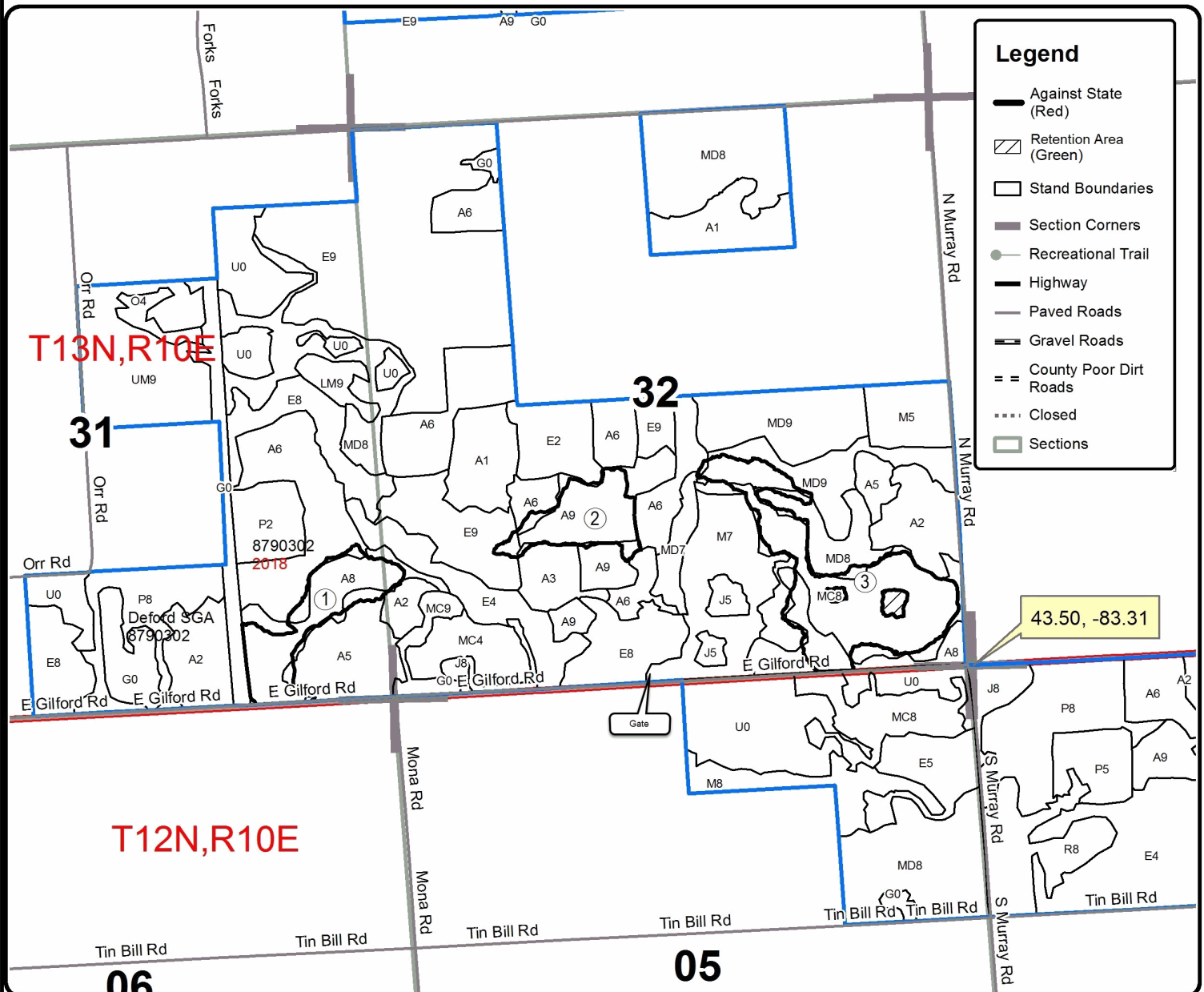
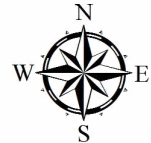
Forest Management Unit Deford SGA		County Tuscola	Mapped By DJ Bonnette	Date 05/08/18	Page 1	of 2
Township 13N	Range 10E	Section(s) and Subdivision(s) 32 SE		Scale 1:15,840		

Cover Type				Density			
A = Aspen	H = Hemlock	N = Marsh	U = Upland Brush	0 = Non Stocked	5 = Pole Timber Medium		
B = Paper Birch	J = Jack Pine	O = Oak	UM = Upland Mixed	1 = Seedling Sapling Poor	6 = Pole Timber Well		
C = Cedar	L = Lowland Brush	P = Lowland Poplar	V = Bog or Marsh	2 = Seedling Sapling Medium	7 = Saw Timber Poor		
D = Treed Bog	LM = Lowland Mixed	Q = Mixed Swamp Conifer	W = White Pine	3 = Seedling Sapling Well	8 = Saw Timber Medium		
E = Swamp Hdwoods	M = Mpl, Bch, Brch	R = Red Pine	X = Non Stocked	4 = Pole Timber Poor	9 = Saw Timber Well		
F = Spruce Fir	MC = Mixed Conifer	S = Black Spruce	Z = Water				
G = Grass	MD = Mixed Deciduous	T = Tamarack					

Payment Unit	Acres
1	16.8
2	13.1
3	34.5

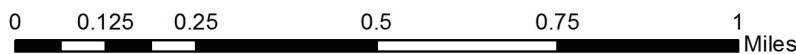
Gilford Mix

64.4 Acres



Legend

- Against State (Red)
- ▨ Retention Area (Green)
- Stand Boundaries
- Section Corners
- Recreational Trail
- Highway
- Paved Roads
- Gravel Roads
- == County Poor Dirt Roads
- ⋯ Closed
- Sections





TIMBER SALE MAP

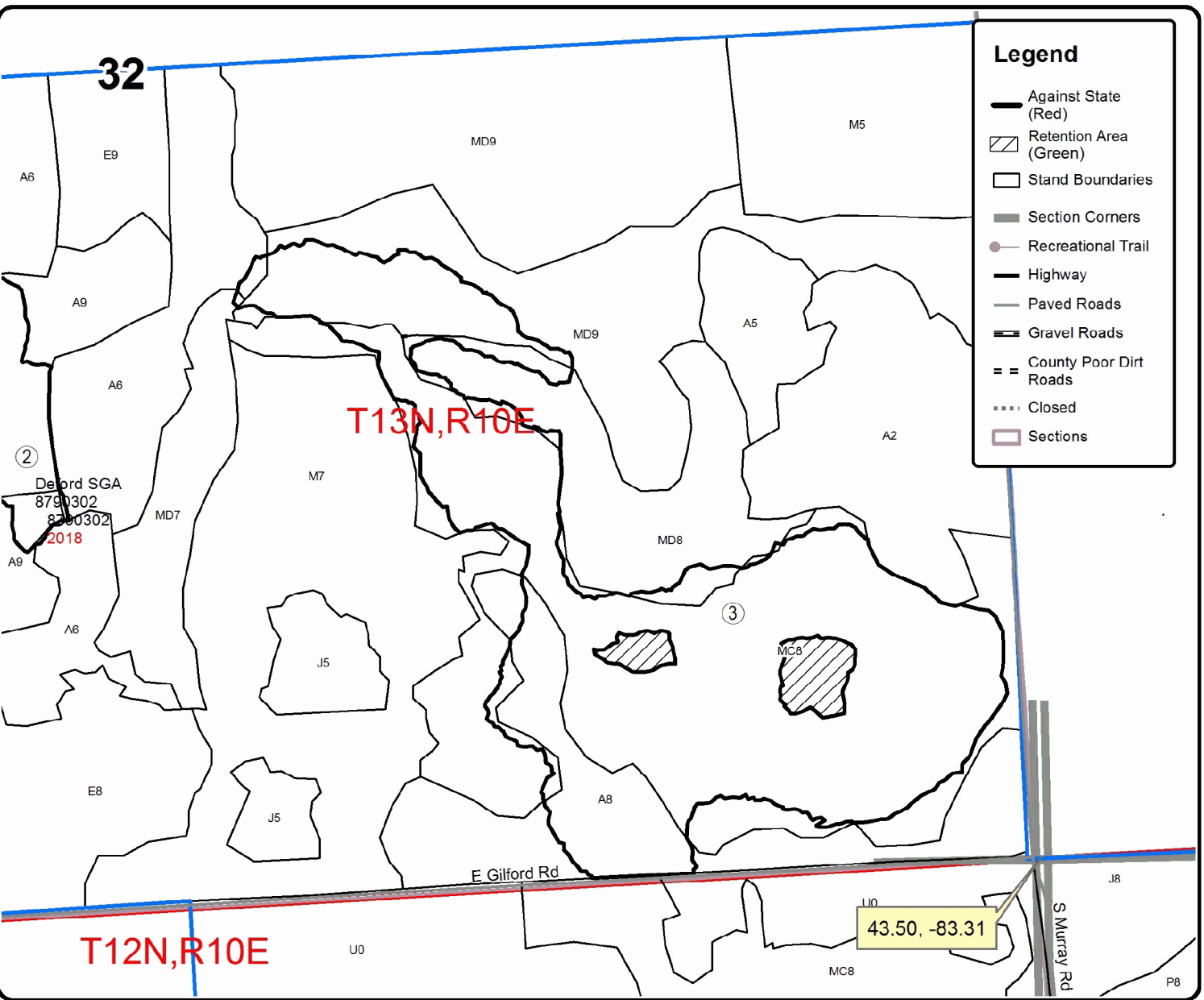
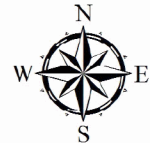
This information provided by authority of Part 525, 1994 PA 451, as amended.

Forest Management Unit Deford SGA		County Tuscola	Mapped By DJ Bonnette	Date 05/08/18	Page 2	of 2
Township 13N	Range 10E	Section(s) and Subdivision(s) 32 SE		Scale 1:5,403		
Cruised By DJ Bonnette						

Cover Type				Density			
A = Aspen	H = Hemlock	N = Marsh	U = Upland Brush	0 = Non Stocked	5 = Pole Timber Medium		
B = Paper Birch	J = Jack Pine	O = Oak	UM = Upland Mixed	1 = Seedling Sapling Poor	6 = Pole Timber Well		
C = Cedar	L = Lowland Brush	P = Lowland Poplar	V = Bog or Marsh	2 = Seedling Sapling Medium	7 = Saw Timber Poor		
D = Treed Bog	LM = Lowland Mixed	Q = Mixed Swamp Conifer	W = White Pine	3 = Seedling Sapling Well	8 = Saw Timber Medium		
E = Swamp Hdwoods	M = Mpl, Bch, Brch	R = Red Pine	X = Non Stocked	4 = Pole Timber Poor	9 = Saw Timber Well		
F = Spruce Fir	MC = Mixed Conifer	S = Black Spruce	Z = Water				
G = Grass	MD = Mixed Deciduous	T = Tamarack					

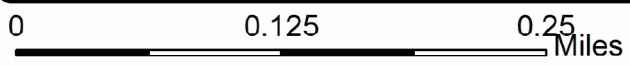
Payment Unit	Acres
1	16.8
2	13.1
3	34.5

Gilford Mix
Retention Area Detail within Payment Unit 3
64.4 Acres



Legend

- Against State (Red)
- Retention Area (Green)
- Stand Boundaries
- Section Corners
- Recreational Trail
- Highway
- Paved Roads
- Gravel Roads
- County Poor Dirt Roads
- Closed
- Sections



TIMBER SALE INFORMATION

Minden Aspen Mix (55-112-18)
 T14N, R14E, SEC. 18; T14N, R14E, SEC. 30.
 Sanilac County (Advertised Price \$19,965.85)

SALE NOTE: Within Payment Unit(s) 1 and 2, unless changed by written agreement, cutting, skidding, and hauling are not permitted during the period of April 1 to June 15. No Payment unit may be started during the period of November 10 to November 30 without permission of the Unit Manager or his/her representative.

Access may be through other public land.

A timber sale contract for this lump sum, sealed bid timber sale will be awarded to the responsible bidder offering the highest sealed bid price. Bids must be at or above the following advertised price for each species:

<u>PRODUCTS & SPECIES</u>	<u>ESTIMATED UNITS*</u>	<u>ADVERTISED PRICE</u>
Sawtimber		
B. T. Aspen	129.00 MBF	\$ 38.00 / MBF
Black Cherry	3.00 MBF	\$ 83.00 / MBF
Paper Birch	7.20 MBF	\$ 30.00 / MBF
Red Maple	16.70 MBF	\$ 38.00 / MBF
Pulpwood		
B. T. Aspen	844.00 Cords	\$ 11.25 / Cord
Mixed Hardwood	107.00 Cords	\$ 12.75 / Cord
Paper Birch	133.00 Cords	\$ 10.50 / Cord
Red Maple	134.00 Cords	\$ 12.75 / Cord

* The estimated units are final and not subject to adjustment. Prospective bidders are urged to examine this timber and to make their own estimates of quantity and quality.

BOND AND PAYMENT SCHEDULE:

1. A bond in the amount of \$998.00 to insure faithful performance of the conditions of the contract will be deposited by the successful bidder within 21 days of the sale award.
2. Cutting in any sale or unit without the required advance payment would be considered a trespass.
3. Total payment must be paid in advance or according to the following schedule:
 - (a) Ten percent (10%) of the sale value must be paid within 21 days of the sale award.
 - (b) The 10% down payment will be credited towards the first unit cut.
 - (c) Payment for each of the following units must be made before cutting begins in that unit:

PAYMENT UNIT NUMBER	PERCENT OF TOTAL SALE VALUE
01	33.5%
02	66.5%
4. If no cutting takes place, the 10% down payment will not be refunded.
5. Operations on the contract issued will terminate on 03/31/2021.

Description of Timber by Payment Unit (PU)

PU	MARKET GROUP	PRODUCT	QUANTITY	UNIT	ACRES	ADVERTISE PRICE
1	B. T. Aspen	Sawtimber	35.7	MBF	16.8	\$6,693.25
	Black Cherry		2.0	MBF		
	Paper Birch		7.2	MBF		
	Red Maple		15.3	MBF		
	B. T. Aspen	Pulpwood	132.0	Cords		
	Mixed Hardwood		45.0	Cords		
	Paper Birch		133.0	Cords		
	Red Maple		72.0	Cords		
2	B. T. Aspen	Sawtimber	93.3	MBF	27.0	\$13,272.60
	Black Cherry		1.0	MBF		
	Red Maple		1.4	MBF		
	B. T. Aspen	Pulpwood	712.0	Cords		
	Mixed Hardwood		62.0	Cords		
	Red Maple		62.0	Cords		
TOTAL:			155.9	MBF		
TOTAL:			1,218.0	Cords		

Sale Specific Conditions & Requirements

Sale Name: Minden Aspen Mix

Sale Number: 55-112-18 Seq#: 2

1 - Sale Area

1.2 - Boundaries

1.2.1 - Painted boundaries (1/14)

The sale boundaries are marked and identified by red and blue paint. Exterior sale boundary lines against state are marked with red paint. Exterior sale boundary lines against private property are marked with blue paint. The painted boundary line trees are not Included Timber and are to be protected.

2 - Timber Specifications

2.1 - Included Timber

2.1.1 - Clearcut unit(s) with unmerchantable trees (6/14)

Within Payment Unit(s) 1 and 2, cut all trees that are two (2) inches or more at DBH, except do not cut beech, oak, apple, hickory, walnut and trees marked with green paint. Special protection trees identified in accordance with condition 3.4.2, within clearcutting unit boundaries, are not Included Timber and are to be protected.

2.2 - Utilization

2.2.3 - Stump heights (4/07)

Stump heights within the Sale Area shall not exceed 12 inches.

2.2.10 - No chipping tops and limbs (8/16)

Within Payment Unit(s) 1 and 2, chipping of the bole, 4-inches in diameter or greater, is allowed. Chipping of limbs or portions of the tree less than 4-inches in diameter is not permitted. Limbs and the remaining top must be left on site and scattered.

3 - Payments

3.4 - Damaged Timber

3.4.2 - Special Protection Trees (4/14)

The Purchaser shall not cut live or dead special protection trees within cutting units or clearings. Special protection trees are apple, and trees marked with green paint. If the Purchaser's operations have cut or damaged special protection trees through carelessness, the Purchaser shall pay \$100 as fixed, agreed and liquidated damages for each special protection tree cut or damaged. Such payment does not constitute ownership of the undesignated timber.

3.6 - Payment Unit Cutting Schedule

3.6.2 - One active unit (12/08)

Each Payment Unit must be completed to the satisfaction of the Unit Manager or his/her representative before the next unit may be opened. The Purchaser must give a one week notice before finishing a unit to allow for inspection.

4 - Transportation

4.1 - Construction

4.1.3 - Slash and earthen piles (8/04)

Piles or windrows of earth along roads and landings that have been widened or constructed shall be leveled. Slash from road maintenance or construction, including stumps, shall be distributed within the sale boundaries.

4.1.12 - No new roads (1/12)

No new roads will be permitted in any Payment Unit. All operations are limited to skid trails or existing trails.

4.2 - Maintenance

4.2.3 - Road maintenance (8/13)

The following road maintenance is required: Within 60 days of completion of hauling, or if no hauling occurs for 60 days, the trail beyond the gate to Payment Units 1 and 2 must be maintained in as good or better condition than before operations

began. This includes cleaning of drainage areas, grading, crowning and filling with gravel, if necessary. Damages will be assessed if grading/repair does not occur.

4.4 - Access

4.4.3 - Access gate (12/08)

Access to Payment Unit 1 is through the gate in the designated parking area on Verona Road, approximately 1 mile to the north of Flannery Rd. Access to Payment Unit 2 is through the gate in the designated parking area on Verona Road, immediately south of Cumber Road. Gates must be closed and locked at the end of each day, and should remain closed during daytime hours.

5 - Operations

5.1 - Notification

5.1.1 - Pre-sale conference (10/16)

A pre-sale conference on site between the Purchaser and sale administrator is required prior to beginning any operations to determine landing and road locations. The Unit Manager or his/her representative must be contacted at least 10 days in advance to schedule the conference.

5.1.4 - Post-sale conference (10/16)

A post-sale conference on site between the Purchaser and sale administrator is required 10 days prior to the completion of active logging operations to determine clean-up and repair of landings, road edges, and the fulfillment of other contract specifications.

5.2 - Conduct of Operations

5.2.1 - Slash

5.2.1.8 - Slash height (12/08)

No slash may exceed 48 inches in height.

5.2.1.11 - Slash for reforestation (5/07)

To facilitate reforestation, the sale area shall be left with slash evenly distributed. Bunched tops within the cutting area shall be broken up and scattered. Stumps shall be cut low to the ground. Processing sites shall not be left with a compacted layer of slash; tops from these sites shall be hauled back into the cut area and scattered.

5.2.2 - Hazard Trees/Snags

5.2.2.1 - Den trees (10/16)

Obvious hollow and/or den trees shall be protected and left standing unless they are a safety hazard. All standing dead timber (snags) must be protected and left standing unless they pose an obvious safety hazard.

5.2.3 - Operating Restrictions

5.2.3.1 - Operating restrictions (9/11)

Within Payment Unit(s) 1 and 2, unless changed by written agreement, cutting, skidding, and hauling are not permitted during the period of April 1 to June 15. This restriction is required to prevent damage to the trail network, saturated soils, minimize rutting and to maximize regeneration.

5.2.3.2 - Operating restrictions (9/11)

Within Payment Unit(s) 1 and 2, the number of skid trails must be minimized. This restriction is necessary to protect sensitive soils, maximize regeneration and protect the trail network.

5.2.3.12 - Hunting operating restriction (1/18)

No Payment unit may be started during the period of November 10 to November 30 without permission of the Unit Manager or his/her representative.

5.2.4 - Dead and Down Creation

5.2.4.6 - Dead and down creation, other (9/09)

To create grouse habitat, within Payment Unit(s) 1 and 2, leave one tree (maple where available) greater than 7 inches at

DBH on the ground for every acre. These trees are to be felled and left within 3 feet of the stump.

5.2.32 - Decking/landing restoration (9/13)

All decking and landing areas must have the surface area restored to a condition equal to or better than before. This is to ensure the proper regeneration of the stand. Wood debris, chips and "cookies" from trimmings must be removed or scattered within the sale boundary away from landing and loading areas and may not be windrowed on the edge.

5.2.37 - No decking areas (12/08)

No decking is allowed within any designated parking area on Verona Road. In addition, no equipment storage is allowed within any parking area.

5.4 - Soil Protection

5.4.1 - Rutting restriction, general (7/16)

Operations are to cease immediately if equipment and weather conditions result in rutting of roads and/or skid trails which is 8 inches or greater in depth and 50 feet in length. The Unit Manager or his/her representative may restrict hauling and/or skidding if ruts exceed the specified depth. With the Unit Manager or his/her representative's approval, the Purchaser may return to the area when the risk of rutting has decreased.

7 - Other Conditions

7.5 - Loss

7.5.1 - Deteriorating timber (7/09)

The sale area has received damage from windthrow in a portion of Payment Unit 2. The Purchaser should harvest the wood as soon as possible. The Department of Natural Resources is held free of responsibility of any further damage or deterioration due to delay in harvesting.

7.10 - Certified Timber

7.10.1 - Non-certified timber (2/16)

The area encompassed by this timber sale is not certified to the standards of the Forest Stewardship Council (FSC) or the Sustainable Forestry Initiative (SFI). Forest products from this sale may not be delivered to the mill as "FSC and / or SFI certified". The lands within this sale are managed as a State Game Area.



TIMBER SALE MAP

This information provided by authority of Part 525, 1994 PA 451, as amended.

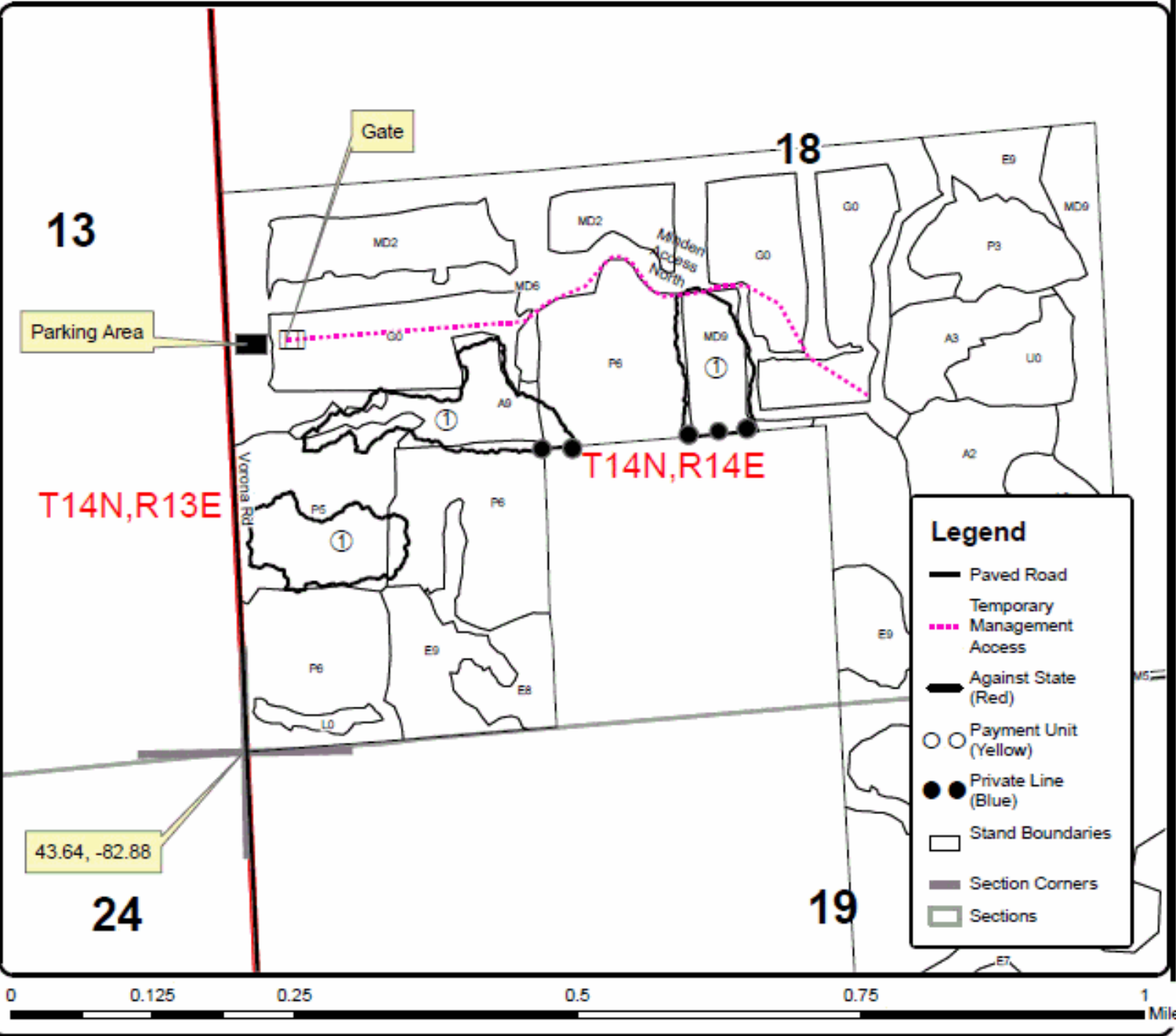
Forest Management Unit Minden City SGA	County Sanilac	Mapped By DJ Bonnette	Date 07/17/2018	Page 1	of 2
Township 14N	Range 14E	Cruised By DJ Bonnette	Scale 1:7,920		
Section(s) and Subdivision(s) Section 18, SW					

Cover Type				Density			
A = Aspen	H = Hemlock	N = Marsh	U = Upland Brush	0 = Non Stocked	5 = Pole Timber Medium		
B = Paper Birch	J = Jack Pine	O = Oak	UM = Upland Mixed	1 = Seeding Sapling Poor	6 = Pole Timber Well		
C = Cedar	L = Lowland Brush	P = Lowland Poplar	V = Bog or Marsh	2 = Seeding Sapling Medium	7 = Saw Timber Poor		
D = Treed Bog	LM = Lowland Mixed	Q = Mixed Swamp Conifer	W = White Pine	3 = Seeding Sapling Well	8 = Saw Timber Medium		
E = Swamp Hardwoods	M = Mpl, Bch, Brch	R = Red Pine	X = Non Stocked	4 = Pole Timber Poor	9 = Saw Timber Well		
F = Spruce Fir	MC = Mixed Conifer	S = Black Spruce	Z = Water				
G = Grass	MD = Mixed Deciduous	T = Tamarack					

PU	Acres	PU	Acres
1	16.8		
2	27.0		

Minden Aspen Mix

43.8 Acres Total
Payment Unit 1 Detail





TIMBER SALE MAP

This information provided by authority of Part 525, 1994 PA 451, as amended.

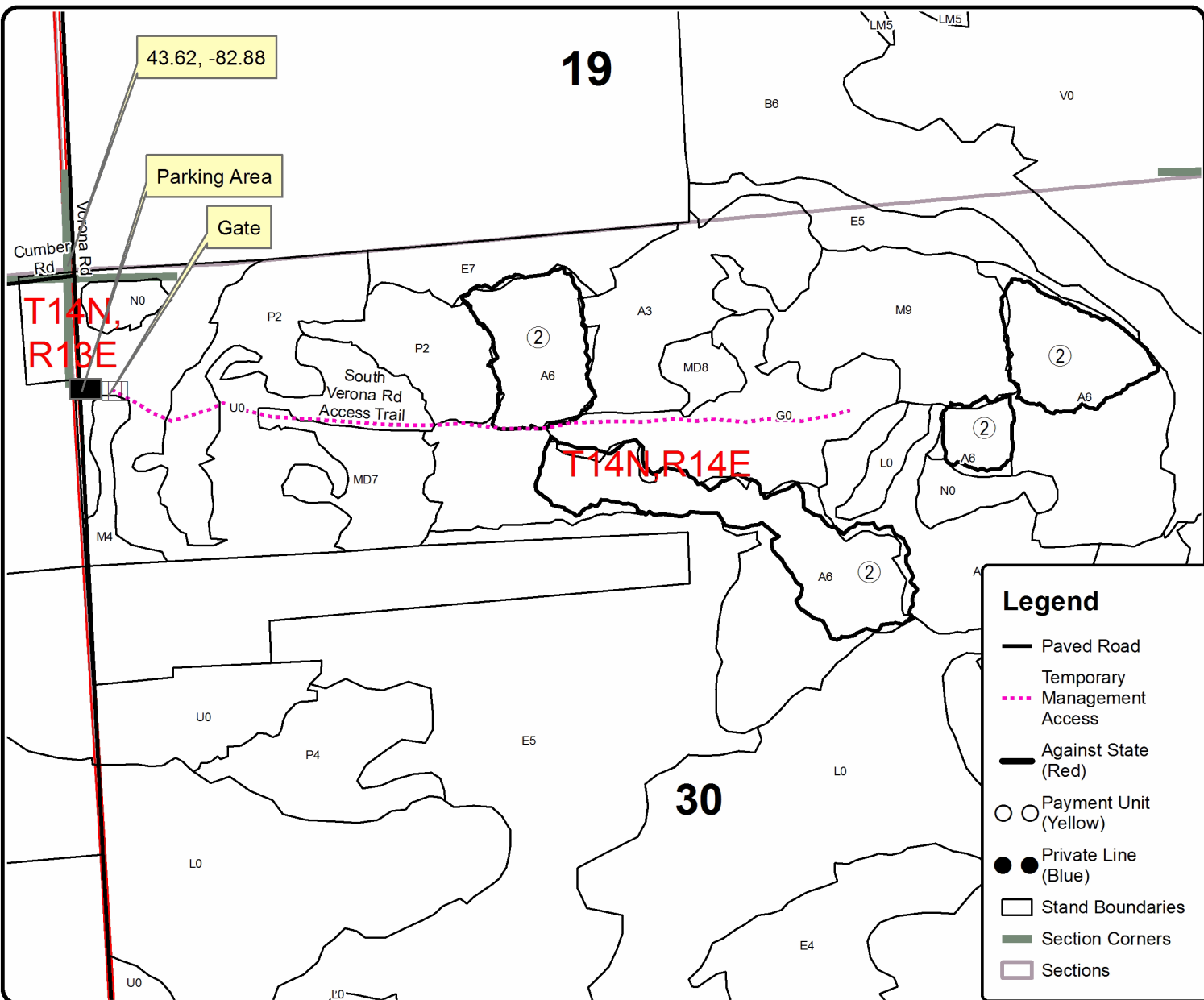
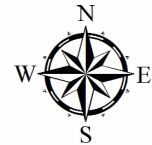
Sale Number	Year
55-112	2018

Forest Management Unit Minden City SGA	County Sanilac	Mapped By DJ Bonnette	Date 07/17/2018	Page 2	of 2
Township 14N	Range 14E	Section(s) and Subdivision(s) Section 30, NW	Scale 1:7,920		

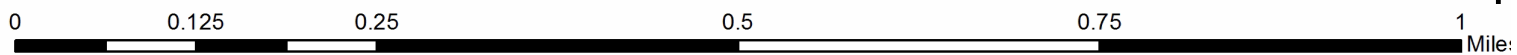
Cover Type				Density	
A = Aspen	H = Hemlock	N = Marsh	U = Upland Brush	0 = Non Stocked	5 = Pole Timber Medium
B = Paper Birch	J = Jack Pine	O = Oak	UM = Upland Mixed	1 = Seedling Sapling Poor	6 = Pole Timber Well
C = Cedar	L = Lowland Brush	P = Lowland Poplar	V = Bog or Marsh	2 = Seedling Sapling Medium	7 = Saw Timber Poor
D = Treed Bog	LM = Lowland Mixed	Q = Mixed Swamp Conifer	W = White Pine	3 = Seedling Sapling Well	8 = Saw Timber Medium
E = Swamp Hdwoods	M = Mpl, Bch, Brch	R = Red Pine	X = Non Stocked	4 = Pole Timber Poor	9 = Saw Timber Well
F = Spruce Fir	MC = Mixed Conifer	S = Black Spruce	Z = Water		
G = Grass	MD = Mixed Deciduous	T = Tamarack			

PU	Acres	PU	Acres
1	16.8		
2	27.0		

Minden Aspen Mix
43.8 Acres Total
Payment Unit 2 Detail



Legend	
	Paved Road
	Temporary Management Access
	Against State (Red)
	Payment Unit (Yellow)
	Private Line (Blue)
	Stand Boundaries
	Section Corners
	Sections



TIMBER SALE INFORMATION

Argyle Swamp Mix (55-113-18)
 T13N, R13E, SEC. 1; T13N, R13E, SEC. 12.
 Sanilac County (Advertised Price \$26,477.90)

SALE NOTE: Permission for access across private land is the responsibility of the Purchaser (see spec 4.4.1).

Within Payment Unit(s) 1 - 3, unless changed by written agreement, cutting, skidding, and hauling are not permitted during the period of April 1 to June 15 (see spec 5.2.3.1).

No Payment unit may be started during the period of November 10 to November 30 without permission of the Unit Manager or his/her representative (see spec 5.2.3.12).

Access may be through private land.

A timber sale contract for this lump sum, sealed bid timber sale will be awarded to the responsible bidder offering the highest sealed bid price. Bids must be at or above the following advertised price for each species:

<u>PRODUCTS & SPECIES</u>	<u>ESTIMATED UNITS*</u>	<u>ADVERTISED PRICE</u>
Sawtimber		
Black Cherry	14.10 MBF	\$ 83.00 / MBF
Mixed Aspen	165.90 MBF	\$ 34.00 / MBF
Paper Birch	7.50 MBF	\$ 30.00 / MBF
Red Maple	44.50 MBF	\$ 38.00 / MBF
Pulpwood		
Mixed Aspen	758.00 Cords	\$ 11.25 / Cord
Mixed Hardwood	99.00 Cords	\$ 12.75 / Cord
Paper Birch	196.00 Cords	\$ 10.50 / Cord
Red Maple	463.00 Cords	\$ 12.75 / Cord

* The estimated units are final and not subject to adjustment. Prospective bidders are urged to examine this timber and to make their own estimates of quantity and quality.

BOND AND PAYMENT SCHEDULE:

1. A bond in the amount of \$1,324.00 to insure faithful performance of the conditions of the contract will be deposited by the successful bidder within 21 days of the sale award.
2. Cutting in any sale or unit without the required advance payment would be considered a trespass.
3. Total payment must be paid in advance or according to the following schedule:
 - (a) Ten percent (10%) of the sale value must be paid within 21 days of the sale award.
 - (b) The 10% down payment will be credited towards the first unit cut.
 - (c) Payment for each of the following units must be made before cutting begins in that unit:

<u>PAYMENT UNIT NUMBER</u>	<u>PERCENT OF TOTAL SALE VALUE</u>
01	34.8%
02	27.9%
03	37.3%
4. If no cutting takes place, the 10% down payment will not be refunded.
5. Operations on the contract issued will terminate on 12/31/2020.

Description of Timber by Payment Unit (PU)

PU	MARKET GROUP	PRODUCT	QUANTITY	UNIT	ACRES	ADVERTISE PRICE
1	Black Cherry	Sawtimber	1.5	MBF	20.2	\$9,226.75
	Mixed Aspen		68.4	MBF		
	Red Maple		26.3	MBF		
	Mixed Aspen	Pulpwood	237.0	Cords		
	Mixed Hardwood		26.0	Cords		
	Paper Birch		17.0	Cords		
	Red Maple		204.0	Cords		
	2	Black Cherry	Sawtimber	8.0		
Mixed Aspen			41.2	MBF		
Paper Birch			3.8	MBF		
Red Maple			11.8	MBF		
Mixed Aspen		Pulpwood	262.0	Cords		
Mixed Hardwood			30.0	Cords		
Paper Birch			33.0	Cords		
Red Maple			85.0	Cords		
3		Black Cherry	Sawtimber	4.6	MBF	21.9
	Mixed Aspen		56.3	MBF		
	Paper Birch		3.7	MBF		
	Red Maple		6.4	MBF		
	Mixed Aspen	Pulpwood	259.0	Cords		
	Mixed Hardwood		43.0	Cords		
	Paper Birch		146.0	Cords		
	Red Maple		174.0	Cords		
	TOTAL:			232.0	MBF	
TOTAL:			1,516.0	Cords		

Sale Specific Conditions & Requirements

Sale Name: Argyle Swamp Mix

Sale Number: 55-113-18 Seq#: 2

1 - Sale Area

1.2 - Boundaries

1.2.1 - Painted boundaries (1/14)

The sale boundaries are marked and identified by red paint. The painted boundary line trees are not Included Timber and are to be protected.

2 - Timber Specifications

2.1 - Included Timber

2.1.1 - Clearcut unit(s) with unmerchantable trees (6/14)

Within Payment Unit(s) 1 - 3, cut all trees that are two (2) inches or more at DBH, except do not cut beech, oak, apple, hickory, walnut and trees marked with green paint. Special protection trees identified in accordance with condition 3.4.2, within clearcutting unit boundaries, are not Included Timber and are to be protected.

2.2 - Utilization

2.2.3 - Stump heights (4/07)

Stump heights within the Sale Area shall not exceed 12 inches.

2.2.10 - No chipping tops and limbs (8/16)

Within Payment Unit(s) 1 - 3, chipping of the bole, 4-inches in diameter or greater, is allowed. Chipping of limbs or portions of the tree less than 4-inches in diameter is not permitted. Limbs and the remaining top must be left on site and scattered.

3 - Payments

3.4 - Damaged Timber

3.4.2 - Special Protection Trees (4/14)

The Purchaser shall not cut live or dead special protection trees within cutting units or clearings. Special protection trees are apple, and trees marked with green paint. If the Purchaser's operations have cut or damaged special protection trees through carelessness, the Purchaser shall pay \$100 as fixed, agreed and liquidated damages for each special protection tree cut or damaged. Such payment does not constitute ownership of the undesignated timber.

3.6 - Payment Unit Cutting Schedule

3.6.2 - One active unit (12/08)

Each Payment Unit must be completed to the satisfaction of the Unit Manager or his/her representative before the next unit may be opened. The Purchaser must give a one week notice before finishing a unit to allow for inspection.

4 - Transportation

4.1 - Construction

4.1.3 - Slash and earthen piles (8/04)

Piles or windrows of earth along roads and landings that have been widened or constructed shall be leveled. Slash from road maintenance or construction, including stumps, shall be distributed within the sale boundaries.

4.1.12 - No new roads (1/12)

No new roads will be permitted in any Payment Unit. All operations are limited to skid trails or existing trails.

4.4 - Access

4.4.1 - Private property access (3/11)

Permission for access across private land is the responsibility of the Purchaser. Should the Purchaser desire to cross private land, a copy of the written permission from the private land-owner may be required by the DNR.

5 - Operations

5.1 - Notification

5.1.1 - Pre-sale conference (10/16)

A pre-sale conference on site between the Purchaser and sale administrator is required prior to beginning any operations to determine landing and road locations. The Unit Manager or his/her representative must be contacted at least 10 days in advance to schedule the conference.

5.1.4 - Post-sale conference (10/16)

A post-sale conference on site between the Purchaser and sale administrator is required 10 days prior to the completion of active logging operations to determine clean-up and repair of landings, road edges, and the fulfillment of other contract specifications.

5.2 - Conduct of Operations

5.2.1 - Slash

5.2.1.8 - Slash height (12/08)

No slash may exceed 48 inches in height.

5.2.1.11 - Slash for reforestation (5/07)

To facilitate reforestation, the sale area shall be left with slash evenly distributed. Bunched tops within the cutting area shall be broken up and scattered. Stumps shall be cut low to the ground. Processing sites shall not be left with a compacted layer of slash; tops from these sites shall be hauled back into the cut area and scattered.

5.2.2 - Hazard Trees/Snags

5.2.2.1 - Den trees (10/16)

Obvious hollow and/or den trees shall be protected and left standing unless they are a safety hazard. All standing dead timber (snags) must be protected and left standing unless they pose an obvious safety hazard.

5.2.3 - Operating Restrictions

5.2.3.1 - Operating restrictions (9/11)

Within Payment Unit(s) 1 - 3, unless changed by written agreement, cutting, skidding, and hauling are not permitted during the period of April 1 to June 15. This restriction is required to prevent damage to the access easement, saturated soils, minimize rutting and to maximize regeneration.

5.2.3.2 - Operating restrictions (9/11)

Within Payment Unit(s) 1 - 3, the number of skid trails must be minimized. This restriction is necessary to protect sensitive soils, maximize regeneration and protect the trail network.

5.2.3.12 - Hunting operating restriction (1/18)

No Payment unit may be started during the period of November 10 to November 30 without permission of the Unit Manager or his/her representative.

5.2.4 - Dead and Down Creation

5.2.4.6 - Dead and down creation, other (9/09)

To create grouse habitat, within Payment Unit(s) 1 - 3, leave one tree (maple where available), greater than 7 inches at DBH on the ground for every acre. These trees are to be felled and left within 3 feet of the stump.

5.2.31 - Landing locations (9/13)

Landing areas are marked on the Timber Sale Map with the letter "L". Landings must be confined to these designated sites unless otherwise authorized by the Unit Manager or his/her representative. In general, landings are limited to a "T" turnaround which will accommodate a truck with a 50 foot trailer.

5.2.32 - Decking/landing restoration (9/13)

All decking and landing areas must have the surface area restored to a condition equal to or better than before. This is to ensure the proper regeneration of the stand. Wood debris, chips and "cookies" from trimmings must be removed or scattered

within the sale boundary away from landing and loading areas and may not be windrowed on the edge. The need for further restoration of the landing area will be determined by the sale administrator. This may include soil preparation, seeding and mulching per the sale administrators' instructions.

5.4 - Soil Protection

5.4.1 - Rutting restriction, general (7/16)

Operations are to cease immediately if equipment and weather conditions result in rutting of roads and/or skid trails which is 8 inches or greater in depth and 50 feet in length. The Unit Manager or his/her representative may restrict hauling and/or skidding if ruts exceed the specified depth. With the Unit Manager or his/her representative's approval, the Purchaser may return to the area when the risk of rutting has decreased.

5.4.6 - Wet area protection (5/10)

No harvesting operations, including skidding and felling, are to take place within vernal pond areas or drainages. When harvesting occurs, there should be no disturbance to any vernal pond depression. All equipment, trees and tops must be kept out of these areas. Within 100 feet of the pond, equipment should only be used when the soil is in a dry or frozen condition. Care must be taken by the Purchaser to identify and avoid operating in these areas of the timber sale.

7 - Other Conditions

7.10 - Certified Timber

7.10.1 - Non-certified timber (2/16)

The area encompassed by this timber sale is not certified to the standards of the Forest Stewardship Council (FSC) or the Sustainable Forestry Initiative (SFI). Forest products from this sale may not be delivered to the mill as "FSC and / or SFI certified". The lands within this sale are managed as a State Game Area.



TIMBER SALE MAP

This information provided by authority of Part 525, 1994 PA 451, as amended.

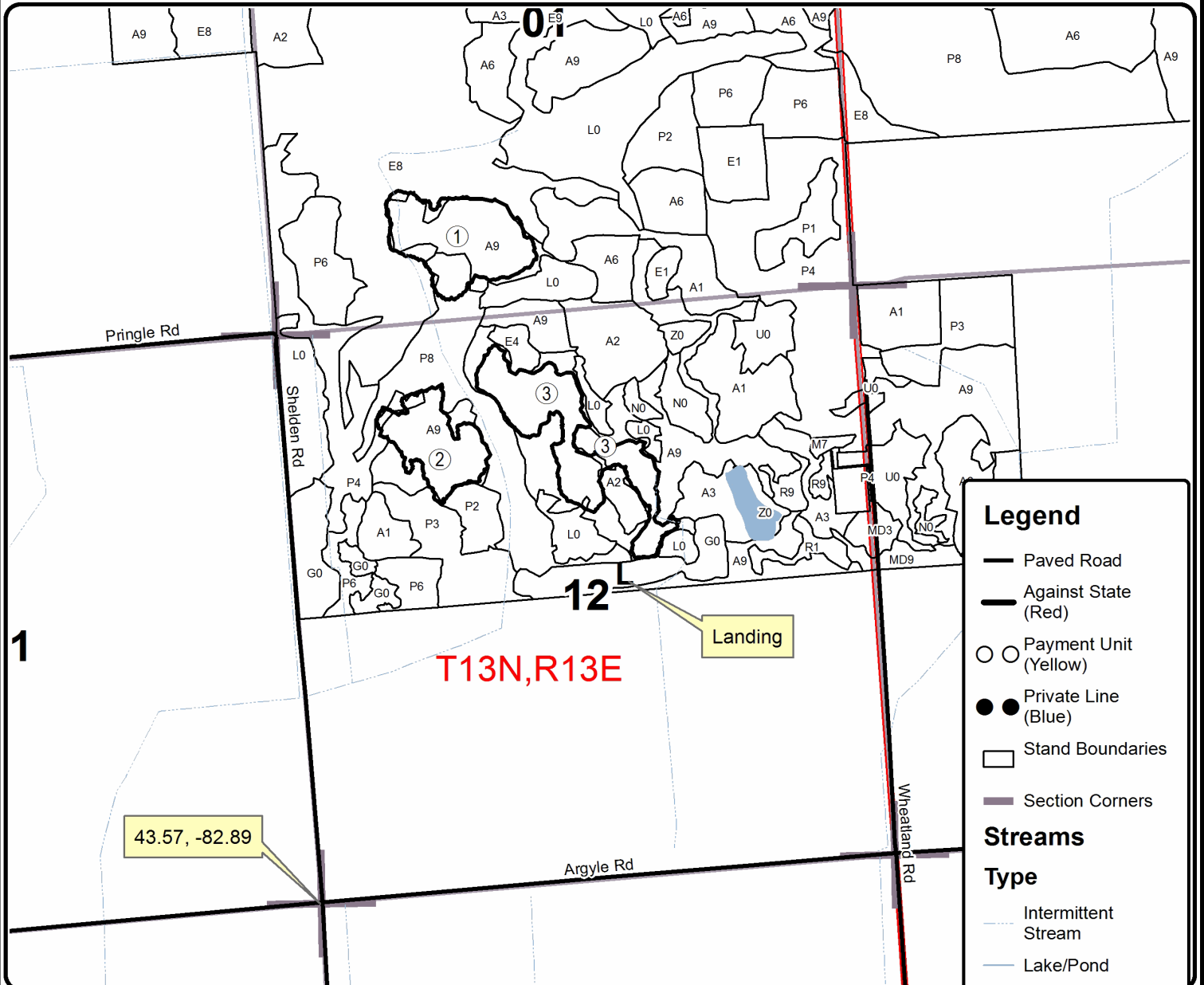
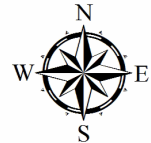
Forest Management Unit Minden City SGA		County Sanilac	Mapped By DJ Bonnette	Date 07/20/2018	Page 1	of 1
Township 13N	Range 14E	Section(s) and Subdivision(s) Sec. 1, SW; Sec. 12 N 1/2		Scale 1:15,840		

Cover Type				Density			
A = Aspen	H = Hemlock	N = Marsh	U = Upland Brush	0 = Non Stocked	5 = Pole Timber Medium		
B = Paper Birch	J = Jack Pine	O = Oak	UM = Upland Mixed	1 = Seedling Sapling Poor	6 = Pole Timber Well		
C = Cedar	L = Lowland Brush	P = Lowland Poplar	V = Bog or Marsh	2 = Seedling Sapling Medium	7 = Saw Timber Poor		
D = Treed Bog	LM = Lowland Mixed	Q = Mixed Swamp Conifer	W = White Pine	3 = Seedling Sapling Well	8 = Saw Timber Medium		
E = Swamp Hdwoods	M = Mpl, Bch, Brch	R = Red Pine	X = Non Stocked	4 = Pole Timber Poor	9 = Saw Timber Well		
F = Spruce Fir	MC = Mixed Conifer	S = Black Spruce	Z = Water				
G = Grass	MD = Mixed Deciduous	T = Tamarack					

PU	Acres	PU	Acres
1	20.2		
2	13.0		
3	21.9		

Argyle Swamp Mix

55.1 Acres



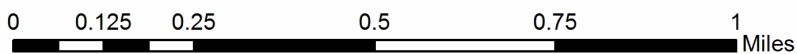
Legend

- Paved Road
- Against State (Red)
- ○ Payment Unit (Yellow)
- ● Private Line (Blue)
- Stand Boundaries
- Section Corners

Streams

Type

- Intermittent Stream
- Lake/Pond



Gilford Mix (55-110-18)
T13N, R10E, SEC. 31; T13N, R10E, SEC. 32; Tuscola COUNTY

In response to the notice of sale to be held 10:00 a.m. (local time) on February 19, 2019, I am hereby submitting my sealed bid (firm offer) for the following forest products to be cut. Bids for individual species must be at or above the advertised price. All non-responsive bid forms may be rejected.

<u>PRODUCTS & SPECIES</u>	<u>ESTIMATED VOLUME*</u>	<u>ADVERTISED PRICE</u>	<u>BID PRICE/UNIT</u>
Sawtimber			
Black Cherry	14.80 MBF	\$ 83.00/MBF	\$ _____
Jack Pine	79.00 MBF	\$ 23.00/MBF	\$ _____
Mixed Aspen	140.60 MBF	\$ 30.00/MBF	\$ _____
Red Maple	56.00 MBF	\$ 38.00/MBF	\$ _____
Red Pine	74.40 MBF	\$ 38.00/MBF	\$ _____
Pulpwood			
Black Cherry	92.00 Cords	\$ 12.75/Cord	\$ _____
Jack Pine	353.00 Cords	\$ 11.25/Cord	\$ _____
Mixed Aspen	353.00 Cords	\$ 11.25/Cord	\$ _____
Paper Birch	18.00 Cords	\$ 10.50/Cord	\$ _____
Red Maple	312.00 Cords	\$ 12.75/Cord	\$ _____
Red Pine	108.00 Cords	\$ 19.00/Cord	\$ _____
White Pine	12.00 Cords	\$ 11.25/Cord	\$ _____

*These estimated volumes are final and not subject to adjustment. Prospective bidders are urged to examine this timber and to make their own estimates of quantity and quality.

I understand that any or all bids may be rejected. All bids must be signed and all bid items must be bid or the bid form may be rejected. I also understand that consideration and awarding a contract will be based upon my past performance and ability to complete the contract based upon equipment and staffing subject to my control.

FEDERAL ID: _____ - _____ or SOCIAL SECURITY NUMBER: _____ - _____ - _____

Company or individual bidding: _____

Company representative's name: _____

Address: _____

City: _____ State: _____ Zip: _____

IF AVAILABLE, PLEASE PLACE THE PERSONALIZED LABEL FROM YOUR PROSPECTUS IN THE ABOVE BOX.

Individual or company representative's signature: _____ Date: _____

Phone number : _____ Email (optional): _____

THE WINNING BIDDER MUST COMPLETE THE VERIFICATION OF WORKER'S DISABILITY COMPENSATION ACT COMPLIANCE (ON REVERSE SIDE IF DOUBLE SIDED) WITHIN 21 DAYS OF SALE AWARD DATE



FOR DEPARTMENT USE ONLY
Sale Number (XX – XXX – XX – XX)
Forest Management Unit:

TIMBER SALE VERIFICATION OF WORKER'S DISABILITY COMPENSATION ACT COMPLIANCE

*As required by Act 317, P.A. 1969 (Worker's Compensation) and
Part 5 of Act 451 of 1994, as amended.*

VERIFICATION OF WORKER'S DISABILITY COMPENSATION ACT COMPLIANCE

- This verification must be completed and submitted within 21 days of contract award and prior to the issuance of the timber sale contract.
- In addition, if boxes 2B or 2C are checked, then Notice of Exclusion or Certificate of Insurance must be submitted within twenty-one (21) days of the contract award and prior to the issuance of the timber sale contract.
- All information must be typed or printed except for written signatures.

Please Check Appropriate Categories:

1. My business is organized as (you **must** check one of the boxes below):
 - A. Sole Proprietorship (individual)
 - B. Partnership
 - C. Corporation

2. You **must** check one of the boxes below:
 - A. I certify my business is a sole proprietorship and it has no employees but the sole proprietor. I am not subject to the Worker's Compensation Laws.
 - B. I certify my business has satisfied its obligation to the Worker's Compensation Act through the use of an approved Notice of Exclusion (BWC-337, Rev. 5/96). I will provide a copy of the Notice of Exclusion within 21 days of the contract award. (For questions or a copy of the BWC-337, please call the Worker's Compensation Bureau at 517-322-1195).
 - C. I certify my business has a Worker's Compensation Policy. I will provide an original Certificate of Insurance within twenty-one (21) days of the contract award.

3. If you have checked item 2(A) or 2(B), you **must** indicate the number of **both** full-time and part-time employees, other than yourself, including family members and active partners (if none, you must enter "0").

_____ Full-time Employees

_____ Part-time Employees

Name of Business		Federal ID (or) Social Security No.	
Address		Telephone ()	
City	State	ZIP	

I hereby certify that the above information is true and correct. I agree to notify the Michigan DNR of any changes that occur in factors affecting my coverage during any of my present and future operations.

Signature of Owner or Authorized Representative

Title

Date

Please complete the "SEALED BID" information on the next page

Minden Aspen Mix (55-112-18)
T14N, R14E, SEC. 18; T14N, R14E, SEC. 30; Sanilac COUNTY

In response to the notice of sale to be held 10:00 a.m. (local time) on February 19, 2019, I am hereby submitting my sealed bid (firm offer) for the following forest products to be cut. Bids for individual species must be at or above the advertised price. All non-responsive bid forms may be rejected.

<u>PRODUCTS & SPECIES</u>	<u>ESTIMATED VOLUME*</u>	<u>ADVERTISED PRICE</u>	<u>BID PRICE/UNIT</u>
Sawtimber			
B. T. Aspen	129.00 MBF	\$ 38.00/MBF	\$ _____
Black Cherry	3.00 MBF	\$ 83.00/MBF	\$ _____
Paper Birch	7.20 MBF	\$ 30.00/MBF	\$ _____
Red Maple	16.70 MBF	\$ 38.00/MBF	\$ _____
Pulpwood			
B. T. Aspen	844.00 Cords	\$ 11.25/Cord	\$ _____
Mixed Hardwood	107.00 Cords	\$ 12.75/Cord	\$ _____
Paper Birch	133.00 Cords	\$ 10.50/Cord	\$ _____
Red Maple	134.00 Cords	\$ 12.75/Cord	\$ _____

*These estimated volumes are final and not subject to adjustment. Prospective bidders are urged to examine this timber and to make their own estimates of quantity and quality.

I understand that any or all bids may be rejected. All bids must be signed and all bid items must be bid or the bid form may be rejected. I also understand that consideration and awarding a contract will be based upon my past performance and ability to complete the contract based upon equipment and staffing subject to my control.

FEDERAL ID: ____ - ____ - ____ or SOCIAL SECURITY NUMBER: ____ - ____ - ____

Company or individual bidding: _____

Company representative's name: _____

Address: _____

City: _____ State: _____ Zip: _____

IF AVAILABLE, PLEASE PLACE THE PERSONALIZED LABEL FROM YOUR PROSPECTUS IN THE ABOVE BOX.

Individual or company representative's signature: _____ Date: _____

Phone number : _____ Email (optional): _____

THE WINNING BIDDER MUST COMPLETE THE VERIFICATION OF WORKER'S DISABILITY COMPENSATION ACT COMPLIANCE (ON REVERSE SIDE IF DOUBLE SIDED) WITHIN 21 DAYS OF SALE AWARD DATE



FOR DEPARTMENT USE ONLY
Sale Number (XX - XXX - XX - XX)
Forest Management Unit:

TIMBER SALE VERIFICATION OF WORKER'S DISABILITY COMPENSATION ACT COMPLIANCE

*As required by Act 317, P.A. 1969 (Worker's Compensation) and
Part 5 of Act 451 of 1994, as amended.*

VERIFICATION OF WORKER'S DISABILITY COMPENSATION ACT COMPLIANCE

- This verification must be completed and submitted within 21 days of contract award and prior to the issuance of the timber sale contract.
- In addition, if boxes 2B or 2C are checked, then Notice of Exclusion or Certificate of Insurance must be submitted within twenty-one (21) days of the contract award and prior to the issuance of the timber sale contract.
- All information must be typed or printed except for written signatures.

Please Check Appropriate Categories:

1. My business is organized as (you **must** check one of the boxes below):
 - A. Sole Proprietorship (individual)
 - B. Partnership
 - C. Corporation

2. You **must** check one of the boxes below:
 - A. I certify my business is a sole proprietorship and it has no employees but the sole proprietor. I am not subject to the Worker's Compensation Laws.
 - B. I certify my business has satisfied its obligation to the Worker's Compensation Act through the use of an approved Notice of Exclusion (BWC-337, Rev. 5/96). I will provide a copy of the Notice of Exclusion within 21 days of the contract award. (For questions or a copy of the BWC-337, please call the Worker's Compensation Bureau at 517-322-1195).
 - C. I certify my business has a Worker's Compensation Policy. I will provide an original Certificate of Insurance within twenty-one (21) days of the contract award.

3. If you have checked item 2(A) or 2(B), you **must** indicate the number of **both** full-time and part-time employees, other than yourself, including family members and active partners (if none, you must enter "0").

_____ Full-time Employees

_____ Part-time Employees

Name of Business		Federal ID (or) Social Security No.	
Address		Telephone ()	
City	State	ZIP	

I hereby certify that the above information is true and correct. I agree to notify the Michigan DNR of any changes that occur in factors affecting my coverage during any of my present and future operations.

Signature of Owner or Authorized Representative

Title

Date

Please complete the "SEALED BID" information on the next page

Argyle Swamp Mix (55-113-18)
T13N, R13E, SEC. 1; T13N, R13E, SEC. 12; Sanilac COUNTY

In response to the notice of sale to be held 10:00 a.m. (local time) on February 19, 2019, I am hereby submitting my sealed bid (firm offer) for the following forest products to be cut. Bids for individual species must be at or above the advertised price. All non-responsive bid forms may be rejected.

<u>PRODUCTS & SPECIES</u>	<u>ESTIMATED VOLUME*</u>	<u>ADVERTISED PRICE</u>	<u>BID PRICE/UNIT</u>
Sawtimber			
Black Cherry	14.10 MBF	\$ 83.00/MBF	\$ _____
Mixed Aspen	165.90 MBF	\$ 34.00/MBF	\$ _____
Paper Birch	7.50 MBF	\$ 30.00/MBF	\$ _____
Red Maple	44.50 MBF	\$ 38.00/MBF	\$ _____
Pulpwood			
Mixed Aspen	758.00 Cords	\$ 11.25/Cord	\$ _____
Mixed Hardwood	99.00 Cords	\$ 12.75/Cord	\$ _____
Paper Birch	196.00 Cords	\$ 10.50/Cord	\$ _____
Red Maple	463.00 Cords	\$ 12.75/Cord	\$ _____

*These estimated volumes are final and not subject to adjustment. Prospective bidders are urged to examine this timber and to make their own estimates of quantity and quality.

I understand that any or all bids may be rejected. All bids must be signed and all bid items must be bid or the bid form may be rejected. I also understand that consideration and awarding a contract will be based upon my past performance and ability to complete the contract based upon equipment and staffing subject to my control.

FEDERAL ID: ____ - ____ - ____ or SOCIAL SECURITY NUMBER: ____ - ____ - ____

Company or individual bidding: _____

Company representative's name: _____

Address: _____

City: _____ State: _____ Zip: _____

IF AVAILABLE, PLEASE PLACE THE PERSONALIZED LABEL FROM YOUR PROSPECTUS IN THE ABOVE BOX.

Individual or company representative's signature: _____ Date: _____

Phone number : _____ Email (optional): _____

THE WINNING BIDDER MUST COMPLETE THE VERIFICATION OF WORKER'S DISABILITY COMPENSATION ACT COMPLIANCE (ON REVERSE SIDE IF DOUBLE SIDED) WITHIN 21 DAYS OF SALE AWARD DATE



FOR DEPARTMENT USE ONLY
Sale Number (XX - XXX - XX - XX)
Forest Management Unit:

TIMBER SALE VERIFICATION OF WORKER'S DISABILITY COMPENSATION ACT COMPLIANCE

*As required by Act 317, P.A. 1969 (Worker's Compensation) and
Part 5 of Act 451 of 1994, as amended.*

VERIFICATION OF WORKER'S DISABILITY COMPENSATION ACT COMPLIANCE

- This verification must be completed and submitted within 21 days of contract award and prior to the issuance of the timber sale contract.
- In addition, if boxes 2B or 2C are checked, then Notice of Exclusion or Certificate of Insurance must be submitted within twenty-one (21) days of the contract award and prior to the issuance of the timber sale contract.
- All information must be typed or printed except for written signatures.

Please Check Appropriate Categories:

1. My business is organized as (you **must** check one of the boxes below):
 - A. Sole Proprietorship (individual)
 - B. Partnership
 - C. Corporation
2. You **must** check one of the boxes below:
 - A. I certify my business is a sole proprietorship and it has no employees but the sole proprietor. I am not subject to the Worker's Compensation Laws.
 - B. I certify my business has satisfied its obligation to the Worker's Compensation Act through the use of an approved Notice of Exclusion (BWC-337, Rev. 5/96). I will provide a copy of the Notice of Exclusion within 21 days of the contract award. (For questions or a copy of the BWC-337, please call the Worker's Compensation Bureau at 517-322-1195).
 - C. I certify my business has a Worker's Compensation Policy. I will provide an original Certificate of Insurance within twenty-one (21) days of the contract award.
3. If you have checked item 2(A) or 2(B), you **must** indicate the number of **both** full-time and part-time employees, other than yourself, including family members and active partners (if none, you must enter "0").

_____ Full-time Employees

_____ Part-time Employees

Name of Business		Federal ID (or) Social Security No.	
Address		Telephone ()	
City	State	ZIP	

I hereby certify that the above information is true and correct. I agree to notify the Michigan DNR of any changes that occur in factors affecting my coverage during any of my present and future operations.

Signature of Owner or Authorized Representative

Title

Date

Please complete the "SEALED BID" information on the next page

Bliss Aspen Mix (55-115-19)
T12N, R09E, SEC. 26; T12N, R09E, SEC. 35; Tuscola COUNTY

In response to the notice of sale to be held 10:00 a.m. (local time) on February 19, 2019, I am hereby submitting my sealed bid (firm offer) for the following forest products to be cut. Bids for individual species must be at or above the advertised price. All non-responsive bid forms may be rejected.

<u>PRODUCTS & SPECIES</u>	<u>ESTIMATED VOLUME*</u>	<u>ADVERTISED PRICE</u>	<u>BID PRICE/UNIT</u>
Sawtimber			
Basswood	7.60 MBF	\$ 30.00/MBF	\$ _____
Black Cherry	5.40 MBF	\$ 83.00/MBF	\$ _____
Green Ash	10.10 MBF	\$ 30.00/MBF	\$ _____
Jack Pine	6.20 MBF	\$ 23.00/MBF	\$ _____
Mixed Aspen	469.10 MBF	\$ 34.00/MBF	\$ _____
Paper Birch	14.70 MBF	\$ 30.00/MBF	\$ _____
Red Maple	142.70 MBF	\$ 38.00/MBF	\$ _____
Red Pine	92.60 MBF	\$ 38.00/MBF	\$ _____
Pulpwood			
Jack Pine	21.00 Cords	\$ 11.25/Cord	\$ _____
Mixed Aspen	977.00 Cords	\$ 11.25/Cord	\$ _____
Mixed Hardwood	172.00 Cords	\$ 12.75/Cord	\$ _____
Paper Birch	120.00 Cords	\$ 10.50/Cord	\$ _____
Red Maple	817.00 Cords	\$ 12.75/Cord	\$ _____
Red Pine	171.00 Cords	\$ 19.00/Cord	\$ _____

*These estimated volumes are final and not subject to adjustment. Prospective bidders are urged to examine this timber and to make their own estimates of quantity and quality.

I understand that any or all bids may be rejected. All bids must be signed and all bid items must be bid or the bid form may be rejected. I also understand that consideration and awarding a contract will be based upon my past performance and ability to complete the contract based upon equipment and staffing subject to my control.

FEDERAL ID: _____ or SOCIAL SECURITY NUMBER: _____

Company or individual bidding: _____

Company representative's name: _____

Address: _____

City: _____ State: _____ Zip: _____

IF AVAILABLE, PLEASE PLACE THE PERSONALIZED LABEL FROM YOUR PROSPECTUS IN THE ABOVE BOX.

Individual or company representative's signature: _____ Date: _____

Phone number : _____ Email (optional): _____

THE WINNING BIDDER MUST COMPLETE THE VERIFICATION OF WORKER'S DISABILITY COMPENSATION ACT COMPLIANCE (ON REVERSE SIDE IF DOUBLE SIDED) WITHIN 21 DAYS OF SALE AWARD DATE



FOR DEPARTMENT USE ONLY	
Sale Number (XX - XXX - XX - XX)	
Forest Management Unit:	

TIMBER SALE VERIFICATION OF WORKER'S DISABILITY COMPENSATION ACT COMPLIANCE

As required by Act 317, P.A. 1969 (Worker's Compensation) and
Part 5 of Act 451 of 1994, as amended.

VERIFICATION OF WORKER'S DISABILITY COMPENSATION ACT COMPLIANCE

- This verification must be completed and submitted within 21 days of contract award and prior to the issuance of the timber sale contract.
- In addition, if boxes 2B or 2C are checked, then Notice of Exclusion or Certificate of Insurance must be submitted within twenty-one (21) days of the contract award and prior to the issuance of the timber sale contract.
- All information must be typed or printed except for written signatures.

Please Check Appropriate Categories:

1. My business is organized as (you **must** check one of the boxes below):
 - A. Sole Proprietorship (individual)
 - B. Partnership
 - C. Corporation
2. You **must** check one of the boxes below:
 - A. I certify my business is a sole proprietorship and it has no employees but the sole proprietor. I am not subject to the Worker's Compensation Laws.
 - B. I certify my business has satisfied its obligation to the Worker's Compensation Act through the use of an approved Notice of Exclusion (BWC-337, Rev. 5/96). I will provide a copy of the Notice of Exclusion within 21 days of the contract award. (For questions or a copy of the BWC-337, please call the Worker's Compensation Bureau at 517-322-1195).
 - C. I certify my business has a Worker's Compensation Policy. I will provide an original Certificate of Insurance within twenty-one (21) days of the contract award.
3. If you have checked item 2(A) or 2(B), you **must** indicate the number of **both** full-time and part-time employees, other than yourself, including family members and active partners (if none, you must enter "0").

_____ Full-time Employees

_____ Part-time Employees

Name of Business		Federal ID (or) Social Security No.	
Address		Telephone ()	
City	State	ZIP	

I hereby certify that the above information is true and correct. I agree to notify the Michigan DNR of any changes that occur in factors affecting my coverage during any of my present and future operations.

Signature of Owner or Authorized Representative

Title

Date

Please complete the "SEALED BID" information on the next page