



**DEPARTMENT OF NATURAL RESOURCES
STATE OF MICHIGAN**

TIMBER SALE PROSPECTUS #6436

SCHEDULED SALE DATE AND TIME: 8:30 a.m. (local time) on June 19, 2019.

LOCATION: CRYSTAL FALLS MGMT UNIT, 1420 US 2 WEST, CRYSTAL FALLS, MI 49920.

PROSPECTUS NOTE: The bidder is advised to inspect the sale area and review the location, estimated volumes, operating costs and contract terms of proposed sales. Please be aware that some landowners may request 60 days or more notice for access across their land.

Notice is hereby given that bids will be received by the Unit Manager, CRYSTAL FALLS MANAGEMENT UNIT, for certain timber on the following described lands:

Vanilla Creamer (12-003-19) / T44N, R28W, SEC. 10, SWSW.

T44N, R28W, SEC. 17, N1/2NE.

T44N, R28W, SEC. 18, N1/2NW, SENW, W1/2NE, NWSE.

T44N, R28W, SEC. 7, NE, NESW, SWSW, N1/2SE, SWSE.

T44N, R28W, SEC. 8, SWNW, SESE.

T44N, R28W, SEC. 9, S1/2SE.

Dickinson County, Advertised Price \$106,684.45, 189.3 Acres, Aspen, Spruce/Fir/Tamarack.

SALE NOTE: Payment Unit 6 has some steep slopes on the north central edge. See spec 8.3.2 for details.

A recreation site such as a trail, pathway, or campground is within the sale area or the vicinity. Certain restrictions/specifications may be applicable including time restrictions.

Old Skull SBW (12-005-19) / T44N, R30W, SEC. 25, S1/2SE.

T44N, R30W, SEC. 36, NWNE.

Dickinson County, Advertised Price \$33,875.70, 70.7 Acres, Hardwood, Spruce/Fir/Tamarack.

SALE NOTE: Access may be through private land.

Man Nor Beast Swamp 2 (12-006-19) / T43N, R27W, SEC. 1, N1/2NW.

T43N, R27W, SEC. 2, NENE.

T44N, R27W, SEC. 26, SWSW.

T44N, R27W, SEC. 27, SESE.

T44N, R27W, SEC. 35, NW, NWNE, S1/2NE, N1/2SE, SESE.

T44N, R27W, SEC. 36, NWSW, S1/2SW.

Dickinson County, Advertised Price \$49,084.15, 240.3 Acres, Spruce/Fir/Tamarack, Hardwood.

SALE NOTE: Road work is required on this sale. See specs 4.1.2, 4.1.5, and 5.2.17 for details. In addition to the road building needed to access sale area, there will be an extensive amount of snow plowing required. Spruce has received damage from Eastern Dwarf Mistletoe (see spec 7.5.1).

West Branch Salvage (12-008-19) / T44N, R27W, SEC. 29, S1/2NW,N1/2SW.

T44N, R27W, SEC. 30, SENW,S1/2NE,NESW,SE.

Dickinson County, Advertised Price \$23,733.35, 122.2 Acres, Spruce/Fir/Tamarack, Hardwood.

SALE NOTE: This is a scaled salvage sale due to windthrow, insects, and diseases affecting the volume of timber. The sale expires on June 30, 2020. A free extension will be granted on a different sale, see Spec. 7.2.6 for details.

BID INSTRUCTIONS (VER. 07/02/2018):

1. Scheduled Bid Location, Date, and Time (2/11)

Bids must be received by the Unit Manager, CRYSTAL FALLS OFFICE, 1420 US 2 West, Crystal Falls, MI 49920, no later than 8:30 a.m. (local time) on June 19, 2019. For further information concerning this sale, contact Dan McNamee at 906-875-6622.

2. Bidder's Qualifications (5/16)

Purchaser shall obtain workers compensation insurance to cover claims under Michigan's Worker's Disability Compensation Act of 1969 or similar employee benefit act of any other state applicable to an employee. If all or part of a timber sale was prepared by a private contractor, the contractor and that contractor's company are not permitted to bid on the timber sale contract. Bids will not be accepted from individuals or companies appearing on the DNR/FRD No-Bid List. This list contains the names of purchasers who previously failed to execute a contract within 21-days or who have a history of poor performance.

3. Preparation of Sealed Bids (5/16)

Bid Forms may be completed online thru Michigan DNR Timber Sale Online Bidding (OLB) at www.michigan.gov/timberbidding or by completing the hardcopy Bid Form found in the Timber Sale Prospectus. Hardcopy Bid Forms shall be manually signed in ink. Registration in OLB is considered your 'signature' for all bids submitted thru that system. Bid prices must be entered for each species and product in the Bid Price column for all material subject to bidding and all fill-in blanks must be completed. If erasures or other changes appear on the hardcopy Bid Form, each erasure or change must be initialed by the person signing the bid.

4. Submission of Sealed Bids (5/16)

Bid forms may be obtained from the Unit Manager or thru OLB. Bids may be submitted hardcopy or thru OLB. All hardcopy bids must be submitted on the bid form and in an envelope clearly identified as described in this section. NOTE: Only one bid form per bid envelope. Sealed bids must be submitted to the Unit office designated in the prospectus and must be submitted at or prior to the time established in the prospectus. The envelope should show on the outside (a) the sale name or number and (b) the date and time of bid opening, as shown in the prospectus. Bids received after the time specified in the sale prospectus are late bids and will be rejected.

It is possible for a bidder to submit multiple bids on a single sale. For example, a bid may be submitted hardcopy and a bid may be submitted thru OLB. Or, two bidders from the same company could both submit bids on the same sale. If this were to happen, the State would accept all bids received and award the contract accordingly. All bidding and contractual requirements would apply to all bids received.

5. Public Opening of Sealed Bids (7/16)

If conditions permit, the sealed bids will be publicly opened and posted at the time and place set in the prospectus.

If a bidder, present at a bid opening, has submitted bids on more than one sale, that bidder may withdraw their unopened bid envelopes or announce the withdrawal of their online bid after being declared the successful bidder on one sale.

6. Award of Contract (1/11)

Award of the contract will be made to the Bidder whose bid, conforming to the prospectus, is most advantageous to the State of Michigan on the basis of total value at rates bid for the estimated quantities. The State reserves the right to reject any bid or waive any minor irregularity in bids received. A written award mailed (or otherwise furnished) to the successful Bidder shall be deemed to result in a binding contract without further action by either party.

7. Down Payment (1/11)

The Bidder to whom award is made must make a down payment within 21 days of the sale award. The amount of the down payment will be calculated as shown in the Bond and Payment Schedule of this prospectus. Only cash may be used to meet this requirement.

8. Performance Security (1/11)

As guarantee of faithful performance, a cash bond, certificate of deposit, surety bond or irrevocable letter of credit (LOC) is required within 21 days of the sale award. The amount of the performance security is shown in the Bond and

Payment Schedule of this prospectus. If an LOC or surety is used, the coverage must extend for at least 6 months beyond the contract expiration.

9. Timber Sale Contract (7/18)

Additional conditions and requirements common to all timber sales are listed on the timber sale contract (R4031) and are available on line at www.michigan.gov/timber. Contact the Unit Manager for additional information or a sample contract. Within 21 days of the date of the award letter, the bidder must sign the contract and provide the required down payment, performance security, and verification of worker's disability compensation. The down payment and performance security shall be in accordance with the provisions of the timber sale contract, in the sums stated in this prospectus. If these actions are not taken, then the Bidder, the Bidder's corporation, and the corporation's principals may not be permitted to bid on State timber sales for a period of 3 months after the first offense, 6 months after the second offense, and 1 year after the third offense. An offense will only be counted against the Bidder for 5 years. In addition, the Bidder certifies that if awarded this contract, the Bidder will complete the timber sale contract in accordance with its terms and any modifications thereof including requirements to purchase, cut, and remove the included timber by the expiration date.

Payment Unit values in the State Forest Timber Sale Contract are calculated based on the advertised value of the Payment Unit as a percentage of the total advertised value of the contract. The advertised value of each Payment Unit is given in the Description of Timber by Payment Unit table on the Timber Sale Information page. For example, if the value of Payment Unit 1 is advertised as \$1,500 and the total Timber Sale value is advertised as \$10,000, the contract price for Payment Unit 1 will be 15% of the total bid price ($\$1,500/\$10,000 * 100$).

10. Disclaimer of Estimates and Bidder's Warranty of Inspection (7/16)

Before submitting this bid, the Bidder is advised and cautioned to inspect the sale area, review the requirements of the sale contract, and take other steps as may be reasonably necessary to ascertain the location, estimated volumes, construction estimates, and operating costs of the proposed sale. Failure to do so will not relieve the Bidder from responsibility for completing the contract.

The Bidder warrants that this bid is submitted solely on the basis of the Bidder's examination and inspection of the quality and quantity of the timber offered for sale and the Bidder's opinion of the value thereof and the costs of recovery. No reliance should be placed on the State of Michigan's estimates of timber quality, quantity or costs of recovery. Bidder further acknowledges that the State of Michigan: (i) expressly disclaims any warranty of fitness of timber for any purpose; (ii) offers this timber as is without any warranty of quality (merchantability) or quantity and (iii) expressly disclaims any warranty as to the quantity or quality of timber sold.

11. Certification and Chain-of-Custody (10/14)

Unless otherwise indicated in the contract under section 7 – Other Conditions of the Sale Specific Conditions & Requirements, the area encompassed by this timber sale is certified to the standards of the Forest Stewardship Council (FSC) - Certificate #SCS-FM/COC-00090N and the Sustainable Forestry Initiative (SFI) - Certificate #NSF-SFIS-5Y031-SF5. Forest products from this sale may be delivered to the mill as "FSC 100% and / or SFI certified" as long as the contractor hauling the forest products is chain-of-custody (COC) certified or covered under a COC certificate from the destination mill. The purchaser is responsible for maintaining COC after leaving the sale area.

12. Good Neighbor Authority (GNA) Requirements (7/16)

If the name of this timber sales contains the acronym GNA, it is authorized by the Good Neighbor Authority (GNA) and covered by various agreements between the U.S. Forest Service and the State. The timber sale occurs on federal land and the following conditions apply:

GNA contracts on US Forest Service land will not be awarded to purchasers on the Federal list of excluded parties. The System for Award Management (SAM) will be checked for active excluded parties prior to award of contract. In addition, the Bidder to whom award is made must complete an Assurance Regarding Felony Conviction or Tax Delinquent Status for Corporate Applicants (AD-3031).

13. Good Neighbor Authority (GNA) Requirements, con't (9/16)

Bidder certifies, by signing this bid form, that to the best of Bidder's knowledge that the following representations are accurate and complete.

- a. That the Bidder and its principals are not presently debarred, suspended, proposed for debarment, declared ineligible, or voluntary excluded from timber sales (covered transactions) by any Federal department or agency.
- b. That the Bidder and its principals have not within a 3-year period preceding this bid been convicted of or had a civil judgment rendered against them for commission of fraud or a criminal offense in connection with obtaining, attempting to obtain, or performing a public (Federal, State, or local) transaction or contract under a public transaction; violation of Federal or State antitrust statutes or commission of embezzlement, theft, forgery, bribery, falsification or destruction of records, making false statements, or receiving stolen property.
- c. That the Bidder and its principals are not presently indicted for or otherwise criminally or civilly charged by a governmental entity (Federal, State, or local) with commission of any of the offenses enumerated in paragraph b of this certification.
- d. That the Bidder and its principals have not within a 3-year period preceding this bid had one or more public transactions (Federal, State, or local) terminated for breach or default of a timber or forest product contract.

Bidders that cannot certify this requirement, in whole or in part, shall submit an explanation with their bid.

DAN EICHINGER
Director

TIMBER SALE INFORMATION

Vanilla Creamer (12-003-19)

T44N, R28W, SEC. 10; T44N, R28W, SEC. 17; T44N, R28W, SEC. 18; T44N, R28W, SEC. 7; T44N, R28W, SEC. 8; T44N, R28W, SEC. 9.

SALE NOTE: Payment Unit 6 has some steep slopes on the north central edge. See spec 8.3.2 for details.

A recreation site such as a trail, pathway, or campground is within the sale area or the vicinity. Certain restrictions/specifications may be applicable including time restrictions.

A timber sale contract for this lump sum, sealed bid timber sale will be awarded to the responsible bidder offering the highest sealed bid price. Bids must be at or above the following advertised price for each species:

<u>PRODUCTS & SPECIES</u>	<u>ESTIMATED UNITS*</u>		<u>ADVERTISED PRICE</u>
Sawtimber			
Red Maple	12.30	MBF	\$ 138.00 / MBF
Red Pine	18.00	MBF	\$ 160.00 / MBF
Pulpwood			
Balsam Fir	506.00	Cords	\$ 20.35 / Cord
Jack Pine	124.00	Cords	\$ 32.05 / Cord
Misc. Species 1	90.00	Cords	\$ 3.75 / Cord
Mixed Hardwood	518.00	Cords	\$ 22.80 / Cord
Mixed Spruce	262.00	Cords	\$ 30.50 / Cord
Quaking Aspen	1,883.00	Cords	\$ 33.75 / Cord
Red Pine	40.00	Cords	\$ 62.60 / Cord
White Pine	36.00	Cords	\$ 45.60 / Cord

* The total volume is statistically estimated within plus (+) or minus (-) 10.34 percent. The estimated units are final and not subject to adjustment. Prospective bidders are urged to examine this timber and to make their own estimates of quantity and quality.

BOND AND PAYMENT SCHEDULE:

1. A bond in the amount of \$8,535.00 to insure faithful performance of the conditions of the contract will be deposited by the successful bidder within 21 days of the sale award.
2. Cutting in any sale or unit without the required advance payment would be considered a trespass.
3. Total payment must be paid in advance or according to the following schedule:
 - (a) Ten percent (10%) of the sale value must be paid within 21 days of the sale award.
 - (b) The 10% down payment will be credited towards the first unit cut.
 - (c) Payment for each of the following units must be made before cutting begins in that unit:

PAYMENT UNIT NUMBER	PERCENT OF TOTAL SALE VALUE
01	6.3%
02	14.7%
03	9.5%
04	15.5%
05	2.5%
06	8.2%
07	5.0%
08	22.5%
09	15.8%

4. If no cutting takes place, the 10% down payment will not be refunded.
5. Operations on the contract issued will terminate on 06/30/2022.

Description of Timber by Payment Unit (PU)

PU	MARKET GROUP	PRODUCT	QUANTITY	UNIT	ACRES	ADVERTISE PRICE
1	Red Maple	Sawtimber	3.4	MBF	22.4	\$6,673.25
	Balsam Fir	Pulpwood	30.0	Cords		
	Mixed Hardwood		61.0	Cords		
	<i>Paper Birch</i>		3.0	<i>Cords</i>		
	<i>Red Maple</i>		55.0	<i>Cords</i>		
	<i>Sugar Maple</i>		3.0	<i>Cords</i>		
	Mixed Spruce		88.0	Cords		
	<i>White Spruce</i>		88.0	<i>Cords</i>		
	Quaking Aspen		45.0	Cords		
	2	Red Pine	Sawtimber	18.0		
Balsam Fir		Pulpwood	4.0	Cords		
Jack Pine			121.0	Cords		
Mixed Spruce			12.0	Cords		
<i>Black Spruce</i>			9.0	<i>Cords</i>		
<i>White Spruce</i>			3.0	<i>Cords</i>		
Quaking Aspen			128.0	Cords		
Red Pine			40.0	Cords		
White Pine			36.0	Cords		
<i>White Pine</i>		<i>Sawtimber</i>	0.8	<i>MBF</i>		
<i>White Pine</i>	<i>Pulpwood</i>	34.0	<i>Cords</i>			
3	Balsam Fir	Pulpwood	92.0	Cords	34.9	\$10,128.15
	Jack Pine		3.0	Cords		
	Misc. Species 1		56.0	Cords		
	Mixed Hardwood		61.0	Cords		
	<i>Paper Birch</i>		8.0	<i>Cords</i>		
	<i>Red Maple</i>		53.0	<i>Cords</i>		
	Mixed Spruce		38.0	Cords		
	<i>Black Spruce</i>		17.0	<i>Cords</i>		
	<i>White Spruce</i>		21.0	<i>Cords</i>		
	Quaking Aspen		160.0	Cords		
4	Balsam Fir	Pulpwood	54.0	Cords	16.4	\$16,585.40
	Mixed Hardwood		60.0	Cords		
	<i>Paper Birch</i>		10.0	<i>Cords</i>		
	<i>Red Maple</i>		50.0	<i>Cords</i>		
	Mixed Spruce		7.0	Cords		
	<i>White Spruce</i>		7.0	<i>Cords</i>		
	Quaking Aspen		412.0	Cords		
5	Balsam Fir	Pulpwood	71.0	Cords	13.5	\$2,701.55
	Mixed Hardwood		4.0	Cords		
	<i>Paper Birch</i>		1.0	<i>Cords</i>		
	<i>Red Maple</i>		3.0	<i>Cords</i>		
	Mixed Spruce		36.0	Cords		
	<i>White Spruce</i>		36.0	<i>Cords</i>		
	Quaking Aspen		2.0	Cords		
6	Balsam Fir	Pulpwood	25.0	Cords	14.5	\$8,765.50
	Misc. Species 1		34.0	Cords		
	Mixed Hardwood		110.0	Cords		
	<i>Paper Birch</i>		91.0	<i>Cords</i>		
	<i>Red Maple</i>		19.0	<i>Cords</i>		
	Mixed Spruce		15.0	Cords		
	<i>Black Spruce</i>		7.0	<i>Cords</i>		
	<i>White Spruce</i>		8.0	<i>Cords</i>		
	Quaking Aspen		153.0	Cords		
	7	Balsam Fir	Pulpwood	13.0		
Mixed Hardwood			12.0	Cords		
<i>Paper Birch</i>			6.0	<i>Cords</i>		

Description of Timber by Payment Unit (PU), con't

PU	MARKET GROUP	PRODUCT	QUANTITY	UNIT	ACRES	ADVERTISE PRICE
	<i>Red Maple</i>		6.0	<i>Cords</i>		
	Mixed Spruce		17.0	Cords		
	<i>White Spruce</i>		17.0	<i>Cords</i>		
	Quaking Aspen		126.0	Cords		
8	Red Maple	Sawtimber	1.9	MBF	29.3	\$23,975.10
	Balsam Fir	Pulpwood	127.0	Cords		
	Mixed Hardwood		74.0	Cords		
	<i>Sugar Maple</i>	<i>Sawtimber</i>	0.3	<i>MBF</i>		
	<i>Basswood</i>	<i>Pulpwood</i>	2.0	<i>Cords</i>		
	<i>Paper Birch</i>		9.0	<i>Cords</i>		
	<i>Red Maple</i>		52.0	<i>Cords</i>		
	<i>Sugar Maple</i>		10.0	<i>Cords</i>		
	Mixed Spruce		10.0	Cords		
	<i>White Spruce</i>		10.0	<i>Cords</i>		
	Quaking Aspen		567.0	Cords		
9	Red Maple	Sawtimber	7.0	MBF	34.1	\$16,875.30
	Balsam Fir	Pulpwood	90.0	Cords		
	Mixed Hardwood		136.0	Cords		
	<i>Sugar Maple</i>	<i>Sawtimber</i>	0.2	<i>MBF</i>		
	<i>Basswood</i>	<i>Pulpwood</i>	1.0	<i>Cords</i>		
	<i>Paper Birch</i>		17.0	<i>Cords</i>		
	<i>Red Maple</i>		113.0	<i>Cords</i>		
	<i>Sugar Maple</i>		5.0	<i>Cords</i>		
	Mixed Spruce		39.0	Cords		
	<i>White Spruce</i>		39.0	<i>Cords</i>		
	Quaking Aspen		290.0	Cords		
TOTAL:			30.3	MBF		
TOTAL:			3,459.0	Cords		

Sale Specific Conditions & Requirements

Sale Name: Vanilla Creamer

Sale Number: 12-003-19 Seq#: 1

1 - Sale Area

1.2 - Boundaries

1.2.1 - Painted boundaries (1/14)

The sale boundary and Payment Unit boundaries are marked and identified by red and yellow paint. Exterior sale boundary lines against state are marked with red paint. Interior Payment Unit boundaries are marked with yellow paint. Yellow painted trees designating an interior Payment Unit boundary are only to be cut when all surrounding Payment Units have been paid.

2 - Timber Specifications

2.1 - Included Timber

2.1.1 - Clearcut unit(s) with unmerchantable trees (6/14)

Within Payment Unit(s) 4 and 6-9, cut all trees that are two (2) inches or more at DBH, except do not cut pine, oak and cedar. In addition, within Payment Unit 4, leave live submerchantable spruce/fir patches measuring 10-20 feet in diameter, where present.

Within Payment Unit(s) 3, cut all spruce and balsam that are 2" or more at DBH. In addition, cut maple, birch and aspen trees which meet minimum piece specifications in 2.2 - Utilization.

2.1.3 - Cut tree marked unit(s) (12/08)

Within Payment Unit(s) 1 & 5, all trees are designated for cutting when marked with orange paint above and below stump height, regardless of merchantability. In addition, all aspen, spruce and balsam fir are designated for cutting.

2.1.4 - Designated timber unit(s) (6/17)

Within Payment Unit(s) 2, all trees two (2) inches or more at DBH are designated for cutting.

2.1.11 - Description of timber note (2/04)

Note that Misc. Species 1 = dead spruce/balsam fir, which is designated for cutting.

2.2 - Utilization

2.2.4 - Skidding length (2/14)

Within Payment Unit 3, skidding of unlimbed tops or lengths over 17 feet is not permissible due to the high residual basal area.

4 - Transportation

4.1 - Construction

4.1.6 - Road construction (1/09)

Construction of new roads or improvements of existing roads shall be done in such a way as to minimize the environmental and visual impacts. Merchantable trees shall be cut and utilized unless otherwise directed. Non-merchantable trees shall be severed and laid flat on the ground. Slash shall be scattered, and not left in windrows and kept a minimum of 10 feet back from the road edge. Stumps shall be set upright, not left on edge, and be moved at least 10 feet away from the road edge. Disturbed soil shall be feathered into the woods and not left in berms or windrows.

4.1.7 - Road closure (10/11)

All new roads built into the sale must be blocked to vehicle traffic upon completion of the sale. Overgrown roads that are reopened shall be considered new roads. In general, this will require constructing a four (4') foot high berm of stumps and logs covered with earth. These roads must be rendered impassable to cars and trucks. Contact the sale administrator for specific details of design and placement.

4.2 - Maintenance

4.2.1 - Hauling restriction (12/08)

Hauling may be restricted on forest roads by the Unit Manager or his representative. The restriction may occur during spring breakup or prolonged wet weather conditions..

4.2.4 - Grading (10/16)

For completion of the sale, state forest roads (O'Neil Lake Rd included) must be graded. In general, this will require a road grader or bull dozer to shape up the roads after forest products have been hauled off site. This includes cleaning of drainage areas, grading, crowning and filling with gravel, if necessary. The grading equipment to be used must be approved by the Unit Manager or his/her representative.

4.3 - Public Right-of-Way

4.3.2 - County R-O-W (12/06)

The county must be contacted prior to decking along the county road R-O-W. This applies to Payment Units 1 & 2 and McGregor Creek/Schwartz Creek Roads.

5 - Operations

5.1 - Notification

5.1.1 - Pre-sale conference (10/16)

A pre-sale conference between the Purchaser and sale administrator is required prior to beginning any operations. The Unit Manager or his representative must be contacted at least 5 days in advance to schedule the conference.

5.1.4 - Post-sale conference (10/16)

A post-sale conference on site between the Purchaser and sale administrator is required 5 days prior to the completion of active logging operations to determine clean-up and repair of landings, road edges, and the fulfillment of other contract specifications.

5.2 - Conduct of Operations

5.2.3 - Operating Restrictions

5.2.3.1 - Operating restrictions (9/11)

Within Payment Unit(s) 1-9, unless changed by written agreement, cutting, skidding, and hauling are not permitted during the snowmobile season, generally December 1 to March 31. This restriction is to encourage bare ground scarification and to avoid snowmobile/logging equipment interface.

5.2.3.11 - Coppice regeneration protection (4/10)

Timber harvesting in any Payment Unit must be completed before significant aspen sprouting occurs in that Payment Unit so as to minimize damage to the new regeneration. The Unit Manager or his/her representative may cease such operations if sprouting occurs before the operation is complete.

5.2.4 - Dead and Down Creation

5.2.4.2 - Dead and down creation, hare and grouse (1/14)

To improve habitat for snowshoe hare, grouse, and other species, the Purchaser is to leave at least 2 piles of slash/tops/logs on the ground for every unit, with the exception of Payment Unit 2. Piles should be at least 6 feet tall and should be scattered throughout the sale or positioned per the sale administrators instructions. Other slash and tops must be scattered evenly across the unit.

5.2.21 - Chains (6/11)

To help promote scarification and natural pine regeneration, it is required that rubber wheeled harvesters and forwarders run with chains or tracks if the sale is cut by a round-wood crew. If the sale is whole tree harvested with grapple skidders the chains will not be needed.

If the Purchaser shows that they can adequately scarify the site without chains/tracks, this specification can be waived by the sale administrator. Contact the sale administrator for further details.

This requirement will pertain primarily to Payment Units 1 & 5.

5.2.32 - Decking/landing restoration (9/13)

All decking and landing areas must have the surface area restored to a condition equal to or better than before. This is to ensure the proper regeneration of the stand. Wood debris, chips and "cookies" from trimmings must be removed or scattered

away from landing and loading areas and may not be windrowed on the edge.

5.2.41 - Snowmobile trail protection (9/11)

Schwartz Creek, McGregor Creek and O'Neil Lake Roads are also a snowmobile trail and is shown on the Timber Sale Map. Do not cut or damage posts with orange trail markers or traffic control signs. Sections of this trail that are not managed by the County must be maintained and restored to a condition equal to or better than before the sale. The road maintenance/restoration must be done prior to December 1. If the trail is used for hauling, it must be graded to the satisfaction of the Unit Manager or his/her representative prior to December 1st. Maintain a 20 foot wide slash, debris, and rut free zone daily using the snowmobile trail as the centerline. All stumps within 20 feet of the snowmobile trail must be cut at ground level. Slash must be removed at least 25 feet from the trail/road.

5.4 - Soil Protection

5.4.1 - Rutting restriction, general (7/16)

Operations are to cease immediately if equipment and weather conditions result in rutting of roads and/or skid trails which is 12 inches or greater in depth and 50 feet in length. The Unit Manager or his/her representative may restrict hauling and/or skidding if ruts exceed the specified depth. With the Unit Manager or his/her representative's approval, the Purchaser may return to the area when the risk of rutting has decreased.

5.4.4 - Slope protection (5/15)

Skid trails and roads on slopes shall be water barred with slash, stumps, and/or clean straw bales native to the area as soon as use is complete to prevent erosion.

6 - Safety and Fire Prevention

6.2 - Signing

6.2.1 - Road posting (9/09)

The Purchaser is responsible for posting and maintaining caution signs on McGregor Creek, Schwartz Creek and O'Neil Lake Roads prior to beginning operations. The road must be posted at appropriate distances from the sale area to warn of logging activity and truck traffic. Signs must be removed when harvest operations are suspended or completed.

7 - Other Conditions

7.5 - Loss

7.5.1 - Deteriorating timber (7/09)

The sale area has received damage from spruce budworm. The Purchaser should harvest the wood as soon as possible. The Department of Natural Resources is held free of responsibility of any further damage or deterioration due to delay in harvesting.

8 - Performance and Settlement

8.3 - Uncompleted or Terminated Contracts

8.3.2 - Completion of contract, other (11/16)

Areas of this sale may be difficult to log. Per General Condition & Requirement 3.5 - Adjustment of Quantity, there will be no adjustment to contract volume, but unharvested timber may not be considered a violation of General Condition & Requirement 8.3 - Uncompleted or Terminated Contract. These areas are located in Payment Unit 6.



TIMBER SALE MAP

This information provided by authority of Part 525, 1994 PA 451, as amended.

Forest Management Unit Crystal Falls Management Unit		County Dickinson Co.	Mapped By Debbie Goupell	Date 11/16/2018	Page 1	of 2
Township 44N	Range 28W	Section(s) and Subdivision(s) Sec 7: NE1/4, NESW, N1/2SE, SWSE Sec 8: SWNW, SESE Sec 9: S1/2SE Sec 10: SWSW Sec 17: N1/2NE Sec 18: W1/2NE, N1/2NW, SENWNWSE		Scale 1:15,840		

Cover Type

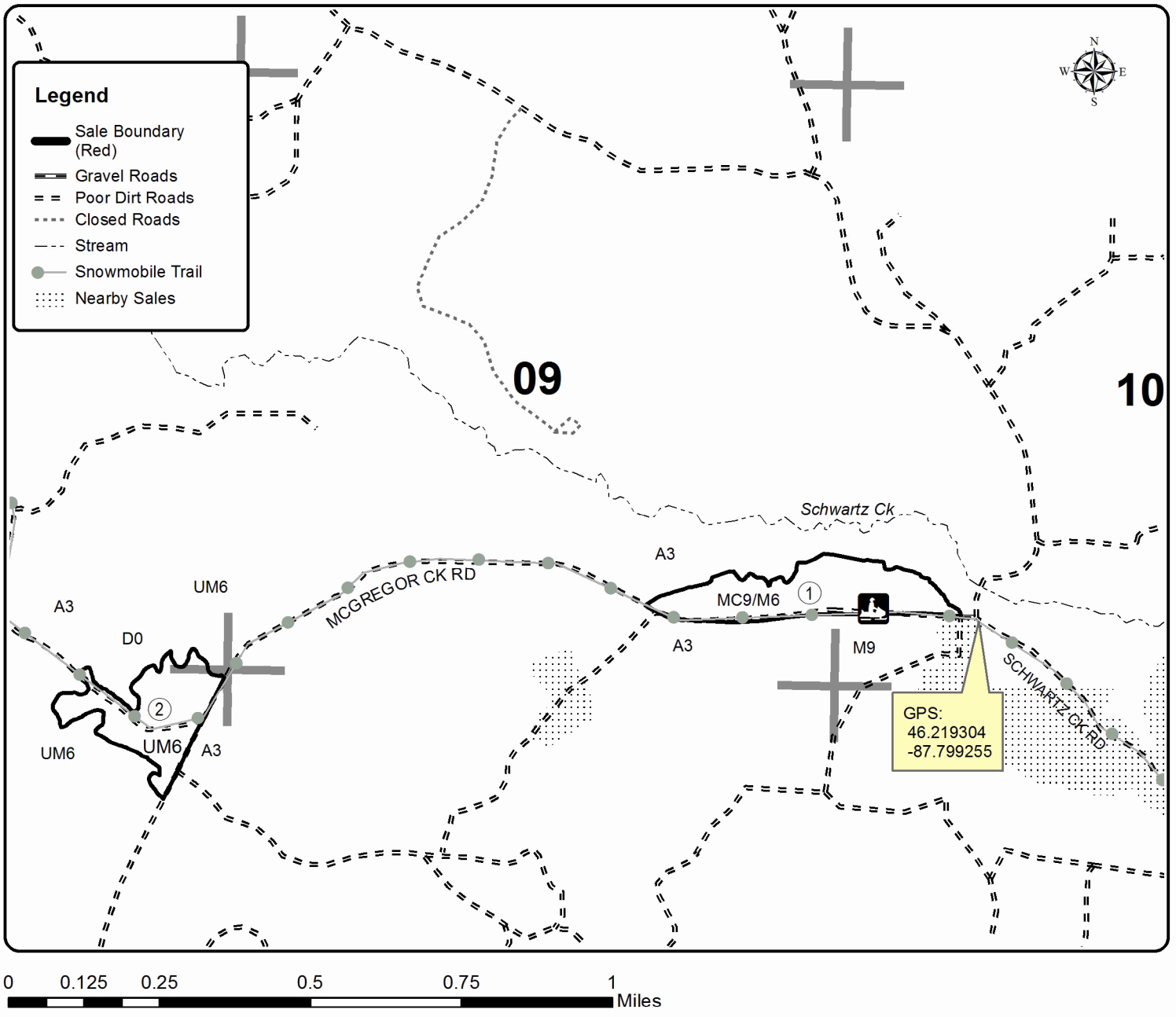
A = Aspen	H = Hemlock	N = Marsh	U = Upland Brush
B = Paper Birch	J = Jack Pine	O = Oak	UM = Upland Mixed
C = Cedar	L = Lowland Brush	P = Lowland Poplar	V = Bog or Marsh
D = Treed Bog	LM = Lowland Mixed	Q = Mixed Swamp Conifer	W = White Pine
E = Swamp Hdwoods	M = Mpl, Bch, Brch	R = Red Pine	X = Non Stocked
F = Spruce Fir	MC = Mixed Conifer	S = Black Spruce	Z = Water
G = Grass	MD = Mixed Deciduous	T = Tamarack	

Density

0 = Non Stocked	5 = Pole Timber Medium
1 = Seedling Sapling Poor	6 = Pole Timber Well
2 = Seedling Sapling Medium	7 = Saw Timber Poor
3 = Seedling Sapling Well	8 = Saw Timber Medium
4 = Pole Timber Poor	9 = Saw Timber Well

PU	Acres	PU	Acres	PU	Acres
1	22.4	4	16.4	7	6.0
2	18.2	5	13.5	8	29.3
3	34.9	6	14.5	9	34.1

Vanilla Creamer
Compartment 14
189.3 acres





TIMBER SALE MAP

This information provided by authority of Part 525, 1994 PA 451, as amended.

Forest Management Unit Crystal Falls Management Unit		County Dickinson Co.	Mapped By Debbie Goupell	Date 11/16/2018	Page 2	of 2
Township 44N	Range 28W	Section(s) and Subdivision(s) Sec 7: NE1/4, NESW, N1/2SE, SWSE Sec 8: SWNW, SESE Sec 9: S1/2SE Sec 10: SWSW Sec 17: N1/2NE Sec 18: W1/2NE, N1/2NW, SENWNWSE		Scale 1:15,840		

Cover Type

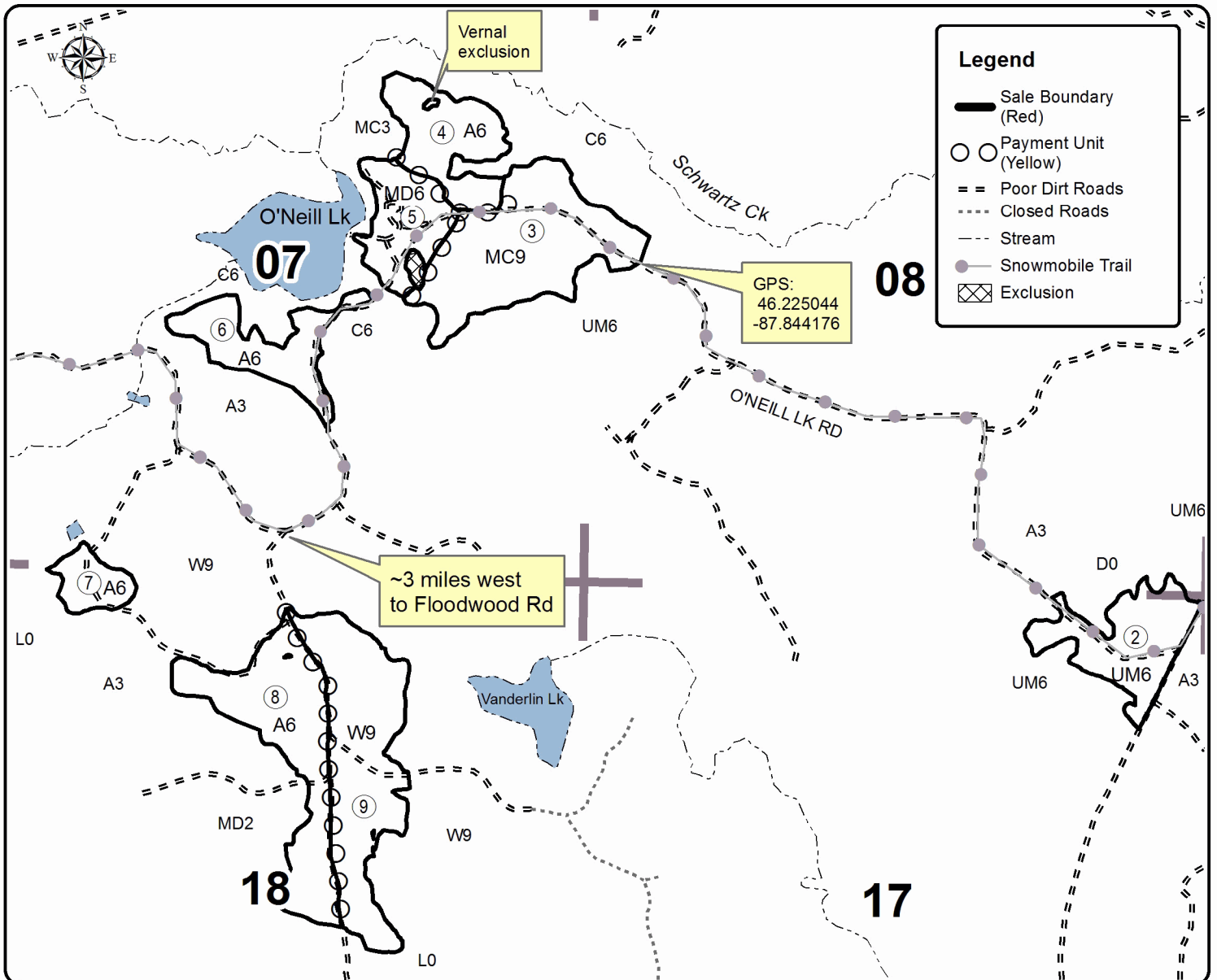
A = Aspen	H = Hemlock	N = Marsh	U = Upland Brush
B = Paper Birch	J = Jack Pine	O = Oak	UM = Upland Mixed
C = Cedar	L = Lowland Brush	P = Lowland Poplar	V = Bog or Marsh
D = Tread Bog	LM = Lowland Mixed	Q = Mixed Swamp Conifer	W = White Pine
E = Swamp Hdwoods	M = Mpl, Bch, Brch	R = Red Pine	X = Non Stocked
F = Spruce Fir	MC = Mixed Conifer	S = Black Spruce	Z = Water
G = Grass	MD = Mixed Deciduous	T = Tamarack	

Density

0 = Non Stocked	5 = Pole Timber Medium
1 = Seedling Sapling Poor	6 = Pole Timber Well
2 = Seedling Sapling Medium	7 = Saw Timber Poor
3 = Seedling Sapling Well	8 = Saw Timber Medium
4 = Pole Timber Poor	9 = Saw Timber Well

PU	Acres	PU	Acres	PU	Acres
1	22.4	4	16.4	7	6.0
2	18.2	5	13.5	8	29.3
3	34.9	6	14.5	9	34.1

Vanilla Creamer
Compartment 14
189.3 acres



Legend

- Sale Boundary (Red)
- Payment Unit (Yellow)
- Poor Dirt Roads (Dashed line)
- Closed Roads (Dotted line)
- Stream (Dashed line with wavy)
- Snowmobile Trail (Dashed line with dots)
- Exclusion (Cross-hatched)

TIMBER SALE INFORMATION

Old Skull SBW (12-005-19)
 T44N, R30W, SEC. 25; T44N, R30W, SEC. 36.
 Dickinson County (Advertised Price \$33,875.70)

SALE NOTE: Access may be through private land.

A timber sale contract for this lump sum, sealed bid timber sale will be awarded to the responsible bidder offering the highest sealed bid price. Bids must be at or above the following advertised price for each species:

<u>PRODUCTS & SPECIES</u>	<u>ESTIMATED UNITS*</u>	<u>ADVERTISED PRICE</u>
Sawtimber		
Red Maple	26.00 MBF	\$ 111.00 / MBF
Sugar Maple	3.00 MBF	\$ 281.00 / MBF
Pulpwood		
Balsam Fir	205.00 Cords	\$ 16.30 / Cord
Mixed Hardwood	550.00 Cords	\$ 18.25 / Cord
Quaking Aspen	191.00 Cords	\$ 36.25 / Cord
Red Pine	41.00 Cords	\$ 50.05 / Cord
White Pine	39.00 Cords	\$ 36.50 / Cord
White Spruce	261.00 Cords	\$ 24.40 / Cord

* The total volume is statistically estimated within plus (+) or minus (-) 10.57 percent. The estimated units are final and not subject to adjustment. Prospective bidders are urged to examine this timber and to make their own estimates of quantity and quality.

BOND AND PAYMENT SCHEDULE:

1. A bond in the amount of \$3,000.00 to insure faithful performance of the conditions of the contract will be deposited by the successful bidder within 21 days of the sale award.
2. Cutting in any sale or unit without the required advance payment would be considered a trespass.
3. Total payment must be paid in advance or according to the following schedule:
 - (a) Ten percent (10%) of the sale value must be paid within 21 days of the sale award.
 - (b) The 10% down payment will be credited towards the first unit cut.
 - (c) Payment for each of the following units must be made before cutting begins in that unit:

<u>PAYMENT UNIT NUMBER</u>	<u>PERCENT OF TOTAL SALE VALUE</u>
01	28.7%
02	27.9%
03	19.5%
04	23.9%
4. If no cutting takes place, the 10% down payment will not be refunded.
5. Operations on the contract issued will terminate on 06/30/2021.

Description of Timber by Payment Unit (PU)

PU	MARKET GROUP	PRODUCT	QUANTITY	UNIT	ACRES	ADVERTISE PRICE
1	Red Maple	Sawtimber	26.0	MBF	18.6	\$9,688.95
	Sugar Maple		3.0	MBF		
	Balsam Fir	Pulpwood	4.0	Cords		
	Mixed Hardwood		323.0	Cords		
	<i>Paper Birch</i>		6.0	<i>Cords</i>		
	<i>Red Maple</i>		248.0	<i>Cords</i>		
	<i>Sugar Maple</i>		69.0	<i>Cords</i>		
	2	Balsam Fir	Pulpwood	84.0		
Mixed Hardwood			92.0	Cords		
<i>Black Cherry</i>			3.0	<i>Cords</i>		
<i>Paper Birch</i>			18.0	<i>Cords</i>		
<i>Red Maple</i>			71.0	<i>Cords</i>		
Quaking Aspen			85.0	Cords		
Red Pine			6.0	Cords		
White Pine			6.0	Cords		
White Spruce			115.0	Cords		
3		Balsam Fir	Pulpwood	49.0	Cords	13.3
	Mixed Hardwood		59.0	Cords		
	<i>Black Cherry</i>		1.0	<i>Cords</i>		
	<i>Paper Birch</i>		13.0	<i>Cords</i>		
	<i>Red Maple</i>		45.0	<i>Cords</i>		
	Quaking Aspen		41.0	Cords		
	Red Pine		22.0	Cords		
	White Pine		21.0	Cords		
	White Spruce		57.0	Cords		
4	Balsam Fir	Pulpwood	68.0	Cords	17.6	\$8,111.90
	Mixed Hardwood		76.0	Cords		
	<i>Black Cherry</i>		2.0	<i>Cords</i>		
	<i>Paper Birch</i>		15.0	<i>Cords</i>		
	<i>Red Maple</i>		59.0	<i>Cords</i>		
	Quaking Aspen		65.0	Cords		
	Red Pine		13.0	Cords		
	White Pine		12.0	Cords		
	White Spruce		89.0	Cords		
TOTAL:			29.0	MBF		
TOTAL:			1,287.0	Cords		

Sale Specific Conditions & Requirements

Sale Name: Old Skull SBW

Sale Number: 12-005-19 Seq#: 1

1 - Sale Area

1.2 - Boundaries

1.2.1 - Painted boundaries (1/14)

The sale boundary and Payment Unit boundaries are marked and identified by blue and red paint. Timber sale boundary lines against private property are marked with blue paint. Sale boundary lines against state land are marked with double red paint dots. Interior Payment Unit boundaries are marked with double red paint slashes.

2 - Timber Specifications

2.1 - Included Timber

2.1.1 - Clearcut unit(s) with unmerchantable trees (6/14)

Within Payment Unit(s) 2, 3 and 4, cut all aspen and mixed hardwood trees that are two (2) inches or more at DBH, except do not cut any oak, yellow birch or black ash, if found. In addition, cut all spruce, balsam and tamarack which meet minimum piece specifications in 2.2 Utilization (100" piece to a top diameter inside bark of 4 inches). Also, red pine and white pine are designated for cutting when marked with orange paint above and below stump height, regardless of merchantability.

2.1.3 - Cut tree marked unit(s) (12/08)

Within Payment Unit(s) 1, all trees are designated for cutting when marked with orange paint above and below stump height, regardless of merchantability. In addition, cut all aspen, spruce, balsam and tamarack trees which meet minimum piece specifications in 2.2 Utilization (100" piece to a top diameter inside bark of 4 inches).

2.2 - Utilization

2.2.11 - Chipping restriction (9/14)

If chipping occurs on this sale, then no woody debris present on the ground at the start of the sale may be chipped. In addition, brush or chips may not be stored or stockpiled on-site for more than 60 days past the sale expiration date. Residual chip depth at the landing may not exceed 4 inches.

2.3 - Log Rule

2.3.1 - Log rule (12/08)

All board foot volumes of sawlog size products in this contract have been determined by the Scribner Decimal C Log Rule.

4 - Transportation

4.1 - Construction

4.1.6 - Road construction (1/09)

Improvements of existing roads shall be done in such a way as to minimize the environmental and visual impacts. Merchantable trees shall be cut and utilized unless otherwise directed. Non-merchantable trees shall be severed and laid flat on the ground. Slash shall be scattered, and not left in windrows. Stumps shall be set upright, not left on edge, and be moved at least 10 feet away from the road edge. Disturbed soil shall be feathered into the woods and not left in berms or windrows.

4.4 - Access

4.4.1 - Private property access (3/11)

Permission for access across private land is the responsibility of the Purchaser.

5 - Operations

5.2 - Conduct of Operations

5.2.1 - Slash

5.2.1.8 - Slash height (12/08)

No slash or tree tops may exceed 36 inches in height.

5.2.3 - Operating Restrictions

5.2.3.3 - Bark slippage restriction (3/09)

Within Payment Unit(s) 1, unless changed by written agreement, cutting and skidding are not permitted during the period of April 15 to July 15. This restriction is because of bark slippage.

5.2.38 - No decking against live trees (2/04)

Cut products may not be decked against unmarked or designated leave trees.

5.4 - Soil Protection

5.4.1 - Rutting restriction, general (7/16)

Operations are to cease immediately if equipment and weather conditions result in rutting of roads and/or skid trails which is 12 inches or greater in depth and 50 feet in length. The Unit Manager or his/her representative may restrict hauling and/or skidding if ruts exceed the specified depth. With the Unit Manager or his/her representative's approval, the Purchaser may return to the area when the risk of rutting has decreased.

5.8 - Protection of Endangered Species

5.8.5 - Protection of raptor nests (3/13)

All trees with raptor nests will be protected if found during harvesting operations. Notification will be made to the Unit Manager or his/her representative who will notify the Wildlife Biologist so an on-site evaluation and recommendation can be made, if necessary.

7 - Other Conditions

7.5 - Loss

7.5.1 - Deteriorating timber (7/09)

The sale area has received damage from spruce budworm. The Purchaser should harvest the wood as soon as possible. The Department of Natural Resources is held free of responsibility of any further damage or deterioration due to delay in harvesting.



Sale Number	Year
12-005-19	2019

TIMBER SALE MAP

This information provided by authority of Part 525, 1994 PA 451, as amended.

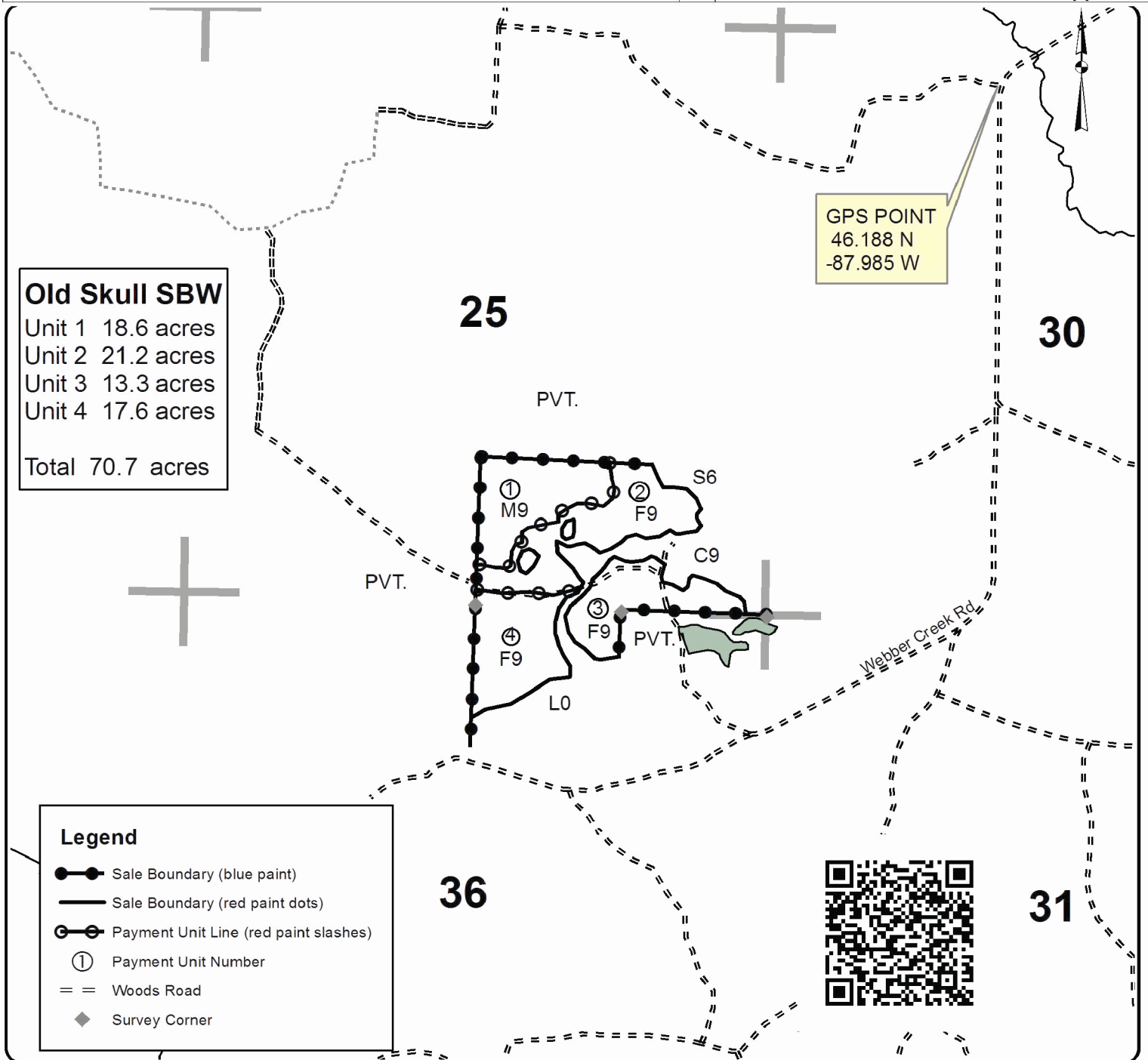
Forest Management Unit Crystal Falls	County Dickinson	Mapped By Scott Sebero	Date 01/25/19	Page 1	of 1
Township 44N	Range 30W	Section(s) and Subdivision(s) 25 S1/2SE, 36 NWNE	Scale 4 inches = 1 mile		

Cover Type

A = Aspen	H = Hemlock	N = Marsh	U = Upland Brush
B = Paper Birch	J = Jack Pine	O = Oak	UM = Upland Mixed
C = Cedar	L = Lowland Brush	P = Lowland Poplar	V = Bog or Marsh
D = Treed Bog	LM = Lowland Mixed	Q = Mixed Swamp Conifer	W = White Pine
E = Swamp Hdwoods	M = Mpl, Bch, Brch	R = Red Pine	X = Non Stocked
F = Spruce Fir	MC = Mixed Conifer	S = Black Spruce	Z = Water
G = Grass	MD = Mixed Deciduous	T = Tamarack	

Density

0 = Non Stocked	5 = Pole Timber Medium
1 = Seedling Sapling Poor	6 = Pole Timber Well
2 = Seedling Sapling Medium	7 = Saw Timber Poor
3 = Seedling Sapling Well	8 = Saw Timber Medium
4 = Pole Timber Poor	9 = Saw Timber Well



TIMBER SALE INFORMATION

Man Nor Beast Swamp 2 (12-006-19)

T43N, R27W, SEC. 1; T43N, R27W, SEC. 2; T44N, R27W, SEC. 26; T44N, R27W, SEC. 27; T44N, R27W, SEC. 35; T44N, R27W, SEC. 36.

SALE NOTE: Road work is required on this sale. See specs 4.1.2, 4.1.5, and 5.2.17 for details. In addition to the road building needed to access sale area, there will be an extensive amount of snow plowing required. Spruce has received damage from Eastern Dwarf Mistletoe (see spec 7.5.1).

A timber sale contract for this lump sum, sealed bid timber sale will be awarded to the responsible bidder offering the highest sealed bid price. Bids must be at or above the following advertised price for each species:

<u>PRODUCTS & SPECIES</u>	<u>ESTIMATED UNITS*</u>	<u>ADVERTISED PRICE</u>
Pulpwood		
Balsam Fir	59.00 Cords	\$ 9.50 / Cord
Black Spruce	1,858.00 Cords	\$ 14.25 / Cord
Jack Pine	24.00 Cords	\$ 14.95 / Cord
Mixed Hardwood	35.00 Cords	\$ 10.65 / Cord
Tamarack	2,232.00 Cords	\$ 9.55 / Cord

* The total volume is statistically estimated within plus (+) or minus (-) 6.84 percent. The estimated units are final and not subject to adjustment. Prospective bidders are urged to examine this timber and to make their own estimates of quantity and quality.

BOND AND PAYMENT SCHEDULE:

1. A bond in the amount of \$5,000.00 to insure faithful performance of the conditions of the contract will be deposited by the successful bidder within 21 days of the sale award.
2. Cutting in any sale or unit without the required advance payment would be considered a trespass.
3. Total payment must be paid in advance or according to the following schedule:
 - (a) Ten percent (10%) of the sale value must be paid within 21 days of the sale award.
 - (b) The 10% down payment will be credited towards the first unit cut.
 - (c) Payment for each of the following units must be made before cutting begins in that unit:

<u>PAYMENT UNIT NUMBER</u>	<u>PERCENT OF TOTAL SALE VALUE</u>
01	15.2%
02	24.6%
03	18.2%
04	15.2%
05	26.8%
4. If no cutting takes place, the 10% down payment will not be refunded.
5. Operations on the contract issued will terminate on 06/30/2023.

Description of Timber by Payment Unit (PU)

PU	MARKET GROUP	PRODUCT	QUANTITY	UNIT	ACRES	ADVERTISE PRICE
1	Balsam Fir	Pulpwood	1.0	Cords	39.0	\$7,472.65
	Black Spruce		489.0	Cords		
	Jack Pine		2.0	Cords		
	Mixed Hardwood		6.0	Cords		
	<i>Red Maple</i>		6.0	<i>Cords</i>		
	Tamarack		42.0	Cords		
2	Balsam Fir	Pulpwood	7.0	Cords	54.6	\$12,097.95
	Black Spruce		339.0	Cords		
	Tamarack		754.0	Cords		
3	Balsam Fir	Pulpwood	19.0	Cords	48.3	\$8,954.00
	Black Spruce		294.0	Cords		
	Tamarack		480.0	Cords		
4	Balsam Fir	Pulpwood	16.0	Cords	38.4	\$7,452.55
	Black Spruce		275.0	Cords		
	Mixed Hardwood		1.0	Cords		
	<i>Paper Birch</i>		1.0	<i>Cords</i>		
	Tamarack		353.0	Cords		
5	Balsam Fir	Pulpwood	16.0	Cords	60.0	\$13,107.00
	Black Spruce		461.0	Cords		
	Jack Pine		22.0	Cords		
	Mixed Hardwood		28.0	Cords		
	<i>Balsam Poplar</i>		8.0	<i>Cords</i>		
	<i>Paper Birch</i>		20.0	<i>Cords</i>		
	Tamarack		603.0	Cords		
TOTAL:			4,208.0	Cords		

Sale Specific Conditions & Requirements

Sale Name: Man Nor Beast Swamp 2

Sale Number: 12-006-19 Seq#: 1

1 - Sale Area

1.2 - Boundaries

1.2.1 - Painted boundaries (1/14)

The sale boundary and Payment Unit boundaries are marked and identified by blue, red and yellow paint. Exterior sale boundary lines against private property are marked with blue paint. Exterior sale boundary lines against state are marked with red paint. Interior Payment Unit boundaries are marked with yellow paint. The painted boundary line trees are not Included Timber and are to be protected. Yellow painted trees designating an interior Payment Unit boundary are only to be cut when all surrounding Payment Units have been paid.

2 - Timber Specifications

2.1 - Included Timber

2.1.1 - Clearcut unit(s) with unmerchantable trees (6/14)

Within Payment Unit(s) 1-5, cut all trees that are two (2) inches or more at DBH, except do not cut cedar, hemlock, white pine, and red pine.

2.2 - Utilization

2.2.6 - Roundwood operation required (5/07)

The skidding of whole trees or tree segments with limbs attached is prohibited. All products must be produced as roundwood and forwarded to existing roads or landing areas in final product length. This is to retain seed source of regenerating stand.

4 - Transportation

4.1 - Construction

4.1.1 - Stream crossings, general (3/11)

All stream crossing structures will be temporary and therefore, shall be provided by the Purchaser, and must be removed upon completion of the sale. All permits for stream crossings will be provided by the DNR.

4.1.2 - Stream crossings, specific (3/11)

If the sale is accessed from the north, the installation of a portable bridge may be necessary. This installation will be performed in accordance with the specifications on the appropriate permits which shall be provided by the DNR.

4.1.5 - Culverts (5/14)

If the sale is accessed from the north, the installation of a temporary culvert may be needed. The location of the culvert is shown on the Timber Sale Map, and it shall be installed prior to hauling. The culvert shall be new, corrugated metal or plastic gauge. Culverts will be a minimum of 12 inches in diameter and 24 feet in length. If culverts are removed, fill shall be removed from wetland soils as specified. Soils shall be maintained and left in a non-erodible condition, with water bars, seed, fertilizer, mulch, and slash installed as directed by the sale administrator and as specified in the BMP manual. Stream crossing permits, if needed, will be obtained by the DNR.

4.1.6 - Road construction (1/09)

Construction of new roads or improvements of existing roads shall be done in such a way as to minimize the environmental and visual impacts. Merchantable trees shall be cut and utilized unless otherwise directed. Non-merchantable trees shall be severed and laid flat on the ground. Slash shall be scattered, and not left in windrows and kept a minimum of 10 feet back from the road edge. Stumps shall be set upright, not left on edge, and be moved at least 10 feet away from the road edge. Disturbed soil shall be feathered into the woods and not left in berms or windrows.

4.1.7 - Road closure (10/11)

All new roads built into the sale must be blocked to vehicle traffic upon completion of the sale. In general, this will require constructing a four (4') foot high berm of stumps and logs covered with earth. These roads must be rendered impassable to cars and trucks. Contact the sale administrator for specific details of design and placement.

4.2 - Maintenance

4.2.4 - Grading (10/16)

If hauling occurs during non-frozen conditions, all state managed haul roads must be graded with a road grader or bull dozer. This includes cleaning of drainage areas, grading, crowning and filling with gravel, if necessary. The grading equipment to be used must be approved by the Unit Manager or his/her representative.

5 - Operations

5.2 - Conduct of Operations

5.2.1 - Slash

5.2.1.13 - Dispose of slash as directed (12/05)

Slash is to be disposed of as directed by the sale administrator.

5.2.3 - Operating Restrictions

5.2.3.1 - Operating restrictions (9/11)

Within Payment Unit(s) 1-5, unless changed by written agreement, cutting and skidding are limited to frozen ground conditions. This restriction is due to the wet soils.

5.2.4 - Dead and Down Creation

5.2.4.2 - Dead and down creation, hare and grouse (1/14)

To improve habitat for snowshoe hare, grouse, and other species, the Purchaser is to leave two piles of slash on the ground for every Payment Unit. Each pile will be scattered throughout the unit and measure a minimum of 6 feet wide by 6 feet tall.

5.2.17 - Timber Mats and Interlocking Composite Mats (3/18)

If the sale is accessed from the north, the stream crossing shown on the Timber Sale Map may require extra protection, such as that afforded by timber mats, interlocking composite mats, or another approved system. If available, mats may be borrowed from the DNR. A Timber Sale Contract Supplement will be used to document the Purchaser's use of the DNR's mats. Contact the sale administrator regarding availability and pick-up. Timber mats are available from various field offices. Composite mats are only available from the Grayling field office. The Purchaser is responsible for picking up and hauling the mats to and from the site. The composite mats will require DNR staff onsite for installation and removal. Contact the sale administrator to schedule at least 30 days before desired install/removal date. All mats must be cleaned prior to drop off. This may include, but is not limited to, power washing and brushing to remove mud and debris. A charge of \$400.00 per timber mat and \$2,000.00 per composite mat will be assessed for all damaged or non-returned mats. Damage for the crane/timber mats is defined as three or more broken cants. Damage for the composite mats is defined as cracked or broken mats.

5.4 - Soil Protection

5.4.1 - Rutting restriction, general (7/16)

Operations are to cease immediately if equipment and weather conditions result in rutting of roads and/or skid trails which is 12 inches or greater in depth and 50 feet in length. The Unit Manager or his/her representative may restrict hauling and/or skidding if ruts exceed the specified depth. With the Unit Manager or his/her representative's approval, the Purchaser may return to the area when the risk of rutting has decreased.

7 - Other Conditions

7.5 - Loss

7.5.1 - Deteriorating timber (7/09)

The sale area has received damage from Eastern Dwarf Mistletoe. The Purchaser should harvest the wood as soon as possible. The Department of Natural Resources is held free of responsibility of any further damage or deterioration due to delay in harvesting.



TIMBER SALE MAP

This information provided by authority of Part 525, 1994 PA 451, as amended.

Sale Number	Year
12 - 006	19

Forest Management Unit Crystal Falls	County Dickinson	Mapped By Church	Date 05/06/2018	Page 1	of 1
Township 43N, 44N	Range 27W	Section(s) and Subdivision(s) 43N 27W Sec 1: NENW, NWNW Sec 2: NENC 44N 27W Sec 26: SWSW Sec 27: SESE Sec 35: NW, NESE, NWNW, NWSE, SENE, SESE, SWNE SEC 36: NWSW, SESW, SWSW	Scale 1:15,840		

Cover Type

A = Aspen	H = Hemlock	N = Marsh	U = Upland Brush
B = Paper Birch	J = Jack Pine	O = Oak	UM = Upland Mixed
C = Cedar	L = Lowland Brush	P = Lowland Poplar	V = Bog or Marsh
D = Tread Bog	LM = Lowland Mixed	Q = Mixed Swamp Conifer	W = White Pine
E = Swamp Hdwoods	M = Mpl, Bch, Brch	R = Red Pine	X = Non Stocked
F = Spruce Fir	MC = Mixed Conifer	S = Black Spruce	Z = Water
G = Grass	MD = Mixed Deciduous	T = Tamarack	

Density

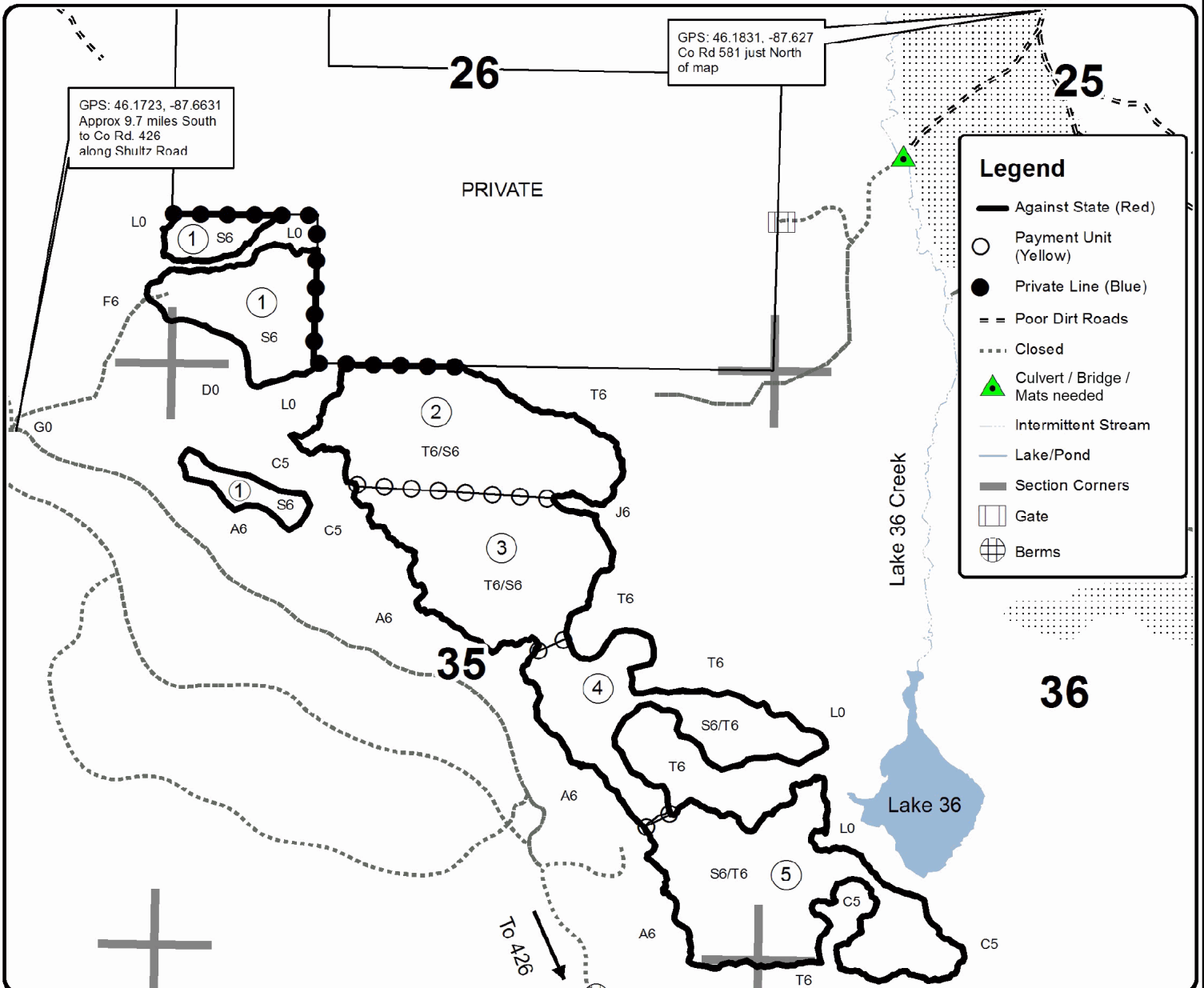
0 = Non Stocked	5 = Pole Timber Medium
1 = Seedling Sapling Poor	6 = Pole Timber Well
2 = Seedling Sapling Medium	7 = Saw Timber Poor
3 = Seedling Sapling Well	8 = Saw Timber Medium
4 = Pole Timber Poor	9 = Saw Timber Well

PU	Acres	PU	Acres
1	39.0	4	38.4
2	54.6	5	60.0
3	48.3		

Man Nor Beast Swamp 2

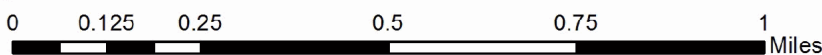
Compartment 25
240.3 Acres

QR Code for
GeoRef map



Legend

- Against State (Red)
- Payment Unit (Yellow)
- Private Line (Blue)
- Poor Dirt Roads
- Closed
- Culvert / Bridge / Mats needed
- Intermittent Stream
- Lake/Pond
- Section Corners
- Gate
- Berms



TIMBER SALE INFORMATION

West Branch Salvage (12-008-19)
 T44N, R27W, SEC. 29; T44N, R27W, SEC. 30.
 Dickinson County (Advertised Price \$23,733.35)

SALE NOTE: This is a scaled salvage sale due to windthrow, insects, and diseases affecting the volume of timber. The sale expires on June 30, 2020. A free extension will be granted on a different sale, see Spec. 7.2.6 for details.

A timber sale contract for this scaled, sealed bid timber sale will be awarded to the responsible bidder offering the highest sealed bid price. Bids must be at or above the following advertised price for each species:

<u>PRODUCTS & SPECIES</u>	<u>ESTIMATED UNITS*</u>	<u>ADVERTISED PRICE</u>
Pulpwood		
Balsam Fir	7.00 Cords	\$ 13.55 / Cord
Balsam Poplar	29.00 Cords	\$ 30.20 / Cord
Mixed Spruce	652.00 Cords	\$ 20.35 / Cord
Red Maple	5.00 Cords	\$ 15.20 / Cord
Tamarack	690.00 Cords	\$ 13.65 / Cord

* The estimated units are final and not subject to adjustment. Prospective bidders are urged to examine this timber and to make their own estimates of quantity and quality.

BOND AND PAYMENT SCHEDULE:

- A bond in the amount of \$1,187.00 to insure faithful performance of the conditions of the contract will be deposited by the successful bidder within 21 days of the sale award.
- Cutting in any sale or unit without the required advance payment would be considered a trespass.
- Total payment must be paid in advance or according to the following schedule:
 - Ten percent (10%) of the sale value must be paid within 21 days of the sale award.
 - The remainder is due before cutting begins.
 - Payment for each of the following units must be made before cutting begins in that unit:

PAYMENT UNIT NUMBER	PERCENT OF TOTAL SALE VALUE
01	100.0%
- If no cutting takes place, the 10% down payment will not be refunded.
- Operations on the contract issued will terminate on 06/30/2020.

Description of Timber by Payment Unit (PU)

PU	MARKET GROUP	PRODUCT	QUANTITY	UNIT	ACRES	ADVERTISE PRICE
1	Balsam Fir	Pulpwood	7.0	Cords	122.2	\$23,733.35
	Balsam Poplar		29.0	Cords		
	Mixed Spruce		652.0	Cords		
	<i>Black Spruce</i>		636.0	Cords		
	<i>White Spruce</i>		16.0	Cords		
	Red Maple		5.0	Cords		
	Tamarack		690.0	Cords		
TOTAL:			1,383.0	Cords		

Sale Specific Conditions & Requirements

Sale Name: West Branch Salvage

Sale Number: 12-008-19 Seq#: 1

1 - Sale Area

1.2 - Boundaries

1.2.1 - Painted boundaries (1/14)

The sale boundary and Payment Unit boundary is marked and identified by red paint. Exterior sale boundary lines against state is marked with red paint. The painted boundary line trees are not Included Timber and are to be protected.

2 - Timber Specifications

2.1 - Included Timber

2.1.1 - Clearcut unit(s) with unmerchantable trees (6/14)

Within Payment Unit(s) 1, cut all trees that are two (2) inches or more at DBH, except do not cut cedar and pine.

2.1.1.1 - Description of timber note (2/04)

Note that Mixed Spruce pulp includes white spruce and black spruce. Mixed Hardwood pulp includes maple, balsam poplar, and small amounts of birch, elm, aspen, ash, and cherry. Due to the amount of mortality, volumes are roughly estimated. Harvested volumes will be scaled.

2.2 - Utilization

2.2.6 - Roundwood operation required (5/07)

The skidding of whole trees or tree segments with limbs attached is prohibited. All products must be produced as roundwood and forwarded to existing roads or landing areas in final product length. This will retain a seed source for the regenerating stand.

3 - Payments

3.2 - Scaled Sales

3.2.1 - Scale location (2/04)

Forest products will be placed for measurement on landings unless other scaling arrangements are agreed to by the sale administrator.

4 - Transportation

4.1 - Construction

4.1.6 - Road construction (1/09)

Construction of new roads or improvements of existing roads shall be done in such a way as to minimize the environmental and visual impacts. Merchantable trees shall be cut and utilized unless otherwise directed. Non-merchantable trees shall be severed and laid flat on the ground. Slash shall be scattered, and not left in windrows and kept a minimum of 10 feet back from the road edge. Stumps shall be set upright, not left on edge, and be moved at least 10 feet away from the road edge. Disturbed soil shall be feathered into the woods and not left in berms or windrows.

4.1.7 - Road closure (10/11)

All new roads built into the sale must be blocked to vehicle traffic upon completion of the sale. Overgrown roads that are reopened shall be considered new roads. In general, this will require constructing a four (4') foot high berm of stumps and logs covered with earth. These roads must be rendered impassable to cars and trucks. Contact the sale administrator for specific details of design and placement.

5 - Operations

5.2 - Conduct of Operations

5.2.1 - Slash

5.2.1.13 - Dispose of slash as directed (12/05)

Slash is to be disposed of as directed by the sale administrator.

5.2.3 - Operating Restrictions

5.2.3.1 - Operating restrictions (9/11)

Within Payment Unit(s) 1, unless changed by written agreement, cutting and skidding are limited to frozen ground conditions. This restriction is due to the wet soils.

5.2.4 - Dead and Down Creation

5.2.4.2 - Dead and down creation, hare and grouse (1/14)

To improve habitat for snowshoe hare, grouse, and other species, the Purchaser is to leave one (1) large slash pile on the ground for every 12 acres (10 total). They should be scattered throughout the sale. Each pile should measure at least 6 feet in diameter and 6 feet tall. The piles can be constructed of un-merchantable pieces of wood or full trees.

5.4 - Soil Protection

5.4.1 - Rutting restriction, general (7/16)

Operations are to cease immediately if equipment and weather conditions result in rutting of roads and/or skid trails which is 12 inches or greater in depth and 50 feet in length. The Unit Manager or his/her representative may restrict hauling and/or skidding if ruts exceed the specified depth. With the Unit Manager or his/her representative's approval, the Purchaser may return to the area when the risk of rutting has decreased.

7 - Other Conditions

7.2 - Extensions

7.2.5 - Weather related extension (1/13)

If weather conditions during the operating period of this contract prevent harvesting, this sale may qualify for a weather related extension. If approved, the normal extension fee would be waived. To qualify, there must be a documented attempt each year to harvest in the difficult portion of the sale.

7.2.6 - Forest health extension (6/13)

This sale contains trees infected with Eastern Larch Beetle, Eastern Dwarf Mistletoe, and Spruce Budworm. It is considered at high risk for mortality and/or loss of timber value. The sale must be harvested promptly. One (1), twelve (12) month extension can be applied to one (1) other State Forest Timber Sale Contract owned by the purchaser or owned by one (1) designated sub-contractor of the Purchaser that works this contract. To qualify, the contract expiration date of the contract to be extended must be within twelve (12) months from the issue date of this contract. If this is the first extension on the other State Forest Timber Sale Contract, then the 5% extension fee will be waived. If this is an additional extension, the 10% fee will be reduced to 5%. The forest health extension must be used before this contract is closed-out. This specification does not alleviate the purchaser from any contractual obligations of the extended State Forest Timber Sale Contract. Per General Condition & Requirement 7.2, extensions are at the sole discretion of the DNR.

7.5 - Loss

7.5.1 - Deteriorating timber (7/09)

The sale area has received damage from windthrow, Eastern Larch Beetle, Eastern Dwarf Mistletoe, and Spruce Budworm. The Purchaser should harvest the wood as soon as possible. The Department of Natural Resources is held free of responsibility of any further damage or deterioration due to delay in harvesting.



TIMBER SALE MAP

This information provided by authority of Part 525, 1994 PA 451, as amended.

Sale Number	Year
12 - 008	19

Forest Management Unit Crystal Falls	County Dickinson	Mapped By Church	Date 03/20/2019	Page 1	of 1
Cruised By Scaled		Scale 1:15,840			

Township 44N	Range 27W	Section(s) and Subdivision(s) Sec 29: S1/2NW,N1/2SW Sec 30: SENW,S1/2NE,NESW,SE	Scale 1:15,840
-----------------	--------------	--	-------------------

Cover Type				Density	
A = Aspen	H = Hemlock	N = Marsh	U = Upland Brush	0 = Non Stocked	5 = Pole Timber Medium
B = Paper Birch	J = Jack Pine	O = Oak	UM = Upland Mixed	1 = Seedling Sapling Poor	6 = Pole Timber Well
C = Cedar	L = Lowland Brush	P = Lowland Poplar	V = Bog or Marsh	2 = Seedling Sapling Medium	7 = Saw Timber Poor
D = Treed Bog	LM = Lowland Mixed	Q = Mixed Swamp Conifer	W = White Pine	3 = Seedling Sapling Well	8 = Saw Timber Medium
E = Swamp Hdwoods	M = Mpl, Bch, Brch	R = Red Pine	X = Non Stocked	4 = Pole Timber Poor	9 = Saw Timber Well
F = Spruce Fir	MC = Mixed Conifer	S = Black Spruce	Z = Water		
G = Grass	MD = Mixed Deciduous	T = Tamarack			

West Branch Salvage

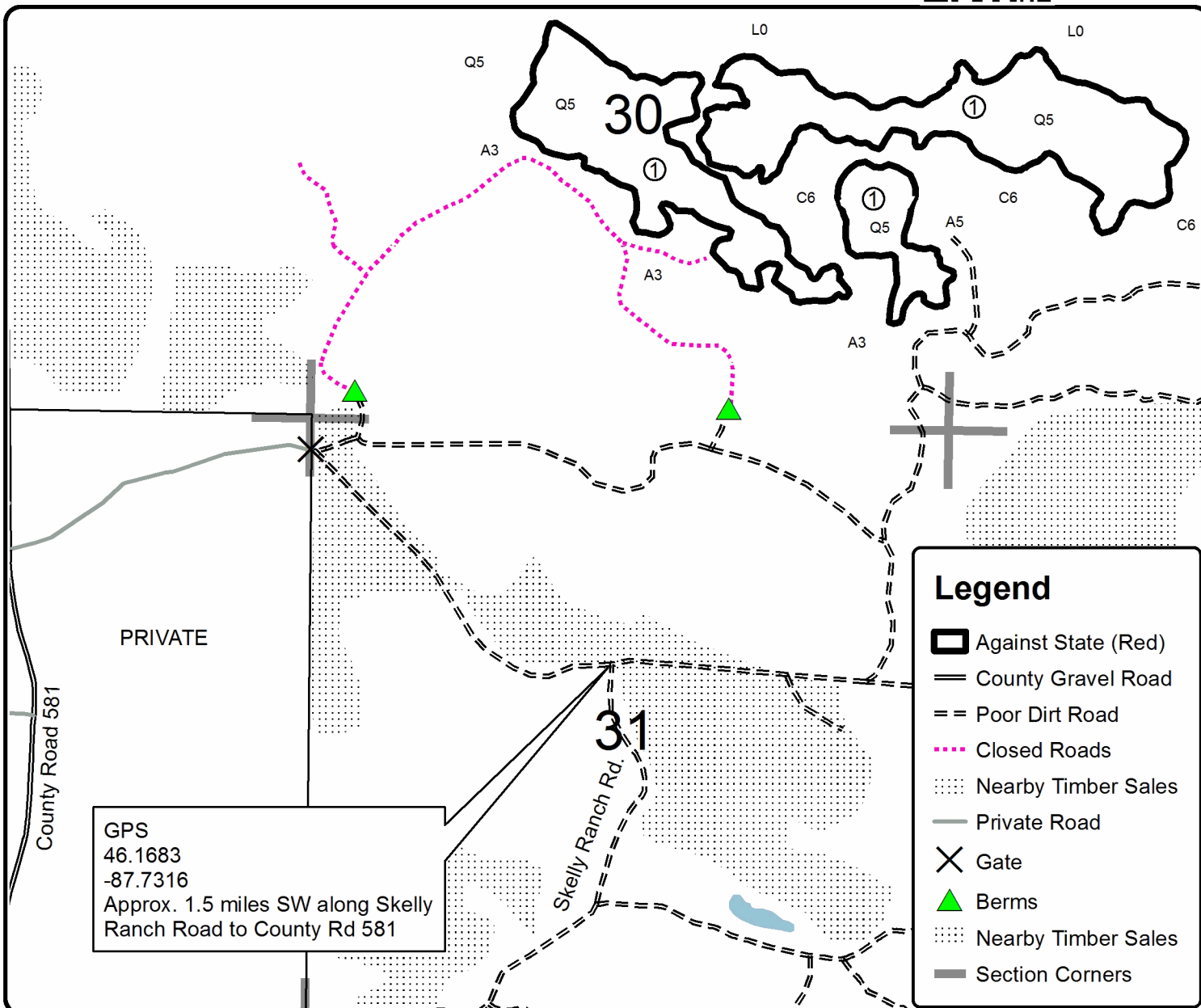
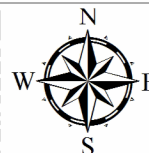
Compartment 33

122.2 Acres

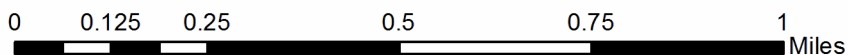
PU	Acres
1	122.2



QR Code for
GeoRef PDF



GPS
46.1683
-87.7316
Approx. 1.5 miles SW along Skelly
Ranch Road to County Rd 581



Vanilla Creamer (12-003-19)
T44N, R28W, SEC. 10; T44N, R28W, SEC. 17; T44N, R28W, SEC. 18; T44N,

In response to the notice of sale to be held 8:30 a.m. (local time) on June 19, 2019, I am hereby submitting my sealed bid (firm offer) for the following forest products to be cut. Bids for individual species must be at or above the advertised price. All non-responsive bid forms may be rejected.

<u>PRODUCTS & SPECIES</u>	<u>ESTIMATED VOLUME*</u>	<u>ADVERTISED PRICE</u>	<u>BID PRICE/UNIT</u>
Sawtimber			
Red Maple	12.30 MBF	\$ 138.00/MBF	\$ _____
Red Pine	18.00 MBF	\$ 160.00/MBF	\$ _____
Pulpwood			
Balsam Fir	506.00 Cords	\$ 20.35/Cord	\$ _____
Jack Pine	124.00 Cords	\$ 32.05/Cord	\$ _____
Misc. Species 1	90.00 Cords	\$ 3.75/Cord	\$ _____
Mixed Hardwood	518.00 Cords	\$ 22.80/Cord	\$ _____
Mixed Spruce	262.00 Cords	\$ 30.50/Cord	\$ _____
Quaking Aspen	1,883.00 Cords	\$ 33.75/Cord	\$ _____
Red Pine	40.00 Cords	\$ 62.60/Cord	\$ _____
White Pine	36.00 Cords	\$ 45.60/Cord	\$ _____

*The volumes are statistically estimated within plus (+) or minus (-) 10.34 percent. These estimated volumes are final and not subject to adjustment. Prospective bidders are urged to examine this timber and to make their own estimates of quantity and quality.

I understand that any or all bids may be rejected. All bids must be signed and all bid items must be bid or the bid form may be rejected. I also understand that consideration and awarding a contract will be based upon my past performance and ability to complete the contract based upon equipment and staffing subject to my control.

FEDERAL ID: _____ or SOCIAL SECURITY NUMBER: _____

Company or individual bidding: _____

Company representative's name: _____

Address: _____

City: _____ State: _____ Zip: _____

IF AVAILABLE, PLEASE PLACE THE PERSONALIZED LABEL FROM YOUR PROSPECTUS IN THE ABOVE BOX.

Individual or company representative's signature: _____ Date: _____

Phone number : _____ Email (optional): _____

THE WINNING BIDDER MUST COMPLETE THE VERIFICATION OF WORKER'S DISABILITY COMPENSATION ACT COMPLIANCE (ON REVERSE SIDE IF DOUBLE SIDED) WITHIN 21 DAYS OF SALE AWARD DATE



FOR DEPARTMENT USE ONLY
Sale Number (XX - XXX - XX - XX)
Forest Management Unit:

TIMBER SALE VERIFICATION OF WORKER'S DISABILITY COMPENSATION ACT COMPLIANCE

*As required by Act 317, P.A. 1969 (Worker's Compensation) and
Part 5 of Act 451 of 1994, as amended.*

VERIFICATION OF WORKER'S DISABILITY COMPENSATION ACT COMPLIANCE

- This verification must be completed and submitted within 21 days of contract award and prior to the issuance of the timber sale contract.
- In addition, if boxes 2B or 2C are checked, then Notice of Exclusion or Certificate of Insurance must be submitted within twenty-one (21) days of the contract award and prior to the issuance of the timber sale contract.
- All information must be typed or printed except for written signatures.

Please Check Appropriate Categories:

1. My business is organized as (you **must** check one of the boxes below):
 - A. Sole Proprietorship (individual)
 - B. Partnership
 - C. Corporation

2. You **must** check one of the boxes below:
 - A. I certify my business is a sole proprietorship and it has no employees but the sole proprietor. I am not subject to the Worker's Compensation Laws.
 - B. I certify my business has satisfied its obligation to the Worker's Compensation Act through the use of an approved Notice of Exclusion (BWC-337, Rev. 5/96). I will provide a copy of the Notice of Exclusion within 21 days of the contract award. (For questions or a copy of the BWC-337, please call the Worker's Compensation Bureau at 517-322-1195).
 - C. I certify my business has a Worker's Compensation Policy. I will provide an original Certificate of Insurance within twenty-one (21) days of the contract award.

3. If you have checked item 2(A) or 2(B), you **must** indicate the number of **both** full-time and part-time employees, other than yourself, including family members and active partners (if none, you must enter "0").

_____ Full-time Employees

_____ Part-time Employees

Name of Business		Federal ID (or) Social Security No.	
Address		Telephone ()	
City	State	ZIP	

I hereby certify that the above information is true and correct. I agree to notify the Michigan DNR of any changes that occur in factors affecting my coverage during any of my present and future operations.

Signature of Owner or Authorized Representative

Title

Date

Please complete the "SEALED BID" information on the next page

Old Skull SBW (12-005-19)
T44N, R30W, SEC. 25; T44N, R30W, SEC. 36; Dickinson COUNTY

In response to the notice of sale to be held 8:30 a.m. (local time) on June 19, 2019, I am hereby submitting my sealed bid (firm offer) for the following forest products to be cut. Bids for individual species must be at or above the advertised price. All non-responsive bid forms may be rejected.

<u>PRODUCTS & SPECIES</u>	<u>ESTIMATED VOLUME*</u>	<u>ADVERTISED PRICE</u>	<u>BID PRICE/UNIT</u>
Sawtimber			
Red Maple	26.00 MBF	\$ 111.00/MBF	\$ _____
Sugar Maple	3.00 MBF	\$ 281.00/MBF	\$ _____
Pulpwood			
Balsam Fir	205.00 Cords	\$ 16.30/Cord	\$ _____
Mixed Hardwood	550.00 Cords	\$ 18.25/Cord	\$ _____
Quaking Aspen	191.00 Cords	\$ 36.25/Cord	\$ _____
Red Pine	41.00 Cords	\$ 50.05/Cord	\$ _____
White Pine	39.00 Cords	\$ 36.50/Cord	\$ _____
White Spruce	261.00 Cords	\$ 24.40/Cord	\$ _____

*The volumes are statistically estimated within plus (+) or minus (-) 10.57 percent. These estimated volumes are final and not subject to adjustment. Prospective bidders are urged to examine this timber and to make their own estimates of quantity and quality.

I understand that any or all bids may be rejected. All bids must be signed and all bid items must be bid or the bid form may be rejected. I also understand that consideration and awarding a contract will be based upon my past performance and ability to complete the contract based upon equipment and staffing subject to my control.

FEDERAL ID: _____ or SOCIAL SECURITY NUMBER: _____

Company or individual bidding: _____

Company representative's name: _____

Address: _____

City: _____ State: _____ Zip: _____

IF AVAILABLE, PLEASE PLACE THE PERSONALIZED LABEL FROM YOUR PROSPECTUS IN THE ABOVE BOX.

Individual or company representative's signature: _____ Date: _____

Phone number : _____ Email (optional): _____

THE WINNING BIDDER MUST COMPLETE THE VERIFICATION OF WORKER'S DISABILITY COMPENSATION ACT COMPLIANCE (ON REVERSE SIDE IF DOUBLE SIDED) WITHIN 21 DAYS OF SALE AWARD DATE



FOR DEPARTMENT USE ONLY
Sale Number (XX - XXX - XX - XX)
Forest Management Unit:

TIMBER SALE VERIFICATION OF WORKER'S DISABILITY COMPENSATION ACT COMPLIANCE

*As required by Act 317, P.A. 1969 (Worker's Compensation) and
Part 5 of Act 451 of 1994, as amended.*

VERIFICATION OF WORKER'S DISABILITY COMPENSATION ACT COMPLIANCE

- This verification must be completed and submitted within 21 days of contract award and prior to the issuance of the timber sale contract.
- In addition, if boxes 2B or 2C are checked, then Notice of Exclusion or Certificate of Insurance must be submitted within twenty-one (21) days of the contract award and prior to the issuance of the timber sale contract.
- All information must be typed or printed except for written signatures.

Please Check Appropriate Categories:

1. My business is organized as (you **must** check one of the boxes below):
 - A. Sole Proprietorship (individual)
 - B. Partnership
 - C. Corporation

2. You **must** check one of the boxes below:
 - A. I certify my business is a sole proprietorship and it has no employees but the sole proprietor. I am not subject to the Worker's Compensation Laws.
 - B. I certify my business has satisfied its obligation to the Worker's Compensation Act through the use of an approved Notice of Exclusion (BWC-337, Rev. 5/96). I will provide a copy of the Notice of Exclusion within 21 days of the contract award. (For questions or a copy of the BWC-337, please call the Worker's Compensation Bureau at 517-322-1195).
 - C. I certify my business has a Worker's Compensation Policy. I will provide an original Certificate of Insurance within twenty-one (21) days of the contract award.

3. If you have checked item 2(A) or 2(B), you **must** indicate the number of **both** full-time and part-time employees, other than yourself, including family members and active partners (if none, you must enter "0").

_____ Full-time Employees

_____ Part-time Employees

Name of Business		Federal ID (or) Social Security No.	
Address		Telephone ()	
City	State	ZIP	

I hereby certify that the above information is true and correct. I agree to notify the Michigan DNR of any changes that occur in factors affecting my coverage during any of my present and future operations.

Signature of Owner or Authorized Representative

Title

Date

Please complete the "SEALED BID" information on the next page

Man Nor Beast Swamp 2 (12-006-19)

T43N, R27W, SEC. 1; T43N, R27W, SEC. 2; T44N, R27W, SEC. 26; T44N, R27W,

In response to the notice of sale to be held 8:30 a.m. (local time) on June 19, 2019, I am hereby submitting my sealed bid (firm offer) for the following forest products to be cut. Bids for individual species must be at or above the advertised price. All non-responsive bid forms may be rejected.

<u>PRODUCTS & SPECIES</u>	<u>ESTIMATED VOLUME*</u>	<u>ADVERTISED PRICE</u>	<u>BID PRICE/UNIT</u>
Pulpwood			
Balsam Fir	59.00 Cords	\$ 9.50/Cord	\$ _____
Black Spruce	1,858.00 Cords	\$ 14.25/Cord	\$ _____
Jack Pine	24.00 Cords	\$ 14.95/Cord	\$ _____
Mixed Hardwood	35.00 Cords	\$ 10.65/Cord	\$ _____
Tamarack	2,232.00 Cords	\$ 9.55/Cord	\$ _____

*The volumes are statistically estimated within plus (+) or minus (-) 6.84 percent. These estimated volumes are final and not subject to adjustment. Prospective bidders are urged to examine this timber and to make their own estimates of quantity and quality.

I understand that any or all bids may be rejected. All bids must be signed and all bid items must be bid or the bid form may be rejected. I also understand that consideration and awarding a contract will be based upon my past performance and ability to complete the contract based upon equipment and staffing subject to my control.

FEDERAL ID: _____ or SOCIAL SECURITY NUMBER: _____

Company or individual bidding: _____

Company representative's name: _____

Address: _____

City: _____ State: _____ Zip: _____

IF AVAILABLE, PLEASE PLACE THE PERSONALIZED LABEL FROM YOUR PROSPECTUS IN THE ABOVE BOX.

Individual or company representative's signature: _____ Date: _____

Phone number : _____ Email (optional): _____

THE WINNING BIDDER MUST COMPLETE THE VERIFICATION OF WORKER'S DISABILITY COMPENSATION ACT COMPLIANCE (ON REVERSE SIDE IF DOUBLE SIDED) WITHIN 21 DAYS OF SALE AWARD DATE



FOR DEPARTMENT USE ONLY
Sale Number (XX - XXX - XX - XX)
Forest Management Unit:

TIMBER SALE VERIFICATION OF WORKER'S DISABILITY COMPENSATION ACT COMPLIANCE

*As required by Act 317, P.A. 1969 (Worker's Compensation) and
Part 5 of Act 451 of 1994, as amended.*

VERIFICATION OF WORKER'S DISABILITY COMPENSATION ACT COMPLIANCE

- This verification must be completed and submitted within 21 days of contract award and prior to the issuance of the timber sale contract.
- In addition, if boxes 2B or 2C are checked, then Notice of Exclusion or Certificate of Insurance must be submitted within twenty-one (21) days of the contract award and prior to the issuance of the timber sale contract.
- All information must be typed or printed except for written signatures.

Please Check Appropriate Categories:

1. My business is organized as (you **must** check one of the boxes below):
 - A. Sole Proprietorship (individual)
 - B. Partnership
 - C. Corporation

2. You **must** check one of the boxes below:
 - A. I certify my business is a sole proprietorship and it has no employees but the sole proprietor. I am not subject to the Worker's Compensation Laws.
 - B. I certify my business has satisfied its obligation to the Worker's Compensation Act through the use of an approved Notice of Exclusion (BWC-337, Rev. 5/96). I will provide a copy of the Notice of Exclusion within 21 days of the contract award. (For questions or a copy of the BWC-337, please call the Worker's Compensation Bureau at 517-322-1195).
 - C. I certify my business has a Worker's Compensation Policy. I will provide an original Certificate of Insurance within twenty-one (21) days of the contract award.

3. If you have checked item 2(A) or 2(B), you **must** indicate the number of **both** full-time and part-time employees, other than yourself, including family members and active partners (if none, you must enter "0").

_____ Full-time Employees

_____ Part-time Employees

Name of Business		Federal ID (or) Social Security No.	
Address		Telephone ()	
City	State	ZIP	

I hereby certify that the above information is true and correct. I agree to notify the Michigan DNR of any changes that occur in factors affecting my coverage during any of my present and future operations.

Signature of Owner or Authorized Representative

Title

Date

Please complete the "SEALED BID" information on the next page

West Branch Salvage (12-008-19)
T44N, R27W, SEC. 29; T44N, R27W, SEC. 30; Dickinson COUNTY

In response to the notice of sale to be held 8:30 a.m. (local time) on June 19, 2019, I am hereby submitting my sealed bid (firm offer) for the following forest products to be cut. Bids for individual species must be at or above the advertised price. All non-responsive bid forms may be rejected.

<u>PRODUCTS & SPECIES</u>	<u>ESTIMATED VOLUME*</u>	<u>ADVERTISED PRICE</u>	<u>BID PRICE/UNIT</u>
Pulpwood			
Balsam Fir	7.00 Cords	\$ 13.55/Cord	\$ _____
Balsam Poplar	29.00 Cords	\$ 30.20/Cord	\$ _____
Mixed Spruce	652.00 Cords	\$ 20.35/Cord	\$ _____
Red Maple	5.00 Cords	\$ 15.20/Cord	\$ _____
Tamarack	690.00 Cords	\$ 13.65/Cord	\$ _____

*These estimated volumes are final and not subject to adjustment. Prospective bidders are urged to examine this timber and to make their own estimates of quantity and quality.

I understand that any or all bids may be rejected. All bids must be signed and all bid items must be bid or the bid form may be rejected. I also understand that consideration and awarding a contract will be based upon my past performance and ability to complete the contract based upon equipment and staffing subject to my control.

FEDERAL ID: _____ or SOCIAL SECURITY NUMBER: _____ Company or individual bidding: _____ Company representative's name: _____ Address: _____ City: _____ State: _____ Zip: _____

IF AVAILABLE, PLEASE PLACE THE PERSONALIZED LABEL FROM YOUR PROSPECTUS IN THE ABOVE BOX.

Individual or company representative's signature: _____ Date: _____

Phone number : _____ Email (optional): _____

THE WINNING BIDDER MUST COMPLETE THE VERIFICATION OF WORKER'S DISABILITY COMPENSATION ACT COMPLIANCE (ON REVERSE SIDE IF DOUBLE SIDED) WITHIN 21 DAYS OF SALE AWARD DATE



FOR DEPARTMENT USE ONLY	
Sale Number (XX – XXX – XX – XX)	
Forest Management Unit:	

TIMBER SALE VERIFICATION OF WORKER'S DISABILITY COMPENSATION ACT COMPLIANCE

*As required by Act 317, P.A. 1969 (Worker's Compensation) and
Part 5 of Act 451 of 1994, as amended.*

VERIFICATION OF WORKER'S DISABILITY COMPENSATION ACT COMPLIANCE

- This verification must be completed and submitted within 21 days of contract award and prior to the issuance of the timber sale contract.
- In addition, if boxes 2B or 2C are checked, then Notice of Exclusion or Certificate of Insurance must be submitted within twenty-one (21) days of the contract award and prior to the issuance of the timber sale contract.
- All information must be typed or printed except for written signatures.

Please Check Appropriate Categories:

- My business is organized as (you **must** check one of the boxes below):
 - Sole Proprietorship (individual)
 - Partnership
 - Corporation
- You **must** check one of the boxes below:
 - I certify my business is a sole proprietorship and it has no employees but the sole proprietor. I am not subject to the Worker's Compensation Laws.
 - I certify my business has satisfied its obligation to the Worker's Compensation Act through the use of an approved Notice of Exclusion (BWC-337, Rev. 5/96). I will provide a copy of the Notice of Exclusion within 21 days of the contract award. (For questions or a copy of the BWC-337, please call the Worker's Compensation Bureau at 517-322-1195).
 - I certify my business has a Worker's Compensation Policy. I will provide an original Certificate of Insurance within twenty-one (21) days of the contract award.
- If you have checked item 2(A) or 2(B), you **must** indicate the number of **both** full-time and part-time employees, other than yourself, including family members and active partners (if none, you must enter "0").

_____ Full-time Employees

_____ Part-time Employees

Name of Business		Federal ID (or) Social Security No.	
Address		Telephone ()	
City	State	ZIP	

I hereby certify that the above information is true and correct. I agree to notify the Michigan DNR of any changes that occur in factors affecting my coverage during any of my present and future operations.

Signature of Owner or Authorized Representative

Title

Date

Please complete the "SEALED BID" information on the next page