



**DEPARTMENT OF NATURAL RESOURCES
STATE OF MICHIGAN**

TIMBER SALE PROSPECTUS #6296

SCHEDULED SALE DATE AND TIME: 3:00 p.m. (local time) on December 4, 2018.

LOCATION: ESCANABA MGMT UNIT, 6833 HWY 2, 41 & 35, GLADSTONE, MI 49837.

PROSPECTUS NOTE: The bidder is advised to inspect the sale area and review the location, estimated volumes, operating costs and contract terms of proposed sales. Please be aware that some landowners may request 60 days or more notice for access across their land.

Notice is hereby given that bids will be received by the Unit Manager, ESCANABA MANAGEMENT UNIT, for certain timber on the following described lands:

Little Cedar SBW (33-024-18) / T36N, R27W, SEC. 10, S1/2SE, NESE.

T36N, R27W, SEC. 11, W1/2SW.

T36N, R27W, SEC. 14, NWNW, SWSW.

T36N, R27W, SEC. 15, S1/2NE, N1/2SE, SWSE.

T36N, R27W, SEC. 22, NENW.

Menominee County, Advertised Price \$55,304.70, 134.6 Acres, Spruce/Fir/Tamarack, Hardwood.

SALE NOTE: The balsam fir and white spruce throughout the sale have had significant defoliation and some mortality from the spruce budworm. The eastern larch beetle has caused some tamarack mortality within the lowland Payment Units. This sale should be harvested as soon as possible to prevent further loss of timber products. A free extension will be granted to the Purchaser of this sale because of forest health concerns.

Payment Units 8 and 9 must be accessed through private property. All other Payment Units can be accessed through state land, but for some of them, the best access is through private property. The Purchaser is responsible for obtaining permission to cross private property.

South Fox Beaver (33-028-18) / T36N, R24W, SEC. 19, NWSW.

T36N, R25W, SEC. 24, E1/2SE.

T36N, R25W, SEC. 25, NENE, N1/2SW, SESW, NESE, S1/2SE.

T36N, R25W, SEC. 26, NESE.

T36N, R25W, SEC. 36, N1/2NW, SENW, NWNE, S1/2NE, NESW.

T36N, R25W, SEC. 36, N1/2SE.

Menominee County, Advertised Price \$73,043.90, 134.4 Acres, Hardwood, Aspen.

SALE NOTE: The Purchaser will be required to haul and spread 120 yards of gravel on one of the access roads within the sale. The gravel is available from a state pit within the sale area. There is a state gate located on the South Fox Road within Payment Unit 7. This gate is always left open and unlocked.

Deer Creek Maple (33-029-18) / T36N, R25W, SEC. 13, SESE.

T36N, R25W, SEC. 24, E1/2NW,N1/2NE,SESW.

T36N, R25W, SEC. 25, NW,NWNE,N1/2SW,NWSE.

Menominee County, Advertised Price \$123,059.50, 171.0 Acres, Hardwood, Spruce/Fir/Tamarack.

SALE NOTE: The Purchaser must purchase and install a culvert and also haul and spread 150 yards of gravel on the main access road, prior to any harvesting taking place. The best access into Payment Units 2 and 3 is through private property off of the North Fox Road. If this access can't be obtained a temporary creek crossing will need to be installed.

West Boneyard (33-030-18) / T35N, R28W, SEC. 5 , NW,W1/2SW.

T35N, R28W, SEC. 6 , E1/2SE.

T36N, R28W, SEC. 32, SWSW.

Menominee County, Advertised Price \$91,628.10, 153.1 Acres, Aspen, Hardwood.

SALE NOTE: The Purchaser will be required to purchase and install a culvert and haul and spread gravel on the access roads, prior to any hauling taking place. Gravel is available from state land within Payment Unit 3. There has been some recent wind damage done to some of the trees within the sale area.

BID INSTRUCTIONS (VER. 07/02/2018):

1. Scheduled Bid Location, Date, and Time (2/11)

Bids must be received by the Unit Manager, ESCANABA OFFICE, 6833 HWY 2 41 & 35, GLADSTONE, MI 49837, no later than 3:00 p.m. (local time) on December 4, 2018. For further information concerning this sale, contact Eric Thompson at 906-786-2354.

2. Bidder's Qualifications (5/16)

Purchaser shall obtain workers compensation insurance to cover claims under Michigan's Worker's Disability Compensation Act of 1969 or similar employee benefit act of any other state applicable to an employee. If all or part of a timber sale was prepared by a private contractor, the contractor and that contractor's company are not permitted to bid on the timber sale contract. Bids will not be accepted from individuals or companies appearing on the DNR/FRD No-Bid List. This list contains the names of purchasers who previously failed to execute a contract within 21-days or who have a history of poor performance.

3. Preparation of Sealed Bids (5/16)

Bid Forms may be completed online thru Michigan DNR Timber Sale Online Bidding (OLB) at www.michigan.gov/timberbidding or by completing the hardcopy Bid Form found in the Timber Sale Prospectus. Hardcopy Bid Forms shall be manually signed in ink. Registration in OLB is considered your 'signature' for all bids submitted thru that system. Bid prices must be entered for each species and product in the Bid Price column for all material subject to bidding and all fill-in blanks must be completed. If erasures or other changes appear on the hardcopy Bid Form, each erasure or change must be initialed by the person signing the bid.

4. Submission of Sealed Bids (5/16)

Bid forms may be obtained from the Unit Manager or thru OLB. Bids may be submitted hardcopy or thru OLB. All hardcopy bids must be submitted on the bid form and in an envelope clearly identified as described in this section. NOTE: Only one bid form per bid envelope. Sealed bids must be submitted to the Unit office designated in the prospectus and must be submitted at or prior to the time established in the prospectus. The envelope should show on the outside (a) the sale name or number and (b) the date and time of bid opening, as shown in the prospectus. Bids received after the time specified in the sale prospectus are late bids and will be rejected.

It is possible for a bidder to submit multiple bids on a single sale. For example, a bid may be submitted hardcopy and a bid may be submitted thru OLB. Or, two bidders from the same company could both submit bids on the same sale. If this were to happen, the State would accept all bids received and award the contract accordingly. All bidding and contractual requirements would apply to all bids received.

5. Public Opening of Sealed Bids (7/16)

If conditions permit, the sealed bids will be publicly opened and posted at the time and place set in the prospectus.

If a bidder, present at a bid opening, has submitted bids on more than one sale, that bidder may withdraw their unopened bid envelopes or announce the withdrawal of their online bid after being declared the successful bidder on one sale.

6. Award of Contract (1/11)

Award of the contract will be made to the Bidder whose bid, conforming to the prospectus, is most advantageous to the State of Michigan on the basis of total value at rates bid for the estimated quantities. The State reserves the right to reject any bid or waive any minor irregularity in bids received. A written award mailed (or otherwise furnished) to the successful Bidder shall be deemed to result in a binding contract without further action by either party.

7. Down Payment (1/11)

The Bidder to whom award is made must make a down payment within 21 days of the sale award. The amount of the down payment will be calculated as shown in the Bond and Payment Schedule of this prospectus. Only cash may be used to meet this requirement.

8. Performance Security (1/11)

As guarantee of faithful performance, a cash bond, certificate of deposit, surety bond or irrevocable letter of credit (LOC) is required within 21 days of the sale award. The amount of the performance security is shown in the Bond and

Payment Schedule of this prospectus. If an LOC or surety is used, the coverage must extend for at least 6 months beyond the contract expiration.

9. Timber Sale Contract (7/18)

Additional conditions and requirements common to all timber sales are listed on the timber sale contract (R4031) and are available on line at www.michigan.gov/timber. Contact the Unit Manager for additional information or a sample contract. Within 21 days of the date of the award letter, the bidder must sign the contract and provide the required down payment, performance security, and verification of worker's disability compensation. The down payment and performance security shall be in accordance with the provisions of the timber sale contract, in the sums stated in this prospectus. If these actions are not taken, then the Bidder, the Bidder's corporation, and the corporation's principals may not be permitted to bid on State timber sales for a period of 3 months after the first offense, 6 months after the second offense, and 1 year after the third offense. An offense will only be counted against the Bidder for 5 years. In addition, the Bidder certifies that if awarded this contract, the Bidder will complete the timber sale contract in accordance with its terms and any modifications thereof including requirements to purchase, cut, and remove the included timber by the expiration date.

Payment Unit values in the State Forest Timber Sale Contract are calculated based on the advertised value of the Payment Unit as a percentage of the total advertised value of the contract. The advertised value of each Payment Unit is given in the Description of Timber by Payment Unit table on the Timber Sale Information page. For example, if the value of Payment Unit 1 is advertised as \$1,500 and the total Timber Sale value is advertised as \$10,000, the contract price for Payment Unit 1 will be 15% of the total bid price ($\$1,500/\$10,000 * 100$).

10. Disclaimer of Estimates and Bidder's Warranty of Inspection (7/16)

Before submitting this bid, the Bidder is advised and cautioned to inspect the sale area, review the requirements of the sale contract, and take other steps as may be reasonably necessary to ascertain the location, estimated volumes, construction estimates, and operating costs of the proposed sale. Failure to do so will not relieve the Bidder from responsibility for completing the contract.

The Bidder warrants that this bid is submitted solely on the basis of the Bidder's examination and inspection of the quality and quantity of the timber offered for sale and the Bidder's opinion of the value thereof and the costs of recovery. No reliance should be placed on the State of Michigan's estimates of timber quality, quantity or costs of recovery. Bidder further acknowledges that the State of Michigan: (i) expressly disclaims any warranty of fitness of timber for any purpose; (ii) offers this timber as is without any warranty of quality (merchantability) or quantity and (iii) expressly disclaims any warranty as to the quantity or quality of timber sold.

11. Certification and Chain-of-Custody (10/14)

Unless otherwise indicated in the contract under section 7 – Other Conditions of the Sale Specific Conditions & Requirements, the area encompassed by this timber sale is certified to the standards of the Forest Stewardship Council (FSC) - Certificate #SCS-FM/COC-00090N and the Sustainable Forestry Initiative (SFI) - Certificate #NSF-SFIS-5Y031-SF5. Forest products from this sale may be delivered to the mill as "FSC 100% and / or SFI certified" as long as the contractor hauling the forest products is chain-of-custody (COC) certified or covered under a COC certificate from the destination mill. The purchaser is responsible for maintaining COC after leaving the sale area.

12. Good Neighbor Authority (GNA) Requirements (7/16)

If the name of this timber sales contains the acronym GNA, it is authorized by the Good Neighbor Authority (GNA) and covered by various agreements between the U.S. Forest Service and the State. The timber sale occurs on federal land and the following conditions apply:

GNA contracts on US Forest Service land will not be awarded to purchasers on the Federal list of excluded parties. The System for Award Management (SAM) will be checked for active excluded parties prior to award of contract. In addition, the Bidder to whom award is made must complete an Assurance Regarding Felony Conviction or Tax Delinquent Status for Corporate Applicants (AD-3031).

13. Good Neighbor Authority (GNA) Requirements, con't (9/16)

Bidder certifies, by signing this bid form, that to the best of Bidder's knowledge that the following representations are accurate and complete.

- a. That the Bidder and its principals are not presently debarred, suspended, proposed for debarment, declared ineligible, or voluntary excluded from timber sales (covered transactions) by any Federal department or agency.
- b. That the Bidder and its principals have not within a 3-year period preceding this bid been convicted of or had a civil judgment rendered against them for commission of fraud or a criminal offense in connection with obtaining, attempting to obtain, or performing a public (Federal, State, or local) transaction or contract under a public transaction; violation of Federal or State antitrust statutes or commission of embezzlement, theft, forgery, bribery, falsification or destruction of records, making false statements, or receiving stolen property.
- c. That the Bidder and its principals are not presently indicted for or otherwise criminally or civilly charged by a governmental entity (Federal, State, or local) with commission of any of the offenses enumerated in paragraph b of this certification.
- d. That the Bidder and its principals have not within a 3-year period preceding this bid had one or more public transactions (Federal, State, or local) terminated for breach or default of a timber or forest product contract.

Bidders that cannot certify this requirement, in whole or in part, shall submit an explanation with their bid.

KEITH CREAGH
Director

TIMBER SALE INFORMATION

Little Cedar SBW (33-024-18)

T36N, R27W, SEC. 10; T36N, R27W, SEC. 11; T36N, R27W, SEC. 14; T36N, R27W, SEC. 15; T36N, R27W, SEC. 22.
Menominee County (Advertised Price \$55,304.70)

SALE NOTE: The balsam fir and white spruce throughout the sale have had significant defoliation and some mortality from the spruce budworm. The eastern larch beetle has caused some tamarack mortality within the lowland Payment Units. This sale should be harvested as soon as possible to prevent further loss of timber products. A free extension will be granted to the Purchaser of this sale because of forest health concerns.

Payment Units 8 and 9 must be accessed through private property. All other Payment Units can be accessed through state land, but for some of them, the best access is through private property. The Purchaser is responsible for obtaining permission to cross private property.

A timber sale contract for this lump sum, sealed bid timber sale will be awarded to the responsible bidder offering the highest sealed bid price. Bids must be at or above the following advertised price for each species:

<u>PRODUCTS & SPECIES</u>	<u>ESTIMATED UNITS*</u>	<u>ADVERTISED PRICE</u>
Sawtimber		
Paper Birch	1.20 MBF	\$ 82.00 / MBF
Sugar Maple	0.40 MBF	\$ 281.00 / MBF
Pulpwood		
B. T. Aspen	26.00 Cords	\$ 29.15 / Cord
Balsam Fir	605.00 Cords	\$ 24.45 / Cord
Mixed Hardwood	449.00 Cords	\$ 29.20 / Cord
Mixed Spruce	290.00 Cords	\$ 21.30 / Cord
N. White Cedar	317.00 Cords	\$ 21.15 / Cord
Quaking Aspen	403.00 Cords	\$ 29.15 / Cord
Tamarack	74.00 Cords	\$ 18.55 / Cord
White Pine	15.00 Cords	\$ 28.75 / Cord

* The total volume is statistically estimated within plus (+) or minus (-) 9.35 percent. The estimated units are final and not subject to adjustment. Prospective bidders are urged to examine this timber and to make their own estimates of quantity and quality.

BOND AND PAYMENT SCHEDULE:

1. A bond in the amount of \$2,765.00 to insure faithful performance of the conditions of the contract will be deposited by the successful bidder within 21 days of the sale award.
2. Cutting in any sale or unit without the required advance payment would be considered a trespass.
3. Total payment must be paid in advance or according to the following schedule:
 - (a) Ten percent (10%) of the sale value must be paid within 21 days of the sale award.
 - (b) The 10% down payment will be credited towards the first unit cut.
 - (c) Payment for each of the following units must be made before cutting begins in that unit:

PAYMENT UNIT NUMBER	PERCENT OF TOTAL SALE VALUE
01	3.4%
02	6.0%
03	11.4%
04	4.6%
05	24.5%
06	5.8%
07	11.2%
08	7.7%
09	6.6%
10	7.6%
11	11.2%

4. If no cutting takes place, the 10% down payment will not be refunded.
5. Operations on the contract issued will terminate on 06/30/2021.

Description of Timber by Payment Unit (PU)

PU	MARKET GROUP	PRODUCT	QUANTITY	UNIT	ACRES	ADVERTISE PRICE
1	Paper Birch	Sawtimber	1.2	MBF	5.2	\$1,899.45
	Balsam Fir	Pulpwood	9.0	Cords		
	Mixed Hardwood		26.0	Cords		
	<i>Black Cherry</i>		1.0	<i>Cords</i>		
	<i>Green Ash</i>		2.0	<i>Cords</i>		
	<i>Paper Birch</i>		18.0	<i>Cords</i>		
	<i>Red Maple</i>		5.0	<i>Cords</i>		
	Mixed Spruce		3.0	Cords		
	<i>Black Spruce</i>		3.0	<i>Cords</i>		
	Quaking Aspen		26.0	Cords		
	2	Balsam Fir	Pulpwood	32.0		
Mixed Hardwood			8.0	Cords		
<i>Red Maple</i>			6.0	<i>Cords</i>		
<i>Sugar Maple</i>			2.0	<i>Cords</i>		
Mixed Spruce			8.0	Cords		
<i>White Spruce</i>			8.0	<i>Cords</i>		
N. White Cedar			5.0	Cords		
Quaking Aspen			70.0	Cords		
3		Balsam Fir	Pulpwood	4.0	Cords	13.2
	Mixed Hardwood		9.0	Cords		
	<i>Balsam Poplar</i>		6.0	<i>Cords</i>		
	<i>Paper Birch</i>		3.0	<i>Cords</i>		
	Mixed Spruce		101.0	Cords		
	<i>Black Spruce</i>		101.0	<i>Cords</i>		
	N. White Cedar		170.0	Cords		
	Quaking Aspen		4.0	Cords		
	Tamarack		3.0	Cords		
4	B. T. Aspen	Pulpwood	7.0	Cords	10.2	\$2,531.80
	Balsam Fir		33.0	Cords		
	Mixed Hardwood		22.0	Cords		
	<i>Balsam Poplar</i>		3.0	<i>Cords</i>		
	<i>Basswood</i>		4.0	<i>Cords</i>		
	<i>Black Cherry</i>		3.0	<i>Cords</i>		
	<i>Paper Birch</i>		3.0	<i>Cords</i>		
	<i>Red Maple</i>		9.0	<i>Cords</i>		
	Mixed Spruce		3.0	Cords		
	<i>White Spruce</i>		3.0	<i>Cords</i>		
	Quaking Aspen		24.0	Cords		
	White Pine		4.0	Cords		
	5	Balsam Fir	Pulpwood	170.0		
Mixed Hardwood			121.0	Cords		
<i>Balsam Poplar</i>			6.0	<i>Cords</i>		
<i>Black Cherry</i>			12.0	<i>Cords</i>		
<i>Ironwood</i>			2.0	<i>Cords</i>		
<i>Paper Birch</i>			7.0	<i>Cords</i>		
<i>Red Maple</i>			94.0	<i>Cords</i>		
Mixed Spruce			59.0	Cords		
<i>Black Spruce</i>			4.0	<i>Cords</i>		
<i>White Spruce</i>			55.0	<i>Cords</i>		
N. White Cedar			27.0	Cords		
Quaking Aspen			137.0	Cords		
6		Balsam Fir	Pulpwood	49.0	Cords	7.9
	Mixed Hardwood		54.0	Cords		
	<i>Balsam Poplar</i>		9.0	<i>Cords</i>		
	<i>Black Ash</i>		17.0	<i>Cords</i>		
	<i>Black Cherry</i>		3.0	<i>Cords</i>		

Description of Timber by Payment Unit (PU), con't

PU	MARKET GROUP	PRODUCT	QUANTITY	UNIT	ACRES	ADVERTISE PRICE
6 con't	<i>Paper Birch</i> <i>Red Maple</i> Mixed Spruce <i>White Spruce</i> Quaking Aspen	<i>Pulpwood</i>	6.0 19.0 7.0 7.0 9.0	<i>Cords</i> <i>Cords</i> Cords <i>Cords</i> Cords		
7	Balsam Fir Mixed Hardwood <i>Balsam Poplar</i> <i>Black Ash</i> <i>Black Cherry</i> <i>Paper Birch</i> <i>Red Maple</i> Mixed Spruce <i>White Spruce</i> Quaking Aspen	Pulpwood	105.0 34.0 3.0 7.0 2.0 12.0 10.0 26.0 26.0 72.0	Cords Cords <i>Cords</i> <i>Cords</i> <i>Cords</i> <i>Cords</i> <i>Cords</i> Cords <i>Cords</i> Cords	16.1	\$6,212.65
8	Sugar Maple B. T. Aspen Balsam Fir Mixed Hardwood <i>American Elm</i> <i>Balsam Poplar</i> <i>Green Ash</i> <i>Ironwood</i> <i>Paper Birch</i> <i>Red Maple</i> <i>Sugar Maple</i> Mixed Spruce <i>White Spruce</i> N. White Cedar Quaking Aspen White Pine	Sawtimber Pulpwood	0.4 10.0 42.0 67.0 2.0 2.0 7.0 1.0 18.0 30.0 7.0 4.0 4.0 16.0 5.0 11.0	MBF Cords Cords Cords <i>Cords</i> <i>Cords</i> <i>Cords</i> <i>Cords</i> <i>Cords</i> <i>Cords</i> <i>Cords</i> Cords <i>Cords</i> Cords Cords Cords	7.0	\$4,272.80
9	Balsam Fir Mixed Hardwood <i>Basswood</i> <i>Paper Birch</i> <i>Red Maple</i> <i>Sugar Maple</i> Mixed Spruce <i>White Spruce</i> Quaking Aspen	Pulpwood	51.0 37.0 10.0 7.0 14.0 6.0 17.0 17.0 33.0	Cords Cords <i>Cords</i> <i>Cords</i> <i>Cords</i> <i>Cords</i> Cords <i>Cords</i> Cords	7.6	\$3,651.40
10	B. T. Aspen Balsam Fir Mixed Hardwood <i>American Elm</i> <i>Black Cherry</i> <i>Northern Pin Oak</i> <i>Paper Birch</i> <i>Red Maple</i> <i>Sugar Maple</i> Mixed Spruce <i>White Spruce</i> Quaking Aspen	Pulpwood	9.0 106.0 23.0 2.0 3.0 3.0 2.0 9.0 4.0 13.0 13.0 14.0	Cords Cords Cords <i>Cords</i> <i>Cords</i> <i>Cords</i> <i>Cords</i> <i>Cords</i> <i>Cords</i> Cords <i>Cords</i> Cords	13.0	\$4,210.65
11	Balsam Fir Mixed Hardwood <i>Black Ash</i> <i>Paper Birch</i>	Pulpwood	4.0 48.0 15.0 24.0	Cords Cords <i>Cords</i> <i>Cords</i>	21.1	\$6,216.35

Description of Timber by Payment Unit (PU), con't

PU	MARKET GROUP	PRODUCT	QUANTITY	UNIT	ACRES	ADVERTISE PRICE
11 con't	<i>Red Maple</i>	<i>Pulpwood</i>	9.0	<i>Cords</i>		
	Mixed Spruce		49.0	Cords		
	<i>Black Spruce</i>		49.0	<i>Cords</i>		
	N. White Cedar		99.0	Cords		
	Quaking Aspen		9.0	Cords		
	Tamarack		71.0	Cords		
TOTAL:			1.6	MBF		
TOTAL:			2,179.0	Cords		

Sale Specific Conditions & Requirements

Sale Name: Little Cedar SBW

Sale Number: 33-024-18 Seq#: 1

1 - Sale Area

1.2 - Boundaries

1.2.1 - Painted boundaries (1/14)

The sale boundary and Payment Unit boundaries are marked and identified by blue, red and yellow paint. Exterior sale boundary lines against private property are marked with blue paint. Exterior sale boundary lines against state are marked with red paint. Interior Payment Unit boundaries are marked with yellow paint. The painted boundary line trees are not Included Timber and are to be protected. Yellow painted trees designating an interior Payment Unit boundary are only to be cut when all surrounding Payment Units have been paid for.

2 - Timber Specifications

2.1 - Included Timber

2.1.1 - Clearcut unit(s) with unmerchantable trees (6/14)

Within Payment Unit(s) 1 - 11, cut all trees that are three (3) inches or more at DBH, with the following exceptions:

- Within Payment Units 1, 4, 6, and 9, do not cut cedar.
- Within Payment Units 3 and 11, do not cut cedar marked with green paint.
- Within Payment Unit 5, do not cut hemlock and white pine.
- Within Payment Units 7 and 10, do not cut hemlock, cedar, and white pine.

3 - Payments

3.3 - Pre-measured Sales

3.3.4 - Dividing payment units (7/14)

Payment Unit(s) \$18,000 in value or greater may be divided at the request of the Purchaser and upon approval of the Unit Manager. Dividing Payment Units is a contract modification which requires a Timber Sale Contract Supplement. There will be only one division per Payment Unit.

4 - Transportation

4.1 - Construction

4.1.6 - Road construction (1/09)

Construction of new roads or improvements of existing roads shall be done in such a way as to minimize the environmental and visual impacts. Merchantable trees shall be cut and utilized unless otherwise directed. Non-merchantable trees shall be severed and laid flat on the ground. Slash shall be scattered, and not left in windrows and kept a minimum of 10 feet back from the road edge. Stumps shall be set upright, not left on edge, and be moved at least 10 feet away from the road edge. Disturbed soil shall be feathered into the woods and not left in berms or windrows.

4.2 - Maintenance

4.2.1 - Hauling restriction (12/08)

Hauling may be restricted on forest roads by the Unit Manager or his/her representative. The restriction may occur during spring breakup or during other wet weather conditions.

4.2.4 - Grading (10/16)

For completion of the sale, state forest roads must be graded. In general, this will require a road grader or bull dozer to shape up the roads after forest products have been hauled off site. This includes cleaning of drainage areas, grading, crowning and filling with gravel, if necessary. The grading equipment to be used must be approved by the Unit Manager or his/her representative.

4.4 - Access

4.4.1 - Private property access (3/11)

Permission for access across private land is the responsibility of the Purchaser. Should the Purchaser desire to cross private land, a copy of the written permission from the private land-owner may be required by the DNR.

5 - Operations

5.2 - Conduct of Operations

5.2.3 - Operating Restrictions

5.2.3.1 - Operating restrictions (9/11)

Within Payment Unit(s) 1, 3, and 11, cutting and skidding are limited to the period of December 1 to March 31, unless there is an extended dry or frozen period and the sale administrator allows harvesting during that time period. This restriction is because of low wet ground throughout the Payment Units.

Note: If access cannot be obtained from the private landowners to the north of Payment Units 2 - 6, then cutting and skidding will be limited to the period of December 1 to March 31 in Payment Units 2 - 6. There is a low area on the access road on state land heading up to these Payment Units.

5.2.22 - Operating Caution

5.2.22.1 - Operating caution (6/11)

It is recommended, but not required, that within Payment Unit(s) 4, 6, and 9, cutting and skidding occur during dry summer or frozen winter conditions. The reason for the recommendation is because of some low wet pockets within the Payment Units and on access trails.

5.3 - Stream Protection

5.3.1 - Operating near stream (7/04)

No tracked or wheeled vehicles shall be operated within 100 feet of the Little Cedar River.

5.4 - Soil Protection

5.4.1 - Rutting restriction, general (7/16)

Operations are to cease immediately if equipment and weather conditions result in rutting of roads and/or skid trails which is 12 inches or greater in depth and 50 feet in length. The Unit Manager or his/her representative may restrict hauling and/or skidding if ruts exceed the specified depth. With the Unit Manager or his/her representative's approval, the Purchaser may return to the area when the risk of rutting has decreased.

5.8 - Protection of Endangered Species

5.8.6 - Protection of eagle nests (5/12)

To protect an active eagle's nest, all harvesting operations within Payment Unit 7 are limited to the period of September 1 through December 31.

7 - Other Conditions

7.2 - Extensions

7.2.6 - Forest health extension (6/13)

This sale contains trees infected with spruce budworm and eastern larch beetle. It is considered at high risk for mortality and/or loss of timber value. The sale must be harvested promptly. One (1), twelve (12) month extension can be applied to one (1) other State Forest Timber Sale Contract owned by the purchaser or owned by one (1) designated sub-contractor of the Purchaser that works this contract. To qualify, the contract expiration date of the contract to be extended must be within twelve (12) months from the issue date of this contract. If this is the first extension on the other State Forest Timber Sale Contract, then the 5% extension fee will be waived. If this is an additional extension, the 10% fee will be reduced to 5%. The forest health extension must be used before this contract is closed-out. This specification does not alleviate the purchaser from any contractual obligations of the extended State Forest Timber Sale Contract. Per General Condition & Requirement 7.2, extensions are at the sole discretion of the DNR.

7.5 - Loss

7.5.1 - Deteriorating timber (7/09)

The sale area has received damage from the spruce budworm and the eastern larch beetle. The Purchaser should harvest the wood as soon as possible. The Department of Natural Resources is held free of responsibility of any further damage or deterioration due to delay in harvesting.

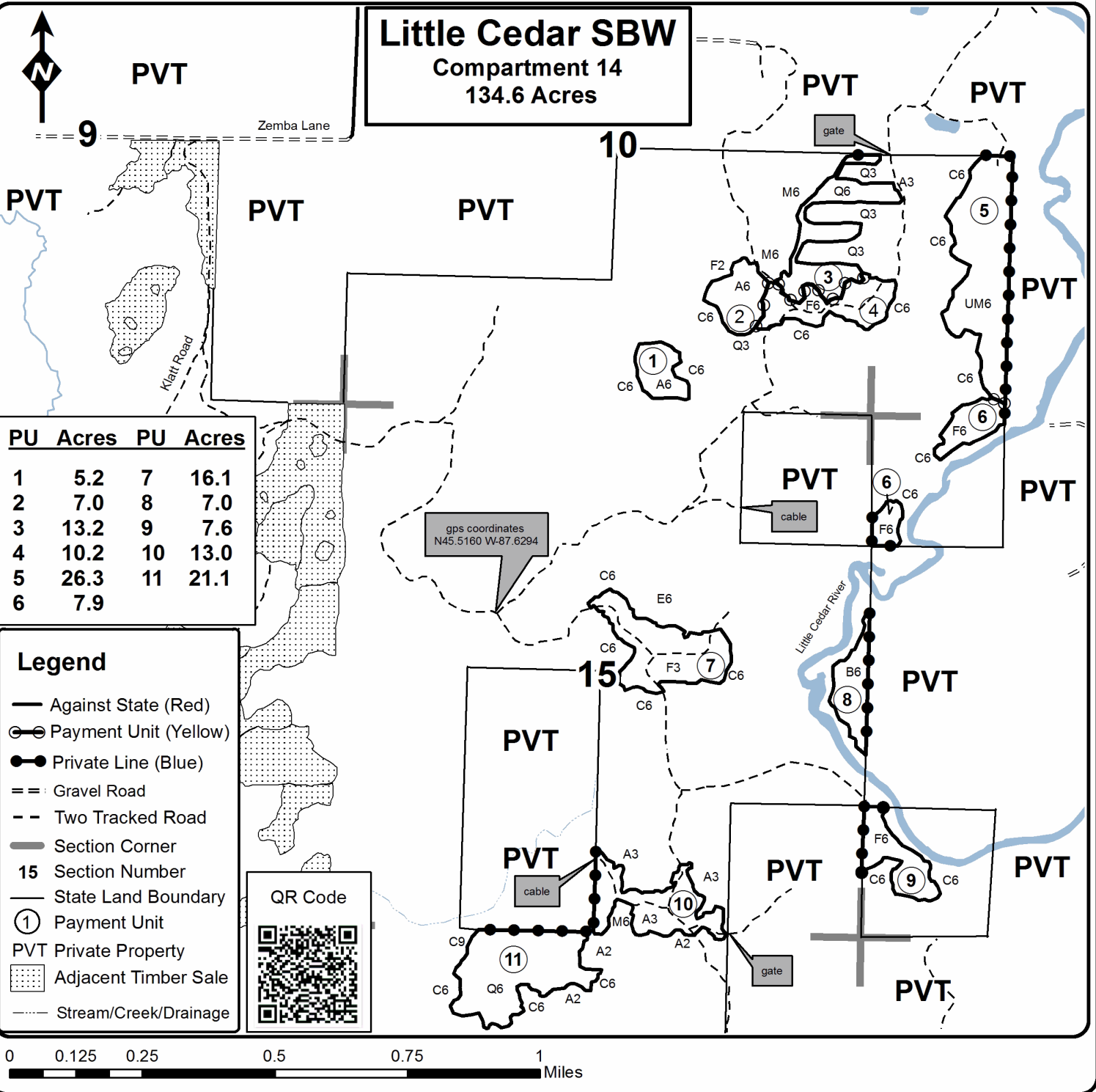


TIMBER SALE MAP

This information provided by authority of Part 525, 1994 PA 451, as amended.

Forest Management Unit Escanaba Management Unit		County Menominee County	Mapped By Beaudo	Date 6/28/2018	Page 1	of 1
Township 36N	Range 27W	Section(s) and Subdivision(s) Sec 10 - NESE, NWSE, SESE, SWSE; Sec 11 - NWSW, SWSW; Sec 14 - NWNW, SWSW; Sec 15 - NESE, NWSE, SENE, SENW, SWNE, SWSE; Sec 22 - NENW, NVNE, NWNW.			Scale 1:15,840	

Cover Type				Density	
A = Aspen	H = Hemlock	N = Marsh	U = Upland Brush	0 = Non Stocked	5 = Pole Timber Medium
B = Paper Birch	J = Jack Pine	O = Oak	UM = Upland Mixed	1 = Seedling Sapling Poor	6 = Pole Timber Well
C = Cedar	L = Lowland Brush	P = Lowland Poplar	V = Bog or Marsh	2 = Seedling Sapling Medium	7 = Saw Timber Poor
D = Treed Bog	LM = Lowland Mixed	Q = Mixed Swamp Conifer	W = White Pine	3 = Seedling Sapling Well	8 = Saw Timber Medium
E = Swamp Hdwoods	M = Mpl, Bch, Brch	R = Red Pine	X = Non Stocked	4 = Pole Timber Poor	9 = Saw Timber Well
F = Spruce Fir	MC = Mixed Conifer	S = Black Spruce	Z = Water		
G = Grass	MD = Mixed Deciduous	T = Tamarack			



TIMBER SALE INFORMATION

South Fox Beaver (33-028-18)

T36N, R24W, SEC. 19; T36N, R25W, SEC. 24; T36N, R25W, SEC. 25; T36N, R25W, SEC. 26; T36N, R25W, SEC. 36.
Menominee County (Advertised Price \$73,043.90)

SALE NOTE: The Purchaser will be required to haul and spread 120 yards of gravel on one of the access roads within the sale. The gravel is available from a state pit within the sale area. There is a state gate located on the South Fox Road within Payment Unit 7. This gate is always left open and unlocked.

A timber sale contract for this lump sum, sealed bid timber sale will be awarded to the responsible bidder offering the highest sealed bid price. Bids must be at or above the following advertised price for each species:

<u>PRODUCTS & SPECIES</u>	<u>ESTIMATED UNITS*</u>	<u>ADVERTISED PRICE</u>
Sawtimber		
Basswood	1.80 MBF	\$ 106.00 / MBF
Green Ash	21.50 MBF	\$ 89.00 / MBF
Red Maple	8.70 MBF	\$ 201.00 / MBF
Sugar Maple	5.30 MBF	\$ 281.00 / MBF
White Pine	27.90 MBF	\$ 58.00 / MBF
Pulpwood		
Balsam Fir	242.00 Cords	\$ 24.45 / Cord
Mixed Aspen	411.00 Cords	\$ 29.15 / Cord
Mixed Hardwood	1,275.00 Cords	\$ 29.20 / Cord
Mixed Spruce	151.00 Cords	\$ 21.30 / Cord
N. White Cedar	240.00 Cords	\$ 21.15 / Cord
Red Pine	14.00 Cords	\$ 54.85 / Cord
Tamarack	3.00 Cords	\$ 18.55 / Cord
White Pine	64.00 Cords	\$ 28.75 / Cord

* The total volume is statistically estimated within plus (+) or minus (-) 10.01 percent. The estimated units are final and not subject to adjustment. Prospective bidders are urged to examine this timber and to make their own estimates of quantity and quality.

BOND AND PAYMENT SCHEDULE:

1. A bond in the amount of \$3,652.00 to insure faithful performance of the conditions of the contract will be deposited by the successful bidder within 21 days of the sale award.
2. Cutting in any sale or unit without the required advance payment would be considered a trespass.
3. Total payment must be paid in advance or according to the following schedule:
 - (a) Ten percent (10%) of the sale value must be paid within 21 days of the sale award.
 - (b) The 10% down payment will be credited towards the first unit cut.
 - (c) Payment for each of the following units must be made before cutting begins in that unit:

PAYMENT UNIT NUMBER	PERCENT OF TOTAL SALE VALUE
01	10.5%
02	2.4%
03	3.0%
04	24.3%
05	10.8%
06	6.9%
07	14.9%
08	14.9%
09	8.3%
10	4.0%

4. If no cutting takes place, the 10% down payment will not be refunded.
5. Operations on the contract issued will terminate on 06/30/2021.

Description of Timber by Payment Unit (PU)

PU	MARKET GROUP	PRODUCT	QUANTITY	UNIT	ACRES	ADVERTISE PRICE
1	White Pine	Sawtimber	27.9	MBF	16.6	\$7,662.05
	Balsam Fir	Pulpwood	52.0	Cords		
	Mixed Aspen		12.0	Cords		
	<i>Balsam Poplar</i>		10.0	<i>Cords</i>		
	<i>Quaking Aspen</i>		2.0	<i>Cords</i>		
	Mixed Hardwood		44.0	Cords		
	<i>Green Ash</i>		2.0	<i>Cords</i>		
	<i>Ironwood</i>		28.0	<i>Cords</i>		
	<i>Paper Birch</i>		6.0	<i>Cords</i>		
	<i>Red Maple</i>		8.0	<i>Cords</i>		
	Mixed Spruce		19.0	Cords		
	<i>White Spruce</i>		19.0	<i>Cords</i>		
	N. White Cedar		10.0	Cords		
	Red Pine		14.0	Cords		
	White Pine		61.0	Cords		
2	Red Maple	Sawtimber	2.0	MBF	2.6	\$1,754.30
	Sugar Maple		0.6	MBF		
	Balsam Fir	Pulpwood	4.0	Cords		
	Mixed Hardwood		35.0	Cords		
	<i>Green Ash</i>		4.0	<i>Cords</i>		
	<i>Red Maple</i>		19.0	<i>Cords</i>		
	<i>Sugar Maple</i>		12.0	<i>Cords</i>		
	Mixed Spruce		3.0	Cords		
	<i>White Spruce</i>		3.0	<i>Cords</i>		
	3	Basswood	Sawtimber	0.8		
Green Ash			0.8	MBF		
Red Maple			0.5	MBF		
Sugar Maple			0.9	MBF		
Mixed Hardwood		Pulpwood	57.0	Cords		
<i>Basswood</i>			1.0	<i>Cords</i>		
<i>Green Ash</i>			7.0	<i>Cords</i>		
<i>Red Maple</i>			18.0	<i>Cords</i>		
<i>Sugar Maple</i>			31.0	<i>Cords</i>		
4		Green Ash	Sawtimber	9.8	MBF	19.1
	Red Maple		2.0	MBF		
	Sugar Maple		1.6	MBF		
	Balsam Fir	Pulpwood	40.0	Cords		
	Mixed Aspen		118.0	Cords		
	<i>Balsam Poplar</i>		94.0	<i>Cords</i>		
	<i>Quaking Aspen</i>		24.0	<i>Cords</i>		
	Mixed Hardwood		291.0	Cords		
	<i>American Elm</i>		3.0	<i>Cords</i>		
	<i>Black Ash</i>		40.0	<i>Cords</i>		
	<i>Green Ash</i>		153.0	<i>Cords</i>		
	<i>Paper Birch</i>		23.0	<i>Cords</i>		
	<i>Red Maple</i>		63.0	<i>Cords</i>		
	<i>Sugar Maple</i>		9.0	<i>Cords</i>		
	Mixed Spruce		11.0	Cords		
	<i>White Spruce</i>		11.0	<i>Cords</i>		
	N. White Cedar		136.0	Cords		
5	Green Ash	Sawtimber	1.5	MBF	15.3	\$7,866.70
	Red Maple		1.2	MBF		
	Balsam Fir	Pulpwood	42.0	Cords		
	Mixed Aspen		63.0	Cords		
	<i>Balsam Poplar</i>		24.0	<i>Cords</i>		
	<i>Quaking Aspen</i>		39.0	<i>Cords</i>		

Description of Timber by Payment Unit (PU), con't

PU	MARKET GROUP	PRODUCT	QUANTITY	UNIT	ACRES	ADVERTISE PRICE
5 con't	Mixed Hardwood	Pulpwood	136.0	Cords		
	<i>Black Ash</i>		13.0	<i>Cords</i>		
	<i>Green Ash</i>		105.0	<i>Cords</i>		
	<i>Paper Birch</i>		9.0	<i>Cords</i>		
	<i>Red Maple</i>		9.0	<i>Cords</i>		
	Mixed Spruce		12.0	Cords		
	<i>Black Spruce</i>		3.0	<i>Cords</i>		
	<i>White Spruce</i>		9.0	<i>Cords</i>		
	N. White Cedar		19.0	Cords		
	6	Green Ash	Sawtimber	5.2		
Balsam Fir		Pulpwood	2.0	Cords		
Mixed Aspen			3.0	Cords		
<i>Balsam Poplar</i>			1.0	<i>Cords</i>		
<i>Quaking Aspen</i>			2.0	<i>Cords</i>		
Mixed Hardwood			134.0	Cords		
<i>Black Ash</i>			35.0	<i>Cords</i>		
<i>Green Ash</i>			87.0	<i>Cords</i>		
<i>Paper Birch</i>			10.0	<i>Cords</i>		
<i>Red Maple</i>			2.0	<i>Cords</i>		
Mixed Spruce			10.0	Cords		
<i>White Spruce</i>			10.0	<i>Cords</i>		
N. White Cedar			15.0	Cords		
7		Red Maple	Sawtimber	0.5	MBF	27.2
	Sugar Maple		0.8	MBF		
	Balsam Fir	Pulpwood	74.0	Cords		
	Mixed Aspen		139.0	Cords		
	<i>Balsam Poplar</i>		82.0	<i>Cords</i>		
	<i>Quaking Aspen</i>		57.0	<i>Cords</i>		
	Mixed Hardwood		111.0	Cords		
	<i>Green Ash</i>		78.0	<i>Cords</i>		
	<i>Paper Birch</i>		20.0	<i>Cords</i>		
	<i>Red Maple</i>		7.0	<i>Cords</i>		
	<i>Sugar Maple</i>		3.0	<i>Cords</i>		
	<i>Yellow Birch</i>		3.0	<i>Cords</i>		
	Mixed Spruce		65.0	Cords		
	<i>White Spruce</i>		65.0	<i>Cords</i>		
	White Pine		3.0	Cords		
8	Basswood	Sawtimber	1.0	MBF	17.9	\$10,870.25
	Red Maple		2.5	MBF		
	Sugar Maple		1.4	MBF		
	Balsam Fir	Pulpwood	28.0	Cords		
	Mixed Aspen		73.0	Cords		
	<i>B. T. Aspen</i>		24.0	<i>Cords</i>		
	<i>Balsam Poplar</i>		29.0	<i>Cords</i>		
	<i>Quaking Aspen</i>		20.0	<i>Cords</i>		
	Mixed Hardwood		214.0	Cords		
	<i>Basswood</i>		17.0	<i>Cords</i>		
	<i>Black Ash</i>		9.0	<i>Cords</i>		
	<i>Green Ash</i>		82.0	<i>Cords</i>		
	<i>Ironwood</i>		6.0	<i>Cords</i>		
	<i>Paper Birch</i>		14.0	<i>Cords</i>		
	<i>Red Maple</i>		33.0	<i>Cords</i>		
	<i>Sugar Maple</i>		26.0	<i>Cords</i>		
	<i>Yellow Birch</i>		27.0	<i>Cords</i>		
	Mixed Spruce		22.0	Cords		
	<i>White Spruce</i>		22.0	<i>Cords</i>		

Description of Timber by Payment Unit (PU), con't

PU	MARKET GROUP	PRODUCT	QUANTITY	UNIT	ACRES	ADVERTISE PRICE
8 con't	N. White Cedar	Pulpwood	16.0	Cords		
9	Green Ash	Sawtimber	3.7	MBF	11.8	\$6,071.75
	Mixed Hardwood	Pulpwood	180.0	Cords		
	<i>Black Ash</i>		41.0	<i>Cords</i>		
	<i>Green Ash</i>		107.0	<i>Cords</i>		
	<i>Paper Birch</i>		24.0	<i>Cords</i>		
	<i>Red Maple</i>		7.0	<i>Cords</i>		
	<i>Yellow Birch</i>		1.0	<i>Cords</i>		
	N. White Cedar		23.0	Cords		
10	Green Ash	Sawtimber	0.5	MBF	6.4	\$2,955.05
	Mixed Aspen	Pulpwood	3.0	Cords		
	<i>Balsam Poplar</i>		3.0	<i>Cords</i>		
	Mixed Hardwood		73.0	Cords		
	<i>Black Ash</i>		29.0	<i>Cords</i>		
	<i>Green Ash</i>		27.0	<i>Cords</i>		
	<i>Paper Birch</i>		9.0	<i>Cords</i>		
	<i>Red Maple</i>		4.0	<i>Cords</i>		
	<i>Yellow Birch</i>		4.0	<i>Cords</i>		
	Mixed Spruce		9.0	Cords		
	<i>White Spruce</i>		9.0	<i>Cords</i>		
	N. White Cedar		21.0	Cords		
	Tamarack		3.0	Cords		
TOTAL:			65.2	MBF		
TOTAL:			2,400.0	Cords		

Sale Specific Conditions & Requirements

Sale Name: South Fox Beaver

Sale Number: 33-028-18 Seq#: 1

1 - Sale Area

1.2 - Boundaries

1.2.1 - Painted boundaries (1/14)

The sale boundary and Payment Unit boundaries are marked and identified by blue, red and yellow paint. Exterior sale boundary lines against private property are marked with blue paint. Exterior sale boundary lines against state are marked with red paint. Interior retention patches are bounded by red paint; no harvesting activities may occur within these areas. Interior Payment Unit boundaries are marked with yellow paint. The painted boundary line trees are not Included Timber and are to be protected. Yellow painted trees designating an interior Payment Unit boundary are only to be cut when all surrounding Payment Units have been paid for.

2 - Timber Specifications

2.1 - Included Timber

2.1.1 - Clearcut unit(s) with unmerchantable trees (6/14)

Within Payment Unit(s) 4 - 10, cut all trees that are three (3) inches or more at DBH, with the following exceptions:

- Within Payment Units 4, 5 and 6, do not cut hemlock and yellow birch.
- Within Payment Unit 7, do not cut hemlock and cedar.
- Within Payment Unit 8, do not cut hemlock and butternut.

Within Payment Unit(s) 2, cut all trees four (4) inches or more at DBH, except do not cut cedar and hemlock.

2.1.3 - Cut tree marked unit(s) (12/08)

Within Payment Unit(s) 3, all trees are designated for cutting when marked with orange paint above and below stump height, regardless of merchantability.

2.1.7 - Leave tree marked unit(s) (6/14)

Within Payment Unit(s) 1, cut all trees that are three (3) inches or more at DBH, except do not cut hemlock and trees marked with green paint above and below stump height.

2.2 - Utilization

2.2.4 - Skidding length (2/14)

Skidding of unlimbed tops or lengths over 17 feet is not permissible within Payment Unit 3.

3 - Payments

3.3 - Pre-measured Sales

3.3.4 - Dividing payment units (7/14)

Payment Unit(s) \$18,000 in value or greater may be divided at the request of the Purchaser and upon approval of the Unit Manager. Dividing Payment Units is a contract modification which requires a Timber Sale Contract Supplement. There will be only one division per Payment Unit.

4 - Transportation

4.1 - Construction

4.1.1 - Stream crossings, general (3/11)

All stream crossing structures will be temporary and therefore, shall be provided by the Purchaser, and must be removed upon completion of the sale. All permits for stream crossings will be provided by the Purchaser. A temporary crossing may be desired to access Payment Unit 10 if the Purchaser doesn't want a long skidding distance.

4.1.6 - Road construction (1/09)

Construction of new roads or improvements of existing roads shall be done in such a way as to minimize the environmental

and visual impacts. Merchantable trees shall be cut and utilized unless otherwise directed. Non-merchantable trees shall be severed and laid flat on the ground. Slash shall be scattered, and not left in windrows and kept a minimum of 10 feet back from the road edge. Stumps shall be set upright, not left on edge, and be moved at least 10 feet away from the road edge. Disturbed soil shall be feathered into the woods and not left in berms or windrows.

4.1.8 - Road work (1) (8/07)

The following road work is required: The Purchaser must haul and spread 120 yards of gravel onto the access road for Payment Units 2 - 5. The road work must be completed prior to any harvesting within Payment Units 2 - 5. Gravel is available from a state pit located adjacent to Payment Unit 7.

4.2 - Maintenance

4.2.1 - Hauling restriction (12/08)

Hauling may be restricted on forest roads by the Unit Manager or his/her representative. The restriction may occur during spring breakup or during other wet weather conditions.

4.2.4 - Grading (10/16)

For completion of the sale, state forest roads must be graded. In general, this will require a road grader or bull dozer to shape up the roads after forest products have been hauled off site. This includes cleaning of drainage areas, grading, crowning and filling with gravel, if necessary. The grading equipment to be used must be approved by the Unit Manager or his/her representative.

4.4 - Access

4.4.2 - Alternate route on private property (2/04)

It is the Purchaser's responsibility to obtain access across private land for any routes other than the route shown on the sale map.

5 - Operations

5.2 - Conduct of Operations

5.2.3 - Operating Restrictions

5.2.3.1 - Operating restrictions (9/11)

Within Payment Unit(s) 2, 4, 5, 6, 9, and 10, cutting and skidding are limited to the period of December 1 to March 31, unless there is an extended dry or frozen period and the sale administrator allows harvesting during that time period. This restriction is because of low wet pockets in Payment Units 2, 4, and 5, and the majority of Payment Units 6, 9, and 10 are low wet ground.

5.2.3.3 - Bark slippage restriction (3/09)

Within Payment Unit(s) 3, unless changed by written agreement, cutting and skidding are not permitted during the period of April 15 to July 15. This restriction is because of bark slippage.

5.2.22 - Operating Caution

5.2.22.1 - Operating caution (6/11)

It is recommended, but not required, that within Payment Unit(s) 7 and 8, cutting and skidding occur during dry summer or frozen winter conditions. The reason for the recommendation is because there are a few acres of each Payment Unit that contain lower ground, but the majority of the Payment Units can be harvested during the dry summer months.

5.3 - Stream Protection

5.3.1 - Operating near stream (7/04)

No tracked or wheeled vehicles shall be operated within 50 feet of a creek/stream/drainage, except at an approved crossing.

5.4 - Soil Protection

5.4.1 - Rutting restriction, general (7/16)

Operations are to cease immediately if equipment and weather conditions result in rutting of roads and/or skid trails which is 12 inches or greater in depth and 50 feet in length. The Unit Manager or his/her representative may restrict hauling and/or skidding if ruts exceed the specified depth. With the Unit Manager or his/her representative's approval, the Purchaser may

return to the area when the risk of rutting has decreased.

6 - Safety and Fire Prevention

6.2 - Signing

6.2.1 - Road posting (9/09)

The Purchaser is responsible for posting and maintaining caution signs on the South Fox Road prior to beginning operations. The road must be posted at appropriate distances from the sale area to warn of logging activity and truck traffic. Signs must be removed when harvest operations are suspended or completed. The Purchaser will provide these signs.

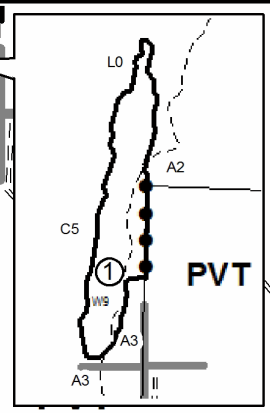
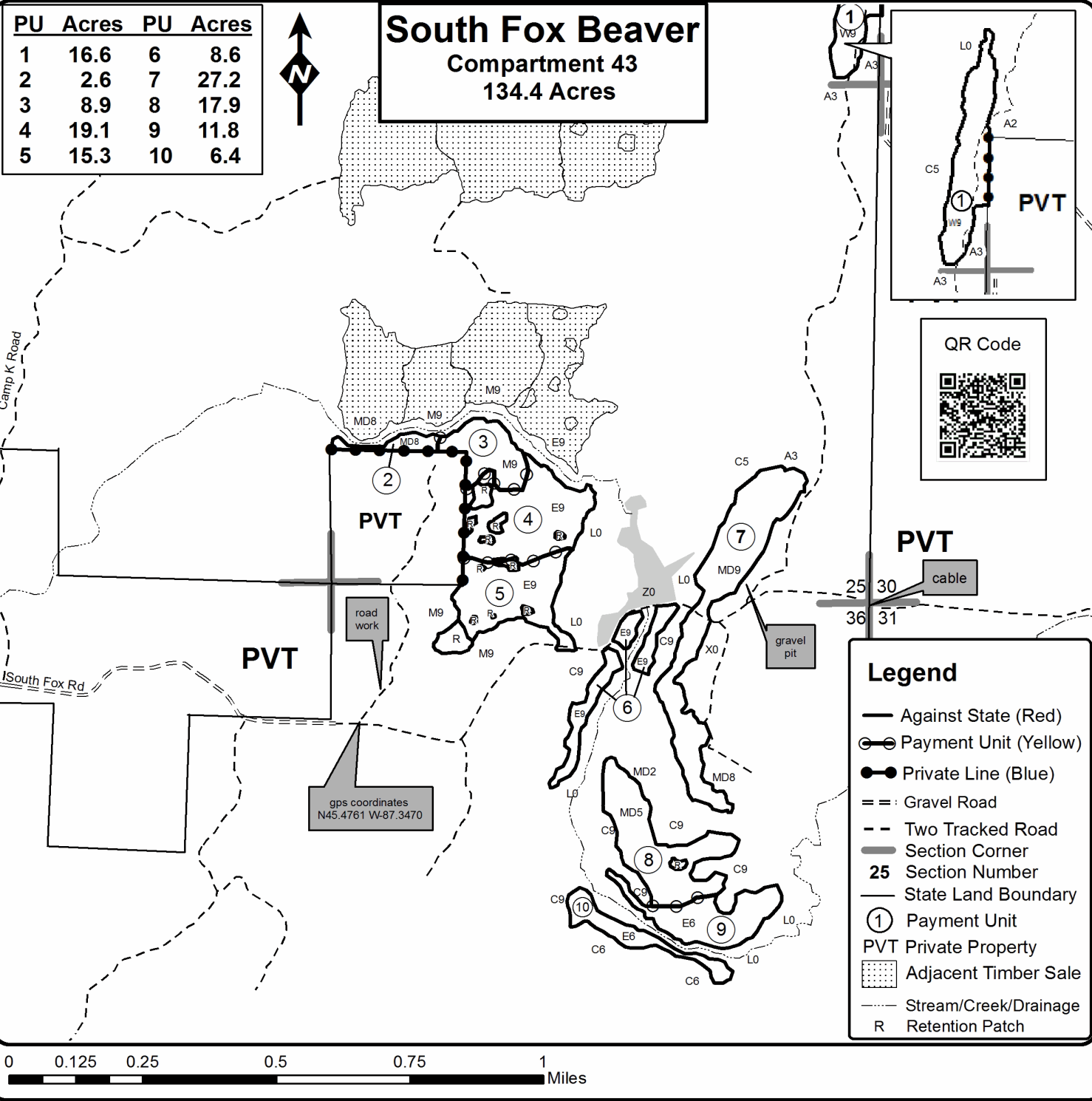


TIMBER SALE MAP

This information provided by authority of Part 525, 1994 PA 451, as amended.

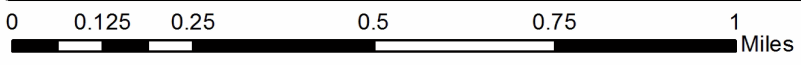
Forest Management Unit Escanaba Management Unit		County Menominee County	Mapped By Beaudo	Date 7/16/2018	Page 1	of 1
Township 36N	Range 24W 25W	Section(s) and Subdivision(s) R24W, sec 19 - NWSW, R25W, sec 24 - NESE, SESE; sec 25 - NENE, NESE, NESW, NWSW, SESE, SESW, SWSE; sec 26 - NESE; sec 36 - NENW, NESE, NESW, NWNE, NWNW, NWSE, SENE, SENW, SWNE.		Scale 1:15,840		

Cover Type				Density			
A = Aspen	H = Hemlock	N = Marsh	U = Upland Brush	0 = Non Stocked	5 = Pole Timber Medium		
B = Paper Birch	J = Jack Pine	O = Oak	UM = Upland Mixed	1 = Seedling Sapling Poor	6 = Pole Timber Well		
C = Cedar	L = Lowland Brush	P = Lowland Poplar	V = Bog or Marsh	2 = Seedling Sapling Medium	7 = Saw Timber Poor		
D = Treed Bog	LM = Lowland Mixed	Q = Mixed Swamp Conifer	W = White Pine	3 = Seedling Sapling Well	8 = Saw Timber Medium		
E = Swamp Hdwoods	M = Mpl, Bch, Brch	R = Red Pine	X = Non Stocked	4 = Pole Timber Poor	9 = Saw Timber Well		
F = Spruce Fir	MC = Mixed Conifer	S = Black Spruce	Z = Water				
G = Grass	MD = Mixed Deciduous	T = Tamarack					



Legend

- Against State (Red)
- ⊙ Payment Unit (Yellow)
- Private Line (Blue)
- == Gravel Road
- - Two Tracked Road
- Section Corner
- 25 Section Number
- State Land Boundary
- ① Payment Unit
- PVT Private Property
- ▨ Adjacent Timber Sale
- Stream/Creek/Drainage
- R Retention Patch



TIMBER SALE INFORMATION

Deer Creek Maple (33-029-18)

T36N, R25W, SEC. 13; T36N, R25W, SEC. 24; T36N, R25W, SEC. 25.
Menominee County (Advertised Price \$123,059.50)

SALE NOTE: The Purchaser must purchase and install a culvert and also haul and spread 150 yards of gravel on the main access road, prior to any harvesting taking place. The best access into Payment Units 2 and 3 is through private property off of the North Fox Road. If this access can't be obtained a temporary creek crossing will need to be installed.

A timber sale contract for this lump sum, sealed bid timber sale will be awarded to the responsible bidder offering the highest sealed bid price. Bids must be at or above the following advertised price for each species:

<u>PRODUCTS & SPECIES</u>	<u>ESTIMATED UNITS*</u>		<u>ADVERTISED PRICE</u>
Sawtimber			
Basswood	3.30	MBF	\$ 106.00 / MBF
Green Ash	21.00	MBF	\$ 89.00 / MBF
Paper Birch	1.10	MBF	\$ 82.00 / MBF
Red Maple	115.30	MBF	\$ 201.00 / MBF
Sugar Maple	11.90	MBF	\$ 281.00 / MBF
White Ash	15.80	MBF	\$ 64.00 / MBF
White Pine	3.80	MBF	\$ 58.00 / MBF
Yellow Birch	2.10	MBF	\$ 118.00 / MBF
Pulpwood			
Balsam Fir	101.00	Cords	\$ 24.45 / Cord
Mixed Aspen	19.00	Cords	\$ 29.15 / Cord
Mixed Hardwood	2,753.00	Cords	\$ 29.20 / Cord
N. White Cedar	217.00	Cords	\$ 21.15 / Cord
Tamarack	6.00	Cords	\$ 18.55 / Cord
White Pine	11.00	Cords	\$ 28.75 / Cord
White Spruce	203.00	Cords	\$ 21.30 / Cord

* The total volume is statistically estimated within plus (+) or minus (-) 7.99 percent. The estimated units are final and not subject to adjustment. Prospective bidders are urged to examine this timber and to make their own estimates of quantity and quality.

BOND AND PAYMENT SCHEDULE:

1. A bond in the amount of \$6,153.00 to insure faithful performance of the conditions of the contract will be deposited by the successful bidder within 21 days of the sale award.
2. Cutting in any sale or unit without the required advance payment would be considered a trespass.
3. Total payment must be paid in advance or according to the following schedule:
 - (a) Ten percent (10%) of the sale value must be paid within 21 days of the sale award.
 - (b) The 10% down payment will be credited towards the first unit cut.
 - (c) Payment for each of the following units must be made before cutting begins in that unit:

PAYMENT UNIT NUMBER	PERCENT OF TOTAL SALE VALUE
01	6.7%
02	3.5%
03	8.7%
04	18.6%
05	23.1%
06	14.3%
07	5.7%
08	3.1%
09	9.5%
10	6.8%

4. If no cutting takes place, the 10% down payment will not be refunded.
5. Operations on the contract issued will terminate on 09/30/2021.

Description of Timber by Payment Unit (PU)

PU	MARKET GROUP	PRODUCT	QUANTITY	UNIT	ACRES	ADVERTISE PRICE
1	Green Ash	Sawtimber	8.3	MBF	15.8	\$8,224.30
	Red Maple		0.5	MBF		
	Balsam Fir	Pulpwood	18.0	Cords		
	Mixed Hardwood		210.0	Cords		
	<i>Balsam Poplar</i>		5.0	<i>Cords</i>		
	<i>Black Ash</i>		61.0	<i>Cords</i>		
	<i>Green Ash</i>		132.0	<i>Cords</i>		
	<i>Paper Birch</i>		3.0	<i>Cords</i>		
	<i>Red Maple</i>		9.0	<i>Cords</i>		
	N. White Cedar		8.0	Cords		
	Tamarack		6.0	Cords		
	White Spruce		25.0	Cords		
	2	Green Ash	Sawtimber	3.4		
Red Maple			3.6	MBF		
Yellow Birch			0.5	MBF		
Mixed Hardwood		Pulpwood	89.0	Cords		
<i>Black Ash</i>			30.0	<i>Cords</i>		
<i>Green Ash</i>			33.0	<i>Cords</i>		
<i>Paper Birch</i>			4.0	<i>Cords</i>		
<i>Red Maple</i>			18.0	<i>Cords</i>		
<i>Yellow Birch</i>			4.0	<i>Cords</i>		
N. White Cedar			26.0	Cords		
White Spruce			1.0	Cords		
3	Basswood	Sawtimber	3.3	MBF	16.9	\$10,680.95
	Red Maple		1.3	MBF		
	Sugar Maple		5.7	MBF		
	White Ash		15.8	MBF		
	Balsam Fir	Pulpwood	5.0	Cords		
	Mixed Hardwood		249.0	Cords		
	<i>Balsam Poplar</i>		2.0	<i>Cords</i>		
	<i>Basswood</i>		53.0	<i>Cords</i>		
	<i>Red Maple</i>		33.0	<i>Cords</i>		
	<i>Sugar Maple</i>		90.0	<i>Cords</i>		
	<i>White Ash</i>		71.0	<i>Cords</i>		
	White Spruce		3.0	Cords		
	4	Red Maple	Sawtimber	27.2		
Sugar Maple			0.5	MBF		
Balsam Fir		Pulpwood	34.0	Cords		
Mixed Aspen			5.0	Cords		
<i>B. T. Aspen</i>			3.0	<i>Cords</i>		
<i>Quaking Aspen</i>			2.0	<i>Cords</i>		
Mixed Hardwood			511.0	Cords		
<i>Black Ash</i>			10.0	<i>Cords</i>		
<i>Black Cherry</i>			3.0	<i>Cords</i>		
<i>Green Ash</i>			15.0	<i>Cords</i>		
<i>Paper Birch</i>			7.0	<i>Cords</i>		
<i>Red Maple</i>			458.0	<i>Cords</i>		
<i>Sugar Maple</i>			15.0	<i>Cords</i>		
<i>Yellow Birch</i>			3.0	<i>Cords</i>		
N. White Cedar			8.0	Cords		
White Spruce			55.0	Cords		
5	Green Ash	Sawtimber	2.4	MBF	30.0	\$28,689.35
	Paper Birch		1.1	MBF		
	Red Maple		35.4	MBF		
	Sugar Maple		3.9	MBF		
	Balsam Fir	Pulpwood	9.0	Cords		

Description of Timber by Payment Unit (PU), con't

PU	MARKET GROUP	PRODUCT	QUANTITY	UNIT	ACRES	ADVERTISE PRICE		
5 con't	Mixed Aspen	Pulpwood	11.0	Cords				
	<i>Quaking Aspen</i>		11.0	<i>Cords</i>				
	Mixed Hardwood		596.0	Cords				
	<i>Balsam Poplar</i>		8.0	<i>Cords</i>				
	<i>Black Ash</i>		38.0	<i>Cords</i>				
	<i>Green Ash</i>		49.0	<i>Cords</i>				
	<i>Paper Birch</i>		6.0	<i>Cords</i>				
	<i>Red Maple</i>		459.0	<i>Cords</i>				
	<i>Sugar Maple</i>		32.0	<i>Cords</i>				
	<i>Yellow Birch</i>		4.0	<i>Cords</i>				
	N. White Cedar		41.0	Cords				
	White Spruce		64.0	Cords				
6	Green Ash	Sawtimber	1.9	MBF	21.1	\$17,548.75		
	Red Maple		23.7	MBF				
	Yellow Birch		1.6	MBF				
	Balsam Fir		Pulpwood	19.0			Cords	
	Mixed Hardwood			340.0			Cords	
	<i>Balsam Poplar</i>			17.0			<i>Cords</i>	
	<i>Black Ash</i>			42.0			<i>Cords</i>	
	<i>Green Ash</i>			79.0			<i>Cords</i>	
	<i>Paper Birch</i>			3.0			<i>Cords</i>	
	<i>Red Maple</i>			191.0			<i>Cords</i>	
	<i>Yellow Birch</i>			8.0			<i>Cords</i>	
	N. White Cedar			68.0			Cords	
	White Spruce			28.0			Cords	
	7			Red Maple			Sawtimber	4.7
White Pine		1.6		MBF				
Balsam Fir		Pulpwood		12.0	Cords			
Mixed Aspen				3.0	Cords			
<i>Quaking Aspen</i>			3.0	<i>Cords</i>				
Mixed Hardwood			177.0	Cords				
<i>Balsam Poplar</i>			1.0	<i>Cords</i>				
<i>Basswood</i>			2.0	<i>Cords</i>				
<i>Black Ash</i>			14.0	<i>Cords</i>				
<i>Green Ash</i>			66.0	<i>Cords</i>				
<i>Red Maple</i>			86.0	<i>Cords</i>				
<i>Sugar Maple</i>			8.0	<i>Cords</i>				
White Pine			4.0	Cords				
White Spruce			12.0	Cords				
8	Green Ash		Sawtimber	0.5	MBF	9.4	\$3,861.70	
	Red Maple			3.4	MBF			
	Sugar Maple	1.8		MBF				
	Mixed Hardwood	Pulpwood		90.0	Cords			
	<i>Basswood</i>			3.0	<i>Cords</i>			
	<i>Black Ash</i>			1.0	<i>Cords</i>			
	<i>Green Ash</i>			16.0	<i>Cords</i>			
	<i>Red Maple</i>			31.0	<i>Cords</i>			
	<i>Sugar Maple</i>			37.0	<i>Cords</i>			
	<i>Yellow Birch</i>			2.0	<i>Cords</i>			
	9			Green Ash	Sawtimber			3.7
Red Maple			15.5	MBF				
White Pine			1.1	MBF				
Balsam Fir			Pulpwood	3.0		Cords		
Mixed Hardwood		273.0		Cords				
<i>Green Ash</i>		41.0		<i>Cords</i>				
<i>Paper Birch</i>		11.0		<i>Cords</i>				

Description of Timber by Payment Unit (PU), con't

PU	MARKET GROUP	PRODUCT	QUANTITY	UNIT	ACRES	ADVERTISE PRICE
9 con't	<i>Red Maple</i>	<i>Pulpwood</i>	221.0	<i>Cords</i>		
	White Pine		2.0	Cords		
	White Spruce		2.0	Cords		
10	Green Ash	Sawtimber	0.8	MBF	17.5	\$8,341.60
	White Pine		1.1	MBF		
	Balsam Fir	Pulpwood	1.0	Cords		
	Mixed Hardwood		218.0	Cords		
	<i>Balsam Poplar</i>		3.0	<i>Cords</i>		
	<i>Black Ash</i>		39.0	<i>Cords</i>		
	<i>Green Ash</i>		94.0	<i>Cords</i>		
	<i>Red Maple</i>		82.0	<i>Cords</i>		
	N. White Cedar		66.0	Cords		
	White Pine		5.0	Cords		
	White Spruce		13.0	Cords		
	TOTAL:			174.3		
TOTAL:			3,310.0	Cords		

Sale Specific Conditions & Requirements

Sale Name: Deer Creek Maple

Sale Number: 33-029-18 Seq#: 1

1 - Sale Area

1.2 - Boundaries

1.2.1 - Painted boundaries (1/14)

The sale boundary and Payment Unit boundaries are marked and identified by blue, red and yellow paint. Exterior sale boundary lines against private property are marked with blue paint. Exterior sale boundary lines against state are marked with red paint. Interior retention patches are bounded by red paint; no harvesting activities may occur within these areas. Interior Payment Unit boundaries are marked with yellow paint. The painted boundary line trees are not Included Timber and are to be protected. Yellow painted trees designating an interior Payment Unit boundary are only to be cut when all surrounding Payment Units have been paid for.

2 - Timber Specifications

2.1 - Included Timber

2.1.1 - Clearcut unit(s) with unmerchantable trees (6/14)

Within Payment Unit(s) 1, 2, 4, 5, 6, and 10, cut all trees that are three (3) inches or more at DBH, with the following exceptions:

- Within Payment Unit 1, do not cut hemlock.
- Within Payment Units 2, 4, 5, and 6, do not cut hemlock and white pine.
- Within Payment Unit 10, do not cut yellow birch and hemlock.

Within Payment Unit(s) 7 and 9, cut all trees that are four (4) inches or more at DBH, with the following exceptions:

- Within Payment Unit 7, do not cut cedar and hemlock.
- Within Payment Unit 9, do not cut cedar, hemlock, and yellow birch.

2.1.3 - Cut tree marked unit(s) (12/08)

Within Payment Unit(s) 3 and 8, all trees are designated for cutting when marked with orange paint above and below stump height, regardless of merchantability.

3 - Payments

3.3 - Pre-measured Sales

3.3.4 - Dividing payment units (7/14)

Payment Unit(s) \$18,000 in value or greater may be divided at the request of the Purchaser and upon approval of the Unit Manager. Dividing Payment Units is a contract modification which requires a Timber Sale Contract Supplement. There will be only one division per Payment Unit.

4 - Transportation

4.1 - Construction

4.1.1 - Stream crossings, general (3/11)

All stream crossing structures will be temporary and therefore, shall be provided by the Purchaser, and must be removed upon completion of the sale. All permits for stream crossings will be provided by the Purchaser. If the Purchaser is unable to secure access through private land into Payment Units 2 and 3 from the east off of the North Fox Road, a temporary crossing will be needed to access these Payment Units. This could be through state or private land from the south.

4.1.6 - Road construction (1/09)

Construction of new roads or improvements of existing roads shall be done in such a way as to minimize the environmental and visual impacts. Merchantable trees shall be cut and utilized unless otherwise directed. Non-merchantable trees shall be severed and laid flat on the ground. Slash shall be scattered, and not left in windrows and kept a minimum of 10 feet back

from the road edge. Stumps shall be set upright, not left on edge, and be moved at least 10 feet away from the road edge. Disturbed soil shall be feathered into the woods and not left in berms or windrows.

4.1.8 - Road work (1) (8/07)

The following road work is required: The Purchaser must purchase and install a new corrugated steel 15" x 24' culvert on the access road into Payment Units 4 - 10. The Purchaser must also haul and spread 150 yards of gravel on this same access road. There must be a minimum of 12" inches of gravel placed over the culvert. Gravel is available from a state gravel pit at the end of the South Fox Road, which is 2 to 3 miles away. All roadwork must be completed prior to any hauling taking place.

4.2 - Maintenance

4.2.1 - Hauling restriction (12/08)

Hauling may be restricted on forest roads by the Unit Manager or his/her representative. The restriction may occur during spring breakup or during other wet weather conditions.

4.2.4 - Grading (10/16)

For completion of the sale, state forest roads must be graded. In general, this will require a road grader or bull dozer to shape up the roads after forest products have been hauled off site. This includes cleaning of drainage areas, grading, crowning and filling with gravel, if necessary. The grading equipment to be used must be approved by the Unit Manager or his/her representative.

4.4 - Access

4.4.2 - Alternate route on private property (2/04)

It is the Purchaser's responsibility to obtain access across private land for any routes other than the route shown on the sale map.

5 - Operations

5.2 - Conduct of Operations

5.2.3 - Operating Restrictions

5.2.3.1 - Operating restrictions (9/11)

Within Payment Unit(s) 1, 2, 6, 10, cutting and skidding are limited to the period of December 1 to March 31, unless there is an extended dry or frozen period and the sale administrator allows harvesting during that period of time. This restriction is because of low wet ground throughout these Payment Units.

5.2.3.3 - Bark slippage restriction (3/09)

Within Payment Unit(s) 3 and 8, cutting and skidding are not permitted during the period of April 15 to July 15. This restriction is because of bark slippage.

5.2.22 - Operating Caution

5.2.22.1 - Operating caution (6/11)

It is recommended, but not required, that within Payment Unit(s) 4, 5, 7, and 9, cutting and skidding occur during dry summer or frozen winter conditions. The reason for the recommendation is because of some low wet pockets and drains running through each of the Payment Units.

5.3 - Stream Protection

5.3.1 - Operating near stream (7/04)

No tracked or wheeled vehicles shall be operated within 50 feet of the creek running along the west edge of Payment Units 2 and 3, except at an approved crossing. Note: If access through private property can be obtained, no crossing will be needed.

5.4 - Soil Protection

5.4.1 - Rutting restriction, general (7/16)

Operations are to cease immediately if equipment and weather conditions result in rutting of roads and/or skid trails which is 12 inches or greater in depth and 50 feet in length. The Unit Manager or his/her representative may restrict hauling and/or skidding if ruts exceed the specified depth. With the Unit Manager or his/her representative's approval, the Purchaser may return to the area when the risk of rutting has decreased.



TIMBER SALE MAP

This information provided by authority of Part 525, 1994 PA 451, as amended.

Forest Management Unit Escanaba Management Unit	County Menominee County	Mapped By Beaudo	Date 7/26/2018	Page 1	of 1
Township 36N	Range 25W	Section(s) and Subdivision(s) Sec 13 - SESE; Sec 24 - E1/2NW, N1/2NE, SESW; Sec 25 - NW, NWNE, N1/2SW, NWSE.	Scale 1:15,840		

Cover Type				Density			
A = Aspen	H = Hemlock	N = Marsh	U = Upland Brush	0 = Non Stocked	5 = Pole Timber Medium		
B = Paper Birch	J = Jack Pine	O = Oak	UM = Upland Mixed	1 = Seedling Sapling Poor	6 = Pole Timber Well		
C = Cedar	L = Lowland Brush	P = Lowland Poplar	V = Bog or Marsh	2 = Seedling Sapling Medium	7 = Saw Timber Poor		
D = Treed Bog	LM = Lowland Mixed	Q = Mixed Swamp Conifer	W = White Pine	3 = Seedling Sapling Well	8 = Saw Timber Medium		
E = Swamp Hdwoods	M = Mpl, Bch, Brch	R = Red Pine	X = Non Stocked	4 = Pole Timber Poor	9 = Saw Timber Well		
F = Spruce Fir	MC = Mixed Conifer	S = Black Spruce	Z = Water				
G = Grass	MD = Mixed Deciduous	T = Tamarack					

Deer Creek Maple Compartment 43 171.0 Acres

PU	Acres	PU	Acres
1	15.8	6	21.1
2	6.1	7	15.6
3	16.9	8	9.4
4	23.0	9	15.6
5	30.0	10	17.5



Camp K Road

PVT

PVT

PVT

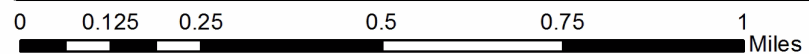


Camp K Road

gps coordinates
N45.4894 W-87.3586

Legend

- Against State (Red)
- Payment Unit (Yellow)
- Private Line (Blue)
- - Two Tracked Road
- Section Corner
- 25 Section Number
- State Land Boundary
- ① Payment Unit
- PVT Private Property
- ▨ Adjacent Timber Sale
- Stream/Creek/Drainage
- R Retention Patch



TIMBER SALE INFORMATION

West Boneyard (33-030-18)

T35N, R28W, SEC. 5; T35N, R28W, SEC. 6; T36N, R28W, SEC. 32.
Menominee County (Advertised Price \$91,628.10)

SALE NOTE: The Purchaser will be required to purchase and install a culvert and haul and spread gravel on the access roads, prior to any hauling taking place. Gravel is available from state land within Payment Unit 3. There has been some recent wind damage done to some of the trees within the sale area.

A timber sale contract for this lump sum, sealed bid timber sale will be awarded to the responsible bidder offering the highest sealed bid price. Bids must be at or above the following advertised price for each species:

<u>PRODUCTS & SPECIES</u>	<u>ESTIMATED UNITS*</u>		<u>ADVERTISED PRICE</u>
Sawtimber			
Northern Pin Oak	17.90	MBF	\$ 118.00 / MBF
Red Maple	1.50	MBF	\$ 187.00 / MBF
Red Oak	27.80	MBF	\$ 167.00 / MBF
White Oak	4.30	MBF	\$ 91.00 / MBF
Pulpwood			
Balsam Fir	63.00	Cords	\$ 22.80 / Cord
Mixed Aspen	1,844.00	Cords	\$ 27.20 / Cord
Mixed Hardwood	530.00	Cords	\$ 27.25 / Cord
Mixed Oak	674.00	Cords	\$ 25.45 / Cord
Mixed Spruce	35.00	Cords	\$ 19.90 / Cord
N. White Cedar	16.00	Cords	\$ 19.75 / Cord

* The total volume is statistically estimated within plus (+) or minus (-) 10.90 percent. The estimated units are final and not subject to adjustment. Prospective bidders are urged to examine this timber and to make their own estimates of quantity and quality.

BOND AND PAYMENT SCHEDULE:

1. A bond in the amount of \$4,581.00 to insure faithful performance of the conditions of the contract will be deposited by the successful bidder within 21 days of the sale award.
2. Cutting in any sale or unit without the required advance payment would be considered a trespass.
3. Total payment must be paid in advance or according to the following schedule:
 - (a) Ten percent (10%) of the sale value must be paid within 21 days of the sale award.
 - (b) The 10% down payment will be credited towards the first unit cut.
 - (c) Payment for each of the following units must be made before cutting begins in that unit:

PAYMENT UNIT NUMBER	PERCENT OF TOTAL SALE VALUE
01	12.7%
02	22.6%
03	18.9%
04	12.5%
05	16.7%
06	10.3%
07	6.3%
4. If no cutting takes place, the 10% down payment will not be refunded.
5. Operations on the contract issued will terminate on 09/30/2021.

Description of Timber by Payment Unit (PU)

PU	MARKET GROUP	PRODUCT	QUANTITY	UNIT	ACRES	ADVERTISE PRICE	
1	Northern Pin Oak	Sawtimber	1.3	MBF	17.7	\$11,641.80	
			0.2	MBF			
			3.5	MBF			
			0.3	MBF			
			Pulpwood	10.0			Cords
				254.0			Cords
				<i>B. T. Aspen</i>			<i>145.0 Cords</i>
				<i>Quaking Aspen</i>			<i>109.0 Cords</i>
				74.0			Cords
				<i>Black Cherry</i>			<i>4.0 Cords</i>
				<i>Paper Birch</i>			<i>1.0 Cords</i>
				<i>Red Maple</i>			<i>69.0 Cords</i>
				60.0			Cords
				<i>Northern Pin Oak</i>			<i>43.0 Cords</i>
				<i>Red Oak</i>			<i>10.0 Cords</i>
				<i>White Oak</i>			<i>7.0 Cords</i>
				6.0			Cords
				<i>Black Spruce</i>			<i>1.0 Cords</i>
			<i>White Spruce</i>	<i>5.0 Cords</i>			
			2.0	Cords			
2	Northern Pin Oak	Sawtimber	2.3	MBF	31.4	\$20,733.15	
			0.5	MBF			
			6.2	MBF			
			0.5	MBF			
			Pulpwood	17.0			Cords
				452.0			Cords
				<i>B. T. Aspen</i>			<i>258.0 Cords</i>
				<i>Balsam Poplar</i>			<i>1.0 Cords</i>
				<i>Quaking Aspen</i>			<i>193.0 Cords</i>
				133.0			Cords
				<i>Basswood</i>			<i>2.0 Cords</i>
				<i>Black Cherry</i>			<i>6.0 Cords</i>
				<i>Paper Birch</i>			<i>3.0 Cords</i>
				<i>Red Maple</i>			<i>122.0 Cords</i>
				107.0			Cords
				<i>Northern Pin Oak</i>			<i>76.0 Cords</i>
				<i>Red Oak</i>			<i>19.0 Cords</i>
				<i>White Oak</i>			<i>12.0 Cords</i>
			8.0	Cords			
			<i>White Spruce</i>	<i>8.0 Cords</i>			
5.0	Cords						
3	Northern Pin Oak	Sawtimber	1.9	MBF	26.4	\$17,322.90	
			0.3	MBF			
			5.2	MBF			
			0.5	MBF			
			Pulpwood	14.0			Cords
				380.0			Cords
				<i>B. T. Aspen</i>			<i>216.0 Cords</i>
				<i>Balsam Poplar</i>			<i>1.0 Cords</i>
				<i>Quaking Aspen</i>			<i>163.0 Cords</i>
				109.0			Cords
				<i>Black Cherry</i>			<i>5.0 Cords</i>
				<i>Paper Birch</i>			<i>2.0 Cords</i>
				<i>Red Maple</i>			<i>102.0 Cords</i>
				89.0			Cords
			<i>Northern Pin Oak</i>	<i>64.0 Cords</i>			

Description of Timber by Payment Unit (PU), con't

PU	MARKET GROUP	PRODUCT	QUANTITY	UNIT	ACRES	ADVERTISE PRICE			
3 con't	<i>Red Oak</i>	<i>Pulpwood</i>	15.0	<i>Cords</i>					
	<i>White Oak</i>		10.0	<i>Cords</i>					
	Mixed Spruce		8.0	<i>Cords</i>					
	<i>Black Spruce</i>		1.0	<i>Cords</i>					
	<i>White Spruce</i>		7.0	<i>Cords</i>					
	N. White Cedar		4.0	<i>Cords</i>					
	4		Northern Pin Oak	Sawtimber			1.3	MBF	17.5
Red Maple		0.2	MBF						
Red Oak		3.5	MBF						
White Oak		0.3	MBF						
Balsam Fir		Pulpwood	9.0		<i>Cords</i>				
Mixed Aspen			251.0		<i>Cords</i>				
<i>B. T. Aspen</i>			143.0		<i>Cords</i>				
<i>Quaking Aspen</i>			108.0		<i>Cords</i>				
Mixed Hardwood			73.0		<i>Cords</i>				
<i>Black Cherry</i>			4.0		<i>Cords</i>				
<i>Paper Birch</i>			1.0		<i>Cords</i>				
<i>Red Maple</i>			68.0		<i>Cords</i>				
Mixed Oak		59.0	<i>Cords</i>						
<i>Northern Pin Oak</i>		42.0	<i>Cords</i>						
<i>Red Oak</i>		10.0	<i>Cords</i>						
<i>White Oak</i>		7.0	<i>Cords</i>						
Mixed Spruce		6.0	<i>Cords</i>						
<i>Black Spruce</i>		1.0	<i>Cords</i>						
<i>White Spruce</i>		5.0	<i>Cords</i>						
N. White Cedar		2.0	<i>Cords</i>						
5		Northern Pin Oak	Sawtimber	1.7	MBF	23.3	\$15,296.60		
		Red Maple		0.3	MBF				
		Red Oak		4.6	MBF				
	White Oak	0.4		MBF					
	Balsam Fir	Pulpwood		13.0	<i>Cords</i>				
	Mixed Aspen			335.0	<i>Cords</i>				
	<i>B. T. Aspen</i>			191.0	<i>Cords</i>				
	<i>Balsam Poplar</i>			1.0	<i>Cords</i>				
	<i>Quaking Aspen</i>			143.0	<i>Cords</i>				
	Mixed Hardwood			97.0	<i>Cords</i>				
	<i>Black Cherry</i>			5.0	<i>Cords</i>				
	<i>Paper Birch</i>			2.0	<i>Cords</i>				
	<i>Red Maple</i>	90.0		<i>Cords</i>					
	Mixed Oak	78.0		<i>Cords</i>					
	<i>Northern Pin Oak</i>	56.0		<i>Cords</i>					
	<i>Red Oak</i>	13.0	<i>Cords</i>						
	<i>White Oak</i>	9.0	<i>Cords</i>						
	Mixed Spruce	7.0	<i>Cords</i>						
	<i>Black Spruce</i>	1.0	<i>Cords</i>						
	<i>White Spruce</i>	6.0	<i>Cords</i>						
	N. White Cedar	3.0	<i>Cords</i>						
	6	Northern Pin Oak	Sawtimber	5.8	MBF			22.8	\$9,412.70
		Red Oak		3.0	MBF				
White Oak		1.4		MBF					
Mixed Aspen		Pulpwood	107.0	<i>Cords</i>					
<i>B. T. Aspen</i>			41.0	<i>Cords</i>					
<i>Quaking Aspen</i>			66.0	<i>Cords</i>					
Mixed Hardwood			27.0	<i>Cords</i>					
<i>Black Cherry</i>			1.0	<i>Cords</i>					
<i>Red Maple</i>			25.0	<i>Cords</i>					

Description of Timber by Payment Unit (PU), con't

PU	MARKET GROUP	PRODUCT	QUANTITY	UNIT	ACRES	ADVERTISE PRICE			
6 con't	<i>White Ash</i>	<i>Pulpwood</i>	1.0	<i>Cords</i>					
	Mixed Oak		175.0	Cords					
	<i>Northern Pin Oak</i>		124.0	<i>Cords</i>					
	<i>Red Oak</i>		14.0	<i>Cords</i>					
	<i>White Oak</i>		37.0	<i>Cords</i>					
7	Northern Pin Oak	Sawtimber	3.6	MBF	14.0	\$5,736.25			
	Red Oak		1.8	MBF					
	White Oak		0.9	MBF					
	Mixed Aspen	Pulpwood	65.0	Cords					
	<i>B. T. Aspen</i>		25.0	<i>Cords</i>					
	<i>Quaking Aspen</i>		40.0	<i>Cords</i>					
	Mixed Hardwood		17.0	Cords					
	<i>Black Cherry</i>		1.0	<i>Cords</i>					
	<i>Red Maple</i>		15.0	<i>Cords</i>					
	<i>White Ash</i>		1.0	<i>Cords</i>					
	Mixed Oak		106.0	Cords					
	<i>Northern Pin Oak</i>		76.0	<i>Cords</i>					
	<i>Red Oak</i>		8.0	<i>Cords</i>					
	<i>White Oak</i>	22.0	<i>Cords</i>						
	TOTAL:			51.5			MBF		
	TOTAL:			3,162.0			Cords		

Sale Specific Conditions & Requirements

Sale Name: West Boneyard

Sale Number: 33-030-18 Seq#: 1

1 - Sale Area

1.2 - Boundaries

1.2.1 - Painted boundaries (1/14)

The sale boundary and Payment Unit boundaries are marked and identified by blue, red and yellow paint. Exterior sale boundary lines against private property are marked with blue paint. Exterior sale boundary lines against state are marked with red paint. Interior retention patches are bounded by red paint; no harvesting activities are to occur within these areas. Interior Payment Unit boundaries are marked with yellow paint. The painted boundary line trees are not Included Timber and are to be protected. Yellow painted trees designating an interior Payment Unit boundary are only to be cut when all surrounding Payment Units have been paid for.

2 - Timber Specifications

2.1 - Included Timber

2.1.1 - Clearcut unit(s) with unmerchantable trees (6/14)

Within Payment Unit(s) 1 - 7, cut all trees that are three (3) inches or more at DBH, except do not cut hemlock, white pine, and red pine.

3 - Payments

3.3 - Pre-measured Sales

3.3.4 - Dividing payment units (7/14)

Payment Unit(s) \$18,000 in value or greater may be divided at the request of the Purchaser and upon approval of the Unit Manager. Dividing Payment Units is a contract modification which requires a Timber Sale Contract Supplement. There will be only one division per Payment Unit.

4 - Transportation

4.1 - Construction

4.1.8 - Road work (1) (8/07)

The following road work is required: The Purchaser must purchase and install a new 18" x 24' corrugated steel culvert. The culvert will be installed on the access road between Payment Units 3 and 4. The Purchaser must haul and spread 400 yards of gravel on the access roads. A minimum of twelve inches of gravel must be placed over the culvert. The exact locations of where the gravel is needed will be identified during the pre-sale meeting. Gravel is available from a state gravel pit within Payment Unit 3. All roadwork must be completed prior to any hauling taking place.

4.2 - Maintenance

4.2.1 - Hauling restriction (12/08)

Hauling may be restricted on forest roads by the Unit Manager or his/her representative. The restriction may occur during spring breakup or during other wet weather conditions.

4.2.4 - Grading (10/16)

For completion of the sale, state forest roads must be graded. In general, this will require a road grader or bull dozer to shape up the roads after forest products have been hauled off site. This includes cleaning of drainage areas, grading, crowning and filling with gravel, if necessary. The grading equipment to be used must be approved by the Unit Manager or his/her representative.

5 - Operations

5.4 - Soil Protection

5.4.1 - Rutting restriction, general (7/16)

Operations are to cease immediately if equipment and weather conditions result in rutting of roads and/or skid trails which is

12 inches or greater in depth and 50 feet in length. The Unit Manager or his/her representative may restrict hauling and/or skidding if ruts exceed the specified depth. With the Unit Manager or his/her representative's approval, the Purchaser may return to the area when the risk of rutting has decreased.

5.5 - Protection of Improvements

5.5.3 - Protection of improvements detail (10/13)

There are a number of green well casings sticking out of the ground 2' to 3', within the sale and surrounding area. The Purchaser must identify and protect them. If one of the well casings is broken, notify the sale administrator immediately.

7 - Other Conditions

7.3 - Contract Modifications

7.3.2 - Modification for oak wilt (2/05)

Within the sale area, there may be patches of oak wilt. If oak wilt is identified within the sale area, this contract may be modified. The following modifications could occur: time of cutting, species to cut, volume to harvest, or various others dealing with the treatment of oak wilt. If a species is not specified in this contract, it shall be paid for at the average price received for that species and product.



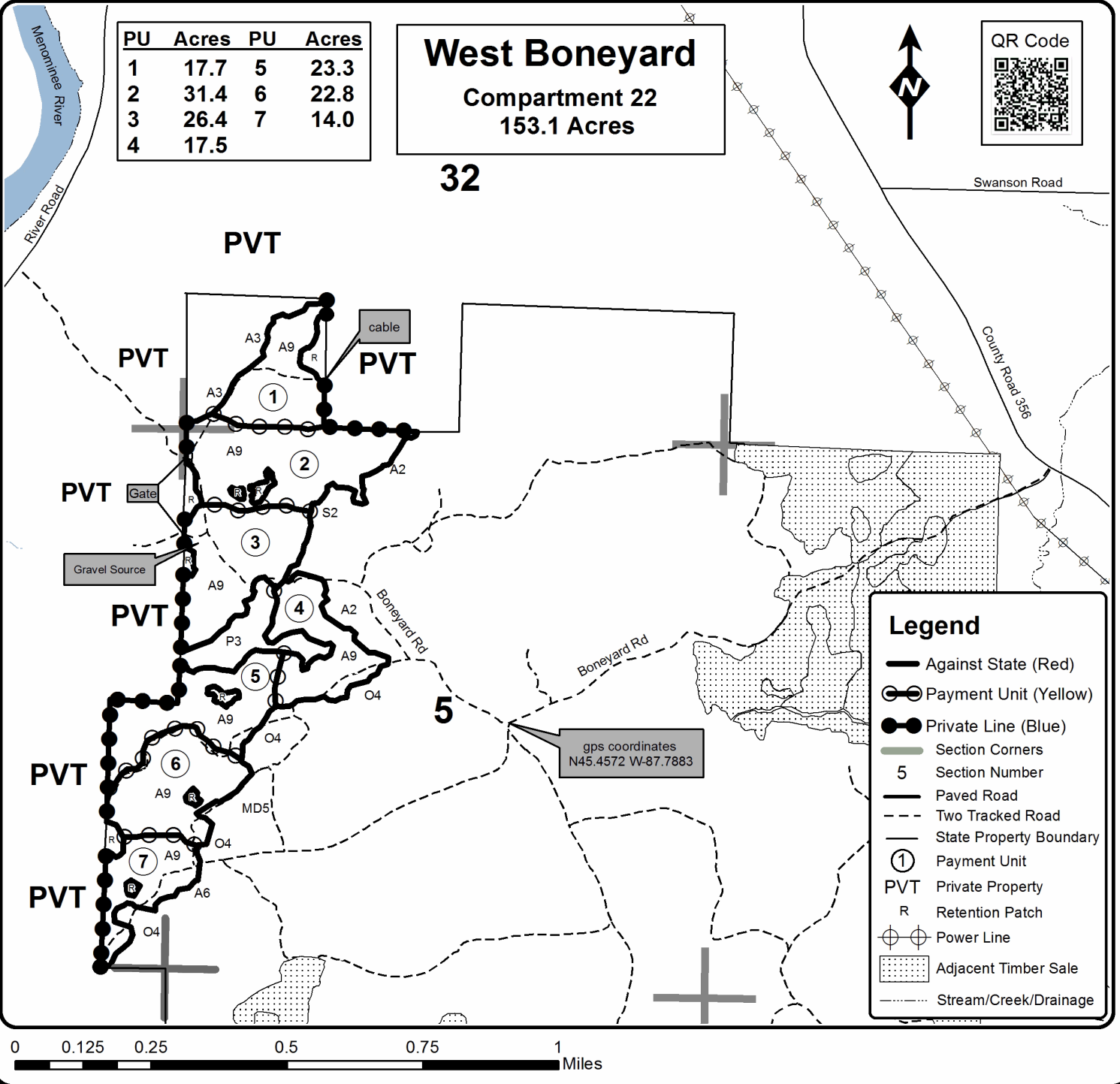
TIMBER SALE MAP

This information provided by authority of Part 525, 1994 PA 451, as amended.

Sale Number	Year
33-030	18

Forest Management Unit	County	Mapped By	Date	Page	of
Escanaba Management Unit	Menominee County	Beaudo	7/27/2018	1	1
Township	Range	Section(s) and Subdivision(s)	Scale		
36N 35N	28W	T36N : Sec 32 - SWSW; T35N: Sec 5 - NW1/4, W1/2SW1/4; Sec 6 - E1/2SE1/4	1:15,840		

Cover Type				Density			
A = Aspen	H = Hemlock	N = Marsh	U = Upland Brush	0 = Non Stocked	5 = Pole Timber Medium		
B = Paper Birch	J = Jack Pine	O = Oak	UM = Upland Mixed	1 = Seedling Sapling Poor	6 = Pole Timber Well		
C = Cedar	L = Lowland Brush	P = Lowland Poplar	V = Bog or Marsh	2 = Seedling Sapling Medium	7 = Saw Timber Poor		
D = Treed Bog	LM = Lowland Mixed	Q = Mixed Swamp Conifer	W = White Pine	3 = Seedling Sapling Well	8 = Saw Timber Medium		
E = Swamp Hdwoods	M = Mpl, Bch, Brch	R = Red Pine	X = Non Stocked	4 = Pole Timber Poor	9 = Saw Timber Well		
F = Spruce Fir	MC = Mixed Conifer	S = Black Spruce	Z = Water				
G = Grass	MD = Mixed Deciduous	T = Tamarack					



Little Cedar SBW (33-024-18)

T36N, R27W, SEC. 10; T36N, R27W, SEC. 11; T36N, R27W, SEC. 14; T36N,

In response to the notice of sale to be held 3:00 p.m. (local time) on December 4, 2018, I am hereby submitting my sealed bid (firm offer) for the following forest products to be cut. Bids for individual species must be at or above the advertised price. All non-responsive bid forms may be rejected.

<u>PRODUCTS & SPECIES</u>	<u>ESTIMATED VOLUME*</u>	<u>ADVERTISED PRICE</u>	<u>BID PRICE/UNIT</u>
Sawtimber			
Paper Birch	1.20 MBF	\$ 82.00/MBF	\$ _____
Sugar Maple	0.40 MBF	\$ 281.00/MBF	\$ _____
Pulpwood			
B. T. Aspen	26.00 Cords	\$ 29.15/Cord	\$ _____
Balsam Fir	605.00 Cords	\$ 24.45/Cord	\$ _____
Mixed Hardwood	449.00 Cords	\$ 29.20/Cord	\$ _____
Mixed Spruce	290.00 Cords	\$ 21.30/Cord	\$ _____
N. White Cedar	317.00 Cords	\$ 21.15/Cord	\$ _____
Quaking Aspen	403.00 Cords	\$ 29.15/Cord	\$ _____
Tamarack	74.00 Cords	\$ 18.55/Cord	\$ _____
White Pine	15.00 Cords	\$ 28.75/Cord	\$ _____

*The volumes are statistically estimated within plus (+) or minus (-) 9.35 percent. These estimated volumes are final and not subject to adjustment. Prospective bidders are urged to examine this timber and to make their own estimates of quantity and quality.

I understand that any or all bids may be rejected. All bids must be signed and all bid items must be bid or the bid form may be rejected. I also understand that consideration and awarding a contract will be based upon my past performance and ability to complete the contract based upon equipment and staffing subject to my control.

FEDERAL ID: _____ or SOCIAL SECURITY NUMBER: _____

Company or individual bidding: _____

Company representative's name: _____

Address: _____

City: _____ State: _____ Zip: _____

IF AVAILABLE, PLEASE PLACE THE PERSONALIZED LABEL FROM YOUR PROSPECTUS IN THE ABOVE BOX.

Individual or company representative's signature: _____ Date: _____

Phone number : _____ Email (optional): _____

THE WINNING BIDDER MUST COMPLETE THE VERIFICATION OF WORKER'S DISABILITY COMPENSATION ACT COMPLIANCE (ON REVERSE SIDE IF DOUBLE SIDED) WITHIN 21 DAYS OF SALE AWARD DATE



FOR DEPARTMENT USE ONLY
Sale Number (XX - XXX - XX - XX)
Forest Management Unit:

TIMBER SALE VERIFICATION OF WORKER'S DISABILITY COMPENSATION ACT COMPLIANCE

*As required by Act 317, P.A. 1969 (Worker's Compensation) and
Part 5 of Act 451 of 1994, as amended.*

VERIFICATION OF WORKER'S DISABILITY COMPENSATION ACT COMPLIANCE

- This verification must be completed and submitted within 21 days of contract award and prior to the issuance of the timber sale contract.
- In addition, if boxes 2B or 2C are checked, then Notice of Exclusion or Certificate of Insurance must be submitted within twenty-one (21) days of the contract award and prior to the issuance of the timber sale contract.
- All information must be typed or printed except for written signatures.

Please Check Appropriate Categories:

1. My business is organized as (you **must** check one of the boxes below):
 - A. Sole Proprietorship (individual)
 - B. Partnership
 - C. Corporation
2. You **must** check one of the boxes below:
 - A. I certify my business is a sole proprietorship and it has no employees but the sole proprietor. I am not subject to the Worker's Compensation Laws.
 - B. I certify my business has satisfied its obligation to the Worker's Compensation Act through the use of an approved Notice of Exclusion (BWC-337, Rev. 5/96). I will provide a copy of the Notice of Exclusion within 21 days of the contract award. (For questions or a copy of the BWC-337, please call the Worker's Compensation Bureau at 517-322-1195).
 - C. I certify my business has a Worker's Compensation Policy. I will provide an original Certificate of Insurance within twenty-one (21) days of the contract award.
3. If you have checked item 2(A) or 2(B), you **must** indicate the number of **both** full-time and part-time employees, other than yourself, including family members and active partners (if none, you must enter "0").

_____ Full-time Employees

_____ Part-time Employees

Name of Business		Federal ID (or) Social Security No.	
Address		Telephone ()	
City	State	ZIP	

I hereby certify that the above information is true and correct. I agree to notify the Michigan DNR of any changes that occur in factors affecting my coverage during any of my present and future operations.

Signature of Owner or Authorized Representative

Title

Date

Please complete the "SEALED BID" information on the next page

South Fox Beaver (33-028-18)

T36N, R24W, SEC. 19; T36N, R25W, SEC. 24; T36N, R25W, SEC. 25; T36N,

In response to the notice of sale to be held 3:00 p.m. (local time) on December 4, 2018, I am hereby submitting my sealed bid (firm offer) for the following forest products to be cut. Bids for individual species must be at or above the advertised price. All non-responsive bid forms may be rejected.

<u>PRODUCTS & SPECIES</u>	<u>ESTIMATED VOLUME*</u>	<u>ADVERTISED PRICE</u>	<u>BID PRICE/UNIT</u>
Sawtimber			
Basswood	1.80 MBF	\$ 106.00/MBF	\$ _____
Green Ash	21.50 MBF	\$ 89.00/MBF	\$ _____
Red Maple	8.70 MBF	\$ 201.00/MBF	\$ _____
Sugar Maple	5.30 MBF	\$ 281.00/MBF	\$ _____
White Pine	27.90 MBF	\$ 58.00/MBF	\$ _____
Pulpwood			
Balsam Fir	242.00 Cords	\$ 24.45/Cord	\$ _____
Mixed Aspen	411.00 Cords	\$ 29.15/Cord	\$ _____
Mixed Hardwood	1,275.00 Cords	\$ 29.20/Cord	\$ _____
Mixed Spruce	151.00 Cords	\$ 21.30/Cord	\$ _____
N. White Cedar	240.00 Cords	\$ 21.15/Cord	\$ _____
Red Pine	14.00 Cords	\$ 54.85/Cord	\$ _____
Tamarack	3.00 Cords	\$ 18.55/Cord	\$ _____
White Pine	64.00 Cords	\$ 28.75/Cord	\$ _____

*The volumes are statistically estimated within plus (+) or minus (-) 10.01 percent. These estimated volumes are final and not subject to adjustment. Prospective bidders are urged to examine this timber and to make their own estimates of quantity and quality.

I understand that any or all bids may be rejected. All bids must be signed and all bid items must be bid or the bid form may be rejected. I also understand that consideration and awarding a contract will be based upon my past performance and ability to complete the contract based upon equipment and staffing subject to my control.

FEDERAL ID: _____ or SOCIAL SECURITY NUMBER: _____

Company or individual bidding: _____

Company representative's name: _____

Address: _____

City: _____ State: _____ Zip: _____

IF AVAILABLE, PLEASE PLACE THE PERSONALIZED LABEL FROM YOUR PROSPECTUS IN THE ABOVE BOX.

Individual or company representative's signature: _____ Date: _____

Phone number : _____ Email (optional): _____

THE WINNING BIDDER MUST COMPLETE THE VERIFICATION OF WORKER'S DISABILITY COMPENSATION ACT COMPLIANCE (ON REVERSE SIDE IF DOUBLE SIDED) WITHIN 21 DAYS OF SALE AWARD DATE



FOR DEPARTMENT USE ONLY
Sale Number (XX - XXX - XX - XX)
Forest Management Unit:

TIMBER SALE VERIFICATION OF WORKER'S DISABILITY COMPENSATION ACT COMPLIANCE

*As required by Act 317, P.A. 1969 (Worker's Compensation) and
Part 5 of Act 451 of 1994, as amended.*

VERIFICATION OF WORKER'S DISABILITY COMPENSATION ACT COMPLIANCE

- This verification must be completed and submitted within 21 days of contract award and prior to the issuance of the timber sale contract.
- In addition, if boxes 2B or 2C are checked, then Notice of Exclusion or Certificate of Insurance must be submitted within twenty-one (21) days of the contract award and prior to the issuance of the timber sale contract.
- All information must be typed or printed except for written signatures.

Please Check Appropriate Categories:

1. My business is organized as (you **must** check one of the boxes below):
 - A. Sole Proprietorship (individual)
 - B. Partnership
 - C. Corporation

2. You **must** check one of the boxes below:
 - A. I certify my business is a sole proprietorship and it has no employees but the sole proprietor. I am not subject to the Worker's Compensation Laws.
 - B. I certify my business has satisfied its obligation to the Worker's Compensation Act through the use of an approved Notice of Exclusion (BWC-337, Rev. 5/96). I will provide a copy of the Notice of Exclusion within 21 days of the contract award. (For questions or a copy of the BWC-337, please call the Worker's Compensation Bureau at 517-322-1195).
 - C. I certify my business has a Worker's Compensation Policy. I will provide an original Certificate of Insurance within twenty-one (21) days of the contract award.

3. If you have checked item 2(A) or 2(B), you **must** indicate the number of **both** full-time and part-time employees, other than yourself, including family members and active partners (if none, you must enter "0").

_____ Full-time Employees

_____ Part-time Employees

Name of Business		Federal ID (or) Social Security No.	
Address		Telephone ()	
City	State	ZIP	

I hereby certify that the above information is true and correct. I agree to notify the Michigan DNR of any changes that occur in factors affecting my coverage during any of my present and future operations.

Signature of Owner or Authorized Representative

Title

Date

Please complete the "SEALED BID" information on the next page

Deer Creek Maple (33-029-18)

T36N, R25W, SEC. 13; T36N, R25W, SEC. 24; T36N, R25W, SEC. 25; Menominee

In response to the notice of sale to be held 3:00 p.m. (local time) on December 4, 2018, I am hereby submitting my sealed bid (firm offer) for the following forest products to be cut. Bids for individual species must be at or above the advertised price. All non-responsive bid forms may be rejected.

<u>PRODUCTS & SPECIES</u>	<u>ESTIMATED VOLUME*</u>	<u>ADVERTISED PRICE</u>	<u>BID PRICE/UNIT</u>
Sawtimber			
Basswood	3.30 MBF	\$ 106.00/MBF	\$ _____
Green Ash	21.00 MBF	\$ 89.00/MBF	\$ _____
Paper Birch	1.10 MBF	\$ 82.00/MBF	\$ _____
Red Maple	115.30 MBF	\$ 201.00/MBF	\$ _____
Sugar Maple	11.90 MBF	\$ 281.00/MBF	\$ _____
White Ash	15.80 MBF	\$ 64.00/MBF	\$ _____
White Pine	3.80 MBF	\$ 58.00/MBF	\$ _____
Yellow Birch	2.10 MBF	\$ 118.00/MBF	\$ _____
Pulpwood			
Balsam Fir	101.00 Cords	\$ 24.45/Cord	\$ _____
Mixed Aspen	19.00 Cords	\$ 29.15/Cord	\$ _____
Mixed Hardwood	2,753.00 Cords	\$ 29.20/Cord	\$ _____
N. White Cedar	217.00 Cords	\$ 21.15/Cord	\$ _____
Tamarack	6.00 Cords	\$ 18.55/Cord	\$ _____
White Pine	11.00 Cords	\$ 28.75/Cord	\$ _____
White Spruce	203.00 Cords	\$ 21.30/Cord	\$ _____

*The volumes are statistically estimated within plus (+) or minus (-) 7.99 percent. These estimated volumes are final and not subject to adjustment. Prospective bidders are urged to examine this timber and to make their own estimates of quantity and quality.

I understand that any or all bids may be rejected. All bids must be signed and all bid items must be bid or the bid form may be rejected. I also understand that consideration and awarding a contract will be based upon my past performance and ability to complete the contract based upon equipment and staffing subject to my control.

FEDERAL ID: _____ or SOCIAL SECURITY NUMBER: _____

Company or individual bidding: _____

Company representative's name: _____

Address: _____

City: _____ State: _____ Zip: _____

IF AVAILABLE, PLEASE PLACE THE PERSONALIZED LABEL FROM YOUR PROSPECTUS IN THE ABOVE BOX.

Individual or company representative's signature: _____ Date: _____

Phone number : _____ Email (optional): _____

THE WINNING BIDDER MUST COMPLETE THE VERIFICATION OF WORKER'S DISABILITY COMPENSATION ACT COMPLIANCE (ON REVERSE SIDE IF DOUBLE SIDED) WITHIN 21 DAYS OF SALE AWARD DATE



FOR DEPARTMENT USE ONLY
Sale Number (XX - XXX - XX - XX)
Forest Management Unit:

TIMBER SALE VERIFICATION OF WORKER'S DISABILITY COMPENSATION ACT COMPLIANCE

*As required by Act 317, P.A. 1969 (Worker's Compensation) and
Part 5 of Act 451 of 1994, as amended.*

VERIFICATION OF WORKER'S DISABILITY COMPENSATION ACT COMPLIANCE

- This verification must be completed and submitted within 21 days of contract award and prior to the issuance of the timber sale contract.
- In addition, if boxes 2B or 2C are checked, then Notice of Exclusion or Certificate of Insurance must be submitted within twenty-one (21) days of the contract award and prior to the issuance of the timber sale contract.
- All information must be typed or printed except for written signatures.

Please Check Appropriate Categories:

1. My business is organized as (you **must** check one of the boxes below):
 - A. Sole Proprietorship (individual)
 - B. Partnership
 - C. Corporation
2. You **must** check one of the boxes below:
 - A. I certify my business is a sole proprietorship and it has no employees but the sole proprietor. I am not subject to the Worker's Compensation Laws.
 - B. I certify my business has satisfied its obligation to the Worker's Compensation Act through the use of an approved Notice of Exclusion (BWC-337, Rev. 5/96). I will provide a copy of the Notice of Exclusion within 21 days of the contract award. (For questions or a copy of the BWC-337, please call the Worker's Compensation Bureau at 517-322-1195).
 - C. I certify my business has a Worker's Compensation Policy. I will provide an original Certificate of Insurance within twenty-one (21) days of the contract award.
3. If you have checked item 2(A) or 2(B), you **must** indicate the number of **both** full-time and part-time employees, other than yourself, including family members and active partners (if none, you must enter "0").

_____ Full-time Employees

_____ Part-time Employees

Name of Business		Federal ID (or) Social Security No.	
Address		Telephone ()	
City	State	ZIP	

I hereby certify that the above information is true and correct. I agree to notify the Michigan DNR of any changes that occur in factors affecting my coverage during any of my present and future operations.

Signature of Owner or Authorized Representative

Title

Date

Please complete the "SEALED BID" information on the next page

West Boneyard (33-030-18)

T35N, R28W, SEC. 5; T35N, R28W, SEC. 6; T36N, R28W, SEC. 32; Menominee

In response to the notice of sale to be held 3:00 p.m. (local time) on December 4, 2018, I am hereby submitting my sealed bid (firm offer) for the following forest products to be cut. Bids for individual species must be at or above the advertised price. All non-responsive bid forms may be rejected.

<u>PRODUCTS & SPECIES</u>	<u>ESTIMATED VOLUME*</u>	<u>ADVERTISED PRICE</u>	<u>BID PRICE/UNIT</u>
Sawtimber			
Northern Pin Oak	17.90 MBF	\$ 118.00/MBF	\$ _____
Red Maple	1.50 MBF	\$ 187.00/MBF	\$ _____
Red Oak	27.80 MBF	\$ 167.00/MBF	\$ _____
White Oak	4.30 MBF	\$ 91.00/MBF	\$ _____
Pulpwood			
Balsam Fir	63.00 Cords	\$ 22.80/Cord	\$ _____
Mixed Aspen	1,844.00 Cords	\$ 27.20/Cord	\$ _____
Mixed Hardwood	530.00 Cords	\$ 27.25/Cord	\$ _____
Mixed Oak	674.00 Cords	\$ 25.45/Cord	\$ _____
Mixed Spruce	35.00 Cords	\$ 19.90/Cord	\$ _____
N. White Cedar	16.00 Cords	\$ 19.75/Cord	\$ _____

*The volumes are statistically estimated within plus (+) or minus (-) 10.90 percent. These estimated volumes are final and not subject to adjustment. Prospective bidders are urged to examine this timber and to make their own estimates of quantity and quality.

I understand that any or all bids may be rejected. All bids must be signed and all bid items must be bid or the bid form may be rejected. I also understand that consideration and awarding a contract will be based upon my past performance and ability to complete the contract based upon equipment and staffing subject to my control.

FEDERAL ID: _____ or SOCIAL SECURITY NUMBER: _____

Company or individual bidding: _____

Company representative's name: _____

Address: _____

City: _____ State: _____ Zip: _____

IF AVAILABLE, PLEASE PLACE THE PERSONALIZED LABEL FROM YOUR PROSPECTUS IN THE ABOVE BOX.

Individual or company representative's signature: _____ Date: _____

Phone number : _____ Email (optional): _____

THE WINNING BIDDER MUST COMPLETE THE VERIFICATION OF WORKER'S DISABILITY COMPENSATION ACT COMPLIANCE (ON REVERSE SIDE IF DOUBLE SIDED) WITHIN 21 DAYS OF SALE AWARD DATE



FOR DEPARTMENT USE ONLY	
Sale Number (XX - XXX - XX - XX)	
Forest Management Unit:	

TIMBER SALE VERIFICATION OF WORKER'S DISABILITY COMPENSATION ACT COMPLIANCE

As required by Act 317, P.A. 1969 (Worker's Compensation) and
Part 5 of Act 451 of 1994, as amended.

VERIFICATION OF WORKER'S DISABILITY COMPENSATION ACT COMPLIANCE

- This verification must be completed and submitted within 21 days of contract award and prior to the issuance of the timber sale contract.
- In addition, if boxes 2B or 2C are checked, then Notice of Exclusion or Certificate of Insurance must be submitted within twenty-one (21) days of the contract award and prior to the issuance of the timber sale contract.
- All information must be typed or printed except for written signatures.

Please Check Appropriate Categories:

1. My business is organized as (you **must** check one of the boxes below):
 - A. Sole Proprietorship (individual)
 - B. Partnership
 - C. Corporation
2. You **must** check one of the boxes below:
 - A. I certify my business is a sole proprietorship and it has no employees but the sole proprietor. I am not subject to the Worker's Compensation Laws.
 - B. I certify my business has satisfied its obligation to the Worker's Compensation Act through the use of an approved Notice of Exclusion (BWC-337, Rev. 5/96). I will provide a copy of the Notice of Exclusion within 21 days of the contract award. (For questions or a copy of the BWC-337, please call the Worker's Compensation Bureau at 517-322-1195).
 - C. I certify my business has a Worker's Compensation Policy. I will provide an original Certificate of Insurance within twenty-one (21) days of the contract award.
3. If you have checked item 2(A) or 2(B), you **must** indicate the number of **both** full-time and part-time employees, other than yourself, including family members and active partners (if none, you must enter "0").

_____ Full-time Employees

_____ Part-time Employees

Name of Business		Federal ID (or) Social Security No.	
Address		Telephone ()	
City	State	ZIP	

I hereby certify that the above information is true and correct. I agree to notify the Michigan DNR of any changes that occur in factors affecting my coverage during any of my present and future operations.

Signature of Owner or Authorized Representative

Title

Date

Please complete the "SEALED BID" information on the next page