



**DEPARTMENT OF NATURAL RESOURCES  
STATE OF MICHIGAN**

**TIMBER SALE PROSPECTUS #6312**

SCHEDULED SALE DATE AND TIME: 3:00 p.m. (local time) on January 3, 2019.

LOCATION: ESCANABA MGMT UNIT, 6833 HWY'S 2, 41 & M-35, GLADSTONE, MI 49837.

PROSPECTUS NOTE: The bidder is advised to inspect the sale area and review the location, estimated volumes, operating costs and contract terms of proposed sales. Please be aware that some landowners may request 60 days or more notice for access across their land.

Notice is hereby given that bids will be received by the Unit Manager, ESCANABA MANAGEMENT UNIT, for certain timber on the following described lands:

Westman Lake (33-031-18) / T35N, R25W, SEC. 18, NWNW.

T35N, R25W, SEC. 6 , SE.

T35N, R25W, SEC. 7 , E1/2NW,N1/2NE,SWNE,NESW.

T35N, R25W, SEC. 7 , S1/2SW,W1/2SE.

T35N, R26W, SEC. 12, SESE.

T35N, R26W, SEC. 13, NENE.

Menominee County, Advertised Price \$65,515.60, 157.6 Acres, Hardwood, White Pine.

SALE NOTE: This sale is within the Menominee County G.E.M.. Three of the access roads are gated to prevent motorized vehicles. These roads can be used for timber harvesting purposes, a key will be provided to the Purchaser.

Drewry Elwood (33-032-18) / T35N, R25W, SEC. 4 , NWNW.

T35N, R25W, SEC. 5 , N1/2NW,SWNW,N1/2NE,SWNE,SW,SE.

T35N, R25W, SEC. 6 , SENE,NESE.

T35N, R25W, SEC. 8 , N1/2NW,NENE.

T36N, R25W, SEC. 32, SESW.

Menominee County, Advertised Price \$106,317.20, 186.5 Acres, Hardwood, White Pine.

SALE NOTE: The Forest Island ORV Trail and route run through the sale area. These trails and routes must be properly signed and protected throughout all harvesting operations, see specs 5.2.39 and 6.2.3 for more details.

A recreation site such as a trail, pathway, or campground is within the sale area or the vicinity. Certain restrictions/specifications may be applicable including time restrictions.

Watch Out Yogi (33-033-18) / T35N, R25W, SEC. 5 , N1/2NW.

T35N, R25W, SEC. 6 , NENW,S1/2NW,NE,N1/2SW.

T35N, R26W, SEC. 1 , E1/2SE.

T36N, R25W, SEC. 31, SESE.

T36N, R25W, SEC. 32, SWSW.

Menominee County, Advertised Price \$46,203.05, 160.5 Acres, Hardwood, Aspen.

SALE NOTE: Payment Units 1, 2, and 3 will have to be accessed through a couple of wildlife gates; a key will be provided to the Purchaser. Within Payment Unit 4, Beech Scale is present, but no mortality has occurred.

Old Style Ridges (33-034-18) / T35N, R25W, SEC. 17, NWNE.

T35N, R25W, SEC. 5 , SWSE.

T35N, R25W, SEC. 8 , NW,W1/2NE,E1/2SW,SE.

Menominee County, Advertised Price \$79,339.90, 139.7 Acres, Hardwood, White Pine.

SALE NOTE: The Camp "O" Road/Forest Island ORV Route runs along Payment Units 2 and 4. The road/trail must be kept clear of debris and route markers protected.

Snake Trail SBW (33-035-18) / T37N, R25W, SEC. 31, E1/2NE,E1/2SE.

T37N, R25W, SEC. 32, SWSW.

Menominee County, Advertised Price \$32,360.50, 89.1 Acres, Hardwood, Spruce/Fir/Tamarack.

SALE NOTE: The balsam fir and spruce have been heavily defoliated by the spruce budworm, with minimal mortality at this time. There is a wooden boardwalk running east to west from the parking lot in Payment Unit 4 to Devils Creek in the southern portion of the unit. This boardwalk must be protected and kept clear of debris from the harvesting of trees at all times.

A recreation site such as a trail, pathway, or campground is within the sale area or the vicinity. Certain restrictions/specifications may be applicable including time restrictions.

## BID INSTRUCTIONS (VER. 07/02/2018):

### 1. Scheduled Bid Location, Date, and Time (2/11)

Bids must be received by the Unit Manager, ESCANABA OFFICE, 6833 Hwy's 2, 41 & M-35, Gladstone, MI 49837, no later than 3:00 p.m. (local time) on January 3, 2019. For further information concerning this sale, contact Eric Thompson at 906-786-2354.

### 2. Bidder's Qualifications (5/16)

Purchaser shall obtain workers compensation insurance to cover claims under Michigan's Worker's Disability Compensation Act of 1969 or similar employee benefit act of any other state applicable to an employee. If all or part of a timber sale was prepared by a private contractor, the contractor and that contractor's company are not permitted to bid on the timber sale contract. Bids will not be accepted from individuals or companies appearing on the DNR/FRD No-Bid List. This list contains the names of purchasers who previously failed to execute a contract within 21-days or who have a history of poor performance.

### 3. Preparation of Sealed Bids (5/16)

Bid Forms may be completed online thru Michigan DNR Timber Sale Online Bidding (OLB) at [www.michigan.gov/timberbidding](http://www.michigan.gov/timberbidding) or by completing the hardcopy Bid Form found in the Timber Sale Prospectus. Hardcopy Bid Forms shall be manually signed in ink. Registration in OLB is considered your 'signature' for all bids submitted thru that system. Bid prices must be entered for each species and product in the Bid Price column for all material subject to bidding and all fill-in blanks must be completed. If erasures or other changes appear on the hardcopy Bid Form, each erasure or change must be initialed by the person signing the bid.

### 4. Submission of Sealed Bids (5/16)

Bid forms may be obtained from the Unit Manager or thru OLB. Bids may be submitted hardcopy or thru OLB. All hardcopy bids must be submitted on the bid form and in an envelope clearly identified as described in this section. NOTE: Only one bid form per bid envelope. Sealed bids must be submitted to the Unit office designated in the prospectus and must be submitted at or prior to the time established in the prospectus. The envelope should show on the outside (a) the sale name or number and (b) the date and time of bid opening, as shown in the prospectus. Bids received after the time specified in the sale prospectus are late bids and will be rejected.

It is possible for a bidder to submit multiple bids on a single sale. For example, a bid may be submitted hardcopy and a bid may be submitted thru OLB. Or, two bidders from the same company could both submit bids on the same sale. If this were to happen, the State would accept all bids received and award the contract accordingly. All bidding and contractual requirements would apply to all bids received.

### 5. Public Opening of Sealed Bids (7/16)

If conditions permit, the sealed bids will be publicly opened and posted at the time and place set in the prospectus.

If a bidder, present at a bid opening, has submitted bids on more than one sale, that bidder may withdraw their unopened bid envelopes or announce the withdrawal of their online bid after being declared the successful bidder on one sale.

### 6. Award of Contract (1/11)

Award of the contract will be made to the Bidder whose bid, conforming to the prospectus, is most advantageous to the State of Michigan on the basis of total value at rates bid for the estimated quantities. The State reserves the right to reject any bid or waive any minor irregularity in bids received. A written award mailed (or otherwise furnished) to the successful Bidder shall be deemed to result in a binding contract without further action by either party.

### 7. Down Payment (1/11)

The Bidder to whom award is made must make a down payment within 21 days of the sale award. The amount of the down payment will be calculated as shown in the Bond and Payment Schedule of this prospectus. Only cash may be used to meet this requirement.

### 8. Performance Security (1/11)

As guarantee of faithful performance, a cash bond, certificate of deposit, surety bond or irrevocable letter of credit (LOC) is required within 21 days of the sale award. The amount of the performance security is shown in the Bond and

Payment Schedule of this prospectus. If an LOC or surety is used, the coverage must extend for at least 6 months beyond the contract expiration.

#### 9. Timber Sale Contract (7/18)

Additional conditions and requirements common to all timber sales are listed on the timber sale contract (R4031) and are available on line at [www.michigan.gov/timber](http://www.michigan.gov/timber). Contact the Unit Manager for additional information or a sample contract. Within 21 days of the date of the award letter, the bidder must sign the contract and provide the required down payment, performance security, and verification of worker's disability compensation. The down payment and performance security shall be in accordance with the provisions of the timber sale contract, in the sums stated in this prospectus. If these actions are not taken, then the Bidder, the Bidder's corporation, and the corporation's principals may not be permitted to bid on State timber sales for a period of 3 months after the first offense, 6 months after the second offense, and 1 year after the third offense. An offense will only be counted against the Bidder for 5 years. In addition, the Bidder certifies that if awarded this contract, the Bidder will complete the timber sale contract in accordance with its terms and any modifications thereof including requirements to purchase, cut, and remove the included timber by the expiration date.

Payment Unit values in the State Forest Timber Sale Contract are calculated based on the advertised value of the Payment Unit as a percentage of the total advertised value of the contract. The advertised value of each Payment Unit is given in the Description of Timber by Payment Unit table on the Timber Sale Information page. For example, if the value of Payment Unit 1 is advertised as \$1,500 and the total Timber Sale value is advertised as \$10,000, the contract price for Payment Unit 1 will be 15% of the total bid price ( $\$1,500/\$10,000 * 100$ ).

#### 10. Disclaimer of Estimates and Bidder's Warranty of Inspection (7/16)

Before submitting this bid, the Bidder is advised and cautioned to inspect the sale area, review the requirements of the sale contract, and take other steps as may be reasonably necessary to ascertain the location, estimated volumes, construction estimates, and operating costs of the proposed sale. Failure to do so will not relieve the Bidder from responsibility for completing the contract.

The Bidder warrants that this bid is submitted solely on the basis of the Bidder's examination and inspection of the quality and quantity of the timber offered for sale and the Bidder's opinion of the value thereof and the costs of recovery. No reliance should be placed on the State of Michigan's estimates of timber quality, quantity or costs of recovery. Bidder further acknowledges that the State of Michigan: (i) expressly disclaims any warranty of fitness of timber for any purpose; (ii) offers this timber as is without any warranty of quality (merchantability) or quantity and (iii) expressly disclaims any warranty as to the quantity or quality of timber sold.

#### 11. Certification and Chain-of-Custody (10/14)

Unless otherwise indicated in the contract under section 7 – Other Conditions of the Sale Specific Conditions & Requirements, the area encompassed by this timber sale is certified to the standards of the Forest Stewardship Council (FSC) - Certificate #SCS-FM/COC-00090N and the Sustainable Forestry Initiative (SFI) - Certificate #NSF-SFIS-5Y031-SF5. Forest products from this sale may be delivered to the mill as "FSC 100% and / or SFI certified" as long as the contractor hauling the forest products is chain-of-custody (COC) certified or covered under a COC certificate from the destination mill. The purchaser is responsible for maintaining COC after leaving the sale area.

#### 12. Good Neighbor Authority (GNA) Requirements (7/16)

If the name of this timber sales contains the acronym GNA, it is authorized by the Good Neighbor Authority (GNA) and covered by various agreements between the U.S. Forest Service and the State. The timber sale occurs on federal land and the following conditions apply:

GNA contracts on US Forest Service land will not be awarded to purchasers on the Federal list of excluded parties. The System for Award Management (SAM) will be checked for active excluded parties prior to award of contract. In addition, the Bidder to whom award is made must complete an Assurance Regarding Felony Conviction or Tax Delinquent Status for Corporate Applicants (AD-3031).

#### 13. Good Neighbor Authority (GNA) Requirements, con't (9/16)

Bidder certifies, by signing this bid form, that to the best of Bidder's knowledge that the following representations are accurate and complete.

- a. That the Bidder and its principals are not presently debarred, suspended, proposed for debarment, declared ineligible, or voluntary excluded from timber sales (covered transactions) by any Federal department or agency.
- b. That the Bidder and its principals have not within a 3-year period preceding this bid been convicted of or had a civil judgment rendered against them for commission of fraud or a criminal offense in connection with obtaining, attempting to obtain, or performing a public (Federal, State, or local) transaction or contract under a public transaction; violation of Federal or State antitrust statutes or commission of embezzlement, theft, forgery, bribery, falsification or destruction of records, making false statements, or receiving stolen property.
- c. That the Bidder and its principals are not presently indicted for or otherwise criminally or civilly charged by a governmental entity (Federal, State, or local) with commission of any of the offenses enumerated in paragraph b of this certification.
- d. That the Bidder and its principals have not within a 3-year period preceding this bid had one or more public transactions (Federal, State, or local) terminated for breach or default of a timber or forest product contract.

Bidders that cannot certify this requirement, in whole or in part, shall submit an explanation with their bid.

KEITH CREAGH  
Director



# TIMBER SALE INFORMATION

## Westman Lake (33-031-18)

T35N, R25W, SEC. 18; T35N, R25W, SEC. 6; T35N, R25W, SEC. 7; T35N, R26W, SEC. 12; T35N, R26W, SEC. 13.  
Menominee County (Advertised Price \$65,515.60)

SALE NOTE: This sale is within the Menominee County G.E.M.. Three of the access roads are gated to prevent motorized vehicles. These roads can be used for timber harvesting purposes, a key will be provided to the Purchaser.

A timber sale contract for this lump sum, sealed bid timber sale will be awarded to the responsible bidder offering the highest sealed bid price. Bids must be at or above the following advertised price for each species:

<u>PRODUCTS &amp; SPECIES</u>	<u>ESTIMATED UNITS*</u>	<u>ADVERTISED PRICE</u>
<b>Sawtimber</b>		
Basswood	0.50 MBF	\$ 99.00 / MBF
Beech	5.20 MBF	\$ 79.00 / MBF
Green Ash	0.50 MBF	\$ 88.00 / MBF
Paper Birch	0.50 MBF	\$ 79.00 / MBF
Red Maple	15.60 MBF	\$ 189.00 / MBF
White Ash	5.10 MBF	\$ 64.00 / MBF
White Pine	46.80 MBF	\$ 54.00 / MBF
<b>Pulpwood</b>		
Balsam Fir	37.00 Cords	\$ 23.05 / Cord
Mixed Aspen	221.00 Cords	\$ 28.50 / Cord
Mixed Hardwood	794.00 Cords	\$ 27.30 / Cord
Mixed Spruce	340.00 Cords	\$ 19.40 / Cord
Red Pine	93.00 Cords	\$ 51.30 / Cord
Tamarack	7.00 Cords	\$ 15.45 / Cord
White Pine	704.00 Cords	\$ 26.80 / Cord

\* The total volume is statistically estimated within plus (+) or minus (-) 10.28 percent. The estimated units are final and not subject to adjustment. Prospective bidders are urged to examine this timber and to make their own estimates of quantity and quality.

### **BOND AND PAYMENT SCHEDULE:**

1. A bond in the amount of \$3,276.00 to insure faithful performance of the conditions of the contract will be deposited by the successful bidder within 21 days of the sale award.
2. Cutting in any sale or unit without the required advance payment would be considered a trespass.
3. Total payment must be paid in advance or according to the following schedule:
  - (a) Ten percent (10%) of the sale value must be paid within 21 days of the sale award.
  - (b) The 10% down payment will be credited towards the first unit cut.
  - (c) Payment for each of the following units must be made before cutting begins in that unit:

PAYMENT UNIT NUMBER	PERCENT OF TOTAL SALE VALUE
01	5.8%
02	18.8%
03	17.5%
04	8.9%
05	8.4%
06	16.9%
07	7.4%
08	9.6%
09	6.7%

4. If no cutting takes place, the 10% down payment will not be refunded.
5. Operations on the contract issued will terminate on 09/30/2021.

**Description of Timber by Payment Unit (PU)**

PU	MARKET GROUP	PRODUCT	QUANTITY	UNIT	ACRES	ADVERTISE PRICE
1	White Pine	Sawtimber	12.1	MBF	10.7	\$3,820.85
	Mixed Hardwood	Pulpwood	5.0	Cords		
	<i>Red Maple</i>		5.0	<i>Cords</i>		
	Mixed Spruce		53.0	Cords		
	<i>Black Spruce</i>		53.0	<i>Cords</i>		
	Tamarack		3.0	Cords		
	White Pine		73.0	Cords		
2	Red Maple	Sawtimber	3.3	MBF	18.1	\$12,256.70
	White Pine	Pulpwood	10.6	MBF		
	Mixed Aspen		3.0	Cords		
	<i>Quaking Aspen</i>		3.0	<i>Cords</i>		
	Mixed Hardwood		120.0	Cords		
	<i>Red Maple</i>		120.0	<i>Cords</i>		
	Red Pine		55.0	Cords		
White Pine	182.0	Cords				
3	Red Maple	Sawtimber	9.5	MBF	16.0	\$11,481.10
	White Pine	Pulpwood	11.3	MBF		
	Balsam Fir		2.0	Cords		
	Mixed Hardwood		171.0	Cords		
	<i>Red Maple</i>		171.0	<i>Cords</i>		
	Mixed Spruce		1.0	Cords		
	<i>Black Spruce</i>		1.0	<i>Cords</i>		
White Pine	162.0	Cords				
4	Red Maple	Sawtimber	1.0	MBF	13.9	\$5,824.95
	White Pine	Pulpwood	7.6	MBF		
	Balsam Fir		1.0	Cords		
	Mixed Hardwood		98.0	Cords		
	<i>Green Ash</i>		4.0	<i>Cords</i>		
	<i>Red Maple</i>		94.0	<i>Cords</i>		
	Mixed Spruce		1.0	Cords		
<i>Black Spruce</i>	1.0	<i>Cords</i>				
Red Pine	5.0	Cords				
White Pine	84.0	Cords				
5	Green Ash	Sawtimber	0.5	MBF	10.1	\$5,526.75
	Paper Birch	Pulpwood	0.5	MBF		
	Red Maple		0.8	MBF		
	White Pine		3.6	MBF		
	Balsam Fir		5.0	Cords		
	Mixed Aspen		3.0	Cords		
	<i>Quaking Aspen</i>		3.0	<i>Cords</i>		
	Mixed Hardwood		107.0	Cords		
	<i>Green Ash</i>		5.0	<i>Cords</i>		
	<i>Paper Birch</i>		9.0	<i>Cords</i>		
	<i>Red Maple</i>		93.0	<i>Cords</i>		
	Mixed Spruce		1.0	Cords		
<i>White Spruce</i>	1.0	<i>Cords</i>				
White Pine	73.0	Cords				
6	Red Maple	Sawtimber	1.0	MBF	34.9	\$11,043.75
	White Pine	Pulpwood	1.6	MBF		
	Balsam Fir		11.0	Cords		
	Mixed Aspen		67.0	Cords		
	<i>Quaking Aspen</i>		67.0	<i>Cords</i>		
	Mixed Hardwood		81.0	Cords		
	<i>Black Cherry</i>		3.0	<i>Cords</i>		
<i>Paper Birch</i>	8.0	<i>Cords</i>				
<i>Red Maple</i>	70.0	<i>Cords</i>				



**Description of Timber by Payment Unit (PU), con't**

PU	MARKET GROUP	PRODUCT	QUANTITY	UNIT	ACRES	ADVERTISE PRICE	
6 con't	Mixed Spruce	Pulpwood	153.0	Cords			
	<i>Black Spruce</i>		102.0	<i>Cords</i>			
	<i>White Spruce</i>		51.0	<i>Cords</i>			
	Red Pine		2.0	Cords			
	White Pine		124.0	Cords			
7	Balsam Fir	Pulpwood	7.0	Cords	17.0	\$4,855.65	
	Mixed Aspen		73.0	Cords			
	<i>Quaking Aspen</i>		73.0	<i>Cords</i>			
	Mixed Hardwood		40.0	Cords			
	<i>Balsam Poplar</i>		2.0	<i>Cords</i>			
	<i>Black Cherry</i>		6.0	<i>Cords</i>			
	<i>Green Ash</i>		5.0	<i>Cords</i>			
	<i>Red Maple</i>		14.0	<i>Cords</i>			
	<i>Sugar Maple</i>		13.0	<i>Cords</i>			
	Mixed Spruce		52.0	Cords			
	<i>Black Spruce</i>		12.0	<i>Cords</i>			
	<i>White Spruce</i>		40.0	<i>Cords</i>			
	Red Pine		10.0	Cords			
	8		Balsam Fir	Pulpwood			11.0
Mixed Aspen		72.0	Cords				
<i>B. T. Aspen</i>		10.0	<i>Cords</i>				
<i>Quaking Aspen</i>		62.0	<i>Cords</i>				
Mixed Hardwood		43.0	Cords				
<i>Balsam Poplar</i>		2.0	<i>Cords</i>				
<i>Black Cherry</i>		4.0	<i>Cords</i>				
<i>Green Ash</i>		27.0	<i>Cords</i>				
<i>Paper Birch</i>		2.0	<i>Cords</i>				
<i>Red Maple</i>		8.0	<i>Cords</i>				
Mixed Spruce		79.0	Cords				
<i>Black Spruce</i>		4.0	<i>Cords</i>				
<i>White Spruce</i>		75.0	<i>Cords</i>				
Red Pine		21.0	Cords				
Tamarack		4.0	Cords				
White Pine		6.0	Cords				
9	Basswood	Sawtimber	0.5	MBF	13.8	\$4,393.90	
	Beech		5.2	MBF			
	White Ash		5.1	MBF			
	Mixed Aspen	Pulpwood	3.0	Cords			
	<i>Quaking Aspen</i>		3.0	<i>Cords</i>			
	Mixed Hardwood		129.0	Cords			
	<i>Basswood</i>		2.0	<i>Cords</i>			
	<i>Beech</i>		61.0	<i>Cords</i>			
	<i>Ironwood</i>		2.0	<i>Cords</i>			
	<i>Paper Birch</i>		3.0	<i>Cords</i>			
	<i>Red Maple</i>		3.0	<i>Cords</i>			
	<i>Sugar Maple</i>		27.0	<i>Cords</i>			
	<i>White Ash</i>		29.0	<i>Cords</i>			
	<i>Yellow Birch</i>		2.0	<i>Cords</i>			
	TOTAL:			74.2			MBF
TOTAL:			2,196.0	Cords			

# Sale Specific Conditions & Requirements

**Sale Name: Westman Lake**

**Sale Number: 33-031-18 Seq#: 1**

## 1 - Sale Area

### 1.2 - Boundaries

#### 1.2.1 - Painted boundaries (1/14)

The sale boundary and Payment Unit boundaries are marked and identified by red and yellow paint. Exterior sale boundary lines against state are marked with red paint. The retention patch within Payment Unit 2 is marked with red paint; no harvesting activities may occur within this patch. Interior Payment Unit boundaries are marked with yellow paint. The painted boundary line trees are not Included Timber and are to be protected. Yellow painted trees designating an interior Payment Unit boundary are only to be cut when all surrounding Payment Units have been paid for.

## 2 - Timber Specifications

### 2.1 - Included Timber

#### 2.1.1 - Clearcut unit(s) with unmerchantable trees (6/14)

Within Payment Unit(s) 1, 2, 3, 4, 5, 7, and 8, cut all trees that are three (3) inches or more at DBH, except do not cut trees marked with green paint. In addition, within Payment Units 7 and 8, do not cut red pine less than six (6) inches at DBH.

Within Payment Unit(s) 6, cut all hardwoods and aspen that are three (3) inches or more at DBH. In addition, cut all conifers that are four (4) inches or more at DBH.

#### 2.1.3 - Cut tree marked unit(s) (12/08)

Within Payment Unit(s) 9, all trees are designated for cutting when marked with orange paint above and below stump height, regardless of merchantability. In addition, cut all aspen, balsam, and balsam fir which meet minimum piece specifications in 2.2 Utilization.

### 2.2 - Utilization

#### 2.2.4 - Skidding length (2/14)

Skidding of unlimbed tops or lengths over 17 feet is not permissible within Payment Units 2 - 5 and 9, unless approved by the Unit Manager or his/her representative. This restriction is to prevent damage to the dense advanced regeneration within these Payment Units.

## 3 - Payments

### 3.3 - Pre-measured Sales

#### 3.3.4 - Dividing payment units (7/14)

Payment Unit(s) \$18,000 in value or greater may be divided at the request of the Purchaser and upon approval of the Unit Manager. Dividing Payment Units is a contract modification which requires a Timber Sale Contract Supplement. There will be only one division per Payment Unit.

## 4 - Transportation

### 4.1 - Construction

#### 4.1.6 - Road construction (1/09)

Construction of new roads or improvements of existing roads shall be done in such a way as to minimize the environmental and visual impacts. Merchantable trees shall be cut and utilized unless otherwise directed. Non-merchantable trees shall be severed and laid flat on the ground. Slash shall be scattered, and not left in windrows and kept a minimum of 10 feet back from the road edge. Stumps shall be set upright, not left on edge, and be moved at least 10 feet away from the road edge. Disturbed soil shall be feathered into the woods and not left in berms or windrows.

### 4.2 - Maintenance

#### 4.2.1 - Hauling restriction (12/08)

Hauling may be restricted on forest roads by the Unit Manager or his/her representative. The restriction may occur during spring breakup or during other wet weather periods.

#### 4.2.2 - Fill material (4/07)

To maintain roads, fill material may be needed in areas where "holes" exist or may be expected to develop. This fill material should be placed before trucking begins. In order to use the access road into Payment Units 2 - 5 during the non-winter months, this access road will need to have gravel hauled and spread by the Purchaser. Gravel is available from a state pit located about three miles north, on the Westman Dam Road.

#### 4.2.4 - Grading (10/16)

For completion of the sale, state forest roads must be graded. In general, this will require a road grader or bull dozer to shape up the roads after forest products have been hauled off site. This includes cleaning of drainage areas, grading, crowning and filling with gravel, if necessary. The grading equipment to be used must be approved by the Unit Manager or his/her representative.

### 4.4 - Access

#### 4.4.3 - Access gate (12/08)

The access gates must be locked at the completion of each day unless otherwise approved by the Unit Manager or his/her representative.

## 5 - Operations

### 5.2 - Conduct of Operations

#### 5.2.3 - Operating Restrictions

##### 5.2.3.1 - Operating restrictions (9/11)

Within Payment Unit(s) 1 and 6, cutting and skidding are limited to the period of December 1 to March 31, unless there is an extended dry or frozen period and the sale administrator allows harvesting during that time period. This restriction is because of low wet ground throughout most of the Payment Units.

##### 5.2.3.3 - Bark slippage restriction (3/09)

Within Payment Unit(s) 9, unless changed by written agreement, cutting and skidding are not permitted during the period of April 15 to July 15. This restriction is because of bark slippage.

#### 5.2.22 - Operating Caution

##### 5.2.22.1 - Operating caution (6/11)

It is recommended, but not required, that within Payment Unit(s) 2, 3, 4, 5, 7, and 8, cutting and skidding occur during dry summer or frozen winter conditions. The reason for the recommendation is because of some low wet pockets within each of the Payment Units.

### 5.4 - Soil Protection

#### 5.4.1 - Rutting restriction, general (7/16)

Operations are to cease immediately if equipment and weather conditions result in rutting of roads and/or skid trails which is 12 inches or greater in depth and 50 feet in length. The Unit Manager or his/her representative may restrict hauling and/or skidding if ruts exceed the specified depth. With the Unit Manager or his/her representative's approval, the Purchaser may return to the area when the risk of rutting has decreased.

## 6 - Safety and Fire Prevention

### 6.2 - Signing

#### 6.2.1 - Road posting (9/09)

The Purchaser is responsible for posting and maintaining caution signs on the Westman Dam Road prior to beginning operations. The road must be posted at appropriate distances from the sale area to warn of logging activity and truck traffic. Signs must be removed when harvest operations are suspended or completed. The Purchaser will provide these signs.



# TIMBER SALE MAP

This information provided by authority of Part 525, 1994 PA 451, as amended.

Forest Management Unit Escanaba Management Unit		County Menominee County	Mapped By Beaudo	Date 8/10/2018	Page 1	of 1
Township 35N	Range 25W 26W	Section(s) and Subdivision(s) 25W: Sec 6 - SE; Sec 7 - E1/2NW, N1/2NE, SWNE, NESW, S1/2SW, W1/2SE; Sec 18 - NWNW, 26W: Sec 12 - SESE, Sec 13 - NENE.		Scale 1:15,840		

Cover Type				Density	
A = Aspen	H = Hemlock	N = Marsh	U = Upland Brush	0 = Non Stocked	5 = Pole Timber Medium
B = Paper Birch	J = Jack Pine	O = Oak	UM = Upland Mixed	1 = Seedling Sapling Poor	6 = Pole Timber Well
C = Cedar	L = Lowland Brush	P = Lowland Poplar	V = Bog or Marsh	2 = Seedling Sapling Medium	7 = Saw Timber Poor
D = Treed Bog	LM = Lowland Mixed	Q = Mixed Swamp Conifer	W = White Pine	3 = Seedling Sapling Well	8 = Saw Timber Medium
E = Swamp Hdwoods	M = Mpl, Bch, Brch	R = Red Pine	X = Non Stocked	4 = Pole Timber Poor	9 = Saw Timber Well
F = Spruce Fir	MC = Mixed Conifer	S = Black Spruce	Z = Water		
G = Grass	MD = Mixed Deciduous	T = Tamarack			

PU	Acres	PU	Acres
1	10.7	6	34.9
2	18.1	7	17.0
3	16.0	8	23.1
4	13.9	9	13.8
5	10.1		

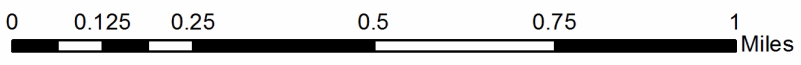
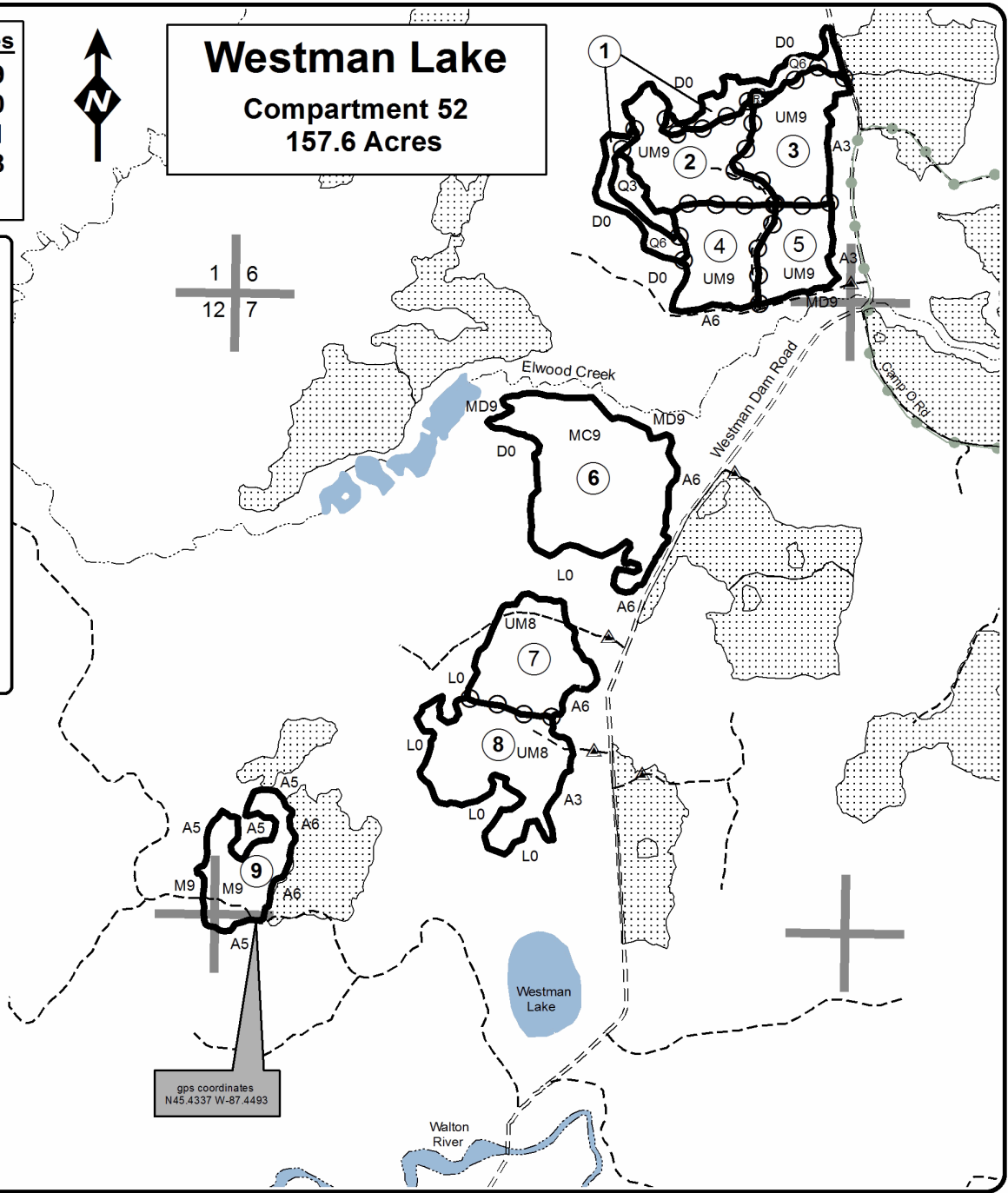
**Westman Lake**  
**Compartment 52**  
**157.6 Acres**

**Legend**

- Against State (Red)
- ⊙ Payment Unit (Yellow)
- Private Line (Blue)
- Section Corners
- 6 Section Number
- === Gravel Road
- - - Two Tracked Road
- ① Payment Unit
- R Retention Patch
- ⋯ Adjacent Timber Sale
- Stream/Creek/Drainage
- ORV Route
- ▲ Gate



gps coordinates  
N45.4337 W-87.4493



**TIMBER SALE INFORMATION**

Drewry Elwood (33-032-18)

T35N, R25W, SEC. 4; T35N, R25W, SEC. 5; T35N, R25W, SEC. 6; T35N, R25W, SEC. 8; T36N, R25W, SEC. 32.  
Menominee County (Advertised Price \$106,317.20)

SALE NOTE: The Forest Island ORV Trail and route run through the sale area. These trails and routes must be properly signed and protected throughout all harvesting operations, see specs 5.2.39 and 6.2.3 for more details.

A recreation site such as a trail, pathway, or campground is within the sale area or the vicinity. Certain restrictions/specifications may be applicable including time restrictions.

A timber sale contract for this lump sum, sealed bid timber sale will be awarded to the responsible bidder offering the highest sealed bid price. Bids must be at or above the following advertised price for each species:

<u>PRODUCTS &amp; SPECIES</u>	<u>ESTIMATED UNITS*</u>	<u>ADVERTISED PRICE</u>
<b>Sawtimber</b>		
Black Ash	0.50 MBF	\$ 66.00 / MBF
Green Ash	27.30 MBF	\$ 88.00 / MBF
Paper Birch	0.50 MBF	\$ 79.00 / MBF
Red Maple	37.90 MBF	\$ 189.00 / MBF
Sugar Maple	0.90 MBF	\$ 264.00 / MBF
White Pine	10.70 MBF	\$ 54.00 / MBF
Yellow Birch	1.90 MBF	\$ 109.00 / MBF
<b>Pulpwood</b>		
Balsam Fir	146.00 Cords	\$ 23.05 / Cord
Mixed Aspen	118.00 Cords	\$ 28.50 / Cord
Mixed Hardwood	2,416.00 Cords	\$ 27.30 / Cord
Mixed Spruce	117.00 Cords	\$ 19.40 / Cord
N. White Cedar	361.00 Cords	\$ 19.90 / Cord
Red Pine	75.00 Cords	\$ 51.30 / Cord
Tamarack	24.00 Cords	\$ 15.45 / Cord
White Pine	347.00 Cords	\$ 26.80 / Cord

\* The total volume is statistically estimated within plus (+) or minus (-) 9.51 percent. The estimated units are final and not subject to adjustment. Prospective bidders are urged to examine this timber and to make their own estimates of quantity and quality.

**BOND AND PAYMENT SCHEDULE:**

1. A bond in the amount of \$5,316.00 to insure faithful performance of the conditions of the contract will be deposited by the successful bidder within 21 days of the sale award.
2. Cutting in any sale or unit without the required advance payment would be considered a trespass.
3. Total payment must be paid in advance or according to the following schedule:
  - (a) Ten percent (10%) of the sale value must be paid within 21 days of the sale award.
  - (b) The 10% down payment will be credited towards the first unit cut.
  - (c) Payment for each of the following units must be made before cutting begins in that unit:

<u>PAYMENT UNIT NUMBER</u>	<u>PERCENT OF TOTAL SALE VALUE</u>
01	26.1%
02	7.6%
03	4.1%
04	2.3%
05	14.3%
06	8.4%
07	20.6%
08	1.7%
09	3.9%
10	7.1%
11	3.9%

4. If no cutting takes place, the 10% down payment will not be refunded.
5. Operations on the contract issued will terminate on 09/30/2021.

**Description of Timber by Payment Unit (PU)**

PU	MARKET GROUP	PRODUCT	QUANTITY	UNIT	ACRES	ADVERTISE PRICE
1	Green Ash	Sawtimber	12.6	MBF	30.1	\$27,805.50
	Red Maple		8.9	MBF		
	Yellow Birch		1.4	MBF		
	Balsam Fir	Pulpwood	16.0	Cords		
	Mixed Aspen		6.0	Cords		
	<i>Quaking Aspen</i>		6.0	<i>Cords</i>		
	Mixed Hardwood		749.0	Cords		
	<i>Black Ash</i>		217.0	<i>Cords</i>		
	<i>Green Ash</i>		294.0	<i>Cords</i>		
	<i>Paper Birch</i>		30.0	<i>Cords</i>		
	<i>Red Maple</i>		170.0	<i>Cords</i>		
	<i>Yellow Birch</i>		38.0	<i>Cords</i>		
	Mixed Spruce		12.0	Cords		
	<i>Black Spruce</i>		5.0	<i>Cords</i>		
	<i>White Spruce</i>		7.0	<i>Cords</i>		
	N. White Cedar		183.0	Cords		
2	Black Ash	Sawtimber	0.5	MBF	17.2	\$8,102.90
	Green Ash		0.8	MBF		
	Paper Birch		0.5	MBF		
	White Pine		3.2	MBF		
	Balsam Fir	Pulpwood	22.0	Cords		
	Mixed Aspen		18.0	Cords		
	<i>Quaking Aspen</i>		18.0	<i>Cords</i>		
	Mixed Hardwood		186.0	Cords		
	<i>Black Ash</i>		27.0	<i>Cords</i>		
	<i>Green Ash</i>		2.0	<i>Cords</i>		
	<i>Paper Birch</i>		10.0	<i>Cords</i>		
	<i>Red Maple</i>		137.0	<i>Cords</i>		
	<i>Yellow Birch</i>		10.0	<i>Cords</i>		
	Mixed Spruce		5.0	Cords		
	<i>Black Spruce</i>		4.0	<i>Cords</i>		
	<i>White Spruce</i>		1.0	<i>Cords</i>		
N. White Cedar		45.0	Cords			
White Pine		26.0	Cords			
3	Green Ash	Sawtimber	0.8	MBF	11.6	\$4,357.90
	Balsam Fir	Pulpwood	4.0	Cords		
	Mixed Hardwood		134.0	Cords		
	<i>Balsam Poplar</i>		4.0	<i>Cords</i>		
	<i>Black Ash</i>		45.0	<i>Cords</i>		
	<i>Green Ash</i>		58.0	<i>Cords</i>		
	<i>Paper Birch</i>		3.0	<i>Cords</i>		
	<i>Red Maple</i>		20.0	<i>Cords</i>		
	<i>Yellow Birch</i>		4.0	<i>Cords</i>		
	Mixed Spruce		2.0	Cords		
	<i>Black Spruce</i>		2.0	<i>Cords</i>		
	N. White Cedar		21.0	Cords		
	White Pine		3.0	Cords		
4	Balsam Fir	Pulpwood	2.0	Cords	10.5	\$2,426.40
	Mixed Aspen		15.0	Cords		
	<i>B. T. Aspen</i>		2.0	<i>Cords</i>		
	<i>Quaking Aspen</i>		13.0	<i>Cords</i>		
	Mixed Hardwood		23.0	Cords		
	<i>Paper Birch</i>		5.0	<i>Cords</i>		
	<i>Red Maple</i>		18.0	<i>Cords</i>		
	Mixed Spruce		53.0	Cords		
	<i>Black Spruce</i>		46.0	<i>Cords</i>		

Description of Timber by Payment Unit (PU), con't

PU	MARKET GROUP	PRODUCT	QUANTITY	UNIT	ACRES	ADVERTISE PRICE
4 con't	<i>White Spruce</i>	<i>Pulpwood</i>	7.0	<i>Cords</i>		
	Tamarack		14.0	Cords		
	White Pine		3.0	Cords		
5	Green Ash	Sawtimber	4.1	MBF	21.9	\$15,163.40
	White Pine	Pulpwood	1.9	MBF		
	Balsam Fir		10.0	Cords		
	Mixed Aspen		19.0	Cords		
	<i>Quaking Aspen</i>		19.0	<i>Cords</i>		
	Mixed Hardwood		444.0	Cords		
	<i>Balsam Poplar</i>		2.0	<i>Cords</i>		
	<i>Black Ash</i>		82.0	<i>Cords</i>		
	<i>Green Ash</i>		124.0	<i>Cords</i>		
	<i>Paper Birch</i>		4.0	<i>Cords</i>		
	<i>Red Maple</i>		222.0	<i>Cords</i>		
	<i>Yellow Birch</i>		10.0	<i>Cords</i>		
	Mixed Spruce		13.0	Cords		
	<i>Black Spruce</i>		13.0	<i>Cords</i>		
	N. White Cedar		66.0	Cords		
	White Pine		9.0	Cords		
	6		White Pine	Sawtimber		
Yellow Birch		Pulpwood	0.5	MBF		
Balsam Fir			36.0	Cords		
Mixed Aspen			30.0	Cords		
<i>Quaking Aspen</i>			30.0	<i>Cords</i>		
Mixed Hardwood			234.0	Cords		
<i>American Elm</i>			1.0	<i>Cords</i>		
<i>Balsam Poplar</i>			3.0	<i>Cords</i>		
<i>Black Ash</i>			7.0	<i>Cords</i>		
<i>Green Ash</i>			40.0	<i>Cords</i>		
<i>Paper Birch</i>			6.0	<i>Cords</i>		
<i>Red Maple</i>			173.0	<i>Cords</i>		
<i>Yellow Birch</i>			4.0	<i>Cords</i>		
Mixed Spruce			11.0	Cords		
<i>Black Spruce</i>			3.0	<i>Cords</i>		
<i>White Spruce</i>			8.0	<i>Cords</i>		
N. White Cedar			27.0	Cords		
White Pine	2.0	Cords				
7	Green Ash	Sawtimber	6.2	MBF	27.2	\$21,889.60
	Red Maple	Pulpwood	25.0	MBF		
	White Pine		1.8	MBF		
	Balsam Fir		50.0	Cords		
	Mixed Aspen		28.0	Cords		
	<i>B. T. Aspen</i>		12.0	<i>Cords</i>		
	<i>Quaking Aspen</i>		16.0	<i>Cords</i>		
	Mixed Hardwood		474.0	Cords		
	<i>Balsam Poplar</i>		4.0	<i>Cords</i>		
	<i>Basswood</i>		6.0	<i>Cords</i>		
	<i>Black Ash</i>		57.0	<i>Cords</i>		
	<i>Green Ash</i>		73.0	<i>Cords</i>		
	<i>Paper Birch</i>		5.0	<i>Cords</i>		
	<i>Red Maple</i>		308.0	<i>Cords</i>		
	<i>Yellow Birch</i>		21.0	<i>Cords</i>		
	Mixed Spruce		10.0	Cords		
	<i>White Spruce</i>		10.0	<i>Cords</i>		
N. White Cedar	17.0	Cords				
White Pine	41.0	Cords				

**Description of Timber by Payment Unit (PU), con't**

PU	MARKET GROUP	PRODUCT	QUANTITY	UNIT	ACRES	ADVERTISE PRICE
8	Red Maple	Sawtimber	4.0	MBF	3.7	\$1,839.90
	Sugar Maple		0.9	MBF		
	Mixed Hardwood	Pulpwood	31.0	Cords		
	<i>Red Maple</i>		17.0	<i>Cords</i>		
	<i>Sugar Maple</i>		14.0	<i>Cords</i>		
9	Green Ash	Sawtimber	2.8	MBF	4.2	\$4,142.15
	Balsam Fir	Pulpwood	3.0	Cords		
	Mixed Hardwood		138.0	Cords		
	<i>Balsam Poplar</i>		1.0	<i>Cords</i>		
	<i>Black Ash</i>		39.0	<i>Cords</i>		
	<i>Green Ash</i>		93.0	<i>Cords</i>		
	<i>Red Maple</i>		5.0	<i>Cords</i>		
	Mixed Spruce		1.0	Cords		
	<i>White Spruce</i>		1.0	<i>Cords</i>		
	N. White Cedar		2.0	Cords		
10	Balsam Fir	Pulpwood	3.0	Cords	23.1	\$7,503.65
	Mixed Spruce		8.0	Cords		
	<i>Black Spruce</i>		8.0	<i>Cords</i>		
	Red Pine		60.0	Cords		
	Tamarack		10.0	Cords		
	White Pine		151.0	Cords		
11	White Pine	Sawtimber	2.9	MBF	22.3	\$4,105.40
	Mixed Aspen	Pulpwood	2.0	Cords		
	<i>B. T. Aspen</i>		2.0	<i>Cords</i>		
	Mixed Hardwood		3.0	Cords		
	<i>Red Maple</i>		2.0	<i>Cords</i>		
	<i>Yellow Birch</i>		1.0	<i>Cords</i>		
	Mixed Spruce		2.0	Cords		
	<i>Black Spruce</i>		1.0	<i>Cords</i>		
	<i>White Spruce</i>		1.0	<i>Cords</i>		
	Red Pine		15.0	Cords		
White Pine		112.0	Cords			
TOTAL:			79.7	MBF		
TOTAL:			3,604.0	Cords		



## Sale Specific Conditions & Requirements

**Sale Name: Drewry Elwood**

**Sale Number: 33-032-18 Seq#: 1**

### 1 - Sale Area

#### 1.2 - Boundaries

##### 1.2.1 - Painted boundaries (1/14)

The sale boundary and Payment Unit boundaries are marked and identified by red and yellow paint. Exterior sale boundary lines against state are marked with red paint. Retention patches are marked with red paint; no harvesting activities may occur within them. Interior Payment Unit boundaries are marked with yellow paint. The painted boundary line trees are not Included Timber and are to be protected; except the double dot red painted trees along the Westman Dam Road in Payment Units 4, 5, and 6, which are included timber and designated for harvest. Yellow painted trees designating an interior Payment Unit boundary are only to be cut when all surrounding Payment Units have been paid for.

### 2 - Timber Specifications

#### 2.1 - Included Timber

##### 2.1.1 - Clearcut unit(s) with unmerchantable trees (6/14)

Within Payment Unit(s) 1 - 7 and 9 - 11, cut all trees that are three (3) inches or more at DBH, with the following exceptions:

- Within Payment Units 1 and 3, do not cut hemlock.

- Within Payment Units 2, 4, 5, 6, 7, 10, and 11, do not cut hemlock and trees marked with green paint.

##### 2.1.3 - Cut tree marked unit(s) (12/08)

Within Payment Unit(s) 8, all trees are designated for cutting when marked with orange paint above and below stump height, regardless of merchantability.

#### 2.2 - Utilization

##### 2.2.4 - Skidding length (2/14)

Skidding of unlimbed tops or lengths over 17 feet is not permissible within Payment Units 2, 8, 10, and 11.

### 3 - Payments

#### 3.3 - Pre-measured Sales

##### 3.3.4 - Dividing payment units (7/14)

Payment Unit(s) \$18,000 in value or greater may be divided at the request of the Purchaser and upon approval of the Unit Manager. Dividing Payment Units is a contract modification which requires a Timber Sale Contract Supplement. There will be only one division per Payment Unit.

### 4 - Transportation

#### 4.2 - Maintenance

##### 4.2.1 - Hauling restriction (12/08)

Hauling may be restricted on forest roads by the Unit Manager or his/her representative. The restriction may occur during spring breakup or during other wet weather conditions.

##### 4.2.4 - Grading (10/16)

For completion of the sale, state forest roads must be graded. In general, this will require a road grader or bull dozer to shape up the roads after forest products have been hauled off site. This includes cleaning of drainage areas, grading, crowning and filling with gravel, if necessary. The grading equipment to be used must be approved by the Unit Manager or his/her representative.

#### 4.4 - Access

##### 4.4.4 - Restricted access (10/05)

Payment Unit 8 will be difficult to access in the non-winter months because of the low wet ground throughout Payment Unit 7. If there is a dry summer, the Purchaser can try and access this unit after July 15.

## **5 - Operations**

### **5.2 - Conduct of Operations**

#### **5.2.3 - Operating Restrictions**

##### **5.2.3.1 - Operating restrictions (9/11)**

Within Payment Unit(s) 1, 3, 4, 5, 7, and 9, cutting and skidding are limited to the period of December 1 to March 31, unless there is an extended dry or frozen period and the sale administrator allows harvesting during that time period. This restriction is because of low wet ground throughout each of the Payment Units.

##### **5.2.3.3 - Bark slippage restriction (3/09)**

Within Payment Unit(s) 8, unless changed by written agreement, cutting and skidding are not permitted during the period of April 15 to July 15. This restriction is because of bark slippage.

#### **5.2.22 - Operating Caution**

##### **5.2.22.1 - Operating caution (6/11)**

It is recommended, but not required, that within Payment Unit(s) 2, 6, 10, and 11, cutting and skidding occur during dry summer or frozen winter conditions. The reason for the recommendation is because of some low wet pockets/drains within each of the Payment Units.

#### **5.2.39 - ORV trail/route protection (4/18)**

The Forest Island ORV trail and route are shown on the Timber Sale Map. Do not cut trees or damage posts with yellow ORV markers. All stumps within 5 feet of the trail must be cut flush with the ground. Maintain a 20 foot wide slash, debris, and rut free zone daily using the ORV trail or route as the centerline. Skidding across the trail or route may only occur in locations approved by the sale administrator.

### **5.4 - Soil Protection**

#### **5.4.1 - Rutting restriction, general (7/16)**

Operations are to cease immediately if equipment and weather conditions result in rutting of roads and/or skid trails which is 12 inches or greater in depth and 50 feet in length. The Unit Manager or his/her representative may restrict hauling and/or skidding if ruts exceed the specified depth. With the Unit Manager or his/her representative's approval, the Purchaser may return to the area when the risk of rutting has decreased.

## **6 - Safety and Fire Prevention**

### **6.2 - Signing**

#### **6.2.1 - Road posting (9/09)**

The Purchaser is responsible for posting and maintaining caution signs on the Westman Dam Road prior to beginning operations. The road must be posted at appropriate distances from the sale area to warn of logging activity and truck traffic. Signs must be removed when harvest operations are suspended or completed. The Purchaser will provide these signs.

#### **6.2.3 - Recreational trail posting (2/10)**

The Purchaser is responsible for posting and maintaining caution signs on the Forest Island ORV route prior to beginning operations. The trail must be posted at appropriate distances from the sale area to warn of logging activity and truck traffic at both ends of the trail. Signs must be removed when harvest operations are suspended or completed. The Purchaser will provide these signs.



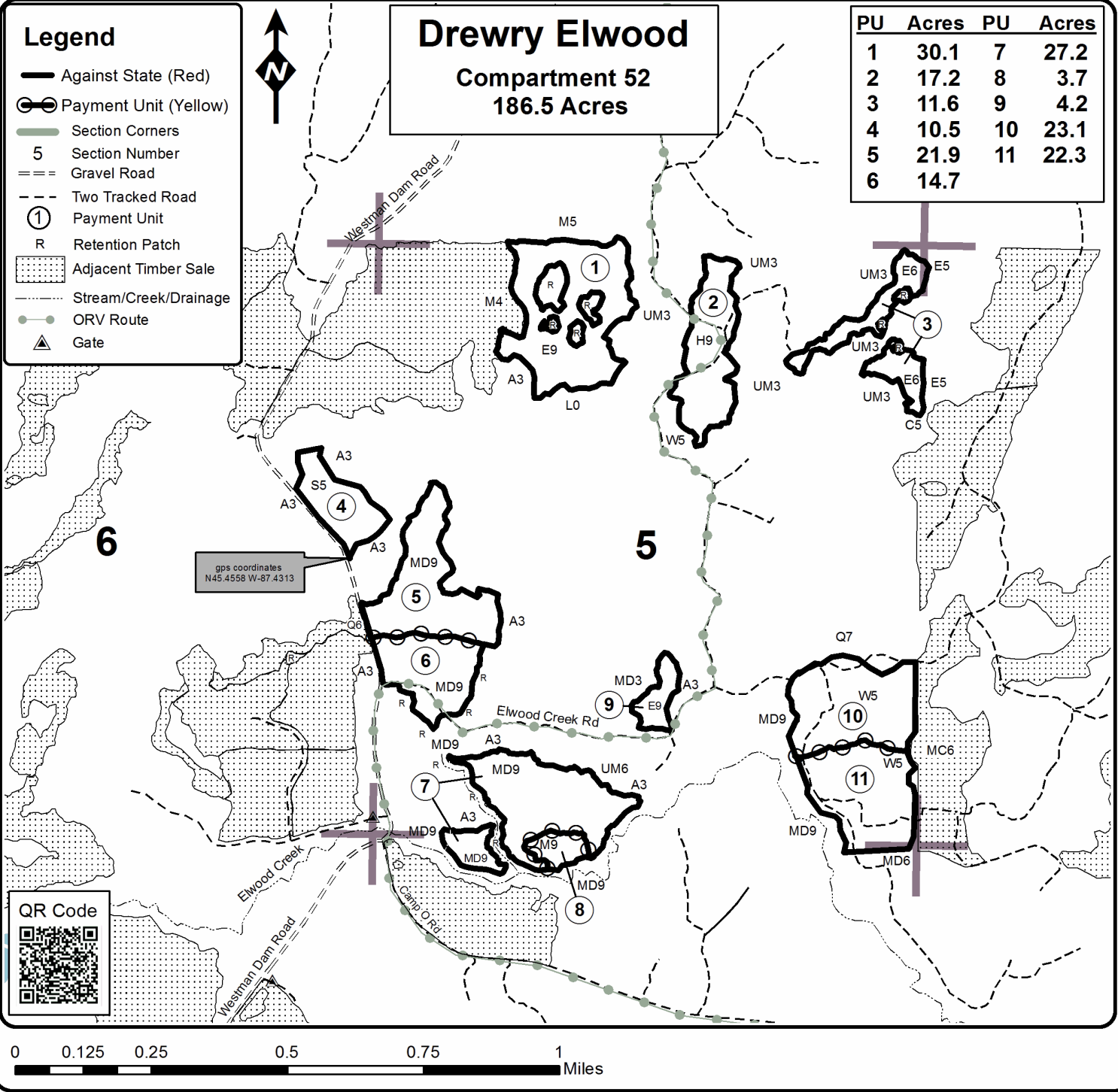
# TIMBER SALE MAP

This information provided by authority of Part 525, 1994 PA 451, as amended.

Sale Number	Year
33-032	18

Forest Management Unit Escanaba Management Unit	County Menominee County	Mapped By Beaudo	Date 8/21/2018	Page 1	of 1
Township 35N 36N	Range 25W	Section(s) and Subdivision(s) 35N: Sec 4 - NWNW; Sec 5 - N1/2NW, SWNW, N1/2NE, SWNE, SW, SE; Sec 6 - SENE, NESE; Sec 8 - N1/2NW, NENE. 36N: Sec 32 - SESW	Scale 1:15,840		

Cover Type				Density	
A = Aspen	H = Hemlock	N = Marsh	U = Upland Brush	0 = Non Stocked	5 = Pole Timber Medium
B = Paper Birch	J = Jack Pine	O = Oak	UM = Upland Mixed	1 = Seedling Sapling Poor	6 = Pole Timber Well
C = Cedar	L = Lowland Brush	P = Lowland Poplar	V = Bog or Marsh	2 = Seedling Sapling Medium	7 = Saw Timber Poor
D = Treed Bog	LM = Lowland Mixed	Q = Mixed Swamp Conifer	W = White Pine	3 = Seedling Sapling Well	8 = Saw Timber Medium
E = Swamp Hdwoods	M = Mpl, Bch, Brch	R = Red Pine	X = Non Stocked	4 = Pole Timber Poor	9 = Saw Timber Well
F = Spruce Fir	MC = Mixed Conifer	S = Black Spruce	Z = Water		
G = Grass	MD = Mixed Deciduous	T = Tamarack			





**TIMBER SALE INFORMATION**

Watch Out Yogi (33-033-18)

T35N, R25W, SEC. 5; T35N, R25W, SEC. 6; T35N, R26W, SEC. 1; T36N, R25W, SEC. 31; T36N, R25W, SEC. 32.  
Menominee County (Advertised Price \$46,203.05)

SALE NOTE: Payment Units 1, 2, and 3 will have to be accessed through a couple of wildlife gates; a key will be provided to the Purchaser. Within Payment Unit 4, Beech Scale is present, but no mortality has occurred.

A timber sale contract for this lump sum, sealed bid timber sale will be awarded to the responsible bidder offering the highest sealed bid price. Bids must be at or above the following advertised price for each species:

<u>PRODUCTS &amp; SPECIES</u>	<u>ESTIMATED UNITS*</u>	<u>ADVERTISED PRICE</u>
<b>Sawtimber</b>		
Basswood	19.00 MBF	\$ 99.00 / MBF
Beech	5.30 MBF	\$ 79.00 / MBF
Green Ash	5.10 MBF	\$ 88.00 / MBF
Sugar Maple	7.10 MBF	\$ 264.00 / MBF
White Ash	6.30 MBF	\$ 64.00 / MBF
Yellow Birch	1.70 MBF	\$ 109.00 / MBF
<b>Pulpwood</b>		
Balsam Fir	138.00 Cords	\$ 23.05 / Cord
Mixed Aspen	276.00 Cords	\$ 28.50 / Cord
Mixed Hardwood	983.00 Cords	\$ 27.30 / Cord
Mixed Spruce	22.00 Cords	\$ 19.40 / Cord
N. White Cedar	134.00 Cords	\$ 19.90 / Cord
Tamarack	1.00 Cords	\$ 15.45 / Cord

\* The total volume is statistically estimated within plus (+) or minus (-) 10.62 percent. The estimated units are final and not subject to adjustment. Prospective bidders are urged to examine this timber and to make their own estimates of quantity and quality.

**BOND AND PAYMENT SCHEDULE:**

1. A bond in the amount of \$2,310.00 to insure faithful performance of the conditions of the contract will be deposited by the successful bidder within 21 days of the sale award.
2. Cutting in any sale or unit without the required advance payment would be considered a trespass.
3. Total payment must be paid in advance or according to the following schedule:
  - (a) Ten percent (10%) of the sale value must be paid within 21 days of the sale award.
  - (b) The 10% down payment will be credited towards the first unit cut.
  - (c) Payment for each of the following units must be made before cutting begins in that unit:

<u>PAYMENT UNIT NUMBER</u>	<u>PERCENT OF TOTAL SALE VALUE</u>
01	22.5%
02	14.2%
03	6.8%
04	17.4%
05	10.1%
06	18.3%
07	10.7%

4. If no cutting takes place, the 10% down payment will not be refunded.
5. Operations on the contract issued will terminate on 09/30/2021.

**Description of Timber by Payment Unit (PU)**

PU	MARKET GROUP	PRODUCT	QUANTITY	UNIT	ACRES	ADVERTISE PRICE	
1	Balsam Fir	Pulpwood	86.0	Cords	23.9	\$10,385.70	
	Mixed Aspen		218.0	Cords			
	<i>Balsam Poplar</i>		38.0	<i>Cords</i>			
	<i>Quaking Aspen</i>		180.0	<i>Cords</i>			
	Mixed Hardwood		25.0	Cords			
	<i>Black Ash</i>		16.0	<i>Cords</i>			
	<i>Green Ash</i>		9.0	<i>Cords</i>			
	Mixed Spruce		9.0	Cords			
	<i>White Spruce</i>		9.0	<i>Cords</i>			
	N. White Cedar		67.0	Cords			
	2		Green Ash	Sawtimber			3.6
Balsam Fir		Pulpwood	13.0	Cords			
Mixed Aspen			27.0	Cords			
<i>Balsam Poplar</i>			7.0	<i>Cords</i>			
<i>Quaking Aspen</i>			20.0	<i>Cords</i>			
Mixed Hardwood			189.0	Cords			
<i>Black Ash</i>			17.0	<i>Cords</i>			
<i>Green Ash</i>			172.0	<i>Cords</i>			
3			Green Ash	Sawtimber	1.0	MBF	10.4
	Balsam Fir		Pulpwood	6.0	Cords		
	Mixed Aspen	25.0		Cords			
	<i>Balsam Poplar</i>	21.0		<i>Cords</i>			
	<i>Quaking Aspen</i>	4.0		<i>Cords</i>			
	Mixed Hardwood	80.0		Cords			
	<i>American Elm</i>	3.0		<i>Cords</i>			
	<i>Black Ash</i>	4.0		<i>Cords</i>			
	<i>Green Ash</i>	70.0		<i>Cords</i>			
	<i>Red Maple</i>	3.0		<i>Cords</i>			
	N. White Cedar	2.0		Cords			
4	Basswood	Sawtimber		15.5	MBF	21.3	\$8,030.95
	Beech		0.5	MBF			
	Sugar Maple		6.1	MBF			
	White Ash		4.2	MBF			
	Balsam Fir		Pulpwood	23.0	Cords		
	Mixed Aspen	6.0		Cords			
	<i>B. T. Aspen</i>	4.0		<i>Cords</i>			
	<i>Quaking Aspen</i>	2.0		<i>Cords</i>			
	Mixed Hardwood	142.0		Cords			
	<i>Basswood</i>	46.0		<i>Cords</i>			
	<i>Beech</i>	22.0		<i>Cords</i>			
	<i>Ironwood</i>	3.0		<i>Cords</i>			
	<i>Paper Birch</i>	3.0		<i>Cords</i>			
	<i>Sugar Maple</i>	40.0		<i>Cords</i>			
	<i>White Ash</i>	28.0		<i>Cords</i>			
	5	Basswood	Sawtimber	3.5	MBF		
Beech		4.8		MBF			
Green Ash		0.5		MBF			
Sugar Maple		1.0		MBF			
White Ash		2.1		MBF			
Yellow Birch		0.8		MBF			
Balsam Fir		Pulpwood		6.0	Cords		
Mixed Hardwood			120.0	Cords			
<i>Basswood</i>			20.0	<i>Cords</i>			
<i>Beech</i>			29.0	<i>Cords</i>			
<i>Black Ash</i>			8.0	<i>Cords</i>			
<i>Green Ash</i>			8.0	<i>Cords</i>			

**Description of Timber by Payment Unit (PU), con't**

PU	MARKET GROUP	PRODUCT	QUANTITY	UNIT	ACRES	ADVERTISE PRICE
5 con't	<i>Ironwood</i>	<i>Pulpwood</i>	4.0	<i>Cords</i>		
	<i>Sugar Maple</i>		37.0	<i>Cords</i>		
	<i>White Ash</i>		12.0	<i>Cords</i>		
	<i>Yellow Birch</i>		2.0	<i>Cords</i>		
6	Yellow Birch	Sawtimber	0.9	MBF	43.9	\$8,453.15
	Balsam Fir	Pulpwood	3.0	Cords		
	Mixed Hardwood		254.0	Cords		
	<i>Beech</i>		4.0	<i>Cords</i>		
	<i>Black Ash</i>		8.0	<i>Cords</i>		
	<i>Black Cherry</i>		3.0	<i>Cords</i>		
	<i>Green Ash</i>		49.0	<i>Cords</i>		
	<i>Red Maple</i>		166.0	<i>Cords</i>		
	<i>Sugar Maple</i>		10.0	<i>Cords</i>		
	<i>Yellow Birch</i>		14.0	<i>Cords</i>		
	Mixed Spruce		3.0	Cords		
	<i>Black Spruce</i>		3.0	<i>Cords</i>		
	N. White Cedar		65.0	Cords		
	7	Balsam Fir	Pulpwood	1.0		
Mixed Hardwood		173.0		Cords		
<i>Beech</i>		2.0		<i>Cords</i>		
<i>Green Ash</i>		11.0		<i>Cords</i>		
<i>Paper Birch</i>		2.0		<i>Cords</i>		
<i>Red Maple</i>		141.0		<i>Cords</i>		
<i>Sugar Maple</i>		11.0		<i>Cords</i>		
<i>Yellow Birch</i>		6.0		<i>Cords</i>		
Mixed Spruce		10.0		Cords		
<i>Black Spruce</i>		10.0		<i>Cords</i>		
Tamarack		1.0		Cords		
TOTAL:			44.5	MBF		
TOTAL:			1,554.0	Cords		

# Sale Specific Conditions & Requirements

**Sale Name: Watch Out Yogi**

**Sale Number: 33-033-18 Seq#: 1**

## 1 - Sale Area

### 1.2 - Boundaries

#### 1.2.1 - Painted boundaries (1/14)

The sale boundary and Payment Unit boundaries are marked and identified by red and yellow paint. Exterior sale boundary lines against state are marked with red paint. Retention patches are bounded by red paint; no harvesting activities may occur within these patches. Interior Payment Unit boundaries are marked with yellow paint. The painted boundary line trees are not Included Timber and are to be protected. Yellow painted trees designating an interior Payment Unit boundary are only to be cut when all surrounding Payment Units have been paid for.

## 2 - Timber Specifications

### 2.1 - Included Timber

#### 2.1.1 - Clearcut unit(s) with unmerchantable trees (6/14)

Within Payment Unit(s) 1, 2, and 3, cut all trees that are three (3) inches or more at DBH, except do not cut trees marked with green paint within Payment Unit 2.

#### 2.1.2 - Clearcut unit(s) w/o unmerchantable trees (8/11)

Within Payment Unit(s) 6 and 7, cut all aspen and hardwood trees which meet minimum piece specifications in 2.2 Utilization. In addition, cut all conifer species greater than seven (7) inches at DBH, except do not cut hemlock and white pine. Also, do not cut cedar marked with green paint.

#### 2.1.3 - Cut tree marked unit(s) (12/08)

Within Payment Unit(s) 4 and 5, all trees are designated for cutting when marked with orange paint above and below stump height, regardless of merchantability. In addition, cut all aspen, balm, balsam fir, spruce, and ironwood greater than three (3) inches at DBH.

### 2.2 - Utilization

#### 2.2.4 - Skidding length (2/14)

Skidding of unlimbed tops or lengths over 17 feet is not permissible within Payment Units 4 and 5, unless approved by the Unit Manager or his/her representative.

## 3 - Payments

### 3.3 - Pre-measured Sales

#### 3.3.4 - Dividing payment units (7/14)

Payment Unit(s) \$18,000 in value or greater may be divided at the request of the Purchaser and upon approval of the Unit Manager. Dividing Payment Units is a contract modification which requires a Timber Sale Contract Supplement. There will be only one division per Payment Unit.

## 4 - Transportation

### 4.1 - Construction

#### 4.1.6 - Road construction (1/09)

Construction of new roads or improvements of existing roads shall be done in such a way as to minimize the environmental and visual impacts. Merchantable trees shall be cut and utilized unless otherwise directed. Non-merchantable trees shall be severed and laid flat on the ground. Slash shall be scattered, and not left in windrows and kept a minimum of 10 feet back from the road edge. Stumps shall be set upright, not left on edge, and be moved at least 10 feet away from the road edge. Disturbed soil shall be feathered into the woods and not left in berms or windrows.

#### 4.1.8 - Road work (1) (8/07)

The following road work is required: the Purchaser must purchase a new 15" X 24' corrugated steel culvert and install it on the access road within Payment Units 4 and 5. The purchaser must also haul and spread 120 yards of gravel on this same



access road, with a minimum of twelve (12) inches of gravel placed over the culvert. This road work must be completed prior to any harvesting taking place within Payment Units 4 and 5.

Gravel is available from a state pit about 3.5 miles north along the Westman Dam Road.

#### 4.4 - Access

##### 4.4.3 - Access gate (12/08)

The access gates must be locked at the completion of each day unless otherwise approved by the Unit Manager or his/her representative.

### 5 - Operations

#### 5.2 - Conduct of Operations

##### 5.2.3 - Operating Restrictions

###### 5.2.3.1 - Operating restrictions (9/11)

Within Payment Unit(s) 2, 3, and 6, cutting and skidding are limited to the period of December 1 to March 31, unless there is an extended dry or frozen period and the sale administrator allows harvesting during that time period. This restriction is because of low wet ground throughout these Payment Units.

###### 5.2.3.3 - Bark slippage restriction (3/09)

Within Payment Unit(s) 4 and 5, unless changed by written agreement, cutting and skidding are not permitted during the period of April 15 to July 15. This restriction is because of bark slippage.

##### 5.2.22 - Operating Caution

###### 5.2.22.1 - Operating caution (6/11)

It is recommended, but not required, that within Payment Unit(s) 1 and 7, cutting and skidding, occur during dry summer or frozen winter conditions. The reason for the recommendation is because of some low wet ground within each of the Payment Units.

#### 5.4 - Soil Protection

##### 5.4.1 - Rutting restriction, general (7/16)

Operations are to cease immediately if equipment and weather conditions result in rutting of roads and/or skid trails which is 12 inches or greater in depth and 50 feet in length. The Unit Manager or his/her representative may restrict hauling and/or skidding if ruts exceed the specified depth. With the Unit Manager or his/her representative's approval, the Purchaser may return to the area when the risk of rutting has decreased.

### 6 - Safety and Fire Prevention

#### 6.2 - Signing

##### 6.2.1 - Road posting (9/09)

The Purchaser is responsible for posting and maintaining caution signs on the Westman Dam Road prior to beginning operations. The road must be posted at appropriate distances from the sale area to warn of logging activity and truck traffic. Signs must be removed when harvest operations are suspended or completed. The Purchaser will provide these signs.

### 7 - Other Conditions

#### 7.5 - Loss

##### 7.5.1 - Deteriorating timber (7/09)

The sale area has received damage from Beech Bark Disease. The Purchaser should harvest the wood as soon as possible. The Department of Natural Resources is held free of responsibility of any further damage or deterioration due to delay in harvesting. In addition, beech scale is present within Payment Unit 4, but no mortality had occurred at the time of sale preparation.



# TIMBER SALE MAP

This information provided by authority of Part 525, 1994 PA 451, as amended.

Sale Number	Year
33-033	18

Forest Management Unit Escanaba Management Unit	County Menominee County	Mapped By Beaudo	Date 8/28/2018	Page 1	of 1
Township 35N 36N	Range 25W 26W	Section(s) and Subdivision(s) T35N25W: Sec 5 -N1/2NW, Sec 6 - NE/NW, S1/2NW, NE, N1/2SW, T35N26W: Sec 1 - E1/2SE, T36N25W: Sec 31 - SESE, Sec 32 - SWSW.	Scale 1:15,840		

Cover Type				Density			
A = Aspen	H = Hemlock	N = Marsh	U = Upland Brush	0 = Non Stocked	5 = Pole Timber Medium		
B = Paper Birch	J = Jack Pine	O = Oak	UM = Upland Mixed	1 = Seedling Sapling Poor	6 = Pole Timber Well		
C = Cedar	L = Lowland Brush	P = Lowland Poplar	V = Bog or Marsh	2 = Seedling Sapling Medium	7 = Saw Timber Poor		
D = Treed Bog	LM = Lowland Mixed	Q = Mixed Swamp Conifer	W = White Pine	3 = Seedling Sapling Well	8 = Saw Timber Medium		
E = Swamp Hdwoods	M = Mpl. Bch. Brch	R = Red Pine	X = Non Stocked	4 = Pole Timber Poor	9 = Saw Timber Well		
F = Spruce Fir	MC = Mixed Conifer	S = Black Spruce	Z = Water				
G = Grass	MD = Mixed Deciduous	T = Tamarack					

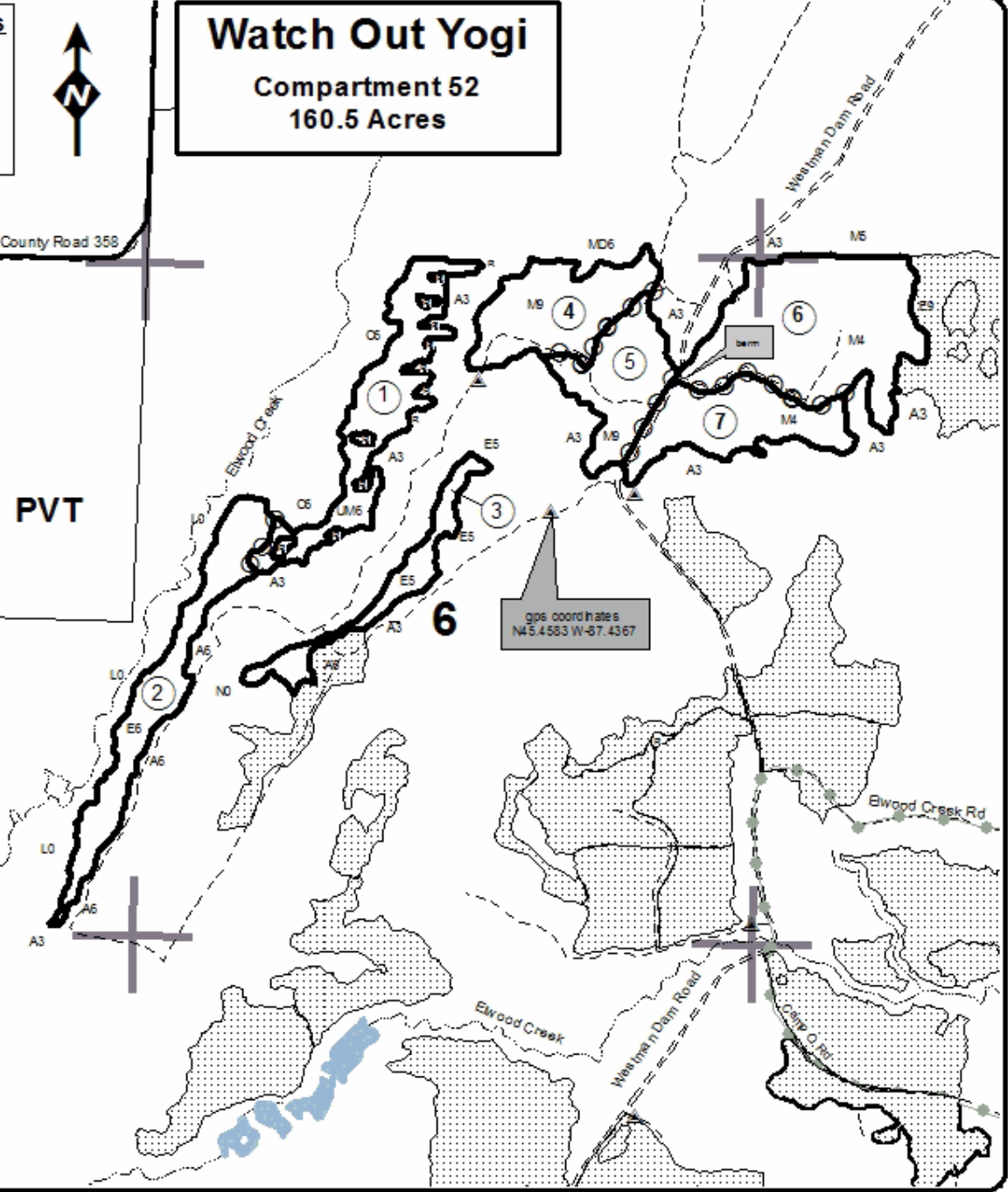
PU	Acres	PU	Acres
1	23.9	5	18.5
2	23.0	6	43.9
3	10.4	7	19.5
4	21.3		



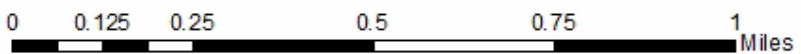
**Watch Out Yogi**  
 Compartment 52  
 160.5 Acres

**Legend**

- Against State (Red)
- Payment Unit (Yellow)
- State Property Boundary
- Section Corners
- Section Number
- Gravel Road
- Paved Road
- Two Tracked Road
- Payment Unit
- Retention Patch
- Adjacent Timber Sale
- Stream/Creek/Drainage
- ORV Route
- Gate
- Private Property



gps coordinates  
 N43.4583 W-87.4367



**TIMBER SALE INFORMATION**

Old Style Ridges (33-034-18)

T35N, R25W, SEC. 17; T35N, R25W, SEC. 5; T35N, R25W, SEC. 8.  
Menominee County (Advertised Price \$79,339.90)

SALE NOTE: The Camp "O" Road/Forest Island ORV Route runs along Payment Units 2 and 4. The road/trail must be kept clear of debris and route markers protected.

A timber sale contract for this lump sum, sealed bid timber sale will be awarded to the responsible bidder offering the highest sealed bid price. Bids must be at or above the following advertised price for each species:

<u>PRODUCTS &amp; SPECIES</u>	<u>ESTIMATED UNITS*</u>		<u>ADVERTISED PRICE</u>
<b>Sawtimber</b>			
Green Ash	10.50	MBF	\$ 94.00 / MBF
Red Maple	3.80	MBF	\$ 203.00 / MBF
White Pine	61.00	MBF	\$ 57.00 / MBF
<b>Pulpwood</b>			
Balsam Fir	144.00	Cords	\$ 24.70 / Cord
Mixed Aspen	128.00	Cords	\$ 30.50 / Cord
Mixed Hardwood	1,339.00	Cords	\$ 29.25 / Cord
Mixed Spruce	176.00	Cords	\$ 20.80 / Cord
N. White Cedar	30.00	Cords	\$ 21.35 / Cord
Red Pine	253.00	Cords	\$ 54.95 / Cord
Tamarack	21.00	Cords	\$ 16.60 / Cord
White Pine	311.00	Cords	\$ 28.70 / Cord

\* The total volume is statistically estimated within plus (+) or minus (-) 9.24 percent. The estimated units are final and not subject to adjustment. Prospective bidders are urged to examine this timber and to make their own estimates of quantity and quality.

**BOND AND PAYMENT SCHEDULE:**

1. A bond in the amount of \$3,967.00 to insure faithful performance of the conditions of the contract will be deposited by the successful bidder within 21 days of the sale award.
2. Cutting in any sale or unit without the required advance payment would be considered a trespass.
3. Total payment must be paid in advance or according to the following schedule:
  - (a) Ten percent (10%) of the sale value must be paid within 21 days of the sale award.
  - (b) The 10% down payment will be credited towards the first unit cut.
  - (c) Payment for each of the following units must be made before cutting begins in that unit:

<u>PAYMENT UNIT NUMBER</u>	<u>PERCENT OF TOTAL SALE VALUE</u>
01	5.2%
02	14.7%
03	17.3%
04	18.3%
05	6.3%
06	16.0%
07	15.2%
08	7.0%

4. If no cutting takes place, the 10% down payment will not be refunded.
5. Operations on the contract issued will terminate on 09/30/2021.

**Description of Timber by Payment Unit (PU)**

PU	MARKET GROUP	PRODUCT	QUANTITY	UNIT	ACRES	ADVERTISE PRICE
1	Balsam Fir	Pulpwood	31.0	Cords	10.1	\$4,118.10
	Mixed Aspen		6.0	Cords		
	<i>B. T. Aspen</i>		3.0	<i>Cords</i>		
	<i>Quaking Aspen</i>		3.0	<i>Cords</i>		
	Mixed Hardwood		92.0	Cords		
	<i>Black Cherry</i>		3.0	<i>Cords</i>		
	<i>Ironwood</i>		1.0	<i>Cords</i>		
	<i>Paper Birch</i>		7.0	<i>Cords</i>		
	<i>Red Maple</i>		12.0	<i>Cords</i>		
	<i>Sugar Maple</i>		69.0	<i>Cords</i>		
	Mixed Spruce		23.0	Cords		
	<i>White Spruce</i>		23.0	<i>Cords</i>		
	2		Green Ash	Sawtimber		
Red Maple			0.8	MBF		
Balsam Fir		Pulpwood	43.0	Cords		
Mixed Aspen			53.0	Cords		
<i>Quaking Aspen</i>			53.0	<i>Cords</i>		
Mixed Hardwood			274.0	Cords		
<i>Balsam Poplar</i>			1.0	<i>Cords</i>		
<i>Black Ash</i>			26.0	<i>Cords</i>		
<i>Green Ash</i>			59.0	<i>Cords</i>		
<i>Paper Birch</i>			2.0	<i>Cords</i>		
<i>Red Maple</i>			185.0	<i>Cords</i>		
<i>Yellow Birch</i>			1.0	<i>Cords</i>		
Mixed Spruce			24.0	Cords		
<i>Black Spruce</i>			3.0	<i>Cords</i>		
<i>White Spruce</i>			21.0	<i>Cords</i>		
N. White Cedar			3.0	Cords		
White Pine			5.0	Cords		
3	White Pine		Sawtimber	19.5	MBF	17.1
	Balsam Fir	Pulpwood	5.0	Cords		
	Mixed Aspen		23.0	Cords		
	<i>B. T. Aspen</i>		7.0	<i>Cords</i>		
	<i>Quaking Aspen</i>		16.0	<i>Cords</i>		
	Mixed Hardwood		39.0	Cords		
	<i>Paper Birch</i>		6.0	<i>Cords</i>		
	<i>Red Maple</i>		33.0	<i>Cords</i>		
	Mixed Spruce		30.0	Cords		
	<i>Black Spruce</i>		30.0	<i>Cords</i>		
	Red Pine		128.0	Cords		
	Tamarack		15.0	Cords		
	White Pine		95.0	Cords		
4	Green Ash	Sawtimber	1.7	MBF	26.1	\$14,480.30
	Red Maple		2.5	MBF		
	White Pine		29.8	MBF		
	Balsam Fir	Pulpwood	27.0	Cords		
	Mixed Aspen		4.0	Cords		
	<i>B. T. Aspen</i>		2.0	<i>Cords</i>		
	<i>Quaking Aspen</i>		2.0	<i>Cords</i>		
	Mixed Hardwood		215.0	Cords		
	<i>Green Ash</i>		42.0	<i>Cords</i>		
	<i>Paper Birch</i>		7.0	<i>Cords</i>		
	<i>Red Maple</i>		164.0	<i>Cords</i>		
	<i>Yellow Birch</i>		2.0	<i>Cords</i>		
	Mixed Spruce		4.0	Cords		
	<i>Black Spruce</i>		4.0	<i>Cords</i>		

Description of Timber by Payment Unit (PU), con't

PU	MARKET GROUP	PRODUCT	QUANTITY	UNIT	ACRES	ADVERTISE PRICE
4 con't	N. White Cedar	Pulpwood	16.0	Cords		
	Red Pine		27.0	Cords		
	White Pine		109.0	Cords		
5	Green Ash	Sawtimber	0.5	MBF	12.8	\$5,035.15
	Balsam Fir	Pulpwood	2.0	Cords		
	Mixed Hardwood		114.0	Cords		
	<i>Black Ash</i>		3.0	Cords		
	<i>Green Ash</i>		21.0	Cords		
	<i>Paper Birch</i>		37.0	Cords		
	<i>Red Maple</i>		53.0	Cords		
	Mixed Spruce		20.0	Cords		
	<i>Black Spruce</i>		20.0	Cords		
	Red Pine		7.0	Cords		
	White Pine		28.0	Cords		
6	Green Ash	Sawtimber	1.1	MBF	19.0	\$12,684.30
	White Pine		7.7	MBF		
	Balsam Fir	Pulpwood	10.0	Cords		
	Mixed Aspen		34.0	Cords		
	<i>B. T. Aspen</i>		34.0	Cords		
	Mixed Hardwood		220.0	Cords		
	<i>Black Ash</i>		3.0	Cords		
	<i>Green Ash</i>		14.0	Cords		
	<i>Paper Birch</i>		22.0	Cords		
	<i>Red Maple</i>		181.0	Cords		
	Mixed Spruce		33.0	Cords		
	<i>Black Spruce</i>		33.0	Cords		
	N. White Cedar		7.0	Cords		
	Red Pine		47.0	Cords		
	White Pine		35.0	Cords		
7	Green Ash	Sawtimber	5.9	MBF	25.4	\$12,075.45
	Red Maple		0.5	MBF		
	Balsam Fir	Pulpwood	13.0	Cords		
	Mixed Aspen		2.0	Cords		
	<i>Quaking Aspen</i>		2.0	Cords		
	Mixed Hardwood		373.0	Cords		
	<i>Black Ash</i>		114.0	Cords		
	<i>Black Cherry</i>		6.0	Cords		
	<i>Green Ash</i>		170.0	Cords		
	<i>Paper Birch</i>		7.0	Cords		
	<i>Red Maple</i>		76.0	Cords		
	Mixed Spruce		2.0	Cords		
	<i>White Spruce</i>		2.0	Cords		
	N. White Cedar		4.0	Cords		
8	White Pine	Sawtimber	4.0	MBF	6.2	\$5,551.80
	Balsam Fir	Pulpwood	13.0	Cords		
	Mixed Aspen		6.0	Cords		
	<i>Quaking Aspen</i>		6.0	Cords		
	Mixed Hardwood		12.0	Cords		
	<i>Paper Birch</i>		2.0	Cords		
	<i>Red Maple</i>		10.0	Cords		
	Mixed Spruce		40.0	Cords		
	<i>Black Spruce</i>		40.0	Cords		
	Red Pine		44.0	Cords		
	Tamarack		6.0	Cords		
White Pine		39.0	Cords			

TOTAL:	75.3	MBF
--------	------	-----

TOTAL:	2,402.0	Cords
--------	---------	-------

# Sale Specific Conditions & Requirements

**Sale Name: Old Style Ridges**

**Sale Number: 33-034-18 Seq#: 1**

## 1 - Sale Area

### 1.2 - Boundaries

#### 1.2.1 - Painted boundaries (1/14)

The sale boundary and Payment Unit boundaries are marked and identified by red and yellow paint. Exterior sale boundary lines against state are marked with red paint. Interior Payment Unit boundaries are marked with yellow paint. The painted boundary line trees are not Included Timber and are to be protected, except the double dot red painted trees along the Camp "O" Road on the north side of Payment Unit 2, which are included timber. Yellow painted trees designating an interior Payment Unit boundary are only to be cut when all surrounding Payment Units have been paid for.

## 2 - Timber Specifications

### 2.1 - Included Timber

#### 2.1.1 - Clearcut unit(s) with unmerchantable trees (6/14)

Within Payment Unit(s) 2, 5, 6, 7, and 8, cut all trees that are three (3) inches or more at DBH, except do not trees marked with green paint. In addition, within Payment Units 5 and 6, do not cut hemlock.

#### 2.1.2 - Clearcut unit(s) w/o unmerchantable trees (8/11)

Within Payment Unit(s) 3 and 4, cut all pine trees which meet minimum piece specifications in 2.2 Utilization, except do not cut pine marked with green paint. In addition, cut all other species greater than three (3) inches at DBH, except do not cut hemlock and trees marked with green paint.

#### 2.1.4 - Designated timber unit(s) (6/17)

Within Payment Unit(s) 1, all aspen greater than four (4) inches at DBH are designated for cutting. In addition, cut all other species greater than three (3) inches at DBH.

## 3 - Payments

### 3.3 - Pre-measured Sales

#### 3.3.4 - Dividing payment units (7/14)

Payment Unit(s) \$18,000 in value or greater may be divided at the request of the Purchaser and upon approval of the Unit Manager. Dividing Payment Units is a contract modification which requires a Timber Sale Contract Supplement. There will be only one division per Payment Unit.

## 4 - Transportation

### 4.1 - Construction

#### 4.1.1 - Stream crossings, general (3/11)

All stream crossing structures will be temporary and therefore, shall be provided by the Purchaser, and must be removed upon completion of the sale. All permits for stream crossings will be provided by the Purchaser. There is a small creek/drain that flows between Payment Units 4 and 5. If the Purchaser would like to skid wood from Payment Units 5 - 8 out to the north to the access road in Payment Unit 4, a temporary crossing will be needed.

#### 4.1.6 - Road construction (1/09)

Construction of new roads or improvements of existing roads shall be done in such a way as to minimize the environmental and visual impacts. Merchantable trees shall be cut and utilized unless otherwise directed. Non-merchantable trees shall be severed and laid flat on the ground. Slash shall be scattered, and not left in windrows and kept a minimum of 10 feet back from the road edge. Stumps shall be set upright, not left on edge, and be moved at least 10 feet away from the road edge. Disturbed soil shall be feathered into the woods and not left in berms or windrows.

### 4.2 - Maintenance

#### 4.2.1 - Hauling restriction (12/08)

Hauling may be restricted on forest roads by the Unit Manager or his/her representative. The restriction may occur during

spring breakup or during other wet weather conditions.

#### 4.2.4 - Grading (10/16)

For completion of the sale, state forest roads must be graded. In general, this will require a road grader or bull dozer to shape up the roads after forest products have been hauled off site. This includes cleaning of drainage areas, grading, crowning and filling with gravel, if necessary. The grading equipment to be used must be approved by the Unit Manager or his/her representative.

### 5 - Operations

#### 5.2 - Conduct of Operations

##### 5.2.3 - Operating Restrictions

###### 5.2.3.1 - Operating restrictions (9/11)

Within Payment Unit(s) 2 and 7, cutting and skidding are limited to the period of December 1 to March 31, unless there is an extended dry or frozen period and the sale administrator allows harvesting during that time period. This restriction is because of low wet ground throughout most of the Payment Units.

##### 5.2.22 - Operating Caution

###### 5.2.22.1 - Operating caution (6/11)

It is recommended, but not required, that within Payment Unit(s) 4, 5, 6, and 8, cutting and skidding occur during dry summer or frozen winter conditions. The reason for the recommendation is because of some low wet areas within each of the Payment Units. The majority of these Payment Units can be harvested during a dry summer, working around the low wet areas.

#### 5.4 - Soil Protection

##### 5.4.1 - Rutting restriction, general (7/16)

Operations are to cease immediately if equipment and weather conditions result in rutting of roads and/or skid trails which is 12 inches or greater in depth and 50 feet in length. The Unit Manager or his/her representative may restrict hauling and/or skidding if ruts exceed the specified depth. With the Unit Manager or his/her representative's approval, the Purchaser may return to the area when the risk of rutting has decreased.

### 6 - Safety and Fire Prevention

#### 6.2 - Signing

##### 6.2.1 - Road posting (9/09)

The Purchaser is responsible for posting and maintaining caution signs on the Camp "O" Road / Forest Island ORV Route prior to beginning operations. The road must be posted at appropriate distances from the sale area to warn of logging activity and truck traffic. Signs must be removed when harvest operations are suspended or completed. The Purchaser will provide these signs. All route markers must be protected and the road/route must be kept clear of debris.





# TIMBER SALE MAP

This information provided by authority of Part 525, 1994 PA 451, as amended.

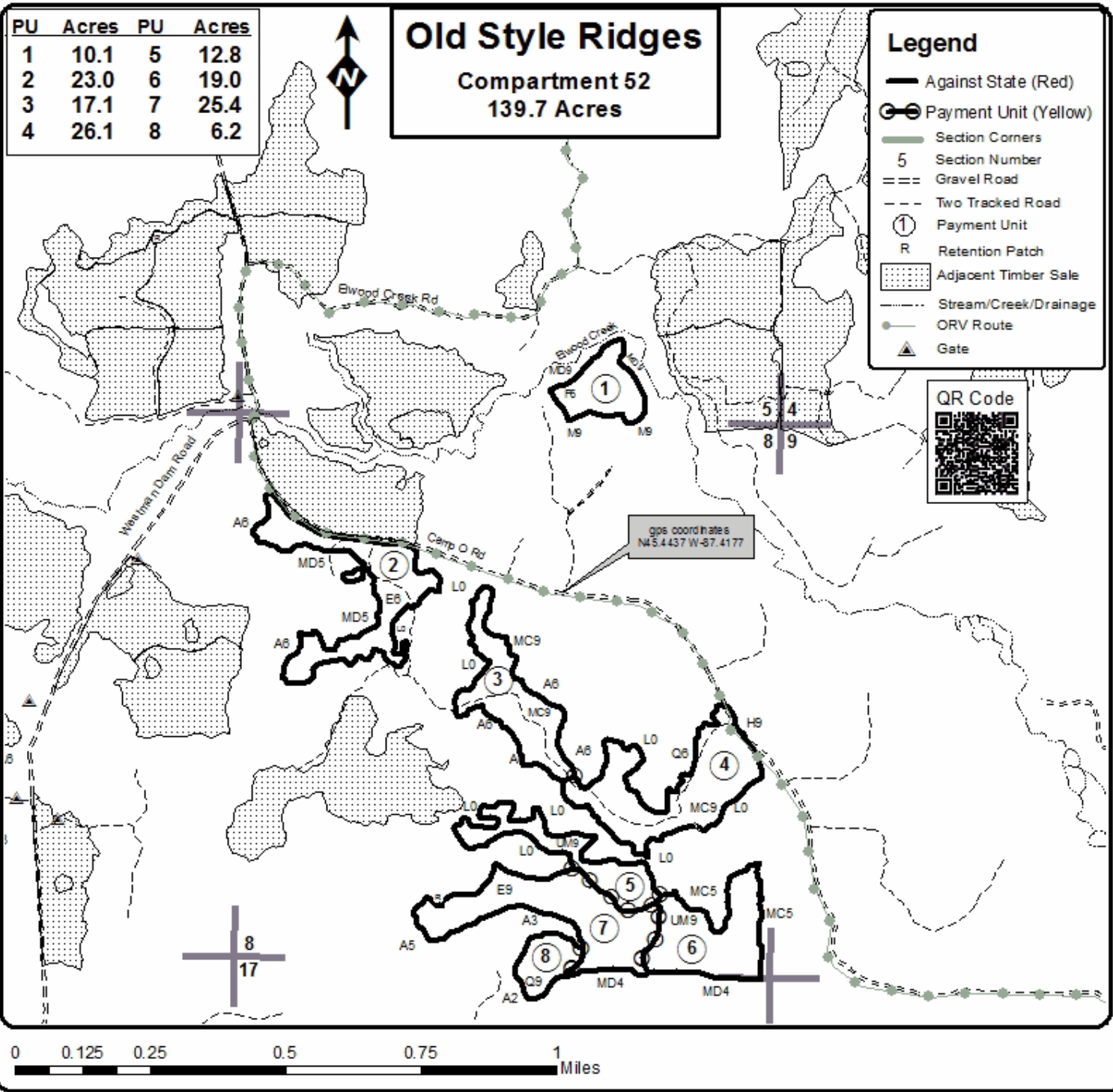
Sale Number	Year
33-034	18

Forest Management Unit Escanaba Management Unit		County Menominee County	Mapped By Beaudo		Date 9/17/2018	Page 1 of 1	
Township 35N	Range 25W	Section(s) and Subdivision(s) Sec 5 - SWSE; Sec 8 - NW, W1/2NE, E1/2SW, SE; Sec 17 - NWNE		Cruised By Salter, Beaudo		Scale 1:15,840	

### Cover Type

### Density

- |                   |                      |                         |                   |                             |                        |
|-------------------|----------------------|-------------------------|-------------------|-----------------------------|------------------------|
| A = Aspen         | H = Hemlock          | N = Marsh               | U = Upland Brush  | 0 = Non Stocked             | 5 = Pole Timber Medium |
| B = Paper Birch   | J = Jack Pine        | O = Oak                 | UM = Upland Mixed | 1 = Seedling Sapling Poor   | 6 = Pole Timber Well   |
| C = Cedar         | L = Lowland Brush    | P = Lowland Poplar      | V = Bog or Marsh  | 2 = Seedling Sapling Medium | 7 = Saw Timber Poor    |
| D = Tread Bog     | LM = Lowland Mixed   | Q = Mixed Swamp Conifer | W = White Pine    | 3 = Seedling Sapling Well   | 8 = Saw Timber Medium  |
| E = Swamp Hdwoods | M = Mpl. Bch. Birch  | R = Red Pine            | X = Non Stocked   | 4 = Pole Timber Poor        | 9 = Saw Timber Well    |
| F = Spruce Fir    | MC = Mixed Conifer   | S = Black Spruce        | Z = Water         |                             |                        |
| G = Grass         | MD = Mixed Deciduous | T = Tamarack            |                   |                             |                        |





## TIMBER SALE INFORMATION

Snake Trail SBW (33-035-18)  
T37N, R25W, SEC. 31; T37N, R25W, SEC. 32.  
Menominee County (Advertised Price \$32,360.50)

SALE NOTE: The balsam fir and spruce have been heavily defoliated by the spruce budworm, with minimal mortality at this time. There is a wooden boardwalk running east to west from the parking lot in Payment Unit 4 to Devils Creek in the southern portion of the unit. This boardwalk must be protected and kept clear of debris from the harvesting of trees at all times.

A recreation site such as a trail, pathway, or campground is within the sale area or the vicinity. Certain restrictions/specifications may be applicable including time restrictions.

A timber sale contract for this lump sum, sealed bid timber sale will be awarded to the responsible bidder offering the highest sealed bid price. Bids must be at or above the following advertised price for each species:

<u>PRODUCTS &amp; SPECIES</u>	<u>ESTIMATED UNITS*</u>		<u>ADVERTISED PRICE</u>
Sawtimber			
Basswood	2.50	MBF	\$ 92.00 / MBF
Red Maple	0.50	MBF	\$ 176.00 / MBF
Sugar Maple	7.10	MBF	\$ 245.00 / MBF
Pulpwood			
Balsam Fir	271.00	Cords	\$ 21.40 / Cord
Mixed Aspen	178.00	Cords	\$ 26.45 / Cord
Mixed Hardwood	700.00	Cords	\$ 25.35 / Cord
Mixed Spruce	80.00	Cords	\$ 18.00 / Cord
N. White Cedar	33.00	Cords	\$ 18.50 / Cord

\* The total volume is statistically estimated within plus (+) or minus (-) 8.95 percent. The estimated units are final and not subject to adjustment. Prospective bidders are urged to examine this timber and to make their own estimates of quantity and quality.

**BOND AND PAYMENT SCHEDULE:**

1. A bond in the amount of \$1,618.00 to insure faithful performance of the conditions of the contract will be deposited by the successful bidder within 21 days of the sale award.
2. Cutting in any sale or unit without the required advance payment would be considered a trespass.
3. Total payment must be paid in advance or according to the following schedule:
  - (a) Ten percent (10%) of the sale value must be paid within 21 days of the sale award.
  - (b) The 10% down payment will be credited towards the first unit cut.
  - (c) Payment for each of the following units must be made before cutting begins in that unit:

PAYMENT UNIT NUMBER	PERCENT OF TOTAL SALE VALUE
01	35.4%
02	11.0%
03	6.6%
04	24.9%
05	22.1%

4. If no cutting takes place, the 10% down payment will not be refunded.
5. Operations on the contract issued will terminate on 09/30/2021.

**Description of Timber by Payment Unit (PU)**

PU	MARKET GROUP	PRODUCT	QUANTITY	UNIT	ACRES	ADVERTISE PRICE
1	Basswood	Sawtimber	2.5	MBF	28.0	\$11,467.80
	Sugar Maple		6.3	MBF		
	Balsam Fir	Pulpwood	105.0	Cords		
	Mixed Aspen		26.0	Cords		
	<i>B. T. Aspen</i>		20.0	<i>Cords</i>		
	<i>Quaking Aspen</i>		6.0	<i>Cords</i>		
	Mixed Hardwood		246.0	Cords		
	<i>Balsam Poplar</i>		2.0	<i>Cords</i>		
	<i>Basswood</i>		84.0	<i>Cords</i>		
	<i>Black Ash</i>		6.0	<i>Cords</i>		
	<i>Black Cherry</i>		3.0	<i>Cords</i>		
	<i>Ironwood</i>		2.0	<i>Cords</i>		
	<i>Paper Birch</i>		13.0	<i>Cords</i>		
	<i>Red Maple</i>		9.0	<i>Cords</i>		
	<i>Sugar Maple</i>		117.0	<i>Cords</i>		
	<i>White Ash</i>		10.0	<i>Cords</i>		
	Mixed Spruce		26.0	Cords		
	<i>White Spruce</i>		26.0	<i>Cords</i>		
	N. White Cedar		3.0	Cords		
	2	Balsam Fir	Pulpwood	13.0		
Mixed Hardwood			117.0	Cords		
<i>Basswood</i>			11.0	<i>Cords</i>		
<i>Black Ash</i>			57.0	<i>Cords</i>		
<i>Green Ash</i>			2.0	<i>Cords</i>		
<i>Paper Birch</i>			22.0	<i>Cords</i>		
<i>Red Maple</i>			25.0	<i>Cords</i>		
Mixed Spruce			6.0	Cords		
<i>Black Spruce</i>			5.0	<i>Cords</i>		
<i>White Spruce</i>			1.0	<i>Cords</i>		
N. White Cedar			11.0	Cords		
3		Balsam Fir	Pulpwood	26.0	Cords	7.2
	Mixed Aspen		5.0	Cords		
	<i>Quaking Aspen</i>		5.0	<i>Cords</i>		
	Mixed Hardwood		46.0	Cords		
	<i>Basswood</i>		8.0	<i>Cords</i>		
	<i>Black Ash</i>		10.0	<i>Cords</i>		
	<i>Paper Birch</i>		7.0	<i>Cords</i>		
	<i>Red Maple</i>		19.0	<i>Cords</i>		
	<i>Sugar Maple</i>		2.0	<i>Cords</i>		
	Mixed Spruce		11.0	Cords		
	<i>White Spruce</i>		11.0	<i>Cords</i>		
	N. White Cedar		4.0	Cords		
	4	Red Maple	Sawtimber	0.5	MBF	
Balsam Fir		Pulpwood	63.0	Cords		
Mixed Aspen			60.0	Cords		
<i>Quaking Aspen</i>			60.0	<i>Cords</i>		
Mixed Hardwood			174.0	Cords		
<i>Balsam Poplar</i>			26.0	<i>Cords</i>		
<i>Basswood</i>			44.0	<i>Cords</i>		
<i>Black Ash</i>			8.0	<i>Cords</i>		
<i>Green Ash</i>			4.0	<i>Cords</i>		
<i>Paper Birch</i>			22.0	<i>Cords</i>		
<i>Red Maple</i>			35.0	<i>Cords</i>		
<i>Sugar Maple</i>			33.0	<i>Cords</i>		
<i>Yellow Birch</i>			2.0	<i>Cords</i>		
Mixed Spruce			27.0	Cords		

**Description of Timber by Payment Unit (PU), con't**

PU	MARKET GROUP	PRODUCT	QUANTITY	UNIT	ACRES	ADVERTISE PRICE			
4 con't	<i>White Spruce</i>	<i>Pulpwood</i>	27.0	<i>Cords</i>					
	N. White Cedar		7.0	Cords					
5	Sugar Maple	Sawtimber	0.8	MBF	19.1	\$7,160.70			
	Balsam Fir	Pulpwood	64.0	Cords					
	Mixed Aspen		87.0	Cords					
	<i>B. T. Aspen</i>		13.0	<i>Cords</i>					
	<i>Quaking Aspen</i>		74.0	<i>Cords</i>					
	Mixed Hardwood		117.0	Cords					
	<i>American Elm</i>		5.0	<i>Cords</i>					
	<i>Balsam Poplar</i>		30.0	<i>Cords</i>					
	<i>Basswood</i>		9.0	<i>Cords</i>					
	<i>Black Ash</i>		5.0	<i>Cords</i>					
	<i>Ironwood</i>		3.0	<i>Cords</i>					
	<i>Paper Birch</i>		12.0	<i>Cords</i>					
	<i>Red Maple</i>		15.0	<i>Cords</i>					
	<i>Sugar Maple</i>		34.0	<i>Cords</i>					
	<i>White Ash</i>		4.0	<i>Cords</i>					
	Mixed Spruce		10.0	Cords					
	<i>White Spruce</i>		10.0	<i>Cords</i>					
	N. White Cedar		8.0	Cords					
	TOTAL:			10.1			MBF		
	TOTAL:			1,262.0			Cords		

## Sale Specific Conditions & Requirements

**Sale Name: Snake Trail SBW**

**Sale Number: 33-035-18 Seq#: 1**

### 1 - Sale Area

#### 1.2 - Boundaries

##### 1.2.1 - Painted boundaries (1/14)

The sale boundary and Payment Unit boundaries are marked and identified by blue, red and yellow paint. Exterior sale boundary lines against private property are marked with blue paint. Exterior sale boundary lines against state are marked with red paint. The retention patch within Payment Unit 2 is bounded by a red paint; no harvesting activities may occur within this patch. Interior Payment Unit boundaries are marked with yellow paint. The painted boundary line trees are not Included Timber and are to be protected. Yellow painted trees designating an interior Payment Unit boundary are only to be cut when all surrounding Payment Units have been paid for.

### 2 - Timber Specifications

#### 2.1 - Included Timber

##### 2.1.1 - Clearcut unit(s) with unmerchantable trees (6/14)

Within Payment Unit(s) 1 - 5, cut all trees that are three (3) inches or more at DBH, with the following exceptions:

- Within Payment Unit 1, do not cut trees marked with green paint.

- Within Payment Unit 4, do not cut maple, cedar, and yellow birch within sixty (60) feet of the boardwalk.

##### 2.1.15 - Hazard trees near roads (7/13)

Cut and remove all standing dead trees within 100 feet of the cleared portion of the Polfus Road, which is a county road. These trees may be utilized or must be scattered back into the sale area.

### 3 - Payments

#### 3.3 - Pre-measured Sales

##### 3.3.4 - Dividing payment units (7/14)

Payment Unit(s) \$18,000 in value or greater may be divided at the request of the Purchaser and upon approval of the Unit Manager. Dividing Payment Units is a contract modification which requires a Timber Sale Contract Supplement. There will be only one division per Payment Unit.

### 4 - Transportation

#### 4.1 - Construction

##### 4.1.6 - Road construction (1/09)

Construction of new roads or improvements of existing roads shall be done in such a way as to minimize the environmental and visual impacts. Merchantable trees shall be cut and utilized unless otherwise directed. Non-merchantable trees shall be severed and laid flat on the ground. Slash shall be scattered, and not left in windrows and kept a minimum of 10 feet back from the road edge. Stumps shall be set upright, not left on edge, and be moved at least 10 feet away from the road edge. Disturbed soil shall be feathered into the woods and not left in berms or windrows.

##### 4.1.7 - Road closure (10/11)

All new roads built into the sale must be blocked to vehicle traffic within 30 days of completion of hauling. Overgrown roads that are reopened shall be considered new roads. In general, this will require constructing a four (4') foot high berm of stumps and logs covered with earth. Stumps and brush must be placed along the remainder of the trail. These roads must be rendered impassable to cars and trucks. Contact the sale administrator for specific details of design and placement.

#### 4.2 - Maintenance

##### 4.2.1 - Hauling restriction (12/08)

Hauling may be restricted on forest roads by the Unit Manager or his/her representative. The restriction may occur during

spring breakup or during other wet weather conditions.

#### 4.2.4 - Grading (10/16)

For completion of the sale, state forest roads must be graded. In general, this will require a road grader or bull dozer to shape up the roads after forest products have been hauled off site. This includes cleaning of drainage areas, grading, crowning and filling with gravel, if necessary. The grading equipment to be used must be approved by the Unit Manager or his/her representative.

#### 4.4 - Access

##### 4.4.2 - Alternate route on private property (2/04)

It is the Purchaser's responsibility to obtain access across private land for any routes other than the route shown on the sale map.

### 5 - Operations

#### 5.2 - Conduct of Operations

##### 5.2.3 - Operating Restrictions

###### 5.2.3.1 - Operating restrictions (9/11)

Within Payment Unit(s) 1, 2, and 3, cutting and skidding are limited to the period of December 1 to March 31, unless the Purchaser is able to obtain access from the private landowners to the east of these units. Payment Units 1 and 2 are mostly upland and could be cut during the summer months if access is obtained through private property. If access can't be obtained, the Purchaser will have to skid the wood from Payment Units 1 - 3 to a landing in Payment Unit 4. Low ground will have to be crossed to do this. This restriction is because of lowland access to Payment Units 1 and 3 and low wet ground within Payment Unit 2.

##### 5.2.22 - Operating Caution

###### 5.2.22.1 - Operating caution (6/11)

It is recommended, but not required, that within Payment Unit(s) 4 and 5, cutting and skidding occur during dry summer or frozen winter conditions. The reason for the recommendation is because of some low wet pockets/drains within these two Payment Units.

#### 5.3 - Stream Protection

##### 5.3.1 - Operating near stream (7/04)

No tracked or wheeled vehicles shall be operated within 50 feet of Devils Creek, except at an approved crossing.

#### 5.4 - Soil Protection

##### 5.4.1 - Rutting restriction, general (7/16)

Operations are to cease immediately if equipment and weather conditions result in rutting of roads and/or skid trails which is 12 inches or greater in depth and 50 feet in length. The Unit Manager or his/her representative may restrict hauling and/or skidding if ruts exceed the specified depth. With the Unit Manager or his/her representative's approval, the Purchaser may return to the area when the risk of rutting has decreased.

#### 5.5 - Protection of Improvements

##### 5.5.3 - Protection of improvements detail (10/13)

A portion of the Peterson Pond Boardwalk runs through the southern portion of Payment Unit 4, from the parking lot to Devils Creek. This boardwalk must be protected and clear from debris from the harvesting of the adjacent trees at all times. The parking lot must be available for use by the public at all times.

### 6 - Safety and Fire Prevention

#### 6.2 - Signing

##### 6.2.1 - Road posting (9/09)

The Purchaser is responsible for posting and maintaining caution signs on the Polfus Road prior to beginning operations. The road must be posted at appropriate distances from the sale area to warn of logging activity and truck traffic. Signs must be

removed when harvest operations are suspended or completed. The Purchaser will provide these signs.

## **7 - Other Conditions**

### 7.5 - Loss

#### 7.5.1 - Deteriorating timber (7/09)

The sale area has received damage from the spruce budworm. The Purchaser should harvest the wood as soon as possible. The Department of Natural Resources is held free of responsibility of any further damage or deterioration due to delay in harvesting. The balsam fir and spruce is heavily defoliated, with very little mortality at this time.





# TIMBER SALE MAP

This information provided by authority of Part 525, 1994 PA 451, as amended.

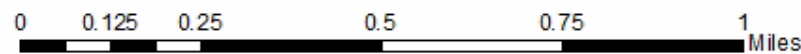
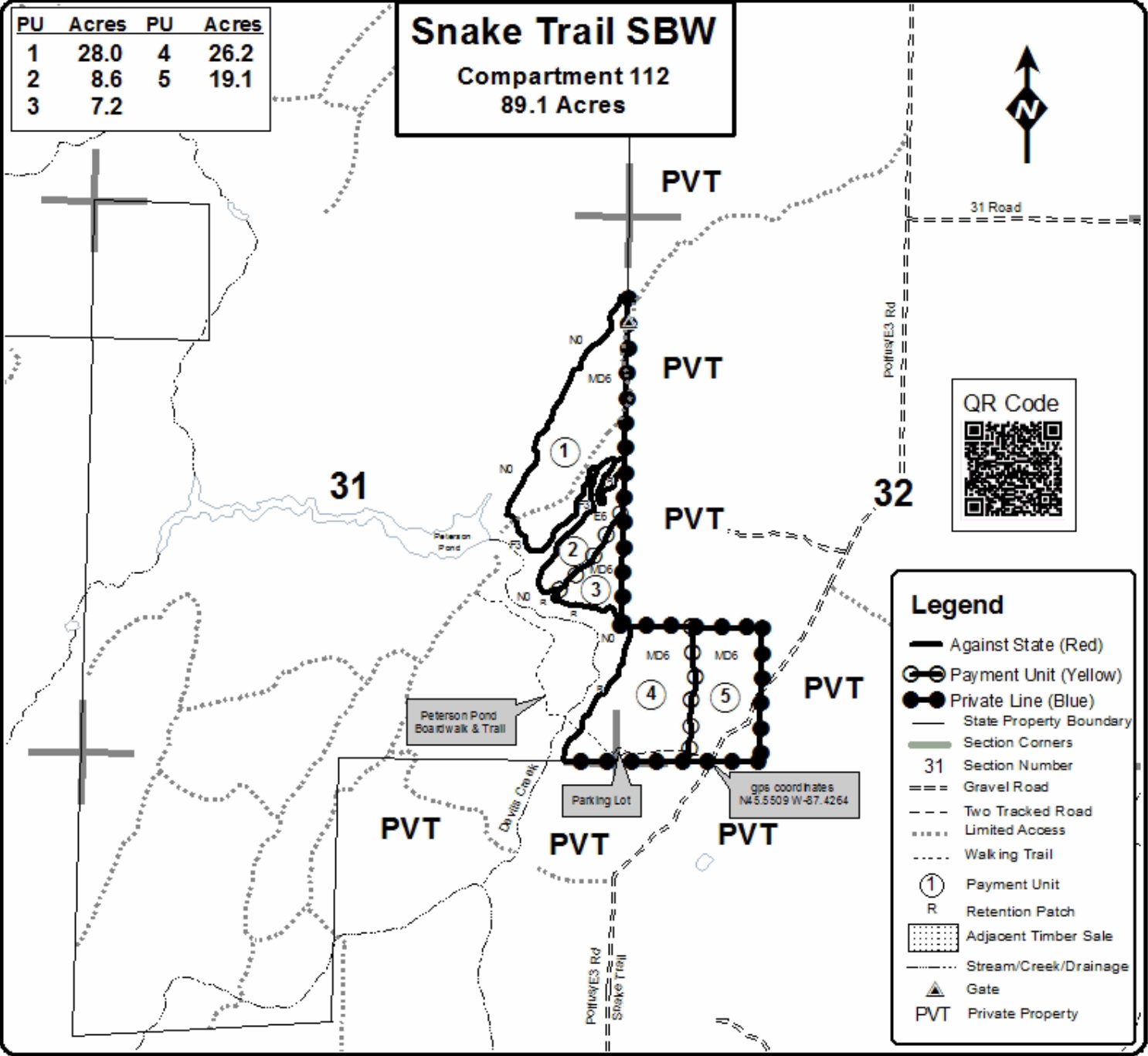
Sale Number	Year
33-035	18

Forest Management Unit Escanaba Management Unit	County Menominee County	Mapped By Beaudo	Date 9/21/2018	Page 1	of 1
Township 37N	Range 25W	Section(s) and Subdivision(s) Sec 31 - E1/2SE, E1/2NE. Sec 32 - SWSW	Scale 1:15,840		

Cover Type				Density			
A = Aspen	H = Hemlock	N = Marsh	U = Upland Brush	0 = Non Stocked	5 = Pole Timber Medium		
B = Paper Birch	J = Jack Pine	O = Oak	UM = Upland Mixed	1 = Seedling Sapling Poor	6 = Pole Timber Well		
C = Cedar	L = Lowland Brush	P = Lowland Poplar	V = Bog or Marsh	2 = Seedling Sapling Medium	7 = Saw Timber Poor		
D = Tread Bog	LM = Lowland Mixed	Q = Mixed Swamp Conifer	W = White Pine	3 = Seedling Sapling Well	8 = Saw Timber Medium		
E = Swamp Hdwoods	M = Mpl. Bch. Birch	R = Red Pine	X = Non Stocked	4 = Pole Timber Poor	9 = Saw Timber Well		
F = Spruce Fir	MC = Mixed Conifer	S = Black Spruce	Z = Water				
G = Grass	MD = Mixed Deciduous	T = Tamarack					

PU	Acres	PU	Acres
1	28.0	4	26.2
2	8.6	5	19.1
3	7.2		

**Snake Trail SBW**  
**Compartment 112**  
**89.1 Acres**





Westman Lake (33-031-18)

T35N, R25W, SEC. 18; T35N, R25W, SEC. 6; T35N, R25W, SEC. 7; T35N, R26W,

In response to the notice of sale to be held 3:00 p.m. (local time) on January 3, 2019, I am hereby submitting my sealed bid (firm offer) for the following forest products to be cut. Bids for individual species must be at or above the advertised price. All non-responsive bid forms may be rejected.

<u>PRODUCTS &amp; SPECIES</u>	<u>ESTIMATED VOLUME*</u>	<u>ADVERTISED PRICE</u>	<u>BID PRICE/UNIT</u>
<b>Sawtimber</b>			
Basswood	0.50 MBF	\$ 99.00/MBF	\$ _____
Beech	5.20 MBF	\$ 79.00/MBF	\$ _____
Green Ash	0.50 MBF	\$ 88.00/MBF	\$ _____
Paper Birch	0.50 MBF	\$ 79.00/MBF	\$ _____
Red Maple	15.60 MBF	\$ 189.00/MBF	\$ _____
White Ash	5.10 MBF	\$ 64.00/MBF	\$ _____
White Pine	46.80 MBF	\$ 54.00/MBF	\$ _____
<b>Pulpwood</b>			
Balsam Fir	37.00 Cords	\$ 23.05/Cord	\$ _____
Mixed Aspen	221.00 Cords	\$ 28.50/Cord	\$ _____
Mixed Hardwood	794.00 Cords	\$ 27.30/Cord	\$ _____
Mixed Spruce	340.00 Cords	\$ 19.40/Cord	\$ _____
Red Pine	93.00 Cords	\$ 51.30/Cord	\$ _____
Tamarack	7.00 Cords	\$ 15.45/Cord	\$ _____
White Pine	704.00 Cords	\$ 26.80/Cord	\$ _____

\*The volumes are statistically estimated within plus (+) or minus (-) 10.28 percent. These estimated volumes are final and not subject to adjustment. Prospective bidders are urged to examine this timber and to make their own estimates of quantity and quality.

I understand that any or all bids may be rejected. All bids must be signed and all bid items must be bid or the bid form may be rejected. I also understand that consideration and awarding a contract will be based upon my past performance and ability to complete the contract based upon equipment and staffing subject to my control.

FEDERAL ID: \_\_\_\_\_ or SOCIAL SECURITY NUMBER: \_\_\_\_\_

Company or individual bidding: \_\_\_\_\_

Company representative's name: \_\_\_\_\_

Address: \_\_\_\_\_

City: \_\_\_\_\_ State: \_\_\_\_\_ Zip: \_\_\_\_\_

IF AVAILABLE, PLEASE PLACE THE PERSONALIZED LABEL FROM YOUR PROSPECTUS IN THE ABOVE BOX.

Individual or company representative's signature: \_\_\_\_\_ Date: \_\_\_\_\_

Phone number : \_\_\_\_\_ Email (optional): \_\_\_\_\_

**THE WINNING BIDDER MUST COMPLETE THE VERIFICATION OF WORKER'S DISABILITY COMPENSATION ACT COMPLIANCE (ON REVERSE SIDE IF DOUBLE SIDED) WITHIN 21 DAYS OF SALE AWARD DATE**



<b>FOR DEPARTMENT USE ONLY</b>
Sale Number (XX - XXX - XX - XX)
Forest Management Unit:

## TIMBER SALE VERIFICATION OF WORKER'S DISABILITY COMPENSATION ACT COMPLIANCE

*As required by Act 317, P.A. 1969 (Worker's Compensation) and  
Part 5 of Act 451 of 1994, as amended.*

### VERIFICATION OF WORKER'S DISABILITY COMPENSATION ACT COMPLIANCE

- This verification must be completed and submitted within 21 days of contract award and prior to the issuance of the timber sale contract.
- In addition, if boxes 2B or 2C are checked, then Notice of Exclusion or Certificate of Insurance must be submitted within twenty-one (21) days of the contract award and prior to the issuance of the timber sale contract.
- All information must be typed or printed except for written signatures.

Please Check Appropriate Categories:

1. My business is organized as (you **must** check one of the boxes below):
  - A.  Sole Proprietorship (individual)
  - B.  Partnership
  - C.  Corporation
  
2. You **must** check one of the boxes below:
  - A.  I certify my business is a sole proprietorship and it has no employees but the sole proprietor. I am not subject to the Worker's Compensation Laws.
  - B.  I certify my business has satisfied its obligation to the Worker's Compensation Act through the use of an approved Notice of Exclusion (BWC-337, Rev. 5/96). I will provide a copy of the Notice of Exclusion within 21 days of the contract award. (For questions or a copy of the BWC-337, please call the Worker's Compensation Bureau at 517-322-1195).
  - C.  I certify my business has a Worker's Compensation Policy. I will provide an original Certificate of Insurance within twenty-one (21) days of the contract award.
  
3. If you have checked item 2(A) or 2(B), you **must** indicate the number of **both** full-time and part-time employees, other than yourself, including family members and active partners (if none, you must enter "0").

\_\_\_\_\_ Full-time Employees

\_\_\_\_\_ Part-time Employees

Name of Business		Federal ID (or) Social Security No.	
Address		Telephone (       )	
City	State	ZIP	

*I hereby certify that the above information is true and correct. I agree to notify the Michigan DNR of any changes that occur in factors affecting my coverage during any of my present and future operations.*

\_\_\_\_\_  
Signature of Owner or Authorized Representative

\_\_\_\_\_  
Title

\_\_\_\_\_  
Date

**Please complete the "SEALED BID" information on the next page**

Drewry Elwood (33-032-18)

T35N, R25W, SEC. 4; T35N, R25W, SEC. 5; T35N, R25W, SEC. 6; T35N, R25W,

In response to the notice of sale to be held 3:00 p.m. (local time) on January 3, 2019, I am hereby submitting my sealed bid (firm offer) for the following forest products to be cut. Bids for individual species must be at or above the advertised price. All non-responsive bid forms may be rejected.

<u>PRODUCTS &amp; SPECIES</u>	<u>ESTIMATED VOLUME*</u>	<u>ADVERTISED PRICE</u>	<u>BID PRICE/UNIT</u>
<b>Sawtimber</b>			
Black Ash	0.50 MBF	\$ 66.00/MBF	\$ _____
Green Ash	27.30 MBF	\$ 88.00/MBF	\$ _____
Paper Birch	0.50 MBF	\$ 79.00/MBF	\$ _____
Red Maple	37.90 MBF	\$ 189.00/MBF	\$ _____
Sugar Maple	0.90 MBF	\$ 264.00/MBF	\$ _____
White Pine	10.70 MBF	\$ 54.00/MBF	\$ _____
Yellow Birch	1.90 MBF	\$ 109.00/MBF	\$ _____
<b>Pulpwood</b>			
Balsam Fir	146.00 Cords	\$ 23.05/Cord	\$ _____
Mixed Aspen	118.00 Cords	\$ 28.50/Cord	\$ _____
Mixed Hardwood	2,416.00 Cords	\$ 27.30/Cord	\$ _____
Mixed Spruce	117.00 Cords	\$ 19.40/Cord	\$ _____
N. White Cedar	361.00 Cords	\$ 19.90/Cord	\$ _____
Red Pine	75.00 Cords	\$ 51.30/Cord	\$ _____
Tamarack	24.00 Cords	\$ 15.45/Cord	\$ _____
White Pine	347.00 Cords	\$ 26.80/Cord	\$ _____

\*The volumes are statistically estimated within plus (+) or minus (-) 9.51 percent. These estimated volumes are final and not subject to adjustment. Prospective bidders are urged to examine this timber and to make their own estimates of quantity and quality.

I understand that any or all bids may be rejected. All bids must be signed and all bid items must be bid or the bid form may be rejected. I also understand that consideration and awarding a contract will be based upon my past performance and ability to complete the contract based upon equipment and staffing subject to my control.

FEDERAL ID: \_\_\_\_\_ or SOCIAL SECURITY NUMBER: \_\_\_\_\_

Company or individual bidding: \_\_\_\_\_

Company representative's name: \_\_\_\_\_

Address: \_\_\_\_\_

City: \_\_\_\_\_ State: \_\_\_\_\_ Zip: \_\_\_\_\_

IF AVAILABLE, PLEASE PLACE THE PERSONALIZED LABEL FROM YOUR PROSPECTUS IN THE ABOVE BOX.

Individual or company representative's signature: \_\_\_\_\_ Date: \_\_\_\_\_

Phone number : \_\_\_\_\_ Email (optional): \_\_\_\_\_

**THE WINNING BIDDER MUST COMPLETE THE VERIFICATION OF WORKER'S DISABILITY COMPENSATION ACT COMPLIANCE (ON REVERSE SIDE IF DOUBLE SIDED) WITHIN 21 DAYS OF SALE AWARD DATE**



<b>FOR DEPARTMENT USE ONLY</b>
Sale Number (XX - XXX - XX - XX)
Forest Management Unit:

## TIMBER SALE VERIFICATION OF WORKER'S DISABILITY COMPENSATION ACT COMPLIANCE

*As required by Act 317, P.A. 1969 (Worker's Compensation) and  
Part 5 of Act 451 of 1994, as amended.*

### VERIFICATION OF WORKER'S DISABILITY COMPENSATION ACT COMPLIANCE

- This verification must be completed and submitted within 21 days of contract award and prior to the issuance of the timber sale contract.
- In addition, if boxes 2B or 2C are checked, then Notice of Exclusion or Certificate of Insurance must be submitted within twenty-one (21) days of the contract award and prior to the issuance of the timber sale contract.
- All information must be typed or printed except for written signatures.

Please Check Appropriate Categories:

1. My business is organized as (you **must** check one of the boxes below):
  - A.  Sole Proprietorship (individual)
  - B.  Partnership
  - C.  Corporation
2. You **must** check one of the boxes below:
  - A.  I certify my business is a sole proprietorship and it has no employees but the sole proprietor. I am not subject to the Worker's Compensation Laws.
  - B.  I certify my business has satisfied its obligation to the Worker's Compensation Act through the use of an approved Notice of Exclusion (BWC-337, Rev. 5/96). I will provide a copy of the Notice of Exclusion within 21 days of the contract award. (For questions or a copy of the BWC-337, please call the Worker's Compensation Bureau at 517-322-1195).
  - C.  I certify my business has a Worker's Compensation Policy. I will provide an original Certificate of Insurance within twenty-one (21) days of the contract award.
3. If you have checked item 2(A) or 2(B), you **must** indicate the number of **both** full-time and part-time employees, other than yourself, including family members and active partners (if none, you must enter "0").

\_\_\_\_\_ Full-time Employees

\_\_\_\_\_ Part-time Employees

Name of Business		Federal ID (or) Social Security No.	
Address		Telephone (       )	
City	State	ZIP	

*I hereby certify that the above information is true and correct. I agree to notify the Michigan DNR of any changes that occur in factors affecting my coverage during any of my present and future operations.*

\_\_\_\_\_  
Signature of Owner or Authorized Representative

\_\_\_\_\_  
Title

\_\_\_\_\_  
Date

**Please complete the "SEALED BID" information on the next page**

Watch Out Yogi (33-033-18)

T35N, R25W, SEC. 5; T35N, R25W, SEC. 6; T35N, R26W, SEC. 1; T36N, R25W,

In response to the notice of sale to be held 3:00 p.m. (local time) on January 3, 2019, I am hereby submitting my sealed bid (firm offer) for the following forest products to be cut. Bids for individual species must be at or above the advertised price. All non-responsive bid forms may be rejected.

<u>PRODUCTS &amp; SPECIES</u>	<u>ESTIMATED VOLUME*</u>	<u>ADVERTISED PRICE</u>	<u>BID PRICE/UNIT</u>
<b>Sawtimber</b>			
Basswood	19.00 MBF	\$ 99.00/MBF	\$ _____
Beech	5.30 MBF	\$ 79.00/MBF	\$ _____
Green Ash	5.10 MBF	\$ 88.00/MBF	\$ _____
Sugar Maple	7.10 MBF	\$ 264.00/MBF	\$ _____
White Ash	6.30 MBF	\$ 64.00/MBF	\$ _____
Yellow Birch	1.70 MBF	\$ 109.00/MBF	\$ _____
<b>Pulpwood</b>			
Balsam Fir	138.00 Cords	\$ 23.05/Cord	\$ _____
Mixed Aspen	276.00 Cords	\$ 28.50/Cord	\$ _____
Mixed Hardwood	983.00 Cords	\$ 27.30/Cord	\$ _____
Mixed Spruce	22.00 Cords	\$ 19.40/Cord	\$ _____
N. White Cedar	134.00 Cords	\$ 19.90/Cord	\$ _____
Tamarack	1.00 Cords	\$ 15.45/Cord	\$ _____

\*The volumes are statistically estimated within plus (+) or minus (-) 10.62 percent. These estimated volumes are final and not subject to adjustment. Prospective bidders are urged to examine this timber and to make their own estimates of quantity and quality.

I understand that any or all bids may be rejected. All bids must be signed and all bid items must be bid or the bid form may be rejected. I also understand that consideration and awarding a contract will be based upon my past performance and ability to complete the contract based upon equipment and staffing subject to my control.

FEDERAL ID: \_\_\_\_\_ or SOCIAL SECURITY NUMBER: \_\_\_\_\_

Company or individual bidding: \_\_\_\_\_

Company representative's name: \_\_\_\_\_

Address: \_\_\_\_\_

City: \_\_\_\_\_ State: \_\_\_\_\_ Zip: \_\_\_\_\_

IF AVAILABLE, PLEASE PLACE THE PERSONALIZED LABEL FROM YOUR PROSPECTUS IN THE ABOVE BOX.

Individual or company representative's signature: \_\_\_\_\_ Date: \_\_\_\_\_

Phone number : \_\_\_\_\_ Email (optional): \_\_\_\_\_

**THE WINNING BIDDER MUST COMPLETE THE VERIFICATION OF WORKER'S DISABILITY COMPENSATION ACT COMPLIANCE (ON REVERSE SIDE IF DOUBLE SIDED) WITHIN 21 DAYS OF SALE AWARD DATE**



## TIMBER SALE VERIFICATION OF WORKER'S DISABILITY COMPENSATION ACT COMPLIANCE

As required by Act 317, P.A. 1969 (Worker's Compensation) and  
Part 5 of Act 451 of 1994, as amended.

**FOR DEPARTMENT USE ONLY**

Sale Number (XX - XXX - XX - XX)

Forest Management Unit:

**VERIFICATION OF WORKER'S DISABILITY COMPENSATION ACT COMPLIANCE**

- This verification must be completed and submitted within 21 days of contract award and prior to the issuance of the timber sale contract.
- In addition, if boxes 2B or 2C are checked, then Notice of Exclusion or Certificate of Insurance must be submitted within twenty-one (21) days of the contract award and prior to the issuance of the timber sale contract.
- All information must be typed or printed except for written signatures.

Please Check Appropriate Categories:

1. My business is organized as (you **must** check one of the boxes below):
  - A.  Sole Proprietorship (individual)
  - B.  Partnership
  - C.  Corporation
2. You **must** check one of the boxes below:
  - A.  I certify my business is a sole proprietorship and it has no employees but the sole proprietor. I am not subject to the Worker's Compensation Laws.
  - B.  I certify my business has satisfied its obligation to the Worker's Compensation Act through the use of an approved Notice of Exclusion (BWC-337, Rev. 5/96). I will provide a copy of the Notice of Exclusion within 21 days of the contract award. (For questions or a copy of the BWC-337, please call the Worker's Compensation Bureau at 517-322-1195).
  - C.  I certify my business has a Worker's Compensation Policy. I will provide an original Certificate of Insurance within twenty-one (21) days of the contract award.
3. If you have checked item 2(A) or 2(B), you **must** indicate the number of **both** full-time and part-time employees, other than yourself, including family members and active partners (if none, you must enter "0").

\_\_\_\_\_ Full-time Employees

\_\_\_\_\_ Part-time Employees

Name of Business		Federal ID (or) Social Security No.	
Address		Telephone (        )	
City	State	ZIP	

*I hereby certify that the above information is true and correct. I agree to notify the Michigan DNR of any changes that occur in factors affecting my coverage during any of my present and future operations.*

\_\_\_\_\_  
Signature of Owner or Authorized Representative

\_\_\_\_\_  
Title

\_\_\_\_\_  
Date

Please complete the "SEALED BID" information on the next page



Old Style Ridges (33-034-18)

T35N, R25W, SEC. 17; T35N, R25W, SEC. 5; T35N, R25W, SEC. 8; Menominee

In response to the notice of sale to be held 3:00 p.m. (local time) on January 3, 2019, I am hereby submitting my sealed bid (firm offer) for the following forest products to be cut. Bids for individual species must be at or above the advertised price. All non-responsive bid forms may be rejected.

<u>PRODUCTS &amp; SPECIES</u>	<u>ESTIMATED VOLUME*</u>	<u>ADVERTISED PRICE</u>	<u>BID PRICE/UNIT</u>
<b>Sawtimber</b>			
Green Ash	10.50 MBF	\$ 94.00/MBF	\$ _____
Red Maple	3.80 MBF	\$ 203.00/MBF	\$ _____
White Pine	61.00 MBF	\$ 57.00/MBF	\$ _____
<b>Pulpwood</b>			
Balsam Fir	144.00 Cords	\$ 24.70/Cord	\$ _____
Mixed Aspen	128.00 Cords	\$ 30.50/Cord	\$ _____
Mixed Hardwood	1,339.00 Cords	\$ 29.25/Cord	\$ _____
Mixed Spruce	176.00 Cords	\$ 20.80/Cord	\$ _____
N. White Cedar	30.00 Cords	\$ 21.35/Cord	\$ _____
Red Pine	253.00 Cords	\$ 54.95/Cord	\$ _____
Tamarack	21.00 Cords	\$ 16.60/Cord	\$ _____
White Pine	311.00 Cords	\$ 28.70/Cord	\$ _____

\*The volumes are statistically estimated within plus (+) or minus (-) 9.24 percent. These estimated volumes are final and not subject to adjustment. Prospective bidders are urged to examine this timber and to make their own estimates of quantity and quality.

I understand that any or all bids may be rejected. All bids must be signed and all bid items must be bid or the bid form may be rejected. I also understand that consideration and awarding a contract will be based upon my past performance and ability to complete the contract based upon equipment and staffing subject to my control.

FEDERAL ID: \_\_\_\_\_ or SOCIAL SECURITY NUMBER: \_\_\_\_\_

Company or individual bidding: \_\_\_\_\_

Company representative's name: \_\_\_\_\_

Address: \_\_\_\_\_

City: \_\_\_\_\_ State: \_\_\_\_\_ Zip: \_\_\_\_\_

IF AVAILABLE, PLEASE PLACE THE PERSONALIZED LABEL FROM YOUR PROSPECTUS IN THE ABOVE BOX.

Individual or company representative's signature: \_\_\_\_\_ Date: \_\_\_\_\_

Phone number : \_\_\_\_\_ Email (optional): \_\_\_\_\_

**THE WINNING BIDDER MUST COMPLETE THE VERIFICATION OF WORKER'S DISABILITY COMPENSATION ACT COMPLIANCE (ON REVERSE SIDE IF DOUBLE SIDED) WITHIN 21 DAYS OF SALE AWARD DATE**



<b>FOR DEPARTMENT USE ONLY</b>
Sale Number (XX – XXX – XX – XX)
Forest Management Unit:

## TIMBER SALE VERIFICATION OF WORKER'S DISABILITY COMPENSATION ACT COMPLIANCE

*As required by Act 317, P.A. 1969 (Worker's Compensation) and  
Part 5 of Act 451 of 1994, as amended.*

### VERIFICATION OF WORKER'S DISABILITY COMPENSATION ACT COMPLIANCE

- This verification must be completed and submitted within 21 days of contract award and prior to the issuance of the timber sale contract.
- In addition, if boxes 2B or 2C are checked, then Notice of Exclusion or Certificate of Insurance must be submitted within twenty-one (21) days of the contract award and prior to the issuance of the timber sale contract.
- All information must be typed or printed except for written signatures.

Please Check Appropriate Categories:

1. My business is organized as (you **must** check one of the boxes below):
  - A.  Sole Proprietorship (individual)
  - B.  Partnership
  - C.  Corporation
  
2. You **must** check one of the boxes below:
  - A.  I certify my business is a sole proprietorship and it has no employees but the sole proprietor. I am not subject to the Worker's Compensation Laws.
  - B.  I certify my business has satisfied its obligation to the Worker's Compensation Act through the use of an approved Notice of Exclusion (BWC-337, Rev. 5/96). I will provide a copy of the Notice of Exclusion within 21 days of the contract award. (For questions or a copy of the BWC-337, please call the Worker's Compensation Bureau at 517-322-1195).
  - C.  I certify my business has a Worker's Compensation Policy. I will provide an original Certificate of Insurance within twenty-one (21) days of the contract award.
  
3. If you have checked item 2(A) or 2(B), you **must** indicate the number of **both** full-time and part-time employees, other than yourself, including family members and active partners (if none, you must enter "0").

\_\_\_\_\_ Full-time Employees                      \_\_\_\_\_ Part-time Employees

Name of Business		Federal ID (or) Social Security No.	
Address		Telephone (       )	
City	State	ZIP	

*I hereby certify that the above information is true and correct. I agree to notify the Michigan DNR of any changes that occur in factors affecting my coverage during any of my present and future operations.*

\_\_\_\_\_  
Signature of Owner or Authorized Representative

\_\_\_\_\_    \_\_\_\_\_  
Title    Date

**Please complete the "SEALED BID" information on the next page**

Snake Trail SBW (33-035-18)  
T37N, R25W, SEC. 31; T37N, R25W, SEC. 32; Menominee COUNTY

In response to the notice of sale to be held 3:00 p.m. (local time) on January 3, 2019, I am hereby submitting my sealed bid (firm offer) for the following forest products to be cut. Bids for individual species must be at or above the advertised price. All non-responsive bid forms may be rejected.

<u>PRODUCTS &amp; SPECIES</u>	<u>ESTIMATED VOLUME*</u>	<u>ADVERTISED PRICE</u>	<u>BID PRICE/UNIT</u>
<b>Sawtimber</b>			
Basswood	2.50 MBF	\$ 92.00/MBF	\$ _____
Red Maple	0.50 MBF	\$ 176.00/MBF	\$ _____
Sugar Maple	7.10 MBF	\$ 245.00/MBF	\$ _____
<b>Pulpwood</b>			
Balsam Fir	271.00 Cords	\$ 21.40/Cord	\$ _____
Mixed Aspen	178.00 Cords	\$ 26.45/Cord	\$ _____
Mixed Hardwood	700.00 Cords	\$ 25.35/Cord	\$ _____
Mixed Spruce	80.00 Cords	\$ 18.00/Cord	\$ _____
N. White Cedar	33.00 Cords	\$ 18.50/Cord	\$ _____

\*The volumes are statistically estimated within plus (+) or minus (-) 8.95 percent. These estimated volumes are final and not subject to adjustment. Prospective bidders are urged to examine this timber and to make their own estimates of quantity and quality.

I understand that any or all bids may be rejected. All bids must be signed and all bid items must be bid or the bid form may be rejected. I also understand that consideration and awarding a contract will be based upon my past performance and ability to complete the contract based upon equipment and staffing subject to my control.

FEDERAL ID: \_\_\_\_\_ or SOCIAL SECURITY NUMBER: \_\_\_\_\_

Company or individual bidding: \_\_\_\_\_

Company representative's name: \_\_\_\_\_

Address: \_\_\_\_\_

City: \_\_\_\_\_ State: \_\_\_\_\_ Zip: \_\_\_\_\_

IF AVAILABLE, PLEASE PLACE THE PERSONALIZED LABEL FROM YOUR PROSPECTUS IN THE ABOVE BOX.

Individual or company representative's signature: \_\_\_\_\_ Date: \_\_\_\_\_

Phone number : \_\_\_\_\_ Email (optional): \_\_\_\_\_

**THE WINNING BIDDER MUST COMPLETE THE VERIFICATION OF WORKER'S DISABILITY COMPENSATION ACT COMPLIANCE (ON REVERSE SIDE IF DOUBLE SIDED) WITHIN 21 DAYS OF SALE AWARD DATE**



<b>FOR DEPARTMENT USE ONLY</b>
Sale Number (XX - XXX - XX - XX)
Forest Management Unit:

## TIMBER SALE VERIFICATION OF WORKER'S DISABILITY COMPENSATION ACT COMPLIANCE

*As required by Act 317, P.A. 1969 (Worker's Compensation) and  
Part 5 of Act 451 of 1994, as amended.*

### VERIFICATION OF WORKER'S DISABILITY COMPENSATION ACT COMPLIANCE

- This verification must be completed and submitted within 21 days of contract award and prior to the issuance of the timber sale contract.
- In addition, if boxes 2B or 2C are checked, then Notice of Exclusion or Certificate of Insurance must be submitted within twenty-one (21) days of the contract award and prior to the issuance of the timber sale contract.
- All information must be typed or printed except for written signatures.

Please Check Appropriate Categories:

1. My business is organized as (you **must** check one of the boxes below):
  - A.  Sole Proprietorship (individual)
  - B.  Partnership
  - C.  Corporation
2. You **must** check one of the boxes below:
  - A.  I certify my business is a sole proprietorship and it has no employees but the sole proprietor. I am not subject to the Worker's Compensation Laws.
  - B.  I certify my business has satisfied its obligation to the Worker's Compensation Act through the use of an approved Notice of Exclusion (BWC-337, Rev. 5/96). I will provide a copy of the Notice of Exclusion within 21 days of the contract award. (For questions or a copy of the BWC-337, please call the Worker's Compensation Bureau at 517-322-1195).
  - C.  I certify my business has a Worker's Compensation Policy. I will provide an original Certificate of Insurance within twenty-one (21) days of the contract award.
3. If you have checked item 2(A) or 2(B), you **must** indicate the number of **both** full-time and part-time employees, other than yourself, including family members and active partners (if none, you must enter "0").

\_\_\_\_\_ Full-time Employees

\_\_\_\_\_ Part-time Employees

Name of Business		Federal ID (or) Social Security No.	
Address		Telephone (       )	
City	State	ZIP	

*I hereby certify that the above information is true and correct. I agree to notify the Michigan DNR of any changes that occur in factors affecting my coverage during any of my present and future operations.*

\_\_\_\_\_  
Signature of Owner or Authorized Representative

\_\_\_\_\_  
Title

\_\_\_\_\_  
Date

**Please complete the "SEALED BID" information on the next page**