



**DEPARTMENT OF NATURAL RESOURCES
STATE OF MICHIGAN**

TIMBER SALE PROSPECTUS #6311

SCHEDULED SALE DATE AND TIME: 3:00 p.m. (local time) on January 16, 2019.

LOCATION: ESCANABA MGMT UNIT, 6833 HWY'S 2, 41 & M-35, GLADSTONE, MI 49837.

PROSPECTUS NOTE: The bidder is advised to inspect the sale area and review the location, estimated volumes, operating costs and contract terms of proposed sales. Please be aware that some landowners may request 60 days or more notice for access across their land.

Notice is hereby given that bids will be received by the Unit Manager, ESCANABA MANAGEMENT UNIT, for certain timber on the following described lands:

Wolf Chase (33-003-18) / T36N, R25W, SEC. 1 , NESW,SE.

T36N, R25W, SEC. 1 , W1/2NW,S1/2NE,NENE,S1/2SW.

T36N, R25W, SEC. 2 , S1/2NE,NENE,E1/2SE.

Menominee County, Advertised Price \$307,421.75, 308.1 Acres, Hardwood, White Pine.

SALE NOTE: The Forest Islands ORV Trail runs through the Sale.

Payment Units 2, 4, 5, 10, and 14 are limited to the period of 12/1 to 3/15, unless frozen ground conditions exist.

Harvest of Payment Units 3, 7, 8, 9, 12, and 13 is recommended for a dry summer or frozen winter conditions.

A recreation site such as a trail, pathway, or campground is within the sale area or the vicinity. Certain restrictions/specifications may be applicable including time restrictions. Access may be through private land.

39 WEST (33-004-18) / T36N, R25W, SEC. 10, N1/2NE.

T36N, R25W, SEC. 2 , N1/2NW,SWNW,NWNE,NWSW.

T36N, R25W, SEC. 3 , E1/2NE,SWSW,SE.

Menominee County, Advertised Price \$138,390.85, 178.1 Acres, Aspen, Hardwood.

SALE NOTE: The 7 Mile Marsh Road and Forest Island ORV route are shown on the attached Timber Sale Map. Utility posts are on the south end of Payment Units 7 and 8.

A recreation site such as a trail, pathway, or campground is within the sale area or the vicinity. Certain restrictions/specifications may be applicable including time restrictions.

ATV EAST (33-008-18) / T37N, R24W, SEC. 20, S1/2NE,N1/2SW,SESW,SE.

T37N, R24W, SEC. 21, S1/2NW,NE,N1/2SW.

Delta County, Advertised Price \$80,212.70, 175.8 Acres, Hardwood, Spruce/Fir/Tamarack.

SALE NOTE: A recreation site such as a trail, pathway, or campground is within the sale area or the vicinity. Certain restrictions/specifications may be applicable including time restrictions.

7 Mile West Ridge (33-009-18) / T37N, R24W, SEC. 18, SWNE,E1/2SW,NWSE,S1/2SE.

T37N, R24W, SEC. 19, E1/2NW,NE,SW,NWSE.

T37N, R24W, SEC. 20, N1/2NW.

Delta County, Advertised Price \$79,875.30, 229.2 Acres, Spruce/Fir/Tamarack, Hardwood.

SALE NOTE: The access into Payment Units 1-8 and 10-13 are winter only access units. Payment Units 1-7 and 10 are high ground units, but low wet access to the ridge.

A recreation site such as a trail, pathway, or campground is within the sale area or the vicinity. Certain restrictions/specifications may be applicable including time restrictions.

BID INSTRUCTIONS (VER. 07/02/2018):

1. Scheduled Bid Location, Date, and Time (2/11)

Bids must be received by the Unit Manager, ESCANABA OFFICE, 6833 Hwy's 2, 41 & M-35, Gladstone, MI 49837, no later than 3:00 p.m. (local time) on January 16, 2019. For further information concerning this sale, contact Eric Thompson at 906-786-2354.

2. Bidder's Qualifications (5/16)

Purchaser shall obtain workers compensation insurance to cover claims under Michigan's Worker's Disability Compensation Act of 1969 or similar employee benefit act of any other state applicable to an employee. If all or part of a timber sale was prepared by a private contractor, the contractor and that contractor's company are not permitted to bid on the timber sale contract. Bids will not be accepted from individuals or companies appearing on the DNR/FRD No-Bid List. This list contains the names of purchasers who previously failed to execute a contract within 21-days or who have a history of poor performance.

3. Preparation of Sealed Bids (5/16)

Bid Forms may be completed online thru Michigan DNR Timber Sale Online Bidding (OLB) at www.michigan.gov/timberbidding or by completing the hardcopy Bid Form found in the Timber Sale Prospectus. Hardcopy Bid Forms shall be manually signed in ink. Registration in OLB is considered your 'signature' for all bids submitted thru that system. Bid prices must be entered for each species and product in the Bid Price column for all material subject to bidding and all fill-in blanks must be completed. If erasures or other changes appear on the hardcopy Bid Form, each erasure or change must be initialed by the person signing the bid.

4. Submission of Sealed Bids (5/16)

Bid forms may be obtained from the Unit Manager or thru OLB. Bids may be submitted hardcopy or thru OLB. All hardcopy bids must be submitted on the bid form and in an envelope clearly identified as described in this section. NOTE: Only one bid form per bid envelope. Sealed bids must be submitted to the Unit office designated in the prospectus and must be submitted at or prior to the time established in the prospectus. The envelope should show on the outside (a) the sale name or number and (b) the date and time of bid opening, as shown in the prospectus. Bids received after the time specified in the sale prospectus are late bids and will be rejected.

It is possible for a bidder to submit multiple bids on a single sale. For example, a bid may be submitted hardcopy and a bid may be submitted thru OLB. Or, two bidders from the same company could both submit bids on the same sale. If this were to happen, the State would accept all bids received and award the contract accordingly. All bidding and contractual requirements would apply to all bids received.

5. Public Opening of Sealed Bids (7/16)

If conditions permit, the sealed bids will be publicly opened and posted at the time and place set in the prospectus.

If a bidder, present at a bid opening, has submitted bids on more than one sale, that bidder may withdraw their unopened bid envelopes or announce the withdrawal of their online bid after being declared the successful bidder on one sale.

6. Award of Contract (1/11)

Award of the contract will be made to the Bidder whose bid, conforming to the prospectus, is most advantageous to the State of Michigan on the basis of total value at rates bid for the estimated quantities. The State reserves the right to reject any bid or waive any minor irregularity in bids received. A written award mailed (or otherwise furnished) to the successful Bidder shall be deemed to result in a binding contract without further action by either party.

7. Down Payment (1/11)

The Bidder to whom award is made must make a down payment within 21 days of the sale award. The amount of the down payment will be calculated as shown in the Bond and Payment Schedule of this prospectus. Only cash may be used to meet this requirement.

8. Performance Security (1/11)

As guarantee of faithful performance, a cash bond, certificate of deposit, surety bond or irrevocable letter of credit (LOC) is required within 21 days of the sale award. The amount of the performance security is shown in the Bond and

Payment Schedule of this prospectus. If an LOC or surety is used, the coverage must extend for at least 6 months beyond the contract expiration.

9. Timber Sale Contract (7/18)

Additional conditions and requirements common to all timber sales are listed on the timber sale contract (R4031) and are available on line at www.michigan.gov/timber. Contact the Unit Manager for additional information or a sample contract. Within 21 days of the date of the award letter, the bidder must sign the contract and provide the required down payment, performance security, and verification of worker's disability compensation. The down payment and performance security shall be in accordance with the provisions of the timber sale contract, in the sums stated in this prospectus. If these actions are not taken, then the Bidder, the Bidder's corporation, and the corporation's principals may not be permitted to bid on State timber sales for a period of 3 months after the first offense, 6 months after the second offense, and 1 year after the third offense. An offense will only be counted against the Bidder for 5 years. In addition, the Bidder certifies that if awarded this contract, the Bidder will complete the timber sale contract in accordance with its terms and any modifications thereof including requirements to purchase, cut, and remove the included timber by the expiration date.

Payment Unit values in the State Forest Timber Sale Contract are calculated based on the advertised value of the Payment Unit as a percentage of the total advertised value of the contract. The advertised value of each Payment Unit is given in the Description of Timber by Payment Unit table on the Timber Sale Information page. For example, if the value of Payment Unit 1 is advertised as \$1,500 and the total Timber Sale value is advertised as \$10,000, the contract price for Payment Unit 1 will be 15% of the total bid price ($\$1,500/\$10,000 * 100$).

10. Disclaimer of Estimates and Bidder's Warranty of Inspection (7/16)

Before submitting this bid, the Bidder is advised and cautioned to inspect the sale area, review the requirements of the sale contract, and take other steps as may be reasonably necessary to ascertain the location, estimated volumes, construction estimates, and operating costs of the proposed sale. Failure to do so will not relieve the Bidder from responsibility for completing the contract.

The Bidder warrants that this bid is submitted solely on the basis of the Bidder's examination and inspection of the quality and quantity of the timber offered for sale and the Bidder's opinion of the value thereof and the costs of recovery. No reliance should be placed on the State of Michigan's estimates of timber quality, quantity or costs of recovery. Bidder further acknowledges that the State of Michigan: (i) expressly disclaims any warranty of fitness of timber for any purpose; (ii) offers this timber as is without any warranty of quality (merchantability) or quantity and (iii) expressly disclaims any warranty as to the quantity or quality of timber sold.

11. Certification and Chain-of-Custody (10/14)

Unless otherwise indicated in the contract under section 7 – Other Conditions of the Sale Specific Conditions & Requirements, the area encompassed by this timber sale is certified to the standards of the Forest Stewardship Council (FSC) - Certificate #SCS-FM/COC-00090N and the Sustainable Forestry Initiative (SFI) - Certificate #NSF-SFIS-5Y031-SF5. Forest products from this sale may be delivered to the mill as "FSC 100% and / or SFI certified" as long as the contractor hauling the forest products is chain-of-custody (COC) certified or covered under a COC certificate from the destination mill. The purchaser is responsible for maintaining COC after leaving the sale area.

12. Good Neighbor Authority (GNA) Requirements (7/16)

If the name of this timber sales contains the acronym GNA, it is authorized by the Good Neighbor Authority (GNA) and covered by various agreements between the U.S. Forest Service and the State. The timber sale occurs on federal land and the following conditions apply:

GNA contracts on US Forest Service land will not be awarded to purchasers on the Federal list of excluded parties. The System for Award Management (SAM) will be checked for active excluded parties prior to award of contract. In addition, the Bidder to whom award is made must complete an Assurance Regarding Felony Conviction or Tax Delinquent Status for Corporate Applicants (AD-3031).

13. Good Neighbor Authority (GNA) Requirements, con't (9/16)

Bidder certifies, by signing this bid form, that to the best of Bidder's knowledge that the following representations are accurate and complete.

- a. That the Bidder and its principals are not presently debarred, suspended, proposed for debarment, declared ineligible, or voluntary excluded from timber sales (covered transactions) by any Federal department or agency.
- b. That the Bidder and its principals have not within a 3-year period preceding this bid been convicted of or had a civil judgment rendered against them for commission of fraud or a criminal offense in connection with obtaining, attempting to obtain, or performing a public (Federal, State, or local) transaction or contract under a public transaction; violation of Federal or State antitrust statutes or commission of embezzlement, theft, forgery, bribery, falsification or destruction of records, making false statements, or receiving stolen property.
- c. That the Bidder and its principals are not presently indicted for or otherwise criminally or civilly charged by a governmental entity (Federal, State, or local) with commission of any of the offenses enumerated in paragraph b of this certification.
- d. That the Bidder and its principals have not within a 3-year period preceding this bid had one or more public transactions (Federal, State, or local) terminated for breach or default of a timber or forest product contract.

Bidders that cannot certify this requirement, in whole or in part, shall submit an explanation with their bid.

KEITH CREAGH
Director

TIMBER SALE INFORMATION

Wolf Chase (33-003-18)
 T36N, R25W, SEC. 1; T36N, R25W, SEC. 2.
 Menominee County (Advertised Price \$307,421.75)

SALE NOTE: The Forest Islands ORV Trail runs through the Sale.

Payment Units 2, 4, 5, 10, and 14 are limited to the period of 12/1 to 3/15, unless frozen ground conditions exist.

Harvest of Payment Units 3, 7, 8, 9, 12, and 13 is recommended for a dry summer or frozen winter conditions.

A recreation site such as a trail, pathway, or campground is within the sale area or the vicinity. Certain restrictions/specifications may be applicable including time restrictions. Access may be through private land.

A timber sale contract for this mixed, sealed bid timber sale will be awarded to the responsible bidder offering the highest sealed bid price. Bids must be at or above the following advertised price for each species:

<u>PRODUCTS & SPECIES</u>	<u>ESTIMATED UNITS*</u>		<u>ADVERTISED PRICE</u>
Sawtimber			
Black Ash	2.30	MBF	\$ 61.00 / MBF
Green Ash	41.40	MBF	\$ 94.00 / MBF
Paper Birch	39.50	MBF	\$ 85.00 / MBF
Red Maple	248.60	MBF	\$ 197.00 / MBF
Sugar Maple	7.70	MBF	\$ 283.00 / MBF
White Ash	5.90	MBF	\$ 70.00 / MBF
Yellow Birch	16.90	MBF	\$ 109.00 / MBF
Pulpwood			
Balsam Fir	487.00	Cords	\$ 24.85 / Cord
Mixed Hardwood	5,219.00	Cords	\$ 28.95 / Cord
Mixed Spruce	385.00	Cords	\$ 20.90 / Cord
N. White Cedar	940.00	Cords	\$ 21.80 / Cord
Quaking Aspen	421.00	Cords	\$ 30.25 / Cord
Red Pine	118.00	Cords	\$ 54.95 / Cord
White Pine	1,243.00	Cords	\$ 28.70 / Cord

* The estimated units are final and not subject to adjustment. Prospective bidders are urged to examine this timber and to make their own estimates of quantity and quality.

BOND AND PAYMENT SCHEDULE:

1. A bond in the amount of \$15,371.00 to insure faithful performance of the conditions of the contract will be deposited by the successful bidder within 21 days of the sale award.
2. Cutting in any sale or unit without the required advance payment would be considered a trespass.
3. Total payment must be paid in advance or according to the following schedule:
 - (a) Ten percent (10%) of the sale value must be paid within 21 days of the sale award.
 - (b) The 10% down payment will be credited towards the first unit cut.
 - (c) Payment for each of the following units must be made before cutting begins in that unit:

PAYMENT UNIT NUMBER	PERCENT OF TOTAL SALE VALUE
01	1.8%
02	2.5%
03	21.2%
04	6.3%
05	4.1%
06	1.4%
07	2.0%
08	13.3%
09	14.2%
10	6.2%
11	0.7%
12	5.6%
13	5.6%
14	15.1%

4. If no cutting takes place, the 10% down payment will not be refunded.
5. Operations on the contract issued will terminate on 09/30/2021.

Description of Timber by Payment Unit (PU)

PU	MARKET GROUP	PRODUCT	QUANTITY	UNIT	ACRES	ADVERTISE PRICE	
1	Red Pine	Pulpwood	40.0	Cords	18.6	\$5,527.20	
	White Pine		116.0	Cords			
2	Mixed Hardwood	Pulpwood	12.0	Cords	5.9	\$7,656.15	
	<i>Red Maple</i>		12.0	<i>Cords</i>			
	Mixed Spruce		94.0	Cords			
	<i>Black Spruce</i>		94.0	<i>Cords</i>			
	Red Pine		21.0	Cords			
	White Pine		146.0	Cords			
3	Paper Birch	Sawtimber	1.8	MBF	48.6	\$65,249.35	
	Red Maple		72.1	MBF			
	Sugar Maple		7.7	MBF			
	White Ash		2.4	MBF			
	Yellow Birch		1.8	MBF			
	Balsam Fir		Pulpwood	26.0			Cords
	Mixed Hardwood			1,122.0			Cords
	<i>Balsam Poplar</i>			8.0			<i>Cords</i>
	<i>Basswood</i>			8.0			<i>Cords</i>
	<i>Beech</i>			10.0			<i>Cords</i>
	<i>Black Ash</i>			27.0			<i>Cords</i>
	<i>Ironwood</i>			11.0			<i>Cords</i>
	<i>Paper Birch</i>			104.0			<i>Cords</i>
	<i>Red Maple</i>			753.0			<i>Cords</i>
	<i>Sugar Maple</i>			66.0			<i>Cords</i>
	<i>White Ash</i>			6.0			<i>Cords</i>
	<i>Yellow Birch</i>	129.0		<i>Cords</i>			
	Mixed Spruce	9.0		Cords			
	<i>Black Spruce</i>	9.0		<i>Cords</i>			
	N. White Cedar	167.0		Cords			
	Quaking Aspen	15.0		Cords			
	Red Pine	10.0		Cords			
	White Pine	362.0	Cords				
4	Red Maple	Sawtimber	17.0	MBF	15.3	\$19,460.45	
	Yellow Birch		8.5	MBF			
	Balsam Fir	Pulpwood	42.0	Cords			
	Mixed Hardwood		371.0	Cords			
	<i>Balsam Poplar</i>		14.0	<i>Cords</i>			
	<i>Black Ash</i>		30.0	<i>Cords</i>			
	<i>Paper Birch</i>		18.0	<i>Cords</i>			
	<i>Red Maple</i>		210.0	<i>Cords</i>			
	<i>Yellow Birch</i>		99.0	<i>Cords</i>			
	N. White Cedar		156.0	Cords			
	5		Green Ash	Sawtimber			1.4
Red Maple		11.5	MBF				
Yellow Birch		2.8	MBF				
Balsam Fir		Pulpwood	6.0	Cords			
Mixed Hardwood			243.0	Cords			
<i>Black Ash</i>			36.0	<i>Cords</i>			
<i>Green Ash</i>			35.0	<i>Cords</i>			
<i>Paper Birch</i>			11.0	<i>Cords</i>			
<i>Red Maple</i>			144.0	<i>Cords</i>			
<i>Yellow Birch</i>			17.0	<i>Cords</i>			
Mixed Spruce			15.0	Cords			
<i>Black Spruce</i>			15.0	<i>Cords</i>			
N. White Cedar			106.0	Cords			
6	Mixed Hardwood	Pulpwood	15.0	Cords	7.8	\$4,376.65	
	<i>Paper Birch</i>		5.0	<i>Cords</i>			

Description of Timber by Payment Unit (PU), con't

PU	MARKET GROUP	PRODUCT	QUANTITY	UNIT	ACRES	ADVERTISE PRICE				
6 con't	<i>Red Maple</i>	<i>Pulpwood</i>	10.0	<i>Cords</i>						
	Quaking Aspen		7.0	Cords						
	Red Pine		47.0	Cords						
	White Pine		40.0	Cords						
7	Black Ash	Sawtimber	1.4	MBF	15.8	\$6,281.00				
	Green Ash		8.2	MBF						
	Paper Birch	1.5	MBF							
	Balsam Fir	Pulpwood	1.0	Cords						
	Mixed Hardwood		175.0	Cords						
	<i>Black Ash</i>		70.0	<i>Cords</i>						
	<i>Green Ash</i>		75.0	<i>Cords</i>						
	<i>Paper Birch</i>		12.0	<i>Cords</i>						
	<i>Red Maple</i>		10.0	<i>Cords</i>						
	<i>Yellow Birch</i>		8.0	<i>Cords</i>						
	Mixed Spruce		3.0	Cords						
	<i>Black Spruce</i>		3.0	<i>Cords</i>						
	White Pine		5.0	Cords						
	8	Green Ash	Sawtimber	5.0			MBF	35.2	\$40,795.50	
Paper Birch		4.8		MBF						
Red Maple		50.4	MBF							
Yellow Birch		2.9	MBF							
Balsam Fir		Pulpwood	61.0	Cords						
Mixed Hardwood			697.0	Cords						
<i>Black Ash</i>			34.0	<i>Cords</i>						
<i>Green Ash</i>			97.0	<i>Cords</i>						
<i>Paper Birch</i>			35.0	<i>Cords</i>						
<i>Red Maple</i>			489.0	<i>Cords</i>						
<i>Yellow Birch</i>			42.0	<i>Cords</i>						
White Pine			278.0	Cords						
9			Green Ash	Sawtimber	9.3	MBF	39.1			\$43,584.65
			Paper Birch		2.4	MBF				
	Red Maple	11.1	MBF							
	White Ash	3.5	MBF							
	Yellow Birch	0.9	MBF							
	Balsam Fir	Pulpwood	150.0	Cords						
	Mixed Hardwood		572.0	Cords						
	<i>Balsam Poplar</i>		82.0	<i>Cords</i>						
	<i>Black Ash</i>		92.0	<i>Cords</i>						
	<i>Green Ash</i>		76.0	<i>Cords</i>						
	<i>Paper Birch</i>		50.0	<i>Cords</i>						
	<i>Red Maple</i>		182.0	<i>Cords</i>						
	<i>White Ash</i>		15.0	<i>Cords</i>						
	<i>Yellow Birch</i>		75.0	<i>Cords</i>						
	N. White Cedar		406.0	Cords						
	Quaking Aspen	253.0	Cords							
	White Pine	111.0	Cords							
10	Green Ash	Sawtimber	2.4	MBF	17.9	\$19,165.90				
	Red Maple		18.9	MBF						
	Balsam Fir	Pulpwood	30.0	Cords						
	Mixed Hardwood		389.0	Cords						
	<i>Black Ash</i>		39.0	<i>Cords</i>						
	<i>Green Ash</i>		46.0	<i>Cords</i>						
	<i>Paper Birch</i>		24.0	<i>Cords</i>						
	<i>Red Maple</i>		267.0	<i>Cords</i>						
	<i>Yellow Birch</i>		13.0	<i>Cords</i>						
	Mixed Spruce		23.0	Cords						

Description of Timber by Payment Unit (PU), con't

PU	MARKET GROUP	PRODUCT	QUANTITY	UNIT	ACRES	ADVERTISE PRICE
10 con't	<i>Black Spruce</i> N. White Cedar Quaking Aspen White Pine	<i>Pulpwood</i>	23.0 101.0 7.0 11.0	<i>Cords</i> Cords Cords Cords		
11	Balsam Fir Mixed Hardwood <i>Black Ash</i> <i>Green Ash</i> <i>Paper Birch</i> <i>Red Maple</i> Mixed Spruce <i>Black Spruce</i>	Pulpwood	8.0 65.0 7.0 11.0 6.0 41.0 5.0 5.0	Cords Cords <i>Cords</i> <i>Cords</i> <i>Cords</i> <i>Cords</i> Cords <i>Cords</i>	4.9	\$2,185.05
12	Paper Birch Red Maple Balsam Fir Mixed Hardwood <i>Balsam Poplar</i> <i>Black Ash</i> <i>Green Ash</i> <i>Paper Birch</i> <i>Red Maple</i> Mixed Spruce <i>Black Spruce</i> <i>White Spruce</i> Quaking Aspen White Pine	Sawtimber Pulpwood	1.4 11.4 90.0 186.0 17.0 16.0 32.0 16.0 105.0 182.0 10.0 172.0 100.0 15.0	MBF MBF Cords Cords <i>Cords</i> <i>Cords</i> <i>Cords</i> <i>Cords</i> <i>Cords</i> Cords <i>Cords</i> <i>Cords</i> Cords Cords	29.6	\$17,245.30
13	Red Maple Balsam Fir Mixed Hardwood <i>Black Ash</i> <i>Green Ash</i> <i>Paper Birch</i> <i>Red Maple</i> Mixed Spruce <i>Black Spruce</i> <i>White Spruce</i> Quaking Aspen	Sawtimber Pulpwood	17.5 20.0 419.0 13.0 14.0 24.0 368.0 14.0 2.0 12.0 24.0	MBF Cords Cords <i>Cords</i> <i>Cords</i> <i>Cords</i> <i>Cords</i> Cords <i>Cords</i> <i>Cords</i> Cords	16.9	\$17,093.15
14	Black Ash Green Ash Paper Birch Red Maple Balsam Fir Mixed Hardwood <i>Balsam Poplar</i> <i>Black Ash</i> <i>Green Ash</i> <i>Paper Birch</i> <i>Red Maple</i> <i>Yellow Birch</i> Mixed Spruce <i>Black Spruce</i> N. White Cedar Quaking Aspen White Pine	Sawtimber Pulpwood	0.9 15.1 27.6 38.7 53.0 953.0 27.0 161.0 125.0 180.0 452.0 8.0 40.0 40.0 4.0 15.0 159.0	MBF MBF MBF MBF Cords Cords <i>Cords</i> <i>Cords</i> <i>Cords</i> <i>Cords</i> <i>Cords</i> <i>Cords</i> Cords <i>Cords</i> Cords Cords Cords	41.5	\$46,290.85
TOTAL:			362.3	MBF		

TOTAL:	8,813.0	Cords
--------	---------	-------

Sale Specific Conditions & Requirements

Sale Name: Wolf Chase

Sale Number: 33-003-18 Seq#: 1

1 - Sale Area

1.2 - Boundaries

1.2.1 - Painted boundaries (1/14)

The sale boundary and Payment Unit boundaries are marked and identified by blue, red and yellow paint. Exterior sale boundary lines against private property are marked with blue paint. Exterior sale boundary lines against state are marked with red paint. Interior Payment Unit boundaries are marked with yellow paint. The painted boundary line trees are not Included Timber and are to be protected unless marked with orange paint. Yellow painted trees designating an interior Payment Unit boundary are only to be cut when all surrounding Payment Units have been paid.

2 - Timber Specifications

2.1 - Included Timber

2.1.1 - Clearcut unit(s) with unmerchantable trees (6/14)

Within Payment Unit(s) 2-5 and 7-14, cut all trees that are three (3) inches or more at DBH, with the following exceptions:

- Within Payment Units 2 and 4; do not cut any trees marked with green paint.
- Within Payment Unit 3; do not cut any trees marked with green paint or hemlock.
- Within Payment Units 5, 9, and 10; do not cut any hemlock.
- Within Payment Unit 7; do not cut any standing hemlock or cedar. In addition, all merchantable blown down trees are designated for cutting, including cedar. Merchantable blown down trees will be scaled at the time of harvest, and payment will be made at the bid price and product category for each species.
- Within Payment Unit 8; do not cut any trees marked with green paint, hemlock, or cedar.
- Within Payment Unit 11; do not cut any pine or cedar.
- Within Payment Unit 13; do not cut any pine, hemlock, or cedar.
- Within Payment Unit 14; do not cut any hemlock or cedar.

2.1.3 - Cut tree marked unit(s) (12/08)

Within Payment Unit(s) 1 and 6, all trees are designated for cutting when marked with orange paint above and below stump height, regardless of merchantability.

2.1.9 - Harvest exception (12/08)

Do not cut cedar in Payment Units 8 and 14, and hemlock in Payment Units 3 and 8, other than those that are necessary to remove in order to operate within the sale area. Every effort must be made to preserve the existing cedar and hemlock and to leave an intact stand upon sale completion. All cut cedar and hemlock shall be piled separately by products and scaled in the woods unless other scaling arrangements are agreed to by the Unit Manager or his/her representative. Stumpage price for cedar shall be \$50.00 per cord for posts and pulpwood, and \$100.00 per cord for bolts and sawlogs. Stumpage price for hemlock shall be \$50.00 per cord for posts and pulpwood, and \$100.00 per cord for bolts and sawlogs. Salvaged wood from Payment Unit 7 will be scaled at the time of harvest and be paid for at the bid rate for the species and product.

2.1.11 - Description of timber note (2/04)

Note that trees leaning 45 degrees or greater will be considered blowdown. This applies to Payment Unit 7.

2.2 - Utilization

2.2.1 - Utilization (2/04)

All listed board foot volumes of sawlog size products in this contract have been determined using a top diameter inside bark of 10 inches.

2.2.3 - Stump heights (4/07)

Stump heights within the Sale Area shall not exceed 12 inches for trees greater than 10 inches DBH and 4 inches for trees smaller than 10 inches DBH.

3 - Payments

3.2 - Scaled Sales

3.2.1 - Scale location (2/04)

Forest products will be placed for measurement . Unit 7 salvage all merchantable blown down trees will be scaled at the time of harvest at the bid price and product category for each species. Cedar blow down trees can be harvested in Unit 7.

3.3 - Pre-measured Sales

3.3.4 - Dividing payment units (7/14)

Payment Unit(s) valued at more than \$20,000 may be divided at the request of the Purchaser and upon approval of the Unit Manager. Dividing Payment Units is a contract modification which requires a Timber Sale Contract Supplement. There will be only one division per Payment Unit.

3.4 - Damaged Timber

3.4.1 - Damaged timber (6/14)

General Condition and Requirement 3.4 Damaged Timber, defines liquidated damages for undesignated live merchantable trees which are cut or injured.

Within Payment Unit 1, if more than 25% of the tree seedlings or saplings (1/4" to 4.5" DBH) are damaged, liquidated damages will be assessed at \$100 per acre for all acreage within that specified portion of the sale area that was damaged.

4 - Transportation

4.1 - Construction

4.1.3 - Slash and earthen piles (8/04)

Piles or windrows of earth along roads and landings that have been widened or constructed shall be leveled. Slash from road maintenance or construction, including stumps, shall be dispersed over a large enough area so that they are less than 24 inches in height.

4.1.4 - Timber removed for construction (12/09)

Trees cut or damaged in the process of pre-approved road, landing or skid trail construction will be decked in an area separate from other Designated Timber and not removed until measured by the sale administrator. Payment will be made at the specified Purchase Unit Price.

4.1.5 - Culverts (5/14)

Roads may require the installation of culverts for cross drainage or at natural drainage-ways. If culverts are needed in these locations, their placement will be specified by the sale administrator and they shall be installed prior to hauling. The culverts shall be new, corrugated metal or plastic gauge. Culverts will be a minimum of 12 inches in diameter and 24 feet in length. If culverts are removed, fill shall be removed from wetland soils as specified. Soils shall be maintained and left in a non-erodible condition, with water bars, seed, fertilizer, mulch, and slash installed as directed by the sale administrator and as specified in the BMP manual. Stream crossing permits, if needed, will be obtained by the DNR.

4.1.6 - Road construction (1/09)

Construction of new roads or improvements of existing roads shall be done in such a way as to minimize the environmental and visual impacts. Merchantable trees shall be cut and utilized unless otherwise directed. Non-merchantable trees shall be severed and laid flat on the ground. Slash shall be scattered, and not left in windrows and kept a minimum of 10 feet back from the road edge be chipped, utilized or spread evenly over the area of the sale. Stumps shall be set upright, not left on edge, and be moved at least 10 feet away from the road edge. Disturbed soil shall be feathered into the woods and not left in berms or windrows.

4.2 - Maintenance

4.2.3 - Road maintenance (8/13)

The following road maintenance is required: Within 60 days of completion of hauling, or if no hauling occurs for 60 days, the road must be maintained and graded. This includes cleaning of drainage areas, grading, crowning and filling with gravel, if necessary. Damages will be assessed if grading/repair does not occur.

4.2.4 - Grading (10/16)

For completion of the sale, state forest roads must be graded. In general, this will require a road grader or bull dozer to shape

up the roads after forest products have been hauled off site. The grading equipment to be used must be approved by the Unit Manager or his/her representative.

5 - Operations

5.2 - Conduct of Operations

5.2.1 - Slash

5.2.1.8 - Slash height (12/08)

No slash or tree tops may exceed 24 inches in height.

5.2.3 - Operating Restrictions

5.2.3.2 - Operating restrictions (9/11)

Within Payment Unit(s) 2, 4, 5, 10, and 14, unless changed by written agreement, cutting, skidding, and hauling are limited to the period of December 1 to March 15, unless frozen ground condition exist. This restriction is because of the wet nature of these stands and potential for rutting.

5.2.22 - Operating Caution

5.2.22.1 - Operating caution (6/11)

It is recommended, but not required, that within Payment Unit(s) 3, 7, 8, 9, 12, and 13, cutting, skidding, and hauling occur during dry summer or frozen winter conditions. The reason for the recommendation is because of the potential for rutting within the Units.

5.2.38 - No decking against live trees (2/04)

Cut products may not be decked against unmarked or designated leave trees.

5.2.39 - ORV trail/route protection (4/18)

The Forest Islands Trail is an ORV trail or route and is shown on the Timber Sale Map. Do not cut trees or damage posts with yellow ORV markers.

5.4 - Soil Protection

5.4.1 - Rutting restriction, general (7/16)

Operations are to cease immediately if equipment and weather conditions result in rutting of roads and/or skid trails which is 12 inches or greater in depth and 50 feet in length. The Unit Manager or his/her representative may restrict hauling and/or skidding if ruts exceed the specified depth. With the Unit Manager or his/her representative's approval, the Purchaser may return to the area when the risk of rutting has decreased.

5.7 - Protection of Historical Sites

5.7.2 - Potential historical site(s) (9/06)

The State Historic Preservation Office has identified the potential for a historic site within the boundary of this timber sale. Note that if the site is discovered during operations, General Condition and Requirement 5.7 - Protection of Historical Sites will apply.

6 - Safety and Fire Prevention

6.2 - Signing

6.2.1 - Road posting (9/09)

The Purchaser is responsible for posting and maintaining caution signs on the North Branch of the North Fox Road prior to beginning operations. The road must be posted at appropriate distances from the sale area to warn of logging activity and truck traffic. Signs must be removed when harvest operations are suspended or completed. The Purchaser will provide these signs.

6.2.3 - Recreational trail posting (2/10)

The Purchaser is responsible for posting and maintaining caution signs on the Forest Islands ORV trail prior to beginning operations. The trail must be posted at appropriate distances from the sale area to warn of logging activity and truck traffic at both ends of the trail. Signs must be removed when harvest operations are suspended or completed. The Purchaser will

provide these signs.



TIMBER SALE MAP

This information provided by authority of Part 525, 1994 PA 451, as amended.

Sale Number	Year
33 - 003	18

Forest Management Unit Escanaba Management Unit	County Menominee	Mapped By Collins	Date 06/26/2018	Page 1	of 1
Township 36N	Range 25W	Section(s) and Subdivision(s) Sec 1 SE 1/4, NENE, SWNE, SENE, NWNW, SWNW NESW, SWSW, SESW Sec 2 NE 1/4, SENW, NESE, SWSE, SESE Sec11 NENE	Scale 1:15,840		

Cover Type				Density			
A = Aspen	H = Hemlock	N = Marsh	U = Upland Brush	0 = Non Stocked	5 = Pole Timber Medium		
B = Paper Birch	J = Jack Pine	O = Oak	UM = Upland Mixed	1 = Seedling Sapling Poor	6 = Pole Timber Well		
C = Cedar	L = Lowland Brush	P = Lowland Poplar	V = Bog or Marsh	2 = Seedling Sapling Medium	7 = Saw Timber Poor		
D = Tread Bog	LM = Lowland Mixed	Q = Mixed Swamp Conifer	W = White Pine	3 = Seedling Sapling Well	8 = Saw Timber Medium		
E = Swamp Hdwoods	M = Mpl, Bch, Brch	R = Red Pine	X = Non Stocked	4 = Pole Timber Poor	9 = Saw Timber Well		
F = Spruce Fir	MC = Mixed Conifer	S = Black Spruce	Z = Water				
G = Grass	MD = Mixed Deciduous	T = Tamarack					

Wolf Chase

Compartment 39

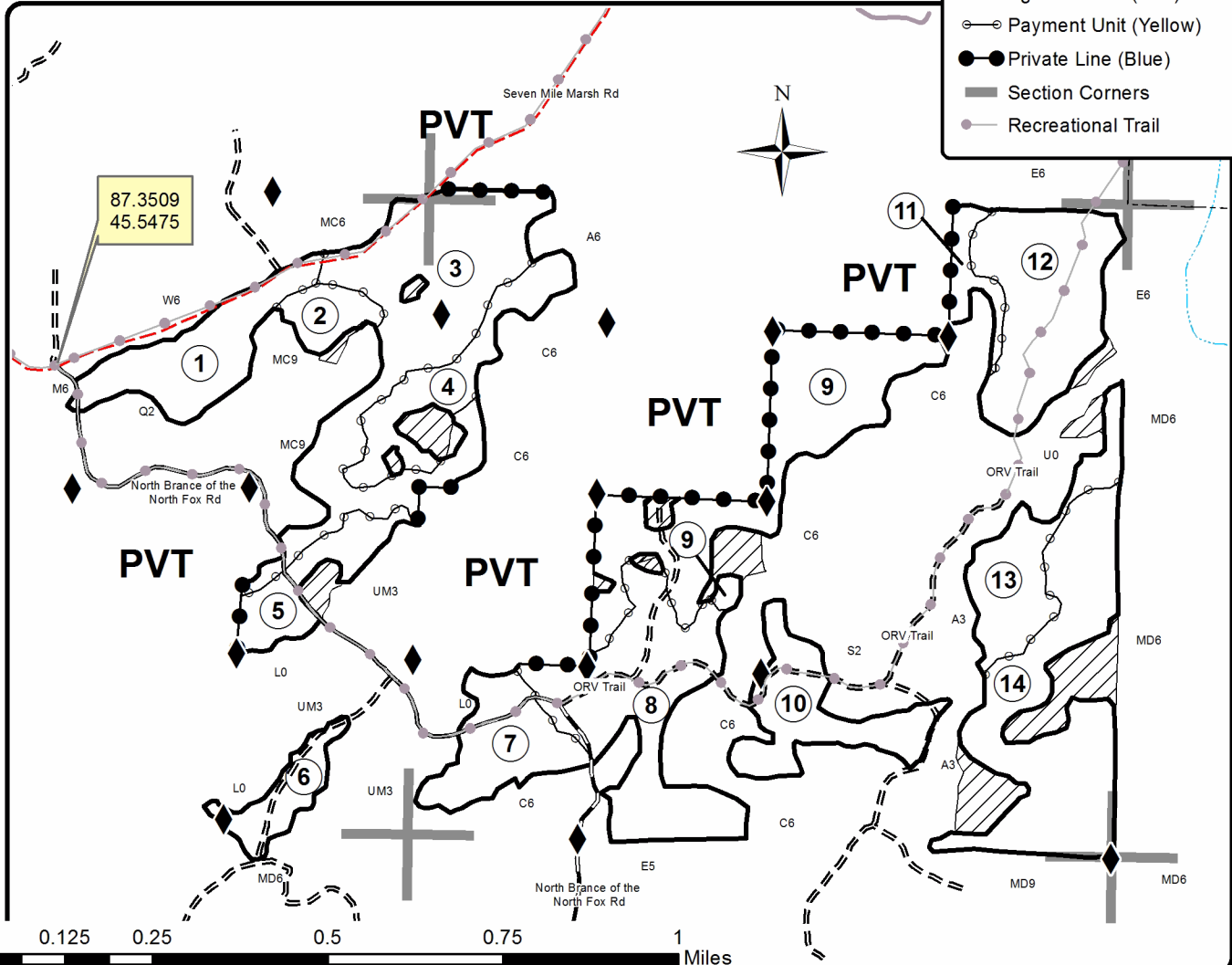
308.1 Acres

PU	Acres	PU	Acres	PU	Acres
1	18.6	6	7.8	11	4.9
2	5.9	7	15.8	12	29.6
3	48.6	8	35.2	13	16.9
4	15.3	9	39.1	14	41.5
5	11	10	17.2		



Legend

- ◆ Survey Corners
- Primary Forest Road
- == Secondary Forest Road
- == Forest Access Route
- - - County Road - Seasonal
- Private
- Intermittent Stream
- ▨ Retention Area
- Against State (Red)
- Payment Unit (Yellow)
- Private Line (Blue)
- Section Corners
- Recreational Trail



TIMBER SALE INFORMATION

39 WEST (33-004-18)

T36N, R25W, SEC. 10; T36N, R25W, SEC. 2; T36N, R25W, SEC. 3.
Menominee County (Advertised Price \$138,390.85)

SALE NOTE: The 7 Mile Marsh Road and Forest Island ORV route are shown on the attached Timber Sale Map. Utility posts are on the south end of Payment Units 7 and 8.

A recreation site such as a trail, pathway, or campground is within the sale area or the vicinity. Certain restrictions/specifications may be applicable including time restrictions.

A timber sale contract for this lump sum, sealed bid timber sale will be awarded to the responsible bidder offering the highest sealed bid price. Bids must be at or above the following advertised price for each species:

<u>PRODUCTS & SPECIES</u>	<u>ESTIMATED UNITS*</u>		<u>ADVERTISED PRICE</u>
Sawtimber			
Green Ash	2.90	MBF	\$ 94.00 / MBF
Paper Birch	12.30	MBF	\$ 85.00 / MBF
Red Maple	33.20	MBF	\$ 197.00 / MBF
Yellow Birch	6.50	MBF	\$ 109.00 / MBF
Pulpwood			
Balsam Fir	97.00	Cords	\$ 24.85 / Cord
Jack Pine	12.00	Cords	\$ 42.20 / Cord
Mixed Aspen	2,119.00	Cords	\$ 30.25 / Cord
Mixed Hardwood	725.00	Cords	\$ 28.95 / Cord
Mixed Spruce	222.00	Cords	\$ 20.90 / Cord
N. White Cedar	3.00	Cords	\$ 21.80 / Cord
Red Pine	338.00	Cords	\$ 54.95 / Cord
White Pine	646.00	Cords	\$ 28.70 / Cord

* The total volume is statistically estimated within plus (+) or minus (-) 9.43 percent. The estimated units are final and not subject to adjustment. Prospective bidders are urged to examine this timber and to make their own estimates of quantity and quality.

BOND AND PAYMENT SCHEDULE:

1. A bond in the amount of \$6,920.00 to insure faithful performance of the conditions of the contract will be deposited by the successful bidder within 21 days of the sale award.
2. Cutting in any sale or unit without the required advance payment would be considered a trespass.
3. Total payment must be paid in advance or according to the following schedule:
 - (a) Ten percent (10%) of the sale value must be paid within 21 days of the sale award.
 - (b) The 10% down payment will be credited towards the first unit cut.
 - (c) Payment for each of the following units must be made before cutting begins in that unit:

PAYMENT UNIT NUMBER	PERCENT OF TOTAL SALE VALUE
01	1.6%
02	18.9%
03	21.3%
04	5.9%
05	8.4%
06	14.5%
07	6.2%
08	4.3%
09	18.9%

4. If no cutting takes place, the 10% down payment will not be refunded.
5. Operations on the contract issued will terminate on 12/31/2021.

Description of Timber by Payment Unit (PU)

PU	MARKET GROUP	PRODUCT	QUANTITY	UNIT	ACRES	ADVERTISE PRICE
1	Balsam Fir	Pulpwood	40.0	Cords	7.6	\$2,270.75
	Mixed Aspen		4.0	Cords		
	<i>Quaking Aspen</i>		4.0	<i>Cords</i>		
	Mixed Hardwood		29.0	Cords		
	<i>Balsam Poplar</i>		29.0	<i>Cords</i>		
	Mixed Spruce		12.0	Cords		
	<i>White Spruce</i>		12.0	<i>Cords</i>		
	N. White Cedar		3.0	Cords		
2	Paper Birch	Sawtimber	2.8	MBF	23.8	\$26,195.15
	Red Maple		4.0	MBF		
	Balsam Fir	Pulpwood	13.0	Cords		
	Mixed Aspen		494.0	Cords		
	<i>B. T. Aspen</i>		379.0	<i>Cords</i>		
	<i>Quaking Aspen</i>		115.0	<i>Cords</i>		
	Mixed Hardwood		66.0	Cords		
	<i>Paper Birch</i>		20.0	<i>Cords</i>		
	<i>Red Maple</i>		46.0	<i>Cords</i>		
	Red Pine		18.0	Cords		
	White Pine		244.0	Cords		
3	Paper Birch		Sawtimber	2.1	MBF	33.6
	Red Maple		3.1	MBF		
	Balsam Fir	Pulpwood	14.0	Cords		
	Mixed Aspen		763.0	Cords		
	<i>B. T. Aspen</i>		257.0	<i>Cords</i>		
	<i>Quaking Aspen</i>		506.0	<i>Cords</i>		
	Mixed Hardwood		65.0	Cords		
	<i>Paper Birch</i>		17.0	<i>Cords</i>		
	<i>Red Maple</i>		48.0	<i>Cords</i>		
	Mixed Spruce		25.0	Cords		
	<i>Black Spruce</i>		9.0	<i>Cords</i>		
	<i>White Spruce</i>		16.0	<i>Cords</i>		
	Red Pine		12.0	Cords		
	White Pine		74.0	Cords		
4	Paper Birch		Sawtimber	1.6	MBF	15.2
	Red Maple		3.1	MBF		
	Balsam Fir	Pulpwood	8.0	Cords		
	Mixed Aspen		6.0	Cords		
	<i>Quaking Aspen</i>		6.0	<i>Cords</i>		
	Mixed Hardwood		72.0	Cords		
	<i>Black Ash</i>		4.0	<i>Cords</i>		
	<i>Black Cherry</i>		2.0	<i>Cords</i>		
	<i>Paper Birch</i>		6.0	<i>Cords</i>		
	<i>Red Maple</i>		60.0	<i>Cords</i>		
	Mixed Spruce		134.0	Cords		
	<i>Black Spruce</i>		130.0	<i>Cords</i>		
	<i>White Spruce</i>		4.0	<i>Cords</i>		
	Red Pine		36.0	Cords		
White Pine	7.0		Cords			
5	Jack Pine	Pulpwood	12.0	Cords	14.5	\$11,583.75
	Mixed Aspen		172.0	Cords		
	<i>B. T. Aspen</i>		172.0	<i>Cords</i>		
	Mixed Hardwood		4.0	Cords		
	<i>Paper Birch</i>		4.0	<i>Cords</i>		
	Red Pine		51.0	Cords		
	White Pine		103.0	Cords		
6	Green Ash	Sawtimber	2.9	MBF	17.8	\$20,013.35

Description of Timber by Payment Unit (PU), con't

PU	MARKET GROUP	PRODUCT	QUANTITY	UNIT	ACRES	ADVERTISE PRICE
6 con't	Paper Birch	Sawtimber	3.9	MBF		
	Red Maple		20.3	MBF		
	Yellow Birch		6.5	MBF		
	Balsam Fir	Pulpwood	9.0	Cords		
	Mixed Hardwood		426.0	Cords		
	<i>Black Ash</i>		87.0	<i>Cords</i>		
	<i>Green Ash</i>		88.0	<i>Cords</i>		
	<i>Paper Birch</i>		8.0	<i>Cords</i>		
	<i>Red Maple</i>		178.0	<i>Cords</i>		
	<i>Yellow Birch</i>		65.0	<i>Cords</i>		
	Mixed Spruce		23.0	Cords		
	<i>White Spruce</i>		23.0	<i>Cords</i>		
	White Pine		58.0	Cords		
	7	Mixed Hardwood	Pulpwood	2.0	Cords	21.0
<i>Red Maple</i>			2.0	<i>Cords</i>		
Mixed Spruce			4.0	Cords		
<i>Black Spruce</i>			4.0	<i>Cords</i>		
Red Pine			124.0	Cords		
White Pine			55.0	Cords		
8	Mixed Hardwood	Pulpwood	2.0	Cords	14.7	\$5,999.65
	<i>Red Maple</i>		2.0	<i>Cords</i>		
	Mixed Spruce		2.0	Cords		
	<i>Black Spruce</i>		2.0	<i>Cords</i>		
	Red Pine		87.0	Cords		
	White Pine		39.0	Cords		
9	Paper Birch	Sawtimber	1.9	MBF	29.9	\$26,198.00
	Red Maple		2.7	MBF		
	Balsam Fir	Pulpwood	13.0	Cords		
	Mixed Aspen		680.0	Cords		
	<i>B. T. Aspen</i>		229.0	<i>Cords</i>		
	<i>Quaking Aspen</i>		451.0	<i>Cords</i>		
	Mixed Hardwood		59.0	Cords		
	<i>Paper Birch</i>		16.0	<i>Cords</i>		
	<i>Red Maple</i>		43.0	<i>Cords</i>		
	Mixed Spruce		22.0	Cords		
	<i>Black Spruce</i>		8.0	<i>Cords</i>		
	<i>White Spruce</i>		14.0	<i>Cords</i>		
	Red Pine		10.0	Cords		
	White Pine		66.0	Cords		
TOTAL:			54.9	MBF		
TOTAL:			4,162.0	Cords		

Sale Specific Conditions & Requirements

Sale Name: 39 WEST

Sale Number: 33-004-18 Seq#: 2

1 - Sale Area

1.2 - Boundaries

1.2.1 - Painted boundaries (1/14)

The sale boundary and Payment Unit boundaries are marked and identified by blue, red and yellow paint. Exterior sale boundary lines against private property are marked with blue paint. Exterior sale boundary lines against state are marked with red paint. Interior Payment Unit boundaries are marked with yellow paint. The painted boundary line trees are not Included Timber and are to be protected unless marked with orange paint. Yellow painted trees designating an interior Payment Unit boundary are only to be cut when all surrounding Payment Units have been paid.

2 - Timber Specifications

2.1 - Included Timber

2.1.1 - Clearcut unit(s) with unmerchantable trees (6/14)

Within Payment Unit(s) 1, 2, 3 and 9, cut all trees that are three (3) inches or more at DBH, except do not cut any trees that are marked with green paint.

2.1.2 - Clearcut unit(s) w/o unmerchantable trees (8/11)

Within Payment Unit(s) 4 and 6, cut all trees which meet minimum piece specifications in 2.2 Utilization, except do not cut unmarked red pine. In addition, within Payment Unit 4, cut all red pine marked with orange paint. Also, within Payment Unit 6, do not cut any hemlock and cedar.

2.1.3 - Cut tree marked unit(s) (12/08)

Within Payment Unit(s) 7 and 8, all trees are designated for cutting when marked with orange paint above and below stump height, regardless of merchantability.

2.1.4 - Designated timber unit(s) (6/17)

Within Payment Unit(s) 5, all red pine trees are designated for cutting when marked with orange paint above and below stump height, regardless of merchantability. In addition, all white pine trees are designated for cutting which meet minimum piece specifications in 2.2 Utilization, except do not cut any white pine trees greater than 26 inches at DBH. Also, all other trees are designated for cutting which meet minimum piece specifications in 2.2 Utilization, except do not cut any trees marked with green paint or any hemlock.

3 - Payments

3.3 - Pre-measured Sales

3.3.4 - Dividing payment units (7/14)

Payment Unit(s) may be divided at the request of the Purchaser and upon approval of the Unit Manager. Dividing Payment Units is a contract modification which requires a Timber Sale Contract Supplement. There will be only one division per Payment Unit.

3.4 - Damaged Timber

3.4.1 - Damaged timber (6/14)

General Condition and Requirement 3.4 Damaged Timber, defines liquidated damages for undesignated live merchantable trees which are cut or injured. In addition, extreme care should be taken to avoid damage to tree seedlings and saplings.

Within Payment Units 2, 3, 5, and 9, if more than 25% of the pine tree seedlings or saplings (1/4" to 3" DBH) within a specified portion of the sale area are damaged, liquidated damages will be assessed at \$100 per acre for all acreage within that specified portion of the sale area that was damaged.

4 - Transportation

4.1 - Construction

4.1.6 - Road construction (1/09)

Construction of new roads or improvements of existing roads shall be done in such a way as to minimize the environmental and visual impacts. Merchantable trees shall be cut and utilized unless otherwise directed. Non-merchantable trees shall be severed and laid flat on the ground. Slash shall be scattered, and not left in windrows and kept a minimum of 10 feet back from the road edge. Stumps shall be set upright, not left on edge, and be moved at least 10 feet away from the road edge. Disturbed soil shall be feathered into the woods and not left in berms or windrows.

4.1.7 - Road closure (10/11)

All new roads built into the sale must be blocked to vehicle traffic upon completion of the sale. Overgrown roads that are reopened shall be considered new roads. In general, this will require constructing a four (4') foot high berm of stumps and logs covered with earth. Contact the sale administrator for specific details of design and placement.

4.2 - Maintenance

4.2.2 - Fill material (4/07)

To maintain roads, fill material may be needed in areas where "holes" exist or may be expected to develop. This fill material should be placed before trucking begins. Contact the sale administrator regarding the availability of onsite sand or gravel from adjacent State-owned lands.

4.2.4 - Grading (10/16)

For completion of the sale, state forest roads must be graded. In general, this will require a road grader or bull dozer to shape up the roads after forest products have been hauled off site. This includes cleaning of drainage areas, grading, crowning and filling with gravel, if necessary. The grading equipment to be used must be approved by the Unit Manager or his/her representative.

5 - Operations

5.2 - Conduct of Operations

5.2.3 - Operating Restrictions

5.2.3.1 - Operating restrictions (9/11)

Within Payment Unit(s) 4, unless changed by written agreement, cutting, skidding, and hauling are limited to the period of December 1 to March 31, or during frozen ground conditions. This restriction is because this unit is low and wet.

5.2.3.3 - Bark slippage restriction (3/09)

Within Payment Unit(s) 7 and 8, unless changed by written agreement, cutting and skidding are not permitted during the period of April 15 to July 15. This restriction is because of bark slippage.

5.2.22 - Operating Caution

5.2.22.1 - Operating caution (6/11)

It is recommended, but not required, that within Payment Unit(s) 1 and 6, cutting, skidding, and hauling occur during dry summer or frozen winter conditions. The reason for the recommendation is because the units or portions of these units are low and wet.

5.2.39 - ORV trail/route protection (4/18)

The Forest Island ORV trail or route is shown on the Timber Sale Map. Do not damage ORV markers. All stumps within 5 feet of the trail must be cut flush with the ground. Maintain a 20 foot wide slash, debris, and rut free zone daily using the ORV trail or route as the centerline.

5.4 - Soil Protection

5.4.1 - Rutting restriction, general (7/16)

Operations are to cease immediately if equipment and weather conditions result in rutting of roads and/or skid trails which is 12 inches or greater in depth and 50 feet in length. The Unit Manager or his/her representative may restrict hauling and/or skidding if ruts exceed the specified depth. With the Unit Manager or his/her representative's approval, the Purchaser may return to the area when the risk of rutting has decreased.

6 - Safety and Fire Prevention

6.2 - Signing

6.2.1 - Road posting (9/09)

The Purchaser is responsible for posting and maintaining caution signs on the 7 Mile Marsh Road prior to beginning operations. The road must be posted at appropriate distances from the sale area to warn of logging activity and truck traffic. Signs must be removed when harvest operations are suspended or completed. The Purchaser will provide these signs.

6.2.3 - Recreational trail posting (2/10)

The Purchaser is responsible for posting and maintaining caution signs on the Forest Island ORV trail/route prior to beginning operations. The trail must be posted at appropriate distances from the sale area to warn of logging activity and truck traffic at both ends of the trail. Signs must be removed when harvest operations are suspended or completed. The Purchaser will provide these signs.



TIMBER SALE MAP

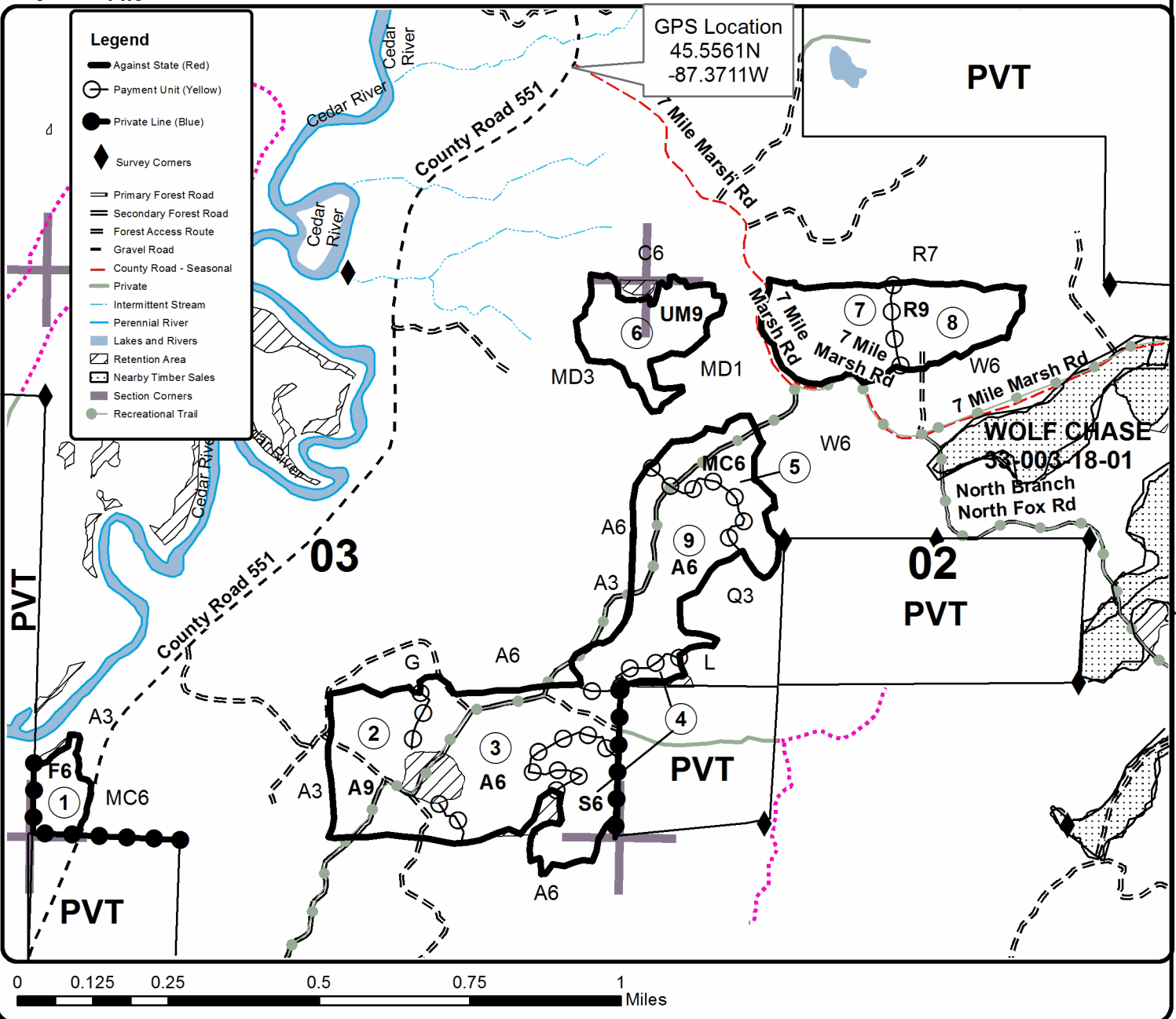
This information provided by authority of Part 525, 1994 PA 451, as amended.

Forest Management Unit Escanaba		County Menominee	Mapped By Racine	Date 07-21-2018	Page 1	of 1
Township 36N	Range 25W	Section(s) and Subdivision(s) 3 SE1/4, E1/2NE, SWSW S.10) N1/2NE S.2) N1/2NW, NWNE, SWNW, NWSW		Scale 1:15,840		

Cover Type				Density			
A = Aspen	H = Hemlock	N = Marsh	U = Upland Brush	0 = Non Stocked	5 = Pole Timber Medium		
B = Paper Birch	J = Jack Pine	O = Oak	UM = Upland Mixed	1 = Seedling Sapling Poor	6 = Pole Timber Well		
C = Cedar	L = Lowland Brush	P = Lowland Poplar	V = Bog or Marsh	2 = Seedling Sapling Medium	7 = Saw Timber Poor		
D = Treed Bog	LM = Lowland Mixed	Q = Mixed Swamp Conifer	W = White Pine	3 = Seedling Sapling Well	8 = Saw Timber Medium		
E = Swamp Hdwoods	M = Mpl, Bch, Brch	R = Red Pine	X = Non Stocked	4 = Pole Timber Poor	9 = Saw Timber Well		
F = Spruce Fir	MC = Mixed Conifer	S = Black Spruce	Z = Water				
G = Grass	MD = Mixed Deciduous	T = Tamarack					

PU	Acres	PU	Acres
1	7.6	6	17.8
2	23.8	7	21
3	33.6	8	14.7
4	15.2	9	29.9
5	14.5		

39 West
Compartment 39
178.1 Acres



TIMBER SALE INFORMATION

ATV EAST (33-008-18)

T37N, R24W, SEC. 20; T37N, R24W, SEC. 21.

Delta County (Advertised Price \$80,212.70)

SALE NOTE: A recreation site such as a trail, pathway, or campground is within the sale area or the vicinity. Certain restrictions/specifications may be applicable including time restrictions.

A timber sale contract for this lump sum, sealed bid timber sale will be awarded to the responsible bidder offering the highest sealed bid price. Bids must be at or above the following advertised price for each species:

<u>PRODUCTS & SPECIES</u>	<u>ESTIMATED UNITS*</u>		<u>ADVERTISED PRICE</u>
Sawtimber			
Paper Birch	2.40	MBF	\$ 74.00 / MBF
Red Maple	78.90	MBF	\$ 171.00 / MBF
Yellow Birch	1.30	MBF	\$ 95.00 / MBF
Pulpwood			
Balsam Fir	111.00	Cords	\$ 21.55 / Cord
Black Spruce	64.00	Cords	\$ 18.10 / Cord
Mixed Aspen	336.00	Cords	\$ 26.20 / Cord
Mixed Hardwood	1,395.00	Cords	\$ 25.10 / Cord
N. White Cedar	54.00	Cords	\$ 18.90 / Cord
Red Pine	135.00	Cords	\$ 47.65 / Cord
Tamarack	394.00	Cords	\$ 14.30 / Cord
White Pine	240.00	Cords	\$ 24.85 / Cord

* The total volume is statistically estimated within plus (+) or minus (-) 9.30 percent. The estimated units are final and not subject to adjustment. Prospective bidders are urged to examine this timber and to make their own estimates of quantity and quality.

BOND AND PAYMENT SCHEDULE:

1. A bond in the amount of \$4,011.00 to insure faithful performance of the conditions of the contract will be deposited by the successful bidder within 21 days of the sale award.
2. Cutting in any sale or unit without the required advance payment would be considered a trespass.
3. Total payment must be paid in advance or according to the following schedule:
 - (a) Ten percent (10%) of the sale value must be paid within 21 days of the sale award.
 - (b) The 10% down payment will be credited towards the first unit cut.
 - (c) Payment for each of the following units must be made before cutting begins in that unit:

PAYMENT UNIT NUMBER	PERCENT OF TOTAL SALE VALUE
01	14.4%
02	6.5%
03	8.0%
04	1.3%
05	7.1%
06	2.9%
07	3.2%
08	8.9%
09	3.5%
10	24.2%
11	20.0%

4. If no cutting takes place, the 10% down payment will not be refunded.
5. Operations on the contract issued will terminate on 12/31/2021.

Description of Timber by Payment Unit (PU)

PU	MARKET GROUP	PRODUCT	QUANTITY	UNIT	ACRES	ADVERTISE PRICE
1	Red Maple	Sawtimber	4.3	MBF	14.8	\$11,590.15
	Balsam Fir	Pulpwood	67.0	Cords		
	Mixed Aspen		204.0	Cords		
	<i>Quaking Aspen</i>		204.0	<i>Cords</i>		
	Mixed Hardwood		162.0	Cords		
	<i>Balsam Poplar</i>		80.0	<i>Cords</i>		
	<i>Black Ash</i>		6.0	<i>Cords</i>		
	<i>Green Ash</i>		33.0	<i>Cords</i>		
	<i>Paper Birch</i>		4.0	<i>Cords</i>		
	<i>Red Maple</i>		39.0	<i>Cords</i>		
	2	Mixed Aspen	Pulpwood	114.0		
<i>B. T. Aspen</i>			111.0	<i>Cords</i>		
<i>Quaking Aspen</i>			3.0	<i>Cords</i>		
Mixed Hardwood			11.0	Cords		
<i>Red Maple</i>			11.0	<i>Cords</i>		
Red Pine			11.0	Cords		
White Pine			57.0	Cords		
3	Red Maple	Sawtimber	2.1	MBF	11.9	\$6,402.30
	Yellow Birch		1.3	MBF		
	Balsam Fir	Pulpwood	3.0	Cords		
	Black Spruce		6.0	Cords		
	Mixed Hardwood		195.0	Cords		
	<i>Black Ash</i>		139.0	<i>Cords</i>		
	<i>Paper Birch</i>		9.0	<i>Cords</i>		
	<i>Red Maple</i>		41.0	<i>Cords</i>		
	<i>Yellow Birch</i>		6.0	<i>Cords</i>		
	N. White Cedar		26.0	Cords		
	Tamarack		20.0	Cords		
	White Pine		3.0	Cords		
4	Black Spruce	Pulpwood	12.0	Cords	4.6	\$1,050.90
	Mixed Hardwood		2.0	Cords		
	<i>Red Maple</i>		2.0	<i>Cords</i>		
	N. White Cedar		18.0	Cords		
	Tamarack		31.0	Cords		
5	Paper Birch	Sawtimber	1.0	MBF	25.0	\$5,680.85
	Red Maple		0.6	MBF		
	Balsam Fir	Pulpwood	7.0	Cords		
	Black Spruce		17.0	Cords		
	Mixed Hardwood		66.0	Cords		
	<i>Black Ash</i>		7.0	<i>Cords</i>		
	<i>Paper Birch</i>		13.0	<i>Cords</i>		
	<i>Red Maple</i>		46.0	<i>Cords</i>		
Tamarack		237.0	Cords			
6	Red Maple	Sawtimber	1.4	MBF	8.0	\$2,311.85
	Balsam Fir	Pulpwood	7.0	Cords		
	Black Spruce		3.0	Cords		
	Mixed Aspen		14.0	Cords		
	<i>B. T. Aspen</i>		14.0	<i>Cords</i>		
	Mixed Hardwood		37.0	Cords		
	<i>Paper Birch</i>		11.0	<i>Cords</i>		
	<i>Red Maple</i>		26.0	<i>Cords</i>		
	Red Pine		12.0	Cords		
7	Paper Birch	Sawtimber	0.4	MBF	11.2	\$2,534.05
	Red Maple		0.3	MBF		
	Balsam Fir	Pulpwood	3.0	Cords		
	Black Spruce		8.0	Cords		

Description of Timber by Payment Unit (PU), con't

PU	MARKET GROUP	PRODUCT	QUANTITY	UNIT	ACRES	ADVERTISE PRICE
	Mixed Hardwood		29.0	Cords		
	<i>Black Ash</i>		3.0	<i>Cords</i>		
	<i>Paper Birch</i>		6.0	<i>Cords</i>		
	<i>Red Maple</i>		20.0	<i>Cords</i>		
	Tamarack		106.0	Cords		
8	Black Spruce	Pulpwood	18.0	Cords	16.0	\$7,103.90
	Red Pine		112.0	Cords		
	White Pine		58.0	Cords		
9	Balsam Fir	Pulpwood	6.0	Cords	17.4	\$2,768.75
	Mixed Aspen		4.0	Cords		
	<i>Quaking Aspen</i>		4.0	<i>Cords</i>		
	Mixed Hardwood		39.0	Cords		
	<i>Paper Birch</i>		2.0	<i>Cords</i>		
	<i>Red Maple</i>		26.0	<i>Cords</i>		
	<i>Yellow Birch</i>		11.0	<i>Cords</i>		
	N. White Cedar		10.0	Cords		
	White Pine		55.0	Cords		
10	Paper Birch	Sawtimber	1.0	MBF	27.1	\$19,532.05
	Red Maple		36.9	MBF		
	Mixed Hardwood	Pulpwood	507.0	Cords		
	<i>Balsam Poplar</i>		8.0	<i>Cords</i>		
	<i>Black Ash</i>		83.0	<i>Cords</i>		
	<i>Paper Birch</i>		38.0	<i>Cords</i>		
	<i>Red Maple</i>		356.0	<i>Cords</i>		
	<i>Yellow Birch</i>		22.0	<i>Cords</i>		
	White Pine		17.0	Cords		
11	Red Maple	Sawtimber	33.3	MBF	25.7	\$16,034.40
	Balsam Fir	Pulpwood	18.0	Cords		
	Mixed Hardwood		347.0	Cords		
	<i>Black Ash</i>		6.0	<i>Cords</i>		
	<i>Green Ash</i>		7.0	<i>Cords</i>		
	<i>Red Maple</i>		231.0	<i>Cords</i>		
	<i>Sugar Maple</i>		13.0	<i>Cords</i>		
	<i>Yellow Birch</i>		90.0	<i>Cords</i>		
	White Pine		50.0	Cords		
TOTAL:			82.6	MBF		
TOTAL:			2,729.0	Cords		

Sale Specific Conditions & Requirements

Sale Name: ATV EAST

Sale Number: 33-008-18 Seq#: 1

1 - Sale Area

1.2 - Boundaries

1.2.1 - Painted boundaries (1/14)

The sale boundary and Payment Unit boundaries are marked and identified by blue, red and yellow paint. Exterior sale boundary lines against private property are marked with blue paint. Exterior sale boundary lines against state are marked with red paint. Interior Payment Unit boundaries are marked with yellow paint. The painted boundary line trees are not Included Timber and are to be protected unless marked with orange paint. Yellow painted trees designating an interior Payment Unit boundary are only to be cut when all surrounding Payment Units have been paid.

2 - Timber Specifications

2.1 - Included Timber

2.1.1 - Clearcut unit(s) with unmerchantable trees (6/14)

Within Payment Unit(s) 1, 3, 4, 5, 7, 10 and 11, cut all trees that are two (2) inches or more at DBH, with the following exceptions:

- Within Payment Units 3 & 11, do not cut any hemlock.
- Within Payment Units 5 & 7, do not cut any cedar.
- Within Payment Unit 10, do not cut any cedar and hemlock.

2.1.3 - Cut tree marked unit(s) (12/08)

Within Payment Unit(s) 6 and 9, all pine are designated for cutting when marked with orange paint above and below stump height, regardless of merchantability. In addition, within Payment Unit 6, cut all other trees except do not cut cedar and hemlock. Also, within Payment Unit 9, cut all other trees except do not cut hemlock.

2.1.4 - Designated timber unit(s) (6/17)

Within Payment Unit(s) 2, all aspen and red maple which meet minimum piece specifications in 2.2 - Utilization are designated for cutting. In addition, cut all trees marked with orange paint above and below breast height, regardless of merchantability.

2.1.7 - Leave tree marked unit(s) (6/14)

Within Payment Unit(s) 8, all trees which meet minimum piece specifications in 2.2 Utilization, are designated for cutting, except do not cut hemlock, cedar and trees marked with green paint above and below stump height.

3 - Payments

3.3 - Pre-measured Sales

3.3.4 - Dividing payment units (7/14)

Payment Unit(s) with a contract bid value of \$20,000 dollars or greater may be divided at the request of the Purchaser and upon approval of the Unit Manager. Dividing Payment Units is a contract modification which requires a Timber Sale Contract Supplement. There will be only one division per Payment Unit.

3.4 - Damaged Timber

3.4.1 - Damaged timber (6/14)

General Condition and Requirement 3.4 Damaged Timber, defines liquidated damages for undesignated live merchantable trees which are cut or injured. In addition, extreme care should be taken to avoid damage to tree seedlings and saplings.

Within Payment Units 2, 6, 8 and 9, if more than 25% of the tree seedlings or saplings (1/4" to 4.5" DBH) within a specified portion of the sale area are damaged, liquidated damages will be assessed at \$100 per acre for all acreage within that specified portion of the sale area that was damaged.

4 - Transportation

4.1 - Construction

4.1.5 - Culverts (5/14)

Roads may require the installation of culverts for cross drainage or at natural drainage-ways. If culverts are needed in these locations, their placement will be specified by the sale administrator and they shall be installed prior to hauling. The culverts shall be new, corrugated metal or plastic gauge. Culverts will be a minimum of 12 inches in diameter and 24 feet in length. If culverts are removed, fill shall be removed from wetland soils as specified. Soils shall be maintained and left in a non-erodible condition, with water bars, seed, fertilizer, mulch, and slash installed as directed by the sale administrator and as specified in the BMP manual. Stream crossing permits, if needed, will be obtained by the DNR.

4.1.6 - Road construction (1/09)

Construction of new roads or improvements of existing roads shall be done in such a way as to minimize the environmental and visual impacts. Merchantable trees shall be cut and utilized unless otherwise directed. Non-merchantable trees shall be severed and laid flat on the ground. Slash shall be scattered, and not left in windrows and kept a minimum of 10 feet back from the road edge. Stumps shall be set upright, not left on edge, and be moved at least 10 feet away from the road edge. Disturbed soil shall be feathered into the woods and not left in berms or windrows.

4.1.7 - Road closure (10/11)

All new roads built into the sale must be blocked to vehicle traffic upon completion of the sale. Overgrown roads that are reopened shall be considered new roads. In general, this will require constructing a four (4') foot high berm of stumps and logs covered with earth. Contact the sale administrator for specific details of design and placement.

4.2 - Maintenance

4.2.2 - Fill material (4/07)

To maintain roads, fill material may be needed in areas where "holes" exist or may be expected to develop. This fill material should be placed before trucking begins. Contact the sale administrator regarding the availability of onsite sand or gravel from adjacent State-owned lands.

4.2.4 - Grading (10/16)

For completion of the sale, state forest roads must be graded. In general, this will require a road grader or bull dozer to shape up the roads after forest products have been hauled off site. This includes cleaning of drainage areas, grading, crowning and filling with gravel, if necessary. The grading equipment to be used must be approved by the Unit Manager or his/her representative.

5 - Operations

5.2 - Conduct of Operations

5.2.3 - Operating Restrictions

5.2.3.1 - Operating restrictions (9/11)

Within Payment Unit(s) 3, 4, 5, 7, 10 and 11, unless changed by written agreement, cutting, skidding, and hauling are limited to the period of December 1 to March 31. This restriction is because these units are low and wet ground.

5.2.3.3 - Bark slippage restriction (3/09)

Within Payment Unit(s) 2, 8 and 9, unless changed by written agreement, cutting and skidding are not permitted during the period of April 15 to July 15. This restriction is because of bark slippage.

5.2.3.6 - Bark beetle restriction (12/08)

In the event drought creates a high risk of pine bark beetle infestation, pine is not to be cut during the period March 1 through July 1, unless all portions of trees greater than two inches in diameter are removed from the sale area, reduced to chips, or treated to the satisfaction of the Unit Manager or his/her representative, within fifteen days of being severed from the stump. Pine log decks, pulpwood piles and treetops that are piled for chipping in the fall or winter within a 1/4 mile of susceptible sites must be removed before March 15. Residual slash must not be placed in piles or rows and must be spread over the site for quick drying. The Department of Natural Resources will exercise this specification if the risk of damage warrants.

5.2.39 - ORV trail/route protection (4/18)

The Forest Islands trail is an ORV trail or route and is shown on the Timber Sale Map. Do not cut trees or damage posts

with yellow ORV markers. All stumps within 5 feet of the trail must be cut flush with the ground. Maintain a 20 foot wide slash, debris, and rut free zone daily using the ORV trail or route as the centerline. There is a boardwalk for the ORV trail in the low wet areas between Payment Units 9 and 11; no operations across the boardwalk will be permitted. Skidding across the trail or route may only occur in locations approved by the sale administrator.

5.4 - Soil Protection

5.4.1 - Rutting restriction, general (7/16)

Operations are to cease immediately if equipment and weather conditions result in rutting of roads and/or skid trails which is 12 inches or greater in depth and 50 feet in length. The Unit Manager or his/her representative may restrict hauling and/or skidding if ruts exceed the specified depth. With the Unit Manager or his/her representative's approval, the Purchaser may return to the area when the risk of rutting has decreased.

6 - Safety and Fire Prevention

6.2 - Signing

6.2.1 - Road posting (9/09)

The Purchaser is responsible for posting and maintaining caution signs on the Limpert Road prior to beginning operations. The road must be posted at appropriate distances from the sale area to warn of logging activity and truck traffic. Signs must be removed when harvest operations are suspended or completed. The Purchaser will provide these signs.

6.2.3 - Recreational trail posting (2/10)

The Purchaser is responsible for posting and maintaining caution signs on the Forest Islands ORV trail prior to beginning operations. The trail must be posted at appropriate distances from the sale area to warn of logging activity and truck traffic at both ends of the trail. Signs must be removed when harvest operations are suspended or completed. The Purchaser will provide these signs.



TIMBER SALE MAP

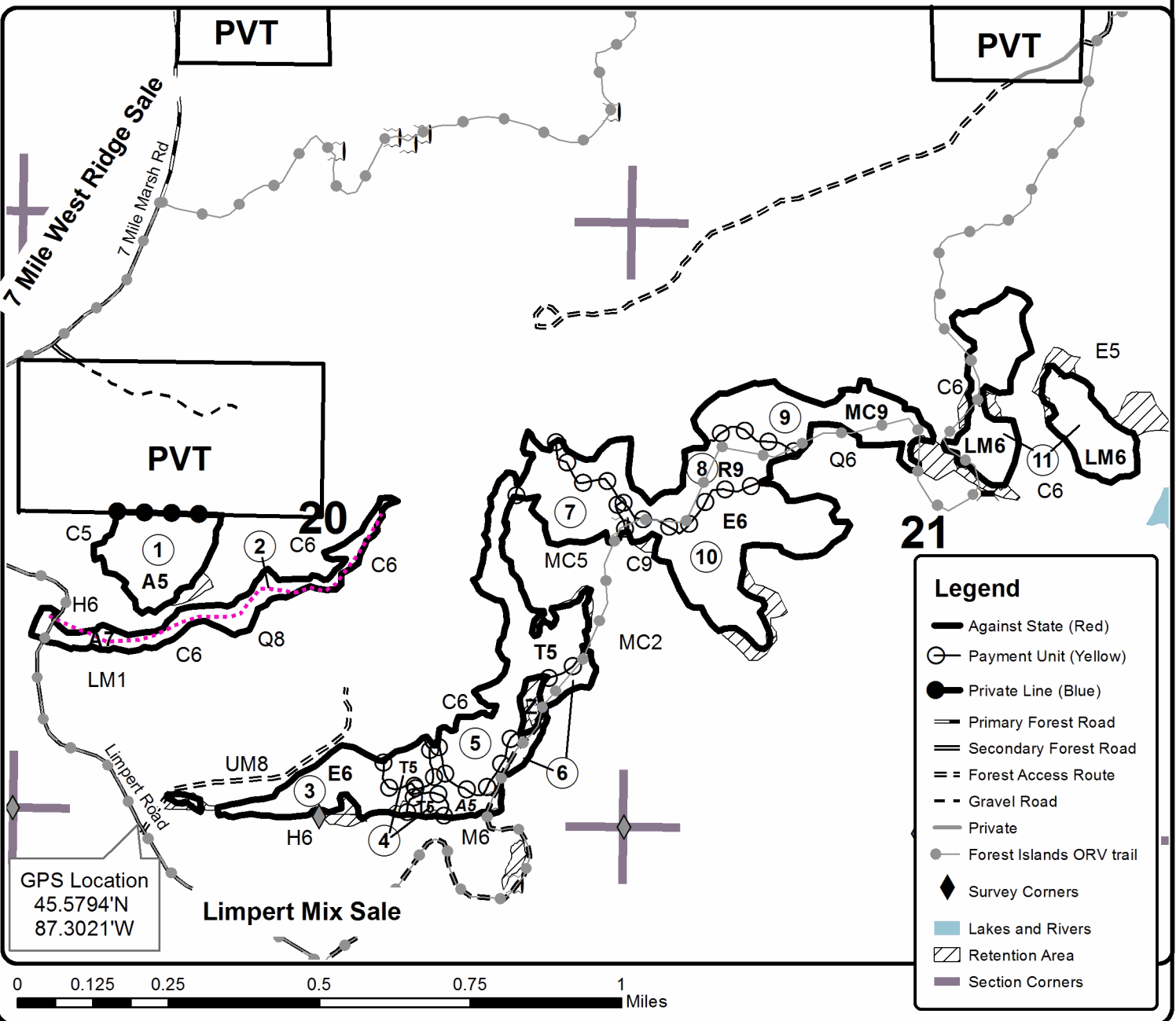
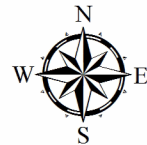
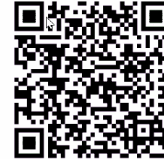
This information provided by authority of Part 525, 1994 PA 451, as amended.

Forest Management Unit Escanaba		County Delta	Mapped By Racine	Date 09/07/2018	Page 1	of 1
Township 37N	Range 24W	Section(s) and Subdivision(s) 20) S1/2NE, N1/2SW, SESW, SE 21) S1/2NW, NE, N1/2SW		Scale 1:15,840		

Cover Type				Density			
A = Aspen	H = Hemlock	N = Marsh	U = Upland Brush	0 = Non Stocked	5 = Pole Timber Medium		
B = Paper Birch	J = Jack Pine	O = Oak	UM = Upland Mixed	1 = Seedling Sapling Poor	6 = Pole Timber Well		
C = Cedar	L = Lowland Brush	P = Lowland Poplar	V = Bog or Marsh	2 = Seedling Sapling Medium	7 = Saw Timber Poor		
D = Treed Bog	LM = Lowland Mixed	Q = Mixed Swamp Conifer	W = White Pine	3 = Seedling Sapling Well	8 = Saw Timber Medium		
E = Swamp Hdwoods	M = Mpl, Bch, Brch	R = Red Pine	X = Non Stocked	4 = Pole Timber Poor	9 = Saw Timber Well		
F = Spruce Fir	MC = Mixed Conifer	S = Black Spruce	Z = Water				
G = Grass	MD = Mixed Deciduous	T = Tamarack					

PU	Acres	PU	Acres	PU	Acres
1	14.8	5	25	9	17.4
2	14.1	6	8	10	27.1
3	11.9	7	11.2	11	25.7
4	4.6	8	16		

ATV EAST
 Compartment 76
 175.8 Acres



TIMBER SALE INFORMATION

7 Mile West Ridge (33-009-18)

T37N, R24W, SEC. 18; T37N, R24W, SEC. 19; T37N, R24W, SEC. 20.
Delta County (Advertised Price \$79,875.30)

SALE NOTE: The access into Payment Units 1-8 and 10-13 are winter only access units. Payment Units 1-7 and 10 are high ground units, but low wet access to the ridge.

A recreation site such as a trail, pathway, or campground is within the sale area or the vicinity. Certain restrictions/specifications may be applicable including time restrictions.

A timber sale contract for this lump sum, sealed bid timber sale will be awarded to the responsible bidder offering the highest sealed bid price. Bids must be at or above the following advertised price for each species:

<u>PRODUCTS & SPECIES</u>	<u>ESTIMATED UNITS*</u>	<u>ADVERTISED PRICE</u>
Sawtimber		
Basswood	92.20 MBF	\$ 94.00 / MBF
Paper Birch	5.30 MBF	\$ 74.00 / MBF
Red Maple	13.50 MBF	\$ 171.00 / MBF
Sugar Maple	16.60 MBF	\$ 245.00 / MBF
White Ash	2.40 MBF	\$ 61.00 / MBF
Pulpwood		
Balsam Fir	316.00 Cords	\$ 21.55 / Cord
Mixed Hardwood	861.00 Cords	\$ 25.10 / Cord
Mixed Spruce	1,035.00 Cords	\$ 18.10 / Cord
N. White Cedar	58.00 Cords	\$ 18.90 / Cord
Quaking Aspen	468.00 Cords	\$ 26.20 / Cord
Red Pine	6.00 Cords	\$ 47.65 / Cord
Tamarack	102.00 Cords	\$ 14.30 / Cord
White Pine	82.00 Cords	\$ 24.85 / Cord

* The total volume is statistically estimated within plus (+) or minus (-) 9.00 percent. The estimated units are final and not subject to adjustment. Prospective bidders are urged to examine this timber and to make their own estimates of quantity and quality.

BOND AND PAYMENT SCHEDULE:

1. A bond in the amount of \$3,994.00 to insure faithful performance of the conditions of the contract will be deposited by the successful bidder within 21 days of the sale award.
2. Cutting in any sale or unit without the required advance payment would be considered a trespass.
3. Total payment must be paid in advance or according to the following schedule:
 - (a) Ten percent (10%) of the sale value must be paid within 21 days of the sale award.
 - (b) The 10% down payment will be credited towards the first unit cut.
 - (c) Payment for each of the following units must be made before cutting begins in that unit:

<u>PAYMENT UNIT NUMBER</u>	<u>PERCENT OF TOTAL SALE VALUE</u>
01	5.8%
02	8.7%
03	6.8%
04	4.1%
05	5.8%
06	14.3%
07	15.9%
08	11.0%
09	2.5%
10	4.4%
11	6.7%
12	5.1%
13	3.3%
14	5.6%

4. If no cutting takes place, the 10% down payment will not be refunded.
5. Operations on the contract issued will terminate on 12/31/2021.

Description of Timber by Payment Unit (PU)

PU	MARKET GROUP	PRODUCT	QUANTITY	UNIT	ACRES	ADVERTISE PRICE
1	Basswood	Sawtimber	15.8	MBF	17.0	\$4,609.65
	Paper Birch		0.2	MBF		
	Red Maple		0.6	MBF		
	Sugar Maple		2.9	MBF		
	White Ash		0.2	MBF		
	Balsam Fir		Pulpwood	7.0		
	Mixed Hardwood	85.0		Cords		
	<i>Basswood</i>	55.0		<i>Cords</i>		
	<i>Beech</i>	5.0		<i>Cords</i>		
	<i>Paper Birch</i>	1.0		<i>Cords</i>		
	<i>Red Maple</i>	3.0		<i>Cords</i>		
	<i>Sugar Maple</i>	16.0		<i>Cords</i>		
	<i>White Ash</i>	4.0		<i>Cords</i>		
	<i>Yellow Birch</i>	1.0	<i>Cords</i>			
2	Basswood	Sawtimber	23.9	MBF	25.8	\$6,982.95
	Paper Birch		0.4	MBF		
	Red Maple		0.9	MBF		
	Sugar Maple		4.3	MBF		
	White Ash		0.4	MBF		
	Balsam Fir		Pulpwood	11.0		
	Mixed Hardwood	129.0		Cords		
	<i>Basswood</i>	83.0		<i>Cords</i>		
	<i>Beech</i>	7.0		<i>Cords</i>		
	<i>Paper Birch</i>	2.0		<i>Cords</i>		
	<i>Red Maple</i>	5.0		<i>Cords</i>		
	<i>Sugar Maple</i>	24.0		<i>Cords</i>		
	<i>White Ash</i>	6.0		<i>Cords</i>		
	<i>Yellow Birch</i>	2.0	<i>Cords</i>			
3	Basswood	Sawtimber	18.5	MBF	20.0	\$5,436.15
	Paper Birch		0.3	MBF		
	Red Maple		0.7	MBF		
	Sugar Maple		3.4	MBF		
	White Ash		0.3	MBF		
	Balsam Fir		Pulpwood	9.0		
	Mixed Hardwood	100.0		Cords		
	<i>Basswood</i>	64.0		<i>Cords</i>		
	<i>Beech</i>	5.0		<i>Cords</i>		
	<i>Paper Birch</i>	2.0		<i>Cords</i>		
	<i>Red Maple</i>	4.0		<i>Cords</i>		
	<i>Sugar Maple</i>	19.0		<i>Cords</i>		
	<i>White Ash</i>	4.0		<i>Cords</i>		
	<i>Yellow Birch</i>	2.0	<i>Cords</i>			
4	Basswood	Sawtimber	11.2	MBF	12.0	\$3,251.95
	Paper Birch		0.2	MBF		
	Red Maple		0.4	MBF		
	Sugar Maple		2.0	MBF		
	White Ash		0.2	MBF		
	Balsam Fir		Pulpwood	5.0		
	Mixed Hardwood	60.0		Cords		
	<i>Basswood</i>	39.0		<i>Cords</i>		
	<i>Beech</i>	3.0		<i>Cords</i>		
	<i>Paper Birch</i>	1.0		<i>Cords</i>		
	<i>Red Maple</i>	2.0		<i>Cords</i>		
	<i>Sugar Maple</i>	11.0		<i>Cords</i>		
	<i>White Ash</i>	3.0		<i>Cords</i>		
	<i>Yellow Birch</i>	1.0	<i>Cords</i>			

Description of Timber by Payment Unit (PU), con't

PU	MARKET GROUP	PRODUCT	QUANTITY	UNIT	ACRES	ADVERTISE PRICE
5	Basswood	Sawtimber	15.9	MBF	17.1	\$4,619.05
	Paper Birch		0.2	MBF		
	Red Maple		0.6	MBF		
	Sugar Maple		2.9	MBF		
	White Ash		0.2	MBF		
	Balsam Fir		Pulpwood	7.0		
	Mixed Hardwood	85.0		Cords		
	<i>Basswood</i>	55.0		<i>Cords</i>		
	<i>Beech</i>	5.0		<i>Cords</i>		
	<i>Paper Birch</i>	1.0		<i>Cords</i>		
	<i>Red Maple</i>	3.0		<i>Cords</i>		
	<i>Sugar Maple</i>	16.0		<i>Cords</i>		
	<i>White Ash</i>	4.0		<i>Cords</i>		
	<i>Yellow Birch</i>	1.0	<i>Cords</i>			
6	Balsam Fir	Pulpwood	53.0	Cords	16.5	\$11,431.85
	Mixed Hardwood		50.0	Cords		
	<i>Ironwood</i>		2.0	<i>Cords</i>		
	<i>Paper Birch</i>		5.0	<i>Cords</i>		
	<i>Red Maple</i>		14.0	<i>Cords</i>		
	<i>White Ash</i>		29.0	<i>Cords</i>		
	Mixed Spruce		7.0	Cords		
	<i>White Spruce</i>		7.0	<i>Cords</i>		
	Quaking Aspen		340.0	Cords		
	7		Basswood	Sawtimber		
Paper Birch		3.6	MBF			
Red Maple		4.7	MBF			
Sugar Maple		1.1	MBF			
White Ash		1.1	MBF			
Balsam Fir		Pulpwood	158.0	Cords		
Mixed Hardwood			239.0	Cords		
<i>Balsam Poplar</i>			6.0	<i>Cords</i>		
<i>Basswood</i>			43.0	<i>Cords</i>		
<i>Black Ash</i>			44.0	<i>Cords</i>		
<i>Black Cherry</i>			9.0	<i>Cords</i>		
<i>Paper Birch</i>			22.0	<i>Cords</i>		
<i>Red Maple</i>			20.0	<i>Cords</i>		
<i>Sugar Maple</i>			67.0	<i>Cords</i>		
<i>White Ash</i>			9.0	<i>Cords</i>		
<i>Yellow Birch</i>			19.0	<i>Cords</i>		
N. White Cedar			50.0	Cords		
Quaking Aspen			8.0	Cords		
8	Mixed Spruce	Pulpwood	370.0	Cords	21.7	\$8,816.25
	<i>Black Spruce</i>		370.0	<i>Cords</i>		
	Tamarack		70.0	Cords		
	White Pine		45.0	Cords		
9	Red Maple	Sawtimber	0.6	MBF	7.7	\$2,033.30
	Balsam Fir	Pulpwood	8.0	Cords		
	Mixed Hardwood		45.0	Cords		
	<i>Paper Birch</i>		8.0	<i>Cords</i>		
	<i>Red Maple</i>		34.0	<i>Cords</i>		
	<i>Yellow Birch</i>		3.0	<i>Cords</i>		
	Quaking Aspen		24.0	Cords		
10	Balsam Fir	Pulpwood	35.0	Cords	6.9	\$3,521.05
	Mixed Hardwood		4.0	Cords		
	<i>Balsam Poplar</i>		2.0	<i>Cords</i>		
	<i>Red Maple</i>		2.0	<i>Cords</i>		

Description of Timber by Payment Unit (PU), con't

PU	MARKET GROUP	PRODUCT	QUANTITY	UNIT	ACRES	ADVERTISE PRICE
10 con't	N. White Cedar Quaking Aspen	Pulpwood	8.0	Cords		
			96.0	Cords		
11	Mixed Spruce <i>Black Spruce</i> Tamarack	Pulpwood	285.0	Cords	18.1	\$5,358.70
			285.0	<i>Cords</i>		
			14.0	Cords		
12	Mixed Spruce <i>Black Spruce</i> Tamarack	Pulpwood	217.0	Cords	13.8	\$4,085.00
			217.0	<i>Cords</i>		
			11.0	Cords		
13	Mixed Spruce <i>Black Spruce</i> Tamarack	Pulpwood	141.0	Cords	9.0	\$2,652.20
			141.0	<i>Cords</i>		
			7.0	Cords		
14	Paper Birch	Sawtimber	0.4	MBF	14.4	\$4,463.50
	Red Maple		5.0	MBF		
	Balsam Fir	Pulpwood	23.0	Cords		
	Mixed Hardwood		64.0	Cords		
	<i>Paper Birch</i>		10.0	<i>Cords</i>		
	<i>Red Maple</i>		49.0	<i>Cords</i>		
	<i>Sugar Maple</i>		5.0	<i>Cords</i>		
	Mixed Spruce		15.0	Cords		
	<i>Black Spruce</i>		15.0	<i>Cords</i>		
	Red Pine		6.0	Cords		
	White Pine		37.0	Cords		
	TOTAL:			130.0		
TOTAL:			2,928.0	Cords		

Sale Specific Conditions & Requirements

Sale Name: 7 Mile West Ridge

Sale Number: 33-009-18 Seq#: 1

1 - Sale Area

1.2 - Boundaries

1.2.1 - Painted boundaries (1/14)

The sale boundary and Payment Unit boundaries are marked and identified by blue, red and yellow paint. Exterior sale boundary lines against private property are marked with blue paint. Exterior sale boundary lines against state are marked with red paint. Interior Payment Unit boundaries are marked with yellow paint. The painted boundary line trees are not Included Timber and are to be protected unless marked with orange paint. Yellow painted trees designating an interior Payment Unit boundary are only to be cut when all surrounding Payment Units have been paid.

2 - Timber Specifications

2.1 - Included Timber

2.1.1 - Clearcut unit(s) with unmerchantable trees (6/14)

Within Payment Unit(s) 6 and 10, cut all trees that are two (2) inches or more at DBH.

Within Payment Unit(s) 11, 12 and 13, cut all spruce and tamarack trees that are three (3) inches or more at DBH.

2.1.2 - Clearcut unit(s) w/o unmerchantable trees (8/11)

Within Payment Unit(s) 7 and 8, cut all trees which meet minimum piece specifications in 2.2 Utilization, except do not cut any hemlock within Payment Unit 8.

2.1.3 - Cut tree marked unit(s) (12/08)

Within Payment Unit(s) 1-5 and 9, all trees are designated for cutting when marked with orange paint above and below stump height, regardless of merchantability. In addition, within Payment Units 1, 2 and 3, cut all spruce and fir trees with 3 or more merchantable pulpwood sticks. Also, within Payment Unit 9, all merchantable aspen, spruce and fir trees are designated for cutting.

2.1.7 - Leave tree marked unit(s) (6/14)

Within Payment Unit(s) 14, all trees, which meet minimum piece specifications in 2.2 Utilization, are designated for cutting except do not cut cedar, hemlock and/or trees marked with green paint above and below stump height. Note that spec 2.1.9 applies to this Payment Unit.

2.1.9 - Harvest exception (12/08)

Do not cut any cedar or hemlock trees other than those that are necessary to remove in order to operate within the sale area. Every effort must be made to preserve the existing cedar and hemlock and to leave an intact stand upon sale completion. All cut cedar and hemlock shall be piled separately by products and scaled in the woods unless other scaling arrangements are agreed to by the Unit Manager or his/her representative. Stumpage price for cedar and hemlock shall be \$50.00 per cord for posts and pulpwood, and \$100.00 per cord for bolts and sawlogs.

4 - Transportation

4.1 - Construction

4.1.5 - Culverts (5/14)

Roads may require the installation of culverts for cross drainage or at natural drainage-ways. If culverts are needed in these locations, their placement will be specified by the sale administrator and they shall be installed prior to hauling. The culverts shall be new, corrugated metal or plastic gauge. Culverts will be a minimum of 12 inches in diameter and 24 feet in length. If culverts are removed, fill shall be removed from wetland soils as specified. Soils shall be maintained and left in a non-erodible condition, with water bars, seed, fertilizer, mulch, and slash installed as directed by the sale administrator and as specified in the BMP manual. Stream crossing permits, if needed, will be obtained by the DNR.

4.1.6 - Road construction (1/09)

Construction of new roads or improvements of existing roads shall be done in such a way as to minimize the environmental and visual impacts. Merchantable trees shall be cut and utilized unless otherwise directed. Non-merchantable trees shall be

severed and laid flat on the ground. Slash shall be scattered, and not left in windrows and kept a minimum of 10 feet back from the road edge. Stumps shall be set upright, not left on edge, and be moved at least 10 feet away from the road edge. Disturbed soil shall be feathered into the woods and not left in berms or windrows.

4.1.7 - Road closure (10/11)

All new roads built into the sale must be blocked to vehicle traffic upon completion of the sale. Overgrown roads that are reopened shall be considered new roads. In general, this will require constructing a four (4') foot high berm of stumps and logs covered with earth. Contact the sale administrator for specific details of design and placement.

4.2 - Maintenance

4.2.2 - Fill material (4/07)

To maintain roads, fill material may be needed in areas where "holes" exist or may be expected to develop. This fill material should be placed before trucking begins. Contact the sale administrator regarding the availability of onsite sand or gravel from adjacent State-owned lands.

4.2.4 - Grading (10/16)

For completion of the sale, state forest roads must be graded. In general, this will require a road grader or bull dozer to shape up the roads after forest products have been hauled off site. This includes cleaning of drainage areas, grading, crowning and filling with gravel, if necessary. The grading equipment to be used must be approved by the Unit Manager or his/her representative.

5 - Operations

5.2 - Conduct of Operations

5.2.3 - Operating Restrictions

5.2.3.1 - Operating restrictions (9/11)

Within Payment Unit(s) 1-8 and 10-13, unless changed by written agreement, cutting, skidding, and hauling are limited to the period of December 1 to March 31 or during frozen ground conditions. This restriction is because the access into Payment Units 1-7 and 10 is a low wet road that requires a significant amount of work use outside frozen ground conditions. Payment Units 8 and 11-13 are low black spruce units.

5.2.3.3 - Bark slippage restriction (3/09)

Within Payment Unit(s) 14, unless changed by written agreement, cutting and skidding are not permitted during the period of April 15 to July 15. This restriction is because of bark slippage.

5.2.3.6 - Bark beetle restriction (12/08)

In the event drought creates a high risk of pine bark beetle infestation, pine is not to be cut during the period March 1 through July 1, unless all portions of trees greater than two inches in diameter are removed from the sale area, reduced to chips, or treated to the satisfaction of the Unit Manager or his/her representative, within fifteen days of being severed from the stump. Pine log decks, pulpwood piles and treetops that are piled for chipping in the fall or winter within a 1/4 mile of susceptible sites must be removed before March 15. Residual slash must not be placed in piles or rows and must be spread over the site for quick drying. The Department of Natural Resources will exercise this specification if the risk of damage warrants.

5.2.38 - No decking against live trees (2/04)

Cut products may not be decked against unmarked or designated leave trees.

5.2.39 - ORV trail/route protection (4/18)

The Forest Islands is an ORV trail or route and is shown on the Timber Sale Map. Maintain a 20 foot wide slash, debris, and rut free zone daily using the ORV trail or route as the centerline.

5.4 - Soil Protection

5.4.1 - Rutting restriction, general (7/16)

Operations are to cease immediately if equipment and weather conditions result in rutting of roads and/or skid trails which is 12 inches or greater in depth and 50 feet in length. The Unit Manager or his/her representative may restrict hauling and/or skidding if ruts exceed the specified depth. With the Unit Manager or his/her representative's approval, the Purchaser may return to the area when the risk of rutting has decreased.

6 - Safety and Fire Prevention

6.2 - Signing

6.2.1 - Road posting (9/09)

The Purchaser is responsible for posting and maintaining caution signs on the Seven Mile Marsh road prior to beginning operations. The road must be posted at appropriate distances from the sale area to warn of logging activity and truck traffic. Signs must be removed when harvest operations are suspended or completed. The Purchaser will provide these signs.

6.2.3 - Recreational trail posting (2/10)

The Purchaser is responsible for posting and maintaining caution signs on Forest Islands ORV trail/route prior to beginning operations. The trail must be posted at appropriate distances from the sale area to warn of logging activity and truck traffic at both ends of the trail. Signs must be removed when harvest operations are suspended or completed. The Purchaser will provide these signs.



TIMBER SALE MAP

This information provided by authority of Part 525, 1994 PA 451, as amended.

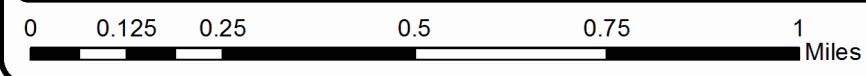
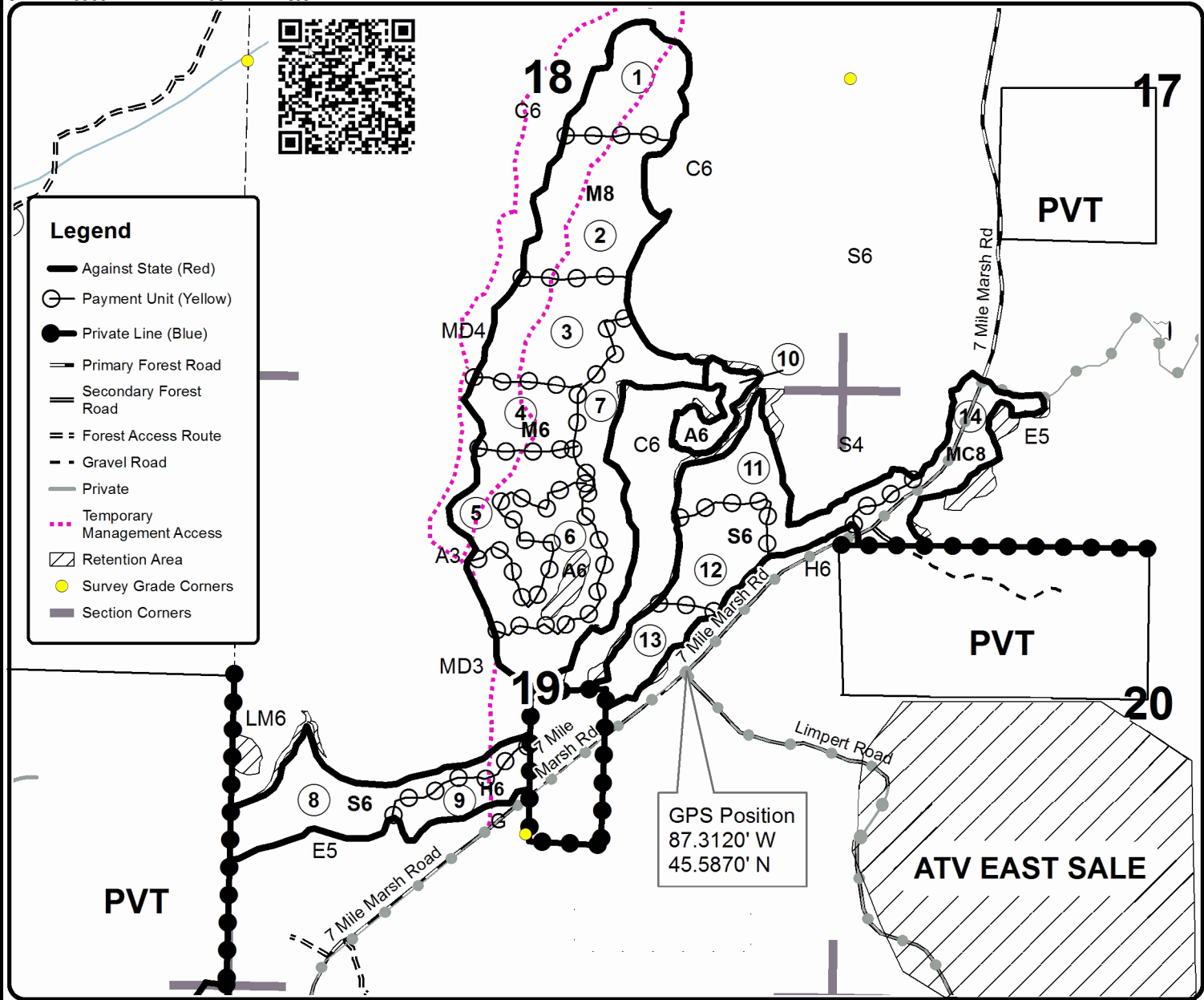
Forest Management Unit Escanaba		County Delta	Mapped By Racine	Date 9/21/2018	Page 1	of 1
Township 37N	Range 24W	Section(s) and Subdivision(s) 18) SWNE, E1/2SW, NWSE, S1/2SE 19) E1/2NW, NE, SW, NWSE 20) N1/2NW		Scale 1:15,840		

Cover Type				Density			
A = Aspen	H = Hemlock	N = Marsh	U = Upland Brush	0 = Non Stocked	5 = Pole Timber Medium		
B = Paper Birch	J = Jack Pine	O = Oak	UM = Upland Mixed	1 = Seedling Sapling Poor	6 = Pole Timber Well		
C = Cedar	L = Lowland Brush	P = Lowland Poplar	V = Bog or Marsh	2 = Seedling Sapling Medium	7 = Saw Timber Poor		
D = Treed Bog	LM = Lowland Mixed	Q = Mixed Swamp Conifer	W = White Pine	3 = Seedling Sapling Well	8 = Saw Timber Medium		
E = Swamp Hdwoods	M = Mpl. Bch, Brch	R = Red Pine	X = Non Stocked	4 = Pole Timber Poor	9 = Saw Timber Well		
F = Spruce Fir	MC = Mixed Conifer	S = Black Spruce	Z = Water				
G = Grass	MD = Mixed Deciduous	T = Tamarack					

PU	Acres	PU	Acres	PU	Acres
1	17	6	16.5	11	18.1
2	25.8	7	29.2	12	13.8
3	20	8	21.7	13	9
4	12	9	7.7	14	14.4
5	17.1	10	6.9		

7 MILE WEST RIDGE

Compartment 76
229.2 Acres



Wolf Chase (33-003-18)
T36N, R25W, SEC. 1; T36N, R25W, SEC. 2; Menominee COUNTY

In response to the notice of sale to be held 3:00 p.m. (local time) on January 16, 2019, I am hereby submitting my sealed bid (firm offer) for the following forest products to be cut. Bids for individual species must be at or above the advertised price. All non-responsive bid forms may be rejected.

<u>PRODUCTS & SPECIES</u>	<u>ESTIMATED VOLUME*</u>	<u>ADVERTISED PRICE</u>	<u>BID PRICE/UNIT</u>
Sawtimber			
Black Ash	2.30 MBF	\$ 61.00/MBF	\$ _____
Green Ash	41.40 MBF	\$ 94.00/MBF	\$ _____
Paper Birch	39.50 MBF	\$ 85.00/MBF	\$ _____
Red Maple	248.60 MBF	\$ 197.00/MBF	\$ _____
Sugar Maple	7.70 MBF	\$ 283.00/MBF	\$ _____
White Ash	5.90 MBF	\$ 70.00/MBF	\$ _____
Yellow Birch	16.90 MBF	\$ 109.00/MBF	\$ _____
Pulpwood			
Balsam Fir	487.00 Cords	\$ 24.85/Cord	\$ _____
Mixed Hardwood	5,219.00 Cords	\$ 28.95/Cord	\$ _____
Mixed Spruce	385.00 Cords	\$ 20.90/Cord	\$ _____
N. White Cedar	940.00 Cords	\$ 21.80/Cord	\$ _____
Quaking Aspen	421.00 Cords	\$ 30.25/Cord	\$ _____
Red Pine	118.00 Cords	\$ 54.95/Cord	\$ _____
White Pine	1,243.00 Cords	\$ 28.70/Cord	\$ _____

*These estimated volumes are final and not subject to adjustment. Prospective bidders are urged to examine this timber and to make their own estimates of quantity and quality.

I understand that any or all bids may be rejected. All bids must be signed and all bid items must be bid or the bid form may be rejected. I also understand that consideration and awarding a contract will be based upon my past performance and ability to complete the contract based upon equipment and staffing subject to my control.

FEDERAL ID: ____ - ____ - ____ or SOCIAL SECURITY NUMBER: ____ - ____ - ____

Company or individual bidding: _____

Company representative's name: _____

Address: _____

City: _____ State: _____ Zip: _____

IF AVAILABLE, PLEASE PLACE THE PERSONALIZED LABEL FROM YOUR PROSPECTUS IN THE ABOVE BOX.

Individual or company representative's signature: _____ Date: _____

Phone number : _____ Email (optional): _____

THE WINNING BIDDER MUST COMPLETE THE VERIFICATION OF WORKER'S DISABILITY COMPENSATION ACT COMPLIANCE (ON REVERSE SIDE IF DOUBLE SIDED) WITHIN 21 DAYS OF SALE AWARD DATE



FOR DEPARTMENT USE ONLY
Sale Number (XX - XXX - XX - XX)
Forest Management Unit:

TIMBER SALE VERIFICATION OF WORKER'S DISABILITY COMPENSATION ACT COMPLIANCE

*As required by Act 317, P.A. 1969 (Worker's Compensation) and
Part 5 of Act 451 of 1994, as amended.*

VERIFICATION OF WORKER'S DISABILITY COMPENSATION ACT COMPLIANCE

- This verification must be completed and submitted within 21 days of contract award and prior to the issuance of the timber sale contract.
- In addition, if boxes 2B or 2C are checked, then Notice of Exclusion or Certificate of Insurance must be submitted within twenty-one (21) days of the contract award and prior to the issuance of the timber sale contract.
- All information must be typed or printed except for written signatures.

Please Check Appropriate Categories:

1. My business is organized as (you **must** check one of the boxes below):
 - A. Sole Proprietorship (individual)
 - B. Partnership
 - C. Corporation
2. You **must** check one of the boxes below:
 - A. I certify my business is a sole proprietorship and it has no employees but the sole proprietor. I am not subject to the Worker's Compensation Laws.
 - B. I certify my business has satisfied its obligation to the Worker's Compensation Act through the use of an approved Notice of Exclusion (BWC-337, Rev. 5/96). I will provide a copy of the Notice of Exclusion within 21 days of the contract award. (For questions or a copy of the BWC-337, please call the Worker's Compensation Bureau at 517-322-1195).
 - C. I certify my business has a Worker's Compensation Policy. I will provide an original Certificate of Insurance within twenty-one (21) days of the contract award.
3. If you have checked item 2(A) or 2(B), you **must** indicate the number of **both** full-time and part-time employees, other than yourself, including family members and active partners (if none, you must enter "0").

_____ Full-time Employees

_____ Part-time Employees

Name of Business		Federal ID (or) Social Security No.	
Address		Telephone ()	
City	State	ZIP	

I hereby certify that the above information is true and correct. I agree to notify the Michigan DNR of any changes that occur in factors affecting my coverage during any of my present and future operations.

Signature of Owner or Authorized Representative

Title

Date

Please complete the "SEALED BID" information on the next page

ATV EAST (33-008-18)
T37N, R24W, SEC. 20; T37N, R24W, SEC. 21; Delta COUNTY

In response to the notice of sale to be held 3:00 p.m. (local time) on January 16, 2019, I am hereby submitting my sealed bid (firm offer) for the following forest products to be cut. Bids for individual species must be at or above the advertised price. All non-responsive bid forms may be rejected.

<u>PRODUCTS & SPECIES</u>	<u>ESTIMATED VOLUME*</u>	<u>ADVERTISED PRICE</u>	<u>BID PRICE/UNIT</u>
Sawtimber			
Paper Birch	2.40 MBF	\$ 74.00/MBF	\$ _____
Red Maple	78.90 MBF	\$ 171.00/MBF	\$ _____
Yellow Birch	1.30 MBF	\$ 95.00/MBF	\$ _____
Pulpwood			
Balsam Fir	111.00 Cords	\$ 21.55/Cord	\$ _____
Black Spruce	64.00 Cords	\$ 18.10/Cord	\$ _____
Mixed Aspen	336.00 Cords	\$ 26.20/Cord	\$ _____
Mixed Hardwood	1,395.00 Cords	\$ 25.10/Cord	\$ _____
N. White Cedar	54.00 Cords	\$ 18.90/Cord	\$ _____
Red Pine	135.00 Cords	\$ 47.65/Cord	\$ _____
Tamarack	394.00 Cords	\$ 14.30/Cord	\$ _____
White Pine	240.00 Cords	\$ 24.85/Cord	\$ _____

*The volumes are statistically estimated within plus (+) or minus (-) 9.30 percent. These estimated volumes are final and not subject to adjustment. Prospective bidders are urged to examine this timber and to make their own estimates of quantity and quality.

I understand that any or all bids may be rejected. All bids must be signed and all bid items must be bid or the bid form may be rejected. I also understand that consideration and awarding a contract will be based upon my past performance and ability to complete the contract based upon equipment and staffing subject to my control.

FEDERAL ID: _____ or SOCIAL SECURITY NUMBER: _____

Company or individual bidding: _____

Company representative's name: _____

Address: _____

City: _____ State: _____ Zip: _____

IF AVAILABLE, PLEASE PLACE THE PERSONALIZED LABEL FROM YOUR PROSPECTUS IN THE ABOVE BOX.

Individual or company representative's signature: _____ Date: _____

Phone number : _____ Email (optional): _____

THE WINNING BIDDER MUST COMPLETE THE VERIFICATION OF WORKER'S DISABILITY COMPENSATION ACT COMPLIANCE (ON REVERSE SIDE IF DOUBLE SIDED) WITHIN 21 DAYS OF SALE AWARD DATE



FOR DEPARTMENT USE ONLY
Sale Number (XX - XXX - XX - XX)
Forest Management Unit:

TIMBER SALE VERIFICATION OF WORKER'S DISABILITY COMPENSATION ACT COMPLIANCE

*As required by Act 317, P.A. 1969 (Worker's Compensation) and
Part 5 of Act 451 of 1994, as amended.*

VERIFICATION OF WORKER'S DISABILITY COMPENSATION ACT COMPLIANCE

- This verification must be completed and submitted within 21 days of contract award and prior to the issuance of the timber sale contract.
- In addition, if boxes 2B or 2C are checked, then Notice of Exclusion or Certificate of Insurance must be submitted within twenty-one (21) days of the contract award and prior to the issuance of the timber sale contract.
- All information must be typed or printed except for written signatures.

Please Check Appropriate Categories:

1. My business is organized as (you **must** check one of the boxes below):
 - A. Sole Proprietorship (individual)
 - B. Partnership
 - C. Corporation

2. You **must** check one of the boxes below:
 - A. I certify my business is a sole proprietorship and it has no employees but the sole proprietor. I am not subject to the Worker's Compensation Laws.
 - B. I certify my business has satisfied its obligation to the Worker's Compensation Act through the use of an approved Notice of Exclusion (BWC-337, Rev. 5/96). I will provide a copy of the Notice of Exclusion within 21 days of the contract award. (For questions or a copy of the BWC-337, please call the Worker's Compensation Bureau at 517-322-1195).
 - C. I certify my business has a Worker's Compensation Policy. I will provide an original Certificate of Insurance within twenty-one (21) days of the contract award.

3. If you have checked item 2(A) or 2(B), you **must** indicate the number of **both** full-time and part-time employees, other than yourself, including family members and active partners (if none, you must enter "0").

_____ Full-time Employees

_____ Part-time Employees

Name of Business		Federal ID (or) Social Security No.	
Address		Telephone ()	
City	State	ZIP	

I hereby certify that the above information is true and correct. I agree to notify the Michigan DNR of any changes that occur in factors affecting my coverage during any of my present and future operations.

Signature of Owner or Authorized Representative

Title

Date

Please complete the "SEALED BID" information on the next page

7 Mile West Ridge (33-009-18)

T37N, R24W, SEC. 18; T37N, R24W, SEC. 19; T37N, R24W, SEC. 20; Delta

In response to the notice of sale to be held 3:00 p.m. (local time) on January 16, 2019, I am hereby submitting my sealed bid (firm offer) for the following forest products to be cut. Bids for individual species must be at or above the advertised price. All non-responsive bid forms may be rejected.

<u>PRODUCTS & SPECIES</u>	<u>ESTIMATED VOLUME*</u>	<u>ADVERTISED PRICE</u>	<u>BID PRICE/UNIT</u>
Sawtimber			
Basswood	92.20 MBF	\$ 94.00/MBF	\$ _____
Paper Birch	5.30 MBF	\$ 74.00/MBF	\$ _____
Red Maple	13.50 MBF	\$ 171.00/MBF	\$ _____
Sugar Maple	16.60 MBF	\$ 245.00/MBF	\$ _____
White Ash	2.40 MBF	\$ 61.00/MBF	\$ _____
Pulpwood			
Balsam Fir	316.00 Cords	\$ 21.55/Cord	\$ _____
Mixed Hardwood	861.00 Cords	\$ 25.10/Cord	\$ _____
Mixed Spruce	1,035.00 Cords	\$ 18.10/Cord	\$ _____
N. White Cedar	58.00 Cords	\$ 18.90/Cord	\$ _____
Quaking Aspen	468.00 Cords	\$ 26.20/Cord	\$ _____
Red Pine	6.00 Cords	\$ 47.65/Cord	\$ _____
Tamarack	102.00 Cords	\$ 14.30/Cord	\$ _____
White Pine	82.00 Cords	\$ 24.85/Cord	\$ _____

*The volumes are statistically estimated within plus (+) or minus (-) 9.00 percent. These estimated volumes are final and not subject to adjustment. Prospective bidders are urged to examine this timber and to make their own estimates of quantity and quality.

I understand that any or all bids may be rejected. All bids must be signed and all bid items must be bid or the bid form may be rejected. I also understand that consideration and awarding a contract will be based upon my past performance and ability to complete the contract based upon equipment and staffing subject to my control.

FEDERAL ID: _____ or SOCIAL SECURITY NUMBER: _____

Company or individual bidding: _____

Company representative's name: _____

Address: _____

City: _____ State: _____ Zip: _____

IF AVAILABLE, PLEASE PLACE THE PERSONALIZED LABEL FROM YOUR PROSPECTUS IN THE ABOVE BOX.

Individual or company representative's signature: _____ Date: _____

Phone number : _____ Email (optional): _____

THE WINNING BIDDER MUST COMPLETE THE VERIFICATION OF WORKER'S DISABILITY COMPENSATION ACT COMPLIANCE (ON REVERSE SIDE IF DOUBLE SIDED) WITHIN 21 DAYS OF SALE AWARD DATE



FOR DEPARTMENT USE ONLY
Sale Number (XX - XXX - XX - XX)
Forest Management Unit:

TIMBER SALE VERIFICATION OF WORKER'S DISABILITY COMPENSATION ACT COMPLIANCE

*As required by Act 317, P.A. 1969 (Worker's Compensation) and
Part 5 of Act 451 of 1994, as amended.*

VERIFICATION OF WORKER'S DISABILITY COMPENSATION ACT COMPLIANCE

- This verification must be completed and submitted within 21 days of contract award and prior to the issuance of the timber sale contract.
- In addition, if boxes 2B or 2C are checked, then Notice of Exclusion or Certificate of Insurance must be submitted within twenty-one (21) days of the contract award and prior to the issuance of the timber sale contract.
- All information must be typed or printed except for written signatures.

Please Check Appropriate Categories:

1. My business is organized as (you **must** check one of the boxes below):
 - A. Sole Proprietorship (individual)
 - B. Partnership
 - C. Corporation

2. You **must** check one of the boxes below:
 - A. I certify my business is a sole proprietorship and it has no employees but the sole proprietor. I am not subject to the Worker's Compensation Laws.
 - B. I certify my business has satisfied its obligation to the Worker's Compensation Act through the use of an approved Notice of Exclusion (BWC-337, Rev. 5/96). I will provide a copy of the Notice of Exclusion within 21 days of the contract award. (For questions or a copy of the BWC-337, please call the Worker's Compensation Bureau at 517-322-1195).
 - C. I certify my business has a Worker's Compensation Policy. I will provide an original Certificate of Insurance within twenty-one (21) days of the contract award.

3. If you have checked item 2(A) or 2(B), you **must** indicate the number of **both** full-time and part-time employees, other than yourself, including family members and active partners (if none, you must enter "0").

_____ Full-time Employees

_____ Part-time Employees

Name of Business		Federal ID (or) Social Security No.	
Address		Telephone ()	
City	State	ZIP	

I hereby certify that the above information is true and correct. I agree to notify the Michigan DNR of any changes that occur in factors affecting my coverage during any of my present and future operations.

Signature of Owner or Authorized Representative

Title

Date

Please complete the "SEALED BID" information on the next page

39 WEST (33-004-18)

T36N, R25W, SEC. 10; T36N, R25W, SEC. 2; T36N, R25W, SEC. 3; Menominee

In response to the notice of sale to be held 3:00 p.m. (local time) on January 16, 2019, I am hereby submitting my sealed bid (firm offer) for the following forest products to be cut. Bids for individual species must be at or above the advertised price. All non-responsive bid forms may be rejected.

<u>PRODUCTS & SPECIES</u>	<u>ESTIMATED VOLUME*</u>	<u>ADVERTISED PRICE</u>	<u>BID PRICE/UNIT</u>
Sawtimber			
Green Ash	2.90 MBF	\$ 94.00/MBF	\$ _____
Paper Birch	12.30 MBF	\$ 85.00/MBF	\$ _____
Red Maple	33.20 MBF	\$ 197.00/MBF	\$ _____
Yellow Birch	6.50 MBF	\$ 109.00/MBF	\$ _____
Pulpwood			
Balsam Fir	97.00 Cords	\$ 24.85/Cord	\$ _____
Jack Pine	12.00 Cords	\$ 42.20/Cord	\$ _____
Mixed Aspen	2,119.00 Cords	\$ 30.25/Cord	\$ _____
Mixed Hardwood	725.00 Cords	\$ 28.95/Cord	\$ _____
Mixed Spruce	222.00 Cords	\$ 20.90/Cord	\$ _____
N. White Cedar	3.00 Cords	\$ 21.80/Cord	\$ _____
Red Pine	338.00 Cords	\$ 54.95/Cord	\$ _____
White Pine	646.00 Cords	\$ 28.70/Cord	\$ _____

*The volumes are statistically estimated within plus (+) or minus (-) 9.43 percent. These estimated volumes are final and not subject to adjustment. Prospective bidders are urged to examine this timber and to make their own estimates of quantity and quality.

I understand that any or all bids may be rejected. All bids must be signed and all bid items must be bid or the bid form may be rejected. I also understand that consideration and awarding a contract will be based upon my past performance and ability to complete the contract based upon equipment and staffing subject to my control.

FEDERAL ID: ____ - ____ - ____ or SOCIAL SECURITY NUMBER: ____ - ____ - ____

Company or individual bidding: _____

Company representative's name: _____

Address: _____

City: _____ State: _____ Zip: _____

IF AVAILABLE, PLEASE PLACE THE PERSONALIZED LABEL FROM YOUR PROSPECTUS IN THE ABOVE BOX.

Individual or company representative's signature: _____ Date: _____

Phone number : _____ Email (optional): _____

THE WINNING BIDDER MUST COMPLETE THE VERIFICATION OF WORKER'S DISABILITY COMPENSATION ACT COMPLIANCE (ON REVERSE SIDE IF DOUBLE SIDED) WITHIN 21 DAYS OF SALE AWARD DATE



FOR DEPARTMENT USE ONLY	
Sale Number (XX - XXX - XX - XX)	
Forest Management Unit:	

TIMBER SALE VERIFICATION OF WORKER'S DISABILITY COMPENSATION ACT COMPLIANCE

As required by Act 317, P.A. 1969 (Worker's Compensation) and
Part 5 of Act 451 of 1994, as amended.

VERIFICATION OF WORKER'S DISABILITY COMPENSATION ACT COMPLIANCE

- This verification must be completed and submitted within 21 days of contract award and prior to the issuance of the timber sale contract.
- In addition, if boxes 2B or 2C are checked, then Notice of Exclusion or Certificate of Insurance must be submitted within twenty-one (21) days of the contract award and prior to the issuance of the timber sale contract.
- All information must be typed or printed except for written signatures.

Please Check Appropriate Categories:

1. My business is organized as (you **must** check one of the boxes below):
 - A. Sole Proprietorship (individual)
 - B. Partnership
 - C. Corporation
2. You **must** check one of the boxes below:
 - A. I certify my business is a sole proprietorship and it has no employees but the sole proprietor. I am not subject to the Worker's Compensation Laws.
 - B. I certify my business has satisfied its obligation to the Worker's Compensation Act through the use of an approved Notice of Exclusion (BWC-337, Rev. 5/96). I will provide a copy of the Notice of Exclusion within 21 days of the contract award. (For questions or a copy of the BWC-337, please call the Worker's Compensation Bureau at 517-322-1195).
 - C. I certify my business has a Worker's Compensation Policy. I will provide an original Certificate of Insurance within twenty-one (21) days of the contract award.
3. If you have checked item 2(A) or 2(B), you **must** indicate the number of **both** full-time and part-time employees, other than yourself, including family members and active partners (if none, you must enter "0").

_____ Full-time Employees

_____ Part-time Employees

Name of Business		Federal ID (or) Social Security No.	
Address		Telephone ()	
City	State	ZIP	

I hereby certify that the above information is true and correct. I agree to notify the Michigan DNR of any changes that occur in factors affecting my coverage during any of my present and future operations.

Signature of Owner or Authorized Representative

Title

Date

Please complete the "SEALED BID" information on the next page