



**DEPARTMENT OF NATURAL RESOURCES
STATE OF MICHIGAN**

TIMBER SALE PROSPECTUS #6470

SCHEDULED SALE DATE AND TIME: 10:00 a.m. (local time) on July 31, 2019.

LOCATION: GLADWIN MGMT UNIT, 801 NORTH SILVERLEAF, GLADWIN, MI 48624.

PROSPECTUS NOTE: The bidder is advised to inspect the sale area and review the location, estimated volumes, operating costs and contract terms of proposed sales. Please be aware that some landowners may request 60 days or more notice for access across their land.

Notice is hereby given that bids will be received by the Unit Manager, GLADWIN MANAGEMENT UNIT, for certain timber on the following described lands:

Sterling Powerline Harvest (73-001-18) / T19N, R02E, SEC. 11, N1/2NE, SENE, NESE.

T19N, R02E, SEC. 12, NW, SWNE, N1/2SW, N1/2SE, SWSE.

T19N, R02E, SEC. 13, SWNW.

T19N, R02E, SEC. 14, SENE.

T19N, R02E, SEC. 2, E1/2SW, S1/2SE.

T19N, R02E, SEC. 23, S1/2NE, SESW, W1/2SE.

T19N, R02E, SEC. 24, SWNW.

T19N, R02E, SEC. 3, E1/2SE.

Gladwin County, Advertised Price \$90,478.45, 233.6 Acres, Aspen, Hardwood.

SALE NOTE: The sale is accessed off of Sterling Truck Trail, Center Fireline, and East Fireline which are seasonal county roads. There is also a major overhead power line that runs along and through the sale units next to the Sterling Truck Trail. In addition, any gates that are open to gain access to sale units will be closed and locked at the end of each working day.

Center Sterling Mix (73-005-18) / T19N, R02E, SEC. 12, SENE, SW, SE.

T19N, R02E, SEC. 13, N1/2NE.

T19N, R02E, SEC. 23, NESW.

T19N, R02E, SEC. 24, N1/2SW, SESW, W1/2SE.

T19N, R03E, SEC. 7, S1/2NW, NWSW.

Gladwin County, Advertised Price \$40,400.10, 118.9 Acres, Hardwood, Aspen.

SALE NOTE: The access to the sale will be off Sterling Truck Trail, Center Fireline, and East Fireline which are all seasonal county roads. Many of the units have inclusion or low wet ground and will need to be harvested in dry/frozen conditions. The access to units 7 and 8 will also require an installation of a temporary equalization tubes and the use of crane mats because of low wet ground.

In Sept of 2018 Payment Unit 1 and 2 were damaged by a wind event. The value of the oak reduced by converted to Misc. Species 1 pulpwood.

BID INSTRUCTIONS (VER. 07/02/2018):

1. Scheduled Bid Location, Date, and Time (2/11)

Bids must be received by the Unit Manager, GLADWIN OFFICE, 801 NORTH SILVERLEAF, GLADWIN, MI 48624, no later than 10:00 a.m. (local time) on July 31, 2019. For further information concerning this sale, contact Patrick Mohney at 989-426-9205 extension 7640.

2. Bidder's Qualifications (5/16)

Purchaser shall obtain workers compensation insurance to cover claims under Michigan's Worker's Disability Compensation Act of 1969 or similar employee benefit act of any other state applicable to an employee. If all or part of a timber sale was prepared by a private contractor, the contractor and that contractor's company are not permitted to bid on the timber sale contract. Bids will not be accepted from individuals or companies appearing on the DNR/FRD No-Bid List. This list contains the names of purchasers who previously failed to execute a contract within 21-days or who have a history of poor performance.

3. Preparation of Sealed Bids (5/16)

Bid Forms may be completed online thru Michigan DNR Timber Sale Online Bidding (OLB) at www.michigan.gov/timberbidding or by completing the hardcopy Bid Form found in the Timber Sale Prospectus. Hardcopy Bid Forms shall be manually signed in ink. Registration in OLB is considered your 'signature' for all bids submitted thru that system. Bid prices must be entered for each species and product in the Bid Price column for all material subject to bidding and all fill-in blanks must be completed. If erasures or other changes appear on the hardcopy Bid Form, each erasure or change must be initialed by the person signing the bid.

4. Submission of Sealed Bids (5/16)

Bid forms may be obtained from the Unit Manager or thru OLB. Bids may be submitted hardcopy or thru OLB. All hardcopy bids must be submitted on the bid form and in an envelope clearly identified as described in this section. NOTE: Only one bid form per bid envelope. Sealed bids must be submitted to the Unit office designated in the prospectus and must be submitted at or prior to the time established in the prospectus. The envelope should show on the outside (a) the sale name or number and (b) the date and time of bid opening, as shown in the prospectus. Bids received after the time specified in the sale prospectus are late bids and will be rejected.

It is possible for a bidder to submit multiple bids on a single sale. For example, a bid may be submitted hardcopy and a bid may be submitted thru OLB. Or, two bidders from the same company could both submit bids on the same sale. If this were to happen, the State would accept all bids received and award the contract accordingly. All bidding and contractual requirements would apply to all bids received.

5. Public Opening of Sealed Bids (7/16)

If conditions permit, the sealed bids will be publicly opened and posted at the time and place set in the prospectus.

If a bidder, present at a bid opening, has submitted bids on more than one sale, that bidder may withdraw their unopened bid envelopes or announce the withdrawal of their online bid after being declared the successful bidder on one sale.

6. Award of Contract (1/11)

Award of the contract will be made to the Bidder whose bid, conforming to the prospectus, is most advantageous to the State of Michigan on the basis of total value at rates bid for the estimated quantities. The State reserves the right to reject any bid or waive any minor irregularity in bids received. A written award mailed (or otherwise furnished) to the successful Bidder shall be deemed to result in a binding contract without further action by either party.

7. Down Payment (1/11)

The Bidder to whom award is made must make a down payment within 21 days of the sale award. The amount of the down payment will be calculated as shown in the Bond and Payment Schedule of this prospectus. Only cash may be used to meet this requirement.

8. Performance Security (1/11)

As guarantee of faithful performance, a cash bond, certificate of deposit, surety bond or irrevocable letter of credit (LOC) is required within 21 days of the sale award. The amount of the performance security is shown in the Bond and

Payment Schedule of this prospectus. If an LOC or surety is used, the coverage must extend for at least 6 months beyond the contract expiration.

9. Timber Sale Contract (7/18)

Additional conditions and requirements common to all timber sales are listed on the timber sale contract (R4031) and are available on line at www.michigan.gov/timber. Contact the Unit Manager for additional information or a sample contract. Within 21 days of the date of the award letter, the bidder must sign the contract and provide the required down payment, performance security, and verification of worker's disability compensation. The down payment and performance security shall be in accordance with the provisions of the timber sale contract, in the sums stated in this prospectus. If these actions are not taken, then the Bidder, the Bidder's corporation, and the corporation's principals may not be permitted to bid on State timber sales for a period of 3 months after the first offense, 6 months after the second offense, and 1 year after the third offense. An offense will only be counted against the Bidder for 5 years. In addition, the Bidder certifies that if awarded this contract, the Bidder will complete the timber sale contract in accordance with its terms and any modifications thereof including requirements to purchase, cut, and remove the included timber by the expiration date.

Payment Unit values in the State Forest Timber Sale Contract are calculated based on the advertised value of the Payment Unit as a percentage of the total advertised value of the contract. The advertised value of each Payment Unit is given in the Description of Timber by Payment Unit table on the Timber Sale Information page. For example, if the value of Payment Unit 1 is advertised as \$1,500 and the total Timber Sale value is advertised as \$10,000, the contract price for Payment Unit 1 will be 15% of the total bid price ($\$1,500/\$10,000 * 100$).

10. Disclaimer of Estimates and Bidder's Warranty of Inspection (7/16)

Before submitting this bid, the Bidder is advised and cautioned to inspect the sale area, review the requirements of the sale contract, and take other steps as may be reasonably necessary to ascertain the location, estimated volumes, construction estimates, and operating costs of the proposed sale. Failure to do so will not relieve the Bidder from responsibility for completing the contract.

The Bidder warrants that this bid is submitted solely on the basis of the Bidder's examination and inspection of the quality and quantity of the timber offered for sale and the Bidder's opinion of the value thereof and the costs of recovery. No reliance should be placed on the State of Michigan's estimates of timber quality, quantity or costs of recovery. Bidder further acknowledges that the State of Michigan: (i) expressly disclaims any warranty of fitness of timber for any purpose; (ii) offers this timber as is without any warranty of quality (merchantability) or quantity and (iii) expressly disclaims any warranty as to the quantity or quality of timber sold.

11. Certification and Chain-of-Custody (10/14)

Unless otherwise indicated in the contract under section 7 – Other Conditions of the Sale Specific Conditions & Requirements, the area encompassed by this timber sale is certified to the standards of the Forest Stewardship Council (FSC) - Certificate #SCS-FM/COC-00090N and the Sustainable Forestry Initiative (SFI) - Certificate #NSF-SFIS-5Y031-SF5. Forest products from this sale may be delivered to the mill as "FSC 100% and / or SFI certified" as long as the contractor hauling the forest products is chain-of-custody (COC) certified or covered under a COC certificate from the destination mill. The purchaser is responsible for maintaining COC after leaving the sale area.

12. Good Neighbor Authority (GNA) Requirements (7/16)

If the name of this timber sales contains the acronym GNA, it is authorized by the Good Neighbor Authority (GNA) and covered by various agreements between the U.S. Forest Service and the State. The timber sale occurs on federal land and the following conditions apply:

GNA contracts on US Forest Service land will not be awarded to purchasers on the Federal list of excluded parties. The System for Award Management (SAM) will be checked for active excluded parties prior to award of contract. In addition, the Bidder to whom award is made must complete an Assurance Regarding Felony Conviction or Tax Delinquent Status for Corporate Applicants (AD-3031).

13. Good Neighbor Authority (GNA) Requirements, con't (9/16)

Bidder certifies, by signing this bid form, that to the best of Bidder's knowledge that the following representations are accurate and complete.

- a. That the Bidder and its principals are not presently debarred, suspended, proposed for debarment, declared ineligible, or voluntary excluded from timber sales (covered transactions) by any Federal department or agency.
- b. That the Bidder and its principals have not within a 3-year period preceding this bid been convicted of or had a civil judgment rendered against them for commission of fraud or a criminal offense in connection with obtaining, attempting to obtain, or performing a public (Federal, State, or local) transaction or contract under a public transaction; violation of Federal or State antitrust statutes or commission of embezzlement, theft, forgery, bribery, falsification or destruction of records, making false statements, or receiving stolen property.
- c. That the Bidder and its principals are not presently indicted for or otherwise criminally or civilly charged by a governmental entity (Federal, State, or local) with commission of any of the offenses enumerated in paragraph b of this certification.
- d. That the Bidder and its principals have not within a 3-year period preceding this bid had one or more public transactions (Federal, State, or local) terminated for breach or default of a timber or forest product contract.

Bidders that cannot certify this requirement, in whole or in part, shall submit an explanation with their bid.

DAN EICHINGER
Director

TIMBER SALE INFORMATION

Sterling Powerline Harvest (73-001-18)

T19N, R02E, SEC. 11; T19N, R02E, SEC. 12; T19N, R02E, SEC. 13; T19N, R02E, SEC. 14; T19N, R02E, SEC. 2; T19N, R02E, SEC. 23; T19N, R02E, SEC. 24; T19N, R02E, SEC. 3.

SALE NOTE: The sale is accessed off of Sterling Truck Trail, Center Fireline, and East Fireline which are seasonal county roads. There is also a major overhead power line that runs along and through the sale units next to the Sterling Truck Trail. In addition, any gates that are open to gain access to sale units will be closed and locked at the end of each working day.

A timber sale contract for this lump sum, sealed bid timber sale will be awarded to the responsible bidder offering the highest sealed bid price. Bids must be at or above the following advertised price for each species:

<u>PRODUCTS & SPECIES</u>	<u>ESTIMATED UNITS*</u>		<u>ADVERTISED PRICE</u>
Sawtimber			
BI/R/Hybrid Oak	102.00	MBF	\$ 73.00 / MBF
Red Maple	7.80	MBF	\$ 40.00 / MBF
Red Pine	16.10	MBF	\$ 135.00 / MBF
White Oak	57.80	MBF	\$ 90.00 / MBF
White Pine	6.70	MBF	\$ 47.00 / MBF
Pulpwood			
BI/R/Hybrid Oak	837.00	Cords	\$ 12.70 / Cord
Black Cherry	45.00	Cords	\$ 11.75 / Cord
Jack Pine	8.00	Cords	\$ 19.80 / Cord
Mixed Aspen	3,466.00	Cords	\$ 14.55 / Cord
Paper Birch	24.00	Cords	\$ 11.85 / Cord
Red Maple	420.00	Cords	\$ 11.75 / Cord
Red Pine	62.00	Cords	\$ 31.85 / Cord
Tamarack	84.00	Cords	\$ 29.20 / Cord
White Oak	196.00	Cords	\$ 12.70 / Cord
White Pine	126.00	Cords	\$ 9.10 / Cord

* The total volume is statistically estimated within plus (+) or minus (-) 8.04 percent. The estimated units are final and not subject to adjustment. Prospective bidders are urged to examine this timber and to make their own estimates of quantity and quality.

BOND AND PAYMENT SCHEDULE:

1. A bond in the amount of \$4,524.00 to insure faithful performance of the conditions of the contract will be deposited by the successful bidder within 21 days of the sale award.
2. Cutting in any sale or unit without the required advance payment would be considered a trespass.
3. Total payment must be paid in advance or according to the following schedule:
 - (a) Ten percent (10%) of the sale value must be paid within 21 days of the sale award.
 - (b) The 10% down payment will be credited towards the first unit cut.
 - (c) Payment for each of the following units must be made before cutting begins in that unit:

<u>PAYMENT UNIT NUMBER</u>	<u>PERCENT OF TOTAL SALE VALUE</u>
01	2.5%
02	13.9%
03	23.5%
04	3.6%
05	4.9%
06	20.8%
07	18.4%
08	2.1%
09	8.4%
10	1.9%

4. If no cutting takes place, the 10% down payment will not be refunded.
5. Operations on the contract issued will terminate on 09/30/2021.

Description of Timber by Payment Unit (PU)

PU	MARKET GROUP	PRODUCT	QUANTITY	UNIT	ACRES	ADVERTISE PRICE
1	BI/R/Hybrid Oak	Sawtimber	3.4	MBF	5.5	\$2,276.60
	BI/R/Hybrid Oak	Pulpwood	6.0	Cords		
	Mixed Aspen		109.0	Cords		
	<i>B. T. Aspen</i>	<i>Sawtimber</i>	13.1	<i>MBF</i>		
	<i>Quaking Aspen</i>		12.2	<i>MBF</i>		
	<i>B. T. Aspen</i>	<i>Pulpwood</i>	23.0	<i>Cords</i>		
	<i>Quaking Aspen</i>		36.0	<i>Cords</i>		
	Paper Birch		20.0	Cords		
	<i>Paper Birch</i>	<i>Sawtimber</i>	1.7	<i>MBF</i>		
	<i>Paper Birch</i>	<i>Pulpwood</i>	17.0	<i>Cords</i>		
	Red Maple		11.0	Cords		
2	BI/R/Hybrid Oak	Sawtimber	3.1	MBF	19.9	\$12,594.65
	Red Pine		16.1	MBF		
	BI/R/Hybrid Oak	Pulpwood	20.0	Cords		
	Black Cherry		7.0	Cords		
	Mixed Aspen		511.0	Cords		
	<i>B. T. Aspen</i>	<i>Sawtimber</i>	1.2	<i>MBF</i>		
	<i>Quaking Aspen</i>		2.8	<i>MBF</i>		
	<i>B. T. Aspen</i>	<i>Pulpwood</i>	234.0	<i>Cords</i>		
	<i>Quaking Aspen</i>		269.0	<i>Cords</i>		
	Red Maple		23.0	Cords		
	Red Pine		62.0	Cords		
	Tamarack		3.0	Cords		
	<i>Tamarack</i>		3.0	<i>Cords</i>		
	White Pine		10.0	Cords		
3	BI/R/Hybrid Oak	Sawtimber	6.2	MBF	41.3	\$21,230.15
	White Oak		34.0	MBF		
	White Pine		2.0	MBF		
	BI/R/Hybrid Oak	Pulpwood	61.0	Cords		
	Black Cherry		17.0	Cords		
	Mixed Aspen		1,017.0	Cords		
	<i>B. T. Aspen</i>	<i>Sawtimber</i>	16.1	<i>MBF</i>		
	<i>B. T. Aspen</i>	<i>Pulpwood</i>	591.0	<i>Cords</i>		
	<i>Quaking Aspen</i>		394.0	<i>Cords</i>		
	Red Maple		13.0	Cords		
	White Oak		113.0	Cords		
	White Pine		29.0	Cords		
	4	BI/R/Hybrid Oak	Sawtimber	4.2		
Red Maple			1.3	MBF		
White Oak			3.9	MBF		
White Pine			2.8	MBF		
BI/R/Hybrid Oak		Pulpwood	64.0	Cords		
Mixed Aspen			56.0	Cords		
<i>Quaking Aspen</i>			56.0	<i>Cords</i>		
Paper Birch			4.0	Cords		
<i>Paper Birch</i>			4.0	<i>Cords</i>		
Red Maple			10.0	Cords		
White Oak			11.0	Cords		
White Pine			54.0	Cords		
5	BI/R/Hybrid Oak	Sawtimber	1.7	MBF	29.7	\$4,441.55
	BI/R/Hybrid Oak	Pulpwood	20.0	Cords		
	Black Cherry		4.0	Cords		
	Mixed Aspen		156.0	Cords		
	<i>B. T. Aspen</i>		57.0	<i>Cords</i>		
	<i>Quaking Aspen</i>		99.0	<i>Cords</i>		
	Red Maple		7.0	Cords		

Description of Timber by Payment Unit (PU), con't

PU	MARKET GROUP	PRODUCT	QUANTITY	UNIT	ACRES	ADVERTISE PRICE
5 con't	Tamarack	Pulpwood	57.0	Cords		
	<i>Tamarack</i>	<i>Sawtimber</i>	1.6	<i>MBF</i>		
	<i>Tamarack</i>	<i>Pulpwood</i>	54.0	<i>Cords</i>		
6	BI/R/Hybrid Oak	Sawtimber	44.0	MBF	51.0	\$18,803.65
	Red Maple		1.0	MBF		
	White Oak		10.6	MBF		
	BI/R/Hybrid Oak	Pulpwood	317.0	Cords		
	Black Cherry		9.0	Cords		
	Mixed Aspen		628.0	Cords		
	<i>B. T. Aspen</i>		137.0	<i>Cords</i>		
	<i>Quaking Aspen</i>		491.0	<i>Cords</i>		
	Red Maple		72.0	Cords		
	White Oak		38.0	Cords		
7	BI/R/Hybrid Oak	Sawtimber	39.0	MBF	45.1	\$16,656.30
	Red Maple		0.9	MBF		
	White Oak		9.3	MBF		
	BI/R/Hybrid Oak	Pulpwood	281.0	Cords		
	Black Cherry		8.0	Cords		
	Mixed Aspen		556.0	Cords		
	<i>B. T. Aspen</i>		121.0	<i>Cords</i>		
	<i>Quaking Aspen</i>		435.0	<i>Cords</i>		
	Red Maple		64.0	Cords		
	White Oak		34.0	Cords		
8	BI/R/Hybrid Oak	Sawtimber	0.4	MBF	6.0	\$1,901.35
	Red Maple		2.2	MBF		
	BI/R/Hybrid Oak	Pulpwood	19.0	Cords		
	Mixed Aspen		102.0	Cords		
	<i>Quaking Aspen</i>		102.0	<i>Cords</i>		
	Red Maple		5.0	Cords		
9	Red Maple	Sawtimber	0.9	MBF	19.7	\$7,580.85
	BI/R/Hybrid Oak	Pulpwood	30.0	Cords		
	Mixed Aspen		299.0	Cords		
	<i>B. T. Aspen</i>		61.0	<i>Cords</i>		
	<i>Quaking Aspen</i>		238.0	<i>Cords</i>		
	Red Maple		200.0	Cords		
	Tamarack		14.0	Cords		
	<i>Tamarack</i>		14.0	<i>Cords</i>		
White Pine		6.0	Cords			
10	Red Maple	Sawtimber	1.5	MBF	6.3	\$1,728.55
	White Pine		1.9	MBF		
	BI/R/Hybrid Oak	Pulpwood	19.0	Cords		
	Jack Pine		8.0	Cords		
	Mixed Aspen		32.0	Cords		
	<i>Quaking Aspen</i>		32.0	<i>Cords</i>		
	Red Maple		15.0	Cords		
	Tamarack		10.0	Cords		
	<i>Tamarack</i>		10.0	<i>Cords</i>		
White Pine		27.0	Cords			
TOTAL:			190.4	MBF		
TOTAL:			5,268.0	Cords		

Sale Specific Conditions & Requirements

Sale Name: Sterling Powerline Harvest

Sale Number: 73-001-18 Seq#: 1

1 - Sale Area

1.2 - Boundaries

1.2.1 - Painted boundaries (1/14)

The sale boundary and Payment Unit boundaries are marked and identified by red and/or yellow paint. Exterior sale boundary lines against state are marked with red paint. Interior Payment Unit boundaries are marked with yellow paint. Yellow painted trees designating an interior Payment Unit boundary are only to be cut when all surrounding Payment Units have been paid unless trees are marked with green paint.

2 - Timber Specifications

2.1 - Included Timber

2.1.1 - Clearcut unit(s) with unmerchantable trees (6/14)

Within Payment Unit(s) 1 thru 10, cut all trees that are two (2) inches or more at DBH except apple trees and trees marked with green paint above and below stump height. In addition, within Unit 4 do not cut any pine trees unless marked with orange paint.

2.2 - Utilization

2.2.3 - Stump heights (4/07)

Stump heights within the Sale Area shall not exceed 12 inches for trees greater than 10 inches DBH and 4 inches for trees smaller than 10 inches DBH.

3 - Payments

3.3 - Pre-measured Sales

3.3.4 - Dividing payment units (7/14)

Payment Unit(s) 3, 6 and 7 may be divided at the request of the Purchaser and upon approval of the Unit Manager. Dividing Payment Units is a contract modification which requires a Timber Sale Contract Supplement. There will be only one division per Payment Unit.

3.4 - Damaged Timber

3.4.1 - Damaged timber (6/14)

General Condition and Requirement 3.4 Damaged Timber, defines liquidated damages for undesignated live merchantable trees which are cut or injured.

No damage is acceptable to merchantable trees. Within the sale area, if more than 5 % of trees (> 4.5" DBH) within a specified area of the sale are damaged, liquidated damages will be assessed for all trees damaged. Rates will be in accordance with General Condition and Requirement 3.4 Damaged Timber.

4 - Transportation

4.1 - Construction

4.1.12 - No new roads (1/12)

No new roads will be permitted in any Payment Unit. All operations are limited to existing roads. Skid trails only will be allowed.

4.2 - Maintenance

4.2.5 - Two wheel drive condition (2/04)

All existing trail roads on and adjacent to the sale area must be passable by two-wheel drive traffic for the duration of the sale.

4.4 - Access

4.4.3 - Access gate (12/08)

The access gate must be locked at the completion of each day unless otherwise approved by the Unit Manager or his/her representative.

5 - Operations

5.2 - Conduct of Operations

5.2.2 - Hazard Trees/Snags

5.2.2.1 - Den trees (10/16)

Obvious hollow and/or den trees shall be protected and left standing unless they are a safety hazard.

5.2.3 - Operating Restrictions

5.2.3.4 - Oak wilt restriction, no exceptions (1/18)

Within Payment Unit(s) 2, 3, 4, 6, and 7 cutting, skidding, hauling within the sale and brushing of access roads to the sale are not permitted during the period of April 15 to July 15. No exceptions will be granted. This is necessary to reduce the spread of oak wilt.

5.2.4 - Dead and Down Creation

5.2.4.4 - Dead and down creation, grouse (6/18)

To encourage grouse and other wildlife, in Payment Unit(s) 1, 3, 5, 6, 7, and 9 leave one 12" or larger diameter whole tree on the ground for every 3 acres. Trees should be scattered throughout the sale and at least two chains from any roads, two-tracks, or trails open to vehicles, or positioned per the sale administrators instructions.

5.2.22 - Operating Caution

5.2.22.2 - Operating caution (6/11)

It is recommended, but not required, that within Payment Unit(s) 6, 7, 9, and 10, cutting, skidding, and hauling occur during dry summer or frozen winter conditions. The reason for the recommendation is because soils are seasonally wet.

5.4 - Soil Protection

5.4.1 - Rutting restriction, general (7/16)

Operations are to cease immediately if equipment and weather conditions result in rutting of roads and/or skid trails which is 12 inches or greater in depth and 50 feet in length. The Unit Manager or his/her representative may restrict hauling and/or skidding if ruts exceed the specified depth. With the Unit Manager or his/her representative's approval, the Purchaser may return to the area when the risk of rutting has decreased.

6 - Safety and Fire Prevention

6.2 - Signing

6.2.1 - Road posting (9/09)

The Purchaser is responsible for posting and maintaining caution signs on Sterling Truck Trail, Center Fireline, and East Fireline prior to beginning operations. The road must be posted at appropriate distances from the sale area to warn of logging activity and truck traffic. Signs must be removed when harvest operations are suspended or completed. The Purchaser will provide these signs.



TIMBER SALE MAP

This information provided by authority of Part 525, 1994 PA 451, as amended.

Forest Management Unit Gladwin Management Unit		County Gladwin	Mapped By Steven Nyhoff		Date 08/14/2018	Page 1 of 4	
		Cruised By Steven Nynoff					
Township 19N	Range 02E	Section(s) and Subdivision(s) Various			Scale 1:15,840		

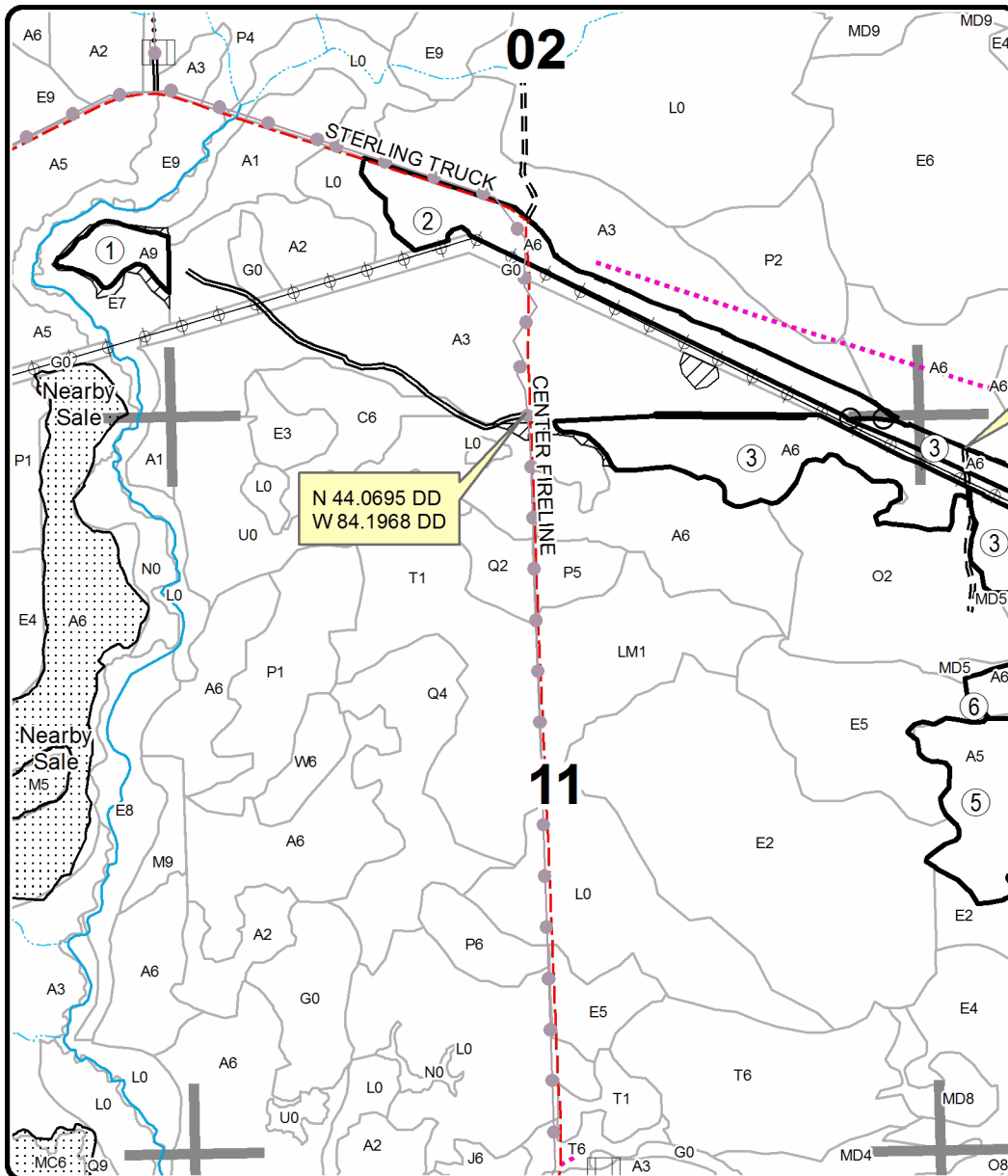
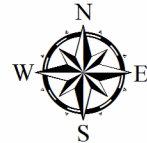
Cover Type				Density			
A = Aspen	H = Hemlock	N = Marsh	U = Upland Brush	0 = Non Stocked	5 = Pole Timber Medium		
B = Paper Birch	J = Jack Pine	O = Oak	UM = Upland Mixed	1 = Seedling Sapling Poor	6 = Pole Timber Well		
C = Cedar	L = Lowland Brush	P = Lowland Poplar	V = Bog or Marsh	2 = Seedling Sapling Medium	7 = Saw Timber Poor		
D = Tread Bog	LM = Lowland Mixed	Q = Mixed Swamp Conifer	W = White Pine	3 = Seedling Sapling Well	8 = Saw Timber Medium		
E = Swamp Hdwoods	M = Mpl, Bch, Brch	R = Red Pine	X = Non Stocked	4 = Pole Timber Poor	9 = Saw Timber Well		
F = Spruce Fir	MC = Mixed Conifer	S = Black Spruce	Z = Water				
G = Grass	MD = Mixed Deciduous	T = Tamarack					

PU	Acres	PU	Acres
1	5.5	6	51.0
2	19.9	7	45.1
3	41.3	8	6.0
4	9.1	9	19.7
5	29.7	10	6.3

Sterling Powerline Harvest

Compartment 48

233.6 Acres

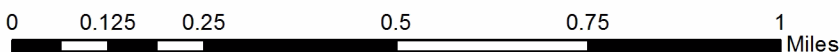
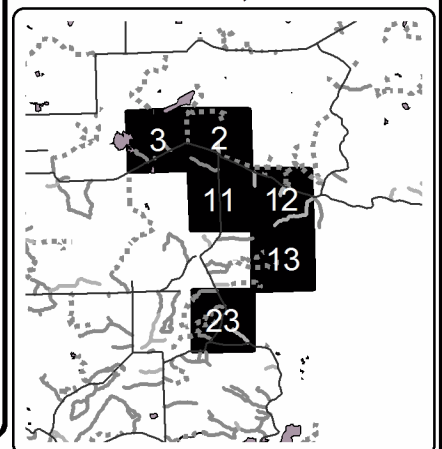


Legend

- Secondary Forest Road
- Forest Access Route
- Gravel Road
- County Road - Seasonal
- DNR - Management Access (NLP)
- Temporary Management Access
- Intermittent Stream
- Perennial River
- Retention Area
- Against State (Red)
- Payment Unit (Yellow)
- Nearby Timber Sales
- Section Corners
- Stand Boundaries

Locator Map

1:200,000





TIMBER SALE MAP

This information provided by authority of Part 525, 1994 PA 451, as amended.

Sale Number	Year
73 - 001	18

Forest Management Unit Gladwin Management Unit	County Gladwin	Mapped By Steven Nyhoff	Date 08/14/2018	Page 2	of 4
Township 19N	Range 02E	Section(s) and Subdivision(s) Various	Scale 1:15,840		

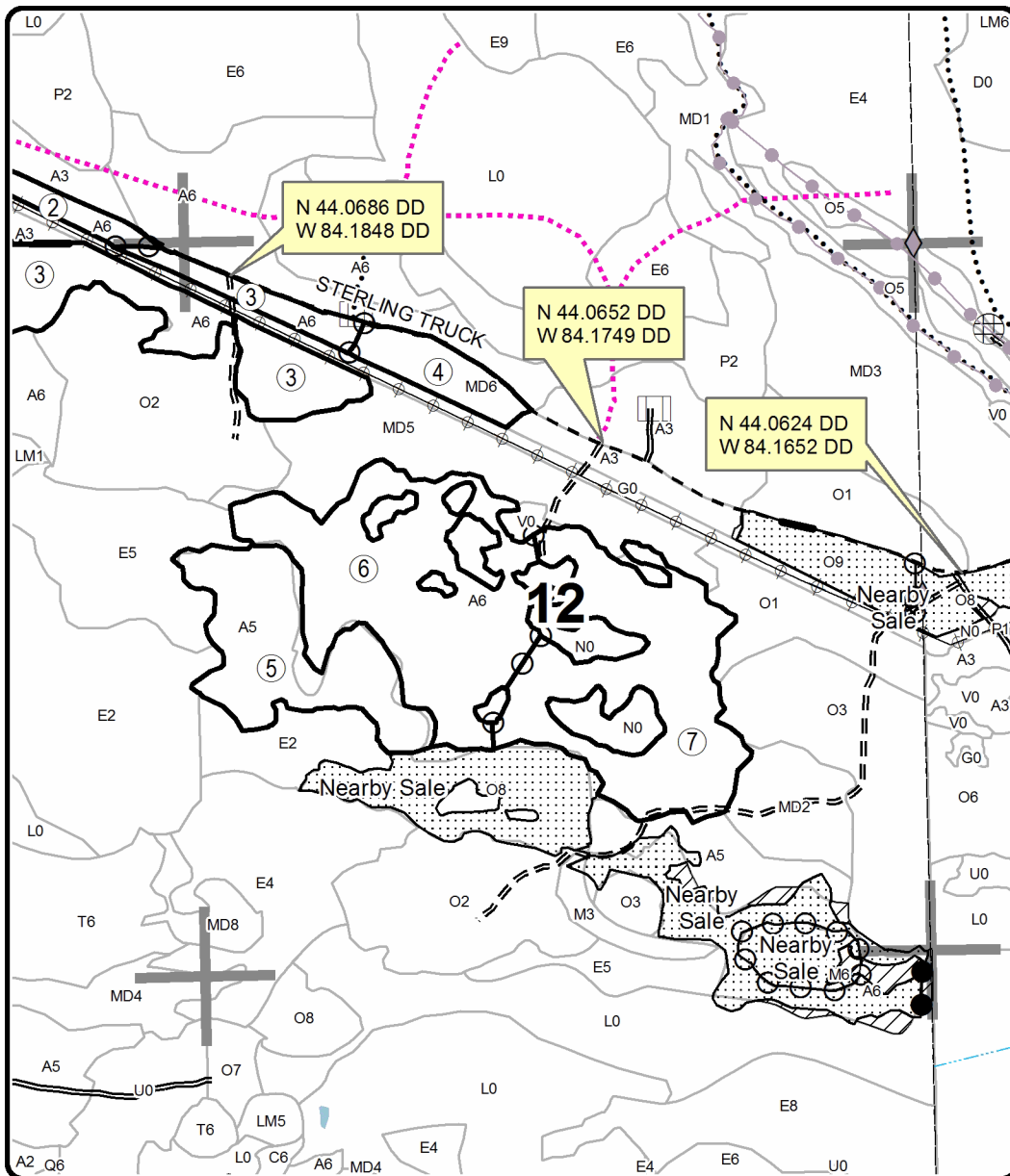
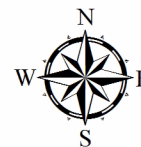
Cover Type				Density	
A = Aspen	H = Hemlock	N = Marsh	U = Upland Brush	0 = Non Stocked	5 = Pole Timber Medium
B = Paper Birch	J = Jack Pine	O = Oak	UM = Upland Mixed	1 = Seedling Sapling Poor	6 = Pole Timber Well
C = Cedar	L = Lowland Brush	P = Lowland Poplar	V = Bog or Marsh	2 = Seedling Sapling Medium	7 = Saw Timber Poor
D = Tread Bog	LM = Lowland Mixed	Q = Mixed Swamp Conifer	W = White Pine	3 = Seedling Sapling Well	8 = Saw Timber Medium
E = Swamp Hdwoods	M = Mpl, Bch, Brch	R = Red Pine	X = Non Stocked	4 = Pole Timber Poor	9 = Saw Timber Well
F = Spruce Fir	MC = Mixed Conifer	S = Black Spruce	Z = Water		
G = Grass	MD = Mixed Deciduous	T = Tamarack			

PU	Acres	PU	Acres
1	5.5	6	51.0
2	19.9	7	45.1
3	41.3	8	6.0
4	9.1	9	19.7
5	29.7	10	6.3

Sterling Powerline Harvest

Compartment 48

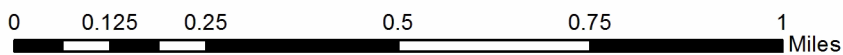
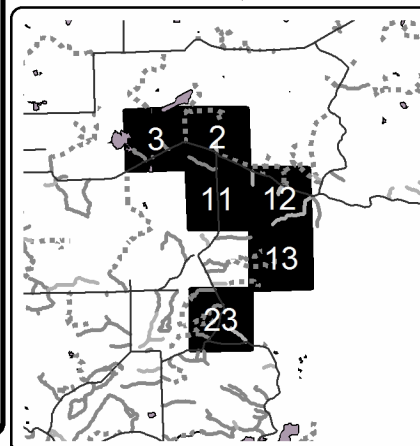
233.6 Acres



Legend

- Field Grade Corners
- Secondary Forest Road
- Forest Access Route
- Gravel Road
- DNR - Management Access (NLP)
- Temporary Management Access
- Intermittent Stream
- Lakes and Rivers
- Retention Area
- Against State (Red)
- Payment Unit (Yellow)
- Private Line (Blue)
- Nearby Timber Sales
- Section Corners
- Stand Boundaries

Locator Map
1:200,000





TIMBER SALE MAP

This information provided by authority of Part 525, 1994 PA 451, as amended.

Sale Number	Year
73 - 001	18

Forest Management Unit Gladwin Management Unit	County Gladwin	Mapped By Steven Nyhoff	Date 08/14/2018	Page 3	of 4
Township 19N	Range 02E	Section(s) and Subdivision(s) Various	Scale 1:15,840		
Cruised By Steven Nynoff					

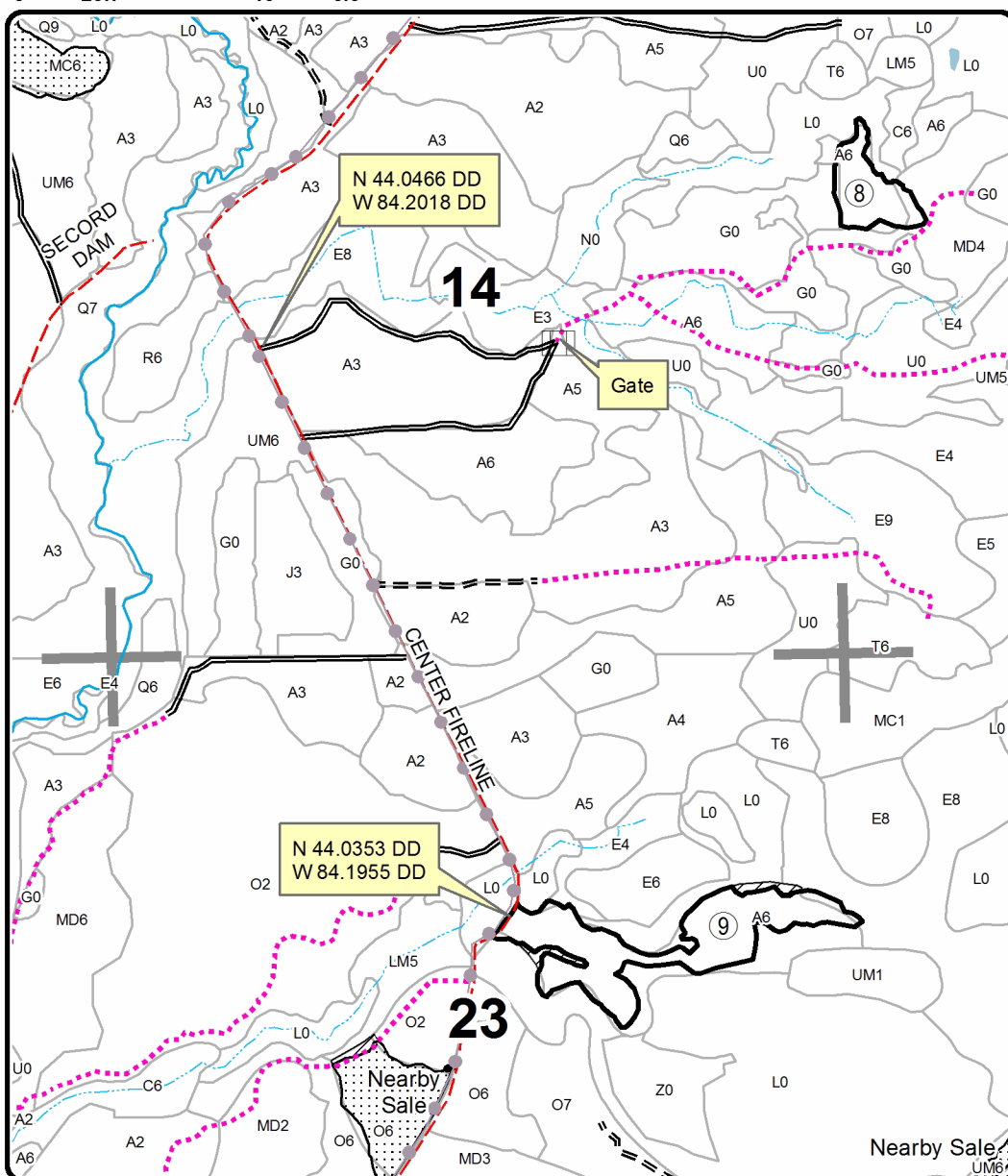
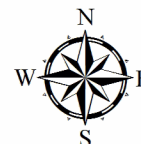
Cover Type				Density	
A = Aspen	H = Hemlock	N = Marsh	U = Upland Brush	0 = Non Stocked	5 = Pole Timber Medium
B = Paper Birch	J = Jack Pine	O = Oak	UM = Upland Mixed	1 = Seedling Sapling Poor	6 = Pole Timber Well
C = Cedar	L = Lowland Brush	P = Lowland Poplar	V = Bog or Marsh	2 = Seedling Sapling Medium	7 = Saw Timber Poor
D = Treed Bog	LM = Lowland Mixed	Q = Mixed Swamp Conifer	W = White Pine	3 = Seedling Sapling Well	8 = Saw Timber Medium
E = Swamp Hdwoods	M = Mpl, Bch, Brch	R = Red Pine	X = Non Stocked	4 = Pole Timber Poor	9 = Saw Timber Well
F = Spruce Fir	MC = Mixed Conifer	S = Black Spruce	Z = Water		
G = Grass	MD = Mixed Deciduous	T = Tamarack			

PU	Acres	PU	Acres
1	5.5	6	51.0
2	19.9	7	45.1
3	41.3	8	6.0
4	9.1	9	19.7
5	29.7	10	6.3

Sterling Powerline Harvest

Compartment 48

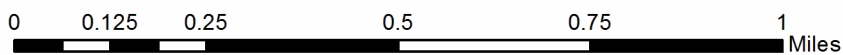
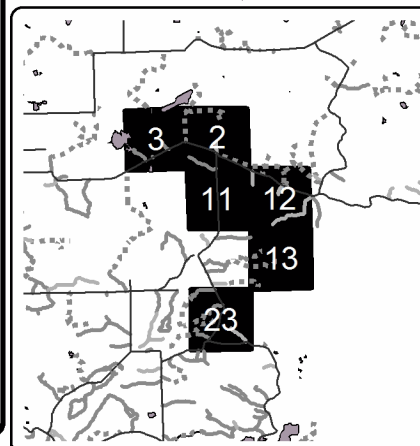
233.6 Acres



Legend

- Secondary Forest Road
- Forest Access Route
- County Road - Seasonal
- Temporary Management Access
- Intermittent Stream
- Perennial River
- Lakes and Rivers
- Retention Area
- Against State (Red)
- Nearby Timber Sales
- Section Corners
- Stand Boundaries

Locator Map
1:200,000





TIMBER SALE MAP

This information provided by authority of Part 525, 1994 PA 451, as amended.

Sale Number	Year
73 - 001	18

Forest Management Unit Gladwin Management Unit	County Gladwin	Mapped By Steven Nyhoff	Date 08/14/2018	Page 4	of 4
Cruised By Steven Nynoff					

Township 19N	Range 02E	Section(s) and Subdivision(s) Various	Scale 1:15,840
-----------------	--------------	--	-------------------

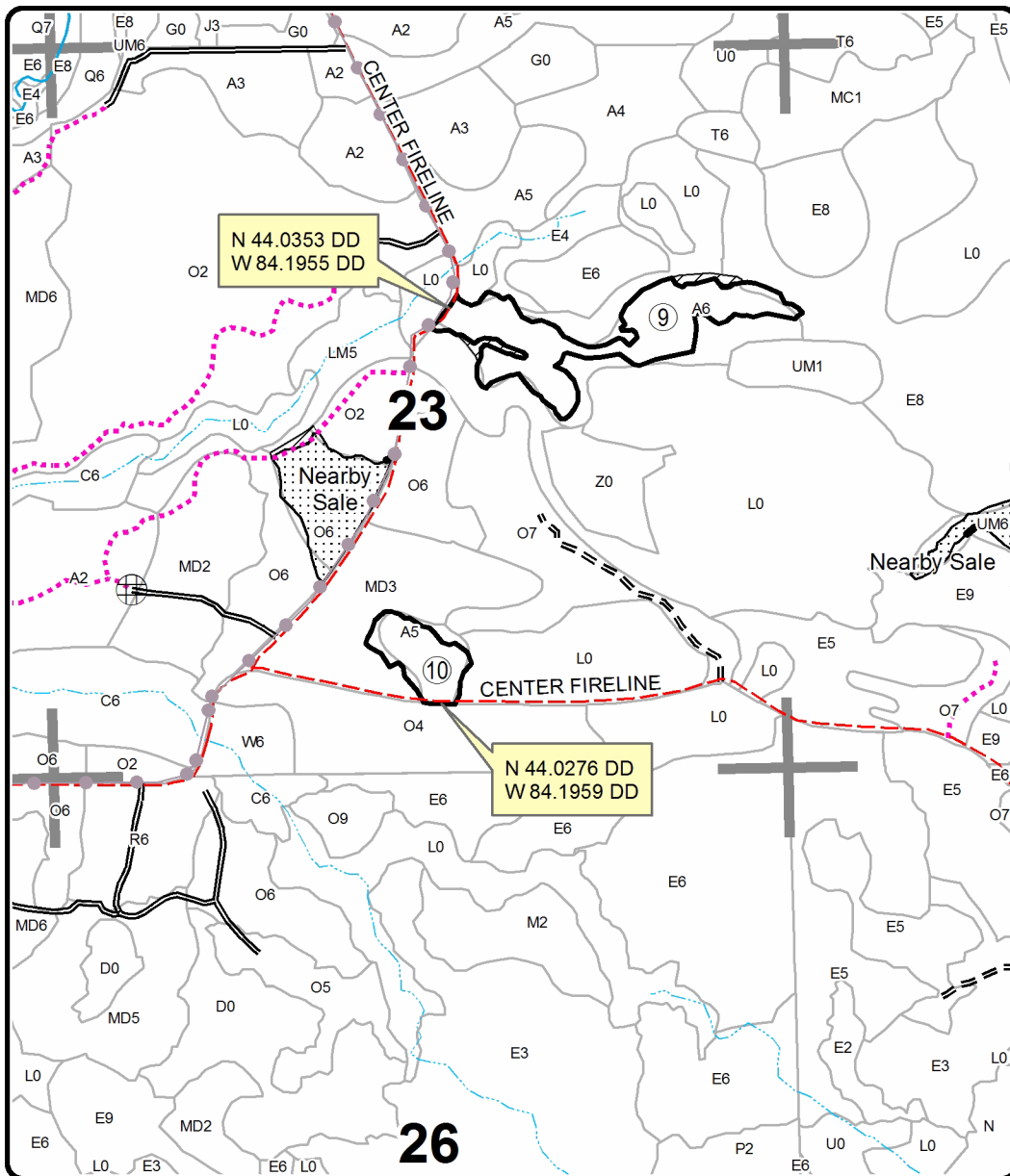
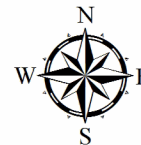
Cover Type				Density	
A = Aspen	H = Hemlock	N = Marsh	U = Upland Brush	0 = Non Stocked	5 = Pole Timber Medium
B = Paper Birch	J = Jack Pine	O = Oak	UM = Upland Mixed	1 = Seedling Sapling Poor	6 = Pole Timber Well
C = Cedar	L = Lowland Brush	P = Lowland Poplar	V = Bog or Marsh	2 = Seedling Sapling Medium	7 = Saw Timber Poor
D = Treed Bog	LM = Lowland Mixed	Q = Mixed Swamp Conifer	W = White Pine	3 = Seedling Sapling Well	8 = Saw Timber Medium
E = Swamp Hdwoods	M = Mpl, Bch, Brch	R = Red Pine	X = Non Stocked	4 = Pole Timber Poor	9 = Saw Timber Well
F = Spruce Fir	MC = Mixed Conifer	S = Black Spruce	Z = Water		
G = Grass	MD = Mixed Deciduous	T = Tamarack			

PU	Acres	PU	Acres
1	5.5	6	51.0
2	19.9	7	45.1
3	41.3	8	6.0
4	9.1	9	19.7
5	29.7	10	6.3

Sterling Powerline Harvest

Compartment 48

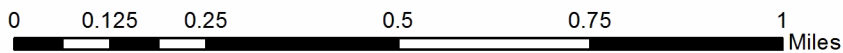
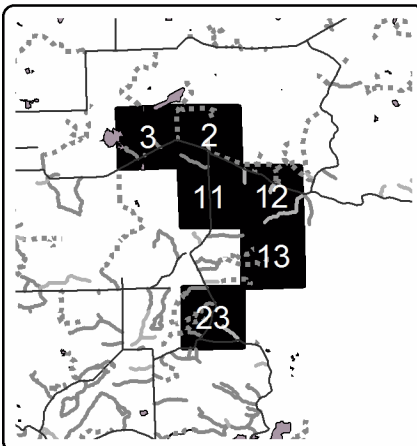
233.6 Acres



Legend

- Secondary Forest Road (solid black line)
- Forest Access Route (dashed black line)
- County Road - Seasonal (red dashed line)
- Temporary Management Access (pink dotted line)
- Intermittent Stream (light blue dashed line)
- Perennial River (solid blue line)
- Retention Area (hatched area)
- Against State (Red) (thick black outline)
- Nearby Timber Sales (dotted area)
- Section Corners (small squares)
- Stand Boundaries (thin grey line)

Locator Map
1:200,000



TIMBER SALE INFORMATION

Center Sterling Mix (73-005-18)

T19N, R02E, SEC. 12; T19N, R02E, SEC. 13; T19N, R02E, SEC. 23; T19N, R02E, SEC. 24; T19N, R03E, SEC. 7.
Gladwin County (Advertised Price \$40,400.10)

SALE NOTE: The access to the sale will be off Sterling Truck Trail, Center Fireline, and East Fireline which are all seasonal county roads. Many of the units have inclusion or low wet ground and will need to be harvested in dry/frozen conditions. The access to units 7 and 8 will also require an installation of a temporary equalization tubes and the use of crane mats because of low wet ground.

In Sept of 2018 Payment Unit 1 and 2 were damaged by a wind event. The value of the oak reduced by converted to Misc. Species 1 pulpwood.

A timber sale contract for this lump sum, sealed bid timber sale will be awarded to the responsible bidder offering the highest sealed bid price. Bids must be at or above the following advertised price for each species:

<u>PRODUCTS & SPECIES</u>	<u>ESTIMATED UNITS*</u>		<u>ADVERTISED PRICE</u>
Sawtimber			
BI/R/Hybrid Oak	69.90	MBF	\$ 78.00 / MBF
Red Maple	55.00	MBF	\$ 43.00 / MBF
Red Pine	13.20	MBF	\$ 144.00 / MBF
White Oak	17.10	MBF	\$ 97.00 / MBF
White Pine	10.00	MBF	\$ 50.00 / MBF
Pulpwood			
B. T. Aspen	37.00	Cords	\$ 15.55 / Cord
BI/R/Hybrid Oak	466.00	Cords	\$ 13.60 / Cord
Black Cherry	7.00	Cords	\$ 12.60 / Cord
Jack Pine	42.00	Cords	\$ 21.20 / Cord
Misc. Species 1	237.00	Cords	\$ 31.20 / Cord
Paper Birch	26.00	Cords	\$ 12.70 / Cord
Quaking Aspen	164.00	Cords	\$ 15.55 / Cord
Red Maple	535.00	Cords	\$ 12.60 / Cord
Red Pine	29.00	Cords	\$ 34.10 / Cord
Tamarack	14.00	Cords	\$ 31.30 / Cord
White Oak	57.00	Cords	\$ 13.60 / Cord
White Pine	145.00	Cords	\$ 9.75 / Cord

* The total volume is statistically estimated within plus (+) or minus (-) 9.49 percent. The estimated units are final and not subject to adjustment. Prospective bidders are urged to examine this timber and to make their own estimates of quantity and quality.

BOND AND PAYMENT SCHEDULE:

1. A bond in the amount of \$2,020.00 to insure faithful performance of the conditions of the contract will be deposited by the successful bidder within 21 days of the sale award.
2. Cutting in any sale or unit without the required advance payment would be considered a trespass.
3. Total payment must be paid in advance or according to the following schedule:
 - (a) Ten percent (10%) of the sale value must be paid within 21 days of the sale award.
 - (b) The 10% down payment will be credited towards the first unit cut.
 - (c) Payment for each of the following units must be made before cutting begins in that unit:

PAYMENT UNIT NUMBER	PERCENT OF TOTAL SALE VALUE
01	13.6%
02	12.9%
03	19.1%
04	5.6%
05	9.6%
06	14.5%
07	21.6%
08	3.1%

4. If no cutting takes place, the 10% down payment will not be refunded.
5. Operations on the contract issued will terminate on 09/30/2021.

Description of Timber by Payment Unit (PU)

PU	MARKET GROUP	PRODUCT	QUANTITY	UNIT	ACRES	ADVERTISE PRICE
1	Red Maple	Sawtimber	1.0	MBF	16.8	\$5,489.20
	Red Pine		10.0	MBF		
	White Pine		2.4	MBF		
	B. T. Aspen	Pulpwood	6.0	Cords		
	Misc. Species 1		96.0	Cords		
	<i>BI/R/Hybrid Oak</i>	<i>Sawtimber</i>	9.8	<i>MBF</i>		
	White Oak		0.7	<i>MBF</i>		
	<i>BI/R/Hybrid Oak</i>	<i>Pulpwood</i>	74.0	<i>Cords</i>		
	White Oak		1.0	<i>Cords</i>		
	Red Maple		20.0	Cords		
	Red Pine		12.0	Cords		
	White Pine		14.0	Cords		
2	B. T. Aspen	Pulpwood	20.0	Cords	10.5	\$5,221.80
	Misc. Species 1		141.0	Cords		
	<i>BI/R/Hybrid Oak</i>	<i>Sawtimber</i>	16.0	<i>MBF</i>		
	White Oak		1.2	<i>MBF</i>		
	<i>BI/R/Hybrid Oak</i>	<i>Pulpwood</i>	100.0	<i>Cords</i>		
	White Oak		7.0	<i>Cords</i>		
	Red Pine		11.0	Cords		
	White Pine		14.0	Cords		
3	BI/R/Hybrid Oak	Sawtimber	3.6	MBF	20.1	\$7,712.20
	Red Maple		7.8	MBF		
	White Oak		5.7	MBF		
	BI/R/Hybrid Oak	Pulpwood	68.0	Cords		
	Paper Birch		7.0	Cords		
	Quaking Aspen		159.0	Cords		
	Red Maple		188.0	Cords		
	Tamarack		10.0	Cords		
	White Oak		24.0	Cords		
	White Pine		5.0	Cords		
	4	BI/R/Hybrid Oak	Sawtimber	1.2		
Red Maple			7.0	MBF		
White Oak			3.1	MBF		
BI/R/Hybrid Oak		Pulpwood	11.0	Cords		
Paper Birch			7.0	Cords		
Red Maple			97.0	Cords		
White Oak			8.0	Cords		
White Pine			1.0	Cords		
5		BI/R/Hybrid Oak	Sawtimber	15.3	MBF	22.6
	Red Maple		3.2	MBF		
	White Oak		3.8	MBF		
	B. T. Aspen	Pulpwood	11.0	Cords		
	BI/R/Hybrid Oak		111.0	Cords		
	Red Maple		13.0	Cords		
	Tamarack		4.0	Cords		
	White Oak		14.0	Cords		
6	BI/R/Hybrid Oak	Sawtimber	24.4	MBF	10.3	\$5,874.05
	Red Maple		1.5	MBF		
	Red Pine		3.2	MBF		
	BI/R/Hybrid Oak	Pulpwood	156.0	Cords		
	Black Cherry		7.0	Cords		
	Jack Pine		42.0	Cords		
	<i>Jack Pine</i>	<i>Sawtimber</i>	3.3	<i>MBF</i>		
	<i>Jack Pine</i>	<i>Pulpwood</i>	35.0	<i>Cords</i>		
	Quaking Aspen		5.0	Cords		
	Red Maple		5.0	Cords		

Description of Timber by Payment Unit (PU), con't

PU	MARKET GROUP	PRODUCT	QUANTITY	UNIT	ACRES	ADVERTISE PRICE
6 con't	Red Pine	Pulpwood	6.0	Cords		
7	BI/R/Hybrid Oak	Sawtimber	24.6	MBF	15.7	\$8,719.75
	Red Maple		31.8	MBF		
	White Oak		4.5	MBF		
	White Pine		5.7	MBF		
	BI/R/Hybrid Oak	Pulpwood	102.0	Cords		
	Paper Birch		5.0	Cords		
	Red Maple		175.0	Cords		
	White Oak		11.0	Cords		
	White Pine		93.0	Cords		
8	BI/R/Hybrid Oak	Sawtimber	0.8	MBF		
	Red Maple		2.7	MBF		
	White Pine		1.9	MBF		
	BI/R/Hybrid Oak	Pulpwood	18.0	Cords		
	Paper Birch		7.0	Cords		
	Red Maple		37.0	Cords		
	White Pine		18.0	Cords		
TOTAL:			165.2	MBF		
TOTAL:			1,759.0	Cords		

Sale Specific Conditions & Requirements

Sale Name: Center Sterling Mix

Sale Number: 73-005-18 Seq#: 1

1 - Sale Area

1.2 - Boundaries

1.2.1 - Painted boundaries (1/14)

The sale boundary and Payment Unit boundaries are marked and identified by blue, red and/or yellow paint. Exterior sale boundary lines against private property are marked with blue paint. Exterior sale boundary lines against state are marked with red paint. Interior Payment Unit boundaries are marked with yellow paint. Yellow painted trees designating an interior Payment Unit boundary are only to be cut when all surrounding Payment Units have been paid unless marked with green paint.

2 - Timber Specifications

2.1 - Included Timber

2.1.1 - Clearcut unit(s) with unmerchantable trees (6/14)

Within Payment Unit(s) 3, 4, 5, 6, and 7, cut all trees that are two (2) inches or more at DBH except trees marked with green paint above and below stump height.

2.1.2 - Clearcut unit(s) w/o unmerchantable trees (8/11)

Within Payment Unit(s) 1 and 2, cut all trees which meet minimum piece specifications in 2.2 Utilization except trees marked with green paint above and below stump height.

2.1.3 - Cut tree marked unit(s) (12/08)

Within Payment Unit(s) 8, all trees are designated for cutting when marked with orange paint above and below stump height, regardless of merchantability.

2.2 - Utilization

2.2.3 - Stump heights (4/07)

Stump heights within the Sale Area shall not exceed 12 inches for trees greater than 10 inches DBH and 4 inches for trees smaller than 10 inches DBH.

3 - Payments

3.4 - Damaged Timber

3.4.1 - Damaged timber (6/14)

General Condition and Requirement 3.4 Damaged Timber, defines liquidated damages for undesignated live merchantable trees which are cut or injured. In addition, extreme care should be taken to avoid damage to tree seedlings and saplings.

Within the Unit 1, 2, and 8, if more than 25% of the tree seedlings or saplings (1/4" to 4.5" DBH) within a specified portion of the sale area are damaged, liquidated damages will be assessed at \$300 per acre for all acreage within that specified portion of the sale area that was damaged.

With in all units no damage is acceptable to merchantable trees. Within the sale area, if more than 5% of trees (> 4.5" DBH) within a specified area of the sale are damaged, liquidated damages will be assessed for all trees damaged. Rates will be in accordance with General Condition and Requirement 3.4 Damaged Timber.

4 - Transportation

4.1 - Construction

4.1.5 - Culverts (5/14)

Roads may require the installation of a temporary equalization tubes for cross drainage or at natural drainage-ways. If culverts are needed in these locations, their placement will be specified by the sale administrator and they shall be installed prior to hauling. The equalization tubes shall be, corrugated metal or plastic gauge. When the equalization tubes are removed,

fill shall be removed from wetland soils as specified. Soils shall be maintained and left in a non-erodible condition, with water bars, seed, fertilizer, mulch, and slash installed as directed by the sale administrator and as specified in the BMP manual.

4.1.7 - Road closure (10/11)

All new roads built into the sale must be blocked to vehicle traffic upon completion of the sale. Overgrown roads that are reopened shall be considered new roads. Some existing roads may also need to be closed, see the Timber Sale Map for locations. Stumps and brush must be placed along the remainder of the trail. These roads must be rendered impassable to cars and trucks. All stumps from road building and landing construction must be reserved to block any newly constructed roads upon completion of the sale. These stumps must be scattered along the road system to prohibit vehicular movement. Contact the sale administrator for specific details of design and placement.

4.2 - Maintenance

4.2.2 - Fill material (4/07)

To maintain roads, fill material may be needed in areas where "holes" exist or may be expected to develop. This fill material should be placed before trucking begins. Contact the sale administrator regarding the availability of onsite sand or gravel from adjacent State-owned lands.

5 - Operations

5.2 - Conduct of Operations

5.2.3 - Operating Restrictions

5.2.3.4 - Oak wilt restriction, no exceptions (1/18)

Within Payment Unit(s) 1, 2, 5, and 6 cutting, skidding, hauling within the sale and brushing of access roads to the sale are not permitted during the period of April 15 to July 15. No exceptions will be granted. This is necessary to reduce the spread of oak wilt.

5.2.22 - Operating Caution

5.2.22.1 - Operating caution (6/11)

It is recommended, but not required, that within Payment Unit(s) 3, 4, 5, 7 and 8, cutting, skidding, and hauling occur during dry summer or frozen winter conditions. The reason for the recommendation is because the unit are seasonably wet.

5.4 - Soil Protection

5.4.1 - Rutting restriction, general (7/16)

Operations are to cease immediately if equipment and weather conditions result in rutting of roads and/or skid trails which is 12 inches or greater in depth and 50 feet in length. The Unit Manager or his/her representative may restrict hauling and/or skidding if ruts exceed the specified depth. With the Unit Manager or his/her representative's approval, the Purchaser may return to the area when the risk of rutting has decreased.

6 - Safety and Fire Prevention

6.2 - Signing

6.2.1 - Road posting (9/09)

The Purchaser is responsible for posting and maintaining caution signs on Sterling Truck Trail, Center Fireline and East Fireline prior to beginning operations. The road must be posted at appropriate distances from the sale area to warn of logging activity and truck traffic. Signs must be removed when harvest operations are suspended or completed. The Purchaser will provide these signs.

7 - Other Conditions

7.5 - Loss

7.5.1 - Deteriorating timber (7/09)

The sale area has received damage from a wind event in Sept. of 2018. The damage is concentrated in Payment Units 1 and 2. The Purchaser should harvest the wood as soon as possible. The Department of Natural Resources is held free of responsibility of any further damage or deterioration due to delay in harvesting.



TIMBER SALE MAP

This information provided by authority of Part 525, 1994 PA 451, as amended.

Sale Number	Year
73 - 005	18

Forest Management Unit Gladwin Management Unit	County Gladwin and Arenac	Mapped By Stevem Nyhoff	Date 08/09/2018	Page 1	of 3
Cruised By Steven Nyhoff					

Township 19N	Range 02E; 03E	Section(s) and Subdivision(s) Various	Scale 1:15,840
-----------------	-------------------	--	-------------------

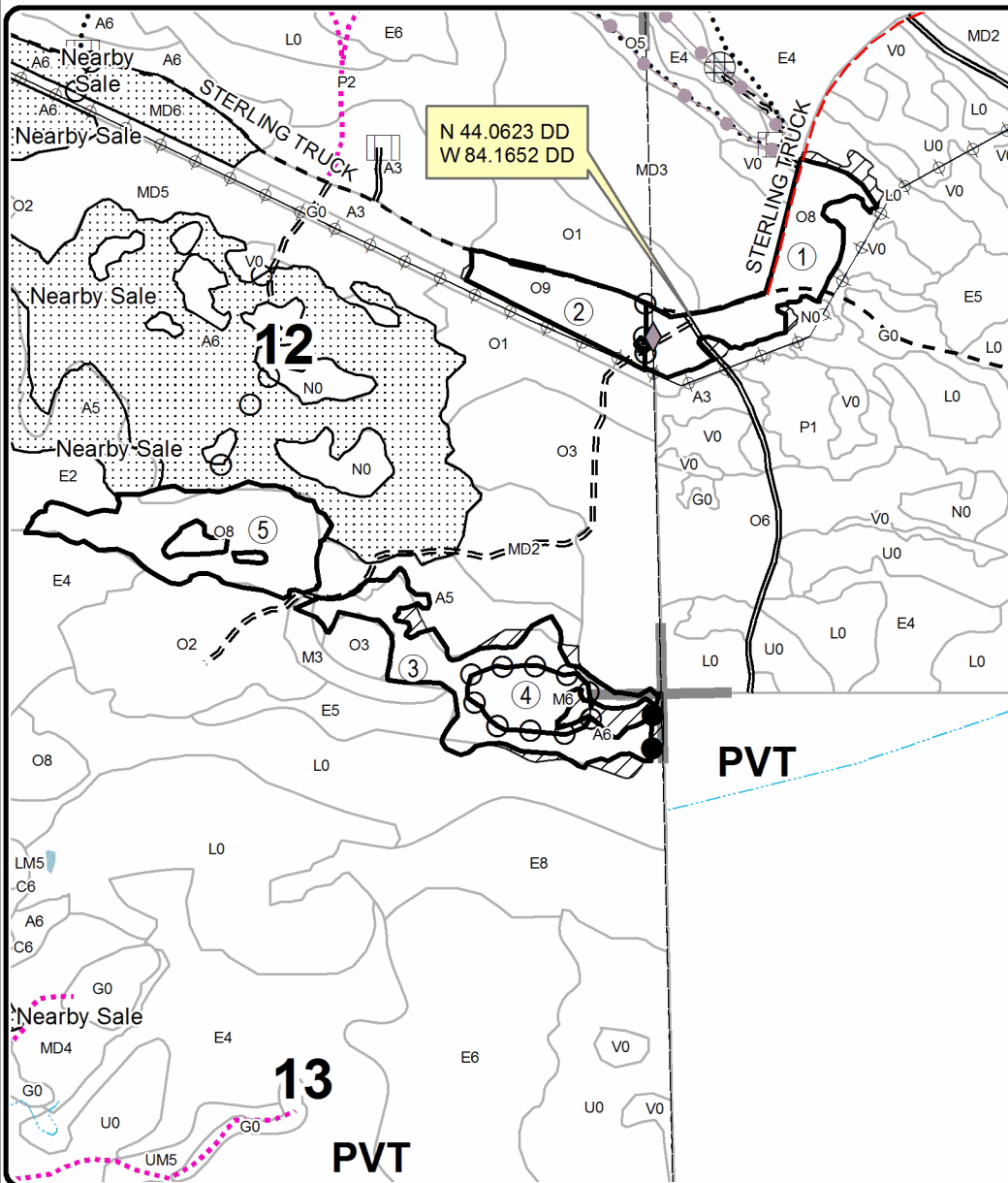
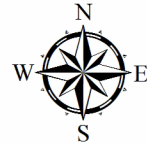
Cover Type				Density			
A = Aspen	H = Hemlock	N = Marsh	U = Upland Brush	0 = Non Stocked	5 = Pole Timber Medium		
B = Paper Birch	J = Jack Pine	O = Oak	UM = Upland Mixed	1 = Seedling Sapling Poor	6 = Pole Timber Well		
C = Cedar	L = Lowland Brush	P = Lowland Poplar	V = Bog or Marsh	2 = Seedling Sapling Medium	7 = Saw Timber Poor		
D = Tread Bog	LM = Lowland Mixed	Q = Mixed Swamp Conifer	W = White Pine	3 = Seedling Sapling Well	8 = Saw Timber Medium		
E = Swamp Hdwoods	M = Mpl, Bch, Brch	R = Red Pine	X = Non Stocked	4 = Pole Timber Poor	9 = Saw Timber Well		
F = Spruce Fir	MC = Mixed Conifer	S = Black Spruce	Z = Water				
G = Grass	MD = Mixed Deciduous	T = Tamarack					

PU	Acres	PU	Acres
1	16.8	5	22.6
2	10.5	6	10.3
3	20.1	7	15.7
4	7.1	8	15.8

Center Sterling Mix

Compartment 48 & 126

118.9 Acres

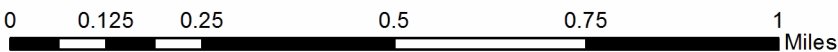
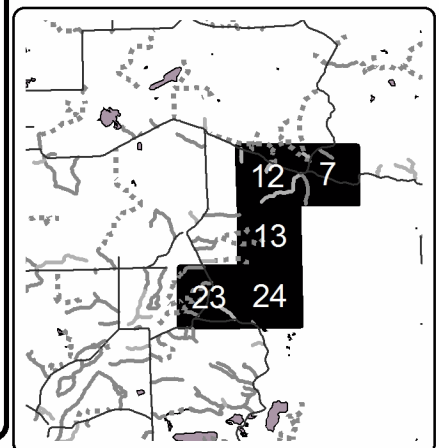


Legend

- Field Grade Corners
- Secondary Forest Road
- Forest Access Route
- Gravel Road
- County Road - Seasonal
- DNR - Management Access (NLP)
- Temporary Management Access
- Intermittent Stream
- Lakes and Rivers
- Retention Area
- Against State (Red)
- Payment Unit (Yellow)
- Private Line (Blue)
- Nearby Timber Sales
- Section Corners
- Stand Boundaries

Locator Map

1:200,000





TIMBER SALE MAP

This information provided by authority of Part 525, 1994 PA 451, as amended.

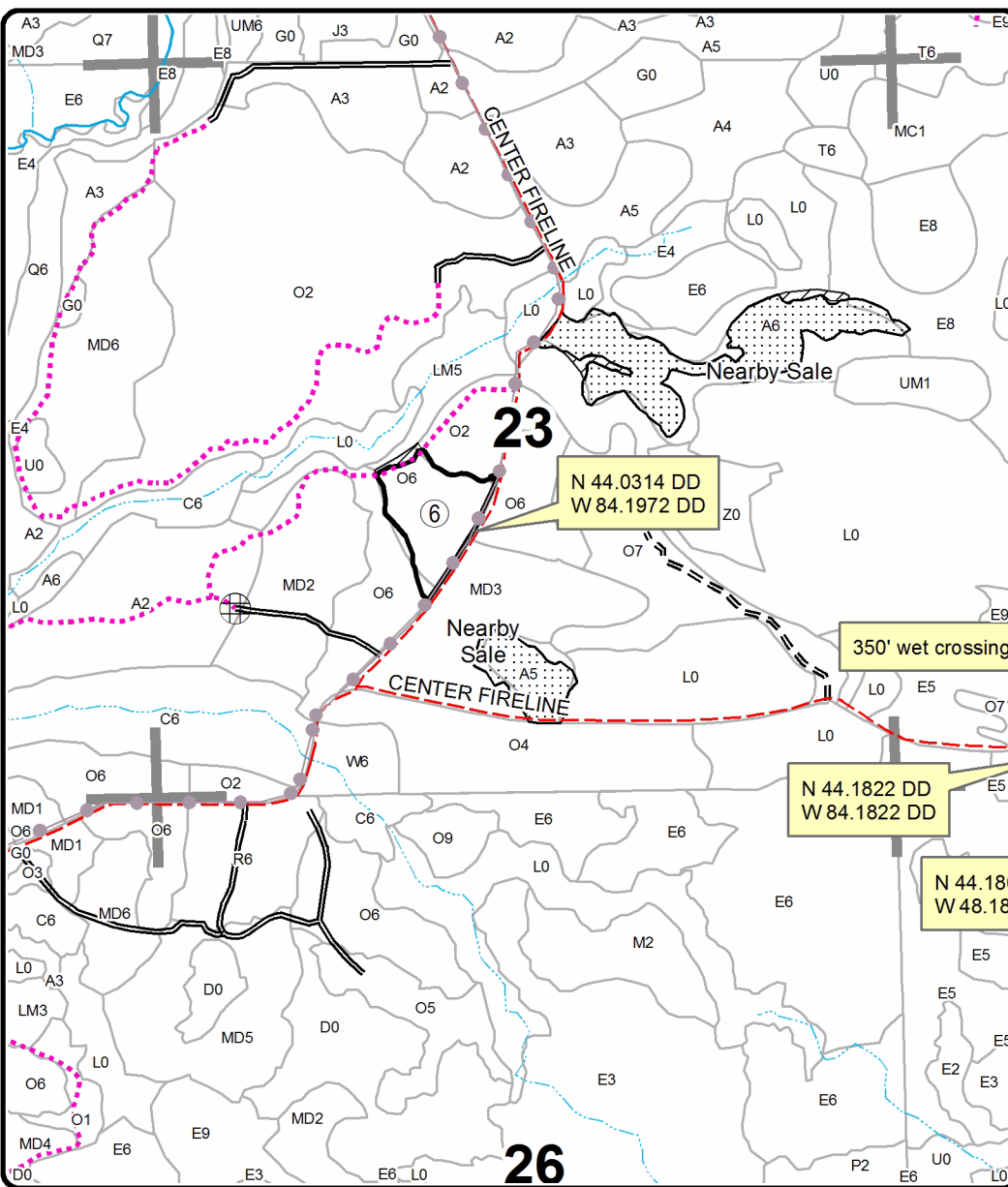
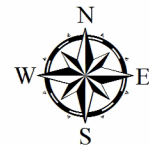
Sale Number	Year
73 - 005	18

Forest Management Unit Gladwin Management Unit	County Gladwin and Arenac	Mapped By Stevem Nyhoff	Date 08/09/2018	Page 2	of 3
Township 19N	Range 02E; 03E	Section(s) and Subdivision(s) Various	Scale 1:15,840		

Cover Type				Density	
A = Aspen	H = Hemlock	N = Marsh	U = Upland Brush	0 = Non Stocked	5 = Pole Timber Medium
B = Paper Birch	J = Jack Pine	O = Oak	UM = Upland Mixed	1 = Seedling Sapling Poor	6 = Pole Timber Well
C = Cedar	L = Lowland Brush	P = Lowland Poplar	V = Bog or Marsh	2 = Seedling Sapling Medium	7 = Saw Timber Poor
D = Treed Bog	LM = Lowland Mixed	Q = Mixed Swamp Conifer	W = White Pine	3 = Seedling Sapling Well	8 = Saw Timber Medium
E = Swamp Hdwoods	M = Mpl, Bch, Brch	R = Red Pine	X = Non Stocked	4 = Pole Timber Poor	9 = Saw Timber Well
F = Spruce Fir	MC = Mixed Conifer	S = Black Spruce	Z = Water		
G = Grass	MD = Mixed Deciduous	T = Tamarack			

PU	Acres	PU	Acres
1	16.8	5	22.6
2	10.5	6	10.3
3	20.1	7	15.7
4	7.1	8	15.8

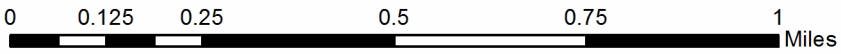
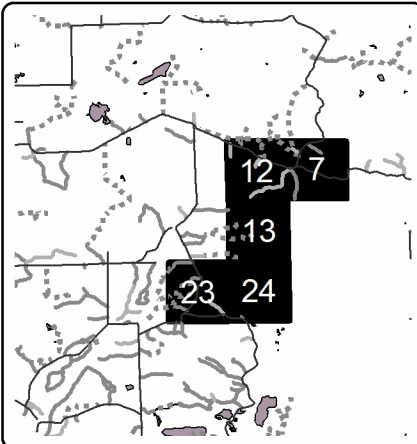
Center Sterling Mix Compartment 48 & 126 118.9 Acres



Legend

- Secondary Forest Road
- Forest Access Route
- County Road - Seasonal
- Temporary Management Access
- Intermittent Stream
- Perennial River
- Retention Area
- Against State (Red)
- Nearby Timber Sales
- Section Corners
- Stand Boundaries

Locator Map
1:200,000





TIMBER SALE MAP

This information provided by authority of Part 525, 1994 PA 451, as amended.

Sale Number	Year
73 - 005	18

Forest Management Unit Gladwin Management Unit	County Gladwin and Arenac	Mapped By Stevem Nyhoff	Date 08/09/2018	Page 3	of 3
Township 19N	Range 02E; 03E	Section(s) and Subdivision(s) Various	Scale 1:15,840		

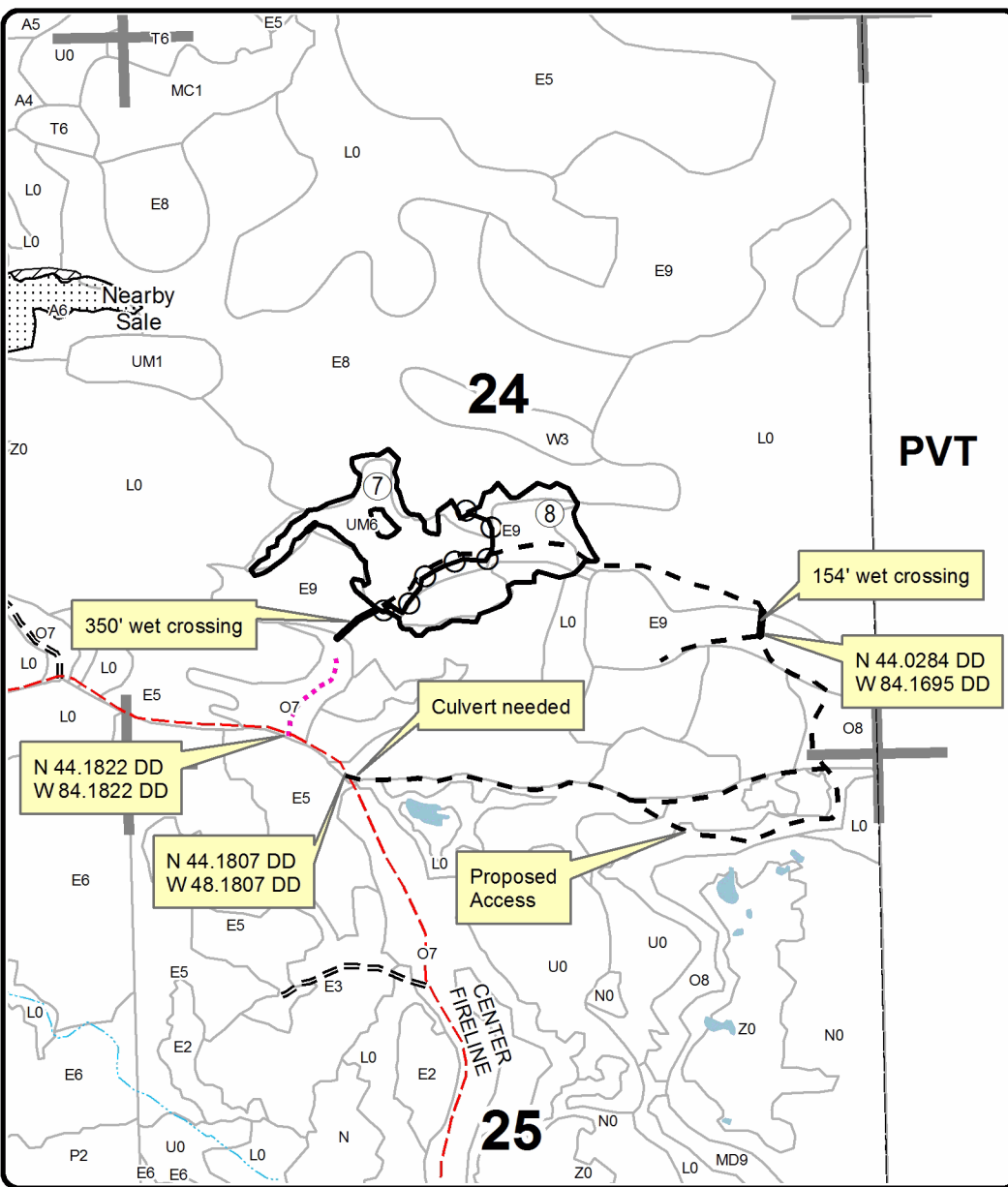
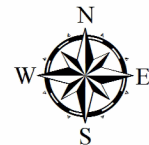
Cover Type				Density	
A = Aspen	H = Hemlock	N = Marsh	U = Upland Brush	0 = Non Stocked	5 = Pole Timber Medium
B = Paper Birch	J = Jack Pine	O = Oak	UM = Upland Mixed	1 = Seedling Sapling Poor	6 = Pole Timber Well
C = Cedar	L = Lowland Brush	P = Lowland Poplar	V = Bog or Marsh	2 = Seedling Sapling Medium	7 = Saw Timber Poor
D = Treed Bog	LM = Lowland Mixed	Q = Mixed Swamp Conifer	W = White Pine	3 = Seedling Sapling Well	8 = Saw Timber Medium
E = Swamp Hdwoods	M = Mpl, Bch, Brch	R = Red Pine	X = Non Stocked	4 = Pole Timber Poor	9 = Saw Timber Well
F = Spruce Fir	MC = Mixed Conifer	S = Black Spruce	Z = Water		
G = Grass	MD = Mixed Deciduous	T = Tamarack			

PU	Acres	PU	Acres
1	16.8	5	22.6
2	10.5	6	10.3
3	20.1	7	15.7
4	7.1	8	15.8

Center Sterling Mix

Compartment 48 & 126

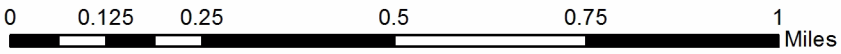
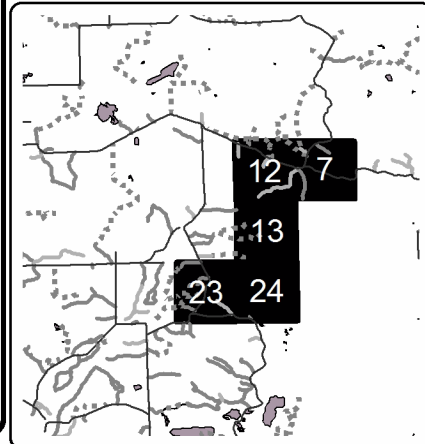
118.9 Acres



Legend

- == Forest Access Route
- - - County Road - Seasonal
- ... Temporary Management Access
- Intermittent Stream
- Lakes and Rivers
- ▨ Retention Area
- Against State (Red)
- Payment Unit (Yellow)
- ... Nearby Timber Sales
- Section Corners
- Stand Boundaries

Locator Map
1:200,000



Sterling Powerline Harvest (73-001-18)
T19N, R02E, SEC. 11; T19N, R02E, SEC. 12; T19N, R02E, SEC. 13; T19N, R02E,

In response to the notice of sale to be held 10:00 a.m. (local time) on July 31, 2019, I am hereby submitting my sealed bid (firm offer) for the following forest products to be cut. Bids for individual species must be at or above the advertised price. All non-responsive bid forms may be rejected.

<u>PRODUCTS & SPECIES</u>	<u>ESTIMATED VOLUME*</u>	<u>ADVERTISED PRICE</u>	<u>BID PRICE/UNIT</u>
Sawtimber			
Bl/R/Hybrid Oak	102.00 MBF	\$ 73.00/MBF	\$ _____
Red Maple	7.80 MBF	\$ 40.00/MBF	\$ _____
Red Pine	16.10 MBF	\$ 135.00/MBF	\$ _____
White Oak	57.80 MBF	\$ 90.00/MBF	\$ _____
White Pine	6.70 MBF	\$ 47.00/MBF	\$ _____
Pulpwood			
Bl/R/Hybrid Oak	837.00 Cords	\$ 12.70/Cord	\$ _____
Black Cherry	45.00 Cords	\$ 11.75/Cord	\$ _____
Jack Pine	8.00 Cords	\$ 19.80/Cord	\$ _____
Mixed Aspen	3,466.00 Cords	\$ 14.55/Cord	\$ _____
Paper Birch	24.00 Cords	\$ 11.85/Cord	\$ _____
Red Maple	420.00 Cords	\$ 11.75/Cord	\$ _____
Red Pine	62.00 Cords	\$ 31.85/Cord	\$ _____
Tamarack	84.00 Cords	\$ 29.20/Cord	\$ _____
White Oak	196.00 Cords	\$ 12.70/Cord	\$ _____
White Pine	126.00 Cords	\$ 9.10/Cord	\$ _____

*The volumes are statistically estimated within plus (+) or minus (-) 8.04 percent. These estimated volumes are final and not subject to adjustment. Prospective bidders are urged to examine this timber and to make their own estimates of quantity and quality.

I understand that any or all bids may be rejected. All bids must be signed and all bid items must be bid or the bid form may be rejected. I also understand that consideration and awarding a contract will be based upon my past performance and ability to complete the contract based upon equipment and staffing subject to my control.

FEDERAL ID: _____ or SOCIAL SECURITY NUMBER: _____

Company or individual bidding: _____

Company representative's name: _____

Address: _____

City: _____ State: _____ Zip: _____

IF AVAILABLE, PLEASE PLACE THE PERSONALIZED LABEL FROM YOUR PROSPECTUS IN THE ABOVE BOX.

Individual or company representative's signature: _____ Date: _____

Phone number : _____ Email (optional): _____

THE WINNING BIDDER MUST COMPLETE THE VERIFICATION OF WORKER'S DISABILITY COMPENSATION ACT COMPLIANCE (ON REVERSE SIDE IF DOUBLE SIDED) WITHIN 21 DAYS OF SALE AWARD DATE



FOR DEPARTMENT USE ONLY	
Sale Number (XX – XXX – XX – XX)	
Forest Management Unit:	

TIMBER SALE VERIFICATION OF WORKER'S DISABILITY COMPENSATION ACT COMPLIANCE

As required by Act 317, P.A. 1969 (Worker's Compensation) and
Part 5 of Act 451 of 1994, as amended.

VERIFICATION OF WORKER'S DISABILITY COMPENSATION ACT COMPLIANCE

- This verification must be completed and submitted within 21 days of contract award and prior to the issuance of the timber sale contract.
- In addition, if boxes 2B or 2C are checked, then Notice of Exclusion or Certificate of Insurance must be submitted within twenty-one (21) days of the contract award and prior to the issuance of the timber sale contract.
- All information must be typed or printed except for written signatures.

Please Check Appropriate Categories:

- My business is organized as (you **must** check one of the boxes below):
 - Sole Proprietorship (individual)
 - Partnership
 - Corporation
- You **must** check one of the boxes below:
 - I certify my business is a sole proprietorship and it has no employees but the sole proprietor. I am not subject to the Worker's Compensation Laws.
 - I certify my business has satisfied its obligation to the Worker's Compensation Act through the use of an approved Notice of Exclusion (BWC-337, Rev. 5/96). I will provide a copy of the Notice of Exclusion within 21 days of the contract award. (For questions or a copy of the BWC-337, please call the Worker's Compensation Bureau at 517-322-1195).
 - I certify my business has a Worker's Compensation Policy. I will provide an original Certificate of Insurance within twenty-one (21) days of the contract award.
- If you have checked item 2(A) or 2(B), you **must** indicate the number of **both** full-time and part-time employees, other than yourself, including family members and active partners (if none, you must enter "0").

_____ Full-time Employees

_____ Part-time Employees

Name of Business		Federal ID (or) Social Security No.	
Address		Telephone ()	
City	State	ZIP	

I hereby certify that the above information is true and correct. I agree to notify the Michigan DNR of any changes that occur in factors affecting my coverage during any of my present and future operations.

Signature of Owner or Authorized Representative

Title

Date

Please complete the "SEALED BID" information on the next page

Center Sterling Mix (73-005-18)

T19N, R02E, SEC. 12; T19N, R02E, SEC. 13; T19N, R02E, SEC. 23; T19N, R02E,

In response to the notice of sale to be held 10:00 a.m. (local time) on July 31, 2019, I am hereby submitting my sealed bid (firm offer) for the following forest products to be cut. Bids for individual species must be at or above the advertised price. All non-responsive bid forms may be rejected.

<u>PRODUCTS & SPECIES</u>	<u>ESTIMATED VOLUME*</u>	<u>ADVERTISED PRICE</u>	<u>BID PRICE/UNIT</u>
Sawtimber			
Bl/R/Hybrid Oak	69.90 MBF	\$ 78.00/MBF	\$ _____
Red Maple	55.00 MBF	\$ 43.00/MBF	\$ _____
Red Pine	13.20 MBF	\$ 144.00/MBF	\$ _____
White Oak	17.10 MBF	\$ 97.00/MBF	\$ _____
White Pine	10.00 MBF	\$ 50.00/MBF	\$ _____
Pulpwood			
B. T. Aspen	37.00 Cords	\$ 15.55/Cord	\$ _____
Bl/R/Hybrid Oak	466.00 Cords	\$ 13.60/Cord	\$ _____
Black Cherry	7.00 Cords	\$ 12.60/Cord	\$ _____
Jack Pine	42.00 Cords	\$ 21.20/Cord	\$ _____
Misc. Species 1	237.00 Cords	\$ 31.20/Cord	\$ _____
Paper Birch	26.00 Cords	\$ 12.70/Cord	\$ _____
Quaking Aspen	164.00 Cords	\$ 15.55/Cord	\$ _____
Red Maple	535.00 Cords	\$ 12.60/Cord	\$ _____
Red Pine	29.00 Cords	\$ 34.10/Cord	\$ _____
Tamarack	14.00 Cords	\$ 31.30/Cord	\$ _____
White Oak	57.00 Cords	\$ 13.60/Cord	\$ _____
White Pine	145.00 Cords	\$ 9.75/Cord	\$ _____

*The volumes are statistically estimated within plus (+) or minus (-) 9.49 percent. These estimated volumes are final and not subject to adjustment. Prospective bidders are urged to examine this timber and to make their own estimates of quantity and quality.

I understand that any or all bids may be rejected. All bids must be signed and all bid items must be bid or the bid form may be rejected. I also understand that consideration and awarding a contract will be based upon my past performance and ability to complete the contract based upon equipment and staffing subject to my control.

FEDERAL ID: _____ or SOCIAL SECURITY NUMBER: _____

Company or individual bidding: _____

Company representative's name: _____

Address: _____

City: _____ State: _____ Zip: _____

IF AVAILABLE, PLEASE PLACE THE PERSONALIZED LABEL FROM YOUR PROSPECTUS IN THE ABOVE BOX.

Individual or company representative's signature: _____ Date: _____

Phone number : _____ Email (optional): _____

THE WINNING BIDDER MUST COMPLETE THE VERIFICATION OF WORKER'S DISABILITY COMPENSATION ACT COMPLIANCE (ON REVERSE SIDE IF DOUBLE SIDED) WITHIN 21 DAYS OF SALE AWARD DATE



FOR DEPARTMENT USE ONLY	
Sale Number (XX - XXX - XX - XX)	
Forest Management Unit:	

TIMBER SALE VERIFICATION OF WORKER'S DISABILITY COMPENSATION ACT COMPLIANCE

As required by Act 317, P.A. 1969 (Worker's Compensation) and
Part 5 of Act 451 of 1994, as amended.

VERIFICATION OF WORKER'S DISABILITY COMPENSATION ACT COMPLIANCE

- This verification must be completed and submitted within 21 days of contract award and prior to the issuance of the timber sale contract.
- In addition, if boxes 2B or 2C are checked, then Notice of Exclusion or Certificate of Insurance must be submitted within twenty-one (21) days of the contract award and prior to the issuance of the timber sale contract.
- All information must be typed or printed except for written signatures.

Please Check Appropriate Categories:

1. My business is organized as (you **must** check one of the boxes below):
 - A. Sole Proprietorship (individual)
 - B. Partnership
 - C. Corporation
2. You **must** check one of the boxes below:
 - A. I certify my business is a sole proprietorship and it has no employees but the sole proprietor. I am not subject to the Worker's Compensation Laws.
 - B. I certify my business has satisfied its obligation to the Worker's Compensation Act through the use of an approved Notice of Exclusion (BWC-337, Rev. 5/96). I will provide a copy of the Notice of Exclusion within 21 days of the contract award. (For questions or a copy of the BWC-337, please call the Worker's Compensation Bureau at 517-322-1195).
 - C. I certify my business has a Worker's Compensation Policy. I will provide an original Certificate of Insurance within twenty-one (21) days of the contract award.
3. If you have checked item 2(A) or 2(B), you **must** indicate the number of **both** full-time and part-time employees, other than yourself, including family members and active partners (if none, you must enter "0").

_____ Full-time Employees

_____ Part-time Employees

Name of Business		Federal ID (or) Social Security No.	
Address		Telephone ()	
City	State	ZIP	

I hereby certify that the above information is true and correct. I agree to notify the Michigan DNR of any changes that occur in factors affecting my coverage during any of my present and future operations.

Signature of Owner or Authorized Representative

Title

Date

Please complete the "SEALED BID" information on the next page