



**DEPARTMENT OF NATURAL RESOURCES  
STATE OF MICHIGAN**

**TIMBER SALE PROSPECTUS #6459**

SCHEDULED SALE DATE AND TIME: 4:00 p.m. (local time) on August 5, 2019.

LOCATION: KALKASKA FIELD OFFICE, 2089 NORTH BIRCH STREET, KALKASKA, MI 49646.

PROSPECTUS NOTE: The bidder is advised to inspect the sale area and review the location, estimated volumes, operating costs and contract terms of proposed sales. Please be aware that some landowners may request 60 days or more notice for access across their land.

Notice is hereby given that bids will be received by the Unit Manager, TRAVERSE CITY MANAGEMENT UNIT, for certain timber on the following described lands:

Muzzleloader Mix (61-106-19) / T27N, R08W, SEC. 31, NWNW,S1/2NW,S1/2NE,SW,N1/2SE.

Kalkaska County, Advertised Price \$124,958.00, 146.8 Acres, Hardwood, Red Pine.

SALE NOTE: Oak wilt restrictions are in place for Payment Units 1, 2, and 3. Note, if a two tree length buffer is cut along the boundary of Payment Unit 2, then Payment Unit 2 may be cut during the restricted period. See specs 5.2.3.4 and 5.2.3.5 for additional details.

Iceman Hardwoods (61-115-19) / T27N, R08W, SEC. 7 , SENW,S1/2NE,SW,N1/2SE,SWSE.

T27N, R09W, SEC. 12, SESE.

Kalkaska County, Advertised Price \$137,847.60, 171.4 Acres, Hardwood, Sugar Maple.

SALE NOTE: Operations may be restricted in Payment Units 2 and 3 for the 1st week in November due to the Ice Man Mountain Bike Race.

151 Frozen Naples East (61-117-19) / T25N, R06W, SEC. 25, SESW,SWSE.

T25N, R06W, SEC. 35, E1/2SE.

T25N, R06W, SEC. 36, N1/2NW,SENE,N1/2SW,SWSW,SE.

Kalkaska County, Advertised Price \$136,770.20, 256.8 Acres, Aspen, Hardwood.

SALE NOTE: Payment Unit 2 must be chipped to facilitate future planting operations. Also, note that Payment Units 1, 3, 4, 5, and 6 are subject to operating restrictions from April 15 to July 15 due to oak wilt concerns and there will be no exceptions.

A recreation site such as a trail, pathway, or campground is within the sale area or the vicinity. Certain restrictions/specifications may be applicable including time restrictions.

White to Red Pine (61-121-19) / T27N, R08W, SEC. 7 , NW,W1/2NE.

Kalkaska County, Advertised Price \$40,463.65, 52.3 Acres, White Pine, Red Pine.

SALE NOTE: Payment Unit 3 is on some hilly terrain.

## BID INSTRUCTIONS (VER. 07/02/2018):

### 1. Scheduled Bid Location, Date, and Time (2/11)

Bids must be received by the Unit Manager, KALKASKA OFFICE, 2089 North Birch Street, Kalkaska, MI 49646, no later than 4:00 p.m. (local time) on August 5, 2019. For further information concerning this sale, contact David Lemmien at 231-922-5280 extension 6840.

### 2. Bidder's Qualifications (5/16)

Purchaser shall obtain workers compensation insurance to cover claims under Michigan's Worker's Disability Compensation Act of 1969 or similar employee benefit act of any other state applicable to an employee. If all or part of a timber sale was prepared by a private contractor, the contractor and that contractor's company are not permitted to bid on the timber sale contract. Bids will not be accepted from individuals or companies appearing on the DNR/FRD No-Bid List. This list contains the names of purchasers who previously failed to execute a contract within 21-days or who have a history of poor performance.

### 3. Preparation of Sealed Bids (5/16)

Bid Forms may be completed online thru Michigan DNR Timber Sale Online Bidding (OLB) at [www.michigan.gov/timberbidding](http://www.michigan.gov/timberbidding) or by completing the hardcopy Bid Form found in the Timber Sale Prospectus. Hardcopy Bid Forms shall be manually signed in ink. Registration in OLB is considered your 'signature' for all bids submitted thru that system. Bid prices must be entered for each species and product in the Bid Price column for all material subject to bidding and all fill-in blanks must be completed. If erasures or other changes appear on the hardcopy Bid Form, each erasure or change must be initialed by the person signing the bid.

### 4. Submission of Sealed Bids (5/16)

Bid forms may be obtained from the Unit Manager or thru OLB. Bids may be submitted hardcopy or thru OLB. All hardcopy bids must be submitted on the bid form and in an envelope clearly identified as described in this section. NOTE: Only one bid form per bid envelope. Sealed bids must be submitted to the Unit office designated in the prospectus and must be submitted at or prior to the time established in the prospectus. The envelope should show on the outside (a) the sale name or number and (b) the date and time of bid opening, as shown in the prospectus. Bids received after the time specified in the sale prospectus are late bids and will be rejected.

It is possible for a bidder to submit multiple bids on a single sale. For example, a bid may be submitted hardcopy and a bid may be submitted thru OLB. Or, two bidders from the same company could both submit bids on the same sale. If this were to happen, the State would accept all bids received and award the contract accordingly. All bidding and contractual requirements would apply to all bids received.

### 5. Public Opening of Sealed Bids (7/16)

If conditions permit, the sealed bids will be publicly opened and posted at the time and place set in the prospectus.

If a bidder, present at a bid opening, has submitted bids on more than one sale, that bidder may withdraw their unopened bid envelopes or announce the withdrawal of their online bid after being declared the successful bidder on one sale.

### 6. Award of Contract (1/11)

Award of the contract will be made to the Bidder whose bid, conforming to the prospectus, is most advantageous to the State of Michigan on the basis of total value at rates bid for the estimated quantities. The State reserves the right to reject any bid or waive any minor irregularity in bids received. A written award mailed (or otherwise furnished) to the successful Bidder shall be deemed to result in a binding contract without further action by either party.

### 7. Down Payment (1/11)

The Bidder to whom award is made must make a down payment within 21 days of the sale award. The amount of the down payment will be calculated as shown in the Bond and Payment Schedule of this prospectus. Only cash may be used to meet this requirement.

### 8. Performance Security (1/11)

As guarantee of faithful performance, a cash bond, certificate of deposit, surety bond or irrevocable letter of credit (LOC) is required within 21 days of the sale award. The amount of the performance security is shown in the Bond and

Payment Schedule of this prospectus. If an LOC or surety is used, the coverage must extend for at least 6 months beyond the contract expiration.

#### 9. Timber Sale Contract (7/18)

Additional conditions and requirements common to all timber sales are listed on the timber sale contract (R4031) and are available on line at [www.michigan.gov/timber](http://www.michigan.gov/timber). Contact the Unit Manager for additional information or a sample contract. Within 21 days of the date of the award letter, the bidder must sign the contract and provide the required down payment, performance security, and verification of worker's disability compensation. The down payment and performance security shall be in accordance with the provisions of the timber sale contract, in the sums stated in this prospectus. If these actions are not taken, then the Bidder, the Bidder's corporation, and the corporation's principals may not be permitted to bid on State timber sales for a period of 3 months after the first offense, 6 months after the second offense, and 1 year after the third offense. An offense will only be counted against the Bidder for 5 years. In addition, the Bidder certifies that if awarded this contract, the Bidder will complete the timber sale contract in accordance with its terms and any modifications thereof including requirements to purchase, cut, and remove the included timber by the expiration date.

Payment Unit values in the State Forest Timber Sale Contract are calculated based on the advertised value of the Payment Unit as a percentage of the total advertised value of the contract. The advertised value of each Payment Unit is given in the Description of Timber by Payment Unit table on the Timber Sale Information page. For example, if the value of Payment Unit 1 is advertised as \$1,500 and the total Timber Sale value is advertised as \$10,000, the contract price for Payment Unit 1 will be 15% of the total bid price ( $\$1,500/\$10,000 * 100$ ).

#### 10. Disclaimer of Estimates and Bidder's Warranty of Inspection (7/16)

Before submitting this bid, the Bidder is advised and cautioned to inspect the sale area, review the requirements of the sale contract, and take other steps as may be reasonably necessary to ascertain the location, estimated volumes, construction estimates, and operating costs of the proposed sale. Failure to do so will not relieve the Bidder from responsibility for completing the contract.

The Bidder warrants that this bid is submitted solely on the basis of the Bidder's examination and inspection of the quality and quantity of the timber offered for sale and the Bidder's opinion of the value thereof and the costs of recovery. No reliance should be placed on the State of Michigan's estimates of timber quality, quantity or costs of recovery. Bidder further acknowledges that the State of Michigan: (i) expressly disclaims any warranty of fitness of timber for any purpose; (ii) offers this timber as is without any warranty of quality (merchantability) or quantity and (iii) expressly disclaims any warranty as to the quantity or quality of timber sold.

#### 11. Certification and Chain-of-Custody (10/14)

Unless otherwise indicated in the contract under section 7 – Other Conditions of the Sale Specific Conditions & Requirements, the area encompassed by this timber sale is certified to the standards of the Forest Stewardship Council (FSC) - Certificate #SCS-FM/COC-00090N and the Sustainable Forestry Initiative (SFI) - Certificate #NSF-SFIS-5Y031-SF5. Forest products from this sale may be delivered to the mill as "FSC 100% and / or SFI certified" as long as the contractor hauling the forest products is chain-of-custody (COC) certified or covered under a COC certificate from the destination mill. The purchaser is responsible for maintaining COC after leaving the sale area.

#### 12. Good Neighbor Authority (GNA) Requirements (7/16)

If the name of this timber sales contains the acronym GNA, it is authorized by the Good Neighbor Authority (GNA) and covered by various agreements between the U.S. Forest Service and the State. The timber sale occurs on federal land and the following conditions apply:

GNA contracts on US Forest Service land will not be awarded to purchasers on the Federal list of excluded parties. The System for Award Management (SAM) will be checked for active excluded parties prior to award of contract. In addition, the Bidder to whom award is made must complete an Assurance Regarding Felony Conviction or Tax Delinquent Status for Corporate Applicants (AD-3031).

#### 13. Good Neighbor Authority (GNA) Requirements, con't (9/16)

Bidder certifies, by signing this bid form, that to the best of Bidder's knowledge that the following representations are accurate and complete.

- a. That the Bidder and its principals are not presently debarred, suspended, proposed for debarment, declared ineligible, or voluntary excluded from timber sales (covered transactions) by any Federal department or agency.
- b. That the Bidder and its principals have not within a 3-year period preceding this bid been convicted of or had a civil judgment rendered against them for commission of fraud or a criminal offense in connection with obtaining, attempting to obtain, or performing a public (Federal, State, or local) transaction or contract under a public transaction; violation of Federal or State antitrust statutes or commission of embezzlement, theft, forgery, bribery, falsification or destruction of records, making false statements, or receiving stolen property.
- c. That the Bidder and its principals are not presently indicted for or otherwise criminally or civilly charged by a governmental entity (Federal, State, or local) with commission of any of the offenses enumerated in paragraph b of this certification.
- d. That the Bidder and its principals have not within a 3-year period preceding this bid had one or more public transactions (Federal, State, or local) terminated for breach or default of a timber or forest product contract.

Bidders that cannot certify this requirement, in whole or in part, shall submit an explanation with their bid.

DAN EICHINGER  
Director

## TIMBER SALE INFORMATION

Muzzleloader Mix (61-106-19)  
 T27N, R08W, SEC. 31.  
 Kalkaska County (Advertised Price \$124,958.00)

SALE NOTE: Oak wilt restrictions are in place for Payment Units 1, 2, and 3. Note, if a two tree length buffer is cut along the boundary of Payment Unit 2, then Payment Unit 2 may be cut during the restricted period. See specs 5.2.3.4 and 5.2.3.5 for additional details.

A timber sale contract for this lump sum, sealed bid timber sale will be awarded to the responsible bidder offering the highest sealed bid price. Bids must be at or above the following advertised price for each species:

<u>PRODUCTS &amp; SPECIES</u>	<u>ESTIMATED UNITS*</u>	<u>ADVERTISED PRICE</u>
<b>Sawtimber</b>		
B. T. Aspen	5.80 MBF	\$ 120.00 / MBF
Red Oak	199.90 MBF	\$ 197.00 / MBF
Red Pine	395.90 MBF	\$ 108.00 / MBF
White Oak	55.80 MBF	\$ 42.00 / MBF
White Pine	51.70 MBF	\$ 47.00 / MBF
<b>Pulpwood</b>		
B. T. Aspen	180.00 Cords	\$ 18.10 / Cord
Jack Pine	21.00 Cords	\$ 11.20 / Cord
Misc. Species 1	8.00 Cords	\$ 3.75 / Cord
Mixed Oak	938.00 Cords	\$ 11.50 / Cord
Red Maple	112.00 Cords	\$ 16.05 / Cord
Red Pine	468.00 Cords	\$ 34.00 / Cord
White Pine	392.00 Cords	\$ 13.60 / Cord

\* The total volume is statistically estimated within plus (+) or minus (-) 8.38 percent. The estimated units are final and not subject to adjustment. Prospective bidders are urged to examine this timber and to make their own estimates of quantity and quality.

**BOND AND PAYMENT SCHEDULE:**

1. A bond in the amount of \$6,248.00 to insure faithful performance of the conditions of the contract will be deposited by the successful bidder within 21 days of the sale award.
2. Cutting in any sale or unit without the required advance payment would be considered a trespass.
3. Total payment must be paid in advance or according to the following schedule:
  - (a) Ten percent (10%) of the sale value must be paid within 21 days of the sale award.
  - (b) The 10% down payment will be credited towards the first unit cut.
  - (c) Payment for each of the following units must be made before cutting begins in that unit:
 

PAYMENT UNIT NUMBER	PERCENT OF TOTAL SALE VALUE
01	28.1%
02	46.6%
03	25.3%
4. If no cutting takes place, the 10% down payment will not be refunded.
5. Operations on the contract issued will terminate on 09/30/2021.

**Description of Timber by Payment Unit (PU)**

PU	MARKET GROUP	PRODUCT	QUANTITY	UNIT	ACRES	ADVERTISE PRICE					
1	B. T. Aspen	Sawtimber	3.6	MBF	42.2	\$35,078.30					
	Red Oak		106.9	MBF							
	Red Pine		11.4	MBF							
	White Oak		25.5	MBF							
	White Pine		18.4	MBF							
	B. T. Aspen		Pulpwood	82.0			Cords				
	Jack Pine			5.0			Cords				
	Mixed Oak			418.0			Cords				
	<i>Red Oak</i>			261.0			<i>Cords</i>				
	<i>White Oak</i>			157.0			<i>Cords</i>				
	Red Maple			72.0			Cords				
	Red Pine			33.0			Cords				
	White Pine			132.0			Cords				
	2			Red Oak			Sawtimber	38.2	MBF	69.5	\$58,269.15
				Red Pine				329.9	MBF		
White Oak		7.7	MBF								
White Pine		15.8	MBF								
Mixed Oak		Pulpwood	172.0	Cords							
<i>Red Oak</i>			119.0	<i>Cords</i>							
<i>White Oak</i>			53.0	<i>Cords</i>							
Red Maple			3.0	Cords							
Red Pine			298.0	Cords							
White Pine			139.0	Cords							
3		B. T. Aspen	Sawtimber	2.2	MBF	35.1		\$31,610.55			
	Red Oak	54.8		MBF							
	Red Pine	54.6		MBF							
	White Oak	22.6		MBF							
	White Pine	17.5		MBF							
	B. T. Aspen	Pulpwood		98.0	Cords						
	Jack Pine			16.0	Cords						
	Misc. Species 1			8.0	Cords						
	Mixed Oak			348.0	Cords						
	<i>Red Oak</i>			164.0	<i>Cords</i>						
	<i>White Oak</i>			184.0	<i>Cords</i>						
	Red Maple			37.0	Cords						
	Red Pine			137.0	Cords						
	White Pine			121.0	Cords						
TOTAL:			709.1	MBF							
TOTAL:			2,119.0	Cords							

# Sale Specific Conditions & Requirements

**Sale Name: Muzzleloader Mix**

**Sale Number: 61-106-19 Seq#: 1**

## 1 - Sale Area

### 1.2 - Boundaries

#### 1.2.1 - Painted boundaries (1/14)

The sale boundary and Payment Unit boundaries are marked and identified by red and yellow paint. Exterior sale boundary lines against state are marked with red paint. Interior Payment Unit boundaries are marked with yellow paint. The painted boundary line trees are not Included Timber and are to be protected. Yellow painted trees designating an interior Payment Unit boundary are only to be cut when all surrounding Payment Units have been paid.

## 2 - Timber Specifications

### 2.1 - Included Timber

#### 2.1.1 - Clearcut unit(s) with unmerchantable trees (6/14)

Within Payment Unit(s) 2, cut all trees that are two (2) inches or more at DBH

#### 2.1.7 - Leave tree marked unit(s) (6/14)

Within Payment Unit(s) 1 and 3, cut all trees greater than 4 inches at DBH, except do not cut trees marked with green paint above and below stump height.

#### 2.1.11 - Description of timber note (2/04)

Note that Misc. Species 1 is dead oak, which is designated for cutting.

### 2.2 - Utilization

#### 2.2.2 - Chipping required (2/18)

Payment Unit 2 must be chip harvested to facilitate subsequent planting operations. The Purchaser has the option to produce sawlogs or pulpwood bolts, but the remaining portion of the trees must be chipped and hauled. If market conditions limit the practicality of chipping, tops and slash must be arranged in a way that will not inhibit future planting operations, as directed by the sale administrator. The requirement to retain approximately 1/6 to 1/3 of tree tops and limbs less than four inches in diameter is still applicable (G. C. & R. 2.2).

#### 2.2.3 - Stump heights (4/07)

Stump heights within the Sale Area shall not exceed 6 inches for all trees.

#### 2.2.11 - Chipping restriction (9/14)

If chipping occurs on this sale, then no woody debris present on the ground at the start of the sale may be chipped within Payment Units 1 and 3. In addition, brush or chips may not be stored or stockpiled on-site for more than 30 days.

## 3 - Payments

### 3.3 - Pre-measured Sales

#### 3.3.4 - Dividing payment units (7/14)

Payment Unit(s) 1, 2, and 3 may be divided at the request of the Purchaser and upon approval of the Unit Manager. Dividing Payment Units is a contract modification which requires a Timber Sale Contract Supplement. There will be only one division per Payment Unit.

## 4 - Transportation

### 4.1 - Construction

#### 4.1.3 - Slash and earthen piles (8/04)

Piles or windrows of earth along roads and landings that have been widened or constructed shall be leveled. Slash from road maintenance or construction, including stumps, shall be dispersed throughout the sale, or chipped, utilized or otherwise removed from the sale.

#### 4.1.11 - Permits (2/12)

The Purchaser will secure any necessary Kalkaska County Road permits that may be required.

### 4.2 - Maintenance

#### 4.2.5 - Two wheel drive condition (2/04)

All existing trail roads on and adjacent to the sale area must be passable by two-wheel drive traffic for the duration of the sale.

## 5 - Operations

### 5.1 - Notification

#### 5.1.1 - Pre-sale conference (10/16)

A pre-sale conference on site between the Purchaser and sale administrator is required prior to beginning any operations to determine landing and road locations. The Unit Manager or his/her representative must be contacted at least 5 days in advance to schedule the conference.

### 5.2 - Conduct of Operations

#### 5.2.1 - Slash

##### 5.2.1.8 - Slash height (12/08)

No slash within Payment Units 1 and 3 may exceed 24 inches in height.

#### 5.2.3 - Operating Restrictions

##### 5.2.3.4 - Oak wilt restriction, no exceptions (1/18)

Within Payment Unit(s) 1 and 3, cutting, skidding, hauling within the sale and brushing of access roads to the sale are not permitted during the period of April 15 to July 15. No exceptions will be granted. This is necessary to reduce the spread of oak wilt.

##### 5.2.3.5 - Oak wilt restriction (1/18)

Within Payment Unit(s) 2, unless changed by written agreement, cutting, skidding, hauling within the sale and brushing of access roads to the sale are not permitted during the period of April 15 to July 15. Operations may be allowed if specific steps are taken to prevent damaging uncut oak during the high risk period. Those steps may include completing all road brushing before April 15th and clearing a tree-length buffer along uncut oak cover before April 15th. This is necessary to reduce the spread of oak wilt. For more information, contact the Unit Manager or his/her representative.

#### 5.2.32 - Decking/landing restoration (9/13)

All decking and landing areas must have the surface area restored to a condition equal to or better than before. This is to ensure the proper regeneration of the stand. Wood debris, chips and "cookies" from trimmings must be removed or scattered away from landing and loading areas and may not be windrowed on the edge.

### 5.4 - Soil Protection

#### 5.4.1 - Rutting restriction, general (7/16)

Operations are to cease immediately if equipment and weather conditions result in rutting of roads and/or skid trails which is 12 inches or greater in depth and 50 feet in length. The Unit Manager or his/her representative may restrict hauling and/or skidding if ruts exceed the specified depth. With the Unit Manager or his/her representative's approval, the Purchaser may return to the area when the risk of rutting has decreased.

## 6 - Safety and Fire Prevention

### 6.2 - Signing

#### 6.2.1 - Road posting (9/09)

The Purchaser is responsible for posting and maintaining caution signs on any state or county road prior to beginning operations. The road must be posted at appropriate distances from the sale area to warn of logging activity and truck traffic. Signs must be removed when harvest operations are suspended or completed. The Purchaser will provide these signs.





# TIMBER SALE MAP

This information provided by authority of Part 525, 1994 PA 451, as amended.

Forest Management Unit	County	Mapped By	Date	Page	of
Traverse City Management Unit	Kalkaska	Tom Peterson	3/13/2019	1	1
Township	Range	Section(s) and Subdivision(s)	Scale		
27N	08W	Sec: 31 - SW1/4, N1/2SE, S1/2NE, & S1/2NW	1:15,820		

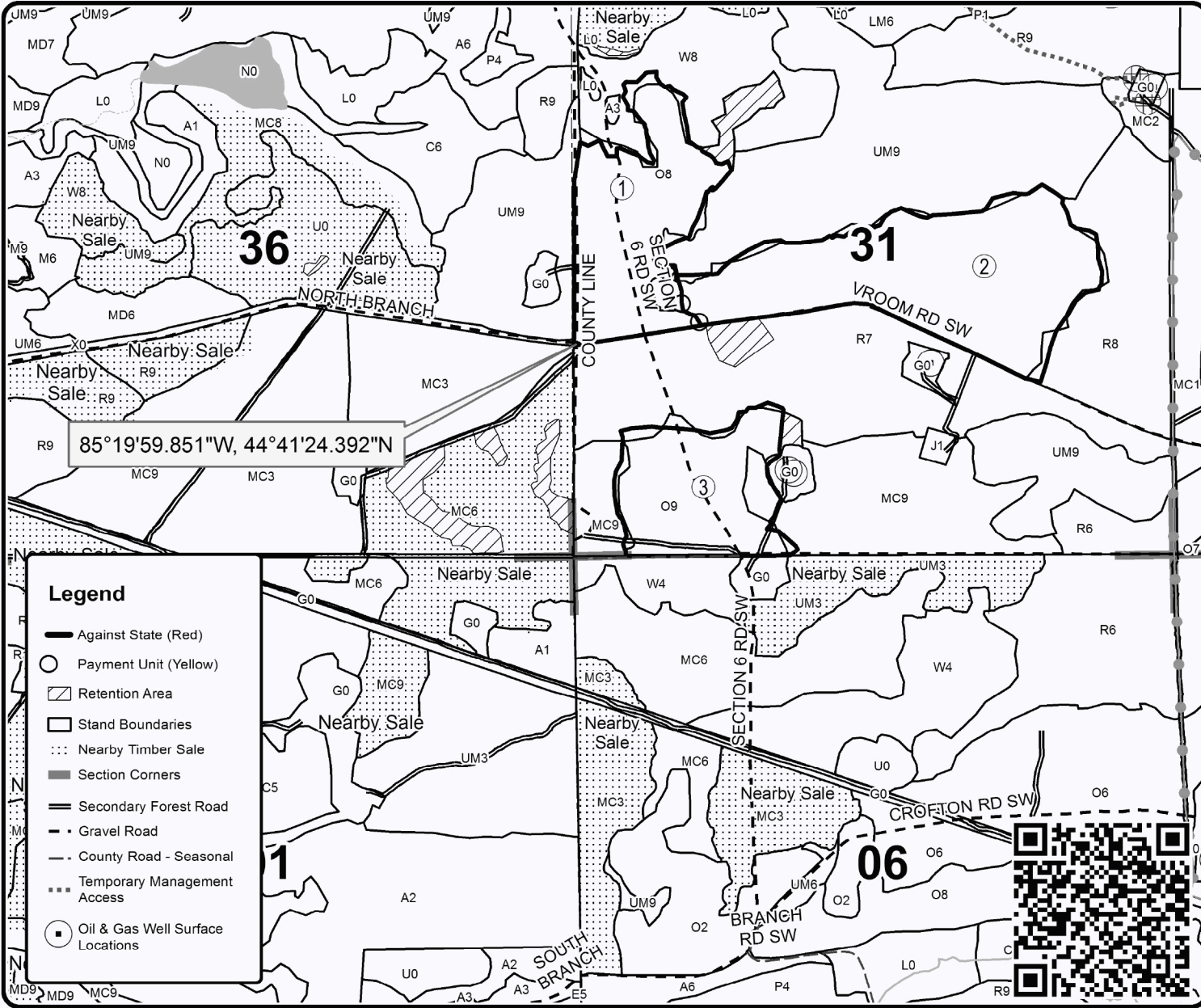
Cover Type				Density	
A = Aspen	H = Hemlock	N = Marsh	U = Upland Brush	0 = Non Stocked	5 = Pole Timber Medium
B = Paper Birch	J = Jack Pine	O = Oak	UM = Upland Mixed	1 = Seedling Sapling Poor	6 = Pole Timber Well
C = Cedar	L = Lowland Brush	P = Lowland Poplar	V = Bog or Marsh	2 = Seedling Sapling Medium	7 = Saw Timber Poor
D = Treed Bog	LM = Lowland Mixed	Q = Mixed Swamp Conifer	W = White Pine	3 = Seedling Sapling Well	8 = Saw Timber Medium
E = Swamp Hdwoods	M = Mpl. Bch, Brch	R = Red Pine	X = Non Stocked	4 = Pole Timber Poor	9 = Saw Timber Well
F = Spruce Fir	MC = Mixed Conifer	S = Black Spruce	Z = Water		
G = Grass	MD = Mixed Deciduous	T = Tamarack			

PU	Acres
1	42.2
2	69.5
3	35.1

## Muzzleloader Mix

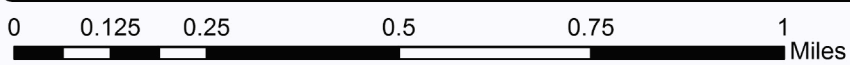
### Compartment 158

146.8 Acres



### Legend

- Against State (Red)
- Payment Unit (Yellow)
- Retention Area
- Stand Boundaries
- Nearby Timber Sale
- Section Corners
- Secondary Forest Road
- Gravel Road
- County Road - Seasonal
- Temporary Management Access
- Oil & Gas Well Surface Locations





## TIMBER SALE INFORMATION

Iceman Hardwoods (61-115-19)  
 T27N, R08W, SEC. 7; T27N, R09W, SEC. 12.  
 Kalkaska County (Advertised Price \$137,847.60)

SALE NOTE: Operations may be restricted in Payment Units 2 and 3 for the 1st week in November due to the Ice Man Mountain Bike Race.

A timber sale contract for this lump sum, sealed bid timber sale will be awarded to the responsible bidder offering the highest sealed bid price. Bids must be at or above the following advertised price for each species:

<u>PRODUCTS &amp; SPECIES</u>	<u>ESTIMATED UNITS*</u>	<u>ADVERTISED PRICE</u>
Sawtimber		
Basswood	81.70 MBF	\$ 100.00 / MBF
Beech	63.00 MBF	\$ 86.00 / MBF
Black Cherry	8.90 MBF	\$ 128.00 / MBF
Red Maple	24.20 MBF	\$ 111.00 / MBF
Red Oak	137.60 MBF	\$ 184.00 / MBF
Red Pine	18.90 MBF	\$ 101.00 / MBF
Sugar Maple	267.00 MBF	\$ 266.00 / MBF
White Pine	16.70 MBF	\$ 43.00 / MBF
Pulpwood		
Mixed Hardwood	1,166.00 Cords	\$ 15.00 / Cord
Quaking Aspen	5.00 Cords	\$ 16.85 / Cord
Red Pine	109.00 Cords	\$ 31.75 / Cord
White Pine	34.00 Cords	\$ 12.70 / Cord

\* The total volume is statistically estimated within plus (+) or minus (-) 15.68 percent. The estimated units are final and not subject to adjustment. Prospective bidders are urged to examine this timber and to make their own estimates of quantity and quality.

**BOND AND PAYMENT SCHEDULE:**

1. A bond in the amount of \$6,892.00 to insure faithful performance of the conditions of the contract will be deposited by the successful bidder within 21 days of the sale award.
2. Cutting in any sale or unit without the required advance payment would be considered a trespass.
3. Total payment must be paid in advance or according to the following schedule:
  - (a) Ten percent (10%) of the sale value must be paid within 21 days of the sale award.
  - (b) The 10% down payment will be credited towards the first unit cut.
  - (c) Payment for each of the following units must be made before cutting begins in that unit:
 

PAYMENT UNIT NUMBER	PERCENT OF TOTAL SALE VALUE
01	49.1%
02	23.4%
03	27.5%
4. If no cutting takes place, the 10% down payment will not be refunded.
5. Operations on the contract issued will terminate on 03/31/2022.

**Description of Timber by Payment Unit (PU)**

PU	MARKET GROUP	PRODUCT	QUANTITY	UNIT	ACRES	ADVERTISE PRICE	
1	Basswood	Sawtimber	48.2	MBF	89.0	\$67,571.00	
	Beech		19.6	MBF			
	Black Cherry		1.6	MBF			
	Red Maple		19.9	MBF			
	Red Oak		110.9	MBF			
	Red Pine		14.4	MBF			
	Sugar Maple		91.0	MBF			
	White Pine		8.4	MBF			
	Mixed Hardwood		Pulpwood	616.0			Cords
	<i>Basswood</i>			63.0			<i>Cords</i>
	<i>Beech</i>	52.0		<i>Cords</i>			
	<i>Black Cherry</i>	6.0		<i>Cords</i>			
	<i>Ironwood</i>	3.0		<i>Cords</i>			
	<i>Misc. Species 2</i>	10.0		<i>Cords</i>			
	<i>Red Maple</i>	58.0		<i>Cords</i>			
	<i>Red Oak</i>	176.0		<i>Cords</i>			
	<i>Sugar Maple</i>	212.0		<i>Cords</i>			
	<i>White Ash</i>	36.0		<i>Cords</i>			
	Red Pine	84.0	Cords				
	White Pine	25.0	Cords				
2	Basswood	Sawtimber	21.6	MBF	39.4	\$32,324.35	
	Beech		23.2	MBF			
	Black Cherry		3.6	MBF			
	Red Oak		12.0	MBF			
	Red Pine		4.5	MBF			
	Sugar Maple		77.4	MBF			
	White Pine		1.4	MBF			
	Mixed Hardwood		Pulpwood	236.0			Cords
	<i>Basswood</i>	19.0		<i>Cords</i>			
	<i>Beech</i>	51.0		<i>Cords</i>			
	<i>Black Cherry</i>	4.0		<i>Cords</i>			
	<i>Ironwood</i>	1.0		<i>Cords</i>			
	<i>Misc. Species 2</i>	3.0		<i>Cords</i>			
	<i>Red Oak</i>	22.0		<i>Cords</i>			
	<i>Sugar Maple</i>	134.0		<i>Cords</i>			
	<i>White Ash</i>	2.0		<i>Cords</i>			
	Red Pine	25.0		Cords			
	White Pine	5.0	Cords				
3	Basswood	Sawtimber	11.9	MBF	43.0	\$37,952.25	
	Beech		20.2	MBF			
	Black Cherry		3.7	MBF			
	Red Maple		4.3	MBF			
	Red Oak		14.7	MBF			
	Sugar Maple		98.6	MBF			
	White Pine		6.9	MBF			
	Mixed Hardwood		Pulpwood	314.0			Cords
	<i>Basswood</i>	13.0		<i>Cords</i>			
	<i>Beech</i>	53.0		<i>Cords</i>			
	<i>Black Cherry</i>	4.0		<i>Cords</i>			
	<i>Ironwood</i>	3.0		<i>Cords</i>			
	<i>Misc. Species 2</i>	2.0		<i>Cords</i>			
	<i>Red Maple</i>	7.0		<i>Cords</i>			
	<i>Red Oak</i>	21.0		<i>Cords</i>			
	<i>Sugar Maple</i>	209.0		<i>Cords</i>			
	<i>White Ash</i>	2.0		<i>Cords</i>			
	Quaking Aspen	5.0	Cords				

**Description of Timber by Payment Unit (PU), con't**

PU	MARKET GROUP	PRODUCT	QUANTITY	UNIT	ACRES	ADVERTISE PRICE
3 con't	White Pine	Pulpwood	4.0	Cords		
TOTAL:			618.0	MBF		
TOTAL:			1,314.0	Cords		

# Sale Specific Conditions & Requirements

**Sale Name: Iceman Hardwoods**

**Sale Number: 61-115-19 Seq#: 1**

## 1 - Sale Area

### 1.2 - Boundaries

#### 1.2.1 - Painted boundaries (1/14)

The sale boundary and Payment Unit boundaries are marked and identified by blue, red and yellow paint. Exterior sale boundary lines against private property are marked with blue paint. Exterior sale boundary lines against state are marked with red paint. Interior Payment Unit boundaries are marked with yellow paint. The painted boundary line trees are not Included Timber and are to be protected unless marked with orange paint. There are also small clear cut patches that are designated by pink paint. The pink boundary trees are not Included Timber and are to be protected.

## 2 - Timber Specifications

### 2.1 - Included Timber

#### 2.1.3 - Cut tree marked unit(s) (12/08)

Within Payment Unit(s) 1, 2, and 3, all trees are designated for cutting when marked with orange paint above and below stump height, regardless of merchantability. In addition, cut all aspen, beech, ash and ironwood, unless they are marked with an orange 'X'. Also, within the pink painted patch cut areas, all trees four (4) feet or taller are designated for cutting.

#### 2.1.11 - Description of timber note (2/04)

Note that Misc. Species 2 = dead oak, which is designated for cutting.

#### 2.1.16 - Timber along county or forest roads (6/14)

Cut and remove all standing trees that are 4.6 inches or greater at DBH within 33 feet of the center line of county road Haynes Lake Road, starting at the intersection of Dockery Road and Haynes Lake Road and going 1 mile to the west to where Haynes Lake Road intersects the blue line.

### 2.2 - Utilization

#### 2.2.4 - Skidding length (2/14)

Skidding of lengths over 17 feet is permissible as long as the timber sale administrator approves the method and machinery used. If at any point damage exceeds specification 3.4.1, all of the remaining wood must be skid in lengths less than 17 feet.

## 3 - Payments

### 3.3 - Pre-measured Sales

#### 3.3.4 - Dividing payment units (7/14)

Payment Unit(s) with a value greater than \$15,000 may be divided at the request of the Purchaser and upon approval of the Unit Manager. Dividing Payment Units is a contract modification which requires a Timber Sale Contract Supplement. There will be only one division per Payment Unit.

### 3.4 - Damaged Timber

#### 3.4.1 - Damaged timber (6/14)

General Condition and Requirement 3.4 Damaged Timber, defines liquidated damages for undesignated live merchantable trees which are cut or injured.

No damage is acceptable to merchantable trees. Within the sale area, if more than 10% of trees (> 4.5" DBH) within a specified area of the sale are damaged, liquidated damages will be assessed for all trees damaged. Rates will be in accordance with General Condition and Requirement 3.4 Damaged Timber.

## 4 - Transportation

### 4.1 - Construction

#### 4.1.6 - Road construction (1/09)

Construction of new roads or improvements of existing roads shall be done in such a way as to minimize the environmental and visual impacts. Merchantable trees shall be cut and utilized unless otherwise directed. Non-merchantable trees shall be severed and laid flat on the ground. Slash shall be scattered, and not left in windrows and kept a minimum of 10 feet back from the road edge. Stumps shall be set upright, not left on edge, and be moved at least 10 feet away from the road edge. Disturbed soil shall be feathered into the woods and not left in berms or windrows.

#### 4.1.7 - Road closure (10/11)

All new roads built into the sale must be blocked to vehicle traffic within 30 days of completion of hauling. Overgrown roads that are reopened shall be considered new roads. In general, this will require constructing double earthen berms at strategic locations. These roads must be rendered impassable to cars and trucks. Contact the sale administrator for specific details of design and placement.

### 4.2 - Maintenance

#### 4.2.1 - Hauling restriction (12/08)

Hauling may be restricted on forest roads by the Unit Manager or his/her representative. The restriction may occur (weather dependent) during the first week of November on forest roads within Payment Units 2 and 3. The restriction is due to a mountain biking event that passes through the sale area.

## 5 - Operations

### 5.1 - Notification

#### 5.1.6 - Utility R.O.W. (1/15)

It is the responsibility of the Purchaser to obtain permission from the utility company to utilize the power line R.O.W. for operations. Contact Kara Plachta with Consumers Energy at 517-499-5762. Note that the power line is private property and requires permission for use of this corridor.

### 5.2 - Conduct of Operations

#### 5.2.1 - Slash

##### 5.2.1.2 - Slash Removal

###### 5.2.1.2.1 - Slash removal, right-of-way (9/16)

All slash must be removed at least 10 feet from the cleared right-of-way of forest roads.

###### 5.2.1.8 - Slash height (12/08)

No slash or tree tops may exceed 36 inches in height.

#### 5.2.3 - Operating Restrictions

##### 5.2.3.1 - Operating restrictions (9/11)

Within Payment Unit(s) 2 and 3, cutting, skidding, and hauling may not be permitted during the first week in November. This restriction is because of the Ice Man Mountain Bike Race that takes place the first Saturday in November.

##### 5.2.3.3 - Bark slippage restriction (3/09)

Within Payment Unit(s) 1, 2, and 3, cutting and skidding are not permitted during the period of April 15 to July 15. This restriction is because of bark slippage and oak wilt.

#### 5.2.32 - Decking/landing restoration (9/13)

All decking and landing areas must have the surface area restored to a condition equal to or better than before. This is to ensure the proper regeneration of the stand. Wood debris, chips and "cookies" from trimmings must be removed or scattered away from landing and loading areas and may not be windrowed on the edge.

#### 5.2.38 - No decking against live trees (2/04)

Cut products may not be decked against unmarked or designated leave trees.

### 5.4 - Soil Protection

#### 5.4.1 - Rutting restriction, general (7/16)

Operations are to cease immediately if equipment and weather conditions result in rutting of roads and/or skid trails which is 12 inches or greater in depth and 50 feet in length. The Unit Manager or his/her representative may restrict hauling and/or

skidding if ruts exceed the specified depth. With the Unit Manager or his/her representative's approval, the Purchaser may return to the area when the risk of rutting has decreased.

#### 5.4.2 - Skid trails (2/04)

Skid trails up and down slopes should be avoided. If however this is unavoidable, these trails will be left in a non-erodible condition using water bars, logs, and slash. Placing of slash on these skid trails while logging is ongoing may alleviate need for any further action. At the direction of the sale administrator, seed, fertilizer, and mulch may also be required.

#### 5.8 - Protection of Endangered Species

##### 5.8.5 - Protection of raptor nests (3/13)

All trees with raptor nests will be protected if found during harvesting operations. Notification will be made to the Unit Manager or his/her representative who will notify the Wildlife Biologist so an on-site evaluation and recommendation can be made, if necessary.

### **6 - Safety and Fire Prevention**

#### 6.2 - Signing

##### 6.2.1 - Road posting (9/09)

The Purchaser is responsible for posting and maintaining caution signs on roads used for hauling prior to beginning operations. The road must be posted at appropriate distances from the sale area to warn of logging activity and truck traffic. Signs must be removed when harvest operations are suspended or completed. The Purchaser will provide these signs.





Sale Number	Year
61 - 115	19

# TIMBER SALE MAP

This information provided by authority of Part 525, 1994 PA 451, as amended.

Forest Management Unit Traverse City	County Kalkaska	Mapped By Crigier	Date 02/14/2019	Page 1	of 1
Township 27N	Range 08W	Section(s) and Subdivision(s) Sec 7: SW1/4, N1/2SE, S1/2NE, SENW	Scale 1:15,840		

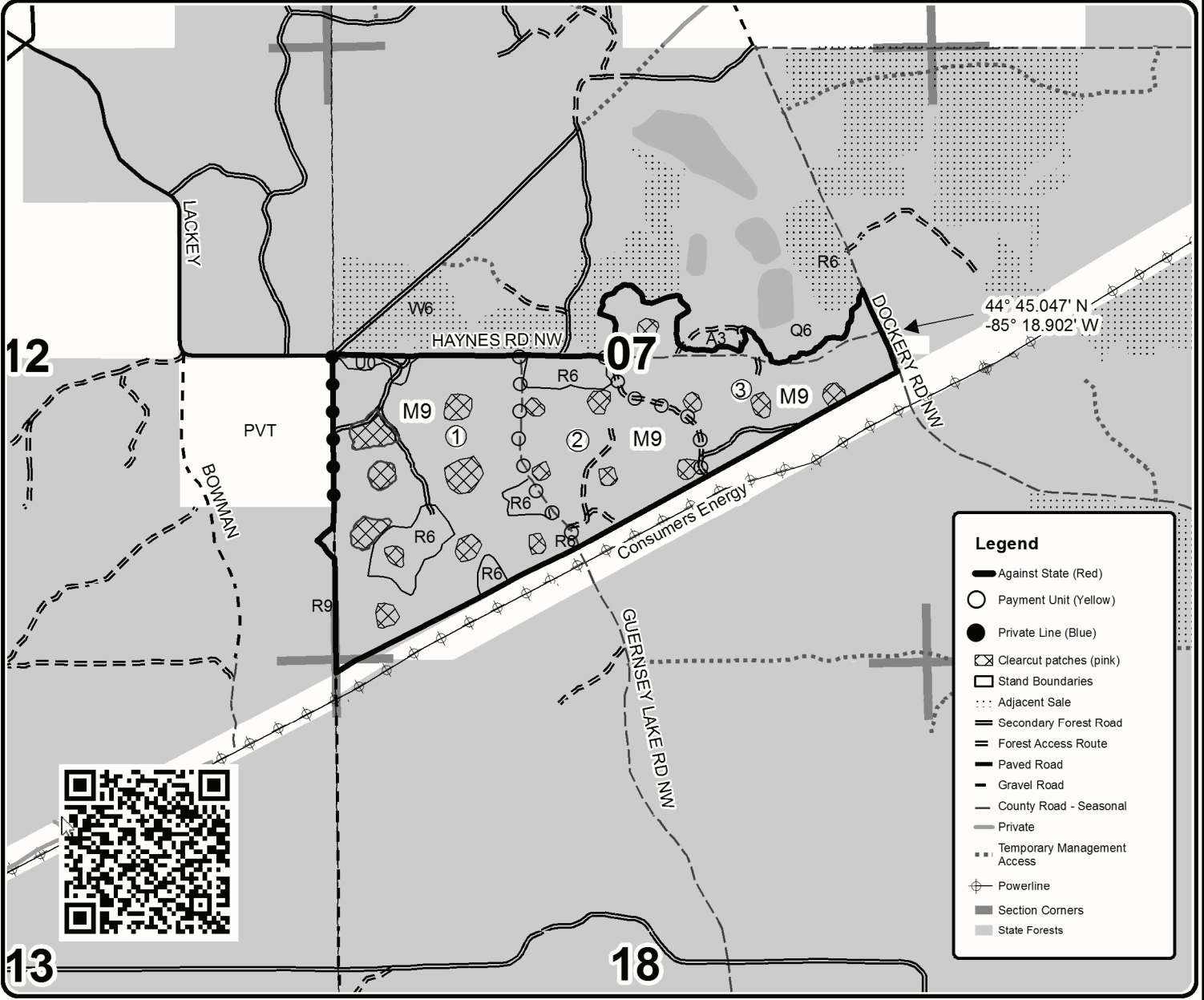
Cover Type				Density	
A = Aspen	H = Hemlock	N = Marsh	U = Upland Brush	0 = Non Stocked	5 = Pole Timber Medium
B = Paper Birch	J = Jack Pine	O = Oak	UM = Upland Mixed	1 = Seedling Sapling Poor	6 = Pole Timber Well
C = Cedar	L = Lowland Brush	P = Lowland Poplar	V = Bog or Marsh	2 = Seedling Sapling Medium	7 = Saw Timber Poor
D = Treed Bog	LM = Lowland Mixed	Q = Mixed Swamp Conifer	W = White Pine	3 = Seedling Sapling Well	8 = Saw Timber Medium
E = Swamp Hdwoods	M = Mpl. Bch, Brch	R = Red Pine	X = Non Stocked	4 = Pole Timber Poor	9 = Saw Timber Well
F = Spruce Fir	MC = Mixed Conifer	S = Black Spruce	Z = Water		
G = Grass	MD = Mixed Deciduous	T = Tamarack			

PU	Acres
1	89.0
2	39.4
3	43.0

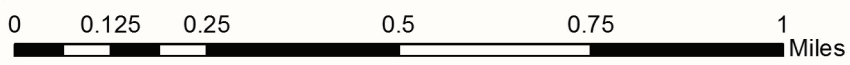
## Iceman Hardwoods

### Compartment 266

171.4 Acres



Legend	
	Against State (Red)
	Payment Unit (Yellow)
	Private Line (Blue)
	Clearcut patches (pink)
	Stand Boundaries
	Adjacent Sale
	Secondary Forest Road
	Forest Access Route
	Paved Road
	Gravel Road
	County Road - Seasonal
	Private
	Temporary Management Access
	Powerline
	Section Corners
	State Forests





## TIMBER SALE INFORMATION

### 151 Frozen Naples East (61-117-19)

T25N, R06W, SEC. 25; T25N, R06W, SEC. 35; T25N, R06W, SEC. 36.  
Kalkaska County (Advertised Price \$136,770.20)

SALE NOTE: Payment Unit 2 must be chipped to facilitate future planting operations. Also, note that Payment Units 1, 3, 4, 5, and 6 are subject to operating restrictions from April 15 to July 15 due to oak wilt concerns and there will be no exceptions.

A recreation site such as a trail, pathway, or campground is within the sale area or the vicinity. Certain restrictions/specifications may be applicable including time restrictions.

A timber sale contract for this lump sum, sealed bid timber sale will be awarded to the responsible bidder offering the highest sealed bid price. Bids must be at or above the following advertised price for each species:

<u>PRODUCTS &amp; SPECIES</u>	<u>ESTIMATED UNITS*</u>		<u>ADVERTISED PRICE</u>
<b>Sawtimber</b>			
Mixed Aspen	187.30	MBF	\$ 120.00 / MBF
Red Maple	15.90	MBF	\$ 119.00 / MBF
Red Oak	144.20	MBF	\$ 197.00 / MBF
Red Pine	300.80	MBF	\$ 108.00 / MBF
White Oak	3.80	MBF	\$ 42.00 / MBF
White Pine	44.20	MBF	\$ 47.00 / MBF
<b>Pulpwood</b>			
Jack Pine	4.00	Cords	\$ 11.20 / Cord
Mixed Aspen	1,403.00	Cords	\$ 18.10 / Cord
Mixed Hardwood	378.00	Cords	\$ 16.05 / Cord
Mixed Oak	607.00	Cords	\$ 11.50 / Cord
Red Pine	246.00	Cords	\$ 34.00 / Cord
White Pine	178.00	Cords	\$ 13.60 / Cord

\* The total volume is statistically estimated within plus (+) or minus (-) 13.00 percent. The estimated units are final and not subject to adjustment. Prospective bidders are urged to examine this timber and to make their own estimates of quantity and quality.

### **BOND AND PAYMENT SCHEDULE:**

1. A bond in the amount of \$13,677.00 to insure faithful performance of the conditions of the contract will be deposited by the successful bidder within 21 days of the sale award.
2. Cutting in any sale or unit without the required advance payment would be considered a trespass.
3. Total payment must be paid in advance or according to the following schedule:
  - (a) Ten percent (10%) of the sale value must be paid within 21 days of the sale award.
  - (b) The 10% down payment will be credited towards the first unit cut.
  - (c) Payment for each of the following units must be made before cutting begins in that unit:

PAYMENT UNIT NUMBER	PERCENT OF TOTAL SALE VALUE
01	4.3%
02	34.3%
03	18.8%
04	3.7%
05	1.1%
06	37.8%

4. If no cutting takes place, the 10% down payment will not be refunded.
5. Operations on the contract issued will terminate on 03/31/2022.

**Description of Timber by Payment Unit (PU)**

PU	MARKET GROUP	PRODUCT	QUANTITY	UNIT	ACRES	ADVERTISE PRICE
1	Red Oak	Sawtimber	1.0	MBF	36.5	\$5,884.80
	Red Pine		37.5	MBF		
	White Pine		9.8	MBF		
	Mixed Hardwood		4.0	Cords		
	<i>Black Cherry</i>		4.0	<i>Cords</i>		
	Mixed Oak		14.0	Cords		
	<i>Red Oak</i>		7.0	<i>Cords</i>		
	<i>White Oak</i>		7.0	<i>Cords</i>		
	Red Pine		20.0	Cords		
	White Pine		20.0	Cords		
2	Red Oak	Sawtimber	85.1	MBF	45.1	\$46,954.85
	Red Pine		188.5	MBF		
	White Oak		3.8	MBF		
	White Pine		18.2	MBF		
	Mixed Hardwood		9.0	Cords		
	<i>Black Cherry</i>		3.0	<i>Cords</i>		
	<i>Red Maple</i>		6.0	<i>Cords</i>		
	Mixed Oak		193.0	Cords		
	<i>Red Oak</i>		184.0	<i>Cords</i>		
	<i>White Oak</i>		9.0	<i>Cords</i>		
	Red Pine		169.0	Cords		
	White Pine		52.0	Cords		
	3		Mixed Aspen	Sawtimber		
<i>Quaking Aspen</i>		3.9	<i>MBF</i>			
Red Maple		2.1	MBF			
Red Oak		14.7	MBF			
Red Pine		74.1	MBF			
White Pine		16.0	MBF			
Jack Pine		3.0	Cords			
Mixed Aspen		374.0	Cords			
<i>B. T. Aspen</i>		2.0	<i>Cords</i>			
<i>Quaking Aspen</i>		372.0	<i>Cords</i>			
Mixed Hardwood		145.0	Cords			
<i>Black Cherry</i>		39.0	<i>Cords</i>			
<i>Red Maple</i>		106.0	<i>Cords</i>			
Mixed Oak		140.0	Cords			
<i>Red Oak</i>		127.0	<i>Cords</i>			
<i>White Oak</i>		13.0	<i>Cords</i>			
Red Pine		57.0	Cords			
White Pine	53.0	Cords				
4	Mixed Aspen	Sawtimber	3.5	MBF	17.4	\$5,061.60
	<i>Quaking Aspen</i>		3.5	<i>MBF</i>		
	Red Maple		0.6	MBF		
	Red Oak		1.1	MBF		
	Red Pine		0.7	MBF		
	White Pine		0.2	MBF		
	Jack Pine		1.0	Cords		
	Mixed Aspen		200.0	Cords		
	<i>B. T. Aspen</i>		1.0	<i>Cords</i>		
	<i>Quaking Aspen</i>		199.0	<i>Cords</i>		
	Mixed Hardwood		30.0	Cords		
	<i>Black Cherry</i>		11.0	<i>Cords</i>		
	<i>Red Maple</i>		19.0	<i>Cords</i>		
	Mixed Oak		10.0	Cords		
	<i>Red Oak</i>		10.0	<i>Cords</i>		
White Pine	3.0	Cords				

**Description of Timber by Payment Unit (PU), con't**

PU	MARKET GROUP	PRODUCT	QUANTITY	UNIT	ACRES	ADVERTISE PRICE				
5	Mixed Aspen	Pulpwood	67.0	Cords	9.6	\$1,453.45				
	<i>Quaking Aspen</i>		67.0	<i>Cords</i>						
	Mixed Hardwood		15.0	Cords						
	<i>Black Cherry</i>		13.0	<i>Cords</i>						
	<i>Red Maple</i>		2.0	<i>Cords</i>						
6	Mixed Aspen	Sawtimber	179.9	MBF	50.1	\$51,647.85				
	<i>B. T. Aspen</i>		136.9	<i>MBF</i>						
	<i>Quaking Aspen</i>		43.0	<i>MBF</i>						
	Red Maple		13.2	MBF						
	Red Oak		42.3	MBF						
	Mixed Aspen	Pulpwood	762.0	Cords						
	<i>B. T. Aspen</i>		500.0	<i>Cords</i>						
	<i>Quaking Aspen</i>		262.0	<i>Cords</i>						
	Mixed Hardwood		175.0	Cords						
	<i>Black Cherry</i>		11.0	<i>Cords</i>						
	<i>Red Maple</i>		164.0	<i>Cords</i>						
	Mixed Oak		250.0	Cords						
	<i>Red Oak</i>		240.0	<i>Cords</i>						
	<i>White Oak</i>		10.0	<i>Cords</i>						
	White Pine		50.0	Cords						
	TOTAL:			696.2			MBF			
	TOTAL:			2,816.0			Cords			

## Sale Specific Conditions & Requirements

**Sale Name: 151 Frozen Naples East**

**Sale Number: 61-117-19 Seq#: 1**

### 1 - Sale Area

#### 1.2 - Boundaries

##### 1.2.1 - Painted boundaries (1/14)

The sale boundary and Payment Unit boundaries are marked and identified by red and yellow paint, along with roads. Exterior sale boundary lines against state are marked with red paint. The interior Payment Unit boundary between Payment Units 1 and 2 is marked with yellow paint; other Payment Unit boundaries are unpainted and designated by roads (see Timber Sale Map). The painted boundary and Payment Unit boundary trees are not Included Timber and are to be protected.

### 2 - Timber Specifications

#### 2.1 - Included Timber

##### 2.1.1 - Clearcut unit(s) with unmerchantable trees (6/14)

Within Payment Unit(s) 2, cut all trees that are one (1) inch or more at DBH.

Within Payment Unit(s) 6, cut all trees that are two (2) inches or more at DBH, except do not cut white pine less than 6 inches at DBH or trees that are marked with green paint above and below stump height.

##### 2.1.7 - Leave tree marked unit(s) (6/14)

Within Payment Unit(s) 1, 3, 4, and 5, cut all trees that are two (2) inches or more at DBH, except do not cut white pine less than 6 inches at DBH, red oak less than 6 inches at DBH, all white oak, or any trees marked with green paint above and below stump height.

#### 2.2 - Utilization

##### 2.2.2 - Chipping required (2/18)

Payment Unit 2 must be chip harvested to facilitate subsequent planting operations. Products may be produced as roundwood and forwarded to decking areas in final product length, but the tops must be left intact and skidded to the landing for chipping in order to minimize the amount of residual slash. A chipping exemption may be obtained if proposed operations are determined to be suitable for planting by the Sale Administrator. This exemption must be granted in writing. The requirement to retain approximately 1/6 to 1/3 of tree tops and limbs less than four inches in diameter is still applicable (G. C. & R. 2.2).

##### 2.2.3 - Stump heights (4/07)

Stump heights within Payment Unit 2 shall not exceed 6 inches for all trees. This is in order to facilitate planting operations. Stump heights within other Payment Units shall not exceed 12 inches for trees greater than 10 inches DBH and 4 inches for trees smaller than 10 inches DBH.

### 3 - Payments

#### 3.3 - Pre-measured Sales

##### 3.3.4 - Dividing payment units (7/14)

Payment Unit(s) greater than \$20,000 may be divided at the request of the Purchaser and upon approval of the Unit Manager. Dividing Payment Units is a contract modification which requires a Timber Sale Contract Supplement. There will be only one division per Payment Unit.

### 4 - Transportation

#### 4.1 - Construction

##### 4.1.6 - Road construction (1/09)

Construction of new roads or improvements of existing roads shall be done in such a way as to minimize the environmental and visual impacts. Merchantable trees shall be cut and utilized unless otherwise directed. Non-merchantable trees shall be severed and laid flat on the ground. Slash shall be scattered, and not left in windrows and kept a minimum of 10 feet back from the road edge. Stumps shall be set upright, not left on edge, and be moved at least 10 feet away from the road edge.

Disturbed soil shall be feathered into the woods and not left in berms or windrows.

#### 4.1.7 - Road closure (10/11)

All new roads built into the sale must be blocked to vehicle traffic within 30 days of completion of hauling. Overgrown roads that are reopened shall be considered new roads. In general, this will require constructing a four (4') foot high berm of stumps and logs covered with earth. These roads must be rendered impassable to cars, trucks and ORVs. Temporary berms may be required if no sale activity occurs for 30 or more consecutive days. Contact the sale administrator for specific details of design and placement.

## 5 - Operations

### 5.1 - Notification

#### 5.1.1 - Pre-sale conference (10/16)

A pre-sale conference between the Purchaser and sale administrator is required prior to beginning any operations to determine landing and road locations. The Sale Administrator must be contacted at least 3 days in advance to schedule the conference.

#### 5.1.3 - Well heads and natural gas pipelines (11/15)

The Purchaser is responsible for contacting the gas or pipeline company 2 weeks prior to operating equipment in the vicinity of well heads or natural gas pipelines. The pipelines should be inactive, but this must be confirmed with DTE at (800)363-9541.

#### 5.1.4 - Post-sale conference (10/16)

A post-sale conference on site between the Purchaser and sale administrator is required 3 days prior to the completion of active logging operations to determine clean-up and repair of landings, road edges, and the fulfillment of other contract specifications.

### 5.2 - Conduct of Operations

#### 5.2.1 - Slash

##### 5.2.1.8 - Slash height (12/08)

No slash or tree tops may exceed 36 inches in height.

#### 5.2.2 - Hazard Trees/Snags

##### 5.2.2.1 - Den trees (10/16)

Obvious hollow and/or den trees shall be protected and left standing unless they are a safety hazard.

#### 5.2.3 - Operating Restrictions

##### 5.2.3.4 - Oak wilt restriction, no exceptions (1/18)

Within Payment Units 1, 3, 4, 5, and 6, cutting, skidding, hauling within the sale and brushing of access roads to the sale are not permitted during the period of April 15 to July 15. No exceptions will be granted. This is necessary to reduce the spread of oak wilt.

##### 5.2.3.5 - Oak wilt restriction (1/18)

Within Payment Unit 2, unless changed by written agreement, cutting, skidding, hauling within the sale and brushing of access roads to the sale are not permitted during the period of April 15 to July 15. Operations may be allowed if specific steps are taken to prevent damaging uncut oak during the high risk period. Those steps may include completing all road brushing before April 15th and clearing a tree-length buffer along uncut oak cover before April 15th. This is necessary to reduce the spread of oak wilt. For more information, contact the Unit Manager or his/her representative.

#### 5.2.32 - Decking/landing restoration (9/13)

All decking and landing areas must have the surface area restored to a condition equal to or better than before. This is to ensure the proper regeneration of the stand. Wood debris, chips and "cookies" from trimmings must be removed or scattered away from landing and loading areas and may not be windrowed on the edge.

#### 5.2.38 - No decking against live trees (2/04)

Cut products may not be decked against unmarked or designated leave trees.

#### 5.2.39 - ORV trail/route protection (4/18)

There are motorcycle trails and an ORV route shown on the Timber Sale Map. Do not cut trees or damage posts with ORV markers. All stumps within 5 feet of the trails must be cut flush with the ground. Maintain a 10-foot wide slash, debris, and rut-free zone daily using the trails as the centerline. Do not run equipment down the motorcycle trail or route.

#### 5.4 - Soil Protection

##### 5.4.1 - Rutting restriction, general (7/16)

Operations are to cease immediately if equipment and weather conditions result in rutting of roads and/or skid trails which is 12 inches or greater in depth and 50 feet in length. The Unit Manager or his/her representative may restrict hauling and/or skidding if ruts exceed the specified depth. With the Unit Manager or his/her representative's approval, the Purchaser may return to the area when the risk of rutting has decreased.

### 6 - Safety and Fire Prevention

#### 6.2 - Signing

##### 6.2.1 - Road posting (9/09)

The Purchaser is responsible for posting and maintaining caution signs on Naples Road, County Line Road, and the forest road that is a designated ORV route prior to beginning operations. The road must be posted 200 feet from both ends of the sale area to warn of logging activity and truck traffic. Signs must be removed when harvest operations are suspended or completed. The Purchaser will provide these signs.

##### 6.2.3 - Recreational trail posting (2/10)

The Purchaser is responsible for posting and maintaining caution signs on the motorcycle trail prior to beginning operations. The trail must be posted at appropriate distances from the sale area to warn of logging activity and truck traffic at both ends of the trail. Signs must be removed when harvest operations are suspended or completed. The Purchaser will provide these signs.

### 8 - Performance and Settlement

#### 8.3 - Uncompleted or Terminated Contracts

##### 8.3.1 - Completion of contract, chipping (1/16)

In addition to cutting, all chipping must be completed by the contract expiration date. If chipping has not been completed, an extension fee or damages may be charged per General Condition & Requirement 7.2 and 8.3.





# TIMBER SALE MAP

This information provided by authority of Part 525, 1994 PA 451, as amended.

Forest Management Unit Traverse City FMU	County Kalkaska	Mapped By Armstrong	Date 5/24/2019	Page 1	of 1
Township 25N	Range 6W	Section(s) and Subdivision(s) Sec. 25: SESW,SWSE; Sec. 35: E1/2SE; Sec. 36: N1/2NW,SENW,NE,N1/2SW,SWSW,SE	Scale 1:15,840		

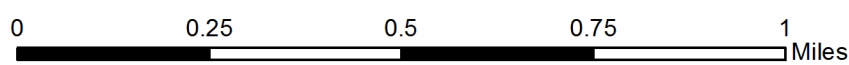
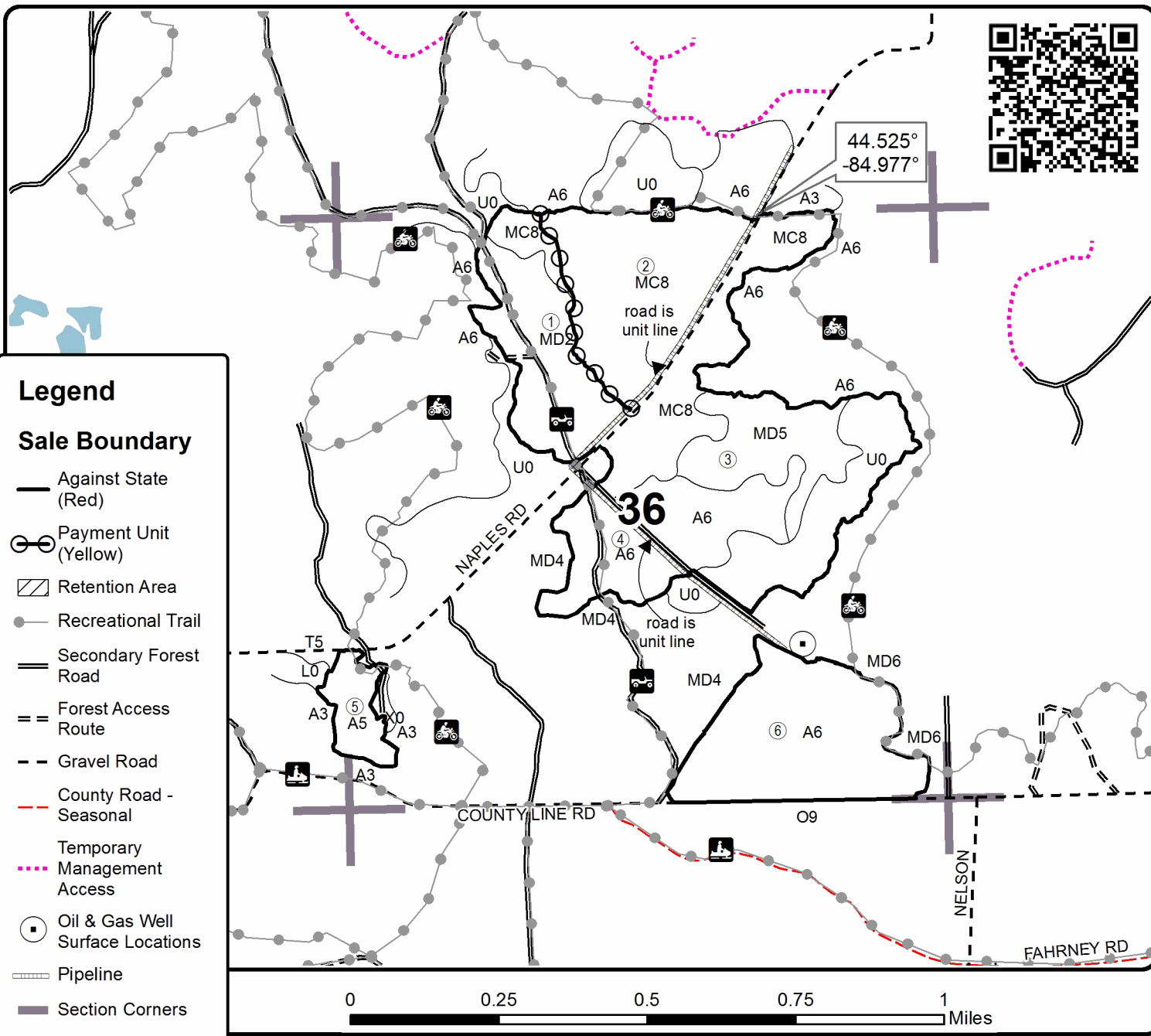
Cover Type				Density	
A = Aspen	H = Hemlock	N = Marsh	U = Upland Brush	0 = Non Stocked	5 = Pole Timber Medium
B = Paper Birch	J = Jack Pine	O = Oak	UM = Upland Mixed	1 = Seedling Sapling Poor	6 = Pole Timber Well
C = Cedar	L = Lowland Brush	P = Lowland Poplar	V = Bog or Marsh	2 = Seedling Sapling Medium	7 = Saw Timber Poor
D = Treed Bog	LM = Lowland Mixed	Q = Mixed Swamp Conifer	W = White Pine	3 = Seedling Sapling Well	8 = Saw Timber Medium
E = Swamp Hdwoods	M = Mpl, Bch, Brch	R = Red Pine	X = Non Stocked	4 = Pole Timber Poor	9 = Saw Timber Well
F = Spruce Fir	MC = Mixed Conifer	S = Black Spruce	Z = Water		
G = Grass	MD = Mixed Deciduous	T = Tamarack			

Unit	Acres	Unit	Acres
1	36.5	4	17.4
2	45.1	5	9.6
3	98.1	6	50.1

**151 Frozen Naples East**  
**Compartment 151**  
**256.8 acres**



44.525°  
-84.977°





**TIMBER SALE INFORMATION**

White to Red Pine (61-121-19)

T27N, R08W, SEC. 7.

Kalkaska County (Advertised Price \$40,463.65)

SALE NOTE: Payment Unit 3 is on some hilly terrain.

A timber sale contract for this lump sum, sealed bid timber sale will be awarded to the responsible bidder offering the highest sealed bid price. Bids must be at or above the following advertised price for each species:

<u>PRODUCTS &amp; SPECIES</u>	<u>ESTIMATED UNITS*</u>	<u>ADVERTISED PRICE</u>
<b>Sawtimber</b>		
Black Cherry	2.50 MBF	\$ 138.00 / MBF
Red Oak	9.30 MBF	\$ 197.00 / MBF
Red Pine	15.10 MBF	\$ 108.00 / MBF
White Pine	404.00 MBF	\$ 47.00 / MBF
<b>Pulpwood</b>		
Black Cherry	13.00 Cords	\$ 16.05 / Cord
Red Oak	21.00 Cords	\$ 11.50 / Cord
Red Pine	50.00 Cords	\$ 34.00 / Cord
White Pine	1,141.00 Cords	\$ 13.60 / Cord

\* The total volume is statistically estimated within plus (+) or minus (-) 15.26 percent. The estimated units are final and not subject to adjustment. Prospective bidders are urged to examine this timber and to make their own estimates of quantity and quality.

**BOND AND PAYMENT SCHEDULE:**

- A bond in the amount of \$2,023.00 to insure faithful performance of the conditions of the contract will be deposited by the successful bidder within 21 days of the sale award.
- Cutting in any sale or unit without the required advance payment would be considered a trespass.
- Total payment must be paid in advance or according to the following schedule:
  - Ten percent (10%) of the sale value must be paid within 21 days of the sale award.
  - The 10% down payment will be credited towards the first unit cut.
  - Payment for each of the following units must be made before cutting begins in that unit:
 

PAYMENT UNIT NUMBER	PERCENT OF TOTAL SALE VALUE
01	8.5%
02	74.4%
03	17.1%
- If no cutting takes place, the 10% down payment will not be refunded.
- Operations on the contract issued will terminate on 09/30/2021.

**Description of Timber by Payment Unit (PU)**

PU	MARKET GROUP	PRODUCT	QUANTITY	UNIT	ACRES	ADVERTISE PRICE
1	Red Pine	Sawtimber	15.1	MBF	7.6	\$3,437.90
	White Pine		1.7	MBF		
	Red Pine	Pulpwood	50.0	Cords		
	White Pine		2.0	Cords		
2	Black Cherry	Sawtimber	2.5	MBF	29.6	\$30,108.75
	Red Oak		9.3	MBF		
	White Pine		318.5	MBF		
	Black Cherry	Pulpwood	13.0	Cords		
	Red Oak		21.0	Cords		
	White Pine		920.0	Cords		
3	White Pine	Sawtimber	83.8	MBF	15.1	\$6,917.00
	White Pine	Pulpwood	219.0	Cords		
TOTAL:			430.9	MBF		
TOTAL:			1,225.0	Cords		

## Sale Specific Conditions & Requirements

**Sale Name: White to Red Pine**

**Sale Number: 61-121-19 Seq#: 1**

### 1 - Sale Area

#### 1.2 - Boundaries

##### 1.2.1 - Painted boundaries (1/14)

The sale boundary and Payment Unit boundaries are marked and identified by red and yellow paint. Exterior sale boundary lines against state are marked with red paint. Interior Payment Unit boundaries are marked with yellow paint. The painted boundary line trees are not Included Timber and are to be protected. Yellow painted trees designating an interior Payment Unit boundary are only to be cut when all surrounding Payment Units have been paid.

### 2 - Timber Specifications

#### 2.1 - Included Timber

##### 2.1.1 - Clearcut unit(s) with unmerchantable trees (6/14)

Within Payment Unit(s) 2, cut all trees that are two (2) inches or more at DBH.

##### 2.1.3 - Cut tree marked unit(s) (12/08)

Within Payment Unit(s) 1, all trees are designated for cutting when marked with orange paint above and below stump height, regardless of merchantability.

##### 2.1.4 - Designated timber unit(s) (6/17)

Within Payment Unit(s) 3, every other white pine tree is designated for cutting which meet minimum piece specifications in 2.2 - Utilization. Operating from the previously cut row in the plantation follow a cut 1 tree, leave one tree pattern on the remaining plantation rows.

#### 2.2 - Utilization

##### 2.2.2 - Chipping required (2/18)

Payment Unit 2 must be chip harvested to facilitate subsequent planting operations. The Purchaser has the option to produce sawlogs or pulpwood bolts, but the remaining portion of the trees must be chipped and hauled. The requirement to retain approximately 1/6 to 1/3 of tree tops and limbs less than four inches in diameter is still applicable (G. C. & R. 2.2).

##### 2.2.3 - Stump heights (4/07)

Stump heights within Payment Unit 2 shall not exceed 6 inches for all trees. This is in order to facilitate planting operations.

### 3 - Payments

#### 3.3 - Pre-measured Sales

##### 3.3.4 - Dividing payment units (7/14)

Payment Unit(s) with a value greater than \$10,000 may be divided at the request of the Purchaser and upon approval of the Unit Manager. Dividing Payment Units is a contract modification which requires a Timber Sale Contract Supplement. There will be only one division per Payment Unit.

#### 3.4 - Damaged Timber

##### 3.4.1 - Damaged timber (6/14)

General Condition and Requirement 3.4 Damaged Timber, defines liquidated damages for undesignated live merchantable trees which are cut or injured.

No damage is acceptable to merchantable trees. Within the sale area, if more than 10% of trees (> 4.5" DBH) within a specified area of the sale are damaged, liquidated damages will be assessed for all trees damaged. Rates will be in accordance with General Condition and Requirement 3.4 Damaged Timber.

### 4 - Transportation

#### 4.1 - Construction

#### 4.1.6 - Road construction (1/09)

Construction of new roads or improvements of existing roads shall be done in such a way as to minimize the environmental and visual impacts. Merchantable trees shall be cut and utilized unless otherwise directed. Non-merchantable trees shall be severed and laid flat on the ground. Slash shall be scattered, and not left in windrows and kept a minimum of 10 feet back from the road edge. Stumps shall be set upright, not left on edge, and be moved at least 10 feet away from the road edge. Disturbed soil shall be feathered into the woods and not left in berms or windrows.

#### 4.1.7 - Road closure (10/11)

All new roads built into the sale must be blocked to vehicle traffic within 30 days of completion of hauling. Overgrown roads that are reopened shall be considered new roads. In general, this will require constructing double earthen berms at strategic locations. These roads must be rendered impassable to cars and trucks. Contact the sale administrator for specific details of design and placement.

### 5 - Operations

#### 5.2 - Conduct of Operations

##### 5.2.3 - Operating Restrictions

###### 5.2.3.5 - Oak wilt restriction (1/18)

Within Payment Units 1, 2, and 3, unless changed by written agreement, cutting, skidding, hauling within the sale and brushing of access roads to the sale are not permitted during the period of April 15 to July 15. Operations may be allowed if specific steps are taken to prevent damaging uncut oak during the high risk period. Those steps may include completing all road brushing before April 15th and clearing a tree-length buffer along uncut oak cover before April 15th. This is necessary to reduce the spread of oak wilt. For more information, contact the Unit Manager or his/her representative.

###### 5.2.32 - Decking/landing restoration (9/13)

All decking and landing areas must have the surface area restored to a condition equal to or better than before. This is to ensure the proper regeneration of the stand. Wood debris, chips and "cookies" from trimmings must be removed or scattered away from landing and loading areas and may not be windrowed on the edge.

###### 5.2.38 - No decking against live trees (2/04)

Cut products may not be decked against unmarked or designated leave trees.

#### 5.4 - Soil Protection

##### 5.4.1 - Rutting restriction, general (7/16)

Operations are to cease immediately if equipment and weather conditions result in rutting of roads and/or skid trails which is 12 inches or greater in depth and 50 feet in length. The Unit Manager or his/her representative may restrict hauling and/or skidding if ruts exceed the specified depth. With the Unit Manager or his/her representative's approval, the Purchaser may return to the area when the risk of rutting has decreased.

##### 5.4.2 - Skid trails (2/04)

Skid trails up and down slopes should be avoided. If however this is unavoidable, these trails will be left in a non-erodible condition using water bars, logs, and slash. Placing of slash on these skid trails while logging is ongoing may alleviate need for any further action. At the direction of the sale administrator, seed, fertilizer, and mulch may also be required.

#### 5.7 - Protection of Historical Sites

##### 5.7.1 - Historical sites (7/12)

The Purchaser shall not cut live or dead trees or operate equipment within historical sites. Historical sites are located off the north side of Payment Unit 2. The Purchaser shall protect historical sites from damage by the Purchaser's operations. If Purchaser's operations have cut or damaged historical sites through carelessness, the Purchaser shall pay \$1,000 as fixed, agreed and liquidated damages for each acre or part thereof cut or damaged.

#### 5.8 - Protection of Endangered Species

##### 5.8.5 - Protection of raptor nests (3/13)

All trees with raptor nests will be protected if found during harvesting operations. Notification will be made to the Unit Manager or his/her representative who will notify the Wildlife Biologist so an on-site evaluation and recommendation can be

made, if necessary.

## **6 - Safety and Fire Prevention**

### 6.2 - Signing

#### 6.2.1 - Road posting (9/09)

The Purchaser is responsible for posting and maintaining caution signs on Haynes Lake Road prior to beginning operations. The road must be posted at appropriate distances from the sale area to warn of logging activity and truck traffic. Signs must be removed when harvest operations are suspended or completed. The Purchaser will provide these signs.



# TIMBER SALE MAP

This information provided by authority of Part 525, 1994 PA 451, as amended.

Forest Management Unit Traverse City	County Kalkaska	Mapped By Crigier	Date 04/03/2019	Page 1	of 1
Township 27N	Range 08W	Section(s) and Subdivision(s) Sec 7: NW1/4, W1/2NE	Scale 1:15,840		

Cover Type				Density	
A = Aspen	H = Hemlock	N = Marsh	U = Upland Brush	0 = Non Stocked	5 = Pole Timber Medium
B = Paper Birch	J = Jack Pine	O = Oak	UM = Upland Mixed	1 = Seedling Sapling Poor	6 = Pole Timber Well
C = Cedar	L = Lowland Brush	P = Lowland Poplar	V = Bog or Marsh	2 = Seedling Sapling Medium	7 = Saw Timber Poor
D = Treed Bog	LM = Lowland Mixed	Q = Mixed Swamp Conifer	W = White Pine	3 = Seedling Sapling Well	8 = Saw Timber Medium
E = Swamp Hdwoods	M = Mpl, Bch, Brch	R = Red Pine	X = Non Stocked	4 = Pole Timber Poor	9 = Saw Timber Well
F = Spruce Fir	MC = Mixed Conifer	S = Black Spruce	Z = Water		
G = Grass	MD = Mixed Deciduous	T = Tamarack			

PU	Acres
1	7.6
2	29.6
3	15.1

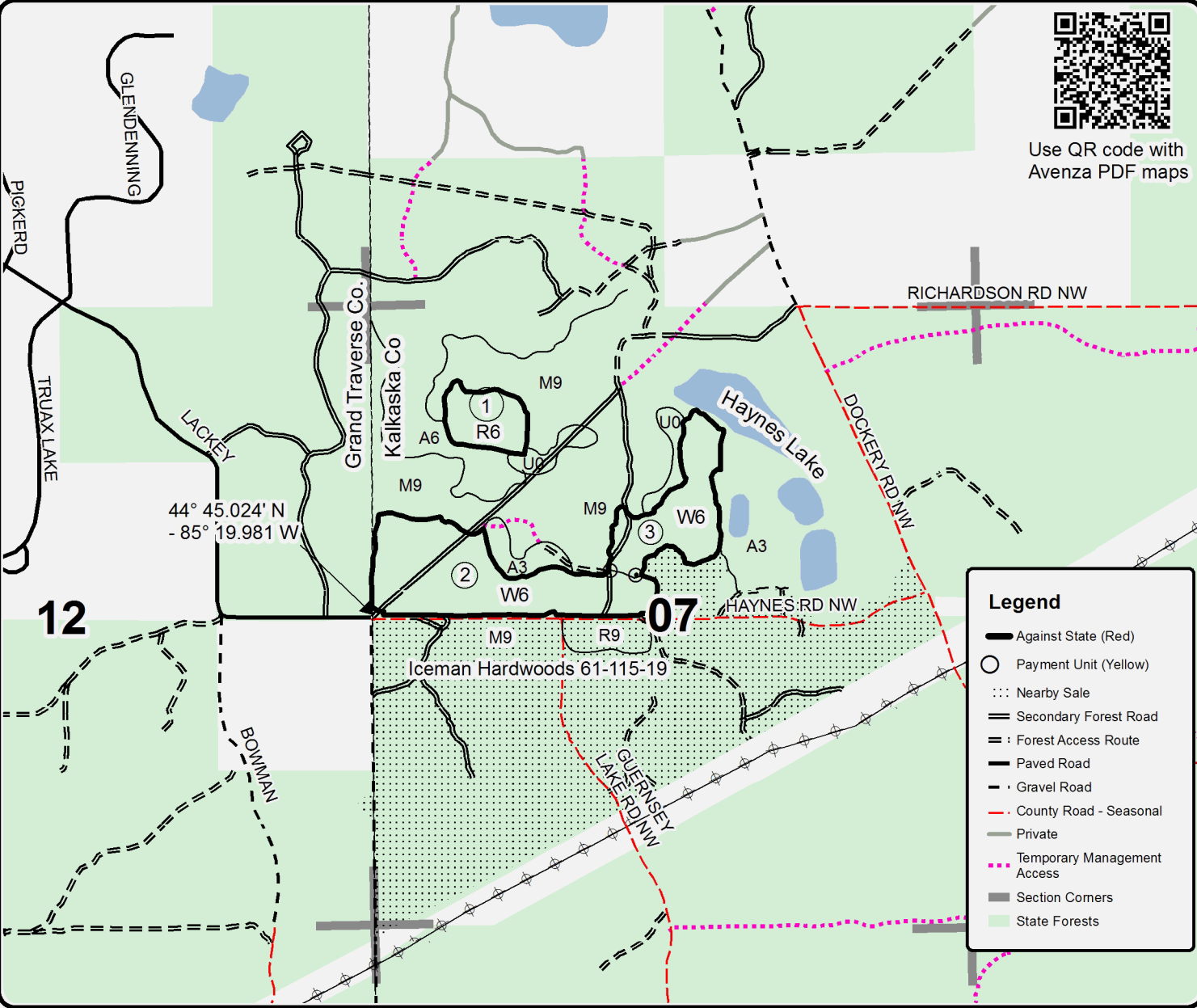
## White to Red Pine

### Compartment 266

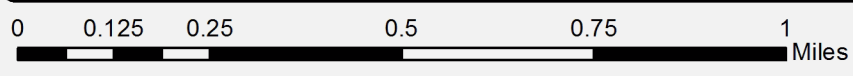
52.3 Acres



Use QR code with Avenza PDF maps



Legend	
	Against State (Red)
	Payment Unit (Yellow)
	Nearby Sale
	Secondary Forest Road
	Forest Access Route
	Paved Road
	Gravel Road
	County Road - Seasonal
	Private
	Temporary Management Access
	Section Corners
	State Forests







Muzzleloader Mix (61-106-19)  
T27N, R08W, SEC. 31; Kalkaska COUNTY

In response to the notice of sale to be held 4:00 p.m. (local time) on August 5, 2019, I am hereby submitting my sealed bid (firm offer) for the following forest products to be cut. Bids for individual species must be at or above the advertised price. All non-responsive bid forms may be rejected.

<u>PRODUCTS &amp; SPECIES</u>	<u>ESTIMATED VOLUME*</u>	<u>ADVERTISED PRICE</u>	<u>BID PRICE/UNIT</u>
<b>Sawtimber</b>			
B. T. Aspen	5.80 MBF	\$ 120.00/MBF	\$ _____
Red Oak	199.90 MBF	\$ 197.00/MBF	\$ _____
Red Pine	395.90 MBF	\$ 108.00/MBF	\$ _____
White Oak	55.80 MBF	\$ 42.00/MBF	\$ _____
White Pine	51.70 MBF	\$ 47.00/MBF	\$ _____
<b>Pulpwood</b>			
B. T. Aspen	180.00 Cords	\$ 18.10/Cord	\$ _____
Jack Pine	21.00 Cords	\$ 11.20/Cord	\$ _____
Misc. Species 1	8.00 Cords	\$ 3.75/Cord	\$ _____
Mixed Oak	938.00 Cords	\$ 11.50/Cord	\$ _____
Red Maple	112.00 Cords	\$ 16.05/Cord	\$ _____
Red Pine	468.00 Cords	\$ 34.00/Cord	\$ _____
White Pine	392.00 Cords	\$ 13.60/Cord	\$ _____

\*The volumes are statistically estimated within plus (+) or minus (-) 8.38 percent. These estimated volumes are final and not subject to adjustment. Prospective bidders are urged to examine this timber and to make their own estimates of quantity and quality.

I understand that any or all bids may be rejected. All bids must be signed and all bid items must be bid or the bid form may be rejected. I also understand that consideration and awarding a contract will be based upon my past performance and ability to complete the contract based upon equipment and staffing subject to my control.

FEDERAL ID: \_\_\_\_\_ - \_\_\_\_\_ or SOCIAL SECURITY NUMBER: \_\_\_\_\_ - \_\_\_\_\_ - \_\_\_\_\_

Company or individual bidding: \_\_\_\_\_

Company representative's name: \_\_\_\_\_

Address: \_\_\_\_\_

City: \_\_\_\_\_ State: \_\_\_\_\_ Zip: \_\_\_\_\_

IF AVAILABLE, PLEASE PLACE THE PERSONALIZED LABEL FROM YOUR PROSPECTUS IN THE ABOVE BOX.

Individual or company representative's signature: \_\_\_\_\_ Date: \_\_\_\_\_

Phone number : \_\_\_\_\_ Email (optional): \_\_\_\_\_

**THE WINNING BIDDER MUST COMPLETE THE VERIFICATION OF WORKER'S DISABILITY COMPENSATION ACT COMPLIANCE (ON REVERSE SIDE IF DOUBLE SIDED) WITHIN 21 DAYS OF SALE AWARD DATE**



FOR DEPARTMENT USE ONLY	
Sale Number (XX - XXX - XX - XX)	
Forest Management Unit:	

## TIMBER SALE VERIFICATION OF WORKER'S DISABILITY COMPENSATION ACT COMPLIANCE

As required by Act 317, P.A. 1969 (Worker's Compensation) and  
Part 5 of Act 451 of 1994, as amended.

### VERIFICATION OF WORKER'S DISABILITY COMPENSATION ACT COMPLIANCE

- This verification must be completed and submitted within 21 days of contract award and prior to the issuance of the timber sale contract.
- In addition, if boxes 2B or 2C are checked, then Notice of Exclusion or Certificate of Insurance must be submitted within twenty-one (21) days of the contract award and prior to the issuance of the timber sale contract.
- All information must be typed or printed except for written signatures.

Please Check Appropriate Categories:

1. My business is organized as (you **must** check one of the boxes below):
  - A.  Sole Proprietorship (individual)
  - B.  Partnership
  - C.  Corporation
2. You **must** check one of the boxes below:
  - A.  I certify my business is a sole proprietorship and it has no employees but the sole proprietor. I am not subject to the Worker's Compensation Laws.
  - B.  I certify my business has satisfied its obligation to the Worker's Compensation Act through the use of an approved Notice of Exclusion (BWC-337, Rev. 5/96). I will provide a copy of the Notice of Exclusion within 21 days of the contract award. (For questions or a copy of the BWC-337, please call the Worker's Compensation Bureau at 517-322-1195).
  - C.  I certify my business has a Worker's Compensation Policy. I will provide an original Certificate of Insurance within twenty-one (21) days of the contract award.
3. If you have checked item 2(A) or 2(B), you **must** indicate the number of **both** full-time and part-time employees, other than yourself, including family members and active partners (if none, you must enter "0").

\_\_\_\_\_ Full-time Employees

\_\_\_\_\_ Part-time Employees

Name of Business		Federal ID (or) Social Security No.	
Address		Telephone (       )	
City	State	ZIP	

*I hereby certify that the above information is true and correct. I agree to notify the Michigan DNR of any changes that occur in factors affecting my coverage during any of my present and future operations.*

\_\_\_\_\_  
Signature of Owner or Authorized Representative

\_\_\_\_\_  
Title

\_\_\_\_\_  
Date

Please complete the "SEALED BID" information on the next page

Iceman Hardwoods (61-115-19)  
T27N, R08W, SEC. 7; T27N, R09W, SEC. 12; Kalkaska COUNTY

In response to the notice of sale to be held 4:00 p.m. (local time) on August 5, 2019, I am hereby submitting my sealed bid (firm offer) for the following forest products to be cut. Bids for individual species must be at or above the advertised price. All non-responsive bid forms may be rejected.

<u>PRODUCTS &amp; SPECIES</u>	<u>ESTIMATED VOLUME*</u>	<u>ADVERTISED PRICE</u>	<u>BID PRICE/UNIT</u>
<b>Sawtimber</b>			
Basswood	81.70 MBF	\$ 100.00/MBF	\$ _____
Beech	63.00 MBF	\$ 86.00/MBF	\$ _____
Black Cherry	8.90 MBF	\$ 128.00/MBF	\$ _____
Red Maple	24.20 MBF	\$ 111.00/MBF	\$ _____
Red Oak	137.60 MBF	\$ 184.00/MBF	\$ _____
Red Pine	18.90 MBF	\$ 101.00/MBF	\$ _____
Sugar Maple	267.00 MBF	\$ 266.00/MBF	\$ _____
White Pine	16.70 MBF	\$ 43.00/MBF	\$ _____
<b>Pulpwood</b>			
Mixed Hardwood	1,166.00 Cords	\$ 15.00/Cord	\$ _____
Quaking Aspen	5.00 Cords	\$ 16.85/Cord	\$ _____
Red Pine	109.00 Cords	\$ 31.75/Cord	\$ _____
White Pine	34.00 Cords	\$ 12.70/Cord	\$ _____

\*The volumes are statistically estimated within plus (+) or minus (-) 15.68 percent. These estimated volumes are final and not subject to adjustment. Prospective bidders are urged to examine this timber and to make their own estimates of quantity and quality.

I understand that any or all bids may be rejected. All bids must be signed and all bid items must be bid or the bid form may be rejected. I also understand that consideration and awarding a contract will be based upon my past performance and ability to complete the contract based upon equipment and staffing subject to my control.

FEDERAL ID: \_\_\_\_\_ or SOCIAL SECURITY NUMBER: \_\_\_\_\_

Company or individual bidding: \_\_\_\_\_

Company representative's name: \_\_\_\_\_

Address: \_\_\_\_\_

City: \_\_\_\_\_ State: \_\_\_\_\_ Zip: \_\_\_\_\_

IF AVAILABLE, PLEASE PLACE THE PERSONALIZED LABEL FROM YOUR PROSPECTUS IN THE ABOVE BOX.

Individual or company representative's signature: \_\_\_\_\_ Date: \_\_\_\_\_

Phone number : \_\_\_\_\_ Email (optional): \_\_\_\_\_

**THE WINNING BIDDER MUST COMPLETE THE VERIFICATION OF WORKER'S DISABILITY COMPENSATION ACT COMPLIANCE (ON REVERSE SIDE IF DOUBLE SIDED) WITHIN 21 DAYS OF SALE AWARD DATE**



<b>FOR DEPARTMENT USE ONLY</b>
Sale Number (XX - XXX - XX - XX)
Forest Management Unit:

## TIMBER SALE VERIFICATION OF WORKER'S DISABILITY COMPENSATION ACT COMPLIANCE

*As required by Act 317, P.A. 1969 (Worker's Compensation) and  
Part 5 of Act 451 of 1994, as amended.*

### VERIFICATION OF WORKER'S DISABILITY COMPENSATION ACT COMPLIANCE

- This verification must be completed and submitted within 21 days of contract award and prior to the issuance of the timber sale contract.
- In addition, if boxes 2B or 2C are checked, then Notice of Exclusion or Certificate of Insurance must be submitted within twenty-one (21) days of the contract award and prior to the issuance of the timber sale contract.
- All information must be typed or printed except for written signatures.

Please Check Appropriate Categories:

1. My business is organized as (you **must** check one of the boxes below):
  - A.  Sole Proprietorship (individual)
  - B.  Partnership
  - C.  Corporation
  
2. You **must** check one of the boxes below:
  - A.  I certify my business is a sole proprietorship and it has no employees but the sole proprietor. I am not subject to the Worker's Compensation Laws.
  - B.  I certify my business has satisfied its obligation to the Worker's Compensation Act through the use of an approved Notice of Exclusion (BWC-337, Rev. 5/96). I will provide a copy of the Notice of Exclusion within 21 days of the contract award. (For questions or a copy of the BWC-337, please call the Worker's Compensation Bureau at 517-322-1195).
  - C.  I certify my business has a Worker's Compensation Policy. I will provide an original Certificate of Insurance within twenty-one (21) days of the contract award.
  
3. If you have checked item 2(A) or 2(B), you **must** indicate the number of **both** full-time and part-time employees, other than yourself, including family members and active partners (if none, you must enter "0").

\_\_\_\_\_ Full-time Employees

\_\_\_\_\_ Part-time Employees

Name of Business		Federal ID (or) Social Security No.	
Address		Telephone (       )	
City	State	ZIP	

*I hereby certify that the above information is true and correct. I agree to notify the Michigan DNR of any changes that occur in factors affecting my coverage during any of my present and future operations.*

\_\_\_\_\_  
Signature of Owner or Authorized Representative

\_\_\_\_\_  
Title

\_\_\_\_\_  
Date

**Please complete the "SEALED BID" information on the next page**

White to Red Pine (61-121-19)  
T27N, R08W, SEC. 7; Kalkaska COUNTY

In response to the notice of sale to be held 4:00 p.m. (local time) on August 5, 2019, I am hereby submitting my sealed bid (firm offer) for the following forest products to be cut. Bids for individual species must be at or above the advertised price. All non-responsive bid forms may be rejected.

<u>PRODUCTS &amp; SPECIES</u>	<u>ESTIMATED VOLUME*</u>	<u>ADVERTISED PRICE</u>	<u>BID PRICE/UNIT</u>
<b>Sawtimber</b>			
Black Cherry	2.50 MBF	\$ 138.00/MBF	\$ _____
Red Oak	9.30 MBF	\$ 197.00/MBF	\$ _____
Red Pine	15.10 MBF	\$ 108.00/MBF	\$ _____
White Pine	404.00 MBF	\$ 47.00/MBF	\$ _____
<b>Pulpwood</b>			
Black Cherry	13.00 Cords	\$ 16.05/Cord	\$ _____
Red Oak	21.00 Cords	\$ 11.50/Cord	\$ _____
Red Pine	50.00 Cords	\$ 34.00/Cord	\$ _____
White Pine	1,141.00 Cords	\$ 13.60/Cord	\$ _____

\*The volumes are statistically estimated within plus (+) or minus (-) 15.26 percent. These estimated volumes are final and not subject to adjustment. Prospective bidders are urged to examine this timber and to make their own estimates of quantity and quality.

I understand that any or all bids may be rejected. All bids must be signed and all bid items must be bid or the bid form may be rejected. I also understand that consideration and awarding a contract will be based upon my past performance and ability to complete the contract based upon equipment and staffing subject to my control.

FEDERAL ID: \_\_\_\_ - \_\_\_\_ - \_\_\_\_ or SOCIAL SECURITY NUMBER: \_\_\_\_ - \_\_\_\_ - \_\_\_\_

Company or individual bidding: \_\_\_\_\_

Company representative's name: \_\_\_\_\_

Address: \_\_\_\_\_

City: \_\_\_\_\_ State: \_\_\_\_\_ Zip: \_\_\_\_\_

IF AVAILABLE, PLEASE PLACE THE PERSONALIZED LABEL FROM YOUR PROSPECTUS IN THE ABOVE BOX.

Individual or company representative's signature: \_\_\_\_\_ Date: \_\_\_\_\_

Phone number : \_\_\_\_\_ Email (optional): \_\_\_\_\_

**THE WINNING BIDDER MUST COMPLETE THE VERIFICATION OF WORKER'S DISABILITY COMPENSATION ACT COMPLIANCE (ON REVERSE SIDE IF DOUBLE SIDED) WITHIN 21 DAYS OF SALE AWARD DATE**



<b>FOR DEPARTMENT USE ONLY</b>
Sale Number (XX - XXX - XX - XX)
Forest Management Unit:

## TIMBER SALE VERIFICATION OF WORKER'S DISABILITY COMPENSATION ACT COMPLIANCE

*As required by Act 317, P.A. 1969 (Worker's Compensation) and  
Part 5 of Act 451 of 1994, as amended.*

### VERIFICATION OF WORKER'S DISABILITY COMPENSATION ACT COMPLIANCE

- This verification must be completed and submitted within 21 days of contract award and prior to the issuance of the timber sale contract.
- In addition, if boxes 2B or 2C are checked, then Notice of Exclusion or Certificate of Insurance must be submitted within twenty-one (21) days of the contract award and prior to the issuance of the timber sale contract.
- All information must be typed or printed except for written signatures.

Please Check Appropriate Categories:

1. My business is organized as (you **must** check one of the boxes below):
  - A.  Sole Proprietorship (individual)
  - B.  Partnership
  - C.  Corporation
  
2. You **must** check one of the boxes below:
  - A.  I certify my business is a sole proprietorship and it has no employees but the sole proprietor. I am not subject to the Worker's Compensation Laws.
  - B.  I certify my business has satisfied its obligation to the Worker's Compensation Act through the use of an approved Notice of Exclusion (BWC-337, Rev. 5/96). I will provide a copy of the Notice of Exclusion within 21 days of the contract award. (For questions or a copy of the BWC-337, please call the Worker's Compensation Bureau at 517-322-1195).
  - C.  I certify my business has a Worker's Compensation Policy. I will provide an original Certificate of Insurance within twenty-one (21) days of the contract award.
  
3. If you have checked item 2(A) or 2(B), you **must** indicate the number of **both** full-time and part-time employees, other than yourself, including family members and active partners (if none, you must enter "0").

\_\_\_\_\_ Full-time Employees

\_\_\_\_\_ Part-time Employees

Name of Business		Federal ID (or) Social Security No.	
Address		Telephone (       )	
City	State	ZIP	

*I hereby certify that the above information is true and correct. I agree to notify the Michigan DNR of any changes that occur in factors affecting my coverage during any of my present and future operations.*

\_\_\_\_\_  
Signature of Owner or Authorized Representative

\_\_\_\_\_  
Title

\_\_\_\_\_  
Date

**Please complete the "SEALED BID" information on the next page**

151 Frozen Naples East (61-117-19)  
T25N, R06W, SEC. 25; T25N, R06W, SEC. 35; T25N, R06W, SEC. 36; Kalkaska

In response to the notice of sale to be held 4:00 p.m. (local time) on August 5, 2019, I am hereby submitting my sealed bid (firm offer) for the following forest products to be cut. Bids for individual species must be at or above the advertised price. All non-responsive bid forms may be rejected.

<u>PRODUCTS &amp; SPECIES</u>	<u>ESTIMATED VOLUME*</u>	<u>ADVERTISED PRICE</u>	<u>BID PRICE/UNIT</u>
<b>Sawtimber</b>			
Mixed Aspen	187.30 MBF	\$ 120.00/MBF	\$ _____
Red Maple	15.90 MBF	\$ 119.00/MBF	\$ _____
Red Oak	144.20 MBF	\$ 197.00/MBF	\$ _____
Red Pine	300.80 MBF	\$ 108.00/MBF	\$ _____
White Oak	3.80 MBF	\$ 42.00/MBF	\$ _____
White Pine	44.20 MBF	\$ 47.00/MBF	\$ _____
<b>Pulpwood</b>			
Jack Pine	4.00 Cords	\$ 11.20/Cord	\$ _____
Mixed Aspen	1,403.00 Cords	\$ 18.10/Cord	\$ _____
Mixed Hardwood	378.00 Cords	\$ 16.05/Cord	\$ _____
Mixed Oak	607.00 Cords	\$ 11.50/Cord	\$ _____
Red Pine	246.00 Cords	\$ 34.00/Cord	\$ _____
White Pine	178.00 Cords	\$ 13.60/Cord	\$ _____

\*The volumes are statistically estimated within plus (+) or minus (-) 13.00 percent. These estimated volumes are final and not subject to adjustment. Prospective bidders are urged to examine this timber and to make their own estimates of quantity and quality.

I understand that any or all bids may be rejected. All bids must be signed and all bid items must be bid or the bid form may be rejected. I also understand that consideration and awarding a contract will be based upon my past performance and ability to complete the contract based upon equipment and staffing subject to my control.

FEDERAL ID: \_\_\_\_\_ - \_\_\_\_\_ or SOCIAL SECURITY NUMBER: \_\_\_\_\_ - \_\_\_\_\_ - \_\_\_\_\_

Company or individual bidding: \_\_\_\_\_

Company representative's name: \_\_\_\_\_

Address: \_\_\_\_\_

City: \_\_\_\_\_ State: \_\_\_\_\_ Zip: \_\_\_\_\_

IF AVAILABLE, PLEASE PLACE THE PERSONALIZED LABEL FROM YOUR PROSPECTUS IN THE ABOVE BOX.

Individual or company representative's signature: \_\_\_\_\_ Date: \_\_\_\_\_

Phone number : \_\_\_\_\_ Email (optional): \_\_\_\_\_

**THE WINNING BIDDER MUST COMPLETE THE VERIFICATION OF WORKER'S DISABILITY COMPENSATION ACT COMPLIANCE (ON REVERSE SIDE IF DOUBLE SIDED) WITHIN 21 DAYS OF SALE AWARD DATE**



<b>FOR DEPARTMENT USE ONLY</b>
Sale Number (XX - XXX - XX - XX)
Forest Management Unit:

## TIMBER SALE VERIFICATION OF WORKER'S DISABILITY COMPENSATION ACT COMPLIANCE

*As required by Act 317, P.A. 1969 (Worker's Compensation) and  
Part 5 of Act 451 of 1994, as amended.*

### VERIFICATION OF WORKER'S DISABILITY COMPENSATION ACT COMPLIANCE

- This verification must be completed and submitted within 21 days of contract award and prior to the issuance of the timber sale contract.
- In addition, if boxes 2B or 2C are checked, then Notice of Exclusion or Certificate of Insurance must be submitted within twenty-one (21) days of the contract award and prior to the issuance of the timber sale contract.
- All information must be typed or printed except for written signatures.

Please Check Appropriate Categories:

1. My business is organized as (you **must** check one of the boxes below):
  - A.  Sole Proprietorship (individual)
  - B.  Partnership
  - C.  Corporation
  
2. You **must** check one of the boxes below:
  - A.  I certify my business is a sole proprietorship and it has no employees but the sole proprietor. I am not subject to the Worker's Compensation Laws.
  - B.  I certify my business has satisfied its obligation to the Worker's Compensation Act through the use of an approved Notice of Exclusion (BWC-337, Rev. 5/96). I will provide a copy of the Notice of Exclusion within 21 days of the contract award. (For questions or a copy of the BWC-337, please call the Worker's Compensation Bureau at 517-322-1195).
  - C.  I certify my business has a Worker's Compensation Policy. I will provide an original Certificate of Insurance within twenty-one (21) days of the contract award.
  
3. If you have checked item 2(A) or 2(B), you **must** indicate the number of **both** full-time and part-time employees, other than yourself, including family members and active partners (if none, you must enter "0").

\_\_\_\_\_ Full-time Employees

\_\_\_\_\_ Part-time Employees

Name of Business		Federal ID (or) Social Security No.	
Address		Telephone (       )	
City	State	ZIP	

*I hereby certify that the above information is true and correct. I agree to notify the Michigan DNR of any changes that occur in factors affecting my coverage during any of my present and future operations.*

\_\_\_\_\_  
Signature of Owner or Authorized Representative

\_\_\_\_\_  
Title

\_\_\_\_\_  
Date

**Please complete the "SEALED BID" information on the next page**