



**DEPARTMENT OF NATURAL RESOURCES
STATE OF MICHIGAN**

TIMBER SALE PROSPECTUS #6493

SCHEDULED SALE DATE AND TIME: 3:00 p.m. (local time) on August 22, 2019.

LOCATION: NEWBERRY MGMT UNIT, 5666 S STATE HWY M 123, NEWBERRY, MI 49868.

PROSPECTUS NOTE: The bidder is advised to inspect the sale area and review the location, estimated volumes, operating costs and contract terms of proposed sales. Please be aware that some landowners may request 60 days or more notice for access across their land.

Notice is hereby given that bids will be received by the Unit Manager, NEWBERRY MANAGEMENT UNIT, for certain timber on the following described lands:

Baird Creek Bobcat (42-004-19) / T48N, R08W, SEC. 28, SESW.

T48N, R08W, SEC. 33, NW,N1/2SW,SWSW.

Luce County, Advertised Price \$39,188.95, 108.0 Acres, Spruce/Fir/Tamarack, Hardwood.

SALE NOTE: Road maintenance may be needed on the Camp 7 Road. See Sale Spec 4.2.3 for additional information.

Within Payment Units 6 and 7, it is recommended, but not required, that cutting, skidding and hauling occur during dry summer or frozen winter conditions. See Sale Spec 5.2.22.1 for additional information.

The Camp 7 Road also serves as a snowmobile trail in the winter months. See Sale Spec 5.2.41 and 6.2.2 for additional information.

A recreation site such as a trail, pathway, or campground is within the sale area or the vicinity. Certain restrictions/specifications may be applicable including time restrictions.

Dances with Wolves (42-006-19) / T45N, R12W, SEC. 31, NW.

Luce County, Advertised Price \$14,254.30, 36.0 Acres, Hardwood, Spruce/Fir/Tamarack.

SALE NOTE: Within Payment Unit(s) 1 and 2, no tops may be chipped. See spec 2.2.9.

The county must be contacted prior to crossing or harvesting in the county road R-O-W. See spec 4.3.2.

Within Payment Unit(s) 1 and 2, harvesting is limited to the period of December 1 to April 1. See spec 5.2.3.1.

Harvesting equipment with tracks is recommended. See spec 5.2.16.

Cessna Mix (42-007-19) / T45N, R09W, SEC. 4 , SW.

Luce County, Advertised Price \$19,131.80, 30.0 Acres, Aspen, Hardwood.

SALE NOTE: No new roads will be permitted in any Payment Unit. See spec. 4.1.12.

Permission for access across private land is the responsibility of the Purchaser. See spec. 4.4.1.

Within Payment Unit 1, it is recommended, but not required, that cutting, skidding and hauling occur during dry summer or frozen winter conditions because of soil types within in the sale area. See spec. 5.2.22.1.

Access may be through private or other public land.

BID INSTRUCTIONS (VER. 07/02/2018):

1. Scheduled Bid Location, Date, and Time (2/11)

Bids must be received by the Unit Manager, NEWBERRY OFFICE, 5666 S STATE HWY M 123, NEWBERRY, MI 49868, no later than 3:00 p.m. (local time) on August 22, 2019. For further information concerning this sale, contact Jason Tokar at 906-293-3293 extension 4740.

2. Bidder's Qualifications (5/16)

Purchaser shall obtain workers compensation insurance to cover claims under Michigan's Worker's Disability Compensation Act of 1969 or similar employee benefit act of any other state applicable to an employee. If all or part of a timber sale was prepared by a private contractor, the contractor and that contractor's company are not permitted to bid on the timber sale contract. Bids will not be accepted from individuals or companies appearing on the DNR/FRD No-Bid List. This list contains the names of purchasers who previously failed to execute a contract within 21-days or who have a history of poor performance.

3. Preparation of Sealed Bids (5/16)

Bid Forms may be completed online thru Michigan DNR Timber Sale Online Bidding (OLB) at www.michigan.gov/timberbidding or by completing the hardcopy Bid Form found in the Timber Sale Prospectus. Hardcopy Bid Forms shall be manually signed in ink. Registration in OLB is considered your 'signature' for all bids submitted thru that system. Bid prices must be entered for each species and product in the Bid Price column for all material subject to bidding and all fill-in blanks must be completed. If erasures or other changes appear on the hardcopy Bid Form, each erasure or change must be initialed by the person signing the bid.

4. Submission of Sealed Bids (5/16)

Bid forms may be obtained from the Unit Manager or thru OLB. Bids may be submitted hardcopy or thru OLB. All hardcopy bids must be submitted on the bid form and in an envelope clearly identified as described in this section. NOTE: Only one bid form per bid envelope. Sealed bids must be submitted to the Unit office designated in the prospectus and must be submitted at or prior to the time established in the prospectus. The envelope should show on the outside (a) the sale name or number and (b) the date and time of bid opening, as shown in the prospectus. Bids received after the time specified in the sale prospectus are late bids and will be rejected.

It is possible for a bidder to submit multiple bids on a single sale. For example, a bid may be submitted hardcopy and a bid may be submitted thru OLB. Or, two bidders from the same company could both submit bids on the same sale. If this were to happen, the State would accept all bids received and award the contract accordingly. All bidding and contractual requirements would apply to all bids received.

5. Public Opening of Sealed Bids (7/16)

If conditions permit, the sealed bids will be publicly opened and posted at the time and place set in the prospectus.

If a bidder, present at a bid opening, has submitted bids on more than one sale, that bidder may withdraw their unopened bid envelopes or announce the withdrawal of their online bid after being declared the successful bidder on one sale.

6. Award of Contract (1/11)

Award of the contract will be made to the Bidder whose bid, conforming to the prospectus, is most advantageous to the State of Michigan on the basis of total value at rates bid for the estimated quantities. The State reserves the right to reject any bid or waive any minor irregularity in bids received. A written award mailed (or otherwise furnished) to the successful Bidder shall be deemed to result in a binding contract without further action by either party.

7. Down Payment (1/11)

The Bidder to whom award is made must make a down payment within 21 days of the sale award. The amount of the down payment will be calculated as shown in the Bond and Payment Schedule of this prospectus. Only cash may be used to meet this requirement.

8. Performance Security (1/11)

As guarantee of faithful performance, a cash bond, certificate of deposit, surety bond or irrevocable letter of credit (LOC) is required within 21 days of the sale award. The amount of the performance security is shown in the Bond and

Payment Schedule of this prospectus. If an LOC or surety is used, the coverage must extend for at least 6 months beyond the contract expiration.

9. Timber Sale Contract (7/18)

Additional conditions and requirements common to all timber sales are listed on the timber sale contract (R4031) and are available on line at www.michigan.gov/timber. Contact the Unit Manager for additional information or a sample contract. Within 21 days of the date of the award letter, the bidder must sign the contract and provide the required down payment, performance security, and verification of worker's disability compensation. The down payment and performance security shall be in accordance with the provisions of the timber sale contract, in the sums stated in this prospectus. If these actions are not taken, then the Bidder, the Bidder's corporation, and the corporation's principals may not be permitted to bid on State timber sales for a period of 3 months after the first offense, 6 months after the second offense, and 1 year after the third offense. An offense will only be counted against the Bidder for 5 years. In addition, the Bidder certifies that if awarded this contract, the Bidder will complete the timber sale contract in accordance with its terms and any modifications thereof including requirements to purchase, cut, and remove the included timber by the expiration date.

Payment Unit values in the State Forest Timber Sale Contract are calculated based on the advertised value of the Payment Unit as a percentage of the total advertised value of the contract. The advertised value of each Payment Unit is given in the Description of Timber by Payment Unit table on the Timber Sale Information page. For example, if the value of Payment Unit 1 is advertised as \$1,500 and the total Timber Sale value is advertised as \$10,000, the contract price for Payment Unit 1 will be 15% of the total bid price ($\$1,500/\$10,000 * 100$).

10. Disclaimer of Estimates and Bidder's Warranty of Inspection (7/16)

Before submitting this bid, the Bidder is advised and cautioned to inspect the sale area, review the requirements of the sale contract, and take other steps as may be reasonably necessary to ascertain the location, estimated volumes, construction estimates, and operating costs of the proposed sale. Failure to do so will not relieve the Bidder from responsibility for completing the contract.

The Bidder warrants that this bid is submitted solely on the basis of the Bidder's examination and inspection of the quality and quantity of the timber offered for sale and the Bidder's opinion of the value thereof and the costs of recovery. No reliance should be placed on the State of Michigan's estimates of timber quality, quantity or costs of recovery. Bidder further acknowledges that the State of Michigan: (i) expressly disclaims any warranty of fitness of timber for any purpose; (ii) offers this timber as is without any warranty of quality (merchantability) or quantity and (iii) expressly disclaims any warranty as to the quantity or quality of timber sold.

11. Certification and Chain-of-Custody (10/14)

Unless otherwise indicated in the contract under section 7 – Other Conditions of the Sale Specific Conditions & Requirements, the area encompassed by this timber sale is certified to the standards of the Forest Stewardship Council (FSC) - Certificate #SCS-FM/COC-00090N and the Sustainable Forestry Initiative (SFI) - Certificate #NSF-SFIS-5Y031-SF5. Forest products from this sale may be delivered to the mill as "FSC 100% and / or SFI certified" as long as the contractor hauling the forest products is chain-of-custody (COC) certified or covered under a COC certificate from the destination mill. The purchaser is responsible for maintaining COC after leaving the sale area.

12. Good Neighbor Authority (GNA) Requirements (7/16)

If the name of this timber sales contains the acronym GNA, it is authorized by the Good Neighbor Authority (GNA) and covered by various agreements between the U.S. Forest Service and the State. The timber sale occurs on federal land and the following conditions apply:

GNA contracts on US Forest Service land will not be awarded to purchasers on the Federal list of excluded parties. The System for Award Management (SAM) will be checked for active excluded parties prior to award of contract. In addition, the Bidder to whom award is made must complete an Assurance Regarding Felony Conviction or Tax Delinquent Status for Corporate Applicants (AD-3031).

13. Good Neighbor Authority (GNA) Requirements, con't (9/16)

Bidder certifies, by signing this bid form, that to the best of Bidder's knowledge that the following representations are accurate and complete.

- a. That the Bidder and its principals are not presently debarred, suspended, proposed for debarment, declared ineligible, or voluntary excluded from timber sales (covered transactions) by any Federal department or agency.
- b. That the Bidder and its principals have not within a 3-year period preceding this bid been convicted of or had a civil judgment rendered against them for commission of fraud or a criminal offense in connection with obtaining, attempting to obtain, or performing a public (Federal, State, or local) transaction or contract under a public transaction; violation of Federal or State antitrust statutes or commission of embezzlement, theft, forgery, bribery, falsification or destruction of records, making false statements, or receiving stolen property.
- c. That the Bidder and its principals are not presently indicted for or otherwise criminally or civilly charged by a governmental entity (Federal, State, or local) with commission of any of the offenses enumerated in paragraph b of this certification.
- d. That the Bidder and its principals have not within a 3-year period preceding this bid had one or more public transactions (Federal, State, or local) terminated for breach or default of a timber or forest product contract.

Bidders that cannot certify this requirement, in whole or in part, shall submit an explanation with their bid.

DAN EICHINGER
Director

TIMBER SALE INFORMATION

Baird Creek Bobcat (42-004-19)
 T48N, R08W, SEC. 28; T48N, R08W, SEC. 33.
 Luce County (Advertised Price \$39,188.95)

SALE NOTE: Road maintenance may be needed on the Camp 7 Road. See Sale Spec 4.2.3 for additional information.

Within Payment Units 6 and 7, it is recommended, but not required, that cutting, skidding and hauling occur during dry summer or frozen winter conditions. See Sale Spec 5.2.22.1 for additional information.

The Camp 7 Road also serves as a snowmobile trail in the winter months. See Sale Spec 5.2.41 and 6.2.2 for additional information.

A recreation site such as a trail, pathway, or campground is within the sale area or the vicinity. Certain restrictions/specifications may be applicable including time restrictions.

A timber sale contract for this lump sum, sealed bid timber sale will be awarded to the responsible bidder offering the highest sealed bid price. Bids must be at or above the following advertised price for each species:

<u>PRODUCTS & SPECIES</u>	<u>ESTIMATED UNITS*</u>	<u>ADVERTISED PRICE</u>
Sawtimber		
Red Maple	19.20 MBF	\$ 114.00 / MBF
Sugar Maple	2.60 MBF	\$ 306.00 / MBF
Pulpwood		
Balsam Fir	892.00 Cords	\$ 13.70 / Cord
Mixed Hardwood	607.00 Cords	\$ 15.90 / Cord
Mixed Spruce	441.00 Cords	\$ 16.75 / Cord
N. White Cedar	131.00 Cords	\$ 7.35 / Cord
Quaking Aspen	221.00 Cords	\$ 24.55 / Cord
White Pine	26.00 Cords	\$ 21.45 / Cord

* The total volume is statistically estimated within plus (+) or minus (-) 12.65 percent. The estimated units are final and not subject to adjustment. Prospective bidders are urged to examine this timber and to make their own estimates of quantity and quality.

BOND AND PAYMENT SCHEDULE:

1. A bond in the amount of \$1,959.00 to insure faithful performance of the conditions of the contract will be deposited by the successful bidder within 21 days of the sale award.
2. Cutting in any sale or unit without the required advance payment would be considered a trespass.
3. Total payment must be paid in advance or according to the following schedule:
 - (a) Ten percent (10%) of the sale value must be paid within 21 days of the sale award.
 - (b) The 10% down payment will be credited towards the first unit cut.
 - (c) Payment for each of the following units must be made before cutting begins in that unit:

PAYMENT UNIT NUMBER	PERCENT OF TOTAL SALE VALUE
01	14.7%
02	20.6%
03	16.3%
04	23.9%
05	12.3%
06	9.5%
07	2.7%

4. If no cutting takes place, the 10% down payment will not be refunded.
5. Operations on the contract issued will terminate on 06/30/2023.

Description of Timber by Payment Unit (PU)

PU	MARKET GROUP	PRODUCT	QUANTITY	UNIT	ACRES	ADVERTISE PRICE
1	Red Maple	Sawtimber	1.9	MBF	14.2	\$5,767.70
	Balsam Fir	Pulpwood	145.0	Cords		
	Mixed Hardwood		74.0	Cords		
	<i>Black Cherry</i>		1.0	<i>Cords</i>		
	<i>Paper Birch</i>		3.0	<i>Cords</i>		
	<i>Red Maple</i>		68.0	<i>Cords</i>		
	<i>Yellow Birch</i>		2.0	<i>Cords</i>		
	Mixed Spruce		74.0	Cords		
	<i>Black Spruce</i>		50.0	<i>Cords</i>		
	<i>White Spruce</i>		24.0	<i>Cords</i>		
	N. White Cedar		21.0	Cords		
	Quaking Aspen		37.0	Cords		
	White Pine		4.0	Cords		
	2	Red Maple	Sawtimber	2.7		
Balsam Fir		Pulpwood	203.0	Cords		
Mixed Hardwood			103.0	Cords		
<i>Black Cherry</i>			1.0	<i>Cords</i>		
<i>Paper Birch</i>			4.0	<i>Cords</i>		
<i>Red Maple</i>			96.0	<i>Cords</i>		
<i>Yellow Birch</i>			2.0	<i>Cords</i>		
Mixed Spruce			104.0	Cords		
<i>Black Spruce</i>			70.0	<i>Cords</i>		
<i>White Spruce</i>			34.0	<i>Cords</i>		
N. White Cedar			29.0	Cords		
Quaking Aspen			52.0	Cords		
White Pine			6.0	Cords		
3		Red Maple	Sawtimber	2.1	MBF	15.8
	Balsam Fir	Pulpwood	161.0	Cords		
	Mixed Hardwood		82.0	Cords		
	<i>Black Cherry</i>		1.0	<i>Cords</i>		
	<i>Paper Birch</i>		3.0	<i>Cords</i>		
	<i>Red Maple</i>		76.0	<i>Cords</i>		
	<i>Yellow Birch</i>		2.0	<i>Cords</i>		
	Mixed Spruce		82.0	Cords		
	<i>Black Spruce</i>		55.0	<i>Cords</i>		
	<i>White Spruce</i>		27.0	<i>Cords</i>		
	N. White Cedar		23.0	Cords		
	Quaking Aspen		41.0	Cords		
	White Pine		5.0	Cords		
	4	Red Maple	Sawtimber	3.1	MBF	
Balsam Fir		Pulpwood	235.0	Cords		
Mixed Hardwood			119.0	Cords		
<i>Black Cherry</i>			1.0	<i>Cords</i>		
<i>Paper Birch</i>			5.0	<i>Cords</i>		
<i>Red Maple</i>			110.0	<i>Cords</i>		
<i>Yellow Birch</i>			3.0	<i>Cords</i>		
Mixed Spruce			119.0	Cords		
<i>Black Spruce</i>			80.0	<i>Cords</i>		
<i>White Spruce</i>			39.0	<i>Cords</i>		
N. White Cedar			34.0	Cords		
Quaking Aspen			60.0	Cords		
White Pine			7.0	Cords		
5		Red Maple	Sawtimber	1.6	MBF	11.9
	Balsam Fir	Pulpwood	121.0	Cords		
	Mixed Hardwood		61.0	Cords		
	<i>Black Cherry</i>		1.0	<i>Cords</i>		

Description of Timber by Payment Unit (PU), con't

PU	MARKET GROUP	PRODUCT	QUANTITY	UNIT	ACRES	ADVERTISE PRICE
5 con't	<i>Paper Birch</i>	<i>Pulpwood</i>	2.0	<i>Cords</i>		
	<i>Red Maple</i>		57.0	<i>Cords</i>		
	<i>Yellow Birch</i>		1.0	<i>Cords</i>		
	Mixed Spruce		62.0	Cords		
	<i>Black Spruce</i>		42.0	<i>Cords</i>		
	<i>White Spruce</i>		20.0	<i>Cords</i>		
	N. White Cedar		18.0	Cords		
	Quaking Aspen		31.0	Cords		
	White Pine		4.0	Cords		
	6		Red Maple	Sawtimber		
Sugar Maple		2.6	MBF			
Balsam Fir		Pulpwood	27.0	Cords		
Mixed Hardwood			118.0	Cords		
<i>Red Maple</i>			76.0	<i>Cords</i>		
<i>Sugar Maple</i>			42.0	<i>Cords</i>		
N. White Cedar			4.0	Cords		
Red Maple			Sawtimber	2.2	MBF	6.6
Mixed Hardwood	Pulpwood	50.0		Cords		
<i>Red Maple</i>		46.0		<i>Cords</i>		
<i>Sugar Maple</i>		4.0		<i>Cords</i>		
N. White Cedar		2.0		Cords		
TOTAL:			21.8	MBF		
TOTAL:			2,318.0	Cords		

Sale Specific Conditions & Requirements

Sale Name: Baird Creek Bobcat

Sale Number: 42-004-19 Seq#: 1

1 - Sale Area

1.2 - Boundaries

1.2.1 - Painted boundaries (1/14)

The sale boundary and Payment Unit boundaries are marked and identified by blue, red and yellow paint. Exterior sale boundary lines against private property are marked with blue paint. Exterior sale boundary lines against state are marked with red paint. Interior Payment Unit boundaries are marked with yellow paint, with the exception of the boundary between Payment Units 4 & 6, which is marked with red paint. The painted boundary line trees are not Included Timber and are to be protected. Yellow painted trees designating an interior Payment Unit boundary are only to be cut when all surrounding Payment Units have been paid.

2 - Timber Specifications

2.1 - Included Timber

2.1.2 - Clearcut unit(s) w/o unmerchantable trees (8/11)

Within Payment Unit(s) 1 - 5, cut all trees which meet minimum piece specifications in 2.2 Utilization, except do not cut white pine greater than 18" at DBH, or any hemlock.

2.1.3 - Cut tree marked unit(s) (12/08)

Within Payment Unit(s) 7, all trees are designated for cutting when marked with orange paint above and below stump height, regardless of merchantability.

2.1.7 - Leave tree marked unit(s) (6/14)

Within Payment Unit(s) 6, all trees which meet minimum piece specifications in 2.2 Utilization are designated for cutting, except do not cut any trees marked with green paint, or any hemlock, white pine, or white spruce.

3 - Payments

3.3 - Pre-measured Sales

3.3.4 - Dividing payment units (7/14)

Payment Unit(s) 1 - 6 may be divided at the request of the Purchaser and upon approval of the Unit Manager. Dividing Payment Units is a contract modification which requires a Timber Sale Contract Supplement.

4 - Transportation

4.1 - Construction

4.1.6 - Road construction (1/09)

Construction of new roads or improvements of existing roads shall be done in such a way as to minimize the environmental and visual impacts. Merchantable trees shall be cut and utilized unless otherwise directed. Non-merchantable trees shall be severed and laid flat on the ground. Slash shall be scattered, and not left in windrows and kept a minimum of 10 feet back from the road edge. Stumps shall be set upright, not left on edge, and be moved at least 10 feet away from the road edge. Disturbed soil shall be feathered into the woods and not left in berms or windrows.

4.1.7 - Road closure (10/11)

All new roads built into the sale must be blocked to vehicle traffic upon completion of the sale. All stumps from road building and landing construction must be reserved to block any newly constructed roads upon completion of the sale. These stumps must be scattered along the road system to prohibit vehicular movement. Contact the sale administrator for specific details of design and placement.

4.2 - Maintenance

4.2.3 - Road maintenance (8/13)

The following road maintenance may be needed on the Camp 7 Road: Grading, crowning and filling with gravel as necessary. The road has areas where blowouts tend to occur during trucking. Gravel and grading will be necessary to keep the road

passable to general traffic.

4.2.4 - Grading (10/16)

For completion of the sale, state forest roads access must be graded. In general, this will require a road grader or bull dozer to shape up the roads after forest products have been hauled off site. This includes cleaning of drainage areas, grading, crowning and filling with gravel, if necessary. The grading equipment to be used must be approved by the Unit Manager or his/her representative.

5 - Operations

5.2 - Conduct of Operations

5.2.1 - Slash

5.2.1.2 - Slash Removal

5.2.1.2.1 - Slash removal, right-of-way (9/16)

All slash must be removed at least 10 feet from the cleared right-of-way of existing forest roads.

5.2.1.8 - Slash height (12/08)

No slash may exceed 36 inches in height.

5.2.2 - Hazard Trees/Snags

5.2.2.1 - Den trees (10/16)

Obvious hollow and/or den trees shall be protected and left standing unless they are a safety hazard.

5.2.22 - Operating Caution

5.2.22.1 - Operating caution (6/11)

It is recommended, but not required, that within Payment Unit(s) 6 and 7, cutting, skidding, and hauling occur during dry summer or frozen winter conditions. The reason for the recommendation because of the heavy clay soils in the area of the unit.

5.2.32 - Decking/landing restoration (9/13)

All decking and landing areas must have the surface area restored to a condition equal to or better than before. This is to ensure the proper regeneration of the stand. Wood debris, chips and "cookies" from trimmings must be removed or scattered away from landing and loading areas and may not be windrowed on the edge.

5.2.38 - No decking against live trees (2/04)

Cut products may not be decked against unmarked or designated leave trees.

5.2.41 - Snowmobile trail protection (9/11)

The Camp 7 Road also serves as a snowmobile trail in the winter months, see Timber Sale Map. Do not cut or damage posts with orange trail markers or traffic control signs. If the trail road is to be used for hauling during the snowmobile season (December 1 to March 31), then a snow covered base must be left on the trail.

5.4 - Soil Protection

5.4.1 - Rutting restriction, general (7/16)

Operations are to cease immediately if equipment and weather conditions result in rutting of roads and/or skid trails which is 12 inches or greater in depth and 50 feet in length. The Unit Manager or his/her representative may restrict hauling and/or skidding if ruts exceed the specified depth. With the Unit Manager or his/her representative's approval, the Purchaser may return to the area when the risk of rutting has decreased.

5.8 - Protection of Endangered Species

5.8.5 - Protection of raptor nests (3/13)

All trees with raptor nests will be protected if found during harvesting operations. Notification will be made to the Unit Manager or his/her representative who will notify the Wildlife Biologist so an on-site evaluation and recommendation can be made, if necessary.

6 - Safety and Fire Prevention

6.2 - Signing

6.2.1 - Road posting (9/09)

The Purchaser is responsible for posting and maintaining caution signs on the Camp 7 Road prior to beginning operations. The road must be posted at appropriate distances from the sale area to warn of logging activity and truck traffic. Signs must be removed when harvest operations are suspended or completed. The Purchaser will provide these signs.

6.2.2 - Snowmobile trail posting (8/09)

The Purchaser is responsible for posting and maintaining caution signs on Camp 7 Road prior to beginning operations during the snowmobile season (approximately December 1 to March 31). The trail must be posted at appropriate distances from the sale area to warn of logging activity and truck traffic. Signs must be removed when harvest operations are suspended or completed. The Purchaser will provide these signs.



TIMBER SALE MAP

This information provided by authority of Part 525, 1994 PA 451, as amended.

Forest Management Unit Newberry		County Luce	Mapped By Lester Livermore	Date 5/03/2019	Page 1	of 1
Township 48N	Range 08W	Section(s) and Subdivision(s) Section 33: SWSW, N½SW, NW¼; Section 28: SESW			Scale 1:15,840	

Cover Type

A = Aspen	H = Hemlock	N = Marsh	U = Upland Brush
B = Paper Birch	J = Jack Pine	O = Oak	UM = Upland Mixed
C = Cedar	L = Lowland Brush	P = Lowland Poplar	V = Bog or Marsh
D = Treed Bog	LM = Lowland Mixed	Q = Mixed Swamp Conifer	W = White Pine
E = Swamp Hdwoods	M = Mpl, Bch, Brch	R = Red Pine	X = Non Stocked
F = Spruce Fir	MC = Mixed Conifer	S = Black Spruce	Z = Water
G = Grass	MD = Mixed Deciduous	T = Tamarack	

Density

0 = Non Stocked	5 = Pole Timber Medium
1 = Seedling Sapling Poor	6 = Pole Timber Well
2 = Seedling Sapling Medium	7 = Saw Timber Poor
3 = Seedling Sapling Well	8 = Saw Timber Medium
4 = Pole Timber Poor	9 = Saw Timber Well

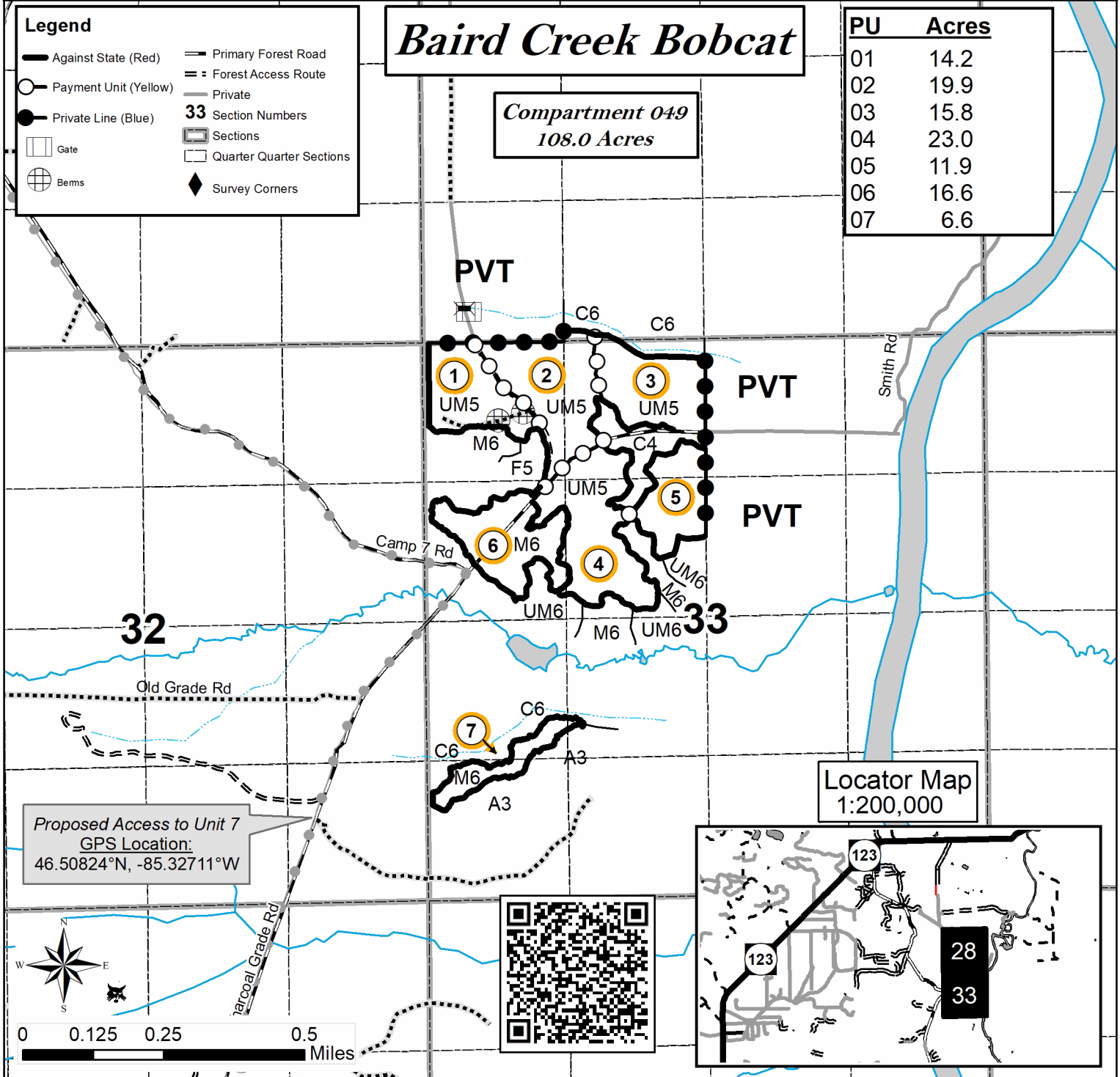
Baird Creek Bobcat

Compartment 049
108.0 Acres

PU	Acres
01	14.2
02	19.9
03	15.8
04	23.0
05	11.9
06	16.6
07	6.6

Legend

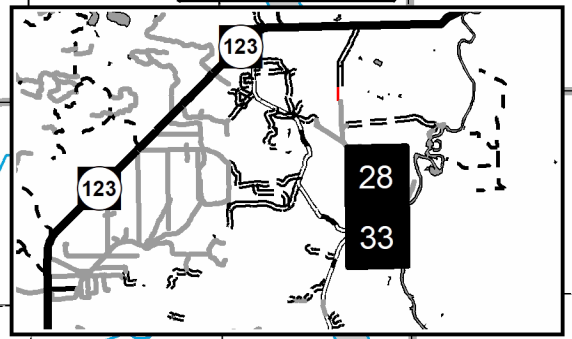
- Against State (Red)
- Payment Unit (Yellow)
- Private Line (Blue)
- Gate
- Bems
- Primary Forest Road
- Forest Access Route
- Private
- 33 Section Numbers
- Sections
- Quarter Quarter Sections
- Survey Corners



Proposed Access to Unit 7
GPS Location:
46.50824°N, -85.32711°W



Locator Map
1:200,000



TIMBER SALE INFORMATION

Dances with Wolves (42-006-19)
 T45N, R12W, SEC. 31.
 Luce County (Advertised Price \$14,254.30)

SALE NOTE: Within Payment Unit(s) 1 and 2, no tops may be chipped. See spec 2.2.9.

The county must be contacted prior to crossing or harvesting in the county road R-O-W. See spec 4.3.2.

Within Payment Unit(s) 1 and 2, harvesting is limited to the period of December 1 to April 1. See spec 5.2.3.1.

Harvesting equipment with tracks is recommended. See spec 5.2.16.

A timber sale contract for this lump sum, sealed bid timber sale will be awarded to the responsible bidder offering the highest sealed bid price. Bids must be at or above the following advertised price for each species:

<u>PRODUCTS & SPECIES</u>	<u>ESTIMATED UNITS*</u>	<u>ADVERTISED PRICE</u>
Sawtimber		
Paper Birch	1.80 MBF	\$ 77.00 / MBF
Red Maple	21.70 MBF	\$ 114.00 / MBF
Yellow Birch	2.40 MBF	\$ 127.00 / MBF
Pulpwood		
Balsam Fir	97.00 Cords	\$ 13.70 / Cord
Mixed Hardwood	471.00 Cords	\$ 15.90 / Cord
Mixed Spruce	61.00 Cords	\$ 16.75 / Cord
Quaking Aspen	61.00 Cords	\$ 24.55 / Cord

* The total volume is statistically estimated within plus (+) or minus (-) 13.18 percent. The estimated units are final and not subject to adjustment. Prospective bidders are urged to examine this timber and to make their own estimates of quantity and quality.

BOND AND PAYMENT SCHEDULE:

1. A bond in the amount of \$713.00 to insure faithful performance of the conditions of the contract will be deposited by the successful bidder within 21 days of the sale award.
2. Cutting in any sale or unit without the required advance payment would be considered a trespass.
3. Total payment must be paid in advance or according to the following schedule:
 - (a) Ten percent (10%) of the sale value must be paid within 21 days of the sale award.
 - (b) The 10% down payment will be credited towards the first unit cut.

(c) Payment for each of the following units must be made before cutting begins in that unit:

<u>PAYMENT UNIT NUMBER</u>	<u>PERCENT OF TOTAL SALE VALUE</u>
01	37.0%
02	63.0%

4. If no cutting takes place, the 10% down payment will not be refunded.
5. Operations on the contract issued will terminate on 06/30/2023.

Description of Timber by Payment Unit (PU)

PU	MARKET GROUP	PRODUCT	QUANTITY	UNIT	ACRES	ADVERTISE PRICE			
1	Red Maple	Sawtimber	7.2	MBF	13.1	\$5,267.70			
	Yellow Birch		1.0	MBF					
	Balsam Fir	Pulpwood	53.0	Cords					
	Mixed Hardwood		178.0	Cords					
	<i>Black Ash</i>		19.0	<i>Cords</i>					
	<i>Paper Birch</i>		19.0	<i>Cords</i>					
	<i>Red Maple</i>		116.0	<i>Cords</i>					
	<i>Yellow Birch</i>		24.0	<i>Cords</i>					
	Mixed Spruce		28.0	Cords					
	<i>Black Spruce</i>		20.0	<i>Cords</i>					
	<i>White Spruce</i>		8.0	<i>Cords</i>					
	Quaking Aspen		12.0	Cords					
	2	Paper Birch	Sawtimber	1.8			MBF	22.9	\$8,986.60
		Red Maple		14.5			MBF		
Yellow Birch			1.4	MBF					
Balsam Fir		Pulpwood	44.0	Cords					
Mixed Hardwood			293.0	Cords					
<i>Black Ash</i>			49.0	<i>Cords</i>					
<i>Paper Birch</i>			45.0	<i>Cords</i>					
<i>Red Maple</i>			167.0	<i>Cords</i>					
<i>Yellow Birch</i>			32.0	<i>Cords</i>					
Mixed Spruce			33.0	Cords					
<i>Black Spruce</i>			29.0	<i>Cords</i>					
<i>White Spruce</i>			4.0	<i>Cords</i>					
Quaking Aspen			49.0	Cords					
TOTAL:			25.9	MBF					
TOTAL:			690.0	Cords					

Sale Specific Conditions & Requirements

Sale Name: Dances with Wolves

Sale Number: 42-006-19 Seq#: 1

1 - Sale Area

1.2 - Boundaries

1.2.1 - Painted boundaries (1/14)

The sale boundary and Payment Unit boundaries are marked and identified by red and yellow paint. Exterior sale boundary lines against state are marked with red paint. Interior Payment Unit boundaries are marked with yellow paint.

2 - Timber Specifications

2.1 - Included Timber

2.1.2 - Clearcut unit(s) w/o unmerchantable trees (8/11)

Within Payment Unit(s) 1 and 2, cut all trees which meet minimum piece specifications in 2.2 Utilization, except do not cut any cedar, hemlock or white pine (see spec 2.1.9 - Harvest exception).

2.1.9 - Harvest exception (12/08)

Do not cut any cedar trees other than those that are necessary to remove in order to operate within the sale area. Every effort must be made to preserve the existing cedar and to leave an intact stand upon sale completion. All cut cedar shall be piled separately by products and scaled in the woods unless other scaling arrangements are agreed to by the Unit Manager or his/her representative. Stumpage price for cedar shall be \$50.00 per cord for posts and pulpwood, and \$100.00 per cord for bolts and sawlogs.

2.2 - Utilization

2.2.9 - No chipping permitted (12/08)

Within Payment Unit(s) 1 and 2, no tops may be chipped in order to provide food for wintering deer.

4 - Transportation

4.1 - Construction

4.1.6 - Road construction (1/09)

Construction of new roads or improvements of existing roads shall be done in such a way as to minimize the environmental and visual impacts. Merchantable trees shall be cut and utilized unless otherwise directed. Non-merchantable trees shall be severed and laid flat on the ground. Slash shall be scattered, and not left in windrows and kept a minimum of 10 feet back from the road edge. Stumps shall be set upright, not left on edge, and be moved at least 10 feet away from the road edge. Disturbed soil shall be feathered into the woods and not left in berms or windrows.

4.1.7 - Road closure (10/11)

All new roads built into the sale must be blocked to vehicle traffic upon completion of the sale. All stumps from road building and landing construction must be reserved to block any newly constructed roads upon completion of the sale. These stumps must be scattered along the road system to prohibit vehicular movement. Contact the sale administrator for specific details of design and placement.

4.3 - Public Right-of-Way

4.3.2 - County R-O-W (12/06)

The county must be contacted prior to crossing or harvesting in the county road R-O-W. This applies to Payment Unit 2 and County Road 477.

5 - Operations

5.2 - Conduct of Operations

5.2.1 - Slash

5.2.1.8 - Slash height (12/08)

No slash may exceed 36 inches in height.

5.2.2 - Hazard Trees/Snags

5.2.2.1 - Den trees (10/16)

Obvious hollow and/or den trees shall be protected and left standing unless they are a safety hazard.

5.2.3 - Operating Restrictions

5.2.3.1 - Operating restrictions (9/11)

Within Payment Unit(s) 1 and 2, unless changed by written agreement, cutting, skidding and hauling are limited to the period of December 1 to April 1. This restriction is because of wintering deer and providing food from harvested tops. Winter conditions are also necessary due to low ground soil types.

5.2.16 - Equipment recommended (11/18)

Harvesting equipment with tracks is recommended due to the low ground and wet soil types within the sale area.

5.4 - Soil Protection

5.4.1 - Rutting restriction, general (7/16)

Operations are to cease immediately if equipment and weather conditions result in rutting of roads and/or skid trails which is 12 inches or greater in depth and 50 feet in length. The Unit Manager or his/her representative may restrict hauling and/or skidding if ruts exceed the specified depth. With the Unit Manager or his/her representative's approval, the Purchaser may return to the area when the risk of rutting has decreased.

5.8 - Protection of Endangered Species

5.8.5 - Protection of raptor nests (3/13)

All trees with raptor nests will be protected if found during harvesting operations. Notification will be made to the Unit Manager or his/her representative who will notify the Wildlife Biologist so an on-site evaluation and recommendation can be made, if necessary.

6 - Safety and Fire Prevention

6.2 - Signing

6.2.1 - Road posting (9/09)

The Purchaser is responsible for posting and maintaining caution signs on County Road 477 prior to beginning operations. The road must be posted at appropriate distances from the sale area to warn of logging activity and truck traffic. Signs must be removed when harvest operations are suspended or completed. The Purchaser will provide these signs.



TIMBER SALE MAP

This information provided by authority of Part 525, 1994 PA 451, as amended.

Forest Management Unit Newberry	County Luce	Mapped By Lester Livermore	Date 04/08/2019	Page 1	of 1
Township 45N	Range 12W	Section(s) and Subdivision(s) NW¼ of Section 31	Scale 1:7,920		

Cover Type				Density	
A = Aspen	H = Hemlock	N = Marsh	U = Upland Brush	0 = Non Stocked	5 = Pole Timber Medium
B = Paper Birch	J = Jack Pine	O = Oak	UM = Upland Mixed	1 = Seedling Sapling Poor	6 = Pole Timber Well
C = Cedar	L = Lowland Brush	P = Lowland Poplar	V = Bog or Marsh	2 = Seedling Sapling Medium	7 = Saw Timber Poor
D = Treed Bog	LM = Lowland Mixed	Q = Mixed Swamp Conifer	W = White Pine	3 = Seedling Sapling Well	8 = Saw Timber Medium
E = Swamp Hdwoods	M = Mpl, Bch, Brch	R = Red Pine	X = Non Stocked	4 = Pole Timber Poor	9 = Saw Timber Well
F = Spruce Fir	MC = Mixed Conifer	S = Black Spruce	Z = Water		
G = Grass	MD = Mixed Deciduous	T = Tamarack			

Dances with Wolves



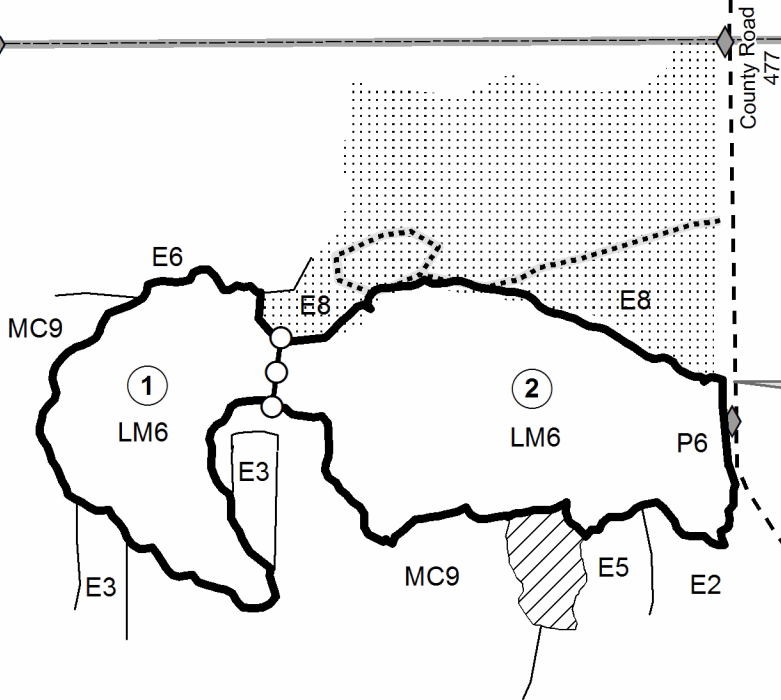
Compartment 100
36.0 Acres

PU	Acres
1	13.1
2	22.9

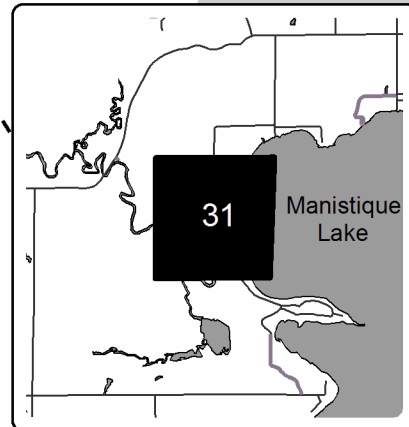
Approximately 1.7 Miles to
Ten Curves Rd. from GPS Point

Legend

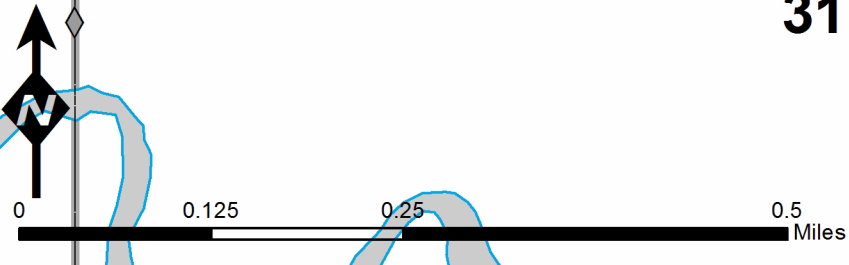
- Against State (Red)
- Payment Unit (Yellow)
- Retention Area (Red Outline)
- Survey Corners
- Field Grade Corners
- Gravel Road
- Temporary Management Access
- Old Timber Sale
- Lakes and Rivers
- Sections
- 31** Section Numbers



GPS Location
46.256°N
-85.855°W



Locator Map
1:100,000



TIMBER SALE INFORMATION

Cessna Mix (42-007-19)
 T45N, R09W, SEC. 4.
 Luce County (Advertised Price \$19,131.80)

SALE NOTE: No new roads will be permitted in any Payment Unit. See spec. 4.1.12.

Permission for access across private land is the responsibility of the Purchaser. See spec. 4.4.1.

Within Payment Unit 1, it is recommended, but not required, that cutting, skidding and hauling occur during dry summer or frozen winter conditions because of soil types within in the sale area. See spec. 5.2.22.1.

Access may be through private or other public land.

A timber sale contract for this lump sum, sealed bid timber sale will be awarded to the responsible bidder offering the highest sealed bid price. Bids must be at or above the following advertised price for each species:

<u>PRODUCTS & SPECIES</u>	<u>ESTIMATED UNITS*</u>	<u>ADVERTISED PRICE</u>
Sawtimber		
Black Cherry	1.60 MBF	\$ 197.00 / MBF
Red Maple	9.40 MBF	\$ 114.00 / MBF
Pulpwood		
Balsam Fir	160.00 Cords	\$ 13.70 / Cord
Mixed Hardwood	336.00 Cords	\$ 15.90 / Cord
Mixed Spruce	31.00 Cords	\$ 16.75 / Cord
N. White Cedar	66.00 Cords	\$ 7.35 / Cord
Quaking Aspen	375.00 Cords	\$ 24.55 / Cord

* The total volume is statistically estimated within plus (+) or minus (-) 10.96 percent. The estimated units are final and not subject to adjustment. Prospective bidders are urged to examine this timber and to make their own estimates of quantity and quality.

BOND AND PAYMENT SCHEDULE:

1. A bond in the amount of \$957.00 to insure faithful performance of the conditions of the contract will be deposited by the successful bidder within 21 days of the sale award.
2. Cutting in any sale or unit without the required advance payment would be considered a trespass.
3. Total payment must be paid in advance or according to the following schedule:
 - (a) Ten percent (10%) of the sale value must be paid within 21 days of the sale award.
 - (b) The remainder is due before cutting begins.
 - (c) Payment for each of the following units must be made before cutting begins in that unit:

<u>PAYMENT UNIT NUMBER</u>	<u>PERCENT OF TOTAL SALE VALUE</u>
01	100.0%

4. If no cutting takes place, the 10% down payment will not be refunded.
5. Operations on the contract issued will terminate on 06/30/2023.

Description of Timber by Payment Unit (PU)

PU	MARKET GROUP	PRODUCT	QUANTITY	UNIT	ACRES	ADVERTISE PRICE
1	Black Cherry	Sawtimber	1.6	MBF	30.0	\$19,131.80
	Red Maple		9.4	MBF		
	Balsam Fir	Pulpwood	160.0	Cords		
	Mixed Hardwood		336.0	Cords		
	<i>Black Cherry</i>		28.0	<i>Cords</i>		
	<i>Paper Birch</i>		31.0	<i>Cords</i>		
	<i>Red Maple</i>		259.0	<i>Cords</i>		
	<i>Sugar Maple</i>		9.0	<i>Cords</i>		
	<i>Yellow Birch</i>		9.0	<i>Cords</i>		
	Mixed Spruce		31.0	Cords		
	<i>Black Spruce</i>		3.0	<i>Cords</i>		
	<i>White Spruce</i>		28.0	<i>Cords</i>		
	N. White Cedar		66.0	Cords		
	Quaking Aspen		375.0	Cords		
	TOTAL:			11.0		
TOTAL:			968.0	Cords		

Sale Specific Conditions & Requirements

Sale Name: Cessna Mix

Sale Number: 42-007-19 Seq#: 1

1 - Sale Area

1.2 - Boundaries

1.2.1 - Painted boundaries (1/14)

The sale boundary and Payment Unit boundaries are marked and identified by blue and red paint. Exterior sale boundary lines against private property are marked with blue paint. Exterior sale boundary lines against state are marked with red paint. Retention areas are marked with green paint; these areas are not to be entered or operated in.

2 - Timber Specifications

2.1 - Included Timber

2.1.2 - Clearcut unit(s) w/o unmerchantable trees (8/11)

Within Payment Unit(s) 1, cut all trees which meet minimum piece specifications in 2.2 Utilization, except do not cut any white pine or hemlock, if present.

3 - Payments

3.3 - Pre-measured Sales

3.3.4 - Dividing payment units (7/14)

Payment Unit(s) 1 may be divided at the request of the Purchaser and upon approval of the Unit Manager. Dividing Payment Units is a contract modification which requires a Timber Sale Contract Supplement.

4 - Transportation

4.1 - Construction

4.1.12 - No new roads (1/12)

No new roads will be permitted in any Payment Unit. All operations are limited to existing roads. Skid trails only will be allowed.

4.4 - Access

4.4.1 - Private property access (3/11)

Permission for access across private land is the responsibility of the Purchaser.

5 - Operations

5.2 - Conduct of Operations

5.2.1 - Slash

5.2.1.8 - Slash height (12/08)

No slash may exceed 36 inches in height.

5.2.2 - Hazard Trees/Snags

5.2.2.1 - Den trees (10/16)

Obvious hollow and/or den trees shall be protected and left standing unless they are a safety hazard.

5.2.22 - Operating Caution

5.2.22.1 - Operating caution (6/11)

It is recommended, but not required, that within Payment Unit(s) 1, cutting, skidding and hauling occur during dry summer or frozen winter conditions. The reason for the recommendation is because of soil types within the sale area as well as access roads that could be damaged during wet weather conditions.

5.4 - Soil Protection

5.4.1 - Rutting restriction, general (7/16)

Operations are to cease immediately if equipment and weather conditions result in rutting of roads and/or skid trails which is 12 inches or greater in depth and 50 feet in length. The Unit Manager or his/her representative may restrict hauling and/or skidding if ruts exceed the specified depth. With the Unit Manager or his/her representative's approval, the Purchaser may return to the area when the risk of rutting has decreased.

5.8 - Protection of Endangered Species

5.8.5 - Protection of raptor nests (3/13)

All trees with raptor nests will be protected if found during harvesting operations. Notification will be made to the Unit Manager or his/her representative who will notify the Wildlife Biologist so an on-site evaluation and recommendation can be made, if necessary.



TIMBER SALE MAP

This information provided by authority of Part 525, 1994 PA 451, as amended.

Forest Management Unit Newberry	County Luce	Mapped By Lester Livermore	Date 04/08/2019	Page 1	of 1
Township 45N	Range 09W	Section(s) and Subdivision(s) SW¼ of Section 4	Scale 1:7,920		
Cruised By Newberry Staff					

Cover Type				Density			
A = Aspen	H = Hemlock	N = Marsh	U = Upland Brush	0 = Non Stocked	5 = Pole Timber Medium		
B = Paper Birch	J = Jack Pine	O = Oak	UM = Upland Mixed	1 = Seedling Sapling Poor	6 = Pole Timber Well		
C = Cedar	L = Lowland Brush	P = Lowland Poplar	V = Bog or Marsh	2 = Seedling Sapling Medium	7 = Saw Timber Poor		
D = Treed Bog	LM = Lowland Mixed	Q = Mixed Swamp Conifer	W = White Pine	3 = Seedling Sapling Well	8 = Saw Timber Medium		
E = Swamp Hdwoods	M = Mpl, Bch, Brch	R = Red Pine	X = Non Stocked	4 = Pole Timber Poor	9 = Saw Timber Well		
F = Spruce Fir	MC = Mixed Conifer	S = Black Spruce	Z = Water				
G = Grass	MD = Mixed Deciduous	T = Tamarack					



Cessna Mix
 Compartment 119
 30.0 Acres

PU	Acres
1	30



04

PVT

A3

A3

PVT

A6

A3

A6

A3

1

M8

M8

A3

GPS Location
 46.321°N
 -85.451°W

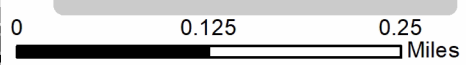
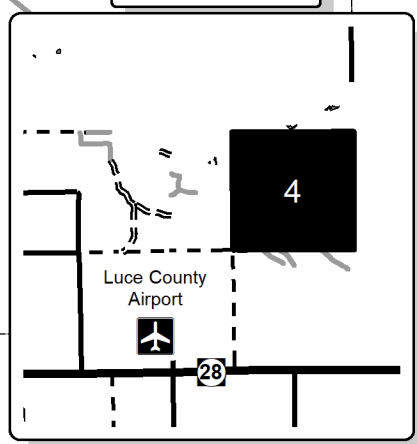
Legend

- Against State (Red)
- Private Line (Blue)
- Retention Area (Green Outline)
- Survey Corners
- Field Grade Corners
- Secondary Forest Road
- Forest Access Route
- Paved Road
- Gravel Road
- Private
- Lakes and Rivers
- Sections
- Quarter Quarter Sections
- 04** Section Numbers

1 Mile to M-28 from Corner
 County Road 408
 804 feet from Corner

PVT

Locator Map
 1:100,000



Baird Creek Bobcat (42-004-19)
T48N, R08W, SEC. 28; T48N, R08W, SEC. 33; Luce COUNTY

In response to the notice of sale to be held 3:00 p.m. (local time) on August 22, 2019, I am hereby submitting my sealed bid (firm offer) for the following forest products to be cut. Bids for individual species must be at or above the advertised price. All non-responsive bid forms may be rejected.

<u>PRODUCTS & SPECIES</u>	<u>ESTIMATED VOLUME*</u>	<u>ADVERTISED PRICE</u>	<u>BID PRICE/UNIT</u>
Sawtimber			
Red Maple	19.20 MBF	\$ 114.00/MBF	\$ _____
Sugar Maple	2.60 MBF	\$ 306.00/MBF	\$ _____
Pulpwood			
Balsam Fir	892.00 Cords	\$ 13.70/Cord	\$ _____
Mixed Hardwood	607.00 Cords	\$ 15.90/Cord	\$ _____
Mixed Spruce	441.00 Cords	\$ 16.75/Cord	\$ _____
N. White Cedar	131.00 Cords	\$ 7.35/Cord	\$ _____
Quaking Aspen	221.00 Cords	\$ 24.55/Cord	\$ _____
White Pine	26.00 Cords	\$ 21.45/Cord	\$ _____

*The volumes are statistically estimated within plus (+) or minus (-) 12.65 percent. These estimated volumes are final and not subject to adjustment. Prospective bidders are urged to examine this timber and to make their own estimates of quantity and quality.

I understand that any or all bids may be rejected. All bids must be signed and all bid items must be bid or the bid form may be rejected. I also understand that consideration and awarding a contract will be based upon my past performance and ability to complete the contract based upon equipment and staffing subject to my control.

FEDERAL ID: ____ - ____ - ____ or SOCIAL SECURITY NUMBER: ____ - ____ - ____

Company or individual bidding: _____

Company representative's name: _____

Address: _____

City: _____ State: _____ Zip: _____

IF AVAILABLE, PLEASE PLACE THE PERSONALIZED LABEL FROM YOUR PROSPECTUS IN THE ABOVE BOX.

Individual or company representative's signature: _____ Date: _____

Phone number : _____ Email (optional): _____

THE WINNING BIDDER MUST COMPLETE THE VERIFICATION OF WORKER'S DISABILITY COMPENSATION ACT COMPLIANCE (ON REVERSE SIDE IF DOUBLE SIDED) WITHIN 21 DAYS OF SALE AWARD DATE



FOR DEPARTMENT USE ONLY
Sale Number (XX – XXX – XX – XX)
Forest Management Unit:

TIMBER SALE VERIFICATION OF WORKER'S DISABILITY COMPENSATION ACT COMPLIANCE

*As required by Act 317, P.A. 1969 (Worker's Compensation) and
Part 5 of Act 451 of 1994, as amended.*

VERIFICATION OF WORKER'S DISABILITY COMPENSATION ACT COMPLIANCE

- This verification must be completed and submitted within 21 days of contract award and prior to the issuance of the timber sale contract.
- In addition, if boxes 2B or 2C are checked, then Notice of Exclusion or Certificate of Insurance must be submitted within twenty-one (21) days of the contract award and prior to the issuance of the timber sale contract.
- All information must be typed or printed except for written signatures.

Please Check Appropriate Categories:

1. My business is organized as (you **must** check one of the boxes below):
 - A. Sole Proprietorship (individual)
 - B. Partnership
 - C. Corporation
2. You **must** check one of the boxes below:
 - A. I certify my business is a sole proprietorship and it has no employees but the sole proprietor. I am not subject to the Worker's Compensation Laws.
 - B. I certify my business has satisfied its obligation to the Worker's Compensation Act through the use of an approved Notice of Exclusion (BWC-337, Rev. 5/96). I will provide a copy of the Notice of Exclusion within 21 days of the contract award. (For questions or a copy of the BWC-337, please call the Worker's Compensation Bureau at 517-322-1195).
 - C. I certify my business has a Worker's Compensation Policy. I will provide an original Certificate of Insurance within twenty-one (21) days of the contract award.
3. If you have checked item 2(A) or 2(B), you **must** indicate the number of **both** full-time and part-time employees, other than yourself, including family members and active partners (if none, you must enter "0").

_____ Full-time Employees

_____ Part-time Employees

Name of Business		Federal ID (or) Social Security No.	
Address		Telephone ()	
City	State	ZIP	

I hereby certify that the above information is true and correct. I agree to notify the Michigan DNR of any changes that occur in factors affecting my coverage during any of my present and future operations.

Signature of Owner or Authorized Representative

Title

Date

Please complete the "SEALED BID" information on the next page

Dances with Wolves (42-006-19)
T45N, R12W, SEC. 31; Luce COUNTY

In response to the notice of sale to be held 3:00 p.m. (local time) on August 22, 2019, I am hereby submitting my sealed bid (firm offer) for the following forest products to be cut. Bids for individual species must be at or above the advertised price. All non-responsive bid forms may be rejected.

<u>PRODUCTS & SPECIES</u>	<u>ESTIMATED VOLUME*</u>	<u>ADVERTISED PRICE</u>	<u>BID PRICE/UNIT</u>
Sawtimber			
Paper Birch	1.80 MBF	\$ 77.00/MBF	\$ _____
Red Maple	21.70 MBF	\$ 114.00/MBF	\$ _____
Yellow Birch	2.40 MBF	\$ 127.00/MBF	\$ _____
Pulpwood			
Balsam Fir	97.00 Cords	\$ 13.70/Cord	\$ _____
Mixed Hardwood	471.00 Cords	\$ 15.90/Cord	\$ _____
Mixed Spruce	61.00 Cords	\$ 16.75/Cord	\$ _____
Quaking Aspen	61.00 Cords	\$ 24.55/Cord	\$ _____

*The volumes are statistically estimated within plus (+) or minus (-) 13.18 percent. These estimated volumes are final and not subject to adjustment. Prospective bidders are urged to examine this timber and to make their own estimates of quantity and quality.

I understand that any or all bids may be rejected. All bids must be signed and all bid items must be bid or the bid form may be rejected. I also understand that consideration and awarding a contract will be based upon my past performance and ability to complete the contract based upon equipment and staffing subject to my control.

FEDERAL ID: _____ or SOCIAL SECURITY NUMBER: _____

Company or individual bidding: _____

Company representative's name: _____

Address: _____

City: _____ State: _____ Zip: _____

IF AVAILABLE, PLEASE PLACE THE PERSONALIZED LABEL FROM YOUR PROSPECTUS IN THE ABOVE BOX.

Individual or company representative's signature: _____ Date: _____

Phone number : _____ Email (optional): _____

THE WINNING BIDDER MUST COMPLETE THE VERIFICATION OF WORKER'S DISABILITY COMPENSATION ACT COMPLIANCE (ON REVERSE SIDE IF DOUBLE SIDED) WITHIN 21 DAYS OF SALE AWARD DATE



FOR DEPARTMENT USE ONLY	
Sale Number (XX – XXX – XX – XX)	
Forest Management Unit:	

TIMBER SALE VERIFICATION OF WORKER'S DISABILITY COMPENSATION ACT COMPLIANCE

As required by Act 317, P.A. 1969 (Worker's Compensation) and
Part 5 of Act 451 of 1994, as amended.

VERIFICATION OF WORKER'S DISABILITY COMPENSATION ACT COMPLIANCE

- This verification must be completed and submitted within 21 days of contract award and prior to the issuance of the timber sale contract.
- In addition, if boxes 2B or 2C are checked, then Notice of Exclusion or Certificate of Insurance must be submitted within twenty-one (21) days of the contract award and prior to the issuance of the timber sale contract.
- All information must be typed or printed except for written signatures.

Please Check Appropriate Categories:

1. My business is organized as (you **must** check one of the boxes below):
 - A. Sole Proprietorship (individual)
 - B. Partnership
 - C. Corporation
2. You **must** check one of the boxes below:
 - A. I certify my business is a sole proprietorship and it has no employees but the sole proprietor. I am not subject to the Worker's Compensation Laws.
 - B. I certify my business has satisfied its obligation to the Worker's Compensation Act through the use of an approved Notice of Exclusion (BWC-337, Rev. 5/96). I will provide a copy of the Notice of Exclusion within 21 days of the contract award. (For questions or a copy of the BWC-337, please call the Worker's Compensation Bureau at 517-322-1195).
 - C. I certify my business has a Worker's Compensation Policy. I will provide an original Certificate of Insurance within twenty-one (21) days of the contract award.
3. If you have checked item 2(A) or 2(B), you **must** indicate the number of **both** full-time and part-time employees, other than yourself, including family members and active partners (if none, you must enter "0").

_____ Full-time Employees

_____ Part-time Employees

Name of Business		Federal ID (or) Social Security No.	
Address		Telephone ()	
City	State	ZIP	

I hereby certify that the above information is true and correct. I agree to notify the Michigan DNR of any changes that occur in factors affecting my coverage during any of my present and future operations.

Signature of Owner or Authorized Representative

Title

Date

Please complete the "SEALED BID" information on the next page

Cessna Mix (42-007-19)
T45N, R09W, SEC. 4; LUCE COUNTY

In response to the notice of sale to be held 3:00 p.m. (local time) on August 22, 2019, I am hereby submitting my sealed bid (firm offer) for the following forest products to be cut. Bids for individual species must be at or above the advertised price. All non-responsive bid forms may be rejected.

<u>PRODUCTS & SPECIES</u>	<u>ESTIMATED VOLUME*</u>	<u>ADVERTISED PRICE</u>	<u>BID PRICE/UNIT</u>
Sawtimber			
Black Cherry	1.60 MBF	\$ 197.00/MBF	\$ _____
Red Maple	9.40 MBF	\$ 114.00/MBF	\$ _____
Pulpwood			
Balsam Fir	160.00 Cords	\$ 13.70/Cord	\$ _____
Mixed Hardwood	336.00 Cords	\$ 15.90/Cord	\$ _____
Mixed Spruce	31.00 Cords	\$ 16.75/Cord	\$ _____
N. White Cedar	66.00 Cords	\$ 7.35/Cord	\$ _____
Quaking Aspen	375.00 Cords	\$ 24.55/Cord	\$ _____

*The volumes are statistically estimated within plus (+) or minus (-) 10.96 percent. These estimated volumes are final and not subject to adjustment. Prospective bidders are urged to examine this timber and to make their own estimates of quantity and quality.

I understand that any or all bids may be rejected. All bids must be signed and all bid items must be bid or the bid form may be rejected. I also understand that consideration and awarding a contract will be based upon my past performance and ability to complete the contract based upon equipment and staffing subject to my control.

FEDERAL ID: _____ or SOCIAL SECURITY NUMBER: _____

Company or individual bidding: _____

Company representative's name: _____

Address: _____

City: _____ State: _____ Zip: _____

IF AVAILABLE, PLEASE PLACE THE PERSONALIZED LABEL FROM YOUR PROSPECTUS IN THE ABOVE BOX.

Individual or company representative's signature: _____ Date: _____

Phone number : _____ Email (optional): _____

THE WINNING BIDDER MUST COMPLETE THE VERIFICATION OF WORKER'S DISABILITY COMPENSATION ACT COMPLIANCE (ON REVERSE SIDE IF DOUBLE SIDED) WITHIN 21 DAYS OF SALE AWARD DATE



FOR DEPARTMENT USE ONLY
Sale Number (XX - XXX - XX - XX)
Forest Management Unit:

TIMBER SALE VERIFICATION OF WORKER'S DISABILITY COMPENSATION ACT COMPLIANCE

*As required by Act 317, P.A. 1969 (Worker's Compensation) and
Part 5 of Act 451 of 1994, as amended.*

VERIFICATION OF WORKER'S DISABILITY COMPENSATION ACT COMPLIANCE

- This verification must be completed and submitted within 21 days of contract award and prior to the issuance of the timber sale contract.
- In addition, if boxes 2B or 2C are checked, then Notice of Exclusion or Certificate of Insurance must be submitted within twenty-one (21) days of the contract award and prior to the issuance of the timber sale contract.
- All information must be typed or printed except for written signatures.

Please Check Appropriate Categories:

1. My business is organized as (you **must** check one of the boxes below):
 - A. Sole Proprietorship (individual)
 - B. Partnership
 - C. Corporation

2. You **must** check one of the boxes below:
 - A. I certify my business is a sole proprietorship and it has no employees but the sole proprietor. I am not subject to the Worker's Compensation Laws.
 - B. I certify my business has satisfied its obligation to the Worker's Compensation Act through the use of an approved Notice of Exclusion (BWC-337, Rev. 5/96). I will provide a copy of the Notice of Exclusion within 21 days of the contract award. (For questions or a copy of the BWC-337, please call the Worker's Compensation Bureau at 517-322-1195).
 - C. I certify my business has a Worker's Compensation Policy. I will provide an original Certificate of Insurance within twenty-one (21) days of the contract award.

3. If you have checked item 2(A) or 2(B), you **must** indicate the number of **both** full-time and part-time employees, other than yourself, including family members and active partners (if none, you must enter "0").

_____ Full-time Employees

_____ Part-time Employees

Name of Business		Federal ID (or) Social Security No.	
Address		Telephone ()	
City	State	ZIP	

I hereby certify that the above information is true and correct. I agree to notify the Michigan DNR of any changes that occur in factors affecting my coverage during any of my present and future operations.

Signature of Owner or Authorized Representative

Title

Date

Please complete the "SEALED BID" information on the next page