



**DEPARTMENT OF NATURAL RESOURCES  
STATE OF MICHIGAN**

**TIMBER SALE PROSPECTUS #6277**

SCHEDULED SALE DATE AND TIME: 9:00 a.m. (local time) on April 18, 2019.

LOCATION: PIGEON RIVER COUNTRY MGMT UNIT, 9966 TWIN LAKES ROAD, PO BOX 456, VANDERBILT, MI 49795.

PROSPECTUS NOTE: The bidder is advised to inspect the sale area and review the location, estimated volumes, operating costs and contract terms of proposed sales. Please be aware that some landowners may request 60 days or more notice for access across their land.

Notice is hereby given that bids will be received by the Unit Manager, PIGEON RIVER COUNTRY MANAGEMENT UNIT, for certain timber on the following described lands:

Hammertime Pine (53-001-19) / T32N, R01W, SEC. 29, SENW,SW,N1/2SE,SWSE.  
T32N, R01W, SEC. 30, SESE.  
T32N, R01W, SEC. 32, N1/2NW.

Otsego County, Advertised Price \$166,939.05, 102.8 Acres, Red Pine, White Pine.

SALE NOTE: Please note chipping requirements in spec 2.2.2.

MacDaddy's Aspen (53-010-18) / T33N, R01W, SEC. 30, SWNW,N1/2SW,SWSW,NWSE.  
T33N, R01W, SEC. 31, NE,NESE.

Cheboygan County, Advertised Price \$70,701.40, 77.8 Acres, Aspen, Hardwood.

SALE NOTE: Seasonal operating restrictions apply within Payment Units 1 and 2.

Walker Aspine (53-018-17) / T33N, R01W, SEC. 17, NENW,NWNE.  
T33N, R01W, SEC. 8, SESW,SWSE.

Cheboygan County, Advertised Price \$8,206.30, 18.0 Acres, Aspen, White Pine.

SALE NOTE: There is an access gate that is locked. Please contact the sale administrator about access through that gate, if needed, to inspect timber prior to sale.

## BID INSTRUCTIONS (VER. 07/02/2018):

### 1. Scheduled Bid Location, Date, and Time (2/11)

Bids must be received by the Unit Manager, PIGEON RIVER COUNTRY OFFICE, 9966 TWIN LAKES ROAD PO BOX 456, VANDERBILT, MI 49795, no later than 9:00 a.m. (local time) on April 18, 2019. For further information concerning this sale, contact Scott Whitcomb at 989-983-4101.

### 2. Bidder's Qualifications (5/16)

Purchaser shall obtain workers compensation insurance to cover claims under Michigan's Worker's Disability Compensation Act of 1969 or similar employee benefit act of any other state applicable to an employee. If all or part of a timber sale was prepared by a private contractor, the contractor and that contractor's company are not permitted to bid on the timber sale contract. Bids will not be accepted from individuals or companies appearing on the DNR/FRD No-Bid List. This list contains the names of purchasers who previously failed to execute a contract within 21-days or who have a history of poor performance.

### 3. Preparation of Sealed Bids (5/16)

Bid Forms may be completed online thru Michigan DNR Timber Sale Online Bidding (OLB) at [www.michigan.gov/timberbidding](http://www.michigan.gov/timberbidding) or by completing the hardcopy Bid Form found in the Timber Sale Prospectus. Hardcopy Bid Forms shall be manually signed in ink. Registration in OLB is considered your 'signature' for all bids submitted thru that system. Bid prices must be entered for each species and product in the Bid Price column for all material subject to bidding and all fill-in blanks must be completed. If erasures or other changes appear on the hardcopy Bid Form, each erasure or change must be initialed by the person signing the bid.

### 4. Submission of Sealed Bids (5/16)

Bid forms may be obtained from the Unit Manager or thru OLB. Bids may be submitted hardcopy or thru OLB. All hardcopy bids must be submitted on the bid form and in an envelope clearly identified as described in this section. NOTE: Only one bid form per bid envelope. Sealed bids must be submitted to the Unit office designated in the prospectus and must be submitted at or prior to the time established in the prospectus. The envelope should show on the outside (a) the sale name or number and (b) the date and time of bid opening, as shown in the prospectus. Bids received after the time specified in the sale prospectus are late bids and will be rejected.

It is possible for a bidder to submit multiple bids on a single sale. For example, a bid may be submitted hardcopy and a bid may be submitted thru OLB. Or, two bidders from the same company could both submit bids on the same sale. If this were to happen, the State would accept all bids received and award the contract accordingly. All bidding and contractual requirements would apply to all bids received.

### 5. Public Opening of Sealed Bids (7/16)

If conditions permit, the sealed bids will be publicly opened and posted at the time and place set in the prospectus.

If a bidder, present at a bid opening, has submitted bids on more than one sale, that bidder may withdraw their unopened bid envelopes or announce the withdrawal of their online bid after being declared the successful bidder on one sale.

### 6. Award of Contract (1/11)

Award of the contract will be made to the Bidder whose bid, conforming to the prospectus, is most advantageous to the State of Michigan on the basis of total value at rates bid for the estimated quantities. The State reserves the right to reject any bid or waive any minor irregularity in bids received. A written award mailed (or otherwise furnished) to the successful Bidder shall be deemed to result in a binding contract without further action by either party.

### 7. Down Payment (1/11)

The Bidder to whom award is made must make a down payment within 21 days of the sale award. The amount of the down payment will be calculated as shown in the Bond and Payment Schedule of this prospectus. Only cash may be used to meet this requirement.

### 8. Performance Security (1/11)

As guarantee of faithful performance, a cash bond, certificate of deposit, surety bond or irrevocable letter of credit (LOC) is required within 21 days of the sale award. The amount of the performance security is shown in the Bond and

Payment Schedule of this prospectus. If an LOC or surety is used, the coverage must extend for at least 6 months beyond the contract expiration.

#### 9. Timber Sale Contract (7/18)

Additional conditions and requirements common to all timber sales are listed on the timber sale contract (R4031) and are available on line at [www.michigan.gov/timber](http://www.michigan.gov/timber). Contact the Unit Manager for additional information or a sample contract. Within 21 days of the date of the award letter, the bidder must sign the contract and provide the required down payment, performance security, and verification of worker's disability compensation. The down payment and performance security shall be in accordance with the provisions of the timber sale contract, in the sums stated in this prospectus. If these actions are not taken, then the Bidder, the Bidder's corporation, and the corporation's principals may not be permitted to bid on State timber sales for a period of 3 months after the first offense, 6 months after the second offense, and 1 year after the third offense. An offense will only be counted against the Bidder for 5 years. In addition, the Bidder certifies that if awarded this contract, the Bidder will complete the timber sale contract in accordance with its terms and any modifications thereof including requirements to purchase, cut, and remove the included timber by the expiration date.

Payment Unit values in the State Forest Timber Sale Contract are calculated based on the advertised value of the Payment Unit as a percentage of the total advertised value of the contract. The advertised value of each Payment Unit is given in the Description of Timber by Payment Unit table on the Timber Sale Information page. For example, if the value of Payment Unit 1 is advertised as \$1,500 and the total Timber Sale value is advertised as \$10,000, the contract price for Payment Unit 1 will be 15% of the total bid price ( $\$1,500/\$10,000 * 100$ ).

#### 10. Disclaimer of Estimates and Bidder's Warranty of Inspection (7/16)

Before submitting this bid, the Bidder is advised and cautioned to inspect the sale area, review the requirements of the sale contract, and take other steps as may be reasonably necessary to ascertain the location, estimated volumes, construction estimates, and operating costs of the proposed sale. Failure to do so will not relieve the Bidder from responsibility for completing the contract.

The Bidder warrants that this bid is submitted solely on the basis of the Bidder's examination and inspection of the quality and quantity of the timber offered for sale and the Bidder's opinion of the value thereof and the costs of recovery. No reliance should be placed on the State of Michigan's estimates of timber quality, quantity or costs of recovery. Bidder further acknowledges that the State of Michigan: (i) expressly disclaims any warranty of fitness of timber for any purpose; (ii) offers this timber as is without any warranty of quality (merchantability) or quantity and (iii) expressly disclaims any warranty as to the quantity or quality of timber sold.

#### 11. Certification and Chain-of-Custody (10/14)

Unless otherwise indicated in the contract under section 7 – Other Conditions of the Sale Specific Conditions & Requirements, the area encompassed by this timber sale is certified to the standards of the Forest Stewardship Council (FSC) - Certificate #SCS-FM/COC-00090N and the Sustainable Forestry Initiative (SFI) - Certificate #NSF-SFIS-5Y031-SF5. Forest products from this sale may be delivered to the mill as "FSC 100% and / or SFI certified" as long as the contractor hauling the forest products is chain-of-custody (COC) certified or covered under a COC certificate from the destination mill. The purchaser is responsible for maintaining COC after leaving the sale area.

#### 12. Good Neighbor Authority (GNA) Requirements (7/16)

If the name of this timber sales contains the acronym GNA, it is authorized by the Good Neighbor Authority (GNA) and covered by various agreements between the U.S. Forest Service and the State. The timber sale occurs on federal land and the following conditions apply:

GNA contracts on US Forest Service land will not be awarded to purchasers on the Federal list of excluded parties. The System for Award Management (SAM) will be checked for active excluded parties prior to award of contract. In addition, the Bidder to whom award is made must complete an Assurance Regarding Felony Conviction or Tax Delinquent Status for Corporate Applicants (AD-3031).

#### 13. Good Neighbor Authority (GNA) Requirements, con't (9/16)

Bidder certifies, by signing this bid form, that to the best of Bidder's knowledge that the following representations are accurate and complete.

- a. That the Bidder and its principals are not presently debarred, suspended, proposed for debarment, declared ineligible, or voluntary excluded from timber sales (covered transactions) by any Federal department or agency.
- b. That the Bidder and its principals have not within a 3-year period preceding this bid been convicted of or had a civil judgment rendered against them for commission of fraud or a criminal offense in connection with obtaining, attempting to obtain, or performing a public (Federal, State, or local) transaction or contract under a public transaction; violation of Federal or State antitrust statutes or commission of embezzlement, theft, forgery, bribery, falsification or destruction of records, making false statements, or receiving stolen property.
- c. That the Bidder and its principals are not presently indicted for or otherwise criminally or civilly charged by a governmental entity (Federal, State, or local) with commission of any of the offenses enumerated in paragraph b of this certification.
- d. That the Bidder and its principals have not within a 3-year period preceding this bid had one or more public transactions (Federal, State, or local) terminated for breach or default of a timber or forest product contract.

Bidders that cannot certify this requirement, in whole or in part, shall submit an explanation with their bid.

DAN EICHINGER  
Director

**TIMBER SALE INFORMATION**

Hammertime Pine (53-001-19)

T32N, R01W, SEC. 29; T32N, R01W, SEC. 30; T32N, R01W, SEC. 32.  
Otsego County (Advertised Price \$166,939.05)

SALE NOTE: Please note chipping requirements in spec 2.2.2.

A timber sale contract for this lump sum, sealed bid timber sale will be awarded to the responsible bidder offering the highest sealed bid price. Bids must be at or above the following advertised price for each species:

<u>PRODUCTS &amp; SPECIES</u>	<u>ESTIMATED UNITS*</u>	<u>ADVERTISED PRICE</u>
Sawtimber		
Red Pine	1,039.60 MBF	\$ 121.00 / MBF
White Pine	29.60 MBF	\$ 64.00 / MBF
Pulpwood		
Jack Pine	8.00 Cords	\$ 25.85 / Cord
Red Maple	5.00 Cords	\$ 23.30 / Cord
Red Pine	733.00 Cords	\$ 48.25 / Cord
White Pine	114.00 Cords	\$ 31.25 / Cord

\* The total volume is statistically estimated within plus (+) or minus (-) 10.01 percent. The estimated units are final and not subject to adjustment. Prospective bidders are urged to examine this timber and to make their own estimates of quantity and quality.

**BOND AND PAYMENT SCHEDULE:**

1. A bond in the amount of \$16,694.00 to insure faithful performance of the conditions of the contract will be deposited by the successful bidder within 21 days of the sale award.
2. Cutting in any sale or unit without the required advance payment would be considered a trespass.
3. Total payment must be paid in advance or according to the following schedule:
  - (a) Ten percent (10%) of the sale value must be paid within 21 days of the sale award.
  - (b) The 10% down payment will be credited towards the first unit cut.
  - (c) Payment for each of the following units must be made before cutting begins in that unit:
 

<u>PAYMENT UNIT NUMBER</u>	<u>PERCENT OF TOTAL SALE VALUE</u>
01	35.4%
02	25.5%
03	19.9%
04	12.8%
05	6.4%
4. If no cutting takes place, the 10% down payment will not be refunded.
5. Operations on the contract issued will terminate on 12/31/2021.

**Description of Timber by Payment Unit (PU)**

PU	MARKET GROUP	PRODUCT	QUANTITY	UNIT	ACRES	ADVERTISE PRICE
1	Red Pine	Sawtimber	390.9	MBF	30.5	\$59,272.90
	White Pine		6.4	MBF		
	Jack Pine	Pulpwood	1.0	Cords		
	Red Maple		1.0	Cords		
	Red Pine		227.0	Cords		
	White Pine		18.0	Cords		
2	Red Pine	Sawtimber	260.8	MBF	27.4	\$42,546.05
	White Pine		7.9	MBF		
	Jack Pine	Pulpwood	4.0	Cords		
	Red Pine		197.0	Cords		
	White Pine		28.0	Cords		
3	Red Pine	Sawtimber	203.7	MBF	21.4	\$33,191.80
	White Pine		6.2	MBF		
	Jack Pine	Pulpwood	3.0	Cords		
	Red Pine		153.0	Cords		
	White Pine		22.0	Cords		
4	Red Pine	Sawtimber	124.0	MBF	11.9	\$21,313.80
	White Pine		2.4	MBF		
	Red Maple	Pulpwood	4.0	Cords		
	Red Pine		114.0	Cords		
	White Pine		18.0	Cords		
5	Red Pine	Sawtimber	60.2	MBF	11.6	\$10,614.50
	White Pine		6.7	MBF		
	Red Pine	Pulpwood	42.0	Cords		
	White Pine		28.0	Cords		
TOTAL:			1,069.2	MBF		
TOTAL:			860.0	Cords		

## Sale Specific Conditions & Requirements

**Sale Name: Hammertime Pine**

**Sale Number: 53-001-19 Seq#: 1**

### 1 - Sale Area

#### 1.2 - Boundaries

##### 1.2.1 - Painted boundaries (1/14)

The sale boundary and Payment Unit boundaries are marked and identified by red and yellow paint, along with a road. Exterior sale boundary lines against state are marked with red paint. Interior retention areas are marked with a red "X". Interior Payment Unit boundaries are marked with yellow paint, with the exception of the boundary between Payment Units 1 & 2 and 3 & 4, which is unpainted and identified by Old Vanderbilt Road. Red painted boundary line trees are not Included Timber and are to be protected. Yellow painted trees designating an interior Payment Unit boundary are only to be cut when all surrounding Payment Units have been paid.

### 2 - Timber Specifications

#### 2.1 - Included Timber

##### 2.1.1 - Clearcut unit(s) with unmerchantable trees (6/14)

Within Payment Unit(s) 1-3, cut all trees that are one (1) inch or more at DBH, except do not cut oak or any trees marked with green paint.

##### 2.1.7 - Leave tree marked unit(s) (6/14)

Within Payment Unit(s) 4, cut all trees that are one (1) inch or more at DBH, except do not cut oak or any trees marked with green paint above and below stump height.

Within Payment Unit(s) 5, cut all trees greater than four (4) inches or more at DBH, except do not cut any oak or any trees marked with green paint above and below stump height.

#### 2.2 - Utilization

##### 2.2.2 - Chipping required (2/18)

This area must be chip harvested to facilitate subsequent planting operations. Products may be produced as roundwood and forwarded to decking areas in final product length, but the tops must be left intact and skidded to the landing for chipping in order to minimize the amount of residual slash. The requirement to retain approximately 1/6 to 1/3 of tree tops and limbs less than four inches in diameter is still applicable (G. C. & R. 2.2).

##### 2.2.3 - Stump heights (4/07)

Stump heights within the Sale Area shall not exceed 12 inches for trees greater than 10 inches DBH and 4 inches for trees smaller than 10 inches DBH. This is in order to facilitate planting operations.

### 3 - Payments

#### 3.3 - Pre-measured Sales

##### 3.3.4 - Dividing payment units (7/14)

Payment Unit(s) 1 and 2 may be divided at the request of the Purchaser and upon approval of the Unit Manager. Dividing Payment Units is a contract modification which requires a Timber Sale Contract Supplement. There will be only one division per Payment Unit.

#### 3.4 - Damaged Timber

##### 3.4.1 - Damaged timber (6/14)

General Condition and Requirement 3.4 Damaged Timber, defines liquidated damages for undesignated live merchantable trees which are cut or injured. In addition, extreme care should be taken to avoid damage to white, red and jack pine seedlings and saplings in Payment Unit 5.

No damage is acceptable to merchantable trees. Within the sale area, if more than 10% of trees (> 4.5" DBH) within a specified area of the sale are damaged, liquidated damages will be assessed for all trees damaged. Rates will be in

accordance with General Condition and Requirement 3.4 Damaged Timber.

### 3.6 - Payment Unit Cutting Schedule

#### 3.6.8 - Operating period (5/16)

Once cutting begins, operations must continue until all Payment Units are completed. This requirement is in place so that post-harvest planting operations may be completed for the Sale Area at one time.

## 4 - Transportation

### 4.1 - Construction

#### 4.1.3 - Slash and earthen piles (8/04)

Piles or windrows of earth along roads and landings that have been widened or constructed shall be leveled. Slash from road maintenance or construction, including stumps, shall be dispersed throughout the sale.

#### 4.1.6 - Road construction (1/09)

Construction of new roads or improvements of existing roads shall be done in such a way as to minimize the environmental and visual impacts. Merchantable trees shall be cut and utilized unless otherwise directed. Non-merchantable trees shall be severed and laid flat on the ground. Slash shall be chipped, utilized or otherwise removed from the sale. Stumps shall be set upright, not left on edge, and be moved at least 10 feet away from the road edge. Disturbed soil shall be feathered into the woods and not left in berms or windrows.

#### 4.1.7 - Road closure (10/11)

All new roads built into the sale must be blocked to vehicle traffic upon completion of the sale. Overgrown roads that are reopened shall be considered new roads. In general, this will require constructing a four (4') foot high berm of stumps and logs covered with earth. These roads must be rendered impassable to cars and trucks. Contact the sale administrator for specific details of design and placement.

### 4.2 - Maintenance

#### 4.2.5 - Two wheel drive condition (2/04)

All existing trail roads on and adjacent to the sale area must be passable by two-wheel drive traffic for the duration of the sale.

## 5 - Operations

### 5.1 - Notification

#### 5.1.3 - Well heads and natural gas pipelines (11/15)

The Purchaser is responsible for contacting the gas or pipeline company 10 days prior to operating equipment in the vicinity of well heads or natural gas pipelines. The natural gas pipeline follows the edge of Old Vanderbilt Road.

### 5.2 - Conduct of Operations

#### 5.2.2 - Hazard Trees/Snags

##### 5.2.2.1 - Den trees (10/16)

Obvious hollow and/or den trees shall be protected and left standing unless they are a safety hazard.

#### 5.2.3 - Operating Restrictions

##### 5.2.3.1 - Operating restrictions (9/11)

Within Payment Unit(s) 4-5, cutting, skidding, and hauling are limited to the period of May 1 to December 1. This restriction is in place in order to maximize the amount of ground scarification.

##### 5.2.31 - Landing locations (9/13)

Recommended landing areas are marked on the Timber Sale Map with the letters "LD". Landings must be confined to these designated sites unless otherwise authorized by the Unit Manager or his/her representative.

##### 5.2.32 - Decking/landing restoration (9/13)

All decking and landing areas must have the surface area restored to a condition equal to or better than before. This is to ensure the proper regeneration of the stand. Wood debris, chips and "cookies" from trimmings must be removed or scattered



away from landing and loading areas and may not be windrowed on the edge.

#### 5.4 - Soil Protection

##### 5.4.1 - Rutting restriction, general (7/16)

Operations are to cease immediately if equipment and weather conditions result in rutting of roads and/or skid trails which is 12 inches or greater in depth and 25 feet in length. The Unit Manager or his/her representative may restrict hauling and/or skidding if ruts exceed the specified depth. With the Unit Manager or his/her representative's approval, the Purchaser may return to the area when the risk of rutting has decreased.

#### 5.8 - Protection of Endangered Species

##### 5.8.5 - Protection of raptor nests (3/13)

All trees with raptor nests will be protected if found during harvesting operations. Notification will be made to the Unit Manager or his/her representative who will notify the Wildlife Biologist so an on-site evaluation and recommendation can be made, if necessary.

### **6 - Safety and Fire Prevention**

#### 6.2 - Signing

##### 6.2.1 - Road posting (9/09)

The Purchaser is responsible for posting and maintaining caution signs on Old Vanderbilt and West Round Lake Roads prior to beginning operations. The road must be posted at appropriate distances from the sale area to warn of logging activity and truck traffic. Signs must be removed when harvest operations are suspended or completed.

### **8 - Performance and Settlement**

#### 8.3 - Uncompleted or Terminated Contracts

##### 8.3.1 - Completion of contract, chipping (1/16)

In addition to cutting, all chipping must be completed by the contract expiration date. If chipping has not been completed, an extension fee or damages may be charged per General Condition & Requirement 7.2 and 8.3.



Sale Number	Year
53 - 001	19

# TIMBER SALE MAP

This information provided by authority of Part 525, 1994 PA 451, as amended.

Forest Management Unit Pigeon River Country		County Otsego	Mapped By Rekowski	Date 09/14/2018	Page 1	of 1
Township 32N	Range 01W	Section(s) and Subdivision(s) 29: SENW, W1/2SE, NESE, SW1/4 32: N1/2NW		Scale 1:15,840		

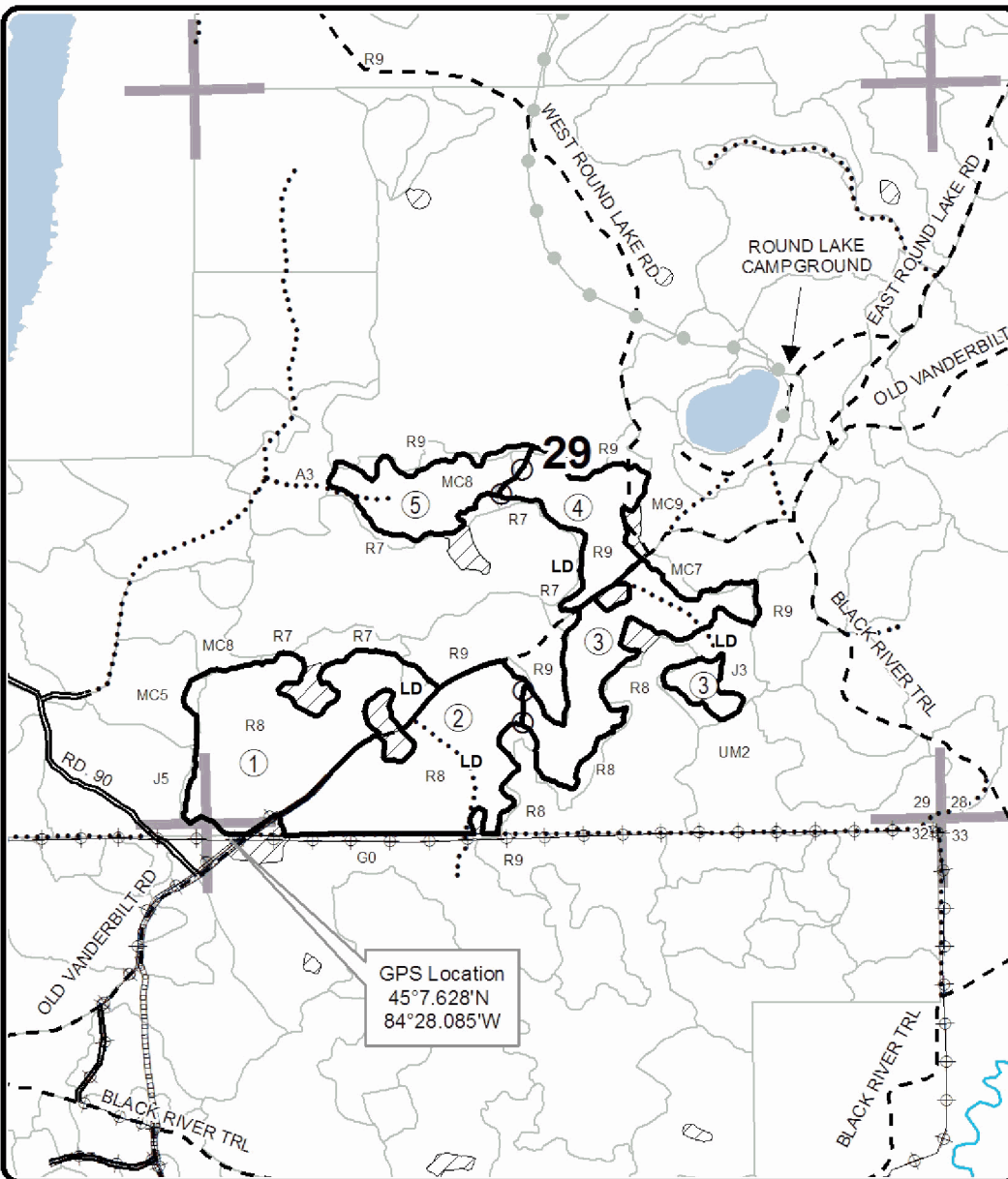
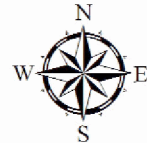
Cover Type				Density	
A = Aspen	H = Hemlock	N = Marsh	U = Upland Brush	0 = Non Stocked	5 = Pole Timber Medium
B = Paper Birch	J = Jack Pine	O = Oak	UM = Upland Mixed	1 = Seedling Sapling Poor	6 = Pole Timber Well
C = Cedar	L = Lowland Brush	P = Lowland Poplar	V = Bog or Marsh	2 = Seedling Sapling Medium	7 = Saw Timber Poor
D = Treed Bog	LM = Lowland Mixed	Q = Mixed Swamp Conifer	W = White Pine	3 = Seedling Sapling Well	8 = Saw Timber Medium
E = Swamp Hdwoods	M = Mpl, Bch, Brch	R = Red Pine	X = Non Stocked	4 = Pole Timber Poor	9 = Saw Timber Well
F = Spruce Fir	MC = Mixed Conifer	S = Black Spruce	Z = Water		
G = Grass	MD = Mixed Deciduous	T = Tamarack			

PU	Acres	PU	Acres
1	30.5	4	11.9
2	27.4	5	11.6
3	21.4		

## Hammertime Pine

### Compartment 040

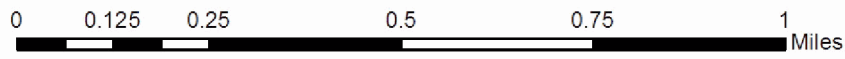
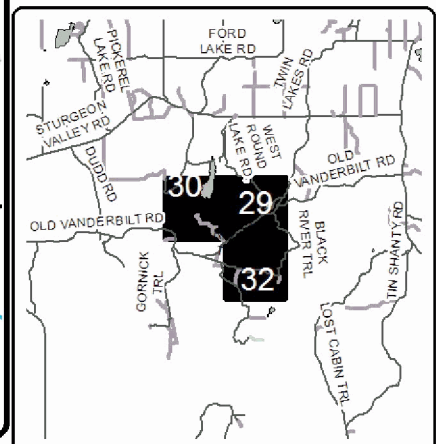
102.8 Acres



### Legend

- Sale Boundary (Red)
- Payment Unit (Yellow)
- Retention Area (Red X)
- Secondary Forest Road
- Gravel Road
- Closed Roads
- Pipeline
- Powerline
- Recreational Trail
- Lakes
- Stand Boundaries
- LD** Landing Location

Locator Map  
1:200,000



## TIMBER SALE INFORMATION

MacDaddy's Aspen (53-010-18)  
 T33N, R01W, SEC. 30; T33N, R01W, SEC. 31.  
 Cheboygan County (Advertised Price \$70,701.40)

SALE NOTE: Seasonal operating restrictions apply within Payment Units 1 and 2.

A timber sale contract for this lump sum, sealed bid timber sale will be awarded to the responsible bidder offering the highest sealed bid price. Bids must be at or above the following advertised price for each species:

<u>PRODUCTS &amp; SPECIES</u>	<u>ESTIMATED UNITS*</u>		<u>ADVERTISED PRICE</u>
<b>Sawtimber</b>			
Basswood	12.00	MBF	\$ 56.00 / MBF
Mixed Aspen	190.70	MBF	\$ 62.00 / MBF
Paper Birch	6.10	MBF	\$ 46.00 / MBF
Red Maple	48.40	MBF	\$ 104.00 / MBF
Sugar Maple	37.70	MBF	\$ 328.00 / MBF
White Pine	49.80	MBF	\$ 60.00 / MBF
White Spruce	10.70	MBF	\$ 68.00 / MBF
<b>Pulpwood</b>			
Balsam Fir	354.00	Cords	\$ 20.70 / Cord
Basswood	30.00	Cords	\$ 8.00 / Cord
Mixed Aspen	661.00	Cords	\$ 21.70 / Cord
Mixed Hardwood	470.00	Cords	\$ 21.85 / Cord
Paper Birch	15.00	Cords	\$ 22.20 / Cord
White Pine	117.00	Cords	\$ 29.30 / Cord
White Spruce	30.00	Cords	\$ 28.95 / Cord

\* The total volume is statistically estimated within plus (+) or minus (-) 10.83 percent. The estimated units are final and not subject to adjustment. Prospective bidders are urged to examine this timber and to make their own estimates of quantity and quality.

**BOND AND PAYMENT SCHEDULE:**

1. A bond in the amount of \$3,535.00 to insure faithful performance of the conditions of the contract will be deposited by the successful bidder within 21 days of the sale award.
2. Cutting in any sale or unit without the required advance payment would be considered a trespass.
3. Total payment must be paid in advance or according to the following schedule:
  - (a) Ten percent (10%) of the sale value must be paid within 21 days of the sale award.
  - (b) The 10% down payment will be credited towards the first unit cut.
  - (c) Payment for each of the following units must be made before cutting begins in that unit:

PAYMENT UNIT NUMBER	PERCENT OF TOTAL SALE VALUE
01	63.1%
02	36.9%

4. If no cutting takes place, the 10% down payment will not be refunded.
5. Operations on the contract issued will terminate on 12/31/2022.

**Description of Timber by Payment Unit (PU)**

PU	MARKET GROUP	PRODUCT	QUANTITY	UNIT	ACRES	ADVERTISE PRICE			
1	Basswood	Sawtimber	11.1	MBF	53.9	\$44,643.95			
	Mixed Aspen		125.0	MBF					
	<i>B. T. Aspen</i>		12.9	<i>MBF</i>					
	<i>Quaking Aspen</i>		112.1	<i>MBF</i>					
	Paper Birch		6.1	MBF					
	Red Maple		43.2	MBF					
	Sugar Maple		15.0	MBF					
	White Pine		2.5	MBF					
	White Spruce		10.7	MBF					
	Balsam Fir	Pulpwood	328.0	Cords					
	<i>Balsam Fir</i>	<i>Sawtimber</i>	34.3	<i>MBF</i>					
	<i>Balsam Fir</i>	<i>Pulpwood</i>	259.0	<i>Cords</i>					
	Basswood		14.0	Cords					
	Mixed Aspen		483.0	Cords					
	<i>B. T. Aspen</i>		23.0	<i>Cords</i>					
	<i>Balsam Poplar</i>		8.0	<i>Cords</i>					
	<i>Quaking Aspen</i>		452.0	<i>Cords</i>					
	Mixed Hardwood		315.0	Cords					
	<i>Ironwood</i>		2.0	<i>Cords</i>					
	<i>Red Maple</i>		224.0	<i>Cords</i>					
	<i>Sugar Maple</i>		89.0	<i>Cords</i>					
	Paper Birch		15.0	Cords					
	White Pine		8.0	Cords					
	White Spruce		30.0	Cords					
	2	Basswood	Sawtimber	0.9			MBF	23.9	\$26,057.45
		Mixed Aspen		65.7			MBF		
<i>B. T. Aspen</i>			57.1	<i>MBF</i>					
<i>Quaking Aspen</i>			8.6	<i>MBF</i>					
Red Maple			5.2	MBF					
Sugar Maple			22.7	MBF					
White Pine			47.3	MBF					
Balsam Fir		Pulpwood	26.0	Cords					
<i>Balsam Fir</i>		<i>Sawtimber</i>	7.4	<i>MBF</i>					
<i>Balsam Fir</i>		<i>Pulpwood</i>	11.0	<i>Cords</i>					
Basswood			16.0	Cords					
Mixed Aspen			178.0	Cords					
<i>B. T. Aspen</i>			123.0	<i>Cords</i>					
<i>Quaking Aspen</i>			55.0	<i>Cords</i>					
Mixed Hardwood			155.0	Cords					
<i>Beech</i>			13.0	<i>Cords</i>					
<i>Ironwood</i>			3.0	<i>Cords</i>					
<i>Red Maple</i>			18.0	<i>Cords</i>					
<i>Sugar Maple</i>			121.0	<i>Cords</i>					
White Pine			109.0	Cords					
TOTAL:			355.4	MBF					
TOTAL:			1,677.0	Cords					

# Sale Specific Conditions & Requirements

**Sale Name: MacDaddy's Aspen**

**Sale Number: 53-010-18 Seq#: 1**

## 1 - Sale Area

### 1.2 - Boundaries

#### 1.2.1 - Painted boundaries (1/14)

The sale boundaries are marked and identified by blue and red paint. Exterior sale boundary lines against private property are marked with blue paint. Exterior sale boundary lines against state are marked with red paint. The red and blue painted boundary line trees are not included timber and are to be protected. Excluded portions of the original sale area that will serve as retention are shown on the Timber Sale Map.

## 2 - Timber Specifications

### 2.1 - Included Timber

#### 2.1.1 - Clearcut unit(s) with unmerchantable trees (6/14)

Within Payment Unit(s) 1 and 2, cut all trees that are two (2) inches or more at DBH, with the following exceptions:

- Within Payment Unit 1, do not cut hemlock, yellow birch, red pine, trees marked with green paint, and the two (2) white spruce banded with red paint that also say "No Cut".

- Within Payment Unit 2, do not cut trees marked with green paint.

Special protection trees identified in accordance with condition 3.4.2, within clearcutting unit boundaries, are not Included Timber and are to be protected.

## 3 - Payments

### 3.3 - Pre-measured Sales

#### 3.3.4 - Dividing payment units (7/14)

Payment Unit(s) 1 and 2 may be divided at the request of the Purchaser and upon approval of the Unit Manager. Dividing Payment Units is a contract modification which requires a Timber Sale Contract Supplement. There will be only one division per Payment Unit.

### 3.4 - Damaged Timber

#### 3.4.1 - Damaged timber (6/14)

General Condition and Requirement 3.4 Damaged Timber, defines liquidated damages for undesignated live merchantable trees which are cut or injured.

No damage is acceptable to undesignated merchantable trees and designated retention areas. Within the sale area, if more than 5% of trees (> 4.5" DBH) within a specified area of the sale are damaged, liquidated damages will be assessed for all trees damaged. Rates will be in accordance with General Condition and Requirement 3.4 Damaged Timber.

#### 3.4.2 - Special Protection Trees (4/14)

The Purchaser shall not cut live or dead special protection trees within cutting units or clearings. Special protection trees are the two (2) white spruce banded with red paint that say "No Cut" within Payment Unit 1, and all trees marked with green paint within Payment Unit 2. Several of the aforementioned special protection trees meet legacy tree standards (26" or greater DBH, fire scars, broken tops/crowns, etc). If the Purchaser's operations have cut or damaged special protection trees through carelessness, the Purchaser shall pay \$100.00 as fixed, agreed and liquidated damages for each special protection tree cut or damaged. Such payment does not constitute ownership of the undesignated timber.

## 4 - Transportation

### 4.1 - Construction

#### 4.1.3 - Slash and earthen piles (8/04)

Piles or windrows of earth along roads and landings that have been widened or constructed shall be leveled. Slash from road maintenance or construction, including stumps, shall be dispersed throughout the sale.

#### 4.1.6 - Road construction (1/09)

Improvements of existing roads shall be done in such a way as to minimize the environmental and visual impacts. Merchantable trees shall be cut and utilized unless otherwise directed. Non-merchantable trees shall be severed and laid flat on the ground. Slash shall be scattered, and not left in windrows and kept a minimum of 10 feet back from the road edge. Stumps shall be set upright, not left on edge, and be moved at least 10 feet away from the road edge. Disturbed soil shall be feathered into the woods and not left in berms or windrows.

#### 4.1.7 - Road closure (10/11)

Overgrown roads that are reopened may need to be blocked to vehicle traffic upon completion of the sale. The sale administrator will determine which roads need to be blocked. In general, this will require constructing a four (4') foot high berm of stumps and logs, as available, covered with earth. The sale administrator may require stumps and brush, as available, to be placed along the remainder of the trail. These roads must be rendered impassable to cars and trucks. Contact the sale administrator for specific details of design and placement.

#### 4.1.12 - No new roads (1/12)

No new roads will be permitted in Payment Units 1 and 2. All operations are limited to existing roads. Skid trails only will be allowed.

### 4.2 - Maintenance

#### 4.2.2 - Fill material (4/07)

To maintain roads, fill material may be needed in areas where "holes" exist or may be expected to develop. This fill material should be placed before trucking begins. The sale administrator must approve any/all fill material prior to its dispersal.

#### 4.2.5 - Two wheel drive condition (2/04)

All existing trail roads on and adjacent to the sale area must be passable by two-wheel drive traffic for the duration of the sale.

### 4.4 - Access

#### 4.4.1 - Private property access (3/11)

Permission for access across private land is the responsibility of the Purchaser. Should the Purchaser desire to cross private land(s), a copy of the written permission from the private land-owner(s) may be required by the Unit Manager prior to the beginning of operations.

#### 4.4.3 - Access gate (12/08)

The access gate in Payment Unit 2 must be locked at the completion of each day unless otherwise approved by the Unit Manager or his/her representative. The gate will likely provide access to Payment Unit 1 as well.

## 5 - Operations

### 5.2 - Conduct of Operations

#### 5.2.1 - Slash

##### 5.2.1.10 - No slash in openings (5/10)

No brush or logging debris is to be left in any of the maintained wildlife openings indicated by G0 on the Timber Sale Map. Any damage to the opening shall be repaired according to specifications of the Unit Manager or his/her representative.

#### 5.2.2 - Hazard Trees/Snags

##### 5.2.2.1 - Den trees (10/16)

Obvious hollow and/or den trees shall be protected and left standing unless they are a safety hazard.

#### 5.2.3 - Operating Restrictions

##### 5.2.3.1 - Operating restrictions (9/11)

Within Payment Unit(s) 1 and 2, cutting, skidding, and hauling are limited to the period of July 1 to March 15. The Unit Manager or his/her representative reserve the right to allow operations outside of the above timeline if conditions warrant.

This restriction is meant to protect the sensitive soils and seasonally inundated areas located within Payment Unit 1, as well as to minimize browse on sprouting regeneration within both Payment Units.

#### 5.2.3.11 - Coppice regeneration protection (4/10)

Any post harvest operations within Payment Units 1 and 2, such as chipping, must be completed before sprouting of regeneration occurs. If it is anticipated that chipping will be delayed, then tops shall be carried to one central location or left unchipped. The Unit Manager or his/her representative may cease such operations if sprouting occurs before the operation is complete.

#### 5.2.4 - Dead and Down Creation

##### 5.2.4.1 - Dead and down creation, marked trees (10/13)

Within Payment Unit(s) 1, all trees marked with orange paint must be felled and left on site for wildlife. Orange marked trees were not cruised during timber tally in Payment Unit 1.

##### 5.2.32 - Decking/landing restoration (9/13)

All decking and landing areas must have the surface area restored to a condition equal to or better than before. This is to ensure the proper regeneration of the stand. Wood debris, chips and "cookies" from trimmings must be removed or scattered away from landing and loading areas and may not be windrowed on the edge.

##### 5.2.38 - No decking against live trees (2/04)

Cut products may not be decked against unmarked or designated leave trees.

##### 5.2.40 - Pathway protection (10/10)

The High Country Pathway is a hiking, biking, and snowshoe trail that travels near the northeast corner of Payment Unit 2. The trail does not travel through Payment Unit 2. It is shown on the Timber Sale Map. Exercise caution in the northeast area of Payment Unit 2 to negate conflicts between trail users and harvesting equipment.

#### 5.4 - Soil Protection

##### 5.4.1 - Rutting restriction, general (7/16)

Operations are to cease immediately if equipment and weather conditions result in rutting of roads and/or skid trails which are 12 inches or greater in depth and 50 feet in length. The Unit Manager or his/her representative may restrict hauling and/or skidding if ruts exceed the specified depth. With the Unit Manager or his/her representative's approval, the Purchaser may return to the area when the risk of rutting has decreased.

#### 5.8 - Protection of Endangered Species

##### 5.8.5 - Protection of raptor nests (3/13)

All trees with raptor nests will be protected if found during harvesting operations. Notification will be made to the Unit Manager or his/her representative who will notify the Wildlife Biologist so an on-site evaluation and recommendation can be made, if necessary.

### 6 - Safety and Fire Prevention

#### 6.2 - Signing

##### 6.2.1 - Road posting (9/09)

The Purchaser is responsible for posting and maintaining caution signs on forest road haul routes prior to beginning operations. The road must be posted at appropriate distances from the sale area to warn of logging activity and truck traffic. Signs must be removed when harvest operations are suspended or completed. The Purchaser will provide these signs.



### TIMBER SALE MAP

This information provided by authority of Part 525, 1994 PA 451, as amended.

Forest Management Unit Pigeon River Country	County Cheboygan	Mapped By J. St. Pierre	Date 6/04/2018	Page 1	of 1
Township 33N	Range 01W	Section(s) and Subdivision(s) Sec.30 SWNW, N1/2SW, SWSW, NWSE Sec.31 NE, NESE	Scale 1:15,840		

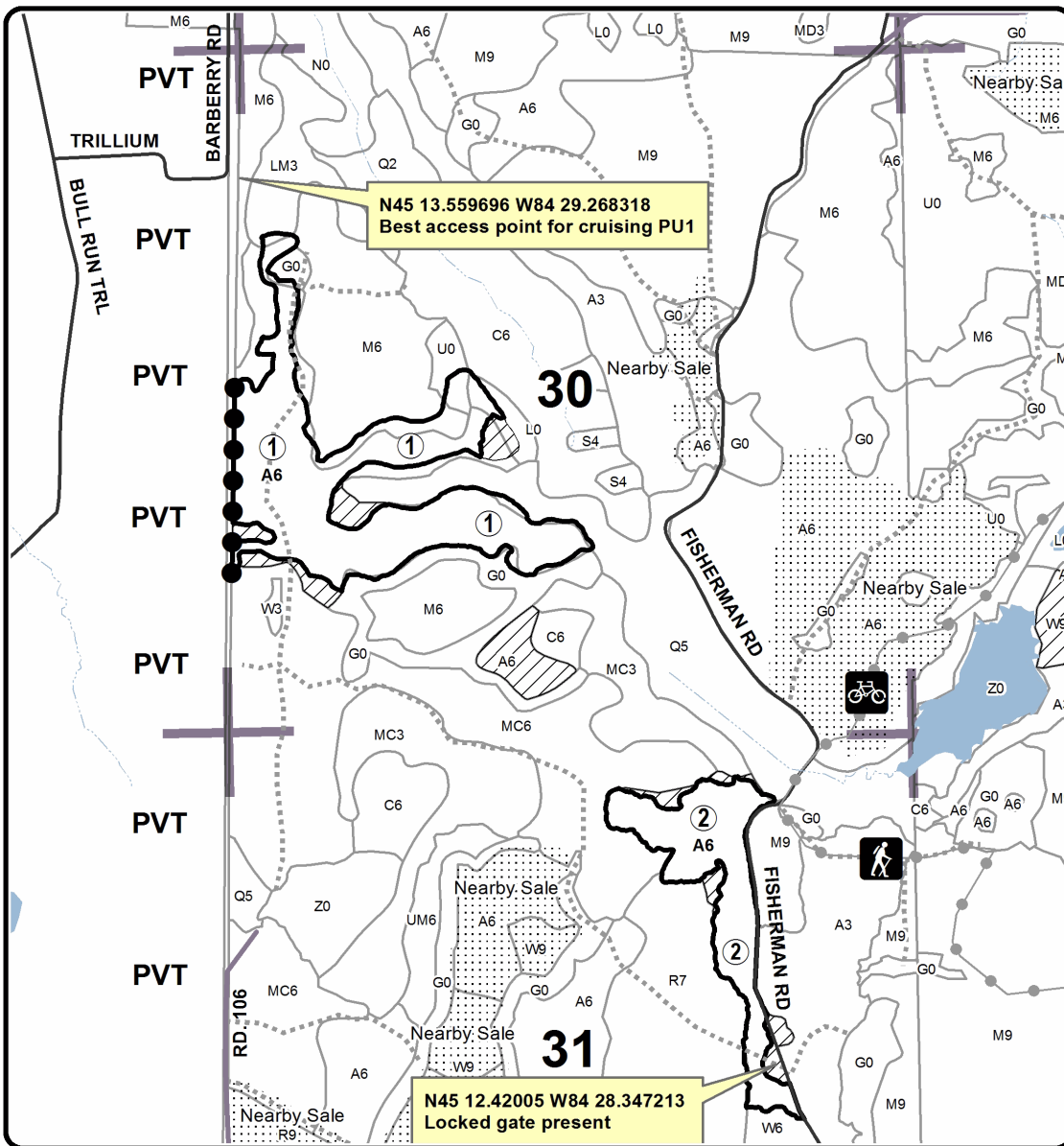
Cover Type				Density			
A = Aspen	H = Hemlock	N = Marsh	U = Upland Brush	0 = Non Stocked	5 = Pole Timber Medium		
B = Paper Birch	J = Jack Pine	O = Oak	UM = Upland Mixed	1 = Seedling Sapling Poor	6 = Pole Timber Well		
C = Cedar	L = Lowland Brush	P = Lowland Poplar	V = Bog or Marsh	2 = Seedling Sapling Medium	7 = Saw Timber Poor		
D = Tread Bog	LM = Lowland Mixed	Q = Mixed Swamp Conifer	W = White Pine	3 = Seedling Sapling Well	8 = Saw Timber Medium		
E = Swamp Hdwoods	M = Mpl. Bch. Brch	R = Red Pine	X = Non Stocked	4 = Pole Timber Poor	9 = Saw Timber Well		
F = Spruce Fir	MC = Mixed Conifer	S = Black Spruce	Z = Water				
G = Grass	MD = Mixed Deciduous	T = Tamarack					

PU	Acres
1	53.9
2	23.9

## MacDaddy's Aspen

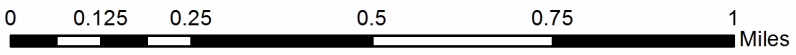
### Compartment 013

77.8 Acres



### Legend

- Against State (Red)
- Retention Area
- Private Line (Blue)
- Payment Unit #
- Secondary Forest Road
- Federal, State, Local Gvt., Private, Other Road
- Internal Use/Administr... Access (NLP)
- Recreational Trail
- Nearby Timber Sales
- Section Corners
- Lakes and Rivers
- Intermittent Stream





**TIMBER SALE INFORMATION**

Walker Aspine (53-018-17)

T33N, R01W, SEC. 17; T33N, R01W, SEC. 8.  
Cheboygan County (Advertised Price \$8,206.30)

SALE NOTE: There is an access gate that is locked. Please contact the sale administrator about access through that gate, if needed, to inspect timber prior to sale.

A timber sale contract for this lump sum, sealed bid timber sale will be awarded to the responsible bidder offering the highest sealed bid price. Bids must be at or above the following advertised price for each species:

<u>PRODUCTS &amp; SPECIES</u>	<u>ESTIMATED UNITS*</u>	<u>ADVERTISED PRICE</u>
Sawtimber		
Red Maple	11.90 MBF	\$ 63.00 / MBF
White Pine	51.20 MBF	\$ 29.00 / MBF
Pulpwood		
Balsam Fir	58.00 Cords	\$ 12.40 / Cord
Quaking Aspen	185.00 Cords	\$ 13.05 / Cord
Red Maple	47.00 Cords	\$ 13.10 / Cord
White Pine	96.00 Cords	\$ 17.55 / Cord
White Spruce	31.00 Cords	\$ 17.35 / Cord

\* The total volume is statistically estimated within plus (+) or minus (-) 18.22 percent. The estimated units are final and not subject to adjustment. Prospective bidders are urged to examine this timber and to make their own estimates of quantity and quality.

**BOND AND PAYMENT SCHEDULE:**

- A bond in the amount of \$1,000.00 to insure faithful performance of the conditions of the contract will be deposited by the successful bidder within 21 days of the sale award.
- Cutting in any sale or unit without the required advance payment would be considered a trespass.
- Total payment must be paid in advance or according to the following schedule:
  - Ten percent (10%) of the sale value must be paid within 21 days of the sale award.
  - The remainder is due before cutting begins.
  - Payment for each of the following units must be made before cutting begins in that unit:
 

PAYMENT UNIT NUMBER	PERCENT OF TOTAL SALE VALUE
01	100.0%
- If no cutting takes place, the 10% down payment will not be refunded.
- Operations on the contract issued will terminate on 12/31/2020.

**Description of Timber by Payment Unit (PU)**

PU	MARKET GROUP	PRODUCT	QUANTITY	UNIT	ACRES	ADVERTISE PRICE
1	Red Maple	Sawtimber	11.9	MBF	18.0	\$8,206.30
	White Pine		51.2	MBF		
	Balsam Fir	Pulpwood	58.0	Cords		
	Quaking Aspen		185.0	Cords		
	Red Maple		47.0	Cords		
	White Pine		96.0	Cords		
	White Spruce		31.0	Cords		
TOTAL:			63.1	MBF		
TOTAL:			417.0	Cords		

## Sale Specific Conditions & Requirements

Sale Name: Walker Aspine

Sale Number: 53-018-17 Seq#: 2

### 1 - Sale Area

#### 1.2 - Boundaries

##### 1.2.1 - Painted boundaries (1/14)

The sale boundary is marked and identified by red paint. The painted boundary line trees are not Included Timber and are to be protected.

### 2 - Timber Specifications

#### 2.1 - Included Timber

##### 2.1.1 - Clearcut unit(s) with unmerchantable trees (6/14)

Within Payment Unit(s) 1, cut all trees that are two (2) inches or more at DBH, regardless of merchantability. All trees marked with a green X are to be cut and left to lay after all cutting and skidding has been completed in that unit.

### 4 - Transportation

#### 4.1 - Construction

##### 4.1.3 - Slash and earthen piles (8/04)

Piles or windrows of earth along roads and landings that have been widened or constructed shall be leveled. Slash from road maintenance or construction, including stumps, shall be dispersed throughout the sale.

##### 4.1.6 - Road construction (1/09)

Construction of new roads or improvements of existing roads shall be done in such a way as to minimize the environmental and visual impacts. Merchantable trees shall be cut and utilized unless otherwise directed. Non-merchantable trees shall be severed and laid flat on the ground. Slash shall be scattered, and not left in windrows and kept a minimum of 10 feet back from the road edge. Stumps shall be set upright, not left on edge, and be moved at least 10 feet away from the road edge. Disturbed soil shall be feathered into the woods and not left in berms or windrows.

#### 4.2 - Maintenance

##### 4.2.5 - Two wheel drive condition (2/04)

All existing trail roads on and adjacent to the sale area must be passable by two-wheel drive traffic for the duration of the sale.

#### 4.4 - Access

##### 4.4.3 - Access gate (12/08)

The access gate(s) must be locked at the completion of each day unless otherwise approved by the Unit Manager or his/her representative.

### 5 - Operations

#### 5.2 - Conduct of Operations

##### 5.2.2 - Hazard Trees/Snags

###### 5.2.2.1 - Den trees (10/16)

Obvious hollow and/or den trees shall be protected and left standing unless they are a safety hazard.

##### 5.2.3 - Operating Restrictions

###### 5.2.3.1 - Operating restrictions (9/11)

Within Payment Unit(s) 1, unless changed by written agreement, cutting, skidding, and hauling are not permitted during the period of March 15 to July 1. This restriction is limit the effects of over-browsing by elk and deer, as well as to mitigate soil damage during breakup.

## 5.4 - Soil Protection

### 5.4.1 - Rutting restriction, general (7/16)

Operations are to cease immediately if equipment and weather conditions result in rutting of roads and/or skid trails which is 12 inches or greater in depth and 50 feet in length. The Unit Manager or his/her representative may restrict hauling and/or skidding if ruts exceed the specified depth. With the Unit Manager or his/her representative's approval, the Purchaser may return to the area when the risk of rutting has decreased.



**TIMBER SALE MAP**

This information provided by authority of Part 525 of Act 451, PA 1994, as amended.

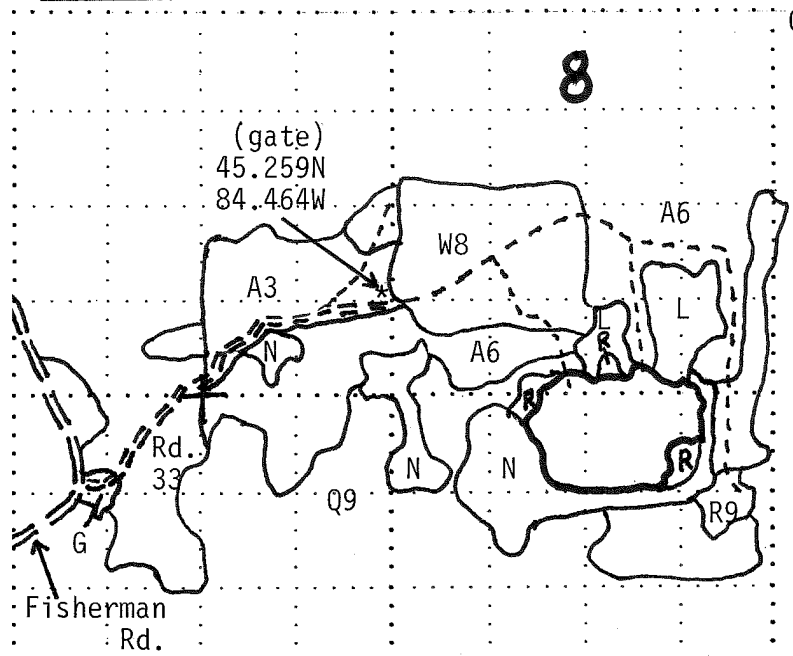
Sale Number

53-018-17

Year

2017

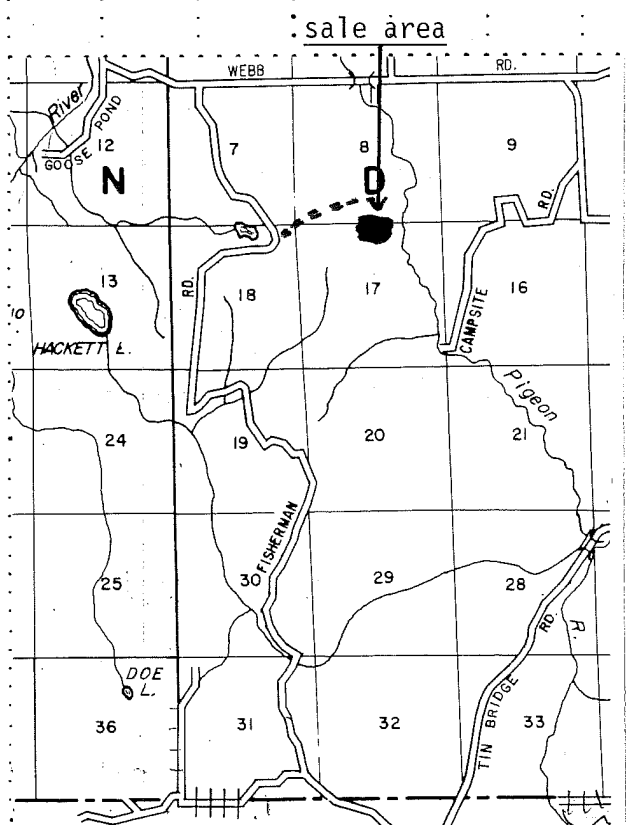
Forest Management Unit Pigeon River Country FMU		County Cheboygan	Mapped By Rick McDonald Cruised By Rick McDonald	Date 9/18/2017	Page of
Township 33N	Range 01W	Section(s) and Subdivision(s) (8) SWSE, SESW (17) NWNE, NENW		Scale 1" = 4" ... 1" = 1 mile	
Cover Type			Density		
A = Aspen	H = Hemlock	P = Lowland Poplar	V = Bog or Marsh	0 = Non Stocked	5 = Pole Timber Medium
B = Paper Birch	J = Jack Pine	Q = Mixed Swamp Cnfr	W = White Pine	1 = Seedling Sapling Poor	6 = Pole Timber Well
C = Cedar	L = Lowland Brush	R = Red Pine	X = Non Stocked	2 = Seedling Sapling Medium	7 = Saw Timber Poor
E = Swamp Hdwoods	M = Mpl, Bch, Brch	S = Black Spruce	Z = Water	3 = Seedling Sapling Well	8 = Saw Timber Medium
F = Spruce Fir	N = Marsh	T = Tamarack		4 = Pole Timber Poor	9 = Saw Timber Well
G = Grass	O = Oak	U = Upland Brush			



Compartment 8  
stand: 74

Walker: Aspine (18 acres)

- Sale Area Boundary (Red)
- County Road - dirt
- Open Forest Road
- Closed Road
- Retention Area



MacDaddy's Aspen (53-010-18)  
T33N, R01W, SEC. 30; T33N, R01W, SEC. 31; Cheboygan COUNTY

In response to the notice of sale to be held 9:00 a.m. (local time) on April 18, 2019, I am hereby submitting my sealed bid (firm offer) for the following forest products to be cut. Bids for individual species must be at or above the advertised price. All non-responsive bid forms may be rejected.

<u>PRODUCTS &amp; SPECIES</u>	<u>ESTIMATED VOLUME*</u>	<u>ADVERTISED PRICE</u>	<u>BID PRICE/UNIT</u>
<b>Sawtimber</b>			
Basswood	12.00 MBF	\$ 56.00/MBF	\$ _____
Mixed Aspen	190.70 MBF	\$ 62.00/MBF	\$ _____
Paper Birch	6.10 MBF	\$ 46.00/MBF	\$ _____
Red Maple	48.40 MBF	\$ 104.00/MBF	\$ _____
Sugar Maple	37.70 MBF	\$ 328.00/MBF	\$ _____
White Pine	49.80 MBF	\$ 60.00/MBF	\$ _____
White Spruce	10.70 MBF	\$ 68.00/MBF	\$ _____
<b>Pulpwood</b>			
Balsam Fir	354.00 Cords	\$ 20.70/Cord	\$ _____
Basswood	30.00 Cords	\$ 8.00/Cord	\$ _____
Mixed Aspen	661.00 Cords	\$ 21.70/Cord	\$ _____
Mixed Hardwood	470.00 Cords	\$ 21.85/Cord	\$ _____
Paper Birch	15.00 Cords	\$ 22.20/Cord	\$ _____
White Pine	117.00 Cords	\$ 29.30/Cord	\$ _____
White Spruce	30.00 Cords	\$ 28.95/Cord	\$ _____

\*The volumes are statistically estimated within plus (+) or minus (-) 10.83 percent. These estimated volumes are final and not subject to adjustment. Prospective bidders are urged to examine this timber and to make their own estimates of quantity and quality.

I understand that any or all bids may be rejected. All bids must be signed and all bid items must be bid or the bid form may be rejected. I also understand that consideration and awarding a contract will be based upon my past performance and ability to complete the contract based upon equipment and staffing subject to my control.

FEDERAL ID: \_\_\_\_\_ or SOCIAL SECURITY NUMBER: \_\_\_\_\_

Company or individual bidding: \_\_\_\_\_

Company representative's name: \_\_\_\_\_

Address: \_\_\_\_\_

City: \_\_\_\_\_ State: \_\_\_\_\_ Zip: \_\_\_\_\_

IF AVAILABLE, PLEASE PLACE THE PERSONALIZED LABEL FROM YOUR PROSPECTUS IN THE ABOVE BOX.

Individual or company representative's signature: \_\_\_\_\_ Date: \_\_\_\_\_

Phone number : \_\_\_\_\_ Email (optional): \_\_\_\_\_

**THE WINNING BIDDER MUST COMPLETE THE VERIFICATION OF WORKER'S DISABILITY COMPENSATION ACT COMPLIANCE (ON REVERSE SIDE IF DOUBLE SIDED) WITHIN 21 DAYS OF SALE AWARD DATE**



FOR DEPARTMENT USE ONLY	
Sale Number (XX - XXX - XX - XX)	
Forest Management Unit:	

## TIMBER SALE VERIFICATION OF WORKER'S DISABILITY COMPENSATION ACT COMPLIANCE

As required by Act 317, P.A. 1969 (Worker's Compensation) and  
Part 5 of Act 451 of 1994, as amended.

### VERIFICATION OF WORKER'S DISABILITY COMPENSATION ACT COMPLIANCE

- This verification must be completed and submitted within 21 days of contract award and prior to the issuance of the timber sale contract.
- In addition, if boxes 2B or 2C are checked, then Notice of Exclusion or Certificate of Insurance must be submitted within twenty-one (21) days of the contract award and prior to the issuance of the timber sale contract.
- All information must be typed or printed except for written signatures.

Please Check Appropriate Categories:

1. My business is organized as (you **must** check one of the boxes below):
  - A.  Sole Proprietorship (individual)
  - B.  Partnership
  - C.  Corporation
2. You **must** check one of the boxes below:
  - A.  I certify my business is a sole proprietorship and it has no employees but the sole proprietor. I am not subject to the Worker's Compensation Laws.
  - B.  I certify my business has satisfied its obligation to the Worker's Compensation Act through the use of an approved Notice of Exclusion (BWC-337, Rev. 5/96). I will provide a copy of the Notice of Exclusion within 21 days of the contract award. (For questions or a copy of the BWC-337, please call the Worker's Compensation Bureau at 517-322-1195).
  - C.  I certify my business has a Worker's Compensation Policy. I will provide an original Certificate of Insurance within twenty-one (21) days of the contract award.
3. If you have checked item 2(A) or 2(B), you **must** indicate the number of **both** full-time and part-time employees, other than yourself, including family members and active partners (if none, you must enter "0").

\_\_\_\_\_ Full-time Employees

\_\_\_\_\_ Part-time Employees

Name of Business		Federal ID (or) Social Security No.	
Address		Telephone (       )	
City	State	ZIP	

*I hereby certify that the above information is true and correct. I agree to notify the Michigan DNR of any changes that occur in factors affecting my coverage during any of my present and future operations.*

\_\_\_\_\_  
Signature of Owner or Authorized Representative

\_\_\_\_\_  
Title

\_\_\_\_\_  
Date

Please complete the "SEALED BID" information on the next page

Hammertime Pine (53-001-19)

T32N, R01W, SEC. 29; T32N, R01W, SEC. 30; T32N, R01W, SEC. 32; Otsego

In response to the notice of sale to be held 9:00 a.m. (local time) on April 18, 2019, I am hereby submitting my sealed bid (firm offer) for the following forest products to be cut. Bids for individual species must be at or above the advertised price. All non-responsive bid forms may be rejected.

<u>PRODUCTS &amp; SPECIES</u>	<u>ESTIMATED VOLUME*</u>	<u>ADVERTISED PRICE</u>	<u>BID PRICE/UNIT</u>
<b>Sawtimber</b>			
Red Pine	1,039.60 MBF	\$ 121.00/MBF	\$ _____
White Pine	29.60 MBF	\$ 64.00/MBF	\$ _____
<b>Pulpwood</b>			
Jack Pine	8.00 Cords	\$ 25.85/Cord	\$ _____
Red Maple	5.00 Cords	\$ 23.30/Cord	\$ _____
Red Pine	733.00 Cords	\$ 48.25/Cord	\$ _____
White Pine	114.00 Cords	\$ 31.25/Cord	\$ _____

\*The volumes are statistically estimated within plus (+) or minus (-) 10.01 percent. These estimated volumes are final and not subject to adjustment. Prospective bidders are urged to examine this timber and to make their own estimates of quantity and quality.

I understand that any or all bids may be rejected. All bids must be signed and all bid items must be bid or the bid form may be rejected. I also understand that consideration and awarding a contract will be based upon my past performance and ability to complete the contract based upon equipment and staffing subject to my control.

FEDERAL ID: \_\_\_\_\_ or SOCIAL SECURITY NUMBER: \_\_\_\_\_

Company or individual bidding: \_\_\_\_\_

Company representative's name: \_\_\_\_\_

Address: \_\_\_\_\_

City: \_\_\_\_\_ State: \_\_\_\_\_ Zip: \_\_\_\_\_

IF AVAILABLE, PLEASE PLACE THE PERSONALIZED LABEL FROM YOUR PROSPECTUS IN THE ABOVE BOX.

Individual or company representative's signature: \_\_\_\_\_ Date: \_\_\_\_\_

Phone number : \_\_\_\_\_ Email (optional): \_\_\_\_\_

**THE WINNING BIDDER MUST COMPLETE THE VERIFICATION OF WORKER'S DISABILITY COMPENSATION ACT COMPLIANCE (ON REVERSE SIDE IF DOUBLE SIDED) WITHIN 21 DAYS OF SALE AWARD DATE**



<b>FOR DEPARTMENT USE ONLY</b>
Sale Number (XX - XXX - XX - XX)
Forest Management Unit:

## TIMBER SALE VERIFICATION OF WORKER'S DISABILITY COMPENSATION ACT COMPLIANCE

*As required by Act 317, P.A. 1969 (Worker's Compensation) and  
Part 5 of Act 451 of 1994, as amended.*

### VERIFICATION OF WORKER'S DISABILITY COMPENSATION ACT COMPLIANCE

- This verification must be completed and submitted within 21 days of contract award and prior to the issuance of the timber sale contract.
- In addition, if boxes 2B or 2C are checked, then Notice of Exclusion or Certificate of Insurance must be submitted within twenty-one (21) days of the contract award and prior to the issuance of the timber sale contract.
- All information must be typed or printed except for written signatures.

Please Check Appropriate Categories:

1. My business is organized as (you **must** check one of the boxes below):
  - A.  Sole Proprietorship (individual)
  - B.  Partnership
  - C.  Corporation
2. You **must** check one of the boxes below:
  - A.  I certify my business is a sole proprietorship and it has no employees but the sole proprietor. I am not subject to the Worker's Compensation Laws.
  - B.  I certify my business has satisfied its obligation to the Worker's Compensation Act through the use of an approved Notice of Exclusion (BWC-337, Rev. 5/96). I will provide a copy of the Notice of Exclusion within 21 days of the contract award. (For questions or a copy of the BWC-337, please call the Worker's Compensation Bureau at 517-322-1195).
  - C.  I certify my business has a Worker's Compensation Policy. I will provide an original Certificate of Insurance within twenty-one (21) days of the contract award.
3. If you have checked item 2(A) or 2(B), you **must** indicate the number of **both** full-time and part-time employees, other than yourself, including family members and active partners (if none, you must enter "0").

\_\_\_\_\_ Full-time Employees

\_\_\_\_\_ Part-time Employees

Name of Business		Federal ID (or) Social Security No.	
Address		Telephone (       )	
City	State	ZIP	

*I hereby certify that the above information is true and correct. I agree to notify the Michigan DNR of any changes that occur in factors affecting my coverage during any of my present and future operations.*

\_\_\_\_\_  
Signature of Owner or Authorized Representative

\_\_\_\_\_  
Title

\_\_\_\_\_  
Date

**Please complete the "SEALED BID" information on the next page**



Walker Aspine (53-018-17)  
T33N, R01W, SEC. 17; T33N, R01W, SEC. 8; Cheboygan COUNTY

In response to the notice of sale to be held 9:00 a.m. (local time) on April 18, 2019, I am hereby submitting my sealed bid (firm offer) for the following forest products to be cut. Bids for individual species must be at or above the advertised price. All non-responsive bid forms may be rejected.

<u>PRODUCTS &amp; SPECIES</u>	<u>ESTIMATED VOLUME*</u>	<u>ADVERTISED PRICE</u>	<u>BID PRICE/UNIT</u>
<b>Sawtimber</b>			
Red Maple	11.90 MBF	\$ 63.00/MBF	\$ _____
White Pine	51.20 MBF	\$ 29.00/MBF	\$ _____
<b>Pulpwood</b>			
Balsam Fir	58.00 Cords	\$ 12.40/Cord	\$ _____
Quaking Aspen	185.00 Cords	\$ 13.05/Cord	\$ _____
Red Maple	47.00 Cords	\$ 13.10/Cord	\$ _____
White Pine	96.00 Cords	\$ 17.55/Cord	\$ _____
White Spruce	31.00 Cords	\$ 17.35/Cord	\$ _____

\*The volumes are statistically estimated within plus (+) or minus (-) 18.22 percent. These estimated volumes are final and not subject to adjustment. Prospective bidders are urged to examine this timber and to make their own estimates of quantity and quality.

I understand that any or all bids may be rejected. All bids must be signed and all bid items must be bid or the bid form may be rejected. I also understand that consideration and awarding a contract will be based upon my past performance and ability to complete the contract based upon equipment and staffing subject to my control.

FEDERAL ID: \_\_\_\_\_ or SOCIAL SECURITY NUMBER: \_\_\_\_\_

Company or individual bidding: \_\_\_\_\_

Company representative's name: \_\_\_\_\_

Address: \_\_\_\_\_

City: \_\_\_\_\_ State: \_\_\_\_\_ Zip: \_\_\_\_\_

IF AVAILABLE, PLEASE PLACE THE PERSONALIZED LABEL FROM YOUR PROSPECTUS IN THE ABOVE BOX.

Individual or company representative's signature: \_\_\_\_\_ Date: \_\_\_\_\_

Phone number : \_\_\_\_\_ Email (optional): \_\_\_\_\_

**THE WINNING BIDDER MUST COMPLETE THE VERIFICATION OF WORKER'S DISABILITY COMPENSATION ACT COMPLIANCE (ON REVERSE SIDE IF DOUBLE SIDED) WITHIN 21 DAYS OF SALE AWARD DATE**



<b>FOR DEPARTMENT USE ONLY</b>
Sale Number (XX – XXX – XX – XX)
Forest Management Unit:

## TIMBER SALE VERIFICATION OF WORKER'S DISABILITY COMPENSATION ACT COMPLIANCE

*As required by Act 317, P.A. 1969 (Worker's Compensation) and  
Part 5 of Act 451 of 1994, as amended.*

### VERIFICATION OF WORKER'S DISABILITY COMPENSATION ACT COMPLIANCE

- This verification must be completed and submitted within 21 days of contract award and prior to the issuance of the timber sale contract.
- In addition, if boxes 2B or 2C are checked, then Notice of Exclusion or Certificate of Insurance must be submitted within twenty-one (21) days of the contract award and prior to the issuance of the timber sale contract.
- All information must be typed or printed except for written signatures.

Please Check Appropriate Categories:

1. My business is organized as (you **must** check one of the boxes below):
  - A.  Sole Proprietorship (individual)
  - B.  Partnership
  - C.  Corporation
2. You **must** check one of the boxes below:
  - A.  I certify my business is a sole proprietorship and it has no employees but the sole proprietor. I am not subject to the Worker's Compensation Laws.
  - B.  I certify my business has satisfied its obligation to the Worker's Compensation Act through the use of an approved Notice of Exclusion (BWC-337, Rev. 5/96). I will provide a copy of the Notice of Exclusion within 21 days of the contract award. (For questions or a copy of the BWC-337, please call the Worker's Compensation Bureau at 517-322-1195).
  - C.  I certify my business has a Worker's Compensation Policy. I will provide an original Certificate of Insurance within twenty-one (21) days of the contract award.
3. If you have checked item 2(A) or 2(B), you **must** indicate the number of **both** full-time and part-time employees, other than yourself, including family members and active partners (if none, you must enter "0").

\_\_\_\_\_ Full-time Employees

\_\_\_\_\_ Part-time Employees

Name of Business		Federal ID (or) Social Security No.	
Address		Telephone (       )	
City	State	ZIP	

*I hereby certify that the above information is true and correct. I agree to notify the Michigan DNR of any changes that occur in factors affecting my coverage during any of my present and future operations.*

\_\_\_\_\_  
Signature of Owner or Authorized Representative

\_\_\_\_\_  
Title

\_\_\_\_\_  
Date

**Please complete the "SEALED BID" information on the next page**