



**DEPARTMENT OF NATURAL RESOURCES
STATE OF MICHIGAN**

TIMBER SALE PROSPECTUS #6330

SCHEDULED SALE DATE AND TIME: 2:00 p.m. (local time) on March 6, 2019.

LOCATION: ROSCOMMON MGMT UNIT, PO BOX 218, ROSCOMMON, MI 48653.

PROSPECTUS NOTE: The bidder is advised to inspect the sale area and review the location, estimated volumes, operating costs and contract terms of proposed sales. Please be aware that some landowners may request 60 days or more notice for access across their land.

Notice is hereby given that bids will be received by the Unit Manager, ROSCOMMON MANAGEMENT UNIT, for certain timber on the following described lands:

Ice Breaker Aspen (71-011-19) / T22N, R02W, SEC. 10, SW,W1/2SE.

T22N, R02W, SEC. 15, S1/2NW,SW,SE.

T22N, R02W, SEC. 16, SENE,NESE.

T22N, R02W, SEC. 22, N1/2NE.

Roscommon County, Advertised Price \$93,562.85, 162.1 Acres, Aspen, White Pine.

Rose City Oak (71-012-19) / T23N, R02E, SEC. 3 , NW.

T23N, R02E, SEC. 4 , NW,NE,SW.

T23N, R02E, SEC. 9 , NENW.

Ogemaw County, Advertised Price \$128,095.85, 115.9 Acres, Hardwood, Red Pine.

SALE NOTE: Payment Units 3, 4 and 5 have access to class A roads for hauling purposes.

Emery Oak Thin (71-014-18) / T22N, R01W, SEC. 29, E1/2NW,NE,NESW,N1/2SE.

Roscommon County, Advertised Price \$33,426.25, 116.9 Acres, Hardwood, Aspen.

SALE NOTE: A recreation site such as a trail, pathway, or campground is within the sale area or the vicinity. Certain restrictions/specifications may be applicable including time restrictions.

Deckers Aspen-Jack (71-024-18) / T24N, R02W, SEC. 23, E1/2NE,NESE.

T24N, R02W, SEC. 24, W1/2NW,NWSW.

Roscommon County, Advertised Price \$54,937.50, 52.2 Acres, White Pine, Aspen.

SALE NOTE: Extensive road work is required to access this sale. One option to access this sale will involve placement of crane mats or composite mats to cross a wet area on the utility ROW to the south-west of the sale.

A recreation site such as a trail, pathway, or campground is within the sale area or the vicinity. Certain restrictions/specifications may be applicable including time restrictions.

BID INSTRUCTIONS (VER. 07/02/2018):

1. Scheduled Bid Location, Date, and Time (2/11)

Bids must be received by the Unit Manager, ROSCOMMON OFFICE, PO BOX 218, ROSCOMMON, MI 48653, no later than 2:00 p.m. (local time) on March 6, 2019. For further information concerning this sale, contact Steve Anderson at 989-275-4622 extension 2740.

2. Bidder's Qualifications (5/16)

Purchaser shall obtain workers compensation insurance to cover claims under Michigan's Worker's Disability Compensation Act of 1969 or similar employee benefit act of any other state applicable to an employee. If all or part of a timber sale was prepared by a private contractor, the contractor and that contractor's company are not permitted to bid on the timber sale contract. Bids will not be accepted from individuals or companies appearing on the DNR/FRD No-Bid List. This list contains the names of purchasers who previously failed to execute a contract within 21-days or who have a history of poor performance.

3. Preparation of Sealed Bids (5/16)

Bid Forms may be completed online thru Michigan DNR Timber Sale Online Bidding (OLB) at www.michigan.gov/timberbidding or by completing the hardcopy Bid Form found in the Timber Sale Prospectus. Hardcopy Bid Forms shall be manually signed in ink. Registration in OLB is considered your 'signature' for all bids submitted thru that system. Bid prices must be entered for each species and product in the Bid Price column for all material subject to bidding and all fill-in blanks must be completed. If erasures or other changes appear on the hardcopy Bid Form, each erasure or change must be initialed by the person signing the bid.

4. Submission of Sealed Bids (5/16)

Bid forms may be obtained from the Unit Manager or thru OLB. Bids may be submitted hardcopy or thru OLB. All hardcopy bids must be submitted on the bid form and in an envelope clearly identified as described in this section. NOTE: Only one bid form per bid envelope. Sealed bids must be submitted to the Unit office designated in the prospectus and must be submitted at or prior to the time established in the prospectus. The envelope should show on the outside (a) the sale name or number and (b) the date and time of bid opening, as shown in the prospectus. Bids received after the time specified in the sale prospectus are late bids and will be rejected.

It is possible for a bidder to submit multiple bids on a single sale. For example, a bid may be submitted hardcopy and a bid may be submitted thru OLB. Or, two bidders from the same company could both submit bids on the same sale. If this were to happen, the State would accept all bids received and award the contract accordingly. All bidding and contractual requirements would apply to all bids received.

5. Public Opening of Sealed Bids (7/16)

If conditions permit, the sealed bids will be publicly opened and posted at the time and place set in the prospectus.

If a bidder, present at a bid opening, has submitted bids on more than one sale, that bidder may withdraw their unopened bid envelopes or announce the withdrawal of their online bid after being declared the successful bidder on one sale.

6. Award of Contract (1/11)

Award of the contract will be made to the Bidder whose bid, conforming to the prospectus, is most advantageous to the State of Michigan on the basis of total value at rates bid for the estimated quantities. The State reserves the right to reject any bid or waive any minor irregularity in bids received. A written award mailed (or otherwise furnished) to the successful Bidder shall be deemed to result in a binding contract without further action by either party.

7. Down Payment (1/11)

The Bidder to whom award is made must make a down payment within 21 days of the sale award. The amount of the down payment will be calculated as shown in the Bond and Payment Schedule of this prospectus. Only cash may be used to meet this requirement.

8. Performance Security (1/11)

As guarantee of faithful performance, a cash bond, certificate of deposit, surety bond or irrevocable letter of credit (LOC) is required within 21 days of the sale award. The amount of the performance security is shown in the Bond and

Payment Schedule of this prospectus. If an LOC or surety is used, the coverage must extend for at least 6 months beyond the contract expiration.

9. Timber Sale Contract (7/18)

Additional conditions and requirements common to all timber sales are listed on the timber sale contract (R4031) and are available on line at www.michigan.gov/timber. Contact the Unit Manager for additional information or a sample contract. Within 21 days of the date of the award letter, the bidder must sign the contract and provide the required down payment, performance security, and verification of worker's disability compensation. The down payment and performance security shall be in accordance with the provisions of the timber sale contract, in the sums stated in this prospectus. If these actions are not taken, then the Bidder, the Bidder's corporation, and the corporation's principals may not be permitted to bid on State timber sales for a period of 3 months after the first offense, 6 months after the second offense, and 1 year after the third offense. An offense will only be counted against the Bidder for 5 years. In addition, the Bidder certifies that if awarded this contract, the Bidder will complete the timber sale contract in accordance with its terms and any modifications thereof including requirements to purchase, cut, and remove the included timber by the expiration date.

Payment Unit values in the State Forest Timber Sale Contract are calculated based on the advertised value of the Payment Unit as a percentage of the total advertised value of the contract. The advertised value of each Payment Unit is given in the Description of Timber by Payment Unit table on the Timber Sale Information page. For example, if the value of Payment Unit 1 is advertised as \$1,500 and the total Timber Sale value is advertised as \$10,000, the contract price for Payment Unit 1 will be 15% of the total bid price ($\$1,500/\$10,000 * 100$).

10. Disclaimer of Estimates and Bidder's Warranty of Inspection (7/16)

Before submitting this bid, the Bidder is advised and cautioned to inspect the sale area, review the requirements of the sale contract, and take other steps as may be reasonably necessary to ascertain the location, estimated volumes, construction estimates, and operating costs of the proposed sale. Failure to do so will not relieve the Bidder from responsibility for completing the contract.

The Bidder warrants that this bid is submitted solely on the basis of the Bidder's examination and inspection of the quality and quantity of the timber offered for sale and the Bidder's opinion of the value thereof and the costs of recovery. No reliance should be placed on the State of Michigan's estimates of timber quality, quantity or costs of recovery. Bidder further acknowledges that the State of Michigan: (i) expressly disclaims any warranty of fitness of timber for any purpose; (ii) offers this timber as is without any warranty of quality (merchantability) or quantity and (iii) expressly disclaims any warranty as to the quantity or quality of timber sold.

11. Certification and Chain-of-Custody (10/14)

Unless otherwise indicated in the contract under section 7 – Other Conditions of the Sale Specific Conditions & Requirements, the area encompassed by this timber sale is certified to the standards of the Forest Stewardship Council (FSC) - Certificate #SCS-FM/COC-00090N and the Sustainable Forestry Initiative (SFI) - Certificate #NSF-SFIS-5Y031-SF5. Forest products from this sale may be delivered to the mill as "FSC 100% and / or SFI certified" as long as the contractor hauling the forest products is chain-of-custody (COC) certified or covered under a COC certificate from the destination mill. The purchaser is responsible for maintaining COC after leaving the sale area.

12. Good Neighbor Authority (GNA) Requirements (7/16)

If the name of this timber sales contains the acronym GNA, it is authorized by the Good Neighbor Authority (GNA) and covered by various agreements between the U.S. Forest Service and the State. The timber sale occurs on federal land and the following conditions apply:

GNA contracts on US Forest Service land will not be awarded to purchasers on the Federal list of excluded parties. The System for Award Management (SAM) will be checked for active excluded parties prior to award of contract. In addition, the Bidder to whom award is made must complete an Assurance Regarding Felony Conviction or Tax Delinquent Status for Corporate Applicants (AD-3031).

13. Good Neighbor Authority (GNA) Requirements, con't (9/16)

Bidder certifies, by signing this bid form, that to the best of Bidder's knowledge that the following representations are accurate and complete.

- a. That the Bidder and its principals are not presently debarred, suspended, proposed for debarment, declared ineligible, or voluntary excluded from timber sales (covered transactions) by any Federal department or agency.
- b. That the Bidder and its principals have not within a 3-year period preceding this bid been convicted of or had a civil judgment rendered against them for commission of fraud or a criminal offense in connection with obtaining, attempting to obtain, or performing a public (Federal, State, or local) transaction or contract under a public transaction; violation of Federal or State antitrust statutes or commission of embezzlement, theft, forgery, bribery, falsification or destruction of records, making false statements, or receiving stolen property.
- c. That the Bidder and its principals are not presently indicted for or otherwise criminally or civilly charged by a governmental entity (Federal, State, or local) with commission of any of the offenses enumerated in paragraph b of this certification.
- d. That the Bidder and its principals have not within a 3-year period preceding this bid had one or more public transactions (Federal, State, or local) terminated for breach or default of a timber or forest product contract.

Bidders that cannot certify this requirement, in whole or in part, shall submit an explanation with their bid.

DAN EICHINGER
Director

TIMBER SALE INFORMATION

Ice Breaker Aspen (71-011-19)

T22N, R02W, SEC. 10; T22N, R02W, SEC. 15; T22N, R02W, SEC. 16; T22N, R02W, SEC. 22.
Roscommon County (Advertised Price \$93,562.85)

A timber sale contract for this lump sum, sealed bid timber sale will be awarded to the responsible bidder offering the highest sealed bid price. Bids must be at or above the following advertised price for each species:

<u>PRODUCTS & SPECIES</u>	<u>ESTIMATED UNITS*</u>	<u>ADVERTISED PRICE</u>
Sawtimber		
B. T. Aspen	97.50 MBF	\$ 65.00 / MBF
Red Maple	21.90 MBF	\$ 66.00 / MBF
Red Pine	15.40 MBF	\$ 123.00 / MBF
White Pine	62.90 MBF	\$ 61.00 / MBF
Pulpwood		
Balsam Fir	282.00 Cords	\$ 16.65 / Cord
Bl/R/Hybrid Oak	1.00 Cords	\$ 18.25 / Cord
Black Spruce	32.00 Cords	\$ 25.85 / Cord
Jack Pine	132.00 Cords	\$ 18.10 / Cord
Mixed Aspen	2,023.00 Cords	\$ 30.10 / Cord
Mixed Hardwood	231.00 Cords	\$ 22.20 / Cord
Red Pine	36.00 Cords	\$ 46.90 / Cord
White Pine	196.00 Cords	\$ 22.50 / Cord

* The total volume is statistically estimated within plus (+) or minus (-) 8.30 percent. The estimated units are final and not subject to adjustment. Prospective bidders are urged to examine this timber and to make their own estimates of quantity and quality.

BOND AND PAYMENT SCHEDULE:

1. A bond in the amount of \$4,678.00 to insure faithful performance of the conditions of the contract will be deposited by the successful bidder within 21 days of the sale award.
2. Cutting in any sale or unit without the required advance payment would be considered a trespass.
3. Total payment must be paid in advance or according to the following schedule:
 - (a) Ten percent (10%) of the sale value must be paid within 21 days of the sale award.
 - (b) The 10% down payment will be credited towards the first unit cut.
 - (c) Payment for each of the following units must be made before cutting begins in that unit:

<u>PAYMENT UNIT NUMBER</u>	<u>PERCENT OF TOTAL SALE VALUE</u>
01	13.3%
02	12.8%
03	5.8%
04	8.9%
05	15.1%
06	6.2%
07	2.7%
08	13.1%
09	8.5%
10	13.6%

4. If no cutting takes place, the 10% down payment will not be refunded.
5. Operations on the contract issued will terminate on 12/31/2021.

Description of Timber by Payment Unit (PU)

PU	MARKET GROUP	PRODUCT	QUANTITY	UNIT	ACRES	ADVERTISE PRICE
1	B. T. Aspen	Sawtimber	24.4	MBF	20.0	\$12,398.70
	White Pine		1.3	MBF		
	Balsam Fir	Pulpwood	6.0	Cords		
	<i>Balsam Fir</i>	<i>Sawtimber</i>	<i>0.4</i>	<i>MBF</i>		
	<i>Balsam Fir</i>	<i>Pulpwood</i>	<i>5.0</i>	<i>Cords</i>		
	Jack Pine		9.0	Cords		
	<i>Jack Pine</i>	<i>Sawtimber</i>	<i>0.9</i>	<i>MBF</i>		
	<i>Jack Pine</i>	<i>Pulpwood</i>	<i>7.0</i>	<i>Cords</i>		
	Mixed Aspen		336.0	Cords		
	<i>B. T. Aspen</i>		<i>299.0</i>	<i>Cords</i>		
	<i>Quaking Aspen</i>		<i>37.0</i>	<i>Cords</i>		
	Mixed Hardwood		10.0	Cords		
	<i>Black Cherry</i>		<i>4.0</i>	<i>Cords</i>		
	<i>Red Maple</i>		<i>6.0</i>	<i>Cords</i>		
	White Pine		6.0	Cords		
2	B. T. Aspen	Sawtimber	8.5	MBF	20.4	\$11,986.05
	Red Maple		0.5	MBF		
	Red Pine		2.0	MBF		
	White Pine		8.3	MBF		
	Balsam Fir	Pulpwood	33.0	Cords		
	<i>Balsam Fir</i>		<i>33.0</i>	<i>Cords</i>		
	Black Spruce		14.0	Cords		
	Mixed Aspen		279.0	Cords		
	<i>B. T. Aspen</i>		<i>186.0</i>	<i>Cords</i>		
	<i>Quaking Aspen</i>		<i>93.0</i>	<i>Cords</i>		
	Mixed Hardwood		25.0	Cords		
	<i>Red Maple</i>		<i>25.0</i>	<i>Cords</i>		
	Red Pine		10.0	Cords		
	White Pine		14.0	Cords		
	3	B. T. Aspen	Sawtimber	3.8		
Red Maple			0.2	MBF		
Red Pine			0.9	MBF		
White Pine			3.7	MBF		
Balsam Fir		Pulpwood	15.0	Cords		
<i>Balsam Fir</i>			<i>15.0</i>	<i>Cords</i>		
Black Spruce			7.0	Cords		
Mixed Aspen			126.0	Cords		
<i>B. T. Aspen</i>			<i>84.0</i>	<i>Cords</i>		
<i>Quaking Aspen</i>			<i>42.0</i>	<i>Cords</i>		
Mixed Hardwood			11.0	Cords		
<i>Red Maple</i>			<i>11.0</i>	<i>Cords</i>		
Red Pine			4.0	Cords		
White Pine			6.0	Cords		
4		B. T. Aspen	Sawtimber	3.1	MBF	16.0
	Red Maple		0.2	MBF		
	Red Pine		0.6	MBF		
	White Pine		3.3	MBF		
	Balsam Fir	Pulpwood	15.0	Cords		
	<i>Balsam Fir</i>		<i>15.0</i>	<i>Cords</i>		
	BI/R/Hybrid Oak		1.0	Cords		
	Black Spruce		11.0	Cords		
	Jack Pine		97.0	Cords		
	<i>Jack Pine</i>		<i>97.0</i>	<i>Cords</i>		
	Mixed Aspen		147.0	Cords		
	<i>B. T. Aspen</i>		<i>73.0</i>	<i>Cords</i>		
	<i>Quaking Aspen</i>		<i>74.0</i>	<i>Cords</i>		

Description of Timber by Payment Unit (PU), con't

PU	MARKET GROUP	PRODUCT	QUANTITY	UNIT	ACRES	ADVERTISE PRICE
4 con't	Mixed Hardwood	Pulpwood	37.0	Cords		
	<i>Red Maple</i>		37.0	<i>Cords</i>		
	Red Pine		3.0	Cords		
	White Pine		7.0	Cords		
5	B. T. Aspen	Sawtimber	19.3	MBF	20.3	\$14,219.00
	White Pine		25.3	MBF		
	Balsam Fir	Pulpwood	50.0	Cords		
	<i>Balsam Fir</i>	<i>Sawtimber</i>	1.7	<i>MBF</i>		
	<i>Balsam Fir</i>	<i>Pulpwood</i>	47.0	<i>Cords</i>		
	Mixed Aspen		260.0	Cords		
	<i>B. T. Aspen</i>		221.0	<i>Cords</i>		
	<i>Quaking Aspen</i>		39.0	<i>Cords</i>		
	Mixed Hardwood		16.0	Cords		
	<i>Red Maple</i>		16.0	<i>Cords</i>		
	White Pine		107.0	Cords		
6	B. T. Aspen	Sawtimber	4.3	MBF	11.2	\$5,799.75
	Red Maple		1.1	MBF		
	Red Pine		1.2	MBF		
	Balsam Fir	Pulpwood	39.0	Cords		
	<i>Balsam Fir</i>	<i>Sawtimber</i>	0.7	<i>MBF</i>		
	<i>Balsam Fir</i>	<i>Pulpwood</i>	38.0	<i>Cords</i>		
	Mixed Aspen		150.0	Cords		
	<i>B. T. Aspen</i>		103.0	<i>Cords</i>		
	<i>Quaking Aspen</i>		47.0	<i>Cords</i>		
	Mixed Hardwood		4.0	Cords		
	<i>Red Maple</i>		4.0	<i>Cords</i>		
	Red Pine		1.0	Cords		
	7	Red Maple	Sawtimber	2.7		
White Pine			10.1	MBF		
Balsam Fir		Pulpwood	13.0	Cords		
<i>Balsam Fir</i>			13.0	<i>Cords</i>		
Mixed Aspen			24.0	Cords		
<i>Quaking Aspen</i>			24.0	<i>Cords</i>		
Mixed Hardwood			11.0	Cords		
<i>Red Maple</i>			11.0	<i>Cords</i>		
White Pine			23.0	Cords		
8	B. T. Aspen	Sawtimber	12.7	MBF	22.4	\$12,253.00
	Red Maple		6.4	MBF		
	Red Pine		3.9	MBF		
	White Pine		4.0	MBF		
	Balsam Fir	Pulpwood	42.0	Cords		
	<i>Balsam Fir</i>	<i>Sawtimber</i>	1.3	<i>MBF</i>		
	<i>Balsam Fir</i>	<i>Pulpwood</i>	39.0	<i>Cords</i>		
	Jack Pine		10.0	Cords		
	<i>Jack Pine</i>	<i>Sawtimber</i>	1.0	<i>MBF</i>		
	<i>Jack Pine</i>	<i>Pulpwood</i>	8.0	<i>Cords</i>		
	Mixed Aspen		260.0	Cords		
	<i>B. T. Aspen</i>		207.0	<i>Cords</i>		
	<i>Quaking Aspen</i>		53.0	<i>Cords</i>		
	Mixed Hardwood		44.0	Cords		
	<i>Black Cherry</i>	<i>Sawtimber</i>	0.3	<i>MBF</i>		
	<i>Black Cherry</i>	<i>Pulpwood</i>	12.0	<i>Cords</i>		
	<i>Red Maple</i>		31.0	<i>Cords</i>		
Red Pine		7.0	Cords			
White Pine		12.0	Cords			
9	B. T. Aspen	Sawtimber	8.3	MBF	14.7	\$7,995.65

Description of Timber by Payment Unit (PU), con't

PU	MARKET GROUP	PRODUCT	QUANTITY	UNIT	ACRES	ADVERTISE PRICE	
9 con't	Red Maple	Sawtimber	4.2	MBF			
	Red Pine		2.6	MBF			
	White Pine		2.7	MBF			
	Balsam Fir	Pulpwood	27.0	Cords			
	<i>Balsam Fir</i>	<i>Sawtimber</i>	0.8	<i>MBF</i>			
	<i>Balsam Fir</i>	<i>Pulpwood</i>	25.0	<i>Cords</i>			
	Jack Pine		6.0	Cords			
	<i>Jack Pine</i>	<i>Sawtimber</i>	0.6	<i>MBF</i>			
	<i>Jack Pine</i>	<i>Pulpwood</i>	5.0	<i>Cords</i>			
	Mixed Aspen		171.0	Cords			
	<i>B. T. Aspen</i>		136.0	<i>Cords</i>			
	<i>Quaking Aspen</i>		35.0	<i>Cords</i>			
	Mixed Hardwood		28.0	Cords			
	<i>Black Cherry</i>	<i>Sawtimber</i>	0.2	<i>MBF</i>			
	<i>Black Cherry</i>	<i>Pulpwood</i>	8.0	<i>Cords</i>			
	<i>Red Maple</i>		20.0	<i>Cords</i>			
	Red Pine		4.0	Cords			
	White Pine		8.0	Cords			
	10	B. T. Aspen	Sawtimber	13.1	MBF	23.2	\$12,703.65
		Red Maple		6.6	MBF		
Red Pine			4.2	MBF			
White Pine			4.2	MBF			
Balsam Fir		Pulpwood	43.0	Cords			
<i>Balsam Fir</i>		<i>Sawtimber</i>	1.3	<i>MBF</i>			
<i>Balsam Fir</i>		<i>Pulpwood</i>	40.0	<i>Cords</i>			
Jack Pine			10.0	Cords			
<i>Jack Pine</i>		<i>Sawtimber</i>	1.0	<i>MBF</i>			
<i>Jack Pine</i>		<i>Pulpwood</i>	8.0	<i>Cords</i>			
Mixed Aspen			270.0	Cords			
<i>B. T. Aspen</i>			215.0	<i>Cords</i>			
<i>Quaking Aspen</i>			55.0	<i>Cords</i>			
Mixed Hardwood			45.0	Cords			
<i>Black Cherry</i>		<i>Sawtimber</i>	0.4	<i>MBF</i>			
<i>Black Cherry</i>		<i>Pulpwood</i>	12.0	<i>Cords</i>			
<i>Red Maple</i>			32.0	<i>Cords</i>			
Red Pine			7.0	Cords			
White Pine			13.0	Cords			
TOTAL:			197.7	MBF			
TOTAL:			2,934.0	Cords			

Sale Specific Conditions & Requirements

Sale Name: Ice Breaker Aspen

Sale Number: 71-011-19 Seq#: 1

1 - Sale Area

1.2 - Boundaries

1.2.1 - Painted boundaries (1/14)

The sale boundary and Payment Unit boundaries are marked and identified by blue, red and yellow paint. Exterior sale boundary lines against private property are marked with blue paint. Exterior sale boundary lines against state are marked with red paint. Interior Payment Unit boundaries are marked with yellow paint. The painted boundary line trees are not Included Timber and are to be protected. Yellow painted trees designating an interior Payment Unit boundary are only to be cut when all surrounding Payment Units have been paid.

2 - Timber Specifications

2.1 - Included Timber

2.1.1 - Clearcut unit(s) with unmerchantable trees (6/14)

Within Payment Unit(s) 1-10, cut all trees that are two (2) inches or more at DBH, except do not cut oak in Payment Units 2, 3, 4, 5, 7, 8, 9, and 10. In addition, do not cut any green marked trees in Payment Units 1, 2, 3, 6, 8, 9, and 10.

2.2 - Utilization

2.2.9 - No chipping permitted (12/08)

Within Payment Unit(s) 4, tops may not be chipped and must be scattered evenly throughout the unit.

3 - Payments

3.3 - Pre-measured Sales

3.3.4 - Dividing payment units (7/14)

Payment Unit(s) may be divided at the request of the Purchaser and upon approval of the Unit Manager. Dividing Payment Units is a contract modification which requires a Timber Sale Contract Supplement.

4 - Transportation

4.1 - Construction

4.1.6 - Road construction (1/09)

Construction of new roads or improvements of existing roads shall be done in such a way as to minimize the environmental and visual impacts. Merchantable trees shall be cut and utilized unless otherwise directed. Non-merchantable trees shall be severed and laid flat on the ground. Slash shall be scattered, and not left in windrows and kept a minimum of 10 feet back from the road edge. Stumps shall be set upright, not left on edge, and be moved at least 10 feet away from the road edge. Disturbed soil shall be feathered into the woods and not left in berms or windrows.

4.1.7 - Road closure (10/11)

All new roads built into the sale must be blocked to vehicle traffic upon completion of the sale. Overgrown roads that are reopened shall be considered new roads. In general, this will require constructing a four (4') foot high berm of stumps and logs covered with earth. These roads must be rendered impassable to cars and trucks. Contact the sale administrator for specific details of design and placement.

4.2 - Maintenance

4.2.1 - Hauling restriction (12/08)

Hauling may be restricted on forest roads by the Unit Manager or his/her representative. The restriction may occur during wet weather conditions.

4.2.5 - Two wheel drive condition (2/04)

All existing trail roads on and adjacent to the sale area must be passable by two-wheel drive traffic for the duration of the sale.

5 - Operations

5.1 - Notification

5.1.1 - Pre-sale conference (10/16)

A pre-sale conference between the Purchaser and sale administrator is required prior to beginning any operations. The Unit Manager or his/her representative must be contacted at least 7 in advance to schedule the conference.

5.1.4 - Post-sale conference (10/16)

A post-sale conference on site between the Purchaser and sale administrator is required prior to the completion of active logging operations to determine clean-up and repair of landings, road edges, and the fulfillment of other contract specifications.

5.2 - Conduct of Operations

5.2.1 - Slash

5.2.1.8 - Slash height (12/08)

No slash may exceed 36 inches in height. All slash must be evenly distributed across the unit and not left in windrows.

5.2.3 - Operating Restrictions

5.2.3.5 - Oak wilt restriction (1/18)

Within Payment Units 1 - 10, unless changed by written agreement, cutting, skidding, hauling within the sale and brushing of access roads to the sale are not permitted during the period of April 15 to July 15. Operations may be allowed if specific steps are taken to prevent damaging uncut oak during the high risk period. Those steps may include completing all road brushing before April 15th and clearing a tree-length buffer along uncut oak cover before April 15th. This is necessary to reduce the spread of oak wilt. For more information, contact the Unit Manager or his/her representative.

5.2.3.11 - Coppice regeneration protection (4/10)

Timber harvesting in any Payment Unit must be completed before significant aspen sprouting occurs in that Payment Unit so as to minimize damage to the new regeneration. Any post harvest operations, such as chipping, must be completed before sprouting of regeneration occurs. If it is anticipated that chipping will be delayed, then tops shall be carried to one central location or left unchipped. The Unit Manager or his/her representative may cease such operations if sprouting occurs before the operation is complete.

5.2.4 - Dead and Down Creation

5.2.4.2 - Dead and down creation, hare and grouse (1/14)

To improve habitat for snowshoe hare, grouse, and other species, the Purchaser is to leave one brush pile on the ground for every two acres in Payment Units 1, 2, 3, 5, 6, 7, 8, 9, and 10. They should be scattered throughout the sale or positioned per the sale administrators instructions. If possible, include logs or trees so their are open cavities within the piles.

5.2.4.4 - Dead and down creation, grouse (6/18)

To encourage grouse and other wildlife, in Payment Unit(s) 1, 2, 3, 5, 6, 7, 8, 9, and 10, leave one, 10" diameter or larger log-length (8 foot minimum) piece on the ground for every 2 acres. These trees will be evenly scattered throughout the unit, preferably at least two chains from any roads, two-tracks, or trails open to vehicles. This can be an unmerchantable piece or a full tree.

5.2.32 - Decking/landing restoration (9/13)

All decking and landing areas must have the surface area restored to a condition equal to or better than before. This is to ensure the proper regeneration of the stand. Wood debris, chips and "cookies" from trimmings must be removed or scattered away from landing and loading areas and may not be windrowed on the edge.

5.4 - Soil Protection

5.4.1 - Rutting restriction, general (7/16)

Operations are to cease immediately if equipment and weather conditions result in rutting of roads and/or skid trails which is 12 inches or greater in depth and 50 feet in length. The Unit Manager or his/her representative may restrict hauling and/or skidding if ruts exceed the specified depth. With the Unit Manager or his/her representative's approval, the Purchaser may return to the area when the risk of rutting has decreased.



TIMBER SALE MAP

This information provided by authority of Part 525, 1994 PA 451, as amended.

Forest Management Unit Roscommon	County Roscommon	Mapped By Martell	Date 12/19/18	Page 1	of 1
Township 22N	Range 02W	Section(s) and Subdivision(s) Sec. 10 - SW, W1/2SE; Sec. 15 - S1/2NW, SW, SE; Sec. 16 - SENE, NESE; Sec. 22 - N1/2NE	Scale 1:15,840		

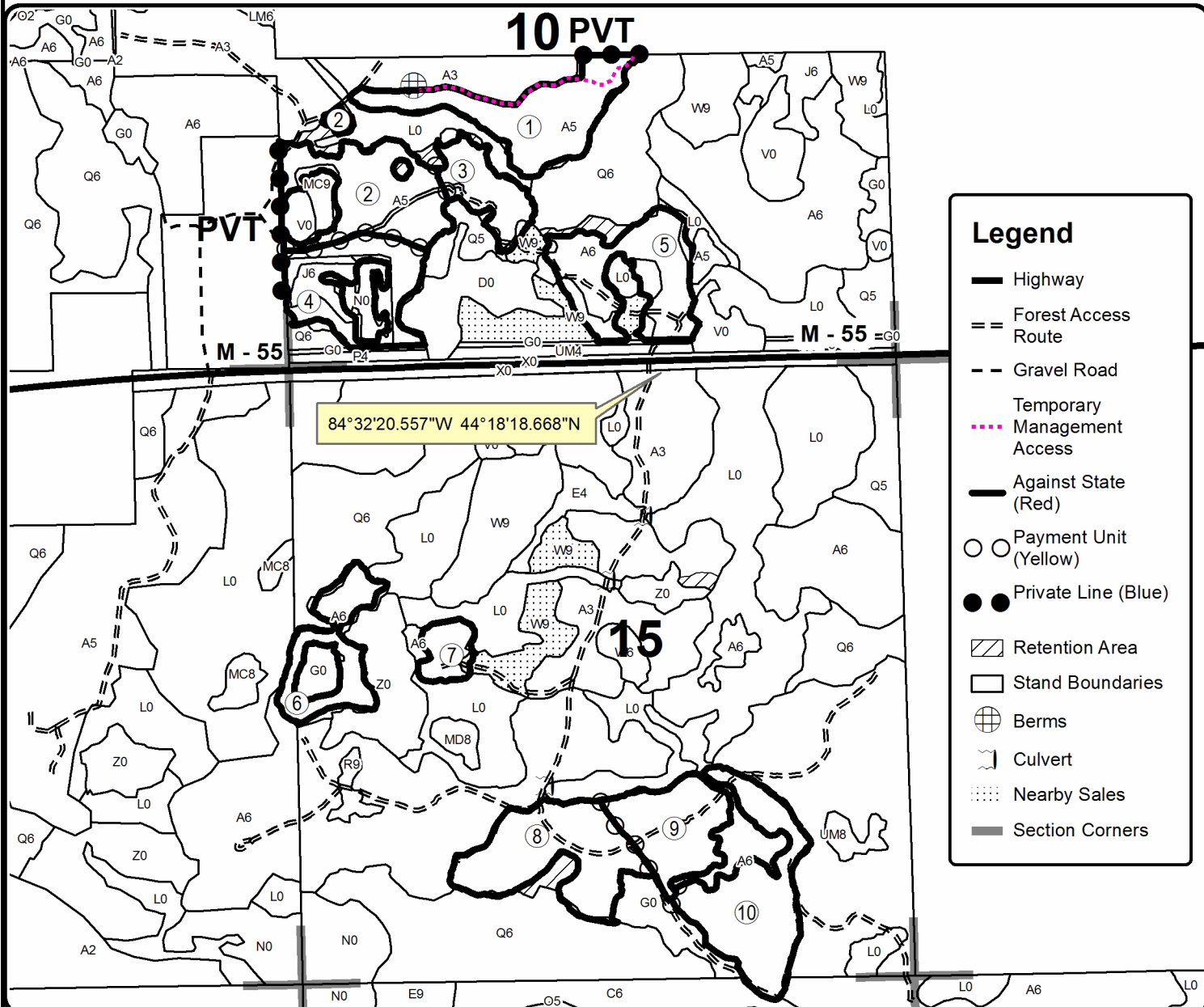
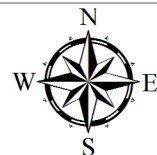
Cover Type				Density	
A = Aspen	H = Hemlock	N = Marsh	U = Upland Brush	0 = Non Stocked	5 = Pole Timber Medium
B = Paper Birch	J = Jack Pine	O = Oak	UM = Upland Mixed	1 = Seedling Sapling Poor	6 = Pole Timber Well
C = Cedar	L = Lowland Brush	P = Lowland Poplar	V = Bog or Marsh	2 = Seedling Sapling Medium	7 = Saw Timber Poor
D = Treed Bog	LM = Lowland Mixed	Q = Mixed Swamp Conifer	W = White Pine	3 = Seedling Sapling Well	8 = Saw Timber Medium
E = Swamp Hdwoods	M = Mpl. Bch, Brch	R = Red Pine	X = Non Stocked	4 = Pole Timber Poor	9 = Saw Timber Well
F = Spruce Fir	MC = Mixed Conifer	S = Black Spruce	Z = Water		
G = Grass	MD = Mixed Deciduous	T = Tamarack			

PU	Acres	PU	Acres
1	20.0	6	11.2
2	20.4	7	4.7
3	9.2	8	22.4
4	16.0	9	14.7
5	20.3	10	23.2

Ice Breaker Aspen

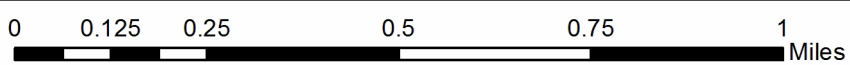
Compartment 043 and 044

162.1 Acres



Legend

- Highway
- Forest Access Route
- Gravel Road
- Temporary Management Access
- Against State (Red)
- Payment Unit (Yellow)
- Private Line (Blue)
- Retention Area
- Stand Boundaries
- Berms
- Culvert
- Nearby Sales
- Section Corners



TIMBER SALE INFORMATION

Rose City Oak (71-012-19)

T23N, R02E, SEC. 3; T23N, R02E, SEC. 4; T23N, R02E, SEC. 9.
Ogemaw County (Advertised Price \$128,095.85)

SALE NOTE: Payment Units 3, 4 and 5 have access to class A roads for hauling purposes.

A timber sale contract for this lump sum, sealed bid timber sale will be awarded to the responsible bidder offering the highest sealed bid price. Bids must be at or above the following advertised price for each species:

<u>PRODUCTS & SPECIES</u>	<u>ESTIMATED UNITS*</u>	<u>ADVERTISED PRICE</u>
Sawtimber		
B. T. Aspen	20.10 MBF	\$ 65.00 / MBF
BI/R/Hybrid Oak	179.80 MBF	\$ 123.00 / MBF
Red Pine	487.20 MBF	\$ 123.00 / MBF
Pulpwood		
Jack Pine	23.00 Cords	\$ 18.10 / Cord
Mixed Aspen	406.00 Cords	\$ 30.10 / Cord
Mixed Oak	633.00 Cords	\$ 18.25 / Cord
Red Maple	173.00 Cords	\$ 22.20 / Cord
Red Pine	344.00 Cords	\$ 46.90 / Cord
White Pine	26.00 Cords	\$ 22.50 / Cord

* The total volume is statistically estimated within plus (+) or minus (-) 9.37 percent. The estimated units are final and not subject to adjustment. Prospective bidders are urged to examine this timber and to make their own estimates of quantity and quality.

BOND AND PAYMENT SCHEDULE:

1. A bond in the amount of \$6,405.00 to insure faithful performance of the conditions of the contract will be deposited by the successful bidder within 21 days of the sale award.
2. Cutting in any sale or unit without the required advance payment would be considered a trespass.
3. Total payment must be paid in advance or according to the following schedule:
 - (a) Ten percent (10%) of the sale value must be paid within 21 days of the sale award.
 - (b) The 10% down payment will be credited towards the first unit cut.
 - (c) Payment for each of the following units must be made before cutting begins in that unit:

<u>PAYMENT UNIT NUMBER</u>	<u>PERCENT OF TOTAL SALE VALUE</u>
01	5.9%
02	44.7%
03	20.6%
04	18.7%
05	10.1%
4. If no cutting takes place, the 10% down payment will not be refunded.
5. Operations on the contract issued will terminate on 09/30/2021.

Description of Timber by Payment Unit (PU)

PU	MARKET GROUP	PRODUCT	QUANTITY	UNIT	ACRES	ADVERTISE PRICE
1	BI/R/Hybrid Oak	Sawtimber	11.3	MBF	10.0	\$7,618.95
	Red Pine		16.5	MBF		
	Jack Pine	Pulpwood	12.0	Cords		
	<i>Jack Pine</i>		12.0	<i>Cords</i>		
	Mixed Aspen		12.0	Cords		
	<i>B. T. Aspen</i>		12.0	<i>Cords</i>		
	Mixed Oak		91.0	Cords		
	<i>White Oak</i>	Sawtimber	0.4	MBF		
	<i>BI/R/Hybrid Oak</i>	Pulpwood	81.0	Cords		
	<i>White Oak</i>		9.0	Cords		
	Red Maple		6.0	Cords		
	<i>Red Maple</i>		6.0	<i>Cords</i>		
	Red Pine		38.0	Cords		
	White Pine		2.0	Cords		
	<i>White Pine</i>		2.0	<i>Cords</i>		
2	BI/R/Hybrid Oak	Sawtimber	5.6	MBF	27.7	\$57,188.55
	Red Pine		357.9	MBF		
	Mixed Oak	Pulpwood	39.0	Cords		
	<i>BI/R/Hybrid Oak</i>		36.0	<i>Cords</i>		
	<i>White Oak</i>		3.0	<i>Cords</i>		
	Red Maple		5.0	Cords		
	<i>Red Maple</i>	Sawtimber	1.1	MBF		
	<i>Red Maple</i>	Pulpwood	3.0	Cords		
	Red Pine		237.0	Cords		
	White Pine		24.0	Cords		
	<i>White Pine</i>	Sawtimber	2.7	MBF		
	<i>White Pine</i>	Pulpwood	19.0	Cords		
	3	BI/R/Hybrid Oak	Sawtimber	45.5		
Red Pine			112.8	MBF		
Jack Pine		Pulpwood	11.0	Cords		
<i>Jack Pine</i>		Sawtimber	0.4	MBF		
<i>Jack Pine</i>		Pulpwood	10.0	Cords		
Mixed Aspen			28.0	Cords		
<i>Quaking Aspen</i>			28.0	<i>Cords</i>		
Mixed Oak			119.0	Cords		
<i>White Oak</i>		Sawtimber	0.9	MBF		
<i>BI/R/Hybrid Oak</i>		Pulpwood	94.0	Cords		
<i>White Oak</i>			23.0	Cords		
Red Maple			23.0	Cords		
<i>Red Maple</i>		Sawtimber	1.2	MBF		
<i>Red Maple</i>		Pulpwood	21.0	Cords		
Red Pine			67.0	Cords		
4	B. T. Aspen	Sawtimber	17.1	MBF	31.1	\$24,017.00
	BI/R/Hybrid Oak		63.1	MBF		
	Mixed Aspen	Pulpwood	298.0	Cords		
	<i>B. T. Aspen</i>		245.0	<i>Cords</i>		
	<i>Quaking Aspen</i>		53.0	<i>Cords</i>		
	Mixed Oak		196.0	Cords		
	<i>White Oak</i>	Sawtimber	1.7	MBF		
	<i>BI/R/Hybrid Oak</i>	Pulpwood	182.0	Cords		
	<i>White Oak</i>		11.0	Cords		
	Red Maple		117.0	Cords		
	<i>Red Maple</i>	Sawtimber	3.9	MBF		
<i>Red Maple</i>	Pulpwood	109.0	Cords			
5	B. T. Aspen	Sawtimber	3.0	MBF	24.8	\$12,915.65
	BI/R/Hybrid Oak		54.3	MBF		

Description of Timber by Payment Unit (PU), con't

PU	MARKET GROUP	PRODUCT	QUANTITY	UNIT	ACRES	ADVERTISE PRICE
5 con't	Mixed Aspen	Pulpwood	68.0	Cords		
	<i>B. T. Aspen</i>		68.0	<i>Cords</i>		
	Mixed Oak		187.0	Cords		
	<i>White Oak</i>	<i>Sawtimber</i>	3.8	<i>MBF</i>		
	<i>Bl/R/Hybrid Oak</i>	<i>Pulpwood</i>	154.0	<i>Cords</i>		
	<i>White Oak</i>		25.0	<i>Cords</i>		
	Red Maple		22.0	Cords		
	<i>Red Maple</i>	<i>Sawtimber</i>	0.4	<i>MBF</i>		
	<i>Red Maple</i>	<i>Pulpwood</i>	21.0	<i>Cords</i>		
	Red Pine		2.0	Cords		
TOTAL:			687.1	MBF		
TOTAL:			1,604.0	Cords		

Sale Specific Conditions & Requirements

Sale Name: Rose City Oak

Sale Number: 71-012-19 Seq#: 1

1 - Sale Area

1.2 - Boundaries

1.2.1 - Painted boundaries (1/14)

The sale boundary and Payment Unit boundaries are marked and identified by red paint. The painted boundary line trees are not Included Timber and are to be protected.

2 - Timber Specifications

2.1 - Included Timber

2.1.1 - Clearcut unit(s) with unmerchantable trees (6/14)

Within Payment Unit(s) 1, 3, 4 and 5, cut all trees that are one (1) inch or more at DBH, except do not cut trees marked with green paint.

2.1.2 - Clearcut unit(s) w/o unmerchantable trees (8/11)

Within Payment Unit(s) 2, cut all trees which meet minimum piece specifications in 2.2 Utilization, except do not cut trees marked with green paint.

2.2 - Utilization

2.2.3 - Stump heights (4/07)

Stump heights within the Sale Area shall not exceed 12 inches for trees greater than 10 inches DBH and 4 inches for trees smaller than 10 inches DBH.

3 - Payments

3.3 - Pre-measured Sales

3.3.4 - Dividing payment units (7/14)

Payment Unit(s) may be divided at the request of the Purchaser and upon approval of the Unit Manager. Dividing Payment Units is a contract modification which requires a Timber Sale Contract Supplement.

3.4 - Damaged Timber

3.4.1 - Damaged timber (6/14)

General Condition and Requirement 3.4 Damaged Timber, defines liquidated damages for undesignated live merchantable trees which are cut or injured. In addition, extreme care should be taken to avoid damage to tree seedlings and saplings.

Within Payment Unit 2, if more than 25% of the tree seedlings or saplings (1/4" to 4.5" DBH) within a specified portion of the sale area are damaged, liquidated damages will be assessed at \$300 per acre for all acreage within that specified portion of the sale area that was damaged.

No damage is acceptable to merchantable trees. Within the sale area, if more than 5% of trees (> 4.5" DBH) within a specified area of the sale are damaged, liquidated damages will be assessed for all trees damaged. Rates will be in accordance with General Condition and Requirement 3.4 Damaged Timber.

4 - Transportation

4.1 - Construction

4.1.6 - Road construction (1/09)

Construction of new roads or improvements of existing roads shall be done in such a way as to minimize the environmental and visual impacts. Merchantable trees shall be cut and utilized unless otherwise directed. Non-merchantable trees shall be severed and laid flat on the ground. Slash shall be scattered, and not left in windrows and kept a minimum of 10 feet back from the road edge. Stumps shall be set upright, not left on edge, and be moved at least 10 feet away from the road edge.

Disturbed soil shall be feathered into the woods and not left in berms or windrows.

4.1.7 - Road closure (10/11)

All new roads built into the sale must be blocked to vehicle traffic upon completion of the sale. In general, this will require constructing a four (4') foot high berm of stumps and logs covered with earth. Stumps and brush must be placed along the remainder of the trail. These roads must be rendered impassable to cars and trucks. All stumps from road building and landing construction must be reserved to block any newly constructed roads upon completion of the sale. These stumps must be scattered along the road system to prohibit vehicular movement. Contact the sale administrator for specific details of design and placement.

4.2 - Maintenance

4.2.1 - Hauling restriction (12/08)

Hauling may be restricted on forest roads by the Unit Manager or his/her representative. The restriction may occur during wet weather conditions.

4.2.3 - Road maintenance (8/13)

The following road maintenance is required: Within 60 days of completion of hauling, or if no hauling occurs for 60 days, the road must be maintained and graded. This includes cleaning of drainage areas, grading, crowning and filling with gravel, if necessary. Damages will be assessed if grading/repair does not occur.

4.2.5 - Two wheel drive condition (2/04)

All existing trail roads on and adjacent to the sale area must be passable by two-wheel drive traffic for the duration of the sale.

5 - Operations

5.1 - Notification

5.1.1 - Pre-sale conference (10/16)

A pre-sale conference between the Purchaser and sale administrator is required prior to beginning any operations to determine landing and road locations.

5.2 - Conduct of Operations

5.2.1 - Slash

5.2.1.8 - Slash height (12/08)

No slash or tree tops may exceed 24 inches in height.

5.2.2 - Hazard Trees/Snags

5.2.2.1 - Den trees (10/16)

Obvious hollow and/or den trees shall be protected and left standing unless they are a safety hazard.

5.2.4 - Dead and Down Creation

5.2.4.2 - Dead and down creation, hare and grouse (1/14)

To improve habitat for snowshoe hare, grouse, and other species, the Purchaser is to leave two trees, nine (9) inches or larger in diameter on the ground for every two acres within Payment Units 3, 4 and 5. They should be scattered throughout the sale or positioned per the sale administrators instructions. If possible, the logs or trees should be felled so they overlap. Note these pieces should have a minimum length of five feet. They can be of any tree species and can be an un-merchantable piece of wood or a full tree.

5.2.4.3 - Dead and down creation, dead trees (6/07)

Except as provided for in General Condition and Requirement 5.2.2, no dead trees, standing or down, are to be cut, skidded, or processed.

5.2.30 - Landing/road top soil protection (2/15)

Top soil on landings and new roads must be removed, stockpiled and saved. Upon completion of the timber sale, soil must be evenly distributed back over the area for revegetation.

5.2.32 - Decking/landing restoration (9/13)

All decking and landing areas must have the surface area restored to a condition equal to or better than before. This is to ensure the proper regeneration of the stand. Wood debris, chips and "cookies" from trimmings must be removed or scattered away from landing and loading areas and may not be windrowed on the edge.

6 - Safety and Fire Prevention

6.2 - Signing

6.2.1 - Road posting (9/09)

The Purchaser is responsible for posting and maintaining caution signs on Rose City Road prior to beginning operations. The road must be posted at appropriate distances from the sale area to warn of logging activity and truck traffic. Signs must be removed when harvest operations are suspended or completed. The Purchaser will provide these signs.



TIMBER SALE MAP

This information provided by authority of Part 525, 1994 PA 451, as amended.

Forest Management Unit	County	Mapped By	Date	Page	of
Roscommon Management Unit	Ogemaw County	Lewicki	01/15/2019	1	1
Township	Range	Section(s) and Subdivision(s)	Scale		
23N	02E	S.3-NW S.4-NW; NE; SW S.9-NENW	1:15,840		

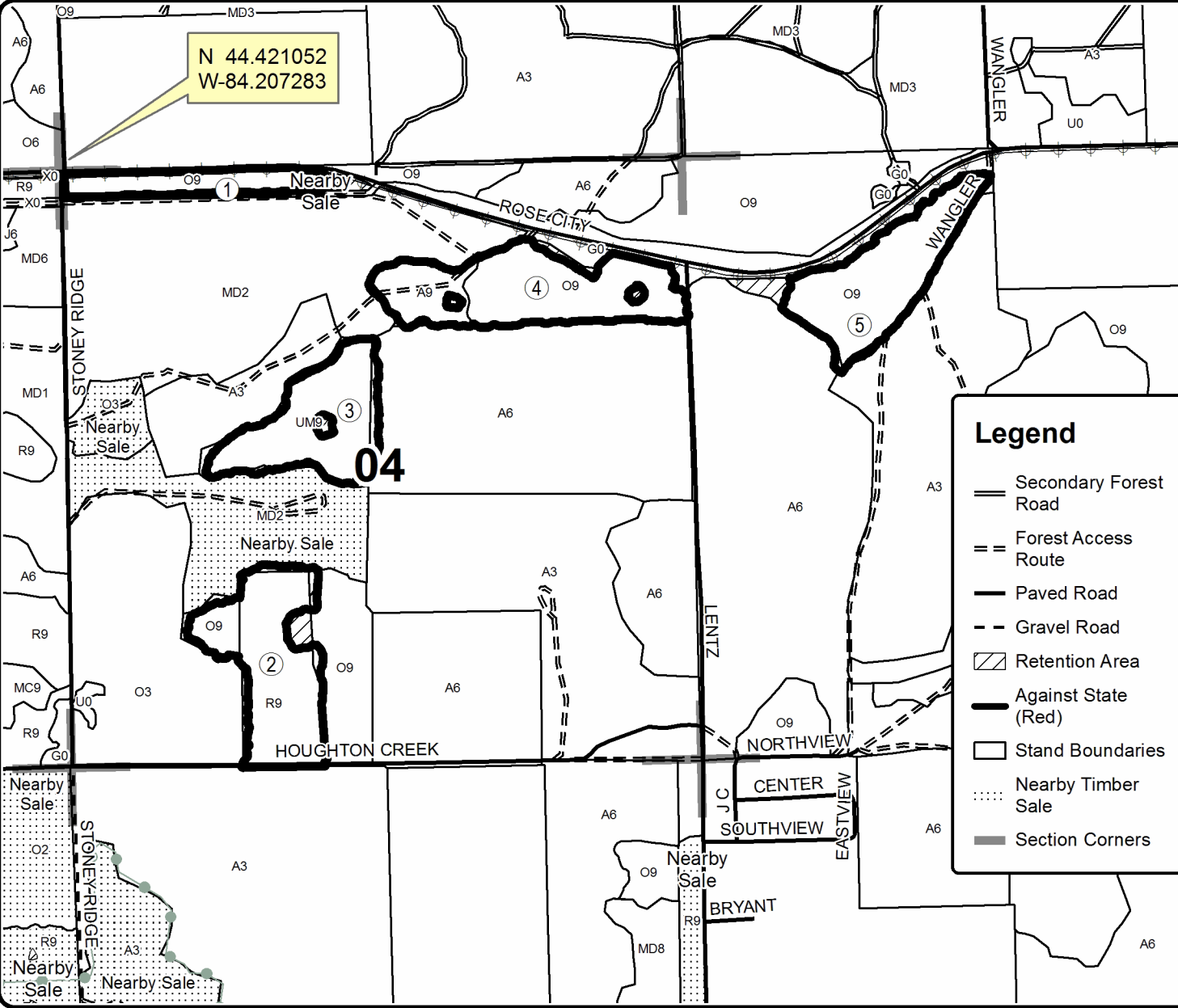
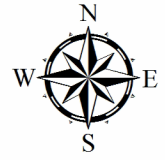
Cover Type				Density	
A = Aspen	H = Hemlock	N = Marsh	U = Upland Brush	0 = Non Stocked	5 = Pole Timber Medium
B = Paper Birch	J = Jack Pine	O = Oak	UM = Upland Mixed	1 = Seedling Sapling Poor	6 = Pole Timber Well
C = Cedar	L = Lowland Brush	P = Lowland Poplar	V = Bog or Marsh	2 = Seedling Sapling Medium	7 = Saw Timber Poor
D = Treed Bog	LM = Lowland Mixed	Q = Mixed Swamp Conifer	W = White Pine	3 = Seedling Sapling Well	8 = Saw Timber Medium
E = Swamp Hdwoods	M = Mpl, Bch, Brch	R = Red Pine	X = Non Stocked	4 = Pole Timber Poor	9 = Saw Timber Well
F = Spruce Fir	MC = Mixed Conifer	S = Black Spruce	Z = Water		
G = Grass	MD = Mixed Deciduous	T = Tamarack			

PU	Acres	PU	Acres
1	10	4	31.1
2	27.7	5	24.8
3	22.3		

Rose City Oak

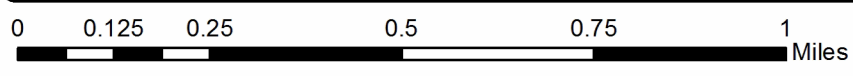
Compartment 85

115.9 Acres



Legend

- Secondary Forest Road
- Forest Access Route
- Paved Road
- Gravel Road
- Retention Area
- Against State (Red)
- Stand Boundaries
- Nearby Timber Sale
- Section Corners



TIMBER SALE INFORMATION

Emery Oak Thin (71-014-18)

T22N, R01W, SEC. 29.

Roscommon County (Advertised Price \$33,426.25)

SALE NOTE: A recreation site such as a trail, pathway, or campground is within the sale area or the vicinity. Certain restrictions/specifications may be applicable including time restrictions.

A timber sale contract for this lump sum, sealed bid timber sale will be awarded to the responsible bidder offering the highest sealed bid price. Bids must be at or above the following advertised price for each species:

<u>PRODUCTS & SPECIES</u>	<u>ESTIMATED UNITS*</u>	<u>ADVERTISED PRICE</u>
Sawtimber		
B. T. Aspen	44.70 MBF	\$ 65.00 / MBF
BI/R/Hybrid Oak	113.50 MBF	\$ 123.00 / MBF
Jack Pine	27.70 MBF	\$ 38.00 / MBF
White Oak	10.20 MBF	\$ 83.00 / MBF
Pulpwood		
B. T. Aspen	96.00 Cords	\$ 30.10 / Cord
Jack Pine	75.00 Cords	\$ 18.10 / Cord
Mixed Oak	539.00 Cords	\$ 18.25 / Cord
Red Maple	26.00 Cords	\$ 22.20 / Cord

* The total volume is statistically estimated within plus (+) or minus (-) 15.19 percent. The estimated units are final and not subject to adjustment. Prospective bidders are urged to examine this timber and to make their own estimates of quantity and quality.

BOND AND PAYMENT SCHEDULE:

1. A bond in the amount of \$1,671.00 to insure faithful performance of the conditions of the contract will be deposited by the successful bidder within 21 days of the sale award.
2. Cutting in any sale or unit without the required advance payment would be considered a trespass.
3. Total payment must be paid in advance or according to the following schedule:
 - (a) Ten percent (10%) of the sale value must be paid within 21 days of the sale award.
 - (b) The 10% down payment will be credited towards the first unit cut.
 - (c) Payment for each of the following units must be made before cutting begins in that unit:

<u>PAYMENT UNIT NUMBER</u>	<u>PERCENT OF TOTAL SALE VALUE</u>
01	57.5%
02	42.5%
4. If no cutting takes place, the 10% down payment will not be refunded.
5. Operations on the contract issued will terminate on 09/30/2021.

Description of Timber by Payment Unit (PU)

PU	MARKET GROUP	PRODUCT	QUANTITY	UNIT	ACRES	ADVERTISE PRICE			
1	B. T. Aspen	Sawtimber	25.7	MBF	67.2	\$19,208.30			
	BI/R/Hybrid Oak		65.2	MBF					
	Jack Pine		15.9	MBF					
	White Oak		5.9	MBF					
	B. T. Aspen	Pulpwood	55.0	Cords					
	Jack Pine		43.0	Cords					
	Mixed Oak		310.0	Cords					
	<i>Red Oak</i>	<i>Sawtimber</i>	<i>0.7</i>	<i>MBF</i>					
	<i>BI/R/Hybrid Oak</i>	<i>Pulpwood</i>	<i>267.0</i>	<i>Cords</i>					
	<i>Red Oak</i>		<i>1.0</i>	<i>Cords</i>					
	<i>White Oak</i>		<i>41.0</i>	<i>Cords</i>					
	Red Maple		15.0	Cords					
	2	B. T. Aspen	Sawtimber	19.0			MBF	49.7	\$14,217.95
		BI/R/Hybrid Oak		48.3			MBF		
Jack Pine			11.8	MBF					
White Oak			4.3	MBF					
B. T. Aspen		Pulpwood	41.0	Cords					
Jack Pine			32.0	Cords					
Mixed Oak			229.0	Cords					
<i>Red Oak</i>		<i>Sawtimber</i>	<i>0.5</i>	<i>MBF</i>					
<i>BI/R/Hybrid Oak</i>		<i>Pulpwood</i>	<i>197.0</i>	<i>Cords</i>					
<i>Red Oak</i>			<i>1.0</i>	<i>Cords</i>					
<i>White Oak</i>			<i>30.0</i>	<i>Cords</i>					
Red Maple			11.0	Cords					
TOTAL:			196.1	MBF					
TOTAL:			736.0	Cords					

Sale Specific Conditions & Requirements

Sale Name: Emery Oak Thin

Sale Number: 71-014-18 Seq#: 1

1 - Sale Area

1.2 - Boundaries

1.2.1 - Painted boundaries (1/14)

The sale boundary and Payment Unit boundaries are marked and identified by red and yellow paint. Exterior sale boundary lines against state are marked with red paint. Interior Payment Unit boundaries are marked with yellow paint. The painted boundary line trees are not Included Timber and are to be protected. Yellow painted trees designating an interior Payment Unit boundary are only to be cut when all surrounding Payment Units have been paid.

2 - Timber Specifications

2.1 - Included Timber

2.1.3 - Cut tree marked unit(s) (12/08)

Within Payment Unit(s) 1 and 2, all trees are designated for cutting when marked with orange paint above and below stump height, regardless of merchantability. In addition, all aspen and jack pine are designated for cutting.

2.2 - Utilization

2.2.3 - Stump heights (4/07)

Stump heights within the Sale Area shall not exceed 12 inches for trees greater than 10 inches DBH and 4 inches for trees smaller than 10 inches DBH.

2.2.6 - Roundwood operation required (5/07)

The skidding of whole trees or tree segments with limbs attached is prohibited. All products must be produced as roundwood and forwarded to existing roads or landing areas in final product length.

3 - Payments

3.3 - Pre-measured Sales

3.3.4 - Dividing payment units (7/14)

Payment Unit(s) may be divided at the request of the Purchaser and upon approval of the Unit Manager. Dividing Payment Units is a contract modification which requires a Timber Sale Contract Supplement.

3.4 - Damaged Timber

3.4.1 - Damaged timber (6/14)

General Condition and Requirement 3.4 Damaged Timber, defines liquidated damages for undesignated live merchantable trees which are cut or injured.

No damage is acceptable to merchantable trees. Within the sale area, if more than 5% of trees (> 4.5" DBH) within a specified area of the sale are damaged, liquidated damages will be assessed for all trees damaged. Rates will be in accordance with General Condition and Requirement 3.4 Damaged Timber.

4 - Transportation

4.1 - Construction

4.1.6 - Road construction (1/09)

Construction of new roads or improvements of existing roads shall be done in such a way as to minimize the environmental and visual impacts. Merchantable trees shall be cut and utilized unless otherwise directed. Non-merchantable trees shall be severed and laid flat on the ground. Slash shall be scattered, and not left in windrows and kept a minimum of 10 feet back from the road edge or be chipped, utilized or otherwise removed from the sale. Stumps shall be set upright, not left on edge, and be moved at least 10 feet away from the road edge. Disturbed soil shall be feathered into the woods and not left in berms or windrows.

4.1.7 - Road closure (10/11)

All new roads built into the sale must be blocked to vehicle traffic upon completion of the sale. In general, this will require constructing a four (4') foot high berm of stumps and logs covered with earth. Stumps and brush must be placed along the remainder of the trail. These roads must be rendered impassable to cars and trucks. Contact the sale administrator for specific details of design and placement.

4.2 - Maintenance

4.2.3 - Road maintenance (8/13)

The following road maintenance is required: Within 60 days of completion of hauling, or if no hauling occurs for 60 days, the road must be maintained and graded. This includes cleaning of drainage areas, grading, crowning and filling with gravel, if necessary. Damages will be assessed if grading/repair does not occur.

4.2.5 - Two wheel drive condition (2/04)

All existing trail roads on and adjacent to the sale area must be passable by two-wheel drive traffic for the duration of the sale.

5 - Operations

5.1 - Notification

5.1.1 - Pre-sale conference (10/16)

A pre-sale conference between the Purchaser and sale administrator is required prior to beginning any operations to determine landing and road locations.

5.1.4 - Post-sale conference (10/16)

A post-sale conference on site between the Purchaser and sale administrator is required prior to the completion of active logging operations to determine clean-up and repair of landings, road edges, and the fulfillment of other contract specifications.

5.2 - Conduct of Operations

5.2.1 - Slash

5.2.1.8 - Slash height (12/08)

No slash or tree tops may exceed 24 inches in height.

5.2.2 - Hazard Trees/Snags

5.2.2.1 - Den trees (10/16)

Obvious hollow and/or den trees shall be protected and left standing unless they are a safety hazard.

5.2.3 - Operating Restrictions

5.2.3.4 - Oak wilt restriction, no exceptions (1/18)

Within Payment Unit(s) 1 and 2, cutting, skidding, hauling within the sale and brushing of access roads to the sale are not permitted during the period of April 15 to July 15. No exceptions will be granted. This is necessary to reduce the spread of oak wilt.

5.2.4 - Dead and Down Creation

5.2.4.3 - Dead and down creation, dead trees (6/07)

Except as provided for in General Condition and Requirement 5.2.2, no dead trees, standing or down, are to be cut, skidded, or processed.

5.2.30 - Landing/road top soil protection (2/15)

Top soil on landings and new roads must be removed, stockpiled and saved. Upon completion of the timber sale, soil must be evenly distributed back over the area for revegetation.

5.2.32 - Decking/landing restoration (9/13)

All decking and landing areas must have the surface area restored to a condition equal to or better than before. This is to ensure the proper regeneration of the stand. Wood debris, chips and "cookies" from trimmings must be removed or scattered away from landing and loading areas and may not be windrowed on the edge.

5.2.39 - ORV trail/route protection (4/18)

The ORV trail is shown on the Timber Sale Map. Do not cut trees or damage posts with yellow ORV markers. All stumps within 5 feet of the trail must be cut flush with the ground. Maintain a 20 foot wide slash, debris, and rut free zone daily using the ORV trail or route as the centerline. Do not run equipment down the ORV trail or route. Skidding across the trail or route may only occur in locations approved by the sale administrator.

6 - Safety and Fire Prevention

6.2 - Signing

6.2.3 - Recreational trail posting (2/10)

The Purchaser is responsible for posting and maintaining caution signs on the ORV trail prior to beginning operations. The trail must be posted at appropriate distances from the sale area to warn of logging activity and truck traffic at both ends of the trail. Signs must be removed when harvest operations are suspended or completed.



TIMBER SALE MAP

This information provided by authority of Part 525, 1994 PA 451, as amended.

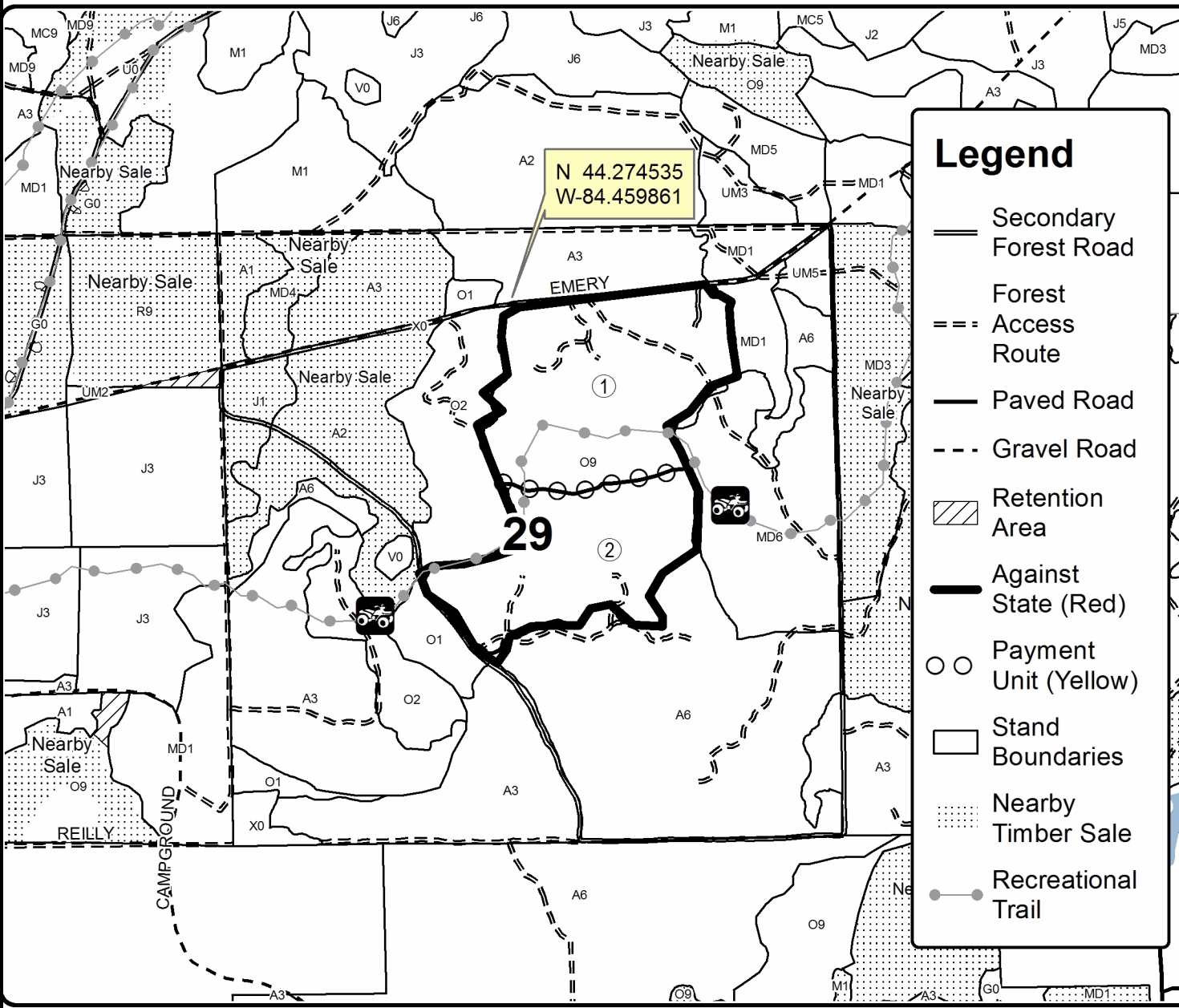
Forest Management Unit Roscommon Management Unit	County Roscommon County	Mapped By LEWICKI	Date 09/28/2018	Page 1	of 1
Township 22N	Range 02W	Section(s) and Subdivision(s) S.29 E1/2NW; NE; NESW; N1/2SE	Scale 1:15,840		

Cover Type				Density	
A = Aspen	H = Hemlock	N = Marsh	U = Upland Brush	0 = Non Stocked	5 = Pole Timber Medium
B = Paper Birch	J = Jack Pine	O = Oak	UM = Upland Mixed	1 = Seedling Sapling Poor	6 = Pole Timber Well
C = Cedar	L = Lowland Brush	P = Lowland Poplar	V = Bog or Marsh	2 = Seedling Sapling Medium	7 = Saw Timber Poor
D = Treed Bog	LM = Lowland Mixed	Q = Mixed Swamp Conifer	W = White Pine	3 = Seedling Sapling Well	8 = Saw Timber Medium
E = Swamp Hdwoods	M = Mpl, Bch, Brch	R = Red Pine	X = Non Stocked	4 = Pole Timber Poor	9 = Saw Timber Well
F = Spruce Fir	MC = Mixed Conifer	S = Black Spruce	Z = Water		
G = Grass	MD = Mixed Deciduous	T = Tamarack			

PU	Acres
1	67.2
2	49.7

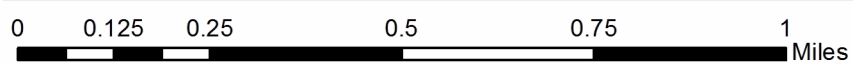
EMERY OAK THIN

Compartment 51
116.9 Acres



Legend

- Secondary Forest Road
- Forest
- Access Route
- Paved Road
- Gravel Road
- Retention Area
- Against State (Red)
- Payment Unit (Yellow)
- Stand Boundaries
- Nearby Timber Sale
- Recreational Trail



TIMBER SALE INFORMATION

Deckers Aspen-Jack (71-024-18)

T24N, R02W, SEC. 23; T24N, R02W, SEC. 24.
Roscommon County (Advertised Price \$54,937.50)

SALE NOTE: Extensive road work is required to access this sale. One option to access this sale will involve placement of crane mats or composite mats to cross a wet area on the utility ROW to the south-west of the sale.

A recreation site such as a trail, pathway, or campground is within the sale area or the vicinity. Certain restrictions/specifications may be applicable including time restrictions.

A timber sale contract for this lump sum, sealed bid timber sale will be awarded to the responsible bidder offering the highest sealed bid price. Bids must be at or above the following advertised price for each species:

<u>PRODUCTS & SPECIES</u>	<u>ESTIMATED UNITS*</u>		<u>ADVERTISED PRICE</u>
Sawtimber			
BI/R/Hybrid Oak	23.90	MBF	\$ 115.00 / MBF
Jack Pine	12.60	MBF	\$ 30.00 / MBF
Red Maple	20.20	MBF	\$ 62.00 / MBF
Red Pine	124.20	MBF	\$ 115.00 / MBF
White Pine	56.10	MBF	\$ 57.00 / MBF
Pulpwood			
BI/R/Hybrid Oak	88.00	Cords	\$ 17.00 / Cord
Black Spruce	9.00	Cords	\$ 24.10 / Cord
Jack Pine	121.00	Cords	\$ 16.90 / Cord
Mixed Aspen	394.00	Cords	\$ 28.10 / Cord
Mixed Hardwood	71.00	Cords	\$ 20.70 / Cord
Red Pine	132.00	Cords	\$ 43.75 / Cord
White Pine	524.00	Cords	\$ 21.00 / Cord

* The total volume is statistically estimated within plus (+) or minus (-) 11.17 percent. The estimated units are final and not subject to adjustment. Prospective bidders are urged to examine this timber and to make their own estimates of quantity and quality.

BOND AND PAYMENT SCHEDULE:

1. A bond in the amount of \$2,747.00 to insure faithful performance of the conditions of the contract will be deposited by the successful bidder within 21 days of the sale award.
2. Cutting in any sale or unit without the required advance payment would be considered a trespass.
3. Total payment must be paid in advance or according to the following schedule:
 - (a) Ten percent (10%) of the sale value must be paid within 21 days of the sale award.
 - (b) The 10% down payment will be credited towards the first unit cut.
 - (c) Payment for each of the following units must be made before cutting begins in that unit:

PAYMENT UNIT NUMBER	PERCENT OF TOTAL SALE VALUE
01	61.6%
02	38.4%

4. If no cutting takes place, the 10% down payment will not be refunded.
5. Operations on the contract issued will terminate on 06/30/2021.

Description of Timber by Payment Unit (PU)

PU	MARKET GROUP	PRODUCT	QUANTITY	UNIT	ACRES	ADVERTISE PRICE			
1	BI/R/Hybrid Oak	Sawtimber	9.4	MBF	29.3	\$33,851.20			
	Jack Pine		12.6	MBF					
	Red Maple		13.0	MBF					
	Red Pine		98.4	MBF					
	White Pine		39.2	MBF					
	BI/R/Hybrid Oak	Pulpwood	52.0	Cords					
	Black Spruce		9.0	Cords					
	Jack Pine		112.0	Cords					
	Mixed Aspen		66.0	Cords					
	<i>Quaking Aspen</i>	<i>Sawtimber</i>	0.8	<i>MBF</i>					
	<i>Quaking Aspen</i>	<i>Pulpwood</i>	64.0	<i>Cords</i>					
	Mixed Hardwood		25.0	Cords					
	<i>Red Maple</i>		25.0	<i>Cords</i>					
	Red Pine		100.0	Cords					
	White Pine		395.0	Cords					
	2	BI/R/Hybrid Oak	Sawtimber	14.5			MBF	22.9	\$21,086.30
		Red Maple		7.2			MBF		
Red Pine			25.8	MBF					
White Pine			16.9	MBF					
BI/R/Hybrid Oak		Pulpwood	36.0	Cords					
Jack Pine			9.0	Cords					
Mixed Aspen			328.0	Cords					
<i>B. T. Aspen</i>		<i>Sawtimber</i>	37.0	<i>MBF</i>					
<i>Quaking Aspen</i>			0.8	<i>MBF</i>					
<i>B. T. Aspen</i>		<i>Pulpwood</i>	120.0	<i>Cords</i>					
<i>Quaking Aspen</i>			132.0	<i>Cords</i>					
Mixed Hardwood			46.0	Cords					
<i>Black Cherry</i>			20.0	<i>Cords</i>					
<i>Red Maple</i>			26.0	<i>Cords</i>					
Red Pine			32.0	Cords					
White Pine			129.0	Cords					
TOTAL:			237.0	MBF					
TOTAL:			1,339.0	Cords					

Sale Specific Conditions & Requirements

Sale Name: Deckers Aspen-Jack

Sale Number: 71-024-18 Seq#: 1

1 - Sale Area

1.2 - Boundaries

1.2.1 - Painted boundaries (1/14)

The sale boundary and Payment Unit boundaries are marked and identified by blue, red, and yellow paint. Exterior sale boundary lines against private property are marked with blue paint. Exterior sale boundary lines against state are marked with red paint. Interior Payment Unit boundaries are marked with yellow paint. The painted boundary line trees are not Included Timber and are to be protected. Yellow painted trees designating an interior Payment Unit boundary are only to be cut when all surrounding Payment Units have been paid.

2 - Timber Specifications

2.1 - Included Timber

2.1.1 - Clearcut unit(s) with unmerchantable trees (6/14)

Within Payment Unit(s) 1 and 2, cut all trees that are two (2) inches or more at DBH, except do not cut any trees marked above and below stump height with green paint.

2.2 - Utilization

2.2.9 - No chipping permitted (12/08)

Within Payment Unit(s) 1, all wood must be removed by whole tree, tree segment, or roundwood. No chipping is permitted and all tops must be scattered and placed low to the ground.

3 - Payments

3.3 - Pre-measured Sales

3.3.4 - Dividing payment units (7/14)

Payment Unit(s) may be divided at the request of the Purchaser and upon approval of the Unit Manager. Dividing Payment Units is a contract modification which requires a Timber Sale Contract Supplement.

3.4 - Damaged Timber

3.4.1 - Damaged timber (6/14)

General Condition and Requirement 3.4 Damaged Timber, defines liquidated damages for undesignated live merchantable trees which are cut or injured.

No damage is acceptable to merchantable residual trees. Within the sale area, if more than 5% of trees (> 4.5" DBH) within a specified area of the sale are damaged, liquidated damages will be assessed for all trees damaged. Rates will be in accordance with General Condition and Requirement 3.4 Damaged Timber.

3.6 - Payment Unit Cutting Schedule

3.6.2 - One active unit (12/08)

Each Payment Unit must be completed to the satisfaction of the Unit Manager or his/her representative before the next unit may be opened.

4 - Transportation

4.1 - Construction

4.1.5 - Culverts (5/14)

Roads may require the installation of culverts for cross drainage or at natural drainage-ways. If culverts are needed in these locations, their placement will be specified by the sale administrator and they shall be installed prior to hauling. The culverts shall be new corrugated metal pipe and be a minimum of 12 inches in diameter and 24 feet in length. If culverts are removed, fill shall be removed from wetland soils as specified. Soils shall be maintained and left in a non-erodible condition, with water

bars, seed, fertilizer, mulch, and slash installed as directed by the sale administrator and as specified in the BMP manual. Stream crossing permits, if needed, will be obtained by the DNR.

4.1.6 - Road construction (1/09)

Construction of new roads or improvements of existing roads shall be done in such a way as to minimize the environmental and visual impacts. Merchantable trees shall be cut and utilized unless otherwise directed. Non-merchantable trees shall be severed and laid flat on the ground. Slash shall be scattered, and not left in windrows and kept a minimum of 10 feet back from the road edge. Stumps shall be set upright, not left on edge, and be moved at least 10 feet away from the road edge. Disturbed soil shall be feathered into the woods and not left in berms or windrows.

4.1.7 - Road closure (10/11)

All new roads built into the sale must be blocked to vehicle traffic upon completion of the sale. Overgrown roads that are reopened shall be considered new roads. In general, this will require constructing a four (4') foot high berm of stumps and logs covered with earth. Stumps and brush must be placed along the remainder of the trail. These roads must be rendered impassable to cars and trucks. Contact the sale administrator for specific details of design and placement.

4.2 - Maintenance

4.2.1 - Hauling restriction (12/08)

Hauling may be restricted on forest roads by the Unit Manager or his/her representative. The restriction may occur during spring breakup or during wet weather conditions.

4.2.3 - Road maintenance (8/13)

The following road maintenance may be needed: Within 60 days of completion of hauling, or if no hauling occurs for 60 days, the road must be maintained and graded. This includes cleaning of drainage areas, grading, crowning and filling with gravel, if necessary. Damages will be assessed if grading/repair does not occur.

5 - Operations

5.1 - Notification

5.1.6 - Utility R.O.W. (1/15)

It is the responsibility of the Purchaser to obtain permission from the utility company to utilize the power line R.O.W. for operations.

5.2 - Conduct of Operations

5.2.1 - Slash

5.2.1.8 - Slash height (12/08)

No slash or tree tops may exceed 24 inches in height.

5.2.2 - Hazard Trees/Snags

5.2.2.1 - Den trees (10/16)

Obvious hollow and/or den trees shall be protected and left standing unless they are a safety hazard.

5.2.3 - Operating Restrictions

5.2.3.4 - Oak wilt restriction, no exceptions (1/18)

Within Payment Units 1 and 2, cutting, skidding, hauling within the sale and brushing of access roads to the sale are not permitted during the period of April 15 to July 15. No exceptions will be granted. This is necessary to reduce the spread of oak wilt.

5.2.3.11 - Coppice regeneration protection (4/10)

Timber harvesting in any Payment Unit must be completed before significant aspen sprouting occurs in that Payment Unit so as to minimize damage to the new regeneration. Any post harvest operations, such as chipping, must be completed before sprouting of regeneration occurs. If it is anticipated that chipping will be delayed, then tops shall be carried to one central location or left unchipped. The Unit Manager or his/her representative may cease such operations if sprouting occurs before the operation is complete.

5.2.4 - Dead and Down Creation

5.2.4.2 - Dead and down creation, hare and grouse (1/14)

To improve habitat for snowshoe hare, grouse, and other species, the Purchaser is to leave two trees, nine (9) inches or larger in diameter on the ground for every two acres. They should be placed within 100' of any sale boundaries which occur along swamp edges. If possible, the logs or trees should be felled so they overlap. Note these pieces should have a minimum length of eight (8) feet. They can be of any tree species and can be an un-merchantable piece of wood or a full tree.

5.2.4.3 - Dead and down creation, dead trees (6/07)

Except as provided for in General Condition and Requirement 5.2.2, no dead trees, standing or down, are to be cut, skidded, or processed.

5.2.4.4 - Dead and down creation, grouse (6/18)

To encourage grouse and other wildlife, in Payment Unit(s) 1 and 2, leave one, 12" diameter or larger log-length (8 foot minimum) piece on the ground for every 2 acres. These will be evenly scattered throughout the unit. This can be an unmerchantable piece or a full tree. Each log must be clearly identified by a piece of blue flagging.

5.2.17 - Timber Mats and Interlocking Composite Mats (3/18)

If the utility ROW is used to access the sale area, some roads or skid trails may require extra protection such as that afforded by timber mats, interlocking composite mats, or another approved system. Portions of approximately 600 feet of road or trail may need extra protection. If available, mats may be borrowed from the DNR. A Timber Sale Contract Supplement will be used to document the Purchaser's use of the DNR's mats. Contact the sale administrator regarding availability and pick-up. Timber mats are available from various field offices. Composite mats are only available from the Grayling field office. The Purchaser is responsible for picking up and hauling the mats to and from the site. The composite mats will require DNR staff onsite for installation and removal. Contact the sale administrator to schedule at least 30 days before desired install/removal date. All mats must be cleaned prior to drop off. This may include, but is not limited to, power washing and brushing to remove mud and debris. A charge of \$400.00 per timber mat and \$2,000.00 per composite mat will be assessed for all damaged or non-returned mats. Damage for the crane/timber mats is defined as three or more broken cants. Damage for the composite mats is defined as cracked or broken mats.

5.2.32 - Decking/landing restoration (9/13)

All decking and landing areas must have the surface area restored to a condition equal to or better than before. This is to ensure the proper regeneration of the stand.

5.2.39 - ORV trail/route protection (4/18)

There is an ORV trail on the sale as shown on the Timber Sale Map. Do not cut trees or damage posts with yellow ORV markers. All stumps within 5 feet of the trail must be cut as flush with the ground as possible. Maintain a 10 foot wide slash, debris, and rut free zone daily using the ORV trail or route as the centerline. Do not run equipment down the ORV trail or route. Skidding across the trail or route may only occur in locations approved by the sale administrator.

5.2.43 - Opening protection (12/08)

No activities are permitted in openings marked on the Timber Sale Map with the letter "G". Any damage to the openings shall be repaired according to specifications of the Unit Manager or his/her representative.

5.4 - Soil Protection

5.4.1 - Rutting restriction, general (7/16)

Operations are to cease immediately if equipment and weather conditions result in rutting of roads and/or skid trails which is 12 inches or greater in depth and 50 feet in length. The Unit Manager or his/her representative may restrict hauling and/or skidding if ruts exceed the specified depth. With the Unit Manager or his/her representative's approval, the Purchaser may return to the area when the risk of rutting has decreased.

5.4.3 - Erosion control (12/08)

Skid trails or haul roads may require erosion control structures or berms per direction of the Unit Manager or his/her representative.

6 - Safety and Fire Prevention

6.2 - Signing

6.2.3 - Recreational trail posting (2/10)

The Purchaser is responsible for posting and maintaining caution signs on the ORV trail prior to beginning operations. The trail must be posted at appropriate distances from the sale area to warn of logging activity and truck traffic at both ends of the trail. Signs must be removed when harvest operations are suspended or completed.



TIMBER SALE MAP

This information provided by authority of Part 525, 1994 PA 451, as amended.

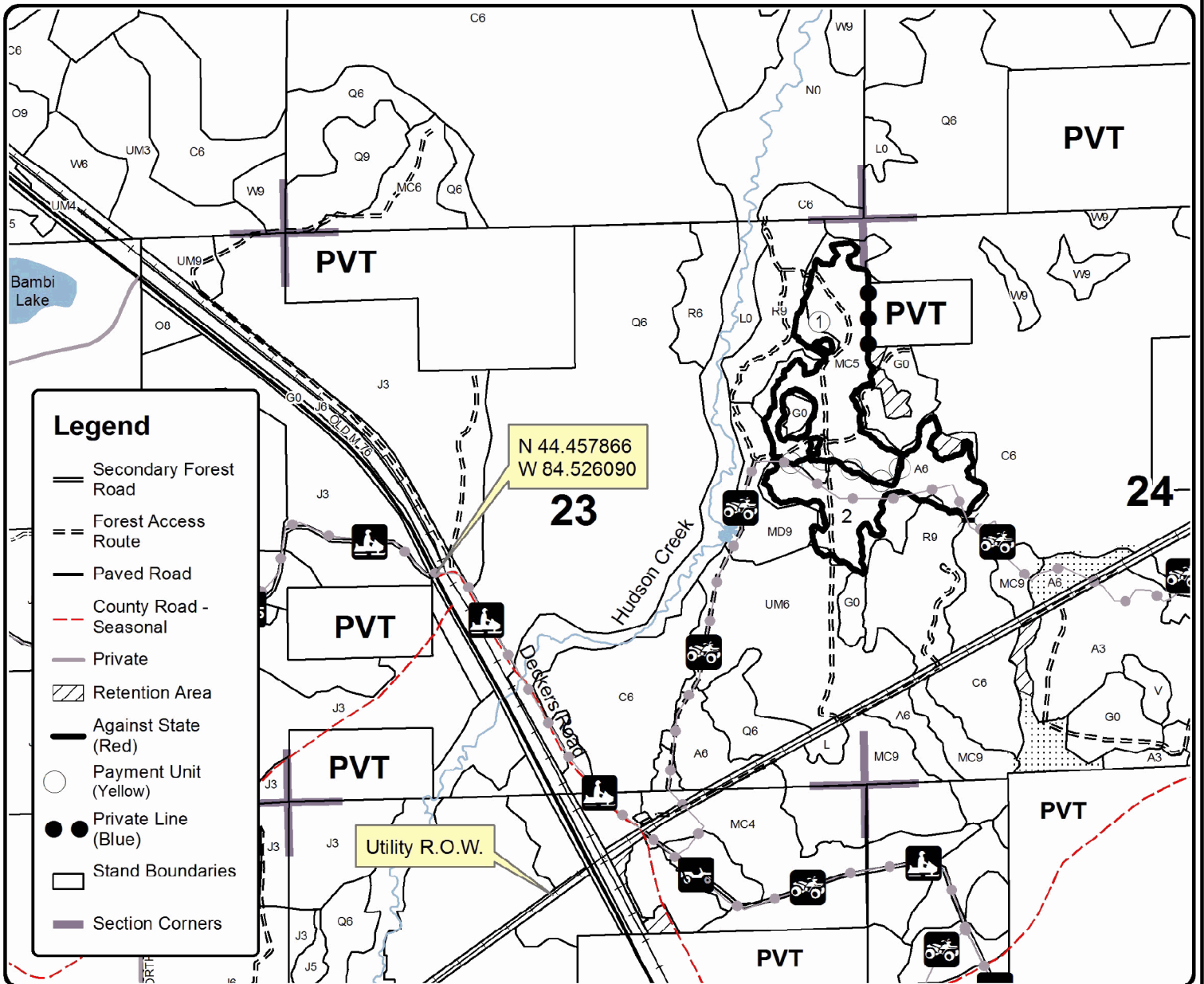
Forest Management Unit Roscommon		County Roscommon	Mapped By Ekdom/Gould	Date 06/18/2018	Page 1	of 1
Township 24N	Range 02W	Section(s) and Subdivision(s) 23 - E1/2NE; NESE 24 - W1/2NW; NWSW		Scale 1:15,840		
Cover Type				Density		
A = Aspen	H = Hemlock	N = Marsh	U = Upland Brush	0 = Non Stocked	5 = Pole Timber Medium	
B = Paper Birch	J = Jack Pine	O = Oak	UM = Upland Mixed	1 = Seedling Sapling Poor	6 = Pole Timber Well	
C = Cedar	L = Lowland Brush	P = Lowland Poplar	V = Bog or Marsh	2 = Seedling Sapling Medium	7 = Saw Timber Poor	
D = Treed Bog	LM = Lowland Mixed	Q = Mixed Swamp Conifer	W = White Pine	3 = Seedling Sapling Well	8 = Saw Timber Medium	
E = Swamp Hdwoods	M = Mpl, Bch, Brch	R = Red Pine	X = Non Stocked	4 = Pole Timber Poor	9 = Saw Timber Well	
F = Spruce Fir	MC = Mixed Conifer	S = Black Spruce	Z = Water			
G = Grass	MD = Mixed Deciduous	T = Tamarack				

PU	Acres
1	29.3
2	22.9

Deckers Aspen-Jack

Compartment 035

52.2 Acres



Deckers Aspen-Jack (71-024-18)
T24N, R02W, SEC. 23; T24N, R02W, SEC. 24; Roscommon COUNTY

In response to the notice of sale to be held 2:00 p.m. (local time) on March 6, 2019, I am hereby submitting my sealed bid (firm offer) for the following forest products to be cut. Bids for individual species must be at or above the advertised price. All non-responsive bid forms may be rejected.

<u>PRODUCTS & SPECIES</u>	<u>ESTIMATED VOLUME*</u>	<u>ADVERTISED PRICE</u>	<u>BID PRICE/UNIT</u>
Sawtimber			
Bl/R/Hybrid Oak	23.90 MBF	\$ 115.00/MBF	\$ _____
Jack Pine	12.60 MBF	\$ 30.00/MBF	\$ _____
Red Maple	20.20 MBF	\$ 62.00/MBF	\$ _____
Red Pine	124.20 MBF	\$ 115.00/MBF	\$ _____
White Pine	56.10 MBF	\$ 57.00/MBF	\$ _____
Pulpwood			
Bl/R/Hybrid Oak	88.00 Cords	\$ 17.00/Cord	\$ _____
Black Spruce	9.00 Cords	\$ 24.10/Cord	\$ _____
Jack Pine	121.00 Cords	\$ 16.90/Cord	\$ _____
Mixed Aspen	394.00 Cords	\$ 28.10/Cord	\$ _____
Mixed Hardwood	71.00 Cords	\$ 20.70/Cord	\$ _____
Red Pine	132.00 Cords	\$ 43.75/Cord	\$ _____
White Pine	524.00 Cords	\$ 21.00/Cord	\$ _____

*The volumes are statistically estimated within plus (+) or minus (-) 11.17 percent. These estimated volumes are final and not subject to adjustment. Prospective bidders are urged to examine this timber and to make their own estimates of quantity and quality.

I understand that any or all bids may be rejected. All bids must be signed and all bid items must be bid or the bid form may be rejected. I also understand that consideration and awarding a contract will be based upon my past performance and ability to complete the contract based upon equipment and staffing subject to my control.

FEDERAL ID: _____ or SOCIAL SECURITY NUMBER: _____

Company or individual bidding: _____

Company representative's name: _____

Address: _____

City: _____ State: _____ Zip: _____

IF AVAILABLE, PLEASE PLACE THE PERSONALIZED LABEL FROM YOUR PROSPECTUS IN THE ABOVE BOX.

Individual or company representative's signature: _____ Date: _____

Phone number : _____ Email (optional): _____

THE WINNING BIDDER MUST COMPLETE THE VERIFICATION OF WORKER'S DISABILITY COMPENSATION ACT COMPLIANCE (ON REVERSE SIDE IF DOUBLE SIDED) WITHIN 21 DAYS OF SALE AWARD DATE



FOR DEPARTMENT USE ONLY
Sale Number (XX – XXX – XX – XX)
Forest Management Unit:

TIMBER SALE VERIFICATION OF WORKER'S DISABILITY COMPENSATION ACT COMPLIANCE

*As required by Act 317, P.A. 1969 (Worker's Compensation) and
Part 5 of Act 451 of 1994, as amended.*

VERIFICATION OF WORKER'S DISABILITY COMPENSATION ACT COMPLIANCE

- This verification must be completed and submitted within 21 days of contract award and prior to the issuance of the timber sale contract.
- In addition, if boxes 2B or 2C are checked, then Notice of Exclusion or Certificate of Insurance must be submitted within twenty-one (21) days of the contract award and prior to the issuance of the timber sale contract.
- All information must be typed or printed except for written signatures.

Please Check Appropriate Categories:

1. My business is organized as (you **must** check one of the boxes below):
 - A. Sole Proprietorship (individual)
 - B. Partnership
 - C. Corporation

2. You **must** check one of the boxes below:
 - A. I certify my business is a sole proprietorship and it has no employees but the sole proprietor. I am not subject to the Worker's Compensation Laws.
 - B. I certify my business has satisfied its obligation to the Worker's Compensation Act through the use of an approved Notice of Exclusion (BWC-337, Rev. 5/96). I will provide a copy of the Notice of Exclusion within 21 days of the contract award. (For questions or a copy of the BWC-337, please call the Worker's Compensation Bureau at 517-322-1195).
 - C. I certify my business has a Worker's Compensation Policy. I will provide an original Certificate of Insurance within twenty-one (21) days of the contract award.

3. If you have checked item 2(A) or 2(B), you **must** indicate the number of **both** full-time and part-time employees, other than yourself, including family members and active partners (if none, you must enter "0").

_____ Full-time Employees

_____ Part-time Employees

Name of Business		Federal ID (or) Social Security No.	
Address		Telephone ()	
City	State	ZIP	

I hereby certify that the above information is true and correct. I agree to notify the Michigan DNR of any changes that occur in factors affecting my coverage during any of my present and future operations.

Signature of Owner or Authorized Representative

Title

Date

Please complete the "SEALED BID" information on the next page

Emery Oak Thin (71-014-18)
T22N, R01W, SEC. 29; Roscommon COUNTY

In response to the notice of sale to be held 2:00 p.m. (local time) on March 6, 2019, I am hereby submitting my sealed bid (firm offer) for the following forest products to be cut. Bids for individual species must be at or above the advertised price. All non-responsive bid forms may be rejected.

<u>PRODUCTS & SPECIES</u>	<u>ESTIMATED VOLUME*</u>	<u>ADVERTISED PRICE</u>	<u>BID PRICE/UNIT</u>
Sawtimber			
B. T. Aspen	44.70 MBF	\$ 65.00/MBF	\$ _____
Bl/R/Hybrid Oak	113.50 MBF	\$ 123.00/MBF	\$ _____
Jack Pine	27.70 MBF	\$ 38.00/MBF	\$ _____
White Oak	10.20 MBF	\$ 83.00/MBF	\$ _____
Pulpwood			
B. T. Aspen	96.00 Cords	\$ 30.10/Cord	\$ _____
Jack Pine	75.00 Cords	\$ 18.10/Cord	\$ _____
Mixed Oak	539.00 Cords	\$ 18.25/Cord	\$ _____
Red Maple	26.00 Cords	\$ 22.20/Cord	\$ _____

*The volumes are statistically estimated within plus (+) or minus (-) 15.19 percent. These estimated volumes are final and not subject to adjustment. Prospective bidders are urged to examine this timber and to make their own estimates of quantity and quality.

I understand that any or all bids may be rejected. All bids must be signed and all bid items must be bid or the bid form may be rejected. I also understand that consideration and awarding a contract will be based upon my past performance and ability to complete the contract based upon equipment and staffing subject to my control.

FEDERAL ID: _____ or SOCIAL SECURITY NUMBER: _____

Company or individual bidding: _____

Company representative's name: _____

Address: _____

City: _____ State: _____ Zip: _____

IF AVAILABLE, PLEASE PLACE THE PERSONALIZED LABEL FROM YOUR PROSPECTUS IN THE ABOVE BOX.

Individual or company representative's signature: _____ Date: _____

Phone number : _____ Email (optional): _____

THE WINNING BIDDER MUST COMPLETE THE VERIFICATION OF WORKER'S DISABILITY COMPENSATION ACT COMPLIANCE (ON REVERSE SIDE IF DOUBLE SIDED) WITHIN 21 DAYS OF SALE AWARD DATE



FOR DEPARTMENT USE ONLY
Sale Number (XX - XXX - XX - XX)
Forest Management Unit:

TIMBER SALE VERIFICATION OF WORKER'S DISABILITY COMPENSATION ACT COMPLIANCE

*As required by Act 317, P.A. 1969 (Worker's Compensation) and
Part 5 of Act 451 of 1994, as amended.*

VERIFICATION OF WORKER'S DISABILITY COMPENSATION ACT COMPLIANCE

- This verification must be completed and submitted within 21 days of contract award and prior to the issuance of the timber sale contract.
- In addition, if boxes 2B or 2C are checked, then Notice of Exclusion or Certificate of Insurance must be submitted within twenty-one (21) days of the contract award and prior to the issuance of the timber sale contract.
- All information must be typed or printed except for written signatures.

Please Check Appropriate Categories:

1. My business is organized as (you **must** check one of the boxes below):
 - A. Sole Proprietorship (individual)
 - B. Partnership
 - C. Corporation
2. You **must** check one of the boxes below:
 - A. I certify my business is a sole proprietorship and it has no employees but the sole proprietor. I am not subject to the Worker's Compensation Laws.
 - B. I certify my business has satisfied its obligation to the Worker's Compensation Act through the use of an approved Notice of Exclusion (BWC-337, Rev. 5/96). I will provide a copy of the Notice of Exclusion within 21 days of the contract award. (For questions or a copy of the BWC-337, please call the Worker's Compensation Bureau at 517-322-1195).
 - C. I certify my business has a Worker's Compensation Policy. I will provide an original Certificate of Insurance within twenty-one (21) days of the contract award.
3. If you have checked item 2(A) or 2(B), you **must** indicate the number of **both** full-time and part-time employees, other than yourself, including family members and active partners (if none, you must enter "0").

_____ Full-time Employees

_____ Part-time Employees

Name of Business		Federal ID (or) Social Security No.	
Address		Telephone ()	
City	State	ZIP	

I hereby certify that the above information is true and correct. I agree to notify the Michigan DNR of any changes that occur in factors affecting my coverage during any of my present and future operations.

Signature of Owner or Authorized Representative

Title

Date

Please complete the "SEALED BID" information on the next page

Ice Breaker Aspen (71-011-19)

T22N, R02W, SEC. 10; T22N, R02W, SEC. 15; T22N, R02W, SEC. 16; T22N,

In response to the notice of sale to be held 2:00 p.m. (local time) on March 6, 2019, I am hereby submitting my sealed bid (firm offer) for the following forest products to be cut. Bids for individual species must be at or above the advertised price. All non-responsive bid forms may be rejected.

<u>PRODUCTS & SPECIES</u>	<u>ESTIMATED VOLUME*</u>	<u>ADVERTISED PRICE</u>	<u>BID PRICE/UNIT</u>
Sawtimber			
B. T. Aspen	97.50 MBF	\$ 65.00/MBF	\$ _____
Red Maple	21.90 MBF	\$ 66.00/MBF	\$ _____
Red Pine	15.40 MBF	\$ 123.00/MBF	\$ _____
White Pine	62.90 MBF	\$ 61.00/MBF	\$ _____
Pulpwood			
Balsam Fir	282.00 Cords	\$ 16.65/Cord	\$ _____
Bl/R/Hybrid Oak	1.00 Cords	\$ 18.25/Cord	\$ _____
Black Spruce	32.00 Cords	\$ 25.85/Cord	\$ _____
Jack Pine	132.00 Cords	\$ 18.10/Cord	\$ _____
Mixed Aspen	2,023.00 Cords	\$ 30.10/Cord	\$ _____
Mixed Hardwood	231.00 Cords	\$ 22.20/Cord	\$ _____
Red Pine	36.00 Cords	\$ 46.90/Cord	\$ _____
White Pine	196.00 Cords	\$ 22.50/Cord	\$ _____

*The volumes are statistically estimated within plus (+) or minus (-) 8.30 percent. These estimated volumes are final and not subject to adjustment. Prospective bidders are urged to examine this timber and to make their own estimates of quantity and quality.

I understand that any or all bids may be rejected. All bids must be signed and all bid items must be bid or the bid form may be rejected. I also understand that consideration and awarding a contract will be based upon my past performance and ability to complete the contract based upon equipment and staffing subject to my control.

FEDERAL ID: _____ or SOCIAL SECURITY NUMBER: _____

Company or individual bidding: _____

Company representative's name: _____

Address: _____

City: _____ State: _____ Zip: _____

IF AVAILABLE, PLEASE PLACE THE PERSONALIZED LABEL FROM YOUR PROSPECTUS IN THE ABOVE BOX.

Individual or company representative's signature: _____ Date: _____

Phone number : _____ Email (optional): _____

THE WINNING BIDDER MUST COMPLETE THE VERIFICATION OF WORKER'S DISABILITY COMPENSATION ACT COMPLIANCE (ON REVERSE SIDE IF DOUBLE SIDED) WITHIN 21 DAYS OF SALE AWARD DATE



FOR DEPARTMENT USE ONLY
Sale Number (XX - XXX - XX - XX)
Forest Management Unit:

TIMBER SALE VERIFICATION OF WORKER'S DISABILITY COMPENSATION ACT COMPLIANCE

*As required by Act 317, P.A. 1969 (Worker's Compensation) and
Part 5 of Act 451 of 1994, as amended.*

VERIFICATION OF WORKER'S DISABILITY COMPENSATION ACT COMPLIANCE

- This verification must be completed and submitted within 21 days of contract award and prior to the issuance of the timber sale contract.
- In addition, if boxes 2B or 2C are checked, then Notice of Exclusion or Certificate of Insurance must be submitted within twenty-one (21) days of the contract award and prior to the issuance of the timber sale contract.
- All information must be typed or printed except for written signatures.

Please Check Appropriate Categories:

1. My business is organized as (you **must** check one of the boxes below):
 - A. Sole Proprietorship (individual)
 - B. Partnership
 - C. Corporation
2. You **must** check one of the boxes below:
 - A. I certify my business is a sole proprietorship and it has no employees but the sole proprietor. I am not subject to the Worker's Compensation Laws.
 - B. I certify my business has satisfied its obligation to the Worker's Compensation Act through the use of an approved Notice of Exclusion (BWC-337, Rev. 5/96). I will provide a copy of the Notice of Exclusion within 21 days of the contract award. (For questions or a copy of the BWC-337, please call the Worker's Compensation Bureau at 517-322-1195).
 - C. I certify my business has a Worker's Compensation Policy. I will provide an original Certificate of Insurance within twenty-one (21) days of the contract award.
3. If you have checked item 2(A) or 2(B), you **must** indicate the number of **both** full-time and part-time employees, other than yourself, including family members and active partners (if none, you must enter "0").

_____ Full-time Employees

_____ Part-time Employees

Name of Business		Federal ID (or) Social Security No.	
Address		Telephone ()	
City	State	ZIP	

I hereby certify that the above information is true and correct. I agree to notify the Michigan DNR of any changes that occur in factors affecting my coverage during any of my present and future operations.

Signature of Owner or Authorized Representative

Title

Date

Please complete the "SEALED BID" information on the next page

Rose City Oak (71-012-19)
T23N, R02E, SEC. 3; T23N, R02E, SEC. 4; T23N, R02E, SEC. 9; Ogemaw

In response to the notice of sale to be held 2:00 p.m. (local time) on March 6, 2019, I am hereby submitting my sealed bid (firm offer) for the following forest products to be cut. Bids for individual species must be at or above the advertised price. All non-responsive bid forms may be rejected.

<u>PRODUCTS & SPECIES</u>	<u>ESTIMATED VOLUME*</u>	<u>ADVERTISED PRICE</u>	<u>BID PRICE/UNIT</u>
Sawtimber			
B. T. Aspen	20.10 MBF	\$ 65.00/MBF	\$ _____
Bl/R/Hybrid Oak	179.80 MBF	\$ 123.00/MBF	\$ _____
Red Pine	487.20 MBF	\$ 123.00/MBF	\$ _____
Pulpwood			
Jack Pine	23.00 Cords	\$ 18.10/Cord	\$ _____
Mixed Aspen	406.00 Cords	\$ 30.10/Cord	\$ _____
Mixed Oak	633.00 Cords	\$ 18.25/Cord	\$ _____
Red Maple	173.00 Cords	\$ 22.20/Cord	\$ _____
Red Pine	344.00 Cords	\$ 46.90/Cord	\$ _____
White Pine	26.00 Cords	\$ 22.50/Cord	\$ _____

*The volumes are statistically estimated within plus (+) or minus (-) 9.37 percent. These estimated volumes are final and not subject to adjustment. Prospective bidders are urged to examine this timber and to make their own estimates of quantity and quality.

I understand that any or all bids may be rejected. All bids must be signed and all bid items must be bid or the bid form may be rejected. I also understand that consideration and awarding a contract will be based upon my past performance and ability to complete the contract based upon equipment and staffing subject to my control.

FEDERAL ID: _____ or SOCIAL SECURITY NUMBER: _____

Company or individual bidding: _____

Company representative's name: _____

Address: _____

City: _____ State: _____ Zip: _____

IF AVAILABLE, PLEASE PLACE THE PERSONALIZED LABEL FROM YOUR PROSPECTUS IN THE ABOVE BOX.

Individual or company representative's signature: _____ Date: _____

Phone number : _____ Email (optional): _____

THE WINNING BIDDER MUST COMPLETE THE VERIFICATION OF WORKER'S DISABILITY COMPENSATION ACT COMPLIANCE (ON REVERSE SIDE IF DOUBLE SIDED) WITHIN 21 DAYS OF SALE AWARD DATE



FOR DEPARTMENT USE ONLY
Sale Number (XX - XXX - XX - XX)
Forest Management Unit:

TIMBER SALE VERIFICATION OF WORKER'S DISABILITY COMPENSATION ACT COMPLIANCE

*As required by Act 317, P.A. 1969 (Worker's Compensation) and
Part 5 of Act 451 of 1994, as amended.*

VERIFICATION OF WORKER'S DISABILITY COMPENSATION ACT COMPLIANCE

- This verification must be completed and submitted within 21 days of contract award and prior to the issuance of the timber sale contract.
- In addition, if boxes 2B or 2C are checked, then Notice of Exclusion or Certificate of Insurance must be submitted within twenty-one (21) days of the contract award and prior to the issuance of the timber sale contract.
- All information must be typed or printed except for written signatures.

Please Check Appropriate Categories:

1. My business is organized as (you **must** check one of the boxes below):
 - A. Sole Proprietorship (individual)
 - B. Partnership
 - C. Corporation
2. You **must** check one of the boxes below:
 - A. I certify my business is a sole proprietorship and it has no employees but the sole proprietor. I am not subject to the Worker's Compensation Laws.
 - B. I certify my business has satisfied its obligation to the Worker's Compensation Act through the use of an approved Notice of Exclusion (BWC-337, Rev. 5/96). I will provide a copy of the Notice of Exclusion within 21 days of the contract award. (For questions or a copy of the BWC-337, please call the Worker's Compensation Bureau at 517-322-1195).
 - C. I certify my business has a Worker's Compensation Policy. I will provide an original Certificate of Insurance within twenty-one (21) days of the contract award.
3. If you have checked item 2(A) or 2(B), you **must** indicate the number of **both** full-time and part-time employees, other than yourself, including family members and active partners (if none, you must enter "0").

_____ Full-time Employees

_____ Part-time Employees

Name of Business		Federal ID (or) Social Security No.	
Address		Telephone ()	
City	State	ZIP	

I hereby certify that the above information is true and correct. I agree to notify the Michigan DNR of any changes that occur in factors affecting my coverage during any of my present and future operations.

Signature of Owner or Authorized Representative

Title

Date

Please complete the "SEALED BID" information on the next page