



**DEPARTMENT OF NATURAL RESOURCES
STATE OF MICHIGAN**

TIMBER SALE PROSPECTUS #6450

SCHEDULED SALE DATE AND TIME: 4:00 p.m. (local time) on August 15, 2019.

LOCATION: TRAVERSE CITY MGMT UNIT, 2122 M 37 SOUTH, TRAVERSE CITY, MI 49685.

PROSPECTUS NOTE: The bidder is advised to inspect the sale area and review the location, estimated volumes, operating costs and contract terms of proposed sales. Please be aware that some landowners may request 60 days or more notice for access across their land.

Notice is hereby given that bids will be received by the Unit Manager, TRAVERSE CITY MANAGEMENT UNIT, for certain timber on the following described lands:

Plan B Hardwood (61-013-19) / T27N, R14W, SEC. 11, E1/2NW,W1/2NE.

T27N, R14W, SEC. 2 , SESW.

Benzie County, Advertised Price \$14,217.25, 46.7 Acres, Hardwood, Sugar Maple.

SALE NOTE: This sale contract has a short duration to accelerate planned re-planting of the site. Contract expiration is October 31, 2019, with no extensions allowed.

Wild Country Red Pine (61-028-19) / T23N, R14W, SEC. 3 , N1/2NW,SWNW,NWSW.

T23N, R14W, SEC. 4 , SENE,NESE.

Manistee County, Advertised Price \$35,332.40, 51.9 Acres, Red Pine.

April Snows Red Pine (61-029-19) / T23N, R14W, SEC. 4 , S1/2NE,N1/2SE.

Manistee County, Advertised Price \$134,410.35, 71.5 Acres, Red Pine, Hardwood.

Ridge Top Aspen (61-030-19) / T22N, R14W, SEC. 18, NENE,S1/2NE.

Manistee County, Advertised Price \$53,650.70, 39.8 Acres, Aspen, Hardwood.

BID INSTRUCTIONS (VER. 07/02/2018):

1. Scheduled Bid Location, Date, and Time (2/11)

Bids must be received by the Unit Manager, TRAVERSE CITY OFFICE, 2122 M 37 South, Traverse City, MI 49685, no later than 4:00 p.m. (local time) on August 15, 2019. For further information concerning this sale, contact David Lemmien at 231-922-6040.

2. Bidder's Qualifications (5/16)

Purchaser shall obtain workers compensation insurance to cover claims under Michigan's Worker's Disability Compensation Act of 1969 or similar employee benefit act of any other state applicable to an employee. If all or part of a timber sale was prepared by a private contractor, the contractor and that contractor's company are not permitted to bid on the timber sale contract. Bids will not be accepted from individuals or companies appearing on the DNR/FRD No-Bid List. This list contains the names of purchasers who previously failed to execute a contract within 21-days or who have a history of poor performance.

3. Preparation of Sealed Bids (5/16)

Bid Forms may be completed online thru Michigan DNR Timber Sale Online Bidding (OLB) at www.michigan.gov/timberbidding or by completing the hardcopy Bid Form found in the Timber Sale Prospectus. Hardcopy Bid Forms shall be manually signed in ink. Registration in OLB is considered your 'signature' for all bids submitted thru that system. Bid prices must be entered for each species and product in the Bid Price column for all material subject to bidding and all fill-in blanks must be completed. If erasures or other changes appear on the hardcopy Bid Form, each erasure or change must be initialed by the person signing the bid.

4. Submission of Sealed Bids (5/16)

Bid forms may be obtained from the Unit Manager or thru OLB. Bids may be submitted hardcopy or thru OLB. All hardcopy bids must be submitted on the bid form and in an envelope clearly identified as described in this section. NOTE: Only one bid form per bid envelope. Sealed bids must be submitted to the Unit office designated in the prospectus and must be submitted at or prior to the time established in the prospectus. The envelope should show on the outside (a) the sale name or number and (b) the date and time of bid opening, as shown in the prospectus. Bids received after the time specified in the sale prospectus are late bids and will be rejected.

It is possible for a bidder to submit multiple bids on a single sale. For example, a bid may be submitted hardcopy and a bid may be submitted thru OLB. Or, two bidders from the same company could both submit bids on the same sale. If this were to happen, the State would accept all bids received and award the contract accordingly. All bidding and contractual requirements would apply to all bids received.

5. Public Opening of Sealed Bids (7/16)

If conditions permit, the sealed bids will be publicly opened and posted at the time and place set in the prospectus.

If a bidder, present at a bid opening, has submitted bids on more than one sale, that bidder may withdraw their unopened bid envelopes or announce the withdrawal of their online bid after being declared the successful bidder on one sale.

6. Award of Contract (1/11)

Award of the contract will be made to the Bidder whose bid, conforming to the prospectus, is most advantageous to the State of Michigan on the basis of total value at rates bid for the estimated quantities. The State reserves the right to reject any bid or waive any minor irregularity in bids received. A written award mailed (or otherwise furnished) to the successful Bidder shall be deemed to result in a binding contract without further action by either party.

7. Down Payment (1/11)

The Bidder to whom award is made must make a down payment within 21 days of the sale award. The amount of the down payment will be calculated as shown in the Bond and Payment Schedule of this prospectus. Only cash may be used to meet this requirement.

8. Performance Security (1/11)

As guarantee of faithful performance, a cash bond, certificate of deposit, surety bond or irrevocable letter of credit (LOC) is required within 21 days of the sale award. The amount of the performance security is shown in the Bond and

Payment Schedule of this prospectus. If an LOC or surety is used, the coverage must extend for at least 6 months beyond the contract expiration.

9. Timber Sale Contract (7/18)

Additional conditions and requirements common to all timber sales are listed on the timber sale contract (R4031) and are available on line at www.michigan.gov/timber. Contact the Unit Manager for additional information or a sample contract. Within 21 days of the date of the award letter, the bidder must sign the contract and provide the required down payment, performance security, and verification of worker's disability compensation. The down payment and performance security shall be in accordance with the provisions of the timber sale contract, in the sums stated in this prospectus. If these actions are not taken, then the Bidder, the Bidder's corporation, and the corporation's principals may not be permitted to bid on State timber sales for a period of 3 months after the first offense, 6 months after the second offense, and 1 year after the third offense. An offense will only be counted against the Bidder for 5 years. In addition, the Bidder certifies that if awarded this contract, the Bidder will complete the timber sale contract in accordance with its terms and any modifications thereof including requirements to purchase, cut, and remove the included timber by the expiration date.

Payment Unit values in the State Forest Timber Sale Contract are calculated based on the advertised value of the Payment Unit as a percentage of the total advertised value of the contract. The advertised value of each Payment Unit is given in the Description of Timber by Payment Unit table on the Timber Sale Information page. For example, if the value of Payment Unit 1 is advertised as \$1,500 and the total Timber Sale value is advertised as \$10,000, the contract price for Payment Unit 1 will be 15% of the total bid price ($\$1,500/\$10,000 * 100$).

10. Disclaimer of Estimates and Bidder's Warranty of Inspection (7/16)

Before submitting this bid, the Bidder is advised and cautioned to inspect the sale area, review the requirements of the sale contract, and take other steps as may be reasonably necessary to ascertain the location, estimated volumes, construction estimates, and operating costs of the proposed sale. Failure to do so will not relieve the Bidder from responsibility for completing the contract.

The Bidder warrants that this bid is submitted solely on the basis of the Bidder's examination and inspection of the quality and quantity of the timber offered for sale and the Bidder's opinion of the value thereof and the costs of recovery. No reliance should be placed on the State of Michigan's estimates of timber quality, quantity or costs of recovery. Bidder further acknowledges that the State of Michigan: (i) expressly disclaims any warranty of fitness of timber for any purpose; (ii) offers this timber as is without any warranty of quality (merchantability) or quantity and (iii) expressly disclaims any warranty as to the quantity or quality of timber sold.

11. Certification and Chain-of-Custody (10/14)

Unless otherwise indicated in the contract under section 7 – Other Conditions of the Sale Specific Conditions & Requirements, the area encompassed by this timber sale is certified to the standards of the Forest Stewardship Council (FSC) - Certificate #SCS-FM/COC-00090N and the Sustainable Forestry Initiative (SFI) - Certificate #NSF-SFIS-5Y031-SF5. Forest products from this sale may be delivered to the mill as "FSC 100% and / or SFI certified" as long as the contractor hauling the forest products is chain-of-custody (COC) certified or covered under a COC certificate from the destination mill. The purchaser is responsible for maintaining COC after leaving the sale area.

12. Good Neighbor Authority (GNA) Requirements (7/16)

If the name of this timber sales contains the acronym GNA, it is authorized by the Good Neighbor Authority (GNA) and covered by various agreements between the U.S. Forest Service and the State. The timber sale occurs on federal land and the following conditions apply:

GNA contracts on US Forest Service land will not be awarded to purchasers on the Federal list of excluded parties. The System for Award Management (SAM) will be checked for active excluded parties prior to award of contract. In addition, the Bidder to whom award is made must complete an Assurance Regarding Felony Conviction or Tax Delinquent Status for Corporate Applicants (AD-3031).

13. Good Neighbor Authority (GNA) Requirements, con't (9/16)

Bidder certifies, by signing this bid form, that to the best of Bidder's knowledge that the following representations are accurate and complete.

- a. That the Bidder and its principals are not presently debarred, suspended, proposed for debarment, declared ineligible, or voluntary excluded from timber sales (covered transactions) by any Federal department or agency.
- b. That the Bidder and its principals have not within a 3-year period preceding this bid been convicted of or had a civil judgment rendered against them for commission of fraud or a criminal offense in connection with obtaining, attempting to obtain, or performing a public (Federal, State, or local) transaction or contract under a public transaction; violation of Federal or State antitrust statutes or commission of embezzlement, theft, forgery, bribery, falsification or destruction of records, making false statements, or receiving stolen property.
- c. That the Bidder and its principals are not presently indicted for or otherwise criminally or civilly charged by a governmental entity (Federal, State, or local) with commission of any of the offenses enumerated in paragraph b of this certification.
- d. That the Bidder and its principals have not within a 3-year period preceding this bid had one or more public transactions (Federal, State, or local) terminated for breach or default of a timber or forest product contract.

Bidders that cannot certify this requirement, in whole or in part, shall submit an explanation with their bid.

DAN EICHINGER
Director

TIMBER SALE INFORMATION

Plan B Hardwood (61-013-19)
T27N, R14W, SEC. 11; T27N, R14W, SEC. 2.
Benzie County (Advertised Price \$14,217.25)

SALE NOTE: This sale contract has a short duration to accelerate planned re-planting of the site. Contract expiration is October 31, 2019, with no extensions allowed.

A timber sale contract for this lump sum, sealed bid timber sale will be awarded to the responsible bidder offering the highest sealed bid price. Bids must be at or above the following advertised price for each species:

<u>PRODUCTS & SPECIES</u>	<u>ESTIMATED UNITS*</u>	<u>ADVERTISED PRICE</u>
Sawtimber		
Beech	8.60 MBF	\$ 68.00 / MBF
Black Cherry	10.40 MBF	\$ 101.00 / MBF
Red Maple	9.20 MBF	\$ 87.00 / MBF
Sugar Maple	38.10 MBF	\$ 209.00 / MBF
Pulpwood		
Mixed Hardwood	325.00 Cords	\$ 11.75 / Cord

* The total volume is statistically estimated within plus (+) or minus (-) 17.75 percent. The estimated units are final and not subject to adjustment. Prospective bidders are urged to examine this timber and to make their own estimates of quantity and quality.

BOND AND PAYMENT SCHEDULE:

1. A bond in the amount of \$711.00 to insure faithful performance of the conditions of the contract will be deposited by the successful bidder within 21 days of the sale award.
2. Cutting in any sale or unit without the required advance payment would be considered a trespass.
3. Total payment must be paid in advance or according to the following schedule:
 - (a) Ten percent (10%) of the sale value must be paid within 21 days of the sale award.
 - (b) The remainder is due before cutting begins.
 - (c) Payment for each of the following units must be made before cutting begins in that unit:

PAYMENT UNIT NUMBER	PERCENT OF TOTAL SALE VALUE
01	100.0%
4. If no cutting takes place, the 10% down payment will not be refunded.
5. Operations on the contract issued will terminate on 12/31/2019.

Description of Timber by Payment Unit (PU)

PU	MARKET GROUP	PRODUCT	QUANTITY	UNIT	ACRES	ADVERTISE PRICE
1	Beech	Sawtimber	8.6	MBF	46.7	\$14,217.25
	Black Cherry		10.4	MBF		
	Red Maple		9.2	MBF		
	Sugar Maple		38.1	MBF		
	Mixed Hardwood		325.0	Cords		
	<i>B. T. Aspen</i>	3.0	<i>Cords</i>			
	<i>Beech</i>	169.0	<i>Cords</i>			
	<i>Black Cherry</i>	19.0	<i>Cords</i>			
	<i>Red Maple</i>	18.0	<i>Cords</i>			
	<i>Sugar Maple</i>	116.0	<i>Cords</i>			
	TOTAL:			66.3		
TOTAL:			325.0	Cords		

Sale Specific Conditions & Requirements

Sale Name: Plan B Hardwood

Sale Number: 61-013-19 Seq#: 2

1 - Sale Area

1.2 - Boundaries

1.2.1 - Painted boundaries (1/14)

The sale boundary is marked and identified by red paint. An interior retention island is bounded by double red paint marks. The painted boundary line trees are not Included Timber and are to be protected.

2 - Timber Specifications

2.1 - Included Timber

2.1.1 - Clearcut unit(s) with unmerchantable trees (6/14)

Within Payment Unit(s) 1, cut all trees that are one (1) inch or more at DBH, except do not cut any maple or cherry trees greater than 18" at DBH, or any yellow birch. For multi-stemmed maple and cherry clumps, if at least one stem is greater than 18" in diameter, then retain the entire clump. Ignore green and yellow paint marks from previous sale.

In addition, remove any fallen trees or limbs greater than 6 inches in diameter at the large end, except for logs which were deliberately left during a previous sale operation (these will have saw-cut ends and will typically be 6 to 10 feet long).

2.2 - Utilization

2.2.2 - Chipping required (2/18)

This area must be chip harvested to facilitate subsequent planting operations. The Purchaser has the option to produce sawlogs or pulpwood bolts, but the remaining portion of the trees must be chipped. The requirement to retain approximately 1/6 to 1/3 of tree tops and limbs less than four inches in diameter is still applicable (G. C. & R. 2.2).

2.2.3 - Stump heights (4/07)

Stump heights within the Sale Area shall not exceed 12 inches for trees greater than 10 inches DBH and 4 inches for trees smaller than 10 inches DBH. This is in order to facilitate planting operations.

4 - Transportation

4.1 - Construction

4.1.12 - No new roads (1/12)

No new roads will be permitted. All operations are limited to existing roads.

5 - Operations

5.2 - Conduct of Operations

5.2.1 - Slash

5.2.1.8 - Slash height (12/08)

No slash or tree tops may exceed 24 inches in height.

7 - Other Conditions

7.2 - Extensions

7.2.2 - No extensions (3/09)

There will be no extensions granted on this contract.



TIMBER SALE MAP

This information provided by authority of Part 525, 1994 PA 451, as amended.

Forest Management Unit	County	Mapped By	Date	Page	of
Traverse City	Benzie	Tim Webb	1/23/2019	1	1
Township	Range	Section(s) and Subdivision(s)	Scale		
27N	14W	Sec. 2: SESW; Sec. 11: E1/2NW, W1/2NE	1:15,840		

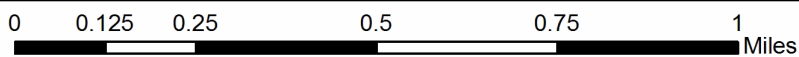
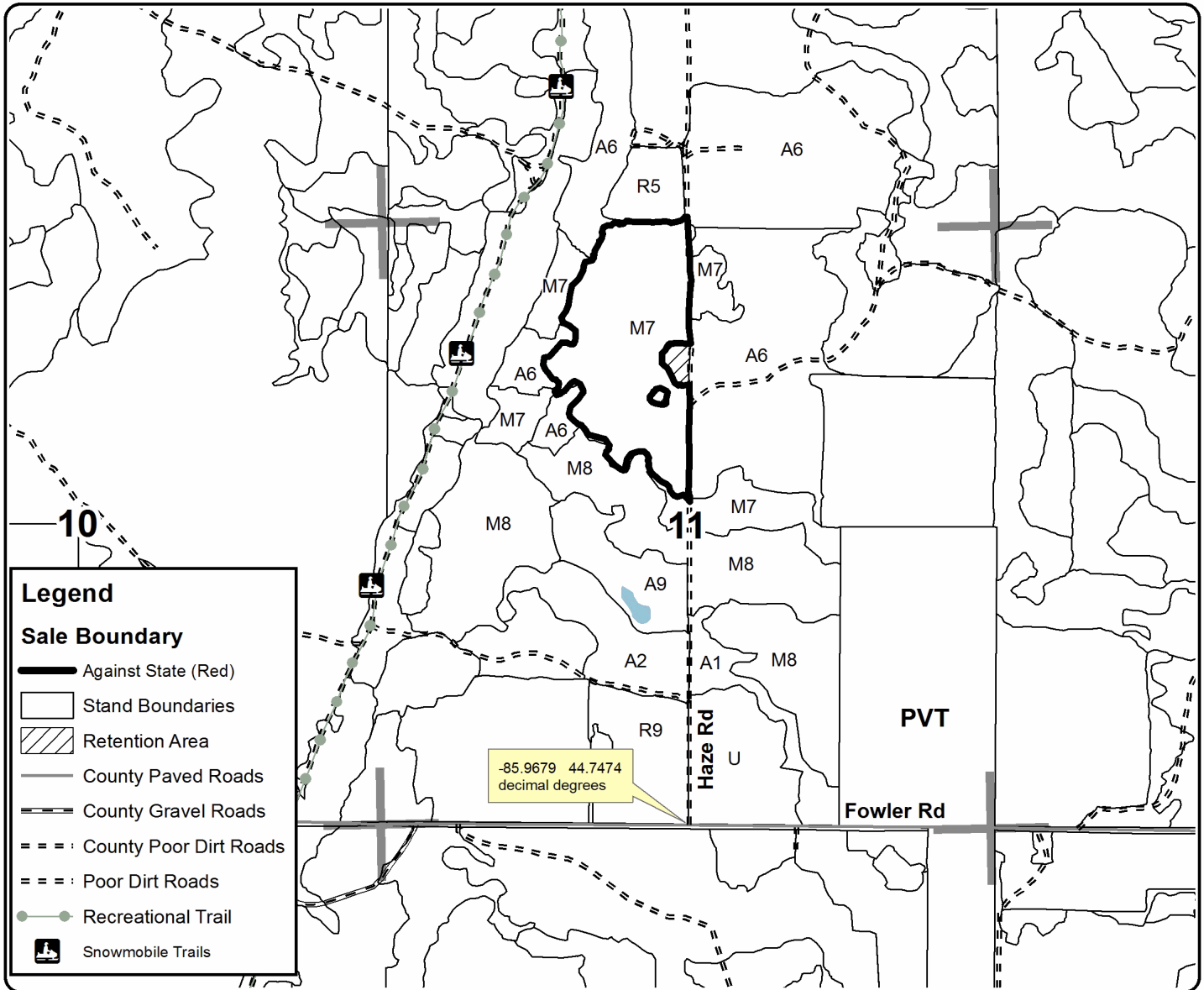
Cover Type				Density	
A = Aspen	H = Hemlock	N = Marsh	U = Upland Brush	0 = Non Stocked	5 = Pole Timber Medium
B = Paper Birch	J = Jack Pine	O = Oak	UM = Upland Mixed	1 = Seedling Sapling Poor	6 = Pole Timber Well
C = Cedar	L = Lowland Brush	P = Lowland Poplar	V = Bog or Marsh	2 = Seedling Sapling Medium	7 = Saw Timber Poor
D = Tread Bog	LM = Lowland Mixed	Q = Mixed Swamp Conifer	W = White Pine	3 = Seedling Sapling Well	8 = Saw Timber Medium
E = Swamp Hdwoods	M = Mpl, Bch, Brch	R = Red Pine	X = Non Stocked	4 = Pole Timber Poor	9 = Saw Timber Well
F = Spruce Fir	MC = Mixed Conifer	S = Black Spruce	Z = Water		
G = Grass	MD = Mixed Deciduous	T = Tamarack			

PU Acres
1 46.7

Plan B Hardwood

Compartment 5

46.7 acres



TIMBER SALE INFORMATION

Wild Country Red Pine (61-028-19)
 T23N, R14W, SEC. 3; T23N, R14W, SEC. 4.
 Manistee County (Advertised Price \$35,332.40)

A timber sale contract for this lump sum, sealed bid timber sale will be awarded to the responsible bidder offering the highest sealed bid price. Bids must be at or above the following advertised price for each species:

<u>PRODUCTS & SPECIES</u>	<u>ESTIMATED UNITS*</u>	<u>ADVERTISED PRICE</u>
Sawtimber		
Red Pine	202.80 MBF	\$ 108.00 / MBF
Pulpwood		
Red Pine	395.00 Cords	\$ 34.00 / Cord

* The total volume is statistically estimated within plus (+) or minus (-) 8.74 percent. The estimated units are final and not subject to adjustment. Prospective bidders are urged to examine this timber and to make their own estimates of quantity and quality.

BOND AND PAYMENT SCHEDULE:

- A bond in the amount of \$1,767.00 to insure faithful performance of the conditions of the contract will be deposited by the successful bidder within 21 days of the sale award.
- Cutting in any sale or unit without the required advance payment would be considered a trespass.
- Total payment must be paid in advance or according to the following schedule:
 - Ten percent (10%) of the sale value must be paid within 21 days of the sale award.
 - The 10% down payment will be credited towards the first unit cut.
 - Payment for each of the following units must be made before cutting begins in that unit:

PAYMENT UNIT NUMBER	PERCENT OF TOTAL SALE VALUE
01	12.0%
02	25.0%
03	26.9%
04	36.1%
- If no cutting takes place, the 10% down payment will not be refunded.
- Operations on the contract issued will terminate on 09/30/2021.

Description of Timber by Payment Unit (PU)

PU	MARKET GROUP	PRODUCT	QUANTITY	UNIT	ACRES	ADVERTISE PRICE
1	Red Pine	Sawtimber	19.5	MBF	7.1	\$4,248.00
	Red Pine	Pulpwood	63.0	Cords		
2	Red Pine	Sawtimber	64.6	MBF	12.0	\$8,846.80
	Red Pine	Pulpwood	55.0	Cords		
3	Red Pine	Sawtimber	46.2	MBF	16.5	\$9,511.60
	Red Pine	Pulpwood	133.0	Cords		
4	Red Pine	Sawtimber	72.5	MBF	16.3	\$12,726.00
	Red Pine	Pulpwood	144.0	Cords		
TOTAL:			202.8	MBF		
TOTAL:			395.0	Cords		

Sale Specific Conditions & Requirements

Sale Name: Wild Country Red Pine

Sale Number: 61-028-19 Seq#: 1

1 - Sale Area

1.2 - Boundaries

1.2.1 - Painted boundaries (1/14)

The sale boundary and Payment Unit boundaries are marked and identified by red and blue paint. Exterior sale boundary lines against private property are marked with blue paint. Exterior sale boundary lines against state are marked with red paint. The painted boundary line trees are not Included Timber and are to be protected unless marked with orange paint.

2 - Timber Specifications

2.1 - Included Timber

2.1.3 - Cut tree marked unit(s) (12/08)

Within Payment Unit(s) 1, 2, 3 & 4, all trees are designated for cutting when marked with orange paint above and below stump height, regardless of merchantability.

2.2 - Utilization

2.2.3 - Stump heights (4/07)

Stump heights within the Sale Area shall not exceed 6 inches for all trees.

2.2.6 - Roundwood operation required (5/07)

The skidding of whole trees or tree segments with limbs attached is prohibited. All products must be produced as roundwood and forwarded to existing roads or landing areas in final product length.

3 - Payments

3.4 - Damaged Timber

3.4.1 - Damaged timber (6/14)

General Condition and Requirement 3.4 Damaged Timber, defines liquidated damages for undesignated live merchantable trees which are cut or injured.

No damage is acceptable to merchantable trees. Within the sale area, if more than 10% of trees (> 4.5" DBH) within a specified area of the sale are damaged, liquidated damages will be assessed for all trees damaged. Rates will be in accordance with General Condition and Requirement 3.4 Damaged Timber.

4 - Transportation

4.1 - Construction

4.1.11 - Permits (2/12)

The Purchaser will secure any necessary permits that may be required.

4.1.12 - No new roads (1/12)

No new roads will be permitted. All operations are limited to existing roads. Skid trails only will be allowed.

5 - Operations

5.2 - Conduct of Operations

5.2.1 - Slash

5.2.1.8 - Slash height (12/08)

No slash or tree tops may exceed 24 inches in height.

5.2.3 - Operating Restrictions

5.2.3.3 - Bark slippage restriction (3/09)

Within Payment Unit(s) 1, 2, 3 & 4, unless changed by written agreement, cutting and skidding are not permitted during the period of April 15 to July 15. This restriction is because of bark slippage.

5.2.3.6 - Bark beetle restriction (12/08)

In the event drought creates a high risk of pine bark beetle infestation, pine is not to be cut during the period March 1 through July 1, unless all portions of trees greater than two inches in diameter are removed from the sale area, reduced to chips, or treated to the satisfaction of the Unit Manager or his/her representative, within fifteen days of being severed from the stump. Pine log decks, pulpwood piles and treetops that are piled for chipping in the fall or winter within a 1/4 mile of susceptible sites must be removed before March 15. Residual slash must not be placed in piles or rows and must be spread over the site for quick drying. The Department of Natural Resources will exercise this specification if the risk of damage warrants.

5.2.41 - Snowmobile trail protection (9/11)

The Bear Valley Trail is a snowmobile trail and is shown on the Timber Sale Map. Do not cut or damage posts with orange trail markers or traffic control signs. The snowmobile trail may not be used for any timber sale operations, and may only be crossed at a right angle to get wood from Payment Unit 2 west to the landing area. No decking of forest products will be permitted along the snowmobile trail.

5.4 - Soil Protection

5.4.1 - Rutting restriction, general (7/16)

Operations are to cease immediately if equipment and weather conditions result in rutting of roads and/or skid trails which is 12 inches or greater in depth and 50 feet in length. The Unit Manager or his/her representative may restrict hauling and/or skidding if ruts exceed the specified depth. With the Unit Manager or his/her representative's approval, the Purchaser may return to the area when the risk of rutting has decreased.

6 - Safety and Fire Prevention

6.2 - Signing

6.2.2 - Snowmobile trail posting (8/09)

The Purchaser is responsible for posting and maintaining caution signs on the snowmobile trail prior to beginning operations during the snowmobile season (approximately December 1 to March 31). The trail must be posted at appropriate distances from the sale area to warn of logging activity and truck traffic. Signs must be removed when harvest operations are suspended or completed. The Purchaser will provide these signs.



TIMBER SALE MAP

This information provided by authority of Part 525, 1994 PA 451, as amended.

Forest Management Unit Traverse City FMU	County Manistee	Mapped By Patrick Cotant	Date 04/11/2019	Page 1	of 1
Township 23N	Range 14W	Section(s) and Subdivision(s) Sec 4-E1/2SENE, E1/2NESE Sec 3-N1/2NW	Scale 1:15,840		

Cover Type

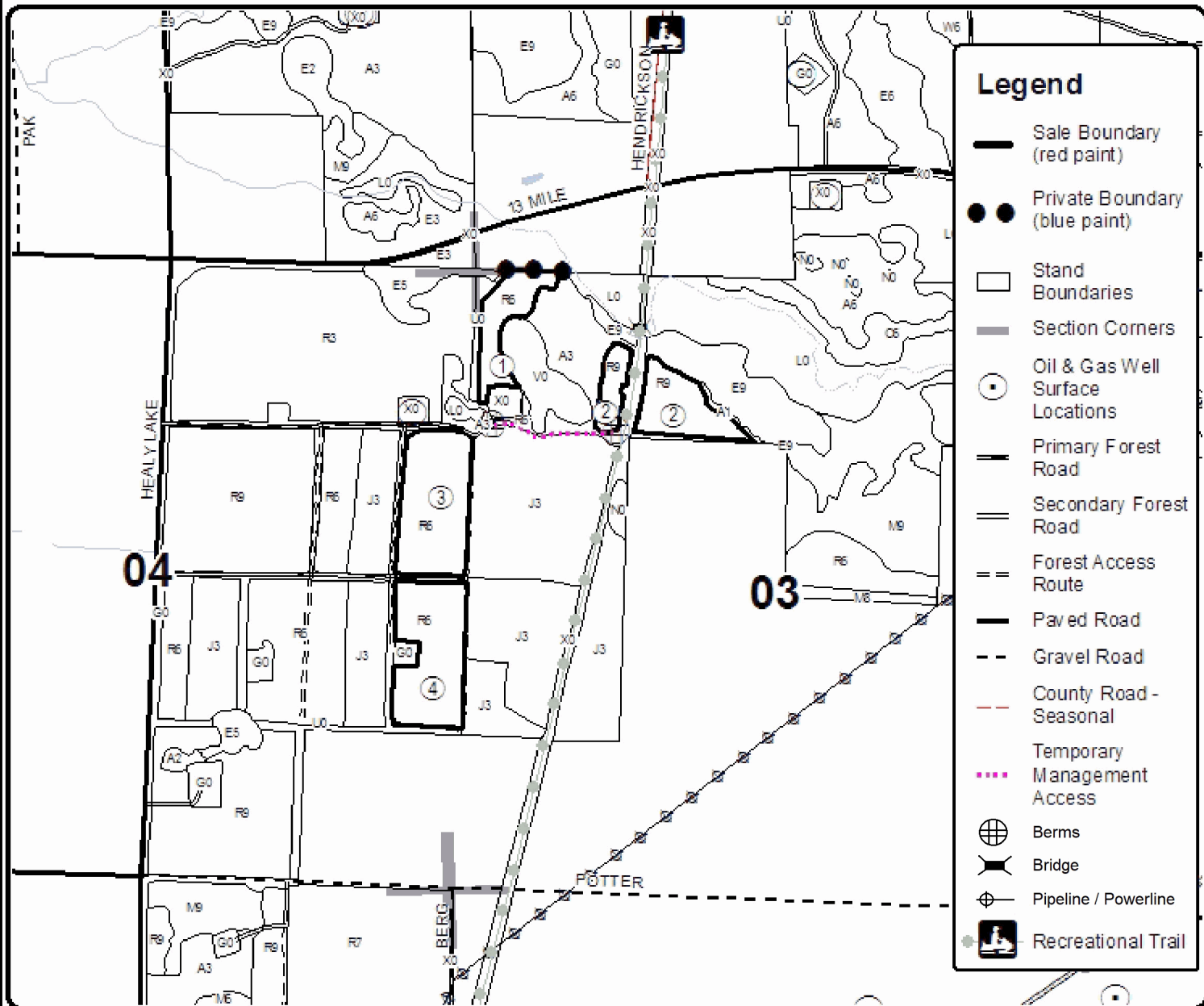
A = Aspen	H = Hemlock	N = Marsh	U = Upland Brush
B = Paper Birch	J = Jack Pine	O = Oak	UM = Upland Mixed
C = Cedar	L = Lowland Brush	P = Lowland Poplar	V = Bog or Marsh
D = Treed Bog	LM = Lowland Mixed	Q = Mixed Swamp Conifer	W = White Pine
E = Swamp Hardwoods	M = Mpl. Ech. Birch	R = Red Pine	X = Non Stocked
F = Spruce Fir	MC = Mixed Conifer	S = Black Spruce	Z = Water
G = Cress	MD = Mixed Deciduous	T = Tamarack	

Density

0 = Non Stocked	5 = Pole Timber Medium
1 = Seedling Sapling Poor	6 = Pole Timber Well
2 = Seedling Sapling Medium	7 = Saw Timber Poor
3 = Seedling Sapling Well	8 = Saw Timber Medium
4 = Pole Timber Poor	9 = Saw Timber Well

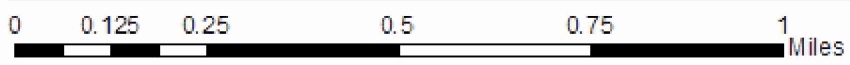
PU	Acres	PU	Acres
1	7.1	4	16.3
2	12		
3	16.5		

Wild Country Red Pine Compartment 039 51.9 Acres



Legend

- Sale Boundary (red paint)
- Private Boundary (blue paint)
- Stand Boundaries
- Section Corners
- Oil & Gas Well Surface Locations
- Primary Forest Road
- Secondary Forest Road
- Forest Access Route
- Paved Road
- Gravel Road
- County Road - Seasonal
- Temporary Management Access
- ⊕ Berms
- ⊗ Bridge
- Pipeline / Powerline
- ⊕ Recreational Trail



TIMBER SALE INFORMATION

April Snows Red Pine (61-029-19)
 T23N, R14W, SEC. 4.
 Manistee County (Advertised Price \$134,410.35)

A timber sale contract for this lump sum, sealed bid timber sale will be awarded to the responsible bidder offering the highest sealed bid price. Bids must be at or above the following advertised price for each species:

<u>PRODUCTS & SPECIES</u>	<u>ESTIMATED UNITS*</u>	<u>ADVERTISED PRICE</u>
Sawtimber		
Red Pine	1,007.60 MBF	\$ 108.00 / MBF
Pulpwood		
Mixed Hardwood	31.00 Cords	\$ 16.05 / Cord
Red Pine	738.00 Cords	\$ 34.00 / Cord

* The total volume is statistically estimated within plus (+) or minus (-) 7.40 percent. The estimated units are final and not subject to adjustment. Prospective bidders are urged to examine this timber and to make their own estimates of quantity and quality.

BOND AND PAYMENT SCHEDULE:

1. A bond in the amount of \$6,721.00 to insure faithful performance of the conditions of the contract will be deposited by the successful bidder within 21 days of the sale award.
2. Cutting in any sale or unit without the required advance payment would be considered a trespass.
3. Total payment must be paid in advance or according to the following schedule:
 - (a) Ten percent (10%) of the sale value must be paid within 21 days of the sale award.
 - (b) The 10% down payment will be credited towards the first unit cut.
 - (c) Payment for each of the following units must be made before cutting begins in that unit:

<u>PAYMENT UNIT NUMBER</u>	<u>PERCENT OF TOTAL SALE VALUE</u>
01	3.9%
02	22.1%
03	20.9%
04	28.7%
05	19.7%
06	4.7%
4. If no cutting takes place, the 10% down payment will not be refunded.
5. Operations on the contract issued will terminate on 09/30/2021.

Description of Timber by Payment Unit (PU)

PU	MARKET GROUP	PRODUCT	QUANTITY	UNIT	ACRES	ADVERTISE PRICE
1	Red Pine	Sawtimber	45.6	MBF	4.7	\$5,298.80
	Red Pine	Pulpwood	11.0	Cords		
2	Red Pine	Sawtimber	255.9	MBF	16.0	\$29,691.35
	Mixed Hardwood	Pulpwood	3.0	Cords		
	<i>Red Maple</i>	<i>Sawtimber</i>	<i>0.5</i>	<i>MBF</i>		
	<i>Red Maple</i>	<i>Pulpwood</i>	<i>2.0</i>	<i>Cords</i>		
	Red Pine		59.0	Cords		
3	Red Pine	Sawtimber	241.5	MBF	15.1	\$28,034.15
	Mixed Hardwood	Pulpwood	3.0	Cords		
	<i>Red Maple</i>	<i>Sawtimber</i>	<i>0.4</i>	<i>MBF</i>		
	<i>Red Maple</i>	<i>Pulpwood</i>	<i>2.0</i>	<i>Cords</i>		
	Red Pine		56.0	Cords		
4	Red Pine	Sawtimber	255.0	MBF	17.2	\$38,592.75
	Mixed Hardwood	Pulpwood	15.0	Cords		
	<i>Black Cherry</i>	<i>Sawtimber</i>	<i>1.0</i>	<i>MBF</i>		
	<i>Black Cherry</i>	<i>Pulpwood</i>	<i>9.0</i>	<i>Cords</i>		
	<i>Red Maple</i>		<i>4.0</i>	<i>Cords</i>		
	Red Pine		318.0	Cords		
5	Red Pine	Sawtimber	174.9	MBF	11.8	\$26,495.70
	Mixed Hardwood	Pulpwood	10.0	Cords		
	<i>Black Cherry</i>	<i>Sawtimber</i>	<i>0.7</i>	<i>MBF</i>		
	<i>Black Cherry</i>	<i>Pulpwood</i>	<i>6.0</i>	<i>Cords</i>		
	<i>Red Maple</i>		<i>3.0</i>	<i>Cords</i>		
	Red Pine		219.0	Cords		
6	Red Pine	Sawtimber	34.7	MBF	6.7	\$6,297.60
	Red Pine	Pulpwood	75.0	Cords		
TOTAL:			1,007.6	MBF		
TOTAL:			769.0	Cords		

Sale Specific Conditions & Requirements

Sale Name: April Snows Red Pine

Sale Number: 61-029-19 Seq#: 1

1 - Sale Area

1.2 - Boundaries

1.2.1 - Painted boundaries (1/14)

The sale boundary and Payment Unit boundaries are marked and identified by red and yellow paint. Exterior sale boundary lines against state are marked with red paint. Interior Payment Unit boundaries are marked with yellow paint, with the exception of the boundary between Payment Units 6A and 6B, which is marked with red paint. The painted boundary line trees are not Included Timber and are to be protected unless marked with orange paint. Yellow painted trees designating an interior Payment Unit boundary are only to be cut when all surrounding Payment Units have been paid.

2 - Timber Specifications

2.1 - Included Timber

2.1.1 - Clearcut unit(s) with unmerchantable trees (6/14)

Within Payment Unit(s) 2-5, cut all trees that are one (1) inches or more at DBH.

2.1.3 - Cut tree marked unit(s) (12/08)

Within Payment Unit(s) 1 and 6A, all trees are designated for cutting when marked with orange paint above and below stump height, regardless of merchantability. In addition, within Payment Unit 6B, cut all red pine regardless of merchantability.

2.2 - Utilization

2.2.2 - Chipping required (2/18)

Payment Unit's 2-5 must be chip harvested to facilitate subsequent planting operations. Products may be produced as roundwood and forwarded to decking areas in final product length, but the tops must be left intact and skidded to the landing for chipping in order to minimize the amount of residual slash. Excessive waste material will not be permitted to accumulate around the landing area and/or on any skid trail. The requirement to retain approximately 1/6 to 1/3 of tree tops and limbs less than four inches in diameter does not apply (G. C. & R. 2.2). This is in order to maximize the potential for plantation success.

2.2.3 - Stump heights (4/07)

Stump heights within the Sale Area shall not exceed 6 inches for all trees. This is in order to facilitate planting operations. If snow depth adversely affects a producers ability to achieve the 6" or less stump height requirement then operations may need to cease. This will be at the discretion of the sale administrator.

4 - Transportation

4.1 - Construction

4.1.11 - Permits (2/12)

The Purchaser will secure any necessary permits that may be required.

4.1.12 - No new roads (1/12)

No new roads will be permitted in any Payment Unit. All operations are limited to existing roads. Skid trails only will be allowed.

5 - Operations

5.2 - Conduct of Operations

5.2.1 - Slash

5.2.1.8 - Slash height (12/08)

No slash or tree tops may exceed 24 inches in height.

5.2.2 - Hazard Trees/Snags

5.2.2.1 - Den trees (10/16)

Obvious hollow and/or den trees shall be protected and left standing unless they are a safety hazard.

5.2.3 - Operating Restrictions

5.2.3.6 - Bark beetle restriction (12/08)

In the event drought creates a high risk of pine bark beetle infestation, pine is not to be cut during the period March 1 through July 1, unless all portions of trees greater than two inches in diameter are removed from the sale area, reduced to chips, or treated to the satisfaction of the Unit Manager or his/her representative, within fifteen days of being severed from the stump. Pine log decks, pulpwood piles and treetops that are piled for chipping in the fall or winter within a 1/4 mile of susceptible sites must be removed before March 15. Residual slash must not be placed in piles or rows and must be spread over the site for quick drying. The Department of Natural Resources will exercise this specification if the risk of damage warrants.

5.4 - Soil Protection

5.4.1 - Rutting restriction, general (7/16)

Operations are to cease immediately if equipment and weather conditions result in rutting of roads and/or skid trails which is 12 inches or greater in depth and 50 feet in length. The Unit Manager or his/her representative may restrict hauling and/or skidding if ruts exceed the specified depth. With the Unit Manager or his/her representative's approval, the Purchaser may return to the area when the risk of rutting has decreased.

6 - Safety and Fire Prevention

6.2 - Signing

6.2.1 - Road posting (9/09)

The Purchaser is responsible for posting and maintaining caution signs on Healy Lake Rd. prior to beginning operations. The road must be posted at appropriate distances from the sale area to warn of logging activity and truck traffic. Signs must be removed when harvest operations are suspended or completed. The Purchaser will provide these signs.



TIMBER SALE MAP

This information provided by authority of Part 525, 1994 PA 451, as amended.

Forest Management Unit Traverse City FMU	County Manistee	Mapped By Patrick Cotant	Date 04/18/2019	Page 1	of 1
Township 23N	Range 14W	Section(s) and Subdivision(s) Sec 4 - S1/2NE, N1/2SE	Scale 1:15,840		

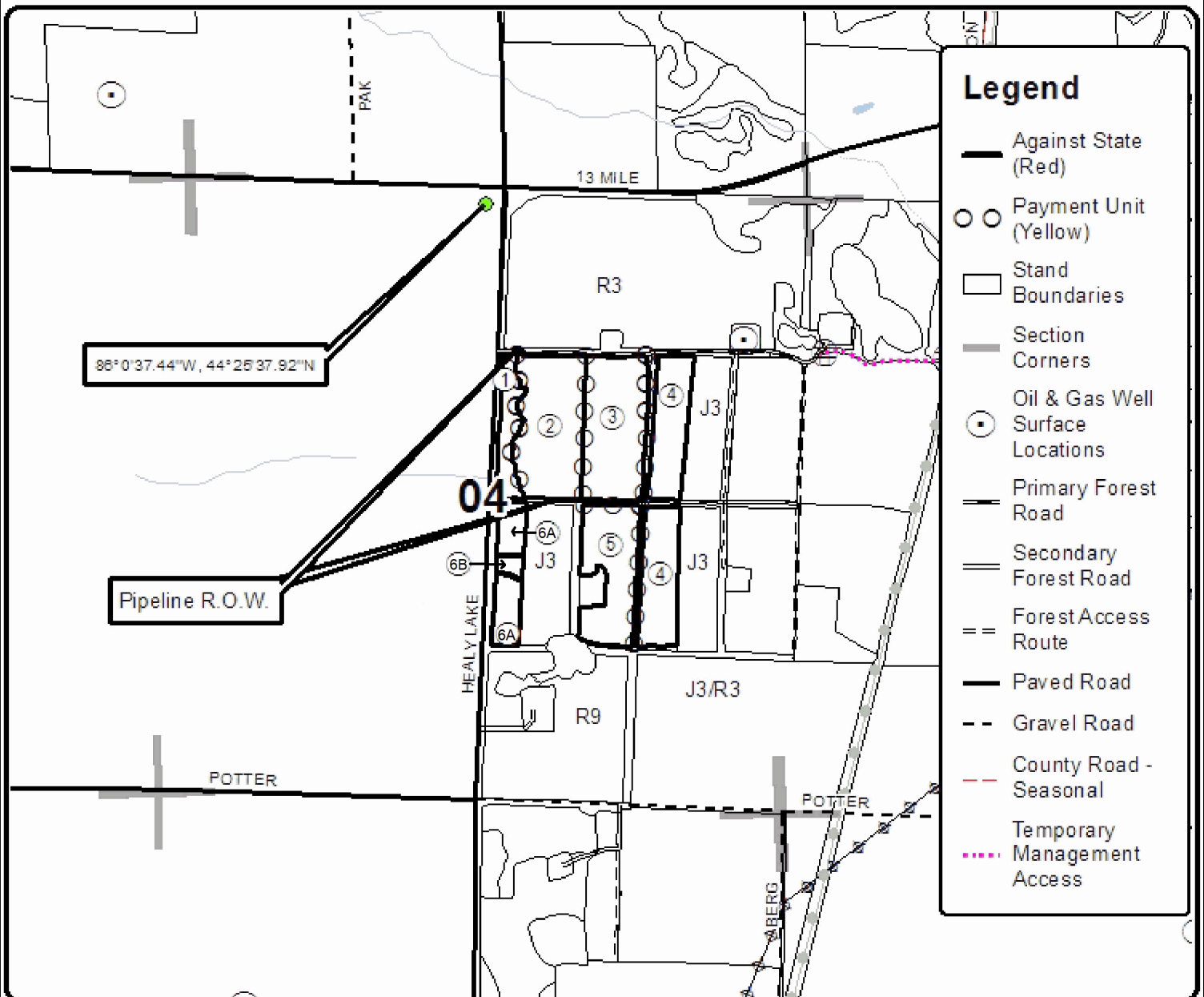
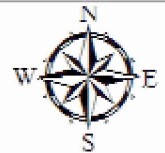
Cover Type				Density	
A = Aspen	H = Hemlock	N = Marsh	U = Upland Brush	0 = Non Stocked	5 = Pole Timber Medium
B = Paper Birch	J = Jack Pine	O = Oak	UM = Upland Mixed	1 = Seeding Sapling Poor	6 = Pole Timber Well
C = Cedar	L = Lowland Birch	P = Lowland Poplar	V = Bog or Marsh	2 = Seeding Sapling Medium	7 = Saw Timber Poor
D = Treed Bog	LM = Lowland Mixed	Q = Mixed Swamp Conifer	W = White Pine	3 = Seeding Sapling Well	8 = Saw Timber Medium
E = Swamp Hardwoods	M = Mpl. Ech. Birch	R = Red Pine	X = Non Stocked	4 = Pole Timber Poor	9 = Saw Timber Well
F = Spruce Fir	MC = Mixed Conifer	S = Black Spruce	Z = Water		
G = Cress	MD = Mixed Deciduous	T = Tamarack			

PU	Acres	PU	Acres
1	4.7	4	17.2
2	16	5	11.8
3	15.1	6	6.7

April Snows Red Pine

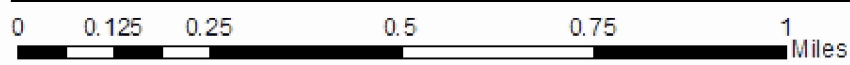
Compartment 039

71.5 Acres



Legend

- Against State (Red)
- Payment Unit (Yellow)
- Stand Boundaries
- Section Corners
- Oil & Gas Well Surface Locations
- Primary Forest Road
- Secondary Forest Road
- Forest Access Route
- Paved Road
- Gravel Road
- County Road - Seasonal
- Temporary Management Access



TIMBER SALE INFORMATION

Ridge Top Aspen (61-030-19)
 T22N, R14W, SEC. 18.
 Manistee County (Advertised Price \$53,650.70)

A timber sale contract for this lump sum, sealed bid timber sale will be awarded to the responsible bidder offering the highest sealed bid price. Bids must be at or above the following advertised price for each species:

<u>PRODUCTS & SPECIES</u>	<u>ESTIMATED UNITS*</u>	<u>ADVERTISED PRICE</u>
Sawtimber		
B. T. Aspen	206.80 MBF	\$ 120.00 / MBF
Red Maple	40.90 MBF	\$ 119.00 / MBF
Red Oak	33.90 MBF	\$ 197.00 / MBF
White Oak	60.80 MBF	\$ 42.00 / MBF
Pulpwood		
B. T. Aspen	533.00 Cords	\$ 18.10 / Cord
Mixed Hardwood	168.00 Cords	\$ 16.05 / Cord
Mixed Oak	208.00 Cords	\$ 11.50 / Cord

* The total volume is statistically estimated within plus (+) or minus (-) 11.26 percent. The estimated units are final and not subject to adjustment. Prospective bidders are urged to examine this timber and to make their own estimates of quantity and quality.

BOND AND PAYMENT SCHEDULE:

1. A bond in the amount of \$2,683.00 to insure faithful performance of the conditions of the contract will be deposited by the successful bidder within 21 days of the sale award.
2. Cutting in any sale or unit without the required advance payment would be considered a trespass.
3. Total payment must be paid in advance or according to the following schedule:
 - (a) Ten percent (10%) of the sale value must be paid within 21 days of the sale award.
 - (b) The 10% down payment will be credited towards the first unit cut.
 - (c) Payment for each of the following units must be made before cutting begins in that unit:

<u>PAYMENT UNIT NUMBER</u>	<u>PERCENT OF TOTAL SALE VALUE</u>
01	49.5%
02	50.5%
4. If no cutting takes place, the 10% down payment will not be refunded.
5. Operations on the contract issued will terminate on 09/30/2021.

Description of Timber by Payment Unit (PU)

PU	MARKET GROUP	PRODUCT	QUANTITY	UNIT	ACRES	ADVERTISE PRICE
1	B. T. Aspen	Sawtimber	97.8	MBF	19.3	\$26,578.10
	Red Maple		16.8	MBF		
	Red Oak		23.7	MBF		
	White Oak		15.8	MBF		
	B. T. Aspen	Pulpwood	282.0	Cords		
	Mixed Hardwood		84.0	Cords		
	<i>Black Cherry</i>	<i>Sawtimber</i>	2.5	<i>MBF</i>		
	<i>Black Cherry</i>	<i>Pulpwood</i>	3.0	<i>Cords</i>		
	<i>Red Maple</i>		76.0	<i>Cords</i>		
	Mixed Oak		92.0	Cords		
	<i>Red Oak</i>		52.0	<i>Cords</i>		
	<i>White Oak</i>		40.0	<i>Cords</i>		
	2	B. T. Aspen	Sawtimber	109.0		
Red Maple			24.1	MBF		
Red Oak			10.2	MBF		
White Oak			45.0	MBF		
B. T. Aspen		Pulpwood	251.0	Cords		
Mixed Hardwood			84.0	Cords		
<i>Red Maple</i>			84.0	<i>Cords</i>		
Mixed Oak			116.0	Cords		
<i>Red Oak</i>			26.0	<i>Cords</i>		
<i>White Oak</i>			90.0	<i>Cords</i>		
TOTAL:			342.4	MBF		
TOTAL:			909.0	Cords		

Sale Specific Conditions & Requirements

Sale Name: Ridge Top Aspen

Sale Number: 61-030-19 Seq#: 1

1 - Sale Area

1.2 - Boundaries

1.2.1 - Painted boundaries (1/14)

The sale boundary and Payment Unit boundaries are marked and identified by red and yellow paint. Exterior sale boundary lines against state are marked with red paint. Interior Payment Unit boundaries are marked with yellow paint. The painted boundary line trees are not Included Timber and are to be protected. Yellow painted trees designating an interior Payment Unit boundary are only to be cut when all surrounding Payment Units have been paid.

2 - Timber Specifications

2.1 - Included Timber

2.1.2 - Clearcut unit(s) w/o unmerchantable trees (8/11)

Within Payment Unit(s) 1 & 2, cut all trees which meet minimum piece specifications in 2.2 Utilization, except do not cut white pine, hemlock, or any trees marked with green paint. Special protection trees identified in accordance with condition 3.4.2, within clearcutting unit boundaries, are not Included Timber and are to be protected.

2.2 - Utilization

2.2.3 - Stump heights (4/07)

Stump heights within the Sale Area shall not exceed 12 inches for trees greater than 10 inches DBH and 4 inches for trees smaller than 10 inches DBH.

2.2.5 - Limbed tree skidding (1/09)

The skidding of whole trees or tree segments with limbs attached is prohibited unless approved by the Unit Manager or his/her representative.

3 - Payments

3.4 - Damaged Timber

3.4.1 - Damaged timber (6/14)

General Condition and Requirement 3.4 Damaged Timber, defines liquidated damages for undesignated live merchantable trees which are cut or injured. In addition, extreme care should be taken to avoid damage to tree seedlings and saplings.

Within the sale area, if more than 25% of the tree seedlings or saplings (1/4" to 4.5" DBH) within a specified portion of the sale area are damaged, liquidated damages will be assessed at \$100 per acre for all acreage within that specified portion of the sale area that was damaged.

No damage is acceptable to merchantable trees. Within the sale area, if more than 5% of trees (> 4.5" DBH) within a specified area of the sale are damaged, liquidated damages will be assessed for all trees damaged. Rates will be in accordance with General Condition and Requirement 3.4 Damaged Timber.

3.4.2 - Special Protection Trees (4/14)

The Purchaser shall not cut live or dead special protection trees within cutting units or clearings. Special protection trees are white pine, hemlock, and trees marked with green paint. If the Purchaser's operations have cut or damaged special protection trees through carelessness, the Purchaser shall pay \$25.00 as fixed, agreed and liquidated damages for each special protection tree cut or damaged. Such payment does not constitute ownership of the undesignated timber.

4 - Transportation

4.1 - Construction

4.1.11 - Permits (2/12)

The Purchaser will secure any necessary permits that may be required.

4.1.12 - No new roads (1/12)

No new roads will be permitted in any Payment Unit. All operations are limited to existing roads and pull-offs to landing areas along powerline ROW's, if needed. Skid trails only will be allowed.

5 - Operations

5.2 - Conduct of Operations

5.2.1 - Slash

5.2.1.8 - Slash height (12/08)

No slash or tree tops may exceed 24 inches in height.

5.2.2 - Hazard Trees/Snags

5.2.2.1 - Den trees (10/16)

Obvious hollow and/or den trees shall be protected and left standing unless they are a safety hazard.

5.2.3 - Operating Restrictions

5.2.3.5 - Oak wilt restriction (1/18)

Within Payment Unit(s) 1 & 2, unless changed by written agreement, cutting, skidding, hauling within the sale and brushing of access roads to the sale are not permitted during the period of April 15 to July 15. Operations may be allowed if specific steps are taken to prevent damaging uncut oak during the high risk period. Those steps may include completing all road brushing before April 15th and clearing a tree-length buffer along uncut oak cover before April 15th. This is necessary to reduce the spread of oak wilt. For more information, contact the Unit Manager or his/her representative.

5.2.4 - Dead and Down Creation

5.2.4.2 - Dead and down creation, hare and grouse (1/14)

To improve habitat for snowshoe hare, grouse, and other species, the Purchaser is to leave two, 14 inch diameter or larger log size pieces on the ground for every two acres. Approximately 35 log pieces should be left on site, two per spot, left overlapping so that one piece is mostly elevated off the ground. They should be scattered throughout the sale or positioned per the sale administrators instructions. Note these pieces should have a minimum length of eight feet. They can be of any tree species and can be an un-merchantable piece of wood or a full tree.

5.2.29 - Shrub protection (9/07)

Do not cut or damage hawthorn, witch-hazel, dogwood or junberry. These woody-shrub plants are highly beneficial to various wildlife species.

5.4 - Soil Protection

5.4.1 - Rutting restriction, general (7/16)

Operations are to cease immediately if equipment and weather conditions result in rutting of roads and/or skid trails which is 12 inches or greater in depth and 50 feet in length. The Unit Manager or his/her representative may restrict hauling and/or skidding if ruts exceed the specified depth. With the Unit Manager or his/her representative's approval, the Purchaser may return to the area when the risk of rutting has decreased.

6 - Safety and Fire Prevention

6.2 - Signing

6.2.1 - Road posting (9/09)

The Purchaser is responsible for posting and maintaining caution signs on Coates Hwy or Graf Road (depending on which road the sale is accessed from) prior to beginning operations. The road must be posted at appropriate distances from the sale area to warn of logging activity and truck traffic. Signs must be removed when harvest operations are suspended or completed. The Purchaser will provide these signs.



TIMBER SALE MAP

This information provided by authority of Part 525, 1994 PA 451, as amended.

Sale Number	Year
61-030-19-01	2019

Forest Management Unit Traverse City FMU	County Manistee	Mapped By Patrick Cotant	Date 04/22/2019	Page 1	of 1
Township 22N	Range 14W	Section(s) and Subdivision(s) Sec 18 - E1/2NE, SWNE	Scale 1:15,840		

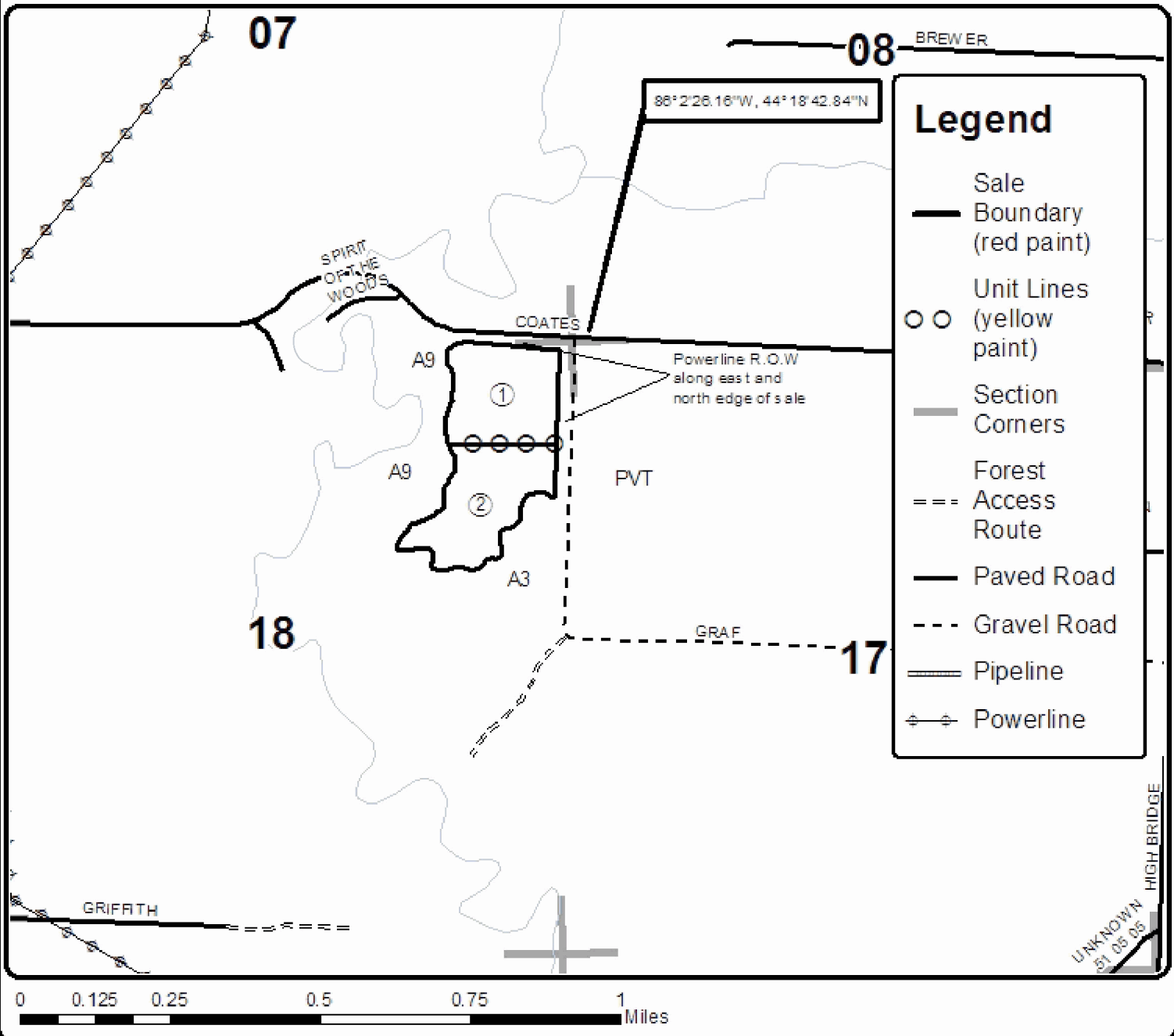
Cover Type				Density	
A = Aspen	H = Hemlock	N = Marsh	U = Upland Brush	0 = Non Stocked	5 = Pole Timber Medium
B = Paper Birch	J = Jack Pine	O = Oak	UM = Upland Mixed	1 = Seeding Sapling Poor	6 = Pole Timber Well
C = Cedar	L = Lowland Brush	P = Lowland Poplar	V = Bog or Marsh	2 = Seeding Sapling Medium	7 = Saw Timber Poor
D = Treed Bog	LM = Lowland Mixed	Q = Mixed Swamp Conifer	W = White Pine	3 = Seeding Sapling Well	8 = Saw Timber Medium
E = Swamp Hardwoods	M = Mpl. Ech. Birch	R = Red Pine	X = Non Stocked	4 = Pole Timber Poor	9 = Saw Timber Well
F = Spruce Fir	MC = Mixed Conifer	S = Black Spruce	Z = Water		
G = Cress	MD = Mixed Deciduous	T = Tamarack			

PU	Acres
1	19.3
2	20.5

Ridge Top Aspen

Compartment 039

39.8 Acres



Wild Country Red Pine (61-028-19)
T23N, R14W, SEC. 3; T23N, R14W, SEC. 4; Manistee COUNTY

In response to the notice of sale to be held 4:00 p.m. (local time) on August 15, 2019, I am hereby submitting my sealed bid (firm offer) for the following forest products to be cut. Bids for individual species must be at or above the advertised price. All non-responsive bid forms may be rejected.

<u>PRODUCTS & SPECIES</u>	<u>ESTIMATED VOLUME*</u>	<u>ADVERTISED PRICE</u>	<u>BID PRICE/UNIT</u>
Sawtimber			
Red Pine	202.80 MBF	\$ 108.00/MBF	\$ _____
Pulpwood			
Red Pine	395.00 Cords	\$ 34.00/Cord	\$ _____

*The volumes are statistically estimated within plus (+) or minus (-) 8.74 percent. These estimated volumes are final and not subject to adjustment. Prospective bidders are urged to examine this timber and to make their own estimates of quantity and quality.

I understand that any or all bids may be rejected. All bids must be signed and all bid items must be bid or the bid form may be rejected. I also understand that consideration and awarding a contract will be based upon my past performance and ability to complete the contract based upon equipment and staffing subject to my control.

FEDERAL ID: ____ - ____ - ____ or SOCIAL SECURITY NUMBER: ____ - ____ - ____

Company or individual bidding: _____

Company representative's name: _____

Address: _____

City: _____ State: _____ Zip: _____

IF AVAILABLE, PLEASE PLACE THE PERSONALIZED LABEL FROM YOUR PROSPECTUS IN THE ABOVE BOX.

Individual or company representative's signature: _____ Date: _____

Phone number : _____ Email (optional): _____

THE WINNING BIDDER MUST COMPLETE THE VERIFICATION OF WORKER'S DISABILITY COMPENSATION ACT COMPLIANCE (ON REVERSE SIDE IF DOUBLE SIDED) WITHIN 21 DAYS OF SALE AWARD DATE



TIMBER SALE VERIFICATION OF WORKER'S DISABILITY COMPENSATION ACT COMPLIANCE

*As required by Act 317, P.A. 1969 (Worker's Compensation) and
Part 5 of Act 451 of 1994, as amended.*

FOR DEPARTMENT USE ONLY

Sale Number (XX - XXX - XX - XX)

Forest Management Unit:

VERIFICATION OF WORKER'S DISABILITY COMPENSATION ACT COMPLIANCE

- This verification must be completed and submitted within 21 days of contract award and prior to the issuance of the timber sale contract.
- In addition, if boxes 2B or 2C are checked, then Notice of Exclusion or Certificate of Insurance must be submitted within twenty-one (21) days of the contract award and prior to the issuance of the timber sale contract.
- All information must be typed or printed except for written signatures.

Please Check Appropriate Categories:

- My business is organized as (you **must** check one of the boxes below):
 - Sole Proprietorship (individual)
 - Partnership
 - Corporation
- You **must** check one of the boxes below:
 - I certify my business is a sole proprietorship and it has no employees but the sole proprietor. I am not subject to the Worker's Compensation Laws.
 - I certify my business has satisfied its obligation to the Worker's Compensation Act through the use of an approved Notice of Exclusion (BWC-337, Rev. 5/96). I will provide a copy of the Notice of Exclusion within 21 days of the contract award. (For questions or a copy of the BWC-337, please call the Worker's Compensation Bureau at 517-322-1195).
 - I certify my business has a Worker's Compensation Policy. I will provide an original Certificate of Insurance within twenty-one (21) days of the contract award.
- If you have checked item 2(A) or 2(B), you **must** indicate the number of **both** full-time and part-time employees, other than yourself, including family members and active partners (if none, you must enter "0").

_____ Full-time Employees

_____ Part-time Employees

Name of Business		Federal ID (or) Social Security No.
Address		Telephone ()
City	State	ZIP

I hereby certify that the above information is true and correct. I agree to notify the Michigan DNR of any changes that occur in factors affecting my coverage during any of my present and future operations.

Signature of Owner or Authorized Representative

Title

Date

Please complete the "SEALED BID" information on the next page

April Snows Red Pine (61-029-19)
T23N, R14W, SEC. 4; Manistee COUNTY

In response to the notice of sale to be held 4:00 p.m. (local time) on August 15, 2019, I am hereby submitting my sealed bid (firm offer) for the following forest products to be cut. Bids for individual species must be at or above the advertised price. All non-responsive bid forms may be rejected.

<u>PRODUCTS & SPECIES</u>	<u>ESTIMATED VOLUME*</u>	<u>ADVERTISED PRICE</u>	<u>BID PRICE/UNIT</u>
Sawtimber			
Red Pine	1,007.60 MBF	\$ 108.00/MBF	\$ _____
Pulpwood			
Mixed Hardwood	31.00 Cords	\$ 16.05/Cord	\$ _____
Red Pine	738.00 Cords	\$ 34.00/Cord	\$ _____

*The volumes are statistically estimated within plus (+) or minus (-) 7.40 percent. These estimated volumes are final and not subject to adjustment. Prospective bidders are urged to examine this timber and to make their own estimates of quantity and quality.

I understand that any or all bids may be rejected. All bids must be signed and all bid items must be bid or the bid form may be rejected. I also understand that consideration and awarding a contract will be based upon my past performance and ability to complete the contract based upon equipment and staffing subject to my control.

FEDERAL ID: _____ or SOCIAL SECURITY NUMBER: _____

Company or individual bidding: _____

Company representative's name: _____

Address: _____

City: _____ State: _____ Zip: _____

IF AVAILABLE, PLEASE PLACE THE PERSONALIZED LABEL FROM YOUR PROSPECTUS IN THE ABOVE BOX.

Individual or company representative's signature: _____ Date: _____

Phone number : _____ Email (optional): _____

THE WINNING BIDDER MUST COMPLETE THE VERIFICATION OF WORKER'S DISABILITY COMPENSATION ACT COMPLIANCE (ON REVERSE SIDE IF DOUBLE SIDED) WITHIN 21 DAYS OF SALE AWARD DATE



FOR DEPARTMENT USE ONLY
Sale Number (XX - XXX - XX - XX)
Forest Management Unit:

TIMBER SALE VERIFICATION OF WORKER'S DISABILITY COMPENSATION ACT COMPLIANCE

*As required by Act 317, P.A. 1969 (Worker's Compensation) and
Part 5 of Act 451 of 1994, as amended.*

VERIFICATION OF WORKER'S DISABILITY COMPENSATION ACT COMPLIANCE

- This verification must be completed and submitted within 21 days of contract award and prior to the issuance of the timber sale contract.
- In addition, if boxes 2B or 2C are checked, then Notice of Exclusion or Certificate of Insurance must be submitted within twenty-one (21) days of the contract award and prior to the issuance of the timber sale contract.
- All information must be typed or printed except for written signatures.

Please Check Appropriate Categories:

1. My business is organized as (you **must** check one of the boxes below):
 - A. Sole Proprietorship (individual)
 - B. Partnership
 - C. Corporation

2. You **must** check one of the boxes below:
 - A. I certify my business is a sole proprietorship and it has no employees but the sole proprietor. I am not subject to the Worker's Compensation Laws.
 - B. I certify my business has satisfied its obligation to the Worker's Compensation Act through the use of an approved Notice of Exclusion (BWC-337, Rev. 5/96). I will provide a copy of the Notice of Exclusion within 21 days of the contract award. (For questions or a copy of the BWC-337, please call the Worker's Compensation Bureau at 517-322-1195).
 - C. I certify my business has a Worker's Compensation Policy. I will provide an original Certificate of Insurance within twenty-one (21) days of the contract award.

3. If you have checked item 2(A) or 2(B), you **must** indicate the number of **both** full-time and part-time employees, other than yourself, including family members and active partners (if none, you must enter "0").

_____ Full-time Employees

_____ Part-time Employees

Name of Business		Federal ID (or) Social Security No.	
Address		Telephone ()	
City	State	ZIP	

I hereby certify that the above information is true and correct. I agree to notify the Michigan DNR of any changes that occur in factors affecting my coverage during any of my present and future operations.

Signature of Owner or Authorized Representative

Title

Date

Please complete the "SEALED BID" information on the next page

Ridge Top Aspen (61-030-19)
T22N, R14W, SEC. 18; Manistee COUNTY

In response to the notice of sale to be held 4:00 p.m. (local time) on August 15, 2019, I am hereby submitting my sealed bid (firm offer) for the following forest products to be cut. Bids for individual species must be at or above the advertised price. All non-responsive bid forms may be rejected.

<u>PRODUCTS & SPECIES</u>	<u>ESTIMATED VOLUME*</u>	<u>ADVERTISED PRICE</u>	<u>BID PRICE/UNIT</u>
Sawtimber			
B. T. Aspen	206.80 MBF	\$ 120.00/MBF	\$ _____
Red Maple	40.90 MBF	\$ 119.00/MBF	\$ _____
Red Oak	33.90 MBF	\$ 197.00/MBF	\$ _____
White Oak	60.80 MBF	\$ 42.00/MBF	\$ _____
Pulpwood			
B. T. Aspen	533.00 Cords	\$ 18.10/Cord	\$ _____
Mixed Hardwood	168.00 Cords	\$ 16.05/Cord	\$ _____
Mixed Oak	208.00 Cords	\$ 11.50/Cord	\$ _____

*The volumes are statistically estimated within plus (+) or minus (-) 11.26 percent. These estimated volumes are final and not subject to adjustment. Prospective bidders are urged to examine this timber and to make their own estimates of quantity and quality.

I understand that any or all bids may be rejected. All bids must be signed and all bid items must be bid or the bid form may be rejected. I also understand that consideration and awarding a contract will be based upon my past performance and ability to complete the contract based upon equipment and staffing subject to my control.

FEDERAL ID: ____-____-____ or SOCIAL SECURITY NUMBER: ____-____-____
 Company or individual bidding: _____
 Company representative's name: _____
 Address: _____
 City: _____ State: _____ Zip: _____

IF AVAILABLE, PLEASE PLACE THE PERSONALIZED LABEL FROM YOUR PROSPECTUS IN THE ABOVE BOX.

Individual or company representative's signature: _____ Date: _____

Phone number : _____ Email (optional): _____

THE WINNING BIDDER MUST COMPLETE THE VERIFICATION OF WORKER'S DISABILITY COMPENSATION ACT COMPLIANCE (ON REVERSE SIDE IF DOUBLE SIDED) WITHIN 21 DAYS OF SALE AWARD DATE



FOR DEPARTMENT USE ONLY
Sale Number (XX - XXX - XX - XX)
Forest Management Unit:

TIMBER SALE VERIFICATION OF WORKER'S DISABILITY COMPENSATION ACT COMPLIANCE

*As required by Act 317, P.A. 1969 (Worker's Compensation) and
Part 5 of Act 451 of 1994, as amended.*

VERIFICATION OF WORKER'S DISABILITY COMPENSATION ACT COMPLIANCE

- This verification must be completed and submitted within 21 days of contract award and prior to the issuance of the timber sale contract.
- In addition, if boxes 2B or 2C are checked, then Notice of Exclusion or Certificate of Insurance must be submitted within twenty-one (21) days of the contract award and prior to the issuance of the timber sale contract.
- All information must be typed or printed except for written signatures.

Please Check Appropriate Categories:

1. My business is organized as (you **must** check one of the boxes below):
 - A. Sole Proprietorship (individual)
 - B. Partnership
 - C. Corporation

2. You **must** check one of the boxes below:
 - A. I certify my business is a sole proprietorship and it has no employees but the sole proprietor. I am not subject to the Worker's Compensation Laws.
 - B. I certify my business has satisfied its obligation to the Worker's Compensation Act through the use of an approved Notice of Exclusion (BWC-337, Rev. 5/96). I will provide a copy of the Notice of Exclusion within 21 days of the contract award. (For questions or a copy of the BWC-337, please call the Worker's Compensation Bureau at 517-322-1195).
 - C. I certify my business has a Worker's Compensation Policy. I will provide an original Certificate of Insurance within twenty-one (21) days of the contract award.

3. If you have checked item 2(A) or 2(B), you **must** indicate the number of **both** full-time and part-time employees, other than yourself, including family members and active partners (if none, you must enter "0").

_____ Full-time Employees

_____ Part-time Employees

Name of Business		Federal ID (or) Social Security No.	
Address		Telephone ()	
City	State	ZIP	

I hereby certify that the above information is true and correct. I agree to notify the Michigan DNR of any changes that occur in factors affecting my coverage during any of my present and future operations.

Signature of Owner or Authorized Representative

Title

Date

Please complete the "SEALED BID" information on the next page

Plan B Hardwood (61-013-19)
T27N, R14W, SEC. 11; T27N, R14W, SEC. 2; Benzie COUNTY

In response to the notice of sale to be held 4:00 p.m. (local time) on August 15, 2019, I am hereby submitting my sealed bid (firm offer) for the following forest products to be cut. Bids for individual species must be at or above the advertised price. All non-responsive bid forms may be rejected.

<u>PRODUCTS & SPECIES</u>	<u>ESTIMATED VOLUME*</u>	<u>ADVERTISED PRICE</u>	<u>BID PRICE/UNIT</u>
Sawtimber			
Beech	8.60 MBF	\$ 68.00/MBF	\$ _____
Black Cherry	10.40 MBF	\$ 101.00/MBF	\$ _____
Red Maple	9.20 MBF	\$ 87.00/MBF	\$ _____
Sugar Maple	38.10 MBF	\$ 209.00/MBF	\$ _____
Pulpwood			
Mixed Hardwood	325.00 Cords	\$ 11.75/Cord	\$ _____

*The volumes are statistically estimated within plus (+) or minus (-) 17.75 percent. These estimated volumes are final and not subject to adjustment. Prospective bidders are urged to examine this timber and to make their own estimates of quantity and quality.

I understand that any or all bids may be rejected. All bids must be signed and all bid items must be bid or the bid form may be rejected. I also understand that consideration and awarding a contract will be based upon my past performance and ability to complete the contract based upon equipment and staffing subject to my control.

FEDERAL ID: ____ - ____ - ____ or SOCIAL SECURITY NUMBER: ____ - ____ - ____

Company or individual bidding: _____

Company representative's name: _____

Address: _____

City: _____ State: _____ Zip: _____

IF AVAILABLE, PLEASE PLACE THE PERSONALIZED LABEL FROM YOUR PROSPECTUS IN THE ABOVE BOX.

Individual or company representative's signature: _____ Date: _____

Phone number : _____ Email (optional): _____

THE WINNING BIDDER MUST COMPLETE THE VERIFICATION OF WORKER'S DISABILITY COMPENSATION ACT COMPLIANCE (ON REVERSE SIDE IF DOUBLE SIDED) WITHIN 21 DAYS OF SALE AWARD DATE



FOR DEPARTMENT USE ONLY
Sale Number (XX - XXX - XX - XX)
Forest Management Unit:

TIMBER SALE VERIFICATION OF WORKER'S DISABILITY COMPENSATION ACT COMPLIANCE

*As required by Act 317, P.A. 1969 (Worker's Compensation) and
Part 5 of Act 451 of 1994, as amended.*

VERIFICATION OF WORKER'S DISABILITY COMPENSATION ACT COMPLIANCE

- This verification must be completed and submitted within 21 days of contract award and prior to the issuance of the timber sale contract.
- In addition, if boxes 2B or 2C are checked, then Notice of Exclusion or Certificate of Insurance must be submitted within twenty-one (21) days of the contract award and prior to the issuance of the timber sale contract.
- All information must be typed or printed except for written signatures.

Please Check Appropriate Categories:

1. My business is organized as (you **must** check one of the boxes below):
 - A. Sole Proprietorship (individual)
 - B. Partnership
 - C. Corporation

2. You **must** check one of the boxes below:
 - A. I certify my business is a sole proprietorship and it has no employees but the sole proprietor. I am not subject to the Worker's Compensation Laws.
 - B. I certify my business has satisfied its obligation to the Worker's Compensation Act through the use of an approved Notice of Exclusion (BWC-337, Rev. 5/96). I will provide a copy of the Notice of Exclusion within 21 days of the contract award. (For questions or a copy of the BWC-337, please call the Worker's Compensation Bureau at 517-322-1195).
 - C. I certify my business has a Worker's Compensation Policy. I will provide an original Certificate of Insurance within twenty-one (21) days of the contract award.

3. If you have checked item 2(A) or 2(B), you **must** indicate the number of **both** full-time and part-time employees, other than yourself, including family members and active partners (if none, you must enter "0").

_____ Full-time Employees

_____ Part-time Employees

Name of Business		Federal ID (or) Social Security No.	
Address		Telephone ()	
City	State	ZIP	

I hereby certify that the above information is true and correct. I agree to notify the Michigan DNR of any changes that occur in factors affecting my coverage during any of my present and future operations.

Signature of Owner or Authorized Representative

Title

Date

Please complete the "SEALED BID" information on the next page