



**DEPARTMENT OF NATURAL RESOURCES  
STATE OF MICHIGAN**

**TIMBER SALE PROSPECTUS #6269**

SCHEDULED SALE DATE AND TIME: 2:00 p.m. (local time) on October 10, 2018.

LOCATION: SHINGLETON MGMT UNIT, PO BOX 67 M-28 WEST, SHINGLETON, MI 49884.

PROSPECTUS NOTE: The bidder is advised to inspect the sale area and review the location, estimated volumes, operating costs and contract terms of proposed sales. Please be aware that some landowners may request 60 days or more notice for access across their land.

Notice is hereby given that bids will be received by the Unit Manager, SHINGLETON MANAGEMENT UNIT, for certain timber on the following described lands:

Creek Hopping Pine (41-003-18) / T43N, R14W, SEC. 1 , NWNE.

T44N, R14W, SEC. 25, SENE,S1/2SE,NESE.

T44N, R14W, SEC. 36, N1/2NE,SWNE,N1/2SE,SESE.

Schoolcraft County, Advertised Price \$81,140.60, 43.7 Acres, Red Pine, Spruce/Fir/Tamarack.

SALE NOTE: Stream crossings depicted on the map will require installation of a culvert or portable bridge. See Sale Spec 4.1.2 for requirements.

The County must be contacted prior to harvesting in the County Road right-of-way (see spec 4.3.2).

Permission for access across private land is the responsibility of the Purchaser (see spec 4.4.1).

The Purchaser is responsible for posting and maintaining cautions signs on the River Road prior to beginning operations. See Sale Spec 6.2.1 for additional information.

Access may be through private land.

Femelschlag (41-004-18) / T41N, R17W, SEC. 22, NW,W1/2NE,SW,SE.

T41N, R17W, SEC. 27, E1/2NW,NE,SESW,SWSE.

T41N, R17W, SEC. 34, NENW.

Schoolcraft County, Advertised Price \$134,596.80, 304.4 Acres, Aspen, Red Oak.

SALE NOTE: The Purchaser is responsible for contracting the pipeline company prior to operating equipment in the vicinity of well heads or natural gas pipelines. See Sale Spec 5.1.3 for additional information.

It is the responsibility of the Purchaser to obtain permission from the utility company to utilize the power line right-of-way for operations. See spec 5.1.6.

Within Payment Unit 7, harvesting is not permitted during the period of April 15 to July 15 due to bark slippage. See spec 5.2.3.3.

Snowmobile Trail 2 is shown on the Timber Sale Map. See Sale Spec 5.2.41 for restrictions.

Ashford Lake 2 (41-009-18) / T43N, R16W, SEC. 10, NENW.

T43N, R16W, SEC. 3 , SW,NWSE.

T43N, R16W, SEC. 4 , SESE.

Schoolcraft County, Advertised Price \$29,889.40, 60.2 Acres, Hardwood, Sugar Maple.

SALE NOTE: Permission for access across private land is the responsibility of the Purchaser.

Within Payment Units 1, 2, 3 and 5, harvesting is not permitted during the period of April 15 to July 15 due to bark slippage.

A recreation site such as a trail, pathway, or campground is within the sale area or the vicinity. Certain restrictions/specifications may be applicable including time restrictions.

GNA Bloodwood (41-811-18) / T45N, R19W, SEC. 10, N1/2NW,SEW,N1/2NE.

T45N, R19W, SEC. 3 , S1/2NW,NWNW,NE,SW.

T45N, R19W, SEC. 4 , E1/2NW,NE,N1/2SW,SESW,SE.

T45N, R19W, SEC. 8 , SENE,NESE.

T45N, R19W, SEC. 9 , SWNW.

T46N, R19W, SEC. 32, NESE.

T46N, R19W, SEC. 33, SW,SE.

T46N, R19W, SEC. 34, NWSW,S1/2SE.

Alger County, Advertised Price \$179,131.55, 632.9 Acres, Hardwood, Spruce/Fir/Tamarack.

SALE NOTE: This is a Good Neighbor Authority (GNA) timber sale on National Forest land. This timber sale was set-up and is being advertised by the Michigan DNR for the US Forest Service. The contract will be awarded and administered by the Michigan DNR.

Harvesting may be restricted during the period of March 1 to August 31 in the sale due to a potential raptor nest. See Sale Spec 5.2.3.1 for detailed information.

Trail 7 cannot be used during the snowmobile season. See Sale Spec 5.2.41 for detailed restrictions.

Equipment Cleaning is required on this sale to minimize the spread of invasive species. See Sale Spec 5.6.2. for requirements.

Access may be through other public land.

## BID INSTRUCTIONS (VER. 07/02/2018):

### 1. Scheduled Bid Location, Date, and Time (2/11)

Bids must be received by the Unit Manager, SHINGLETON OFFICE, PO BOX 67 M-28 WEST, SHINGLETON, MI 49884, no later than 2:00 p.m. (local time) on October 10, 2018. For further information concerning this sale, contact Robert Burnham at 906-452-6227 extension 240.

### 2. Bidder's Qualifications (5/16)

Purchaser shall obtain workers compensation insurance to cover claims under Michigan's Worker's Disability Compensation Act of 1969 or similar employee benefit act of any other state applicable to an employee. If all or part of a timber sale was prepared by a private contractor, the contractor and that contractor's company are not permitted to bid on the timber sale contract. Bids will not be accepted from individuals or companies appearing on the DNR/FRD No-Bid List. This list contains the names of purchasers who previously failed to execute a contract within 21-days or who have a history of poor performance.

### 3. Preparation of Sealed Bids (5/16)

Bid Forms may be completed online thru Michigan DNR Timber Sale Online Bidding (OLB) at [www.michigan.gov/timberbidding](http://www.michigan.gov/timberbidding) or by completing the hardcopy Bid Form found in the Timber Sale Prospectus. Hardcopy Bid Forms shall be manually signed in ink. Registration in OLB is considered your 'signature' for all bids submitted thru that system. Bid prices must be entered for each species and product in the Bid Price column for all material subject to bidding and all fill-in blanks must be completed. If erasures or other changes appear on the hardcopy Bid Form, each erasure or change must be initialed by the person signing the bid.

### 4. Submission of Sealed Bids (5/16)

Bid forms may be obtained from the Unit Manager or thru OLB. Bids may be submitted hardcopy or thru OLB. All hardcopy bids must be submitted on the bid form and in an envelope clearly identified as described in this section. NOTE: Only one bid form per bid envelope. Sealed bids must be submitted to the Unit office designated in the prospectus and must be submitted at or prior to the time established in the prospectus. The envelope should show on the outside (a) the sale name or number and (b) the date and time of bid opening, as shown in the prospectus. Bids received after the time specified in the sale prospectus are late bids and will be rejected.

It is possible for a bidder to submit multiple bids on a single sale. For example, a bid may be submitted hardcopy and a bid may be submitted thru OLB. Or, two bidders from the same company could both submit bids on the same sale. If this were to happen, the State would accept all bids received and award the contract accordingly. All bidding and contractual requirements would apply to all bids received.

### 5. Public Opening of Sealed Bids (7/16)

If conditions permit, the sealed bids will be publicly opened and posted at the time and place set in the prospectus.

If a bidder, present at a bid opening, has submitted bids on more than one sale, that bidder may withdraw their unopened bid envelopes or announce the withdrawal of their online bid after being declared the successful bidder on one sale.

### 6. Award of Contract (1/11)

Award of the contract will be made to the Bidder whose bid, conforming to the prospectus, is most advantageous to the State of Michigan on the basis of total value at rates bid for the estimated quantities. The State reserves the right to reject any bid or waive any minor irregularity in bids received. A written award mailed (or otherwise furnished) to the successful Bidder shall be deemed to result in a binding contract without further action by either party.

### 7. Down Payment (1/11)

The Bidder to whom award is made must make a down payment within 21 days of the sale award. The amount of the down payment will be calculated as shown in the Bond and Payment Schedule of this prospectus. Only cash may be used to meet this requirement.

### 8. Performance Security (1/11)

As guarantee of faithful performance, a cash bond, certificate of deposit, surety bond or irrevocable letter of credit (LOC) is required within 21 days of the sale award. The amount of the performance security is shown in the Bond and

Payment Schedule of this prospectus. If an LOC or surety is used, the coverage must extend for at least 6 months beyond the contract expiration.

#### 9. Timber Sale Contract (7/18)

Additional conditions and requirements common to all timber sales are listed on the timber sale contract (R4031) and are available on line at [www.michigan.gov/timber](http://www.michigan.gov/timber). Contact the Unit Manager for additional information or a sample contract. Within 21 days of the date of the award letter, the bidder must sign the contract and provide the required down payment, performance security, and verification of worker's disability compensation. The down payment and performance security shall be in accordance with the provisions of the timber sale contract, in the sums stated in this prospectus. If these actions are not taken, then the Bidder, the Bidder's corporation, and the corporation's principals may not be permitted to bid on State timber sales for a period of 3 months after the first offense, 6 months after the second offense, and 1 year after the third offense. An offense will only be counted against the Bidder for 5 years. In addition, the Bidder certifies that if awarded this contract, the Bidder will complete the timber sale contract in accordance with its terms and any modifications thereof including requirements to purchase, cut, and remove the included timber by the expiration date.

Payment Unit values in the State Forest Timber Sale Contract are calculated based on the advertised value of the Payment Unit as a percentage of the total advertised value of the contract. The advertised value of each Payment Unit is given in the Description of Timber by Payment Unit table on the Timber Sale Information page. For example, if the value of Payment Unit 1 is advertised as \$1,500 and the total Timber Sale value is advertised as \$10,000, the contract price for Payment Unit 1 will be 15% of the total bid price ( $\$1,500/\$10,000 * 100$ ).

#### 10. Disclaimer of Estimates and Bidder's Warranty of Inspection (7/16)

Before submitting this bid, the Bidder is advised and cautioned to inspect the sale area, review the requirements of the sale contract, and take other steps as may be reasonably necessary to ascertain the location, estimated volumes, construction estimates, and operating costs of the proposed sale. Failure to do so will not relieve the Bidder from responsibility for completing the contract.

The Bidder warrants that this bid is submitted solely on the basis of the Bidder's examination and inspection of the quality and quantity of the timber offered for sale and the Bidder's opinion of the value thereof and the costs of recovery. No reliance should be placed on the State of Michigan's estimates of timber quality, quantity or costs of recovery. Bidder further acknowledges that the State of Michigan: (i) expressly disclaims any warranty of fitness of timber for any purpose; (ii) offers this timber as is without any warranty of quality (merchantability) or quantity and (iii) expressly disclaims any warranty as to the quantity or quality of timber sold.

#### 11. Certification and Chain-of-Custody (10/14)

Unless otherwise indicated in the contract under section 7 – Other Conditions of the Sale Specific Conditions & Requirements, the area encompassed by this timber sale is certified to the standards of the Forest Stewardship Council (FSC) - Certificate #SCS-FM/COC-00090N and the Sustainable Forestry Initiative (SFI) - Certificate #NSF-SFIS-5Y031-SF5. Forest products from this sale may be delivered to the mill as "FSC 100% and / or SFI certified" as long as the contractor hauling the forest products is chain-of-custody (COC) certified or covered under a COC certificate from the destination mill. The purchaser is responsible for maintaining COC after leaving the sale area.

#### 12. Good Neighbor Authority (GNA) Requirements (7/16)

If the name of this timber sales contains the acronym GNA, it is authorized by the Good Neighbor Authority (GNA) and covered by various agreements between the U.S. Forest Service and the State. The timber sale occurs on federal land and the following conditions apply:

GNA contracts on US Forest Service land will not be awarded to purchasers on the Federal list of excluded parties. The System for Award Management (SAM) will be checked for active excluded parties prior to award of contract. In addition, the Bidder to whom award is made must complete an Assurance Regarding Felony Conviction or Tax Delinquent Status for Corporate Applicants (AD-3031).

#### 13. Good Neighbor Authority (GNA) Requirements, con't (9/16)

Bidder certifies, by signing this bid form, that to the best of Bidder's knowledge that the following representations are accurate and complete.

- a. That the Bidder and its principals are not presently debarred, suspended, proposed for debarment, declared ineligible, or voluntary excluded from timber sales (covered transactions) by any Federal department or agency.
- b. That the Bidder and its principals have not within a 3-year period preceding this bid been convicted of or had a civil judgment rendered against them for commission of fraud or a criminal offense in connection with obtaining, attempting to obtain, or performing a public (Federal, State, or local) transaction or contract under a public transaction; violation of Federal or State antitrust statutes or commission of embezzlement, theft, forgery, bribery, falsification or destruction of records, making false statements, or receiving stolen property.
- c. That the Bidder and its principals are not presently indicted for or otherwise criminally or civilly charged by a governmental entity (Federal, State, or local) with commission of any of the offenses enumerated in paragraph b of this certification.
- d. That the Bidder and its principals have not within a 3-year period preceding this bid had one or more public transactions (Federal, State, or local) terminated for breach or default of a timber or forest product contract.

Bidders that cannot certify this requirement, in whole or in part, shall submit an explanation with their bid.

KEITH CREAGH  
Director



# TIMBER SALE INFORMATION

Creek Hopping Pine (41-003-18)  
 T43N, R14W, SEC. 1; T44N, R14W, SEC. 25; T44N, R14W, SEC. 36.  
 Schoolcraft County (Advertised Price \$81,140.60)

SALE NOTE: Stream crossings depicted on the map will require installation of a culvert or portable bridge. See Sale Spec 4.1.2 for requirements.

The County must be contacted prior to harvesting in the County Road right-of-way (see spec 4.3.2).

Permission for access across private land is the responsibility of the Purchaser (see spec 4.4.1).

The Purchaser is responsible for posting and maintaining cautions signs on the River Road prior to beginning operations. See Sale Spec 6.2.1 for additional information.

Access may be through private land.

A timber sale contract for this lump sum, sealed bid timber sale will be awarded to the responsible bidder offering the highest sealed bid price. Bids must be at or above the following advertised price for each species:

<u>PRODUCTS &amp; SPECIES</u>	<u>ESTIMATED UNITS*</u>	<u>ADVERTISED PRICE</u>
Pulpwood		
Balsam Fir	4.00 Cords	\$ 15.50 / Cord
Black Spruce	260.00 Cords	\$ 20.35 / Cord
Jack Pine	56.00 Cords	\$ 35.95 / Cord
Quaking Aspen	6.00 Cords	\$ 23.90 / Cord
Red Maple	2.00 Cords	\$ 18.20 / Cord
Red Pine	1,541.00 Cords	\$ 47.05 / Cord
Tamarack	23.00 Cords	\$ 7.60 / Cord
White Pine	45.00 Cords	\$ 20.35 / Cord

\* The total volume is statistically estimated within plus (+) or minus (-) 13.38 percent. The estimated units are final and not subject to adjustment. Prospective bidders are urged to examine this timber and to make their own estimates of quantity and quality.

**BOND AND PAYMENT SCHEDULE:**

1. A bond in the amount of \$4,057.00 to insure faithful performance of the conditions of the contract will be deposited by the successful bidder within 21 days of the sale award.
2. Cutting in any sale or unit without the required advance payment would be considered a trespass.
3. Total payment must be paid in advance or according to the following schedule:
  - (a) Ten percent (10%) of the sale value must be paid within 21 days of the sale award.
  - (b) The 10% down payment will be credited towards the first unit cut.
  - (c) Payment for each of the following units must be made before cutting begins in that unit:

PAYMENT UNIT NUMBER	PERCENT OF TOTAL SALE VALUE
01	5.0%
02	15.6%
03	9.5%
04	21.5%
05	16.2%
06	20.1%
07	4.1%
08	8.0%

4. If no cutting takes place, the 10% down payment will not be refunded.
5. Operations on the contract issued will terminate on 06/30/2021.

**Description of Timber by Payment Unit (PU)**

PU	MARKET GROUP	PRODUCT	QUANTITY	UNIT	ACRES	ADVERTISE PRICE
1	Red Pine	Pulpwood	83.0	Cords	3.1	\$4,088.30
	White Pine		9.0	Cords		
2	Red Pine	Pulpwood	264.0	Cords	6.7	\$12,645.05
	White Pine		11.0	Cords		
3	Balsam Fir	Pulpwood	4.0	Cords	4.3	\$7,676.05
	Black Spruce		6.0	Cords		
	Red Maple		2.0	Cords		
	Red Pine		155.0	Cords		
	White Pine		8.0	Cords		
4	Quaking Aspen	Pulpwood	6.0	Cords	5.9	\$17,492.15
	Red Pine		367.0	Cords		
	White Pine		4.0	Cords		
5	Jack Pine	Pulpwood	5.0	Cords	5.9	\$13,173.20
	Red Pine		274.0	Cords		
	White Pine		5.0	Cords		
6	Black Spruce	Pulpwood	13.0	Cords	5.6	\$16,283.20
	Red Pine		337.0	Cords		
	White Pine		8.0	Cords		
7	Black Spruce	Pulpwood	71.0	Cords	4.3	\$3,327.30
	Jack Pine		31.0	Cords		
	Red Pine		16.0	Cords		
	Tamarack		2.0	Cords		
8	Black Spruce	Pulpwood	170.0	Cords	7.9	\$6,455.35
	Jack Pine		20.0	Cords		
	Red Pine		45.0	Cords		
	Tamarack		21.0	Cords		
TOTAL:			1,937.0	Cords		



# Sale Specific Conditions & Requirements

**Sale Name: Creek Hopping Pine**

**Sale Number: 41-003-18 Seq#: 1**

## 1 - Sale Area

### 1.2 - Boundaries

#### 1.2.1 - Painted boundaries (1/14)

The sale boundary and Payment Unit boundaries are marked and identified by blue, red and yellow paint. Exterior sale boundary lines against private property are marked with blue paint. Exterior sale boundary lines against state are marked with red paint. Interior Payment Unit boundaries are marked with yellow paint. The painted boundary line trees are not Included Timber and are to be protected. Yellow painted trees designating an interior Payment Unit boundary are only to be cut when all surrounding Payment Units have been paid.

## 2 - Timber Specifications

### 2.1 - Included Timber

#### 2.1.2 - Clearcut unit(s) w/o unmerchantable trees (8/11)

Within Payment Unit(s) 1-8, cut all trees which meet minimum piece specifications in 2.2 Utilization, except do not cut cedar and hemlock in Payment Units 7 & 8.

### 2.2 - Utilization

#### 2.2.3 - Stump heights (4/07)

Stump heights within Payment Unit(s) 1-6 shall not exceed 12 inches for trees greater than 10 inches DBH and 4 inches for trees smaller than 10 inches DBH. This is in order to facilitate planting operations.

## 3 - Payments

### 3.3 - Pre-measured Sales

#### 3.3.4 - Dividing payment units (7/14)

Payment Unit(s) over \$15,000 may be divided at the request of the Purchaser and upon approval of the Unit Manager. Dividing Payment Units is a contract modification which requires a Timber Sale Contract Supplement.

## 4 - Transportation

### 4.1 - Construction

#### 4.1.2 - Stream crossings, specific (3/11)

The stream crossings (3) depicted on the map will require the installation of a culvert or portable bridge. This installation will be performed in accordance with the specifications on the appropriate permits which shall be provided by the DNR. The DNR will provide the culverts or portable bridge depending on what is required in the permit. Installation, along with any other materials required in the permit, will be the Purchaser's responsibility.

#### 4.1.3 - Slash and earthen piles (8/04)

Piles or windrows of earth along roads and landings that have been widened or constructed shall be leveled. Slash from road maintenance or construction, including stumps, shall be dispersed throughout the sale.

#### 4.1.4 - Timber removed for construction (12/09)

Trees cut or damaged in the process of pre-approved road, landing or skid trail construction will be decked in an area separate from other Designated Timber and not removed until measured by the sale administrator. Payment will be made at the specified Purchase Unit Price.

#### 4.1.6 - Road construction (1/09)

Construction of new roads or improvements of existing roads shall be done in such a way as to minimize the environmental and visual impacts. Merchantable trees shall be cut and utilized unless otherwise directed. Non-merchantable trees shall be severed and laid flat on the ground. Slash shall be scattered, and not left in windrows and kept a minimum of 10 feet back from the road edge. Stumps shall be set upright, not left on edge, and be moved at least 10 feet away from the road edge. Disturbed soil shall be feathered into the woods and not left in berms or windrows.

#### 4.1.7 - Road closure (10/11)

All new roads built into the sale must be blocked to vehicle traffic upon completion of the sale. Overgrown roads that are reopened shall be considered new roads. In general, this will require constructing double earthen berms at strategic locations. These roads must be rendered impassable to cars and trucks. Contact the sale administrator for specific details of design and placement.

#### 4.3 - Public Right-of-Way

##### 4.3.2 - County R-O-W (12/06)

The county must be contacted prior to harvesting in the county road R-O-W.

#### 4.4 - Access

##### 4.4.1 - Private property access (3/11)

Permission for access across private land is the responsibility of the Purchaser. Should the Purchaser desire to cross private land, a copy of the written permission from the private land-owner may be required by the DNR.

### 5 - Operations

#### 5.1 - Notification

##### 5.1.1 - Pre-sale conference (10/16)

A pre-sale conference on site or by phone between the Purchaser and sale administrator is required prior to beginning any operations the sale. The Unit Manager or his/her representative must be contacted at least 10 days in advance to schedule the conference.

#### 5.2 - Conduct of Operations

##### 5.2.1 - Slash

###### 5.2.1.11 - Slash for reforestation (5/07)

To facilitate reforestation, Payment Unit(s) 1-6 shall be left with slash evenly distributed. Bunched tops within the cutting area shall be broken up and scattered. Stumps shall be cut low to the ground. Processing sites shall not be left with a compacted layer of slash; tops from these sites shall be hauled back into the cut area and scattered.

##### 5.2.3 - Operating Restrictions

###### 5.2.3.6 - Bark beetle restriction (12/08)

In the event drought creates a high risk of pine bark beetle infestation, pine is not to be cut during the period March 1 through July 1, unless all portions of trees greater than two inches in diameter are removed from the sale area, reduced to chips, or treated to the satisfaction of the Unit Manager or his/her representative, within fifteen days of being severed from the stump. Pine log decks, pulpwood piles and treetops that are piled for chipping in the fall or winter within a 1/4 mile of susceptible sites must be removed before March 15. Residual slash must not be placed in piles or rows and must be spread over the site for quick drying. The Department of Natural Resources will exercise this specification if the risk of damage warrants.

##### 5.2.32 - Decking/landing restoration (9/13)

All decking and landing areas must have the surface area restored to a condition equal to or better than before. This is to ensure the proper regeneration of the stand. Wood debris, chips and "cookies" from trimmings must be removed or scattered away from landing and loading areas and may not be windrowed on the edge.

##### 5.2.38 - No decking against live trees (2/04)

Cut products may not be decked against unmarked or designated leave trees.

#### 5.4 - Soil Protection

##### 5.4.1 - Rutting restriction, general (7/16)

Operations are to cease immediately if equipment and weather conditions result in rutting of roads and/or skid trails which is 12 inches or greater in depth and 50 feet in length. The Unit Manager or his/her representative may restrict hauling and/or skidding if ruts exceed the specified depth. With the Unit Manager or his/her representative's approval, the Purchaser may return to the area when the risk of rutting has decreased.

## 5.8 - Protection of Endangered Species

### 5.8.3 - Red shoulder hawk or goshawk (2/16)

In the event that an active red shoulder hawk or goshawk nest is found, the contract may be amended to protect the nest site until the nest is determined to be inactive. The value of the trees in this excluded area will be refunded or credited to the Purchaser. The nest will be buffered with a five-chain radius (eight acre) protection area, centered on the nest tree, in which there will be no cutting or new roads constructed. Avoid human disturbance, including loading and skidding, in the protection area.

An additional zone of five chains (ten chains centered on the active nest tree) will be established in which there is no management activity from April 1 to July 30. Limit biomass harvesting and chipping operations within this ten-chain zone, retain the maximum one-third of residues per the Woody Biomass Harvesting Guidelines (Michigan DNR 2010). Nests determined to be inactive will be protected with a one-chain no-harvest buffer.

## 6 - Safety and Fire Prevention

### 6.2 - Signing

#### 6.2.1 - Road posting (9/09)

The Purchaser is responsible for posting and maintaining caution signs on the River Road prior to beginning operations. The road must be posted at appropriate distances from the sale area to warn of logging activity and truck traffic. Signs must be removed when harvest operations are suspended or completed. The Purchaser will provide these signs.

## 7 - Other Conditions

### 7.3 - Contract Modifications

#### 7.3.1 - Emerald Ash Borer

##### 7.3.1.2 - Emerald ash borer, ash or firewood on sale (2/05)

There is ash and/or "firewood" in this sale and it is located within an emerald ash borer quarantined area. The Director of the Michigan Department of Agriculture (MDA) by the authority of Act No. 72 of the Public Acts of 1945, as amended, and Quarantine Regulation No. 620, has promulgated this quarantine to prevent the further spread of this pest and sets forth: definitions, regulated articles, regulated areas, conditions of movement, violations and penalties, and special exemptions. The Purchaser must comply with this quarantine. Contact the MDA for further information.



# TIMBER SALE MAP

This information provided by authority of Part 5, 1994 PA 451, as amended.

Sale Number	Year
41-003-18	2018

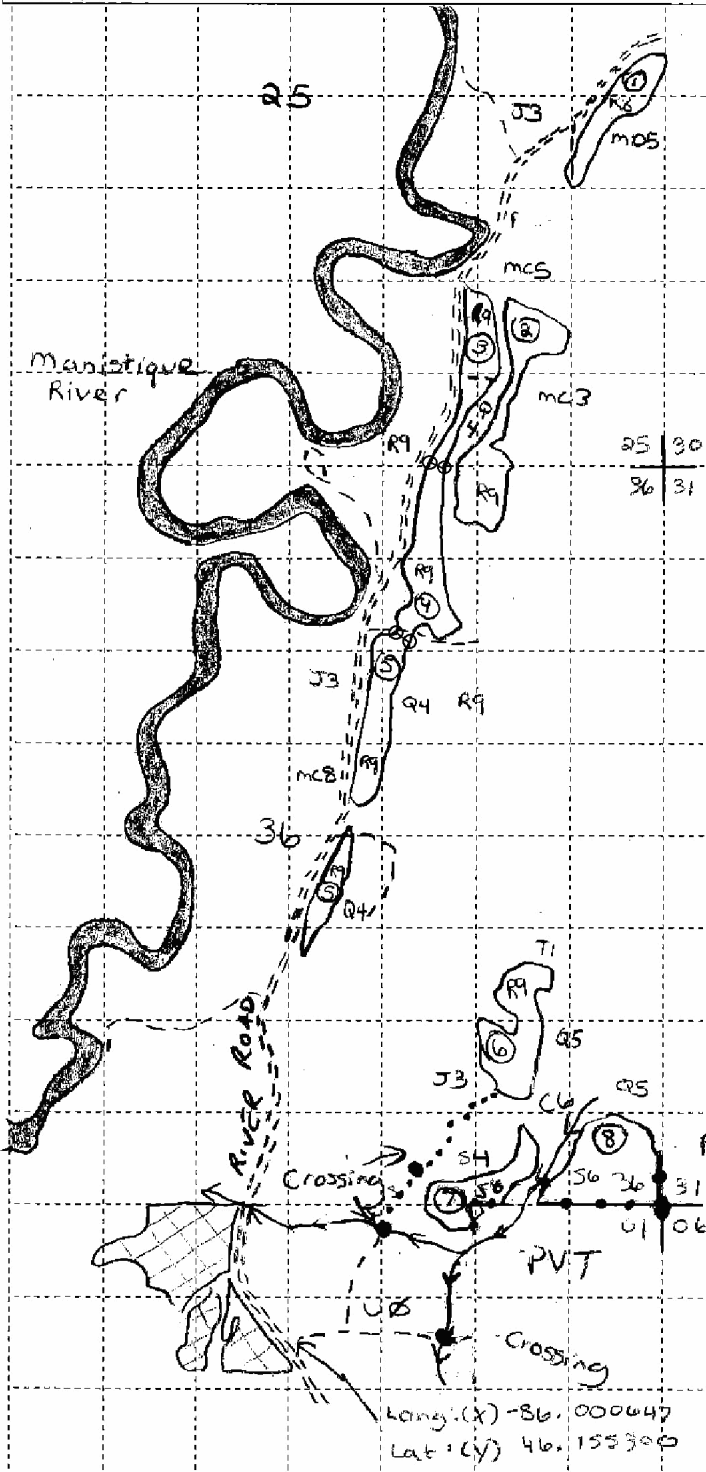
Forest Management Unit Shingleton	County Schoolcraft	Mapped By S. Clark	Date 12-12-17	Page 1	of 1
Compartment Number 10	Township T44N	Range R14W	Section(s) and Subdivision(s) 43-14-1 NW NE 5-25 E 1/2 SE, SE NE, SW SE / 5-36 SE, N 1/2 NE, SW NE	Scale: [ ... 4 ... ] = 1 mile	

### Cover Type

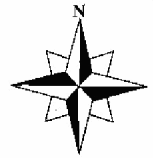
A = Aspen	J = Jack Pine	O = Oak	U = Upland Brush
B = Paper Birch	K = Rock	P = Lowland Poplar	UM = Upland Mix Forest
C = Cedar	L = Lowland Brush	Q = Mixed Swamp Conifer	V = Bog or Marsh
D = Treed Bog	LM = Lowland Mix Forest	R = Red Pine	W = White Pine
E = Swamp Hardwoods	M = Maple, Beech, Birch	S = Black Spruce	X = Non Stocked
F = Spruce/Fir	MC = Mixed Conifer	T = Tamarack	Y = Sand
G = Grass	MD = Mixed Deciduous	Z = Water	
H = Hemlock	N = Marsh		

### Density

0 = Non Stocked	5 = Pole Timber Medium
1 = Seedling Sapling Poor	6 = Pole Timber Well
2 = Seedling Sapling Medium	7 = Saw Timber Poor
3 = Seedling Sapling Well	8 = Saw Timber Medium
4 = Pole Timber Poor	9 = Saw Timber Well



Creek Hopping Pine  
43.7 acres

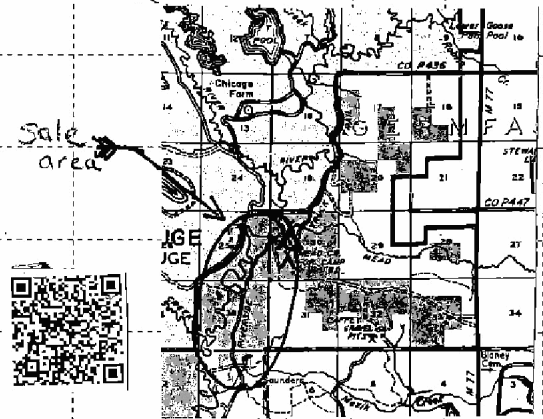


### Payment Unit Acres

1 - 3.1	5 - 5.9
2 - 6.7	6 - 5.6
3 - 4.3	7 - 4.3
4 - 5.9	8 - 2.9

### Legend

- Sale Boundary against state - red
- Sale Boundary against private - blue
- Payment Unit - yellow
- Survey corner
- wooden post
- Manistique River
- Gravel road - River Road
- poor dirt road
- Creek/drain crossing
- adjacent timber sale
- trail / closed road
- Creek



Long. (X) -86.000647  
Lat. (Y) 46.155309



## TIMBER SALE INFORMATION

### Femelschlag (41-004-18)

T41N, R17W, SEC. 22; T41N, R17W, SEC. 27; T41N, R17W, SEC. 34.  
Schoolcraft County (Advertised Price \$134,596.80)

SALE NOTE: The Purchaser is responsible for contracting the pipeline company prior to operating equipment in the vicinity of well heads or natural gas pipelines. See Sale Spec 5.1.3 for additional information.

It is the responsibility of the Purchaser to obtain permission from the utility company to utilize the power line right-of-way for operations. See spec 5.1.6.

Within Payment Unit 7, harvesting is not permitted during the period of April 15 to July 15 due to bark slippage. See spec 5.2.3.3.

Snowmobile Trail 2 is shown on the Timber Sale Map. See Sale Spec 5.2.41 for restrictions.

A timber sale contract for this lump sum, sealed bid timber sale will be awarded to the responsible bidder offering the highest sealed bid price. Bids must be at or above the following advertised price for each species:

<u>PRODUCTS &amp; SPECIES</u>	<u>ESTIMATED UNITS*</u>	<u>ADVERTISED PRICE</u>
Sawtimber		
Basswood	2.90 MBF	\$ 201.00 / MBF
Paper Birch	0.30 MBF	\$ 91.00 / MBF
Red Maple	1.00 MBF	\$ 121.00 / MBF
Red Oak	145.60 MBF	\$ 227.00 / MBF
Sugar Maple	2.50 MBF	\$ 407.00 / MBF
Pulpwood		
Balsam Fir	13.00 Cords	\$ 23.95 / Cord
Basswood	13.00 Cords	\$ 14.00 / Cord
Beech	24.00 Cords	\$ 28.15 / Cord
Jack Pine	83.00 Cords	\$ 55.60 / Cord
Mixed Aspen	1,360.00 Cords	\$ 36.95 / Cord
Mixed Hardwood	195.00 Cords	\$ 28.15 / Cord
Paper Birch	8.00 Cords	\$ 18.65 / Cord
Red Oak	789.00 Cords	\$ 30.95 / Cord
Red Pine	131.00 Cords	\$ 72.70 / Cord
White Ash	3.00 Cords	\$ 28.15 / Cord
White Pine	130.00 Cords	\$ 31.50 / Cord

\* The total volume is statistically estimated within plus (+) or minus (-) 15.82 percent. The estimated units are final and not subject to adjustment. Prospective bidders are urged to examine this timber and to make their own estimates of quantity and quality.

### **BOND AND PAYMENT SCHEDULE:**

1. A bond in the amount of \$6,730.00 to insure faithful performance of the conditions of the contract will be deposited by the successful bidder within 21 days of the sale award.
2. Cutting in any sale or unit without the required advance payment would be considered a trespass.
3. Total payment must be paid in advance or according to the following schedule:
  - (a) Ten percent (10%) of the sale value must be paid within 21 days of the sale award.
  - (b) The 10% down payment will be credited towards the first unit cut.
  - (c) Payment for each of the following units must be made before cutting begins in that unit:

PAYMENT UNIT NUMBER	PERCENT OF TOTAL SALE VALUE
01	9.6%
02	20.6%
03	13.1%
04	8.7%
05	20.6%
06	4.0%
07	3.7%
08	6.6%
09	6.8%
10	4.9%
11	1.4%

4. If no cutting takes place, the 10% down payment will not be refunded.
5. Operations on the contract issued will terminate on 12/31/2021.

**Description of Timber by Payment Unit (PU)**

PU	MARKET GROUP	PRODUCT	QUANTITY	UNIT	ACRES	ADVERTISE PRICE			
1	Jack Pine	Pulpwood	9.0	Cords	35.7	\$12,911.90			
	Mixed Aspen		313.0	Cords					
	<i>B. T. Aspen</i>		278.0	<i>Cords</i>					
	<i>Quaking Aspen</i>		35.0	<i>Cords</i>					
	Mixed Hardwood		18.0	Cords					
	<i>Black Cherry</i>		4.0	<i>Cords</i>					
	<i>Red Maple</i>		14.0	<i>Cords</i>					
	Paper Birch		3.0	Cords					
	White Pine		9.0	Cords					
2	Balsam Fir	Pulpwood	10.0	Cords	40.0	\$27,698.20			
	Jack Pine		30.0	Cords					
	Mixed Aspen		374.0	Cords					
	<i>Quaking Aspen</i>		374.0	<i>Cords</i>					
	Mixed Hardwood		96.0	Cords					
	<i>Black Cherry</i>		39.0	<i>Cords</i>					
	<i>Red Maple</i>		57.0	<i>Cords</i>					
	Red Pine		95.0	Cords					
	White Pine		75.0	Cords					
3	Red Oak	Sawtimber	52.3	MBF	33.1	\$17,688.40			
	Mixed Hardwood	Pulpwood	2.0	Cords					
	<i>Red Maple</i>		2.0	<i>Cords</i>					
	Red Oak		180.0	Cords					
	White Pine	6.0	Cords						
4	Red Oak	Sawtimber	26.9	MBF	37.4	\$11,687.20			
	Red Oak	Pulpwood	162.0	Cords					
	White Pine		18.0	Cords					
5	Red Oak	Sawtimber	63.7	MBF	71.3	\$27,742.40			
	Red Oak	Pulpwood	420.0	Cords					
	White Pine		9.0	Cords					
6	Jack Pine	Pulpwood	15.0	Cords	9.1	\$5,414.25			
	Mixed Aspen		86.0	Cords					
	<i>Quaking Aspen</i>		86.0	<i>Cords</i>					
	Mixed Hardwood		11.0	Cords					
	<i>Black Cherry</i>		9.0	<i>Cords</i>					
	<i>Red Maple</i>		2.0	<i>Cords</i>					
	Red Pine		12.0	Cords					
	White Pine		7.0	Cords					
7	Basswood	Sawtimber	2.9	MBF	12.3	\$4,939.00			
	Paper Birch		0.3	MBF					
	Red Maple		1.0	MBF					
	Sugar Maple		2.5	MBF					
	Balsam Fir		Pulpwood	3.0			Cords		
	Basswood	13.0		Cords					
	Beech	24.0		Cords					
	Mixed Hardwood	25.0		Cords					
	<i>Red Maple</i>	14.0		<i>Cords</i>					
	<i>Sugar Maple</i>	11.0		<i>Cords</i>					
	Paper Birch	1.0		Cords					
	Red Pine	20.0		Cords					
	White Ash	3.0		Cords					
	8	Jack Pine		Pulpwood			15.0	Cords	20.0
		Mixed Aspen	200.0				Cords		
<i>Quaking Aspen</i>		200.0	<i>Cords</i>						
Mixed Hardwood		15.0	Cords						
<i>Red Maple</i>		15.0	<i>Cords</i>						
Paper Birch		4.0	Cords						

**Description of Timber by Payment Unit (PU), con't**

PU	MARKET GROUP	PRODUCT	QUANTITY	UNIT	ACRES	ADVERTISE PRICE
	White Pine		6.0	Cords		
9	Jack Pine	Pulpwood	5.0	Cords	20.3	\$9,130.15
	Mixed Aspen		235.0	Cords		
	<i>Quaking Aspen</i>		235.0	<i>Cords</i>		
	Mixed Hardwood		6.0	Cords		
	<i>Black Cherry</i>		3.0	<i>Cords</i>		
	<i>Red Maple</i>		3.0	<i>Cords</i>		
10	Jack Pine	Pulpwood	9.0	Cords	14.2	\$6,642.85
	Mixed Aspen		151.0	Cords		
	<i>Quaking Aspen</i>		151.0	<i>Cords</i>		
	Mixed Hardwood		20.0	Cords		
	<i>Red Maple</i>		20.0	<i>Cords</i>		
11	Red Oak	Sawtimber	2.7	MBF	11.0	\$1,832.60
	Mixed Aspen	Pulpwood	1.0	Cords		
	<i>B. T. Aspen</i>		1.0	<i>Cords</i>		
	Mixed Hardwood		2.0	Cords		
	<i>Red Maple</i>		2.0	<i>Cords</i>		
	Red Oak		27.0	Cords		
	Red Pine		4.0	Cords		
TOTAL:			152.3	MBF		
TOTAL:			2,749.0	Cords		



## Sale Specific Conditions & Requirements

**Sale Name: Femelschlag**

**Sale Number: 41-004-18 Seq#: 1**

### 1 - Sale Area

#### 1.2 - Boundaries

##### 1.2.1 - Painted boundaries (1/14)

The sale boundary and Payment Unit boundaries are marked and identified by blue, red and yellow paint. Exterior sale boundary lines against private property are marked with blue paint. Exterior sale boundary lines against state are marked with red paint, with the exception of the boundaries around Payment Units 4, 5, and 11, which are unpainted and identified by patch clearcuts. The circular 1/5 acre patch clearcuts within Payment Units 4, 5 and 11 are marked with red paint. The inside of the patches are marked with a red "V" and the outside of the patches are marked with a red "I". Interior Payment Unit boundaries are marked with yellow paint. The painted boundary line trees are not Included Timber and are to be protected unless marked with orange paint. Yellow painted trees designating an interior Payment Unit boundary are only to be cut when all surrounding Payment Units have been paid.

### 2 - Timber Specifications

#### 2.1 - Included Timber

##### 2.1.1 - Clearcut unit(s) with unmerchantable trees (6/14)

Within Payment Unit(s) 1, 2, 6 and 9, cut all hardwood and aspen trees that are two (2) inches or more at DBH, except do not cut oak. In addition, cut all conifer species which meet minimum piece specifications in 2.2 Utilization, except do not cut hemlock. Special protection trees identified in accordance with condition 3.4.2, within clearcutting unit boundaries, are not Included Timber and are to be protected.

##### 2.1.2 - Clearcut unit(s) w/o unmerchantable trees (8/11)

Within Payment Unit(s) 8 and 10, cut all trees which meet minimum piece specifications in 2.2 Utilization, except do not cut oak and hemlock.

##### 2.1.3 - Cut tree marked unit(s) (12/08)

Within Payment Unit(s) 3 and 7, all trees are designated for cutting when marked with orange paint above and below stump height, regardless of merchantability.

##### 2.1.4 - Designated timber unit(s) (6/17)

Within Payment Unit(s) 4, 5 and 11, all trees within the circular patches surrounded by red paint, are designated for cutting regardless of merchantability.

### 3 - Payments

#### 3.3 - Pre-measured Sales

##### 3.3.4 - Dividing payment units (7/14)

Payment Unit(s) over \$15,000 may be divided at the request of the Purchaser and upon approval of the Unit Manager. Dividing Payment Units is a contract modification which requires a Timber Sale Contract Supplement.

#### 3.4 - Damaged Timber

##### 3.4.1 - Damaged timber (6/14)

General Condition and Requirement 3.4 Damaged Timber, defines liquidated damages for undesignated live merchantable trees which are cut or injured. In addition, extreme care should be taken to avoid damage to oak seedlings and saplings within Payment Units 8 and 10.

If more than 25% of the tree seedlings or saplings (1/4" to 4.5" DBH) within a specified portion of the sale area are damaged, liquidated damages will be assessed at \$500.00 per acre for all acreage within that specified portion of the sale area that was damaged.

##### 3.4.2 - Special Protection Trees (4/14)

The Purchaser shall not cut live or dead special protection trees within cutting units or clearings. Special protection trees are

hemlock. If the Purchaser's operations have cut or damaged special protection trees through carelessness, the Purchaser shall pay \$100.00 as fixed, agreed and liquidated damages for each special protection tree cut or damaged. Such payment does not constitute ownership of the undesignated timber.

#### **4 - Transportation**

##### 4.1 - Construction

###### 4.1.3 - Slash and earthen piles (8/04)

Piles or windrows of earth along roads and landings that have been widened or constructed shall be leveled. Slash from road maintenance or construction, including stumps, shall be dispersed throughout the sale.

###### 4.1.4 - Timber removed for construction (12/09)

Trees cut or damaged in the process of pre-approved road, landing or skid trail construction will be decked in an area separate from other Designated Timber and not removed until measured by the sale administrator. Payment will be made at the specified Purchase Unit Price.

###### 4.1.6 - Road construction (1/09)

Construction of new roads or improvements of existing roads shall be done in such a way as to minimize the environmental and visual impacts. Merchantable trees shall be cut and utilized unless otherwise directed. Non-merchantable trees shall be severed and laid flat on the ground. Slash shall be scattered, and not left in windrows and kept a minimum of 10 feet back from the road edge. Stumps shall be set upright, not left on edge, and be moved at least 10 feet away from the road edge. Disturbed soil shall be feathered into the woods and not left in berms or windrows.

###### 4.1.7 - Road closure (10/11)

All new roads built into the sale must be blocked to vehicle traffic upon completion of the sale. Overgrown roads that are reopened shall be considered new roads. In general, this will require constructing a four (4') foot high berm of stumps and logs covered with earth. These roads must be rendered impassable to cars and trucks. Contact the sale administrator for specific details of design and placement.

##### 4.2 - Maintenance

###### 4.2.4 - Grading (10/16)

For completion of the sale, state forest roads must be graded. In general, this will require a road grader or bull dozer to shape up the roads after forest products have been hauled off site. This includes cleaning of drainage areas, grading, crowning and filling with gravel, if necessary. The grading equipment to be used must be approved by the Unit Manager or his/her representative.

#### **5 - Operations**

##### 5.1 - Notification

###### 5.1.1 - Pre-sale conference (10/16)

A pre-sale conference between the Purchaser and sale administrator is required prior to beginning any operations. The Unit Manager or his/her representative must be contacted at least 10 days in advance to schedule the conference.

###### 5.1.3 - Well heads and natural gas pipelines (11/15)

The Purchaser is responsible for contacting the pipeline company prior to operating equipment in the vicinity of well heads or natural gas pipelines. Contact TransCanada at 248 205-7774 and Enbridge at 906 341-2730.

###### 5.1.6 - Utility R.O.W. (1/15)

It is the responsibility of the Purchaser to obtain permission from the utility company to utilize the power line R.O.W. for operations.

##### 5.2 - Conduct of Operations

###### 5.2.2 - Hazard Trees/Snags

###### 5.2.2.1 - Den trees (10/16)

Obvious hollow and/or den trees shall be protected and left standing unless they are a safety hazard.

###### 5.2.3 - Operating Restrictions

#### 5.2.3.3 - Bark slippage restriction (3/09)

Within Payment Unit(s) 7, unless changed by written agreement, cutting and skidding are not permitted during the period of April 15 to July 15. This restriction is because of bark slippage.

#### 5.2.32 - Decking/landing restoration (9/13)

All decking and landing areas must have the surface area restored to a condition equal to or better than before. This is to ensure the proper regeneration of the stand. Wood debris, chips and "cookies" from trimmings must be removed or scattered away from landing and loading areas and may not be windrowed on the edge.

#### 5.2.38 - No decking against live trees (2/04)

Cut products may not be decked against unmarked or designated leave trees.

#### 5.2.41 - Snowmobile trail protection (9/11)

Snowmobile Trail 2 is shown on the Timber Sale Map. Do not cut or damage posts with orange trail markers or traffic control signs. If the trail is used for hauling, it must be graded to the satisfaction of the Unit Manager or his/her representative prior to December 1st. The snowmobile trail may not be used for any timber sale operations from December 1 to March 31.

### 5.4 - Soil Protection

#### 5.4.1 - Rutting restriction, general (7/16)

Operations are to cease immediately if equipment and weather conditions result in rutting of roads and/or skid trails which is 12 inches or greater in depth and 50 feet in length. The Unit Manager or his/her representative may restrict hauling and/or skidding if ruts exceed the specified depth. With the Unit Manager or his/her representative's approval, the Purchaser may return to the area when the risk of rutting has decreased.

### 5.8 - Protection of Endangered Species

#### 5.8.3 - Red shoulder hawk or goshawk (2/16)

In the event that an active red shoulder hawk or goshawk nest is found, the contract may be amended to protect the nest site until the nest is determined to be inactive. The value of the trees in this excluded area will be refunded or credited to the Purchaser. The nest will be buffered with a five-chain radius (eight acre) protection area, centered on the nest tree, in which there will be no cutting or new roads constructed. Avoid human disturbance, including loading and skidding, in the protection area.

An additional zone of five chains (ten chains centered on the active nest tree) will be established in which there is no management activity from April 1 to July 30. Limit biomass harvesting and chipping operations within this ten-chain zone, retain the maximum one-third of residues per the Woody Biomass Harvesting Guidelines (Michigan DNR 2010). Nests determined to be inactive will be protected with a one-chain no-harvest buffer.

## 7 - Other Conditions

### 7.3 - Contract Modifications

#### 7.3.1 - Emerald Ash Borer

##### 7.3.1.2 - Emerald ash borer, ash or firewood on sale (2/05)

There is ash and/or "firewood" in this sale and it is located within an emerald ash borer quarantined area. The Director of the Michigan Department of Agriculture (MDA) by the authority of Act No. 72 of the Public Acts of 1945, as amended, and Quarantine Regulation No. 620, has promulgated this quarantine to prevent the further spread of this pest and sets forth: definitions, regulated articles, regulated areas, conditions of movement, violations and penalties, and special exemptions. The Purchaser must comply with this quarantine. Contact the MDA for further information.



# TIMBER SALE MAP

This information provided by authority of Part 525, 1994 PA 451, as amended.

Sale Number	Year
004	18

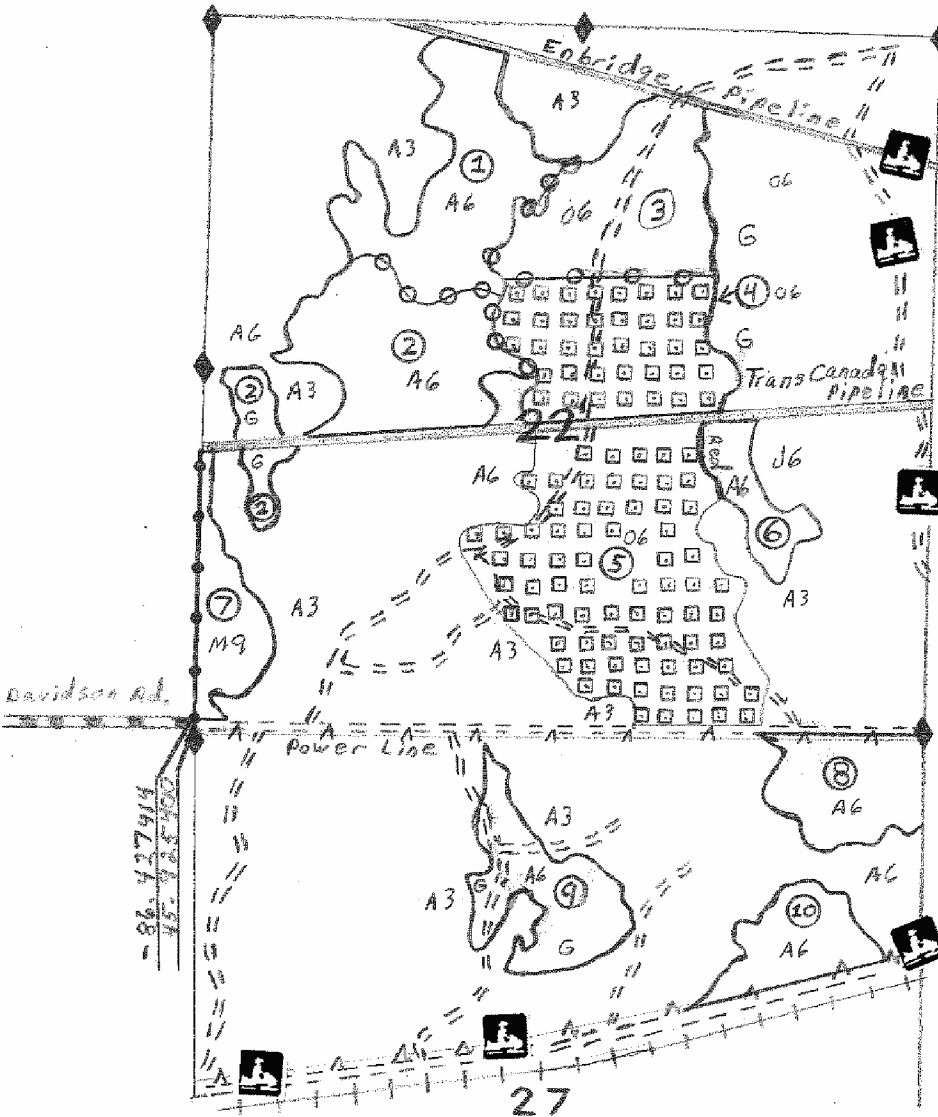
Forest Management Unit Shingleton	County Schoolcraft	Mapped By T. Burnis	Date 02/02/2018	Page 1	of 2
Compartment Number 85	Township 41N	Range 17W	Section(s) and Subdivision(s) 22,27: see map	Scale 1/4 inch = 1 mile	

Cover Type				Density	
A = Aspen	J = Jack Pine	O = Oak	U = Upland Brush	0 = Non Stocked	5 = Pole Timber Medium
B = Paper Birch	K = Rock	P = Lowland Poplar	UM = Upland Mix Forest	1 = Seedling Sapling Poor	6 = Pole Timber Well
C = Cedar	L = Lowland Brush	Q = Mixed Swamp Conifer	V = Bog or Marsh	2 = Seedling Sapling Medium	7 = Saw Timber Poor
D = Treed Bog	LM = Lowland Mix Forest	R = Red Pine	W = White Pine	3 = Seedling Sapling Well	8 = Saw Timber Medium
E = Swamp Hardwoods	M = Maple, Beech, Birch	S = Black Spruce	X = Non Stocked	4 = Pole Timber Poor	9 = Saw Timber Well
F = Spruce/Fir	MD = Mixed Deciduous	T = Tamarack	Y = Sand		
G = Grass	N = Marsh		Z = Water		
H = Hemlock					

## FEMELSCHLAG

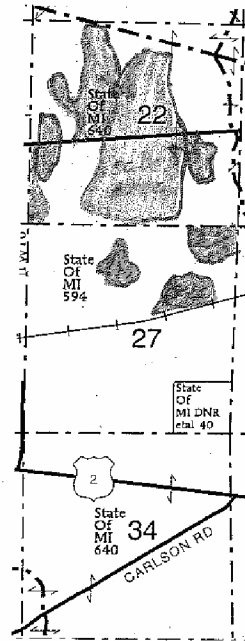
304.4 acres

Unit	Acres	Unit	Acres
1	35.7	7	12.3
2	40.0	8	20.0
3	33.1	9	20.3
4	37.4	10	14.2
5	71.3	11	11.0
6	9.1		



### LEGEND

Red paint line	
Blue paint line	
Yellow paint line	
Patch Clearcuts	
Pipe line	
Power line	
Railroad Tracks	
Dirt Roads	
County Road	
Paved Highway	
Unit Numbers	
Survey Corners	
Snowmobile Trail	





# TIMBER SALE MAP

This information provided by authority of Part 525, 1994 PA 451, as amended.

Sale Number	Year
004	18

Forest Management Unit Shingleton	County Schoolcraft	Mapped By T. Burnis	Date 02/02/2018	Page 2	of 2
Compartments Number 85	Township 41N	Range 17W	Section(s) and Subdivision(s) 22, 27, 34: see map	Scale [... 4 inches...] = 1 mile	

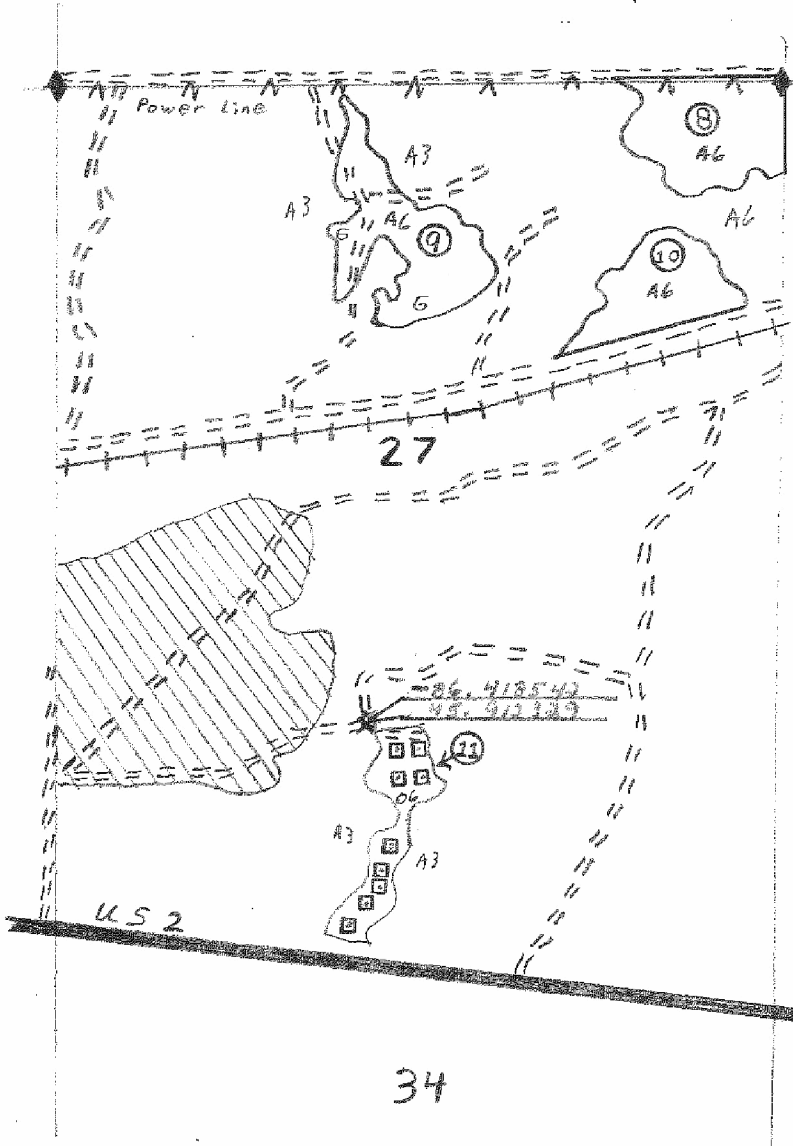
Cover Type				Density	
A = Aspen	J = Jack Pine	O = Oak	U = Upland Brush	0 = Non Stocked	5 = Pole Timber Medium
B = Paper Birch	K = Rock	P = Lowland Poplar	UM = Upland Mix Forest	1 = Seedling Sapling Poor	6 = Pole Timber Well
C = Cedar	L = Lowland Brush	Q = Mixed Swamp Conifer	V = Bog or Marsh	2 = Seedling Sapling Medium	7 = Saw Timber Poor
D = Treed Bog	LM = Lowland Mix Forest	R = Red Pine	W = White Pine	3 = Seedling Sapling Well	8 = Saw Timber Medium
E = Swamp Hardwoods	M = Maple, Beech, Birch	S = Black Spruce	X = Non Stocked	4 = Pole Timber Poor	9 = Saw Timber Well
F = Spruce/Fir	MC = Mixed Conifer	T = Tamarack	Y = Sand		
G = Grass	MD = Mixed Deciduous		Z = Water		
H = Hemlock	N = Marsh				

## FEMELSCHLAG

304.4 acres

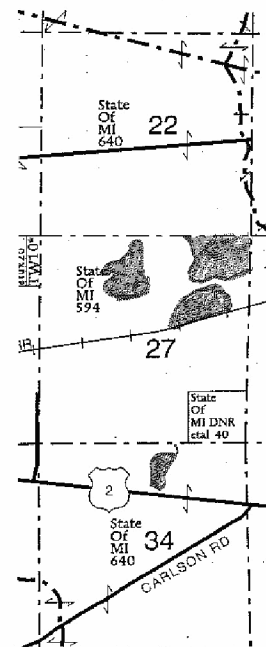


Unit	Acres	Unit	Acres
1	35.7	7	12.3
2	40.0	8	20.0
3	33.1	9	20.3
4	37.4	10	14.2
5	71.3	11	11.0
6	9.1		



### LEGEND

- Red paint line
- Blue paint line
- Yellow paint line
- Patch Clearcuts
- Pipe line
- Power line
- Railroad Tracks
- Dirt Roads
- County Road
- Paved Highway
- Unit Numbers
- Survey Corners
- Snowmobile Trail
- Near by Sale





**TIMBER SALE INFORMATION**

Ashford Lake 2 (41-009-18)

T43N, R16W, SEC. 10; T43N, R16W, SEC. 3; T43N, R16W, SEC. 4.  
Schoolcraft County (Advertised Price \$29,889.40)

SALE NOTE: Permission for access across private land is the responsibility of the Purchaser.

Within Payment Units 1, 2, 3 and 5, harvesting is not permitted during the period of April 15 to July 15 due to bark slippage.

A recreation site such as a trail, pathway, or campground is within the sale area or the vicinity. Certain restrictions/specifications may be applicable including time restrictions.

A timber sale contract for this lump sum, sealed bid timber sale will be awarded to the responsible bidder offering the highest sealed bid price. Bids must be at or above the following advertised price for each species:

<u>PRODUCTS &amp; SPECIES</u>	<u>ESTIMATED UNITS*</u>	<u>ADVERTISED PRICE</u>
Sawtimber		
Red Maple	30.90 MBF	\$ 121.00 / MBF
Sugar Maple	27.50 MBF	\$ 407.00 / MBF
Pulpwood		
Balsam Fir	2.00 Cords	\$ 23.95 / Cord
Mixed Aspen	54.00 Cords	\$ 36.95 / Cord
Mixed Hardwood	442.00 Cords	\$ 28.15 / Cord
White Pine	15.00 Cords	\$ 31.50 / Cord

\* The estimated units are final and not subject to adjustment. Prospective bidders are urged to examine this timber and to make their own estimates of quantity and quality.

**BOND AND PAYMENT SCHEDULE:**

- A bond in the amount of \$1,494.00 to insure faithful performance of the conditions of the contract will be deposited by the successful bidder within 21 days of the sale award.
- Cutting in any sale or unit without the required advance payment would be considered a trespass.
- Total payment must be paid in advance or according to the following schedule:
  - Ten percent (10%) of the sale value must be paid within 21 days of the sale award.
  - The 10% down payment will be credited towards the first unit cut.
  - Payment for each of the following units must be made before cutting begins in that unit:
 

<u>PAYMENT UNIT NUMBER</u>	<u>PERCENT OF TOTAL SALE VALUE</u>
01	6.5%
02	64.5%
03	14.6%
04	8.3%
05	6.1%
- If no cutting takes place, the 10% down payment will not be refunded.
- Operations on the contract issued will terminate on 12/31/2021.

**Description of Timber by Payment Unit (PU)**

PU	MARKET GROUP	PRODUCT	QUANTITY	UNIT	ACRES	ADVERTISE PRICE
1	Red Maple	Sawtimber	3.1	MBF	7.1	\$1,955.25
	Sugar Maple		1.6	MBF		
	Mixed Hardwood	Pulpwood	33.0	Cords		
	<i>Black Cherry</i>		4.0	<i>Cords</i>		
	<i>Red Maple</i>		9.0	<i>Cords</i>		
	<i>Sugar Maple</i>		15.0	<i>Cords</i>		
	<i>Yellow Birch</i>		5.0	<i>Cords</i>		
2	Red Maple	Sawtimber	17.4	MBF	32.5	\$19,245.30
	Sugar Maple		23.3	MBF		
	Mixed Hardwood	Pulpwood	272.0	Cords		
	<i>Beech</i>		11.0	<i>Cords</i>		
	<i>Red Maple</i>		54.0	<i>Cords</i>		
	<i>Sugar Maple</i>		207.0	<i>Cords</i>		
3	Red Maple	Sawtimber	8.8	MBF	10.2	\$4,371.60
	Sugar Maple		1.9	MBF		
	Mixed Hardwood	Pulpwood	90.0	Cords		
	<i>Black Cherry</i>		18.0	<i>Cords</i>		
	<i>Red Maple</i>		48.0	<i>Cords</i>		
	<i>Sugar Maple</i>		24.0	<i>Cords</i>		
4	Mixed Aspen	Pulpwood	50.0	Cords	7.3	\$2,488.90
	<i>B. T. Aspen</i>		50.0	<i>Cords</i>		
	Mixed Hardwood		6.0	Cords		
	<i>Red Maple</i>		4.0	<i>Cords</i>		
	<i>Sugar Maple</i>		2.0	<i>Cords</i>		
	White Pine		15.0	Cords		
5	Red Maple	Sawtimber	1.6	MBF	3.1	\$1,828.35
	Sugar Maple		0.7	MBF		
	Balsam Fir	Pulpwood	2.0	Cords		
	Mixed Aspen		4.0	Cords		
	<i>Quaking Aspen</i>		4.0	<i>Cords</i>		
	Mixed Hardwood		41.0	Cords		
	<i>Beech</i>		5.0	<i>Cords</i>		
	<i>Red Maple</i>		34.0	<i>Cords</i>		
	<i>Sugar Maple</i>		2.0	<i>Cords</i>		
TOTAL:			58.4	MBF		
TOTAL:			513.0	Cords		



## Sale Specific Conditions & Requirements

**Sale Name: Ashford Lake 2**

**Sale Number: 41-009-18 Seq#: 1**

### 1 - Sale Area

#### 1.2 - Boundaries

##### 1.2.1 - Painted boundaries (1/14)

The sale boundary is marked and identified by blue and red paint. Exterior sale boundary lines against private property are marked with blue paint. Exterior sale boundary lines against state are marked with red paint. The painted boundary line trees are not Included Timber and are to be protected unless marked with orange paint.

### 2 - Timber Specifications

#### 2.1 - Included Timber

##### 2.1.1 - Clearcut unit(s) with unmerchantable trees (6/14)

Within Payment Unit(s) 4, cut all trees that are two (2) inches or more at DBH, except do not cut hemlock and oak. Special protection trees identified in accordance with condition 3.4.2, within clearcutting unit boundaries, are not Included Timber and are to be protected.

##### 2.1.3 - Cut tree marked unit(s) (12/08)

Within Payment Unit(s) 1, 2, 3, and 5, all trees are designated for cutting when marked with orange paint above and below stump height, regardless of merchantability.

### 3 - Payments

#### 3.3 - Pre-measured Sales

##### 3.3.4 - Dividing payment units (7/14)

Payment Unit(s) over \$10,000 may be divided at the request of the Purchaser and upon approval of the Unit Manager. Dividing Payment Units is a contract modification which requires a Timber Sale Contract Supplement.

#### 3.4 - Damaged Timber

##### 3.4.1 - Damaged timber (6/14)

General Condition and Requirement 3.4 Damaged Timber, defines liquidated damages for undesignated live merchantable trees which are cut or injured. In addition, extreme care should be taken to avoid damage to tree seedlings and saplings.

Within the sale area, if more than 25% of the hemlock tree seedlings or saplings (1/4" to 4.5" DBH) within a specified portion of the sale area are damaged, liquidated damages will be assessed at \$300 per acre for all acreage within that specified portion of the sale area that was damaged.

##### 3.4.2 - Special Protection Trees (4/14)

The Purchaser shall not cut live or dead special protection trees within cutting units or clearings. Special protection trees are hemlock and oak. If the Purchaser's operations have cut or damaged special protection trees through carelessness, the Purchaser shall pay \$100 as fixed, agreed and liquidated damages for each special protection tree cut or damaged. Such payment does not constitute ownership of the undesignated timber.

### 4 - Transportation

#### 4.1 - Construction

##### 4.1.3 - Slash and earthen piles (8/04)

Piles or windrows of earth along roads and landings that have been widened or constructed shall be leveled. Slash from road maintenance or construction, including stumps, shall be dispersed throughout the sale.

##### 4.1.6 - Road construction (1/09)

Construction of new roads or improvements of existing roads shall be done in such a way as to minimize the environmental and visual impacts. Merchantable trees shall be cut and utilized unless otherwise directed. Non-merchantable trees shall be severed and laid flat on the ground. Slash shall be scattered, and not left in windrows and kept a minimum of 10 feet back

from the road edge. Stumps shall be set upright, not left on edge, and be moved at least 10 feet away from the road edge. Disturbed soil shall be feathered into the woods and not left in berms or windrows.

#### 4.1.7 - Road closure (10/11)

All new roads built into the sale must be blocked to vehicle traffic upon completion of the sale. Overgrown roads that are reopened shall be considered new roads. In general, this will require constructing a four (4') foot high berm of stumps and logs covered with earth. These roads must be rendered impassable to cars and trucks.

### 4.2 - Maintenance

#### 4.2.4 - Grading (10/16)

For completion of the sale, state forest roads must be graded. In general, this will require a road grader or bull dozer to shape up the roads after forest products have been hauled off site. The grading equipment to be used must be approved by the Unit Manager or his/her representative.

### 4.4 - Access

#### 4.4.1 - Private property access (3/11)

Permission for access across private land is the responsibility of the Purchaser.

## 5 - Operations

### 5.1 - Notification

#### 5.1.1 - Pre-sale conference (10/16)

A pre-sale conference on site between the Purchaser and sale administrator is required prior to beginning any operations to determine landing and road locations. The Unit Manager or his/her representative must be contacted at least 10 days in advance to schedule the conference.

### 5.2 - Conduct of Operations

#### 5.2.1 - Slash

##### 5.2.1.1 - Slash within sale area (9/16)

No trees are to be felled outside the sale area and all slash is to be kept at least 10 feet back from the blue paint line. If sale boundary lines are along a public road or highway, then slash must be removed 50' from these lines per General Condition & Requirement 5.2.1.

#### 5.2.2 - Hazard Trees/Snags

##### 5.2.2.1 - Den trees (10/16)

Obvious hollow and/or den trees shall be protected and left standing unless they are a safety hazard.

#### 5.2.3 - Operating Restrictions

##### 5.2.3.3 - Bark slippage restriction (3/09)

Within Payment Unit(s) 1, 2, 3, and 5, unless changed by written agreement, cutting and skidding are not permitted during the period of April 15 to July 15. This restriction is because of bark slippage.

#### 5.2.32 - Decking/landing restoration (9/13)

All decking and landing areas must have the surface area restored to a condition equal to or better than before. This is to ensure the proper regeneration of the stand. Wood debris, chips and "cookies" from trimmings must be removed or scattered away from landing and loading areas and may not be windrowed on the edge.

#### 5.2.37 - No decking areas (12/08)

No decking is allowed on the Ashford Lake boat launch access site road.

#### 5.2.38 - No decking against live trees (2/04)

Cut products may not be decked against unmarked or designated leave trees.

### 5.4 - Soil Protection

#### 5.4.1 - Rutting restriction, general (7/16)

Operations are to cease immediately if equipment and weather conditions result in rutting of roads and/or skid trails which is 12 inches or greater in depth and 50 feet in length. The Unit Manager or his/her representative may restrict hauling and/or skidding if ruts exceed the specified depth. With the Unit Manager or his/her representative's approval, the Purchaser may return to the area when the risk of rutting has decreased.

## 5.8 - Protection of Endangered Species

### 5.8.3 - Red shoulder hawk or goshawk (2/16)

In the event that an active red shoulder hawk or goshawk nest is found, the contract may be amended to protect the nest site until the nest is determined to be inactive. The value of the trees in this excluded area will be refunded or credited to the Purchaser. The nest will be buffered with a five-chain radius (eight acre) protection area, centered on the nest tree, in which there will be no cutting or new roads constructed. Avoid human disturbance, including loading and skidding, in the protection area.

An additional zone of five chains (ten chains centered on the active nest tree) will be established in which there is no management activity from April 1 to July 30. Limit biomass harvesting and chipping operations within this ten-chain zone, retain the maximum one-third of residues per the Woody Biomass Harvesting Guidelines (Michigan DNR 2010). Nests determined to be inactive will be protected with a one-chain no-harvest buffer.

## 7 - Other Conditions

### 7.3 - Contract Modifications

#### 7.3.1 - Emerald Ash Borer

##### 7.3.1.2 - Emerald ash borer, ash or firewood on sale (2/05)

There is ash and/or "firewood" in this sale and it is located within an emerald ash borer quarantined area. The Director of the Michigan Department of Agriculture (MDA) by the authority of Act No. 72 of the Public Acts of 1945, as amended, and Quarantine Regulation No. 620, has promulgated this quarantine to prevent the further spread of this pest and sets forth: definitions, regulated articles, regulated areas, conditions of movement, violations and penalties, and special exemptions. The Purchaser must comply with this quarantine. Contact the MDA for further information.



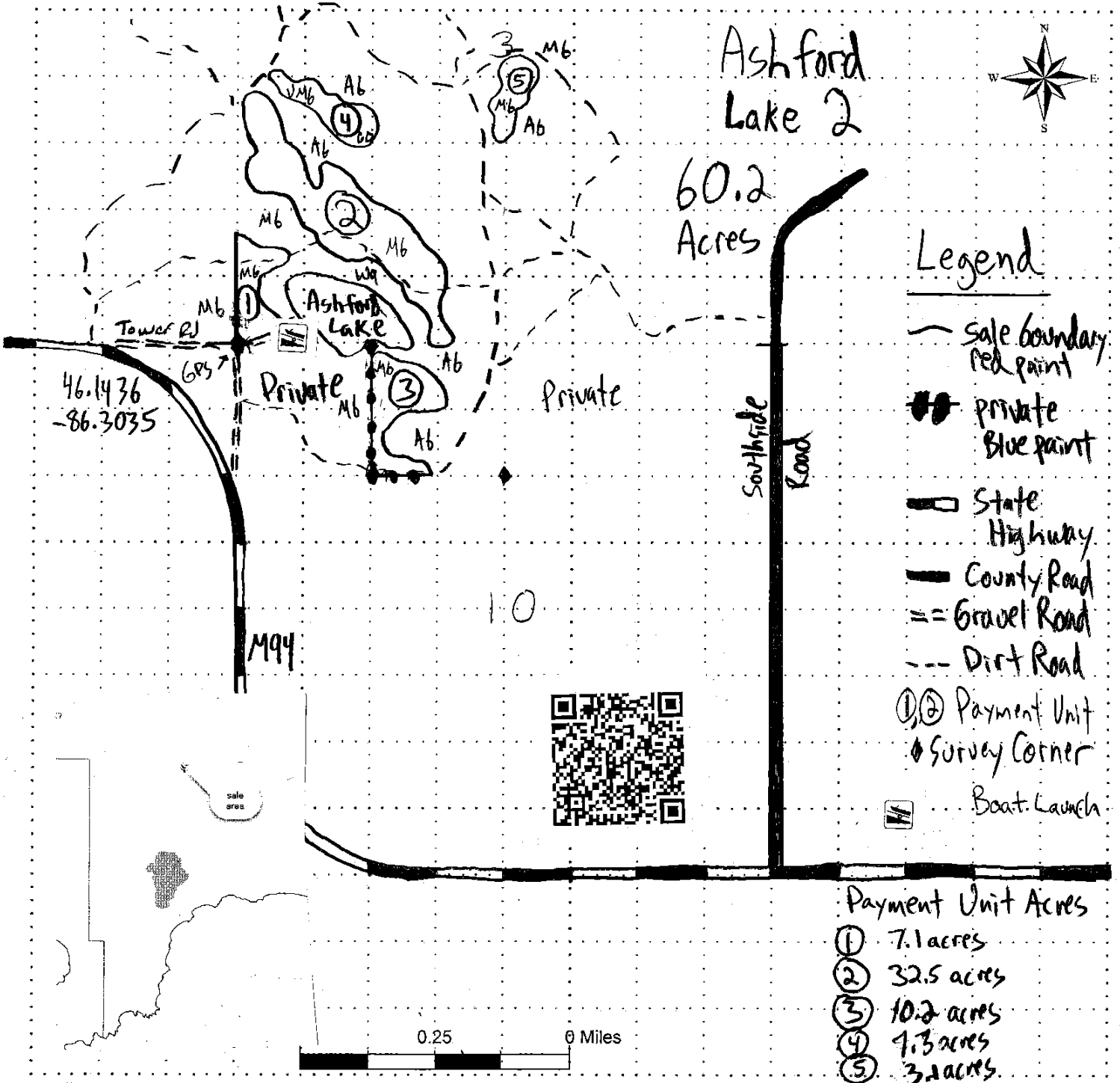
# TIMBER SALE MAP

This information provided by authority of Part 5, 1994 PA 451, as amended.

Sale Number	009	Year	18
-------------	-----	------	----

Forest Management Unit <b>Shingleton</b>	County <b>Schoolcraft</b>	Mapped By <b>Petrelis</b>	Date <b>6-24-18</b>	Page <b>1</b>	of <b>1</b>
Compartment Number <b>36</b>	Township <b>43N</b>	Range <b>16W</b>	Section(s) and Subdivision(s) <b>4: E 1/2 SE 10: N 1/2 NW 3: SW, NWSE, SWNE</b>		

Cover Type				Density	
A = Aspen	J = Jack Pine	O = Oak	U = Upland Brush	0 = Non Stocked	5 = Pole Timber Medium
B = Paper Birch	K = Rock	P = Lowland Poplar	UM = Upland Mix Forest	1 = Seedling Sapling Poor	6 = Pole Timber Well
C = Cedar	L = Lowland Brush	Q = Mixed Swamp Conifer	V = Bog or Marsh	2 = Seedling Sapling Medium	7 = Saw Timber Poor
D = Tread Bog	LM = Lowland Mix Forest	R = Red Pine	W = White Pine	3 = Seedling Sapling Well	8 = Saw Timber Medium
E = Swamp Hardwoods	M = Maple, Beech, Birch	S = Black Spruce	X = Non Stocked	4 = Pole Timber Poor	9 = Saw Timber Well
F = Spruce/Fir	MC = Mixed Conifer	T = Tamarack	Y = Sand		
G = Grass	MD = Mixed Deciduous		Z = Water		
H = Hemlock	N = Marsh				



## TIMBER SALE INFORMATION

### GNA Bloodwood (41-811-18)

T45N, R19W, SEC. 10; T45N, R19W, SEC. 3; T45N, R19W, SEC. 4; T45N, R19W, SEC. 8; T45N, R19W, SEC. 9; T46N, R19W, SEC. 32; T46N, R19W, SEC. 33; T46N, R19W, SEC. 34.

SALE NOTE: This is a Good Neighbor Authority (GNA) timber sale on National Forest land. This timber sale was set-up and is being advertised by the Michigan DNR for the US Forest Service. The contract will be awarded and administered by the Michigan DNR.

Harvesting may be restricted during the period of March 1 to August 31 in the sale due to a potential raptor nest. See Sale Spec 5.2.3.1 for detailed information.

Trail 7 cannot be used during the snowmobile season. See Sale Spec 5.2.41 for detailed restrictions.

Equipment Cleaning is required on this sale to minimize the spread of invasive species. See Sale Spec 5.6.2. for requirements.

Access may be through other public land.

A timber sale contract for this lump sum, sealed bid timber sale will be awarded to the responsible bidder offering the highest sealed bid price. Bids must be at or above the following advertised price for each species:

<u>PRODUCTS &amp; SPECIES</u>	<u>ESTIMATED UNITS*</u>		<u>ADVERTISED PRICE</u>
Sawtimber			
Black Cherry	54.60	MBF	\$ 108.00 / MBF
Red Maple	78.30	MBF	\$ 106.00 / MBF
Sugar Maple	22.10	MBF	\$ 360.00 / MBF
Pulpwood			
Balsam Fir	622.00	Cords	\$ 21.10 / Cord
Hemlock	36.00	Cords	\$ 1.00 / Cord
Jack Pine	730.00	Cords	\$ 49.05 / Cord
Mixed Hardwood	3,021.00	Cords	\$ 24.80 / Cord
Paper Birch	125.00	Cords	\$ 16.45 / Cord
Quaking Aspen	103.00	Cords	\$ 32.60 / Cord
Red Pine	84.00	Cords	\$ 64.15 / Cord
White Pine	111.00	Cords	\$ 27.80 / Cord
White Spruce	692.00	Cords	\$ 27.75 / Cord

\* The estimated units are final and not subject to adjustment. Prospective bidders are urged to examine this timber and to make their own estimates of quantity and quality.

### **BOND AND PAYMENT SCHEDULE:**

1. A bond in the amount of \$8,957.00 to insure faithful performance of the conditions of the contract will be deposited by the successful bidder within 21 days of the sale award.
2. Cutting in any sale or unit without the required advance payment would be considered a trespass.
3. Total payment must be paid in advance or according to the following schedule:
  - (a) Ten percent (10%) of the sale value must be paid within 21 days of the sale award.
  - (b) The 10% down payment will be credited towards the first unit cut.

(c) Payment for each of the following units must be made before cutting begins in that unit:

PAYMENT UNIT NUMBER	PERCENT OF TOTAL SALE VALUE
01	7.6%
02	15.5%
03	11.5%
04	5.2%
05	1.8%
06	0.3%
07	2.0%
08	3.2%
09	3.5%
10	7.1%
11	5.2%
12	6.8%
13	14.0%
14	8.3%
15	2.1%
16	2.9%
17	3.0%

4. If no cutting takes place, the 10% down payment will not be refunded.

5. Operations on the contract issued will terminate on 12/31/2021.

**Description of Timber by Payment Unit (PU)**

PU	MARKET GROUP	PRODUCT	QUANTITY	UNIT	ACRES	ADVERTISE PRICE
1	Black Cherry	Sawtimber    Pulpwood	33.8	MBF	45.4	\$13,678.20
	Red Maple		2.5	MBF		
	Sugar Maple		1.6	MBF		
	Balsam Fir		6.0	Cords		
	Mixed Hardwood		334.0	Cords		
	<i>Beech</i>		5.0	<i>Cords</i>		
	<i>Black Cherry</i>		199.0	<i>Cords</i>		
	<i>Red Maple</i>		117.0	<i>Cords</i>		
	<i>Sugar Maple</i>		13.0	<i>Cords</i>		
	White Spruce		28.0	Cords		
2	Black Cherry	Sawtimber    Pulpwood	4.1	MBF	106.8	\$27,490.75
	Red Maple		13.3	MBF		
	Sugar Maple		4.1	MBF		
	Balsam Fir		144.0	Cords		
	Mixed Hardwood		600.0	Cords		
	<i>Black Cherry</i>		107.0	<i>Cords</i>		
	<i>Red Maple</i>		398.0	<i>Cords</i>		
	<i>Sugar Maple</i>		95.0	<i>Cords</i>		
	White Spruce		225.0	Cords		
	3		Red Maple	Sawtimber    Pulpwood		
Sugar Maple		2.4	MBF			
Balsam Fir		139.0	Cords			
Mixed Hardwood		426.0	Cords			
<i>Black Cherry</i>		48.0	<i>Cords</i>			
<i>Red Maple</i>		298.0	<i>Cords</i>			
<i>Sugar Maple</i>		80.0	<i>Cords</i>			
Paper Birch		17.0	Cords			
White Spruce		154.0	Cords			
4		Black Cherry	Sawtimber    Pulpwood		10.6	MBF
	Red Maple	13.8		MBF		
	Sugar Maple	2.0		MBF		
	Balsam Fir	41.0		Cords		
	Mixed Hardwood	161.0		Cords		
	<i>Black Cherry</i>	38.0		<i>Cords</i>		
	<i>Red Maple</i>	118.0		<i>Cords</i>		
	<i>Sugar Maple</i>	5.0		<i>Cords</i>		
	White Spruce	42.0		Cords		
	5	Balsam Fir		Pulpwood	43.0	Cords
Mixed Hardwood		59.0	Cords			
<i>Black Cherry</i>		7.0	<i>Cords</i>			
<i>Red Maple</i>		52.0	<i>Cords</i>			
White Spruce		31.0	Cords			
6	Balsam Fir	Pulpwood	2.0	Cords	5.5	\$552.95
	Mixed Hardwood		15.0	Cords		
	<i>Red Maple</i>		15.0	<i>Cords</i>		
	White Spruce		5.0	Cords		
7	Red Maple	Sawtimber    Pulpwood	4.2	MBF	13.8	\$3,568.40
	Sugar Maple		2.5	MBF		
	Balsam Fir		33.0	Cords		
	Mixed Hardwood		28.0	Cords		
	<i>Black Cherry</i>		5.0	<i>Cords</i>		
	<i>Red Maple</i>		21.0	<i>Cords</i>		
	<i>Sugar Maple</i>		2.0	<i>Cords</i>		
	White Spruce		30.0	Cords		
8	Balsam Fir	Pulpwood	6.0	Cords	31.0	\$5,787.85
	Mixed Hardwood		34.0	Cords		

Description of Timber by Payment Unit (PU), con't

PU	MARKET GROUP	PRODUCT	QUANTITY	UNIT	ACRES	ADVERTISE PRICE
	<i>Red Maple</i> Red Pine White Pine White Spruce		34.0 24.0 79.0 39.0	<i>Cords</i> Cords Cords Cords		
9	Balsam Fir Mixed Hardwood <i>Beech</i> <i>Black Cherry</i> <i>Red Maple</i> <i>Sugar Maple</i> White Spruce	Pulpwood	68.0 162.0 31.0 12.0 74.0 45.0 30.0	Cords Cords <i>Cords</i> <i>Cords</i> <i>Cords</i> <i>Cords</i> Cords	43.0	\$6,284.90
10	Red Maple Balsam Fir Mixed Hardwood <i>Red Maple</i> Paper Birch White Spruce	Sawtimber Pulpwood	1.5 25.0 446.0 446.0 6.0 30.0	MBF Cords Cords <i>Cords</i> Cords Cords	63.1	\$12,678.50
11	Balsam Fir Mixed Hardwood <i>Black Cherry</i> <i>Red Maple</i> Paper Birch White Spruce	Pulpwood	22.0 271.0 9.0 262.0 79.0 30.0	Cords Cords <i>Cords</i> <i>Cords</i> Cords Cords	66.0	\$9,317.05
12	Black Cherry Red Maple Sugar Maple Balsam Fir Mixed Hardwood <i>Beech</i> <i>Black Cherry</i> <i>Red Maple</i> <i>Sugar Maple</i> Paper Birch White Spruce	Sawtimber Pulpwood	6.1 20.0 8.8 20.0 215.0 2.0 30.0 159.0 24.0 6.0 16.0	MBF MBF MBF Cords Cords <i>Cords</i> <i>Cords</i> <i>Cords</i> <i>Cords</i> Cords Cords	17.0	\$12,243.50
13	Balsam Fir Jack Pine Mixed Hardwood <i>Red Maple</i> Quaking Aspen White Spruce	Pulpwood	3.0 450.0 47.0 47.0 52.0 4.0	Cords Cords Cords <i>Cords</i> Cords Cords	48.2	\$25,107.60
14	Jack Pine Mixed Hardwood <i>Red Maple</i> Quaking Aspen Red Pine White Pine	Pulpwood	185.0 11.0 11.0 51.0 45.0 32.0	Cords Cords <i>Cords</i> Cords Cords Cords	19.3	\$14,786.00
15	Red Maple Balsam Fir Hemlock Mixed Hardwood <i>Beech</i> <i>Red Maple</i> White Spruce	Sawtimber Pulpwood	5.6 18.0 29.0 91.0 20.0 71.0 18.0	MBF Cords Cords Cords <i>Cords</i> <i>Cords</i> Cords	13.4	\$3,758.70
16	Jack Pine Mixed Hardwood	Pulpwood	95.0 4.0	Cords Cords	9.5	\$5,283.20



**Description of Timber by Payment Unit (PU), con't**

PU	MARKET GROUP	PRODUCT	QUANTITY	UNIT	ACRES	ADVERTISE PRICE
16 con't	<i>Red Maple</i>	<i>Pulpwood</i>	4.0	<i>Cords</i>		
	Paper Birch		15.0	Cords		
	White Spruce		10.0	Cords		
17	Red Maple	Sawtimber	1.1	MBF	9.6	\$5,369.55
	Sugar Maple		0.7	MBF		
	Balsam Fir	Pulpwood	52.0	Cords		
	Hemlock		7.0	Cords		
	Mixed Hardwood		117.0	Cords		
	<i>Beech</i>		25.0	<i>Cords</i>		
	<i>Red Maple</i>		89.0	<i>Cords</i>		
	<i>Sugar Maple</i>		3.0	<i>Cords</i>		
	Paper Birch		2.0	Cords		
	Red Pine		15.0	Cords		
	TOTAL:			155.0		
TOTAL:			5,524.0	Cords		

## Sale Specific Conditions & Requirements

**Sale Name: GNA Bloodwood**

**Sale Number: 41-811-18 Seq#: 1**

### 1 - Sale Area

#### 1.2 - Boundaries

##### 1.2.1 - Painted boundaries (1/14)

The sale boundary and Payment Unit boundaries are marked and identified by orange paint. Exterior sale boundary lines against USFS are marked with orange paint. Interior Payment Unit boundaries are marked with orange paint. The painted boundary line trees are not Included Timber and are to be protected.

### 2 - Timber Specifications

#### 2.1 - Included Timber

##### 2.1.1 - Clearcut unit(s) with unmerchantable trees (6/14)

Within Payment Unit(s) 13, 14 & 16, cut all all trees that are two (2) inches or more at DBH, except do not cut red pine, white pine and oak. In addition, cut all red pine and white pine marked in blue paint.

##### 2.1.3 - Cut tree marked unit(s) (12/08)

Within Payment Unit(s) 1-11 & 15, all trees are designated for cutting when marked with blue paint above and below stump height, regardless of merchantability. In addition, all balsam fir and spruce which meet minimum piece specifications in 2.2 Utilization, are designated for cutting.

##### 2.1.7 - Leave tree marked unit(s) (6/14)

Within Payment Unit(s) 12 & 17, all trees, which meet minimum piece specifications in 2.2 Utilization, are designated for cutting, except do not cut trees marked with orange paint above and below stump height. In addition, within Payment Unit 12, do not cut hemlock or white pine.

#### 2.2 - Utilization

##### 2.2.3 - Stump heights (4/07)

Stump heights within Payment Units 12, 13, 14, 16 & 17 shall not exceed 12 inches for trees greater than 10 inches DBH and 4 inches for trees smaller than 10 inches DBH. This is in order to facilitate regeneration operations.

##### 2.2.12 - GNA, cut and remove Included Timber (3/18)

Unless provided otherwise herein, the DNR agrees to sell and permit Purchaser to cut and remove Included Timber and Purchaser agrees to purchase, cut, and remove Included Timber.

### 4 - Transportation

#### 4.1 - Construction

##### 4.1.3 - Slash and earthen piles (8/04)

Piles or windrows of earth along roads and landings that have been widened or constructed shall be leveled. Slash from road maintenance or construction, including stumps, shall be dispersed throughout the sale.

##### 4.1.4 - Timber removed for construction (12/09)

Trees cut or damaged in the process of pre-approved road, landing or skid trail construction will be decked in an area separate from other Designated Timber and not removed until measured by the sale administrator. Payment will be made at the specified Purchase Unit Price.

##### 4.1.6 - Road construction (1/09)

Construction of new roads or improvements of existing roads shall be done in such a way as to minimize the environmental and visual impacts. Merchantable trees shall be cut and utilized unless otherwise directed. Non-merchantable trees shall be severed and laid flat on the ground. Slash shall be scattered, and not left in windrows and kept a minimum of 10 feet back from the road edge. Stumps shall be set upright, not left on edge, and be moved at least 10 feet away from the road edge. Disturbed soil shall be feathered into the woods and not left in berms or windrows.

##### 4.1.7 - Road closure (10/11)

All new roads built into the sale must be blocked to vehicle traffic upon completion of the sale. In general, this will require constructing a four (4') foot high berm of stumps and logs covered with earth. Stumps and brush must be placed along the remainder of the trail. These roads must be rendered impassable to cars and trucks. Contact the sale administrator for specific details of design and placement.

## 5 - Operations

### 5.1 - Notification

#### 5.1.1 - Pre-sale conference (10/16)

A pre-sale conference on site between the Purchaser and sale administrator is required prior to beginning any operations to determine landing and road locations. The Unit Manager or his/her representative must be contacted at least 10 days in advance to schedule the conference.

### 5.2 - Conduct of Operations

#### 5.2.1 - Slash

##### 5.2.1.11 - Slash for reforestation (5/07)

To facilitate reforestation, Payment Unit(s) 12, 13, 14, 16 & 17 shall be left with slash evenly distributed. Bunched tops within the cutting area shall be broken up and scattered. Stumps shall be cut low to the ground. Processing sites shall not be left with a compacted layer of slash; tops from these sites shall be hauled back into the cut area and scattered.

#### 5.2.2 - Hazard Trees/Snags

##### 5.2.2.1 - Den trees (10/16)

Obvious hollow and/or den trees shall be protected and left standing unless they are a safety hazard.

#### 5.2.3 - Operating Restrictions

##### 5.2.3.1 - Operating restrictions (9/11)

Within Payment Unit(s) 1 - 17, unless changed by written agreement, cutting, skidding, and hauling are not permitted during the period of March 1 to August 31. This restriction is due to being in the vicinity of a known raptor nest. Note: Nests are generally checked for activity by June 1; if the nests are not active, the restriction can be waived for the remainder of the period.

##### 5.2.3.6 - Bark beetle restriction (12/08)

In the event drought creates a high risk of pine bark beetle infestation, pine is not to be cut during the period March 1 through July 1, unless all portions of trees greater than two inches in diameter are removed from the sale area, reduced to chips, or treated to the satisfaction of the Unit Manager or his/her representative, within fifteen days of being severed from the stump. Pine log decks, pulpwood piles and treetops that are piled for chipping in the fall or winter within a 1/4 mile of susceptible sites must be removed before March 15. Residual slash must not be placed in piles or rows and must be spread over the site for quick drying. The Department of Natural Resources will exercise this specification if the risk of damage warrants.

#### 5.2.32 - Decking/landing restoration (9/13)

All decking and landing areas must have the surface area restored to a condition equal to or better than before. This is to ensure the proper regeneration of the stand. Wood debris, chips and "cookies" from trimmings must be removed or scattered away from landing and loading areas and may not be windrowed on the edge.

#### 5.2.38 - No decking against live trees (2/04)

Cut products may not be decked against unmarked or designated leave trees.

#### 5.2.41 - Snowmobile trail protection (9/11)

Trail 7 is a snowmobile trail and is shown on the Timber Sale Map. Do not cut or damage posts with orange trail markers or traffic control signs. The snowmobile trail may not be used for any timber sale operations from December 1 to March 31. Maintain a 20 foot wide slash, debris, and rut free zone daily using the snowmobile trail as the centerline. All stumps within 20 feet of the snowmobile trail must be cut at ground level.

### 5.4 - Soil Protection

#### 5.4.1 - Rutting restriction, general (7/16)

Operations are to cease immediately if equipment and weather conditions result in rutting of roads which is 12 inches or greater in depth and 50 feet in length. The Unit Manager or his/her representative may restrict hauling and/or skidding if ruts exceed the specified depth. With the Unit Manager or his/her representative's approval, the Purchaser may return to the area when the risk of rutting has decreased.

## 5.6 - Debris and Waste Material

### 5.6.2 - GNA, equipment cleaning (1/16)

(a) Areas, known by the DNR prior to timber sale advertisement, that are infested with invasive species of concern are shown on the Timber Sale Map. A current list of invasive species of concern and a map showing the extent of known infestations is available from the DNR. For purposes of this provision, "Off-Road Equipment" includes all logging and construction machinery, except for log trucks, chip vans, service vehicles, water trucks, pickup trucks, cars, and similar vehicles.

(b) Purchaser shall adhere to the following requirements with regard to cleaning "Off-Road Equipment":

(i) Prior to moving Off-Road Equipment onto the Sale Area, Purchaser shall identify the location of the equipment's most recent operation. Purchaser shall not move any Off-Road Equipment that last operated in an area infested with one or more invasive species of concern onto Sale Area without having cleaned such equipment of seeds, soil, vegetative matter, and other debris that could contain or hold seeds, and having notified the DNR, as provided in (iii). If the location of prior operation cannot be identified, then Purchaser shall assume that the location is infested with invasive species of concern.

(ii) Prior to moving Off-Road Equipment from a cutting unit that is shown on the Timber Sale Map to be infested with invasive species of concern to, or through any other area that is shown as being free of invasive species of concern, or infested with a different invasive species, Purchaser shall clean such equipment of seeds, soil, vegetative matter, and other debris that could contain or hold seeds, and shall notify the DNR, as provided in (iii).

(iii) Prior to moving any Off-Road Equipment subject to the cleaning requirements set forth above, Purchaser shall advise DNR of its cleaning measures and make the equipment available for inspection. DNR shall have 2 days, excluding weekends and State holidays, to inspect equipment after it has been made available. After satisfactory inspection or after such 2 day period, Purchaser may move the equipment as planned. Equipment shall be considered clean when a visual inspection does not disclose seeds, soil, vegetative matter, and other debris that could contain or hold seeds. Purchaser shall not be required to disassemble equipment unless so directed by the DNR after inspection.

(iv) If Purchaser desires to clean Off-Road Equipment on National Forest land, such as at the end of a project or prior to moving to, or through an area that is free of invasive species of concern, Purchaser shall obtain prior approval from the Unit Manager or his/her representative as to the location for such cleaning and measures, if any, for controlling impacts.

(v) Unit Manager or his/her representative may order delay, interruption, or modification of this Contract pursuant to Condition & Requirement 7.3 or 7.3.4.

(c) Nothing contained in this Condition & Requirement shall be interpreted as creating any warranty on the part of the DNR that all locations of invasive species of concern have been described herein, elsewhere in this Contract, or designated on the ground. Following sale advertisement, additional locations may be described or designated, and other species may be added to the list of invasive species of concern. In such event, the Unit Manager or his/her representative may order delay, interruption, or modification of this Contract pursuant to Condition & Requirement 7.3 or 7.3.4.

(d) The parties shall promptly communicate with one another with respect to description or designation of additional locations; discovery of locations of new species or new infestation; and, addition of species to the list of invasive species of concern.

## 5.8 - Protection of Endangered Species

### 5.8.3 - Red shoulder hawk or goshawk (2/16)

In the event that an active red shoulder hawk or goshawk nest is found, the contract may be amended to protect the nest site until the nest is determined to be inactive. The value of the trees in this excluded area will be refunded or credited to the Purchaser. The nest will be buffered with a five-chain radius (eight acre) protection area, centered on the nest tree, in which there will be no cutting or new roads constructed. Avoid human disturbance, including loading and skidding, in the protection

area.

An additional zone of five chains (ten chains centered on the active nest tree) will be established in which there is no management activity from April 1 to July 30. Limit biomass harvesting and chipping operations within this ten-chain zone, retain the maximum one-third of residues per the Woody Biomass Harvesting Guidelines (Michigan DNR 2010). Nests determined to be inactive will be protected with a one-chain no-harvest buffer.

## 6 - Safety and Fire Prevention

### 6.2 - Signing

#### 6.2.1 - Road posting (9/09)

The Purchaser is responsible for posting and maintaining caution signs on Forest Service Roads prior to beginning operations. The road must be posted at appropriate distances from the sale area to warn of logging activity and truck traffic. Signs must be removed when harvest operations are suspended or completed. The Purchaser will provide these signs.

## 7 - Other Conditions

### SKIP

#### 7.1.1 - GNA, title (7/16)

General Condition & Requirement 7.1 is inapplicable. The following applies to this contract.

All right, title, and interest in and to any Included Timber shall remain in USDA Forest Service with the State of Michigan acting on behalf of the USDA Forest Service under this GNA contract, until it has been Measured, removed from Sale Area or other authorized cutting area, and paid for, at which time title shall vest in Purchaser. Title to any Included Timber that has been Measured and paid for, but not removed from Sale Area or other authorized cutting area by Purchaser on or prior to Termination Date, shall remain in USDA Forest Service.

### 7.3 - Contract Modifications

#### 7.3.1 - Emerald Ash Borer

##### 7.3.1.2 - Emerald ash borer, ash or firewood on sale (2/05)

There is ash and/or "firewood" in this sale and it is located within an emerald ash borer quarantined area. The Director of the Michigan Department of Agriculture (MDA) by the authority of Act No. 72 of the Public Acts of 1945, as amended, and Quarantine Regulation No. 620, has promulgated this quarantine to prevent the further spread of this pest and sets forth: definitions, regulated articles, regulated areas, conditions of movement, violations and penalties, and special exemptions. The Purchaser must comply with this quarantine. Contact the MDA for further information.

#### 7.3.3 - Modification for reforestation (8/05)

When contractual work of Purchaser has been accepted for any Payment Unit identified on Sale Area Map, Payment Unit will be eliminated from the Sale Area on written notice so that reforestation operations can begin.

#### 7.3.4 - GNA, contract suspension and modification (5/16)

(a) The Unit Manager may, by written order, delay or interrupt authorized operations under this contract or, notwithstanding Condition & Requirement 7.3, modify this contract, in whole or in part:

(i) To prevent environmental degradation or resource damage, including, but not limited to, harm to habitat, plants, animals, cultural resources, or cave resources;

(ii) To ensure consistency with land and resource management plans or other documents prepared pursuant to the National Environmental Policy Act of 1969, 42 USC 4321-4347;

(iii) To conduct environmental analysis, including, but not limited to, engaging in consultation pursuant to the Endangered Species Act of 1973, 16 USC 1531, et seq.; or

(iv) Upon agreement of the Forest Service, due to administrative appeal or litigation, regardless of whether the Unit Manager's order is required by a court order or this contract is named in such a proceeding.

(b) In the event of an order delaying or interrupting Purchaser's Operations under this Condition & Requirement, Purchaser's remedy shall be:

(i) a no cost contract extension,

(ii) reimbursement for Out-of-Pocket Expenses,

however, the foregoing remedies shall be available only to the extent that the Unit Manager's order was the sole and exclusive cause of the delay or interruption of Purchaser's operations.

(c) Remedies awarded to the Purchaser shall not be duplicative, and the Unit Manager shall have the right to structure remedies provided herein to avoid duplicative compensation.

(d) Purchaser agrees that this Condition & Requirement, and the remedies provided herein shall apply regardless of any finding by any court that the DNR failed to comply with any statute, regulation and/or policy in connection with awarding, advertising, or authorizing this sale, or a similar sale.

## 7.5 - Loss

### 7.5.2 - GNA, liability for loss (7/16)

If Included Timber is destroyed or damaged by an unexpected event that changes the nature of Included Timber, such as wind, flood, insects, disease, or similar cause, the Purchaser shall bear the timber value loss resulting from such destruction or damage.

Deterioration or loss of timber value due to delay or interruption under 7.3.4 - GNA, contract suspension and modification, shall be borne by the party holding title. In this event, Included Timber to which USDA Forest Service holds title, Purchaser of the State GNA contract will not be obligated to remove and pay for such timber. This Subsection shall not be construed to relieve either party of liability for negligence.

## 7.10 - Certified Timber

### 7.10.1 - Non-certified timber (2/16)

The area encompassed by this timber sale is not certified to the standards of the Forest Stewardship Council (FSC) or the Sustainable Forestry Initiative (SFI). Forest products from this sale may not be delivered to the mill as "FSC and / or SFI certified". The lands within this sale belong to the National Forest system and are being managed by the State as part of a Good Neighbor Authority (GNA) agreement.





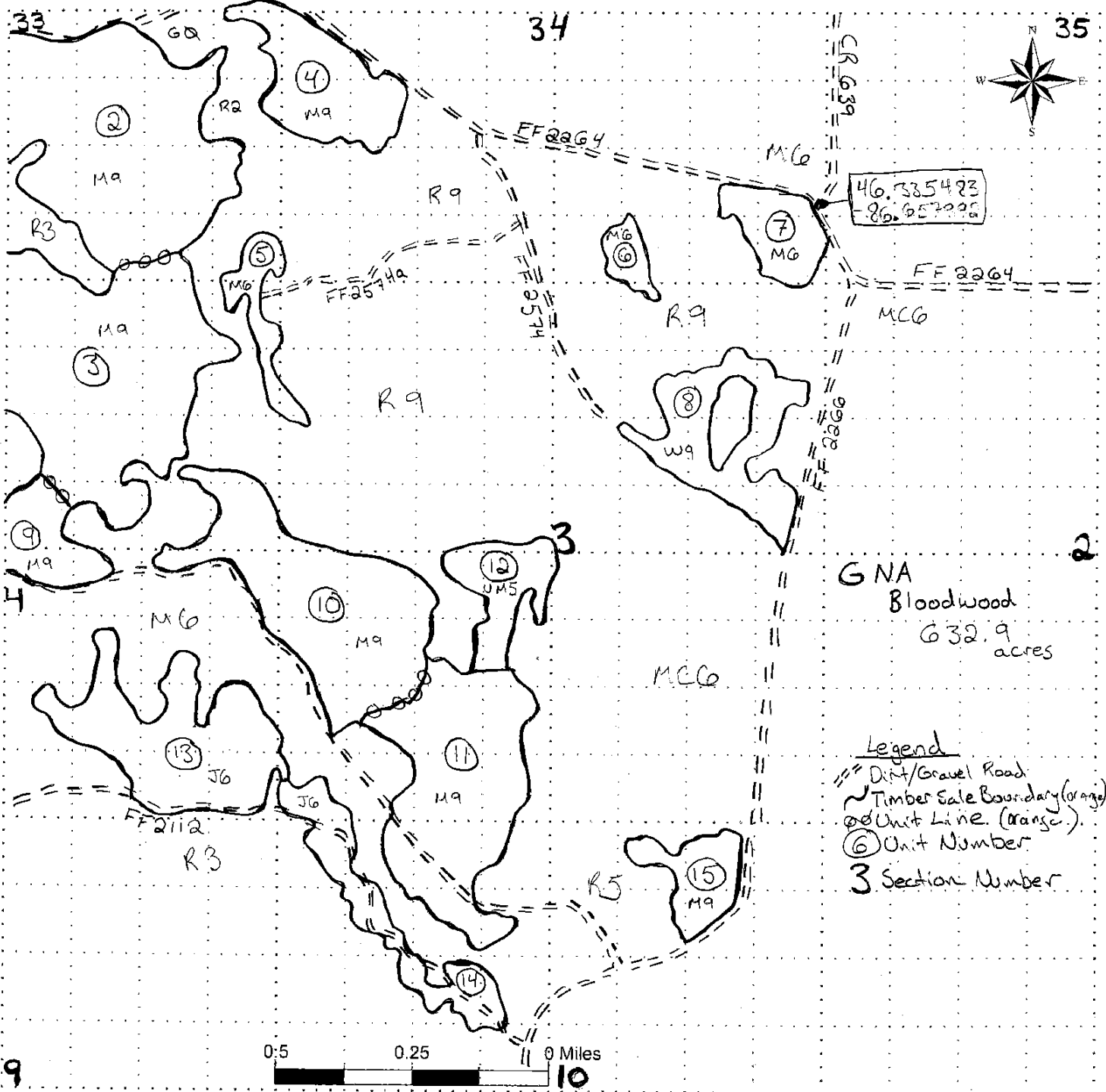
# TIMBER SALE MAP

This information provided by authority of Part 5, 1994 PA 451, as amended.

Sale Number 41-811	Year 18
Date 6/11/18	Page of 2 13

Forest Management Unit Shingleton	County Alger	Mapped By S. Kentner
Township 45, 46N	Range 19W	Cruised By Unit Staff
Section(s) and Subdivision(s) 32, 33, 34, 4, 3, 10, 9, 8		

Cover Type				Density	
A = Aspen	J = Jack Pine	O = Oak	U = Upland Brush	0 = Non Stocked	5 = Pole Timber Medium
B = Paper Birch	K = Rock	P = Lowland Poplar	UM = Upland Mix Forest	1 = Seedling Sapling Poor	6 = Pole Timber Well
C = Cedar	L = Lowland Brush	Q = Mixed Swamp Conifer	V = Bog or Marsh	2 = Seedling Sapling Medium	7 = Saw Timber Poor
D = Tread Bog	LM = Lowland Mix Forest	R = Red Pine	W = White Pine	3 = Seedling Sapling Well	8 = Saw Timber Medium
E = Swamp Hardwoods	M = Maple, Beech, Birch	S = Black Spruce	X = Non Stocked	4 = Pole Timber Poor	9 = Saw Timber Well
F = Spruce/Fir	MC = Mixed Conifer	T = Tamarack	Y = Sand		
G = Grass	MD = Mixed Deciduous	Z = Water			
H = Hemlock	N = Marsh				



46.385423  
86.657228

GNA  
Bloodwood  
632.9 acres

Legend  
 --- Dirt/Gravel Road  
 ~ Timber Sale Boundary (orange)  
 o Unit Line (orange)  
 ⑥ Unit Number  
 3 Section Number





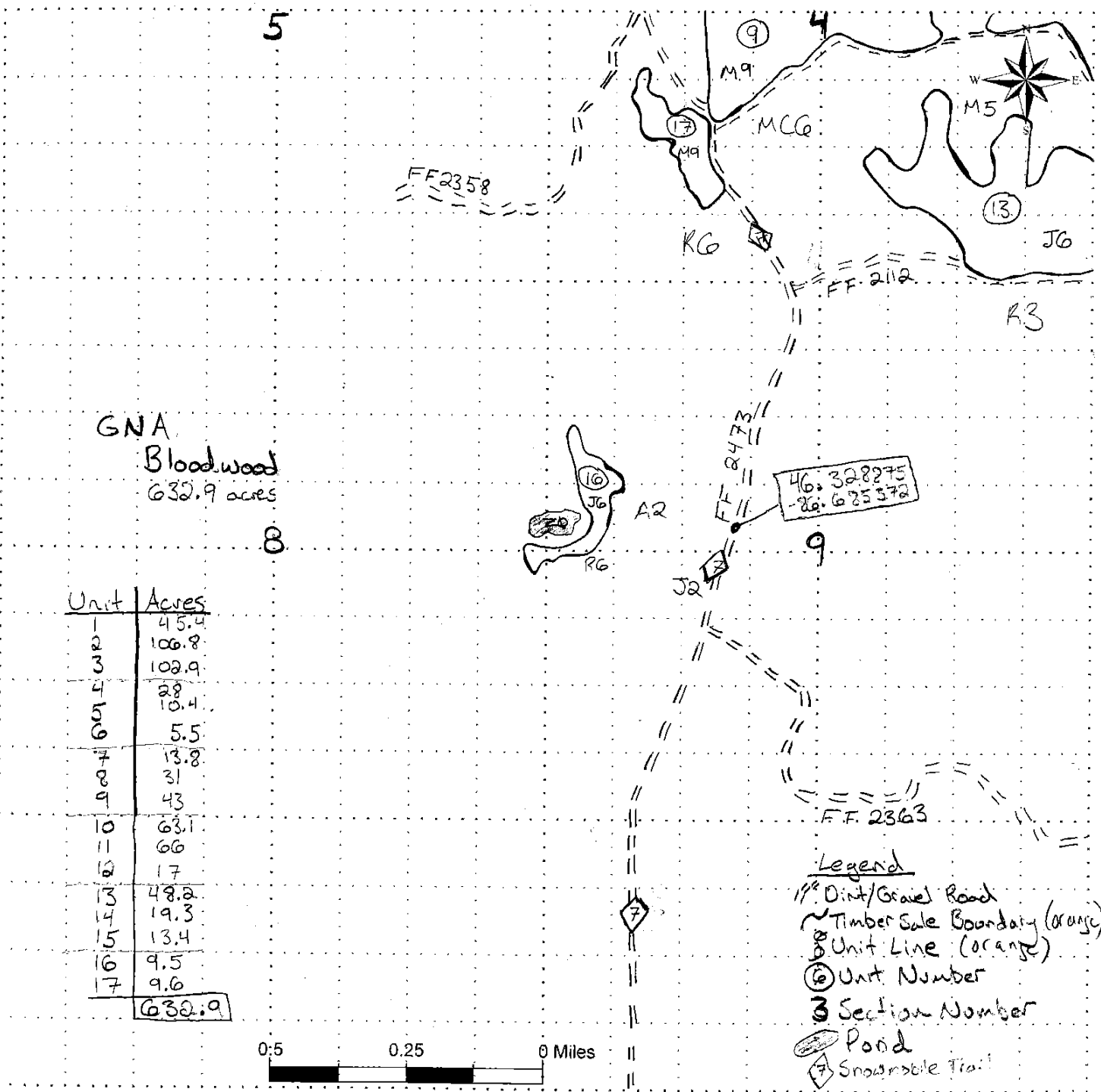
# TIMBER SALE MAP

This information provided by authority of Part 5, 1994 PA 451, as amended.

Sale Number	Year
41 - 811	18

Forest Management Unit Shingleton	County Alger	Mapped By S. Kentner	Date 6/11/18	Page 3	of 3
Township 45, 46N	Range 19W	Section(s) and Subdivision(s) 32, 33, 34, 4, 3, 10, 9, 8			

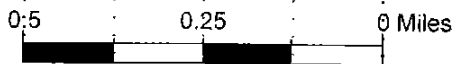
Cover Type				Density	
A = Aspen	J = Jack Pine	O = Oak	U = Upland Brush	0 = Non Stocked	5 = Pole Timber Medium
B = Paper Birch	K = Rock	P = Lowland Poplar	UM = Upland Mix Forest	1 = Seedling Sapling Poor	6 = Pole Timber Well
C = Cedar	L = Lowland Brush	Q = Mixed Swamp Conifer	V = Bog or Marsh	2 = Seedling Sapling Medium	7 = Saw Timber Poor
D = Treed Bog	LM = Lowland Mix Forest	R = Red Pine	W = White Pine	3 = Seedling Sapling Well	8 = Saw Timber Medium
E = Swamp Hardwoods	M = Maple, Beech, Birch	S = Black Spruce	X = Non Stocked	4 = Pole Timber Poor	9 = Saw Timber Well
F = Spruce/Fir	MC = Mixed Conifer	T = Tamarack	Y = Sand		
G = Grass	MD = Mixed Deciduous	Z = Water			
H = Hemlock	N = Marsh				



GNA  
Bloodwood  
632.9 acres

Unit	Acres
1	45.4
2	106.8
3	102.9
4	2.8
5	10.4
6	5.5
7	13.8
8	31
9	43
10	63.1
11	66
12	17
13	48.2
14	19.3
15	13.4
16	9.5
17	9.6
<b>Total</b>	<b>632.9</b>

- Legend
- Dirt/Gravel Road
  - Timber Sale Boundary (orange)
  - Unit Line (orange)
  - ⑨ Unit Number
  - 3 Section Number
  - Pond
  - ◇ Snowmobile Trail





Creek Hopping Pine (41-003-18)  
T43N, R14W, SEC. 1; T44N, R14W, SEC. 25; T44N, R14W, SEC. 36; Schoolcraft

In response to the notice of sale to be held 2:00 p.m. (local time) on October 10, 2018, I am hereby submitting my sealed bid (firm offer) for the following forest products to be cut. Bids for individual species must be at or above the advertised price. All non-responsive bid forms may be rejected.

<u>PRODUCTS &amp; SPECIES</u>	<u>ESTIMATED VOLUME*</u>	<u>ADVERTISED PRICE</u>	<u>BID PRICE/UNIT</u>
Pulpwood			
Balsam Fir	4.00 Cords	\$ 15.50/Cord	\$ _____
Black Spruce	260.00 Cords	\$ 20.35/Cord	\$ _____
Jack Pine	56.00 Cords	\$ 35.95/Cord	\$ _____
Quaking Aspen	6.00 Cords	\$ 23.90/Cord	\$ _____
Red Maple	2.00 Cords	\$ 18.20/Cord	\$ _____
Red Pine	1,541.00 Cords	\$ 47.05/Cord	\$ _____
Tamarack	23.00 Cords	\$ 7.60/Cord	\$ _____
White Pine	45.00 Cords	\$ 20.35/Cord	\$ _____

\*The volumes are statistically estimated within plus (+) or minus (-) 13.38 percent. These estimated volumes are final and not subject to adjustment. Prospective bidders are urged to examine this timber and to make their own estimates of quantity and quality.

I understand that any or all bids may be rejected. All bids must be signed and all bid items must be bid or the bid form may be rejected. I also understand that consideration and awarding a contract will be based upon my past performance and ability to complete the contract based upon equipment and staffing subject to my control.

FEDERAL ID: \_\_\_\_\_ - \_\_\_\_\_ or SOCIAL SECURITY NUMBER: \_\_\_\_\_ - \_\_\_\_\_ - \_\_\_\_\_

Company or individual bidding: \_\_\_\_\_

Company representative's name: \_\_\_\_\_

Address: \_\_\_\_\_

City: \_\_\_\_\_ State: \_\_\_\_\_ Zip: \_\_\_\_\_

IF AVAILABLE, PLEASE PLACE THE PERSONALIZED LABEL FROM YOUR PROSPECTUS IN THE ABOVE BOX.

Individual or company representative's signature: \_\_\_\_\_ Date: \_\_\_\_\_

Phone number : \_\_\_\_\_ Email (optional): \_\_\_\_\_

**THE WINNING BIDDER MUST COMPLETE THE VERIFICATION OF WORKER'S DISABILITY COMPENSATION ACT COMPLIANCE (ON REVERSE SIDE IF DOUBLE SIDED) WITHIN 21 DAYS OF SALE AWARD DATE**



<b>FOR DEPARTMENT USE ONLY</b>
Sale Number (XX - XXX - XX - XX)
Forest Management Unit:

## TIMBER SALE VERIFICATION OF WORKER'S DISABILITY COMPENSATION ACT COMPLIANCE

*As required by Act 317, P.A. 1969 (Worker's Compensation) and  
Part 5 of Act 451 of 1994, as amended.*

### VERIFICATION OF WORKER'S DISABILITY COMPENSATION ACT COMPLIANCE

- This verification must be completed and submitted within 21 days of contract award and prior to the issuance of the timber sale contract.
- In addition, if boxes 2B or 2C are checked, then Notice of Exclusion or Certificate of Insurance must be submitted within twenty-one (21) days of the contract award and prior to the issuance of the timber sale contract.
- All information must be typed or printed except for written signatures.

Please Check Appropriate Categories:

1. My business is organized as (you **must** check one of the boxes below):
  - A.  Sole Proprietorship (individual)
  - B.  Partnership
  - C.  Corporation
2. You **must** check one of the boxes below:
  - A.  I certify my business is a sole proprietorship and it has no employees but the sole proprietor. I am not subject to the Worker's Compensation Laws.
  - B.  I certify my business has satisfied its obligation to the Worker's Compensation Act through the use of an approved Notice of Exclusion (BWC-337, Rev. 5/96). I will provide a copy of the Notice of Exclusion within 21 days of the contract award. (For questions or a copy of the BWC-337, please call the Worker's Compensation Bureau at 517-322-1195).
  - C.  I certify my business has a Worker's Compensation Policy. I will provide an original Certificate of Insurance within twenty-one (21) days of the contract award.
3. If you have checked item 2(A) or 2(B), you **must** indicate the number of **both** full-time and part-time employees, other than yourself, including family members and active partners (if none, you must enter "0").

\_\_\_\_\_ Full-time Employees

\_\_\_\_\_ Part-time Employees

Name of Business		Federal ID (or) Social Security No.	
Address		Telephone (       )	
City	State	ZIP	

*I hereby certify that the above information is true and correct. I agree to notify the Michigan DNR of any changes that occur in factors affecting my coverage during any of my present and future operations.*

\_\_\_\_\_  
Signature of Owner or Authorized Representative

\_\_\_\_\_  
Title

\_\_\_\_\_  
Date

**Please complete the "SEALED BID" information on the next page**

Femelschlag (41-004-18)

T41N, R17W, SEC. 22; T41N, R17W, SEC. 27; T41N, R17W, SEC. 34; Schoolcraft

In response to the notice of sale to be held 2:00 p.m. (local time) on October 10, 2018, I am hereby submitting my sealed bid (firm offer) for the following forest products to be cut. Bids for individual species must be at or above the advertised price. All non-responsive bid forms may be rejected.

<u>PRODUCTS &amp; SPECIES</u>	<u>ESTIMATED VOLUME*</u>	<u>ADVERTISED PRICE</u>	<u>BID PRICE/UNIT</u>
<b>Sawtimber</b>			
Basswood	2.90 MBF	\$ 201.00/MBF	\$ _____
Paper Birch	0.30 MBF	\$ 91.00/MBF	\$ _____
Red Maple	1.00 MBF	\$ 121.00/MBF	\$ _____
Red Oak	145.60 MBF	\$ 227.00/MBF	\$ _____
Sugar Maple	2.50 MBF	\$ 407.00/MBF	\$ _____
<b>Pulpwood</b>			
Balsam Fir	13.00 Cords	\$ 23.95/Cord	\$ _____
Basswood	13.00 Cords	\$ 14.00/Cord	\$ _____
Beech	24.00 Cords	\$ 28.15/Cord	\$ _____
Jack Pine	83.00 Cords	\$ 55.60/Cord	\$ _____
Mixed Aspen	1,360.00 Cords	\$ 36.95/Cord	\$ _____
Mixed Hardwood	195.00 Cords	\$ 28.15/Cord	\$ _____
Paper Birch	8.00 Cords	\$ 18.65/Cord	\$ _____
Red Oak	789.00 Cords	\$ 30.95/Cord	\$ _____
Red Pine	131.00 Cords	\$ 72.70/Cord	\$ _____
White Ash	3.00 Cords	\$ 28.15/Cord	\$ _____
White Pine	130.00 Cords	\$ 31.50/Cord	\$ _____

\*The volumes are statistically estimated within plus (+) or minus (-) 15.82 percent. These estimated volumes are final and not subject to adjustment. Prospective bidders are urged to examine this timber and to make their own estimates of quantity and quality.

I understand that any or all bids may be rejected. All bids must be signed and all bid items must be bid or the bid form may be rejected. I also understand that consideration and awarding a contract will be based upon my past performance and ability to complete the contract based upon equipment and staffing subject to my control.

FEDERAL ID: \_\_\_\_ - \_\_\_\_ - \_\_\_\_ or SOCIAL SECURITY NUMBER: \_\_\_\_ - \_\_\_\_ - \_\_\_\_

Company or individual bidding: \_\_\_\_\_

Company representative's name: \_\_\_\_\_

Address: \_\_\_\_\_

City: \_\_\_\_\_ State: \_\_\_\_\_ Zip: \_\_\_\_\_

IF AVAILABLE, PLEASE PLACE THE PERSONALIZED LABEL FROM YOUR PROSPECTUS IN THE ABOVE BOX.

Individual or company representative's signature: \_\_\_\_\_ Date: \_\_\_\_\_

Phone number : \_\_\_\_\_ Email (optional): \_\_\_\_\_

**THE WINNING BIDDER MUST COMPLETE THE VERIFICATION OF WORKER'S DISABILITY COMPENSATION ACT COMPLIANCE (ON REVERSE SIDE IF DOUBLE SIDED) WITHIN 21 DAYS OF SALE AWARD DATE**



<b>FOR DEPARTMENT USE ONLY</b>
Sale Number (XX – XXX – XX – XX)
Forest Management Unit:

## TIMBER SALE VERIFICATION OF WORKER'S DISABILITY COMPENSATION ACT COMPLIANCE

*As required by Act 317, P.A. 1969 (Worker's Compensation) and  
Part 5 of Act 451 of 1994, as amended.*

### VERIFICATION OF WORKER'S DISABILITY COMPENSATION ACT COMPLIANCE

- This verification must be completed and submitted within 21 days of contract award and prior to the issuance of the timber sale contract.
- In addition, if boxes 2B or 2C are checked, then Notice of Exclusion or Certificate of Insurance must be submitted within twenty-one (21) days of the contract award and prior to the issuance of the timber sale contract.
- All information must be typed or printed except for written signatures.

Please Check Appropriate Categories:

1. My business is organized as (you **must** check one of the boxes below):
  - A.  Sole Proprietorship (individual)
  - B.  Partnership
  - C.  Corporation
2. You **must** check one of the boxes below:
  - A.  I certify my business is a sole proprietorship and it has no employees but the sole proprietor. I am not subject to the Worker's Compensation Laws.
  - B.  I certify my business has satisfied its obligation to the Worker's Compensation Act through the use of an approved Notice of Exclusion (BWC-337, Rev. 5/96). I will provide a copy of the Notice of Exclusion within 21 days of the contract award. (For questions or a copy of the BWC-337, please call the Worker's Compensation Bureau at 517-322-1195).
  - C.  I certify my business has a Worker's Compensation Policy. I will provide an original Certificate of Insurance within twenty-one (21) days of the contract award.
3. If you have checked item 2(A) or 2(B), you **must** indicate the number of **both** full-time and part-time employees, other than yourself, including family members and active partners (if none, you must enter "0").

\_\_\_\_\_ Full-time Employees

\_\_\_\_\_ Part-time Employees

Name of Business		Federal ID (or) Social Security No.	
Address		Telephone (       )	
City	State	ZIP	

*I hereby certify that the above information is true and correct. I agree to notify the Michigan DNR of any changes that occur in factors affecting my coverage during any of my present and future operations.*

\_\_\_\_\_  
Signature of Owner or Authorized Representative

\_\_\_\_\_  
Title

\_\_\_\_\_  
Date

**Please complete the "SEALED BID" information on the next page**

Ashford Lake 2 (41-009-18)

T43N, R16W, SEC. 10; T43N, R16W, SEC. 3; T43N, R16W, SEC. 4; Schoolcraft

In response to the notice of sale to be held 2:00 p.m. (local time) on October 10, 2018, I am hereby submitting my sealed bid (firm offer) for the following forest products to be cut. Bids for individual species must be at or above the advertised price. All non-responsive bid forms may be rejected.

<u>PRODUCTS &amp; SPECIES</u>	<u>ESTIMATED VOLUME*</u>	<u>ADVERTISED PRICE</u>	<u>BID PRICE/UNIT</u>
<b>Sawtimber</b>			
Red Maple	30.90 MBF	\$ 121.00/MBF	\$ _____
Sugar Maple	27.50 MBF	\$ 407.00/MBF	\$ _____
<b>Pulpwood</b>			
Balsam Fir	2.00 Cords	\$ 23.95/Cord	\$ _____
Mixed Aspen	54.00 Cords	\$ 36.95/Cord	\$ _____
Mixed Hardwood	442.00 Cords	\$ 28.15/Cord	\$ _____
White Pine	15.00 Cords	\$ 31.50/Cord	\$ _____

\*These estimated volumes are final and not subject to adjustment. Prospective bidders are urged to examine this timber and to make their own estimates of quantity and quality.

I understand that any or all bids may be rejected. All bids must be signed and all bid items must be bid or the bid form may be rejected. I also understand that consideration and awarding a contract will be based upon my past performance and ability to complete the contract based upon equipment and staffing subject to my control.

FEDERAL ID: \_\_\_\_ - \_\_\_\_ - \_\_\_\_ or SOCIAL SECURITY NUMBER: \_\_\_\_ - \_\_\_\_ - \_\_\_\_

Company or individual bidding: \_\_\_\_\_

Company representative's name: \_\_\_\_\_

Address: \_\_\_\_\_

City: \_\_\_\_\_ State: \_\_\_\_\_ Zip: \_\_\_\_\_

IF AVAILABLE, PLEASE PLACE THE PERSONALIZED LABEL FROM YOUR PROSPECTUS IN THE ABOVE BOX.

Individual or company representative's signature: \_\_\_\_\_ Date: \_\_\_\_\_

Phone number : \_\_\_\_\_ Email (optional): \_\_\_\_\_

**THE WINNING BIDDER MUST COMPLETE THE VERIFICATION OF WORKER'S DISABILITY COMPENSATION ACT COMPLIANCE (ON REVERSE SIDE IF DOUBLE SIDED) WITHIN 21 DAYS OF SALE AWARD DATE**



FOR DEPARTMENT USE ONLY	
Sale Number (XX - XXX - XX - XX)	
Forest Management Unit:	

## TIMBER SALE VERIFICATION OF WORKER'S DISABILITY COMPENSATION ACT COMPLIANCE

As required by Act 317, P.A. 1969 (Worker's Compensation) and  
Part 5 of Act 451 of 1994, as amended.

### VERIFICATION OF WORKER'S DISABILITY COMPENSATION ACT COMPLIANCE

- This verification must be completed and submitted within 21 days of contract award and prior to the issuance of the timber sale contract.
- In addition, if boxes 2B or 2C are checked, then Notice of Exclusion or Certificate of Insurance must be submitted within twenty-one (21) days of the contract award and prior to the issuance of the timber sale contract.
- All information must be typed or printed except for written signatures.

Please Check Appropriate Categories:

1. My business is organized as (you **must** check one of the boxes below):
  - A.  Sole Proprietorship (individual)
  - B.  Partnership
  - C.  Corporation
2. You **must** check one of the boxes below:
  - A.  I certify my business is a sole proprietorship and it has no employees but the sole proprietor. I am not subject to the Worker's Compensation Laws.
  - B.  I certify my business has satisfied its obligation to the Worker's Compensation Act through the use of an approved Notice of Exclusion (BWC-337, Rev. 5/96). I will provide a copy of the Notice of Exclusion within 21 days of the contract award. (For questions or a copy of the BWC-337, please call the Worker's Compensation Bureau at 517-322-1195).
  - C.  I certify my business has a Worker's Compensation Policy. I will provide an original Certificate of Insurance within twenty-one (21) days of the contract award.
3. If you have checked item 2(A) or 2(B), you **must** indicate the number of **both** full-time and part-time employees, other than yourself, including family members and active partners (if none, you must enter "0").

\_\_\_\_\_ Full-time Employees

\_\_\_\_\_ Part-time Employees

Name of Business		Federal ID (or) Social Security No.	
Address		Telephone (       )	
City	State	ZIP	

*I hereby certify that the above information is true and correct. I agree to notify the Michigan DNR of any changes that occur in factors affecting my coverage during any of my present and future operations.*

\_\_\_\_\_  
Signature of Owner or Authorized Representative

\_\_\_\_\_  
Title

\_\_\_\_\_  
Date

Please complete the "SEALED BID" information on the next page



GNA Bloodwood (41-811-18)

T45N, R19W, SEC. 10; T45N, R19W, SEC. 3; T45N, R19W, SEC. 4; T45N, R19W,

In response to the notice of sale to be held 2:00 p.m. (local time) on October 10, 2018, I am hereby submitting my sealed bid (firm offer) for the following forest products to be cut. Bids for individual species must be at or above the advertised price. All non-responsive bid forms may be rejected.

<u>PRODUCTS &amp; SPECIES</u>	<u>ESTIMATED VOLUME*</u>	<u>ADVERTISED PRICE</u>	<u>BID PRICE/UNIT</u>
<b>Sawtimber</b>			
Black Cherry	54.60 MBF	\$ 108.00/MBF	\$ _____
Red Maple	78.30 MBF	\$ 106.00/MBF	\$ _____
Sugar Maple	22.10 MBF	\$ 360.00/MBF	\$ _____
<b>Pulpwood</b>			
Balsam Fir	622.00 Cords	\$ 21.10/Cord	\$ _____
Hemlock	36.00 Cords	\$ 1.00/Cord	\$ _____
Jack Pine	730.00 Cords	\$ 49.05/Cord	\$ _____
Mixed Hardwood	3,021.00 Cords	\$ 24.80/Cord	\$ _____
Paper Birch	125.00 Cords	\$ 16.45/Cord	\$ _____
Quaking Aspen	103.00 Cords	\$ 32.60/Cord	\$ _____
Red Pine	84.00 Cords	\$ 64.15/Cord	\$ _____
White Pine	111.00 Cords	\$ 27.80/Cord	\$ _____
White Spruce	692.00 Cords	\$ 27.75/Cord	\$ _____

\*These estimated volumes are final and not subject to adjustment. Prospective bidders are urged to examine this timber and to make their own estimates of quantity and quality.

I understand that any or all bids may be rejected. All bids must be signed and all bid items must be bid or the bid form may be rejected. I also understand that consideration and awarding a contract will be based upon my past performance and ability to complete the contract based upon equipment and staffing subject to my control.

FEDERAL ID: \_\_\_\_ - \_\_\_\_ - \_\_\_\_ or SOCIAL SECURITY NUMBER: \_\_\_\_ - \_\_\_\_ - \_\_\_\_

Company or individual bidding: \_\_\_\_\_

Company representative's name: \_\_\_\_\_

Address: \_\_\_\_\_

City: \_\_\_\_\_ State: \_\_\_\_\_ Zip: \_\_\_\_\_

IF AVAILABLE, PLEASE PLACE THE PERSONALIZED LABEL FROM YOUR PROSPECTUS IN THE ABOVE BOX.

Individual or company representative's signature: \_\_\_\_\_ Date: \_\_\_\_\_

Phone number : \_\_\_\_\_ Email (optional): \_\_\_\_\_

**THE WINNING BIDDER MUST COMPLETE THE VERIFICATION OF WORKER'S DISABILITY COMPENSATION ACT COMPLIANCE (ON REVERSE SIDE IF DOUBLE SIDED) WITHIN 21 DAYS OF SALE AWARD DATE**



FOR DEPARTMENT USE ONLY	
Sale Number (XX - XXX - XX - XX)	
Forest Management Unit:	

## TIMBER SALE VERIFICATION OF WORKER'S DISABILITY COMPENSATION ACT COMPLIANCE

As required by Act 317, P.A. 1969 (Worker's Compensation) and  
Part 5 of Act 451 of 1994, as amended.

### VERIFICATION OF WORKER'S DISABILITY COMPENSATION ACT COMPLIANCE

- This verification must be completed and submitted within 21 days of contract award and prior to the issuance of the timber sale contract.
- In addition, if boxes 2B or 2C are checked, then Notice of Exclusion or Certificate of Insurance must be submitted within twenty-one (21) days of the contract award and prior to the issuance of the timber sale contract.
- All information must be typed or printed except for written signatures.

Please Check Appropriate Categories:

1. My business is organized as (you **must** check one of the boxes below):
  - A.  Sole Proprietorship (individual)
  - B.  Partnership
  - C.  Corporation
2. You **must** check one of the boxes below:
  - A.  I certify my business is a sole proprietorship and it has no employees but the sole proprietor. I am not subject to the Worker's Compensation Laws.
  - B.  I certify my business has satisfied its obligation to the Worker's Compensation Act through the use of an approved Notice of Exclusion (BWC-337, Rev. 5/96). I will provide a copy of the Notice of Exclusion within 21 days of the contract award. (For questions or a copy of the BWC-337, please call the Worker's Compensation Bureau at 517-322-1195).
  - C.  I certify my business has a Worker's Compensation Policy. I will provide an original Certificate of Insurance within twenty-one (21) days of the contract award.
3. If you have checked item 2(A) or 2(B), you **must** indicate the number of **both** full-time and part-time employees, other than yourself, including family members and active partners (if none, you must enter "0").

\_\_\_\_\_ Full-time Employees

\_\_\_\_\_ Part-time Employees

Name of Business		Federal ID (or) Social Security No.	
Address		Telephone (       )	
City	State	ZIP	

*I hereby certify that the above information is true and correct. I agree to notify the Michigan DNR of any changes that occur in factors affecting my coverage during any of my present and future operations.*

\_\_\_\_\_  
Signature of Owner or Authorized Representative

\_\_\_\_\_  
Title

\_\_\_\_\_  
Date

Please complete the "SEALED BID" information on the next page