



**DEPARTMENT OF NATURAL RESOURCES
STATE OF MICHIGAN**

TIMBER SALE PROSPECTUS #6283

SCHEDULED SALE DATE AND TIME: 8:30 a.m. (local time) on November 7, 2018.

LOCATION: CRYSTAL FALLS MGT UNIT, 1420 US-2 WEST, CRYSTAL FALLS, MI 49920.

PROSPECTUS NOTE: The bidder is advised to inspect the sale area and review the location, estimated volumes, operating costs and contract terms of proposed sales. Please be aware that some landowners may request 60 days or more notice for access across their land.

Notice is hereby given that bids will be received by the Unit Manager, CRYSTAL FALLS MANAGEMENT UNIT, for certain timber on the following described lands:

Snake Line Aspen (12-012-18) / T44N, R28W, SEC. 14, NWSW,S1/2SW.

T44N, R28W, SEC. 15, SW,SE.

T44N, R28W, SEC. 16, E1/2SE.

T44N, R28W, SEC. 22, N1/2NE,SENE.

T44N, R28W, SEC. 23, NW,NWNE,S1/2NE,N1/2SE,SWSE.

T44N, R28W, SEC. 24, S1/2SW.

T44N, R28W, SEC. 25, N1/2NW,SENW.

Dickinson County, Advertised Price \$219,036.30, 295.9 Acres, Aspen, Hardwood.

SALE NOTE: Schwartz Creek Road is also the snowmobile trail, so non-frozen conditions are recommended to avoid snowmobiler interface. Payment Unit 9 is lowland spruce, but may be harvested in a dry summer. New road construction will likely be necessary to harvest Payment Units 1 & 2; other roadwork will also be necessary (see Timber Sale Map pg. 4).

A recreation site such as a trail, pathway, or campground is within the sale area or the vicinity. Certain restrictions/specifications may be applicable including time restrictions.

Batman Mix (12-057-18) / T41N, R32W, SEC. 4 , SW.

T41N, R32W, SEC. 8 , E1/2SE.

T41N, R32W, SEC. 9 , W1/2NW,NWSW.

Iron County, Advertised Price \$88,380.40, 156.3 Acres, Aspen, Red Pine.

SALE NOTE: A recreation site such as a trail, pathway, or campground is within the sale area or the vicinity. Certain restrictions/specifications may be applicable including time restrictions.

Acorn Mix (12-060-18) / T41N, R32W, SEC. 3 , NWNW.

T41N, R32W, SEC. 4 , E1/2NW,N1/2NE,SWNE,NESW.

T41N, R32W, SEC. 4 , N1/2SE,SWSE.

Iron County, Advertised Price \$128,524.00, 132.4 Acres, Aspen, Red Oak.

Dog House Mix (12-061-18) / T41N, R32W, SEC. 10, SW.

T41N, R32W, SEC. 11, W1/2NW.

T41N, R32W, SEC. 2 , SWNW,W1/2SW.

T41N, R32W, SEC. 3 , SW,E1/2SE.

Iron County, Advertised Price \$134,549.30, 150.9 Acres, Aspen, Red Oak.

BID INSTRUCTIONS (VER. 07/02/2018):

1. Scheduled Bid Location, Date, and Time (2/11)

Bids must be received by the Unit Manager, CRYSTAL FALLS OFFICE, 1420 US-2 WEST, CRYSTAL FALLS, MI 49920, no later than 8:30 a.m. (local time) on November 7, 2018. For further information concerning this sale, contact Dan McNamee at 906-875-6622.

2. Bidder's Qualifications (5/16)

Purchaser shall obtain workers compensation insurance to cover claims under Michigan's Worker's Disability Compensation Act of 1969 or similar employee benefit act of any other state applicable to an employee. If all or part of a timber sale was prepared by a private contractor, the contractor and that contractor's company are not permitted to bid on the timber sale contract. Bids will not be accepted from individuals or companies appearing on the DNR/FRD No-Bid List. This list contains the names of purchasers who previously failed to execute a contract within 21-days or who have a history of poor performance.

3. Preparation of Sealed Bids (5/16)

Bid Forms may be completed online thru Michigan DNR Timber Sale Online Bidding (OLB) at www.michigan.gov/timberbidding or by completing the hardcopy Bid Form found in the Timber Sale Prospectus. Hardcopy Bid Forms shall be manually signed in ink. Registration in OLB is considered your 'signature' for all bids submitted thru that system. Bid prices must be entered for each species and product in the Bid Price column for all material subject to bidding and all fill-in blanks must be completed. If erasures or other changes appear on the hardcopy Bid Form, each erasure or change must be initialed by the person signing the bid.

4. Submission of Sealed Bids (5/16)

Bid forms may be obtained from the Unit Manager or thru OLB. Bids may be submitted hardcopy or thru OLB. All hardcopy bids must be submitted on the bid form and in an envelope clearly identified as described in this section. NOTE: Only one bid form per bid envelope. Sealed bids must be submitted to the Unit office designated in the prospectus and must be submitted at or prior to the time established in the prospectus. The envelope should show on the outside (a) the sale name or number and (b) the date and time of bid opening, as shown in the prospectus. Bids received after the time specified in the sale prospectus are late bids and will be rejected.

It is possible for a bidder to submit multiple bids on a single sale. For example, a bid may be submitted hardcopy and a bid may be submitted thru OLB. Or, two bidders from the same company could both submit bids on the same sale. If this were to happen, the State would accept all bids received and award the contract accordingly. All bidding and contractual requirements would apply to all bids received.

5. Public Opening of Sealed Bids (7/16)

If conditions permit, the sealed bids will be publicly opened and posted at the time and place set in the prospectus.

If a bidder, present at a bid opening, has submitted bids on more than one sale, that bidder may withdraw their unopened bid envelopes or announce the withdrawal of their online bid after being declared the successful bidder on one sale.

6. Award of Contract (1/11)

Award of the contract will be made to the Bidder whose bid, conforming to the prospectus, is most advantageous to the State of Michigan on the basis of total value at rates bid for the estimated quantities. The State reserves the right to reject any bid or waive any minor irregularity in bids received. A written award mailed (or otherwise furnished) to the successful Bidder shall be deemed to result in a binding contract without further action by either party.

7. Down Payment (1/11)

The Bidder to whom award is made must make a down payment within 21 days of the sale award. The amount of the down payment will be calculated as shown in the Bond and Payment Schedule of this prospectus. Only cash may be used to meet this requirement.

8. Performance Security (1/11)

As guarantee of faithful performance, a cash bond, certificate of deposit, surety bond or irrevocable letter of credit (LOC) is required within 21 days of the sale award. The amount of the performance security is shown in the Bond and

Payment Schedule of this prospectus. If an LOC or surety is used, the coverage must extend for at least 6 months beyond the contract expiration.

9. Timber Sale Contract (7/18)

Additional conditions and requirements common to all timber sales are listed on the timber sale contract (R4031) and are available on line at www.michigan.gov/timber. Contact the Unit Manager for additional information or a sample contract. Within 21 days of the date of the award letter, the bidder must sign the contract and provide the required down payment, performance security, and verification of worker's disability compensation. The down payment and performance security shall be in accordance with the provisions of the timber sale contract, in the sums stated in this prospectus. If these actions are not taken, then the Bidder, the Bidder's corporation, and the corporation's principals may not be permitted to bid on State timber sales for a period of 3 months after the first offense, 6 months after the second offense, and 1 year after the third offense. An offense will only be counted against the Bidder for 5 years. In addition, the Bidder certifies that if awarded this contract, the Bidder will complete the timber sale contract in accordance with its terms and any modifications thereof including requirements to purchase, cut, and remove the included timber by the expiration date.

Payment Unit values in the State Forest Timber Sale Contract are calculated based on the advertised value of the Payment Unit as a percentage of the total advertised value of the contract. The advertised value of each Payment Unit is given in the Description of Timber by Payment Unit table on the Timber Sale Information page. For example, if the value of Payment Unit 1 is advertised as \$1,500 and the total Timber Sale value is advertised as \$10,000, the contract price for Payment Unit 1 will be 15% of the total bid price ($\$1,500/\$10,000 * 100$).

10. Disclaimer of Estimates and Bidder's Warranty of Inspection (7/16)

Before submitting this bid, the Bidder is advised and cautioned to inspect the sale area, review the requirements of the sale contract, and take other steps as may be reasonably necessary to ascertain the location, estimated volumes, construction estimates, and operating costs of the proposed sale. Failure to do so will not relieve the Bidder from responsibility for completing the contract.

The Bidder warrants that this bid is submitted solely on the basis of the Bidder's examination and inspection of the quality and quantity of the timber offered for sale and the Bidder's opinion of the value thereof and the costs of recovery. No reliance should be placed on the State of Michigan's estimates of timber quality, quantity or costs of recovery. Bidder further acknowledges that the State of Michigan: (i) expressly disclaims any warranty of fitness of timber for any purpose; (ii) offers this timber as is without any warranty of quality (merchantability) or quantity and (iii) expressly disclaims any warranty as to the quantity or quality of timber sold.

11. Certification and Chain-of-Custody (10/14)

Unless otherwise indicated in the contract under section 7 – Other Conditions of the Sale Specific Conditions & Requirements, the area encompassed by this timber sale is certified to the standards of the Forest Stewardship Council (FSC) - Certificate #SCS-FM/COC-00090N and the Sustainable Forestry Initiative (SFI) - Certificate #NSF-SFIS-5Y031-SF5. Forest products from this sale may be delivered to the mill as "FSC 100% and / or SFI certified" as long as the contractor hauling the forest products is chain-of-custody (COC) certified or covered under a COC certificate from the destination mill. The purchaser is responsible for maintaining COC after leaving the sale area.

12. Good Neighbor Authority (GNA) Requirements (7/16)

If the name of this timber sales contains the acronym GNA, it is authorized by the Good Neighbor Authority (GNA) and covered by various agreements between the U.S. Forest Service and the State. The timber sale occurs on federal land and the following conditions apply:

GNA contracts on US Forest Service land will not be awarded to purchasers on the Federal list of excluded parties. The System for Award Management (SAM) will be checked for active excluded parties prior to award of contract. In addition, the Bidder to whom award is made must complete an Assurance Regarding Felony Conviction or Tax Delinquent Status for Corporate Applicants (AD-3031).

13. Good Neighbor Authority (GNA) Requirements, con't (9/16)

Bidder certifies, by signing this bid form, that to the best of Bidder's knowledge that the following representations are accurate and complete.

- a. That the Bidder and its principals are not presently debarred, suspended, proposed for debarment, declared ineligible, or voluntary excluded from timber sales (covered transactions) by any Federal department or agency.
- b. That the Bidder and its principals have not within a 3-year period preceding this bid been convicted of or had a civil judgment rendered against them for commission of fraud or a criminal offense in connection with obtaining, attempting to obtain, or performing a public (Federal, State, or local) transaction or contract under a public transaction; violation of Federal or State antitrust statutes or commission of embezzlement, theft, forgery, bribery, falsification or destruction of records, making false statements, or receiving stolen property.
- c. That the Bidder and its principals are not presently indicted for or otherwise criminally or civilly charged by a governmental entity (Federal, State, or local) with commission of any of the offenses enumerated in paragraph b of this certification.
- d. That the Bidder and its principals have not within a 3-year period preceding this bid had one or more public transactions (Federal, State, or local) terminated for breach or default of a timber or forest product contract.

Bidders that cannot certify this requirement, in whole or in part, shall submit an explanation with their bid.

KEITH CREAGH
Director

TIMBER SALE INFORMATION

Snake Line Aspen (12-012-18)

T44N, R28W, SEC. 14; T44N, R28W, SEC. 15; T44N, R28W, SEC. 16; T44N, R28W, SEC. 22; T44N, R28W, SEC. 23; T44N, R28W, SEC. 24; T44N, R28W, SEC. 25.

SALE NOTE: Schwartz Creek Road is also the snowmobile trail, so non-frozen conditions are recommended to avoid snowmobiler interface. Payment Unit 9 is lowland spruce, but may be harvested in a dry summer. New road construction will likely be necessary to harvest Payment Units 1 & 2; other roadwork will also be necessary (see Timber Sale Map pg. 4).

A recreation site such as a trail, pathway, or campground is within the sale area or the vicinity. Certain restrictions/specifications may be applicable including time restrictions.

A timber sale contract for this lump sum, sealed bid timber sale will be awarded to the responsible bidder offering the highest sealed bid price. Bids must be at or above the following advertised price for each species:

<u>PRODUCTS & SPECIES</u>	<u>ESTIMATED UNITS*</u>	<u>ADVERTISED PRICE</u>
Sawtimber		
Basswood	7.90 MBF	\$ 228.00 / MBF
Paper Birch	14.30 MBF	\$ 78.00 / MBF
Red Maple	28.90 MBF	\$ 154.00 / MBF
Sugar Maple	16.20 MBF	\$ 375.00 / MBF
Pulpwood		
Balsam Fir	458.00 Cords	\$ 17.00 / Cord
Basswood	94.00 Cords	\$ 11.30 / Cord
Mixed Aspen	4,415.00 Cords	\$ 33.75 / Cord
Mixed Hardwood	1,250.00 Cords	\$ 23.05 / Cord
Mixed Spruce	660.00 Cords	\$ 25.20 / Cord
Tamarack	143.00 Cords	\$ 16.05 / Cord

* The total volume is statistically estimated within plus (+) or minus (-) 6.38 percent. The estimated units are final and not subject to adjustment. Prospective bidders are urged to examine this timber and to make their own estimates of quantity and quality.

BOND AND PAYMENT SCHEDULE:

1. A bond in the amount of \$17,523.00 to insure faithful performance of the conditions of the contract will be deposited by the successful bidder within 21 days of the sale award.
2. Cutting in any sale or unit without the required advance payment would be considered a trespass.
3. Total payment must be paid in advance or according to the following schedule:
 - (a) Ten percent (10%) of the sale value must be paid within 21 days of the sale award.
 - (b) The 10% down payment will be credited towards the first unit cut.
 - (c) Payment for each of the following units must be made before cutting begins in that unit:

<u>PAYMENT UNIT NUMBER</u>	<u>PERCENT OF TOTAL SALE VALUE</u>
01	7.0%
02	12.5%
03	6.8%
04	12.9%
05	10.6%
06	11.6%
07	7.3%
08	7.8%
09	3.2%
10	3.6%
11	5.5%
12	11.2%

4. If no cutting takes place, the 10% down payment will not be refunded.
5. Operations on the contract issued will terminate on 06/30/2021.

Description of Timber by Payment Unit (PU)

PU	MARKET GROUP	PRODUCT	QUANTITY	UNIT	ACRES	ADVERTISE PRICE			
1	Paper Birch	Sawtimber	5.5	MBF	26.8	\$15,388.15			
	Sugar Maple		3.1	MBF					
	Balsam Fir	Pulpwood	7.0	Cords					
	Basswood		31.0	Cords					
	Mixed Aspen		306.0	Cords					
	<i>B. T. Aspen</i>		12.0	<i>Cords</i>					
	<i>Balsam Poplar</i>		89.0	<i>Cords</i>					
	<i>Quaking Aspen</i>		205.0	<i>Cords</i>					
	Mixed Hardwood		105.0	Cords					
	<i>Paper Birch</i>		63.0	<i>Cords</i>					
	<i>Red Maple</i>		12.0	<i>Cords</i>					
	<i>Sugar Maple</i>		30.0	<i>Cords</i>					
	Mixed Spruce		23.0	Cords					
	<i>Black Spruce</i>		11.0	<i>Cords</i>					
	<i>White Spruce</i>		12.0	<i>Cords</i>					
2	Basswood	Sawtimber	6.2	MBF	34.2	\$27,312.85			
	Paper Birch		4.1	MBF					
	Sugar Maple		3.5	MBF					
	Balsam Fir	Pulpwood	12.0	Cords					
	Basswood		38.0	Cords					
	Mixed Aspen		522.0	Cords					
	<i>B. T. Aspen</i>		212.0	<i>Cords</i>					
	<i>Balsam Poplar</i>		24.0	<i>Cords</i>					
	<i>Quaking Aspen</i>		286.0	<i>Cords</i>					
	Mixed Hardwood		261.0	Cords					
	<i>Paper Birch</i>		46.0	<i>Cords</i>					
	<i>Red Maple</i>		129.0	<i>Cords</i>					
	<i>Sugar Maple</i>		86.0	<i>Cords</i>					
	3	Basswood	Sawtimber	1.7			MBF	26.6	\$14,919.15
		Paper Birch		1.7			MBF		
Red Maple			14.4	MBF					
Balsam Fir		Pulpwood	43.0	Cords					
Basswood			19.0	Cords					
Mixed Aspen			252.0	Cords					
<i>B. T. Aspen</i>			70.0	<i>Cords</i>					
<i>Balsam Poplar</i>			13.0	<i>Cords</i>					
<i>Quaking Aspen</i>			169.0	<i>Cords</i>					
Mixed Hardwood			113.0	Cords					
<i>Paper Birch</i>			8.0	<i>Cords</i>					
<i>Red Maple</i>			94.0	<i>Cords</i>					
<i>Sugar Maple</i>			11.0	<i>Cords</i>					
Mixed Spruce			5.0	Cords					
<i>White Spruce</i>			5.0	<i>Cords</i>					
4	Red Maple	Sawtimber	2.4	MBF	37.6	\$28,392.55			
	Sugar Maple		4.0	MBF					
	Balsam Fir	Pulpwood	34.0	Cords					
	Basswood		6.0	Cords					
	Mixed Aspen		569.0	Cords					
	<i>B. T. Aspen</i>		136.0	<i>Cords</i>					
	<i>Quaking Aspen</i>		433.0	<i>Cords</i>					
	Mixed Hardwood		260.0	Cords					
	<i>Paper Birch</i>		6.0	<i>Cords</i>					
	<i>Red Maple</i>		163.0	<i>Cords</i>					
	<i>Sugar Maple</i>		91.0	<i>Cords</i>					
	Mixed Spruce		27.0	Cords					
	<i>Black Spruce</i>		9.0	<i>Cords</i>					

Description of Timber by Payment Unit (PU), con't

PU	MARKET GROUP	PRODUCT	QUANTITY	UNIT	ACRES	ADVERTISE PRICE
4 con't	<i>White Spruce</i>	<i>Pulpwood</i>	18.0	<i>Cords</i>		
5	Red Maple Balsam Fir Mixed Aspen <i>B. T. Aspen</i> <i>Quaking Aspen</i> Mixed Hardwood <i>Paper Birch</i> <i>Red Maple</i> <i>Sugar Maple</i> Mixed Spruce <i>Black Spruce</i> <i>White Spruce</i>	Sawtimber Pulpwood	3.4 81.0 557.0 115.0 442.0 78.0 9.0 61.0 8.0 26.0 17.0 9.0	MBF Cords Cords <i>Cords</i> <i>Cords</i> Cords <i>Cords</i> <i>Cords</i> <i>Cords</i> Cords <i>Cords</i> <i>Cords</i>	30.3	\$23,152.45
6	Paper Birch Red Maple Sugar Maple Balsam Fir Mixed Aspen <i>B. T. Aspen</i> <i>Quaking Aspen</i> Mixed Hardwood <i>Paper Birch</i> <i>Red Maple</i> <i>Sugar Maple</i> Mixed Spruce <i>Black Spruce</i> <i>White Spruce</i> Tamarack	Sawtimber Pulpwood	3.0 6.2 4.7 23.0 459.0 117.0 342.0 206.0 54.0 97.0 55.0 59.0 26.0 33.0 25.0	MBF MBF MBF Cords Cords <i>Cords</i> <i>Cords</i> Cords <i>Cords</i> <i>Cords</i> <i>Cords</i> Cords <i>Cords</i> <i>Cords</i> Cords	28.9	\$25,469.90
7	Red Maple Sugar Maple Balsam Fir Mixed Aspen <i>B. T. Aspen</i> <i>Quaking Aspen</i> Mixed Hardwood <i>Paper Birch</i> <i>Red Maple</i> <i>Sugar Maple</i> Mixed Spruce <i>White Spruce</i>	Sawtimber Pulpwood	1.7 0.9 41.0 299.0 43.0 256.0 158.0 2.0 100.0 56.0 38.0 38.0	MBF MBF Cords Cords <i>Cords</i> <i>Cords</i> Cords <i>Cords</i> <i>Cords</i> <i>Cords</i> Cords <i>Cords</i>	18.3	\$15,987.05
8	Red Maple Balsam Fir Mixed Aspen <i>B. T. Aspen</i> <i>Quaking Aspen</i> Mixed Hardwood <i>Red Maple</i> <i>Sugar Maple</i> <i>Yellow Birch</i> Mixed Spruce <i>Black Spruce</i> <i>White Spruce</i>	Sawtimber Pulpwood	0.8 66.0 414.0 60.0 354.0 67.0 46.0 18.0 3.0 12.0 3.0 9.0	MBF Cords Cords <i>Cords</i> <i>Cords</i> Cords <i>Cords</i> <i>Cords</i> <i>Cords</i> Cords <i>Cords</i> <i>Cords</i>	19.3	\$17,064.45
9	Balsam Fir Mixed Aspen <i>Balsam Poplar</i> <i>Quaking Aspen</i>	Pulpwood	5.0 19.0 8.0 11.0	Cords Cords <i>Cords</i> <i>Cords</i>	15.8	\$6,952.15

Description of Timber by Payment Unit (PU), con't

PU	MARKET GROUP	PRODUCT	QUANTITY	UNIT	ACRES	ADVERTISE PRICE
9 con't	Mixed Spruce	Pulpwood	177.0	Cords		
	<i>Black Spruce</i>		177.0	<i>Cords</i>		
	Tamarack		110.0	Cords		
10	Balsam Fir	Pulpwood	40.0	Cords	18.0	\$7,893.40
	Mixed Aspen		54.0	Cords		
	<i>Quaking Aspen</i>		54.0	<i>Cords</i>		
	Mixed Hardwood		2.0	Cords		
	<i>Red Maple</i>		2.0	<i>Cords</i>		
	Mixed Spruce		207.0	Cords		
	<i>Black Spruce</i>		207.0	<i>Cords</i>		
Tamarack	8.0	Cords				
11	Balsam Fir	Pulpwood	33.0	Cords	15.9	\$12,038.70
	Mixed Aspen		302.0	Cords		
	<i>Quaking Aspen</i>		302.0	<i>Cords</i>		
	Mixed Spruce		51.0	Cords		
	<i>Black Spruce</i>		32.0	<i>Cords</i>		
	<i>White Spruce</i>		19.0	<i>Cords</i>		
12	Balsam Fir	Pulpwood	73.0	Cords	24.2	\$24,465.50
	Mixed Aspen		662.0	Cords		
	<i>Quaking Aspen</i>		662.0	<i>Cords</i>		
	Mixed Spruce		35.0	Cords		
	<i>White Spruce</i>		35.0	<i>Cords</i>		
TOTAL:			67.3	MBF		
TOTAL:			7,020.0	Cords		

Sale Specific Conditions & Requirements

Sale Name: Snake Line Aspen

Sale Number: 12-012-18 Seq#: 1

1 - Sale Area

1.2 - Boundaries

1.2.1 - Painted boundaries (1/14)

The sale boundary and Payment Unit boundaries are marked and identified by red and yellow paint. Exterior sale boundary lines against state are marked with red paint. Interior Payment Unit boundaries are marked with yellow paint. Yellow painted trees designating an interior Payment Unit boundary are only to be cut when all surrounding Payment Units have been paid.

2 - Timber Specifications

2.1 - Included Timber

2.1.1 - Clearcut unit(s) with unmerchantable trees (6/14)

Within Payment Unit(s) 1-12, cut all trees that are two (2) inches or more at DBH, except do not cut red pine, white pine, cedar, oak, or hemlock. In addition, within Payment Units 1-6, do not cut any sugar maple trees with a DBH equal to or less than 4 inches, or any live submerchantable spruce and fir within 100 feet of the south red line.

4 - Transportation

4.1 - Construction

4.1.4 - Timber removed for construction (12/09)

Trees cut or damaged in the process of pre-approved road, landing or skid trail construction will be decked in an area separate from other Designated Timber and not removed until measured by the sale administrator. Payment will be made at the specified Purchase Unit Price.

4.1.5 - Culverts (5/14)

Roads may require the installation of culverts for cross drainage or at natural drainage-ways. If culverts are needed in these locations, their placement will be specified by the sale administrator and they shall be installed prior to hauling. The culverts shall be new, corrugated metal or plastic gauge. Culverts will be a minimum of 12 inches in diameter and 24 feet in length. If culverts are removed, fill shall be removed from wetland soils as specified. Soils shall be maintained and left in a non-erodible condition, with water bars, seed, fertilizer, mulch, and slash installed as directed by the sale administrator and as specified in the BMP manual. Stream crossing permits, if needed, will be obtained by the Purchaser.

4.1.6 - Road construction (1/09)

Construction of new roads or improvements of existing roads shall be done in such a way as to minimize the environmental and visual impacts. Merchantable trees shall be cut and utilized unless otherwise directed. Non-merchantable trees shall be severed and laid flat on the ground. Slash shall be scattered, and not left in windrows and kept a minimum of 10 feet back from the road edge. Stumps shall be set upright, not left on edge, and be moved at least 5 feet away from the road edge. Disturbed soil shall be feathered into the woods and not left in berms or windrows.

4.1.7 - Road closure (10/11)

All new roads built into the sale must be blocked to vehicle traffic upon completion of the sale. Overgrown roads that are reopened shall be considered new roads. In general, this will require constructing a four (4') foot high berm of stumps and logs covered with earth. Contact the sale administrator for specific details of design and placement.

4.1.8 - Road work (1) (8/07)

The following road work may be required (see Timber Sale Map pg. 4 for locations):

(A) Construction of at least one-half mile of new road.

(B) Leveling wash out on road.

(C) Adding fill to level out road for truck traffic.

Construction or improvement of alternate routes may require additional work, culverts, and/or permits.

4.1.11 - Permits (2/12)

The Purchaser will secure any necessary stream crossing permits that may be required.

4.2 - Maintenance

4.2.1 - Hauling restriction (12/08)

Hauling may be restricted on forest roads by the Unit Manager or his/her representative. The restriction may occur during spring breakup or extensive wet weather conditions.

4.2.4 - Grading (10/16)

For completion of the sale, state forest roads must be graded. In general, this will require a road grader or bull dozer to shape up the roads after forest products have been hauled off site. This includes cleaning of drainage areas, grading, crowning and filling with gravel, if necessary. The grading equipment to be used must be approved by the Unit Manager or his/her representative.

4.3 - Public Right-of-Way

4.3.2 - County R-O-W (12/06)

The county must be contacted prior to decking along the county road R-O-W. This applies to Schwartz Creek Road; Dickinson County Road Commission may require a permit.

5 - Operations

5.2 - Conduct of Operations

5.2.3 - Operating Restrictions

5.2.3.11 - Coppice regeneration protection (4/10)

Timber harvesting in any Payment Unit must be completed before significant aspen sprouting occurs in that Payment Unit so as to minimize damage to the new regeneration. Any post harvest operations, such as chipping, must be completed before sprouting of regeneration occurs. If it is anticipated that chipping will be delayed, then tops shall be carried to one central location or left unchipped. The Unit Manager or his representative may cease such operations if sprouting occurs before the operation is complete.

5.2.4 - Dead and Down Creation

5.2.4.2 - Dead and down creation, hare and grouse (1/14)

To improve habitat for snowshoe hare, grouse, and other species, the Purchaser is to leave 2-3 piles of slash at least 10 feet tall on the ground for every unit. Piles should be scattered throughout the sale area and be a minimum of 100 feet from a road. Piles can consist of any tree species. All other slash will be scattered evenly across the sale area.

5.2.22 - Operating Caution

5.2.22.1 - Operating caution (6/11)

It is recommended, but not required, that within Payment Unit(s) 9, cutting and skidding occur during dry summer or frozen winter conditions. The reason for the recommendation is because of wetter soils.

5.2.32 - Decking/landing restoration (9/13)

All decking and landing areas must have the surface area restored to a condition equal to or better than before. This is to ensure the proper regeneration of the stand. Wood debris, slash, chips and "cookies" from trimmings must be removed or scattered away from landing and loading areas and may not be windrowed on the edge.

5.2.41 - Snowmobile trail protection (9/11)

The Schwartz Creek Road is also a snowmobile trail and is shown on the Timber Sale Map. Do not cut or damage posts with orange trail markers or traffic control signs. If the trail is used, it must be maintained and restored to a condition equal to or better than before the sale. The road maintenance/restoration must be done prior to December 1. If the trail road is to be used for hauling during the snowmobile season, then a snow covered base (at least 4") must be left on the trail. Maintain a 50 foot wide slash, debris, and rut free zone daily using the snowmobile trail as the centerline. No decking of forest products will be permitted along the snowmobile trail during snowmobile season. All stumps within 20 feet of the snowmobile trail must be cut at ground level.

5.4 - Soil Protection

5.4.1 - Rutting restriction, general (7/16)

Operations are to cease immediately if equipment and weather conditions result in rutting of roads and/or skid trails which is 12 inches or greater in depth and 50 feet in length. The Unit Manager or his/her representative may restrict hauling and/or skidding if ruts exceed the specified depth. With the Unit Manager or his/her representative's approval, the Purchaser may return to the area when the risk of rutting has decreased.

6 - Safety and Fire Prevention

6.2 - Signing

6.2.1 - Road posting (9/09)

The Purchaser is responsible for posting and maintaining caution signs on Schwartz Creek Road prior to beginning operations. The road must be posted at appropriate distances from the sale area in either direction to warn of logging activity and truck traffic. Signs must be removed when harvest operations are suspended or completed. The Purchaser will provide these signs.

7 - Other Conditions

7.5 - Loss

7.5.1 - Deteriorating timber (7/09)

The sale area has received damage from spruce budworm. The Purchaser should harvest the wood as soon as possible. The Department of Natural Resources is held free of responsibility of any further damage or deterioration due to delay in harvesting.



TIMBER SALE MAP

This information provided by authority of Part 525, 1994 PA 451, as amended.

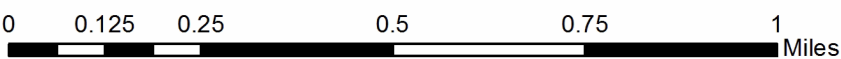
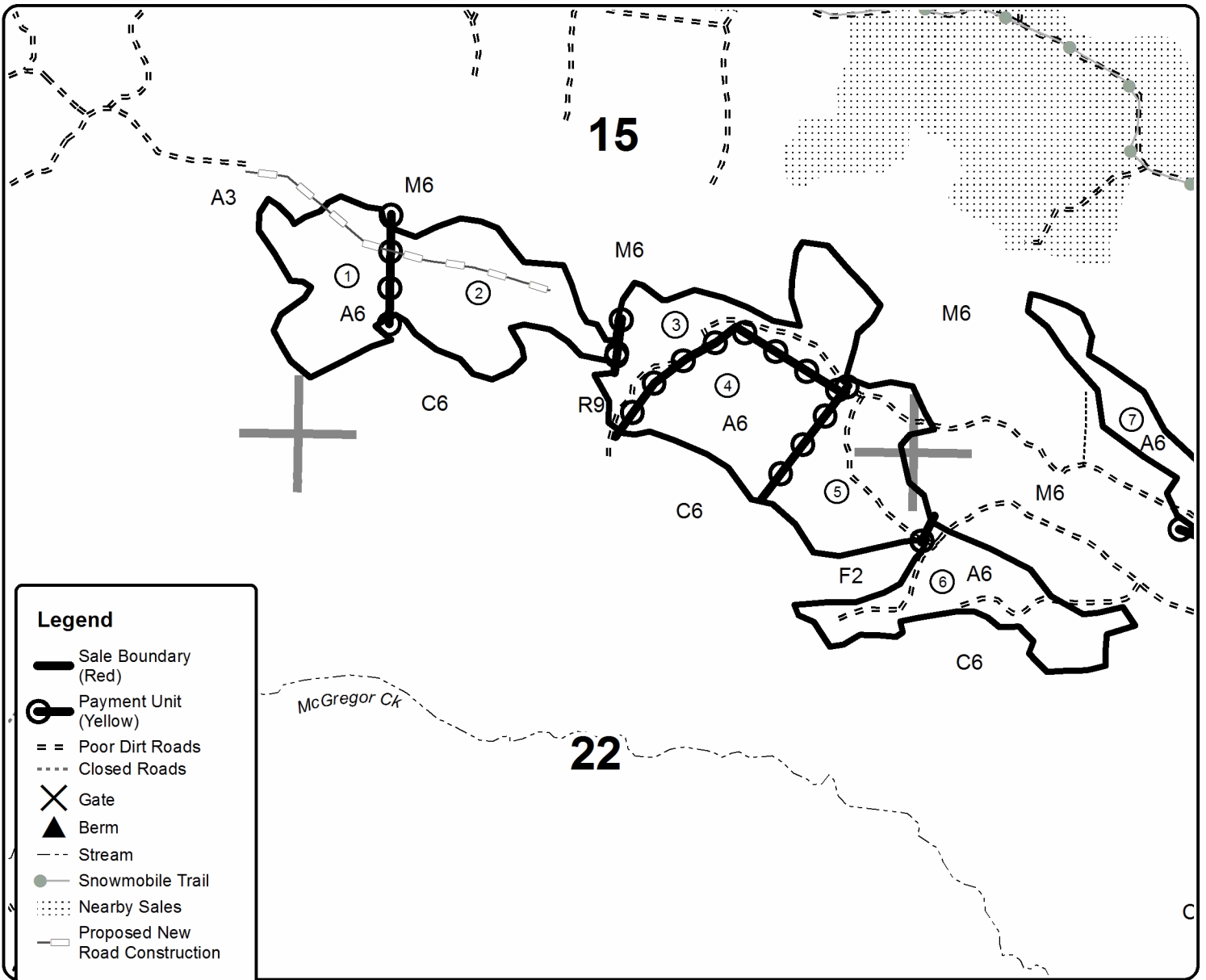
Forest Management Unit Crystal Falls Management Unit		County Dickinson Co.	Mapped By Debbie Goupell	Date 10/16/2018	Page 1	of 4
Township 44N	Range 28W	Section(s) and Subdivision(s) Sec 14: S1/2SW,NWSW Sec 15: S1/2 Sec 16: E1/2SE Sec 22:N1/2NE,SENE Sec 23:NW1/4,W1/2NE,SENE,W1/2SE Sec 24: S1/2SW Sec 25: N1/2NW,SENW		Scale 1:15,840		

Cover Type				Density			
A = Aspen	H = Hemlock	N = Marsh	U = Upland Brush	0 = Non Stocked	5 = Pole Timber Medium		
B = Paper Birch	J = Jack Pine	O = Oak	UM = Upland Mixed	1 = Seedling Sapling Poor	6 = Pole Timber Well		
C = Cedar	L = Lowland Brush	P = Lowland Poplar	V = Bog or Marsh	2 = Seedling Sapling Medium	7 = Saw Timber Poor		
D = Tread Bog	LM = Lowland Mixed	Q = Mixed Swamp Conifer	W = White Pine	3 = Seedling Sapling Well	8 = Saw Timber Medium		
E = Swamp Hdwoods	M = Mpl, Bch, Brch	R = Red Pine	X = Non Stocked	4 = Pole Timber Poor	9 = Saw Timber Well		
F = Spruce Fir	MC = Mixed Conifer	S = Black Spruce	Z = Water				
G = Grass	MD = Mixed Deciduous	T = Tamarack					

PU	Acres	PU	Acres	PU	Acres
1	26.8	5	30.3	9	15.8
2	34.2	6	28.9	10	18.0
3	26.6	7	18.3	11	15.9
4	37.6	8	19.3	12	24.2

Snake Line Aspen

Compartment 17
295.9 acres





TIMBER SALE MAP

This information provided by authority of Part 525, 1994 PA 451, as amended.

Forest Management Unit Crystal Falls Management Unit	County Dickinson Co.	Mapped By Debbie Goupell	Date 9/5/2018	Page 2	of 4
Township 44N	Range 28W	Section(s) and Subdivision(s) Sec 14: S1/2SW,NWSW Sec 15: S1/2 Sec 16: E1/2SE Sec 22:N1/2NE,SENE Sec 23:NW1/4,W1/2NE,SENE,W1/2SE Sec 24: S1/2SW Sec 25: N1/2NW,SENW	Scale 1:15,840		

Cover Type

A = Aspen	H = Hemlock	N = Marsh	U = Upland Brush
B = Paper Birch	J = Jack Pine	O = Oak	UM = Upland Mixed
C = Cedar	L = Lowland Brush	P = Lowland Poplar	V = Bog or Marsh
D = Treed Bog	LM = Lowland Mixed	Q = Mixed Swamp Conifer	W = White Pine
E = Swamp Hdwoods	M = Mpl, Bch, Brch	R = Red Pine	X = Non Stocked
F = Spruce Fir	MC = Mixed Conifer	S = Black Spruce	Z = Water
G = Grass	MD = Mixed Deciduous	T = Tamarack	

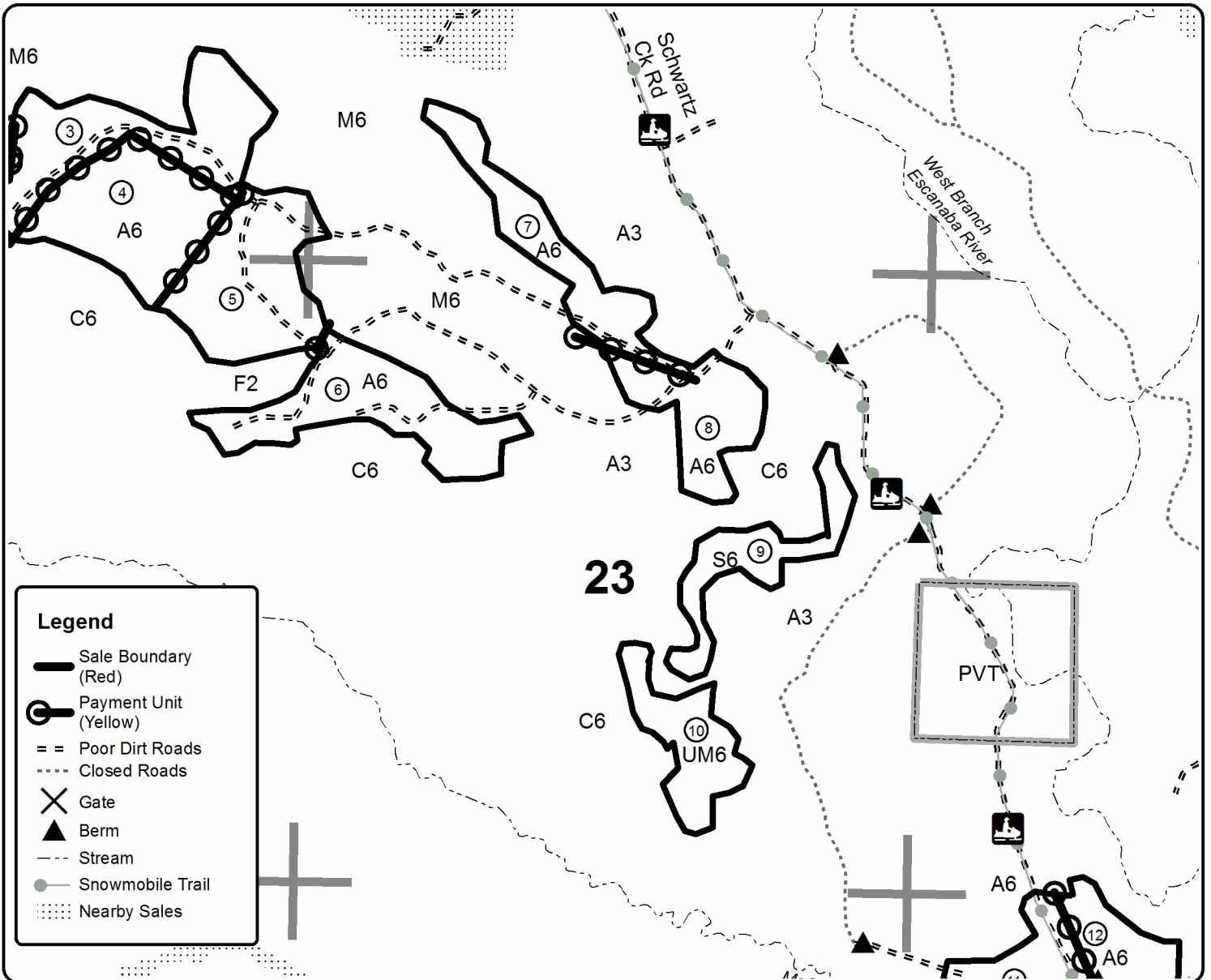
Density

0 = Non Stocked	5 = Pole Timber Medium
1 = Seedling Sapling Poor	6 = Pole Timber Well
2 = Seedling Sapling Medium	7 = Saw Timber Poor
3 = Seedling Sapling Well	8 = Saw Timber Medium
4 = Pole Timber Poor	9 = Saw Timber Well

PU	Acres	PU	Acres	PU	Acres
1	26.9	5	30.7	9	15.8
2	34.2	6	28.9	10	18.0
3	26.3	7	18.4	11	16.1
4	37.4	8	19.2	12	24.0

Snake Line Aspen

Compartment 17
295.9 acres





TIMBER SALE MAP

This information provided by authority of Part 525, 1994 PA 451, as amended.

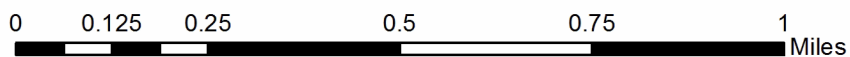
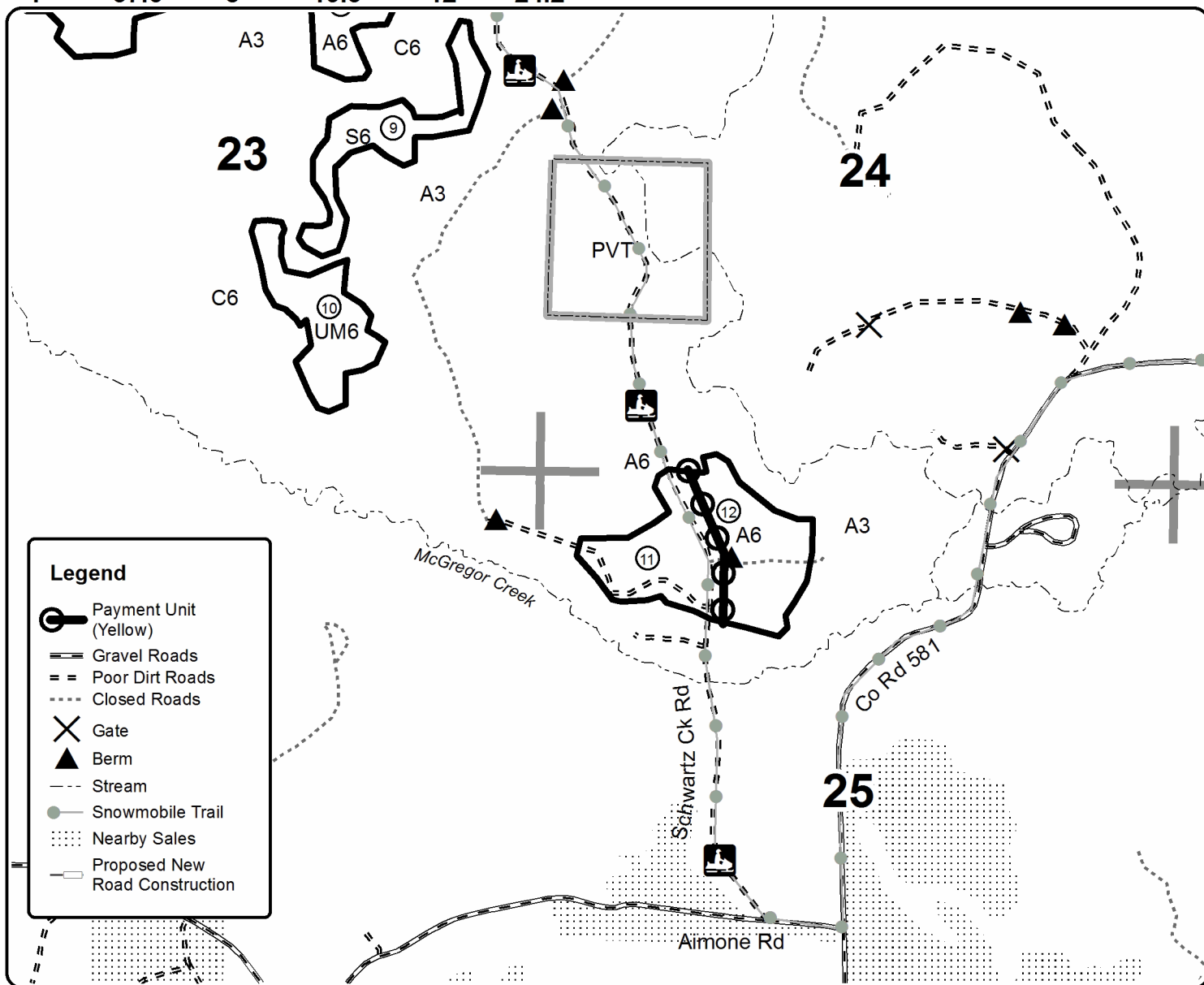
Forest Management Unit Crystal Falls Management Unit		County Dickinson Co.	Mapped By Debbie Goupell	Date 10/16/2018	Page 3	of 4
Township 44N	Range 28W	Section(s) and Subdivision(s) Sec 14: S1/2SW,NWSW Sec 15: S1/2 Sec 16: E1/2SE Sec 22:N1/2NE,SENE Sec 23:NW1/4,W1/2NE,SENE,W1/2SE Sec 24: S1/2SW Sec 25: N1/2NW,SENW		Scale 1:15,840		

Cover Type				Density			
A = Aspen	H = Hemlock	N = Marsh	U = Upland Brush	0 = Non Stocked	5 = Pole Timber Medium		
B = Paper Birch	J = Jack Pine	O = Oak	UM = Upland Mixed	1 = Seedling Sapling Poor	6 = Pole Timber Well		
C = Cedar	L = Lowland Brush	P = Lowland Poplar	V = Bog or Marsh	2 = Seedling Sapling Medium	7 = Saw Timber Poor		
D = Treed Bog	LM = Lowland Mixed	Q = Mixed Swamp Conifer	W = White Pine	3 = Seedling Sapling Well	8 = Saw Timber Medium		
E = Swamp Hdwoods	M = Mpl, Bch, Brch	R = Red Pine	X = Non Stocked	4 = Pole Timber Poor	9 = Saw Timber Well		
F = Spruce Fir	MC = Mixed Conifer	S = Black Spruce	Z = Water				
G = Grass	MD = Mixed Deciduous	T = Tamarack					

PU	Acres	PU	Acres	PU	Acres
1	26.8	5	30.3	9	15.8
2	34.2	6	28.9	10	18.0
3	26.6	7	18.3	11	15.9
4	37.6	8	19.3	12	24.2

Snake Line Aspen

Compartment 17
295.9 acres





Sale Number	Year
12-012	18

TIMBER SALE MAP

This information provided by authority of Part 525, 1994 PA 451, as amended.

Forest Management Unit Crystal Falls Management Unit	County Dickinson Co.	Mapped By Debbie Goupell	Date 10/16/2018	Page 4	of 4
Township 44N	Range 28W	Section(s) and Subdivision(s) Sec 14: S1/2SW,NWSE Sec 15: S1/2 Sec 16: E1/2SE Sec 22:N1/2NE,SENE Sec 23: N1/2,W1/2SE Sec 24: S1/2SW Sec 25: N1/2NW	Scale 1:32,000		

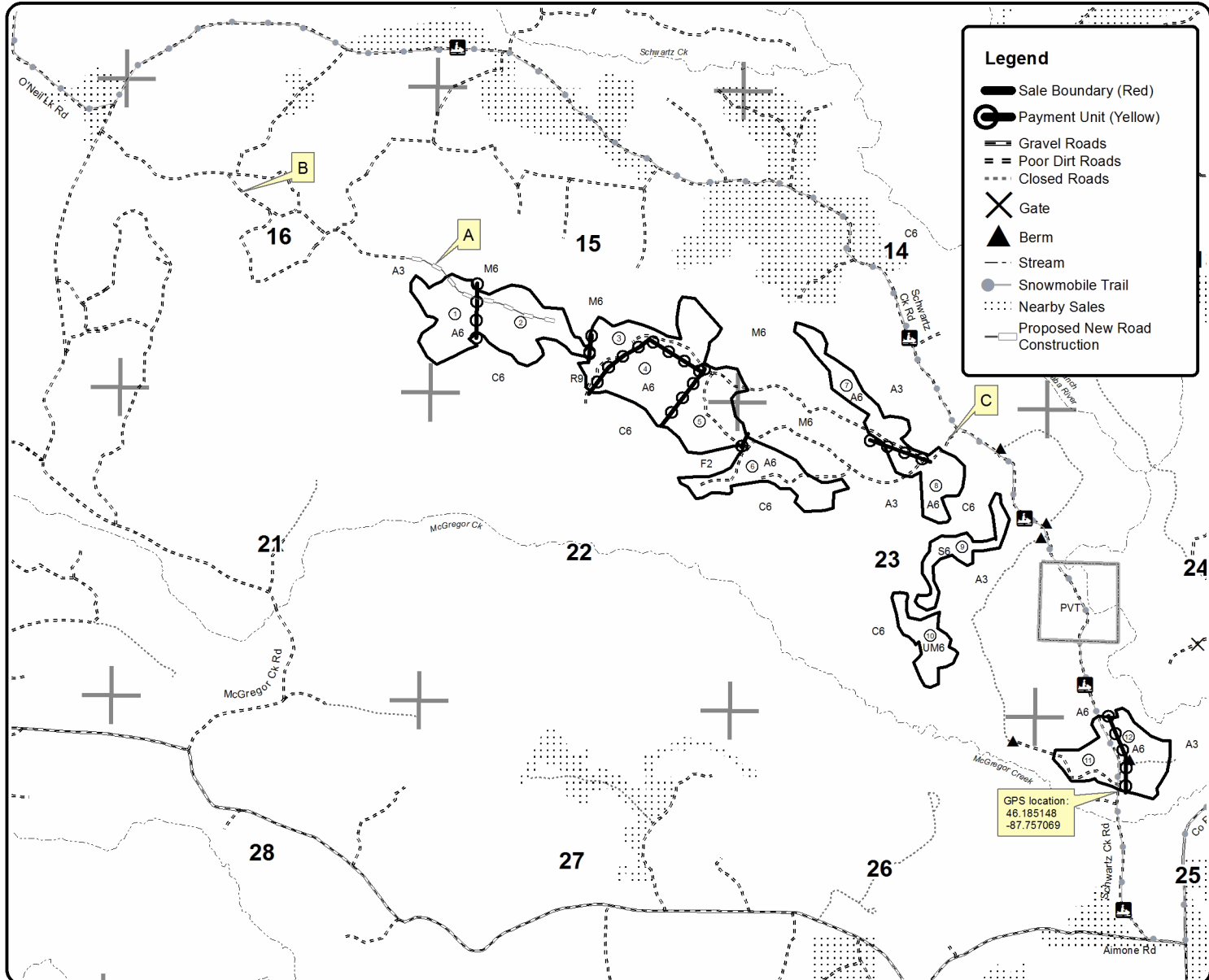
Cover Type				Density			
A = Aspen	H = Hemlock	N = Marsh	U = Upland Brush	0 = Non Stocked	5 = Pole Timber Medium		
B = Paper Birch	J = Jack Pine	O = Oak	UM = Upland Mixed	1 = Seedling Sapling Poor	6 = Pole Timber Well		
C = Cedar	L = Lowland Brush	P = Lowland Poplar	V = Bog or Marsh	2 = Seedling Sapling Medium	7 = Saw Timber Poor		
D = Treed Bog	LM = Lowland Mixed	Q = Mixed Swamp Conifer	W = White Pine	3 = Seedling Sapling Well	8 = Saw Timber Medium		
E = Swamp Hdwoods	M = Mpl, Bch, Brch	R = Red Pine	X = Non Stocked	4 = Pole Timber Poor	9 = Saw Timber Well		
F = Spruce Fir	MC = Mixed Conifer	S = Black Spruce	Z = Water				
G = Grass	MD = Mixed Deciduous	T = Tamarack					

PU	Acres	PU	Acres	PU	Acres
1	26.8	5	30.3	9	15.8
2	34.2	6	28.9	10	18.0
3	26.6	7	18.3	11	15.9
4	37.6	8	19.3	12	24.2

Snake Line Aspen

Compartment 17

295.9 acres



TIMBER SALE INFORMATION

Batman Mix (12-057-18)

T41N, R32W, SEC. 4; T41N, R32W, SEC. 8; T41N, R32W, SEC. 9.
Iron County (Advertised Price \$88,380.40)

SALE NOTE: A recreation site such as a trail, pathway, or campground is within the sale area or the vicinity. Certain restrictions/specifications may be applicable including time restrictions.

A timber sale contract for this lump sum, sealed bid timber sale will be awarded to the responsible bidder offering the highest sealed bid price. Bids must be at or above the following advertised price for each species:

<u>PRODUCTS & SPECIES</u>	<u>ESTIMATED UNITS*</u>	<u>ADVERTISED PRICE</u>
Sawtimber		
Red Pine	44.50 MBF	\$ 135.00 / MBF
White Pine	20.00 MBF	\$ 92.00 / MBF
Pulpwood		
Balsam Fir	77.00 Cords	\$ 17.00 / Cord
Jack Pine	12.00 Cords	\$ 41.60 / Cord
Mixed Aspen	946.00 Cords	\$ 39.90 / Cord
Mixed Hardwood	92.00 Cords	\$ 23.05 / Cord
Red Pine	582.00 Cords	\$ 59.45 / Cord
White Pine	72.00 Cords	\$ 46.20 / Cord
White Spruce	37.00 Cords	\$ 25.20 / Cord

* The total volume is statistically estimated within plus (+) or minus (-) 9.10 percent. The estimated units are final and not subject to adjustment. Prospective bidders are urged to examine this timber and to make their own estimates of quantity and quality.

BOND AND PAYMENT SCHEDULE:

1. A bond in the amount of \$4,500.00 to insure faithful performance of the conditions of the contract will be deposited by the successful bidder within 21 days of the sale award.
2. Cutting in any sale or unit without the required advance payment would be considered a trespass.
3. Total payment must be paid in advance or according to the following schedule:
 - (a) Ten percent (10%) of the sale value must be paid within 21 days of the sale award.
 - (b) The 10% down payment will be credited towards the first unit cut.
 - (c) Payment for each of the following units must be made before cutting begins in that unit:

<u>PAYMENT UNIT NUMBER</u>	<u>PERCENT OF TOTAL SALE VALUE</u>
01	31.4%
02	13.1%
03	12.6%
04	12.9%
05	30.0%

4. If no cutting takes place, the 10% down payment will not be refunded.
5. Operations on the contract issued will terminate on 06/30/2021.

Description of Timber by Payment Unit (PU)

PU	MARKET GROUP	PRODUCT	QUANTITY	UNIT	ACRES	ADVERTISE PRICE
1	Red Pine	Sawtimber	20.6	MBF	54.8	\$27,705.10
	Jack Pine	Pulpwood	8.0	Cords		
	Mixed Aspen		40.0	Cords		
	<i>Quaking Aspen</i>		40.0	<i>Cords</i>		
	Mixed Hardwood		7.0	Cords		
	<i>Red Maple</i>		7.0	<i>Cords</i>		
	Red Pine		379.0	Cords		
	White Spruce		12.0	Cords		
2	Red Pine	Sawtimber	15.5	MBF	14.0	\$11,616.30
	White Pine		20.0	MBF		
	Jack Pine	Pulpwood	4.0	Cords		
	Mixed Aspen		46.0	Cords		
	<i>Quaking Aspen</i>		46.0	<i>Cords</i>		
	Mixed Hardwood		2.0	Cords		
	<i>Red Maple</i>		2.0	<i>Cords</i>		
	Red Pine		38.0	Cords		
	White Pine		72.0	Cords		
	White Spruce		2.0	Cords		
3	Mixed Aspen	Pulpwood	259.0	Cords	13.1	\$11,163.90
	<i>Quaking Aspen</i>		259.0	<i>Cords</i>		
	Mixed Hardwood		36.0	Cords		
	<i>Red Maple</i>		36.0	<i>Cords</i>		
4	Red Pine	Sawtimber	8.4	MBF	34.9	\$11,409.30
	Mixed Aspen	Pulpwood	3.0	Cords		
	<i>Quaking Aspen</i>		3.0	<i>Cords</i>		
	Mixed Hardwood		3.0	Cords		
	<i>Black Cherry</i>		3.0	<i>Cords</i>		
	Red Pine		165.0	Cords		
	White Spruce		11.0	Cords		
5	Balsam Fir	Pulpwood	77.0	Cords	39.5	\$26,485.80
	Mixed Aspen		598.0	Cords		
	<i>B. T. Aspen</i>		76.0	<i>Cords</i>		
	<i>Quaking Aspen</i>		522.0	<i>Cords</i>		
	Mixed Hardwood		44.0	Cords		
	<i>Paper Birch</i>		9.0	<i>Cords</i>		
	<i>Red Maple</i>		35.0	<i>Cords</i>		
	White Spruce		12.0	Cords		
TOTAL:			64.5	MBF		
TOTAL:			1,818.0	Cords		

Sale Specific Conditions & Requirements

Sale Name: Batman Mix

Sale Number: 12-057-18 Seq#: 1

1 - Sale Area

1.2 - Boundaries

1.2.1 - Painted boundaries (1/14)

The sale boundary and Payment Unit boundaries are marked and identified by blue and red paint. Timber sale boundary lines against private property are marked with blue paint. Sale boundary lines against state land are marked with double red paint dots. Interior Payment Unit boundaries are marked with double red paint slashes.

2 - Timber Specifications

2.1 - Included Timber

2.1.1 - Clearcut unit(s) with unmerchantable trees (6/14)

Within Payment Unit(s) 3 and 5, cut all aspen and maple trees that are two (2) inches or more at DBH. In addition, cut all spruce, balsam, tamarack and jack pine which meet minimum piece specifications in 2.2 Utilization (100" piece to a top diameter inside bark of 4 inches).

Note: There is a portion of Payment Unit 5 along the recreation trail that is unpainted (see Timber Sale Map). Within this area, cut 20 feet from the edge of the trail.

Within Payment Unit(s) 2, cut all trees that are two (2) inches or more at DBH, except do not cut any oak or trees marked with green paint.

2.1.3 - Cut tree marked unit(s) (12/08)

Within Payment Unit(s) 1 and 4, all trees are designated for cutting when marked with orange paint above and below stump height, regardless of merchantability. In addition, cut all aspen, maple, birch, cherry, balsam, spruce and jack pine which meet minimum piece specifications in 2.2 Utilization (100" piece to a top diameter inside bark of 4 inches).

2.2 - Utilization

2.2.10 - No chipping tops and limbs (8/16)

Within Payment Unit(s) 2, chipping of the bole, 2-inches in diameter or greater, is allowed. Chipping of limbs or portions of the tree less than 2-inches in diameter is not permitted. Limbs and the remaining top must be left on site and scattered.

2.3 - Log Rule

2.3.1 - Log rule (12/08)

All board foot volumes of sawlog size products in this contract have been determined by the Scribner Decimal C Log Rule to a 10" top.

4 - Transportation

4.1 - Construction

4.1.3 - Slash and earthen piles (8/04)

Piles or windrows of earth along roads and landings that have been widened or constructed shall be leveled. Slash from road maintenance or construction, including stumps, shall be removed at least ten feet from the edge of the road and not left in piles.

4.1.6 - Road construction (1/09)

Improvements of existing roads shall be done in such a way as to minimize the environmental and visual impacts. Merchantable trees shall be cut and utilized unless otherwise directed. Non-merchantable trees shall be severed and laid flat on the ground. Slash shall be scattered, and not left in windrows. Stumps shall be set upright, not left on edge, and be moved at least 10 feet away from the road edge. Disturbed soil shall be feathered into the woods and not left in berms or windrows.

4.1.7 - Road closure (10/11)

All new roads built into the sale must be blocked to vehicle traffic within 60 days of the sale expiration. Overgrown roads that are reopened shall be considered new roads. In general, this will require constructing a four foot high berm of stumps and logs covered with dirt. Contact the sale administrator for specific design and placement.

5 - Operations

5.2 - Conduct of Operations

5.2.1 - Slash

5.2.1.8 - Slash height (12/08)

No slash or tree tops may exceed 36 inches in height.

5.2.3 - Operating Restrictions

5.2.3.5 - Oak wilt restriction (1/18)

Within Payment Unit(s) 3 and 5, unless changed by written agreement, cutting, skidding, hauling within the sale and brushing of access roads to the sale are not permitted during the period of April 15 to July 15. Operations may be allowed if specific steps are taken to prevent damaging uncut oak during the high risk period. Those steps may include completing all road brushing before April 15th and clearing a tree-length buffer along uncut oak cover before April 15th. This is necessary to reduce the spread of oak wilt. For more information, contact the Unit Manager or his/her representative.

5.2.38 - No decking against live trees (2/04)

Cut products may not be decked against unmarked or designated leave trees.

5.2.39 - ORV trail/route protection (4/18)

The Iron County Recreation Trail is an ORV trail or route and is shown on the Timber Sale Map. Do not damage posts with yellow ORV markers. All stumps within 5 feet of the trail must be cut flush with the ground. Maintain a 20 foot wide slash, debris, and rut free zone daily using the ORV trail or route as the centerline.

5.2.41 - Snowmobile trail protection (9/11)

The snowmobile trail is shown on the Timber Sale Map. Do not cut or damage posts with orange trail markers or traffic control signs. The trail must be maintained and restored to a condition equal to or better than before the sale. The road maintenance/restoration must be done prior to December 1. If the trail is to be used for hauling during the snowmobile season, then a snow covered base must be left on the trail. Maintain a 20 foot wide slash, debris, and rut free zone daily using the snowmobile trail as the centerline. No decking of forest products will be permitted along the trail.

5.4 - Soil Protection

5.4.1 - Rutting restriction, general (7/16)

Operations are to cease immediately if equipment and weather conditions result in rutting of roads and/or skid trails which is 12 inches or greater in depth and 50 feet in length. The Unit Manager or his/her representative may restrict hauling and/or skidding if ruts exceed the specified depth. With the Unit Manager or his/her representative's approval, the Purchaser may return to the area when the risk of rutting has decreased.

5.8 - Protection of Endangered Species

5.8.5 - Protection of raptor nests (3/13)

All trees with raptor nests will be protected if found during harvesting operations. Notification will be made to the Unit Manager or his/her representative who will notify the Wildlife Biologist so an on-site evaluation and recommendation can be made, if necessary.

6 - Safety and Fire Prevention

6.2 - Signing

6.2.2 - Snowmobile trail posting (8/09)

The Purchaser is responsible for posting and maintaining caution signs on the snowmobile trail prior to beginning operations during the snowmobile season (approximately December 1 to March 31). The trail must be posted at appropriate distances from the sale area to warn of logging activity and truck traffic. Signs must be removed when harvest operations are

suspended or completed. The Purchaser will provide these signs.



TIMBER SALE MAP

This information provided by authority of Part 525, 1994 PA 451, as amended.

Forest Management Unit Crystal Falls		County Iron	Mapped By Sebero	Date 06/06/2018	Page 1	of 1
		Cruised By Sebero				
Township 41N	Range 32W	Section(s) and Subdivision(s) 4 SW1/4, 8 E1/2SE, 9 W1/2NW,W1/2SW		Scale 4 inches = 1 mile		

Cover Type

A = Aspen	H = Hemlock	N = Marsh	U = Upland Brush
B = Paper Birch	J = Jack Pine	O = Oak	UM = Upland Mixed
C = Cedar	L = Lowland Brush	P = Lowland Poplar	V = Bog or Marsh
D = Treed Bog	LM = Lowland Mixed	Q = Mixed Swamp Conifer	W = White Pine
E = Swamp Hdwoods	M = Mpl, Bch, Bich	R = Red Pine	X = Non Stocked
F = Spruce Fir	MC = Mixed Conifer	S = Black Spruce	Z = Water
G = Grass	MD = Mixed Deciduous	T = Tamarack	

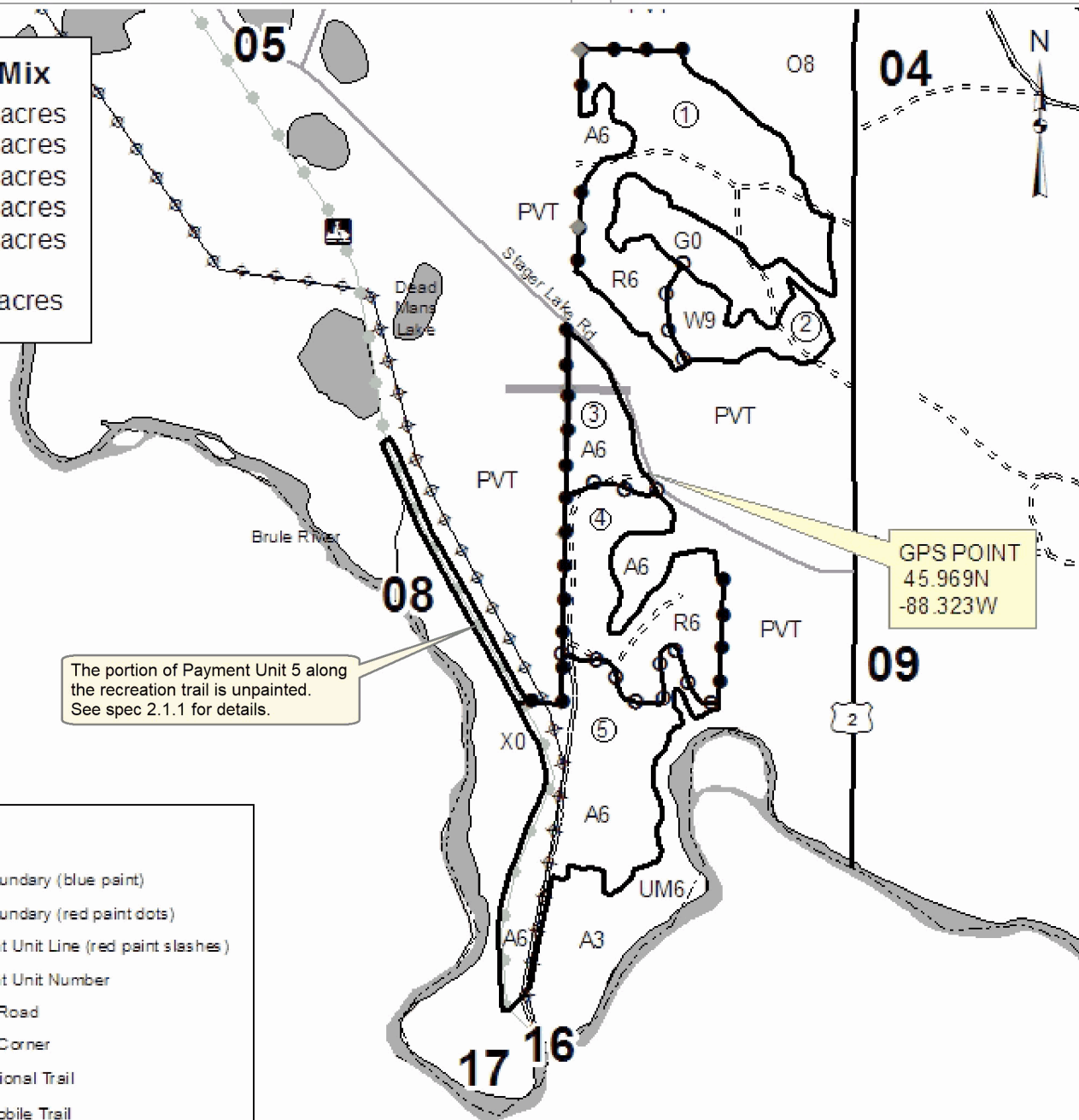
Density

0 = Non Stocked	5 = Pole Timber Medium
1 = Seeding Sapling Poor	6 = Pole Timber Well
2 = Seeding Sapling Medium	7 = Saw Timber Poor
3 = Seeding Sapling Well	8 = Saw Timber Medium
4 = Pole Timber Poor	9 = Saw Timber Well

Batman Mix

PU 1 54.8 acres
 PU 2 14.0 acres
 PU 3 13.1 acres
 PU 4 34.9 acres
 PU 5 39.5 acres

Total 156.3 acres



The portion of Payment Unit 5 along the recreation trail is unpainted. See spec 2.1.1 for details.

GPS POINT
 45.969N
 -88.323W

Legend

- Sale Boundary (blue paint)
- Sale Boundary (red paint dots)
- Payment Unit Line (red paint slashes)
- Payment Unit Number
- Woods Road
- Survey Corner
- Recreational Trail
- Snowmobile Trail
- Powerline

TIMBER SALE INFORMATION

Acorn Mix (12-060-18)

T41N, R32W, SEC. 3; T41N, R32W, SEC. 4.
Iron County (Advertised Price \$128,524.00)

A timber sale contract for this lump sum, sealed bid timber sale will be awarded to the responsible bidder offering the highest sealed bid price. Bids must be at or above the following advertised price for each species:

<u>PRODUCTS & SPECIES</u>	<u>ESTIMATED UNITS*</u>	<u>ADVERTISED PRICE</u>
Sawtimber		
Red Pine	30.10 MBF	\$ 135.00 / MBF
Pulpwood		
Jack Pine	3.00 Cords	\$ 41.60 / Cord
Mixed Aspen	2,055.00 Cords	\$ 39.90 / Cord
Mixed Hardwood	384.00 Cords	\$ 23.05 / Cord
Red Oak	971.00 Cords	\$ 26.30 / Cord
Red Pine	126.00 Cords	\$ 59.45 / Cord
White Pine	10.00 Cords	\$ 46.20 / Cord

* The total volume is statistically estimated within plus (+) or minus (-) 7.62 percent. The estimated units are final and not subject to adjustment. Prospective bidders are urged to examine this timber and to make their own estimates of quantity and quality.

BOND AND PAYMENT SCHEDULE:

1. A bond in the amount of \$7,000.00 to insure faithful performance of the conditions of the contract will be deposited by the successful bidder within 21 days of the sale award.
2. Cutting in any sale or unit without the required advance payment would be considered a trespass.
3. Total payment must be paid in advance or according to the following schedule:
 - (a) Ten percent (10%) of the sale value must be paid within 21 days of the sale award.
 - (b) The 10% down payment will be credited towards the first unit cut.
 - (c) Payment for each of the following units must be made before cutting begins in that unit:

<u>PAYMENT UNIT NUMBER</u>	<u>PERCENT OF TOTAL SALE VALUE</u>
01	34.6%
02	15.3%
03	12.0%
04	10.7%
05	22.5%
06	4.9%
4. If no cutting takes place, the 10% down payment will not be refunded.
5. Operations on the contract issued will terminate on 03/30/2021.

Description of Timber by Payment Unit (PU)

PU	MARKET GROUP	PRODUCT	QUANTITY	UNIT	ACRES	ADVERTISE PRICE
1	Mixed Aspen	Pulpwood	944.0	Cords	32.2	\$44,574.00
	<i>B. T. Aspen</i>		791.0	<i>Cords</i>		
	<i>Quaking Aspen</i>		153.0	<i>Cords</i>		
	Mixed Hardwood		124.0	Cords		
	<i>Paper Birch</i>		16.0	<i>Cords</i>		
	<i>Red Maple</i>		108.0	<i>Cords</i>		
	Red Oak		154.0	Cords		
2	Mixed Aspen	Pulpwood	422.0	Cords	21.6	\$19,603.80
	<i>B. T. Aspen</i>		422.0	<i>Cords</i>		
	Mixed Hardwood		120.0	Cords		
	<i>Paper Birch</i>		59.0	<i>Cords</i>		
	<i>Red Maple</i>		61.0	<i>Cords</i>		
3	Mixed Aspen	Pulpwood	193.0	Cords	14.6	\$15,414.30
	<i>B. T. Aspen</i>		181.0	<i>Cords</i>		
	<i>Quaking Aspen</i>		12.0	<i>Cords</i>		
	Mixed Hardwood		30.0	Cords		
	<i>Paper Birch</i>		2.0	<i>Cords</i>		
	<i>Red Maple</i>		28.0	<i>Cords</i>		
	Red Oak		267.0	Cords		
4	Red Pine	Sawtimber	30.1	MBF	26.3	\$13,794.70
	Mixed Aspen	Pulpwood	20.0	Cords		
	<i>B. T. Aspen</i>		3.0	<i>Cords</i>		
	<i>Quaking Aspen</i>		17.0	<i>Cords</i>		
	Mixed Hardwood		22.0	Cords		
	<i>Paper Birch</i>		8.0	<i>Cords</i>		
	<i>Red Maple</i>		14.0	<i>Cords</i>		
	Red Oak		18.0	Cords		
	Red Pine		126.0	Cords		
	White Pine		10.0	Cords		
5	Mixed Aspen	Pulpwood	473.0	Cords	21.2	\$28,899.25
	<i>B. T. Aspen</i>		456.0	<i>Cords</i>		
	<i>Quaking Aspen</i>		17.0	<i>Cords</i>		
	Mixed Hardwood		79.0	Cords		
	<i>Red Maple</i>		79.0	<i>Cords</i>		
	Red Oak		312.0	Cords		
6	Jack Pine	Pulpwood	3.0	Cords	16.5	\$6,237.95
	Mixed Aspen		3.0	Cords		
	<i>Quaking Aspen</i>		3.0	<i>Cords</i>		
	Mixed Hardwood		9.0	Cords		
	<i>Red Maple</i>		9.0	<i>Cords</i>		
	Red Oak		220.0	Cords		
TOTAL:			30.1	MBF		
TOTAL:			3,549.0	Cords		

Sale Specific Conditions & Requirements

Sale Name: Acorn Mix

Sale Number: 12-060-18 Seq#: 1

1 - Sale Area

1.2 - Boundaries

1.2.1 - Painted boundaries (1/14)

The sale boundary and Payment Unit boundaries are marked and identified by blue and red paint. Timber sale boundary lines against private property are marked with blue paint. Sale boundary lines against state land are marked with double red paint dots. Interior Payment Unit boundaries are marked with double red paint slashes.

2 - Timber Specifications

2.1 - Included Timber

2.1.1 - Clearcut unit(s) with unmerchantable trees (6/14)

Within Payment Unit(s) 1-3, 5, and 6, cut all aspen and maple trees that are two (2) inches or more at DBH. In addition, cut all spruce, balsam, jack pine and oak which meet minimum piece specifications in 2.2 Utilization (100" piece to a top diameter inside bark of 4 inches), with the following exceptions:

- Within Payment Unit 2 and the portion of Payment Unit 1 between the yellow paint line and Paint Pond Road (see Timber Sale Map), do not cut any oak.

- Within Payment Unit 6, do not cut any oak marked with green paint.

2.1.3 - Cut tree marked unit(s) (12/08)

Within Payment Unit(s) 4, all trees are designated for cutting when marked with orange paint above and below stump height, regardless of merchantability. In addition, cut all aspen, maple, birch, spruce, balsam and jack pine which meet minimum piece specifications in 2.2 Utilization (100" piece to a top diameter inside bark of 4 inches).

2.3 - Log Rule

2.3.1 - Log rule (12/08)

All board foot volumes of sawlog size products in this contract have been determined by the Scribner Decimal C Log Rule to a 10" top.

4 - Transportation

4.1 - Construction

4.1.3 - Slash and earthen piles (8/04)

Piles or windrows of earth along roads and landings that have been widened or constructed shall be leveled. Slash from road maintenance or construction, including stumps, shall be removed at least ten feet from the edge of the road and not left in piles.

4.1.6 - Road construction (1/09)

Improvements of existing roads shall be done in such a way as to minimize the environmental and visual impacts. Merchantable trees shall be cut and utilized unless otherwise directed. Non-merchantable trees shall be severed and laid flat on the ground. Slash shall be scattered, and not left in windrows. Stumps shall be set upright, not left on edge, and be moved at least 10 feet away from the road edge. Disturbed soil shall be feathered into the woods and not left in berms or windrows.

4.1.7 - Road closure (10/11)

All new roads built into the sale must be blocked to vehicle traffic within 60 days of the sale expiration. Overgrown roads that are reopened shall be considered new roads. In general, this will require constructing a four foot high berm of stumps and logs covered with dirt. Contact the sale administrator for specific design and placement.

5 - Operations

5.2 - Conduct of Operations

5.2.1 - Slash

5.2.1.8 - Slash height (12/08)

No slash or tree tops may exceed 36 inches in height.

5.2.3 - Operating Restrictions

5.2.3.5 - Oak wilt restriction (1/18)

Within Payment Unit(s) 1-6, unless changed by written agreement, cutting, skidding, hauling within the sale and brushing of access roads to the sale are not permitted during the period of April 15 to July 15. Operations may be allowed if specific steps are taken to prevent damaging uncut oak during the high risk period. Those steps may include completing all road brushing before April 15th and clearing a tree-length buffer along uncut oak cover before April 15th. This is necessary to reduce the spread of oak wilt. For more information, contact the Unit Manager or his/her representative.

5.2.38 - No decking against live trees (2/04)

Cut products may not be decked against unmarked or designated leave trees.

5.4 - Soil Protection

5.4.1 - Rutting restriction, general (7/16)

Operations are to cease immediately if equipment and weather conditions result in rutting of roads and/or skid trails which is 12 inches or greater in depth and 50 feet in length. The Unit Manager or his/her representative may restrict hauling and/or skidding if ruts exceed the specified depth. With the Unit Manager or his/her representative's approval, the Purchaser may return to the area when the risk of rutting has decreased.

5.8 - Protection of Endangered Species

5.8.5 - Protection of raptor nests (3/13)

All trees with raptor nests will be protected if found during harvesting operations. Notification will be made to the Unit Manager or his/her representative who will notify the Wildlife Biologist so an on-site evaluation and recommendation can be made, if necessary.



TIMBER SALE MAP

This information provided by authority of Part 525, 1994 PA 451, as amended.

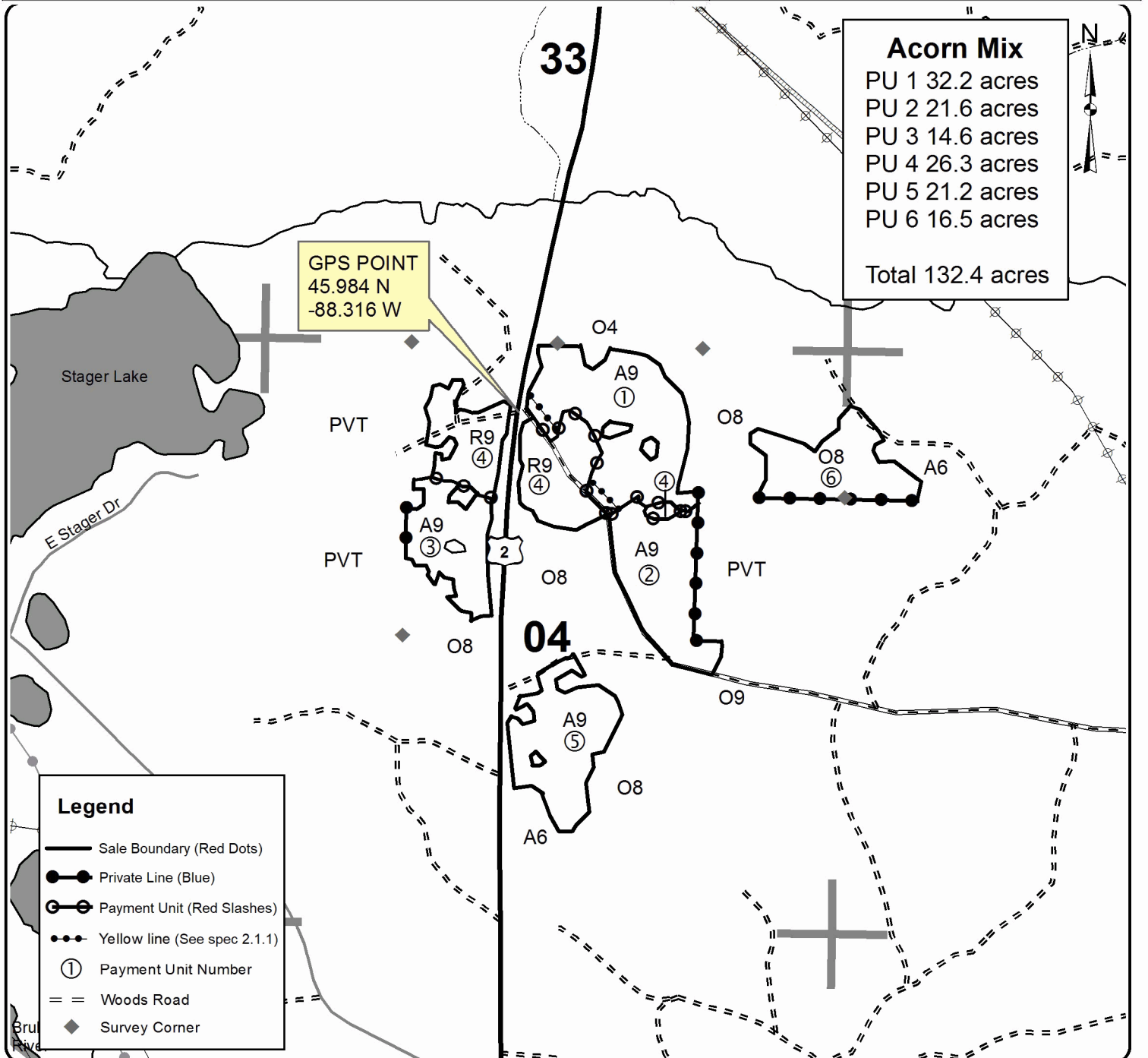
Forest Management Unit Crystal Falls		County Iron	Mapped By Robers	Date 06/18/2018	Page 1	of 1
Township 41N	Range 32W	Section(s) and Subdivision(s) 3 NWNW 33 SESW,SWSE 4 E1/2NW N1/2NE,SWNE W1/2 SE,NESE E1/2SW		Scale 4 inches = 1 mile		

Cover Type

A = Aspen	H = Hemlock	N = Marsh	U = Upland Brush
B = Paper Birch	J = Jack Pine	O = Oak	UM = Upland Mixed
C = Cedar	L = Lowland Brush	P = Lowland Poplar	V = Bog or Marsh
D = Treed Bog	LM = Lowland Mixed	Q = Mixed Swamp Conifer	W = White Pine
E = Swamp Hdwoods	M = Mpl, Bch, Brch	R = Red Pine	X = Non Stocked
F = Spruce Fir	MC = Mixed Conifer	S = Black Spruce	Z = Water
G = Grass	MD = Mixed Deciduous	T = Tamarack	

Density

0 = Non Stocked	5 = Pole Timber Medium
1 = Seedling Sapling Poor	6 = Pole Timber Well
2 = Seedling Sapling Medium	7 = Saw Timber Poor
3 = Seedling Sapling Well	8 = Saw Timber Medium
4 = Pole Timber Poor	9 = Saw Timber Well



TIMBER SALE INFORMATION

Dog House Mix (12-061-18)

T41N, R32W, SEC. 10; T41N, R32W, SEC. 11; T41N, R32W, SEC. 2; T41N, R32W, SEC. 3.
Iron County (Advertised Price \$134,549.30)

A timber sale contract for this lump sum, sealed bid timber sale will be awarded to the responsible bidder offering the highest sealed bid price. Bids must be at or above the following advertised price for each species:

<u>PRODUCTS & SPECIES</u>	<u>ESTIMATED UNITS*</u>	<u>ADVERTISED PRICE</u>
Pulpwood		
Balsam Fir	2.00 Cords	\$ 17.00 / Cord
Jack Pine	25.00 Cords	\$ 41.60 / Cord
Mixed Aspen	2,034.00 Cords	\$ 39.90 / Cord
Mixed Spruce	119.00 Cords	\$ 25.20 / Cord
Paper Birch	85.00 Cords	\$ 24.45 / Cord
Red Maple	349.00 Cords	\$ 23.05 / Cord
Red Oak	465.00 Cords	\$ 26.30 / Cord
Red Pine	452.00 Cords	\$ 59.45 / Cord
Tamarack	6.00 Cords	\$ 16.05 / Cord

* The total volume is statistically estimated within plus (+) or minus (-) 7.57 percent. The estimated units are final and not subject to adjustment. Prospective bidders are urged to examine this timber and to make their own estimates of quantity and quality.

BOND AND PAYMENT SCHEDULE:

1. A bond in the amount of \$7,500.00 to insure faithful performance of the conditions of the contract will be deposited by the successful bidder within 21 days of the sale award.
2. Cutting in any sale or unit without the required advance payment would be considered a trespass.
3. Total payment must be paid in advance or according to the following schedule:
 - (a) Ten percent (10%) of the sale value must be paid within 21 days of the sale award.
 - (b) The 10% down payment will be credited towards the first unit cut.
 - (c) Payment for each of the following units must be made before cutting begins in that unit:

<u>PAYMENT UNIT NUMBER</u>	<u>PERCENT OF TOTAL SALE VALUE</u>
01	14.0%
02	7.6%
03	21.4%
04	7.0%
05	9.5%
06	40.5%

4. If no cutting takes place, the 10% down payment will not be refunded.
5. Operations on the contract issued will terminate on 06/30/2021.

Description of Timber by Payment Unit (PU)

PU	MARKET GROUP	PRODUCT	QUANTITY	UNIT	ACRES	ADVERTISE PRICE
1	Mixed Aspen	Pulpwood	342.0	Cords	10.9	\$18,854.90
	<i>B. T. Aspen</i>		315.0	<i>Cords</i>		
	<i>Quaking Aspen</i>		27.0	<i>Cords</i>		
	Paper Birch		13.0	Cords		
	Red Maple		73.0	Cords		
	Red Oak		122.0	Cords		
	2		Mixed Aspen	Pulpwood		
<i>B. T. Aspen</i>	175.0	<i>Cords</i>				
<i>Quaking Aspen</i>	31.0	<i>Cords</i>				
Paper Birch	23.0	Cords				
Red Maple	63.0	Cords				
3	Mixed Aspen	Pulpwood	458.0	Cords	25.5	\$28,849.45
	<i>B. T. Aspen</i>		370.0	<i>Cords</i>		
	<i>Quaking Aspen</i>		88.0	<i>Cords</i>		
	Paper Birch		43.0	Cords		
	Red Maple		88.0	Cords		
	Red Oak		285.0	Cords		
4	Mixed Aspen	Pulpwood	197.0	Cords	21.3	\$9,366.95
	<i>B. T. Aspen</i>		194.0	<i>Cords</i>		
	<i>Quaking Aspen</i>		3.0	<i>Cords</i>		
	Paper Birch		6.0	Cords		
	Red Maple		59.0	Cords		
5	Mixed Aspen	Pulpwood	246.0	Cords	13.2	\$12,816.00
	<i>B. T. Aspen</i>		190.0	<i>Cords</i>		
	<i>Quaking Aspen</i>		56.0	<i>Cords</i>		
	Red Maple		64.0	Cords		
	Red Oak		58.0	Cords		
6	Balsam Fir	Pulpwood	2.0	Cords	57.0	\$54,428.10
	Jack Pine		25.0	Cords		
	Mixed Aspen		585.0	Cords		
	<i>Quaking Aspen</i>		585.0	<i>Cords</i>		
	Mixed Spruce		119.0	Cords		
	<i>Black Spruce</i>		112.0	<i>Cords</i>		
	<i>White Spruce</i>		7.0	<i>Cords</i>		
	Red Maple		2.0	Cords		
	Red Pine		452.0	Cords		
	Tamarack		6.0	Cords		
	TOTAL:			3,537.0		

Sale Specific Conditions & Requirements

Sale Name: Dog House Mix

Sale Number: 12-061-18 Seq#: 1

1 - Sale Area

1.2 - Boundaries

1.2.1 - Painted boundaries (1/14)

The sale boundary and Payment Unit boundaries are marked and identified by blue and red paint. Timber sale boundary lines against private property are marked with blue paint. Sale boundary lines against state land are marked with double red paint dots. Interior Payment Unit boundaries are marked with double red paint slashes.

2 - Timber Specifications

2.1 - Included Timber

2.1.1 - Clearcut unit(s) with unmerchantable trees (6/14)

Within Payment Unit(s) 1-4, 5A, 5B, and 6A, cut all aspen and maple trees that are two (2) inches or more at DBH. In addition, cut all spruce, balsam, jack pine which meet minimum piece specifications in 2.2 Utilization (100" piece to a top diameter inside bark of 4 inches), along with the following:

- Within Payment Units 1, 3, and 5A, cut all oak which meet minimum piece specifications.

- Within Payment Units 2, 4, 5B, and 6A, cut all tamarack which meet minimum piece specifications.

2.1.3 - Cut tree marked unit(s) (12/08)

Within Payment Unit(s) 6B, all trees are designated for cutting when marked with orange paint above and below stump height, regardless of merchantability. In addition, cut all aspen, maple, birch, cherry, spruce, balsam and jack pine which meet minimum piece specifications in 2.2 Utilization (100" piece to a top diameter inside bark of 4 inches).

2.3 - Log Rule

2.3.1 - Log rule (12/08)

All board foot volumes of sawlog size products in this contract have been determined by the Scribner Decimal C Log Rule to a 10" top.

3 - Payments

3.3 - Pre-measured Sales

3.3.4 - Dividing payment units (7/14)

Payment Unit(s) 6 may be divided at the request of the Purchaser and upon approval of the Unit Manager. Dividing Payment Units is a contract modification which requires a Timber Sale Contract Supplement. There will be only one division per Payment Unit.

4 - Transportation

4.1 - Construction

4.1.3 - Slash and earthen piles (8/04)

Piles or windrows of earth along roads and landings that have been widened or constructed shall be leveled. Slash from road maintenance or construction, including stumps, shall be removed at least ten feet from the edge of the road and not left in piles.

4.1.6 - Road construction (1/09)

Improvements of existing roads shall be done in such a way as to minimize the environmental and visual impacts. Merchantable trees shall be cut and utilized unless otherwise directed. Non-merchantable trees shall be severed and laid flat on the ground. Slash shall be scattered, and not left in windrows. Stumps shall be set upright, not left on edge, and be moved at least 10 feet away from the road edge. Disturbed soil shall be feathered into the woods and not left in berms or windrows.

4.1.7 - Road closure (10/11)

All new roads built into the sale must be blocked to vehicle traffic within 60 days of the sale expiration. Overgrown roads that are reopened shall be considered new roads. In general, this will require constructing a four foot high berm of stumps and logs covered with dirt. Contact the sale administrator for specific design and placement.

5 - Operations

5.2 - Conduct of Operations

5.2.1 - Slash

5.2.1.8 - Slash height (12/08)

No slash or tree tops may exceed 36 inches in height.

5.2.3 - Operating Restrictions

5.2.3.5 - Oak wilt restriction (1/18)

Within Payment Unit(s) 1-4, 5A and 5B, unless changed by written agreement, cutting, skidding, hauling within the sale and brushing of access roads to the sale are not permitted during the period of April 15 to July 15. Operations may be allowed if specific steps are taken to prevent damaging uncut oak during the high risk period. Those steps may include completing all road brushing before April 15th and clearing a tree-length buffer along uncut oak cover before April 15th. This is necessary to reduce the spread of oak wilt. For more information, contact the Unit Manager or his/her representative.

5.2.38 - No decking against live trees (2/04)

Cut products may not be decked against unmarked or designated leave trees.

5.4 - Soil Protection

5.4.1 - Rutting restriction, general (7/16)

Operations are to cease immediately if equipment and weather conditions result in rutting of roads and/or skid trails which is 12 inches or greater in depth and 50 feet in length. The Unit Manager or his/her representative may restrict hauling and/or skidding if ruts exceed the specified depth. With the Unit Manager or his/her representative's approval, the Purchaser may return to the area when the risk of rutting has decreased.

5.8 - Protection of Endangered Species

5.8.5 - Protection of raptor nests (3/13)

All trees with raptor nests will be protected if found during harvesting operations. Notification will be made to the Unit Manager or his/her representative who will notify the Wildlife Biologist so an on-site evaluation and recommendation can be made, if necessary.



TIMBER SALE MAP

This information provided by authority of Part 525, 1994 PA 451, as amended.

Forest Management Unit Crystal Falls	County Iron	Mapped By Robers	Date 06/25/2018	Page 1	of 1
Township 41N	Range 32W	Section(s) and Subdivision(s) 3 SW1/4, E1/2 SE 2 W1/2 SW, SWNW 10 SW1/4 11 W1/2 NW	Scale 1:15,840		

Cover Type

A = Aspen	H = Hemlock	N = Marsh	U = Upland Brush
B = Paper Birch	J = Jack Pine	O = Oak	UM = Upland Mixed
C = Cedar	L = Lowland Brush	P = Lowland Poplar	V = Bog or Marsh
D = Treed Bog	LM = Lowland Mixed	Q = Mixed Swamp Conifer	W = White Pine
E = Swamp Hdwoods	M = Mpl, Bch, Bich	R = Red Pine	X = Non Stocked
F = Spruce Fir	MC = Mixed Conifer	S = Black Spruce	Z = Water
G = Grass	MD = Mixed Deciduous	T = Tamarack	

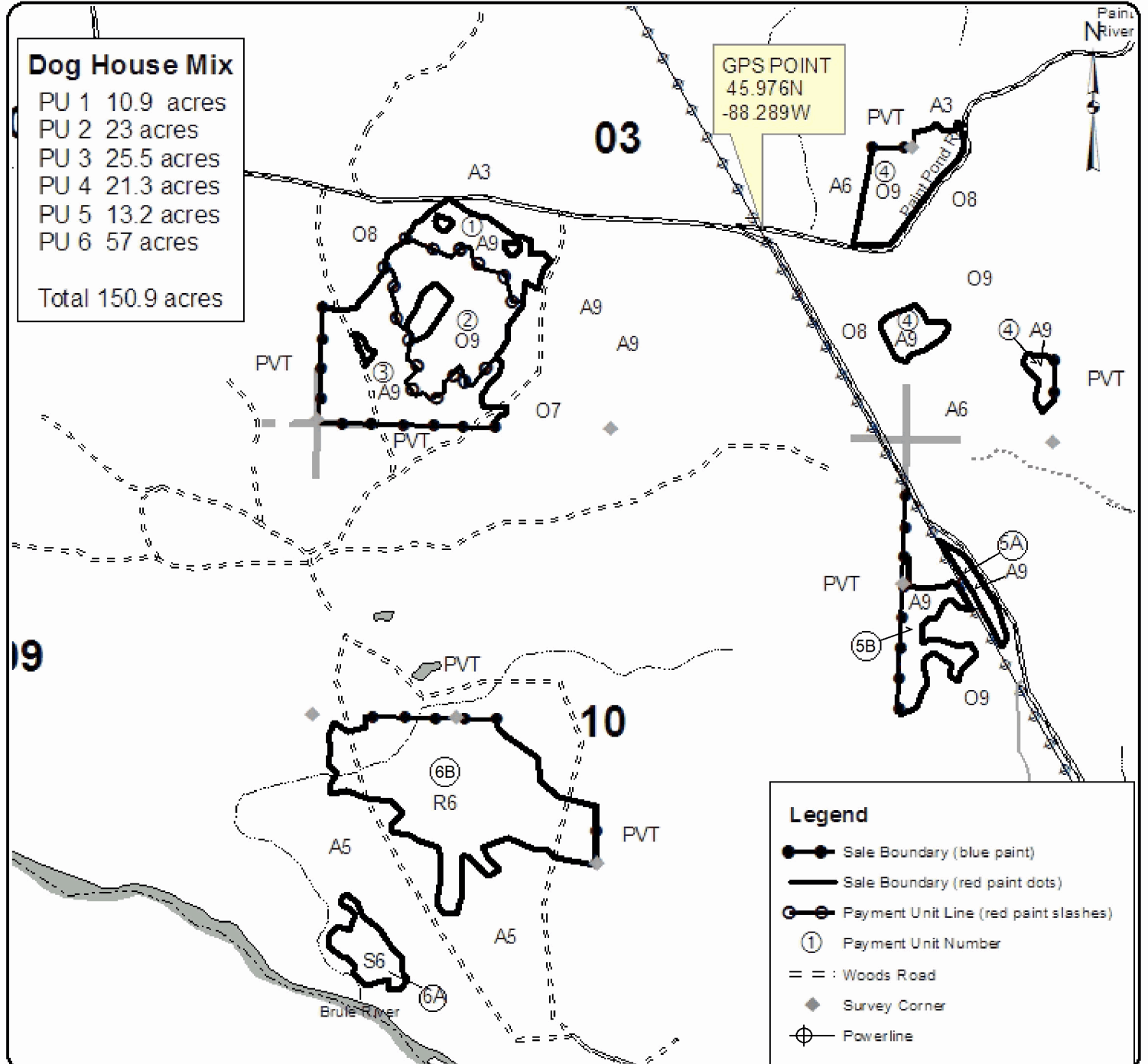
Density

0 = Non Stocked	5 = Pole Timber Medium
1 = Seeding Sapling Poor	6 = Pole Timber Well
2 = Seeding Sapling Medium	7 = Saw Timber Poor
3 = Seeding Sapling Well	8 = Saw Timber Medium
4 = Pole Timber Poor	9 = Saw Timber Well

Dog House Mix

- PU 1 10.9 acres
- PU 2 23 acres
- PU 3 25.5 acres
- PU 4 21.3 acres
- PU 5 13.2 acres
- PU 6 57 acres

Total 150.9 acres



Batman Mix (12-057-18)

T41N, R32W, SEC. 4; T41N, R32W, SEC. 8; T41N, R32W, SEC. 9; Iron COUNTY

In response to the notice of sale to be held 8:30 a.m. (local time) on November 7, 2018, I am hereby submitting my sealed bid (firm offer) for the following forest products to be cut. Bids for individual species must be at or above the advertised price. All non-responsive bid forms may be rejected.

<u>PRODUCTS & SPECIES</u>	<u>ESTIMATED VOLUME*</u>	<u>ADVERTISED PRICE</u>	<u>BID PRICE/UNIT</u>
Sawtimber			
Red Pine	44.50 MBF	\$ 135.00/MBF	\$ _____
White Pine	20.00 MBF	\$ 92.00/MBF	\$ _____
Pulpwood			
Balsam Fir	77.00 Cords	\$ 17.00/Cord	\$ _____
Jack Pine	12.00 Cords	\$ 41.60/Cord	\$ _____
Mixed Aspen	946.00 Cords	\$ 39.90/Cord	\$ _____
Mixed Hardwood	92.00 Cords	\$ 23.05/Cord	\$ _____
Red Pine	582.00 Cords	\$ 59.45/Cord	\$ _____
White Pine	72.00 Cords	\$ 46.20/Cord	\$ _____
White Spruce	37.00 Cords	\$ 25.20/Cord	\$ _____

*The volumes are statistically estimated within plus (+) or minus (-) 9.10 percent. These estimated volumes are final and not subject to adjustment. Prospective bidders are urged to examine this timber and to make their own estimates of quantity and quality.

I understand that any or all bids may be rejected. All bids must be signed and all bid items must be bid or the bid form may be rejected. I also understand that consideration and awarding a contract will be based upon my past performance and ability to complete the contract based upon equipment and staffing subject to my control.

FEDERAL ID: ____ - ____ - ____ or SOCIAL SECURITY NUMBER: ____ - ____ - ____

Company or individual bidding: _____

Company representative's name: _____

Address: _____

City: _____ State: _____ Zip: _____

IF AVAILABLE, PLEASE PLACE THE PERSONALIZED LABEL FROM YOUR PROSPECTUS IN THE ABOVE BOX.

Individual or company representative's signature: _____ Date: _____

Phone number : _____ Email (optional): _____

THE WINNING BIDDER MUST COMPLETE THE VERIFICATION OF WORKER'S DISABILITY COMPENSATION ACT COMPLIANCE (ON REVERSE SIDE IF DOUBLE SIDED) WITHIN 21 DAYS OF SALE AWARD DATE



FOR DEPARTMENT USE ONLY
Sale Number (XX - XXX - XX - XX)
Forest Management Unit:

TIMBER SALE VERIFICATION OF WORKER'S DISABILITY COMPENSATION ACT COMPLIANCE

*As required by Act 317, P.A. 1969 (Worker's Compensation) and
Part 5 of Act 451 of 1994, as amended.*

VERIFICATION OF WORKER'S DISABILITY COMPENSATION ACT COMPLIANCE

- This verification must be completed and submitted within 21 days of contract award and prior to the issuance of the timber sale contract.
- In addition, if boxes 2B or 2C are checked, then Notice of Exclusion or Certificate of Insurance must be submitted within twenty-one (21) days of the contract award and prior to the issuance of the timber sale contract.
- All information must be typed or printed except for written signatures.

Please Check Appropriate Categories:

1. My business is organized as (you **must** check one of the boxes below):
 - A. Sole Proprietorship (individual)
 - B. Partnership
 - C. Corporation
2. You **must** check one of the boxes below:
 - A. I certify my business is a sole proprietorship and it has no employees but the sole proprietor. I am not subject to the Worker's Compensation Laws.
 - B. I certify my business has satisfied its obligation to the Worker's Compensation Act through the use of an approved Notice of Exclusion (BWC-337, Rev. 5/96). I will provide a copy of the Notice of Exclusion within 21 days of the contract award. (For questions or a copy of the BWC-337, please call the Worker's Compensation Bureau at 517-322-1195).
 - C. I certify my business has a Worker's Compensation Policy. I will provide an original Certificate of Insurance within twenty-one (21) days of the contract award.
3. If you have checked item 2(A) or 2(B), you **must** indicate the number of **both** full-time and part-time employees, other than yourself, including family members and active partners (if none, you must enter "0").

_____ Full-time Employees

_____ Part-time Employees

Name of Business		Federal ID (or) Social Security No.	
Address		Telephone ()	
City	State	ZIP	

I hereby certify that the above information is true and correct. I agree to notify the Michigan DNR of any changes that occur in factors affecting my coverage during any of my present and future operations.

Signature of Owner or Authorized Representative

Title

Date

Please complete the "SEALED BID" information on the next page

Acorn Mix (12-060-18)
T41N, R32W, SEC. 3; T41N, R32W, SEC. 4; Iron COUNTY

In response to the notice of sale to be held 8:30 a.m. (local time) on November 7, 2018, I am hereby submitting my sealed bid (firm offer) for the following forest products to be cut. Bids for individual species must be at or above the advertised price. All non-responsive bid forms may be rejected.

<u>PRODUCTS & SPECIES</u>	<u>ESTIMATED VOLUME*</u>	<u>ADVERTISED PRICE</u>	<u>BID PRICE/UNIT</u>
Sawtimber			
Red Pine	30.10 MBF	\$ 135.00/MBF	\$ _____
Pulpwood			
Jack Pine	3.00 Cords	\$ 41.60/Cord	\$ _____
Mixed Aspen	2,055.00 Cords	\$ 39.90/Cord	\$ _____
Mixed Hardwood	384.00 Cords	\$ 23.05/Cord	\$ _____
Red Oak	971.00 Cords	\$ 26.30/Cord	\$ _____
Red Pine	126.00 Cords	\$ 59.45/Cord	\$ _____
White Pine	10.00 Cords	\$ 46.20/Cord	\$ _____

*The volumes are statistically estimated within plus (+) or minus (-) 7.62 percent. These estimated volumes are final and not subject to adjustment. Prospective bidders are urged to examine this timber and to make their own estimates of quantity and quality.

I understand that any or all bids may be rejected. All bids must be signed and all bid items must be bid or the bid form may be rejected. I also understand that consideration and awarding a contract will be based upon my past performance and ability to complete the contract based upon equipment and staffing subject to my control.

FEDERAL ID: _____ or SOCIAL SECURITY NUMBER: _____

Company or individual bidding: _____

Company representative's name: _____

Address: _____

City: _____ State: _____ Zip: _____

IF AVAILABLE, PLEASE PLACE THE PERSONALIZED LABEL FROM YOUR PROSPECTUS IN THE ABOVE BOX.

Individual or company representative's signature: _____ Date: _____

Phone number : _____ Email (optional): _____

THE WINNING BIDDER MUST COMPLETE THE VERIFICATION OF WORKER'S DISABILITY COMPENSATION ACT COMPLIANCE (ON REVERSE SIDE IF DOUBLE SIDED) WITHIN 21 DAYS OF SALE AWARD DATE



FOR DEPARTMENT USE ONLY
Sale Number (XX - XXX - XX - XX)
Forest Management Unit:

TIMBER SALE VERIFICATION OF WORKER'S DISABILITY COMPENSATION ACT COMPLIANCE

*As required by Act 317, P.A. 1969 (Worker's Compensation) and
Part 5 of Act 451 of 1994, as amended.*

VERIFICATION OF WORKER'S DISABILITY COMPENSATION ACT COMPLIANCE

- This verification must be completed and submitted within 21 days of contract award and prior to the issuance of the timber sale contract.
- In addition, if boxes 2B or 2C are checked, then Notice of Exclusion or Certificate of Insurance must be submitted within twenty-one (21) days of the contract award and prior to the issuance of the timber sale contract.
- All information must be typed or printed except for written signatures.

Please Check Appropriate Categories:

1. My business is organized as (you **must** check one of the boxes below):
 - A. Sole Proprietorship (individual)
 - B. Partnership
 - C. Corporation
2. You **must** check one of the boxes below:
 - A. I certify my business is a sole proprietorship and it has no employees but the sole proprietor. I am not subject to the Worker's Compensation Laws.
 - B. I certify my business has satisfied its obligation to the Worker's Compensation Act through the use of an approved Notice of Exclusion (BWC-337, Rev. 5/96). I will provide a copy of the Notice of Exclusion within 21 days of the contract award. (For questions or a copy of the BWC-337, please call the Worker's Compensation Bureau at 517-322-1195).
 - C. I certify my business has a Worker's Compensation Policy. I will provide an original Certificate of Insurance within twenty-one (21) days of the contract award.
3. If you have checked item 2(A) or 2(B), you **must** indicate the number of **both** full-time and part-time employees, other than yourself, including family members and active partners (if none, you must enter "0").

_____ Full-time Employees _____ Part-time Employees

Name of Business		Federal ID (or) Social Security No.	
Address		Telephone ()	
City	State	ZIP	

I hereby certify that the above information is true and correct. I agree to notify the Michigan DNR of any changes that occur in factors affecting my coverage during any of my present and future operations.

Signature of Owner or Authorized Representative

Title

Date

Please complete the "SEALED BID" information on the next page

Dog House Mix (12-061-18)

T41N, R32W, SEC. 10; T41N, R32W, SEC. 11; T41N, R32W, SEC. 2; T41N, R32W,

In response to the notice of sale to be held 8:30 a.m. (local time) on November 7, 2018, I am hereby submitting my sealed bid (firm offer) for the following forest products to be cut. Bids for individual species must be at or above the advertised price. All non-responsive bid forms may be rejected.

<u>PRODUCTS & SPECIES</u>	<u>ESTIMATED VOLUME*</u>	<u>ADVERTISED PRICE</u>	<u>BID PRICE/UNIT</u>
Pulpwood			
Balsam Fir	2.00 Cords	\$ 17.00/Cord	\$ _____
Jack Pine	25.00 Cords	\$ 41.60/Cord	\$ _____
Mixed Aspen	2,034.00 Cords	\$ 39.90/Cord	\$ _____
Mixed Spruce	119.00 Cords	\$ 25.20/Cord	\$ _____
Paper Birch	85.00 Cords	\$ 24.45/Cord	\$ _____
Red Maple	349.00 Cords	\$ 23.05/Cord	\$ _____
Red Oak	465.00 Cords	\$ 26.30/Cord	\$ _____
Red Pine	452.00 Cords	\$ 59.45/Cord	\$ _____
Tamarack	6.00 Cords	\$ 16.05/Cord	\$ _____

*The volumes are statistically estimated within plus (+) or minus (-) 7.57 percent. These estimated volumes are final and not subject to adjustment. Prospective bidders are urged to examine this timber and to make their own estimates of quantity and quality.

I understand that any or all bids may be rejected. All bids must be signed and all bid items must be bid or the bid form may be rejected. I also understand that consideration and awarding a contract will be based upon my past performance and ability to complete the contract based upon equipment and staffing subject to my control.

FEDERAL ID: ____ - ____ - ____ or SOCIAL SECURITY NUMBER: ____ - ____ - ____

Company or individual bidding: _____

Company representative's name: _____

Address: _____

City: _____ State: _____ Zip: _____

IF AVAILABLE, PLEASE PLACE THE PERSONALIZED LABEL FROM YOUR PROSPECTUS IN THE ABOVE BOX.

Individual or company representative's signature: _____ Date: _____

Phone number : _____ Email (optional): _____

THE WINNING BIDDER MUST COMPLETE THE VERIFICATION OF WORKER'S DISABILITY COMPENSATION ACT COMPLIANCE (ON REVERSE SIDE IF DOUBLE SIDED) WITHIN 21 DAYS OF SALE AWARD DATE



TIMBER SALE VERIFICATION OF WORKER'S DISABILITY COMPENSATION ACT COMPLIANCE

As required by Act 317, P.A. 1969 (Worker's Compensation) and
Part 5 of Act 451 of 1994, as amended.

FOR DEPARTMENT USE ONLY	
Sale Number (XX - XXX - XX - XX)	
Forest Management Unit:	

VERIFICATION OF WORKER'S DISABILITY COMPENSATION ACT COMPLIANCE

- This verification must be completed and submitted within 21 days of contract award and prior to the issuance of the timber sale contract.
- In addition, if boxes 2B or 2C are checked, then Notice of Exclusion or Certificate of Insurance must be submitted within twenty-one (21) days of the contract award and prior to the issuance of the timber sale contract.
- All information must be typed or printed except for written signatures.

Please Check Appropriate Categories:

1. My business is organized as (you **must** check one of the boxes below):
 - A. Sole Proprietorship (individual)
 - B. Partnership
 - C. Corporation
2. You **must** check one of the boxes below:
 - A. I certify my business is a sole proprietorship and it has no employees but the sole proprietor. I am not subject to the Worker's Compensation Laws.
 - B. I certify my business has satisfied its obligation to the Worker's Compensation Act through the use of an approved Notice of Exclusion (BWC-337, Rev. 5/96). I will provide a copy of the Notice of Exclusion within 21 days of the contract award. (For questions or a copy of the BWC-337, please call the Worker's Compensation Bureau at 517-322-1195).
 - C. I certify my business has a Worker's Compensation Policy. I will provide an original Certificate of Insurance within twenty-one (21) days of the contract award.
3. If you have checked item 2(A) or 2(B), you **must** indicate the number of **both** full-time and part-time employees, other than yourself, including family members and active partners (if none, you must enter "0").

_____ Full-time Employees

_____ Part-time Employees

Name of Business		Federal ID (or) Social Security No.	
Address		Telephone ()	
City	State	ZIP	

I hereby certify that the above information is true and correct. I agree to notify the Michigan DNR of any changes that occur in factors affecting my coverage during any of my present and future operations.

Signature of Owner or Authorized Representative

Title

Date

Please complete the "SEALED BID" information on the next page

Snake Line Aspen (12-012-18)

T44N, R28W, SEC. 14; T44N, R28W, SEC. 15; T44N, R28W, SEC. 16; T44N,

In response to the notice of sale to be held 8:30 a.m. (local time) on November 7, 2018, I am hereby submitting my sealed bid (firm offer) for the following forest products to be cut. Bids for individual species must be at or above the advertised price. All non-responsive bid forms may be rejected.

<u>PRODUCTS & SPECIES</u>	<u>ESTIMATED VOLUME*</u>	<u>ADVERTISED PRICE</u>	<u>BID PRICE/UNIT</u>
Sawtimber			
Basswood	7.90 MBF	\$ 228.00/MBF	\$ _____
Paper Birch	14.30 MBF	\$ 78.00/MBF	\$ _____
Red Maple	28.90 MBF	\$ 154.00/MBF	\$ _____
Sugar Maple	16.20 MBF	\$ 375.00/MBF	\$ _____
Pulpwood			
Balsam Fir	458.00 Cords	\$ 17.00/Cord	\$ _____
Basswood	94.00 Cords	\$ 11.30/Cord	\$ _____
Mixed Aspen	4,415.00 Cords	\$ 33.75/Cord	\$ _____
Mixed Hardwood	1,250.00 Cords	\$ 23.05/Cord	\$ _____
Mixed Spruce	660.00 Cords	\$ 25.20/Cord	\$ _____
Tamarack	143.00 Cords	\$ 16.05/Cord	\$ _____

*The volumes are statistically estimated within plus (+) or minus (-) 6.38 percent. These estimated volumes are final and not subject to adjustment. Prospective bidders are urged to examine this timber and to make their own estimates of quantity and quality.

I understand that any or all bids may be rejected. All bids must be signed and all bid items must be bid or the bid form may be rejected. I also understand that consideration and awarding a contract will be based upon my past performance and ability to complete the contract based upon equipment and staffing subject to my control.

FEDERAL ID: _____ or SOCIAL SECURITY NUMBER: _____

Company or individual bidding: _____

Company representative's name: _____

Address: _____

City: _____ State: _____ Zip: _____

IF AVAILABLE, PLEASE PLACE THE PERSONALIZED LABEL FROM YOUR PROSPECTUS IN THE ABOVE BOX.

Individual or company representative's signature: _____ Date: _____

Phone number : _____ Email (optional): _____

THE WINNING BIDDER MUST COMPLETE THE VERIFICATION OF WORKER'S DISABILITY COMPENSATION ACT COMPLIANCE (ON REVERSE SIDE IF DOUBLE SIDED) WITHIN 21 DAYS OF SALE AWARD DATE



FOR DEPARTMENT USE ONLY
Sale Number (XX - XXX - XX - XX)
Forest Management Unit:

TIMBER SALE VERIFICATION OF WORKER'S DISABILITY COMPENSATION ACT COMPLIANCE

*As required by Act 317, P.A. 1969 (Worker's Compensation) and
Part 5 of Act 451 of 1994, as amended.*

VERIFICATION OF WORKER'S DISABILITY COMPENSATION ACT COMPLIANCE

- This verification must be completed and submitted within 21 days of contract award and prior to the issuance of the timber sale contract.
- In addition, if boxes 2B or 2C are checked, then Notice of Exclusion or Certificate of Insurance must be submitted within twenty-one (21) days of the contract award and prior to the issuance of the timber sale contract.
- All information must be typed or printed except for written signatures.

Please Check Appropriate Categories:

1. My business is organized as (you **must** check one of the boxes below):
 - A. Sole Proprietorship (individual)
 - B. Partnership
 - C. Corporation

2. You **must** check one of the boxes below:
 - A. I certify my business is a sole proprietorship and it has no employees but the sole proprietor. I am not subject to the Worker's Compensation Laws.
 - B. I certify my business has satisfied its obligation to the Worker's Compensation Act through the use of an approved Notice of Exclusion (BWC-337, Rev. 5/96). I will provide a copy of the Notice of Exclusion within 21 days of the contract award. (For questions or a copy of the BWC-337, please call the Worker's Compensation Bureau at 517-322-1195).
 - C. I certify my business has a Worker's Compensation Policy. I will provide an original Certificate of Insurance within twenty-one (21) days of the contract award.

3. If you have checked item 2(A) or 2(B), you **must** indicate the number of **both** full-time and part-time employees, other than yourself, including family members and active partners (if none, you must enter "0").

_____ Full-time Employees

_____ Part-time Employees

Name of Business		Federal ID (or) Social Security No.	
Address		Telephone ()	
City	State	ZIP	

I hereby certify that the above information is true and correct. I agree to notify the Michigan DNR of any changes that occur in factors affecting my coverage during any of my present and future operations.

Signature of Owner or Authorized Representative

Title

Date

Please complete the "SEALED BID" information on the next page