



**DEPARTMENT OF NATURAL RESOURCES  
STATE OF MICHIGAN**

**TIMBER SALE PROSPECTUS #6292**

SCHEDULED SALE DATE AND TIME: 3:00 p.m. (local time) on December 4, 2018.

LOCATION: INDIAN RIVER FIELD OFFICE, 6984 WILSON, INDIAN RIVER, MI 49749.

PROSPECTUS NOTE: The bidder is advised to inspect the sale area and review the location, estimated volumes, operating costs and contract terms of proposed sales. Please be aware that some landowners may request 60 days or more notice for access across their land.

Notice is hereby given that bids will be received by the Unit Manager, GAYLORD MANAGEMENT UNIT, for certain timber on the following described lands:

Kleber Pond Mix (52-129-17)

Cheboygan County, Advertised Price \$61,553.05, 126.7 Acres, Aspen, Red Pine.

SALE NOTE: Within Payment Units 1 - 4, harvesting activities are not permitted during the period of December 1 to April 1 (see spec 5.2.3.1). Payment Unit 8 is an optional cutting unit with access and long forwarding distances concerns (see spec 2.1.11).

A recreation site such as a trail, pathway, or campground is within the sale area or the vicinity. Certain restrictions/specifications may be applicable including time restrictions. Access may be through private land.

Comp 210 Aspen (52-130-17)

Cheboygan County, Advertised Price \$130,959.85, 145.3 Acres, Aspen, Spruce/Fir/Tamarack.

SALE NOTE: Good access to all units.

A recreation site such as a trail, pathway, or campground is within the sale area or the vicinity. Certain restrictions/specifications may be applicable including time restrictions.

Stoney Campground Mix (52-132-17) / T35N, R01W, SEC. 21, N1/2NE, SWNE, NWSE.

T35N, R01W, SEC. 22, N1/2NW, SENW, SWNE, S1/2SW, W1/2SE.

T35N, R01W, SEC. 27, NWNE.

Cheboygan County, Advertised Price \$63,869.45, 122.0 Acres, Aspen, Spruce/Fir/Tamarack.

SALE NOTE: Harvest activities will be restricted in Payment Units 1 and 2 from 4/15 to 7/15 due to Oak Wilt concerns. It is recommended that harvest activities for Payment Unit 4 occur during summer or winter months because of possible wet soil conditions.

A recreation site such as a trail, pathway, or campground is within the sale area or the vicinity. Certain restrictions/specifications may be applicable including time restrictions. Access may be through private land.

Munger Mix (52-138-17) / T34N, R02W, SEC. 36, N1/2NW.

Cheboygan County, Advertised Price \$10,473.30, 33.6 Acres, N White Cedar, Spruce/Fir/Tamarack.

SALE NOTE: Cedar is showing signs of decline. Wet soils in most of the sale.

## BID INSTRUCTIONS (VER. 07/02/2018):

### 1. Scheduled Bid Location, Date, and Time (2/11)

Bids must be received by the Unit Manager, INDIAN RIVER OFFICE, 6984 Wilson, Indian River, MI 49749, no later than 3:00 p.m. (local time) on December 4, 2018. For further information concerning this sale, contact Lucas Merrick at 989-732-3541 extension 5440.

### 2. Bidder's Qualifications (5/16)

Purchaser shall obtain workers compensation insurance to cover claims under Michigan's Worker's Disability Compensation Act of 1969 or similar employee benefit act of any other state applicable to an employee. If all or part of a timber sale was prepared by a private contractor, the contractor and that contractor's company are not permitted to bid on the timber sale contract. Bids will not be accepted from individuals or companies appearing on the DNR/FRD No-Bid List. This list contains the names of purchasers who previously failed to execute a contract within 21-days or who have a history of poor performance.

### 3. Preparation of Sealed Bids (5/16)

Bid Forms may be completed online thru Michigan DNR Timber Sale Online Bidding (OLB) at [www.michigan.gov/timberbidding](http://www.michigan.gov/timberbidding) or by completing the hardcopy Bid Form found in the Timber Sale Prospectus. Hardcopy Bid Forms shall be manually signed in ink. Registration in OLB is considered your 'signature' for all bids submitted thru that system. Bid prices must be entered for each species and product in the Bid Price column for all material subject to bidding and all fill-in blanks must be completed. If erasures or other changes appear on the hardcopy Bid Form, each erasure or change must be initialed by the person signing the bid.

### 4. Submission of Sealed Bids (5/16)

Bid forms may be obtained from the Unit Manager or thru OLB. Bids may be submitted hardcopy or thru OLB. All hardcopy bids must be submitted on the bid form and in an envelope clearly identified as described in this section. NOTE: Only one bid form per bid envelope. Sealed bids must be submitted to the Unit office designated in the prospectus and must be submitted at or prior to the time established in the prospectus. The envelope should show on the outside (a) the sale name or number and (b) the date and time of bid opening, as shown in the prospectus. Bids received after the time specified in the sale prospectus are late bids and will be rejected.

It is possible for a bidder to submit multiple bids on a single sale. For example, a bid may be submitted hardcopy and a bid may be submitted thru OLB. Or, two bidders from the same company could both submit bids on the same sale. If this were to happen, the State would accept all bids received and award the contract accordingly. All bidding and contractual requirements would apply to all bids received.

### 5. Public Opening of Sealed Bids (7/16)

If conditions permit, the sealed bids will be publicly opened and posted at the time and place set in the prospectus.

If a bidder, present at a bid opening, has submitted bids on more than one sale, that bidder may withdraw their unopened bid envelopes or announce the withdrawal of their online bid after being declared the successful bidder on one sale.

### 6. Award of Contract (1/11)

Award of the contract will be made to the Bidder whose bid, conforming to the prospectus, is most advantageous to the State of Michigan on the basis of total value at rates bid for the estimated quantities. The State reserves the right to reject any bid or waive any minor irregularity in bids received. A written award mailed (or otherwise furnished) to the successful Bidder shall be deemed to result in a binding contract without further action by either party.

### 7. Down Payment (1/11)

The Bidder to whom award is made must make a down payment within 21 days of the sale award. The amount of the down payment will be calculated as shown in the Bond and Payment Schedule of this prospectus. Only cash may be used to meet this requirement.

### 8. Performance Security (1/11)

As guarantee of faithful performance, a cash bond, certificate of deposit, surety bond or irrevocable letter of credit (LOC) is required within 21 days of the sale award. The amount of the performance security is shown in the Bond and

Payment Schedule of this prospectus. If an LOC or surety is used, the coverage must extend for at least 6 months beyond the contract expiration.

#### 9. Timber Sale Contract (7/18)

Additional conditions and requirements common to all timber sales are listed on the timber sale contract (R4031) and are available on line at [www.michigan.gov/timber](http://www.michigan.gov/timber). Contact the Unit Manager for additional information or a sample contract. Within 21 days of the date of the award letter, the bidder must sign the contract and provide the required down payment, performance security, and verification of worker's disability compensation. The down payment and performance security shall be in accordance with the provisions of the timber sale contract, in the sums stated in this prospectus. If these actions are not taken, then the Bidder, the Bidder's corporation, and the corporation's principals may not be permitted to bid on State timber sales for a period of 3 months after the first offense, 6 months after the second offense, and 1 year after the third offense. An offense will only be counted against the Bidder for 5 years. In addition, the Bidder certifies that if awarded this contract, the Bidder will complete the timber sale contract in accordance with its terms and any modifications thereof including requirements to purchase, cut, and remove the included timber by the expiration date.

Payment Unit values in the State Forest Timber Sale Contract are calculated based on the advertised value of the Payment Unit as a percentage of the total advertised value of the contract. The advertised value of each Payment Unit is given in the Description of Timber by Payment Unit table on the Timber Sale Information page. For example, if the value of Payment Unit 1 is advertised as \$1,500 and the total Timber Sale value is advertised as \$10,000, the contract price for Payment Unit 1 will be 15% of the total bid price ( $\$1,500/\$10,000 * 100$ ).

#### 10. Disclaimer of Estimates and Bidder's Warranty of Inspection (7/16)

Before submitting this bid, the Bidder is advised and cautioned to inspect the sale area, review the requirements of the sale contract, and take other steps as may be reasonably necessary to ascertain the location, estimated volumes, construction estimates, and operating costs of the proposed sale. Failure to do so will not relieve the Bidder from responsibility for completing the contract.

The Bidder warrants that this bid is submitted solely on the basis of the Bidder's examination and inspection of the quality and quantity of the timber offered for sale and the Bidder's opinion of the value thereof and the costs of recovery. No reliance should be placed on the State of Michigan's estimates of timber quality, quantity or costs of recovery. Bidder further acknowledges that the State of Michigan: (i) expressly disclaims any warranty of fitness of timber for any purpose; (ii) offers this timber as is without any warranty of quality (merchantability) or quantity and (iii) expressly disclaims any warranty as to the quantity or quality of timber sold.

#### 11. Certification and Chain-of-Custody (10/14)

Unless otherwise indicated in the contract under section 7 – Other Conditions of the Sale Specific Conditions & Requirements, the area encompassed by this timber sale is certified to the standards of the Forest Stewardship Council (FSC) - Certificate #SCS-FM/COC-00090N and the Sustainable Forestry Initiative (SFI) - Certificate #NSF-SFIS-5Y031-SF5. Forest products from this sale may be delivered to the mill as "FSC 100% and / or SFI certified" as long as the contractor hauling the forest products is chain-of-custody (COC) certified or covered under a COC certificate from the destination mill. The purchaser is responsible for maintaining COC after leaving the sale area.

#### 12. Good Neighbor Authority (GNA) Requirements (7/16)

If the name of this timber sales contains the acronym GNA, it is authorized by the Good Neighbor Authority (GNA) and covered by various agreements between the U.S. Forest Service and the State. The timber sale occurs on federal land and the following conditions apply:

GNA contracts on US Forest Service land will not be awarded to purchasers on the Federal list of excluded parties. The System for Award Management (SAM) will be checked for active excluded parties prior to award of contract. In addition, the Bidder to whom award is made must complete an Assurance Regarding Felony Conviction or Tax Delinquent Status for Corporate Applicants (AD-3031).

#### 13. Good Neighbor Authority (GNA) Requirements, con't (9/16)

Bidder certifies, by signing this bid form, that to the best of Bidder's knowledge that the following representations are accurate and complete.

- a. That the Bidder and its principals are not presently debarred, suspended, proposed for debarment, declared ineligible, or voluntary excluded from timber sales (covered transactions) by any Federal department or agency.
- b. That the Bidder and its principals have not within a 3-year period preceding this bid been convicted of or had a civil judgment rendered against them for commission of fraud or a criminal offense in connection with obtaining, attempting to obtain, or performing a public (Federal, State, or local) transaction or contract under a public transaction; violation of Federal or State antitrust statutes or commission of embezzlement, theft, forgery, bribery, falsification or destruction of records, making false statements, or receiving stolen property.
- c. That the Bidder and its principals are not presently indicted for or otherwise criminally or civilly charged by a governmental entity (Federal, State, or local) with commission of any of the offenses enumerated in paragraph b of this certification.
- d. That the Bidder and its principals have not within a 3-year period preceding this bid had one or more public transactions (Federal, State, or local) terminated for breach or default of a timber or forest product contract.

Bidders that cannot certify this requirement, in whole or in part, shall submit an explanation with their bid.

KEITH CREAGH  
Director

## TIMBER SALE INFORMATION

### Kleber Pond Mix (52-129-17)

Cheboygan County (Advertised Price \$61,553.05)

SALE NOTE: Within Payment Units 1 - 4, harvesting activities are not permitted during the period of December 1 to April 1 (see spec 5.2.3.1). Payment Unit 8 is an optional cutting unit with access and long forwarding distances concerns (see spec 2.1.11).

A recreation site such as a trail, pathway, or campground is within the sale area or the vicinity. Certain restrictions/specifications may be applicable including time restrictions. Access may be through private land.

A timber sale contract for this lump sum, sealed bid timber sale will be awarded to the responsible bidder offering the highest sealed bid price. Bids must be at or above the following advertised price for each species:

<u>PRODUCTS &amp; SPECIES</u>	<u>ESTIMATED UNITS*</u>		<u>ADVERTISED PRICE</u>
<b>Sawtimber</b>			
Mixed Aspen	35.10	MBF	\$ 63.00 / MBF
Red Maple	1.10	MBF	\$ 134.00 / MBF
Red Pine	143.10	MBF	\$ 107.00 / MBF
White Pine	31.80	MBF	\$ 60.00 / MBF
<b>Pulpwood</b>			
Balsam Fir	175.00	Cords	\$ 34.10 / Cord
Black Spruce	9.00	Cords	\$ 33.60 / Cord
Jack Pine	61.00	Cords	\$ 26.90 / Cord
Mixed Aspen	444.00	Cords	\$ 21.65 / Cord
N. White Cedar	94.00	Cords	\$ 23.00 / Cord
Paper Birch	13.00	Cords	\$ 20.90 / Cord
Red Maple	156.00	Cords	\$ 26.25 / Cord
Red Pine	277.00	Cords	\$ 46.25 / Cord
White Pine	122.00	Cords	\$ 27.85 / Cord
White Spruce	51.00	Cords	\$ 33.60 / Cord

\* The total volume is statistically estimated within plus (+) or minus (-) 11.15 percent. The estimated units are final and not subject to adjustment. Prospective bidders are urged to examine this timber and to make their own estimates of quantity and quality.

#### **BOND AND PAYMENT SCHEDULE:**

1. A bond in the amount of \$6,155.00 to insure faithful performance of the conditions of the contract will be deposited by the successful bidder within 21 days of the sale award.
2. Cutting in any sale or unit without the required advance payment would be considered a trespass.
3. Total payment must be paid in advance or according to the following schedule:
  - (a) Ten percent (10%) of the sale value must be paid within 21 days of the sale award.
  - (b) The 10% down payment will be credited towards the first unit cut.
  - (c) Payment for each of the following units must be made before cutting begins in that unit:

PAYMENT UNIT NUMBER	PERCENT OF TOTAL SALE VALUE
01	6.0%
02	2.8%
03	17.7%
04	20.2%
05	24.4%
06	5.1%
07	6.7%
08	17.1%

4. If no cutting takes place, the 10% down payment will not be refunded.
5. Operations on the contract issued will terminate on 09/30/2021.

**Description of Timber by Payment Unit (PU)**

PU	MARKET GROUP	PRODUCT	QUANTITY	UNIT	ACRES	ADVERTISE PRICE
1	Red Pine	Sawtimber	13.3	MBF	6.1	\$3,677.30
	White Pine		13.5	MBF		
	Mixed Aspen	Pulpwood	2.0	Cords		
	Red Maple		5.0	Cords		
	Red Pine		13.0	Cords		
	White Pine		24.0	Cords		
	2	Red Pine	Sawtimber	1.3		
White Pine			10.1	MBF		
Mixed Aspen		Pulpwood	2.0	Cords		
Red Pine			1.0	Cords		
White Pine			31.0	Cords		
3	Red Pine	Sawtimber	59.3	MBF	15.4	\$10,914.55
	White Pine		5.1	MBF		
	Mixed Aspen	Pulpwood	13.0	Cords		
	Red Pine		59.0	Cords		
	White Pine		45.0	Cords		
	4	Red Pine	Sawtimber	33.5		
Jack Pine		Pulpwood	47.0	Cords		
Mixed Aspen			8.0	Cords		
Red Pine			160.0	Cords		
5	Mixed Aspen	Sawtimber	20.9	MBF	40.1	\$15,044.00
	Balsam Fir	Pulpwood	109.0	Cords		
	Black Spruce		9.0	Cords		
	Mixed Aspen		281.0	Cords		
	Paper Birch		13.0	Cords		
	Red Maple		97.0	Cords		
	White Spruce		24.0	Cords		
	6	Mixed Aspen	Sawtimber	6.9		
Red Pine			9.7	MBF		
Balsam Fir		Pulpwood	13.0	Cords		
Mixed Aspen			28.0	Cords		
Red Maple			10.0	Cords		
Red Pine			8.0	Cords		
7		Mixed Aspen	Sawtimber	2.2	MBF	9.2
	Red Pine		9.5	MBF		
	Jack Pine	Pulpwood	14.0	Cords		
	Mixed Aspen		38.0	Cords		
	Red Maple		17.0	Cords		
	Red Pine		19.0	Cords		
	White Pine		15.0	Cords		
8	Mixed Aspen	Sawtimber	5.1	MBF	26.7	\$10,545.45
	Red Maple		1.1	MBF		
	Red Pine		16.5	MBF		
	White Pine		3.1	MBF		
	Balsam Fir	Pulpwood	53.0	Cords		
	Mixed Aspen		72.0	Cords		
	N. White Cedar		94.0	Cords		
	Red Maple		27.0	Cords		
	Red Pine		17.0	Cords		
	White Pine		7.0	Cords		
	White Spruce		27.0	Cords		
	TOTAL:			211.1		
TOTAL:			1,402.0	Cords		

# Sale Specific Conditions & Requirements

**Sale Name: Kleber Pond Mix**

**Sale Number: 52-129-17 Seq#: 3**

## 1 - Sale Area

### 1.2 - Boundaries

#### 1.2.1 - Painted boundaries (1/14)

The sale boundary and Payment Unit boundaries are marked and identified by blue, red, yellow and teal paint. Exterior sale boundary lines against private property are marked with blue paint. Exterior sale boundary lines against state are marked with red paint. Interior Payment Unit boundaries are marked with yellow paint. Retention areas are marked with teal paint. Yellow painted trees designating an interior Payment Unit boundary are only to be cut when all surrounding Payment Units have been paid.

## 2 - Timber Specifications

### 2.1 - Included Timber

#### 2.1.1 - Clearcut unit(s) with unmerchantable trees (6/14)

Within Payment Unit(s) 1 - 8, cut all trees that are two (2) inches or more at DBH, except do not cut oak, hemlock, and teal marked trees. In addition, within Payment Units 1 - 7, do not cut cedar. Also, do not cut white pine within Payment Unit 4, or any pine within Payment Unit 5.

#### 2.1.11 - Description of timber note (2/04)

Note that Payment Unit 8 is an optional cutting unit. If the Purchaser decides not to cut the unit, the value of the unit will be deducted from the sale bid price via a Timber Sale Contract Supplement. Any additional wood volumes cut when accessing the unit through state land will be added via a Timber Sale Contract Supplement.

## 3 - Payments

### 3.3 - Pre-measured Sales

#### 3.3.4 - Dividing payment units (7/14)

Payment Unit(s) 5 may be divided at the request of the Purchaser and upon approval of the Unit Manager. Dividing Payment Units is a contract modification which requires a Timber Sale Contract Supplement.

### 3.6 - Payment Unit Cutting Schedule

#### 3.6.1 - Order of cutting (1/09)

Payment Units shall be cut in numerical order unless the sale is paid in full, or unless approved by the Unit Manager or his/her representative.

## 4 - Transportation

### 4.1 - Construction

#### 4.1.3 - Slash and earthen piles (8/04)

Piles or windrows of earth along roads and landings that have been widened or constructed shall be leveled. Slash from road maintenance or construction, including stumps, shall be dispersed throughout the sale.

#### 4.1.6 - Road construction (1/09)

Improvements of existing roads shall be done in such a way as to minimize the environmental and visual impacts. Merchantable trees shall be cut and utilized unless otherwise directed. Non-merchantable trees shall be severed and laid flat on the ground. Slash shall be scattered, and not left in windrows and kept a minimum of 10 feet back from the road edge. Stumps shall be set upright, not left on edge, and be moved at least 10 feet away from the road edge. Disturbed soil shall be feathered into the woods and not left in berms or windrows.

#### 4.1.12 - No new roads (1/12)

No new roads will be permitted. All operations are limited to existing roads. Skid trails only will be allowed.

### 4.2 - Maintenance

#### 4.2.4 - Grading (10/16)

For completion of the sale, state forest roads must be graded. In general, this will require a road grader or bull dozer to shape up the roads after forest products have been hauled off site. This includes cleaning of drainage areas, grading, crowning and filling with gravel, if necessary. The grading equipment to be used must be approved by the Unit Manager or his/her representative.

### 5 - Operations

#### 5.1 - Notification

##### 5.1.1 - Pre-sale conference (10/16)

A pre-sale conference on site between the Purchaser and sale administrator is required prior to beginning any operations to determine landing and road locations. The Unit Manager or his/her representative must be contacted at least 2 days in advance to schedule the conference.

##### 5.1.4 - Post-sale conference (10/16)

A post-sale conference on site between the Purchaser and sale administrator is required 5 days prior to the completion of active logging operations to determine clean-up and repair of landings, road edges, and the fulfillment of other contract specifications.

#### 5.2 - Conduct of Operations

##### 5.2.2 - Hazard Trees/Snags

###### 5.2.2.1 - Den trees (10/16)

Obvious hollow and/or den trees shall be protected and left standing unless they are a safety hazard.

##### 5.2.3 - Operating Restrictions

###### 5.2.3.1 - Operating restrictions (9/11)

Within Payment Unit(s) 1 - 4, unless changed by written agreement, cutting is not permitted during the period of December 1 to April 1. This restriction is to minimize the residual stump height for replanting.

##### 5.2.22 - Operating Caution

###### 5.2.22.1 - Operating caution (6/11)

It is recommended, but not required, that within Payment Unit(s) 5 and 8, cutting, skidding, and hauling occur during dry summer or frozen winter conditions. The reason for the recommendation is because of the wetter soil conditions and to minimize excessive rutting concerns.

##### 5.2.32 - Decking/landing restoration (9/13)

All decking and landing areas must have the surface area restored to a condition equal to or better than before. This is to ensure the proper regeneration of the stand.

##### 5.2.39 - ORV trail/route protection (4/18)

The MCCCT is an ORV trail or route and is shown on the Timber Sale Map. Do not cut trees or damage posts with yellow ORV markers.

#### 5.4 - Soil Protection

##### 5.4.1 - Rutting restriction, general (7/16)

Operations are to cease immediately if equipment and weather conditions result in rutting of roads and/or skid trails which is 12 inches or greater in depth and 50 feet in length. The Unit Manager or his/her representative may restrict hauling and/or skidding if ruts exceed the specified depth. With the Unit Manager or his/her representative's approval, the Purchaser may return to the area when the risk of rutting has decreased.

#### 5.8 - Protection of Endangered Species

##### 5.8.5 - Protection of raptor nests (3/13)

All trees with raptor nests will be protected if found during harvesting operations. Notification will be made to the Unit Manager or his/her representative who will notify the Wildlife Biologist so an on-site evaluation and recommendation can be made, if necessary.



## **6 - Safety and Fire Prevention**

### **6.2 - Signing**

#### **6.2.3 - Recreational trail posting (2/10)**

The Purchaser is responsible for posting and maintaining caution signs on Kisser Road (MCCCT Trail) prior to beginning operations. The trail must be posted at appropriate distances from the sale area to warn of logging activity and truck traffic at both ends of the trail. Signs must be removed when harvest operations are suspended or completed.



# TIMBER SALE MAP

This information provided by authority of Part 525, 1994 PA 451, as amended.

Sale Number	Year
52 - 129	17

Forest Management Unit Gaylord Management Unit	County Cheboygan	Mapped By TSP	Date 09/27/2017	Page 1	of 2
Township 35N and 34N	Range 01E	Section(s) and Subdivision(s) 35N: 29: SESE; 32: SWNE, E1/2E1/2; 33: SESW, E1/2SE; 34: SWSW. 34N: 4: NENW	Cruised By Scheele	Scale 1:15,840	

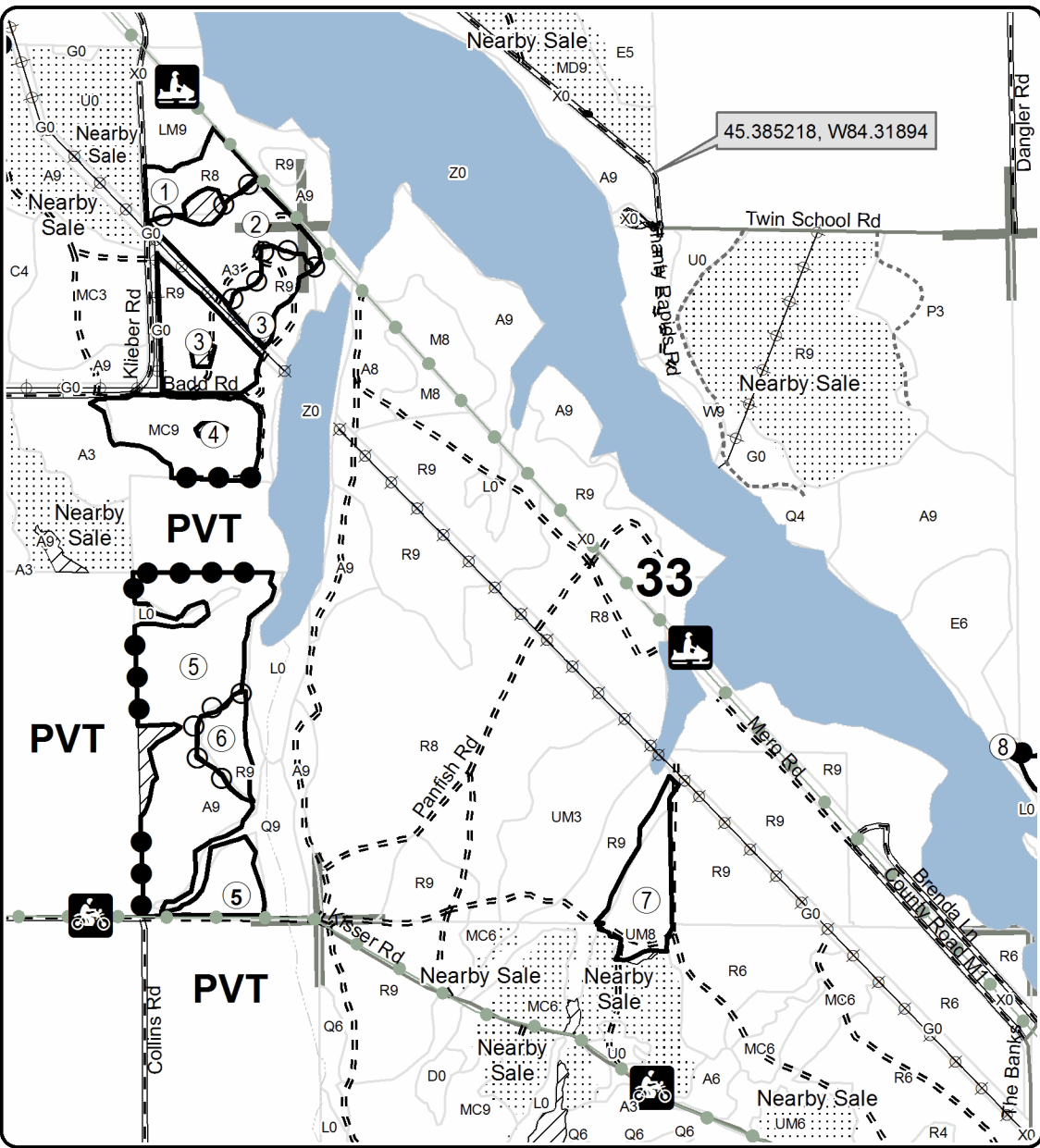
Cover Type				Density	
A = Aspen	H = Hemlock	N = Marsh	U = Upland Brush	0 = Non Stocked	5 = Pole Timber Medium
B = Paper Birch	J = Jack Pine	O = Oak	UM = Upland Mixed	1 = Seedling Sapling Poor	6 = Pole Timber Well
C = Cedar	L = Lowland Brush	P = Lowland Poplar	V = Bog or Marsh	2 = Seedling Sapling Medium	7 = Saw Timber Poor
D = Treed Bog	LM = Lowland Mixed	Q = Mixed Swamp Conifer	W = White Pine	3 = Seedling Sapling Well	8 = Saw Timber Medium
E = Swamp Hdwoods	M = Mpl, Bch, Brch	R = Red Pine	X = Non Stocked	4 = Pole Timber Poor	9 = Saw Timber Well
F = Spruce Fir	MC = Mixed Conifer	S = Black Spruce	Z = Water		
G = Grass	MD = Mixed Deciduous	T = Tamarack			

PU	Acres	PU	Acres	PU	Acres
1	6.1	4	13	7	9.2
2	11.5	5	40.1	8	26.7
3	15.4	6	4.7		

## Kleber Pond Mix

### Compartment 210

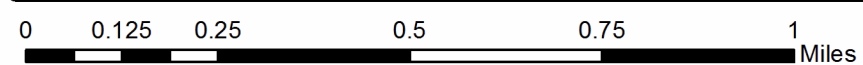
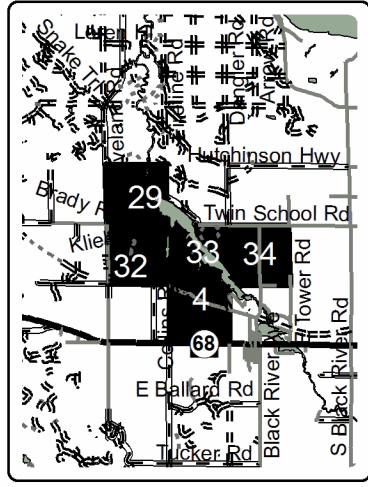
### 126.7 Acres



### Legend

- Against State (Red)
- ○ Payment Unit (Yellow)
- ● Private Line (Blue)
- ▨ Retention Area (Teal)
- Stand Boundaries
- ⋯ Nearby Timber Sale
- Recreational Trail
- Paved Roads
- Gravel Roads
- Poor Dirt Roads
- Closed Roads
- ⚡ Powerline
- ~ Streams
- Section Corners

Locator Map  
1:200,000





### TIMBER SALE MAP

This information provided by authority of Par 525, 1994 PA 451, as amended.

Forest Management Unit Gaylord Management Unit		County Cheboygan	Mapped By TSP	Date 09/27/2017	Page 2	of 2
Township 35N and 34N	Range 01E	Section(s) and Subdivision(s) 35N: 29: SESE; 32: SWNE, E1/2E1/2; 33: SESW, E1/2SE; 34: SWSW, 34N: 4: NENW		Scale 1:15,840		

#### Cover Type

A = Aspen	H = Hemlock	N = Marsh	U = Upland Brush
B = Paper Birch	J = Jack Pine	O = Oak	UM = Upland Mixed
C = Cedar	L = Lowland Brush	P = Lowland Poplar	V = Bog or Marsh
D = Treed Bog	LM = Lowland Mixed	Q = Mixed Swamp Conifer	W = White Pine
E = Swamp Hdwoods	M = Mpl, Bch, Birch	R = Red Pine	X = Non Stocked
F = Spruce Fir	MC = Mixed Conifer	S = Black Spruce	Z = Water
G = Grass	MD = Mixed Deciduous	T = Tamarack	

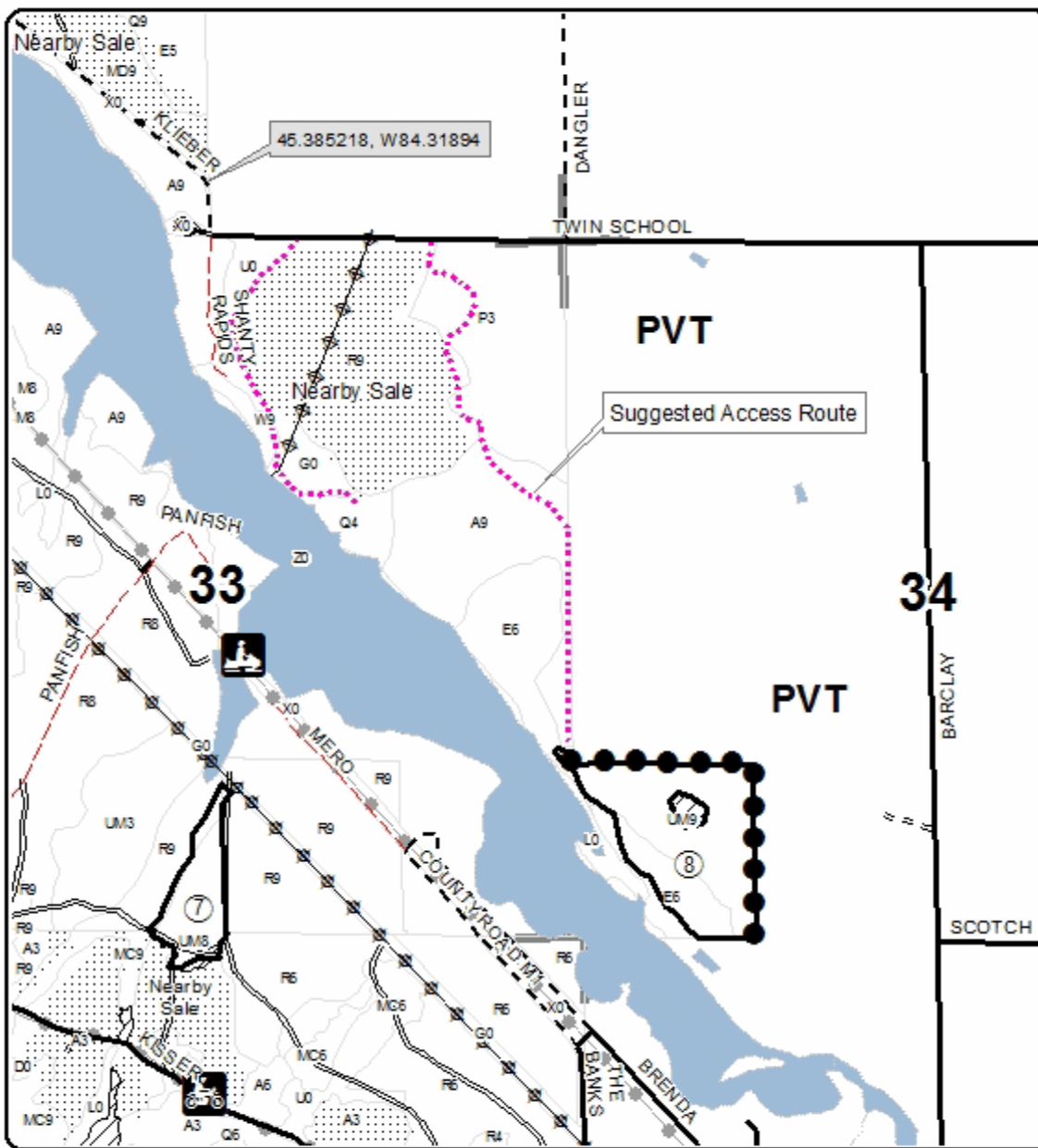
#### Density

0 = Non Stocked	5 = Pole Timber Medium
1 = Seeding Sapling Poor	6 = Pole Timber Well
2 = Seeding Sapling Medium	7 = Saw Timber Poor
3 = Seeding Sapling Well	8 = Saw Timber Medium
4 = Pole Timber Poor	9 = Saw Timber Well

PU	Acres	PU	Acres	PU	Acres
1	6.1	4	13	7	9.2
2	11.5	5	40.1	8	26.7
3	15.4	6	4.7		

## Kleber Pond Mix

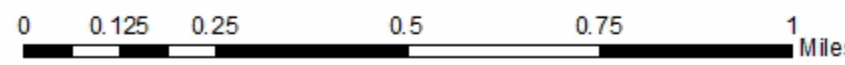
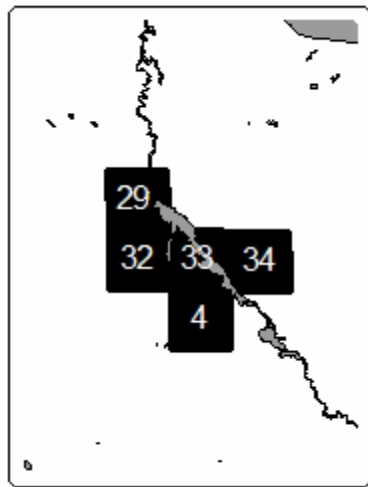
Compartment 210  
126.7 Acres



#### Legend

- Against State (Red)
- Private Line (Blue)
- Retention Area (Teal)
- Stand Boundaries
- Nearby Timber Sale
- Recreational Trail
- Secondary Forest Road
- Paved Road
- Gravel Road
- County Road - Seasonal
- Temporary Management Access
- Powerline
- Streams
- Section Corners

Locator Map  
1:200,000





## TIMBER SALE INFORMATION

Comp 210 Aspen (52-130-17)

Cheboygan County (Advertised Price \$130,959.85)

SALE NOTE: Good access to all units.

A recreation site such as a trail, pathway, or campground is within the sale area or the vicinity. Certain restrictions/specifications may be applicable including time restrictions.

A timber sale contract for this lump sum, sealed bid timber sale will be awarded to the responsible bidder offering the highest sealed bid price. Bids must be at or above the following advertised price for each species:

<u>PRODUCTS &amp; SPECIES</u>	<u>ESTIMATED UNITS*</u>		<u>ADVERTISED PRICE</u>
<b>Sawtimber</b>			
Mixed Aspen	325.90	MBF	\$ 63.00 / MBF
N. White Cedar	10.00	MBF	\$ 60.00 / MBF
Paper Birch	10.50	MBF	\$ 51.00 / MBF
Red Maple	56.30	MBF	\$ 134.00 / MBF
Red Pine	51.60	MBF	\$ 107.00 / MBF
Sugar Maple	7.50	MBF	\$ 333.00 / MBF
White Spruce	17.10	MBF	\$ 77.00 / MBF
<b>Pulpwood</b>			
Balsam Fir	933.00	Cords	\$ 34.10 / Cord
Mixed Aspen	1,670.00	Cords	\$ 21.65 / Cord
Mixed Hardwood	43.00	Cords	\$ 26.25 / Cord
N. White Cedar	93.00	Cords	\$ 23.00 / Cord
Paper Birch	110.00	Cords	\$ 20.90 / Cord
Red Maple	438.00	Cords	\$ 26.25 / Cord
Red Pine	92.00	Cords	\$ 46.25 / Cord
White Pine	12.00	Cords	\$ 27.85 / Cord
White Spruce	83.00	Cords	\$ 33.60 / Cord

\* The total volume is statistically estimated within plus (+) or minus (-) 9.49 percent. The estimated units are final and not subject to adjustment. Prospective bidders are urged to examine this timber and to make their own estimates of quantity and quality.

**BOND AND PAYMENT SCHEDULE:**

1. A bond in the amount of \$13,096.00 to insure faithful performance of the conditions of the contract will be deposited by the successful bidder within 21 days of the sale award.
2. Cutting in any sale or unit without the required advance payment would be considered a trespass.
3. Total payment must be paid in advance or according to the following schedule:
  - (a) Ten percent (10%) of the sale value must be paid within 21 days of the sale award.
  - (b) The 10% down payment will be credited towards the first unit cut.
  - (c) Payment for each of the following units must be made before cutting begins in that unit:
 

PAYMENT UNIT NUMBER	PERCENT OF TOTAL SALE VALUE
01	17.6%
02	11.0%
03	44.9%
04	5.5%
05	8.7%
06	12.3%
4. If no cutting takes place, the 10% down payment will not be refunded.
5. Operations on the contract issued will terminate on 09/30/2021.

**Description of Timber by Payment Unit (PU)**

PU	MARKET GROUP	PRODUCT	QUANTITY	UNIT	ACRES	ADVERTISE PRICE
1	Mixed Aspen Red Maple Red Pine White Spruce Balsam Fir Mixed Aspen Paper Birch Red Maple Red Pine White Pine White Spruce	Sawtimber	32.9	MBF	22.7	\$23,073.45
			6.4	MBF		
			37.9	MBF		
			3.7	MBF		
			165.0	Cords		
			232.0	Cords		
		Pulpwood	20.0	Cords		
			42.0	Cords		
			65.0	Cords		
			2.0	Cords		
			17.0	Cords		
2	Mixed Aspen N. White Cedar Red Maple Balsam Fir Mixed Aspen N. White Cedar Paper Birch Red Maple	Sawtimber	29.9	MBF	15.1	\$14,364.20
			4.7	MBF		
			12.3	MBF		
		Pulpwood	113.0	Cords		
			153.0	Cords		
			21.0	Cords		
			17.0	Cords		
			97.0	Cords		
3	Mixed Aspen Paper Birch Red Maple Sugar Maple Balsam Fir Mixed Aspen Mixed Hardwood Paper Birch Red Maple White Spruce	Sawtimber	219.7	MBF	65.2	\$58,904.25
			9.7	MBF		
			26.4	MBF		
			7.5	MBF		
		Pulpwood	329.0	Cords		
			910.0	Cords		
			33.0	Cords		
			48.0	Cords		
			206.0	Cords		
			10.0	Cords		
4	Mixed Aspen Red Pine White Spruce Balsam Fir Mixed Aspen Paper Birch Red Maple Red Pine White Pine White Spruce	Sawtimber	6.4	MBF	15.2	\$7,242.25
			13.7	MBF		
			1.1	MBF		
		Pulpwood	23.0	Cords		
			88.0	Cords		
			14.0	Cords		
			22.0	Cords		
			27.0	Cords		
			10.0	Cords		
			6.0	Cords		
5	Mixed Aspen Red Maple White Spruce Balsam Fir Mixed Aspen Paper Birch Red Maple White Spruce	Sawtimber	15.4	MBF	12.8	\$11,331.80
			3.0	MBF		
			3.1	MBF		
		Pulpwood	147.0	Cords		
			120.0	Cords		
			3.0	Cords		
			46.0	Cords		
			25.0	Cords		
6	Mixed Aspen N. White Cedar Paper Birch Red Maple White Spruce Balsam Fir Mixed Aspen Mixed Hardwood N. White Cedar	Sawtimber	21.6	MBF	14.3	\$16,043.90
			5.3	MBF		
			0.8	MBF		
			8.2	MBF		
		Pulpwood	9.2	MBF		
			156.0	Cords		
			167.0	Cords		
			10.0	Cords		
			72.0	Cords		

**Description of Timber by Payment Unit (PU), con't**

PU	MARKET GROUP	PRODUCT	QUANTITY	UNIT	ACRES	ADVERTISE PRICE
6 con't	Paper Birch	Pulpwood	8.0	Cords		
	Red Maple		25.0	Cords		
	White Spruce		25.0	Cords		
TOTAL:			478.9	MBF		
TOTAL:			3,474.0	Cords		

## Sale Specific Conditions & Requirements

Sale Name: Comp 210 Aspen

Sale Number: 52-130-17 Seq#: 3

### 1 - Sale Area

#### 1.2 - Boundaries

##### 1.2.1 - Painted boundaries (1/14)

The sale boundary and Payment Unit boundaries are marked and identified by blue, red, and teal paint. Exterior sale boundary lines against private property are marked with blue paint. Exterior sale boundary lines against state are marked with red paint. Retention areas are marked with teal paint.

### 2 - Timber Specifications

#### 2.1 - Included Timber

##### 2.1.2 - Clearcut unit(s) w/o unmerchantable trees (8/11)

Within Payment Unit(s) 1 - 6, cut all trees which meet minimum piece specifications in 2.2 Utilization, except do not cut hemlock, oak, trees marked with teal paint, or the following:

Within Payment Units 1 and 4, do not cut cedar.

Within Payment Unit 3, do not cut cedar, white pine, or white spruce.

Within Payment Unit 5, do not cut cedar or any pine.

Within Payment Unit 6, do not cut white pine.

### 3 - Payments

#### 3.3 - Pre-measured Sales

##### 3.3.4 - Dividing payment units (7/14)

Payment Unit(s) 3 may be divided at the request of the Purchaser and upon approval of the Unit Manager. Dividing Payment Units is a contract modification which requires a Timber Sale Contract Supplement.

### 4 - Transportation

#### 4.1 - Construction

##### 4.1.3 - Slash and earthen piles (8/04)

Piles or windrows of earth along roads and landings that have been widened or constructed shall be leveled. Slash from road maintenance or construction, including stumps, shall be dispersed throughout the sale.

##### 4.1.6 - Road construction (1/09)

Improvements of existing roads shall be done in such a way as to minimize the environmental and visual impacts. Merchantable trees shall be cut and utilized unless otherwise directed. Non-merchantable trees shall be severed and laid flat on the ground. Slash shall be scattered, and not left in windrows and kept a minimum of 10 feet back from the road edge. Stumps shall be set upright, not left on edge, and be moved at least 10 feet away from the road edge. Disturbed soil shall be feathered into the woods and not left in berms or windrows.

##### 4.1.7 - Road closure (10/11)

All new roads built into the sale must be blocked to vehicle traffic upon completion of the sale. Overgrown roads that are reopened shall be considered new roads. In general, this will require constructing a four (4') foot high berm of stumps and logs covered with earth.

#### 4.2 - Maintenance

##### 4.2.4 - Grading (10/16)

For completion of the sale, state forest roads must be graded. In general, this will require a road grader or bull dozer to shape



up the roads after forest products have been hauled off site. This includes cleaning of drainage areas, grading, crowning and filling with gravel, if necessary. The grading equipment to be used must be approved by the Unit Manager or his/her representative.

## **5 - Operations**

### 5.1 - Notification

#### 5.1.1 - Pre-sale conference (10/16)

A pre-sale conference on site between the Purchaser and sale administrator is required prior to beginning any operations to determine landing and road locations. The Unit Manager or his/her representative must be contacted at least 2 days in advance to schedule the conference.

#### 5.1.4 - Post-sale conference (10/16)

A post-sale conference on site between the Purchaser and sale administrator is required 5 days prior to the completion of active logging operations to determine clean-up and repair of landings, road edges, and the fulfillment of other contract specifications.

### 5.2 - Conduct of Operations

#### 5.2.2 - Hazard Trees/Snags

##### 5.2.2.1 - Den trees (10/16)

Obvious hollow and/or den trees shall be protected and left standing unless they are a safety hazard.

#### 5.2.32 - Decking/landing restoration (9/13)

All decking and landing areas must have the surface area restored to a condition equal to or better than before. This is to ensure the proper regeneration of the stand.

#### 5.2.39 - ORV trail/route protection (12/12)

The MCCCT Trail is an ORV trail or route and is shown on the Timber Sale Map. Do not cut trees or damage posts with orange ORV markers.

### 5.4 - Soil Protection

#### 5.4.1 - Rutting restriction, general (7/16)

Operations are to cease immediately if equipment and weather conditions result in rutting of roads and/or skid trails which is 12 inches or greater in depth and 50 feet in length. The Unit Manager or his/her representative may restrict hauling and/or skidding if ruts exceed the specified depth. With the Unit Manager or his/her representative's approval, the Purchaser may return to the area when the risk of rutting has decreased.

### 5.7 - Protection of Historical Sites

#### 5.7.1 - Historical sites (7/12)

The Purchaser shall not cut live or dead trees or operate equipment within historical sites. Historical sites are marked with a green boundary line. A potential historical site has been observed and is located within the boundaries of a retention area. The Purchaser shall protect historical sites from damage by the Purchaser's operations. If Purchaser's operations have cut or damaged historical sites through carelessness, the Purchaser shall pay \$500 as fixed, agreed and liquidated damages for each acre or part thereof cut or damaged.

### 5.8 - Protection of Endangered Species

#### 5.8.5 - Protection of raptor nests (3/13)

All trees with raptor nests will be protected if found during harvesting operations. Notification will be made to the Unit Manager or his/her representative who will notify the Wildlife Biologist so an on-site evaluation and recommendation can be made, if necessary.

## **6 - Safety and Fire Prevention**

### 6.2 - Signing

#### 6.2.3 - Recreational trail posting (2/10)

The Purchaser is responsible for posting and maintaining caution signs on Waveland Road (MCCCT Trail) prior to beginning operations. The trail must be posted at appropriate distances from the sale area to warn of logging activity and truck traffic at both ends of the trail. Signs must be removed when harvest operations are suspended or completed.



# TIMBER SALE MAP

This information provided by authority of Par 525, 1994 PA 451, as amended.

Sale Number	Year
52 - 130	17

Forest Management Unit Gaylord Management Unit	County Cheboygan	Mapped By TSP	Date 09/27/2017	Page 1	of 1
Township 35N	Range 01E	Section(s) and Subdivision(s) 29: S1/2S1/2, S1/2NW, NESW, NWSE; 32: N1/2N1/2, SWNE, SENW	Scale 1:15,840		

### Cover Type

A = Aspen	H = Hemlock	N = Marsh	U = Upland Brush
B = Paper Birch	J = Jack Pine	O = Oak	UM = Upland Mixed
C = Cedar	L = Lowland Brush	P = Lowland Poplar	V = Bog or Marsh
D = Treed Bog	LM = Lowland Mixed	Q = Mixed Swamp Conifer	W = White Pine
E = Swamp Hdwoods	M = Mpl, Bch, Bich	R = Red Pine	X = Non Stocked
F = Spruce Fir	MC = Mixed Conifer	S = Black Spruce	Z = Water
G = Grass	MD = Mixed Deciduous	T = Tamarack	

### Density

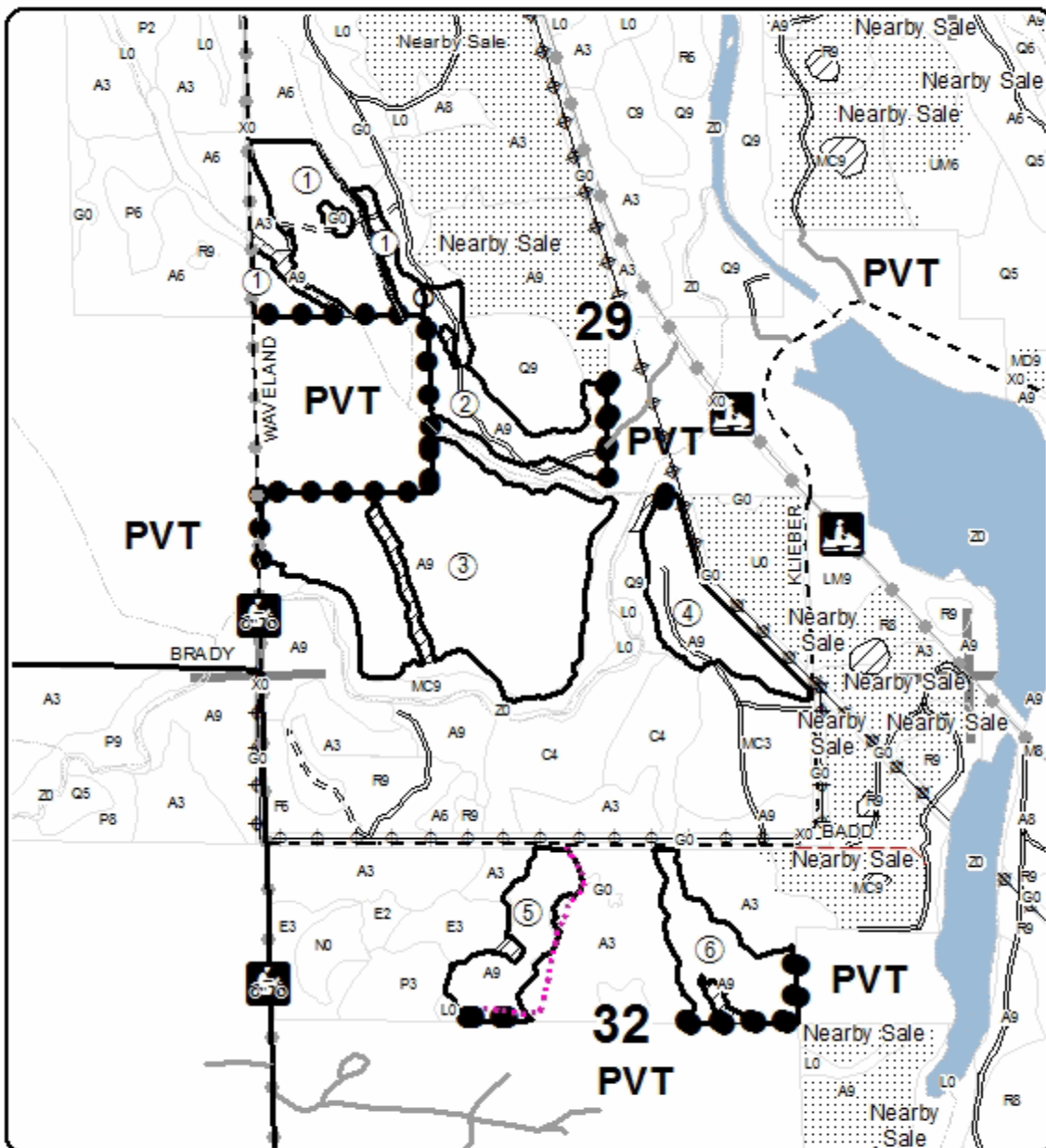
0 = Non Stocked	5 = Pole Timber Medium
1 = Seeding Sapling Poor	6 = Pole Timber Well
2 = Seeding Sapling Medium	7 = Saw Timber Poor
3 = Seeding Sapling Well	8 = Saw Timber Medium
4 = Pole Timber Poor	9 = Saw Timber Well

PU Acres	PU Acres
1 22.7	4 15.2
2 15.1	5 12.8
3 65.2	6 14.3

## Comp 210 Aspen

### Compartment 210

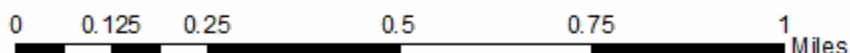
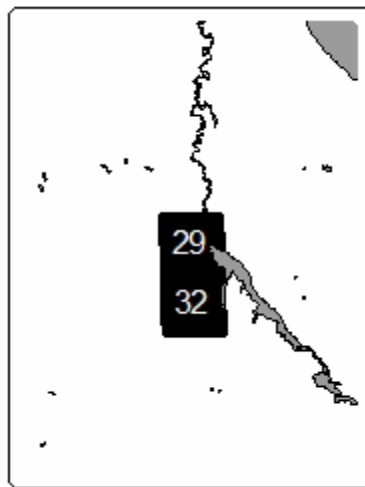
145.3 Acres



### Legend

- Against State (Red)
- Payment Unit (Yellow)
- Private Line (Blue)
- Retention Area (Teal)
- Stand Boundaries
- Nearby Timber Sale
- Recreational Trail
- Secondary Forest Road
- Forest Access Route
- Paved Road
- Gravel Road
- County Road - Seasonal
- Private
- Streams
- Powerline
- Section Corners

Locator Map  
1:200,000





**TIMBER SALE INFORMATION**

Stoney Campground Mix (52-132-17)

T35N, R01W, SEC. 21; T35N, R01W, SEC. 22; T35N, R01W, SEC. 27.  
Cheboygan County (Advertised Price \$63,869.45)

SALE NOTE: Harvest activities will be restricted in Payment Units 1 and 2 from 4/15 to 7/15 due to Oak Wilt concerns. It is recommended that harvest activities for Payment Unit 4 occur during summer or winter months because of possible wet soil conditions.

A recreation site such as a trail, pathway, or campground is within the sale area or the vicinity. Certain restrictions/specifications may be applicable including time restrictions. Access may be through private land.

A timber sale contract for this lump sum, sealed bid timber sale will be awarded to the responsible bidder offering the highest sealed bid price. Bids must be at or above the following advertised price for each species:

<u>PRODUCTS &amp; SPECIES</u>	<u>ESTIMATED UNITS*</u>	<u>ADVERTISED PRICE</u>
<b>Sawtimber</b>		
Mixed Aspen	117.90 MBF	\$ 63.00 / MBF
Red Maple	10.50 MBF	\$ 134.00 / MBF
Red Oak	50.70 MBF	\$ 237.00 / MBF
White Spruce	19.60 MBF	\$ 74.00 / MBF
<b>Pulpwood</b>		
Balsam Fir	312.00 Cords	\$ 34.10 / Cord
Balsam Poplar	19.00 Cords	\$ 21.65 / Cord
Basswood	14.00 Cords	\$ 7.15 / Cord
Black Spruce	13.00 Cords	\$ 33.60 / Cord
Mixed Aspen	694.00 Cords	\$ 21.65 / Cord
Mixed Hardwood	353.00 Cords	\$ 26.25 / Cord
Paper Birch	10.00 Cords	\$ 20.90 / Cord
Red Oak	167.00 Cords	\$ 21.35 / Cord
White Spruce	57.00 Cords	\$ 33.60 / Cord

\* The total volume is statistically estimated within plus (+) or minus (-) 12.73 percent. The estimated units are final and not subject to adjustment. Prospective bidders are urged to examine this timber and to make their own estimates of quantity and quality.

**BOND AND PAYMENT SCHEDULE:**

1. A bond in the amount of \$6,387.00 to insure faithful performance of the conditions of the contract will be deposited by the successful bidder within 21 days of the sale award.
2. Cutting in any sale or unit without the required advance payment would be considered a trespass.
3. Total payment must be paid in advance or according to the following schedule:
  - (a) Ten percent (10%) of the sale value must be paid within 21 days of the sale award.
  - (b) The 10% down payment will be credited towards the first unit cut.
  - (c) Payment for each of the following units must be made before cutting begins in that unit:

<u>PAYMENT UNIT NUMBER</u>	<u>PERCENT OF TOTAL SALE VALUE</u>
01	25.6%
02	18.6%
03	8.3%
04	47.5%

4. If no cutting takes place, the 10% down payment will not be refunded.
5. Operations on the contract issued will terminate on 09/30/2021.

**Description of Timber by Payment Unit (PU)**

PU	MARKET GROUP	PRODUCT	QUANTITY	UNIT	ACRES	ADVERTISE PRICE
1	Mixed Aspen	Sawtimber	21.1	MBF	43.1	\$16,339.95
	<i>B. T. Aspen</i>		21.1	<i>MBF</i>		
	Red Oak	Pulpwood	17.9	MBF		
	Balsam Fir		6.0	Cords		
	Basswood		12.0	Cords		
	Mixed Aspen		273.0	Cords		
	<i>B. T. Aspen</i>		273.0	<i>Cords</i>		
	Mixed Hardwood		113.0	Cords		
	<i>Beech</i>		13.0	<i>Cords</i>		
	<i>Red Maple</i>		77.0	<i>Cords</i>		
	<i>Sugar Maple</i>		23.0	<i>Cords</i>		
	Red Oak		75.0	Cords		
2	Red Oak	Sawtimber	32.8	MBF	23.3	\$11,900.55
	Basswood	Pulpwood	2.0	Cords		
	Mixed Aspen		18.0	Cords		
	<i>B. T. Aspen</i>		18.0	<i>Cords</i>		
	Mixed Hardwood		67.0	Cords		
	<i>Beech</i>		9.0	<i>Cords</i>		
	<i>Red Maple</i>		46.0	<i>Cords</i>		
	<i>Sugar Maple</i>		12.0	<i>Cords</i>		
	Red Oak		92.0	Cords		
	3		Mixed Aspen	Sawtimber		
<i>B. T. Aspen</i>		1.4	<i>MBF</i>			
<i>Quaking Aspen</i>		2.5	<i>MBF</i>			
White Spruce		Pulpwood	1.5	MBF		
Balsam Fir			53.0	Cords		
Black Spruce			13.0	Cords		
Mixed Aspen			57.0	Cords		
<i>B. T. Aspen</i>			32.0	<i>Cords</i>		
<i>Quaking Aspen</i>			25.0	<i>Cords</i>		
Mixed Hardwood			50.0	Cords		
<i>Red Maple</i>			50.0	<i>Cords</i>		
White Spruce	5.0	Cords				
4	Mixed Aspen	Sawtimber	92.9	MBF	46.3	\$30,313.60
	<i>B. T. Aspen</i>		44.3	<i>MBF</i>		
	<i>Quaking Aspen</i>		48.6	<i>MBF</i>		
	Red Maple	Pulpwood	10.5	MBF		
	White Spruce		18.1	MBF		
	Balsam Fir		253.0	Cords		
	Balsam Poplar		19.0	Cords		
	Mixed Aspen		346.0	Cords		
	<i>B. T. Aspen</i>		174.0	<i>Cords</i>		
	<i>Quaking Aspen</i>		172.0	<i>Cords</i>		
	Mixed Hardwood		123.0	Cords		
	<i>Red Maple</i>		123.0	<i>Cords</i>		
	Paper Birch		10.0	Cords		
White Spruce	52.0	Cords				
TOTAL:			198.7	MBF		
TOTAL:			1,639.0	Cords		

## Sale Specific Conditions & Requirements

**Sale Name: Stoney Campground Mix**

**Sale Number: 52-132-17 Seq#: 1**

### 1 - Sale Area

#### 1.2 - Boundaries

##### 1.2.1 - Painted boundaries (1/14)

The sale boundary and Payment Unit boundaries are marked and identified by blue, red, and teal paint. Exterior sale boundary lines against private property are marked with blue paint. Exterior sale boundary lines against state are marked with red paint. Retention areas are marked with teal paint.

### 2 - Timber Specifications

#### 2.1 - Included Timber

##### 2.1.2 - Clearcut unit(s) w/o unmerchantable trees (8/11)

Within Payment Unit(s) 1 - 4, cut all trees which meet minimum piece specifications in 2.2 Utilization, except do not cut cedar, hemlock, and trees marked with teal paint. In addition, do not cut any pine in Payment Units 1 - 3, or any oak less than 10 inches at DBH in Payment Unit 1.

### 3 - Payments

#### 3.3 - Pre-measured Sales

##### 3.3.4 - Dividing payment units (7/14)

Payment Unit(s) 3 may be divided at the request of the Purchaser and upon approval of the Unit Manager. Dividing Payment Units is a contract modification which requires a Timber Sale Contract Supplement.

#### 3.4 - Damaged Timber

##### 3.4.1 - Damaged timber (6/14)

General Condition and Requirement 3.4 Damaged Timber, defines liquidated damages for undesignated live merchantable trees which are cut or injured. In addition, extreme care should be taken to avoid damage to oak tree seedlings and saplings.

#### 3.6 - Payment Unit Cutting Schedule

##### 3.6.1 - Order of cutting (1/09)

Payment Units shall be cut in numerical order unless the sale is paid in full, or approved by the Unit Manager or his/her representative.

### 4 - Transportation

#### 4.1 - Construction

##### 4.1.3 - Slash and earthen piles (8/04)

Piles or windrows of earth along roads and landings that have been widened or constructed shall be leveled. Slash from road maintenance or construction, including stumps, shall be dispersed throughout the sale.

##### 4.1.6 - Road construction (1/09)

Construction of new roads or improvements of existing roads shall be done in such a way as to minimize the environmental and visual impacts. Merchantable trees shall be cut and utilized unless otherwise directed. Non-merchantable trees shall be severed and laid flat on the ground. Slash shall be scattered, and not left in windrows and kept a minimum of 10 feet back from the road edge. Stumps shall be set upright, not left on edge, and be moved at least 10 feet away from the road edge. Disturbed soil shall be feathered into the woods and not left in berms or windrows.

##### 4.1.7 - Road closure (10/11)

All new roads built into the sale must be blocked to vehicle traffic upon completion of the sale. Overgrown roads that are reopened shall be considered new roads. In general, this will require constructing a four (4') foot high berm of stumps and logs covered with earth.

## 4.2 - Maintenance

### 4.2.4 - Grading (10/16)

For completion of the sale, state forest roads must be graded. In general, this will require a road grader or bull dozer to shape up the roads after forest products have been hauled off site. This includes cleaning of drainage areas, grading, crowning and filling with gravel, if necessary. The grading equipment to be used must be approved by the Unit Manager or his/her representative.

## 4.4 - Access

### 4.4.1 - Private property access (3/11)

Permission for access across private land for Payment Unit 1 has been obtained by the DNR.

## 5 - Operations

### 5.1 - Notification

#### 5.1.1 - Pre-sale conference (10/16)

A pre-sale conference on site between the Purchaser and sale administrator is required prior to beginning any operations to determine landing and road locations. The Unit Manager or his/her representative must be contacted at least 2 days in advance to schedule the conference.

#### 5.1.4 - Post-sale conference (10/16)

A post-sale conference on site between the Purchaser and sale administrator is required 5 days prior to the completion of active logging operations to determine clean-up and repair of landings, road edges, and the fulfillment of other contract specifications.

### 5.2 - Conduct of Operations

#### 5.2.2 - Hazard Trees/Snags

##### 5.2.2.1 - Den trees (10/16)

Obvious hollow and/or den trees shall be protected and left standing unless they are a safety hazard.

#### 5.2.3 - Operating Restrictions

##### 5.2.3.4 - Oak wilt restriction (9/17)

Within Payment Unit(s) 1 and 2, unless changed by written agreement, cutting, skidding, hauling and brushing of access roads are not permitted during the period of April 15 to July 15. Operations may be allowed if specific steps are taken to prevent damaging uncut oak during the high risk period. Those steps include completing all road brushing before April 15th, clearing a tree-length buffer along uncut oak cover before April 15th or leaving an uncut buffer there until after July 15th. This is necessary to reduce the spread of oak wilt. For more information, contact the Unit Manager or his/her representative.

#### 5.2.22 - Operating Caution

##### 5.2.22.1 - Operating caution (6/11)

It is recommended, but not required, that within Payment Unit(s) 4, cutting, skidding, and hauling occur during dry summer or frozen winter conditions (June 1 - October 1 or December 1 - April 1). The reason for the recommendation is because of the wetter soil conditions and the concerns for excessive rutting potential.

#### 5.2.32 - Decking/landing restoration (9/13)

All decking and landing areas must have the surface area restored to a condition equal to or better than before. This is to ensure the proper regeneration of the stand.

#### 5.2.40 - Pathway protection (10/10)

The Midland to Mackinaw is a bike/hiking/horse trail and is shown on the Timber Sale Map. Do not cut trees or damage posts with blue pathway markers. Maintain a 20-foot wide slash, debris, and rut free zone daily, using the pathway as the centerline. Do not run equipment down the pathway.

### 5.4 - Soil Protection



#### 5.4.1 - Rutting restriction, general (7/16)

Operations are to cease immediately if equipment and weather conditions result in rutting of roads and/or skid trails which is 12 inches or greater in depth and 50 feet in length. The Unit Manager or his/her representative may restrict hauling and/or skidding if ruts exceed the specified depth. With the Unit Manager or his/her representative's approval, the Purchaser may return to the area when the risk of rutting has decreased.

### 5.8 - Protection of Endangered Species

#### 5.8.5 - Protection of raptor nests (3/13)

All trees with raptor nests will be protected if found during harvesting operations. Notification will be made to the Unit Manager or his/her representative who will notify the Wildlife Biologist so an on-site evaluation and recommendation can be made, if necessary.

## 6 - Safety and Fire Prevention

### 6.2 - Signing

#### 6.2.1 - Road posting (9/09)

The Purchaser is responsible for posting and maintaining caution signs on Stoney Creek Road prior to beginning operations. The road must be posted at appropriate distances from the sale area to warn of logging activity and truck traffic. Signs must be removed when harvest operations are suspended or completed.

#### 6.2.3 - Recreational trail posting (2/10)

The Purchaser is responsible for posting and maintaining caution signs on the Midland to Mackinaw Recreation Trail prior to beginning operations. The trail must be posted at appropriate distances from the sale area to warn of logging activity and truck traffic at both ends of the trail. Signs must be removed when harvest operations are suspended or completed.



# TIMBER SALE MAP

This information provided by authority of Part 525, 1994 PA 451, as amended.

Forest Management Unit Gaylord Management Unit		County Cheboygan	Mapped By TSP	Date 09/27/2017	Page 1	of 1
Township 35N	Range 01W	Section(s) and Subdivision(s) 21: SE1/4, W1/2NE, NENE; 22: W1/2, SWNE, W1/2SE; 27: NWNE		Scale 1:15,840		

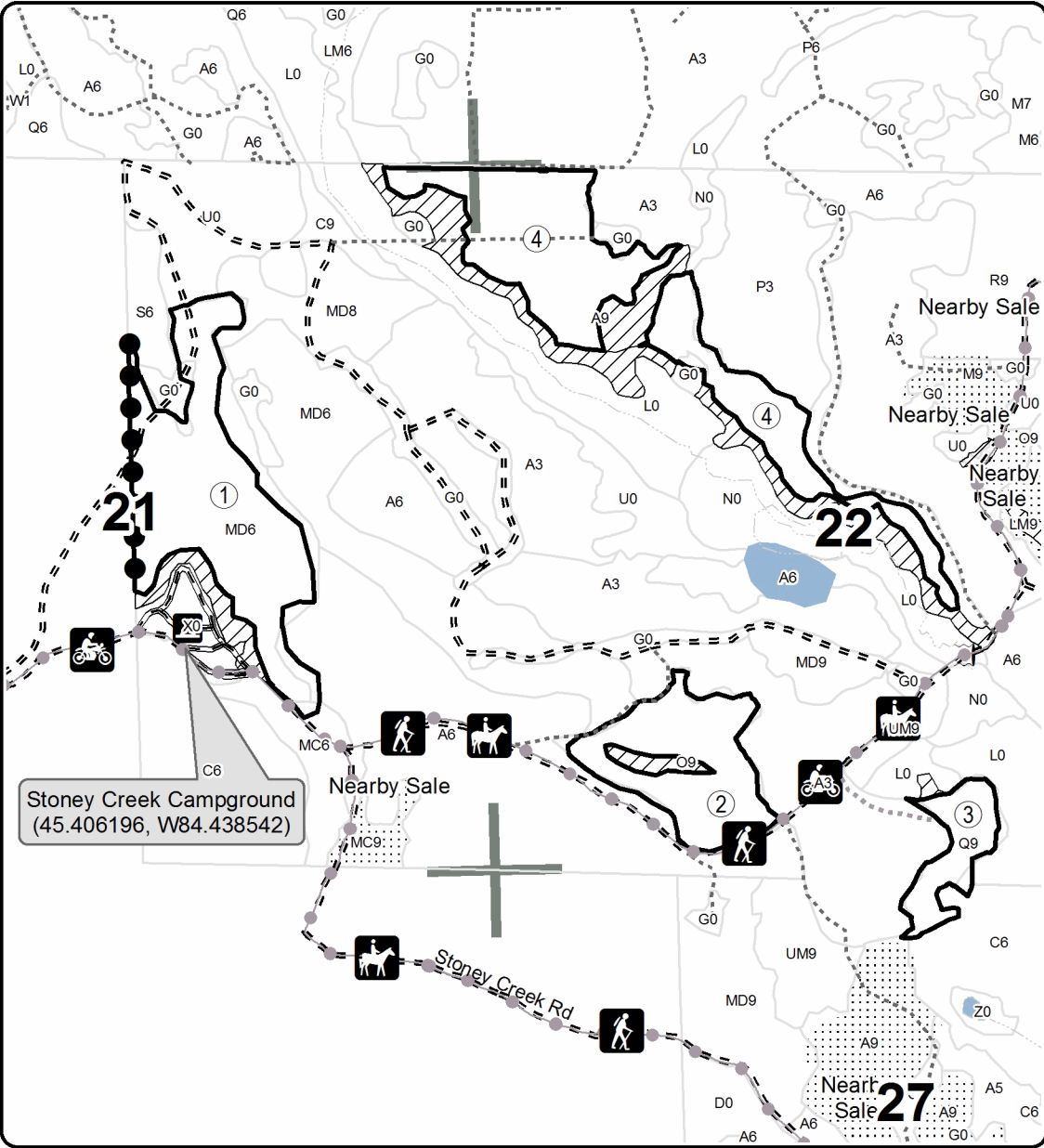
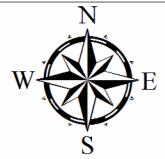
Cover Type				Density	
A = Aspen	H = Hemlock	N = Marsh	U = Upland Brush	0 = Non Stocked	5 = Pole Timber Medium
B = Paper Birch	J = Jack Pine	O = Oak	UM = Upland Mixed	1 = Seedling Sapling Poor	6 = Pole Timber Well
C = Cedar	L = Lowland Brush	P = Lowland Poplar	V = Bog or Marsh	2 = Seedling Sapling Medium	7 = Saw Timber Poor
D = Treed Bog	LM = Lowland Mixed	Q = Mixed Swamp Conifer	W = White Pine	3 = Seedling Sapling Well	8 = Saw Timber Medium
E = Swamp Hdwoods	M = Mpl, Bch, Brch	R = Red Pine	X = Non Stocked	4 = Pole Timber Poor	9 = Saw Timber Well
F = Spruce Fir	MC = Mixed Conifer	S = Black Spruce	Z = Water		
G = Grass	MD = Mixed Deciduous	T = Tamarack			

PU	Acres	PU	Acres
1	43.1	4	46.3
2	23.3		
3	9.3		

## Stoney Campground Mix

### Compartment 186

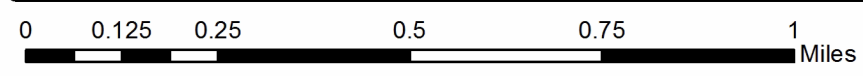
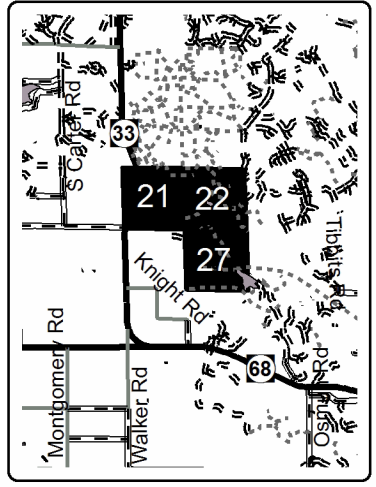
### 122 Acres



**Legend**

- Against State (Red)
- Private Line (Blue)
- ▨ Retention Area (Teal)
- Stand Boundaries
- Recreational Trail
- ▬ Gravel Roads
- - - Poor Dirt Roads
- ⋯ Closed Roads
- ⋯ Streams
- ⊕ Section Corners

Locator Map  
1:200,000



**TIMBER SALE INFORMATION**

Munger Mix (52-138-17)

T34N, R02W, SEC. 36.

Cheboygan County (Advertised Price \$10,473.30)

SALE NOTE: Cedar is showing signs of decline. Wet soils in most of the sale.

A timber sale contract for this lump sum, sealed bid timber sale will be awarded to the responsible bidder offering the highest sealed bid price. Bids must be at or above the following advertised price for each species:

<u>PRODUCTS &amp; SPECIES</u>	<u>ESTIMATED UNITS*</u>	<u>ADVERTISED PRICE</u>
Pulpwood		
Balsam Fir	65.00 Cords	\$ 15.90 / Cord
Mixed Hardwood	29.00 Cords	\$ 12.25 / Cord
Mixed Spruce	197.00 Cords	\$ 15.70 / Cord
N. White Cedar	459.00 Cords	\$ 10.75 / Cord
Tamarack	68.00 Cords	\$ 15.55 / Cord

\* The total volume is statistically estimated within plus (+) or minus (-) 19.12 percent. The estimated units are final and not subject to adjustment. Prospective bidders are urged to examine this timber and to make their own estimates of quantity and quality.

**BOND AND PAYMENT SCHEDULE:**

- A bond in the amount of \$524.00 to insure faithful performance of the conditions of the contract will be deposited by the successful bidder within 21 days of the sale award.
- Cutting in any sale or unit without the required advance payment would be considered a trespass.
- Total payment must be paid in advance or according to the following schedule:
  - Ten percent (10%) of the sale value must be paid within 21 days of the sale award.
  - The remainder is due before cutting begins.
  - Payment for each of the following units must be made before cutting begins in that unit:
 

PAYMENT UNIT NUMBER	PERCENT OF TOTAL SALE VALUE
01	100.0%
- If no cutting takes place, the 10% down payment will not be refunded.
- Operations on the contract issued will terminate on 06/30/2021.

**Description of Timber by Payment Unit (PU)**

PU	MARKET GROUP	PRODUCT	QUANTITY	UNIT	ACRES	ADVERTISE PRICE
1	Balsam Fir	Pulpwood	65.0	Cords	33.6	\$10,473.30
	Mixed Hardwood		29.0	Cords		
	Mixed Spruce		197.0	Cords		
	N. White Cedar		459.0	Cords		
	Tamarack		68.0	Cords		
<b>TOTAL:</b>			<b>818.0</b>	<b>Cords</b>		

## Sale Specific Conditions & Requirements

**Sale Name: Munger Mix**

**Sale Number: 52-138-17 Seq#: 2**

### 1 - Sale Area

#### 1.2 - Boundaries

##### 1.2.1 - Painted boundaries (1/14)

The sale boundary is marked and identified by red paint. Exterior sale boundary lines against state are marked with red paint. The painted boundary line trees are not Included Timber and are to be protected.

### 2 - Timber Specifications

#### 2.1 - Included Timber

##### 2.1.1 - Clearcut unit(s) with unmerchantable trees (6/14)

Within Payment Unit(s) 1, cut all trees that are two (2) inches or more at DBH.

### 3 - Payments

#### 3.3 - Pre-measured Sales

##### 3.3.4 - Dividing payment units (7/14)

Payment Unit(s) 1 may be divided at the request of the Purchaser and upon approval of the Unit Manager. Dividing Payment Units is a contract modification which requires a Timber Sale Contract Supplement. There will be only one division per Payment Unit.

### 4 - Transportation

#### 4.1 - Construction

##### 4.1.4 - Timber removed for construction (12/09)

Trees cut or damaged in the process of pre-approved road, landing or skid trail construction will be decked in an area separate from other Designated Timber and not removed until measured by the sale administrator. Payment will be made at the specified Purchase Unit Price. Some timber may have to be cut in the adjacent stand for the haul road and landing. Timber harvested will be paid for at the average price received for that species and product in the Mackinaw State Forest area.

##### 4.1.6 - Road construction (1/09)

Construction of new roads or improvements of existing roads shall be done in such a way as to minimize the environmental and visual impacts. Merchantable trees shall be cut and utilized unless otherwise directed. Non-merchantable trees shall be severed and laid flat on the ground. Slash shall be scattered, and not left in windrows and kept a minimum of 10 feet back from the road edge. Stumps shall be set upright, not left on edge, and be moved at least 10 feet away from the road edge. Disturbed soil shall be feathered into the woods and not left in berms or windrows.

##### 4.1.7 - Road closure (10/11)

All new roads built into the sale must be blocked to vehicle traffic upon completion of the sale. In general, this will require constructing a four (4') foot high berm of stumps and logs covered with earth. These roads must be rendered impassable to cars and trucks. All stumps from road building and landing construction must be reserved to block any newly constructed roads upon completion of the sale. These stumps must be scattered along the road system to prohibit vehicular movement. Contact the sale administrator for specific details of design and placement.

#### 4.2 - Maintenance

##### 4.2.5 - Two wheel drive condition (2/04)

All existing trail roads on and adjacent to the sale area must be passable by two-wheel drive traffic for the duration of the sale.

### 5 - Operations

#### 5.1 - Notification

#### 5.1.1 - Pre-sale conference (10/16)

A pre-sale conference on site between the Purchaser and sale administrator is required prior to beginning any operations to determine landing and road locations. The Unit Manager or his/her representative must be contacted at least 3 days in advance to schedule the conference.

### 5.2 - Conduct of Operations

#### 5.2.2 - Hazard Trees/Snags

##### 5.2.2.1 - Den trees (10/16)

Obvious hollow and/or den trees shall be protected and left standing unless they are a safety hazard.

#### 5.2.22 - Operating Caution

##### 5.2.22.1 - Operating caution (6/11)

It is recommended, but not required, that within Payment Unit(s) 1, cutting, skidding, and hauling occur during dry summer or frozen winter conditions. The reason for the recommendation is because of wet soils throughout the sale area.

### 5.4 - Soil Protection

#### 5.4.1 - Rutting restriction, general (7/16)

Operations are to cease immediately if equipment and weather conditions result in rutting of roads and/or skid trails which is 12 inches or greater in depth and 50 feet in length. The Unit Manager or his/her representative may restrict hauling and/or skidding if ruts exceed the specified depth. With the Unit Manager or his/her representative's approval, the Purchaser may return to the area when the risk of rutting has decreased.

#### 5.4.5 - Soil caution (11/04)

Care must be taken to minimize soil damage due to the saturated soils.

### 5.8 - Protection of Endangered Species

#### 5.8.5 - Protection of raptor nests (3/13)

All trees with raptor nests will be protected if found during harvesting operations. Notification will be made to the Unit Manager or his/her representative who will notify the Wildlife Biologist so an on-site evaluation and recommendation can be made, if necessary.



# TIMBER SALE MAP

This information provided by authority of Part 525, 1994 PA 451, as amended.

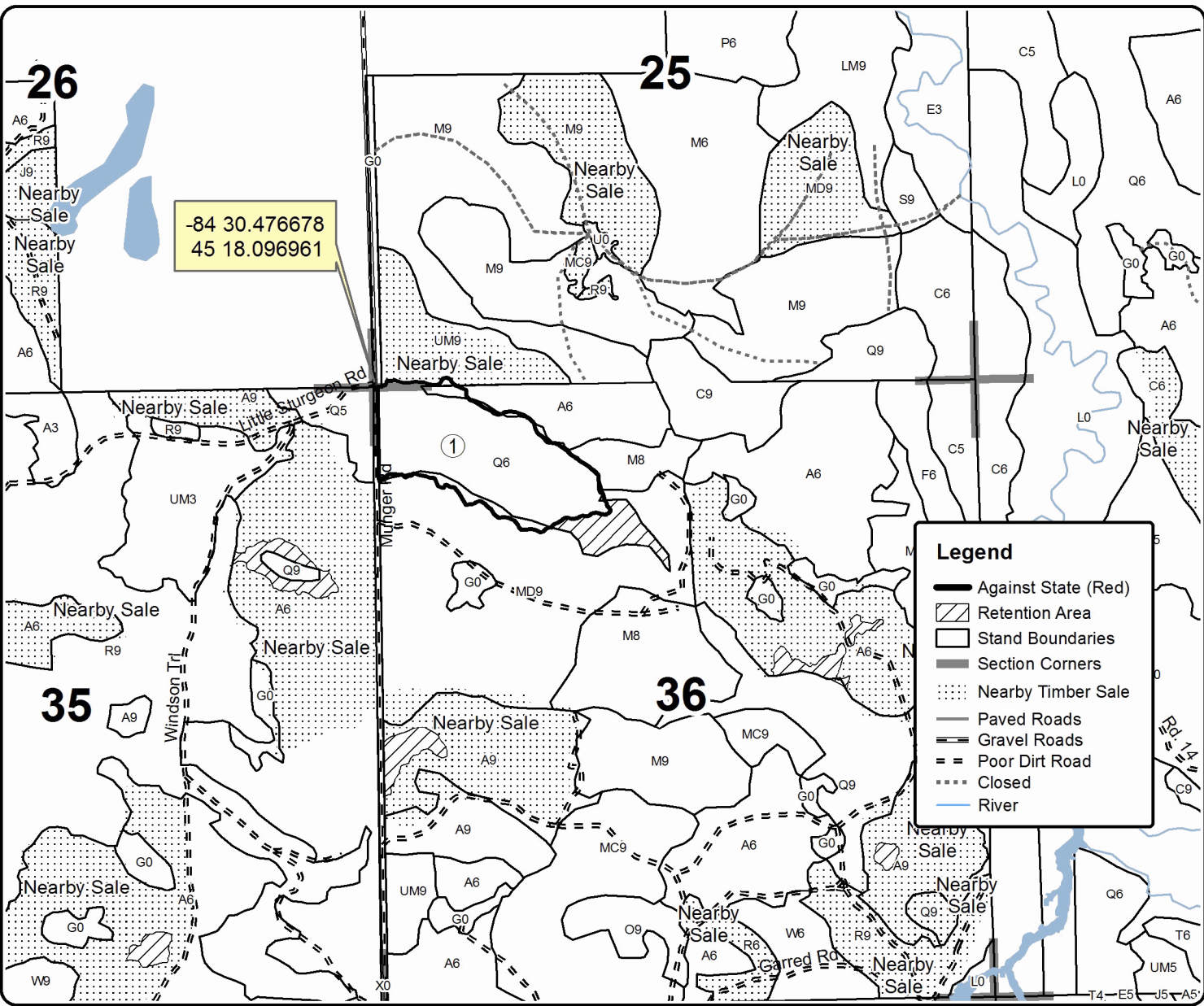
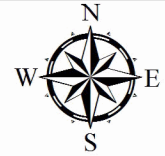
Forest Management Unit GFMU - Indian River Field Office	County Cheboygan	Mapped By Harig	Date 9/27/2017	Page 1	of 1
		Cruised By Harig			

Township 34N	Range 02W	Section(s) and Subdivision(s) Sec. 25: SWSW Sec. 36: N1/2NW	Scale 1:15,840
-----------------	--------------	--	-------------------

Cover Type				Density			
A = Aspen	H = Hemlock	N = Marsh	U = Upland Brush	0 = Non Stocked	5 = Pole Timber Medium		
B = Paper Birch	J = Jack Pine	O = Oak	UM = Upland Mixed	1 = Seedling Sapling Poor	6 = Pole Timber Well		
C = Cedar	L = Lowland Brush	P = Lowland Poplar	V = Bog or Marsh	2 = Seedling Sapling Medium	7 = Saw Timber Poor		
D = Tread Bog	LM = Lowland Mixed	Q = Mixed Swamp Conifer	W = White Pine	3 = Seedling Sapling Well	8 = Saw Timber Medium		
E = Swamp Hdwoods	M = Mpl, Bch, Brch	R = Red Pine	X = Non Stocked	4 = Pole Timber Poor	9 = Saw Timber Well		
F = Spruce Fir	MC = Mixed Conifer	S = Black Spruce	Z = Water				
G = Grass	MD = Mixed Deciduous	T = Tamarack					

**PU Acres**  
1 33.6

## Munger Mix Compartment 172 33.6 Acres



Stoney Campground Mix (52-132-17)  
T35N, R01W, SEC. 21; T35N, R01W, SEC. 22; T35N, R01W, SEC. 27; Cheboygan

In response to the notice of sale to be held 3:00 p.m. (local time) on December 4, 2018, I am hereby submitting my sealed bid (firm offer) for the following forest products to be cut. Bids for individual species must be at or above the advertised price. All non-responsive bid forms may be rejected.

<u>PRODUCTS &amp; SPECIES</u>	<u>ESTIMATED VOLUME*</u>	<u>ADVERTISED PRICE</u>	<u>BID PRICE/UNIT</u>
<b>Sawtimber</b>			
Mixed Aspen	117.90 MBF	\$ 63.00/MBF	\$ _____
Red Maple	10.50 MBF	\$ 134.00/MBF	\$ _____
Red Oak	50.70 MBF	\$ 237.00/MBF	\$ _____
White Spruce	19.60 MBF	\$ 74.00/MBF	\$ _____
<b>Pulpwood</b>			
Balsam Fir	312.00 Cords	\$ 34.10/Cord	\$ _____
Balsam Poplar	19.00 Cords	\$ 21.65/Cord	\$ _____
Basswood	14.00 Cords	\$ 7.15/Cord	\$ _____
Black Spruce	13.00 Cords	\$ 33.60/Cord	\$ _____
Mixed Aspen	694.00 Cords	\$ 21.65/Cord	\$ _____
Mixed Hardwood	353.00 Cords	\$ 26.25/Cord	\$ _____
Paper Birch	10.00 Cords	\$ 20.90/Cord	\$ _____
Red Oak	167.00 Cords	\$ 21.35/Cord	\$ _____
White Spruce	57.00 Cords	\$ 33.60/Cord	\$ _____

\*The volumes are statistically estimated within plus (+) or minus (-) 12.73 percent. These estimated volumes are final and not subject to adjustment. Prospective bidders are urged to examine this timber and to make their own estimates of quantity and quality.

I understand that any or all bids may be rejected. All bids must be signed and all bid items must be bid or the bid form may be rejected. I also understand that consideration and awarding a contract will be based upon my past performance and ability to complete the contract based upon equipment and staffing subject to my control.

FEDERAL ID: \_\_\_\_\_ or SOCIAL SECURITY NUMBER: \_\_\_\_\_

Company or individual bidding: \_\_\_\_\_

Company representative's name: \_\_\_\_\_

Address: \_\_\_\_\_

City: \_\_\_\_\_ State: \_\_\_\_\_ Zip: \_\_\_\_\_

IF AVAILABLE, PLEASE PLACE THE PERSONALIZED LABEL FROM YOUR PROSPECTUS IN THE ABOVE BOX.

Individual or company representative's signature: \_\_\_\_\_ Date: \_\_\_\_\_

Phone number : \_\_\_\_\_ Email (optional): \_\_\_\_\_

**THE WINNING BIDDER MUST COMPLETE THE VERIFICATION OF WORKER'S DISABILITY COMPENSATION ACT COMPLIANCE (ON REVERSE SIDE IF DOUBLE SIDED) WITHIN 21 DAYS OF SALE AWARD DATE**



<b>FOR DEPARTMENT USE ONLY</b>	
Sale Number (XX - XXX - XX - XX)	
Forest Management Unit:	

### TIMBER SALE VERIFICATION OF WORKER'S DISABILITY COMPENSATION ACT COMPLIANCE

As required by Act 317, P.A. 1969 (Worker's Compensation) and  
Part 5 of Act 451 of 1994, as amended.

#### VERIFICATION OF WORKER'S DISABILITY COMPENSATION ACT COMPLIANCE

- This verification must be completed and submitted within 21 days of contract award and prior to the issuance of the timber sale contract.
- In addition, if boxes 2B or 2C are checked, then Notice of Exclusion or Certificate of Insurance must be submitted within twenty-one (21) days of the contract award and prior to the issuance of the timber sale contract.
- All information must be typed or printed except for written signatures.

Please Check Appropriate Categories:

1. My business is organized as (you **must** check one of the boxes below):
  - A.  Sole Proprietorship (individual)
  - B.  Partnership
  - C.  Corporation
2. You **must** check one of the boxes below:
  - A.  I certify my business is a sole proprietorship and it has no employees but the sole proprietor. I am not subject to the Worker's Compensation Laws.
  - B.  I certify my business has satisfied its obligation to the Worker's Compensation Act through the use of an approved Notice of Exclusion (BWC-337, Rev. 5/96). I will provide a copy of the Notice of Exclusion within 21 days of the contract award. (For questions or a copy of the BWC-337, please call the Worker's Compensation Bureau at 517-322-1195).
  - C.  I certify my business has a Worker's Compensation Policy. I will provide an original Certificate of Insurance within twenty-one (21) days of the contract award.
3. If you have checked item 2(A) or 2(B), you **must** indicate the number of **both** full-time and part-time employees, other than yourself, including family members and active partners (if none, you must enter "0").

\_\_\_\_\_ Full-time Employees

\_\_\_\_\_ Part-time Employees

Name of Business		Federal ID (or) Social Security No.	
Address		Telephone (       )	
City	State	ZIP	

*I hereby certify that the above information is true and correct. I agree to notify the Michigan DNR of any changes that occur in factors affecting my coverage during any of my present and future operations.*

\_\_\_\_\_  
Signature of Owner or Authorized Representative

\_\_\_\_\_  
Title

\_\_\_\_\_  
Date

Please complete the "SEALED BID" information on the next page



Munger Mix (52-138-17)  
T34N, R02W, SEC. 36; Cheboygan COUNTY

In response to the notice of sale to be held 3:00 p.m. (local time) on December 4, 2018, I am hereby submitting my sealed bid (firm offer) for the following forest products to be cut. Bids for individual species must be at or above the advertised price. All non-responsive bid forms may be rejected.

<u>PRODUCTS &amp; SPECIES</u>	<u>ESTIMATED VOLUME*</u>	<u>ADVERTISED PRICE</u>	<u>BID PRICE/UNIT</u>
Pulpwood			
Balsam Fir	65.00 Cords	\$ 15.90/Cord	\$ _____
Mixed Hardwood	29.00 Cords	\$ 12.25/Cord	\$ _____
Mixed Spruce	197.00 Cords	\$ 15.70/Cord	\$ _____
N. White Cedar	459.00 Cords	\$ 10.75/Cord	\$ _____
Tamarack	68.00 Cords	\$ 15.55/Cord	\$ _____

\*The volumes are statistically estimated within plus (+) or minus (-) 19.12 percent. These estimated volumes are final and not subject to adjustment. Prospective bidders are urged to examine this timber and to make their own estimates of quantity and quality.

I understand that any or all bids may be rejected. All bids must be signed and all bid items must be bid or the bid form may be rejected. I also understand that consideration and awarding a contract will be based upon my past performance and ability to complete the contract based upon equipment and staffing subject to my control.

FEDERAL ID: \_\_\_\_\_ or SOCIAL SECURITY NUMBER: \_\_\_\_\_

Company or individual bidding: \_\_\_\_\_

Company representative's name: \_\_\_\_\_

Address: \_\_\_\_\_

City: \_\_\_\_\_ State: \_\_\_\_\_ Zip: \_\_\_\_\_

IF AVAILABLE, PLEASE PLACE THE PERSONALIZED LABEL FROM YOUR PROSPECTUS IN THE ABOVE BOX.

Individual or company representative's signature: \_\_\_\_\_ Date: \_\_\_\_\_

Phone number : \_\_\_\_\_ Email (optional): \_\_\_\_\_

**THE WINNING BIDDER MUST COMPLETE THE VERIFICATION OF WORKER'S DISABILITY COMPENSATION ACT COMPLIANCE (ON REVERSE SIDE IF DOUBLE SIDED) WITHIN 21 DAYS OF SALE AWARD DATE**



<b>FOR DEPARTMENT USE ONLY</b>
Sale Number (XX - XXX - XX - XX)
Forest Management Unit:

## TIMBER SALE VERIFICATION OF WORKER'S DISABILITY COMPENSATION ACT COMPLIANCE

*As required by Act 317, P.A. 1969 (Worker's Compensation) and  
Part 5 of Act 451 of 1994, as amended.*

### VERIFICATION OF WORKER'S DISABILITY COMPENSATION ACT COMPLIANCE

- This verification must be completed and submitted within 21 days of contract award and prior to the issuance of the timber sale contract.
- In addition, if boxes 2B or 2C are checked, then Notice of Exclusion or Certificate of Insurance must be submitted within twenty-one (21) days of the contract award and prior to the issuance of the timber sale contract.
- All information must be typed or printed except for written signatures.

Please Check Appropriate Categories:

1. My business is organized as (you **must** check one of the boxes below):
  - A.  Sole Proprietorship (individual)
  - B.  Partnership
  - C.  Corporation
  
2. You **must** check one of the boxes below:
  - A.  I certify my business is a sole proprietorship and it has no employees but the sole proprietor. I am not subject to the Worker's Compensation Laws.
  - B.  I certify my business has satisfied its obligation to the Worker's Compensation Act through the use of an approved Notice of Exclusion (BWC-337, Rev. 5/96). I will provide a copy of the Notice of Exclusion within 21 days of the contract award. (For questions or a copy of the BWC-337, please call the Worker's Compensation Bureau at 517-322-1195).
  - C.  I certify my business has a Worker's Compensation Policy. I will provide an original Certificate of Insurance within twenty-one (21) days of the contract award.
  
3. If you have checked item 2(A) or 2(B), you **must** indicate the number of **both** full-time and part-time employees, other than yourself, including family members and active partners (if none, you must enter "0").

\_\_\_\_\_ Full-time Employees

\_\_\_\_\_ Part-time Employees

Name of Business		Federal ID (or) Social Security No.	
Address		Telephone (       )	
City	State	ZIP	

*I hereby certify that the above information is true and correct. I agree to notify the Michigan DNR of any changes that occur in factors affecting my coverage during any of my present and future operations.*

\_\_\_\_\_  
Signature of Owner or Authorized Representative

\_\_\_\_\_  
Title

\_\_\_\_\_  
Date

**Please complete the "SEALED BID" information on the next page**

Comp 210 Aspen (52-130-17)  
; Cheboygan COUNTY

In response to the notice of sale to be held 3:00 p.m. (local time) on December 4, 2018, I am hereby submitting my sealed bid (firm offer) for the following forest products to be cut. Bids for individual species must be at or above the advertised price. All non-responsive bid forms may be rejected.

<u>PRODUCTS &amp; SPECIES</u>	<u>ESTIMATED VOLUME*</u>	<u>ADVERTISED PRICE</u>	<u>BID PRICE/UNIT</u>
<b>Sawtimber</b>			
Mixed Aspen	325.90 MBF	\$ 63.00/MBF	\$ _____
N. White Cedar	10.00 MBF	\$ 60.00/MBF	\$ _____
Paper Birch	10.50 MBF	\$ 51.00/MBF	\$ _____
Red Maple	56.30 MBF	\$ 134.00/MBF	\$ _____
Red Pine	51.60 MBF	\$ 107.00/MBF	\$ _____
Sugar Maple	7.50 MBF	\$ 333.00/MBF	\$ _____
White Spruce	17.10 MBF	\$ 77.00/MBF	\$ _____
<b>Pulpwood</b>			
Balsam Fir	933.00 Cords	\$ 34.10/Cord	\$ _____
Mixed Aspen	1,670.00 Cords	\$ 21.65/Cord	\$ _____
Mixed Hardwood	43.00 Cords	\$ 26.25/Cord	\$ _____
N. White Cedar	93.00 Cords	\$ 23.00/Cord	\$ _____
Paper Birch	110.00 Cords	\$ 20.90/Cord	\$ _____
Red Maple	438.00 Cords	\$ 26.25/Cord	\$ _____
Red Pine	92.00 Cords	\$ 46.25/Cord	\$ _____
White Pine	12.00 Cords	\$ 27.85/Cord	\$ _____
White Spruce	83.00 Cords	\$ 33.60/Cord	\$ _____

\*The volumes are statistically estimated within plus (+) or minus (-) 9.49 percent. These estimated volumes are final and not subject to adjustment. Prospective bidders are urged to examine this timber and to make their own estimates of quantity and quality.

I understand that any or all bids may be rejected. All bids must be signed and all bid items must be bid or the bid form may be rejected. I also understand that consideration and awarding a contract will be based upon my past performance and ability to complete the contract based upon equipment and staffing subject to my control.

FEDERAL ID: \_\_\_\_ - \_\_\_\_ - \_\_\_\_ or SOCIAL SECURITY NUMBER: \_\_\_\_ - \_\_\_\_ - \_\_\_\_

Company or individual bidding: \_\_\_\_\_

Company representative's name: \_\_\_\_\_

Address: \_\_\_\_\_

City: \_\_\_\_\_ State: \_\_\_\_\_ Zip: \_\_\_\_\_

IF AVAILABLE, PLEASE PLACE THE PERSONALIZED LABEL FROM YOUR PROSPECTUS IN THE ABOVE BOX.

Individual or company representative's signature: \_\_\_\_\_ Date: \_\_\_\_\_

Phone number : \_\_\_\_\_ Email (optional): \_\_\_\_\_

**THE WINNING BIDDER MUST COMPLETE THE VERIFICATION OF WORKER'S DISABILITY COMPENSATION ACT COMPLIANCE (ON REVERSE SIDE IF DOUBLE SIDED) WITHIN 21 DAYS OF SALE AWARD DATE**



<b>FOR DEPARTMENT USE ONLY</b>
Sale Number (XX - XXX - XX - XX)
Forest Management Unit:

## TIMBER SALE VERIFICATION OF WORKER'S DISABILITY COMPENSATION ACT COMPLIANCE

*As required by Act 317, P.A. 1969 (Worker's Compensation) and  
Part 5 of Act 451 of 1994, as amended.*

### VERIFICATION OF WORKER'S DISABILITY COMPENSATION ACT COMPLIANCE

- This verification must be completed and submitted within 21 days of contract award and prior to the issuance of the timber sale contract.
- In addition, if boxes 2B or 2C are checked, then Notice of Exclusion or Certificate of Insurance must be submitted within twenty-one (21) days of the contract award and prior to the issuance of the timber sale contract.
- All information must be typed or printed except for written signatures.

Please Check Appropriate Categories:

1. My business is organized as (you **must** check one of the boxes below):
  - A.  Sole Proprietorship (individual)
  - B.  Partnership
  - C.  Corporation
2. You **must** check one of the boxes below:
  - A.  I certify my business is a sole proprietorship and it has no employees but the sole proprietor. I am not subject to the Worker's Compensation Laws.
  - B.  I certify my business has satisfied its obligation to the Worker's Compensation Act through the use of an approved Notice of Exclusion (BWC-337, Rev. 5/96). I will provide a copy of the Notice of Exclusion within 21 days of the contract award. (For questions or a copy of the BWC-337, please call the Worker's Compensation Bureau at 517-322-1195).
  - C.  I certify my business has a Worker's Compensation Policy. I will provide an original Certificate of Insurance within twenty-one (21) days of the contract award.
3. If you have checked item 2(A) or 2(B), you **must** indicate the number of **both** full-time and part-time employees, other than yourself, including family members and active partners (if none, you must enter "0").

\_\_\_\_\_ Full-time Employees

\_\_\_\_\_ Part-time Employees

Name of Business		Federal ID (or) Social Security No.	
Address		Telephone (       )	
City	State	ZIP	

*I hereby certify that the above information is true and correct. I agree to notify the Michigan DNR of any changes that occur in factors affecting my coverage during any of my present and future operations.*

\_\_\_\_\_  
Signature of Owner or Authorized Representative

\_\_\_\_\_  
Title

\_\_\_\_\_  
Date

**Please complete the "SEALED BID" information on the next page**

Kleber Pond Mix (52-129-17)  
; Cheboygan COUNTY

In response to the notice of sale to be held 3:00 p.m. (local time) on December 4, 2018, I am hereby submitting my sealed bid (firm offer) for the following forest products to be cut. Bids for individual species must be at or above the advertised price. All non-responsive bid forms may be rejected.

<u>PRODUCTS &amp; SPECIES</u>	<u>ESTIMATED VOLUME*</u>	<u>ADVERTISED PRICE</u>	<u>BID PRICE/UNIT</u>
<b>Sawtimber</b>			
Mixed Aspen	35.10 MBF	\$ 63.00/MBF	\$ _____
Red Maple	1.10 MBF	\$ 134.00/MBF	\$ _____
Red Pine	143.10 MBF	\$ 107.00/MBF	\$ _____
White Pine	31.80 MBF	\$ 60.00/MBF	\$ _____
<b>Pulpwood</b>			
Balsam Fir	175.00 Cords	\$ 34.10/Cord	\$ _____
Black Spruce	9.00 Cords	\$ 33.60/Cord	\$ _____
Jack Pine	61.00 Cords	\$ 26.90/Cord	\$ _____
Mixed Aspen	444.00 Cords	\$ 21.65/Cord	\$ _____
N. White Cedar	94.00 Cords	\$ 23.00/Cord	\$ _____
Paper Birch	13.00 Cords	\$ 20.90/Cord	\$ _____
Red Maple	156.00 Cords	\$ 26.25/Cord	\$ _____
Red Pine	277.00 Cords	\$ 46.25/Cord	\$ _____
White Pine	122.00 Cords	\$ 27.85/Cord	\$ _____
White Spruce	51.00 Cords	\$ 33.60/Cord	\$ _____

\*The volumes are statistically estimated within plus (+) or minus (-) 11.15 percent. These estimated volumes are final and not subject to adjustment. Prospective bidders are urged to examine this timber and to make their own estimates of quantity and quality.

I understand that any or all bids may be rejected. All bids must be signed and all bid items must be bid or the bid form may be rejected. I also understand that consideration and awarding a contract will be based upon my past performance and ability to complete the contract based upon equipment and staffing subject to my control.

FEDERAL ID: \_\_\_\_ - \_\_\_\_ - \_\_\_\_ or SOCIAL SECURITY NUMBER: \_\_\_\_ - \_\_\_\_ - \_\_\_\_

Company or individual bidding: \_\_\_\_\_

Company representative's name: \_\_\_\_\_

Address: \_\_\_\_\_

City: \_\_\_\_\_ State: \_\_\_\_\_ Zip: \_\_\_\_\_

IF AVAILABLE, PLEASE PLACE THE PERSONALIZED LABEL FROM YOUR PROSPECTUS IN THE ABOVE BOX.

Individual or company representative's signature: \_\_\_\_\_ Date: \_\_\_\_\_

Phone number : \_\_\_\_\_ Email (optional): \_\_\_\_\_

**THE WINNING BIDDER MUST COMPLETE THE VERIFICATION OF WORKER'S DISABILITY COMPENSATION ACT COMPLIANCE (ON REVERSE SIDE IF DOUBLE SIDED) WITHIN 21 DAYS OF SALE AWARD DATE**



<b>FOR DEPARTMENT USE ONLY</b>
Sale Number (XX - XXX - XX - XX)
Forest Management Unit:

## TIMBER SALE VERIFICATION OF WORKER'S DISABILITY COMPENSATION ACT COMPLIANCE

*As required by Act 317, P.A. 1969 (Worker's Compensation) and  
Part 5 of Act 451 of 1994, as amended.*

### VERIFICATION OF WORKER'S DISABILITY COMPENSATION ACT COMPLIANCE

- This verification must be completed and submitted within 21 days of contract award and prior to the issuance of the timber sale contract.
- In addition, if boxes 2B or 2C are checked, then Notice of Exclusion or Certificate of Insurance must be submitted within twenty-one (21) days of the contract award and prior to the issuance of the timber sale contract.
- All information must be typed or printed except for written signatures.

Please Check Appropriate Categories:

1. My business is organized as (you **must** check one of the boxes below):
  - A.  Sole Proprietorship (individual)
  - B.  Partnership
  - C.  Corporation
  
2. You **must** check one of the boxes below:
  - A.  I certify my business is a sole proprietorship and it has no employees but the sole proprietor. I am not subject to the Worker's Compensation Laws.
  - B.  I certify my business has satisfied its obligation to the Worker's Compensation Act through the use of an approved Notice of Exclusion (BWC-337, Rev. 5/96). I will provide a copy of the Notice of Exclusion within 21 days of the contract award. (For questions or a copy of the BWC-337, please call the Worker's Compensation Bureau at 517-322-1195).
  - C.  I certify my business has a Worker's Compensation Policy. I will provide an original Certificate of Insurance within twenty-one (21) days of the contract award.
  
3. If you have checked item 2(A) or 2(B), you **must** indicate the number of **both** full-time and part-time employees, other than yourself, including family members and active partners (if none, you must enter "0").

\_\_\_\_\_ Full-time Employees

\_\_\_\_\_ Part-time Employees

Name of Business		Federal ID (or) Social Security No.	
Address		Telephone (       )	
City	State	ZIP	

*I hereby certify that the above information is true and correct. I agree to notify the Michigan DNR of any changes that occur in factors affecting my coverage during any of my present and future operations.*

\_\_\_\_\_  
Signature of Owner or Authorized Representative

\_\_\_\_\_  
Title

\_\_\_\_\_  
Date

**Please complete the "SEALED BID" information on the next page**