



**DEPARTMENT OF NATURAL RESOURCES
STATE OF MICHIGAN**

TIMBER SALE PROSPECTUS #6242

SCHEDULED SALE DATE AND TIME: 2:00 p.m. (local time) on December 13, 2018.

LOCATION: ROSCOMMON MGMT UNIT, PO BOX 218, ROSCOMMON, MI 48653.

PROSPECTUS NOTE: The bidder is advised to inspect the sale area and review the location, estimated volumes, operating costs and contract terms of proposed sales. Please be aware that some landowners may request 60 days or more notice for access across their land.

Notice is hereby given that bids will be received by the Unit Manager, ROSCOMMON MANAGEMENT UNIT, for certain timber on the following described lands:

Barney's Blowdown (71-003-19) / T22N, R03W, SEC. 28, NW,NE,NWSW.

Roscommon County, Advertised Price \$75,237.50, 87.4 Acres, Hardwood, Red Pine.

SALE NOTE: This sale is a large blowdown salvage area. All standing trees will be cut and processed, and all blowdown trees will be processed. Volumes are from data taken before the blowdown event occurred, or in the same stand types adjacent to the blowdown. Sale area is designated with purple paint. Red and orange paint is present within and around the sale area and is to be ignored.

A recreation site such as a trail, pathway, or campground is within the sale area or the vicinity. Certain restrictions/specifications may be applicable including time restrictions.

Aspen Interchange (71-021-18) / T24N, R04W, SEC. 27, S1/2NW,SW,NESE,S1/2SE.

T24N, R04W, SEC. 33, NENE.

T24N, R04W, SEC. 34, NW,NWNE.

Roscommon County, Advertised Price \$49,238.65, 78.0 Acres, Aspen, Hardwood.

SALE NOTE: An old and over-grown road will need to be brushed out and improved off Dead-Stream Road to access Payment Unit 2. This road may require a culvert at Dead-Stream Road. When the sale is completed, the road will need to be re-closed, the culvert (if installed) must be pulled out, and the ditch must be re-contoured.

Duratrac Aspen (71-029-18) / T23N, R04W, SEC. 30, S1/2SE.

T23N, R04W, SEC. 31, NENW,NWNE.

T23N, R04W, SEC. 32, N1/2NW.

Roscommon County, Advertised Price \$34,371.55, 50.0 Acres, Aspen, Hardwood.

127 Red Pine (71-001-17) / T24N, R04W, SEC. 27, E1/2SW,W1/2SE.

Roscommon County, Advertised Price \$5,719.35, 20.8 Acres, Red Pine.

BID INSTRUCTIONS (VER. 07/02/2018):

1. Scheduled Bid Location, Date, and Time (2/11)

Bids must be received by the Unit Manager, ROSCOMMON OFFICE, PO BOX 218, ROSCOMMON, MI 48653, no later than 2:00 p.m. (local time) on December 13, 2018. For further information concerning this sale, contact Steve Anderson at 989-275-4622 extension 2740.

2. Bidder's Qualifications (5/16)

Purchaser shall obtain workers compensation insurance to cover claims under Michigan's Worker's Disability Compensation Act of 1969 or similar employee benefit act of any other state applicable to an employee. If all or part of a timber sale was prepared by a private contractor, the contractor and that contractor's company are not permitted to bid on the timber sale contract. Bids will not be accepted from individuals or companies appearing on the DNR/FRD No-Bid List. This list contains the names of purchasers who previously failed to execute a contract within 21-days or who have a history of poor performance.

3. Preparation of Sealed Bids (5/16)

Bid Forms may be completed online thru Michigan DNR Timber Sale Online Bidding (OLB) at www.michigan.gov/timberbidding or by completing the hardcopy Bid Form found in the Timber Sale Prospectus. Hardcopy Bid Forms shall be manually signed in ink. Registration in OLB is considered your 'signature' for all bids submitted thru that system. Bid prices must be entered for each species and product in the Bid Price column for all material subject to bidding and all fill-in blanks must be completed. If erasures or other changes appear on the hardcopy Bid Form, each erasure or change must be initialed by the person signing the bid.

4. Submission of Sealed Bids (5/16)

Bid forms may be obtained from the Unit Manager or thru OLB. Bids may be submitted hardcopy or thru OLB. All hardcopy bids must be submitted on the bid form and in an envelope clearly identified as described in this section. NOTE: Only one bid form per bid envelope. Sealed bids must be submitted to the Unit office designated in the prospectus and must be submitted at or prior to the time established in the prospectus. The envelope should show on the outside (a) the sale name or number and (b) the date and time of bid opening, as shown in the prospectus. Bids received after the time specified in the sale prospectus are late bids and will be rejected.

It is possible for a bidder to submit multiple bids on a single sale. For example, a bid may be submitted hardcopy and a bid may be submitted thru OLB. Or, two bidders from the same company could both submit bids on the same sale. If this were to happen, the State would accept all bids received and award the contract accordingly. All bidding and contractual requirements would apply to all bids received.

5. Public Opening of Sealed Bids (7/16)

If conditions permit, the sealed bids will be publicly opened and posted at the time and place set in the prospectus.

If a bidder, present at a bid opening, has submitted bids on more than one sale, that bidder may withdraw their unopened bid envelopes or announce the withdrawal of their online bid after being declared the successful bidder on one sale.

6. Award of Contract (1/11)

Award of the contract will be made to the Bidder whose bid, conforming to the prospectus, is most advantageous to the State of Michigan on the basis of total value at rates bid for the estimated quantities. The State reserves the right to reject any bid or waive any minor irregularity in bids received. A written award mailed (or otherwise furnished) to the successful Bidder shall be deemed to result in a binding contract without further action by either party.

7. Down Payment (1/11)

The Bidder to whom award is made must make a down payment within 21 days of the sale award. The amount of the down payment will be calculated as shown in the Bond and Payment Schedule of this prospectus. Only cash may be used to meet this requirement.

8. Performance Security (1/11)

As guarantee of faithful performance, a cash bond, certificate of deposit, surety bond or irrevocable letter of credit (LOC) is required within 21 days of the sale award. The amount of the performance security is shown in the Bond and

Payment Schedule of this prospectus. If an LOC or surety is used, the coverage must extend for at least 6 months beyond the contract expiration.

9. Timber Sale Contract (7/18)

Additional conditions and requirements common to all timber sales are listed on the timber sale contract (R4031) and are available on line at www.michigan.gov/timber. Contact the Unit Manager for additional information or a sample contract. Within 21 days of the date of the award letter, the bidder must sign the contract and provide the required down payment, performance security, and verification of worker's disability compensation. The down payment and performance security shall be in accordance with the provisions of the timber sale contract, in the sums stated in this prospectus. If these actions are not taken, then the Bidder, the Bidder's corporation, and the corporation's principals may not be permitted to bid on State timber sales for a period of 3 months after the first offense, 6 months after the second offense, and 1 year after the third offense. An offense will only be counted against the Bidder for 5 years. In addition, the Bidder certifies that if awarded this contract, the Bidder will complete the timber sale contract in accordance with its terms and any modifications thereof including requirements to purchase, cut, and remove the included timber by the expiration date.

Payment Unit values in the State Forest Timber Sale Contract are calculated based on the advertised value of the Payment Unit as a percentage of the total advertised value of the contract. The advertised value of each Payment Unit is given in the Description of Timber by Payment Unit table on the Timber Sale Information page. For example, if the value of Payment Unit 1 is advertised as \$1,500 and the total Timber Sale value is advertised as \$10,000, the contract price for Payment Unit 1 will be 15% of the total bid price ($\$1,500/\$10,000 * 100$).

10. Disclaimer of Estimates and Bidder's Warranty of Inspection (7/16)

Before submitting this bid, the Bidder is advised and cautioned to inspect the sale area, review the requirements of the sale contract, and take other steps as may be reasonably necessary to ascertain the location, estimated volumes, construction estimates, and operating costs of the proposed sale. Failure to do so will not relieve the Bidder from responsibility for completing the contract.

The Bidder warrants that this bid is submitted solely on the basis of the Bidder's examination and inspection of the quality and quantity of the timber offered for sale and the Bidder's opinion of the value thereof and the costs of recovery. No reliance should be placed on the State of Michigan's estimates of timber quality, quantity or costs of recovery. Bidder further acknowledges that the State of Michigan: (i) expressly disclaims any warranty of fitness of timber for any purpose; (ii) offers this timber as is without any warranty of quality (merchantability) or quantity and (iii) expressly disclaims any warranty as to the quantity or quality of timber sold.

11. Certification and Chain-of-Custody (10/14)

Unless otherwise indicated in the contract under section 7 – Other Conditions of the Sale Specific Conditions & Requirements, the area encompassed by this timber sale is certified to the standards of the Forest Stewardship Council (FSC) - Certificate #SCS-FM/COC-00090N and the Sustainable Forestry Initiative (SFI) - Certificate #NSF-SFIS-5Y031-SF5. Forest products from this sale may be delivered to the mill as "FSC 100% and / or SFI certified" as long as the contractor hauling the forest products is chain-of-custody (COC) certified or covered under a COC certificate from the destination mill. The purchaser is responsible for maintaining COC after leaving the sale area.

12. Good Neighbor Authority (GNA) Requirements (7/16)

If the name of this timber sales contains the acronym GNA, it is authorized by the Good Neighbor Authority (GNA) and covered by various agreements between the U.S. Forest Service and the State. The timber sale occurs on federal land and the following conditions apply:

GNA contracts on US Forest Service land will not be awarded to purchasers on the Federal list of excluded parties. The System for Award Management (SAM) will be checked for active excluded parties prior to award of contract. In addition, the Bidder to whom award is made must complete an Assurance Regarding Felony Conviction or Tax Delinquent Status for Corporate Applicants (AD-3031).

13. Good Neighbor Authority (GNA) Requirements, con't (9/16)

Bidder certifies, by signing this bid form, that to the best of Bidder's knowledge that the following representations are accurate and complete.

- a. That the Bidder and its principals are not presently debarred, suspended, proposed for debarment, declared ineligible, or voluntary excluded from timber sales (covered transactions) by any Federal department or agency.
- b. That the Bidder and its principals have not within a 3-year period preceding this bid been convicted of or had a civil judgment rendered against them for commission of fraud or a criminal offense in connection with obtaining, attempting to obtain, or performing a public (Federal, State, or local) transaction or contract under a public transaction; violation of Federal or State antitrust statutes or commission of embezzlement, theft, forgery, bribery, falsification or destruction of records, making false statements, or receiving stolen property.
- c. That the Bidder and its principals are not presently indicted for or otherwise criminally or civilly charged by a governmental entity (Federal, State, or local) with commission of any of the offenses enumerated in paragraph b of this certification.
- d. That the Bidder and its principals have not within a 3-year period preceding this bid had one or more public transactions (Federal, State, or local) terminated for breach or default of a timber or forest product contract.

Bidders that cannot certify this requirement, in whole or in part, shall submit an explanation with their bid.

KEITH CREAGH
Director

TIMBER SALE INFORMATION

Barney's Blowdown (71-003-19)

T22N, R03W, SEC. 28.

Roscommon County (Advertised Price \$75,237.50)

SALE NOTE: This sale is a large blowdown salvage area. All standing trees will be cut and processed, and all blowdown trees will be processed. Volumes are from data taken before the blowdown event occurred, or in the same stand types adjacent to the blowdown. Sale area is designated with purple paint. Red and orange paint is present within and around the sale area and is to be ignored.

A recreation site such as a trail, pathway, or campground is within the sale area or the vicinity. Certain restrictions/specifications may be applicable including time restrictions.

A timber sale contract for this lump sum, sealed bid timber sale will be awarded to the responsible bidder offering the highest sealed bid price. Bids must be at or above the following advertised price for each species:

<u>PRODUCTS & SPECIES</u>	<u>ESTIMATED UNITS*</u>	<u>ADVERTISED PRICE</u>
Sawtimber		
B. T. Aspen	86.80 MBF	\$ 42.00 / MBF
Bl/R/Hybrid Oak	165.20 MBF	\$ 85.00 / MBF
Red Maple	23.50 MBF	\$ 47.00 / MBF
Red Pine	195.60 MBF	\$ 84.00 / MBF
White Oak	155.90 MBF	\$ 33.00 / MBF
White Pine	120.90 MBF	\$ 49.00 / MBF
Pulpwood		
B. T. Aspen	308.00 Cords	\$ 20.70 / Cord
Jack Pine	29.00 Cords	\$ 12.25 / Cord
Mixed Hardwood	89.00 Cords	\$ 15.55 / Cord
Mixed Oak	717.00 Cords	\$ 12.20 / Cord
Red Pine	201.00 Cords	\$ 31.20 / Cord
White Pine	346.00 Cords	\$ 16.80 / Cord

* The total volume is statistically estimated within plus (+) or minus (-) 13.52 percent. The estimated units are final and not subject to adjustment. Prospective bidders are urged to examine this timber and to make their own estimates of quantity and quality.

BOND AND PAYMENT SCHEDULE:

1. A bond in the amount of \$3,762.00 to insure faithful performance of the conditions of the contract will be deposited by the successful bidder within 21 days of the sale award.
2. Cutting in any sale or unit without the required advance payment would be considered a trespass.
3. Total payment must be paid in advance or according to the following schedule:
 - (a) Ten percent (10%) of the sale value must be paid within 21 days of the sale award.
 - (b) The 10% down payment will be credited towards the first unit cut.
 - (c) Payment for each of the following units must be made before cutting begins in that unit:

<u>PAYMENT UNIT NUMBER</u>	<u>PERCENT OF TOTAL SALE VALUE</u>
01	21.2%
02	61.2%
03	17.6%

4. If no cutting takes place, the 10% down payment will not be refunded.
5. Operations on the contract issued will terminate on 03/31/2020.

Description of Timber by Payment Unit (PU)

PU	MARKET GROUP	PRODUCT	QUANTITY	UNIT	ACRES	ADVERTISE PRICE		
1	BI/R/Hybrid Oak	Sawtimber	61.3	MBF	20.7	\$15,977.45		
	Red Pine		55.5	MBF				
	White Oak		27.9	MBF				
	White Pine		3.4	MBF				
	B. T. Aspen		Pulpwood	19.0			Cords	
	Mixed Hardwood			17.0			Cords	
	<i>Red Maple</i>			17.0			<i>Cords</i>	
	Mixed Oak			236.0			Cords	
	<i>BI/R/Hybrid Oak</i>			133.0			<i>Cords</i>	
	<i>White Oak</i>			103.0			<i>Cords</i>	
	Red Pine			41.0			Cords	
	White Pine			12.0			Cords	
2	B. T. Aspen	Sawtimber	74.0	MBF	50.4	\$45,989.05		
	BI/R/Hybrid Oak		69.6	MBF				
	Red Maple		9.2	MBF				
	Red Pine		136.5	MBF				
	White Oak		77.9	MBF				
	White Pine		89.4	MBF				
	B. T. Aspen		Pulpwood	233.0			Cords	
	Jack Pine			29.0			Cords	
	<i>Jack Pine</i>			<i>Sawtimber</i>			9.4	<i>MBF</i>
	<i>Jack Pine</i>			<i>Pulpwood</i>			10.0	<i>Cords</i>
	Mixed Hardwood			40.0			Cords	
	<i>Black Cherry</i>			2.0			<i>Cords</i>	
	<i>Red Maple</i>			38.0			<i>Cords</i>	
	Mixed Oak			279.0			Cords	
	<i>BI/R/Hybrid Oak</i>			135.0			<i>Cords</i>	
	<i>White Oak</i>			144.0			<i>Cords</i>	
	Red Pine		151.0	Cords				
	White Pine		250.0	Cords				
	3		B. T. Aspen	Sawtimber			12.8	MBF
BI/R/Hybrid Oak		34.3	MBF					
Red Maple		14.3	MBF					
Red Pine		3.6	MBF					
White Oak		50.1	MBF					
White Pine		28.1	MBF					
B. T. Aspen		Pulpwood	56.0		Cords			
Mixed Hardwood			32.0		Cords			
<i>Red Maple</i>			32.0		<i>Cords</i>			
Mixed Oak			202.0		Cords			
<i>BI/R/Hybrid Oak</i>			48.0		<i>Cords</i>			
<i>White Oak</i>			154.0		<i>Cords</i>			
Red Pine			9.0		Cords			
White Pine			84.0		Cords			
TOTAL:			747.9	MBF				
TOTAL:			1,690.0	Cords				

Sale Specific Conditions & Requirements

Sale Name: Barney's Blowdown

Sale Number: 71-003-19 Seq#: 1

1 - Sale Area

1.2 - Boundaries

1.2.1 - Painted boundaries (1/14)

The sale boundary and Payment Unit boundaries are marked and identified by purple and blue paint. Exterior sale boundary lines against private property are marked with blue paint. Exterior sale boundary lines against state are marked with purple paint. The painted boundary line trees are not Included Timber and are to be protected. Note that red and orange paint is present within and around the sale area and is to be ignored.

2 - Timber Specifications

2.1 - Included Timber

2.1.1 - Clearcut unit(s) with unmerchantable trees (6/14)

Within Payment Unit(s) 1, 2, and 3, cut all trees that are two (2) inches or more at DBH. Additionally, process all blown-down and damaged trees within the sale area.

2.1.11 - Description of timber note (2/04)

Note that volumes are from data taken before the blowdown event occurred, or in the same stand types adjacent to the blowdown.

3 - Payments

3.3 - Pre-measured Sales

3.3.4 - Dividing payment units (7/14)

Payment Unit(s) may be divided at the request of the Purchaser and upon approval of the Unit Manager. Dividing Payment Units is a contract modification which requires a Timber Sale Contract Supplement.

4 - Transportation

4.1 - Construction

4.1.12 - No new roads (1/12)

No new roads will be permitted in any Payment Unit.

4.2 - Maintenance

4.2.5 - Two wheel drive condition (2/04)

All existing trail roads on and adjacent to the sale area must be passable by two-wheel drive traffic for the duration of the sale.

5 - Operations

5.1 - Notification

5.1.1 - Pre-sale conference (10/16)

A pre-sale conference between the Purchaser and sale administrator is required prior to beginning any operations to determine landing and road locations. The Unit Manager or his/her representative must be contacted at least 5 days in advance to schedule the conference.

5.2 - Conduct of Operations

5.2.3 - Operating Restrictions

5.2.3.5 - Oak wilt restriction (1/18)

Within Payment Units 1, 2, and 3, unless changed by written agreement, cutting, skidding, hauling within the sale and brushing of access roads to the sale are not permitted during the period of April 15 to July 15. Operations may be

allowed if specific steps are taken to prevent damaging uncut oak during the high risk period. Those steps may include completing all road brushing before April 15th and clearing a tree-length buffer along uncut oak cover before April 15th. This is necessary to reduce the spread of oak wilt. For more information, contact the Unit Manager or his/her representative.

5.2.32 - Decking/landing restoration (9/13)

All decking and landing areas must have the surface area restored to a condition equal to or better than before. This is to ensure the proper regeneration of the stand.

5.2.41 - Snowmobile trail protection (9/11)

There is a snowmobile trail in the sale area that is shown on the Timber Sale Map. Do not cut or damage posts with orange trail markers or traffic control signs. If the trail is used, it must be maintained and restored to a condition equal to or better than before the sale. If the trail road is to be used for hauling during the snowmobile season, then a snow covered base must be left on the trail. The snowmobile trail may only be crossed at right angles.

6 - Safety and Fire Prevention

6.2 - Signing

6.2.1 - Road posting (9/09)

The Purchaser is responsible for posting and maintaining caution signs on Duck Lake Road and the snowmobile trail prior to beginning operations. The road must be posted at appropriate distances from the sale area to warn of logging activity and truck traffic. Signs must be removed when harvest operations are suspended or completed. The Purchaser will provide these signs.

7 - Other Conditions

7.2 - Extensions

7.2.2 - No extensions (3/09)

There will be no extensions granted on this contract.

7.2.3 - Salvage extension (6/13)

This is a salvage sale with a short contract length. The sale must be harvested promptly. One (1), twelve (12) month extension can be applied to one (1) other State Forest Timber Sale Contract owned by the purchaser or owned by one (1) designated sub-contractor of the Purchaser that works this contract. To qualify, the contract expiration date of the contract to be extended must be within twelve (12) months from the issue date of this contract. If this is the first extension on the other State Forest Timber Sale Contract, then the 5% extension fee will be waived. If this is an additional extension, the 10% fee will be reduced to 5%. The salvage extension must be used before this contract is closed-out. This specification does not alleviate the purchaser from any contractual obligations of the extended State Forest Timber Sale Contract. Per General Condition & Requirement 7.2, extensions are at the sole discretion of the DNR.

7.5 - Loss

7.5.1 - Deteriorating timber (7/09)

The sale area has received damage from windthrow. The Purchaser should harvest the wood as soon as possible. The Department of Natural Resources is held free of responsibility of any further damage or deterioration due to delay in harvesting.



TIMBER SALE MAP

This information provided by authority of Part 525, 1994 PA 451, as amended.

Forest Management Unit Roscommon	County Roscommon	Mapped By Martell	Date 10/31/18	Page 1	of 1
Township 22N	Range 03W	Section(s) and Subdivision(s) Sec. 28 - NW, NE, NWSW	Scale 1:15,840		

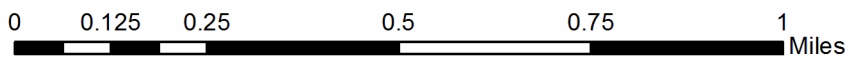
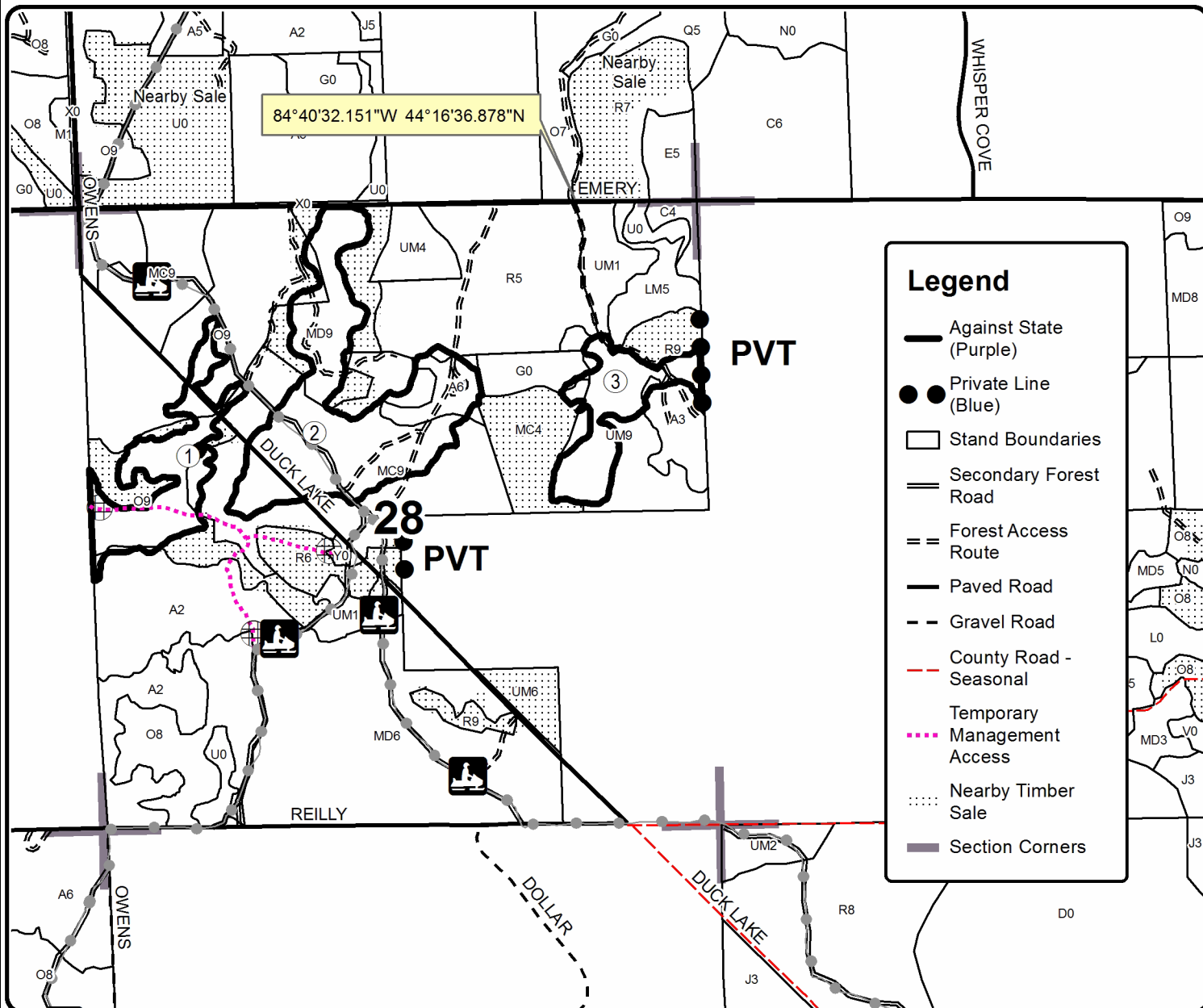
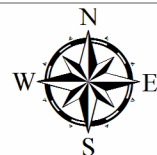
Cover Type				Density	
A = Aspen	H = Hemlock	N = Marsh	U = Upland Brush	0 = Non Stocked	5 = Pole Timber Medium
B = Paper Birch	J = Jack Pine	O = Oak	UM = Upland Mixed	1 = Seedling Sapling Poor	6 = Pole Timber Well
C = Cedar	L = Lowland Brush	P = Lowland Poplar	V = Bog or Marsh	2 = Seedling Sapling Medium	7 = Saw Timber Poor
D = Treed Bog	LM = Lowland Mixed	Q = Mixed Swamp Conifer	W = White Pine	3 = Seedling Sapling Well	8 = Saw Timber Medium
E = Swamp Hdwoods	M = Mpl, Bch, Brch	R = Red Pine	X = Non Stocked	4 = Pole Timber Poor	9 = Saw Timber Well
F = Spruce Fir	MC = Mixed Conifer	S = Black Spruce	Z = Water		
G = Grass	MD = Mixed Deciduous	T = Tamarack			

PU	Acres
1	20.7
2	50.4
3	16.3

Barney's Blowdown

Compartment 23

87.4 Acres



TIMBER SALE INFORMATION

Aspen Interchange (71-021-18)

T24N, R04W, SEC. 27; T24N, R04W, SEC. 33; T24N, R04W, SEC. 34.
Roscommon County (Advertised Price \$49,238.65)

SALE NOTE: An old and over-grown road will need to be brushed out and improved off Dead-Stream Road to access Payment Unit 2. This road may require a culvert at Dead-Stream Road. When the sale is completed, the road will need to be re-closed, the culvert (if installed) must be pulled out, and the ditch must be re-contoured.

A timber sale contract for this lump sum, sealed bid timber sale will be awarded to the responsible bidder offering the highest sealed bid price. Bids must be at or above the following advertised price for each species:

<u>PRODUCTS & SPECIES</u>	<u>ESTIMATED UNITS*</u>		<u>ADVERTISED PRICE</u>
Sawtimber			
Mixed Aspen	238.10	MBF	\$ 62.00 / MBF
Mixed Oak	14.00	MBF	\$ 127.00 / MBF
Red Maple	47.40	MBF	\$ 70.00 / MBF
Pulpwood			
Balsam Fir	33.00	Cords	\$ 16.55 / Cord
Black Spruce	60.00	Cords	\$ 21.85 / Cord
Mixed Aspen	611.00	Cords	\$ 31.00 / Cord
Mixed Hardwood	228.00	Cords	\$ 23.30 / Cord
Mixed Oak	97.00	Cords	\$ 18.25 / Cord
Red Pine	31.00	Cords	\$ 46.75 / Cord
White Pine	2.00	Cords	\$ 25.20 / Cord

* The total volume is statistically estimated within plus (+) or minus (-) 12.40 percent. The estimated units are final and not subject to adjustment. Prospective bidders are urged to examine this timber and to make their own estimates of quantity and quality.

BOND AND PAYMENT SCHEDULE:

1. A bond in the amount of \$2,462.00 to insure faithful performance of the conditions of the contract will be deposited by the successful bidder within 21 days of the sale award.
2. Cutting in any sale or unit without the required advance payment would be considered a trespass.
3. Total payment must be paid in advance or according to the following schedule:
 - (a) Ten percent (10%) of the sale value must be paid within 21 days of the sale award.
 - (b) The 10% down payment will be credited towards the first unit cut.
 - (c) Payment for each of the following units must be made before cutting begins in that unit:

PAYMENT UNIT NUMBER	PERCENT OF TOTAL SALE VALUE
01	7.5%
02	15.9%
03	2.3%
04	11.8%
05	21.5%
06	21.4%
07	19.6%
4. If no cutting takes place, the 10% down payment will not be refunded.
5. Operations on the contract issued will terminate on 03/31/2021.

Description of Timber by Payment Unit (PU)

PU	MARKET GROUP	PRODUCT	QUANTITY	UNIT	ACRES	ADVERTISE PRICE	
1	Mixed Aspen	Sawtimber	16.1	MBF	7.6	\$3,699.20	
	<i>B. T. Aspen</i>		14.1	<i>MBF</i>			
	<i>Quaking Aspen</i>		2.0	<i>MBF</i>			
	Mixed Oak		5.1	MBF			
	<i>Red Oak</i>		4.4	<i>MBF</i>			
	<i>White Oak</i>		0.7	<i>MBF</i>			
	Red Maple		1.8	MBF			
	Mixed Aspen		Pulpwood	39.0			Cords
	<i>B. T. Aspen</i>			19.0			<i>Cords</i>
	<i>Quaking Aspen</i>			20.0			<i>Cords</i>
	Mixed Hardwood			13.0			Cords
	<i>Black Cherry</i>			2.0			<i>Cords</i>
	<i>Red Maple</i>			11.0			<i>Cords</i>
	Mixed Oak			20.0			Cords
	<i>Red Oak</i>			16.0			<i>Cords</i>
	<i>White Oak</i>			4.0			<i>Cords</i>
White Pine	2.0	Cords					
2	Mixed Aspen	Sawtimber	58.7	MBF	8.2	\$7,820.05	
	<i>B. T. Aspen</i>		58.7	<i>MBF</i>			
	Red Maple		9.4	MBF			
	Mixed Aspen		Pulpwood	67.0			Cords
	<i>B. T. Aspen</i>			67.0			<i>Cords</i>
	Mixed Hardwood			48.0			Cords
	<i>Red Maple</i>			48.0			<i>Cords</i>
	Red Pine		7.0	Cords			
<i>Red Pine</i>	<i>Sawtimber</i>	2.7	<i>MBF</i>				
<i>Red Pine</i>	<i>Pulpwood</i>	2.0	<i>Cords</i>				
3	Mixed Aspen	Sawtimber	1.9	MBF	2.6	\$1,148.50	
	<i>Quaking Aspen</i>		1.9	<i>MBF</i>			
	Red Maple		1.1	MBF			
	Mixed Aspen		Pulpwood	24.0			Cords
	<i>Quaking Aspen</i>			24.0			<i>Cords</i>
	Mixed Hardwood			9.0			Cords
	<i>Black Cherry</i>			1.0			<i>Cords</i>
<i>Red Maple</i>	8.0	<i>Cords</i>					
4	Mixed Aspen	Sawtimber	20.8	MBF	7.8	\$5,825.50	
	<i>B. T. Aspen</i>		20.8	<i>MBF</i>			
	Mixed Oak		2.1	MBF			
	<i>Red Oak</i>		1.4	<i>MBF</i>			
	<i>White Oak</i>		0.7	<i>MBF</i>			
	Red Maple		3.1	MBF			
	Mixed Aspen		Pulpwood	72.0			Cords
	<i>B. T. Aspen</i>			64.0			<i>Cords</i>
	<i>Quaking Aspen</i>			8.0			<i>Cords</i>
	Mixed Hardwood			19.0			Cords
	<i>Red Maple</i>			19.0			<i>Cords</i>
	Mixed Oak			14.0			Cords
	<i>Red Oak</i>			13.0			<i>Cords</i>
	<i>White Oak</i>			1.0			<i>Cords</i>
	Red Pine			24.0			Cords
<i>Red Pine</i>	<i>Sawtimber</i>	1.2		<i>MBF</i>			
<i>Red Pine</i>	<i>Pulpwood</i>	22.0	<i>Cords</i>				
5	Mixed Aspen	Sawtimber	74.8	MBF	15.6	\$10,552.80	
	<i>B. T. Aspen</i>		49.1	<i>MBF</i>			
	<i>Quaking Aspen</i>		25.7	<i>MBF</i>			
	Red Maple		4.1	MBF			

Description of Timber by Payment Unit (PU), con't

PU	MARKET GROUP	PRODUCT	QUANTITY	UNIT	ACRES	ADVERTISE PRICE
5 con't	Mixed Aspen	Pulpwood	156.0	Cords		
	<i>B. T. Aspen</i>		84.0	<i>Cords</i>		
	<i>Quaking Aspen</i>		72.0	<i>Cords</i>		
	Mixed Hardwood		34.0	Cords		
	<i>Black Cherry</i>		8.0	<i>Cords</i>		
	<i>Red Maple</i>		26.0	<i>Cords</i>		
6	Mixed Aspen	Sawtimber	27.0	MBF	18.8	\$10,527.70
	<i>Quaking Aspen</i>		27.0	<i>MBF</i>		
	Mixed Oak		6.8	MBF		
	<i>BI/R/Hybrid Oak</i>		6.8	<i>MBF</i>		
	Red Maple		3.6	MBF		
	Balsam Fir	Pulpwood	2.0	Cords		
	<i>Balsam Fir</i>		2.0	<i>Cords</i>		
	Black Spruce		35.0	Cords		
	<i>Black Spruce</i>	<i>Sawtimber</i>	6.7	<i>MBF</i>		
	<i>Black Spruce</i>	<i>Pulpwood</i>	22.0	<i>Cords</i>		
	Mixed Aspen		168.0	Cords		
	<i>Quaking Aspen</i>		168.0	<i>Cords</i>		
	Mixed Hardwood		25.0	Cords		
	<i>Black Cherry</i>	<i>Sawtimber</i>	0.7	<i>MBF</i>		
	<i>Black Cherry</i>	<i>Pulpwood</i>	3.0	<i>Cords</i>		
	<i>Paper Birch</i>		2.0	<i>Cords</i>		
	<i>Red Maple</i>		19.0	<i>Cords</i>		
	Mixed Oak		63.0	Cords		
	<i>BI/R/Hybrid Oak</i>		63.0	<i>Cords</i>		
	7	Mixed Aspen	Sawtimber	38.8		
<i>B. T. Aspen</i>			10.6	<i>MBF</i>		
<i>Quaking Aspen</i>			28.2	<i>MBF</i>		
Red Maple			24.3	MBF		
Balsam Fir		Pulpwood	31.0	Cords		
<i>Balsam Fir</i>		<i>Sawtimber</i>	2.5	<i>MBF</i>		
<i>Balsam Fir</i>		<i>Pulpwood</i>	26.0	<i>Cords</i>		
Black Spruce			25.0	Cords		
<i>Black Spruce</i>		<i>Sawtimber</i>	2.1	<i>MBF</i>		
<i>Black Spruce</i>		<i>Pulpwood</i>	21.0	<i>Cords</i>		
Mixed Aspen			85.0	Cords		
<i>B. T. Aspen</i>			25.0	<i>Cords</i>		
<i>Quaking Aspen</i>			60.0	<i>Cords</i>		
Mixed Hardwood			80.0	Cords		
<i>Paper Birch</i>			3.0	<i>Cords</i>		
<i>Red Maple</i>			77.0	<i>Cords</i>		
TOTAL:			299.5	MBF		
TOTAL:			1,062.0	Cords		

Sale Specific Conditions & Requirements

Sale Name: Aspen Interchange

Sale Number: 71-021-18 Seq#: 1

1 - Sale Area

1.2 - Boundaries

1.2.1 - Painted boundaries (1/14)

The sale boundary and Payment Unit boundaries are marked and identified by blue and red paint. Exterior sale boundary lines against private property are marked with blue paint. Exterior sale boundary lines against state are marked with red paint. The painted boundary line trees are not Included Timber and are to be protected.

2 - Timber Specifications

2.1 - Included Timber

2.1.1 - Clearcut unit(s) with unmerchantable trees (6/14)

Within Payment Unit(s) 2, 3, 5, and 7, cut all trees that are two (2) inches or more at DBH, except do not cut any oak or trees marked with green paint above and below stump height. In addition, within Payment Unit 5, do not cut any red pine or white pine. Also, within Payment Unit 7, do not cut any cedar or hemlock.

2.1.2 - Clearcut unit(s) w/o unmerchantable trees (8/11)

Within Payment Unit(s) 1, 4, and 6, cut all trees which meet minimum piece specifications in 2.2 Utilization, except do not cut any red pine, white pine, or trees marked with green paint above and below stump height. In addition, within Payment Unit 4, cut all red pine marked with orange paint above and below stump height, regardless of merchantability. Also, within Payment Unit 6, do not cut any cedar or hemlock.

2.1.15 - Hazard trees near roads (7/13)

Cut and remove all standing dead trees within 100 feet of the cleared portion of County Road 104 (W. Pine Drive) and Loxley Roads. These trees must be scattered back into the sale area.

3 - Payments

3.3 - Pre-measured Sales

3.3.4 - Dividing payment units (7/14)

Payment Unit(s) may be divided at the request of the Purchaser and upon approval of the Unit Manager. Dividing Payment Units is a contract modification which requires a Timber Sale Contract Supplement.

3.4 - Damaged Timber

3.4.1 - Damaged timber (6/14)

General Condition and Requirement 3.4 Damaged Timber, defines liquidated damages for undesignated live merchantable trees which are cut or injured. In addition, extreme care should be taken to avoid damage to tree seedlings and saplings in Payment Units 1, 4, and 6.

Within Payment Units 1, 4, and 6, if more than 20% of the tree seedlings or saplings (1/4" to 4.5" DBH) within a specified portion of the sale area are damaged, liquidated damages will be assessed at \$300 per acre for all acreage within that specified portion of the sale area that was damaged.

No damage is acceptable to merchantable trees. Within the sale area, if more than 5% of the residual trees (> 4.5" DBH) within a specified area of the sale are damaged, liquidated damages will be assessed for all trees damaged. Rates will be in accordance with General Condition and Requirement 3.4 Damaged Timber.

3.6 - Payment Unit Cutting Schedule

3.6.2 - One active unit (12/08)

Each Payment Unit must be completed to the satisfaction of the Unit Manager or his/her representative before the next unit may be opened.

4 - Transportation

4.1 - Construction

4.1.6 - Road construction (1/09)

Construction of new roads or improvements of existing roads shall be done in such a way as to minimize the environmental and visual impacts. Merchantable trees shall be cut and utilized unless otherwise directed. Non-merchantable trees shall be severed and laid flat on the ground. Slash shall be scattered, and not left in windrows and kept a minimum of 10 feet back from the road edge. Stumps shall be set upright, not left on edge, and be moved at least 10 feet away from the road edge. Disturbed soil shall be feathered into the woods and not left in berms or windrows.

4.1.7 - Road closure (10/11)

All new roads built into the sale must be blocked to vehicle traffic upon completion of the sale. Overgrown roads that are reopened shall be considered new roads. In general, this will require constructing a four (4') foot high berm of stumps and logs covered with earth. Stumps and brush must be placed along the remainder of the trail. These roads must be rendered impassable to cars and trucks. Contact the sale administrator for specific details of design and placement.

4.1.11 - Permits (2/12)

The Michigan DNR will secure any necessary Michigan DOT permits that may be required.

4.2 - Maintenance

4.2.1 - Hauling restriction (12/08)

Hauling may be restricted on forest roads by the Unit Manager or his/her representative. The restriction may occur during spring breakup or during wet weather conditions.

4.2.3 - Road maintenance (8/13)

The following road maintenance may be needed: Within 60 days of completion of hauling, or if no hauling occurs for 60 days, the road must be maintained and graded. This includes cleaning of drainage areas, grading, crowning and filling with gravel, if necessary. Damages will be assessed if grading/repair does not occur.

4.4 - Access

4.4.3 - Access gate (12/08)

The access gate into Payment Unit 3 must be locked at the completion of each day of harvesting, unless otherwise approved by the Unit Manager or his/her representative. During post harvest hauling operations, this access gate must be locked at all times. This is to prevent someone other than the Purchaser from going through the gate and being locked in. The Purchaser must provide a 2nd lock for this gate so the DNR can still access the sale area when the harvest crews are not on-site.

5 - Operations

5.1 - Notification

5.1.6 - Utility R.O.W. (1/15)

It is the responsibility of the Purchaser to obtain permission from the utility company to utilize the power line R.O.W. for operations.

5.2 - Conduct of Operations

5.2.1 - Slash

5.2.1.8 - Slash height (12/08)

No slash or tree tops may exceed 24 inches in height.

5.2.2 - Hazard Trees/Snags

5.2.2.1 - Den trees (10/16)

Obvious hollow and/or den trees shall be protected and left standing unless they are a safety hazard.

5.2.3 - Operating Restrictions

5.2.3.4 - Oak wilt restriction, no exceptions (1/18)

Within Payment Units 1, 3, 5, and 7, cutting, skidding, hauling within the sale and brushing of access roads to the sale are not permitted during the period of April 15 to July 15. No exceptions will be granted. This is necessary to reduce the spread of oak wilt.

5.2.3.11 - Coppice regeneration protection (4/10)

To promote aspen regeneration, and to limit damage to a maintained opening and old dump, harvesting in Payment Units 2, 4 and 6 is limited to snow-on conditions between December 1 to March 31. Any post harvest operations, such as chipping, must be completed before sprouting of regeneration occurs. If it is anticipated that chipping will be delayed, then tops shall be carried to one central location or left unchipped. The Unit Manager or his/her representative may cease such operations if sprouting occurs before the operation is complete.

5.2.4 - Dead and Down Creation

5.2.4.2 - Dead and down creation, hare and grouse (1/14)

To improve habitat for snowshoe hare, grouse, and other species, the Purchaser is to leave two trees or tree tops, nine (9) inches or larger in diameter, on the ground for every two acres within Payment Units 6 and 7. They should be placed within 100 feet of the south boundaries of these units along the swamp edge and if possible, trees or tree tops should be felled so they overlap. Note these pieces should have a minimum length of eight (8) feet. They can be of any tree species and can be an un-merchantable piece of wood, a tree top, or a full tree.

5.2.4.3 - Dead and down creation, dead trees (6/07)

Except as provided for in General Condition and Requirement 5.2.2, no dead trees, standing or down, are to be cut, skidded, or processed.

5.2.4.4 - Dead and down creation, grouse (6/18)

To encourage grouse and other wildlife, in Payment Unit(s) 1 - 7, leave one 10" or larger diameter (or largest diameter trees within stand) whole tree on the ground for every 2 acres, preferably a hardwood species such as oak or maple, or if no hardwoods are present, a pine species (white or red). These trees will be evenly scattered throughout the units, preferably at least two chains from any roads, two-tracks, or trails open to vehicles.

5.2.32 - Decking/landing restoration (9/13)

All decking and landing areas must have the surface area restored to a condition equal to or better than before. This is to ensure the proper regeneration of the stand.

5.2.43 - Opening protection (12/08)

No activities are permitted in openings marked on the Timber Sale Map with the letter "G". Any damage to the openings shall be repaired according to specifications of the Unit Manager or his/her representative.

5.4 - Soil Protection

5.4.1 - Rutting restriction, general (7/16)

Operations are to cease immediately if equipment and weather conditions result in rutting of roads and/or skid trails which is 12 inches or greater in depth and 50 feet in length. The Unit Manager or his/her representative may restrict hauling and/or skidding if ruts exceed the specified depth. With the Unit Manager or his/her representative's approval, the Purchaser may return to the area when the risk of rutting has decreased.

5.4.3 - Erosion control (12/08)

Skid trails or haul roads may require erosion control structures or berms per direction of the Unit Manager or his/her representative.

6 - Safety and Fire Prevention

6.2 - Signing

6.2.1 - Road posting (9/09)

The Purchaser is responsible for posting and maintaining caution signs on County Road 104, Loxley Road, and Dead Stream Road prior to beginning operations. The road must be posted at appropriate distances from the sale area to warn of logging activity and truck traffic. Signs must be removed when harvest operations are suspended or completed.



TIMBER SALE MAP

This information provided by authority of Part 525, 1994 PA 451, as amended.

Sale Number	71-021	Year	18
-------------	--------	------	----

Forest Management Unit	County	Mapped By	Date	Page	of
Roscommon	Roscommon	Ekdorn	05/21/2018	1	1
Township	Range	Section(s) and Subdivision(s)	Scale		
24N	04W	27 - SWNE;SWNW;NWSW:S1/2SW;NESE:S1/2SE 34 - N1/2NE:N1/2NW;SWNW	1:15,834		

Cover Type

A = Aspen	H = Hemlock	N = Marsh	U = Upland Brush
B = Paper Birch	J = Jack Pine	O = Oak	UM = Upland Mixed
C = Cedar	L = Lowland Brush	P = Lowland Poplar	V = Bog or Marsh
D = Treed Bog	LM = Lowland Mixed	Q = Mixed Swamp Conifer	W = White Pine
E = Swamp Hdwoods	M = Mpl, Bch, Brch	R = Red Pine	X = Non Stocked
F = Spruce Fir	MC = Mixed Conifer	S = Black Spruce	Z = Water
G = Grass	MD = Mixed Deciduous	T = Tamarack	

Density

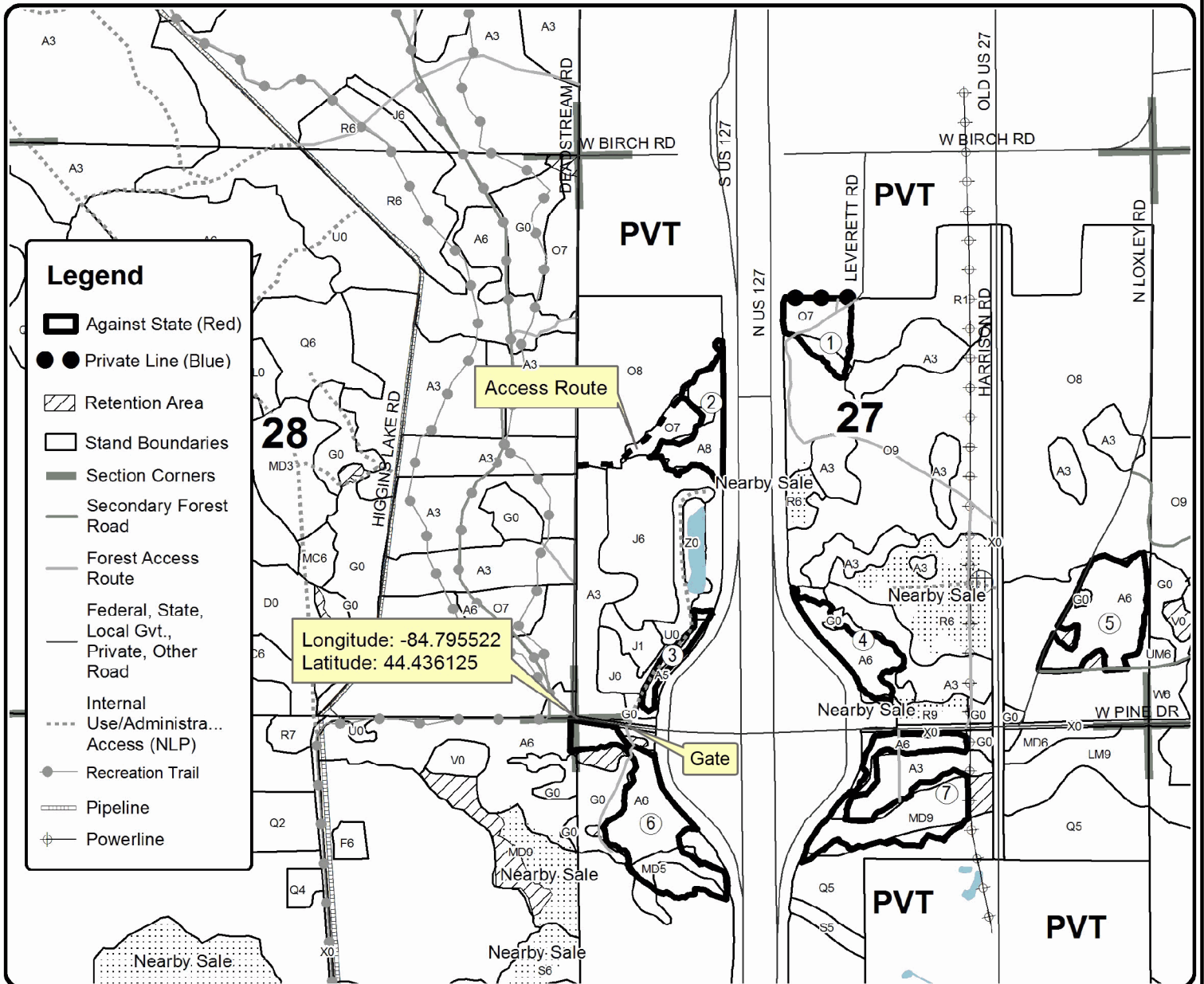
0 = Non Stocked	5 = Pole Timber Medium
1 = Seedling Sapling Poor	6 = Pole Timber Well
2 = Seedling Sapling Medium	7 = Saw Timber Poor
3 = Seedling Sapling Well	8 = Saw Timber Medium
4 = Pole Timber Poor	9 = Saw Timber Well

PU	Acres	PU	Acres
1	7.6	5	15.6
2	8.2	6	18.8
3	2.6	7	17.4
4	7.8		

Aspen Interchange

Compartment 6

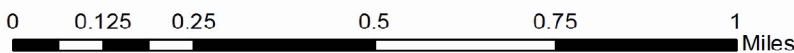
78 Acres



Legend

- Against State (Red)
- Private Line (Blue)
- Retention Area
- Stand Boundaries
- Section Corners
- Secondary Forest Road
- Forest Access Route
- Federal, State, Local Gvt., Private, Other Road
- Internal Use/Administrative Access (NLP)
- Recreation Trail
- Pipeline
- Powerline

Longitude: -84.795522
Latitude: 44.436125



TIMBER SALE INFORMATION

Duratrak Aspen (71-029-18)

T23N, R04W, SEC. 30; T23N, R04W, SEC. 31; T23N, R04W, SEC. 32.
Roscommon County (Advertised Price \$34,371.55)

A timber sale contract for this lump sum, sealed bid timber sale will be awarded to the responsible bidder offering the highest sealed bid price. Bids must be at or above the following advertised price for each species:

<u>PRODUCTS & SPECIES</u>	<u>ESTIMATED UNITS*</u>	<u>ADVERTISED PRICE</u>
Sawtimber		
Red Maple	24.70 MBF	\$ 70.00 / MBF
Red Oak	14.40 MBF	\$ 260.00 / MBF
White Oak	2.90 MBF	\$ 50.00 / MBF
Pulpwood		
Balsam Fir	13.00 Cords	\$ 16.55 / Cord
Jack Pine	3.00 Cords	\$ 18.40 / Cord
Mixed Aspen	628.00 Cords	\$ 31.00 / Cord
Mixed Hardwood	241.00 Cords	\$ 23.30 / Cord
Mixed Oak	95.00 Cords	\$ 18.25 / Cord
Red Pine	13.00 Cords	\$ 46.75 / Cord
White Pine	42.00 Cords	\$ 25.20 / Cord

* The total volume is statistically estimated within plus (+) or minus (-) 11.13 percent. The estimated units are final and not subject to adjustment. Prospective bidders are urged to examine this timber and to make their own estimates of quantity and quality.

BOND AND PAYMENT SCHEDULE:

1. A bond in the amount of \$1,719.00 to insure faithful performance of the conditions of the contract will be deposited by the successful bidder within 21 days of the sale award.
2. Cutting in any sale or unit without the required advance payment would be considered a trespass.
3. Total payment must be paid in advance or according to the following schedule:
 - (a) Ten percent (10%) of the sale value must be paid within 21 days of the sale award.
 - (b) The 10% down payment will be credited towards the first unit cut.
 - (c) Payment for each of the following units must be made before cutting begins in that unit:

<u>PAYMENT UNIT NUMBER</u>	<u>PERCENT OF TOTAL SALE VALUE</u>
01	79.4%
02	20.6%

4. If no cutting takes place, the 10% down payment will not be refunded.
5. Operations on the contract issued will terminate on 12/31/2020.

Description of Timber by Payment Unit (PU)

PU	MARKET GROUP	PRODUCT	QUANTITY	UNIT	ACRES	ADVERTISE PRICE
1	Red Maple	Sawtimber	22.9	MBF	42.1	\$27,296.15
	Red Oak		10.5	MBF		
	White Oak		1.9	MBF		
	Balsam Fir	Pulpwood	13.0	Cords		
	Jack Pine		3.0	Cords		
	<i>Jack Pine</i>	<i>Sawtimber</i>	1.0	<i>MBF</i>		
	<i>Jack Pine</i>	<i>Pulpwood</i>	1.0	<i>Cords</i>		
	Mixed Aspen		507.0	Cords		
	<i>B. T. Aspen</i>	<i>Sawtimber</i>	5.9	<i>MBF</i>		
	<i>Quaking Aspen</i>		1.9	<i>MBF</i>		
	<i>B. T. Aspen</i>	<i>Pulpwood</i>	278.0	<i>Cords</i>		
	<i>Quaking Aspen</i>		213.0	<i>Cords</i>		
	Mixed Hardwood		197.0	Cords		
	<i>Paper Birch</i>	<i>Sawtimber</i>	0.5	<i>MBF</i>		
	<i>Black Cherry</i>	<i>Pulpwood</i>	5.0	<i>Cords</i>		
	<i>Paper Birch</i>		5.0	<i>Cords</i>		
	<i>Red Maple</i>		186.0	<i>Cords</i>		
	Mixed Oak		63.0	Cords		
	<i>Red Oak</i>		42.0	<i>Cords</i>		
	<i>White Oak</i>		21.0	<i>Cords</i>		
	Red Pine		5.0	Cords		
	<i>Red Pine</i>		5.0	<i>Cords</i>		
	White Pine		36.0	Cords		
	<i>White Pine</i>	<i>Sawtimber</i>	8.8	<i>MBF</i>		
<i>White Pine</i>	<i>Pulpwood</i>	18.0	<i>Cords</i>			
2	Red Maple	Sawtimber	1.8	MBF	7.9	\$7,075.40
	Red Oak		3.9	MBF		
	White Oak		1.0	MBF		
	Mixed Aspen	Pulpwood	121.0	Cords		
	<i>B. T. Aspen</i>	<i>Sawtimber</i>	2.1	<i>MBF</i>		
	<i>B. T. Aspen</i>	<i>Pulpwood</i>	109.0	<i>Cords</i>		
	<i>Quaking Aspen</i>		8.0	<i>Cords</i>		
	Mixed Hardwood		44.0	Cords		
	<i>Red Maple</i>		44.0	<i>Cords</i>		
	Mixed Oak		32.0	Cords		
	<i>Red Oak</i>		26.0	<i>Cords</i>		
	<i>White Oak</i>		6.0	<i>Cords</i>		
	Red Pine		8.0	Cords		
	<i>Red Pine</i>	<i>Sawtimber</i>	3.2	<i>MBF</i>		
	<i>Red Pine</i>	<i>Pulpwood</i>	2.0	<i>Cords</i>		
	White Pine		6.0	Cords		
<i>White Pine</i>	<i>Sawtimber</i>	0.4	<i>MBF</i>			
<i>White Pine</i>	<i>Pulpwood</i>	5.0	<i>Cords</i>			
TOTAL:			42.0	MBF		
TOTAL:			1,035.0	Cords		

Sale Specific Conditions & Requirements

Sale Name: Duratrac Aspen

Sale Number: 71-029-18 Seq#: 1

1 - Sale Area

1.2 - Boundaries

1.2.1 - Painted boundaries (1/14)

The sale boundary and Payment Unit boundaries are marked and identified by blue and red paint. Exterior sale boundary lines against private property are marked with blue paint. Exterior sale boundary lines against state are marked with red paint. The painted boundary line trees are not Included Timber and are to be protected.

2 - Timber Specifications

2.1 - Included Timber

2.1.1 - Clearcut unit(s) with unmerchantable trees (6/14)

Within Payment Unit(s) 1 and 2, cut all trees that are two (2) inches or more at DBH.

3 - Payments

3.3 - Pre-measured Sales

3.3.4 - Dividing payment units (7/14)

Payment Unit(s) may be divided at the request of the Purchaser and upon approval of the Unit Manager. Dividing Payment Units is a contract modification which requires a Timber Sale Contract Supplement.

4 - Transportation

4.1 - Construction

4.1.6 - Road construction (1/09)

Construction of new roads or improvements of existing roads shall be done in such a way as to minimize the environmental and visual impacts. Merchantable trees shall be cut and utilized unless otherwise directed. Non-merchantable trees shall be severed and laid flat on the ground. Slash shall be scattered, and not left in windrows and kept a minimum of 10 feet back from the road edge. Stumps shall be set upright, not left on edge, and be moved at least 10 feet away from the road edge. Disturbed soil shall be feathered into the woods and not left in berms or windrows.

4.1.7 - Road closure (10/11)

All new roads built into the sale must be blocked to vehicle traffic upon completion of the sale. Overgrown roads that are reopened shall be considered new roads. In general, this will require constructing a four (4') foot high berm of stumps and logs covered with earth. These roads must be rendered impassable to cars and trucks. Contact the sale administrator for specific details of design and placement.

5 - Operations

5.1 - Notification

5.1.1 - Pre-sale conference (10/16)

A pre-sale conference between the Purchaser and sale administrator is required prior to beginning any operations to determine landing and road locations. The Unit Manager or his/her representative must be contacted at least 10 days in advance to schedule the conference.

5.2 - Conduct of Operations

5.2.1 - Slash

5.2.1.8 - Slash height (12/08)

No slash or tree tops may exceed 36 inches in height.

5.2.3 - Operating Restrictions

5.2.3.5 - Oak wilt restriction (1/18)

Within Payment Unit 2, unless changed by written agreement, cutting, skidding, hauling within the sale and brushing of access roads to the sale are not permitted during the period of April 15 to July 15. Operations may be allowed if specific steps are taken to prevent damaging uncut oak during the high risk period. Those steps may include completing all road brushing before April 15th and clearing a tree-length buffer along uncut oak cover before April 15th. This is necessary to reduce the spread of oak wilt. For more information, contact the Unit Manager or his/her representative.

5.2.4 - Dead and Down Creation

5.2.4.4 - Dead and down creation, grouse (6/18)

To encourage grouse and other wildlife, in Payment Unit(s) 1 and 2, leave two, 10" diameter or larger log-length (8 foot minimum) piece on the ground for every 1 acre. These will be evenly scattered throughout both units.

5.2.22 - Operating Caution

5.2.22.1 - Operating caution (6/11)

It is recommended, but not required, that within Payment Unit(s) 1, cutting, skidding, and hauling occur during dry summer or frozen winter conditions. The reason for the recommendation is because of the possibility of wet soil conditions.

5.2.32 - Decking/landing restoration (9/13)

All decking and landing areas must have the surface area restored to a condition equal to or better than before. This is to ensure the proper regeneration of the stand. Wood debris, chips and "cookies" from trimmings must be removed or scattered away from landing and loading areas and may not be windrowed on the edge.

5.4 - Soil Protection

5.4.1 - Rutting restriction, general (7/16)

Operations are to cease immediately if equipment and weather conditions result in rutting of roads and/or skid trails which is 12 inches or greater in depth and 50 feet in length. The Unit Manager or his/her representative may restrict hauling and/or skidding if ruts exceed the specified depth. With the Unit Manager or his/her representative's approval, the Purchaser may return to the area when the risk of rutting has decreased.

6 - Safety and Fire Prevention

6.2 - Signing

6.2.1 - Road posting (9/09)

The Purchaser is responsible for posting and maintaining caution signs on Randall Road prior to beginning operations. The road must be posted at appropriate distances from the sale area to warn of logging activity and truck traffic. Signs must be removed when harvest operations are suspended or completed. The Purchaser will provide these signs.



TIMBER SALE MAP

This information provided by authority of Part 525, 1994 PA 451, as amended.

Forest Management Unit Roscommon	County Roscommon	Mapped By Martell	Date 09/20/2018	Page 1	of 1
Township 23N	Range 04W	Section(s) and Subdivision(s) Sec. 30 - S1/2SE; Sec. 31 - NENW, NWNE; Sec. 32 - N1/2NW	Cruised By Martell/Lewicki		
Scale 1:7,920					

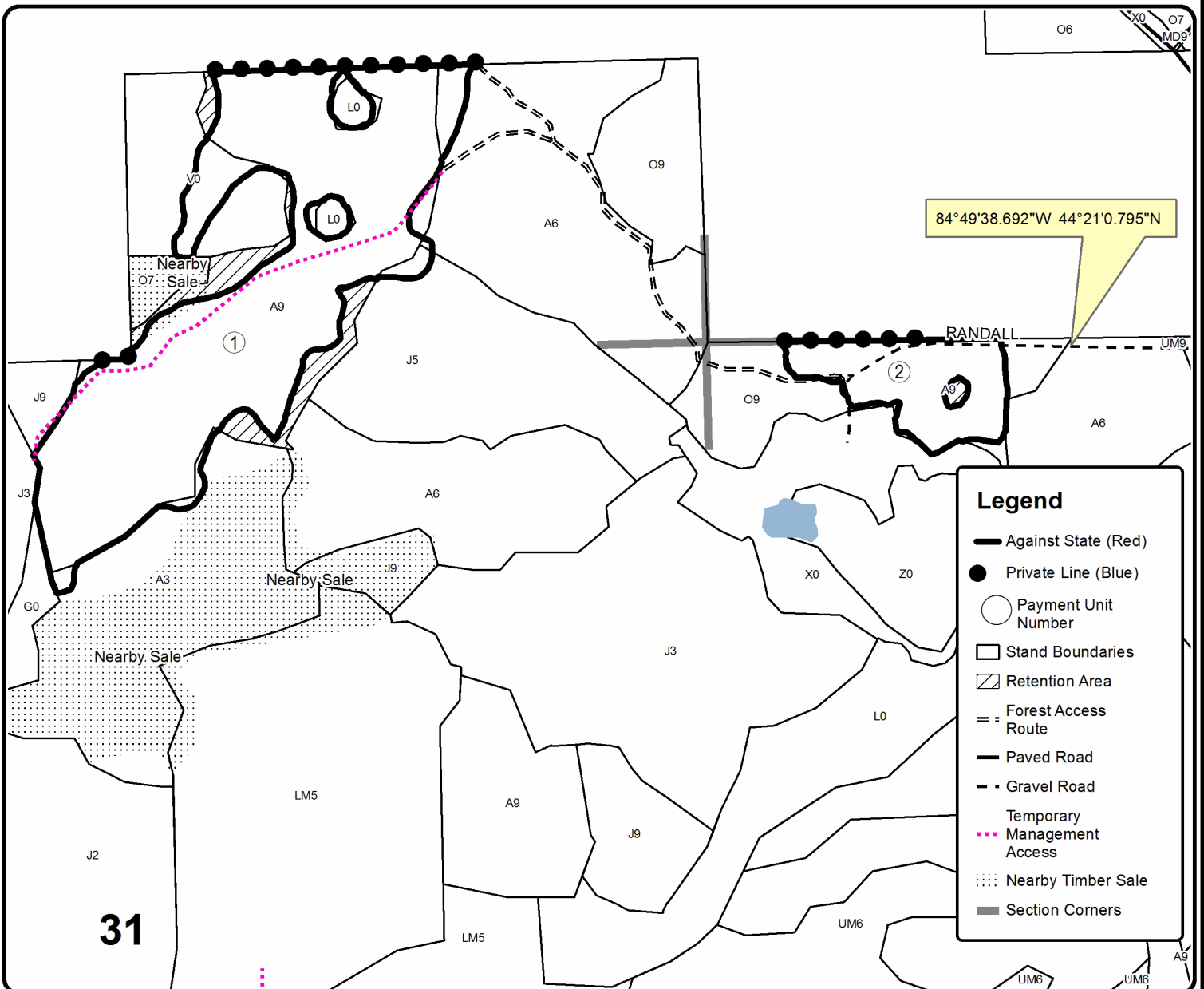
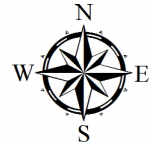
Cover Type				Density			
A = Aspen	H = Hemlock	N = Marsh	U = Upland Brush	0 = Non Stocked	5 = Pole Timber Medium		
B = Paper Birch	J = Jack Pine	O = Oak	UM = Upland Mixed	1 = Seedling Sapling Poor	6 = Pole Timber Well		
C = Cedar	L = Lowland Brush	P = Lowland Poplar	V = Bog or Marsh	2 = Seedling Sapling Medium	7 = Saw Timber Poor		
D = Treed Bog	LM = Lowland Mixed	Q = Mixed Swamp Conifer	W = White Pine	3 = Seedling Sapling Well	8 = Saw Timber Medium		
E = Swamp Hdwoods	M = Mpl, Bch, Brch	R = Red Pine	X = Non Stocked	4 = Pole Timber Poor	9 = Saw Timber Well		
F = Spruce Fir	MC = Mixed Conifer	S = Black Spruce	Z = Water				
G = Grass	MD = Mixed Deciduous	T = Tamarack					

PU	Acres
1	42.1
2	7.9

Duratrak Aspen

Compartment 010

50 Acres



Legend

- Against State (Red)
- Private Line (Blue)
- Payment Unit Number
- Stand Boundaries
- ▨ Retention Area
- - Forest Access Route
- Paved Road
- - Gravel Road
- Temporary Management Access
- ⋯ Nearby Timber Sale
- Section Corners

TIMBER SALE INFORMATION

127 Red Pine (71-001-17)

T24N, R04W, SEC. 27.

Roscommon County (Advertised Price \$5,719.35)

A timber sale contract for this lump sum, sealed bid timber sale will be awarded to the responsible bidder offering the highest sealed bid price. Bids must be at or above the following advertised price for each species:

<u>PRODUCTS & SPECIES</u>	<u>ESTIMATED UNITS*</u>	<u>ADVERTISED PRICE</u>
Sawtimber		
Red Pine	32.50 MBF	\$ 75.00 / MBF
Pulpwood		
Red Pine	117.00 Cords	\$ 28.05 / Cord

* The total volume is statistically estimated within plus (+) or minus (-) 31.42 percent. The estimated units are final and not subject to adjustment. Prospective bidders are urged to examine this timber and to make their own estimates of quantity and quality.

BOND AND PAYMENT SCHEDULE:

- A bond in the amount of \$286.00 to insure faithful performance of the conditions of the contract will be deposited by the successful bidder within 21 days of the sale award.
- Cutting in any sale or unit without the required advance payment would be considered a trespass.
- Total payment must be paid in advance or according to the following schedule:
 - Ten percent (10%) of the sale value must be paid within 21 days of the sale award.
 - The 10% down payment will be credited towards the first unit cut.
 - Payment for each of the following units must be made before cutting begins in that unit:

PAYMENT UNIT NUMBER	PERCENT OF TOTAL SALE VALUE
01	18.2%
02	81.8%
- If no cutting takes place, the 10% down payment will not be refunded.
- Operations on the contract issued will terminate on 12/31/2020.

Description of Timber by Payment Unit (PU)

PU	MARKET GROUP	PRODUCT	QUANTITY	UNIT	ACRES	ADVERTISE PRICE
1	Red Pine	Sawtimber	5.3	MBF	4.9	\$1,042.65
	Red Pine	Pulpwood	23.0	Cords		
2	Red Pine	Sawtimber	27.2	MBF	15.9	\$4,676.70
	Red Pine	Pulpwood	94.0	Cords		
TOTAL:			32.5	MBF		
TOTAL:			117.0	Cords		

Sale Specific Conditions & Requirements

Sale Name: 127 Red Pine

Sale Number: 71-001-17 Seq#: 2

1 - Sale Area

1.2 - Boundaries

1.2.1 - Painted boundaries (1/14)

The sale boundary and Payment Unit boundaries are marked and identified by red paint. The painted boundary line trees are not Included Timber and are to be protected unless marked with orange paint.

2 - Timber Specifications

2.1 - Included Timber

2.1.3 - Cut tree marked unit(s) (12/08)

Within Payment Unit(s) 1 and 2, all trees are designated for cutting when marked with orange paint above and below stump height, regardless of merchantability.

2.2 - Utilization

2.2.6 - Roundwood operation required (5/07)

The skidding of whole trees or tree segments with limbs attached is prohibited within Payment Unit(s) 1 and 2. All products must be produced as roundwood and forwarded to existing roads or landing areas in final product length.

2.2.9 - No chipping permitted (12/08)

Within Payment Unit(s) 1 and 2, tops may not be chipped.

3 - Payments

3.3 - Pre-measured Sales

3.3.4 - Dividing payment units (7/14)

Payment Unit(s) 2 may be divided at the request of the Purchaser and upon approval of the Unit Manager. Dividing Payment Units is a contract modification which requires a Timber Sale Contract Supplement.

3.4 - Damaged Timber

3.4.1 - Damaged timber (6/14)

General Condition and Requirement 3.4 Damaged Timber, defines liquidated damages for undesignated live merchantable trees which are cut or injured. In addition, extreme care should be taken to avoid damage to tree seedlings and saplings.

Within the sale area, if more than 30% of the tree seedlings or saplings (1/4" to 4.5" DBH) within a specified portion of the sale area are damaged, liquidated damages will be assessed at \$300.00 per acre for all acreage within that specified portion of the sale area that was damaged.

No damage is acceptable to merchantable trees. Within the sale area, if more than 5% of trees (> 4.5" DBH) within a specified area of the sale are damaged, liquidated damages will be assessed for all trees damaged. Rates will be in accordance with General Condition and Requirement 3.4 Damaged Timber.

4 - Transportation

4.1 - Construction

4.1.6 - Road construction (1/09)

Construction of new roads or improvements of existing roads shall be done in such a way as to minimize the environmental and visual impacts. Merchantable trees shall be cut and utilized unless otherwise directed. Non-merchantable trees shall be severed and laid flat on the ground. Slash shall be scattered, and not left in windrows and kept a minimum of 10 feet back from the road edge. Stumps shall be set upright, not left on edge, and be moved at least 10 feet away from the road edge. Disturbed soil shall be feathered into the woods and not left in berms or windrows.

4.1.7 - Road closure (10/11)

All new roads built into the sale must be blocked to vehicle traffic upon completion of the sale. Overgrown roads that are reopened shall be considered new roads. In general, this will require constructing a four (4') foot high berm of stumps and logs covered with earth. Stumps and brush must be placed along the remainder of the trail. These roads must be rendered impassable to cars and trucks. Contact the sale administrator for specific details of design and placement.

4.2 - Maintenance

4.2.1 - Hauling restriction (12/08)

Hauling may be restricted on forest roads by the Unit Manager or his/her representative. The restriction may occur during spring breakup or during extended wet weather conditions.

4.2.3 - Road maintenance (8/13)

The following road maintenance may be needed: Within 60 days of completion of hauling, or if no hauling occurs for 60 days, the road must be maintained and graded. This includes cleaning of drainage areas, grading, crowning and filling with gravel, if necessary. Damages will be assessed if grading/repair does not occur.

5 - Operations

5.1 - Notification

5.1.1 - Pre-sale conference (10/16)

A pre-sale conference on site between the Purchaser and sale administrator is required prior to beginning any operations to determine landing and road locations.

5.1.4 - Post-sale conference (10/16)

A post-sale conference on site between the Purchaser and sale administrator is required prior to the completion of active logging operations to determine clean-up and repair of landings, road edges, and the fulfillment of other contract specifications.

5.1.6 - Utility R.O.W. (1/15)

It is the responsibility of the Purchaser to obtain permission from the utility company to utilize the power line R.O.W. for operations. Contact Consumers Energy at 800-477-5050.

5.2 - Conduct of Operations

5.2.1 - Slash

5.2.1.8 - Slash height (12/08)

No slash or tree tops may exceed 24 inches in height.

5.2.2 - Hazard Trees/Snags

5.2.2.1 - Den trees (10/16)

Obvious hollow and/or den trees shall be protected and left standing unless they are a safety hazard.

5.2.3 - Operating Restrictions

5.2.3.3 - Bark slippage restriction (3/09)

Within Payment Unit(s) 1 and 2, unless changed by written agreement, cutting and skidding are not permitted during the period of April 15 to July 15. This restriction is because of bark slippage.

5.2.3.6 - Bark beetle restriction (12/08)

In the event drought creates a high risk of pine bark beetle infestation, pine is not to be cut during the period March 1 through July 1, unless all portions of trees greater than two inches in diameter are removed from the sale area, reduced to chips, or treated to the satisfaction of the Unit Manager or his/her representative, within fifteen days of being severed from the stump. Pine log decks, pulpwood piles and treetops that are piled for chipping in the fall or winter within a 1/4 mile of susceptible sites must be removed before March 15. Residual slash must not be placed in piles or rows and must be spread over the site for quick drying. The Department of Natural Resources will exercise this specification if the risk of damage warrants.

5.2.32 - Decking/landing restoration (9/13)

All decking and landing areas must have the surface area restored to a condition equal to or better than before. This is to

ensure the proper regeneration of the stand. Wood debris, chips and "cookies" from trimmings must be removed or scattered away from landing and loading areas and may not be windrowed on the edge.

5.2.38 - No decking against live trees (2/04)

Cut products may not be decked against unmarked or designated leave trees.

5.4 - Soil Protection

5.4.1 - Rutting restriction, general (7/16)

Operations are to cease immediately if equipment and weather conditions result in rutting of roads and/or skid trails which is 12 inches or greater in depth and 50 feet in length. The Unit Manager or his/her representative may restrict hauling and/or skidding if ruts exceed the specified depth. With the Unit Manager or his/her representative's approval, the Purchaser may return to the area when the risk of rutting has decreased.

5.4.3 - Erosion control (12/08)

Skid trails or haul roads may require erosion control structures or berms per direction of the Unit Manager or his/her representative.

5.8 - Protection of Endangered Species

5.8.5 - Protection of raptor nests (3/13)

All trees with raptor nests will be protected if found during harvesting operations. Notification will be made to the Unit Manager or his/her representative who will notify the Wildlife Biologist so an on-site evaluation and recommendation can be made, if necessary.



TIMBER SALE MAP

This information provided by authority of Part 525, 1994 PA 451, as amended.

Sale Number	Year
71-001	2017

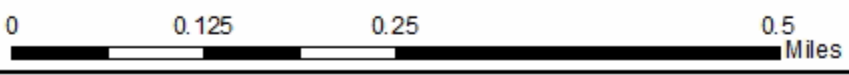
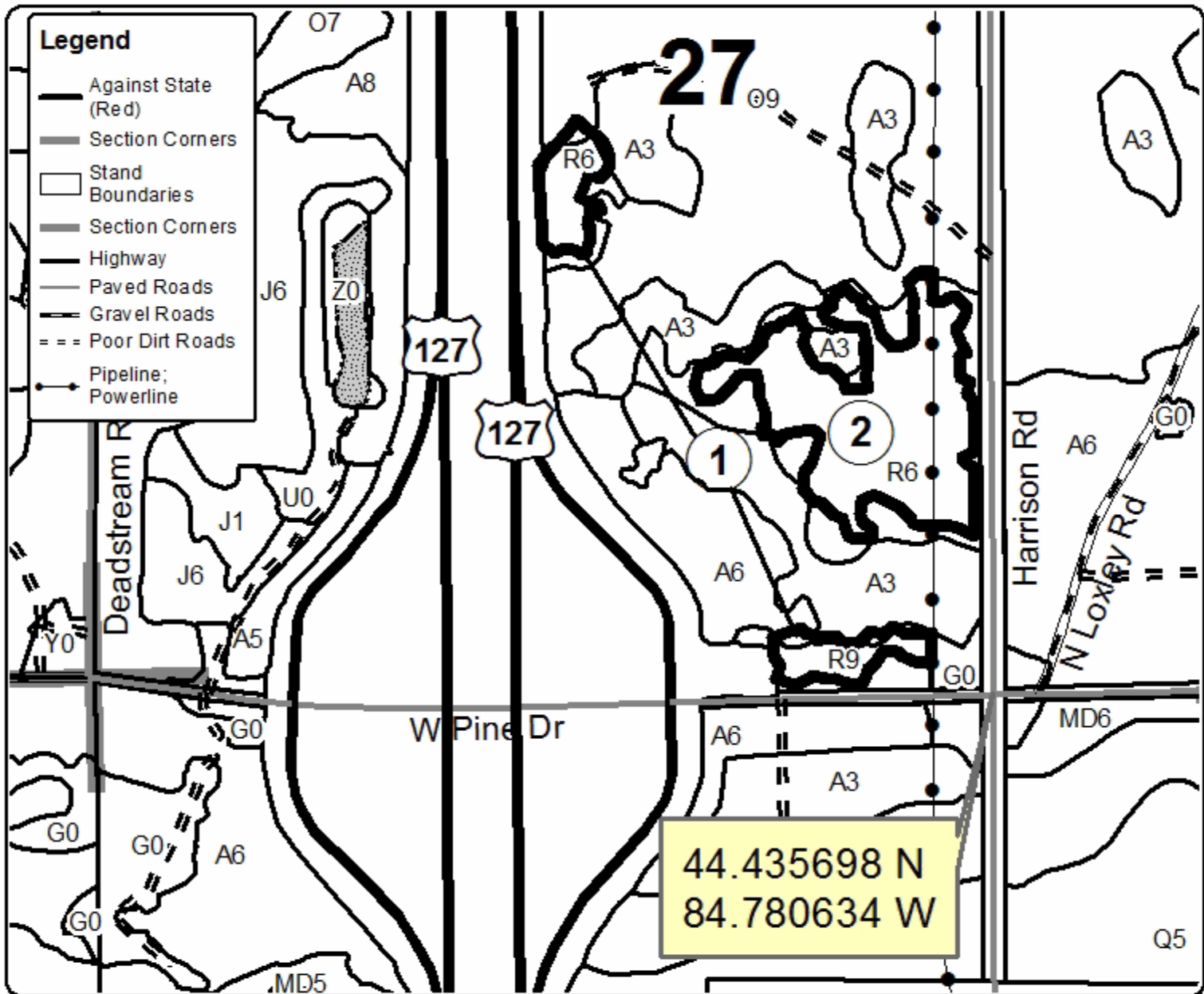
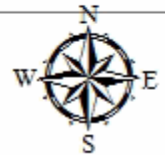
Forest Management Unit Roscommon	County Roscommon	Mapped By Ekdom	Date 04/11/2017	Page 1	of 1
Township 24N	Range 04W	Section(s) and Subdivision(s) 27 - W1/2SE; E1/2SW	Scale 1:7,920		

Cover Type				Density	
A = Aspen	H = Hemlock	N = Marsh	U = Upland Brush	0 = Non Stocked	5 = Pole Timber Medium
R = Paper Birch	J = Jack Pine	O = Oak	UM = Upland Mixed	1 = Seedling Sapling Poor	6 = Pole Timber Well
C = Cedar	L = Lowland Brush	P = Lowland Poplar	V = Bog or Marsh	2 = Seedling Sapling Medium	7 = Saw Timber Poor
D = Tread Bog	LM = Lowland Mixed	Q = Mixed Swamp Conifer	W = White Pine	3 = Seedling Sapling Well	8 = Saw Timber Medium
E = Swamp Hardwoods	M = Mpl, Bch, Brch	R = Red Pine	X = Non Stocked	4 = Pole Timber Poor	9 = Saw Timber Well
F = Spruce Fir	MC = Mixed Conifer	S = Black Spruce	Z = Water		
G = Grass	MD = Mixed Deciduous	T = Tamarack			

Unit Acres

1	4.9
2	15.9

127 Red Pine
Compartment 28
20.8 Acres



Aspen Interchange (71-021-18)
T24N, R04W, SEC. 27; T24N, R04W, SEC. 33; T24N, R04W, SEC. 34;

In response to the notice of sale to be held 2:00 p.m. (local time) on December 13, 2018, I am hereby submitting my sealed bid (firm offer) for the following forest products to be cut. Bids for individual species must be at or above the advertised price. All non-responsive bid forms may be rejected.

<u>PRODUCTS & SPECIES</u>	<u>ESTIMATED VOLUME*</u>	<u>ADVERTISED PRICE</u>	<u>BID PRICE/UNIT</u>
Sawtimber			
Mixed Aspen	238.10 MBF	\$ 62.00/MBF	\$ _____
Mixed Oak	14.00 MBF	\$ 127.00/MBF	\$ _____
Red Maple	47.40 MBF	\$ 70.00/MBF	\$ _____
Pulpwood			
Balsam Fir	33.00 Cords	\$ 16.55/Cord	\$ _____
Black Spruce	60.00 Cords	\$ 21.85/Cord	\$ _____
Mixed Aspen	611.00 Cords	\$ 31.00/Cord	\$ _____
Mixed Hardwood	228.00 Cords	\$ 23.30/Cord	\$ _____
Mixed Oak	97.00 Cords	\$ 18.25/Cord	\$ _____
Red Pine	31.00 Cords	\$ 46.75/Cord	\$ _____
White Pine	2.00 Cords	\$ 25.20/Cord	\$ _____

*The volumes are statistically estimated within plus (+) or minus (-) 12.40 percent. These estimated volumes are final and not subject to adjustment. Prospective bidders are urged to examine this timber and to make their own estimates of quantity and quality.

I understand that any or all bids may be rejected. All bids must be signed and all bid items must be bid or the bid form may be rejected. I also understand that consideration and awarding a contract will be based upon my past performance and ability to complete the contract based upon equipment and staffing subject to my control.

FEDERAL ID: _____ or SOCIAL SECURITY NUMBER: _____

Company or individual bidding: _____

Company representative's name: _____

Address: _____

City: _____ State: _____ Zip: _____

IF AVAILABLE, PLEASE PLACE THE PERSONALIZED LABEL FROM YOUR PROSPECTUS IN THE ABOVE BOX.

Individual or company representative's signature: _____ Date: _____

Phone number : _____ Email (optional): _____

THE WINNING BIDDER MUST COMPLETE THE VERIFICATION OF WORKER'S DISABILITY COMPENSATION ACT COMPLIANCE (ON REVERSE SIDE IF DOUBLE SIDED) WITHIN 21 DAYS OF SALE AWARD DATE



FOR DEPARTMENT USE ONLY	
Sale Number (XX - XXX - XX - XX)	
Forest Management Unit:	

TIMBER SALE VERIFICATION OF WORKER'S DISABILITY COMPENSATION ACT COMPLIANCE

As required by Act 317, P.A. 1969 (Worker's Compensation) and
Part 5 of Act 451 of 1994, as amended.

VERIFICATION OF WORKER'S DISABILITY COMPENSATION ACT COMPLIANCE

- This verification must be completed and submitted within 21 days of contract award and prior to the issuance of the timber sale contract.
- In addition, if boxes 2B or 2C are checked, then Notice of Exclusion or Certificate of Insurance must be submitted within twenty-one (21) days of the contract award and prior to the issuance of the timber sale contract.
- All information must be typed or printed except for written signatures.

Please Check Appropriate Categories:

1. My business is organized as (you **must** check one of the boxes below):
 - A. Sole Proprietorship (individual)
 - B. Partnership
 - C. Corporation
2. You **must** check one of the boxes below:
 - A. I certify my business is a sole proprietorship and it has no employees but the sole proprietor. I am not subject to the Worker's Compensation Laws.
 - B. I certify my business has satisfied its obligation to the Worker's Compensation Act through the use of an approved Notice of Exclusion (BWC-337, Rev. 5/96). I will provide a copy of the Notice of Exclusion within 21 days of the contract award. (For questions or a copy of the BWC-337, please call the Worker's Compensation Bureau at 517-322-1195).
 - C. I certify my business has a Worker's Compensation Policy. I will provide an original Certificate of Insurance within twenty-one (21) days of the contract award.
3. If you have checked item 2(A) or 2(B), you **must** indicate the number of **both** full-time and part-time employees, other than yourself, including family members and active partners (if none, you must enter "0").

_____ Full-time Employees

_____ Part-time Employees

Name of Business		Federal ID (or) Social Security No.	
Address		Telephone ()	
City	State	ZIP	

I hereby certify that the above information is true and correct. I agree to notify the Michigan DNR of any changes that occur in factors affecting my coverage during any of my present and future operations.

Signature of Owner or Authorized Representative

Title

Date

Please complete the "SEALED BID" information on the next page

Duratrac Aspen (71-029-18)
T23N, R04W, SEC. 30; T23N, R04W, SEC. 31; T23N, R04W, SEC. 32;

In response to the notice of sale to be held 2:00 p.m. (local time) on December 13, 2018, I am hereby submitting my sealed bid (firm offer) for the following forest products to be cut. Bids for individual species must be at or above the advertised price. All non-responsive bid forms may be rejected.

<u>PRODUCTS & SPECIES</u>	<u>ESTIMATED VOLUME*</u>	<u>ADVERTISED PRICE</u>	<u>BID PRICE/UNIT</u>
Sawtimber			
Red Maple	24.70 MBF	\$ 70.00/MBF	\$ _____
Red Oak	14.40 MBF	\$ 260.00/MBF	\$ _____
White Oak	2.90 MBF	\$ 50.00/MBF	\$ _____
Pulpwood			
Balsam Fir	13.00 Cords	\$ 16.55/Cord	\$ _____
Jack Pine	3.00 Cords	\$ 18.40/Cord	\$ _____
Mixed Aspen	628.00 Cords	\$ 31.00/Cord	\$ _____
Mixed Hardwood	241.00 Cords	\$ 23.30/Cord	\$ _____
Mixed Oak	95.00 Cords	\$ 18.25/Cord	\$ _____
Red Pine	13.00 Cords	\$ 46.75/Cord	\$ _____
White Pine	42.00 Cords	\$ 25.20/Cord	\$ _____

*The volumes are statistically estimated within plus (+) or minus (-) 11.13 percent. These estimated volumes are final and not subject to adjustment. Prospective bidders are urged to examine this timber and to make their own estimates of quantity and quality.

I understand that any or all bids may be rejected. All bids must be signed and all bid items must be bid or the bid form may be rejected. I also understand that consideration and awarding a contract will be based upon my past performance and ability to complete the contract based upon equipment and staffing subject to my control.

FEDERAL ID: _____ or SOCIAL SECURITY NUMBER: _____

Company or individual bidding: _____

Company representative's name: _____

Address: _____

City: _____ State: _____ Zip: _____

IF AVAILABLE, PLEASE PLACE THE PERSONALIZED LABEL FROM YOUR PROSPECTUS IN THE ABOVE BOX.

Individual or company representative's signature: _____ Date: _____

Phone number : _____ Email (optional): _____

THE WINNING BIDDER MUST COMPLETE THE VERIFICATION OF WORKER'S DISABILITY COMPENSATION ACT COMPLIANCE (ON REVERSE SIDE IF DOUBLE SIDED) WITHIN 21 DAYS OF SALE AWARD DATE



FOR DEPARTMENT USE ONLY
Sale Number (XX - XXX - XX - XX)
Forest Management Unit:

TIMBER SALE VERIFICATION OF WORKER'S DISABILITY COMPENSATION ACT COMPLIANCE

*As required by Act 317, P.A. 1969 (Worker's Compensation) and
Part 5 of Act 451 of 1994, as amended.*

VERIFICATION OF WORKER'S DISABILITY COMPENSATION ACT COMPLIANCE

- This verification must be completed and submitted within 21 days of contract award and prior to the issuance of the timber sale contract.
- In addition, if boxes 2B or 2C are checked, then Notice of Exclusion or Certificate of Insurance must be submitted within twenty-one (21) days of the contract award and prior to the issuance of the timber sale contract.
- All information must be typed or printed except for written signatures.

Please Check Appropriate Categories:

1. My business is organized as (you **must** check one of the boxes below):
 - A. Sole Proprietorship (individual)
 - B. Partnership
 - C. Corporation
2. You **must** check one of the boxes below:
 - A. I certify my business is a sole proprietorship and it has no employees but the sole proprietor. I am not subject to the Worker's Compensation Laws.
 - B. I certify my business has satisfied its obligation to the Worker's Compensation Act through the use of an approved Notice of Exclusion (BWC-337, Rev. 5/96). I will provide a copy of the Notice of Exclusion within 21 days of the contract award. (For questions or a copy of the BWC-337, please call the Worker's Compensation Bureau at 517-322-1195).
 - C. I certify my business has a Worker's Compensation Policy. I will provide an original Certificate of Insurance within twenty-one (21) days of the contract award.
3. If you have checked item 2(A) or 2(B), you **must** indicate the number of **both** full-time and part-time employees, other than yourself, including family members and active partners (if none, you must enter "0").

_____ Full-time Employees _____ Part-time Employees

Name of Business		Federal ID (or) Social Security No.	
Address		Telephone ()	
City	State	ZIP	

I hereby certify that the above information is true and correct. I agree to notify the Michigan DNR of any changes that occur in factors affecting my coverage during any of my present and future operations.

Signature of Owner or Authorized Representative

_____ _____
Title Date

Please complete the "SEALED BID" information on the next page

127 Red Pine (71-001-17)
T24N, R04W, SEC. 27; Roscommon COUNTY

In response to the notice of sale to be held 2:00 p.m. (local time) on December 13, 2018, I am hereby submitting my sealed bid (firm offer) for the following forest products to be cut. Bids for individual species must be at or above the advertised price. All non-responsive bid forms may be rejected.

<u>PRODUCTS & SPECIES</u>	<u>ESTIMATED VOLUME*</u>	<u>ADVERTISED PRICE</u>	<u>BID PRICE/UNIT</u>
Sawtimber			
Red Pine	32.50 MBF	\$ 75.00/MBF	\$ _____
Pulpwood			
Red Pine	117.00 Cords	\$ 28.05/Cord	\$ _____

*The volumes are statistically estimated within plus (+) or minus (-) 31.42 percent. These estimated volumes are final and not subject to adjustment. Prospective bidders are urged to examine this timber and to make their own estimates of quantity and quality.

I understand that any or all bids may be rejected. All bids must be signed and all bid items must be bid or the bid form may be rejected. I also understand that consideration and awarding a contract will be based upon my past performance and ability to complete the contract based upon equipment and staffing subject to my control.

FEDERAL ID: ____ - ____ - ____ or SOCIAL SECURITY NUMBER: ____ - ____ - ____

Company or individual bidding: _____

Company representative's name: _____

Address: _____

City: _____ State: _____ Zip: _____

IF AVAILABLE, PLEASE PLACE THE PERSONALIZED LABEL FROM YOUR PROSPECTUS IN THE ABOVE BOX.

Individual or company representative's signature: _____ Date: _____

Phone number : _____ Email (optional): _____

THE WINNING BIDDER MUST COMPLETE THE VERIFICATION OF WORKER'S DISABILITY COMPENSATION ACT COMPLIANCE (ON REVERSE SIDE IF DOUBLE SIDED) WITHIN 21 DAYS OF SALE AWARD DATE



FOR DEPARTMENT USE ONLY	
Sale Number (XX - XXX - XX - XX)	
Forest Management Unit:	

TIMBER SALE VERIFICATION OF WORKER'S DISABILITY COMPENSATION ACT COMPLIANCE

As required by Act 317, P.A. 1969 (Worker's Compensation) and
Part 5 of Act 451 of 1994, as amended.

VERIFICATION OF WORKER'S DISABILITY COMPENSATION ACT COMPLIANCE

- This verification must be completed and submitted within 21 days of contract award and prior to the issuance of the timber sale contract.
- In addition, if boxes 2B or 2C are checked, then Notice of Exclusion or Certificate of Insurance must be submitted within twenty-one (21) days of the contract award and prior to the issuance of the timber sale contract.
- All information must be typed or printed except for written signatures.

Please Check Appropriate Categories:

1. My business is organized as (you **must** check one of the boxes below):
 - A. Sole Proprietorship (individual)
 - B. Partnership
 - C. Corporation
2. You **must** check one of the boxes below:
 - A. I certify my business is a sole proprietorship and it has no employees but the sole proprietor. I am not subject to the Worker's Compensation Laws.
 - B. I certify my business has satisfied its obligation to the Worker's Compensation Act through the use of an approved Notice of Exclusion (BWC-337, Rev. 5/96). I will provide a copy of the Notice of Exclusion within 21 days of the contract award. (For questions or a copy of the BWC-337, please call the Worker's Compensation Bureau at 517-322-1195).
 - C. I certify my business has a Worker's Compensation Policy. I will provide an original Certificate of Insurance within twenty-one (21) days of the contract award.
3. If you have checked item 2(A) or 2(B), you **must** indicate the number of **both** full-time and part-time employees, other than yourself, including family members and active partners (if none, you must enter "0").

_____ Full-time Employees

_____ Part-time Employees

Name of Business		Federal ID (or) Social Security No.	
Address		Telephone ()	
City	State	ZIP	

I hereby certify that the above information is true and correct. I agree to notify the Michigan DNR of any changes that occur in factors affecting my coverage during any of my present and future operations.

Signature of Owner or Authorized Representative

Title

Date

Please complete the "SEALED BID" information on the next page

Barney's Blowdown (71-003-19)
T22N, R03W, SEC. 28; Roscommon COUNTY

In response to the notice of sale to be held 2:00 p.m. (local time) on December 13, 2018, I am hereby submitting my sealed bid (firm offer) for the following forest products to be cut. Bids for individual species must be at or above the advertised price. All non-responsive bid forms may be rejected.

<u>PRODUCTS & SPECIES</u>	<u>ESTIMATED VOLUME*</u>	<u>ADVERTISED PRICE</u>	<u>BID PRICE/UNIT</u>
Sawtimber			
B. T. Aspen	86.80 MBF	\$ 42.00/MBF	\$ _____
Bl/R/Hybrid Oak	165.20 MBF	\$ 85.00/MBF	\$ _____
Red Maple	23.50 MBF	\$ 47.00/MBF	\$ _____
Red Pine	195.60 MBF	\$ 84.00/MBF	\$ _____
White Oak	155.90 MBF	\$ 33.00/MBF	\$ _____
White Pine	120.90 MBF	\$ 49.00/MBF	\$ _____
Pulpwood			
B. T. Aspen	308.00 Cords	\$ 20.70/Cord	\$ _____
Jack Pine	29.00 Cords	\$ 12.25/Cord	\$ _____
Mixed Hardwood	89.00 Cords	\$ 15.55/Cord	\$ _____
Mixed Oak	717.00 Cords	\$ 12.20/Cord	\$ _____
Red Pine	201.00 Cords	\$ 31.20/Cord	\$ _____
White Pine	346.00 Cords	\$ 16.80/Cord	\$ _____

*The volumes are statistically estimated within plus (+) or minus (-) 13.52 percent. These estimated volumes are final and not subject to adjustment. Prospective bidders are urged to examine this timber and to make their own estimates of quantity and quality.

I understand that any or all bids may be rejected. All bids must be signed and all bid items must be bid or the bid form may be rejected. I also understand that consideration and awarding a contract will be based upon my past performance and ability to complete the contract based upon equipment and staffing subject to my control.

FEDERAL ID: ____ - ____ - ____ or SOCIAL SECURITY NUMBER: ____ - ____ - ____

Company or individual bidding: _____

Company representative's name: _____

Address: _____

City: _____ State: _____ Zip: _____

IF AVAILABLE, PLEASE PLACE THE PERSONALIZED LABEL FROM YOUR PROSPECTUS IN THE ABOVE BOX.

Individual or company representative's signature: _____ Date: _____

Phone number : _____ Email (optional): _____

THE WINNING BIDDER MUST COMPLETE THE VERIFICATION OF WORKER'S DISABILITY COMPENSATION ACT COMPLIANCE (ON REVERSE SIDE IF DOUBLE SIDED) WITHIN 21 DAYS OF SALE AWARD DATE



FOR DEPARTMENT USE ONLY
Sale Number (XX - XXX - XX - XX)
Forest Management Unit:

TIMBER SALE VERIFICATION OF WORKER'S DISABILITY COMPENSATION ACT COMPLIANCE

*As required by Act 317, P.A. 1969 (Worker's Compensation) and
Part 5 of Act 451 of 1994, as amended.*

VERIFICATION OF WORKER'S DISABILITY COMPENSATION ACT COMPLIANCE

- This verification must be completed and submitted within 21 days of contract award and prior to the issuance of the timber sale contract.
- In addition, if boxes 2B or 2C are checked, then Notice of Exclusion or Certificate of Insurance must be submitted within twenty-one (21) days of the contract award and prior to the issuance of the timber sale contract.
- All information must be typed or printed except for written signatures.

Please Check Appropriate Categories:

1. My business is organized as (you **must** check one of the boxes below):
 - A. Sole Proprietorship (individual)
 - B. Partnership
 - C. Corporation
2. You **must** check one of the boxes below:
 - A. I certify my business is a sole proprietorship and it has no employees but the sole proprietor. I am not subject to the Worker's Compensation Laws.
 - B. I certify my business has satisfied its obligation to the Worker's Compensation Act through the use of an approved Notice of Exclusion (BWC-337, Rev. 5/96). I will provide a copy of the Notice of Exclusion within 21 days of the contract award. (For questions or a copy of the BWC-337, please call the Worker's Compensation Bureau at 517-322-1195).
 - C. I certify my business has a Worker's Compensation Policy. I will provide an original Certificate of Insurance within twenty-one (21) days of the contract award.
3. If you have checked item 2(A) or 2(B), you **must** indicate the number of **both** full-time and part-time employees, other than yourself, including family members and active partners (if none, you must enter "0").

_____ Full-time Employees

_____ Part-time Employees

Name of Business		Federal ID (or) Social Security No.	
Address		Telephone ()	
City	State	ZIP	

I hereby certify that the above information is true and correct. I agree to notify the Michigan DNR of any changes that occur in factors affecting my coverage during any of my present and future operations.

Signature of Owner or Authorized Representative

Title

Date

Please complete the "SEALED BID" information on the next page