



**DEPARTMENT OF NATURAL RESOURCES
STATE OF MICHIGAN**

TIMBER SALE PROSPECTUS #6264

SCHEDULED SALE DATE AND TIME: 9:00 a.m. (local time) on January 3, 2019.

LOCATION: GRAYLING MGMT UNIT, 1955 HARTWICK PINES ROAD, GRAYLING, MI 49738.

PROSPECTUS NOTE: The bidder is advised to inspect the sale area and review the location, estimated volumes, operating costs and contract terms of proposed sales. Please be aware that some landowners may request 60 days or more notice for access across their land.

Notice is hereby given that bids will be received by the Unit Manager, GRAYLING MANAGEMENT UNIT, for certain timber on the following described lands:

Kickoff Oak (72-013-18) / T27N, R01E, SEC. 10, N1/2NW,NWNE.

T27N, R01E, SEC. 3 , SESW,SWSE.

T27N, R01E, SEC. 9 , S1/2SE.

Oscoda County, Advertised Price \$109,687.95, 96.5 Acres, Hardwood, Aspen.

SALE NOTE: Oak wilt restrictions are in place, however there is latitude to operate during the restricted period if certain measures are taken prior to oak wilt season. See spec 5.2.3.5 for details.

McMasters Pine (72-018-18) / T27N, R01W, SEC. 21, NENW,S1/2NW,NE,SW,SE.

T27N, R01W, SEC. 22, W1/2SW.

T27N, R01W, SEC. 27, NWNW.

T27N, R01W, SEC. 28, NE.

Crawford County, Advertised Price \$207,288.05, 649.2 Acres, Jack Pine, Red Pine.

SALE NOTE: This is a KW sale located along North Down River Rd. and McMasters Bridge Rd.

Oak wilt restrictions apply in the north Payment Units (refer to sale spec 5.2.3.5).

A goshawk was seen flying in the vicinity of this timber sale and may require a buffer if a nest is located prior to, or during operations (refer to sale spec 5.8.3).

Permission to deck along utility ROW's must be obtained from the Utility Company.

No extensions will be granted for this sale due to KW site prep and planting schedule.

Two in One Mix (72-026-16) / T28N, R04W, SEC. 32, E1/2NE.

T28N, R04W, SEC. 33, NWNW.

Crawford County, Advertised Price \$5,297.40, 15.3 Acres, Aspen, White Pine.

SALE NOTE: A recreation site such as a trail, pathway, or campground is within the sale area or the vicinity. Certain restrictions/specifications may be applicable including time restrictions.

Deer Hunters Oak (72-041-16) / T28N, R01W, SEC. 25, S1/2NW,N1/2SW,SESW.

Crawford County, Advertised Price \$154,466.80, 103.1 Acres, Hardwood, Red Oak.

SALE NOTE: Oak Wilt restrictions apply to this sale. Harvest activity may be allowed during oak wilt season with written permission, as long as a strip along the sale boundary & retention islands that are interfacing with other oak (mature and regeneration) is harvested during the non-risk period. All road work into the sale (widening, pruning, trimming) must occur prior to entering oak wilt window as well.

Bear Track Jack (72-045-16) / T28N, R01E, SEC. 30, NWSW.

T28N, R01W, SEC. 25, E1/2NW,NE,N1/2SE,SESE.

Crawford County, Advertised Price \$30,297.85, 102.9 Acres, Jack Pine, Aspen.

SALE NOTE: The Purchaser is encouraged to cut this during summer months to better scarify soil and maximize regeneration. This sale interfaces with a snowmobile trail and horse trail, which need to be protected. Operations along the horse trail should not occur during designated trail rides as a safety precaution. The sale administrator will provide dates of trail rides as they become available.

A recreation site such as a trail, pathway, or campground is within the sale area or the vicinity. Certain restrictions/specifications may be applicable including time restrictions.

BID INSTRUCTIONS (VER. 07/02/2018):

1. Scheduled Bid Location, Date, and Time (2/11)

Bids must be received by the Unit Manager, GRAYLING OFFICE, 1955 HARTWICK PINES ROAD, GRAYLING, MI 49738, no later than 9:00 a.m. (local time) on January 3, 2019. For further information concerning this sale, contact Susan Thiel at 989-348-6371 extension 7440.

2. Bidder's Qualifications (5/16)

Purchaser shall obtain workers compensation insurance to cover claims under Michigan's Worker's Disability Compensation Act of 1969 or similar employee benefit act of any other state applicable to an employee. If all or part of a timber sale was prepared by a private contractor, the contractor and that contractor's company are not permitted to bid on the timber sale contract. Bids will not be accepted from individuals or companies appearing on the DNR/FRD No-Bid List. This list contains the names of purchasers who previously failed to execute a contract within 21-days or who have a history of poor performance.

3. Preparation of Sealed Bids (5/16)

Bid Forms may be completed online thru Michigan DNR Timber Sale Online Bidding (OLB) at www.michigan.gov/timberbidding or by completing the hardcopy Bid Form found in the Timber Sale Prospectus. Hardcopy Bid Forms shall be manually signed in ink. Registration in OLB is considered your 'signature' for all bids submitted thru that system. Bid prices must be entered for each species and product in the Bid Price column for all material subject to bidding and all fill-in blanks must be completed. If erasures or other changes appear on the hardcopy Bid Form, each erasure or change must be initialed by the person signing the bid.

4. Submission of Sealed Bids (5/16)

Bid forms may be obtained from the Unit Manager or thru OLB. Bids may be submitted hardcopy or thru OLB. All hardcopy bids must be submitted on the bid form and in an envelope clearly identified as described in this section. NOTE: Only one bid form per bid envelope. Sealed bids must be submitted to the Unit office designated in the prospectus and must be submitted at or prior to the time established in the prospectus. The envelope should show on the outside (a) the sale name or number and (b) the date and time of bid opening, as shown in the prospectus. Bids received after the time specified in the sale prospectus are late bids and will be rejected.

It is possible for a bidder to submit multiple bids on a single sale. For example, a bid may be submitted hardcopy and a bid may be submitted thru OLB. Or, two bidders from the same company could both submit bids on the same sale. If this were to happen, the State would accept all bids received and award the contract accordingly. All bidding and contractual requirements would apply to all bids received.

5. Public Opening of Sealed Bids (7/16)

If conditions permit, the sealed bids will be publicly opened and posted at the time and place set in the prospectus.

If a bidder, present at a bid opening, has submitted bids on more than one sale, that bidder may withdraw their unopened bid envelopes or announce the withdrawal of their online bid after being declared the successful bidder on one sale.

6. Award of Contract (1/11)

Award of the contract will be made to the Bidder whose bid, conforming to the prospectus, is most advantageous to the State of Michigan on the basis of total value at rates bid for the estimated quantities. The State reserves the right to reject any bid or waive any minor irregularity in bids received. A written award mailed (or otherwise furnished) to the successful Bidder shall be deemed to result in a binding contract without further action by either party.

7. Down Payment (1/11)

The Bidder to whom award is made must make a down payment within 21 days of the sale award. The amount of the down payment will be calculated as shown in the Bond and Payment Schedule of this prospectus. Only cash may be used to meet this requirement.

8. Performance Security (1/11)

As guarantee of faithful performance, a cash bond, certificate of deposit, surety bond or irrevocable letter of credit (LOC) is required within 21 days of the sale award. The amount of the performance security is shown in the Bond and

Payment Schedule of this prospectus. If an LOC or surety is used, the coverage must extend for at least 6 months beyond the contract expiration.

9. Timber Sale Contract (7/18)

Additional conditions and requirements common to all timber sales are listed on the timber sale contract (R4031) and are available on line at www.michigan.gov/timber. Contact the Unit Manager for additional information or a sample contract. Within 21 days of the date of the award letter, the bidder must sign the contract and provide the required down payment, performance security, and verification of worker's disability compensation. The down payment and performance security shall be in accordance with the provisions of the timber sale contract, in the sums stated in this prospectus. If these actions are not taken, then the Bidder, the Bidder's corporation, and the corporation's principals may not be permitted to bid on State timber sales for a period of 3 months after the first offense, 6 months after the second offense, and 1 year after the third offense. An offense will only be counted against the Bidder for 5 years. In addition, the Bidder certifies that if awarded this contract, the Bidder will complete the timber sale contract in accordance with its terms and any modifications thereof including requirements to purchase, cut, and remove the included timber by the expiration date.

Payment Unit values in the State Forest Timber Sale Contract are calculated based on the advertised value of the Payment Unit as a percentage of the total advertised value of the contract. The advertised value of each Payment Unit is given in the Description of Timber by Payment Unit table on the Timber Sale Information page. For example, if the value of Payment Unit 1 is advertised as \$1,500 and the total Timber Sale value is advertised as \$10,000, the contract price for Payment Unit 1 will be 15% of the total bid price ($\$1,500/\$10,000 * 100$).

10. Disclaimer of Estimates and Bidder's Warranty of Inspection (7/16)

Before submitting this bid, the Bidder is advised and cautioned to inspect the sale area, review the requirements of the sale contract, and take other steps as may be reasonably necessary to ascertain the location, estimated volumes, construction estimates, and operating costs of the proposed sale. Failure to do so will not relieve the Bidder from responsibility for completing the contract.

The Bidder warrants that this bid is submitted solely on the basis of the Bidder's examination and inspection of the quality and quantity of the timber offered for sale and the Bidder's opinion of the value thereof and the costs of recovery. No reliance should be placed on the State of Michigan's estimates of timber quality, quantity or costs of recovery. Bidder further acknowledges that the State of Michigan: (i) expressly disclaims any warranty of fitness of timber for any purpose; (ii) offers this timber as is without any warranty of quality (merchantability) or quantity and (iii) expressly disclaims any warranty as to the quantity or quality of timber sold.

11. Certification and Chain-of-Custody (10/14)

Unless otherwise indicated in the contract under section 7 – Other Conditions of the Sale Specific Conditions & Requirements, the area encompassed by this timber sale is certified to the standards of the Forest Stewardship Council (FSC) - Certificate #SCS-FM/COC-00090N and the Sustainable Forestry Initiative (SFI) - Certificate #NSF-SFIS-5Y031-SF5. Forest products from this sale may be delivered to the mill as "FSC 100% and / or SFI certified" as long as the contractor hauling the forest products is chain-of-custody (COC) certified or covered under a COC certificate from the destination mill. The purchaser is responsible for maintaining COC after leaving the sale area.

12. Good Neighbor Authority (GNA) Requirements (7/16)

If the name of this timber sales contains the acronym GNA, it is authorized by the Good Neighbor Authority (GNA) and covered by various agreements between the U.S. Forest Service and the State. The timber sale occurs on federal land and the following conditions apply:

GNA contracts on US Forest Service land will not be awarded to purchasers on the Federal list of excluded parties. The System for Award Management (SAM) will be checked for active excluded parties prior to award of contract. In addition, the Bidder to whom award is made must complete an Assurance Regarding Felony Conviction or Tax Delinquent Status for Corporate Applicants (AD-3031).

13. Good Neighbor Authority (GNA) Requirements, con't (9/16)

Bidder certifies, by signing this bid form, that to the best of Bidder's knowledge that the following representations are accurate and complete.

- a. That the Bidder and its principals are not presently debarred, suspended, proposed for debarment, declared ineligible, or voluntary excluded from timber sales (covered transactions) by any Federal department or agency.
- b. That the Bidder and its principals have not within a 3-year period preceding this bid been convicted of or had a civil judgment rendered against them for commission of fraud or a criminal offense in connection with obtaining, attempting to obtain, or performing a public (Federal, State, or local) transaction or contract under a public transaction; violation of Federal or State antitrust statutes or commission of embezzlement, theft, forgery, bribery, falsification or destruction of records, making false statements, or receiving stolen property.
- c. That the Bidder and its principals are not presently indicted for or otherwise criminally or civilly charged by a governmental entity (Federal, State, or local) with commission of any of the offenses enumerated in paragraph b of this certification.
- d. That the Bidder and its principals have not within a 3-year period preceding this bid had one or more public transactions (Federal, State, or local) terminated for breach or default of a timber or forest product contract.

Bidders that cannot certify this requirement, in whole or in part, shall submit an explanation with their bid.

KEITH CREAGH
Director

TIMBER SALE INFORMATION

Kickoff Oak (72-013-18)

T27N, R01E, SEC. 10; T27N, R01E, SEC. 3; T27N, R01E, SEC. 9.

Oscoda County (Advertised Price \$109,687.95)

SALE NOTE: Oak wilt restrictions are in place, however there is latitude to operate during the restricted period if certain measures are taken prior to oak wilt season. See spec 5.2.3.5 for details.

A timber sale contract for this lump sum, sealed bid timber sale will be awarded to the responsible bidder offering the highest sealed bid price. Bids must be at or above the following advertised price for each species:

<u>PRODUCTS & SPECIES</u>	<u>ESTIMATED UNITS*</u>	<u>ADVERTISED PRICE</u>
Sawtimber		
Northern Pin Oak	225.20 MBF	\$ 204.00 / MBF
Quaking Aspen	59.90 MBF	\$ 78.00 / MBF
Red Pine	93.90 MBF	\$ 110.00 / MBF
Pulpwood		
Jack Pine	47.00 Cords	\$ 16.80 / Cord
Mixed Hardwood	216.00 Cords	\$ 32.60 / Cord
Northern Pin Oak	858.00 Cords	\$ 20.45 / Cord
Quaking Aspen	384.00 Cords	\$ 23.55 / Cord
Red Pine	258.00 Cords	\$ 41.60 / Cord
White Pine	129.00 Cords	\$ 27.85 / Cord

* The total volume is statistically estimated within plus (+) or minus (-) 8.16 percent. The estimated units are final and not subject to adjustment. Prospective bidders are urged to examine this timber and to make their own estimates of quantity and quality.

BOND AND PAYMENT SCHEDULE:

1. A bond in the amount of \$5,484.00 to insure faithful performance of the conditions of the contract will be deposited by the successful bidder within 21 days of the sale award.
2. Cutting in any sale or unit without the required advance payment would be considered a trespass.
3. Total payment must be paid in advance or according to the following schedule:
 - (a) Ten percent (10%) of the sale value must be paid within 21 days of the sale award.
 - (b) The 10% down payment will be credited towards the first unit cut.
 - (c) Payment for each of the following units must be made before cutting begins in that unit:

PAYMENT UNIT NUMBER	PERCENT OF TOTAL SALE VALUE
01	41.8%
02	23.3%
03	34.9%
4. If no cutting takes place, the 10% down payment will not be refunded.
5. Operations on the contract issued will terminate on 03/31/2021.

Description of Timber by Payment Unit (PU)

PU	MARKET GROUP	PRODUCT	QUANTITY	UNIT	ACRES	ADVERTISE PRICE			
1	Northern Pin Oak	Sawtimber	137.3	MBF	38.2	\$45,856.70			
	Red Pine		20.2	MBF					
	Mixed Hardwood	Pulpwood	41.0	Cords					
	<i>Red Maple</i>		41.0	<i>Cords</i>					
	Northern Pin Oak		510.0	Cords					
	<i>Northern Pin Oak</i>		508.0	<i>Cords</i>					
	<i>White Oak</i>		2.0	<i>Cords</i>					
	Quaking Aspen		3.0	Cords					
	Red Pine		73.0	Cords					
	White Pine		27.0	Cords					
	<i>White Pine</i>	<i>Sawtimber</i>	1.2	<i>MBF</i>					
	<i>White Pine</i>	<i>Pulpwood</i>	25.0	<i>Cords</i>					
	2	Northern Pin Oak	Sawtimber	76.6			MBF	21.3	\$25,521.30
Red Pine			11.2	MBF					
Mixed Hardwood		Pulpwood	23.0	Cords					
<i>Red Maple</i>			23.0	<i>Cords</i>					
Northern Pin Oak			284.0	Cords					
<i>Northern Pin Oak</i>			283.0	<i>Cords</i>					
<i>White Oak</i>			1.0	<i>Cords</i>					
Quaking Aspen			1.0	Cords					
Red Pine			40.0	Cords					
White Pine			15.0	Cords					
<i>White Pine</i>		<i>Sawtimber</i>	0.6	<i>MBF</i>					
<i>White Pine</i>		<i>Pulpwood</i>	14.0	<i>Cords</i>					
3		Northern Pin Oak	Sawtimber	11.3	MBF	37.0	\$38,282.10		
	Quaking Aspen		59.9	MBF					
	Red Pine		62.5	MBF					
	Jack Pine	Pulpwood	47.0	Cords					
	<i>Jack Pine</i>	<i>Sawtimber</i>	0.4	<i>MBF</i>					
	<i>Jack Pine</i>	<i>Pulpwood</i>	46.0	<i>Cords</i>					
	Mixed Hardwood		152.0	Cords					
	<i>Red Maple</i>	<i>Sawtimber</i>	9.7	<i>MBF</i>					
	<i>Black Cherry</i>	<i>Pulpwood</i>	1.0	<i>Cords</i>					
	<i>Paper Birch</i>		2.0	<i>Cords</i>					
	<i>Red Maple</i>		130.0	<i>Cords</i>					
	Northern Pin Oak		64.0	Cords					
	<i>Northern Pin Oak</i>		62.0	<i>Cords</i>					
	<i>White Oak</i>		2.0	<i>Cords</i>					
	Quaking Aspen		380.0	Cords					
	Red Pine		145.0	Cords					
	White Pine		86.0	Cords					
	<i>White Pine</i>	<i>Sawtimber</i>	4.5	<i>MBF</i>					
	<i>White Pine</i>	<i>Pulpwood</i>	77.0	<i>Cords</i>					
	TOTAL:			379.0	MBF				
	TOTAL:			1,891.0	Cords				

Sale Specific Conditions & Requirements

Sale Name: Kickoff Oak

Sale Number: 72-013-18 Seq#: 1

1 - Sale Area

1.2 - Boundaries

1.2.1 - Painted boundaries (1/14)

The sale boundary and payment unit boundaries are marked and identified by blue, red, yellow and green paint, along with a road. Exterior sale boundary lines against private property are marked with blue paint, with the exception of the west boundary Payment Unit 3, which is unpainted and identified by Pine Haven Road. Exterior sale boundary lines against state are marked with red paint. Interior Payment Unit boundaries are marked with yellow paint. Interior retention island boundaries are marked with green paint. The painted boundary line trees are not included timber and are to be protected.

2 - Timber Specifications

2.1 - Included Timber

2.1.1 - Clearcut unit(s) with unmerchantable trees (6/14)

Within Payment Unit(s) 1, 2 and 3, cut all trees that are two (2) inches or more at DBH.

2.2 - Utilization

2.2.3 - Stump heights (4/07)

Stump heights within the Sale Area shall not exceed 12 inches for trees greater than 10 inches DBH and 4 inches for trees smaller than 10 inches DBH.

3 - Payments

3.3 - Pre-measured Sales

3.3.4 - Dividing payment units (7/14)

Payment Unit(s) may be divided at the request of the Purchaser and upon approval of the Unit Manager. Dividing Payment Units is a contract modification which requires a Timber Sale Contract Supplement.

4 - Transportation

4.1 - Construction

4.1.3 - Slash and earthen piles (8/04)

Piles or windrows of earth along roads and landings that have been widened or constructed shall be leveled. Slash from road maintenance or construction, including stumps, shall be used to close landing and temporary roads.

4.1.6 - Road construction (1/09)

Construction of new roads or improvements of existing roads shall be done in such a way as to minimize the environmental and visual impacts. Merchantable trees shall be cut and utilized unless otherwise directed. Non-merchantable trees shall be severed and laid flat on the ground. Slash shall be scattered, and not left in windrows and kept a minimum of 10 feet back from the road edge. Stumps shall be set upright, not left on edge, and be moved at least 10 feet away from the road edge. Disturbed soil shall be feathered into the woods and not left in berms or windrows.

4.1.7 - Road closure (10/11)

All new roads built into the sale must be blocked to vehicle traffic upon completion of the sale. Overgrown roads that are reopened shall be considered new roads. In general, this will require constructing a four (4') foot high berm of stumps and logs covered with earth. Stumps and brush must be placed along the remainder of the trail. These roads must be rendered impassable to cars and trucks. Contact the sale administrator for specific details of design and placement.

4.1.11 - Permits (2/12)

The Purchaser will secure any necessary highway permits that may be required.

4.2 - Maintenance

4.2.1 - Hauling restriction (12/08)

Hauling may be restricted on forest roads by the Unit Manager or his/her representative. The restriction may occur during spring breakup.

4.2.5 - Two wheel drive condition (2/04)

All existing trail roads on and adjacent to the sale area must be passable by two-wheel drive traffic for the duration of the sale.

5 - Operations

5.1 - Notification

5.1.1 - Pre-sale conference (10/16)

A pre-sale conference on site between the Purchaser and sale administrator is required prior to beginning any operations to determine landing and road locations. The Unit Manager or his/her representative must be contacted at least 5 days in advance to schedule the conference.

5.2 - Conduct of Operations

5.2.1 - Slash

5.2.1.8 - Slash height (12/08)

No slash or tree tops may exceed 36 inches in height.

5.2.2 - Hazard Trees/Snags

5.2.2.1 - Den trees (10/16)

Obvious hollow and/or den trees shall be protected and left standing unless they are a safety hazard.

5.2.3 - Operating Restrictions

5.2.3.5 - Oak wilt restriction (1/18)

Within Payment Unit(s) 1, 2 and 3, unless changed by written agreement, cutting, skidding, hauling within the sale and brushing of access roads to the sale are not permitted during the period of April 15 to July 15. Operations may be allowed if specific steps are taken to prevent damaging uncut oak during the high risk period. Those steps may include completing all road brushing before April 15th and clearing a tree-length buffer along uncut oak cover before April 15th. This is necessary to reduce the spread of oak wilt. For more information, contact the Unit Manager or his/her representative.

5.2.32 - Decking/landing restoration (9/13)

All decking and landing areas must have the surface area restored to a condition equal to or better than before. This is to ensure the proper regeneration of the stand. Wood debris, chips and "cookies" from trimmings must be removed or scattered away from landing and loading areas and may not be windrowed on the edge.

5.2.37 - No decking areas (12/08)

No decking is allowed within 50 feet of Pine Haven Road without permission of the Unit Manager or his/her representative.

5.4 - Soil Protection

5.4.1 - Rutting restriction, general (7/16)

Operations are to cease immediately if equipment and weather conditions result in rutting of roads and/or skid trails which is 12 inches or greater in depth and 50 feet in length. The Unit Manager or his/her representative may restrict hauling and/or skidding if ruts exceed the specified depth. With the Unit Manager or his/her representative's approval, the Purchaser may return to the area when the risk of rutting has decreased.

5.4.2 - Skid trails (2/04)

Skid trails up and down slopes should be avoided. If however this is unavoidable, these trails will be left in a non-erodible condition using water bars, logs, and slash. Placing of slash on these skid trails while logging is ongoing may alleviate need for any further action. At the direction of the sale administrator, seed, fertilizer, and mulch may also be required.

6 - Safety and Fire Prevention

6.2 - Signing

6.2.1 - Road posting (9/09)

The Purchaser is responsible for posting and maintaining caution signs on Pine Haven Road and Red Oak Road prior to beginning operations. The road must be posted at appropriate distances from the sale area to warn of logging activity and truck traffic. Signs must be removed when harvest operations are suspended or completed. The Purchaser will provide these signs.



TIMBER SALE MAP

This information provided by authority of Part 525, 1994 PA 451, as amended.

Sale Number	Year
72 - 013	18

Forest Management Unit Grayling	County Oscoda	Mapped By Behrmann	Date 06/11/2018	Page 1	of 1
Cruised By Behrmann					

Township 27N	Range 01E	Section(s) and Subdivision(s) Sec 9: SESE, SWSE Sec 10: NWNE, NENW, NWNW	Scale 1:15,840
-----------------	--------------	---	-------------------

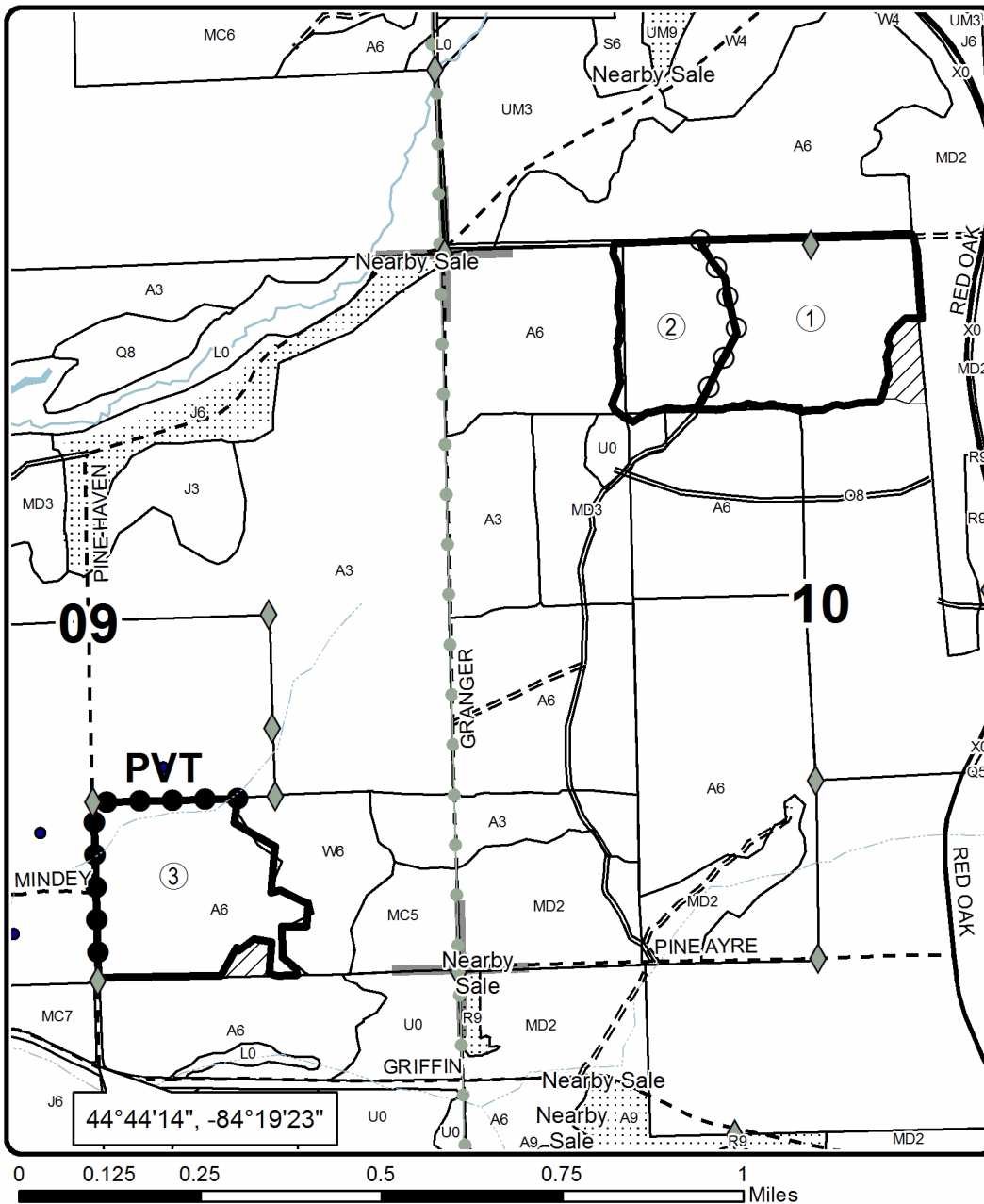
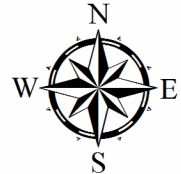
Cover Type				Density			
A = Aspen	H = Hemlock	N = Marsh	U = Upland Brush	0 = Non Stocked	5 = Pole Timber Medium		
B = Paper Birch	J = Jack Pine	O = Oak	UM = Upland Mixed	1 = Seedling Sapling Poor	6 = Pole Timber Well		
C = Cedar	L = Lowland Brush	P = Lowland Poplar	V = Bog or Marsh	2 = Seedling Sapling Medium	7 = Saw Timber Poor		
D = Treed Bog	LM = Lowland Mixed	Q = Mixed Swamp Conifer	W = White Pine	3 = Seedling Sapling Well	8 = Saw Timber Medium		
E = Swamp Hdwoods	M = Mpl, Bch, Brch	R = Red Pine	X = Non Stocked	4 = Pole Timber Poor	9 = Saw Timber Well		
F = Spruce Fir	MC = Mixed Conifer	S = Black Spruce	Z = Water				
G = Grass	MD = Mixed Deciduous	T = Tamarack					

PU	Acres
1	38.2
2	21.3
3	37

Kickoff Oak

Compartment 7

96.5 Acres



Legend

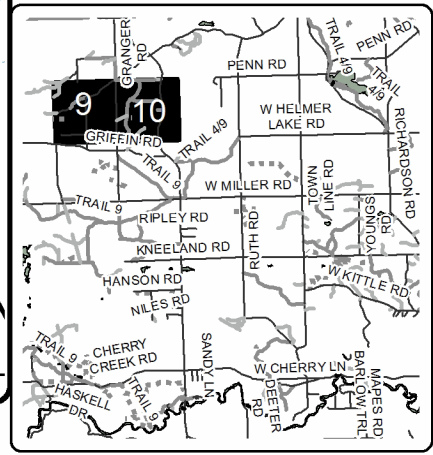
- Field Grade Corners
- Section Corners
- Retention Area (Green)
- Against State (Red)
- Payment Unit (Yellow)
- Private Line (Blue)
- Stand Boundaries
- Secondary Forest Road
- Forest Access Route
- Paved Road
- Gravel Road
- Recreational Trail

Streams

Type

- Intermittent Stream
- Perennial River
- Nearby Sales

Locator Map
1:200,000



TIMBER SALE INFORMATION

McMasters Pine (72-018-18)

T27N, R01W, SEC. 21; T27N, R01W, SEC. 22; T27N, R01W, SEC. 27; T27N, R01W, SEC. 28.
Crawford County (Advertised Price \$207,288.05)

SALE NOTE: This is a KW sale located along North Down River Rd. and McMasters Bridge Rd.

Oak wilt restrictions apply in the north Payment Units (refer to sale spec 5.2.3.5).

A goshawk was seen flying in the vicinity of this timber sale and may require a buffer if a nest is located prior to, or during operations (refer to sale spec 5.8.3).

Permission to deck along utility ROW's must be obtained from the Utility Company.

No extensions will be granted for this sale due to KW site prep and planting schedule.

A timber sale contract for this lump sum, sealed bid timber sale will be awarded to the responsible bidder offering the highest sealed bid price. Bids must be at or above the following advertised price for each species:

<u>PRODUCTS & SPECIES</u>	<u>ESTIMATED UNITS*</u>	<u>ADVERTISED PRICE</u>
Pulpwood		
BI/R/Hybrid Oak	568.00 Cords	\$ 20.45 / Cord
Jack Pine	4,376.00 Cords	\$ 16.80 / Cord
Quaking Aspen	175.00 Cords	\$ 23.55 / Cord
Red Pine	2,827.00 Cords	\$ 41.60 / Cord
White Oak	17.00 Cords	\$ 20.45 / Cord
White Pine	3.00 Cords	\$ 27.85 / Cord

* The total volume is statistically estimated within plus (+) or minus (-) 10.67 percent. The estimated units are final and not subject to adjustment. Prospective bidders are urged to examine this timber and to make their own estimates of quantity and quality.

BOND AND PAYMENT SCHEDULE:

1. A bond in the amount of \$10,364.00 to insure faithful performance of the conditions of the contract will be deposited by the successful bidder within 21 days of the sale award.
2. Cutting in any sale or unit without the required advance payment would be considered a trespass.
3. Total payment must be paid in advance or according to the following schedule:
 - (a) Ten percent (10%) of the sale value must be paid within 21 days of the sale award.
 - (b) The 10% down payment will be credited towards the first unit cut.
 - (c) Payment for each of the following units must be made before cutting begins in that unit:

<u>PAYMENT UNIT NUMBER</u>	<u>PERCENT OF TOTAL SALE VALUE</u>
01	2.3%
02	21.4%
03	24.8%
04	5.9%
05	9.8%
06	6.5%
07	9.1%
08	6.2%
09	2.9%
10	3.3%
11	3.2%
12	4.6%

4. If no cutting takes place, the 10% down payment will not be refunded.
5. Operations on the contract issued will terminate on 03/31/2022.

Description of Timber by Payment Unit (PU)

PU	MARKET GROUP	PRODUCT	QUANTITY	UNIT	ACRES	ADVERTISE PRICE
1	BI/R/Hybrid Oak Jack Pine	Pulpwood	10.0	Cords	29.8	\$4,740.50
			270.0	Cords		
2	BI/R/Hybrid Oak Jack Pine Red Pine White Oak	Pulpwood	48.0	Cords	58.0	\$44,284.20
			354.0	Cords		
			896.0	Cords		
			4.0	Cords		
3	BI/R/Hybrid Oak Jack Pine Red Pine White Pine	Pulpwood	22.0	Cords	53.9	\$51,547.20
			198.0	Cords		
			1,147.0	Cords		
			2.0	Cords		
4	BI/R/Hybrid Oak Jack Pine Red Pine White Oak White Pine	Pulpwood	53.0	Cords	31.5	\$12,132.70
			354.0	Cords		
			120.0	Cords		
			4.0	Cords		
			1.0	Cords		
5	BI/R/Hybrid Oak Jack Pine Red Pine White Oak	Pulpwood	80.0	Cords	52.2	\$20,303.95
			600.0	Cords		
			203.0	Cords		
			7.0	Cords		
6	BI/R/Hybrid Oak Jack Pine Quaking Aspen Red Pine White Oak	Pulpwood	53.0	Cords	78.1	\$13,475.50
			553.0	Cords		
			1.0	Cords		
			73.0	Cords		
			2.0	Cords		
7	BI/R/Hybrid Oak Jack Pine Quaking Aspen Red Pine	Pulpwood	120.0	Cords	43.5	\$18,891.40
			187.0	Cords		
			100.0	Cords		
			263.0	Cords		
8	BI/R/Hybrid Oak Jack Pine Quaking Aspen Red Pine	Pulpwood	72.0	Cords	70.4	\$12,859.75
			480.0	Cords		
			21.0	Cords		
			68.0	Cords		
9	BI/R/Hybrid Oak Jack Pine Quaking Aspen Red Pine	Pulpwood	24.0	Cords	48.6	\$5,952.75
			294.0	Cords		
			1.0	Cords		
			12.0	Cords		
10	BI/R/Hybrid Oak Jack Pine Quaking Aspen Red Pine	Pulpwood	23.0	Cords	51.5	\$6,827.20
			294.0	Cords		
			39.0	Cords		
			12.0	Cords		
11	BI/R/Hybrid Oak Jack Pine Quaking Aspen Red Pine	Pulpwood	25.0	Cords	53.1	\$6,643.45
			316.0	Cords		
			12.0	Cords		
			13.0	Cords		
12	BI/R/Hybrid Oak Jack Pine Quaking Aspen Red Pine	Pulpwood	38.0	Cords	78.6	\$9,629.45
			476.0	Cords		
			1.0	Cords		
			20.0	Cords		
TOTAL:			7,966.0	Cords		

Sale Specific Conditions & Requirements

Sale Name: McMasters Pine

Sale Number: 72-018-18 Seq#: 1

1 - Sale Area

1.2 - Boundaries

1.2.1 - Painted boundaries (1/14)

The sale boundary and Payment Unit boundaries are marked and identified by blue, red and yellow paint, along with roads.

Exterior sale boundary lines against private property are marked with blue paint, with the exception of the private property line along Conners Marsh Trl, which is unpainted and identified by the road. Exterior sale boundary lines against state are marked with red paint, with the exception of the west boundary of Payment Unit 12, which is unmarked and identified by Martindale Road.

Interior Payment Unit boundaries are marked with yellow paint, with the following exceptions: The west boundary of Payment Unit 7 is unpainted and identified by Conners Marsh Trl. The north and east boundaries of Payment Unit 5 are unpainted and identified by unnamed forest roads. The east boundary of Payment Unit 2 is unpainted and identified by an unnamed forest road. The Payment Unit boundaries along North Down River Road are unpainted and identified by the road.

The painted boundary line trees are not Included Timber and are to be protected. Yellow painted trees designating an interior Payment Unit boundary are only to be cut when all surrounding Payment Units have been paid.

2 - Timber Specifications

2.1 - Included Timber

2.1.1 - Clearcut unit(s) with unmerchantable trees (6/14)

Within Payment Unit(s) 1-12, cut all trees that are two (2) inches or more at DBH, except do not cut red and white pine greater than 20 inches at DBH. Retention areas identified with trees marked with green paint above and below stump height are not included timber and are to be protected. Witness trees were identified with green paint above and below stump height and are not to be damaged.

2.2 - Utilization

2.2.2 - Chipping required (2/18)

This area must be chip harvested to meet Kirtland's warbler habitat requirements. The requirement to retain approximately 1/6 to 1/3 of tree tops and limbs less than four inches in diameter does not apply (G. C. & R. 2.2).

2.2.3 - Stump heights (4/07)

Stump heights within the Sale Area shall not exceed 6 inches for all trees. This is in order to facilitate planting operations.

3 - Payments

3.3 - Pre-measured Sales

3.3.4 - Dividing payment units (7/14)

Payment Unit(s) may be divided at the request of the Purchaser and upon approval of the Unit Manager. Dividing Payment Units is a contract modification which requires a Timber Sale Contract Supplement. There will be only one division per Payment Unit.

3.4 - Damaged Timber

3.4.3 - Special Protection Areas (8/11)

The Purchaser shall protect special protection areas from damage by the Purchaser's operations. Special protection areas are bound out of the sale area with red paint. The Purchaser shall not cut live or dead trees within special protection areas.

4 - Transportation

4.1 - Construction

4.1.3 - Slash and earthen piles (8/04)

Piles or windrows of earth along roads and landings that have been widened or constructed shall be leveled. Slash from road maintenance or construction, including stumps, shall be chipped, utilized or otherwise removed from the sale.

4.1.6 - Road construction (1/09)

Construction of new roads or improvements of existing roads shall be done in such a way as to minimize the environmental and visual impacts. Merchantable trees shall be cut and utilized unless otherwise directed. Non-merchantable trees shall be severed and laid flat on the ground. Slash shall be chipped, utilized or otherwise removed from the sale. Stumps shall be set upright, not left on edge, and be moved at least 10 feet away from the road edge. Disturbed soil shall be feathered into the woods and not left in berms or windrows.

4.1.7 - Road closure (10/11)

All new roads built into the sale must be blocked to vehicle traffic upon completion of the sale. Overgrown roads that are reopened shall be considered new roads. In general, this will require constructing a four (4') foot high berm of stumps and logs covered with earth. Stumps and brush must be placed along the remainder of the trail. These roads must be rendered impassable to cars and trucks. Contact the sale administrator for specific details of design and placement.

4.1.11 - Permits (2/12)

The Purchaser will secure any necessary highway permits that may be required.

4.2 - Maintenance

4.2.5 - Two wheel drive condition (2/04)

All existing trail roads on and adjacent to the sale area must be passable by two-wheel drive traffic for the duration of the sale.

5 - Operations

5.1 - Notification

5.1.1 - Pre-sale conference (10/16)

A pre-sale conference on site between the Purchaser and sale administrator is required prior to beginning any operations to determine landing and road locations. The Unit Manager or his/her representative must be contacted at least 5 days in advance to schedule the conference.

5.1.6 - Utility R.O.W. (1/15)

It is the responsibility of the Purchaser to obtain permission from the utility company to utilize the power line R.O.W. for operations.

5.2 - Conduct of Operations

5.2.1 - Slash

5.2.1.8 - Slash height (12/08)

No slash may exceed 24 inches in height.

5.2.2 - Hazard Trees/Snags

5.2.2.1 - Den trees (10/16)

Obvious hollow and/or den trees shall be protected and left standing unless they are a safety hazard.

5.2.3 - Operating Restrictions

5.2.3.5 - Oak wilt restriction (1/18)

Within Payment Unit(s) 1-6, unless changed by written agreement, cutting, skidding, hauling within the sale and brushing of access roads to the sale are not permitted during the period of April 15 to July 15. Operations may be allowed if specific steps are taken to prevent damaging uncut oak during the high risk period. Those steps may include completing all road brushing before April 15th and clearing a tree-length buffer along uncut oak cover before April 15th. This is necessary to reduce the spread of oak wilt. For more information, contact the Unit Manager or his/her representative.

5.2.3.2 - Decking/landing restoration (9/13)

All decking and landing areas must have the surface area restored to a condition equal to or better than before. This is to

ensure the proper regeneration of the stand. Wood debris, chips and "cookies" from trimmings must be removed or scattered away from landing and loading areas and may not be windrowed on the edge.

5.4 - Soil Protection

5.4.1 - Rutting restriction, general (7/16)

Operations are to cease immediately if equipment and weather conditions result in rutting of roads and/or skid trails which is 12 inches or greater in depth and 50 feet in length. The Unit Manager or his/her representative may restrict hauling and/or skidding if ruts exceed the specified depth. With the Unit Manager or his/her representative's approval, the Purchaser may return to the area when the risk of rutting has decreased.

5.8 - Protection of Endangered Species

5.8.1 - Kirtland's warbler (1) (10/12)

This sale is adjacent to a young jack pine stand which may be used by the endangered Kirtland's Warbler. The Department reserves the right to temporarily restrict all harvesting operations in a buffer zone of up to 500 feet if it is determined that Warbler territory has been established in the adjacent stand. The restricted period, if put into effect, would apply from May 1st to August 15th.

5.8.3 - Red shoulder hawk or goshawk (2/16)

In the event that an active red shoulder hawk or goshawk nest is found, the contract may be amended to protect the nest site until the nest is determined to be inactive. The value of the trees in this excluded area will be refunded or credited to the Purchaser. The nest will be buffered with a five-chain radius (eight acre) protection area, centered on the nest tree, in which there will be no cutting or new roads constructed. Avoid human disturbance, including loading and skidding, in the protection area.

An additional zone of five chains (ten chains centered on the active nest tree) will be established in which there is no management activity from March 15 to July 15. Limit biomass harvesting and chipping operations within this ten-chain zone, retain the maximum one-third of residues per the Woody Biomass Harvesting Guidelines (Michigan DNR 2010). Nests determined to be inactive will be protected with a one-chain no-harvest buffer.

6 - Safety and Fire Prevention

6.2 - Signing

6.2.1 - Road posting (9/09)

The Purchaser is responsible for posting and maintaining caution signs on North Down River Road and McMasters Bridge Road prior to beginning operations. The road must be posted at appropriate distances from the sale area to warn of logging activity and truck traffic. Signs must be removed when harvest operations are suspended or completed. The Purchaser will provide these signs.

7 - Other Conditions

7.2 - Extensions

7.2.2 - No extensions (3/09)

There will be no harvest extensions granted on this contract. The purpose of this sale is to create habitat for the endangered Kirtland's Warbler. This sale is already scheduled for planting.



TIMBER SALE MAP

This information provided by authority of Part 525, 1994 PA 451, as amended.

Sale Number	Year
72 - 018	18

Forest Management Unit Grayling	County Crawford	Mapped By Scott McClarren	Date 08/20/2018	Page 1	of 2
Township 27N	Range 01W	Section(s) and Subdivision(s) S21-NENW, S1/2NW, NE, SW, SE; S22- W1/2SW; S27-NWNW; S28-NE	Scale 1:15,840		

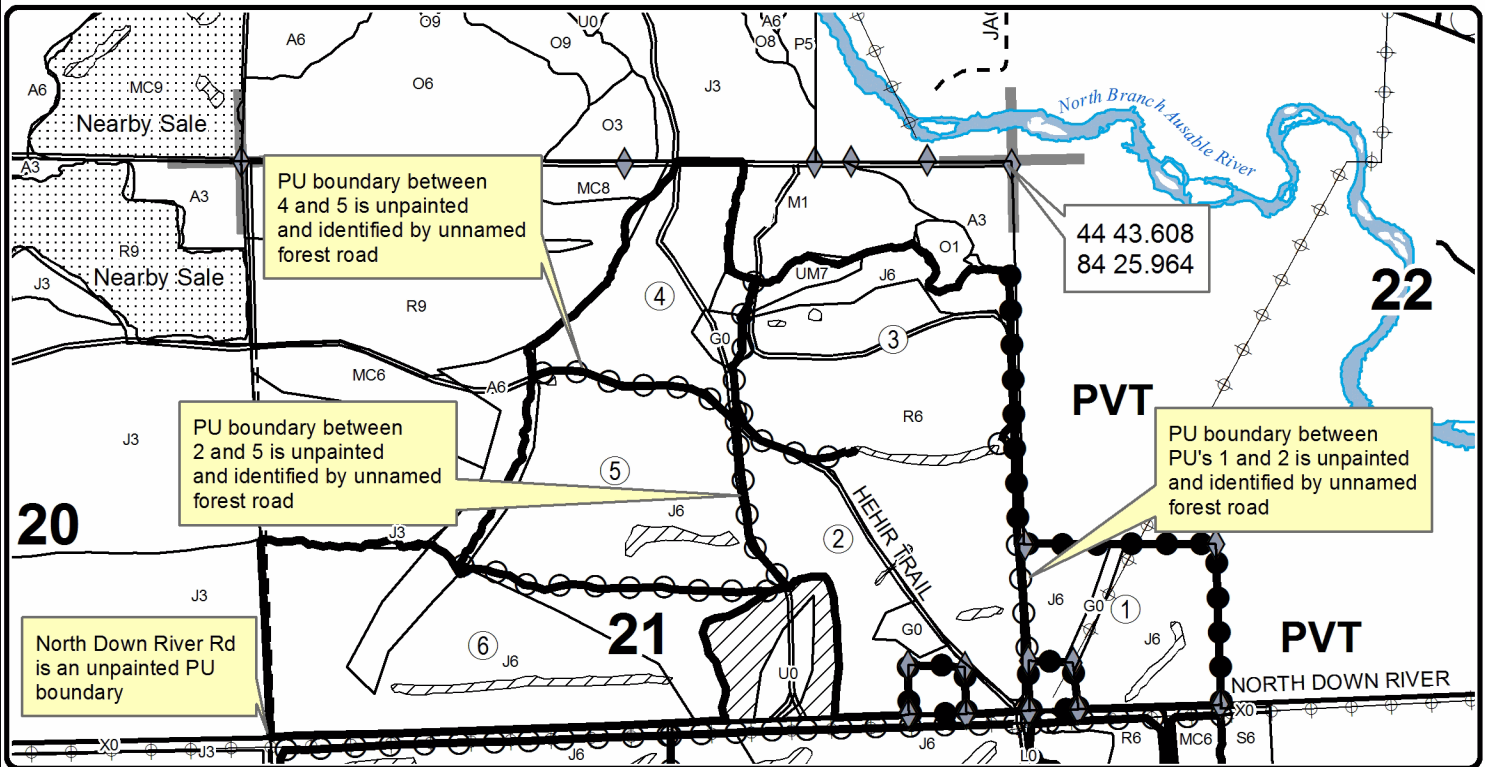
Cover Type				Density			
A = Aspen	H = Hemlock	N = Marsh	U = Upland Brush	0 = Non Stocked	5 = Pole Timber Medium		
B = Paper Birch	J = Jack Pine	O = Oak	UM = Upland Mixed	1 = Seedling Sapling Poor	6 = Pole Timber Well		
C = Cedar	L = Lowland Brush	P = Lowland Poplar	V = Bog or Marsh	2 = Seedling Sapling Medium	7 = Saw Timber Poor		
D = Treed Bog	LM = Lowland Mixed	Q = Mixed Swamp Conifer	W = White Pine	3 = Seedling Sapling Well	8 = Saw Timber Medium		
E = Swamp Hdwoods	M = Mpl, Bch, Brch	R = Red Pine	X = Non Stocked	4 = Pole Timber Poor	9 = Saw Timber Well		
F = Spruce Fir	MC = Mixed Conifer	S = Black Spruce	Z = Water				
G = Grass	MD = Mixed Deciduous	T = Tamarack					

PU	Acres	PU	Acres	PU	Acres
1	29.8	5	52.2	9	48.6
2	58	6	78.1	10	51.5
3	53.9	7	43.5	11	53.1
4	31.5	8	70.4	12	78.6

McMasters Pine

Compartment 282

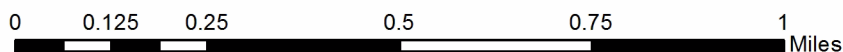
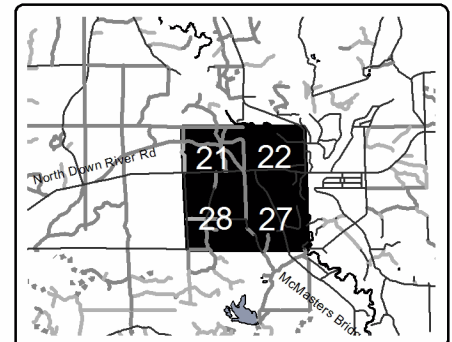
649.2 Acres



Legend

Against State (Red)	Primary Forest Road	Lakes and Rivers
Payment Unit (Yellow)	Secondary Forest Road	Retention Area (Green)
Private Line (Blue)	Forest Access Route	Nearby Timber Sales
Stand Boundaries	Paved Road	Section Corners
PU_Label	Gravel Road	Powerline
Field Grade Corners		

Locator Map
1:200,000





TIMBER SALE MAP

This information provided by authority of Part 525, 1994 PA 451, as amended.

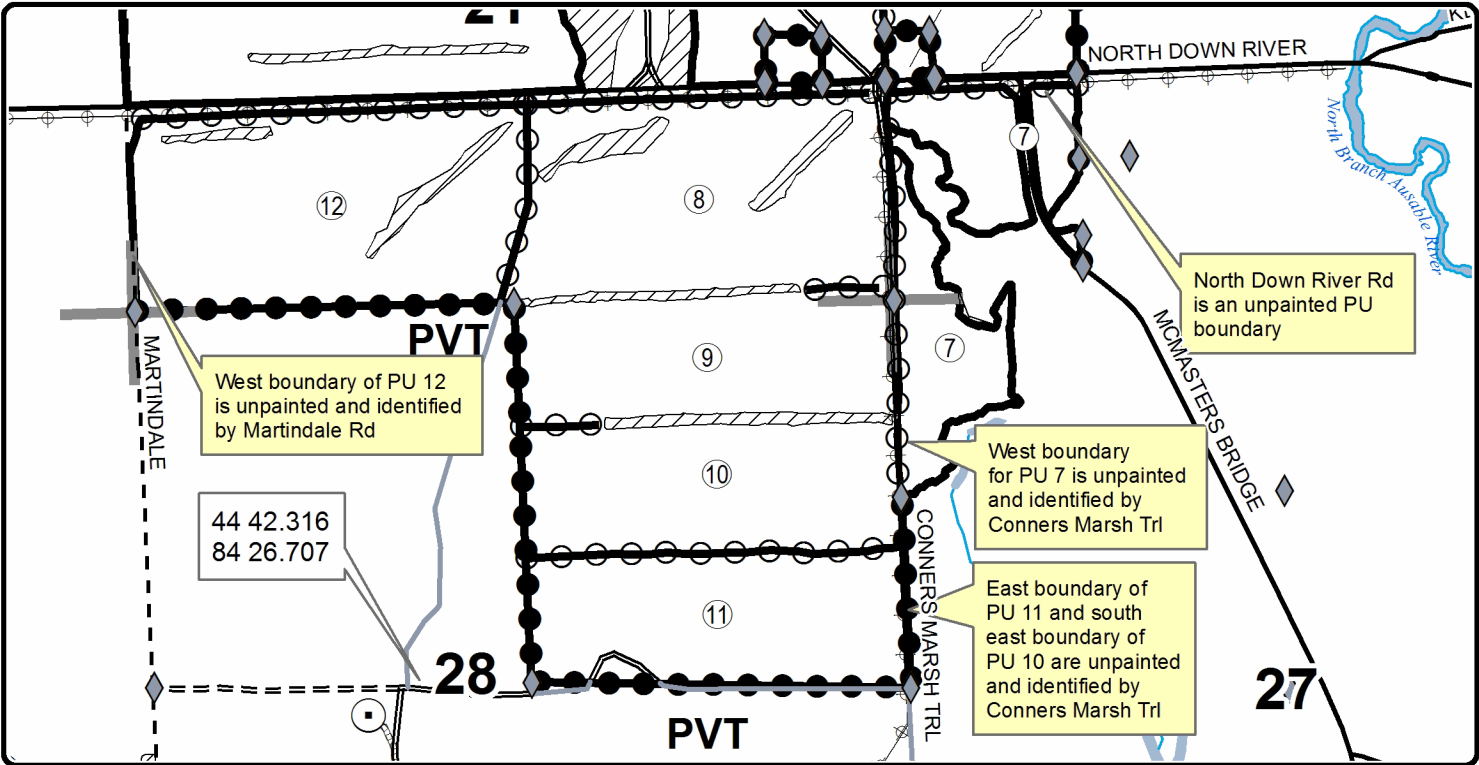
Forest Management Unit Grayling		County Crawford	Mapped By Scott McClarren	Date 08/20/2018	Page 2	of 2
Township 27N	Range 01W	Section(s) and Subdivision(s) S21-NENW, S1/2NW, NE, SW, SE; S22- W1/2SW; S27-NWNW; S28-NE		Scale 1:15,840		

Cover Type				Density	
A = Aspen	H = Hemlock	N = Marsh	U = Upland Brush	0 = Non Stocked	5 = Pole Timber Medium
B = Paper Birch	J = Jack Pine	O = Oak	UM = Upland Mixed	1 = Seedling Sapling Poor	6 = Pole Timber Well
C = Cedar	L = Lowland Brush	P = Lowland Poplar	V = Bog or Marsh	2 = Seedling Sapling Medium	7 = Saw Timber Poor
D = Treed Bog	LM = Lowland Mixed	Q = Mixed Swamp Conifer	W = White Pine	3 = Seedling Sapling Well	8 = Saw Timber Medium
E = Swamp Hdwoods	M = Mpl, Bch, Brch	R = Red Pine	X = Non Stocked	4 = Pole Timber Poor	9 = Saw Timber Well
F = Spruce Fir	MC = Mixed Conifer	S = Black Spruce	Z = Water		
G = Grass	MD = Mixed Deciduous	T = Tamarack			

PU	Acres	PU	Acres	PU	Acres
1	29.8	5	52.2	9	48.6
2	58	6	78.1	10	51.5
3	53.9	7	43.5	11	53.1
4	31.5	8	70.4	12	78.6

McMasters Pine

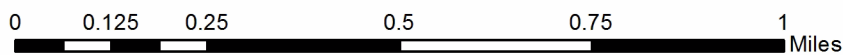
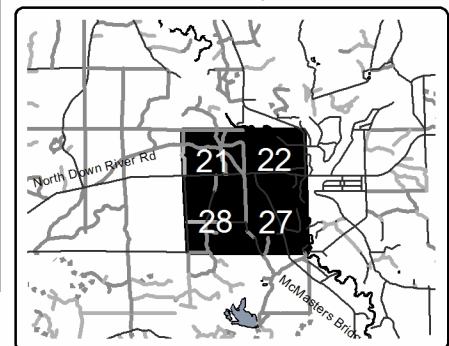
Compartment 282
649.2 Acres



Legend

- Against State (Red)
- Secondary Forest Road
- Payment Unit (Yellow)
- Forest Access Route
- Private Line (Blue)
- Paved Road
- ▨ Retention Area (Green)
- Gravel Road
- ◆ Field Grade Corners
- PU_Label
- Oil & Gas Well Surface Locations
- Perennial River
- Lakes and Rivers
- Section Corners
- Pipeline
- Powerline

Locator Map
1:200,000



TIMBER SALE INFORMATION

Two in One Mix (72-026-16)
 T28N, R04W, SEC. 32; T28N, R04W, SEC. 33.
 Crawford County (Advertised Price \$5,297.40)

SALE NOTE: A recreation site such as a trail, pathway, or campground is within the sale area or the vicinity. Certain restrictions/specifications may be applicable including time restrictions.

A timber sale contract for this lump sum, sealed bid timber sale will be awarded to the responsible bidder offering the highest sealed bid price. Bids must be at or above the following advertised price for each species:

<u>PRODUCTS & SPECIES</u>	<u>ESTIMATED UNITS*</u>	<u>ADVERTISED PRICE</u>
Sawtimber		
White Pine	10.60 MBF	\$ 59.00 / MBF
Pulpwood		
Quaking Aspen	136.00 Cords	\$ 20.40 / Cord
Red Maple	36.00 Cords	\$ 28.25 / Cord
Red Pine	5.00 Cords	\$ 36.05 / Cord
White Pine	29.00 Cords	\$ 24.15 / Cord

* The total volume is statistically estimated within plus (+) or minus (-) 43.22 percent. The estimated units are final and not subject to adjustment. Prospective bidders are urged to examine this timber and to make their own estimates of quantity and quality.

BOND AND PAYMENT SCHEDULE:

- A bond in the amount of \$1,000.00 to insure faithful performance of the conditions of the contract will be deposited by the successful bidder within 21 days of the sale award.
- Cutting in any sale or unit without the required advance payment would be considered a trespass.
- Total payment must be paid in advance or according to the following schedule:
 - Ten percent (10%) of the sale value must be paid within 21 days of the sale award.
 - The remainder is due before cutting begins.
 - Payment for each of the following units must be made before cutting begins in that unit:

PAYMENT UNIT NUMBER	PERCENT OF TOTAL SALE VALUE
01	100.0%
- If no cutting takes place, the 10% down payment will not be refunded.
- Operations on the contract issued will terminate on 12/31/2020.

Description of Timber by Payment Unit (PU)

PU	MARKET GROUP	PRODUCT	QUANTITY	UNIT	ACRES	ADVERTISE PRICE
1	White Pine	Sawtimber	10.6	MBF	15.3	\$5,297.40
	Quaking Aspen	Pulpwood	136.0	Cords		
	<i>Quaking Aspen</i>	<i>Sawtimber</i>	7.4	<i>MBF</i>		
	<i>Quaking Aspen</i>	<i>Pulpwood</i>	121.0	<i>Cords</i>		
	Red Maple		36.0	Cords		
	<i>Red Maple</i>	<i>Sawtimber</i>	2.2	<i>MBF</i>		
	<i>Black Cherry</i>	<i>Pulpwood</i>	4.0	<i>Cords</i>		
	<i>Red Maple</i>		28.0	<i>Cords</i>		
	Red Pine		5.0	Cords		
	<i>Red Pine</i>	<i>Sawtimber</i>	1.1	<i>MBF</i>		
	<i>Red Pine</i>	<i>Pulpwood</i>	3.0	<i>Cords</i>		
	White Pine		29.0	Cords		
	<i>Jack Pine</i>		2.0	<i>Cords</i>		
	<i>White Pine</i>		27.0	<i>Cords</i>		
TOTAL:			10.6	MBF		
TOTAL:			206.0	Cords		

Sale Specific Conditions & Requirements

Sale Name: Two in One Mix

Sale Number: 72-026-16 Seq#: 1

1 - Sale Area

1.2 - Boundaries

1.2.1 - Painted boundaries (1/14)

The sale boundary is marked and identified red paint. Exterior sale boundary lines against state are marked with red paint. The painted boundary line trees are not Included Timber and are to be protected.

2 - Timber Specifications

2.1 - Included Timber

2.1.1 - Clearcut unit(s) with unmerchantable trees (6/14)

Within Payment Unit(s) 1, cut all trees that are two (2) inches or more at DBH.

3 - Payments

3.3 - Pre-measured Sales

3.3.4 - Dividing payment units (7/14)

Payment Unit(s) may be divided at the request of the Purchaser and upon approval of the Unit Manager. Dividing Payment Units is a contract modification which requires a Timber Sale Contract Supplement.

4 - Transportation

4.1 - Construction

4.1.3 - Slash and earthen piles (8/04)

Piles or windrows of earth along roads and landings that have been widened or constructed shall be leveled. Slash from road maintenance or construction, including stumps, shall be dispersed throughout the sale.

4.1.12 - No new roads (1/12)

No new roads will be permitted in any Payment Unit. All operations are limited to existing roads. Skid trails only will be allowed.

4.2 - Maintenance

4.2.5 - Two wheel drive condition (2/04)

All existing trail roads on and adjacent to the sale area must be passable by two-wheel drive traffic for the duration of the sale.

5 - Operations

5.1 - Notification

5.1.1 - Pre-sale conference (10/11)

A pre-sale conference on site between the Purchaser and sale administrator is required prior to beginning any operations to determine landing and road locations. The Unit Manager or his/her representative must be contacted at least 10 days in advance to schedule the conference.

5.1.4 - Post-sale conference (6/11)

A post-sale conference on site between the Purchaser and sale administrator is required 5 days prior to the completion of active logging operations to determine clean-up and repair of landings, road edges, and the fulfillment of other contract specifications.

5.2 - Conduct of Operations

5.2.1 - Slash

5.2.1.8 - Slash height (12/08)

No slash or tree tops may exceed 24 inches in height.

5.2.2 - Hazard Trees/Snags

5.2.2.1 - Den trees (2/04)

Obvious hollow and/or den trees shall be protected and left standing unless they are a safety hazard.

5.2.4 - Dead and Down Creation

5.2.4.4 - Dead and down creation, grouse (8/13)

To encourage grouse and other wildlife, in Payment Unit(s) 1, leave one, 8" diameter or larger log-length (8 foot minimum) piece on the ground for every 2 acres. These will be evenly scattered throughout the unit. This can be an unmerchantable piece or a full tree.

5.2.29 - Shrub protection (9/07)

Do not cut or damage hawthorn, witch-hazel, dogwood or junberry. These woody-shrub plants are highly beneficial to various wildlife species.

5.2.32 - Decking/landing restoration (9/13)

All decking and landing areas must have the surface area restored to a condition equal to or better than before. This is to ensure the proper regeneration of the stand. Wood debris, chips and "cookies" from trimmings must be removed or scattered away from landing and loading areas and may not be windrowed on the edge.

5.2.39 - ORV trail/route protection (12/12)

The ORV trail or route is shown on the Timber Sale Map. Do not cut trees or damage posts with orange ORV markers. All stumps within 5 feet of the trail must be cut flush with the ground. Maintain a 20 foot wide slash, debris, and rut free zone daily using the ORV trail or route as the centerline. Do not run equipment down the ORV trail or route. Skidding across the trail or route may only occur in locations approved by the sale administrator.

5.2.41 - Snowmobile trail protection (9/11)

The snowmobile trail is shown on the Timber Sale Map. Do not cut or damage posts with orange trail markers or traffic control signs. If the trail is used for hauling, it must be graded to the satisfaction of the Unit Manager or his/her representative prior to December 1st. If the trail road is to be used for hauling during the snowmobile season, then a snow covered base must be left on the trail. The snowmobile trail may not be used for any timber sale operations from December 1 to March 31 without written permission from the Unit Manager. No decking of forest products will be permitted along the snowmobile trail.

5.4 - Soil Protection

5.4.1 - Rutting restriction, general (1/09)

Operations are to cease immediately if equipment and weather conditions result in rutting of roads and skid trails which is 12 inches or greater in depth and 50 feet in length. The Unit Manager or his/her representative may restrict hauling and/or skidding if ruts exceed the specified depth. With the Unit Manager or his/her representative's approval, the Purchaser may return to the area when the risk of rutting has decreased.

6 - Safety and Fire Prevention

6.2 - Signing

6.2.2 - Snowmobile trail posting (8/09)

The Purchaser is responsible for posting and maintaining caution signs on the snowmobile trail (if used for hauling) prior to beginning operations during the snowmobile season (approximately December 1 to March 31). The trail must be posted at appropriate distances from the sale area to warn of logging activity and truck traffic. Signs must be removed when harvest operations are suspended or completed. The Purchaser will provide these signs.

6.2.3 - Recreational trail posting (2/10)

The Purchaser is responsible for posting and maintaining caution signs on the ORV trail prior to beginning operations. The trail must be posted at appropriate distances from the sale area to warn of logging activity and truck traffic at both ends of the trail. Signs must be removed when harvest operations are suspended or completed. The Purchaser will provide these signs.



TIMBER SALE MAP

This information provided by authority of Part 525, 1994 PA 451, as amended.

Forest Management Unit Grayling		County Crawford	Mapped By Matt Foster		Date 06/06/2016	Page 1	of 1
Township 28N	Range 04W	Section(s) and Subdivision(s) Sec 33: NWNW Sec 32: E1/2NE			Scale 1:15,840		
Cover Type				Density			
A = Aspen	H = Hemlock	N = Marsh	U = Upland Brush	0 = Non Stocked	5 = Pole Timber Medium		
B = Paper Birch	J = Jack Pine	O = Oak	UM = Upland Mixed	1 = Seedling Sapling Poor	6 = Pole Timber Well		
C = Cedar	L = Lowland Brush	P = Lowland Poplar	V = Bog or Marsh	2 = Seedling Sapling Medium	7 = Saw Timber Poor		
D = Treed Bog	LM = Lowland Mixed	Q = Mixed Swamp Conifer	W = White Pine	3 = Seedling Sapling Well	8 = Saw Timber Medium		
E = Swamp Hdwoods	M = Mpl, Bch, Brch	R = Red Pine	X = Non Stocked	4 = Pole Timber Poor	9 = Saw Timber Well		
F = Spruce Fir	MC = Mixed Conifer	S = Black Spruce	Z = Water				
G = Grass	MD = Mixed Deciduous	T = Tamarack					

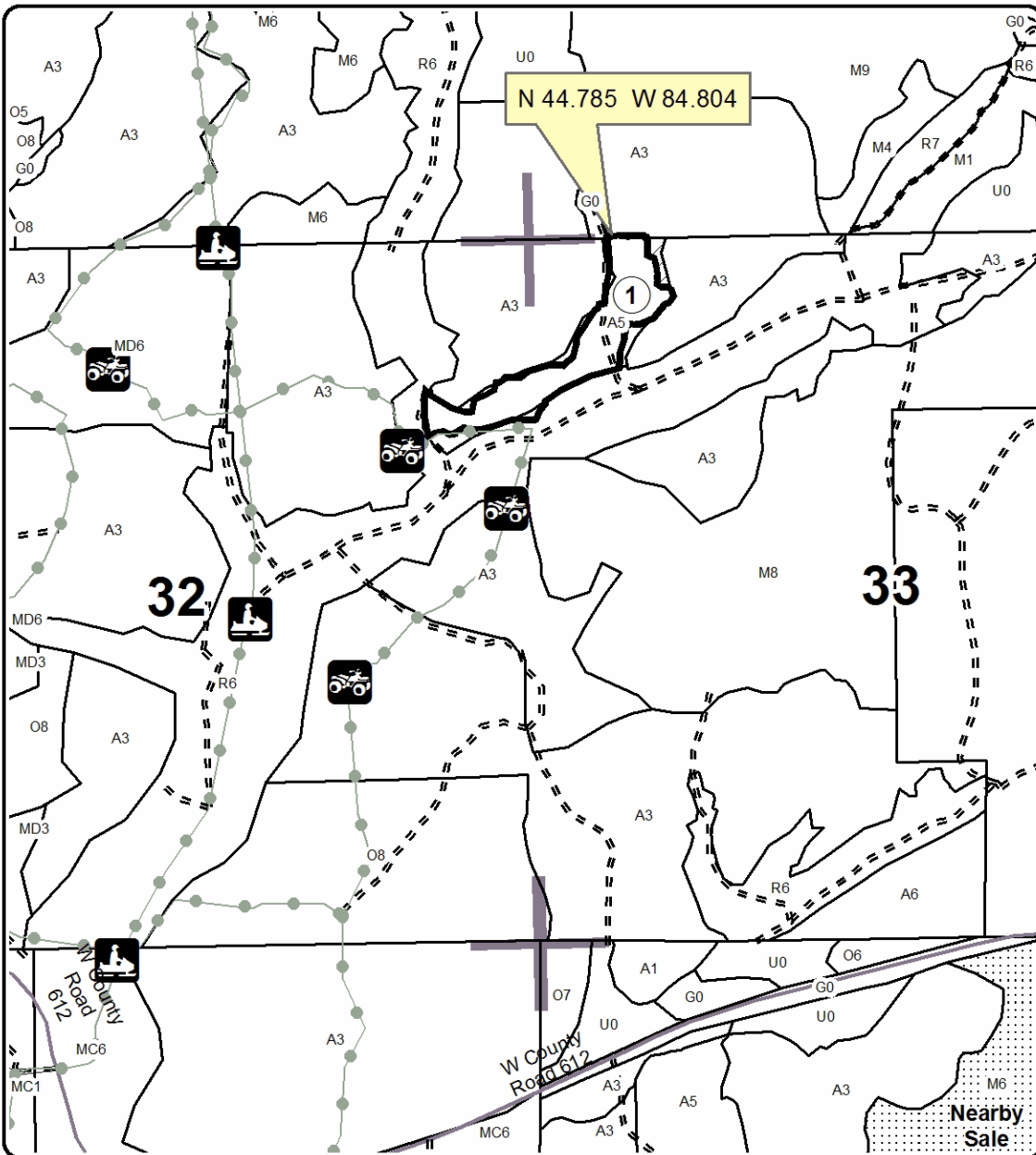
PU Acres

1 15.3

Two in One Mix

Compartment 174

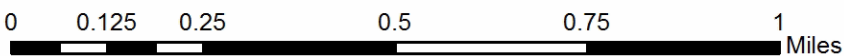
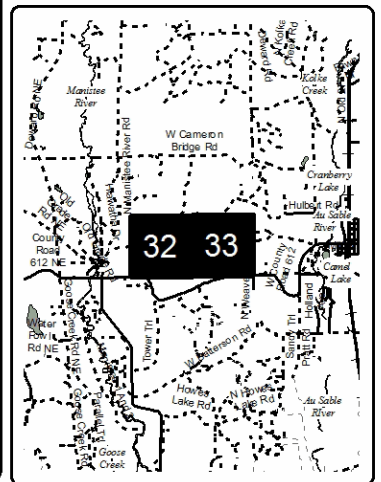
15.3 Acres



Legend

- Sale Boundary**
- Against State (Red)
- Section Corners
- ▨ Retention Area
- ▭ Adjacent Stand Boundaries
- Section Corners
- Paved Roads
- Gravel Roads
- Poor Dirt Roads
- Recreational Trail
- PU_Label

Locator Map
1:200,000



TIMBER SALE INFORMATION

Deer Hunters Oak (72-041-16)
 T28N, R01W, SEC. 25.
 Crawford County (Advertised Price \$154,466.80)

SALE NOTE: Oak Wilt restrictions apply to this sale. Harvest activity may be allowed during oak wilt season with written permission, as long as a strip along the sale boundary & retention islands that are interfacing with other oak (mature and regeneration) is harvested during the non-risk period. All road work into the sale (widening, pruning, trimming) must occur prior to entering oak wilt window as well.

A timber sale contract for this lump sum, sealed bid timber sale will be awarded to the responsible bidder offering the highest sealed bid price. Bids must be at or above the following advertised price for each species:

<u>PRODUCTS & SPECIES</u>	<u>ESTIMATED UNITS*</u>		<u>ADVERTISED PRICE</u>
Sawtimber			
Mixed Aspen	14.90	MBF	\$ 83.00 / MBF
Mixed Oak	39.00	MBF	\$ 217.00 / MBF
Red Oak	327.40	MBF	\$ 296.00 / MBF
Red Pine	11.80	MBF	\$ 117.00 / MBF
Pulpwood			
Misc. Species 1	120.00	Cords	\$ 8.00 / Cord
Mixed Aspen	97.00	Cords	\$ 25.10 / Cord
Mixed Oak	1,502.00	Cords	\$ 21.80 / Cord
Red Maple	148.00	Cords	\$ 34.75 / Cord
Red Pine	117.00	Cords	\$ 44.40 / Cord

* The total volume is statistically estimated within plus (+) or minus (-) 10.16 percent. The estimated units are final and not subject to adjustment. Prospective bidders are urged to examine this timber and to make their own estimates of quantity and quality.

BOND AND PAYMENT SCHEDULE:

1. A bond in the amount of \$7,723.00 to insure faithful performance of the conditions of the contract will be deposited by the successful bidder within 21 days of the sale award.
2. Cutting in any sale or unit without the required advance payment would be considered a trespass.
3. Total payment must be paid in advance or according to the following schedule:
 - (a) Ten percent (10%) of the sale value must be paid within 21 days of the sale award.
 - (b) The 10% down payment will be credited towards the first unit cut.
 - (c) Payment for each of the following units must be made before cutting begins in that unit:

PAYMENT UNIT NUMBER	PERCENT OF TOTAL SALE VALUE
01	51.2%
02	33.4%
03	15.4%
4. If no cutting takes place, the 10% down payment will not be refunded.
5. Operations on the contract issued will terminate on 03/31/2021.

Description of Timber by Payment Unit (PU)

PU	MARKET GROUP	PRODUCT	QUANTITY	UNIT	ACRES	ADVERTISE PRICE	
1	Mixed Aspen	Sawtimber	12.9	MBF	43.7	\$79,151.85	
	<i>B. T. Aspen</i>		1.3	<i>MBF</i>			
	<i>Quaking Aspen</i>		11.6	<i>MBF</i>			
	Mixed Oak		14.5	MBF			
	<i>Northern Pin Oak</i>		1.0	<i>MBF</i>			
	<i>White Oak</i>		13.5	<i>MBF</i>			
	Red Oak		176.0	MBF			
	Red Pine		6.3	MBF			
	Misc. Species 1		Pulpwood	17.0			Cords
	Mixed Aspen			81.0			Cords
	<i>B. T. Aspen</i>			8.0			<i>Cords</i>
	<i>Quaking Aspen</i>			73.0			<i>Cords</i>
	Mixed Oak			725.0			Cords
	<i>Northern Pin Oak</i>			6.0			<i>Cords</i>
	<i>Red Oak</i>			639.0			<i>Cords</i>
	<i>White Oak</i>	80.0		<i>Cords</i>			
	Red Maple	83.0		Cords			
	<i>Red Maple</i>	2.4		<i>MBF</i>			
	<i>Red Maple</i>	78.0	<i>Cords</i>				
	Red Pine	28.0	Cords				
	<i>Jack Pine</i>	1.0	<i>Cords</i>				
<i>Red Pine</i>	27.0	<i>Cords</i>					
2	Mixed Aspen	Sawtimber	2.0	MBF	25.7	\$51,583.75	
	<i>B. T. Aspen</i>		0.9	<i>MBF</i>			
	<i>Quaking Aspen</i>		1.1	<i>MBF</i>			
	Mixed Oak		6.4	MBF			
	<i>Northern Pin Oak</i>		0.9	<i>MBF</i>			
	<i>White Oak</i>		5.5	<i>MBF</i>			
	Red Oak		124.3	MBF			
	Red Pine		0.8	MBF			
	Misc. Species 1		Pulpwood	15.0			Cords
	Mixed Aspen			10.0			Cords
	<i>B. T. Aspen</i>	6.0		<i>Cords</i>			
	<i>Quaking Aspen</i>	4.0		<i>Cords</i>			
	Mixed Oak	505.0		Cords			
	<i>Northern Pin Oak</i>	7.0		<i>Cords</i>			
	<i>Red Oak</i>	455.0		<i>Cords</i>			
	<i>White Oak</i>	43.0		<i>Cords</i>			
	Red Maple	29.0	Cords				
	<i>Red Maple</i>	29.0	<i>Cords</i>				
Red Pine	17.0	Cords					
<i>Jack Pine</i>	1.0	<i>Cords</i>					
<i>Red Pine</i>	16.0	<i>Cords</i>					
3	Mixed Oak	Sawtimber	18.1	MBF	33.7	\$23,731.20	
	<i>Northern Pin Oak</i>		7.0	<i>MBF</i>			
	<i>White Oak</i>		11.1	<i>MBF</i>			
	Red Oak		27.1	MBF			
	Red Pine		4.7	MBF			
	Misc. Species 1		Pulpwood	88.0			Cords
	Mixed Aspen	6.0		Cords			
	<i>Quaking Aspen</i>	6.0		<i>Cords</i>			
	Mixed Oak	272.0		Cords			
	<i>Northern Pin Oak</i>	99.0		<i>Cords</i>			
	<i>Red Oak</i>	108.0		<i>Cords</i>			
	<i>White Oak</i>	65.0	<i>Cords</i>				
Red Maple	36.0	Cords					

Description of Timber by Payment Unit (PU), con't

PU	MARKET GROUP	PRODUCT	QUANTITY	UNIT	ACRES	ADVERTISE PRICE
3 con't	<i>Red Maple</i>	<i>Pulpwood</i>	36.0	<i>Cords</i>		
	Red Pine		72.0	Cords		
	<i>Jack Pine</i>		2.0	<i>Cords</i>		
	<i>Red Pine</i>		70.0	<i>Cords</i>		
TOTAL:			393.1	MBF		
TOTAL:			1,984.0	Cords		

Sale Specific Conditions & Requirements

Sale Name: Deer Hunters Oak

Sale Number: 72-041-16 Seq#: 2

1 - Sale Area

1.2 - Boundaries

1.2.1 - Painted boundaries (1/14)

The sale boundary and Payment Unit boundaries are marked and identified by blue, red and yellow paint. Exterior sale boundary lines against private property are marked with blue paint. Exterior sale boundary lines against state and retention islands are marked with red paint. Interior Payment Unit boundaries are marked with yellow paint. The painted boundary line trees are not Included Timber and are to be protected. Yellow painted trees designating an interior Payment Unit boundary are only to be cut when all surrounding Payment Units have been paid.

2 - Timber Specifications

2.1 - Included Timber

2.1.1 - Clearcut unit(s) with unmerchantable trees (6/14)

Within Payment Unit(s) 1-3, cut all trees that are two (2) inches or more at DBH.

2.1.11 - Description of timber note (2/04)

Note that Misc. Species 1 = dead oak, which is designated for cutting.

3 - Payments

3.3 - Pre-measured Sales

3.3.4 - Dividing payment units (7/14)

Payment Unit(s) may be divided at the request of the Purchaser and upon approval of the Unit Manager. Dividing Payment Units is a contract modification which requires a Timber Sale Contract Supplement.

4 - Transportation

4.1 - Construction

4.1.3 - Slash and earthen piles (8/04)

Piles or windrows of earth along roads and landings that have been widened or constructed shall be leveled. Slash from road maintenance or construction, including stumps, shall be dispersed throughout the sale.

4.1.6 - Road construction (1/09)

Construction of new roads or improvements of existing roads shall be done in such a way as to minimize the environmental and visual impacts. Merchantable trees shall be cut and utilized unless otherwise directed. Non-merchantable trees shall be severed and laid flat on the ground. Slash shall be scattered, and not left in windrows and kept a minimum of 10 feet back from the road edge. Stumps shall be set upright, not left on edge, and be moved at least 10 feet away from the road edge. Disturbed soil shall be feathered into the woods and not left in berms or windrows.

4.1.7 - Road closure (10/11)

All new roads built into the sale must be blocked to vehicle traffic upon completion of the sale. Overgrown roads that are reopened shall be considered new roads. In general, this will require constructing a four (4') foot high berm of stumps and logs covered with earth. Stumps and brush must be placed along the remainder of the trail. These roads must be rendered impassable to cars and trucks. Contact the sale administrator for specific details of design and placement.

5 - Operations

5.1 - Notification

5.1.1 - Pre-sale conference (10/11)

A pre-sale conference on site between the Purchaser and sale administrator is required prior to beginning any operations to determine landing and road locations. The Unit Manager or his/her representative must be contacted at least 5 days in advance to schedule the conference.

5.1.4 - Post-sale conference (6/11)

A post-sale conference on site between the Purchaser and sale administrator is required 5 days prior to the completion of active logging operations to determine clean-up and repair of landings, road edges, and the fulfillment of other contract specifications.

5.2 - Conduct of Operations

5.2.1 - Slash

5.2.1.11 - Slash for reforestation (5/07)

To facilitate reforestation, the sale area shall be left with slash evenly distributed. Bunched tops within the cutting area shall be broken up and scattered. Stumps shall be cut low to the ground. Processing sites shall not be left with a compacted layer of slash; tops from these sites shall be hauled back into the cut area and scattered.

5.2.2 - Hazard Trees/Snags

5.2.2.1 - Den trees (2/04)

Obvious hollow and/or den trees shall be protected and left standing unless they are a safety hazard.

5.2.3 - Operating Restrictions

5.2.3.4 - Oak wilt restriction (6/10)

Within Payment Unit(s) 1-3, unless changed by written agreement, cutting, skidding, and hauling are not permitted during the period of April 15 to July 15. This is necessary to reduce the spread of oak wilt. For more information, contact the Unit Manager or his/her representative.

5.2.32 - Decking/landing restoration (9/13)

All decking and landing areas must have the surface area restored to a condition equal to or better than before. This is to ensure the proper regeneration of the stand. Wood debris, chips and "cookies" from trimmings must be removed or scattered away from landing and loading areas and may not be windrowed on the edge.

5.4 - Soil Protection

5.4.1 - Rutting restriction, general (7/16)

Operations are to cease immediately if equipment and weather conditions result in rutting of roads and/or skid trails which is 12 inches or greater in depth and 50 feet in length. The Unit Manager or his/her representative may restrict hauling and/or skidding if ruts exceed the specified depth. With the Unit Manager or his/her representative's approval, the Purchaser may return to the area when the risk of rutting has decreased.

6 - Safety and Fire Prevention

6.2 - Signing

6.2.1 - Road posting (9/09)

The Purchaser is responsible for posting and maintaining caution signs on the unnamed two track north of Payment Units 1 and 2 prior to beginning operations. The road must be posted at appropriate distances from the sale area to warn of logging activity and truck traffic. Signs must be removed when harvest operations are suspended or completed. The Purchaser will provide these signs.



TIMBER SALE MAP

This information provided by authority of Part 525, 1994 PA 451, as amended.

Forest Management Unit Grayling	County Crawford	Mapped By Matt Foster	Date 09/07/2016	Page 1	of 1
Township 28N	Range 01W	Section(s) and Subdivision(s) Section 25: SW1/4, S1/2NW	Scale 1:15,840		

Cover Type			Density		
-------------------	--	--	----------------	--	--

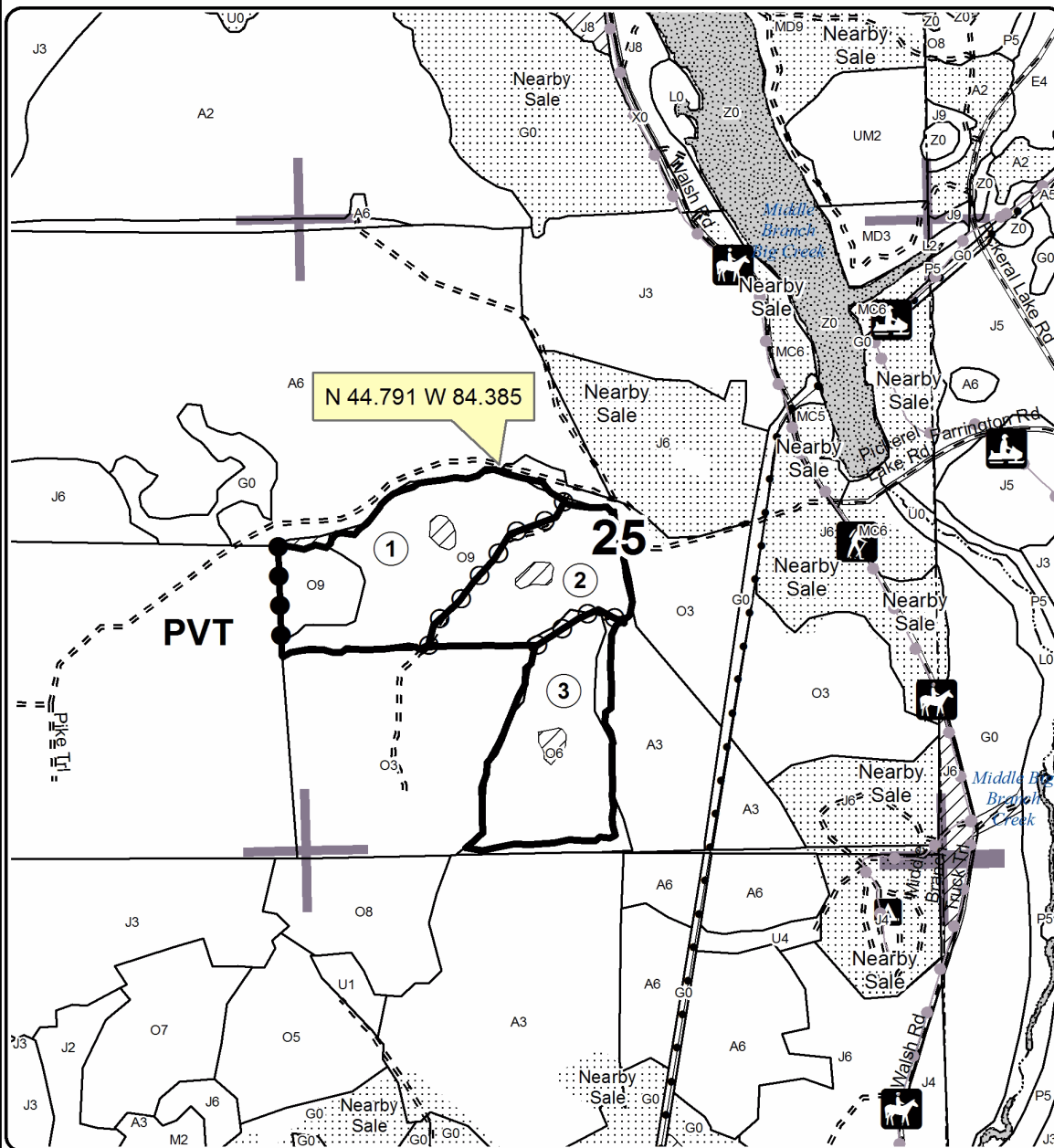
- | | | | | | |
|-------------------|----------------------|-------------------------|-------------------|-----------------------------|------------------------|
| A = Aspen | H = Hemlock | N = Marsh | U = Upland Brush | 0 = Non Stocked | 5 = Pole Timber Medium |
| B = Paper Birch | J = Jack Pine | O = Oak | UM = Upland Mixed | 1 = Seedling Sapling Poor | 6 = Pole Timber Well |
| C = Cedar | L = Lowland Brush | P = Lowland Poplar | V = Bog or Marsh | 2 = Seedling Sapling Medium | 7 = Saw Timber Poor |
| D = Treed Bog | LM = Lowland Mixed | Q = Mixed Swamp Conifer | W = White Pine | 3 = Seedling Sapling Well | 8 = Saw Timber Medium |
| E = Swamp Hdwoods | M = Mpl, Bch, Brch | R = Red Pine | X = Non Stocked | 4 = Pole Timber Poor | 9 = Saw Timber Well |
| F = Spruce Fir | MC = Mixed Conifer | S = Black Spruce | Z = Water | | |
| G = Grass | MD = Mixed Deciduous | T = Tamarack | | | |

PU	Acres
1	43.7
2	25.7
3	33.7

Deer Hunters Oak

Compartment 289

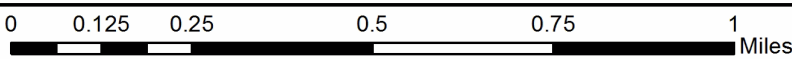
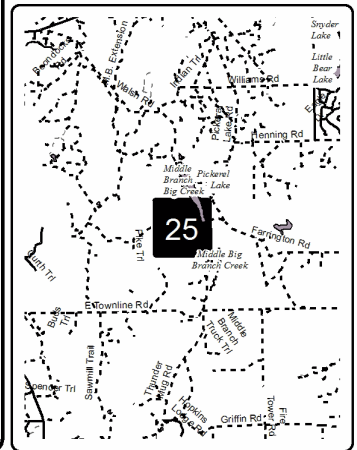
103.1 Acres



Legend

- Against State (Red)
- Payment Unit (Yellow)
- Private Line (Blue)
- Retention Area (Red)
- Section Corners
- Stand Boundaries
- Nearby Timber Sale
- Gravel Roads
- Poor Dirt Roads
- Recreational Trail
- Lakes and Rivers
- Pipeline; Powerline
- PU_Label
- State Forest Campgrounds

Locator Map
1:200,000



TIMBER SALE INFORMATION

Bear Track Jack (72-045-16)
 T28N, R01E, SEC. 30; T28N, R01W, SEC. 25.
 Crawford County (Advertised Price \$30,297.85)

SALE NOTE: The Purchaser is encouraged to cut this during summer months to better scarify soil and maximize regeneration. This sale interfaces with a snowmobile trail and horse trail, which need to be protected. Operations along the horse trail should not occur during designated trail rides as a safety precaution. The sale administrator will provide dates of trail rides as they become available.

A recreation site such as a trail, pathway, or campground is within the sale area or the vicinity. Certain restrictions/specifications may be applicable including time restrictions.

A timber sale contract for this lump sum, sealed bid timber sale will be awarded to the responsible bidder offering the highest sealed bid price. Bids must be at or above the following advertised price for each species:

<u>PRODUCTS & SPECIES</u>	<u>ESTIMATED UNITS*</u>	<u>ADVERTISED PRICE</u>
Sawtimber		
Red Pine	6.80 MBF	\$ 110.00 / MBF
Pulpwood		
Jack Pine	1,233.00 Cords	\$ 16.80 / Cord
Mixed Aspen	180.00 Cords	\$ 23.55 / Cord
Mixed Hardwood	20.00 Cords	\$ 32.60 / Cord
Mixed Oak	81.00 Cords	\$ 20.45 / Cord
Red Pine	55.00 Cords	\$ 41.60 / Cord

* The total volume is statistically estimated within plus (+) or minus (-) 12.77 percent. The estimated units are final and not subject to adjustment. Prospective bidders are urged to examine this timber and to make their own estimates of quantity and quality.

BOND AND PAYMENT SCHEDULE:

1. A bond in the amount of \$1,515.00 to insure faithful performance of the conditions of the contract will be deposited by the successful bidder within 21 days of the sale award.
2. Cutting in any sale or unit without the required advance payment would be considered a trespass.
3. Total payment must be paid in advance or according to the following schedule:
 - (a) Ten percent (10%) of the sale value must be paid within 21 days of the sale award.
 - (b) The 10% down payment will be credited towards the first unit cut.
 - (c) Payment for each of the following units must be made before cutting begins in that unit:

<u>PAYMENT UNIT NUMBER</u>	<u>PERCENT OF TOTAL SALE VALUE</u>
01	37.9%
02	27.2%
03	34.9%
4. If no cutting takes place, the 10% down payment will not be refunded.
5. Operations on the contract issued will terminate on 06/30/2021.

Description of Timber by Payment Unit (PU)

PU	MARKET GROUP	PRODUCT	QUANTITY	UNIT	ACRES	ADVERTISE PRICE
1	Red Pine	Sawtimber	1.1	MBF	38.4	\$11,516.65
	Jack Pine	Pulpwood	513.0	Cords		
	<i>Jack Pine</i>	<i>Sawtimber</i>	16.2	<i>MBF</i>		
	<i>Jack Pine</i>	<i>Pulpwood</i>	481.0	<i>Cords</i>		
	Mixed Aspen		84.0	Cords		
	<i>Quaking Aspen</i>	<i>Sawtimber</i>	1.9	<i>MBF</i>		
	<i>B. T. Aspen</i>	<i>Pulpwood</i>	4.0	<i>Cords</i>		
	<i>Quaking Aspen</i>		76.0	<i>Cords</i>		
	Mixed Hardwood		5.0	Cords		
	<i>Black Cherry</i>		2.0	<i>Cords</i>		
	<i>Red Maple</i>		3.0	<i>Cords</i>		
	Mixed Oak		25.0	Cords		
	<i>Northern Pin Oak</i>	<i>Sawtimber</i>	1.1	<i>MBF</i>		
	<i>Northern Pin Oak</i>	<i>Pulpwood</i>	21.0	<i>Cords</i>		
	<i>White Oak</i>		2.0	<i>Cords</i>		
	Red Pine		3.0	Cords		
	2	Red Pine	Sawtimber	0.8		
Jack Pine		Pulpwood	365.0	Cords		
<i>Jack Pine</i>		<i>Sawtimber</i>	11.5	<i>MBF</i>		
<i>Jack Pine</i>		<i>Pulpwood</i>	342.0	<i>Cords</i>		
Mixed Aspen			60.0	Cords		
<i>Quaking Aspen</i>		<i>Sawtimber</i>	1.4	<i>MBF</i>		
<i>B. T. Aspen</i>		<i>Pulpwood</i>	3.0	<i>Cords</i>		
<i>Quaking Aspen</i>			54.0	<i>Cords</i>		
Mixed Hardwood			4.0	Cords		
<i>Black Cherry</i>			2.0	<i>Cords</i>		
<i>Red Maple</i>			2.0	<i>Cords</i>		
Mixed Oak			19.0	Cords		
<i>Northern Pin Oak</i>		<i>Sawtimber</i>	0.9	<i>MBF</i>		
<i>Northern Pin Oak</i>		<i>Pulpwood</i>	15.0	<i>Cords</i>		
<i>White Oak</i>			2.0	<i>Cords</i>		
Red Pine			2.0	Cords		
3		Red Pine	Sawtimber	4.9	MBF	37.2
	Jack Pine	Pulpwood	355.0	Cords		
	<i>Jack Pine</i>	<i>Sawtimber</i>	21.6	<i>MBF</i>		
	<i>Jack Pine</i>	<i>Pulpwood</i>	312.0	<i>Cords</i>		
	Mixed Aspen		37.0	Cords		
	<i>Quaking Aspen</i>	<i>Sawtimber</i>	1.4	<i>MBF</i>		
	<i>Quaking Aspen</i>	<i>Pulpwood</i>	34.0	<i>Cords</i>		
	Mixed Hardwood		11.0	Cords		
	<i>Black Cherry</i>		6.0	<i>Cords</i>		
	<i>Red Maple</i>		5.0	<i>Cords</i>		
	Mixed Oak		37.0	Cords		
	<i>Northern Pin Oak</i>	<i>Sawtimber</i>	0.6	<i>MBF</i>		
	<i>White Oak</i>		0.5	<i>MBF</i>		
	<i>Northern Pin Oak</i>	<i>Pulpwood</i>	26.0	<i>Cords</i>		
	<i>White Oak</i>		9.0	<i>Cords</i>		
	Red Pine		50.0	Cords		
	TOTAL:			6.8	MBF	
TOTAL:			1,570.0	Cords		

Sale Specific Conditions & Requirements

Sale Name: Bear Track Jack

Sale Number: 72-045-16 Seq#: 2

1 - Sale Area

1.2 - Boundaries

1.2.1 - Painted boundaries (1/14)

The sale boundary and Payment Unit boundaries are marked and identified by red paint, along with a powerline and county road. Exterior sale boundary lines against state and retention islands are marked with red paint. The Interior Payment Unit boundary between Payment Units 1 and 2 is unpainted and identified by the powerline corridor. The Interior Payment Unit boundary between Payment Units 2 and 3 is unpainted and identified by Walsh Road. The painted boundary line trees are not Included Timber and are to be protected.

2 - Timber Specifications

2.1 - Included Timber

2.1.1 - Clearcut unit(s) with unmerchantable trees (6/14)

Within Payment Unit(s) 1-3, cut all trees that are two (2) inches or more at DBH.

2.1.15 - Hazard trees near roads (7/13)

Cut and remove all standing dead trees within 100 feet of the cleared portion of Walsh Road. These trees may be utilized or scattered back into the sale area.

2.2 - Utilization

2.2.2 - Chipping required (2/18)

Payment Units 1-3 must be chip harvested to facilitate future silvicultural activities. The Purchaser has the option to produce sawlogs or pulpwood bolts, but the remaining portion of the trees must be chipped and hauled. The requirement to retain approximately 1/6 to 1/3 of tree tops and limbs less than four inches in diameter is still applicable (G. C. & R. 2.2).

3 - Payments

3.3 - Pre-measured Sales

3.3.4 - Dividing payment units (7/14)

Payment Unit(s) may be divided at the request of the Purchaser and upon approval of the Unit Manager. Dividing Payment Units is a contract modification which requires a Timber Sale Contract Supplement.

4 - Transportation

4.1 - Construction

4.1.3 - Slash and earthen piles (8/04)

Piles or windrows of earth along roads and landings that have been widened or constructed shall be leveled. Slash from road maintenance or construction, including stumps, shall be dispersed throughout the sale.

4.1.6 - Road construction (1/09)

Construction of new roads or improvements of existing roads shall be done in such a way as to minimize the environmental and visual impacts. Merchantable trees shall be cut and utilized unless otherwise directed. Non-merchantable trees shall be severed and laid flat on the ground. Slash shall be scattered, and not left in windrows and kept a minimum of 10 feet back from the road edge. Stumps shall be set upright, not left on edge, and be moved at least 10 feet away from the road edge. Disturbed soil shall be feathered into the woods and not left in berms or windrows.

4.1.7 - Road closure (10/11)

All new roads built into the sale must be blocked to vehicle traffic upon completion of the sale. Overgrown roads that are reopened shall be considered new roads. In general, this will require constructing a four (4') foot high berm of stumps and logs covered with earth. Stumps and brush must be placed along the remainder of the trail. These roads must be rendered impassable to cars and trucks. Contact the sale administrator for specific details of design and placement.

4.1.11 - Permits (2/12)

The Purchaser will secure any necessary permits that may be required.

4.2 - Maintenance

4.2.5 - Two wheel drive condition (2/04)

All existing trail roads on and adjacent to the sale area must be passable by two-wheel drive traffic for the duration of the sale.

5 - Operations

5.1 - Notification

5.1.1 - Pre-sale conference (10/11)

A pre-sale conference on site between the Purchaser and sale administrator is required prior to beginning any operations to determine landing and road locations. The Unit Manager or his/her representative must be contacted at least 5 days in advance to schedule the conference.

5.1.6 - Utility R.O.W. (1/15)

It is the responsibility of the Purchaser to obtain permission from the utility company to utilize the power line R.O.W. for operations.

5.2 - Conduct of Operations

5.2.2 - Hazard Trees/Snags

5.2.2.1 - Den trees (2/04)

Obvious hollow and/or den trees shall be protected and left standing unless they are a safety hazard.

5.2.29 - Shrub protection (9/07)

Do not cut or damage hawthorn, witch-hazel, dogwood or juneberry. These woody-shrub plants are highly beneficial to various wildlife species.

5.2.32 - Decking/landing restoration (9/13)

All decking and landing areas must have the surface area restored to a condition equal to or better than before. This is to ensure the proper regeneration of the stand. Wood debris, chips and "cookies" from trimmings must be removed or scattered away from landing and loading areas and may not be windrowed on the edge.

5.2.40 - Pathway protection (10/10)

The horse and hiking trail is shown on the Timber Sale Map. Do not cut trees or damage posts with blue pathway markers. Maintain a 20-foot wide slash, debris, and rut free zone daily, using the pathway as the centerline. Skidding is prohibited across the trail due to the trail also being a county road. In addition, the Purchaser will be notified when event rides are scheduled for this part of the equestrian trail. It is requested that harvest and hauling operations do not occur within close proximity of the trail when an event is occurring, so as not to spook horses and riders with equipment.

5.2.41 - Snowmobile trail protection (9/11)

The snowmobile trail is shown on the Timber Sale Map. Do not cut or damage posts with orange trail markers or traffic control signs. If the trail is used, it must be maintained and restored to a condition equal to or better than before the sale. The road maintenance/restoration must be done prior to December 1. If the trail road is to be used for hauling during the snowmobile season, then a snow covered base must be left on the trail. The snowmobile trail may not be used for any timber sale operations from December 1 to March 31 without written permission from the Unit Manager. The snowmobile trail may only be crossed at right angles. Maintain a 20 foot wide slash, debris, and rut free zone daily using the snowmobile trail as the centerline. No decking of forest products will be permitted along the snowmobile trail. All stumps within 20 feet of the snowmobile trail must be cut at ground level.

5.4 - Soil Protection

5.4.1 - Rutting restriction, general (7/16)

Operations are to cease immediately if equipment and weather conditions result in rutting of roads and/or skid trails which is 12 inches or greater in depth and 50 feet in length. The Unit Manager or his/her representative may restrict hauling and/or skidding if ruts exceed the specified depth. With the Unit Manager or his/her representative's approval, the Purchaser may

return to the area when the risk of rutting has decreased.

6 - Safety and Fire Prevention

6.2 - Signing

6.2.1 - Road posting (9/09)

The Purchaser is responsible for posting and maintaining caution signs on Walsh Road and Pickerel Lake Road prior to beginning operations. The road must be posted at appropriate distances from the sale area to warn of logging activity and truck traffic. Signs must be removed when harvest operations are suspended or completed. The Purchaser will provide these signs.

6.2.2 - Snowmobile trail posting (8/09)

The Purchaser is responsible for posting and maintaining caution signs on the snowmobile trail prior to beginning operations during the snowmobile season (approximately December 1 to March 31). The trail must be posted at appropriate distances from the sale area to warn of logging activity and truck traffic. Signs must be removed when harvest operations are suspended or completed. The Purchaser will provide these signs.

6.2.3 - Recreational trail posting (2/10)

The Purchaser is responsible for posting and maintaining caution signs on the horse trail prior to beginning operations. The trail must be posted at appropriate distances from the sale area to warn of logging activity and truck traffic at both ends of the trail. Signs must be removed when harvest operations are suspended or completed. The Purchaser will provide these signs.



Sale Number	Year
72 - 045	16

TIMBER SALE MAP

This information provided by authority of Part 525, 1994 PA 451, as amended.

Forest Management Unit	County	Mapped By	Date	Page	of
Grayling	Crawford	Matt Foster	09/22/2016	1	1
Township	Range	Section(s) and Subdivision(s)	Scale		
28N	01W	Section 25: NE1/4, E1/2NW, N1/2SE, SESE	1:15,840		

Cover Type				Density			
A = Aspen	H = Hemlock	N = Marsh	U = Upland Brush	0 = Non Stocked	5 = Pole Timber Medium		
B = Paper Birch	J = Jack Pine	O = Oak	UM = Upland Mixed	1 = Seedling Sapling Poor	6 = Pole Timber Well		
C = Cedar	L = Lowland Brush	P = Lowland Poplar	V = Bog or Marsh	2 = Seedling Sapling Medium	7 = Saw Timber Poor		
D = Tread Bog	LM = Lowland Mixed	Q = Mixed Swamp Conifer	W = White Pine	3 = Seedling Sapling Well	8 = Saw Timber Medium		
E = Swamp Hdwoods	M = Mpl. Bch, Brch	R = Red Pine	X = Non Stocked	4 = Pole Timber Poor	9 = Saw Timber Well		
F = Spruce Fir	MC = Mixed Conifer	S = Black Spruce	Z = Water				
G = Grass	MD = Mixed Deciduous	T = Tamarack					

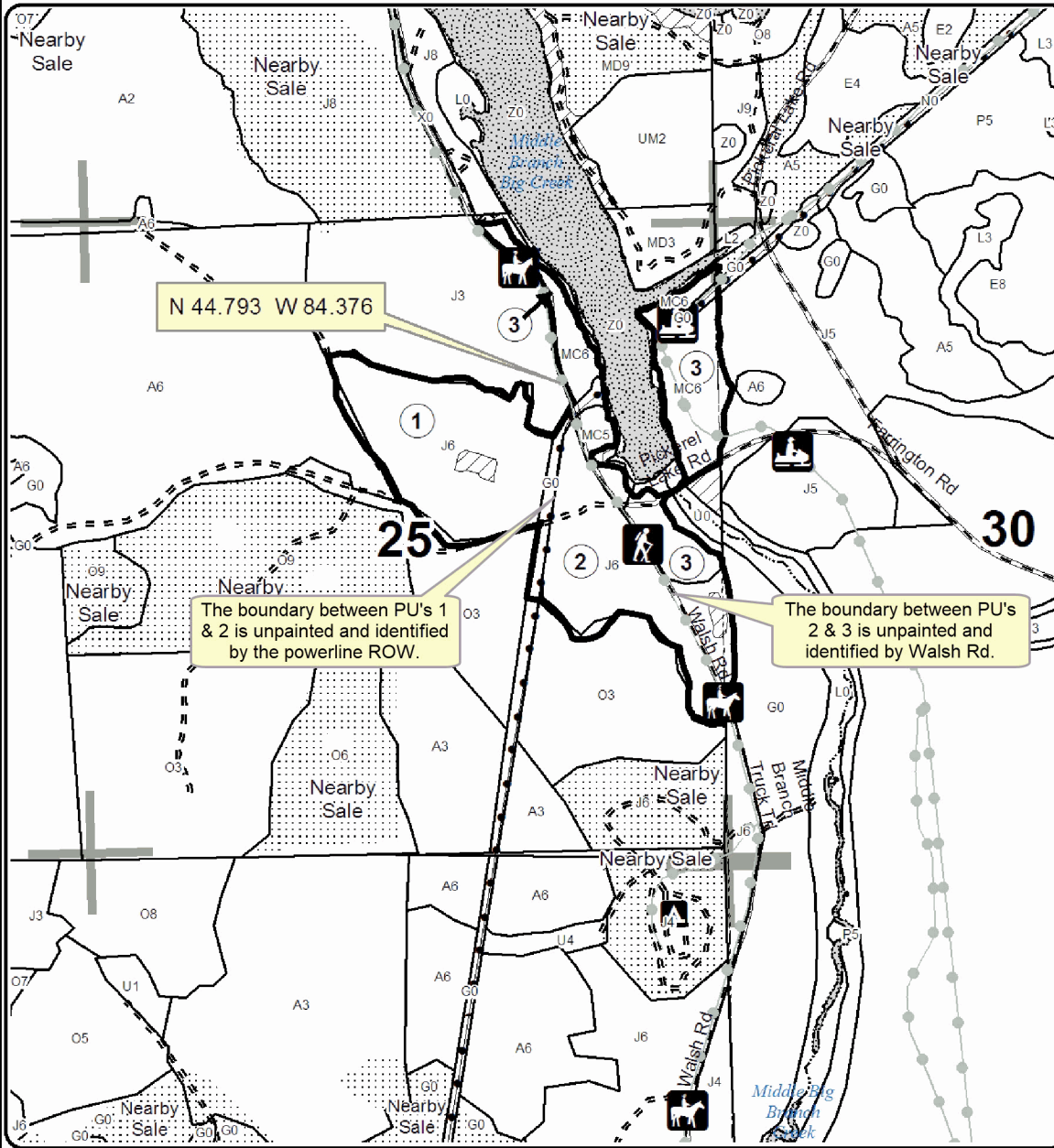
PU Acres

1	38.4
2	27.3
3	37.2

Bear Track Jack

Compartment 289

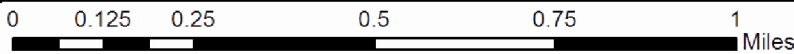
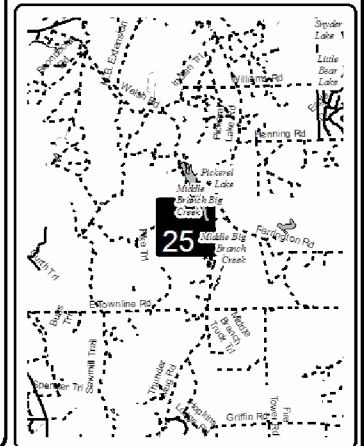
102.9 Acres



Legend

- Against State (Red)
- Retention Area (Red)
- Stand Boundaries
- Section Corners
- Gravel Roads
- Poor Dirt Roads
- Recreational Trail
- State Forest Campgrounds
- Lakes and Rivers
- Nearby Timber Sale
- Pipeline; Powerline
- PU_Label

Locator Map 1:200,000



Two in One Mix (72-026-16)
T28N, R04W, SEC. 32; T28N, R04W, SEC. 33; Crawford COUNTY

In response to the notice of sale to be held 9:00 a.m. (local time) on January 3, 2019, I am hereby submitting my sealed bid (firm offer) for the following forest products to be cut. Bids for individual species must be at or above the advertised price. All non-responsive bid forms may be rejected.

<u>PRODUCTS & SPECIES</u>	<u>ESTIMATED VOLUME*</u>	<u>ADVERTISED PRICE</u>	<u>BID PRICE/UNIT</u>
Sawtimber			
White Pine	10.60 MBF	\$ 59.00/MBF	\$ _____
Pulpwood			
Quaking Aspen	136.00 Cords	\$ 20.40/Cord	\$ _____
Red Maple	36.00 Cords	\$ 28.25/Cord	\$ _____
Red Pine	5.00 Cords	\$ 36.05/Cord	\$ _____
White Pine	29.00 Cords	\$ 24.15/Cord	\$ _____

*The volumes are statistically estimated within plus (+) or minus (-) 43.22 percent. These estimated volumes are final and not subject to adjustment. Prospective bidders are urged to examine this timber and to make their own estimates of quantity and quality.

I understand that any or all bids may be rejected. All bids must be signed and all bid items must be bid or the bid form may be rejected. I also understand that consideration and awarding a contract will be based upon my past performance and ability to complete the contract based upon equipment and staffing subject to my control.

FEDERAL ID: ____ - ____ - ____ or SOCIAL SECURITY NUMBER: ____ - ____ - ____
 Company or individual bidding: _____
 Company representative's name: _____
 Address: _____
 City: _____ State: _____ Zip: _____

IF AVAILABLE, PLEASE PLACE THE PERSONALIZED LABEL FROM YOUR PROSPECTUS IN THE ABOVE BOX.

Individual or company representative's signature: _____ Date: _____

Phone number : _____ Email (optional): _____

THE WINNING BIDDER MUST COMPLETE THE VERIFICATION OF WORKER'S DISABILITY COMPENSATION ACT COMPLIANCE (ON REVERSE SIDE IF DOUBLE SIDED) WITHIN 21 DAYS OF SALE AWARD DATE



FOR DEPARTMENT USE ONLY
Sale Number (XX - XXX - XX - XX)
Forest Management Unit:

TIMBER SALE VERIFICATION OF WORKER'S DISABILITY COMPENSATION ACT COMPLIANCE

*As required by Act 317, P.A. 1969 (Worker's Compensation) and
Part 5 of Act 451 of 1994, as amended.*

VERIFICATION OF WORKER'S DISABILITY COMPENSATION ACT COMPLIANCE

- This verification must be completed and submitted within 21 days of contract award and prior to the issuance of the timber sale contract.
- In addition, if boxes 2B or 2C are checked, then Notice of Exclusion or Certificate of Insurance must be submitted within twenty-one (21) days of the contract award and prior to the issuance of the timber sale contract.
- All information must be typed or printed except for written signatures.

Please Check Appropriate Categories:

1. My business is organized as (you **must** check one of the boxes below):
 - A. Sole Proprietorship (individual)
 - B. Partnership
 - C. Corporation
2. You **must** check one of the boxes below:
 - A. I certify my business is a sole proprietorship and it has no employees but the sole proprietor. I am not subject to the Worker's Compensation Laws.
 - B. I certify my business has satisfied its obligation to the Worker's Compensation Act through the use of an approved Notice of Exclusion (BWC-337, Rev. 5/96). I will provide a copy of the Notice of Exclusion within 21 days of the contract award. (For questions or a copy of the BWC-337, please call the Worker's Compensation Bureau at 517-322-1195).
 - C. I certify my business has a Worker's Compensation Policy. I will provide an original Certificate of Insurance within twenty-one (21) days of the contract award.
3. If you have checked item 2(A) or 2(B), you **must** indicate the number of **both** full-time and part-time employees, other than yourself, including family members and active partners (if none, you must enter "0").

_____ Full-time Employees

_____ Part-time Employees

Name of Business		Federal ID (or) Social Security No.	
Address		Telephone ()	
City	State	ZIP	

I hereby certify that the above information is true and correct. I agree to notify the Michigan DNR of any changes that occur in factors affecting my coverage during any of my present and future operations.

Signature of Owner or Authorized Representative

Title

Date

Please complete the "SEALED BID" information on the next page

Deer Hunters Oak (72-041-16)
T28N, R01W, SEC. 25; Crawford COUNTY

In response to the notice of sale to be held 9:00 a.m. (local time) on January 3, 2019, I am hereby submitting my sealed bid (firm offer) for the following forest products to be cut. Bids for individual species must be at or above the advertised price. All non-responsive bid forms may be rejected.

<u>PRODUCTS & SPECIES</u>	<u>ESTIMATED VOLUME*</u>	<u>ADVERTISED PRICE</u>	<u>BID PRICE/UNIT</u>
Sawtimber			
Mixed Aspen	14.90 MBF	\$ 83.00/MBF	\$ _____
Mixed Oak	39.00 MBF	\$ 217.00/MBF	\$ _____
Red Oak	327.40 MBF	\$ 296.00/MBF	\$ _____
Red Pine	11.80 MBF	\$ 117.00/MBF	\$ _____
Pulpwood			
Misc. Species 1	120.00 Cords	\$ 8.00/Cord	\$ _____
Mixed Aspen	97.00 Cords	\$ 25.10/Cord	\$ _____
Mixed Oak	1,502.00 Cords	\$ 21.80/Cord	\$ _____
Red Maple	148.00 Cords	\$ 34.75/Cord	\$ _____
Red Pine	117.00 Cords	\$ 44.40/Cord	\$ _____

*The volumes are statistically estimated within plus (+) or minus (-) 10.16 percent. These estimated volumes are final and not subject to adjustment. Prospective bidders are urged to examine this timber and to make their own estimates of quantity and quality.

I understand that any or all bids may be rejected. All bids must be signed and all bid items must be bid or the bid form may be rejected. I also understand that consideration and awarding a contract will be based upon my past performance and ability to complete the contract based upon equipment and staffing subject to my control.

FEDERAL ID: ____ - ____ - ____ or SOCIAL SECURITY NUMBER: ____ - ____ - ____

Company or individual bidding: _____

Company representative's name: _____

Address: _____

City: _____ State: _____ Zip: _____

IF AVAILABLE, PLEASE PLACE THE PERSONALIZED LABEL FROM YOUR PROSPECTUS IN THE ABOVE BOX.

Individual or company representative's signature: _____ Date: _____

Phone number : _____ Email (optional): _____

THE WINNING BIDDER MUST COMPLETE THE VERIFICATION OF WORKER'S DISABILITY COMPENSATION ACT COMPLIANCE (ON REVERSE SIDE IF DOUBLE SIDED) WITHIN 21 DAYS OF SALE AWARD DATE



FOR DEPARTMENT USE ONLY
Sale Number (XX - XXX - XX - XX)
Forest Management Unit:

TIMBER SALE VERIFICATION OF WORKER'S DISABILITY COMPENSATION ACT COMPLIANCE

*As required by Act 317, P.A. 1969 (Worker's Compensation) and
Part 5 of Act 451 of 1994, as amended.*

VERIFICATION OF WORKER'S DISABILITY COMPENSATION ACT COMPLIANCE

- This verification must be completed and submitted within 21 days of contract award and prior to the issuance of the timber sale contract.
- In addition, if boxes 2B or 2C are checked, then Notice of Exclusion or Certificate of Insurance must be submitted within twenty-one (21) days of the contract award and prior to the issuance of the timber sale contract.
- All information must be typed or printed except for written signatures.

Please Check Appropriate Categories:

1. My business is organized as (you **must** check one of the boxes below):
 - A. Sole Proprietorship (individual)
 - B. Partnership
 - C. Corporation

2. You **must** check one of the boxes below:
 - A. I certify my business is a sole proprietorship and it has no employees but the sole proprietor. I am not subject to the Worker's Compensation Laws.
 - B. I certify my business has satisfied its obligation to the Worker's Compensation Act through the use of an approved Notice of Exclusion (BWC-337, Rev. 5/96). I will provide a copy of the Notice of Exclusion within 21 days of the contract award. (For questions or a copy of the BWC-337, please call the Worker's Compensation Bureau at 517-322-1195).
 - C. I certify my business has a Worker's Compensation Policy. I will provide an original Certificate of Insurance within twenty-one (21) days of the contract award.

3. If you have checked item 2(A) or 2(B), you **must** indicate the number of **both** full-time and part-time employees, other than yourself, including family members and active partners (if none, you must enter "0").

_____ Full-time Employees _____ Part-time Employees

Name of Business		Federal ID (or) Social Security No.	
Address		Telephone ()	
City	State	ZIP	

I hereby certify that the above information is true and correct. I agree to notify the Michigan DNR of any changes that occur in factors affecting my coverage during any of my present and future operations.

Signature of Owner or Authorized Representative

_____ _____
Title Date

Please complete the "SEALED BID" information on the next page

Bear Track Jack (72-045-16)
T28N, R01E, SEC. 30; T28N, R01W, SEC. 25; Crawford COUNTY

In response to the notice of sale to be held 9:00 a.m. (local time) on January 3, 2019, I am hereby submitting my sealed bid (firm offer) for the following forest products to be cut. Bids for individual species must be at or above the advertised price. All non-responsive bid forms may be rejected.

<u>PRODUCTS & SPECIES</u>	<u>ESTIMATED VOLUME*</u>	<u>ADVERTISED PRICE</u>	<u>BID PRICE/UNIT</u>
Sawtimber			
Red Pine	6.80 MBF	\$ 110.00/MBF	\$ _____
Pulpwood			
Jack Pine	1,233.00 Cords	\$ 16.80/Cord	\$ _____
Mixed Aspen	180.00 Cords	\$ 23.55/Cord	\$ _____
Mixed Hardwood	20.00 Cords	\$ 32.60/Cord	\$ _____
Mixed Oak	81.00 Cords	\$ 20.45/Cord	\$ _____
Red Pine	55.00 Cords	\$ 41.60/Cord	\$ _____

*The volumes are statistically estimated within plus (+) or minus (-) 12.77 percent. These estimated volumes are final and not subject to adjustment. Prospective bidders are urged to examine this timber and to make their own estimates of quantity and quality.

I understand that any or all bids may be rejected. All bids must be signed and all bid items must be bid or the bid form may be rejected. I also understand that consideration and awarding a contract will be based upon my past performance and ability to complete the contract based upon equipment and staffing subject to my control.

FEDERAL ID: _____ or SOCIAL SECURITY NUMBER: _____

Company or individual bidding: _____

Company representative's name: _____

Address: _____

City: _____ State: _____ Zip: _____

IF AVAILABLE, PLEASE PLACE THE PERSONALIZED LABEL FROM YOUR PROSPECTUS IN THE ABOVE BOX.

Individual or company representative's signature: _____ Date: _____

Phone number : _____ Email (optional): _____

THE WINNING BIDDER MUST COMPLETE THE VERIFICATION OF WORKER'S DISABILITY COMPENSATION ACT COMPLIANCE (ON REVERSE SIDE IF DOUBLE SIDED) WITHIN 21 DAYS OF SALE AWARD DATE



FOR DEPARTMENT USE ONLY	
Sale Number (XX - XXX - XX - XX)	
Forest Management Unit:	

TIMBER SALE VERIFICATION OF WORKER'S DISABILITY COMPENSATION ACT COMPLIANCE

As required by Act 317, P.A. 1969 (Worker's Compensation) and
Part 5 of Act 451 of 1994, as amended.

VERIFICATION OF WORKER'S DISABILITY COMPENSATION ACT COMPLIANCE

- This verification must be completed and submitted within 21 days of contract award and prior to the issuance of the timber sale contract.
- In addition, if boxes 2B or 2C are checked, then Notice of Exclusion or Certificate of Insurance must be submitted within twenty-one (21) days of the contract award and prior to the issuance of the timber sale contract.
- All information must be typed or printed except for written signatures.

Please Check Appropriate Categories:

1. My business is organized as (you **must** check one of the boxes below):
 - A. Sole Proprietorship (individual)
 - B. Partnership
 - C. Corporation
2. You **must** check one of the boxes below:
 - A. I certify my business is a sole proprietorship and it has no employees but the sole proprietor. I am not subject to the Worker's Compensation Laws.
 - B. I certify my business has satisfied its obligation to the Worker's Compensation Act through the use of an approved Notice of Exclusion (BWC-337, Rev. 5/96). I will provide a copy of the Notice of Exclusion within 21 days of the contract award. (For questions or a copy of the BWC-337, please call the Worker's Compensation Bureau at 517-322-1195).
 - C. I certify my business has a Worker's Compensation Policy. I will provide an original Certificate of Insurance within twenty-one (21) days of the contract award.
3. If you have checked item 2(A) or 2(B), you **must** indicate the number of **both** full-time and part-time employees, other than yourself, including family members and active partners (if none, you must enter "0").

_____ Full-time Employees

_____ Part-time Employees

Name of Business		Federal ID (or) Social Security No.	
Address		Telephone ()	
City	State	ZIP	

I hereby certify that the above information is true and correct. I agree to notify the Michigan DNR of any changes that occur in factors affecting my coverage during any of my present and future operations.

Signature of Owner or Authorized Representative

Title

Date

Please complete the "SEALED BID" information on the next page

Kickoff Oak (72-013-18)

T27N, R01E, SEC. 10; T27N, R01E, SEC. 3; T27N, R01E, SEC. 9; Oscoda

In response to the notice of sale to be held 9:00 a.m. (local time) on January 3, 2019, I am hereby submitting my sealed bid (firm offer) for the following forest products to be cut. Bids for individual species must be at or above the advertised price. All non-responsive bid forms may be rejected.

<u>PRODUCTS & SPECIES</u>	<u>ESTIMATED VOLUME*</u>	<u>ADVERTISED PRICE</u>	<u>BID PRICE/UNIT</u>
Sawtimber			
Northern Pin Oak	225.20 MBF	\$ 204.00/MBF	\$ _____
Quaking Aspen	59.90 MBF	\$ 78.00/MBF	\$ _____
Red Pine	93.90 MBF	\$ 110.00/MBF	\$ _____
Pulpwood			
Jack Pine	47.00 Cords	\$ 16.80/Cord	\$ _____
Mixed Hardwood	216.00 Cords	\$ 32.60/Cord	\$ _____
Northern Pin Oak	858.00 Cords	\$ 20.45/Cord	\$ _____
Quaking Aspen	384.00 Cords	\$ 23.55/Cord	\$ _____
Red Pine	258.00 Cords	\$ 41.60/Cord	\$ _____
White Pine	129.00 Cords	\$ 27.85/Cord	\$ _____

*The volumes are statistically estimated within plus (+) or minus (-) 8.16 percent. These estimated volumes are final and not subject to adjustment. Prospective bidders are urged to examine this timber and to make their own estimates of quantity and quality.

I understand that any or all bids may be rejected. All bids must be signed and all bid items must be bid or the bid form may be rejected. I also understand that consideration and awarding a contract will be based upon my past performance and ability to complete the contract based upon equipment and staffing subject to my control.

FEDERAL ID: ____ - ____ - ____ or SOCIAL SECURITY NUMBER: ____ - ____ - ____

Company or individual bidding: _____

Company representative's name: _____

Address: _____

City: _____ State: _____ Zip: _____

IF AVAILABLE, PLEASE PLACE THE PERSONALIZED LABEL FROM YOUR PROSPECTUS IN THE ABOVE BOX.

Individual or company representative's signature: _____ Date: _____

Phone number : _____ Email (optional): _____

THE WINNING BIDDER MUST COMPLETE THE VERIFICATION OF WORKER'S DISABILITY COMPENSATION ACT COMPLIANCE (ON REVERSE SIDE IF DOUBLE SIDED) WITHIN 21 DAYS OF SALE AWARD DATE



FOR DEPARTMENT USE ONLY
Sale Number (XX - XXX - XX - XX)
Forest Management Unit:

TIMBER SALE VERIFICATION OF WORKER'S DISABILITY COMPENSATION ACT COMPLIANCE

*As required by Act 317, P.A. 1969 (Worker's Compensation) and
Part 5 of Act 451 of 1994, as amended.*

VERIFICATION OF WORKER'S DISABILITY COMPENSATION ACT COMPLIANCE

- This verification must be completed and submitted within 21 days of contract award and prior to the issuance of the timber sale contract.
- In addition, if boxes 2B or 2C are checked, then Notice of Exclusion or Certificate of Insurance must be submitted within twenty-one (21) days of the contract award and prior to the issuance of the timber sale contract.
- All information must be typed or printed except for written signatures.

Please Check Appropriate Categories:

1. My business is organized as (you **must** check one of the boxes below):
 - A. Sole Proprietorship (individual)
 - B. Partnership
 - C. Corporation
2. You **must** check one of the boxes below:
 - A. I certify my business is a sole proprietorship and it has no employees but the sole proprietor. I am not subject to the Worker's Compensation Laws.
 - B. I certify my business has satisfied its obligation to the Worker's Compensation Act through the use of an approved Notice of Exclusion (BWC-337, Rev. 5/96). I will provide a copy of the Notice of Exclusion within 21 days of the contract award. (For questions or a copy of the BWC-337, please call the Worker's Compensation Bureau at 517-322-1195).
 - C. I certify my business has a Worker's Compensation Policy. I will provide an original Certificate of Insurance within twenty-one (21) days of the contract award.
3. If you have checked item 2(A) or 2(B), you **must** indicate the number of **both** full-time and part-time employees, other than yourself, including family members and active partners (if none, you must enter "0").

_____ Full-time Employees

_____ Part-time Employees

Name of Business		Federal ID (or) Social Security No.	
Address		Telephone ()	
City	State	ZIP	

I hereby certify that the above information is true and correct. I agree to notify the Michigan DNR of any changes that occur in factors affecting my coverage during any of my present and future operations.

Signature of Owner or Authorized Representative

Title

Date

Please complete the "SEALED BID" information on the next page

McMasters Pine (72-018-18)
T27N, R01W, SEC. 21; T27N, R01W, SEC. 22; T27N, R01W, SEC. 27; T27N,

In response to the notice of sale to be held 9:00 a.m. (local time) on January 3, 2019, I am hereby submitting my sealed bid (firm offer) for the following forest products to be cut. Bids for individual species must be at or above the advertised price. All non-responsive bid forms may be rejected.

<u>PRODUCTS & SPECIES</u>	<u>ESTIMATED VOLUME*</u>	<u>ADVERTISED PRICE</u>	<u>BID PRICE/UNIT</u>
Pulpwood			
BI/R/Hybrid Oak	568.00 Cords	\$ 20.45/Cord	\$ _____
Jack Pine	4,376.00 Cords	\$ 16.80/Cord	\$ _____
Quaking Aspen	175.00 Cords	\$ 23.55/Cord	\$ _____
Red Pine	2,827.00 Cords	\$ 41.60/Cord	\$ _____
White Oak	17.00 Cords	\$ 20.45/Cord	\$ _____
White Pine	3.00 Cords	\$ 27.85/Cord	\$ _____

*The volumes are statistically estimated within plus (+) or minus (-) 10.67 percent. These estimated volumes are final and not subject to adjustment. Prospective bidders are urged to examine this timber and to make their own estimates of quantity and quality.

I understand that any or all bids may be rejected. All bids must be signed and all bid items must be bid or the bid form may be rejected. I also understand that consideration and awarding a contract will be based upon my past performance and ability to complete the contract based upon equipment and staffing subject to my control.

FEDERAL ID: ___ - ___ - ___ or SOCIAL SECURITY NUMBER: ___ - ___ - ___

Company or individual bidding: _____

Company representative's name: _____

Address: _____

City: _____ State: _____ Zip: _____

IF AVAILABLE, PLEASE PLACE THE PERSONALIZED LABEL FROM YOUR PROSPECTUS IN THE ABOVE BOX.

Individual or company representative's signature: _____ Date: _____

Phone number : _____ Email (optional): _____

THE WINNING BIDDER MUST COMPLETE THE VERIFICATION OF WORKER'S DISABILITY COMPENSATION ACT COMPLIANCE (ON REVERSE SIDE IF DOUBLE SIDED) WITHIN 21 DAYS OF SALE AWARD DATE



FOR DEPARTMENT USE ONLY	
Sale Number (XX - XXX - XX - XX)	
Forest Management Unit:	

TIMBER SALE VERIFICATION OF WORKER'S DISABILITY COMPENSATION ACT COMPLIANCE

As required by Act 317, P.A. 1969 (Worker's Compensation) and
Part 5 of Act 451 of 1994, as amended.

VERIFICATION OF WORKER'S DISABILITY COMPENSATION ACT COMPLIANCE

- This verification must be completed and submitted within 21 days of contract award and prior to the issuance of the timber sale contract.
- In addition, if boxes 2B or 2C are checked, then Notice of Exclusion or Certificate of Insurance must be submitted within twenty-one (21) days of the contract award and prior to the issuance of the timber sale contract.
- All information must be typed or printed except for written signatures.

Please Check Appropriate Categories:

1. My business is organized as (you **must** check one of the boxes below):
 - A. Sole Proprietorship (individual)
 - B. Partnership
 - C. Corporation
2. You **must** check one of the boxes below:
 - A. I certify my business is a sole proprietorship and it has no employees but the sole proprietor. I am not subject to the Worker's Compensation Laws.
 - B. I certify my business has satisfied its obligation to the Worker's Compensation Act through the use of an approved Notice of Exclusion (BWC-337, Rev. 5/96). I will provide a copy of the Notice of Exclusion within 21 days of the contract award. (For questions or a copy of the BWC-337, please call the Worker's Compensation Bureau at 517-322-1195).
 - C. I certify my business has a Worker's Compensation Policy. I will provide an original Certificate of Insurance within twenty-one (21) days of the contract award.
3. If you have checked item 2(A) or 2(B), you **must** indicate the number of **both** full-time and part-time employees, other than yourself, including family members and active partners (if none, you must enter "0").

_____ Full-time Employees

_____ Part-time Employees

Name of Business		Federal ID (or) Social Security No.	
Address		Telephone ()	
City	State	ZIP	

I hereby certify that the above information is true and correct. I agree to notify the Michigan DNR of any changes that occur in factors affecting my coverage during any of my present and future operations.

Signature of Owner or Authorized Representative

Title

Date

Please complete the "SEALED BID" information on the next page