



**DEPARTMENT OF NATURAL RESOURCES  
STATE OF MICHIGAN**

**TIMBER SALE PROSPECTUS #6303**

SCHEDULED SALE DATE AND TIME: 4:00 p.m. (local time) on January 28, 2019.

LOCATION: KALKASKA FIELD OFFICE, 2089 NORTH BIRCH STREET, KALKASKA, MI 49646.

PROSPECTUS NOTE: The bidder is advised to inspect the sale area and review the location, estimated volumes, operating costs and contract terms of proposed sales. Please be aware that some landowners may request 60 days or more notice for access across their land.

Notice is hereby given that bids will be received by the Unit Manager, TRAVERSE CITY MANAGEMENT UNIT, for certain timber on the following described lands:

106 Hardwood Scuffle (61-140-18) / T28N, R05W, SEC. 13, NW,N1/2SW,SWSW.

T28N, R05W, SEC. 14, SENW,NESW,SWSW,SESE.

T28N, R05W, SEC. 23, N1/2NW,SEW,N1/2NE,SWNE,N1/2SE.

T28N, R05W, SEC. 24, NWNW,NWSW.

Kalkaska County, Advertised Price \$332,438.85, 478.1 Acres, Hardwood, Aspen.

SALE NOTE: Please note all Payment Units, have additional requirements to sever beech and ironwood understory/brush 1 inch DBH and up and there are equipment recommendations regarding the cutting of this understory/brush, see sale specification 5.2.16 for further details.

In Addition, there is +/- 256.6 MBF and +/- 2359 cords of beech that is in varying stages of decline from beech bark disease. Purchaser is encouraged to inspect the area and make their own judgement regarding beech decline and quality.

A recreation site such as a trail, pathway, or campground is within the sale area or the vicinity. Certain restrictions/specifications may be applicable including time restrictions.

Underdog Mix (61-158-18) / T27N, R06W, SEC. 25, E1/2SW,W1/2SE.

T27N, R06W, SEC. 35, NENE.

T27N, R06W, SEC. 36, NW,NE,W1/2SW.

Kalkaska County, Advertised Price \$145,852.30, 167.4 Acres, Aspen, Hardwood.

Hansel and Kettle Mix (61-161-18) / T27N, R05W, SEC. 30, SENW,SWNE,E1/2SW,NWSE,S1/2SE.

T27N, R05W, SEC. 31, S1/2NW,N1/2NE,SWNE,SW,SE.

T27N, R06W, SEC. 36, SESE.

Kalkaska County, Advertised Price \$168,151.20, 264.5 Acres, Aspen, Hardwood.

SALE NOTE: A recreation site such as a trail, pathway, or campground is within the sale area or the vicinity. Certain restrictions/specifications may be applicable including time restrictions.

Mean Dogs Mix (61-162-18) / T28N, R07W, SEC. 8, S1/2NE,E1/2SW,SE.

Kalkaska County, Advertised Price \$139,531.00, 152.7 Acres, Hardwood, Aspen.

## BID INSTRUCTIONS (VER. 07/02/2018):

### 1. Scheduled Bid Location, Date, and Time (2/11)

Bids must be received by the Unit Manager, KALKASKA OFFICE, 2089 North Birch Street, Kalkaska, MI 49646, no later than 4:00 p.m. (local time) on January 28, 2019. For further information concerning this sale, contact David Lemmien at 231-922-5280 extension 6840.

### 2. Bidder's Qualifications (5/16)

Purchaser shall obtain workers compensation insurance to cover claims under Michigan's Worker's Disability Compensation Act of 1969 or similar employee benefit act of any other state applicable to an employee. If all or part of a timber sale was prepared by a private contractor, the contractor and that contractor's company are not permitted to bid on the timber sale contract. Bids will not be accepted from individuals or companies appearing on the DNR/FRD No-Bid List. This list contains the names of purchasers who previously failed to execute a contract within 21-days or who have a history of poor performance.

### 3. Preparation of Sealed Bids (5/16)

Bid Forms may be completed online thru Michigan DNR Timber Sale Online Bidding (OLB) at [www.michigan.gov/timberbidding](http://www.michigan.gov/timberbidding) or by completing the hardcopy Bid Form found in the Timber Sale Prospectus. Hardcopy Bid Forms shall be manually signed in ink. Registration in OLB is considered your 'signature' for all bids submitted thru that system. Bid prices must be entered for each species and product in the Bid Price column for all material subject to bidding and all fill-in blanks must be completed. If erasures or other changes appear on the hardcopy Bid Form, each erasure or change must be initialed by the person signing the bid.

### 4. Submission of Sealed Bids (5/16)

Bid forms may be obtained from the Unit Manager or thru OLB. Bids may be submitted hardcopy or thru OLB. All hardcopy bids must be submitted on the bid form and in an envelope clearly identified as described in this section. NOTE: Only one bid form per bid envelope. Sealed bids must be submitted to the Unit office designated in the prospectus and must be submitted at or prior to the time established in the prospectus. The envelope should show on the outside (a) the sale name or number and (b) the date and time of bid opening, as shown in the prospectus. Bids received after the time specified in the sale prospectus are late bids and will be rejected.

It is possible for a bidder to submit multiple bids on a single sale. For example, a bid may be submitted hardcopy and a bid may be submitted thru OLB. Or, two bidders from the same company could both submit bids on the same sale. If this were to happen, the State would accept all bids received and award the contract accordingly. All bidding and contractual requirements would apply to all bids received.

### 5. Public Opening of Sealed Bids (7/16)

If conditions permit, the sealed bids will be publicly opened and posted at the time and place set in the prospectus.

If a bidder, present at a bid opening, has submitted bids on more than one sale, that bidder may withdraw their unopened bid envelopes or announce the withdrawal of their online bid after being declared the successful bidder on one sale.

### 6. Award of Contract (1/11)

Award of the contract will be made to the Bidder whose bid, conforming to the prospectus, is most advantageous to the State of Michigan on the basis of total value at rates bid for the estimated quantities. The State reserves the right to reject any bid or waive any minor irregularity in bids received. A written award mailed (or otherwise furnished) to the successful Bidder shall be deemed to result in a binding contract without further action by either party.

### 7. Down Payment (1/11)

The Bidder to whom award is made must make a down payment within 21 days of the sale award. The amount of the down payment will be calculated as shown in the Bond and Payment Schedule of this prospectus. Only cash may be used to meet this requirement.

### 8. Performance Security (1/11)

As guarantee of faithful performance, a cash bond, certificate of deposit, surety bond or irrevocable letter of credit (LOC) is required within 21 days of the sale award. The amount of the performance security is shown in the Bond and

Payment Schedule of this prospectus. If an LOC or surety is used, the coverage must extend for at least 6 months beyond the contract expiration.

#### 9. Timber Sale Contract (7/18)

Additional conditions and requirements common to all timber sales are listed on the timber sale contract (R4031) and are available on line at [www.michigan.gov/timber](http://www.michigan.gov/timber). Contact the Unit Manager for additional information or a sample contract. Within 21 days of the date of the award letter, the bidder must sign the contract and provide the required down payment, performance security, and verification of worker's disability compensation. The down payment and performance security shall be in accordance with the provisions of the timber sale contract, in the sums stated in this prospectus. If these actions are not taken, then the Bidder, the Bidder's corporation, and the corporation's principals may not be permitted to bid on State timber sales for a period of 3 months after the first offense, 6 months after the second offense, and 1 year after the third offense. An offense will only be counted against the Bidder for 5 years. In addition, the Bidder certifies that if awarded this contract, the Bidder will complete the timber sale contract in accordance with its terms and any modifications thereof including requirements to purchase, cut, and remove the included timber by the expiration date.

Payment Unit values in the State Forest Timber Sale Contract are calculated based on the advertised value of the Payment Unit as a percentage of the total advertised value of the contract. The advertised value of each Payment Unit is given in the Description of Timber by Payment Unit table on the Timber Sale Information page. For example, if the value of Payment Unit 1 is advertised as \$1,500 and the total Timber Sale value is advertised as \$10,000, the contract price for Payment Unit 1 will be 15% of the total bid price ( $\$1,500/\$10,000 * 100$ ).

#### 10. Disclaimer of Estimates and Bidder's Warranty of Inspection (7/16)

Before submitting this bid, the Bidder is advised and cautioned to inspect the sale area, review the requirements of the sale contract, and take other steps as may be reasonably necessary to ascertain the location, estimated volumes, construction estimates, and operating costs of the proposed sale. Failure to do so will not relieve the Bidder from responsibility for completing the contract.

The Bidder warrants that this bid is submitted solely on the basis of the Bidder's examination and inspection of the quality and quantity of the timber offered for sale and the Bidder's opinion of the value thereof and the costs of recovery. No reliance should be placed on the State of Michigan's estimates of timber quality, quantity or costs of recovery. Bidder further acknowledges that the State of Michigan: (i) expressly disclaims any warranty of fitness of timber for any purpose; (ii) offers this timber as is without any warranty of quality (merchantability) or quantity and (iii) expressly disclaims any warranty as to the quantity or quality of timber sold.

#### 11. Certification and Chain-of-Custody (10/14)

Unless otherwise indicated in the contract under section 7 – Other Conditions of the Sale Specific Conditions & Requirements, the area encompassed by this timber sale is certified to the standards of the Forest Stewardship Council (FSC) - Certificate #SCS-FM/COC-00090N and the Sustainable Forestry Initiative (SFI) - Certificate #NSF-SFIS-5Y031-SF5. Forest products from this sale may be delivered to the mill as "FSC 100% and / or SFI certified" as long as the contractor hauling the forest products is chain-of-custody (COC) certified or covered under a COC certificate from the destination mill. The purchaser is responsible for maintaining COC after leaving the sale area.

#### 12. Good Neighbor Authority (GNA) Requirements (7/16)

If the name of this timber sales contains the acronym GNA, it is authorized by the Good Neighbor Authority (GNA) and covered by various agreements between the U.S. Forest Service and the State. The timber sale occurs on federal land and the following conditions apply:

GNA contracts on US Forest Service land will not be awarded to purchasers on the Federal list of excluded parties. The System for Award Management (SAM) will be checked for active excluded parties prior to award of contract. In addition, the Bidder to whom award is made must complete an Assurance Regarding Felony Conviction or Tax Delinquent Status for Corporate Applicants (AD-3031).

#### 13. Good Neighbor Authority (GNA) Requirements, con't (9/16)

Bidder certifies, by signing this bid form, that to the best of Bidder's knowledge that the following representations are accurate and complete.

- a. That the Bidder and its principals are not presently debarred, suspended, proposed for debarment, declared ineligible, or voluntary excluded from timber sales (covered transactions) by any Federal department or agency.
- b. That the Bidder and its principals have not within a 3-year period preceding this bid been convicted of or had a civil judgment rendered against them for commission of fraud or a criminal offense in connection with obtaining, attempting to obtain, or performing a public (Federal, State, or local) transaction or contract under a public transaction; violation of Federal or State antitrust statutes or commission of embezzlement, theft, forgery, bribery, falsification or destruction of records, making false statements, or receiving stolen property.
- c. That the Bidder and its principals are not presently indicted for or otherwise criminally or civilly charged by a governmental entity (Federal, State, or local) with commission of any of the offenses enumerated in paragraph b of this certification.
- d. That the Bidder and its principals have not within a 3-year period preceding this bid had one or more public transactions (Federal, State, or local) terminated for breach or default of a timber or forest product contract.

Bidders that cannot certify this requirement, in whole or in part, shall submit an explanation with their bid.

DAN EICHINGER  
Director

**TIMBER SALE INFORMATION**

106 Hardwood Scuffle (61-140-18)

T28N, R05W, SEC. 13; T28N, R05W, SEC. 14; T28N, R05W, SEC. 23; T28N, R05W, SEC. 24.  
Kalkaska County (Advertised Price \$332,438.85)

SALE NOTE: Please note all Payment Units, have additional requirements to sever beech and ironwood understory/brush 1 inch DBH and up and there are equipment recommendations regarding the cutting of this understory/brush, see sale specification 5.2.16 for further details.

In Addition, there is +/- 256.6 MBF and +/- 2359 cords of beech that is in varying stages of decline from beech bark disease. Purchaser is encouraged to inspect the area and make there own judgement regarding beech decline and quality.

A recreation site such as a trail, pathway, or campground is within the sale area or the vicinity. Certain restrictions/specifications may be applicable including time restrictions.

A timber sale contract for this lump sum, sealed bid timber sale will be awarded to the responsible bidder offering the highest sealed bid price. Bids must be at or above the following advertised price for each species:

<u>PRODUCTS &amp; SPECIES</u>	<u>ESTIMATED UNITS*</u>	<u>ADVERTISED PRICE</u>
<b>Sawtimber</b>		
Basswood	174.20 MBF	\$ 79.00 / MBF
Beech	257.60 MBF	\$ 89.00 / MBF
Mixed Aspen	240.00 MBF	\$ 80.00 / MBF
Paper Birch	5.20 MBF	\$ 35.00 / MBF
Red Maple	201.80 MBF	\$ 82.00 / MBF
Red Oak	4.00 MBF	\$ 186.00 / MBF
Red Pine	416.10 MBF	\$ 80.00 / MBF
Sugar Maple	484.90 MBF	\$ 221.00 / MBF
White Pine	20.50 MBF	\$ 36.00 / MBF
<b>Pulpwood</b>		
Basswood	402.00 Cords	\$ 16.55 / Cord
Beech	2,359.00 Cords	\$ 13.55 / Cord
Mixed Aspen	1,031.00 Cords	\$ 14.95 / Cord
Mixed Hardwood	3,817.00 Cords	\$ 13.55 / Cord
Red Pine	414.00 Cords	\$ 27.60 / Cord
White Pine	74.00 Cords	\$ 9.60 / Cord

\* The total volume is statistically estimated within plus (+) or minus (-) 7.72 percent. The estimated units are final and not subject to adjustment. Prospective bidders are urged to examine this timber and to make their own estimates of quantity and quality.

**BOND AND PAYMENT SCHEDULE:**

1. A bond in the amount of \$16,622.00 to insure faithful performance of the conditions of the contract will be deposited by the successful bidder within 21 days of the sale award.
2. Cutting in any sale or unit without the required advance payment would be considered a trespass.
3. Total payment must be paid in advance or according to the following schedule:
  - (a) Ten percent (10%) of the sale value must be paid within 21 days of the sale award.
  - (b) The 10% down payment will be credited towards the first unit cut.
  - (c) Payment for each of the following units must be made before cutting begins in that unit:

<u>PAYMENT UNIT NUMBER</u>	<u>PERCENT OF TOTAL SALE VALUE</u>
01	3.6%
02	6.7%
03	11.4%
04	13.2%
05	5.6%
06	14.1%
07	4.1%
08	3.4%
09	7.0%
10	4.4%
11	19.0%
12	7.5%

4. If no cutting takes place, the 10% down payment will not be refunded.
5. Operations on the contract issued will terminate on 03/31/2022.

**Description of Timber by Payment Unit (PU)**

PU	MARKET GROUP	PRODUCT	QUANTITY	UNIT	ACRES	ADVERTISE PRICE	
1	Mixed Aspen	Sawtimber	22.4	MBF	16.4	\$12,032.95	
	<i>B. T. Aspen</i>		22.4	<i>MBF</i>			
	Red Maple		12.8	MBF			
	Sugar Maple		21.3	MBF			
	Basswood		Pulpwood	22.0			Cords
	Beech			4.0			Cords
	Mixed Aspen			107.0			Cords
	<i>B. T. Aspen</i>			101.0			<i>Cords</i>
	<i>Quaking Aspen</i>			6.0			<i>Cords</i>
	Mixed Hardwood			182.0			Cords
	<i>Red Maple</i>			74.0			<i>Cords</i>
	<i>Sugar Maple</i>			108.0			<i>Cords</i>
2	Basswood	Sawtimber	9.7	MBF	33.1	\$22,384.25	
	Beech		1.2	MBF			
	Mixed Aspen		87.9	MBF			
	<i>B. T. Aspen</i>		87.9	<i>MBF</i>			
	Paper Birch		1.6	MBF			
	Red Maple		9.9	MBF			
	Sugar Maple		30.6	MBF			
	White Pine		0.6	MBF			
	Basswood		Pulpwood	20.0			Cords
	Beech			25.0			Cords
	Mixed Aspen			194.0			Cords
	<i>B. T. Aspen</i>			194.0			<i>Cords</i>
	Mixed Hardwood			234.0			Cords
	<i>Black Cherry</i>			4.0			<i>Cords</i>
	<i>Ironwood</i>			9.0			<i>Cords</i>
	<i>Paper Birch</i>			8.0			<i>Cords</i>
	<i>Red Maple</i>			72.0			<i>Cords</i>
	<i>Red Oak</i>			2.0			<i>Cords</i>
<i>Sugar Maple</i>	139.0	<i>Cords</i>					
White Pine	9.0	Cords					
3	Basswood	Sawtimber	81.8	MBF	74.2	\$37,810.75	
	Beech		48.4	MBF			
	Mixed Aspen		59.4	MBF			
	<i>B. T. Aspen</i>		59.4	<i>MBF</i>			
	Red Maple		29.5	MBF			
	Sugar Maple		24.3	MBF			
	Basswood		Pulpwood	159.0			Cords
	Beech			243.0			Cords
	Mixed Aspen			115.0			Cords
	<i>B. T. Aspen</i>			115.0			<i>Cords</i>
	Mixed Hardwood			506.0			Cords
	<i>Ironwood</i>			57.0			<i>Cords</i>
<i>Red Maple</i>	130.0	<i>Cords</i>					
<i>Sugar Maple</i>	319.0	<i>Cords</i>					
4	Basswood	Sawtimber	11.2	MBF	51.1	\$43,918.45	
	Mixed Aspen		11.1	MBF			
	<i>B. T. Aspen</i>		11.1	<i>MBF</i>			
	Paper Birch		2.4	MBF			
	Red Maple		42.4	MBF			
	Red Pine		252.6	MBF			
	Sugar Maple		2.4	MBF			
	White Pine		4.5	MBF			
	Basswood		Pulpwood	76.0			Cords
	Beech			6.0			Cords

Description of Timber by Payment Unit (PU), con't

PU	MARKET GROUP	PRODUCT	QUANTITY	UNIT	ACRES	ADVERTISE PRICE
4 con't	Mixed Aspen	Pulpwood	122.0	Cords		
	<i>B. T. Aspen</i>		122.0	<i>Cords</i>		
	Mixed Hardwood		467.0	Cords		
	<i>Black Cherry</i>		8.0	<i>Cords</i>		
	<i>Ironwood</i>		44.0	<i>Cords</i>		
	<i>Paper Birch</i>		12.0	<i>Cords</i>		
	<i>Red Maple</i>		284.0	<i>Cords</i>		
	<i>Sugar Maple</i>		119.0	<i>Cords</i>		
	Red Pine		292.0	Cords		
	White Pine		14.0	Cords		
5	Mixed Aspen	Sawtimber	7.1	MBF	21.4	\$18,632.95
	<i>B. T. Aspen</i>		7.1	<i>MBF</i>		
	Red Maple		3.7	MBF		
	Red Pine		108.4	MBF		
	Sugar Maple		6.8	MBF		
	White Pine		6.1	MBF		
	Mixed Aspen	Pulpwood	173.0	Cords		
	<i>B. T. Aspen</i>		173.0	<i>Cords</i>		
	Mixed Hardwood		120.0	Cords		
	<i>Black Cherry</i>		7.0	<i>Cords</i>		
	<i>Red Maple</i>		10.0	<i>Cords</i>		
	<i>Sugar Maple</i>		103.0	<i>Cords</i>		
	Red Pine		107.0	Cords		
	White Pine		21.0	Cords		
6	Beech	Sawtimber	65.2	MBF	48.6	\$46,863.85
	Mixed Aspen		18.5	MBF		
	<i>B. T. Aspen</i>	18.5	<i>MBF</i>			
	Paper Birch	1.2	MBF			
	Red Maple	20.1	MBF			
	Sugar Maple	106.7	MBF			
	Beech	Pulpwood	441.0	Cords		
	Mixed Aspen		30.0	Cords		
	<i>B. T. Aspen</i>		17.0	<i>Cords</i>		
	<i>Quaking Aspen</i>		13.0	<i>Cords</i>		
	Mixed Hardwood		582.0	Cords		
	<i>Ironwood</i>		6.0	<i>Cords</i>		
	<i>Paper Birch</i>		7.0	<i>Cords</i>		
	<i>Red Maple</i>		55.0	<i>Cords</i>		
<i>Red Oak</i>	4.0	<i>Cords</i>				
<i>Sugar Maple</i>	510.0	<i>Cords</i>				
7	Beech	Sawtimber	2.2	MBF	18.9	\$13,591.15
	Mixed Aspen		3.2	MBF		
	<i>B. T. Aspen</i>		3.2	<i>MBF</i>		
	Red Maple	6.0	MBF			
	Sugar Maple	37.6	MBF			
	Beech	Pulpwood	25.0	Cords		
	Mixed Aspen		69.0	Cords		
	<i>B. T. Aspen</i>		31.0	<i>Cords</i>		
	<i>Quaking Aspen</i>		38.0	<i>Cords</i>		
	Mixed Hardwood		219.0	Cords		
	<i>Ironwood</i>		17.0	<i>Cords</i>		
<i>Red Maple</i>	29.0		<i>Cords</i>			
<i>Sugar Maple</i>	173.0		<i>Cords</i>			
8	Beech	Sawtimber	11.7	MBF	28.3	\$11,354.15
	Mixed Aspen		5.2	MBF		
	<i>B. T. Aspen</i>		4.0	<i>MBF</i>		



Description of Timber by Payment Unit (PU), con't

PU	MARKET GROUP	PRODUCT	QUANTITY	UNIT	ACRES	ADVERTISE PRICE
8 con't	<i>Quaking Aspen</i>	<i>Sawtimber</i>	1.2	<i>MBF</i>		
	Red Maple		14.7	MBF		
	Red Oak		0.9	MBF		
	Red Pine		7.0	MBF		
	Sugar Maple		10.1	MBF		
	White Pine		2.2	MBF		
	Basswood	Pulpwood	8.0	Cords		
	Beech		214.0	Cords		
	Mixed Aspen		33.0	Cords		
	<i>B. T. Aspen</i>		24.0	<i>Cords</i>		
	<i>Quaking Aspen</i>		9.0	<i>Cords</i>		
	Mixed Hardwood		150.0	Cords		
	<i>Ironwood</i>		4.0	<i>Cords</i>		
	<i>Red Maple</i>		79.0	<i>Cords</i>		
	<i>Red Oak</i>		2.0	<i>Cords</i>		
	<i>Sugar Maple</i>		65.0	<i>Cords</i>		
	Red Pine		1.0	Cords		
	White Pine		7.0	Cords		
	9	Beech	Sawtimber	22.3	MBF	57.3
Mixed Aspen			9.9	MBF		
<i>B. T. Aspen</i>			7.6	<i>MBF</i>		
<i>Quaking Aspen</i>			2.3	<i>MBF</i>		
Red Maple			27.9	MBF		
Red Oak			1.9	MBF		
Red Pine			34.5	MBF		
Sugar Maple			17.9	MBF		
White Pine			4.2	MBF		
Basswood		Pulpwood	16.0	Cords		
Beech			410.0	Cords		
Mixed Aspen			60.0	Cords		
<i>B. T. Aspen</i>			44.0	<i>Cords</i>		
<i>Quaking Aspen</i>			16.0	<i>Cords</i>		
Mixed Hardwood			280.0	Cords		
<i>Ironwood</i>			6.0	<i>Cords</i>		
<i>Red Maple</i>			151.0	<i>Cords</i>		
<i>Red Oak</i>			5.0	<i>Cords</i>		
<i>Sugar Maple</i>			118.0	<i>Cords</i>		
Red Pine			10.0	Cords		
White Pine		14.0	Cords			
10	Beech	Sawtimber	15.4	MBF	36.9	\$14,638.25
	Mixed Aspen		6.8	MBF		
	<i>B. T. Aspen</i>		5.2	<i>MBF</i>		
	<i>Quaking Aspen</i>		1.6	<i>MBF</i>		
	Red Maple		19.2	MBF		
	Red Oak		1.2	MBF		
	Red Pine		9.2	MBF		
	Sugar Maple		12.4	MBF		
	White Pine		2.9	MBF		
	Basswood	Pulpwood	11.0	Cords		
	Beech		283.0	Cords		
	Mixed Aspen		41.0	Cords		
	<i>B. T. Aspen</i>		30.0	<i>Cords</i>		
	<i>Quaking Aspen</i>		11.0	<i>Cords</i>		
	Mixed Hardwood		192.0	Cords		
	<i>Ironwood</i>		4.0	<i>Cords</i>		
<i>Red Maple</i>		104.0	<i>Cords</i>			

**Description of Timber by Payment Unit (PU), con't**

PU	MARKET GROUP	PRODUCT	QUANTITY	UNIT	ACRES	ADVERTISE PRICE	
10 con't	<i>Red Oak</i>	<i>Pulpwood</i>	3.0	<i>Cords</i>			
	<i>Sugar Maple</i>		81.0	<i>Cords</i>			
	Red Pine		1.0	Cords			
	White Pine		9.0	Cords			
11	Basswood	Sawtimber	51.1	MBF	65.7	\$62,929.40	
	Beech		65.2	MBF			
	Mixed Aspen		6.1	MBF			
	<i>B. T. Aspen</i>		6.1	<i>MBF</i>			
	Red Maple		11.2	MBF			
	Red Pine		3.1	MBF			
	Sugar Maple	153.6	MBF				
	Basswood	Pulpwood	64.0	Cords			
	Beech		506.0	Cords			
	Mixed Aspen		63.0	Cords			
	<i>B. T. Aspen</i>		14.0	<i>Cords</i>			
	<i>Quaking Aspen</i>		49.0	<i>Cords</i>			
	Mixed Hardwood		633.0	Cords			
	<i>Ironwood</i>		6.0	<i>Cords</i>			
	<i>Red Maple</i>		30.0	<i>Cords</i>			
	<i>Sugar Maple</i>		597.0	<i>Cords</i>			
	Red Pine		2.0	Cords			
	12		Basswood	Sawtimber	20.4	MBF	26.2
Beech			26.0		MBF		
Mixed Aspen		2.4	MBF				
<i>B. T. Aspen</i>		2.4	<i>MBF</i>				
Red Maple		4.4	MBF				
Red Pine		1.3	MBF				
Sugar Maple		61.2	MBF				
Basswood		Pulpwood	26.0	Cords			
Beech			202.0	Cords			
Mixed Aspen			24.0	Cords			
<i>B. T. Aspen</i>			5.0	<i>Cords</i>			
<i>Quaking Aspen</i>			19.0	<i>Cords</i>			
Mixed Hardwood			252.0	Cords			
<i>Ironwood</i>			2.0	<i>Cords</i>			
<i>Red Maple</i>			12.0	<i>Cords</i>			
<i>Sugar Maple</i>			238.0	<i>Cords</i>			
Red Pine			1.0	Cords			
TOTAL:			1,804.3	MBF			
TOTAL:			8,097.0	Cords			

## Sale Specific Conditions & Requirements

**Sale Name: 106 Hardwood Scuffle**

**Sale Number: 61-140-18 Seq#: 1**

### 1 - Sale Area

#### 1.2 - Boundaries

##### 1.2.1 - Painted boundaries (1/14)

The sale boundary and Payment Unit boundaries are marked and identified by blue, red and yellow paint. Exterior sale boundary lines against private property are marked with blue paint. Exterior sale boundary lines against state are marked with red paint. Interior Payment Unit boundaries are marked with yellow paint. Yellow painted trees designating an interior Payment Unit boundary are only to be cut when all surrounding Payment Units have been paid for and they are designated for cutting in both adjacent payment units. (Such as: species designated for cutting in both adjacent units or marked with orange paint)

### 2 - Timber Specifications

#### 2.1 - Included Timber

##### 2.1.1 - Clearcut unit(s) with unmerchantable trees (6/14)

Within Payment Unit(s) 1, 2, 4 & 5, cut all trees that are two (2) inches or more at DBH with the following exceptions:

Do not cut any yellow birch or hemlock trees.

Do not cut any sugar maple or white pine trees six (6) inches DBH and less.

Do not cut any trees marked with green paint.

In Addition, cut all beech and ironwood one (1) inch or more at DBH. This understory brush can be incorporated into the brush piles referenced in specification 5.2.4.2.

##### 2.1.3 - Cut tree marked unit(s) (12/08)

Within Payment Unit(s) 3, 8, 9 & 10, all trees are designated for cutting when marked with orange paint above and below stump height, regardless of merchantability.

In Addition, cut all beech and ironwood one (1) inch or more at DBH. This brush may be left in brush piles or scattered throughout the sale area.

##### 2.1.7 - Leave tree marked unit(s) (6/14)

Within Payment Unit(s) 6, 7, 11 & 12, all trees over two (2) inches DBH are designated to be cut with the following exceptions:

Do not cut any trees marked with green paint above and below stump height.

Do not cut any yellow birch or hemlock trees.

Do not cut any sugar maple or white pine 6 inches DBH and less.

In Addition, cut all beech and ironwood one (1) inch or more at DBH. This understory brush can be incorporated into the brush piles referenced in specification 5.2.4.2.

#### 2.2 - Utilization

##### 2.2.4 - Skidding length (2/14)

Skidding of unlimbed tops or lengths over 17 feet is not permissible within payment units 3, 6, 7, 8, 9 & 10 unless approved by the Unit Manager or his/her representative. Skidding of lengths over 17 feet is permissible as long as the timber sale administrator approves the method and machinery used. If at any point damage exceeds specification 3.4.1, all of the remaining wood must be skid in lengths less than 17 feet.

### 3 - Payments

#### 3.3 - Pre-measured Sales

##### 3.3.4 - Dividing payment units (7/14)

Payment Unit(s) over \$20,000.00 in value may be divided at the request of the Purchaser and upon approval of the Unit Manager. Dividing Payment Units is a contract modification which requires a Timber Sale Contract Supplement.

## 4 - Transportation

### 4.1 - Construction

#### 4.1.6 - Road construction (1/09)

Construction of new roads or improvements of existing roads shall be done in such a way as to minimize the environmental and visual impacts. Merchantable trees shall be cut and utilized unless otherwise directed. Non-merchantable trees shall be severed and laid flat on the ground. Slash shall be scattered, and not left in windrows and kept a minimum of 10 feet back from the road edge. Stumps shall be set upright, not left on edge, and be moved at least 10 feet away from the road edge. Disturbed soil shall be feathered into the woods and not left in berms or windrows.

#### 4.1.7 - Road closure (10/11)

All new roads built into the sale must be blocked to vehicle traffic within 30 days of completion of hauling. Overgrown roads that are reopened shall be considered new roads. In general, this will require constructing a four (4') foot high berm of stumps and logs covered with earth. Stumps and brush must be placed along the remainder of the trail where they are readily available. These roads must be rendered impassable to cars and trucks.

## 5 - Operations

### 5.1 - Notification

#### 5.1.3 - Well heads and natural gas pipelines (11/15)

The Purchaser is responsible for contacting the gas and/or pipeline company 30 days prior to operating equipment in the vicinity of well heads or natural gas pipelines.

### 5.2 - Conduct of Operations

#### 5.2.2 - Hazard Trees/Snags

##### 5.2.2.1 - Den trees (10/16)

Obvious hollow and/or den trees shall be protected and left standing unless they are a safety hazard.

#### 5.2.3 - Operating Restrictions

##### 5.2.3.3 - Bark slippage restriction (3/09)

Within Payment Unit(s) 3, 6, 7, 8, 9 & 10, unless changed by written agreement, cutting and skidding are not permitted during the period of April 15 to July 15. This restriction is because of bark slippage.

#### 5.2.4 - Dead and Down Creation

##### 5.2.4.2 - Dead and down creation, hare and grouse (1/14)

To improve habitat for snowshoe hare, grouse, and other species, the Purchaser is to leave at least one brush pile (approximately 20' x 20' x 5') on the ground for every three acres. They should be scattered throughout the sale or positioned per the sale administrators instructions and they should not be within 50' of recreation trails or roads. When possible, larger cull pieces should be put in at the base of the brush piles to create air space.

#### 5.2.16 - Equipment recommended (11/18)

Within All Payment Units, it is required that all beech and ironwood one (1) inch or more at DBH be severed from the stump. A rotary head feller buncher is recommended to sever the understory/brush from the stump. This requirement is to set back the beech and ironwood understory. Note, that at least 80% of all beech and ironwood over 1 inch DBH are to be cut and left in brush piles or scattered within these units.

If 80% of the understory beech and ironwood understory 1 inch DBH and up is not cut, a fee of \$150.00/acre will be assessed for all acres not meeting the 80% threshold.

There are several steep slopes within the sale area that will be exempt from the 80% threshold of understory beech and ironwood cutting. Contact Timber Sale Administrator for details regarding location of these steep slopes.

#### 5.2.38 - No decking against live trees (2/04)

Cut products may not be decked against unmarked or designated leave trees.

#### 5.2.39 - ORV trail/route protection (4/18)

There is an ORV trail & ORV route shown on the Timber Sale Map. Do not cut trees or damage posts with ORV markers. All stumps within 5 feet of the trail must be cut flush with the ground. Maintain a 20 foot wide slash, debris, and rut free zone daily using the ORV trail or route as the centerline. Do not run equipment down the ORV trail. Skidding across the trail or route may only occur in locations approved by the sale administrator.

#### 5.2.41 - Snowmobile trail protection (9/11)

There is a snowmobile trail shown on the Timber Sale Map. Do not cut or damage posts with orange trail markers or traffic control signs. If the trail is used for hauling, it must be graded to the satisfaction of the Unit Manager or his/her representative prior to December 1st. If the trail road is to be used for hauling during the snowmobile season, then a snow covered base must be left on the trail. Maintain a 20 foot wide slash, debris, and rut free zone daily using the snowmobile trail as the centerline. No decking of forest products will be permitted along the snowmobile trail. All stumps within 20 feet of the snowmobile trail must be cut at ground level.

### 5.4 - Soil Protection

#### 5.4.1 - Rutting restriction, general (7/16)

Operations are to cease immediately if equipment and weather conditions result in rutting of roads and/or skid trails which is 12 inches or greater in depth and 50 feet in length. The Unit Manager or his/her representative may restrict hauling and/or skidding if ruts exceed the specified depth. With the Unit Manager or his/her representative's approval, the Purchaser may return to the area when the risk of rutting has decreased.

### 5.8 - Protection of Endangered Species

#### 5.8.5 - Protection of raptor nests (3/13)

All trees with raptor nests will be protected if found during harvesting operations. Notification will be made to the Unit Manager or his/her representative who will notify the Wildlife Biologist so an on-site evaluation and recommendation can be made, if necessary.

## 6 - Safety and Fire Prevention

### 6.2 - Signing

#### 6.2.1 - Road posting (9/09)

The Purchaser is responsible for posting and maintaining caution signs on impacted roads prior to beginning operations. The road must be posted at appropriate distances from the sale area to warn of logging activity and truck traffic. Signs must be removed when harvest operations are suspended or completed. The Purchaser will provide these signs.

#### 6.2.2 - Snowmobile trail posting (8/09)

The Purchaser is responsible for posting and maintaining caution signs on the snowmobile trail prior to beginning operations during the snowmobile season (approximately December 1 to March 31). The trail must be posted at appropriate distances from the sale area to warn of logging activity and truck traffic. Signs must be removed when harvest operations are suspended or completed. The Purchaser will provide these signs.

#### 6.2.3 - Recreational trail posting (2/10)

The Purchaser is responsible for posting and maintaining caution signs on ORV trails and ORV routes prior to beginning operations. The trail must be posted at appropriate distances from the sale area to warn of logging activity and truck traffic at both ends of the trail. Signs must be removed when harvest operations are suspended or completed. The Purchaser will provide these signs.

## 7 - Other Conditions

### 7.5 - Loss

#### 7.5.1 - Deteriorating timber (7/09)

The sale area has received damage from beech bark disease. The Purchaser should harvest the wood as soon as possible. The Department of Natural Resources is held free of responsibility of any further damage or deterioration due to delay in harvesting.

## 8 - Performance and Settlement

## 8.3 - Uncompleted or Terminated Contracts

### 8.3.2 - Completion of contract, other (11/16)

Areas of this sale may be difficult to log. Per General Condition & Requirement 3.5 - Adjustment of Quantity, there will be no adjustment to contract volume, but unharvested timber may not be considered a violation of General Condition & Requirement 8.3 - Uncompleted or Terminated Contract. There are several areas with steep slopes that may be challenging to harvest. Brush and trees on these slopes do not need to be cut with the rotary head feller buncher. Contact Timber Sale Administrator for further details and location of steep slopes.



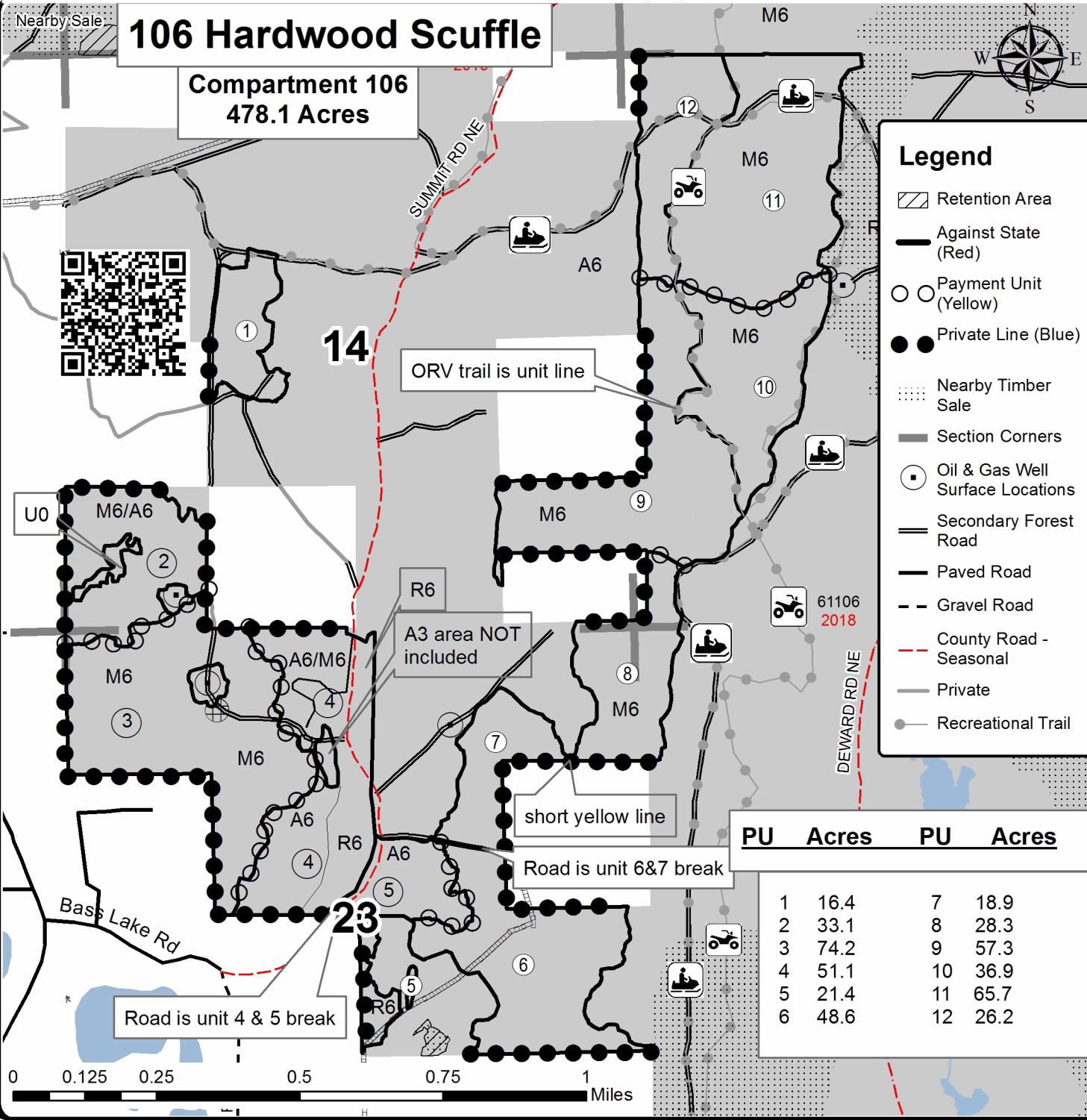
# TIMBER SALE MAP

This information provided by authority of Part 525, 1994 PA 451, as amended.

Sale Number	Year
61-140	18

Forest Management Unit	County	Mapped By	Date	Page	of
Traverse City MU	Kalkaska	Standerfer	09/21/2018	1	1
Township	Range	Section(s) and Subdivision(s)	Scale		
28N	05W	Sec 13, 14 & 23 (various, see map and sale proposal)	1:15,840		

Cover Type				Density	
A = Aspen	H = Hemlock	N = Marsh	U = Upland Brush	0 = Non Stocked	5 = Pole Timber Medium
B = Paper Birch	J = Jack Pine	O = Oak	UM = Upland Mixed	1 = Seedling Sapling Poor	6 = Pole Timber Well
C = Cedar	L = Lowland Brush	P = Lowland Poplar	V = Bog or Marsh	2 = Seedling Sapling Medium	7 = Saw Timber Poor
D = Treed Bog	LM = Lowland Mixed	Q = Mixed Swamp Conifer	W = White Pine	3 = Seedling Sapling Well	8 = Saw Timber Medium
E = Swamp Hdwoods	M = Mpl, Bch, Brch	R = Red Pine	X = Non Stocked	4 = Pole Timber Poor	9 = Saw Timber Well
F = Spruce Fir	MC = Mixed Conifer	S = Black Spruce	Z = Water		
G = Grass	MD = Mixed Deciduous	T = Tamarack			







**TIMBER SALE INFORMATION**

Underdog Mix (61-158-18)

T27N, R06W, SEC. 25; T27N, R06W, SEC. 35; T27N, R06W, SEC. 36.  
Kalkaska County (Advertised Price \$145,852.30)

A timber sale contract for this lump sum, sealed bid timber sale will be awarded to the responsible bidder offering the highest sealed bid price. Bids must be at or above the following advertised price for each species:

<u>PRODUCTS &amp; SPECIES</u>	<u>ESTIMATED UNITS*</u>	<u>ADVERTISED PRICE</u>
<b>Sawtimber</b>		
Basswood	18.90 MBF	\$ 116.00 / MBF
Beech	1.50 MBF	\$ 130.00 / MBF
Black Cherry	2.50 MBF	\$ 149.00 / MBF
Mixed Aspen	300.00 MBF	\$ 116.00 / MBF
Red Maple	32.80 MBF	\$ 119.00 / MBF
Red Oak	1.50 MBF	\$ 271.00 / MBF
Red Pine	337.70 MBF	\$ 116.00 / MBF
Sugar Maple	1.50 MBF	\$ 321.00 / MBF
White Pine	6.80 MBF	\$ 52.00 / MBF
<b>Pulpwood</b>		
Balsam Fir	16.00 Cords	\$ 13.70 / Cord
Basswood	95.00 Cords	\$ 24.05 / Cord
Jack Pine	12.00 Cords	\$ 12.80 / Cord
Mixed Aspen	1,223.00 Cords	\$ 21.75 / Cord
Mixed Hardwood	952.00 Cords	\$ 19.70 / Cord
Red Oak	43.00 Cords	\$ 15.15 / Cord
Red Pine	373.00 Cords	\$ 40.15 / Cord
White Pine	24.00 Cords	\$ 13.95 / Cord

\* The total volume is statistically estimated within plus (+) or minus (-) 13.74 percent. The estimated units are final and not subject to adjustment. Prospective bidders are urged to examine this timber and to make their own estimates of quantity and quality.

**BOND AND PAYMENT SCHEDULE:**

- A bond in the amount of \$14,585.00 to insure faithful performance of the conditions of the contract will be deposited by the successful bidder within 21 days of the sale award.
- Cutting in any sale or unit without the required advance payment would be considered a trespass.
- Total payment must be paid in advance or according to the following schedule:
  - Ten percent (10%) of the sale value must be paid within 21 days of the sale award.
  - The 10% down payment will be credited towards the first unit cut.
  - Payment for each of the following units must be made before cutting begins in that unit:
 

<u>PAYMENT UNIT NUMBER</u>	<u>PERCENT OF TOTAL SALE VALUE</u>
01	12.9%
02	27.4%
03	25.0%
04	34.7%
- If no cutting takes place, the 10% down payment will not be refunded.
- Operations on the contract issued will terminate on 03/31/2021.

**Description of Timber by Payment Unit (PU)**

PU	MARKET GROUP	PRODUCT	QUANTITY	UNIT	ACRES	ADVERTISE PRICE
1	Red Pine	Sawtimber	111.9	MBF	7.1	\$18,887.15
	Mixed Hardwood	Pulpwood	41.0	Cords		
	<i>Black Cherry</i>		11.0	<i>Cords</i>		
	<i>Red Maple</i>		30.0	<i>Cords</i>		
	Red Pine		127.0	Cords		
2	Red Maple	Sawtimber	3.4	MBF	24.8	\$40,028.75
	Red Pine		225.8	MBF		
	White Pine		6.8	MBF		
	Balsam Fir	Pulpwood	16.0	Cords		
	Jack Pine		12.0	Cords		
	Mixed Aspen		15.0	Cords		
	<i>Quaking Aspen</i>		15.0	<i>Cords</i>		
	Mixed Hardwood		110.0	Cords		
	<i>Black Cherry</i>		99.0	<i>Cords</i>		
	<i>Red Maple</i>		11.0	<i>Cords</i>		
	Red Pine		246.0	Cords		
	White Pine		24.0	Cords		
3	Basswood	Sawtimber	8.2	MBF	66.0	\$36,450.00
	Beech		0.6	MBF		
	Black Cherry		0.9	MBF		
	Mixed Aspen		120.8	MBF		
	<i>B. T. Aspen</i>		55.9	<i>MBF</i>		
	<i>Quaking Aspen</i>		64.9	<i>MBF</i>		
	Red Maple		13.8	MBF		
	Red Oak		0.6	MBF		
	Sugar Maple		1.2	MBF		
	Basswood	Pulpwood	42.0	Cords		
	Mixed Aspen		493.0	Cords		
	<i>B. T. Aspen</i>		217.0	<i>Cords</i>		
	<i>Quaking Aspen</i>		276.0	<i>Cords</i>		
	Mixed Hardwood		357.0	Cords		
	<i>American Elm</i>		3.0	<i>Cords</i>		
	<i>Beech</i>		17.0	<i>Cords</i>		
	<i>Black Cherry</i>		94.0	<i>Cords</i>		
	<i>Ironwood</i>		23.0	<i>Cords</i>		
	<i>Red Maple</i>		131.0	<i>Cords</i>		
	<i>Sugar Maple</i>		65.0	<i>Cords</i>		
<i>White Ash</i>		24.0	<i>Cords</i>			
Red Oak		21.0	Cords			
4	Basswood	Sawtimber	10.7	MBF	69.5	\$50,486.40
	Beech		0.9	MBF		
	Black Cherry		1.6	MBF		
	Mixed Aspen		179.2	MBF		
	<i>B. T. Aspen</i>		71.9	<i>MBF</i>		
	<i>Quaking Aspen</i>		107.3	<i>MBF</i>		
	Red Maple		15.6	MBF		
	Red Oak		0.9	MBF		
	Sugar Maple		0.3	MBF		
	Basswood	Pulpwood	53.0	Cords		
	Mixed Aspen		715.0	Cords		
	<i>B. T. Aspen</i>		270.0	<i>Cords</i>		
	<i>Quaking Aspen</i>		445.0	<i>Cords</i>		
	Mixed Hardwood		444.0	Cords		
	<i>American Elm</i>		1.0	<i>Cords</i>		
	<i>Beech</i>		27.0	<i>Cords</i>		
<i>Black Cherry</i>		107.0	<i>Cords</i>			

**Description of Timber by Payment Unit (PU), con't**

PU	MARKET GROUP	PRODUCT	QUANTITY	UNIT	ACRES	ADVERTISE PRICE
4 con't	<i>Ironwood</i>	<i>Pulpwood</i>	37.0	<i>Cords</i>		
	<i>Red Maple</i>		154.0	<i>Cords</i>		
	<i>Sugar Maple</i>		77.0	<i>Cords</i>		
	<i>White Ash</i>		41.0	<i>Cords</i>		
	Red Oak		22.0	Cords		
TOTAL:			703.2	MBF		
TOTAL:			2,738.0	Cords		

## Sale Specific Conditions & Requirements

**Sale Name: Underdog Mix**

**Sale Number: 61-158-18 Seq#: 1**

### 1 - Sale Area

#### 1.2 - Boundaries

##### 1.2.1 - Painted boundaries (1/14)

The sale boundary and Payment Unit boundaries are marked and identified by blue and red paint, along with a road. Exterior sale boundary lines against private property are marked with blue paint. Exterior sale boundary lines against state are marked with red paint. The Interior Payment Unit boundary is unpainted and identified by Johnson Lake Road. The painted boundary line trees are not Included Timber and are to be protected.

### 2 - Timber Specifications

#### 2.1 - Included Timber

##### 2.1.1 - Clearcut unit(s) with unmerchantable trees (6/14)

Within Payment Unit(s) 1 and 2, cut all trees that are three (3) inches or more at DBH.

Within Payment Unit(s) 3 and 4, cut all trees that are three (3) inches or more at DBH, except do not cut trees marked with green paint above and below stump height. In addition, leave all conifers throughout these units and leave oak in openings.

##### 2.1.11 - Description of timber note (2/04)

Note that Mixed Hardwood Pulp includes approximately 44 cords of beech and 65 cords of white ash.

#### 2.2 - Utilization

##### 2.2.4 - Skidding length (2/14)

Skidding of unlimbed tops or lengths over 17 feet is not permissible. Skidding of lengths over 17 feet may be approved by the Unit Manager or Sale Administrator if the Purchaser demonstrates that it does not excessively damage the advanced regeneration. If damage ever exceeds specification 3.4.1, all of the remaining wood must be skid in lengths less than 17 feet.

### 3 - Payments

#### 3.3 - Pre-measured Sales

##### 3.3.4 - Dividing payment units (7/14)

Payment Unit(s) greater than \$20,000 may be divided at the request of the Purchaser and upon approval of the Unit Manager. Dividing Payment Units is a contract modification which requires a Timber Sale Contract Supplement. There will be only one division per Payment Unit.

#### 3.4 - Damaged Timber

##### 3.4.1 - Damaged timber (6/14)

General Condition and Requirement 3.4 Damaged Timber, defines liquidated damages for undesignated live merchantable trees which are cut or injured. In addition, extreme care should be taken to avoid damage to tree seedlings and saplings.

Within the sale area, if more than 25% of the tree seedlings or saplings (1/4" to 4.5" DBH) within a specified portion of the sale area are damaged, liquidated damages will be assessed at \$300 per acre for all acreage within that specified portion of the sale area that was damaged.

### 4 - Transportation

#### 4.1 - Construction

##### 4.1.6 - Road construction (1/09)

Improvements of existing roads shall be done in such a way as to minimize the environmental and visual impacts.

Merchantable trees shall be cut and utilized unless otherwise directed. Non-merchantable trees shall be severed and laid flat on the ground. Slash shall be scattered, and not left in windrows and kept a minimum of 10 feet back from the road edge.

Stumps shall be set upright, not left on edge, and be moved at least 10 feet away from the road edge. Disturbed soil shall be

feathered into the woods and not left in berms or windrows.

#### 4.1.7 - Road closure (10/11)

The road into Payment Unit 2 shall be blocked to vehicle traffic at the berm shown on the Timber Sale Map within 30 days of completion of hauling. In general, this will require constructing a four (4') foot high berm of stumps and logs covered with earth. These roads must be rendered impassable to cars, trucks and ORVs. Contact the sale administrator for specific details of design and placement.

#### 4.1.12 - No new roads (1/12)

No new roads will be permitted in any Payment Unit. Skid trails only will be allowed.

### 4.2 - Maintenance

#### 4.2.2 - Fill material (4/07)

To maintain roads, fill material may be needed in areas where "holes" exist or may be expected to develop. This fill material should be placed before trucking begins. This mainly applies to the road into Payment Unit 2 and would only be necessary at certain times of the year. Contact the sale administrator regarding the availability of sand or gravel from nearby State-owned lands.

## 5 - Operations

### 5.1 - Notification

#### 5.1.1 - Pre-sale conference (10/16)

A pre-sale conference on site between the Purchaser and sale administrator is required prior to beginning any operations to determine landing and road locations. The Sale Administrator must be contacted at least 5 days in advance to schedule the conference.

### 5.2 - Conduct of Operations

#### 5.2.1 - Slash

##### 5.2.1.8 - Slash height (12/08)

No slash or tree tops may exceed 36 inches in height.

#### 5.2.2 - Hazard Trees/Snags

##### 5.2.2.1 - Den trees (10/16)

Obvious hollow and/or den trees shall be protected and left standing unless they are a safety hazard.

#### 5.2.3 - Operating Restrictions

##### 5.2.3.11 - Coppice regeneration protection (4/10)

Any post harvest operations, such as chipping, must be completed before sprouting of regeneration occurs. If it is anticipated that chipping will be delayed, then tops must be carried to one central location or left unchipped. The Unit Manager or his/her representative may cease such operations if sprouting occurs before the operation is complete.

#### 5.2.22 - Operating Caution

##### 5.2.22.1 - Operating caution (6/11)

It is recommended, but not required, that within Payment Unit(s) 2, hauling occur during dry summer or frozen winter conditions, or the haul road would need some fill and grading to be used at other times. The reason for the recommendation is because the haul road is in poor condition.

##### 5.2.22.2 - Operating caution (6/11)

It is recommended, but not required, that within Payment Unit(s) 3 (the southern end), cutting and skidding occur during dry summer or frozen winter conditions. The reason for the recommendation is because of wet ground.

#### 5.2.29 - Shrub protection (9/07)

Do not cut or damage hawthorn, witch-hazel, dogwood or junberry. These woody-shrub plants are highly beneficial to various wildlife species.

#### 5.2.32 - Decking/landing restoration (9/13)

All decking and landing areas must have the surface area restored to a condition equal to or better than before. This is to ensure the proper regeneration of the stand. Wood debris, chips and "cookies" from trimmings must be removed or scattered away from landing and loading areas and may not be windrowed on the edge.

#### 5.2.38 - No decking against live trees (2/04)

Cut products may not be decked against unmarked or designated leave trees.

### 5.4 - Soil Protection

#### 5.4.1 - Rutting restriction, general (7/16)

Operations are to cease immediately if equipment and weather conditions result in rutting of roads and/or skid trails which is 12 inches or greater in depth and 50 feet in length. The Unit Manager or his/her representative may restrict hauling and/or skidding if ruts exceed the specified depth. With the Unit Manager or his/her representative's approval, the Purchaser may return to the area when the risk of rutting has decreased.

## 6 - Safety and Fire Prevention

### 6.2 - Signing

#### 6.2.1 - Road posting (9/09)

The Purchaser is responsible for posting and maintaining caution signs on Johnson Lake Road prior to beginning operations. The road must be posted near the intersection with Sunset Trail to warn of logging activity and truck traffic. Signs must be removed when harvest operations are suspended or completed. The Purchaser will provide this sign.



# TIMBER SALE MAP

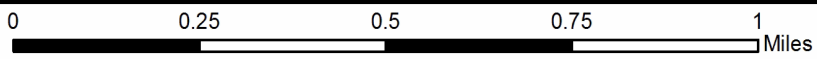
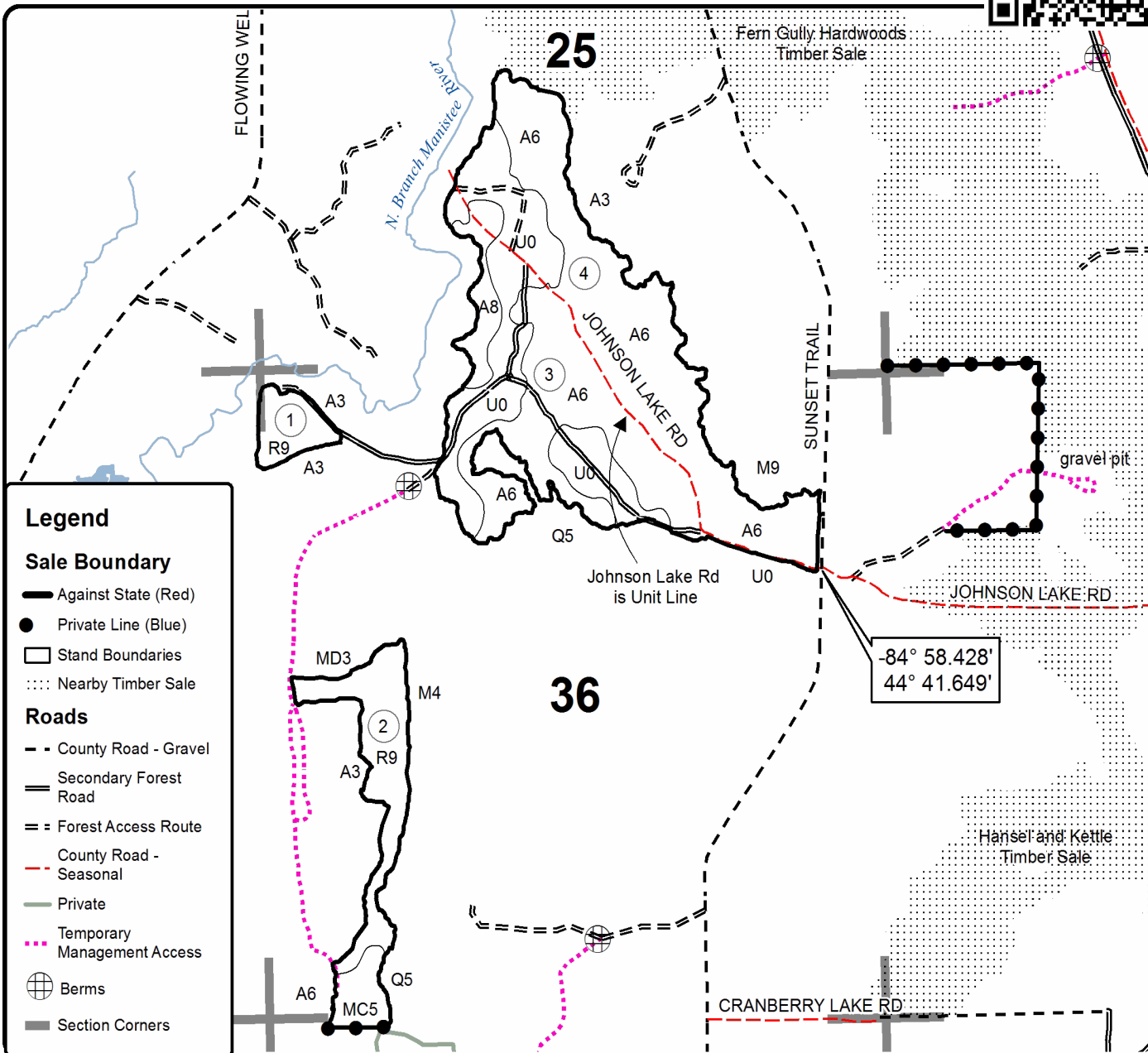
This information provided by authority of Part 525, 1994 PA 451, as amended.

Forest Management Unit Traverse City		County Kalkaska	Mapped By Armstrong	Date 9/20/2018	Page 1	of 1
Township 27N	Range 6W	Section(s) and Subdivision(s) 25: E1/2SW, W1/2SE; 35: NENE; 36: N1/2, W1/2SW		Roell, Standerfer	Scale 1:15,840	

Cover Type				Density			
A = Aspen	H = Hemlock	N = Marsh	U = Upland Brush	0 = Non Stocked	5 = Pole Timber Medium		
B = Paper Birch	J = Jack Pine	O = Oak	UM = Upland Mixed	1 = Seedling Sapling Poor	6 = Pole Timber Well		
C = Cedar	L = Lowland Brush	P = Lowland Poplar	V = Bog or Marsh	2 = Seedling Sapling Medium	7 = Saw Timber Poor		
D = Treed Bog	LM = Lowland Mixed	Q = Mixed Swamp Conifer	W = White Pine	3 = Seedling Sapling Well	8 = Saw Timber Medium		
E = Swamp Hdwoods	M = Mpl, Bch, Brch	R = Red Pine	X = Non Stocked	4 = Pole Timber Poor	9 = Saw Timber Well		
F = Spruce Fir	MC = Mixed Conifer	S = Black Spruce	Z = Water				
G = Grass	MD = Mixed Deciduous	T = Tamarack					

Unit	Acres	Unit	Acres
1	7.1	3	66.0
2	24.8	4	69.5

**Underdog Mix**  
 Compartment 118  
 167.4 acres







**TIMBER SALE INFORMATION**

Hansel and Kettle Mix (61-161-18)

T27N, R05W, SEC. 30; T27N, R05W, SEC. 31; T27N, R06W, SEC. 36.  
Kalkaska County (Advertised Price \$168,151.20)

SALE NOTE: A recreation site such as a trail, pathway, or campground is within the sale area or the vicinity. Certain restrictions/specifications may be applicable including time restrictions.

A timber sale contract for this lump sum, sealed bid timber sale will be awarded to the responsible bidder offering the highest sealed bid price. Bids must be at or above the following advertised price for each species:

<u>PRODUCTS &amp; SPECIES</u>	<u>ESTIMATED UNITS*</u>	<u>ADVERTISED PRICE</u>
<b>Sawtimber</b>		
Basswood	115.80 MBF	\$ 108.00 / MBF
Black Cherry	16.70 MBF	\$ 139.00 / MBF
Mixed Aspen	180.40 MBF	\$ 109.00 / MBF
Red Maple	56.70 MBF	\$ 112.00 / MBF
Red Oak	2.70 MBF	\$ 254.00 / MBF
Red Pine	204.10 MBF	\$ 109.00 / MBF
Sugar Maple	34.70 MBF	\$ 301.00 / MBF
White Pine	113.10 MBF	\$ 49.00 / MBF
<b>Pulpwood</b>		
Basswood	256.00 Cords	\$ 22.55 / Cord
Mixed Aspen	1,742.00 Cords	\$ 20.40 / Cord
Mixed Hardwood	1,038.00 Cords	\$ 18.50 / Cord
Red Oak	57.00 Cords	\$ 14.20 / Cord
Red Pine	498.00 Cords	\$ 37.65 / Cord
White Pine	635.00 Cords	\$ 13.10 / Cord

\* The total volume is statistically estimated within plus (+) or minus (-) 8.46 percent. The estimated units are final and not subject to adjustment. Prospective bidders are urged to examine this timber and to make their own estimates of quantity and quality.

**BOND AND PAYMENT SCHEDULE:**

1. A bond in the amount of \$16,815.00 to insure faithful performance of the conditions of the contract will be deposited by the successful bidder within 21 days of the sale award.
2. Cutting in any sale or unit without the required advance payment would be considered a trespass.
3. Total payment must be paid in advance or according to the following schedule:
  - (a) Ten percent (10%) of the sale value must be paid within 21 days of the sale award.
  - (b) The 10% down payment will be credited towards the first unit cut.
  - (c) Payment for each of the following units must be made before cutting begins in that unit:

<u>PAYMENT UNIT NUMBER</u>	<u>PERCENT OF TOTAL SALE VALUE</u>
01	6.6%
02	22.8%
03	17.6%
04	5.6%
05	11.6%
06	7.0%
07	2.8%
08	7.2%
09	6.3%
10	12.5%

4. If no cutting takes place, the 10% down payment will not be refunded.
5. Operations on the contract issued will terminate on 04/14/2021.

**Description of Timber by Payment Unit (PU)**

PU	MARKET GROUP	PRODUCT	QUANTITY	UNIT	ACRES	ADVERTISE PRICE	
1	Basswood	Sawtimber	2.4	MBF	18.5	\$11,047.20	
	Black Cherry		0.7	MBF			
	Mixed Aspen		37.1	MBF			
	<i>B. T. Aspen</i>		19.5	<i>MBF</i>			
	<i>Quaking Aspen</i>		17.6	<i>MBF</i>			
	Sugar Maple		5.6	MBF			
	White Pine		2.0	MBF			
	Basswood		Pulpwood	2.0			Cords
	Mixed Aspen			173.0			Cords
	<i>B. T. Aspen</i>			120.0			<i>Cords</i>
	<i>Quaking Aspen</i>			53.0			<i>Cords</i>
	Mixed Hardwood			63.0			Cords
	<i>Black Cherry</i>			10.0			<i>Cords</i>
	<i>Ironwood</i>			7.0			<i>Cords</i>
	<i>Red Maple</i>			14.0			<i>Cords</i>
	<i>Sugar Maple</i>	32.0		<i>Cords</i>			
	Red Oak	5.0		Cords			
	White Pine	4.0	Cords				
	<i>White Pine</i>	4.0	<i>Cords</i>				
	2	Basswood	Sawtimber	3.6			MBF
Black Cherry		0.7		MBF			
Mixed Aspen		93.8		MBF			
<i>B. T. Aspen</i>		87.8		<i>MBF</i>			
<i>Quaking Aspen</i>		6.0		<i>MBF</i>			
Red Maple		24.1		MBF			
<i>American Elm</i>		0.7		<i>MBF</i>			
<i>Red Maple</i>		23.4		<i>MBF</i>			
Red Oak		0.8		MBF			
Sugar Maple		9.0		MBF			
Basswood		Pulpwood		16.0	Cords		
Mixed Aspen				659.0	Cords		
<i>B. T. Aspen</i>				600.0	<i>Cords</i>		
<i>Quaking Aspen</i>				59.0	<i>Cords</i>		
Mixed Hardwood				411.0	Cords		
<i>American Elm</i>				6.0	<i>Cords</i>		
<i>Beech</i>				9.0	<i>Cords</i>		
<i>Black Cherry</i>				137.0	<i>Cords</i>		
<i>Ironwood</i>				2.0	<i>Cords</i>		
<i>Red Maple</i>				219.0	<i>Cords</i>		
<i>Sugar Maple</i>				38.0	<i>Cords</i>		
Red Oak				33.0	Cords		
White Pine				29.0	Cords		
<i>Balsam Fir</i>				5.0	<i>Cords</i>		
<i>White Pine</i>				24.0	<i>Cords</i>		
3	Red Pine	Sawtimber	141.9	MBF	24.8	\$29,555.05	
	White Pine		1.0	MBF			
	Mixed Aspen	Pulpwood	20.0	Cords			
	<i>Quaking Aspen</i>		20.0	<i>Cords</i>			
	Red Pine		361.0	Cords			
	White Pine		3.0	Cords			
	<i>White Pine</i>		3.0	<i>Cords</i>			
4	Black Cherry	Sawtimber	0.6	MBF	12.0	\$9,429.15	
	Mixed Aspen		1.2	MBF			
	<i>B. T. Aspen</i>		1.2	<i>MBF</i>			
	Red Pine		42.5	MBF			
	White Pine		1.7	MBF			

Description of Timber by Payment Unit (PU), con't

PU	MARKET GROUP	PRODUCT	QUANTITY	UNIT	ACRES	ADVERTISE PRICE
4 con't	Mixed Aspen	Pulpwood	4.0	Cords		
	<i>B. T. Aspen</i>		4.0	<i>Cords</i>		
	Mixed Hardwood		12.0	Cords		
	<i>Black Cherry</i>		11.0	<i>Cords</i>		
	<i>Red Maple</i>		1.0	<i>Cords</i>		
	Red Pine		109.0	Cords		
	White Pine		7.0	Cords		
	<i>White Pine</i>		7.0	<i>Cords</i>		
5	Basswood	Sawtimber	61.9	MBF	25.3	\$19,429.10
	Black Cherry		1.1	MBF		
	Mixed Aspen		6.1	MBF		
	<i>B. T. Aspen</i>		6.1	<i>MBF</i>		
	Red Maple		1.2	MBF		
	<i>Red Maple</i>		1.2	<i>MBF</i>		
	Red Pine		4.7	MBF		
	Sugar Maple		15.0	MBF		
	White Pine		0.5	MBF		
	Basswood		Pulpwood	162.0		
	Mixed Aspen	29.0		Cords		
	<i>B. T. Aspen</i>	26.0		<i>Cords</i>		
	<i>Quaking Aspen</i>	3.0		<i>Cords</i>		
	Mixed Hardwood	117.0		Cords		
	<i>Black Cherry</i>	5.0		<i>Cords</i>		
	<i>Ironwood</i>	16.0		<i>Cords</i>		
	<i>Red Maple</i>	5.0		<i>Cords</i>		
	<i>Sugar Maple</i>	91.0		<i>Cords</i>		
	Red Pine	6.0		Cords		
	White Pine	8.0	Cords			
	<i>White Pine</i>		8.0	<i>Cords</i>		
6	Basswood	Sawtimber	17.9	MBF	16.6	\$11,745.45
	Mixed Aspen		33.1	MBF		
	<i>B. T. Aspen</i>		33.1	<i>MBF</i>		
	Red Pine		0.8	MBF		
	Sugar Maple		5.1	MBF		
	White Pine	1.0	MBF			
	Basswood	Pulpwood	50.0	Cords		
	Mixed Aspen		118.0	Cords		
	<i>B. T. Aspen</i>		118.0	<i>Cords</i>		
	Mixed Hardwood		38.0	Cords		
	<i>Black Cherry</i>		4.0	<i>Cords</i>		
	<i>Red Maple</i>		2.0	<i>Cords</i>		
	<i>Sugar Maple</i>		32.0	<i>Cords</i>		
	Red Oak		8.0	Cords		
	Red Pine		1.0	Cords		
White Pine	11.0		Cords			
	<i>White Pine</i>		11.0	<i>Cords</i>		
7	Basswood	Sawtimber	3.5	MBF	9.4	\$4,772.55
	Black Cherry		1.3	MBF		
	Mixed Aspen		0.8	MBF		
	<i>Quaking Aspen</i>		0.8	<i>MBF</i>		
	Red Maple		2.9	MBF		
	<i>Red Maple</i>		2.9	<i>MBF</i>		
	Red Oak		0.2	MBF		
	Red Pine	1.2	MBF			
	White Pine	10.4	MBF			
	Basswood	Pulpwood	3.0	Cords		

Description of Timber by Payment Unit (PU), con't

PU	MARKET GROUP	PRODUCT	QUANTITY	UNIT	ACRES	ADVERTISE PRICE
7 con't	Mixed Aspen	Pulpwood	75.0	Cords		
	<i>Quaking Aspen</i>		75.0	<i>Cords</i>		
	Mixed Hardwood		38.0	Cords		
	<i>Black Cherry</i>		20.0	<i>Cords</i>		
	<i>Red Maple</i>		18.0	<i>Cords</i>		
	Red Oak		1.0	Cords		
	Red Pine		2.0	Cords		
	White Pine		55.0	Cords		
	<i>White Pine</i>		55.0	<i>Cords</i>		
8	Basswood	Sawtimber	9.2	MBF	24.0	\$12,082.20
	Black Cherry		3.2	MBF		
	Mixed Aspen		1.8	MBF		
	<i>Quaking Aspen</i>		1.8	<i>MBF</i>		
	Red Maple		7.3	MBF		
	<i>Red Maple</i>		7.3	<i>MBF</i>		
	Red Oak		0.6	MBF		
	Red Pine		2.9	MBF		
	White Pine		26.2	MBF		
	Basswood		Pulpwood	8.0		
	Mixed Aspen	191.0		Cords		
	<i>Quaking Aspen</i>	191.0		<i>Cords</i>		
	Mixed Hardwood	98.0		Cords		
	<i>Black Cherry</i>	51.0		<i>Cords</i>		
	<i>Red Maple</i>	47.0		<i>Cords</i>		
	Red Oak	3.0		Cords		
	Red Pine	4.0		Cords		
	White Pine	137.0		Cords		
	<i>White Pine</i>	137.0		<i>Cords</i>		
	9	Basswood	Sawtimber	7.9		
Black Cherry		2.8		MBF		
Mixed Aspen		1.6		MBF		
<i>Quaking Aspen</i>		1.6		<i>MBF</i>		
Red Maple		6.4		MBF		
<i>Red Maple</i>		6.4		<i>MBF</i>		
Red Oak		0.5		MBF		
Red Pine		2.5		MBF		
White Pine		22.8		MBF		
Basswood		Pulpwood		7.0	Cords	
Mixed Aspen			165.0	Cords		
<i>Quaking Aspen</i>			165.0	<i>Cords</i>		
Mixed Hardwood			86.0	Cords		
<i>Black Cherry</i>			45.0	<i>Cords</i>		
<i>Red Maple</i>			41.0	<i>Cords</i>		
Red Oak			2.0	Cords		
Red Pine			4.0	Cords		
White Pine			120.0	Cords		
<i>White Pine</i>			120.0	<i>Cords</i>		
10		Basswood	Sawtimber	9.4	MBF	37.4
	Black Cherry	6.3		MBF		
	Mixed Aspen	4.9		MBF		
	<i>Quaking Aspen</i>	4.9		<i>MBF</i>		
	Red Maple	14.8		MBF		
	<i>Red Maple</i>	14.8		<i>MBF</i>		
	Red Oak	0.6		MBF		
	Red Pine	7.6		MBF		
	White Pine	47.5		MBF		

**Description of Timber by Payment Unit (PU), con't**

PU	MARKET GROUP	PRODUCT	QUANTITY	UNIT	ACRES	ADVERTISE PRICE
10 con't	Basswood	Pulpwood	8.0	Cords		
	Mixed Aspen		308.0	Cords		
	<i>Quaking Aspen</i>		308.0	<i>Cords</i>		
	Mixed Hardwood		175.0	Cords		
	<i>Black Cherry</i>		94.0	<i>Cords</i>		
	<i>Red Maple</i>		81.0	<i>Cords</i>		
	Red Oak		5.0	Cords		
	Red Pine		11.0	Cords		
	White Pine		261.0	Cords		
	<i>White Pine</i>		261.0	<i>Cords</i>		
TOTAL:			724.2	MBF		
TOTAL:			4,226.0	Cords		

## Sale Specific Conditions & Requirements

**Sale Name: Hansel and Kettle Mix**

**Sale Number: 61-161-18 Seq#: 1**

### 1 - Sale Area

#### 1.2 - Boundaries

##### 1.2.1 - Painted boundaries (1/14)

The sale boundary and Payment Unit boundaries are marked and identified by blue, red and yellow paint, along with a trail. Exterior sale boundary lines against private property are marked with blue paint. Exterior sale boundary lines against state are marked with red paint. Interior Payment Unit boundaries are marked with yellow paint, with the exception of the boundary between Payment Units 9 and 10, which is unpainted and identified by the ORV trail. The painted boundary line trees are not Included Timber and are to be protected.

### 2 - Timber Specifications

#### 2.1 - Included Timber

##### 2.1.1 - Clearcut unit(s) with unmerchantable trees (6/14)

Within Payment Unit(s) 6, cut all trees that are two (2) inches or more at DBH.

##### 2.1.3 - Cut tree marked unit(s) (12/08)

Within Payment Unit(s) 3 and 5, all trees are designated for cutting when marked with orange paint above and below stump height, regardless of merchantability. In addition, cut all aspen, ash, ironwood, and beech.

##### 2.1.7 - Leave tree marked unit(s) (6/14)

Within Payment Unit(s) 1, 2, 7, 8, 9, and 10, cut all trees that are two (2) inches or more at DBH, except do not cut trees marked with green paint above and below stump height. In addition, within Payment Units 7, 8, 9, and 10, do not cut any sugar maple trees.

##### 2.1.8 - Designated plantation row unit(s) (12/08)

Within Payment Unit(s) 4, all red pine trees which meet minimum piece specifications in 2.2 Utilization, within designated plantation rows are designated for cutting. Designated plantation rows begin with the third row in from the outside of the plantation, then continue every third row. Because of the variability of row direction, it shall be the responsibility of the producer to maintain the third row sequence. Other species which fall within the designated plantation rows are also designated for cutting.

##### 2.1.11 - Description of timber note (2/04)

Note that red maple Sawtimber includes approximately 0.7 MBF of American elm, and white pine Pulpwood includes approximately 5 cords or balsam fir.

#### 2.2 - Utilization

##### 2.2.4 - Skidding length (2/14)

Within Payment Units 1, 2, 3, 4, and 5, skidding of unlimbed tops or lengths over 17 feet is not permissible unless approved by the Unit Manager or Sale Administrator.

### 3 - Payments

#### 3.3 - Pre-measured Sales

##### 3.3.4 - Dividing payment units (7/14)

Payment Unit(s) greater than \$20,000 may be divided at the request of the Purchaser and upon approval of the Unit Manager. Dividing Payment Units is a contract modification which requires a Timber Sale Contract Supplement. There will be only one division per Payment Unit.

#### 3.4 - Damaged Timber

##### 3.4.1 - Damaged timber (6/14)

General Condition and Requirement 3.4 Damaged Timber, defines liquidated damages for undesignated live merchantable trees which are cut or injured. In addition, extreme care should be taken to avoid damage to tree seedlings and saplings.

Within the sale area, if more than 25% of the tree seedlings or saplings (1/4" to 4.5" DBH) within a specified portion of the sale area are damaged, liquidated damages will be assessed at \$300 per acre for all acreage within that specified portion of the sale area that was damaged.

No damage is acceptable to merchantable trees. Within the sale area, if more than 10% of trees (> 4.5" DBH) within a specified area of the sale are damaged, liquidated damages will be assessed for all trees damaged. Rates will be in accordance with General Condition and Requirement 3.4 Damaged Timber.

## **4 - Transportation**

### 4.1 - Construction

#### 4.1.6 - Road construction (1/09)

Construction of new roads or improvements of existing roads shall be done in such a way as to minimize the environmental and visual impacts. Merchantable trees shall be cut and utilized unless otherwise directed. Non-merchantable trees shall be severed and laid flat on the ground. Slash shall be scattered, and not left in windrows and kept a minimum of 10 feet back from the road edge. Stumps shall be set upright, not left on edge, and be moved at least 10 feet away from the road edge. Disturbed soil shall be feathered into the woods and not left in berms or windrows.

#### 4.1.7 - Road closure (10/11)

All new roads built into the sale must be blocked to vehicle traffic within 30 days of completion of hauling. Overgrown roads that are reopened shall be considered new roads. In general, this will require constructing a four (4') foot high berm of stumps and logs covered with earth. These roads must be rendered impassable to cars, trucks, and ORVs. Temporary berms may be required if no sale activity occurs for 30 or more consecutive days. Contact the sale administrator for specific details of design and placement.

## **5 - Operations**

### 5.1 - Notification

#### 5.1.1 - Pre-sale conference (10/16)

A pre-sale conference on site between the Purchaser and sale administrator is required prior to beginning any operations to determine landing and road locations. The Sale Administrator must be contacted at least 5 days in advance to schedule the conference.

### 5.2 - Conduct of Operations

#### 5.2.1 - Slash

##### 5.2.1.8 - Slash height (12/08)

No slash or tree tops may exceed 36 inches in height.

#### 5.2.2 - Hazard Trees/Snags

##### 5.2.2.1 - Den trees (10/16)

Obvious hollow and/or den trees shall be protected and left standing unless they are a safety hazard.

#### 5.2.3 - Operating Restrictions

##### 5.2.3.3 - Bark slippage restriction (3/09)

Within Payment Unit(s) 3, 4, and 5, unless changed by written agreement, cutting and skidding are not permitted during the period of April 15 to July 15. This restriction is because of bark slippage.

##### 5.2.3.4 - Oak wilt restriction, no exceptions (1/18)

Within Payment Units 1, 2, 6, 7, 8, 9 and 10, cutting, skidding, and brushing of access roads to the sale are not permitted during the period of April 15 to July 15. No exceptions will be granted. This is necessary to reduce the spread of oak wilt. It may be possible to haul from the sale if roads have been brushed out ahead of time.

##### 5.2.3.11 - Coppice regeneration protection (4/10)

Any post harvest operations, such as chipping, must be completed before sprouting of regeneration occurs. If it is

anticipated that chipping will be delayed, then tops shall be carried to one central location or left unchipped. The Unit Manager or Sale Administrator may cease such operations if sprouting occurs before the operation is complete.

#### 5.2.29 - Shrub protection (9/07)

Do not cut or damage hawthorn, witch-hazel, dogwood or juneberry. These woody-shrub plants are highly beneficial to various wildlife species.

#### 5.2.32 - Decking/landing restoration (9/13)

All decking and landing areas must have the surface area restored to a condition equal to or better than before. This is to ensure the proper regeneration of the stand. Wood debris, chips and "cookies" from trimmings must be removed or scattered away from landing and loading areas and may not be windrowed on the edge.

#### 5.2.38 - No decking against live trees (2/04)

Cut products may not be decked against unmarked or designated leave trees.

#### 5.2.39 - ORV trail/route protection (4/18)

There is an ORV trail shown on the Timber Sale Map, adjacent to Payment Unit 6 and running through Payment Units 9 and 10. Do not cut trees or damage posts with yellow ORV markers. All stumps within 5 feet of the trail must be cut flush with the ground. Maintain a 20 foot wide slash, debris, and rut free zone daily using the ORV trail or route as the centerline. Do not run equipment down the ORV trail. Skidding across the trail should be minimized and may only occur in locations approved by the sale administrator.

#### 5.2.41 - Snowmobile trail protection (9/11)

There is a snowmobile trail shown on the Timber Sale Map. Do not cut or damage posts with orange trail markers or traffic control signs. If the trail is used for hauling, it must be graded to the satisfaction of the Unit Manager or Sale Administrator prior to December 1st. If the trail is used for hauling during the snowmobile season, then a snow-covered base must be left on the trail. Maintain a 20 foot wide slash, debris, and rut free zone daily using the snowmobile trail as the centerline. No decking of forest products will be permitted along the snowmobile trail in any season. All stumps within 10 feet of the snowmobile trail must be cut at ground level.

### 5.4 - Soil Protection

#### 5.4.1 - Rutting restriction, general (7/16)

Operations are to cease immediately if equipment and weather conditions result in rutting of roads and/or skid trails which is 12 inches or greater in depth and 50 feet in length. The Unit Manager or his/her representative may restrict hauling and/or skidding if ruts exceed the specified depth. With the Unit Manager or his/her representative's approval, the Purchaser may return to the area when the risk of rutting has decreased.

#### 5.4.6 - Wet area protection (5/10)

No harvesting operations, including skidding and felling, are to take place within the vernal pond areas or kettle lake areas. When harvesting occurs, there should be no disturbance to the pond depressions. All equipment, trees and tops should be kept out of this area. Within 50 feet of the red line around a pond, equipment should only be used when the soil is in a dry or frozen condition. Care must be taken by the Purchaser to identify and avoid operating in these areas of the timber sale.

## 6 - Safety and Fire Prevention

### 6.2 - Signing

#### 6.2.1 - Road posting (9/09)

The Purchaser is responsible for posting and maintaining caution signs on Johnson Lake Road prior to beginning operations. The road must be posted at appropriate distances from both ends of the sale area to warn of logging activity and truck traffic. Signs must be removed when harvest operations are suspended or completed. The Purchaser will provide these signs.

#### 6.2.2 - Snowmobile trail posting (8/09)

The Purchaser is responsible for posting and maintaining caution signs on the snowmobile trail prior to beginning operations during the snowmobile season (approximately December 1 to March 31). The trail must be posted at appropriate distances from both ends of the sale area to warn of logging activity and truck traffic. Signs must be removed when harvest operations are suspended or completed. The Purchaser will provide these signs.

#### 6.2.3 - Recreational trail posting (2/10)

The Purchaser is responsible for posting and maintaining caution signs on the ORV trail prior to beginning operations. The



trail must be posted at appropriate distances from the sale area to warn of logging activity and truck traffic at both ends of the trail. Signs must be removed when harvest operations are suspended or completed. The Purchaser will provide these signs.



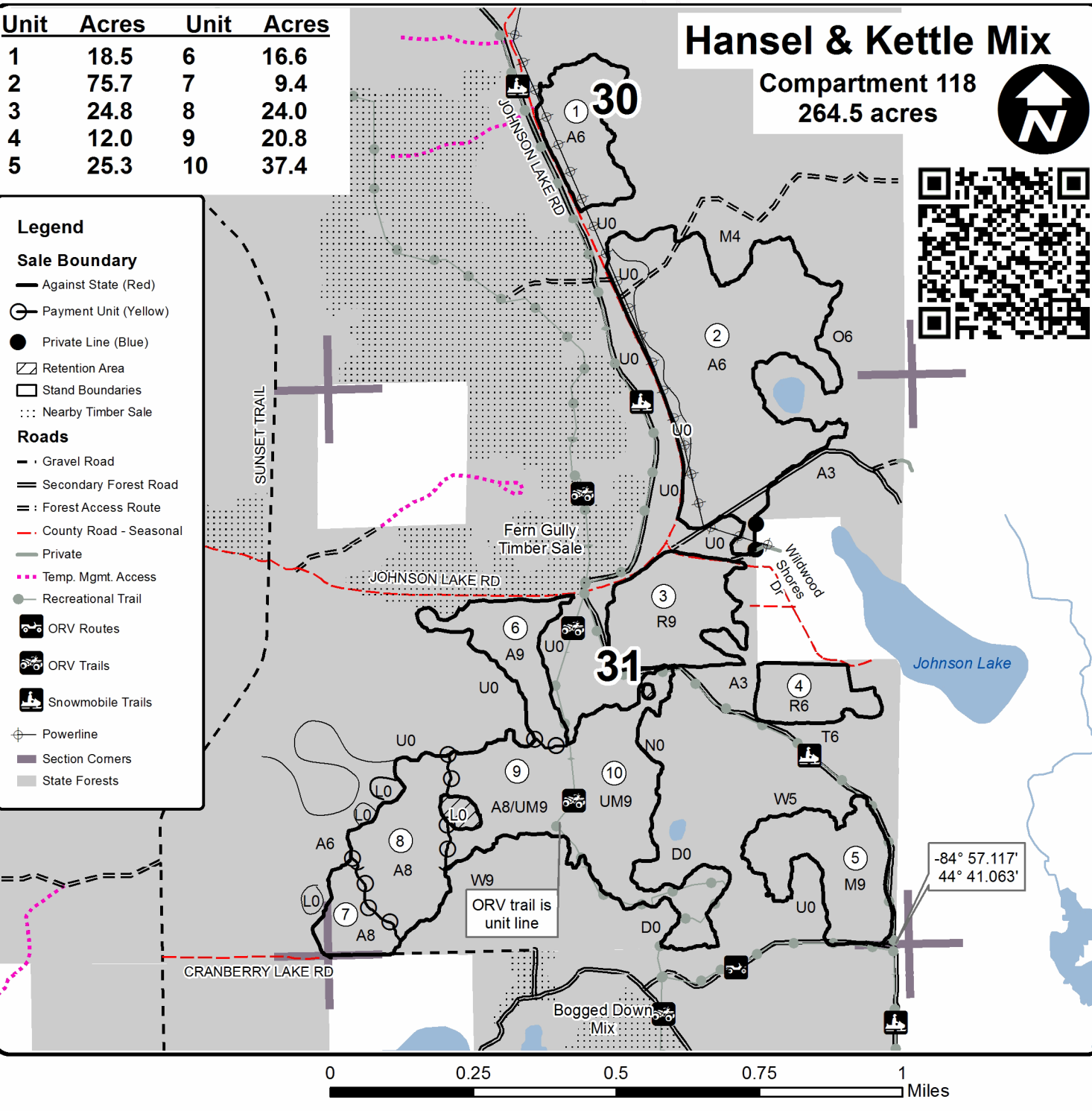
# TIMBER SALE MAP

This information provided by authority of Part 525, 1994 PA 451, as amended.

Sale Number	Year
61-161-18-01	2018

Forest Management Unit Traverse City	County Kalkaska	Mapped By Armstrong	Date 9/21/2018	Page 1	of 1
Township 27N	Range 5W	Section(s) and Subdivision(s) SE1/2SW, E1/2SW, NWSE, S1/2SE; Sec 31: S1/2NW, N1/2NE, SWNE, SW, SESE	Peterson, Roell, Standerfer Scale 1:15,840		

Cover Type				Density	
A = Aspen	H = Hemlock	N = Marsh	U = Upland Brush	0 = Non Stocked	5 = Pole Timber Medium
B = Paper Birch	J = Jack Pine	O = Oak	UM = Upland Mixed	1 = Seedling Sapling Poor	6 = Pole Timber Well
C = Cedar	L = Lowland Brush	P = Lowland Poplar	V = Bog or Marsh	2 = Seedling Sapling Medium	7 = Saw Timber Poor
D = Treed Bog	LM = Lowland Mixed	Q = Mixed Swamp Conifer	W = White Pine	3 = Seedling Sapling Well	8 = Saw Timber Medium
E = Swamp Hdwoods	M = Mpl, Bch, Brch	R = Red Pine	X = Non Stocked	4 = Pole Timber Poor	9 = Saw Timber Well
F = Spruce Fir	MC = Mixed Conifer	S = Black Spruce	Z = Water		
G = Grass	MD = Mixed Deciduous	T = Tamarack			



**TIMBER SALE INFORMATION**

Mean Dogs Mix (61-162-18)

T28N, R07W, SEC. 8.

Kalkaska County (Advertised Price \$139,531.00)

A timber sale contract for this lump sum, sealed bid timber sale will be awarded to the responsible bidder offering the highest sealed bid price. Bids must be at or above the following advertised price for each species:

<u>PRODUCTS &amp; SPECIES</u>	<u>ESTIMATED UNITS*</u>	<u>ADVERTISED PRICE</u>
<b>Sawtimber</b>		
Basswood	3.20 MBF	\$ 101.00 / MBF
Beech	32.50 MBF	\$ 114.00 / MBF
Black Cherry	1.70 MBF	\$ 130.00 / MBF
Mixed Aspen	91.80 MBF	\$ 101.00 / MBF
Red Maple	499.10 MBF	\$ 104.00 / MBF
Sugar Maple	86.00 MBF	\$ 281.00 / MBF
White Pine	10.90 MBF	\$ 46.00 / MBF
<b>Pulpwood</b>		
Mixed Aspen	955.00 Cords	\$ 19.05 / Cord
Mixed Hardwood	1,761.00 Cords	\$ 17.25 / Cord
White Pine	71.00 Cords	\$ 12.20 / Cord

\* The total volume is statistically estimated within plus (+) or minus (-) 10.72 percent. The estimated units are final and not subject to adjustment. Prospective bidders are urged to examine this timber and to make their own estimates of quantity and quality.

**BOND AND PAYMENT SCHEDULE:**

1. A bond in the amount of \$6,977.00 to insure faithful performance of the conditions of the contract will be deposited by the successful bidder within 21 days of the sale award.
2. Cutting in any sale or unit without the required advance payment would be considered a trespass.
3. Total payment must be paid in advance or according to the following schedule:
  - (a) Ten percent (10%) of the sale value must be paid within 21 days of the sale award.
  - (b) The 10% down payment will be credited towards the first unit cut.
  - (c) Payment for each of the following units must be made before cutting begins in that unit:

<u>PAYMENT UNIT NUMBER</u>	<u>PERCENT OF TOTAL SALE VALUE</u>
01	32.2%
02	19.1%
03	27.6%
04	21.1%

4. If no cutting takes place, the 10% down payment will not be refunded.
5. Operations on the contract issued will terminate on 03/31/2021.

**Description of Timber by Payment Unit (PU)**

PU	MARKET GROUP	PRODUCT	QUANTITY	UNIT	ACRES	ADVERTISE PRICE	
1	Beech	Sawtimber	22.6	MBF	50.2	\$44,864.35	
	Mixed Aspen		2.5	MBF			
	<i>B. T. Aspen</i>		2.5	<i>MBF</i>			
	Red Maple		210.0	MBF			
	Sugar Maple		27.7	MBF			
	Mixed Aspen		Pulpwood	5.0			Cords
	<i>B. T. Aspen</i>			5.0			<i>Cords</i>
	Mixed Hardwood			714.0			Cords
	<i>Beech</i>			64.0			<i>Cords</i>
	<i>Red Maple</i>			543.0			<i>Cords</i>
	<i>Sugar Maple</i>			107.0			<i>Cords</i>
2	Mixed Aspen	Sawtimber	37.6	MBF	36.9	\$26,712.05	
	<i>B. T. Aspen</i>		36.7	<i>MBF</i>			
	<i>Quaking Aspen</i>		0.9	<i>MBF</i>			
	Red Maple		25.5	MBF			
	Sugar Maple		13.1	MBF			
	White Pine		5.7	MBF			
	Mixed Aspen		Pulpwood	624.0			Cords
	<i>B. T. Aspen</i>			500.0			<i>Cords</i>
	<i>Quaking Aspen</i>			124.0			<i>Cords</i>
	Mixed Hardwood			235.0			Cords
	<i>Black Cherry</i>			14.0			<i>Cords</i>
	<i>Ironwood</i>			5.0			<i>Cords</i>
	<i>Red Maple</i>			159.0			<i>Cords</i>
	<i>Sugar Maple</i>			57.0			<i>Cords</i>
	White Pine			31.0			Cords
3	Black Cherry	Sawtimber	1.7	MBF	35.7	\$38,444.60	
	Mixed Aspen		48.4	MBF			
	<i>B. T. Aspen</i>		33.9	<i>MBF</i>			
	<i>Quaking Aspen</i>		14.5	<i>MBF</i>			
	Red Maple		94.4	MBF			
	Sugar Maple		34.5	MBF			
	White Pine		5.2	MBF			
	Mixed Aspen		Pulpwood	318.0			Cords
	<i>B. T. Aspen</i>			253.0			<i>Cords</i>
	<i>Quaking Aspen</i>			65.0			<i>Cords</i>
	Mixed Hardwood			408.0			Cords
	<i>Beech</i>			4.0			<i>Cords</i>
	<i>Black Cherry</i>			20.0			<i>Cords</i>
	<i>Ironwood</i>			3.0			<i>Cords</i>
	<i>Red Maple</i>			257.0			<i>Cords</i>
<i>Sugar Maple</i>	124.0	<i>Cords</i>					
White Pine	40.0	Cords					
4	Basswood	Sawtimber	3.2	MBF	29.9	\$29,510.00	
	Beech		9.9	MBF			
	Mixed Aspen		3.3	MBF			
	<i>B. T. Aspen</i>		1.0	<i>MBF</i>			
	<i>Quaking Aspen</i>		2.3	<i>MBF</i>			
	Red Maple		169.2	MBF			
	Sugar Maple		10.7	MBF			
	Mixed Aspen		Pulpwood	8.0			Cords
	<i>B. T. Aspen</i>			5.0			<i>Cords</i>
	<i>Quaking Aspen</i>			3.0			<i>Cords</i>
	Mixed Hardwood			404.0			Cords
	<i>Basswood</i>			4.0			<i>Cords</i>
	<i>Beech</i>			28.0			<i>Cords</i>

**Description of Timber by Payment Unit (PU), con't**

PU	MARKET GROUP	PRODUCT	QUANTITY	UNIT	ACRES	ADVERTISE PRICE
4 con't	<i>Ironwood</i>	<i>Pulpwood</i>	4.0	<i>Cords</i>		
	<i>Red Maple</i>		336.0	<i>Cords</i>		
	<i>Sugar Maple</i>		32.0	<i>Cords</i>		
TOTAL:			725.2	MBF		
TOTAL:			2,787.0	Cords		

## Sale Specific Conditions & Requirements

**Sale Name: Mean Dogs Mix**

**Sale Number: 61-162-18 Seq#: 1**

### 1 - Sale Area

#### 1.2 - Boundaries

##### 1.2.1 - Painted boundaries (1/14)

The sale boundary and Payment Unit boundaries are marked and identified by blue, red and yellow paint. Exterior sale boundary lines against private property are marked with blue paint. Exterior sale boundary lines against state are marked with red paint. Interior Payment Unit boundaries are marked with yellow paint. The painted boundary line trees are not Included Timber and are to be protected unless marked with orange paint.

### 2 - Timber Specifications

#### 2.1 - Included Timber

##### 2.1.1 - Clearcut unit(s) with unmerchantable trees (6/14)

Within Payment Unit(s) 2, cut all trees that are two (2) inches or more at DBH, except do not cut yellow birch, hemlock, and trees marked with green paint.

##### 2.1.3 - Cut tree marked unit(s) (12/08)

Within Payment Unit(s) 1 and 4, all trees are designated for cutting when marked with orange paint above and below stump height, regardless of merchantability. In addition, cut all aspen, beech and ironwood, except those marked with an orange 'X'.

##### 2.1.7 - Leave tree marked unit(s) (6/14)

Within Payment Unit(s) 3, cut all trees that are two (2) inches or more at DBH, except do not cut yellow birch, hemlock, and trees marked with green paint above and below stump height.

#### 2.2 - Utilization

##### 2.2.4 - Skidding length (2/14)

Skidding of unlimbed tops or lengths over 17 feet is not permissible in Payment Units 1 and 4. Skidding of lengths over 17 feet is permissible as long as the timber sale administrator approves the method and machinery used. If at any point damage exceeds specification 3.4.1, all of the remaining wood must be skid in lengths less than 17 feet.

### 3 - Payments

#### 3.3 - Pre-measured Sales

##### 3.3.4 - Dividing payment units (7/14)

Payment Unit(s) with a value of \$20,000 or more may be divided at the request of the Purchaser and upon approval of the Unit Manager. Dividing Payment Units is a contract modification which requires a Timber Sale Contract Supplement. There will be only one division per Payment Unit.

#### 3.4 - Damaged Timber

##### 3.4.1 - Damaged timber (6/14)

General Condition and Requirement 3.4 Damaged Timber, defines liquidated damages for undesignated live merchantable trees which are cut or injured. In addition, extreme care should be taken to avoid damage to tree seedlings and saplings.

No damage is acceptable to merchantable trees. Within the sale area, if more than 10% of trees (> 4.5" DBH) within a specified area of the sale are damaged, liquidated damages will be assessed for all trees damaged. Rates will be in accordance with General Condition and Requirement 3.4 Damaged Timber.

### 4 - Transportation

#### 4.1 - Construction

##### 4.1.6 - Road construction (1/09)

Construction of new roads or improvements of existing roads shall be done in such a way as to minimize the environmental

and visual impacts. Merchantable trees shall be cut and utilized unless otherwise directed. Non-merchantable trees shall be severed and laid flat on the ground. Slash shall be scattered, and not left in windrows and kept a minimum of 10 feet back from the road edge. Stumps shall be set upright, not left on edge, and be moved at least 10 feet away from the road edge. Disturbed soil shall be feathered into the woods and not left in berms or windrows.

#### 4.1.7 - Road closure (10/11)

All new roads built into the sale must be blocked to vehicle traffic within 30 days of completion of hauling. Overgrown roads that are reopened shall be considered new roads. In general, this will require constructing double earthen berms at strategic locations. Stumps and brush must be placed along the remainder of the trail. These roads must be rendered impassable to cars and trucks. Contact the sale administrator for specific details of design and placement.

## 5 - Operations

### 5.1 - Notification

#### 5.1.1 - Pre-sale conference (10/16)

A pre-sale conference on site between the Purchaser and sale administrator is required prior to beginning any operations to determine landing and road locations. The Unit Manager or his/her representative must be contacted at least 3 days in advance to schedule the conference.

#### 5.1.3 - Well heads and natural gas pipelines (11/15)

The Purchaser is responsible for contacting the gas or pipeline company prior to operating equipment in the vicinity of well heads or natural gas pipelines.

### 5.2 - Conduct of Operations

#### 5.2.1 - Slash

##### 5.2.1.8 - Slash height (12/08)

No slash or tree tops may exceed 36" inches in height.

#### 5.2.3 - Operating Restrictions

##### 5.2.3.3 - Bark slippage restriction (3/09)

Within Payment Unit(s) 1 and 4, cutting and skidding are not permitted during the period of April 15 to July 15. This restriction is because of bark slippage.

#### 5.2.29 - Shrub protection (9/07)

Do not cut or damage hawthorn, witch-hazel, dogwood or juneberry. These woody-shrub plants are highly beneficial to various wildlife species.

#### 5.2.32 - Decking/landing restoration (9/13)

All decking and landing areas must have the surface area restored to a condition equal to or better than before. This is to ensure the proper regeneration of the stand. Wood debris, chips and "cookies" from trimmings must be removed or scattered away from landing and loading areas and may not be windrowed on the edge.

### 5.4 - Soil Protection

#### 5.4.1 - Rutting restriction, general (7/16)

Operations are to cease immediately if equipment and weather conditions result in rutting of roads and/or skid trails which is 12 inches or greater in depth and 50 feet in length. The Unit Manager or his/her representative may restrict hauling and/or skidding if ruts exceed the specified depth. With the Unit Manager or his/her representative's approval, the Purchaser may return to the area when the risk of rutting has decreased.

#### 5.4.2 - Skid trails (2/04)

Skid trails up and down slopes should be avoided. If however this is unavoidable, these trails will be left in a non-erodible condition using water bars, logs, and slash. Placing of slash on these skid trails while logging is ongoing may alleviate need for any further action. At the direction of the sale administrator, seed, fertilizer, and mulch may also be required.

#### 5.4.6 - Wet area protection (5/10)

No harvesting operations, including skidding and felling, are to take place within the vernal pond area. When harvesting occurs, there should be no disturbance to the vernal pond depression. All equipment, trees and tops should be kept out of this

area. Within 100 feet of the pond, equipment should only be used when the soil is in a dry or frozen condition. Care must be taken by the Purchaser to identify and avoid operating in these areas of the timber sale.

#### 5.8 - Protection of Endangered Species

##### 5.8.5 - Protection of raptor nests (3/13)

All trees with raptor nests will be protected if found during harvesting operations. Notification will be made to the Unit Manager or his/her representative who will notify the Wildlife Biologist so an on-site evaluation and recommendation can be made, if necessary.

### **6 - Safety and Fire Prevention**

#### 6.2 - Signing

##### 6.2.1 - Road posting (9/09)

The Purchaser is responsible for posting and maintaining caution signs on Wallace and Smith Road prior to beginning operations. The road must be posted at appropriate distances from the sale area to warn of logging activity and truck traffic. Signs must be removed when harvest operations are suspended or completed. The Purchaser will provide these signs.





# TIMBER SALE MAP

This information provided by authority of Part 525, 1994 PA 451, as amended.

Forest Management Unit Traverse City	County Kalkaska	Mapped By Crigier	Date 09/28/2018	Page 1	of 1
Township 28N	Range 07W	Section(s) and Subdivision(s) 8: S1/2NE, SE1/4, E1/2SW	Scale 1:15,840		

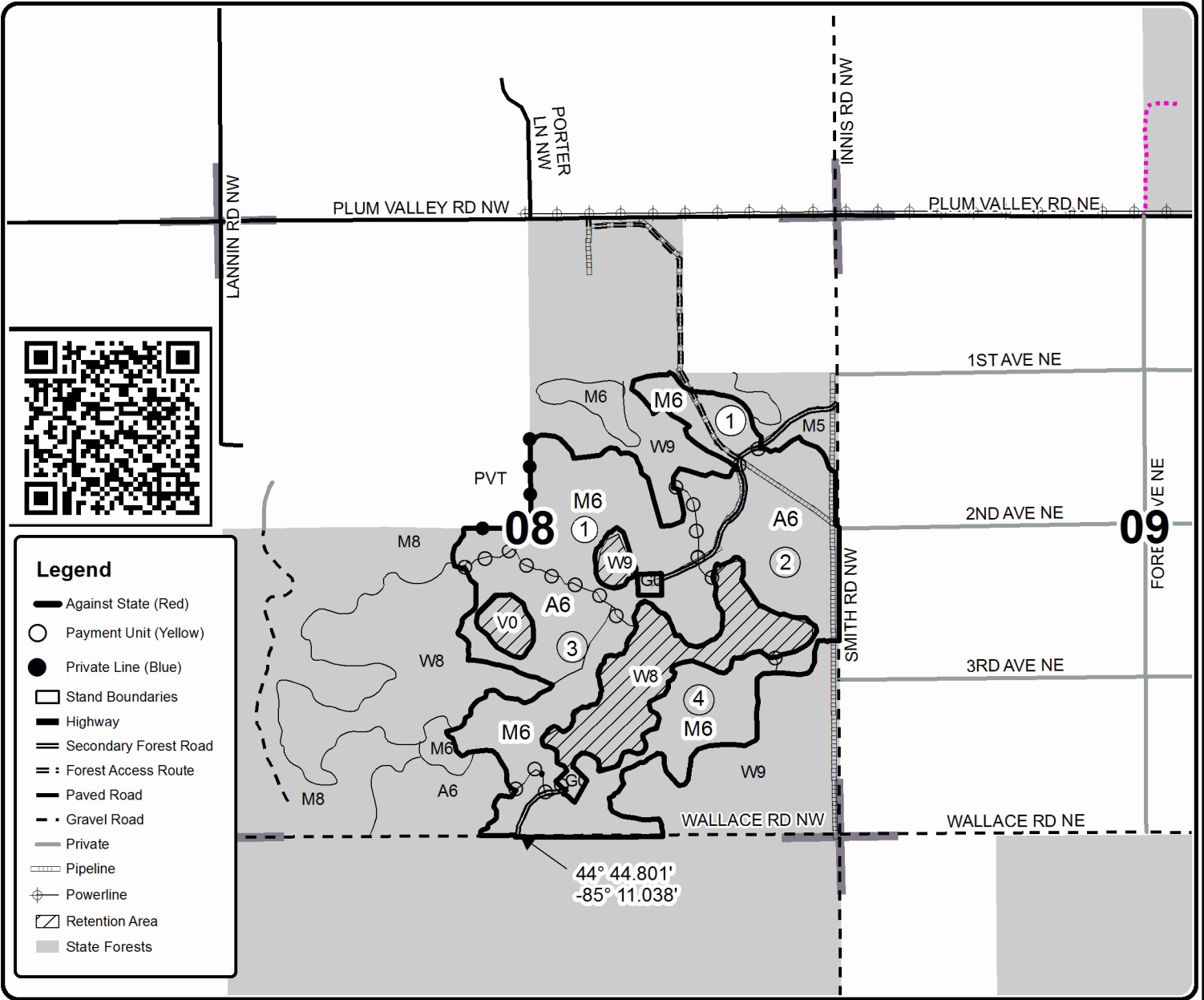
Cover Type				Density	
A = Aspen	H = Hemlock	N = Marsh	U = Upland Brush	0 = Non Stocked	5 = Pole Timber Medium
B = Paper Birch	J = Jack Pine	O = Oak	UM = Upland Mixed	1 = Seedling Sapling Poor	6 = Pole Timber Well
C = Cedar	L = Lowland Brush	P = Lowland Poplar	V = Bog or Marsh	2 = Seedling Sapling Medium	7 = Saw Timber Poor
D = Treed Bog	LM = Lowland Mixed	Q = Mixed Swamp Conifer	W = White Pine	3 = Seedling Sapling Well	8 = Saw Timber Medium
E = Swamp Hdwoods	M = Mpl. Bch, Brch	R = Red Pine	X = Non Stocked	4 = Pole Timber Poor	9 = Saw Timber Well
F = Spruce Fir	MC = Mixed Conifer	S = Black Spruce	Z = Water		
G = Grass	MD = Mixed Deciduous	T = Tamarack			

PU	Acres	PU	Acres
1	50.2	4	29.9
2	36.9		
3	35.7		

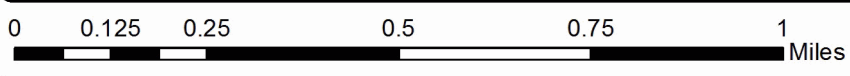
## Mean Dogs Mix

### Compartment 175

152.7 Acres



44° 44.801'  
-85° 11.038'





Underdog Mix (61-158-18)

T27N, R06W, SEC. 25; T27N, R06W, SEC. 35; T27N, R06W, SEC. 36; Kalkaska

In response to the notice of sale to be held 4:00 p.m. (local time) on January 28, 2019, I am hereby submitting my sealed bid (firm offer) for the following forest products to be cut. Bids for individual species must be at or above the advertised price. All non-responsive bid forms may be rejected.

<u>PRODUCTS &amp; SPECIES</u>	<u>ESTIMATED VOLUME*</u>	<u>ADVERTISED PRICE</u>	<u>BID PRICE/UNIT</u>
<b>Sawtimber</b>			
Basswood	18.90 MBF	\$ 116.00/MBF	\$ _____
Beech	1.50 MBF	\$ 130.00/MBF	\$ _____
Black Cherry	2.50 MBF	\$ 149.00/MBF	\$ _____
Mixed Aspen	300.00 MBF	\$ 116.00/MBF	\$ _____
Red Maple	32.80 MBF	\$ 119.00/MBF	\$ _____
Red Oak	1.50 MBF	\$ 271.00/MBF	\$ _____
Red Pine	337.70 MBF	\$ 116.00/MBF	\$ _____
Sugar Maple	1.50 MBF	\$ 321.00/MBF	\$ _____
White Pine	6.80 MBF	\$ 52.00/MBF	\$ _____
<b>Pulpwood</b>			
Balsam Fir	16.00 Cords	\$ 13.70/Cord	\$ _____
Basswood	95.00 Cords	\$ 24.05/Cord	\$ _____
Jack Pine	12.00 Cords	\$ 12.80/Cord	\$ _____
Mixed Aspen	1,223.00 Cords	\$ 21.75/Cord	\$ _____
Mixed Hardwood	952.00 Cords	\$ 19.70/Cord	\$ _____
Red Oak	43.00 Cords	\$ 15.15/Cord	\$ _____
Red Pine	373.00 Cords	\$ 40.15/Cord	\$ _____
White Pine	24.00 Cords	\$ 13.95/Cord	\$ _____

\*The volumes are statistically estimated within plus (+) or minus (-) 13.74 percent. These estimated volumes are final and not subject to adjustment. Prospective bidders are urged to examine this timber and to make their own estimates of quantity and quality.

I understand that any or all bids may be rejected. All bids must be signed and all bid items must be bid or the bid form may be rejected. I also understand that consideration and awarding a contract will be based upon my past performance and ability to complete the contract based upon equipment and staffing subject to my control.

FEDERAL ID: \_\_\_\_\_ or SOCIAL SECURITY NUMBER: \_\_\_\_\_

Company or individual bidding: \_\_\_\_\_

Company representative's name: \_\_\_\_\_

Address: \_\_\_\_\_

City: \_\_\_\_\_ State: \_\_\_\_\_ Zip: \_\_\_\_\_

IF AVAILABLE, PLEASE PLACE THE PERSONALIZED LABEL FROM YOUR PROSPECTUS IN THE ABOVE BOX.

Individual or company representative's signature: \_\_\_\_\_ Date: \_\_\_\_\_

Phone number : \_\_\_\_\_ Email (optional): \_\_\_\_\_

**THE WINNING BIDDER MUST COMPLETE THE VERIFICATION OF WORKER'S DISABILITY COMPENSATION ACT COMPLIANCE (ON REVERSE SIDE IF DOUBLE SIDED) WITHIN 21 DAYS OF SALE AWARD DATE**



FOR DEPARTMENT USE ONLY	
Sale Number (XX - XXX - XX - XX)	
Forest Management Unit:	

# TIMBER SALE VERIFICATION OF WORKER'S DISABILITY COMPENSATION ACT COMPLIANCE

As required by Act 317, P.A. 1969 (Worker's Compensation) and  
Part 5 of Act 451 of 1994, as amended.

## VERIFICATION OF WORKER'S DISABILITY COMPENSATION ACT COMPLIANCE

- This verification must be completed and submitted within 21 days of contract award and prior to the issuance of the timber sale contract.
- In addition, if boxes 2B or 2C are checked, then Notice of Exclusion or Certificate of Insurance must be submitted within twenty-one (21) days of the contract award and prior to the issuance of the timber sale contract.
- All information must be typed or printed except for written signatures.

Please Check Appropriate Categories:

1. My business is organized as (you **must** check one of the boxes below):
  - A.  Sole Proprietorship (individual)
  - B.  Partnership
  - C.  Corporation
2. You **must** check one of the boxes below:
  - A.  I certify my business is a sole proprietorship and it has no employees but the sole proprietor. I am not subject to the Worker's Compensation Laws.
  - B.  I certify my business has satisfied its obligation to the Worker's Compensation Act through the use of an approved Notice of Exclusion (BWC-337, Rev. 5/96). I will provide a copy of the Notice of Exclusion within 21 days of the contract award. (For questions or a copy of the BWC-337, please call the Worker's Compensation Bureau at 517-322-1195).
  - C.  I certify my business has a Worker's Compensation Policy. I will provide an original Certificate of Insurance within twenty-one (21) days of the contract award.
3. If you have checked item 2(A) or 2(B), you **must** indicate the number of **both** full-time and part-time employees, other than yourself, including family members and active partners (if none, you must enter "0").

\_\_\_\_\_ Full-time Employees

\_\_\_\_\_ Part-time Employees

Name of Business		Federal ID (or) Social Security No.	
Address		Telephone (       )	
City	State	ZIP	

*I hereby certify that the above information is true and correct. I agree to notify the Michigan DNR of any changes that occur in factors affecting my coverage during any of my present and future operations.*

\_\_\_\_\_  
Signature of Owner or Authorized Representative

\_\_\_\_\_  
Title

\_\_\_\_\_  
Date

Please complete the "SEALED BID" information on the next page

Hansel and Kettle Mix (61-161-18)  
T27N, R05W, SEC. 30; T27N, R05W, SEC. 31; T27N, R06W, SEC. 36; Kalkaska

In response to the notice of sale to be held 4:00 p.m. (local time) on January 28, 2019, I am hereby submitting my sealed bid (firm offer) for the following forest products to be cut. Bids for individual species must be at or above the advertised price. All non-responsive bid forms may be rejected.

<u>PRODUCTS &amp; SPECIES</u>	<u>ESTIMATED VOLUME*</u>	<u>ADVERTISED PRICE</u>	<u>BID PRICE/UNIT</u>
<b>Sawtimber</b>			
Basswood	115.80 MBF	\$ 108.00/MBF	\$ _____
Black Cherry	16.70 MBF	\$ 139.00/MBF	\$ _____
Mixed Aspen	180.40 MBF	\$ 109.00/MBF	\$ _____
Red Maple	56.70 MBF	\$ 112.00/MBF	\$ _____
Red Oak	2.70 MBF	\$ 254.00/MBF	\$ _____
Red Pine	204.10 MBF	\$ 109.00/MBF	\$ _____
Sugar Maple	34.70 MBF	\$ 301.00/MBF	\$ _____
White Pine	113.10 MBF	\$ 49.00/MBF	\$ _____
<b>Pulpwood</b>			
Basswood	256.00 Cords	\$ 22.55/Cord	\$ _____
Mixed Aspen	1,742.00 Cords	\$ 20.40/Cord	\$ _____
Mixed Hardwood	1,038.00 Cords	\$ 18.50/Cord	\$ _____
Red Oak	57.00 Cords	\$ 14.20/Cord	\$ _____
Red Pine	498.00 Cords	\$ 37.65/Cord	\$ _____
White Pine	635.00 Cords	\$ 13.10/Cord	\$ _____

\*The volumes are statistically estimated within plus (+) or minus (-) 8.46 percent. These estimated volumes are final and not subject to adjustment. Prospective bidders are urged to examine this timber and to make their own estimates of quantity and quality.

I understand that any or all bids may be rejected. All bids must be signed and all bid items must be bid or the bid form may be rejected. I also understand that consideration and awarding a contract will be based upon my past performance and ability to complete the contract based upon equipment and staffing subject to my control.

FEDERAL ID: \_\_\_\_\_ or SOCIAL SECURITY NUMBER: \_\_\_\_\_

Company or individual bidding: \_\_\_\_\_

Company representative's name: \_\_\_\_\_

Address: \_\_\_\_\_

City: \_\_\_\_\_ State: \_\_\_\_\_ Zip: \_\_\_\_\_

IF AVAILABLE, PLEASE PLACE THE PERSONALIZED LABEL FROM YOUR PROSPECTUS IN THE ABOVE BOX.

Individual or company representative's signature: \_\_\_\_\_ Date: \_\_\_\_\_

Phone number : \_\_\_\_\_ Email (optional): \_\_\_\_\_

**THE WINNING BIDDER MUST COMPLETE THE VERIFICATION OF WORKER'S DISABILITY COMPENSATION ACT COMPLIANCE (ON REVERSE SIDE IF DOUBLE SIDED) WITHIN 21 DAYS OF SALE AWARD DATE**



<b>FOR DEPARTMENT USE ONLY</b>
Sale Number (XX - XXX - XX - XX)
Forest Management Unit:

## TIMBER SALE VERIFICATION OF WORKER'S DISABILITY COMPENSATION ACT COMPLIANCE

*As required by Act 317, P.A. 1969 (Worker's Compensation) and  
Part 5 of Act 451 of 1994, as amended.*

### VERIFICATION OF WORKER'S DISABILITY COMPENSATION ACT COMPLIANCE

- This verification must be completed and submitted within 21 days of contract award and prior to the issuance of the timber sale contract.
- In addition, if boxes 2B or 2C are checked, then Notice of Exclusion or Certificate of Insurance must be submitted within twenty-one (21) days of the contract award and prior to the issuance of the timber sale contract.
- All information must be typed or printed except for written signatures.

Please Check Appropriate Categories:

1. My business is organized as (you **must** check one of the boxes below):
  - A.  Sole Proprietorship (individual)
  - B.  Partnership
  - C.  Corporation
  
2. You **must** check one of the boxes below:
  - A.  I certify my business is a sole proprietorship and it has no employees but the sole proprietor. I am not subject to the Worker's Compensation Laws.
  - B.  I certify my business has satisfied its obligation to the Worker's Compensation Act through the use of an approved Notice of Exclusion (BWC-337, Rev. 5/96). I will provide a copy of the Notice of Exclusion within 21 days of the contract award. (For questions or a copy of the BWC-337, please call the Worker's Compensation Bureau at 517-322-1195).
  - C.  I certify my business has a Worker's Compensation Policy. I will provide an original Certificate of Insurance within twenty-one (21) days of the contract award.
  
3. If you have checked item 2(A) or 2(B), you **must** indicate the number of **both** full-time and part-time employees, other than yourself, including family members and active partners (if none, you must enter "0").

\_\_\_\_\_ Full-time Employees

\_\_\_\_\_ Part-time Employees

Name of Business		Federal ID (or) Social Security No.	
Address		Telephone (       )	
City	State	ZIP	

*I hereby certify that the above information is true and correct. I agree to notify the Michigan DNR of any changes that occur in factors affecting my coverage during any of my present and future operations.*

\_\_\_\_\_  
Signature of Owner or Authorized Representative

\_\_\_\_\_  
Title

\_\_\_\_\_  
Date

**Please complete the "SEALED BID" information on the next page**

Mean Dogs Mix (61-162-18)  
T28N, R07W, SEC. 8; Kalkaska COUNTY

In response to the notice of sale to be held 4:00 p.m. (local time) on January 28, 2019, I am hereby submitting my sealed bid (firm offer) for the following forest products to be cut. Bids for individual species must be at or above the advertised price. All non-responsive bid forms may be rejected.

<u>PRODUCTS &amp; SPECIES</u>	<u>ESTIMATED VOLUME*</u>	<u>ADVERTISED PRICE</u>	<u>BID PRICE/UNIT</u>
<b>Sawtimber</b>			
Basswood	3.20 MBF	\$ 101.00/MBF	\$ _____
Beech	32.50 MBF	\$ 114.00/MBF	\$ _____
Black Cherry	1.70 MBF	\$ 130.00/MBF	\$ _____
Mixed Aspen	91.80 MBF	\$ 101.00/MBF	\$ _____
Red Maple	499.10 MBF	\$ 104.00/MBF	\$ _____
Sugar Maple	86.00 MBF	\$ 281.00/MBF	\$ _____
White Pine	10.90 MBF	\$ 46.00/MBF	\$ _____
<b>Pulpwood</b>			
Mixed Aspen	955.00 Cords	\$ 19.05/Cord	\$ _____
Mixed Hardwood	1,761.00 Cords	\$ 17.25/Cord	\$ _____
White Pine	71.00 Cords	\$ 12.20/Cord	\$ _____

\*The volumes are statistically estimated within plus (+) or minus (-) 10.72 percent. These estimated volumes are final and not subject to adjustment. Prospective bidders are urged to examine this timber and to make their own estimates of quantity and quality.

I understand that any or all bids may be rejected. All bids must be signed and all bid items must be bid or the bid form may be rejected. I also understand that consideration and awarding a contract will be based upon my past performance and ability to complete the contract based upon equipment and staffing subject to my control.

FEDERAL ID: \_\_\_\_\_ or SOCIAL SECURITY NUMBER: \_\_\_\_\_

Company or individual bidding: \_\_\_\_\_

Company representative's name: \_\_\_\_\_

Address: \_\_\_\_\_

City: \_\_\_\_\_ State: \_\_\_\_\_ Zip: \_\_\_\_\_

IF AVAILABLE, PLEASE PLACE THE PERSONALIZED LABEL FROM YOUR PROSPECTUS IN THE ABOVE BOX.

Individual or company representative's signature: \_\_\_\_\_ Date: \_\_\_\_\_

Phone number : \_\_\_\_\_ Email (optional): \_\_\_\_\_

**THE WINNING BIDDER MUST COMPLETE THE VERIFICATION OF WORKER'S DISABILITY COMPENSATION ACT COMPLIANCE (ON REVERSE SIDE IF DOUBLE SIDED) WITHIN 21 DAYS OF SALE AWARD DATE**



<b>FOR DEPARTMENT USE ONLY</b>
Sale Number (XX - XXX - XX - XX)
Forest Management Unit:

## TIMBER SALE VERIFICATION OF WORKER'S DISABILITY COMPENSATION ACT COMPLIANCE

*As required by Act 317, P.A. 1969 (Worker's Compensation) and  
Part 5 of Act 451 of 1994, as amended.*

### VERIFICATION OF WORKER'S DISABILITY COMPENSATION ACT COMPLIANCE

- This verification must be completed and submitted within 21 days of contract award and prior to the issuance of the timber sale contract.
- In addition, if boxes 2B or 2C are checked, then Notice of Exclusion or Certificate of Insurance must be submitted within twenty-one (21) days of the contract award and prior to the issuance of the timber sale contract.
- All information must be typed or printed except for written signatures.

Please Check Appropriate Categories:

1. My business is organized as (you **must** check one of the boxes below):
  - A.  Sole Proprietorship (individual)
  - B.  Partnership
  - C.  Corporation
  
2. You **must** check one of the boxes below:
  - A.  I certify my business is a sole proprietorship and it has no employees but the sole proprietor. I am not subject to the Worker's Compensation Laws.
  - B.  I certify my business has satisfied its obligation to the Worker's Compensation Act through the use of an approved Notice of Exclusion (BWC-337, Rev. 5/96). I will provide a copy of the Notice of Exclusion within 21 days of the contract award. (For questions or a copy of the BWC-337, please call the Worker's Compensation Bureau at 517-322-1195).
  - C.  I certify my business has a Worker's Compensation Policy. I will provide an original Certificate of Insurance within twenty-one (21) days of the contract award.
  
3. If you have checked item 2(A) or 2(B), you **must** indicate the number of **both** full-time and part-time employees, other than yourself, including family members and active partners (if none, you must enter "0").

\_\_\_\_\_ Full-time Employees

\_\_\_\_\_ Part-time Employees

Name of Business		Federal ID (or) Social Security No.	
Address		Telephone (       )	
City	State	ZIP	

*I hereby certify that the above information is true and correct. I agree to notify the Michigan DNR of any changes that occur in factors affecting my coverage during any of my present and future operations.*

\_\_\_\_\_  
Signature of Owner or Authorized Representative

\_\_\_\_\_  
Title

\_\_\_\_\_  
Date

**Please complete the "SEALED BID" information on the next page**



106 Hardwood Scuffle (61-140-18)  
T28N, R05W, SEC. 13; T28N, R05W, SEC. 14; T28N, R05W, SEC. 23; T28N,

In response to the notice of sale to be held 4:00 p.m. (local time) on January 28, 2019, I am hereby submitting my sealed bid (firm offer) for the following forest products to be cut. Bids for individual species must be at or above the advertised price. All non-responsive bid forms may be rejected.

<u>PRODUCTS &amp; SPECIES</u>	<u>ESTIMATED VOLUME*</u>	<u>ADVERTISED PRICE</u>	<u>BID PRICE/UNIT</u>
<b>Sawtimber</b>			
Basswood	174.20 MBF	\$ 79.00/MBF	\$ _____
Beech	257.60 MBF	\$ 89.00/MBF	\$ _____
Mixed Aspen	240.00 MBF	\$ 80.00/MBF	\$ _____
Paper Birch	5.20 MBF	\$ 35.00/MBF	\$ _____
Red Maple	201.80 MBF	\$ 82.00/MBF	\$ _____
Red Oak	4.00 MBF	\$ 186.00/MBF	\$ _____
Red Pine	416.10 MBF	\$ 80.00/MBF	\$ _____
Sugar Maple	484.90 MBF	\$ 221.00/MBF	\$ _____
White Pine	20.50 MBF	\$ 36.00/MBF	\$ _____
<b>Pulpwood</b>			
Basswood	402.00 Cords	\$ 16.55/Cord	\$ _____
Beech	2,359.00 Cords	\$ 13.55/Cord	\$ _____
Mixed Aspen	1,031.00 Cords	\$ 14.95/Cord	\$ _____
Mixed Hardwood	3,817.00 Cords	\$ 13.55/Cord	\$ _____
Red Pine	414.00 Cords	\$ 27.60/Cord	\$ _____
White Pine	74.00 Cords	\$ 9.60/Cord	\$ _____

\*The volumes are statistically estimated within plus (+) or minus (-) 7.72 percent. These estimated volumes are final and not subject to adjustment. Prospective bidders are urged to examine this timber and to make their own estimates of quantity and quality.

I understand that any or all bids may be rejected. All bids must be signed and all bid items must be bid or the bid form may be rejected. I also understand that consideration and awarding a contract will be based upon my past performance and ability to complete the contract based upon equipment and staffing subject to my control.

FEDERAL ID: \_\_\_\_\_ or SOCIAL SECURITY NUMBER: \_\_\_\_\_

Company or individual bidding: \_\_\_\_\_

Company representative's name: \_\_\_\_\_

Address: \_\_\_\_\_

City: \_\_\_\_\_ State: \_\_\_\_\_ Zip: \_\_\_\_\_

IF AVAILABLE, PLEASE PLACE THE PERSONALIZED LABEL FROM YOUR PROSPECTUS IN THE ABOVE BOX.

Individual or company representative's signature: \_\_\_\_\_ Date: \_\_\_\_\_

Phone number : \_\_\_\_\_ Email (optional): \_\_\_\_\_

**THE WINNING BIDDER MUST COMPLETE THE VERIFICATION OF WORKER'S DISABILITY COMPENSATION ACT COMPLIANCE (ON REVERSE SIDE IF DOUBLE SIDED) WITHIN 21 DAYS OF SALE AWARD DATE**



<b>FOR DEPARTMENT USE ONLY</b>
Sale Number (XX - XXX - XX - XX)
Forest Management Unit:

## TIMBER SALE VERIFICATION OF WORKER'S DISABILITY COMPENSATION ACT COMPLIANCE

*As required by Act 317, P.A. 1969 (Worker's Compensation) and  
Part 5 of Act 451 of 1994, as amended.*

### VERIFICATION OF WORKER'S DISABILITY COMPENSATION ACT COMPLIANCE

- This verification must be completed and submitted within 21 days of contract award and prior to the issuance of the timber sale contract.
- In addition, if boxes 2B or 2C are checked, then Notice of Exclusion or Certificate of Insurance must be submitted within twenty-one (21) days of the contract award and prior to the issuance of the timber sale contract.
- All information must be typed or printed except for written signatures.

Please Check Appropriate Categories:

1. My business is organized as (you **must** check one of the boxes below):
  - A.  Sole Proprietorship (individual)
  - B.  Partnership
  - C.  Corporation
  
2. You **must** check one of the boxes below:
  - A.  I certify my business is a sole proprietorship and it has no employees but the sole proprietor. I am not subject to the Worker's Compensation Laws.
  - B.  I certify my business has satisfied its obligation to the Worker's Compensation Act through the use of an approved Notice of Exclusion (BWC-337, Rev. 5/96). I will provide a copy of the Notice of Exclusion within 21 days of the contract award. (For questions or a copy of the BWC-337, please call the Worker's Compensation Bureau at 517-322-1195).
  - C.  I certify my business has a Worker's Compensation Policy. I will provide an original Certificate of Insurance within twenty-one (21) days of the contract award.
  
3. If you have checked item 2(A) or 2(B), you **must** indicate the number of **both** full-time and part-time employees, other than yourself, including family members and active partners (if none, you must enter "0").

\_\_\_\_\_ Full-time Employees

\_\_\_\_\_ Part-time Employees

Name of Business		Federal ID (or) Social Security No.	
Address		Telephone (       )	
City	State	ZIP	

*I hereby certify that the above information is true and correct. I agree to notify the Michigan DNR of any changes that occur in factors affecting my coverage during any of my present and future operations.*

\_\_\_\_\_  
Signature of Owner or Authorized Representative

\_\_\_\_\_  
Title

\_\_\_\_\_  
Date

**Please complete the "SEALED BID" information on the next page**