



**DEPARTMENT OF NATURAL RESOURCES  
STATE OF MICHIGAN**

**TIMBER SALE PROSPECTUS #6288**

SCHEDULED SALE DATE AND TIME: 2:00 p.m. (local time) on February 12, 2019.

LOCATION: ROSCOMMON MGMT UNIT, PO BOX 218, ROSCOMMON, MI 48653.

PROSPECTUS NOTE: The bidder is advised to inspect the sale area and review the location, estimated volumes, operating costs and contract terms of proposed sales. Please be aware that some landowners may request 60 days or more notice for access across their land.

Notice is hereby given that bids will be received by the Unit Manager, ROSCOMMON MANAGEMENT UNIT, for certain timber on the following described lands:

55 and Dunham Breakup (71-007-19) / T22N, R01W, SEC. 23, W1/2NW,NENE.

T22N, R01W, SEC. 24, N1/2NW,SENE,NE.

Roscommon County, Advertised Price \$84,518.55, 86.1 Acres, Aspen, Hardwood.

SALE NOTE: This sale has all class A road access.

A recreation site such as a trail, pathway, or campground is within the sale area or the vicinity. Certain restrictions/specifications may be applicable including time restrictions.

Duck Lake Thin (71-004-18) / T22N, R03W, SEC. 28, NENE,NESW.

T22N, R03W, SEC. 30, SENE.

T22N, R03W, SEC. 32, NENW,N1/2NE.

Roscommon County, Advertised Price \$49,649.50, 72.4 Acres, Hardwood, Red Pine.

SALE NOTE: Units have may have received storm damage them after sale data was collected.

A recreation site such as a trail, pathway, or campground is within the sale area or the vicinity. Certain restrictions/specifications may be applicable including time restrictions.

202 Harvest (71-020-18) / T21N, R02E, SEC. 15, SWSW.

T21N, R02E, SEC. 22, NWNW.

T21N, R02E, SEC. 32, N1/2NE,SENE.

Ogemaw County, Advertised Price \$117,821.15, 119.0 Acres, Aspen, Hardwood.

## BID INSTRUCTIONS (VER. 07/02/2018):

### 1. Scheduled Bid Location, Date, and Time (2/11)

Bids must be received by the Unit Manager, ROSCOMMON OFFICE, PO BOX 218, ROSCOMMON, MI 48653, no later than 2:00 p.m. (local time) on February 12, 2019. For further information concerning this sale, contact Steve Anderson at 989-275-4622 extension 2740.

### 2. Bidder's Qualifications (5/16)

Purchaser shall obtain workers compensation insurance to cover claims under Michigan's Worker's Disability Compensation Act of 1969 or similar employee benefit act of any other state applicable to an employee. If all or part of a timber sale was prepared by a private contractor, the contractor and that contractor's company are not permitted to bid on the timber sale contract. Bids will not be accepted from individuals or companies appearing on the DNR/FRD No-Bid List. This list contains the names of purchasers who previously failed to execute a contract within 21-days or who have a history of poor performance.

### 3. Preparation of Sealed Bids (5/16)

Bid Forms may be completed online thru Michigan DNR Timber Sale Online Bidding (OLB) at [www.michigan.gov/timberbidding](http://www.michigan.gov/timberbidding) or by completing the hardcopy Bid Form found in the Timber Sale Prospectus. Hardcopy Bid Forms shall be manually signed in ink. Registration in OLB is considered your 'signature' for all bids submitted thru that system. Bid prices must be entered for each species and product in the Bid Price column for all material subject to bidding and all fill-in blanks must be completed. If erasures or other changes appear on the hardcopy Bid Form, each erasure or change must be initialed by the person signing the bid.

### 4. Submission of Sealed Bids (5/16)

Bid forms may be obtained from the Unit Manager or thru OLB. Bids may be submitted hardcopy or thru OLB. All hardcopy bids must be submitted on the bid form and in an envelope clearly identified as described in this section. NOTE: Only one bid form per bid envelope. Sealed bids must be submitted to the Unit office designated in the prospectus and must be submitted at or prior to the time established in the prospectus. The envelope should show on the outside (a) the sale name or number and (b) the date and time of bid opening, as shown in the prospectus. Bids received after the time specified in the sale prospectus are late bids and will be rejected.

It is possible for a bidder to submit multiple bids on a single sale. For example, a bid may be submitted hardcopy and a bid may be submitted thru OLB. Or, two bidders from the same company could both submit bids on the same sale. If this were to happen, the State would accept all bids received and award the contract accordingly. All bidding and contractual requirements would apply to all bids received.

### 5. Public Opening of Sealed Bids (7/16)

If conditions permit, the sealed bids will be publicly opened and posted at the time and place set in the prospectus.

If a bidder, present at a bid opening, has submitted bids on more than one sale, that bidder may withdraw their unopened bid envelopes or announce the withdrawal of their online bid after being declared the successful bidder on one sale.

### 6. Award of Contract (1/11)

Award of the contract will be made to the Bidder whose bid, conforming to the prospectus, is most advantageous to the State of Michigan on the basis of total value at rates bid for the estimated quantities. The State reserves the right to reject any bid or waive any minor irregularity in bids received. A written award mailed (or otherwise furnished) to the successful Bidder shall be deemed to result in a binding contract without further action by either party.

### 7. Down Payment (1/11)

The Bidder to whom award is made must make a down payment within 21 days of the sale award. The amount of the down payment will be calculated as shown in the Bond and Payment Schedule of this prospectus. Only cash may be used to meet this requirement.

### 8. Performance Security (1/11)

As guarantee of faithful performance, a cash bond, certificate of deposit, surety bond or irrevocable letter of credit (LOC) is required within 21 days of the sale award. The amount of the performance security is shown in the Bond and

Payment Schedule of this prospectus. If an LOC or surety is used, the coverage must extend for at least 6 months beyond the contract expiration.

#### 9. Timber Sale Contract (7/18)

Additional conditions and requirements common to all timber sales are listed on the timber sale contract (R4031) and are available on line at [www.michigan.gov/timber](http://www.michigan.gov/timber). Contact the Unit Manager for additional information or a sample contract. Within 21 days of the date of the award letter, the bidder must sign the contract and provide the required down payment, performance security, and verification of worker's disability compensation. The down payment and performance security shall be in accordance with the provisions of the timber sale contract, in the sums stated in this prospectus. If these actions are not taken, then the Bidder, the Bidder's corporation, and the corporation's principals may not be permitted to bid on State timber sales for a period of 3 months after the first offense, 6 months after the second offense, and 1 year after the third offense. An offense will only be counted against the Bidder for 5 years. In addition, the Bidder certifies that if awarded this contract, the Bidder will complete the timber sale contract in accordance with its terms and any modifications thereof including requirements to purchase, cut, and remove the included timber by the expiration date.

Payment Unit values in the State Forest Timber Sale Contract are calculated based on the advertised value of the Payment Unit as a percentage of the total advertised value of the contract. The advertised value of each Payment Unit is given in the Description of Timber by Payment Unit table on the Timber Sale Information page. For example, if the value of Payment Unit 1 is advertised as \$1,500 and the total Timber Sale value is advertised as \$10,000, the contract price for Payment Unit 1 will be 15% of the total bid price ( $\$1,500/\$10,000 * 100$ ).

#### 10. Disclaimer of Estimates and Bidder's Warranty of Inspection (7/16)

Before submitting this bid, the Bidder is advised and cautioned to inspect the sale area, review the requirements of the sale contract, and take other steps as may be reasonably necessary to ascertain the location, estimated volumes, construction estimates, and operating costs of the proposed sale. Failure to do so will not relieve the Bidder from responsibility for completing the contract.

The Bidder warrants that this bid is submitted solely on the basis of the Bidder's examination and inspection of the quality and quantity of the timber offered for sale and the Bidder's opinion of the value thereof and the costs of recovery. No reliance should be placed on the State of Michigan's estimates of timber quality, quantity or costs of recovery. Bidder further acknowledges that the State of Michigan: (i) expressly disclaims any warranty of fitness of timber for any purpose; (ii) offers this timber as is without any warranty of quality (merchantability) or quantity and (iii) expressly disclaims any warranty as to the quantity or quality of timber sold.

#### 11. Certification and Chain-of-Custody (10/14)

Unless otherwise indicated in the contract under section 7 – Other Conditions of the Sale Specific Conditions & Requirements, the area encompassed by this timber sale is certified to the standards of the Forest Stewardship Council (FSC) - Certificate #SCS-FM/COC-00090N and the Sustainable Forestry Initiative (SFI) - Certificate #NSF-SFIS-5Y031-SF5. Forest products from this sale may be delivered to the mill as "FSC 100% and / or SFI certified" as long as the contractor hauling the forest products is chain-of-custody (COC) certified or covered under a COC certificate from the destination mill. The purchaser is responsible for maintaining COC after leaving the sale area.

#### 12. Good Neighbor Authority (GNA) Requirements (7/16)

If the name of this timber sales contains the acronym GNA, it is authorized by the Good Neighbor Authority (GNA) and covered by various agreements between the U.S. Forest Service and the State. The timber sale occurs on federal land and the following conditions apply:

GNA contracts on US Forest Service land will not be awarded to purchasers on the Federal list of excluded parties. The System for Award Management (SAM) will be checked for active excluded parties prior to award of contract. In addition, the Bidder to whom award is made must complete an Assurance Regarding Felony Conviction or Tax Delinquent Status for Corporate Applicants (AD-3031).

#### 13. Good Neighbor Authority (GNA) Requirements, con't (9/16)

Bidder certifies, by signing this bid form, that to the best of Bidder's knowledge that the following representations are accurate and complete.

- a. That the Bidder and its principals are not presently debarred, suspended, proposed for debarment, declared ineligible, or voluntary excluded from timber sales (covered transactions) by any Federal department or agency.
- b. That the Bidder and its principals have not within a 3-year period preceding this bid been convicted of or had a civil judgment rendered against them for commission of fraud or a criminal offense in connection with obtaining, attempting to obtain, or performing a public (Federal, State, or local) transaction or contract under a public transaction; violation of Federal or State antitrust statutes or commission of embezzlement, theft, forgery, bribery, falsification or destruction of records, making false statements, or receiving stolen property.
- c. That the Bidder and its principals are not presently indicted for or otherwise criminally or civilly charged by a governmental entity (Federal, State, or local) with commission of any of the offenses enumerated in paragraph b of this certification.
- d. That the Bidder and its principals have not within a 3-year period preceding this bid had one or more public transactions (Federal, State, or local) terminated for breach or default of a timber or forest product contract.

Bidders that cannot certify this requirement, in whole or in part, shall submit an explanation with their bid.

DAN EICHINGER  
Director

**TIMBER SALE INFORMATION**

55 and Dunham Breakup (71-007-19)

T22N, R01W, SEC. 23; T22N, R01W, SEC. 24.

Roscommon County (Advertised Price \$84,518.55)

SALE NOTE: This sale has all class A road access.

A recreation site such as a trail, pathway, or campground is within the sale area or the vicinity. Certain restrictions/specifications may be applicable including time restrictions.

A timber sale contract for this lump sum, sealed bid timber sale will be awarded to the responsible bidder offering the highest sealed bid price. Bids must be at or above the following advertised price for each species:

<u>PRODUCTS &amp; SPECIES</u>	<u>ESTIMATED UNITS*</u>	<u>ADVERTISED PRICE</u>
Sawtimber		
B. T. Aspen	113.80 MBF	\$ 64.00 / MBF
Northern Pin Oak	71.00 MBF	\$ 128.00 / MBF
Red Oak	36.30 MBF	\$ 275.00 / MBF
Pulpwood		
Mixed Aspen	1,283.00 Cords	\$ 32.05 / Cord
Mixed Hardwood	209.00 Cords	\$ 23.10 / Cord
Mixed Oak	640.00 Cords	\$ 18.65 / Cord
Red Pine	4.00 Cords	\$ 46.45 / Cord
White Pine	4.00 Cords	\$ 23.75 / Cord

\* The total volume is statistically estimated within plus (+) or minus (-) 10.38 percent. The estimated units are final and not subject to adjustment. Prospective bidders are urged to examine this timber and to make their own estimates of quantity and quality.

**BOND AND PAYMENT SCHEDULE:**

1. A bond in the amount of \$4,226.00 to insure faithful performance of the conditions of the contract will be deposited by the successful bidder within 21 days of the sale award.
2. Cutting in any sale or unit without the required advance payment would be considered a trespass.
3. Total payment must be paid in advance or according to the following schedule:
  - (a) Ten percent (10%) of the sale value must be paid within 21 days of the sale award.
  - (b) The 10% down payment will be credited towards the first unit cut.
  - (c) Payment for each of the following units must be made before cutting begins in that unit:

<u>PAYMENT UNIT NUMBER</u>	<u>PERCENT OF TOTAL SALE VALUE</u>
01	11.7%
02	24.0%
03	8.9%
04	35.4%
05	13.5%
06	6.5%

4. If no cutting takes place, the 10% down payment will not be refunded.
5. Operations on the contract issued will terminate on 03/31/2021.

**Description of Timber by Payment Unit (PU)**

PU	MARKET GROUP	PRODUCT	QUANTITY	UNIT	ACRES	ADVERTISE PRICE
1	B. T. Aspen	Sawtimber	4.8	MBF	13.9	\$9,889.45
	Red Oak		4.4	MBF		
	Mixed Aspen	Pulpwood	182.0	Cords		
	<i>B. T. Aspen</i>		182.0	<i>Cords</i>		
	Mixed Hardwood		9.0	Cords		
	<i>Red Maple</i>		9.0	<i>Cords</i>		
	Mixed Oak		125.0	Cords		
	<i>Northern Pin Oak</i>		24.0	<i>Cords</i>		
	<i>Red Oak</i>		101.0	<i>Cords</i>		
2	B. T. Aspen	Sawtimber	38.9	MBF	20.6	\$20,268.05
	Northern Pin Oak		20.9	MBF		
	Red Oak		17.4	MBF		
	Mixed Aspen	Pulpwood	183.0	Cords		
	<i>B. T. Aspen</i>		183.0	<i>Cords</i>		
	Mixed Hardwood		3.0	Cords		
	<i>Red Maple</i>		3.0	<i>Cords</i>		
	Mixed Oak		220.0	Cords		
	<i>Northern Pin Oak</i>		151.0	<i>Cords</i>		
	<i>Red Oak</i>		59.0	<i>Cords</i>		
	<i>White Oak</i>		10.0	<i>Cords</i>		
	Red Pine		4.0	Cords		
	White Pine		4.0	Cords		
3	B. T. Aspen	Sawtimber	5.9	MBF	8.3	\$7,529.75
	Red Oak		2.5	MBF		
	Mixed Aspen	Pulpwood	160.0	Cords		
	<i>B. T. Aspen</i>		160.0	<i>Cords</i>		
	Mixed Hardwood		7.0	Cords		
	<i>Red Maple</i>		7.0	<i>Cords</i>		
	Mixed Oak		63.0	Cords		
	<i>Northern Pin Oak</i>		5.0	<i>Cords</i>		
	<i>Red Oak</i>		56.0	<i>Cords</i>		
<i>White Oak</i>		2.0	<i>Cords</i>			
4	B. T. Aspen	Sawtimber	41.1	MBF	23.3	\$29,899.75
	Northern Pin Oak		8.6	MBF		
	Red Oak		12.0	MBF		
	Mixed Aspen	Pulpwood	564.0	Cords		
	<i>B. T. Aspen</i>		386.0	<i>Cords</i>		
	<i>Quaking Aspen</i>		178.0	<i>Cords</i>		
	Mixed Hardwood		113.0	Cords		
	<i>Red Maple</i>		113.0	<i>Cords</i>		
	Mixed Oak		117.0	Cords		
	<i>White Oak</i>	<i>Sawtimber</i>	1.4	<i>MBF</i>		
	<i>Northern Pin Oak</i>	<i>Pulpwood</i>	26.0	<i>Cords</i>		
	<i>Red Oak</i>		76.0	<i>Cords</i>		
	<i>White Oak</i>		12.0	<i>Cords</i>		
5	B. T. Aspen	Sawtimber	23.1	MBF	11.0	\$11,438.25
	Northern Pin Oak		8.2	MBF		
	Mixed Aspen	Pulpwood	194.0	Cords		
	<i>B. T. Aspen</i>		194.0	<i>Cords</i>		
	Mixed Hardwood		77.0	Cords		
	<i>Red Maple</i>	<i>Sawtimber</i>	4.5	<i>MBF</i>		
	<i>Black Cherry</i>	<i>Pulpwood</i>	3.0	<i>Cords</i>		
	<i>Red Maple</i>		65.0	<i>Cords</i>		
	Mixed Oak		49.0	Cords		
<i>Northern Pin Oak</i>		49.0	<i>Cords</i>			
6	Northern Pin Oak	Sawtimber	33.3	MBF	9.0	\$5,493.30

**Description of Timber by Payment Unit (PU), con't**

PU	MARKET GROUP	PRODUCT	QUANTITY	UNIT	ACRES	ADVERTISE PRICE
6 con't	Mixed Oak	Pulpwood	66.0	Cords		
	<i>Northern Pin Oak</i>		66.0	<i>Cords</i>		
TOTAL:			221.1	MBF		
TOTAL:			2,140.0	Cords		

## Sale Specific Conditions & Requirements

**Sale Name: 55 and Dunham Breakup**

**Sale Number: 71-007-19 Seq#: 1**

### 1 - Sale Area

#### 1.2 - Boundaries

##### 1.2.1 - Painted boundaries (1/14)

The sale boundary and Payment Unit boundaries are marked and identified by blue and red paint. Exterior sale boundary lines against private property are marked with blue paint. Exterior sale boundary lines against state are marked with red paint. The painted boundary line trees are not Included Timber and are to be protected.

### 2 - Timber Specifications

#### 2.1 - Included Timber

##### 2.1.1 - Clearcut unit(s) with unmerchantable trees (6/14)

Within Payment Unit(s) 1-6, cut all trees that are two (2) inches or more at DBH, except do not cut white oak within Payment Unit 6.

#### 2.2 - Utilization

##### 2.2.6 - Roundwood operation required (5/07)

The skidding of whole trees or tree segments with limbs attached is prohibited within Payment Unit 6. All products must be produced as roundwood and forwarded to existing roads or landing areas in final product length.

##### 2.2.9 - No chipping permitted (12/08)

Within Payment Unit(s) 1, no chipping is permitted. Tops must be scattered throughout the sale area and along an illegal hill climb as directed by the sale administrator. In addition, some tops in Payment Unit 2 may be required to be placed along another illegal hill climb as directed by the sale administrator.

### 3 - Payments

#### 3.3 - Pre-measured Sales

##### 3.3.4 - Dividing payment units (7/14)

Payment Unit(s) may be divided at the request of the Purchaser and upon approval of the Unit Manager. Dividing Payment Units is a contract modification which requires a Timber Sale Contract Supplement.

#### 3.4 - Damaged Timber

##### 3.4.1 - Damaged timber (6/14)

General Condition and Requirement 3.4 Damaged Timber, defines liquidated damages for undesignated live merchantable trees which are cut or injured. In addition, extreme care should be taken to avoid damage to tree seedlings and saplings in Payment Unit 6.

Within Payment Unit 6, if more than 50% of the tree seedlings or saplings (1/4" to 4.5" DBH) within a specified portion of the sale area are damaged, liquidated damages will be assessed at \$250 per acre for all acreage within that specified portion of the sale area that was damaged.

### 4 - Transportation

#### 4.1 - Construction

##### 4.1.6 - Road construction (1/09)

Improvements of existing roads shall be done in such a way as to minimize the environmental and visual impacts.

Merchantable trees shall be cut and utilized unless otherwise directed. Non-merchantable trees shall be severed and laid flat on the ground. Slash shall be scattered, and not left in windrows and kept a minimum of 10 feet back from the road edge.

Stumps shall be set upright, not left on edge, and be moved at least 10 feet away from the road edge. Disturbed soil shall be feathered into the woods and not left in berms or windrows.



#### 4.1.12 - No new roads (1/12)

No new roads will be permitted in any Payment Unit. All operations are limited to existing roads.

### 5 - Operations

#### 5.1 - Notification

##### 5.1.1 - Pre-sale conference (10/16)

A pre-sale conference between the Purchaser and sale administrator is required prior to beginning any operations. The Unit Manager or his/her representative must be contacted at least 5 days in advance to schedule the conference.

#### 5.2 - Conduct of Operations

##### 5.2.1 - Slash

###### 5.2.1.8 - Slash height (12/08)

No slash or tree tops may exceed 36 inches in height.

##### 5.2.2 - Hazard Trees/Snags

###### 5.2.2.1 - Den trees (10/16)

Obvious hollow and/or den trees shall be protected and left standing unless they are a safety hazard.

##### 5.2.3 - Operating Restrictions

###### 5.2.3.5 - Oak wilt restriction (1/18)

Within Payment Unit(s) 1-6, unless changed by written agreement, cutting, skidding, hauling within the sale and brushing of access roads to the sale are not permitted during the period of April 15 to July 15. Operations may be allowed if specific steps are taken to prevent damaging uncut oak during the high risk period. Those steps may include completing all road brushing before April 15th and clearing a tree-length buffer along uncut oak cover before April 15th. This is necessary to reduce the spread of oak wilt. For more information, contact the Unit Manager or his/her representative.

##### 5.2.4 - Dead and Down Creation

###### 5.2.4.4 - Dead and down creation, grouse (6/18)

To encourage grouse and other wildlife, in Payment Unit(s) 1, 4, and 5, leave one, 10" diameter or larger log-length (8 foot minimum) piece on the ground for every 2 acres. These trees will be evenly scattered throughout the unit, preferably away from M-55. They can be an unmerchantable piece or a full tree.

##### 5.2.32 - Decking/landing restoration (9/13)

All decking and landing areas must have the surface area restored to a condition equal to or better than before. This is to ensure the proper regeneration of the stand. Wood debris, chips and "cookies" from trimmings must be removed or scattered away from landing and loading areas and may not be windrowed on the edge.

##### 5.2.41 - Snowmobile trail protection (9/11)

There is a snowmobile trail/ORV route bordering the west side of Payment Unit 1. Do not cut or damage posts with orange trail markers or traffic control signs. If the trail is used, it must be maintained and restored to a condition equal to or better than before the sale. The road maintenance/restoration must be done prior to December 1. If the trail road is to be used for hauling during the snowmobile season, then a snow covered base must be left on the trail.

### 6 - Safety and Fire Prevention

#### 6.2 - Signing

##### 6.2.1 - Road posting (9/09)

The Purchaser is responsible for posting and maintaining caution signs on M-55, Dunham Lake Road, Emery Road, and the snowmobile trail prior to beginning operations. The road must be posted at appropriate distances from the sale area to warn of logging activity and truck traffic. Signs must be removed when harvest operations are suspended or completed. The Purchaser will provide these signs.



# TIMBER SALE MAP

This information provided by authority of Part 525, 1994 PA 451, as amended.

Forest Management Unit Roscommon	County Roscommon	Mapped By Martell	Date 11/14/18	Page 1	of 2
Township 22N	Range 01W	Section(s) and Subdivision(s) Sec. 23 - W1/2NW, NENE; Sec. 24 - N1/2NW, SENW, NE	Scale 1:15,840		

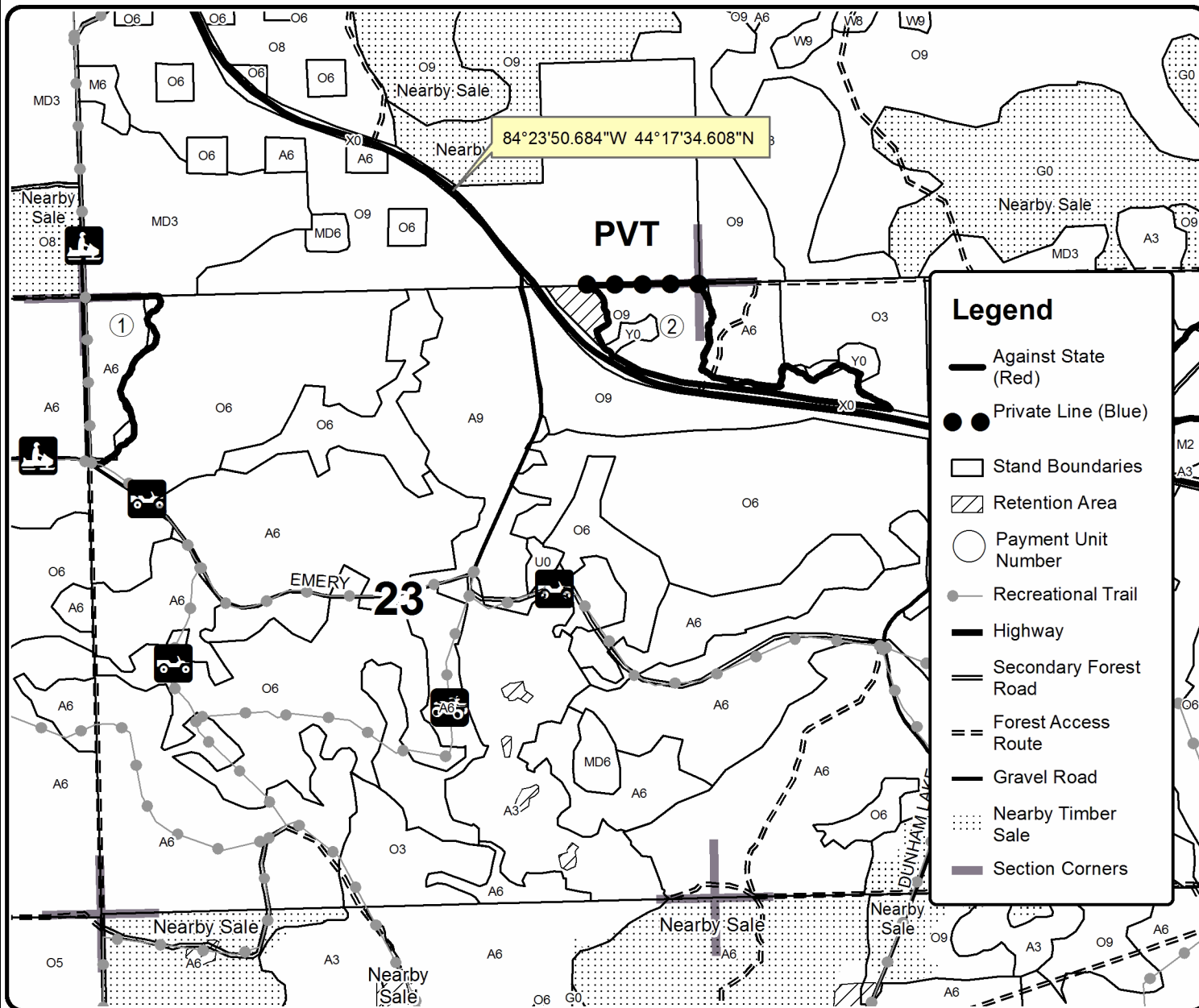
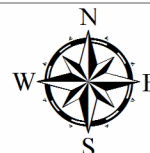
Cover Type				Density	
A = Aspen	H = Hemlock	N = Marsh	U = Upland Brush	0 = Non Stocked	5 = Pole Timber Medium
B = Paper Birch	J = Jack Pine	O = Oak	UM = Upland Mixed	1 = Seedling Sapling Poor	6 = Pole Timber Well
C = Cedar	L = Lowland Brush	P = Lowland Poplar	V = Bog or Marsh	2 = Seedling Sapling Medium	7 = Saw Timber Poor
D = Treed Bog	LM = Lowland Mixed	Q = Mixed Swamp Conifer	W = White Pine	3 = Seedling Sapling Well	8 = Saw Timber Medium
E = Swamp Hdwoods	M = Mpl, Bch, Brch	R = Red Pine	X = Non Stocked	4 = Pole Timber Poor	9 = Saw Timber Well
F = Spruce Fir	MC = Mixed Conifer	S = Black Spruce	Z = Water		
G = Grass	MD = Mixed Deciduous	T = Tamarack			

PU	Acres	PU	Acres
1	13.9	4	23.3
2	20.6	5	11.0
3	8.3	6	9.0

## 55 and Dunham Breakup

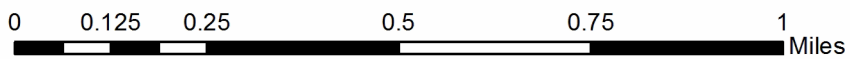
### Compartment 054

86.1 Acres



### Legend

- Against State (Red)
- Private Line (Blue)
- Stand Boundaries
- Retention Area
- Payment Unit Number
- Recreational Trail
- Highway
- Secondary Forest Road
- Forest Access Route
- Gravel Road
- Nearby Timber Sale
- Section Corners





# TIMBER SALE MAP

This information provided by authority of Part 525, 1994 PA 451, as amended.

Sale Number	Year
71 - 007	19

Forest Management Unit Roscommon		County Roscommon	Mapped By Martell	Date 11/14/18	Page 2	of 2
Township 22N	Range 01W	Section(s) and Subdivision(s) Sec. 23 - W1/2NW, NENE; Sec. 24 - N1/2NW, SENW, NE		Scale 1:15,840		

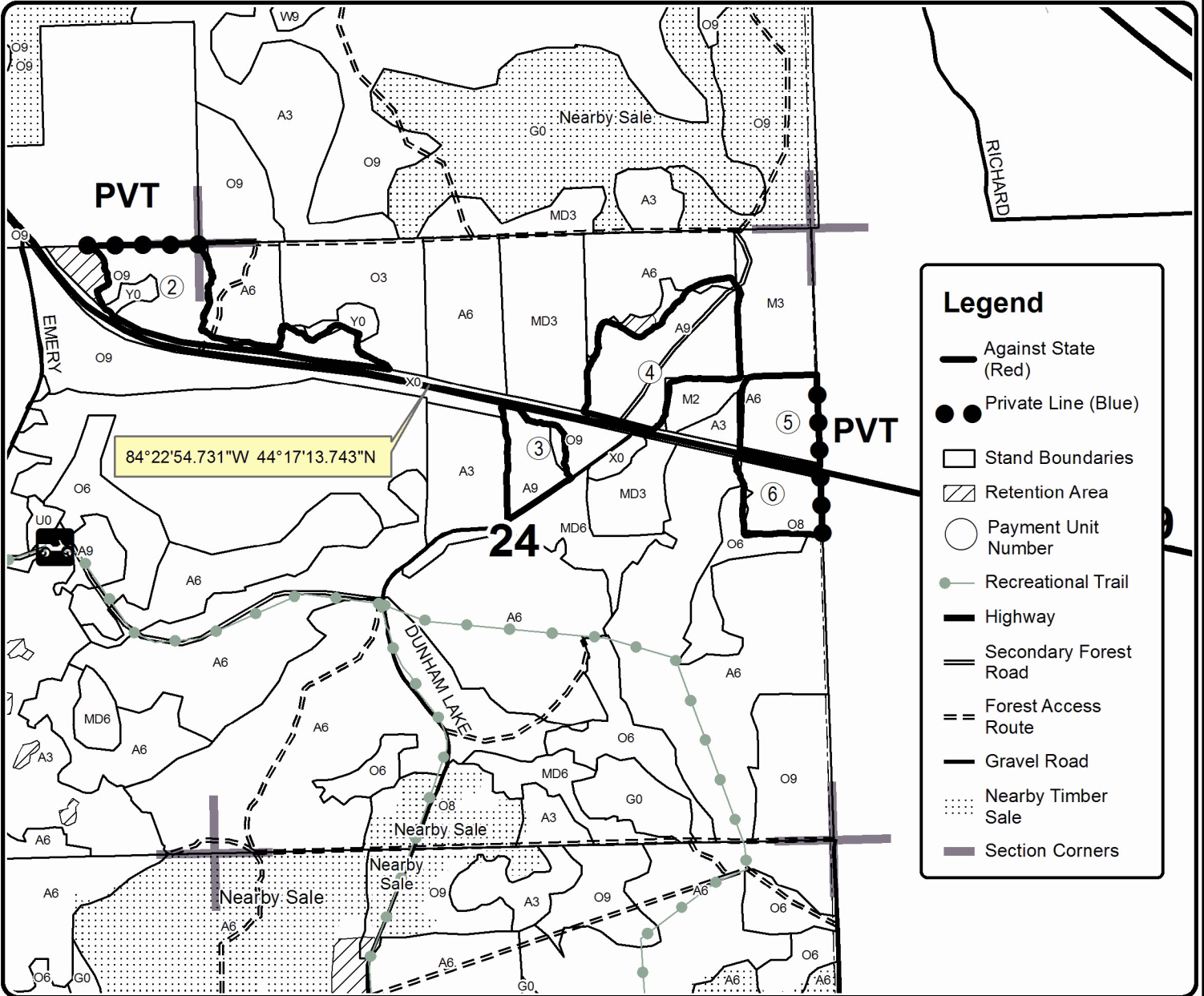
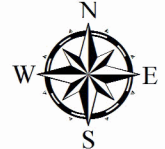
Cover Type				Density	
A = Aspen	H = Hemlock	N = Marsh	U = Upland Brush	0 = Non Stocked	5 = Pole Timber Medium
B = Paper Birch	J = Jack Pine	O = Oak	UM = Upland Mixed	1 = Seedling Sapling Poor	6 = Pole Timber Well
C = Cedar	L = Lowland Brush	P = Lowland Poplar	V = Bog or Marsh	2 = Seedling Sapling Medium	7 = Saw Timber Poor
D = Treed Bog	LM = Lowland Mixed	Q = Mixed Swamp Conifer	W = White Pine	3 = Seedling Sapling Well	8 = Saw Timber Medium
E = Swamp Hdwoods	M = Mpl, Bch, Brch	R = Red Pine	X = Non Stocked	4 = Pole Timber Poor	9 = Saw Timber Well
F = Spruce Fir	MC = Mixed Conifer	S = Black Spruce	Z = Water		
G = Grass	MD = Mixed Deciduous	T = Tamarack			

PU	Acres	PU	Acres
1	13.9	4	23.3
2	20.6	5	11.0
3	8.3	6	9.0

## 55 and Dunham Breakup

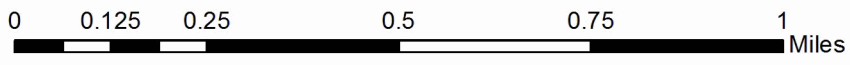
### Compartment 054

### 86.1 Acres



### Legend

- Against State (Red)
- Private Line (Blue)
- Stand Boundaries
- ▨ Retention Area
- Payment Unit Number
- Recreational Trail
- Highway
- Secondary Forest Road
- - - Forest Access Route
- Gravel Road
- ▤ Nearby Timber Sale
- Section Corners





**TIMBER SALE INFORMATION**

Duck Lake Thin (71-004-18)

T22N, R03W, SEC. 28; T22N, R03W, SEC. 30; T22N, R03W, SEC. 32.  
Roscommon County (Advertised Price \$49,649.50)

SALE NOTE: Units have may have received storm damage them after sale data was collected.

A recreation site such as a trail, pathway, or campground is within the sale area or the vicinity. Certain restrictions/specifications may be applicable including time restrictions.

A timber sale contract for this lump sum, sealed bid timber sale will be awarded to the responsible bidder offering the highest sealed bid price. Bids must be at or above the following advertised price for each species:

<u>PRODUCTS &amp; SPECIES</u>	<u>ESTIMATED UNITS*</u>	<u>ADVERTISED PRICE</u>
<b>Sawtimber</b>		
B. T. Aspen	14.30 MBF	\$ 52.00 / MBF
Bl/R/Hybrid Oak	70.50 MBF	\$ 123.00 / MBF
Red Oak	36.50 MBF	\$ 264.00 / MBF
Red Pine	50.10 MBF	\$ 118.00 / MBF
White Oak	8.10 MBF	\$ 77.00 / MBF
White Pine	14.10 MBF	\$ 61.00 / MBF
<b>Pulpwood</b>		
B. T. Aspen	123.00 Cords	\$ 30.75 / Cord
Balsam Fir	9.00 Cords	\$ 16.00 / Cord
Jack Pine	10.00 Cords	\$ 17.85 / Cord
Misc. Species 1	2.00 Cords	\$ 22.55 / Cord
Mixed Oak	242.00 Cords	\$ 17.95 / Cord
Quaking Aspen	11.00 Cords	\$ 30.75 / Cord
Red Maple	65.00 Cords	\$ 22.20 / Cord
Red Pine	249.00 Cords	\$ 44.60 / Cord
Scotch Pine	16.00 Cords	\$ 23.75 / Cord
White Pine	60.00 Cords	\$ 22.80 / Cord
White Spruce	3.00 Cords	\$ 24.80 / Cord

\* The total volume is statistically estimated within plus (+) or minus (-) 14.08 percent. The estimated units are final and not subject to adjustment. Prospective bidders are urged to examine this timber and to make their own estimates of quantity and quality.

**BOND AND PAYMENT SCHEDULE:**

1. A bond in the amount of \$2,482.00 to insure faithful performance of the conditions of the contract will be deposited by the successful bidder within 21 days of the sale award.
2. Cutting in any sale or unit without the required advance payment would be considered a trespass.
3. Total payment must be paid in advance or according to the following schedule:
  - (a) Ten percent (10%) of the sale value must be paid within 21 days of the sale award.
  - (b) The 10% down payment will be credited towards the first unit cut.
  - (c) Payment for each of the following units must be made before cutting begins in that unit:
 

<u>PAYMENT UNIT NUMBER</u>	<u>PERCENT OF TOTAL SALE VALUE</u>
01	25.8%
02	25.8%
03	18.1%
04	21.5%
05	8.8%
4. If no cutting takes place, the 10% down payment will not be refunded.
5. Operations on the contract issued will terminate on 06/30/2021.

**Description of Timber by Payment Unit (PU)**

PU	MARKET GROUP	PRODUCT	QUANTITY	UNIT	ACRES	ADVERTISE PRICE	
1	B. T. Aspen	Sawtimber	1.3	MBF	15.6	\$12,790.60	
	BI/R/Hybrid Oak		31.1	MBF			
	Red Oak		20.2	MBF			
	White Oak		2.1	MBF			
	B. T. Aspen	Pulpwood	26.0	Cords			
	Mixed Oak		99.0	Cords			
	<i>BI/R/Hybrid Oak</i>		64.0	<i>Cords</i>			
	<i>Red Oak</i>		22.0	<i>Cords</i>			
	<i>White Oak</i>		13.0	<i>Cords</i>			
	Quaking Aspen		11.0	Cords			
	Red Maple		22.0	Cords			
	<i>Red Maple</i>		22.0	<i>Cords</i>			
	2		B. T. Aspen	Sawtimber			6.2
BI/R/Hybrid Oak		20.1	MBF				
Red Oak		9.6	MBF				
Red Pine		9.4	MBF				
White Oak		3.1	MBF				
White Pine		5.8	MBF				
B. T. Aspen		Pulpwood	52.0	Cords			
Balsam Fir			1.0	Cords			
<i>Balsam Fir</i>			1.0	<i>Cords</i>			
Jack Pine			2.0	Cords			
<i>Jack Pine</i>			0.4	<i>MBF</i>			
<i>Jack Pine</i>			1.0	<i>Cords</i>			
Mixed Oak			76.0	Cords			
<i>BI/R/Hybrid Oak</i>			58.0	<i>Cords</i>			
<i>Red Oak</i>			10.0	<i>Cords</i>			
<i>White Oak</i>			8.0	<i>Cords</i>			
Red Maple			8.0	Cords			
<i>Red Maple</i>			8.0	<i>Cords</i>			
Red Pine			46.0	Cords			
White Pine			26.0	Cords			
3	B. T. Aspen		Sawtimber	4.3	MBF	16.6	\$8,965.70
	BI/R/Hybrid Oak			14.1	MBF		
	Red Oak	6.7		MBF			
	Red Pine	6.6		MBF			
	White Oak	2.2		MBF			
	White Pine	4.1		MBF			
	B. T. Aspen	Pulpwood	36.0	Cords			
	Balsam Fir		1.0	Cords			
	<i>Balsam Fir</i>		1.0	<i>Cords</i>			
	Jack Pine		2.0	Cords			
	<i>Jack Pine</i>		0.3	<i>MBF</i>			
	<i>Jack Pine</i>		1.0	<i>Cords</i>			
	Mixed Oak		52.0	Cords			
	<i>BI/R/Hybrid Oak</i>		40.0	<i>Cords</i>			
	<i>Red Oak</i>		7.0	<i>Cords</i>			
	<i>White Oak</i>		5.0	<i>Cords</i>			
	Red Maple		5.0	Cords			
<i>Red Maple</i>	5.0	<i>Cords</i>					
Red Pine	32.0	Cords					
White Pine	18.0	Cords					
4	Red Pine	Sawtimber	22.8	MBF	11.5	\$10,689.15	
	Jack Pine	Pulpwood	7.0	Cords			
	<i>Jack Pine</i>	<i>Sawtimber</i>	0.5	<i>MBF</i>			
	<i>Jack Pine</i>	<i>Pulpwood</i>	6.0	<i>Cords</i>			

**Description of Timber by Payment Unit (PU), con't**

PU	MARKET GROUP	PRODUCT	QUANTITY	UNIT	ACRES	ADVERTISE PRICE			
4 con't	Red Pine	Pulpwood	167.0	Cords					
	Scotch Pine		16.0	Cords					
	<i>Scotch Pine</i>	<i>Sawtimber</i>	0.8	<i>MBF</i>					
	<i>Scotch Pine</i>	<i>Pulpwood</i>	14.0	<i>Cords</i>					
	White Pine		2.0	Cords					
5	B. T. Aspen	Sawtimber	2.5	MBF	4.9	\$4,354.20			
	BI/R/Hybrid Oak		5.2	MBF					
	Red Pine		11.3	MBF					
	White Oak		0.7	MBF					
	White Pine		4.2	MBF					
	B. T. Aspen	Pulpwood	9.0	Cords					
	Balsam Fir		7.0	Cords					
	<i>Balsam Fir</i>	<i>Sawtimber</i>	1.0	<i>MBF</i>					
	<i>Balsam Fir</i>	<i>Pulpwood</i>	5.0	<i>Cords</i>					
	Misc. Species 1		2.0	Cords					
	Mixed Oak		15.0	Cords					
	<i>BI/R/Hybrid Oak</i>		13.0	<i>Cords</i>					
	<i>White Oak</i>		2.0	<i>Cords</i>					
	Red Maple		30.0	Cords					
	<i>Red Maple</i>	<i>Sawtimber</i>	3.4	<i>MBF</i>					
	<i>Red Maple</i>	<i>Pulpwood</i>	23.0	<i>Cords</i>					
	Red Pine		4.0	Cords					
	White Pine		14.0	Cords					
	White Spruce		3.0	Cords					
	<i>White Spruce</i>	<i>Sawtimber</i>	0.7	<i>MBF</i>					
	<i>White Spruce</i>	<i>Pulpwood</i>	2.0	<i>Cords</i>					
	TOTAL:			193.6			MBF		
	TOTAL:			791.0			Cords		

# Sale Specific Conditions & Requirements

**Sale Name: Duck Lake Thin**

**Sale Number: 71-004-18 Seq#: 1**

## 1 - Sale Area

### 1.2 - Boundaries

#### 1.2.1 - Painted boundaries (1/14)

The sale boundary and Payment Unit boundaries are marked and identified by blue, red and yellow paint. Exterior sale boundary lines against private property are marked with blue paint. Exterior sale boundary lines against state are marked with red paint. Interior Payment Unit boundaries are marked with yellow paint. The painted boundary line trees are not Included Timber and are to be protected unless marked with orange paint. Yellow painted trees designating an interior Payment Unit boundary are only to be cut when all surrounding Payment Units have been paid.

## 2 - Timber Specifications

### 2.1 - Included Timber

#### 2.1.3 - Cut tree marked unit(s) (12/08)

Within Payment Unit(s) 1 -3, all trees are designated for cutting when marked with orange paint above and below stump height, regardless of merchantability.

IN ADDITION: Within Payment Unit 1, cut all aspen and red maple to a two inch d.b.h.

IN ADDITION: Within Payment Unit 2 and 3, cut all aspen trees to a two inch d.b.h..

#### 2.1.7 - Leave tree marked unit(s) (6/14)

Within Payment Unit(s) 5, cut all trees that are two (2) inches or more at DBH except trees marked with green paint above and below stump height.

#### 2.1.8 - Designated plantation row unit(s) (12/08)

Within Payment Unit(s) 4, all red pine trees which meet minimum piece specifications in 2.2 Utilization, within designated plantation rows are designated for cutting. Designated plantation rows are identified by orange paint that are to be cut. IN ADDITION: Remove all Scots Pine trees including those in adjacent rows where the red pine are not to be removed.

#### 2.1.11 - Description of timber note (2/04)

Note that miscellaneous species is pin cherry and mixed oak is both red and white oak species.

### 2.2 - Utilization

#### 2.2.3 - Stump heights (4/07)

Stump heights within the Sale Area shall not exceed 6 inches for all trees.

#### 2.2.6 - Roundwood operation required (5/07)

The skidding of whole trees or tree segments with limbs attached is prohibited within Payment Unit(s) 1-4. All products must be produced as roundwood and forwarded to existing roads or landing areas in final product length.

## 3 - Payments

### 3.3 - Pre-measured Sales

#### 3.3.4 - Dividing payment units (7/14)

Payment Unit(s) 2 may be divided at the request of the Purchaser and upon approval of the Unit Manager. Dividing Payment Units is a contract modification which requires a Timber Sale Contract Supplement. There will be only one division per Payment Unit.

### 3.4 - Damaged Timber

#### 3.4.1 - Damaged timber (6/14)

General Condition and Requirement 3.4 Damaged Timber, defines liquidated damages for undesignated live merchantable trees which are cut or injured. In addition, extreme care should be taken to avoid damage to tree seedlings and saplings.

Within Payment Units 1-3, if more than 30% of the tree seedlings or saplings (1/4" to 4.5" DBH) within a specified portion of



the sale area are damaged, liquidated damages will be assessed at \$300 per acre for all acreage within that specified portion of the sale area that was damaged.

No damage is acceptable to merchantable trees. Within the sale area, if more than 5% of trees (> 4.5" DBH) within a specified area of the sale are damaged, liquidated damages will be assessed for all trees damaged. Rates will be in accordance with General Condition and Requirement 3.4 Damaged Timber.

#### **4 - Transportation**

##### 4.1 - Construction

###### 4.1.3 - Slash and earthen piles (8/04)

Piles or windrows of earth along roads and landings that have been widened or constructed shall be leveled. Slash from road maintenance or construction, including stumps, shall be utilized to block off a new trail.

###### 4.1.6 - Road construction (1/09)

Construction of the new access route to Payment Unit 1 shall be done in such a way as to minimize the environmental and visual impacts. Merchantable trees shall be cut and utilized unless otherwise directed. Non-merchantable trees shall be severed and laid flat on the ground. Slash shall be scattered, and not left in windrows and used to block off the new road upon sale completion. Stumps shall be set upright, not left on edge, and be moved at least 20 feet away from the county road edge. Disturbed soil shall be feathered into the woods and not left in berms or windrows.

###### 4.1.7 - Road closure (10/11)

All new roads built into the sale must be blocked to vehicle traffic upon completion of the sale. All stumps from road building and landing construction must be reserved to block any newly constructed roads upon completion of the sale. These stumps must be scattered along the road system to prohibit vehicular movement. Contact the sale administrator for specific details of design and placement.

###### 4.1.8 - Road work (1) (8/07)

A new driveway needs to be installed off of Reserve Road to access Payment Unit 1. The Roscommon County Road Commission must be contacted and all applicable permits and construction requirements, if required, are the responsibility of the producer.

###### 4.1.12 - No new roads (1/12)

No new roads will be permitted in Payment Unit(s) 2-4. All operations are limited to existing roads. Skid trails only will be allowed.

##### 4.2 - Maintenance

###### 4.2.3 - Road maintenance (8/13)

The following road maintenance is required: Within 60 days of completion of hauling, or if no hauling occurs for 60 days, the road must be maintained and graded to the condition the road was prior to usage. This includes cleaning of drainage areas, grading, crowning and filling with gravel, if necessary. Damages will be assessed if grading/repair does not occur.

###### 4.2.5 - Two wheel drive condition (2/04)

All existing trail roads on and adjacent to the sale area must be passable by two-wheel drive traffic for the duration of the sale.

#### **5 - Operations**

##### 5.1 - Notification

###### 5.1.1 - Pre-sale conference (10/16)

A pre-sale conference on site between the Purchaser and sale administrator is required prior to beginning any operations to determine landing and road locations.

###### 5.1.4 - Post-sale conference (10/16)

A post-sale conference on site between the Purchaser and sale administrator is required 5 days prior to the completion of active logging operations to determine clean-up and repair of landings, road edges, and the fulfillment of other contract specifications.

## 5.2 - Conduct of Operations

### 5.2.1 - Slash

#### 5.2.1.1 - Slash within sale area (9/16)

No trees are to be felled outside the sale area and all slash is to be kept at least 15 feet back from the blue paint line. If sale boundary lines are along a public road or highway, then slash must be removed 50' from these lines per General Condition & Requirement 5.2.1.

#### 5.2.1.8 - Slash height (12/08)

No slash or tree tops may exceed 24 inches in height.

### 5.2.2 - Hazard Trees/Snags

#### 5.2.2.1 - Den trees (10/16)

Obvious hollow and/or den trees shall be protected and left standing unless they are a safety hazard.

### 5.2.3 - Operating Restrictions

#### 5.2.3.3 - Bark slippage restriction (3/09)

Within Payment Unit(s) 4, unless changed by written agreement, cutting and skidding are not permitted during the period of April 15 to July 15. This restriction is because of bark slippage.

#### 5.2.3.4 - Oak wilt restriction, no exceptions (1/18)

Within Payment Unit(s) 1-3, cutting, skidding, hauling within the sale and brushing of access roads to the sale are not permitted during the period of April 15 to July 15. No exceptions will be granted. This is necessary to reduce the spread of oak wilt.

#### 5.2.3.6 - Bark beetle restriction (12/08)

In the event drought creates a high risk of pine bark beetle infestation, pine is not to be cut during the period March 1 through July 1, unless all portions of trees greater than two inches in diameter are removed from the sale area, reduced to chips, or treated to the satisfaction of the Unit Manager or his/her representative, within fifteen days of being severed from the stump. Pine log decks, pulpwood piles and treetops that are piled for chipping in the fall or winter within a 1/4 mile of susceptible sites must be removed before March 15. Residual slash must not be placed in piles or rows and must be spread over the site for quick drying. The Department of Natural Resources will exercise this specification if the risk of damage warrants.

#### 5.2.32 - Decking/landing restoration (9/13)

All decking and landing areas must have the surface area restored to a condition equal to or better than before. This is to ensure the proper regeneration of the stand. Wood debris, chips and "cookies" from trimmings must be removed or scattered away from landing and loading areas and may not be windrowed on the edge. Depth of the debris shall not exceed 6 inches.

#### 5.2.38 - No decking against live trees (2/04)

Cut products may not be decked against unmarked or designated leave trees.

#### 5.2.41 - Snowmobile trail protection (9/11)

The snowmobile trail is shown on the Timber Sale Map. Do not cut or damage posts with orange trail markers or traffic control signs. The snowmobile trail may not be used for any timber sale operations from December 1 to March 31. The snowmobile trail may only be crossed at right angles. Maintain a 20 foot wide slash, debris, and rut free zone daily using the snowmobile trail as the centerline. No decking of forest products will be permitted along the snowmobile trail during the snowmobile season. All stumps within 20 feet of the snowmobile trail must be cut at ground level.

## 5.4 - Soil Protection

### 5.4.1 - Rutting restriction, general (7/16)

Operations are to cease immediately if equipment and weather conditions result in rutting of roads and/or skid trails which is 12 inches or greater in depth and 50 feet in length. The Unit Manager or his/her representative may restrict hauling and/or skidding if ruts exceed the specified depth. With the Unit Manager or his/her representative's approval, the Purchaser may return to the area when the risk of rutting has decreased.

## 6 - Safety and Fire Prevention

## 6.2 - Signing

### 6.2.1 - Road posting (9/09)

The Purchaser is responsible for posting and maintaining caution signs on all county roads prior to beginning operations. The road must be posted at appropriate distances from the sale area to warn of logging activity and truck traffic. Signs must be removed when harvest operations are suspended or completed. The Purchaser will provide these signs.

### 6.2.2 - Snowmobile trail posting (8/09)

The Purchaser is responsible for posting and maintaining caution signs on the snowmobile trail prior to beginning operations during the snowmobile season (approximately December 1 to March 31). The trail must be posted at appropriate distances from the sale area to warn of logging activity and truck traffic. Signs must be removed when harvest operations are suspended or completed. The Purchaser will provide these signs.



# TIMBER SALE MAP

This information provided by authority of Part 525, 1994 PA 451, as amended.

Sale Number	Year
71 - 004	18

Forest Management Unit Roscommon	County Roscommon	Mapped By Bates/Martell	Date 09/30/18	Page 1	of 2
Township 22N	Range 03W	Section(s) and Subdivision(s) Sec. 28 - E1/2NE, NESW; Sec. 30 - SENE; Sec 32 - NENW, N1/2NE	Scale 1:15,840		
		Cruised By Metcalf			

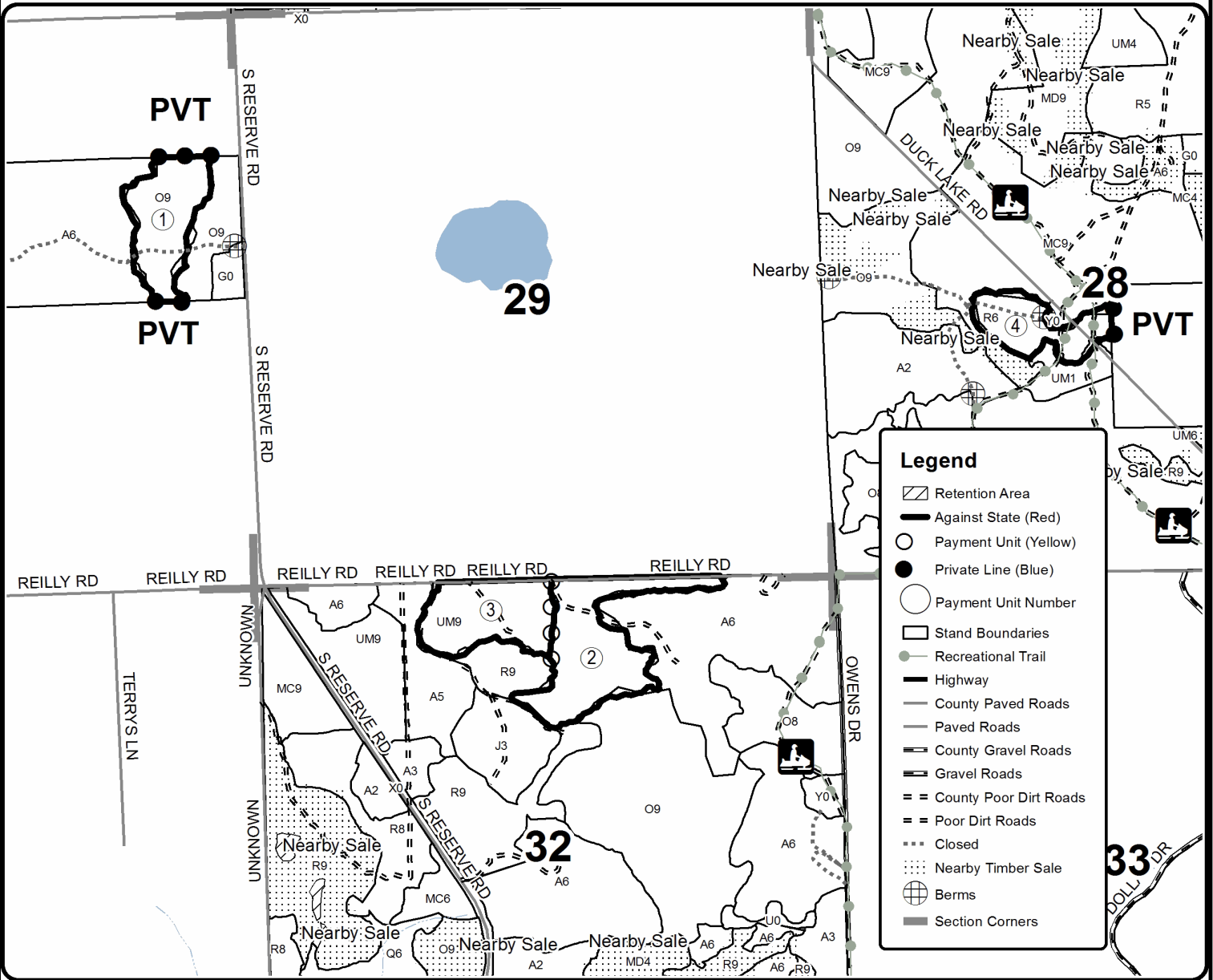
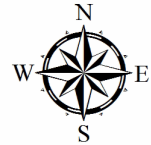
Cover Type				Density	
A = Aspen	H = Hemlock	N = Marsh	U = Upland Brush	0 = Non Stocked	5 = Pole Timber Medium
B = Paper Birch	J = Jack Pine	O = Oak	UM = Upland Mixed	1 = Seedling Sapling Poor	6 = Pole Timber Well
C = Cedar	L = Lowland Brush	P = Lowland Poplar	V = Bog or Marsh	2 = Seedling Sapling Medium	7 = Saw Timber Poor
D = Treed Bog	LM = Lowland Mixed	Q = Mixed Swamp Conifer	W = White Pine	3 = Seedling Sapling Well	8 = Saw Timber Medium
E = Swamp Hdwoods	M = Mpl, Bch, Brch	R = Red Pine	X = Non Stocked	4 = Pole Timber Poor	9 = Saw Timber Well
F = Spruce Fir	MC = Mixed Conifer	S = Black Spruce	Z = Water		
G = Grass	MD = Mixed Deciduous	T = Tamarack			

PU	Acres	PU	Acres
1	15.6	4	11.5
2	23.8	5	4.9
3	16.6		

## Duck Lake Thin

### Compartment 023

72.4 Acres





# TIMBER SALE MAP

This information provided by authority of Part 525, 1994 PA 451, as amended.

Sale Number	Year
71 - 004	18

Forest Management Unit Roscommon	County Roscommon	Mapped By Bates/Martell	Date 09/30/18	Page 2	of 2
Cruised By Metcalfe					

Township 22N	Range 03W	Section(s) and Subdivision(s) Sec. 28 - E1/2NE, NESW; Sec. 30 - SENE; Sec 32 - NENW, N1/2NE	Scale 1:15,840
-----------------	--------------	--	-------------------

### Cover Type

### Density

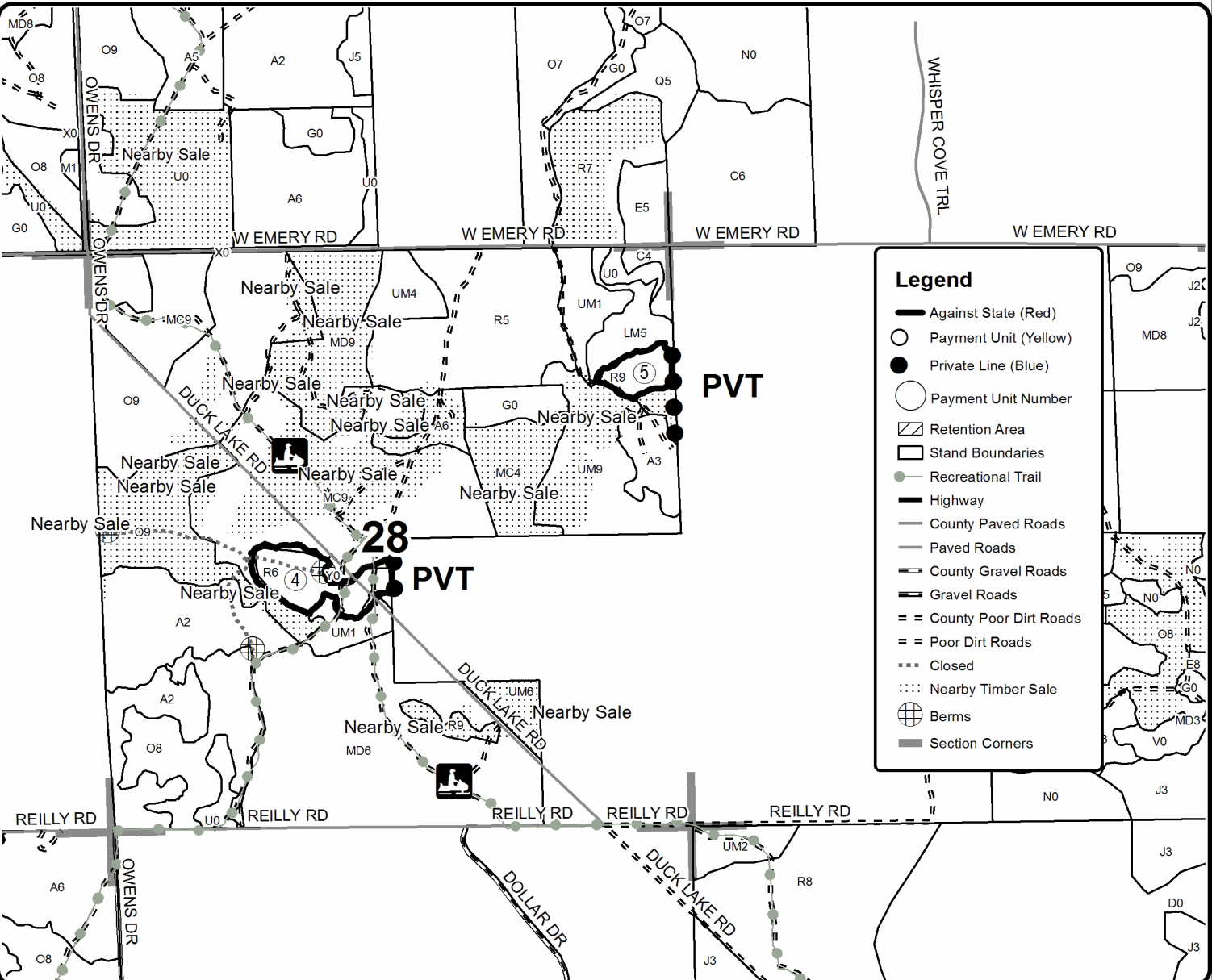
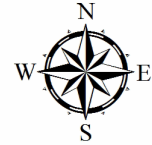
A = Aspen	H = Hemlock	N = Marsh	U = Upland Brush	0 = Non Stocked	5 = Pole Timber Medium
B = Paper Birch	J = Jack Pine	O = Oak	UM = Upland Mixed	1 = Seedling Sapling Poor	6 = Pole Timber Well
C = Cedar	L = Lowland Brush	P = Lowland Poplar	V = Bog or Marsh	2 = Seedling Sapling Medium	7 = Saw Timber Poor
D = Treed Bog	LM = Lowland Mixed	Q = Mixed Swamp Conifer	W = White Pine	3 = Seedling Sapling Well	8 = Saw Timber Medium
E = Swamp Hdwoods	M = Mpl, Bch, Brch	R = Red Pine	X = Non Stocked	4 = Pole Timber Poor	9 = Saw Timber Well
F = Spruce Fir	MC = Mixed Conifer	S = Black Spruce	Z = Water		
G = Grass	MD = Mixed Deciduous	T = Tamarack			

PU	Acres	PU	Acres
1	15.6	4	11.5
2	23.8	5	4.9
3	16.6		

## Duck Lake Thin

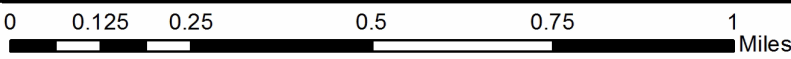
### Compartment 023

### 72.4 Acres



### Legend

- Against State (Red)
- Payment Unit (Yellow)
- Private Line (Blue)
- Payment Unit Number
- Retention Area
- Stand Boundaries
- Recreational Trail
- Highway
- County Paved Roads
- Paved Roads
- County Gravel Roads
- Gravel Roads
- County Poor Dirt Roads
- Poor Dirt Roads
- Closed
- Nearby Timber Sale
- Berms
- Section Corners





**TIMBER SALE INFORMATION**

202 Harvest (71-020-18)

T21N, R02E, SEC. 15; T21N, R02E, SEC. 22; T21N, R02E, SEC. 32.  
Ogemaw County (Advertised Price \$117,821.15)

A timber sale contract for this lump sum, sealed bid timber sale will be awarded to the responsible bidder offering the highest sealed bid price. Bids must be at or above the following advertised price for each species:

<u>PRODUCTS &amp; SPECIES</u>	<u>ESTIMATED UNITS*</u>	<u>ADVERTISED PRICE</u>
<b>Sawtimber</b>		
B. T. Aspen	179.80 MBF	\$ 56.00 / MBF
Red Maple	19.60 MBF	\$ 61.00 / MBF
Red Pine	20.80 MBF	\$ 107.00 / MBF
White Pine	19.70 MBF	\$ 56.00 / MBF
<b>Pulpwood</b>		
B. T. Aspen	3,313.00 Cords	\$ 27.75 / Cord
Jack Pine	59.00 Cords	\$ 16.10 / Cord
Mixed Hardwood	19.00 Cords	\$ 20.05 / Cord
Red Maple	171.00 Cords	\$ 20.05 / Cord
Red Pine	84.00 Cords	\$ 40.25 / Cord
White Pine	153.00 Cords	\$ 20.60 / Cord

\* The total volume is statistically estimated within plus (+) or minus (-) 8.79 percent. The estimated units are final and not subject to adjustment. Prospective bidders are urged to examine this timber and to make their own estimates of quantity and quality.

**BOND AND PAYMENT SCHEDULE:**

1. A bond in the amount of \$5,891.00 to insure faithful performance of the conditions of the contract will be deposited by the successful bidder within 21 days of the sale award.
2. Cutting in any sale or unit without the required advance payment would be considered a trespass.
3. Total payment must be paid in advance or according to the following schedule:
  - (a) Ten percent (10%) of the sale value must be paid within 21 days of the sale award.
  - (b) The 10% down payment will be credited towards the first unit cut.
  - (c) Payment for each of the following units must be made before cutting begins in that unit:

<u>PAYMENT UNIT NUMBER</u>	<u>PERCENT OF TOTAL SALE VALUE</u>
01	1.4%
02	7.4%
03	29.5%
04	32.4%
05	29.0%
06	0.3%

4. If no cutting takes place, the 10% down payment will not be refunded.
5. Operations on the contract issued will terminate on 03/31/2021.

**Description of Timber by Payment Unit (PU)**

PU	MARKET GROUP	PRODUCT	QUANTITY	UNIT	ACRES	ADVERTISE PRICE
1	Red Pine	Sawtimber	7.2	MBF	14.5	\$1,672.95
	Jack Pine	Pulpwood	21.0	Cords		
	Red Pine		13.0	Cords		
	<i>Red Pine</i>		12.0	<i>Cords</i>		
	<i>Scotch Pine</i>		1.0	<i>Cords</i>		
	White Pine		2.0	Cords		
	2	White Pine	Sawtimber	9.8		
B. T. Aspen	Pulpwood	258.0	Cords			
White Pine		47.0	Cords			
3	B. T. Aspen	Sawtimber	101.3	MBF	26.9	\$34,715.15
	White Pine		5.6	MBF		
	B. T. Aspen	Pulpwood	930.0	Cords		
	Jack Pine		24.0	Cords		
	Red Maple		20.0	Cords		
	Red Pine		9.0	Cords		
	<i>Red Pine</i>		9.0	<i>Cords</i>		
	White Pine		86.0	Cords		
	4	B. T. Aspen	Sawtimber	38.2		
Red Maple			17.9	MBF		
Red Pine			13.6	MBF		
B. T. Aspen		Pulpwood	1,051.0	Cords		
Mixed Hardwood			7.0	Cords		
<i>Paper Birch</i>			7.0	<i>Cords</i>		
Red Maple			93.0	Cords		
Red Pine			59.0	Cords		
<i>Red Pine</i>			59.0	<i>Cords</i>		
5		B. T. Aspen	Sawtimber	40.3	MBF	33.6
	Red Maple		1.7	MBF		
	White Pine		4.3	MBF		
	B. T. Aspen	Pulpwood	1,074.0	Cords		
	Mixed Hardwood		12.0	Cords		
	<i>Black Cherry</i>		6.0	<i>Cords</i>		
	<i>Paper Birch</i>		6.0	<i>Cords</i>		
	Red Maple		58.0	Cords		
	White Pine		18.0	Cords		
	6	Jack Pine	Pulpwood	14.0	Cords	
Red Pine			3.0	Cords		
<i>Scotch Pine</i>			3.0	<i>Cords</i>		
TOTAL:			239.9	MBF		
TOTAL:			3,799.0	Cords		



## Sale Specific Conditions & Requirements

**Sale Name: 202 Harvest**

**Sale Number: 71-020-18 Seq#: 1**

### 1 - Sale Area

#### 1.2 - Boundaries

##### 1.2.1 - Painted boundaries (1/14)

The sale boundary and Payment Unit boundaries are marked and identified by blue, red and yellow paint. Exterior sale boundary lines against private property are marked with blue paint. Exterior sale boundary lines against state are marked with red paint. Interior Payment Unit boundaries are marked with yellow paint. The painted boundary line trees are not Included Timber and are to be protected. Yellow painted trees designating an interior Payment Unit boundary are only to be cut when all surrounding Payment Units have been paid.

### 2 - Timber Specifications

#### 2.1 - Included Timber

##### 2.1.1 - Clearcut unit(s) with unmerchantable trees (6/14)

Within Payment Unit(s) 1 - 6, cut all trees that are 2 inches or more at DBH, except do not cut any ash or oak. In addition, do not cut any white pine trees greater than or equal to 20 inches at DBH.

##### 2.1.11 - Description of timber note (2/04)

Note that Mixed hardwood pulpwood includes black cherry and white birch.

#### 2.2 - Utilization

##### 2.2.3 - Stump heights (4/07)

Stump heights within the Sale Area shall not exceed 12 inches for trees greater than 10 inches DBH and 4 inches for trees smaller than 10 inches DBH.

### 3 - Payments

#### 3.3 - Pre-measured Sales

##### 3.3.4 - Dividing payment units (7/14)

Payment Unit(s) 3 - 5 may be divided at the request of the Purchaser and upon approval of the Unit Manager. Dividing Payment Units is a contract modification which requires a Timber Sale Contract Supplement.

#### 3.4 - Damaged Timber

##### 3.4.1 - Damaged timber (6/14)

General Condition and Requirement 3.4 Damaged Timber, defines liquidated damages for undesignated live merchantable trees which are cut or injured.

No damage is acceptable to merchantable trees. Within the sale area, if more than 5% of residual trees (> 4.5" DBH) within a specified area of the sale are damaged, liquidated damages will be assessed for all trees damaged. Rates will be in accordance with General Condition and Requirement 3.4 Damaged Timber.

#### 3.6 - Payment Unit Cutting Schedule

##### 3.6.2 - One active unit (12/08)

Each Payment Unit must be completed to the satisfaction of the Unit Manager or his/her representative before the next unit may be opened.

### 4 - Transportation

#### 4.1 - Construction

##### 4.1.6 - Road construction (1/09)

Construction of new roads or improvements of existing roads shall be done in such a way as to minimize the environmental

and visual impacts. Merchantable trees shall be cut and utilized unless otherwise directed. Non-merchantable trees shall be severed and laid flat on the ground. Slash shall be scattered, and not left in windrows and kept a minimum of 10 feet back from the road edge. Stumps shall be set upright, not left on edge, and be moved at least 10 feet away from the road edge. Disturbed soil shall be feathered into the woods and not left in berms or windrows.

#### 4.1.7 - Road closure (10/11)

All new roads built into the sale must be blocked to vehicle traffic upon completion of the sale. Overgrown roads that are reopened shall be considered new roads. Some existing roads may also need to be closed, see the timber sale administrator for locations. In general, this will require constructing a four (4') foot high berm of stumps and logs covered with earth. Stumps and brush must be placed along the remainder of the trail. These roads must be rendered impassable to cars and trucks. Contact the sale administrator for specific details of design and placement.

### 4.2 - Maintenance

#### 4.2.1 - Hauling restriction (12/08)

Hauling may be restricted on forest roads by the Unit Manager or his/her representative. The restriction may occur during spring breakup or during wet weather conditions.

#### 4.2.3 - Road maintenance (8/13)

The following road maintenance may be needed: Within 60 days of completion of hauling, or if no hauling occurs for 60 days, forest roads must be maintained and graded. This includes cleaning of drainage areas, grading, crowning and filling with gravel, if necessary. Damages will be assessed if grading/repair does not occur.

## 5 - Operations

### 5.2 - Conduct of Operations

#### 5.2.1 - Slash

##### 5.2.1.8 - Slash height (12/08)

No slash or tree tops may exceed 24 inches in height.

##### 5.2.1.11 - Slash for reforestation (5/07)

To facilitate reforestation, Payment Unit 1 shall be left with slash evenly distributed. Bunched tops within the cutting area shall be broken up and scattered. Stumps shall be cut low to the ground. Processing sites shall not be left with a compacted layer of slash; tops from these sites shall be hauled back into the cut area and scattered.

#### 5.2.2 - Hazard Trees/Snags

##### 5.2.2.1 - Den trees (10/16)

Obvious hollow and/or den trees shall be protected and left standing unless they are a safety hazard.

#### 5.2.3 - Operating Restrictions

##### 5.2.3.11 - Coppice regeneration protection (4/10)

In Payment Units 4 - 6, to promote aspen regeneration and reduce the potential for rutting, harvesting is limited to dry or frozen ground from September 1 through March 31. Timber harvesting in any Payment Unit must be completed before significant aspen sprouting occurs in that Payment Unit so as to minimize damage to the new regeneration. Any post harvest operations, such as chipping, must be completed before sprouting of regeneration occurs. If it is anticipated that chipping will be delayed, then tops shall be carried to one central location or left unchipped. The Unit Manager or his/her representative may cease such operations if sprouting occurs before the operation is complete.

#### 5.2.4 - Dead and Down Creation

##### 5.2.4.3 - Dead and down creation, dead trees (6/07)

Except as provided for in General Condition and Requirement 5.2.2, no dead trees, standing or down, are to be cut, skidded, or processed.

##### 5.2.4.4 - Dead and down creation, grouse (4/18)

To encourage grouse and other wildlife, in Payment Unit(s) 2 - 5, leave one, 8" diameter or larger log-length (8 foot minimum) piece on the ground for every 2 acres. These trees will be evenly scattered throughout the unit, preferably at least two chains from any roads, two-tracks, or trails open to vehicles. This can be an unmerchantable piece or a full

tree. Each log must be clearly identified by a piece of blue flagging.

#### 5.2.29 - Shrub protection (9/07)

Do not cut or damage hawthorn, witch-hazel, dogwood or juneberry. These woody-shrub plants are highly beneficial to various wildlife species.

#### 5.2.32 - Decking/landing restoration (9/13)

All decking and landing areas must have the surface area restored to a condition equal to or better than before. This is to ensure the proper regeneration of the stand. Wood debris, chips and "cookies" from trimmings must be removed or scattered away from landing and loading areas and may not be windrowed on the edge.

#### 5.2.38 - No decking against live trees (2/04)

Cut products may not be decked against unmarked or designated leave trees.

### 5.4 - Soil Protection

#### 5.4.1 - Rutting restriction, general (7/16)

Operations are to cease immediately if equipment and weather conditions result in rutting of roads and/or skid trails which is 12 inches or greater in depth and 50 feet in length. The Unit Manager or his/her representative may restrict hauling and/or skidding if ruts exceed the specified depth. With the Unit Manager or his/her representative's approval, the Purchaser may return to the area when the risk of rutting has decreased.

#### 5.4.3 - Erosion control (12/08)

Skid trails or haul roads may require erosion control structures or berms per direction of the Unit Manager or his/her representative.



# TIMBER SALE MAP

This information provided by authority of Part 525, 1994 PA 451, as amended.

Forest Management Unit Roscommon FMU		County Ogemaw	Mapped By Nyhoff/Ekdom	Date 05/04/2018	Page 1	of 2
Township 21N	Range 02E	Section(s) and Subdivision(s) 32 - E1/2NE; NWNE		Scale 1:15,840		
Cruised By Nyhoff						

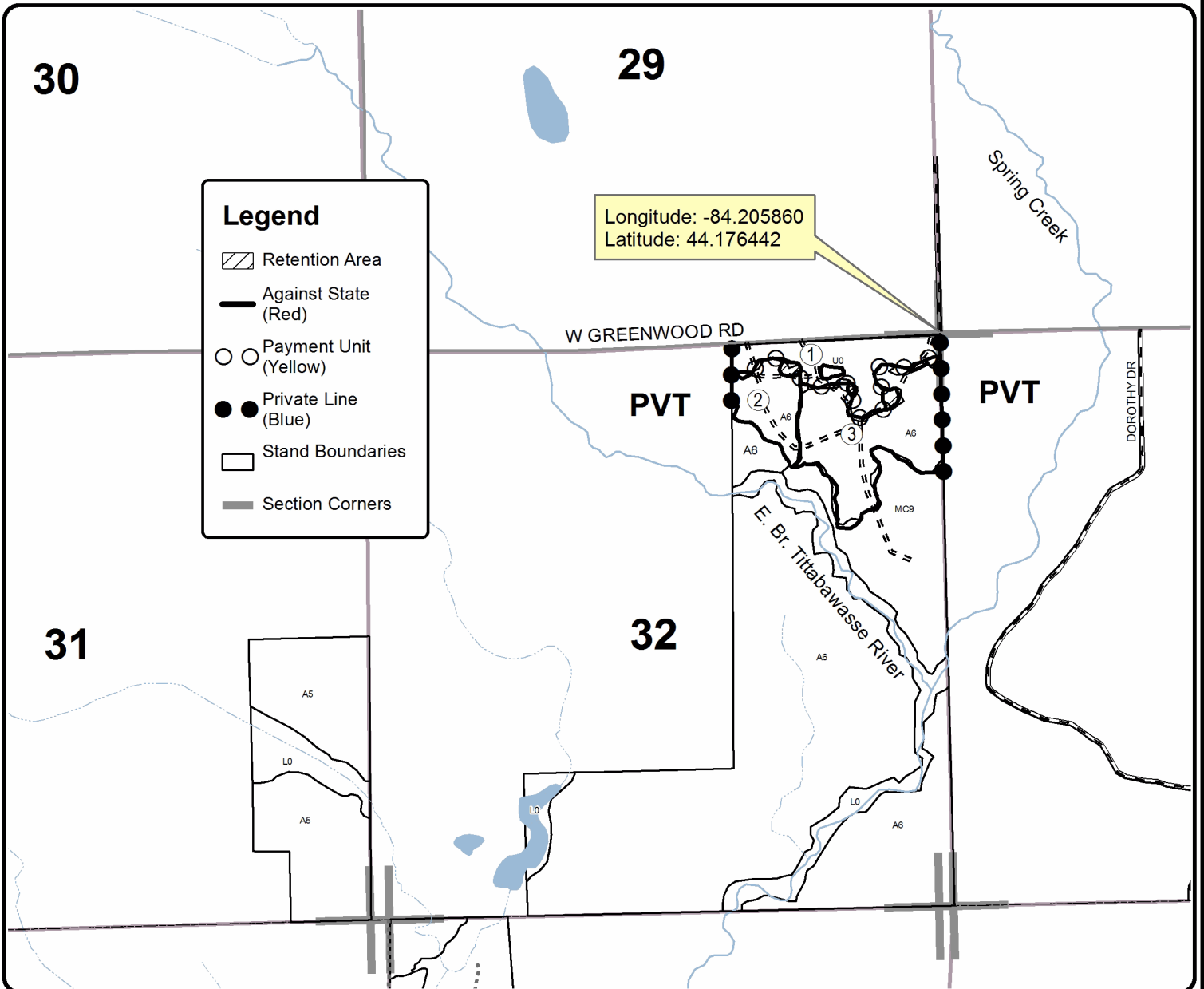
Cover Type				Density	
A = Aspen	H = Hemlock	N = Marsh	U = Upland Brush	0 = Non Stocked	5 = Pole Timber Medium
B = Paper Birch	J = Jack Pine	O = Oak	UM = Upland Mixed	1 = Seedling Sapling Poor	6 = Pole Timber Well
C = Cedar	L = Lowland Brush	P = Lowland Poplar	V = Bog or Marsh	2 = Seedling Sapling Medium	7 = Saw Timber Poor
D = Treed Bog	LM = Lowland Mixed	Q = Mixed Swamp Conifer	W = White Pine	3 = Seedling Sapling Well	8 = Saw Timber Medium
E = Swamp Hdwoods	M = Mpl, Bch, Brch	R = Red Pine	X = Non Stocked	4 = Pole Timber Poor	9 = Saw Timber Well
F = Spruce Fir	MC = Mixed Conifer	S = Black Spruce	Z = Water		
G = Grass	MD = Mixed Deciduous	T = Tamarack			

PU	Acres
1	14.5
2	9
3	26.9

## 202 Harvest

### Compartment 90

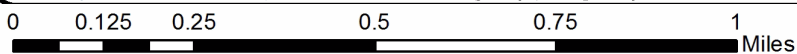
119 Acres



**Legend**

- Retention Area
- Against State (Red)
- Payment Unit (Yellow)
- Private Line (Blue)
- Stand Boundaries
- Section Corners

Longitude: -84.205860  
Latitude: 44.176442





# TIMBER SALE MAP

This information provided by authority of Part 525, 1994 PA 451, as amended.

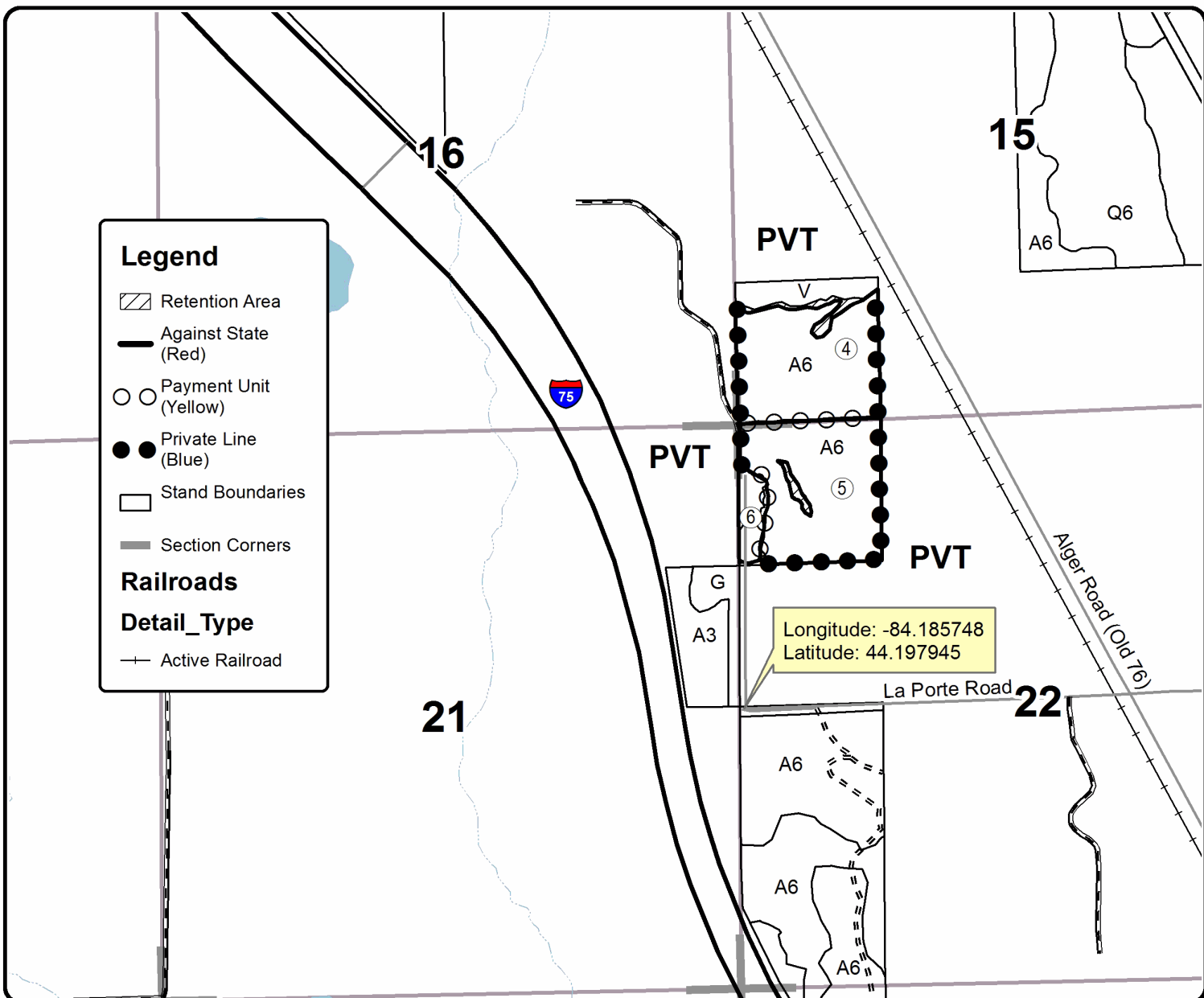
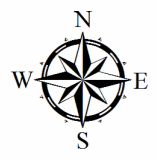
Forest Management Unit Roscommon FMU	County Ogemaw	Mapped By Ekdom/Nyhoff	Date 05/04/2018	Page 2	of 2
Township 21N	Range 02E	Section(s) and Subdivision(s) 15 - SWSW 22 - NWNW	Scale 1:15,840		
Cruised By Nyhoff					

Cover Type				Density	
A = Aspen	H = Hemlock	N = Marsh	U = Upland Brush	0 = Non Stocked	5 = Pole Timber Medium
B = Paper Birch	J = Jack Pine	O = Oak	UM = Upland Mixed	1 = Seedling Sapling Poor	6 = Pole Timber Well
C = Cedar	L = Lowland Brush	P = Lowland Poplar	V = Bog or Marsh	2 = Seedling Sapling Medium	7 = Saw Timber Poor
D = Treed Bog	LM = Lowland Mixed	Q = Mixed Swamp Conifer	W = White Pine	3 = Seedling Sapling Well	8 = Saw Timber Medium
E = Swamp Hdwoods	M = Mpl, Bch, Brch	R = Red Pine	X = Non Stocked	4 = Pole Timber Poor	9 = Saw Timber Well
F = Spruce Fir	MC = Mixed Conifer	S = Black Spruce	Z = Water		
G = Grass	MD = Mixed Deciduous	T = Tamarack			

## 202 Harvest

Compartment 090  
119 Acres

PU	Acres
4	30.6
5	33.6
6	4.4

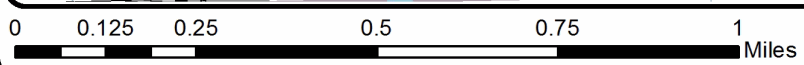


**Legend**

- Retention Area
- Against State (Red)
- Payment Unit (Yellow)
- Private Line (Blue)
- Stand Boundaries
- Section Corners

**Railroads**

- Detail\_Type
- Active Railroad





202 Harvest (71-020-18)

T21N, R02E, SEC. 15; T21N, R02E, SEC. 22; T21N, R02E, SEC. 32; Ogemaw

In response to the notice of sale to be held 2:00 p.m. (local time) on February 12, 2019, I am hereby submitting my sealed bid (firm offer) for the following forest products to be cut. Bids for individual species must be at or above the advertised price. All non-responsive bid forms may be rejected.

<u>PRODUCTS &amp; SPECIES</u>	<u>ESTIMATED VOLUME*</u>	<u>ADVERTISED PRICE</u>	<u>BID PRICE/UNIT</u>
<b>Sawtimber</b>			
B. T. Aspen	179.80 MBF	\$ 56.00/MBF	\$ _____
Red Maple	19.60 MBF	\$ 61.00/MBF	\$ _____
Red Pine	20.80 MBF	\$ 107.00/MBF	\$ _____
White Pine	19.70 MBF	\$ 56.00/MBF	\$ _____
<b>Pulpwood</b>			
B. T. Aspen	3,313.00 Cords	\$ 27.75/Cord	\$ _____
Jack Pine	59.00 Cords	\$ 16.10/Cord	\$ _____
Mixed Hardwood	19.00 Cords	\$ 20.05/Cord	\$ _____
Red Maple	171.00 Cords	\$ 20.05/Cord	\$ _____
Red Pine	84.00 Cords	\$ 40.25/Cord	\$ _____
White Pine	153.00 Cords	\$ 20.60/Cord	\$ _____

\*The volumes are statistically estimated within plus (+) or minus (-) 8.79 percent. These estimated volumes are final and not subject to adjustment. Prospective bidders are urged to examine this timber and to make their own estimates of quantity and quality.

I understand that any or all bids may be rejected. All bids must be signed and all bid items must be bid or the bid form may be rejected. I also understand that consideration and awarding a contract will be based upon my past performance and ability to complete the contract based upon equipment and staffing subject to my control.

FEDERAL ID: \_\_\_\_\_ or SOCIAL SECURITY NUMBER: \_\_\_\_\_

Company or individual bidding: \_\_\_\_\_

Company representative's name: \_\_\_\_\_

Address: \_\_\_\_\_

City: \_\_\_\_\_ State: \_\_\_\_\_ Zip: \_\_\_\_\_

IF AVAILABLE, PLEASE PLACE THE PERSONALIZED LABEL FROM YOUR PROSPECTUS IN THE ABOVE BOX.

Individual or company representative's signature: \_\_\_\_\_ Date: \_\_\_\_\_

Phone number : \_\_\_\_\_ Email (optional): \_\_\_\_\_

**THE WINNING BIDDER MUST COMPLETE THE VERIFICATION OF WORKER'S DISABILITY COMPENSATION ACT COMPLIANCE (ON REVERSE SIDE IF DOUBLE SIDED) WITHIN 21 DAYS OF SALE AWARD DATE**



<b>FOR DEPARTMENT USE ONLY</b>	
Sale Number (XX - XXX - XX - XX)	
Forest Management Unit:	

# TIMBER SALE VERIFICATION OF WORKER'S DISABILITY COMPENSATION ACT COMPLIANCE

As required by Act 317, P.A. 1969 (Worker's Compensation) and  
Part 5 of Act 451 of 1994, as amended.

## VERIFICATION OF WORKER'S DISABILITY COMPENSATION ACT COMPLIANCE

- This verification must be completed and submitted within 21 days of contract award and prior to the issuance of the timber sale contract.
- In addition, if boxes 2B or 2C are checked, then Notice of Exclusion or Certificate of Insurance must be submitted within twenty-one (21) days of the contract award and prior to the issuance of the timber sale contract.
- All information must be typed or printed except for written signatures.

Please Check Appropriate Categories:

1. My business is organized as (you **must** check one of the boxes below):
  - A.  Sole Proprietorship (individual)
  - B.  Partnership
  - C.  Corporation
2. You **must** check one of the boxes below:
  - A.  I certify my business is a sole proprietorship and it has no employees but the sole proprietor. I am not subject to the Worker's Compensation Laws.
  - B.  I certify my business has satisfied its obligation to the Worker's Compensation Act through the use of an approved Notice of Exclusion (BWC-337, Rev. 5/96). I will provide a copy of the Notice of Exclusion within 21 days of the contract award. (For questions or a copy of the BWC-337, please call the Worker's Compensation Bureau at 517-322-1195).
  - C.  I certify my business has a Worker's Compensation Policy. I will provide an original Certificate of Insurance within twenty-one (21) days of the contract award.
3. If you have checked item 2(A) or 2(B), you **must** indicate the number of **both** full-time and part-time employees, other than yourself, including family members and active partners (if none, you must enter "0").

\_\_\_\_\_ Full-time Employees

\_\_\_\_\_ Part-time Employees

Name of Business		Federal ID (or) Social Security No.	
Address		Telephone (       )	
City	State	ZIP	

*I hereby certify that the above information is true and correct. I agree to notify the Michigan DNR of any changes that occur in factors affecting my coverage during any of my present and future operations.*

\_\_\_\_\_  
Signature of Owner or Authorized Representative

\_\_\_\_\_  
Title

\_\_\_\_\_  
Date

Please complete the "SEALED BID" information on the next page



Duck Lake Thin (71-004-18)  
T22N, R03W, SEC. 28; T22N, R03W, SEC. 30; T22N, R03W, SEC. 32;

In response to the notice of sale to be held 2:00 p.m. (local time) on February 12, 2019, I am hereby submitting my sealed bid (firm offer) for the following forest products to be cut. Bids for individual species must be at or above the advertised price. All non-responsive bid forms may be rejected.

<u>PRODUCTS &amp; SPECIES</u>	<u>ESTIMATED VOLUME*</u>	<u>ADVERTISED PRICE</u>	<u>BID PRICE/UNIT</u>
<b>Sawtimber</b>			
B. T. Aspen	14.30 MBF	\$ 52.00/MBF	\$ _____
Bl/R/Hybrid Oak	70.50 MBF	\$ 123.00/MBF	\$ _____
Red Oak	36.50 MBF	\$ 264.00/MBF	\$ _____
Red Pine	50.10 MBF	\$ 118.00/MBF	\$ _____
White Oak	8.10 MBF	\$ 77.00/MBF	\$ _____
White Pine	14.10 MBF	\$ 61.00/MBF	\$ _____
<b>Pulpwood</b>			
B. T. Aspen	123.00 Cords	\$ 30.75/Cord	\$ _____
Balsam Fir	9.00 Cords	\$ 16.00/Cord	\$ _____
Jack Pine	10.00 Cords	\$ 17.85/Cord	\$ _____
Misc. Species 1	2.00 Cords	\$ 22.55/Cord	\$ _____
Mixed Oak	242.00 Cords	\$ 17.95/Cord	\$ _____
Quaking Aspen	11.00 Cords	\$ 30.75/Cord	\$ _____
Red Maple	65.00 Cords	\$ 22.20/Cord	\$ _____
Red Pine	249.00 Cords	\$ 44.60/Cord	\$ _____
Scotch Pine	16.00 Cords	\$ 23.75/Cord	\$ _____
White Pine	60.00 Cords	\$ 22.80/Cord	\$ _____
White Spruce	3.00 Cords	\$ 24.80/Cord	\$ _____

\*The volumes are statistically estimated within plus (+) or minus (-) 14.08 percent. These estimated volumes are final and not subject to adjustment. Prospective bidders are urged to examine this timber and to make their own estimates of quantity and quality.

I understand that any or all bids may be rejected. All bids must be signed and all bid items must be bid or the bid form may be rejected. I also understand that consideration and awarding a contract will be based upon my past performance and ability to complete the contract based upon equipment and staffing subject to my control.

FEDERAL ID: \_\_\_\_\_ or SOCIAL SECURITY NUMBER: \_\_\_\_\_

Company or individual bidding: \_\_\_\_\_

Company representative's name: \_\_\_\_\_

Address: \_\_\_\_\_

City: \_\_\_\_\_ State: \_\_\_\_\_ Zip: \_\_\_\_\_

IF AVAILABLE, PLEASE PLACE THE PERSONALIZED LABEL FROM YOUR PROSPECTUS IN THE ABOVE BOX.

Individual or company representative's signature: \_\_\_\_\_ Date: \_\_\_\_\_

Phone number : \_\_\_\_\_ Email (optional): \_\_\_\_\_

**THE WINNING BIDDER MUST COMPLETE THE VERIFICATION OF WORKER'S DISABILITY COMPENSATION ACT COMPLIANCE (ON REVERSE SIDE IF DOUBLE SIDED) WITHIN 21 DAYS OF SALE AWARD DATE**



FOR DEPARTMENT USE ONLY	
Sale Number (XX - XXX - XX - XX)	
Forest Management Unit:	

## TIMBER SALE VERIFICATION OF WORKER'S DISABILITY COMPENSATION ACT COMPLIANCE

As required by Act 317, P.A. 1969 (Worker's Compensation) and  
Part 5 of Act 451 of 1994, as amended.

### VERIFICATION OF WORKER'S DISABILITY COMPENSATION ACT COMPLIANCE

- This verification must be completed and submitted within 21 days of contract award and prior to the issuance of the timber sale contract.
- In addition, if boxes 2B or 2C are checked, then Notice of Exclusion or Certificate of Insurance must be submitted within twenty-one (21) days of the contract award and prior to the issuance of the timber sale contract.
- All information must be typed or printed except for written signatures.

Please Check Appropriate Categories:

1. My business is organized as (you **must** check one of the boxes below):
  - A.  Sole Proprietorship (individual)
  - B.  Partnership
  - C.  Corporation
2. You **must** check one of the boxes below:
  - A.  I certify my business is a sole proprietorship and it has no employees but the sole proprietor. I am not subject to the Worker's Compensation Laws.
  - B.  I certify my business has satisfied its obligation to the Worker's Compensation Act through the use of an approved Notice of Exclusion (BWC-337, Rev. 5/96). I will provide a copy of the Notice of Exclusion within 21 days of the contract award. (For questions or a copy of the BWC-337, please call the Worker's Compensation Bureau at 517-322-1195).
  - C.  I certify my business has a Worker's Compensation Policy. I will provide an original Certificate of Insurance within twenty-one (21) days of the contract award.
3. If you have checked item 2(A) or 2(B), you **must** indicate the number of **both** full-time and part-time employees, other than yourself, including family members and active partners (if none, you must enter "0").

\_\_\_\_\_ Full-time Employees

\_\_\_\_\_ Part-time Employees

Name of Business		Federal ID (or) Social Security No.	
Address		Telephone (       )	
City	State	ZIP	

*I hereby certify that the above information is true and correct. I agree to notify the Michigan DNR of any changes that occur in factors affecting my coverage during any of my present and future operations.*

\_\_\_\_\_  
Signature of Owner or Authorized Representative

\_\_\_\_\_  
Title

\_\_\_\_\_  
Date

Please complete the "SEALED BID" information on the next page

55 and Dunham Breakup (71-007-19)  
T22N, R01W, SEC. 23; T22N, R01W, SEC. 24; Roscommon COUNTY

In response to the notice of sale to be held 2:00 p.m. (local time) on February 12, 2019, I am hereby submitting my sealed bid (firm offer) for the following forest products to be cut. Bids for individual species must be at or above the advertised price. All non-responsive bid forms may be rejected.

<u>PRODUCTS &amp; SPECIES</u>	<u>ESTIMATED VOLUME*</u>	<u>ADVERTISED PRICE</u>	<u>BID PRICE/UNIT</u>
<b>Sawtimber</b>			
B. T. Aspen	113.80 MBF	\$ 64.00/MBF	\$ _____
Northern Pin Oak	71.00 MBF	\$ 128.00/MBF	\$ _____
Red Oak	36.30 MBF	\$ 275.00/MBF	\$ _____
<b>Pulpwood</b>			
Mixed Aspen	1,283.00 Cords	\$ 32.05/Cord	\$ _____
Mixed Hardwood	209.00 Cords	\$ 23.10/Cord	\$ _____
Mixed Oak	640.00 Cords	\$ 18.65/Cord	\$ _____
Red Pine	4.00 Cords	\$ 46.45/Cord	\$ _____
White Pine	4.00 Cords	\$ 23.75/Cord	\$ _____

\*The volumes are statistically estimated within plus (+) or minus (-) 10.38 percent. These estimated volumes are final and not subject to adjustment. Prospective bidders are urged to examine this timber and to make their own estimates of quantity and quality.

I understand that any or all bids may be rejected. All bids must be signed and all bid items must be bid or the bid form may be rejected. I also understand that consideration and awarding a contract will be based upon my past performance and ability to complete the contract based upon equipment and staffing subject to my control.

FEDERAL ID: \_\_\_\_ - \_\_\_\_ - \_\_\_\_ or SOCIAL SECURITY NUMBER: \_\_\_\_ - \_\_\_\_ - \_\_\_\_

Company or individual bidding: \_\_\_\_\_

Company representative's name: \_\_\_\_\_

Address: \_\_\_\_\_

City: \_\_\_\_\_ State: \_\_\_\_\_ Zip: \_\_\_\_\_

IF AVAILABLE, PLEASE PLACE THE PERSONALIZED LABEL FROM YOUR PROSPECTUS IN THE ABOVE BOX.

Individual or company representative's signature: \_\_\_\_\_ Date: \_\_\_\_\_

Phone number : \_\_\_\_\_ Email (optional): \_\_\_\_\_

**THE WINNING BIDDER MUST COMPLETE THE VERIFICATION OF WORKER'S DISABILITY COMPENSATION ACT COMPLIANCE (ON REVERSE SIDE IF DOUBLE SIDED) WITHIN 21 DAYS OF SALE AWARD DATE**



**FOR DEPARTMENT USE ONLY**

Sale Number (XX - XXX - XX - XX)

Forest Management Unit:

**TIMBER SALE  
VERIFICATION OF WORKER'S DISABILITY  
COMPENSATION ACT COMPLIANCE**

*As required by Act 317, P.A. 1969 (Worker's Compensation) and  
Part 5 of Act 451 of 1994, as amended.*

**VERIFICATION OF WORKER'S DISABILITY COMPENSATION ACT COMPLIANCE**

- This verification must be completed and submitted within 21 days of contract award and prior to the issuance of the timber sale contract.
- In addition, if boxes 2B or 2C are checked, then Notice of Exclusion or Certificate of Insurance must be submitted within twenty-one (21) days of the contract award and prior to the issuance of the timber sale contract.
- All information must be typed or printed except for written signatures.

Please Check Appropriate Categories:

1. My business is organized as (you **must** check one of the boxes below):
  - A.  Sole Proprietorship (individual)
  - B.  Partnership
  - C.  Corporation
2. You **must** check one of the boxes below:
  - A.  I certify my business is a sole proprietorship and it has no employees but the sole proprietor. I am not subject to the Worker's Compensation Laws.
  - B.  I certify my business has satisfied its obligation to the Worker's Compensation Act through the use of an approved Notice of Exclusion (BWC-337, Rev. 5/96). I will provide a copy of the Notice of Exclusion within 21 days of the contract award. (For questions or a copy of the BWC-337, please call the Worker's Compensation Bureau at 517-322-1195).
  - C.  I certify my business has a Worker's Compensation Policy. I will provide an original Certificate of Insurance within twenty-one (21) days of the contract award.
3. If you have checked item 2(A) or 2(B), you **must** indicate the number of **both** full-time and part-time employees, other than yourself, including family members and active partners (if none, you must enter "0").

\_\_\_\_\_ Full-time Employees

\_\_\_\_\_ Part-time Employees

Name of Business		Federal ID (or) Social Security No.	
Address		Telephone (       )	
City	State	ZIP	

*I hereby certify that the above information is true and correct. I agree to notify the Michigan DNR of any changes that occur in factors affecting my coverage during any of my present and future operations.*

\_\_\_\_\_  
Signature of Owner or Authorized Representative

\_\_\_\_\_  
Title

\_\_\_\_\_  
Date

**Please complete the "SEALED BID" information on the next page**